

# Comprehensive Global Assessment of 24 Gridded Precipitation Datasets Across 18,428 Catchments Using Hydrological Modeling

Ather Abbas<sup>1</sup>, Yuan Yang<sup>2</sup>, Ming Pan<sup>2</sup>, Yves Trambalay<sup>3</sup>, Chaopeng Shen<sup>4</sup>, Haoyu Ji<sup>4</sup>, Solomon H. Gebrechorkos<sup>5</sup>, Florian Pappenberger<sup>6</sup>, JongCheol Pyo<sup>7</sup>, Dapeng Feng<sup>8</sup>, George Huffman<sup>9</sup>, Phu Nguyen<sup>10</sup>, Christian Massari<sup>11</sup>, Luca Brocca<sup>11</sup>, Jackson Tan<sup>9</sup>, and Hylke E. Beck<sup>1</sup>

<sup>1</sup>Division of Physical Science and Engineering, King Abdullah University of Science and Technology, Thuwal 23955-6900, Saudi Arabia

<sup>2</sup>Center for Western Weather and Water Extremes, Scripps Institution of Oceanography, University of California San Diego, La Jolla, CA, USA

<sup>3</sup>Espace Dev (University Montpellier, IRD), Montpellier, France

<sup>4</sup>Civil and Environmental Engineering, The Pennsylvania State University, PA, USA

<sup>5</sup>School of Geography and the Environment, University of Oxford, Oxford, UK

<sup>6</sup>European Centre for Medium-range Weather Forecasts, Reading/Bonn/Bologna, UK/DE/IT

<sup>7</sup>Department of Environmental Engineering, Pusan National University, Busan, 46241, Republic of Korea

<sup>8</sup>Department of Earth System Science, Stanford University, Stanford, CA 94305, USA

<sup>9</sup>NASA Goddard Space Flight Center, Greenbelt, MD, USA

<sup>10</sup>Center for Hydrometeorology and Remote Sensing (CHRS), Department of Civil and Environmental Engineering, University of California, Irvine, CA 92697, USA

<sup>11</sup>Research Institute for Geo-Hydrological Protection (CNR-IRPI), National Research Council, Perugia, Italy

**Correspondence:** Hylke E. Beck (hylke.beck@kaust.edu.sa)

**Abstract.** Numerous gridded precipitation ( $P$ ) datasets have been developed to address a variety of needs and challenges. However, selecting the most suitable and reliable dataset remains difficult for users. We conducted the most comprehensive global evaluation to date of gridded (sub-)daily  $P$  datasets using hydrological modeling. A total of 24 datasets — derived from satellite, (re)analysis, gauge sources, or combinations thereof — were assessed. To evaluate their performance, we calibrated the conceptual hydrological model HBV against observed daily streamflow for 18,428 catchments (each  $< 10,000 \text{ km}^2$ ) world-wide, using each  $P$  dataset as input. The Kling-Gupta Efficiency (KGE) was used as performance metric, with the calibration score serving as proxy for  $P$  dataset performance. Overall, Multi-Source Weighted-Ensemble Precipitation (MSWEP) V2.8 demonstrated the highest performance (median KGE of 0.78), highlighting the value of merging  $P$  estimates from diverse data sources and applying daily gauge corrections. Among the purely satellite-based  $P$  datasets, the soil moisture- and microwave-based Global Precipitation Mission plus Soil Moisture to RAIN (GPM+SM2RAIN) dataset performed best (median KGE of 0.64). The Global Data Assimilation System (GDAS) analysis ranked highest among the (re)analyses (median KGE of 0.72), slightly outperforming the widely used European Centre for Medium-range Weather Forecasts ReAnalysis 5 (ERA5; median KGE of 0.71). Performance varied across Köppen-Geiger climate zones, with the highest scores in polar (E) regions (median KGE of 0.76 across datasets) and the lowest in arid (B) regions (median KGE of 0.53 across datasets). Spatial correlation analysis between catchment attributes and KGE scores identified potential evaporation, air temperature, solid  $P$  fraction, and latitude as the strongest predictors of performance. Our assessment revealed significant regional differences in dataset per-

formance and error characteristics, emphasizing the importance of careful dataset selection for water resource management, hazard assessment, agricultural planning, and environmental monitoring.

## 1 Introduction

20 Understanding the spatio-temporal distribution of precipitation ( $P$ ) is crucial for a wide range of applications, including water  
resources assessment, flood forecasting, agricultural monitoring, and disease tracking (Dresel et al., 2018; Liang and Gornish,  
2019; McKinnon and Deser, 2021; Hinge et al., 2022; Dimitrova et al., 2022). However,  $P$  exhibits high variability across  
space and time, making it difficult to estimate, particularly in regions with complex topography, convection-driven  $P$ , or snow-  
dominated climates (Herold et al., 2016; Prein and Gobiet, 2017; Sharma et al., 2020b; Li et al., 2020; Tarek et al., 2021).  
25  $P$  estimates can be derived from satellites, models, and rain gauges, but each data source is subject to limitations. Satellite  
retrievals are hindered by surface snow and ice contamination (Cao et al., 2018; Chen et al., 2020), struggle to capture shallow  
orographic  $P$  (Yamamoto et al., 2017; Adhikari and Behrangi, 2022), and face challenges in detecting snowfall (You et al.,  
2021; Jääskeläinen et al., 2024; Girotto et al., 2024b). Reanalyses (e.g., European Centre for Medium-range Weather Forecasts  
ReAnalysis 5 — ERA5; Hersbach et al., 2020) rely on uncertain parameterizations and often lack sufficient spatial resolution  
30 to adequately capture orographic effects (Skamarock, 2004; Ménégos et al., 2013; Liu et al., 2018). Rain gauge networks  
are sparse and biased towards lower elevations (Schneider et al., 2014; Kidd et al., 2017; Ehsani and Behrangi, 2022) and  
gauges can severely underestimate snowfall due to wind-induced under-catch (Groisman and Legates, 1994; Sevruk et al.,  
2009; Rasmussen et al., 2012; Girotto et al., 2024a).

In recent decades, numerous gridded  $P$  datasets have been developed based on these data sources and combinations thereof.  
35 Each dataset has a different design objectives, spatio-temporal resolution, coverage, algorithms, and latency (see Table 1 for  
an overview of quasi- and fully-global datasets). A plethora of studies have evaluated these datasets (see, e.g., reviews by  
Gebremichael, 2010, Maggioni et al., 2016, and Sun et al., 2018). However, the large majority of these studies use rain gauge  
observations as reference, which has limitations: (i) rain gauge observations are unavailable in many regions (Kidd et al., 2017);  
(ii) differences in scale between point-based rain gauges and grid-based  $P$  datasets (Ensor and Robeson, 2008; Yates et al.,  
40 2006) can skew results; (iii) time discrepancies between daily accumulations of gauges and satellite and (re)analysis datasets  
(Yang et al., 2020a; Beck et al., 2019b) can yield misleading daily evaluation results; (iv) the systematic  $P$  underestimation by  
rain gauges in snow-dominated and mountainous regions (Groisman and Legates, 1994; Sevruk et al., 2009; Rasmussen et al.,  
2012) can unfairly penalize  $P$  datasets in these regions; and (iv) using rain gauges already incorporated into the  $P$  datasets for  
validation results in misleading conclusions.

45 An alternative approach to evaluate  $P$  datasets is to use hydrological modeling, wherein streamflow simulations driven by  
different  $P$  datasets are compared to streamflow observations. The degree of correspondence between simulated and observed  
streamflow serves as a proxy for how accurately the  $P$  dataset captures the intensity and timing of  $P$  events. This approach  
avoids the aforementioned limitations by providing a direct, real-world measure of performance that reflects the dataset's ability  
to capture  $P$  dynamics in a hydrological context (Camici et al., 2018). Several studies have successfully employed this approach

50 to evaluate various  $P$  datasets (e.g., Voisin et al., 2008; Su et al., 2008; Bitew et al., 2012; Tang et al., 2016; Beck et al., 2017c; Lussana et al., 2018; Mazzoleni et al., 2019; Pradhan and Indu, 2021; Xiang et al., 2021; Gu et al., 2023; Gebrechorkos et al., 2023). However, many studies are limited in scope by (i) focusing on specific regions or subcontinents, or using streamflow data from relatively few catchments, thus restricting the generalizability of their findings; (ii) analyzing only a small subset of available  $P$  datasets, often excluding (re)analysis-based datasets; (iii) focusing on a monthly rather than daily time scale, which  
55 can obscure important short-term variability, such as extreme rainfall events or floods. Additionally, several studies failed to re-calibrate the hydrological model for each  $P$  dataset, including the recent global assessment by Gebrechorkos et al. (2023), which could result in biased conclusions.

In this study, we present the most comprehensive evaluation to date of gridded (sub-)daily (quasi-)global  $P$  datasets, aiming to identify their strengths and limitations across diverse geographical and climatological settings, and to inform their suitability for hydrological applications. We leverage an unparalleled database of streamflow observations from 18,428 catchments worldwide, spanning all climate zones and latitudes, to ensure broad generalizability of our results. Moreover, we evaluate an extensive collection of 24  $P$  datasets, including new datasets like the microwave-based IMERG V7 (Huffman et al., 2019b), the infrared-based PDIR-Now (Nguyen et al., 2020), and the reanalysis JRA-3Q (Kosaka et al., 2024), all three of which have not been comprehensively assessed at the global scale yet. To provide a fair and balanced assessment, we re-calibrate the  
60 hydrological model for each  $P$  dataset.

## 2 Data and Methods

### 2.1 Gridded $P$ Datasets

Table 1 lists the 24 gridded  $P$  datasets included in our assessment. These datasets were selected based on their global or quasi-global coverage, widespread use in hydrological applications, and availability of daily or sub-daily data. Regional datasets, while valuable, were excluded to maintain consistency across diverse geographic areas (e.g., Asian Precipitation - Highly-Resolved Observational Data Integration Towards Evaluation — APHRODITE, Yatagai et al., 2012, and North American Land Data Assimilation System — NLDAS, Xia et al., 2012). The selected datasets are tailored for specific purposes: some, like IMERG-Early V7 and PDIR-Now, are designed for short-latency applications such as near-real-time monitoring heavy  $P$  events, while others with longer latency, such as CHIRPS V2.0 and IMERG-Final V7, are more suitable for comprehensive,  
75 long-term climate and hydrological analyses.

The 24  $P$  datasets are grouped into six categories based on their input data sources (see Table 1 for full dataset names and references): (i) Satellite-only (S): IMERG-Early V7, IMERG-Late V6, IMERG-Late V7, PERSIANN-CCS, PDIR-Now, GSMaP-std V7, GSMaP-std V8, SM2RAIN-ASCAT, SM2RAIN-CCI, GPM+SM2RAIN, CMORPH-CDR, and CMORPH-RT; (ii) Reanalysis- or Analysis-only (R/A): ERA5, GDAS, and JRA-3Q; (iii) Gauge-only (G): CPC Unified, REGEN V1; (iv) Satellite and Gauge (S+G): IMERG-Final V7, GPCP V3.2, and PERSIANN-CCS-CDR; (v) Satellite, Reanalysis, and Gauge (S+R+G): CHIRPS V2.0, MSWEP V2.8; and (vi) Satellite and Reanalysis (S+R): CHIRP, MSWEP-ng V2.8. Version numbers are consistently indicated throughout the manuscript to ensure transparency and reproducibility.  
80

Table 1: Overview of the (sub-)daily (quasi-)global gridded  $P$  datasets evaluated in this study. Definition of abbreviations: S=satellite, G=gauge, R=Reanalysis, A=Analysis, and NRT=near real time.

Data	Full Name	Data Source	Temporal Res.	Spatial. Res.	Spatial Cov.	Temp. Cov.	Time Latency	Reference
CHIRP	Climate Hazards group Infrared Precipitation	S,R	Daily	0.05°	Land, 50° N/S	1981–	6 days	Funk et al. (2015)
CHIRPS V2.0	Climate Hazards group Infrared Precipitation with Stations	S,G,R	Daily	0.05°	Land, 50° N/S	1981–	2 weeks	Funk et al. (2015)
CMORPH-CDR	Climate Prediction Center MORPHing technique Climate Data Record	S	30 min.	8 km	60° N/S	1998 - NRT	4 hours	Xie et al. (2019)
CMORPH-RT	Climate Prediction Center MORPHing technique - Real Time	S	30 min.	8 km	60° N/S	2019 - NRT	4 hours	Xie et al. (2017)
CPC Unified ERA5	Climate Prediction Center Unified European Centre for Medium-range Weather Forecasts ReAnalysis	G R	Daily Hourly	0.5° 0.25°	Land Global	1979–NRT 1940–	1 day 6 days	Chen et al. (2008) Hersbach et al. (2020)
GDAS GPCP V3.2	Global Data Assimilation System Global Precipitation Climatology Project	A S, G	Hourly daily	0.25° 0.5°	Global Global	2021–NRT 2000–	3-6 hours 2 weeks	NCEP (2024) Huffman et al. (2023)
IMERG-Final V7	Integrated Multi-satellite Retrievals for Global Precipitation Mission	S, G	30 min.	0.1°	Global	2000–	3 months	Huffman et al. (2019a)
IMERG-Late V7	Integrated Multi-satellite Retrievals for Global Precipitation Mission	S	30 min.	0.1°	Global	2000–NRT	12 hours	Huffman et al. (2019a)
IMERG-Late V6	Integrated Multi-satellite Retrievals for Global Precipitation Mission	S	30 min.	0.1°	60° N/S	2000–2024	12 hours	Huffman et al. (2019a)
IMERG-Early V7	Integrated Multi-satellite Retrievals for Global Precipitation Mission	S	30 min.	0.1°	60° N/S	2000 - NRT	4 hours	Huffman et al. (2019a)
GSMaP-std V7	Global Satellite Mapping of Precipitation Standard	S	Hourly	0.1°	60° N/S	2000–	3 days	Kubota et al. (2020)
GSMaP-std V8	Global Satellite Mapping of Precipitation Standard	S	Hourly	0.1°	60° N/S	2000–	3 days	Kubota et al. (2024)
JRA-3Q	Japanese Reanalysis for Three Quarters of a Century	R	3-hourly	~40 km	Global	1947–	20 days	Kosaka et al. (2024)
MSWEP V2.8	Multi-Source Weighted-Ensemble Precipitation	S,G,R	3-hourly	0.1°	Global	1979–NRT	3 hours	Beck et al. (2019b)
MSWEP-V2.8	MSWEP no gauge	S,R	Hourly	0.1°	Global	1979–NRT	3 hours	Beck et al. (2019b)
PERSIANN-CCS	Precipitation Estimation from Remotely Sensed Information using Artificial Neural Networks (PERSIANN) Cloud Classification System (CCS)	S	Hourly	0.04°	60° N/S	2003–NRT	90 minutes	Hong et al. (2004)
PERSIANN-CCS-CDR	Precipitation Estimation from Remotely Sensed Information using Artificial Neural Networks (PERSIANN) Cloud Classification System from Climate Data Record	S,G	3-hourly	0.04°	60° N/S	1983–2021	/	Satoghi et al. (2021)
PDIR-Now	Precipitation Estimation from Remotely Sensed Information using Artificial Neural Networks (PERSIANN) Dynamic Infrared–Rain Rate	S	Hourly	0.04°	60° N/S	2000–NRT	100 minutes	Nguyen et al. (2020)
REGEN V1	Rainfall Estimates on a Gridded Network	G	Daily	1°	Global	1950–2016	/	Contractor et al. (2020)
SM2RAIN-ASCAT	P inferred from Advanced Scatterometer (ASCAT) satellite	S	Daily	0.1°	60° N/S	2007–2021	/	Brocca et al. (2019)
SM2RAIN-CCI	Soil Moisture to RAIN Derived from European Space Agency Climate Change Initiative	S	Daily	0.25°	Global	1998–2015	/	Ciabatta et al. (2018)
GPM + SM2RAIN	Global Precipitation Mission plus Soil Moisture to RAIN	S	Daily	0.25°	Global	2007–2018	/	Massari et al. (2020)

## 2.2 Streamflow Observations and Catchment Selection

85 We utilized a comprehensive global database of daily streamflow observations and catchment boundaries compiled from 29 national and international datasets. Appendix A provides a detailed list of the data sources, along with corresponding references or websites. Initially, the database contained 43,627 stations. However, as many stations appeared in multiple data sources, we performed a duplication check and discarded stations where both the station location and the corresponding catchment centroid were within 5 km of those of another station. In case of duplication, regional data sources were prioritized over international ones (e.g., CAMELS datasets were preferred over GRDC). After this process, the number of unique stations was reduced to 90 35,254.

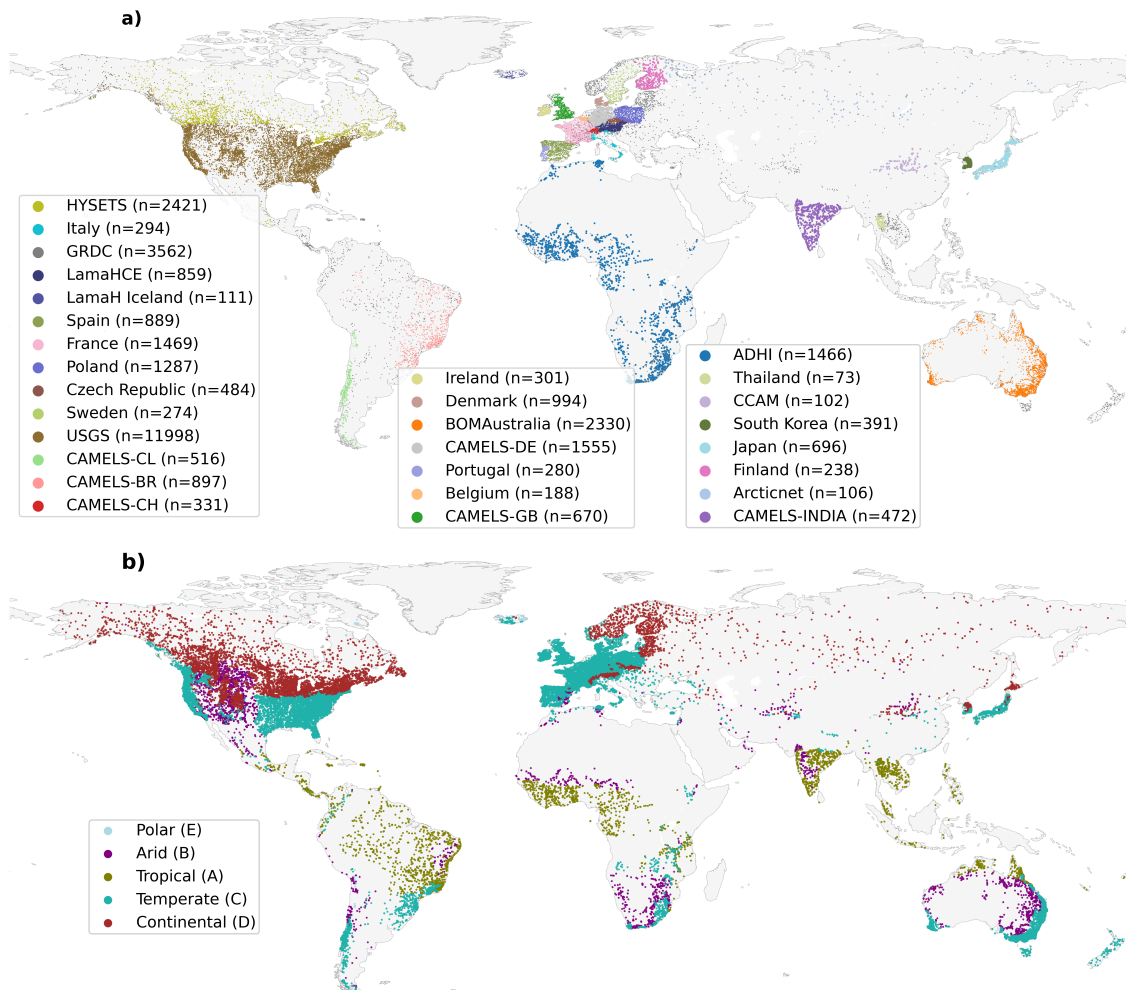
To ensure the suitability of the catchments for the present analysis, we applied the following inclusion criteria:

1. Catchment areas were limited to  $<10,000 \text{ km}^2$  to minimize the influence of channel routing, which can become significant at the daily time scale in larger catchments (Gericke and Smithers, 2014). Moreover, since we use catchment-mean  $P$  time series to drive the hydrological model, larger catchments are prone to greater spatial averaging, leading to a less realistic representation of  $P$  patterns. 95
2. The total streamflow record had to be  $>3$  years, not necessarily consecutive. This threshold was chosen due to the short records of GDAS and CMORPH-RT. We realize that such a short record may introduce some random variability in the KGE scores of these datasets, particularly in arid regions where  $P$  events are less frequent. However, this random variability will likely be averaged out due to the large number of catchments included in our assessment. 100
3. The number of events (defined as runoff  $> 5 \text{ mm d}^{-1}$ ) had to be  $> 10$  non-consecutively, to ensure we have sufficient data for calibration.
4. The mean annual runoff had to be  $\geq 5$  and  $< 5000 \text{ mm yr}^{-1}$ , to filter out catchments with erroneous streamflow and/or catchment boundary data.
5. The reservoir influence (defined as the ratio of total reservoir capacity by mean cumulative annual streamflow) had to be  $<0.1$ , as Hydrologiska Byråns Vattenbalansavdelning (HBV), the hydrological model used in this study, does not explicitly simulate reservoirs. To determine the total reservoir capacity, we used the Global Reservoir and Dam (GRanD) dataset (V1.3; Lehner et al., 2011). 105

After applying these criteria, 18,428 catchments remained. The 2.5th, 10th, 50th, 90th and 97.5th percentiles of the catchment areas are  $23 \text{ km}^2$ ,  $55 \text{ km}^2$ ,  $213 \text{ km}^2$ ,  $2688 \text{ km}^2$  and  $6165 \text{ km}^2$ , respectively (Fig. 1). 110

## 2.3 Hydrological Modeling

The performance of the gridded  $P$  datasets was assessed using hydrological modeling for the 18,428 catchments that passed the suitability checks. For each catchment, the HBV conceptual hydrological model (Bergström, 1992; Seibert and Vis, 2012) was calibrated against daily streamflow observations using time series from each  $P$  dataset. The HBV model was selected due



**Figure 1.** Locations of the 35,254 gauges with daily streamflow data that passed the duplication checks, used to evaluate the gridded  $P$  datasets. Each data point represents the centroid of a catchment. The colors indicates the dominant major Köppen-Geiger climate class, based on the 1-km resolution map for 1991–2020 from Beck et al. (2023). For more information on the streamflow data sources, refer to Appendix A.

115 to its versatility and computational efficiency, and numerous successful applications (see review by Seibert and Bergström,  
 2022). The model incorporates two groundwater stores, one unsaturated-zone store, and a triangular weighting function to  
 simulate channel routing delays. Table 2 provides the model parameters and their calibration ranges. An additional parameter,  
 PCORR, was introduced to further adjust for systematic  $P$  biases, which are generally easier to mitigate and should, therefore,  
 not disproportionately penalize the datasets. Note that PCORR and SFCF are applied simultaneously: SFCF adjusts snowfall  
 120 for gauge undercatch, while PCORR scales total  $P$ . Snowfall is therefore affected by both.

**Table 2.** HBV model parameter descriptions and calibration ranges.

Parameter	Units	Description	Minimum	Maximum
TT	°C	Threshold temperature when precipitation is simulated as snowfall	-5	5
SFCF	-	Snowfall gauge undercatch correction factor	1	2
CWH	-	water holding capacity of snowfall	0	0.2
CFMAX	mm °C <sup>-1</sup> d <sup>-1</sup>	Melt rate of snowfall	0.5	10
CFR	-	Refreezing coefficient	0	0.1
FC	mm	Maximum water storage in unsaturated-zone storage	50	1000
LP	-	Soil moisture value above which actual evaporation reaches potential evaporation	0.2	1.0
BETA	-	shape coefficient of recharge function	1	6
UZL	mm	threshold parameter for extra outflow from upper zone	0	100
PERC	mm d <sup>-1</sup>	maximum percolation to lower zone	0	10
K0	d <sup>-1</sup>	Additional recession coefficient of upper groundwater store	0.005	0.9
K1	d <sup>-1</sup>	Recession coefficient of upper groundwater store	0.001	0.5
K2	d <sup>-1</sup>	Recession coefficient of lower groundwater store	0.001	0.2
MAXBAS	d	Length of equilateral triangular weighting function	1	10
PCORR	-	Multiplier to mitigate systematic $P$ underestimation	1	2

The model requires daily time series of  $P$ , potential evaporation, and air temperature as inputs. We used catchment-mean  
 daily  $P$  time series from the gridded datasets listed in Table 1. Daily potential evaporation was estimated using the Penman-  
 Monteith (Penman, 1948; Monteith, 1965) equation, which requires daily time series of air temperature, downward shortwave  
 and longwave radiation, relative humidity, and wind speed as input. Catchment-mean daily time series of these variables were  
 125 sourced from the Multi-Source Weather (MSWX) dataset (Beck et al., 2022). Advantages of MSWX over datasets like ERA5  
 are its bias correction and higher spatial resolution (0.1°), which enable more accurate snowmelt simulation in mountainous  
 regions.

## 2.4 Calibration Procedure

The 15 model parameters were calibrated for each catchment and  $P$  dataset over the period where both observed streamflow  
 130 and  $P$  data were available. Model initialization was done by running the model with 10 years of prior  $P$  data, if available. If 10

years of prior  $P$  data were not available, the model was run multiple times using the available  $P$  data until a total of more than 10 years was accumulated. Furthermore, simulation of 365 days was not used for calculating model performance. We used a  $(\mu + \lambda)$  evolutionary algorithm, which is a population-based optimization method that iteratively evolves solutions through selection, crossover, and mutation to maximize the Kling-Gupta Efficiency (KGE) objective. The algorithm was implemented using the Distributed Evolutionary Algorithms in Python (DEAP) library (version 1.4; Ashlock, 2010; Fortin et al., 2012), with a population size ( $\mu$ ) of 20 and an offspring pool size ( $\lambda$ ) of 48. Crossover was applied with a probability of 90%, and mutation was applied with a probability of 10% using a Gaussian-based mutation operator. To ensure convergence, the optimization process was terminated if the best KGE value did not improve by more than 0.01 for five consecutive generations after a minimum of 25 generations.

To assess the influence of systematic  $P$  bias correction using the PCORR and SFCF adjustment factors on model performance, we explored four calibration scenarios with varying bounds for the PCORR and SFCF parameters. In the first scenario, PCORR was allowed to vary between 0.0 and 2.0, providing full flexibility to adjust for both under- and overestimation of  $P$ , while SFCF was allowed to vary between 1.0 to 2.0. The second scenario limited PCORR to the range 0.5–2.0, while keeping the range of SFCF between 1.0 and 2.0. The third scenario fixed both PCORR and SFCF parameters at 1.0, effectively disabling  $P$  bias correction. The fourth scenario constrained both PCORR and SFCF to the range 1.0–2.0, allowing only upward correction. These scenarios enabled us to evaluate the sensitivity of model performance to  $P$  bias correction and assess the robustness of  $P$  dataset rankings under varying calibration constraints.

In line with several previous studies (e.g., Beck et al., 2017c; Tarek et al., 2020; Arsenault et al., 2023), we opted not to split the record into separate calibration and validation periods. Instead, the full period of overlapping streamflow and  $P$  data was used to maximize the available information for parameter calibration and evaluation and yield more reliable scores. This is particularly critical for  $P$  datasets with short records (GDAS and CMORPH-RT), where splitting the data would lead to scores based on only one or two years of data which could cause instability in the performance scores (see Arsenault et al., 2018).

## 2.5 Performance Metric

To assess the performance of streamflow simulations forced by the different gridded  $P$  datasets, we calculated the Kling-Gupta Efficiency (KGE) scores between daily observed and simulated streamflow for each catchment. KGE, introduced by Gupta et al. (2009) and modified by Kling et al. (2012), is an objective performance metric that combines correlation, bias, and variability, and is defined as:

$$\text{KGE} = 1 - \sqrt{(r - 1)^2 + (\gamma - 1)^2 + (\beta - 1)^2}, \quad (1)$$

where  $r$  represents the Pearson correlation coefficient,  $\gamma$  is the ratio of the estimated to observed coefficients of variation, and  $\beta$  is the ratio of estimated to observed means:

$$\gamma = \frac{\sigma_s / \mu_s}{\sigma_o / \mu_o}, \quad \beta = \frac{\mu_s}{\mu_o}, \quad (2)$$

where  $\mu$  and  $\sigma$  are the mean and standard deviation, respectively, and the subscripts  $s$  and  $o$  refer to the estimated and observed values. Optimal values for KGE,  $r$ ,  $\beta$ , and  $\gamma$  are all 1. The  $r$  term is primarily sensitive to the timing and intensity of  $P$

extremes, while  $\beta$  captures systematic over- or underestimation of  $P$ . While the PCORR and SFCF parameters, which account for systematic biases, were calibrated, the  $\beta$  component of KGE reflects residual biases that may persist due to limitations in the  $P$  dataset's ability to accurately represent the spatial and temporal distribution of  $P$  intensities and magnitudes (Sun et al., 2018).

### 3 Results and Discussion

#### 3.1 Overall Model Performance

Fig. 2 presents median calibration scores obtained by HBV forced with 24 gridded  $P$  datasets across 18,428 catchments. The key findings are as follows:

- Among the six main categories of  $P$  datasets — satellite, gauge, (re)analysis, satellite+reanalysis, satellite+reanalysis+gauge, and satellite+gauge — the satellite category performed the worst overall. This challenges the common assumption among non-experts that satellite datasets, being observation-based and offering high spatial resolution, are inherently superior. However, (re)analyses are also “observation-based,” as they assimilate large volumes of satellite, surface, radiosonde, and aircraft data. Moreover, a higher spatial resolution does not guarantee better performance, though this may be due to spatial averaging of the  $P$  data across catchments. This does not imply that satellite datasets never perform best; for instance, they excel in tropical regions, as will be discussed in Section 3.2.
- The multi-source MSWEP V2.8 dataset (Beck et al., 2019b) demonstrated the best overall performance (median KGE of 0.78). This dataset leverages the complementary strengths of gauge, satellite, and (re)analysis data to provide improved  $P$  estimates across the globe. Specifically, bias correction using gauge data enhances performance in regions with dense rain gauge networks, satellite estimates enhance performance in convection-dominated regions and periods, and (re)analysis estimates improve performance in frontal-dominated regions and periods (Beck et al., 2019b).
- Among the purely satellite-based  $P$  datasets (CMORPH-CDR and -RT; IMERG-Early and -Late; GSMaP; PDIR-Now; PERSIANN-CCS; and SM2RAIN-ASCAT and -CCI; and GPM+SM2RAIN), the GPM+SM2RAIN dataset (Massari et al., 2020) exhibited the best performance (median KGE of 0.64; Fig. 2). This dataset combines satellite soil moisture retrievals from ASCAT H113 H-SAF, SMOS L3 and SMAP L3 with microwave-based  $P$  retrievals from IMERG using the so-called optimal linear combination approach (Bishop and Abramowitz, 2013). IMERG-Late V7 (median KGE of 0.55) introduced several improvements over V6, notably a climatological rain gauge adjustment, leading to a significant performance boost compared to V6 (median KGE of 0.54), particularly in the tropical, cold, and polar catchments (Supplement Fig. S12).
- Among the purely infrared-based  $P$  datasets (PERSIANN-CCS and PDIR-Now), PERSIANN-CCS (Hong et al., 2004; median KGE of 0.46) performed similar to PDIR-Now (Nguyen et al., 2020; median KGE of 0.45). This is surprising as PDIR-Now features several improvements over PERSIANN-CCS, such as the dynamic adjustment of the relationship

195 between cloud-top brightness temperatures and rain rates based on rainfall climatologies, as well as the use of a higher temperature threshold to enhance the detection of warm rain events (Nguyen et al., 2020). Further analysis revealed that PDIR-Now performs particularly poorly in the UK, Denmark, and Italy (Supplement Fig. S25), resulting in its overall poorer performance compared to PERSIANN-CCS.

200 – Among the (re)analyses (ERA5, GDAS, and JRA-3Q), GDAS, based on V16.3 from 2022 of the Global Forecasting System (GFS) model ([www.ncei.noaa.gov/products/weather-climate-models/global-forecast](http://www.ncei.noaa.gov/products/weather-climate-models/global-forecast)), performed best (median KGE of 0.72). The recently released reanalysis JRA-3Q, based on the Japan Meteorological Agency (JMA) operational system as of December 2018 (Kosaka et al., 2024), performed similarly to ERA5 (both yielding a median KGE of 0.71). ERA5 is based on Cycle 41r2 of the Integrated Forecasting System (IFS) model from 2016 (Hersbach et al., 2020). While ERA5 is widely regarded as the most reliable reanalysis overall, these results suggest that JRA-3Q is a viable

205 alternative for hydrological modeling. GDAS has a much shorter record than ERA5 and JRA-3Q (Table 1), which limits its applicability.

– Among the rain gauge-based  $P$  datasets (CHIRPS 2.0, CPC Unified, GPCP V3.2, IMERG-Final V7, MSWEP V2.8, REGEN V1, and PERSIANN-CCS-CDR), MSWEP V2.8 (Beck et al., 2019b) achieved the best overall performance (median KGE of 0.78), underscoring the value of combining  $P$  estimates from satellite, reanalysis, and gauge data and

210 applying daily gauge corrections. In contrast, CHIRPS V2.0 (median KGE of 0.66) applies five-day gauge corrections, while the other datasets apply monthly corrections, which provide fewer benefits at the daily time scale. The main challenge in applying daily gauge corrections is the difficulty in accounting for shifts in the accumulation times of daily  $P$  gauge accumulations (i.e., daily gauge accumulations generally do not start/end at midnight UTC; Yang et al., 2020b). As CPC Unified and REGEN V1 are solely based on daily gauge observations, their performance is limited by the lack of

215 daily gauge observations in many regions (Kidd et al., 2017). In these regions, the dataset relies entirely on interpolating observations from potentially distant gauges. Another challenge in application of daily gauge corrections is the relatively low coverage of gauge observations in regions outside North America, Europe and Australia. PERSIANN-CCS-CDR is currently under revision due to inconsistencies in the infrared input data before and after 2000 (Sadeghi et al., 2021); however, this issue is unlikely to significantly affect its ranking in our assessment.

220 – The marked differences in median KGE values between MSWEP V2.8 and MSWEP-ng V2.8 (median KGE of 0.78 vs. 0.73), between CHIRPS V2.0 and CHIRP (median KGE of 0.66 vs. 0.58), and between IMERG-Final V7 and -Late V7 (median KGE of 0.72 vs. 0.55) emphasize the importance of applying gauge corrections, in line with previous evaluations (Gochis et al., 2009; Beck et al., 2017c, b; Shen et al., 2018). This highlights the critical role national meteorological agencies play in feeding rain gauge data into global databases such as the Global Historical Climatology

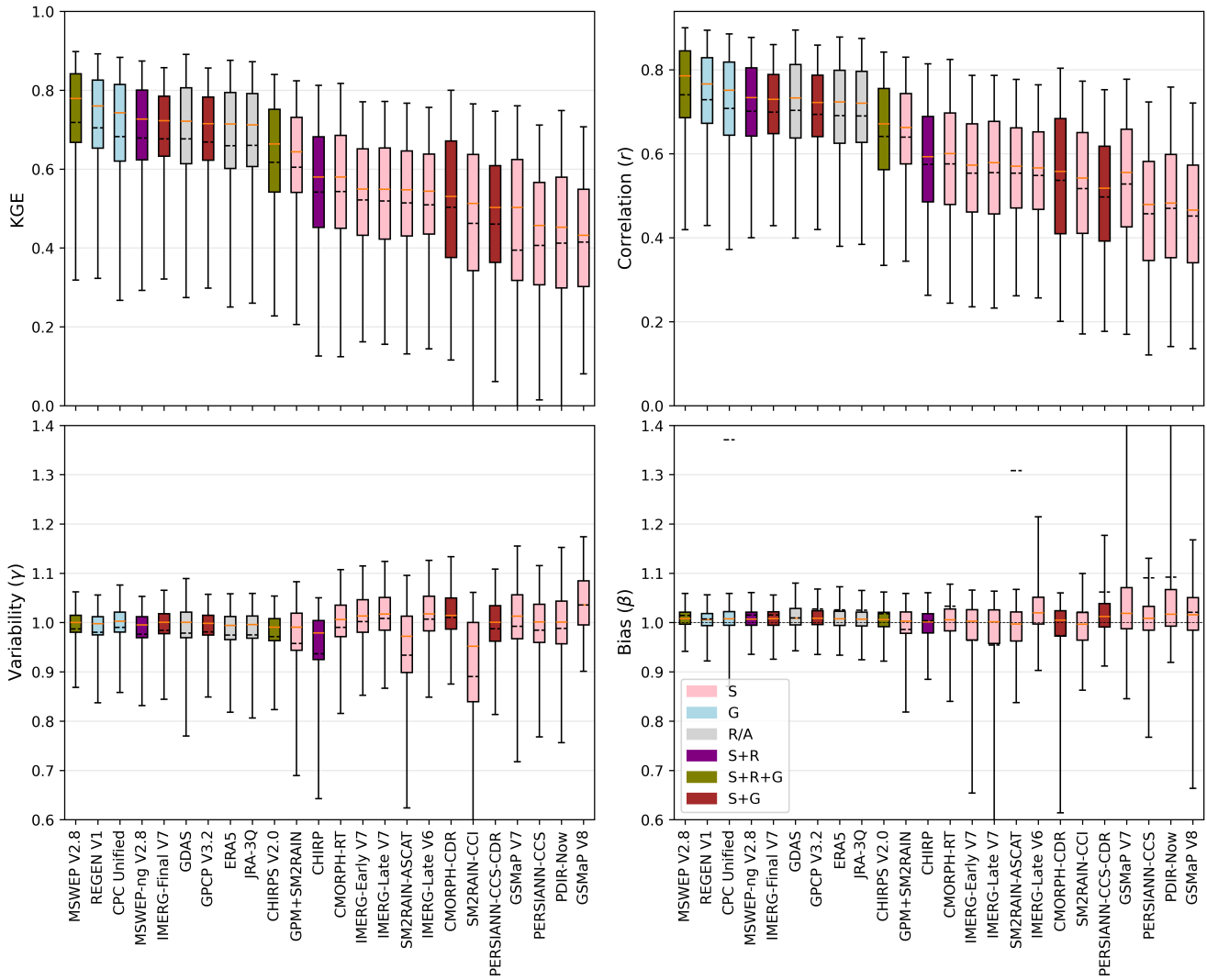
225 Network daily (GHCNd; Menne et al., 2012) and the need to expand gauge coverage and promote open data sharing, particularly in data-scarce regions, to improve the accuracy of  $P$  datasets in those areas.

- 230 – Our results reaffirm that higher-resolution  $P$  datasets do not necessarily yield better streamflow simulations compared to lower-resolution datasets, consistent with previous assessments (e.g., Bador et al., 2020; Huang et al., 2019; Chan et al., 2013). Notably, the  $0.04^\circ$  resolution satellite infrared-based datasets (PERSIANN-CCS and -CCS-CDR, and PDIR-Now; median KGE of 0.46, 0.50, and 0.45, respectively) — the highest resolution datasets included in our assessment — do not consistently perform better neither globally nor for any Köppen-Geiger climate zones. This is likely due not only to the generally poor performance of infrared-based datasets but also to the use of catchment-mean  $P$  to drive HBV, which omits local variability that high-resolution datasets might otherwise capture. Another potential factor is that coarser datasets may inadvertently improve reliability by averaging out small-scale random errors; however, our
- 235 catchment-scale assessment cannot confirm this. Conversely, for the (re)analyses, the benefits of a higher resolution are evident in mountainous regions. Here, the 13-km GDAS outperformed the 31-km ERA5, which in turn outperformed the 40-km JRA-3Q (Supplement Fig. S53; see also Section 3.2). This indicates that higher-resolution NWP models more accurately capture orographic  $P$ .
- 240 – A comparison of PCORR parameter values obtained after calibration using different  $P$  datasets reveals that the IMERG-Early and -Late V7 datasets necessitate the highest PCORR values, while PDIR-Now is associated with the lowest values (Supplement Figs. S1–S24). The lower PCORR for PDIR-Now reflects its tendency to overestimate  $P$ , as confirmed by the significant positive bias obtained by the datasets (Fig. 2). This may be because the algorithm was calibrated with a focus on heavy rainfall events for near real-time applications (Nguyen et al., 2020). Conversely, the higher PCORR values required for the IMERG-Early and -Late V7 products reflect their tendency to underestimate  $P$ , which is confirmed by their lower bias values (Fig. 2).
- 245 – The overall ranking of  $P$  datasets remained largely consistent across the four PCORR calibration scenarios (Supplement Fig. S26). However, in the scenario where PCORR and SFCF were fixed at 1.0, GPCP V3.2 and ERA5 showed improved relative rankings — not due to higher performance, but because other datasets experienced greater performance drops under this constraint. Most datasets showed little sensitivity to the PCORR bound below 1.0, but a few — namely PDIR-Now, GSMaP V7, PERSIANN-CCS-CDR, and IMERG-Late V6 — exhibited notable use of PCORR values below 1.0
- 250 (Supplement Fig. S27). This suggests that these datasets tend to overestimate  $P$ , and that downward rescaling improves their hydrological performance.
- 255 – The lower performance of PDIR-Now can be partially attributed to the default PCORR range of 1.0–2.0, which precludes the correction of  $P$  overestimation. This is confirmed by the lower calibrated PCORR values when allowed to vary below 1.0, leading to a decrease in the median calibrated PCORR from 1.2 to 1.1 and a slight improvement in median KGE from 0.43 to 0.47. Further analysis showed the largest decrease in median calibrated PCORR (from 1.0 to 0.7) and corresponding improvement in KGE (from 0.15 to 0.37) occurred in CAMELS-GB (Supplement Fig. S29). However, across most other  $P$  datasets, the improvement in KGE was negligible when PCORR was allowed to drop below 1.0, confirming that the default PCORR range (1.0–2.0) is appropriate for most  $P$  datasets (Supplement Fig. S28).

260 Overall, our findings are consistent with those of Beck et al. (2017c), Gu et al. (2023), and Gebrechorkos et al. (2023),  
who also evaluated multiple gridded  $P$  datasets using hydrological modeling in catchments across the globe. However, while  
Beck et al. (2017c) assessed nine datasets across 9,053 catchments, Gu et al. (2023) evaluated two datasets across 10,596  
catchments, and Gebrechorkos et al. (2023) analyzed six datasets across 1,825 catchments, our study evaluated 24 datasets  
across 18,428 catchments, making our results more likely to be generalizable. Additionally, Beck et al. (2017c) and Gu et al.  
265 (2023) primarily assessed outdated versions of  $P$  datasets, whereas our analysis included several new  $P$  datasets — such as  
PDIR-Now, IMERG V7, JRA-3Q, and MSWEP V2.80 — that have not yet been comprehensively evaluated. Furthermore,  
unlike Gebrechorkos et al. (2023), we recalibrated the hydrological model for each  $P$  dataset, which likely reduces potential  
biases and enhances the reliability of our conclusions.

**Table 3.** Median daily calibration KGE values obtained using HBV driven by the different  $P$  datasets for the five major Köppen-Geiger climate classes. No values are provided for datasets for which the number of calibrated catchments is  $< 75\%$  of the total number of catchments. In each column, the dataset with the best performance is shown in bold font. The catchments were classified based on the most dominant class, determined using the 1-km resolution Köppen-Geiger map for 1991–2020 from Beck et al. (2023). See Fig. 1 for a map of the dominant major Köppen-Geiger climate class for the catchments.

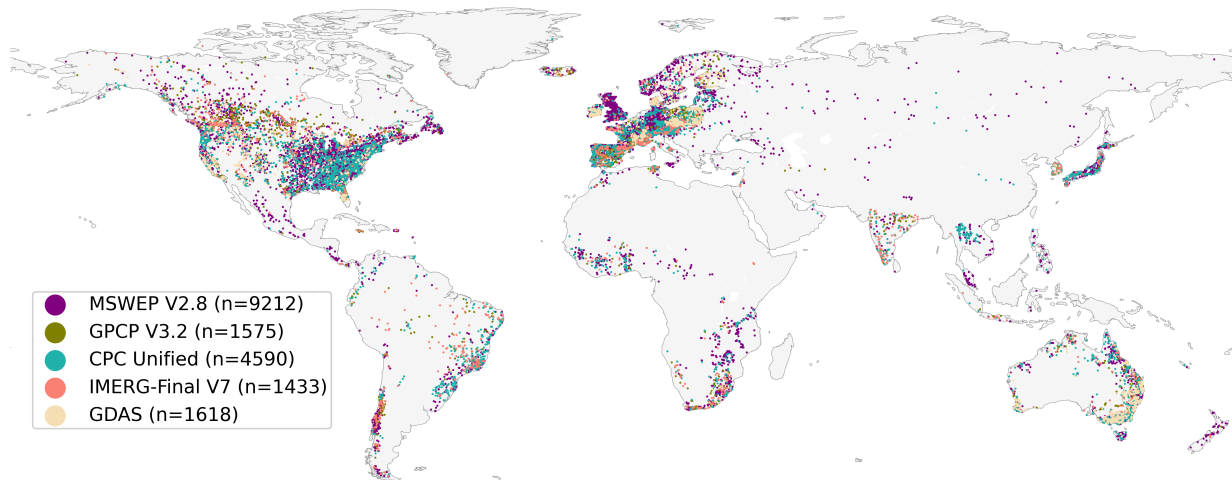
Dataset Type	KG Climate Zone	All	Tropical (A)	Arid (B)	Temperate (C)	Cold (D)	Polar (E)	
	Number of Catchments	18428	1220	1300	12208	3538	162	
S	CMORPH-CDR	0.53(15132)	—(727)	—(972)	0.56(10862)	—(2485)	—(86)	
	CMORPH-RT	0.58(7876)	—(128)	—(536)	—(5488)	—(1717)	—(7)	
	IMERG-Early V7	0.55(15388)	—(700)	—(944)	0.54(10783)	0.56(2824)	0.63(137)	
	IMERG-Late V7	0.55(15386)	—(700)	—(945)	0.54(10781)	0.55(2823)	0.58(137)	
	IMERG-Late V6	0.54(15349)	—(700)	—(944)	0.54(10778)	0.52(2797)	0.62(130)	
	GSMaP V7	0.50(12616)	—(534)	—(807)	—(8929)	—(2268)	—(78)	
	GSMaP V8	0.43(14947)	—(708)	—(952)	0.42(10750)	—(2453)	—(84)	
	PERSIANN-CCS	0.46(14572)	—(669)	—(922)	0.43(10499)	—(2402)	—(80)	
	PDIR-Now	0.45(14809)	—(696)	—(931)	0.40(10653)	—(2447)	—(82)	
	SM2RAIN-ASCAT	0.55(14384)	—(630)	—(896)	0.55(10141)	—(2624)	—(93)	
R/A	SM2RAIN-CCI	0.51(13799)	—(656)	—(907)	0.46(9994)	—(2221)	—(21)	
	GPM+SM2RAIN	0.64(14059)	—(640)	—(891)	0.65(10121)	—(2326)	—(81)	
	JRA-3Q	0.71(16354)	—(834)	0.50(1028)	0.72(11253)	0.73(3094)	0.77(146)	
	GDAS	0.72(6617)	—(105)	—(483)	—(4728)	—(1268)	—(7)	
	ERA5	0.71(18423)	0.61(1217)	0.52(1300)	0.72(12207)	0.74(3537)	0.77(162)	
	G	CPC Unified	0.74(18356)	0.66(1213)	0.52(1298)	0.74(12168)	0.73(3529)	0.75(148)
		REGEN V1	0.76(18122)	0.71(1217)	0.58(1288)	0.77(12016)	0.78(3439)	0.75(162)
		IMERG-Final V7	0.72(15389)	—(700)	—(945)	0.72(10784)	0.73(2823)	0.72(137)
		PERSIANN-CCS-CDR	0.50(17081)	0.52(1133)	0.32(1228)	0.46(11717)	0.53(2905)	—(98)
	S+R	GPCP V3.2	0.72(15313)	—(700)	—(944)	0.71(10722)	0.73(2810)	0.76(137)
CHIRP		0.58(14295)	0.58(1187)	0.36(1259)	0.57(9449)	—(2318)	—(82)	
MSWEP-ng V2.8		0.73(18326)	0.65(1215)	0.53(1297)	0.73(12139)	0.75(3514)	<b>0.78</b> (162)	
CHIRPS V2.0		0.66(14296)	0.66(1187)	0.49(1259)	0.66(9450)	—(2318)	—(82)	
S+R+G	MSWEP V2.8	<b>0.78</b> (18424)	<b>0.70</b> (1217)	<b>0.60</b> (1298)	<b>0.79</b> (12207)	<b>0.79</b> (3538)	0.76(162)	



**Figure 2.** Calibration KGE, correlation ( $r$ ), long-term bias ( $\beta$ ), and variability ratio ( $\gamma$ ) scores achieved by the 24  $P$  datasets. The horizontal black and orange lines represent the mean and median, respectively. The box extends from the 25th to 75th percentiles, while the whiskers represent the 5th and 95th percentiles. The datasets are sorted according to their median KGE values. The colors represent the dataset type: S = Satellite; G = Gauge; R/A = Reanalysis or Analysis; S+R = Satellite and Reanalysis; S+R+G = Satellite, Reanalysis, and Gauge; and S+G = Satellite and Gauge.

### 3.2 Regional Performance Differences

270 Table 3 presents median calibration KGE scores for the 24 gridded  $P$  datasets across the five major Köppen-Geiger climate classes (see Supplement Fig. S54 for the distribution of KGE values). While satellite  $P$  datasets perform the worst overall



**Figure 3.** The  $P$  dataset with the highest calibration KGE for each catchment. Each data point represents the centroid of a catchment ( $n = 18,428$ ). Only the five best-performing  $P$  datasets are included, with MSWEP-np V2.8 excluded due to its similarity to MSWEP V2.8.

(see Section 3.1), microwave-based satellite datasets such as IMERG and GSMaP generally outperform (re)analyses (ERA5, GDAS, and JRA-3Q) in tropical regions. This is likely because tropical  $P$  events, typically localized and short-lived, can be directly observed by satellites, while numerical weather prediction (NWP) models generally struggle to simulate the complex convective processes driving these events (Yano et al., 2018; Peters et al., 2019; Lin et al., 2022). Conversely, in arid climates, all  $P$  datasets tend to perform relatively poorly, with a slight advantage for (re)analyses over satellite-based datasets.  $P$  in arid regions tends to be brief and intense, making it challenging to detect and simulate accurately (Beck et al., 2017c; Sun et al., 2018; El Kenawy et al., 2019; Beck et al., 2019a). The occurrence of virga, or  $P$  that evaporates before reaching the ground, further complicates accurate  $P$  estimation in these regions (Wang et al., 2018). In temperate and, particularly, cold regions, (re)analysis-based  $P$  datasets generally outperform satellite-based datasets, as the large-scale, long-duration frontal  $P$  typical of these regions is generally reliably simulated by NWP models (Ebert et al., 2007; Beck et al., 2017c, 2019a; Sun et al., 2018).

Fig. 4 shows correlations between static catchment attributes (Appendix B) and calibration KGE, correlation ( $r$ ), variability ratio ( $\gamma$ ), and long-term bias ( $\beta$ ) scores for the catchments. We present these correlations for the merged MSWEP V2.8 dataset, the ERA5 reanalysis, and the satellite-based IMERG-Late V7 dataset, shedding light on the ability of different catchment attributes in predicting the performance of each dataset. MSWEP V2.8 and ERA5 exhibit similar results, likely because ERA5 served as a key input for producing MSWEP V2.8. For MSWEP V2.8, the best predictors of a high KGE are low Mean PET and high Absolute Latitude, likely due to the prevalence of frontal  $P$  in these regions — typically well simulated by NWP models — combined with higher rain gauge densities (Kidd et al., 2017). For ERA5, the best predictors of a high KGE are high Solid  $P$  Fraction and low Mean  $T$ , as frontal  $P$  is prevalent under these conditions. For IMERG-Late V7, KGE performance is poorly predictable; however,  $\beta$  is highly predictable. The best predictors of a low  $\beta$  (indicating  $P$  underestimation) for

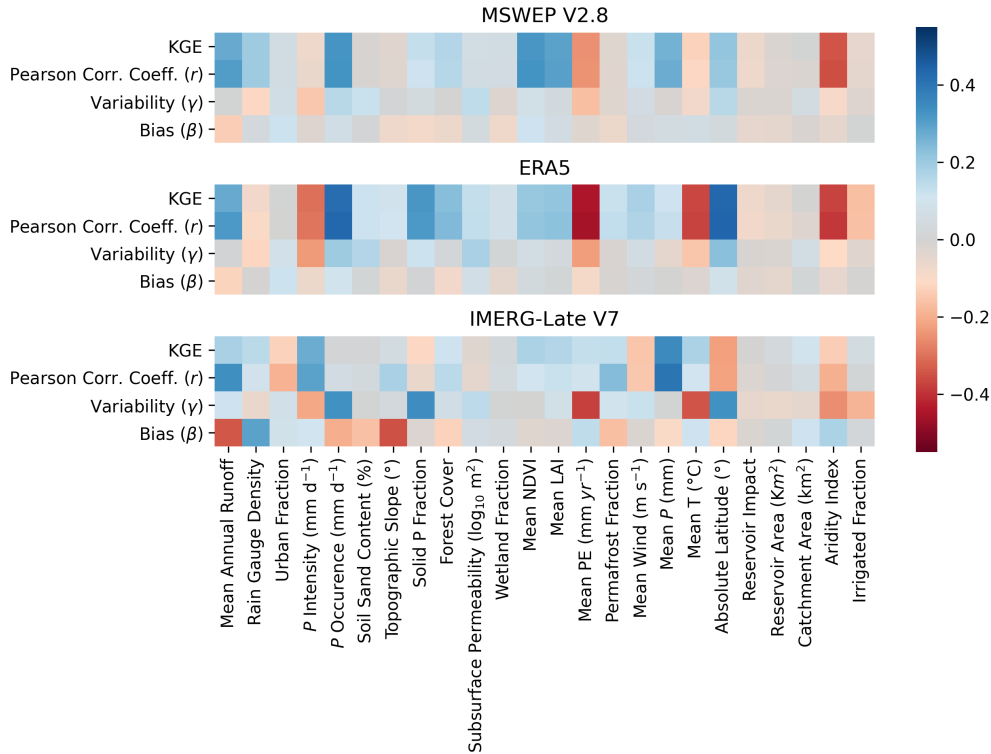
IMERG-Late V7 are low Mean PET and low Mean  $T$ , potentially reflecting difficulties in snowfall detection (Sadeghi et al., 2019; Song et al., 2021). Rain Gauge Density, calculated as the number of gauges per 100 km<sup>2</sup> smoothed using an exponential filter (see Table B1 for details), showed a slight positive relationship with MSWEP v2.8 performance, suggesting that a higher gauge density contributes to improved accuracy, as expected.

295 To better analyze the influence of catchment-mean topographic slope on calibration KGE for each  $P$  dataset, we calculated median KGE values for flat catchments (mean slope < 1°) and steep ones (mean slope > 7°; Supplement Fig. S53a), as well as spatial correlations between KGE and catchment-mean slope values (Supplement Fig. S53b). The following conclusions can be drawn:

- Each gauge-based  $P$  dataset shows better performance (in terms of median KGE) in flat catchments than in steep ones (Supplement Fig. S53a). For example, the CHIRPS V2.0 median KGE is 0.05 higher in flat catchments. In contrast, each non-gauge-based dataset performs worse in flat catchments than in steep ones (e.g., the ERA5 median KGE is 0.06 lower). This pattern is further supported by negative spatial correlations between KGE and mean slope for each gauge-based dataset, while the correlation is positive for each non-gauge-based dataset (Supplement Fig. S53b). The performance decline of each gauge-based  $P$  dataset in mountainous regions reflects the sparsity of rain gauge networks in these less accessible and less populous areas (Kidd et al., 2017).
- Among the non-gauge-based  $P$  datasets, the better performance of each (re)analysis in mountainous regions reflects the strong ability of NWP models to simulate the large-scale uplift of moist air over terrain associated with orographic  $P$  (e.g., Pontoppidan et al., 2017; Schumacher et al., 2020). GDAS performs particularly well, likely due to the high 13-km resolution of GFS V16.3, enabling more accurate representation of topographic gradients and associated atmospheric dynamics. JRA-3Q performs least well, reflecting the coarser 40-km resolution of the JMA NWP model from December 2018 (Kosaka et al., 2024). ERA5 lies between these two models, with a 31-km resolution IFS model from 2016 (Hersbach et al., 2020).
- The better performance of each satellite-based  $P$  dataset in mountainous regions conflicts with previous evaluations using rain gauges and radar data (e.g., Beck et al., 2019a; Sharma et al., 2020a; Adhikari and Behrangi, 2022). In these studies, poorer performance is generally attributed to surface snow and ice contamination (Cao et al., 2018; Chen et al., 2020), difficulties in detecting snowfall (You et al., 2021; Jääskeläinen et al., 2024; Giroto et al., 2024b), and shallow orographic  $P$  (Yamamoto et al., 2017; Adhikari and Behrangi, 2022). Our results suggest that these factors may be offset because streamflow is inherently easier to model in mountainous regions, where steep slopes generate high runoff, evaporation is relatively low, streamflow is primarily composed of slowly releasing snowmelt and groundwater (baseflow), seasonal rather than daily variations dominate, and human activities are limited (Müller Schmied et al., 2014; Beck et al., 2015, 2017a; Wada et al., 2017).

Fig. 5 presents median calibration KGE scores obtained by the different  $P$  datasets for the different streamflow data sources (see Fig. 1a and Appendix A). Somewhat lower overall performance was obtained for BOMAustralia, CAMELS-INDIA, South Korea, and particularly ADHI. Some discussion on reasons for the lower performance is given below:

- 325 – For BOMAustralia ([www.bom.gov.au/waterdata/](http://www.bom.gov.au/waterdata/)), the lower performance (Fig. 5) is attributed to arid regions exhibiting consistently low performance (Table 3), with Australian catchments having a particularly high median aridity index of 1.93. Additionally, the presence of numerous small dams used for irrigation, domestic water supply, and flood control contributes to reduced performance (Ouyang et al., 2021). Our hydrological model, HBV (Bergström, 1992; Seibert and Vis, 2012), does not explicitly simulate dams, and although we excluded catchments with significant dam influence
- 330 (see Section 2.2), we relied on the GRanD dataset (Lehner et al., 2011), which only includes larger dams. Significant groundwater withdrawals in Australia — also not represented in HBV — may also have contributed to the degraded performance.
- For CAMELS-INDIA (Mangukiya et al., 2024), the main data source for India, the lower performance (Fig. 5) is likely due to extensive human activity, particularly significant groundwater withdrawals (Rodell et al., 2009; Dangar et al., 2021). CAMELS-INDIA catchments have the highest median irrigated area (9.5 %) based on the Global Map of Irrigated Areas (GMIA) V5 (Siebert et al., 2005). Additionally, despite excluding catchments with substantial dam influence, CAMELS-INDIA has the highest median reservoir influence (0.04), so the presence of dams may have further degraded performance.
- 335
- Similarly, for South Korea (<https://water.nier.go.kr>), the lower performance (Fig. 5) is likely related to extensive human activity, including numerous dams not captured in the GRanD dataset. These dams primarily serve domestic and municipal water supplies and irrigation, with catchments having a median irrigated area of 6 % (based on GMIA).
- 340
- For ADHI (Tramblay et al., 2021), the main data source for Africa, the arid conditions are likely a major factor for the particularly low performance (Fig. 5), given the mean aridity index of 1.94 across these catchments — identical to that of the Australian catchments. Another factor to consider is the numerous mostly smaller dams across the continent, not included in GRanD and thus not excluded from our assessment. Low streamflow data quality may also be a contributing factor, though global assessments do not fully support this explanation (Crochemore et al., 2020). Additional challenges for rain gauge-based  $P$  datasets (CHIRPS 2.0, CPC Unified, REGEN V1, GPCP V3.2, IMERG-Final V7, MSWEP V2.8, and PERSIANN-CCS-CDR) in Africa include sparse rain gauge networks (Kidd et al., 2017), poor data quality, and frequent gaps. For (re)analysis-based datasets (ERA5, GDAS, and JRA-3Q), limited availability of surface, radiosonde, and aircraft observations for assimilation further reduces performance (<https://charts.ecmwf.int/catalogue/packages/monitoring/>). For ERA5 specifically, spurious  $P$  trends in central Africa (also discussed in Zsótér et al., 2020) — likely linked to changes in the observing system — and the occurrence of intense localized rainfall events (“rain bombs”) in eastern Africa contribute to degraded performance (Hersbach et al., 2020).
- 345
- The low median calibration KGE scores for PDIR-Now in Italy, Denmark, and CAMELS-GB reflect  $P$  overestimation, with median bias scores of 1.7, 2.0, and 1.9, respectively, suggesting a tendency of PDIR-Now to overestimate  $P$  at higher latitudes. Likewise, the low median calibration KGE of JRA-3Q for Thailand is due to overestimated  $P$ , with a median bias score of 4.9.
- 355

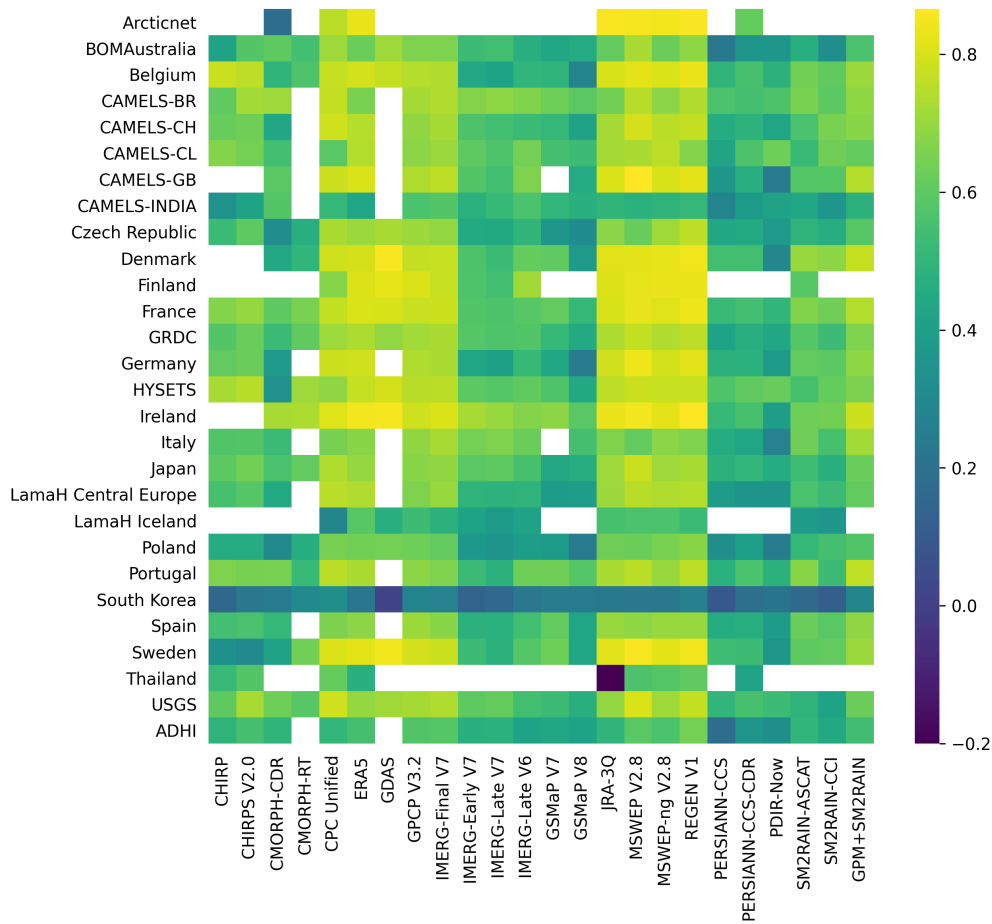


**Figure 4.** Spearman rank correlations between static catchment attributes and calibration KGE, correlation ( $r$ ), long-term bias ( $\beta$ ), and variability ratio ( $\gamma$ ) scores obtained for the catchments using (a) MSWEP V2.8, (b) ERA5, and (c) IMERG-Late V7. See Appendix B for details on the catchment attributes.

### 3.3 Potential Limitations and Future Work

We conducted the most extensive evaluation to date of quasi- and fully-global gridded  $P$  datasets using hydrological modeling. However, a few potential limitations should be considered when interpreting the results:

1. The calibration process may potentially suppress certain systematic issues inherent in the  $P$  datasets, such as consistent under- or overestimation of peaks, long-term biases, or the presence of drizzle, due to the PCORR and SFCF parameters of HBV. As a result, these issues might not be fully reflected in our calibration scores. However, this should not necessarily be viewed as a limitation. Systematic  $P$  biases, once identified, are relatively straightforward to correct through post-processing or bias-adjustment techniques. Consequently, penalizing datasets too heavily for such deficiencies may be unwarranted.
2. While the HBV hydrological model has been widely and successfully applied across a range of climates and geographic settings (Seibert and Bergström, 2022), it remains a simple conceptual model with a fixed structure and process representation. Additionally, it does not account for spatio-temporal variations in land cover or use and relies on



**Figure 5.** Median calibration KGE scores obtained by  $P$  datasets for the different streamflow data sources (see Fig. 1a and Appendix A). White indicates that no catchments met the inclusion criteria (Section 2.2).

370 catchment-averaged meteorological forcings, omitting sub-catchment variability in climate and terrain. More complex (semi-)distributed models with hydrologic response units or elevation bands may yield improved simulations (Gu et al., 2023).

375 3. The HBV model does not explicitly account for human activities such as dam operations or groundwater withdrawals, which can significantly influence streamflow. However, incorporating human activities is inherently challenging due to the lack of consistent and detailed data on water use and management practices. For instance, many large dams, and likely the large majority of smaller ones, are absent from global compilations (Zhang and Gu, 2023), and global sectoral water use data is inherently uncertain, particularly at sub-national scales (e.g., Huang et al., 2018; Puy et al., 2022).

- 380 4. We compiled an unparalleled global observed streamflow dataset comprising 35,254 catchments (excluding duplicates) covering all climate zones and latitudes (Fig. 1). Yet, many highly populated and vulnerable regions, particularly in West Asia, and parts of Central and Eastern Africa, remain underrepresented. This underscores the continued need to improve access to local and regional streamflow data (Krabbenhoft et al., 2022).
5. Since the global distribution of streamflow gauging stations closely aligns with that of meteorological monitoring networks (see Krabbenhoft et al., 2022 and Kidd et al., 2017), our approach may slightly overestimate the relative performance of gauge-based  $P$  datasets and (re)analyses compared to satellite-only datasets.
- 385 6. Some  $P$  datasets (GDAS and CMORPH-RT) have relatively short record lengths (Table 1), which may have resulted in less reliable KGE scores, particularly in arid regions where  $P$  events are less frequent. However, given the large number of catchments included in our assessment, we believe that any potential variability due to these shorter records has been largely eliminated and is unlikely to have affected our main conclusions.
- 390 7. Our assessment was carried out on a daily time scale, which obscures critical sub-daily dynamics, particularly in small catchments and arid regions prone to flash floods. Future research may expand our analysis to sub-daily time scales, which would enable a more rigorous evaluation of the timing and intensity of  $P$  estimates. Such a sub-daily assessment would likely improve scores for satellite-based  $P$  datasets due to their ability to directly observe events, unlike (re)analyses that rely on approximating when such events occur.

#### 4 Conclusions

395 The availability of wide range of gridded  $P$  datasets, each with unique technical specifications, strengths, and weaknesses, can make choosing the best dataset for a particular application a complex task. To assist users in making better informed decisions, we conducted the most comprehensive assessment to date of (sub-)daily (quasi-)global gridded  $P$  datasets using hydrological modeling. We evaluated 24  $P$  datasets across 18,428 catchments worldwide. For each catchment, we calibrated a hydrological model using daily streamflow observations, driven by each  $P$  dataset as input. Our main findings can be summarized as follows:

- 400 1. Among all  $P$  datasets, MSWEP V2.8 consistently achieved the highest overall performance, owing to its inclusion of both satellite and reanalysis data combined with daily gauge corrections. The best predictors for high KGE of MSWEP V2.8 are high Mean NDVI and Mean LAI as well as low Mean PE and low Aridity Index. Satellite datasets performed worst overall. GPM+SM2RAIN performed best among the satellite-based datasets, due to its integration of satellite soil moisture and  $P$  retrievals. IMERG-Late V7 showed significant improvements over V6, particularly in tropical and polar regions. Among the (re)analyses, GDAS performed slightly better than both ERA5 and JRA-3Q, which exhibited comparable performance. MSWEP V2.8 led among the gauge-corrected datasets, benefiting from its daily gauge corrections, unlike others with five-day or monthly gauge corrections. Infrared-based satellite datasets showed lower scores, with PERSIANN-CCS outperforming PDIR-Now.
- 405

2. Regional performance of  $P$  datasets varied significantly across climates and locations, influenced by local  $P$  characteristics, topography, data quality, and human activities. Tropical regions favor microwave-based satellite datasets like IMERG due to their ability to capture localized, convective rainfall, while all datasets perform poorly in arid regions, with a slight advantage for (re)analyses. In temperate and cold regions, (re)analyses such as JRA-3Q excel due to their ability to simulate large-scale, frontal  $P$ . Each gauge-based  $P$  dataset shows better performance in flat catchments than in steep ones, whereas each non-gauge-based dataset performs worse in flat catchments than in steep ones. Factors such as aridity, dam presence, and irrigation likely reduced dataset performance in regions like Australia, India, and Africa. The limited availability of in situ meteorological data, combined with potential streamflow data quality issues, may have further degraded performance in Africa.
3. Despite the comprehensiveness of our assessment, several limitations should be noted. Systematic  $P$  biases may have been partially masked during calibration, though these biases can often be easily mitigated through post-processing. Additionally, we employed a relatively simple conceptual hydrological model with catchment-average inputs, although this is unlikely to have affected the results significantly. The overlap in the global distribution of streamflow and meteorological networks may have slightly favored gauge- and (re)analysis-based datasets over satellite-based ones. Lastly, the use of a daily time scale may obscure important sub-daily dynamics, highlighting the need for future sub-daily assessments.

In conclusion, although our findings indicate that datasets like MSWEP V2.8 are well-suited for a broad range of uses, while satellite datasets generally perform worse overall, selecting the most appropriate  $P$  dataset ultimately depends on the study region and the specific needs of the application. For example, long-record datasets such as JRA-3Q may be suitable for climate analysis, while IMERG-Early V7 provides a reliable near real-time solution. The continued development of  $P$  datasets that balance long-term homogeneity, latency, and spatial-temporal coverage will be essential to meet the varied requirements of users for applications in water resource management, hazard assessment, agriculture, and environmental monitoring.

*Code availability.* The Python implementation of the HBV hydrological model used in this work is available at <https://github.com/AtrCheema/rain2flow>. The AquaFetch Python (<https://github.com/hyex-research/AquaFetch>, last accessed: 17 July 2025) library was used to access and harmonize open source streamflow data. The Python code used to generate the results of this study is available from the corresponding author upon request.

*Data availability.* Most of the streamflow observations are freely available, and their sources are listed in Table A1. All  $P$  datasets are freely accessible for non-commercial research. CPC Unified is available on the NOAA Physical Sciences Laboratory (PSL) website (<https://psl.noaa.gov/data/gridded/data.cpc.globalprecip.html>). IMERG can be accessed from the NASA Global Precipitation Measurement (GPM) website (<https://gpm.nasa.gov/data>). JRA-3Q is available via the National Center for Atmospheric Research (NCAR) Research Data Archive (RDA; <https://rda.ucar.edu/datasets/ds640000/dataaccess>). GPCP is accessible via the NOAA PSL website (<https://psl.noaa.gov/data/gridded/data.gpcp.html>). SM2RAIN-ASCAT, SM2RAIN-CCI, and GPM+SM2RAIN are hosted on Zenodo (<https://zenodo.org/records/10376109>,

440 <https://zenodo.org/records/1305021>, and <https://zenodo.org/records/3854817>, respectively). ERA5 data can be obtained from the Copernicus Climate Data Store (CDS; <https://cds.climate.copernicus.eu/datasets/reanalysis-era5-single-levels?tab=overview>). CHIRP and CHIRPS are available via the University of California Climate Hazards Center (CHC) website (<https://www.chc.ucsb.edu/data/chirps/>). MSWEP can be accessed via the GloH2O website (<https://www.gloh2o.org/mswep/>). PERSIANN-CCS-CDR and PDIR-Now are accessible via the Center for Hydrometeorology and Remote Sensing (CHRS) website (<https://chrsdata.eng.uci.edu/>).

#### 445 **Appendix A: Streamflow Data Sources**

We compiled an unparalleled database with daily streamflow observations and catchment boundaries for 35,254 catchments worldwide, drawing from the 29 data sources listed in Table A1. These sources are divided into two categories. The first category comprises published datasets, including ADHI, HYSETS, CAMELS, LamaHCE, LamaHIce, Germany, and CCAM. For the remaining sources, except GRDC, daily observed streamflow data were obtained from the websites of the respective  
450 countries' hydrological or meteorological agencies. Data from GRDC were acquired by submitting an application form on their website and receiving the data via email. For the second set of sources, we used streamflow observations exclusively from stations with available catchment boundaries, allowing us to calculate time series of meteorological forcings for these catchments, including  $P$ , temperature, radiation, and humidity. Catchment boundaries for USGS data were sourced from HYSETS, while those for Italy, Spain, France, Poland, Czech Republic, Sweden, Ireland, Denmark, and Finland came from EStreams  
455 (do Nascimento et al., 2024). For BOM Australia, Thailand, and Japan, boundaries were obtained from GSHA (Yin et al., 2023). The catchment boundaries for South Korea were acquired from the Environmental Geographic Information Service (EGIS) of South Korea (<https://egis.me.go.kr/>).

**Table A1.** Daily observed streamflow data sources, number of catchments, and references/URLs. The number of catchments represents the amount after duplication checks but before suitability checks.

Data source	Spatial Coverage	Number of catchments	Reference/URL
ADHI	Africa	1466	Tramblay et al. (2021)
Arcticnet	Antarctica	106	<a href="https://www.r-arcticnet.sr.unh.edu/v4.0/AllData/index.html">https://www.r-arcticnet.sr.unh.edu/v4.0/AllData/index.html</a>
Belgium	Belgium	188	<a href="https://hydrometrie.wallonie.be/home/observations/debit.html">https://hydrometrie.wallonie.be/home/observations/debit.html</a>
BOM Australia	Australia	2330	<a href="http://www.bom.gov.au/waterdata/">www.bom.gov.au/waterdata/</a>
CAMELS-GB	Britain	671	Coxon et al. (2020)
CAMELS-INDIA	India	472	Mangukiya et al. (2024)
CAMELS-CL	Chile	516	Alvarez-Garreton et al. (2018)
CAMELS-BR	Brazil	897	Chagas et al. (2020)
CAMELS-CH	Switzerland	331	Höge et al. (2023)
CCAM	China	102	Hao et al. (2021)
Czech Republic	Czech Republic	484	<a href="https://isvs.chmi.cz/">https://isvs.chmi.cz/</a>
Denmark	Denmark	994	<a href="https://odaforalle.au.dk/login.aspx">https://odaforalle.au.dk/login.aspx</a>
Finland	Finland	239	<a href="http://www.i3.ymparisto.fi/i3/paasivu/ENG/Virtaama/Virtaama.htm">www.i3.ymparisto.fi/i3/paasivu/ENG/Virtaama/Virtaama.htm</a>
France	France	1469	<a href="http://www.hydro.eaufrance.fr">www.hydro.eaufrance.fr</a>
Germany	Germany	1555	Loritz et al. (2024)
GRDC	Global	3631	<a href="https://portal.grdc.bafg.de/">https://portal.grdc.bafg.de/</a>
HYSETS	Mexico, Canada	2421	Arsenault et al. (2020)
Ireland	Ireland	312	<a href="https://epawebapp.epa.ie/hydronet/#Flow">https://epawebapp.epa.ie/hydronet/#Flow</a>
Italy	Italy	294	<a href="http://www.hiscentral.isprambiente.gov.it">www.hiscentral.isprambiente.gov.it</a>
Japan	Japan	696	<a href="http://www.river.go.jp/">www.river.go.jp/</a>
LamaHCE	Iceland	859	Klingler et al. (2021)
LamaHIce	Austria	111	Helgason and Nijssen (2024)
Poland	Poland	1287	<a href="https://danepubliczne.imgw.pl/">https://danepubliczne.imgw.pl/</a>
Portugal	Portugal	280	<a href="https://snirh.apambiente.pt/">https://snirh.apambiente.pt/</a>
South Korea	South Korea	391	<a href="https://water.nier.go.kr/">https://water.nier.go.kr/</a>
Spain	Spain	889	<a href="https://ceh.cedex.es/anuarioaforos/demarcaciones.asp">https://ceh.cedex.es/anuarioaforos/demarcaciones.asp</a>
Sweden	Sweden	274	<a href="http://www.smhi.se">www.smhi.se</a>
Thailand	Thailand	73	<a href="https://hydro.iis.u-tokyo.ac.jp/GAME-T/GAIN-T/routine/rid-river/disc_d.html">https://hydro.iis.u-tokyo.ac.jp/GAME-T/GAIN-T/routine/rid-river/disc_d.html</a>
USGS	United States	12004	<a href="https://dashboard.waterdata.usgs.gov/app/nwd/en/">https://dashboard.waterdata.usgs.gov/app/nwd/en/</a>

## Appendix B: Static Catchment Attributes

Table B1 presents the static catchment attributes used for assessing performance predictability. Here, ‘static’ refers to attributes that do not vary over time. The attributes were calculated for each catchment as described in the table.

Table B1: Description and sources of static catchment attributes.

Attribute Name	Description
Mean Annual Runoff	Mean annual runoff ( $\text{mm yr}^{-1}$ ) calculated from the observed stream-flow record and catchment area
Rain Gauge Density	Average influence of rain gauges within a catchment as number of gauges per $100 \text{ km}^2$ . This was estimated by applying a spatial smoothing filter with a radius of 278 km to the global map of rain gauges from the Global Historical Climatology Network (GHCN-D; Menne et al., 2012)).
Urban Fraction	Urban land cover fraction from GlobCover (Bontemps et al., 2011)
$P$ Intensity	99.5th percentile daily $P$ intensity ( $\text{mm d}^{-1}$ ) from PPDIST (Beck et al., 2020)
$P$ Occurrence	Daily $P$ occurrence (%) using a $0.5 \text{ mm d}^{-1}$ threshold from PPDIST (Beck et al., 2020)
Soil Sand Content	Soil sand content (%) from SoilGrids250m (Hengl et al., 2017), mean over all layers
Topographic Slope	Average slope (%) of the catchment from Global Multi-resolution Terrain Elevation Data 2010 (GMTED2010; Danielson and Gesch, 2011)
Solid $P$ Fraction	Fraction of total $P$ falling as snow calculated according to Legates and Bogart (2009) using WorldClim V2 (Fick and Hijmans, 2017) for land and ERA5 (Hersbach et al., 2020) for ocean.
Forest Cover	Forest cover fraction from Food and Agriculture Organization (FAO) Global Forest Resources Assessment (FRA) 2000 (FAO, 2000)
Subsurface Permeability	subsurface permeability ( $\log_{10} \text{ m}^2$ ) from GLobal HYdrogeology MaPS (GLHYMPS) V2.0 (Huscroft et al., 2018)
Wetlands Fraction	Wetlands fraction from Global Lakes and Wetlands Database (GLWD) V3 (Lehner and Döll, 2004)
Mean NDVI	Normalized Difference Vegetation Index (NDVI) from SPOT-VEGETATION and PROBA-V (Maisongrande et al., 2004)

*(continued on next page)*

(continued from previous page)

---

<b>Attribute Name</b>	<b>Description</b>
Mean LAI	Mean Leaf Area Index (LAI) from SPOT-VEGETATION and PROBA-V (Fuster et al., 2020)
Mean PE	Mean annual potential evaporation (PE) following Consultative Group for International Agricultural Research (CGIAR) V2 (Zomer et al., 2008)
Permafrost Fraction	Permafrost fraction following (Brown et al., 1997)
Mean $P$	Mean annual $P$ (mm yr <sup>-1</sup> ) from WorldClim V2.1 (Fick and Hijmans, 2017)
Mean $T$	Mean annual air temperature (°C) from WorldClim V2.1 (Fick and Hijmans, 2017)
Mean Wind	Mean annual wind speed (m s <sup>-1</sup> ) from WorldClim V2.1 (Fick and Hijmans, 2017)
Absolute Latitude	Absolute latitude (°) of the centroid of the catchment
Catchment Area	Catchment area (km <sup>2</sup> )
Reservoir Impact	Ratio of total reservoir capacity (km <sup>3</sup> ) by annual cumulative streamflow (km <sup>3</sup> ), where the reservoir capacity is taken from Global Reservoir and Dam (GRanD) dataset (V1.3; Lehner et al., 2011) and the annual cumulative streamflow was calculated from the observed streamflow record
Reservoir Area	Area covered by reservoirs (km <sup>2</sup> ) from Georeferenced global Dams And Reservoirs dataset (GeoDAR) V11 (Wang et al., 2021)
Aridity Index	Ratio between potential evaporation and mean annual $P$ , where $P$ was taken from WorldClim V2.1 (Fick and Hijmans, 2017) and potential evaporation from CGIAR V2 (Zomer et al., 2008)
Irrigated Fraction	Fraction of irrigated area from Global Map of Irrigated Areas (GMIA) V5 (Siebert et al., 2013)

---

*Author contributions.* AA: modeling, analysis, visualization, and writing. HB: initial idea, conceptualization, writing, and project administration. All coauthors contributed to writing, revising, and refining the manuscript.

*Competing interests.* The authors declare that they have no conflict of interest.

*Acknowledgements.* The CHIRP and CHIRPS daily products are provided by the Climate Hazards Center (CHC), UC Santa Barbara. The  
465 CMORPH Climate Data Record (CDR) precipitation data used in this study was acquired from the NOAA National Centers for Environ-  
mental Information (NCEI). This CDR was developed by Pingping Xie of NOAA-CPC, Robert Joyce, Shaorong Wu Soo-Hyun Yoo, Yelena  
Yarosh, Fengying Sun, and Roger Lin of Innovim, LLC. The GPCP Daily precipitation used in this study was acquired from the NOAA  
National Centers for Environmental Information (NCEI; formerly NCDC) (<https://www.ncei.noaa.gov>). CPC Global Unified Gauge-Based  
Analysis of Daily Precipitation data provided by the NOAA PSL, Boulder, Colorado, USA, from their website at <https://psl.noaa.gov>. The  
470 different IMERG products used in this study were provided by the NASA/Goddard Space Flight Center and PPS, which develop and com-  
pute the IMERG datasets as a contribution to GPM, and archived at the NASA GES DISC. This report references JRA-3Q reanalysis data  
from the Japan Meteorological Agency. The ERA5 data used in this study is a reanalysis product from the Copernicus Climate Change  
Service (C3S) at the European Centre for Medium-Range Weather Forecasts (ECMWF), provided under a free license from the European  
Union. We are also grateful to the National Centers for Environmental Information (NCEI) and the Global Precipitation Climatology Centre  
475 (GPCC) for provision of REGEN data. PERSIANN-CCS, PERSIAN-CCS-CDR and PDIR-Now were obtained from Center for Hydrome-  
teorology & Remote Sensing (CHRS, <https://chrs.web.uci.edu>) Data Portal. The three SM2RAIN products were obtained from their zenodo  
repositories (<https://doi.org/10.5281/zenodo.2591214> for SMRAIN-ASCAT, <https://doi.org/10.5281/zenodo.3854817> for GPM+SM2RAIN  
and <https://doi.org/10.5281/zenodo.1305021> for SM2RAIN-CCI). We thank the developers of the  $P$  datasets listed in Table 1 for their efforts  
in creating and sharing these valuable resources. Our gratitude also extends to the streamflow data providers listed in Table A1, including the  
480 Global Runoff Data Centre (GRDC; Koblenz, Germany), the French National Research Institute for Sustainable Development (RDI), and the  
Korean National Institute of Environmental Research (NIER). We further thank the developers of the datasets used for the static catchment  
attributes listed in Table B1. Special thanks are due to Takuji Kubota and Munehisa K. Yamamoto for their valuable insights regarding the  
performance of GSMaP. Part of the analysis was conducted using Shaheen III, managed by the Supercomputing Core Laboratory at King  
Abdullah University of Science & Technology (KAUST) in Thuwal, Saudi Arabia.

## 485 References

- Adhikari, A. and Behrangi, A.: Assessment of satellite precipitation products in relation with orographic enhancement over the western United States, *Earth and Space Science*, 9, e2021EA001 906, 2022.
- Alvarez-Garreton, C., Mendoza, P. A., Boisier, J. P., Addor, N., Galleguillos, M., Zambrano-Bigiarini, M., Lara, A., Puelma, C., Cortes, G., Garreaud, R., McPhee, J., and Ayala, A.: The CAMELS-CL dataset: catchment attributes and meteorology for large sample studies – Chile  
490 dataset, *Hydrology and Earth System Sciences*, 22, 5817–5846, <https://doi.org/10.5194/hess-22-5817-2018>, 2018.
- Arsenault, R., Brissette, F., and Martel, J.-L.: The hazards of split-sample validation in hydrological model calibration, *Journal of Hydrology*, 566, 346–362, 2018.
- Arsenault, R., Brissette, F., Martel, J.-L., Troin, M., Lévesque, G., Davidson-Chaput, J., Gonzalez, M. C., Ameli, A., and Poulin, A.: A  
495 comprehensive, multisource database for hydrometeorological modeling of 14,425 North American watersheds, *Scientific Data*, 7, 243, 2020.
- Arsenault, R., Martel, J.-L., Brunet, F., Brissette, F., and Mai, J.: Continuous streamflow prediction in ungauged basins: long short-term memory neural networks clearly outperform traditional hydrological models, *Hydrology and Earth System Sciences*, 27, 139–157, <https://doi.org/10.5194/hess-27-139-2023>, 2023.
- Ashlock, D.: *Evolutionary computation for modeling and optimization*, Springer Publishing Company, 2010.
- 500 Bador, M., Boé, J., Terray, L., Alexander, L. V., Baker, A., Bellucci, A., Haarsma, R., Koenigk, T., Moine, M.-P., Lohmann, K., et al.: Impact of higher spatial atmospheric resolution on precipitation extremes over land in global climate models, *Journal of Geophysical Research: Atmospheres*, 125, e2019JD032 184, 2020.
- Beck, H. E., van Dijk, A. I. J. M., and de Roo, A.: Global maps of streamflow characteristics based on observations from several thousand catchments, *Journal of Hydrometeorology*, 16, 1478–1501, 2015.
- 505 Beck, H. E., van Dijk, A. I. J. M., de Roo, A., Dutra, E., Fink, G., Orth, R., and Schellekens, J.: Global evaluation of runoff from 10 state-of-the-art hydrological models, *Hydrology and Earth System Sciences*, 21, 2881–2903, 2017a.
- Beck, H. E., van Dijk, A. I. J. M., Levizzani, V., Schellekens, J., Miralles, D. G., Martens, B., and de Roo, A.: MSWEP: 3-hourly 0.25° global gridded precipitation (1979–2015) by merging gauge, satellite, and reanalysis data, *Hydrology and Earth System Sciences*, 21, 589–615, 2017b.
- 510 Beck, H. E., Vergopolan, N., Pan, M., Levizzani, V., van Dijk, A. I. J. M., Weedon, G. P., Brocca, L., Pappenberger, F., Huffman, G. J., and Wood, E. F.: Global-scale evaluation of 22 precipitation datasets using gauge observations and hydrological modeling, *Hydrology and Earth System Sciences*, 21, 6201–6217, 2017c.
- Beck, H. E., Pan, M., Roy, T., Weedon, G. P., Pappenberger, F., van Dijk, A. I. J. M., Huffman, G. J., Adler, R. F., and Wood, E. F.: Daily evaluation of 26 precipitation datasets using Stage-IV gauge-radar data for the CONUS, *Hydrology and Earth System Sciences*, 23,  
515 207–224, 2019a.
- Beck, H. E., Wood, E. F., Pan, M., Fisher, C. K., Miralles, D. G., Van Dijk, A. I., McVicar, T. R., and Adler, R. F.: MSWEP V2 global 3-hourly 0.1 precipitation: methodology and quantitative assessment, *Bulletin of the American Meteorological Society*, 100, 473–500, 2019b.
- Beck, H. E., Westra, S., Tan, J., Pappenberger, F., Huffman, G. J., McVicar, T. R., Gründemann, G. J., Vergopolan, N., Fowler, H. J., Lewis, E.,  
520 Verbist, K., and Wood, E. F.: PPDIST, global 0.1° daily and 3-hourly precipitation probability distribution climatologies for 1979–2018, *Scientific Data*, 7, <https://doi.org/10.1038/s41597-020-00631-x>, 2020.

- Beck, H. E., van Dijk, A. I. J. M., Larraondo, P. R., McVicar, T. R., Pan, M., Dutra, E., and Miralles, D. G.: MSWX: global 3-hourly 0.1° bias-corrected meteorological data including near-real-time updates and forecast ensembles, *Bulletin of the American Meteorological Society*, 103, E710–E732, 2022.
- 525 Beck, H. E., McVicar, T. R., Vergopolan, N., Berg, A., Lutsko, N. J., Dufour, A., Zeng, Z., Jiang, X., van Dijk, A. I. J. M., and Miralles, D. G.: High-resolution (1 km) Köppen-Geiger maps for 1901–2099 based on constrained CMIP6 projections, *Scientific Data*, 10, <https://doi.org/10.1038/s41597-023-02549-6>, 2023.
- Bergström, S.: The HBV model—its structure and applications, SMHI Reports RH 4, Swedish Meteorological and Hydrological Institute (SMHI), Norrköping, Sweden, 1992.
- 530 Bishop, C. H. and Abramowitz, G.: Climate model dependence and the replicate Earth paradigm, *Climate dynamics*, 41, 885–900, 2013.
- Bitew, M. M., Gebremichael, M., Ghebremichael, L. T., and Bayissa, Y. A.: Evaluation of high-resolution satellite rainfall products through streamflow simulation in a hydrological modeling of a small mountainous watershed in Ethiopia, *Journal of Hydrometeorology*, 13, 338–350, 2012.
- Bontemps, S., Defourny, P., and van Bogaert, E.: GlobCover 2009, products description and validation report, Tech. rep., ESA GlobCover project, available at: <http://ionia1.esrin.esa.int>, 2011.
- 535 Brocca, L., Filippucci, P., Hahn, S., Ciabatta, L., Massari, C., Camici, S., Schüller, L., Bojkov, B., and Wagner, W.: SM2RAIN-ASCAT (2007–2018): global daily satellite rainfall data from ASCAT soil moisture observations, *Earth System Science Data*, 11, 1583–1601, <https://doi.org/10.5194/essd-11-1583-2019>, publisher: Copernicus GmbH, 2019.
- Brown, J., Ferrians, O. J., Heginbottom, J. A., and Melnikov, E. S.: Circum-Arctic Map of Permafrost and Ground-Ice Conditions. Version 540 2, Tech. rep., National Snow and Ice Data Center, Boulder, Colorado USA, 1997.
- Camici, S., Ciabatta, L., Massari, C., and Brocca, L.: How reliable are satellite precipitation estimates for driving hydrological models: A verification study over the Mediterranean area, *Journal of Hydrology*, 563, 950–961, <https://doi.org/https://doi.org/10.1016/j.jhydrol.2018.06.067>, 2018.
- Cao, Q., Painter, T. H., Currier, W. R., Lundquist, J. D., and Lettenmaier, D. P.: Estimation of Precipitation over the OLYMPEX Domain 545 during Winter 2015/16, *Journal of Hydrometeorology*, 19, 143–160, 2018.
- Chagas, V. B. P., Chaffe, P. L. B., Addor, N., Fan, F. M., Fleischmann, A. S., Paiva, R. C. D., and Siqueira, V. A.: CAMELS-BR: hydrometeorological time series and landscape attributes for 897 catchments in Brazil, *Earth System Science Data*, 12, 2075–2096, <https://doi.org/10.5194/essd-12-2075-2020>, 2020.
- Chan, S. C., Kendon, E. J., Fowler, H. J., Blenkinsop, S., Ferro, C. A., and Stephenson, D. B.: Does increasing the spatial resolution of a 550 regional climate model improve the simulated daily precipitation?, *Climate dynamics*, 41, 1475–1495, 2013.
- Chen, H., Yong, B., Qi, W., Wu, H., Ren, L., and Hong, Y.: Investigating the evaluation uncertainty for satellite precipitation estimates based on two different ground precipitation observation products, *Journal of Hydrometeorology*, 21, 2595–2606, 2020.
- Chen, M., Shi, W., Xie, P., Silva, V. B. S., Kousky, V. E., Wayne Higgins, R., and Janowiak, J. E.: Assessing objective techniques for gauge-based analyses of global daily precipitation, *Journal of Geophysical Research: Atmospheres*, 113, <https://doi.org/10.1029/2007JD009132>, 555 [\\_eprint: https://onlinelibrary.wiley.com/doi/pdf/10.1029/2007JD009132](https://onlinelibrary.wiley.com/doi/pdf/10.1029/2007JD009132), 2008.
- Ciabatta, L., Massari, C., Brocca, L., Gruber, A., Reimer, C., Hahn, S., Paulik, C., Dorigo, W., Kidd, R., and Wagner, W.: SM2RAIN-CCI: a new global long-term rainfall data set derived from ESA CCI soil moisture, *Earth System Science Data*, 10, 267–280, <https://doi.org/10.5194/essd-10-267-2018>, publisher: Copernicus GmbH, 2018.

- Contractor, S., Donat, M. G., Alexander, L. V., Ziese, M., Meyer-Christoffer, A., Schneider, U., Rustemeier, E., Becker, A., Durre, I., and  
560 Vose, R. S.: Rainfall Estimates on a Gridded Network (REGEN) – a global land-based gridded dataset of daily precipitation from 1950 to  
2016, *Hydrology and Earth System Sciences*, 24, 919–943, <https://doi.org/10.5194/hess-24-919-2020>, 2020.
- Coxon, G., Addor, N., Bloomfield, J. P., Freer, J., Fry, M., Hannaford, J., Howden, N. J. K., Lane, R., Lewis, M., Robinson, E. L., Wagener,  
T., and Woods, R.: CAMELS-GB: hydrometeorological time series and landscape attributes for 671 catchments in Great Britain, *Earth  
System Science Data*, 12, 2459–2483, <https://doi.org/10.5194/essd-12-2459-2020>, 2020.
- 565 Crochemore, L., Isberg, K., Pimentel, R., Pineda, L., Hasan, A., and Arheimer, B.: Lessons learnt from checking the quality of openly  
accessible river flow data worldwide, *Hydrological Sciences Journal*, 65, 699–711, 2020.
- Dangar, S., Asoka, A., and Mishra, V.: Causes and implications of groundwater depletion in India: A review, *Journal of Hydrology*, 596,  
126 103, 2021.
- Danielson, J. J. and Gesch, D. B.: Global Multi-resolution Terrain Elevation Data 2010 (GMTED2010), Open-File Report 2011–1073, United  
570 States Geological Survey (USGS), Reston, Virginia, 2011.
- Dimitrova, A., McElroy, S., Levy, M., Gershunov, A., and Benmarhnia, T.: Precipitation variability and risk of infectious disease in children  
under 5 years for 32 countries: a global analysis using Demographic and Health Survey data, *The Lancet Planetary Health*, 6, e147–e155,  
2022.
- do Nascimento, T. V., Rudlang, J., Höge, M., van der Ent, R., Chappon, M., Seibert, J., Hrachowitz, M., and Fenicia, F.: EStreams: An  
575 integrated dataset and catalogue of streamflow, hydro-climatic and landscape variables for Europe, *Scientific Data*, 11, 879, 2024.
- Dresel, P. E., Dean, J. F., Perveen, F., Webb, J. A., Hekmeijer, P., Adelana, S. M., and Daly, E.: Effect of Eucalyptus plantations, geology,  
and precipitation variability on water resources in upland intermittent catchments, *Journal of hydrology*, 564, 723–739, 2018.
- Ebert, E. E., Janowiak, J. E., and Kidd, C.: Comparison of near-real-time precipitation estimates from satellite observations and numerical  
models, *Bulletin of the American Meteorological Society*, 88, 47–64, 2007.
- 580 Ehsani, M. R. and Behrangi, A.: A comparison of correction factors for the systematic gauge-measurement errors to improve the global land  
precipitation estimate, *Journal of Hydrology*, 610, 127 884, 2022.
- El Kenawy, A. M., McCabe, M. F., Lopez-Moreno, J. I., Hathal, Y., Robaa, S. M., Al Budeiri, A. L., Jadoon, K. Z., Abouelmagd,  
A., Eddenjal, A., Domínguez-Castro, F., Trigo, R. M., and Vicente-Serrano, S. M.: Spatial assessment of the performance of multi-  
585 ple high-resolution satellite-based precipitation data sets over the Middle East, *International Journal of Climatology*, 39, 2522–2543,  
<https://doi.org/10.1002/joc.5968>, 2019.
- Ensor, L. A. and Robeson, S. M.: Statistical characteristics of daily precipitation: comparisons of gridded and point datasets, *Journal of  
Applied Meteorology and Climatology*, 47, 2468–2476, 2008.
- FAO: Forest Resource Assessment (FRA) forest cover, [www.fao.org/forestry/32203/en/](http://www.fao.org/forestry/32203/en/), 2000.
- Fick, S. E. and Hijmans, R. J.: WorldClim 2: new 1-km spatial resolution climate surfaces for global land areas, *International Journal of  
590 Climatology*, 37, 4302–4315, 2017.
- Fortin, F., De Rainville, F., Gardner, M., Parizeau, M., and Gagné, C.: DEAP: evolutionary algorithms made easy, *Journal of Machine  
Learning Research*, 13, 2171–2175, 2012.
- Funk, C., Peterson, P., Landsfeld, M., Pedreros, D., Verdin, J., Shukla, S., Husak, G., Rowland, J., Harrison, L., Hoell, A., and Michaelsen, J.:  
The climate hazards infrared precipitation with stations—a new environmental record for monitoring extremes, *Scientific Data*, 2, 150 066,  
595 <https://doi.org/10.1038/sdata.2015.66>, 2015.

- Fuster, B., Sánchez-Zapero, J., Camacho, F., García-Santos, V., Verger, A., Lacaze, R., Weiss, M., Baret, F., and Smets, B.: Quality assessment of PROBA-V LAI, fAPAR and fCOVER collection 300 m products of copernicus global land service, *Remote Sensing*, 12, 1017, 2020.
- Gebrechorkos, S. H., Leyland, J., Dadson, S. J., Cohen, S., Slater, L., Wortmann, M., Ashworth, P. J., Bennett, G. L., Boothroyd, R., Cloke, H., et al.: Global scale evaluation of precipitation datasets for hydrological modelling, *Hydrology and Earth System Sciences Discussions*, 2023, 1–33, 2023.
- 600 Gebremichael, M.: Framework for satellite rainfall product evaluation, in: *Rainfall: State of the Science*, edited by Testik, F. Y. and Gebremichael, M., Geophysical Monograph Series, American Geophysical Union, Washington, D. C., <https://doi.org/10.1029/2010GM000974>, 2010.
- Gericke, O. J. and Smithers, J. C.: Review of methods used to estimate catchment response time for the purpose of peak discharge estimation, *Hydrological Sciences Journal*, 59, 1935–1971, 2014.
- 605 Giroto, M., Formetta, G., Azimi, S., Bachand, C., Cowherd, M., De Lannoy, G., Lievens, H., Modanesi, S., Raleigh, M. S., Rigon, R., and Massari, C.: Identifying snowfall elevation patterns by assimilating satellite-based snow depth retrievals, *Science of The Total Environment*, 906, 167 312, <https://doi.org/https://doi.org/10.1016/j.scitotenv.2023.167312>, 2024a.
- Giroto, M., Formetta, G., Azimi, S., Bachand, C., Cowherd, M., De Lannoy, G., Lievens, H., Modanesi, S., Raleigh, M. S., Rigon, R., and 610 Massari, C.: Identifying snowfall elevation patterns by assimilating satellite-based snow depth retrievals, *Science of The Total Environment*, 906, 167 312, <https://doi.org/https://doi.org/10.1016/j.scitotenv.2023.167312>, 2024b.
- Gochis, D. J., Nesbitt, S. W., Yu, W., and Williams, S. F.: Comparison of gauge-corrected versus non-gauge corrected satellite-based quantitative precipitation estimates during the 2004 NAME enhanced observing period, *Atmósfera*, 22, 69–98, 2009.
- Groisman, P. Y. and Legates, D. R.: The accuracy of United States precipitation data, *Bulletin of the American Meteorological Society*, 72, 615 215–227, 1994.
- Gu, L., Yin, J., Wang, S., Chen, J., Qin, H., Yan, X., He, S., and Zhao, T.: How well do the multi-satellite and atmospheric reanalysis products perform in hydrological modelling, *Journal of Hydrology*, 617, 128 920, 2023.
- Gupta, H. V., Kling, H., Yilmaz, K. K., and Martinez, G. F.: Decomposition of the mean squared error and NSE performance criteria: Implications for improving hydrological modelling, *Journal of Hydrology*, 370, 80–91, 2009.
- 620 Hao, Z., Jin, J., Xia, R., Tian, S., Yang, W., Liu, Q., Zhu, M., Ma, T., Jing, C., and Zhang, Y.: CCAM: China Catchment Attributes and Meteorology dataset, *Earth System Science Data*, 13, 5591–5616, <https://doi.org/10.5194/essd-13-5591-2021>, 2021.
- Helgason, H. B. and Nijssen, B.: LamaH-Ice: LARge-SaMple DATA for Hydrology and Environmental Sciences for Iceland, *Earth System Science Data*, 16, 2741–2771, <https://doi.org/10.5194/essd-16-2741-2024>, 2024.
- Hengl, T., Mendes de Jesus, J., Heuvelink, G. B., Ruiperez Gonzalez, M., Kilibarda, M., Blagotić, A., Shangguan, W., Wright, M. N., Geng, 625 X., Bauer-Marschallinger, B., et al.: SoilGrids250m: Global gridded soil information based on machine learning, *PLoS one*, 12, e0169 748, 2017.
- Herold, N., Alexander, L. V., Donat, M. G., Contractor, S., and Becker, A.: How much does it rain over land?, *Geophysical Research Letters*, 43, 341–348, 2016.
- Hersbach, H., Bell, B., Berrisford, P., Hirahara, S., Horanyi, A., noz Sabater, J. M., Nicolas, J., Peubey, C., Radu, R., Schepers, D., Simmons, 630 A., Soci, C., Abdalla, S., Abellan, X., Balsamo, G., Bechtold, P., Biavati, G., Bidlot, J., Bonavita, M., Chiara, G. D., Dahlgren, P., Dee, D., Diamantakis, M., Dragani, R., Flemming, J., Forbes, R., Fuentes, M., Geer, A., Haimberger, L., Healy, S., Hogan, R. J., Holm, E., Janiskova, M., Keeley, S., Laloyaux, P., Lopez, P., Radnoti, G., de Rosnay, P., Rozum, I., Vamborg, F., Villaume, S., and Thépaut, J.-N.: The ERA5 global reanalysis, *Quarterly Journal of the Royal Meteorological Society*, <https://doi.org/10.1002/qj.3803>, 2020.

- Hinge, G., Hamouda, M. A., Long, D., and Mohamed, M. M.: Hydrologic utility of satellite precipitation products in flood prediction: A meta-data analysis and lessons learnt, *Journal of Hydrology*, 612, 128–103, 2022.
- Höge, M., Kauzlaric, M., Siber, R., Schönenberger, U., Horton, P., Schwanbeck, J., Floriancic, M. G., Viviroli, D., Wilhelm, S., Sikorska-Senoner, A. E., Addor, N., Brunner, M., Pool, S., Zappa, M., and Fenicia, F.: CAMELS-CH: hydro-meteorological time series and landscape attributes for 331 catchments in hydrologic Switzerland, *Earth System Science Data*, 15, 5755–5784, <https://doi.org/10.5194/essd-15-5755-2023>, 2023.
- Hong, Y., Hsu, K.-L., Sorooshian, S., and Gao, X.: Precipitation Estimation from Remotely Sensed Imagery Using an Artificial Neural Network Cloud Classification System, *Journal of Applied Meteorology and Climatology*, 43, 1834–1853, <https://doi.org/10.1175/JAM2173.1>, publisher: American Meteorological Society Section: *Journal of Applied Meteorology and Climatology*, 2004.
- Huang, Y., Bárdossy, A., and Zhang, K.: Sensitivity of hydrological models to temporal and spatial resolutions of rainfall data, *Hydrology and Earth System Sciences*, 23, 2647–2663, 2019.
- Huang, Z., Hejazi, M., Li, X., Tang, Q., Vernon, C., Leng, G., Liu, Y., Döll, P., Eisner, S., Gerten, D., et al.: Reconstruction of global gridded monthly sectoral water withdrawals for 1971–2010 and analysis of their spatiotemporal patterns, *Hydrology and Earth System Sciences*, 22, 2117–2133, 2018.
- Huffman, G. J., Stocker, E. F., Bolvin, D. T., Nelkin, E. J., and Tan, J.: GPM IMERG final precipitation L3 half hourly 0.1 degree x 0.1 degree V06, Goddard Earth Sciences Data and Information Services Center (GES DISC): Greenbelt, MD, USA, 2019a.
- Huffman, G. J., Stocker, E. F., Bolvin, D. T., Nelkin, E. J., and Tan, J.: GPM IMERG final precipitation L3 half hourly 0.1 degree x 0.1 degree V06, Goddard Earth Sciences Data and Information Services Center (GES DISC): Greenbelt, MD, USA, 2019b.
- Huffman, G. J., Adler, R. F., Behrangi, A., Bolvin, D. T., Nelkin, E. J., Gu, G., and Ehsani, M. R.: The new version 3.2 global precipitation climatology project (GPCP) monthly and daily precipitation products, *Journal of Climate*, 36, 7635–7655, publisher: American Meteorological Society, 2023.
- Huscroft, J., Gleeson, T., Hartmann, J., and Börker, J.: Compiling and mapping global permeability of the unconsolidated and consolidated Earth: GLobal HYdrogeology MaPS 2.0 (GLHYMPS 2.0), *Geophysical Research Letters*, 45, 1897–1904, 2018.
- Jääskeläinen, E., Kouki, K., and Riihelä, A.: Detecting snowfall events over the arctic using optical and microwave satellite measurements, *Hydrology and Earth System Sciences Discussions*, 2024, 1–26, 2024.
- Kidd, C., Becker, A., Huffman, G. J., Muller, C. L., Joe, P., Skofronick-Jackson, G., and Kirschbaum, D. B.: So, how much of the Earth’s surface is covered by rain gauges?, *Bulletin of the American Meteorological Society*, 98, 69–78, 2017.
- Kling, H., Fuchs, M., and Paulin, M.: Runoff conditions in the upper Danube basin under an ensemble of climate change scenarios, *Journal of Hydrology*, 424–425, 264–277, <https://doi.org/10.1016/j.hydrol.2012.01.011>, 2012.
- Klingler, C., Schulz, K., and Herrnegger, M.: LamaH-CE: LArge-SaMple DAta for Hydrology and Environmental Sciences for Central Europe, *Earth System Science Data*, 13, 4529–4565, <https://doi.org/10.5194/essd-13-4529-2021>, 2021.
- Kosaka, Y., Kobayashi, S., Harada, Y., Kobayashi, C., Naoe, H., Koichi, Y., Harada, M., Goto, N., Chiba, J., Miyaoka, K., Sekiguchi, R., Deushi, M., Kamahori, H., Nakaegawa, T., Tanaka, T., Tokuyoshi, T., Sato, Y., Matsushita, Y., and Onogi, K.: The JRA-3Q Reanalysis The JRA-3Q Reanalysis, *Journal of the Meteorological Society of Japan. Ser. II*, 102, <https://doi.org/10.2151/jmsj.2024-004>, 2024.
- Krabbenhoft, C. A., Allen, G. H., Lin, P., Godsey, S. E., Allen, D. C., Burrows, R. M., DelVecchia, A. G., Fritz, K. M., Shanafield, M., Burgin, A. J., et al.: Assessing placement bias of the global river gauge network, *Nature Sustainability*, 5, 586–592, 2022.

- 670 Kubota, T., Aonashi, K., Ushio, T., Shige, S., Takayabu, Y. N., Kachi, M., Arai, Y., Tashima, T., Masaki, T., and Kawamoto, N.: Global Satellite Mapping of Precipitation (GSMaP) products in the GPM era, *Satellite Precipitation Measurement: Volume 1*, pp. 355–373, publisher: Springer, 2020.
- Kubota, T., Yamamoto, M. K., Ito, M., Tashima, T., Hirose, H., Ushio, T., Aonashi, K., Shige, S., Hamada, A., Yamaji, M., Yoshida, N., and Kachi, M.: Construction of a longer-term and more homogeneous GSMaP precipitation dataset, pp. 355–373, Springer, 675 [https://doi.org/10.1007/978-3-030-24568-9\\_20](https://doi.org/10.1007/978-3-030-24568-9_20), 2024.
- Legates, D. R. and Bogart, T. A.: Estimating the proportion of monthly precipitation that falls in solid form, *Journal of Hydrometeorology*, 10, 1299–1306, 2009.
- Lehner, B. and Döll, P.: Development and validation of a global database of lakes, reservoirs and wetlands, *Journal of hydrology*, 296, 1–22, 2004.
- 680 Lehner, B., Reidy Liermann, C., Revenga, C., Vörösmarty, C., Fekete, B., Crouzet, P., Döll, P., Endejan, M., Frenken, K., Magome, J., Nilsson, C., Robertson, J. C., Rödel, R., Sindorf, N., and Wissler, D.: High resolution mapping of the world’s reservoirs and dams for sustainable river flow management, *Frontiers in Ecology and the Environment*, 9, 494–502, 2011.
- Li, Z., Chen, M., Gao, S., Hong, Z., Tang, G., Wen, Y., Gourley, J. J., and Hong, Y.: Cross-examination of similarity, difference and deficiency of gauge, radar and satellite precipitation measuring uncertainties for extreme events using conventional metrics and multiplicative triple 685 collocation, *Remote Sensing*, 12, 1258, 2020.
- Liang, M. and Gornish, E. S.: Rainfall regulation of grazed grasslands, *Proceedings of the National Academy of Sciences*, 116, 23 887–23 888, 2019.
- Lin, J., Qian, T., Bechtold, P., Grell, G., Zhang, G. J., Zhu, P., Freitas, S. R., Barnes, H., and Han, J.: Atmospheric convection, *Atmosphere-Ocean*, 60, 422–476, 2022.
- 690 Liu, Z., Liu, Y., Wang, S., Yang, X., Wang, L., Baig, M. H. A., Chi, W., and Wang, Z.: Evaluation of spatial and temporal performances of ERA-Interim precipitation and temperature in Mainland China, *Journal of Climate*, 31, 4347–4365, 2018.
- Loritz, R., Dolich, A., Acuña Espinoza, E., Ebeling, P., Guse, B., Götze, J., Hassler, S. K., Hauffe, C., Heidbüchel, I., Kiesel, J., Mälicke, M., Müller-Thomy, H., Stölzle, M., and Tarasova, L.: CAMELS-DE: hydro-meteorological time series and attributes for 1555 catchments in Germany, *Earth System Science Data Discussions*, 2024, 1–30, <https://doi.org/10.5194/essd-2024-318>, 2024.
- 695 Lussana, C., Saloranta, T., Skaugen, T., Magnusson, J., Tveito, O. E., and Andersen, J.: seNorge2 daily precipitation, an observational gridded dataset over Norway from 1957 to the present day, *Earth System Science Data*, 10, 235–249, <https://doi.org/10.5194/essd-10-235-2018>, 2018.
- Maggioni, V., Meyers, P. C., and Robinson, M. D.: A review of merged high resolution satellite precipitation product accuracy during the Tropical Rainfall Measuring Mission (TRMM)-era, *Journal of Hydrometeorology*, 17, 1101–1117, <https://doi.org/10.1175/JHM-D-15-0190.1>, 2016.
- 700 Maisongrande, P., Duchemin, B., and Dedieu, G.: VEGETATION/SPOT: an operational mission for the Earth monitoring; presentation of new standard products, *International Journal of Remote Sensing*, 25, 9–14, 2004.
- Mangukiya, N. K., Kumar, K. B., Dey, P., Sharma, S., Bejagam, V., Mujumdar, P. P., and Sharma, A.: CAMELS-INDIA: hydrometeorological time series and catchment attributes for 472 catchments in Peninsular India, *Earth System Science Data Discussions*, 2024, 1–43, 705 <https://doi.org/10.5194/essd-2024-379>, 2024.
- Massari, C., Brocca, L., Pellarin, T., Abramowitz, G., Filippucci, P., Ciabatta, L., Maggioni, V., Kerr, Y., and Fernandez Prieto, D.: A daily 25&thinsp;km short-latency rainfall product for data-scarce regions based on the integration of the Global Precipitation

- Measurement mission rainfall and multiple-satellite soil moisture products, *Hydrology and Earth System Sciences*, 24, 2687–2710, <https://doi.org/10.5194/hess-24-2687-2020>, publisher: Copernicus GmbH, 2020.
- 710 Mazzoleni, M., Brandimarte, L., and Amaranto, A.: Evaluating precipitation datasets for large-scale distributed hydrological modelling, *Journal of Hydrology*, 578, 124 076, <https://doi.org/https://doi.org/10.1016/j.jhydrol.2019.124076>, 2019.
- McKinnon, K. A. and Deser, C.: The inherent uncertainty of precipitation variability, trends, and extremes due to internal variability, with implications for Western US water resources, *Journal of Climate*, 34, 9605–9622, 2021.
- Ménégoz, M., Gallée, H., and Jacobi, H. W.: Precipitation and snow cover in the Himalaya: from reanalysis to regional climate simulations, *Hydrology and Earth System Sciences*, 17, 3921–3936, 2013.
- 715 Menne, M. J., Durre, I., Vose, R. S., Gleason, B. E., and Houston, T. G.: An overview of the global historical climatology network-daily database, *Journal of atmospheric and oceanic technology*, 29, 897–910, 2012.
- Monteith, J. L.: Evaporation and environment, in: *Symposia of the society for experimental biology*, vol. 19, pp. 205–234, Cambridge University Press (CUP) Cambridge, 1965.
- 720 Müller Schmied, H., Eisner, S., Franz, D., Wattenbach, M., Portmann, F. T., Flörke, M., and Döll, P.: Sensitivity of simulated global-scale freshwater fluxes and storages to input data, hydrological model structure, human water use and calibration, *Hydrology and Earth System Sciences*, 18, 3511–3538, <https://doi.org/10.5194/hess-18-3511-2014>, 2014.
- NCEP: Global Data Assimilation System (GDAS), <https://www.ncei.noaa.gov/products/weather-climate-models/global-data-assimilation>, last Accessed: Nov. 2024, 2024.
- 725 Nguyen, P., Ombadi, M., Gorooh, V. A., Shearer, E. J., Sadeghi, M., Sorooshian, S., Hsu, K., Bolvin, D., and Ralph, M. F.: PERSIANN Dynamic Infrared–Rain Rate (PDIR-Now): A Near-Real-Time, Quasi-Global Satellite Precipitation Dataset, *Journal of Hydrometeorology*, 21, 2893–2906, <https://doi.org/10.1175/JHM-D-20-0177.1>, publisher: American Meteorological Society Section: Journal of Hydrometeorology, 2020.
- Ouyang, W., Lawson, K., Feng, D., Ye, L., Zhang, C., and Shen, C.: Continental-scale streamflow modeling of basins with reservoirs: Towards a coherent deep-learning-based strategy, *Journal of Hydrology*, 599, 126 455, <https://doi.org/10.1016/j.jhydrol.2021.126455>, 2021.
- 730 Penman, H. L.: Natural evaporation from open water, bare soil and grass, *Proceedings of the Royal Society*, 193, 120–146, series A, 1948.
- Peters, K., Hohenegger, C., and Klocke, D.: Different representation of mesoscale convective systems in convection-permitting and convection-parameterizing NWP models and its implications for large-scale forecast evolution, *Atmosphere*, 10, 503, 2019.
- Pontoppidan, M., Reuder, J., Mayer, S., and Kolstad, E. W.: Downscaling an intense precipitation event in complex terrain: the importance of high grid resolution, <https://doi.org/10.1080/16000870.2016.1271561>, 2017.
- 735 Pradhan, A. and Indu, J.: Assessment of SM2RAIN derived and IMERG based precipitation products for hydrological simulation, *Journal of Hydrology*, 603, 127 191, <https://doi.org/https://doi.org/10.1016/j.jhydrol.2021.127191>, 2021.
- Prein, A. F. and Gobiet, A.: Impacts of uncertainties in European gridded precipitation observations on regional climate analysis, *International Journal of Climatology*, 37, 305–327, 2017.
- 740 Puy, A., Lankford, B., Meier, J., Van Der Kooij, S., and Saltelli, A.: Large variations in global irrigation withdrawals caused by uncertain irrigation efficiencies, *Environmental Research Letters*, 17, 044 014, 2022.
- Rasmussen, R. M., Baker, B., Kochendorfer, J., Meyers, T., Landolt, S., Fischer, A. P., Black, J., Thériault, J. M., Kucera, P., Gochis, D., Smith, C., Nitu, R., Hall, M., Ikeda, K., and Gutmann, E.: How well are we measuring snow: The NOAA/FAA/NCAR winter precipitation test bed, *Bulletin of the American Meteorological Society*, 93, 811–829, <https://doi.org/10.1175/BAMS-D-11-00052.1>, 2012.

- 745 Rodell, M., Velicogna, I., and Famiglietti, J. S.: Satellite-based estimates of groundwater depletion in India, *Nature*, 460, 999–1002, <https://doi.org/10.1038/nature08238>, 2009.
- Sadeghi, L., Saghafian, B., and Moazami, S.: Evaluation of IMERG and MRMS remotely sensed snowfall products, *International Journal of Remote Sensing*, 40, 4175–4192, 2019.
- Sadeghi, M., Nguyen, P., Naeini, M. R., Hsu, K., Braithwaite, D., and Sorooshian, S.: PERSIANN-CCS-CDR, a 3-hourly 0.04° global precipitation climate data record for heavy precipitation studies, *Scientific Data*, 8, 157, <https://doi.org/10.1038/s41597-021-00940-9>, publisher: Nature Publishing Group, 2021.
- 750 Schneider, U., Becker, A., Finger, P., Meyer-Christoffer, A., Ziese, M., and Rudolf, B.: GPCC's new land surface precipitation climatology based on quality-controlled in situ data and its role in quantifying the global water cycle, *Theoretical and Applied Climatology*, 115, 15–40, 2014.
- 755 Schumacher, V., Fernández, A., Justino, F., and Comin, A.: WRF High Resolution Dynamical Downscaling of Precipitation for the Central Andes of Chile and Argentina, <https://doi.org/10.3389/feart.2020.00328>, 2020.
- Seibert, J. and Bergström, S.: A retrospective on hydrological catchment modelling based on half a century with the HBV model, *Hydrology and Earth System Sciences*, 26, 1371–1388, <https://doi.org/10.5194/hess-26-1371-2022>, 2022.
- Seibert, J. and Vis, M. J. P.: Teaching hydrological modeling with a user-friendly catchment-runoff-model software package, *Hydrology and Earth System Sciences*, 16, 3315–3325, 2012.
- 760 Sevruk, B., Ondrás, M., and Chvíla, B.: The WMO precipitation measurement intercomparisons, *Atmospheric Research*, 92, 376–380, 2009.
- Sharma, S., Chen, Y., Zhou, X., Yang, K., Li, X., Niu, X., Hu, X., and Khadka, N.: Evaluation of GPM-Era Satellite Precipitation Products on the Southern Slopes of the Central Himalayas Against Rain Gauge Data, <https://doi.org/10.3390/rs12111836>, 2020a.
- Sharma, S., Khadka, N., Hamal, K., Shrestha, D., Talchabhadel, R., and Chen, Y.: How accurately can satellite products (TMPA and IMERG) detect precipitation patterns, extremities, and drought across the Nepalese Himalaya?, *Earth and Space Science*, 7, e2020EA001315, 2020b.
- 765 Shen, Y., Hong, Z., Pan, Y., Yu, J., and Maguire, L.: China's 1 km Merged Gauge, Radar and Satellite Experimental Precipitation Dataset, *Remote Sensing*, 10, <https://doi.org/10.3390/rs10020264>, 2018.
- Siebert, S., Döll, P., Hoogeveen, J., Faures, J., Frenken, K., and Feick, S.: Development and validation of the global map of irrigation areas, *Hydrology and Earth System Sciences*, 9, 535–547, <https://doi.org/10.5194/hess-9-535-2005>, 2005.
- 770 Siebert, S., Henrich, V., Frenken, K., and Burke, J.: Update of the digital global map of irrigation areas to version 5, Rheinische Friedrich-Wilhelms-Universität, Bonn, Germany and Food and Agriculture Organization of the United Nations, Rome, Italy, 10, 2660–6728, 2013.
- Skamarock, W. C.: Evaluating mesoscale NWP models using kinetic energy spectra, *Monthly Weather Review*, 132, 3019–3032, 2004.
- Song, Y., Broxton, P. D., Ehsani, M. R., and Behrangi, A.: Assessment of snowfall accumulation from satellite and reanalysis products using SNOTEL observations in Alaska, *Remote Sensing*, 13, 2922, 2021.
- 775 Su, F., Hong, Y., and Lettenmaier, D. P.: Evaluation of TRMM Multisatellite Precipitation Analysis (TMPA) and its utility in hydrologic prediction in the La Plata Basin, *Journal of Hydrometeorology*, 9, 622, 2008.
- Sun, Q., Miao, C., Duan, Q., Ashouri, H., Sorooshian, S., and Hsu, K.-L.: A review of global precipitation datasets: data sources, estimation, and intercomparisons, *Reviews of Geophysics*, 56, 79–107, 2018.
- 780 Tang, G., Ma, Y., Long, D., Zhong, L., and Hong, Y.: Evaluation of GPM Day-1 IMERG and TMPA Version-7 legacy products over Mainland China at multiple spatiotemporal scales, *Journal of Hydrology*, 533, 152–167, 2016.

- Tarek, M., Brissette, F. P., and Arsenault, R.: Evaluation of the ERA5 reanalysis as a potential reference dataset for hydrological modelling over North America, *Hydrology and Earth System Sciences*, 24, 2527–2544, <https://doi.org/10.5194/hess-24-2527-2020>, 2020.
- 785 Tarek, M., Brissette, F., and Arsenault, R.: Uncertainty of gridded precipitation and temperature reference datasets in climate change impact studies, *Hydrology and Earth System Sciences*, 25, 3331–3350, 2021.
- Tramblay, Y., Rouché, N., Paturol, J.-E., Mahé, G., Boyer, J.-F., Amoussou, E., Bodian, A., Dacosta, H., Dakhlaoui, H., Dezetter, A., Hughes, D., Hanich, L., Peugeot, C., Tshimanga, R., and Lachassagne, P.: ADHI: the African Database of Hydrometric Indices (1950–2018), *Earth System Science Data*, 13, 1547–1560, <https://doi.org/10.5194/essd-13-1547-2021>, 2021.
- 790 Voisin, N., Wood, A. W., and Lettenmaier, D. P.: Evaluation of precipitation products for global hydrological prediction, *Journal of Hydrometeorology*, 9, 388–407, 2008.
- Wada, Y., Bierkens, M. F. P., de Roo, A., Dirmeyer, P. A., Famiglietti, J. S., Hanasaki, N., Konar, M., Liu, J., Müller Schmied, H., Oki, T., Pokhrel, Y., Sivapalan, M., Troy, T. J., van Dijk, A. I. J. M., van Emmerik, T., Van Huijgevoort, M. H. J., Van Lanen, H. A. J., Vörösmarty, C. J., Wanders, N., and Wheeler, H.: Human–water interface in hydrological modelling: current status and future directions, *Hydrology and Earth System Sciences*, 21, 4169–4193, <https://doi.org/10.5194/hess-21-4169-2017>, 2017.
- 795 Wang, J., Walter, B. A., Yao, F., Song, C., Ding, M., Maroof, A. S., Zhu, J., Fan, C., Xin, A., McAlister, J. M., et al.: GeoDAR: Georeferenced global dam and reservoir dataset for bridging attributes and geolocations, *Earth System Science Data Discussions*, 2021, 1–52, 2021.
- Wang, Y., You, Y., and Kulie, M.: Global Virga Precipitation Distribution Derived From Three Spaceborne Radars and Its Contribution to the False Radiometer Precipitation Detection, *Geophysical Research Letters*, 45, 4446–4455, <https://doi.org/10.1029/2018GL077891>, [\\_eprint: https://onlinelibrary.wiley.com/doi/pdf/10.1029/2018GL077891](https://onlinelibrary.wiley.com/doi/pdf/10.1029/2018GL077891), 2018.
- 800 Xia, Y., Mitchell, K., Ek, M., Sheffield, J., Cosgrove, B., Wood, E., Luo, L., Alonge, C., Wei, H., Meng, J., et al.: Continental-scale water and energy flux analysis and validation for the North American Land Data Assimilation System project phase 2 (NLDAS-2): 1. Intercomparison and application of model products, *Journal of Geophysical Research: Atmospheres*, 117, 2012.
- Xiang, Y., Chen, J., Li, L., Peng, T., and Yin, Z.: Evaluation of eight global precipitation datasets in hydrological modeling, *Remote Sensing*, 13, 2831, 2021.
- 805 Xie, P., Joyce, R., Wu, S., Yoo, S.-H., Yarosh, Y., Sun, F., and Lin, R.: Reprocessed, Bias-Corrected CMORPH Global High-Resolution Precipitation Estimates from 1998, *Journal of Hydrometeorology*, 18, 1617–1641, <https://doi.org/10.1175/JHM-D-16-0168.1>, publisher: American Meteorological Society Section: *Journal of Hydrometeorology*, 2017.
- Xie, P., Joyce, R., Wu, S., Yoo, S.-H., Yarosh, Y., Sun, F., Lin, R., and Program, N. C.: NOAA Climate Data Record (CDR) of CPC Morphing Technique (CMORPH) High Resolution Global Precipitation Estimates, Version 1 [indicate subset], <https://doi.org/10.25921/w9va-q159>,  
810 nOAA National Centers for Environmental Information. Accessed: 2025-07-01, 2019.
- Yamamoto, M. K., Shige, S., Yu, C.-K., and Cheng, L.-W.: Further improvement of the heavy orographic rainfall retrievals in the GSMaP algorithm for microwave radiometers, *Journal of Applied Meteorology and Climatology*, 56, 2607–2619, 2017.
- Yang, S., Jones, P. D., Jiang, H., and Zhou, Z.: Development of a near-real-time global in situ daily precipitation dataset for 0000–0000 UTC, *International Journal of Climatology*, 40, 2795–2810, <https://doi.org/https://doi.org/10.1002/joc.6367>, 2020a.
- 815 Yang, S., Jones, P. D., Jiang, H., and Zhou, Z.: Development of a near-real-time global in situ daily precipitation dataset for 0000–0000 UTC, *International Journal of Climatology*, 40, 2795–2810, 2020b.
- Yano, J.-I., Ziemiański, M. Z., Cullen, M., Termonia, P., Onvlee, J., Bengtsson, L., Carrassi, A., Davy, R., Deluca, A., Gray, S. L., et al.: Scientific challenges of convective-scale numerical weather prediction, *Bulletin of the American Meteorological Society*, 99, 699–710, 2018.

- 820 Yatagai, A., Kamiguchi, K., Arakawa, O., Hamada, A., Yasutomi, N., and Kitoh, A.: APHRODITE: constructing a long-term daily gridded precipitation dataset for Asia based on a dense network of rain gauges, *Bulletin of the American Meteorological Society*, 93, 1401–1415, 2012.
- Yates, E., Anquetin, S., Ducrocq, V., Creutin, J.-D., Ricard, D., and Chancibault, K.: Point and areal validation of forecast precipitation fields, *Meteorological Applications*, 13, 1–20, <https://doi.org/10.1017/S1350482705001921>, 2006.
- 825 Yin, Z., Lin, P., Riggs, R., Allen, G. H., Lei, X., Zheng, Z., and Cai, S.: A synthesis of Global Streamflow Characteristics, Hydrometeorology, and Catchment Attributes (GSHA) for large sample river-centric studies, *Earth System Science Data Discussions*, 2023, 1–36, 2023.
- You, Y., Peters-Lidard, C., Ringerud, S., and Haynes, J. M.: Evaluation of rainfall-snowfall separation performance in remote sensing datasets, *Geophysical Research Letters*, 48, e2021GL094180, 2021.
- Zhang, A. T. and Gu, V. X.: Global Dam Tracker: A database of more than 35,000 dams with location, catchment, and attribute information, 830 *Scientific data*, 10, 111, 2023.
- Zomer, R. J., Trabucco, A., Bossio, D. A., and Verchot, L. V.: Climate change mitigation: A spatial analysis of global land suitability for clean development mechanism afforestation and reforestation, *Agriculture, ecosystems & environment*, 126, 67–80, 2008.
- Zsótér, E., Cloke, H., Prudhomme, C., Harrigan, S., de Rosnay, P., Muñoz-Sabater, J., and Stephens, E.: Trends in the GloFAS-ERA5 river discharge reanalysis, *ECMWF Technical Memoranda*, <https://doi.org/https://doi.org/10.21957/p9jrh0xp>, 2020.