

A framework for three-dimensional dynamic modeling of mountain glaciers in the Community Ice Sheet Model (CISM v2.2)

Samar Minallah^{1,*}, William H. Lipscomb^{1,*}, Gunter Leguy¹, and Harry Zekollari^{2,3}

¹Climate and Global Dynamics Laboratory, NSF National Center for Atmospheric Research, Boulder, CO, USA

²Department of Water and Climate, Vrije Universiteit Brussel, Brussels, Belgium

³Laboratory of Hydraulics, Hydrology and Glaciology (VAW), ETH Zürich, Zurich, Switzerland

*These authors contributed equally to this work.

Correspondence: Samar Minallah (minallah@ucar.edu)

Abstract. It is essential to improve our understanding of ~~mountain~~-glaciers and their effects on sea level, ecosystems, and freshwater resources in a changing climate. To this end, we implemented a framework for three-dimensional, high-resolution, regional-scale glacier simulations in the Community Ice Sheet Model (CISM v2.2), using higher-order ice-flow dynamics previously applied to the Greenland and Antarctic ice sheets. Here, we present the modeling framework and its application to the European Alps glaciers at a 100-meter resolution, using protocols from the third phase of the Glacier Model Intercomparison Project (GlacierMIP3). The model results align ~~well~~ with observations and other glacier models, ~~showing~~indicating that Alpine glaciers will lose ~~nearly half of their present-day area and volume under current climate conditions, with a more~~than half their current mass if present-day climate conditions persist, with near-total ~~ice loss expected in loss under~~ warmer scenarios. This new development integrates glacier and ice sheet systems in a common modeling framework and will support advances in coupled land ice – Earth system assessments across timescales in the Community Earth System Model (CESM).

Copyright statement. ©2025 - All rights reserved

1 Introduction

Numerical models are ~~powerful tools~~a powerful tool to study the physical processes governing glaciers and continental ice sheets, enabling the prediction of cryospheric changes from seasonal to millennial timescales and their impacts on Earth systems. These impacts span local, regional, and global scales and influence sea levels, hydroclimates, ecosystems, and human activities. For example, the Greenland and Antarctic ice sheets regulate global-scale climate and ocean circulation patterns and are major contributors to sea-level rise (Fox-Kemper et al., 2021). High-latitude (polar and sub-polar) glaciers, decoupled from the ice sheets, are also large contributors to sea-level rise and freshwater flux to the oceans (Hock et al., 2019; Marzeion et al., 2020; Zemp et al., 2019). Inland mountain glaciers contribute less to sea level but are important freshwater sources for streams, rivers, and lakes. These mountain glaciers regulate ecosystems, contribute to local and downstream water supply, and interact with regional hydroclimates on sub-seasonal to decadal timescales (Huss and Hock, 2018; Milner et al., 2009; Hock

et al., 2005; Ficetola et al., 2024; Immerzeel et al., 2020; Bosson et al., 2023). Although the underlying physics of glaciers is similar to that of ice sheets, glaciers are usually studied with different models because of their smaller spatial scales. Modern ice sheet models typically have resolutions of ~ 1 to 10 km, whereas mountain glaciers require sub-km resolutions to accurately
25 represent surface and bed topography, mass balance, and ice-flow dynamics.

Glacier mass balance (MB), geometry evolution, and ice-flow dynamics modeling has seen significant advancements over the past decade (Zekollari et al., 2022b), with the availability of global glacier inventories (RGI Consortium, 2017), distributed global- and regional-scale ice thickness estimates (Farinotti et al., 2019; Grab et al., 2021; Millan et al., 2022), and satellite-derived mass-balance measurements (Hugonnet et al., 2021). The representation of glacier geometry has evolved from the simplified ~~volume-area~~volume-area/length scaling of early models (~~Bahr et al., 1997; Hock et al., 2019~~) (Bahr et al., 1997; Hock et al., 2019)
30 to geometric models that dynamically adjust area and surface elevation at all elevations (Huss and Hock, 2015), and recently to two-dimensional flowline dynamics based on the shallow-ice approximation (~~e.g., for example,~~ the Open Global Glacier Model (OGGM v1.1; Maussion et al. 2019) and the Global Glacier Evolution Model flow (GloGEMflow; Zekollari et al. 2019)). Some newer developments include 3D geometry of individual glaciers (e.g., GloGEMflow3D (Zekollari et al., 2022a)).
35 Advances in computational power and numerical techniques, such as GPU processing and machine learning (ML) approaches, have further enabled 3D models of glacier evolution over long timescales with improved resolution. For example, the Instructed Glacier Model (IGM) applies deep learning to emulate Stokes dynamics and predict the evolution of ice sheets, ice caps, and glaciers (Jouvet et al., 2021; Jouvet and Cordonnier, 2023). Other ML applications for glacier modeling have also been explored, including MB reconstruction (Guidicelli et al., 2023), MB uncertainty estimation (Diaconu and Gottschling, 2024), and
40 ice flow dynamics (Bolibar et al., 2023). However, applications of full-Stokes models (which solve the 3D Stokes equations for ice flow) to large regions and global-scale assessments have been limited due to computational requirements (Zekollari et al. (2022b), and the citations therein).

To provide a structured framework for comparing multiple glacier models, assessing their performance, and improving confidence in model projections, the Glacier Model Intercomparison Project (GlacierMIP) was launched in 2015. The first two
45 phases of GlacierMIP focused on glacier evolution through the 21st century. GlacierMIP1 (~~2015-2019~~2015-2019) compared published projections from six glacier evolution models (Hock et al., 2019). None of the six models included prognostic ice dynamics; instead, five models relied on volume-area/length scaling for geometry change (Slangen et al., 2011; Radić et al., 2013; Marzeion et al., 2012; Hirabayashi et al., 2013; Giesen and Oerlemans, 2013), and one model used an empirical glacier evolution scheme (Huss and Hock, 2015). Eleven models took part in GlacierMIP2 (2019-2020) (Marzeion et al., 2020),
50 including the flowline models OGGM and GloGEMflow. The third phase, GlacierMIP3 (~~?~~) (Zekollari et al., 2025), built on the first two phases and investigated the long-term equilibration of glaciers under constant climate conditions. In GlacierMIP3, the models have become increasingly sophisticated in terms of geometry representation, mass balance, and ice dynamics.

This study presents a new framework for simulating glaciers in the Community Ice Sheet Model (CISM), the ice dynamics component of the Community Earth System Model (CESM; Danabasoglu et al. 2020). Originally developed to simulate the
55 evolution of the Greenland and Antarctic ice sheets (Lipscomb et al., 2019, 2021), CISM is the first 3D, higher-order ice-flow model to participate in GlacierMIP. In contrast to the 2D flowline models, which resolve the flow only in the $x-z$ plane

(where x is the direction of motion), CISM is a dynamic model that prognoses the ice velocity, temperature, and stresses in three dimensions. As a higher-order model, it includes not only vertical shear stresses, but also longitudinal and lateral stresses, in the ice momentum balance (Hindmarsh, 2004; Pattyn et al., 2008). Integrating glacier modeling within an Earth System Model (ESM) framework offers several emerging advantages for studying glaciated regions. It will enable dynamic coupling with the climate system, enhancing the representation of feedback mechanisms with the land-atmosphere-hydrology components. This integration will allow more comprehensive assessments of climate, ecological, and hydrological impacts across glaciated regions worldwide.

The new CISM developments support high-resolution, regional-scale glacier simulations, similar to other regional glaciation models (Seguinot et al., 2018; Clarke et al., 2015). This ~~contrasts~~ is in contrast to glacier-centric models, such as GloGEM-flow3D and OGGM, that model each glacier independently. When run as a glacier model, CISM can compute and calibrate the surface mass balance (SMB) for all glaciers in the domain, optimize the agreement between modeled and observed glacier area and thickness, and track the advance and retreat of each glacier.

In this work, we apply the new glacier-enabled model to all the glaciers of the European Alps ~~within~~ in the framework of GlacierMIP3. After reviewing CISM's ice-sheet capabilities (Sect. 2), we describe the new developments that support glacier simulations and its implementation to the European Alps (Sect. 3). ~~We present the model application to the European Alps, showing results of, discuss the model initialization, spin-up and equilibration, and calibration process (Sect. 4), and present the results from the GlacierMIP3 experiments (Sect. ??5).~~ We then evaluate the computational performance (Sect. 6), discuss model limitations and future work (Sect. 7), and offer conclusions (Sect. 8).

2 CISM as an ice sheet model

CISM is a parallel, open-source code, written in Fortran and Python, which can be run either as a standalone ice sheet model or as a coupled component of CESM. As a standalone model, CISM has participated in several community comparisons, including the Ice Sheet Model Intercomparison Project ~~for CMIP6~~ (ISMIP6; Nowicki et al. 2020; Goelzer et al. 2020; Seroussi et al. 2020), the Linear Antarctic Response to basal melting Model Intercomparison Project (LARMIP2; Levermann et al. 2019), and the Antarctic Buttressing Model Intercomparison Project (ABUMIP; Sun et al. 2020). As a coupled CESM component, CISM has been used to study the evolution of the Greenland ice sheet in future ~~warm~~ climates (Muntjewerf et al., 2020a, b) and during the Last Interglacial period (Sommers et al., 2021).

~~Since the underlying physics of glaciers is similar to that of ice sheets, many~~ Because glaciers and ice sheets share similar underlying physics, most of CISM's numerical algorithms can be ~~used for~~ applied to glaciers without modifications. This section summarizes methods common to ice sheets and glaciers, while Sect. 3 describes the new glacier-related developments.

2.1 Dynamical core

CISM includes a dynamical core, called Glissade, which solves conservation equations for mass, momentum, and thermal energy to determine changes in ice thickness, velocity, and internal temperature. The model runs on a structured rectangular grid with scalars (e.g., ice thickness and temperature) located at the cell centers and velocity components at cell corners.

90 The most complex part of the dynamical core is a velocity solver that incorporates a hierarchy of Stokes-flow approximations, including (1) the shallow-ice approximation (SIA; Hutter 1983), (2) the shallow-shelf approximation (SSA; MacAyeal 1989), (3) a depth-integrated higher-order approximation (DIVA) based on Goldberg (2011), and (4) a higher-order approximation based on Blatter (1995) and Pattyn (2003).

With the ~~Blatter-Pattyn~~ Blatter-Pattyn (BP) approximation, CISM solves a 3D set of elliptic equations for the horizontal
95 velocity components (u, v) at all vertical levels. DIVA simplifies the problem by solving a 2D set of elliptic equations for the vertically averaged velocity components (\bar{u}, \bar{v}) in each ice column, and then integrating ~~locally-vertically~~ through each column to obtain the full 3D velocity profile (see Goldberg (2011) and Lipscomb et al. (2019) for details). The DIVA solver ~~computes-is computationally much faster than BP, while computing~~ velocities similar to ~~the BP-velocities~~ BP in most glaciated regions ~~but-is computationally much faster than BP~~. An exception would be flow with large vertical shear over a bed with rough topography,
100 as discussed by Goldberg (2011). In the runs below, most glaciers have relatively smooth beds and/or sliding-dominated flow with small vertical shear, for which the two solvers give similar results. DIVA also scales well to the high resolutions needed to model mountain glaciers (Robinson et al., 2022). We therefore used DIVA for the simulations in this study.

DIVA solves the following approximation of the Stokes equations in the x ~~direction-(the and y equation is similar)-~~ directions:

$$\begin{aligned} & \frac{1}{H} \frac{\partial}{\partial x} \left[2\bar{\eta} H^2 \frac{\partial \bar{u}}{\partial x} + \frac{\partial \bar{v}}{\partial y} + \frac{1}{H} \frac{\partial}{\partial y} H \frac{\partial \bar{u}}{\partial y} + \frac{\partial \bar{v}}{\partial x} + \frac{\partial}{\partial z} \eta \frac{\partial u}{\partial z} \right] = \rho_i g \frac{\partial s}{\partial x}, \\ & \frac{1}{H} \frac{\partial}{\partial x} \left[\bar{\eta} H \left(\frac{\partial \bar{u}}{\partial y} + \frac{\partial \bar{v}}{\partial x} \right) \right] + \frac{1}{H} \frac{\partial}{\partial y} \left[2\bar{\eta} H \left(\frac{\partial \bar{u}}{\partial x} + 2 \frac{\partial \bar{v}}{\partial y} \right) \right] + \frac{\partial}{\partial z} \left(\eta \frac{\partial v}{\partial z} \right) \end{aligned} \quad (1)$$

105

where H is the ice thickness, $\bar{\eta}$ is the vertical mean viscosity, ρ_i is the density of ice, g is gravitational acceleration, and s is the surface elevation. The three terms on the left side of the equation describe longitudinal stresses, lateral stresses, and vertical shear stresses, ~~respectively~~. These internal ice stresses balance the gravitational driving ~~stress-on-the-right-hand~~ force on the right-hand side.

110 The viscosity η is a nonlinear function of temperature and strain rate:

$$\eta \equiv \frac{1}{2} A^{\frac{-1}{n}} \dot{\epsilon}_e^{\frac{1-n}{n}}, \quad (2)$$

where A is a temperature-dependent flow factor, $\dot{\epsilon}_e$ is the effective strain rate (derived from the 3D ~~strain-rate~~ strain-rate tensor), and $n = 3$ is the exponent in Glen's flow law. The ice velocity can be partitioned into a sliding velocity \mathbf{u}_b and an internal deformational velocity. The lower the viscosity, the greater the deformational velocity relative to the sliding.

115 When solving Eq. (1), CISM has an option to cap the magnitude $\|\partial s / \partial x\|$ of the surface slope to $(\|\partial s / \partial x\|$ at east and west cell edges and $\|\partial s / \partial y\|$ at north and south edges) at a value of m_{\max} to maintain model stability in regions of steep topography. After using Eq. (1) to compute the vertical mean velocity, the solver integrates in the vertical direction to find the full 3D velocity (see Goldberg (2011) and Lipscomb et al. (2019) for details). The ice velocity can be partitioned into a sliding velocity u_b and an internal deformational velocity. CISM computes the deformational velocity as a function of the viscosity, which depends on the ice temperature and deformation rate; warmer and faster-deforming ice is softer. For this study we set $m_{\max} = 1.0$ (a 45° slope). The cap is applied to about 1% of ice-covered cell edges in the Alps domain described in (Sect. 4).

The model supports several basal friction schemes with different relationships between sliding velocity and shear stress. For the simulations in this study, the sliding velocity is computed using a Weertman-type power law (Weertman, 1957):

$$\tau_b = C_p u_b^{1/m} |u_b|^{1/m - 1} u_b, \quad (3)$$

125 where τ_b is the basal shear stress (a boundary condition for Eq. (1)), u_b is the basal sliding speed, m is a power-law exponent, and C_p is a spatially varying friction coefficient.

CISM transports mass and internal energy using incremental remapping (Lipscomb and Hunke, 2004)—a conservative, second-order-accurate upwind scheme that preserves the monotonicity of ice temperature and other tracers. An implicit vertical solver computes interior heat dissipation and conduction. At the lower surface, CISM computes the temperature (if below the pressure melting point) or melt rate based on the balance of frictional, geothermal, and conductive heat fluxes.

2.2 Ice sheet initialization

Ice sheets are initialized in CISM by spinning up the model for thousands of simulated years until the ice geometry reaches a steady state consistent with the applied forcing. External forcing consists of the surface mass balance (which determines thickness changes at the upper ice surface), the surface air temperature (an upper boundary condition for ice thermodynamics), the geothermal heat flux (a lower boundary condition for thermodynamics of grounded ice), and ocean thermal forcing in sub-ice-shelf cavities for floating ice. The climate forcing used during the spin-up is derived from observations or models and is typically from a period in the 20th century when the ice sheet was in approximate balance with the climate. During the spin-up, the ice sheet is nudged toward an observation-based thickness target (e.g., Morlighem et al. 2014, 2019). For grounded ice, this is done by adjusting a spatial field of friction coefficients in the basal sliding law (Pollard and DeConto, 2012a; Lipscomb et al., 2021) (Pollard and DeConto, 2012b; Lipscomb et al., 2021).

The initialization is followed by a historical run to advance the ice sheet state to the present day, and then a projection run that continues into the future. Forcing during the historical run comes from recent observations and reanalyses, while the projection run uses output from simulations of future climate by regional models or Earth system models (ESMs).

3 CISM development for glacier modeling and application to the European Alps

145 ~~To participate in GlacierMIP3, we modified CISM to simulate glacier evolution at regional scales. The goals of GlacierMIP3 were to (~~

3.1 Forcing and initialization data

CISM requires five types of input data for glacier simulations: the outline and ID of each glacier, continuous surface elevation over the domain, ice thickness, atmospheric forcing, and climatic mass balance.

- 150 1. We used the glacier outlines and IDs from the Randolph Glacier Inventory version 6 (RGIv6; RGI Consortium 2017). For the Alps, most glacier outlines are from summer 2003. We refer to this as the RGI date and use it as the reference year for the glacier extent.
- 155 2. ~~To create continuous surface elevation, we used two Digital Elevation Model (DEM) sources: (1) estimate the equilibrium area and volume of all glaciers outside the two ice sheets, if temperatures were to stabilize at present-day levels,) the USGS 3 arc-sec (2) make similar estimates for temperature changes under various climate change scenarios, and 90-meter) SRTM (Shuttle Radar Topography Mission) DEM and (3) determine the time needed to reach a new equilibrium.~~ 2) finer-resolution glacier-specific surface DEM tiles taken from Farinotti et al. (2019) (hereafter F19). We merged these two sources, with the latter taking precedence in overlapping regions.
3. The target distributed ice thickness for calibration was taken from the F19 five-model consensus estimate.
- 160 4. ~~The GlacierMIP3 protocol specifies that each glacier should be initialized to its observed state at the RGIv6 date, usually around the year 2000.~~ Inter-Sectoral Impact Model Intercomparison Project phase 3b (ISIMIP3b) W5E5 v2.0 data provided the atmospheric forcing at daily, 0.5° resolution from January 1979 through December 2019 (Lange et al., 2021). W5E5 is a merged dataset with WATCH Forcing Data methodology applied to ERA5 data (Cucchi et al., 2020). The variables needed for CISM are near-surface air temperature (°C), total precipitation flux ($\text{kg m}^{-2} \text{s}^{-1}$), and surface elevation of the data (m). We averaged the atmospheric forcing to monthly mean values.
- 165 5. We used the glacier-wide geodetic mass balance from Hugonnet et al. (2021) for CISM SMB calibration.

~~Initializing a glacier requires calibration with respect to atmospheric forcing by tuning model parameters so that the initial state is consistent with the RGIv6 extent, observed mass balance, and ice thickness estimates. After initialization to the RGIv6 date, each glacier is run forward to equilibrium for either 2000 years or 5000 years, depending on the region. Further details on the protocols and the prescribed atmospheric forcing are available on the GlacierMIP3 GitHub page (). Given that the W5E5 v2.0 forcing data began in 1979, we chose a 1984 baseline and calculated the 1979–1988 average to establish a baseline climatology, assuming approximate glacial equilibrium during this decade. We constructed a recent climatology (nominally for the year 2010) by taking the 2000–2019 mean, the same period over which Hugonnet et al. (2021) calculated the geodetic mass balance.~~

170 on the protocols and the prescribed atmospheric forcing are available on the GlacierMIP3 GitHub page (). Given that the W5E5 v2.0 forcing data began in 1979, we chose a 1984 baseline and calculated the 1979–1988 average to establish a baseline climatology, assuming approximate glacial equilibrium during this decade. We constructed a recent climatology (nominally for the year 2010) by taking the 2000–2019 mean, the same period over which Hugonnet et al. (2021) calculated the geodetic mass balance.

175 ~~Table 1 shows the values of the parameters introduced below and used in glacier simulations.~~

3.2 Model domain and resolution

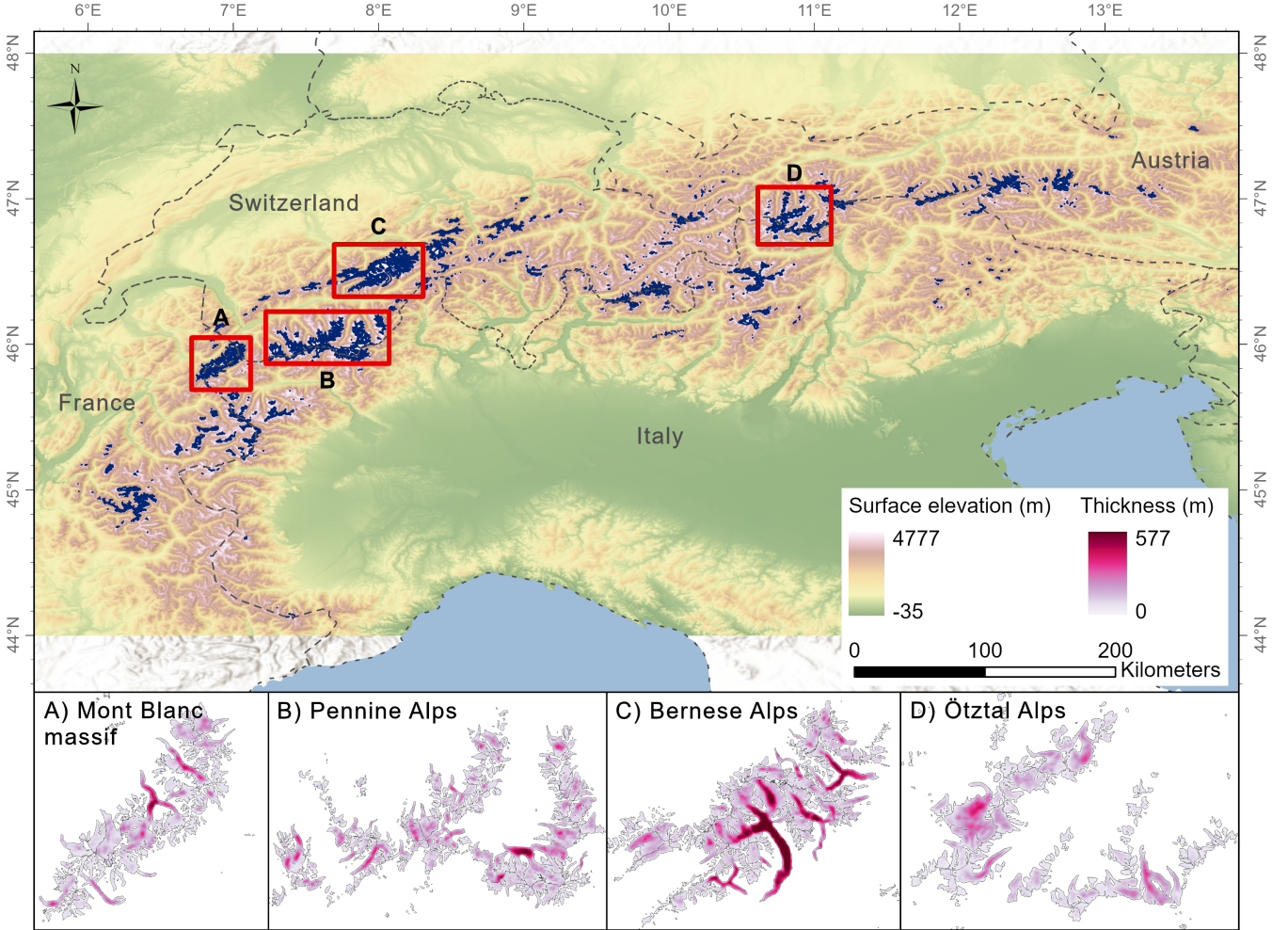


Figure 1. Default values Top: CISM domain for the European Alps, which contains most of various physical constants and glacier-specific parameters the glaciers in CISMIRGI region 11 (Central Europe). These parameters are user-defined and can be adjusted during Shading shows the initial model setup surface elevation profile (m). Name-Value and units Symbol Ice density 917 kg m^{-3} ρ_i Gravitational acceleration 9.81 m s^{-2} g Glen's exponent 3 n Max slope for surface gradients 0.2 m_{\max} Geothermal heat flux 0.05 W m^{-2} G Uniform atmospheric lapse rate $6.0 \text{ }^{\circ}\text{C km}^{-1}$ λ Melt threshold temperature $-1 \text{ }^{\circ}\text{C}$ T_{melt} Snow-rain threshold temperatures 0 $-2 \text{ }^{\circ}\text{C}$ T_s^{min} Bottom: Input ice thickness (m) from Farinotti et al. (2019), T_s^{max} Ablation factor (initial/default) $1500 \text{ mm w.e. } ^{\circ}\text{C}^{-1} \text{ yr}^{-1}$ μ_{init} Ablation factor (range) 300 $-4000 \text{ mm w.e. } ^{\circ}\text{C}^{-1} \text{ yr}^{-1}$ $\mu_{\text{min}}, \mu_{\text{max}}$ Precipitation factor (initial/default) 1.0 α_{init} Precipitation factor (range) 0.3 -3 α_{min} remapped to the 100-m CISM grid, α_{max} Temperature correction (initial/default) $0 \text{ }^{\circ}\text{C}$ β_{init} Temperature correction (range) -5 -5 for four sub-domains (A-D).

The CISM domain for this study covers the European Alps (Fig. $^{\circ}\text{C}$ $\beta_{\text{min}}, \beta_{\text{max}}$ Basal friction coefficient (initial/default) $3.0 \times 10^4 \text{ Pa (m yr}^{-1})^{-1/n}$ C_p^{init} Basal friction coefficient (range) 3.0×10^3 $-1.0 \times 10^5 \text{ Pa (m yr}^{-1})^{-1/n}$ $C_p^{\text{min}}, C_p^{\text{max}}$

Thickness scale for basal tuning 200 m H_0 Time scale for basal tuning 1 , with 3892 individual glaciers (out of 3927 glaciers in RGIv6 region 11). These glaciers cover a combined area of $\sim 2089\text{ km}^2$. We excluded 35 small glaciers in the Pyrenees, Montenegro, and Albania (combined area of $\sim 3\text{ km}^2$, i.e. $\sim 0.1\%$ of the regional area) from the original RGIv6 region 11 to reduce the model domain size. The two largest glaciers in the domain are the Aletsch ($\sim 82\text{ km}^2$) and Gorner ($\sim 56\text{ km}^2$), while more than 40% of the glaciers have areas smaller than 0.05 km^2 . Therefore, the model grid must be fine enough to accurately represent these small glaciers and their flow dynamics.

We created two grids with horizontal resolutions of 100 m and 200 m τ_0 Relaxation factor for basal tuning 0.05 f_r Redistribution rate for advanced ice 1 m yr^{-1} R Minimum ice thickness 1 m H_{\min} , using the coarser grid for model development and the finer grid for GlacierMIP3 production runs. At 100 m resolution, six glaciers are at sub-grid scale, leaving 3886 glaciers resolved; 42 of these occupy a single grid cell. The 200 m grid resolves 3633 glaciers, with around 780 glaciers occupying a single model grid cell. All results in this study use the 100 m grid; Sect. 6 discusses the computational costs associated with both resolutions.

3.3 Glacier identification and tracking

Each glacier in the RGIv6 inventory has a unique identification number. The first step to modeling these glaciers in CISM is to remap the RGI outlines to the CISM grid (Sect. 3.2) and assign an RGI ID to each grid cell with a non-zero nonzero ice thickness. At startup, CISM makes a list of all the unique RGI IDs in the domain. It puts these in numerical order and associates each RGI ID with a CISM glacier ID between 1 and N_g , where N_g is the total number of glaciers in the domain. Numbering the glaciers in order, without gaps, without gaps facilitates calculations that require looping over all glaciers.

Cells that are initially ice-free receive a CISM ID of 0. When a glacier retreats, any newly all new ice-free cell is cells are also given an ID of 0. If the glacier re-advances to a cell from which it previously retreated, the initial ID is restored. Some glaciers will advance into cells that were initially ice-free; a cell is deemed to be newly glaciated when its ice thickness H exceeds a prescribed value, H_{\min} . When this happens, CISM looks upstream to the grid cells that are ice sources for the new glacier cell. In most cases, the upstream ice belongs to a single glacier, which provides the ID for this cell. If the upstream ice belongs to two different glaciers, CISM must choose between them. We determined found that selecting the upstream glacier ID that yields a more negative SMB for the new glacier cell is optimal, as a negative SMB inhibits further advance beyond the original RGI boundary.

3.4 Surface Glacier surface mass balance

When run as an ice sheet model, CISM usually does not compute the SMB internally. Instead, the SMB is an input calculated offline by from a regional climate model or, or it is computed at runtime by the land component of CESM when interactively coupled. For CISM as a glacier model, coupling between the land and land-ice components of CESM has not yet been implemented. Therefore, we use introduced a simple temperature-index method in CISM to calculate the SMB, similar to the scheme in OGGM (Maussion et al., 2019).

In this scheme, CISM computes the SMB of glaciers based on the monthly mean surface air temperature and precipitation rate, remapped to the CISM grid(see Sect. 3.1). The input air temperature ~~usually is~~ is usually provided at the reference elevation of the coarse-resolution atmospheric forcing. CISM downscales the air temperature from the reference elevation to the local surface elevation on the ~~(high-resolution)~~ CISM-model grid based on a fixed lapse rate λ (Table 1). The fraction of
 215 the total precipitation reaching the glacier surface as snow depends on the downscaled temperature T . Precipitation is assumed to fall entirely as snow when $T \leq T_s^{\min}$ and as rain when $T \geq T_s^{\max}$. At temperatures between T_s^{\min} and T_s^{\max} , the snow fraction varies linearly between 1 and 0.

The SMB is calculated ~~from as~~ the difference between ~~the snowfall and the melt, which is calculated from~~ snowfall and melt, estimated using a temperature-index scheme:

$$220 \quad B_i = \alpha S_i - \mu \max(T_i - T_{\text{melt}}, 0), \quad (4)$$

where B_i is the SMB for grid cell i , S_i is the snowfall rate, T_i is the surface temperature, and T_{melt} is a temperature threshold for melting. The quantities B_i , S_i , and T_i are monthly means at a given location. The units of B_i and S_i are mm water equivalent (w.e.) yr^{-1} , and T_i is measured in ~~deg~~ $^{\circ}\text{C}$. Within the model, the ablation factor μ (also known as the degree-day factor, melt factor, or temperature sensitivity parameter in literature) is computed in mm w.e. ~~$^{\circ}\text{C}^{-1}$~~ $\text{yr}^{-1} \text{ } ^{\circ}\text{C}^{-1}$ while the precipitation
 225 correction parameter α is dimensionless. Sect. 4.1 describes the mass balance calibration in detail.

~~The calibration parameters μ and α are determined for each individual glacier in a two-step calibration process:-~~

- ~~1. We assume that the glacier was in a state of approximate balance with the climate during a baseline period in the 20th century (i.e., the glacier-specific mean SMB was zero):-~~

$$B = \sum_{m=1}^{12} \sum_{i=1}^N [\alpha S_{im} - \mu \max(T_{im} - T_{\text{melt}}, 0)] = 0,$$

230 ~~where B is the annual mean SMB for the glacier, the first summation is over the months of the year, the second summation is over the N grid-cells in the glacier, and the subscript m denotes a particular month. For a given value of α (e.g., $\alpha = 1$ if the precipitation is unbiased), we can sum over all months and grid-cells in Eq. (6) and obtain μ for each glacier.~~

- ~~2. If we have observations of both SMB and atmospheric forcing during a recent period when the glacier was out of balance with the climate, we introduce a second criterion. For each glacier we supplement Eq. (6) with a similar equation for the recent period:-~~

$$235 \quad \hat{B} = \sum_{m=1}^{12} \sum_{i=1}^N [\alpha \hat{S}_{im} - \mu \max(\hat{T}_{im} - T_{\text{melt}}, 0)],$$

~~where the carets denote quantities taken over the recent period.~~

~~Equations (6) and (7) form a system of two equations with two unknowns, which can be solved for α and μ for each glacier.~~

The summation over N cells for each glacier includes all the cells belonging to the glacier based on the RGI outlines, including ice-free cells bordering the glacier (within one cell), provided they are in the ablation zone. In calculating the glacier's area-integrated annual-mean SMB, we include these neighboring cells because ice flows into and melts within them throughout the year. If these cells were excluded, the temperature sums in Eqs. (6) and (7) would be too small, and μ would be overestimated as a result.

The parameters α and μ are required to fall within physically reasonable ranges $(\alpha_{\min}, \alpha_{\max})$ and (μ_{\min}, μ_{\max}) . For some (usually small) glaciers, the α and μ computed from Eqs. (6) and (7) can lie outside these ranges because of atmospheric forcing biases or observational errors in \hat{B} . In such cases, the first option is to ignore Eq. (7), set α to its default value of 1.0, and solve Eq. (6) for μ . This is done, for example, if $\hat{B} > 0$ (i.e., the glacier is supposedly gaining mass) in a warming climate. If this first option fails to yield μ within the defined range, a second option is to introduce a temperature correction β , which is added to T_i for each cell in the glacier. This option is needed if T has a strong cold bias, resulting in little or no ablation even when μ is large. In Sect. ??, we discuss the distribution of calibrated values within the α

3.5 Glacier initialization and thickness inversion

4 Model initialization and calibration

To initialize glaciers

4.1 Spin-up and historical runs

To initialize the model, we use a procedure similar to the method described for ice sheets in Sect. 2.2. That approach, however, relies on the area and thickness targets being appropriate for a steady state in equilibrium with the climate. Most glaciers have been losing mass in recent decades and are out of balance with the climate (Zemp et al., 2019; Zekollari et al., 2020), and therefore which means that estimates of present-day or recent ice thickness (e.g., Farinotti et al. 2019) are not a suitable target for a steady-state spin-up.

We therefore divide the initialization into two steps. The first step parts.

The first part is a spin-up run of several thousand years, with climate-the forcing corresponding to a baseline year (e.g., in the mid-to-late 20th century) climatology when glaciers are assumed to be approximately in equilibrium with the climate. The second step Our simulations for the Alps used a 5000-year spin-up; the basal friction parameter C_p was inverted for the first 4000 years, then held constant for the final 1000 years to avoid initialization shocks in the forward runs. This is roughly the time needed for glacier thickness to reach steady state. The total glacier volume changes by less than 0.03 km³ during the last 1000 years of the inversion and by less than 0.01 km³ during the period with constant basal parameters.

The second part is a historical run from the baseline year (1984; Sect. 3.1) to the outline date for glaciers in the RGIv6 dataset (~2003). During the historical period, most simulated glaciers lose mass, consistent with the observational record. The goal of the spin-up is to initialize each glacier with an extent and thickness corresponding to the baseline year. If we lack region-wide observations for this year (as is usually the case), we make two approximations:

Table 1. Default values of various physical constants and glacier-specific parameters in CISM. These parameters are user-defined and can be adjusted during the initial model setup.

Name	Value and units	Symbol
Ice density	917 kg m ⁻³	ρ_i
Gravitational acceleration	9.81 m s ⁻²	g
Glen's exponent	3	n
Max slope for surface gradients	1.0	m_{\max}
Geothermal heat flux	0.05 W m ⁻²	G
Uniform atmospheric lapse rate	6.0 °C km ⁻¹	λ
Melt threshold temperature	-1 °C	T_{melt}
Snow-rain threshold temperatures	0 - 2 °C	$T_{\text{min}}, T_{\text{max}}$
Ablation factor (initial/default)	1500 mm w.e. yr ⁻¹ °C ⁻¹	μ_{init}
Ablation factor (range)	300 - 4000 mm w.e. yr ⁻¹ °C ⁻¹	$\mu_{\text{min}}, \mu_{\text{r}}, \text{and } \beta \text{ ranges (Table 1) for glaciers in the Alps. } \mu_{\text{max}}$
Precipitation factor (initial/default)	1.0	α_{init}
Precipitation factor (range)	0.3 - 3	$\alpha_{\text{min}}, \alpha_{\text{max}}$
Temperature correction (initial/default)	0 °C	β_{init}
Temperature correction (range)	-5 - 5 °C	$\beta_{\text{min}}, \beta_{\text{max}}$
Basal friction coefficient (initial/default)	$5.0 \times 10^4 \text{ Pa (m yr}^{-1})^{-1/n}$	$C_{\text{r}}^{\text{init}}$
Basal friction coefficient (range)	$5.0 \times 10^3 - 2.0 \times 10^5 \text{ Pa (m yr}^{-1})^{-1/n}$	$C_{\text{r}}^{\text{min}}, C_{\text{r}}^{\text{max}}$
Thickness scale for basal tuning	200 m	H_0
Time scale for basal tuning	200 yr	τ_0
Relaxation factor for basal tuning	0.05	f_{r}
Redistribution rate for advanced ice	1 m yr ⁻¹	R
Minimum ice thickness	1 m	H_{min}

1. The areal retreat between the baseline year and the RGI year (2003) is relatively small; thus, we can use the unmodified RGI outlines as an area target. This assumption is undesirable for glaciers that retreated substantially between the baseline and RGI dates, but we considered it preferable to guessing the earlier outlines without observational support.
2. The decrease in thickness at a specific location from the baseline year to the RGI year can be estimated by calculating the average SMB between these two years. We accordingly ~~make adjustments to the~~ adjust the target thickness, assuming that the SMB ~~changes-evolves~~ linearly over time and that the time between the baseline and RGI ~~year-dates~~ (i.e., ~19 years) is relatively short compared to the glacier's dynamic response time.

With the second assumption, we can adjust the baseline thickness targets at runtime to be consistent with the calibrated historical SMB (Sect. 3.4). In a warming climate, the total ice volume will be greater at the baseline date than at the RGI date. When the model is run forward with the historical SMB, the goal is to reach the observed volume at the RGI date (Table 2).

as specified in the GlacierMIP3 protocol. ~~For the runs described in Sect. ??, the baseline year is 1984, implying a 19-year historical run to 2003.~~ The methods for thickness inversion and mass balance calibration are detailed below; Table 1 lists the various parameter values used here.

~~At the basal boundary, we assume an upward geothermal heat flux G .~~

285

4.2 Thickness inversion

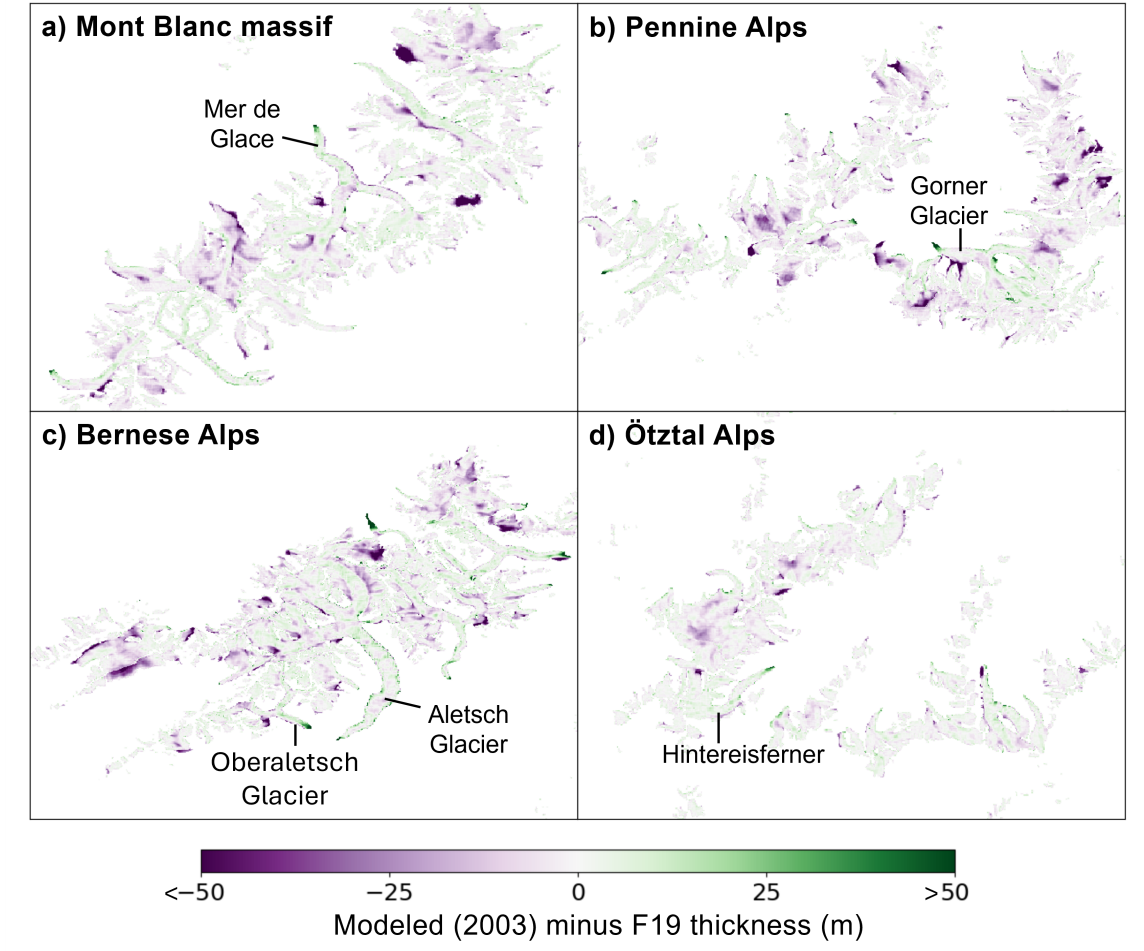


Figure 2. Difference between the post-calibration 2003 CISM and F19 ice thickness (m) for the four sub-domains in Fig. 1. Purple colors correspond to lower thickness in the CISM simulation.

We compute the basal shear stress as a function of the sliding speed using Eq. (3). ~~Since~~ Because the friction coefficient C_p is not well constrained, we use it as a tuning parameter to nudge the ice thickness in each grid cell toward the baseline target. The value of C_p is initially set to C_p^{init} and is constrained to lie in the range $(C_p^{\text{min}}, C_p^{\text{max}})$ (Table 1). Where the ice is thicker

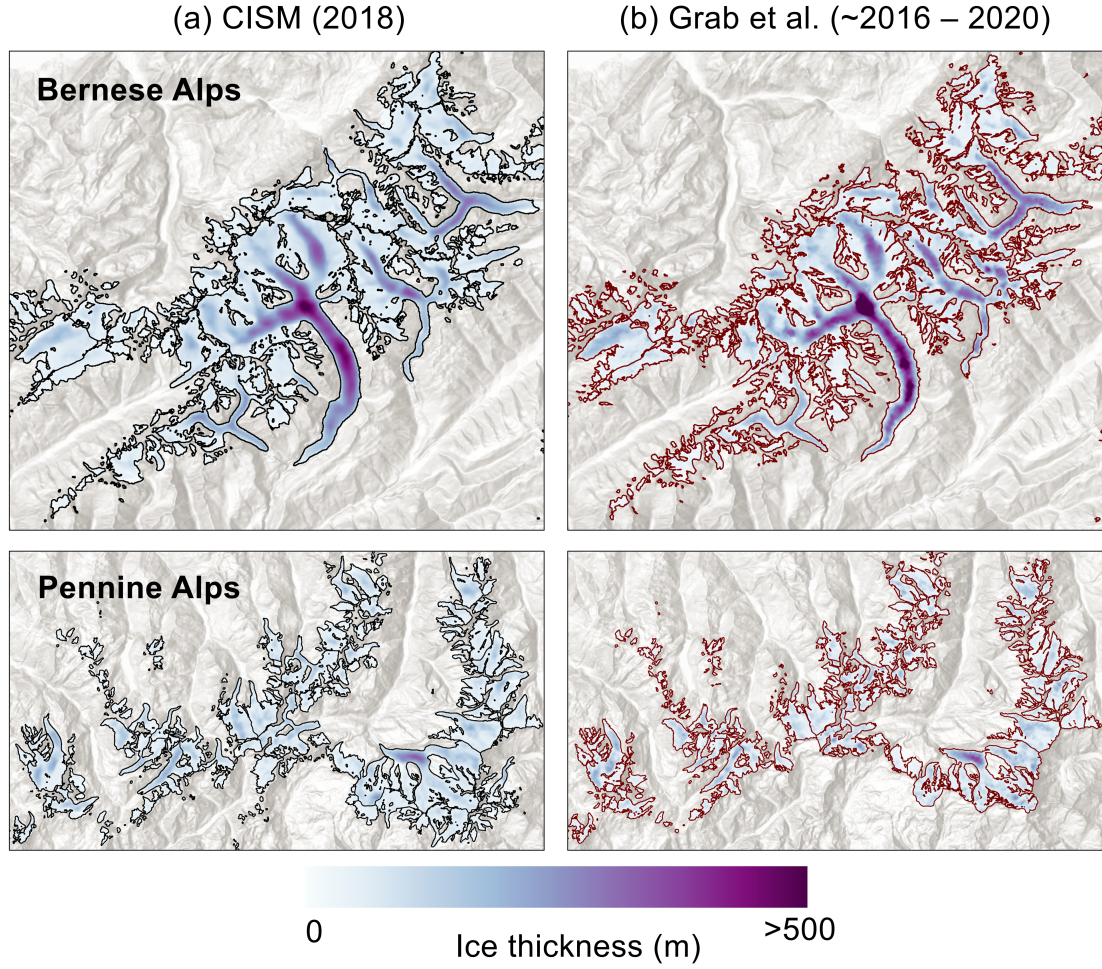


Figure 3. Comparison of CISM-simulated ice thickness (m) to observed thickness from Grab et al. (2021) for the Swiss Bernese and Pennine Alps around 2018. Note that the model and observations have different glacier extents in black and brown outlines, respectively.

than its target value, C_p is reduced to increase sliding and promote thinning, whereas C_p is increased if the ice is thinner than its target.

Following Lipsecomb et al. (2021), the rate of change of C_p is given by

$$\frac{dC_p}{dt} = C_p \left[\frac{(H_{\text{obs}} - H)}{H_0 \tau_0} - \frac{2}{H_0} \frac{dH}{dt} - \frac{f_r}{\tau_0} \ln \frac{C_p}{C_p^{\text{init}}} \log(C_p/C_p^{\text{init}}) \right], \quad (5)$$

where H_{obs} is the observation-based thickness target, H_0 is a thickness scale, τ_0 is a relaxation time scale, and f_r is a relaxation factor. The first term on the right side of the equation minimizes differences between H and H_{obs} ; the second term dampens oscillations in C_p as H approaches H_{obs} ; and the last term prevents C_p from drifting toward the max or min value

when the first term is small but ~~non-zero, nonzero~~. The logarithmic form reflects the fact that a given change ΔC_p has greater dynamic effects when C_p is small than when C_p is large.

In most regions, this tuning procedure yields a steady-state ice thickness close to the target value. The procedure cannot, however, add ice to grid cells that are ice-free for other reasons (e.g., a highly negative SMB). Nor can it remove ice from
 300 cells that advance beyond the RGI outlines, but it gives these cells a low ~~value of~~ C_p that reduces the thickness. An alternate approach, often used in SIA glacier models, is to tune the softness parameter A in the ice viscosity, Eq. (2) (Zekollari et al., 2022b). In our CISM simulations, A is not a tuning parameter but is determined internally by the evolving ice temperature.

~~We found that during initialization, glaciers tend to advance to a steady state beyond the RGI outlines. The main reason for this advance is that the transport scheme allows some ice.~~ The ice volume at the end of the 5000-year spin-up (nominally
 305 in 1984) is 137.3 km³, about 1% below the target volume of 138.9 km³ (Table 2). The root-mean-square error between the modeled and target ice thickness across the entire ice-covered domain is 12.5 m. Positive differences (where the CISM thickness exceeds the target value) occur along glacier peripheries and at termini (Fig. 2). There are some regions where the modeled ice is thinner than the target value, which we discuss further in Sect. 7. During the historical run from 1984 to 2003, the volume decreases by about 8% to ~~diffuse into previously ice-free grid cells in the accumulation zone, where it is not removed by~~
 310 ~~melting.~~ 127.2 km³, within 0.5% of the total F19 volume of 126.6 km³ (Table 2).

The glaciers simulated in CISM have a total area of 2423.7 km² in 2003, greater than the RGI area of 2086.4 km². We attribute the excess area to two main factors. First, there is some numerical diffusion of ice thickness under transport. This can lead to one or two rows of advanced ice, usually no more than a few meters thick, at glacier peripheries (Fig. 2). To limit this spurious advance, we impose two corrections. In advanced cells (i.e., cells that are ice-covered in the model but are ice-free in
 315 the RGI data), we allow ablation where the computed SMB is negative, but we forbid accumulation where the computed SMB is positive. At the same time, we remove ice from advanced cells at a rate R and spread this ice, conserving mass, over the target area of the glacier. This can be viewed as a crude model of mass redistribution by avalanches at on steep glacier walls. A redistribution rate $R = 1 \text{ m yr}^{-1}$ is enough to significantly reduce glacier advance. We do not, however, apply a negative SMB to advanced grid cells in the accumulation zone, since as this would be a nonphysical sink for ice mass. Secondly, in CISM, ice
 320 can accumulate at high elevations on steep slopes. Though the avalanche redistribution process removes some of the peripheral ice, a portion remains, resulting in a larger area after spin-up.

5 CISM application to the European Alps

4.1 Model domain and resolution

~~Top: CISM domain for the European Alps, which contain most of the glaciers in RGI region 11 (Central Europe). Shading~~
 325 ~~shows the surface elevation profile (m). Bottom: Input ice thickness (m) from Farinotti et al. (2019), remapped to the 100-m CISM grid, for four sub-domains (A–D).~~

~~The CISM domain for this study covers the European Alps (Figure 1), with 3892 individual glaciers (out of 3927 glaciers in RGIv6 region 11). These glaciers cover a combined area of $\sim 2089 \text{ km}^2$. We excluded 35 small glaciers in the Pyrenees,~~

Montenegro, and Albania (combined area of $\sim 3 \text{ km}^2$, i.e. $\sim 0.1\%$ of the regional area) from the original RGIv6 region 11 to
330 reduce the model domain size. The two largest glaciers in the region are the Aletsch ($\sim 82 \text{ km}^2$) and Gorner ($\sim 56 \text{ km}^2$), while
more than 40% of the glaciers have areas smaller than 0.05 km^2 . Therefore, the model grid must be fine enough to accurately
represent these small glaciers and their ice dynamics.

We created two grids with horizontal resolutions of 100 m and 200 m, using the coarser grid for model development and the
finer grid for GlacierMIP3 production runs. At 100-m resolution, six glaciers are at sub-grid scale, resulting in 3886 glaciers
335 represented on the grid (Table 2). Of these, 42 glaciers occupy one grid cell each.

4.1 Forcing and initialization data

CISM requires five types of input data for glacier simulations: the outline and ID of each glacier, continuous surface elevation
over the domain, ice thickness, atmospheric forcing (monthly mean temperature and precipitation), and glacier geodetic mass
balance. All data were mapped to the 100-m and 200-m CISM grids.

- 340 1. We used the glacier outlines and IDs from RGIv6. For the Alps, the vast majority of glacier outlines are from summer
2003. We refer to this year as the RGI date and take it as the reference year for the glacier outlines.
2. To create continuous surface elevation, we used two Digital Elevation Model (DEM) sources: (1) the USGS 3-arc-sec
(90-meter) SRTM (Shuttle Radar Topography Mission) DEM and (2) finer-resolution glacier-specific surface DEM tiles
taken from Farinotti et al. (2019) (hereafter F19). We merged these two sources, with the latter taking precedence in
345 overlapping regions.
3. The distributed ice thickness was also taken from the F19 five-model consensus estimate.
4. The atmospheric forcing was taken from W5E5 v2.0 data from the Inter-Sectoral Impact Model Intercomparison Project
phase 3b (ISIMIP3b) at daily, 0.5° resolution from January 1979 through December 2019 (Lange et al., 2021). This is
a merged dataset with WATCH Forcing Data methodology applied to ERA5 data (Cucchi et al., 2020). The variables
350 needed for CISM are near-surface air temperature ($^\circ\text{C}$), total precipitation flux ($\text{kg m}^{-2} \text{ s}^{-1}$), and surface altitude of the
data (m). We averaged the atmospheric forcing to monthly mean values.
5. We took the glacier-wide geodetic mass balance from Hugonnet et al. (2021).

Since the W5E5 v2.0 forcing data were available only from 1979 onward, we used 1984 as the baseline year and constructed
a baseline climatology by computing the 1979–1988 mean, assuming that glaciers were in approximate balance during this
355 decade. We constructed a recent climatology (nominally for year 2010) by taking the 2000–2019 mean, the same period over
which Hugonnet et al. (2021) calculated the geodetic mass balance used for SMB calibration (Sect. 3.4).

To calibrate the SMB at runtime, we apply the baseline climatology in Eq. (6) and the recent climatology in Eq. (7). During
the historical run from the baseline date to the RGI date, we interpolate between the baseline and recent climatology, assuming
that monthly mean temperature and precipitation evolved linearly in time between 1984 and 2010.

Table 2. Cumulative statistics for glaciers in the European Alps for the input data, at the end of the spin-up (1984), and at the RGI date (2003).

Number of input glaciers on 100-m CISM grid	3886
Input glacier area (RGIv6)	2086.4 km ²
Input glacier volume (F19)	126.6 km ³
Target glacier area (baseline year of 1984) 2086.4 km ² Target glacier-volume (baseline year of 1984)	138.9 km ³
Post spin-up glacier area (~1984)	2500.9 2497.2 km ²
Post spin-up glacier volume (~1984)	138.0 137.3 km ³
Glacier area after historical run (~2003)	2250.0 2423.7 km ²
Glacier volume after historical run (~2003)	127.0 127.2 km ³

Distribution of the SMB parameters described in Sect. 3.4 for all simulated glaciers in the Alps. The x-axis shows the range of values for each parameter (Table 1), and the y-axis shows the number of glaciers. The y-axis in panel c is capped at 30, because most glaciers (n=3593) have $\beta=0$.

We conducted a 10,000-year spin-up for the Alps. For the first 8,000 years, we invert for the basal friction parameter C_p in We also ran the model forward from the RGI date to 2018, to compare the modeled 2018 ice thickness with the Grab et al. (2021) thickness measurements in the Swiss Alps, which used aerial ground-penetrating radar to determine ice thickness during 2016–2020. A direct comparison between the two datasets is not possible since the CISM extent is simulated, while the Grab et al. (2021) extent is observed (hence the two have different glacier outlines), but we found similar magnitudes and spatial patterns in thickness (Fig. 3).

370 4.1 Mass balance calibration

The SMB parameters μ and α in Eq. (5) as described in Sect. 4. For the last 2,000 years, we hold C_p fixed to avoid initialization shocks in the forward runs. Throughout the spin-up, we nudge each glacier towards its RGI-based area target using the calibration procedure described in Sect. 3.44) are calibrated for each glacier to yield a balanced state for the 1979–1988 climate, while matching the Hugonnet et al. (2021) geodetic mass balance over 2000–2019. This is done in a two-step calibration process:

1. We assume that the glacier was in a state of approximate balance with the climate during a baseline period in the 20th century (i.e., the glacier-specific mean SMB was zero):

$$B = \sum_{m=1}^{12} \sum_{i=1}^N [\alpha S_{im} - \mu \max(T_{im} - T_{\text{melt}}, 0)] = 0, \quad (6)$$

where B is the annual mean SMB for the glacier, the first summation is over the months of the year, the second summation is over the N grid cells in the glacier, and the subscript m denotes a particular month. For a given value of α (e.g., $\alpha = 1$ if the precipitation is unbiased), we can sum over all months and grid cells in Eq. (6) and obtain μ for each glacier.

2. If we have observations of both SMB and atmospheric forcing during a recent period when the glacier was out of balance with the climate, we introduce a second criterion. For each glacier we supplement Eq. (6) with a similar equation for the recent period:

$$\hat{B} = \sum_{m=1}^{12} \sum_{i=1}^N \left[\alpha \hat{S}_{im} - \mu \max(\hat{T}_{im} - T_{\text{melt}}, 0) \right], \quad (7)$$

where the carets denote quantities taken over the recent period.

Equations (6) and (7) form a system of two equations with two unknowns, which can be solved for α and μ for each glacier.

The summation over N cells for each glacier includes all the cells belonging to the glacier based on the RGI outlines, as well as ice-free cells bordering the glacier outline (within one cell), provided the bordering cells are in the ablation zone. In calculating the glacier's area-integrated annual-mean SMB, we include these neighboring cells because ice flows into and melts within them during at least part of the year. If these cells were excluded, the temperature sums in Eqs. (6) and (7) would be too small, and μ would be overestimated as a result.

The ~~SMB parameters~~ μ parameters α and μ are required to fall within physically reasonable ranges ($\alpha_{\min}, \alpha_{\max}$) and (μ_{\min}, μ_{\max}). For some (usually small) glaciers, the α and μ computed from Eqs. (6) and (7) can lie outside these ranges because of atmospheric forcing biases or observational errors in \hat{B} . In such cases, the first option is to ignore Eq. (4) and calibrate for each glacier to yield a balanced state for the 1979–1988 climate while matching the Hugonnet et al. (2021) geodetic mass balance over 2000–2019–7), set α to its default value of 1.0, and solve Eq. (6) for μ . This is done, for example, if $\hat{B} > 0$ (i.e., the glacier is supposedly gaining mass) in a warming climate. If this first option fails to yield μ within the defined range, a second option is to introduce a temperature correction β , which is added to T_i for each cell in the glacier. This option is needed if T has a strong cold bias, resulting in little or no ablation even when μ is large.

Figure 4 shows the distribution of ~~these the calibrated~~ parameters and the β correction (Sect. 3.4) for all glaciers in the domain. The μ values are limited to a range between 300 and 4000 mm w.e. $\text{yr}^{-1} \text{ } ^\circ\text{C}^{-1}$ (approximately 0.8 – 11 mm w.e. $\text{day}^{-1} \text{ } ^\circ\text{C}^{-1}$), and α to a range between 0.3 and 3 (Table 1). The correction β can be of either sign and is limited to a magnitude of 5°C . These ranges are similar to, but and somewhat narrower than, those in OGGM assessments. For example, Schuster et al. (2023) set the corresponding μ ranges to 0.33 – 33 mm w.e. $\text{day}^{-1} \text{ } ^\circ\text{C}^{-1}$, α to 0.1 – 10, and β to $-8 - 8^\circ\text{C}$.

For glaciers in the Alps, μ has a median value of 2.9 and a mean of 3.2 ± 1.7 mm w.e. $\text{day}^{-1} \text{ } ^\circ\text{C}^{-1}$ across all glaciers (without weighting according to glacier area or volume). More than 95% of the glaciers have $\mu < 6.3$, which aligns with previous literature. For example, Hock (2003) reported this parameter (referred to as the degree-day factor) ranging from 5–12 mm w.e. $\text{day}^{-1} \text{ } ^\circ\text{C}^{-1}$ for individual glaciers globally, while Braithwaite and Hughes (2022)

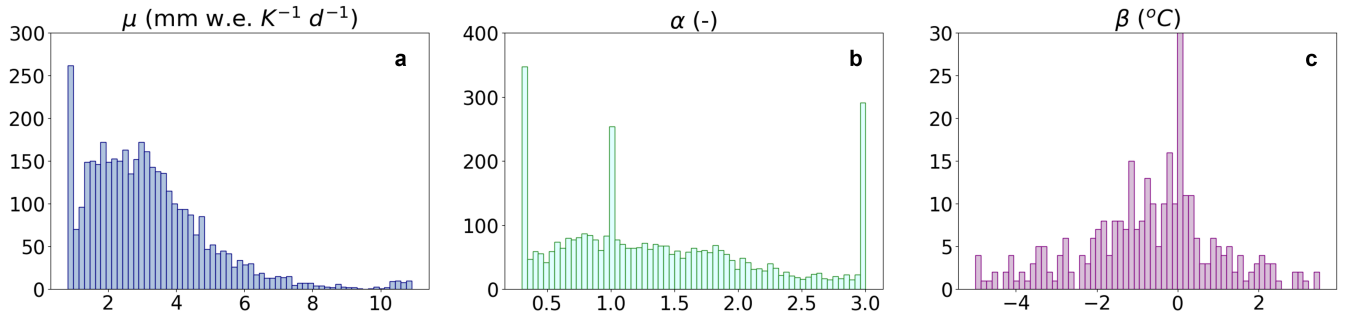


Figure 4. Distribution of the SMB parameters for all simulated glaciers in the Alps. The x-axis shows the range of values for each parameter (Table 1), and the y-axis shows the number of glaciers. The y-axis in panel c is capped at 30, because most glaciers ($n = 3593$) have $\beta = 0$.

reported values ranging from 4.1–6.8 for eight glaciers in the Alps. Schuster et al. (2023) assessed various temperature-index models and calibration methods and found a range for calibrated μ of ~ 4 – 10 mm w.e. $^{\circ}\text{C}^{-1} \text{ day}^{-1}$ for 88 glaciers globally.

The median value of α is 1.22 (Figure Fig. 4b). There are 303–304 glaciers with the lower threshold value of 0.3 and 270–273 glaciers with the upper value of 3.0, suggesting that some of these glaciers require a temperature correction β . We find that 293 glaciers have nonzero β (Figure Fig. 4c), but all have values well within the $\pm 5^{\circ}\text{C}$ threshold. Several factors, including variations among different glacier tributaries, as well as biases in the climate forcing and the geodetic mass balanced data, influence the ranges of these glacier-specific parameters.

4.2 Ice thickness and extent

Difference between CISM and F19 ice thickness (m) for the four sub-domains in Figure 1. Green colors correspond to greater thickness in the CISM simulations.

Comparison of CISM-simulated ice thickness (m) to observed thickness from Grab et al. (2021) for the Swiss Bernese and Pennine Alps around 2018. Note that the model and observations have different glacier extents in black and brown outlines, respectively.

We invert for ice thickness during the spin-up with the goal to match a baseline (1984) thickness target that is derived from the F19 estimates. This target in many regions is thicker than F19 because of the SMB correction described in Sect. 4. The resulting ice volume at the end of the spin-up (1984) is 138.9 km^3 , about 10% larger than the F19 volume of 126.6 km^3 (Table 2). During the historical run to the RGI date, the volume decreases to 127.0 km^3 , closely matching the F19 value. The RMS error in ice thickness between the modeled estimate and F19 target across the entire domain is 14.8 m. In most cases, positive differences (where the CISM thickness exceeds F19) occur along glacier peripheries and at termini (Figure 2). There are some regions where the modeled ice is thinner than F19, which we discuss further in Sect. 7.

We also ran the model forward from the RGI date to 2018, to compare the modeled 2018 ice thickness with the Grab et al. (2021) thickness measurements in the Swiss Alps, which used aerial ground-penetrating radar to determine ice thickness during

2016–2020. A direct comparison between the two datasets is not possible, since CISM extent is simulated while the Grab et al. (2021) extent is observed (hence the two have different glacier outlines), but we found similar magnitudes and spatial patterns in thickness (Figure 3).

The glaciers simulated in CISM have a total area of 2500.9 km² in 1984, much greater than the target area of 2086.4 km². When the model runs forward to 2003, the total area drops to 2250 km², closer to, but still above, the RGI targets (Table 2). We attribute the area excess to two main factors. First, there is some numerical diffusion of ice thickness under transport. This can lead to one or two rows of advanced ice, usually no more than a few meters thick, at glacier peripheries (Figure 2). Second, the RGI outlines have extensive ice-free regions at high elevations because of steep terrain that does not allow snow to accumulate. In CISM, ice can flow into these areas and remain; the “avalanche” redistribution described in Sect. 4 removes some but not all peripheral ice.

For individual glaciers, the mean difference in glacier area between RGIv6 and the 2003 model estimate is 0.04–0.15 km² (mean–std). For 17 large glaciers, the simulated area exceeds the observed area by more than 1 km². Glaciers with large differences include the Aletsch Glacier (area difference of 4.28 km²), the Gorner Glacier (2.80 km²), and the Oberaletsch Glacier system (2.56 km²). As these glaciers have large accumulation zones and/or long tongues, the area increase is due to glacier advance into peripheral grid cells of the initial extent (Figure 2).

4.2 Surface velocity

We compared the modeled surface velocities with two satellite-derived estimates: ITS-LIVE (Gardner et al., 2022) and Millan et al. (2022), both remapped to the CISM grid (Figure 5). Although velocity is not an inversion target, the simulated surface velocities are in good agreement with observations, showing that CISM is capturing key processes governing ice flow.

Figure 5 shows simulated and observed velocity patterns for several large glaciers, where velocity differences can potentially be generally more prominent due to the greater surface area and thickness. Because the Millan et al. (2022) data spans 2017/2018–2017–2018, we limited our comparison of the three datasets to 2017, although seasonal glacier velocity changes may cause temporal misalignment in the three datasets some temporal misalignment. The model captures both the spatial patterns and overall magnitudes quite well. However, the model’s accuracy varies for larger glaciers, particularly model–data differences can be greater for large glaciers, especially in accumulation zones and glacier tongues where it the model tends to overestimate velocities, unlike and for higher elevations and upper tributaries where it underestimates them (Figure 5b,c).

Statistically, the differences between CISM and the two datasets are small. Figure 6 a and b illustrate illustrates this for ITS-LIVE and Millan et al. (2022), respectively, focusing on the largest glaciers within the area that also have the greatest velocity differences. For cell-by-cell comparison, the mean differences are 20 ± 33 and 11 ± 32 19 ± 35 and 11 ± 34 m yr^{−1} for the two datasets. Only a small fraction of the glacier area (~Less than 10%) of the area has a difference exceeding ± 50 m yr^{−1}. There could be several reasons for these differences. In, but in general, velocity errors are correlated with thickness errors. Where the model underestimates (overestimates) ice thickness, the driving stress and the ice speed are likely to be too low (high).

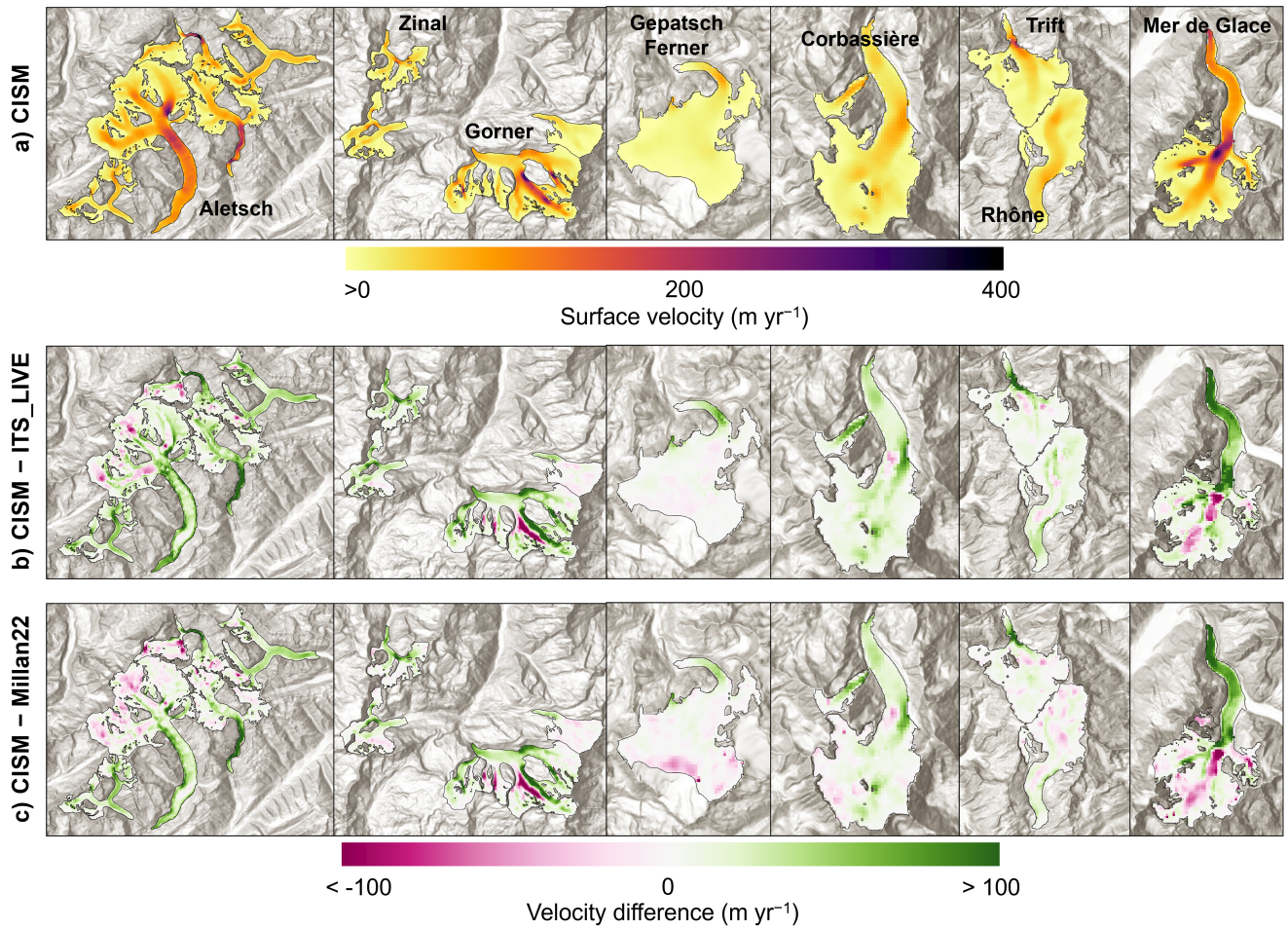


Figure 5. (a) CISM-simulated surface velocity (m yr^{-1}) for select large glaciers in the Alps. (b and c) Difference between CISM and two satellite-derived estimates: ITS-LIVE and Millan et al. (2022). All three velocity profiles are around the year 2017.

5 GlacierMIP3 simulations

The goals of GlacierMIP3 were to (1) estimate the equilibrium area and volume of all glaciers outside the two ice sheets, if temperatures were to stabilize at present-day levels, (2) make similar estimates for temperature changes under various climate change scenarios, and (3) determine the time needed to reach a new equilibrium. The GlacierMIP3 protocol specifies that each glacier should be initialized to its observed state at the RGI date. After initialization, each glacier is run forward to equilibrium for either 2000 years or 5000 years, depending on the region. Further details on the protocols and the prescribed atmospheric forcing are available on the GlacierMIP3 GitHub page (<https://github.com/GlacierMIP/GlacierMIP3>).

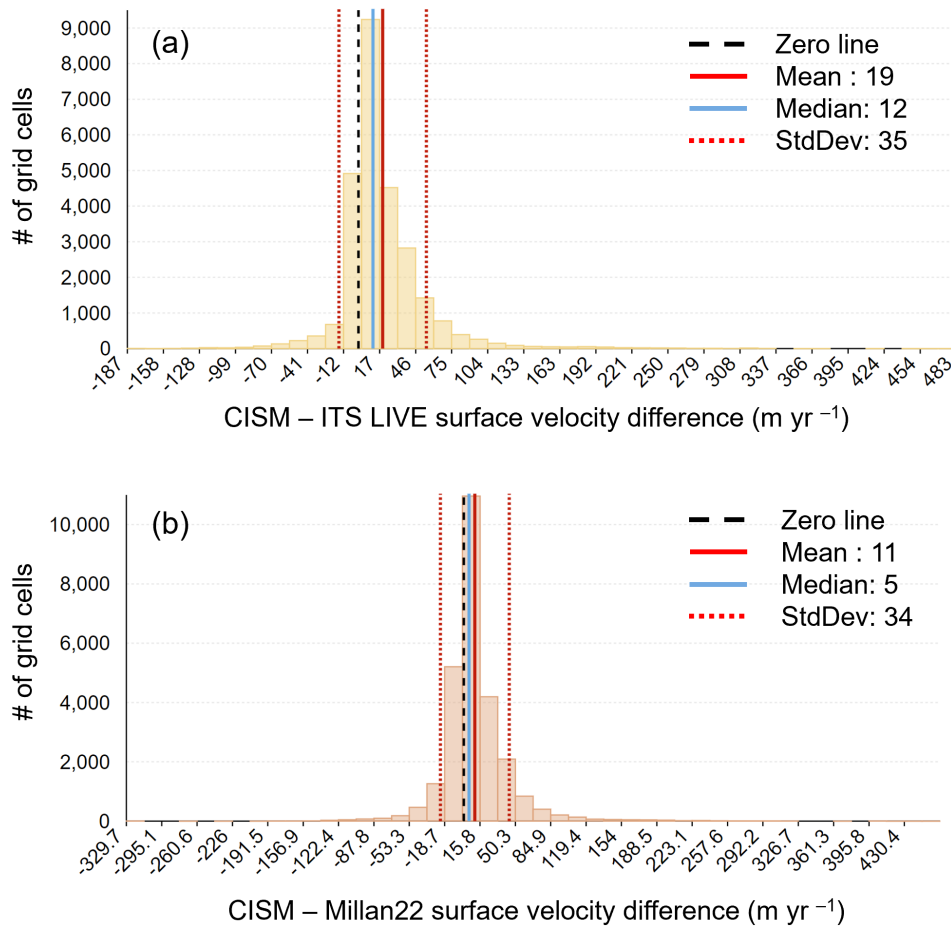


Figure 6. Velocity difference statistics between CISM and (a) ITS-LIVE and (b) Millan et al. (2022), around the year 2017. These are cell-by-cell differences for the 16 largest glaciers in the domain, each with ~~volume > 1100 km³ and~~ area > 14 km². The limits of the x-axis correspond to the maximum difference.

5.1 Committed ice loss

475 We assessed the committed ice loss for ~~these glaciers~~ glaciers in the Alps, i.e., the long-term equilibrium ice loss if recent climate conditions (2000–2019) were to remain unchanged. For the commitment run, we started with the baseline state of 1984 and gradually introduced warming from 1984–2010 using a linear ramp. After 2010, we held the atmospheric forcing constant and continued the simulation ~~for several centuries until the mass stabilized to 2484 (a total of 500 years), by which time the mass stabilizes.~~

480 Figure 7 shows snapshots for the Swiss Bernese Alps (including the Aletsch Glacier) for four dates: the 1984 baseline, 2021, 2084(~~100-years after the baseline~~), and 2184. By 2184, the glaciers are close to ~~equilibration~~ equilibrium. Even in this highly

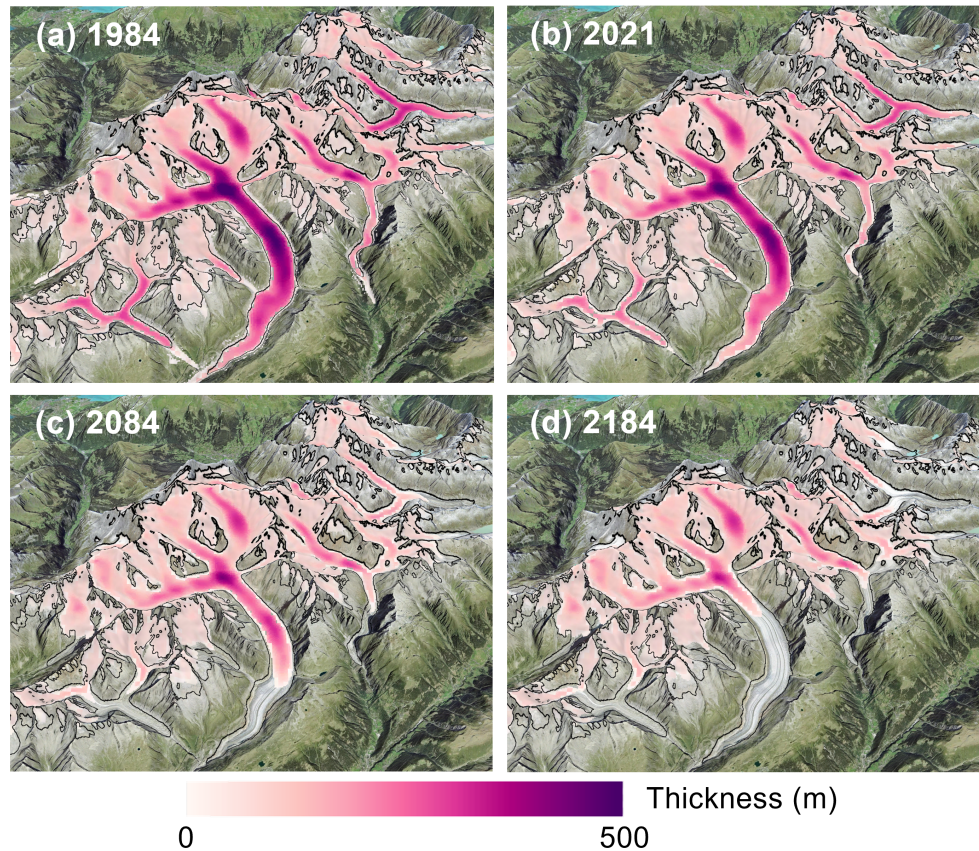


Figure 7. Committed ice loss for the Bernese Alps. Ice thickness (m) for (a) the baseline climate of 1984, and (b–d) years 2021, 2084, and 2184, assuming continuation of recent climate (2000–2019) with no further warming. RGIv6 glacier outlines (~2003) are shown in black.

optimistic climate scenario, there is significant area and volume loss (FigureFig. 7d), emphasizing that glaciers are far from equilibrium with the current climate. During ~~this 200-year commitment run~~ these 200 years, the total ice volume ~~in the entire Alps domain drops from 138~~ drops from 137 km³ (1984) to 127 (2003), ~~104–105~~ (2021), ~~63–65~~ (2084), and ~~51–53~~ (2184). The total area drops from ~~2500~~ 2497 km² in 1984 to ~~994~~ 1117 km² by 2184. At the end of the run in 2484, the area and volume are 1041 km² and 51 km³.

These results are similar to those of Juvet and Huss (2019), who studied the retreat of the Aletsch Glacier using a full-Stokes ice dynamics model. They found that, by 2100, the Aletsch Glacier is already committed to losing nearly half its 2017 volume based on the 2008–2018 climate, with a 32% loss projected using the 1988–2018 climate. CISM projects comparable volume loss with the 2000–2019 climate; ~~approximately 35%~~ approximately 34% between 2017 and 2100. ~~We note that by~~ By 2017, the simulated Aletsch glacier has already lost 11% of its 1984 baseline volume of ~~14.27~~ 14.30 km³.

5.2 Equilibration runs for GlacierMIP3

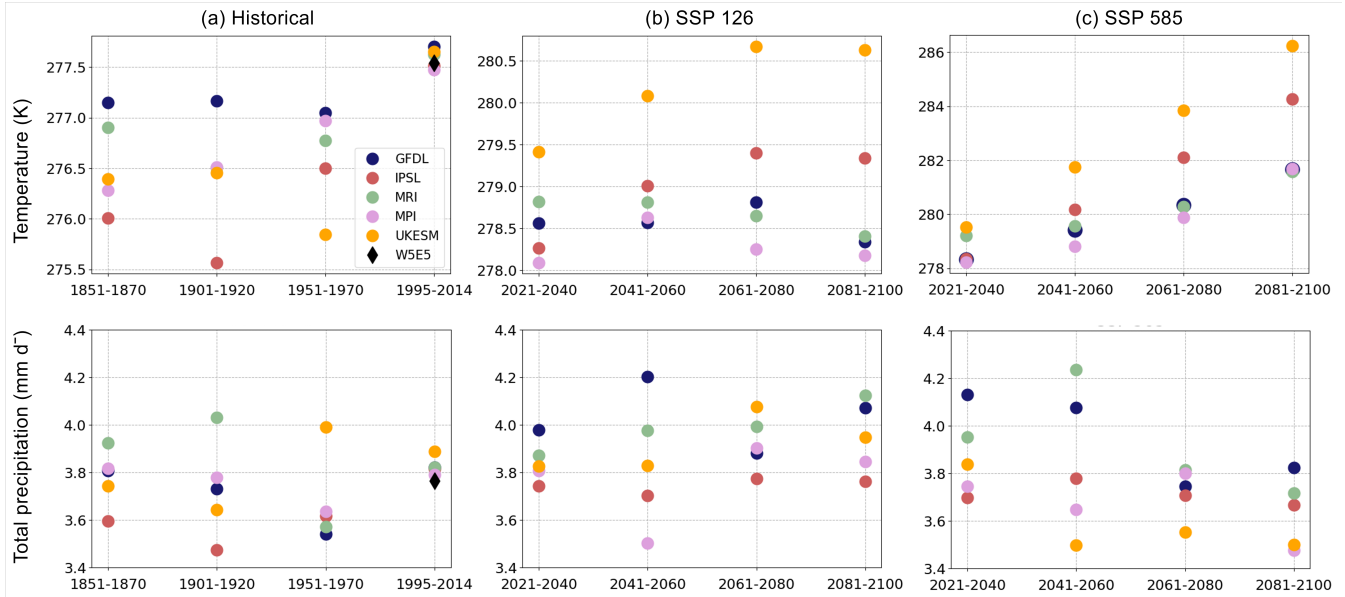


Figure 8. Temperature (K) and precipitation (mm d^{-1}) magnitudes in five CMIP6 models averaged over the glaciated grid cells in the Alps for the (a) historical, (b) SSP126, and (c) SSP585 scenarios. These are 20-year averages for the periods shown on the x-axis.

We carried out the full suite of GlacierMIP3 experiments for the Alps glaciers in RGI region 11 (FigureFig. 1). Climate forcing for these experiments comes from five bias-corrected CMIP6 models from ISIMIP3b (GFDL-ESM4, IPSL-CM6A-LR, MPI-ESM1.2-HR, MRI-ESM2.0, and UKESM1-0-LL), for both the historical period (1850–2014) and the future. The future forcing includes three scenarios with different levels of warming: SSP126, SSP370, and SSP585. The forcing for an equilibrium run corresponds to one of eight 20-year periods as simulated by each of these CMIP6 models. The 20 years of data in each time series are shuffled so that the forcing can be applied repeatedly for thousands of years without introducing spurious 20-year cycles (see the GlacierMIP3 GitHub page for more details).

Our simulations show that Alpine glaciers will lose a large fraction of their area and volume under current temperatures, with near-total ice loss under in warmer scenarios. For the 1995–2014 historical climate (FigureFig. 8a), the cumulative volume loss for these glaciers is 56–63%, depending on the forcing dataset, and it will take 140–150 years to reach the equilibrium state (i.e., when the slope of the trend-line is nearly flat, rounded to the nearest 5 years; FigureFig. 9d). Under the sustainability-focused SSP126 scenario, volume loss ranges between 74% for MPI and 94% for UKESM with 2021–2040 climate forcing (FigureFig. 9e). For this forcing, UKESM is 1.3°C warmer than MPI but has similar precipitation magnitude (FigureFig. 8b).

For 2021–2040 forcing under SSP585, the domain-mean annual temperature ranges from 278.2 K (MPI) to 279.5 K (UKESM) (FigureFig. 8c), and the total volume loss ranges from 73% (GFDL) to 94% (MRI and UKESM) (FigureFig. 9i). In comparison to the other models, the GFDL forcing drives less volume loss due to the higher precipitation and lower temper-

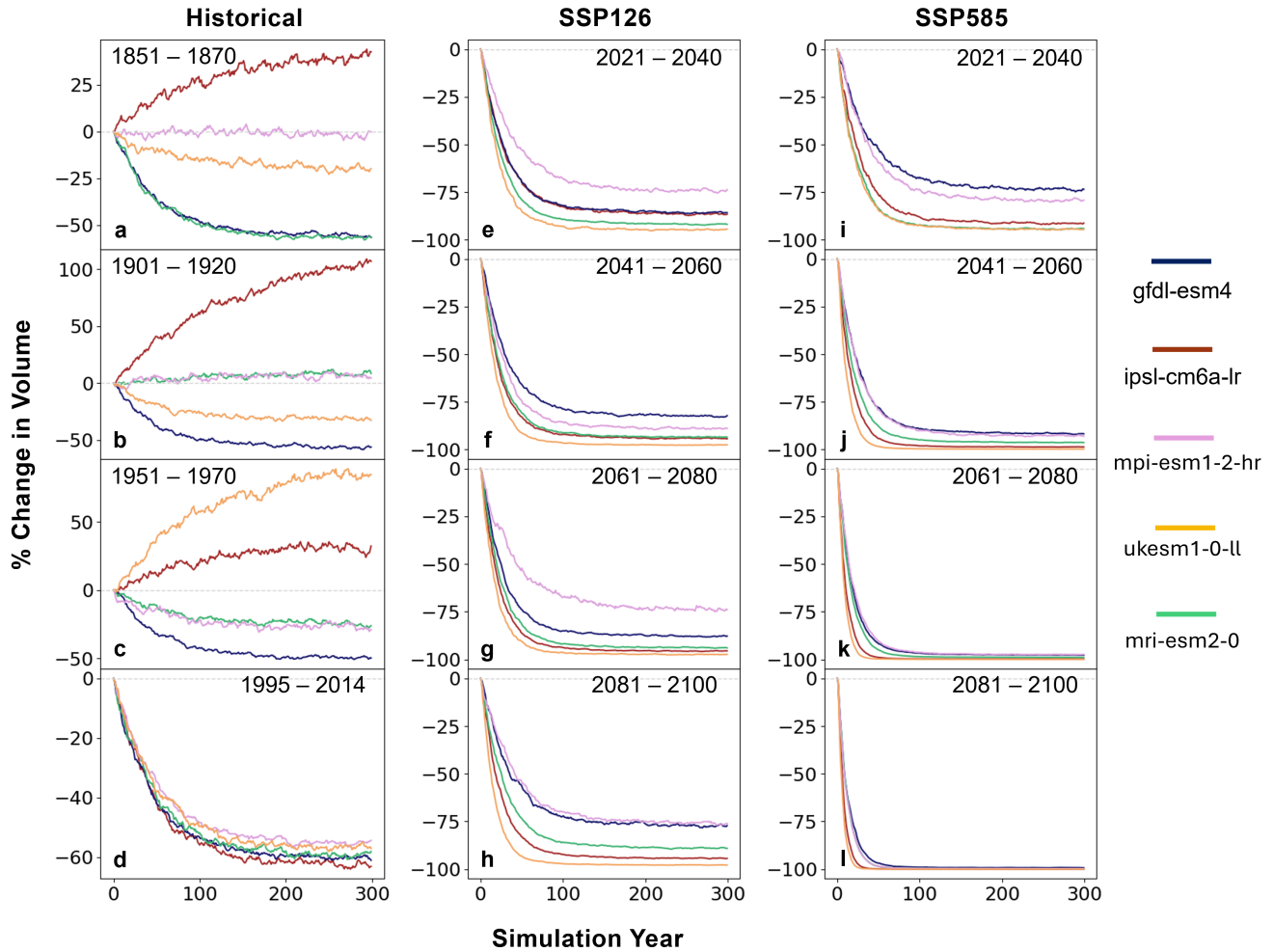


Figure 9. CISM GlacierMIP3 experiment results, showing the percentage change in total ice volume in the Alps, for the climate periods and scenarios in [FigureFig. 8](#). The x-axis shows the first 300 simulation years of the 2000-year model run.

ature ([FigureFig. 8c](#)). With slower warming, there is an increased response time; the time to equilibrium is about 140 years for GFDL, compared to 130, 100, and 90 years for MPI, IPSL, and UKESM/MRI, respectively; [FigureFig. 9i](#)).

In the projected climate of the later decades of SSP585, CISM predicts a near-complete loss of area and volume for all five models, with an equilibrium response time of less than 50 years ([FigureFig. 9kand-1](#)). For the SSP126 scenario in the later decades, MPI and GFDL show relatively less volume loss (about 75%; [FigureFig. 9h](#)), noting that these models simulate slightly cooler temperatures than the other models ([FigureFig. 8b](#)).

We refer the reader to [Zekollari et al. \(2025\)](#) for a detailed analysis of GlacierMIP3 simulations by all participating models.

6 Computational performance

3D glacier models are computationally more expensive compared to their 2D counterparts, limiting the ability to model large glaciated regions at high spatial resolutions on century-to-millennial scales. A twofold reduction in grid spacing quadruples the number of grid cells and typically halves the maximum stable time step, increasing the overall computational cost by a factor of eight. This suggests that the cost of glacier simulations using sub-kilometer grids would be several orders of magnitude higher than that of ice-sheet simulations ~~-, which with CISM are~~ (generally run at 4-km resolution with CISM). However, we have implemented computationally efficient schemes in CISM to make glacier runs more affordable.

6.1 ~~Spatio-temporal resolutions~~ Spatial resolution and computational efficiency

For the Alps domain (~~Figure~~Fig. 1), we created grids at 100-m and 200-m resolutions to evaluate the sensitivity of model results and computational costs. On the 200-m grid, with the same model settings, we spun up the model for 7000 years, including 6000 years with inversion until the rate of volume change falls below 0.1 km³ per 1000 yr. The final spun-up area and volume are 2530.8 km² and 137.9 km³, respectively, only slightly higher than the 100-m values (Table 2). In a commitment run (Sect. 5.1), the volume drops to 128 km³ (2003), 105 (2021), 65 (2084) and 53 (2184). The close similarity to the 100-m results suggests that the 200-m grid is adequate for regional-scale area and volume projections, although it fails to resolve many small glaciers. While 259 glaciers are unresolved on the 200-meter grid, the 100-meter grid resolves all but 6.

The 100-m grid has dimensions of 9611 × 5545 (more than 50 million grid cells), of which only about 250,000 are glaciated. To conserve computing resources, we created a glacier mask to identify regions that are currently ice-covered, or could potentially contain ice if glaciers ~~advanced~~advance. The mask starts with ice-filled grid cells from the RGI input grid and is extended to a radius of 1 km around each glaciated cell. ~~Upon~~On initialization, CISM ~~identifies and retains data~~blocks ~~containing at least one cell within the glacier mask, labeling these as active while discarding~~ partitions the global domain into square blocks of data. For the 100-m grid, the initial domain consists of about 9300 blocks, each with 75 or 76 cells on a side. Of these blocks, only about 900 contain one or more of the grid cells included in the glacier mask. CISM labels these blocks as active, assigns one block to each processor core, and discards the remaining blocks. We modified CISM's parallel routines (halo updates, gather/scatters, global sums, and broadcasts) to operate only on active blocks~~only. This masking reduces the number of active blocks on the 100-meter Alps grid to fewer than 900-, exchanging data with adjacent blocks that are also active. This allows~~ a tenfold reduction ~~compared to running the in cost compared to a~~ simulation with inactive blocks included.

The atmospheric forcing consists of monthly mean temperature and precipitation. We found that runs on both grids were stable with a time step of 1 month (with each month containing exactly 30 days). This is similar to the maximum stable time step for CISM ice-sheet simulations on a 4-km grid. Ice sheets require shorter time steps relative to the grid spacing because the fastest outlet glaciers have speeds of several km yr⁻¹. In the Alps, the maximum glacier speeds are only several hundred m yr⁻¹ (~~Figure~~Fig. 5; Millan et al. 2022).

6.2 High-performance computing costs

On the 100-m grid with a time step of 1 month, we achieved throughput of ~~about 140~~145 model years per wallclock-hour on 896 processor-cores (7 nodes with 128 cores each) on Derecho, a high-performance computing system at the NSF National Center for Atmospheric Research. The cost per simulated year is about ~~6.4~~6.2 cpu-hours. These numbers are for the last 1000 years of the spin-up; the throughput is $\sim 20\%$ lower during the first few model centuries. On the 200-m grid ~~, with~~with the same time step but about four times fewer grid cells, the throughput is ~~about 430~~588 model years per wallclock hour on 768 cores, a cost of about ~~1.8~~1.3 cpu-hours per simulated year. Thus, the cost per cpu-hour on the 100-m grid is ~~less than 4~~about 4.8 times the cost on the 200-m grid. ~~This superlinear scaling is a result of the method used to discard inactive blocks. Because each block in the 100-meter grid covers a smaller area than the 200-meter grid, there are far fewer active blocks than inactive ones, showing that the scaling is close to linear. The cost of the full spin-up on the fine grid is less than 4 times the cost on the coarser grid, since the model equilibrates in fewer years on the fine grid (Sect. 6.1).~~

These numbers suggest that applying CISM to regions larger than the Alps is computationally practical, ~~particularly with a coarser~~especially with a resolution of 200 m. The four largest RGI regions (Alaska, Arctic Canada North, the Greenland periphery, and Antarctic islands) have a glaciated area of $\sim 10^5$ km² each. At 200-m resolution, this would imply 2.5 million glaciated cells per region. Assuming 10 ice-free grid cells per glaciated cell (i.e., somewhat denser glaciation than the Alps, where we ~~ran with~~have about 20 ice-free cells per glaciated cell), the computational domain would contain 25 million cells, or about 5 times as many as on the 100-m Alps grid. While substantial, the increased computational cost would not be prohibitive.

7 Model limitations and future work

7.1 SMB scheme

A limitation in the current modeling framework is the surface mass balance scheme (~~Sect. 3.4~~), which is based on a temperature-index approach with a single glacier-specific degree-day factor μ . We adopted this approach for its simplicity ~~in the initial implementation, and also~~and to make best use of the available datasets while accounting for their limitations.

For many glaciers, especially large ones, it is unrealistic to assume that a single degree-day factor applies to the entire glacier. The accumulation/ablation rates depend on terrain characteristics, microclimate effects, debris cover (Rounce et al., 2021), avalanches, and wind drift, among other factors. We refer the reader to Schuster et al. (2023) for a comprehensive assessment on the effects of SMB schemes, calibration approaches, and parameter values (e.g., lapse rate) on the accuracy of glacier projections.

We illustrate some limitations of the current SMB scheme by ~~focusing on individual glaciers in two regions. The first is considering~~ the Glacier du Tour, ~~on the northwest side in the northwest part~~ of the Mont Blanc massif. Figure 10a shows the thickness difference between the CISM spin-up and the F19 thickness estimates. This glacier has a tributary that lies between 2800 and 2900 m (dark purple shade in ~~Figure~~Fig. 10a), just above the equilibrium-line altitude (ELA). CISM, however, balances the glacier-wide SMB by choosing a value of μ that puts the ELA around 2900 m, above the tributary. As a result,

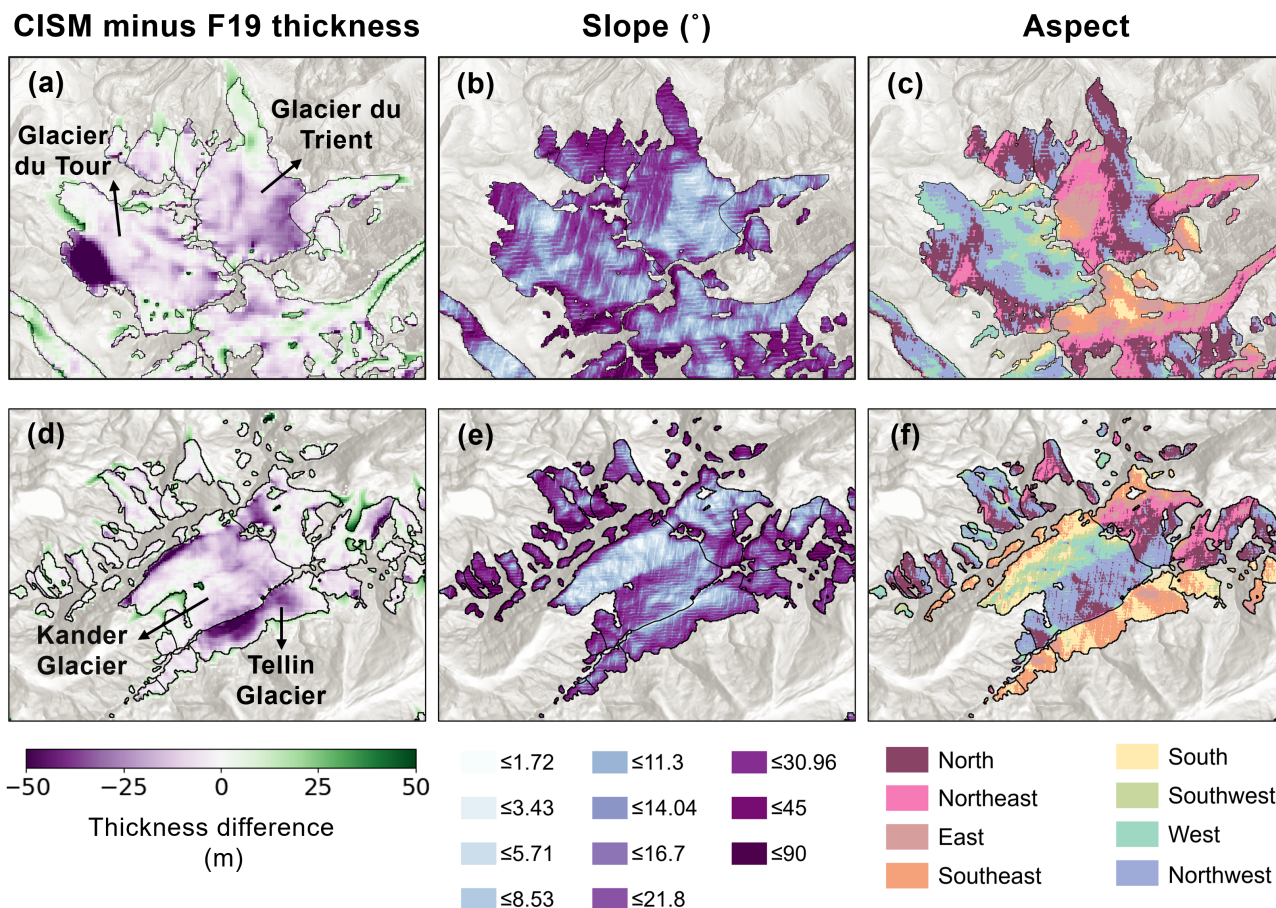


Figure 10. (a, d) Difference between 2003 CISM simulated and F19 thickness (m) for select glaciers in the Mont Blanc massif (top row) and the Bernese Alps (bottom row). (b, e) Glacier slope and (c, f) aspect, from the surface elevation DEM.

this region has a negative SMB, and since it is not fed by any ice in the accumulation zone, it remains ice-free. CISM's SMB scheme cannot account for ELA variations due to aspect and shading. This tributary has a north-facing aspect, ranging from northeast to northwest, and is shaded by steep ridges to the southwest (FigureFig. 10b,c), which could explain why its ELA, in reality, lies below the glacier mean ELA.

~~Next, consider the~~ Some of the differences between CISM and F19, however, stem from factors beyond the model's SMB limitations. Consider the Kander and Tellin Glaciers in the western part of the Bernese Alps (FigureFig. 10d-f). ~~These glaciers are separated by a ridge at around 3000 m elevation, which divides north-flowing glaciers in the Bern canton from south-flowing glaciers in Valais.~~ Both glaciers have regions-areas where the simulated ice in CISM is much thinner than the F19 estimates. ~~For Kander, the thin ice along the northwest lateral margin is likely a function of slope. CISM puts ice along glacier walls which in reality are too steep to retain snow and ice.~~

The Tellin Glacier occupies a narrow elevation range between about 2800 and 3000 m. Since the glacier faces These areas have steep slopes with a south and southeast (Figure 10 aspect (Fig. 10e,f), it receives direct sunlight leading to high melt and a relatively high ELA and terminus. Near the ridge, CISM simulates ice that is much thinner than leading to fast downhill flow that would tend to thin the ice at higher elevations. Faster downslope flow in CISM relative to the F19 models could explain the thickness differences. Running CISM forward to 2018 in a warming climate, we can compare model thicknesses with the observations from Grab et al. (2021). CISM agrees fairly well with the Grab et al. (2021) data (Fig. 3), which suggests that the model flow is realistic, perhaps more so than the F19 estimates. Hence, while certain differences between CISM and F19 are attributable to the limitations within CISM, other inconsistencies may be due to limitations in F19, or in both estimates. The reasons for the difference are not obvious, but one possibility is that with the steep slope in the ablation zone, CISM simulates fast flow that moves ice efficiently downslope away from the ridge.

To better capture topographic effects ,in future work, we plan to introduce new SMB and redistribution schemes a SMB scheme within the land component of CESM, the Community Land Model (CLM Terrestrial Systems Model (CTSM; Lawrence et al. 2019), which computes surface mass balance using an energy-based scheme. With the hillslope hydrology configuration of CLM-CTSM (Swenson et al., 2019), we can account for aspect, relief, and slope and assess spatial variability in snow cover, debris cover, and local climate factors. CISM-CLM CISM-CTSM coupling is currently limited to ice sheets, but we plan to add glacier coupling in future CESM versions, with the aim to improve SMB estimates.

7.2 Limitations and uncertainty in atmospheric forcing Glacier initialization

CISM uses a simple, computationally efficient inverse method to estimate the spatial distribution of the basal friction coefficient C_p , adjusting the values to minimize the mismatch between modeled and observed ice thickness (Sect. 4.2). It is similar to the method developed by Pollard and DeConto (2012b) to derive basal sliding coefficients for Antarctica. Other studies have used more sophisticated approaches such as adjoint-based optimization methods, which compute gradients of a cost function (typically the mismatch between modeled and observed velocities) with respect to control parameters using the adjoint of the governing equations, or transient (time-evolving) inversion that assimilates time series of observations (Morlighem et al., 2013; Goldberg et al., 2018). At present, CISM does not have these capabilities for ice-flow modeling.

7.3 Uncertainty in atmospheric forcing

High-resolution, high-fidelity land and glacier models often require better-resolved, higher-quality forcing data than their simpler counterparts; otherwise their accuracy is often constrained by the lower resolution of atmospheric and input data. For example, Gabbi et al. (2014) found that a full energy-balance model is less consistent with observations than simpler models, despite being able to capture relevant physical processes in detail. The energy-balance model is more sensitive than simpler models to errors in the atmospheric forcing. Nevertheless, improvements in satellite data and the application of machine learning to data assimilation are gradually resolving these issues; these advancements will guide future CISM developments.

This initial implementation applies to land-terminating glaciers only, whereas many RGI regions (including Alaska, Arctic Canada, Svalbard, the Russian Arctic, the Greenland periphery, and Antarctic islands) have glaciers that flow into the ocean. In other regions, such as High Mountain Asia and Patagonia, many glaciers terminate in lakes. While CISM includes subgrid parameterizations for ~~basal sliding, iceberg calving~~, iceberg calving and grounding-line migration in ice sheets (Lipscomb et al., 2019; Leguy et al., 2021), we have not yet implemented these processes for mountain glaciers. This will require a glacier calving parameterization, along with a modified SMB calibration scheme that accounts for the additional mass loss. Finally, CISM currently does not account for glacier surges, which would require a more sophisticated treatment of subglacial hydrology. This is left for future work.

8 Conclusions

We have implemented a new framework for modeling mountain glaciers using the Community Ice Sheet Model, which was originally developed to study ice sheets. We used this framework to study the evolution of the nearly 4000 glaciers of the European Alps. This is one of the first uses of a 3D, higher-order ice-flow model to simulate thousands of glaciers at the scale of an RGI region. Unlike traditional flowline models, a 3D higher-order model can resolve complex topography and ice flow patterns, simulating horizontal and vertical variations in velocity, temperature, and stress, thus providing more detailed glacier predictions in complex terrains.

We initialized the model on a 100-meter grid to a stable state using 1980s atmospheric data(~~monthly-average-temperature and precipitation~~), a period when we ~~assume~~assumed the Alpine glaciers to be in near equilibrium with the climate. During the spin-up, we calibrated surface-mass-balance and basal-friction parameters to optimize agreement with observation-based area and thickness targets. We then ran the model forward to the present, simulating glacier retreat in a warming climate. We obtained strong agreement with ~~RGI glacier outlines~~, the consensus ice thickness estimates ~~,~~ and satellite-observed ice velocities.

Using the GlacierMIP3 protocols, we ran the model to equilibrium under various forcing scenarios corresponding to five different CMIP6 Earth system models, several historical and future periods, and three ~~future~~emissions scenarios. With ~~the~~ present-day climate forcing (2000–2019), we found that the glaciers of the Alps are committed to lose ~~nearly more than~~ half their area and volume relative to the present day. We simulated near-total ice loss in warmer climate scenarios, with most of the loss taking place before 2100. Climate sensitivity for the Alps in CISM is similar to that of other GlacierMIP3 models analyzed by ~~?~~Zekollari et al. (2025).

We have shown that large-scale, high-resolution, decade-to-millennial-scale glacier simulations can be run at reasonable cost on high-performance computers, due to CISM's parallel scalability, efficient higher-order velocity solver, and methods for limiting the computational domain to active glacier regions. Similar simulations for larger RGI regions should be computationally feasible, and would enable further assessments of the sensitivity of glacier projections to model complexity. Comparing ~~a variety of models with~~ multiple models of varying complexity will enhance our understanding of glacier systems.

This work suggests many possible areas for improvement: for example, (1) using the Community ~~Land~~-~~Terrestrial Systems~~ Model within the CESM framework to improve SMB calculations by adding physical factors and terrain characteristics such as aspect, slope, and debris cover, (2) extending the model to lake/marine-terminating glaciers, which would require a treatment of calving, ~~and~~ (3) modeling glacier surges, which ~~would demand~~ demands more sophisticated subglacial hydrology, ~~and~~ (4) introducing more rigorous model initialization techniques.

Overall, these simulations are a step towards unification of glacier and ice sheet studies in a common modeling framework. ~~Further, this~~ This model development will enable assessments ~~on the of~~ interactions and feedback mechanisms between land ice and ~~intereonected~~ connected processes including freshwater resources, ecosystem dynamics, and sea-level rise using ~~the Community Earth System Model~~ CESM.

Code and data availability. CISM is an open-source code developed on the Earth System Community Model Portal (ESCOMP) Git repository at <https://github.com/ESCOMP/CISM>. The version used to perform the glacier simulations is the CISM release version 2.2, tagged as cism_main_2.02.001 in the GitHub repository (https://github.com/ESCOMP/CISM/releases/tag/cism_main_2.02.001; last access: 24 January 2025).

Zenodo also hosts the archived model source code (v2.2), along with the configuration files and input data (10.5281/zenodo.14714941; Minallah et al. 2025), and the resulting model output for GlacierMIP3 (10.5281/zenodo.14045268; Schuster et al. 2024).

Author contributions. SM and WHL designed the study and the modeling framework. SM prepared the input datasets and conducted the validation, analysis, and output assessments. WHL wrote and tested the new glacier module and related software infrastructure in CISM. GL provided support for data processing and ran the CISM–GlacierMIP3 simulations. HZ assisted in implementing the GlacierMIP3 protocols for CISM and provided guidance on current glacier modeling frameworks in the literature. SM and WHL co-wrote the manuscript, with SM creating the figures. All authors discussed the modeling framework and the final manuscript.

Competing interests. The authors declare no competing interests.

Acknowledgements. This material is based upon work supported by the NSF National Center for Atmospheric Research (NCAR), which is a major facility sponsored by the U.S. National Science Foundation under Cooperative Agreement No. 1852977. We acknowledge high-performance computing support from the Derecho system (doi:10.5065/qx9a-pg09) and computing resources provided by the Climate Simulation Laboratory at NSF NCAR’s Computational and Information Systems Laboratory (CISL). SM was additionally funded by the NSF NCAR Advanced Study Program (ASP) postdoctoral fellowship. HZ was funded by the European Research Council (ERC) under the European Union’s Horizon Framework research and innovation programme, grant agreement 101115565 and the Research foundation – Flanders (FWO) through an Odysseus Type II project, grant agreement G0DCA23N.

We thank Fabien Maussion and Lilian Schuster for their support and guidance, especially in designing the surface-mass-balance scheme in CISM. We also thank Kate Thayer-Calder for CISM software engineering support, including the transition to the NSF NCAR Derecho supercomputer.

References

- 685 Bahr, D. B., Meier, M. F., and Peckham, S. D.: The physical basis of glacier volume-area scaling, *Journal of Geophysical Research: Solid Earth*, 102, 20 355–20 362, <https://doi.org/https://doi.org/10.1029/97JB01696>, 1997.
- Blatter, H.: Velocity and stress fields in grounded glaciers - a simple algorithm for including deviatoric stress gradients, *J. Glaciol.*, 41, 333–344, 1995.
- Bolibar, J., Sapienza, F., Maussion, F., Lguensat, R., Wouters, B., and Pérez, F.: Universal differential equations for glacier ice flow modelling, *Geoscientific Model Development*, 16, 6671–6687, <https://doi.org/10.5194/gmd-16-6671-2023>, 2023.
- 690 Bosson, J. B., Huss, M., Cauvy-Fraunie, S., Clement, J. C., Costes, G., Fischer, M., Poulénard, J., and Arthaud, F.: Future emergence of new ecosystems caused by glacial retreat, *Nature*, 620, 562–569, <https://doi.org/10.1038/s41586-023-06302-2>, 2023.
- Braithwaite, R. J. and Hughes, P. D.: Positive degree-day sums in the Alps: a direct link between glacier melt and international climate policy, *Journal of Glaciology*, pp. 1–11, <https://doi.org/10.1017/jog.2021.140>, 2022.
- 695 Clarke, G. K. C., Jarosch, A. H., Anslow, F. S., Radić, V., and Menounos, B.: Projected deglaciation of western Canada in the twenty-first century, *Nature Geoscience*, 8, 372–377, <https://doi.org/10.1038/ngeo2407>, 2015.
- Cucchi, M., Weedon, G. P., Amici, A., Bellouin, N., Lange, S., Müller Schmied, H., Hersbach, H., and Buontempo, C.: WFDE5: bias-adjusted ERA5 reanalysis data for impact studies, *Earth System Science Data*, 12, 2097–2120, <https://doi.org/10.5194/essd-12-2097-2020>, 2020.
- Danabasoglu, G., Lamarque, J.-F., Bacmeister, J., Bailey, D. A., DuVivier, A. K., Edwards, J., Emmons, L. K., Fasullo, J., Gar-cia, R.,
700 Gettelman, A., Hannay, C., Holland, M. M., Large, W. G., Lauritzen, P. H., Lawrence, D. M., Lenaerts, J. T. M., Lindsay, K., Lipscomb, W. H., Mills, M. J., Neale, R., Ole-son, K. W., Otto-Bliesner, B., Phillips, A. S., Sacks, W., Tilmes, S., van Kampenhout, L., Vertenstein, M., Bertini, A., Dennis, J., Deser, C., Fischer, C., Fox-Kemper, B., Kay, J. E., Kinni-son, D., Kushner, P. J., Larson, V. E., Long, M. C., Mickelson, S., Moore, J. K., Nienhouse, E., Polvani, L., Rasch, P. J., and Strand, W. G.: The Community Earth System Model version 2 (CESM2), *Journal of Advances in Modeling Earth Systems*, 12, e2019MS001 916, <https://doi.org/10.1029/2019MS001916>, 2020.
- 705 Diaconu, C.-A. and Gottschling, N. M.: Uncertainty-Aware Learning With Label Noise for Glacier Mass Balance Modeling, *IEEE Geo-science and Remote Sensing Letters*, 21, 1–5, <https://doi.org/10.1109/LGRS.2024.3356160>, 2024.
- Farinotti, D., Huss, M., Furst, J. J., Landmann, J., Machguth, H., Maussion, F., and Pandit, A.: A consensus estimate for the ice thickness distribution of all glaciers on Earth, *Nature Geoscience*, 12, 168–+, <https://doi.org/10.1038/s41561-019-0300-3>, 2019.
- Ficetola, G. F., Marta, S., Guerrieri, A., Cantera, I., Bonin, A., Cauvy-Fraunie, S., Ambrosini, R., Caccianiga, M., Anthelme, F., Azzoni, R. S.,
710 Almond, P., Alviz Gazitua, P., Ceballos Lievano, J. L., Chand, P., Chand Sharma, M., Clague, J. J., Cochachin Rapre, J. A., Compostella, C., Encarnacion, R. C., Dangles, O., Deline, P., Eger, A., Erokhin, S., Franzetti, A., Gielly, L., Gili, F., Gobbi, M., Hagvar, S., Kaufmann, R., Khedim, N., Meneses, R. I., Morales-Martinez, M. A., Peyre, G., Pittino, F., Proietto, A., Rabatel, A., Sieron, K., Tielidze, L., Urseitova, N., Yang, Y., Zaginaev, V., Zerboni, A., Zimmer, A., Diolaiuti, G. A., Taberlet, P., Poulénard, J., Fontaneto, D., Thuiller, W., and Carteron, A.: The development of terrestrial ecosystems emerging after glacier retreat, *Nature*, 632, 336–342, [https://doi.org/10.1038/s41586-024-](https://doi.org/10.1038/s41586-024-07778-2)
715 07778-2, 2024.
- Fox-Kemper, B., Hewitt, H., Xiao, C., Aðalgeirsdóttir, G., Drijfhout, S., Edwards, T., Golledge, N., Hemer, M., Kopp, R., Krinner, G., Mix, A., Notz, D., Nowicki, S., Nurhati, I., Ruiz, L., Sallée, J.-B., Slangen, A., and Yu, Y.: Ocean, Cryosphere and Sea Level Change, in: *Climate Change 2021: The Physical Science Basis. Contribution of Working Group I to the Sixth Assessment Report of the Intergovernmental Panel on Climate Change*, edited by Masson-Delmotte, V., Zhai, P., Pirani, A., Connors, S., Péan, C., Berger, S., Caud, N., Chen, Y., Goldfarb, L., Gomis, M., Huang, M., Leitzell, K., Lonnoy, E., Matthews, J., Maycock, T., Waterfield, T.,
- 720

- Yelekçi, O., Yu, R., and Zhou, B., p. 1211–1362, Cambridge University Press, Cambridge, United Kingdom and New York, NY, USA, <https://doi.org/doi:10.1017/9781009157896.011>, 2021.
- Gabbi, J., Carenzo, M., Pellicciotti, F., Bauder, A., and Funk, M.: A comparison of empirical and physically based glacier surface melt models for long-term simulations of glacier response, *Journal of Glaciology*, 60, 1140–1154, <https://doi.org/10.3189/2014JoG14J011>, 2014.
- 725 Gardner, A. S., Fahnestock, M., and Scambos, T.: MEaSUREs ITS_LIVE Landsat Image-Pair Glacier and Ice Sheet Surface Velocities. (NSIDC-0775, Version 1), <https://doi.org/https://doi.org/10.5067/IMR9D3PEI28U>, 2022.
- Giesen, R. H. and Oerlemans, J.: Climate-model induced differences in the 21st century global and regional glacier contributions to sea-level rise, *Climate Dynamics*, 41, 3283–3300, <https://doi.org/10.1007/s00382-013-1743-7>, 2013.
- Goelzer, H., Nowicki, S., Payne, A., Larour, E., Seroussi, H., Lipscomb, W. H., Gregory, J., Abe-Ouchi, A., Shepherd, A., Simon, E., Agosta, C., Alexander, P., Aschwanden, A., Barthel, A., Calov, R., Chambers, C., Choi, Y., Cuzzone, J., Dumas, C., Edwards, T., Felikson, D., Fettweis, X., Golledge, N. R., Greve, R., Humbert, A., Huybrechts, P., clec'h, S. L., Lee, V., Leguy, G., Little, C., Lowry, D. P., Morlighem, M., Nias, I., Quiquet, A., Rückamp, M., Schlegel, N.-J., Slater, D., Smith, R., Straneo, F., Tarasov, L., van de Wal, R., , and van den Broeke, M.: The future sea-level contribution of the Greenland ice sheet: a multi-model ensemble study of ISMIP6, *The Cryosphere*, 14, 3071–3096, <https://doi.org/10.5194/tc-14-3071-2020>, 2020.
- 730 Goldberg, D. N.: A variationally derived, depth-integrated approximation to a higher-order glaciological flow model, *J. Glaciol.*, 57, 157–170, <https://doi.org/10.3189/002214311795306763>, 2011.
- Goldberg, D. N. and Heimbach, P.: Parameter and state estimation with a time-dependent adjoint marine ice sheet model, *The Cryosphere*, 7, 1659–1678, <https://doi.org/10.5194/tc-7-1659-2013>, 2013.
- Grab, M., Mattea, E., Bauder, A., Huss, M., Rabenstein, L., Hodel, E., Linsbauer, A., Langhammer, L., Schmid, L., Church, G., Hellmann, S., Deleze, K., Schaer, P., Lathion, P., Farinotti, D., and Maurer, H.: Ice thickness distribution of all Swiss glaciers based on extended ground-penetrating radar data and glaciological modeling, *Journal of Glaciology*, 67, 1074–1092, <https://doi.org/PII S0022143021000551> 10.1017/jog.2021.55, 2021.
- 740 Guidicelli, M., Huss, M., Gabella, M., and Salzmänn, N.: Spatio-temporal reconstruction of winter glacier mass balance in the Alps, Scandinavia, Central Asia and western Canada (1981–2019) using climate reanalyses and machine learning, *The Cryosphere*, 17, 977–1002, <https://doi.org/10.5194/tc-17-977-2023>, 2023.
- Hindmarsh, R.: A numerical comparison of approximations to the Stokes equations used in ice sheet and glacier modeling, *J. Geophys. Res.*, 109, <https://doi.org/10.1029/2003JF000065>, 2004.
- Hirabayashi, Y., Zang, Y., Watanabe, S., Koirala, S., and Kanae, S.: Projection of glacier mass changes under a high-emission climate scenario using the global glacier model HYOGA2, *Hydrological Research Letters*, 7, 6–11, <https://doi.org/10.3178/hrl.7.6>, 2013.
- 750 Hock, R.: Temperature index melt modelling in mountain areas, *Journal of Hydrology*, 282, 104–115, [https://doi.org/10.1016/s0022-1694\(03\)00257-9](https://doi.org/10.1016/s0022-1694(03)00257-9), 2003.
- Hock, R., Jansson, P., and Braun, L. N.: Modelling the Response of Mountain Glacier Discharge to Climate Warming, pp. 243–252, Springer Netherlands, Dordrecht, ISBN 978-1-4020-3508-1, https://doi.org/10.1007/1-4020-3508-X_25, 2005.
- Hock, R., Bliss, A., Marzeion, B. E. N., Giesen, R. H., Hirabayashi, Y., Huss, M., Radić, V., and Slangen, A. B. A.: Glacier-MIP – A model intercomparison of global-scale glacier mass-balance models and projections, *Journal of Glaciology*, 65, 453–467, <https://doi.org/10.1017/jog.2019.22>, 2019.
- 755

- Hugonnet, R., McNabb, R., Berthier, E., Menounos, B., Nuth, C., Girod, L., Farinotti, D., Huss, M., Dussaillant, I., Brun, F., and Kaab, A.: Accelerated global glacier mass loss in the early twenty-first century, *Nature*, 592, 726–731, <https://doi.org/10.1038/s41586-021-03436-z>, 2021.
- 760 Huss, M. and Hock, R.: A new model for global glacier change and sea-level rise, *Frontiers in Earth Science*, 3, <https://doi.org/10.3389/feart.2015.00054>, 2015.
- Huss, M. and Hock, R.: Global-scale hydrological response to future glacier mass loss, *Nature Climate Change*, 8, 135–+, <https://doi.org/10.1038/s41558-017-0049-x>, 2018.
- Hutter, K.: *Theoretical Glaciology, Mathematical Approaches to Geophysics*, D. Reidel Publishing Company, Dordrecht, Boston, Lancaster, 1983.
- 765 Immerzeel, W. W., Lutz, A. F., Andrade, M., Bahl, A., Biemans, H., Bolch, T., Hyde, S., Brumby, S., Davies, B. J., Elmore, A. C., Emmer, A., Feng, M., Fernandez, A., Haritashya, U., Kargel, J. S., Koppes, M., Kraaijenbrink, P. D. A., Kulkarni, A. V., Mayewski, P. A., Nepal, S., Pacheco, P., Painter, T. H., Pellicciotti, F., Rajaram, H., Rupper, S., Sinisalo, A., Shrestha, A. B., Viviroli, D., Wada, Y., Xiao, C., Yao, T., and Baillie, J. E. M.: Importance and vulnerability of the world’s water towers, *Nature*, 577, 364–369, <https://doi.org/10.1038/s41586-019-1822-y>, 2020.
- 770 Jouvét, G. and Cordonnier, G.: Ice-flow model emulator based on physics-informed deep learning, *Journal of Glaciology*, 69, 1941–1955, <https://doi.org/10.1017/jog.2023.73>, 2023.
- Jouvét, G. and Huss, M.: Future retreat of Great Aletsch Glacier, *Journal of Glaciology*, 65, <https://doi.org/10.1017/jog.2019.52>, 2019.
- Jouvét, G., Cordonnier, G., Kim, B., Lüthi, M., Vieli, A., and Aschwanden, A.: Deep learning speeds up ice flow modelling by several orders of magnitude, *Journal of Glaciology*, 68, 651–664, <https://doi.org/10.1017/jog.2021.120>, 2021.
- 775 Lange, S., Menz, C., Gleixner, S., Cucchi, M., Weedon, G. P., Amici, A., Bellouin, N., Schmied, H. M., Hersbach, H., Buontempo, C., and Cagnazzo, C.: WFDE5 over land merged with ERA5 over the ocean (W5E5 v2.0), <https://doi.org/10.48364/ISIMIP.342217>, 2021.
- Lawrence, D. M., Fisher, R. A., Koven, C. D., Oleson, K. W., Swenson, S. C., Bonan, G., Collier, N., Ghimire, B., van Kampenhout, L., Kennedy, D., Kluzek, E., Lawrence, P. J., Li, F., Li, H., Lombardozzi, D., Riley, W. J., Sacks, W. J., Shi, M., Vertenstein, M., Wieder, W. R., Xu, C., Ali, A. A., Badger, A. M., Bisht, G., van den Broeke, M., Brunke, M. A., Burns, S. P., Buzan, J., Clark, M., Craig, A., Dahlin, K., Drewniak, B., Fisher, J. B., Flanner, M., Fox, A. M., Gentine, P., Hoffman, F., Keppel-Aleks, G., Knox, R., Kumar, S., Lenaerts, J., Leung, L. R., Lipscomb, W. H., Lu, Y., Pandey, A., Pelletier, J. D., Perket, J., Randerson, J. T., Ricciuto, D. M., Sanderson, B. M., Slater, A., Subin, Z. M., Tang, J., Thomas, R. Q., Val Martin, M., and Zeng, X.: The Community Land Model Version 5: Description of New Features, Benchmarking, and Impact of Forcing Uncertainty, *Journal of Advances in Modeling Earth Systems*, 11, 4245–4287, <https://doi.org/https://doi.org/10.1029/2018MS001583>, 2019.
- 785 Leguy, G. R., Lipscomb, W. H., and Asay-Davis, X. S.: Marine ice-sheet experiments with the Community Ice Sheet Model, *The Cryosphere*, 15, 3229–3253, <https://doi.org/10.5194/tc-15-3229-2021>, 2021.
- Levermann, A., Winkelmann, R., Albrecht, T., Goelzer, H., Golledge, N. R., Greve, R., Huybrechts, P., Jordan, J., Leguy, G., Martin, D., Morlighem, M., Pattyn, F., Pollard, D., Quiquet, A., Rodehacke, C., Seroussi, H., Sutter, J., Zhang, T., Van Breedam, J., DeConto, R., Dumas, C., Garbe, J., Gudmundsson, G. H., Hoffman, M. J., Humbert, A., Kleiner, T., Lipscomb, W., Meinshausen, M., Ng, E., Perego, M., Price, S. F., Saito, F., Schlegel, N.-J., Sun, S., and van de Wal, R. S. W.: Projecting Antarctica’s contribution to future sea level rise from basal ice-shelf melt using linear response functions of 16 ice sheet models (LARMIP-2), *Earth System Dynamics Discussions*, 2019, 1–63, <https://doi.org/10.5194/esd-2019-23>, 2019.
- 790 Lipscomb, W. H. and Hunke, E. C.: Modeling sea ice transport using incremental remapping, *Mon. Wea. Rev.*, 132, 1341–1354, 2004.

- 795 Lipscomb, W. H., Price, S. F., Hoffman, M. J., Leguy, G. R., Bennett, A. R., Bradley, S. L., Evans, K. J., Fyke, J. G., Kennedy, J. H., Perego, M., Ranken, D. M., Sacks, W. J., Salinger, A. G., Vargo, L. J., and Worley, P. H.: Description and evaluation of the Community Ice Sheet Model (CISM) v2.1, *Geosci. Model Dev.*, 12, 387–424, <https://doi.org/10.5194/gmd-12-387-2019>, 2019.
- Lipscomb, W. H., Leguy, G. R., Jourdain, N. C., Asay-Davis, X. S., Seroussi, H., and Nowicki, S.: ISMIP6-based projections of ocean-forced Antarctic Ice Sheet evolution using the Community Ice Sheet Model, *The Cryosphere*, 15, 633–661, [https://doi.org/10.5194/tc-15-633-](https://doi.org/10.5194/tc-15-633-2021)
800 2021, 2021.
- MacAyeal, D. R.: Large-scale ice flow over a viscous basal sediment - Theory and application to Ice Stream B, Antarctica, *J. Geophys. Res.*, 94, 4071–4087, 1989.
- Marzeion, B., Jarosch, A. H., and Hofer, M.: Past and future sea-level change from the surface mass balance of glaciers, *The Cryosphere*, 6, 1295–1322, <https://doi.org/10.5194/tc-6-1295-2012>, 2012.
- 805 Marzeion, B., Hock, R., Anderson, B., Bliss, A., Champollion, N., Fujita, K., Huss, M., Immerzeel, W. W., Kraaijenbrink, P., Malles, J. H., Maussion, F., Radic, V., Rounce, D. R., Sakai, A., Shannon, S., van de Wal, R., and Zekollari, H.: Partitioning the Uncertainty of Ensemble Projections of Global Glacier Mass Change, *Earths Future*, 8, <https://doi.org/ARTN e2019EF001470> 10.1029/2019EF001470, 2020.
- Maussion, F., Butenko, A., Champollion, N., Dusch, M., Eis, J., Fourteau, K., Gregor, P., Jarosch, A. H., Landmann, J., Oesterle, F., Recinos, B., Rothenpieler, T., Vlug, A., Wild, C. T., and Marzeion, B.: The Open Global Glacier Model (OGGM) v1.1, *Geoscientific Model*
810 *Development*, 12, 909–931, <https://doi.org/10.5194/gmd-12-909-2019>, 2019.
- Millan, R., Mouginot, J., Rabatel, A., and Morlighem, M.: Ice velocity and thickness of the world’s glaciers, *Nature Geoscience*, 15, 124–+, <https://doi.org/10.1038/s41561-021-00885-z>, 2022.
- Milner, A. M., Brown, L. E., and Hannah, D. M.: Hydroecological response of river systems to shrinking glaciers, *Hydrological Processes*, 23, 62–77, <https://doi.org/https://doi.org/10.1002/hyp.7197>, 2009.
- 815 Minallah, S., Lipscomb, W., and Leguy, G.: Three-dimensional dynamic modeling framework for mountain glaciers in the Community Ice Sheet Model (CISM), <https://doi.org/10.5281/zenodo.14714941>, 2025.
- Morlighem, M., Seroussi, H., Larour, E., and Rignot, E.: Inversion of basal friction in Antarctica using exact and incomplete adjoints of a higher-order model, *Journal of Geophysical Research: Earth Surface*, 118, 1746–1753, <https://doi.org/https://doi.org/10.1002/jgrf.20125>, 2013.
- 820 Morlighem, M., Rignot, E., Mouginot, J., Seroussi, H., and Larour, E.: Deeply incised submarine glacial valleys beneath the Greenland Ice Sheet, *Nat. Geosci.*, 7, 418–422, <https://doi.org/10.1038/ngeo2167>, 2014.
- Morlighem, M., Rignot, E., Binder, T., Blankenship, D., Drews, R., Eagles, G., Eisen, O., Ferraccioli, F., Forsberg, R., Fretwell, P., Goel, V., Greenbaum, J. S., Gudmundsson, H., Guo, J., Helm, V., Hofstede, C., Howat, I., Humbert, A., Jokat, W., Karlsson, N. B., Lee, W. S., Matsuoka, K., Millan, R., Mouginot, J., Paden, J., Pattyn, F., Roberts, J., Rosier, S., Ruppel, A., Seroussi, H., Smith, E. C., Steinhage, D.,
825 Sun, B., Broeke, M. R. v. d., Ommen, T. D. v., Wessem, M. v., and Young, D. A.: Deep glacial troughs and stabilizing ridges unveiled beneath the margins of the Antarctic ice sheet, *Nature Geoscience*, <https://doi.org/10.1038/s41561-019-0510-8>, 2019.
- Muntjewerf, L., Petrini, M., Vizcaino, M., da Silva, C. E., Sellevold, R., Scherrenberg, M. D. W., Thayer-Calder, K., Bradley, S. L., Lenaerts, J. T. M., Lipscomb, W. H., and Lofverstrom, M.: Greenland Ice Sheet contribution to 21st century sea level rise as simulated by the coupled CESM2.1-CISM2.1, *Geophys. Res. Lett.*, 47, e2019GL086 836, <https://doi.org/10.1029/2019GL086836>, 2020a.
- 830 Muntjewerf, L., Sellevold, R., Vizcaino, M., Ernani da Silva, C., Petrini, M., Thayer-Calder, K., Scherrenberg, M. D., Bradley, S. L., Fyke, J., Lipscomb, W. H., Lofverstrom, M., and Sacks, W. J.: Accelerated Greenland ice sheet mass loss under high greenhouse gas forcing as simulated by the coupled CESM2. 1-CISM2. 1, *Journal of Advances in Modeling Earth Systems*, p. e2019MS002031, 2020b.

- Nowicki, S., Payne, A., Goelzer, H., Seroussi, H., Lipscomb, W., Abe-Ouchi, A., Agosta, C., Alexander, P., Asay-Davis, X., Barthel, A., Bracegirdle, T., Cullather, R., Felikson, D., Fettweis, X., Gregory, J., Hatterman, T., Jourdain, N., Munneke, P. K., Larour, E., Little, C., Morlinghem, M., Nias, I., Shepherd, A., Simon, E., Slater, D., Smith, R., Straneo, F., Trusel, L., van den Broeke, M., and van de Wal, R.: Experimental protocol for sea level projections from ISMIP6 standalone ice sheet models, *The Cryosphere*, 14, 2331–2368, <https://doi.org/10.5194/tc-14-2331-2020>, 2020.
- Pattyn, F.: A new three-dimensional higher-order thermomechanical ice sheet model: Basic sensitivity, ice stream development, and ice flow across subglacial lakes, *J. Geophys. Res.*, 108, 2003.
- 835 Pattyn, F., Perichon, L., Aschwanden, A., Breuer, B., de Smedt, B., Gagliardini, O., Gudmundsson, G. H., Hindmarsh, R. C. A., Hubbard, A., Johnson, J. V., Kleiner, T., Konovalov, Y., Martin, C., Payne, A. J., Pollard, D., Price, S., Rückamp, M., Saito, F., Souček, O., Sugiyama, S., and Zwinger, T.: Benchmark experiments for higher-order and full-Stokes ice sheet models (ISMIP—HOM), *The Cryosphere*, 2, 95–108, <https://doi.org/10.5194/tc-2-95-2008>, 2008.
- Perego, M., Price, S., and Stadler, G.: Optimal initial conditions for coupling ice sheet models to Earth system models, *J. Geophys. Res.*, 845 119, 1894–1917, <https://doi.org/10.1002/2014jf003181>, 2014.
- Pollard, D. and DeConto, R. M.: A simple inverse method for the distribution of basal sliding coefficients under ice sheets, applied to Antarctica, *The Cryosphere*, 6, 953–971, <https://doi.org/10.5194/tc-6-953-2012>, 2012a.
- Pollard, D. and DeConto, R. M.: A simple inverse method for the distribution of basal sliding coefficients under ice sheets, applied to Antarctica, *The Cryosphere*, 6, 953–971, <https://doi.org/10.5194/tc-6-953-2012>, 2012b.
- 850 Radić, V., Bliss, A., Beedlow, A. C., Hock, R., Miles, E., and Cogley, J. G.: Regional and global projections of twenty-first century glacier mass changes in response to climate scenarios from global climate models, *Climate Dynamics*, 42, 37–58, <https://doi.org/10.1007/s00382-013-1719-7>, 2013.
- RGI Consortium: Randolph Glacier Inventory - A Dataset of Global Glacier Outlines. (NSIDC-0770, Version 6), <https://doi.org/https://doi.org/10.7265/4m1f-gd79>, 2017.
- 855 Robinson, A., Goldberg, D., and Lipscomb, W. H.: A comparison of the stability and performance of depth-integrated ice-dynamics solvers, *The Cryosphere*, 16, 689–709, <https://doi.org/10.5194/tc-16-689-2022>, 2022.
- Rounce, D. R., Hock, R., McNabb, R. W., Millan, R., Sommer, C., Braun, M. H., Malz, P., Maussion, F., Mouginot, J., Seehaus, T. C., and Shean, D. E.: Distributed Global Debris Thickness Estimates Reveal Debris Significantly Impacts Glacier Mass Balance, *Geophysical Research Letters*, 48, e2020GL091311, <https://doi.org/https://doi.org/10.1029/2020GL091311>, e2020GL091311 2020GL091311, 2021.
- 860 Schuster, L., Rounce, D. R., and Maussion, F.: Glacier projections sensitivity to temperature-index model choices and calibration strategies, *Annals of Glaciology*, <https://doi.org/10.1017/aog.2023.57>, 2023.
- Schuster, L., Zekollari, H., Maussion, F., Hock, R., Marzeion, B., Rounce, D. R., Compagno, L., Fujita, K., Huss, M., James, M., Kraaijenbrink, P. D. A., Lipscomb, W. H., Minallah, S., Oberrauch, M., and Van Tricht, L.: Data from Glacier Model Intercomparison Project Phase 3 (GlacierMIP3), <https://doi.org/10.5281/zenodo.14045268>, 2024.
- 865 Seguinot, J., Ivy-Ochs, S., Jouvet, G., Huss, M., Funk, M., and Preusser, F.: Modelling last glacial cycle ice dynamics in the Alps, *The Cryosphere*, 12, 3265–3285, <https://doi.org/10.5194/tc-12-3265-2018>, 2018.
- Seroussi, H., Nowicki, S., Payne, A. J., Goelzer, H., Lipscomb, W. H., Ouchi, A. A., Agosta, C., Albrecht, T., Asay-Davis, X., Barthel, A., Calov, R., Cullather, R., Dumas, C., Galton-Fenzi, B. K., Gladstone, R., Golledge, N., Gregory, J. M., Greve, R., Hatterman, T., Hoffman, M. J., Humbert, A., Huybrechts, P., Jourdain, N. C., Kleiner, T., Larour, E., Leguy, G. R., Lowry, D. P., Little, C. M., Morlinghem, M., 870 Pattyn, F., Pelle, T., Price, S. F., Quiquet, A., Reese, R., Schlegel, N.-J., Shepherd, A., Simon, E., Smith, R. S., Straneo, F., Sun, S., Trusel,

- L. D., Breedam, J. V., van de Wal, R. S. W., Winkelmann, R., Zhao, C., Zhang, T., , and Zwinger, T.: ISMIP6 Antarctica: a multi-model ensemble of the Antarctic ice sheet evolution over the 21st century, *The Cryosphere*, 14, 3033–3070, <https://doi.org/10.5194/tc-14-3033-2020>, 2020.
- 875 Slangen, A. B. A., Katsman, C. A., van de Wal, R. S. W., Vermeersen, L. L. A., and Riva, R. E. M.: Towards regional projections of twenty-first century sea-level change based on IPCC SRES scenarios, *Climate Dynamics*, 38, 1191–1209, <https://doi.org/10.1007/s00382-011-1057-6>, 2011.
- Sommers, A. N., Otto-Bliesner, B. L., Lipscomb, W. H., Lofverstrom, M., Shafer, S. L., Bartlein, P. J., Brady, E. C., Kluzek, E., Leguy, G., Thayer-Calder, K., and Tomas, R. A.: Retreat and regrowth of the Greenland Ice Sheet during the Last Inter-glacial as simulated by the CESM2-CISM2 coupled climate-ice sheet model, *Paleoceanogr. Paleoclimatol.*, 36, e2021PA004272, <https://doi.org/10.1029/2021PA004272>, 2021.
- 880 Sun, S., Pattyn, F., Simon, E. G., Albrecht, T., Cornford, S., Calov, R., Dumas, C., Gillet-Chaulet, F., Goelzer, H., Golledge, N. R., Greve, R., Hoffman, M. J., Humbert, A., Kazmierczak, E., Kleiner, T., Leguy, G., Lazeroms, W. M. J., Lipscomb, W., Martin, D., Morlighem, M., Nowicki, S., Pollard, D., Price11, S., Quique, A., Seroussi, H., Schlemm, T., Sutter, J., van de Wal, R. S. W., Winkelmann, R., and Zhang, T.: Antarctic ice sheet response to sudden and sustained ice shelf collapse (ABUMIP), *J. Glaciol.*, pp. 1–14, <https://doi.org/10.1017/jog.2020.67>, 2020.
- 885 Swenson, S. C., Clark, M., Fan, Y., Lawrence, D. M., and Perket, J.: Representing Intrahillslope Lateral Subsurface Flow in the Community Land Model, *Journal of Advances in Modeling Earth Systems*, 11, 4044–4065, <https://doi.org/https://doi.org/10.1029/2019MS001833>, 2019.
- Weertman, J.: On the sliding of glaciers, *J. Glaciol.*, 3, 33–38, 1957.
- 890 Zekollari, H., Huss, M., and Farinotti, D.: Modelling the future evolution of glaciers in the European Alps under the EURO-CORDEX RCM ensemble, *Cryosphere*, 13, 1125–1146, <https://doi.org/10.5194/tc-13-1125-2019>, 2019.
- Zekollari, H., Huss, M., and Farinotti, D.: On the Imbalance and Response Time of Glaciers in the European Alps, *Geophysical Research Letters*, 47, e2019GL085578, <https://doi.org/https://doi.org/10.1029/2019GL085578>, 2020.
- Zekollari, H., Huss, M., Compagno, L., Pattyn, F., Goelzer, H., Lhermitte, S., Wouters, B., and Farinotti, D.: Modelling the 3-D evolution of glaciers at regional to global scales: challenges and opportunities, in: EGU General Assembly 2022, <https://doi.org/10.5194/egusphere-egu22-4231>, 2022a.
- 895 Zekollari, H., Huss, M., Farinotti, D., and Lhermitte, S.: Ice-Dynamical Glacier Evolution Modeling—A Review, *Reviews of Geophysics*, 60, <https://doi.org/10.1029/2021rg000754>, 2022b.
- Zekollari, H., Schuster, L., Maussion, F., Hock, R., Marzeion, B., Rounce, D. R., Compagno, L., Fujita, K., Huss, M., James, M., Kraai-jenbrink, P. D. A., Lipscomb, W. H., Minallah, S., Oberrauch, M., Tricht, L. V., Champollion, N., Edwards, T., Farinotti, D., Immerzeel, W., Leguy, G., and Sakai, A.: Glacier preservation doubled by limiting warming to 1.5°C versus 2.7°C, *Science*, 388, 979–983, <https://doi.org/10.1126/science.adu4675>, 2025.
- 900 Zemp, M., Huss, M., Thibert, E., Eckert, N., McNabb, R., Huber, J., Barandun, M., Machguth, H., Nussbaumer, S. U., Gärtner-Roer, I., Thomson, L., Paul, F., Maussion, F., Kutuzov, S., and Cogley, J. G.: Global glacier mass changes and their contributions to sea-level rise from 1961 to 2016, *Nature*, 568, 382—386, <https://doi.org/10.1038/s41586-019-1071-0>, 2019.
- 905