

Optimisation of the World Ocean Model of Biogeochemistry and Trophic-dynamics (WOMBAT) using surrogate machine learning methods.

Pearse J. Buchanan^{1,2}, P. Jyoteeshkumar Reddy¹, Richard Matear¹, Matthew A. Chamberlain¹, Tyler Rohr^{2,3}, Dougal Squire^{1,4}, and Elizabeth H. Shadwick^{1,2}.

¹CSIRO Environment, Hobart, 7004, Australia.

²Australian Antarctic Program Partnership, Hobart, 7000, Australia.

³Institute for Marine and Antarctic Studies, University of Tasmania, Hobart, 7004, Australia.

⁴ACCESS-NRI, Australian National University, Canberra, 2601, Australia.

Correspondence to: Pearse J. Buchanan (pearse.buchanan@csiro.au)

Abstract. The introduction of new processes in biogeochemical models brings new model parameters that must be set. Optimisation of the model parameters is crucial to ensure that model performance is based on process representation (i.e., functional forms), rather than poor choices of input parameter values. However, for most biogeochemical models, standard optimisation techniques are not viable due to computational cost. Typically, (tens of) thousands of simulations are required to accurately estimate optimal parameter values of complex non-linear models. To overcome this persistent challenge, we apply surrogate machine learning methods to optimise the model parameters of a new version of the World Ocean Model of Biogeochemistry and Trophic dynamics (WOMBAT), which we call WOMBAT-lite. WOMBAT-lite has undergone numerous updates described herein with many new model parameters to prescribe. A computationally inexpensive surrogate machine learning model based on Gaussian Process Regression was trained on a set of 512 simulations with WOMBAT-lite and was used to produce synthetic results emulating tens of thousands of simulations. These simulations explored model fidelity to 8 observation-based target datasets by varying 26 uncertain parameters across their *a priori* ranges. The surrogate model, trained on these 512 simulations, facilitated a global sensitivity analysis to identify the most important parameters and facilitated Bayesian parameter optimisation. Our approach returned constrained posterior distributions of 13 important parameters that, when sampled and input to WOMBAT-lite, ensured excellent fidelity to the target datasets. This process improved the representation of chlorophyll-a concentrations, air-sea carbon dioxide fluxes and patterns of phytoplankton nutrient limitation. We present an optimal parameter set for use by the modelling community. Overall, we show that surrogate-based calibration can deliver optimal parameter values for the biogeochemical components of Earth system models and can improve the simulation of key processes in the global carbon cycle.

35 **1 Introduction**

Ocean biogeochemical models are crucial tools for unravelling the complex interactions between the physical transport of properties, the chemical reactions of compounds and the biological conversions between inorganic and organic matter (e.g., Fennel et al., 2022). They are key for understanding and quantifying the impact of climate change on ocean ecosystems and biogeochemical cycles. This includes both the natural pulses of climate variation, such as the El Nino Southern Oscillation, and the pervasive long-term climate change, such as that induced by accumulating greenhouse gas emissions. For instance, ocean biogeochemical models are used to estimate the ocean's uptake of carbon dioxide (CO₂) (Doney et al., 2003; Friedlingstein et al., 2023; Joos et al., 2013; Orr et al., 2001; Terhaar et al., 2024), to understand the controls on interior oxygen concentrations (Buchanan and Tagliabue, 2021; Oschlies et al., 2018), to quantify changing volumes of oxygen minimum zones (Busecke et al., 2022), for projecting change in ocean primary productivity (Kwiatkowski et al., 2020; Tagliabue et al., 2021), to evaluate shifts in marine ecosystem community composition (Cael et al., 2021a; Follows et al., 2007) and fisheries production (Lotze et al., 2019; Stock et al., 2017), and most recently to evaluate the efficacy of marine CO₂ removal strategies (Fennel et al., 2023; Kwiatkowski et al., 2023; Siegel et al., 2021).

At their core, ocean biogeochemical models include an ecosystem component. This component, in its simplest form, represents the growth of phytoplankton via uptake of nutrients and photosynthesis, their mortality via zooplankton grazing and respiration, and the routing of dead biomass from both phytoplankton and zooplankton to detritus. The detritus sinks through the water column and is acted on by heterotrophic remineralisation to return the organic matter to the inorganic nutrients from which phytoplankton biomass was initially constructed. This ecosystem component, at its simplest, is known as a nutrient-phytoplankton-zooplankton-detritus (NPZD) model (e.g., Fennel et al., 2022). Other components may accompany it, such as those that encode the chemical reactions of the carbon system (Orr et al., 2017), exchanges with external reservoirs (i.e., rivers, sediments, and atmosphere), trace metals (Tagliabue et al., 2023), isotopes (Buchanan et al., 2021), or biogenic aerosols (Gantt et al., 2012). Some models consider different types of nutrients, phytoplankton, zooplankton and detritus, with some including dozens of types defined by distinct traits and/or sizes (Follett et al., 2022; Follows and Dutkiewicz, 2011; Serra-Pompei et al., 2022). Whether simple or complex, a defining feature of ocean biogeochemical models is their ecosystem component, which controls how elements cycle between inorganic and organic phases.

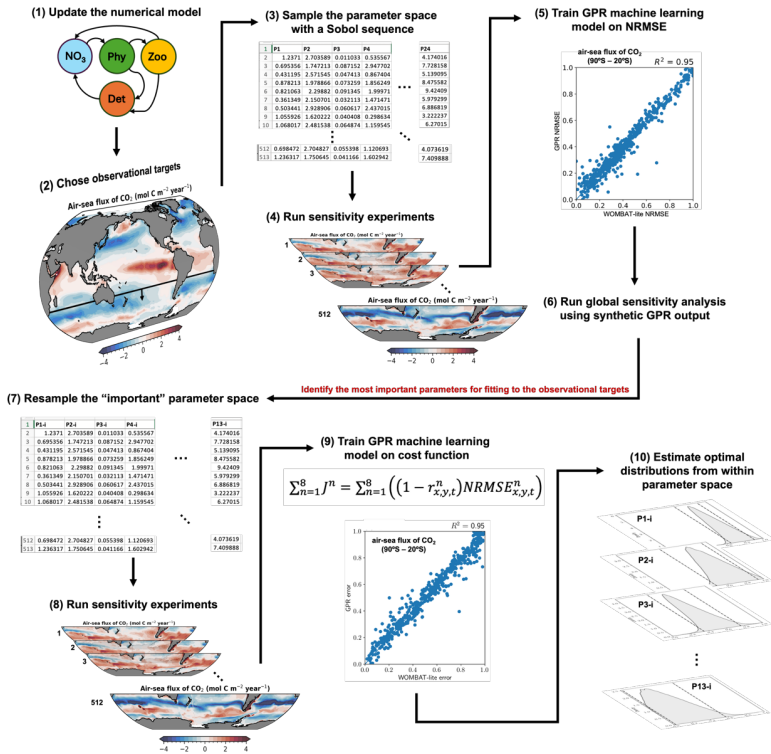
Despite their critical applications, the construction of biogeochemical models suffers from numerous sources of uncertainty. Model simulations of air-sea fluxes of CO₂, for instance, suffer from considerable seasonal biases, particularly in the

65 Southern Ocean (Hauck et al., 2020) due, in part, to biases in the phasing and magnitude of biological activity (Mongwe et al., 2018). These biases stem from poor mechanistic understanding of the processes being modelled, the complex interplay of those processes and a lack of observational constraint (Denman, 2003; Fennel et al., 2022; Matear, 1995; Rohr et al., 2023; Ward et al., 2010). However, even with greater understanding and observations, there exist many tuneable and potentially inter-dependent parameters that control many target outcomes (air-sea CO₂ fluxes, nutrient fields, chlorophyll concentrations, etc.) that must be reproduced simultaneously. One optimisation approach has been to reduce the number of processes being represented, both physical and biogeochemical, such that a smaller number of parameters requires optimisation (DeVries and Weber, 2017; Holzer and Primeau, 2013). While this approach has skill for reproducing the ocean's large-scale fields in an equilibrium state, it arguably has less skill in emulating the many inter-dependent upper ocean processes that operate on higher frequencies. More complex models with more processes have more potential to represent reality, but realizing this potential occurs only by making good parameter choices. Optimising a model with more processes would ideally involve: (1) a global sensitivity analysis that identified the most important parameters, followed by (2) a Bayesian optimisation procedure to constrain the optimal values of the most important parameters from within their uniform *a priori* ranges. Being Bayesian, the optimal parameter values would be taken from posterior distributions, recognising that many "optimal" parameter combinations are possible. Even so, the sheer number of parameters, their non-linear interactions and an objective function composed of many targets (i.e., trying to reproduce many features at once) makes this approach impossible without large and typically unfeasible computational costs.

Machine learning techniques now offer a means to overcome this key challenge (Reddy et al., 2024b, a). Synthetic output may be generated by a surrogate machine learning model trained on a smaller set of real model output. The surrogate machine learning model is computationally cheap and can generate tens to hundreds of thousands of samples required for a detailed exploration of the parameter space. Such a high number of samples is critical to identify both the first-order and interactive effects of different parameters (Reddy et al., 2024b; Saltelli et al., 2019), as well as a means to undergo Bayesian optimisation (Reddy et al., 2024a). The surrogate-based calibration has been successful with physical and terrestrial biosphere components of climate system models (Li et al., 2018; Reddy et al., 2024a; Williamson et al., 2017; Xu et al., 2022, 2018), but its application to marine biogeochemical components is in its infancy.

In this study, we optimise a relatively simple ocean-biogeochemical model designed to represent open-ocean biomes using surrogate machine learning techniques: version "lite" of the World Ocean Model of Biogeochemistry And Trophic dynamics (WOMBAT-lite) (Fig. 1). This surrogate approach is crucial. Although WOMBAT-lite has few tracers and is computationally efficient, making it viable for high resolution configurations (Kiss et al., 2020; Matear et al., 2015; Menviel and Spence, 2024; Oke et al., 2013) and large ensembles (Mackallah et al., 2022; Rashid, 2022; Ziehn et al., 2020), it is nonetheless a global, three-dimensional, biogeochemical model with complex non-linear process interactions. This makes it computationally demanding enough to prevent parameter calibration via traditional techniques. Second, surrogate-based

optimisation has been successfully applied to physical and terrestrial components of climate models (Li et al., 2018; Reddy et al., 2024a; Xu et al., 2022, 2018) and so offers real potential for, but has not been widely applied to, biogeochemical models. Finally, biogeochemical models are constantly undergoing major updates and new process development. The need for efficient and accurate optimisation is therefore constant. As an example, we made major updates during this study (detailed in Appendix A) and focussed on improving air-sea CO₂ fluxes in the Southern Oceans, which, shows persistent biases in ocean biogeochemical models (Hauck et al., 2020, 2023b; Mongwe et al., 2018). This optimised version of WOMBAT-lite is intended for use within the Australian Community Climate and Earth System Simulator (ACCESS) umbrella of ocean-only model configurations (e.g., Kiss et al., 2020), while slight changes would be needed for the full earth system configurations to accommodate the differences in the physical state of the ocean (e.g., Law et al., 2017).



110 **Figure 1. Flow chart representation of the methodology.** (1) Any updates to the numerical model, in this case a biogeochemical model, are finalized. Because the model has been altered, it requires optimization. (2) The target observations are chosen against which the model performance will be assessed and, eventually, optimized. (3) Sobol sequencing of the full parameter space selects 512 unique parameter sets from *a priori* ranges of the uncertain parameters. In this case, we chose 24 uncertain parameters. (4) The 512 unique parameter sets are used to run the numerical model forward to obtain 512 “simulated” solutions for each of the target observations. (5) Using a metric of model performance, in this case the normalised root mean square error (NRMSE), we train a surrogate machine learning model based on Gaussian Process Regression (GPR) to synthetically reproduce the model performance (NRMSE) given a parameter set as input. (6) With a the GPR model we create thousands of synthetic model simulations to conduct a global Sobol sensitivity analysis. This tells us what the most important parameters are for model performance against our observational targets. (7) We resample the parameter space using only the most important parameters and (8) run a new set of simulations with these unique parameter sets. (9) The GPR model is then trained to reproduce the global cost-function (denoted “error” above), which accounts for the performance of the model across all observational targets, given a unique parameter set as input. (10) Thousands of synthetic cost-function results, estimated by the GPR model, are used to perform Bayesian optimization that solves for the optimal posterior distributions of the important parameters from within the *a priori* ranges.

2. Methods

2.1 Optimisation Summary

125 We have updated an ocean-biogeochemical model called WOMBAT-lite (Fig. 2). These updates (detailed below) necessitated a thorough sensitivity analysis and optimisation to a chosen set of observations. We performed Sobol sensitivity analysis (Sobol’, 2001), which gave an understanding of which parameters were most important to the model outcomes, followed by Bayesian optimisation to fine-tune parameter values and improve model accuracy. However, both Sobol sensitivity analysis and Bayesian optimisation require many thousands of samples to be reliable. To overcome this challenge, 130 we employed a machine learning model based on Gaussian Process Regression to act as a surrogate of WOMBAT-lite. This computationally inexpensive surrogate was trained on hundreds of real simulations with WOMBAT-lite, predicted global univariate statistics of model error and was able to produce large samples of synthetic results that enabled sensitivity analysis and optimisation (Fig. 1).

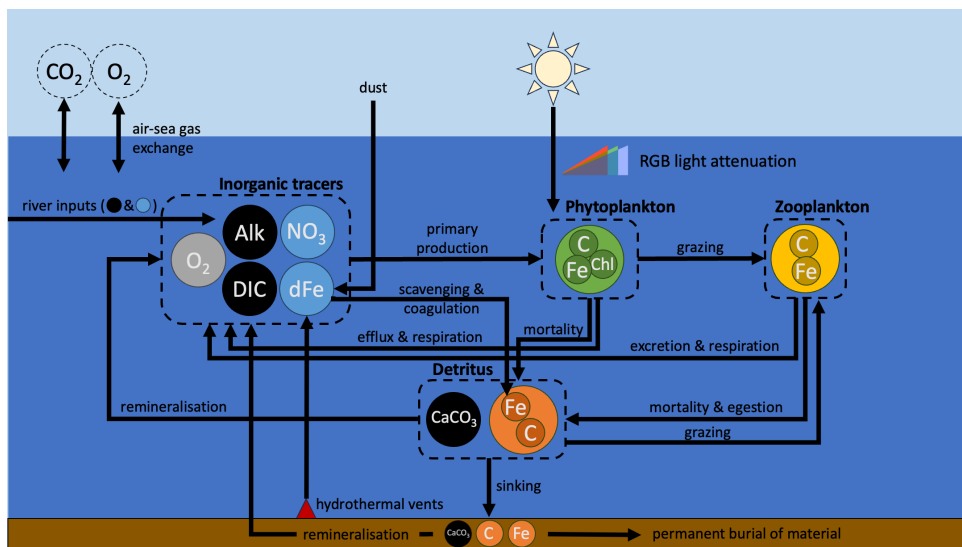


Figure 2. Schematic representation of WOMBAT-lite. Tracers and biomass pools are represented by circles of different colours. Black tracers represent the carbon system, blue are inorganic nutrients. Inner circles of C, Chl and Fe within each biomass pool represent the units of carbon, chlorophyll and iron that are explicitly tracked. Major components are grouped within the dashed outlines. Although dissolved inorganic carbon (DIC), alkalinity (Alk) and oxygen (O_2) are connected to primary production, they are only affected by it and do not limit primary production of phytoplankton. In contrast, both nitrate (NO_3) and dissolved iron (dFe) are biogeochemical tracers whose availability both controls and is affected by phytoplankton growth. Dust and hydrothermal iron input dFe, while rivers input DIC, Alk, NO_3 and dFe. Atmospheric concentrations of carbon dioxide (CO_2) and O_2 are not explicitly tracked by the ocean model (dashed circles).

2.2 Model development summary

Although “lite”, the version of WOMBAT developed for this study is more complex than the previous WOMBAT. Updates include an implicit representation of the packaging effect of cell size, which explicitly controls light attenuation through the water column; explicit photoacclimation of phytoplankton; a dynamic colimitation of iron and light, whereby phytoplankton require increases in their iron quotas as they photoacclimate (i.e., increase their chlorophyll quotas) in low light conditions; spatial variations in nutrient affinities of phytoplankton for nitrogen and iron; expanded iron cycling, with additional sinks due to scavenging onto detrital particles, colloidal coagulation and nanoparticle precipitation; riverine sources offset by permanent burial in sediments; a spatially varying sinking rate of detritus that increases with an implicit estimate of mean community cell size and also with depth; simplistic sedimentary denitrification and nitrogen fixation routines; and dampened temperature-dependence of zooplankton grazing. WOMBAT-lite (Fig. 2) considers 13 tracers: two nutrients, being nitrate

(NO₃) and dissolved iron (dFe), the carbon system (dissolved inorganic carbon (DIC), alkalinity (Alk), calcium carbonate (CaCO₃)), oxygen (O₂), the biomass pools of one phytoplankton (B_p), one zooplankton (B_z) and one sinking detrital (B_d) functional type, prognostic chlorophyll (B_p^{chl}), as well as biogenic iron in phytoplankton (B_p^{Fe}), zooplankton (B_z^{Fe}) and sinking detritus (B_d^{Fe}). In WOMBAT-lite, photosynthetically active radiation (PAR) is split into three wavelength bands associated with blue, green and red light, and each of these bands attenuates differently through the water column. The explicit chlorophyll content of phytoplankton allows for photoacclimation and the formation of deep chlorophyll maxima.

The attenuation of blue, green and red light is affected by chlorophyll concentrations, and we implicitly account for the “packaging effect” by assuming a positive relationship between chlorophyll concentration and community mean cell size, where larger cells have less effect on light absorption. Phytoplankton limitation by nutrients is affected by an implicit positive relationship between cell size and cell density, where larger cells have less affinity for nutrients. Limitation by iron is modelled via variable quotas, allowing for luxury uptake in dFe-rich conditions and the export of Fe-rich detritus.

Phytoplankton increase their iron requirements as their intracellular quota of chlorophyll increases, generating a co-limitation of light and iron on growth. Cycling of dFe now explicitly considers free, ligand-bound and colloidal iron, and is lost via nanoparticle formation, scavenging and colloidal coagulation. Zooplankton grazing is via a type III disk formulation that substantially dampens the temperature effect on grazing activity, aligning with rapid consumption rates in polar and tropical waters alike. The sinking of detritus is spatiotemporally variable and is dependent on phytoplankton biomass, emulating community shifts in mean cell size and bloom conditions, and depth, emulating a power law rather than an exponential decay associated with acceleration due to packaging with increasing pressure. A fraction of the detritus (and CaCO₃) reaching the sediment is now permanently buried. In addition, WOMBAT-lite considers inputs of nitrate, dissolved inorganic carbon and alkalinity from rivers, simplistic sedimentary denitrification and nitrogen fixation routines, and the flux of dissolved iron from hydrothermal vents. All biogeochemical cycles in WOMBAT-lite are therefore open and their inventories can change. The basic unit of biomass is carbon with a fixed C:N:O₂ of 122:16:-172. A full description of WOMBAT-lite is in Appendix A.

2.3 Model experiments and evaluation

2.3.1 Observational target fields for assessment

We use 8 observational products/databases to assess the performance of WOMBAT-lite (Fig. 3) including the gridded, global products of surface nitrate (Garcia et al., 2024b) and dissolved iron (Huang et al., 2022). While nutrient distributions are useful, they have limited power by themselves for assessing biogeochemical models, since similar distributions of nutrients can be achieved for different rates of phytoplankton growth and recycling (Fennel et al., 2022). Remotely sensed chlorophyll is an important constraint that can be considered a proxy for the total stock of phytoplankton biomass and features heavily in biogeochemical model evaluation (Fennel et al., 2022). We use the Copernicus three-dimensional

chlorophyll-a product that combines remotely-sensed, hydrographic and BGC-Argo measurements of fluorescence to generate a depth-resolved climatology of chlorophyll (Sauzède et al., 2015). The extension of chlorophyll to depth allows for an assessment of patterns in the vertical, including spatiotemporal variations in the position of the deep chlorophyll maximum, which we assess in addition to surface chlorophyll concentrations. Other important observations include a gridded and global product of air-sea CO₂ fluxes for the year 1985 (Chau et al., 2022), the earliest year available, and vertically integrated net primary production (Westberry et al., 2008). We opt for CO₂ fluxes rather than pCO₂ concentrations to also account for any error in the windspeed-dependent gas exchange formulation, which we do not update or optimise at this stage. Because the carbon-based productivity model (CbPM; Westberry et al., 2008) is based on backscatter and explicitly accounts for growth rates separate from biomass its patterns are more orthogonal to chlorophyll than the Vertically Generalized Production Model (VGPM; Behrenfeld and Falkowski, 1997), and so offers greater potential as an independent constraint on model performance (Westberry et al., 2023). Net primary production (NPP) built from the CbPM products should therefore provide more independent constraints on model assessment than an NPP product built from chlorophyll concentrations. In addition to these gridded products, we also use a database of the primary limiting nutrient for phytoplankton growth (Browning and Moore, 2023) and sediment trap records of the sinking flux of detrital particles through the ocean interior (Mouw et al., 2016). For the primary limiting nutrient dataset, we only consider nitrogen and iron as limiting (excluding phosphorus) and ascribe nitrogen limitation, iron-nitrogen co-limitation and iron limitation as equal to 1.0, 1.5 and 2.0, respectively. This is compared directly to the degree of limitation by the model, which varies continuously from strong nitrogen limitation to strong iron limitation (1.0 to 2.0). Although the model does not include co-limitation as a process, simulated values between 1.0 and 2.0 can represent seasonal variations between nitrogen and iron limitation over an annual timescale.

While we recognise that these datasets are themselves subject to uncertainty, their combination allows for a powerful model assessment. Furthermore, our assessment focusses on the reproduction of large-scale, seasonal patterns. It is also worth noting that having too many target fields compounds the difficulty associated with parameter optimisation, while having too few risks poor performance in unconsidered targets. Target fields must therefore be chosen carefully. All gridded datasets as well as the particle flux database are resolved on a global 1° by 1° degree grid and on a monthly temporal resolution, while the primary limiting nutrient for phytoplankton, due to data paucity, is represented annually (unchanging in time).

2.3.2 Sensitivity experiments for evaluation and surrogate model training

Our first goal was to understand which parameters in WOMBAT-lite were most important for model performance. We undertook 512 simulations that each sampled randomly from predefined ranges of 24 key parameters related to the ecosystem component of the model (Table 1; Fig. 1) using a Quasi-Monte Carlo Sobol sequence (see section 2.4). A total of 512 experiments was selected because it was enough for training the surrogate machine learning model to an acceptable standard (Fig. S1). Each experiment carried a unique biogeochemical parameter set that altered the biogeochemical

behaviour, but all experiments had identical physical conditions and initial conditions. Physical fields were initialised from a previous spin up with the same ocean model (Kiss et al., 2020) forced by JRA55-do (Tsujino et al., 2018). We used a repeat “normal” year forcing of the JRA55-do to avoid inter-annual variability and extremes in climate modes (Stewart et al., 2020). Atmospheric CO₂ was maintained at 315.2 ppm (i.e., levels at calendar year 1958). Nitrate, dissolved iron, dissolved oxygen, dissolved inorganic carbon and alkalinity fields were initialised from globally gridded datasets at the month of December (Garcia et al., 2024b, a; Huang et al., 2022; Lauvset et al., 2016). Concentrations of phytoplankton, zooplankton, detritus, and calcium carbonate were initialised at globally homogenous values of 0.1 mmol C m⁻³. Fe:C ratios of phytoplankton, zooplankton and detritus were initialised at 7 μmol per mol. Chlorophyll was initialised at 0.004 mg per mg of phytoplankton carbon biomass.

Observations and observation-based products for model assessment

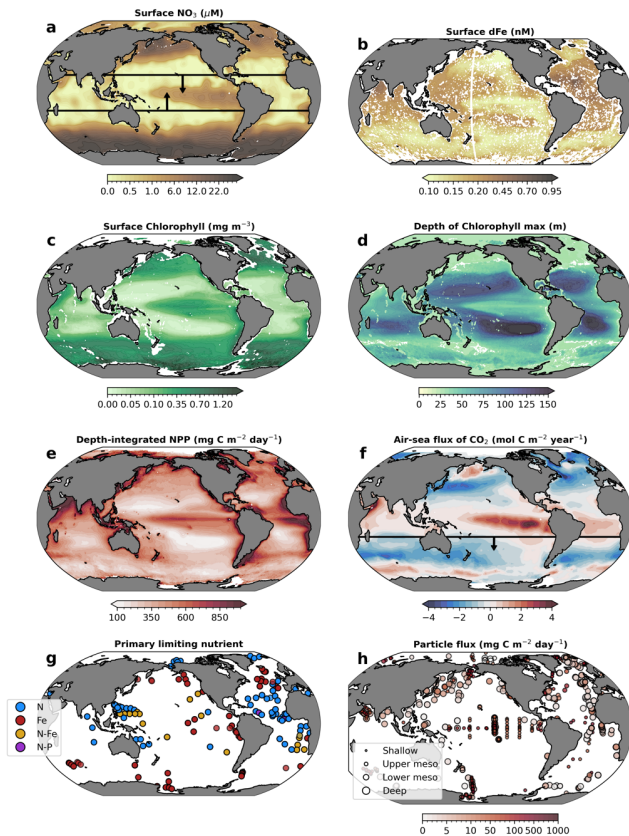


Figure 3. Observation-based target fields used for assessment (sensitivity analysis and optimisation) of WOMBAT-lite. Annual means are shown here for illustration purposes, but monthly resolution was used for all products except the Primary Limiting Nutrient dataset (Browning and Moore, 2023). Boxes in maps of surface nitrate (NO_3) and the air-sea flux of carbon dioxide (CO_2) encapsulate the specific regions of focus when assessing model performance and optimization, being between 20°S and 20°N for surface NO_3 and south of 20°S for air-sea CO_2 fluxes. CO_2 fluxes out of the ocean are positive.

230

235

Table 1. Key ecosystem parameters for WOMBAT-lite and their predefined ranges for ocean-only experiments. Parameter values for other configurations, include for the Earth System Model (ACCESS-ESM1.6), are available at <https://github.com/ACCESS-NRI>.

Component	Parameter	<i>a priori</i> range	Default (optimal range)	Description	Units	Reference
Phytoplankton	α_a	0.25 - 1.25	1.0 (0.89 – 1.16)	Scaler control on phytoplankton maximum growth rates	day ⁻¹	Anderson et al. (2021a)
	$^{(b)}\beta_a$	1.040 - 1.080	1.050 (1.041 – 1.063)	Base for temperature-dependent autotrophy	-	Anderson et al. (2021a)
	Pl^0	1.5 - 3.0	2.25	Initial slope of the photosynthesis-irradiance curve	(W m ⁻²) ⁻¹ (mg Chl / mg C) ⁻¹	MacIntyre et al. (2002)
	$^{(b)}B_p^{thresh}$	0.01 - 1.0	0.6 (0.48 – 0.94)	Biomass threshold of phytoplankton for implicit allometric scaling	mmol C m ⁻³	N/A
	K_p^{No}	0.01 - 3.0	2.0 (1.04 – 2.30)	Half-saturation coefficient for nitrogen uptake	mmol N m ⁻³	Litchman (2007)
	$K_p^{dFe_0}$	0.01 - 3.0	2.5 (2.07 – 2.97)	Half-saturation coefficient for dissolved iron uptake	μmol Fe m ⁻³	Shaked et al. (2020)
	$Q_p^{\frac{Fe}{C}}$	20 - 100	50 (39 – 64)	Maximum Fe:C quota of the cell	μmol Fe (mol C) ⁻¹	Twining et al. (2021)
	$Q_p^{\frac{Fe}{C}}$	4 - 15	10	Optimal Fe:C quota of the cell	μmol Fe (mol C) ⁻¹	Twining et al. (2021)
	$Q_p^{\frac{Chl}{C}}$	0.001 - 0.01	0.004	Minimum Chl:C quota of the cell	mg Chl (mg C) ⁻¹	Geider (1987)
	$Q^{\frac{Chl}{C}}$	0.02 - 0.06	0.036 (0.020 – 0.038)	Optimal Chl:C quota of the cell	mg Chl (mg C) ⁻¹	Geider (1987)
	γ_p^0	0.01 - 0.10	0.01 (0.010 – 0.016)	Linear mortality rate of phytoplankton	day ⁻¹	Baker and Geider (2021)
	Γ_p^0	0.01 - 0.10	0.05	Quadratic mortality rate of phytoplankton	(mmol C m ⁻³) ⁻¹ day ⁻¹	Suttle (1994)
Zooplankton	g_h	2.0 - 4.0	3.0	Scaler control on maximum zooplankton grazing rate	day ⁻¹	Rohr et al. (2022)
	ε	0.05 - 1.5	0.05 (0.05 – 0.15)	Zooplankton prey capture rate coefficient	(mmol C m ⁻³) ⁻² day ⁻¹	Rohr et al. (2022)
	$^{(b)}\phi_z^p$	1.0	1.0	Preference of zooplankton for phytoplankton	-	N/A
	ϕ_z^d	0.01 - 0.50	0.25	Preference of zooplankton for detritus	-	N/A
	$^{(b)}\lambda$	0.6	0.6	Zooplankton assimilation efficiency	-	Anderson et al. (2021b)
	γ_z^0	0.01 - 0.10	0.05	Linear mortality of zooplankton (respiration)	day ⁻¹	Anderson et al. (2021b)

Component	Parameter	<i>a priori</i> range	Default (optimal range)	Description	Units	Reference
Detritus	K_z^Y	0.01 – 0.5	0.25	Half-saturation coefficient of zooplankton mortality	mmol C m ⁻³	N/A
	Γ_z^0	0.1 - 1.0	0.9 (0.61 – 0.99)	Quadratic mortality rate of zooplankton (predation)	(mmol m ⁻³) ⁻¹ day ⁻¹	N/A
	β_h	1.060 - 1.080	1.065 (1.060 – 1.075)	Base for temperature-dependent heterotrophy	-	Chen et al. (2012)
	ω_d^0	5 - 20	18 (12.7 – 19.9)	Scaler to sinking speed of detritus	m day ⁻¹	De La Rocha and Passow (2007)
	ω_d^{max}	20 - 50	35	Maximum sinking speed of detritus	m day ⁻¹	De La Rocha and Passow (2007)
	γ_d^0	0.025 - 0.1	0.09 (0.064 – 0.099)	Linear rate of (implicit) bacterial remineralisation	day ⁻¹	del Giorgio and Cole (1998)
	$R_{\frac{CaCO_3}{detritus}}$	0.01 – 0.15	0.050	CaCO ₃ to organic detrital ratio	mol C / mol C	Lehmann and Bach (2025)
	$\omega_{CaCO_3}^0$	3 - 10	6.0	Scaler to sinking speed of CaCO ₃	m day ⁻¹	Pantorno et al. (2013)
Iron cycling	$\gamma_{CaCO_3}^0$	0.0005 - 0.01	0.01	Scaler control on (implicit) CaCO ₃ dissolution rate	day ⁻¹	Kwon et al. (2024)
	⁽ⁱⁱⁱ⁾ Lig	0.7	0.7	Concentration of Fe-binding organic ligand	μmol m ⁻³	Johnson et al. (1997)
	⁽ⁱⁱⁱ⁾ K_{nanop}^{Fe}	0.01	0.01	Precipitation of Fe' as nanoparticles (in excess of solubility)	day ⁻¹	Tagliabue et al. (2023)
	⁽ⁱⁱⁱ⁾ K_{scav}^{Fe}	0.00005	0.00005	Scavenging of Fe' onto biogenic particles	(mmol C m ⁻³) ⁻¹ day ⁻¹	Tagliabue et al. (2023)
	⁽ⁱⁱⁱ⁾ K_{coag}^{Fe}	0.0001	0.0001	Coagulation of dissolved Fe into colloidal Fe	(mmol C m ⁻³) ⁻¹ day ⁻¹	Tagliabue et al. (2023)

⁽ⁱ⁾Parameter variations not included in initial sensitivity experiments for sensitivity analysis (steps 3-6 in Fig. 1). Only in optimization (steps 7-10 in Fig. 1).

240 ⁽ⁱⁱ⁾Parameter range was set equal to 0.01 to 0.1 in the initial sensitivity experiments for sensitivity analysis (step 3-6 in Fig. 1).

⁽ⁱⁱⁱ⁾Parameter space not explored.

245 We chose to run the experiments for only 10 years, making a total of 5120 model years and at a nominal horizontal resolution of 1°. This short timescale was sufficient to assess the skill of the biogeochemical model, at least regarding its ecosystem component. Marine phytoplankton contribute half of all primary production in the Earth system (Field, 1998) but represent less than 1% of photosynthetic biomass (Friedlingstein et al., 2023; Le Quéré et al., 2005), meaning that they turn over quickly. Changes to key parameters within the ecosystem component therefore result in a rapid realisation of different
250 patterns in biological states (e.g., chlorophyll and net primary production, among others). Our analyses and optimisation thus focus on the ecosystem component and the upper ocean using 10-year model runs. We do acknowledge that longer-term, low frequency modes of variation exist in biogeochemical models, and to partially address this we completed 100-year simulations with 20 optimal parameter sets. We note that longer integrations risk the compounding of physical and biogeochemical model errors as the physical state drifts further from the observations, even when applying a repeat
255 climatological atmospheric forcing. Our optimisation therefore does not counteract the potential for long-term drift but does provide some guardrails against rapid deviations from the initial state with respect to dissolved nutrient and carbon fields. Optimisation of the biogeochemistry under these conditions can cause over-tuning of the biogeochemical parameter set that compensate for physical errors (e.g., Singh et al., 2025). However, by assessing the cost function after 100 years and selecting the best performing of the optimal experiments we likely select for a parameter set with minimal long-term drift.

260 2.3.3 Measures of performance

Output from the final year of the experiments (year 10) was compared directly to the target datasets (Fig. 3). Univariate measures of performance were calculated, including the correlation coefficient (Pearson's), root mean square error, global mean bias and the normalised standard deviation (Stow et al., 2009). These were calculated across all grid cells and time points. For surface nitrate concentrations, we only calculated these statistics between 20°S to 20°N to focus on achieving a
265 realistic transition of higher concentrations to lower concentrations from the equatorial to subtropical biome. We stress that fidelity in extra-tropical regions was captured independently via the limiting nutrient dataset. Also, surface nitrate in the equatorial region is highly responsive to changes in the ecosystem component due to warmer temperatures that accelerate metabolism. After only 10 years our simulations diverged most in this region. Additionally, surface nitrate concentrations were log₁₀ transformed prior to calculating the measures of performance due to a skewed distribution towards very low
270 values. This substantially improved the ability of our optimisation approach to select parameters that reproduced the high nitrate tongue in the equatorial region (see below). For air-sea fluxes of CO₂, we assessed model performance exclusively in the Southern Oceans south of 20°S. This region was also highly sensitive to the parameterisations of the model, showing positive or negative fluxes depending on our parameter set and aligning with findings that biological activity in this region is of high importance for model skill (Mongwe et al., 2018).

2.4 Details of the sensitivity analysis and model optimisation

2.4.1 Global sensitivity analysis

Sensitivity analysis (SA) methods are broadly categorized into local and global approaches. Local SA examines how small perturbations in parameters around certain reference points affect outputs, making it computationally feasible and widely used (Rakovec et al., 2014). However, for models where parameters interact or have non-linear impacts on the outputs, local SA can introduce substantial bias, underestimating parameter importance (Saltelli et al., 2019). The model parameters in this study are anticipated to exhibit complex, non-linear interactions influencing the outputs (Denman, 2003; Fennel et al., 2022; Matear, 1995; Ward et al., 2010), thus justifying the use of global SA to capture these dynamics accurately. One of the most effective global SA methods, Sobol sensitivity analysis, is widely adopted due to its precision in addressing interaction effects, discontinuities, and non-linear influences of parameters on model outputs (Baki et al., 2022; Reddy et al., 2024b). Based on the Hoeffding-Sobol decomposition, Sobol SA leverages Analysis of Variance (ANOVA) to decompose output variance into contributions from individual parameters, interactions between parameter pairs, and so on across increasing levels of dimensionality (Saltelli et al., 2010; Sobol', 2001). Sobol sensitivity indices, representing the importance of parameter interactions in the context of total output variance, are then computed by evaluating ratios of these variances. To perform Sobol SA on the WOMBAT-lite outputs requires extensive parameter sampling, a computationally expensive task. To efficiently manage this, we use a surrogate Gaussian Process Regression (GPR) model (Williams and Rasmussen, 1995, 2006), which is trained on a limited number of runs (sensitivity experiments; section 2.3.2; visualised in Fig. 1). The GPR model, designed for accuracy, provides predictions over a large sample space, allowing SA to be performed without extensive and computationally unfeasible simulations.

The analysis focuses on the target fields detailed in Fig. 3 and section 2.3.1. To generate the 512 sensitivity experiments required to train the surrogate machine learning model, a Quasi-Monte Carlo Sobol sequence is applied to generate 512 parameter samples using the Uncertainty Quantification Python Laboratory package (UQ-PyL; Wang et al., 2020). Simulations are then run with these parameter samples, and the relative root mean square error (rRMSE) values are calculated by comparing the model outputs with observational data in space and time. The rRMSE is then normalized (NRMSE) via min-max scaling. A sample size of 512 is selected based on the sample size sensitivity experiments (Fig. S1). Next, GPR models are trained for each observational target using these parameter samples as inputs and the NRMSE as the output. NRMSE was chosen as a metric of performance because of our diversity of target fields each with different units, which required normalization to ensure that each contributed equally to an assessment of global performance. K-fold cross-validation is used to evaluate the GPR model's accuracy and we chose 8 folds (K=8) to cleanly divide the 512 experiments and provide a balance between sufficient training (448) and testing data (64) (Reddy et al., 2024a). The data is split into K

folds, and the model is trained on K-1 folds, with the left-out fold serving as the test set. This is repeated across all folds, and predictions are aggregated. The GPR model accuracy is assessed through the goodness-of-fit (R^2) metric by comparing GPR predictions of NRMSE with WOMBAT-lite NRMSE data, which indicates high accuracy (Fig. S2). Using this validated GPR model, NRMSEs for 53,248 new parameter samples (generated via Sobol sequence) are predicted for each target field (all eight), consistent with methods from previous studies (Baki et al., 2022; Reddy et al., 2024b). Finally, Sobol sensitivity indices are calculated based on these predictions for all eight target fields, offering insight into the relative influence of each parameter on the ability of WOMBAT-lite to reproduce the targets.

2.4.2 Parameter optimisation

Following sensitivity analysis, which identified the most important parameters for model performance (NRMSE) of the eight target fields, we performed parameter optimisation (Fig. 1). This study uses Gaussian Process Regression-based Bayesian Optimisation (G-BO) (Reddy et al., 2024a) to identify the optimal parameter distributions so that WOMBAT-lite can best reproduce the eight target fields simultaneously. The process begins by generating another 512 parameter samples via the same Quasi Monte-Carlo (QMC) Sobol sequence design implemented through the UQ-PyL package (Wang et al., 2020). This set of 512 sensitivity experiments are different from those generated during the sensitivity analysis because we now use a reduced set of only the most important parameters, which also provides a denser sampling of the parameter space essential for the G-BO process (Reddy et al., 2024a). These 512 sample parameter sets are used as input to WOMBAT-lite, and the model is run forward for 10 years (see above). A sample size of 512 is selected based on the sample size sensitivity experiments (Fig. S3). Then, the GPR surrogate model, trained on these 512 samples, predicts a normalized cost function for each target field,

$$J = (1 - r_{x,y,t}) \cdot NRSME_{x,y,t} , \quad (1)$$

Where J is the cost function for a given target field, $NRSME_{x,y,t}$ is the normalized root mean square error (scaled by the max-min, such that the worst experiment has an NRMSE of one and the best is zero) and $r_{x,y,t}$ is the Pearson's correlation coefficient evaluated across all longitude (subscript x), latitude (subscript y) and time (subscript t) points (time in this case being monthly in resolution). Unlike the sensitivity analysis that measured model performance purely via the NRMSE, this cost function also penalizes poor correlations. Rather than optimise for the parameters that best reproduce each target field in isolation, we chose to optimise to a global cost function

$$\sum_{(n)=1}^8 J^{(n)} = \sum_{(n)=1}^8 \left((1 - r_{x,y,t}^{(n)}) NRMSE_{x,y,t}^{(n)} \right) , \quad (2)$$

Where superscript n is the n^{th} target field. Therefore, we select parameter sets that optimise overall model performance by summing the prediction errors from all eight surrogate GPR models. Using a composite kernel—constant, Matern, and white noise kernels with hyperparameters guided by previous work (Reddy et al., 2024a)—the GPR model accurately predicts the

normalized cost function values, confirmed by R^2 scores > 0.8 from K-fold cross-validation ($K=8$) (Fig. S4). The trained GPR model is then used to estimate the normalized cost function value for optimisation purposes. Although expected, we note that the predicted cost functions using the GPR models are not completely orthogonal, with some being well correlated (Fig. S5), indicating that the optimization of parameters towards one target field will affect other target fields.

Bayesian optimisation enables iterative learning of optimal model parameters using observational data. Here, we apply uniform priors under the assumption that there is equal probability of the optimal values falling anywhere between what are known lower and upper bounds (Table 1). The priors are normalised from 0 to 1 via max-min scaling, and the normalized cost function value predicted by the GPR model serves as the likelihood function (Reddy et al., 2024a). Since computing marginal likelihood directly is often complex, Markov Chain Monte Carlo (MCMC) sampling is employed, which estimates the posterior distribution without explicit calculation of this constant (Issan et al., 2023). Normalisation of priors between 0 and 1 ensures more efficient exploration of the high-dimensional parameter space (i.e., better “mixing”) and therefore more reliable convergence, while normalisation of the cost functions ensures equal weighting of each target field to the solution. Among MCMC methods, Affine invariant ensemble sampling, implemented using the “emcee” Python package (Foreman-Mackey et al., 2013), is selected for its efficient convergence properties. This method uses an ensemble of chains to simplify sampling from anisotropic distributions. Fifty walkers and a stretch move of two are applied, with the first 10,000 steps used as a burn-in phase to ensure convergence, followed by 90,000 additional steps to achieve stable posterior distribution estimates (Foreman-Mackey et al., 2013; Goodman and Weare, 2010). This substantial burn-in phase converts our uniform priors into distributions that look more like the posterior (Foreman-Mackey et al., 2013). In total, 90,000 steps for each of 50 walkers means a total of 4,500,000 random walks, and with a mean autocorrelation time of 690 steps, we achieve 6500 independent samples of the posterior. This number of samples, made possible by the efficiency of the surrogate GPR model, is more than sufficient for convergence. Convergence was also evident by a mean acceptance fraction of 0.22 (Foreman-Mackey et al., 2013), a Gelman-Rubin statistic of between 1.005 and 1.009 for each parameter and visual assessment of the chains (Fig. S6).

3. Results

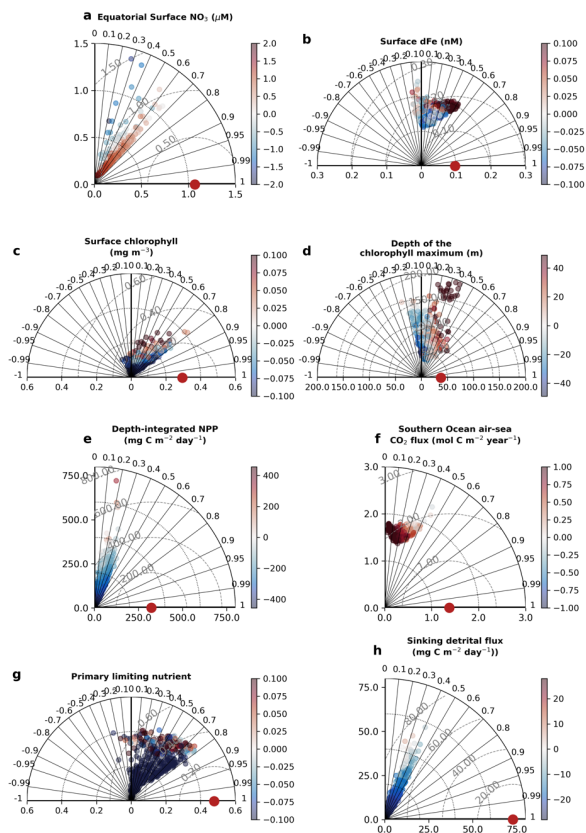
3.1 Performance

The 512 sensitivity experiments, each with a unique parameter set (Table 1), produced 512 unique realisations of biogeochemical and ecosystem dynamics. We compared year 10 of the experiments at all grid cells and at monthly temporal resolution with the target datasets (i.e., the observations). The skill of these simulations ranged widely (Fig. 4; Table 2). Global surface chlorophyll showed the greatest variation, ranging in correlations from -0.45 to 0.8, followed by the primary limiting nutrient of phytoplankton growth (-0.29 to 0.82) and the depth of the chlorophyll maximum (-0.25 to 0.69). Most experiments underestimated the variability in surface chlorophyll, and many produced surface chlorophyll concentrations

370 that were low compared with the observation-based product. Unlike surface chlorophyll, there was too much variation in the depth of the chlorophyll maximum and many experiments had chlorophyll maxima that were positioned too deep (i.e., positive bias).

For the air-sea flux of CO₂ in the Southern Oceans (20°S – 90°S) and the depth-integrated rate of net primary production, our
375 simulations showed a narrow range of correlations between 0 and 0.5. The narrower range potentially reflects the identical physical state across our experiments, which strongly influences air-sea gas exchange and nutrient delivery to the surface. For net primary production, the weaker correlations might reflect significant errors in the observation-based products themselves (Westberry et al., 2023) that limit the potential for agreement. Like chlorophyll, net primary production showed a negative bias in many experiments and a chronic inability to capture the observed magnitude of variations. The same general
380 underestimation of values and variability was the case for the sinking flux of detritus. No experiment was able to reproduce the observed spatiotemporal variations in sinking detrital flux, although this is perhaps expected given that this dataset captures higher frequency variations in particle flux that are lost in a coarse resolution model.

For surface dissolved iron, the experiments produced correlations ranging from -0.13 to 0.52, and thus the best performing
385 experiments compared well with other biogeochemical models (Huang et al., 2022). Finally, the primary limiting nutrient of phytoplankton growth (i.e., nitrogen or iron) showed biases and correlations ranging from negative to positive, indicating that some were too nitrogen limited, some were too iron limited, and some performed well.



390 **Figure 4. Performance of the 512 sensitivity experiments with WOMBAT-lite against the 8 key observational targets.** Taylor Diagrams
 (Taylor, 2001) represent the agreement between a dataset and the target (red dot) by visualising the dataset in terms of its correlation (radii),
 normalised standard deviation (x and y axes), and the centered root mean square error (dashed grey contours). We also colour each
 experiment by its global mean bias. Positive bias in the Southern Oceans air-sea flux of CO₂ signifies too much outgassing or not enough
 395 ingassing. These statistics were computed on the global 1° by 1° grid at monthly resolution, except the Primary Limiting Nutrient dataset
 which was computed as an annual mean.

Table 2. Performance ranges of experiments for key observations. Minimum and maximum values of correlations, normalised standard deviations and bias across all 512 sensitivity experiments. Surface nitrate was log₁₀ transformed. NO₃ = nitrate. dFe = dissolved iron. CO₂ = carbon dioxide. POC = particulate organic carbon.

Observation	Correlation	Normalised standard deviation	Bias
Surface NO ₃ (20°S – 20°N) (μM)	0.20 0.66	0.09 1.30	-2.14 1.33
Surface dFe (nM)	-0.13 0.52	1.15 2.51	-0.10 0.27
Surface Chlorophyll (mg m ⁻³)	-0.45 0.80	0.01 1.41	-0.27 0.21
Depth of the chlorophyll maximum (m)	-0.25 0.69	0.89 5.19	-49.4 271.4
Depth-integrated net primary production (mg C m ⁻² day ⁻¹)	0.02 0.49	0.00 2.26	-456 325
Air-sea flux of CO ₂ (20°S – 90°S) (mol C m ⁻² year ⁻¹)	0.03 0.44	1.01 1.73	-1.40 0.26
Primary limiting nutrient (1=N, 2=Fe)	-0.29 0.82	0.00 1.01	-0.46 0.51
Sinking flux of POC (mg C m ⁻² day ⁻¹)	0.08 0.59	0.00 0.79	-27.6 6.2

3.2 Global sensitivity analysis

Global sensitivity analysis with our first set of 512 experiments and supplemented by the surrogate machine learning model revealed that the overall performance of WOMBAT-lite was sensitive to 11 of the 24 parameters tested, based on an arbitrary threshold of a 5% contribution to variation (Fig. 5). These were the scaler on the maximum growth (α_a) and linear mortality rates of phytoplankton (γ_p^0), the half-saturation coefficients for phytoplankton uptake of dissolved iron (K_p^{dFe}) and nitrate (K_p^N), the maximum quota of iron ($q_p^{\frac{Fe}{C}}$) and optimal quota of chlorophyll ($q_p^{\frac{chl}{C}}$), the prey capture rate coefficient of zooplankton (ϵ) and their quadratic mortality rate (r_ϵ^0), the sinking (ω_d^0) and remineralisation (γ_d^0) rate of detritus, and the temperature sensitivity of heterotrophy (β_h). The initial slope of the photosynthesis-irradiance curve (PI^0) was not included

410 because it fell just below the 5% threshold (shown rounded up in Figure 5b) in its higher order effects. For each of the 8 target fields, typically only a few of these key parameters were influential. We step through these parameters here.

All target fields were highly sensitive to the phytoplankton maximum growth rates (α_a) and their linear mortality (γ_p^0) (Fig. 5). Of these, only the depth of the chlorophyll maximum and surface dFe concentrations were sensitive to α_a and γ_p^0 via
415 interactive effects with each other or other variables (i.e., higher-order interactive effects). All other target fields were directly affected by these parameters, making α_a and γ_p^0 master parameters with largely predictable effects for controlling the performance and output of WOMBAT-lite. For example, while the air-sea flux of CO₂ in the Southern Oceans (south of 20°S) was sensitive to several parameters, the model's ability to reproduce the observations was primarily controlled by the ability of phytoplankton to accumulate biomass rapidly in the spring and summer. If γ_p^0 was too high then too much biomass
420 was lost over the winter, causing a lag in the spring bloom. If α_a was too low, then the bloom would be too weak. The link between CO₂ ingassing in the summer and the phytoplankton bloom also meant that the prey capture rate coefficient of zooplankton (ϵ), the half-saturation coefficient for iron uptake by phytoplankton (K_p^{dFe}) and the sinking rate of detritus (ω_d^0) were also important controls on CO₂ fluxes in the Southern Oceans.

425 Surface nitrate concentrations in the tropics (20°S – 20°N), depth-integrated net primary production and the sinking flux of detritus were all affected by similar parameters. After α_a and γ_p^0 , the parameters of influence were the sinking and remineralisation rates of detritus (ω_d^0 and γ_d^0). Elevated sinking rates and decelerated remineralisation both deepen the nitracline by stripping more nitrate out of the upper ocean and shrinking the large tongue of high nitrate water that spreads west across the equatorial Pacific. Surface nitrate in the equatorial band was also marginally affected by the temperature
430 sensitivity of heterotrophy (β_h), which amplifies remineralisation rates (set also by γ_d^0) in warmer waters and so can increase substantially how much detritus is returned to inorganic nutrients.

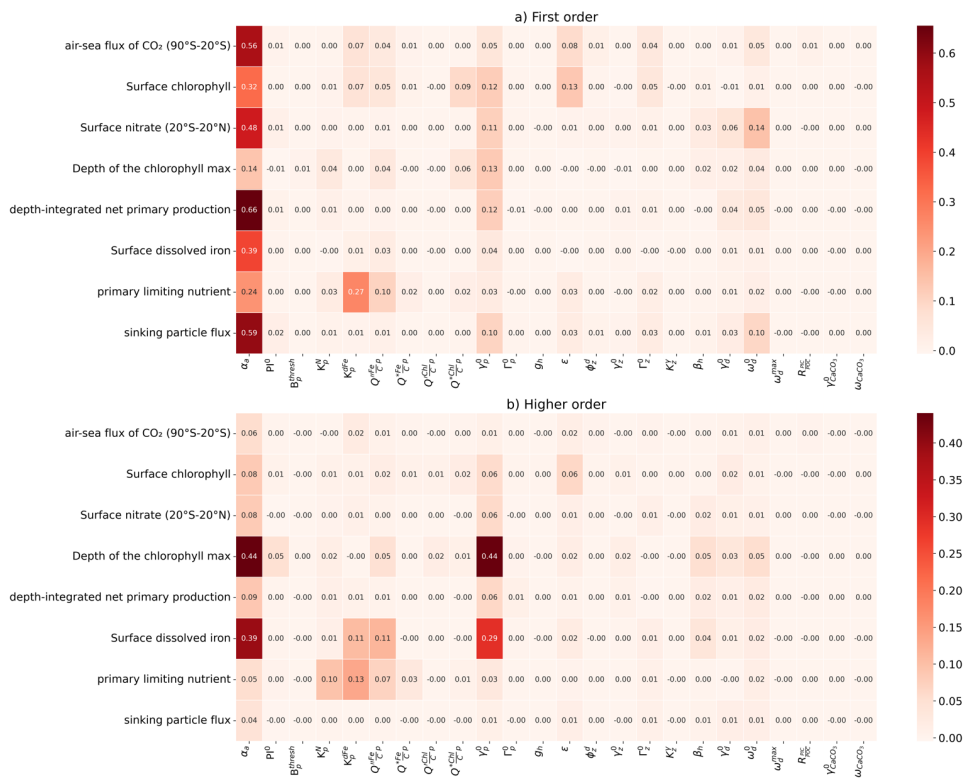


Figure 5. Sensitivity of WOMBAT-lite performance to variations in the parameters listed in Table 1. Performance is measured by the root mean square error (RMSE), which is here normalised by the full range (max-min scaling). First-order indices are direct individual effect of a parameter on the target field, while higher-order indices indicate that interaction effects with other parameters are important. First-order indices sum to at most one for a given target field, while first-order + higher-order indices sum to at least one. If there are no interaction effects, then higher-order effects are nil. Darker colours indicate a greater sensitivity of a target field to the parameter in question. In (a) we show first-order sensitivities and in (b) the higher-order sensitivities, otherwise referred to as an interaction effect, where the effect on the target is dependent on the variations in other parameters. Note that the parameter β_a was not included at this stage but only later during the optimisation process (steps 7-10 in Fig. 1).

Two key parameters controlling the model's ability to reproduce surface dissolved iron (after α_a and γ_p^0) and the primary limiting nutrient dataset were the half-saturation coefficient for iron uptake (K_p^{dFe}) and the maximum Fe:C quota of

phytoplankton ($Q_p^{\frac{Fe}{C}}$). Variations in these parameters had strong interactive effects. Elevating iron quotas increased the ability of phytoplankton to take excess dFe into their biomass, reduced surface dFe concentrations and strengthened iron limitation as more Fe-rich biomass was exported as sinking detritus. However, if we also increased the half-saturation coefficient of dFe uptake, this slowed phytoplankton luxury uptake of dFe and made them less likely to achieve high intra-cellular Fe:C quotas. As such, setting higher Fe:C quotas had little effect on surface dFe concentrations when K_p^{dFe} was high. On the other hand, setting high Fe:C quotas can have a substantial effect on dFe concentrations when K_p^{dFe} is low. For the primary limiting nutrient dataset, however, we found that increasing both Fe:C quotas and K_p^{dFe} elevated dFe limitation regardless of what happened to the dFe concentrations.

Performance in surface chlorophyll was the most inter-dependent metric, meaning that many parameters were influential. In addition to the master parameters of α_a and γ_p^0 , surface chlorophyll was affected by the maximum Fe:C quota ($Q_p^{\frac{Fe}{C}}$), the half-saturation of dFe uptake (K_p^{dFe}), the maximum quota of chlorophyll to carbon in phytoplankton ($Q_p^{\frac{Chl}{C}}$), the prey capture rate coefficient of zooplankton (ϵ), and marginally by the quadratic mortality coefficient of zooplankton (Γ_z^0). Thus, 7 of the 11 important parameters were influential. The fact that many parameters were crucial for determining the performance of surface chlorophyll reflects that a delicate balance between phytoplankton growth and mortality must be struck to reproduce overall biomass.

Finally, the depth of the chlorophyll maximum was overwhelmingly influenced by α_a and γ_p^0 , with weaker influences from the half-saturation coefficient for nitrogen uptake (K_p^N), cell quotas of iron and chlorophyll ($Q_p^{\frac{Fe}{C}}$ and $Q_p^{\frac{Chl}{C}}$), as well as parameters related to the sinking and remineralisation of detritus (β_h , ω_d^0 and γ_d^0). All these parameters affected the depth of the nitracline in direct and indirect ways, to which the depth of the chlorophyll maximum was strongly linked. Increasing α_a while simultaneously decreasing γ_p^0 , for example, would cause an accelerated deepening of the nitracline since phytoplankton consume more nutrients but can also survive for longer under light limitation at depth.

3.3 Parameter optimisation

Our optimisation procedure involved another 512 experiments that varied 13 parameters: the 11 parameters identified in the sensitivity analysis plus 2 additional parameters that were missed by our sensitivity analysis. The additional 2 parameters included wider variations in the biomass threshold of phytoplankton for allometric scaling (B_p^{thresh}) from 0.01 to 1.0 (previously this had been varied from 0.01 to 0.1), as well as variations in the base scaler of temperature-dependent autotrophy (β_a), which was previously held constant during the sensitivity experiments at a value of 1.066 ($Q_{10} = 1.89$),

following Eppley (1972), but have nonetheless been shown to vary between phytoplankton types (Anderson et al., 2021a). We took the opportunity during the optimisation to vary these parameters. In our optimisation step, we explored a range of 1.040 to 1.080 (Q_{10} from 1.48 to 2.16) in β_d motivated by the results of Anderson et al. (2021a). All remaining, insensitive parameters were held at their default values (Table 1). Thus, we explored variations in 13 parameters (11 parameters from the sensitivity analysis and 2 additional parameters) and sought their optimal values for best reproducing the 8 target fields (Fig. 3) by minimizing the global cost function (Eq. 2). The 512 experiments were used to train the surrogate GPR model to reproduce the global cost function, and this training was then used to synthetically estimate the optimal parameter values.

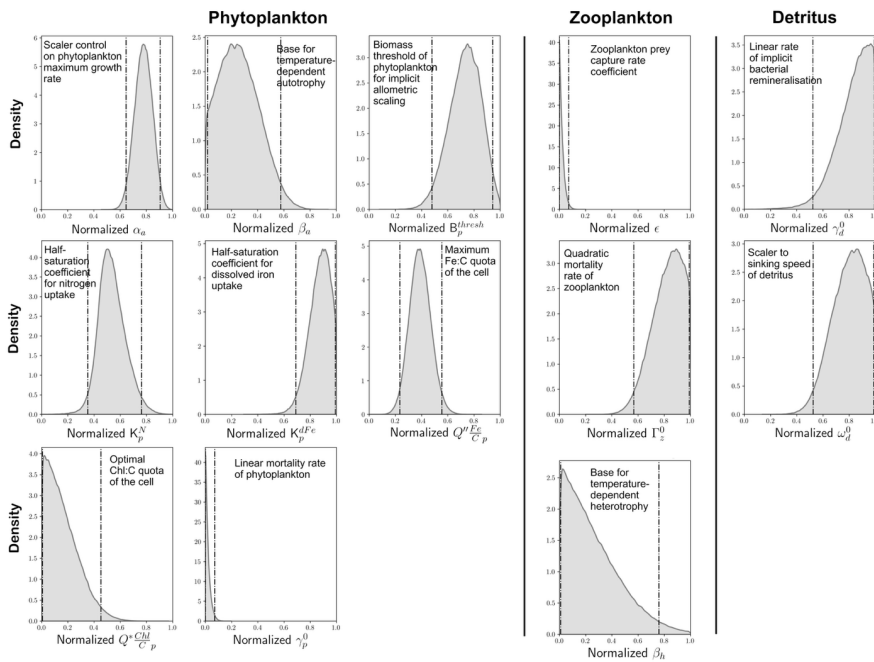


Figure 6. Optimal probability density functions of 13 important parameters. Optimisation involved minimizing the global (summed) cost function (Eq. 2) of model performance across the 8 target variables shown in Figure 3. We show normalized distributions of each parameter here and refer the reader to the ranges (*a priori* and optimal) shown in Table 1 for their actual values. Vertical dashed lines denote 95% confidence intervals. Parameters are organised according to whether they control phytoplankton, zooplankton or detritus.

490 We identified posterior distributions of each of the 13 parameters from which optimal values could be chosen (Fig. 6).
Optimal values for each of these parameters and their 95% confidence interval range are detailed in Table 1. For most of the
parameters, the probability distributions showed peaks away from the edges of the predefined ranges, suggesting that our *a*
priori ranges were sufficiently wide to capture the optimal values. For the scaler on maximum growth rates of phytoplankton
(α_a), for instance, the model predicted optimal values with 95% confidence between 0.89 and 1.16 day⁻¹, a range that sits
495 within our *a priori* range of 0.25 to 1.25 day⁻¹ (Table 1) and suggests that the rapid accumulation of biomass during the
growth season is crucial for model performance. We also note that the model predicted optimal values that often aligned well
with ecological theory. Higher values of K_p^{dFe} over K_p^N (half-saturation coefficients for uptake) reflect the lesser
bioavailability of dFe relative to that of inorganic nitrogen due to its complexation with organics (Shaked et al., 2020;
Tagliabue et al., 2017). Fidelity to observations was also better when the temperature sensitivity of autotrophy (β_a) was
500 much lower than the temperature sensitivity of heterotrophy (β_h), consistent with ecological theory on metabolism (Brown et
al., 2004) and experimental data (Chen et al., 2012).

Optimal values for two parameters were predicted at the lower edge of their range (Fig. 6). These were the linear mortality
rate of phytoplankton at 0°C (γ_p^0) and the prey capture rate coefficient of zooplankton (ϵ), for which the optimal values were
505 predicted at 0.01 day⁻¹ and 0.05 (mmol C m⁻³)⁻² day⁻¹, respectively (Table 1). Given that γ_p^0 was strongly influential to the
ability of WOMBAT-lite to reproduce all 8 of our target fields, it is likely that lower values of this parameter than explored
herein would produce a better fit to the observations. Rates of mortality considerably lower (< 0.001 day⁻¹) than the lowest
value in our *a priori* range (0.01 day⁻¹) were observed in phytoplankton cultures grown within their thermal niche (Baker and
Geider, 2021). However, mortalities also increase severely at higher temperatures (Baker and Geider, 2021), and our choice
510 of higher values in our *a priori* range was motivated by an attempt to account for the small proportion of phytoplankton taxa
placed above their thermal niche or affected by other sources of environmental stress at any given time. The fact that our
optimisation always chose the lowest values (near 0.01 day⁻¹) perhaps suggests that, at least with our simple model, the
proportion of the community that is stressed is lower than initially assumed. Similarly, optimal values of ϵ , the zooplankton
prey capture rate coefficient, tended towards the lowest of our predefined range. This parameter was a strong control on the
515 model's ability to reproduce the observed surface chlorophyll and the summer uptake of CO₂ in the Southern Oceans (Fig.
5). Values less than 0.05 (mmol C m⁻³)⁻² day⁻¹ suggest grazing pressure more in line with a zooplankton community with a
large representation of mesozooplankton (Rohr et al., 2022). This type of community is typical for eutrophic and high
latitude regions but may not be representative of zooplankton grazers in the oligotrophic gyres (Rohr et al., 2024).
Importantly, the lower grazing pressure associated with this type of zooplankton community would allow phytoplankton
520 growth during the spring to outpace zooplankton grazing for longer, which we note again was important for achieving
summer CO₂ uptake in the Southern Oceans. While we cannot say whether an expanded range would have selected for even

lower values, we note that a value near $0.05 \text{ (mmol C m}^{-3}\text{)}^{-2} \text{ day}^{-1}$ sits at the global median of empirical estimates across a large range of zooplankton taxa (Rohr et al., 2022).

3.4 Outcomes

3.4.1 Finding the optimal parameter set

After our optimisation, we chose 20 randomly sampled parameter sets from the optimal posterior distributions shown in Figure 6 and ran WOMBAT-lite forward for 10 years from initial conditions. These optimal versions of WOMBAT-lite show good fidelity to the target fields, with all registering good performances in terms of the global cost function that were as good as or better than the best of the 512 sensitivity experiments for the majority of the target fields (compare yellow and grey bars in Fig. 7; Fig. S6). Continuing to run the model forward for 100 years post initialization showed some degradation in the performance (red bars in Fig. 7). This is expected, since our optimisation procedure was trained on model output only 10 years post initialization due to computational constraints. Model outcomes drift further away from the target fields with longer integrations. Lower frequency variability and trends are thus missed by the optimisation that are nonetheless present in the biogeochemical model, and these play out as the model is integrated forward for longer. After 100 years, we chose our best performing parameter set, detailed in Table 1 (red star in Fig. 7). This experiment showed good performance across all observational metrics in its 100th year and we hereafter show output from this experiment.

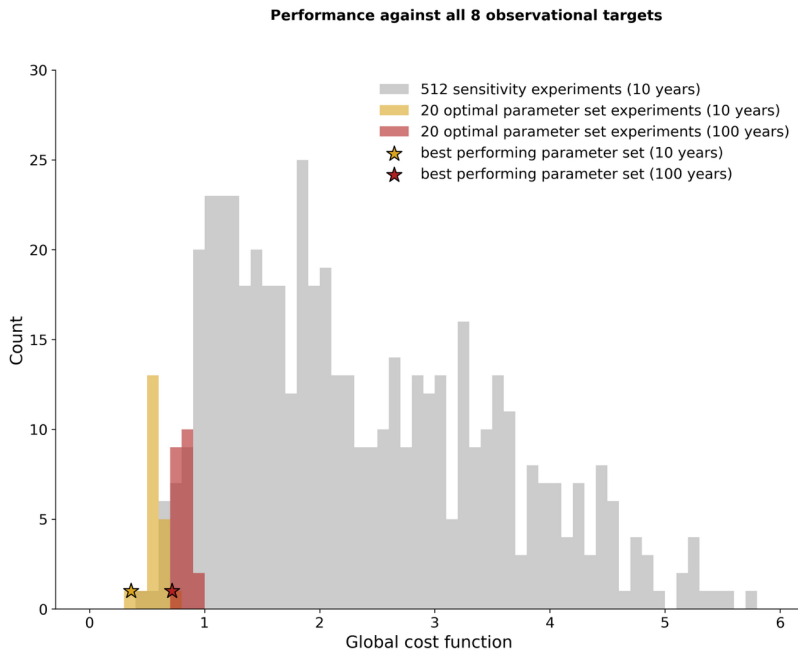


Figure 7. Overall performance of WOMBAT-lite in terms of the global cost function (summed across all target variables; Eq. 2). We show all 512 sensitivity experiments (grey bars), the 20 optimal experiments that selected parameter values randomly from the optimal probability density functions (Fig. 6) after 10 years (gold bars) and 100 years (red bars), and the performance of the optimal parameter set after 10 years (gold star) and 100 years (red star).

3.4.2 Performance improvements

A key challenge in model development is that the addition of new processes can degrade performance if the new processes are implemented poorly and/or if these processes have complex interactive effects once introduced. Our sensitivity analysis and optimisation procedure provided a means to constrain both the effects and values of the WOMBAT-lite parameter set, so that any advances in functionality are accompanied by an improvement in performance. We take the opportunity to compare the optimised WOMBAT-lite with a prior version that did not undergo this same optimisation process but was nonetheless tuned manually (Appendix A.1), run under the same conditions and without the functional improvements described in Appendix A.2. The optimised WOMBAT-lite shows a better tropical distribution of surface nitrate (Fig. 8a-c), lower

concentrations of dissolved iron at the surface (Fig. 8d-f) and, consequently, the appearance of iron-limited regimes for phytoplankton growth in the Southern Ocean, subarctic North Pacific and Atlantic, eastern Equatorial Pacific, and the upwelling centres of the Benguela, Arabian and Canary current systems (Fig. 8s-u). Note that the surface iron distribution shown in Figure 8 is of the annual average, which includes higher concentrations caused by winter mixing (Tagliabue et al., 2014b), whereas much of the observations will have been taken during the polar summer when dFe concentrations are drawn down by biology. WOMBAT-lite also shows a 50% increase in globally integrated net primary production (from 18.5 Pg C yr⁻¹ to 27.9 Pg C yr⁻¹) compared to the previous unoptimised version, and less diffuse peaks of primary production in the highly productive upwelling zones, consistent with observations (Fig. 8m-o). The increase in primary production combined with the spatially variable sinking scheme, which includes a linear increase in sinking speeds with depth, likely contributed to elevating the flux of detritus into the deep ocean (Fig. 8v-x). We note, however, that any improvements to sinking of detritus are marginal and deep ocean organic particle fluxes are still underestimated, likely because WOMBAT-lite still underestimates globally integrated net primary production (Buitenhuis et al., 2013) and stocks of sinking detritus (Fox et al., 2024). In the annual averages presented in Figure 8, there is little obvious change in air-sea CO₂ fluxes, but this hides compensating improvements in the seasonality which we detail in section 3.4.4. Finally, WOMBAT-lite shows good agreement with surface chlorophyll and the broad patterns in the depth of the chlorophyll maximum (Fig. 8g-l), although the chlorophyll maxima are situated too deep in the subtropical gyres and are too shallow in the Southern Ocean. We note that in places where the chlorophyll maxima appear very shallow in the subtropical gyres is where chlorophyll concentrations are so low as to not form any appreciable maximum at depth, essentially where the nitracline is so deep as to be placed in darkness.

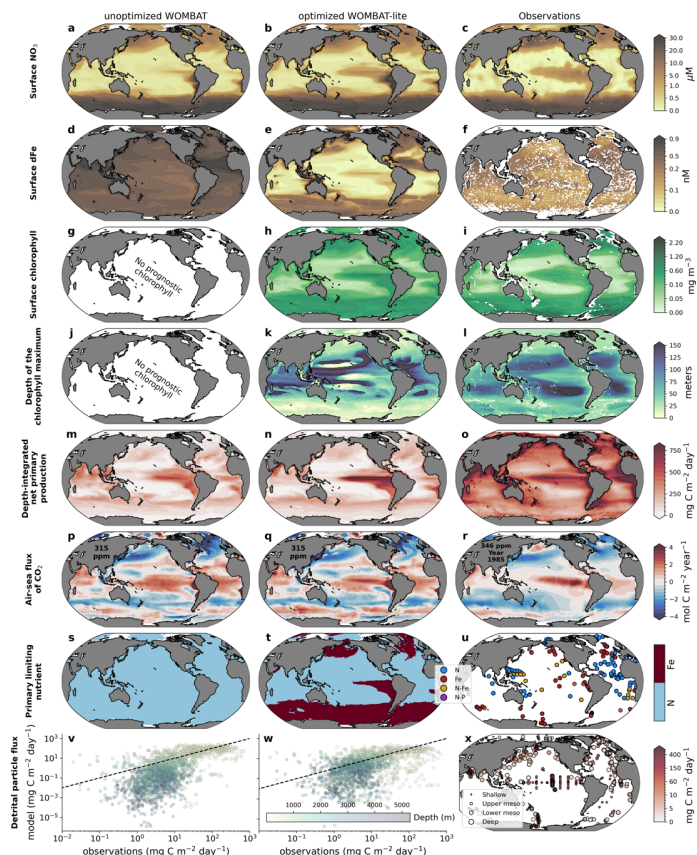
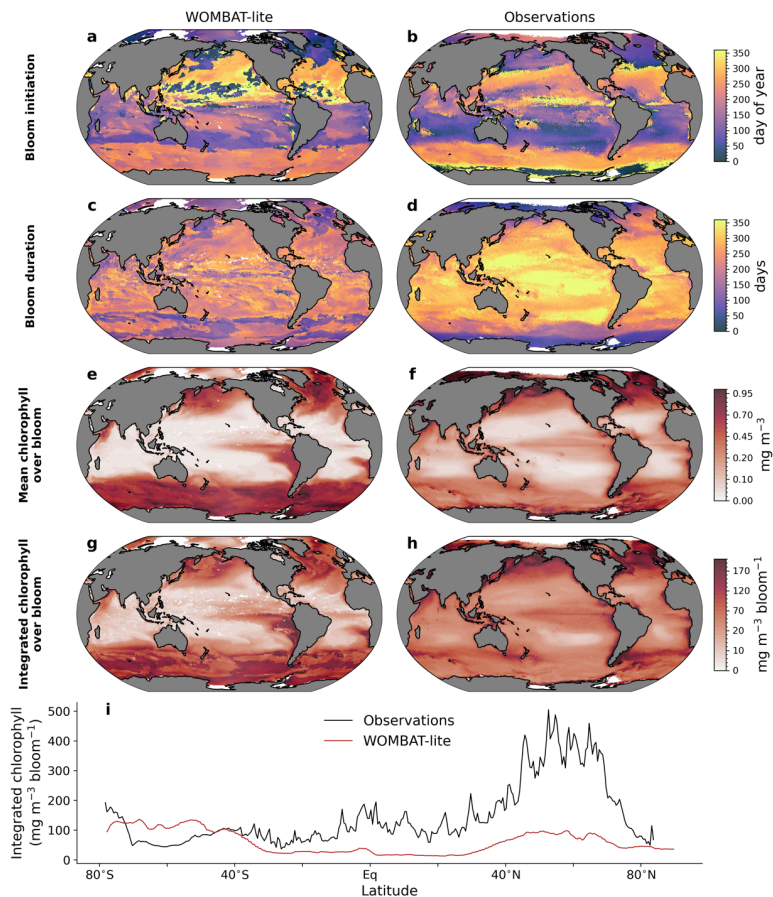


Figure 8. Comparison of the previous unoptimised WOMBAT (left) and WOMBAT-lite (middle) with the 8 target observations (right). (a-c) Surface nitrate concentration (μM). (d-f) Surface dissolved iron concentration (nM). (g-i) Surface chlorophyll concentration (mg m^{-3}). (j-l) Depth of the chlorophyll maximum (m). (m-o) Depth-integrated net primary production ($\text{mg C m}^{-2} \text{ day}^{-1}$). (p-r) Downward flux of CO_2 ($\text{mol C m}^{-2} \text{ year}^{-1}$) (μM). (s-u) Primary limiting nutrient to phytoplankton growth at the surface. (v-x) Downward flux of particulate organic carbon ($\text{mg C m}^{-2} \text{ day}^{-1}$). We show annual means here even though statistical measures of performance shown in Figure 6 are computed including temporal variations on a monthly resolution. Output after 100 years of forward simulation from initialization with repeat atmospheric forcing for calendar year 1990-1991 conditions using the JRA-55do (Tsuji et al., 2018). Atmospheric CO_2 set at 315 ppm in the experiments. Note that the ocean-only hindcast runs performed here with the previous, unoptimized WOMBAT used a parameter set detailed in Law et al. (2017) that is intended for the ACCESS-1.5 Earth System Model.

3.4.3 Phytoplankton bloom phenology

A major update to WOMBAT-lite has been to inclusion of prognostic chlorophyll to carbon ratios within its phytoplankton functional type. This allows for direct comparison with remotely sensed chlorophyll products, including those that investigate the phenology of phytoplankton blooms (Nicholson et al., 2024). WOMBAT-lite was not optimised for its representation of phytoplankton phenology, but nonetheless performs well in respect to the timing of its annual blooms (Fig. 9a,b). The model captures the sharp change in bloom initiation (using the cumulative sum method) between the subtropical and subpolar regimes in both hemispheres, with autumn-winter subtropical blooms and spring-summer polar blooms. WOMBAT-lite also shows a general increase in duration of its blooms in the tropics compared to the polar regions (Fig. 9c,d), as well as increases in the mean and integrated chlorophyll concentrations in the polar and upwelling regions compared to the subtropical gyres (Fig. 9e-h).

That said, WOMBAT-lite shows some clear biases compared with the Nicholson et al. (2024) dataset, which was built from the Ocean Color – Climate Change Initiative remotely-sensed chlorophyll product (Sathyendranath et al., 2019). Blooms at the poles start too early and their duration is too long. Overly long blooms in the Southern Ocean contributed to an overestimate of mean and integrated concentrations of chlorophyll than that calculated by Nicholson et al. (2024) (Fig. 9i). This bias may be associated with an excess of dFe due to a ferricline that is placed too shallow (Fig. 8e,f), a common model bias (Tagliabue et al., 2016) that is also present in our simulations, and which amplifies iron supply and chlorophyll accumulation. Meanwhile, in the subtropics and northern high latitudes, the phytoplankton blooms in WOMBAT-lite appear to be too low in mean and integrated chlorophyll (Fig. 9i). This is possibly caused by bloom durations that are too short in the subtropics (they are > 300 days in the remote-sensing product), although this is not the case in the north polar region. Equally, though, these biases in bloom chlorophyll metrics may be due to our optimisation against a different chlorophyll product (Sauzède et al., 2016), with which the model shows good agreement. Alternatively, it is possible that representing the global marine phytoplankton community with only one functional type limits the model's potential to realize the full variation. Capturing the bloom phenology of phytoplankton is important because there is evidence of multi-decadal trends in their start, end, and duration in both the Southern and Arctic Oceans (Ardyna and Arrigo, 2020; Thomalla et al., 2023), and according to the results herein, the timing and duration of the bloom is influential to air-sea CO₂ fluxes.



610 **Figure 9. Comparison of WOMBAT-lite (left) with phenological indicators of the annual phytoplankton bloom observed via**
chlorophyll-a (right). (a-b) Bloom initiation day. (c-d) Bloom duration (days). (e-f) Mean bloom chlorophyll-a across duration (mg m⁻³).
(g-h) Integrated bloom chlorophyll (mg m⁻³ bloom⁻¹). (i) Zonal mean integrated bloom chlorophyll for the observations (black) and
WOMBAT-lite (red). Observations are provided by Nicholson et al. (2024). Phenological metrics are calculated via the cumulative sum
615 **method. For WOMBAT-lite these results come from the optimized model after 100 years of forward simulation from initialization with**
repeat atmospheric forcing for calendar year 1990-1991 conditions using the JRA-55do (Tsujino et al., 2018).

3.4.4 Carbon fluxes

Previous assessments of ocean biogeochemical models show that the Southern Ocean air-sea CO₂ fluxes are strongly biased (Hauck et al., 2020, 2023b). We therefore sought to improve this aspect within WOMBAT-lite. To properly assess the performance of WOMBAT-lite for reproducing global CO₂ fluxes, we performed a hindcast simulation with the optimal version of WOMBAT-lite from 1958 to 2019 forced by the inter-annually changing JRA55-do atmospheric fields and with the historical increase in atmospheric CO₂. This hindcast simulation was initialised with biogeochemical fields at the end of a 200-year spin-up simulation with the same repeat “normal” year forcing of the JRA55-do (Stewart et al., 2020), with atmospheric CO₂ set at 315.2 ppm (equivalent calendar year 1957) and where alkalinity and preindustrial DIC budgets were at quasi-equilibrium. Budgets of major tracers at year 200 are presented in Table 3. This hindcast simulation did not strictly adhere to the recommendations of the OMIP2 protocol (Orr et al., 2017), but was sufficient to assess the seasonality of air-sea CO₂ fluxes in WOMBAT-lite.

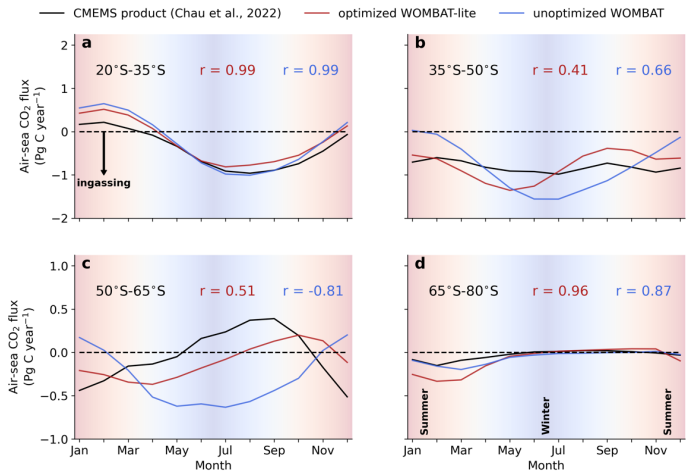


Figure 10. Climatological evolution of the integrated air-sea CO₂ flux over the latitudinal bands in the Southern Oceans averaged over years 1990 to 2010. (a), Observational product from the Copernicus Marine Environmental Monitoring Service (black) are compared with fluxes from WOMBAT-lite (red) and an unoptimized, previous version of WOMBAT (blue) integrated between 20°S-35°S (subtropics). Pearson’s correlations are shown for both models. Negative values are net ingassing of CO₂ into the ocean. Background shading denotes the seasonal transition from summer to winter to summer. Panels (b), (c), and (d) are the same as in (a), but integrated within 35°S-50°S for the subtropical-subantarctic transition, 50°S-65°S for the Antarctic Circumpolar Current and 65°S-80°S for Antarctic zone, respectively.

Table 3. Key rates in WOMBAT-lite after 200-year spin-up under repeat normal year forcing with optimised parameters.

Cycle	Description	Units	WOMBAT-lite
Carbon	Net primary production	Pg C yr ⁻¹	27.9
	Organic export (100 m)	Pg C yr ⁻¹	6.2
	CaCO ₃ export (100 m)	Pg C yr ⁻¹	0.60
	Preindustrial air-sea flux	Pg C yr ⁻¹	-0.358
	Sedimentary burial	Pg C yr ⁻¹	-0.20
	CaCO ₃ sedimentary burial	Pg C yr ⁻¹	-0.012
	Riverine flux	Pg C yr ⁻¹	0.587
	Sedimentary burial	Pmol Eq. yr ⁻¹	0.002
Alkalinity	CaCO ₃ sedimentary burial	Pmol Eq. yr ⁻¹	-0.002
	Riverine flux	Pmol Eq. yr ⁻¹	0.018
	Sedimentary denitrification	Pmol Eq. yr ⁻¹	0.0028
	Nitrogen fixation	Pmol Eq. yr ⁻¹	-0.0015
Nitrogen	Sedimentary burial	Tg N yr ⁻¹	-30.8
	Riverine flux	Tg N yr ⁻¹	35.8
	Nitrogen fixation	Tg N yr ⁻¹	20.4
	Sedimentary denitrification	Tg N yr ⁻¹	-39.6
Oxygen	Preindustrial air-sea flux	Pmol O ₂ yr ⁻¹	-0.04
	Volume of hypoxia (< 60 µM)	10 ¹⁵ m ³	79.1
Iron	Atmospheric deposition	Gmol Fe yr ⁻¹	1.1
	Hydrothermal flux	Gmol Fe yr ⁻¹	9.9
	Sedimentary burial	Gmol Fe yr ⁻¹	0.60

640

We directly compared the monthly CO₂ fluxes between an observation product (Chau et al., 2022) and WOMBAT-lite as well as the unoptimised model from January 1985 to December 2018. With optimal parameters, WOMBAT-lite shows improvement in its seasonality and regional agreement of CO₂ fluxes compared with an unoptimised version of the model (Fig. 10; Fig. 11). While CO₂ fluxes are strongly controlled by thermal processes in the subtropics and are thus well approximated by optimised and unoptimised versions alike (Fig. 10a; Fig. 11), CO₂ fluxes at higher latitudes are, however, more affected by biological drawdown and release (Mongwe et al., 2018; Takahashi et al., 2002). In the transition from subtropical to subantarctic zones (35°S-50°S) the observations show overall oceanic uptake of CO₂, but importantly a greater uptake in the summer (Fig. 10b). Optimised WOMBAT-lite manages to show some improvement over the unoptimised model, with lower uptake in the winter and a trend towards uptake in the spring/summer. Nonetheless, this improvement is marginal in this zone and suggests that further improvement can be made in the future. The best match between WOMBAT-lite and the data is achieved in the Antarctic Circumpolar Current zone (50°S-65°S), where WOMBAT-lite shows good climatological correlations with the observations, while the unoptimised model shows negative correlations (Fig. 10c; Fig. 11). The flip from poor to good performance is caused by the net outgassing in the late winter and a trend towards oceanic uptake in the spring summer (Fig. 10c). Better seasonal correlations (0.87 → 0.96) are also achieved in the Antarctic Zone (65°S-80°S), although with WOMBAT-lite potentially overestimating the summer flux of CO₂ into these waters (Fig. 10d).

Improvement in air-sea CO₂ fluxes is noteworthy from a zonally integrated perspective that incorporates the Northern Hemisphere (Fig. 12). North of 40°N, the oceanic uptake of CO₂ in the unoptimised version of the model exceeded the observations and this is somewhat reduced in WOMBAT-lite due to a substantial reduction in winter ingassing (Fig. 12b), while summer uptake is increased (Fig. 12c), resulting in a better match to observed CO₂ fluxes in the Northern Hemisphere (Fig. 12a) that is also visible in the temporal correlations (Fig. 11). Meanwhile, there is little difference between the optimised and unoptimised versions of the model in the low latitudes, emphasising how thermal changes dominate air-sea CO₂ fluxes in this region (Takahashi et al., 2002). Once again, in the Southern Ocean, we see clear improvements from a zonally integrated perspective. Winter outgassing is now achieved in WOMBAT-lite, although the zone of peak outgassing occurs too far north (Fig. 12c). Similarly, summer oceanic uptake is now achieved and is a closer match to the observations, although again the zones of maximum uptake are shifted too far north by roughly ~5° (Fig. 12b). Overall, the changes in the biogeochemical functionality of WOMBAT-lite show some improvements in reproducing observed air-sea CO₂ fluxes, although we note some degree of caution is required given the uncertainty in the observational-based product itself (Gloege et al., 2021; Hauck et al., 2023a).

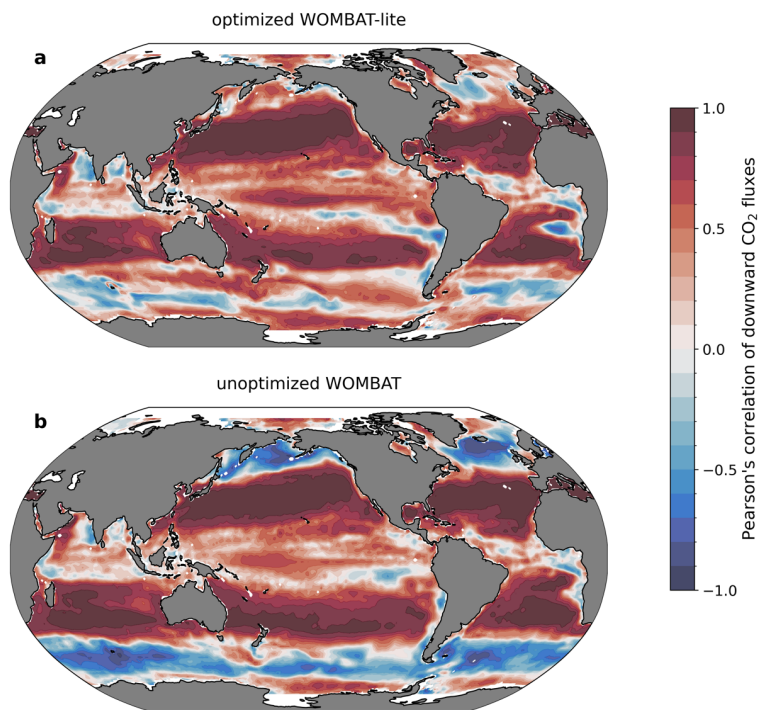


Figure 11. Temporal correlations in monthly CO₂ fluxes with an observation product (Chau et al., 2022). (a), optimised WOMBAT-lite and (b), unoptimized, previous WOMBAT over years 1985 to 2019.

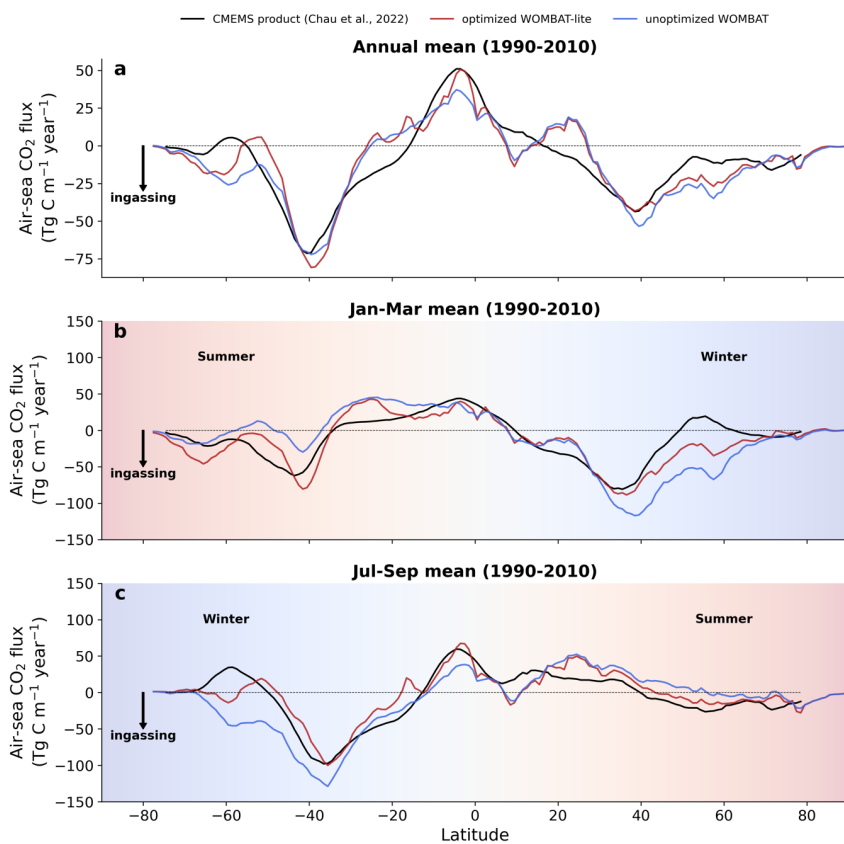


Figure 12. Zonally integrated air-sea CO₂ fluxes. (a), Annual mean observations (black) averaged over years 1990-2010 are compared with fluxes from WOMBAT-lite (red) and a previous, unoptimized version of WOMBAT (blue). Panels (b) and (c) are the same as in (a) but are averages over the months of January-March and July-September, respectively. Positive fluxes are out of the ocean.

Summary

We have updated The World Ocean Model of Biogeochemistry And Trophic dynamics (WOMBAT) in a new version called WOMBAT-lite (see methods). These updates necessitated optimisation of the many new and existing model parameters. To do so, we used a surrogate machine learning model trained on a limited sample of real model output that provided many synthetic estimates of model performance (i.e., global NRMSE and the global cost function) at low computation cost. It is critical for accurate global sensitivity analysis (Saltelli et al., 2019) and Bayesian parameter optimisation techniques (Reddy et al., 2024a) to have many samples. These surrogate-based sensitivity analyses and parameter optimisation techniques are therefore gaining traction in climate and environmental sciences where computational overhead severely restricts the number of direct model simulations that can be done (Li et al., 2018; Reddy et al., 2024a, b; Williamson et al., 2017; Xu et al., 2022, 2018). Ocean biogeochemical models are no different. Here we applied the surrogate-based method to WOMBAT-lite, optimised the model parameters and delivered improved performance in reproducing 8 target datasets.

Other approaches do exist for optimisation of biogeochemical models, such as iterative ensemble methods (Singh et al., 2025), which do not rely on surrogate methods but instead use ensembles to iteratively adjust either the initial state or the parameters towards their optimal values through regular data assimilation (Dowd et al., 2014). Similarly, the emergence of machine learning emulators (Eyring et al., 2024) that resolve the full spatiotemporal field of the target datasets could be used to assess performance and optimise parameters. While these approaches can provide optimal parameter values that evolve in time and/or space, the surrogate approach employed herein represents a simple yet valid approach that provides globally optimised parameter values that are fixed in time and space, but importantly without large computation overhead. Once the surrogate is trained, it can be deployed cheaply to explore the parameter space in different ways, offering flexibility to select a new set of parameters with perhaps an emphasis on one target field (e.g., air-sea CO₂ flux) over another, if required. One disadvantage, however, is that the optimisation can only be as good as the skill of the surrogate, meaning that careful training is critical.

The improvements showcased herein included surface distributions of iron and nitrate, surface chlorophyll concentrations, the representation of deep chlorophyll maximums, phytoplankton phenology, and particularly the seasonality of air-sea CO₂ fluxes in the high latitudes, where in some regions the seasonality flipped from a negative correlation in the unoptimised model to a positive correlation with our optimised, new model. Surface chlorophyll was also well reproduced, as was the distribution of iron-limited regions of primary productivity. Additionally, global net primary production was increased by 50%, partially rectifying a low bias in the previous unoptimised model, although our simulated rate of 28 Pg C yr⁻¹ remains low compared with data-based estimates of ~50 Pg C yr⁻¹ (Buitenhuis et al., 2013).

Despite these improvements, biases do remain. Chief among them is a difficulty in reproducing the seasonality of air-sea CO₂ exchange in the Southern Ocean, despite the improvements achieved here. WOMBAT-lite does manage to represent the austral winter outgassing of CO₂ from the polar frontal region but fails to absorb enough CO₂ in the summer, particularly in the subantarctic zone. Other models struggle with representing the seasonality of CO₂ exchange in the Southern Ocean, with some absorbing too much (e.g., Yool et al., 2021) and others, like WOMBAT-lite, too little (see Hauck et al., 2020, 2023b). Physical biases in the model are no doubt important here, such as those that have insufficient winter mixing, as has been proposed (Hauck et al., 2023b). Our sensitivity analysis and optimisation procedure, however, would also suggest that how we chose to represent the biology contributes substantially to model skill in air-sea CO₂ fluxes (also see Mongwe et al., 2018). Two parameters of importance for Southern Ocean CO₂ fluxes were optimised at the lower edge of their *a priori* ranges: the linear mortality coefficient for phytoplankton (γ_p^0) and the prey capture rate coefficient of zooplankton (ϵ). This suggests that further improvement in Southern Ocean CO₂ fluxes can be gained by exploring lower values for these parameters than those explored here. Alternatively, spatial variations in ϵ that capture transitions from nano- to meso-zooplankton from oligotrophic to eutrophic regimes (Rohr et al., 2024) may serve to accelerate the phytoplankton bloom at the beginning of the growth season. Furthermore, the succession of different types of phytoplankton is important for the biological carbon pump (Tréguer et al., 2018). Therefore, representing these shifts in community with additional functional types of plankton beyond that explored herein might be important for the phenology of the annual spring bloom, and by extension Southern Ocean CO₂ fluxes. According to a recent analysis, this phenology is changing (Thomalla et al., 2023), which may imply a changing strength and/or seasonality of air-sea CO₂ fluxes in the region.

As a final word, we note that a surrogate-based optimisation of a complex numerical model can only be as good as the initial sample set on which the surrogate is trained. A clear example of this limitation is evident in Figure 7. Even with its optimal parameters, WOMBAT-lite suffered a loss in performance when run over 100 years compared to when run over only 10 years. Future iterations of surrogate-based optimisation would therefore benefit from extending the length of simulations done by initial set of sensitivity experiments. That said, significant savings in computation efficiency would be needed before this is possible with computationally demanding models, such as ocean biogeochemical models, in particular those involving more plankton functional groups and thus many more uncertain parameters, but could be feasible by running the biogeochemical model offline from the ocean physics (e.g., Séférián et al., 2013). This approach would also eliminate any confounding errors caused by an evolution of the ocean's physical state since the physical state would not be allowed to evolve. Future versions of WOMBAT, including WOMBAT-lite, WOMBAT-mid and WOMBAT-full, and their deployment into different configurations (e.g., higher resolution versions) would benefit from this approach.

Code availability

745 Model code of WOMBAT-lite developed for the simulations done in this paper is available at
https://github.com/pearseb/WOMBAT_dev. Future versions will be implemented using the GFDL “generic tracer”
framework to enable its use in MOM5 and MOM6. The code is available at [https://github.com/ACCESS-NRI/GFDL-](https://github.com/ACCESS-NRI/GFDL-generic-tracers)
[generic-tracers](https://github.com/ACCESS-NRI/GFDL-generic-tracers). Code for the sensitivity analysis and optimisation routines are at [https://github.com/Jyoteesh38/Bayesian-](https://github.com/Jyoteesh38/Bayesian-Optimization-of-the-World-Ocean-Model-of-Biogeochemistry-and-Trophic-dynamics-WOMBAT-)
[Optimization-of-the-World-Ocean-Model-of-Biogeochemistry-and-Trophic-dynamics-WOMBAT-](https://github.com/Jyoteesh38/Bayesian-Optimization-of-the-World-Ocean-Model-of-Biogeochemistry-and-Trophic-dynamics-WOMBAT-). Code for the analysis in
750 sections 3.1 and 3.4 and the figures therein is available at https://github.com/pearseb/WOMBAT-lite_optimisation_analysis.

Data availability

Model output will be made available upon request due to the size of the output (> 50 Gb).

Competing Interests

The authors declare that they have no conflict of interest.

755 Acknowledgements

This research was undertaken with the assistance of resources from the National Computational Infrastructure (NCI
Australia), an NCRIS enabled capability supported by the Australian Government. TR is an ARC DECRA recipient
(DE240100115) funded by the Australian Government. The authors wish to acknowledge use of the Ferret program
(<http://ferret.pmel.noaa.gov/Ferret/>), climate data operators (<https://code.mpimet.mpg.de/projects/cdo/>), NetCDF Operators
760 (<http://nco.sourceforge.net/>) and Python (www.python.org) for the analysis and graphics in this paper. Thanks to Thomas
Moore, Tilo Ziehn and Rachel Law for their support and for generously providing computational resources and storage.

References

Anderson, S. I., Barton, A. D., Clayton, S., Dutkiewicz, S., and Rynearson, T. A.: Marine phytoplankton functional types
exhibit diverse responses to thermal change, *Nat Commun*, 12, 6413, <https://doi.org/10.1038/s41467-021-26651-8>, 2021a.
765 Anderson, T. R., Hessen, D. O., and Mayor, D. J.: Is the growth of marine copepods limited by food quantity or quality?,
Limnol Oceanogr Lett, 6, 127–133, <https://doi.org/10.1002/lol2.10184>, 2021b.
Ardyna, M. and Arrigo, K. R.: Phytoplankton dynamics in a changing Arctic Ocean, *Nat Clim Chang*, 10, 892–903,
<https://doi.org/10.1038/s41558-020-0905-y>, 2020.

Aumont, O., Ethé, C., Tagliabue, A., Bopp, L., and Gehlen, M.: PISCES-v2: an ocean biogeochemical model for carbon and
 ecosystem studies, *Geosci Model Dev*, 8, 2465–2513, <https://doi.org/10.5194/gmd-8-2465-2015>, 2015.

Bach, L. T., Boxhammer, T., Larsen, A., Hildebrandt, N., Schulz, K. G., and Riebesell, U.: Influence of plankton community
 structure on the sinking velocity of marine aggregates, *Global Biogeochem Cycles*, 30, 1145–1165,
<https://doi.org/10.1002/2016GB005372>, 2016.

Baker, K. G. and Geider, R. J.: Phytoplankton mortality in a changing thermal seascape, *Glob Chang Biol*, 27, 5253–5261,
<https://doi.org/10.1111/gcb.15772>, 2021.

Baki, H., Chinta, S., and Srinivasan, B.: Determining the sensitive parameters of the Weather Research and Forecasting (WRF)
 model for the simulation of tropical cyclones in the Bay of Bengal using global sensitivity analysis and machine learning,
Geosci Model Dev, 15, 2133–2155, <https://doi.org/10.5194/gmd-15-2133-2022>, 2022.

Bar-Zeev, E., Avishay, I., Bidle, K. D., and Berman-Frank, I.: Programmed cell death in the marine cyanobacterium
Trichodesmium mediates carbon and nitrogen export, *ISME Journal*, 7, 2340–2348, <https://doi.org/10.1038/ismej.2013.121>,
 2013.

Behrenfeld, M. J. and Falkowski, P. G.: Photosynthetic rates derived from satellite-based chlorophyll concentration, *Limnol
 Oceanogr*, 42, 1–20, <https://doi.org/10.4319/lo.1997.42.1.0001>, 1997.

Berelson, W. M.: Particle settling rates increase with depth in the ocean, *Deep Sea Research Part II: Topical Studies in
 Oceanography*, 49, 237–251, [https://doi.org/10.1016/S0967-0645\(01\)00102-3](https://doi.org/10.1016/S0967-0645(01)00102-3), 2001.

Bressac, M., Guieu, C., Ellwood, M. J., Tagliabue, A., Wagener, T., Laurenceau-Cornec, E. C., Whitby, H., Sarthou, G., and
 Boyd, P. W.: Resupply of mesopelagic dissolved iron controlled by particulate iron composition, *Nat Geosci*, 12, 995–1000,
<https://doi.org/10.1038/s41561-019-0476-6>, 2019.

Brown, J. H., Gillooly, J. F., Allen, A. P., Savage, V. M., and West, G. B.: Toward a metabolic theory of ecology, *Ecology*,
 85, 1771–1789, <https://doi.org/10.1890/03-9000>, 2004.

Browning, T. J. and Moore, C. M.: Global analysis of ocean phytoplankton nutrient limitation reveals high prevalence of co-
 limitation, *Nat Commun*, 14, 5014, <https://doi.org/10.1038/s41467-023-40774-0>, 2023.

Brussaard, C. P. D., Timmermans, K. R., Uitz, J., and Veldhuis, M. J. W.: Virioplankton dynamics and virally induced
 phytoplankton lysis versus microzooplankton grazing southeast of the Kerguelen (Southern Ocean), *Deep Sea Research Part
 II: Topical Studies in Oceanography*, 55, 752–765, <https://doi.org/10.1016/j.dsr2.2007.12.034>, 2008.

Buchanan, P. J. and Tagliabue, A.: The Regional Importance of Oxygen Demand and Supply for Historical Ocean Oxygen
 Trends, *Geophys Res Lett*, 48, <https://doi.org/10.1029/2021GL094797>, 2021.

Buchanan, P. J., Aumont, O., Bopp, L., Mahaffey, C., and Tagliabue, A.: Impact of intensifying nitrogen limitation on ocean
 net primary production is fingerprinted by nitrogen isotopes, *Nat Commun*, 12, 6214, <https://doi.org/10.1038/s41467-021-26552-w>, 2021.

Buitenhuis, E. T., Hashioka, T., and Quéré, C. Le: Combined constraints on global ocean primary production using
 observations and models, *Global Biogeochem Cycles*, 27, 847–858, <https://doi.org/10.1002/gbc.20074>, 2013.

- Busecke, J. J. M., Resplandy, L., Ditkovsky, S. J., and John, J. G.: Diverging Fates of the Pacific Ocean Oxygen Minimum Zone and Its Core in a Warming World, *AGU Advances*, 3, <https://doi.org/10.1029/2021AV000470>, 2022.
- 805 Cael, B. B., Dutkiewicz, S., and Henson, S.: Abrupt shifts in 21st-century plankton communities, *Sci Adv*, 7, <https://doi.org/10.1126/sciadv.abf8593>, 2021a.
- Cael, B. B., Cavan, E. L., and Britten, G. L.: Reconciling the Size-Dependence of Marine Particle Sinking Speed, *Geophys Res Lett*, 48, 1–11, <https://doi.org/10.1029/2020GL091771>, 2021b.
- Calbet, A. and Landry, M. R.: Phytoplankton growth, microzooplankton grazing, and carbon cycling in marine systems, *Limnol Oceanogr*, 49, 51–57, <https://doi.org/10.4319/lo.2004.49.1.0051>, 2004.
- 810 Chau, T. T. T., Gehlen, M., and Chevallier, F.: A seamless ensemble-based reconstruction of surface ocean CO₂ and air–sea CO₂ fluxes over the global coastal and open oceans, *Biogeosciences*, 19, 1087–1109, <https://doi.org/10.5194/bg-19-1087-2022>, 2022.
- Chen, B., Landry, M. R., Huang, B., and Liu, H.: Does warming enhance the effect of microzooplankton grazing on marine phytoplankton in the ocean?, *Limnol Oceanogr*, 57, 519–526, <https://doi.org/10.4319/lo.2012.57.2.0519>, 2012.
- 815 Denman, K. L.: Modelling planktonic ecosystems: parameterizing complexity, *Prog Oceanogr*, 57, 429–452, [https://doi.org/10.1016/S0079-6611\(03\)00109-5](https://doi.org/10.1016/S0079-6611(03)00109-5), 2003.
- DeVries, T. and Weber, T.: The export and fate of organic matter in the ocean: New constraints from combining satellite and oceanographic tracer observations, *Global Biogeochem Cycles*, 31, 535–555, <https://doi.org/10.1002/2016GB005551>, 2017.
- 820 Doney, S. C., Lindsay, K., and Moore, J. K.: Global Ocean Carbon Cycle Modeling, in: *Ocean Biogeochemistry*, Springer Berlin Heidelberg, Berlin, Heidelberg, 217–238, https://doi.org/10.1007/978-3-642-55844-3_10, 2003.
- Dowd, M., Jones, E., and Parslow, J.: A statistical overview and perspectives on data assimilation for marine biogeochemical models, *Environmetrics*, 25, 203–213, <https://doi.org/10.1002/env.2264>, 2014.
- 825 Droop, M. R.: 25 Years of Algal Growth Kinetics A Personal View, *Botanica Marina*, 26, <https://doi.org/10.1515/botm.1983.26.3.99>, 1983.
- Dunne, J. P., Sarmiento, J. L., and Gnanadesikan, A.: A synthesis of global particle export from the surface ocean and cycling through the ocean interior and on the seafloor, *Global Biogeochem Cycles*, 21, n/a-n/a, <https://doi.org/10.1029/2006GB002907>, 2007.
- Eppley, R. W.: Temperature and phytoplankton growth in the sea, *Fishery Bulletin*, 70, 1063–1085, 1972.
- 830 Eyring, V., Collins, W. D., Gentine, P., Barnes, E. A., Barreiro, M., Beucler, T., Bocquet, M., Bretherton, C. S., Christensen, H. M., Dagon, K., Gagne, D. J., Hall, D., Hammerling, D., Hoyer, S., Iglesias-Suarez, F., Lopez-Gomez, I., McGraw, M. C., Meehl, G. A., Molina, M. J., Monteleoni, C., Mueller, J., Pritchard, M. S., Rolnick, D., Runge, J., Stier, P., Watt-Meyer, O., Weigel, K., Yu, R., and Zanna, L.: Pushing the frontiers in climate modelling and analysis with machine learning, *Nat Clim Chang*, 14, 916–928, <https://doi.org/10.1038/s41558-024-02095-y>, 2024.
- 835 Fennel, K., Mattern, J. P., Doney, S. C., Bopp, L., Moore, A. M., Wang, B., and Yu, L.: Ocean biogeochemical modelling, *Nature Reviews Methods Primers*, 2, 76, <https://doi.org/10.1038/s43586-022-00154-2>, 2022.

- Fennel, K., Long, M. C., Algar, C., Carter, B., Keller, D., Laurent, A., Mattern, J. P., Musgrave, R., Oschlies, A., Ostiguy, J., Palter, J. B., and Whitt, D. B.: Modelling considerations for research on ocean alkalinity enhancement (OAE), *State of the Planet*, 9, <https://doi.org/10.5194/sp-2-oae2023-9-2023>, 2023.
- 840 Field, C. B.: Primary Production of the Biosphere: Integrating Terrestrial and Oceanic Components, *Science* (1979), 281, 237–240, <https://doi.org/10.1126/science.281.5374.237>, 1998.
- Flynn, K. J.: Modelling multi-nutrient interactions in phytoplankton; balancing simplicity and realism, *Prog Oceanogr*, 56, 249–279, [https://doi.org/10.1016/S0079-6611\(03\)00006-5](https://doi.org/10.1016/S0079-6611(03)00006-5), 2003.
- Flynn, K. J. and Hipkin, C. R.: Interactions between iron, light, ammonium, and nitrate: insights from the construction of a dynamic model of algal physiology, *J Phycol*, 35, 1171–1190, <https://doi.org/10.1046/j.1529-8817.1999.3561171.x>, 1999.
- 845 Follett, C. L., Dutkiewicz, S., Ribalet, F., Zakem, E., Caron, D., Armbrust, E. V., and Follows, M. J.: Trophic interactions with heterotrophic bacteria limit the range of *Prochlorococcus*, *Proceedings of the National Academy of Sciences*, 119, 1–10, <https://doi.org/10.1073/pnas.2110993118>, 2022.
- Follows, M. J. and Dutkiewicz, S.: Modeling diverse communities of marine microbes., *Ann Rev Mar Sci*, 3, 427–451, <https://doi.org/10.1146/annurev-marine-120709-142848>, 2011.
- 850 Follows, M. J., Dutkiewicz, S., Grant, S., and Chisholm, S. W.: Emergent Biogeography of Microbial Communities in a Model Ocean, *Science* (1979), 315, 1843–1846, <https://doi.org/10.1126/science.1138544>, 2007.
- Foreman-Mackey, D., Hogg, D. W., Lang, D., and Goodman, J.: emcee : The MCMC Hammer, *Publications of the Astronomical Society of the Pacific*, 125, 306–312, <https://doi.org/10.1086/670067>, 2013.
- 855 Fox, J., Behrenfeld, M. J., Halsey, K. H., and Graff, J. R.: Global Estimates of Particulate Organic Carbon Concentration From the Surface Ocean to the Base of the Mesopelagic, *Global Biogeochem Cycles*, 38, <https://doi.org/10.1029/2024GB008149>, 2024.
- Friedlingstein, P., O’Sullivan, M., Jones, M. W., Andrew, R. M., Bakker, D. C. E., Hauck, J., Landschützer, P., Le Quéré, C., Luijkx, I. T., Peters, G. P., Peters, W., Pongratz, J., Schwingshackl, C., Sitch, S., Canadell, J. G., Ciais, P., Jackson, R. B.,
- 860 Alin, S. R., Anthoni, P., Barbero, L., Bates, N. R., Becker, M., Bellouin, N., Decharme, B., Bopp, L., Brasika, I. B. M., Cadule, P., Chamberlain, M. A., Chandra, N., Chau, T.-T.-T., Chevallier, F., Chini, L. P., Cronin, M., Dou, X., Enyo, K., Evans, W., Falk, S., Feely, R. A., Feng, L., Ford, D. J., Gasser, T., Ghattas, J., Gkritzalis, T., Grassi, G., Gregor, L., Gruber, N., Gürses, Ö., Harris, I., Hefner, M., Heinke, J., Houghton, R. A., Hurtt, G. C., Iida, Y., Ilyina, T., Jacobson, A. R., Jain, A., Jarníková, T., Jersild, A., Jiang, F., Jin, Z., Joos, F., Kato, E., Keeling, R. F., Kennedy, D., Klein Goldewijk, K., Knauer, J., Korsbakken, J. I., Körtzinger, A., Lan, X., Lefèvre, N., Li, H., Liu, J., Liu, Z., Ma, L., Marland, G., Mayot, N., McGuire, P. C., McKinley, G. A., Meyer, G., Morgan, E. J., Munro, D. R., Nakaoka, S.-I., Niwa, Y., O’Brien, K. M., Olsen, A., Omar, A. M., Ono, T., Paulsen, M., Pierrot, D., Pockock, K., Poulter, B., Powis, C. M., Rehder, G., Resplandy, L., Robertson, E., Rödenbeck, C., Rosan, T. M., Schwinger, J., Séférian, R., et al.: Global Carbon Budget 2023, *Earth Syst Sci Data*, 15, 5301–5369, <https://doi.org/10.5194/essd-15-5301-2023>, 2023.

- 870 Gantt, B., Johnson, M. S., Meskhidze, N., Sciare, J., Ovadnevaite, J., Ceburnis, D., and O'Dowd, C. D.: Model evaluation of marine primary organic aerosol emission schemes, *Atmos Chem Phys*, 12, 8553–8566, [https://doi.org/10.5194/acp-12-8553-](https://doi.org/10.5194/acp-12-8553-2012)2012, 2012.
- Garcia, H. E., Wang, Z., Bouchard, C., Cross, S. L., Paver, C. R., Reagan, J. R., Boyer, T. P., Locarnini, R. A., Mishonov, A. V., Baranova, O. K., Seidov, D., and Dukhovskoy, D.: World Ocean Atlas 2023, Volume 3: Dissolved Oxygen, Apparent
875 Oxygen Utilization, Dissolved Oxygen Saturation and 30-year Climate Normal, <https://doi.org/10.25923/rb67-ns53>, 2024a.
- Garcia, H. E., Bouchard, C., Cross, S. L., Paver, C. R., Reagan, J. R., Boyer, T. P., Locarnini, R. A., Mishonov, A. V., Baranova, O. K., Seidov, D., Wang, Z., and Dukhovskoy, D.: World Ocean Atlas 2023, Volume 4: Dissolved Inorganic Nutrients (Phosphate, Nitrate, and Silicate), <https://doi.org/10.25923/39qw-7j08>, 2024b.
- Geider, R. J.: Light and Temperature Dependence of the Carbon to Chlorophyll a Ratio in Microalgae and Cyanobacteria: Implications for Physiology and Growth of Phytoplankton, *New Phytologist*, 1, 1–34, 1987.
880
- Gentleman, W. C. and Neuheimer, A. B.: Functional responses and ecosystem dynamics: how clearance rates explain the influence of satiation, food-limitation and acclimation, *J Plankton Res*, 30, 1215–1231, <https://doi.org/10.1093/plankt/fbn078>, 2008.
- del Giorgio, P. A. and Cole, J. J.: BACTERIAL GROWTH EFFICIENCY IN NATURAL AQUATIC SYSTEMS, *Annu Rev Ecol Syst*, 29, 503–541, <https://doi.org/10.1146/annurev.ecolsys.29.1.503>, 1998.
885
- Gloege, L., McKinley, G. A., Landschützer, P., Fay, A. R., Frölicher, T. L., Fyfe, J. C., Ilyina, T., Jones, S., Lovenduski, N. S., Rodgers, K. B., Schlunegger, S., and Takano, Y.: Quantifying Errors in Observationally Based Estimates of Ocean Carbon Sink Variability, *Global Biogeochem Cycles*, 35, <https://doi.org/10.1029/2020GB006788>, 2021.
- Goodman, J. and Weare, J.: Ensemble samplers with affine invariance, *Comm App Math Comp Sci*, 5, 65–80,
890 <https://doi.org/10.2140/camcos.2010.5.65>, 2010.
- Hauck, J., Zeising, M., Le Quéré, C., Gruber, N., Bakker, D. C. E., Bopp, L., Chau, T. T. T., Gürses, Ö., Ilyina, T., Landschützer, P., Lenton, A., Resplandy, L., Rödenbeck, C., Schwinger, J., and Séférian, R.: Consistency and Challenges in the Ocean Carbon Sink Estimate for the Global Carbon Budget, *Front Mar Sci*, 7, <https://doi.org/10.3389/fmars.2020.571720>, 2020.
- 895 Hauck, J., Nissen, C., Landschützer, P., Rödenbeck, C., Bushinsky, S., and Olsen, A.: Sparse observations induce large biases in estimates of the global ocean CO₂ sink: an ocean model subsampling experiment, *Philosophical Transactions of the Royal Society A: Mathematical, Physical and Engineering Sciences*, 381, <https://doi.org/10.1098/rsta.2022.0063>, 2023a.
- Hauck, J., Gregor, L., Nissen, C., Patara, L., Hague, M., Mongwe, P., Bushinsky, S., Doney, S. C., Gruber, N., Le Quéré, C., Manizza, M., Mazloff, M., Monteiro, P. M. S., and Terhaar, J.: The Southern Ocean Carbon Cycle 1985–2018: Mean, Seasonal
900 Cycle, Trends, and Storage, *Global Biogeochem Cycles*, 37, <https://doi.org/10.1029/2023GB007848>, 2023b.
- Holling, C. S.: Some Characteristics of Simple Types of Predation and Parasitism, *Can Entomol*, 91, 385–398, <https://doi.org/10.4039/Ent91385-7>, 1959.

- Holzer, M. and Primeau, F. W.: Global teleconnections in the oceanic phosphorus cycle: Patterns, paths, and timescales, *J Geophys Res Oceans*, 118, 1775–1796, <https://doi.org/10.1002/jgrc.20072>, 2013.
- 905 Hopkinson, B. M., Seegers, B., Hatta, M., Measures, C. I., Greg Mitchell, B., and Barbeau, K. A.: Planktonic C:Fe ratios and carrying capacity in the southern Drake Passage, *Deep Sea Research Part II: Topical Studies in Oceanography*, 90, 102–111, <https://doi.org/10.1016/j.dsr2.2012.09.001>, 2013.
- Huang, Y., Tagliabue, A., and Cassar, N.: Data-Driven Modeling of Dissolved Iron in the Global Ocean, *Front Mar Sci*, 9, <https://doi.org/10.3389/fmars.2022.837183>, 2022.
- 910 Ikeda, T.: Metabolic rates of epipelagic marine zooplankton as a function of body mass and temperature, *Mar Biol*, 85, 1–11, <https://doi.org/10.1007/BF00396409>, 1985.
- Ikeda, T., Kanno, Y., Ozaki, K., and Shinada, A.: Metabolic rates of epipelagic marine copepods as a function of body mass and temperature, *Mar Biol*, 139, 587–596, <https://doi.org/10.1007/s002270100608>, 2001.
- Issan, O., Riley, P., Camporeale, E., and Kramer, B.: Bayesian Inference and Global Sensitivity Analysis for Ambient Solar
- 915 Wind Prediction, *Space Weather*, 21, <https://doi.org/10.1029/2023SW003555>, 2023.
- Iversen, M. H. and Lampitt, R. S.: Size does not matter after all: No evidence for a size-sinking relationship for marine snow, *Prog Oceanogr*, 189, <https://doi.org/10.1016/j.pocean.2020.102445>, 2020.
- Johnson, K. S., Gordon, R. M., and Coale, K. H.: What controls dissolved iron concentrations in the world ocean?, *Mar Chem*, 57, 137–161, [https://doi.org/10.1016/S0304-4203\(97\)00043-1](https://doi.org/10.1016/S0304-4203(97)00043-1), 1997.
- 920 Joos, F., Roth, R., Fuglestad, J. S., Peters, G. P., Enting, I. G., von Bloh, W., Brovkin, V., Burke, E. J., Eby, M., Edwards, N. R., Friedrich, T., Frölicher, T. L., Halloran, P. R., Holden, P. B., Jones, C., Kleinen, T., Mackenzie, F. T., Matsumoto, K., Meinshausen, M., Plattner, G.-K., Reisinger, A., Segschneider, J., Shaffer, G., Steinacher, M., Strassmann, K., Tanaka, K., Timmermann, A., and Weaver, A. J.: Carbon dioxide and climate impulse response functions for the computation of greenhouse gas metrics: a multi-model analysis, *Atmos Chem Phys*, 13, 2793–2825, [https://doi.org/10.5194/acp-13-2793-](https://doi.org/10.5194/acp-13-2793-2013)
- 925 2013, 2013.
- Kiss, A. E., Hogg, A. McC., Hannah, N., Boeira Dias, F., Brassington, G. B., Chamberlain, M. A., Chapman, C., Dobrohotoff, P., Domingues, C. M., Duran, E. R., England, M. H., Fiedler, R., Griffies, S. M., Heerdegen, A., Heil, P., Holmes, R. M., Klocker, A., Marsland, S. J., Morrison, A. K., Munroe, J., Nikurashin, M., Oke, P. R., Pilo, G. S., Richet, O., Savita, A., Spence, P., Stewart, K. D., Ward, M. L., Wu, F., and Zhang, X.: ACCESS-OM2 v1.0: a global ocean–sea ice model at three
- 930 resolutions, *Geosci Model Dev*, 13, 401–442, <https://doi.org/10.5194/gmd-13-401-2020>, 2020.
- Kwiatkowski, L., Torres, O., Bopp, L., Aumont, O., Chamberlain, M., Christian, J. R., Dunne, J. P., Gehlen, M., Ilyina, T., John, J. G., Lenton, A., Li, H., Lovenduski, N. S., Orr, J. C., Palmieri, J., Santana-Falcón, Y., Schwinger, J., Séférian, R., Stock, C. A., Tagliabue, A., Takano, Y., Tjiputra, J., Toyama, K., Tsujino, H., Watanabe, M., Yamamoto, A., Yool, A., and Ziehn, T.: Twenty-first century ocean warming, acidification, deoxygenation, and upper-ocean nutrient and primary production
- 935 decline from CMIP6 model projections, *Biogeosciences*, 17, 3439–3470, <https://doi.org/10.5194/bg-17-3439-2020>, 2020.

Kwiatkowski, L., Berger, M., Bopp, L., Doléac, S., and Ho, D. T.: Contrasting carbon dioxide removal potential and nutrient feedbacks of simulated ocean alkalinity enhancement and macroalgae afforestation, *Environmental Research Letters*, 18, 124036, <https://doi.org/10.1088/1748-9326/ad08f9>, 2023.

Kwon, E. Y., Dunne, J. P., and Lee, K.: Biological export production controls upper ocean calcium carbonate dissolution and CO₂ buffer capacity, *Sci Adv*, 10, 779, <https://doi.org/10.1126/sciadv.adl0779>, 2024.

De La Rocha, C. L. and Passow, U.: Factors influencing the sinking of POC and the efficiency of the biological carbon pump, *Deep Sea Research Part II: Topical Studies in Oceanography*, 54, 639–658, <https://doi.org/10.1016/j.dsr2.2007.01.004>, 2007.

Lauvset, S. K., Key, R. M., Olsen, A., van Heuven, S., Velo, A., Lin, X., Schirmick, C., Kozyr, A., Tanhua, T., Hoppema, M., Jutterström, S., Steinfeldt, R., Jeansson, E., Ishii, M., Perez, F. F., Suzuki, T., and Watelet, S.: A new global interior ocean mapped climatology: the 1° × 1° GLODAP version 2, *Earth Syst Sci Data*, 8, 325–340, <https://doi.org/10.5194/essd-8-325-2016>, 2016.

Law, R. M., Ziehn, T., Matear, R. J., Lenton, A., Chamberlain, M. A., Stevens, L. E., Wang, Y. P., Srbinovsky, J., Bi, D., Yan, H., and Vohralik, P. F.: The carbon cycle in the Australian Community Climate and Earth System Simulator (ACCESS-ESM1) - Part 1: Model description and pre-industrial simulation, *Geosci Model Dev*, 10, 2567–2590, <https://doi.org/10.5194/gmd-10-2567-2017>, 2017.

Lehmann, N. and Bach, L. T.: Global carbonate chemistry gradients reveal a negative feedback on ocean alkalinity enhancement, *Nat Geosci*, 18, 232–238, <https://doi.org/10.1038/s41561-025-01644-0>, 2025.

Li, J., Duan, Q., Wang, Y., Gong, W., Gan, Y., and Wang, C.: Parameter optimization for carbon and water fluxes in two global land surface models based on surrogate modelling, *International Journal of Climatology*, 38, <https://doi.org/10.1002/joc.5428>, 2018.

Litchman, E.: Resource Competition and the Ecological Success of Phytoplankton, in: *Evolution of Primary Producers in the Sea*, Elsevier, 351–375, <https://doi.org/10.1016/B978-012370518-1/50017-5>, 2007.

Lotze, H. K., Tittensor, D. P., Bryndum-Buchholz, A., Eddy, T. D., Cheung, W. W. L., Galbraith, E. D., Barange, M., Barrier, N., Bianchi, D., Blanchard, J. L., Bopp, L., Büchner, M., Bulman, C. M., Carozza, D. A., Christensen, V., Coll, M., Dunne, J. P., Fulton, E. A., Jennings, S., Jones, M. C., Mackinson, S., Maury, O., Niiranen, S., Oliveros-Ramos, R., Roy, T., Fernandes, J. A., Schewe, J., Shin, Y.-J., Silva, T. A. M., Steenbeek, J., Stock, C. A., Verley, P., Volkholz, J., Walker, N. D., and Worm, B.: Global ensemble projections reveal trophic amplification of ocean biomass declines with climate change, *Proceedings of the National Academy of Sciences*, 116, 12907–12912, <https://doi.org/10.1073/pnas.1900194116>, 2019.

Ludwig, W., Probst, J., and Kempe, S.: Predicting the oceanic input of organic carbon by continental erosion, *Global Biogeochem Cycles*, 10, 23–41, <https://doi.org/10.1029/95GB02925>, 1996.

MacIntyre, H. L., Kana, T. M., Anning, T., and Geider, R. J.: PHOTOACCLIMATION OF PHOTOSYNTHESIS IRRADIANCE RESPONSE CURVES AND PHOTOSYNTHETIC PIGMENTS IN MICROALGAE AND CYANOBACTERIA ¹, *J Phycol*, 38, 17–38, <https://doi.org/10.1046/j.1529-8817.2002.00094.x>, 2002.

Mackallah, C., Chamberlain, M. A., Law, R. M., Dix, M., Ziehn, T., Bi, D., Bodman, R., Brown, J. R., Dobrohotoff, P.,
970 Druken, K., Evans, B., Harman, I. N., Hayashida, H., Holmes, R., Kiss, A. E., Lenton, A., Liu, Y., Marsland, S., Meissner, K.,
Menviel, L., O'Farrell, S., Rashid, H. A., Ridzwan, S., Savita, A., Srbinovsky, J., Sullivan, A., Trenham, C., Vohralik, P. F.,
Wang, Y.-P., Williams, G., Woodhouse, M. T., and Yeung, N.: ACCESS datasets for CMIP6: methodology and idealised
experiments, *Journal of Southern Hemisphere Earth Systems Science*, 72, 93–116, <https://doi.org/10.1071/ES21031>, 2022.

Mahowald, N. M., Baker, A. R., Bergametti, G., Brooks, N., Duce, R. a., Jickells, T. D., Kubilay, N., Prospero, J. M., and
975 Tegen, I.: Atmospheric global dust cycle and iron inputs to the ocean, *Global Biogeochem Cycles*, 19, n/a-n/a,
<https://doi.org/10.1029/2004GB002402>, 2005.

Martin, J. H., Knauer, G. A., Karl, D. M., and Broenkow, W. W.: VERTEX: carbon cycling in the northeast Pacific, *Deep Sea
Research Part A. Oceanographic Research Papers*, 34, 267–285, [https://doi.org/10.1016/0198-0149\(87\)90086-0](https://doi.org/10.1016/0198-0149(87)90086-0), 1987.

Matear, R. J.: Parameter optimization and analysis of ecosystem models using simulated annealing: A case study at Station P,
980 *J Mar Res*, 53, 571–607, <https://doi.org/10.1357/0022240953213098>, 1995.

Matear, R. J., Chamberlain, M. A., Sun, C., and Feng, M.: Climate change projection for the western tropical Pacific Ocean
using a high-resolution ocean model: Implications for tuna fisheries, *Deep Sea Research Part II: Topical Studies in
Oceanography*, 113, 22–46, <https://doi.org/10.1016/j.dsr2.2014.07.003>, 2015.

Mayorga, E., Seitzinger, S. P., Harrison, J. A., Dumont, E., Beusen, A. H. W., Bouwman, A. F., Fekete, B. M., Kroeze, C.,
985 and Van Drecht, G.: Global Nutrient Export from WaterSheds 2 (NEWS 2): Model development and implementation,
Environmental Modelling and Software, 25, 837–853, <https://doi.org/10.1016/j.envsoft.2010.01.007>, 2010.

Menviel, L. and Spence, P.: Southern Ocean circulation's impact on atmospheric CO₂ concentration, *Front Mar Sci*, 10,
<https://doi.org/10.3389/fmars.2023.1328534>, 2024.

Middelburg, J. J., Soetaert, K., Herman, P. M. J., and Heip, C. H. R.: Denitrification in marine sediments: A model study,
990 *Global Biogeochem Cycles*, 10, 661–673, <https://doi.org/10.1029/96GB02562>, 1996.

Mongwe, N. P., Vichi, M., and Monteiro, P. M. S.: The seasonal cycle of p CO₂ and CO₂ fluxes in the Southern Ocean:
diagnosing anomalies in CMIP5 Earth system models, *Biogeosciences*, 15, 2851–2872, [https://doi.org/10.5194/bg-15-2851-](https://doi.org/10.5194/bg-15-2851-2018)
2018, 2018.

Morel, A. and Maritorena, S.: Bio-optical properties of oceanic waters: A reappraisal, *J Geophys Res*, 106, 7163–7180,
995 <https://doi.org/10.1029/2000JC000319>, 2001.

Mouw, C. B., Barnett, A., McKinley, G. A., Gloege, L., and Pilcher, D.: Phytoplankton size impact on export flux in the global
ocean, *Global Biogeochem Cycles*, 30, 1542–1562, <https://doi.org/10.1002/2015GB005355>, 2016.

Nicholson, S.-A., Ryan-Keogh, T. J., Thomalla, S. J., Chang, N., and Smith, M. E.: Observed global ocean phytoplankton
phenology indices, *Earth System Science Data Discussions*, <https://doi.org/10.5194/essd-2024-21>, 2024.

1000 Oke, P. R., Griffin, D. A., Schiller, A., Matear, R. J., Fiedler, R., Mansbridge, J., Lenton, A., Cahill, M., Chamberlain, M. A.,
and Ridgway, K.: Evaluation of a near-global eddy-resolving ocean model, *Geosci Model Dev*, 6, 591–615,
<https://doi.org/10.5194/gmd-6-591-2013>, 2013.

- Orr, J. C., Maier-Reimer, E., Mikolajewicz, U., Monfray, P., Sarmiento, J. L., Toggweiler, J. R., Taylor, N. K., Palmer, J., Gruber, N., Sabine, C. L., Le Quéré, C., Key, R. M., and Boutin, J.: Estimates of anthropogenic carbon uptake from four three-dimensional global ocean models, *Global Biogeochem Cycles*, 15, 43–60, <https://doi.org/10.1029/2000GB001273>, 2001.
- Orr, J. C., Najjar, R. G., Aumont, O., Bopp, L., Bullister, J. L., Danabasoglu, G., Doney, S. C., Dunne, J. P., Dutay, J.-C., Graven, H., Griffies, S. M., John, J. G., Joos, F., Levin, I., Lindsay, K., Matear, R. J., McKinley, G. A., Mouchet, A., Oschlies, A., Romanou, A., Schlitzer, R., Tagliabue, A., Tanhua, T., and Yool, A.: Biogeochemical protocols and diagnostics for the CMIP6 Ocean Model Intercomparison Project (OMIP), *Geosci Model Dev*, 10, 2169–2199, <https://doi.org/10.5194/gmd-10-2169-2017>, 2017.
- Oschlies, A., Brandt, P., Stramma, L., and Schmidtko, S.: Drivers and mechanisms of ocean deoxygenation, *Nat Geosci*, 11, 467–473, <https://doi.org/10.1038/s41561-018-0152-2>, 2018.
- Pantorno, A., Holland, D. P., Stojkovic, S., and Beardall, J.: Impacts of nitrogen limitation on the sinking rate of the coccolithophorid *Emiliana huxleyi* (Prymnesiophyceae), *Phycologia*, 52, 288–294, <https://doi.org/10.2216/12-064.1>, 2013.
- Paulmier, A., Kriest, I., and Oschlies, A.: Stoichiometries of remineralisation and denitrification in global biogeochemical ocean models, *Biogeosciences*, 6, 923–935, <https://doi.org/10.5194/bg-6-923-2009>, 2009.
- Le Quéré, C., Harrison, S. P., Colin Prentice, I., Buitenhuis, E. T., Aumont, O., Bopp, L., Claustre, H., Cotrim Da Cunha, L., Geider, R., Giraud, X., Klaas, C., Kohfeld, K. E., Legendre, L., Manizza, M., Platt, T., Rivkin, R. B., Sathyendranath, S., Uitz, J., Watson, A. J., and Wolf-Gladrow, D.: Ecosystem dynamics based on plankton functional types for global ocean biogeochemistry models, *Glob Chang Biol*, 11, 2016–2040, <https://doi.org/10.1111/j.1365-2486.2005.1004.x>, 2005.
- Rakovec, O., Hill, M. C., Clark, M. P., Weerts, A. H., Teuling, A. J., and Uijlenhoet, R.: Distributed Evaluation of Local Sensitivity Analysis (DELSA), with application to hydrologic models, *Water Resour Res*, 50, 409–426, <https://doi.org/10.1002/2013WR014063>, 2014.
- Rashid, H. A.: Forced changes in El Niño–Southern Oscillation due to global warming and the associated uncertainties in ACCESS-ESM1.5 large ensembles, *Frontiers in Climate*, 4, <https://doi.org/10.3389/fclim.2022.954449>, 2022.
- Reddy, P. J., Chinta, S., Baki, H., Matear, R., and Taylor, J.: Gaussian Process Regression-Based Bayesian Optimisation (G-BO) of Model Parameters—A WRF Model Case Study of Southeast Australia Heat Extremes, *Geophys Res Lett*, 51, <https://doi.org/10.1029/2024GL111074>, 2024a.
- Reddy, P. J., Chinta, S., Matear, R., Taylor, J., Baki, H., Thatcher, M., Kala, J., and Sharples, J.: Machine learning based parameter sensitivity of regional climate models—a case study of the WRF model for heat extremes over Southeast Australia, *Environmental Research Letters*, 19, <https://doi.org/10.1088/1748-9326/ad0eb0>, 2024b.
- Riley, J. S., Sanders, R., Marsay, C., Le Moigne, F. A. C., Achterberg, E. P., and Poulton, A. J.: The relative contribution of fast and slow sinking particles to ocean carbon export, *Global Biogeochem Cycles*, 26, <https://doi.org/10.1029/2011GB004085>, 2012.
- Rohr, T., Richardson, A. J., Lenton, A., and Shadwick, E.: Recommendations for the formulation of grazing in marine biogeochemical and ecosystem models, *Prog Oceanogr*, 208, 102878, <https://doi.org/10.1016/j.pocean.2022.102878>, 2022.

- Rohr, T., Richardson, A. J., Lenton, A., Chamberlain, M. A., and Shadwick, E. H.: Zooplankton grazing is the largest source of uncertainty for marine carbon cycling in CMIP6 models, *Commun Earth Environ*, 4, <https://doi.org/10.1038/s43247-023-00871-w>, 2023.
- 1040 Rohr, T., Richardson, A., Lenton, A., Chamberlain, M. A., and Shadwick, E. H.: The Global Distribution of Grazing Dynamics Estimated From Inverse Modeling, *Geophys Res Lett*, 51, <https://doi.org/10.1029/2023GL107732>, 2024.
- Saltelli, A., Annoni, P., Azzini, I., Campolongo, F., Ratto, M., and Tarantola, S.: Variance based sensitivity analysis of model output. Design and estimator for the total sensitivity index, *Comput Phys Commun*, 181, 259–270, <https://doi.org/10.1016/j.cpc.2009.09.018>, 2010.
- 1045 Saltelli, A., Aleksankina, K., Becker, W., Fennell, P., Ferretti, F., Holst, N., Li, S., and Wu, Q.: Why so many published sensitivity analyses are false: A systematic review of sensitivity analysis practices, *Environmental Modelling & Software*, 114, 29–39, <https://doi.org/10.1016/j.envsoft.2019.01.012>, 2019.
- Sathyendranath, S., Brewin, R., Brockmann, C., Brotas, V., Calton, B., Chuprin, A., Cipollini, P., Couto, A., Dingle, J., Doerffer, R., Donlon, C., Dowell, M., Farman, A., Grant, M., Groom, S., Horseman, A., Jackson, T., Krasemann, H., Lavender, S., Martinez-Vicente, V., Mazeran, C., Mélin, F., Moore, T., Müller, D., Regner, P., Roy, S., Steele, C., Steinmetz, F., Swinton, J., Taberner, M., Thompson, A., Valente, A., Zühlke, M., Brando, V., Feng, H., Feldman, G., Franz, B., Frouin, R., Gould, R., Hooker, S., Kahru, M., Kratzer, S., Mitchell, B., Muller-Karger, F., Sosik, H., Voss, K., Werdell, J., and Platt, T.: An Ocean-Colour Time Series for Use in Climate Studies: The Experience of the Ocean-Colour Climate Change Initiative (OC-CCI), *Sensors*, 19, 4285, <https://doi.org/10.3390/s19194285>, 2019.
- 1050 Sauzède, R., Claustre, H., Jamet, C., Uitz, J., Ras, J., Mignot, A., and D’Ortenzio, F.: Retrieving the vertical distribution of chlorophyll a concentration and phytoplankton community composition from in situ fluorescence profiles: A method based on a neural network with potential for global-scale applications, *J Geophys Res Oceans*, 120, 451–470, <https://doi.org/10.1002/2014JC010355>, 2015.
- Sauzède, R., Claustre, H., Uitz, J., Jamet, C., Dall’Olmo, G., D’Ortenzio, F., Gentili, B., Poteau, A., and Schmechtig, C.: A neural network-based method for merging ocean color and Argo data to extend surface bio-optical properties to depth: Retrieval of the particulate backscattering coefficient, *J Geophys Res Oceans*, 121, 2552–2571, <https://doi.org/10.1002/2015JC011408>, 2016.
- 1060 Séférian, R., Bopp, L., Gehlen, M., Orr, J. C., Ethé, C., Cadule, P., Aumont, O., Salas y Mélia, D., Voltaire, A., and Madec, G.: Skill assessment of three earth system models with common marine biogeochemistry, *Clim Dyn*, 40, 2549–2573, <https://doi.org/10.1007/s00382-012-1362-8>, 2013.
- Serra-Pompei, C., Ward, B. A., Pinti, J., Visser, A. W., Kjørboe, T., and Andersen, K. H.: Linking Plankton Size Spectra and Community Composition to Carbon Export and Its Efficiency, *Global Biogeochem Cycles*, 36, 1–23, <https://doi.org/10.1029/2021GB007275>, 2022.
- Shaked, Y., Buck, K. N., Mellett, T., and Maldonado, M. T.: Insights into the bioavailability of oceanic dissolved Fe from phytoplankton uptake kinetics, *ISME J*, <https://doi.org/10.1038/s41396-020-0597-3>, 2020.
- 1070

- Siegel, D. A., DeVries, T., Doney, S. C., and Bell, T.: Assessing the sequestration time scales of some ocean-based carbon dioxide reduction strategies, *Environmental Research Letters*, 16, 104003, <https://doi.org/10.1088/1748-9326/ac0be0>, 2021.
- Singh, T., Counillon, F., Tjiputra, J., and Wang, Y.: A Novel Ensemble-Based Parameter Estimation for Improving Ocean Biogeochemistry in an Earth System Model, *J Adv Model Earth Syst*, 17, <https://doi.org/10.1029/2024MS004237>, 2025.
- 1075 Sobol', I. M.: Global sensitivity indices for nonlinear mathematical models and their Monte Carlo estimates, *Math Comput Simul*, 55, 271–280, [https://doi.org/10.1016/S0378-4754\(00\)00270-6](https://doi.org/10.1016/S0378-4754(00)00270-6), 2001.
- Stewart, K. D., Kim, W. M., Urakawa, S., Hogg, A. McC., Yeager, S., Tsujino, H., Nakano, H., Kiss, A. E., and Danabasoglu, G.: JRA55-do-based repeat year forcing datasets for driving ocean–sea-ice models, *Ocean Model (Oxf)*, 147, 101557, <https://doi.org/10.1016/j.ocemod.2019.101557>, 2020.
- 1080 Stock, C. A., John, J. G., Rykaczewski, R. R., Asch, R. G., Cheung, W. W. L., Dunne, J. P., Friedland, K. D., Lam, V. W. Y., Sarmiento, J. L., and Watson, R. A.: Reconciling fisheries catch and ocean productivity, *Proceedings of the National Academy of Sciences*, 114, E1441–E1449, <https://doi.org/10.1073/pnas.1610238114>, 2017.
- Stow, C. A., Jolliff, J., McGillicuddy, D. J., Doney, S. C., Allen, J. I., Friedrichs, M. A. M., Rose, K. A., and Wallhead, P.: Skill assessment for coupled biological/physical models of marine systems, *Journal of Marine Systems*, 76, 4–15, <https://doi.org/10.1016/j.jmarsys.2008.03.011>, 2009.
- 1085 Strzepek, R. F., Hunter, K. A., Frew, R. D., Harrison, P. J., and Boyd, P. W.: Iron-light interactions differ in Southern Ocean phytoplankton, *Limnol Oceanogr*, 57, 1182–1200, <https://doi.org/10.4319/lo.2012.57.4.1182>, 2012.
- Sunda, W. G., Swift, D. G., and Huntsman, S. A.: Low iron requirement for growth in oceanic phytoplankton, *Nature*, 351, 55–57, <https://doi.org/10.1038/351055a0>, 1991.
- 1090 Suttle, C. A.: The Significance of Viruses to Mortality in Aquatic Microbial Communities, *Microb Ecol*, 237–243 pp., <https://doi.org/10.1007/BF00166813>, 1994.
- Tagliabue, a, Aumont, O., and Bopp, L.: The impact of different external sources of iron on the global carbon cycle, *Geophys Res Lett*, 41, 10.1002/2013GL059059, <https://doi.org/10.1002/2013GL059059>.Received, 2014a.
- Tagliabue, A., Sallée, J.-B., Bowie, A. R., Lévy, M., Swart, S., and Boyd, P. W.: Surface-water iron supplies in the Southern Ocean sustained by deep winter mixing, *Nat Geosci*, 7, 314–320, <https://doi.org/10.1038/NGEO2101>, 2014b.
- 1095 Tagliabue, A., Aumont, O., DeAth, R., Dunne, J. P., Dutkiewicz, S., Galbraith, E., Misumi, K., Moore, J. K., Ridgwell, A., Sherman, E., Stock, C., Vichi, M., Völker, C., and Yool, A.: How well do global ocean biogeochemistry models simulate dissolved iron distributions?, *Global Biogeochem Cycles*, 30, 149–174, <https://doi.org/10.1002/2015GB005289>, 2016.
- Tagliabue, A., Bowie, A. R., Boyd, P. W., Buck, K. N., Johnson, K. S., and Saito, M. A.: The integral role of iron in ocean biogeochemistry, *Nature*, 543, 51–59, <https://doi.org/10.1038/nature21058>, 2017.
- 1100 Tagliabue, A., Kwiatkowski, L., Bopp, L., Butenschön, M., Cheung, W., Lengaigne, M., and Vialard, J.: Persistent Uncertainties in Ocean Net Primary Production Climate Change Projections at Regional Scales Raise Challenges for Assessing Impacts on Ecosystem Services, *Frontiers in Climate*, 3, 1–16, <https://doi.org/10.3389/fclim.2021.738224>, 2021.

- Tagliabue, A., Buck, K. N., Sofen, L. E., Twining, B. S., Aumont, O., Boyd, P. W., Caprara, S., Homoky, W. B., Johnson, R.,
1105 König, D., Ohnemus, D. C., Sohst, B., and Sedwick, P.: Authigenic mineral phases as a driver of the upper-ocean iron cycle,
Nature, 620, 104–109, <https://doi.org/10.1038/s41586-023-06210-5>, 2023.
- Takahashi, T., Sutherland, S. C., Sweeney, C., Poisson, A., Metzl, N., Tilbrook, B., Bates, N., Wanninkhof, R., Feely, R. a.,
Sabine, C., Olafsson, J., and Nojiri, Y.: Global sea-air CO₂ flux based on climatological surface ocean pCO₂, and seasonal
biological and temperature effects, *Deep Sea Res 2 Top Stud Oceanogr*, 49, 1601–1622, <https://doi.org/10.1016/S0967->
1110 0645(02)00003-6, 2002.
- Taylor, K. E.: Summarizing multiple aspects of model performance in a single diagram, *J Geophys Res*, 106, 7183,
<https://doi.org/10.1029/2000JD900719>, 2001.
- Terhaar, J., Goris, N., Müller, J. D., DeVries, T., Gruber, N., Hauck, J., Perez, F. F., and Séférian, R.: Assessment of Global
Ocean Biogeochemistry Models for Ocean Carbon Sink Estimates in RECCAP2 and Recommendations for Future Studies, *J*
1115 *Adv Model Earth Syst*, 16, <https://doi.org/10.1029/2023MS003840>, 2024.
- Thomalla, S. J., Nicholson, S. A., Ryan-Keogh, T. J., and Smith, M. E.: Widespread changes in Southern Ocean phytoplankton
blooms linked to climate drivers, *Nat Clim Chang*, <https://doi.org/10.1038/s41558-023-01768-4>, 2023.
- Thornton, D. C. O.: Dissolved organic matter (DOM) release by phytoplankton in the contemporary and future ocean, *Eur J*
Phycol, 49, 20–46, <https://doi.org/10.1080/09670262.2013.875596>, 2014.
- 1120 Tjiputra, J. F., Schwinger, J., Bentsen, M., Morée, A. L., Gao, S., Bethke, I., Heinze, C., Goris, N., Gupta, A., He, Y.-C.,
Olivie, D., Seland, Ø., and Schulz, M.: Ocean biogeochemistry in the Norwegian Earth System Model version 2 (NorESM2),
Geosci Model Dev, 13, 2393–2431, <https://doi.org/10.5194/gmd-13-2393-2020>, 2020.
- Tréguer, P., Bowler, C., Moriceau, B., Dutkiewicz, S., Gehlen, M., Aumont, O., Bittner, L., Dugdale, R., Finkel, Z., Iudicone,
D., Jahn, O., Guidi, L., Lasbleiz, M., Leblanc, K., Levy, M., and Pondaven, P.: Influence of diatom diversity on the ocean
biological carbon pump, *Nat Geosci*, 11, 27–37, <https://doi.org/10.1038/s41561-017-0028-x>, 2018.
- 1125 Tsujino, H., Urakawa, S., Nakano, H., Small, R. J., Kim, W. M., Yeager, S. G., Danabasoglu, G., Suzuki, T., Bamber, J. L.,
Bentsen, M., Böning, C. W., Bozec, A., Chassignet, E. P., Curchitser, E., Boeira Dias, F., Durack, P. J., Griffies, S. M., Harada,
Y., Ilıcak, M., Josey, S. A., Kobayashi, C., Kobayashi, S., Komuro, Y., Large, W. G., Le Sommer, J., Marsland, S. J., Masina,
S., Scheinert, M., Tomita, H., Valdivieso, M., and Yamazaki, D.: JRA-55 based surface dataset for driving ocean–sea-ice
1130 models (JRA55-do), *Ocean Model (Oxf)*, 130, 79–139, <https://doi.org/10.1016/j.ocemod.2018.07.002>, 2018.
- Twining, B. S., Antipova, O., Chappell, P. D., Cohen, N. R., Jacquot, J. E., Mann, E. L., Marchetti, A., Ohnemus, D. C.,
Rauschenberg, S., and Tagliabue, A.: Taxonomic and nutrient controls on phytoplankton iron quotas in the ocean, *Limnol*
Oceanogr Lett, 6, 96–106, <https://doi.org/10.1002/lol2.10179>, 2021.
- Wang, C., Qian, Y., Duan, Q., Huang, M., Berg, L. K., Shin, H. H., Feng, Z., Yang, B., Quan, J., Hong, S., and Yan, J.:
1135 Assessing the sensitivity of land-atmosphere coupling strength to boundary and surface layer parameters in the WRF model
over Amazon, *Atmos Res*, 234, 104738, <https://doi.org/10.1016/j.atmosres.2019.104738>, 2020.

- Ward, B. A., Friedrichs, M. A. M., Anderson, T. R., and Oschlies, A.: Parameter optimisation techniques and the problem of underdetermination in marine biogeochemical models, *Journal of Marine Systems*, 81, 34–43, <https://doi.org/10.1016/j.jmarsys.2009.12.005>, 2010.
- 1140 Westberry, T., Behrenfeld, M. J., Siegel, D. A., and Boss, E.: Carbon-based primary productivity modeling with vertically resolved photoacclimation, *Global Biogeochem Cycles*, 22, 1–18, <https://doi.org/10.1029/2007GB003078>, 2008.
- Westberry, T. K., Silsbe, G. M., and Behrenfeld, M. J.: Gross and net primary production in the global ocean: An ocean color remote sensing perspective, <https://doi.org/10.1016/j.earscirev.2023.104322>, 1 February 2023.
- Wickman, J., Litchman, E., and Klausmeier, C. A.: Eco-evolutionary emergence of macroecological scaling in plankton communities, *Science* (1979), 383, 777–782, <https://doi.org/10.1126/science.adk6901>, 2024.
- 1145 Williams, C. K. and Rasmussen, C. E.: Gaussian Processes for Regression, *Adv Neural Inf Process Syst*, 8, 1995.
- Williams, C. K. and Rasmussen, C. E.: Gaussian processes for machine learning, vol. 2, MIT press, Cambridge, MA, 4, 2006.
- Williamson, D. B., Blaker, A. T., and Sinha, B.: Tuning without over-tuning: parametric uncertainty quantification for the NEMO ocean model, *Geosci Model Dev*, 10, 1789–1816, <https://doi.org/10.5194/gmd-10-1789-2017>, 2017.
- 1150 Xu, D., Bisht, G., Sargsyan, K., Liao, C., and Ruby Leung, L.: Using a surrogate-assisted Bayesian framework to calibrate the runoff-generation scheme in the Energy Exascale Earth System Model (E3SM) v1, *Geosci Model Dev*, 15, 5021–5043, <https://doi.org/10.5194/gmd-15-5021-2022>, 2022.
- Xu, H., Zhang, T., Luo, Y., Huang, X., and Xue, W.: Parameter calibration in global soil carbon models using surrogate-based optimization, *Geosci Model Dev*, 11, 3027–3044, <https://doi.org/10.5194/gmd-11-3027-2018>, 2018.
- 1155 Yool, A., Palmiéri, J., Jones, C. G., de Mora, L., Kuhlbrodt, T., Popova, E. E., Nurser, A. J. G., Hirschi, J., Blaker, A. T., Coward, A. C., Blockley, E. W., and Sellar, A. A.: Evaluating the physical and biogeochemical state of the global ocean component of UKESM1 in CMIP6 historical simulations, *Geosci Model Dev*, 14, 3437–3472, <https://doi.org/10.5194/gmd-14-3437-2021>, 2021.
- Ziehn, T., Chamberlain, M. A., Law, R. M., Lenton, A., Bodman, R. W., Dix, M., Stevens, L., Wang, Y.-P., and Srbinovsky, J.: The Australian Earth System Model: ACCESS-ESM1.5, *Journal of Southern Hemisphere Earth Systems Science*, 70, 193–214, <https://doi.org/10.1071/ES19035>, 2020.
- 1160

Appendix A

A.1 Key equations of the previous WOMBAT

The previous version of WOMBAT is a simple nutrient-phytoplankton-zooplankton-detritus model (Law et al., 2017; Oke et al., 2013) simulating the biomass pools of one phytoplankton, one zooplankton and one detrital functional type, two nutrients of phosphate * 16, which is often referred to conveniently as nitrate, (NO_3 , mmol m^{-3}) and dissolved iron (dFe , $\mu\text{mol m}^{-3}$), the carbonate system (dissolved inorganic carbon, alkalinity, and calcium carbonate; mmol C m^{-3}), and dissolved oxygen ($\text{mmol O}_2 \text{ m}^{-3}$). The basic currency of the ecosystem component is 16 times phosphorus (i.e., nitrogen but without external sources and sinks). Biological stoichiometry is fixed at a C:N:O₂ ratio of 106:16:-172, and the Fe:N of phytoplankton is 20:1 $\mu\text{mol}:\text{mol}$. The minimum of nutrient availability or availability of photosynthetically activate radiation (PAR, W m^{-2}) control phytoplankton growth rates. Growth of phytoplankton is calculated by first solving for a maximum growth rate (μ^{max} , day^{-1}), dependent on temperature (T , $^{\circ}\text{C}$), and then applying the minimum of nutrient (L^{nutrient}) and light (L^{PAR}) limitation terms to scale down from the maximum to a realised growth rate (μ , day^{-1}).

The budgets for the previous WOMBAT are as follows:

$$\frac{\partial \text{NO}_3}{\partial t} = \gamma_d + \gamma_z + \gamma_p - \mu B_p, \quad (\text{A1})$$

$$\frac{\partial \text{dFe}}{\partial t} = (\gamma_d + \gamma_z + \gamma_p - \mu B_p) \left(\frac{\text{Fe}}{\text{N}} \right) - \text{Scavenging}, \quad (\text{A2})$$

$$\frac{\partial \text{O}_2}{\partial t} = (\mu B_p - \gamma_d - \gamma_z - \gamma_p) \left(\frac{\text{O}_2}{\text{N}} \right), \quad (\text{A3})$$

$$\frac{\partial B_p}{\partial t} = \mu B_p - \gamma_p - \Gamma_p - g B_z, \quad (\text{A4})$$

$$\frac{\partial B_z}{\partial t} = g B_z \lambda - \gamma_z - \Gamma_z, \quad (\text{A5})$$

$$\frac{\partial B_d}{\partial t} = \Gamma_p + \Gamma_z + g B_z (1 - \lambda) - \gamma_d, \quad (\text{A6})$$

$$\frac{\partial B_{\text{CaCO}_3}}{\partial t} = (\Gamma_p + \Gamma_z + g B_z (1 - \lambda)) \left(\frac{\text{C}}{\text{N}} \right) f_{\text{inorg}} - \gamma_{\text{CaCO}_3}, \quad (\text{A7})$$

$$\frac{\partial \text{DIC}}{\partial t} = (\gamma_d + \gamma_z + \gamma_p - \mu B_p) \left(\frac{\text{C}}{\text{N}} \right) - \left((\Gamma_p + \Gamma_z + g B_z (1 - \lambda)) \left(\frac{\text{C}}{\text{N}} \right) f_{\text{inorg}} - \gamma_{\text{CaCO}_3} \right), \quad (\text{A8})$$

$$\frac{\partial \text{Alk}}{\partial t} = -(\gamma_d + \gamma_z + \gamma_p - \mu B_p) - 2 \left((\Gamma_p + \Gamma_z + g B_z (1 - \lambda)) \left(\frac{\text{C}}{\text{N}} \right) f_{\text{inorg}} - \gamma_{\text{CaCO}_3} \right). \quad (\text{A9})$$

Regarding phytoplankton growth rates (μ , units of day^{-1}) the individual terms are

$$\mu^{\max} = \alpha\beta^{(T)} , \quad (\text{A10})$$

$$1190 \quad L^{\text{PAR}} = \left(1 - e^{-\frac{\text{PI} \cdot \text{PAR}}{\mu^{\max}}}\right) , \quad (\text{A11})$$

$$L^{\text{nutrient}} = \min\left(\frac{\text{NO}_3}{\text{NO}_3 + \text{K}^{\text{N}}}, \frac{\text{dFe}}{\text{dFe} + \text{K}^{\text{Fe}}}\right) , \quad (\text{A12})$$

$$\mu = \min(\mu^{\max} L^{\text{PAR}}, \mu^{\max} L^{\text{nutrient}}) , \quad (\text{A13})$$

where α and β control the non-linear temperature-dependency of phytoplankton metabolism (Eppley, 1972), PI is the slope of the photosynthetic-irradiance curve ($\text{mg N (mg Chl)}^{-1} (\text{W m}^{-2})^{-1} \text{day}^{-1}$), and K^{N} and K^{Fe} are the half saturation coefficients for nutrient limitation by NO_3 and dFe (mmol m^{-3} and $\mu\text{mol m}^{-3}$, respectively). The realised growth of phytoplankton (μ , day^{-1}) is multiplied by their biomass (B_p , mmol N m^{-3}) to retrieve growth of phytoplankton ($\text{mmol N m}^{-3} \text{day}^{-1}$). PAR is solved for as 0.43 of incoming shortwave radiation and then attenuated at a constant rate through the water column.

Phytoplankton mortality occurs via zooplankton grazing, as well as linear (γ) and quadratic (Γ) mortality terms. The specific grazing rate for zooplankton (g, units of day^{-1}) is described by a Type III disk equation (Gentleman and Neuheimer, 2008)

$$1200 \quad g = \frac{g^{\max} \varepsilon B_p^2}{g^{\max} + \varepsilon B_p^2} , \quad (\text{A14})$$

where g^{\max} is the constant, temperature-independent, maximum (prey replete) specific grazing rate in units of day^{-1} and ε describes how fast the prey capture rates increase with the ambient phytoplankton (or prey) concentration in units of $(\text{mmol N m}^{-3})^{-2} \text{day}^{-1}$ (Rohr et al., 2022). Phytoplankton losses to grazing then occur according to the product of g and zooplankton biomass (B_z , mmol N m^{-3}). A fraction of the grazed phytoplankton biomass is routed to zooplankton according to $g B_z \lambda$, where λ is the assimilation efficiency (akin to gross growth efficiency). The fraction that is not assimilated into zooplankton ($1 - \lambda$) is routed to detritus (B_d , mmol N m^{-3}). Linear mortality is temperature dependent, such that

$$\gamma_p = \gamma_p^0 B_p \beta^T , \quad (\text{A15})$$

whereas quadratic mortality is density dependent, but temperature independent, such that

$$\Gamma_p = \Gamma_p^0 B_p^2 . \quad (\text{A16})$$

1210 Both γ_p^0 and Γ_p^0 are constant parameters in units of day^{-1} and $\text{m}^3 \text{mmol}^{-1} \text{day}^{-1}$, respectively. Zooplankton are also affected by linear (γ_z) and quadratic (Γ_z) mortality terms of the same form according to predefined values of γ_z^0 and Γ_z^0 . All quadratic mortality of phytoplankton and zooplankton biomass is routed to detritus, while linear mortality losses are routed to

dissolved nutrients and inorganic carbon. Remineralisation of detritus follows the same form as linear mortality (Eq. A15), with its own rate controlled by the γ_d^0 coefficient, which is halved at depths below 180 metres.

1215 Both detritus and calcium carbonate sink at constant rates. Calcium carbonate is produced at the same time as detritus (i.e., via unassimilated phytoplankton and quadratic mortality losses of phytoplankton and zooplankton), but at a constant rate controlled by f_{inorg} , which is equal to 6.2% of the organic detritus being produced. In contrast to the detrital pool, the calcium carbonate pool (B_{CaCO_3} , mmol C m⁻³) is remineralised (dissolved) at a constant rate (γ_{CaCO_3}) that is not temperature dependent.

1220 In addition to its biological cycling, dissolved iron is affected by abiotic scavenging. This is represented implicitly via a relaxation term ($K_{\text{scav}}^{\text{dFe}}$, day⁻¹) to a background dFe concentration set by an assumed concentration of ligand-bound iron (Fe_{Lig} , $\mu\text{mol m}^{-3}$), where

$$\text{Scavenging} = K_{\text{scav}}^{\text{dFe}} \cdot \max(0, \text{dFe} - \text{Fe}_{\text{Lig}}) . \quad (\text{A17})$$

dFe is also reduced to a maximum of 1 $\mu\text{mol m}^{-3}$ at the continental shelves where the sediments are less than 200 metres deep.

1225 A.2 Key equations of WOMBAT-lite

The budgets for the full set of ecosystem equations of WOMBAT-lite are as follows:

$$\frac{\partial \text{NO}_3}{\partial t} = (\gamma_d + \gamma_z + \gamma_p - \mu B_p) \left(\frac{N}{C} \right) , \quad (\text{A18})$$

$$\frac{\partial \text{dFe}}{\partial t} = \left(\gamma_d Q_d^{\frac{\text{Fe}}{C}} + \gamma_z Q_z^{\frac{\text{Fe}}{C}} + \gamma_p Q_p^{\frac{\text{Fe}}{C}} - \mu_{\text{Fe}} \right) \cdot 1000 - \text{Fe}_{\text{precip}}^{\text{dFe} \rightarrow} - \text{Fe}_{\text{scav}}^{\text{dFe} \rightarrow} - \text{Fe}_{\text{coag}}^{\text{dFe} \rightarrow B_d^{\text{Fe}}} , \quad (\text{A19})$$

$$\frac{\partial \text{O}_2}{\partial t} = (\mu B_p - \gamma_d - \gamma_z - \gamma_p) \left(\frac{\text{O}_2}{C} \right) , \quad (\text{A20})$$

$$1230 \quad \frac{\partial B_p}{\partial t} = \mu B_p - \gamma_p - \Gamma_p - g B_z \left(\frac{B_p}{B_{\text{prey}}} \right) , \quad (\text{A21})$$

$$\frac{\partial B_p^{\text{Fe}}}{\partial t} = \mu_{\text{Fe}} - \left(\gamma_p + \Gamma_p + g B_z \left(\frac{B_p}{B_{\text{prey}}} \right) \right) Q_p^{\frac{\text{Fe}}{C}} , \quad (\text{A22})$$

$$\frac{\partial B_p^{\text{Chl}}}{\partial t} = \mu_{\text{Chl}} - 12 \left(\gamma_p + \Gamma_p + g B_z \left(\frac{B_p}{B_{\text{prey}}} \right) \right) Q_p^{\frac{\text{Chl}}{C}} , \quad (\text{A23})$$

$$\frac{\partial B_z}{\partial t} = g B_z \lambda - \gamma_z - \Gamma_z , \quad (\text{A24})$$

$$\frac{\partial B_z^{\text{Fe}}}{\partial t} = g B_z \lambda \left(\frac{B_p}{B_{\text{prey}}} \right) Q_p^{\frac{\text{Fe}}{C}} + g B_z \lambda \left(\frac{\varphi_d^{\text{dFe}} B_d}{B_{\text{prey}}} \right) Q_d^{\frac{\text{Fe}}{C}} - (\gamma_z + \Gamma_z) Q_z^{\frac{\text{Fe}}{C}} , \quad (\text{A25})$$

$$1235 \quad \frac{\partial B_d}{\partial t} = \Gamma_p + \Gamma_z + gB_z(1 - \lambda) - \gamma_d - gB_z \left(\frac{\varphi_d^d B_d}{B_{prey}} \right), \quad (A26)$$

$$\frac{\partial B_d^{Fe}}{\partial t} = \Gamma_p Q_p^{Fe} + \Gamma_z Q_z^{Fe} + gB_z(1 - \lambda) \left(\frac{B_p}{B_{prey}} \right) Q_p^{Fe} + gB_z(1 - \lambda) \left(\frac{\varphi_d^d B_d}{B_{prey}} \right) Q_d^{Fe} - \left(\gamma_d + gB_z \left(\frac{\varphi_d^d B_d}{B_{prey}} \right) \right) Q_d^{Fe}, \quad (A27)$$

$$\frac{\partial B_{CaCO_3}}{\partial t} = \left(\Gamma_p + \Gamma_z + gB_z(1 - \lambda) \left(\frac{B_p}{B_{prey}} \right) \right) f_{inorg} - \gamma_{CaCO_3}, \quad (A28)$$

$$\frac{\partial DIC}{\partial t} = (\gamma_d + \gamma_z + \gamma_p - \mu B_p) - \left(\left(\Gamma_p + \Gamma_z + gB_z(1 - \lambda) \left(\frac{B_p}{B_{prey}} \right) \right) f_{inorg} - \gamma_{CaCO_3} \right), \quad (A29)$$

$$\frac{\partial Alk}{\partial t} = -(\gamma_d + \gamma_z + \gamma_p - \mu B_p) - 2 \left(\left(\Gamma_p + \Gamma_z + gB_z(1 - \lambda) \left(\frac{B_p}{B_{prey}} \right) \right) f_{inorg} - \gamma_{CaCO_3} \right). \quad (A30)$$

1240

A2.1 Phytoplankton growth

Growth of phytoplankton (B_p) is controlled by a combination of temperature, light and nutrient supply. Temperature, T ($^{\circ}C$), sets the maximum potential growth rate of phytoplankton, μ^{\max} (day^{-1}), following the Eppley curve (Eppley, 1972),

$$\mu^{\max} = \alpha_a \beta_a^{(T)}, \quad (A31)$$

1245 and where both α_a and β_a (subscript a for autotrophy) are predefined (Table 1).

A2.2 Phytoplankton growth: light limitation

Incoming shortwave radiation at the surface ($W m^{-2}$) is multiplied by 0.43 to return the photosynthetically active radiation (PAR), which is further split into three major wavelength bands associated with blue, green, and red light. Each band has

1250 unique attenuation through the water column according to the power law coefficients (χ and e) provided by Morel and Maritorena (2001) in their Table 2, which change depending on the chlorophyll concentration and implicitly account for the packaging effect of larger cells, assuming that more chlorophyll brings with it an increase in the mean community cell size.

Attenuation of blue, green and red light is increased as chlorophyll concentrations increase, but as cells grow larger they absorb less light per unit chlorophyll. We calculate the depth of the euphotic zone to be the depth at which PAR is 1% of its

1255 incident intensity, resulting in typical depths between 50 and 150 metres.

The maximum potential growth rate is multiplied by a light limitation term, L^{PAR} , to return light-limited primary production,

μ^{PAR} . L^{PAR} depends on the availability of PAR, the ratio of the euphotic depth to mixed layer depth ($\frac{z_{eup}}{z_{MLD}}$), the linear

mortality rate (γ , day⁻¹) and on the chlorophyll quota of the cell (Q^{Chl} , mg mg⁻¹). First, we solve for the initial slope of the

1260 photosynthetic-irradiance curve, PI, which is altered by Q^{Chl} such that

$$PI = PI^0 Q^{\frac{\text{Chl}}{c}}, \quad (\text{A32})$$

and where PI^0 can be altered to increase or decrease the response of phytoplankton to light. Following PI, we calculate L^{PAR} via

$$L^{\text{PAR}} = \left(1 - e^{-\frac{PI \cdot PAR}{1 + \gamma p}}\right) L^{\text{eup}}, \quad (\text{A33})$$

$$1265 \quad L^{\text{eup}} = \min\left(1, \frac{z^{\text{eup}}}{z^{\text{MLD}}}\right), \quad (\text{A34})$$

where L^{eup} is scaled down when the mixed layer is deeper than the euphotic zone, representing the disadvantageous mixing of cells into darkness due to deep mixed layers. Light limited phytoplankton growth, μ^{PAR} (units of mmol C m⁻³ day⁻¹), is then

$$\mu^{\text{PAR}} = \mu^{\text{max}} L^{\text{PAR}}. \quad (\text{A35})$$

1270

A2.3 Phytoplankton growth: nutrient limitation

The minimum of multiple nutrient limitation terms (L^{nutrient}) is then multiplied against μ^{PAR} to return the realised growth rate, μ (day⁻¹)

$$\mu = \mu^{\text{PAR}} L^{\text{nutrient}} = \mu^{\text{max}} L^{\text{PAR}} L^{\text{nutrient}}. \quad (\text{A36})$$

1275 The limitation terms include growth limitation by nitrogen (L^{N}) and dissolved iron (L^{Fe}), such that

$$L^{\text{nutrient}} = \min(L^{\text{N}}, L^{\text{Fe}}). \quad (\text{A37})$$

The nutrient limitation terms are dependent on the availability of resource, R , and the half-saturation coefficient for uptake of that resource by the phytoplankton (K_p^{R}), which itself is dependent on the biomass of phytoplankton in terms of carbon (B_p).

Initial K_p^{R} values are predefined ($K_p^{\text{R}_0}$; Table 1) but are made to vary with phytoplankton biomass. We relate the biomass

1280 concentration of phytoplankton to the mean community cell size, which then affects the half-saturation coefficients for resource uptake. Using compilations of marine phytoplankton and zooplankton communities, Wickman et al. (2024) show that the nutrient affinity, aff , of a phytoplankton cell is related to its volume, V , via

$$\text{aff} = V^{-0.57}. \quad (\text{A38})$$

Additionally, the authors demonstrate that the volume of the average phytoplankton cell is related to the density (i.e., concentration; here B_p) of phytoplankton via

$$V = B_p^{0.65} \text{ (combining panels c and f of their Figure 1), making} \quad (A39)$$

$$\text{aff} = B_p^{-0.37}. \quad (A40)$$

Finally, the affinity of phytoplankton for a given nutrient is proportional to the inverse of the half-saturation coefficient, K_p^R , such that we can relate K_p^R to the biomass concentration of phytoplankton via

$$K_p^R = K_p^{R_0} B_p^{0.37}. \quad (A41)$$

For nitrogen limitation we follow the simple Monod formulation of

$$L^N = \frac{N}{N + K_N^N}. \quad (A42)$$

For iron we follow Aumont et al. (2015), who use the Droop formulation to assign growth limitation according to the quota

model (Droop, 1983; Flynn, 2003). First, a minimum cellular iron requirement in terms of an Fe:C ratio is solved for, Q^{Fe}_{c} , dependent on chlorophyll content ($Q^{\text{chl}}_{\text{c}}$), the prescribed N:C ratio of 122:16, and nitrogen limitation terms (Flynn and Hipkin, 1999).

$$Q^{\text{Fe}}_{\text{c}} = \left(\frac{0.0016}{55.85} 12 Q^{\text{chl}}_{\text{c}} \right) + \left(1.21 \times 10^{-5} \frac{14}{55.85} \frac{N}{C} \cdot 0.5 \cdot 1.5 L^N \right) + \left(1.15 \times 10^{-4} \frac{14}{55.85} \frac{N}{C} \cdot 0.5 L^N \right). \quad (A43)$$

Limitation of growth by iron (L^{Fe}) is then calculated as the difference between the current quota (Q^{Fe}_{c}) and the minimum requirements of the cell (Q^{Fe}_{c}) divided by a predefined optimal iron quota (Q^{Fe}_{c}) assigned according to estimates from the literature (Hopkinson et al., 2013; Strzepek et al., 2012; Sunda et al., 1991; Twining et al., 2021), such that

$$L^{\text{Fe}} = \min \left(1, \max \left(0, \frac{Q^{\text{Fe}}_{\text{c}} - Q^{\text{Fe}}_{\text{c}}}{Q^{\text{Fe}}_{\text{c}}} \right) \right). \quad (A44)$$

A2.4 Phytoplankton growth: chlorophyll

Chlorophyll concentration in phytoplankton (B_p^{chl} , mg m^{-3}) is explicitly considered as a tracer in WOMBAT-lite (Eq. A23).

It has a direct influence on phytoplankton growth. The concentration of chlorophyll in the water column increases light

attenuation, affecting light availability, and the chlorophyll quota of phytoplankton ($Q^{\text{chl}}_{\text{c}} = \frac{B_p^{\text{chl}}}{B_p}$, $\text{mg Chl (mg C)}^{-1}$) influences

Deleted: (Droop, 1983; Flynn, 2003)

Deleted: (Flynn and Hipkin, 1999)

Deleted: (Hopkinson et al., 2013; Strzepek et al., 2012; Sunda et al., 1991; Twining et al., 2021)

the slope of the photosynthetic-irradiance curve, PI (Eq. A32). Also, an elevated chlorophyll quota increases the iron demand of phytoplankton (Eq. A43). Phytoplankton attempting to reduce light limitation through photoacclimation therefore have a higher iron demand.

1315 Growth of chlorophyll occurs similarly to growth of biomass carbon but with its own light limitation term, $L_{\text{Chl}}^{\text{PAR}}$, where

$$L_{\text{Chl}}^{\text{PAR}} = \left(1 - e^{-\left(\frac{\text{PI} \cdot \text{PAR}_{\text{MLD}}}{\mu_{\text{max}} (1 - L^{\text{nutrient}})} \right)} \right) L_{\text{eup}} . \quad (\text{A45})$$

Note the adjustments to $L_{\text{Chl}}^{\text{PAR}}$ (Eq. A45) relative to L^{PAR} (Eq. A33). These adjustments are responsible for photoacclimation. They increase chlorophyll accumulation in phytoplankton at depth, where there is less light, waters are cooler and where there are more nutrients, but cause chlorophyll depletion near the surface in warm oligotrophic waters.

1320 We step through why this is the case. PAR_{MLD} is the average availability of light within the mixed layer. PAR_{MLD} is therefore less than PAR near the surface, but greater than PAR towards the bottom of the mixed layer. Beneath the mixed layer $\text{PAR}_{\text{MLD}} = \text{PAR}$. That chlorophyll sees PAR_{MLD} makes light limitation of chlorophyll stronger than phytoplankton near the surface where $\text{PAR}_{\text{MLD}} < \text{PAR}$, but weaker than phytoplankton limitation at depth where $\text{PAR}_{\text{MLD}} > \text{PAR}$. Additionally, the placement of $\mu_{\text{max}} (1 - L^{\text{nutrient}})$ in the denominator decreases $L_{\text{Chl}}^{\text{PAR}}$ more so than respiration ($1 + \gamma_p$ in Eq. A33)

1325 decreases L^{PAR} for phytoplankton in warm waters (where μ_{max} is high) and in nutrient deplete waters (where $(1 - L^{\text{nutrient}})$ is high).

Growth of chlorophyll is then calculated similarly to growth of phytoplankton, where a maximum growth rate is scaled down by limitations associated with light and nutrient availability. However, chlorophyll production is affected by the minimum

1330 $(Q^{\frac{\text{Chl}}{\text{C}}})$ and optimal $(Q^{\frac{\text{Chl}}{\text{C}}})$ quotas (units mg Chl (mg C)⁻¹). Minimum and optimal chlorophyll production rates, $\mu_{\text{Chl}}^{\text{min}}$ and $\mu_{\text{Chl}}^{\text{opt}}$ (mg Chl m⁻³ day⁻¹), ensure that phytoplankton chlorophyll growth always stays within specified bounds, where

$$\mu_{\text{Chl}}^{\text{min}} = \mu B_p 12 Q^{\frac{\text{Chl}}{\text{C}}} , \quad (\text{A46})$$

$$\mu_{\text{Chl}}^{\text{opt}} = \mu B_p 12 Q^{\frac{\text{Chl}}{\text{C}}} . \quad (\text{A47})$$

Chlorophyll growth rate is then calculated as

$$1335 \mu_{\text{Chl}} = \mu_{\text{Chl}}^{\text{min}} + \frac{(\mu_{\text{Chl}}^{\text{opt}} - \mu_{\text{Chl}}^{\text{min}}) L_{\text{Chl}}^{\text{PAR}} L^{\text{nutrient}}}{\text{PI} \cdot \text{PAR}_{\text{MLD}}} , \quad (\text{A48})$$

where we include the light response in the denominator to further accelerate chlorophyll growth in low light environments and depress it in high light environments. This effectively increases or decreases the maximum quota that is attainable by a

phytoplankton cell around its optimal quota that is predefined ($Q^{chl}_{\overline{C}}$, Table 1). Losses of chlorophyll occur in the same way as losses of phytoplankton but are multiplied by the chlorophyll quota (Eq. A23).

A2.5 Phytoplankton growth: iron uptake

Like chlorophyll, the iron content of phytoplankton (B_p^{Fe} , mmol m⁻³) is explicitly tracked as a tracer in WOMBAT-lite (Eq. A22). First, an uptake rate is found dependent on the maximum quota of Fe within the phytoplankton type ($Q^{Fe}_{\overline{C}}$) and the maximum phytoplankton growth rate via

$$\mu_{Fe}^{max} = \mu^{max} B_p Q^{Fe}_{\overline{C}}. \quad (A49)$$

Following [Aumont et al. \(2015\)](#), this rate is scaled by three terms relating to (i) michaelis-menten type affinity for dFe, (ii) up-regulation of dFe uptake representing investment in transporters when cell quotas are limiting to growth, and (iii) down-regulation of dFe uptake associated with enriched cellular quotas:

Deleted: Aumont et al. (2015)

$$i. \quad \frac{dFe}{dFe + K_p^{dFe}}, \quad (A50)$$

$$ii. \quad 4 - \frac{4.5 L^{Fe}}{0.5 + L^{Fe}}, \quad (A51)$$

$$iii. \quad \max \left(0, 1 - \frac{\frac{Q^{Fe}_{\overline{C}}}{L^{Fe}}}{\text{abs} \left(1.05 - \frac{Q^{Fe}_{\overline{C}}}{L^{Fe}} \right)} \right), \quad (A52)$$

such that dFe uptake by phytoplankton is simulated as

$$\mu_{Fe} = \mu_{Fe}^{max} \cdot \left(\frac{dFe}{dFe + K_p^{dFe}} \right) \cdot \left(4 - \frac{4.5 L^{Fe}}{0.5 + L^{Fe}} \right) \cdot \max \left(0, 1 - \frac{\frac{Q^{Fe}_{\overline{C}}}{L^{Fe}}}{\text{abs} \left(1.05 - \frac{Q^{Fe}_{\overline{C}}}{L^{Fe}} \right)} \right). \quad (A53)$$

The iron to carbon ratios of phytoplankton are passed to zooplankton and detritus and are also tracked in these pools.

A2.6 Zooplankton grazing

Grazing is represented as a Holling Type III function of prey biomass ([Holling, 1959](#)). This choice assumes that at very low prey concentrations grazing is impaired by increased searching (i.e., slower clearance rate ([Gentleman and Neuheimer, 2008](#))); at moderate prey concentrations zooplankton grazing accelerates exponentially to account for their learning to feed

Deleted: (Holling, 1959)

Deleted: (Gentleman and Neuheimer, 2008)

on a growing prey source; at high prey density zooplankton handling time becomes the limiting factor (Gentleman and Neuheimer, 2008; Rohr et al., 2022). This formulation allows for greater stability in the ecosystem and elongates the phytoplankton spring bloom. The Holling Type III formulation requires two basic parameters to estimate grazing, g , in units of day^{-1} . These are the maximum grazing rate, g^{\max} (day^{-1}), and a prey capture rate coefficient, ϵ ($(\text{mmol C m}^{-3})^{-2} \text{ day}^{-1}$). The grazing formula is

$$g = \frac{g^{\max} \epsilon B_{\text{prey}}^2}{g^{\max} + \epsilon B_{\text{prey}}^2} . \quad (\text{A54})$$

Both WOMBAT-lite and legacy WOMBAT therefore use the same grazing formulation. However, an important distinction is that the maximum grazing rate, g^{\max} , is now made dependent on temperature (T , in $^{\circ}\text{C}$) according to

$$g^{\max} = g_h \beta_h^{(T)} , \quad (\text{A55})$$

where both g_h and β_h (subscript h for heterotrophy) must be predefined (Table 1). The application of g^{\max} in both the numerator and denominator make this grazing formula unique (Rohr et al., 2023) and equivalent to a disk formulation, rather than a Michaelis Menten formulation (Rohr et al., 2022). Practically, this amplifies grazing in warmer climes, but to a lesser extent than other formulations that apply the temperature amplification (i.e., $\beta_h^{(T)}$) only in the numerator of Eq. A54 (Rohr et al., 2023). This dampens the effect that variations in temperature have on grazing activity, amplifying the effect of ϵ , and aligning with observations that the ratio of grazing to phytoplankton growth varies little between tropical and polar climes (Calbet and Landry, 2004). Theoretically, this assumes some evolutionary adaptation to account for the physiological effects of temperature across environmental niches, such that the efficiency of prey capture and handling become more important to grazers than metabolic constraints due to temperature.

Both phytoplankton (B_p) and detritus (B_d) contribute to the available prey biomass (B_{prey}), scaled by the preference of zooplankton for these prey types (φ_z^p, φ_z^d ; Table 1), such that

$$B_{\text{prey}} = \varphi_z^p B_p + \varphi_z^d B_d . \quad (\text{A56})$$

Finally, an assimilation efficiency, λ , controls how efficiently prey biomass is ingested by the grazer, with the 25% of remainder being lost to the environment as detritus (i.e., sloppy feeding) and 75% as inorganic nutrients (i.e., excretion). For our experiments, λ is set to 0.6 to align with measurements of gross growth efficiency from the literature (Anderson et al., 2021b), such that sloppy feeding is 10% and excretion is 30% of what is grazed. Variations in gross growth efficiency and excretion associated with food quality and quantity (Anderson et al., 2021b) will be considered in a future version of WOMBAT-lite.

Deleted: (Gentleman and Neuheimer, 2008; Rohr et al., 2022)

Deleted: (Rohr et al., 2023)

Deleted: (Rohr et al., 2022)

Deleted: (Rohr et al., 2023)

Deleted: (Calbet and Landry, 2004)

A2.7 Non-grazing losses of biomass

Phytoplankton, zooplankton and organic detrital functional types are affected by both linear (γ_p and γ_z) and quadratic (Γ_p and Γ_z) mortality coefficients. These terms are of the form

$$\gamma = \gamma^0 \beta_h^{(T)} B, \text{ and} \quad (\text{A57})$$

$$\Gamma = \Gamma^0 B^2, \quad (\text{A58})$$

Where γ^0 and Γ^0 are predefined (Table 1) and are different for different biomass pools (i.e., $\gamma_p^0 \neq \gamma_z^0 \neq \gamma_d^0$), and $\beta_h^{(T)}$ is a temperature-dependent amplifier for heterotrophic processes (Table 1). The linear mortality term for phytoplankton emulates thermally dependent losses of biomass that escalate as a greater proportion of the phytoplankton community is pushed above their thermal niche (Baker and Geider, 2021). These losses are also associated with increased respiration and efflux, for instance of exopolymers (Bar-Zeev et al., 2013; Thornton, 2014), that route biomass to the inorganic nutrient pool. The quadratic mortality term emulates density-dependent losses of phytoplankton biomass that are not accounted for by grazing, for instance due to viral lysis (Brussaard et al., 2008; Suttle, 1994), and is not thermally dependent but density dependent.

These quadratic losses are routed to sinking detritus.

Linear mortality for zooplankton represents rates of respiration (i.e., losses to inorganic nutrients) that are thermally dependent due to metabolism scaling positively with temperature (Ikeda, 1985; Ikeda et al., 2001), while the quadratic mortality closure term represents density-dependent predation by higher trophic levels not included in the model. As for phytoplankton, linear and quadratic loss terms are routed to inorganic nutrients and sinking detritus, respectively. For zooplankton, the linear losses associated with respiration are reduced by a Michaelis-Menten function of zooplankton biomass,

$$\gamma_z = \gamma_z^0 B_z \left(\frac{B_z}{B_z + K_z} \right), \quad (\text{A59})$$

such that in environments with little zooplankton their losses are reduced. This additional term ensures more stable population dynamics of zooplankton, and ecologically, mimics the greater prevalence of gelatinous zooplankton (tunicates, ctenophores, cnidarians, etc.) in oligotrophic regions with lower metabolic demands.

Detritus undergoes remineralisation at a rate that is linearly dependent on the concentration of detritus (Eq. A57). There are no quadratic losses (Eq. A58; i.e., no explicit variations in bacterial biomass are considered) but remineralisation rates are halved beneath 200 metres depth to account implicitly for more intense heterotrophic bacterial activity in the upper ocean.

A2.8 Sinking detritus

One sinking detrital pool B_d is considered. One quarter of the prey that is not assimilated into zooplankton biomass (i.e. sloppy feeding) and the product of quadratic mortality of both phytoplankton ($\Gamma_p B_p^2$) and zooplankton ($\Gamma_z B_z^2$) are routed to this detrital pool. Since we only account for one detrital pool, we consider that base sinking rates of this detritus (ω^0 , metres day⁻¹) are varied as a function of phytoplankton concentration (in a similar fashion to half-saturation coefficients described earlier). This approach is to emulate observations of varying sinking speeds (Riley et al., 2012) and that such variations may be strongly dependent on phytoplankton community composition (Bach et al., 2016).

In accordance with a more general Navier-Stokes drag equation and using a compilation of particle sinking speeds, Cael et al. (2021b) identified that the sinking velocity of particles (ω , meters per day) is proportional to their diameter raised to the power of roughly 0.63, such that

$$\omega \propto d^{0.63} . \quad (A60)$$

Knowing that $d = \left(\frac{6V}{\pi}\right)^{\frac{1}{3}}$ and given that the average volume of phytoplankton cells can be approximated by $V = B_p^{0.65}$ (Wickman et al., 2024), we can relate ω to the biomass concentration of phytoplankton multiplied by the scaler ω^0 :

$$\omega = \omega^0 (B_p)^{0.21} . \quad (A61)$$

This formula is identical to that presented by Cael et al. (2021b) in their Eq. 3, with the exception that we have related sinking rates to the biomass concentration of phytoplankton (B_p) by assuming that $V = B_p^{0.65}$ (Eq. A26) based on marine phytoplankton data (Wickman et al., 2024).

Deleted: (Wickman et al., 2024)

However, phytoplankton concentrations are negligible beneath the euphotic zone. Using in situ B_p would therefore result in negligible sinking speeds throughout most of the dark ocean. To address this, we use B_p in the upper-most grid cell ($k=1$) within Eq. A61 ($B_p^{k=1}$). This assumes that the sinking velocities of marine aggregates can be related to phytoplankton community composition (Bach et al., 2016; Iversen and Lampitt, 2020), which varies more horizontally across the ocean than vertically. Moreover, because we do not include dissolved/suspended organic matter as a tracer in WOMBAT-lite, we must also account for the large fraction of organics that are suspended and thus neutrally buoyant in the gyres. As such, we vary Eq. A61 to include a phytoplankton biomass threshold (B_p^{thresh} , in mmol C m⁻³) above which sinking accelerates and beneath which any produced detritus emulates dissolved (neutrally buoyant) organic matter:

$$\omega = \omega^0 \cdot \max(0.0, B_p^{k=1} - B_p^{\text{thresh}})^{0.21} . \quad (A62)$$

Deleted: (Bach et al., 2016; Iversen and Lampitt, 2020)

Finally, we apply a linear increase to sinking speeds with depth to ensure that the trend in the concentration of detritus with depth exhibits a power-law behaviour, which is widely observed (Berelson, 2001; Martin et al., 1987), thought to be associated with a greater attenuation of slower sinking particles, and shows better performance than a constant sinking rate in models (Tjiputra et al., 2020). This is applied after Eq. A62 as

$$\omega = \omega + \max\left(0.0, \frac{\text{depth}}{5000} \cdot (\omega^{\max} - \omega)\right). \quad (\text{A63})$$

A2.9 Sinking CaCO₃

No changes have been made to CaCO₃ dynamics in WOMBAT-lite, except for permanent burial in the sediments (see section A.2.11) and changes to the parameter values (Table 1). Calcium carbonate (CaCO₃) is produced alongside organic detritus but scaled according to the CaCO₃ to organic detritus ratio, $R_{\text{CaCO}_3}^{\text{detritus}}$. It sinks at a predefined rate of 6 metres per day ($\omega_{\text{CaCO}_3}^0$) and dissolves at a temperature-independent rate of 0.01 day⁻¹ ($r_{\text{CaCO}_3}^0$).

A2.10 Iron cycling outside the ecosystem component

Treatment of dissolved iron (dFe, $\mu\text{mol m}^{-3}$) follows Aumont et al. (2015). Equilibrium concentrations of ligand-bound dissolved iron (Fe_{Lig} , $\mu\text{mol m}^{-3}$) and free iron (Fe' , $\mu\text{mol m}^{-3}$) are estimated using the concentration of ligand (Lig, $\mu\text{mol m}^{-3}$) and an equilibrium constant ($K_{\text{eq}}^{\text{Fe}}$, $\mu\text{mol m}^{-3}$) dependent on temperature in degrees Kelvin ($T_K = T + 273.15$)

$$K_{\text{eq}}^{\text{Fe}} = 10^{17.27 - \frac{1565.7}{T_K}} \cdot 1 \times 10^{-9}, \quad (\text{A64})$$

$$\text{Fe}_x = 1 + K_{\text{eq}}^{\text{Fe}} \text{Lig} - K_{\text{eq}}^{\text{Fe}} \text{dFe}, \quad (\text{A65})$$

$$\text{Fe}' = \frac{-\text{Fe}_x + \sqrt{(\text{Fe}_x)^2 + 4K_{\text{eq}}^{\text{Fe}} \text{dFe}}}{2K_{\text{eq}}^{\text{Fe}}}. \quad (\text{A66})$$

Ligand-bound dissolved iron is then the difference between total dissolved iron in seawater and free iron

$$\text{Fe}_{\text{Lig}} = \text{dFe} - \text{Fe}'. \quad (\text{A67})$$

Following the equilibrium partitioning of dFe into Fe' and Fe_{Lig} , we estimate losses of dFe due to precipitation, scavenging and coagulation. These processes work to increase the quota of iron within the detritus as it sinks deeper, emulating observations of increased iron content of particulates with increasing depth (Bressac et al., 2019).

Deleted: (Berelson, 2001; Martin et al., 1987)

Deleted: (Tjiputra et al., 2020)

Deleted: Aumont et al. (2015)

Deleted: (Bressac et al., 2019)

Precipitation of Fe' onto nanoparticles ($\text{Fe}_{\text{precip}}^{\text{dFe} \rightarrow}$), which represents a permanent loss of dFe from the model domain (hence the superscript $\text{dFe} \rightarrow$), occurs when the concentration of Fe' is in excess of the solubility of Fe(III) in solution, $\text{Fe}_{\text{sol}}^{\text{(III)}}$.

This solubility is calculated using experimentally derived coefficients ($c_{1-5}^{\text{Fe(III)}}$) dependent on temperature, T_K (°K), salinity, sal (psu), and pH:

$$\text{sal}_x = \frac{19.924 \text{ sal}}{1000 - 1.005 \text{ sal}}, \quad (\text{A68})$$

$$c_1^{\text{Fe(III)}} = 10^{-13.486 - 0.1856 \sqrt{\text{sal}_x} + 0.3073 \text{sal}_x + \frac{5254}{T_K}}, \quad (\text{A69})$$

$$c_2^{\text{Fe(III)}} = 10^{2.517 - 0.8885 \sqrt{\text{sal}_x} + 0.2139 \text{sal}_x + \frac{1320}{T_K}}, \quad (\text{A70})$$

$$c_3^{\text{Fe(III)}} = 10^{0.4511 - 0.3305 \sqrt{\text{sal}_x} - \frac{1996}{T_K}}, \quad (\text{A71})$$

$$c_4^{\text{Fe(III)}} = 10^{-0.2965 - 0.7881 \sqrt{\text{sal}_x} - \frac{4086}{T_K}}, \quad (\text{A72})$$

$$c_5^{\text{Fe(III)}} = 10^{4.4466 - 0.8505 \sqrt{\text{sal}_x} - \frac{7980}{T_K}}, \quad (\text{A73})$$

$$\text{Fe}_{\text{sol}}^{\text{(III)}} = c_1^{\text{Fe(III)}} \left(\text{pH}^3 + c_2^{\text{Fe(III)}} \text{pH}^2 + c_3^{\text{Fe(III)}} \text{pH} + c_4^{\text{Fe(III)}} + \frac{c_5^{\text{Fe(III)}}}{\text{pH}} \right). \quad (\text{A74})$$

Precipitation of nanoparticles is then estimated as that in excess of solubility, multiplied by a parameterised rate, $K_{\text{nanop}}^{\text{Fe}}$ (day^{-1}), via:

$$\text{Fe}_{\text{precip}}^{\text{dFe} \rightarrow} = \max(0, \text{Fe}' - \text{Fe}_{\text{sol}}^{\text{(III)}}) K_{\text{nanop}}^{\text{Fe}}. \quad (\text{A75})$$

Scavenging of Fe' onto particles ($\text{Fe}_{\text{scav}}^{\text{dFe} \rightarrow}$) is linearly dependent on the concentration of particles in solution, which we estimate roughly as the sum of detrital carbon and calcium carbonate:

$$\text{particles} = B_d + B_{\text{CaCO}_3}. \quad (\text{A76})$$

Scavenging then occurs at a parameterised rate controlled by $K_{\text{scav}}^{\text{Fe}}$ ($(\text{mmol C m}^{-3})^{-1} \text{ day}^{-1}$) via

$$\text{Fe}_{\text{scav}}^{\text{dFe} \rightarrow} = \text{Fe}' (3 \times 10^{-5} + K_{\text{scav}}^{\text{dFe}} \text{particles}). \quad (\text{A77})$$

$\text{Fe}_{\text{scav}}^{\text{dFe} \rightarrow}$ represents the total scavenging rate of Fe' , which is subtracted from the dFe pool. However, the proportion of scavenging due to detrital particles ($\text{Fe}_{\text{scav}}^{\text{dFe} \rightarrow B_d^{\text{Fe}}}$) is apportioned to detrital iron (B_d^{Fe}) according to the proportion of B_d in the total mass of particles.

Coagulation of colloidal iron, which represents a transfer of dissolved iron to detrital iron, is estimated as linearly dependent on the concentration of detrital organic carbon. First, we assume that half of all Fe_{Lig} is colloidal, where

$$\text{Fe}_{\text{coll}} = \frac{\text{Fe}_{\text{Lig}}}{2}. \quad (\text{A78})$$

The concentration of colloidal iron is multiplied by the coagulation rate, $K_{\text{coag}}^{\text{Fe}}$ ((mmol C m⁻³)⁻¹ day⁻¹) and the concentration of detrital carbon to control the transfer of Fe_{coll} to the detrital iron pool (B_d^{Fe}):

$$\text{Fe}_{\text{coag}}^{\text{dFe} \rightarrow \text{B}_d^{\text{Fe}}} = \text{Fe}_{\text{coll}} (0.001 + \text{B}_d K_{\text{coag}}^{\text{Fe}}). \quad (\text{A79})$$

Colloidal aggregation rates are scaled down by a factor of 100 beneath the mixed layer to reflect a reduction in encounter rates associated with reduced mixing.

Finally, we elevate scavenging in waters close to the coasts, specifically in waters shallower than 200 metres, by setting dFe to a maximum of 1.0 $\mu\text{mol m}^{-3}$ in these environments. Precipitation, scavenging and colloidal coagulation rate constants are described in Table 1.

A2.11 Boundary fluxes

WOMBAT-lite has been updated to include boundary fluxes from rivers, hydrothermal vents and burial in the sediments.

Riverine fluxes are annually repeating climatologies of dissolved inorganic carbon (DIC), alkalinity and nitrate. For nitrate, the flux is based on GLOBAL-NEWS2 (Mayorga et al., 2010) and combines their estimates of inorganic and organic nitrogen loads at a total of 35.8 Tg N yr⁻¹. For DIC the fluxes are based on Ludwig et al. (1996) and amount to a total of

0.587 Pg DIC yr⁻¹. Alkalinity is added at a rate of 0.216 Pg C equivalents yr⁻¹ to correct for a long-term positive trend in global alkalinity. Hydrothermal fluxes include constant release of dissolved iron to the ocean at a rate of 9.9 Gmol Fe yr⁻¹

(Tagliabue et al., 2014a). The iron cycle in legacy WOMBAT already includes a monthly climatology of atmospheric flux of dissolved iron from Mahowald et al. (2005) at a rate of 1.1 Gmol Fe yr⁻¹, and this has not been updated in this version.

We consider burial of detrital organic carbon, nitrogen, iron and CaCO₃. The fraction of incoming organic matter (C, N and Fe) and inorganic matter (CaCO₃) that is permanently buried in the sediments (f_{bury}) and therefore removed from the model domain is computed according to the metamodel of Dunne et al. (2007), where

$$f_{\text{bury}} = 0.013 + 0.53 * \frac{(F_{\text{org}})^2}{(7 + F_{\text{org}})^2}. \quad (\text{A80})$$

Here, F_{org} is the flux of detrital organic carbon to the sediments in units of mmol C m⁻² day⁻¹. The fraction of organic and

inorganic matter that is not buried is routed to a labile sedimentary pool, which is acted upon by remineralisation/dissolution at each timestep. Sedimentary pools of iron and calcium carbonate are tracked explicitly, such that the

Deleted: (Mayorga et al., 2010)

Deleted: Ludwig et al. (1996)

Deleted: (Tagliabue et al., 2014a)

Deleted: Mahowald et al. (2005)

remineralisation/dissolution of this material to the overlying water occurs at ratios with detrital organic carbon and nitrogen that differ spatially and temporally. The remineralisation of sedimentary detrital organic carbon, nitrogen, iron and calcium carbonate is computed according to temperature via Eq. A51, with the exception that the α_n terms scaling the rate of remineralisation are equal to 0.02 day^{-1} and 0.0035 day^{-1} for organics (C, N and Fe) and inorganics (CaCO_3), respectively.

1550

A fraction of the sedimentary organic matter is remineralised anaerobically, specifically via denitrification. We compute this fraction (f_{denit}) using the metamodel of Middelburg et al. (1996), where

$$f_{\text{denit}}^{\text{log}} = -2.2567 - 1.185 \log_{10}(F_{\text{org}}) - 0.221(\log_{10}(F_{\text{org}}))^2 - 0.3995 \log_{10}(\text{NO}_3^-) \log_{10}(\text{O}_2) + 2 \log_{10}(\text{NO}_3^-) + 0.04721 \log_{10}(\text{O}_2) - 0.0996 \log_{10}(z) + 0.4256 \log_{10}(F_{\text{org}}) \log_{10}(\text{O}_2), \quad (\text{A81})$$

1555 $f_{\text{denit}} = 10^{f_{\text{denit}}^{\text{log}}} \cdot \frac{\text{NO}_3^-}{\text{NO}_3^- + 1}, \quad (\text{A82})$

$$\text{denitrification} = f_{\text{denit}} \left(\frac{94.4}{122} \right). \quad (\text{A83})$$

Here, NO_3^- is the concentration of nitrate in mmol m^{-3} , O_2 is the concentration of oxygen in mmol m^{-3} and z is the depth in metres. Eq. A82 differs slightly from that of Middelburg et al. (1996) in that we accelerate sedimentary denitrification when
1560 nitrate concentrations are high by scaling by 2 instead of 1.25 in the 5th term. Eq. A84 includes the theoretical stoichiometry of the denitrification nitrate demand of 94.4/122 (Paulmier et al., 2009). To ensure balance in the nitrogen cycle, we track the total rate of denitrification at each timestep and add this evenly to surface waters. This proxy for nitrogen fixation will be updated in future versions to account for environmental conditions favourable for diazotrophs, ensuring a more realistic distribution. When nitrate is consumed or added to the ocean model via denitrification and nitrogen fixation, respectively, we
1565 add and remove alkalinity in equal measure.

Appendix B

B.1 Interior tracer distributions

One hundred years of simulation is sufficient to understand the impacts of WOMBAT-lite on the distributions of key tracers at mesopelagic depths. Distributions of nitrate, dissolved iron, oxygen, dissolved inorganic carbon (DIC) and alkalinity at
1570 500 metres depth are shown in Figure S5. Nitrate, DIC and alkalinity all show accumulation in the eastern Pacific that is well in excess of the observations, and coincident severe oxygen depletion in this region. Despite this and other biases, WOMBAT-lite shows some slight improvements in the distribution of these tracers within the mesopelagic. Oxygen is slightly more depleted in the subarctic North Pacific in WOMBAT-lite consistent with the observations. Alkalinity distributions in WOMBAT-lite show less bias compared with legacy WOMBAT, although the North Atlantic and Indian
1575 Oceans still have too much alkalinity compared with the observations. The biggest change has been to the iron cycle, which

now shows less uniform interior distributions. Concentrations of dFe are highest in the tropics and subarctic North Pacific and this is consistent with the broad patterns observed (Huang et al., 2022). However, there is too much dFe in the mesopelagic of WOMBAT-lite, meaning that the ferricline is placed too shallow. This bias is most important in the Southern Ocean, where concentrations of dFe should be low even at 500 metres but instead are too high in WOMBAT-lite. Despite overestimating dFe in the mesopelagic Southern Ocean, primary production in the Southern Ocean is still dominantly limited by iron during the spring and summer (Fig. 8t). This suggests that future versions of WOMBAT-lite may benefit from elevating the iron scavenging term on particles to help strip out the excess dFe in the interior.