

# Ice/firn age distribution on the Elbrus Western Plateau (Caucasus) inferred from ice flow model

Gleb Chernyakov<sup>1</sup>, Nelly Elagina<sup>1</sup>, Taisiia Kiseleva<sup>1</sup>, and Stanislav Kutuzov<sup>2,3</sup>

<sup>1</sup>Department of Glaciology, Institute of Geography, Russian Academy of Sciences, Moscow, Russia

<sup>2</sup>Byrd Polar and Climate Research Center, The Ohio State University, Columbus, OH, USA

<sup>3</sup>School of Earth Sciences, The Ohio State University, Columbus, OH, USA

**Correspondence:** Gleb Chernyakov (glchern@igras.ru)

**Abstract.** The glaciers of Mount Elbrus (Caucasus) contain paleoclimatic and paleoenvironmental information representative of a vast region. ~~The cold conditions and negligible~~ Negligible seasonal melting in the near-summit area of Elbrus ~~ensure the ensures~~ excellent preservation of climatic signals. In 2009, a 182.65 meter long ice core was obtained from the glacier on the near-summit Western Plateau (WP) of Elbrus ~~at approximately 5100 m a. s.l. This core was partially dated using chemical~~ stratigraphy (upper part) and radiocarbon dating (basal samples), serving as the basis for numerous paleoreconstructions. However, ~~the ice age distribution within the intermediate part.~~ The upper part and basal samples of the core ~~and across the entire glacier on the WP remained unknown~~ were dated. In this work, a three-dimensional ~~steady-state full (3D) steady state thermomechanically coupled~~ Stokes flow model for a cold glacier with a rheological law accounting for firn densification ~~was applied both in a purely mechanical and in a thermomechanically coupled versions. Using this model, the ice velocity field was simulated,~~ calibrated based on the ice core dating, was applied to model the velocity field and the corresponding distribution of the age of the ice in the central part of the WP. ~~Ice age distribution was determined by solving a boundary value problem for the dating equation. All calculations were performed using~~ We performed multiple model runs, varying boundary conditions (BCs), ice viscosity, and the inclusion of thermomechanical coupling. The Elmer/Ice ~~, a finite element software designed for ice dynamics modeling software was used for numerical simulation.~~ The model ~~was calibrated by fitting the simulated age-depth relationship to the observed data from the ice core, with ice viscosity used as the primary calibration parameter. This approach provided a series of three-dimensional ice age distributions on the WP for various modeling scenarios. All versions of the model accurately reproduce the ice~~ quite accurately reproduces the age of the ice according to ice core data to a depth of ~~140–150 m (130–180~~ 165 m (up to 243 years). Below ~~150 m, the ice age,~~ the age of the ice increases sharply and the ~~dating discrepancies~~ discrepancies in dating between different modeling scenarios become larger. Overall ~~the modelled, the simulated~~ ages fell within 68.2 % confidence intervals ~~of the radiocarbon dated for the ages of~~ near-bottom ice samples ~~which indicated mean radiocarbon ages ranging from 1 to 2 ka. However, the model was unable to resolve the dating of the basal ice layer up to~~ (mean radiocarbon age 1–2 ka). The model is not applicable for dating the lowermost ice layer (3–4 m thick). Future model improvements should focus on ~~refining basal conditions, including~~ accounting for potential melting ~~and~~ identifying areas containing the oldest ice.

## 1 Introduction

The glaciers of Mt. Elbrus offer a unique paleoclimate archive ~~representative of~~ that traces signals from a large region, including the North Caucasus, the Black Sea region, Southeastern Europe, North Africa, and the Middle East (~~Mikhailenko et al., 2024; Kutuzov et al., 2019a~~); (Mikhailenko et al., 2024; Kutuzov et al., 2019a). The cold conditions (10 m depth temperature of  $-17.3$  °C) and negligible seasonal melting in the near-summit region of Elbrus ensure the preservation of climatic and environmental signals in ice cores (~~Mikhailenko et al., 2015~~); (Mikhailenko et al., 2015).

The Elbrus Western Plateau (WP) has been the subject of ice core studies since 2004 (~~Mikhailenko et al., 2005~~); (Mikhailenko et al., 2005). Glaciochemical investigations of a deep ice core (182.65 m long – from the glacier surface to solid rock) drilled in 2009 include reconstructions of past anthropogenic sulfur emissions (~~Preunkert et al., 2019~~); black carbon (~~Lim et al., 2017~~); dust events (~~Kutuzov et al., 2013; Kutuzov et al., 2019a~~); ammonia (~~Legrand et al., 2024a~~); (Preunkert et al., 2019); black carbon (Lim et al., 2017); dust events (Kutuzov et al., 2013, 2019a); ammonia (Legrand et al., 2025); dissolved organic carbon (~~Legrand et al., 2024b~~); (Legrand et al., 2024); polycyclic aromatic hydrocarbons (~~Vecchiato et al., 2020~~); isotopic composition (~~Kozachek et al., 2017~~); (Vecchiato et al., 2020); isotopic composition (Kozachek et al., 2017); and snow accumulation (~~Mikhailenko et al., 2024~~); (Mikhailenko et al., 2024).

Relatively high annual accumulation (1.2 m w.e.) ensures the preservation of the seasonal cycle in geochemistry down to a depth of 168.6 m (131.6 m w.e.) in the ice core. This section was dated by annual layer counting, primarily using pronounced seasonal variations in ammonium and succinate concentrations (~~Preunkert et al., 2019~~); (Preunkert et al., 2019). According to an estimate based on a two-dimensional (2D) analytical model (~~Salamatin et al., 2000~~); (Salamatin et al., 2000), the age of the ~~basal~~ ice at the bottom of the drilling site does not exceed 350–400 years ~~; while and~~ the age of the ~~deepest ice~~ basal ice in the deepest part of the glacier (more than 250 m deep) is about 660 years (~~Mikhailenko et al., 2015~~); (Mikhailenko et al., 2015). Radiocarbon dating indicates that bottom ice samples from a depth of 176.89–182.15 m are between 1 and 2 ka old (~~Preunkert et al., 2019~~); (Preunkert et al., 2019). Detailed ground-penetrating radar (GPR) surveys (~~Lavrentiev et al., 2010; Kutuzov et al., 2019b~~); (Lavrentiev et al., 2010; Kutuzov et al., 2019b) revealed that the glacier ice at the WP site fills an ancient volcanic crater, resulting in specific morphological conditions (a large aspect ratio) and thermodynamic conditions (a high geothermal heat flux). More recently, the ice flow modeling was performed for the WP using a three-dimensional (3D) ~~full~~ Stokes ice flow model using only dynamical equations to account for the upstream effect in ~~accumulation record~~ (~~Mikhailenko et al., 2024~~); (the accumulation record (Mikhailenko et al., 2024)). Despite significant progress in glaciological investigations of this site, several important questions remain unresolved, including the spatial ~~ice age distribution~~ distribution of the age of the ice.

The objectives of this study are to determine the spatial distribution of the ice/firn age at the WP and, in particular, to reconstruct the age of the intermediate section of the 2009 core, which had not previously been dated by other methods. We apply a thermomechanically coupled 3D flow model of the present-day glacier, based on the finite element modeling software

Elmer/Ice (~~Gagliardini et al., 2013~~), ([Gagliardini et al., 2013](#)), which solves 3D ~~full~~ Stokes equations for a nonlinear viscous fluid with the firm rheological law (~~Gagliardini and Meyssonier, 1997~~) of Gagliardini and Meyssonier (1997).

Ice flow models have been repeatedly used to study the age distribution of ice in mountain glaciers and, in particular, ice cores. [Dating models have undergone a natural evolution - from 2D purely mechanical \(Vincent et al., 1997\) analytical solutions to 3D numerical approaches that take into account the mutual influence of mechanical and thermal processes. The main stages of this development appear to us as follows. 2D purely mechanical \(Vincent et al., 1997\) and thermomechanically coupled \(Salamat et al., 2000; Shiraiwa et al., 2001\) \(Salamat et al., 2000; Shiraiwa et al., 2001\) analytical models were developed and applied for modeling age–depth relations in ice at Mt. Dôme du Goûter \(Mont ~~Blank~~ Blanc, French Alps\) and at Ushkovsky Volcano \(Kamchatka Peninsula\), respectively. \(Gagliardini and Meyssonier, 1997\) Gagliardini and Meyssonier \(1997\) adapted the rheological law of \(~~Duva and Crow, 1994~~\) Duva and Crow \(1994\) for a cold glacier with a thick firm layer and implemented it in a 2D dynamical finite element model for Dôme du Goûter. Further, the firm rheological law of \(~~Gagliardini and Meyssonier, 1997~~\) Gagliardini and Meyssonier \(1997\) was applied in 2D and 3D finite element models for Colle Gnifetti glacier saddle \(Monte Rosa, Swiss/Italian Alps\) in the work \(~~Lüthi and Funk, 2000~~\). In \(~~Zwinger et al., 2007~~\) a of Lüthi and Funk \(2000\). Zwinger et al. \(2007\) modified the rheological relations of Gagliardini and Meyssonier \(1997\) for 3D thermomechanically coupled ~~full~~ Stokes flow model with firm rheology for a crater glacier at Ushkovsky Volcano. Konrad et al. \(2013\) used a semi-analytical 2D flow model with Glen’s rheology in combination with the data of ice core and ~~ground-penetrating radar~~ GPR for determining the age distribution of Colle Gnifetti. \(~~Liciulli et al., 2020~~\) Gilbert et al. \(2014\) performed a simulation of firm age for the Col du Dôme glacier \(Mont Blanc area\) to validate their 3D thermomechanically coupled transient model, including the firm densification process, developed for modeling the thermal regime of polythermal mountain glaciers and implemented in Elmer/Ice. Liciulli et al. \(2020\) applied a 3D ~~full~~ Stokes thermomechanically coupled model with firm rheology implemented in Elmer/Ice to interpret ice core data at Colle Gnifetti and included this model to a more general transient simulation scheme.](#)

## 2 Study area

The ~~glacier-glaciated~~ area of Mt. Elbrus is around 112 km<sup>2</sup>. Glaciers cover an altitudinal range from 2680 to 5642 m a.s.l. ~~with the 0 ° isotherm at around~~ Above 5200 m a.s.l. [temperature stays negative throughout a year and no melting occurs \(Mikhaleenko et al., 2020\)](#). Elbrus glaciers are currently losing mass ( $-0.55 \pm 0.04$  m w.e. a<sup>-1</sup>). The rate of Elbrus glacier mass loss tripled in 1997–2017 compared with the 1957–1997 period (~~Kutuzov et al., 2019b~~). ([Kutuzov et al., 2019b](#)). The ice cores used for climate and environment reconstructions were recovered at the WP at 5115 m a.s.l. (~~Mikhaleenko et al., 2020~~). ([Mikhaleenko et al., 2020](#)). A 182.65 m ice core was recovered at the WP at a point with coordinates 43°20′53.9″ N and 42°25′36.0″ E in August–September 2009. The WP which covers approximately 0.5 km<sup>2</sup>, is bordered by lava ridges to the south and southeast, and a vertical wall of ~~Mount~~ Mt. Elbrus to the east (Fig. 1). The results of a series of ground-based radar surveys at a frequency of 20 MHz in 2005, 2007, and 2017 show a significant ice thickness and a crater shape of the underlying

90 bedrock. The maximum depth is  $255 \pm 8$  m at the central part of the plateau, with minimum values of about 60 m near the edge. The GPR survey used in this study was conducted in July 2017. The ice thickness map was completed using empirical Bayesian kriging interpolation (Kutuzov et al., 2019b). The 10 m depth temperature is  $-17.3$  °C (Mikhaleiko et al., 2015). (Mikhaleiko et al., 2015). A series of field measurement campaigns were conducted on the WP in 2004–2018, including the detailed low and high frequency GPR surveys, snow accumulation distribution measurements, meteorological measurements, snow pits and ice cores from several shallow and ~~two-three~~ deep (182.65~~and 150.~~ 150.3, and 119.8 m) boreholes (Mikhaleiko et al., 2020). (Mikhaleiko et al., 2020). For the information about topography, we used the Pléiades ~~DEM digital elevation model (DEM) from 8 September 2017~~ with the vertical uncertainty between  $\pm 0.5$  m and  $\pm 1$  m (Kutuzov et al., 2019b). ~~The Pléiades DEM used in this study was provided by the Pléiades Glacier Observatory initiative of the French Space Agency (CNES) (Kutuzov et al., 2019b). The map of the subglacial relief of the WP was constructed as the difference between the~~ elevation marks of the glacier surface according to the DEM and the data on the ice thickness (Mikhaleiko et al., 2020).

### 3 Research data

To model the flow and determine the age of ice/firn in the WP glacier, we used the following data:

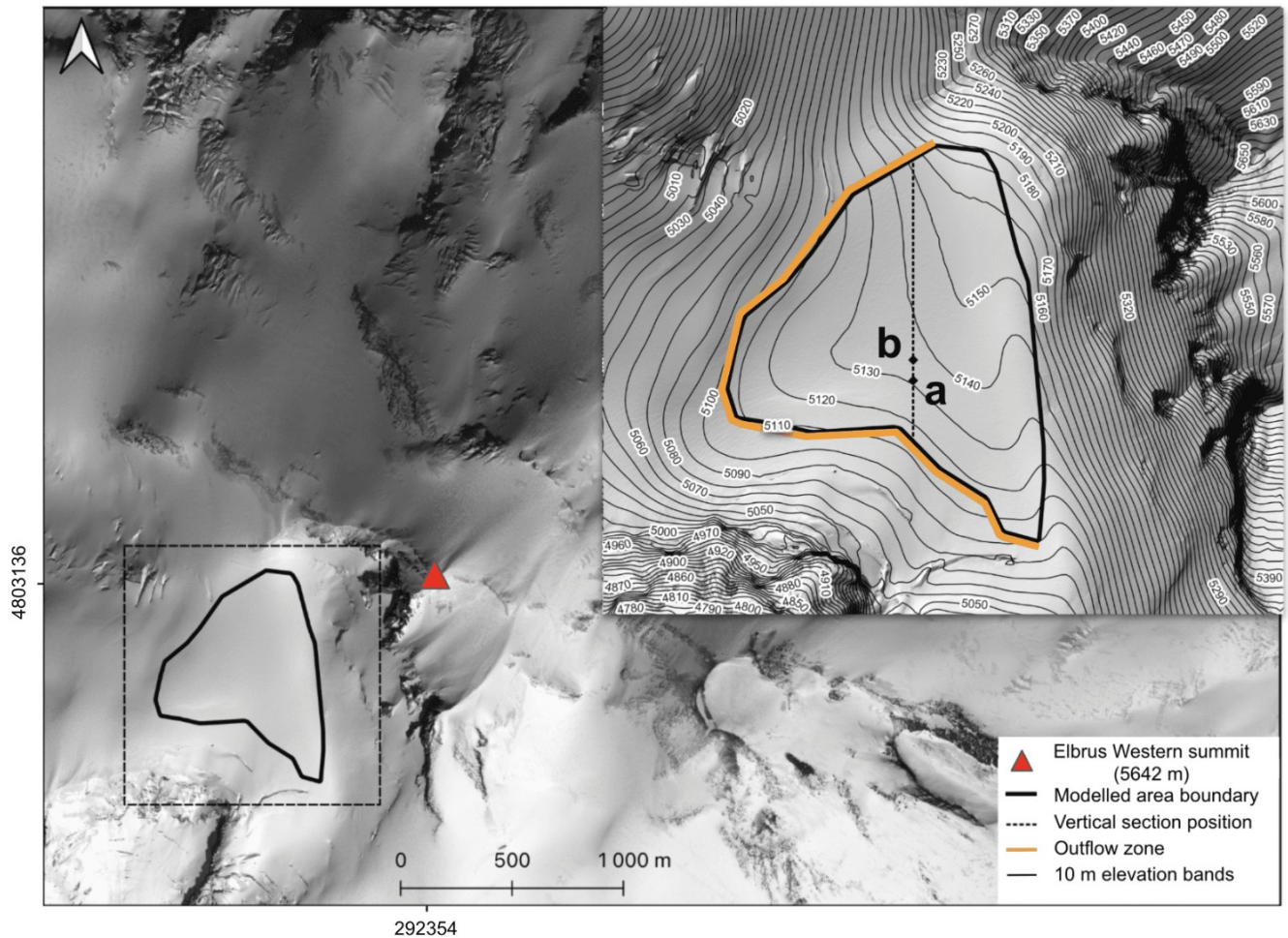
1. ~~Digital elevation models (DEMs)~~ DEMs of the glacier surface and bedrock with a cell size of  $10 \times 10$  m, ~~obtained in 2017 based on radar surveys.~~ both obtained in 2017.
- 105 2. Temperature distribution in a deep-drilling borehole obtained from measurements in 2009.
3. Ice/firn density distribution in the 2009 deep ice core.
4. Ice/firn age distribution in the 2009 ice core with a resolution of about one year, obtained by laboratory methods (upper 168.6 m).
5. Interval age estimates of basal ice samples obtained by the radiocarbon method (lower 5.8 m).

### 110 4 Spatial structure

Ice/firn flow modeling with subsequent dating was performed in a 3D domain (Fig. 2) ~~covering a~~ The domain is limited by that part of the glacier on the WP, for which DEMs (2017) of both the surface and the bed are available. The computational domain is ~~limited~~ bounded by three surfaces: a part of the glacier surface; the lateral surface of the domain (the vertical "wall"); a part of the glacier base.

115 ~~A flat computational grid (footprint) was created within the contour (shown in Fig. 1) of the area of the WP covered with DEMs. It contains 2508 nodes, 4734 linear triangular elements, and 280 linear one-dimensional elements on the boundary.~~

~~The volumetric computational grid was obtained by vertical extrusion of the flat grid. It is regular in the vertical direction (50 node levels) and characterized by a linear refinement of the step towards the glacier bed.~~

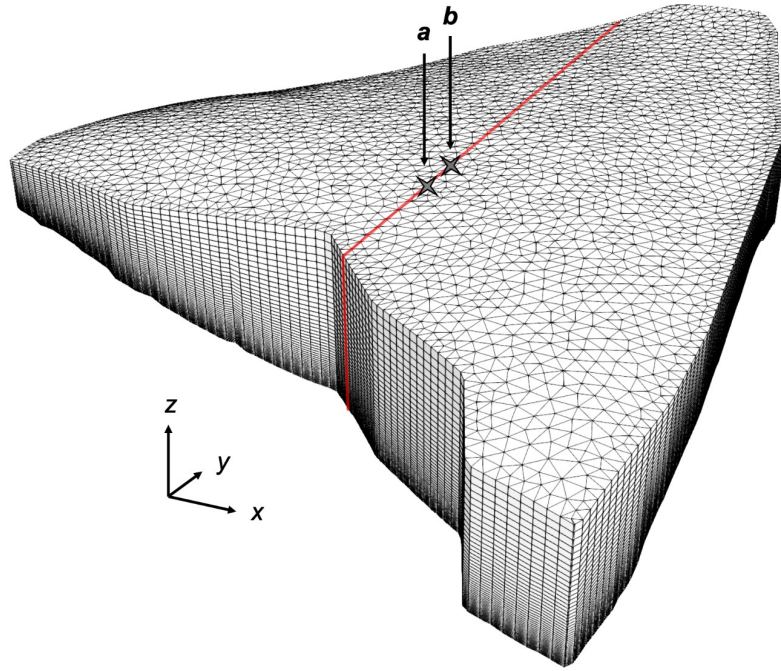


**Figure 1.** Study area on Mt. Elbrus. **Geographic** The vertical distributions obtained in our study (Fig. 5) refer to location *a*; the 2009 drilling site is marked with *b*. The top-right figure is a zoom of the black dashed square. The elevation bands are based on the Pléiades DEM of 2017. The coordinates are presented in the WGS 84 (UTM 38 N). The SPOT 7 image obtained on 20 August 2016 is shown as a background. The elevation bands are based on the Pléiades DEM of 2017.

According to DEMs ice thickness at the 2009 drilling site location is 6.1 m greater than ice core length. Possible reasons for this discrepancy include: time difference in obtaining the DEMs of the surface and the base (8 years); errors in constructing the DEMs; inaccuracy in determining the coordinates of the drilling site; probable presence of a solid inclusion in the ice above the glacier bed, which could become a mechanical obstacle to drilling to the bed (Stiévenard et al., 1996).

In our opinion, comparison of age–depth distributions (one modeled and one ice core based) for locations at a glacier with different ice thicknesses makes little sense. Also, the glacier surface elevation at the drilling site (5135.42 m a.s.l.) obtained using the 2017 DEM does not align closely with the glacier surface elevation at the drilling site determined during deep





**Figure 2.** Computational domain and computational grid. The vertical distributions obtained in our study (Fig. 45) refer to location  $a$ ; the 2009 drilling site is marked with  $b$ . The vertical section to which the simulation results presented in Fig. 3-4 relate is shown by the red line. Directions of coordinate axes:  $x$  – eastward,  $y$  – northward,  $z$  – upward.

drilling in 2009 (5115 m a.s.l.; Mikhalenko et al. (2015)), probably due to an assumed error in determining the latter. This makes problematic another possible interpretation of the original data, namely, matching the zero depth of the ice core with the surface altitude of the computational domain.

To represent the vertical profiles of ice/firn ~~velocity~~, age and temperature and compare them with ice core data, we chose one of the points closest to the drilling site with similar ice thickness (182.67 m according to DEMs) and topography of surface and bedrock. This point ~~(and corresponding vertical)~~ is located 50 m south of the drilling site (denoted by  $a$  in Fig. 1, 2, and 34).

## 5 ~~Mathematical~~ Ice flow model

~~The~~ Under the assumption of steady state, the velocity distribution in the glacier allows one to calculate the time required for each ice/firn particle to move from the glacier surface to its current position. The calculation of the velocity field was performed on the basis of a 3D stationary ~~full~~ Stokes model with ~~a rheological law~~ the rheological law of Gagliardini and Meyssonier (1997) for a compressible nonlinear viscous medium (ice/firn) ~~(Gagliardini and Meyssonier, 1997).~~ The model is applied in

its full version, without scaling and excluding any terms in the equations below. We have applied both purely mechanical (isothermal) and thermomechanically coupled ice flow models. Information on the quantities used in the ~~mathematical~~ models is given in Table 1.

Table 1: Quantities. This table describes most of the quantities used in the ~~mathematical~~-ice flow model. The units in the table are chosen to be more representative, rather than coherent.

Group	Quantity	Description	Value / Dependent on	Units
Geometric	$x, y$	Horizontal coordinates	Independent variables	m
	$z$	Upward vertical coordinate	Independent variable	m
	$s$	Glacier surface altitude	$x, y$	m
	$d$	Depth	$x, y, z$	m
	$H$	Ice thickness	$x, y$	m
	$\mathbf{n}$	Outer unit normal vector to the computational domain boundary	$x, y, z$	<del>-Dimensionless</del>
Mechanical	$\rho$	Ice/firn density	$d$	$\text{kg m}^{-3}$
	$\rho_i$	Pure ice density	918	$\text{kg m}^{-3}$
	$\varphi$	Relative density	$\rho$	<del>-Dimensionless</del>
	$p$	Pressure	Free field	Pa
	$\boldsymbol{\sigma}$	Cauchy stress tensor	$p, \mu, \mathbf{D}$	Pa
	$n$	Stress exponent	3	<del>-Dimensionless</del>
	$\mathbf{v}$	Velocity	Free field	$\text{m a}^{-1}$
	$v_b$	Basal normal velocity	$10^{-6}$	$\text{m a}^{-1}$
	$v_{\text{out}}$	Lateral outflow velocity	$d$	$\text{m a}^{-1}$
	$v_{\text{max}}$	Maximum lateral outflow velocity	20	$\text{m a}^{-1}$
	$\mathbf{D}$	Strain-rate tensor	$\text{grad } \mathbf{v}$	$\text{a}^{-1}$
	$\mathbf{g}$	Gravitational acceleration	9.81	$\text{m s}^{-2}$
	$\mu$	Shear viscosity	$T', \delta, \varphi$	Pa s
	$E$	Flow enhancement factor	0.016, 0.2, 0.25	<del>-Dimensionless</del>
Thermodynamic	$T$	Temperature	Free field	K
	$T_m$	Melting temperature of ice	$p$	K
	$T_0$	Melting temperature of ice for low pressure	273.15	K
	$T'$	Temperature relative to the pressure melting point	$p, T$	K
	$T_s$	Glacier surface temperature	-18	$^{\circ}\text{C}$
	$\beta$	Clausius-Clapeyron constant for air-saturated ice	$9.8 \times 10^{-8}$	$\text{K Pa}^{-1}$
	$A$	Rate factor	$2.291 \times 10^{-25} / T'$	$\text{Pa}^{-3} \text{s}^{-1}$



	$A_0$	Pre-exponential constant	$\begin{cases} 3.985 \times 10^{-13} & (T' \leq 263.15 \text{ K}) \\ 1.916 \times 10^3 & (T' > 263.15 \text{ K}) \end{cases}$	$\text{Pa}^{-3} \text{ s}^{-1}$
	$Q$	Activation energy	$\begin{cases} 60 & (T' \leq 263.15 \text{ K}) \\ 139 & (T' > 263.15 \text{ K}) \end{cases}$	$\text{kJ mol}^{-1}$
	$R$	Universal gas constant	8.314	$\text{J mol}^{-1} \text{ K}^{-1}$
	$c$	Specific heat	$T$	$\text{J kg}^{-1} \text{ K}^{-1}$
	<del><math>\kappa</math></del> $\tilde{k}$	Heat conductivity	$T$	$\text{W m}^{-1} \text{ K}^{-1}$
	$q$	Heat flux	$T, \text{grad } T$	$\text{W m}^{-2}$
	$q_{\text{geo}}$	Geothermal flux	0.34	$\text{W m}^{-2}$
Other	$t$	Time	Independent variable	a
	$\mathcal{A}$	Ice/firn age	Free field	a
	$a, b$	<u>Flow law auxiliary functions</u>	$\mathcal{Q}$	<u>Dimensionless</u>
	$\delta$	Tensor invariant	$\mathbf{D}, \varphi$	$\text{s}^{-1}$
	<del><math>a, b</math></del> $\tilde{\mathbf{I}}$	<del>Flow law auxiliary functions</del> <u>Unit tensor</u>	<del><math>\varphi \text{diag}(1, 1, 1)</math></del>	<del>Dimensionless</del>

## 5.1 Dating problem

In order to obtain a 3D age field of ice/firn  $\mathcal{A}(x, y, z)$ , we first calculated the velocity field  $\mathbf{v}(x, y, z)$  in the computational domain and then solved the dating equation  $d\mathcal{A}/dt = 1$ , or

$$\frac{\partial \mathcal{A}}{\partial t} + \mathbf{v} \cdot \text{grad } \mathcal{A} = 1 \quad (1)$$

145 with a boundary condition of zero age at the surface of the glacier:

$$\mathcal{A}|_s = 0. \quad (2)$$

Due to the steady-state assumption  $\partial \mathcal{A} / \partial t \equiv 0$ .

## 5.2 Constitutive relations

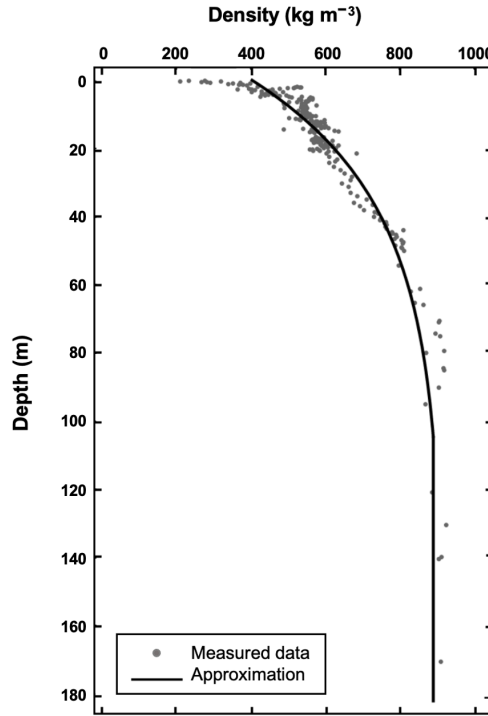
The velocity field calculation for the WP glacier was performed based on a 3D steady-state ~~full~~ Stokes flow model with  
150 ~~rheological law (Gagliardini and Meyssonier, 1997)~~ the rheological law of Gagliardini and Meyssonier (1997) for a compressible ~~nonlinear-viscous~~ nonlinear viscous medium (ice/firn). The mathematical formulation of the ice/firn flow problem follows the work of Zwinger et al. (2007) with some modifications ~~follows (Zwinger et al., 2007).~~

~~Next, the constitutive equations of the model are subsequently introduced.~~ Based on the surface heights, a depth field is calculated in the entire 3D domain:

$$155 \quad d(x, y, z) = s(x, y) - z. \quad (3)$$

Based on an approximation of the density distribution in the 2009 ice core, the ice/firn density in the glacier is represented as a function of depth (Fig. 3) as follows :

$$\rho(d) = \begin{cases} \rho_i (1 - 0.56e^{-0.028d}), & d < 104.5 \text{ m} \\ 0.97\rho_i, & d \geq 104.5 \text{ m}. \end{cases} \quad (4)$$



**Figure 3.** Vertical distribution of ice/firn density. The dots mark the density values determined from the 2009 ice core; the line shows the graph of the function (Eq. (4)) approximating these values.

The functions of the relative density  $\varphi$  ( $\varphi = \rho/\rho_i$ )

$$160 \quad a(\varphi) = \begin{cases} \exp(13.2224 - 15.78652\varphi), & \varphi \leq 0.81 \\ \frac{1}{3}(5 - 2\varphi)\varphi^{-\frac{2n}{n+1}}, & \varphi > 0.81 \end{cases} \quad (5)$$

and

$$b(\varphi) = \begin{cases} \exp(15.09371 - 20.46489\varphi), & \varphi \leq 0.81 \\ \frac{3}{4} \left( \frac{(1-\varphi)^{\frac{1}{n}}}{n(1-(1-\varphi)^{\frac{1}{n}})} \right)^{\frac{2n}{n+1}}, & \varphi > 0.81 \end{cases} \quad (6)$$

taken from the work of Zwinger et al. (2007) are used to construct the flow law relations ~~in accordance with (Gagliardini and Meyssonier, 1997).~~

165 ~~The strain-rate tensor is a symmetric part of the velocity gradient:-~~

$$\underline{\mathbf{D}} = \frac{1}{2} \left( \text{grad } \mathbf{v} + (\text{grad } \mathbf{v})^T \right).$$

~~Decomposing the strain-rate tensor into an isotropic and a deviatoric parts, we obtain:-~~

$$\underline{\mathbf{D}} = \frac{\text{div } \mathbf{v}}{3} \mathbf{I} + \mathbf{D}^D.$$

Hereinafter the superscripts T and D denote the transpose and the deviator of a tensor, respectively; I is the unit tensor. The  
170 ~~first invariant of the strain-rate tensor is represented in the form of the velocity divergence.-~~

~~Following (Gagliardini and Meyssonier, 1997),~~ Following the work of Gagliardini and Meyssonier (1997), we introduce the tensor invariant

$$\delta = \sqrt{\frac{2 \text{tr} \left( \mathbf{D}^D \right)^2}{a(\varphi)} + \frac{(\text{div } \mathbf{v})^2}{b(\varphi)}}. \quad (7)$$

~~where~~ Hereinafter tr denotes the trace of a tensor, the superscript D denotes the deviator of a tensor.

175 The melting temperature of ice is considered to be pressure-dependent:  $T_m = T_0 - \beta p$ . The temperature relative to the pressure melting point is defined as follows:  $T' = T - T_m + T_0$  ~~(Greve and Blatter, 2009)~~ (Greve and Blatter, 2009).

In the case of thermomechanically coupled model, the rate factor  $A$  is dependent on the temperature relative to the pressure melting point  $T'$  and is determined by the Arrhenius law:

$$A(T') = A_0 e^{-\frac{Q}{RT'}}. \quad (8)$$

180 Then the viscosity of ice/firn can be expressed as follows:

$$\mu(T', \delta, \varphi) = \frac{(2EA(T'))^{-\frac{1}{n}} \delta^{\frac{1-n}{n}}}{a(\varphi)}. \quad (9)$$

The constant flow enhancement factor  $E$  in Eq. (9) is used as a calibration parameter.

After ~~splitting~~ decomposing the Cauchy stress tensor into an isotropic and a deviatoric ~~part~~ parts

$$\boldsymbol{\sigma} = -p\mathbf{I} + \boldsymbol{\sigma}^D, \quad (10)$$

185 where  $p = -\text{tr } \boldsymbol{\sigma}/3$ , we can write the ~~rheological law in general form:-~~

$$\underline{\boldsymbol{\sigma}^D = 2\mu \mathbf{D}^D}.$$

constitutive relations for each component:

$$p = -\frac{a(\varphi)\mu}{b(\varphi)} \text{div } \mathbf{v}, \quad (11)$$

$$\underline{\boldsymbol{\sigma}^D = 2\mu \mathbf{D}^D}, \quad (12)$$

190 where  $\mu$  is determined by Eq. (9).

The specific heat

$$c(T) = 146.3 + 7.253T \quad (13)$$

and the heat conductivity

$$\underline{\kappa k}(T) = 9.828e^{-0.0057T} \quad (14)$$

195 of the ice/firn are temperature-dependent (Ritz, 1987).

The heat flux is determined by Fourier's law of heat conduction:

$$\mathbf{q} = \underline{-\kappa - k} \text{grad } T. \quad (15)$$

### 5.3 Field equations

The mechanical field equations equation of the model ~~are the volume balance equation-~~

$$200 \quad \underline{\text{div } \mathbf{v} + \frac{b(\varphi)}{a(\varphi)\mu} p = 0}$$

~~and the~~ is the Stokes equation

$$\text{div } \boldsymbol{\sigma} + \rho \mathbf{g} = \mathbf{0}. \quad (16)$$

In the case of thermomechanically coupled model the ~~mechanical equations are~~ Stokes equation is supplemented with the heat transfer equation

$$205 \quad \rho c \left( \frac{\partial T}{\partial t} + \mathbf{v} \cdot \text{grad } T \right) = -\text{div } \mathbf{q} + \text{tr}(\boldsymbol{\sigma} \cdot \mathbf{D}), \quad T \leq T_m. \quad (17)$$

Since the model is steady-state,  $\partial T / \partial t \equiv 0$ . The solution is limited by the pressure melting point  $T_m$ .

### 5.4 Boundary conditions

Boundary conditions (BCs) are specified separately at three areas of the boundary of the computational domain: the surface, the base, and the lateral side.

### 210 5.4.1 Surface boundary conditions

Surface BCs apply to the part of the glacier surface under consideration (designated by the subscript s). They include the stress-free condition

$$(\boldsymbol{\sigma} \cdot \mathbf{n})|_s = \mathbf{0} \quad (18)$$

and the surface temperature condition

$$215 \quad T|_s = T_s. \quad (19)$$

The surface temperature value  $T_s = -18^\circ\text{C}$  is selected on the basis of 2009 borehole temperature measurements ( $-17^\circ\text{C}$  at 10 m depth) and meteorologically based estimation of the annual mean air temperature at the drill site of  $-19^\circ\text{C}$  (Mikhaleiko et al., 2015). (Mikhaleiko et al., 2015).

### 5.4.2 Basal boundary conditions

220 Basal BCs (denoted by b) apply to the bedrock of the glacier. The dynamical basal BC implies a cold base (zero tangential velocity) and a small normal outflow ice velocity at the bedrock:

$$\mathbf{v}|_b = v_b \mathbf{n}|_b. \quad (20)$$

225 Under the BC (20), ice/firn particles are modeled as moving from the glacier surface to the bedrock in finite time, which ensures convergence in the numerical solution of the dating problem (1)–(2). Also, such a small deviation of the basal velocity from zero apparently does not affect the dating results of the overlying ice/firn (except for a thin bottom layer), as indicated by the coincidence of the age fields obtained with the  $v_b$  increased and decreased by several orders of magnitude compared to the selected value.

The constant geothermal flux is specified as the thermodynamic bedrock BC:

$$\left( \kappa \text{grad } T \cdot \mathbf{n} \right)|_b = q_{\text{geo}}. \quad (21)$$

230 The value of the basal heat flux  $q_{\text{geo}} = 0.34 \text{ W m}^{-2}$  was calculated from the temperature measurements near the bottom of the 2009 borehole (Mikhaleiko et al., 2015). (Mikhaleiko et al., 2015).

### 5.4.3 Lateral boundary conditions

Lateral BCs (denotation l) are specified at the vertical surface surrounding the modeled area and connecting the upper and lower parts of the computational domain boundary (glacier surface and bedrock). When modeling lateral outflow, the lateral BCs differ at the eastern (l, E) and western (l, W) sides of the domain, since the outflow is applied only at the western side (Fig. 1).

The WP glacier is bounded on the east by a steep wall of Elbrus summit, so we assume that there is no outflow from the domain through the eastern boundary:

$$(\mathbf{v} \cdot \mathbf{n})|_{l, E} = 0. \quad (22)$$

240 The western side of the plateau is characterized by westward slope, so outflow is expected at the western boundary of the domain. During field work, measurements of ice velocity on the glacier surface were not carried out. In this regard, we have performed all simulations for two extreme cases: 1) the outflow through the lateral side of the domain is completely absent; 2) the outflow is faster ( $20 \text{ m a}^{-1}$  at the western rim of the surface) than would be expected in real conditions:

$$(\mathbf{v} \cdot \mathbf{n})|_{l, W} = 0 \quad \text{or} \quad (\mathbf{v} \cdot \mathbf{n})|_{l, W} = v_{\text{out}}, \quad (23)$$

245 where

$$v_{\text{out}}(d) = v_{\text{max}} \left( 1 - \left( \frac{d}{H} \right)^4 \right). \quad (24)$$

Here we assume that horizontal outflow decreases with depth in accordance with the forth power law. Similar relations are discussed in literature ~~; e.g. (Hooke, 2019; Greve and Blatter, 2009)~~(e.g., Hooke, 2019; Greve and Blatter, 2009).

Zero normal heat flux is assumed at the entire lateral boundary:

$$250 \quad \left( \kappa \text{grad } T \cdot \mathbf{n} \right)|_l = 0. \quad (25)$$

The ~~differential-field~~ equations of Sect. 5.3 together with the material equations of Sect. 5.2 and the ~~boundary-conditions~~ BCs of Sect. 5.4 form a complete boundary value problem for determining the ~~unknown~~ fields  $\mathbf{v}$ ,  $p$ , and  $T$ .

## 5.5 ~~Reduced-model~~

## 6 Numerical methods

255 ~~All the simulation variants produced on the basis of the thermomechanically coupled model were also repeated by means of a purely mechanical model, i.e. a reduced flow model with the heat transfer block switched off~~For finite element calculations, a flat computational grid (footprint) was created using the mesh generator Gmsh within the contour (shown in Fig. 1) of the area of the WP covered with DEMs. It contains 2508 nodes, 4734 linear triangular elements, and 280 linear one-dimensional elements on the boundary.

260 The ~~reduction of the complete model is as follows. The ice/firn temperature is assumed to be constant ( $-14$ ) and close to the average value inferred from borehole measurements in 2009. In this case, the rate factor is constant ( $2.291 \times 10^{-25}$ ) and corresponds to this temperature (Cuffey and Paterson, 2010). Hence, the viscosity lacks the dependency on temperature and pressure (see Eq. (9)).~~



## 7 Numerical methods

265 ~~All simulations were performed numerically based on the finite element method in the framework of dedicated ice flow modeling software Elmer/Ice (Gagliardini et al., 2013).~~ volumetric computational grid was obtained by vertical extrusion of the flat grid. It is regular in the vertical direction (50 node levels) and characterized by a linear refinement of the step towards the glacier bed. The typical node spacing at the refined boundary is of order 0.1 m (less than 1 m), and at the coarser boundary it is of order 1 m (less than 10 m).

270 ~~In Elmer/Ice differential~~ Differential field equations are solved numerically via their transformation to a discretized variational form (Gagliardini et al., 2013). ~~Since our initial differential problem is nonlinear, the discretized equations of its variational (weak) formulation are also nonlinear and need to be solved iteratively~~ (Gagliardini et al., 2013). In the numerical implementation, the constitutive relation (11) is interpreted as a field equation with unknowns  $v$  and  $p$ .

For the thermomechanically coupled model ~~there is a nonlinear iteration loop between~~ the Stokes equation (16) (together  
275 with the ~~volume balance equation (Eq. (11))~~ are solved sequentially until convergence is achieved. On each step of ~~the this~~ nonlinear iteration a system of linear algebraic equations ~~arise and need~~ arises and needs to be solved both for the Stokes equation and for the heat transfer equation. The linear systems for the Stokes equations are solved via an iterative method – the biconjugate gradient stabilized method (BiCGStab) with zero-fill incomplete lower-upper preconditioner (ILU(0)). The linear systems for the heat transfer equation are solved via a direct method - unsymmetric-pattern  
280 multifrontal method, implemented in the solver UMFPACK.

In a purely mechanical case linear algebraic systems for the Stokes equation are solved via the same iterative method and preconditioner as in the coupled model.

The dating equation (1) is solved in a final step based on ~~a precalculated velocity field~~ the velocity field calculated by the mechanical model. The equation was discretized via discontinuous Galerkin method and the resulting linear algebraic systems  
285 were solved by a direct method for the thermomechanically coupled model and by BiCGStab with ILU(1) preconditioner for the purely mechanical model.

## 7 Model calibration

All the simulation variants produced on the basis of the thermomechanically coupled model were also repeated by means of a purely mechanical model, i.e. a flow model with the heat transfer block switched off.

290 The simplification of the complete model is as follows. The ice/firn temperature is assumed to be constant ( $-14^{\circ}\text{C}$ ) and close to the average value inferred from borehole measurements in 2009. In this case, the rate factor is constant ( $2.291 \times 10^{-25} \text{ Pa}^{-3} \text{ s}^{-1}$ ) and corresponds to this temperature (Cuffey and Paterson, 2010).

In order to provide the best fit between age–depth distributions simulated for the location  $a$  and derived from empirical data for the location  $b$  (Fig. 1), we varied three independent characteristics of the model. The first is the general type of the model  
295 (thermomechanically coupled or purely mechanical). The second is the presence or absence of lateral ice/firn outflow. The

third characteristic is the viscosity value; ~~its tuning is what constitutes the calibration procedure~~. Technically, the calibration of viscosity comes down to choice of the value of flow enhancement factor ~~-(see Eq. (9))~~.

~~Changing the enhancement factor results in a general increase/decrease in ice/firn velocities. The velocities, in turn, affect the age field and, in particular, the configuration of the age–depth curve at the studied location. For the purely mechanical model, we varied the enhancement factor in the range from 0.15 to 0.35; for the thermomechanically coupled model, in the range from 0.01 to 0.05. Choosing the value outside these ranges resulted in a significant discrepancy between the model and the empirical age–depth dependencies.~~

## 8 Results

The results presented below correspond to three selected simulation cases among numerous cases for each of which the ice-core-derived age–depth dependency is reproduced relatively well. These cases represent limiting scenarios, as the age–depth curves for the remaining simulations lie within the region bounded by the curves of these three cases. The combinations of model characteristics for these cases are presented in Table 2.

**Table 2.** Comparison of datings of reference horizons.

<i>E</i>	0.016	0.2	0.25		
Lateral outflow	No	Yes	No		
Model type	Thermomechanical	Mechanical	Mechanical		
<i>d</i> (m)	Model date (CE)			Proxy date (CE)	Proxy description
75.6	1959	1966	1979	1963	<sup>3</sup> H
116.7	1920	1913	1945	1912	Katmai
146.38	1866	1829	1886	1854	Shiveluch
153.7	1838	1785	1853	1815	Tambora
154.73	1831	1774	1845	1815	Tambora
160.4	1807	1734	1815	1783	Laki
177.11	1367	981	1288	670–1245	<sup>14</sup> C
179.19	1021	386	877	130–770	<sup>14</sup> C

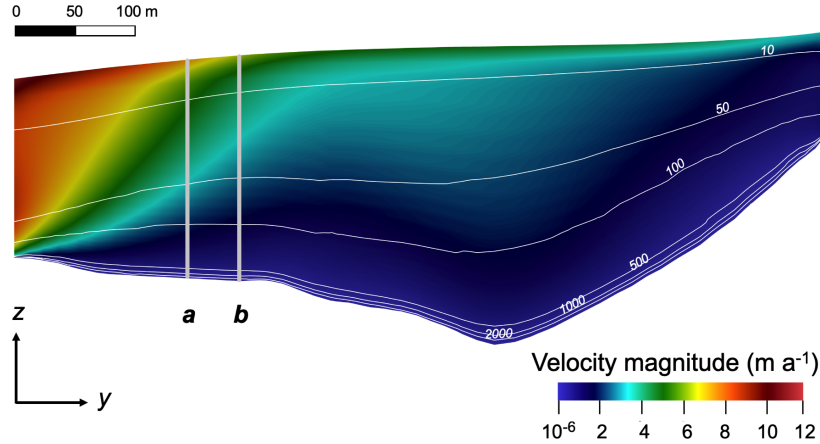
Figure 3–4 illustrates the simulation results for a purely mechanical model without lateral outflow, showing the velocity magnitude and isochrones in the vertical section passing through the 2009 drilling site. ~~Figure 4 The velocity of ice/firn in this section reaches its highest values (about 12 m a<sup>−1</sup>) near the southern boundary of the computational domain, due to the tangential (to the vertical "wall") component. The lateral boundary condition in this simulated case sets the normal velocities to zero, while the tangential velocities remain unconstrained.~~

Figure 5 presents vertical profiles of modeled ~~velocity, age~~, ~~age~~ and temperature of the ice/firn at a selected location shifted slightly southward from the drilling site. The modeling results are compared to the laboratory-derived 2009 ice core dating

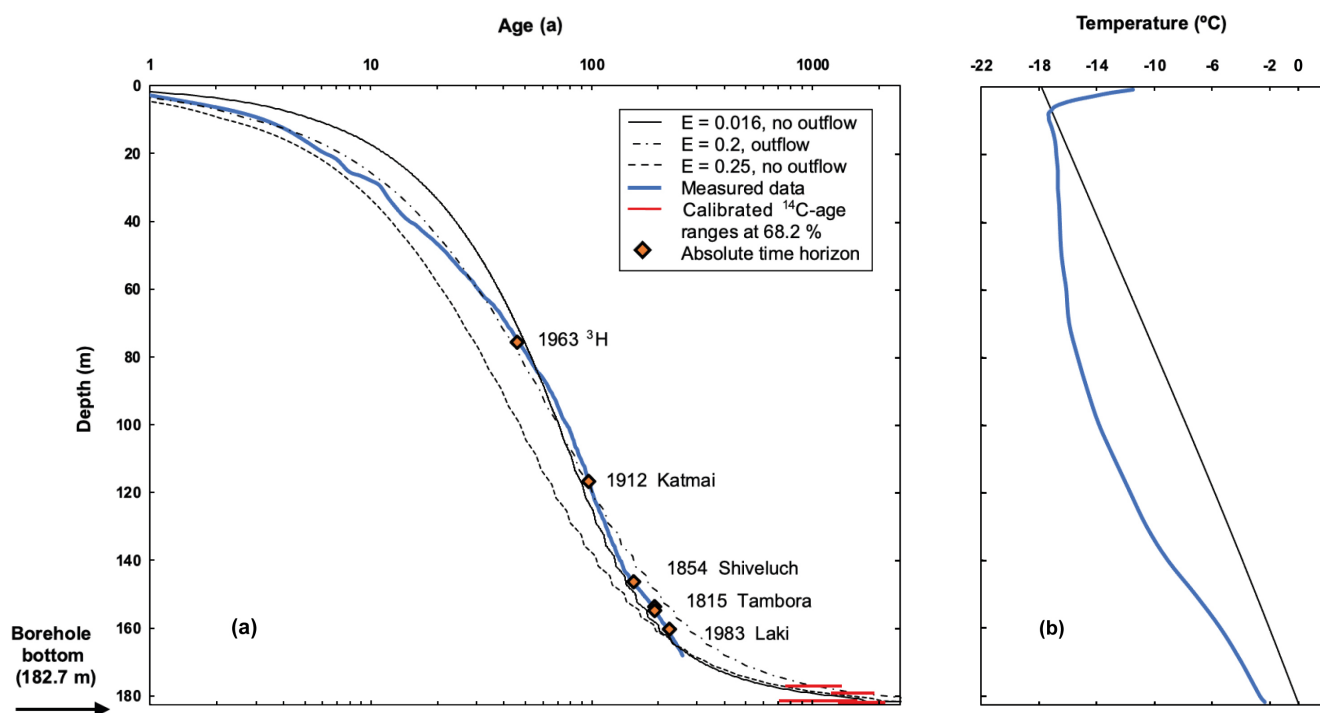
315 results (Fig. 4b5a) and the borehole temperature measurements from 2009 (Fig. 4e).5b). The measured data are presented in interpolated form.

In Figure 4bFig. 5a, the dating of the upper 168.6 m section of the ice core (Mikhaleiko et al., 2024) (Mikhaleiko et al., 2024) is referred to as "Measured data". This is a revised version of the chronology by Preunkert et al. (2019)Preunkert et al. (2019), dating the deepest layers back to 1750. Additionally, calibrated date ranges at a 68.2 % confidence level for radiocarbon dating  
320 (Preunkert et al., 2019) (Preunkert et al., 2019) of four basal ice samples are shown. The depth ranges of the sampled ice are  $177.11 \pm 0.22$  m,  $179.19 \pm 0.14$  m,  $181.50 \pm 0.13$  m, and  $182.02 \pm 0.13$  m (Preunkert et al., 2019). (Preunkert et al., 2019).

The ice in the intermediate part of the core (depth range 168.6–177.11 m) has not previously been dated by other methods. Using modeling, we obtained a probable dating range for each horizon in this part of the ice core. The lower bounds of these date ranges correspond to a thermomechanically coupled model without lateral ice outflow and a flow enhancement factor of  
325 0.016, while the upper bounds correspond to a purely mechanical model with lateral outflow and a flow enhancement factor of 0.2 (Fig. 5a). The lengths of these date ranges increase with depth from 130 years at 168.6 m to 386 years at 177.11 m. At a depth of 168.6 m, the modeled date range is 1591–1721 (the age is overestimated, as the corresponding date based on annual layer counting is approximately 1750). At 177.11 m, the modeled date range overlaps with the 68.2 % confidence interval of the radiocarbon date (the overlapping range is 981–1245; see Table 2).



**Figure 4.** Cross-section of the computational domain by a vertical plane (case  $E = 0.25$ ,  $v_{\text{out}} = 0$ ). The cross-section is drawn in the north-south direction and passes through the drilling site of 2009 (vertical line *b*; the modeling results presented in Fig. 45 refer to vertical line *a*). The  $y$  coordinate axis is directed north,  $z$  – upwards. The colors of the rainbow show the velocity value (m/a). The white curves are isochrones corresponding to the model ice/firn ages of 10, 50, 100, 500, 1000, and 2000 years.



**Figure 5.** Modeled ice/firn ~~velocity-age~~ (a) ~~,age (b),~~ and temperature (eb) vertical profiles for ~~vertical-the location~~ location a (see Fig. 34) and empirical data.

330 Table 2 compares the dates obtained from our simulations with the 2009 ice core dating for reference horizons and the two upper basal ice samples. ~~Similar to the~~ The two lower ice samples are not included in Table 2 because the model significantly overestimates their ages. The age of the basal ice is formally equal to 100,000 years due to the upper limit specified in the numerical solution. Similarly to the vertical profiles in Fig. 4, ~~these model results 5, the model results in the table~~ correspond to location *a* rather than the drilling site *b* (Fig. 1). The depth values for the tritium horizon ( $^3\text{H}$ ), formed as a result of nuclear tests, and for volcanic horizons (Katmai, Shiveluch, Tambora, and Laki) provided based on the more reliable of the two main chronologies ~~in (Mikhalenko et al., 2024). Notably, from the work of Mikhalenko et al. (2024). Note that~~ Table 2 ~~also~~ reflects the uncertainty in determining the depth of the Tambora volcanic layer. For the bottom ice samples, the table presents the median sample depths along with calibrated  $^{14}\text{C}$  date ranges at a 68.2 % confidence level, as reported by ~~Preunkert et al. (2019)~~ Preunkert et al. (2019).

340 The simulated temperature of the basal ice at the location *a* is equal to the pressure melting temperature for this point ( $-0.14^{\circ}\text{C}$ ); the temperature measured at the bottom of the 2009 borehole is  $-2.4^{\circ}\text{C}$  (Mikhalenko et al., 2015).

## 9 Discussion

~~Due to incomplete data, the~~ The modeling of the velocity field and ~~ice the~~ age of the ice in the WP glacier was conducted under several simplifying assumptions and limitations. The key assumptions are as follows:

- 345 1. *Stationarity*: This assumes a steady-state geometry of the glacier, along with unchanging density, velocity, pressure, and temperature fields.
2. *Lack of velocity data*: No direct measurements of the glacier's velocity field are available.
3. *Surface temperature ~~boundary condition~~BC*: The temperature at the glacier surface reflects early 21st-century conditions and does not account for historical variations.
- 350 4. *Geothermal flux*: A locally determined geothermal flux value is extrapolated across the entire glacier bed.
5. Density distribution: The density distribution is not simulated and depends only on depth.
6. Neglecting bubbles close-off: The pressure in air bubbles after their close-off in the lower layers of firn is not taken into account when calculating the pressure field.
7. Heat conductivity parameterization: The dependence of thermal conductivity on density is not accounted for.
- 355 8. *No basal melting*: The model does not incorporate the potential effects of basal melting.
9. *Ice thickness uncertainty*: Ice thickness estimates have an uncertainty of several meters.
10. *Spatial mismatch*: The simulations performed for a site that does not match exactly the location of the 2009 drilling site.

Conditions 1–4 are determined by the lack of data on the modern and historical state of glaciation of the WP.

360 In the presence of millennial scale paleoclimatic data (air temperature and surface mass balance), it would be possible to perform a transient simulation of glacier geometry and the long-term change of the flow regime, which could make the dating of basal ice formed under conditions different from the modern ones more accurate.

An alternative to the assumption of spatial homogeneity and stationarity of the geothermal flux (condition 4) could be some kind of its parameterization, for example, a power-law dependence on bedrock elevation, as in the work of Zwinger et al. (2007). However, the authors mentioned had several empirical values of the basal heat flux at the site of their study. We have a single  
365 value obtained from field data, so any parameterization of the geothermal flow would remain speculative. The relatively high value of heat flux at the glacier bed on WP can be explained by the action of the magma chamber of the Elbrus volcano (Likhodeev and Mikhaleenko, 2012; Mikhaleenko et al., 2015). Also, in the study by Masurenkov (1971), a close value of heat flux ( $0.347 \text{ W m}^{-2}$ ) was obtained for the Garabashi glacier (southern slope of Elbrus), and the maximum value for Elbrus is estimated at  $2 \text{ W m}^{-2}$ .

370 Condition 5 is a significant simplifying assumption. A more rigorous approach is to calculate the density field based on the solution of the continuity equation together with the Stokes equation. In 2018, two more ice cores were obtained on the WP

– 150.3 m and 119.8 m long. These cores are not dated, but the ice/firn density measurements showed close agreement with the density distribution in the 2009 ice core (Mikhaleenko et al., 2020). This suggests that the actual deviations of the density values from the distribution used are moderate.

375 According to the known parameterization, the pressure in air bubbles in ice/firn depends on the atmospheric pressure, as well as the temperature and relative density both at the point under consideration and at close-off (Lüthi and Funk, 2000). Taking this effect into account in the model (condition 6) would lead to a change in the simulated pressure field, and consequently the velocity field and, ultimately, the age field. Considering bubbles close-off would provide an additional calibration parameter for more accurate reproduction of the empirical age–depth dependency, for example, by varying the close-off density, as  
380 was done in the work of Lüthi and Funk (2000). According to the results of their study, when changing this parameter, the increase/decrease in the simulated age of the ice is more pronounced the greater the depth, which can be used to refine the age of near-bottom ice.

Including the dependence of heat conductivity on density in the model (condition 7) was tried but did not lead to adequate results. A more effective approach was found to be to compensate for this simplified parameterization by choosing appropriate  
385 values of the flow enhancement factor.

Concerning condition ~~5, a study of the WP temperature regime (Mikhaleenko et al., 2015)~~, ~~8, a study of the WP temperature regime (Mikhaleenko et al., 2015)~~, based on the method proposed by ~~Salamatin et al. (2001)~~ Salamatin et al. (2001), suggested basal melting occurs at depths exceeding 220 m, with rates not exceeding 10 mm water equivalent per year. ~~Condition 7~~  
Therefore, most of the glacier bed is probably cold, and we assume that the cold glacier model is generally adequate for the  
390 WP.

~~Condition 10~~ is a consequence of condition ~~6~~.

~~The positioning of 9. The spatial arrangement of the~~ isochrones (Fig. 34) indicates minimal differences in the ice/firn age distributions between verticals *a* and *b*. Thus, using the age distribution ~~from vertical along vertical line a for model calibration~~  
~~gives to calibrate the model provides~~ a satisfactory representation of the broader area, including the 2009 core drilling site.

395 As highlighted, the region between the curves in Fig. ~~4b–5a~~ represents the range of ~~age–depth age–depth~~ relationships derived from the modeling, as these curves correspond to the limiting cases. From this perspective, the model ~~accurately reproduces the ice age reproduces the age of the ice~~ for the upper part of the core (down to a depth of ~~140–150 m~~) ~~about 165 m~~ quite accurately, overestimates the age in the depth range of ~~150–170–165–170~~ m, and aligns with the 68.2 % confidence intervals for the ages of the upper two of the four basal ice samples. However, steady-state models for cold glaciers are known to be  
400 unsuitable for dating the deepest ice layers near the bedrock (~~Zwinger et al., 2007~~). Consequently, (~~Zwinger et al., 2007~~). Therefore, our model could not capture the age confidence intervals for the two lowermost basal ice samples (Fig. ~~4b5a~~).

The vertical temperature distribution, simulated using the thermomechanically coupled model, ~~qualitatively reflects observed trends but shows a tendency toward overestimation is almost linear and overestimates temperatures~~ (Fig. ~~4e~~). ~~5b~~). Thus, the mechanical coupling is weakly manifested.



~~Based on the simulation of glacier dynamics, a~~ A series of 3D ice/firn age ~~distribution~~ distributions in the glacier on the Elbrus Western Plateau was obtained. ~~using an ice flow model in thermomechanically coupled and purely mechanical implementations, varying boundary conditions and calibration parameter values. Among all simulations, were identified the cases defining an envelope within which lie all other simulated age-depth curves matching the 2009 ice core.~~ The pattern of

410 isochronous surfaces suggests that the obtained ~~ice ages~~ ages of the ice are generally representative of the area near the 2009 drilling site. The dating results are robust to small variations in the ~~calibrated model~~ calibration parameters and align closely with the dating of the upper part of the 2009 ice core. ~~In two of the three model cases, the~~ The correspondence extends to ~~a depth of 165 m most of the core~~ (1766 CE ~~according to the core and later~~). In the depth range ~~3.3~~ about 3.5–5.8–6 m above the bedrock, all model dates (~~320–1389–386–1367~~ CE) fall within or near the 68.2 % confidence intervals of radiocarbon-dated

415 ice core samples. Comparison with ice core data supports the validity of the model dating except for the 3–4 m bottom layer. Additionally, the model provided an approximate reconstruction of the previously undated middle part of the 2009 ice core. To our knowledge, we have constructed the first 3D age model for the glacier on the Elbrus Western Plateau. The model may become the basis for identifying the most promising sites for ice core drilling on the plateau in the future.

*Data availability.* Input data for Elbrus Western Plateau (Caucasus) ice flow model are available at <https://doi.org/10.5281/zenodo.14795959>

420 (Chernyakov et al., 2025).

*Author contributions.* GC performed the simulations and prepared the manuscript with contributions from all co-authors, NE performed visualization of the data and results, TK provided the study area description and mapping, SK contributed to conceptualization and writing.

*Competing interests.* The authors declare that they have no conflict of interest.

*Acknowledgements.* The work of Gleb Chernyakov, Nelly Elagina, and Taisiia Kiseleva was carried out within the framework of the Russian Science Foundation project no. 24-27-00262. The Pléiades DEM used in this study was provided by the Pléiades Glacier Observatory initiative of the French Space Agency (CNES). We thank Olivier Gagliardini and Vladimir Mikhalenko for fruitful discussions that significantly contributed to the work.

425

## References

- Chernyakov, G., Kutuzov, S., Lavrentiev, I., Mikhaleiko, V.: Input data for Elbrus Western Plateau (Caucasus) ice flow model, Zenodo [data set], <https://doi.org/10.5281/zenodo.14795959>, 2025.
- Cuffey, K. M. and Paterson, W. S. B.: The physics of glaciers, ~~Academie-Press~~, 4th edn., Elsevier, Amsterdam, ISBN 9780123694614, 2010.
- Duva, J. M. and Crow, P. D.: Analysis of consolidation of reinforced materials by power-law creep, *Mech. Mater.*, 17, 25–32, [https://doi.org/10.1016/0167-6636\(94\)90011-6](https://doi.org/10.1016/0167-6636(94)90011-6), 1994.
- Gagliardini, O. and Meyssonier, J.: Flow simulation of a firn-covered cold glacier, *Ann. Glaciol.*, 24, 242–248, <https://doi.org/10.3189/S0260305500012246>, 1997.
- Gagliardini, O., Zwinger, T., Gillet-Chaulet, F., Durand, G., Favier, L., De Fleurian, B., Greve, R., Malinen, M., Martín, C., Råback, P., Ruokolainen, J., Sacchetti, M., Schäfer, M., Seddik, H., and Thies, J.: Capabilities and performance of Elmer/Ice, a new-generation ice sheet model, *Geosci. Model Dev.*, 6, 1299–1318, <https://doi.org/10.5194/gmd-6-1299-2013>, 2013.
- Gilbert, A., Gagliardini, O., Vincent, C., and Wagnon, P.: A 3-D thermal regime model suitable for cold accumulation zones of polythermal mountain glaciers, *Journal of Geophysical Research (Earth Surface)*, 119, 18761893, <https://doi.org/10.1002/2014JF003199>, 2014.
- Greve, R. and Blatter, H.: Dynamics of Ice Sheets and Glaciers, Springer, Berlin, Germany, 2009.
- Hooke, R. L. B.: Principles of Glacier Mechanics, 3rd ed., Cambridge University Press, 2019.
- Konrad, H., Bohleber, P., Wagenbach, D., Vincent, C., and Eisen, O.: Determining the age distribution of Colle Gnifetti, Monte Rosa, Swiss Alps, by combining ice cores, ground-penetrating radar and a simple flow model, *J. Glaciol.*, 59, 179–189, <https://doi.org/10.3189/2013JoG12J072>, 2013.
- Kozachek, A., Mikhaleiko, V., Masson-Delmotte, V., Ekaykin, A., Ginot, P., Kutuzov, S., Legrand, M., Lipenkov, V., and Preunkert, S.: Large-scale drivers of Caucasus climate variability in meteorological records and Mt El’brus ice cores, *Clim. Past*, 13, 473–489, <https://doi.org/10.5194/cp-13-473-2017>, 2017.
- Kutuzov, S., Shahgedanova, M., Mikhaleiko, V., Ginot, P., Lavrentiev, I., and Kemp, S.: High-resolution provenance of desert dust deposited on Mt. Elbrus, Caucasus in 2009–2012 using snow pit and firn core records, *Cryosphere*, 7, 1481–1498, <https://doi.org/10.5194/tc-7-1481-2013>, 2013.
- Kutuzov, S., Legrand, M., Preunkert, S., Ginot, P., Mikhaleiko, V., Shukurov, K., Poliukhov, A., and Toropov, P.: The Elbrus (Caucasus, Russia) ice core ~~record-Part-record – Part~~ 2: History of desert dust deposition, *Atmos. Chem. Phys.*, 19, 14133–14148, <https://doi.org/10.5194/acp-19-14133-2019>, 2019a.
- Kutuzov, S., Lavrentiev, I., Smirnov, A., Nosenko, G., and Petrakov, D.: Volume Changes of Elbrus Glaciers From 1997 to 2017, *Front. Earth Sci.*, 7, <https://doi.org/10.3389/feart.2019.00153>, 2019b.
- Lavrentiev, I. I., Mikhaleiko, V. N., and Kutuzov, S. S.: Ice thickness and subglacial relief of the Western ice plateau of Elbrus [in Russian], *Led i Sneg*, 2, 2–18, 2010.
- Legrand, M., Preunkert, S., Kutuzov, S., Siour, G., Mikhaleiko, V., Dolgova, E., and Friedrich, R.: 20th Century changes of DOC and its 14C signature archived in Caucasus ice-core: Implications for past sources of organic carbon aerosol in south-eastern Europe, *Journal of Geophysical Research: Atmospheres*, 129, e2023JD040121, <https://doi.org/10.1029/2023JD040121>, 2024.
- Legrand, M., Vorobyev, M., Bokuchava, D., Kutuzov, S., Plach, A., Stohl, A., Khairidinova, A., Mikhaleiko, V., Vinogradova, M., Eckhardt, S., and Preunkert, S.: Measurement Report: Changes of ammonia emissions since the 18th century in south-eastern Europe inferred from an Elbrus (Caucasus, Russia) ice-core-record, *EGUsphere preprint*, <https://doi.org/10.5194/egusphere-2024-1381>, 2024a.

- 465 Legrand, M., Preunkert, S., Kutuzov, S., Siour, G., Mikhaleiko, V., Dolgova, E., and Friedrich, R.: 20th-Century changes of  
DOC and its 14C signature archived in Caucasus ice core: Implications for past sources of organic carbon aerosol in south-eastern  
Europe. *Journal of Geophysical Research: Atmospheres*, 129, e2023JD040121, [ice-core record, Atmos. Chem. Phys., 25, 1385–1399,](https://doi.org/10.1029/2023JD040121)  
<https://doi.org/10.1029/2023JD040121>, 2024b.  
[acp-25-1385-2025, 2025.](https://doi.org/10.1029/2023JD040121)
- 470 Licciulli, C., Bohleber, P., Lier, J., Gagliardini, O., Hoelzle, M., and Eisen, O.: A full Stokes ice-flow model to assist the inter-  
pretation of millennial-scale ice cores at the high-Alpine drilling site Colle Gnifetti, Swiss/Italian Alps, *J. Glaciol.*, 66, 35–48,  
<https://doi.org/10.1017/jog.2019.82>, 2019.  
[2020.](https://doi.org/10.1017/jog.2019.82)
- [Likhodeev, D. V., Mikhaleiko, V. N.: Temperature estimation for the most upper part of magmatic chamber of the Elbrus volcano \[in](https://doi.org/10.1017/jog.2019.82)  
475 [Russian\], \*Geofizicheskiye issledovaniya. Geophys. Research\*, 13 \(4\), 70–75, 2012.](https://doi.org/10.1017/jog.2019.82)
- Lim, S., Faïn, X., Ginot, P., Mikhaleiko, V., Kutuzov, S., Paris, J. D., Kozachek, A., and Laj, P.: Black carbon variability since prein-  
dustrial times in the eastern part of Europe reconstructed from Mt. Elbrus, Caucasus, ice cores, *Atmos. Chem. Phys.*, 17, 3489–3505,  
<https://doi.org/10.5194/acp-17-3489-2017>, 2017.
- Lüthi, M. and Funk, M.: Dating of ice cores from a high Alpine glacier with a flow model for cold firn, *Ann. Glaciol.*, 31, 69–79,  
480 <https://doi.org/10.3189/172756400781820381>, 2000.
- [Masurenkov, Yu. P.: Density of the thermal flow and depth of the magma source under the Elbrus volcano \[in Russian\], \*Byul. vulkanol.\*](https://doi.org/10.3189/172756400781820381)  
[stantsiy. Bull. volcanic stations](https://doi.org/10.3189/172756400781820381), 47, 79–82, 1971.
- Mikhaleiko, V., Sokratov, S., Kutuzov, S., Ginot, P., Legrand, M., Preunkert, S., Lavrentiev, I., Kozachek, A., Ekaykin, A., Faïn, X., Lim,  
S., Schotterer, U., Lipenkov, V., and Toropov, P.: Investigation of a deep ice core from the Elbrus western plateau, the Caucasus, Russia,  
485 *Cryosph.*, 9, 2253–2270, <https://doi.org/10.5194/tc-9-2253-2015>, 2015.
- Mikhaleiko, V., Kutuzov, S., Toropov, P., Legrand, M., Sokratov, S., Chernyakov, G., Lavrentiev, I., Preunkert, S., Kozachek, A., Vorobiev,  
M., Khairedinova, A., and Lipenkov, V.: Accumulation rates over the past 260 years archived in Elbrus ice core, Caucasus, *Clim. Past*, 20,  
237–255, <https://doi.org/10.5194/cp-20-237-2024>, 2024.
- Mikhaleiko, V. N., Kutuzov, S. S., Lavrentiev, I. I., Kunakhovich, M. G., and Thomson, L. G.: Western Elbrus Plateau studies: results and  
490 perspectives [in Russian], *Mater. Glyatsiologicheskikh Issled. Data Glaciol. Stud.*, 99, 185–190, 2005.
- Mikhaleiko, V. N. (Ed.): *Elbrus Glaciers and Climate*, Nestor-Historia Publications, Moscow-St. Petersburg, Russia, ISBN 978-5-4469-  
1671-9, 2020.
- Preunkert, S., Legrand, M., Kutuzov, S., Ginot, P., Mikhaleiko, V., and Friedrich, R.: The Elbrus (Caucasus, Russia) ice core record  
– Part 1: reconstruction of past anthropogenic sulfur emissions in south-eastern Europe, *Atmos. Chem. Phys.*, 19, 14119–14132,  
495 <https://doi.org/10.5194/acp-19-14119-2019>, 2019.
- [Ritz, C.: Time dependent boundary conditions for calculation of temperature fields in ice sheets, in: \*The Physical Basis of Ice Sheet\*](https://doi.org/10.5194/acp-19-14119-2019)  
[Modelling, edited by: Waddington, E. D. and Walder, J. S., IAHS Press, Wallingford, UK, 207–216, IAHS Publication No. 170, 1987.](https://doi.org/10.5194/acp-19-14119-2019)
- Salamatin, A. N., Murav'yev, Y. D., Shiraiwa, T., and Matsuoka, K.: Modelling dynamics of glaciers in volcanic craters, *J. Glaciol.*, 46,  
177–187, <https://doi.org/10.3189/172756500781832990>, 2000.
- 500 Salamatin, A. N., Shiraiwa, T., Muravyev, Y. D., Kameda, T., Silantiyeva, E., and Ziganshin, M.: Dynamics and borehole temperature  
memory of Gorshkov Ice Cap on the summit of Ushkovsky Volcano, ~~Kamchka~~ [Kamchatka](https://doi.org/10.3189/172756500781832990) Peninsula, in: *Proceedings of the International*

- Symposium on the Atmosphere–Ocean–Cryosphere Interaction in the Sea of Okhotsk and the Surrounding Environments held at Institute of Low Temperature Science, Hokkaido University, Sapporo, Japan, 12–15 December 2000, 120–121, 2001.
- Shiraiwa, T., Muravyev, Y. D., Kameda, T., Nishio, F., Toyama, Y., Takahashi, A., Ovsyannikov, A. A., Salamatina, A. N., and Yamagata, K.: Characteristics of a crater glacier at Ushkovsky volcano, Kamchatka, Russia, as revealed by the physical properties of ice cores and borehole thermometry, *J. Glaciol.*, 47, 423–432, <https://doi.org/10.3189/172756501781832061>, 2001.
- Stiévenard, M., Nikolaev, V., Bol'shiyanov, D. Y., Fléhoc, C., Jouzel, J., Klementyev, O. L., and Souchez, R.: Pleistocene ice at the bottom of the Vavilov ice cap, Severnaya Zemlya, Russian Arctic, *J. Glaciol.*, 42 (142), 403–406, <https://doi.org/10.3189/S0022143000003385>, 1996.
- Vecchiato, M., Gambaro, A., Kehrwald, N. M., Ginot, P., Kutuzov, S., Mikhailenko, V., and Barbante, C.: The Great Acceleration of fragrances and PAHs archived in an ice core from Elbrus, Caucasus, *Sci. Rep.*, 10, 1–10, <https://doi.org/10.1038/s41598-020-67642-x>, 2020.
- Vincent, C., Vallon, M., Pinglot, J. F., Funk, M., and Reynaud, L.: Snow accumulation and ice flow at Dôme du Goûter (4300 m), Mont Blanc, French Alps, *J. Glaciol.*, 43, 513–521, <https://doi.org/10.3189/S0022143000035127>, 1997.
- Zwinger, T., Greve, R., Gagliardini, O., Shiraiwa, T., and Lyly, M.: A full Stokes-flow thermo-mechanical model for firn and ice applied to the Gorshkov crater glacier, Kamchatka, *Ann. Glaciol.*, 45, 29–37, <https://doi.org/10.3189/172756407782282543>, 2007.