

Assessment of regional and interannual variations in tropospheric ozone in chemical reanalyses

Dylan B. A. Jones¹, Lucas Prates¹, Zhen Qu², William Y. Y. Cheng³, Kazuyuki Miyazaki⁴, Takashi Sekiya⁵, Antje Inness⁶, Rajesh Kumar³, Xiao Tang^{7,8}, Helen Worden³, Gerbrand Koren⁹, and Vincent Huijnen¹⁰

¹Department of Physics, University of Toronto, Toronto, Ontario, Canada

²Department of Marine Earth and Atmospheric Sciences, North Carolina State University, Raleigh, NC 27607, USA

³NSF National Center for Atmospheric Research, Boulder, CO, USA

⁴Jet Propulsion Laboratory/California Institute of Technology, Pasadena, CA, USA

10 ⁵Japan Agency for Marine-Earth Science and Technology, Yokohama 2360001, Japan

⁶European Centre for Medium-range Weather Forecasts (ECMWF), Reading, UK

⁷LAPC & ICCES, Institute of Atmospheric Physics, Chinese Academy of Sciences, Beijing, 100029, China

⁸College of Earth and Planetary Sciences, University of Chinese Academy of Sciences, Beijing, 100049, China

⁹Copernicus Institute of Sustainable Development, Utrecht University, Utrecht, the Netherlands

15 ¹⁰Royal Netherlands Meteorological Institute (KNMI), De Bilt, the Netherlands

Correspondence to: Dylan Jones (dbj@atmosph.physics.utoronto.ca)

Abstract. We evaluate regional and interannual variations in tropospheric ozone in five global and regional chemical reanalyses, consisting of the Copernicus Atmosphere Monitoring Service reanalysis (CAMSR), the second-generation Tropospheric Chemistry Reanalysis (TCR-2), the GEOS-Chem reanalysis, the Community Multiscale Air Quality (CMAQ) regional analysis, and the Chinese air quality reanalysis (CAQRA). We find that there are large regional differences (about 10–15 nmol mol⁻¹) in mean surface ozone between the reanalyses. GEOS-Chem has high ozone relative to the ensemble mean across most continental regions, whereas CAMSR has low ozone. Comparison with surface ozone observations shows that the reanalyses are biased high relative to the observations, with surface ozone biases exceeding 10 nmol mol⁻¹ in GEOS-Chem. We find that CAMSR has the smallest bias with respect to the observations, with negative biases in Europe, and in the central and western US, and positive biases everywhere else. In the free troposphere the reanalyses are in good agreement, and the mean bias between the reanalyses and ozonesonde observations are small, less than 4 nmol mol⁻¹ at 500 hPa. In addition, the correlations between the ozonesondes and the reanalyses are as high as 0.8 and 0.9 in the southern and northern midlatitudes respectively. The results suggest that chemical reanalyses should provide valuable information for quantifying variations in ozone in the free troposphere. However, to enhance the utility of the surface ozone analyses, improvements in the reanalyses are needed to better exploit assimilated observations to mitigate the impact of discrepancies in the model chemistry and ozone precursor emissions.

1 Introduction

Tropospheric ozone (O_3) plays a critical role in the chemistry of the troposphere. It is an important precursor of the hydroxyl radical (OH), the main atmospheric oxidant. It is also a greenhouse gas and an air quality pollutant. It is produced by reaction of volatile organic compounds (VOCs) and carbon monoxide (CO) in the presence of nitrogen oxides ($NO_x = NO + NO_2$), and its distribution reflects the combined influence of atmospheric transport and local chemical sources and sinks. The ozone- NO_x -VOC chemistry is non-linear, with ozone production increasing with NO_x emissions at low NO_x concentrations, which is referred to as the NO_x -limited regime. In contrast, ozone production decreases with increasing NO_x emissions at high NO_x concentrations. Under high NO_x concentrations, ozone production can increase with increasing VOC emissions, which is called the VOC-limited regime. A detailed review of the ozone- NO_x -VOC chemistry can be found in Monks et al. (2015). Globally, the chemical source of tropospheric ozone is about 5000 Tg yr^{-1} , with a chemical sink of about 4550 Tg yr^{-1} . The net chemical source of about 450 Tg yr^{-1} is balanced by deposition to the surface, which is about 1000 Tg yr^{-1} , and input from the stratosphere of about 550 Tg yr^{-1} (Monks et al., 2015). There are uncertainties in the global budget and large regional variations in the various sources and sinks. Observations of surface level ozone indicate that across eastern North America and parts of Europe surface ozone concentrations have decreased during the past two decades (Strode et al., 2015; Chang et al., 2017). Satellite observations have also revealed associated reductions in ozone precursors such as NO_x and CO (e.g., Worden et al., 2013; Lamsal et al., 2015; Duncan et al., 2016; Elshorbany et al., 2024). Despite these reductions, it is estimated that 126 million people in the United States (US) in 2023 lived in counties in which ozone levels exceeded the US national ambient air quality standards (NAAQS) for ozone (EPA, 2024).

A challenge with quantifying and monitoring changes in surface ozone globally is that the surface observing network is sparse, with measurements concentrated mainly in North America, Europe, and East Asia. Space-based observations of ozone and its precursors have provided significantly greater observational coverage, starting with the Total Ozone Mapping Spectrometer (TOMS) in the 1980s (Ziemke et al., 2005) and the Global Ozone Monitoring Experiment (GOME; Burrows et al., 1999) and Measurement of Pollution In The Troposphere satellite instruments (MOPITT; Drummond 1992, Drummond et al., 2010) in the 1990s. However, satellite instruments that measure in the thermal infrared (TIR) part of the spectrum have limited sensitivity to the lower troposphere. Instruments that measure in the ultraviolet and visible (UV/VIS) or the shortwave infrared (SWIR) have greater sensitivity to the lower troposphere, but still lack sensitivity to the surface (Boersma et al., 2016), and offer limited information on the vertical distribution of trace gases in the troposphere. Satellite retrievals that combine information from the SWIR and TIR (e.g., Worden et al., 2010; Deeter et al., 2011), or the UV/VIS and TIR (e.g., Fu et al., 2013; Colombi et al., 2021, Cuesta et al., 2013) provide more information near the surface and greater constraints on the vertical distribution of trace gases. However, for these multispectral retrievals, the trace gas information near the surface reflects a blend of information from the surface and free troposphere, which complicates the use of these retrievals for interpreting variations in trace gases at the surface.

65 Atmospheric chemistry models provide a means of filling the observational gaps in both the surface and space-based
networks, but atmospheric chemistry models typically exhibit spatially and temporally varying biases (e.g., Shindell et al.,
2006; Stevenson et al. 2006; Young et al., 2013, 2018; Wild et al., 2020). Young et al. (2018), for example, found that
atmospheric chemistry models typically have positive biases throughout the northern troposphere and negative biases in the
southern troposphere. Parrish et al (2014) showed that models underestimate the observed long-term, decadal changes in
70 tropospheric ozone. These discrepancies can arise from a number of issues in the models. First, the specified emission
inventories in the model can have large uncertainties (e.g., Elguindi et al., 2020), which will adversely impact the fidelity of
the models. In this context, the treatment of NO_x emissions from lightning, which can have a significant impact of ozone in
the upper troposphere, and which varies across models is another potential source of uncertainty. Second, discrepancy in
transport in the models will impact the simulated spatial distribution of ozone and its precursors. Third, the spatial resolution
75 of the model can also impact the model fidelity. Coarse resolution global models typically exhibit excessive stratosphere-
troposphere exchange (STE), which degrades the model simulation in the upper troposphere and lower stratosphere (UTLS)
(Strahan and Polansky, 2006), with implications for the lower troposphere. Lin et al. (2012) showed that in a model with a
high resolution of 50 km x 50 km, episodic stratospheric intrusions could enhance daily maximum 8-hour average ozone at
surface sites in the western United States (US) by as much as 20–40 nmol mol⁻¹. They found that the intrusions enhanced the
80 influence of the stratosphere on springtime surface ozone in the western US by a factor of 2–3 compared to previous studies
using lower resolution models. Furthermore, the contribution of STE to the ozone budget is highly uncertain. For example,
Young et al. (2018) found that the stratospheric source of ozone varied by as much as a factor 3 between models, and
observation-based estimates of the stratospheric source also had large uncertainties. Wild and Prather (2006) showed that
ozone production in the planetary boundary layer decreases with increasing model resolution. They also found that at coarse
85 resolution, the export of ozone precursors such as NO_x from continental source regions is overestimated. They suggested that
even at a resolution of 1.1° x 1.1° models will overestimate regional ozone production.

Chemical data assimilation seeks to statistically combine models with observations to obtain an improved description of
the chemical state of the atmosphere. Global space-based observations are available for a suite of atmospheric trace constituents
including ozone, NO₂, CO, nitric acid (HNO₃), formaldehyde (HCHO), isoprene, sulfur dioxide (SO₂), and aerosol optical
90 depth (AOD). These observations, when assimilated into a model, can provide valuable constraints on tropospheric ozone
chemistry (e.g., Parrington et al., 2009; Inness et al., 2013; Miyazaki et al., 2015; Gaubert et al., 2017; Zhang et al. 2019).
The assimilation provides a means of correcting for discrepancies in the modeled chemical processes while the model fills the
spatiotemporal gaps in the observing network. Chemical reanalyses extend this data assimilation approach in time to produce
a consistent, long-term record of changes in atmospheric composition. Assimilation of satellite limb measurements for ozone
95 profiles and nadir measurements for ozone columns has been used to evaluate ozone changes in the stratosphere and the upper
troposphere (e.g., Stajner and Wargan, 2004; Jackson, 2007; Barré et al., 2013; Emili et al., 2014). Long-term integrated data
sets of stratospheric ozone have been produced by combining multiple satellite retrieval data sets (e.g., van der A et al., 2015).
The first tropospheric chemistry reanalysis (TCR-1), which was conducted for 2005-2012 (Miyazaki et al., 2012, 2015), was

a pioneer study for providing long-term integrated data of tropospheric composition. Global chemical reanalysis products also
100 have been produced for 2003-2010 by the Monitoring Atmospheric Composition and Climate (MACC; Inness et al., 2013)
and Copernicus Atmospheric Service (CAMS; Flemming et al., 2017) projects. Chemical reanalyses were used to study
decadal changes in NO_x and CO emissions (Miyazaki et al., 2014; Jiang et al., 2017; Miyazaki et al., 2017a) and evaluate
chemistry climate models (Miyazaki et al., 2017b; Kuai et al., 2020) and satellite retrievals (Cady-Pereira et al. 2017; Cuesta
et al., 2018; Fu et al. 2018). The Multi-Model Multi-Component Chemistry (MOMO-Chem) framework (Miyazaki et al.,
105 2020a) is a methodological advance that applies the same assimilation system to multiple models, and is a unique approach to
provide the range of uncertainty in the assimilation due to model errors and differences in chemistry governing air pollutant
production. The recent reanalysis products have been used in various science applications (Thompson et al., 2019; Miyazaki
et al., 2019; Park et al., 2020; Gaubert et al. 2020).

In support of the International Global Atmospheric Chemistry (IGAC) Tropospheric Ozone Assessment Report Phase II
110 (TOAR-II) (<https://igacproject.org/activities/TOAR/TOAR-II>) Chemical Reanalysis Focus Working Group, we present here
an evaluation of the potential utility of the following five chemical reanalyses, which are listed in Table 1, for quantifying
regional and interannual variations in tropospheric ozone: TCR-2 (Miyazaki et al., 2020b), the Copernicus Atmosphere
Monitoring Service reanalysis (CAMSRA) (Inness et al., 2019), GEOS-Chem (Qu et al., 2020), the Chinese air quality
reanalysis (CAQRA) (Kong et al., 2021), and the Community Multiscale Air Quality (CMAQ) chemical reanalysis (Kumar et
115 al, 2025). The CAMSRA, GEOS-Chem, and TCR-2 reanalyses are global, whereas CAQRA and CMAQ are regional
reanalyses focused on China and the contiguous United States (CONUS), respectively. The regional reanalyses are evaluated
only at the surface. The objective of the work presented here is to examine the consistency of the ozone field between the
reanalyses and observations to assess the potential utility of the reanalyses for air quality studies. A companion TOAR-II study
by Sekiya et al. (2025) examines the impact of the choice of assimilated ozone and ozone precursor observations in the
120 chemical reanalyses on the resulting ozone fields. We begin in Section 2 with a description of the five chemical reanalyses and
the independent data sets used for the evaluation. The results of the evaluation are presented in Section 3, followed by a
discussion in Section 4. We end with a summary in Section 5.

2 Data and Models

2.1 TCR-2

125 The TCR-2 product employs the MIROC-Chem global chemistry transport model. The model has a T106 (1.1° x 1.1°)
horizontal resolution with 32 vertical levels extending from the surface to 4 hPa. The TCR-2 meteorological fields are produced
using the MIROC-AGCM (Watanabe et al., 2011) general circulation model with the model simulation nudged toward 6-
hourly ERA-Interim reanalysis fields (Dee et al., 2011). The chemical mechanism in the model consists of 92 chemical species
and 292 reactions. A priori anthropogenic emissions in the model are from the HTAP version 2 inventory (Janssens-Maenhout
130 et al., 2015). NO_x emissions from soils are based on the Global Emissions Inventory Activity (GEIA) (Graedel et al., 1993).

Biomass burning emissions are from the Global Fire Emissions Database version 4 (GFED4) (Randerson et al., 2018) and biogenic emissions are from version 2.1 of the Model of Emissions of Gases and Aerosols from Nature (MEGAN2.1; Guenther et al., 2006, 2012).

135 TCR-2 used a Local Ensemble Transform Kalman Filter (LETKF) (Hunt et al., 2007) to assimilate NO₂ observations from the SCanning Imaging Absorption spectroMeter for Atmospheric CartograpHY (SCIAMACHY), the Ozone Monitoring Instrument (OMI), and GOME-2; ozone observations from the Tropospheric Emission Spectrometer (TES) and the Microwave Limb Sounder (MLS); CO data from MOPITT; HNO₃ observations from MLS; and SO₂ data from OMI. The assimilated observations were used to optimize the atmospheric mixing ratio of ozone, NO_x, HNO₃, pernitric acid (HNO₄), dinitrogen pentoxide (N₂O₅), peroxyacetyl nitrate (PAN), and peroxyacetylnitrate (MPAN). Emissions of NO_x (from the surface and lightning), SO₂, and CO were also optimized in the assimilation. Although the model has 92 chemical species, the state vector in the assimilation consisted of a smaller subset of 35 species as well as the NO_x, CO, and SO₂ emissions. The emissions were optimized using a state augmentation approach that used the background error covariance, determined from the forecast ensemble, to link the emissions and the atmospheric concentrations in the optimization.

2.2 CAMSRA

145 The Copernicus Atmosphere Monitoring Service reanalysis (CAMSRA) product (Inness et al., 2019) is produced using the Integrated Forecast System (IFS) of the European Centre for Medium-Range Weather Forecasts (ECMWF). The product has a horizontal resolution of T255 ($\approx 0.75^\circ$), with 60 vertical levels from the surface to 0.1 hPa. The chemical mechanism in IFS is an extended version of the CB05 (Yarwood et al., 2005) chemical mechanism for the troposphere, which consists of 55 chemical species and 126 reactions. Explicit chemistry is not included in the stratosphere. Instead, stratospheric ozone chemistry is parameterized using the “Cariolle-scheme” (Cariolle and Déqué, 1986; Cariolle and Teysse re, 2007). Anthropogenic emissions in CAMSRA are from the MACCity inventory (Granier et al., 2011), with modifications to increase wintertime road traffic emissions over North America and Europe following the correction of Stein et al. (2014). Biogenic emissions are from MEGAN2.1 (Guenther et al., 2006, 2012) driven by meteorological fields from the Modern-Era Retrospective analysis for Research and Applications, Version 2 (MERRA-2; Gelaro et al., 2017). Soil and oceanic emissions are from the Precursors of Ozone and their Effects in the Troposphere (POET) database for 2000 (Olivier et al., 2003; Granier et al., 2005). Biomass burning emissions are from the Global Fire Assimilation System, version 1.2 (GFASv1.2; Kaiser et al., 2012).

160 The CAMSRA assimilation scheme is an incremental four-dimensional variational (4D-Var) data assimilation scheme (Courtier et al., 1994) with 12-hour assimilation windows from 09:00–21:00 and 21:00–09:00 UTC. Background error covariances are diagonal so that chemical species in the control vector are optimized independently. CAMSRA optimizes ozone, CO, NO₂, and aerosol mass mixing ratios using observations of ozone from SCIAMACHY, the Michelson Interferometer for Passive Atmospheric Sounding (MIPAS), MLS, OMI, GOME-2, and the Solar Backscatter Ultraviolet

Radiometer (SBUV/2), together with CO observations from MOPITT and NO₂ observations from SCIAMACHY, OMI, and GOME-2. Ozone precursor emissions are not optimized in the assimilation.

165 2.3 GEOS-Chem

The GEOS-Chem reanalysis (Qu et al., 2020) was produced using version v35k of the GEOS-Chem adjoint model (Henze et al., 2007). The model is driven by MERRA-2 (Gelaro et al., 2017) meteorological fields at a horizontal resolution of 2° x 2.5° with 47 levels from the surface to 0.01 hPa. The model has detailed tropospheric ozone chemistry, with 43 transported species and 297 chemical reactions. Stratospheric ozone is parameterized based on the linearized ozone scheme of McLinden et al. (2000). A priori anthropogenic emissions in the model are from the HTAP version 2 inventory (Janssens-Maenhout et al., 2015). Biomass burning emissions are from GFED4 (Randerson et al., 2018), NO_x emissions from soils are based on Yienger and Levy (1995), and biogenic emissions are from MEGAN2.1 (Guenther et al., 2006, 2012)

GEOS-Chem uses a 4D-Var data assimilation scheme to assimilate NO₂ slant column densities (SCD) from OMI to optimize NO_x emissions. The GEOS-Chem reanalysis presented here assimilated OMI NO₂ retrievals from version 3 of the NASA standard product OMNO2 (Krotkov et al., 2017). The GEOS-Chem reanalysis assimilated only NO₂ as the focus of Qu et al. (2020) was on the impact of discrepancies in OMI NO₂ retrievals on inferred NO_x emissions and posterior ozone simulations. The assimilation minimizes a cost function that is the sum of observation-error-weighted differences between the modeled and retrieved SCDs and departures of the emission scaling factors from the prior estimates weighted by the prior emissions error. In constructing the cost function, the modeled NO₂ vertical column densities (VCDs) are converted to SCDs using scattering weights from the OMI retrievals. Additional details of the GEOS-Chem assimilation are discussed in Qu et al. (2020).

2.4 CMAQ

The CMAQ regional reanalysis (Kumar et al., 2025) uses version 5.3.2 of the CMAQ model driven by meteorological fields from version 4.1 of the Weather Research and Forecasting (WRF) model (Skamarock and Klemp, 2008). The reanalysis was conducted at a horizontal resolution of 12 km x 12 km over the CONUS with 35 vertical levels from the surface to 50 hPa. The meteorological initial and boundary conditions for WRF are from the ERA-Interim reanalysis, while chemical initial and boundary conditions for CMAQ are from the Whole Atmosphere Community Climate Model (Marsh et al., 2013; Gettelman et al., 2019). The chemical mechanism in the model is based on the Carbon Bond 6 version r3 scheme for gas-phase chemistry with the AERO7 aerosol module for aerosol processes, including secondary organic aerosols (Appel et al., 2021). The chemical mechanism has 147 species and 343 reactions. A priori anthropogenic emissions in CMAQ are based on the US EPA National Emissions Inventory (NEIv2) for 2011 (<https://www.epa.gov/air-emissions-inventories/2014-national-emissions-inventory-nei-data>). WRF meteorology was used with the Sparse Matrix Operator Kernel Emissions (SMOKE) (de Almeida Albuquerque et al., 2018) to produce meteorology-dependent anthropogenic emissions for 2011, 2014, and 2017, which were adjusted in time using EPA reported annual state-wise trends. Biomass burning emissions are from the Fire Inventory from NCAR (FINN)

195 version 2.2 (Wiedinmyer et al., 2023). Biogenic emissions are specified using the Biogenic Emission Inventory System (BEIS) (Vukovich and Pierce, 2002).

CMAQ assimilated standard Level 2 Collection 6.1 AOD from the Moderate Resolution Imaging Spectroradiometer (MODIS) and Version 8 of the MOPITT CO multispectral retrievals using a three-dimensional variational (3D-Var) data assimilation scheme. The CO chemical data assimilation capability in Kumar et al. (2024) was a recent addition to the
200 previously existing MODIS AOD data assimilation capability. The assimilation optimized total aerosol mass per mode (Aiken, accumulation, and coarse) and CO mixing ratios. Background error covariance matrices generated for January and July are used seasonally to represent wintertime and summertime background error covariances, respectively. The wintertime background error covariance matrix is used for assimilating observations between November to March, while the summertime background error covariance matrix is used during the other months.

205 **2.5 CAQRA**

The CAQRA product (Kong et al., 2021) is a regional reanalysis for Asia that employs the Nested Air Quality Prediction Modeling System (NAQPMS) chemical transport model (Wang et al., 2000). The model is driven by meteorological fields from WRF at a horizontal resolution of 15 km x 15 km. The meteorological initial and boundary conditions for WRF are from the NCAR-NCEP reanalysis, while chemical boundary conditions are from the Model for Ozone and Related Chemical Tracers
210 (MOZART; Brasseur et al., 1998; Hauglustaine et al., 1998) model. The chemical mechanism in CAQRA is the carbon bond mechanism Z (Zaveri and Peters, 1999), with aqueous-phase chemistry and wet deposition based on the Regional Acid Deposition Model (RADM) mechanism from version 4.6 of CMAQ and inorganic aerosol processes represented by ISORROPIA1.7 (Nenes et al., 1998). Anthropogenic emissions in the model are from the HTAP version 2.2 inventory with a 2010 base year (Janssens-Maenhout et al., 2015). Emissions of VOCs are from the MEGAN-MACC model (Sindelarova et
215 al., 2014). Biomass burning emissions are from GFED4 (Randerson et al., 2018), soil NO_x emissions are from the Regional Emission Inventory in Asia (Yan et al., 2003), and oceanic emissions are from the POET database (Granier et al., 2005).

CAQRA uses an LETFK data assimilation scheme to assimilate surface observations of ozone, CO, NO₂, SO₂, PM_{2.5}, and PM₁₀ to optimize the atmospheric concentration of these constituents. In constructing the background error covariance, inter-species correlation is neglected. Thus, in the assimilation, each chemical species is optimized using only observations of that
220 species. Additional details of the CAQRA assimilation configuration are available in Kong et al. (2021).

2.6 Ozonesondes

To evaluate the reanalyses, we use ozonesonde observations from the TOAR-II Harmonization and Evaluation of Ground-based Instruments for Free Tropospheric Ozone Measurements (HEGIFTOM) effort
(<https://hegiftom.meteo.be/datasets/ozonesondes>). The measurement precision for the ozonesondes is better than 3–5% with
225 an accuracy of about 5–10% (Smit et al., 2007). The HEGIFTOM ozonesonde data were harmonized to remove systematic

biases and to provide an uncertainty estimate for every measurement. The database contains time series observations from 43 sites. Here we use data from 39 sites that each had a minimum of 48 measurements between January 2003 and December 2022.

2.7 Surface ozone observations

Surface ozone observations from the TOAR-I data set (Schultz et al. 2017) were used for evaluation of the reanalyses. The dataset consists of a consistent long-term record (1990–2014) of surface ozone observations that have been harmonized and processed with consistent quality control. We used the $2^\circ \times 2^\circ$ gridded monthly mean observations for the period 2003–2014 for comparison with the reanalysis. All of the reanalyses were regridded onto the ozone $2^\circ \times 2^\circ$ grid for the evaluation. The ozone data are available for both rural and urban sites. However, since the lowest resolution of the available reanalyses is $2^\circ \times 2.5^\circ$, which cannot reliably distinguish between urban and rural locations, we follow the approach of Huijnen et al. (2020) and Sekiya et al. (2025) and use only rural TOAR-I observations in the evaluation of the reanalyses.

3 Results

3.1 Climatological ozone distribution

The mean ozone distribution at the surface from the five reanalyses for 2006–2016 and the differences between the individual reanalyses and the ensemble mean are shown in Fig. 1. The global mean distribution (Fig. 1a) consists of a band of high ozone across the northern subtropics and a minimum in the tropics. In North America, there are high values over the southeastern US and the mountain west. In Asia, high ozone values are located over the Tibetan plateau. Figure 1b shows that GEOS-Chem is high everywhere compared to the ensemble mean, with differences exceeding 10 nmol mol^{-1} in Asia and western North America. Figure S1 shows that the largest relative differences in GEOS-Chem are between 20–40%. In contrast, CAMSRA is low over all continental regions, with the largest difference of about $10\text{--}15 \text{ nmol mol}^{-1}$ over central Africa and parts of Asia. The largest relative differences in CAMSRA are in central Africa and western South America, where the reanalysis is more than 40% lower than the ensemble mean (Fig. S1). TCR-2 is slightly lower than the ensemble mean at the high latitudes and about $5\text{--}10 \text{ nmol mol}^{-1}$ higher over tropical South America and central Africa. The high ozone over tropical South America and central Africa in TCR-2 correspond to differences exceeding 40% relative to the ensemble mean in these regions. For the regional reanalyses, CAQRA is about 5 to 15 nmol mol^{-1} lower (less than 40%) across much of Asia, with small positive differences over Thailand and Myanmar, whereas CMAQ had small differences of less than 5 nmol mol^{-1} across much of the US, with positive differences in the Pacific Northwest and negative differences in the southeastern US. Examination of the seasonal differences between the individual reanalyses and the ensemble mean (Fig. S2) reveals that the pattern of differences shown in Fig. 1b is relatively consistent seasonally in all reanalyses, with the exception of CMAQ, although the magnitude of the differences is generally larger in the winter hemisphere. CMAQ has positive differences across much of the US in December–February (DJF), and negative differences in June–August (JJA). However, the high ozone in GEOS-Chem relative to the ensemble mean could be because the GEOS-Chem reanalysis did not assimilate ozone

observations. Sekiya et al. (2025) found that ozone in the lower troposphere was high in the GEOS-Chem control (the model without assimilation) relative to the TCR-2 and CAMSRA controls, and that data assimilation increased ozone in CAMSRA and TCR-2, but had a minimal impact on ozone in GEOS-Chem.

260 In the middle troposphere, the mean ozone distribution, shown in Fig 2a, is similar to that at the surface, with a band of high ozone across the northern subtropics and mid-latitudes, but with fewer small-scale features than at the surface. Note that only the global reanalyses are evaluated in the free troposphere since only surface fields are available from the regional reanalyses. Examination of the differences between the individual global reanalyses and the ensemble mean (in Fig. 3a) shows that the reanalyses are all closer to the mean in the middle troposphere. The relative differences are shown in Fig. S3. The
265 major differences with respect to the ensemble mean are mainly in the tropics and subtropics, with TCR-2 and GEOS-Chem exhibiting an opposite pattern of differences. The differences in the individual reanalyses are generally less than 5 nmol mol^{-1} , except for localized regions in the tropics where the differences are larger. TCR-2 has a large difference with respect to the ensemble mean over the tropical Atlantic, northern South America, and the Indian Ocean, where the relative differences are 10–20%, with the largest relative difference exceeding 20% over northern South America (Fig. S3). The GEOS-Chem relative
270 differences are 10–20% and are opposite in sign to those of TCR-2 over the tropical Atlantic, northern South America, and the Indian Ocean. CAMSRA has small positive differences over the Pacific and small negative differences over Africa and the southern tropical Atlantic and Indian Oceans (Fig. 3a). The pattern of the differences in the reanalyses is consistent seasonally (see Fig. S4) but with a seasonally-dependent latitudinal shift. In GEOS-Chem and TCR-2 the difference pattern is shifted into the tropics of the summer hemisphere in a manner similar to the seasonal shift of the Intertropical Convergence Zone (ITCZ).
275 The spatial distribution of the differences in GEOS-Chem and TCR-2 in the tropics and subtropic is similar to the spatial pattern of the multi-model spread in ozone in the middle troposphere reported by Miyazaki et al. (2020a) in their multi-model data assimilation analysis using four different CTMs, including GEOS-Chem and MIROC-Chem. Indeed, they found that the largest multi-model spread was over northern south America, where we see large differences in TCR-2 and GEOS-Chem. Miyazaki et al. (2020a) suggested that the large multi-model spread over northern South America could be due to the
280 background errors not accurately capturing rapid error growth associated with deep convection and biomass burning. They also suggested that discrepancies in isoprene emissions and the isoprene oxidation chemistry could be another factor contributing to the large multi-model spread in the region.

At 250 hPa the mean ozone distribution shown in Fig. 2b reveals the influence of the extratropical lower stratosphere with high ozone at the high-latitudes. In the tropics there is a minimum in ozone over the warm pool of the tropical western Pacific,
285 which reflects the influence of convective transport (e.g., Pan et al., 2017). The mean differences between the individual reanalyses and the ensemble mean (Fig 3b) are small, with the largest differences mainly in the southern midlatitudes. As a result of the minimum in ozone over the tropical western Pacific, the largest relative differences in TCR-2 and CAMSRA are found in this region (Fig. S5). In addition to large relative differences over the western Pacific, GEOS-Chem also has large relative ozone differences in the southern midlatitudes, where it is high relative to the ensemble mean. The spatial pattern of
290 the differences in TCR-2 is opposite that in GEOS-Chem. The high ozone in GEOS-Chem relative to the ensemble mean is

likely due to the fact that GEOS-Chem did not assimilate ozone observations. The high ozone in GEOS-Chem extends across the southern extratropics in DJF and MAM (see Fig S6), whereas it is confined to the southern midlatitudes in JJA and SON. In TCR-2, the differences in the southern midlatitudes are largest in JJA and SON. CAMSRA has high ozone relative to the ensemble mean in the northern high-latitudes in JJA and low ozone in the southern high-latitudes in DJF.

295 Daily maximum 8-hour average (MDA8) ozone is a daily metric widely used for air quality standards and for ozone exposure studies (e.g., Turner et al., 2015; Fleming et al., 2018; Lyu et al., 2019; Chen et al., 2024). In particular, it is used for evaluating the mortality risks associated with short-term ozone exposure (Fleming et al., 2018). We include MDA8 in our evaluation since the ozone reanalyses could be useful for ozone exposure studies where local surface air quality observations are lacking. The ensemble mean MDA8 ozone distribution and the differences between the individual reanalyses and the ensemble mean are shown in Fig. 4. The spatial pattern of differences in MDA8 (Fig. 4b) is similar to that shown for ozone in Fig. 1b, except for the CMAQ reanalysis. In CMAQ, MDA8 ozone is high relative to the ensemble mean over the western and central US, in contrast to the pattern of differences in mean ozone shown in Fig. 1b. Overall, we find that the regional differences in MDA8 ozone between the individual reanalyses and the ensemble mean are generally smaller than the differences shown for surface ozone in Fig. 1b. The exception is the TCR-2 reanalysis which has larger MDA8 differences with respect to the ensemble mean over South America and central Africa.

3.2 Regional ozone variations

The seasonal variations in regional mean ozone are shown in Figs. 5–7 for the nine regions defined in Table 2 (and shown in Fig S7). The regions are based on those in Miyazaki et al. (2017a). At the surface (Fig 5), the seasonal cycle is consistent across all the reanalyses. In all regions, CAMSRA has the lowest ozone mixing ratios. For example, in the US, ozone in CAMSRA is about 5 nmol mol⁻¹ lower than in TCR-2. In contrast, GEOS-Chem ozone is 5–10 nmol mol⁻¹ higher than in TCR-2. Indeed, GEOS-Chem has the highest ozone concentrations in all regions except for South America. In South America, TCR-2 has higher mean ozone than GEOS-Chem in all months except for August. In China, CAQRA is fairly consistent with CAMSRA.

In the free troposphere, at 500 hPa (Fig 6), the seasonality of the global reanalyses is generally consistent in the extratropics, which is in agreement with the results shown in Fig. 3a. In the tropics, there are larger discrepancies between the reanalyses over South America, North Africa, and the Middle East. Over South America, for example, TCR-2 has higher ozone concentrations between January–July and October–December, similar to the discrepancies observed at the surface (Fig 5). Over the US, ozone concentrations peak about three months later in GEOS-Chem than in the other reanalyses. And over China, GEOS-Chem has a broader ozone maximum than CAMSRA and TCR-2. In the UTLS (Fig. 7), TCR-2 and CAMSRA are generally in agreement in terms of the ozone concentrations and variability in all regions, probably due to the assimilation of ozone measurements from MLS (Sekiya et al., 2025). Over South America and southern Africa, GEOS-Chem exhibits a larger seasonal cycle than CAMSRA and TCR-2. The discrepancy could be attributed to the lack of assimilation of ozone measurements in GEOS-Chem.

The time series of the regional mean ozone concentrations are shown in Figs. 8–10. As can be seen in Fig 8, the lower
 325 ozone mixing ratios at the surface in CAMSRA are present in all years. The differences in the mean concentrations between
 CAMSRA and the other reanalyses is particularly pronounced in the three African regions. Across most regions, with the
 exception of South America, the three global reanalyses have similar interannual variability in surface ozone, with a high
 ozone in GEOS-Chem and a low ozone in CAMSRA. In South America, ozone in TCR-2 is generally higher than 20 nmol
 mol⁻¹ throughout the year, while CAMSRA ozone is lower than 10 nmol mol⁻¹ during the summer months. For the regional
 330 reanalyses, we find that in the US, surface ozone variability in CMAQ is similar to that in GEOS-Chem, whereas in China,
 CAQRA is similar to CAMSRA. In the northern extratropical middle troposphere, over the US, Europe, and China (Fig 9), the
 variability in the three global reanalyses is remarkably similar. The worst agreement is found over Northern Africa, where the
 interannual variability is significantly different in each of the three global reanalyses. Over South America and central Africa
 the simulation of the ozone maxima in TCR-2 is consistent with the other reanalyses, but TCR-2 significantly overestimates
 335 the ozone minima. In the UTLS (Fig. 10), Northern Africa is the region with the greatest disagreement between the reanalyses
 in their simulation of the ozone variability. The South American, Northern African, and Central African regions are all strongly
 influenced by convective transport, which is highly variable and will pose a challenge for the reanalyses. These regions are
 also strongly influenced by biomass burning emissions and biogenic ozone precursor emissions, which are poorly constrained
 in models.

340 The linear trend in surface ozone in the reanalyses is shown in Fig. 11. There are large regional differences between the
 reanalyses in the trends. For example, in Asia TCR-2 has positive trends (that are as much as 0.4 nmol mol⁻¹ per year), whereas
 CAMSRA has large negative trends in East Asia (exceeding -0.4 nmol mol⁻¹ per year) with small positive trends in South
 Asia. In North America, the pattern of the trends is similar in CAMSRA, GEOS-Chem, and CMAQ, with negative trends over
 the southeastern US and the mountain west, and positive trends over northern and eastern Canada, although the negative trends
 345 in GEOS-Chem are not statistically significant. In TCR-2 there are negative trends over much of North America. The main
 statistically significant trends in GEOS-Chem are in the southern mid-latitudes, where there are negative trends that are
 consistent with the negative trends that TCR-2 exhibits across the southern extratropics. However, in this region CAMSRA
 has positive trends.

350 **Table 2.** Regional definitions used in the ozone evaluation.

Region	Latitude range	Longitude range
United States	28.0°N–50.0°N	70.0°W–125.0°W
Europe	35.0°N–60.0°N	10.0°W–30.0°E
India	8.0°N–33.0°N	68.0°E–89.0°E

China	30.0°N–40.0°N	110.0°E–123.0°E
Middle East	12.5°N–37.5°N	30.0°E–60.0°E
Northern Africa	Equator–20.0°N	20.0°W–40.0°E
Central Africa	Equator–20.0°S	10.0°E–40.0°E
Southern Africa	22.0°S–31.0°S	25.0°E–34.0°E
South America	Equator–20.0°S	50.0°W–70.0°W

3.3 Evaluation with independent observations

The mean surface ozone observations from TOAR-I for 2006-2014 and the differences between the individual reanalyses and the TOAR observations are plotted in Fig. 12. The relative biases are shown in Fig S8. The evaluation only extends to 355 2014 because observations in the TOAR-I database are not available after 2014. In addition, the CAQRA reanalysis was not included in this evaluation because of the short temporal overlap between CAQRA and the TOAR-I database and the limited number of TOAR-1 observations over Asia. As can be seen in Fig 8b, GEOS-Chem, TCR-2, and CMAQ are biased high relative to the TOAR observations, with GEOS-Chem exhibiting the highest global bias of about 14 nmol mol⁻¹ (47%). The mean bias for CAMSRA and TCR-2 is 1.6 nmol mol⁻¹ (7%) and 5.5 nmol mol⁻¹ (20%), respectively. Over the US, CMAQ has a mean high bias of 6.4 nmol mol⁻¹ (22%). The CAMSRA global mean bias reflects the compensating influence of negative 360 biases over the central and western US and over central and eastern Europe, and positive biases everywhere else. Examination of the seasonality of the bias (see Fig. S9) reveals that in GEOS-Chem the largest global mean bias with respect to the TOAR observations is 16.6 nmol mol⁻¹ in JJA and the smallest mean bias is 10.5 nmol mol⁻¹ in DJF. In TCR-2 and CAMSRA the largest mean bias is 9.8 nmol mol⁻¹ and 5.3 nmol mol⁻¹, respectively, in JJA and the smallest mean bias is 1.7 nmol mol⁻¹ and 365 -1.6 nmol mol⁻¹, respectively, in DJF. In CMAQ the largest total mean bias is 10.4 nmol mol⁻¹ in DJF, while the smallest total mean bias is 4.3 nmol mol⁻¹ in JJA.

A comparison of the global reanalyses with ozonesonde data in the middle troposphere and UTLS is shown in Fig. 13. The ozonesonde data were binned into the following three latitude bins: 20°S–60°S, 20°S–20°N, and 20°N–60°N. There were three ozonesonde sites used in the 20°S–60°S latitude bin, 11 in the 20°S–20°N bin, and 17 in the 20°N–60°N bin. At 500 hPa 370 the reanalyses capture the variability in the ozonesonde data well, with correlations of about 0.8 and 0.9 in the southern and northern midlatitudes, respectively. The correlation is lower in the tropics, with values between 0.5–0.7. The higher correlation in the midlatitudes is expected since ozone transport in this region is dominated by large-scale synoptic processes that are well constrained by meteorological reanalyses. In contrast, transport in the tropics is dominated by convective processes, which are less well constrained by models and meteorological reanalyses. The mean bias across all three regions in the middle

375 troposphere is less than 4 nmol mol^{-1} (10%). In the northern midlatitudes, the largest bias, which is in the GEOS-Chem reanalysis, is only about 2 nmol mol^{-1} (4%). The standard deviation is also low, less than 4 nmol mol^{-1} , in the tropics and northern midlatitudes. The standard deviation increases to about 6 nmol mol^{-1} in the southern midlatitudes. However, it should be noted that there are only three ozonesonde sites in the southern midlatitude region.

In the UTLS (at 250 hPa) the correlations in the midlatitudes are just as high as at 500 hPa. However, the correlations in the upper tropical troposphere are slightly lower. In the northern midlatitudes, the largest mean bias is about 10 nmol mol^{-1} (10%). In the tropics, where the ozone mixing ratio is lower, the mean bias is smaller. The largest mean bias, exceeding 20 nmol mol^{-1} (30%) is found in GEOS-Chem in the southern midlatitudes. This large bias in GEOS-Chem in the southern midlatitudes could explain the high ozone in GEOS-Chem relative to the ensemble mean in the upper troposphere of the southern midlatitudes shown in Fig 3b. The standard deviation in the UTLS is larger than at 500 hPa, particularly in the midlatitudes, which is expected given the higher ozone mixing ratios in the lower stratosphere and the small-scale meteorological processes that drive variability in the tropopause region. At 250 hPa the ozone distribution will be strongly influenced by variations in the tropopause and it is a challenge for models to reproduce the small-scale, dynamically-driven variations in ozone in this region.

3.4. Surface NO_2 distribution

390 As NO_2 is a key ozone precursor, examination of the NO_2 distribution in the reanalyses could provide insight in the source of the differences in surface ozone between the reanalyses. The ensemble mean NO_2 distribution and the differences between the individual reanalyses and the ensemble mean are plotted in Fig. 14. As shown in Fig. 14b, the ensemble mean reflects the combined influence of low NO_2 mixing ratios in GEOS-Chem and high NO_2 in CAMSRA. CMAQ has low NO_2 in the US, whereas CAQRA generally has high NO_2 in eastern China and low NO_2 in western China, northern India, and southeast Asia.

395 The seasonal variations in regional mean NO_2 at the surface are shown in Fig. 15. Across all region, GEOS-Chem has low NO_2 seasonally compared to the other reanalyses. For most regions, except South America and China, CAMSRA has higher NO_2 than TCR-2. For example, over North America, India, and the Middle East, CAMSRA has much higher NO_2 than TCR-2. The large discrepancies in surface NO_2 between the reanalyses is due, in part, to the differences in the assimilation configuration employed in the reanalyses. For example, GEOS-Chem constrained only NO_x emissions, CAMSRA constrained

400 NO_2 and ozone mixing ratios, TCR-2 constrained NO_2 and ozone mixing ratios as well NO_x emissions, and CMAQ constrained aerosol mass and CO mixing ratios. In addition, GEOS-Chem has the lowest spatial resolution at $2^\circ \times 2.5^\circ$. These differences will have a significant impact on the simulated surface NO_2 in the reanalyses since NO_x emissions represent a strong forcing on surface NO_2 mixing ratios in the assimilation, with implications for surface ozone. In their observing system experiments, Sekiya et al. (2025) found that assimilation of the satellite NO_2 data produced a larger increase in lower tropospheric ozone in

405 TCR-2 than in GEOS-Chem, which they suggested could be due to differences in the sensitivities of ozone to changes in NO_x emissions in GEOS-Chem and TCR-2, as reported by Miyazaki et al. (2020a) in the multi-model data assimilation system. Sekiya et al. (2025) also noted that Qu et al. (2020) reported lower posterior NO_x emission estimates in GEOS-Chem when

assimilating the NASA standard OMNO2 NO₂ product compared to when assimilating the KNMI DOMINO product (Boersma et al., 2011) or the QA4ECV product (Boersma et al., 2018). The GEOS-Chem results presented here are based on the OMNO2 product.

4. Discussion

The larger biases in ozone at the surface compared to the free troposphere is consistent with previous studies that showed that atmospheric chemistry models tend to overestimate surface ozone concentrations (e.g., Reidmiller et al., 2009; Travis et al., 2016). The large positive mean biases of up to 10–15 nmol mol⁻¹ found here are similar to those reported by Young et al. (2018) in their evaluation of models used in the Atmospheric Chemistry and Climate Model Intercomparison Project (ACCMIP). One potential contributor to the overestimate of surface ozone in the reanalyses could be the model resolution, since according to Wild and Prather (2006), even at a horizontal resolution of 1.1° x 1.1° models will overestimate regional ozone production. Furthermore, it was suggested by Valin et al. (2011) that high spatial resolution of 4–12 km is required to capture the non-linear NO_x chemistry. CMAQ was run at a high spatial resolution of 12 km x 12 km, however only aerosol optical depth and the CO mixing ratio were optimized in the analysis. Thus, in CMAQ, ozone was adjusted indirectly through changes in the model chemistry. TCR-2 and CAMSRA both optimized the ozone mixing ratio, but the spatial resolution of both models, 1.1° and 0.75°, respectively, is still coarse. Higher resolution is also important to more effectively assimilate the satellite observations to analyze emissions and concentrations on a megacity scale (Sekiya et al., 2021). GEOS-Chem has the lowest spatial resolution (at 2° x 2.5°) and the highest ozone bias. Another possible source of the high surface ozone in GEOS-Chem is bias in the chemical mechanism in the model. Qu et al. (2020) found that using the a posteriori NO_x emissions from the GEOS-Chem reanalysis in a more recent version of the model resulted in lower ozone mixing ratios, which they attributed to differences in the chemical mechanism and VOC emissions in the two versions of GEOS-Chem.

The regional discrepancies in surface ozone between the reanalyses clearly reflects the fact that atmospheric composition measurements from space have less sensitivity to ozone and its precursors near the surface. However, the discrepancies in surface ozone in the reanalyses also reflect differences in the assimilation configuration employed in the reanalyses as well as discrepancies in the chemical mechanisms used in the models. Near the surface the ozone lifetime is shorter than in the middle and upper troposphere, thus, near-surface information from the observations ingested in the assimilation will be rapidly destroyed and the surface ozone analysis will be strongly influenced by discrepancies in the model chemistry and precursor emissions at the surface. As a result, the configuration of the assimilation will have a significant impact on the surface ozone analysis. This could explain the larger discrepancies that we see between the reanalyses at the surface as compared to the middle and upper troposphere in Figs. 5–10. For the reanalyses considered here, GEOS-Chem optimized only NO_x emissions, CAMSRA optimized the atmospheric concentration of ozone and its precursors, CMAQ optimized the atmospheric concentration of aerosols and CO, and CAQRA assimilated only in situ surface observations, but optimized the atmospheric concentration of ozone, CO, NO₂, SO₂, and particulate matter. Zhang et al. (2019) showed that optimizing only NO_x emissions

440 can result in large regional differences in the inferred emissions compared to jointly optimizing the emissions together with
the ozone concentrations due to the influence of discrepancies in the ozone field on the NO₂ concentrations. TCR-2 is the only
reanalysis that optimized both the atmospheric concentrations of ozone and its precursor as well as the precursor emissions.
To mitigate the impact of discrepancies in model chemistry and ozone precursor emissions, improvements in the chemical
reanalyses are required to jointly optimize the atmospheric concentrations of ozone and its precursors together with the ozone
445 precursor emissions. In this context, the construction of better background error covariances in the reanalyses is needed to
propagate the information from the observations in space, time, and, in particular, across species.

In our evaluation of the reanalyses, we have focused on discrepancies in NO₂ as possible factor influences the ozone
analysis. However, VOCs also play an important role in ozone formation and none of the reanalyses examined here assimilated
observations to constrain the VOC emissions. Isoprene is the dominant non-methane VOC (Guenther et al., 2012) and HCHO
450 is a key byproduct of isoprene oxidation. Assimilation of satellite observations of HCHO have been widely used to quantify
isoprene emissions (e.g., Palmer et al., 2003; Millet et al., 2008; Stavrou et al., 2015; Kaiser et al., 2018). In addition, satellite
observations of isoprene are now available from the Cross-Track Infrared Sounder (CrIS) satellite instrument and can provide
constraints on isoprene emissions (Wells et al., 2020). Integrating HCHO and isoprene observations should provide greater
constraints on tropospheric ozone. For the first time, observations of ozone, NO₂, and HCHO are also available from
455 geostationary (GEO) orbit by the Geostationary Environment Monitoring Spectrometer (GEMS) and the Tropospheric
Emissions: Monitoring of Pollution (TEMPO) instruments. In contrast to low-earth orbiting (LEO) satellites, GEO instruments
greater daytime temporal coverage to capture diurnal variations in ozone, NO₂, and HCHO. Park et al. (2024) and Hsu et al.
(2024) showed that assimilating GEO observations of NO₂ results in improved NO_x emission estimates compared to those
inferred from assimilating LEO data. Integrating GEO and LEO observations will enhance the constraints on tropospheric
460 ozone in the reanalyses. Ultimately, given the limitations in the vertical sensitivity of the satellite measurements near the
surface, and the limitations in the observational coverage of the surface network, integrating the surface and satellite
observations in the reanalyses to exploit their complementarity will provide valuable constraints on surface ozone variability.

5. Summary

We have conducted an evaluation of the regional and interannual variations in tropospheric ozone in five chemical
465 reanalyses, consisting of three global (TCR-2, CAMSRA, and GEOS-Chem) and two regional (CMAQ and CAQRA)
reanalyses. We found that at the surface there can be large regional differences in mean ozone (exceeding 10 nmol mol⁻¹)
between the reanalyses. In general, the GEOS-Chem reanalysis was biased high relative to the ensemble mean across most
continental regions, whereas CAMSRA was biased low. The TCR-2 reanalysis was closest to the ensemble mean at the surface
except in tropical South America and central Africa. In the free troposphere the global reanalyses were in closer agreement.
470 At 500 hPa the mean bias between individual reanalyses and the ensemble mean was less than 5 nmol mol⁻¹ in most regions.
Similarly, in the UTLS the mean bias between the individual reanalyses and the ensemble mean was less than 5 nmol mol⁻¹,

except in the northern high-latitudes where the biases exceeded 30 nmol mol^{-1} , with GEOS-Chem and CAMSRA exhibiting large positive bias and negative biases, respectively.

Regionally, at the surface the reanalyses were generally consistent in their simulation of the seasonal cycle and interannual
475 variations in regional mean ozone, with high ozone in GEOS-Chem and low ozone in CAMSRA at the surface. In the free
troposphere the reanalyses are in better agreement in their simulation of the ozone variability as well as the ozone mixing ratio,
with a few exceptions. At 500 hPa the seasonal maximum in ozone over the US occurs three months later in GEOS-Chem than
in the other reanalyses. At 250 hPa the amplitude of the seasonal cycle in ozone is larger over South America and southern
Africa in GEOS-Chem than in CAMSRA or TCR-2. At both 500 hPa and 250 hPa there are significant differences across the
480 reanalyses in the interannual variability in ozone over northern Africa.

Evaluation of the reanalyses with TOAR surface ozone observations reveal that GEOS-Chem, TCR-2, and CMAQ are
biased high, with surface ozone biases exceeding 10 nmol mol^{-1} in GEOS-Chem. The CAMSRA product has the smallest bias
with negative biases in central, eastern, and southern Europe, and in the central and western US, and positive biases everywhere
else. We did not evaluate CAQRA with the surface ozone observations because of the limited number of observations available
485 in Asia in the TOAR-I database. In the free troposphere the biases in the reanalyses relative to the ozonesonde data are small,
for example, less than 4 nmol mol^{-1} everywhere at 500 hPa. The correlations between the reanalyses and the ozonesonde data
were about 0.9 and 0.8 for the northern and southern midlatitudes, respectively, with lower correlations of between 0.4–0.7 in
the tropics. The higher correlations in the midlatitudes likely reflect that fact that ozone transport in the extratropical free
troposphere is controlled by large-scale synoptic processes that are well represented by meteorological reanalyses. In contrast,
490 in the tropics, despite the constraints that satellite observations provide on atmospheric composition, transport of trace gases
is dominated by convective processes, which are less well captured in meteorological reanalyses.

Our results suggest that chemical reanalyses should provide valuable information for quantifying regional and interannual
variations in ozone in the free troposphere. Large regional discrepancies in ozone at the surface between the reanalyses impact
their utility for surface ozone studies. The discrepancies reflect differences in the configuration of the assimilation schemes
495 employed in the reanalyses as well as discrepancies in the chemical mechanisms and prior emission inventories in the models.
The reported discrepancies suggest the need for a detailed follow-up intercomparison study to better determine the influence
of the prior emissions, model transport and chemistry, and choice of assimilated observations on the ozone reanalyses.
Improvements in the reanalyses are needed to mitigate these discrepancies by better exploiting the assimilated observations,
both satellite and in situ observations, to jointly optimize the atmospheric concentrations of ozone and its precursors together
500 with the ozone precursor emissions. Incorporating newly available satellite observations, such as isoprene observations from
CrIS and high temporal resolution GEO observations of ozone, NO_2 , and HCHO from GEMS and TEMPO (Zoogman et al.,
2017), will provide greater constraints on tropospheric ozone. This will enhance the consistency and quality of the surface
ozone analyses and thus the utility of the reanalyses for quantifying regional and long-term variations in surface ozone.

505

Author contributions. D.J., K.M., and H.W. designed the research. L.P., Z.Q., and W.C. performed the analysis. Z.Q., K.M., A.I., R.K., and X. T. provided chemical reanalysis products. All authors contributed to the writing of the manuscript.

510

Competing interests. The authors declare that they have no conflict of interest.

Data Availability. The CAMSRA data are available <https://ads.atmosphere.copernicus.eu/datasets/cams-global-reanalysis-eac4>. TCR-2 data can be publicly accessed at <https://disc.gsfc.nasa.gov/information/data-release?title=Release%20of%20TROPESS%20Chemical%20Reanalysis%20Products>. The CMAQ reanalysis is available at: https://gdex.ucar.edu/dataset/382_kumar.html. The GEOS-Chem-adjoint top-down NO_x emission data are available at <https://dataverse.harvard.edu/dataset.xhtml?persistentId=doi:10.7910/DVN/HVT1FO>. Details about the ozonesonde data and how to download them can be found at <https://hegiftom.meteo.be/datasets/ozonesondes>. Information on the TOAR ozone dataset and instructions for accessing the data are available at <https://toar-data.fz-juelich.de>.

520

Acknowledgments. This work was supported by the Natural Science and Engineering Research Council of Canada (NSERC). Part of this work was conducted at the Jet Propulsion Laboratory, California Institute of Technology, under contract with the NASA. The NSF National Center for Atmospheric Research is sponsored by the U.S. National Science Foundation. The TCR-2 product was generated by the calculations using the Earth Simulator with the support of the Japan Agency for Marine-Earth Science and Technology. The Copernicus Atmosphere Monitoring Service is operated by the European Centre for Medium-Range Weather Forecasts (ECMWF) on behalf of the European Commission as part of the Copernicus Programme (<http://copernicus.eu>).

530

References

Appel, K. W., Bash, J. O., Fahey, K. M., Foley, K. M., Gilliam, R. C., Hogrefe, C., Hutzell, W. T., Kang, D., Mathur, R., Murphy, B. N., Napelenok, S. L., Nolte, C. G., Pleim, J. E., Pouliot, G. A., Pye, H. O. T., Ran, L., Roselle, S. J., Sarwar, G., Schwede, D. B., Sidi, F. I., Spero, T. L., and Wong, D. C.: The Community Multiscale Air Quality (CMAQ) model versions 5.3 and 5.3.1: system updates and evaluation, *Geoscientific Model Development*, 14, 2867–2897, <https://doi.org/10.5194/gmd-14-2867-2021>, 2021.

535

- Barré, J., Peuch, V.-H., Lahoz, W. a., Attié, J.-L., Josse, B., Piacen-
tini, A., Eremenko, M., Dufour, G., Nedelec, P., von
Clarmann, T., and El Amraoui, L.: Combined data assimilation of ozone tro-
pospheric columns and stratospheric profiles
in a high-resolution CTM, *Q. J. Roy. Meteorol. Soc.*, doi:10.1002/qj.2176, 2013.
- 540 Boersma, K. F., Vinken, G. C. M., and Eskes, H. J.: Representativeness errors in comparing chemistry transport and chemistry
climate models with satellite UV–Vis tropospheric column retrievals, *Geosci. Model Dev.*, 9, 875–898,
https://doi.org/10.5194/gmd-9-875-2016, 2016.
- Brasseur, G. P., Hauglustaine, D. A., Walters, S., Rasch, P. J., Muller, J. F., Granier, C., and Tie, X. X.: MOZART, a global
chemical transport model for ozone and related chemical tracers 1. Model description, *J. Geophys. Res.-Atmos.*, 103,
545 28265–28289, https://doi.org/10.1029/98jd02397, 1998.
- Burrows, J. P., M. Weber, M. Buchwitz, V. Rozanov, A. Ladstätter-Weissenmayer, A. Richter, et al.: The Global Ozone
Monitoring Experiment (GOME): Mission concept and first scientific results, *J. Atmos. Sci.*, 56, 151–175,
https://doi.org/10.1175/1520-0469(1999)056<0151:TGOMEG>2.0.CO;2, 1999.
- Cady-Pereira, K. E., Payne, V. H., Neu, J. L., Bowman, K. W., Miyazaki, K., Marais, E. A., Kulawik, S., Tzompa-Sosa, Z. A.,
550 and Hegarty, J. D.: Seasonal and spatial changes in trace gases over megacities from Aura TES observations: two case
studies, *Atmos. Chem. Phys.*, 17, 9379–9398, https://doi.org/10.5194/acp-17-9379-2017, 2017.
- Cariolle, D. and Déqué, M.: Southern hemisphere medium-scale waves and total ozone disturbances in a spectral general
circulation model, *J. Geophys. Res.*, 91, 10825–10846, 1986.
- Cariolle, D. and Teyssède, H.: A revised linear ozone photochemistry parameterization for use in transport and general
555 circulation models: multi-annual simulations, *Atmos. Chem. Phys.*, 7, 2183–2196, https://doi.org/10.5194/acp-7-2183-
2007, 2007.
- Chang, K-L, et al.: Regional trend analysis of surface ozone observations from monitoring networks in eastern North America,
Europe and East Asia. *Elem Sci Anth*, 5: 50, DOI: <https://doi.org/10.1525/elementa.243>, 2017.
- Chen, Z. Y., Petetin, H., Méndez Turrubiates, R. F., et al.: Population exposure to multiple air pollutants and its compound
560 episodes in Europe, *Nat. Commun.*, 15, 2094, https://doi.org/10.1038/s41467-024-46103-3, 2024.
- Colombi, N., Miyazaki, K., Bowman, K. W., Neu, J. L., and Jacob, D. J.: A new methodology for inferring surface ozone from
multispectral satellite measurements, *Environ. Res. Lett.* 16 (2021), 105005, https://doi.org/10.1088/1748-9326/ac243d,
2021.
- Courtier, P., Thépaut, J.-N., and Hollingsworth, A.: A strategy for operational implementation of 4D-Var, using an incremental
565 approach, *Q. J. Roy. Meteor. Soc.*, 120, 1367–1388, 1994.
- Cuesta, J., Kanaya, Y., Takigawa, M., Dufour, G., Eremenko, M., Foret, G., Miyazaki, K., and Beekmann, M.: Transboundary
ozone pollution across East Asia: daily evolution and photochemical production analysed by IASI + GOME2 multispectral
satellite observations and models, *Atmos. Chem. Phys.*, 18, 9499–9525, https://doi.org/10.5194/acp-18-9499-2018, 2018.
- Cuesta, J., Eremenko, M., Liu, X., Dufour, G., Cai, Z., Höpfner, M., von Clarmann, T., Sellitto, P., Foret, G., Gaubert, B.,
570 Beekmann, M., Orphal, J., Chance, K., Spurr, R., and Flaud, J.-M.: Satellite observation of lowermost tropospheric ozone

- by multispectral synergism of IASI thermal infrared and GOME-2 ultraviolet measurements over Europe, *Atmos. Chem. Phys.*, 13, 9675–9693, <https://doi.org/10.5194/acp-13-9675-2013>, 2013.
- de Almeida Albuquerque, T.T., de Fátima Andrade, M., Ynoue, R.Y. et al. WRF-SMOKE-CMAQ modeling system for air quality evaluation in São Paulo megacity with a 2008 experimental campaign data, *Environ Sci Pollut Res*, 25, 36555–36569, <https://doi.org/10.1007/s11356-018-3583-9>, 2018.
- Dee, D. P., Uppala, S. M., Simmons, A. J., Berrisford, P., Poli, P., Kobayashi, S., Andrae, U., Balmaseda, M. A., Balsamo, G., Bauer, P., Bechtold, P., Beljaars, A. C. M., van de Berg, L., Bidlot, J., Bormann, N., Delsol, C., Dragani, R., Fuentes, M., Geer, A. J., Haimberger, L., Healy, S. B., Hersbach, H., Hólm, E. V., Isaksen, I., Kållberg, P., Köhler, M., Matricardi, M., McNally, A. P., Monge-Sanz, B. M., Morcrette, J.-J., Park, B.-K., Peubey, C., de Rosnay, P., Tavolato, C., Thépaut, J.-N., and Vitart, F.: The ERA-Interim reanalysis: Configuration and performance of the data assimilation system, *Q. J. Roy. Meteor. Soc.*, 137, 553–597, 2011.
- Deeter, M. N., H. M. Worden, J. C. Gille, D. P. Edwards, D. Mao, and James R. Drummond: MOPITT multispectral CO retrievals: Origins and effects of geophysical radiance errors. *J. Geophys. Res. Atmos.*, 116(D15), doi: <https://doi.org/10.1029/2011JD015703>, 2011.
- Drummond, J. R.: Measurements Of Pollution In The Troposphere (MOPITT), in *The use of EOS for studies of Atmospheric Physics*, edited by J. C. Gille and G. Visconti, pp 77-101, North- Holland, New York, 1992.
- Drummond J. R., et al.: A review of 9-year performance and operation of the MOPITT instrument, *Adv. Space Res.* 45(6) 760-774 doi:10.1016/j.asr.2009.11.019. 2010.
- Duncan, B. N., L. N. Lamsal, A. M. Thompson, Y. Yoshida, Z. Lu, D. G. Streets, M. M. Hurwitz, and K. E. Pickering: A space-based, high-resolution view of notable changes in urban NO_x pollution around the world (2005–2014), *J. Geophys. Res. Atmos.*, 121, 976–996, doi:10.1002/2015JD024121, 2016.
- Elguindi, N., C. Granier, T. Stavrou, S. Darras, M. Bauwens, H. Cao, C. Chen, et al.: Intercomparison of magnitudes and trends in anthropogenic surface emissions from bottom-up inventories, top-down estimates, and emission scenarios. *Earth's Future*, 8(8):e2020EF001520, 2020. doi: <https://doi.org/10.1029/2020EF001520>, 2020.
- Elshorbany, Y., Ziemke, J. R., Strode, S., Petetin, H., Miyazaki, K., De Smedt, I., Pickering, K., Seguel, R. J., Worden, H., Emmerichs, T., Taraborrelli, D., Cazorla, M., Fadnavis, S., Buchholz, R. R., Gaubert, B., Rojas, N. Y., Nogueira, T., Salameh, T., and Huang, M.: Tropospheric ozone precursors: global and regional distributions, trends, and variability, *Atmos. Chem. Phys.*, 24, 12225–12257, <https://doi.org/10.5194/acp-24-12225-2024>, 2024.
- Emili, E., Barret, B., Massart, S., Le Flochmoen, E., Piacentini, A., El Amraoui, L., Pannekoucke, O., and Cariolle, D.: Combined assimilation of IASI and MLS observations to constrain tropospheric and stratospheric ozone in a global chemical transport model, *Atmos. Chem. Phys.*, 14, 177–198, <https://doi.org/10.5194/acp-14-177-2014>, 2014.
- Environmental Protection Agency (EPA), <https://www.epa.gov/air-trends/air-quality-national-summary>, 2024.
- Fleming, Z. L., Doherty, R., Von Schneidmesser, E., Malley, C. S., Cooper, O. R., Pinto, J. P., Colette, A., Xu, X., Simpson, D., Schultz, M. G., Lefohn, A. S., Hamad, S., Moolla, R., Solberg, S. and Feng, Z.: Tropospheric Ozone Assessment

- 605 Report: Present-day ozone distribution and trends relevant to human health, *Elem Sci Anth*, 6, 12, <https://doi.org/10.1525/elementa.273>, 2018.
- Flemming, J., Benedetti, A., Inness, A., Engelen, R. J., Jones, L., Huijnen, V., Remy, S., Parrington, M., Suttie, M., Bozzo, A., Peuch, V.-H., Akritidis, D., and Katragkou, E.: The CAMS interim Reanalysis of Carbon Monoxide, Ozone and Aerosol for 2003–2015, *Atmos. Chem. Phys.*, 17, 1945–1983, <https://doi.org/10.5194/acp-17-1945-2017>, 2017.
- 610 Fu, D., Kulawik, S. S., Miyazaki, K., Bowman, K. W., Worden, J. R., Eldering, A., Livesey, N. J., Teixeira, J., Irlon, F. W., Herman, R. L., Osterman, G. B., Liu, X., Levelt, P. F., Thompson, A. M., and Luo, M.: Retrievals of tropospheric ozone profiles from the synergism of AIRS and OMI: methodology and validation, *Atmos. Meas. Tech.*, 11, 5587–5605, <https://doi.org/10.5194/amt-11-5587-2018>, 2018.
- Fu, D., Worden, J. R., Liu, X., Kulawik, S. S., Bowman, K. W., and Natraj, V.: Characterization of ozone profiles derived
615 from Aura TES and OMI radiances, *Atmos. Chem. Phys.*, 13, 3445–3462, <https://doi.org/10.5194/acp-13-3445-2013>, 2013.
- Gaubert, B., Worden, H. M., Arellano, A. F. J., Emmons, L. K., Tilmes, S., Barré, J., et al., Chemical feedback from decreasing carbon monoxide emissions. *Geophysical Research Letters*, 44, <https://doi.org/10.1002/2017GL074987>, 2017.
- Gaubert, B., et al., Correcting model biases of CO in east Asia: impact on oxidant distributions during KORUS-AQ, *Atmospheric Chemistry and Physics*, 20(23), 14,617–14,647, doi:10.5194/acp-20-14617-2020, 2020.
- 620 Gelaro, R., McCarty, W., Suárez, M. J., Todling, R., Molod, A., Takacs, L. et al.: The modern-era retrospective analysis for research and applications, version 2 (MERRA-2). *J. Climate*, 30(14), 5419–5454. <https://doi.org/10.1175/jcli-d-16-0758.1>, 2017.
- Gottelman, A., Mills, M. J., Kinnison, D. E., Garcia, R. R., Smith, A. K., Marsh, D. R., Tilmes, S., Vitt, F., Bardeen, C. G., McInerney, J., Liu, H.-L., Solomon, S. C., Polvani, L. M., Emmons, L. K., Lamarque, J.-F., Richter, J. H., Glanville, A. S.,
625 Bacmeister, J. T., Phillips, A. S., Neale, R. B., Simpson, I. R., DuVivier, A. K., Hodzic, A., and Randel, W. J.: The Whole Atmosphere Community Climate Model Version 6 (WACCM6), *J. Geophys. Res. Atmos*, 124, 12380–12403, <https://doi.org/10.1029/2019JD030943>, 2019.
- Graedel, T. E., Bates, T. S., Bouwman, A. F., Cunnold, D., Dignon, J., Fung, I., Jacob, D. J., Lamb, B. K., Logan, J. A., Marland, G., Middleton, P., Pacyna, J. M., Placet, M., and Veldt, C.: A compilation of inventories of emissions to the
630 atmosphere, *Global Biogeochem. Cy.*, 7, 1–26, 1993.
- Granier, C., Bessagnet, B., Bond, T., D'Angiola, A., Denier van der Gon, H., Frost, G. J., Heil, A., Kaiser, J. W., Kinne, S., Klimont, Z., Kloster, S., Lamarque, J.-F., Liousse, C., Masui, T., Meleux, F., Mieville, A., Ohara, R., Raut, J.-C., Riahi, K., Schultz, M. G., Smith, S. G., Thompson, A., van Aardenne, J., van der Werf, G. R., and van Vuuren, D. P.: Evolution of anthropogenic and biomass burning emissions of air pollutants at global and regional scales during the 1980–2010 period,
635 *Climatic Change*, 109, 163–190, <https://doi.org/10.1007/s10584-011-0154-1>, 2011.
- Granier, C., Guenther, A., Lamarque, J. F., Mieville, A., Muller, J. F., Olivier, J., Orlando, J., Peters, J., Petron, G., Tyndall, G., and Wallens, S.: POET, a database of surface emissions of ozone precursors, available at: <http://www.aero.jussieu.fr/projet/ACCENT/POET.php> (last accessed: 16 November 2024), 2005.

- 640 Guenther, A. B., Jiang, X., Heald, C. L., Sakulyanontvittaya, T., Duhl, T., Emmons, L. K., and Wang, X.: The Model of Emissions of Gases and Aerosols from Nature version 2.1 (MEGAN2.1): an extended and updated framework for modeling biogenic emissions, *Geosci. Model Dev.*, 5, 1471–1492, <https://doi.org/10.5194/gmd-5-1471-2012>, 2012.
- Guenther, A., Karl, T., Harley, P., Wiedinmyer, C., Palmer, P. I., and Geron, C.: Estimates of global terrestrial isoprene emissions using MEGAN (Model of Emissions of Gases and Aerosols from Nature), *Atmos. Chem. Phys.*, 6, 3181–3210, <https://doi.org/10.5194/acp-6-3181-2006>, 2006.
- 645 Hauglustaine, D. A., Brasseur, G. P., Walters, S., Rasch, P. J., Müller, J. F., Emmons, L. K., and Carroll, C. A.: MOZART, a global chemical transport model for ozone and related chemical tracers 2. Model results and evaluation, *J. Geophys. Res.-Atmos.*, 103, 28291–28335, <https://doi.org/10.1029/98jd02398>, 1998.
- Henze, D. K., Hakami, A., and Seinfeld, J. H.: Development of the adjoint of GEOS-Chem, *Atmos. Chem. Phys.*, 7, 2413–2433, <https://doi.org/10.5194/acp-7-2413-2007>, 2007.
- 650 Huijnen, V., Miyazaki, K., Flemming, J., Inness, A., Sekiya, T., and Schultz, M. G.: An intercomparison of tropospheric ozone reanalysis products from CAMS, CAMS interim, TCR-1, and TCR-2, *Geosci. Model Dev.*, 13, 1513–1544, <https://doi.org/10.5194/gmd-13-1513-2020>, 2020.
- Hunt, B. R., Kostelich, E. J., and Szunyogh, I.: Efficient data assimilation for spatiotemporal chaos: A local ensemble transform Kalman filter, *Physica D*, 230, 112–126, 2007.
- 655 Hsu, C.-H., Henze, D. K., Mizzi, A. P., González Abad, G., He, J., Harkins, C., et al.: An observing system simulation experiment analysis of how well geostationary satellite trace-gas observations constrain NO_x emissions in the US, *Journal of Geophysical Research: Atmospheres*, 129, e2023JD039323, <https://doi.org/10.1029/2023JD039323>, 2024.
- Inness, A., Ades, M., Agustí-Panareda, A., Barré, J., Benedictow, A., Blechschmidt, A.-M., Dominguez, J. J., Engelen, R., Eskes, H., Flemming, J., Huijnen, V., Jones, L., Kipling, Z., Massart, S., Parrington, M., Peuch, V.-H., Razinger, M., Remy, S., Schulz, M., and Suttie, M.: The CAMS reanalysis of atmospheric composition, *Atmos. Chem. Phys.*, 19, 3515–3556, <https://doi.org/10.5194/acp-19-3515-2019>, 2019.
- 660 Inness, A., et al., The macc reanalysis: an 8 yr data set of atmospheric composition, *Atmospheric Chemistry and Physics*, 13(8), 4073–4109, doi:10.5194/acp-13-4073-2013, 2013.
- Jackson, D. R., Assimilation of EOS MLS ozone observations in the Met Office data-assimilation system, *Q. J. R. Meteorol. Soc.*, 133, 1771 – 1788, 2007.
- 665 Janssens-Maenhout, G., Crippa, M., Guizzardi, D., Dentener, F., Muntean, M., Pouliot, G., Keating, T., Zhang, Q., Kurokawa, J., Wankmüller, R., Denier van der Gon, H., Kuenen, J. J. P., Klimont, Z., Frost, G., Darras, S., Koffi, B., and Li, M.: HTAP_v2.2: a mosaic of regional and global emission grid maps for 2008 and 2010 to study hemispheric transport of air pollution, *Atmos. Chem. Phys.*, 15, 11411–11432, <https://doi.org/10.5194/acp-15-11411-2015>, 2015.
- 670 Jiang, Z., et al.: Unexpected slowdown of us pollutant emission reduction in the past decade, *Proceedings of the National Academy of Sciences*, 115(20), 5099–5104, 2018.

- Jiang, Z., Worden, J. R., Worden, H., Deeter, M., Jones, D. B. A., Arellano, A. F., and Henze, D. K.: A 15-year record of CO emissions constrained by MOPITT CO observations, *Atmos. Chem. Phys.*, 17, 4565–4583, <https://doi.org/10.5194/acp-17-4565-2017>, 2017.
- 675 Kaiser, J., Jacob, D. J., Zhu, L., Travis, K. R., Fisher, J. A., González Abad, G., Zhang, L., Zhang, X., Fried, A., Crouse, J. D., St. Clair, J. M., and Wisthaler, A.: High-resolution inversion of OMI formaldehyde columns to quantify isoprene emission on ecosystem-relevant scales: Application to the southeast US, *Atmos. Chem. Phys.*, 18(8), 5483–5497, <https://doi.org/10.5194/acp-18-5483-2018>, 2018.
- 680 Kaiser, J. W., Heil, A., Andreae, M. O., Benedetti, A., Chubarova, N., Jones, L., Morcrette, J.-J., Razinger, M., Schultz, M. G., Suttie, M., and van der Werf, G. R.: Biomass burning emissions estimated with a global fire assimilation system based on observed fire radiative power, *Biogeosciences*, 9, 527–554, <https://doi.org/10.5194/bg-9-527-2012>, 2012.
- Kong, L., Tang, X., Zhu, J., Wang, Z., Li, J., Wu, H., Wu, Q., Chen, H., Zhu, L., Wang, W., Liu, B., Wang, Q., Chen, D., Pan, Y., Song, T., Li, F., Zheng, H., Jia, G., Lu, M., Wu, L., and Carmichael, G. R.: A 6-year-long (2013–2018) high-resolution air quality reanalysis dataset in China based on the assimilation of surface observations from CNEMC, *Earth Syst. Sci. Data*, 13, 529–570, <https://doi.org/10.5194/essd-13-529-2021>, 2021.
- 685 Krotkov, N. A., Lamsal, L. N., Celarier, E. A., Swartz, W. H., Marchenko, S. V., Bucsela, E. J., Chan, K. L., Wenig, M., and Zara, M.: The version 3 OMI NO₂ standard product, *Atmos. Meas. Tech.*, 10, 3133–3149, <https://doi.org/10.5194/amt-10-3133-2017>, 2017.
- Kuai, L., Bowman, K. W., Miyazaki, K., Deushi, M., Revell, L., Rozanov, E., Paulot, F., Strode, S., Conley, A., Lamarque, J.-F., Jöckel, P., Plummer, D. A., Oman, L. D., Worden, H., Kulawik, S., Paynter, D., Stenke, A., and Kunze, M.: Attribution of Chemistry-Climate Model Initiative (CCMI) ozone radiative flux bias from satellites, *Atmos. Chem. Phys.*, 20, 281–301, <https://doi.org/10.5194/acp-20-281-2020>, 2020.
- 690 Kumar, R., Bhardwaj, P., He, C., Boehnert, J., Lacey, F., Alessandrini, S., Sampson, K., Casali, M., Swerdlin, S., Wilhelmi, O., Pfister, G. G., Gaubert, B., and Worden, H.: A long-term high-resolution air quality reanalysis with public facing air quality dashboard over the Contiguous United States (CONUS), *Earth Syst. Sci. Data Discuss.*, 7, 1807–1834, <https://doi.org/10.5194/essd-17-1807-2025>, 2025.
- Lamsal, L. N., B. N. Duncan, Y. Yoshida, Ni. A. Krotkov, K. E. Pickering, D. G. Streets, and Z. Lu (2015), U.S. NO₂ trends (2005-2013): EPA Air Quality System (AQS) data versus improved observations from the Ozone Monitoring Instrument (OMI), *Atmos. Environ.*, 110, 130-143, <https://doi.org/10.1016/j.atmosenv.2015.03.055>, 2015.
- 700 Lin, M., A. M. Fiore, O. R. Cooper, L. W. Horowitz, A. O. Langford, H. Levy II, B. J. Johnson, V. Naik, S. J. Oltmans, and C. J. Senff: Springtime high surface ozone events over the western United States: Quantifying the role of stratospheric intrusions, *J. Geophys. Res.*, 117, D00V22, doi:10.1029/2012JD018151, 2012.
- Lyu, C., Capps, S. L., Hakami, A., Zhao, S., Resler, J., Carmichael, G. R., Sandu, S., Russell, A. G., Chai, T., and Henze, D. K.: Elucidating emissions control strategies for ozone to protect human health and public welfare within the continental United States, *Environ. Res. Lett.*, 14, 124093, <https://doi.org/10.1088/1748-9326/ab5e05>, 2019.
- 705

- Marsh, D. R., Mills, M. J., Kinnison, D. E., Lamarque, J.-F., Calvo, N., and Polvani, L. M.: Climate Change from 1850 to 2005 Simulated in CESM1(WACCM): *J. Climate*, 26, 7372–7391, <https://doi.org/10.1175/JCLI-D-12-00558.1>, 2013.
- McLinden, C.A., Olsen, S. C., Hannegan, B., Wild, O., Prather, M. J., and Sundet, J.: Stratospheric ozone in 3-D models: A simple chemistry and the cross-tropopause flux. *J. Geophys. Res.*, 105(D11), 14,653–14,665, <https://doi.org/10.1029/2000JD900124>, 2000.
- 710 Millet, D. B., Jacob, D. J., Boersma, K. F., Fu, T., Kurosu, T. P., Chance, K., Heald, C. L., and Guenther, A.: Spatial distribution of isoprene emissions from North America derived from formaldehyde column measurements by the OMI satellite sensor, *J. Geophys. Res.*, 113(D2), <https://doi.org/10.1029/2007jd008950>, 2008.
- Miyazaki, K., Bowman, K. W., Yumimoto, K., Walker, T., and Sudo, K.: Evaluation of a multi-model, multi-constituent assimilation framework for tropospheric chemical reanalysis, *Atmos. Chem. Phys.*, 20, 931–967, <https://doi.org/10.5194/acp-20-931-2020>, 2020a.
- 715 Miyazaki, K., Bowman, K., Sekiya, T., Eskes, H., Boersma, F., Worden, H., Livesey, N., Payne, V. H., Sudo, K., Kanaya, Y., Takigawa, M., and Ogochi, K.: Updated tropospheric chemistry reanalysis and emission estimates, TCR-2, for 2005–2018, *Earth Syst. Sci. Data*, 12, 2223–2259, <https://doi.org/10.5194/essd-12-2223-2020>, 2020b.
- 720 Miyazaki, K., Sekiya, T., Fu, D., Bowman, K. W., Kulawik, S. S., Sudo, K., et al.: Balance of emission and dynamical controls on ozone during the Korea-United States Air Quality campaign from multiconstituent satellite data assimilation, *J. Geophys. Res.*, 124, 387–413. <https://doi.org/10.1029/2018JD028912>, 2019.
- Miyazaki, K., H. Eskes, K. Sudo, K. F. Boersma, K. Bowman, and Y. Kanaya, Decadal changes in global surface NO_x emissions from multi-constituent satellite data assimilation., *Atmospheric Chemistry & Physics*, 17, 807–837, <https://doi.org/10.5194/acp-17-807-2017a>.
- 725 Miyazaki, K., and K. Bowman, Evaluation of ACCMIP ozone simulations and ozonesonde sampling biases using a satellite-based multi-constituent chemical reanalysis., *Atmospheric Chemistry & Physics*, 17(13), 2017b.
- Miyazaki, K., H. Eskes, and K. Sudo, A tropospheric chemistry reanalysis for the years 2005–2012 based on an assimilation of OMI, MLS, TES, and MOPITT satellite data, *Atmos. Chem. Phys.*, 15(14), 8315–8348, 2015.
- 730 Miyazaki, K., H. Eskes, K. Sudo, and C. Zhang, Global lightning NO_x production estimated by an assimilation of multiple satellite data sets, *Atmospheric Chemistry and Physics*, 14(7), 3277–3305, 2014.
- Miyazaki, K., H. Eskes, K. Sudo, M. Takigawa, M. Van Weele, and K. Boersma, Simultaneous assimilation of satellite NO₂, O₃, CO, and HNO₃ data for the analysis of tropospheric chemical composition and emissions, *Atmos. Chem. Phys.*, 12(20), 9545–9579, 2012.
- 735 Monks, P. S., Archibald, A. T., Colette, A., Cooper, O., Coyle, M., Derwent, R., Fowler, D., Granier, C., Law, K. S., Mills, G. E., Stevenson, D. S., Tarasova, O., Thouret, V., von Schneidmesser, E., Sommariva, R., Wild, O., and Williams, M. L.: Tropospheric ozone and its precursors from the urban to the global scale from air quality to short-lived climate forcer, *Atmos. Chem. Phys.*, 15, 8889–8973, <https://doi.org/10.5194/acp-15-8889-2015>, 2015.

- Nenes, A., Pandis, S. N., and Pilinis, C.: ISORROPIA: A new thermodynamic equilibrium model for multiphase
740 multicomponent inorganic aerosols, *Aquat. Geochem.*, 4, 123–152, <https://doi.org/10.1023/a:1009604003981>, 1998.
- Olivier J, Peters, J., Granier, C., Petron, G., Müller, J. F., and Wallens, S.: Present and future surface emissions of atmospheric
compounds, POET report #2, EU project EVK2-1999-00011, 2003.
- Palmer, P. I., Jacob, D. J., Fiore, A. M., Martin, R. V., Chance, K., and Kurosu, T. P.: Mapping isoprene emissions over North
America using formaldehyde column observations from space, *J. Geophys. Res. Atmos.*, 108(D6),
745 <https://doi.org/10.1029/2002jd002153>, 2003.
- Pan, L. L., et al.: The Convective Transport of Active Species in the Tropics (CONTRAST) Experiment, *Bull. Amer. Meteor.
Soc.*, 98, 106–128, <https://doi.org/10.1175/BAMS-D-14-00272.1>, 2017.
- Park, J., Choi, Y., Jung, J. et al.: First top-down diurnal adjustment to NO_x emissions inventory in Asia informed by the
Geostationary Environment Monitoring Spectrometer (GEMS) tropospheric NO₂ columns, *Sci Rep*, 14, 24338,
750 <https://doi.org/10.1038/s41598-024-76223-1>, 2024.
- Park, S., Son, S.-W., Jung, M.-I., Park, J., and Park, S. S.: Evaluation of tropospheric ozone reanalyses with independent
ozonesonde observations in East Asia, *Geosci. Lett.* (2020) 7:12, <https://doi.org/10.1186/s40562-020-00161-9>, 2020.
- Parrington, M., D. B. A. Jones, K. W. Bowman, L. W. Horowitz, A. M. Thompson, D. W. Tarasick, and J. C. Witte, Estimating
the summertime tropospheric ozone distribution over North America through assimilation of observations from the
755 Tropospheric Emission Spectrometer, *J. Geophys. Res.*, 113, D18307, doi:10.1029/2007JD009341, 2008.
- Parrish, D. D., et al.: Long-term changes in lower tropospheric baseline ozone concentrations: Comparing chemistry-climate
models and observations at northern midlatitudes, *J. Geophys. Res. Atmos.*, 119, 5719–5736, doi:10.1002/2013JD021435,
2014.
- Qu, Z., Henze, D. K., Cooper, O. R., and Neu, J. L.: Impacts of global NO_x inversions on NO₂ and ozone simulations, *Atmos.
760 Chem. Phys.*, 20, 13109–13130, <https://doi.org/10.5194/acp-20-13109-2020>, 2020.
- Randerson, J., van der Werf, G., Giglio, L., Collatz, G., and Kasibhatla, P.: Global Fire Emissions Database, Version 4,
(GFEDv4), ORNL DAAC, Oak Ridge, Tennessee, USA, <https://doi.org/10.3334/ORNLDAAAC/1293>, 2018.
- Reidmiller, D. R., Fiore, A. M., Jaffe, D. A., Bergmann, D., Cuvelier, C., Dentener, F. J., and Zuber, A.: The influence of
foreign vs. North American emissions on surface ozone in the us. *Atmospheric Chemistry and Physics*, 9(14), 5027–5042.
765 <https://doi.org/10.5194/acp-9-5027-2009>, 2009.
- Schultz, M. G., Schröder, S., Lyapina, O., Cooper, O. R., Galbally, I., Petropavlovskikh, I., von Schneidmesser, E., Tanimoto,
H., Elshorbany, Y., Naja, M., Seguel, R. J., Dauert, U., Eckhardt, P., Feigenspan, S., Fiebig, M., Hjellbrekke, A.-G., Hong,
Y.-D., Kjeld, P. C., Koide, H., Lear, G., Tarasick, D., Ueno, M., Wallasch, M., Baumgardner, D., Chuang, M.-T., Gillett,
R., Lee, M., Molloy, S., Moolla, R., Wang, T., Sharps, K., Adame, J. A., Ancellet, G., Apadula, F., Artaxo, P., Barlasina,
770 M. E., Bogucka, M., Bonasoni, P., Chang, L., Colomb, A., Cuevas-Agull., E., Cupeiro, M., Degorska, A., Ding, A.,
Fröhlich, M., Frolova, M., Gadhavi, H., Gheusi, F., Gilge, S., Gonzalez, M. Y., Gros, V., Hamad, S. H., Helmig, D.,
Henriques, D., Hermansen, O., Holla, R., Hueber, J., Im, U., Jaffe, D. A., Komala, N., Kubistin, D., Lam, K.-S., Laurila,

- 775 T., Lee, H., Levy, I., Mazzoleni, C., Mazzoleni, L. R., McClure-Begley, A., Mohamad, M., Murovec, M., Navarro-Comas, M., Nicodim, F., Parrish, D., Read, K. A., Reid, N., Ries, L., Saxena, P., Schwab, J. J., Scorgie, Y., Senik, I., Simmonds, P., Sinha, V., Skorokhod, A. I., Spain, G., Spangl, W., Spoor, R., Springston, S. R., Steer, K., Steinbacher, M., Suharguniyawan, E., Torre, P., Trickl, T., Weili, L., Weller, R., Xiaobin, X., Xue, L., and Zhiqiang, M.: Tropospheric Ozone Assessment Report: Database and metrics data of global surface ozone observations, *Elem. Sci. Anth.*, 5, 58, <https://doi.org/10.1525/elementa.244>, 2017.
- 780 Sekiya, T., Emili, E., Miyazaki, K., Inness, A., Qu, Z., Pierce, R. B., Jones, D., Worden, H., Cheng, W. Y. Y., Huijnen, V., and Koren, G.: Assessing the relative impacts of satellite ozone and its precursor observations to improve global tropospheric ozone analysis using multiple chemical reanalysis systems, *Atmos. Chem. Phys.*, 25, 2243–2268, <https://doi.org/10.5194/acp-25-2243-2025>, 2025.
- 785 Sekiya, T., Miyazaki, K., Ogochi, K., Sudo, K., Takigawa, M., Eskes, H., & Boersma, K. F.: Impacts of horizontal resolution on global data assimilation of satellite measurements for tropospheric chemistry analysis. *Journal of Advances in Modeling Earth Systems*, 13, e2020MS002180. <https://doi.org/10.1029/2020MS002180>, 2021.
- Shindell, D. T., et al.: Multimodel simulations of carbon monoxide: Comparison with observations and projected near-future changes, *J. Geophys. Res.*, 111, D19306, doi:10.1029/2006JD007100, 2006.
- 790 Sindelarova, K., Granier, C., Bouarar, I., Guenther, A., Tilmes, S., Stavrakou, T., Müller, J.-F., Kuhn, U., Stefani, P., and Knorr, W.: Global data set of biogenic VOC emissions calculated by the MEGAN model over the last 30 years, *Atmos. Chem. Phys.*, 14, 9317–9341, <https://doi.org/10.5194/acp-14-9317-2014>, 2014.
- Skamarock, W. and Klemp, J.: A time-split nonhydrostatic atmospheric model for weather research and forecasting applications. *Journal of Computational Physics*, 227(7), 3465–3485, 2008.
- 795 Smit, H. G. J., Straeter, W., Johnson, B. J., Oltmans, S. J., Davies, J., Tarasick, D. W., Hoegger, B., Stubi, R., Schmidlin, F. J., Northam, T., Thompson, A. M., Witte, J. C., Boyd, I., and Posny, F.: Assessment of the performance of ECC-ozonesondes under quasi-flight conditions in the environmental simulation chamber: Insights from the Juelich Ozone Sonde Intercomparison Experiment (JOSIE), *J. Geophys. Res.*, 112, <https://doi.org/10.1029/2006JD007308>, 2007.
- Stajner, I., and K. Wargan, Antarctic stratospheric ozone from the assimilation of occultation data, *Geophys. Res. Lett.*, 31, L18108, doi:10.1029/2004GL020846, 2004.
- 800 Stavrakou, T., Müller, J.-F., Bauwens, M., De Smedt, I., Van Roozendael, M., De Mazière, M., Vigouroux, C., Hendrick, F., George, M., Clerbaux, C., Coheur, P.-F., and Guenther, A.: How consistent are top-down hydrocarbon emissions based on formaldehyde observations from GOME-2 and OMI? *Atmos. Chem. Phys.*, 15(20), 11861–11884. <https://doi.org/10.5194/acp-15-11861-2015>, 2015.
- Stevenson, D. S., et al.: Multimodel ensemble simulations of present-day and near-future tropospheric ozone, *J. Geophys. Res.*, 111, D08301, doi:10.1029/2005JD006338, 2006.

- 805 Stein, O., Schultz, M. G., Bouarar, I., Clark, H., Huijnen, V., Gaudel, A., George, M., and Clerbaux, C.: On the wintertime low bias of Northern Hemisphere carbon monoxide found in global model simulations, *Atmos. Chem. Phys.*, 14, 9295–9316, <https://doi.org/10.5194/acp-14-9295-2014>, 2014.
- Strahan, S. E. and Polansky, B. C.: Meteorological implementation issues in chemistry and transport models, *Atmos. Chem. Phys.*, 6, 2895–2910, <https://doi.org/10.5194/acp-6-2895-2006>, 2006.
- 810 Strode, S. A., J. M. Rodriguez, J. A. Logan, O. R. Cooper, J. C. Witte, L. N. Lamsal, M. Damon, B. Van Aartsen, S. D. Steenrod, and S. E. Strahan: Trends and variability in surface ozone over the United States, *J. Geophys. Res. Atmos.*, 120, 9020–9042, doi:10.1002/2014JD022784, 2015.
- Thompson, A. M., Stauffer, R. M., Boyle, T. P., Kollonige, D. E., Miyazaki, K., Tzortziou, M., et al.: Comparison of Near-Surface NO₂ Pollution With Pandora Total Column NO₂ During the Korea-United States Ocean Color (KORUS OC) Campaign, *J. Geophys. Res.*, 124, 13,560–13,575, <https://doi.org/10.1029/2019JD03076>, 2019.
- 815 Travis, K. R., Jacob, D. J., Fisher, J. A., Kim, P. S., Marais, E. A., Zhu, L., and Zhou, X.: Why do models overestimate surface ozone in the southeast United States? *Atmos. Chem. Phys.*, 16(21), 13561–13577. <https://doi.org/10.5194/acp-16-13561-2016>, 2016.
- Turner et al.: Long-Term Ozone Exposure and Mortality in a Large Prospective Study, *Am. J. Respir. Crit. Care Med.*, 193, 820 <https://doi.org/10.1164/rccm.201508-1633OC>, 2015.
- Valin, L. C., A. R. Russell, R. C. Hudman, and R. C. Cohen: Effects of model resolution on the interpretation of satellite NO₂ observations, *Atmos. Chem. Phys.*, 11, 11647–11655, <https://doi.org/10.5194/acp-11-11647-2011>, 2011.
- Vukovich, J. and T. Pierce: The Implementation of BEIS3 within the SMOKE Modeling Framework”, In Proceedings of the 11th International Emissions Inventory Conference, Atlanta, Georgia, April 15-18, 2002. Retrieved from www.epa.gov/ttn/chief/conference/ei11/modeling/vukovich.pdf.
- 825 Wang, Z. F., Sha, W. M., and Ueda, H.: Numerical modeling of pollutant transport and chemistry during a high-ozone event in northern Taiwan, *Tellus B*, 52, 1189–1205, <https://doi.org/10.1034/j.1600-0889.2000.01064.x>, 2000.
- Watanabe, S., Hajima, T., Sudo, K., Nagashima, T., Takemura, T., Okajima, H., Nozawa, T., Kawase, H., Abe, M., Yokohata, T., Ise, T., Sato, H., Kato, E., Takata, K., Emori, S., and Kawamiya, M.: MIROC-ESM 2010: model description and basic results of CMIP5-20c3m experiments, *Geosci. Model Dev.*, 4, 845–872, <https://doi.org/10.5194/gmd-4-845-2011>, 2011.
- 830 Wells, K. C., Millet, D. B., Payne, V. H., Deventer, M. J., Bates, K. H., de Gouw, J. A., Graus, M., Warneke, C., Wisthaler, A., and Fuentes, J. D.: Satellite isoprene retrievals constrain emissions and atmospheric oxidation, *Nature*, 585(7824), 225–233, <https://doi.org/10.1038/s41586-020-2664-3>, 2020.
- Wiedinmyer, C., Kimura, Y., McDonald-Buller, E. C., Emmons, L. K., Buchholz, R. R., Tang, W., Seto, K., Joseph, M. B., Barsanti, K. C., Carlton, A. G., and Yokelson, R.: The Fire Inventory from NCAR version 2.5: an updated global fire emissions model for climate and chemistry applications, *EGUsphere*, 1–45, <https://doi.org/10.5194/egusphere-2023-124>, 835 2023.

- Wild, O., Voulgarakis, A., O'Connor, F., Lamarque, J.-F., Ryan, E. M., and Lee, L.: Global sensitivity analysis of chemistry–
climate model budgets of tropospheric ozone and OH: exploring model diversity, *Atmos. Chem. Phys.*, 20, 4047–4058,
840 <https://doi.org/10.5194/acp-20-4047-2020>, 2020.
- Wild, O. and Prather, M. J.: Global tropospheric ozone modelling: Quantifying errors due to grid resolution, *J. Geophys. Res.*,
111, D11305, doi:10.1029/2005JD006605, 2006.
- Worden, H. M., Deeter, M. N., Frankenberg, C., George, M., Nichitiu, F., Worden, J., Aben, I., Bowman, K. W., Clerbaux,
C., Coheur, P. F., de Laat, A. T. J., Detweiler, R., Drummond, J. R., Edwards, D. P., Gille, J. C., Hurtmans, D., Luo, M.,
845 Martínez-Alonso, S., Massie, S., Pfister, G., and Warner, J. X.: Decadal record of satellite carbon monoxide observations,
Atmos. Chem. Phys., 13, 837–850, <https://doi.org/10.5194/acp-13-837-2013>, 2013.
- Worden, H. M., M. N. Deeter, D. P. Edwards, J. C. Gille, J. R. Drummond, and P. Nédélec: Observations of near-surface
carbon monoxide from space using MOPITT multispectral retrievals, *J. Geophys. Res.*, 115, D18314,
doi:10.1029/2010JD014242, 2010.
- 850 Yan, X. Y., Akimoto, H., and Ohara, T.: Estimation of nitrous oxide, nitric oxide and ammonia emissions from croplands in
East, Southeast and South Asia, *Glob. Change Biol.*, 9, 1080–1096, <https://doi.org/10.1046/j.1365-2486.2003.00649.x>,
2003.
- Yarwood, G., Rao, S., Yocke, M., and Whitten, G.: Updates to the carbon bond chemical mechanism: CB05, Final report to
the US EPA, EPA Report Number: RT-0400675, available at:
855 https://www.camx.com/Files/CB05_Final_Report_120805.pdf (last accessed: 16 November 2024), 2005.
- Yienger, J. J., and H. Levy: Empirical model of global soil-biogenic NO_x emissions, *J. Geophys. Res.*, 100(D6), 11,447–
11,464, doi:10.1029/95JD00370, 1995.
- Young, P. J., et al.: Tropospheric Ozone Assessment Report: Assessment of global-scale model performance for global and
regional ozone distributions, variability, and trends, *Elem. Sci. Anth.*, 6: 10. DOI: <https://doi.org/10.1525/elementa.265>,
860 2018.
- Young, P. J., Archibald, A. T., Bowman, K. W., Lamarque, J.-F., Naik, V., Stevenson, D. S., Tilmes, S., et al.: Pre-industrial
to end 21st century projections of tropospheric ozone from the Atmospheric Chemistry and Climate Model Intercomparison
Project (ACCMIP), *Atmos. Chem. Phys.*, 13, 2063–2090, <https://doi.org/10.5194/acp-13-2063-2013>, 2013.
- Zaveri, R. A. and Peters, L. K.: A new lumped structure photochemical mechanism for large-scale applications, *J. Geophys.*
865 *Res.-Atmos.*, 104, 30387–30415, <https://doi.org/10.1029/1999jd900876>, 1999.
- Zhang, X., Jones, D. B. A., Keller, M., Walker, T. W., Jiang, Z., Henze, D. K., et al.: Quantifying emissions of CO and NO_x
using observations from MOPITT, OMI, TES, and OSIRIS. *Journal of Geophysical Research: Atmospheres*, 124, 1170–
1193, <https://doi.org/10.1029/2018JD028670>, 2019.
- Ziemke, J. R., S. Chandra, and P. K. Bhartia: A 25-year data record of atmospheric ozone in the Pacific from Total Ozone
870 Mapping Spectrometer (TOMS) cloud slicing: Implications for ozone trends in the stratosphere and troposphere, *J.*
Geophys. Res., 110, D15105, doi:10.1029/2004JD005687, 2005.

Zoogman, P., X. Liu, R.M. Suleiman, W.F. Pennington, D.E. Flittner, et al.: Tropospheric emissions: Monitoring of pollution (TEMPO), *Journal of Quantitative Spectroscopy and Radiative Transfer*, 186, 17–39, <https://doi.org/10.1016/j.jqsrt.2016.05.008>, 2017.

875

Table 1. Chemical reanalyses used in this study.

Reanalysis (Reference)	Resolution	Scheme	Period*	Domain	Assimilated Observations (Instrument)	Emissions: Anthropogenic; Biomass Burning; Biogenic
TCR-2 (Miyazaki et al., 2020b)	1.1°×1.1°	LETKF	2005–2019	Global	O ₃ (TES, MLS); NO ₂ (SCIAMACHY, OMI, GOME-2); CO (MOPITT); HNO ₃ (MLS); SO ₂ (OMI)	HTAP (Janssens-Maenhout et al., 2015); GFED4 (Randerson et al., 2018); MEGAN2.1 (Guenther et al., 2012)
CAMSRA (Inness et al., 2019)	0.75°×0.75°	4D-Var	2003–2021	Global	O ₃ , (SCIAMACHY, MIPAS, MLS, OMI, GOME-2, SBUV/2); CO (MOPITT); NO ₂ (SCIAMACHY, OMI, GOME-2)	MACCity (Granier et al., 2011); GFASv1.2 (Kaiser et al., 2012); MEGAN2.1 (Guenther et al., 2012)
GEOS-Chem (Qu et al., 2020)	2°×2.5°	4D-Var	2006–2017	Global	NO ₂ (OMI)	HTAP (Janssens-Maenhout et al., 2015); GFED4 (Randerson et al., 2018); MEGAN2.1 (Guenther et al., 2012)
CMAQ (Kumar et al., 2024)	12 km × 12 km	3D-Var	2005–2018	CONUS	CO (MOPITT); AOD (MODIS)	NEIv2 (https://www.epa.gov/air-emissions-inventories/2014-national-emissions-inventory-nei-data); FINNv2.2 (Wiedinmyer et al., 2023); BEIS (Vukovich and Pierce, 2002)
CAQRA (Kong et al., 2021)	15 km × 15 km	LETKF	2013–2020	China	O ₃ , NO ₂ , CO, SO ₂ , PM _{2.5} , PM ₁₀ (surface observations)	HTAP (Janssens-Maenhout et al., 2015); GFED4 (Randerson et al., 2018); MEGAN-MACC (Sindelarova et al., 2014)

*This refers to the period for which reanalysis data was available. The work presented here focused on the 2006-2016 period, unless otherwise noted, to maximize overlap between the reanalyses.

880

885

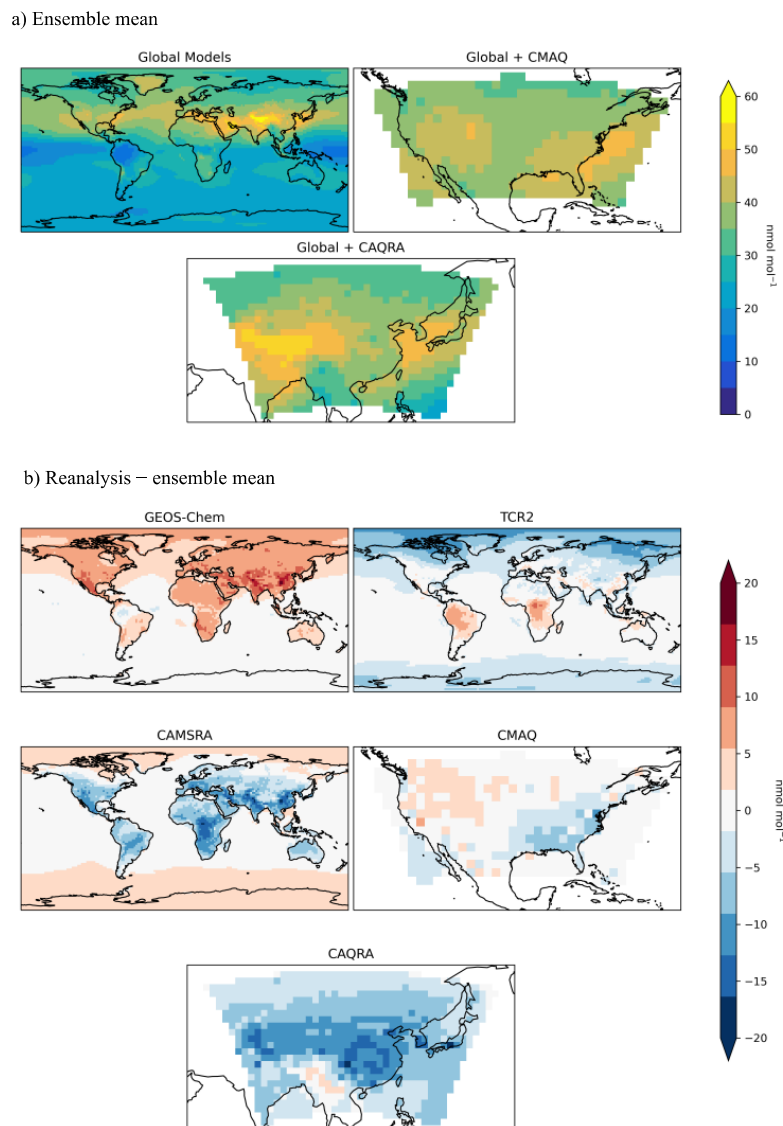


Figure 1. a) Ensemble mean ozone (nmol mol^{-1}) at the surface for the global reanalyses (CAMSRA, GEOS-Chem, and TCR-2) for 2006–2016 (top), the global reanalyses and CMAQ over the United States (top right), and the global reanalyses and CAQRA over Asia (bottom). b) Mean differences (nmol mol^{-1}) between surface ozone in the individual reanalyses and the ensemble mean. The ensemble mean and the differences from the mean for the CAQRA evaluation were calculated for 2013–2016 since CAQRA data are only available starting in 2013.

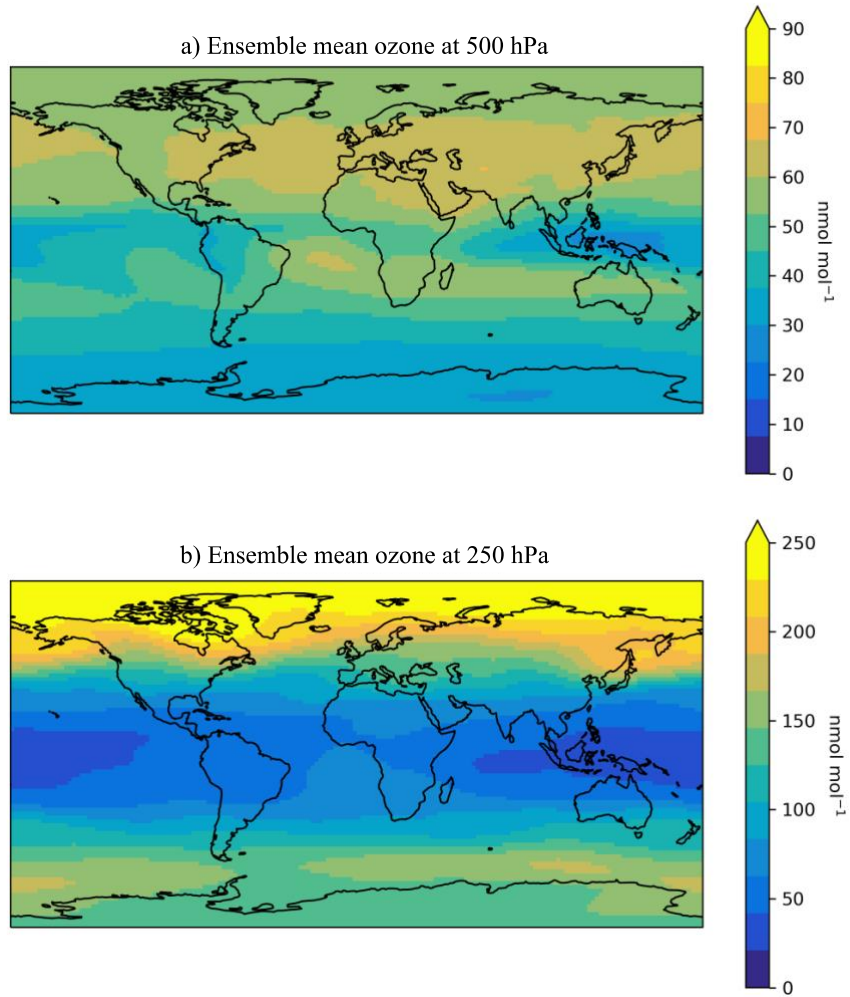


Figure 2. Ensemble mean ozone (nmol mol^{-1}) at 500 hPa (a) and 250 hPa (b) for the three global reanalyses for 2006-2016.

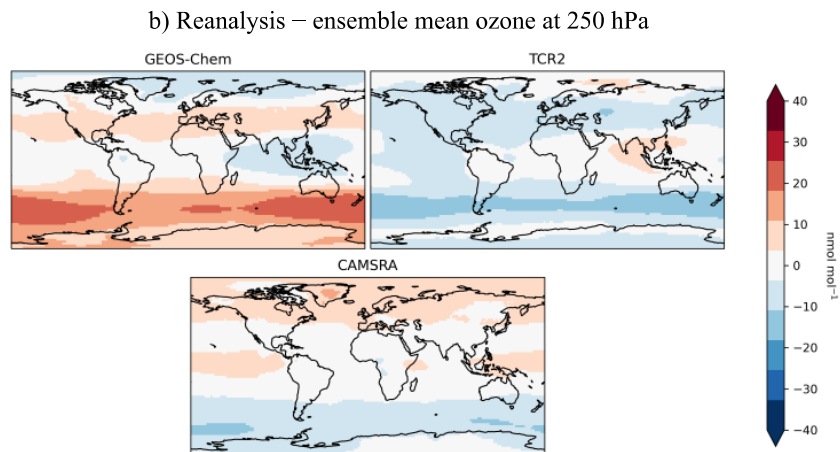
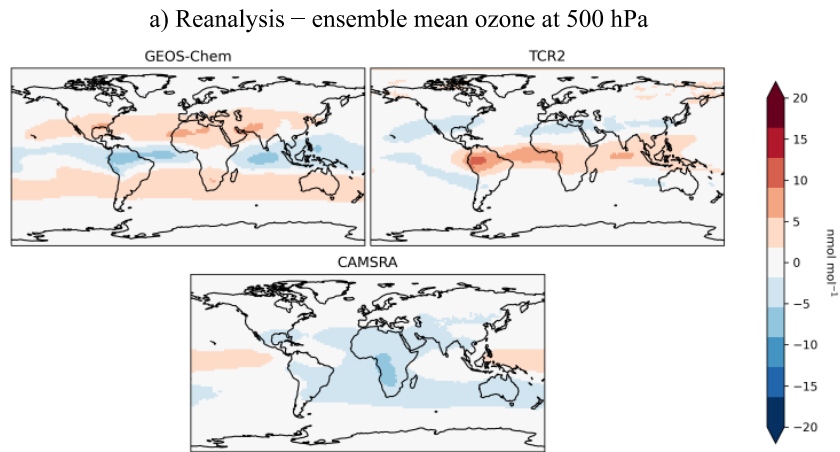
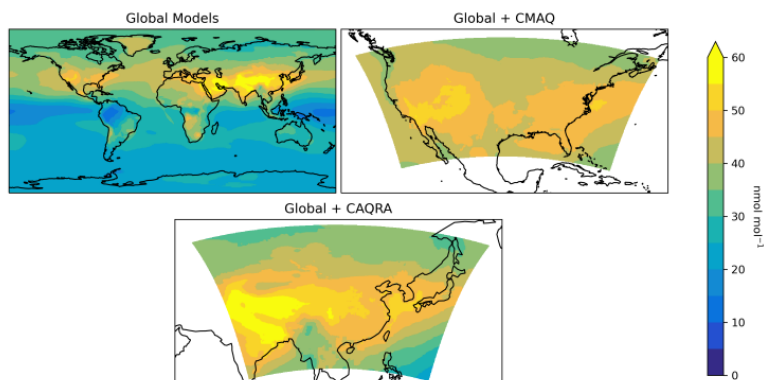


Figure 3. Mean differences (nmol mol⁻¹) between the individual reanalyses and the ensemble mean (shown in Figure 2) at 500 hPa (a) and 250 hPa (b).

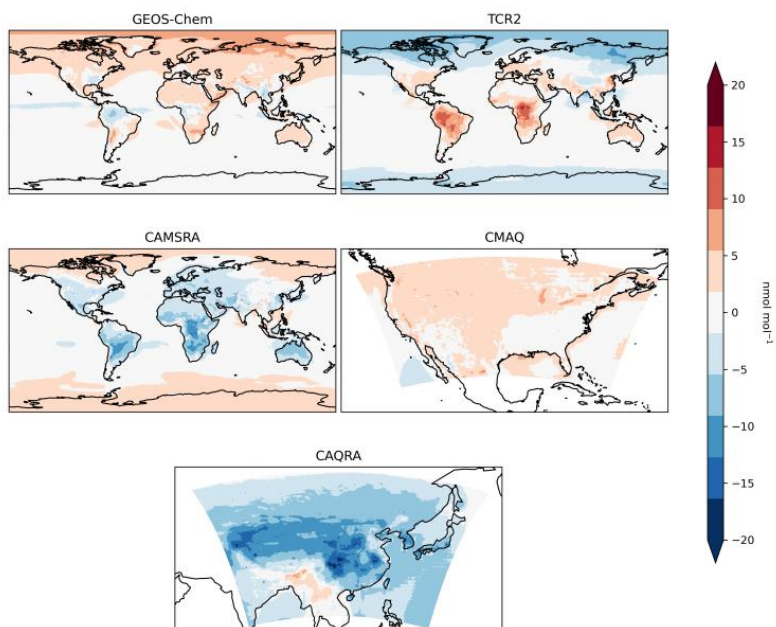
910

915

a) Ensemble mean



b) Reanalysis – ensemble mean



920 **Figure 4.** a) Ensemble mean MDA8 ozone (nmol mol^{-1}) at the surface for the global reanalyses (CAMSRA, GEOS-Chem, and TCR-2) for 2006–2016 (top), the global reanalyses and CMAQ over the United States (top right), and the global reanalyses and CAQRA over Asia (bottom). b) Mean differences (nmol mol^{-1}) between MDA8 ozone in the individual reanalyses and the ensemble mean. The ensemble mean and the differences from the mean for the CAQRA evaluation were calculated for 2013–2016 since CAQRA data are only available starting in 2013.

925

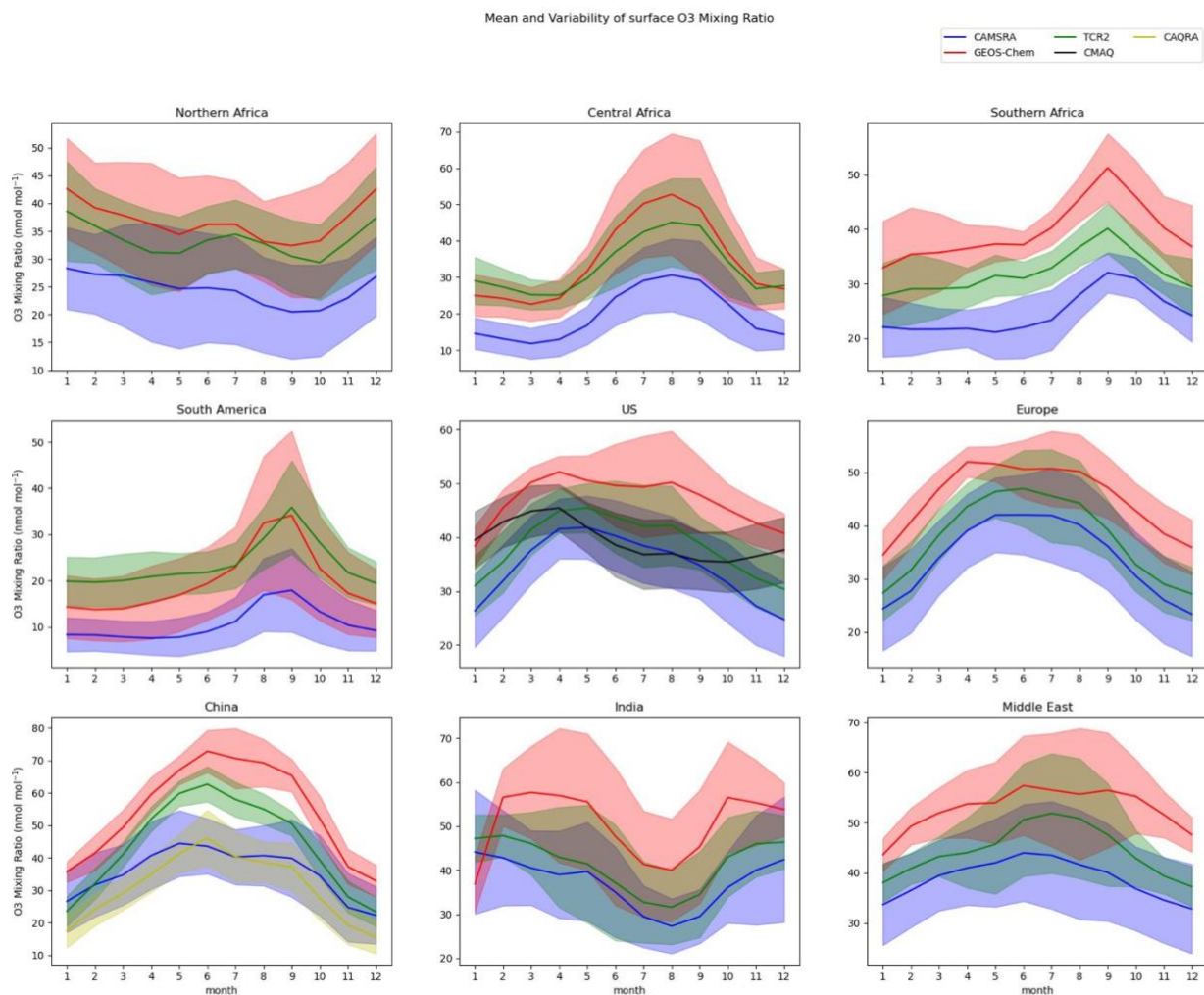
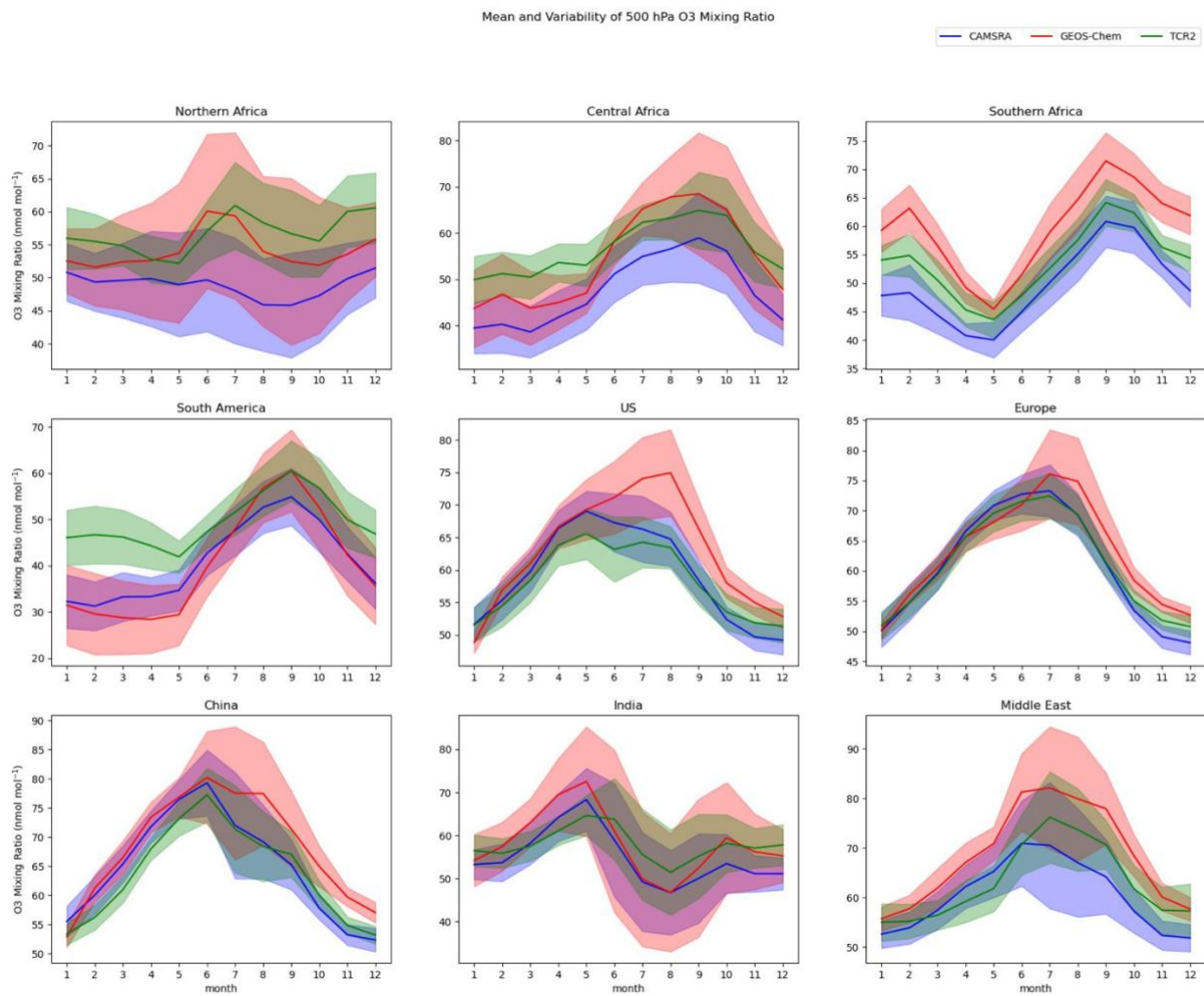
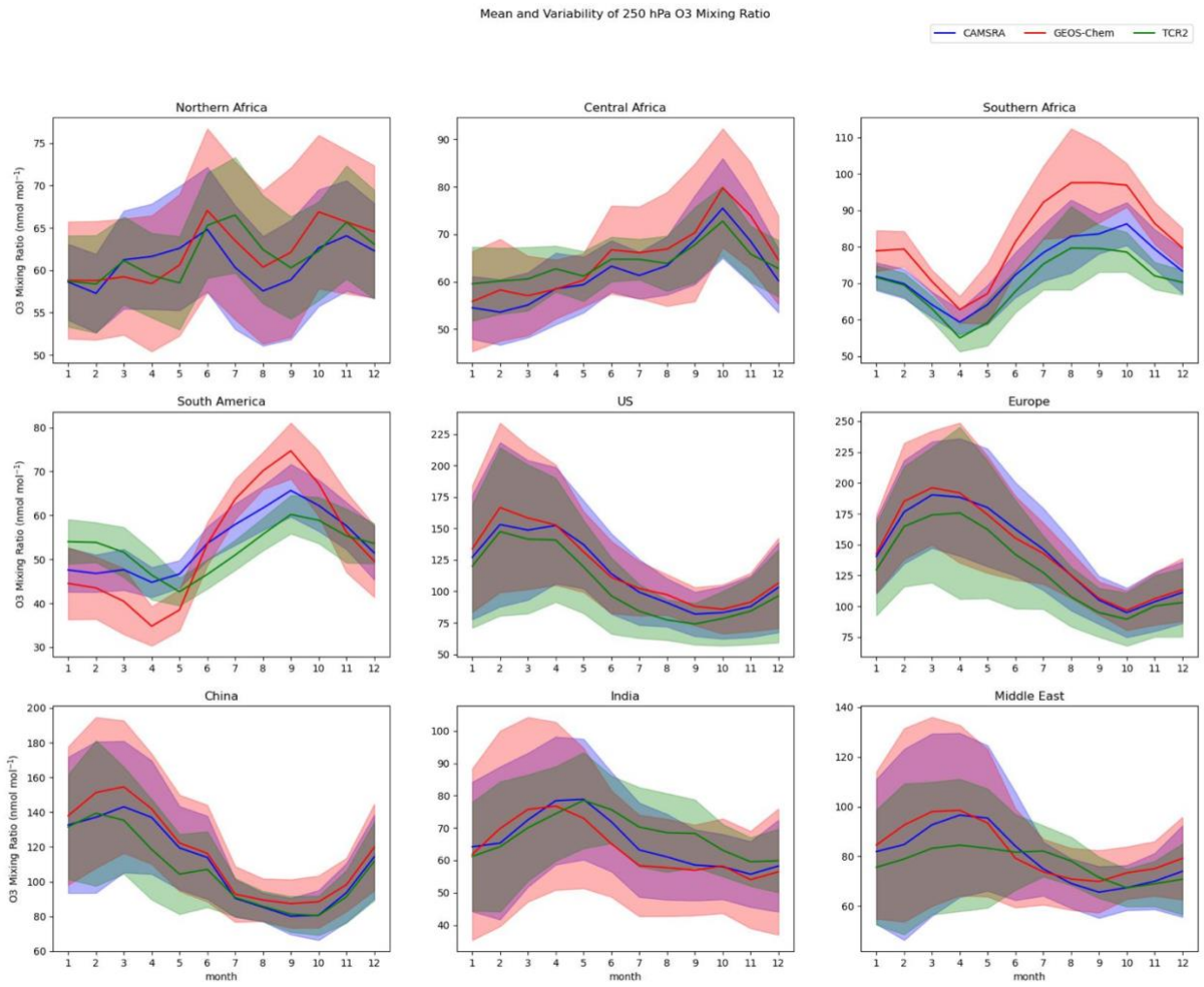


Figure 5. Seasonal variations in regional mean ozone (nmol mol^{-1}) at the surface for the regions defined in Table 1. Shown are the monthly mean fields for CAMSRA (blue), GEOS-Chem (red), TCR-2 (green), CMAQ (black), and CAQRA (yellow). The monthly fields were averaged for 2006–2016, except for CAQRA, which was averaged for 2013–2016. The regional and temporal standard deviation for each month is indicated by the shading.



940 **Figure 6.** As in Figure 5, but for 500 hPa.

945



950

Figure 7. As in Figure 5, but for 250 hPa.

955

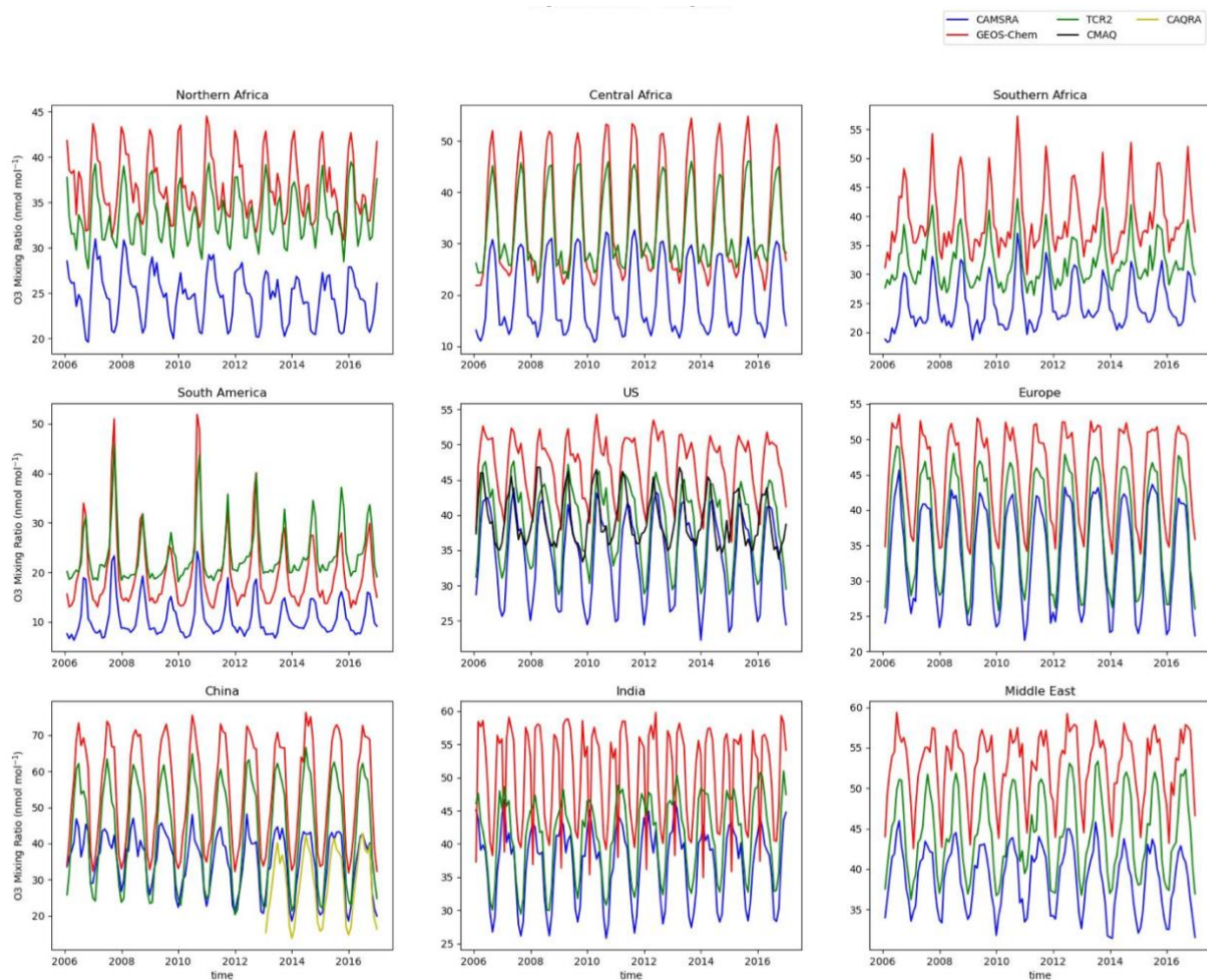
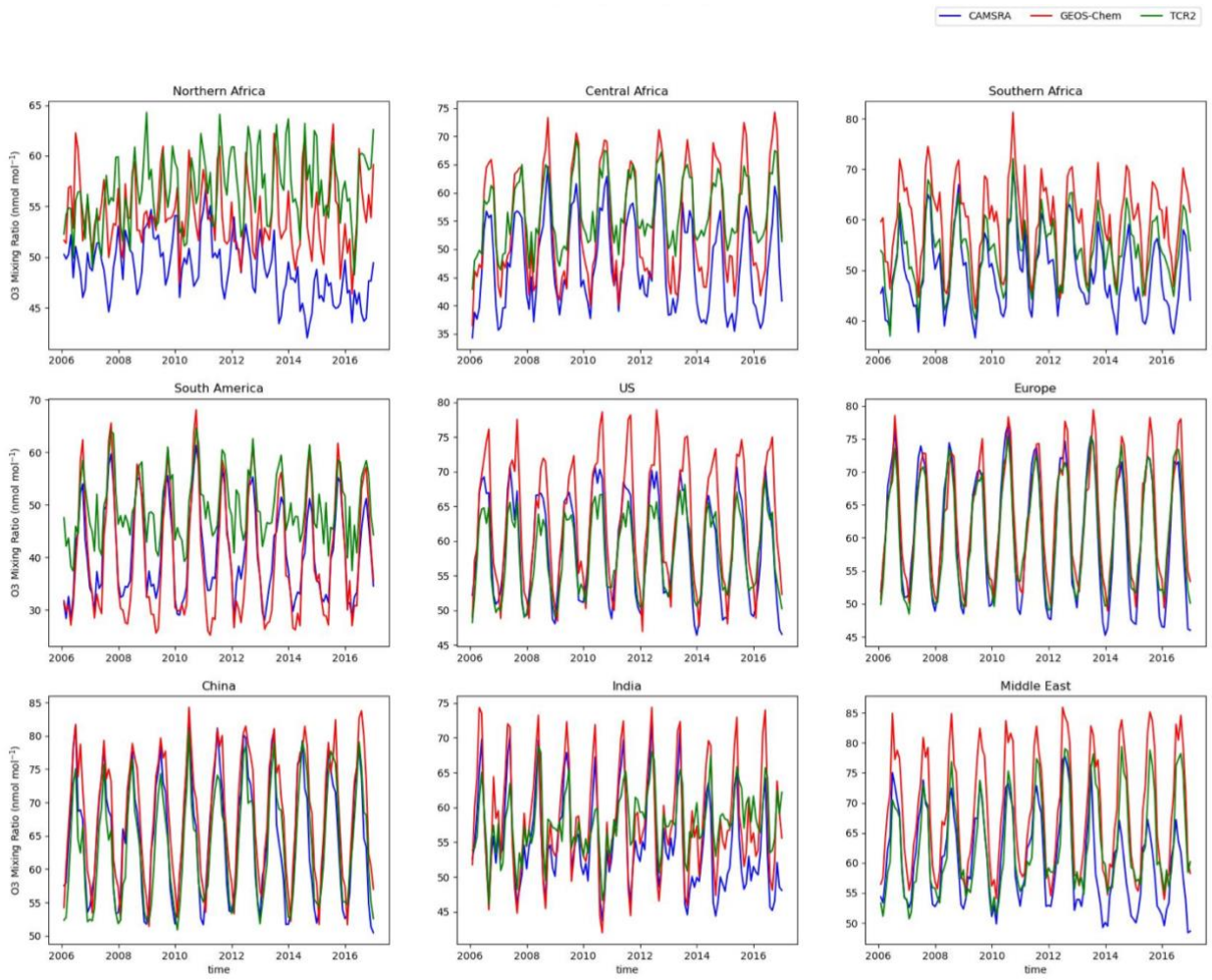
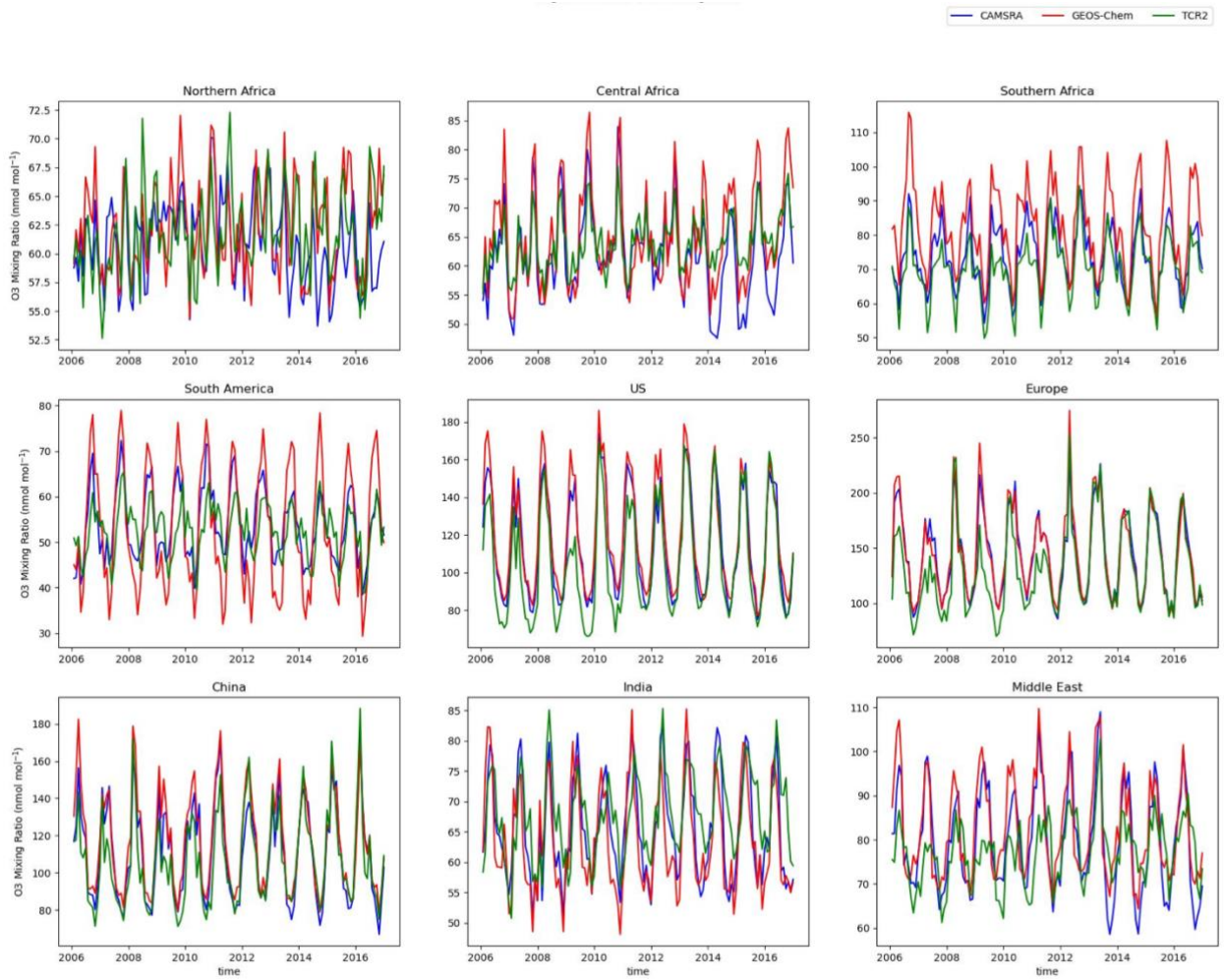


Figure 8. Time series of regional mean ozone (nmol mol^{-1}) at the surface for 2006–2016 for the regions defined in Table 1 (and shown in Fig S4). Shown are the monthly mean fields for CAMSRA (blue), GEOS-Chem (red), TCR-2 (green), CMAQ (black), and CAQRA (yellow). The time series for the CAQRA product extends from 2013–2016.



970 **Figure 9.** As in Figure 8, but for 500 hPa.

975



980

Figure 10. As in Figure 8, but for 250 hPa.

985

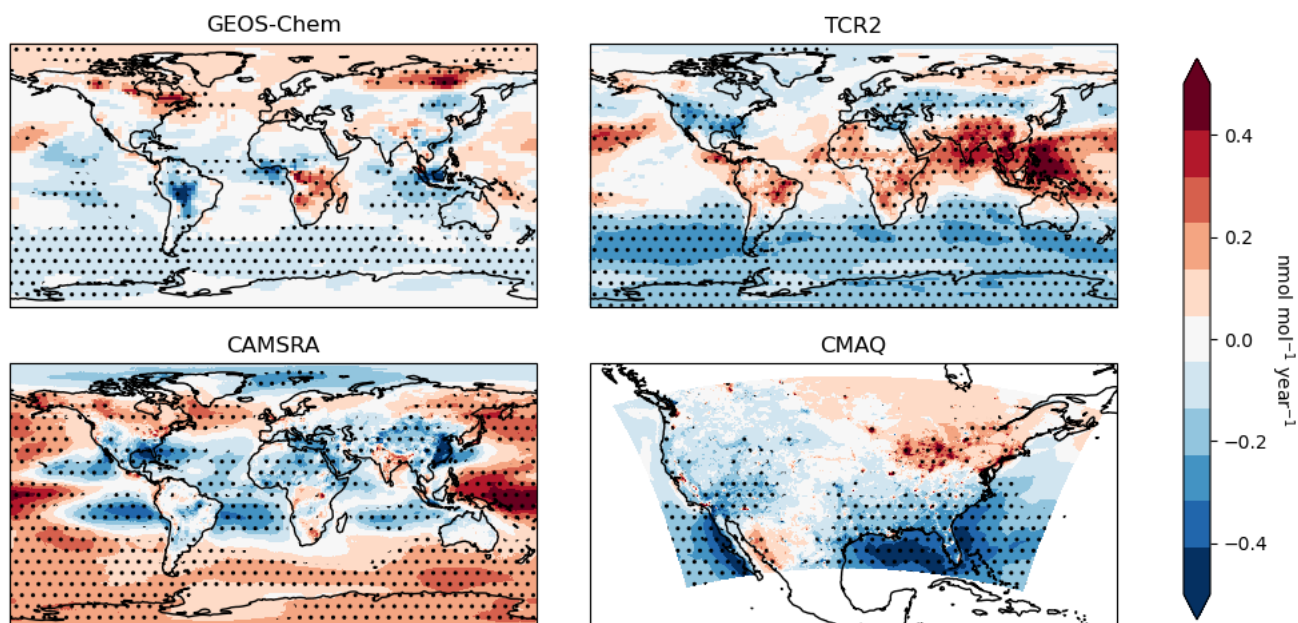
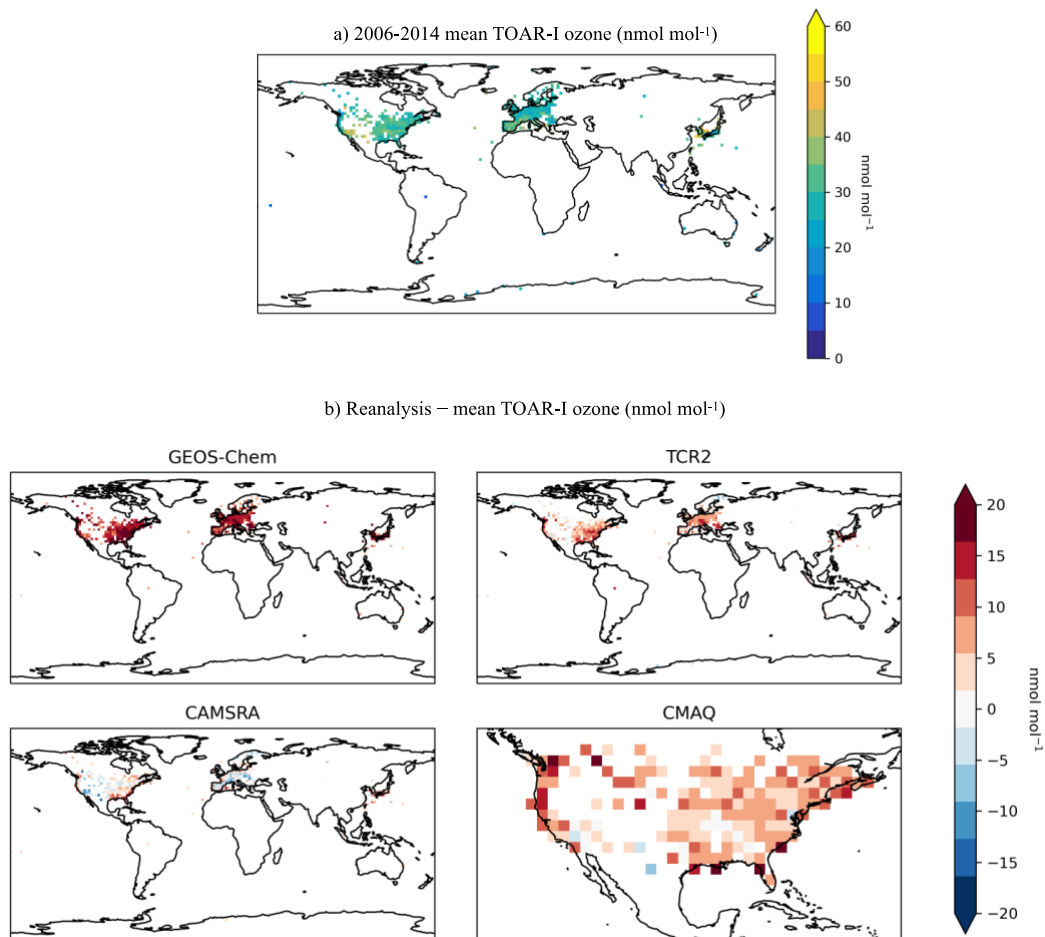
Linear trend of surface O₃ 2006-2016

Figure 11. Spatial distribution of the linear trends (nmol mol^{-1} per year) in surface ozone for 2006–2016 for the individual reanalysis. The trend was not calculated for CAQRA since the CAQRA fields are only available starting in 2013. The stippling indicates where the trend is statistically significant with $p < 0.05$.

1000

1005



1010 **Figure 12.** a) Mean surface ozone (nmol mol^{-1}) for 2006–2014 from the TOAR-I database. b) Mean bias (nmol mol^{-1}) between surface ozone in the individual reanalyses and the TOAR-I observations. The CAQRA product was not included in the evaluation because of the short temporal overlap between CAQRA and the TOAR-I database and the limited number of TOAR-I observations over Asia.

1015

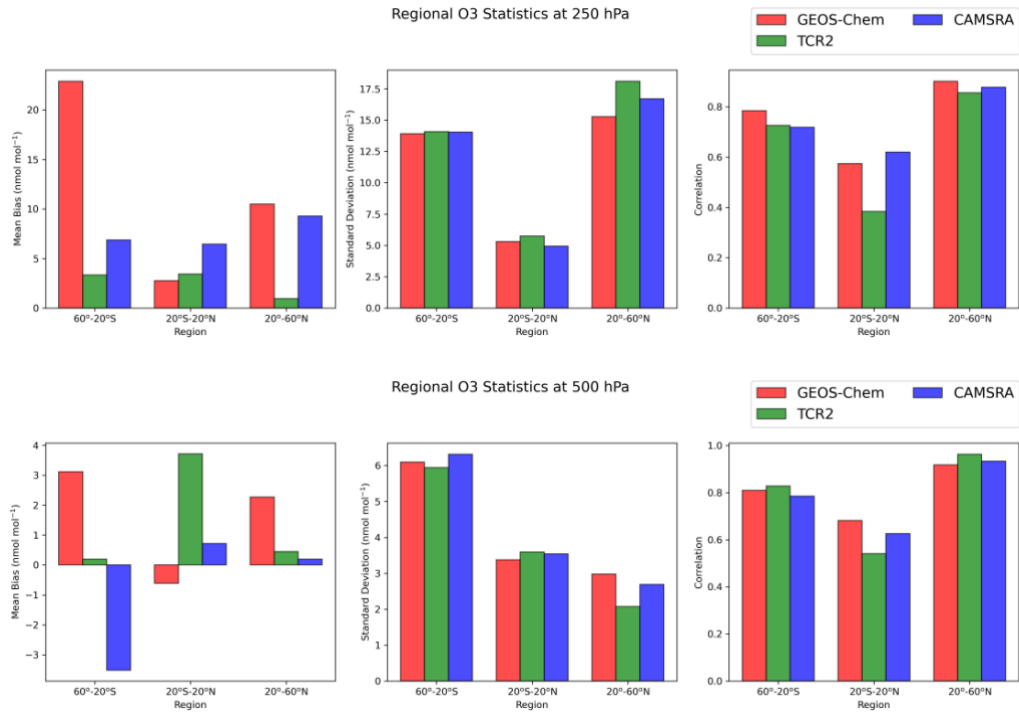
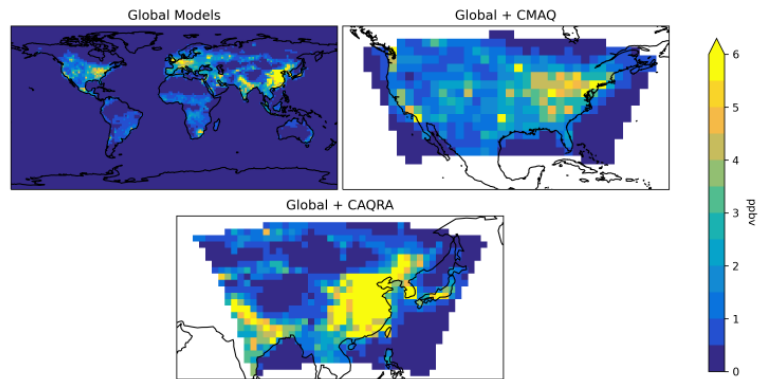
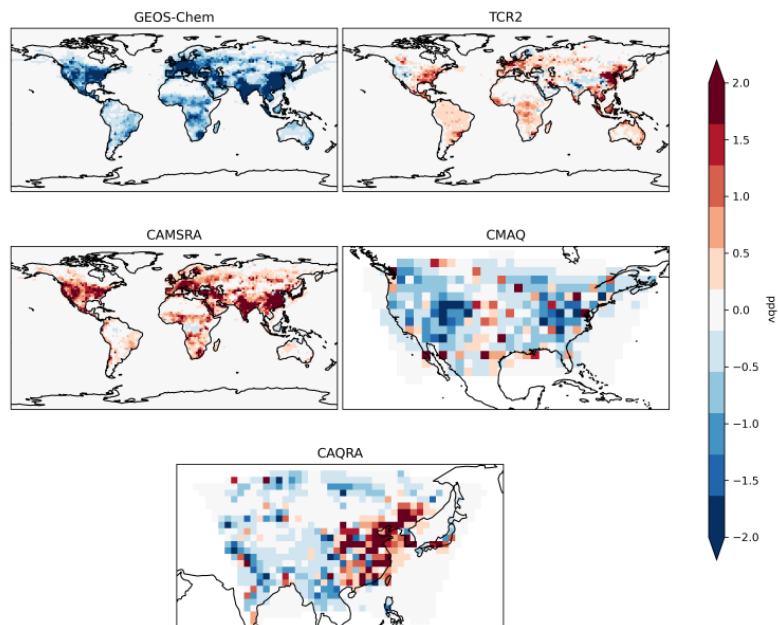


Figure 13. Regional statistics for the evaluation of the reanalyses with ozonesondes at 250 hPa (top row) and 500 hPa (bottom row). Shown are the mean bias (nmol mol⁻¹) between the reanalyses and the ozonesondes (left column), the standard deviation between the reanalyses and the ozonesondes (middle column), and the correlation between the reanalyses and the ozonesondes (right column).

a) Ensemble mean



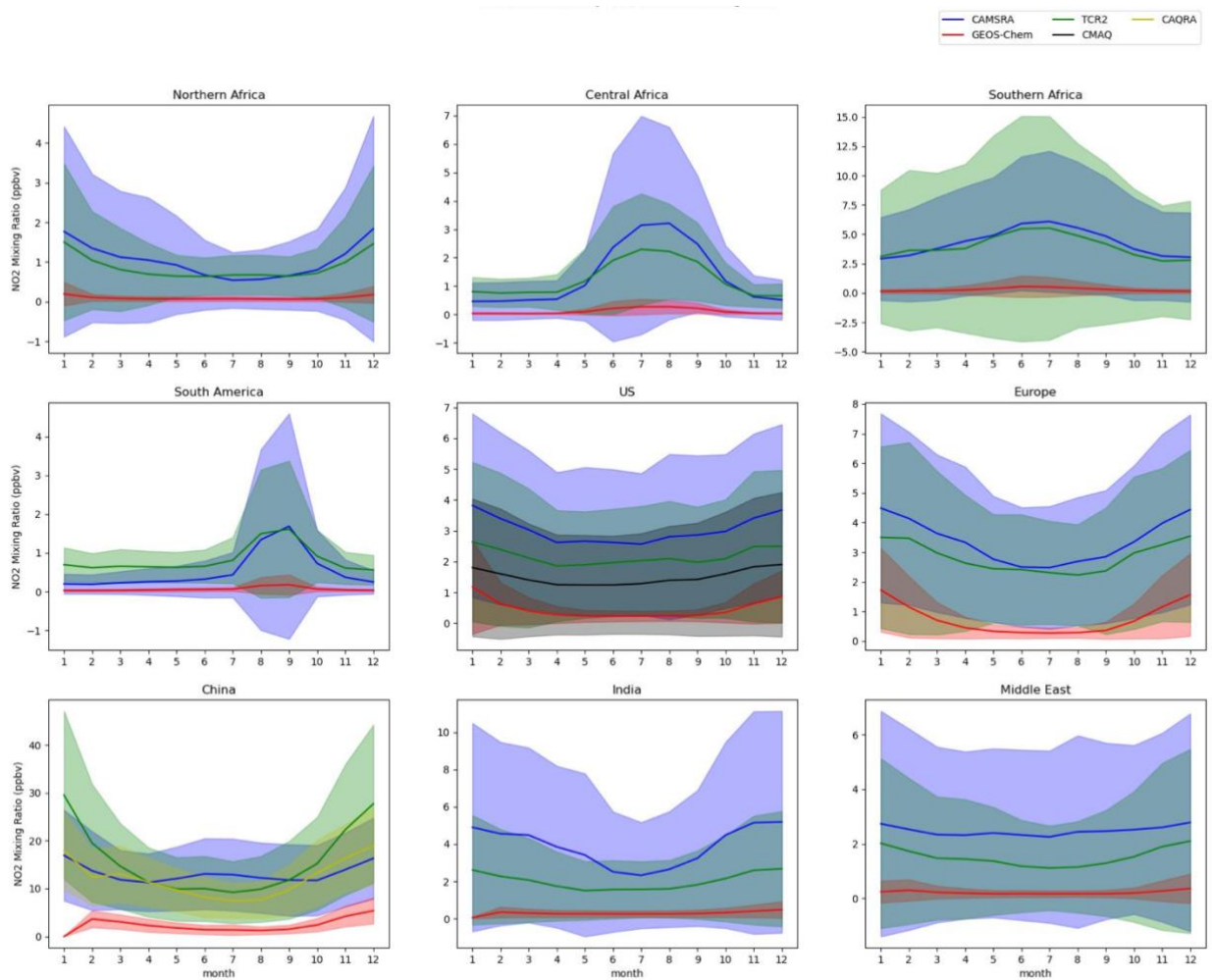
b) Reanalysis – ensemble mean



1035

Figure 14. Ensemble mean NO_2 (ppbv) at the surface for the global reanalyses (CAMSRA, GEOS-Chem, and TCR-2) for 2006–2016 (top), the global reanalyses and CMAQ over the United States (top right), and the global reanalyses and CAQRA over Asia (bottom). b) Mean differences (ppbv) between surface NO_2 in the individual reanalyses and the ensemble mean. The ensemble mean and the differences from the mean for the CAQRA evaluation were calculated for 2013–2016 since CAQRA data are only available starting in 2013.

1040



1045

Figure 15. Seasonal variations in regional mean NO₂ (ppbv) at the surface for the regions defined in Table 1. Shown are the monthly mean fields for CAMSRA (blue), GEOS-Chem (red), TCR-2 (green), CMAQ (black), and CAQRA (yellow). The monthly fields were averaged for 2006–2016, except for CAQRA, which was averaged for 2013–2016. The regional and temporal standard deviation for each month is indicated by the shading.

1050