

Response to the editor for manuscript "Seasonal ... fjords" by Vries et al. (2025)  
2025-06-24

We thank the editor for their consideration for colorblind-friendly colormaps. We have changed the colors in all figures to "seaborn colorblind palette" and added markers where we deemed necessary. Please find a screenshot of the green and red blind deficiency simulator below for Figure 3 below.

Drag and drop or paste your file in the area below or:  No file selected.

Trichromatic view: Anomalous Trichromacy:

☐ Normal

☐ Red-Weak/Protanomaly

☐ Green-Weak/Deuteranomaly

☐ Blue-Weak/Tritanomaly

Dichromatic view:

☐ Red-Blind/Protanopia

☒ Green-Blind/Deuteranopia

☐ Blue-Blind/Tritanopia

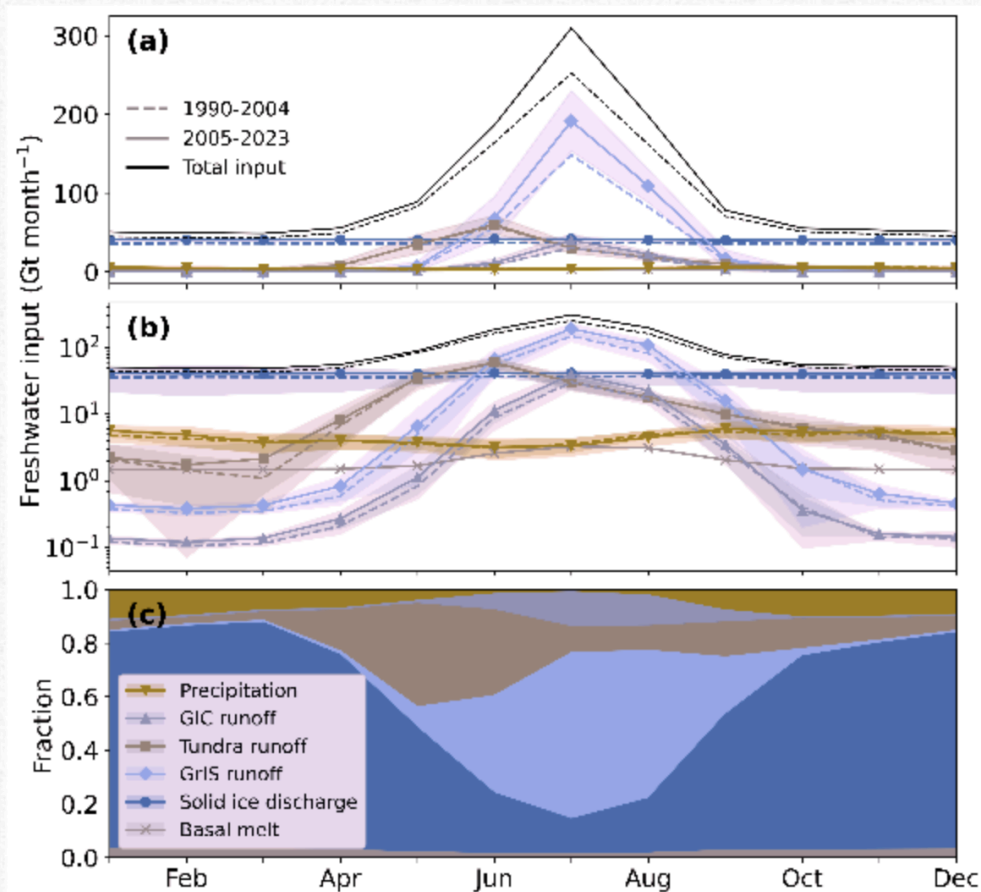
Monochromatic view:

☐ Monochromacy/Achroma

☐ Blue Cone Monochromat

Use lens to compare with normal view: ☒ No Lens ☐ Normal Lens ☐ Inverse Lens

[Reset View](#) [Open simulated image in new window](#)



Drag and drop or paste your file in the area below or:  No file selected.

Trichromatic view: Anomalous Trichromacy:

☐ Normal

☐ Red-Weak/Protanomaly

☐ Green-Weak/Deuteranomaly

☐ Blue-Weak/Tritanomaly

Dichromatic view:

☒ Red-Blind/Protanopia

☐ Green-Blind/Deuteranopia

☐ Blue-Blind/Tritanopia

Monochromatic view:

☐ Monochromacy/Act

☐ Blue Cone Monoch

Use lens to compare with normal view: ☒ No Lens ☐ Normal Lens ☐ Inverse Lens

[Reset View](#) [Open simulated image in new window](#)

