

Nitrogen deposition and climate drive plant nitrogen uptake while soil factors drive nitrogen use efficiency in terrestrial ecosystems

Helena Vallicrosa^{1,2,3}, Katrin Fleischer^{4,5}, Manuel Delgado-Baquerizo⁶, Marcos Fernández-Martínez⁷, Jakub Černý⁸, Di Tian⁹, Angeliki Kourmouli^{10,11}, Carolina Mayoral^{11,12}, Diego Grados¹³, Mingzhen Lu^{14,15}, César Terrer¹

1 Department of Civil and Environmental Engineering, Massachusetts Institute of Technology, Cambridge, Massachusetts, USA.

2 Community Ecology Unit, Swiss Federal Institute for Forest, Snow and Landscape Research WSL, CH-8903 Birmensdorf, Switzerland

3 Plant Ecology Research Laboratory PERL, School of Architecture, Civil and Environmental Engineering ENAC, EPFL, CH-1015 Lausanne, Switzerland

4 Department of Biogeochemical Signals, Max-Planck-Institute for Biogeochemistry, Jena, Germany.

5 Section Systems Ecology, Amsterdam Institute for Life and Environment, Vrije Universiteit Amsterdam, The Netherlands

6 Laboratorio de Biodiversidad y Funcionamiento Ecosistémico, Instituto de Recursos Naturales y Agrobiología de Sevilla (IRNAS), CSIC, Sevilla, Spain

7 CREA, E08193 Bellaterra (Cerdanyola del Vallès), Catalonia, Spain.

8 Forestry and Game Management Research Institute, Strnady 136, Jíloviště 252 02, Czech Republic.

9 State Key Laboratory of Efficient Production of Forest Resources, Beijing Forestry University, Beijing 100083, China

10 Lancaster Environment Centre, Lancaster University, Lancaster, UK

11 Birmingham Institute of Forest Research, University of Birmingham, United Kingdom

12 School of Biosciences, Edgbaston Campus, University of Birmingham, United Kingdom

13 Department of Agroecology, Climate and Water, Aarhus University, 8830 Tjele, Denmark

14 Department of Environmental Studies, New York University, New York, NY 10012, USA.

15 Santa Fe Institute, New Mexico, NM 87501, USA

Correspondence to: Helena Vallicrosa (helena.vallicrosa@gmail.com)

ABSTRACT

The role of plants in sequestering carbon is a critical component in mitigating climate change. A key aspect of this role involves plant nitrogen (N) uptake (Nup) and N use efficiency (NUE), as these factors directly influence the capacity of plants to store carbon.

49 However, the additive contribution of N deposition, soil factors (biotic and abiotic) and
50 climate to the plant N cycle, remains inadequately understood, introducing significant
51 uncertainties into climate change projections. Here, we used ground-based observations
52 across 159 field experiments (including above and belowground information) to calculate
53 Nup and NUE and identify their main drivers in natural ecosystems. We found that global
54 plant Nup is primarily driven by N deposition, mean temperature and precipitation, with
55 Nup increasing in warmer and wetter areas. In contrast, NUE is driven by soil biotic and
56 abiotic factors. Specifically, NUE decreased with the intensity of colonization by arbuscular
57 mycorrhizal fungi and increased with soil pH and soil microbial stocks. Nup and NUE
58 presented opposite latitudinal distributions, with Nup higher on tropical latitudes and NUE
59 higher towards the poles. Total soil N stocks were not found to be a driver of Nup or NUE.
60 We also compared our results with TRENDY models and found that models may
61 overestimate Nup by $\sim 100 \text{ Tg N yr}^{-1}$ in the tropics and triple the standard deviation at boreal
62 latitudes. Our findings emphasize the effect of N deposition and soil microbes that, in
63 addition to climate and soil pH, are crucial for accurately predicting ecosystems' capacity to
64 sequester carbon and mitigate climate change at a global scale.

65 Plain language summary

66 We used field empirical data worldwide to calculate plant nitrogen uptake (Nup) and
67 nitrogen use efficiency (NUE) in woodlands and grasslands and determine their drivers,
68 which can be used as empirical validation for models. Even though some regions of the
69 world have decreased their N deposition, N deposition is still the most important driver
70 explaining plant nitrogen uptake, aside from climatic variables.
71
72
73
74
75
76
77
78
79
80
81
82
83
84
85
86
87
88
89
90
91
92

Deleted: contribution

Deleted: and

Deleted: in addition to

Deleted: ,

Deleted: the

Deleted: on

Deleted: its

1.Introduction

Climate and nutrient availability play significant roles in the capacity of plants to sequester carbon (C). Nitrogen uptake (Nup) and nitrogen use efficiency (NUE) are fundamental processes in plant-soil N cycling, which in turn impact biodiversity, ecosystem productivity, C sequestration, food security, and human health (Peñuelas et al., 2020). Hence, realistic quantifications of Nup and NUE, and the understanding of their drivers are crucial to predicting the fate of terrestrial ecosystems under a changing environment. Climate, biomass production, and Nup are strongly intertwined, where hotter and wetter ecosystems have the capacity to grow more, increase their N demand, and therefore absorb more N if available (Berntson et al., 1998; Wu et al., 2011). Nonetheless, several factors can affect N availability. Traditionally, total soil N stocks were used to proxy N availability or plant Nup. Although this correlation is weak, it is still used from a modeling perspective (Stevens et al., 2015; Vicca et al., 2018) assuming that total soil N positively correlates with N availability.

The soil community (i.e. microbes and fungi) plays a crucial role in global biogeochemical cycles governing processes such as N fixation, nitrification, denitrification, and general organic matter and nutrient turnover (Aber et al., 2001; Sinsabaugh et al., 2002; Sinsabaugh et al., 2008; Crowther et al., 2019; Delgado-Baquerizo et al., 2020). In turn, the soil community can also act as a buffer in case of nutrient excess (Wall et al., 2015) or contribute to nutrient foraging in case of nutrient deficiencies (Chen et al., 2018), shaping ecosystem functioning (Bardgett and van der Putten, 2014). Therefore, the soil community is expected to interfere substantially with plant Nup and NUE, N deposition is another agent relevant for global N cycles, which has increased from ~30 to ~80 Tg N/year worldwide since 1850 (Kanakidou et al., 2016) with an associated increase in N availability (Elser et al., 2010; Battye et al., 2017; Peñuelas et al., 2020). Consequently, reliable quantifications of plant Nup and NUE need to include climatic factors as well as soil biotic factors and N deposition.

N regulates the capacity of ecosystems to store C (Hungate et al., 2003; Fernández-Martínez et al., 2014; 2019; Wang et al., 2017) and respond to climate change drivers (Fleischer et al., 2019; Terrer et al., 2019; Walker et al., 2021; Zhou et al., 2022) being the C-N assembly relevant for land surface models (LSM). Eight of the LSM of the TRENDY ensemble v8 (Sitch et al., 2015), a model ensemble designed to disentangle the effects of climate, CO₂, land use, and land cover change, include representations of the N cycle and plant Nup. Nonetheless, their parameterization of N cycling is poorly constrained by observations (Zaehle et al., 2014; Fowler et al., 2015; Braghieri et al., 2022). Consequently, when models are assembled, the result leads to accumulated uncertainty (Prentice et al., 2015; Franklin et al., 2020) and therefore divergent predictions of the land sink (Zaehle et al., 2014; Stocker et al., 2016; Arora et al., 2020). Furthermore, when accounting for N interactions, LSMs do not generally consider the direct effects of microorganisms, missing out on the role of soil bacteria or mycorrhizae on plant nutrient uptake. Including global calculations of plant Nup and NUE based on empirical data, as well as accounting for climate, N deposition, and soil biomass interactions, would potentially refine the N accountability in LSM.

Deleted: (

Deleted:)

Deleted: in

Deleted: ,

Deleted: substantially interfere with in the plants Nup and NUE...

Deleted:

Deleted: take

Deleted: its

Deleted: not

Deleted: '

Here, we gathered information from 159 plots worldwide that describe woodlands and grasslands across different biomes to calculate plot-based plant Nup and plant NUE using exclusively empirical field data. Our analyses combine N concentration and net primary productivity (NPP) data in different aboveground and belowground plant tissues (i.e., leaves, roots and stem). We used linear models to identify the drivers of Nup and NUE, including N deposition, soil microbes, woodiness, and climatic factors. We then upscaled those results using machine-learning models to quantify yearly plant Nup and plant NUE at a global scale in natural terrestrial ecosystems (woodlands and grasslands) and compared these results with simulations from LSM. We hypothesize that factors such as N deposition and soil microorganisms have significant impacts on Nup and NUE respectively, playing a role as important as climatic drivers. We expect the ground-based data, and incorporation of these N-relevant drivers to increase the accuracy of global Nup quantifications. Thus, a mismatch between our estimation and current TRENDY simulation outputs is expected.

2. Results and discussion

2.1 Nitrogen uptake and nitrogen use efficiency

Our findings indicate that N deposition and climate are fundamental factors explaining plant Nup on a global scale (Fig. 1). We found a positive relationship between Nup and accumulated N deposition, mean annual temperature (MAT), and mean annual precipitation (MAP). Thus, regions that are warm, wet, and with higher levels of N deposition exhibit the highest rates of Nup. Our results show that N deposition is strongly contributing to fulfilling the N demand in productive environments, alleviating potential N limitations, and allowing high plant Nup levels. On the other hand, our empirical results did not show important relationships between plant Nup and soil microbial interactions nor soil physico-chemical variables (Fig. 1a). Those results include no significant relationship between soil N stocks and Nup at a global scale (Fig. S1a), which has been further tested following a univariate approach. This result discourages the use of soil N to infer N availability.

Deleted: ,

Deleted: the

Deleted: Further analysis revealed

Deleted: ,

Plant nitrogen uptake

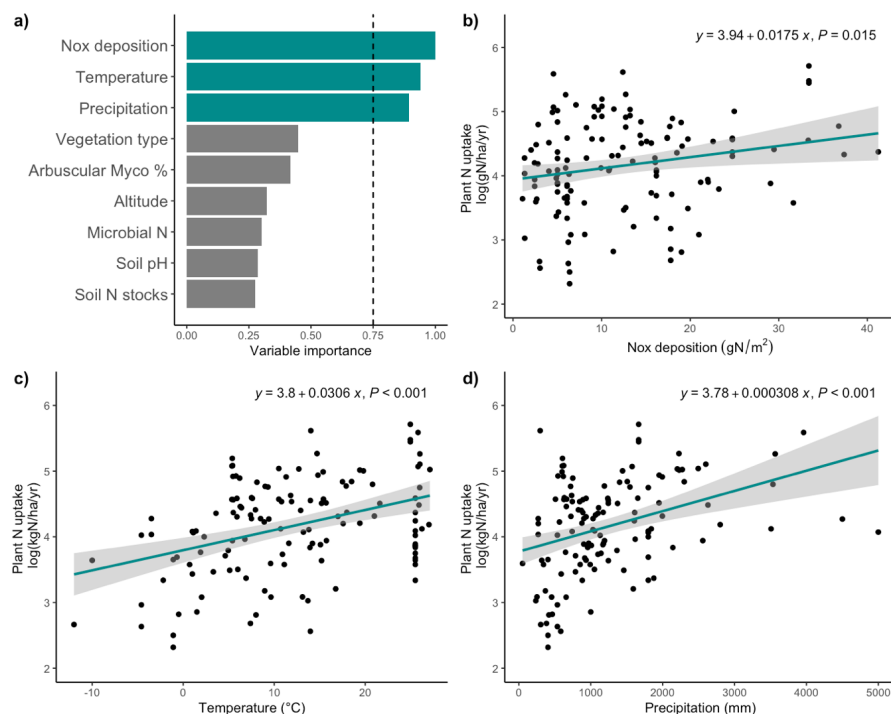


Figure 1. a) Variable importance plot for the general linear model (GLM) describing plant nitrogen uptake (Nup). The dashed line is set at 0.75, separating the threshold for important variables. The GLM model pseudoR² was 0.349. Linear regressions were displayed describing plants' nitrogen and important variables b) accumulated Nox deposition from 1901 to 2021, c) mean annual temperature, and d) mean annual precipitation. Equation and p-value per regression are displayed. Acronyms: Nox: oxidized nitrogen, N: nitrogen, Myco %: Mycorrhizal percentage.

In contrast, our model selection analysis identified soil biotic and abiotic factors as the main NUE drivers (Fig. 2). We found that NUE decreased with AM % and increased with soil pH and soil microbial N stocks. Thus, plant species prone to be colonized by arbuscular mycorrhizae, are less efficient in N use to build biomass. In contrast, basic pH and abundant soil microbial stocks facilitate higher NUE rates. Even though soil variables appear to be important for NUE, soil N stocks remain unrelated to NUE in the model and when tested individually (Fig. S1b). Despite climatic variables such as MAT and MAP not appearing as important variables explaining NUE, they are to some extent represented in the soil variables. As shown in Table S2, soil variables are not independent of climatic variables, since they have some degree of correlation.

Deleted: y

Deleted: when describing NUE,

Deleted: Specifically, our results described

Deleted: but a positive relation

Deleted: between

Deleted: ,

Deleted: and NUE was found.

Nitrogen use efficiency

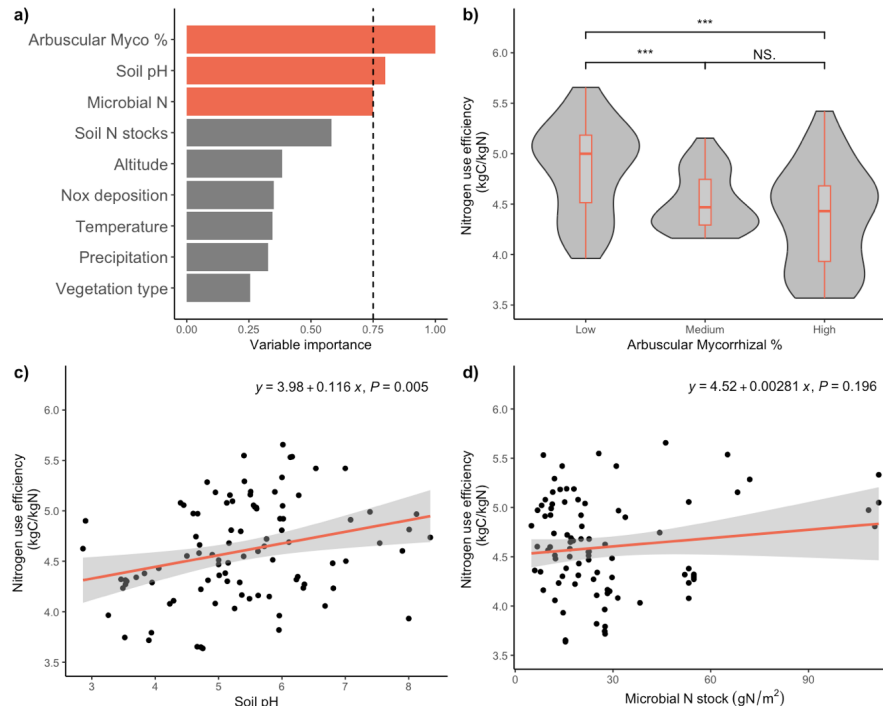


Figure 2. a) Variable importance plot for the generalized linear model describing nitrogen use efficiency (NUE). The model pseudoR² was 0.355. The dashed line is set at 0.75, separating the threshold for important variables. In b) arbuscular mycorrhizae percentage is divided into low, medium, and high, and NUE is displayed. * = P-value < 0.05, ** = P-value < 0.01, *** = P-value < 0.001. Linear regressions were displayed describing plants' nitrogen use efficiency c) soil pH and d) microbial N stocks. Equation and p-value per regression are displayed.

2.2 Global maps of Nup and NUE

Next, we used a machine-learning model, **XGBoost**, to **estimate** the global magnitude and distribution of Nup and NUE **by extrapolating the site-level relationships to the global scale**. For methodological consistency, the XGBoost model was trained using the same nine variables as the linear model. **The model identified** temperature, precipitation, and N deposition as the most critical factors for describing Nup (Fig. S2), **consistent with** the linear model, **though ranked** in a slightly different order. Partial dependence plots further **supported the** relationships observed in the linear models (Fig. S3).

The upscaled Nup map showed a total yearly Nup of 842.215 ± 236.11 Tg of N, with a mean coefficient of variation of 26.77 % (Fig. S4) and an R^2 of 0.54 (Fig. S2). The lowest Nup values were on boreal latitudes and mountain ranges such as the Rockies (USA), Andes (South America), various Europe an ranges, and the Himalayan plateau (Asia). **In contrast**, higher rates of Nup **were** predicted in temperate latitudes in Europe, the eastern United States,

Deleted: understand

Deleted: when the relationships found at the site level are

Deleted: extrapolated

Deleted: at a

Deleted: We identified

Deleted: which aligned with those in

Deleted: albeit

Deleted: corroborated these

Deleted: ,

Deleted: showing consistent correlation signs with those

Deleted: r

Deleted: y Mountains in the

Deleted: the

Deleted: in

Deleted: the different mountain ridges in

Deleted: in

Deleted: The

Deleted: a

Southeast Asia, eastern Australia, much of South America, and central Africa. The highest values were found in the Congo region, where high N deposition, temperature and precipitation converge (Fig. 3a). The Nup map shows a strong NPP influence, driven by temperature and precipitation, but including N deposition,

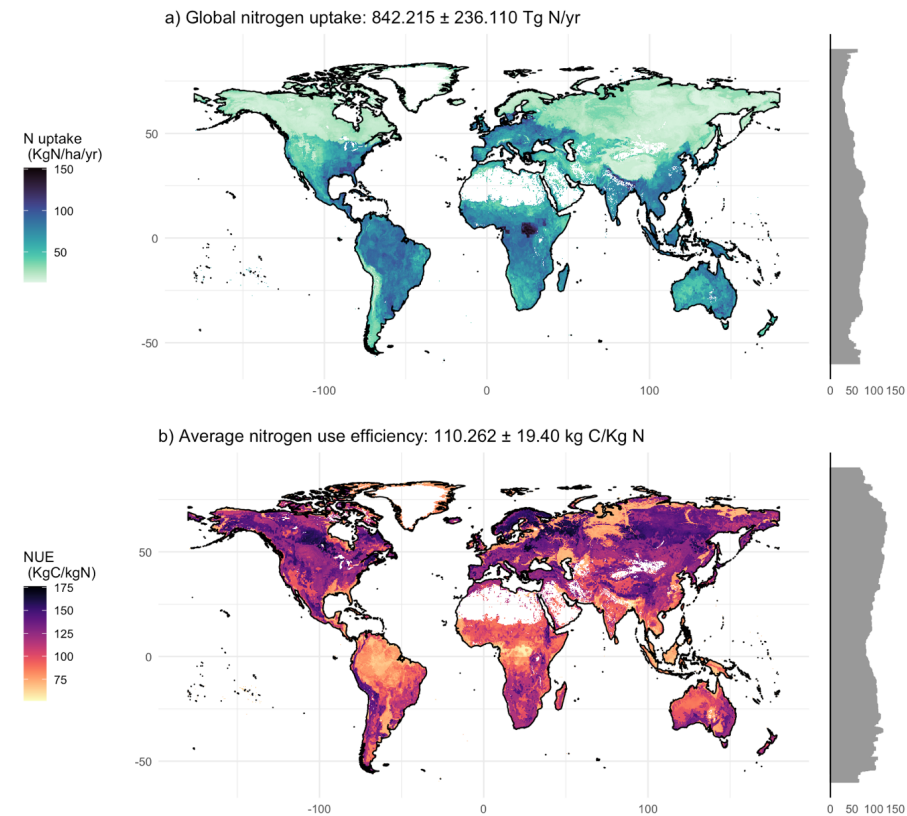


Figure 3. Upscaled global maps describing a) Plant nitrogen uptake and b) Nitrogen use efficiency. The total amount of nitrogen uptake calculated per year is 842.215 Tg of N with a standard deviation of ± 236.11 . The mean value of global nitrogen use efficiency is 110.26 kg of C per kg of N, and its standard deviation is 19.40. White areas indicate no data due to absence of grasslands or woody vegetation.

The machine-learning model for NUE identified microbial N stocks, altitude, precipitation, soil pH, and AM% as the most important drivers (Fig. S5). The direction of these effects matched those found in the linear model, with the addition of precipitation and altitude (Fig. S6). The global mean NUE estimate was 110.262 units of C per unit of N with a mean coefficient of variation of 17.89 % (Fig. S4) and an R^2 of 0.44 (Fig. S5). The global map showed lower NUE around the Equator, progressively increasing towards the poles. Nonetheless,

Deleted: E
Deleted: ost
Deleted: ,
Deleted: with the most intense spot around
Deleted: there is the most
Deleted: combined
Deleted: refore,
Deleted: n
Deleted: added to an
Deleted: distribution that shades the strictly latitudinal distribution of Nup...

Deleted: color describes
Deleted: a lack
Deleted: s
Deleted: describing
Deleted: showed the importance of
Deleted: NUE drivers
Deleted: These results generally align with the variable importance shown in...
Deleted: s
Deleted: . The variables' relation showed similar general trends as in the linear model (
Deleted: average predictions for
Deleted: at a global scale
Deleted: ere
Deleted: r
Deleted: distribution
Deleted: general
Deleted: and

some heterogeneous patches of high and low NUE appeared between 50 and 60 degrees latitude north (Fig. 3b).

2.3 Global-scale Nup comparison with TRENDY models

We compared our estimates for total yearly Nup upscaled from field observations with the mean Nup across the eight N models included in TRENDY. TRENDY models simulate higher Nup in the tropical regions, reaching differences of around 100 kg N ha⁻¹ yr⁻¹ in those areas (Fig. 4a), representing more than 100% of the Nup estimated by field observations (Fig. 4b). Other areas like northern and northeastern North America, Southeast Asia, and northern Eurasia also show higher Nup values in TRENDY models than in field observations. In boreal latitudes, TRENDY model deviations for Nup exceeded 300% overestimation. On the other hand, areas where the machine-learning models predict higher values than TRENDY models include the southern latitudes, Middle Eastern regions, the Somali peninsula, and the Rocky Mountains (Fig. 4). Overall, TRENDY models estimate Nup values that are higher by 16.61 kg N ha⁻¹ yr⁻¹ on average, accounting for 48.54 % of the variability. When aggregating total yearly Nup, LPX-Bern and CLM5.0 were the models that predicted overall values exceeding our confidence range, suggesting significantly higher Nup (Fig. S7).

Deleted: r

Deleted: alternating

Deleted: can be found

Deleted: further seek to

Deleted: the

Deleted: of the

Deleted: provided by

Deleted: When comparing TRENDY Nup with our Nup upscaled projections, we found clear geospatial pattern differences. ...

Deleted: produce

Deleted: the

Deleted: of

Deleted: of

Deleted: ppear to have

Deleted: the

Deleted: s

Deleted: could even reach

Deleted: of

Deleted: upscaled approach projects

Deleted: the

Deleted: ,

Deleted: are

Deleted: austral

Deleted: ,

Deleted: the

Deleted: higher values of

Deleted: ,

Deleted: ,

Deleted: meaning the

Deleted: the

Deleted: range of

Deleted: assuming a

Deleted: larger

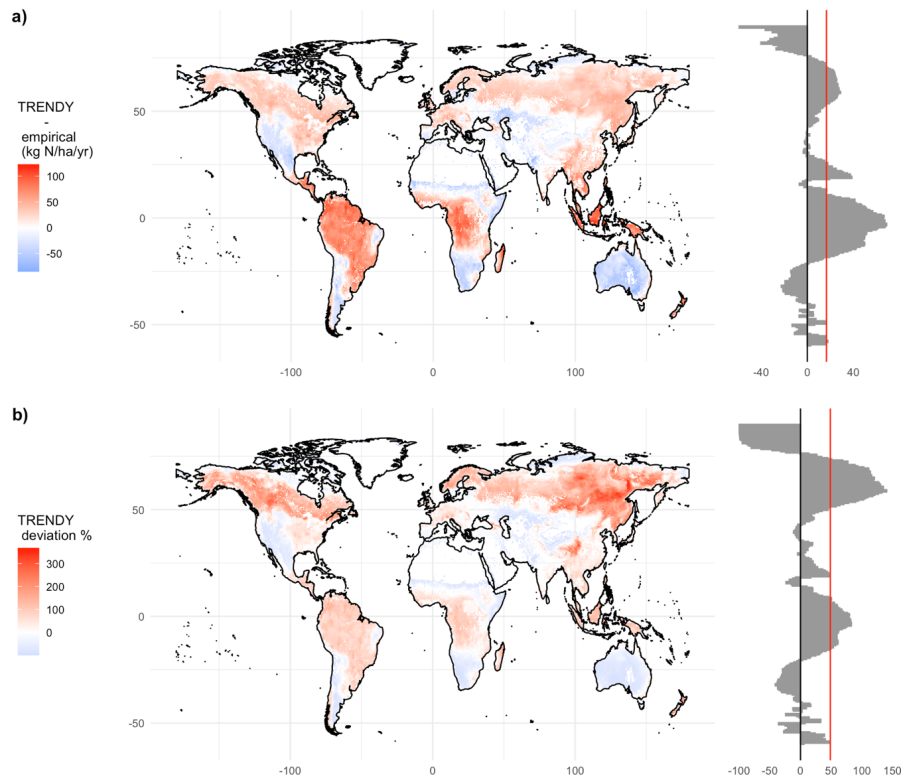


Figure 4. Comparison between the mean of the nitrogen uptake provided by TRENDY v8 models minus the upscaled nitrogen uptake. The red color stands for higher values on the TRENDY model, and the blue color stands for higher nitrogen uptake values on the upscaled approach. In a) units in kg N ha⁻¹ yr⁻¹ and in b) units in percentage of deviation from field upscaling. Latitudinal aggregation on the right, with a red vertical line showing a) the mean of the total comparison at 16.61 kg N ha⁻¹ yr⁻¹ and b) the mean percentage of deviation at 48.54%.

2.4 Nup global drivers and implications

Our models estimated annual global plant Nup at 842 ± 236 Tg of N. This figure is consistent with the findings of Peng et al., 2023, which estimated 950 ± 260 Tg of N, and Braghiere et al., 2022, with an estimated uptake of 841.8 Tg N. The slight variations can be attributed to differences in methodologies and data sources (simultaneous plot-averaged records vs individual-level records) used in these studies. In our study, linear models and machine learning models consistently identify N deposition, temperature, and precipitation as global drivers of Nup. Hotter and wetter environments increase biological activity, leading to more biomass production and therefore more N demand. An increase in N demand with enough N availability is associated with an increase in Nup. The accumulation of N deposition throughout time originating from anthropogenic sources has been increasing the N availability in some areas, generally close to industrial or agroforestry pools. Hence, in a global change context where CO₂ fertilization and temperature increase have generated a

Deleted: the

Deleted: are

Deleted: when determining

greening effect (Ruehr et al., 2023), areas with higher N deposition were able to better supply the increasing N demand. Thus, according to our results, anthropogenic N supply may now be as important a driver of Nup as climate.

These results are concerning since our data emphasize the far-reaching influence of human-induced N deposition in shaping global Nup patterns. Some regions such as Europe, the eastern USA, and the tropics have decreased their N deposition levels during the last four decades (Ackerman et al., 2019). Nonetheless, these reductions have not yet translated into measurable changes in how N deposition affects natural woodlands and grasslands, which still appear to be primarily driven by N deposition. This sustained input of anthropogenic N has been associated with a fertilization effect, enhancing the land C sink by $0.72 \text{ Pg C yr}^{-1}$ during the 2010s (Gurmesa et al., 2022). However, this N fertilization effect has showed signs of saturation in forests and grasslands (Tian et al., 2016; Peng et al., 2020), where increases in biomass production (and therefore C sink strength) have slowed. Consequently, this excess N input from N deposition may no longer be captured by biomass and instead contributes to N leaching, eutrophication, acidification, loss of biodiversity, and N_2O emissions (Aber et al., 1989; Gundersen et al., 1998; Bobbink et al., 2010), exacerbating environmental problems.

2.5 NUE global drivers and implications

Our results predict a mean NUE of $110 \pm 19 \text{ kg C per kg N}$, driven by soil biotic and abiotic factors. The main divergence between linear models and machine learning models is the importance of altitude and precipitation, which showed explicit relevance only in the machine learning model. We attribute these differences to the nature of the models, where machine-learning models accommodate correlations without modifying their variable importance. Thus, the important variables in the linear model could also have embedded important latitudinal gradients and therefore altitudinal or precipitation gradients. Our NUE predictions differ from Peng et al., 2023, who reported a mean NUE of $76 \pm 26 \text{ kg C per kg of N}$. The main distinction is that our approach included biotic factors, such as mycorrhizal associations and microbial interactions, which explained NUE better than abiotic factors. In contrast, Peng et al., 2023 based their estimates solely on abiotic factors. We do not consider environmental variables such as precipitation to be totally independent from NUE relations, as they influence important biotic variables such as AM %, and microbial N stocks. Nonetheless, the results showed that including biotic variables may result in more efficient use of N by plants at a global scale.

The response of NUE has been postulated as a method to assess N saturation in plant communities (Shcherbak et al., 2014). A negative relationship between N addition and NUE, along with lower NUE levels, can indicate N saturation (Iversen et al., 2010). In our study, tropical areas exhibit the lowest NUE, suggesting lower N limitation, consistent with previous global upscaling studies using different methods (Du et al., 2020; Vallicrosa et al., 2022). According to the soil age hypothesis (Walker and Syers, 1976), N accumulates in ecosystems over time through biological processes. Thus, younger ecosystems, such as those at high elevations or with lower pH , show higher values of NUE and are likely to be

Deleted: have become a Nup driver as important

Deleted: nitrogen ... deposition in shaping global Nup patterns. Some regions such as Europe, the eE...stern USA, and the tropics have decreased their N deposition levels during the last four decades (Ackerman et al., 2019). Nonetheless, these reductions do ...ave not yet translated yet...into how N deposition effects natural woodlands and grasslands, showing to still be the main driver for plant Nup...easurable changes in how N deposition affects natural woodlands and grasslands, which still appear to be primarily driven by N deposition. This sustained entrance ...nput of anthropogenic N has been associated with a fertilization effect, enhancing the land C sink by $0.72 \text{ Pg C yr}^{-1}$ during the 2010s (Gurmesa et al., 2022). Nonetheless...owever, this N fertilization effect has showed evidence ...igns of saturation in forests and grasslands (Tian et al., 2016; Peng et al., 2020), where increases inthe...biomass production (and therefore the ... sink strength) haveincrease ...slowed down... Consequently, this excess Ntra...input of N coming ...rom N deposition mayis...no longest...being...captured by biomass and enhances the...nstead contributes to N leaching, associated with

[1]

Deleted: . Our results indicate...soil biotic and abiotic factors drive NUE in natural ecosystems... The main divergence between linear models and machine learning models is the importance of altitude and precipitation, which showed explicit relevancy...only in the machine learning models... We attribute these differences to the nature of the models, where machine-learning models accommodate correlations without modifying their variable importance. Thus, the important variables in the linear model could also have embedded important latitudinal gradients and therefore altitudinal or precipitation gradients. Our NUE predictions contrasted with...iffer from Peng et al., 2023, which predicts...ho reported a mean NUE of $76 \pm 26 \text{ kg C per kg of N}$. The main difference ...instinction between studies ...s that our approach included biotic factors, such as mycorrhizal associations and microbial interactions, that described...hich explained NUE better than abiotic factors. In contrast, Peng et al., 2023 focused ...ased their predictions only...stimates solely on abiotic factors. In that regard, ...w... do not consider environmental variables such as precipitation to be totally detached ...ndependent from NUE relations, asince...th

[2]

Deleted: and ...long with lower NUE levels, would...an indicate N saturation (Iversen et al., 2010). In our study, tropical areas are shown to have...xhibit the lowest NUE, being the less...uggesting lower N limited...tion, and matching...onsistent with previous global upscaling studies using different approaches ...ethods (Du et al., 2020; Vallicrosa et al., 2022). According to the soil age hypothesis (Walker and Syers, 1976), N accumulates in ecosystems through ...ver time due to...hrough biological processes. newer formation areas,...ounger ecosystems, such as those at high elevations or with lower pH, areas are those showing...higher values of NUE and are likely where N is expected ...

[3]

more N-limited. Our results show only a modest effect of N saturation due to N deposition, so further studies are needed to better assess where and under what circumstances areas are N saturated due to N deposition at a global scale.

Biological activity, particularly the type of mycorrhizal associations and soil microbial N stocks, had a strong impact on N dynamics. Arbuscular mycorrhizal associations, which dominate tropical ecosystems (Soudzilovskaia et al., 2019), are hypothesized to be more efficient in nutrient acquisition and more abundant in areas with fast N cycling (Averill et al., 2019). Our models show that AM associations are linked to lower NUE, possibly due to abundant N and the high efficiency of AM fungi in acquiring it. Conversely, N acquisition appears more efficient in regions with higher microbial N stocks. As described by Kuzyakov and Xu (2013), we hypothesize a potential competition effect between soil microbes and plants for N, but further studies are needed to corroborate this mechanism. Given the central role of biological processes in regulating N transformation and uptake, it is reasonable to conclude that total soil N stocks (which include all forms and pools of N) are not reliable indicators of N availability or plant Nup.

2.6 Latitudinal discrepancies between Nup map and TRENDY

LPX-Bern and CLM5.0 models projected Nup values significantly above our estimates, reporting 1471 and 1454 Tg N/yr, respectively (Fig. S7). Although the average of all TRENDY models falls within our Nup confidence range, spatial discrepancies are large. In tropical and northern latitudes, TRENDY models predicted higher Nup than our estimates. In contrast, TRENDY models predicted lower Nup values in southern latitudes, western Asia, and the Rocky Mountains. This mismatch could result in an overestimation of the terrestrial C sink and a misinterpretation of the role of vegetation in N cycling. One possible explanation is that LSMs overestimate biomass production by failing to account for growth-limiting factors such as phosphorus limitation, drought, or biotic competition. Alternatively, overestimation of tissue N concentration could also lead to inflated Nup values, which would inherently result in lower modeled NUE. In our calculations, we explicitly accounted for the variability of N concentration and net primary productivity among tissues, including leaf resorption, to generate more accurate Nup and NUE estimates.

2.7 Representativity and future research

An inherent challenge in ecological studies of this scale is to ensure the global representativeness of the dataset since systematic geographical sampling biases underrepresent the global South (Auge et al., 2024). In this study, 28 % of the data comes from areas below 15° latitude, outside the US, Europe, or China (Fig. S8). In terms of ecosystem representation, the Whittaker diagram shows coverage across all biomes (Fig. S9), with subtropical deserts, tundra, and temperate rainforest being the least represented. Nonetheless, we acknowledge that calculations based on empirical data, especially when a portion of the data has undergone a gap-filling process, may still carry biases related to sampling and upscaling. These biases are primarily shaped by the biomes with higher observational density. Still, we argue that calibrating and validating models built on mathematical assumptions using field measurements is essential to better anchor model

Deleted: ing... Our results only

[4]

Deleted: such as...articularly the type of mycorrhizal associations and soil microbes...N stocks, was found to have...a strong impact on the terrestrial ... dynamicscycle... Arbuscular mycorrhizal associations, are the most abundant in the tropics ...high dominate tropical ecosystems (Soudzilovskaia et al., 2019), and ...re theorized...ypoththesized to be more efficient in nutrient capture ...quisition and more abundant in areas with fast N cycling (Averill et al., 2019). Our models show that AM associations have ...re linked to lower NUE, possibly driven by the ...ue to abundance... of ... and the high efficiency of AM fungi associations ...n N ...quisition...ing it. Conversely, N obtention...quisition was ...ppear more efficient in areas...egions with higher soil ...icrobiales...N stocks. As described by Kuzyakov and Xu (2013), we hypothesize a potential competition effect between soil microbes and plants for N, but further studies are needed to corroborate this mechanismrelation... Thus, g...iven the importance of...entral role of biological activity ...rocesses in fixing and...egulating N transforming ...ransformation N...nd uptake, it is reasonable to conclude that total soil N stocks,...that ...which include N in ...ll forms and pools of N) aggregations,...would not be a good indicator of N availability and plant N uptake.

[5]

Deleted: ...models included in the TRENDY ensemble, projected Nup values significantly above our estimations... being ...eporting 1471 and 1454 Tg N/yr, respectively (Fig. S7). Even ...though the average of all TRENDY models falls within our Nup confidence range, spatial discrepancies are large differences become relevant through space... In tropical and northern latitudes, TRENDY models projected predicted higher values ...up than our estimations... On the other hand...n contrast, TRENDY models predicted...lower Nup values in southern latitudes, western Asia, and at...the Rocky Mountains. This mismatch could be associated with...result in an overestimation of the terrestrial C sink capacity ...nd a misinterpretation of the role of vegetation in N cycling. OneA...possible explanation of this phenomenon would be ...s that the overestimation of biomass production by ...SMs overestimate biomass production when not...y failing to accounting...for growth-limiting factors such as phosphorus availability...imitati...

[6]

Deleted: are...underrepresenting...the global Ss...uth (Auge et al., 2024). In this study, 28 % of the data comes from areas below 15° latitude, outside the US, Europe, or China (Fig. S8). When accounting for...n terms of ecosystem representativity...epresentation, the Whittaker diagram shows we have a representation...overage across of ...ll the biomes (Fig. S9), showing the lowest representativity on...ith subtropical deserts, tundra, and temperate rainforest being the least represented. Nonetheless, we acknowledge that calculations based on empirical data, especially when a portion of the data has undergone a gap-filling process, maycan...still have...arry biases associated with ...elated to sampling and the...upsampling. These biases areprocess, which are mainly defined by the more...represented ...rimarily...

[7]

973 ~~outputs~~ to reality. Global scale approaches ~~like~~ this one ~~aim~~ to provide broad ~~estimates~~ of
974 planetary processes, ~~accepting~~ a scale-precision ~~tradeoff~~. As such, we do not ~~recommend~~
975 ~~applying~~ our approach to fine-scale ~~predictions~~, since ~~local heterogeneity, including~~ forest
976 type, species ~~composition~~, and land management practices ~~may not be captured accurately~~.

Deleted: s...to reality. ¶

... [8]

977
978 This study is focused on a quantitative approach at a global scale, attempting to target
979 variables' relative importance on Nup and NUE along with its correlations to environmental
980 and biotic variables. In future research, specific data detailing the different N fractions
981 obtained at a global scale (e.g. organic-inorganic, ammonium-nitrate) and a more
982 mechanistic framework are strongly encouraged. We also encourage empirical studies
983 ~~targeting~~ underrepresented biomes, especially from the global South. Approaches such as
984 those in Niu et al., 2016 quantifying the fraction of Nup taken by plants, leached and
985 retained in the soil at a global scale are crucial to enhancing our understanding of the N
986 cycle and its interactions with ecosystems.

Deleted: sampling ...argeting underrepresented biomes,
especially from the global Ss

... [9]

988 3. Conclusion

989 We ~~found~~ that N deposition and climatic variables are the main global-scale factors
990 ~~explaining~~ Nup. Regions that are warm and wet, and ~~subject to~~ higher levels of N deposition,
991 exhibit the highest rates of Nup. This result highlights the far-reaching influence of
992 ~~anthropogenic N~~ deposition in shaping global Nup patterns. Interestingly, NUE was shown
993 to be driven by soil biotic and abiotic factors, emphasizing the importance of soil
994 microorganisms and pH as regulators of the N cycle. We further ~~demonstrated~~ that total
995 soil N stocks are not ~~significant drivers of either~~ Nup or NUE. Our upscaling ~~results~~ showed
996 large spatially ~~explicit discrepancies compared to~~ TRENDY Nup values, ~~with~~ TRENDY
997 ~~simulating~~ higher absolute values ~~in~~ tropical regions, and ~~larger~~ deviations in boreal
998 latitudes. This ~~spatial~~ mismatch between empirical data and land system models could
999 substantially affect model accuracy and future ~~projections~~ of the C sink, ~~particularly if~~
1000 tropical C ~~storage capacity~~ has been overestimated. Our ~~findings offer key insights for~~
1001 ~~improving understanding of~~ C – N interactions, N cycling, and ~~N uptake in~~ terrestrial
1002 ecosystems, and ~~they underscore~~ that N deposition ~~remains a dominant global driver of~~
1003 plant Nup.

Deleted: showed ...ound that accumulated ... deposition and climatic variables are the main global-scale factors describing explaining Nup,... where r...egions that are warm and wet, and also experience ...subject to higher levels of N exhibit the highest rates of Nup. This result highlights the far-reaching influence of anthropogenic nitrogen... deposition in shaping the ...lobal Nup patterns. Interestingly, NUE was shown to be driven by soil biotic and abiotic factors, emphasizing the importance of soil microorganisms and pH as regulators of the N cycle. We further revealed demonstrated that total soil N stocks are not significant drivers of either a...Nup n...r NUE driver... Our upscaling results showed large spatially ...xplicit discrepancies compared tofferences with ...TRENDY Nup values, where...th TRENDY projects ...imulating higher absolute values around the...n tropical regions...and higher...arger deviations values in boreal latitudes. This spatial mismatch in the spatial correlation ...etween empirical data and land system models could substantially affect model accuracy and future predictions ...rojections of the C sink, where the...articularly if tropical capacity to store ... storage capacity might...hasve...been overestimated. Our findings results provide...ffer key insights t...or improving understanding better the...f C – N interactions, N cycling, and N uptake absorption ...n terrestrial ecosystems, and they underscorehighlight...that N deposition remains largely impacts... dominant global driver of plant Nup worldw...

... [10]

1004 4. Methods

1006 4.1 Data extraction

1007 We gathered 159 field plot data representing 129 different sites in natural conditions
1008 coming from published data or repositories (Table S1). The data included information on
1009 the dominant species and vegetation type (grassland, coniferous, or broadleaved), foliar
1010 and root N concentration, foliar and root biomass production, and stem biomass production
1011 in the case of woody plants at the same location and time. In situ measurements for foliage
1012 and fine roots are the most relevant for Nup calculation (Dybzinski et al., 2024), so all our
1013 data points include biomass production (NPP) and N content (N%) of leaves and roots. We
1014 gathered 45 data points, representing 28% of the data, coming from latitudes under the 15°
1015 latitude, despite the systematic lack of field sampling on some regions of the earth such as
1016 the global south. We also complemented the dataset with field values of litter biomass

production, litter N concentration, stem N concentration, soil pH, soil C %, soil N %, soil texture, soil moisture, mean annual precipitation, mean annual air temperature, and altitude. We included woody and grassland natural environments (Fig. S8), including representation from most biomes according to Whitaker's diagram (Fig. S9). Each data point covered by the analysis has been collected from 1984 to 2022. If stem N was missing, happening in 25% of the data entries, we gap-filled it with the mean value of its vegetation type (coniferous=0.33 or broadleaved=0.52%). With leaves, stem, and roots we calculated the gross Nup (see in the next section). By subtracting the amount of N recovered during leaf senescence we obtain the net Nup. If litter biomass was missing, 52% of the time, we assumed it to be the same amount of green leaf biomass production. If litter N concentration was missing, we calculated the net Nup using the predicted value from a linear model created with net Nup in the base of gross Nup, in 33% of the entries. This model had an r^2 of 0.88, a p -value $< 2.2e-16$, and a correlation of 0.72 between gross and net Nup.

We extracted mean annual precipitation from WorldClim2 (Fick and Hijmans, 2017), as well as soil pH, soil C, and soil N, soil moisture, soil bulk density, and soil texture from soilGrids (Poggio et al., 2021). All soil data for the topsoil layer (0-15 cm). We also identified the potential mycorrhizal association from the dominant species (% of colonization) based on Soudzilovskaia et al. 2020, and categorized it into 0, 50, or 100 arbuscular mycorrhizal (AM) percentages, since AM is the most abundant and common throughout the globe. When dominant species were not provided, we extracted the AM% of colonization based on the AM map of Soudzilovskaia et al. 2019 and the coordinates of our samples. Moreover, we extracted the microbial N stock from Xu et al. 2013. We calculated and obtained the accumulated oxidized N deposition from Yang and Tian, 2022 from 1901 to 2022 by georeferencing each field plot. Oxidized and reduced N deposition are correlated and are thought to have similar ecological effects (Sutton and Fowler, 1993; Yang and Tian, 2022). Oxidized forms generally come from combustion reactions while reduced forms generally come from agricultural practices. We decided to use the oxidized form because it is the most equally distributed at a global scale.

4.2 Nitrogen uptake and Nitrogen use efficiency calculation

We calculated the increase in annual N stock for each tissue (leaves, stem, roots, and litter) by multiplying the biomass increase by its N concentration. We obtained the gross annual Nup by aggregating tissue's Nup (roots, leaves, and stem if woody). To account for the N that has been reabsorbed before senescence, we subtracted the litter N stock from the green leaves N stock. We subtracted the reabsorbed N from the gross Nup to obtain the final net Nup value as follows:

$$Nup = (NPP_{leaves} * N_{leaves} + NPP_{stem} * N_{stem} + NPP_{roots} * N_{roots}) - (NPP_{leaves} * N_{leaves} - NPP_{litter} * N_{litter})$$

Nup = Plant nitrogen uptake (kg N/ha/yr)

NPP = Net primary production (kg of biomass/ha/yr)

N = Nitrogen (% in dry weight)

We calculated the nitrogen use efficiency (NUE) by calculating the total amount of biomass produced in leaves, stems, and root tissue divided by the amount of nitrogen in each tissue. It will give the amount of biomass produced by a unit of nitrogen.

$$NUE = (NPP_{leaves} / Nup_{leaves}) + (NPP_{stem} / Nup_{stem}) + (NPP_{roots} / Nup_{roots})$$

NUE = Nitrogen use efficiency (kg C / kg N)

NPP = Net primary production (kg of biomass/ha/yr)

Nup = Plant nitrogen uptake (kg N/ha/yr)

4.3 Linear statistical analysis

Nup and NUE values correlate 34% (Fig. S10). From the available variables collected, we selected the less correlated ones using the *cor* function in R to deal with multicollinearity. The less correlated variables selected were mean annual air temperature, mean annual precipitation, altitude, arbuscular mycorrhizae percentage, microbial N stock, soil N stock, soil pH, accumulated oxidized N deposition from 1901 to 2022, and woodiness. The biggest collinearity among variables was 0.52 between mean annual temperature and AM presence (Table S2). With the less correlated variables, we created generalized linear models using Nup and NUE as dependent variables. The family was set up as Gamma with an inverse link to fulfill the residual normality requirements. We also calculated the Variance Inflation Factor (VIF) with the *vif* function of the *car* R package (Fox and Weisberg, 2019) of the aggregated model to validate VIFs lower than 4. We performed a model selection using the *dredge* function in the MuMIn R package (Barton, 2023) and chose the best linear model based on its lowest AIC. We calculated the variable importance using the function *sw* on the MuMIn R package (Barton, 2023), which is a standard method based on Akaike weights (Giam and Olden, 2016). We calculated the pseudo R square of the models using the function *pR2* from the package *pscl* (Jackman, 2020). Figures were created using the R package *ggplot2* (Wickham, 2016).

4.4 Nitrogen uptake and nitrogen use efficiency upscaling

To upscale Nup and NUE to global grasslands and woody vegetation, we used extreme gradient boosting (XGBoost) models splitting the database into train, test, and validation using a standard ratio of 70:20:10, respectively (Lever et al., 2016). Extreme gradient boosting is a machine learning algorithm that builds ensemble decision trees, applying regularization and pruning techniques to improve performance and prevent overfitting (Chen et al., 2016). XGBoost is a non-parametric model particularly indicated for high performance in sample sizes above 100 data points, overcoming potential problems of autocorrelation and optimizing predictive power. We trained an XGBoost model using the R package *xgboost* (Chen et al., 2023), forcing an early stop based on minimum root mean squared error to avoid overfitting and setting up the objective as a gamma regression. We optimized the parameters based on performance (prediction R²) at a maximum depth of 6, minimum child weight of 1, and eta of 0.3, which are generally standard values. We considered the same independent variables included in the linear model without interactions. We repeated this process 20 times with random database separation to

Deleted: '

stabilize the variability due to randomness in subset splitting. We extracted the variable importance of each model using the function *xgb.plot.importance* on the *xgboost* R package (Chen et al., 2023), calculated the mean of the values among the 20 different training sets, and displayed it using *ggplot*. We calculated partial dependence plots using the function *partial* in *purrr* R package (Wickham and Henry, 2023) to explore the non-linear relations on the models. To calculate the model performance, we calculated the mean squared error of the test set and the *r* squared of the predicted vs observed in the validation subset, considering the validation set as completely independent.

To predict the values at a global scale, we used the spatial explicit mean annual precipitation, mean annual temperature, and altitude variables provided by WorldClim2 (Fick and Hijmans, 2017); the microbial N stocks by Xu et al. 2013; the oxidized accumulated N deposition from 1909 to 2022 calculated from Yang and Tian 2022 and soil N stocks and soil pH provided by soilGrids 2.0 (Poggio et al., 2021) at 15 cm depth. We reclassified the European Space Agency Land Cover (ESA-LC) map (Defourny, 2019) (Table S3) and we downscaled its resolution to 2 km using the raster R package (Hijmans, 2023). We upscaled each of the 20 Nup and NUE models using the trained XGBoost models and their prediction per pixel at 2 km resolution and calculated the mean to obtain the final maps. We parallelized the process using the *parallel* function and *spaDES.tools* R package (McIntire and Chubaty 2023) to accelerate the upscaling. We masked areas not considered woodlands or grasslands in natural conditions according to the European Space Agency cover map (Defourny, 2019) (Table S3), and then, we obtained a map of the yearly Nup, Nup standard deviation, and annual NUE. We obtained the final number of yearly Nup by summing all the pixels available.

4.5 Nitrogen uptake comparison with TRENDY models ensemble

We obtained the available Nitrogen uptake of Vegetation (fNup) variable associated with all the available models in TRENDY v8 S3 (Sitch et al., 2015; Le Quéré et al., 2018). The models containing fNup are ORCHIDEE, LPX-Bern, LPJ-GUESS, JULES, JSBACH, DLEM, CLM5.0, and Cable-POP, and the S3 experiment in the simulation considering the adaptation of CO₂, land use, N deposition, and climate from 1850 representing current environmental conditions. We calculated the yearly mean Nup from 1984 to 2022 for each model, and the average of all of them combined, to obtain a final yearly value. Then, we calculated the difference between each model included in the TRENDY ensemble and our Nup estimations. After, we averaged all the fNup values in a unique spatial explicit representation and compared it with our estimations. We also calculated the latitudinal mean of the difference to achieve a latitudinal profile and calculated the overall mean.

Contributions

H.V. and C.T. conceived the project; C.T. got the funding and supervised the work; H.V., C.M., A.K., J.C., and D.T. collected and compiled the data; H.V. curated and analyzed the data, created the visuals and wrote the first draft; H.V., C.T., M.D.B., M.F.M., M.L., D.G., contributed with substantial ideas and feedback on the manuscript; all authors revised, edited, and agreed on the final manuscript.

Data availability statement

The data gathered for this study, code and produced models are available at Zenodo (Vallicrosa Pou, 2024).

Competing interests

The authors declare no competing interests

Acknowledgments

We acknowledge the members of the Terror Lab for providing scientific consulting as well as mental and emotional support during the investigation. We acknowledge the Pioneer Center Land-CRAFT, Department of Agroecology, Aarhus University for making possible this collaboration with D.G. J.C. was supported by the National Agency of Agricultural Research of the Czech Republic (Project No. QK22020008) and the Ministry of Agriculture (CR), institutional support MZE-RO0123, and he thanks FGMRI technician staff for help with field and lab works. M.F.M was supported by the European Research Council project ERC-StG-2022-101076740 STOIKOS and a Ramón y Cajal fellowship (RYC2021-031511-I) funded by the Spanish Ministry of Science and Innovation, the NextGenerationEU program of the European Union, the Spanish plan of recovery, transformation and resilience, and the Spanish Research Agency.

References

Aber, J.D., Nadelhoffer, K.J., Steudler, P., and Melillo, J.M.: Nitrogen saturation in northern forest ecosystems. *BioScience*, 39, 378–386, 1989.

Aber, J., and J. Melillo.: Terrestrial ecosystems. Second edition. Harcourt Academic Press, San Diego, California, USA, 2001.

Ackerman, D., Millet, D. B., and Chen, X.: Global estimates of inorganic nitrogen deposition across four decades. *Global Biogeochemical Cycles*, 33, 100–107. <https://doi.org/10.1029/2018GB005990>, 2019.

Arora, V. K., Katavouta, A., Williams, R. G., Jones, C. D., Brovkin, V., Friedlingstein, P., Schwinger, J., Bopp, L., Boucher, O., Cadule, P., Chamberlain, M. A., Christian, J. R., Delire, C., Fisher, R. A., Hajima, T., Ilyina, T., Joetzier, E., Kawamiya, M., Koven, C. D., Krasting, J. P., Law, R. M., Lawrence, D. M., Lenton, A., Lindsay, K., Pongratz, J., Raddatz, T., Séférian, R., Tachiiri, K., Tjiputra, J. F., Wiltshire, A., Wu, T., and Ziehn, T.: Carbon-concentration and carbon-climate feedbacks in CMIP6 models and their comparison to CMIP5 models, *Biogeosciences*, 17, 4173–4222, <https://doi.org/10.5194/bg-17-4173-2020>, 2020.

Auge, G., Sunil, R.S., Ingle, R.A., Rahul, P.V., Mutwil, and M., Estevez, J.M.: Current challenges for plant biology research in the Global South, *New Phytologist* 244: 1168–1174, 2024.

Averill, C., Bhatnagar, J. M., Dietze, M. C., Pearse, W. D., and Kivlin, S. N.: Global imprint of mycorrhizal fungi on whole-plant nutrient economics. *Proc. Natl Acad. Sci. USA* 116, 23163–23168, 2019.

Bardgett, R., and van der Putten, W.: Belowground biodiversity and ecosystem functioning. *Nature* 515, 505–511. <https://doi.org/10.1038/nature13855>, 2014.

Deleted: &

Deleted: .

Deleted: .

Deleted: 2001.

Deleted: .

Deleted: &

Deleted: . (2019)

Deleted: .

Formatted: Font: Not Italic, English (UK)

Formatted: English (UK)

Formatted: Font: 10 pt

Formatted: Font: 10 pt

Formatted: English (UK)

Deleted: Arora, V. K., Katavouta, A., Williams, R. G., Jones, C. D., Brovkin, V., Friedlingstein, P., et al. (2020). Carbon-concentration and carbon-climate feedbacks in CMIP6 models and their comparison to CMIP5 models. *Biogeosciences*, 17(16), 4173–4222. <https://doi.org/10.5194/bg-17-4173-2020>

Deleted: &

Deleted: .

Deleted: .

Deleted: (

Deleted:)

Formatted: Font: Not Italic

Deleted: .

Deleted: .

Formatted: Font: Not Italic

Deleted: (2014).

Bartoń K.: MuMIn: Multi-Model Inference. R package version 1.47.5, <https://CRAN.R-project.org/package=MumIn>, 2023.

Battye, W., Aneja, V.P., and Schlesinger, W.H.: Is nitrogen the next carbon? *Earth's Future*, 5: 894-904. <https://doi.org/10.1002/2017EF000592>, 2017.

Bauters, M., Verbeeck, H., Rütting, T., Barthel, M., Bazirake Mujinya, B., Bamba, F., Bodé, S., Boyemba, F., Bulonza, E., Carlsson, E., Eriksson, L., Makelele, I., Six, J., Cizungu Ntaboba, L., and Boeckx, P.: Contrasting nitrogen fluxes in African tropical forests of the Congo Basin. *Ecological Monographs*, 89(1), 1–17. <https://doi.org/10.1002/ecm.1342>, 2019.

Bauters, M., Janssens, I.A., Wasner, D., Doetterl, S., Vermeir, P., Griepentrog, M., Drake, T.W., Six, J., Barthel, M., Baumgartner, S., Van Oost, K., Makelele, I.A., Ewango, C., Verheyen, K., and Boeckx, P.: Increasing calcium scarcity along Afrotropical forest succession. *Nat Ecol Evol* 6, 1122–1131. <https://doi.org/10.1038/s41559-022-01810-2>, 2022.

Berntson, G.M., Rajakaruna, N., and Bazzaz, F.A.: Growth and nitrogen uptake in an experimental community of annuals exposed to elevated atmospheric CO₂. *Global Change Biology*, 4: 607-626. <https://doi.org/10.1046/j.1365-2486.1998.00171.x>, 1998.

Bobbink, R., Hicks, K., Galloway, J., Spranger, T., Alkemade, R., Ashmore, M., Bustamante, M., Cinnerby, S., Davidson, E., Dentener, F., Emmett, B., Erisman, J.W., Fenn, M., Gilliam, F., Nordin, A., Pardo, L., and De Vries, W.: Global assessment of nitrogen deposition effects on terrestrial plant diversity: a synthesis. *Ecol. Appl.* 20, 30–59, 2010.

Braghiere, R. K., Fisher, J. B., Allen, K., Brzostek, E., Shi, M., Yang, X., Ricciuto, D.M., Fischer, R.A., Zhu, Q., and Phillips, R. P.: Modeling global carbon costs of plant nitrogen and phosphorus acquisition. *Journal of Advances in Modeling Earth Systems*, 14, e2022MS003204. <https://doi.org/10.1029/2022MS003204>, 2022.

Chen, W., Koide, R.T., and Eissenstat, D.M.: Nutrient foraging by mycorrhizas: From species functional traits to ecosystem processes. *Funct Ecol*, 32: 858–869. <https://doi.org/10.1111/1365-2435.13041>, 2018.

Chen, T., and Guestrin, C.: XGBoost: A scalable Tree Boosting System. [arXiv:1603.02754v3](https://arxiv.org/abs/1603.02754)

Chen, T., He, T., Benesty, M., Khotilovich, V., Tang, Y., Cho, H., Chen, K., Mitchell, R., Cano, I., Zhou, T., Li, M., Xie, J., Lin, M., Geng, Y., Li, Y., and Yuan, J.: xgboost: Extreme Gradient Boosting. R package version 1.7.5.1, <https://CRAN.R-project.org/package=xgboost>, 2023.

Crowther, T.W., van den Hoogen, J., Wan, J., Mayes, M.A., Keiser, A.D., Mo, L., Averill, C., and Maynard, D.S.: The global soil community and its influence on biogeochemistry. *Science*, 365:eaav0550, 2019.

Defourny, P.: ESA Land Cover CCI project team; ESA Land Cover Climate Change Initiative (Land_Cover_cci): Global Land Cover Maps, Version 2.0.7. Centre for Environmental Data Analysis, <https://catalogue.ceda.ac.uk/uuid/b382ebe6679d44b8b0e68ea4ef4b701c>, 2019.

Delgado-Baquerizo, M., Reich, P.B., Trivedi, C., Eldridge, D.J., Abades, S., Alfaro, F.D., Bastida, F., Berhe, A.A., Cutler, N.A., Gallardo, A., García-Velázquez, L., Hart, S.C., Hayes, P.E., He, J., Hseu, Z., Hu, H., Kirchmair, M., Neuhauser, S., Pérez, C.A., Reed, S.C., Santos, F., Sullivan, B.W., Trivedi, P., Wang, J., Weber,

Formatted ... [11]
Deleted: (2023)...._MuMIn: Multi-Model Inference... [12]
Deleted: >.
Deleted: . (2017),
Formatted ... [13]
Formatted ... [14]
Deleted: &...Boeckx, P.: (2019)....Contrasting nitroge... [15]
Formatted ... [16]
Formatted ... [17]
Formatted ... [18]
Deleted: et al.
Formatted ... [19]
Deleted: .
Deleted: (2022).
Formatted ... [20]
Formatted ... [21]
Deleted: ERNTSON... G.M., RajakarunaAJAKARUNA... [22]
Formatted ... [23]
Formatted ... [24]
Formatted ... [25]
Deleted: et al.
Deleted:Ecol. Appl. 20, 30–59, (...010) ... [27]
Formatted ... [26]
Deleted: et al...: (2022). ... [28]
Formatted ... [29]
Formatted ... [30]
Formatted ... [31]
Deleted: .
Deleted: . 2018;
Formatted ... [32]
Formatted ... [33]
Formatted ... [34]
Formatted ... [35]
Deleted: (2023)...._xgboost: Extreme Gradient Boos... [36]
Deleted: >.
Formatted ... [37]
Deleted: et al...verill, C., and Maynard, D.S.: The glo... [39]
Formatted ... [38]
Deleted: (2019)... ESA Land Cover CCI project team;... [40]
Formatted ... [41]
Formatted ... [42]
Deleted: et al
Formatted ... [43]

Grullon, L., Williams, M.A., and Singh, B.K.: Multiple elements of soil biodiversity drive ecosystem functions across biomes. *Nat Ecol Evol* 4:210–20, 2020.

Du, E., Terrer, C., Pellegrini, A.F.A., Ahlström, A., van Lissa, C.J., Zhao, X., Xia, N., Wu, X., and Jackson, R.B.: Global patterns of terrestrial nitrogen and phosphorus limitation. *Nat. Geosci.* 13, 221–226, <https://doi.org/10.1038/s41561-019-0530-4>, 2020.

Dybzinski, R., Segal, E., McCormack, M.L., Rollinson, C.R., Mascarenhas, R., Giambuzzi, P., Rivera, J., Fitzpatrick, L., Wiggins, C., and Midgley, M.G.: Calculating Nitrogen Uptake Rates in Forests: Which Components Can Be Omitted, Simplified, or Taken from Trait Databases and Which Must Be Measured In Situ? *Ecosystems* 27, 739–763, <https://doi.org/10.1007/s10021-024-00919-8>, 2024.

Elser, J.J., Fagan, W.F., Kerkhoff, A.J., Swenson, N.G., and Enquist, B.J.: Biological stoichiometry of plant production: metabolism, scaling and ecological response to global change. *New Phytologist* 186: 593–608, 2010.

Etzold, S., Ferretti, M., Reinds, G.J., Solberg, S., Gessler, A., Waldner, P., Schaub, M., Simpson, D., Benham, S., Hansen, K., Ingerslev, M., Jonard, M., Karlsson, P.E., Lindroos, A.-J., Marchetto, A., Manninger, M., Meessenburg, H., Merilä, P., Nöjd, P., Rautio, P., Sanders, T.G.M., Seidling, W., Skudnik, M., Thimonier, A., Verstraeten, A., Vesterdal, L., Vejputsková, M., and de Vries, W.: Nitrogen deposition is the most important environmental driver of growth of pure, even-aged and managed European forests. *Forest Ecology and Management* 458: 117762. DOI: 10.1016/j.foreco.2019.117762, 2020.

Fernández-Martínez, M., Vicca, S., Janssens, I., Sardans, J., Luyssaert, S., Campioli, M., Chapin III, F.S., Ciais, P., Malhi, Y., Obersteiner, M., Papale, D., Piao, S.L., Reichstein, M., Rodà, F. and Peñuelas, J.: Nutrient availability as the key regulator of global forest carbon balance. *Nature Clim Change* 4, 471–476, <https://doi.org/10.1038/nclimate2177>, 2014.

Fernández-Martínez, M., Sardans, J., Chevallier, F., Ciais, P., Obersteiner, M., Vicca, S., Canadell, J.G., Bastos, A., Friedlingstein, P., Sitch, S., Piao, S.L., Janssens, I.A. and Peñuelas, J.: Global trends in carbon sinks and their relationships with CO2 and temperature. *Nature Clim Change* 9, 73–79, <https://doi.org/10.1038/s41558-018-0367-7>, 2019.

Fick, S.E. and R.J. Hijmans: WorldClim 2: new 1km spatial resolution climate surfaces for global land areas. *International Journal of Climatology* 37 (12): 4302–4315, 2017.

Finzi, A.C., Norby, R.J., Calfapietra, C., Gallet-Budynek, A., Gielen, B., Holmes, W.E., Hoosbeek, M.R., Iversen, C.M., Jackson, R.B., Kubske, M.E., Ledford, J., Liberloo, M., Oren, R., Polle, A., Pritchard, S., Zak, D.R., Schlesinger, W.H., Ceulemans, R.: Increases in nitrogen uptake rather than nitrogen-use efficiency support higher rates of temperate forest productivity under elevated CO2. *Proceedings of the National Academy of Sciences* 104: 14014–14019, 2007.

Fleischer, K., Rammig, A., De Kauwe, M. G., Walker, A. P., Domingues, T. F., Fuchslueger, L., Garcia, S., Goll, D.S., Grandis, A., Jiang, M., Haverd, V., Hofhansl, F., Holm, J.A., Kruijt, B., Leung, F., Medlyn, B.E., Mercado, L.M., Norby, R.J., Pak, B., von Randow, C., Quesada, C.A., Schaap, K.J., Valverde-Barrantes, O.J., Wang, Y., Yang, X., Zaehle, S., Zhu, Q., and Lapola, D.M.: Amazon forest response to CO2 fertilization dependent on plant phosphorus acquisition. *Nature Geoscience*, 12(9), 736–741, <https://doi.org/10.1038/s41561-019-0404-9>, 2019.

Fowler, D., Steadman, C. E., Stevenson, D., Coyle, M., Rees, R. M., Skiba, U. M., Sutton, M. A., Cape, J. N., Dore, A. J., Vieno, M., Simpson, D., Zaehle, S., Stocker, B. D., Rinaldi, M., Facchini, M. C., Flechard, C. R.,

Deleted: .

Deleted: . 2020;

Deleted: .

Deleted: et al

Formatted: English (UK)

Formatted: English (UK)

Deleted: .

Deleted: (2020).

Formatted: Font: 10 pt

Deleted: et al

Deleted: .

Deleted: (2024).

Deleted: 2010.

Deleted: .

Deleted: .

Deleted: (2020)

Formatted: English (US)

Deleted: et al.

Deleted: .

Formatted: Font: Not Italic, English (UK)

Formatted: English (UK)

Deleted: (2014).

Formatted: Hyperlink, Font: 12 pt, English (UK)

Formatted: English (UK)

Field Code Changed

Deleted: et al.

Formatted: English (UK)

Formatted: Font: Not Italic

Deleted: (2019).

Formatted: Font: 10 pt

Deleted: , 2017

Deleted: .

Deleted: .

Formatted: Font: 10 pt

Deleted: 2007.

Deleted:

Deleted: .

Deleted: et al. (2019).

Deleted: .

Formatted: Font: 10 pt

Nemitz, E., Twigg, M., Erismann, J. W., Butterbach-Bahl, K., and Galloway, J. N.: Effects of global change during the 21st century on the nitrogen cycle, *Atmos. Chem. Phys.*, 15, 13849–13893, <https://doi.org/10.5194/acp-15-13849-2015>, 2015.

Fox, J., and Weisberg, S.: *An R Companion to Applied Regression*, Third edition. Sage, Thousand Oaks CA. <https://socialsciences.mcmaster.ca/jfox/Books/Companion/>, 2019.

Franklin, O., Harrison, S.P., Dewar, R., Farrior, C.E., Brännström, Å., Dieckmann, U., Pietsch, S., Falster, D., Cramer, W., Loreau, M., Wang, H., Mäkelä, A., Rebel, K.T., Meron, E., Schymanski, S.J., Rovenskaya, E., Stocker, B.D., Zaehle, S., Manzoni, S., van Oijen, M., Wright, I.J., Ciais, P., van Bodegom, P.M., Peñuelas, J., Hofhansl, F., Terrer, C., Soudzilovskaia, N.A., Midgley, G., and Prentice, I.C.: Organizing principles for vegetation dynamics, *Nat. Plants* 6, 444–453, <https://doi.org/10.1038/s41477-020-0655-x>, 2020.

Giam, X., and Olden, J.D.: Quantifying variable importance in a multimodel inference framework, *Methods Ecol Evol*, 7: 388–397, <https://doi.org/10.1111/2041-210X.12492>, 2016.

Gundersen, P., Emmett, B.A., Kjønaas, O.J., Koopmans, C.J., and Tietema, A.: Impact of nitrogen deposition on nitrogen cycling in forests: a synthesis of NITREX data, *Forest Ecology and Management*, 101, 37–55, 1998.

Gurmesa, G.A., Wang, A., Li, S., Peng, S., de Vries, W., Gundersen, P., Ciais, P., Phillips, O.L., Hobbie, E.A., Zhu, W., Nadelhoffer, K., Xi, Y., Bai, E., Sun, T., Chen, D., Zhou, W., Zhang, Y., Guo, Y., Zhu, J., Duan, L., Li, D., Koba, K., Du, E., Zhou, G., Han, X., Han S., and Fang, Y.: Retention of deposited ammonium and nitrate and its impact on the global forest carbon sink, *Nat Commun* 13, 880, <https://doi.org/10.1038/s41467-022-28345-1>, 2022.

Hijmans, R.: *raster: Geographic Data Analysis and Modeling*, R package version 3.6-20, <https://CRAN.R-project.org/package=raster>, 2023.

Hungate, B.A., Dukes, J.S., Shaw, R., Luo, Y., and Field, C.B.: Nitrogen and Climate Change, *Science* 302, 1512–1513, DOI:10.1126/science.1091390, 2003.

Iversen, C.M., Bridgman, S.D., and Kellogg, L.F.: Scaling plant nitrogen use and uptake efficiencies in response to nutrient addition in peatlands, *Ecology* 91 693–707, 2010.

Jackman, S.: *pscl: Classes and Methods for R Developed in the Political Science Computational Laboratory*. United States Studies Centre, University of Sydney. Sydney, New South Wales, Australia. R package version 1.5.5.1. URL <https://github.com/atahk/pscl/>, 2020.

Kanakidou, M., Myriokefalitakis, S., Daskalakis, N., Fanourgakis, G., Nenes, A., Baker, A. R., Tsigaridis, K., and Mihalopoulos, N.: Past, present, and future atmospheric nitrogen deposition. *Journal of the Atmospheric Sciences*, 73(5), 2039–2047, <https://doi.org/10.1175/JAS-D-15-0278.1>, 2016.

Kuzyakov, Y., and Xu, X.: Competition between roots and microorganisms for nitrogen: mechanisms and ecological relevance. *New Phytol*, 198: 656–669, <https://doi.org/10.1111/nph.12235>, 2013.

Le Quéré, C., Andrew, R. M., Friedlingstein, P., Sitch, S., Hauck, J., Pongratz, J., Pickers, P. A., Korsbakken, J. I., Peters, G. P., Canadell, J. G., Arneeth, A., Arora, V. K., Barbero, L., Bastos, A., Bopp, L., Chevallier, F., Chini, L. P., Ciais, P., Doney, S. C., Gkritzalis, T., Goll, D. S., Harris, I., Havard, V., Hoffman, F. M., Hoppema, M., Houghton, R. A., Hurtt, G., Ilyina, T., Jain, A. K., Johannessen, T., Jones, C. D., Kato, E., Keeling, R. F., Goldewijk, K. K., Landschützer, P., Lefèvre, N., Lienert, S., Liu, Z., Lombardozzi, D., Metzl, N., Munro, D. R., Nabel, J. E. M. S., Nakaoka, S., Neill, C., Olsen, A., Ono, T., Patra, P., Peregon, A., Peters, W., Peylin, P., Pfeil, B., Pierrot, D., Poulter, B., Rehder, G., Resplandy, L., Robertson, E., Rocher, M., Rödenbeck, C.,

Formatted: German (Switzerland)

Deleted: Fowler D, Steadman CE, Stevenson D, Coyle M, Rees RM, Skiba UM, Sutton MA, Cape JN, Dore AJ, Vieno M, Simpson D, et al. Effects of global change during the 21st century on the nitrogen cycle. *Atmospheric Chemistry and Physics*. 2015; 15(24): 13849–13893. <https://doi.org/10.5194/acp-15-13849-2015>

Formatted: Font: 10 pt, German (Switzerland)

Formatted: German (Switzerland)

Deleted: (2019).

Formatted: English (UK)

Deleted: <...<https://socialsciences.mcmaster.ca/jfox/Books/Companion/>, 2019.>. ... [44]

Deleted: et al.... Organizing principles for vegetation dynamics,. ... [45]

Deleted: (2020).

Formatted: Font: Not Italic

Formatted: Font: 10 pt

Deleted: (2016),...Quantifying variable importance in a multimodel inference framework,. ... [46]

Formatted: Font: 10 pt

Deleted: &...Tietema, A.: (1998)...Impact of nitrogen deposition on nitrogen cycling in forests: a synthesis of NITREX data,...*Forest Ecology and Management*, 101, 37–55, 1998.. ... [47]

Deleted: . et al....Retention of deposited ammonium and nitrate and its impact on the global forest carbon sink ... [48]

Formatted: Font: Not Italic

Deleted: (2022).

Formatted: Font: 10 pt

Deleted: (2023).

Formatted ... [49]

Formatted: English (US)

Deleted: et al.,

Formatted ... [50]

Deleted: (2003).

Formatted: Font: 10 pt

Deleted:, Bridgman, S ...D., and Kellogg, L.: 20 ... [51]

Formatted: Font: Not Italic

Deleted: (2020).

Deleted: &...Mihalopoulos, N. (2016) ... [52]

Formatted: Font: 10 pt

Deleted: (2013),

Formatted: Font: 10 pt

Schuster, U., Schwinger, J., Séférian, R., Skjelvan, I., Steinhoff, T., Sutton, A., Tans, P. P., Tian, H., Tilbrook, B., Tubiello, F. N., van der Laan-Luijckx, I. T., van der Werf, G. R., Viovy, N., Walker, A. P., Wiltshire, A. J., Wright, R., Zaehle, S., and Zheng, B.: Global Carbon Budget 2018, *Earth Syst. Sci. Data*, **10**, 2141–2194, <https://doi.org/10.5194/essd-10-2141-2018>, 2018.

Lever, J., Krzywinski, M., and Altman, N.: Model selection and overfitting, *Nature Methods*, **13**, 703–704, 2016.

McIntire, E., Chubaty, A.: SpaDES.tools: Additional Tools for Developing Spatially Explicit Discrete Event Simulation (SpaDES) Models. R package version 2.0.0, <https://CRAN.R-project.org/package=SpaDES.tools>, 2023.

Niu, S., Classen, A.T., Dukes, J.S., Kardol, P., Liu, L., Luo, Y., Rustad, L., Sun, J., Tang, J., Templer, P.H., Thomas, R.Q., Tian, D., Vicca, S., Wang, Y.-P., Xia, J., and Zaehle, S.: Global patterns and substrate-based mechanisms of the terrestrial nitrogen cycle, *Ecol Lett*, **19**: 697–709, <https://doi.org/10.1111/ele.12591>, 2016.

Peng, Y., Chen, H.Y.H., and Yang, Y.: Global pattern and drivers of nitrogen saturation threshold of grassland productivity, *Funct Ecol*, **34**: 1979–1990, <https://doi.org/10.1111/1365-2435.13622>, 2020.

Peng, Y., Prentice, I.C., Bloomfield, K.J., Campioli, M., Guo, Z., Sun, Y., Tian, D., Wang, X., Vicca, S., and Stocker, B.D.: Global terrestrial nitrogen uptake and nitrogen use efficiency, *Journal of Ecology*, **111**, 2676–2693, <https://doi.org/10.1111/1365-2745.14208>, 2023.

Penuelas, J., Janssens, I.A., Ciais, P., Obersteiner, M., and Sardans, J.: Anthropogenic global shifts in biospheric N and P concentrations and ratios and their impacts on biodiversity, ecosystem productivity, food security, and human health, *Glob Change Biol.*, **26**: 1962–1985, <https://doi.org/10.1111/gcb.14981>, 2020.

Poggio, L., de Sousa, L. M., Batjes, N. H., Heuvelink, G. B. M., Kempen, B., Ribeiro, E., and Rossiter, D.: SoilGrids 2.0: producing soil information for the globe with quantified spatial uncertainty, *SOIL*, **7**, 217–240, <https://doi.org/10.5194/soil-7-217-2021>, 2021.

Prentice, I. C., Liang, X., Medlyn, B. E., and Wang, Y.-P.: Reliable, robust and realistic: The three R's of next-generation land-surface modelling, *Atmospheric Chemistry and Physics*, **15**(10), 5987–6005, <https://doi.org/10.5194/acp-15-5987-2015>, 2015.

Ruehr, S., Keenan, T.F., Williams, C., Zhou, Y., Lu, X., Bastos, A., Canadell, J.G., Prentice, I.C., Sitch, S., and Terrer, C.: Evidence and attribution of the enhanced land carbon sink, *Nat Rev Earth Environ* **4**, 518–534, <https://doi.org/10.1038/s43017-023-00456-3>, 2023.

Shcherbak, I., Millar, N., and Robertson, G. P.: Global metaanalysis of the nonlinear response of soil nitrous oxide (N₂O) emissions to fertilizer nitrogen, *Proc. Natl Acad. Sci. USA* **111** 9199–204, 2014.

Sinsabaugh, R., Carreiro, M., and Repert, D.: Allocation of extracellular enzymatic activity in relation to litter composition, N deposition, and mass loss, *Biogeochemistry* **60**, 1–24, <https://doi.org/10.1023/A:1016541114786>, 2002.

Sinsabaugh, R.L., Lauber, C.L., Weintraub, M.N., Ahmed, B., Allison, S.D., Crenshaw, C., Contosta, A.R., Cusack, D., Frey, S., Gallo, M.E., Gartner, T.B., Hobbie, S.E., Holland, K., Keeler, B.L., Powers, J.S., Stursova, M., Takacs-Vesbach, C., Waldrop, M.P., Wallenstein, M.D., Zak, D.R., and Zeglin, L.H.: Stoichiometry of soil enzyme activity at global scale, *Ecology Letters*, **11**: 1252–1264, <https://doi.org/10.1111/j.1461-0248.2008.01245.x>, 2008.

Deleted: Le Quéré, C. et al., Global Carbon Budget 2018, *Earth Syst. Sci. Data*, **10**, 2141–2194, DOI: 10.5194/essd-10-2141-2018, 2018. [53]

Deleted: &...Altman, N. (2016). [53]

Deleted: . [53]

Formatted: English (UK) [53]

Formatted: English (UK) [53]

Formatted: Font: Not Italic [53]

Deleted: . [53]

Deleted: (2023). ... SpaDES.tools: Additional Tools for Developing Spatially Explicit Discrete Event Simulation (SpaDES) Models. R package version 2.0.0, < [54]

Formatted: Font: 10 pt [54]

Deleted: >. [54]

Deleted: (2016). ... Global patterns and substrate-based mechanisms of the terrestrial nitrogen cycle. [55]

Formatted: Font: 10 pt [55]

Deleted: ...Funct Ecol. 202...0; [56]

Formatted: Font: 10 pt [56]

Deleted: ..., Bloomfield, K. J., Campioli, M., Guo, Z., Sun, Y., Tian, D., Wang, X., Vicca, S., ., ...and &...Stocker, B. (2023). ...Global terrestrial nitrogen uptake and nitrogen use efficiency. [57]

Formatted [58]

Deleted:Anthropogenic global shifts in biospheric N and P concentrations and ratios and their impacts on biodiversity, ecosystem productivity, food security, and human health. [59]

Deleted: 2020; [59]

Formatted: Font: Not Italic [59]

Formatted: Font: 10 pt [59]

Deleted: &...Wang, Y.-P.: (2015). [60]

Formatted: Font: 10 pt [60]

Deleted: et al.: Evidence and attribution of the enhanced land carbon sink, ...Nat Rev Earth Environ **4**, 518–534, (2023). [61]

Formatted: Font: 10 pt [61]

Deleted: 2014 [62]

Formatted: Font: Not Italic [62]

Deleted: &...Repert, D.: Allocation of extracellular [63]

Deleted: (2002). [63]

Formatted: Font: Not Italic [63]

Formatted: Font: 10 pt [63]

Deleted: (2008). ... Stoichiometry of soil enzyme act [64]

Formatted: Font: 10 pt [64]

Sitch, S., Friedlingstein, P., Gruber, N., Jones, S. D., Murray-Tortarolo, G., Ahlström, A., Doney, S. C., Graven, H., Heinze, C., Huntingford, C., Levis, S., Levy, P. E., Lomas, M., Poulter, B., Viovy, N., Zaehle, S., Zeng, N., Arneeth, A., Bonan, G., Bopp, L., Canadell, J. G., Chevallier, F., Ciais, P., Ellis, R., Gloor, M., Peylin, P., Piao, S. L., Le Quéré, C., Smith, B., Zhu, Z., and Myneni, R.: Recent trends and drivers of regional sources and sinks of carbon dioxide, *Biogeosciences*, 12, 653–679, <https://doi.org/10.5194/bg-12-653-2015>, 2015.

Soudzilovskaia, N.A., van Bodegom, P.M., Terrer, C., van't Zelfde, M., McCallum, I., McCormack, M.L., Fisher, J.B., Brundrett, M.C., de Sá, N.C., and Tedersoo, L.: Global mycorrhizal plant distribution linked to terrestrial carbon stocks, *Nat Commun* 10, 5077, <https://doi.org/10.1038/s41467-019-13019-2>, 2019.

Soudzilovskaia, N.A., Vaessen, S., Barcelo, M., He, J., Rahimlou, S., Abarenkov, K., Brundrett, M.C., Gomes, S.I.F., Merckx, V., and Tedersoo, L.: FungalRoot: global online database of plant mycorrhizal associations. *New Phytol*, 227: 955–966. <https://doi.org/10.1111/nph.16569>, 2020.

Stevens, C.J., Lind, E.M., Hautier, Y., and Harpole, W.S.: Anthropogenic nitrogen deposition predicts local grassland primary production worldwide, *Ecology* 96 1459–65, 2015.

Stocker, B.D., Prentice, I.C., Cornell, S.E., Davies-Barnard, T., Finzi, A.C., Franklin, O., Janssens, I., Larmola, T., Manzoni, S., Näsholm, T., Raven, J.A., Rebel, K.T., Reed, S., Vicca, S., Wiltshire, A., Zaehle, S.: Terrestrial nitrogen cycling in Earth system models revisited, *New Phytologist*, 210(4): 1165–1168. <https://doi.org/10.1111/nph.13997>, 2016.

Sutton, M.A., Fowler, D.: Estimating the relative contribution of SO_x, NO_y and NH_x inputs to effects of atmospheric deposition Critical loads: concept and applications. Grange-over-Sands Workshop, 1993.

Terrer, C., Jackson, R. B., Prentice, I. C., Keenan, T. F., Kaiser, C., Vicca, S., Fisher, J.B., Reich, P.B., Stocker, B.D., Hungate, B.A., Peñuelas, J., McCallum, I., Soudzilovskaia, N.A., Cernusak, L.A., Talhelm, A.F., Van Sundert, K., Piao, S., Newton, P.C.D., Hovenden, M.J., Blumenthal, D.M., Liu, Y.Y., Müller, C., Winter, K., Field, C.B., Viechtbauer, W., Van Lissa, C.J., Hoosbeek, M.R., Watanabe, M., Koike, T., Leshyk, V.O., Polley, H.W., and Franklin, O.: Nitrogen and phosphorus constrain the CO₂ fertilization of global plant biomass, *Nature Climate Change*, 9(9), 684–689, <https://doi.org/10.1038/s41558-019-0545-2>, 2019.

Tian, D., Wang H., Sun, J., and Niu, S. Global evidence on nitrogen saturation of terrestrial ecosystem net primary productivity, *Environmental Research Letters*, 11, 2, 2016.

Tian, D., Kattge, J., Chen, Y., Han, W., Luo, Y., He, J., Hu, H., Tang, Z., Ma, S., Yan, Z., Lin, Q., Schmid, B., and Fang, J.: A global database of paired leaf nitrogen and phosphorus concentrations of terrestrial plants, *Ecology* 100(9): e02812, 2019.

Vallicrosa, H., Sardans, J., Maspons, J., and Peñuelas, J.: Global distribution and drivers of forest biome foliar nitrogen to phosphorus ratios (N:P), *Global Ecology and Biogeography* 31: 861–71, 2022.

Vallicrosa Pou, H.: Global plant nitrogen uptake and nitrogen use efficiency. Zenodo. <https://doi.org/10.5281/zenodo.13332734>, 2024.

Vicca, S., Stocker, B. D., Reed, S., Wieder, W. R., Bahn, M., Fay, P. A., Janssens, I. A., Lambers, H., Peñuelas, J., Piao, S., Rebel, K. T., Sardans, J., Sigurdsson, B. D., Sundert, K. V., Wang, Y. P., Zaehle, S., and Ciais, P.: Using research networks to create the comprehensive datasets needed to assess nutrient availability as a key determinant of terrestrial carbon cycling, *Environ. Res. Lett.*, 13, 125006, <https://doi.org/10.1088/1748-9326/aaeae7>, 2018.

- Deleted: ¶ ... [65]
- Deleted: et al
- Deleted: .
- Deleted: (2019).
- Formatted: Font: Not Italic
- Deleted: (2020),
- Formatted: Font: 10 pt
- Deleted:
- Deleted:
- Deleted:
- Deleted:
- Deleted: 2015
- Formatted: Font: Not Italic
- Deleted: et al.
- Deleted: .
- Deleted: 2016;
- Formatted: Font: 10 pt
- Deleted: ;
- Deleted: 1993
- Deleted: et al
- Deleted: (2019).
- Deleted: .
- Formatted: Font: 10 pt
- Deleted: ,
- Deleted: 2016.
- Deleted: Volume
- Deleted: Number
- Deleted: 2019.
- Deleted: .
- Deleted: .
- Deleted: J.
- Deleted: J.
- Deleted: 2022.
- Deleted: “
- Deleted: ”
- Deleted: .
- Deleted: (2024).

1844
1845
1846
1847
1848
1849
1850
1851
1852
1853
1854
1855
1856
1857
1858
1859
1860
1861
1862
1863
1864
1865
1866
1867
1868
1869
1870
1871
1872
1873
1874
1875
1876
1877
1878
1879
1880
1881
1882
1883
1884
1885
1886
1887
1888
1889
1890
1891

Walker, T. W., and Syers, J.K.: Fate of Phosphorus during Pedogenesis. *Geoderma* 15: 1–19, 1976.

Walker, A.P., De Kauwe, M.G., Bastos, A., Belmecheri, S., Georgiou, K., Keeling, R.F., McMahon, S.M., Medlyn, B.E., Moore, D.J.P., Norby, R.J., Zaehle, S., Anderson-Teixeira, K.J., Battipaglia, G., Brien, R.J.W., Cabugao, K.G., Cailleret, M., Campbell, E., Canadell, J.G., Ciais, P., Craig, M.E., Ellsworth, D.S., Farquhar, G.D., Fattichi, S., Fisher, J.B., Frank, D.C., Graven, H., Gu, L., Haverd, V., Heilman, K., Heimann, M., Hungate, B.A., Iversen, C.M., Joos, F., Jiang, M., Keenan, T.F., Knauer, J., Körner, C., Leshyk, V.O., Leuzinger, S., Liu, Y., MacBean, N., Malhi, Y., McVicar, T.R., Penuelas, J., Pongratz, J., Powell, A.S., Riutta, T., Sabot, M.E.B., Schleucher, J., Sitch, S., Smith, W.K., Sulman, B., Taylor, B., Terrer, C., Torn, M.S., Treseder, K.K., Trugman, A.T., Trumbore, S.E., van Mantgem, P.J., Voelker, S.L., Whelan, M.E. and Zuidema, P.A.: Integrating the evidence for a terrestrial carbon sink caused by increasing atmospheric CO₂. *New Phytol.* 229: 2413–2445. <https://doi.org/10.1111/nph.16866>, 2021.

Wall, D. H., Nielsen, U. N., and Six, J.: Soil biodiversity and human health. *Nature* 528, 69–76, 2015.

Wang, R., Goll, D., Balkanski, Y., Hauglustaine, D., Boucher, O., Ciais, P., Janssens, I.A., Peñuelas, J., Guenet, B., Sardans, J., Bopp, L., Vuichard, N., Zhou, F., Li, B., Piao, S., Peng, S., Huang, Y., and Tao, S.: Global forest carbon uptake due to nitrogen and phosphorus deposition from 1850–2100. *Global Change Biology* 23: 4854–4872, 2017.

Wang, X., and Zhao, X. (Eds.): Protocol for Field Investigation and Literature Data Compilation of Carbon Storage in Terrestrial Ecosystems. Science Press, Beijing, 2022.

Wickham, H.: ggplot2: Elegant Graphics for Data Analysis. Springer-Verlag New York, 2016.

Wickham, H., and Henry, L.: purrr: Functional Programming Tools. R package version 1.0.2, <https://CRAN.R-project.org/package=purrr>, 2023.

Wu, Z., Dijkstra, P., Koch, G.W., Peñuelas, J., and Hungate, B.A.: Responses of terrestrial ecosystems to temperature and precipitation change: a meta-analysis of experimental manipulation. *Global Change Biology*, 17: 927–942. <https://doi.org/10.1111/j.1365-2486.2010.02302.x>, 2011.

Xu, X., Thornton, P.E., and Post, W.M.: Global soil microbial biomass C, N and P. *Global Ecology and Biogeography*, 22: 737–749. <https://doi.org/10.1111/geb.12029>, 2013.

Yang, J., and Tian, H.: ISIMIP3a N-deposition input data (v1.2). ISIMIP Repository. <https://doi.org/10.48364/ISIMIP.759077.2>, 2022.

Zaehle, S., Medlyn, B.E., De Kauwe, M.G., Walker, A.P., Dietze, M.C., Hickler, T., Luo, Y., Wang, Y.P., El-Masri, B., Thornton, P., Jain, A., Wang, S., Warland, D., Weng, E., Parton, W., Iversen, C.M., Gallet-Budynek, A., McCarthy, H., Finzi, A., Hanson, P.J., Prentice, I.C., Oren, R., Norby, R.J.: Evaluation of 11 terrestrial carbon-nitrogen cycle models against observations from two temperate Free-Air CO₂ Enrichment studies. *New Phytologist*, 202(3): 803–822. <https://doi.org/10.1111/nph.12697>, 2014.

Zhou, G., Terrer, C., Huang, A., Hungate, B.A., van Gestel, N., Zhou, X., van Groenigen, K.J.: Nitrogen and water availability control plant carbon storage with warming. *Sci Total Environ*, Dec 10;851(Pt 1):158243. doi: 10.1016/j.scitotenv.2022.158243. Epub 2022 Aug 23. PMID: 36007637, 2022.

- Deleted:** J. K. ...yers, J.K.: 1976. "...ate of Phosphorus during Pedogenesis," ...Geoderma 15: 1–19, 1976.. (... [66])
- Deleted:** ¶ (... [67])
- Deleted:** (2021),...Integrating the evidence for a terrestrial carbon sink caused by increasing atmospheric CO₂. (... [68])
- Formatted:** Font: 10 pt
- Deleted:** &...Six, J.: Soil biodiversity and human heal (... [69])
- Deleted:** (...015.). (... [70])
- Formatted:** Font: Not Italic
- Deleted:** ~ n
- Deleted:** et al. 2017...: Global forest carbon uptake due to nitrogen and phosphorus deposition from 1850–2100. *Global Change Biology* 23: 4854–4872, 2017.. (... [72])
- Formatted:** (... [71])
- Deleted:** , 2022....Protocol for Field Investigation and Literature Data Compilation of Carbon Storage in Terrestrial Ecosystems,. (... [73])
- Deleted:** .
- Formatted:** English (UK)
- Deleted:** (2023). ...purrr: Functional Programming Tools. R package version 1.0.2, <...https://CRAN.R-project.org/package=purrr. 2023.>. (... [74])
- Deleted:** U... Z., DijkstraUKSTRA,... P., KochOCH... G.W., Peñuelas,EÑUELAS,...J., and HungateUNGATE... B.A.: (2011),...Responses of terrestrial ecosystems to temperature and precipitation change: a meta-analysis of experimental manipulation,. (... [75])
- Formatted:** Font: 10 pt
- Deleted:** (2013),...Global soil microbial biomass C, N (... [76])
- Formatted:** Font: 10 pt
- Deleted:** (2022):
- Formatted:** Font: 10 pt
- Deleted:** et al.... Evaluation of 11 terrestrial carbon-nitrogen cycle models against observations from two temperate Free-Air CO₂ Enrichment studies,....New Phytologist. 2014; (... [77])
- Formatted:** Font: 10 pt
- Deleted:** .
- Deleted:** 2022...Dec 10;851(Pt 1):158243. doi: 10.1016/j.scitotenv.2022.158243. Epub 2022 Aug 23. PMID: 36007637, 2022.. (... [78])
- Formatted:** English (US)

▼

Page 10: [1] Deleted	Helena Vallicrosa	20/05/2025 10:33:00
----------------------	-------------------	---------------------

▼

Page 10: [1] Deleted	Helena Vallicrosa	20/05/2025 10:33:00
----------------------	-------------------	---------------------

▼

Page 10: [1] Deleted	Helena Vallicrosa	20/05/2025 10:33:00
----------------------	-------------------	---------------------

▼

Page 10: [1] Deleted	Helena Vallicrosa	20/05/2025 10:33:00
----------------------	-------------------	---------------------

▼

Page 10: [1] Deleted	Helena Vallicrosa	20/05/2025 10:33:00
----------------------	-------------------	---------------------

▼

Page 10: [1] Deleted	Helena Vallicrosa	20/05/2025 10:33:00
----------------------	-------------------	---------------------

▼

Page 10: [1] Deleted	Helena Vallicrosa	20/05/2025 10:33:00
----------------------	-------------------	---------------------

▼

Page 10: [1] Deleted	Helena Vallicrosa	20/05/2025 10:33:00
----------------------	-------------------	---------------------

▼

Page 10: [1] Deleted	Helena Vallicrosa	20/05/2025 10:33:00
----------------------	-------------------	---------------------

▼

Page 10: [1] Deleted	Helena Vallicrosa	20/05/2025 10:33:00
----------------------	-------------------	---------------------

▼

Page 10: [1] Deleted	Helena Vallicrosa	20/05/2025 10:33:00
----------------------	-------------------	---------------------

▼

Page 10: [1] Deleted	Helena Vallicrosa	20/05/2025 10:33:00
----------------------	-------------------	---------------------

▼

Page 10: [1] Deleted	Helena Vallicrosa	20/05/2025 10:33:00
----------------------	-------------------	---------------------

▼

Page 10: [1] Deleted	Helena Vallicrosa	20/05/2025 10:33:00
----------------------	-------------------	---------------------

▼

Page 10: [1] Deleted	Helena Vallicrosa	20/05/2025 10:33:00
----------------------	-------------------	---------------------

▼

Page 10: [1] Deleted	Helena Vallicrosa	20/05/2025 10:33:00
----------------------	-------------------	---------------------

▼

Page 10: [1] Deleted	Helena Vallicrosa	20/05/2025 10:33:00
----------------------	-------------------	---------------------

▼

Page 10: [1] Deleted	Helena Vallicrosa	20/05/2025 10:33:00
----------------------	-------------------	---------------------

▼

Page 10: [1] Deleted	Helena Vallicrosa	20/05/2025 10:33:00
----------------------	-------------------	---------------------

▼

Page 10: [2] Deleted	Helena Vallicrosa	20/05/2025 10:41:00
----------------------	-------------------	---------------------

▼

Page 10: [2] Deleted	Helena Vallicrosa	20/05/2025 10:41:00
----------------------	-------------------	---------------------

▼

Page 10: [2] Deleted	Helena Vallicrosa	20/05/2025 10:41:00
----------------------	-------------------	---------------------

▼

Page 10: [2] Deleted	Helena Vallicrosa	20/05/2025 10:41:00
----------------------	-------------------	---------------------

▼

Page 10: [2] Deleted	Helena Vallicrosa	20/05/2025 10:41:00
----------------------	-------------------	---------------------

▼

Page 10: [2] Deleted	Helena Vallicrosa	20/05/2025 10:41:00
----------------------	-------------------	---------------------

▼

Page 10: [2] Deleted	Helena Vallicrosa	20/05/2025 10:41:00
----------------------	-------------------	---------------------

▼

Page 10: [2] Deleted	Helena Vallicrosa	20/05/2025 10:41:00
----------------------	-------------------	---------------------

▼

Page 10: [2] Deleted	Helena Vallicrosa	20/05/2025 10:41:00
----------------------	-------------------	---------------------

▼

Page 10: [2] Deleted	Helena Vallicrosa	20/05/2025 10:41:00
----------------------	-------------------	---------------------

▼

Page 10: [2] Deleted	Helena Vallicrosa	20/05/2025 10:41:00
----------------------	-------------------	---------------------

▼

Page 10: [2] Deleted	Helena Vallicrosa	20/05/2025 10:41:00
----------------------	-------------------	---------------------

▼

Page 10: [2] Deleted	Helena Vallicrosa	20/05/2025 10:41:00
----------------------	-------------------	---------------------

▼

Page 10: [2] Deleted	Helena Vallicrosa	20/05/2025 10:41:00
----------------------	-------------------	---------------------

▼

Page 10: [2] Deleted	Helena Vallicrosa	20/05/2025 10:41:00
----------------------	-------------------	---------------------

▼

Page 10: [2] Deleted	Helena Vallicrosa	20/05/2025 10:41:00
----------------------	-------------------	---------------------

▼

Page 10: [2] Deleted	Helena Vallicrosa	20/05/2025 10:41:00
----------------------	-------------------	---------------------

▼

Page 10: [3] Deleted	Helena Vallicrosa	20/05/2025 10:51:00
----------------------	-------------------	---------------------

▼

Page 10: [3] Deleted	Helena Vallicrosa	20/05/2025 10:51:00
----------------------	-------------------	---------------------

▼

Page 10: [3] Deleted	Helena Vallicrosa	20/05/2025 10:51:00
----------------------	-------------------	---------------------

▼

Page 10: [3] Deleted	Helena Vallicrosa	20/05/2025 10:51:00
----------------------	-------------------	---------------------

▼

Page 10: [3] Deleted	Helena Vallicrosa	20/05/2025 10:51:00
----------------------	-------------------	---------------------

▼

Page 10: [3] Deleted	Helena Vallicrosa	20/05/2025 10:51:00
----------------------	-------------------	---------------------

▼

Page 10: [3] Deleted	Helena Vallicrosa	20/05/2025 10:51:00
----------------------	-------------------	---------------------

▼

Page 10: [3] Deleted	Helena Vallicrosa	20/05/2025 10:51:00
----------------------	-------------------	---------------------

▼

Page 10: [3] Deleted	Helena Vallicrosa	20/05/2025 10:51:00
----------------------	-------------------	---------------------

▼

Page 10: [3] Deleted	Helena Vallicrosa	20/05/2025 10:51:00
----------------------	-------------------	---------------------

▼

Page 10: [3] Deleted	Helena Vallicrosa	20/05/2025 10:51:00
----------------------	-------------------	---------------------

▼

Page 10: [3] Deleted	Helena Vallicrosa	20/05/2025 10:51:00
----------------------	-------------------	---------------------

▼

Page 10: [3] Deleted	Helena Vallicrosa	20/05/2025 10:51:00
----------------------	-------------------	---------------------

▼

Page 10: [3] Deleted	Helena Vallicrosa	20/05/2025 10:51:00
----------------------	-------------------	---------------------

▼

Page 11: [4] Deleted	Helena Vallicrosa	20/05/2025 10:54:00
----------------------	-------------------	---------------------

▼

Page 11: [4] Deleted	Helena Vallicrosa	20/05/2025 10:54:00
----------------------	-------------------	---------------------

▼

Page 11: [5] Deleted	Helena Vallicrosa	20/05/2025 10:55:00
----------------------	-------------------	---------------------

▼

Page 11: [5] Deleted	Helena Vallicrosa	20/05/2025 10:55:00
----------------------	-------------------	---------------------

▼

Page 11: [5] Deleted	Helena Vallicrosa	20/05/2025 10:55:00
----------------------	-------------------	---------------------

▼

Page 11: [5] Deleted	Helena Vallicrosa	20/05/2025 10:55:00
----------------------	-------------------	---------------------

▼

Page 11: [5] Deleted	Helena Vallicrosa	20/05/2025 10:55:00
----------------------	-------------------	---------------------

▼

Page 11: [5] Deleted	Helena Vallicrosa	20/05/2025 10:55:00
----------------------	-------------------	---------------------

▼

Page 11: [5] Deleted	Helena Vallicrosa	20/05/2025 10:55:00
----------------------	-------------------	---------------------

▼

Page 11: [5] Deleted	Helena Vallicrosa	20/05/2025 10:55:00
----------------------	-------------------	---------------------

▼

Page 11: [5] Deleted	Helena Vallicrosa	20/05/2025 10:55:00
----------------------	-------------------	---------------------

▼

Page 11: [5] Deleted	Helena Vallicrosa	20/05/2025 10:55:00
----------------------	-------------------	---------------------

▼

Page 11: [5] Deleted	Helena Vallicrosa	20/05/2025 10:55:00
----------------------	-------------------	---------------------

▼

Page 11: [5] Deleted	Helena Vallicrosa	20/05/2025 10:55:00
----------------------	-------------------	---------------------

▼

Page 11: [5] Deleted	Helena Vallicrosa	20/05/2025 10:55:00
----------------------	-------------------	---------------------

▼

Page 11: [5] Deleted	Helena Vallicrosa	20/05/2025 10:55:00
----------------------	-------------------	---------------------

▼

Page 11: [5] Deleted	Helena Vallicrosa	20/05/2025 10:55:00
----------------------	-------------------	---------------------

▼

Page 11: [5] Deleted	Helena Vallicrosa	20/05/2025 10:55:00
----------------------	-------------------	---------------------

▼

Page 11: [5] Deleted	Helena Vallicrosa	20/05/2025 10:55:00
----------------------	-------------------	---------------------

▼

Page 11: [5] Deleted	Helena Vallicrosa	20/05/2025 10:55:00
----------------------	-------------------	---------------------

▼

Page 11: [5] Deleted	Helena Vallicrosa	20/05/2025 10:55:00
----------------------	-------------------	---------------------

▼

Page 11: [5] Deleted	Helena Vallicrosa	20/05/2025 10:55:00
----------------------	-------------------	---------------------

▼

Page 11: [5] Deleted	Helena Vallicrosa	20/05/2025 10:55:00
----------------------	-------------------	---------------------

▼

Page 11: [5] Deleted	Helena Vallicrosa	20/05/2025 10:55:00
----------------------	-------------------	---------------------

▼

Page 11: [5] Deleted	Helena Vallicrosa	20/05/2025 10:55:00
----------------------	-------------------	---------------------

▼

Page 11: [5] Deleted	Helena Vallicrosa	20/05/2025 10:55:00
----------------------	-------------------	---------------------

▼

Page 11: [5] Deleted	Helena Vallicrosa	20/05/2025 10:55:00
----------------------	-------------------	---------------------

▼

Page 11: [5] Deleted	Helena Vallicrosa	20/05/2025 10:55:00
----------------------	-------------------	---------------------

▼

Page 11: [5] Deleted	Helena Vallicrosa	20/05/2025 10:55:00
----------------------	-------------------	---------------------

▼

Page 11: [5] Deleted	Helena Vallicrosa	20/05/2025 10:55:00
----------------------	-------------------	---------------------

Page 11: [5] Deleted	Helena Vallicrosa	20/05/2025 10:55:00
----------------------	-------------------	---------------------

▼

Page 11: [5] Deleted	Helena Vallicrosa	20/05/2025 10:55:00
----------------------	-------------------	---------------------

▼

Page 11: [5] Deleted	Helena Vallicrosa	20/05/2025 10:55:00
----------------------	-------------------	---------------------

▼

Page 11: [5] Deleted	Helena Vallicrosa	20/05/2025 10:55:00
----------------------	-------------------	---------------------

▼

Page 11: [5] Deleted	Helena Vallicrosa	20/05/2025 10:55:00
----------------------	-------------------	---------------------

▼

Page 11: [5] Deleted	Helena Vallicrosa	20/05/2025 10:55:00
----------------------	-------------------	---------------------

▼

Page 11: [5] Deleted	Helena Vallicrosa	20/05/2025 10:55:00
----------------------	-------------------	---------------------

▼

Page 11: [6] Deleted	Helena Vallicrosa	20/05/2025 11:05:00
----------------------	-------------------	---------------------

▼

Page 11: [6] Deleted	Helena Vallicrosa	20/05/2025 11:05:00
----------------------	-------------------	---------------------

▼

Page 11: [6] Deleted	Helena Vallicrosa	20/05/2025 11:05:00
----------------------	-------------------	---------------------

▼

Page 11: [6] Deleted	Helena Vallicrosa	20/05/2025 11:05:00
----------------------	-------------------	---------------------

▼

Page 11: [6] Deleted	Helena Vallicrosa	20/05/2025 11:05:00
----------------------	-------------------	---------------------

▼

Page 11: [6] Deleted	Helena Vallicrosa	20/05/2025 11:05:00
----------------------	-------------------	---------------------

▼

Page 11: [6] Deleted	Helena Vallicrosa	20/05/2025 11:05:00
----------------------	-------------------	---------------------

▼

Page 11: [6] Deleted	Helena Vallicrosa	20/05/2025 11:05:00
----------------------	-------------------	---------------------

▼

Page 11: [6] Deleted	Helena Vallicrosa	20/05/2025 11:05:00
----------------------	-------------------	---------------------

▼

Page 11: [6] Deleted	Helena Vallicrosa	20/05/2025 11:05:00
----------------------	-------------------	---------------------

▼

Page 11: [6] Deleted	Helena Vallicrosa	20/05/2025 11:05:00
----------------------	-------------------	---------------------

▼

Page 11: [6] Deleted	Helena Vallicrosa	20/05/2025 11:05:00
----------------------	-------------------	---------------------

▼

Page 11: [6] Deleted	Helena Vallicrosa	20/05/2025 11:05:00
----------------------	-------------------	---------------------

▼

Page 11: [6] Deleted	Helena Vallicrosa	20/05/2025 11:05:00
----------------------	-------------------	---------------------

▼

Page 11: [6] Deleted	Helena Vallicrosa	20/05/2025 11:05:00
----------------------	-------------------	---------------------

▼

Page 11: [6] Deleted	Helena Vallicrosa	20/05/2025 11:05:00
----------------------	-------------------	---------------------

▼

Page 11: [6] Deleted	Helena Vallicrosa	20/05/2025 11:05:00
----------------------	-------------------	---------------------

▼

Page 11: [6] Deleted	Helena Vallicrosa	20/05/2025 11:05:00
----------------------	-------------------	---------------------

▼

Page 11: [6] Deleted	Helena Vallicrosa	20/05/2025 11:05:00
----------------------	-------------------	---------------------

▼

Page 11: [6] Deleted	Helena Vallicrosa	20/05/2025 11:05:00
----------------------	-------------------	---------------------

▼

Page 11: [6] Deleted	Helena Vallicrosa	20/05/2025 11:05:00
----------------------	-------------------	---------------------

▼

Page 11: [6] Deleted	Helena Vallicrosa	20/05/2025 11:05:00
----------------------	-------------------	---------------------

▼

Page 11: [6] Deleted	Helena Vallicrosa	20/05/2025 11:05:00
----------------------	-------------------	---------------------

▼

Page 11: [6] Deleted	Helena Vallicrosa	20/05/2025 11:05:00
----------------------	-------------------	---------------------

▼

Page 11: [6] Deleted	Helena Vallicrosa	20/05/2025 11:05:00
----------------------	-------------------	---------------------

▼

Page 11: [6] Deleted	Helena Vallicrosa	20/05/2025 11:05:00
----------------------	-------------------	---------------------

▼

Page 11: [6] Deleted	Helena Vallicrosa	20/05/2025 11:05:00
----------------------	-------------------	---------------------

▼

Page 11: [6] Deleted	Helena Vallicrosa	20/05/2025 11:05:00
----------------------	-------------------	---------------------

▼

Page 11: [6] Deleted	Helena Vallicrosa	20/05/2025 11:05:00
----------------------	-------------------	---------------------

▼

Page 11: [6] Deleted	Helena Vallicrosa	20/05/2025 11:05:00
----------------------	-------------------	---------------------

▼

Page 11: [6] Deleted	Helena Vallicrosa	20/05/2025 11:05:00
----------------------	-------------------	---------------------

▼

Page 11: [6] Deleted	Helena Vallicrosa	20/05/2025 11:05:00
----------------------	-------------------	---------------------

▼

Page 11: [7] Deleted	Helena Vallicrosa	20/05/2025 11:14:00
----------------------	-------------------	---------------------

▼

Page 11: [7] Deleted	Helena Vallicrosa	20/05/2025 11:14:00
----------------------	-------------------	---------------------

▼

Page 11: [7] Deleted	Helena Vallicrosa	20/05/2025 11:14:00
----------------------	-------------------	---------------------

▼

Page 11: [7] Deleted	Helena Vallicrosa	20/05/2025 11:14:00
----------------------	-------------------	---------------------

▼

Page 11: [7] Deleted	Helena Vallicrosa	20/05/2025 11:14:00
----------------------	-------------------	---------------------

▼

Page 11: [7] Deleted	Helena Vallicrosa	20/05/2025 11:14:00
----------------------	-------------------	---------------------

▼

Page 11: [7] Deleted	Helena Vallicrosa	20/05/2025 11:14:00
----------------------	-------------------	---------------------

▼

Page 11: [7] Deleted	Helena Vallicrosa	20/05/2025 11:14:00
----------------------	-------------------	---------------------

▼

Page 11: [7] Deleted	Helena Vallicrosa	20/05/2025 11:14:00
----------------------	-------------------	---------------------

▼

Page 11: [7] Deleted	Helena Vallicrosa	20/05/2025 11:14:00
----------------------	-------------------	---------------------

▼

Page 11: [7] Deleted	Helena Vallicrosa	20/05/2025 11:14:00
----------------------	-------------------	---------------------

▼

Page 11: [7] Deleted	Helena Vallicrosa	20/05/2025 11:14:00
----------------------	-------------------	---------------------

▼

Page 11: [7] Deleted	Helena Vallicrosa	20/05/2025 11:14:00
----------------------	-------------------	---------------------

▼

Page 11: [7] Deleted	Helena Vallicrosa	20/05/2025 11:14:00
----------------------	-------------------	---------------------

▼

Page 11: [7] Deleted	Helena Vallicrosa	20/05/2025 11:14:00
----------------------	-------------------	---------------------

▼

Page 11: [7] Deleted	Helena Vallicrosa	20/05/2025 11:14:00
----------------------	-------------------	---------------------

▼

Page 11: [7] Deleted	Helena Vallicrosa	20/05/2025 11:14:00
----------------------	-------------------	---------------------

▼

Page 11: [7] Deleted	Helena Vallicrosa	20/05/2025 11:14:00
----------------------	-------------------	---------------------

▼

Page 11: [7] Deleted	Helena Vallicrosa	20/05/2025 11:14:00
----------------------	-------------------	---------------------

▼

Page 11: [7] Deleted	Helena Vallicrosa	20/05/2025 11:14:00
----------------------	-------------------	---------------------

▼

Page 11: [7] Deleted	Helena Vallicrosa	20/05/2025 11:14:00
----------------------	-------------------	---------------------

▼		
▼	Page 11: [7] Deleted	Helena Vallicrosa 20/05/2025 11:14:00
▼		
▼	Page 11: [7] Deleted	Helena Vallicrosa 20/05/2025 11:14:00
▼		
▼	Page 11: [7] Deleted	Helena Vallicrosa 20/05/2025 11:14:00
▼		
▼	Page 12: [8] Deleted	Helena Vallicrosa 20/05/2025 11:21:00
▼		
▼	Page 12: [8] Deleted	Helena Vallicrosa 20/05/2025 11:21:00
▼		
▼	Page 12: [8] Deleted	Helena Vallicrosa 20/05/2025 11:21:00
▼		
▼	Page 12: [8] Deleted	Helena Vallicrosa 20/05/2025 11:21:00
▼		
▼	Page 12: [8] Deleted	Helena Vallicrosa 20/05/2025 11:21:00
▼		
▼	Page 12: [8] Deleted	Helena Vallicrosa 20/05/2025 11:21:00
▼		
▼	Page 12: [8] Deleted	Helena Vallicrosa 20/05/2025 11:21:00
▼		
▼	Page 12: [8] Deleted	Helena Vallicrosa 20/05/2025 11:21:00
▼		
▼	Page 12: [8] Deleted	Helena Vallicrosa 20/05/2025 11:21:00
▼		
▼	Page 12: [8] Deleted	Helena Vallicrosa 20/05/2025 11:21:00
▼		
▼	Page 12: [8] Deleted	Helena Vallicrosa 20/05/2025 11:21:00
▼		
▼	Page 12: [8] Deleted	Helena Vallicrosa 20/05/2025 11:21:00
▼		
▼	Page 12: [9] Deleted	Helena Vallicrosa 20/05/2025 11:26:00
▼		

Page 12: [9] Deleted	Helena Vallicrosa	20/05/2025 11:26:00
----------------------	-------------------	---------------------

▼

Page 12: [10] Deleted	Helena Vallicrosa	20/05/2025 11:26:00
-----------------------	-------------------	---------------------

▼

Page 12: [10] Deleted	Helena Vallicrosa	20/05/2025 11:26:00
-----------------------	-------------------	---------------------

▼

Page 12: [10] Deleted	Helena Vallicrosa	20/05/2025 11:26:00
-----------------------	-------------------	---------------------

▼

Page 12: [10] Deleted	Helena Vallicrosa	20/05/2025 11:26:00
-----------------------	-------------------	---------------------

▼

Page 12: [10] Deleted	Helena Vallicrosa	20/05/2025 11:26:00
-----------------------	-------------------	---------------------

▼

Page 12: [10] Deleted	Helena Vallicrosa	20/05/2025 11:26:00
-----------------------	-------------------	---------------------

▼

Page 12: [10] Deleted	Helena Vallicrosa	20/05/2025 11:26:00
-----------------------	-------------------	---------------------

▼

Page 12: [10] Deleted	Helena Vallicrosa	20/05/2025 11:26:00
-----------------------	-------------------	---------------------

▼

Page 12: [10] Deleted	Helena Vallicrosa	20/05/2025 11:26:00
-----------------------	-------------------	---------------------

▼

Page 12: [10] Deleted	Helena Vallicrosa	20/05/2025 11:26:00
-----------------------	-------------------	---------------------

▼

Page 12: [10] Deleted	Helena Vallicrosa	20/05/2025 11:26:00
-----------------------	-------------------	---------------------

▼

Page 12: [10] Deleted	Helena Vallicrosa	20/05/2025 11:26:00
-----------------------	-------------------	---------------------

▼

Page 12: [10] Deleted	Helena Vallicrosa	20/05/2025 11:26:00
-----------------------	-------------------	---------------------

▼

Page 12: [10] Deleted	Helena Vallicrosa	20/05/2025 11:26:00
-----------------------	-------------------	---------------------

▼

Page 12: [10] Deleted	Helena Vallicrosa	20/05/2025 11:26:00
-----------------------	-------------------	---------------------

▼

Page 12: [10] Deleted	Helena Vallicrosa	20/05/2025 11:26:00
-----------------------	-------------------	---------------------

▼

Page 12: [10] Deleted	Helena Vallicrosa	20/05/2025 11:26:00
-----------------------	-------------------	---------------------

▼

Page 12: [10] Deleted	Helena Vallicrosa	20/05/2025 11:26:00
-----------------------	-------------------	---------------------

▼

Page 12: [10] Deleted	Helena Vallicrosa	20/05/2025 11:26:00
-----------------------	-------------------	---------------------

▼

Page 12: [10] Deleted	Helena Vallicrosa	20/05/2025 11:26:00
-----------------------	-------------------	---------------------

▼

Page 12: [10] Deleted	Helena Vallicrosa	20/05/2025 11:26:00
-----------------------	-------------------	---------------------

▼

Page 12: [10] Deleted	Helena Vallicrosa	20/05/2025 11:26:00
-----------------------	-------------------	---------------------

▼

Page 12: [10] Deleted	Helena Vallicrosa	20/05/2025 11:26:00
-----------------------	-------------------	---------------------

▼

Page 12: [10] Deleted	Helena Vallicrosa	20/05/2025 11:26:00
-----------------------	-------------------	---------------------

▼

Page 12: [10] Deleted	Helena Vallicrosa	20/05/2025 11:26:00
-----------------------	-------------------	---------------------

▼

Page 12: [10] Deleted	Helena Vallicrosa	20/05/2025 11:26:00
-----------------------	-------------------	---------------------

▼

Page 12: [10] Deleted	Helena Vallicrosa	20/05/2025 11:26:00
-----------------------	-------------------	---------------------

▼

Page 12: [10] Deleted	Helena Vallicrosa	20/05/2025 11:26:00
-----------------------	-------------------	---------------------

▼

Page 12: [10] Deleted	Helena Vallicrosa	20/05/2025 11:26:00
-----------------------	-------------------	---------------------

▼

Page 12: [10] Deleted	Helena Vallicrosa	20/05/2025 11:26:00
-----------------------	-------------------	---------------------

▼

Page 12: [10] Deleted	Helena Vallicrosa	20/05/2025 11:26:00
-----------------------	-------------------	---------------------

▼

Page 12: [10] Deleted	Helena Vallicrosa	20/05/2025 11:26:00
-----------------------	-------------------	---------------------

▼

Page 12: [10] Deleted	Helena Vallicrosa	20/05/2025 11:26:00
-----------------------	-------------------	---------------------

▼

Page 12: [10] Deleted	Helena Vallicrosa	20/05/2025 11:26:00
-----------------------	-------------------	---------------------

▼

Page 17: [11] Formatted	Helena Vallicrosa	19/05/2025 11:16:00
-------------------------	-------------------	---------------------

Formatted

Page 17: [12] Deleted	Helena Vallicrosa	19/05/2025 10:55:00
-----------------------	-------------------	---------------------

✖

Page 17: [12] Deleted	Helena Vallicrosa	19/05/2025 10:55:00
-----------------------	-------------------	---------------------

✖

Page 17: [13] Formatted	Helena Vallicrosa	19/05/2025 11:16:00
-------------------------	-------------------	---------------------

Font: 10 pt

Page 17: [14] Formatted	Helena Vallicrosa	19/05/2025 11:16:00
-------------------------	-------------------	---------------------

Font: 10 pt

Page 17: [15] Deleted	Helena Vallicrosa	19/05/2025 11:31:00
-----------------------	-------------------	---------------------

▼

Page 17: [15] Deleted	Helena Vallicrosa	19/05/2025 11:31:00
-----------------------	-------------------	---------------------

▼

Page 17: [15] Deleted	Helena Vallicrosa	19/05/2025 11:31:00
-----------------------	-------------------	---------------------

▼

Page 17: [16] Formatted	Helena Vallicrosa	19/05/2025 11:16:00
-------------------------	-------------------	---------------------

Font: Not Italic

Page 17: [16] Formatted	Helena Vallicrosa	19/05/2025 11:16:00
-------------------------	-------------------	---------------------

Font: Not Italic

Page 17: [16] Formatted	Helena Vallicrosa	19/05/2025 11:16:00
-------------------------	-------------------	---------------------

Font: Not Italic

Page 17: [17] Formatted	Helena Vallicrosa	19/05/2025 11:16:00
-------------------------	-------------------	---------------------

Font: 10 pt

Page 17: [17] Formatted	Helena Vallicrosa	19/05/2025 11:16:00
-------------------------	-------------------	---------------------

Font: 10 pt

Page 17: [18] Formatted	Helena Vallicrosa	19/05/2025 11:16:00
-------------------------	-------------------	---------------------

Font: Not Italic, English (US)

Page 17: [19] Formatted	Helena Vallicrosa	19/05/2025 11:16:00
-------------------------	-------------------	---------------------

English (UK)

Page 17: [20] Formatted	Helena Vallicrosa	19/05/2025 11:16:00
-------------------------	-------------------	---------------------

Font: Not Italic

Page 17: [21] Formatted	Helena Vallicrosa	19/05/2025 11:16:00
-------------------------	-------------------	---------------------

Font: 10 pt

Page 17: [22] Deleted	Helena Vallicrosa	19/05/2025 11:01:00
-----------------------	-------------------	---------------------

▼

Page 17: [22] Deleted	Helena Vallicrosa	19/05/2025 11:01:00
-----------------------	-------------------	---------------------

▼

Page 17: [22] Deleted	Helena Vallicrosa	19/05/2025 11:01:00
-----------------------	-------------------	---------------------

▼

Page 17: [22] Deleted	Helena Vallicrosa	19/05/2025 11:01:00
-----------------------	-------------------	---------------------

▼

Page 17: [22] Deleted	Helena Vallicrosa	19/05/2025 11:01:00
-----------------------	-------------------	---------------------

▼

Page 17: [23] Formatted	Helena Vallicrosa	19/05/2025 11:16:00
-------------------------	-------------------	---------------------

Font: 10 pt

Page 17: [24] Formatted	Helena Vallicrosa	19/05/2025 11:16:00
-------------------------	-------------------	---------------------

Font: 10 pt

Page 17: [25] Formatted	Helena Vallicrosa	19/05/2025 11:16:00
-------------------------	-------------------	---------------------

Font: Not Italic

Page 17: [25] Formatted	Helena Vallicrosa	19/05/2025 11:16:00
Font: Not Italic		
Page 17: [26] Formatted	Helena Vallicrosa	19/05/2025 11:16:00
Font: Not Italic		
Page 17: [27] Deleted	Helena Vallicrosa	19/05/2025 11:06:00
x.....		
Page 17: [27] Deleted	Helena Vallicrosa	19/05/2025 11:06:00
x.....		
Page 17: [27] Deleted	Helena Vallicrosa	19/05/2025 11:06:00
x.....		
Page 17: [28] Deleted	Helena Vallicrosa	19/05/2025 11:05:00
v.....		
Page 17: [28] Deleted	Helena Vallicrosa	19/05/2025 11:05:00
v.....		
Page 17: [29] Formatted	Helena Vallicrosa	19/05/2025 11:16:00
Font: Not Italic		
Page 17: [29] Formatted	Helena Vallicrosa	19/05/2025 11:16:00
Font: Not Italic		
Page 17: [30] Formatted	Helena Vallicrosa	19/05/2025 11:16:00
Font: 10 pt		
Page 17: [31] Formatted	Helena Vallicrosa	19/05/2025 11:16:00
English (UK)		
Page 17: [31] Formatted	Helena Vallicrosa	19/05/2025 11:16:00
English (UK)		
Page 17: [31] Formatted	Helena Vallicrosa	19/05/2025 11:16:00
English (UK)		
Page 17: [31] Formatted	Helena Vallicrosa	19/05/2025 11:16:00
English (UK)		
Page 17: [31] Formatted	Helena Vallicrosa	19/05/2025 11:16:00
English (UK)		
Page 17: [31] Formatted	Helena Vallicrosa	19/05/2025 11:16:00
English (UK)		
Page 17: [31] Formatted	Helena Vallicrosa	19/05/2025 11:16:00
English (UK)		
Page 17: [32] Formatted	Helena Vallicrosa	19/05/2025 11:16:00
Font: Not Italic		

Page 17: [33] Formatted	Helena Vallicrosa	19/05/2025 11:16:00
Font: 10 pt		
Page 17: [34] Formatted	Helena Vallicrosa	19/05/2025 11:16:00
Font: 10 pt		
Page 17: [35] Formatted	Helena Vallicrosa	19/05/2025 11:16:00
Font: 10 pt		
Page 17: [36] Deleted	Helena Vallicrosa	19/05/2025 11:08:00
▼		
Page 17: [36] Deleted	Helena Vallicrosa	19/05/2025 11:08:00
▼		
Page 17: [37] Formatted	Helena Vallicrosa	19/05/2025 11:16:00
Font: 10 pt		
Page 17: [38] Formatted	Helena Vallicrosa	19/05/2025 11:16:00
English (US)		
Page 17: [38] Formatted	Helena Vallicrosa	19/05/2025 11:16:00
English (US)		
Page 17: [38] Formatted	Helena Vallicrosa	19/05/2025 11:16:00
English (US)		
Page 17: [38] Formatted	Helena Vallicrosa	19/05/2025 11:16:00
English (US)		
Page 17: [38] Formatted	Helena Vallicrosa	19/05/2025 11:16:00
English (US)		
Page 17: [38] Formatted	Helena Vallicrosa	19/05/2025 11:16:00
English (US)		
Page 17: [38] Formatted	Helena Vallicrosa	19/05/2025 11:16:00
English (US)		
Page 17: [38] Formatted	Helena Vallicrosa	19/05/2025 11:16:00
English (US)		
Page 17: [38] Formatted	Helena Vallicrosa	19/05/2025 11:16:00
English (US)		
Page 17: [39] Deleted	Helena Vallicrosa	19/05/2025 11:10:00
▼		
Page 17: [39] Deleted	Helena Vallicrosa	19/05/2025 11:10:00
▼		
Page 17: [39] Deleted	Helena Vallicrosa	19/05/2025 11:10:00
▼		
Page 17: [39] Deleted	Helena Vallicrosa	19/05/2025 11:10:00
▼		

Page 17: [40] Deleted	Helena Vallicrosa	19/05/2025 11:11:00
▼		
Page 17: [40] Deleted	Helena Vallicrosa	19/05/2025 11:11:00
▼		
Page 17: [41] Formatted	Helena Vallicrosa	19/05/2025 11:16:00
Font: 10 pt		
Page 17: [42] Formatted	Helena Vallicrosa	19/05/2025 11:16:00
Font: 10 pt		
Page 17: [43] Formatted	Helena Vallicrosa	19/05/2025 11:16:00
Font: 10 pt		
Page 19: [44] Deleted	Helena Vallicrosa	19/05/2025 11:42:00
▼		
Page 19: [44] Deleted	Helena Vallicrosa	19/05/2025 11:42:00
▼		
Page 19: [45] Deleted	Helena Vallicrosa	19/05/2025 11:45:00
▼		
Page 19: [45] Deleted	Helena Vallicrosa	19/05/2025 11:45:00
▼		
Page 19: [46] Deleted	Helena Vallicrosa	19/05/2025 12:35:00
▼		
Page 19: [46] Deleted	Helena Vallicrosa	19/05/2025 12:35:00
▼		
Page 19: [47] Deleted	Helena Vallicrosa	19/05/2025 12:37:00
▼		
Page 19: [47] Deleted	Helena Vallicrosa	19/05/2025 12:37:00
▼		
Page 19: [47] Deleted	Helena Vallicrosa	19/05/2025 12:37:00
▼		
Page 19: [47] Deleted	Helena Vallicrosa	19/05/2025 12:37:00
▼		
Page 19: [48] Deleted	Helena Vallicrosa	19/05/2025 12:38:00
▼		
Page 19: [48] Deleted	Helena Vallicrosa	19/05/2025 12:38:00
▼		
Page 19: [49] Formatted	Helena Vallicrosa	19/05/2025 12:43:00
English (US)		
Page 19: [49] Formatted	Helena Vallicrosa	19/05/2025 12:43:00
English (US)		
Page 19: [50] Formatted	Helena Vallicrosa	19/05/2025 12:43:00
English (US)		
Page 19: [50] Formatted	Helena Vallicrosa	19/05/2025 12:43:00

English (US)

Page 19: [50] Formatted	Helena Vallicrosa	19/05/2025 12:43:00
-------------------------	-------------------	---------------------

English (US)

Page 19: [51] Deleted	Helena Vallicrosa	19/05/2025 12:43:00
-----------------------	-------------------	---------------------

▼

Page 19: [51] Deleted	Helena Vallicrosa	19/05/2025 12:43:00
-----------------------	-------------------	---------------------

▼

Page 19: [51] Deleted	Helena Vallicrosa	19/05/2025 12:43:00
-----------------------	-------------------	---------------------

▼

Page 19: [51] Deleted	Helena Vallicrosa	19/05/2025 12:43:00
-----------------------	-------------------	---------------------

▼

Page 19: [52] Deleted	Helena Vallicrosa	19/05/2025 12:47:00
-----------------------	-------------------	---------------------

▼

Page 19: [52] Deleted	Helena Vallicrosa	19/05/2025 12:47:00
-----------------------	-------------------	---------------------

▼

Page 20: [53] Deleted	Helena Vallicrosa	19/05/2025 12:49:00
-----------------------	-------------------	---------------------

✖

Page 20: [53] Deleted	Helena Vallicrosa	19/05/2025 12:49:00
-----------------------	-------------------	---------------------

✖

Page 20: [54] Deleted	Helena Vallicrosa	19/05/2025 12:49:00
-----------------------	-------------------	---------------------

▼

Page 20: [54] Deleted	Helena Vallicrosa	19/05/2025 12:49:00
-----------------------	-------------------	---------------------

▼

Page 20: [55] Deleted	Helena Vallicrosa	19/05/2025 12:50:00
-----------------------	-------------------	---------------------

▼

Page 20: [55] Deleted	Helena Vallicrosa	19/05/2025 12:50:00
-----------------------	-------------------	---------------------

▼

Page 20: [56] Deleted	Helena Vallicrosa	19/05/2025 12:50:00
-----------------------	-------------------	---------------------

▼

Page 20: [56] Deleted	Helena Vallicrosa	19/05/2025 12:50:00
-----------------------	-------------------	---------------------

▼

Page 20: [56] Deleted	Helena Vallicrosa	19/05/2025 12:50:00
-----------------------	-------------------	---------------------

▼

Page 20: [57] Deleted	Helena Vallicrosa	19/05/2025 12:51:00
-----------------------	-------------------	---------------------

▼

Page 20: [57] Deleted	Helena Vallicrosa	19/05/2025 12:51:00
-----------------------	-------------------	---------------------

▼

Page 20: [57] Deleted	Helena Vallicrosa	19/05/2025 12:51:00
-----------------------	-------------------	---------------------

▼

Page 20: [57] Deleted	Helena Vallicrosa	19/05/2025 12:51:00
-----------------------	-------------------	---------------------

▼

Page 20: [57] Deleted	Helena Vallicrosa	19/05/2025 12:51:00
▼		
Page 20: [57] Deleted	Helena Vallicrosa	19/05/2025 12:51:00
▼		
Page 20: [57] Deleted	Helena Vallicrosa	19/05/2025 12:51:00
▼		
Page 20: [58] Formatted	Helena Vallicrosa	19/05/2025 11:16:00
Font: Not Italic		
Page 20: [58] Formatted	Helena Vallicrosa	19/05/2025 11:16:00
Font: Not Italic		
Page 20: [59] Deleted	Helena Vallicrosa	19/05/2025 12:51:00
▼		
Page 20: [59] Deleted	Helena Vallicrosa	19/05/2025 12:51:00
▼		
Page 20: [60] Deleted	Helena Vallicrosa	19/05/2025 12:54:00
▼		
Page 20: [60] Deleted	Helena Vallicrosa	19/05/2025 12:54:00
▼		
Page 20: [61] Deleted	Helena Vallicrosa	19/05/2025 12:55:00
▼		
Page 20: [61] Deleted	Helena Vallicrosa	19/05/2025 12:55:00
▼		
Page 20: [61] Deleted	Helena Vallicrosa	19/05/2025 12:55:00
▼		
Page 20: [62] Deleted	Helena Vallicrosa	19/05/2025 12:56:00
▼		
Page 20: [62] Deleted	Helena Vallicrosa	19/05/2025 12:56:00
▼		
Page 20: [63] Deleted	Helena Vallicrosa	19/05/2025 12:57:00
▼		
Page 20: [63] Deleted	Helena Vallicrosa	19/05/2025 12:57:00
▼		
Page 20: [64] Deleted	Helena Vallicrosa	19/05/2025 12:58:00
▼		
Page 20: [64] Deleted	Helena Vallicrosa	19/05/2025 12:58:00
▼		
Page 21: [65] Deleted	Helena Vallicrosa	19/05/2025 12:58:00
▼		
Page 22: [66] Deleted	Helena Vallicrosa	19/05/2025 13:13:00
▼		
Page 22: [66] Deleted	Helena Vallicrosa	19/05/2025 13:13:00
▼		

Page 22: [66] Deleted	Helena Vallicrosa	19/05/2025 13:13:00
▼		
Page 22: [66] Deleted	Helena Vallicrosa	19/05/2025 13:13:00
▼		
Page 22: [67] Deleted	Helena Vallicrosa	19/05/2025 13:14:00
▼		
Page 22: [68] Deleted	Helena Vallicrosa	19/05/2025 13:14:00
▼		
Page 22: [68] Deleted	Helena Vallicrosa	19/05/2025 13:14:00
▼		
Page 22: [69] Deleted	Helena Vallicrosa	19/05/2025 13:15:00
▼		
Page 22: [69] Deleted	Helena Vallicrosa	19/05/2025 13:15:00
▼		
Page 22: [70] Deleted	Helena Vallicrosa	19/05/2025 13:15:00
▼		
Page 22: [70] Deleted	Helena Vallicrosa	19/05/2025 13:15:00
▼		
Page 22: [71] Formatted English (US)	Helena Vallicrosa	19/05/2025 13:17:00
Page 22: [71] Formatted English (US)	Helena Vallicrosa	19/05/2025 13:17:00
Page 22: [71] Formatted English (US)	Helena Vallicrosa	19/05/2025 13:17:00
Page 22: [71] Formatted English (US)	Helena Vallicrosa	19/05/2025 13:17:00
Page 22: [71] Formatted English (US)	Helena Vallicrosa	19/05/2025 13:17:00
Page 22: [71] Formatted English (US)	Helena Vallicrosa	19/05/2025 13:17:00
Page 22: [71] Formatted English (US)	Helena Vallicrosa	19/05/2025 13:17:00
Page 22: [71] Formatted English (US)	Helena Vallicrosa	19/05/2025 13:17:00
Page 22: [71] Formatted English (US)	Helena Vallicrosa	19/05/2025 13:17:00
Page 22: [72] Deleted	Helena Vallicrosa	19/05/2025 13:17:00
▼		
Page 22: [72] Deleted	Helena Vallicrosa	19/05/2025 13:17:00
▼		
Page 22: [73] Deleted	Helena Vallicrosa	19/05/2025 13:18:00

▼	Page 22: [73] Deleted	Helena Vallicrosa	19/05/2025 13:18:00
▼	Page 22: [74] Deleted	Helena Vallicrosa	19/05/2025 13:19:00
✖	Page 22: [74] Deleted	Helena Vallicrosa	19/05/2025 13:19:00
✖	Page 22: [74] Deleted	Helena Vallicrosa	19/05/2025 13:19:00
✖	Page 22: [75] Deleted	Helena Vallicrosa	19/05/2025 13:34:00
▼	Page 22: [75] Deleted	Helena Vallicrosa	19/05/2025 13:34:00
▼	Page 22: [75] Deleted	Helena Vallicrosa	19/05/2025 13:34:00
▼	Page 22: [75] Deleted	Helena Vallicrosa	19/05/2025 13:34:00
▼	Page 22: [75] Deleted	Helena Vallicrosa	19/05/2025 13:34:00
▼	Page 22: [75] Deleted	Helena Vallicrosa	19/05/2025 13:34:00
▼	Page 22: [75] Deleted	Helena Vallicrosa	19/05/2025 13:34:00
▼	Page 22: [75] Deleted	Helena Vallicrosa	19/05/2025 13:34:00
▼	Page 22: [76] Deleted	Helena Vallicrosa	19/05/2025 13:35:00
▼	Page 22: [76] Deleted	Helena Vallicrosa	19/05/2025 13:35:00
▼	Page 22: [77] Deleted	Helena Vallicrosa	19/05/2025 13:39:00
▼	Page 22: [77] Deleted	Helena Vallicrosa	19/05/2025 13:39:00
▼	Page 22: [77] Deleted	Helena Vallicrosa	19/05/2025 13:39:00
▼	Page 22: [78] Deleted	Helena Vallicrosa	19/05/2025 13:39:00
✖	Page 22: [78] Deleted	Helena Vallicrosa	19/05/2025 13:39:00
✖			