

24 **Table S1.** The geographic scope and temporal coverage of the data involved in this study

Data	Data Sources	Geographic scope	Temporal coverage
MODIS fire product (MCD14ML)	Fire Information for Resource Management System (FIRMS) (https://firms.modaps.eosdis.nasa.gov/)	Northeast China	2001-2020
ChinaCropArea1km	http://www.nesdc.org.cn/	Northeast China	2001-2019
ChinaCropPhen1km	http://www.nesdc.org.cn/	Northeast China	2001-2019
HLJ-Soybean-map	https://figshare.com/articles/figure/HLJ_Soybean_map/14776500	Heilongjiang Province	2001-2012
Crop classification maps for Northeast China	https:// doi.org/10.6084/m9.figshare.20411424.v1	Northeast China	2013-2020
Output of major farm products	National Bureau of Statistics of China (NBSC) (http://www.stats.gov.cn/tjsj/ndsj/)	Heilongjiang Province, Jilin Province, Liaoning Province	2001-2020
Rural residential coal consumption	National Bureau of Statistics of China (NBSC) (http://www.stats.gov.cn/tjsj/tjcbw/)	Heilongjiang Province, Jilin Province, Liaoning Province	2001-2020

25 Note: Missing data for a certain year were replaced with those of the adjacent year, e.g. the distribution and phenology of corn, rice, and wheat in 2020 are supplemented
 26 with relevant data from 2019; and we did not calculate the emissions of GHGs from open bean straw burning in Jilin and Liaoning provinces from 2001-2012, due to
 27 missing data of this section. In addition, since the bean lacked the corresponding phenology data, the mode of emergence and maturity dates of other crops were used
 28 to supplement. The above data processing process will produce errors, which we would like to clarify here.

29 **Table S2.** Pearson correlation coefficient of CO₂-eq emissions and straw yield

Study area	2001-2020	Period I (2001-2012)	Period II (2013-2017)	Period III (2018-2020)
Northeast China	0.707**	0.789**	-	-
Heilongjiang	0.655**	0.756**	-	-
Jilin	0.749**	0.679**	-	-
Liaoning	-	0.625*	-	-

30 Note: ** significance level at $p < 0.01$; * significance level at $p < 0.05$

31 **Table S3.** Pearson correlation coefficient of CO₂-eq emissions and rural residential coal consumption

Study area	2001-2020	Period I (2001-2012)	Period II (2013-2017)	Period III (2018-2020)
Northeast China	0.747**	-	-	-
Heilongjiang	0.644**	0.716**	-	-
Jilin	0.689**	-	-	-
Liaoning	-	-	-	-

32 Note: ** significance level at $p < 0.01$; * significance level at $p < 0.05$

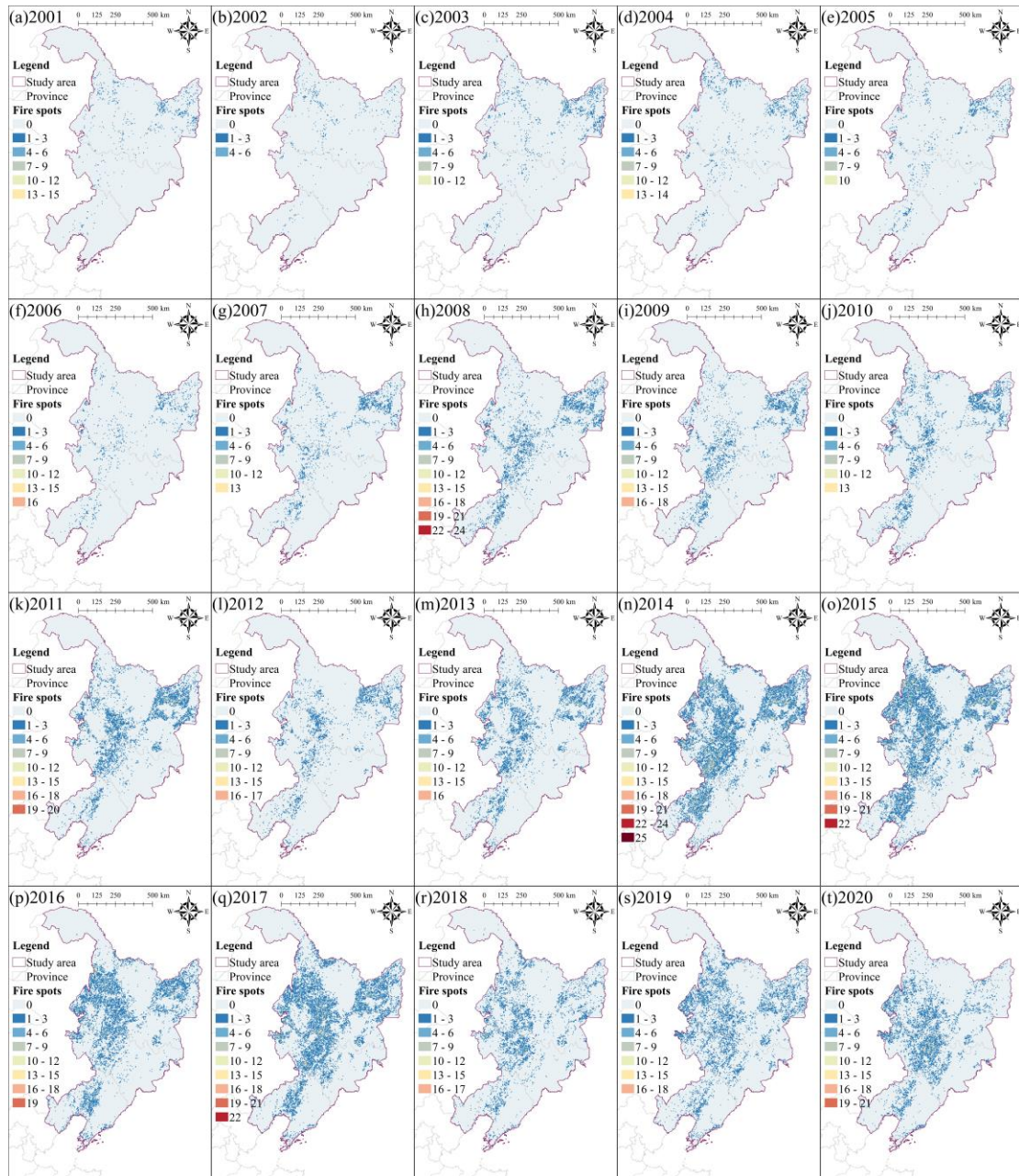
33

34

35

36 **Table S4.** The straw burning bans in Heilongjiang, Jinlin, and Liaoning

Province	Number	Year	Straw burning bans
Heilongjiang	1	2015	Emergency Notice on Further Promoting Straw Burning Banning
	2	2016	Implementation Plan for Heilongjiang Province to Prohibit Burning Straw in the Field to Improve the Quality of Atmospheric Environment
	3		Notice on Further Strengthening the Province's Straw Burning Banning Control Work
	4	2018	Three-year Action Plan for Comprehensive Utilization of Straw in Harbin City, Suihua City, Zhaozhou County and Zhaoyuan County
	5		Implementation Plan for Heilongjiang Province to Comprehensive Utilisation of Straw in 2019
	6	2020	Implementation Plan for Heilongjiang Province to Comprehensive Utilisation of Straw in 2020
Jilin	1	2013	Notice on Prohibiting Open Burning of Crop Straw
	2	2014	Notice on Further Promoting the Banning of Straw Burning in Autumn and Winter
	3	2016	Instructions on Promoting the Comprehensive Utilization of Crop Straws
	4	2017	Decision on the Prohibition of Open Burning and Comprehensive Utilization of Crop Straw
	5	2018	Work Plan for Banning Straw Burning in Autumn and Winter in Jilin Province 2018
	6	2019	Notice on Enhancing Straw Programme Burning and Removal Work
	7	2020	2020 Autumn and Winter Key Areas Straw Burning Control Package Assistance Program
Liaoning	1	2016	Implementation Opinions on Promoting Comprehensive Utilization of Crop Straw and Banning Burning Work (2016-2018)
	2		Liaoning Province 2017-2018 Autumn and Winter Comprehensive Air Pollution Control and Tackling Action Supervision Programme
	3	2018	Liaoning Province Straw Burning Prevention and Control Responsibility Measures
	4	2020	Straw Burning Control Work Programme for Liaoning Province during 2020-2021

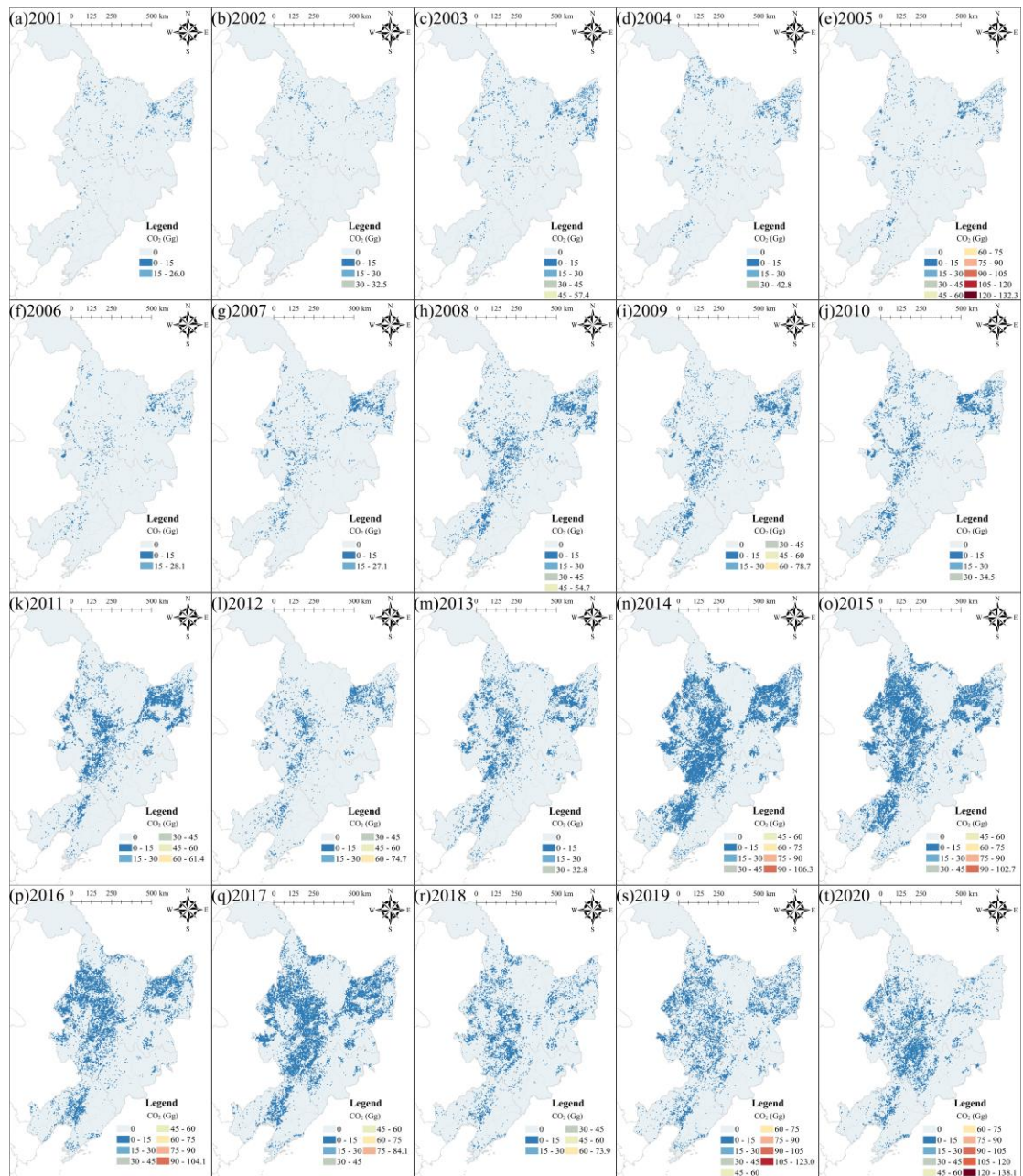


38

39 **Fig. S1** The spatial distribution of annual fire spots from open straw burning in

40 Northeast China from 2001 to 2020

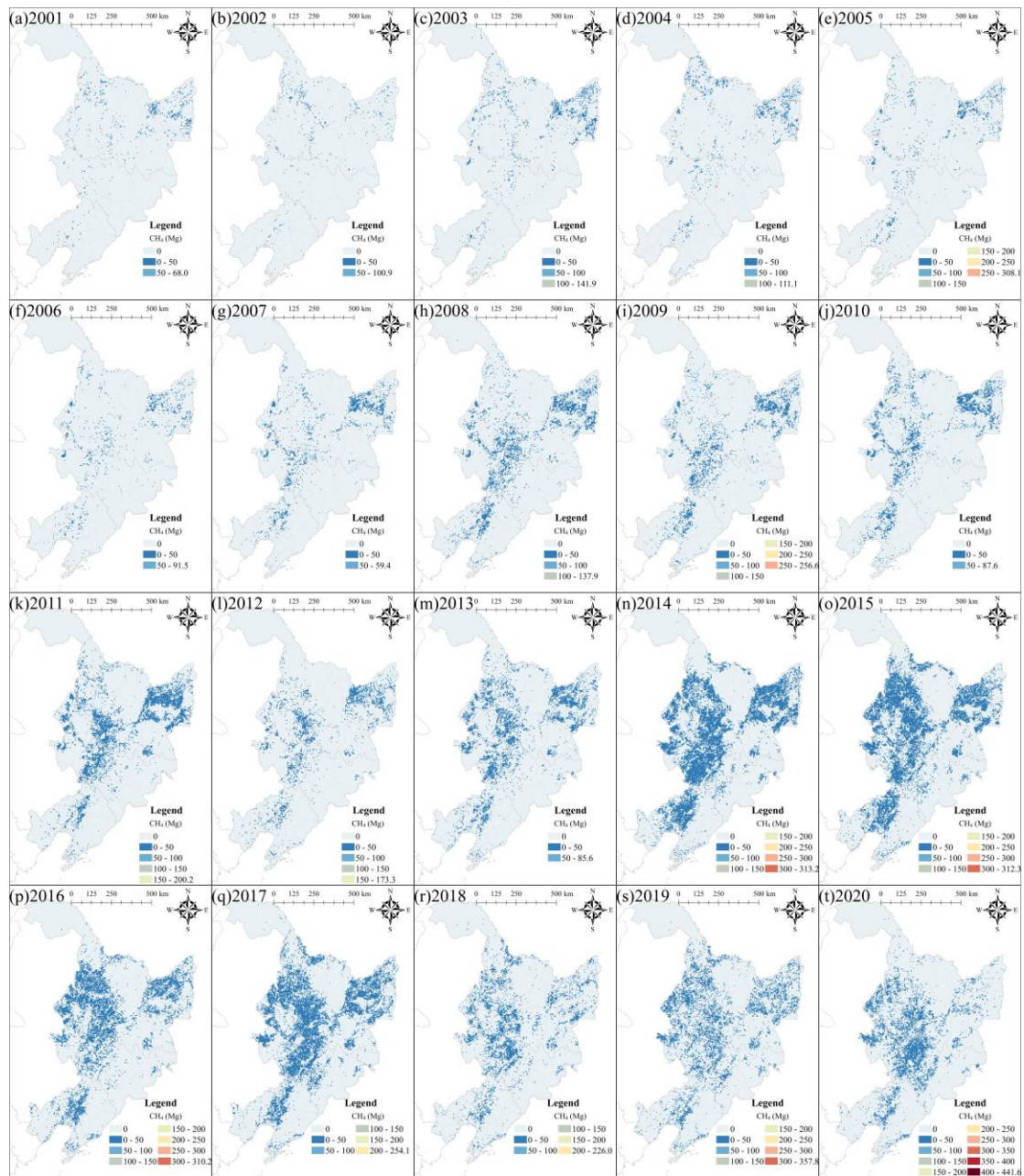
41



42

43 **Fig. S2** The annual CO₂ emission inventory from open straw burning in Northeast

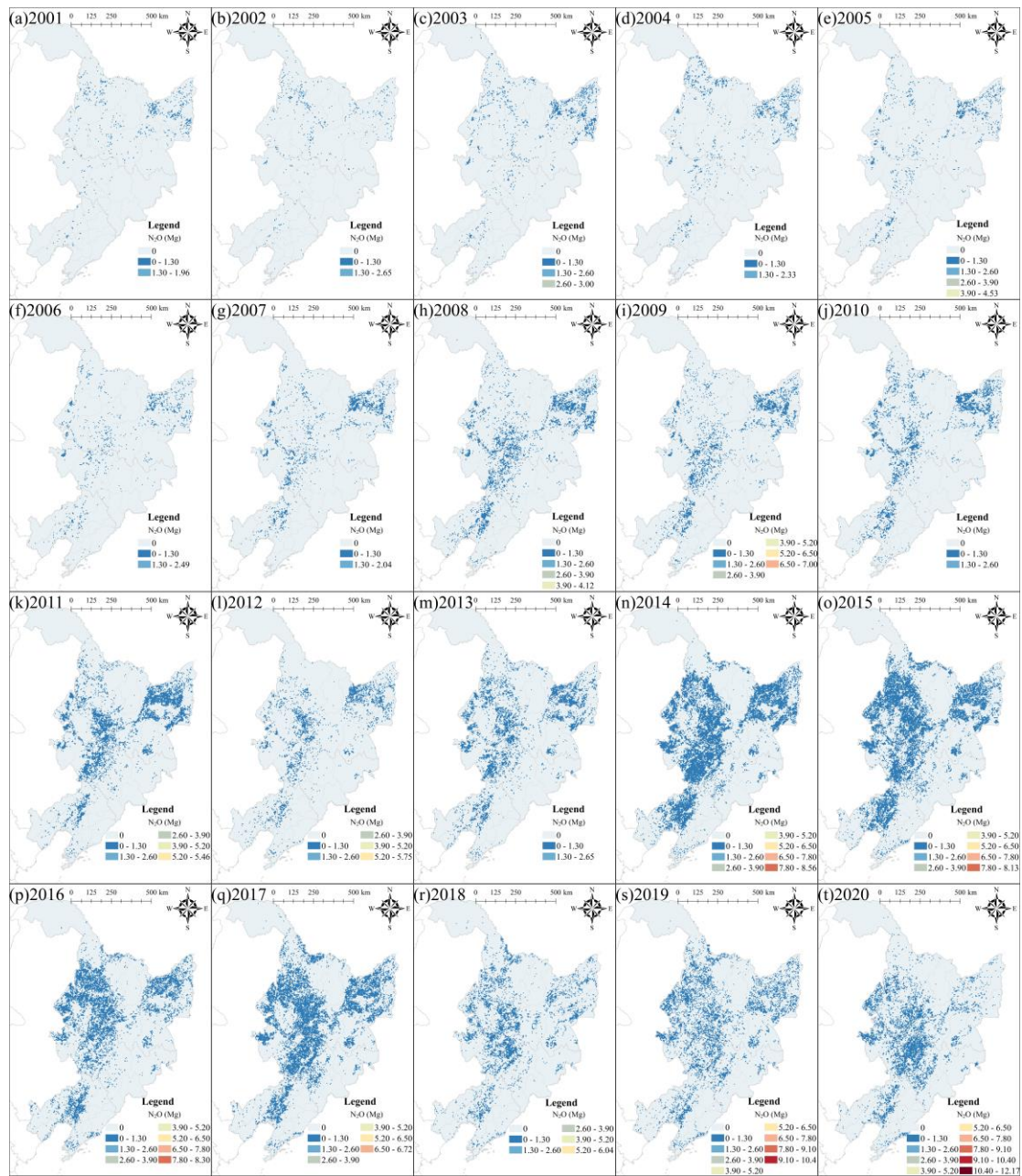
44 China from 2001 to 2020



45

46 **Fig. S3** The annual CH₄ emission inventory from open straw burning in Northeast

47 China from 2001 to 2020



48

49 **Fig. S4** The annual N_2O emission inventory from open straw burning in Northeast

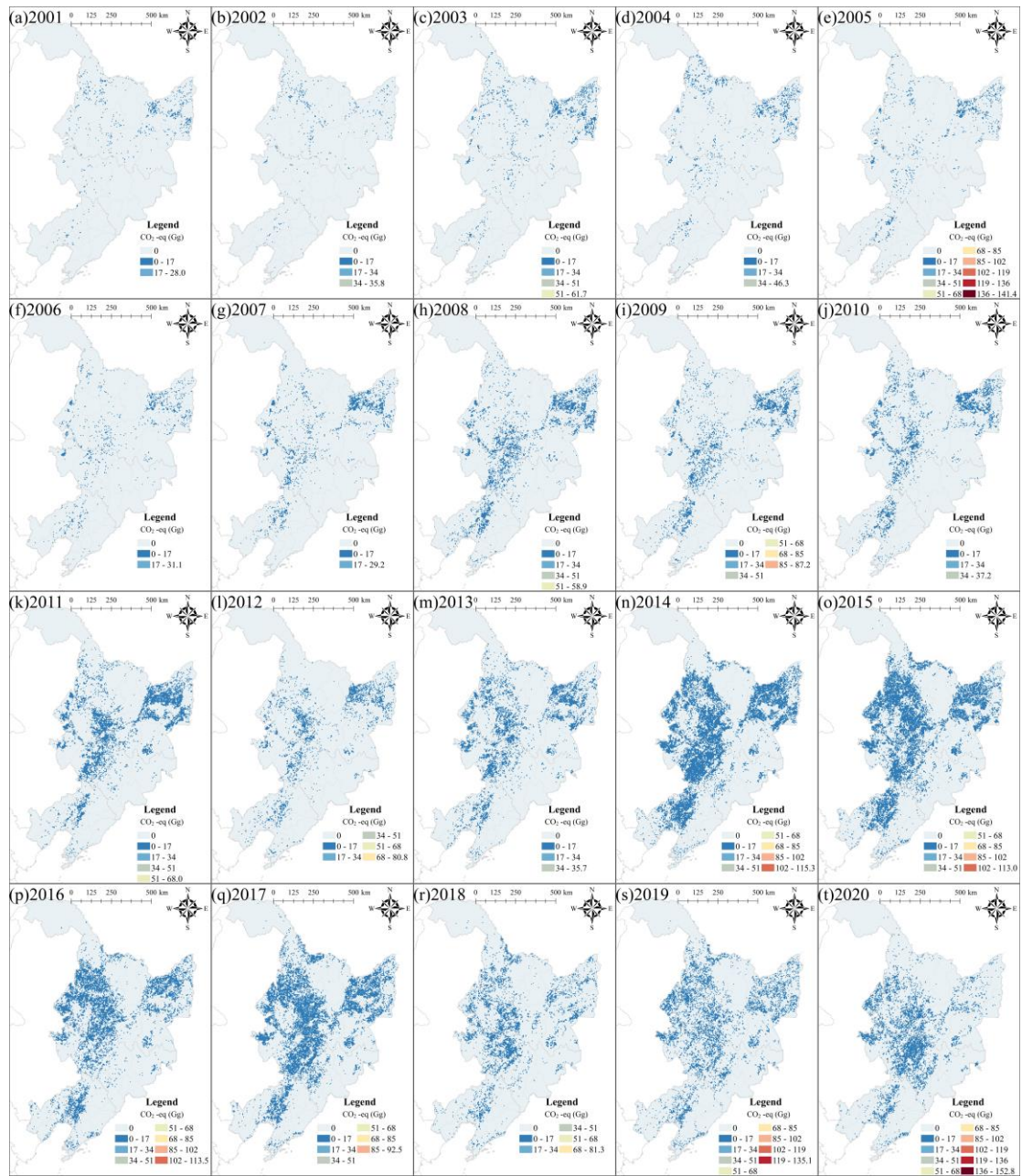
50 China from 2001 to 2020

51

52

53

54



55

56 **Fig. S5** The annual CO₂-eq emission inventory from open straw burning in Northeast

57 China from 2001 to 2020.