



Experimental design for the marine ice sheet and ocean model intercomparison project - phase 2 (MISOMIP2)

Jan De Rydt^{1,*}, Nicolas C. Jourdain^{2,*}, Yoshihiro Nakayama^{3,*}, Mathias van Caspel^{4,*},
Ralph Timmermann^{4,*}, Pierre Mathiot², Xylar S. Asay-Davis⁵, H el ene Seroussi⁶, Pierre Dutrieux⁷,
Ben Galton-Fenzi⁸, David Holland⁹, and Ronja Reese¹

¹Department of Geography and Environmental Sciences, Northumbria University, Newcastle, UK

²Univ. Grenoble Alpes/CNRS/IRD/G-INP, Institut des G eosciences de l'Environnement, Grenoble, France

³Institute of Low Temperature Science, Hokkaido University, Sapporo, Japan

⁴Alfred Wegener Institute, Bremerhaven, Germany

⁵Los Alamos National Laboratory, Los Alamos, US

⁶Thayer School of Engineering, Dartmouth College, Hanover, NH, US

⁷British Antarctic Survey, Cambridge, UK

⁸Australian Antarctic Division, University of Tasmania, Hobart, Australia

⁹Courant Institute of Mathematical Sciences, University of New York, New York, US

*These authors contributed equally to this work.

Correspondence: J. De Rydt (jan.rydt@northumbria.ac.uk) and N. C. Jourdain (nicolas.jourdain@univ-grenoble-alpes.fr)

Abstract. The Marine Ice Sheet and Ocean Model Intercomparison Project - phase 2 (MISOMIP2) is a natural progression of previous and ongoing model intercomparison exercises that have focused on the simulation of ice-sheet and ocean processes in Antarctica. The previous exercises motivate the move towards realistic configurations as well as more diverse model parameters and resolutions. The main objective of MISOMIP2 is to investigate the performance of existing ocean and coupled ice-sheet–ocean models in a range of Antarctic environments, through comparisons to observational data. We will assess the status of ice-sheet–ocean modelling as a community and identify common characteristics of models that are best able to capture observed features. As models are highly tuned based on present-day data, we will also compare their sensitivity to prescribed abrupt atmospheric perturbations leading to either very warm or slightly warmer ocean conditions compared to present-day. The approach of MISOMIP2 is to welcome contributions of models as they are, including global and regional configurations, but we request standardised variables and common grids for the outputs. We target the analysis on two specific regions, the Amundsen Sea and the Weddell Sea, since they describe two different ocean environments and have been relatively well observed compared to other areas of Antarctica. An observational “MIPkit” synthesizing existing ocean and ice sheet observations for a common period is provided to evaluate ocean and ice sheet models in these two regions.



15 1 Introduction

Model intercomparison projects (MIPs) for standalone ice-sheet models with a marine termination have been key to understanding what was needed in ice-sheet models to reproduce fast grounding line migrations similar to those observed in West Antarctica (Pattyn, 2018). In particular, MISMIP (Marine Ice Sheet Model Intercomparison Project; Pattyn et al., 2012) and MISMIP3D (Pattyn et al., 2013), both conducted with idealized glacier geometries, highlighted the need for high (sub-
20 kilometer) model resolution at the grounding line and the inclusion of membrane stresses. Recently, MISMIP+ (Asay-Davis et al., 2016) emphasised the improved agreement in model behaviours across a range of model architectures and the important role of ice-sheet sliding laws for a geometry representative of a highly buttressed ice shelf (Cornford et al., 2020). These MIPs have played a crucial role in the development of credible designs for Antarctic Ice Sheet projection frameworks (Nowicki et al., 2016).

25 The Ice Shelf Ocean Model Intercomparison Project (ISOMIP; Holland et al., 2003; Hunter, 2006) was the first standardised configuration for stand-alone ocean models with a thermodynamically active ice-shelf cavity with fixed geometry (henceforth called ice-shelf–ocean models). However, ISOMIP has mostly been used as a test case for individual modelling groups (e.g., Losch, 2008; Gwyther et al., 2015; Mathiot et al., 2017). Its successor, ISOMIP+ (Asay-Davis et al., 2016), was implemented more as a coordinated intercomparison with a provided calibration method and common parameters. Results highlighted fun-
30 damental differences in simulated melt rates depending on the vertical discretisation and resolution of ocean models (Gwyther et al., 2020). When all the ocean models used the same physical parameters, the relationship between basal melt and the ocean circulation in the cavity was consistent across models, but the relationship did not hold when models were run with their typical parameter values (Asay-Davis et al., in prep.). This illustrates that despite facilitating the interpretation of an intercomparison exercise, the requirement of common set-ups may push the models far from their typical use, making it difficult to generalise
35 the results for realistic configurations. The use of a single ice shelf in ISOMIP+ and the absence of realistic ocean–sea-ice dynamics over the continental shelf also made it difficult to generalise the melt sensitivity to the large variety of ice shelf geometries in the whole Antarctic region (Jourdain et al., 2020; Burgard et al., 2022). Hence, previous MIPs motivate the move towards realistic configurations and more diverse model parameters and resolutions. One such approach was recently adopted by the Realistic Ice-sheet/ocean State Estimates (RISE) project in which the circum-Antarctic response of basal melting was
40 evaluated against satellite-derived melt estimates in ten circum-Antarctic ice-shelf–ocean models (Smith et al. in-prep).

The continued development of ice-shelf–ocean models for Antarctica is a crucial step towards improved forecasts of sea-level rise, and to further our understanding of the complex interactions between the ice sheet and other components of the climate system. However, so far, sea level projections have relied heavily on the use of parameterisations of ocean-induced melt rates in stand-alone ice sheet models. These parameterisations were identified as a major source of uncertainty in the
45 Antarctic Ice Sheet projections from the Ice Sheet Model Intercomparison Project for CMIP6 (ISMIP6; Nowicki et al., 2020; Seroussi et al., 2020; Payne et al., 2021; Seroussi et al., 2023). Since then, comparisons of these parameterisations to ice-shelf–ocean simulations have been used to better calibrate their sensitivity to ocean warming (Burgard et al., 2022; Reese et al., 2022; Jourdain et al., 2022). However, there is currently limited confidence in the validity of such ice-shelf–ocean simulations

for several reasons: 1) important biases remain in the stand-alone model components as well as the coupled system, 2) so far coupled models have been used for simulations with realistic geometries and forcings only in a small number of cases, and 3) no comprehensive comparison between models and with observational data has been carried out. As such, the use of ice-shelf–ocean model output to calibrate melt-parameterisations that inform sea-level projections is questionable. A targeted ice-shelf–ocean MIP with a harmonized comparison of model output to available ocean data, would help identify ocean model similarities and differences, as well as better estimate uncertainties.

55 While melting parameterisations will undoubtedly remain useful due to their low computing cost compared to actual ocean models, they suffer from important biases despite improved calibration and increased complexity (Burgard et al., 2022). Therefore, many groups engaged in the development of coupled ice-sheet–ocean models, i.e., models in which the ice and ocean dynamics evolve together and feed back on each other (Thoma et al., 2015; De Rydt and Gudmundsson, 2016; Seroussi et al., 2017; Timmermann and Goeller, 2017; Goldberg et al., 2018; Favier et al., 2019; Pelle et al., 2021; Zhao et al., 2022; Pel-
60 letier et al., 2022). While this type of coupling is emerging in Earth System Models (Smith et al., 2021; Siahaan et al., 2022; Comeau et al., 2022), there is currently very limited knowledge on the fidelity of simulated interactions. Similarly to the case of standalone ocean models, a targeted MIP for coupled ice-sheet–ocean models would help identify some of these caveats and quantify uncertainties. The first Marine Ice Sheet Ocean Model Intercomparison Project (MISOMIP1; Asay-Davis et al., 2016) was built along the lines of the aforementioned MISMIP+ and ISOMIP+, with a single, idealized ice shelf and no interaction
65 with atmosphere and sea ice. While MISOMIP1 has been useful for generating cohesion within the ocean and ice-sheet modelling communities and for beta-testing individual coupled models (e.g., Favier et al., 2019), progressing towards more diverse and realistic conditions would bring new information on the state of coupled ice-sheet–ocean modelling.

In this paper, we propose a protocol for MISOMIP2, a new coordinated intercomparison project for standalone ocean models representing ice shelf cavities and for coupled ice-sheet–ocean models. While there previously were distinct names for
70 ocean (ISOMIP+) and coupled (MISOMIP1) experiments, we now embed standalone and coupled experiments within a single acronym, MISOMIP2, for the sake of simplicity.

The first objective of MISOMIP2 is to investigate the robustness and biases of ice-shelf–ocean models (ocean models with fixed ice-shelf cavities) and ice-sheet–ocean models (ocean models with dynamically evolving cavities) in a range of Antarctic environments, through comparisons to observational data that capture the range of natural ocean variability. The comparison
75 to observations is not primarily designed to rank individual models, as targeted model tuning and bias compensations may hide poorly represented physical processes. Our aim is rather to assess the status of ice-sheet–ocean modelling as a community and, if possible, to identify common characteristics of models that are best able to capture observed features. For that, we have gathered a set of reprocessed observational products that can be used for MISOMIP2 or for individual model tests and calibrations. The corresponding observational database is referred to as the “MIPkit” in the following. As our objective is to
80 understand differences between complex models, we will generally follow a “come as you are” (CAYA) approach, with no prescription of model domain, resolution, physical parameters and forcing.

Besides hindcast-type reference simulations, MISOMIP2 also includes a small number of perturbation experiments that are designed to deepen our understanding of model responses to a prescribed (large and abrupt) change in atmospheric conditions



and to a prescribed change in cavity geometry. Importantly, we propose idealized perturbations to focus on strong changes over
85 time windows compatible with a range of models of relatively high resolution, and to have model responses that are relatively
easy to interpret. The initial aim of MISOMIP2 is not to build emission-based coupled ice-sheet–ocean projections, which is
the remit of ISMIP (Nowicki et al., 2016, 2020). The proposed model intercomparison will however contribute to improved
future ice-sheet projections due to better constrained melting and freezing parameterisations, and future climate simulations
with interactive ice sheets thanks to a better understanding of the strengths and limitations of the various coupling approaches.

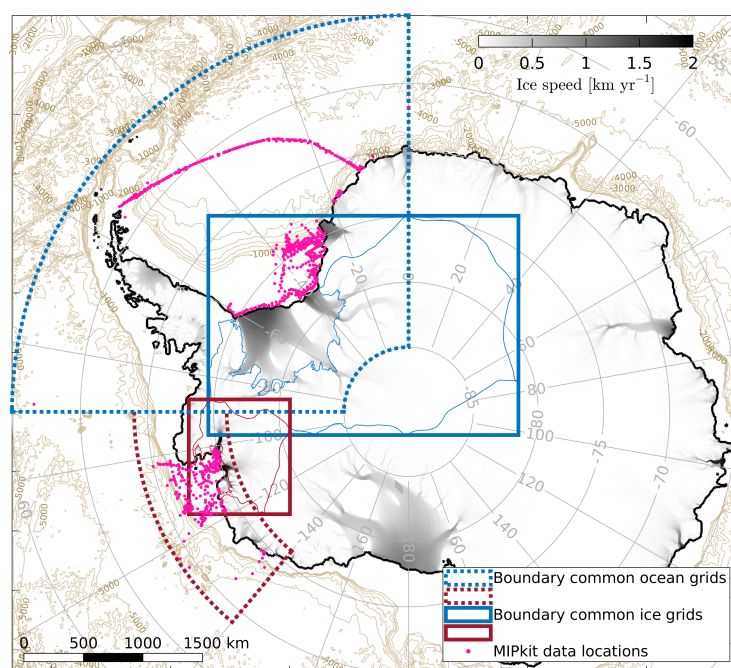


Figure 1. Boundaries of the standard MISOMIP2 grids for the ocean (dashed lines) and ice (solid lines) outputs of the Amundsen Sea (red lines) and Weddell Sea (blue lines) domains. Geographical locations of the CTD and mooring data provided as part of the MIPkit are indicated by the pink dots.

90 There will be two target regions in MISOMIP2: 1) the Amundsen Sea and 2) the Weddell Sea, and associated ice-sheet
drainage basins, as illustrated in Fig. 1. These regions are chosen because they describe two contrasting present-day environ-
ments. Deep water masses in the Amundsen Sea are relatively warm, with high ice-shelf basal melt rates driven by Circumpolar
Deep Water that is found on the continental shelf (e.g., Jacobs et al., 2013; Dutrieux et al., 2014; Jenkins et al., 2018). The
ice-sheet grounding zone has significantly retreated in recent decades (Mouginot et al., 2014), and there has been significant
95 acceleration and mass loss of the grounded ice sheet in this sector (Rignot et al., 2019; Shepherd et al., 2018). In contrast, the



Weddell Sea is relatively cold, with associated low ice-shelf basal melt rates and refreezing beneath some parts of ice shelves due to strong ice-shelf thickness gradients and the presence of High Salinity Shelf Water on the continental shelf (Nicholls et al., 2009, e.g., []). The Filchner-Ronne Ice Shelf and the upstream ice sheet have remained relatively unchanged over the last decades (Rignot et al., 2019), although future atmospheric perturbations may cause Warm Deep Water intrusions onto the continental shelf, and initiate significant grounding line retreat through enhanced basal melt (Timmermann and Hellmer, 2013; Hellmer et al., 2017; Timmermann and Goeller, 2017; Hazel and Stewart, 2020; Naughten et al., 2021). We would consider a good representation of these very distinct environments to be a good indication of model robustness. Moreover, a multi-decadal record of ocean data is available for both regions, with a more comprehensive coverage compared to other parts of the Southern Ocean, which facilitates a more in-depth comparison between model results and observations.

In subsequent sections, we describe the experimental protocol for MISOMIP2, including the motivation and description of individual experiments (section 2), a description of the datasets provided in the MIPkit (section 3), and an overview of the requested model outputs (section 4). To illustrate the experimental design, preliminary results from a range of global and regional ocean models and regional ice-sheet configurations are provided.

2 Experiments

2.1 Overview of the MIP experiments

The MISOMIP2 experiments were designed with two broad objectives in mind. First, to test and intercompare the fidelity of ice-shelf–ocean models and ice-sheet–ocean models over the observational period, and second, to assess the sensitivity of models to a plausible change in the shape of the ice-shelf cavities and to a large perturbation in the atmospheric forcing. An overview of the experiments planned in MISOMIP2 and their time windows are provided in Tab. 1 and Fig. 2, respectively. Further details for each experiment are provided hereafter. In all the following, “A” stands for Amundsen, and “W” for Weddell.

- Ocean-A1p & W1p experiments are designed to compare stand-alone ocean model simulations with static ice shelves and *present-day* atmospheric forcing to a common set of ocean observations that are relevant to Antarctic ice shelves, to analyse multi-model sensitivity to external drivers, and to potentially identify clusters of models with a similar behaviour for specific modelling choices.
- Ocean-A1vw & W1vw experiments are designed to compare the response of simulated melt rates to a transition to *very warm* ocean conditions, in response to a rapid modification of the atmospheric forcing. The model configuration is otherwise identical to the Ocean-A1p and Ocean-W1p experiments. All models will apply a strong atmospheric perturbation representative of an abrupt shift to a warmer climate in the form of a prescribed anomaly to be added to the present-day forcing used in the Ocean-A1p & W1p experiments. For regional models with open ocean boundaries, an additional temperature and salinity anomaly is provided for the boundaries to represent the ocean warming outside the domain. A detailed description of the perturbations can be found in Sect. 2.3.

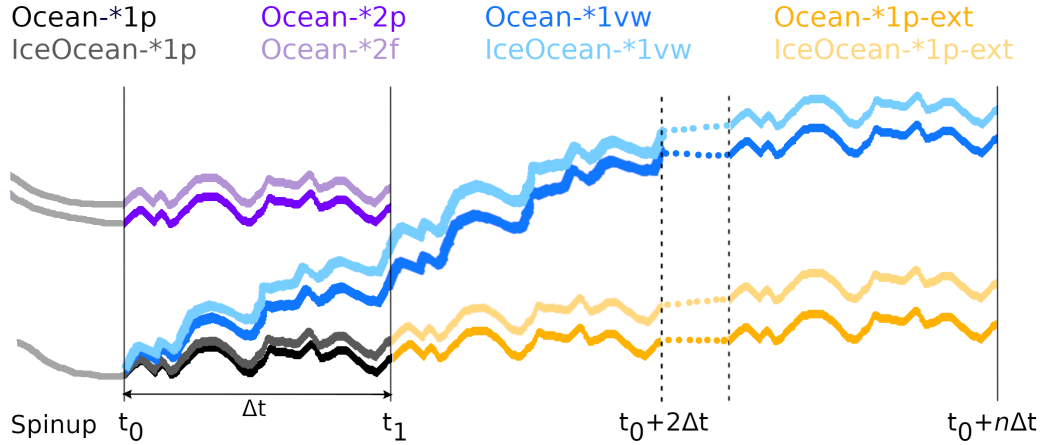


Figure 2. Schematic overview of the MISOMIP2 experiments and their respective time windows. As specified in more detail in Section 2, hindcast experiments (black and grey curves) and geometric perturbation experiments (purple curves) will cover the observational period between $t_0 \leq 2007$ and $t_1 \geq 2018$, with the exact time window decided by individual contributors. The atmospheric perturbation experiments (blue curves) and corresponding reference experiments (orange curves) start at time t_0 and end at time $t_0 + n\Delta t$, where $\Delta t = t_1 - t_0$ and n chosen sufficiently large such that melt rates are equilibrated with the atmospheric perturbation (regional models) or $n\Delta t \leq 100$ years (global models).

Experiment name (* is either A or W)	Ocean only (O) or coupled (C)	Atmospheric forcing	Ice-sheet geometry	Time window
Ocean-*1p	O	historical (CAYA)	present-day (CAYA)	$[t_0, t_1]$, with $t_0 \leq 2007, t_1 \geq 2018$
Ocean-*1vw	O	historical (CAYA) + prescribed anomaly	present-day (CAYA)	$[t_0, t_0 + n\Delta t]$, with $\Delta t = t_1 - t_0$ and $n\Delta t \approx 100$ yrs
Ocean-*1p-ext	O	historical (CAYA)	present-day (CAYA)	$[t_0, t_0 + n\Delta t]$
Ocean-*2p & *2f	O	historical (CAYA)	prescribed present (p) and future (f)	$[t_0, t_1]$
IceOcean-*1p	C	historical (CAYA)	time-evolving	$[t_0, t_1]$
IceOcean-*1vw	C	historical (CAYA) + prescribed anomaly	time-evolving	$[t_0, t_0 + n\Delta t]$
IceOcean-*1p-ext	C	historical (CAYA)	time-evolving	$[t_0, t_0 + n\Delta t]$

Table 1. Overview of the MISOMIP2 experiments, where * is either “A” for the Amundsen domain, or “W” for the Weddell domain. CAYA refers to Come-As-You-Are. Further details are provided in sections 2.1 and 2.2

- Ocean-A1p-ext & W1p-ext experiments are *extensions* of Ocean-A1p & W1p and forced by present-day atmospheric conditions to be used as a control for the perturbation experiments.



- 130 – Ocean-A2p/A2f & W2p/W2f experiments are designed to compare the response of simulated melt rates in stand-alone ocean models to an imposed modification of the ice-shelf geometry. Two distinct geometries for the Amundsen Sea and Filchner-Ronne cavities are provided: one that represents the *present-day* state of the ice sheet (Ocean-A2p and Ocean-W2p experiments), and one hypothetical *future* state (Ocean-A2f and Ocean-W2f experiments). The atmospheric forcing remains unchanged between these experiments. The difference between Ocean-A2p/W2p and Ocean-A1p/W1p experiments is that in the former, the present-day geometry of the ice shelves is prescribed and provided as part of the MIPkit (see section 3.3), whereas in the latter the user is free to choose a present-day ice-sheet geometry as part of the CAYA approach.
- 135
- IceOcean-A1p & W1p experiments are similar to Ocean-A1p & W1p focusing on *present-day* conditions, but with coupled ice-sheet–ocean models (including “intermediate-complexity coupling” through parameterisations; e.g., Kreuzer et al., 2021). Here we aim to compare the simulated ice and ocean evolution to recent observations. We will also attempt to estimate the bias reduction (if any) that such coupled models attain compared to standalone ocean models.
- 140
- IceOcean-A1vw & W1vw experiments are designed to compare the response of the coupled system to the same idealised *very warm* perturbation as for Ocean-A1vw & W1vw.
- IceOcean-A1p-ext & W1p-ext experiments are *extensions* of IceOcean-A1p & W1p over several present-day cycles (in a similar way as in the OMIP protocol Griffies et al., 2016), to be used as control for the perturbation experiments. This is used to account for possible drifts in the simulation.
- 145

A more detailed description of each experiment, including the aims, type of models, time windows and forcing, are provided in subsequent sections.

2.2 Ocean-A1p & W1p experiments

Aim:

150 These experiments will be used to compare multiple ocean simulations to a common set of observations, over the continental shelf and within the ice-shelf cavities. We primarily want to assess the mean state and interannual variability of ocean conditions and simulated sub-ice shelf melt. These experiments will also be used to identify clusters of similar model responses to various modelling choices (e.g., horizontal resolution, vertical grid, atmospheric forcing), and to assess the multi-model response to external drivers (e.g., wind stress variations and surface freshwater fluxes, possibly in relation to large-scale modes of climate variability).

155

Type of models:

Any type of ocean model can be used as long as the original domain includes the main ice shelf cavities, i.e., we are interested in both global and regional configurations. Model contributions to “A” experiments should include at least Cosgrove, Pine Island, Thwaites, Crosson and Dotson ice shelf cavities, and the continental shelf break northward of these cavities ($\sim 71^\circ\text{S}$);



160 “W” experiments should include at least Filchner and Ronne ice shelf cavities, and the continental shelf break northward of these cavities ($\sim 72^{\circ}\text{S}$, 30°W).

Time window:

All the ocean simulations must be provided after spin up (we let the participants decide on the appropriate duration). All simulations must cover at least 2007-2018, forced by the corresponding atmospheric conditions during that time (i.e., forcing should not be repeated). The proposed time window includes a reasonable amount of observations for both the Amundsen and the Weddell sectors. For the Amundsen Sea, this includes years when a shallow thermocline has been observed (e.g., 2009), and a period when a deep thermocline has been observed (2012–2014). We encourage participants to submit simulations over longer periods if possible, ideally 1979–2022, which will be used for model intercomparison and identification of common model biases and variability.

170 *Input/Forcing:*

Ice-shelf–ocean interactions must be thermodynamically interactive, i.e., ice-shelf basal melt rates are calculated from ocean properties and the corresponding melt water effect is seen by the ocean. For all other modelling choices, we follow a come-as-you-are (CAYA) approach, and we do not define specific requirements for domain size, resolution, bathymetry and ice draft data, atmospheric reanalysis, sea-ice and ocean model parameters, representation of icebergs if any, data and method to prescribe lateral boundaries, or representation of tidal effects if any. In particular, participants can choose to prescribe sea-ice fluxes from observations, rather than include a dynamic sea ice component in their model. We may propose more constrained simulations with a common set of boundary conditions in future iterations of MISOMIP, but this would come at a later stage as the experimental design would benefit from the analysis of the currently-proposed MISOMIP2 experiments.

2.3 Ocean-A1vw & W1vw experiments

180 *Aim:*

These experiments will be used to compare the melt response to a transition to very warm (“vw”) oceanic conditions resulting from a strong and abrupt perturbation of the atmospheric forcing. As we do not expect all ocean models to reach the same warming levels over the duration of the experiment, the melt response will be considered as a function of regional and/or cavity warming. This will provide a valuable database for evaluating and tuning melt parameterisations used in ice sheet models. We will also identify clusters of ocean responses and attempt to link them to the representation of important physical phenomena (e.g., sea ice production, currents at the shelf break). An example of Ocean-A1vw & W1vw simulation is shown in Fig. 3.

Type of models:

The requirements are similar to Ocean-A1p & W1p. It should be noted that models prescribing energy fluxes at the surface of the ocean rather than calculating fluxes based on a sea-ice model and surface air properties will not be able to run these perturbation experiments.

Time window:

Simulations will start from the same initial state and timestamp as the Ocean-A1p & W1p experiments, as illustrated in Fig. 2 and Fig. 3. Experiments will cover the same time window as the Ocean-A1p & W1p simulations, $[t_0, t_1]$, but with a



possible extension beyond t_1 to allow ice-shelf melt rates to reach a new quasi steady state. The extended simulations will be
195 forced by cyclically repeating perturbed atmospheric conditions used for the $[t_0, t_1]$ time period, as described in detail below.
For example, if the Ocean-A1p & W1p simulations cover the 2000–2019 time window (after a spin up prior to 2000), then
Ocean-A1vw & W1vw simulations should start in 2000 and be forced by 20-year cycles of perturbed 2000–2019 conditions.
The number of cycles is to be decided by the participants, and should be chosen such that melt rates reach a quasi steady state
200 not exceed 100 years, even if a steady state is not reached, as slow change of the global thermohaline circulation is not the
focus of MISOMIP2.

Note that the time variable will continue forward over the different cycles, e.g., it will indicate 2020–2039 in an extension
over a second cycle of the 2000–2019 present-day period.

Atmospheric Input/Forcing:

205 We provide a perturbation that participants are requested to add to their atmospheric forcing used in their Ocean-A1p & W1p
experiments. This perturbation was fully described and tested in Mathiot and Jourdain (2023), and key details are provided
below. In case of regional configurations, an additional perturbation is to be applied to the ocean and sea-ice lateral boundary
conditions, as described in the *Lateral Input/Forcing* paragraph below.

The prescribed atmospheric perturbation consists of a 12-month record (i.e., one entry for each month), with effective
210 timestamps at the middle of each month. The time series is to be added to each year of the Ocean-A1p & W1p forcing, using
linear interpolation between the middle of two consecutive months to recreate a continuous perturbation.

The perturbation was extracted from monthly outputs of the IPSL-CM6A-LR projections (Boucher et al., 2020; Lurton et al.,
2020) under the SSP5-8.5 emission scenario (Meinshausen et al., 2020). Monthly anomalies from 1975-2014 to 2260-2299
were calculated for all the fields used to calculate the ocean and sea-ice surface boundary conditions (2-m air temperature and
215 specific humidity, 10-m zonal and meridional winds, surface pressure, downward shortwave and longwave radiative fluxes,
total precipitation, snowfall). To limit computing cost and focus on regional changes while aiming for a strong change, the
perturbation is applied abruptly from the same initial state as Ocean-A1p & W1p, i.e., after a spin-up under present-day
forcing (Figure 2).

Lateral Input/Forcing:

220 In addition to the perturbation in atmospheric forcing, regional ocean configurations are requested to apply a prescribed
perturbation to the lateral boundary conditions. Because of the abrupt change in atmospheric conditions, the proposed ocean
simulations will be different from the actual IPSL-CM6A-LR ocean projections, as they won't represent slow warming of the
deep ocean from 2015 to 2300. For this reason, the perturbation of the lateral boundary conditions for regional configurations is
not taken from the IPSL-CM6A-LR projections, as this would make it difficult to compare global ocean models with no lateral
225 boundary conditions to regional domains. Taking zero perturbation at the lateral boundaries would raise a similar inconsistency
between global and regional simulations, as (far-field) changes in the global ocean are not propagated into the regional domain.
We therefore request that regional configurations apply ocean and sea ice anomalies at their boundaries taken from a global
NEMO simulation (Mathiot and Jourdain, 2023) under the proposed atmospheric perturbation.



We provide the gridded average of the last 30 years of the present-day and perturbed state obtained by Mathiot and Jourdain
230 (2023). They are provided as the mean monthly values of ocean (temperature, salinity, velocities and sea surface height) and
sea ice (fraction, ice and snow thickness, velocity) properties, and we let individual groups choose their method to calculate and
prescribe the anomaly at the lateral boundaries as we consider it as part of the uncertainty. For example, Jourdain et al. (2022)
prescribed anomalies in the geographical space while Naughten et al. (in revision) prescribed anomalies in the temperature–
salinity space. Although not mandatory, we encourage groups to apply anomalies in ocean velocities, e.g., through conservative
235 interpolation of the provided model outputs or by re-calculating geostrophic velocities from changes in temperature and salinity
(from vertically-integrated density gradients). Deriving the anomaly in barotropic velocity from the provided anomaly in
barotropic stream function might also be useful for the various grids used in MISOMIP2.

Similar to the atmospheric perturbation, the present-day and perturbed ocean state of NEMO were calculated separately for
each calendar month, i.e., they include a seasonal cycle. The corresponding anomalies should therefore be linearly interpolated
240 between the middle of two consecutive months to recreate a continuous perturbation.

We acknowledge that the NEMO anomaly cannot be considered as the true response, but this has been identified as the most
consistent approach, and the variations across models will anyway be interpreted as a function of regional ocean warming in
individual models.

2.4 Ocean-A1p-ext & W1p-ext experiments

245 Because of possible model drifts in the absence of a perturbation, in particular for global models, we need a control simulation
that is similar to the perturbed experiments but with zero anomaly in the forcing. All the sensitivity analyses will be undertaken
with respect to this control simulation.

The Ocean-A1p-ext & W1p-ext experiments represent extensions (“ext”) of the Ocean-A1p & W1p experiments, obtained
by cycling the forcing used in the latter. In the case where only one cycle of present-day conditions is used in Ocean-A1vw
and W1vw experiments (i.e., $n = 0$ in Fig. 2 and Tab. 1), no extension is required. In other cases, the extension will start
250 immediately after Ocean-A1p & W1p, as shown in Fig. 2. Note that as for the Ocean-A1vw & Ocean-W1vw experiments, the
time variable will continue forward for the time cycles, e.g., it will indicate 2015–2050 in an extension over a second cycle of
the 1979–2014 present-day period.

2.5 Ocean-A2p, A2f, W2p & W2f experiments

255 *Aim:*

These experiments will be used to compare the basal melt response to an imposed change in the geometry of the Amundsen
and Weddell Seas ice-shelf cavities. Simulations are carried out with stand-alone ice-shelf–ocean models for two different ice-
shelf cavity shapes: one present-day geometry (experiments A2p and W2p) and one hypothetical future geometry (experiments
W2f and W2f). Further details about the geometries are provided below. The aim is to identify and compare the modelled
260 feedbacks between changes in cavity geometry, ocean circulation and basal melt rates at early stages of grounding line retreat,
as explored, e.g., by Holland et al. (2023) and De Rydt and Naughten (2023).

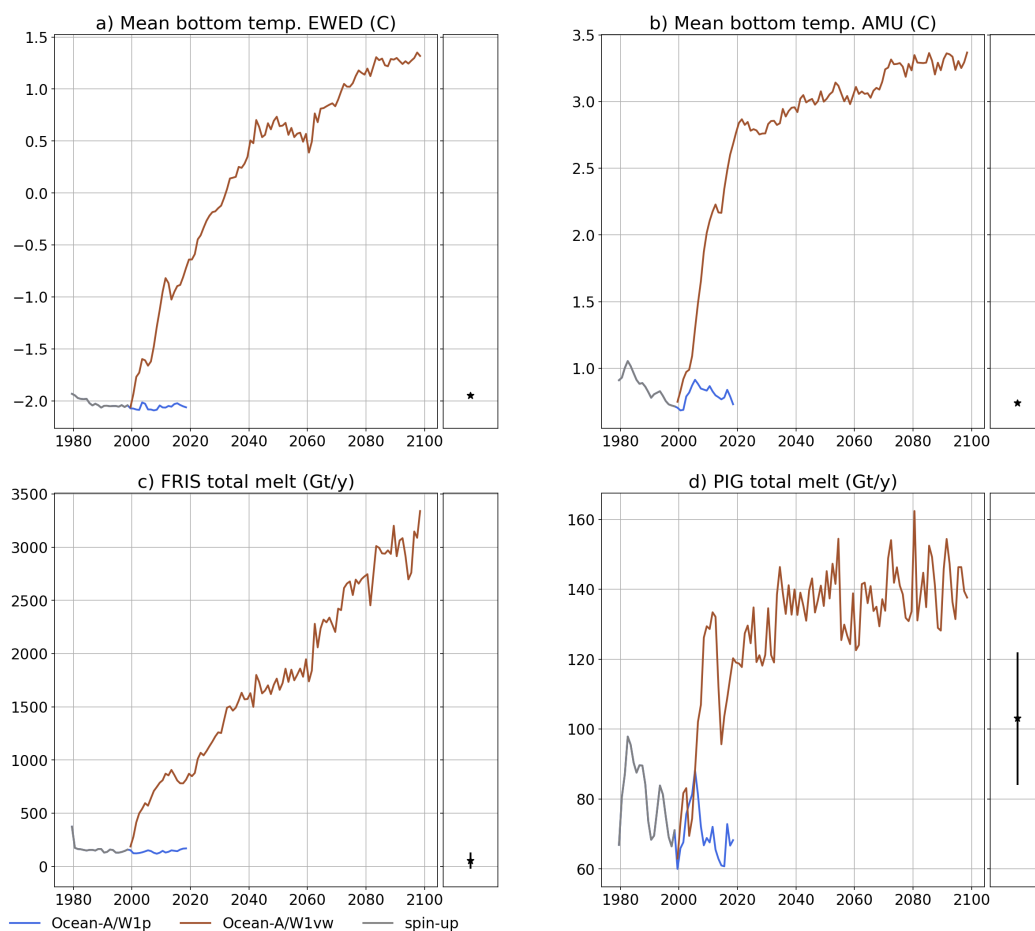


Figure 3. Example of results obtained by Mathiot and Jourdain (2023) in the Ocean-A1p & W1p and Ocean-A1vw & W1vw experiments. Present-day A1p/W1p is in blue, and A1vw/W1vw are in brown. Top panels show the bottom temperature on the (a) East Weddell (EWED: 78.63-76.90°S; 45.65-32.25°W) and (b) Amundsen Sea (AMU: 75.80-71.66°S; 109.64-102.23°W) continental shelf. Lower panels show total melt integrated beneath (c) Filchner-Ronne and (d) Pine Island ice shelves (FRIS and PIG, respectively). Black stars on the right are the observational estimates from World Ocean Atlas 2018 (Locarnini et al., 2019) for the bottom temperature and from Paolo et al. (2023a) for the ice shelf melt. Here the perturbation experiment starts in 2000, and the anomaly is put added to the 2000-2018 atmospheric forcing, then on top of repeated cycles of the 1979-2018 period conditions.



Type of models:

The model requirements are identical to those for the Ocean-A1p & W1p experiments. Models need to be able to implement the prescribed ice-shelf geometries.

265 *Time Window:*

Experiments with present-day and future cavity geometries both cover the same time window as Ocean-A1p & W1p, following a spin-up period with the imposed ice-shelf geometry, as shown in Figure 2. Present-day and future geometries each have their own spin-up.

Input/Forcing:

270 The forcing is the same as for Ocean-A1p & W1p, i.e., the CAYA approach, except that a common bathymetry as well as present-day (A2p and W2p) and future (A2f and W2f) ice-shelf draft are imposed in the area from Dotson to Cosgrove (A) or in the region covered by the Filchner Ronne Ice Shelf (W).

For the A2p and W2p experiments, participants are asked to use the Bedmachine-Antarctica-v3 dataset (Morlighem, 2022) for the bathymetry and present-day ice draft. For some groups, this geometry might be very similar to the geometry in their
275 Ocean-*1p experiments, for example when an earlier version of the Bedmachine dataset was used. For consistency, we ask participants to only provide results for the A2p and W2p experiments based on the exact Bedmachine-Antarctica-v3 topography.

For the A2f and W2f experiments, participants are asked to use the same bathymetry from Bedmachine-Antarctica-v3, but a modified ice-shelf draft. The latter is provided as part of the MIPkit, in the same format as Bedmachine-Antarctica-v3. The original Bedmachine-v3 values were left unchanged outside of the Amundsen and Weddell Seas regions, with a linear transition
280 to the modified geometry over a 10 km halo. The future ice draft in the A2f experiment was produced with the coupled ice-ocean model Úa-MITgcm, starting from a present-day ice-sheet geometry and forced by constant, shallow thermocline conditions on the Amundsen continental shelf (De Rydt and Naughten, 2023) for 200 years. The difference in ice thickness between the A2p and A2f geometries is shown in figure 4a. For the W2f experiment, the future ice draft is taken from an unpublished 300-year simulation with the coupled ice-ocean model Úa-MITgcm. The model configuration is identical to the abrupt-4xCO2
285 experiment described in (Naughten et al., 2021), but extended from 150 to 300 years based on a new timeseries of atmospheric and ocean boundary conditions from the UKESM-1-0-LL CMIP6 ensemble. The difference in ice thickness between the W2p and W2f experiment is shown in figure 4. Global or circum-Antarctic models can run the A2 and W2 experiments in a single simulation.

2.6 IceOcean-A1p & W1p experiments

290 *Aim:*

The objectives of the IceOcean-A1p and W1p experiments are analogous to MISOMIP1, but with a broader focus on model evaluation rather than verification of initial coupling developments. We invite contributions from coupled ice-sheet-ocean models to assess their ability to hindcast observed changes in ice volume, ice dynamics and grounding line location, as well as ice-shelf melting and ocean changes. As with Ocean-A1p & W1p, the MISOMIP2 protocol advocates a CAYA approach to
295 these experiments.

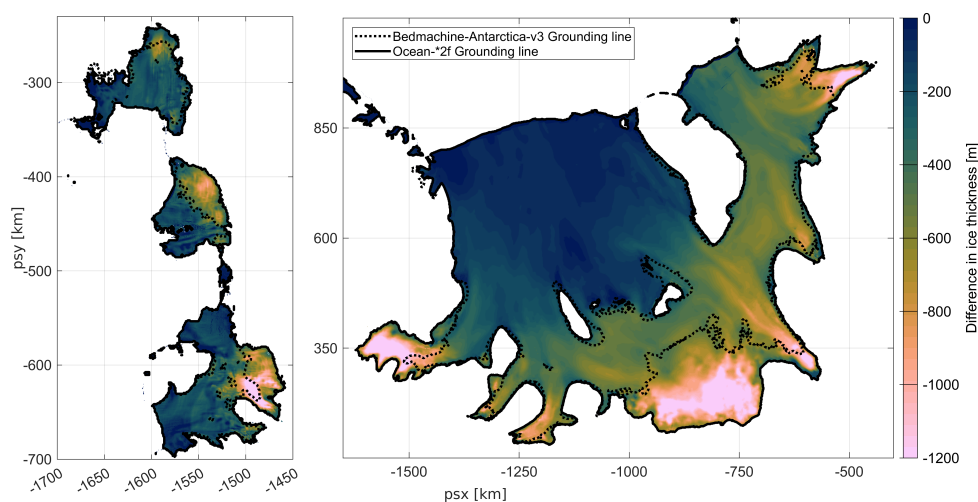


Figure 4. Difference in ice thickness between (a) the A2p and A2f experiments, and (b) the W2p and W2f experiments. The geometry for the A2p and W2p experiments is taken from BedMachine Antarctica v3, the geometry for the A2f and W2f experiments is taken from Úa-MITgcm simulations, as described in the main text. The dotted and solid black lines correspond to the grounding lines for present-day (A2p and W2p) and future (A2f and W2f) geometries, respectively.

The main focus of this exercise will be on the Amundsen Sea region, which has seen substantial changes over the 1990s-2020 time period, with a strong negative mass balance and a significant acceleration of mass loss. The Weddell Sea sector has remained relatively unchanged and is assumed to be close to balance, but models need to be able to demonstrate this too, as capturing steady conditions can be challenging for some model set-ups (Comeau et al., 2022). Model outputs for these
300 contrasting cases will be compared between different models, and to available oceanographic and glaciological observations.

Type of models:

The experiments should be performed by coupled ice-sheet–ocean models, i.e., models in which the ocean state evolves as a result of ice shelf melt and the evolution of ice shelf thickness and ice-sheet grounding lines. This includes the option of using coarse ocean models coupled to an ice-sheet model through a parameterisation with no explicit representation of the ocean
305 circulation in ice shelf cavities (e.g., Kreuzer et al., 2021).

Any type of ice-sheet/glacier model can be used here, from pan-Antarctic to smaller regional domains, ideally including the following drainage basins:

- For the Amundsen Sea: Pine Island, Thwaites, Smith, Pope, Kohler Glaciers.
 - For the Weddell Sea: Evans, Carlson, Rutford, Institute, Moller, Foundation, Support Force, Recovery, Slessor and Bailey Ice Streams.
- 310



Additional levels of complexity in the coupling procedure involving, e.g., the evolution of the ice shelf calving front (Asay-Davis et al., 2016), the representation of iceberg drift (Smith et al., 2021), or subglacial freshwater discharge (Nakayama et al., 2021), are welcome but not required.

Time window:

315 Models will ideally simulate ocean and ice dynamics over the past three decades (1990s-2020). If not possible, simulations should start in the mid 2000s at the latest. We welcome outputs starting earlier, e.g., from 1979, for models able to represent this period. However limited observations exists in the 1980s, so results from this time period will be use almost exclusively for model intercomparison.

Input/Forcing:

320 Participants are encouraged to follow the CAYA approach, in particular with respect to the surface and lateral boundary conditions, with the loose constraint that the initial ice-sheet state should be as representative as possible of the geometry and dynamics observed a few decades ago. This can be obtained from a formal inversion using observations, from a calibrated or selected spin-up phase, or a combination of both. For example, for an initial configuration with nominal timestamp in the early 2000s, participants can use the Bedmachine bathymetry, the ICESat corrected ERS-1 DEM with a nominal timestamp
325 of January 2004 (Bamber et al., 2009), and concurrent MeaSURES surface velocity data (Mouginot et al., 2017b) to constrain their inversion. For an initial configuration in the mid to late 2000s, we recommend the use of recent topography products such as Bedmachine-Antarctica-v3 (Morlighem, 2022), and one of many suitable ice velocity products.

2.7 IceOcean-A1vw & W1vw experiments

These experiments undergo the same ocean perturbation and are run for the same duration as the Ocean-A1vw & W1vw
330 experiments. The ice-sheet surface mass balance and other potential surface conditions (e.g., atmospheric temperature above the ice sheet) remain unchanged compared to IceOcean-A1p & W1p. The requested outputs are the same as IceOcean-A1p & W1p with a continuous time variable over several cycles of the present-day period.

2.8 IceOcean-A1p-ext & W1p-ext experiments

This is an extension of IceOcean-A1p & W1p over several present-day cycles, and therefore with repeated conditions similar
335 to present, to be used as control for the IceOcean-A1vw and W1vw experiments.

3 MIPkit

For both the Amundsen and Weddell sectors, the initial version of the MIPkit consists of ocean and ice data that are formatted to be directly comparable to the model outputs (described in the next section), as well as the input files needed for coordinated perturbation experiments. In summary:



- 340 – Instantaneous ocean temperature (T) and salinity (S) sampled on horizontal depth levels at 100, 200, 300, 400, 500, 600, 700, 800, 900, 1000, and 1500 meter, from available CTDs in the intercomparison domain. These observations will be used for the evaluation of large-scale hydrographic structures.
- Instantaneous ocean T,S from CTDs on a few chosen vertical sections at higher vertical resolution, which will be used for finer evaluation of the thermocline and pycnocline evolution across the continental shelf.
- 345 – Monthly-mean T,S at a few mooring sites providing a longer observational window (seasonal and interannual).
- Annual ice surface velocities and surface elevation changes from available earth observation products will be used for the evaluation of the present-day state of the ice sheet and its dynamical evolution over the observational period.
- Perturbed atmospheric forcing (“vw” experiments) and ice-sheet perturbed geometry (A2/W2 experiments).

Importantly, the provided CTD measurements are representative of summer conditions, so model outputs will need to be considered in summer as well for evaluation.

We may evaluate the simulated ice-shelf basal melt rates based on several types of data, including autonomous phase-sensitive radio-echo sounder (ApRES), which will be facilitated by the NECKLACE project (<https://necklaceproject.com>), estimates from remote sensing and regional climate models (Rignot et al., 2013; Moholdt et al., 2014; Shean et al., 2019; Adusumilli et al., 2020; Paolo et al., 2023a), and estimates from CTD measurements (Jacobs et al., 2011; Dutrieux et al., 2014; Jenkins et al., 2018). However, there is no consensus on the reliability of these estimates, in particular to assess the interannual variability, so the use of these data in MISOMIP2 will be discussed during the results analysis. If relevant, we may simply regrid existing products to the MISOMIP2 common grids.

The different parts of the MIPkit are gathered in the MISOMIP2 community on Zenodo: <https://zenodo.org/communities/misomip2>.

360 3.1 MIPkit–A (Amundsen)

MIPkit–A contains both ice-sheet and ocean data. For the ice-sheet, annual maps of ice surface velocity and surface elevation change are provided for the time periods 2000-2019 and 1992-2019 respectively. The datasets were compiled from available Earth observation data, and linearly interpolated onto the MISOMIP2 common grid (Table 4). For the surface velocities, a weighted average of data from the MeaSURES project (Rignot et al., 2014; Mouginit et al., 2017a) and MeaSURES ITS_LIVE project (Gardner et al., 2022) is provided, with weights corresponding to the inverse square error of the original datasets. For the surface elevation changes, a weighted average of data from CPOM data (Otosaka et al., 2023; Bevan et al., 2023) and MeaSURES ITS_LIVE data (Nilsson et al., 2023) for the grounded ice and MeaSURES ITS_LIVE data (Paolo et al., 2023a, b) for floating ice is provided. Both data sets include propagated errors and a mask indicating the original data sources for each grid point.

370 The ocean data consists of hydrographic properties along horizontal and vertical sections. The hydrographic properties provided on horizontal sections at 15 depths (every 100 m) come from the CTD measurements obtained during cruises of the



following icebreaker research vessels Nathaniel B. Palmer (United States Antarctic Program), James C. Ross (British Antarctic Survey and Natural Environment Research Council), Araon (Korea Polar Research Institute), Oden (Swedish Polar Research), and Polarstern (Alfred Wegener Institute, Germany). Here we have gathered data for the first months of 1994 (Jacobs, 1994), 375 2000 (Jacobs, 2000), 2007 (Jacobs, 2007), 2009 (Jacobs, 2009), 2010 (Swedish Polar Research Secretariat, 2010; Gohl, 2015), 2012 (Kim et al., 2012), 2014 (Heywood, 2014; Ha et al., 2014), 2016 (Kim et al., 2016), 2017 (Gohl, 2017), 2018 (Kim et al., 2018), 2019 (Larter et al., 2019) and 2020 (Wellner, 2020).

These data have been used in a number of scientific studies, from the discovery of intrusions of warm deep water towards peripheral Antarctic ice shelves (Jacobs et al., 1996) to the description of the interannual variability of ocean properties on 380 the continental shelf (e.g., Jacobs et al., 2011; Nakayama et al., 2013; Dutrieux et al., 2014; Heywood et al., 2016; Kim et al., 2016; Webber et al., 2017; Jenkins et al., 2018). In front of the Pine Island and Dotson ice shelves, the thermocline rose in the mid 2000s and remained high from 2006 to 2011, associated with an increased heat content over the continental shelf. The thermocline was back to a relatively deep position from 2012 to 2017 (Naughten et al., 2022).

The first vertical section where we provide hydrographic data in the Amundsen Sea starts across the continental shelf break 385 and follows the Eastern Pine Island Trough southward until Pine Island Ice Shelf. This section was monitored by the following cruises: N.B. Palmer in January 2009, Polarstern in March 2010 and Araon in February-March 2012 (Jacobs et al., 2011; Gohl, 2015; Dutrieux et al., 2014). The second vertical section starts across the continental shelf break and follows the Dotson-Getz Trough southward until the Dotson Ice Shelf. It was monitored by the aforementioned Araon expeditions in 2010–2011 and early 2012 (Kim et al., 2017).

390 We will also conduct model-data comparisons for multi-year mooring observations. The first mooring site is located near the northern part of the Pine Island ice shelf front (102.07°W, 74.87°S) and captures the thermocline variability from 2012 to 2018 (“iSTAR-8” in the NERC iSTAR program, and “pig-n” in the NERC Ocean Forcing Ice Change Program). The second mooring site is located near the southern part of the Pine Island ice shelf front (102.15°W, 75.05°S), was monitored between 2009 and 2016, then in 2019–2020 through the following moorings: “BSR-5” (Buoy Supported Riser, Jacobs, 2009), “iSTAR-9” (NERC 395 iSTAR Program), and “pig-s” (NERC Ocean Forcing Ice Change Program). This second site experienced a strong deepening of the thermocline in 2012–2013 (Webber et al., 2017), then a more moderate deepening in 2016. These two mooring sites are located only 20 km from each other, show distinct mean thermocline depth and more consistent variability (Joughin et al., 2021).

The third mooring observation (“trough-e” in the NERC Ocean Forcing Ice Change Program) used in MISOMIP2 is at 400 the eastern Pine Island trough (102.55°W, 71.33°S). The eastern trough is considered to be the entrance of mCDW reaching the Pine Island Ice Shelf (Jacobs et al., 2011; Nakayama et al., 2013; Webber et al., 2017) but only two years of mooring observation was conducted from 2014–2015 due to important sea ice cover.

The fourth mooring site used in MISOMIP2 is at the western Pine Island trough (113.05°W, 71.56°S). Several mooring observations were conducted within 2 km of each other, allowing us to observe thermocline variability from 2009 to 2016 with 405 one year gap in 2011: “BSR-12” (Jacobs, 2009), “iSTAR-1” (NERC iSTAR Program), and “trough-w” (NERC Ocean Forcing Ice Change Program).



3.2 MIPkit–W (Weddell)

Similar to MIPkit–A, the MIPkit–W contains both ice-sheet and ocean data. The ice-sheet data was obtained from the same data sources and using the same methods as described in section 3.1 for MIPkit–A.

410 For the evaluation of the ocean model performance in the Weddell Sea sector we focus on the interaction between the far-field general circulation and the processes on the continental shelf and in the ice-shelf cavities.

The hydrographic properties provided on horizontal sections at 15 depths come from the CTD measurements obtained from late December to early March by the Alfred Wegener Institute, Bremerhaven (AWI) during Polarstern cruises ANT-XII/3 (Schröder, 2010), PS82 (Schröder and Wisotzki, 2014), PS96 (Schröder et al., 2016) and PS111 (Janout et al., 2019), which
415 cover years 1995, 2014, 2016 and 2018, respectively.

The first vertical section where we provide hydrographic data goes from the tip of the Antarctic Peninsula to Kapp Norwegia (12.33°E). It is known as WOCE-SR04 and has been monitored since 1989. It captures both the water masses that feed the continental shelf and those that have been modified by ice shelf–ocean interaction, including newly formed bottom water. The surface water and the subsurface Winter Water influence the sea-ice formation and thus the production of the High Salinity
420 Shelf Water (HSSW) that enters FRIS cavity. The intermediate Warm Deep Water (WDW), i.e., the CDW upwelled in the Weddell Sea, is an important heat source that —modified to some degree— episodically enters the Filchner Through and might reach the cavity (Ryan et al., 2020). The water masses below WDW, i.e., the Weddell Sea Deep Water (WSDW) and Weddell Sea Bottom Water (WSBW) are products of mixing between the HSSW and the Ice Shelf Water (ISW) formed in the depths of the FRIS cavity. The data provided were collected during Polarstern cruises in Sep.–Oct. 1989, Nov.–Dec. 1990,
425 Dec. 1992–Jan. 1993, Mar.–May 1996, Apr.–May 1998 (Fahrbach and Rohardt, 1990, 1991, 1993, 1996, 1998), Jan.–Apr. 2005 (Rohardt, 2010), Feb.–Apr. 2008 (Fahrbach and Rohardt, 2008), Dec. 2010–Jan. 2011 (Rohardt et al., 2011), Dec. 2012–Jan. 2013 (Rohardt, 2013), as well as Dec. 2016–Jan. 2017 and Dec. 2018–Feb. 2019 (Rohardt and Boebel, 2017, 2020).

The second vertical section is at ~76°S and covers the eastern side of Filchner Through. It was surveyed during some of the aforementioned Polarstern cruises on 5–8 Jan. 2014, 20–24 Jan. 2016 and 4–23 Feb. 2018. These sections showed episodic
430 signs of intruding modified WDW.

The third and fourth sections were obtained along the front of Ronne and Filchner ice shelves, respectively. The Filchner section was measured on 1–3 Feb. 1977 (Foldvik et al., 1985) and 7–16 Jan. 1981 (Hubold et al., 1982) from the Norwegian Research Vessel “Polarsirkel”, then during several of the Polarstern cruises: 25 Jan.– 4 Mar. 1995, 15–17 Jan. 2014, 15 Jan. 2016 (only one vertical profile), and 14–23 Feb. 2018. The Ronne section was measured on 25 Jan.– 24 Feb. 1995, 14–15
435 Jan. 2016, and 9–14 Feb. 2018 in the continuity of the Filchner section. These sections showed the properties and location of in- and outflow to/from the ice shelf cavity and their variability.

Finally, three moorings placed along the 76°S vertical section give an insight into the variability of intrusions of modified WDW. These moorings are referred to as AWI252 (30.47°W), AWI253 (30.99°W) and AWI254 (31.48°W), and cover the period from Jan. 2014 to Feb. 2018 (Schröder et al., 2017a, b, c, 2019a, b, c). Temperature, salinity and velocity data were
440 obtained at two depths for AWI252 (335 and 421 m depth for a seafloor at 447 m) and AWI253 (349 and 434 m depth for a



seafloor at 456 m), while a single depth is provided for AWI254 (553 m for a seafloor at 581 m). For our goals we provide monthly means but it is important to mention that the area is influenced by high frequency variability.

3.3 MIPkit–Perturbations

This MIPkit contains all data needed to run the perturbation experiments: the perturbations to add to the atmospheric forcing and possibly to the ocean lateral boundaries (A1vw, W1vw), as well as the perturbed ice-shelf geometry (A2, W2). More details are provided in section 2.

3.4 Living MIPkit

While an effort has been made to gather existing Earth observation and in situ data for the ice sheet and ocean as part of the initial release of the MISOMIP2 protocol, we consider the MIPkit to be a living archive. We expect the MIPkit to be updated with new observational products reformatted for MISOMIP2 as necessary. The on-going updates will be associated with version numbers on Zenodo. The MIPkit is nonetheless not intended to be a complete archive of all available data, rather a representative subset of observations that have been reformatted for easy comparison to the required model output.

4 Requested model outputs

Although we do not plan to upload the MISOMIP2 data onto the Earth System Grid Federation (ESGF) to keep some flexibility, we believe that a step toward more standardisation than in MISOMIP1 will make our intercomparison more robust and reproducible, and will facilitate potential future contributions of our community to CMIP and ISMIP.

For all the outputs described hereafter, we encourage participants to use the NetCDF-4 format with a simple precision for floats, a deflation level of 1 and chunking along the vertical and time dimensions set to 1, which should save space and facilitate the data processing.

4.1 Ocean outputs

Monthly mean outputs will be submitted on standard horizontal and vertical grids: a three-dimensional grid with few vertical levels used to plot horizontal slices, a few vertical sections to coincide with ship borne CTD sections, a few vertical profiles at much higher vertical resolution, and a few profiles at a single location for direct comparison to existing mooring data. The common grids, list of requested variables and recommended interpolation methods are provided below.

File naming convention and common grids:

Three types of files will be provided by participants:

- Oce3d_<institute>_<model>_<abc>_<exp>_<period>.nc
- OceSec<n>_<institute>_<model>_<abc>_<exp>_<period>.nc
- OceMoor<n>_<institute>_<model>_<abc>_<exp>_<period>.nc



470 where $\langle n \rangle$ is the section or mooring number, $\langle \text{model} \rangle$ is the model name, possibly including a version number, $\langle \text{institute} \rangle$
 is the name of the institute(s) that produced the simulation (use “-” rather than “_” for multiple entities), $\langle \text{abc} \rangle$ is a
 single letter used to distinguish multiple set-ups produced by a given institute (e.g., variation of model parameters, resolu-
 tion, initial states or boundary conditions), $\langle \text{exp} \rangle$ is the MISOMIP2 experiment name (e.g., Ocean-Alp, Ocean-Wlp,
 IceOcean-Alp, ...), and $\langle \text{period} \rangle$ indicates the starting year and month and the final year and month (e.g., 197901-
 475 202012). The simulations can be split into as many time segments as desired. Note that modelling groups that provide regional
 simulations for both the Amundsen and Weddell sectors should use the same letter in $\langle \text{abc} \rangle$ only if the modelling set-up is
 exactly the same (apart from the domain location).

The *Oce3d* files cover monthly mean fields on the three-dimensional common grids described in Tab. 2 and shown in
 Fig. 1, and contain all the ocean variables discussed hereafter. The *OceSec* files correspond to observed vertical sections and
 480 contain potential temperature and salinity with much higher vertical resolution than in the *Oce3d* files. The *OceMoor* files
 correspond to oceanographic moorings and contain potential temperature and salinity with much higher temporal resolution
 than in the *Oce3d* files, and their location is indicated in Tab. 3. The exact locations and depth of individual sections are
 provided in `preproc/def_grids.py` in <https://github.com/misomip/misomip2> or as `.csv` files in the MIPkit-A and
 MIPkit-W datasets.

Table 2. Common grid parameters used for *Oce3d* files.

	longitude	latitude	resolution (lon×lat)	depth (m)
Amundsen Sea	140°W–90°W	76°S–69°S	1/10° × 1/30°	0,100,...,900,1000,1500
Weddell Sea	90°W– 0°E	85°S–60°S	1/3° × 1/10°	0,100,...,900,1000,1500

Table 3. Location of mooring data.

sector	mooring	longitude	latitude	vertical discretisation (m)
Amundsen	Moor1	102.08°W	74.87°S	200, 210, 220, ..., 950
	Moor2	102.15°W	75.06°S	200, 210, 220, ..., 950
	Moor3	102.55°W	71.33°S	200, 210, 220, ..., 950
	Moor4	113.05°W	71.56°S	200, 210, 220, ..., 950
Weddell	Moor1	30.47°W	76.09°S	335.2, 421.2
	Moor2	30.99°W	76.05°S	348.9, 433.8
	Moor3	31.48°W	75.96°S	553.0

485 *Dimensions, variables and metadata:*

The requested output format follows the NetCDF Climate and Forecast (CF) Metadata Conventions. The dimensions of the
 common ocean grids are $(\text{lon}, \text{lat}, \text{lev}, \text{time}, \text{bnds})$, and their corresponding variables and attributes are defined in
 Appendix (Tab. A1).



The requested ocean variables are listed in Tabs. A1-A5. They are largely based on the CMIP6 data request and on the
490 OMIP variables described in the appendices of Griffies et al. (2016), with additional variables introduced here to describe
ice-shelf cavities and ice-shelf–ocean interactions, as well as a few new variables that are the sum of existing variables (un-
derlined variables in Tabs. A1-A5). Note that for the perturbation experiments (Ocean-*1vw, Ocean-*1p-ext, IceOcean-*1vw
and IceOcean-*1p-ext) the time variable will continue forward over the time cycles, e.g., it will indicate 2001–2040 for two
consecutive cycles forced by 2001–2020 boundary conditions.

495 Although several models have transitioned to the TEOS10 seawater thermodynamics which is formulated for a better repre-
sentation of heat conservation and of the chemical compositions of seawater (IOC et al., 2010), many model formulations are
still based on pre-TEOS10 thermodynamics. For simplicity, we make the choice to stick to this formulation for MISOMIP2,
although we believe that future intercomparisons would benefit from transitioning towards TEOS10. Models that archived
TEOS10 quantities may use the Gibbs Sea Water oceanographic toolbox to convert to pre-TEOS10 quantities.

500 All time-dependent ocean variables are monthly means (over full calendar months). All these variables have a fill value
(`_FillValue`) set to 9.969209968386869e36 (standard missing value for floats in NetCDF); this value is attributed to any
part of the MISOMIP2 domain that is not covered by the original domain (no extrapolation), and to cell fractions lower than
1% (e.g., all the variables interpolated from ice-shelf cells are set to the fill value if the interpolated ice-shelf fraction is lower
than 1%). Note that according to this framework, some cells with a partial ice-shelf fraction have both a non-zero ice-shelf
505 draft and non-zero sea surface fraction with corresponding surface temperature, salinity, etc.

We recommend that participants add a `warning` attribute for any variable that was recalculated offline based on specific
assumptions, interpolated in an atypical way, or where its interpretation might otherwise require caveats.

We ask all contributors to indicate the main aspects of their modelling set-up as global attributes in the NetCDF files. This
is an important part of the output that will facilitate automatic display, analysis and clustering of multi-model outputs. The
510 requested global attributes for ocean outputs are listed in Tabs. A7-A8.

Interpolation methods:

Because of the imposed regridding to the common grid, it is essential to clarify the interpolation method.

We do not recommend using conservative interpolation for model grids of similar or coarser resolution than the MISOMIP2
standard grids, as this would keep the patterns of the original grids with sharp gradients, whereas we prefer seeing dynamical
515 features. Instead, we recommend linear interpolation in the $(\text{lon} \times \cos(\text{lat}), \text{lat})$ space for all variables, where $\langle \text{lat} \rangle$ is the mean
latitude over the MISOMIP domain. This is preferred to an interpolation in the (lon, lat) space to have a more isotropic inter-
polation. As there are a variety of grid structures and projections, we recommend the linear triangular interpolation which may
be suitable for all models. It consists of triangulating the input data and performing a linear interpolation in the barycentric co-
ordinate system. For target points falling out of the convex zone, no triangular interpolation is possible, and a nearest-neighbor
520 interpolation is recommended to fill these points. Bi-linear interpolation can also be performed for models on structured lon-
lat grids, and other similar linear methods are also accepted (e.g., `ESMF_RegridWeightGen` from the ESMF library). For
model grids of significantly higher resolution than the standard MISOMIP2 grid, conservative interpolation or average-based
grid coarsening prior to linear interpolation are reasonable options.



For the model intercomparison, it is essential that interpolations consider whether a given variable is defined over the entire
525 cell or only over a fraction of it. This is indicated through the `cell_methods` attribute in Tabs.A1-A5:

- `area: mean` indicates interpolation from all neighbour cells.
- `area: mean where sea ice` indicates interpolation from neighbour cells weighted by their sea-ice fraction.
- `area: mean where ice shelf` indicates interpolation from neighbour cells weighted by their ice-shelf fraction.
- `area: mean over bottom ocean cells` indicates interpolation from neighbour bottom ocean cells.
- 530 - `area: mean where ocean surface` indicates interpolation from neighbour cells with ocean or sea-ice at the surface (ice shelves excluded).
- `area: mean where 3d ocean` indicates interpolation from neighbour cells with ocean at any depth (i.e., including ice-shelf cavities).
- `volume: mean where ocean` indicates 3D interpolation from neighbour ocean cells.

535 The recommended vertical interpolation method is a simple one-dimensional linear interpolation in depth coordinates. Non-Z-coordinate models therefore need to convert their outputs to Z coordinates prior to interpolation to the MISOMIP2 grids. Several vertical coordinate systems may depend on sea surface height, which makes vertical levels fluctuate by a few meters at most. In MISOMIP2, we tolerate that this is not accounted for in the vertical interpolation as it can greatly facilitate computations without altering the intercomparison to a significant extent.

540 4.2 Ice Outputs

In addition to the aforementioned ocean outputs, all participants will provide yearly snapshots or means for a range of ice-sheet variables, including ice thickness, ice velocities, and grounding line location, on a predefined horizontal grid. The common grids, list of requested variables (largely based on ISMIP6 requested variables, see Nowicki et al., 2016) and recommended interpolation methods are listed here.

545 *File naming convention and common grids:*

In MISOMIP2, we only request 2D ice-sheet variables, provided as snapshots or yearly averages at the end of each year. Variables should be vertically averaged and interpolated onto cell centers of a regular horizontal grid with uniform horizontal resolution of 1 kilometer. The characteristics of the common grids for the Amundsen Sea and Weddell Sea domains are provided in Tab. 4 and shown in Fig. 1.

550 Only one type of file will be provided by participants for ice outputs:

- `Ice_<model>_<institute>_<abc>_<exp>_<period>.nc`

where `<model>`, `<institute>`, `<abc>`, `<exp>` and `<period>` are defined in the previous subsection.



Table 4. Boundaries, resolution and number of points of the standard ice grids. Coordinates use the EPSG:3031 Antarctic Polar Stereographic projection with standard parallel -71°S and central meridian 0°W .

	x [m]	y [m]	resolution [m]	nx	ny
Amundsen	[-1847000 : -997000]	[-860000 : 104000]	1000 × 1000	850	964
Weddell	[-1683000 : 923000]	[-195000 : 1648000]	1000 × 1000	2606	1843

Dimensions, variables and metadata:

The requested output format follows the NetCDF Climate and Forecast (CF) Metadata Conventions. The dimensions of the common ice-sheet grids are $(x, y, time, bnds)$, and their corresponding variables and attributes are defined in Tab. A9.

The requested ice variables are listed in Tabs. A9-A12. They are largely based on the CMIP6 data request and on the ISMIP6 variables described in Nowicki et al. (2016).

Interpolation methods:

In contrast to ISMIP6, the primary aim of MISOMIP2 is to analyse dynamical patterns across a large range of model resolutions, rather than to accurately quantify the evolution of the ice-sheet mass. Therefore, we do not request conservative interpolation. In the case of original ice-sheet model grids that are much coarser than the 1-km common grid, linear interpolation methods (see examples in the previous subsection) should be preferred to conservative and nearest-neighbour interpolations, to avoid misleading strong gradients on the common grid.

For the intercomparison between models, it is essential that interpolations consider whether a given variable is defined over the entire cell or only over a fraction of the cell. This is indicated through the `cell_methods` attribute in Tabs. A9-A12:

- `area: mean` indicates interpolation from all neighbouring cells, including nunataks, ocean, ice sheet.
- `area: mean where land ice` indicates interpolation from neighbouring cells weighted by their land-ice fraction (grounded or floating).
- `area: mean where ice shelf` indicates interpolation from neighbouring cells weighted by their ice-shelf fraction.
- `area: mean where grounded ice` indicates interpolation from neighbouring cells weighted by their grounded ice fraction.

As in ISMIP6, we require snapshots for the state variables and yearly averages for the flux and tendency variables. This is indicated in in Tabs. A9-A12 through the `cell_methods` attribute, which contains either `time: instantaneous` or `time: yearly mean`.

We ask all contributors to indicate the main aspects of their modelling set-up as global attributes in the NetCDF files in a way to facilitate automatic display, analysis and clustering of multi-model outputs. The global attributes of the ice output file are listed in Tab. A13.



5 Conclusions and outlook

580 We have described the design of several interrelated ocean and coupled ice-sheet–ocean experiments for two targeted regions of Antarctica, collectively referred to as the Marine Ice Sheet Ocean Model Intercomparison Project - phase 2 (MISOMIP2). A series of ocean-only and coupled ice-sheet–ocean experiments were designed to test model fidelity and model sensitivity to a large, prescribed anomaly in climate forcing. We expect that results from each part (ocean-only and coupled ocean–ice) will be published separately with all contributors as coauthors, following the tradition of earlier MIPs. We have tested the feasibility
585 of all standalone ocean and ice-sheet–ocean experiments using several ocean and ice-sheet–ocean configurations, and we are confident that they can be run by other participants who use different model architectures and climatic forcing datasets. Future community activities will be determined based on the outcomes of the MISOMIP2 experiments. These potentially include, but are not limited to, experiments with a higher degree of similarity in climate forcing between contributing models, parameter and numerical choices, and forward simulations at multi-decadal to century timescales under a range of prescribed climate-change
590 scenarios, aimed at coordinating with ongoing ISMIP and CMIP efforts.

Code and data availability. All the code and data provided for the MISOMIP2 experiments, from pre-processing to post-processing, are and will be shared within the MISOMIP2 Zenodo community (<https://zenodo.org/communities/misomip2>) and on GitHub (<https://github.com/misomip/misomip2>). As ice-sheet modellers previously developed scripts to interpolate their outputs onto the ISMIP6 stereographic grid, we have not developed any processing tool for ice sheet models. The shared data include:

- 595 – MIPkit–A (Amundsen observational data): <https://zenodo.org/doi/10.5281/zenodo.10062355>
- MIPkit–W (Weddell observational data): <https://zenodo.org/doi/10.5281/zenodo.8316180>
- MIPkit–Perturbation: <https://zenodo.org/doi/10.5281/zenodo.10046053>
- Python tools that can be used to prepare the ocean data (<https://github.com/misomip/misomip2>), including:
 - 600 – the ocean grids definition in `preproc/def_grids.py`;
 - the definition of attributes for individual variables in `preproc/def_attrs.py`;
 - an example of inclusion of global attributes in `examples/interpolate_to_common_grid_oce.py`.
 - full interpolation procedure, currently only implemented for examples from NEMO, MITgcm and ROMS which are provided on <https://doi.org/10.5281/zenodo.4709850> although this could be generalised to other models, including with unstructured grids.
- Analysis tools will be shared progressively on <https://github.com/misomip/misomip2>.



Table A1. Requested ocean variables and their attributes. Variables that are modified or newly introduced in this article are underlined. For time dependent variables, monthly mean outputs are requested.

variable (dimensions)	attribute name	attribute value
lon (lon)	long_name	“Longitude”
	units	“degrees_east”
	standard_name	“longitude”
	comment	common MISOMIP2 grid
lat (lat)	long_name	“Latitude”
	units	“degrees_north”
	standard_name	“latitude”
	comment	common MISOMIP2 grid
lev (lev)	long_name	“depth”
	units	“m”
	positive	“down”
	comment	common MISOMIP2 grid; increases from the sea surface to the sea floor
time (time)	long_name	“time”
	units	“days since 1900-1-1 0:0:0” or “seconds since 1900-1-1 0:0:0”, or since any other date.
	standard_name	“time”
	calendar	“standard” (same as “gregorian” for recent centuries) for actual dates, or any other calendar, e.g. “no_leap” or “360_day”
	bounds	“time_bounds”
	comment	the time_bounds variable should be defined with dimensions (time,bnds) to indicate the beginning and end of the months over which the monthly averages are done
sftff ([time,]lat,lon)	long_name	“Floating Ice Shelf Area Percentage”
	units	“%”
	standard_name	“floating_ice_shelf_area_fraction”
	cell_methods	“area: mean[; time: monthly mean]”
	comment	Time-dependent for coupled ocean–ice simulations or prescribed changes
sftof ([time,]lat,lon)	long_name	“Sea Area Percentage at the Surface”
	units	“%”
	standard_name	sea_area_fraction
	cell_methods	“area: mean[; time: monthly mean]”
	comment	Equals zero if sftff is 100% (ice shelf) or if the cell is fully occupied by land, but 100% for a cell fully or partially covered with sea ice; time-dependent for coupled ocean–ice simulations or prescribed changes.
levof ([time,]lev,lat,lon)	long_name	“Sea area fraction at each vertical level”
	units	“%”
	standard_name	TBD
	cell_methods	“area: mean[; time: monthly mean]”
	comment	Time-dependent for coupled ocean–ice simulations or prescribed changes.



Table A2. Continuation of Tab. A1

deptho ([time,]lat,lon)	long_name units standard_name cell_methods comment	“Sea Floor Depth Below Geoid” “m” “sea_floor_depth_below_geoid” “area: mean where 3d ocean[; time: monthly mean]” Possibly time-dependent if glacial isostasy or bathymetry corrections are implemented.
depff ([time,]lat,lon)	long_name units standard_name cell_methods comment	“Depth of Floating Ice Shelf Base Below Geoid” “m” TBD “area: mean where ice shelf[; time: monthly mean]” Time-dependent for coupled ocean–ice simulations or prescribed changes.
thetao (time,lev,lat,lon)	long_name units standard_name cell_methods	“Sea Water Potential Temperature” “degC” “sea_water_potential_temperature” “volume: mean where ocean; time: monthly mean”
so (time,lev,lat,lon)	long_name units standard_name cell_methods comment	“Sea Water Salinity” “0.001” “sea_water_salinity” “volume: mean where ocean; time: monthly mean” This is the quantity that approximates the practical salinity traditionally obtained through conductivity measurements (see appendix D of Griffies et al., 2016).
tob (time,lat,lon)	long_name units standard_name cell_methods	“Sea Water Potential Temperature at Sea Floor” “degC” “sea_water_potential_temperature_at_sea_floor” “area: mean where bottom ocean; time: monthly mean”
sob (time,lat,lon)	long_name units standard_name cell_methods comment	“Sea Water Salinity at Sea Floor” “0.001” “sea_water_salinity_at_sea_floor” “area: mean where bottom ocean; time: monthly mean” This is practical salinity.



Table A3. Continuation of Tab. A1

uo (time,lev,lat,lon)	long_name units standard_name cell_methods comment	“Sea Water X Velocity” “m s-1” “sea_water_x_velocity” “volume: mean where ocean; time: monthly mean” This is zonal velocity on the common grid, positive eastward
vo (time,lev,lat,lon)	long_name units standard_name cell_methods comment	“Sea Water Y Velocity” “m s-1” “sea_water_y_velocity” “volume: mean where ocean; time: monthly mean” This is meridional velocity on the common grid, positive northward
tauo (time,lat,lon)	long_name units standard_name cell_methods comment	“Sea Water Downward X Stress” “N m-2” “downward_x_stress_at_sea_water_surface” “area: mean where 3d ocean; time: monthly mean” This is the zonal stress on the liquid ocean from overlying atmosphere, sea ice, ice shelf (expressed as a 2D variable) and possibly icebergs and any momentum flux correction.
tauvo (time,lat,lon)	long_name units standard_name cell_methods comment	“Sea Water Downward Y Stress” “N m-2” “downward_y_stress_at_sea_water_surface” “area: mean where 3d ocean; time: monthly mean” This is the meridional stress on the liquid ocean from overlying atmosphere, sea ice, ice shelf (expressed as a 2D variable) and possibly icebergs and any momentum flux correction.
msftbarot (time,lat,lon)	long_name units standard_name cell_methods comment	“Ocean Barotropic Mass Streamfunction” “kg s-1” “ocean_barotropic_mass_streamfunction” “area: mean; time: monthly mean” Quasi-barotropic streamfunction as discussed in appendix H26 of Griffies et al. (2016); for Boussinesq models, this is simply the volume barotropic streamfunction times the reference seawater volumic mass; the streamfunction Ψ is computed so that $\partial_y \Psi = U^p$ and $\partial_x \Psi = -V^p$, where U^p and V^p are the zonal and meridional vertically integrated velocities multiplied by seawater density (i.e., barotropic mass transports per distance along the section).
zos (time,lat,lon)	long_name units standard_name cell_methods comment	“Sea Surface Height Above Geoid” “m” “sea_surface_height_above_geoid” “area: mean where 3d ocean; time: monthly mean” This is the dynamic sea surface height above geoid, i.e. not including steric sea-level changes (see appendix H7 of Griffies et al., 2016).



Table A4. Continuation of Tab. A1

wfoat (time,lat,lon)	long_name units positive standard_name cell_methods comment	“Water Mass Flux Into Sea Water From Atmosphere” “kg m-2 s-1” “downward” TBD “area: mean where 3d ocean; time: monthly mean” This is calculated as condensation minus evaporation plus solid and liquid precipitation, only considering the part of these fluxes that enters the sea-ice free portion of the cell, but expressed per area of sea and sea-ice; considering appendix K2-K3 of Griffies et al. (2016), wfoat=pr+prsn+evs; models using virtual salt fluxes are invited to calculate an equivalent freshwater mass flux
flandice (time,lat,lon)	long_name units positive standard_name cell_methods comment	“Water Mass Flux Into Sea Water From Land Ice” “kg m-2 s-1” “downward” water_flux_into_sea_water_from_land_ice “area: mean where 3d ocean; time: monthly mean” This is calculated as runoff from rivers or surface ice-sheet melting, plus iceberg melt, plus ice-shelf melt minus refreezing; considering appendix K2-K3 of Griffies et al. (2016), flandice=friver+ficeberg+ficeshelf; models using virtual salt fluxes are invited to calculate an equivalent freshwater mass flux
fsitherm (time,lat,lon)	long_name units positive standard_name cell_methods comment	“Water Mass Flux Into Sea Water Due to Sea Ice Thermodynamics” “kg m-2 s-1” “downward” “water_mass_flux_into_sea_water_due_to_sea_ice_thermodynamics” “area: mean where 3d ocean; time: monthly mean” This is the net flux, calculated as sea-ice melt minus sea-ice formation/freezing; this is the flux into the total sea cell (open + sea-ice covered); models using virtual salt fluxes are invited to calculate an equivalent freshwater mass flux
wfocorr (time,lat,lon)	long_name units positive standard_name cell_methods comment	“Water Mass Flux Into Sea Water From Salinity Correction” “kg m-2 s-1” “downward” TBD “area: mean where 3d ocean; time: monthly mean” This is the flux corresponding to the sea surface salinity restoring/adjustment that is common in global ocean models; it should be set to zero for models with no correction; models using virtual salt fluxes are invited to calculate an equivalent freshwater mass flux; this variable is not officially part of CMIP6 but was used in OMIP



Table A5. Continuation of Tab. A1

hfs (time,lat,lon)	long_name units standard_name cell_methods comment	“Downward Heat Flux into Sea Water Surface” “W m-2” TBD “area: mean where 3d ocean; time: monthly mean” This is calculated from the net shortwave and longwave radiative fluxes penetrating into the liquid water, the sensible and latent heat fluxes at the atmosphere–ocean, sea-ice–ocean, ice-shelf–ocean (expressed as a 2D variable) and iceberg–ocean interfaces, including those related to the heat content of runoff or precipitation, and any heat flux correction at the ocean surface; see list of individual fluxes in appendix K4 of Griffies et al. (2016); this variable is similar to the hfds variable in CMIP/OMIP, except that it includes potential heat flux correction
libmassbffl (time,lat,lon)	long_name units standard_name cell_methods comment	“Basal Specific Mass Balance of Floating Ice Shelf” “kg m-2 s-1” “land_ice_basal_specific_mass_balance_flux” “area: mean where ice shelf; time: monthly mean” This differs from the ficeshelf term in Griffies et al. (2016), which was the net water mass flux into sea water from ice shelf, i.e. per unit of ocean area, while libmassbffl is per unit of ice-shelf area; positive for melting, negative for refreezing
dydrffl (time,lat,lon)	long_name units standard_name cell_methods comment	“Dynamical Driving at the Base of Floating Ice Shelf” “m s-1” TBD “area: mean where ice shelf; time: monthly mean” This is also referred to as the heat exchange velocity, i.e. friction velocity times heat exchange coefficient
thdrffl (time,lat,lon)	long_name units standard_name cell_methods comment	“Thermal Driving at the Base of Floating Ice Shelf” “degC” TBD “area: mean where ice shelf; time: monthly mean” This is calculated as the potential temperature in the top ocean boundary layer beneath the ice shelf, minus the freezing potential temperature at the ice–ocean interface
hadrffl (time,lat,lon)	long_name units standard_name cell_methods comment	“Haline Driving at the Base of Floating Ice Shelf” “0.001” TBD “area: mean where ice shelf; time: monthly mean” This is calculated as the practical salinity in the top ocean boundary layer beneath the ice shelf minus the salinity at the ice–ocean interface



Table A6. Continuation of Tab. A1

siconc (time,lat,lon)	long_name	“Sea-Ice Area Percentage”
	units	“%”
	standard_name	“sea_ice_area_fraction”
	cell_methods	“area: mean; time: monthly mean”
sivol (time,lat,lon)	long_name	“Sea-Ice Volume per Area”
	units	“m”
	standard_name	“sea_ice_thickness”
	cell_methods	“area: mean; time: monthly mean”
siu (time,lat,lon)	long_name	“X-Component of the Sea-Ice Velocity”
	units	“m s-1”
	standard_name	“sea_ice_x_velocity”
	cell_methods	“area: mean where sea ice; time: monthly mean”
	comment	Zonal velocity on the MISOMIP2 grid
siv (time,lat,lon)	long_name	“Y-Component of the Sea-Ice Velocity”
	units	“m s-1”
	standard_name	“sea_ice_y_velocity”
	cell_methods	“area: mean where sea ice; time: monthly mean”
	comment	Meridional velocity on the MISOMIP2 grid



Table A7. Global Attributes requested for the ocean outputs

Attribute name	Attribute value
project	'MISOMIP2'
contact	Name(s) of the person(s) who produced the simulation <email>
institute	Name of the institute(s) that produced the simulation (use '-' to separate multiple entities)
computing_facility	Computing center where the simulation was run
interpolation_method	e.g., 'linear triangular barycentric', 'bi-linear', 'nearest-neighbor', 'conservative'
ocean_model	Model name and version
reference	Main publication and/or website describing the simulation or a similar one, e.g. 'Naughten et al. (2021).'
original_sim_name	Original simulation name (so that each group keeps track of the one that was used in MISOMIP2), e.g. 'eORCA025.L121-OPM006'
experiment	MISOMIP2 experiment, e.g. 'Ocean-A1p', 'IceOcean-W1vw', ..
bathymetry	Bathymetry dataset (specify exact version), e.g. 'BedMachine-1.33', 'Bedmap2', 'RTopo-2.0.4', 'Merge of Millan et al. (2017) and Bedmap2'
ice_shelf_draft	Dataset for the depth of ice-shelf base (similar to previous).
atmosphere	Atmospheric forcing, with a reference, e.g., 'ERA5 (Hersbach et al. 2020)', 'ERAint (Dee et al. 2011)', 'JRA55do (Tsuji no et al. 2018)', 'MARv3.9.3 (Donat-Magnin et al. 2020)'
iceberg	Method used to account for melting icebergs, with a reference, e.g. 'Lagrangian model (Martin and Adcroft 2010)', 'Prescribed freshwater (Merino et al. 2016)', 'Prescribed Freshwater and Heat (Merino et al. 2016)', 'None'
sea_ice	Method used to simulate or prescribe the ocean-sea-ice interaction, with a reference, e.g. 'Dynamics-Thermodynamics Model (Rousset et al. 2016)', 'Thermodynamics Model (Bitz and Lipscomb 1999)', 'Prescribed Freshwater and Heat'.
ocean_lateral_bdy	Type of lateral boundary conditions, e.g. 'Simulation (Merino et al. 2018)', 'Reanalysis (Mazloff et al. 2016)', 'Observations (Locarnini et al. 2018)', 'Corrected simulation (explain method)', 'None'.
tides	Method used to account for the effect of tides on ice-shelf melt, and dataset if relevant, e.g. 'Barotropic tidal harmonics prescribed at lateral boundaries (CATS)', 'Forced by a tidal potential', 'Parameterized through uniform tidal velocity in the three equations (utide=0.1 m s-1)', 'Parameterized through non-uniform tidal velocity in the three equations (FES2012)', 'None'.
vertical_coordinate	e.g. 'Geopotential (Z)', 'Stretched Geopotential (Zstar)', 'Pressure (P)', 'Stretched Pressure (P*)', 'Isopycnal', 'Terrain-Following (Sigma)', 'Arbitrary Lagrangian-Eulerian (ALE)'.
is_melt_param	Parameterization used to calculate ice-shelf basal melt rates, e.g. '3-equation (constant gamma)', '3-equation (velocity-dependent gamma)', '3-equation (stability and velocity-dependent gamma)'
eos	Equation of state, e.g. 'TEOS10', 'EOS80', 'linear'
advection	Brief description of the momentum- and tracer advection schemes (centered, third-order with limiter, etc.)



Table A8. Continuation of Tab. A7

horizontal_mixing	Brief description of how “horizontal” mixing was performed (harmonic, biharmonic, etc.; within model levels, along geopotentials, along isopycnals, etc.; using the Gent-McWilliams parameterisation; etc).
vertical_mixing	Brief description of how “vertical” mixing was performed (constant diffusivity, k-profile parameterisation, etc.; harmonic, biharmonic, etc).
convection	Brief description of the procedure for handling convection, e.g. ‘Explicitly modeled’, ‘Parameterised using enhanced vertical mixing’.
avg_hor_res_73S	Average horizontal resolution (m) at 73°S in the MISOMIP2 domain (average of x and y resolution).
original_min_lat	Minimum latitude of the original domain, in [-90:90].
original_max_lat	Maximum latitude of the original domain, in [-90:90].
original_min_lon	Minimum longitude of the original domain, in [-180:180].
original_max_lon	Maximum longitude of the original domain, in [-180:180].



Table A9. Requested ice-sheet variables and their attributes. Variables that are modified or newly introduced in this article are underlined.

variable (dimensions)	attribute name	attribute value
x (x)	long_name	“X-coordinate”
	units	“m”
	axis	“X”
	comment	common MISOMIP2 grid
y (y)	long_name	“Y-coordinate”
	units	“m”
	axis	“Y”
	comment	common MISOMIP2 grid
time (time)	long_name	“time”
	units	“days since 1900-1-1 0:0:0” or “seconds since 1900-1-1 0:0:0”, or since any other date.
	standard_name	“time”
	calendar	“standard”, “no_leap”, “360_day”, or other specific year duration.
	bounds	“time_bounds”
	axis	“T”
	comment	The snapshots should correspond to 31st December of every years. The time_bounds variable should be defined with dimensions (time,bnds) to indicate the beginning and end of the years over which the yearly averages are done.
sftgif (x,y,time)	long_name	“Land Ice Area Percentage”
	units	“%”
	standard_name	“land_ice_area_fraction”
	cell_methods	“area: mean; time: instantaneous”
	comment	Land ice includes ice sheet, ice shelf, ice cap, glacier, not nunataks.
sftflf (x,y,time)	long_name	“Floating Ice Shelf Area Percentage”
	units	“%”
	standard_name	“floating_ice_shelf_area_fraction”
	cell_methods	“area: mean; time: instantaneous”
	comment	This does not include ice sheet fraction over subglacial lakes.
sftgrf (x,y,time)	long_name	“Grounded Ice Sheet Area Percentage”
	units	“%”
	standard_name	“grounded_ice_sheet_area_fraction”
	cell_methods	“area: mean; time: instantaneous”
	comment	This does not include ice shelves or ice sheet over subglacial lakes.



Table A10. Continuation of Fig. A9

lithk (x,y,time)	long_name	“Ice Sheet Thickness”
	units	“m”
	standard_name	“land_ice_thickness”
	cell_methods	“area: mean where land ice; time: instantaneous”
	comment	Physical thickness of the ice sheet, including air thickness from the firn layer if present
orog (x,y,time)	long_name	“Ice Sheet Surface Altitude”
	units	“m”
	standard_name	surface_altitude
	cell_methods	“area: mean where land ice; time: instantaneous”
	comment	The surface called ‘surface’ means the lower boundary of the atmosphere (top of ice shelf, ice sheet or firn layer if any). Altitude is the (geometric) height above the geoid, which is the reference geopotential surface. The geoid is similar to mean sea level.
base (x,y,time)	long_name	“Ice Sheet Base Altitude”
	units	“m”
	standard_name	base_altitude
	cell_methods	“area: mean where land ice; time: instantaneous”
	comment	Geometric height of the lower ice surface above the geoid; negative values correspond to a surface below mean sea level.
topg (x,y,time)	long_name	“Bedrock Altitude”
	units	“m”
	standard_name	“bedrock_altitude”
	cell_methods	“area: mean; time: instantaneous”
	comment	Calculated above geoid, i.e. negative values correspond to a surface below mean sea level; time dependency if glacial isostasy or adjustments are implemented.
rholi (x,y,time)	long_name	“Depth Averaged Land Ice Density”
	units	“kg m-3”
	standard_name	“ice_density”
	cell_methods	“area: mean where land ice; time: instantaneous”
	comment	Calculated as $rholi = \frac{1}{lithk} \int_{base}^{orog} \rho_i(z) dz$, where ρ_i is the depth-dependent ice density.
tendlithk (x,y,time)	long_name	“Tendency of Land Ice Thickness”
	units	“m s-1”
	standard_name	“tendency_of_land_ice_thickness”
	cell_methods	“area: mean where land ice; time: yearly mean”
	comment	Ice thickness imbalance defined as $tendlithk = \frac{dlithk}{dt}$; introduced in MISOMIP2 to facilitate comparison to observations.



Table A11. Continuation of Fig. A9

acabf (x,y,time)	long_name	“Surface Mass Balance Flux”
	units	“kg m-2 s-1”
	standard_name	“land_ice_surface_specific_mass_balance_flux”
	cell_methods	“area: mean where land ice; time: yearly mean”
	comment	This is the net rate at which ice is added per unit area at the land ice surface due to all processes of surface accumulation (positive) and ablation (negative).
libmassbgr (x,y,time)	long_name	“Basal Specific Mass Balance Flux of Grounded Ice Sheet”
	units	“kg m-2 s-1”
	standard_name	“land_ice_basal_specific_mass_balance_flux”
	cell_methods	“area: mean where grounded land ice; time: yearly mean”
	comment	This is the net rate at which ice is added per unit area at the base of grounded ice; positive for ice mass gain, negative for ice mass loss.
libmassbffl (x,y,time)	long_name	“Basal Specific Mass Balance Flux of Floating Ice Shelf”
	units	“kg m-2 s-1”
	standard_name	“land_ice_basal_specific_mass_balance_flux”
	cell_methods	“area: mean where ice shelf; time: yearly mean”
	comment	This is the net rate at which ice is added per unit area at the base of ice shelves; positive for ice mass gain (refreezing), negative for ice mass loss (melting).
licalf (x,y,time)	long_name	“Land Ice Calving Flux”
	units	“kg m-2 s-1”
	standard_name	“land_ice_specific_mass_flux_due_to_calving”
	cell_methods	“area: mean where land ice; time: yearly mean”
	comment	Calculated as the rate of mass loss by the ice sheet (in kg s-1) divided by the horizontal area (m2) of the ice sheet grid box where calving occurred. Only for grid cells in contact with ocean.
ligroundf (x,y,time)	long_name	“Land Ice Flux across the Grounding Line”
	units	“kg m-2 s-1”
	standard_name	TBD
	cell_methods	“area: mean where grounded ice; time: yearly mean”
	comment	Loss of grounded ice mass resulting at grounding line. Only for grid cells in contact with grounding line.



Table A12. Continuation of Fig. A9

xvelmean (x,y,time)	long_name	“X-Component of Land Ice Vertical Mean Velocity”
	units	“m s-1”
	standard_name	“land_ice_vertical_mean_x_velocity”
	cell_methods	“area: mean where land ice; time: yearly mean”
	comment	Averaged from the bedrock to the ice surface.
yvelmean (x,y,time)	long_name	“Y-Component of Land Ice Vertical Mean Velocity”
	units	“m s-1”
	standard_name	“land_ice_vertical_mean_y_velocity”
	cell_methods	“area: mean where land ice; time: yearly mean”
	comment	Averaged from the bedrock to the ice surface.
xvelsurf (x,y,time)	long_name	“X-Component of Land Ice Surface Velocity”
	units	“m s-1”
	standard_name	“land_ice_surface_x_velocity”
	cell_methods	“area: mean where land ice; time: yearly mean”
	comment	This is equal to xvelmean in 1-layer ice sheet models.
yvelsurf (x,y,time)	long_name	“Y-Component of Land Ice Surface Velocity”
	units	“m s-1”
	standard_name	“land_ice_surface_y_velocity”
	cell_methods	“area: mean where land ice; time: yearly mean”
	comment	This is equal to yvelmean in 1-layer ice sheet models.
strbasemag (x,y,time)	long_name	“Land Ice Basal Drag”
	units	“Pa” or “N m-2”
	standard_name	“land_ice_basal_drag”
	cell_methods	“area: mean where land ice; time: yearly mean”
	comment	This is the magnitude of the tangential basal traction opposing the ice flow.



Table A13. Global attributes requested for the ice outputs

Attribute name	Attribute value
project	‘MISOMIP2’
contact	Name(s) of the person(s) who produced the simulation <email>
institute	Name of the institute(s) that produced the simulation (use “-” to separate multiple entities).
computing_facility	Computing center where the simulation was run.
interpolation_method	e.g., ‘linear triangular barycentric’, ‘bi-linear’, ‘nearest-neighbor’, ‘conservative’.
ice_sheet_model	Model name and version
reference	Main publication or website describing the simulation or a similar one.
original_sim_name	Original simulation name (if applicable, so that each group keeps track of the one that was used in MISOMIP2).
experiment	MISOMIP2 experiment, e.g. ‘IceOcean-A1p’, ‘IceOcean-W1sw’, ..
bedrock	Bedrock/bathymetry dataset (specify exact version), e.g. ‘BedMachine-1.33’, ‘Bedmap2’, ‘RTopo-2.0.4’, ‘Merge of Millan et al. (2017) and Bedmap2’.
surface_mass_balance	Surface Mass Balance forcing, with a reference, e.g., ‘MARv10 (Kittel et al. 2022)’, ‘ERAint (Dee et al. 2011)’
basal_mass_balance	Method, parameter, and input data used to calculate the ice shelf basal mass balance, e.g., ‘ISMIP6 standard MeanAnt and ISMIP6 data (Jourdain et al. 2020)’, ‘PICO (Reese et al. 2018), calibration from Reese et al. (2022) and ocean data from Schmidtko et al. (2014).’
initialization	Method used to initialize the ice sheet model, e.g., ‘1000-year spin up under pre-industrial conditions’, ‘Inversion of ice-sheet surface velocities and surface elevation for the mid 1990s followed by a 10-year relaxation’.
basal_friction	Type of basal friction and reference, e.g., ‘Non-linear (Weertman 1957)’, ‘Based on effective pressure (Tsai et al. 2015)’.
ice_flow_equation	e.g., ‘Shallow Shelf Approximation (MacAyeal 1989)’, ‘Full Stokes equation’
rheology	Provide information such as the exponent in Glen’s law, the enhancement factor, whether temperature or damage are considered in the ice effective viscosity, etc.
calving	Method used to represent calving and reference, e.g., ‘Fixed calving front’, etc.
avg_GL_res	Average horizontal resolution (m) of the original grid along the grounding line.
coupling_method	Reference or description of the ice-shelf–ocean coupling method, e.g., ‘Favier et al. (2019)’, ‘Goldberg et al. (2018)’.
coupling_period	e.g., ‘1 year’, ‘1450 s (ocean model time step)’.



605 *Author contributions.* JDR, NCJ, YN, RT and MVC designed the initial protocol and wrote the initial draft. YN collected the Amundsen Sea data provided as part of the MIPkit, and MVC did the equivalent for the Weddell Sea. NCJ tested the Ocean-A1p, A2p and A2f experiments, RT the Ocean-W1p, W2p and W2f experiments. JDR and RT ran several preliminary ice sheet simulations for the Amundsen and Weddell sectors. All authors contributed to the final version of this manuscript and to early discussions on the second phase of MISOMIP.

Competing interests. We declare no competing interest.

610 *Acknowledgements.* The authors thank all the participants of the 3rd workshop on Rising Coastal Seas on a Warming Earth (May 2018, NYU Abu Dhabi) for discussions on the initial framing of MISOMIP2. NCJ and RT were supported by the European Union's Horizon 2020 research and innovation programme (EU-H2020) under grant agreement No 869304 (PROTECT). JDR, NCJ and RT were supported by EU-H2020 under grant agreements No 820575 (TiPACCs). JDR, NCJ and RT were supported by the EU, Horizon Europe Funding Programme for research and innovation under grant agreement Nr. 101060452 and by UK Research and Innovation (OCEAN:ICE). NCJ was also
615 supported by the French National Research Agency under grants No ANR-19-CE01-0015 (EIS) and ANR-22-CE01-0014 (AIAI). JDR was also supported by a UKRI Future Leaders Fellowship under grant No number MR/W011816/1. XSAD was supported through the Scientific Discovery through Advanced Computing (SciDAC) program funded by the US Department of Energy (DOE), Office of Science, Advanced Scientific Computing Research and Biological and Environmental Research Programs. HS was supported by grants from NASA Cryospheric Science Program (80NSSC21K1939 and 80NSSC22K0383). The example NEMO simulations were run through the HPC resources of CINES
620 under the allocation A0100106035 attributed by GENCI.



References

- Adusumilli, S., Fricker, H. A., Medley, B., Padman, L., and Siegfried, M. R.: Interannual variations in meltwater input to the Southern Ocean from Antarctic ice shelves, *Nature Geoscience*, 13, 616–620, 2020.
- Asay-Davis, X. S., Cornford, S. L., Durand, G., Galton-Fenzi, B. K., Gladstone, R. M., Gudmundsson, G. H., Hattermann, T., Holland, D. M., Holland, D., Holland, P. R., et al.: Experimental design for three interrelated Marine Ice-Sheet and Ocean Model Intercomparison Projects, *Geosci. Model Dev.*, 9, 2471–2497, 2016.
- Bamber, J. L., Riva, R. E. M., Vermeersen, B. L. A., and LeBrocq, A. M.: Reassessment of the potential sea-level rise from a collapse of the West Antarctic Ice Sheet, *Science*, 324, 901–903, 2009.
- Bevan, S., Cornford, S., Gilbert, L., Otosaka, I., Martin, D., and Surawy-Stepney, T.: Amundsen Sea Embayment ice-sheet mass-loss predictions to 2050 calibrated using observations of velocity and elevation change, *Journal of Glaciology*, p. 1–11, <https://doi.org/10.1017/jog.2023.57>, 2023.
- Boucher, O., Servonnat, J., Albright, A. L., Aumont, O., Balkanski, Y., Bastrikov, V., Bekki, S., Bonnet, R., Bony, S., Bopp, L., et al.: Presentation and evaluation of the IPSL-CM6A-LR climate model, *J. Adv. Model. Ea. Sys.*, 12, e2019MS002 010, 2020.
- Burgard, C., Jourdain, N. C., Reese, R., Jenkins, A., and Mathiot, P.: An assessment of basal melt parameterisations for Antarctic ice shelves, *The Cryosphere*, 0, 1–56, 2022.
- Comeau, D., Asay-Davis, X. S., Begeman, C. B., Hoffman, M. J., Lin, W., Petersen, M. R., Price, S. F., Roberts, A. F., Van Roekel, L. P., Veneziani, M., Wolfe, J. D., Fyke, J. G., Ringler, T. D., and Turner, A. K.: The DOE E3SM v1. 2 Cryosphere Configuration: Description and Simulated Antarctic Ice-Shelf Basal Melting, *J. Adv. Model. Ea. Sys.*, 14, e2021MS002 468, 2022.
- Cornford, S. L., Seroussi, H., Asay-Davis, X. S., Gudmundsson, G. H., Arthern, R., Borstad, C., Christmann, J., Dias dos Santos, T., Feldmann, J., Goldberg, D., et al.: Results of the third Marine Ice Sheet Model Intercomparison Project (MISMIP+), *The Cryosphere*, 14, 2283–2301, 2020.
- De Rydt, J. and Gudmundsson, G. H.: Coupled ice shelf-ocean modeling and complex grounding line retreat from a seabed ridge, *J. Geophys. Res.*, 121, 865–880, 2016.
- De Rydt, J. and Naughten, K.: Geometric amplification and suppression of ice-shelf basal melt in West Antarctica, *EGUsphere*, 2023, 1–36, <https://doi.org/10.5194/egusphere-2023-1587>, <https://egusphere.copernicus.org/preprints/2023/egusphere-2023-1587/>, 2023.
- Dutrieux, P., De Rydt, J., Jenkins, A., Holland, P. R., Ha, H. K., Lee, S. H., Steig, E. J., Ding, Q., Abrahamsen, E. P., and Schröder, M.: Strong sensitivity of Pine Island ice-shelf melting to climatic variability, *Science*, 343, 174–178, 2014.
- Fahrbach, E. and Rohardt, G.: Physical oceanography during POLARSTERN cruise ANT-VIII/2 (WWGS) on section SR02 and SR04, PANGAEA, <https://doi.org/10.1594/PANGAEA.742580>, <https://doi.org/10.1594/PANGAEA.742580>, in supplement to: Hellmer, Hartmut H; Huhn, Oliver; Gomis, Damià; Timmermann, Ralph (2011): On the freshening of the northwestern Weddell Sea continental shelf. *Ocean Science*, 7(3), 305-316, <https://doi.org/10.5194/os-7-305-2011>, 1990.
- Fahrbach, E. and Rohardt, G.: Physical oceanography during POLARSTERN cruise ANT-IX/2 on section SR04, PANGAEA, <https://doi.org/10.1594/PANGAEA.735277>, <https://doi.org/10.1594/PANGAEA.735277>, in supplement to: Hellmer, Hartmut H; Huhn, Oliver; Gomis, Damià; Timmermann, Ralph (2011): On the freshening of the northwestern Weddell Sea continental shelf. *Ocean Science*, 7(3), 305-316, <https://doi.org/10.5194/os-7-305-2011>, 1991.
- Fahrbach, E. and Rohardt, G.: Physical oceanography during POLARSTERN cruise ANT-X/7 on section SR04, PANGAEA, <https://doi.org/10.1594/PANGAEA.742651>, <https://doi.org/10.1594/PANGAEA.742651>, in supplement to: Hellmer, Hartmut H; Huhn,



- Oliver; Gomis, Damià; Timmermann, Ralph (2011): On the freshening of the northwestern Weddell Sea continental shelf. *Ocean Science*, 7(3), 305-316, <https://doi.org/10.5194/os-7-305-2011>, 1993.
- 660 Fahrbach, E. and Rohardt, G.: Physical oceanography during POLARSTERN cruise ANT-XIII/4 on section S04A, PANGAEA, <https://doi.org/10.1594/PANGAEA.738489>, <https://doi.org/10.1594/PANGAEA.738489>, in supplement to: Hellmer, Hartmut H; Huhn, Oliver; Gomis, Damià; Timmermann, Ralph (2011): On the freshening of the northwestern Weddell Sea continental shelf. *Ocean Science*, 7(3), 305-316, <https://doi.org/10.5194/os-7-305-2011>, 1996.
- Fahrbach, E. and Rohardt, G.: Physical oceanography during POLARSTERN cruise ANT-XV/4 (DOVETAIL) on section SR04, PANGAEA, <https://doi.org/10.1594/PANGAEA.742626>, <https://doi.org/10.1594/PANGAEA.742626>, in supplement to: Hellmer, Hartmut H; Huhn, Oliver; Gomis, Damià; Timmermann, Ralph (2011): On the freshening of the northwestern Weddell Sea continental shelf. *Ocean Science*, 7(3), 305-316, <https://doi.org/10.5194/os-7-305-2011>, 1998.
- 665 Fahrbach, E. and Rohardt, G.: Physical oceanography during POLARSTERN cruise ANT-XXIV/3, PANGAEA, <https://doi.org/10.1594/PANGAEA.733414>, <https://doi.org/10.1594/PANGAEA.733414>, in supplement to: Hellmer, Hartmut H; Huhn, Oliver; Gomis, Damià; Timmermann, Ralph (2011): On the freshening of the northwestern Weddell Sea continental shelf. *Ocean Science*, 7(3), 305-316, <https://doi.org/10.5194/os-7-305-2011>, 2008.
- Favier, L., Jourdain, N. C., Jenkins, A., Merino, N., Durand, G., Gagliardini, O., Gillet-Chaulet, F., and Mathiot, P.: Assessment of Sub-Shelf Melting Parameterisations Using the Ocean-Ice Sheet Coupled Model NEMO (v3. 6)-Elmer/Ice (v8. 3), *Geosci. Model Dev.*, 2019.
- Foldvik, A., Gammelsrød, T., and Tørresen, T.: Hydrographic observations from the Weddell Sea during the Norwegian Antarctic Research Expedition 1976/77, *Polar Research*, 3, 177–193, 1985.
- 675 Gardner, A., Fahnestock, M., and Scambos, T.: MEaSURES ITS_LIVE Regional Glacier and Ice Sheet Surface Velocities, Version 1, <https://doi.org/10.5067/6II6VW8LLWJ7>, 2022.
- Gohl, K.: Station list and links to master tracks in different resolutions of POLARSTERN cruise ANT-XXVI/3, Wellington - Punta Arenas, 2010-01-30 - 2010-04-05, Tech. rep., Alfred Wegener Institute, Helmholtz Centre for Polar and Marine Research, Bremerhaven, <https://doi.org/10.1594/PANGAEA.847944>, <https://doi.org/10.1594/PANGAEA.847944>, 2015.
- 680 Gohl, K.: The Expedition PS104 of the Research Vessel POLARSTERN to the Amundsen Sea in 2017, Reports on polar and marine research, Tech. rep., Alfred Wegener Institute for Polar and Marine Research, Bremerhaven, http://doi.org/10.2312/BzPM_0712_2017, 2017.
- Goldberg, D. N., Snow, K., Holland, P., Jordan, J. R., Campin, J.-M., Heimbach, P., Arthern, R., and Jenkins, A.: Representing grounding line migration in synchronous coupling between a marine ice sheet model and a z-coordinate ocean model, *Ocean Model.*, 125, 45–60, 2018.
- 685 Griffies, S. M., Danabasoglu, G., Durack, P. J., Adcroft, A. J., Balaji, V., Böning, C. W., Chassignet, E. P., Curchitser, E., Deshayes, J., Drange, H., et al.: OMIP contribution to CMIP6: Experimental and diagnostic protocol for the physical component of the Ocean Model Intercomparison Project, *Geoscientific Model Development*, 9, 3231–3296, 2016.
- Gwyther, D. E., Galton-Fenzi, B. K., Dinniman, M. S., Roberts, J. L., and Hunter, J. R.: The effect of basal friction on melting and freezing in ice shelf–ocean models, *Ocean Model.*, 95, 38–52, 2015.
- 690 Gwyther, D. E., Kusahara, K., Asay-Davis, X. S., Dinniman, M. S., and Galton-Fenzi, B. K.: Vertical processes and resolution impact ice shelf basal melting: A multi-model study, *Ocean Model.*, 147, 101–156, 2020.
- Ha, H. K., Kim, T. W., Lee, H. J., Kang, C. Y., Hong, C. S., Wählin, A. K., Rolandsson, J., Karen, O., and Miles, T.: The Amundsen Sea Expedition (ANA04B): IBRV Araon, 24 December 2013 – 25 January 2014 – Chapter 1: Physical Oceanography, Tech. rep., Korea Polar Research Institute, Incheon, <https://repository.kopri.re.kr/handle/201206/4605>, 2014.
- 695



- Hazel, J. E. and Stewart, A. L.: Bistability of the Filchner-Ronne Ice Shelf Cavity Circulation and Basal Melt, *J. Geophys. Res. Oceans*, 125, e2019JC015848, 2020.
- Hellmer, H. H., Kauker, F., Timmermann, R., and Hattermann, T.: The fate of the southern Weddell Sea continental shelf in a warming climate, *J. Climate*, 30, 4337–4350, 2017.
- 700 Heywood, K. J.: JR294/295 Cruise Report, Ice Sheet Stability Programme (iSTAR), RRS James Clark Ross, 26th February – 8th March 2014, Amundsen Sea, Tech. rep., Natural Environment Research Council (NERC), https://www.bodc.ac.uk/resources/inventories/cruise_inventory/report/13405/, 2014.
- Heywood, K. J., Biddle, L. C., Boehme, L., Dutrieux, P., Fedak, M., Jenkins, A., Jones, R. W., Kaiser, J., Mallett, H., et al.: Between the devil and the deep blue sea: the role of the Amundsen Sea continental shelf in exchanges between ocean and ice shelves, *Oceanography*, 705 29, 118–129, 2016.
- Holland, D., Hunter, J., Grosfeld, K., Hellmer, H., Jenkins, A., Morales Maqueda, M., Hemer, M., Williams, M., Klinck, J., and Dinniman, M.: The ice shelf-ocean model intercomparison project (ISOMIP), in: *Eos Trans. AGU*, 84, Fall Meet. Suppl., vol. 2003, pp. C41A–05, 2003.
- Holland, P. R., Bevan, S. L., and Luckman, A. J.: Strong Ocean Melting Feedback During the Recent Retreat of Thwaites Glacier, *Geophysical Research Letters*, 50, <https://doi.org/10.1029/2023GL103088>, 2023.
- 710 Hubold, G., and Drescher, H. E.: Die Filchner-Schelfeis-Expedition 1980/81 mit MS "Polarsirkel". Liste der Planktonfänge und Lichtstärkemessungen, <https://epic.awi.de/id/eprint/26181/1/BerPolarforsch19824.pdf>, 1982.
- Hunter, J. R.: Specification for Test Models of Ice Shelf Cavities, Tech. rep., Antarctic Climate & Ecosystems Cooperative Research Centre, Hobart, Tasmania, https://www.johnroberthunter.org/science/home_prof/reports/test_cavities.pdf, 2006.
- 715 IOC, SCOR, and IAPSO: The international thermodynamic equation of seawater - 2010 : Calculation and use of thermodynamic properties, Tech. rep., Intergovernmental Oceanographic Commission, http://www.teos-10.org/pubs/TEOS-10_Manual.pdf, 2010.
- Jacobs, S.: Cruise NBP9402, RVIB Nathaniel B. Palmer, Feb 14 – Apr 5 1994, Tech. rep., United States Antarctic Program, <http://doi.org/10.7284/905397>, 1994.
- Jacobs, S.: Cruise NBP0001, RVIB Nathaniel B. Palmer, Feb 15 – Apr 1 2000, Tech. rep., United States Antarctic Program, <http://doi.org/10.7284/905450>, 2000.
- 720 Jacobs, S.: Cruise NBP0702, RVIB Nathaniel B. Palmer, Feb 03 – Mar 25 2007, Tech. rep., United States Antarctic Program, <http://doi.org/10.7284/905530>, 2007.
- Jacobs, S.: Cruise NBP0901, RVIB Nathaniel B. Palmer, Jan 05 – Feb 26 2009, Tech. rep., United States Antarctic Program, <http://doi.org/10.7284/905547>, 2009.
- 725 Jacobs, S., Giulivi, C., Dutrieux, P., Rignot, E., Nitsche, F., and Mouginot, J.: Getz Ice Shelf melting response to changes in ocean forcing, *J. Geophys. Res.*, 118, 4152–4168, 2013.
- Jacobs, S. S., Hellmer, H. H., and Jenkins, A.: Antarctic ice sheet melting in the Southeast Pacific, *Geophys. Res. Lett.*, 23, 957–960, 1996.
- Jacobs, S. S., Jenkins, A., Giulivi, C. F., and Dutrieux, P.: Stronger ocean circulation and increased melting under Pine Island Glacier ice shelf, *Nature Geoscience*, 4, 519–523, 2011.
- 730 Janout, M. A., Hellmer, H. H., Schröder, M., and Wisotzki, A.: Physical oceanography during POLARSTERN cruise PS111 (ANT-XXXIII/2), <https://doi.org/10.1594/PANGAEA.897280>, <https://doi.org/10.1594/PANGAEA.897280>, 2019.
- Jenkins, A., Shoosmith, D., Dutrieux, P., Jacobs, S., Kim, T. W., Lee, S. H., Ha, H. K., and Stammerjohn, S.: West Antarctic Ice Sheet retreat in the Amundsen Sea driven by decadal oceanic variability, *Nature Geosc.*, 11, 733–738, 2018.



- Joughin, I., Shapero, D., Smith, B., Dutriex, P., and Barham, M.: Ice-shelf retreat drives recent Pine Island Glacier speedup, *Science Advances*, 7, eabg3080, <https://doi.org/10.1126/sciadv.abg3080>, <https://advances.sciencemag.org/content/7/24/eabg3080>, 2021.
- 735 Jourdain, N. C., Asay-Davis, X., Hattermann, T., Straneo, F., Seroussi, H., Little, C. M., and Nowicki, S.: A protocol for calculating basal melt rates in the ISMIP6 Antarctic ice sheet projections, *The Cryosphere*, 14, 3111–3134, 2020.
- Jourdain, N. C., Mathiot, P., Burgard, C., Caillet, J., and Kittel, C.: Ice shelf basal melt rates in the Amundsen Sea at the end of the 21st century, *Geophys. Res. Lett.*, p. e2022GL100629, 2022.
- 740 Kim, T. W., H. H. K., and Hong, C. S.: The Amundsen Sea Expedition (ANA02C): IBRV Araon, 31 January 2012 – 20 March 2012 – Chapter 1: Hydrographic Survey, Tech. rep., Korea Polar Research Institute, Incheon, <https://repository.kopri.re.kr/handle/201206/4603>, 2012.
- Kim, T. W., Cho, K. H., Kim, C. S., Yang, H. W., La, H. S., Lee, J. H., Kim, D. K., Jung, J. H., Wåhlin, A. K., Assmann, K. M., Darelus, E., Abrahamsen, E. P., and Waite, N.: The Amundsen Sea Expedition (ANA06B): IBRV Araon, 6 January – 23 February 2016 – Chapter 1: Physical Oceanography in Amundsen Sea, Tech. rep., Korea Polar Research Institute, Incheon, https://ftp.nmdc.no/nmdc/UIB/Mooring/20181213/ANA06B_cruise_report.pdf, 2016.
- 745 Kim, T.-W., Ha, H. K., Wåhlin, A. K., Lee, S., Kim, C.-S., Lee, J. H., and Cho, Y.-K.: Is Ekman pumping responsible for the seasonal variation of warm circumpolar deep water in the Amundsen Sea?, *Continental Shelf Research*, 132, 38–48, 2017.
- Kim, T. W., Cho, K. H., Park, T. W., Yang, H. W., Kim, Y., Assmann, K. M., Rolandsson, J., Dutriex, P., Gobat, J., Beem, L., Richter, T., Buhl, D., and Durand, I.: The Amundsen Sea Expedition (ANA08B): IBRV Araon, 21 December 2017 – 13 February 2018 – Chapter 1: Physical Oceanography, Tech. rep., Korea Polar Research Institute, Incheon, <https://repository.kopri.re.kr/handle/201206/9441>, 2018.
- 750 Kreuzer, M., Reese, R., Huiskamp, W. N., Petri, S., Albrecht, T., Feulner, G., and Winkelmann, R.: Coupling framework (1.0) for the PISM (1.1. 4) ice sheet model and the MOM5 (5.1. 0) ocean model via the PICO ice shelf cavity model in an Antarctic domain, *Geosci. Mod. Dev.*, 14, 3697–3714, 2021.
- 755 Larter, R., Barham, M., Boehme, L., Braddock, S., Graham, A., Hogan, K., Mazur, A., Minzoni, R., Queste, B., Sheehan, P., Spoth, M., Wåhlin, A., Bortolotto-d’Oliveira, G., Clark, R. W., Fitzgerald, V., Karam, S., Kirkham, J., Stedt, F., Zheng, Y., Beeler, C., Goodell, J., Rush, E., Snow, T., Welzenbach, L., Andersson, J., and Rolandsson, J.: Cruise NBP1902, RVIB Nathaniel B. Palmer, Jan 29 – Mar 25 2019, Tech. rep., United States Antarctic Program, <http://doi.org/10.7284/908147>, 2019.
- Locarnini, R. A., Mishonov, A. V., Baranova, O. K., Boyer, T. P., Zweng, M. M., Garcia, H. E., Reagan, J. R., Seidov, D., Weathers, K. W., Paver, C. R., and Smolyar, I. V.: World Ocean Atlas 2018, Volume 1: Temperature, Tech. Rep. Atlas NESDIS 81, NOAA, https://data.nodc.noaa.gov/woa/WOA18/DOC/woa18_vol1.pdf, 2019.
- 760 Losch, M.: Modeling ice shelf cavities in az coordinate ocean general circulation model, *J. Geophys. Res.*, 113, 2008.
- Lurton, T., Balkanski, Y., Bastrikov, V., Bekki, S., Bopp, L., Braconnot, P., Brockmann, P., Cadule, P., Contoux, C., Cozic, A., et al.: Implementation of the CMIP6 Forcing Data in the IPSL-CM6A-LR Model, *J. Adv. Model. Ea. Sys.*, 12, e2019MS001940, 2020.
- 765 Mathiot, P. and Jourdain, N. C.: High-end projections of Southern Ocean warming and Antarctic ice shelf melting in conditions typical of the end of the 23rd century, *Ocean Science*, in review, 2023, 1–27, <https://doi.org/10.5194/egusphere-2023-1606>, <https://egusphere.copernicus.org/preprints/2023/egusphere-2023-1606/>, 2023.
- Mathiot, P., Jenkins, A., Harris, C., and Madec, G.: Explicit and parametrised representation of under ice shelf seas in az* coordinate ocean model NEMO 3.6, *Geosci. Model Dev.*, 10, 2849–2874, 2017.



- 770 Meinshausen, M., Nicholls, Z. R. J., Lewis, J., Gidden, M. J., Vogel, E., Freund, M., Beyerle, U., Gessner, C., Nauels, A., Bauer, N., et al.: The shared socio-economic pathway (SSP) greenhouse gas concentrations and their extensions to 2500, *Geosci. Model Dev.*, 13, 3571–3605, 2020.
- Moholdt, G., Padman, L., and Fricker, H. A.: Basal mass budget of Ross and Filchner-Ronne ice shelves, Antarctica, derived from Lagrangian analysis of ICESat altimetry, *J. Geophys. Res.*, 119, 2361–2380, 2014.
- 775 Morlinghem, M.: MEaSURES BedMachine Antarctica, Version 3, Tech. rep., Boulder, Colorado USA. NASA National Snow and Ice Data Center Distributed Active Archive Center, <https://doi.org/10.5067/FPSU0V1MWUB6>, <https://doi.org/10.5067/FPSU0V1MWUB6>, 2022.
- Mouginot, J., Rignot, E., and Scheuchl, B.: Sustained increase in ice discharge from the Amundsen Sea Embayment, West Antarctica, from 1973 to 2013, *Geophys. Res. Lett.*, 41, 1576–1584, 2014.
- Mouginot, J., Scheuchl, B., and Rignot, E.: MEaSURES Annual Antarctic Ice Velocity Maps, Version 1, <https://doi.org/10.5067/9T4EPQXTJYW9>, 2017a.
- 780 Mouginot, J., Scheuchl, B., and Rignot, E.: MEaSURES Antarctic Boundaries for IPY 2007-2009 from Satellite Radar, Version 2, Tech. rep., Boulder, Colorado USA. NASA National Snow and Ice Data Center Distributed Active Archive Center, <https://doi.org/10.5067/AXE4121732AD>, 2017b.
- Nakayama, Y., Schröder, M., and Hellmer, H. H.: From circumpolar deep water to the glacial meltwater plume on the eastern Amundsen Shelf, *Deep Sea Res. I*, 77, 50–62, 2013.
- 785 Nakayama, Y., Cai, C., and Seroussi, H.: Impact of subglacial freshwater discharge on Pine Island Ice Shelf, *Geophys. Res. Lett.*, 48, e2021GL093 923, 2021.
- Naughten, K. A., De Rydt, J., Rosier, S. H. R., Jenkins, A., Holland, P. R., and Ridley, J. K.: Two-timescale response of a large Antarctic ice shelf to climate change, *Nature Comm.*, 12, 1–10, 2021.
- 790 Naughten, K. A., Holland, P. R., Dutrieux, P., Kimura, S., Bett, D. T., and Jenkins, A.: Simulated twentieth-century ocean warming in the Amundsen Sea, West Antarctica, *Geophys. Res. Lett.*, 49, e2021GL094 566, 2022.
- Nicholls, K. W., Østerhus, S., Makinson, K., Gammelsrød, T., and Fahrbach, E.: Ice-ocean processes over the continental shelf of the southern Weddell Sea, Antarctica: A review, *Reviews of Geophysics*, 47, 2009.
- Nilsson, J., Gardner, A. S., and Paolo, F. S.: MEaSURES ITS_LIVE Antarctic Grounded Ice Sheet Elevation Change, Version 1, <https://doi.org/10.5067/L3LSVDZS15ZV>, 2023.
- 795 Nowicki, S., Payne, A., Goelzer, H., Seroussi, H., Lipscomb, W., Abe-Ouchi, A., Agosta, C., Alexander, P., Asay-Davis, X., Barthel, A., Bracegirdle, T., Cullather, R., Felikson, D., Fettweis, X., Gregory, J., Hatterman, T., Jourdain, N., C., Kuipers Munneke, P., Larour, E., Little, C., Morlinghem, M., Nias, I., Shepherd, A., Simon, E., Slater, D., Smith, R., Straneo, F., Trusel, L., van den Broeke, M., and van de Wal, R.: Experimental protocol for sea level projections from ISMIP6 standalone ice sheet models, *The Cryosphere*, 14, 2331–2368, <https://doi.org/10.5194/tc-14-2331-2020>, 2020.
- 800 Nowicki, S. M. J., Payne, A., Larour, E., Seroussi, H., Goelzer, H., Lipscomb, W., Gregory, J., Abe-Ouchi, A., and Shepherd, A.: Ice Sheet Model Intercomparison Project (ISMIP6) contribution to CMIP6, *Geosci. Model Dev.*, 9, 4521, 2016.
- Otosaka, I., Gilbert, L., and Shepherd, A.: Surface elevation change of the Amundsen Sea Embayment 1992-2019, <https://doi.org/10.5281/zenodo.8117577>, 2023.
- 805 Paolo, F., Gardner, A., Greene, C., Nilsson, J., Schodlok, M., Schlegel, N., and Fricker, H.: Widespread slowdown in thinning rates of West Antarctic Ice Shelves, *The Cryosphere Discussion*, pp. 1–45, 2023a.



- Paolo, F. S., Gardner, A. S., Greene, C. A., and Schlegel, N.-J.: MEaSUREs ITS_LIVE Antarctic Ice Shelf Height Change and Basal Melt Rates, Version 1, <https://doi.org/10.5067/SE3XH9RXQWAM>, 2023b.
- Pattyn, F.: The paradigm shift in Antarctic ice sheet modelling, *Nature Comm.*, 9, 1–3, 2018.
- 810 Pattyn, F., Schoof, C., Perichon, L., Hindmarsh, R. C. A., Bueler, E., de Fleurian, B., Durand, G., Gagliardini, O., Gladstone, R., Goldberg, D., et al.: Results of the marine ice sheet model intercomparison project, MISMIIP, *The Cryosphere*, 6, 573–588, 2012.
- Pattyn, F., Perichon, L., Durand, G., Favier, L., Gagliardini, O., Hindmarsh, R. C. A., Zwinger, T., Albrecht, T., Cornford, S. L., Docquier, D., Fürst, J. J., Goldberg, D., Gudmundsson, G. H., Humbert, A., Hütten, M., Huybrechts, P., Jouvét, G., Kleiner, T., Larour, E., Martin, D., Morlighem, M., Payne, A. J., Pollard, D., Rückamp, M., Rybak, O., Seroussi, H., Thoma, M., and Wilkens, N.: Grounding-
815 line migration in plan-view marine ice-sheet models: results of the ice2sea MISMIIP3d intercomparison, *J. Glaciology*, 59, 410–422, <https://doi.org/10.3189/2013JoG12J129>, 2013.
- Payne, A. J., Nowicki, S., Abe-Ouchi, A., Agosta, C., Alexander, P., Albrecht, T., Asay-Davis, X., Aschwanden, A., Barthel, A., Bracegirdle, T. J., et al.: Future sea level change under CMIP5 and CMIP6 scenarios from the Greenland and Antarctic ice sheets, *Geophysical Research Letters*, p. e2020GL091741, 2021.
- 820 Pelle, T., Morlighem, M., Nakayama, Y., and Seroussi, H.: Widespread grounding line retreat of Totten Glacier, East Antarctica, over the 21st century, *Geophysical Research Letters*, 48, e2021GL093213, 2021.
- Pelletier, C., Fichefet, T., Goosse, H., Haubner, K., Helsen, S., Huot, P.-V., Kittel, C., Klein, F., Le clec'h, S., van Lipzig, N. P. M., Marchi, S., Massonnet, F., Mathiot, P., Moravveji, E., Moreno-Chamarro, E., Ortega, P., Pattyn, F., Souverijns, N., Van Achter, G., Vanden Broecke, S., Vanhulle, A., Verfaillie, D., and Zipf, L.: PARASO, a circum-Antarctic fully coupled ice-sheet–ocean–sea-ice–atmosphere–land model
825 involving f.ETISH1.7, NEMO3.6, LIM3.6, COSMO5.0 and CLM4.5, *Geosci. Mod. Dev.*, 15, 553–594, <https://doi.org/10.5194/gmd-15-553-2022>, 2022.
- Reese, R., Garbe, J., Hill, E. A., Urruty, B., Naughten, K. A., Gagliardini, O., Durand, G., Gillet-Chaulet, F., Chandler, D., Langebroek, P. M., et al.: The stability of present-day Antarctic grounding lines–Part B: Possible commitment of regional collapse under current climate, *The Cryosphere Discussions*, 0, 1–33, 2022.
- 830 Rignot, E., Jacobs, S., Mouginot, J., and Scheuchl, B.: Ice-shelf melting around Antarctica, *Science*, 341, 266–270, 2013.
- Rignot, E., Mouginot, J., and Scheuchl, B.: MEaSUREs InSAR-Based Ice Velocity of the Amundsen Sea Embayment, Antarctica, Version 1, <https://doi.org/10.5067/MEASURES/CRYOSPHERE/nsidc-0545.001>, 2014.
- Rignot, E., Mouginot, J., Scheuchl, B., van den Broeke, M., van Wessem, M. J., and Morlighem, M.: Four decades of Antarctic Ice Sheet mass balance from 1979–2017, *Proceedings of the National Academy of Sciences*, 116, 1095–1103, 2019.
- 835 Rohardt, G.: Physical oceanography during POLARSTERN cruise ANT-XXII/3, <https://doi.org/10.1594/PANGAEA.733664>, <https://doi.org/10.1594/PANGAEA.733664>, 2010.
- Rohardt, G.: Physical oceanography during POLARSTERN cruise ANT-XXIX/2, <https://doi.org/10.1594/PANGAEA.817255>, <https://doi.org/10.1594/PANGAEA.817255>, 2013.
- Rohardt, G. and Boebel, O.: Physical oceanography during POLARSTERN cruise PS103 (ANT-XXXII/2),
840 <https://doi.org/10.1594/PANGAEA.881076>, <https://doi.org/10.1594/PANGAEA.881076>, 2017.
- Rohardt, G. and Boebel, O.: Physical oceanography during POLARSTERN cruise PS117, <https://doi.org/10.1594/PANGAEA.910663>, <https://doi.org/10.1594/PANGAEA.910663>, 2020.
- Rohardt, G., Fahrbach, E., and Wisotzki, A.: Physical oceanography during POLARSTERN cruise ANT-XXVII/2, <https://doi.org/10.1594/PANGAEA.772244>, <https://doi.org/10.1594/PANGAEA.772244>, 2011.



- 845 Ryan, S., Hellmer, H. H., Janout, M., Darelius, E., Vignes, L., and Schröder, M.: Exceptionally warm and prolonged flow of Warm Deep Water toward the Filchner-Ronne Ice Shelf in 2017, *Geophysical Research Letters*, 47, e2020GL088119, 2020.
- Schröder, M.: Physical oceanography during POLARSTERN cruise ANT-XII/3, <https://doi.org/10.1594/PANGAEA.742581>, <https://doi.org/10.1594/PANGAEA.742581>, 2010.
- Schröder, M. and Wisotzki, A.: Physical oceanography during POLARSTERN cruise PS82 (ANT-XXIX/9),
850 <https://doi.org/10.1594/PANGAEA.833299>, <https://doi.org/10.1594/PANGAEA.833299>, 2014.
- Schröder, M., Ryan, S., and Wisotzki, A.: Physical oceanography during POLARSTERN cruise PS96 (ANT-XXXI/2 FROSN), <https://doi.org/10.1594/PANGAEA.859040>, <https://doi.org/10.1594/PANGAEA.859040>, 2016.
- Schröder, M., Ryan, S., and Wisotzki, A.: Physical oceanography and current meter data from mooring AWI252-1, <https://doi.org/10.1594/PANGAEA.875931>, <https://doi.org/10.1594/PANGAEA.875931>, 2017a.
- 855 Schröder, M., Ryan, S., and Wisotzki, A.: Physical oceanography and current meter data from mooring AWI253-1, <https://doi.org/10.1594/PANGAEA.875932>, <https://doi.org/10.1594/PANGAEA.875932>, 2017b.
- Schröder, M., Ryan, S., and Wisotzki, A.: Physical oceanography and current meter data from mooring AWI254-1, <https://doi.org/10.1594/PANGAEA.875933>, <https://doi.org/10.1594/PANGAEA.875933>, 2017c.
- Schröder, M., Ryan, S., and Wisotzki, A.: Physical oceanography and current meter data from mooring AWI252-2,
860 <https://doi.org/10.1594/PANGAEA.903104>, <https://doi.org/10.1594/PANGAEA.903104>, 2019a.
- Schröder, M., Ryan, S., and Wisotzki, A.: Physical oceanography and current meter data from mooring AWI253-2, <https://doi.org/10.1594/PANGAEA.903315>, <https://doi.org/10.1594/PANGAEA.903315>, 2019b.
- Schröder, M., Ryan, S., and Wisotzki, A.: Physical oceanography and current meter data from mooring AWI254-2, <https://doi.org/10.1594/PANGAEA.903317>, <https://doi.org/10.1594/PANGAEA.903317>, 2019c.
- 865 Seroussi, H., Nakayama, Y., Larour, E., Menemenlis, D., Morlighem, M., Rignot, E., and Khazendar, A.: Continued retreat of Thwaites Glacier, West Antarctica, controlled by bed topography and ocean circulation, *Geophys. Res. Lett.*, 44, 6191–6199, 2017.
- Seroussi, H., Nowicki, S., Payne, A. J., Goelzer, H., Lipscomb, W. H., Abe-Ouchi, A., Agosta, C., Albrecht, T., Asay-Davis, X., Barthel, A., et al.: ISMIP6 Antarctica: a multi-model ensemble of the Antarctic ice sheet evolution over the 21st century, *The Cryosphere*, 14, 3033–3070, 2020.
- 870 Seroussi, H., Verjans, V., Nowicki, S., Payne, A. J., Goelzer, H., Lipscomb, W. H., Abe Ouchi, A., Agosta, C., Albrecht, T., Asay-Davis, X., Barthel, A., Calov, R., Cullather, R., Dumas, C., Galton-Fenzi, B. K., Gladstone, R., Golledge, N. R., Gregory, J. M., Greve, R., Hatterman, T., Hoffman, M. J., Humbert, A., Huybrechts, P., Jourdain, N. C., Kleiner, T., Larour, E., Leguy, G. R., Lowry, D. P., Little, C. M., Morlighem, M., Pattyn, F., Pelle, T., Price, S. F., Quiquet, A., Reese, R., Schlegel, N.-J., Shepherd, A., Simon, E., Smith, R. S., Straneo, F., Sun, S., Trusel, L. D., Van Breedam, J., Van Katwyk, P., van de Wal, R. S. W., Winkelmann, R., Zhao, C., Zhang, T., and
875 Zwinger, T.: Insights on the vulnerability of Antarctic glaciers from the ISMIP6 ice sheet model ensemble and associated uncertainty, *The Cryosphere*, <https://doi.org/10.5194/tc-2023-109>, 2023.
- Shean, D. E., Joughin, I. R., Dutrieux, P., Smith, B. E., and Berthier, E.: Ice shelf basal melt rates from a high-resolution digital elevation model (DEM) record for Pine Island Glacier, Antarctica, *The Cryosphere*, 13, 2633–2656, 2019.
- Shepherd, A., Ivins, E., Rignot, E., Smith, B., van den Broeke, M., Velicogna, I., Whitehouse, P., Briggs, K., Joughin, I., Krinner, G., Nowicki,
880 S., Payne, T., Scambos, T., Schlegel, N., Geruo, A., Agosta, C., Ahlstrom, A., Bobonis, G., Barletta, V., Blazquez, A., Bonin, J., Csatho, B., Cullather, R., Felikson, D., Fettweis, X., Forsberg, R., Gallée, H., Gardner, A., Gilbert, L., Groh, A., Gunter, B., Edward, H., Harig, C., Helm, V., Horvath, A., Horwath, M., Khan, S., Kjeldsen, K. K., Konrad, H., Langen, P., Lecavalier, B., Loomis, B., Luthcke, S.,



- 885 McMillan, M., Melini, D., Mernild, S., Mohajerani, Y., Moore, P., Mougnot, J., Moyano, G., Muir, A., Nagler, T., Nield, G., Nilsson, J.,
Noel, B., Ootaka, I., Pattle, M. E., Peltier, W. R., Pie, N., Bietbroek, R., Rott, H., Sandberg-Sorensen, L., Sasgen, I., Save, H., Scheuchl,
B., Schrama, E., Schroder, L., Seo, K.-W., Simonsen, S., Slater, T., Spada, G., Sutterley, T., Talpe, M., Tarasov, L., van de Berg, W., van der
Wal, W., van Wessem, M., Vishwakarma, B., Wiese, D., and Wouters, B.: Mass balance of the Antarctic Ice Sheet from 1992 to 2017,
Nature, 558, 219–222, <https://doi.org/10.1038/s41586-018-0179-y>, 2018.
- 890 Siahhan, A., Smith, R. S., Holland, P. R., Jenkins, A., Gregory, J. M., Lee, V., Mathiot, P., Payne, A. J., Ridley, J. K., and Jones, C. G.:
The Antarctic contribution to 21st-century sea-level rise predicted by the UK Earth System Model with an interactive ice sheet, The
Cryosphere, 16, 4053–4086, 2022.
- Smith, R. S., Mathiot, P., Siahhan, A., Lee, V., Cornford, S. L., Gregory, J. M., Payne, A. J., Jenkins, A., Holland, P. R., Ridley, J. K., et al.:
Coupling the UK Earth System Model to dynamic models of the Greenland and Antarctic ice sheets, Journal of Advances in Modeling
Earth Systems, 13, e2021MS002 520, 2021.
- 895 Swedish Polar Research Secretariat: Oden Southern Ocean 2009/10 - Conductivity-Temperature-Depth (CTD) Data Collected Onboard Ice-
breaker Oden during February through March 2010, Tech. rep., Swedish Polar Research, <http://snd.gu.se/en/catalogue/dataset/ecds0220-1>,
2010.
- Thoma, M., Determann, J., Grosfeld, K., Goeller, S., and Hellmer, H. H.: Future sea-level rise due to projected ocean warming beneath the
Filchner Ronne Ice Shelf: A coupled model study, Earth & Planet. Sci. Lett., 431, 217–224, 2015.
- 900 Timmermann, R. and Goeller, S.: Response to Filchner–Ronne Ice Shelf cavity warming in a coupled ocean–ice sheet model–Part 1: The
ocean perspective, Ocean Science, 13, 765–776, 2017.
- Timmermann, R. and Hellmer, H. H.: Southern Ocean warming and increased ice shelf basal melting in the twenty-first and twenty-second
centuries based on coupled ice-ocean finite-element modelling, Ocean Dyn., 63, 1011–1026, 2013.
- Webber, B. G. M., Heywood, K. J., Stevens, D. P., Dutrieux, P., Abrahamsen, E. P., Jenkins, A., Jacobs, S. S., Ha, H. K., Lee, S. H., and Kim,
T. W.: Mechanisms driving variability in the ocean forcing of Pine Island Glacier, Nature Communications, 8, 1–8, 2017.
- 905 Wellner, J.: Cruise NBP2002, RVIB Nathaniel B. Palmer, Jan 25 2020 – Mar 08 2020, Tech. rep., United States Antarctic Program, <http://doi.org/10.7284/908803>, 2020.
- Zhao, C., Gladstone, R., Galton-Fenzi, B. K., Gwyther, D., and Hattermann, T.: Evaluation of an emergent feature of sub-shelf melt oscil-
lations from an idealized coupled ice sheet–ocean model using FISOC (v1. 1)–ROMSIceShelf (v1. 0)–Elmer/Ice (v9. 0), Geosci. Model
Dev., 15, 5421–5439, 2022.