

Mixing, Spatial Resolution and Argon Saturation in a Suite of Coupled General Ocean Circulation Biogeochemical ~~Models~~-Model Configurations off Mauretania

Heiner Dietze^{1, 2, *} and Ulrike Lötien^{1, *}

¹Department of Computer Science, Archaeoinformatics - Data Science, University of Kiel, Germany

²Department of Chemistry, King's College London, London UK

*These authors contributed equally to this work.

Correspondence: Heiner Dietze (heiner.dietze@ifg.uni-kiel.de)

Abstract. Numerical coupled ocean circulation biogeochemical modules are routinely employed in Earth System Models that provide projections into our warming future to the Intergovernmental Panel on Climate Change (IPCC). Previous studies have shown that a major source of uncertainties in the biogeochemical ocean component is ~~the yet-unacquainted~~-vertical, or rather diapycnal, ocean mixing. The representation of diapycnal mixing in models is ~~effected~~-affected by several factors, among them
5 are the (poorly constrained) parameter choices of the background diffusivity, the choice of the underlying advection numerics and the spatial discretization. This study adds to the discussion by exploring these effects in a suite of regional coupled ocean circulation biogeochemical model configurations. The configurations comprise the Atlantic Ocean off Mauretania - a region renowned for its complex ocean circulation driven by seasonal wind patterns, coastal upwelling and peculiar mode water eddies featuring toxically low levels of dissolved oxygen. ~~By exploiting~~-Based on simulated argon saturation as a proxy for effective
10 mixing we ~~show~~-conclude that the resolution effect beyond mesoscale on diapycnal mixing is comparable to other infamous spurious effects, such as the choice of advection numerics or a change of the background diffusivity ~~within 20-40~~of less than
60%.

1 Introduction

Numerical earth system models (ESMs) based on partial differential equations are generically used to project into our warming
15 future. In contrast to global climate models, ESMs feature an explicit representation of biogeochemical processes that interact with the physical components of the climate system (e.g. Flato, 2011). This allows for an exploration of the feedbacks between climate and biogeochemical processes in the oceans (and elsewhere) which has been put to use to evaluate ocean-based geo-engineering options (e.g. Keller et al., 2014; Feng et al., 2017, 2020). Even so, for many metrics of societal interest substantial model uncertainties prevail (e.g. Lötien, 2015; Lötien and Dietze, 2017; Lötien et al., 2021).

20 Among the contemporary efforts to fence-in model uncertainties are the development of techniques that exploit ensembles of simulations (e.g. Deser et al., 2020) and models (e.g. Counillon et al., 2023): rather than putting trust into one, potentially ~~erroneous~~-erroneous model simulation the idea is that an ensemble of similar yet different models and model simulations

may cancel out individual model deficiencies and, in addition, can provide a measure of uncertainty by relating to the envelope of all individual ensemble members. Another route to fencing-in model uncertainties is to identify (e.g. Löptien et al., 2021) and improve the representation of relevant processes in the models (e.g. Rogers et al., 2017; Braghieri et al., 2023). This entails explicitly resolving ever more of the spatial and temporal spectrum as it becomes computationally affordable with the progression of Moore's law (e.g. Gutjahr et al., 2019).

As for the representation of the ocean in ESMs, an infamous uncertainty is vertical mixing (Gnanadesikan et al., 2015; Löptien and Dietze, 2019; Zhu et al., 2020; Semmler et al., 2021; Löptien et al., 2021) which constitutes the primary link between the ocean surface (that is in exchange with the atmosphere) and vast abyssal stocks of nutrients, carbon and heat. Even though vertical mixing is prevalent on rather small spatial (of the order of meters only) and temporal scales (of the order of tens of minutes) it directly impacts the global-scale thermohaline circulation (e.g. Wunsch and Ferrari, 2004; Kuhlbrodt et al., 2007) and effectively controls atmospheric stocks of greenhouse gases (e.g. Schmittner et al., 2009; Sallée et al., 2012; Ellison et al., 2023). This combination of small-scale, short-lived processes and large-scale, long-term compounding effects is a real challenge since the width of spacial and temporal spectra that have to be resolved map onto high computational cost of respective simulations and, further, call for extensive (and expensive) observational surveys. Unfortunately, however, direct microstructure measurements of mixing in the field are labour intensive and difficult to interpret. This has been somewhat alleviated by advances in respective finescale parameterizations which infer mixing "... with built-in averaging over internal wave times and space scales" (Kunze, 2017). But even so, and despite considerable effort (as summarized in e.g. Whalen et al., 2015; Kunze, 2017; Waterhouse et al., 2020) comprehensive and reliable 3-dimensional climatology of global oceanic mixing is yet to be compiled. An alternative (to direct measurements), indirect approach is to constrain mixing by fitting general circulation models to available observations in an optimal way; i.e. testing effectively through mixing distributions until an optimal fit to available observations such as temperatures, salinities and pressure is obtained. This approach, however, has been failing so far as, e.g., Trossman et al. (2022) found physical variables to be insufficient to constrain mixing in this way and proposed to include, additionally, biogeochemical variables such as dissolved oxygen. ~~This, conversely, is potentially problematic circular reasoning because such an approach relies on the realism of simulated biogeochemical dynamics which is a work-in-progress (Dietze and Loeptien, 2013; Löptien et al., 2021) that is hampered also by just the contemporary uncertainty in ocean mixing since~~ While the latter is technically feasible it can be misleading in those cases where the biogeochemical model formulations that define oxygen consumption (by bacteria) and production (by algae) are imprecise. For those unfortunate but not uncommon cases it has been shown that biogeochemical and physical model deficiencies can ~~mask~~ compensate one another (Löptien and Dietze, 2019; Ruan et al., 2023).

To date, observational estimates of mixing are sparse and large-scale ocean-circulation simulations rely on mixing parameterizations since the explicit resolution of the entire relevant spectrum of motion is computationally unfeasible. The respective parameterizations range from simple Richardson Number approaches (e.g. Pacanowski and Philander, 1981) to more elaborate closures that include table-lookups based on environmental conditions for flux profiles (e.g. Large et al., 1994) or even explicitly solving equations describing the temporal evolution of turbulence properties (P. Gaspard and Lefevre, 1990; Mellor and Yamada, 1982). Still, the uncertainty in background turbulent diapycnal mixing as applied in ESMs spans an order of magnitude with little to no improvement over the last decade(s) (c.f. Schmittner et al., 2009; Ellison et al., 2023). We speculate

that this limited advancement is, in parts, associated to spurious diffusion i.e. the fact that the effective mixing in ESMs is generally not known because spurious effects of advection numerics are substantial but rather unknown contributors.

60 Early on, Gerdes et al. (1991) illustrated that the specifics of advection numerics in models matter for the simulation of water mass transformation rates in ocean circulation models. This proves the significance of the link between advection numerics and mixing since mass transformation is essentially the result of mixing. Further confirmation came from, e.g., Lee et al. (2002) showing that the spurious numerical mixing of 3-dimensional advection schemes may well be of the order of observational estimates of mixing (and the explicit representation thereof in models Holmes et al., 2021). These findings are well recognized and are the drivers behind ongoing advection scheme development (e.g., McGraw et al., 2024).

65 In summary, for a given computational cost a compromise has to be made between spurious diffusivity and dispersion of advection numerics. (Somewhat counter to intuition both may ultimately result in spurious diapycnal mixing because the "un-mixing" effect of dispersion can cause static instabilities in the water column which, in turn, supplies energy (or a reason) for vertical mixing (schemes) to set in (Hecht, 2010)). The quantification of spurious mixing in realistic (as opposed to idealized) circulation model configurations that apply state-of-the-art advection numerics (as opposed to e.g. simple upstream schemes) is - however - so complex that the essence of the compromise between computational cost and spurious diffusivity is often not known. The core of this problem is the dependency of spurious mixing on local advection velocities and property gradients. Obviously, the advection of a homogeneously distributed property can-not-cause spurious mixing (in all sensible numerical implementations of advection). Likewise, advection with zero velocity can-not-cause spurious mixing either. For non-zero velocities and property gradients, however, the existence of substantial spurious mixing has been illustrated using clever experimental designs and diagnostics (Griffies et al., 2000; Megann, 2018; Burchard and Rennau, 2008; Getzlaff et al., 2012; Ilicak et al., 2012; Hill et al., 2012; Klingbeil et al., 2014; Gibson et al., 2017; Klingbeil et al., 2019; Banerjee et al., 2023). Among the remaining challenges is to infer spurious mixing at specific locations in space and time (preferably on a time-step and grid-cell base) using a simple, generic and (computationally) cost-effective procedure. (Note, that this challenge is closely related to developing an ideal numerical advection scheme that is devoid of spurious mixing because a successful quantification of spurious effects may be applied to infer respective corrections.)

75 This study adds to the discussion by exploring the usability of argon saturation as a means or proxy to rank the effective diapycnal mixing (consisting of the sum of both explicitly prescribed and spurious mixing) in members of a suite of regional general ocean circulation models against one another. The relatively novel approach exploits the nonlinear relationship between argon saturation in seawater and temperature (and to a lesser extend salinity). It is rooted in findings showing that (1) such nonlinear relationships accumulate in the presence of mixing to significant deviations from saturation in the thermocline (e.g. Dietze and Oschlies, 2005a, b) and (2) that this effect can be exploited in order to trace diapycnal mixing both in models and observations (e.g. Henning et al., 2011; Ito et al., 2007; Emerson et al., 2012).

80 We focus on differences in model configurations as effected by differences in horizontal resolution. The rationale is that the recent years saw substantial progress in that, e.g., the CMIP6 model ensemble (O'Neill et al., 2016) now entails eddy-present and eddy-rich models, capable of resolving mesoscale features in their ocean model components (as reviewed by Hewitt et al., 2020). An examination of respective climate sensitivities is on-going (Ruan et al., 2023, c.f.) but there is consensus that an

eddy-resolving resolution is associated to important model improvements, such as in the representation of boundary currents and ventilation at deep-water formation sites (e.g. Marzocchi et al., 2015). A follow-up question (c.f. Capet et al., 2008; Brett et al., 2023a, b; Karleskind et al., 2011) to which we contribute here, is as to how sub-mesoscale resolving models will differ from contemporary mesoscale resolving models in terms of biogeochemical cycling and air-sea heat exchange. To this end we analyse a suite of regional ocean model configurations in the range between 12 to 1.5 km resolution in the Atlantic Ocean off Mauretania. The region is renowned for its complex circulation, biogeochemical processes and fishery (e.g. Doumbouya et al., 2017). Ranking " ... among the four major eastern boundary coastal upwelling systems in the world oceans" (Klenz et al., 2018) it is one of biologically most productive and diverse regions world-wide. As such it is of high ecological and socioeconomic importance and there is concern that a combination of anthropogenic warming, acidification, oxygen depletion and poor resource management may deplete its assets rapidly.

The dynamics in the region of interest are exceptionally diverse which suggests that a multitude of physical and biogeochemical processes that potentially depend on resolution are at play. Off Mauretania, a fertile coastal system intersects with an oligotrophic gyre further offshore. Along the rugged complex coastline (characterized by prominent headlands and bays) coastal currents and nutrient-rich upwelling is driven by seasonal winds (e.g. Siedler et al., 1992; Pelegrí and Benazzouz, 2015; Camp et al., 1991). The seasonality in itself is also diverse in that it increases from North towards the tropics because it is linked to the seasonal migration of the intertropical convergence zone (Messié et al., 2009; Lachkar and Gruber, 2012). Off the coast, in the Cape Verde Frontal System, sub-tropical surface water is mixed with tropical water while traveling west pushed by the North Equatorial Current and north Cape Verde Current, respectively (Mittelstaedt, 1991; Zenk et al., 1991). Evidence of intense meso- and small-scale mixing by eddies has been documented early on in the region (Tomczak, 1978; Tomczak and Hughes, 1980; Barton, 1985, 1987; Mittelstaedt, 1991). These early results were routinely confirmed: For example, von Appen et al. (2020) report on correlations between physical and biogeochemical properties on (sub-mesoscale) spatial scales of several ~~kilometers~~kilometer. Karstensen et al. (2015) find evidence that sub-mesoscale spatial scales are involved in creating so-called "dead-zone eddies" - peculiar mode water eddies containing low (potentially toxic) oxygen concentrations throughout their month-long journey from the coast offshore. In summary, the region of interest is reportedly dynamically diverse and suspected to be affected by small-scale circulation. As such we conclude that the region is well suited to test the effects of going beyond mesoscale resolution in a suite of coupled general ocean circulation biogeochemical models.

The following Section 2 presents the technical aspects of our approach including a description of our suite of model simulations (Section 2.1)~~and the pros and cons of using argon saturation~~. Section 2.2 introduced argon as a proxy for mixing(~~Section 2.2~~), ~~Section~~, Section 3 compares the model results which are then ~~summarized in the conclusions~~discussed (Section 3.3) and summarized (Section 4). The Appendix (~~4~~) provides a selection of additional comparisons between the model resolutions.

2 Materials and Methods

125 We use four configurations of a *basin-scale*, quasi-realistic, numerical coupled ocean-circulation biogeochemical model that differ from one another in their horizontal resolutions of 12 km, 6 km, 3 km and 1.5 km in a confined region of interest off Mauretania, respectively (Figure 1, Table 1). All configurations share the same 12 km - resolution bathymetry. The ultra-high 1.5 km resolution configuration has been previously validated favourably in terms of ocean physics with special focus on sub-mesoscale features by Dilmahamod et al. (2021). In the present study we explore differences that emerge as we coarsen the
130 horizontal spatial resolution incrementally such that sub-mesoscale features are no longer resolved. The coarsest model version is additionally integrated with altered background ~~diffusivites~~diffusivities and three different advection schemes. The major focus of our analysis is on diapycnal or diabatic oceanic transports which we trace by introducing the noble gas argon as an additional prognostic tracer.

2.1 Coupled Ocean Circulation Biogeochemical Model

135 All experiments are based on the Modular Ocean Model (MOM), version MOM4p1, (Griffies, 2009) model framework as released by NOAA's Geophysical Fluid Dynamics Laboratory via <https://github.com/mom-ocean/MOM4p1>, last access 15th July 2021. The biogeochemical module is BLING - short for **B**iology **L**ight **I**ron **N**utrients and **G**asses developed by Galbraith et al. (2010). The model configurations are identical to the Southern Ocean setup MOMSO (~~Dietze et al., 2020~~) ([≈ 11 km resolution Dietze et al.](#)
140 except for changes related to the grid, bathymetry and forcing. The high-resolution settings build on experience with the 2 km-resolution configuration MOMBA (Dietze et al., 2014) and the 100 m-resolution configuration MOMBE (Dietze and Löptien, 2021).

Even our highest-resolved configuration *High* applies sub-grid scale parameterizations because it ~~can not~~cannot resolve the full spectrum of processes (which expands down to centimetre scale). In order to mimic the effect of unresolved vertical turbulent fluxes we apply the k-profile parameterization approach of Large et al. (1994) with a critical bulk Richardson number
145 of 0.3 and a constant vertical background diffusivity and viscosity of $10^{-5} m^2 s^{-1}$ in all of our coupled ocean circulation biogeochemical model simulations (unless explicitly stated otherwise such as in Table 2). These background values apply also below the surface mixed layer throughout the water column. The choice of background diffusivity is consistent with space and time-averaged estimates of open-ocean conditions derived by Ledwell et al. (1993) (to which substantial uncertainties in our region of interest apply, Schafstall et al., 2010). Both parameterizations of the non-local and the double diffusive (vertical)
150 scalar tracer fluxes are applied. Horizontally, we apply a state-dependent horizontal Smagorinsky viscosity scheme (Griffies and Hallberg, 2000; Smagorinsky, 1993a, b) to keep friction at the minimal level necessitated by numerical stability. The scale of the Smagorinsky isotropic viscosity is set to a very low 0.01 which effects very low friction and thereby allows for a most vivid circulation. We do not apply any explicit horizontal diffusivity. The (default) advection scheme in the four model versions is the Sweby-advection scheme of Hundsdorfer and Trompert (1994) with Sweby (1984) flux limiters. We dub our
155 reference model setup MOMA: **MO**dular Ocean Model off **MA**uretania. MOMA, in its highest-resolution configuration *High*

Table 1. List of coupled ocean-circulation biogeochemical model configurations. Horizontal resolution refers to both zonal and meridional resolution within respective high-resolution domains (bounded by 30° to 15.5°W and 14° to 25°N).

name tag	horizontal resolution [<i>km</i>]	total number of grid points
<i>Coarse</i>	12	167 × 168 × 72
<i>CoarseMedium</i>	6	368 × 271 × 72
<i>MediumHigh</i>	3	536 × 670 × 72
<i>High</i>	1.5	1427 × 1159 × 72

(see Table 1), has recently been favourably compared to observations by Dilmahamod et al. (2021) with a special focus on sub-mesoscale circulation.

2.1.1 Grid and Bathymetry

We use the ETOPO5 bathymetry (Data Announcement 88-MGG-02, Digital relief of the Surface of the Earth. NOAA, National Geophysical Data Center, Boulder, Colorado, 1988). The bathymetry is interpolated onto an Arakawa B (Arakawa and Lamb, 1977) model grid using a bilinear scheme. The model bathymetry is smoothed with a filter similar to the Shapiro filter (Shapiro, 1970). The filter weights are 0.25, 0.5 and 0.25. The filtering procedure can only decrease the bottom depth, i.e. essentially, it fills rough holes. The filter is applied three times consecutively because we found in other high-resolution model configurations (Dietze et al., 2020, 2014), this to be a good compromise between unnecessary smoothing on the one hand and numerical instabilities introduced by overly steep topography on the other hand.

Our model configurations cover almost the entire North Atlantic Ocean. The boundary is a solid rectangular wall (15.5° to 60°W and 6.25° to 38.5°N; Figure 1 (a)) that does not allow for any ingoing and outgoing fluxes. The design rationale is to separate boundaries and the region of interest (30° to 15.5°W and 14° to 25°N) such that spurious boundary effects fall short of entering the region of interest within our integration time which is few years only. For that reason we chose a model domain that is so much larger than the region of interest.

Within the region of interest which comprises the dynamically complex Cape Verde Frontal System where the North Equatorial Current meets the north Cape Verde Current (Figure 1 (a)) the horizontal ~~resolutions~~ resolution is telescoping (Figure 1 (c) and (d)) in all of the configurations as specified in Table 1. The 12 km, 6 km, 3 km and 1.5 km resolution configurations of MOMA are dubbed *Coarse*, *CoarseMedium*, *MediumHigh* and *High*, respectively (Table 1). The vertical discretization comprises a total of ~~55~~ 72 levels in all configurations. The resolution is 10 m at the surface, coarsens to 100 m at depth and is cutoff at 1500 m. Figure 1 (a) and (b) show the nominal depth and thickness of each vertical grid level, respectively. The confinement to a maximum of 1500 m water depth facilitates the use of a larger barotropic timestep which reduces computational burden. (Note that an additional set of simulations, as described in Section 2.1.3, was integrated in order to put the effect of resolution into perspective.)

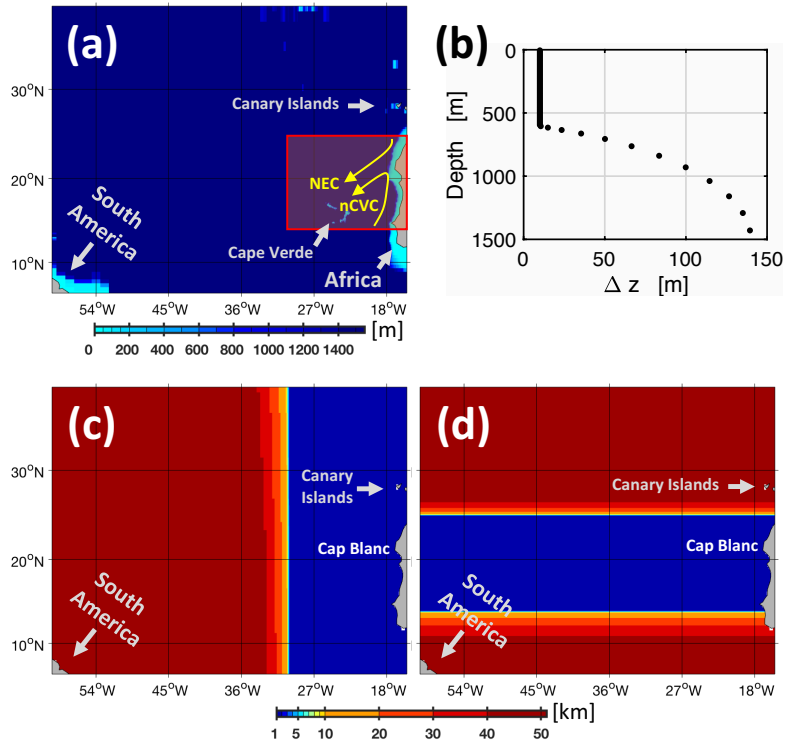


Figure 1. MOMA model domain and spatial (finite difference) discretization. Panel (a) shows the model domain and bathymetry. The red rectangle denotes the high-resolution domain of all configurations listed in Table 1. The yellow arrows in panel (a) depict the North Equatorial Current and the north Cape Verde Current. Their convergence defines the Cape Verde Frontal System. Panels (b) shows the vertical discretization of all configuration (as listed in Table 1). Panel (c), and (d) exemplarily show the ~~vertical~~, zonal and meridional resolutions of configuration *High*, respectively.

180 The computational cost increases from *Coarse* to *High* by more than three orders of magnitude: one order of magnitude increase for each of the increase in zonal and meridional resolution combined with an overhead that is predominantly associated to the smaller time step necessitated by the increased demands in numerical stability as a consequence of higher spatial resolution. (Higher spatial resolution facilitates the simulation of faster, relatively short-lived dynamics that has to be resolved temporally in order to avoid a build-up of spurious numerical effects.)

185 2.1.2 Initial Conditions and Atmospheric Forcing

Initial conditions and forcing are identical to the settings in the Southern Ocean setup MOMSO as documented in the respective model documentation (Dietze et al., 2020).

The configurations are started from rest using climatological annual mean temperatures, salinities, phosphate and oxygen concentrations from Locarnini et al. (2010); Antonov et al. (2009); Garcia et al. (2010a) and Garcia et al. (2010b), respec-

190 tively. All other biogeochemical prognostic variables (such as dissolved iron concentrations and dissolved organic matter) are initialized with downscaled model output from the global fully spun-up coarse resolution configuration "FMCD" described in Dietze et al. (2017). This pragmatic decision speeds up the equilibration of biogeochemical cycles and saves computing time (but note that there are more sophisticated approaches to this problem, e.g. Khatiwala, 2024).

As for the atmospheric conditions that (in combination with the simulated surface properties of the ocean such as SST and surface velocities) effect-drive the fluxes of heat, moisture, and momentum onto the ocean we apply the Large and Yeager (2004, 2008) Corrected Normal Year Forcing (COREv2) - an a well-tested annual climatological cycle of all the data needed to force an ocean model ~~which may be considered as one of few standard procedures to spin up an ocean circulation model~~(note that similar contemporary products exist; Tsujino et al., 2018; Hersbach et al., 2020). The forcing includes (artificial) synoptic variability and air-sea fluxes evolve freely based on bulk-formula. Even so, our approach may well skew the effects of synoptic weather systems which has been shown to be of relevance in regions of strong ocean-atmosphere coupling (e.g. O’Kane et al., 2014). Despite this caveat Dilmahamod et al. (2021) showed that our pragmatic choice of using a climatology in MOMA produces realistic oceanic variability.

2.1.3 List of Simulations

The design rationale of our simulation ensemble is to encourage the simulations to diverge from one another in response to the differences in spatial resolution, diffusivities and the choice of the advection schemes: ~~For one, we~~ We start from rest such that all configurations are shocked by the sudden onset of the atmospheric forcing which excites waves and non-linear circulation patterns that are free to develop independently on the respective spatial model grids. Further, we encourage diverging air-sea heat and momentum fluxes by applying non-linear bulk formulas based on the simulated oceanic surface properties in the respective calculations. ~~Finally, we~~

We compare simulations that have not reached equilibrium yet (after ~~the short integration of only three years at most~~), ~~the rationale being that a state of model equilibrium which could potentially be equalised across the resolutions/configurations by similarities in boundary conditions is not warranted. Rather we are interested in potentially differing evolutions away from the climatological starting conditions. Note one year of spin-up and a relatively short overall integration time of maximal three years~~ which constrains potentially spurious effects of our lateral boundary conditions (c.f. Appendix B) and saves computational resources. Note in this context that Dilmahamod et al. (2021) showed that the circulation of MOMA is already realistic after a ~~spinup~~ spin-up of only one seasonal cycle. Consistent with this result we find that the energy content of our eddy-field ~~is sufficiently spun-up after one year in that its energy content~~ does not fall short of observational estimates after one year already (Figure 5). This suggests that our simulation period of 3 years is ~~, on the one hand,~~ long enough to reveal the major effects of differing resolution. ~~On the other hand this suggests that the simulation period is short enough such that potentially spurious effects associated to our box-like boundary conditions have not yet entered the region of interest (since the overall model domain is much larger~~ (even though it may take much longer to equilibrate potential energy).

We integrate two sets of model simulations. The first set features 4 differing resolutions as listed in Table 1. The simulations are dubbed *Coarse*, *CoarseMedium*, *MediumHigh* and *High*.

Table 2. Simulated dissolved argon over-saturation in units % on nominal October 1st 1902 averaged over depth (0 to 400 m) and the respective high-resolution model domains (bounded by 30° to 15.5°W and 14° to 25°N). Rates refer to nominal year 1901.

name tag	description	ΔAr [%]
<i>High</i>	high horizontal resolution (1.5 km) <u>horizontal resolution; $1 \times 10^{-5} m^2 s^{-1}$ background diffusivity</u>	0.7057 <u>0.43</u>
<i>Coarse</i>	coarse horizontal resolution (12 km) <u>horizontal resolution; $1 \times 10^{-5} m^2 s^{-1}$ background diffusivity</u>	0.6990 <u>0.45</u>
<i>Coarse 1.2</i>	coarse resolution with 20% increase in <u>12 km horizontal resolution; $1.2 \times 10^{-5} m^2 s^{-1}$ background diffusivity</u>	0.6995 <u>0.45</u>
<i>Coarse 1.4</i>	coarse resolution with 40% increase in <u>12 km horizontal resolution; $1.4 \times 10^{-5} m^2 s^{-1}$ background diffusivity</u>	0.7061 <u>0.46</u>
<i>Coarse 1.6</i>	coarse resolution with 60% increase in <u>12 km horizontal resolution; $1.6 \times 10^{-5} m^2 s^{-1}$ background diffusivity</u>	0.7059 <u>0.47</u>
<i>Coarse 1.8</i>	coarse resolution with 80% increase in <u>12 km horizontal resolution; $1.8 \times 10^{-5} m^2 s^{-1}$ background diffusivity</u>	0.7104 <u>0.47</u>
<i>Coarse 2</i>	coarse resolution with doubling of the <u>12 km horizontal resolution; $2 \times 10^{-5} m^2 s^{-1}$ background diffusivity</u>	0.7260 <u>0.50</u>
<i>Coarse 10</i>	coarse resolution with a 10-fold increase in <u>12 km horizontal resolution; $1 \times 10^{-4} m^2 s^{-1}$ background diffusivity</u>	0.8704 <u>0.77</u>
<i>Coarse upwind</i>	coarse resolution with <u>12 km horizontal resolution; upwind advection scheme</u>	1.1891 <u>1.15</u>
<i>Coarse QUICKer</i>	coarse resolution with <u>12 km horizontal resolution; QUICKer advection scheme (Leonard, 1979)</u>	0.6938 <u>0.44</u>
<i>Coarse MDPPM</i>	coarse resolution <u>12 km horizontal resolution; resolution with piece-wise parabolic method (Griffies, 2009)</u>	0.6661 <u>0.41</u>

The second set of simulations is targeted at putting the differences among the first set into perspective. The focus is on effective domain-averaged diapycnal mixing between *Coarse* and *High* as traced by simulated argon saturation. The simulations explore a range of (uncertain) parameter settings for the vertical background mixing/diffusivity (*Coarse 1.2*, *Coarse 10*) and numerical advection schemes (*Coarse upwind*, *Coarse QUICKer*, *Coarse MDPPM*) (Section 2.2.1, Table 2).

2.2 Model Analyses

We focus on ranking the effective diapycnal mixing in our simulations against one another. Effective, diapycnal mixing is infamously difficult to quantify in models (Griffies et al., 2000; Megann, 2018; Burchard and Rennau, 2008; Getzlaff et al., 2012). Here we add to the discussion by introducing dissolved argon as an additional prognostic tracer to our simulations in order to track mixing by respective oversaturation.

2.2.1 Argon Saturation - a Proxy for Mixing

As suggested by Dietze and Oschlies (2005a) we employ an explicit representation of argon in our suite of configurations in order to trace the effect of mixing: argon (Ar) is a noble gas and, once isolated from the sea surface, is a conservative tracer in the ocean (e.g. Bieri et al., 1966). Argon oversaturation, ΔAr is defined as:

$$\Delta Ar = \frac{\delta Ar}{Ar_{sat}} \frac{Ar}{Ar_{sat}} \times 100\% - 100\%, \quad (1)$$

where $\delta Ar = Ar - Ar_{sat}$ denotes the difference between Ar and Ar_{sat} denotes the actual and saturated Argon concentrations, respectively. In contrast to concentration the saturation is not conservative. The reason being that Ar_{sat} is a non-linear function of temperature (and to a lesser extent salinity). As a consequence mixing of two water parcels will always result in a mixing

~~product that his higher in~~: a mixed water-parcel will always carry a higher argon saturation than the arithmetic average-mean of the original parcels since the saturation curves are convex over the entire range of oceanic temperatures (and salinities). Hence, an increase in $\Delta Ar\%$ may be indicative of mixing (while negative values can be indicative for spurious dispersion).

Even though there is consensus on the link between mixing and ΔAr (Dietze and Oschlies, 2005a; Ito and Deutsch, 2006; 245 Henning et al., 2011; Ito et al., 2007; Emerson et al., 2012; Hamme et al., 2017; Getzlaff et al., 2019) a ubiquitous relationship between standing stocks of argon saturation and diapycnal mixing that would ~~allows-allow~~ for a global, localized assessment of effective diffusivities in numerical models has not been established yet. Among the challenges yet to overcome is to correct for processes other than mixing that affect ΔAr such as subsurface warming by penetrating solar radiation (e.g. Dietze and Oschlies, 2005b) and bubble entrainment (e.g. Spitzer and Jenkins, 1989; Hamme et al., 2017).

250 In this study a ubiquitous relationship is not targeted. Instead, we aim to use ΔAr as a relative measure to rank our simulations with respect mixing against one another. To this end our simulated argon concentrations are more of a simple analytical tool designed to compare simulations among one another rather than a metric capable of constraining the absolute effective mixing in models with observations (such as developed by e.g. Holmes et al., 2021). This facilitates the implementation because we can initialize all simulations with $\Delta Ar = 0\%$ and are not bound to integrate until the saturations have equilibrated because we 255 only study the differences between our simulations rather than linking simulated concentrations to observations.

3 Results

A comprehensive and favourable comparison between simulation *High* and observations is provided by Dilmahamod et al. (2021). Here we focus on illustrating that our simulation *High* is capable of resolving sub-mesoscale features. Further, we will employ ΔAr to compare simulations with respect to the effect of diapycnal mixing.

260 3.1 Resolving Mesoscale and Sub-Mesoscale Dynamics

Figure 2 shows a sea surface temperature snapshot of the respective entire model domain after 2 years, 3 months and 11 days of spinup. The simulated sea surface temperatures look very similar both outside and inside the respective high-resolution domain. Differences between the resolutions become only apparent at extreme zoom levels such as shown in Figure 3 for an upwelling filament off Cap Blanc. On these scales it is evident that a higher spatial model resolution clearly improves the ~~reproduction of~~ 265 ~~small-scale circulation features~~ representation of small circulation features such as the relatively warm SST feature near 18°W, 21°N that is completely absent in Coarse. Figure 4 confirms the visual impression of increasing levels of detail with increasing resolution by showing respective vertical relative vorticities, calculated as:

$$\zeta^z = \partial_x v - \partial_y u \quad (2)$$

normalized by the Coriolis frequency f . Given that sub-mesoscale structures are associated to values of magnitude $O(1)$ (e.g. 270 Shcherbina et al., 2013), Figure 4 shows that the configurations *Coarse* and *CoarseMedium* are devoid of sub-mesoscale dy-

namics, while *MediumHigh* features sporadic occurrences and *High* ubiquitous coverage. This warrants a comparison between sub-mesoscale and coarser resolution using our configurations *Coarse* and *High*.

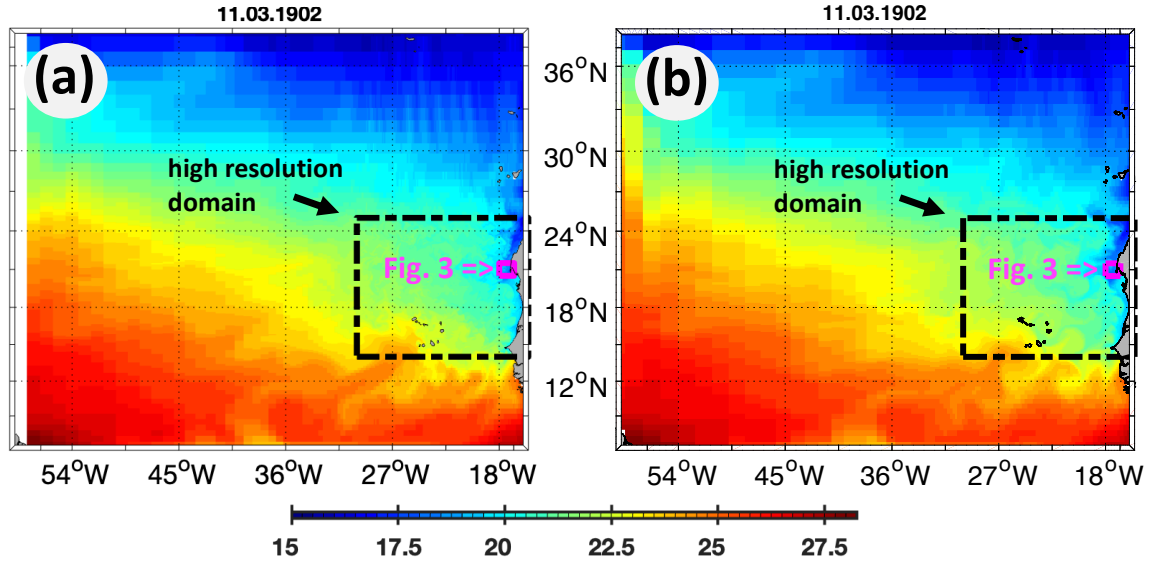


Figure 2. Exemplary snapshots of simulated sea surface temperatures in units degrees centigrade. Panel (a) and (b) feature the entire model domain of the high-resolution configuration *High* and the coarse resolution configuration *Coarse*, respectively. The black dashed line denotes the region where both zonal and meridional resolution telescopes (Figure 1) as specified in Table 1. The tiny magenta squares off Cap Blanc at the Coast of Mauretania depicts the boundaries of the zoom shown in Figure 3.

Figure 5 show eddy kinetic energy (EKE) averaged meridionally over the respective high-resolution model domain as observed from space and simulated with *High* and *Coarse*. As to be expected, the eddy kinetic energy increases with higher spatial resolution because the sub-mesoscale circulation starts to ~~contributes~~[contribute](#) to the integrated energy spectrum. Hence, simulation *High* features higher EKE-levels than *Coarse* (also because the energy cascade from large to smaller spatial scales is apparently not accelerated by the increase in resolution). Both EKEs in *High* and *Coarse* do not fall short of observational estimates (neither during the upwelling nor during the relaxation season). This implies that the simulations capture enough dynamics for a meaningful comparison of the differing configurations (as, reversely, a comparison of *High* and *Coarse* with overly sluggish circulations would be inconclusive). (On a side note we add, that Dilmahamod et al. (2021) finds no evidence for excessive overestimation of our simulated eddy dynamics in *High* while, at the same time, there is evidence that eddy kinetic energy estimates from space are biased low (e.g. [Fratantoni, 2001](#)); ~~(Fratantoni (e.g. 2001); but see also Luecke et al. (2020) for agreements between models and observations across frequency bands)~~.)

Small-scale mesoscale and sub-mesoscale features have been associated with locally-intensified vertical fluxes (e.g. Lévy et al., 2001; Mahadevan and Archer, 2000; Mahadevan and Tandon, 2006; Martin and Pondaven, 2003). Consequently, it

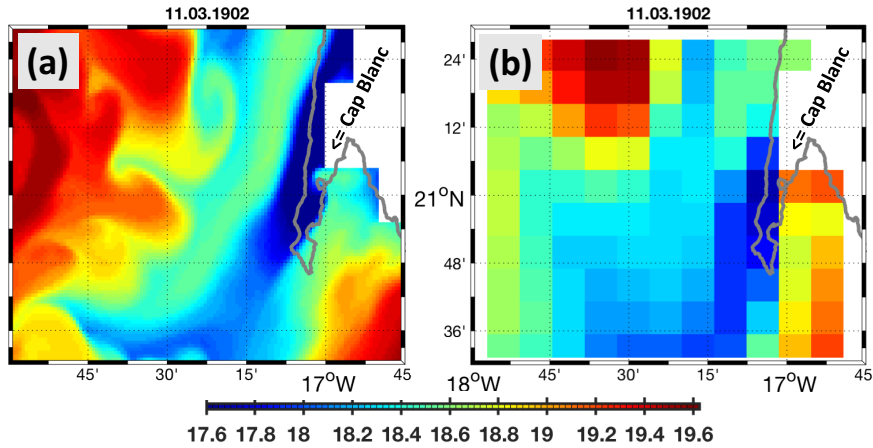


Figure 3. Exemplary snapshots of simulated sea surface temperatures capturing an upwelling filament off Cap Blanc. Panel (a) and (b) show the high-resolution configuration *High* and the coarse resolution configuration *Coarse*, respectively. Note that the entire model domains are larger than shown here (Figure 2).

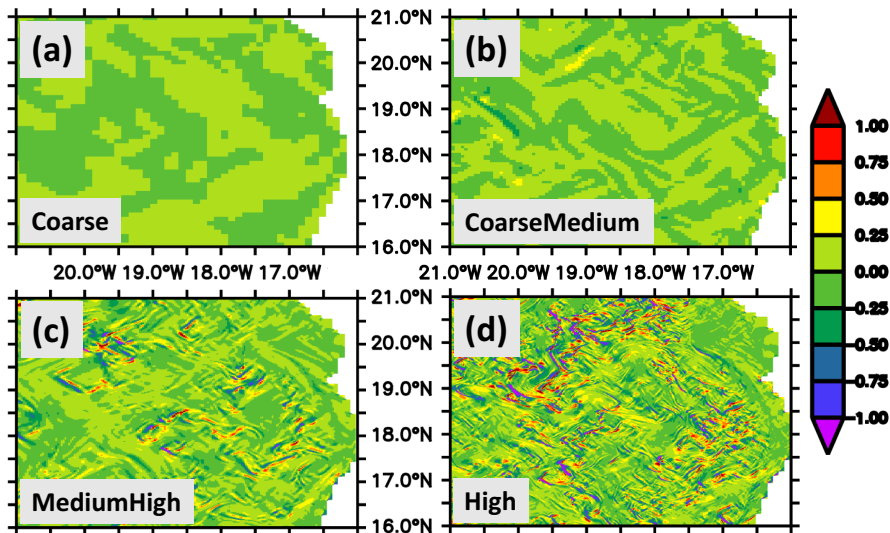


Figure 4. Exemplary snapshot of simulated vorticity during the upwelling period (on nominal 15 January 1902). The vorticity is calculated from surface currents averaged over the upper 50 m and normalized by the Coriolis frequency. Panel (a), (b), (c) and (d) showcase the effect of horizontal resolution in our configurations. Relative vorticity of magnitude $O(1)$ indicate sub-mesoscale flows. The region shown corresponds to $\approx 15\%$ of the area of the high-resolution model domain.

has been argued that vertical exchange should increase along with spatial resolution since ever more small-scale features are resolved with increasing resolution. One of the processes potentially leveraging this effect is surface current wind interaction

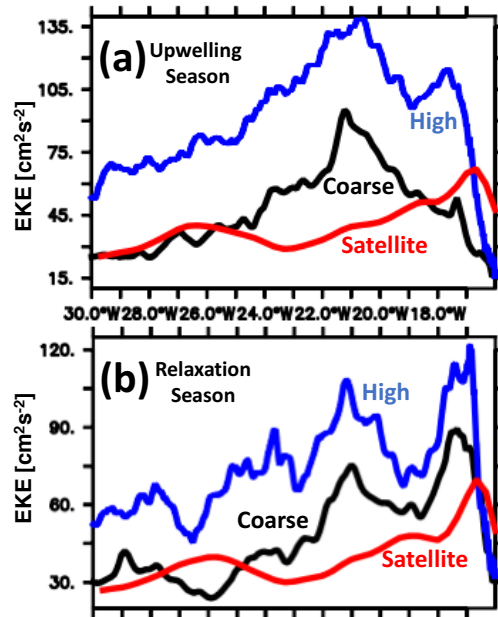


Figure 5. Eddy kinetic energy, domain averaged over the high-resolution model domain ($30^{\circ}\text{W} - 15^{\circ}\text{W}$ and $17^{\circ}\text{N} - 24^{\circ}\text{N}$). Panel (a) and (b) refer to the Upwelling Season (December - April) and the Relaxation Season (May - July), respectively. The red line refers to observations from space (Aviso 1993-2010). The black and blue lines denote model output averaged over nominal years 1901-1902 simulated with configuration *High* and *Coarse*, respectively.

(Martin and Richards, 2001): Ekman pumping is calculated from the curl of the wind stress. The resolution of ever smaller spatial scales in ocean currents yields higher spatial derivatives of wind stress, calculated from the squared difference of wind speed and oceanic surface current velocity. Hence, simulated Ekman pumping, associated with the wind stress curl, increases with model resolution. Table 3 confirms that higher resolution yields higher Ekman velocities in our configurations. This applies for both the mean of the magnitude and the standard deviation which approximately double from *Coarse* to *High*. Figure 6 showcases the signature of ocean circulation in the Ekman pumping in more detail. In *Coarse* the prevalent structure is boxlike with a spatial scale of $O(100\text{ km})$ effected by the scale of the (spatially discretised) atmospheric forcing. Increasing resolution to *CoarseMedium*, *MediumHigh* and *High* results in ever more structure, apparently related to an eddying circulation with local values increasing up to several meters per day. Hence we expect, consistent with the pioneering work of, e.g., Lévy et al. (2001); Mahadevan and Archer (2000); Mahadevan and Tandon (2006); Martin and Pondaven (2003), an increase in vertical, **diapycnal**-fluxes of heat, salt and biogeochemical entities with increasing resolution in our configurations. **This hypothesis is put to the test with a detailed assessment of the effective diabatic mixing in the following section** We are particularly curious whether the increase in Ekman dynamics with increasing resolution leads to enhanced diapycnal mixing or if its effect is primarily advective.

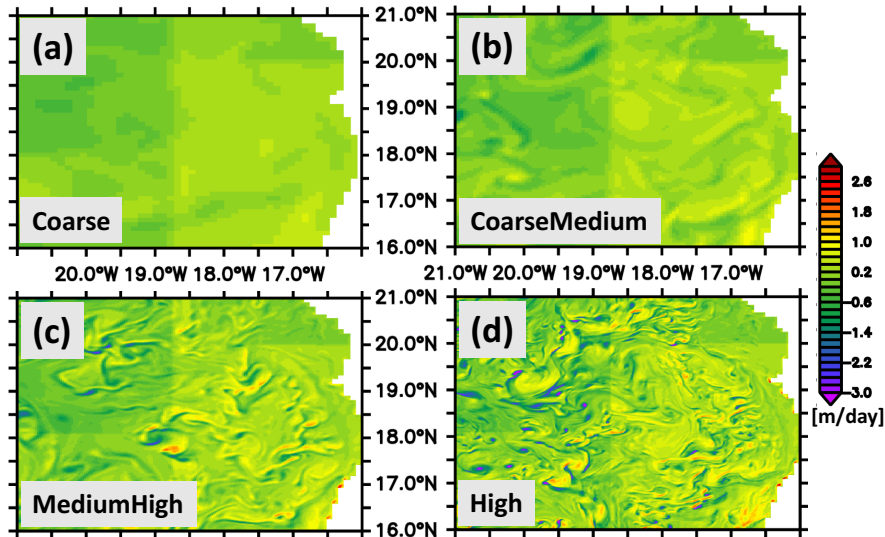


Figure 6. Exemplary snapshot of simulated Ekman pumping (nominal 15 January 1901). The Ekman pumping includes surface current wind effects. Panel (a), (b), (c), and (d) refer to configuration *Coarse*, *CoarseMedium*, *MediumHigh* and *High*, respectively. The region shown corresponds to $\approx 15\%$ of the area of the high-resolution model domain.

Table 3. Ekman pumping as simulated within the high-resolution model domains on nominal 15th January 1901 in units $m\ day^{-1}$.

tag	mean of magnitude	standard deviation
<i>Coarse</i>	0.16	0.20
<i>CoarseMedium</i>	0.18	0.23
<i>MediumHigh</i>	0.21	0.29
<i>High</i>	0.28	0.41

3.2 Ocean Mixing

Based on previous work (e.g. Lévy et al., 2001; Mahadevan and Archer, 2000; Mahadevan and Tandon, 2006; Martin and Pondaven, 2003) we expect an increase in vertical mixing in response to increasing resolution of intense and localised up- and downwelling events. Alternatively, we may find that the effect of such events cancel out on larger scales in our model (Reissmann et al., 2009; Eden and Dietze, 2009; Dietze and Löptien, 2016).

In this Section, we use argon over-saturation as a proxy recording the mixing history of water parcels since these were last in contact with equilibrating air-sea fluxes at the sea surface. We start with an illustration of effects, continue with comparing the different spacial resolutions and end with putting the latter into perspective by comparing them to other simulations.

The interpretation of argon saturation is not straightforward because it is antagonistically affected by mixing: Diapycnal mixing produces oversaturation as explained in Section 2.2.1. At the same time however, mixing transports oversaturated

water to the surface where it ~~loses~~ loses its oversaturation to the atmosphere. Figure 7 (a) shows a Hovmöller diagram of the argon saturation averaged over the high-resolution domain which illustrates the antagonistic processes at work. Above the surface mixed layer the water is always saturated because it is subject to equilibrating air-sea fluxes. Below the surface mixed layer the water is shielded from the direct effect of air-sea fluxes and three effects prevail in our simulations: (1) Solar radiation penetrating below the surface mixed layer increases the temperature in summer. This reduces the solubility and increases the saturation (e.g. Dietze and Oschlies, 2005b). (2) Mixing of water parcels (effected by the sum of explicitly prescribed diffusivity and implicit spurious mixing from numerical schemes) with differing temperatures and salinities results in oversaturation because solubility is a nonlinear function of temperature and salinity (e.g. Dietze and Oschlies, 2005a; Ito and Deutsch, 2006; Emerson et al., 2012). (3) Mixing with equilibrated surface water across the surface mixed layer and abyssal water still carrying their initial 0% oversaturation. In combination these effects drive a seasonal saturation maximum situated directly below the surface mixed layer and a linearly downward protruding saturation signal over time.

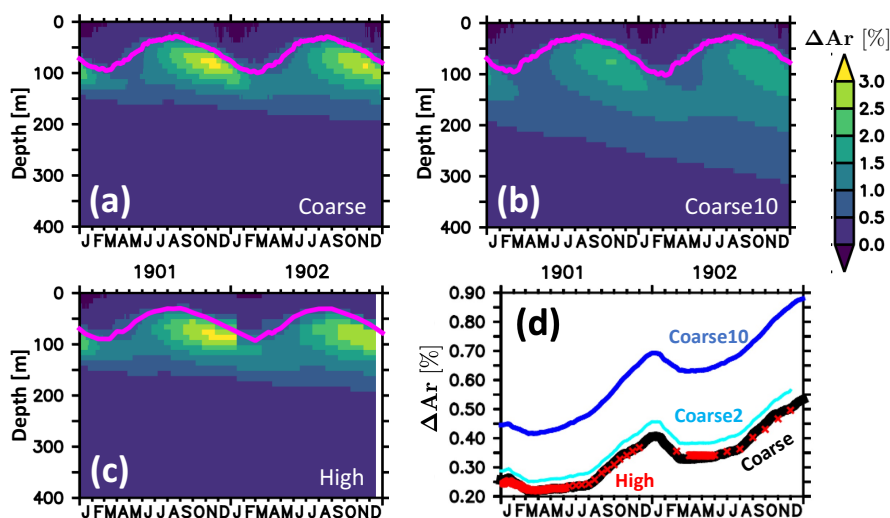


Figure 7. Simulated argon oversaturation in units % averaged over the high-resolution model domain (30°W - 15°W and 17°N - 24°N). Panel (a), (b), and (c) refer to model configurations *Coarse*, *Coarse10* (featuring a ten-fold increase in background diffusivity relative to *Coarse*) and *High*, respectively. The magenta line denotes the surface mixed layer defined with a $\Delta = 0.5 K$ temperature criterion. Panel (d) shows corresponding vertical averages oversaturation averaged over 0-100 to 400 m depth for configurations High, Coarse, Coarse2 and Coarse10. Coarse2 refers to a simulation with a two-fold increase (from 1 to $2 \times 10^{-5} m^2 s^{-1}$) in background diffusivity.

A comparison between Figure 7 (a) and (b), showing results from *Coarse* and *Coarse10* (Table 2), respectively, reveals how an (exaggerated) 10-fold increase in explicitly prescribed background diffusivity manifests itself: the higher diffusivity smooths the maximum below the surface mixed layer by distributing the saturation signal vertically. Part of the signal enters the surface mixed layer and is eradicated by equilibrating air-sea fluxes while part of it is protruding downwards. Comparing When computing water column averages below the surface we see in Figure 7 (d) we see that *Coarse10* accumulates deep

oversaturation at a faster pace than *Coarse* - even though its losses to the ventilated surface mixed layer are greater due to enhanced vertical exchange by mixing. Note, that this applies also when averaging over the entire water column (not shown).

330 A comparison between *High*, *Coarse* and *Coarse10* in Figure 7 suggests that the effective diapycnal mixing in *High* and is not larger than in *Coarse* is similar as because *High* features a small similar or rather smaller increase relative to *Coarse* only. The (high-resolution) domain: near the end of the simulation the averaged ΔAr amounts in the 100 to 400 m depth range amounts to 0.43% in *High* relative to 0.699% - 0.45% in *Coarse* i.e. Also, the visual impression of the simulated argon saturation for *High* *Coarse* feature higher diapycnal mixing than and *Coarse* *High*. The values for the other simulations are, as

335 expected, in between these two values (not shown). So what do these differences of less than 0.1% actually mean? in Figure 7 (a) and (c) is rather, while (b) is distinctly different.

Table 2 and Figure 9 puts the small differences in simulated averaged oversaturation values between *High* and *Coarse* into perspective: compared against From a suite of 9 simulations with a 20%, 40%, 60%, 80%, 100%, 1000% increase simulations with background diffusivities 1, 1.2, 1.4, 1.6, 1.8, 2 and $10 \times 10^{-5} m^2 s^{-1}$ we conclude that our method can reliably detect

340 differences in background diffusivity we find that the increase in argon saturation from down to $0.4 \times 10^{-5} m^2 s^{-1}$, but fails at distinguishing very low diffusivities - probably because the implicit numerical diffusion is then masking the effects of our choices of explicit diffusivity.

Overall we conclude that the difference between *Coarse* *High* relative to and *High* *Coarse* corresponds to a modest increase of 20% to 40% in the background diffusivity. This in diffusivity as detected by argon saturation is rather minor compared and

345 comparable to other infamous and contemporary uncertainties. In fact we find that the difference is comparable to the effect of such as switching from one to another state-of-the-art advection scheme (Table 2; default scheme in *Coarse* versus *Coarse QUICKer*). Using the MDPPM scheme introduces somewhat larger effect (i.e. somewhat less mixing) and *Coarse MDPPM*.

Note in this context, that the effect of using the outdated upwind scheme introduces much larger effects on the diapycnal mixing and this effect is even stronger than a 10-fold increase *Coarse 10* in background diffusivity.

350 3.3 Discussion

Our study exploits the nonlinear, convex relationship between argon saturation and temperature (and salinity) in order to rank effective diapycnal mixing in a suite of model simulations. Our range of calibration simulations where the background diffusivity was varied between $1 \times 10^{-5} m^2 s^{-1}$ and $1 \times 10^{-4} m^2 s^{-1}$ show that simulations with differences in background diffusivities of more than $4 \times 10^{-6} m^2 s^{-1}$ are consistently different in that higher diffusivities are associated with higher

355 saturations throughout year two and three of the simulation (Figure 8, 7, Table 2). We suspect that the same holds for the first spin-up year for which we did not keep all of the model output.

Clearly, the saturation signals due to mixing are low in amplitude. This obstructs a comparison of our model output with real world observations where additional antagonistic processes such as bubble entrainment and effects of finite gas exchange that can fail to keep up with the cooling effect on saturation in convective regimes (e.g. Seltzer et al., 2023) are at play. The representation of these effects is - to-date - dependent on model formulations which is work in progress (e.g. Pöppelmeier et al., 2023);

360 driven by an increasing observational base and interest in general (e.g. Jenkins et al., 2023; Hamme et al., 2017). Nonetheless,

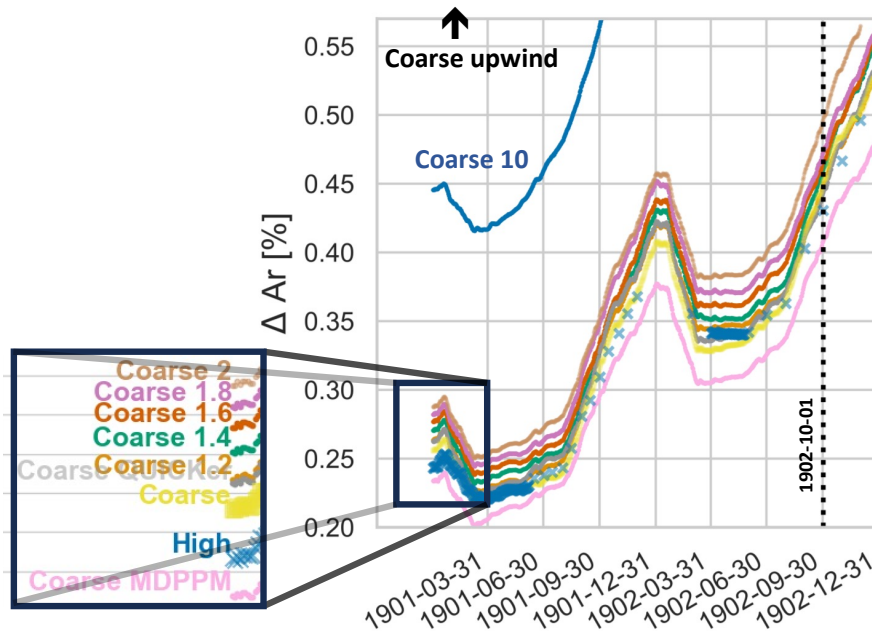


Figure 8. Simulated argon oversaturation as a function of explicit background diffusivity. Each value corresponds to a Coarse simulation with respective diffusivity for temperature, salinity and Ar. The simulated argon oversaturation is calculated as in units % averaged horizontally over the high-resolution model domain (30°W - 15°W and 17°N - 24°N) and vertically over 0-100 to 400 m depth starting after the first year of spinup. For reference, simulation Data gaps such as in configuration High features 0.71% (are attributable to I/O-failures. The black-dashed line marks nominal October 1902 which is the base of Table 2). Configuration Coarse upwind is off the scale. Model tags are explained in Table 2.

our results show that our method consistently ranks simulations with varying background diffusivity and advection schemes, suggesting robustness of argon saturation as a comparative metric. So how does it compare to other contemporary approaches to diagnose diffusivities in model simulations?

365 The main advantage of our method is its simplicity. Typically all models provide an interface to add a passive tracer so that our implementation of argon to trace mixing reduces to merely calculating initial conditions (i.e. 100% saturation based on initial temperatures and salinities) and setting of a surface boundary condition where argon is reset to 100% saturation every timestep. This sets it apart from more sophisticated approaches based on variance decay (e.g. Burchard and Rennau, 2008; Schlichting et al., 2023) or available potential energy (e.g. Ilicak, 2016).

370 Our approach based on argon saturation is apparently similar to the approach of Holmes et al. (2021) that is based on diffusively effected heat fluxes: First, we find that their diffusively effected heat fluxes yield qualitatively similar patterns to our estimates of “diffusively effected” argon fluxes (Figure A1 of Holmes et al. (2021) versus Figure 3 in Dietze and Oeschies (2005a)). Second, we report a detection accuracy of down to $4 \times 10^{-6} m^2 s^{-1}$ which is similar to what we derive from Figure 17

in Holmes et al. (2021) where their simulations 025-NG0, 025-KBV and 025KB5 showcase that their approach can detect changes in diffusivities down to $5 \times 10^{-6} m^2 s^{-1}$.

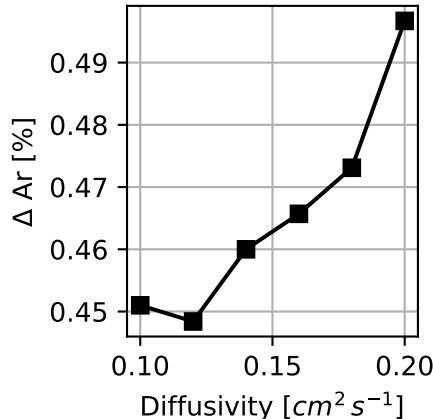


Figure 9. Simulated argon oversaturation as a function of explicit background diffusivity. Each value corresponds to a *Coarse* simulation with respective diffusivity for temperature, salinity and Ar. The argon oversaturation is calculated as averaged horizontally over the high-resolution model domain ($30^\circ W - 15^\circ W$ and $17^\circ N - 24^\circ N$) and vertically over 100 to 400 m depth. For reference, simulation *High* features 0.43% (Table 2).

375

4 Conclusions

We implemented an explicit, prognostic representation of dissolved argon into an ocean-circulation biogeochemical model of the North Atlantic. A suite of ~~simulations with differing calibration simulations with systematically altered~~ background diffusivities established a link between argon saturation and effective vertical diffusivity. This link was employed to rank effective diffusivity in a suite of model configurations with differing spatial resolutions off Mauretania against one another. Further, we tested different numerical advection schemes in order to set the resolution effects into perspective.

Our results ~~are consistent with foregoing studies (e.g. Lévy et al., 2001; Mahadevan and Archer, 2000; Mahadevan and Tandon, 2006; M that they suggest an increase of effective diffusivity with spatial horizontal resolution. More specifically we report a 20-40% increase in the respective high-resolution sub-region of the model when witching suggest rather modest effects, comparable to contemporary numerical errors when switching~~ from a 12 km mesoscale to a 1.5 km sub-mesoscale resolution. This sensitivity is, as suggested by our simulations with different advection schemes, comparable to contemporary numerical errors. More specifically we find the effect on argon based on this change in resolution is comparable to a change to another contemporary advection scheme or to a change of the background diffusivity of less than 60% (note that all these minor effects appear below the detection limit of our method while larger changes in diffusivity could be clearly identified).

390 Our ~~rather modest effect of resolution~~ results are is in-line with recent findings of ~~Brett et al. (2023a, b); Karleskind et al. (2011) who~~
~~compared~~ Brett et al. (2023a); Karleskind et al. (2011) who reported on surprisingly large similarities between sub-mesoscale
resolving simulations ~~with artificially damped simulations of the same configuration and the same simulations with an artificially~~
damped circulation (Porcupine Abyssal Plain and POMME region, respectively).

395 Caveats apply. Among them are (1) the application of the hydrostatic approximation (which we applied in line with contem-
porary IPCC models but in contrast to e.g. Mahadevan and Archer (2000)), (2) the effects of a combined increase in horizontal
and vertical resolution (e.g. Stewart et al., 2017) has not been tested, (3) our results apply for the region off Mauretania only
and (4) potentially accumulating long-term effects of differing resolutions have not been studied.

Appendix A: Generic Model Output

The main body of the paper is focussed on effective vertical mixing as traced by argon saturation rather than showcasing results from the suite of simulations. Here we present more generic model output such as simulated air-sea fluxes, export production and simulated dissolved oxygen. We focus on averages covering the respective highly-resolved subdomains rather than going for side-by-side comparisons between snapshots. The reason being that eddying model simulations are known to show a highly nonlinear behaviour that can manifest itself in notable difference even in repetitions of the exact same experiment using identical executables and hardware (e.g. Dietze et al., 2014, "computational uncertainty" in their Figure 21). Further, detailed differences between individual circulation features may be considered irrelevant in the context of IPCC-type modelling - if they average out on the larger spatial scales that are assertive to coupled components such as the atmosphere.

Among the oceanic peculiarities in the region of interest is an exceptionally complex seasonally varying coastal circulation including deep-reaching undercurrents. Figure A1 shows an example as resolved in exemplary snapshots by configuration *High* and *Coarse*: during the upwelling season, at 18°N, *High* features a double-cored poleward undercurrent consistent with observations (Dilmahamod et al., 2021, their Figure 2). Configuration *Coarse* is similar but features overall weaker currents. This makes it less realistic in terms of its representation of the undercurrent and more realistic in terms of its representation of the near-surface equatorward current on the shelf. During the relaxation season an intensification of wind stress curl induces an intensification of poleward flow. This, along with ebbed-away equatorward surface current, is reproduced by both *High* and *Coarse*. In summary, *Coarse* is strikingly similar to *High* in terms of seasonality and spatial structure of near-coastal currents, except for resolving less small-scale details.

These similarities of complex seasonal coastal dynamics may, despite the fact that they appear very small, still allow for substantially differing distributions of heat and salt due to the nonlinear nature of the system. This may be of relevance especially for those surface properties that couple the ocean with the atmosphere such as sea surface temperature (SST). Table A1 illustrates, however, that domain-averaged sea surface temperatures, sea surface salinities and near surface nutrients differ also very little across the model configurations. Further, these differences are not all monotonically aligned with the spatial model resolution which suggests other reason for the (very small) differences between the configurations.

Figure A2 provides evidence that the small SST differences do not amplify to considerable air-sea heat flux differences: the exemplary snapshots after almost three years of spinup are - irrespective of resolution - strikingly similar with the only difference being the amount of small-scale structure resolved (which may, or may not be associated with Ekman pumping driven by the surface-current wind effects described above). This is consistent with the rather low sensitivity of effective diffusivity as traced by argon saturation in Section 3.

In the following our focus is on domain-averaged persistent effects that may be missed by coarse resolution configurations rather than on local small-scale transient phenomena: Figure A3 (a) shows the ensemble mean domain-averaged seasonal heat flux. In line with results from Faye et al. (2015) and Foltz et al. (2013) we find a substantial seasonality ranging from a 200 $W m^{-2}$ oceanic heat loss in winter up to a 100 $W m^{-2}$ heat gain in summer. Figure A3(b) shows that the difference among the configurations is of the order of few $W m^{-2}$, corresponding to deviations of several percent only. These differences are

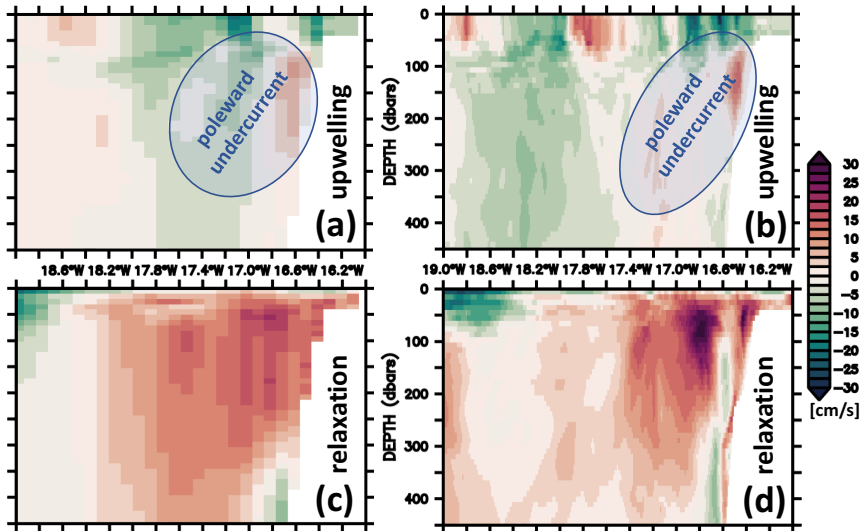


Figure A1. Simulated alongshore currents for configurations *Coarse* (a, c) and *High* (b, d) along a zonal section at 18°N. Panels (a) and (b) refer to exemplary snapshots during the upwelling season (on nominal 1 February 1902) while (c) and (d) refer to the relaxation season (on nominal 1 June 1901).

Table A1. Sea surface temperature (SST), sea surface salinity (SSS) and phosphate concentration simulated with respective model configurations (resolutions). All values are averaged over the respective high-resolution model domains (bounded by 30° to 15.5°W and 14° to 25°N) at the end of the simulation on nominal 31st of December 1902. Phosphate concentrations refer to vertical averages over the euphotic zone (0 - 120 m depth).

Configuration	SST [°C]	SSS [PSU]	PO ₄ [mmol P m ⁻³]
<i>Coarse</i>	23.67	36.15	0.040
<i>CoarseMedium</i>	23.66	36.15	0.057
<i>MediumHigh</i>	23.69	36.11	0.039
<i>High</i>	23.63	36.11	0.042

well within the uncertainty range even for observational estimates (e.g. Gulev et al., 2007). In addition we report, again, that there is no apparent consistent relationship between the deviation from the ensemble mean and the spatial model resolution.

435 Similar conclusions apply to simulated biogeochemical entities: the vertical gradients of temperature and nutrients are typically opposing one another with warm, sun-lit surface waters being depleted in nutrients (essential for phytoplankton growth) and abyssal, cold waters being nutrient replete. Enhanced vertical transports are expected to increase oceanic heat gain by exposing additional cold water to the relatively warm atmosphere (in our region of interest). Similarly, enhanced vertical transport result in an increase of nutrient availability to phytoplankton at the sun-lit surface which should manifest itself in e.g. increased

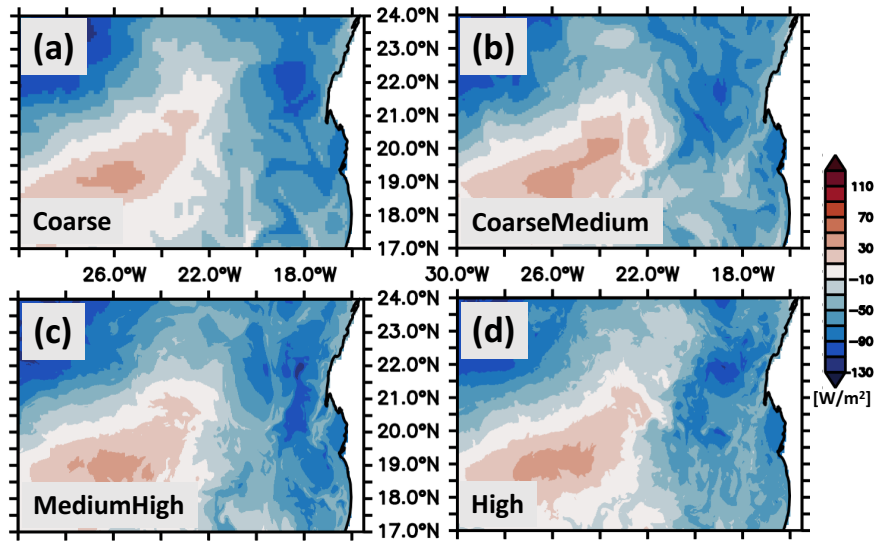


Figure A2. Snapshot of simulated daily mean sea-air heat flux (nominal 17 December 1902). Panel (a), (b), (c) and (d) refers to configuration *Coarse*, *CoarseMedium*, *MediumHigh* and *High*, respectively. Positive numbers denote oceanic heat gain.

biotic export production. Figure A4 (a) shows the ensemble mean domain-averaged export production over the course of the year with peaking values between 40 and $50 \text{ mmol } P \text{ m}^{-2} \text{ yr}^{-1}$ during the spring bloom and wintertime values of only several $\text{mmol } P \text{ m}^{-2} \text{ yr}^{-1}$. Throughout this strong seasonal cycle the individual configurations deviate only a few $\text{mmol } P \text{ m}^{-2} \text{ yr}^{-1}$ from the ensemble mean and, again, there is no consistent relationship between deviation and resolution (Figure A4(b)).

A1 Dead-Zone Eddies - a Case Study

Among the regional peculiarities off Mauretania are anticyclonic mode water eddies (ACMEs) that travel from the shelf break hundreds of miles offshore carrying a body of low-oxygenated water (Karstensen et al., 2015). Scientific interest in these ‘dead-zone eddies’ includes, e.g., the sensitivity of organisms to oxygen deficit (Hauss et al., 2016). Here, we present them as episodic events benchmarking the effect of resolution. Our interest is rooted in that ACMEs are highly nonlinear events shaped by an interplay of complex ocean circulation with biogeochemical cycles. Our rationale is that this nonlinearity could amplify the rather insignificant differences in metrics discussed so far. To this end, the following dead-zone eddy case study is designed to find differences between the resolutions that may be of relevance to other components of the earth system such as higher trophic levels and fisheries.

Figure A5 shows a respective comparison between *Coarse* and *High*. Panel (a) and (b) start with showcasing an anticyclonic mode water eddy (ACME) being shed off the Mauretanian shelf. An analyses of underlying dynamics is provided by Dilmahamod et al. (2021) and a more comprehensive visualization of processes is animated at <https://nextcloud.ifg.uni-kiel.de/index.php/s/SxKm2fKSpaTd7Y2>. Both *High* and *Coarse* feature a pronounced seasonal cycle of dissolved oxygen concentration on

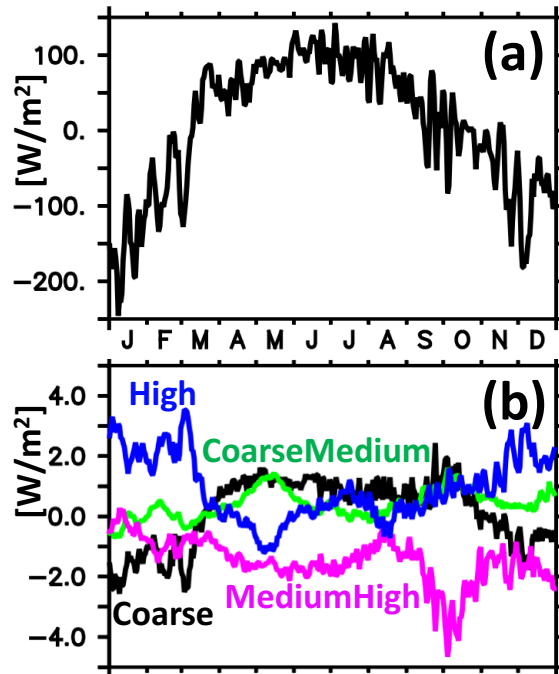


Figure A3. Simulated mean sea-air heat flux averaged over the high-resolution model domain ($30^{\circ}\text{W} - 15^{\circ}\text{W}$ and $17^{\circ}\text{N} - 24^{\circ}\text{N}$) (nominal year 1902). Panel (a) shows the ensemble mean of configuration *Coarse*, *CoarseMedium*, *MediumHigh* and *High*. Positive numbers denote oceanic heat gain. Panel (b) shows respective differences to the ensemble mean.

the shelf, which is consistent with results from Mittelstaedt (1991): during the upwelling season the shelf is sheltered from relatively cool and oxygen rich upwelling waters offshore. The biotic production on the shelf is exceptionally high (e. g. Wolff et al., 1993) and this fuels declining levels of oxygen at depth. In line with Mittelstaedt (1991) we find that the isolation of shelf water is permeated by occasional export events. Figure A5(a) and (b) show such export events in configuration *High* and
 460 *Coarse*, respectively: ACME seeded with low-oxygenated shelf water are formed and travel offshore for months (Figure A5 (c) and (d)) retaining their low-oxygenated signature.

The upwelling season ends in July south of Cape Blanc (Mittelstaedt, 1991, their Figure 4) when the winds weaken and veer into a more on-shore direction driving currents that flush the shelf with oxygenated water of off-shore origin (ould Dedah, 1993). The oxygen on the shelf is then replenished until the cycle restarts in spring. Figure A5 (e) and (f) show that the
 465 ACMEs are associated to a biotic export production that is elevated relative to ambient waters in our simulations. Even so, both configurations retain rather constant oxygen concentrations within the ACMEs' cores. We conclude that both configurations *High* and *Coarse*, simulate a series of complex coupled ocean circulation biogeochemical processes driving the evolution of oxygen in ACMEs in a surprisingly similar manner. Apparently, the differences among the configurations are limited to details rather than to materially different processes and dynamics.

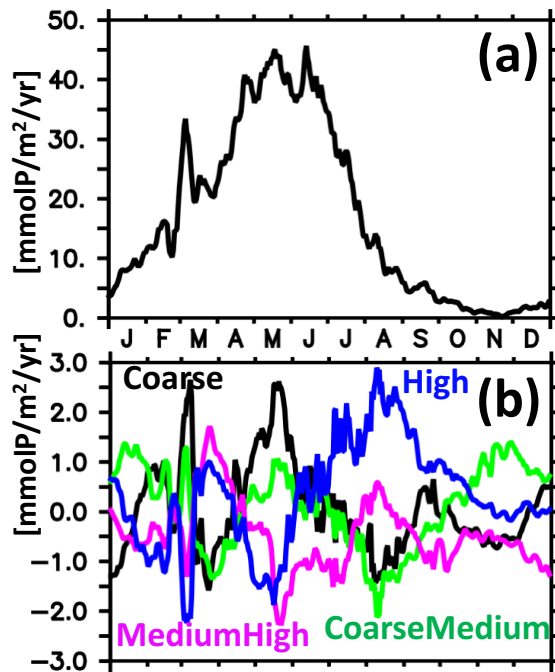


Figure A4. Simulated export production calculated as net biotic phosphate sources and sinks integrated over the upper 150 m water column and averaged over the high-resolution model domain ($30^{\circ}\text{W} - 15^{\circ}\text{W}$ and $17^{\circ}\text{N} - 24^{\circ}\text{N}$) (nominal year 1902). Panel (a) shows the ensemble mean of configuration *Coarse*, *CoarseMedium*, *MediumHigh* and *High*. Panel (b) shows respective differences to the ensemble mean.

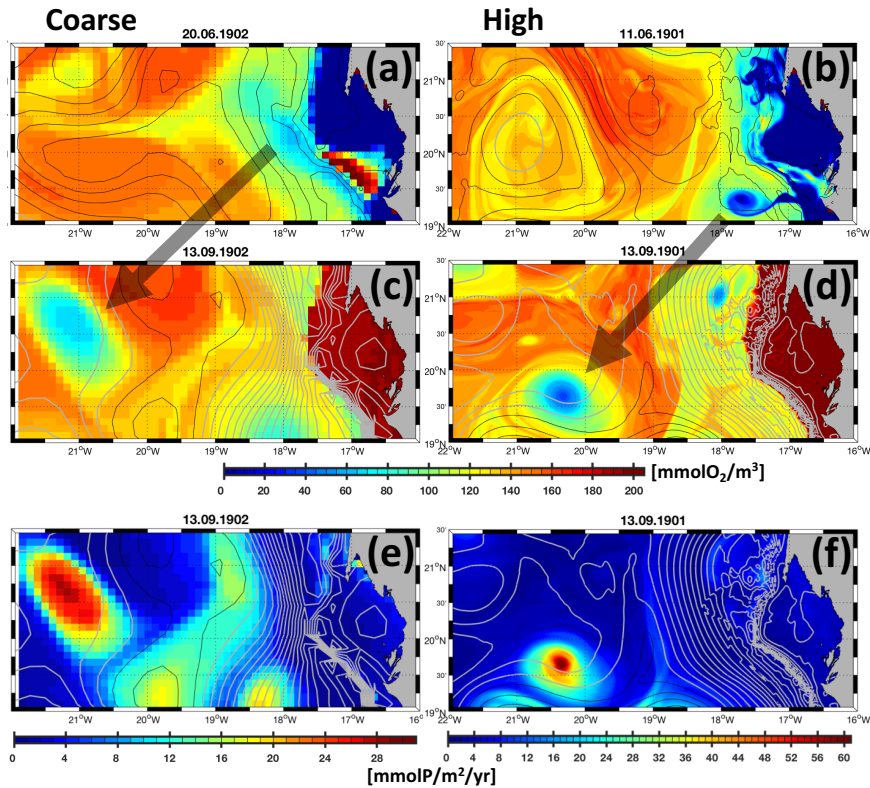


Figure A5. Simulated spawning and westward progression of an hypoxic anticyclonic mode water eddy (ACME). Panels (a), (c), (e) refer to configuration *Coarse* and (b), (d), (f) to *High*. The color in panel (a), (b), (c) and (d) denotes the minimum oxygen concentrations found locally in vertical water columns. Panel (e) and (f) show color coded export production. Grey and black contours denote positive and negative sea surface height anomalies spaced at 2 cm. Panel (a) and (b) feature the ACME spawning in June as simulated with configuration *Coarse* and *High*, respectively. The grey arrows pointing into Panel (c) and (d) indicate the ACMEs' westward progression until September simulated with configuration *Coarse* and *High*, respectively. Panel (e) and (f) show export production calculated as net biotic phosphate sources and sinks integrated over the upper 150 m water column in September from configuration *Coarse* and *High*, respectively. The respective maximum export production coincides with the position of the ACMEs.

470 Appendix B: Boundary Conditions

The model configurations used in this study are peculiar in that the Northern, Southern and Western boundaries are closed walls rather than a realistic representation of the polar gyre, the equatorial current system and the coast of America, respectively. Figure B provides information as to how this may affect the model results in the high-resolution model domain: By introducing an artificial tracer into configuration *Coarse* that is continuously reset to zero at these boundaries and counts up time elsewhere we count the time elapsed since water parcels have been in contact with the boundaries. After an integration of 30 years we find that water in the 100 m to 400 m depth interval entering the high-resolution model domain is older than three years (Figure B). This suggests that our findings at the end of our three year-long simulation are rather unaffected by our simple representation of boundaries.

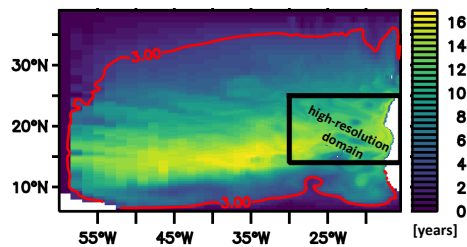


Figure B1. Simulated time elapsed since water parcels have been in contact with the Northern, Southern or Western boundary of the model domain (monthly mean at the end of a 30 year-long integration of configuration “Coarse”). The time elapsed shown is averaged over the 100m to 400m depth interval. The red contour depicts the 3-year isoline indicating that the contoured region is rather undisturbed by boundary effects at the end of a 3 year-long simulation.

Code and data availability. Model output and additional visualizations are available at <https://zenodo.org/records/5549894>. The model configurations are available upon request.

Author contributions. HD and UL have been equally involved in setting up and running the model configurations. Both authors contributed to the interpretation of model results and to outlining and writing the paper in equal shares.

Competing interests. The authors declare that they have no conflict of interest.

Acknowledgements. We acknowledge discussions with Ahmad Fehmi Dilmahamad, Julia Getzlaff and Johannes Karstensen. We are grateful
485 to Steven ~~Griffith~~Griffies and the MOM community for sharing their work. Eric ~~Galbreith~~Galbraith is acknowledged for sharing BLING.
This is a contribution to DFG project number 491008639 "Projecting critical coastal oxygen deficits by the example of the Eckernförde
Bight" and FUTURO <https://www.geomar.de/futuro>.

References

- Antonov, J. I., Seidov, D., Boyer, T. P., Locarnini, A., Mishonov, A. V., Garcia, H. E., Baranova, O. K., Zweng, M. M., and Johnson, D. R.:
490 World Ocean Atlas 2009, Volume 2: Salinity, in: NOAA Atlas NESDIS 69, edited by Levitus, S., vol. 2, p. 184 pp., U.S. Government
Printing Office, Washington DC, 2009.
- Arakawa, A. and Lamb, V. R.: Computational design of the basic dynamical processes of the UCLA general circulation model., *Methods in
Computational Physics*, 17, 173–265, 1977.
- Banerjee, T., Danilov, S., and Klingbeil, K.: Discrete variance decay analysis of spurious mixing, arXiv:2310.16768 [physics.ao-ph],
495 <https://doi.org/10.48550/arXiv.2310.16768>, 2023.
- Barton, E. D.: Structure and variability of the central water mass front off Cabo Blanco. International Symposium on Upwelling off West
Africa, Instituto de Investigaciones Pesqueras, Barcelona, I, 49–61, 1985.
- Barton, E. D.: Meanders, eddies and intrusions in the thermohaline front off Northwest Africa., *Oceanologica Acta*, 10, (3), 267–283, 1987.
- Bieri, R. H., Koide, M., and Goldberg, E. D.: The noble gas contents of Pacific seawaters., *Journal of Geophysical Research*, 71, 22, 5243–
500 5265, <https://doi.org/10.1029/JZ071i022p05243>, 1966.
- Braghiere, R. K., Wang, Y., Gagné-Landmann, A., Brodrick, P. G., Bloom, A. A., Norton, A. J., Ma, A., Levine, P., Longo, M., Deck, K.,
Gentine, P., Worden, J. R., Frankenberg, C., and Schneider, T.: The Importance of Hyperspectral Soil Albedo Information for Improving
Earth System Model Projections, *AGU Advances*, 4, <https://doi.org/10.1029/2023AV000910>, 2023.
- Brett, G. J., Whitt, D. B., Long, M. C., Bryan, F. O., Feloy, K., and Richards, K. J.: Submesoscale Effects on Changes to Export Production
505 Under Global Warming, *Global Biogeochemical Cycles*, 37, <https://doi.org/10.1029/2022GB007619>, 2023a.
- Brett, G. J., Whitt, D. B., Long, M. C., Bryan, F. O., Feloy, K., and Richards, K. J.: Submesoscale Effects on Changes to Export Production
Under Global Warming, *Global Biogeochemical Cycles*, 37, <https://doi.org/10.1029/2022GB007619>, 2023b.
- Burchard, H. and Rennau, H.: Comparative quantification of physically and numerically induced mixing in ocean models., *Ocean Modelling*,
20, 293–311, <https://doi.org/10.1016/j.ocemod.2007.10.003>, 2008.
- 510 Camp, L. V. V., Nykjær, L., Mittelstaedt, E., and Schlittenhardt, P.: Upwelling and boundary circulation off Northwest Africa as depicted
by infrared and visible satellite observations., *Progress in Oceanography*, 26, 357–402, [https://doi.org/10.1016/0079-6611\(91\)90012-B](https://doi.org/10.1016/0079-6611(91)90012-B),
1991.
- Capet, X., Williams, J. C. M., Molemaker, M. J., and Shchepetkin, A. F.: Mesoscale to sub-mesoscale Transition in the Califor-
nia Current System. Part I: Flow Structure, Eddy Flux, and Observational Tests., *Journal of Physical Oceanography*, 38, 29–43,
515 <https://doi.org/10.1175/2007JPO3671.1>, 2008.
- Counillon, F., Keenlyside, N., Wang, S., Devilliers, M., Gupta, A., Koseki, S., and Shen, M.-L.: Framework for an Ocean-Connected Super-
model of the Earth System, *Journal of Advances in Modeling Earth Systems*, 15, <https://doi.org/10.1029/2022MS003310>, 2023.
- Deser, C., Lehner, F., Rodgers, K. B., Ault, T., Delworth, T. L., DiNezio, P. N., Fiore, A., Frankignoul, C., Fyfe, J. C., Horton, D. E.,
Kay, J. E., Knutti, R., Lovenduski, N. S., Marotzke, J., McKinnon, K. A., Minobe, S., Randerson, J., Screen, J. A., Simpson, I. R.,
520 and Ting, M.: Insights from Earth system model initial-condition large ensembles and future prospects, *Nature Climate Change*, 10,
<https://doi.org/10.1038/s41558-020-0731>, 2020.
- Dietze, H. and Loeptien, U.: Revisiting "nutrient trapping" in global coupled biogeochemical ocean circulation models, *Global Biogeochem-
ical Cycles*, 27, 265–284, <https://doi.org/10.1002/gbc.20029>, 2013.

- Dietze, H. and Löptien, U.: Effects of surface current-wind interaction in an eddy-rich general ocean circulation simulation of the Baltic Sea.,
525 Ocean Science, 12, 977–986, <https://doi.org/10.5194/os-12-977-2016>, 2016.
- Dietze, H. and Löptien, U.: Retracing Hypoxia in Eckernförde Bight (Baltic Sea)., Biogeosciences, 18, 4243–4264,
<https://doi.org/10.5194/bg-18-4243-2021>, 2021.
- Dietze, H. and Oschlies, A.: On the correlation between air-sea heat flux and abiotically induced oxygen gas exchange in a circulation model
of the North Atlantic., Journal of Geophysical Research-Oceans, 110, C9, <https://doi.org/10.1029/2004JC002453>, 2005a.
- 530 Dietze, H. and Oschlies, A.: Modeling abiotic production of apparent oxygen utilisation in the oligotrophic subtropical North Atlantic, Ocean
Dynamics, 55, 28–33, <https://doi.org/10.1007/s10236-005-0109-z>, 2005b.
- Dietze, H., Löptien, U., and Getzlaff, K.: MOMBA 1.1 - a high-resolution Baltic Sea configuration of GFDL's Modular Ocean Model.
Geoscientific Model Development, Geoscientific Model Development, 7, 1713–1731, <https://doi.org/10.5194/gmd-7-1713-2014>, 2014.
- Dietze, H., Getzlaff, J., and Löptien, U.: Simulating natural carbon sequestration in the Southern Ocean: on uncertainties associated with
535 eddy parameterizations and iron deposition. Biogeosciences., Biogeosciences, 14, 1561–1576, <https://doi.org/10.5194/bg-14-1561-2017>,
2017.
- Dietze, H., Getzlaff, J., and Löptien, U.: MOMSO 1.0 - an eddying Southern Ocean model configuration with fairly equilibrated natural
carbon., Geoscientific Model Development, 13,1, 71–97, <https://doi.org/10.5194/gmd-13-71-2020>, 2020.
- Dilmahamod, A. F., Karstensen, J., Dietze, H., Löptien, U., and Fennel, K.: Generation mechanisms of mesoscale eddies in the Mauretania
540 Upwelling Region., Journal of Physical Oceanography, <https://doi.org/10.1175/JPO-D-21-0092.1>, 2021.
- Doumbouya, A., Camara, O. T., Mamie, J., Intchama, J. F., Jarra, A., Ceesay, S., Guéye, A., Ndiaye, D., Beibou, E., Padilla, A., and Belhabib,
D.: Assessing the Effectiveness of Monitoring Control and Surveillance of Illegal Fishing: The Case of West Africa., Frontiers in Marine
Science, 4:50, <https://doi.org/10.3389/fmars.2017.00050>, 2017.
- Eden, C. and Dietze, H.: Effects of mesoscale eddy/wind interactions on biological new production and eddy kinetic energy, Journal of
545 Geophysical Reserach, <https://doi.org/10.1029/2008JC005129>, 2009.
- Ellison, E., Mashayek, A., and Mazloff, M.: The Sensitivity of Southern Ocean Air-Sea Carbon Fluxes to Background Turbulent Diapycnal
Mixing Variability, Journal of Geophysical Reserach: Ocean, 128, <https://doi.org/10.1029/2023JC019756>, 2023.
- Emerson, S., Ito, T., and Hamme, R. C.: Argon supersaturation indicates low decadal-scale vertical mixing in the ocean thermocline., Geo-
physical Research Letters, 3, 19, <https://doi.org/10.1029/2012GL053054>, 2012.
- 550 Faye, S., Lazar, A., Sow, B. A., and Gaye, A. T.: A model study of the seasonality of sea surface temperature and circulation in the Atlantic
North-eastern Tropical Upwelling System., Frontiers in Physics, 3, 76, <https://doi.org/10.3389/fphy.2015.00076>, 2015.
- Feng, E. Y., Koeve, W., Keller, D. P., and Oschlies, A.: Model-Based Assessment of the CO₂ Sequestration Potential of Coastal Ocean
Alkalinization, Earth's Future, 5, 1252–1266, <https://doi.org/10.1002/2017EF000659>, 2017.
- Feng, E. Y., Su, B., and Oschlies, A.: Geoeingeneered Ocean Vertical Water Exchange Can Accelerate Global Deoxygenation, Geophysical
555 Research Letters, 47, <https://doi.org/10.1029/2020GL088263>, 2020.
- Flato, G. M.: Earth system models: an overview, WIREs Clim Change, 2, 783–800, <https://doi.org/10.1002/wcc.148>, 2011.
- Foltz, G. R., Schmid, C., and Lumpkin, R.: Seasonal Cycle of the Mixed Layer Heat Budget in the Northeastern Tropical Atlantic Ocean.,
Journal of Climate, 26, 20, 8169–8188, <https://doi.org/10.1175/JCLI-D-13-00037.1>, 2013.
- Fratantoni, D. M.: North Atlantic surface circulation during the 1990's observed with satellite-tracked drifters., Journal of Geophysical
560 Research Oceans, 106, C10, 22 067–22 093, <https://doi.org/10.1029/2000JC000730>, 2001.

- Galbraith, E. D., Gnanadesikan, A., Dunne, J. P., and Hiscock, M. R.: Regional impacts of iron-light colimitation in a global biogeochemical model. *Biogeosciences*, *7*, 1043–1064, <https://doi.org/10.5194/bg-7-1043-2010>, 2010.
- Garcia, H. E., Locarnini, R. A., Boyer, T. P., and Antonov, J. I.: World Ocean Atlas 2009, Volume 4: Nutrients (phosphate, nitrate, silicate), in: NOAA Atlas NESDIS 71, edited by Levitus, S., vol. 4, p. 398 pp., U.S. Government Printing Office, Washington DC, 2010a.
- 565 Garcia, H. E., Locarnini, R. A., Boyer, T. P., I., A. I., Baranova, O. K., M. M. Zweng, M. M., and Johnson, D. R.: World Ocean Atlas 2009, Volume 3: Dissolved Oxygen, Apparent Oxygen Utilization, and Oxygen Saturation., in: NOAA Atlas NESDIS 70, edited by Levitus, S., vol. 4, p. 344 pp., U.S. Government Printing Office, Washington DC, 2010b.
- Gerdes, R., Köberle, C., and Willebrand, J.: The influence of numerical advection schemes on the results of ocean general circulation models, *Climate Dynamics*, *5*, 211–226, 1991.
- 570 Getzlaff, J., Nurser, G., and Oschlies, A.: Diagnostics of diapycnal diffusion in z-level ocean models. Part II: 3-Dimensional OGCM., *Ocean Modelling*, 45–46, 27–37, <https://doi.org/10.106/j.ocemod.2011.11.00>, 2012.
- Getzlaff, J., Dietze, H., and Löptien, U.: Tracing net diapycnal mixing in ocean circulation models with Argon saturation., *Geophysical Research Abstracts*, *21*, EGU2019–11 174, 2019.
- Gibson, A. H., Hogg, A. M., Kiss, A. E., Shakespeare, C. J., and Adcroft, A.: Attribution of horizontal and vertical contributions to spurious
- 575 mixing in an Arbitrary Lagrangian–Eulerian ocean model, *Ocean Modelling*, *119*, 45–56, <https://doi.org/10.1016/j.ocemod.2017.09.008>, 2017.
- Gnanadesikan, A., Pradal, A.-A., and Abernathey, R.: Isopycnal mixing by mesoscale eddies significantly impacts oceanic anthropogenic carbon uptake, *Geophysical Research Letters*, pp. 4249–4255, <https://doi.org/10.1002/2015GL064100>, 2015.
- Griffies, S. M.: Elements of MOM4p1., in: GFDL Ocean Group Technical Report No. 6, p. 444 pp., NOAA/Geophysical Fluid Dynamics
- 580 Laboratory, 2009.
- Griffies, S. M. and Hallberg, R. W.: Biharmonic friction with a Smagorinsky-like viscosity for use in largescale eddy-permitting ocean models., *Monthly Weather Review*, *128*, 2935–2946, [https://doi.org/10.1175/1520-0493\(2000\)128<2935:BFWASL>2.0.CO;2](https://doi.org/10.1175/1520-0493(2000)128<2935:BFWASL>2.0.CO;2), 2000.
- Griffies, S. M., Pacanowski, R. C., and Hallberg, R. W.: Spurious diapycnal mixing associated with advection in a z-coordinate ocean model., *Monthly Weather Review*, *128*, (3), 538–564, [https://doi.org/10.1175/1520-0493\(2000\)128h0538:442SDMAWAi2.0.CO;2](https://doi.org/10.1175/1520-0493(2000)128h0538:442SDMAWAi2.0.CO;2), 2000.
- 585 Gulev, S., Jung, T., and Ruprecht, E.: Estimation of the Impact of Sampling Errors in the VOS Observations on Air-Sea Fluxes. Part II: Impacts on Trends and Interannual Variability, *Journal of Climate*, *20*, 302–315, <https://doi.org/10.1175/JCLI4008.1>, 2007.
- Gutjahr, O., Putrasahan, D., Lohmann, K., Jungclaus, J. H., von Storch, J.-S., Brüggemann, N., Haak, H., and Stössel, A.: Max Planck Institute Earth System Model (MPI-ESM1.2) for the High-Resolution Model Intercomparison Project (HighResMIP), *Geoscientific Model Development*, *12*, <https://doi.org/10.5194/gmd-12-3241-2019>, 2019.
- 590 Hamme, R. C., Emerson, S. R., Severinghaus, J. P., Long, M. C., and Yashayaev, I.: Using Noble Gas Measurements to Derive Air-Sea Process Information and Predict Physical Gas Saturations, *Geophysical Research Letters*, *44*, 9901–9909, <https://doi.org/10.1002/2017GL075123>, 2017.
- Hauss, H., Christiansen, S., Schütte, F., Kiko, R., Lima, M. E., Rodrigues, E., Karstensen, J., Löscher, C., Körtzinger, A., and Fiedler, B.: Dead zone or oasis in the open ocean? Zooplankton distribution and migration in low-oxygen modewater eddies., *Biogeosciences*, *13*,
- 595 1977–1989, <https://doi.org/10.5194/bg-13-1977-2016>, 2016.
- Hecht, M. W.: Cautionary tales of persistent accumulation of numerical error: Dispersive centered advection, *Ocean Modelling*, pp. 270–276, <https://doi.org/10.1016/j.ocemod.2010.07.005>, 2010.

- Henning, C. C., Archer, D., and Fung, I.: Argon as a Tracer of Cross-Isopycnal Mixing in the Thermocline., *Journal of Physical Oceanography*, 36, 11, 2090–2105, <https://doi.org/10.1175/JPO2961.1>, 2011.
- 600 Hersbach, H., Bell, B., Berrisford, P., Hirahara, S., Horányi, A., Muñoz-Sabater, J., Nicolas, J., Peubey, C., Radu, R., Schepers, D., Simmons, A., Soci, C., Abdalla, S., Abellan, X., Balsamo, G., Bechtold, P., Biavati, G., Bidlot, J., Bonavita, M., Chiara, G. D., Dahlgren, P., Dee, D., Diamantakis, M., Dragani, R., Flemming, J., Forbes, R., Fuentes, M., Geer, A., Haimberger, L., Healy, S., Hogan, R. J., Hólm, E., Janisková, M., Keeley, S., Laloyaux, P., Lopez, P., Lupu, C., Radnoti, G., de Rosnay, P., Rozum, I., Vamborg, F., Villaume, S., and Thépaut, J.-N.: The ERA5 global reanalysis, *Quarterly Journal of the Royal Meteorological Society*, 146, 1999–2049, <https://doi.org/10.1002/qj.3803>, 2020.
- 605 Hewitt, H. T., Roberts, M., Mathiot, P., Biastoch, A., Blockley, E., Chassignet, E. P., Fox-Kemper, B., Hyder, P., Marshall, D. P., Treguier, E. P. A.-M., Zanna, L., Yool, A., Yu, Y., Beadling, R., Bell, M., Kuhlbrodt, T., Arsouze, T., Belluci, A., Castuccio, F., Gan, B., Putrasahan, D., Roberts, C. D., Roedel, L. V., and Zhang, Q.: Resolving and Parameterising the Ocean Mesoscale in Earth System Models., *Current Climate Change Reports*, 6, 137–152, <https://doi.org/10.1007/s40641-020-00164-w>, 2020.
- 610 Hill, C., Ferreira, D., Campin, J.-M., Marshall, J., Abernathy, R., and Barrie, N.: Controlling spurious diapycnal mixing in eddy-resolving height-coordinate ocean models—insights from virtual deliberate tracer release experiments., *Ocean Modelling*, 45–46, 14–26, <https://doi.org/10.1016/j.ocemod.2011.12.001>, 2012.
- Holmes, R. M., Zika, J. D., Griffies, S. M., Hogg, A. M., Kiss, A. E., and England, M. H.: The Geography of Numerical Mixing in a Suite of Global Ocean Models., *Journal of Advances in Modeling Earth Systems*, 13, <https://doi.org/10.1029/2020MS002333>, 2021.
- 615 Hundsdoerfer, W. and Trompert, R.: Methods of lines and direct discretization: a comparison for linear advection., *Applied Numerical Mathematics*, pp. 469–490, [https://doi.org/10.1016/0168-9274\(94\)90009-4](https://doi.org/10.1016/0168-9274(94)90009-4), 1994.
- Ilicak, M.: Quantifying spatial distribution of spurious mixing in ocean models, *Ocean Modelling*, 108, 30–38, <https://doi.org/10.1016/j.ocemod.2016.11.003>, this is an open access article under the CC BY-NC-ND license (<http://creativecommons.org/licenses/by-nc-nd/4.0/>), 2016.
- 620 Ilicak, M., Adcroft, A., Griffies, S. M., and Hallberg, R. W.: Spurious dianeutral mixing and the role of momentum closure, *Ocean Modelling*, 45–46, 37–58, <https://doi.org/10.1016/j.ocemod.2011.10.003>, 2012.
- Ito, T. and Deutsch, C.: Understanding the saturation state of argon in the thermocline: The role of air-sea gas exchange and diapycnal mixing., *Global Biogeochemical Cycles*, 20, 3, <https://doi.org/10.1029/2005GB002655>, 2006.
- Ito, T., Deutsch, C., Emerson, S., and Hamme, R. C.: Impact of diapycnal mixing on the saturation state of argon in the subtropical North Pacific., *Geophysical Research Letters*, 34, (9), <https://doi.org/10.1029/2006GL029209>, 2007.
- 625 Jenkins, W. J., Seltzer, A. M., Gebbie, G., and German, C. R.: Noble gas evidence of a millennial-scale deep North Pacific palaeo-barometric anomaly, *Nature Geoscience*, <https://doi.org/10.1038/s41561-023-01368-z>, brief Communication, 2023.
- Karleskind, P., Lévy, M., and Mémerly, L.: Modifications of mode water properties by sub-mesoscales in a biophysical model of the Northeast Atlantic, *Ocean Modelling*, 39, <https://doi.org/10.1016/j.ocemod.2010.12.003>, 2011.
- 630 Karstensen, J., Fiedler, B., Schütte, F., Brandt, P., Körtzinger, A., Fischer, G., Zantopp, R., Hahn, J., Visbeck, M., and Wallace, D.: Open ocean dead zones in the tropical North Atlantic Ocean., *Biogeosciences*, 12, 2597–2605, <https://doi.org/10.5194/bg-12-2597-2015>, 2015.
- Keller, D. P., Feng, E. Y., and Oschlies, A.: Potential climate engineering effectiveness and side effects during a high carbon dioxide-emission scenario, *Nature Communications*, <https://doi.org/10.1038/ncomms4304>, 2014.
- Khatiwala, S.: Efficient spin-up of Earth System Models using sequence acceleration, *Science Advances*, 10, <https://doi.org/10.1126/sciadv.adn2839>, 2024.
- 635

- Klenz, T., Dengler, M., and Brandt, P.: Seasonal Variability of the Mauretania Current and Hydrography at 18°N., *Journal of Geophysical Research: Oceans*, 123, 8122–8137, <https://doi.org/10.1029/2018JC014264>, 2018.
- Klingbeil, K., Mohammadi-Aragh, M., Gräwe, U., and Burchard, H.: Quantification of spurious dissipation and mixing – Discrete variance decay in a Finite-Volume framework, *Ocean Modelling*, pp. 49–64, <https://doi.org/10.1016/j.ocemod.2014.06.001>, 2014.
- 640 Klingbeil, K., Burchard, H., Danilov, S., Goetz, C., and Iske, A.: Reducing Spurious Diapycnal Mixing in Ocean Models, in: *Energy Transfers in Atmosphere and Ocean. Mathematics of Planet Earth*, edited by Carsten, C. and Iske, A., vol. 1, Springer, https://doi.org/10.1007/978-3-030-05704-6_8, 2019.
- Kuhlbrodt, T., Griesel, A., Montoya, M., Levermann, A., Hofmann, M., and Rahmstorf, S.: On the driving process of the Atlantic meridional overturning circulation, *Reviews of Geophysics*, 45, <https://doi.org/10.1029/2004RG000166>, 2007.
- 645 Kunze, E.: Internal-Wave-Driven Mixing: Global Geography and Budgets, *Journal of Physical Oceanography*, pp. 1325–1345, <https://doi.org/10.1175/JPO-D-16-0141.1>, 2017.
- Lachkar, Z. and Gruber, N.: A comparative study of biological production in eastern boundary upwelling systems using an artificial neural network., *Biogeosciences*, 9, 293–308, <https://doi.org/10.5194/bg-9-293-2012>, 2012.
- Large, W. G. and Yeager, S. G.: Diurnal to decadal global forcing for ocean and sea-ice models: the data sets and flux climatologies., in: 650 NCAR Technical Note, TN-460, NCAR, Boulder, Colorado, 2004.
- Large, W. G. and Yeager, S. G.: The global climatology of an interannually varying air-sea flux data set., *Climate Dynamics*, 33, 341–364, <https://doi.org/10.1007/s00382-008-0441-3>, 2008.
- Large, W. G., McWilliams, J. C., and Doney, S. C.: Ocean vertical mixing: A review and a model with a nonlocal boundary layer parameterization., *Reviews of Geophysics*, 32, 4, 363–403, <https://doi.org/10.1029/94RG01872>, 1994.
- 655 Ledwell, J. R., Watson, A., and Law, C. S.: Evidence for slow mixing across the pycnocline from an open-ocean tracer-release experiment., *Nature*, 364, 701–703, <https://doi.org/10.1038/364701a0>, 1993.
- Lee, M.-M., Coward, A. C., and Nurser, A. J. G.: Spurious Diapycnal Mixing of the Deep Waters in an Eddy-Permitting Global Ocean Model, *Journal of Physical Oceanography*, 32, [https://doi.org/10.1175/1520-0485\(2002\)032<1522:SDMOTD>2.0.CO;2](https://doi.org/10.1175/1520-0485(2002)032<1522:SDMOTD>2.0.CO;2), 2002.
- Leonard, B. P.: A stable and accurate convective modelling procedure based on quadratic upstream interpolation., *Computer Methods in 660 Applied Mechanics and Engineering*, 19, 59–98, [https://doi.org/10.1016/0045-7825\(79\)90034-3](https://doi.org/10.1016/0045-7825(79)90034-3), 1979.
- Lévy, M., Klein, P., and Treguir, A.: Impact of sub-mesoscale physics on production and subduction of phytoplankton in an oligotrophic regime., *Journal of Marine Research*, 59, 535–565, <https://doi.org/10.1357/002224001762842181>, 2001.
- Locarnini, R. A., Mishonov, A. V., Antonov, J. I., Boyer, T. P., Garcia, H. E., Baranova, O. K., Zweng, M. M., and Johnson, S. G.: World Ocean Atlas 2009, Volume 1: Temperature., in: *NOAA Atlas NESDIS 69*, edited by Levitus, S., vol. 1, p. 184 pp., U.S. Government 665 Printing Office, Washington DC, 2010.
- Löptien, U.: Constraining parameters in marine pelagic ecosystem models - is it actually feasible with typical observations of standing stocks?, *Ocean Science*, 11, 573–590, <https://doi.org/10.5194/os-11-573-2015>, 2015.
- Löptien, U. and Dietze, H.: Effects of parameter indeterminacy in pelagic biogeochemical modules of Earth System Models on projections into a warming future: The scale of the problem., *Global Biogeochemical Cycles*, 31, 7, 1155–1172, 670 <https://doi.org/10.1002/2017GB005690>, 2017.
- Löptien, U. and Dietze, H.: Reciprocal bias compensation and ensuing uncertainties in model-based climate projections: pelagic biogeochemistry versus ocean mixing., *Biogeosciences*, 19, 9, 1865–1881, <https://doi.org/10.5194/bg-16-1865-2019>, 2019.

- Löptien, U., Dietze, H., Preuss, R., and Toussaint, U. V.: Mapping manifestations of parametric uncertainty in projected pelagic oxygen concentrations back to contemporary local model fidelity, *Scientific Reports*, 11, 20949, <https://doi.org/10.1038/s41598-021-00334-2>, 2021.
- 675 Luecke, C. A., Arbic, B. K., Richman, J. G., Shriver, J. F., Alford, M. H., Ansong, J. K., Basette, S. L., Buijsman, M. C., and Menemenlis, D.: Statistical Comparisons of Temperature Variance and Kinetic Energy in Global Ocean Models and Observations: Results From Mesoscale to Internal Wave Frequencies, *Journal of Geophysical Research: Oceans*, 125, <https://doi.org/10.1029/2019JC015306>, 2020.
- MacKinnon, J. A., Zhao, Z., Whalen, C. B., Waterhouse, A. F., Trossman, D. S., Sun, O. M., Laurent, L. C. S., Simmons, H. L., Polzin, K., Pinkel, R., Pickering, A., Norton, N. J., Nash, J. D., Musgrave, R., Merchant, L. M., Melet, A. V., Mater, B., Legg, S., Large, W. G., Kunze, E., Klymak, J. M., Jochum, M., Jayne, S. R., Hallberg, R. W., Griffies, S. M., Diggs, S., Danabasoglu, G., Chassignet, E. P., Buijsman, M. C., Bryan, F. O., Briegleb, B. P., Barna, A., Arbic, B. K., Ansong, J. K., and Alford, M. H.: Climate Process Team on Internal Wave–Driven Ocean Mixing, *Bulletin of the American Meteorological Society*, 98, 2429–2454, <https://doi.org/10.1175/BAMS-D-16-0030.1>, 2017.
- 680 Mahadevan, A. and Archer, D.: Modeling the impact of fronts and mesoscale circulation on the nutrient supply and biogeochemistry of the upper ocean., *Journal of Geophysical Research*, 105, 1209–1225, <https://doi.org/10.1029/1999JC900216>, 2000.
- Mahadevan, A. and Tandon, A.: An analysis of mechanisms for submesoscale vertical motion at ocean fronts., *Ocean Modelling*, 14, 241–256, <https://doi.org/10.1016/j.ocemod.2006.05.006>, 2006.
- Martin, A. and Pondaven, P.: On estimates for the vertical nitrate flux due to eddy pumping., *Journal of Geophysical Research*, 108, C11, 3359, <https://doi.org/10.1029/2003JC001841>, 2003.
- 690 Martin, A. P. and Richards, K. J.: Mechanisms for the vertical nutrient transport within a North Atlantic mesoscale eddy., *Deep-Sea Research Part II*, 48, 757–773, [https://doi.org/10.1016/S0967-0645\(00\)00096-5](https://doi.org/10.1016/S0967-0645(00)00096-5), 2001.
- Marzocchi, A., Hirschi, J. J.-M., Holliday, N. P., Blaker, S. A. C. A. T., and Coward, A. C.: The North Atlantic subpolar circulation in an eddy-resolving global ocean model, *Journal of Marine Systems*, 142, 126–143, <https://doi.org/10.1016/j.jmarsys.2014.10.007>, 2015.
- 695 McGraw, R., Yang, F., and Fierce, L. M.: Preserving tracer correlations in moment-based atmospheric transport models, *Journal of Advances in Modeling Earth Systems*, 16, e2023MS003621, <https://doi.org/10.1029/2023MS003621>, 2024.
- Megann, A.: Estimating the numerical diapycnal mixing in an eddy-permitting ocean model., *Ocean Modelling*, 121, 19–33, <https://doi.org/10.1016/j.ocemod.2017.11.001>, 2018.
- Mellor, G. L. and Yamada, T.: Development of a turbulence closure model for geophysical fluid problems, *Reviews of Geophysics*, 20, 851–875, 1982.
- 700 Messié, M., Ledesma, J., Kolber, D. D., Michisaki, R. P., Foley, D. G., and Chavez, F. P.: Potential new production estimates in four eastern boundary upwelling ecosystems., *Progress in Oceanography*, 83, 151–158, <https://doi.org/10.1016/j.pocean.2009.07.018>, 2009.
- Mittelstaedt: The ocean boundary along the northwest African coast: Circulation and oceanographic properties at the sea surface., *Progress in Oceanography*, 26, 307–355, [https://doi.org/10.1016/0079-6611\(91\)90011-A](https://doi.org/10.1016/0079-6611(91)90011-A), 1991.
- 705 O’Kane, T., Matear, R., Chamberlain, M., and Oke, P.: ENSO regimes and the late 1970’s climate regime shift: The role of synoptic weather and South Pacific ocean spiciness., *Journal of Computational Physics*, 271, 19–38, <https://doi.org/10.1016/j.jcp.2013.10.058>, 2014.
- O’Neill, B., Tebaldi, C., Vuuren, D. P. V., Eyring, V., Friedlingstein, P., ..., G. H., and Sanderson, B. M.: The scenario model intercomparison project (ScenarioMIP) for CMIP6., *Geoscientific Model Development*, 9, (9), 3461–3482, <https://doi.org/10.5194/gmd-9-3461-2016>, 2016.

- ould Dedah, S.: Wind, surface water temperature, surface salinity and pollution in the area of the Banc d'Arguin, Mauritania., *Hydrobiologica*, 258, 9–19, https://doi.org/10.1007/978-94-011-1986-3_2, 1993.
- P. Gaspard, Y. G. and Lefevre, J.-M.: A simple eddy kinetic energy model for simulations of the oceanic vertical mixing: Tests at station Papa and long-term upper ocean study site, *Journal of Geophysical Research Oceans*, 95, 16 179–16 193, <https://doi.org/10.1029/JC095iC09p16179>, 1990.
- 715 Pacanowski, R. C. and Philander, S. G. H.: Parameterization of Vertical Mixing in Numerical Models of the Tropical Oceans, *Journal of Physical Oceanography*, 11, 1443–1451, [https://doi.org/10.1175/1520-0485\(1981\)011<1443:POVMIN>2.0.CO;2/large](https://doi.org/10.1175/1520-0485(1981)011<1443:POVMIN>2.0.CO;2/large), 2981.
- Pelegrí, J. L. and Benazzouz, A.: Coastal upwelling off North-West Africa., in: *Oceanographic and biological features in the Canary Current Large Marine Ecosystem.*, edited by L. Valdés, L. and Déniz-González, I., vol. 115, pp. 93–103, IOC-UNESCO, IOC Technical Series, Paris, 2015.
- 720 Pöppelmeier, F., Bagginstos, D., Grimmer, M., Liu, Z., Schmitt, J., Fischer, H., and Stocker, T. F.: The Effect of Past Saturation Changes on Noble Gas Reconstructions of Mean Ocean Temperature, *Geophysical Research Letters*, 50, e2022GL102055, <https://doi.org/10.1029/2022GL102055>, 2023.
- Reissmann, J. H., Burchard, H., Feistel, R., Hagen, E., Lass, H. U., Mohrholz, V., Nausch, G., Umlauf, L., and Wiczorek, G.: Vertical mixing in the Baltic Sea and consequences for eutrophication - A review, *Progress in Oceanography*, pp. 47–80, <https://doi.org/10.1016/j.pocean.2007.10.004>, 2009.
- 725 Rogers, A., Medlyn, B. E., Dukes, J. S., Bonan, G., von Caemmerer, S., Dietze, M. C., Kattge, J., Leakey, A. D. B., Mercado, L. M., Niinemets, U., Prentice, I. C., Serbin, S. P., Sitch, S., Way, D. A., and Zaehle, S.: A roadmap for improving the representation of photosynthesis in Earth system models, *New Phytologist*, 213, 22–42, <https://doi.org/10.1111/nph.14283>, 2017.
- Ruan, X., Couespel, D., Lévy, ., Mak, L. J., and Wang, Y.: Combined physical and biogeochemical assessment of mesoscale eddy parameterisations in ocean models: Eddy induced advection at non-eddying resolutions, *Ocean Modelling*, 183, <https://doi.org/10.1016/j.ocemod.2023.102204>, 2023.
- 730 Sallée, J.-B., Matear, R. J., Rintoul, S. R., and Lenton, A.: Localized subduction of anthropogenic carbon dioxide in the Southern Hemisphere oceans, *Nature Geoscience*, 5, <https://doi.org/doi.org/10.1038/ngeo1523>, 2012.
- Schafstall, J., Dengler, M., Brandt, P., and Bange, H.: Tidal-induced mixing and diapycnal nutrient fluxes in the Mauritanian upwelling region., *Journal of Geophysical Research: Oceans*, 115, C10, <https://doi.org/10.1029/2009JC005940>, 2010.
- 735 Schlichting, D., Qu, L., Kobashi, D., and Hetland, R.: Quantification of Physical and Numerical Mixing in a Coastal Ocean Model Using Salinity Variance Budgets, *Journal of Advances in Modeling Earth Systems*, 15, e2022MS003380, <https://doi.org/10.1029/2022MS003380>, open Access, 2023.
- Schmittner, A., Urban, N. M., Keller, K., and Matthews, D.: Using tracer observations to reduce the uncertainty of ocean diapycnal mixing and climate-carbon cycle projections, *Global Biogeochemical Cycles*, 23, <https://doi.org/10.1029/2008GB003421>, 2009.
- 740 Seltzer, A. M., Nicholson, D. P., Smethie, W. M., Tyne, R. L., Roy, E. L., Stanley, R. H. R., Stute, M., Barry, P. H., McPaul, K., Davidson, P. W., Chang, B. X., Rafter, P. A., Lethaby, P., Johnson, R. J., Khatiwala, S., and Jenkins, W. J.: Dissolved gases in the deep North Atlantic track ocean ventilation processes, *Proceedings of the National Academy of Sciences of the United States of America*, 120, e2217946 120, <https://doi.org/10.1073/pnas.2217946120>, edited by Mark Thiemens, University of California, San Diego, La Jolla, CA; received October 21, 2022; accepted February 2, 2023, 2023.
- 745 Semmler, T., Jungclauss, J., Danek, C., Goessling, H. F., Koldunov, N. V., Rackow, T., and Sidorenko, D.: Ocean Model Formulation Influences Transient Climate Response, *Journal of Geophysical Research: Oceans*, <https://doi.org/10.1029/2021JC017633>, 2021.

- Shapiro, R.: Smoothing, filtering, and boundary effects., *Reviews of Geophysics and Space Physics*, 8, 2, 359–387, <https://doi.org/10.1029/RG008i002p00359>, 1970.
- 750 Shcherbina, A. Y., D’Asaro, E. A., Lee, C. M., Klymak, J. M., Molemaker, M. J., and McWilliams, J. C.: Statistics of vertical vorticity, divergence, and strain in a developed sub-mesoscale turbulence field., *Geophysical Research Letters*, 40, (17), 4706–4711, <https://doi.org/10.1002/grl.50919>, 2013.
- Siedler, G., Zangenberg, N., and Onken, R.: Seasonal Changes in the Tropical Atlantic Circulation: Observation and Simulation of the Guinea Dome., *Journal of Geophysical Research*, 97, C1, 703–715, <https://doi.org/10.1029/91JC02501>, 1992.
- 755 Smagorinsky, J.: General circulation experiments with the primitive equations: I. The basic experiment., *Monthly Weather Review*, 91, 99–164, [https://doi.org/10.1175/1520-0493\(1963\)091<0099:GCEWTP>2.3.CO;2](https://doi.org/10.1175/1520-0493(1963)091<0099:GCEWTP>2.3.CO;2), 1993a.
- Smagorinsky, J.: Some historical remarks on the use of nonlinear viscosities., in: *Large Eddy Simulation of Complex Engineering and Geophysical Flows*, edited by Galperin, B. and Orszag, S. A., pp. 3–36, Cambridge University Press, 1993b.
- Spitzer, W. S. and Jenkins, W. J.: Rates of vertical mixing, gas exchange and new production: estimates from seasonal gas cycles in the upper
760 ocean near Bermuda., *Journal of Marine Research*, 47, 169–196, <https://doi.org/10.1357/002224089785076370>, 1989.
- Stewart, K. D., Hogg, A. M., Griffies, S. M., Heerdegen, A. P., Ward, M. L., Spence, P., and England, M. H.: Vertical resolution of baroclinic modes in global ocean models., *Ocean Modelling*, 113, 50–65, <https://doi.org/10.1016/j.ocemod.2017.03.012>, 2017.
- Sweby, P.: High-resolution schemes using flux limiters for hyperbolic conservation-laws., *SIAM Journal of Numerical Analysis*, 21, 995–1011, <https://doi.org/10.1137/0721062>, 1984.
- 765 Tomczak, M. J.: De l’origine et la distribution de l’eau remontée à la surface au large de la côte Nor-Ouest Africaine., *Annales Hydrographiques, Série 5*, 6, 5–14, 1978.
- Tomczak, M. J. and Hughes, P.: Three dimensional variability of water masses and currents in the Canary upwelling region., *Meteor Forschungsergebnisse (A)*, 21, 1–24, 1980.
- Trossman, D. S., Whalen, C. B., Haine, T. W. N., Waterhouse, A. F., Nguyen, A. T., Bigdeli, A., Mazloff, M., and Heimbach, P.:
770 Tracer and observationally derived constraints on diapycnal diffusivities in an ocean state estimate, *Ocean Science*, 18, 729–759, <https://doi.org/10.5194/os-18-729-2022>, 2022.
- Tsujino, H., Urakawa, S., Nakano, H., Small, R. J., Kim, W. M., Yeager, S. G., Danabasoglu, G., Suzuki, T., Bamber, J. L., Bentsen, M., Böning, C. W., Bozec, A., Chassignet, E. P., Curchitser, E., Dias, F. B., Durack, P. J., Griffies, S. M., Harada, Y., Ilıcak, M., Josey, S. A., Kobayashi, C., Kobayashi, S., Komuro, Y., Large, W. G., Sommer, J. L., Marsland, S. J., Masina, S., Scheinert, M., Tomita,
775 H., Valdivieso, M., and Yamazaki, D.: JRA-55 based surface dataset for driving ocean–sea-ice models (JRA55-do), *Ocean Modelling*, <https://doi.org/10.1016/j.ocemod.2018.07.002>, 2018.
- von Appen, W.-J., Strass, V. H., Bracher, A., Xi, H., Hörstmann, C., Iversen, M. H., and Waite, A. M.: High-resolution physical-biogeochemical structure of a filament and an eddy of upwelled water off northwest Africa., *Ocean Science*, 16, 253–270, <https://doi.org/10.5194/os-16-253-2020>, 2020.
- 780 Waterhouse, A. F., MacKinnon, J. A., Nash, J. D., Alford, M. H., Kunze, E., Simmons, H. L., Polzin, K. L., Laurent, L. C. S., Sun, O. M., Pinkel, R., Talley, L. D., Whalen, C. B., Huussen, T. N., carter, G. S., Fer, I., Waterman, S., Garabato, A. C. N., Sanford, T. B., and Lee, C. M.: Global Patterns of Diapycnal Mixing from Measurements of the Turbulent Dissipation Rate, *Journal of Physical Oceanography*, 44, 1854–1872, <https://doi.org/10.1175/JPO-D-13-0104.1>, 2014.
- Whalen, C. B., MacKinnon, J. A., Talley, L. D., and Waterhouse, A. F.: Estimating the Mean Diapycnal Mixing Using a Finescale Strain
785 Parameterization, *Journal of Physical Oceanography*, pp. 1174–1188, <https://doi.org/10.1175/JPO-D-14-0167.1>, 2015.

- Wolff, W. J., van der Land, J., Nienhuis, P. H., and de Wilde, P. A. W. J.: The functioning of the ecosystem of the Banc d'Arguin, Mauretania., *Hydrobiologica*, 258, 211–222, <https://doi.org/10.1007/BF00006198>, 1993.
- Wunsch, C. and Ferrari, R.: Vertical mixing, energy, and the general circulation of the oceans., *Annual Review of Fluid Mechanics*, 36, 281–314, <https://doi.org/10.1146/annurev.uid.36.050802.122121>, 2004.
- 790 Zenk, W., Klein, B., and Schroder, M.: Cape Verde Frontal Zone., *Oceanographic Research Papers*, 38, 1, S505–S530, [https://doi.org/10.1016/S0198-0149\(12\)80022-7](https://doi.org/10.1016/S0198-0149(12)80022-7), 1991.
- Zhu, Y., Zhang, R.-H., and Sun, J.: North Pacific Upper-Ocean Cold Temperature Biases in CMIP6 Simulations and the Role of Regional Vertical Mixing, *Journal of Climate*, 33, 7523–7538, <https://doi.org/10.1175/JCLI-D-19-0654.1>, 2020.