

Assessment of seasonal soil moisture forecasts over Central Mediterranean ~~toward groundwater management~~

Lorenzo Silvestri¹, Miriam Saraceni², Bruno Brunone³, Silvia Meniconi³, Giulia Passadore³, and Paolina Bongioannini Cerlini⁴

¹Department of Engineering Enzo Ferrari, University of Modena and Reggio Emilia, Modena, Italy

²Interuniversity Research Center, CIRIAF, University of Perugia, Perugia, Italy

³Department of Civil and Environmental Engineering, DICA, University of Perugia

³Department of Civil, Environmental and Architectural Engineering, ICEA, University of Padova, Italy

⁴Department of Physics and Geology, University of Perugia, Italy

Correspondence: Lorenzo Silvestri (lorenzo.silvestri@unimore.it)

Abstract. It is highly likely that the Mediterranean region will experience increased aridity and hydrological droughts. Therefore, seasonal forecasts of soil moisture can be a valuable resource for ~~groundwater management~~ agriculture and for evaluating the flux in the vadose zone towards shallow unconfined aquifers. However, their accuracy in this region has not been evaluated against observations. This ~~paper study~~ paper study presents an evaluation of soil moisture in the Central Mediterranean region during 5 the period 2001-2021 using the seasonal forecast system (SEAS5) of European Center for Medium-range Weather Forecast (ECMWF). Standardized anomalies of soil moisture are compared with observed values in ~~ERA5 reanalysis~~ ERA5-LAND reanalysis of ECMWF. In terms of the average magnitude of the forecast error and the anomaly correlation coefficient, the forecasts demonstrate good performance only in certain regions of the domain for the deepest soil layer ~~at 289 cm, the most interesting for groundwater management. No clear overlap with specific land features such as orography, land cover, or distance~~ 10 ~~from the coast has been observed with respect to the forecast performance. Accordingly, seasonal forecasts can be used:~~ Hungary, Peninsular Italy, Internal areas of Balkan Peninsula, Provence, Sardinia and Sicily. These regions correspond to those with the largest memory time scale of soil moisture, which does not exhibit a complex orography. The obtained results show that seasonal forecasts are useful to detect wet and dry events for the deepest soil layer in ~~certain the mentioned~~ certain the mentioned regions, with lead-times of up to ~~6 six~~ six months. In these regions, the area under the Relative Operating Characteristic (ROC) curve can reach 15 values larger than 0.8. ~~Dry For all soil layers, dry~~ dry events are generally better captured than wet events ~~for all soil layers. We also analyzed the effectiveness of seasonal forecasts in predicting wet and dry events in Northern and Central Italy for the 2012-2013 period, with a lead-time of 6 months. We found that seasonal forecasting has great potential for groundwater management in certain areas of the Central Mediterranean. However, improvements are needed in observations, data assimilation methods, and the seasonal forecasting system to ensure reliable forecasts for upper soil layers and other regions; the best forecast skill, on~~ 20 ~~average, is obtained for the events where antecedent condition is correspondent to the present condition (dry after dry, wet after wet). To illustrate, the case study of the 2012 drought period demonstrates the capacity of the SEAS5 model to forecast such an event for Central and Northern Italy with a six-month lead time. Furthermore, the close correlation between soil moisture and~~

the observed water table in shallow unconfined aquifers in Italy underscores the significant potential of seasonal soil moisture forecasts for water management applications.

25 *Copyright statement.* TEXT

1 Introduction

Soil moisture, starting from the ~~soil~~terrestrial surface to the deepest soil layers, represents an invaluable parameter which has a fundamental role in the dynamics of the earth system (McColl et al., 2017). Its variability results from the complex interaction between the atmosphere, vegetation and soil processes.

30 On the ~~soil~~terrestrial surface, soil moisture is an essential component of the Earth surface energy budget, influencing the surface heat fluxes and evapotranspiration from land to atmosphere (Seneviratne et al., 2010). From the climate point of view, Mueller and Seneviratne (2012) ~~have shown~~showed that the number of hot days is largely determined by a precipitation deficit ~~at the surface that implies and, as a consequence, by~~ small values of soil moisture. This ~~soil-atmosphere-coupling~~coupling between atmospheric temperature and soil moisture is usually defined as soil moisture-temperature feedback, where drier soils determine warmer ~~atmospheres (soil moisture-temperature feedback, see also Seneviratne et al., 2010), could lead to an amplification of the atmosphere (Seneviratne et al., 2010). Such feedback has the potential to exacerbate~~ global warming by ~~changing~~altering the surface heat balance (Qiao et al., 2023). ~~Apart from soil moisture-temperature feedbacks, most studies have focused on the soil~~Other studies (Hohenegger et al., 2009; Hohenegger and Stevens, 2018; Taylor, 2008; Taylor et al., 2010) concentrated on ~~the reciprocal influence between soil moisture and precipitation, which is referred to as the soil~~ moisture-precipitation feed-
40 back. ~~Several processes can~~A number of processes may contribute to this feedback~~by acting both~~, acting both on a synoptic scale ~~, by changing (by modifying~~ synoptic settings and enhancing the ~~advection of water vapour, and locally~~, by changing the large-scale transport of water vapor) and locally (by modifying boundary layer characteristics and influencing the organization of convection~~(Hohenegger et al., 2009; Hohenegger and Stevens, 2018; Taylor, 2008; Taylor et al., 2010). However, it is still difficult to determine~~). Nevertheless, it remains challenging to ascertain an overall sign (positive or negative) for ~~such a~~this
45 feedback.

The soil moisture available in the root zone is essential for vegetation and agriculture. Its values can be used as indexes for detecting hydrological drought (Spennemann and Saulo, 2015). Through its impact on photosynthesis processes, Humphrey et al. (2021) found that the variability of soil moisture in climate model simulations ~~drives~~drive the 90% of the inter-annual variability of the global land carbon uptake~~(Humphrey et al., 2021).~~

50 The deep soil moisture is ~~fundamental~~a fundamental feature with respect to ~~aquifer recharge mechanisms, particularly for unconfined shallow~~the flux in the vadose zone towards shallow unconfined aquifers. For example, Rodell et al. (2007) used the satellite observed terrestrial water storage from the Gravity Recovery and Climate Experiment (GRACE) to determine the groundwater storage. Later, Getirana et al. (2020) demonstrated that the initialization of seasonal forecast with such data

improves groundwater forecasts in the ~~US~~. ~~Also Li et al. (2021) evaluates USA~~. In addition, Li et al. (2021) evaluated ground-
55 ~~water recharge from different land surface models and found that ,despite model improvements are needed to increase the~~
~~recharge estimates accuracy, the~~ the seasonal cycle of simulated groundwater storage compared well with in situ groundwater
observations.

Despite its fundamental role, in situ observations of soil moisture are scarce. Satellite and reanalysis products can provide
60 a useful alternative to fill this gap. However, direct satellite observations are possible only for the first few centimeters below
the surface (Dorigo et al., 2021). These surface observations can be propagated through the root zone by filtering operations,
empirical models or by land surface models. ~~Reanalysis-Reanalyses~~ offer a great alternative for studying soil moisture and
they have shown significant correlations with in situ observations. Li et al. (2020) ~~compares compared~~ different reanalysis and
found ERA5, the fifth generation reanalysis of the European Center for Medium range Weather Forecasts (ECMWF), to show
65 the highest skill. Also Bongioannini Cerlini et al. (2017, 2021) ~~shows showed~~ the strong correlation between ERA5 ~~fluxes flux~~
and aquifer water table observations. The same was found by Spennemann and Saulo (2015) between ~~GLDAS the Global Land~~
Data Assimilation System (GLDAS) and multi-satellite soil moisture anomalies. The ~~relevance utility~~ of soil moisture data from
land surface models ~~regards especially not its absolute value , but their time employed within atmospheric general circulation~~
~~models hinges not on the soil moisture value itself, but on its temporal~~ variations, which are ~~very well captured particularly well~~
70 ~~represented~~ when compared to observations (Koster et al., 2009). By analyzing different reanalysis and land surface models
with respect to observational data in Central Italy, Bongioannini Cerlini et al. (2023) found, on average, the best performances
of the ERA5 reanalysis with respect to other well-established reanalysis. As a further feature suggesting the use of ERA5, its
good performance in terms of water budget evaluation in closed lakes must be mentioned (Bongioannini Cerlini et al., 2022)
For these reasons, in this paper ERA5 reanalysis, and its land component ERA5-LAND (Muñoz-Sabater et al., 2021), will
75 be used as a reference soil moisture condition. ~~ERA5 soil moisture comes from a particular land surface model that lack of~~
~~a sophisticated representation of certain hydrological processes (e.g., subsaturated vertical flow, interflow, groundwater flow)~~
~~(Koster et al., 2009). However, adding complexity to a land surface model does not ensure an improvement of soil moisture~~
~~simulations (Beck et al., 2021).~~

80 There is high confidence that the Mediterranean region will suffer from an increased aridity and an increase in hydrological
droughts (Ranasinghe et al., 2021). Moreover, aridity can heavily impact the snowmelt recharge of the aquifers in the mountain
ranges of the Mediterranean area, further affecting hydrological droughts (Lorenzi et al., 2024; Doummar et al., 2018). In this
context of climate change, sub-seasonal to seasonal (S2S) forecasts are a fundamental tool for adaptation strategies, espe-
cially ~~in the context of regarding~~ water resources management. The accuracy of S2S forecast system relies on the simu-
85 lation of the response of the atmosphere to the slowly varying states of the ocean and land surface (Koster et al., 2004).
Johnson et al. (2019) demonstrates how SEAS5, the seasonal forecasting system of ECMWF, has a particular strength in the
prediction of El Niño Southern Oscillation (ENSO). de Boissésou and Balmaseda (2024) found globally useful forecast skill
when predicting the occurrence of marine heatwaves (prolonged period of extremely warm sea surface temperature) for the

two seasons after the forecast initialization date. Crespi et al. (2021) analyze the forecast skill of SEAS5 for three key climate variables (temperature, precipitation and wind speed) over Europe and found such forecasts useful for climate services after a proper bias-adjustment method was applied. Prodhomme et al. (2021) found that seasonal forecasts from the SEAS5 system starting from the early May can provide useful information about the probability of occurrence of European summer heatwaves. A recent study over the Mediterranean region by Cali Quaglia et al. (2022) found that individual seasonal forecasting systems outperform elementary forecasts of precipitation anomalies based on persistence or climatology. However, the added value is not uniform over the Mediterranean area. The same dis-homogeneity and potential usefulness of seasonal forecast in the Mediterranean area was found also by Costa-Saura et al. (2022) for agriculture and forestry. However, the same analysis could bring different results in regions with marked orographic impact and land-sea contrast such as the Mediterranean region. Ceglar and Toreti (2021) show that seasonal climate forecast by SEAS5 provides useful information for decision-making processes in the European winter wheat-producing sector, by analyzing minimum and maximum daily temperature and daily total precipitation. In particular, drought events were better predicted than excessive wetness periods.

On the scale of S2S forecasts, soil moisture is one of the most impactful land parameter and can contribute to is crucial for the forecast skill (Koster et al., 2004, 2016; Merryfield et al., 2020; Dirmeyer et al., 2018). Esit et al. (2021) found that land initialization contributes to approximately a third of the total soil moisture predictability, while the remaining part is attributable to ocean conditions. Moreover, they found that the same initialization can provide limited skill in the precipitation forecast but enough skill in the soil moisture forecast. This result suggests that skillful seasonal prediction can be made on drought occurrence focusing on the soil state. This is traced back can be attributed to reduced variability of soil moisture which is an order of magnitude smaller than that of rainfall. The study by Kumar et al. (2019) in North America suggested that this source of predictability is connected to the soil moisture reemergence process, in which moisture anomalies stored in the deep soil layer can "reemerge" "reemerge" to the surface, restoring the earlier root zone anomaly and providing a year-to-year soil moisture memory. Spennemann et al. (2017) found that seasonal forecast of Standardized Soil Moisture Anomalies (SSMA) perform better than forecast of precipitation by using the CFSv2 (Climate Forecast System) in South America. Moreover, the performance were found to be higher for austral winter than summer, and for dry events rather than wet episodes. This result shows the value of seasonal forecast of SSMA for their use for agricultural drought monitoring. A recent study by Boas et al. (2023) found that ~~seasonal forecasts by the European Center for Medium-range Weather Forecast (ECMWF) system,~~ the Community Land Model (CLM5), forced by SEAS5 system seasonal forecasts, satisfactorily reproduces the inter-annual variation of crop yield and also the high- and low-yield seasons in Germany and Australia. However, a systematic bias of soil moisture was found when comparing with satellite observations.

Most of the above results apply to large continental regions in North and South America. ~~However, the same analysis could bring different results in regions with marked orographic impact and land-sea contrast such as the Mediterranean region. A recent study over the Mediterranean region by Cali Quaglia et al. (2022) found that individual seasonal forecasting systems outperform elementary forecasts of precipitation anomalies based on persistence or climatology. However, the added value is not uniform over the Mediterranean area. The same dis-homogeneity and potential usefulness of seasonal forecast in the~~

Mediterranean was found also by Costa-Saura et al. (2022) for agriculture and forestry. In contrast to the above papers which focused, while in Europe seasonal forecast performances are mostly evaluated on surface atmospheric variables, this work, This paper focuses on evaluating seasonal forecasts of soil moisture for water resources management and estimation of aquifer recharge, with particular attention for to wet and dry events. The key question we try to address is: can we use seasonal forecast of soil moisture over Central Mediterranean for predicting the flow toward groundwater, for forecasting dry and wet periods, and then supporting water resources questions addressed in this study are: i) can the seasonal forecast over the central Mediterranean be used to predict the soil moisture behavior? ii) Do performances vary depending on whether a forecast period is dry or wet? iii) Can we use such information to develop a real-time applications for water resource management? Accordingly, the The paper is structured as it follows. Section 2 describes the study area, the seasonal forecast system and the reanalysis data used to validate the forecast (i. e., ERA5 reanalysis and water table observations). Section 3 provides a description of how seasonal forecasts and reanalysis data are processed and the scores used methods for evaluating the forecast performance. The results of the different scores performances. Results are reported in Section 4 over the whole analyzed period and study domain, while Section 5 examines some case studies of extreme dry and wet periods, showing a possible applications of seasonal forecasts to groundwater management. Finally, section 6 summarizes and discuss the main findings of this paper study.

2 Study area and data

2.1 Study area

This study focuses on the Central part of the Mediterranean region (5°E-25°E, 35°N-50°N) as shown in Figure 1. Such an area represents a challenge for seasonal forecasts (Doblas-Reyes et al., 2013) for different reasons. First it is greatly influenced by climate change, sometimes recognized as a hot spot. As stated by the sixth IPCC report (Ranasinghe et al., 2021), in the Mediterranean region there is a strong agreement between regional climate models that precipitation will decrease and temperature will increase by mid- and end-century for the Representative Concentration Pathway (RCP-8.5) and the Shared Socioeconomic Pathways (SSP5-8.5) scenarios. Therefore, with high confidence, this area will suffer from an increased aridity and an increase in hydrological droughts. Second, the complex orography of such this region (the Alps, the Apennines, the Dinaric Alps, and part of the Atlas mountains) complicates the precipitation forecasts (Silvestri et al., 2022). Finally, additional sources of uncertainties comes from land-sea contrast, atmosphere-sea interactions, and the complex dynamics of extra-tropical atmospheric circulation.

2.2 The seasonal forecasting system: Soil moisture reanalysis

ERA5-LAND (Muñoz-Sabater et al., 2021) and ERA5 reanalysis itself (Hersbach et al., 2020), are used here as reference dataset for soil moisture since it has been shown to have good performance in representing the observed soil moisture

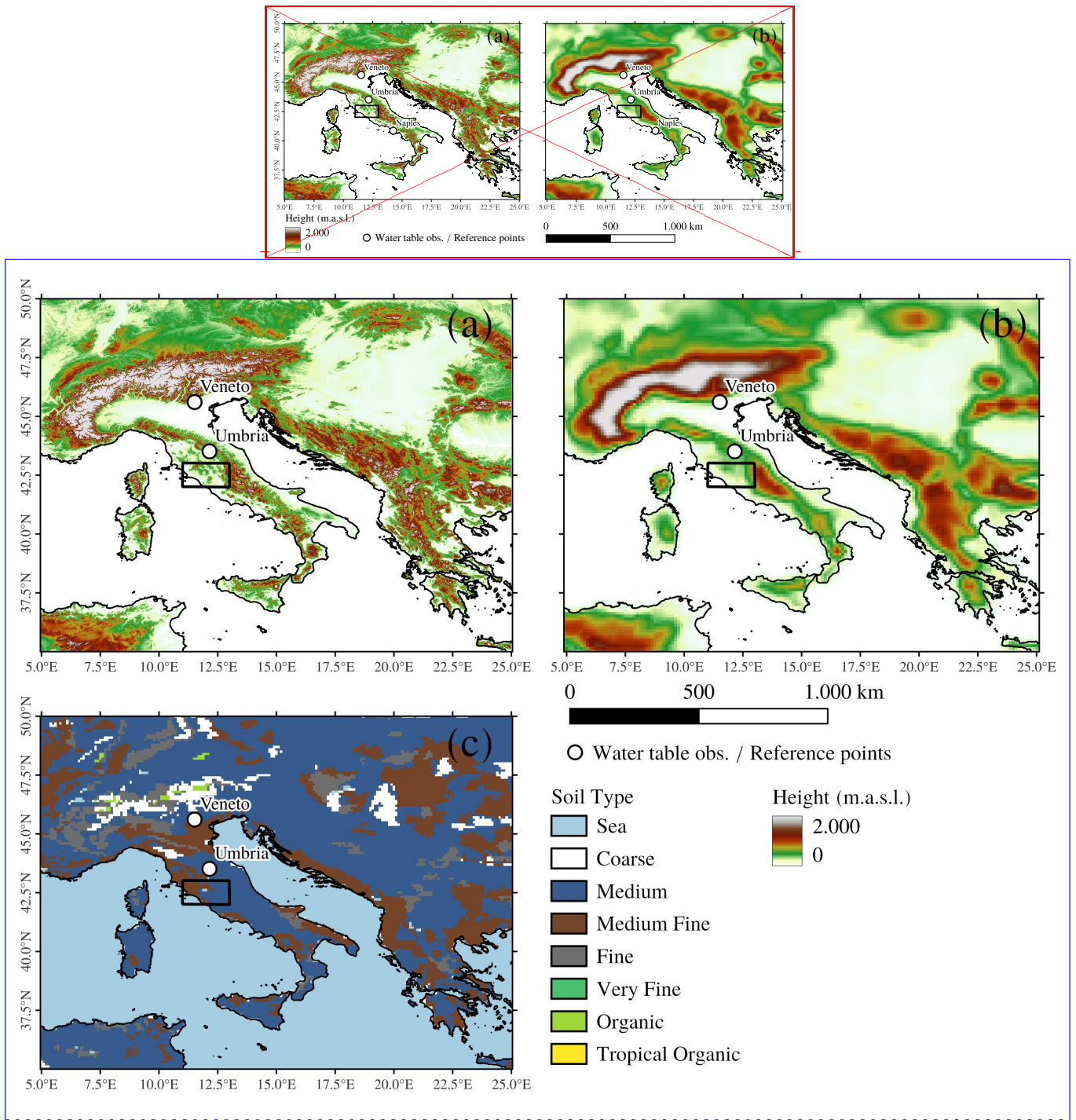


Figure 1. The study area and its orography as represented by: (a) Digital Elevation Model with 1 km resolution (Danielson et al., 2011, GMTED) and; (b) ERA5 reanalysis with horizontal resolution of about 31 km (which can be taken as a reference also for SEAS5 system which has resolution of about 36 km); (c) is the soil type categories as represented in ERA5-LAND. White dots represent water table observations (Veneto and Umbria) and additional reference points (Naples) used in the case studies analyzed in this workstudy. The black rectangular area is used as a reference area for averaging anomaly correlation coefficients in Central Italy.

155 (Muñoz-Sabater et al., 2021; Li et al., 2020), especially regarding its seasonal cycle.
ERA5 is produced by using the Integrated Forecasting System (IFS) model version CY42R1. The land surface model is HTESSSEL (Balsamo et al., 2009) which interacts directly with the atmosphere. Soil moisture is a prognostic variable and, for this reason, its initial value is needed to run the model. Precisely, observations in ERA5 are assimilated each 12 hours through a 4d-variational (4d-Var) approach. A simplified Extended Kalman Filter (De Rosnay et al., 2013) is implemented
160 in IFS to produce the initial condition for the soil moisture analysis. It is based on two different sources of observations (Albergel et al., 2012): the surface observations of temperature and relative humidity from synoptic stations (SYNOP) measured at 2 m above the ground level (the so-called screen level), and MetOp-A, MetOp-B Advanced Scatterometer (ASCAT) soil moisture data from satellites. Screen-level parameters are indirectly related to soil moisture, while satellites provide a more direct measurement of the surface soil moisture. Since the latter source is capable of describing only the top few centimeters of
165 the soil (Albergel et al., 2012), the root-zone soil moisture is estimated by propagating downwards this information by means of the H-TESSSEL hydrological model.
The high horizontal resolution of ERA5 ($0.28^\circ \approx 31$ km), together with an improved physics and data assimilation methods, make this reanalysis one of the most reliable and physically consistent dataset of global soil moisture. Seasonal forecasts products from SEAS5 ~~Seasonal forecasts of~~ come from a different model version, with different initial conditions, different
170 data assimilation methods, and different horizontal resolution (see Johnson et al., 2019, for more details).

The land component of ERA5, ERA5-LAND is produced by running the H-TESSSEL hydrological model at a higher horizontal resolution of 9 km. The static and climatological fields, like soil type, land-sea mask and orography, are the same as ERA5 but interpolated to a higher resolution grid. Soil type, which is a relevant parameter for calculating soil moisture,
175 is shown in Figure 1c. When moving across different grids, the dominant soil type is selected in order to preserve hydraulic properties (Balsamo et al., 2009). This is true also for the seasonal forecast system SEAS5 (see below). The other difference between ERA5 and ERA5-LAND is the thermodynamic input. In particular, in ERA5-LAND the surface pressure and the temperature are adjusted for the altitude through a daily environmental lapse rate obtained by ERA5 data. As discussed in Muñoz-Sabater et al. (2021), such dynamical downscaling of ERA5 implies consistent improvements for soil moisture
180 especially in the root zone, when compared to soil moisture observations. Instead, for the top layer, ERA5-LAND slightly improves the ERA5 estimates. The main reasons behind such improvements were traced back to a better representation of the soil type which changes the saturation level of soil moisture, thus affecting evapotranspiration.

2.3 The seasonal forecasting system (SEAS5)

Seasonal forecasts of monthly mean soil moisture were taken from the fifth generation seasonal forecasting system (SEAS5)
185 of ECMWF (Johnson et al., 2019). In the following, we briefly provide a few details on SEAS5, but the reader is referred to Johnson et al. (2019) for further information.

SEAS5 is based on cycle 43r1 of the Integrated Forecast System (IFS) and consists of a coupled system of atmospheric, land surface, oceanic, and sea-ice components. The horizontal resolution of the atmospheric model physics is about 36 km (O320

grid) with 91 levels in the vertical. The ocean model is ORCA (0.25°) with 75 levels in the vertical. Land surface is represented through the H-TESEL model (Balsamo et al., 2009), while sea-ice is treated with the LIM2 model (Fichefet and Maqueda, 1997). The atmosphere and land surface are initialized using ECWMF operational analyses, while the ocean and sea-ice are initialized using OCEAN5 (Zuo et al., 2019), which combines the ORAS5 historical ocean reanalysis with the OCEAN5-RT daily ocean analysis.

In this paper, SEAS5 hindcasts ~~, also indicated as (or~~ reforecasts, that is forecasts produced for the past period between 2001-2016) and forecasts between 2016-2021, for a total period of twenty years (2001-2021), are used. There is no substantial difference between the system set up for hindcasts (reforecasts) and forecasts. Such a distinction is done since the SEAS5 system become operational in 2017 and the actual forecasts were started from that period. Hindcasts are performed in order to extend the available time period of seasonal forecasts and allow a better calibration. Moreover, the period until 2016 is used as a reference period for calculating anomalies and the bias adjustment of forecasts with respect to observations. Each forecast consists of different members and lead-time months. The SEAS5 reforecasts have 25 members, while the forecasts have 51 members. To have a homogeneous number of members throughout all the analyzed period, only the first 25 forecast members are considered. Regarding the lead-times, each forecast consists of 7-month time steps and it is initialized at the beginning of each month. In our analysis, all lead-times spanning from 1 to 6 months are considered.

2.4 Soil moisture reanalysis ERA5

~~The deterministic high-resolution version of ERA5 reanalysis (Hersbach et al., 2020) is used here as a reference dataset for soil moisture, since it has been shown to have good performance in representing the observed soil moisture (Li et al., 2020), especially regarding its seasonal cycle. ERA5 is produced by using the Integrated Forecasting System (IFS) model version CY42R1. The land surface model is H-TESEL (Balsamo et al., 2009) which interacts directly with the atmosphere. Soil moisture is a prognostic variable and, for this reason, its initial value is needed to run the model. The high horizontal resolution of ERA5 (0.28° ≈ 31 km), together with an improved physics and data assimilation methods, make this reanalysis one of the most reliable and physically consistent dataset of global soil moisture. Seasonal forecasts products from SEAS5 come from a different model version, with different initial conditions, different data assimilation methods, and different horizontal resolution. In order to compare SEAS5 and ERA5 data, both dataset have been interpolated to a higher resolution grid of about 0.25°. Observations in ERA5 are assimilated each 12 hours through a 4d-variational (4d-Var) approach. A simplified Extended Kalman Filter (De Rosnay et al., 2013) is implemented in IFS to produce the initial condition for the soil moisture analysis. It is based on two different sources of observations (Albergel et al., 2012): the surface observations of temperature and relative humidity from synoptic stations (SYNOP) measured at 2 m above the ground level (the so-called screen level), and MetOp-A, MetOp-B Advanced Scatterometer (ASCAT) soil moisture data from satellites. Screen-level parameters are indirectly related to soil moisture, while satellites provide a more direct measurement of the surface soil moisture. Since the latter source is capable of describing only the top few centimeters of the soil (Albergel et al., 2012), the root-zone soil moisture is estimated by propagating downwards this information by means of the H-TESEL hydrological model.~~

2.4 Water table observations

In this study, we use surface observations of water table as a direct proxy for dry and wet case study events. We select 2 piezometers in two different Italian regions, Umbria and Veneto, respectively located in the Central and Northern part of Italy (white dots in Figure 1). The piezometers monitor two different shallow alluvial and unconfined aquifers with a mean depth of water table below 10 m, whose evolution has been found to be representative of a large area surrounding the point observation ~~-In fact, in Bongiannini Cerlini et al. (2021). In~~ such aquifers, ~~a direct interaction between land and atmosphere occurs and~~ the flux in the vadose zone is ~~a significant aquifer recharge mechanism~~ the result of the direct interaction between land and atmosphere.

The measurements of the water table elevation are provided by the regional piezometric network of the Umbria region, managed by the Regional Environmental Protection Agency [Agenzia Regionale per la Protezione Ambientale (ARPA)] and by local water management services in Veneto. Daily water table data are collected for at ~~least~~ last 10 years and have been subjected to preliminary quality control procedures (see Bongiannini Cerlini et al., 2021, for a detailed description of the quality controls), before calculating their monthly mean and the corresponding standardized anomalies.

~~The southernmost point in Figure 1 (Naples) lacks of a direct measurement of water table elevation, but it will be used later in Section 4 as a reference point to better show the different performances of seasonal forecast across the domain.~~

3 Methods

Monthly mean values of ~~soil moisture~~ the soil moisture, θ , from seasonal forecasts are validated against monthly mean values of soil moisture from both ERA5 and ERA5-LAND reanalysis. Both datasets are interpolated over a regular grid of 0.250.125° of horizontal resolution. The number and the depth of soil layers in each column is the same in both SEAS5 ~~and~~ ERA5 and ERA5-LAND: 4 soil layers at a depth of 7, 28, 100, and 289 cm, respectively. The soil type, when passing across different grids, is taken as the prevailing soil type in order to preserve soil hydraulic properties (Balsamo et al., 2009).

The evaluation of seasonal forecasts and also the discrimination of dry and wet periods is performed over the Standardized Soil Moisture Anomaly (SSMA). Following the approach by Spennemann et al. (2017), SSMA is calculated at each grid point (i,j) , month (m , from January to December), year (y) and soil layer (k) as:

$$SSMA_k(i, j, \underline{tm}, y) = \left(\theta_k(i, j, \underline{tm}, y) - \overline{\theta_k(i, j, m)} \right) / \sigma_{\theta_k(i, j, t_{month})} \theta_k(i, j, m) \quad (1)$$

where $\bar{\cdot}$ = time average operator ~~over all the reference year, and~~ σ = standard deviation operator, ~~t_{month} indicates the month (from January to December) over which the statistics is computed.~~ The time period considered for the forecast validation spans 20 years from 2001 to 2021, while the reference time period considered for evaluating the monthly climatology and standard deviation ranges from 2001 to 2016.

The same reference period is also considered for the bias adjustment of seasonal forecast. The method used in this work is the simple Mean and Variance Adjustment method as described by Manzananas et al. (2019). In our case, each member mean

and variance over each grid point is bias-adjusted with respect to the ERA5 observation mean and variance over the period 2001-2016, in the following form:

$$255 \quad \theta_k^l(l, m, t, y, n) = \left(\theta_k(l, m, t, y, n) - \hat{\theta}_k(l, m) \frac{\sigma_{obs}}{\sigma_f} \right) \frac{\sigma_{obs}(m)}{\sigma_f(l, m)} + \overline{\theta_k^{obs}}(m) \quad (2)$$

where l is the forecast lead time, m is the forecast month, n is the index representing each ensemble member, $\hat{\theta}_k - \theta_k(l, m)$ is the ensemble average of the time mean $\overline{\theta_k(m, t)}$, σ_f and time average of forecasts for each lead time and month over the reference period, $\sigma_f(l, m)$ is the standard deviation of the complete ensemble, θ_k^{obs} is the for each lead time and month over the reference period, $\overline{\theta_k^{obs}}$ is the time average of all observation over the considered time for the considered month over the reference period, and $\sigma_{obs} - \sigma_{obs}(m)$ is the standard deviation of all observations. The same for the considered month over the reference period. This operation is computed for each forecast lead-time (from 1 to 6 months). In this way, the bias and variance adjustment take into account both the forecast month and the forecast lead time, which has been found to be beneficial in previous work by Kumar et al. (2014). Although the most simple among different methods, Manzanas et al. (2019) demonstrated that MVA methods represent a good compromise between computational cost and performance. This is particularly relevant, since the final aim of this study is to develop real-time applications for climate services. The final effect of the bias adjustment on the forecast ensemble mean is shown in Figure 2, where the Umbria reference grid point (see Figure 1) is shown as an example.

In order to analyze the variability of soil moisture and to compare it across different soil layers, we compute the memory time-scale of each layer as the e-folding time of the temporal autocorrelation function. The autocorrelation is evaluated by calculating the Spearman correlation coefficient, shifting the time series by a temporal lag which is between 0 and 365 days. The corresponding time when the correlation coefficient becomes lower than e^{-1} is taken as the memory time scale of that grid point and soil layer. This time scale is evaluated by considering ERA-LAND daily mean soil moisture data over all the domain. An example of this procedure for the Umbria reference point is reported in Figure 3. As expected, the deeper the soil layer the longer the memory time scale. This relationship is fulfilled by all grid points of the study domain, as it will be shown later in subsection 4.1.

The performance of SSMA forecasts is evaluated through 3 different metrics, two deterministic and one probabilistic. First, the average magnitude error of SSMA ensemble mean is evaluated through the Root-Mean-Squared Error (RMSE). This metric, by definition, puts greater influence on large errors than smaller errors. RMSE is commonly used both in weather forecast performance assessment (Robertson et al., 2015; Johnson et al., 2019) and seasonal streamflow forecasting (Mendoza et al., 2017; Yuan, 2017). Successively, the Anomaly Correlation Coefficient (ACC) is used to measure the correspondence between forecasted and observed ensemble mean SSMA. ACC is the most widely used skill metric for evaluating the skill of deterministic forecast (Doblas-Reyes et al., 2013; Mishra et al., 2019; Johnson et al., 2019; Costa-Saura et al., 2022) and it is not sensitive to forecast bias. Then the ability of SEAS5 ensemble system to discriminate between different event type is measured by the area under the Relative Operating Characteristic (ROC) curve (Wilks, 2011; Madrigal et al., 2018; Carrao et al., 2018). An example of

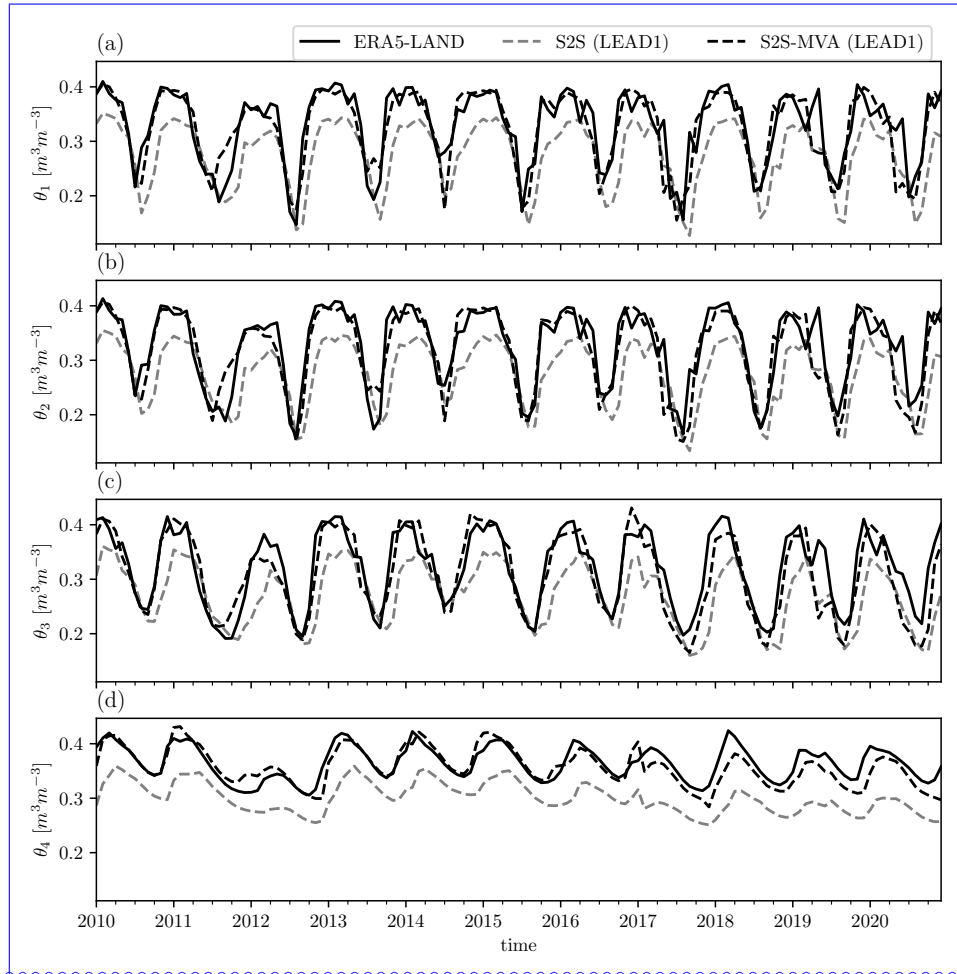


Figure 2. Soil moisture time series over Umbria for (a) soil layer 1, (b) soil layer 2, (c) soil layer 3, (d) soil layer 4. Different lines represent ERA5-LAND reanalysis (black solid line), SEAS5 seasonal forecast without bias adjustment at lead time 1 month (gray dashed line), SEAS5 seasonal forecast with mean and variance bias adjustment at lead time 1 month (SEAS5-MVA, black dashed line).

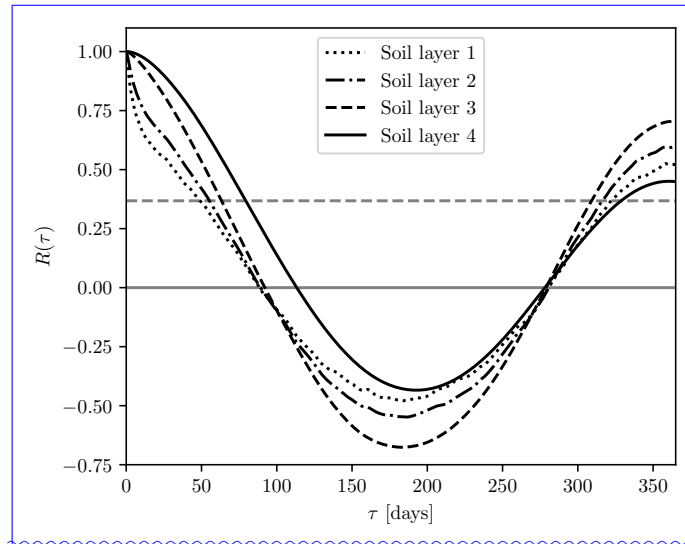


Figure 3. Example of calculation of memory time scale over Umbria region for the different soil layers: soil layer 1 (dotted line), soil layer 2 (dashed-dotted line), soil layer 3 (dashed line), soil layer 4 (solid line). The temporal correlation refers to the time series shown in Figure 2. The dashed gray line represents the threshold e^{-1} and the corresponding e-folding time (the time when correlation is lower than this threshold) represents the memory time scale of each soil layer.

the procedure for the evaluation of the ROC curve is reported in Figure 4 for the Umbria reference point. In particular, dry and wet events have been defined as those with the SSMA being smaller or larger than 1, respectively (see Figure 4a). An ensemble (probabilistic) forecast will have a certain probability of detecting that event. Using a set of increasing probability thresholds, we build a contingency table (true and false positive, true and false negative). Then we calculate the true positive rate (or probability of detection) and the false positive rate (or false alarm rate) for each probability bin. The ROC curve is obtained by plotting the true positive rate against the false positive rate as shown in Figure 4b for the different probability bin. For each probability bin, the true positive rate should be larger than the false alarm rate, otherwise the forecast is not useful. Therefore, the area under the ROC curve can be used as a score to evaluate the usefulness of a forecast. The diagonal line on Figure 4b, indicates no skill (ROC area close to 0.5), while the perfect forecast would have a ROC area equal to 1. Each metric has been evaluated for the different forecast lead-times. The first two metrics (RMSE and ACC) are evaluated by considering the ensemble mean SSMA values, while the latter (ROC) is evaluated by considering all the ensemble members. All metrics calculations rely on the xskillscore Python Package (https://github.com/xarray-contrib/xskillscore).

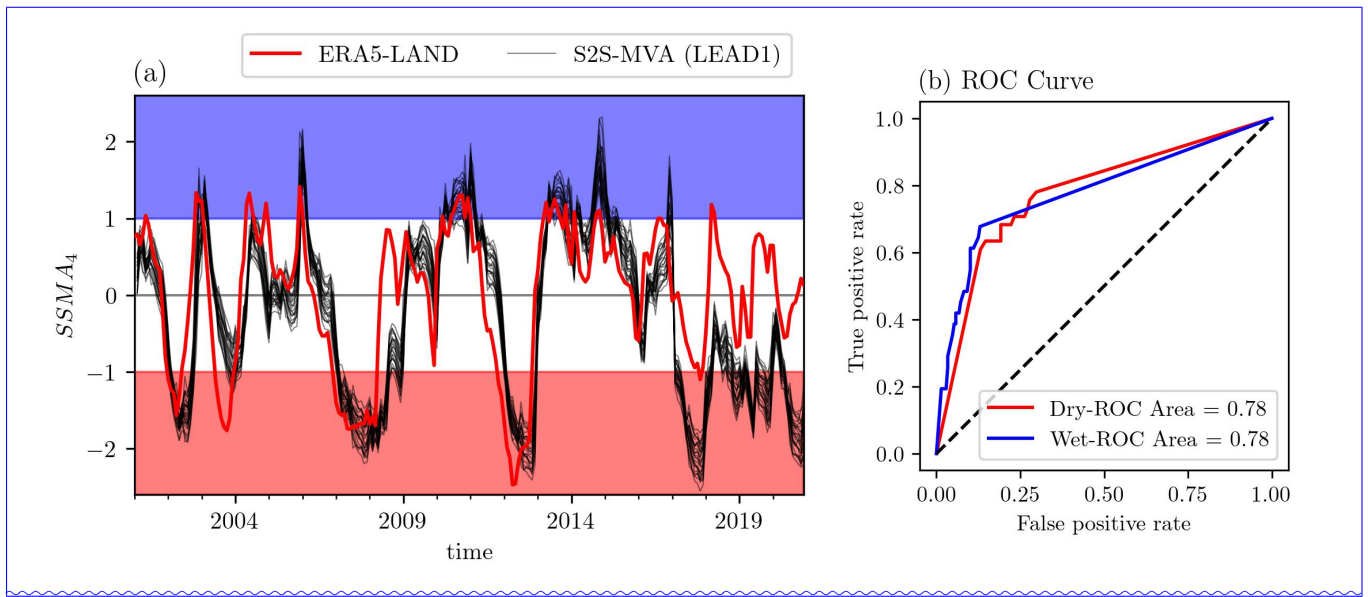


Figure 4. Example of estimation of ROC curve over Umbria (white dot in Figure 1: a) the time series of SSMA4 over soil layer 4 as observed by ERA5-LAND (red line) and forecasted by the 25 members of S2S bias-corrected ensemble at lead-time 1 months(S2S-MVA (LEAD1), black lines). Dry ($SSMA4 < 1$) and wet ($SSMA4 > 1$) events are highlighted by red and blue shading, respectively, and b) ROC curve for the time series shown in (a) for dry events (red line) and wet events (blue line). The value of the area under the ROC curve is reported in the legend.

4 Results

In the following subsections, the results for the mentioned performance metrics are reported: RMSE, ACC and the area under the ROC curve. In this section, the obtained results are analyzed in terms of soil moisture variability and forecast performance metrics.

4.1 Soil moisture variability

The monthly mean soil moisture variability for each soil layer is shown in Figure 5. Both ERA5 and ERA5-LAND datasets are reported in order to highlight the differences between these datasets. Along with the soil moisture reanalysis products, also the unbiased version of SEAS5 is reported at the following lead times: 1 month (L1), 3 months (L3) and six months (L6). The boxplot represents the spread of soil moisture both in time (i.e., soil moisture variations across different years for the same month) and space (i.e., soil moisture variations across all the domain grid points).

Figure 5 shows that there is a strong seasonal cycle in the upper layers (Figures 5a-c) and a weak seasonal cycle in the deepest soil layer (Figure 5d), where the median values of soil moisture exhibit very small variations across the year.

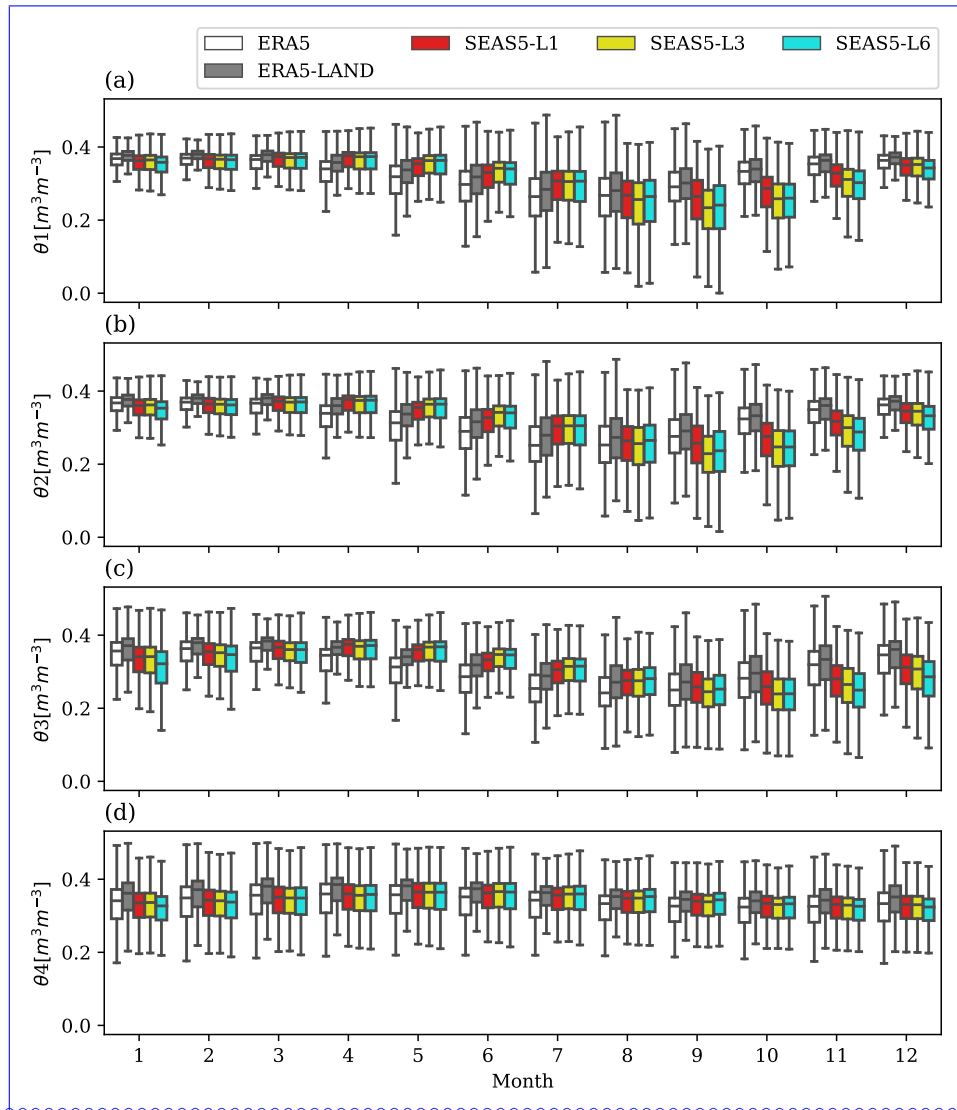


Figure 5. Boxplot of monthly mean soil moisture values for all the land grid points (land percentage $> 75\%$) for ERA5 (white), ERA5-LAND (gray), SEAS5-L1 (lead time 1 month, red), SEAS5-L3 (lead time 3 months, yellow), SEAS5-L6 (lead time 6 months, cyan). (a) Soil layer 1, (b) Soil layer 2, (c) Soil layer 3, and (d) Soil layer 4.

310 Regarding the median values, ERA5 differs from ERA5-LAND. In particular, ERA5 has smaller values of soil moisture with respect to ERA5-LAND. This may be related to the different thermodynamic input and soil properties, which modify the evapotranspiration contribution, as discussed in Muñoz-Sabater et al. (2021). The need for a bias-adjustment of the seasonal forecast is evident in Figure 5: the median values are not always aligned with the soil moisture reanalysis, especially during the autumn season (September, October, November) for the three uppermost soil layers. In the deepest soil layer the bias is smaller
315 and homogeneous throughout the year, but still present.

The spread of soil moisture across all domain points and years, measured as the difference between the 75th percentile and the 25th percentile, consistently vary across the months in the three uppermost soil layers and it reaches its maximum variations during summer and autumn seasons. On the contrary, it remains almost constant throughout the year for the deepest soil layer. In general, the magnitude of the spread and its variability seems to be well represented by the seasonal forecasting system.
320 Finally, moving across different forecast lead times, a largest bias can be found as the lead time increases, whereas the spread in general remains constant.

The most important result from Figure 5 regards the smaller variability of soil moisture in the deepest layer, with respect to that of the surface layers. As expected, the dynamics of the deepest soil layer is slower than the three uppermost layers and this may be important for a seasonal forecasting system where slowly varying variable can be a source of predictability
325 (Kumar et al., 2019). In the following, we will use ERA5-LAND as main products for comparing with forecasts. However, all the analysis have been done also for ERA5 reanalysis in order to confirm that results are not significantly affected by the choice of the reanalysis system.

To confirm such results and show the different dynamics of the soil layers across all the central Mediterranean region, Figure 6 provides the memory time scale, as evaluated from ERA5-LAND daily mean soil moisture. The memory time scale in the first soil layer (Figure 6a) is between 1 and 2 months, with minimum values of 5 days over complex orographic region (Alps and Dinaric Alps) where fast oscillations of soil moisture occur, and maximum values of 64 days over the other regions. In general, the memory time scale increases for all regions as we move toward the deepest soil layer, even though in some areas it remains also below 40 days. In the soil layer 2, the maximum values of memory time scale is around 3 months, with some regions in
335 the Alps and the dinaric Alps still exhibiting values as low as 6 days. In soil layer 3, minimum values equal to two weeks are still present in the Alps, while the maximum values even larger than 6 months appear in the Northern part of Africa. Finally, in the soil layer 4, the minimum time scale is 1 month in some region of the Alps, while the maximum values can exceed also the entire year (white areas in Figure 6d). There is a marked variability of soil moisture time scale in the fourth layer which exhibits a close connection to the orography of the domain (Figure 1b). Complex orographic areas, with the exception of few
340 regions such the Northern Africa, usually exhibit smaller memory time scale than the flat areas.

4.2 Root-Mean-Squared Error (RMSE)

The RMSE of the seasonal forecasts ensemble mean SSMA over all soil layers is shown in Figure 7 for lead-times 1, 3 and 6 months. ~~The~~ In all cases, the average magnitude error is ~~always almost~~ larger than one standard deviation of soil moisture

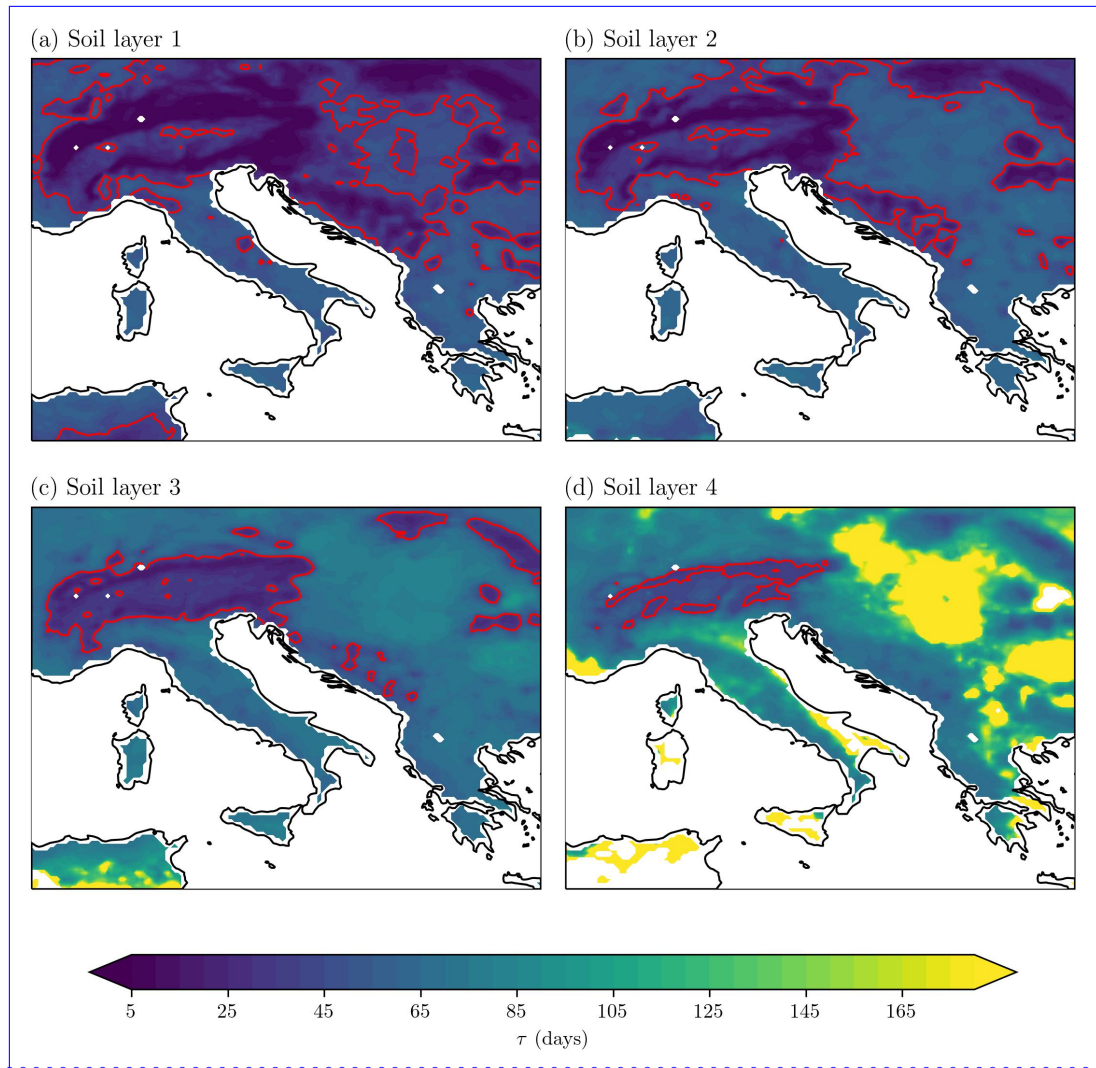


Figure 6. Memory time-scale of daily mean ERA5-LAND soil moisture over the period 2001-2020 for the Central Mediterranean for: (a) soil layer 1, (b) soil layer 2, (c) soil layer 3, and (d) soil layer 4. The time-scale is reported in days and correspond to the time in which the temporal autocorrelation becomes lower than e^{-1} . Land regions where color shading is absent are regions where the memory time scale exceed 1 year. Red contour line indicates where the memory time scale correspond to 40 days.

(1 SSMA) over soil [level-layer 1](#) and soil [level-layer 2](#) (Figures 7a and 7d). This error remains almost constant over different
345 forecast lead-times.

Going towards the deepest soil layers and considering lead-time 1 month, the RMSE decreases over certain regions (Provence in France, Central and North Italy, Hungary and Romania), with values below 0.75, while it largely increases in other regions like the Alps, South-eastern Sicily, Sardinia and Tunisia (Figure 7l). The same distribution of average errors characterizes also lead-times 3 and 6 months, even if with a slight increase of RMSE over all regions. As a result, ~~it can be stated that~~ the
350 accuracy of seasonal ~~forecasts-predictions~~ increases for the deeper soil ~~level-layers~~. This can be ~~reconciled-attributed~~ to the slower ~~dynamic-of-dynamics of the~~ deep soil layers ~~, that are less influenced by fast temporal oscillations due to rain and evaporation as for the upper layers as shown in Figure 6.~~

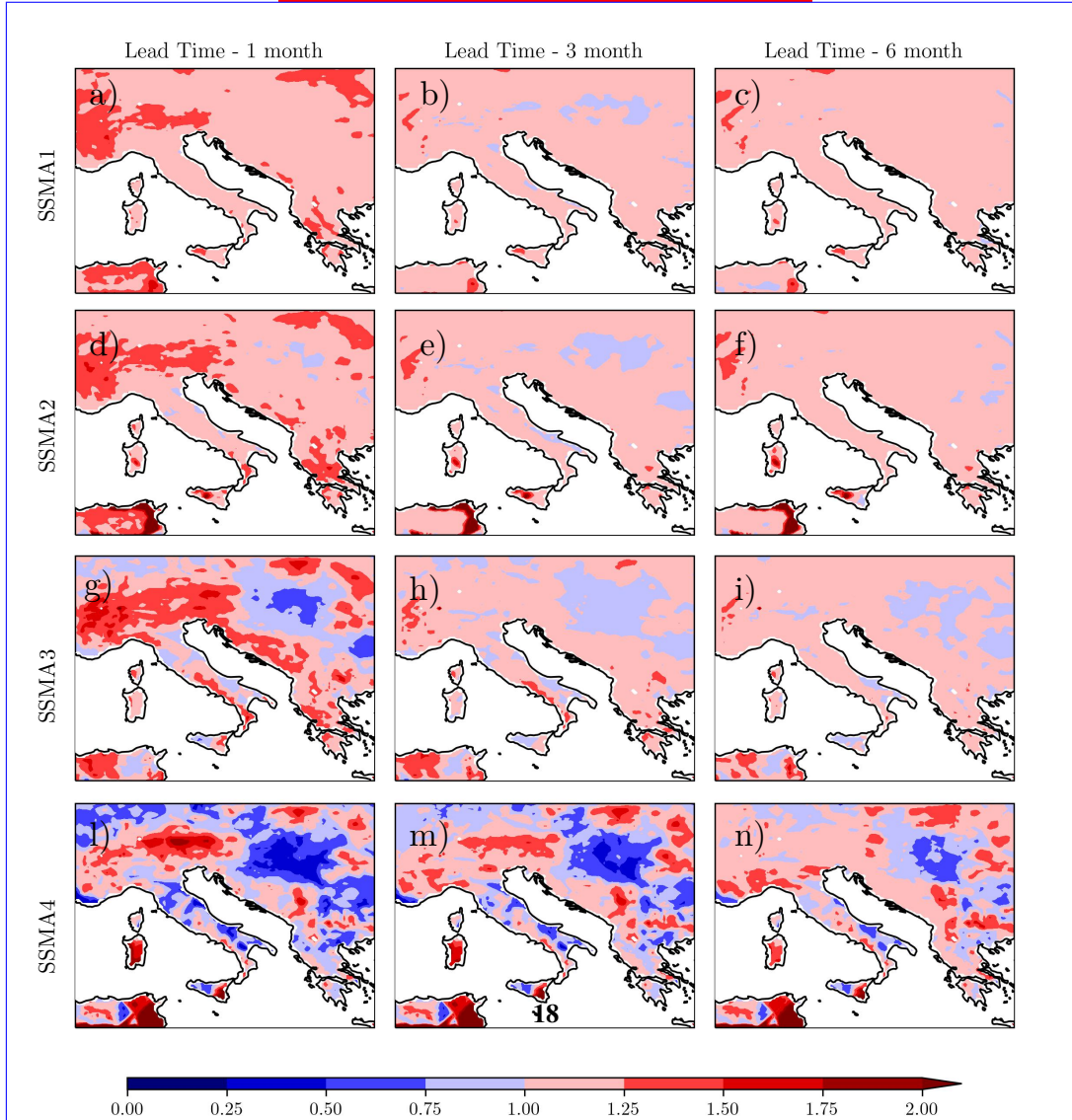
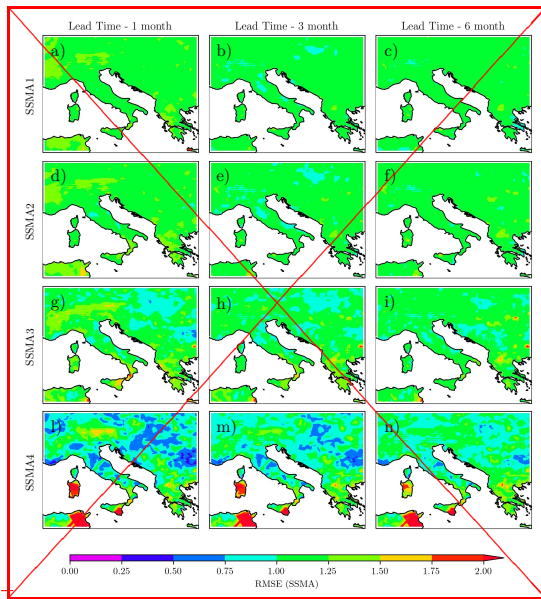
4.3 Anomaly Correlation Coefficient (ACC)

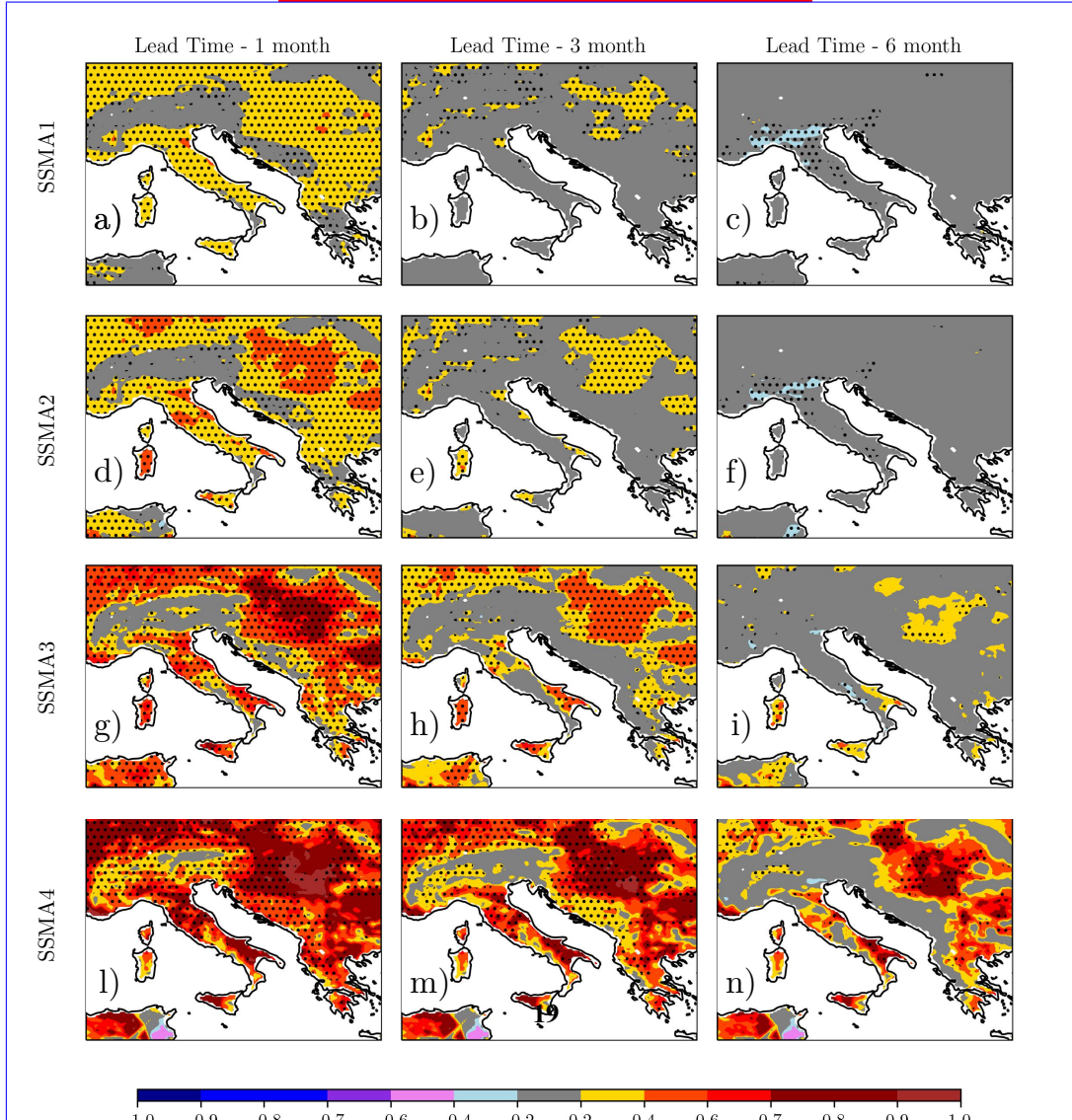
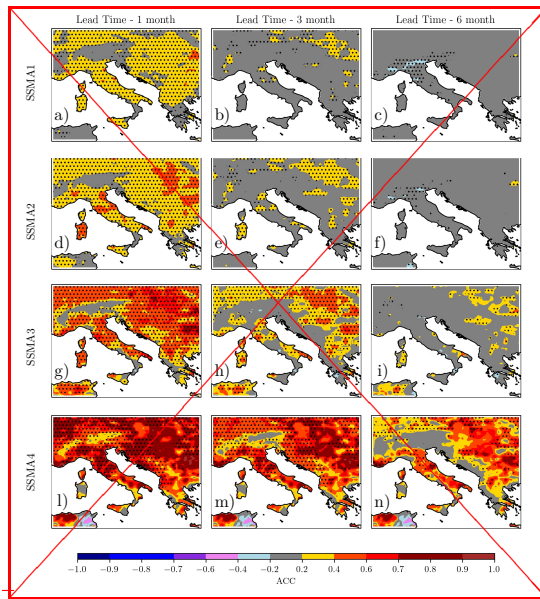
Figure 8 shows the ACC between forecasted and observed SSMA. As found for the RMSE, ~~the~~-ACC reaches significant values
355 (as indicated by black dots in Figure 8) above 0.8 (shaded contours in Figure 8) only on the deepest soil layer and over certain regions like Central and Northern Italy, some parts of France, Croatia and Hungary (Figure 8l). At lead-time 6 month, some regions like Central and Northern Italy and Bavaria, still exhibit high correlation values (Figure 8n). On the other hand, no correlation is found for the upper soil layers at 3 and 6-months lead-time (Figures 8b,c,e,f,h,i). This absence of correlation is also present at the deepest soil layer in the Alps, the Sardinia, the South-western coast of Italy, and in Tunisia, where correlation
360 coefficient become negative (Figure 8n). At 6-month lead-times, the correlation disappears also for all the Western coast of Balkan peninsula (Figure 8n), where ~~positive values are present~~ ~~there are positive values~~ at 1 and 3 lead-time month (Figure 8l and 8m, respectively).

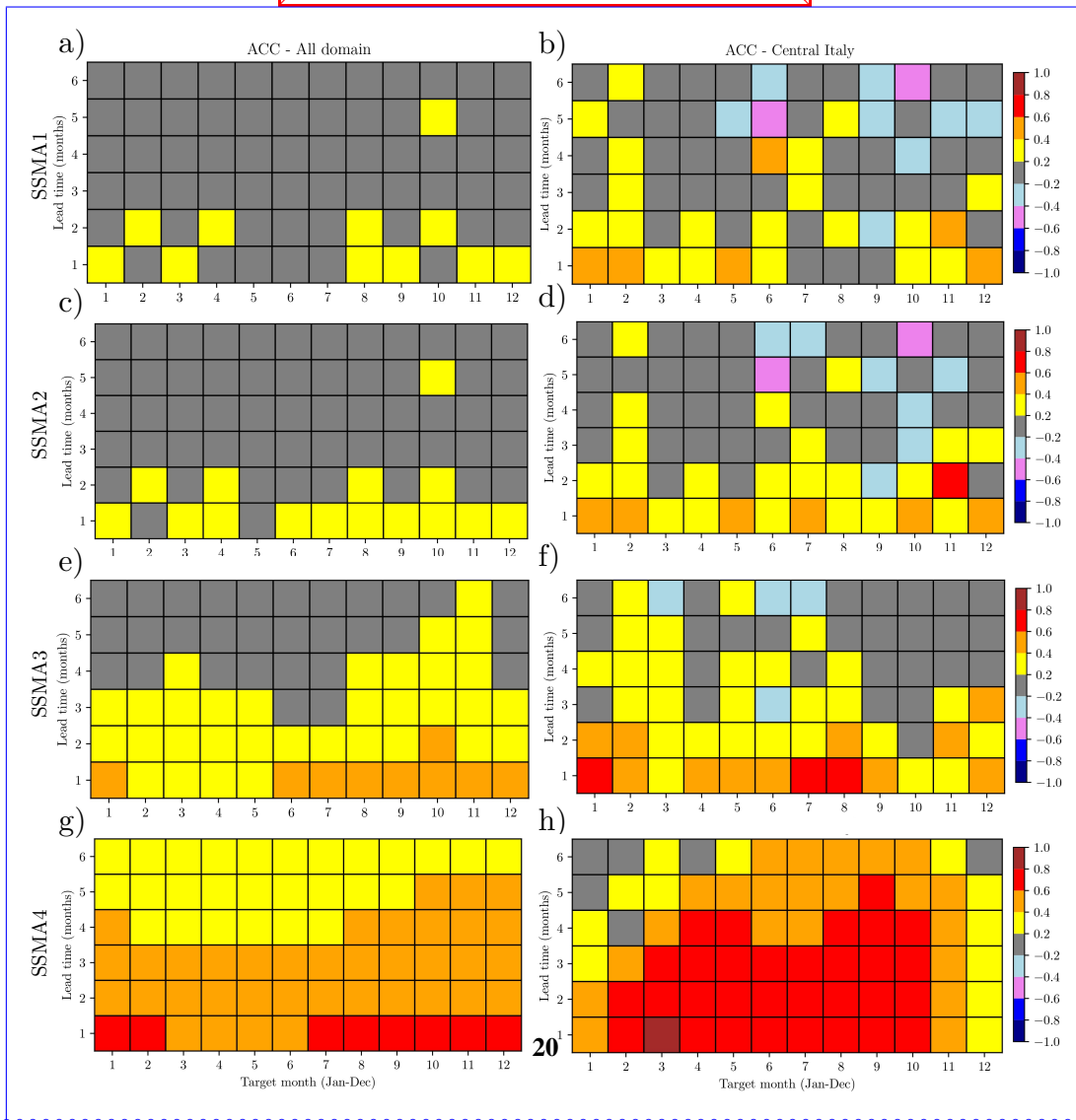
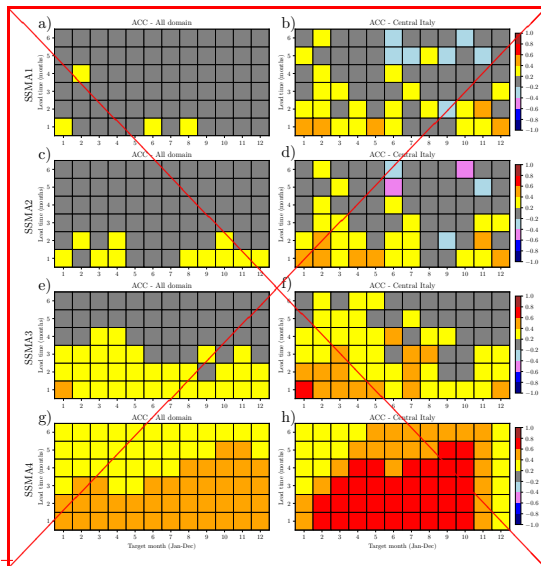
Figure 9 shows the average ACC for all forecast months and lead-times. The first column shows values averaged over all domain, while the second column shows values averaged over Central Italy (black squared shown in Figure 1). Either
365 averaging over all the domain or only over Central Italy, ~~no~~ correlation is evident ~~until~~ ~~only in~~ the deepest soil layer (SSMA4) is considered. With regard to the correlation of SSMA4 forecasts with observations, the domain-average ACC is always below ~~0.60~~ ~~8~~, while it increases above 0.8 over Central Italy. In general, the highest correlations are found over the Autumn (SON) season, while the lowest are during the winter (DJF) season. In areas with a high correlation, like Central Italy, the most correlated target-months are between April and October, with a minimum in December and January.

370 4.4 Relative Operating Characteristic (ROC)

The ability of the seasonal forecasts to discriminate between dry and wet events is examined through the area under the ROC curve. ~~Here~~ ~~In this paper~~, a wet and dry event is considered as the one in which ~~the~~-SSMA is above or below 1, respectively. A ROC area larger than 0.5 means that forecasts can give more information than climatology alone, thereby indicating the potential usefulness of the forecasts. Figure 10 shows the ROC area for dry events for the first three soil layers at lead-time
375 1, 3, and 6 months, ~~respectively~~. As also found for RMSE and ACC, it is evident that the forecast becomes more effective going towards the deepest soil layers. Values larger than 0.8 concern only SSMA2 and SSMA3 and some regions (i.e., Central







and Northern Italy, internal areas of Hungary). ~~Such values decrease with increasing forecast lead-time, until we get no skill everywhere in the domain for all soil layer levels at lead-time six months.~~ The values in question exhibit a decline as the forecast lead time increases. This trend reaches its maximum at lead time six months, at which point no skill is evident in any region or soil layer. The sole exception to this is found in some regions of southern Europe, namely Northern Africa, Apulia and Sicily. The same behavior is observed for wet events, but with smaller values of ROC area, indicating that wet events are less predictable than dry events (not shown). From Figure 10 it is evident that seasonal forecast for the upper three layers is useful only in certain regions like the Central and Northern part of Italy and some internal area of Hungary, and only for ~~few shorter~~ shorter lead-time months. There are also some areas which exhibit no skill at all, neither at different ~~levels layers~~ levels layers or different lead-time months: the South-western coast of Italy, the Southern part of the Balkan peninsula, and the Alps.

The picture changes for the deepest soil layer as shown in Figure 11. At lead-time 1 month, dry and wet periods show similar spatial distribution of ROC area, but with dry events (Figure 11a) having larger values than wet events (Figure 11b). Areas with no skill are still present and they are very similar to those listed above for the other soil ~~levels layers~~ levels layers: South-western coast of Italy, the Alps, Tunisia, the Alps and the Southern portion of Balkan Peninsula. There are also regions, like Sicily and Sardinia, where the ROC area is larger than 0.5 for dry events, but it turns into values smaller than 0.5 for wet events.

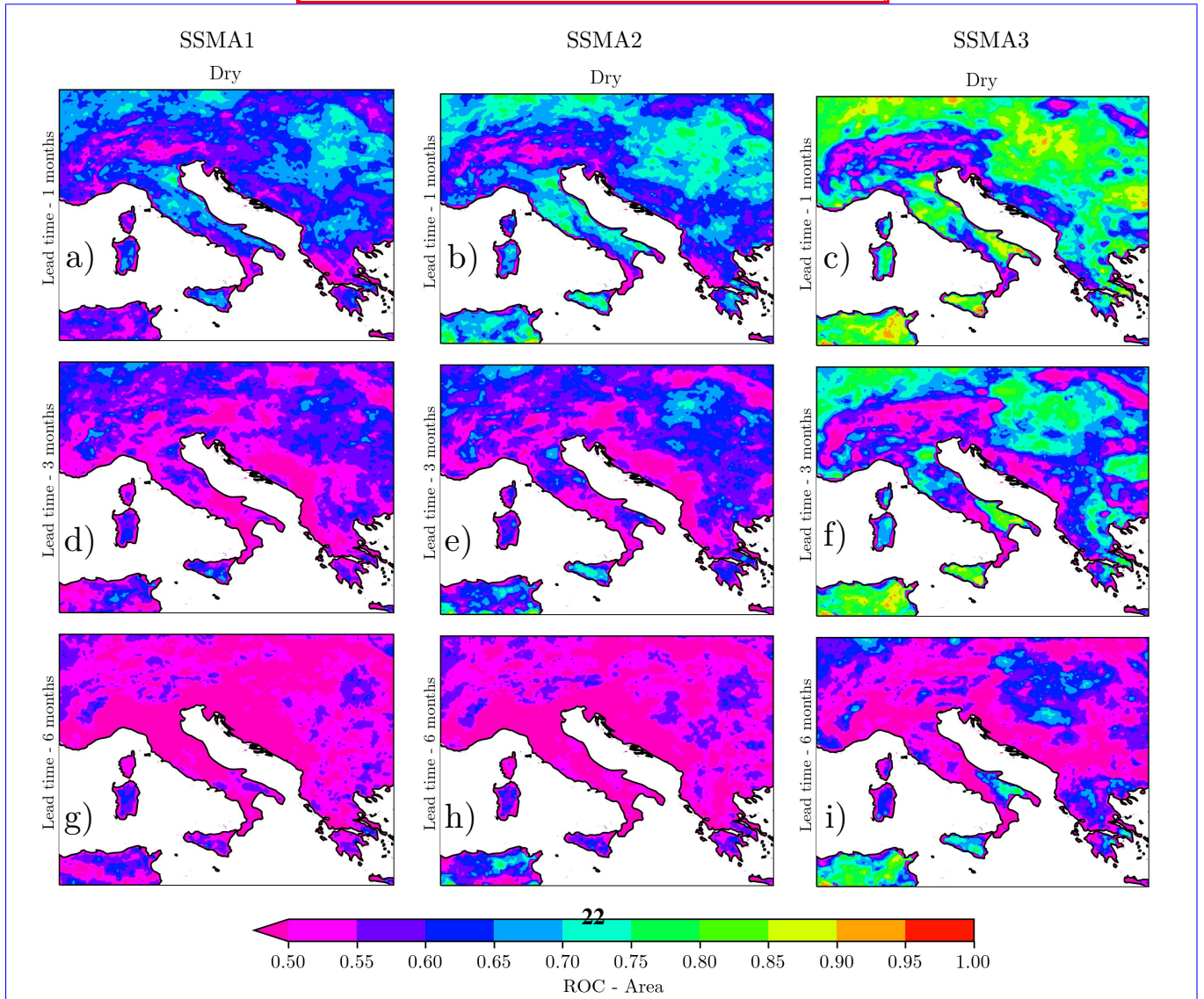
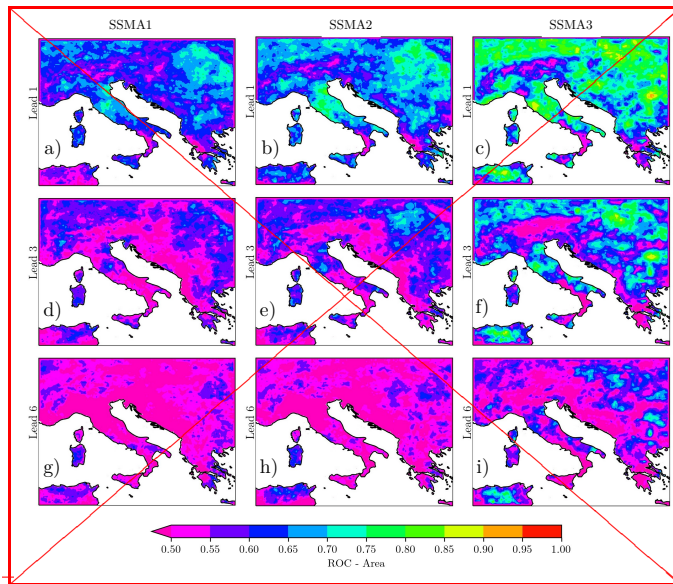
When examining lead-time 6 months, there are some areas where the seasonal forecasts are still very useful and exhibit large ROC area: Provence, South eastern coast of Italy, Central and Northern Italy, internal areas of Balkan peninsula. Instead, other areas lose their predictability, such as the Adriatic coast of Balkan peninsula or the Alps. ~~A ROC area larger than 0.8 for both~~

4.5 Sensitivity to soil moisture preconditions

In order to better understand the system's predictive ability to different soil moisture conditions, we study whether the forecast performance varies with varying antecedent soil moisture preconditions. In Section 4.1, we demonstrated that the memory time scale of soil moisture in the deepest soil layer is, on average, approximately three months. Consequently, we will consider the soil moisture antecedent condition to be that which was three months earlier. In order to have a larger number of events, differently from the previous section, we will consider dry events and wet events as those where the SSMA was lower than -0.5 and higher than 0.5, respectively. The dry precondition is considered to be present when the antecedent SSMA is negative, while a wet precondition is verified when the SSMA is positive. An example of event selection for the Umbria reference point is reported in Figure 12.

After the event selection, we calculate the area under the ROC curve for each grid point, following the procedure already used for dry and wet events in many regions of the Central Mediterranean for lead-time of 6 months is a clear indication of the potential usefulness of seasonal forecast of soil moisture in these regions. Section 4.4. The results are reported in Figure 13 for the deepest soil layer and considering only the forecast at lead time 1 month.

As expected, most of the predictive ability of the system comes from the memory of the deepest soil layer itself, since the area under the ROC curve is larger on average for the events where antecedent condition is correspondent to the present condition (dry after dry, wet after wet). When the system is in transition from a dry period to a wet period, only few regions exhibit values of the area under the ROC curve larger than 0.7: some regions of central and northern Italy, internal regions of the



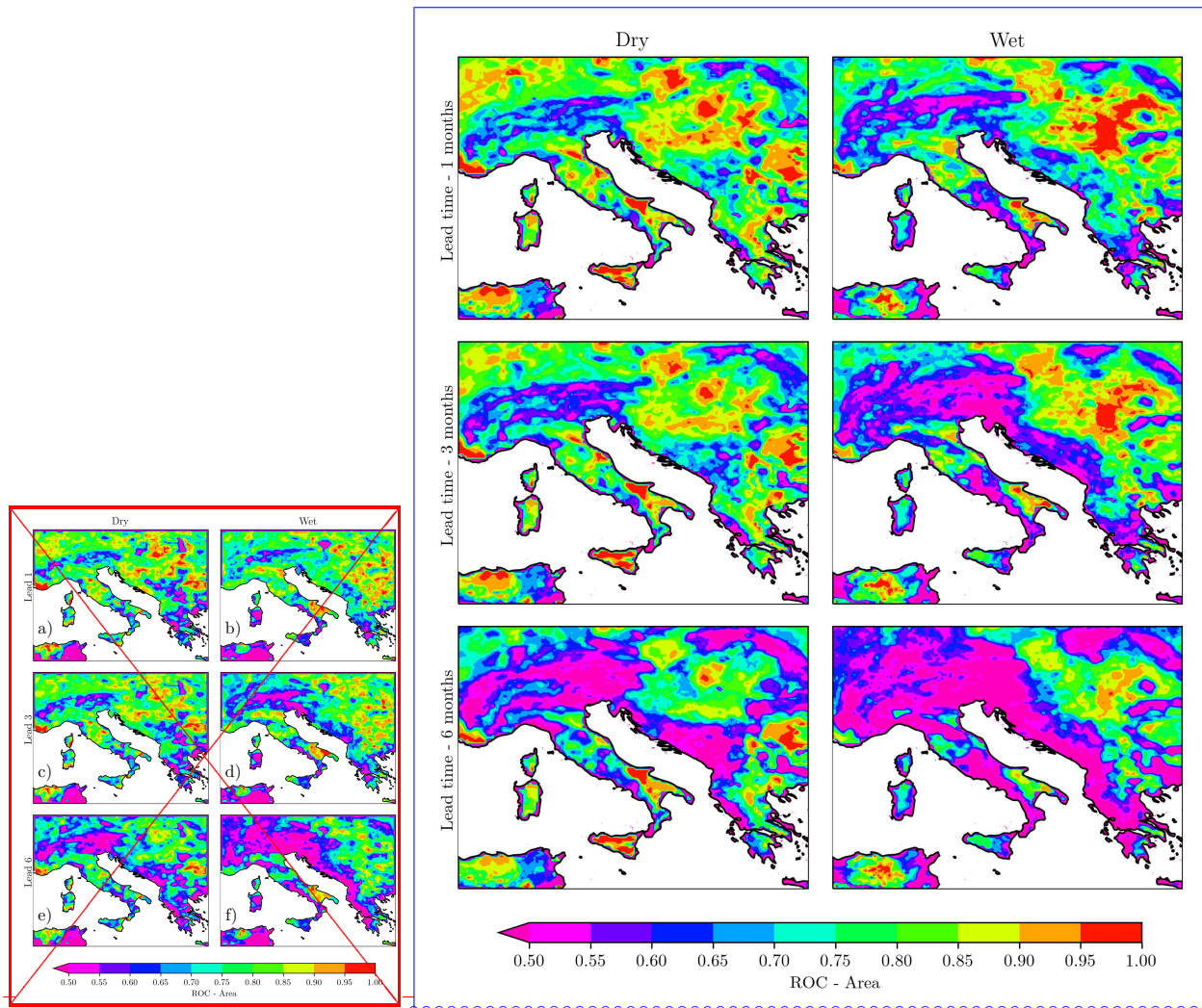


Figure 11. Area under the ROC curve averaged over all dry (a,c,d) and wet (b,d,g) events during 2001-2021 for the bottom-deepest soil layer 4, SSMA4. Different rows concern different lead-times.

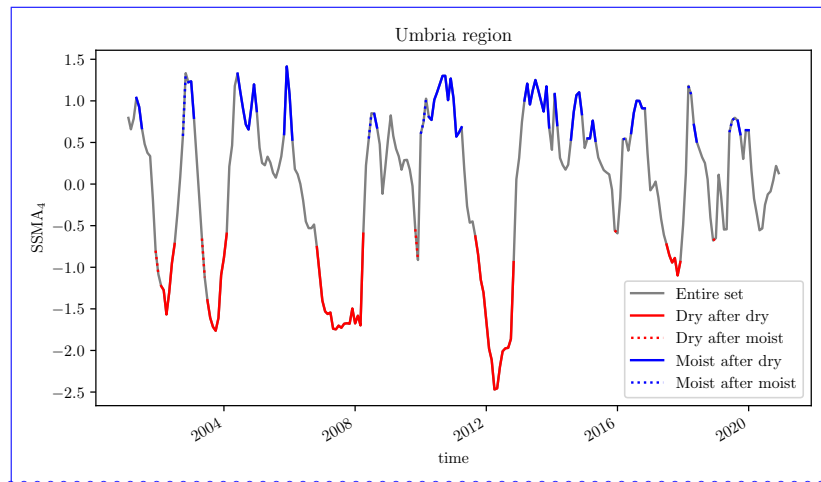


Figure 12. Example of event selection based on soil moisture pre-condition over the Umbria reference point for ERA5-LAND SSMA in the soil layer 4. Dry periods are considered as those with $SSMA < -0.5$, while wet periods are those with $SSMA > 0.5$. A period is considered to happen after a dry period when the SSMA evaluated three months earlier is negative ($SSMA < 0$), while a period is considered to happen after a wet period when the SSMA evaluated three months earlier is positive ($SSMA > 0$). The result of such a selection is reported with the following lines: entire time series (gray solid line), dry period after a dry period (red solid line), dry period after a wet period (red dotted line), wet period after a dry period (blue dotted line), wet period after a wet period (blue solid line). (CAMBIA LEGENDA È SBAGLIATA).

Balkan peninsula and the Hungary region. In particular, the Hungary region (the Great Hungarian Plain) seems to have a large values of the score for all the events type. Regarding the wet after dry period the score is relevant also for the southern-east coast of Italy and the Wallachia in Romania.

5 Case study Links with groundwater levels: The the 2012-2013 dry and wet periods

415 In this section, we shows a possible application of seasonal forecasts of soil moisture for groundwater management.

Figure 14a shows the water table level observations (expressed as a standardized anomalies with respect to their mean and standard deviation) in two different locations of Italy, Umbria and Veneto, in the Central and Northern part of Italy, respectively (Figure 1). The monitored aquifers are selected to be shallow (depth smaller than 10 m) and unconfined in order to be directly influenced by atmospheric conditions rather than other groundwater processes (Bongioannini Cerlini et al., 2021). From such
 420 observations we detect only three dry periods where the standardized anomalies of water table level were less than -1 for both regions: 2007, 2012 and 2017. On the other hand, wet periods in the water table observations, where values larger than 1 are observed, seem to happen more frequently.

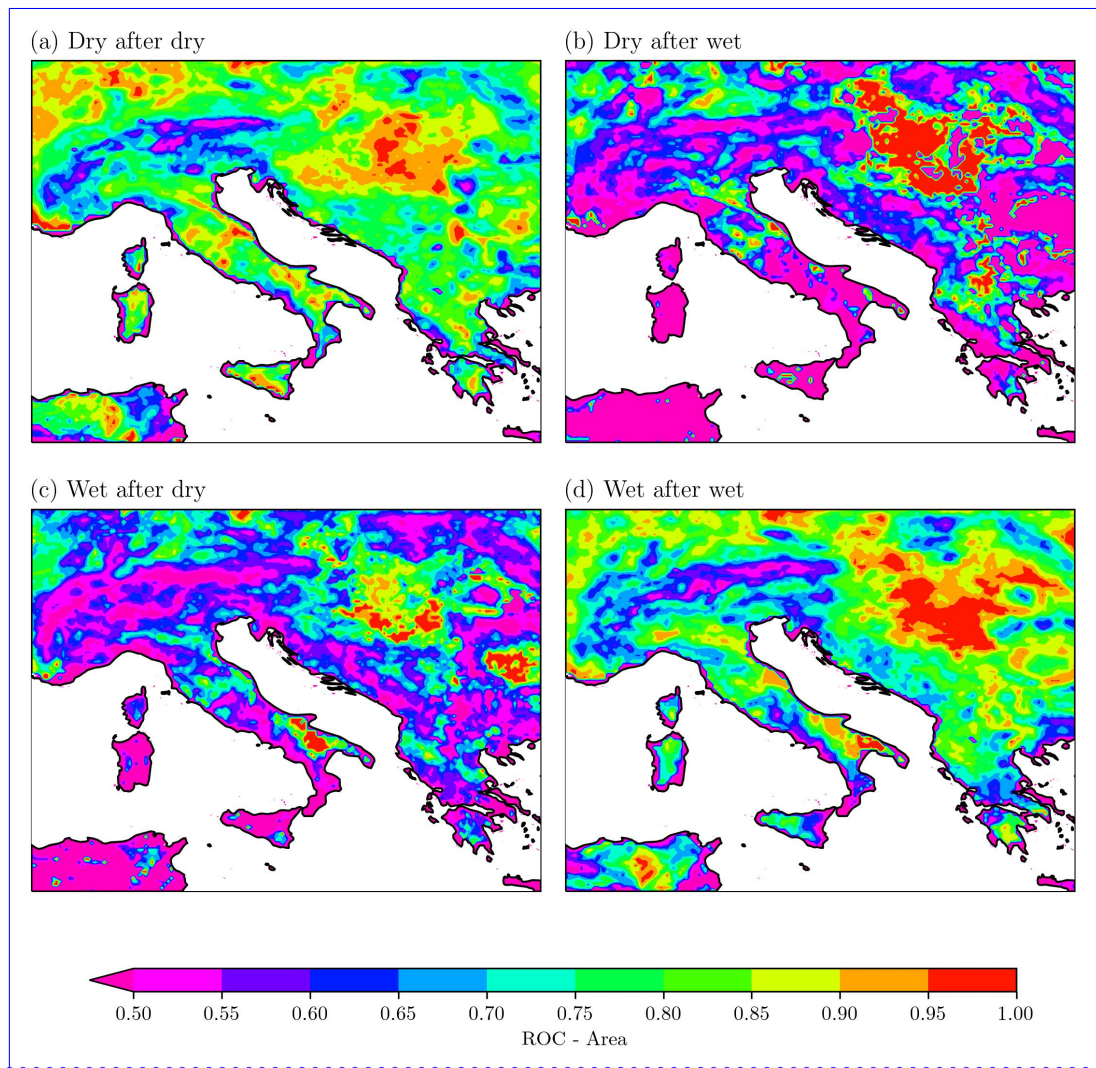


Figure 13. Area under the ROC curve for the deepest soil layer 4, SSMA4 and for the forecast lead time 1 month as averaged over all: (a) dry after dry events, (b) dry after wet events, (c) wet after dry events, and (d) wet after wet events.

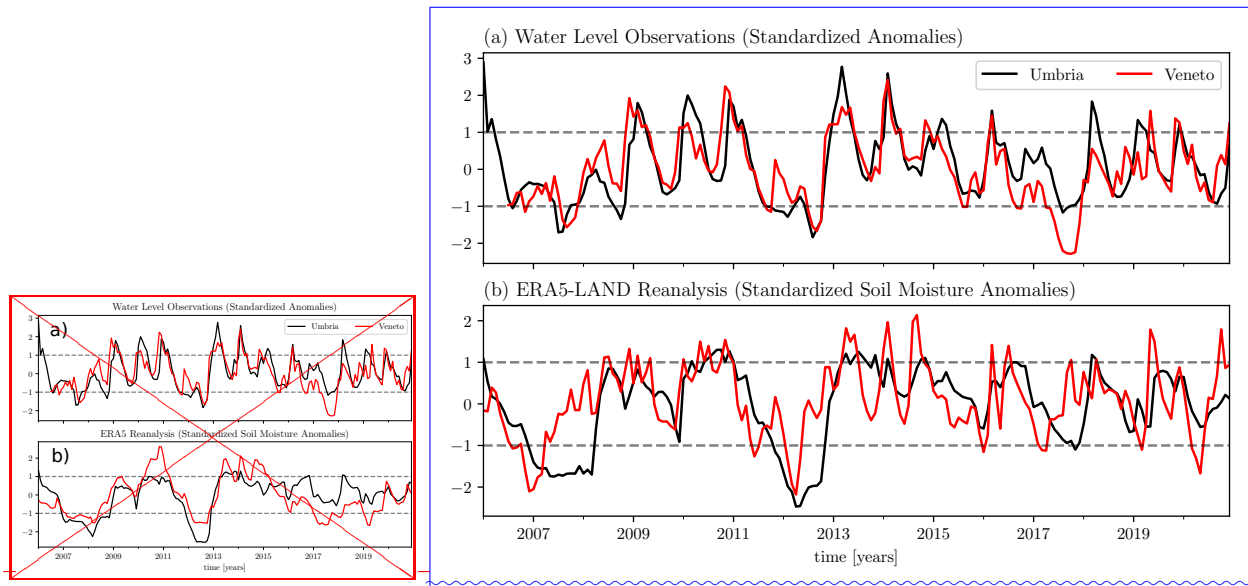


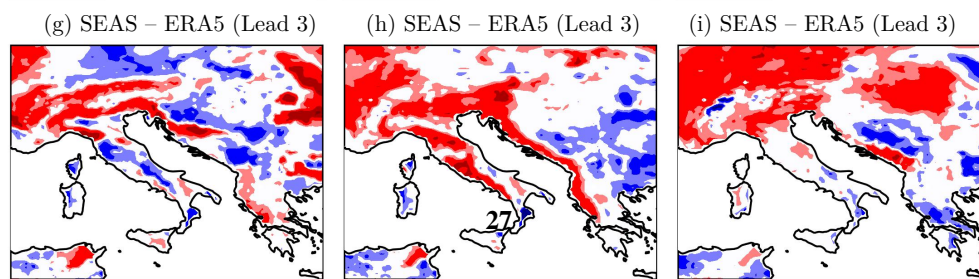
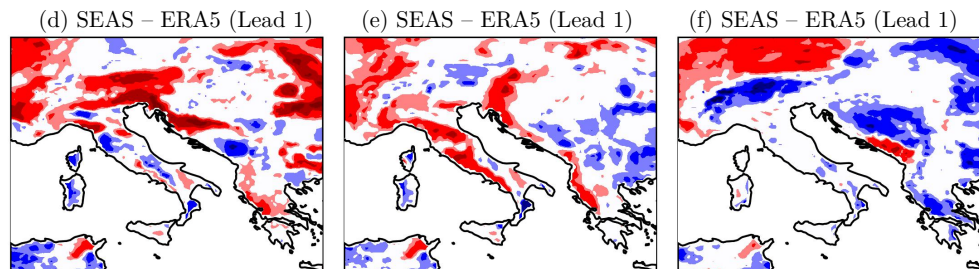
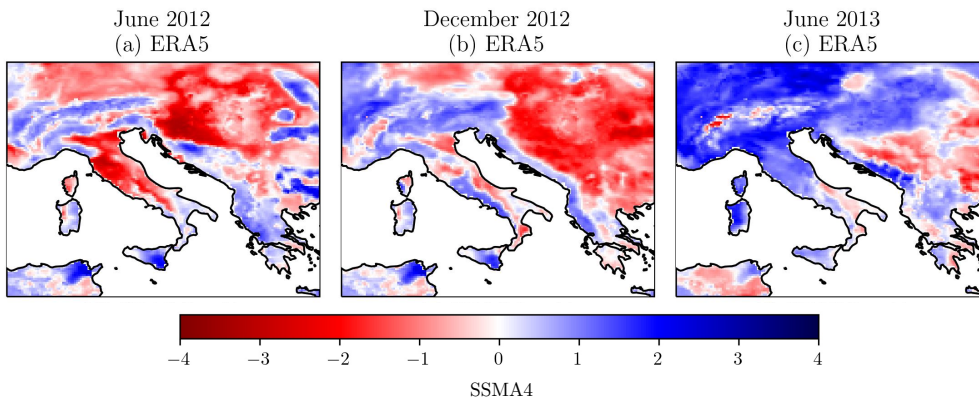
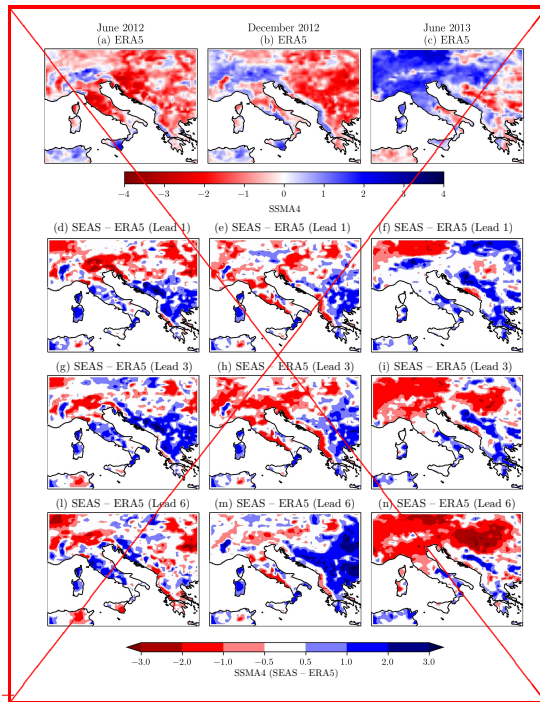
Figure 14. The correspondence between standardized anomalies of the water table elevations from a piezometric network (a) and SSMA4 from ERA5-ERA5-LAND reanalysis (b) in two points of the Mediterranean region (Umbria and Veneto, as shown in Figure 1).

The water shortage of 2007, 2012 and 2017 in different parts of Italy is an indication of the synoptic scale character of such drought periods. The variability of water table level is well captured by the variability of deep soil moisture as extracted from ERA5 reanalysis, as reported shown in Figure 14b. The 2007 and 2012 and 2017 are negative anomalies also for SSMA4 in both the analyzed piezometers, while with the 2017 dry period is detected only in the time series extracted in Veneto. Such a correspondence between water level observations and soil moisture reanalysis further highlights the large potential usefulness of seasonal forecasts of soil moisture anomaly being weaker with respect to the others.

In the below analysis, we focus on the 2012 dry period and the following wet period in order to test the ability of seasonal forecasts to predict such events. Figures 15a, 15b and 15c show the spatial distribution of SSMA4 over the Central Mediterranean on June 2012, December 2012, and June 2013, respectively. These periods are taken as a reference for the start of the dry period, the end of the dry period and the start of the wet period, as observed in Figure 14b for North-Central Italy.

June 2012 is characterized by a large negative anomaly over all the domain except for the Alps, Sicily, Tunisia and the Adriatic coast of the Balkan Peninsula. Seasonal forecasts for lead-time 1 month predict smaller negative anomalies over Central Italy and the Balkan peninsula, while largely underestimating the positive anomalies over the Alps (Figure 15d). The forecast slightly improves in Northern Italy and Balkan peninsula going to lead-time 3 and 6 months (Figure 15g and 15l), while it gets worse for Sicily and Tunisia.

December 2012 shows a similar spatial distribution of SSMA4 except for larger positive anomalies on the Alps, the South-western coast of Italy, and the South-western coast of the Balkan Peninsula (Figure 15b). Also the amplitude of negative



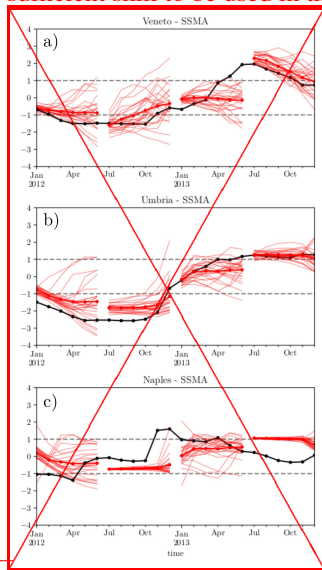
anomalies of SSMA4 decreases in Central and Northern Italy. The seasonal forecasts perform well in Central and North Italy, in the South-eastern coast of Italy, in Sicily and in Provence for all lead-times (Figure 15e-h-m). However, it was not able to detect the large increase in positive anomalies over the Alps, the Western coast of Balkan peninsula, and the Tyrrhenian coast of Italy. Also the larger negative SSMA4 in the internal regions of the Balkan peninsula was not detected.

The wet period of June 2013 involved especially the Northern part of the domain with large positive anomalies of SSMA4 (Figure 15c). Seasonal forecasts show in general a good performance especially in Central and North Italy at lead-time 1-month (Figure 15f), while they tend to underestimate such positive anomaly at larger lead-times, especially over Hungary (Figure 15i-n).

450

Figure ??a and ??b show how the ensemble members follow quite well the observations for Umbria (Central Italy) and Veneto (Northern Italy). On the other hand, this is not true for Naples, which is taken here as a reference point for the South-western coast of Italy (Figure 1). By looking at December 2013, the increase of SSMA4 in this region is not captured by the ensemble mean. Only few members detect such an increase and only one member reaches values of SSMA4 larger than 1. As highlighted also by the analysis of the ROC curve in Figure 11, Figure ??c confirms the fact that seasonal forecasts have no sufficient skill to be used in the South-western coast of Italy neither for dry or wet events prediction.

455



Time evolution of seasonal forecasts of SSMA4 over the period 2012-2013 and different

points: a) Veneto, b) Umbria and c) Naples as reported in Figure 1. Thin red lines show each ensemble member with different lead-times and different forecasting starting periods. Black lines show the correspondent ERA5 reanalysis observation of SSMA4.

460

6 Discussion and conclusions

~~This paper~~ This study provides a first assessment of seasonal forecast of soil moisture for the Central Mediterranean Region. The seasonal model ~~analysed in this study~~ is SEAS5 ~~from the ECMWF and the ERA5 reanalysis is~~, whereas the reanalysis is ERA5-LAND, both produced by the ECMWF. ERA5-LAND is considered as a reference dataset for soil moisture observations. ~~25 member~~ Twenty-five member seasonal forecasts with lead-times from 1 to 6 months have been analyzed from 2001 to 2021, by considering the hindcast period 2001-2016 as climatology. ~~By considering such a climatological~~ In this reference period, the standardized soil moisture anomaly (SSMA) has been evaluated and the ~~forecast values~~ forecasts have been bias-adjusted through the mean-variance adjustment method. Then ~~the RMSE, the ACC~~ Root Mean Squared Error (RMSE), the Anomaly Correlation Coefficient (ACC) have been evaluated for ~~the~~ SSMA for all soil layers considered in ERA5-LAND. To test the ability of the forecast to discriminate between dry and wet events, ~~we calculate the ROC area~~ the Relative Operating Characteristic (ROC) area has been calculated. Finally, a case study of the dry and wet periods during 2012-2013 has been studied in detail, to show the potential usefulness of the seasonal model. The outcomes of the ~~paper~~ research can be summarized ~~in the following key points: the~~ as it follows.

The average magnitude of the forecast errors, as indicated by the RMSE, decreases as we go deeper into the soil. Only in the deepest soil layer at 289 cm depth, the RMSE can reach values below 0.5 even for lead-time 6 months. However, this is valid only over certain ~~region~~ regions like Central and Northern Italy, Hungary, some internal regions of the Balkan Peninsula and the Provence region. The RMSE remains too large in other regions, even ~~by when~~ when considering only the deepest layer; ~~significant~~. Significant values of the ~~anomaly correlation coefficient (ACC)~~ ACC, with values larger than 0.8, can be found ~~over some region the mentioned regions~~ even at lead-time of 6 months; ~~in areas with large correlation coefficient the larger correlations are found between April and October, while a minimum correlation is found in December and January; the~~. The analyzed performance depend on the memory time scale of the soil layer: the higher the memory time scale the higher the forecast performance. The main physical factors affecting the spatial variability of memory time scale are various: soil depth, orographic complexity, local climatology (e.g. soil aridity, mean precipitation) and soil hydraulic properties. In general, we found better forecast performance in the deepest soil layer and in regions with low orographic complexity, corresponding to regions with larger memory time scale. This is in agreement with previous studies on the spatial variability of soil moisture memory. For example, MacLeod et al. (2016) found a large sensitivity of soil moisture memory on soil hydraulic parameters (e.g. Brunone et al., 2003) and found a longer memory in the deepest soil layers. The dependence on soil depth was ascribed to the smallest influence of the throughfall precipitation, which is partly absorbed by evapotranspiration before penetrating into the deepest soil layers. Moreover, Orth et al. (2013) analyzed the influence of altitude, topography and dryness index on soil moisture memory time scales, finding that memory time scales decrease with elevation and increase with topography (measured by a topographic index which is a function of the slope) and aridity. Our study identified comparable signals in the Central Mediterranean. However, further investigations are required to ascertain which factors (soil properties, altitude, orographic complexity, climate) are most influential in shaping the soil moisture memory in a given region. Such an investigation could inform a more robust modeling approach, incorporating additional parameter uncertainty into the forecasting system, which may ultimately enhance the skill of seasonal forecasts (MacLeod et al., 2016).

The ability of seasonal ~~forecast-forecasts~~ to detect wet and dry events ~~exhibit-exhibits~~ a large variability within the domain. However, a ROC larger than 0.8 can be found in certain ~~region-regions~~ for the deepest soil layer also for lead-time 6 months. This ~~means-indicates~~ that in those regions, like Provence, Central and North Italy, the South-eastern coast of Italy and the inter-
500 nal regions of Balkan peninsula, ~~we can use seasonal forecast~~ seasonal forecasts can be used to detect such events in advance; ~~the ROC area~~. The area under the ROC curve for dry and wet events in the two uppermost soil layers is ~~always smaller than~~ about 0.5 when ~~lead-times larger than 3~~ lead times exceeding three months are considered; ~~a~~. This suggests that the seasonal forecasting is not a reliable method for predicting the evolution of upper soil moisture beyond three months. A small ROC area for dry and wet events is found at lead-time 6 months especially in ~~coastal regions (South-western coast of Italy and~~
505 ~~Balkan peninsula, Sicily and Sardinia, Tunisia) and~~ mountainous regions (Alps and Dinaric Alps); ~~in~~, confirming the spatial variability already found for RMSE and ACC indicators. In general, for all soil layers, dry events are generally better captured than wet events. From the water management point of view, this indicates that information provided by seasonal forecast on soil moisture should be trusted more for supporting drought-risk management rather than flood-risk management. The most useful forecasts are produced for events where the antecedent and present conditions are aligned (e.g., dry after dry, wet after
510 wet). This further validates the significance of soil moisture memory and soil moisture pre-condition for the predictability of the system.

In the areas with large correlation coefficients, the larger correlations are found between April and October, while a minimum correlation is found in December and January. Such a feature is of great relevance in terms of water resources management
515 as the critical period is late spring and summer, when the water demand is the largest in the year for both agriculture and civil activities. As an example, the case study of 2012 drought period shows how the SEAS5 model is able to predict such an event for Central and Northern Italy 6 months before. Moreover, the strict connection between the deepest soil moisture and the water table of shallow unconfined aquifer in Italy, ~~demonstrates the potential use of seasonal forecast~~ highlights the large potential usefulness of seasonal forecasts of soil moisture for water management purposes. ~~Using multiple seasonal models,~~
520 ~~more advanced bias-adjustment methods and a larger ensemble could definitely improve the proposed analysis, as well as improving deep soil moisture observations in order to verify both reanalysis and forecasts.~~

A local water management service, especially those located in the most effective areas, could monitor the forecasted soil moisture anomalies across all soil layers, as publicly provided by the Copernicus Climate Data Store. The seasonal forecasting system can provide a probability of either a wet, dry, or normal month at different lead times, thus assisting in the decision-making
525 process for the management of drought or flood risks. Moreover, groundwater models or simpler methods such as those in Bongioannini Cerlini et al. (2021) could be run starting from forecasted soil moisture products for monitoring groundwater levels in unconfined aquifers. In this case, when using these data in very local application, an evaluation of the influence of irrigation input could be of great importance. However, the volume of water used for irrigation – a critical quantity towards water resources management – is a data that is very difficult to find for a number of reasons. One of the most important is the
530 poor measuring instrumentation installed in irrigation systems. Consequently, it is difficult to estimate the contribution to soil moisture. The irrigation volume being equal, the dispersion towards the aquifer depends on the type of irrigation practiced.

535 Maximum dispersion occurs in flowing systems, whereas in the case of drop irrigation in pressurised networks, dispersion can be considered negligible. For the Veneto irrigation systems, due to the extreme relevance of aquifers, reliable quantitative assessments are available (Altissimo et al., 1999; Rinaldo et al., 2010). These irrigation systems, active for the entire year, are supplied by surface water and are of the flowing type with unlined channels in 70% of the cases. Groundwater withdrawals are carried out by water utilities for drinking water use. On the basis of the data provided by the land reclamation consortia and water utilities, it is shown that the entity of dispersion of the irrigation systems, minus withdrawals for drinking water use, is comparable to that of effective rainfall (Altissimo et al., 1999; Rinaldo et al., 2010). In the Umbria region, even if analogous documentation is not available, the same situation can be assumed. However, since in this study the analysis is focused on the soil moisture anomaly, the contribute of the irrigation volume is not effective, as it is almost constant over the year. On the contrary, in cases where irrigation were active only in few months, its effect should be taken into account provided that data availability allows.

540 Finally, to refine the proposed approach, using different seasonal forecasting models, different reanalysis and observation products (e.g. MERRA-2 (Gelaro et al., 2017) and GLEAMv3 (Martens et al., 2017)), could be taken into account to further assess the findings of the present study.

Code availability. The python packages xarray and xskillscore have been used extensively in this work and they are freely available at <https://docs.xarray.dev/en/stable/> and <https://xskillscore.readthedocs.io/en/stable/>

550 *Data availability.* ERA5 and ERA5-LAND reanalysis data and Seasonal forecasts data are available on the Copernicus Climate Data Store. The water table data of Umbria that support the findings of this study are available upon request from <https://apps.arpa.umbria.it/acqua/contenuto/Livelli-Di-Falda>.

Author contributions. All authors contributed to the conceptualization of the research. L.S. carried out the data analysis. All authors contributed to the investigation of the results. L.S. wrote the original draft. P.B.C. supervised all the research group work. All authors reviewed and edited the manuscript.

Competing interests. The authors declare that they have no conflict of interest

555 *Acknowledgements.* This research has been supported by [Fondi di Ricerca di Ateneo - edizioni 2021 e 2022 of](#) the University of Perugia [Fondi di ricerca di Ateneo—edizioni 2021 e 2022 and SSTAM and SSTAM](#). P.B.C. has been funded by the European Union - NextGenerationEU under the Italian Ministry of University and Research (MUR) National Innovation Ecosystem grant ECS00000041 - VITALITY -

(CUP J97G22000170005-~~We thank~~). The Authors would like to thank the European Commission, MUR (Italy), Fapesc (Brazil), and FCT (Portugal) for funding in the frame of the collaborative international consortium MORE4WATER financed under the 2022 Joint call of the European Partnership 101060874 – Water4all (CUP J93C23002030006). The authors also acknowledge Marco Sangati and Sinergeo ~~S.R.L.~~ for providing us with data of ~~Srl~~ for providing data of the water table level ~~from in~~ Veneto region.

References

- Albergel, C., De Rosnay, P., Balsamo, G., Isaksen, L., and Muñoz-Sabater, J.: Soil moisture analyses at ECMWF. Evaluation using global ground-based in situ observations, *Journal of Hydrometeorology*, 13, 1442–1460, 2012.
- 565 Altissimo, L., DalPrà, A., and Scaltriti, G.: Interprovincial observatory for groundwater protection. Final Report (in Italian), Amministrazione Provinciale di Vicenza Press, 1999.
- Balsamo, G., Beljaars, A., Scipal, K., Viterbo, P., van den Hurk, B., Hirschi, M., and Betts, A. K.: A revised hydrology for the ECMWF model: Verification from field site to terrestrial water storage and impact in the Integrated Forecast System, *Journal of Hydrometeorology*, 10, 623–643, 2009.
- 570 Beck, H. E., Pan, M., Miralles, D. G., Reichle, R. H., Dorigo, W. A., Hahn, S., Sheffield, J., Karthikeyan, L., Balsamo, G., Parinussa, R. M., van Dijk, A. I. J. M., Du, J., Kimball, J. S., Vergopolan, N., and Wood, E. F.: Evaluation of 18 satellite- and model-based soil moisture products using in situ measurements from 826 sensors, *Hydrology and Earth System Sciences*, 25, 17–40, 2021.
- Boas, T., Bogen, H. R., Ryu, D., Vereecken, H., Western, A., and Hendricks Franssen, H.-J.: Seasonal soil moisture and crop yield prediction with fifth-generation seasonal forecasting system (SEAS5) long-range meteorological forecasts in a land surface modelling approach, 575 *Hydrology and Earth System Sciences*, 27, 3143–3167, 2023.
- Bongioannini Cerlini, P., Meniconi, S., and Brunone, B.: Groundwater supply and climate change management by means of global atmospheric datasets. Preliminary results, *Procedia Engineering*, 186, 420–427, 2017.
- Bongioannini Cerlini, P., Silvestri, L., Meniconi, S., and Brunone, B.: Simulation of the water table elevation in shallow unconfined aquifers by means of the ERA5 soil moisture dataset. The Umbria region case study, *Earth Interactions*, 25, 15–32, 2021.
- 580 Bongioannini Cerlini, P., Saraceni, M., Silvestri, L., Meniconi, S., and Brunone, B.: Monitoring the water mass balance variability of small shallow lakes by an ERA5-Land reanalysis and water level measurement-based model. An application to the Trasimeno lake, Italy, *Atmosphere*, 13, 949, 2022.
- Bongioannini Cerlini, P., Silvestri, L., Meniconi, S., and Brunone, B.: Performance of three reanalyses in simulating the water table elevation in different shallow unconfined aquifers in Central Italy, *Meteorological Applications*, 30, e2118, 2023.
- 585 Brunone, B., Ferrante, M., Romano, N., and Santini, A.: Numerical simulations of one-dimensional infiltration into layered soils with the Richards equation using different estimates of the interlayer conductivity, *Vadose Zone Journal*, 2, 193–200, 2003.
- Calì Quaglia, F., Terzago, S., and von Hardenberg, J.: Temperature and precipitation seasonal forecasts over the Mediterranean region: added value compared to simple forecasting methods, *Climate Dynamics*, 58, 2167–2191, 2022.
- Carrao, H., Naumann, G., Dutra, E., Lavaysse, C., and Barbosa, P.: Seasonal drought forecasting for Latin America using the ECMWF S4 590 forecast system, *Climate*, 6, 48, 2018.
- Ceglar, A. and Toreti, A.: Seasonal climate forecast can inform the European agricultural sector well in advance of harvesting, *Npj Climate and Atmospheric Science*, 4, 42, 2021.
- Costa-Saura, J., Mereu, V., Santini, M., Trabucchi, A., Spano, D., and Bacciu, V.: Performances of climatic indicators from seasonal forecasts for ecosystem management: The case of Central Europe and the Mediterranean, *Agricultural and Forest Meteorology*, 319, 108 921, 2022.
- 595 Crespi, A., Petitta, M., Marson, P., Viel, C., and Grigis, L.: Verification and bias adjustment of ECMWF SEAS5 seasonal forecasts over Europe for climate service applications, *Climate*, 9, 181, 2021.
- Danielson, J. J., Gesch, D. B., et al.: Global multi-resolution terrain elevation data 2010 (GMTED2010), 2011.

- de Boissésou, E. and Balmaseda, M. A.: Predictability of marine heatwaves: assessment based on the ECMWF seasonal forecast system, *Ocean Science*, 20, 265–278, 2024.
- 600 De Rosnay, P., Drusch, M., Vasiljevic, D., Balsamo, G., Albergel, C., and Isaksen, L.: A simplified Extended Kalman Filter for the global operational soil moisture analysis at ECMWF, *Quarterly Journal of the Royal Meteorological Society*, 139, 1199–1213, 2013.
- Dirmeyer, P. A., Halder, S., and Bombardi, R.: On the harvest of predictability from Land States in a Global Forecast Model, *Journal of Geophysical Research: Atmospheres*, 123, 13,111–13,127, 2018.
- Doblas-Reyes, F. J., García-Serrano, J., Lienert, F., Biescas, A. P., and Rodrigues, L. R. L.: Seasonal climate predictability and forecasting: status and prospects, *WIREs Climate Change*, 4, 245–268, 2013.
- 605 Dorigo, W., Himmelbauer, I., Aberer, D., Schremmer, L., Petrakovic, I., Zappa, L., Preimesberger, W., Xaver, A., et al.: The International Soil Moisture Network: serving Earth system science for over a decade, *Hydrology and Earth System Sciences*, 25, 5749–5804, 2021.
- Doummar, J., Kassem, A. H., and Gurdak, J. J.: Impact of historic and future climate on spring recharge and discharge based on an integrated numerical modelling approach: Application on a snow-governed semi-arid karst catchment area, *Journal of Hydrology*, 565, 636–649, 610 2018.
- Esit, M., Kumar, S., Pandey, A., Lawrence, D. M., Rangwala, I., and Yeager, S.: Seasonal to multi-year soil moisture drought forecasting, *npj Climate and Atmospheric Science*, 4, 16, 2021.
- Fichefet, T. and Maqueda, M. M.: Sensitivity of a global sea ice model to the treatment of ice thermodynamics and dynamics, *Journal of Geophysical Research: Oceans*, 102, 12 609–12 646, 1997.
- 615 Gelaro, R., McCarty, W., Suárez, M. J., Todling, R., Molod, A., Takacs, L., Randles, C. A., Darmenov, A., Bosilovich, M. G., Reichle, R., et al.: The modern-era retrospective analysis for research and applications, version 2 (MERRA-2), *Journal of climate*, 30, 5419–5454, 2017.
- Getirana, A., Rodell, M., Kumar, S., Beaudoin, H. K., Arsenault, K., Zaitchik, B., Save, H., and Bettadpur, S.: GRACE improves seasonal groundwater forecast initialization over the United States, *Journal of Hydrometeorology*, 21, 59–71, 2020.
- 620 Hersbach, H., Bell, B., Berrisford, P., Hirahara, S., Horányi, A., Muñoz-Sabater, J., Nicolas, J., Peubey, C., Radu, R., Schepers, D., et al.: The ERA5 global reanalysis, *Quarterly Journal of the Royal Meteorological Society*, 146, 1999–2049, 2020.
- Hohenegger, C. and Stevens, B.: The role of the permanent wilting point in controlling the spatial distribution of precipitation, *Proceedings of the National Academy of Sciences*, 115, 5692–5697, 2018.
- Hohenegger, C., Brockhaus, P., Bretherton, C. S., and Schär, C.: The soil moisture–precipitation feedback in simulations with explicit and 625 parameterized convection, *Journal of Climate*, 22, 5003–5020, 2009.
- Humphrey, V., Berg, A., Ciais, P., Gentine, P., Jung, M., Reichstein, M., Seneviratne, S. I., and Frankenberg, C.: Soil moisture–atmosphere feedback dominates land carbon uptake variability, *Nature*, 592, 65–69, 2021.
- Johnson, S. J., Stockdale, T. N., Ferranti, L., Balmaseda, M. A., Molteni, F., Magnusson, L., Tietsche, S., Decremmer, D., Weisheimer, A., Balsamo, G., et al.: SEAS5: the new ECMWF seasonal forecast system, *Geoscientific Model Development*, 12, 1087–1117, 2019.
- 630 Koster, R. D., Dirmeyer, P. A., Guo, Z., Bonan, G., Chan, E., Cox, P., Gordon, C., Kanae, S., Kowalczyk, E., Lawrence, D., et al.: Regions of strong coupling between soil moisture and precipitation, *Science*, 305, 1138–1140, 2004.
- Koster, R. D., Guo, Z., Yang, R., Dirmeyer, P. A., Mitchell, K., and Puma, M. J.: On the nature of soil moisture in land surface models, *Journal of Climate*, 22, 4322–4335, 2009.

- 635 Koster, R. D., Chang, Y., Wang, H., and Schubert, S. D.: Impacts of local soil moisture anomalies on the atmospheric circulation and
on remote surface meteorological fields during boreal summer: A comprehensive analysis over North America, *Journal of Climate*, 29,
7345–7364, 2016.
- Kumar, S., Dirmeyer, P. A., and Kinter III, J.: Usefulness of ensemble forecasts from NCEP Climate Forecast System in sub-seasonal to
intra-annual forecasting, *Geophysical Research Letters*, 41, 3586–3593, 2014.
- 640 Kumar, S., Newman, M., Wang, Y., and Livneh, B.: Potential reemergence of seasonal soil moisture anomalies in North America, *Journal of
Climate*, 32, 2707–2734, 2019.
- Li, B., Rodell, M., Peters-Lidard, C., Erlingis, J., Kumar, S., and Mocko, D.: Groundwater recharge estimated by land surface models: An
evaluation in the conterminous United States, *Journal of Hydrometeorology*, 22, 499–522, 2021.
- Li, M., Wu, P., and Ma, Z.: A comprehensive evaluation of soil moisture and soil temperature from third-generation atmospheric and land
reanalysis data sets, *International Journal of Climatology*, 40, 5744–5766, 2020.
- 645 Lorenzi, V., Banzato, F., Barberio, M. D., Goepfert, N., Goldscheider, N., Gori, F., Lacchini, A., Manetta, M., Medici, G., Rusi, S., et al.:
Tracking flowpaths in a complex karst system through tracer test and hydrogeochemical monitoring: Implications for groundwater protec-
tion (Gran Sasso, Italy), *Heliyon*, 10, 2024.
- MacLeod, D., Cloke, H., Pappenberger, F., and Weisheimer, A.: Evaluating uncertainty in estimates of soil moisture memory with a reverse
ensemble approach, *Hydrology and Earth System Sciences*, 20, 2737–2743, 2016.
- 650 Madrigal, J., Solera, A., Suárez-Almiñana, S., Paredes-Arquiola, J., Andreu, J., and Sanchez-Quispe, S. T.: Skill assessment of a seasonal
forecast model to predict drought events for water resource systems, *Journal of Hydrology*, 564, 574–587, 2018.
- Manzanas, R., Gutiérrez, J. M., Bhend, J., Hemri, S., Doblas-Reyes, F. J., Torralba, V., Penabad, E., and Brookshaw, A.: Bias adjustment and
ensemble recalibration methods for seasonal forecasting: a comprehensive intercomparison using the C3S dataset, *Climate Dynamics*, 53,
1287–1305, 2019.
- 655 Martens, B., Miralles, D. G., Lievens, H., Van Der Schalie, R., De Jeu, R. A., Fernández-Prieto, D., Beck, H. E., Dorigo, W. A., and Verhoest,
N. E.: GLEAM v3: Satellite-based land evaporation and root-zone soil moisture, *Geoscientific Model Development*, 10, 1903–1925, 2017.
- McColl, K. A., Alemohammad, S. H., Akbar, R., Konings, A. G., Yueh, S., and Entekhabi, D.: The global distribution and dynamics of
surface soil moisture, *Nature Geoscience*, 10, 100–104, 2017.
- Mendoza, P. A., Wood, A. W., Clark, E., Rothwell, E., Clark, M. P., Nijssen, B., Brekke, L. D., and Arnold, J. R.: An intercomparison of
660 approaches for improving operational seasonal streamflow forecasts, *Hydrology and Earth System Sciences*, 21, 3915–3935, 2017.
- Merryfield, W. J., Baehr, J., Batté, L., Becker, E. J., Butler, A. H., Coelho, C. A. S., Danabasoglu, G., Dirmeyer, P. A., Doblas-Reyes, F. J.,
et al.: Current and emerging developments in subseasonal to decadal prediction, *Bulletin of the American Meteorological Society*, 101,
E869 – E896, 2020.
- Mishra, N., Prodhomme, C., and Guemas, V.: Multi-model skill assessment of seasonal temperature and precipitation forecasts over Europe,
665 *Climate Dynamics*, 52, 4207–4225, 2019.
- Mueller, B. and Seneviratne, S. I.: Hot days induced by precipitation deficits at the global scale, *Proceedings of the National Academy of
Sciences*, 109, 12 398–12 403, 2012.
- Muñoz-Sabater, J., Dutra, E., Agustí-Panareda, A., Albergel, C., Arduini, G., Balsamo, G., Boussetta, S., Choulga, M., Harrigan, S., Hers-
bach, H., et al.: ERA5-Land: A state-of-the-art global reanalysis dataset for land applications, *Earth System Science Data*, 13, 4349–4383,
670 2021.

- Orth, R., Koster, R. D., and Seneviratne, S. I.: Inferring soil moisture memory from streamflow observations using a simple water balance model, *Journal of Hydrometeorology*, 14, 1773–1790, 2013.
- Prodhomme, C., Materia, S., Ardilouze, C., White, R. H., Batté, L., Guemas, V., Fragkoulidis, G., and García-Serrano, J.: Seasonal prediction of European summer heatwaves, *Climate Dynamics*, pp. 1–18, 2021.
- 675 Qiao, L., Zuo, Z., Zhang, R., Piao, S., Xiao, D., and Zhang, K.: Soil moisture–atmosphere coupling accelerates global warming, *Nature Communications*, 14, 4908, 2023.
- Ranasinghe, R., Ruane, A., Vautard, R., Arnell, N., Coppola, E., Cruz, F., Dessai, S., Islam, A., Rahimi, M., Ruiz Carrascal, D., Sillmann, J., Sylla, M., Tebaldi, C., Wang, W., and Zaaboul, R.: *Climate change information for regional impact and for risk assessment*, p. 1767–1926, Cambridge University Press, Cambridge, United Kingdom and New York, NY, USA, 2021.
- 680 Rinaldo, A., Altissimo, L., Putti, M., Passadore, G., Monego, M., and Sottani, A.: *Mathematical model for the simulation of groundwater behavior in the territories of Autorità d’Ambito Territoriale Ottimale A.T.O. Brenta (in Italian)*, University of Padoa, 2010.
- Robertson, A. W., Kumar, A., Peña, M., and Vitart, F.: Improving and promoting subseasonal to seasonal prediction, *Bulletin of the American Meteorological Society*, 96, ES49–ES53, 2015.
- Rodell, M., Chen, J., Kato, H., Famiglietti, J. S., Nigro, J., and Wilson, C. R.: Estimating groundwater storage changes in the Mississippi
685 River basin (USA) using GRACE, *Hydrogeology Journal*, 15, 159–166, 2007.
- Seneviratne, S. I., Corti, T., Davin, E. L., Hirschi, M., Jaeger, E. B., Lehner, I., Orlowsky, B., and Teuling, A. J.: Investigating soil moisture–climate interactions in a changing climate: A review, *Earth-Science Reviews*, 99, 125–161, 2010.
- Silvestri, L., Saraceni, M., Bongioannini Cerlini, P., et al.: Links between precipitation, circulation weather types and orography in central Italy, *Int. J. Climatol.*, 42, 5807–5825, 2022.
- 690 Spennemann, P. C. and Saulo, A. C.: An estimation of the land-atmosphere coupling strength in South America using the Global Land Data Assimilation System, *International Journal of Climatology*, 35, 4151–4166, 2015.
- Spennemann, P. C., Rivera, J. A., Osman, M., Saulo, A. C., and Penalba, O. C.: Assessment of seasonal soil moisture forecasts over Southern South America with emphasis on dry and wet events, *Journal of Hydrometeorology*, 18, 2297–2311, 2017.
- Taylor, C. M.: Intraseasonal land–atmosphere coupling in the West African monsoon, *Journal of Climate*, 21, 6636–6648, 2008.
- 695 Taylor, C. M., Harris, P. P., and Parker, D. J.: Impact of soil moisture on the development of a Sahelian mesoscale convective system: A case-study from the AMMA special observing period, *Quarterly Journal of the Royal Meteorological Society*, 136, 456–470, 2010.
- Wilks, D. S.: *Statistical methods in the atmospheric sciences*, Academic press, 2011.
- Yuan, X.: An experimental seasonal hydrological forecasting system over the Yellow River basin–Part 2: The added value from climate forecast models, *Hydrology and Earth System Sciences*, 20, 2453–2466, 2016.
- 700 Zuo, H., Balmaseda, M. A., Tietsche, S., Mogensen, K., and Mayer, M.: The ECMWF operational ensemble reanalysis–analysis system for ocean and sea ice: a description of the system and assessment, *Ocean Science*, 15, 779–808, 2019.