

The future of Upernavik Isstrøm through ISMIP6 framework: Sensitivity analysis and Bayesian calibration of ensemble prediction

Eliot Jager^{1,2}, Fabien Gillet-chaulet¹, Nicolas Champollion¹, Romain Millan¹, Heiko Goelzer³, and Jérémie Mouginit^{1,†}

¹IGE, Univ. Grenoble Alpes, CNRS, IRD, 38000 Grenoble, France

²Institute for Atmospheric and Earth System Research / Physics, Faculty of Science, University of Helsinki, Finland

³NORCE Norwegian Research Centre, Bjerknes Centre for Climate Research, Bergen, Norway

[†]deceased, 28 September 2022

Correspondence: Eliot Jager (eliot.jager@univ-grenoble-alpes.fr)

Abstract.

This study investigates the uncertain future contribution to sea-level rise in response to global warming of Upernavik Isstrøm, a tidewater glacier in Greenland. We analyze multiple sources of uncertainty, including shared socio-economic pathways (SSPs), climate models (global and regional), ice-ocean interactions, and ice sheet model parameters (ISM). We use weighting methods based on spatio-temporal velocity and elevation data to reduce ice flow model uncertainty, and evaluate their ability to prevent overconfidence. Our developed initialization method demonstrates the capability of Elmer/Ice to accurately replicate the hindcast mass loss of Upernavik Isstrøm. Future mass loss predictions in 2100 range from a contribution to sea level rise from 1.5 to 7.2 mm, with an already committed sea-level contribution projection from 0.6 to 1.3 mm. ~~While all sources of uncertainty contribute at least 15% to uncertainty until~~ At the end of the century, SSP-related uncertainty ~~dominates at~~ constitutes the predominant component of total uncertainty, accounting for 40%, while uncertainty linked to the ISM represents 15% of the overall uncertainty. We find that calibration does not reduce uncertainty of the future mass loss between today and 2100 (+2%) but significantly reduces uncertainty in the hindcast mass loss between 1985 and 2015 (-32 to -61% depending on the weighting method). Combining calibration of the ice sheet model with SSP weighting yields uncertainty reductions of future mass loss in 2050 (-1.5 %) and in 2100 (-32 %).

15 1 Introduction

The primary cause of present-day sea-level change is human-induced climate change, which will have far-reaching effects on coastal communities worldwide. To make informed decisions on protective measures, it is crucial to understand the extent and timing of sea-level rise. Predicting future local sea-level rise is a challenging task as it depends on many factors, such as the mean sea-level rise (SLR), ocean dynamics, local context and, of course, future mitigation of greenhouse gas emissions (Durand et al., 2022). As an important component to the local solution, it is essential to predict future mean sea-level rise for the end of the 21st century. As recent assessments by the Intergovernmental Panel on Climate Change have highlighted (Masson-Delmotte et al., 2021), future sea-level change is highly uncertain, especially the high-end scenarios. The main source

of uncertainty in SLR stems from the constrained ability to model the future mass loss of the Antarctic and Greenland Ice Sheets (GrIS) due to a limited understanding of their climate forcings and initial state, as well as uncertainties in Ice Sheet Models (ISM) (Goelzer et al., 2018; Seroussi et al., 2019; Goelzer et al., 2020; Seroussi et al., 2020).

To better understand uncertainties and enhance projections of the two ice sheets, a collective initiative has emerged: the Ice Sheet Model Intercomparison Project for CMIP6 (ISMIP6) framework (Nowicki et al., 2020). The outcomes of this endeavor have provided valuable insights into the behaviour of ISMs and the range of their variability. However, to improve estimates for decision-makers, Aschwanden et al. (2021) suggests two key areas of improvement. First, although ISMIP6 quantifies uncertainty in model structure, the intrinsic uncertainties associated with model parameters, as well as initial and boundary conditions, must be more thoroughly accounted for. Second, simulations should accurately reflect current observations within the limits of their uncertainty.

In addition ~~of~~ to providing a more comprehensive quantification of uncertainties, sensitivity analyses play a crucial role in classifying uncertainties and prioritising their reduction. This approach has gained popularity in glaciology, as evident from case studies conducted with a single ISM in Antarctica (Bulthuis et al., 2019; Hill et al., 2021) and Greenland (Aschwanden et al., 2019), as well as the ISMIP6 analyses (Goelzer et al., 2020; Seroussi et al., 2020, 2023), which also facilitate the examination of model structure uncertainty through multiple ISMs. The first two individual ISM studies revealed that the dominant origins of uncertainty were atmospheric forcings for Greenland and oceanic forcings for Antarctica. The ISMIP6 outcomes, in contrast, emphasize that uncertainties linked to ISMs persist significantly, akin to uncertainties originating from forcings and their application. These findings underscore the potential for reducing uncertainty in model projection by reconciling the differences among ISMs. In this regard, a better use of observational data to calibrate these models and ensure their skill in reproducing recent data holds promise (Aschwanden and Brinkerhoff, 2022; Nias et al., 2023).

Bayesian calibration using observations has become a common practice in glaciology, as ~~evidenced by~~ is evident from previous studies on the SLR contribution from the GrIS (Applegate et al., 2012; McNeill et al., 2013; Chang et al., 2014; Aschwanden and Brinkerhoff, 2022; Nias et al., 2023), the Antarctic ice sheet (Gladstone et al., 2012; Ritz et al., 2015; DeConto and Pollard, 2016; Nias et al., 2019; Gilford et al., 2020; Wernecke et al., 2020) or likewise the mountain glaciers (Rounce et al., 2023) and a review of the previous studies is made in the supplementary material of Aschwanden and Brinkerhoff (2022). These studies typically involve two steps: (i) establishing prior distributions over uncertain model parameters to obtain an ensemble and projecting it into the future to forecast a prior future SLR contribution, and (ii) adjusting prior distributions by giving weights to the members according to their ability to reproduce past observations. However, due to the limited availability of observational data, these studies often employ all available observational data for calibration without incorporating any form of validation to assess the improved performance of the calibrated ensemble compared to the non-calibrated one. This gives rise to concerns regarding the potential for overfitting and excessive confidence in future predictions of sea-level rise, especially in the context of a dataset of considerable size like ours.

In a previous study (Jager et al., 2024), the focus was directed towards investigating the ability of the ISM Elmer/Ice to replicate past variations of Upernavik Isstrøm (UI) during the period from 1985 to 2019. UI is a tidewater glacier situated in the North-West sector of Greenland and is characterized by five distinct catchments: UI-NN, UI-N, UI-C, UI-S, and UI-SS

(Figure 1), as named in Mouginit et al. (2019). The diverse dynamics of their front enable multiple tidewater glacier studies to be conducted within this comprehensive catchment. This approach mitigates the risk of over-interpretation that may arise when focusing on a single tidewater glacier, providing more robust results; i.e., if the model successfully reproduces these varied behaviors, it is likely to do so for other tidewater glaciers as well. Moreover, UI has experienced substantial mass loss since 1985, contributing to 0.47 mm of sea-level rise, or more than 3% of Greenland's total contribution during this period, indicating significant temporal changes (Mouginit et al., 2019). The extensive satellite observations spanning 1985 to 2019 make UI an ideal candidate for evaluating the ability of a large-scale ISM to reproduce available observations of a local glacier. Furthermore, the pronounced spatial and temporal heterogeneity of this case study helps prevent unwarranted overconfidence in the model's performance.

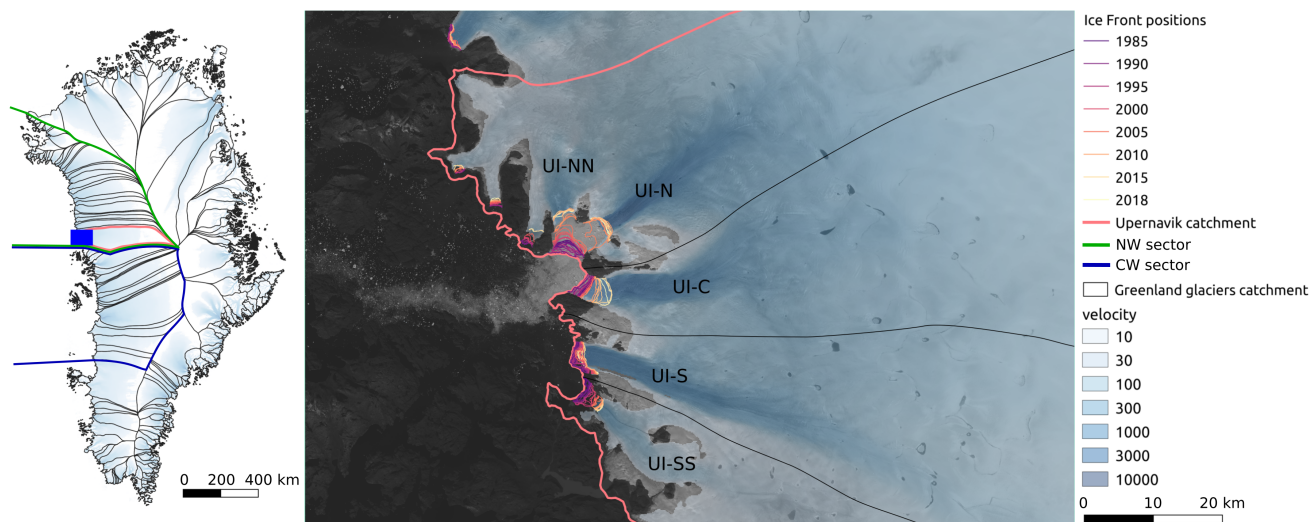


Figure 1. Left, GrIS drainage catchments with the catchment of UI in pale red, NW in green and CW in blue sectors as defined in Slater et al. (2019). The blue box is the validation area shown in the right with the four different catchments (UI-N, UI-C, UI-S and UI-SS), the front positions between 1985 and 2018 (Wood et al., 2021) and the surface ice speed (Mouginit et al., 2019) overlaid on a Landsat image (2017-08-13). All the data collected are in this validation area.

To reproduce past changes of UI using Elmer/Ice, Jager et al. (2024) introduced a new initialization method employing a model ensemble that incorporates various uncertainties within the ISM, including different basal friction field calibrations, initial surface elevation, and model parameters. Additionally, the front positions and Surface Mass Balance (SMB) were pre-scribed for each year. Subsequently, the performance of two ensembles, using two different basal friction relationships, was compared against a comprehensive dataset comprising spatio-temporal series of velocities and elevations, ice discharge, and mass loss. Jager et al. (2024) indicate the necessity of accounting for a reduction in friction near the glacier front to accurately reproduce these observational data. The sensitivity analysis, made possible by the ensemble approach, underscored the

predominant role of the initial friction field compared to the initial surface or surface mass balance in shaping the hindcast
75 variations of ice mass loss.

The objective of this study is to assess the UI's contribution to SLR throughout the 21st century and to enhance the quantifi-
cation of associated uncertainties. The following aspects will be addressed:

1. A **sensitivity analysis** to project the future SLR contribution to quantify the contribution of the ISM and forcings to the
forecast uncertainty
- 80 2. A **bayesian calibration** to robustly adjust prior information using available observations.

To address the first question, we adopt the ISMIP6 framework for the GrIS (Nowicki et al., 2020). The forcings for the future
are a SMB and a parametrisation for the position of the glacier fronts. The SMB is derived from a Regional Climate Model
(RCM) that downscales outputs from an Atmosphere-Ocean Coupled Global Climate Model (AOGCM) associated with a
specific Shared Socio-economic Pathway (SSP). Future front positions are estimated using a parameterisation that incorporates
85 RCM runoff and AOGCM ocean temperatures as input variables, while allowing for consideration of different front retreat
sensitivities. By incorporating uncertainties associated with RCM, AOGCM, SSPs, front retreat sensitivities, and ISM itself,
this approach enables a comprehensive analysis of the impacts of these various sources of uncertainty on SLR. Additionally, it
quantifies the potential reduction in uncertainty attributable to the ISM.

To address the second aspect, we propose several weighting methods and have designed a rigorous cross-validation approach
90 to ensure robust calibration of the model ensemble. The validation process assesses the performance of the calibrated ensemble
against independent data. Additionally, we investigate the sensitivity of the calibration to different assumptions, evaluating
calibration performance through the validation procedure. Once the optimal calibration has been determined, we analyze the
implications of this calibration on the selection of model parameters and its impact on SLR predictions. We also study the
reduction potential when we change the weighting of the SSPs used.

95 2 Method

2.1 Model ensemble

In this sub-section, we delineate the methodology employed for initialising and propagating the ensemble into the future,
utilizing a single Ice Sheet Model (ISM) and following a framework akin to the ISMIP6 framework for the GrIS (Nowicki
et al., 2020). The figure 2 summarize our workflow:

- 100 1. The shared Hindcast prior ensemble (Hpr) covers the period from 1985 to 2019 following the methodology of Jager et al.
(2024) and serves as a starting point for the two other ensembles.
2. The Control prior ensemble (Cpr) extends the ISM into the future from 2015 to 2100 with constant forcing.
3. The Predicted prior ensemble (Ppr) extends the ISM into the future from 2015 to 2100 with realistic forcing.

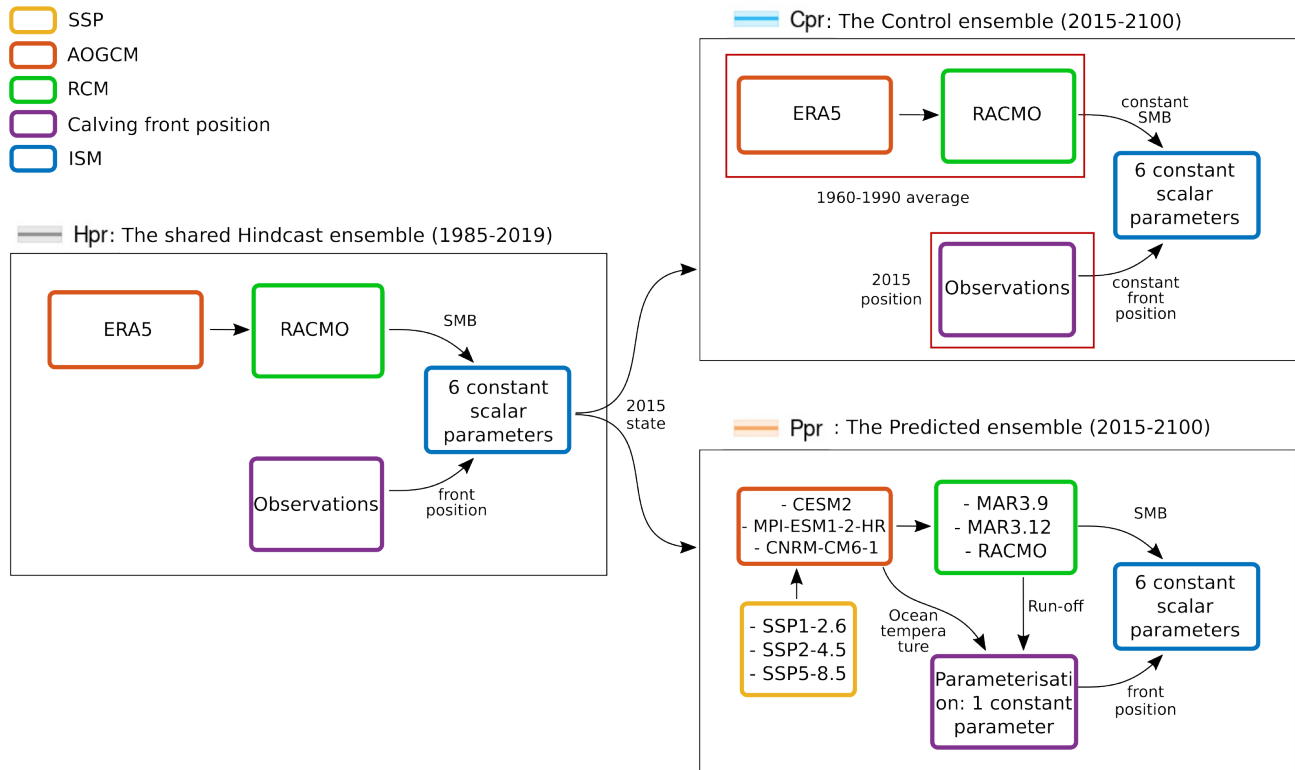


Figure 2. Ensemble model and sensitivity analysis. Illustration of the forcings (Surface Mass Balance, front position) used by the three ensembles: Hpr, Cpr and Ppr. SSP: Shared Socio-economic Pathway; AOGCM: Atmosphere-Ocean Coupled Global Climate Model; RCM: Regional Climate Model; ISM: Ice Sheet Model.

For the ISM we use Elmer/Ice, a parallel finite-element software (Gagliardini et al., 2013). Several sources of uncertainty were identified within the ISM, and based on the findings from our prior study (Jager et al., 2024), we have exclusively retained those parameters that exert a substantial influence, employing factor fixing. Parameters leading to undesirable model outputs, when compared to observational data, were excluded through factor mapping. Factor fixing, also known as screening, serves to pinpoint model components that either have a minimal impact to the variability of the outputs or metrics of interest. Conversely, factor mapping is employed to ascertain which uncertain model factors correlate with specific model behaviors (refer to the glossary in Reed et al. (2022)). Additional information regarding the model characteristics and parameter selection is available in appendices A and C1, respectively.

Finally, the ISM uncertainty depends on 6 constant scalar parameters (Fig. 2), with two parameters influencing the calibration of the friction field (λ_{reg} and OBS_{inv}), three parameters influencing the friction law (f_{law} , f_{param} and m) and one parameter influencing the ice rheology (E). [See appendix A to understand what are the ISM parameters.](#)

115 2.1.1 Shared Hindcast prior ensemble (1985-2019)

The ensemble is initialised in 1985 and covers the observational period.

The SMB is prescribed using annual values from the regional climate model RACMO forced with the global reanalyses ERA5 (Noël et al., 2018). Our previous study showed that using RACMO ~~instead of MAR as the as a~~ regional climate model ~~;~~ ~~led instead of MAR lead~~ to better performances in reproducing the observed surface elevations, while having a small influence
120 in the other model outputs. Here by using only RACMO, we improve the overall performance of the ensemble and restricts the parameter space to better cover the other sources of uncertainty.

The position of the UI calving fronts is prescribed at each time step based on observations ~~from Wood et al. (2021)~~([Wood et al., 2021](#))
. Given that the uncertainty associated with these observations is small compared to the model mesh size (less than 60 m versus more than 150 m), we do not account for this potential forcing uncertainty during the shared hindcast period.

125 The state of the ensemble members in 2015 is used as a starting point for the next to ensembles that cover the period 2015 to 2100.

2.1.2 Control prior Ensemble (2015-2100)

The Cpr is a control ensemble where the forcings are kept constant.

The SMB is the average of RACMO between 1960 and 1990, to be consistent with the anomaly procedure for the forecast
130 (see below).

The position of the front is kept constant using the observation in 2015.

2.1.3 Predicted prior Ensemble (2015-2100)

For the SMB, we adopt the ISMIP6 framework for the GrIS (Nowicki et al., 2020; Goelzer et al., 2020). This approach employs a RCM to downscale an AOGCM associated with a specific SSP at the GrIS scale. These results are then prescribed
135 as anomalies which are added to the reference SMB used for the Cpr. The procedure also parameterise the feedback with the elevation by proving the SMB altitudinal gradients. The various combinations of SSP-AOGCM-RCM are presented in Table 1. As an initial approach, we assign different probabilities to the various SSP-AOGCM-RCM combinations (Table 1) to mitigate ~~mitigate~~ potential biases arising from the over-representation of specific SSPs (7/24, 8/24 and 9/24 for SSP1-2.6, SSP2-4.5 and SSP5-8.5), while trying to maintain balanced proportions between AOGCMs (1/2, 1/4 and 1/4 for CESM2, MPI-ESM1-2-HR
140 and CNRM-CM6-1) and RCMs (1/3 for each). In Section 5, we explore alternative probability distributions for the SSPs.

For the future position of the front, we used the ISMIP6 parameterisation (Slater et al., 2019, 2020) where the variation in front position ΔL is given by:

$$\Delta L = \kappa \Delta(Q^{0.4} \times TF) \tag{1}$$

Table 1. SSP-AOGCM-RCM combinations and their probabilities used in the Latin-Hypercube Sampling

RCM	AOGCM	SSP	Probability
RACMO	CESM2	SSP1-2.6	1/12
RACMO	CESM2	SSP2-4.5	1/6
MAR3.9	CESM2*	SSP5-8.5	1/12
MAR3.12	CESM2*	SSP5-8.5	1/12
RACMO	CESM2*	SSP5-8.5	1/12
MAR3.12	MPI-ESM1-2-HR	SSP1-2.6	1/24
MAR3.12	MPI-ESM1-2-HR	SSP2-4.5	1/6
MAR3.12	MPI-ESM1-2-HR	SSP5-8.5	1/24
MAR3.9	CNRM-CM6-1	SSP1-2.6	1/6
MAR3.9	CNRM-CM6-1	SSP5-8.5	1/12

* For practical purposes, this is the same physical model as CESM2 (CMIP6), but a different ensemble member.

where Q denotes the mean summer (June–July–August) subglacial runoff (in $\text{m}^3 \cdot \text{s}^{-1}$) from the RCM, and TF represents
145 the ocean thermal forcing (in $^{\circ}\text{C}$) outside of the fjord from the AOGCM. κ is the front sensitivity and it has been calibrated independently for different sectors of the GrIS using available observations (Slater et al., 2019). The distribution of κ effectively encapsulates the uncertainties arising from several critical parameters, e.g. calving rates, thermal transport into the fjord.

To examine the uncertainty associated with the future position of the front, we use six distinct values of κ . UI is located in the north-western (NW) sector, just above the central-western (CW) sector (Figure 1). Given the distinct sensitivity of these two
150 sectors, both are considered in our analysis to mitigate overconfidence. For the distribution of κ , we adopt three distinct levels: low, medium, and high. Specifically, the low sensitivity encompasses the smallest 25% of the κ values, medium sensitivity includes the smallest 50%, and high sensitivity comprises the smallest 75%. In total, this results in six different κ values (three levels across two sectors), each assigned equal probability. To simplify, the sensitivity of this front parameterisation is hereafter referred to as front_s .

155 2.1.4 Propagation of uncertainty

Having identified the different sources of uncertainty, we proceed to propagate them through the model. To explore the various sources of uncertainty of the three ensemble (Hpr, Cpr and Ppr), we use a 200-member Latin hypercube sampling technique to cover the 10 different parameters, 6 ISM parameters and 4 for the forcing (SSP, AOGCM, RCM and front_s). By definition As defined by our set-up, the uncertain parameters of the forcing (SSP, AOGCM, RCM, front_s) do not affect Hpr and Cpr (Fig. 2).

160 We use the first-order sensitivity indices to analyse the sensitivity of Ppr to the different parameters (Sobol, 2001):

$$S_i = \frac{\text{Var}(\text{E}[Y|X_i])}{\text{Var}Y} \quad (2)$$

where $\text{Var}Y$ is the variance of an output Y and $E[Y|X_i]$ is the expectation of having Y given the parameter X_i . Here, X_i is one of the 10 different parameters. We provide more details on the calculation of these first-order sensitivity indices in appendix C2.

165 2.2 Model ensemble evaluation

2.2.1 Observational data

To evaluate the performance of Hpr, we compiled an extensive dataset comprising observations of surface velocity, surface elevation, ice discharge, and ice mass loss. This is summarized in table 2 and more details on how we obtain these data are provided in appendix B.

Table 2. Summary of Observation Data Types and Sources

Observation Type	Data Type	Source
Surface Velocity	Spatial	Jager et al. (2024)
Surface Elevation	Spatial	Jager et al. (2024)
Ice Discharge	Global	Mankoff et al. (2019), King et al. (2018), Mouginot et al. (2019), MouginotV2
Ice Mass Loss	Global	Input-output method with SMB from RACMO (Noël et al., 2018) and Ice discharge from above

170 2.2.2 Metrics

To evaluate the performance of the Hpr, we use several ensemble metrics. The Continuous Rank Probability Score (*CRPS*) measures the accuracy and sharpness (opposite of uncertainty/spread) of the ensemble, where lower values indicate improved alignment between the ensemble mean and observations, as well as similarity between ensemble spread and observational uncertainty. To investigate whether changes in *CRPS* result from a reduction in the difference between the ensemble mean and observations, we examine the Mean Absolute Error (*MAE*) of the ensemble mean. Similarly, to determine whether changes in *CRPS* stem from alterations in the ensemble’s sharpness, we analyze the spatio-temporal average of the standard deviation (*STD*) of the ensemble. Ultimately, the RMSE will serve as a metric for assessing the performance of individual ensemble members, allowing us to calibrate the ensemble based on their respective performance.

$$CRPS = \frac{1}{n_{obs}} \sum_{j=1}^{n_{obs}} \int_{\mathbb{R}} (F_m^j(Q) - F_o^j(Q))^2 dQ \quad (3)$$

$$180 \quad MAE = \frac{1}{n_{obs}} \sum_{j=1}^{n_{obs}} |\bar{Q}_m^j - Q_o^j| \quad (4)$$

$$STD = \frac{1}{n_{obs}} \sum_{j=1}^{n_{obs}} \sqrt{\frac{1}{n_m} \sum_{i=1}^{n_m} (Q_{m,i}^j - \bar{Q}_m^j)^2} \quad (5)$$

$$RMSE_i = \sqrt{\frac{1}{n_{obs}} \sum_{j=1}^{n_{obs}} (Q_o^j - Q_{m,i}^j)^2} \quad (6)$$

where n_{obs} is the number of the different observations in the space and time, n_m is the number of members, Q is a physical quantity (velocity, elevation, ice discharge, change of volume), \bar{Q}_m is the ensemble mean and $F_m(Q)$ is the cumulative distribution function of the ensemble. The subscript i is associated with the i -th member of the ensemble and the superscript j is associated with the j -th observation. As common for $F_o(Q)$ we use the Heaviside function where $F_o(Q) = 0$ $F_e(Q, Q_o) = 0$ for $Q < Q_o$ and $F_o(Q) = 1$ $F_e(Q, Q_o) = 1$ otherwise, with Q_o the observation (Brown, 1974; Matheson and Winkler, 1976; Unger, 1985; Bouvier, 1994; Hersbach, 2000).

2.3 Bayesian calibration

190 In the context of ice sheet forecasting, the focus lies on predicting the future contribution to global mean sea level rise (*SLR*) while leveraging a diverse array of information, including models, observations, and previous studies (see review in the supplementary material of Aschwanden and Brinkerhoff (2022)). In this study, we adopt the formalism introduced by Aschwanden and Brinkerhoff (2022), which updates a model prediction by considering a vector of model parameters \mathbf{M} from the parameter space Σ , a collection of untraversed model assumptions \mathcal{H} , the evolution of external forcings \mathcal{F} , and a set of observations \mathcal{B} :

$$195 \quad \underbrace{P(SLR|\mathcal{B}, \mathcal{H}, \mathcal{F})}_{\text{Posterior prediction}} = \int_{\Sigma} \underbrace{P(SLR|\mathbf{M}, \mathcal{H}, \mathcal{F})}_{\text{Model prediction}} \cdot \underbrace{P(\mathbf{M}|\mathcal{B})}_{\text{Calibration}} d\mathbf{M} \quad (7)$$

In the rest of this sub-section, we will describe how the calibration term $P(\mathbf{M}|\mathcal{B})$ is obtained from a prior ensemble thanks to the Bayes formula.

2.3.1 Bayesian problem approached by weighted bootstrap

To compute the calibration term $P(\mathbf{M}|\mathcal{B})$, we employ an ensemble sampling method named weighted bootstrap (Smith and Gelfand, 1992), which uses an ensemble of n_m particles \mathbf{M}_i , corresponding to different members, to approximate the prior probability of the model $P(\mathbf{M})$ by:

$$P(\mathbf{M}) = \frac{1}{n_m} \sum_{i=1}^{n_m} \delta(\mathbf{M} - \mathbf{M}_i) \quad (8)$$

where δ is the *Dirac* function.

The posterior distribution, conditioned by the observations is approximated by:

$$205 \quad P(\mathbf{M}|\mathcal{B}) = \sum_{i=1}^{n_m} w_i \cdot \delta(\mathbf{M} - \mathbf{M}_i) \quad (9)$$

The weight w_i represents the likelihood, i.e. the probability of observing the data with for member i and is therefor higher for members that are the closest to the observations. It is defined as:

$$w_i = \frac{P(\mathcal{B}|\mathbf{M}_i)}{\sum_{k=1}^{n_m} P(\mathcal{B}|\mathbf{M}_k)} \quad (10)$$

Assuming that the ~~n_{obs}~~ n_{obs} are independent, and the error is Gaussian with a constant standard deviation, it is possible to
210 expressed $P(\mathcal{B}|\mathbf{M}_i)$ as a function of the RMSE as:

$$P(\mathcal{B}|\mathbf{M}_i) = C \exp \left[- \sum_{j=1}^{n_{obs}} \frac{(Q_o^j - Q_{m,i}^j)^2}{2\sigma^2} \right] \quad (11)$$

$$= C \exp \left[- \frac{n_{obs}}{2} \cdot \frac{RMSE_i^2}{\sigma^2} \right] \quad (12)$$

As these assumptions are difficult to fulfill and verify in practice, we adopt the following expression to compute the weights:

$$w_i = \frac{\prod_{s=1}^{n_s} f(RMSE_{i,s}, \sigma)}{\sum_{j=1}^N \prod_{s=1}^{n_s} f(RMSE_{j,s}, \sigma)} \quad (13)$$

215 with $f(RMSE, \sigma)$ a probability density function (gaussian or student, see below). which depends on the parameter σ that represents both the observation and model error and n_s the number of different error metrics (RMSEs) used to compute the performance of the ensemble members.

In our study Eq. 12 can not be used directly for three main reasons. First, due to the substantial volume of data at hand, we encounter a challenge similar to particle filters framework, which tend to retain only one member, leading to overfitting
220 (Leeuwen, 2010). To overcome this issue, a considerable number of ensemble members comparable to the number of observations is would be necessary. However, achieving such a large ensemble size proves impractical in this case, as the number

of observations exceeds four million, even with a surrogate model as proposed in Aschwanden and Brinkerhoff (2022). Secondly, the assumption of independent and identically distributed observations is difficult to justify, given the strong temporal and spatial correlations of velocities and surface elevations. Higher values observed at one grid point or time step are likely to be similarly high at adjacent locations or subsequent time steps. Thirdly, even supposing observational uncertainties were independent and identically distributed, it is clear that the modelling errors are not. Ultimately, the crux of the matter lies in our lack of a suitable likelihood function for effective model-data comparison.

Eq. 13 uses a performance metric approach to address the challenge of spatial and temporal correlation. The distance between the observed and modeled fields is then only assessed in average using the *RMSE*, effectively treating the multiple observations as a single observation (Pollard et al., 2016; Bondzio et al., 2018; Albrecht et al., 2020). This method substantially diminishes the influence of observations, thereby mitigating the risk of overfitting while potentially introducing underfitting, as previously identified by ~~Wernecke et al. (2020)~~ (Wernecke et al., 2020). This performance metric is applicable across various model outputs, encompassing velocity, surface elevation, ice discharge, and cumulative ice discharge. Furthermore, this metric can be computed for each sub-catchment (UI-N, UI-C, UI-S, and UI-SS, as illustrated in Figure 1), and potentially, for distinct sub-periods (as detailed in the Sub-period weighting in section 2.3.2). When these n_s metrics are independent (e.g., an RMSE on UI-N is quasi-independent of the RMSE on UI-C), they can be combined by multiplication, as shown in equation 13. These different combinations will be tested for the full-period weighting (section 2.3.2 for the methodology and 4.1 for the results).

In addition, the challenge of selecting a single member could stem from the restrictive nature of the probability density function $f(RMSE, \sigma)$ outlined in Eq. 13. This issue may arise from the specific form of $f(RMSE, \sigma)$ —for example, a Gaussian distribution has lower tails than a Student’s-t distribution, thereby reducing the influence of higher RMSE values—or from the selection of the parameter σ . The parameter σ , which is partially derived from the standard deviation of the observation error as specified in equation 12, additionally encompasses the structural errors inherent in the model. The model simplifications of reality hinder an exact representation of the real world, thereby manifesting the discrepancies between the optimized model parameters and empirical observations (Murphy et al., 2009; Nias et al., 2019; Edwards et al., 2019). However, accurately quantifying structural error remains a persistent challenge, often necessitating retrospective estimation. To mitigate this limitation, we adopt an assumption that leverages the distribution of RMSE values to estimate σ . Specifically, ~~the minimum RMSE value serves as the lower bound~~ we will evaluate the minimum, median, and maximum RMSE values as potential estimates for σ . ~~Remarkably, this minimum RMSE corresponds to the configuration with the least structural error concerning the observed data.~~ This assumption underpins the weighting methodology adopted in earlier studies which employ a singular performance metric; for instance, in references Pollard et al. (2016) and Albrecht et al. (2020), the median of such a performance metric is utilised as an estimate for σ . The effect of the choice of σ will be assessed using the full-period weighting, as described in the methodology (section 2.3.2) and presented in the results (section 4.1).

2.3.2 Cross-validation and weighting choices

The heart of this Bayesian calibration is the calculation of weights (Eq. 13). Several choices are possible for calculating them as discussed above. To assess the performance of these different choices, we have developed a cross-validation method. This

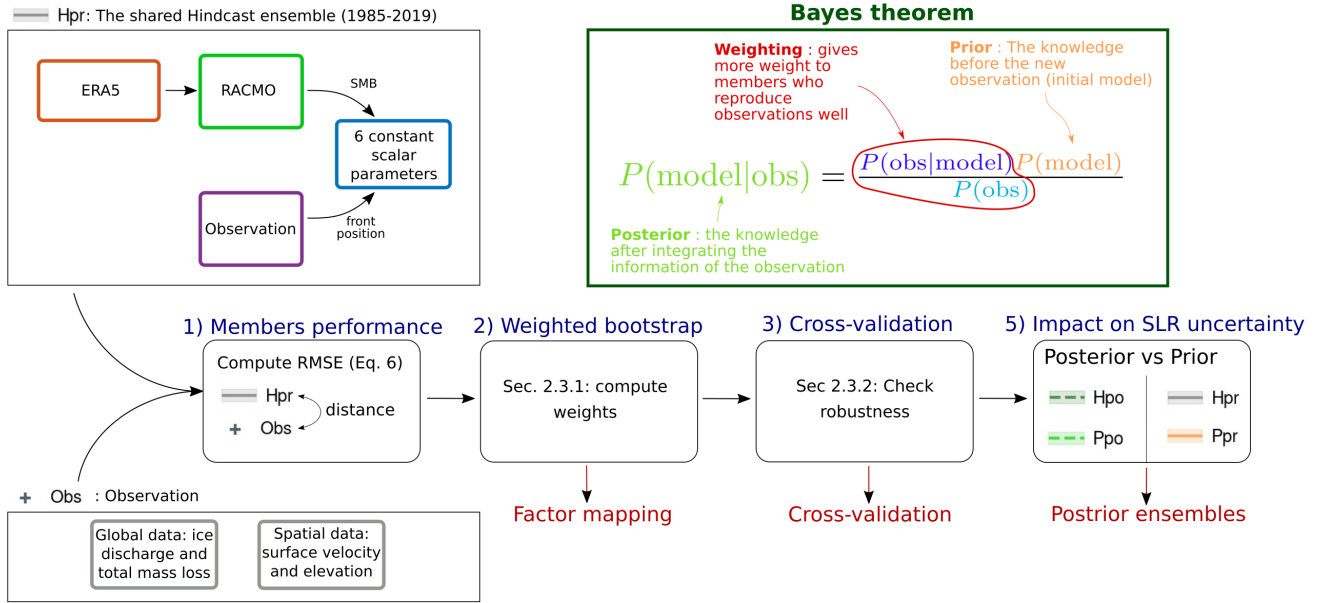


Figure 3. Bayesian calibration. Different steps of our methodology to obtain a robust bayesian calibration from an hindcast ensemble (Hpr) and observations. Title in red refer to the subsections where the results are presented (Sec. 4). In the top right box, a simple explanation of the Bayes theorem (Eq. 9 in case of weighted bootstrap) with the three main component: in green the posterior model, in red the weighting (Eq. 10 and 13) and in orange the prior model.

process entails computing weights and calibrating the ensemble using data from three out of the four sub-catchments, and subsequently employing the ensemble-based metrics previously defined (CRPS, MAE, and STD) to appraise the performance of the posterior ensemble with respect to the fourth sub-catchment. These metrics are normalised with metrics obtained with the prior ensemble, wherein a value exceeding 1 signifies inferior performance of the posterior ensemble in contrast to the prior ensemble (Hpr), whereas a value less than 1 signifies enhanced performance.

The evaluation encompasses three distinct weighting approaches:

1. Full-period weighting
2. Sub-period weighting
3. f_{param} weighting

265 **Full-period weighting**

In the case of full-period weighting, the weighting of ensemble members depends on their ability to, on average, replicate the temporal evolution of various sub-catchments throughout the entire period from 1985 to 2019. To determine the final weight, we compute the RMSE for each sub-catchment over the entire observation period and then apply Equation 13 to combine these RMSEs with n_s the number of sub-catchments, i.e. $n_s = 3$ for the cross-validation and $n_s = 4$ for posterior ensemble.

270 In the context of Full-period weighting, several assumptions are also examined:

1. The selection of probability density: Gaussian, following Nias et al. (2023), or Student's-t, as in Aschwanden and Brinkerhoff (2022).
2. The choice of σ estimate: minimum, mean, or median of the RMSE distribution.
3. The choice of data source: surface elevations, surface velocities, ice discharge, or cumulative ice discharge.

275 ***Sub-period weighting***

In the case of sub-period weighting, the weighting of ensemble members depends on their ability to, on average, replicate the temporal evolution of different sub-catchments across various sub-periods, such as the pre-retreat, retreat, and post-retreat periods. To accomplish this, distinct RMSE values are calculated for each combination of sub-catchment and sub-period. For instance, for UI-N, RMSEs are computed for the periods 1985-2004, 2004-2010, and 2010-2019, while for UI-C, RMSEs
280 are determined for the periods 1985-2009, 2009-2015, and 2015-2019 (see evolution of front on figure 1). Conversely, for sub-catchment UI-S and UI-SS, RMSEs are assessed over the entire period. To determine the final weight, we apply Equation 13 to combine all these RMSEs with this time n_s the total number of periods, i.e. 8 for posterior ensemble (3 for UI-N and UI-C, 1 for UI-S and UI-SS). Similar to the full-period weighting approach, the assessment of the posterior ensemble through cross-validation employs ensemble metrics spanning the entire period from 1985 to 2019. Because this weighting involves
285 more RMSEs than the full-period weighting (8 versus 4), it leads to a narrower posterior distribution.

f_{param} weighting

This alternative weighting approach was investigated based on insights from our previous study, which demonstrated that the model's ability to reproduce observation data improved significantly when accounting for the reduction in friction near the front (Jager et al., 2024). Indeed, in most of the large-scale applications of Elmer/Ice (e.g. Goelzer et al. (2018); Seroussi
290 et al. (2020); Hill et al. (2023)), friction is considered to be constant over time with no dependence on subglacial hydrology. The parameterisation developed in this previous study addresses this limitation. This also allows us (i) to see the effect of our parameterisation in terms of the predicted future sea level rise contribution of Upernavik Isstrøm and (ii) to compare this weighting with the other weighting to see if they are able to highlight this characteristic without going into as much detail as this previous study.

295 In the case of f_{param} weighting, the weighting of ensemble members depends on the presence or the absence of the parameterisation of the sub-hydrology effect on friction (Eq. A3). We then give a weight of $w_i = w$ for members with parameterisation ($f_{param} = \text{True}$) and a weight $w_i = (1 - w)$ for members without parameterisation ($f_{param} = \text{False}$) and test different values of w (0.6, 0.7, 0.8, 0.9 and 1). Then we evaluate the performance of this ensemble with the CRPS, MAE, and STD on each .

2.3.3 Summary

300 The main steps of the Bayesian calibration and the sub-sections where the results are discussed are summarised by Fig. 3.

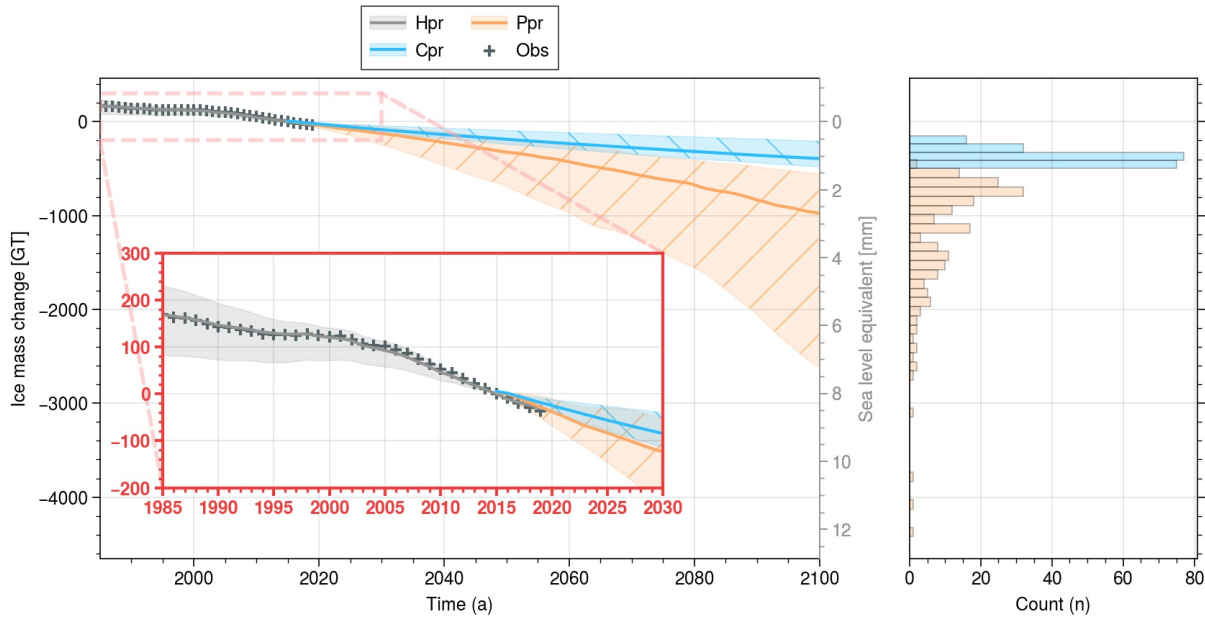


Figure 4. UI ice mass change relative to 2015 for the hindcast (grey), the predicted (orange with /) and the committed mass loss (blue with \). For each ensemble, the mean is represented in solid line and the shading include 95% of the ensemble members. Observations of the 1985-2019 period are represented by +. The red box shows a zoom to 1985-2030 period. The histogram on the right illustrates the distribution of the predicted (orange) and the committed mass loss (blue) UI contribution to sea level rise spanning from 2015 to 2100.

3 Results: Sensitivity analysis

To comprehensively assess the future sea-level rise contribution of Upernavik Isstrøm in our sensitivity analysis, we begin by projecting the ensemble into the future using the initialization method established in Jager et al. (2024). This initial exploration sets the stage for determining a reference sea-level rise contribution and understanding the components of Upernavik Isstrøm’s mass loss, particularly focusing on ice discharge and surface mass balance. Additionally, it highlights disparities between the Predicted prior Ensemble (Ppr) and the Control prior Ensemble (Cpr). Following this, we dissect the uncertainty within the Predicted prior Ensemble, examining the importance of different sources such as Shared Socioeconomic Pathways (SSP), Atmosphere-Ocean General Circulation Models (AOGCM), Regional Climate Models (RCM), frontal sensitivity ($front_s$), and the Ice Sheet Model (ISM). This analysis underscores the potential of ISM calibration to effectively reduce overall uncertainty.

3.1 Model prediction

In figure 4, the ice mass change is depicted relative to 2015 for observations and three simulation ensembles (Fig. 2): the shared Hindcast prior ensemble (Hpr), the Control prior ensemble (Cpr), and the Predicted prior ensemble (Ppr). The figure encompass the various SSPs for Ppr and the results for the individual scenarios are given in supplement fig. S1.

The shared Hindcast prior ensemble (Hpr) yields a median mass loss of 200 Gt between 1985 and 2019, ranging from 100 to 250 Gt (95% confidence interval). The Hpr median reproduces very faithfully the observations. This result confirms the ability of the methodology established in Jager et al. (2024) to reproduce past observations.

By 2015, the UI had already contributed by 0.47 [0.23, 0.64] mm to sea level rise (SLR) since 1985, and the mass loss of Cpr and Ppr is projected to add an additional 1.1 [0.6, 1.3] mm and 2.7 [1.5, 7.2] mm, respectively, by 2100. Notably, the most extreme values of the Ppr indicate a contribution to SLR exceeding 10 mm, while the majority of Ppr values range from 1 to 3.5 mm. It is worth noting that the distribution's tail for values above this interval is wider than for values below, which is similar to other results in glaciology studies (e.g. Robel et al. (2019)). Finally, the loss of mass due to future warming, given by subtracting Cpr members to Ppr members, gives us an additional contribution to SLR of 1.7 [0.7-6.3] mm.

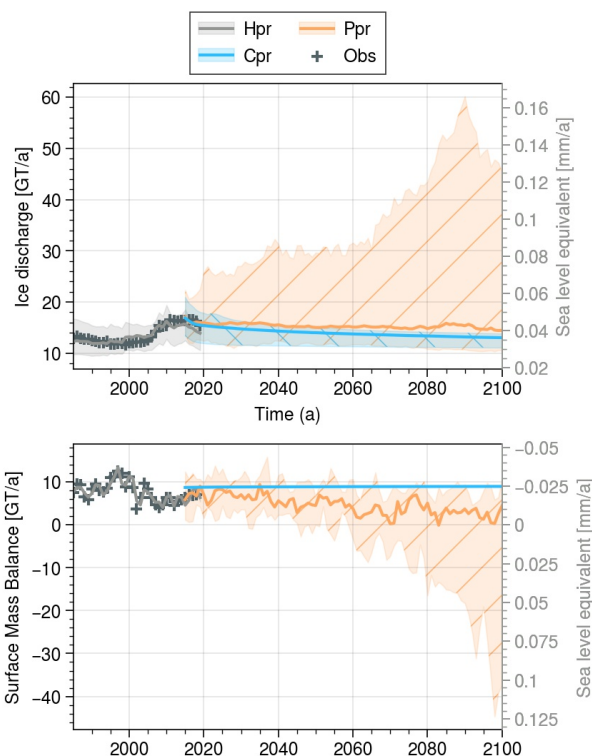


Figure 5. UI ice discharge and SMB over the period 1985-2100 for the hindcast (grey), the predicted (orange with /) and the committed mass loss (blue with \) ensemble simulations. For each ensemble, the mean is represented in solid line and the shading include 95% of the ensemble members. Observation from Mouginit et al. (2019) of the 1985-2019 period are represented by +.

The SMB and the ice discharge have two opposite trends at the end of the century (figure 5). Until the 2090s, some members following the SSP5-8.5 see their discharge increasing sharply, reaching high values of 60 Gt/a, but with a sharp decrease between 2090 and 2100. We attribute this late period decrease to the fact that 2 of the 3 marine-terminated glaciers of the UI catchment become land-terminated from this point onwards for members with large retreat forcings. On the other hand, the

median SMB remains close to current levels at around 6 Gt/a (mass gain) until the 2050s, before falling slowly to around 3 Gt/a. In 2050, members forced by SSP5-8.5 start to have a negative SMB, which becomes permanently negative from 2070 onwards. Looking at the discharge and SMB of Cpr, it can be seen that UI has still not reached an equilibrium in 2100, with a discharge of 13 [11.1,13.9] Gt/a, while the SMB is 9 Gt/a, resulting in a negative mass balance.

3.2 Uncertainty partitioning

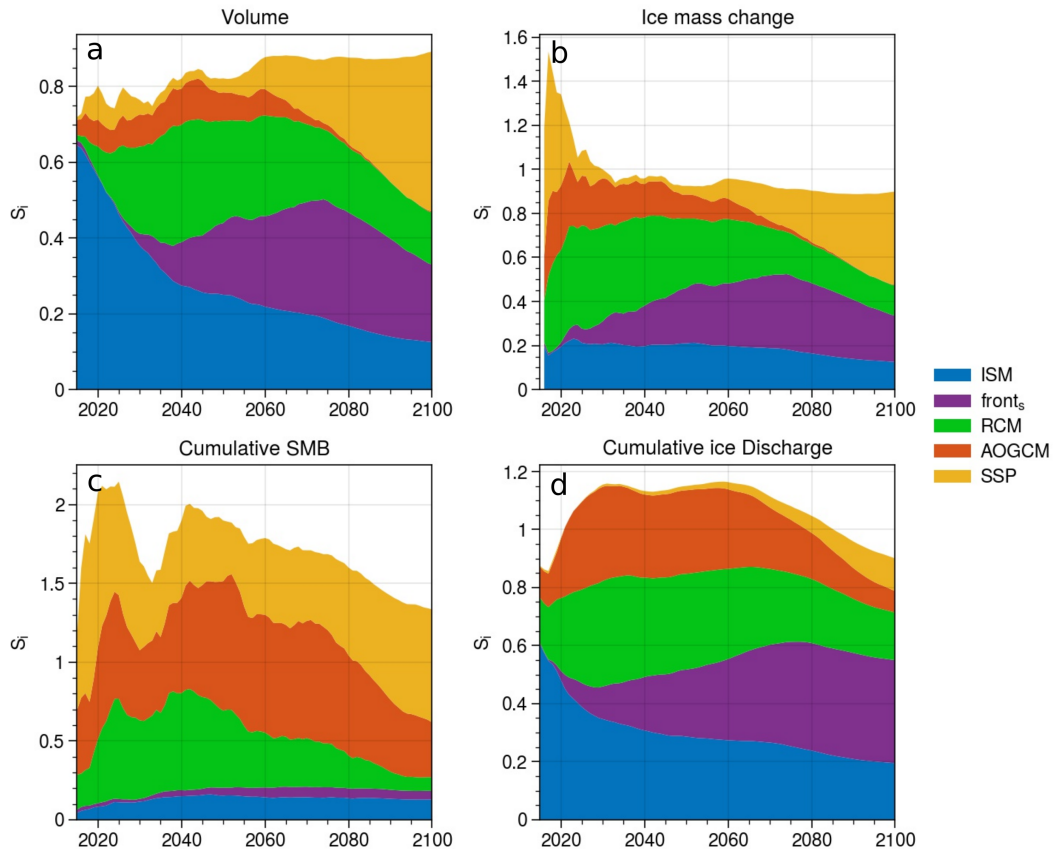


Figure 6. Sensitivity indices for the five sources of uncertainty of Ppr (the dynamics, the front parameterisation, the RCM, the AOGCM and the SSP) for the volume (a), the ice mass change relative to 2015 (b), the cumulative SMB since 2015 (c) and the cumulative ice discharge since 2015 (d).

Figure 6 depicts the evolution from 2015 to 2100 of the sensitivity indices computed with the Predicted prior Ensemble (Ppr), for the volume, the ice mass change, the cumulative SMB and the cumulative ice discharge. Sensitivity to ice mass change is equivalent to the sensitivity of UI's contribution to SLR. To make things simpler, we sum all the indices influencing the ISM (f_{law} , f_{param} , m , E , λ_{reg} , OBS_{inv}) and compare them with the indices associated with the SSP, AOGCM, RCM,

and front parameterisation. Neglecting the sensitivity indices of the parameter combinations leads to a small underestimation of the impact of the dynamics, since part of its influence comes from the parameter combinations.

The sensitivity indices provided in the figure are presented in their non-normalized form. It should be emphasized that a sum of sensitivity indices less than 1 means a substantial impact of specific parameter combinations, e.g. the fact that the influence of the combination of emission scenario and front sensitivity is stronger than the sum of the influences of each, due to non-linearities. Otherwise, if the sum is greater than 1, this implies interdependencies between input parameters, e.g. the fact that SSP, AOGCM and RCM are not independent in our case.

As expected, in 2015 the initial volume is independent of the choice of SSP, RCM, AOGCM and $front_s$ (Figure 6a) and the sum of the ISMs sensitivity indices is equal to 0.65. The value being smaller than 1 is attributed to the interactions between various ISM parameters. The influence of the ISM only diminishes as we move away from this initial state, with the influence of the other sources increasing with very different characteristics.

By 2040, the RCM exhibits the most significant increase in influence on the volume, with a sensitivity index of 0.3, equal to that of the ISM (Figure 6a). Subsequently, from 2040 to 2075, the sensitivity indices associated to RCM and ISM gradually decreases to 0.2. During this period, the influence of the AOGCM diminishes from 0.1 to 0. Conversely, the sensitivity index associated with the front parameterisation experiences the most pronounced increase, rising from 0.1 in 2040 to 0.3 in 2075.

Beyond 2075, the sensitivity indices of the ISM on the volume, front parameterisation, and RCM gradually decline until they reach 0.1, 0.2, and 0.1, respectively (Figure 6a). Meanwhile, the impact of the SSP starts to emerge, becoming non-negligible in the 2050s and significantly accelerating from 2070 onwards. By 2100, the SSP becomes the most influential parameter, with a sensitivity index of 0.45. Throughout this period, the influence of the AOGCM remains at zero.

For the ice mass change in the year 2100, the impact of the parameters exhibits similarities to their influence on total volume, contrasting with cumulative SMB and cumulative ice discharge (refer to Figure Figure 6b,c,d). Specifically, for total mass loss, the influence of the SSP is substantial (0.4), while the front parameterisation (0.2), the RCM (0.1), and the ISM (0.15) also exhibit discernible but lesser effects. In contrast, the AOGCM demonstrates no discernible influence on total mass loss.

As anticipated, the cumulative ice discharge is primarily influenced by the ISM parameters and the front parameterisation $front_s$, ~~which demonstrate the most pronounced impact~~. Additionally, the roles played by the SSP, AOGCM, and RCM are not negligible. The combined sensitivity indices of ISM and $front_s$ exhibit a peak value of 0.6 by 2075 and 0.55 by 2100. This heightened influence is also reflected in ice mass loss, with a peak sensitivity indices sum of 0.5 in 2075. In contrast, the sensitivity indices of SSP, AOGCM, and RCM peak at 0.65 in 2030 and gradually decrease to 0.35 towards the later stages.

Conversely, the cumulative SMB demonstrates strong sensitivity almost exclusively to the SSP, AOGCM, and RCM, with their sensitivity indices reaching approximately 2 at the maximum and 1.1 towards the end of the analysis period. For the ISM and $front_s$, their influence on cumulative SMB remains limited, with sensitivity indices not exceeding 0.2 (maximum 0.15 for dynamics and 0.05 for front parameterisation), owing to feedback interactions with elevation and ice-covered area.

Significant changes in the influence of the SSP emerge since 2050, notably impacting the cumulative ice discharge, the total mass loss, the volume and the cumulative SMB. Except for the cumulative SMB, the SSP influence is almost zero before 2050, before becoming the most important parameter after 2090 for both the total mass loss, the volume, and the cumulative SMB.

The influence of the AOGCM demonstrates an intriguing trend. From 2050 to 2080, the AOGCM’s impact gradually decreases until it reaches zero for ice volume and ice mass change. Concurrently, its effect on cumulative SMB and cumulative ice discharge also diminishes, though it never reaches zero. This intriguing behavior is a result of an equilibrium phenomenon, where AOGCMs with the smallest surface mass balance gains correspond to those associated with the lowest ice discharge losses.

Concerning the sensitivity indices of the ISM parameters for volume, ice mass loss, cumulative SMB, and cumulative ice discharge, the friction parameterisation f_{param} exhibits the highest significance at the end of the analysis period (Fig. C1). In 2100, its sensitivity index is 0.06 for volume, 0.05 for ice mass loss, and 0.1 for cumulative ice discharge, i.e., at least a third of the ISM total. Additionally, the observation used for the friction calibration OBS_{inv} has a substantial impact at the beginning, with a sensitivity index of 0.5 for volume. However, its influence gradually diminishes over time and becomes negligible by 2080 (less than 0.01). Lastly, the [parameter-exponent of the friction law](#) m emerges as another significant factor in 2100 for dynamics, with a sensitivity index of 0.04 for volume, ice mass loss, and cumulative ice discharge.

4 Results: Bayesian calibration

This section present the results of the different steps of our Bayesian calibration as given in Fig. 3. First, we present our cross-validation process, which evaluates the robustness of the calibration methodology and allows us to select only the robust weightings. Second, we perform a factor mapping analysis to assess the impact of these weightings on our six ISM parameters (λ_{reg} , OBS_{inv} , f_{law} , f_{param} , m , and E). Third, we examine the impact of weightings on the model predictions of UI’s contribution to sea level rise.

4.1 Cross-validation

This section section presents the key findings of the cross-validation. As detailed in sec. 2.3.2, the cross-validation is used to assess the ability of the calibration to improve the ensemble performance. The ensemble performance is assessed with the CRPS (Eq. 3) computed using several set of observations that were not used for the calibration. A detailed analysis is given in Appendix D and the main conclusions are summarised below:

1. Weighting using the Student distribution generally exhibited superior performance compared to the Gaussian distribution: by assigning less preference to the best members, the Student distribution effectively reduced total variance and mitigated overfitting. Similarly, increasing σ led to reduced emphasis on the best members and aided in avoiding overfitting. However, excessively high values of σ resulted in decreased CRPS performance due to underfitting. We determined that an optimal compromise is achieved by utilizing the median or mean of the RMSE distribution for determining σ .
2. Utilizing surface elevations and velocities in the weighting process yielded the most robust outcomes, reducing CRPS across all variables. Weighting solely based on ice discharge or volume change improved CRPS for these specific quantities but not for surface velocities and elevations.

3. Introduction of multiple periods into the weighting process enhanced CRPS for volume changes but not for surface elevation and velocity, as it excessively reduced overall variance. To mitigate this effect, it is advisable to increase σ by selecting the 3rd quartile of the RMSE distribution, thereby balancing undesirable reductions in variance while preserving desirable outcomes.
4. The f_{param} weighting scheme generally yielded superior CRPS for volume change and ice discharge but exhibited poorer performance for surface elevation and velocity compared to alternative weighting approaches.

4.2 Factor mapping

Figure 7 shows the prior and posterior distributions of our 6 ISM parameters for two weighting methods. For Full-period weighting, we adopt a Student's distribution with the median as the estimate of σ , along with the integration of the combination of velocity and surface elevation data (ZSxV). In the case of Sub-period weighting, we maintain these characteristics, except for the σ estimate, which is determined by the 75th percentile (SP_Q75) of the RMSE distribution.

While the primary findings are presented herein, additional details can be accessed in appendix C4:

1. Full-period weighting favors members initialised with friction data from the 1990s and 2000s due to lower RMSE values, while members with inversions conducted in 2010 or 2017 exhibit poorer performance, particularly in ice-free areas pre-retreat, due to extrapolation needs. Confidence in predictions increases as data is faithfully reproduced after the ice front retreats.
2. The presence or absence of f_{param} is a significant factor influencing the distribution shift between prior and posterior in Full-period weighting, highlighting its crucial role in accurately reproducing data.
3. Excessively high regularization weight (λ_{reg}) values result in elevated RMSEs due to overly smooth friction fields, emphasizing the importance of balancing regularization strength and model fidelity.
4. Parameters m , f_{law} , and E show no substantial trends in the difference between prior and posterior distributions. However, higher weights are observed for certain values of m , E , and $f_{law} = W$ due to the influence of λ_{reg} , OBS_{inv} , and f_{param} .
5. Sub-period weighting amplifies discrepancies in f_{param} selection, indicating a greater likelihood for accurately replicating distinct periods. This indicates that the members that best reproduce changes in dynamics are those that use parametrisation proposed in Jager et al. (2024).

4.3 Posterior ensembles

Mass changes between 1989 and 2100 for the prior and posterior ensembles are shown in Fig. 8. Results are shown for the Full-period, sub-period and f_{param} weightings. For the full-period and sub-period weightings we use both surface velocities and elevations for the calibration with a Student distribution. For the Full-period σ is the median of the RMSEs distribution,

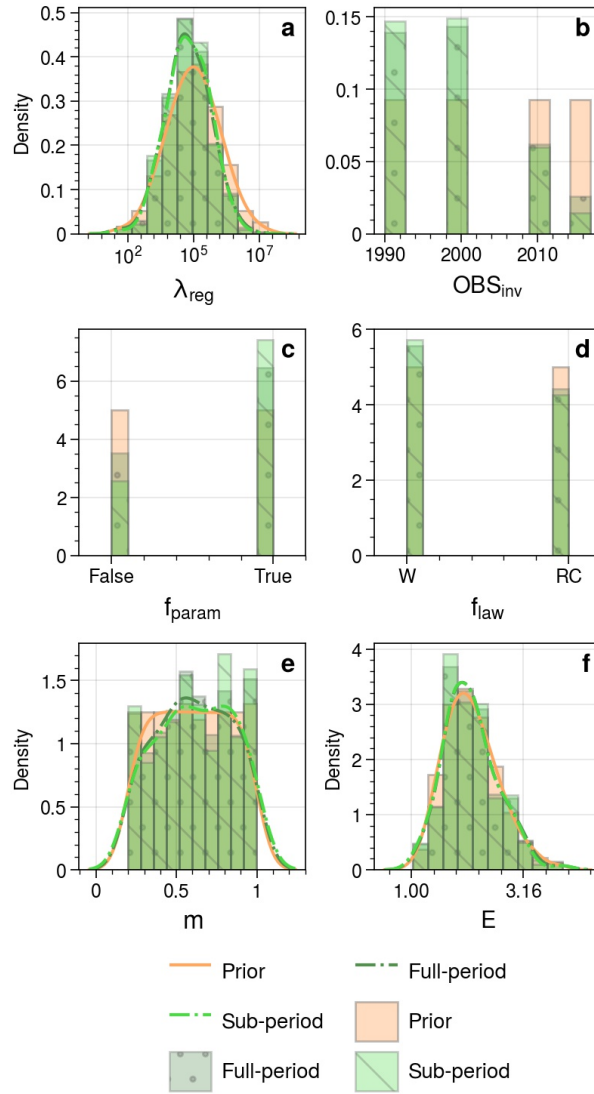


Figure 7. Distribution of λ_{reg} (a), OBS_{inv} (b), f_{param} (c), f_{law} (d), m (e), and E (f) for the prior ensembles (Hpr, Ppr and Cpr) in orange and for the calibrated ensembles (Hpo, Ppo and Cpo) with Full-period in dark green with \bullet and Sub-period weightings in light green with \cdot .

along with the integration of a combination of velocity and surface elevation data (ZSxV). In the case of Sub-period weighting, we maintain these characteristics, except for the σ estimate, which is determined by the 75th percentile (SP_Q75) of the RMSE distribution.

435 4.3.1 Hindcast ensemble

Throughout the hindcast period, weightings based on ISM performance over the period 1985-2019, as the Full-period, sub-period, and f_{param} weightings, has considerably narrowed the mass loss distribution around the observations (Figure 8). This narrowing of the distribution is particularly pronounced for f_{param} weighting (-51% of the 95% confidence interval in 1985) and sub-period weighting (-61%), surpassing that achieved by Full-period weighting (-32%). For f_{param} weighting, the notable
440 reduction in uncertainty mainly arises from adjusting the weights assigned to members with the greatest mass loss, rather than to members with the lowest mass loss. Conversely, the opposite trend is observed for the other two weighting methods. This second pattern is attributed to the selection of members based on the year of inversion (see Figure 7), rather than the presence or absence of f_{param} parameterisation. Specifically, members initialised before the retreat and not employing f_{param} show lower mass losses, which are less consistent with the observed data. Sub-period weighting emerges as a compromise between
445 the other two weighting approaches. It incorporates the more precise selection criterion of f_{param} weighting while retaining the inclusion of ~~lower members~~, similar to the members with a lower mass loss, which are members using inversion data before the retreat.

4.3.2 Control ensemble

The results of the mass loss analysis of the posterior control ensemble (Cpo), are not shown in this section, but these results
450 present similar trends to those observed over the hindcast period. In particular, the reduction in uncertainty is greater for the f_{param} weighting and sub-period weighting approaches. In these cases, the main impact is the exclusion of ensemble members characterized by the lowest mass loss, leading to projected contributions in 2100 of 0.83 to 1.31 and 0.83 to 1.25 mmSLE, respectively. This contrasts with the prior ensemble (Cpr), which ranges from 0.56 to 1.31 mmSLE. For the full-period weighting approach, the uncertainty reduction is more symmetrical, affecting the ensemble members with the highest
455 and lowest mass loss, resulting in a range of 0.64 to 1.26 mmSLE.

4.3.3 Predicted ensemble

Regarding the prediction for the year 2050 and 2100, both the Full-period weighting and sub-period weighting methods exhibit minimal changes in the posterior ensemble, as depicted in Figure 8. The median contribution of Upernavik Isstrøm to sea level rise by the end of the century remains unchanged at 2.7 mm, consistent with the earlier ensemble. Moreover, little revisions are
460 observed in the 50% and the 95% confidence interval, which has been adjusted upwards for both weighting (Fig. 8 d, e, i, m).

In contrast, when using f_{param} weighting for weighting, significant changes are observed in the prediction of the posterior ensemble, leading to a larger projected loss of mass. The median SLR contribution in 2100 increases to 3.0 mm compared to 2.7 mm in the prior ensemble. Moreover, the 50% interval and the 95% confidence interval expands significantly (Fig. 8 g, h).

5 Results: Dependence on SSP

465 To complete this results section, we explored an alternative probability distribution for the SSPs, given its pronounced uncertainty in 2100 (Fig. 6). Contrary to many studies where the results are discussed for different SSPs, our results encompass three scenarios that were almost equally-weighted. This allowed to discuss the sensitivity to the SSP with respect to the other sources of uncertainty. Without any preconceived ideas about their distribution, we have assigned an almost equal weighting to each SSP (Sec. 2.1.3). However, recent evidence suggests that each SSP is not equally likely to occur in the future, with higher
470 probabilities associated with scenarios projected to reach 2 to 3.5°C of warming by 2100 (Raftery et al., 2017; Hausfather and Peters, 2020; Intergovernmental Panel on Climate Change (IPCC), 2022; Hausfather and Moore, 2022; Jr et al., 2022). Drawing from the survey results presented in Tollefson (2021), we propose allocating probabilities of 1/10, 6/10, and 3/10 to SSP5-8.5 (representing more than or equal to 4°C of warming), SSP2-4.5 (indicative of warming between 2.5°C and 3.5°C), and SSP1-2.6 (corresponding to warming below or equal to 2°C), respectively. We base these probabilities on the challenges
475 we face in achieving SSP5-8.5 under current policies (Intergovernmental Panel on Climate Change (IPCC), 2022), which leads us to give more weight to SSP2-4.5. Similarly, SSP1-2.6 is deemed improbable due to the limited extent of CO₂ emission reductions to date (Raftery et al., 2017). However, it is important to acknowledge that these probabilities are approximate estimates and should not be taken at face value. By construction, these probabilities have no effect on the Hpr, and the performance in terms of CRPS, MAE, and STD cannot be evaluated.

480 The SSP weighting on the future prediction has a very significant effect, reducing the median contribution of UI in 2100 from 2.7 mm to 2.2 mm. The 50% and 95% confidence interval are also revised downwards (Fig. 8.p). In 2050, on the other hand, the range of the 95 % confidence interval becomes wider, while the median is revised ~~slightly~~ downwards, from 0.90 to 0.79 mm (Fig. 8.o).

Through the combination of ISM weighting, specifically Sub-period weighting, with the existing SSP weighting (Figure 9),
485 we are able to constrain the wider 95% interval in short-term predictions (2050) compared to SSP weighting alone (Figs. 8.o 9.c). This combined approach results in a reduced interval of [0.53, 1.89], compared to the [0.46, 2.05] interval achieved by SSP weighting alone (Fig. 8.o), and is slightly smaller than the prior interval of [0.52, 1.90]. Moreover, the combination ~~leads to a slight upward shift in the median~~ remains essentially unchanged with the median shifting upwards from 0.79 mm to 0.80 mm.

490 In the context of long-term predictions (2100), the combination with Sub-period weighting also results in an upward shift compared to SSP weighting alone (Figs. 8.p 9.d). The 95% confidence interval shifts from [1.5, 5.7] to [1.6, 5.5], while the median experiences a slight increase from 2.18 mm to 2.25 mm.

By employing this weighting combination, we are able to capitalize on the long-term reduction achieved by SSP weighting, while simultaneously leveraging the uncertainty reduction facilitated by dynamic performance-based weighting in the short
495 and medium term. Notably, dynamic performance-based weighting also contributes to the reduction of long-term uncertainty by excluding members that underestimate past mass loss and provide the lowest SLR contributions.

An alternative method to assess the influence of Bayesian calibration with reduced SSP-related uncertainty entails presenting results for each distinct SSP (Fig. 10). This approach reveals effects that the aggregation of SSPs otherwise conceals. For SSP2-4.5 (d, e), the application of Sub-period weighting significantly tightens the 95% confidence interval across ~~short, medium~~ medium (30% in 2050), and long-term (20% in 2100) projections. Concerning SSP1-2.6 (b, c) and SSP5-8.5 (f, g), the reduction in uncertainty is less pronounced, not mirroring the levels seen in previous studies on Greenland ice sheet (e.g. Aschwanden and Brinkerhoff (2022)). This modest reduction is attributed to the robustness of our model, with a prior close to observations. Nonetheless, a notable shift ~~towards higher probability~~ in probability towards higher values is observed for each SSP, as shown by histograms, boxplots, and median values of figure 10 (b, c, d, e, f, g). Similar results for the Full-period and f_{param} weightings are illustrated in the supplement (fig. S2).

To conclude this section, our exploration yielded two notable findings: i) incorporating information about the primary source of uncertainty (fig. 6) and adjusting its probabilities can notably diminish overall uncertainty; ii) subsequent to reducing this uncertainty, integrating ISM Bayesian calibration further diminishes total uncertainty to a greater extent compared to applying ISM Bayesian calibration alone without updating SSP probabilities.

510 6 Discussion

6.1 Prior ensemble

One of the reasons behind the use of a control run in ISMIP6 was to address the limitations of the models in accurately reproducing recently observed changes of the ice sheets due to artificial model drift, thus making it easier to assess the deviation of each projection from this drift (Goelzer et al., 2020; Seroussi et al., 2020; Nowicki et al., 2020). However, the control run represents the average state of the recent period, accounting for both model drift and climate change already experienced, such as a 0.5°C warming in 1990 compared to pre-industrial conditions (Masson-Delmotte et al., 2021). Consequently, the results obtained by differentiating between a simulation with realistic forcing and a control simulation with constant forcing do not allow us to predict the future evolution of Sea Level Rise (SLR), as they do not take into account the mass loss already underway as a result of past global warming.

520 The initialization method developed in Jager et al. (2024) effectively reproduces the past UI trend, negating the need for control run differentiation as practiced in the ISMIP6 framework. In our case, since we can successfully reproduce recent observations, the prediction (Ppr) offers a comprehensive SLR prediction encompassing this committed mass loss. Subtracting the control (Cpr) from the prediction from the prior ensemble (Ppr) would have underestimated UI's contribution to SLR by approximately 1 mm (i.e. the median contribution of Cpr), almost 35% of the median value of Ppr. This implies also
525 that stabilizing the forcing at present levels does not stabilize the ice sheet, which would continue to melt. However, it is important to note that in this study, we do not employ a constant forcing from the present day in the control experiment or "Cpr". Instead, we utilize a prescribed SMB representative of the period between 1960 and 1990, along with a prescribed front characteristic of the year 2015. It is worth mentioning that using an SMB averaged over more recent years, such as those from the 2010 decade, would yield a higher estimate of melt for Cpr and consequently result in a even greater committed mass loss.

530 Additionally, considering the current climate conditions, it is more likely for the front to retreat than to advance, leading to increased discharge and more mass loss.

6.2 Uncertainty of future prediction

Our sensitivity study on the contribution of sea-level rise differs from previous studies (Aschwanden et al., 2019; Goelzer et al., 2020; Hill et al., 2021) by incorporating the SSP into the parameters, rather than conducting separate analyses for each SSP. 535 However, this approach is not unique and is similar to studies carried out for glaciers outside the Greenland and Antarctic ice sheets (Marzeion et al., 2020), as well as for global temperature and precipitation (Hawkins and Sutton, 2009). As the SSP is included in our sensitivity analysis, in contrast to previous studies on the Greenland ice sheet up to at least 2100, such as Goelzer et al. (2020) and Aschwanden et al. (2019), we have had to reassess the estimates of uncertainty associated with the SSP, the ISM, the RCM, and the AOGCM used in those studies. Herein, we ~~delineate~~describe our approach to this reassessment 540 process and demonstrate that these revised estimates yield results consistent with those obtained in our study.

Specifically, the ISMIP6 study highlights a substantial difference of approximately 58 mm of sea-level equivalent between the means of the RCP8.5 and RCP2.6 scenarios, with the combined uncertainty spanning 125 mm of sea-level equivalent, representing a variability of over 45%. Similarly, the variance between RCPs in Aschwanden et al. (2019) accounts for nearly 35% of the overall uncertainty. In our study, which focuses on a single tidewater glacier in Greenland, we observe a comparable 545 magnitude of uncertainty (40%). Notably, when examining the ISM, the uncertainty attributed to this factor is considerably lower in our study (15%) compared to ISMIP6 (35%). Conversely, the uncertainty associated with front parameterisation is higher in our study (20%) than in ISMIP6 (15%), because we are looking at uncertainty due to parametric differences in one model compared to different models in ISMIP6. The uncertainty of the RCM is not investigated in ISMIP6, preventing direct comparisons. Furthermore, our study reveals zero sensitivity of the AOGCM, in contrast to ISMIP6 where it accounts 550 for almost 30% of the overall variability (36 mm of the 125 mm total uncertainty). This lack of influence can be attributed to a compensatory effect: the AOGCM exerts a non-zero influence on both the ice discharge and the SMB as depicted in Figure 6. Nevertheless, AOGCMs with higher discharge rates are associated with higher SMB, and vice versa, culminating in a comparable net ice mass change across different AOGCMs (Fig. S1). Finally, Rohmer et al. (2022) demonstrated that spatial resolution and front parameterisation were the two most influential parameters in the ISMIP6 framework, which notably does 555 not account for RCM and SSP uncertainties. Regarding the significance of front retreat parameterisation, our study aligns with this observation, demonstrating its substantial influence. In fact, it emerges as the second most influential factor after SSP, which was not explored in the mentioned study. For the spatial resolution, our sensitivity analysis does not take it into account. However, we conducted mesh sensitivity tests during the hindcast period, changing the resolution by factors of 0.5, 2 and 4. These tests revealed that such modifications resulted in approximately a 30% alteration in local velocities at a given time, which 560 depends on the precise timing of the front's position as it moves discretely along the edges of the elements. Nevertheless, the overall mass loss across these varying meshes exhibited minimal variation, amounting to less than 5%.

6.2.1 Reducing uncertainty through ISM calibration

Considering the small sensitivity of the ice mass loss to the ISM, our calibration analysis reaffirms the limitation of reducing uncertainty solely through ISM calibration. Notably, our prior results indicate a considerable reduction in uncertainty compared to broader intercomparison studies like ISMIP6 when employing a single model. This discrepancy can be partly attributed to ISMIP6's more comprehensive consideration of structural uncertainties within the models. Additionally, the prior ensemble already demonstrates a high level of skill in reproducing past observations, as shown in Figure 4. However, it is important to acknowledge that all models must overcome this challenge before a future intercomparison study like ISMIP7, as suggested in Aschwanden et al. (2021). Once this hurdle has been successfully addressed by the ice-sheet dynamics modeling community, it will be essential to focus on reducing other sources of uncertainty.

6.2.2 Reducing uncertainty through climate forcing calibration

Our findings regarding the weighting of SSPs underscore the significant reduction in uncertainty, particularly for long-term predictions with a 20% reduction in the 95% confidence interval, that can be achieved through this approach. This opens up possibilities for similar studies aimed at assigning weights to other model assumptions, such as front parameterisation, the selection of RCMs, or AOGCMs. For short-term predictions, which are of great interest to some practitioners, it appears that the primary sources of uncertainty are associated with RCMs, AOGCMs, and front parameterisation. ~~While there remains a substantial level of uncertainty associated with~~ Although significant uncertainty remains regarding ice sheet dynamics for UI, ~~and some aspects have not been explored~~ with certain aspects still unexplored (e.g., bed elevation), ~~it appears that we are nearing the practical threshold for achievable reductions while maintaining~~ we appear to be approaching the practical limit for uncertainty reduction while preserving the robustness of our results ~~concerning~~ related to these dynamic processes of GrIS, ~~unless other sources of uncertainty are addressed first. Specifically, after reducing the uncertainty associated with the SSPs, applying a weighting to the ISM further reduces uncertainty by 10% by 2100 (Ppo in fig. 8.j and 8.a).~~

In the context of front retreat parameterisation, despite its foundation in observational data, there remains significant room for reducing associated uncertainties. In our study, we have considered two sectors, the CW and NW, at three distinct sensitivity levels (low, medium, and high) to prevent unwarranted confidence in our findings. Applying the parameterisation to the hindcast period results in a uniform retreat of all branches, with 6 km for the highest sensitivity (high sensitivity of the centre-west sector) and 0.9 km for the lowest sensitivity (low sensitivity of the north-west sector). In comparison, UI-N retreated by 5.7 km and UI-S by 1.1 km over the same period (Fig. 1). To improve the parameterisation, it will be necessary to take into account additional factors beyond currently considered runoff and far-field ocean temperature changes, which do not allow for the difference in ice dynamics between the different ice streams as shown here for Upernavik Isstrøm. Furthermore, given the significant influence of this front parameterisation on the ice discharge and the mass loss of UI, as revealed by the sensitivity analysis, it seems important for the scientific community to engage in further research aimed at improving this characterization of front retreat and introducing a more physics-based formulation of this parameterisation. Such efforts would require a comprehensive analysis of past behavior, along the lines of previous studies (Wood et al., 2021), followed by calibration efforts for an appropriate calving

595 law (Bondzio et al., 2018), and investigations into the complex interactions between ocean, atmosphere and outlet glaciers (Slater et al., 2019).

In the realm of RCMs, multiple studies have been conducted to compare these models with data obtained from the Greenland ice sheet (Fettweis et al., 2020; Vernon et al., 2013). These comparative analyses serve to identify the biases inherent in different RCMs and guide efforts towards their correction in subsequent iterations. However, despite these endeavors, the various models
600 continue to yield significantly divergent results, attributable in part to disparities in the underlying physics employed and the down-scaling techniques used. For example, in our previous study (Jager et al., 2024), we demonstrated that members using RACMO, which employs a 1 km statistical down-scaling approach to the 5.5 km grid (Noël et al., 2016), better reproduce past trends in surface elevation than the MAR model without statistical down-scaling (Fettweis et al., 2017). One potential solution to address the disparities among RCMs is to incorporate multiple ensemble members from these models, accounting
605 for their associated uncertainties. This presupposes that the RCMs themselves undertake uncertainty quantification to follow the bayesian approach proposed in Aschwanden et al. (2021). By doing so, it becomes possible to generate a range of forcing scenarios for both hindcast and forecast periods and evaluate their performance against past surface elevation observations. Efforts can also be directed towards reducing uncertainty by promoting convergence among different RCMs, contingent upon them duly accounting for their intrinsic uncertainties.

610 Considering the substantial impact of the SSP on uncertainty, it would be valuable to conduct a more thorough examination of this uncertainty, particularly given that SSP2-4.5 and SSP1-2.6 exhibit similar outcomes in this study. Currently, many studies primarily focus on the SSP5-8.5 scenario, which yields striking results due to its high level of warming (Hausfather and Peters, 2020), and only a few include SSP1-2.6 or SSP2-4.5, as used in this study. However, considering the notable differences in results between SSP2-4.5 and SSP5-8.5, a more refined discretisation of future scenarios would provide a more comprehensive
615 understanding of uncertainty in future sea-level rise projections. This will also help macro-studies such as McKay et al. (2022) to better identify at what level of warming the GrIS and AIS tipping points may be exceeded.

6.3 Cross-validation method for bayesian calibration

To address the challenge of spatial and temporal correlation and its impact on model weighting, various approaches have been previously explored. We discuss three methods here. The first approach involves the utilisation of aggregated data, such as
620 volume and discharge changes, as it was used with a single global value in Ritz et al. (2015) for calibrating the future of Antarctic Ice sheet with the mean rate of change for each sub-catchment. However, by using time-series, it does not effectively resolve the issue of temporal correlation as used in Aschwanden and Brinkerhoff (2022) with the mass calibration. The second approach employs a performance metric, which can be interpreted as the distance between the observed and modeled fields, effectively treating multiple observations as a single observation (i.e., n_{obs} is then equal to one in Eq. 12). This is the method
625 used in our study. For example, in a different context focused on constraining a calving law, Bondzio et al. (2018) proposed an approach to weight ensemble members using a metric that measures the distance between each member's front and the observed one. In other contexts of Antarctic Ice Sheet modeling, Pollard et al. (2016) and Albrecht et al. (2020) also proposed weighting methods based on a metric that measures the performance of each member. A third option is to use one observation

for each mode (distinct group of ensemble members with similar characteristics) of the ensemble using principal component decomposition. In the domain of glaciology, Wernecke et al. (2020) implemented the third approach by employing it in the context of the Amundsen Sea [bay embayment](#). The calibration process utilised two-dimensional satellite data reflecting surface elevation change. Notably, this investigation conducted a comparative analysis, by comparing this mode-based approach with both the first method (i.e., aggregated data approach) and an approach that kept all the information encapsulated in the field of view (Eq. 12). The study's results indicated that this mode-based approach succeeded in reducing uncertainty to a greater extent compared to the approach utilising aggregated data but not as effectively as an approach that harnessed the complete observation field. The study postulated that this second aspect could signify potential overconfidence in the retrieved parameter values or, conversely, a more efficient exploitation of the available information. However, it is worth noting that the study did not perform an evaluation of the calibrated ensemble's performance, leaving a distinction between these two possibilities uncharted.

Our validation method responds to the limitations raised above and represents a significant advance in Bayesian calibration within model ensembles of ice sheet modelling. We used a cross-validation approach that allows us to examine the diverse impacts of weighting choices and mitigate the risk of overfitting. However, it is important to acknowledge that the selection of hyperparameters (e.g., number of parameters taking into account for the ISM sensitivity analysis) itself may contribute to overfitting, and we have yet to identify an effective strategy to address this challenge.

While there is room for further improvement in our method, the unique characteristics of glaciology pose challenges in drawing inspiration from other scientific disciplines. In contrast to hydrology, meteorology, or oceanography, where a wealth of events can be used for weighting or calibration, glaciology often deals with a limited number of observed events. For instance, in hydrology, multiple flood events can be employed for weighting and calibration, with additional events available for validation (Hallouin et al., 2020). In contrast, glaciology typically involves only a single observed retreat event per catchment, as demonstrated in our study of UI. Consequently, the application of such techniques becomes unfeasible in glaciology. Nonetheless, the notion of calibrating and validating parameters on a catchment-specific basis holds great promise, as it would enable a more targeted parameter selection within individual catchments rather than considering the entire ice sheet as a whole. To effectively validate the calibration of parameters on a per-catchment basis, it is imperative to identify a glacier exhibiting dual events (e.g., two major retreats of the same front since the 1980s). Subsequently, the model ensemble can be calibrated using the initial retreat data, followed by a comparison of the calibrated model's CRPS performance against that of the non-calibrated model. Such a case study could also serve as a basis for comparing the calibration with weights as developed here, against other transient data assimilation methods as developed in Goldberg et al. (2015).

Furthermore, the validation approach employed in this study has demonstrated the additional benefits of transient calibration compared to snapshot inversion, i.e. the traditional inverse method of friction calibration. It is particularly in scenarios where a front retreat occurs, as evident in the case of the substantial retreat of the UI-N and UI-C fronts. In contrast, when there are no significant front retreats (UI-S) or velocities are low, implying a limited role for dynamics (UI-SS), calibration does not seem to offer any discernible improvements. This observation is likely attributable to the fact that, in the absence of substantial changes in dynamics, all ensemble members can effectively reproduce these dynamics through inversion alone.

Our study underscores the substantial impact of calibrating with velocity and elevation data (Full-period weighting) in
665 diminishing the uncertainty linked to hindcast ice mass loss in the UI region, especially when considering their temporal
aspects (sub-period weighting). This reduction in uncertainty opens up possibilities for data assimilation of past velocity and
elevation data inspired of Goldberg et al. (2015) or Gillet-Chaulet (2020), offering a way to reconstruct discharge with better-
characterised uncertainties compared to the conventional input-output method. Using advanced transient data assimilation
670 techniques can lead to enhanced performance in terms of cumulative ice discharge, moving beyond the limitations of the
simplistic gate-based approach. By incorporating velocity and elevation data through data assimilation, uncertainties related
to velocities, surface elevation, and bed elevation can be effectively addressed, making the use of gates unnecessary. This
approach represents a promising advancement in improving the accuracy and reliability of ice discharge reconstructions.

6.4 Insights for future studies

Thanks to our validation methodology, designed to mitigate the risk of overfitting, we can assert the reliability of our findings
675 concerning future sea-level rise and the interpretation of related outcomes. In this context, we offer valuable insights that
hold significance for ice sheet modelers concerned with bayesian calibration through the weighting choices and retrospective
modeling.

6.4.1 Use of bayesian calibration

Our investigation reveals that the selection of weighting strategies for bayesian calibration, encompassing the probability
680 distribution shape, the determination of an appropriate standard deviation (σ), and the incorporation of multiple periods, can
precipitate over-adjustment during the calibration process. Opting for an overly narrow distribution or favoring a distribution
with very thin tails as the Gaussian over a distribution with fatter tails as the Student's t can result in overfitting, wherein only
a few high-performing members are emphasized, thereby disregarding crucial information. This observation resonates with
findings presented by Jiang and Forssén (2022), wherein they highlight significant challenges arising from the utilization of
685 complex likelihood functions (as encountered in our study with multiple periods) or extremely small data errors (represented
by excessively small σ values). Such circumstances may lead to the selection of a limited number of members, potentially
overlooking vital aspects of the posterior distribution. Consequently, cautious consideration is warranted when employing
these techniques, and our validation approach serves as a safeguard against such pitfalls.

Regarding the selection of data, our analysis revealed a notable asymmetry between spatialized data, such as speeds and
690 elevations, and global data, such as ice discharge and total mass loss. Specifically, when members were chosen based on their
ability to accurately reproduce velocities and elevations, it resulted in an overall enhancement in the ensemble's performance
for both spatialized data and global indicators like ice discharge and mass loss. However, the converse was not observed to hold
true. This discrepancy can be attributed to potential compensatory effects, wherein a model that closely matches the observed
discharge may exhibit excessively high velocities and disproportionately low elevations. Conversely, a model that accurately
695 represents velocities and elevations will inherently yield a satisfactory discharge estimation. Additionally, selecting members

based on spatialized data also facilitates improved reproduction of other phenomena that indirectly influence discharge, such as shear margins.

We conducted an analysis of the influence of sub-periods that characterize different phases, namely before, during, and after glacier retreat. Our findings indicate that the use of sub-periods results in a slightly improved selection of members using parameterisation compared to Full-period weighting, as the former exhibits better representation of glacier acceleration. This approach can be considered as an intermediate method between f_{param} weighting and Full-period weighting, particularly during the hindcast period. However, it should be noted that the selection process is still strongly influenced by the choice of inversion data, which becomes less influential in future predictions. A potential future approach could involve using only pre-retreat data to create a new ensemble, enabling a slightly more refined selection based on other model parameters. This calibration method also provides more relevant information, as it demonstrates the model's ability to accurately reproduce past total mass change data, which aligns with our ultimate objective. Consequently, we place slightly more confidence in Sub-period weighting than in Full-period weighting.

6.4.2 Friction law

The most influential parameter within the ISM, regarding the reproduction of past Upernavik Isstrøm behavior, is the choice of input data for the inverse method of the friction field. Weights are notably larger when using inversion data from the pre-retreat period (1990s and 2000s). This is because no extrapolation is needed in the ice-free areas during this period, in contrast to post-retreat inversions where extrapolation is necessary due to ice front retreat, introducing additional uncertainties in their performance assessment. Consequently, post-retreat inversions exhibit lower performance in ice-free areas before the retreat. The accurate reproduction of data when the front retreats instills greater confidence in our predictions, aligning with the observed trend of front retreat. However, if one wishes to delve further back in time or undertake a paleo-climatic study, extrapolation becomes necessary (e.g., Haubner et al., 2018). Thus, the choice of friction field extrapolation will become a crucial issue as it significantly influences the result, as previously shown in Jager et al. (2024).

Concerning the shape of the friction law, our findings emphasize that incorporating the sub-hydrological effect—albeit in a parameterized manner as demonstrated in this study—is crucial for accurately simulating the historical dynamics of the UI. Additionally, inclusion of this effect is associated with an amplification of projected future mass loss of the glacier, consistent with expectations outlined in Jager et al. (2024). In that study, we highlighted the significance of the sub-hydrological effect and posited that its consideration would likely exacerbate glacial mass loss. Moreover, the findings related to parameter selection indicate that the role of parameterisation is more crucial than the specific choice of friction law formulation when it comes to reproducing the observed data. In Joughin et al. (2019), reducing friction near the front probably contributed as much, if not more, to obtaining better agreement with observed data than using a regularized Coulomb law. This suggests that a Budd law, whose formulation is close to that used here for members using Weertman's law and which takes subglacial hydrology into account, at least in a parameterised way, would perform just as well as the regularized Coulomb law in reproducing past acceleration of UI. For Greenland tidewater glaciers, Choi et al. (2022) also showed that friction laws that include a parameterised dependence on the effective pressure better reproduce the observed acceleration and mass loss of the past decade

730 in Northwest Greenland. However, despite the promising results from our previous paper, the predominance of inversion data had a moderating effect on the extent of the observed improvements. In the previous study, only front-end post-processing data were employed for the inversion process. In contrast, the current study incorporates data from both the pre- and post-retreat periods, which noticeably influenced the calibration due to the necessity for extrapolation. In the future, as the front continues to retreat, it is anticipated that this influence will diminish, rendering extrapolation unnecessary in ice-covered regions.

735 **7 Conclusions**

In conclusion, we have shown that our initialization method for Elmer/Ice effectively captures trends of ice mass change and enhances the credibility of future tidewater glacier contributions to sea-level rise, aligning with recommendations from Aschwanden et al. (2021). This approach not only characterizes model uncertainties but also reproduces past observations, akin to successful efforts with ISMs such as ISSM and PISM for Greenland (Aschwanden and Brinkerhoff, 2022; Nias et al., 2023).
740 By addressing model drift, our study moves beyond conventional projections and sensitivity analyses (Goelzer et al., 2020; Seroussi et al., 2020), signaling a paradigm shift towards more localised and precise sea-level rise predictions, particularly for polar ice sheets.

Our sensitivity analysis emphasizes that, in 2100, the most significant factors affecting the future contribution of Upernavik Isstrøm to sea-level rise are the shared socio-economic pathways (SSP), followed by the front retreat parameterisation. Regional
745 climate models (RCM) and ISM have a slightly lesser impact on sea level rise contribution at long term, while atmospheric ocean general circulation models (AOGCM) play a minor role. However, in the short and medium term, for results that may be of interest to public policy, the influence of the SSP is much less, with uncertainties coming mainly from the other 4 sources.

Furthermore, our ISM calibration with different weightings brings about marginal improvements in 2100 due to its relative low impact on the ice mass loss sensitivity. However, the combination of multiple weightings shows promise, suggesting
750 that a more holistic approach may yield greater benefits. In addition, our methodology combining bayesian calibration and cross-validation has generated noteworthy findings of relevance to the scientific community: (i) Spatially-based weighting demonstrates enhanced robustness compared to globally-based weighting strategies; (ii) Temporal partitioning of the calibration period, particularly considering calving events (prior, during, and post-calving), significantly reduces overall uncertainty while preserving comparable model performance; (iii) The model initialization using inverse methods exhibits robustness,
755 particularly in scenarios involving glacier front retreat, with friction initializations derived from pre-retreat data yielding superior performance. These insights contribute to advancing our understanding of ice sheet modeling and calibration techniques, offering avenues for further research and improvement in future studies.

Looking ahead, it would be interesting to extend our methodology to the scale of the Greenland ice sheet. This would involve creating frontal masks dating back to the 1980s, collecting velocity and elevation data over this hindcast period for the
760 peripheral regions of the ice sheet, and running ensemble simulations for comprehensive comparisons. Such an undertaking could lead to a better understanding of ice sheet dynamics and improved forecasting capabilities.

Appendix A: Model description

765 The ISM employed in this study is the parallel finite-element code Elmer/Ice (Gagliardini et al., 2013). The model domain corresponds to the UI catchment, as depicted in Fig. 1. The model used here follows the methodology presented in Jager et al. (2024), and we provide a concise overview of its main aspects in this section. For a more comprehensive understanding, we refer readers to the original paper.

770 The Shelfy-Stream Approximation, also called Shallow-Shelf Approximation (SSA, MacAyeal (1989)), is used for the force balance equations together with the non-linear Glen's flow law (Glen and Perutz, 1955) for the constitutive relation. It relies on three parameters: the Glen exponent n , the rate factor A , and the enhancement factor E . Thermo-mechanical coupling is disregarded due to the short time period considered (Seroussi et al., 2013), and for simplicity, the rate factor A is assumed to be constant over time. The initialization of A involves using a present-day 3D ice temperature field computed with SICOPOLIS (Greve, 1997), which is preceded by a paleo-climatic spin-up and incorporates the prefactors and activation energies provided 775 by Cuffey and Paterson (2010). Uncertainties related to this flow law are commonly accounted for through the enhancement factor E , which serves as a scaling factor to A .

In this study, two distinct friction laws ($f_{law} = W$ or RC) governing the relationship between basal velocity \mathbf{u}_b and basal shear stress $\boldsymbol{\tau}_b$ are employed for grounded areas:

- A Weertman friction law (Weertman, 1957):

$$780 \quad \boldsymbol{\tau}_b = -\beta_W \|\mathbf{u}_b\|^{\frac{1}{m}} \frac{\mathbf{u}_b}{\|\mathbf{u}_b\|} \quad (\text{A1})$$

- A regularized-Coulomb friction law (Joughin et al., 2019):

$$\boldsymbol{\tau}_b = -\beta_{RC} \left(\frac{\|\mathbf{u}_b\|}{\|\mathbf{u}_b\| + u_0} \right)^{\frac{1}{m}} \frac{\mathbf{u}_b}{\|\mathbf{u}\|} \quad (\text{A2})$$

Both equations (A1) and (A2) involve a friction parameter (β_W or β_{RC} respectively), a positive exponent m , and a threshold velocity u_0 in the case of the regularized-Coulomb friction law (Joughin et al., 2019). The friction parameter β can either remain 785 constant over time ($f_{param} = \text{False}$) or take into account the effective pressure in a parameterised way (Jager et al., 2024) as in Jager et al. (2024) ($f_{param} = \text{True}$):

$$\beta = \beta_{ref} + \beta_{lim} \frac{d}{d + d_{lim}} \quad (\text{A3})$$

where β_{ref} represents a time-independent reference field, d denotes the distance to the front, and β_{lim} and d_{lim} are two parameters accounting for the dependence of β on this distance.

790 Significant uncertainties surround the parameter β , often initialised based on current topography and surface velocity observations (OBS_{inv}) using an inverse approach that minimizes a composite cost function. This cost function comprises terms assessing the discrepancy between observed and modeled velocities, a regularization term promoting a smooth friction field solution, and a third term that penalises flux divergence anomalies (Gillet-Chaulet et al., 2012). This two last terms are weighted with the parameters λ_{reg} and λ_{div} that are adjusted using a L-curve approach (Gillet-Chaulet et al., 2012). The inversions in
795 this study are conducted at the UI scale, distinguishing it from our previous study that used inversions previously made at the GrIS scale (Gillet-Chaulet et al., 2012).

For the evolution of the bottom and top free surfaces, we solve the continuity equation for the ice thickness using the flotation condition. As we do not resolve the thermo-mechanical coupling, we neglect the basal melt rate in grounded areas. We also set it to 0 in floating areas, as they remain small during our simulations. For the surface mass balance \dot{a}_s , we use outputs from a
800 RCM.

The unstructured mesh is refined near the ice front and in areas where high velocity or thickness curvatures are observed, featuring element sizes ranging from 150 m to 600 m within the initial 50 km and increasing to around 5 km further upstream. A time step of 5 days is used.

The temporal variation of the glacier fronts is treated as an external forcing, with their positions considered fixed within each
805 time step. The mesh remains unchanged, and the effective ice-ocean boundary is defined by the edges connecting glaciated and deglaciated elements, resulting in discrete changes over time. Deglaciated elements are subsequently deactivated and excluded from the numerical solution.

Appendix B: Observation description

For surface velocity and surface elevation, we used the same spatio-temporal data as presented in our previous work (Jager
810 et al., 2024). These observational data have a grid resolution of 150 m and are annually averaged to improve spatial coverage. However, these data are somewhat unbalanced, exhibiting better coverage in both time and space from the 2010s onward compared to earlier years. To facilitate model-data comparison, the model fields are bilinearly interpolated onto the same regular grid as the observations.

The ice discharge data used in our analysis is a compilation of published data from Mankoff et al. (2019), King et al. (2018),
815 and Mougnot et al. (2019). This data corresponds to the flow of ice through the gates, assuming that the average velocity over the thickness is equal to the observed surface velocity. As a result, the derived ice discharge data may exhibit variations depending on the positioning of the gates, the selection of ice heights, and the velocity measurements used. In addition, J. Mougnot has redone a set of discharges, this time using bedmachine rather than a flight line which we call MougnotV2, and the data obtained are close to those of Mankoff et al. (2019). Our observation of ice discharge is then an average of these four
820 dataset. For the model, we used the same methodology, by taking the gate defined in Mankoff et al. (2019).

The total ice mass loss at the catchment scale is assessed using the input-output method (Mougnot et al., 2019). This method entails subtracting the ice discharge from the surface mass balance outputs of RACMO. In the ISM, the volume is an output

obtained by integrating the thickness over the entire active domain. Consequently, the change in volume encompasses the variations due to front retreat, which are not considered in the input-output approach. Nevertheless, this change in volume was found to be negligible (less than 1%).

Appendix C: ISM parameters

C1 Factor fixing and factor mapping

As detailed in the primary manuscript, modifications have been made to the dynamic parameters in comparison to Jager et al. (2024):

- 830 – the ice rheology : Considering the enhancement factor (E), we ascertained that members with E between 1 and 3.5 yield better results. Consequently, we transformed the distribution from continuous between 0.5 and 5 to a log-normal distribution with parameters $\mu = 0.8$ and $\sigma = 0.5$ to enhance the values within the range [1, 3.5].
- the friction law : To distinguish between the influence of the choice of friction law and the presence of the parameterisation described in Jager et al. (2024), we introduce two new parameters. The first parameter, denoted as f_{law} , is characterized by two states: "RC" when the member employs the regularized Coulomb friction law and "W" when utilizing the Weertman friction law. The second parameter, termed as f_{param} , possesses binary values: "true" to signify the friction parameter β_{RC} or β_W evolving according to Eq. A3, and "false" when the friction parameter remains constant. We also keep in our parameter space the choice of exponent of the friction law m . Finally, the impact of u_0 on model outputs was found to be less significant than that of the other ISM parameters. We therefore use a single u_0 of 300 m.a⁻¹, which is similar to the median value of our previous study and to the one used in Joughin et al. (2019).
- 840 – the calibration of the friction field : For the friction field, we do not take into account the uncertainty of the whole field (i.e., one parameter per mesh node) but we consider only the uncertainty of the hyper-parameters of the inverse method, which considerably reduce the parameter space. Our two hyper-parameters are the regularization weight λ_{reg} , and the observed data used for the inversion OBS_{inv} . In the previous study, the impact of λ_{div} on friction was found to be less significant than that of the other ISM parameters and we therefore use a single λ_{div} . In terms of the overarching framework, we have implemented modifications to our inversion procedure. In our previous study, a 40-member inversion had previously been carried out at the scale of Greenland. In contrast, the present study involves individual inversions for each member at Upernavik Isstrøm scale, affording enhanced continuity within the parameter space of inversion. A L-curve analysis was conducted to determine the revised distribution profile of λ_{reg} , alongside the optimal value for λ_{div} . While our previous study used five observational velocity datasets from the 2010s, aligned with BedMachine surface elevations, the current approach employs average velocities and altitudes representative of the entire temporal span from 1985 to 2019. These averages were computed using our own dataset, spanning distinct periods for OBS_{inv} : 1985-1995, 1995-2005, 2005-2015, and 2015-2019. [Due to the presence of ice-free regions in certain areas of the glacier](#)
- 845
- 850

855 following its retreat around 2005, it is imperative to extrapolate the friction field in these regions for members using
observational data from 2005-2015 or 2015-2019. When the parameterization of the effective pressure change effect is
enabled (i.e., $f_{param} = \text{True}$), the time-independent reference field β_{ref} is set to 0 in the extrapolated areas. Conversely,
when parameterization is disabled ($f_{param} = \text{False}$), either β_W or β_{RC} are set to 0 is utilized. The implications of the
chosen extrapolation method are further examined and discussed in Jager et al. (2024).

- 860 – the initial geometry : With regard to the initial surface elevation, we have established that it exerts a minimal influence
on both ice mass loss and ultimate volume. Compared with this previous study, we have therefore fixed the parameters
influencing only this initial surface, namely the period for relaxation, which we set at 5 years, and the period over which
the SMB was averaged, which is now the average over the period 1960-1990. By doing so, the initial surface depends
only on the ISM parameters (material property, friction law and friction field calibration).

C2 Calculation of sensitivity indices

865 Accurately computing sensitivity indices of an order greater than one usually requires a large number of simulations and meth-
ods have been developed to optimise the experimental design (Reed et al., 2022). However, due to the extensive computational
demands of our model, conducting such a large number of simulations is impractical. Therefore, to simplify the approach,
we opted to focus solely on first-order sensitivity indices (Eq. 2), which assess the individual impacts of the parameters with-
out considering their interactions, which correspond to higher index orders. These sensitivity indices are computed using the
870 ANOVA method (Brevault et al., 2013; Lamboni et al., 2011). When the probability distribution of X_i is discrete, determining
 $\text{Var}(E[Y|X_i])$ involves averaging the Y values for each value that X_i assumes and then calculating the variance of the means
of these distinct subgroups. For continuous probability distributions of X_i , we discretised the distribution, assuming only four
distinct values for X_i . This approach simplifies the problem significantly but results in the loss of subtleties present in continu-
ous distributions. Brevault et al. (2013) emphasized the importance of the number of levels chosen for discretisation. Different
875 levels can lead to variations in the sensitivity indices, as small-scale variations in continuous parameters may be smoothed out
during discretisation. So we tested the convergence of these indices as a function of the number of members considered, and
found that they converged towards a value that changed by less than 3 percents from fifty members upwards. Given the primary
objective of qualitative result discussion rather than precise estimation, the ANOVA method is well-suited for this purpose.
Our focus remains on the identification of principal influences and overarching patterns, supported by the figures that offer
880 approximate magnitudes of the observed effects.

C3 Sensitivity analysis

Figure C1 illustrates the evolution of sensitivity indices for ISM parameters from 2015 to 2100, computed using the Predicted
prior Ensemble (Ppr), concerning ice mass, ice mass change, cumulative SMB, and cumulative ice discharge. The sensitivity
indices provided in the figure are presented in their non-normalized form.

The Full-period weighting method used shows a clear preference for members for whom friction initialization was done with data from the 1990s and 2000s, as shown by the weights assigned (Fig. 7.b). This preference is attributed to the comparatively lower RMSE values observed for these members. Conversely, members with inversions conducted in 2010 or 2017 necessitate extrapolation in regions where the ice front has retreated, thereby introducing additional uncertainties in their performance assessment. Consequently, these later inversions exhibit poorer performance in ice-free areas before the retreat due to the need for extrapolation. Notably, the influence of the inversion year diminishes considerably after the retreat of the ice front. The fact that we faithfully reproduce the data when the front retreats gives greater confidence in the results of our predictions, as the front tends to retreat.

The presence or absence of the f_{param} emerges as the second prominent factor influencing the distribution shift between the prior and posterior in the Full-period weighting process, subsequent to OBS_{inv} (Fig. 7.c). This finding aligns with the findings of Jager et al. (2024), where we demonstrated the crucial role of this parameterisation in enabling the model to accurately reproduce data spanning the period from 1985 to 2019.

Regarding the regularization weight of the cost function, λ_{reg} , the distribution tends to shift towards lower values (Fig. 7.a). This implies that excessively high λ_{reg} values result in elevated RMSEs due to an overly smooth friction field. This result is noteworthy, as it suggests that solutions with less smoothness, potentially influenced by data noise, are not necessarily of inferior quality. This scenario is preferred over excessive regularization, highlighting the importance of striking a balance between regularization strength and model fidelity.

Regarding the parameters m , f_{law} , and E , there are no substantial trends in the difference between the prior and posterior distributions (see Figure 7 d, e and f). However, for the parameter m , members with values exceeding 0.4 or approximately 0.25 exhibit higher weights, although this outcome could be attributed largely to the influence of λ_{reg} , OBS_{inv} , and f_{param} . Likewise, members characterized by an E value near 1.9 and $f_{law} = W$ demonstrate increased weights. In hindsight, our initial choice of distribution for these three parameters proves to be suitable due to the absence of significant changes observed in their posterior distributions.

In terms of Sub-period weighting (see Figure 7), the notable alteration is the amplification of the discrepancy in f_{param} selection. Specifically, the posterior probability rises from 6.4 to 7.4, indicating a greater likelihood for parameterised members to accurately replicate distinct periods. These findings provide further validation and support for the outcomes reported in Jager et al. (2024).

Appendix D: Cross-validation of bayesian calibration choices

Figure D1 visually presents the normalized Continuous Rank Probability Score (CRPS) as a performance metric for distinct calibrated ensemble configurations. These configurations encompass Full-period weighting, Sub-period weighting, and f_{param} weighting approaches. The CRPS are computed for ice discharge, cumulative ice discharge, surface elevation, and surface velocity, providing a comprehensive view of the calibrated ensembles' performance across various datasets. In addition, it is

important to note that similar figures illustrating the Mean Absolute Error of the ensemble mean (MAE, Eq. 4), the standard deviation of the ensemble (STD, Eq. 5) and the non-normalized values are not included to avoid duplication (see supplementary material, figures S1 to S5). Moving beyond the graphical presentation, this section undertakes a thorough analysis of the calibrated ensemble's performance in relation to Hpr under different weightings. We begin by scrutinizing the full-period weighting approach, delving into how variations in probability density form, estimate used for σ , and data choice for the calibration. Subsequently, we evaluate the outcomes of sub-period weighting and f_{param} weighting methodologies.

In general, all the various calibrations result in notable improvements in the CRPS of the ensemble. This improvement is evident by the prevalence of blue shades (67%), indicating lower CRPS values, compared to red shades (33%), indicating higher CRPS values, and the presence of more dark blue shades than dark red shades. For all combinations, the STD is reduced by 20 [4,56]% for cumulative ice discharge, 18 [5,47]% for ice discharge, 10 [2,23]% for surface elevation, and 17 [2,34]% for velocity. Furthermore, the MAE is also reduced overall, with a decrease observed in 70% of the cases.

Notably, significant differences are observed between the CRPS of the different sub-catchments: for the cumulative ice discharge and ice discharge, the CRPS rarely increases for UI-S and UI-SS, while the opposite is true for UI-N and UI-C. This disparity corresponds to lower CRPS values on cumulative ice discharge and ice discharge before calibration. For UI-S and UI-SS, the CRPS before calibration on cumulative ice discharge is 0.07 Gt and 0.06 Gt, respectively, compared to 0.22 Gt and 0.43 Gt for UI-N and UI-C. Similarly, their CRPS on ice discharge is also lower, at 1.1 Gt/a and 0.8 Gt/a, compared to 1.7 Gt/a and 4.1 Gt/a for UI-N and UI-C, respectively. The regions where CRPS is lower before calibration correspond to areas where the front retreat was not brief, as seen in the case of UI-N and UI-C. This can be attributed to the fact that, due to the inversion process, and with no major change in dynamics as observed for UI-N and UI-C, all the members are already capable of reproducing the observed data, rendering the calibration process less impactful on the inversion ensemble in these cases.

Additionally, a disparity is observed in the response of different data types, with notably greater reductions or increases observed for global data, such as cumulative ice discharge and ice discharge, compared to spatio-temporal data, such as surface elevation and velocity. Furthermore, no significant patterns are discernible between sub-catchments concerning these spatio-temporal data.

D1 Influence of the data used

Among the Full-period weightings using different data, the calibration using RMSE of both surface velocity and surface elevation (ZSxV) demonstrates the highest robustness in reducing the CRPS for various observations. For the UI-N sub-catchment, ZSxV significantly reduces CRPS for cumulative ice discharge, ice discharge, surface elevation, and velocity by -8.4%, -0.3%, -5.4%, and -0.7%, respectively. Similarly, for the UI-C sub-catchment, it leads to substantial reduction in CRPS for cumulative ice discharge, ice discharge, surface elevation, and velocity by -39%, -11.8%, -0.8%, and -5.7%, respectively. Additionally, ZSxV also contributes to reducing almost all the CRPS for surface elevation and velocity in the UI-S sub-catchment by +1.3% and -2.3%, respectively, and in the UI-SS sub-catchment by -1.5% and -0.8%. This is due to a reduction in MAE in the majority of cases (75%), as well by a reduction of -17 [-11, -25] % of the STD.

On the other hand, the cumulative ice discharge (CID) calibration enhances CRPS for the UI-N and UI-C sub-catchments concerning cumulative ice discharge (-18% and -28%), ice discharge (-1% and -14%), and velocity (-2% and -2%), but does not yield significant improvements for surface elevation (+0% and +1%). However, for the UI-S and UI-SS sub-catchments, cumulative ice discharge calibration results in increased CRPS values (88 % of the cases). These observed increases are likely
955 indicative of overfitting, as evidenced by a reduction in the MAE in most cases and the STD in all cases.

In the case of the ice discharge (ID) calibration, it primarily improves CRPS for ice discharge itself but does not have a considerable impact on other observations, such as cumulative ice discharge, surface elevation, and velocity. For most instances, this improvement is accompanied by an increase in MAE, suggesting that the ice discharge calibration may not effectively identify the "best" members due to the presence of noisy or imprecise data.

960 Lastly, applying a weighting system based on surface elevation (ZS) or velocity (V) leads to improved CRPS for each type of observation on the UI-N and UI-C sub-catchments, including cumulative ice discharge, ice discharge, surface elevation, and velocity. However, the degree of improvement is less pronounced compared to the weighting with the combined use of both variables (ZSxV), e.g., -29% and -20% for ZS and V calibrations for cumulative ice discharge CRPS on UI-C, as opposed to -39% for ZSxV. Notably, there is a reduction in MAE, primarily for surface elevation and velocity observations, and STD,
965 though not as significant as when employing the combined data. Consequently, relying solely on velocity or surface elevation (ZS) for calibration assignment appears to result in an under-utilisation of data.

D2 Influence of the form of the probability density on ZSxV

To assess the sensitivity of the calibration to the choice of probability density functions, we explore two distinct distributions: Gaussian (G) and Student's with 2 degrees of freedom (S). These distributions are combined with three different estimates for
970 the parameter σ , which are based on the minimum (min), median (med), and maximum (max) values within the ensemble of RMSEs. We do not show the results with the mean, which are almost identical to those with the median. In Figure D1, the first letter (G or S) denotes the distribution type, while the second part signifies the specific σ estimate employed.

Among the six different distribution shapes (G_min, G_max, G_med, S_min, S_max, S_med) used for calibration, the utilisation of the Student distribution leads to marginally lower CRPS compared to its Gaussian counterpart across all variables
975 and catchments, with an average reduction of -1.6% compared to -1.3%. In most cases, employing the Student's distribution for weighting exhibits lower reduction for STD (-14% against -15% in average) but lower increase of MAE (+0.18% against +0.42% in average). However, based on these results, it remains inconclusive whether weighting using a Gaussian distribution yields a poorer CRPS because it is less close to observations with the MAE, or whether it is due to being too confident with the STD, i.e., too low a sharpness.

980 Similarly, calibration using the median or the mean of RMSE as an estimate of σ demonstrates better CRPS in most cases compared to those using the minimum or maximum of RMSE as an estimate, which assigns respectively greater and lower weights to members that fit the data best. Thus, it leads to an average CRPS reduction of -1.8% for the median, versus -1.0% for the minimum and -1.2% for the maximum. Weighting with the maximum leads to a reduction in the Mean Absolute Error (MAE) by an average of -0.69%, whereas using the minimum and median weights results in an increase of +1.2% and +0.43%,

985 respectively. However, when considering the STD, the values of the min-estimate are consistently lower, with reductions of
-23% on average for the minimum compared to -15% and -6% for the median and maximum. Therefore, the relatively modest
reduction in CRPS with the minimum estimate can be attributed to its overconfident nature, whereas the limited reduction in
CRPS with the maximum estimate is indicative of its underconfident nature. The median RMSE estimate for σ appears to strike
the best balance, with additional tests indicating that using the mean as an estimate of σ yields results similar to those obtained
990 with the median.

D3 Use of sub-periods

The Sub-period weighting SP_mean, using the following characteristics : Student's distribution, mean of RMSEs for the estimate of σ , and utilisation of surface elevation and velocity data (ZSxV); does not yield improvements in the CRPS for ice discharge, surface elevation, and velocity (+8%, -0.9%, and -2% respectively, against an average of +4.6%, -1.6%, and -2.4%).
995 However, a reduction in CRPS is observed for cumulative ice discharge (-10.6% against an average of -7.7%). Despite this, SP_mean leads to a decrease in the MAE of the mean in 69% of the cases and a significant decrease in STD for these variables (-26% against an average of -14%). These findings indicate that the SP_mean weighting may be overconfident, as it excessively reduces the model's uncertainty.

To address the issue of overconfidence, alternative proxies for σ were tested. It was found that using the 75th percentile
1000 (SP_Q75) of the RMSE distribution as a estimate for σ resulted in better CRPS values for ice discharge, surface elevation, and velocity (+6.5%, -1.4%, -2.3% respectively, compared to +8%, -0.9%, and -2% for SP_mean previously). However, the CRPS for cumulative ice discharge becomes worse and closer to S_med (-9.3% versus -10.6% for SP_mean previously). Consequently, we decided to analyze the results of this calibration choice as the Sub-period weighting.

D4 The f_{param} weighting

1005 To evaluate the effectiveness of an ensemble that assigns greater significance to the parameterisation developed in Jager et al. (2024), we conducted an analysis of the f_{param} weighting's performance in terms of CRPS, MAE, and STD. This also enables us to assess whether the intricacies of the validation analysis conducted in the initial study, which encompassed elements such as initial state maps and the temporal evolution of velocity and surface elevation, can be effectively captured within the broader scope of this global analysis.

1010 The CRPS analysis reveals that the f_{param} weighting outperforms both the Full-period and Sub-period weightings for cumulative ice discharge and ice discharge, achieving reductions of -1.6% and -13% for P90, respectively. In contrast, the SP_Q75 weighting shows CRPS changes of +5.5% and -7.7% for cumulative ice discharge and ice discharge, while the S_med weighting yields CRPS changes of +4.6% and -7.7% for the same variables, on average. However, for surface elevation and velocity, the f_{param} weighting results in slightly lower CRPS reduction (-0.6% and -0.8% for P90) compared to the CRPS
1015 reduction of -1.6% and -2.2% for SP_Q75, and -1.6% and -2.4% for S_med on average.

Consistent patterns are observed for the MAE of the mean and the STD. For cumulative ice discharge and ice discharge, the P90 weighting yields lower MAE values (-2% and +1.6% for P90, respectively) compared to the SP_Q75 weighting (+4.8%

and +7%). Similarly, the P90 weighting leads to lower STD values for cumulative ice discharge and ice discharge (-19.6% and -23.4%, respectively) in contrast to the SP_Q75 weighting (-19.1% and -21.4%). However, for surface elevation and velocity, the P90 weighting results in higher MAE values (-1.7% and -2.1%, respectively) compared to the SP_Q75 weighting (-3% and -5.3%). Similarly, the P90 weighting leads to higher STD values for surface elevation and velocity (-8.4% and -11.2%, respectively) in contrast to the SP_Q75 weighting (-10.6% and -19.6%).

Author contributions. EJ conducted the study through the supervision of FGC, NC and JM. RM and JM prepared and processed the satellite data of surface elevation, surface flow velocities and ice discharges. HG provided data and assistance for the retreat forcing approach. EJ wrote the paper with comments from all co-authors.

Competing interests. The contact author has declared that none of the authors has any competing interests.

Acknowledgements. This work was funded through the project SOSIce from the french Agence National de la Recherche (grant no. ANR-19-CE01-0011-01). EJ also benefits of the ICEMAP funding (Research Concl of Finland 355572). Most of the computations presented in this paper were performed using the GRICAD infrastructure (<https://gricad.univ-grenoble-alpes.fr>), which is supported by Grenoble research communities.

HG has received funding from the European Union's Horizon 2020 Research and Innovation Programme under grant agreement no. 869304, PROTECT and from the Research Council of Norway under project 324639. High-performance computing and storage resources were provided by Sigma2 - the National Infrastructure for High Performance Computing and Data Storage in Norway through projects NN8006K, NN8085K, NS8006K, NS8085K and NS5011K.

SMB forcing data was provided in the context of PROTECT by Xavier Fettweis for MAR and Brice Noël for RACMO. This is PROTECT publication number #.

The authors would also like to thank H el ene Seroussi and  tienne Berthier for their comments on an earlier version.

To help with the writing of this manuscript, we used DeepL and chatGPT, for which we would like to acknowledge their help. The first was used to translate some sentences from French into English. The second was used to reformulate certain paragraphs by asking it to rewrite the paragraph in a scientific style.

References

- Albrecht, T., Winkelmann, R., and Levermann, A.: Glacial-cycle simulations of the Antarctic Ice Sheet with the Parallel Ice Sheet Model (PISM) – Part 2: Parameter ensemble analysis, *The Cryosphere*, 14, 633–656, <https://doi.org/10.5194/tc-14-633-2020>, 2020.
- Applegate, P. J., Kirchner, N., Stone, E. J., Keller, K., and Greve, R.: An assessment of key model parametric uncertainties in projections of
1045 Greenland Ice Sheet behavior, *The Cryosphere*, 6, 589–606, <https://doi.org/10.5194/tc-6-589-2012>, 2012.
- Aschwanden, A. and Brinkerhoff, D. J.: Calibrated Mass Loss Predictions for the Greenland Ice Sheet, *Geophysical Research Letters*, 49, e2022GL099058, <https://doi.org/https://doi.org/10.1029/2022GL099058>, e2022GL099058 2022GL099058, 2022.
- Aschwanden, A., Fahnestock, M. A., Truffer, M., Brinkerhoff, D. J., Hock, R., Khroulev, C., Mottram, R., and Khan, S. A.: Contribution of
1050 the Greenland Ice Sheet to sea level over the next millennium, *Science Advances*, 5, eaav9396, <https://doi.org/10.1126/sciadv.aav9396>, 2019.
- Aschwanden, A., Bartholomaus, T. C., Brinkerhoff, D. J., and Truffer, M.: Brief communication: A roadmap towards credible projections of ice sheet contribution to sea level, *The Cryosphere*, 15, 5705–5715, <https://doi.org/10.5194/tc-15-5705-2021>, 2021.
- Bondzio, J. H., Morlighem, M., Seroussi, H., Wood, M. H., and Mouginot, J.: Control of Ocean Temperature on Jakobshavn Isbraes Present and Future Mass Loss, *Geophysical Research Letters*, 45, 12,912–12,921, <https://doi.org/https://doi.org/10.1029/2018GL079827>, 2018.
- 1055 Bouttier, F.: Sur la prévision de la qualité des prévisions météorologiques, Ph.D. thesis, Université Paul Sabatier, Toulouse, France, [Available from Library, Université Paul Sabatier, route de Narbonne, Toulouse, France.], 1994.
- Brevault, L., Balesdent, M., Bérend, N., and Le Riche, R.: Comparison of different global sensitivity analysis methods for aerospace vehicle optimal design, 2013.
- Brown, T.: Admissible scoring systems for continuous distributions, Manuscript P-5235, The Rand Corporation, Santa Monica, CA, [Available
1060 from The Rand Corporation, 1700 Main St., Santa Monica, CA 90407-2138.], 1974.
- Bulthuis, K., Arnst, M., Sun, S., and Pattyn, F.: Uncertainty quantification of the multi-centennial response of the Antarctic ice sheet to climate change, *The Cryosphere*, 13, 1349–1380, <https://doi.org/10.5194/tc-13-1349-2019>, 2019.
- Chang, W., Applegate, P. J., Haran, M., and Keller, K.: Probabilistic calibration of a Greenland Ice Sheet model using spatially resolved synthetic observations: Toward projections of ice mass loss with uncertainties, *Geoscientific Model Development*, 7, 1933–1943,
1065 <https://doi.org/10.5194/gmd-7-1933-2014>, 2014.
- Choi, Y., Seroussi, H., Gardner, A., and Schlegel, N.-J.: Uncovering Basal Friction in Northwest Greenland Using an Ice Flow Model and Observations of the Past Decade, *Journal of Geophysical Research: Earth Surface*, 127, e2022JF006710, <https://doi.org/https://doi-org.insu.bib.cnrs.fr/10.1029/2022JF006710>, e2022JF006710 2022JF006710, 2022.
- Cuffey, K. and Paterson, W.: *The physics of Glaciers*, Elsevier, 2010.
- 1070 DeConto, R. and Pollard, D.: Contribution of Antarctica to past and future sea-level rise, *Nature*, 531, 591–597, <https://doi.org/10.1038/nature17145>, 2016.
- Durand, G., van den Broeke, M. R., Le Cozannet, G., Edwards, T. L., Holland, P. R., Jourdain, N. C., Marzeion, B., Mottram, R., Nicholls, R. J., Pattyn, F., Paul, F., Slangen, A. B. A., Winkelmann, R., Burgard, C., van Calcar, C. J., Barré, J.-B., Bataille, A., and Chapuis, A.: Sea-Level Rise: From Global Perspectives to Local Services, *Frontiers in Marine Science*, 8, <https://doi.org/10.3389/fmars.2021.709595>,
1075 2022.
- Edwards, T. L., Brandon, M. A., Durand, G., Edwards, N. R., Golledge, N. R., Holden, P. B., Nias, I. J., Payne, A. J., Ritz, C., and Wernecke, A.: Revisiting Antarctic ice loss due to marine ice-cliff instability, *Nature*, 566, 58–64, 2019.

- Fettweis, X., Box, J. E., Agosta, C., Amory, C., Kittel, C., Lang, C., van As, D., Machguth, H., and Gallée, H.: Reconstructions of the 1900–2015 Greenland ice sheet surface mass balance using the regional climate MAR model, *The Cryosphere*, 11, 1015–1033, <https://doi.org/10.5194/tc-11-1015-2017>, 2017.
- 1080
- Fettweis, X., Hofer, S., Krebs-Kanzow, U., Amory, C., Aoki, T., Berends, C. J., Born, A., Box, J. E., Delhasse, A., Fujita, K., Gierz, P., Goelzer, H., Hanna, E., Hashimoto, A., Huybrechts, P., Kapsch, M.-L., King, M. D., Kittel, C., Lang, C., Langen, P. L., Lenaerts, J. T. M., Liston, G. E., Lohmann, G., Mernild, S. H., Mikolajewicz, U., Modali, K., Mottram, R. H., Niwano, M., Noël, B., Ryan, J. C., Smith, A., Streffing, J., Tedesco, M., van de Berg, W. J., van den Broeke, M., van de Wal, R. S. W., van Kampenhout, L., Wilton, D., Wouters, B., Ziemen, F., and Zolles, T.: GrSMBMIP: intercomparison of the modelled 1980–2012 surface mass balance over the Greenland Ice Sheet, *The Cryosphere*, 14, 3935–3958, <https://doi.org/10.5194/tc-14-3935-2020>, 2020.
- 1085
- Gagliardini, O., Zwinger, T., Gillet-Chaulet, F., Durand, G., Favier, L., de Fleurian, B., Greve, R., Malinen, M., Martín, C., Råback, P., Ruokolainen, J., Sacchettini, M., Schäfer, M., Seddik, H., and Thies, J.: Capabilities and performance of Elmer/Ice, a new-generation ice sheet model, *Geoscientific Model Development*, 6, 1299–1318, <https://doi.org/10.5194/gmd-6-1299-2013>, 2013.
- 1090
- Gilford, D. M., Ashe, E. L., DeConto, R. M., Kopp, R. E., Pollard, D., and Rovere, A.: Could the last interglacial constrain projections of future Antarctic Ice mass loss and sea-level rise?, *Journal of Geophysical Research: Earth Surface*, 125, <https://doi.org/10.1029/2019JF005418>, 2020.
- Gillet-Chaulet, F.: Assimilation of surface observations in a transient marine ice sheet model using an ensemble Kalman filter, *The Cryosphere*, 14, 811–832, <https://doi.org/10.5194/tc-14-811-2020>, 2020.
- 1095
- Gillet-Chaulet, F., Gagliardini, O., Seddik, H., Nodet, M., Durand, G., Ritz, C., Zwinger, T., Greve, R., and Vaughan, D. G.: Greenland ice sheet contribution to sea-level rise from a new-generation ice-sheet model, *The Cryosphere*, 6, 1561–1576, <https://doi.org/10.5194/tc-6-1561-2012>, 2012.
- Gladstone, R. M., Lee, V., Rougier, J., Payne, A. J., Hellmer, H., Le Brocq, A., and et al.: Calibrated prediction of Pine Island Glacier Retreat during the 21st and 22nd centuries with a coupled flowline model, *Earth and Planetary Science Letters*, 333, 191–199, <https://doi.org/10.1016/j.epsl.2012.04.022>, 2012.
- 1100
- Glen, J. W. and Perutz, M. F.: The creep of polycrystalline ice, *Proceedings of the Royal Society of London. Series A. Mathematical and Physical Sciences*, 228, 519–538, <https://doi.org/10.1098/rspa.1955.0066>, 1955.
- Goelzer, H., Nowicki, S., Edwards, T., Beckley, M., Abe-Ouchi, A., Aschwanden, A., Calov, R., Gagliardini, O., Gillet-Chaulet, F., Gollledge, N. R., Gregory, J., Greve, R., Humbert, A., Huybrechts, P., Kennedy, J. H., Larour, E., Lipscomb, W. H., Le clec’h, S., Lee, V., Morlighem, M., Pattyn, F., Payne, A. J., Rodehacke, C., Rückamp, M., Saito, F., Schlegel, N., Seroussi, H., Shepherd, A., Sun, S., van de Wal, R., and Ziemen, F. A.: Design and results of the ice sheet model initialisation experiments initMIP-Greenland: an ISMIP6 intercomparison, *The Cryosphere*, 12, 1433–1460, <https://doi.org/10.5194/tc-12-1433-2018>, 2018.
- 1105
- Goelzer, H., Nowicki, S., Payne, A., Larour, E., Seroussi, H., Lipscomb, W. H., Gregory, J., Abe-Ouchi, A., Shepherd, A., Simon, E., Agosta, C., Alexander, P., Aschwanden, A., Barthel, A., Calov, R., Chambers, C., Choi, Y., Cuzzone, J., Dumas, C., Edwards, T., Felikson, D., Fettweis, X., Gollledge, N. R., Greve, R., Humbert, A., Huybrechts, P., Le clec’h, S., Lee, V., Leguy, G., Little, C., Lowry, D. P., Morlighem, M., Nias, I., Quiquet, A., Rückamp, M., Schlegel, N.-J., Slater, D. A., Smith, R. S., Straneo, F., Tarasov, L., van de Wal, R., and van den Broeke, M.: The future sea-level contribution of the Greenland ice sheet: a multi-model ensemble study of ISMIP6, *The Cryosphere*, 14, 3071–3096, <https://doi.org/10.5194/tc-14-3071-2020>, 2020.
- 1110
- Goldberg, D. N., Heimbach, P., Joughin, I., and Smith, B.: Committed retreat of Smith, Pope, and Kohler Glaciers over the next 30 years inferred by transient model calibration, *The Cryosphere*, 9, 2429–2446, <https://doi.org/10.5194/tc-9-2429-2015>, 2015.
- 1115

- Greve, R.: Application of a Polythermal Three-Dimensional Ice Sheet Model to the Greenland Ice Sheet: Response to Steady-State and Transient Climate Scenarios, *Journal of Climate*, 10, 901–918, [https://doi.org/10.1175/1520-0442\(1997\)010<0901:AOAPTD>2.0.CO;2](https://doi.org/10.1175/1520-0442(1997)010<0901:AOAPTD>2.0.CO;2), 1997.
- 1120 Hallouin, T., Bruen, M., and O’Loughlin, F. E.: Calibration of hydrological models for ecologically relevant streamflow predictions: a trade-off between fitting well to data and estimating consistent parameter sets?, *Hydrology and Earth System Sciences*, 24, 1031–1054, <https://doi.org/10.5194/hess-24-1031-2020>, 2020.
- Haubner, K., Box, J. E., Schlegel, N. J., Larour, E. Y., Morlighem, M., Solgaard, A. M., Kjeldsen, K. K., Larsen, S. H., Rignot, E., Dupont, T. K., and Kjær, K. H.: Simulating ice thickness and velocity evolution of Upernavik Isstrøm 1849–2012 by forcing prescribed terminus positions in ISSM, *The Cryosphere*, 12, 1511–1522, <https://doi.org/10.5194/tc-12-1511-2018>, 2018.
- 1125 Hausfather, Z. and Moore, F. C.: Net-zero commitments could limit warming to below 2 °C, *Nature*, 604, 247–248, <https://doi.org/10.1038/d41586-022-00874-1>, 2022.
- Hausfather, Z. and Peters, G.: Emissions – the ‘business as usual’ story is misleading, *Nature*, 577, 618–620, <https://doi.org/10.1038/d41586-020-00177-3>, 2020.
- Hawkins, E. and Sutton, R.: The Potential to Narrow Uncertainty in Regional Climate Predictions, *Bulletin of the American Meteorological Society*, 90, 1095 – 1108, <https://doi.org/https://doi.org/10.1175/2009BAMS2607.1>, 2009.
- Hersbach, H.: Decomposition of the Continuous Ranked Probability Score for Ensemble Prediction Systems, *Weather and Forecasting*, 15, 559 – 570, [https://doi.org/https://doi.org/10.1175/1520-0434\(2000\)015<0559:DOTCRP>2.0.CO;2](https://doi.org/https://doi.org/10.1175/1520-0434(2000)015<0559:DOTCRP>2.0.CO;2), 2000.
- Hill, E. A., Rosier, S. H. R., Gudmundsson, G. H., and Collins, M.: Quantifying the potential future contribution to global mean sea level from the Filchner–Ronne basin, Antarctica, *The Cryosphere*, 15, 4675–4702, <https://doi.org/10.5194/tc-15-4675-2021>, 2021.
- 1135 Hill, E. A., Urruty, B., Reese, R., Garbe, J., Gagliardini, O., Durand, G., Gillet-Chaulet, F., Gudmundsson, G. H., Winkelmann, R., Chekki, M., Chandler, D., and Langebroek, P. M.: The stability of present-day Antarctic grounding lines – Part 1: No indication of marine ice sheet instability in the current geometry, *The Cryosphere*, 17, 3739–3759, <https://doi.org/10.5194/tc-17-3739-2023>, 2023.
- Intergovernmental Panel on Climate Change (IPCC): Summary for Policymakers, Cambridge University Press, Cambridge, UK and New York, NY, USA, <https://doi.org/10.1017/9781009157926.001>, 2022.
- 1140 Jager, E., Gillet-Chaulet, F., Mouginit, J., and Millan, R.: Validating ensemble historical simulations of Upernavik Isstrøm (1985-2019) using observations of surface velocity and elevation, *Journal of Glaciology*, p. 1–48, <https://doi.org/10.1017/jog.2024.10>, 2024.
- Jiang, W. and Forssén, C.: Bayesian probability updates using sampling/importance resampling: Applications in nuclear theory, *Frontiers in Physics*, 10, <https://doi.org/10.3389/fphy.2022.1058809>, 2022.
- Joughin, I., Smith, B. E., and Schoof, C. G.: Regularized Coulomb Friction Laws for Ice Sheet Sliding: Application to Pine Island Glacier, Antarctica, *Geophysical Research Letters*, 46, 4764–4771, <https://doi.org/https://doi.org/10.1029/2019GL082526>, 2019.
- Jr, R. P., Burgess, M. G., and Ritchie, J.: Plausible 2005–2050 emissions scenarios project between 2 °C and 3 °C of warming by 2100, *Environmental Research Letters*, 17, 024 027, <https://doi.org/10.1088/1748-9326/ac4ebf>, 2022.
- King, M. D., Howat, I. M., Jeong, S., Noh, M. J., Wouters, B., Noël, B., and van den Broeke, M. R.: Seasonal to decadal variability in ice discharge from the Greenland Ice Sheet, *The Cryosphere*, 12, 3813–3825, <https://doi.org/10.5194/tc-12-3813-2018>, 2018.
- 1150 Lamboni, M., Monod, H., and Makowski, D.: Multivariate sensitivity analysis to measure global contribution of input factors in dynamic models, *Reliability Engineering & System Safety*, 96, 450–459, <https://doi.org/https://doi.org/10.1016/j.res.2010.12.002>, 2011.
- Leeuwen, P. J. V.: Nonlinear data assimilation in geosciences: An extremely efficient particle filter, *Quarterly Journal of the Royal Meteorological Society*, 136, 1991–1999, <https://doi.org/10.1002/qj.699>, 2010.

- MacAyeal, D. R.: Large-scale ice flow over a viscous basal sediment: Theory and application to ice stream B, Antarctica, *Journal of Geophysical Research: Solid Earth*, 94, 4071–4087, <https://doi.org/https://doi.org/10.1029/JB094iB04p04071>, 1989.
- 1155
- Mankoff, K. D., Colgan, W., Solgaard, A., Karlsson, N. B., Ahlstrøm, A. P., van As, D., Box, J. E., Khan, S. A., Kjeldsen, K. K., Moug-
inot, J., and Fausto, R. S.: Greenland Ice Sheet solid ice discharge from 1986 through 2017, *Earth System Science Data*, 11, 769–786,
<https://doi.org/10.5194/essd-11-769-2019>, 2019.
- Marzeion, B., Hock, R., Anderson, B., Bliss, A., Champollion, N., Fujita, K., Huss, M., Immerzeel, W. W., Kraaijenbrink, P., Malles, J.-H.,
1160 Maussion, F., Radić, V., Rounce, D. R., Sakai, A., Shannon, S., van de Wal, R., and Zekollari, H.: Partitioning the Uncertainty of Ensemble
Projections of Global Glacier Mass Change, *Earth’s Future*, 8, e2019EF001470, <https://doi.org/https://doi.org/10.1029/2019EF001470>,
e2019EF001470 10.1029/2019EF001470, 2020.
- Masson-Delmotte, V., Zhai, P., Pirani, A., Connors, S., Péan, C., Berger, S., Caud, N., Chen, Y., Goldfarb, L., Gomis, M., Huang, M., Leitzell,
K., Lonnoy, E., Matthews, J., Maycock, T., Waterfield, T., Yelekeçi, O., Yu, R., and Zhou, B.: Summary for Policymakers. In: *Climate*
1165 *Change 2021: The Physical Science Basis. Contribution of Working Group I to the Sixth Assessment Report of the Intergovernmental*
Panel on Climate Change, IPCC, 2021.
- Matheson, J. and Winkler, R.: Scoring rules for continuous probability distributions, *Management Science*, 22, 1087–1095, 1976.
- McKay, D. I. A., Staal, A., Abrams, J. F., Winkelmann, R., Sakschewski, B., Loriani, S., Fetzer, I., Cornell, S. E., Rockström,
J., and Lenton, T. M.: Exceeding 1.5°C global warming could trigger multiple climate tipping points, *Science*, 377, eabn7950,
1170 <https://doi.org/10.1126/science.abn7950>, 2022.
- McNeall, D. J., Challenor, P. G., Gattiker, J., and Stone, E. J.: The potential of an observational data set for calibration of a computationally
expensive computer model, *Geoscientific Model Development*, 6, 1715–1728, <https://doi.org/10.5194/gmd-6-1715-2013>, 2013.
- Mouginot, J., Rignot, E., Bjørk, A. A., van den Broeke, M., Millan, R., Morlighem, M., Noël, B., Scheuchl, B., and Wood, M.: Forty-six
years of Greenland Ice Sheet mass balance from 1972 to 2018, *Proceedings of the National Academy of Sciences*, 116, 9239–9244,
1175 <https://doi.org/10.1073/pnas.1904242116>, 2019.
- Murphy, J., Sexton, D. M. H., Jenkins, G., Boorman, P. M., Booth, B., Brown, C. C., Clark, R. T., Harris, G. R., Kendon, E. J., Betts,
R., Brown, S., Howard, T. P., Humphrey, K. A., McCarthy, M. P., McDonald, R. E., Stephens, A., Wallace, C., Warren, R., Wilby, R.,
and Wood, R. A.: UK Climate Projections Science Report: Climate change projections, Tech. rep., Met Office Hadley Centre, Exeter,
<http://ukclimateprojections.defra.gov.uk/content/view/824/517/index.html>, 2009.
- 1180 Nias, I. J., Cornford, S. L., Edwards, T. L., Gourmelen, N., and Payne, A. J.: Assessing Uncertainty in the Dynamical Ice Re-
sponse to Ocean Warming in the Amundsen Sea Embayment, West Antarctica, *Geophysical Research Letters*, 46, 11 253–11 260,
<https://doi.org/https://doi.org/10.1029/2019GL084941>, 2019.
- Nias, I. J., Nowicki, S., Felikson, D., and Loomis, B.: Modeling the Greenland Ice Sheet’s Committed Contribu-
tion to Sea Level During the 21st Century, *Journal of Geophysical Research: Earth Surface*, 128, e2022JF006914,
1185 <https://doi.org/https://doi.org/10.1029/2022JF006914>, e2022JF006914 2022JF006914, 2023.
- Noël, B., van de Berg, W. J., Machguth, H., Lhermitte, S., Howat, I., Fettweis, X., and van den Broeke, M. R.: A daily, 1 km resolution data
set of downscaled Greenland ice sheet surface mass balance (1958–2015), *The Cryosphere*, 10, 2361–2377, [https://doi.org/10.5194/tc-10-](https://doi.org/10.5194/tc-10-2361-2016)
2361-2016, 2016.
- Noël, B., van de Berg, W. J., van Wessem, J. M., van Meijgaard, E., van As, D., Lenaerts, J. T. M., Lhermitte, S., Kuipers Munneke, P.,
1190 Smeets, C. J. P. P., van Uflit, L. H., van de Wal, R. S. W., and van den Broeke, M. R.: Modelling the climate and surface mass balance of

- polar ice sheets using RACMO2 – Part 1: Greenland (1958–2016), *The Cryosphere*, 12, 811–831, <https://doi.org/10.5194/tc-12-811-2018>, 2018.
- 1195 Nowicki, S., Goelzer, H., Seroussi, H., Payne, A. J., Lipscomb, W. H., Abe-Ouchi, A., Agosta, C., Alexander, P., Asay-Davis, X. S., Barthel, A., Bracegirdle, T. J., Cullather, R., Felikson, D., Fettweis, X., Gregory, J. M., Hattermann, T., Jourdain, N. C., Kuipers Munneke, P., Larour, E., Little, C. M., Morlighem, M., Nias, I., Shepherd, A., Simon, E., Slater, D., Smith, R. S., Straneo, F., Trusel, L. D., van den Broeke, M. R., and van de Wal, R.: Experimental protocol for sea level projections from ISMIP6 stand-alone ice sheet models, *The Cryosphere*, 14, 2331–2368, <https://doi.org/10.5194/tc-14-2331-2020>, 2020.
- 1200 Pollard, D., Chang, W., Haran, M., Applegate, P., and DeConto, R.: Large ensemble modeling of the last deglacial retreat of the West Antarctic Ice Sheet: comparison of simple and advanced statistical techniques, *Geoscientific Model Development*, 9, 1697–1723, <https://doi.org/10.5194/gmd-9-1697-2016>, 2016.
- Raftery, A. E., Zimmer, A., Frierson, D. M. W., Startz, R., and Liu, P.: Less than 2 °C warming by 2100 unlikely, *Nature Climate Change*, 7, 637–641, <https://doi.org/10.1038/nclimate3352>, 2017.
- Reed, P. M., Hadjimichael, A., Malek, K., Karimi, T., Vernon, C. R., Srikrishnan, V., Gupta, R. S., Gold, D. F., Lee, B., Keller, K., Thurber, T. B., and Rice, J. S.: Addressing Uncertainty in Multisector Dynamics Research, Zenodo, <https://doi.org/10.5281/zenodo.6110623>, 2022.
- 1205 Ritz, C., Edwards, T. L., Durand, G., Payne, A. J., Peyaud, V., and Hindmarsh, R. C. A.: Potential sea-level rise from Antarctic ice-sheet instability constrained by observations, *Nature*, 528, 1–14, <https://doi.org/10.1038/nature16147>, 2015.
- Robel, A. A., Seroussi, H., and Roe, G. H.: Marine ice sheet instability amplifies and skews uncertainty in projections of future sea-level rise, *Proceedings of the National Academy of Sciences*, 116, 14 887–14 892, <https://doi.org/10.1073/pnas.1904822116>, 2019.
- Rohmer, J., Thieblemont, R., Le Cozannet, G., Goelzer, H., and Durand, G.: Improving interpretation of sea-level projections through a machine-learning-based local explanation approach, *The Cryosphere*, 16, 4637–4657, <https://doi.org/10.5194/tc-16-4637-2022>, 2022.
- 1210 Rounce, D. R., Hock, R., Maussion, F., Hugonnet, R., Kochtitzky, W., Huss, M., Berthier, E., Brinkerhoff, D., Compagno, L., Copland, L., Farinotti, D., Menounos, B., and McNabb, R. W.: Global glacier change in the 21st century: Every increase in temperature matters, *Science*, 379, 78–83, <https://doi.org/10.1126/science.abo1324>, 2023.
- 1215 Seroussi, H., Morlighem, M., Rignot, E., Khazendar, A., Larour, E., and Mouginot, J.: Dependence of century-scale projections of the Greenland ice sheet on its thermal regime, *Journal of Glaciology*, 59, 1024–1034, <https://doi.org/10.3189/2013JoG13J054>, 2013.
- 1220 Seroussi, H., Nowicki, S., Simon, E., Abe-Ouchi, A., Albrecht, T., Brondex, J., Cornford, S., Dumas, C., Gillet-Chaulet, F., Goelzer, H., Gollledge, N. R., Gregory, J. M., Greve, R., Hoffman, M. J., Humbert, A., Huybrechts, P., Kleiner, T., Larour, E., Leguy, G., Lipscomb, W. H., Lowry, D., Mengel, M., Morlighem, M., Pattyn, F., Payne, A. J., Pollard, D., Price, S. F., Quiquet, A., Reerink, T. J., Reese, R., Rodehacke, C. B., Schlegel, N.-J., Shepherd, A., Sun, S., Sutter, J., Van Breedam, J., van de Wal, R. S. W., Winkelmann, R., and Zhang, T.: initMIP-Antarctica: an ice sheet model initialization experiment of ISMIP6, *The Cryosphere*, 13, 1441–1471, <https://doi.org/10.5194/tc-13-1441-2019>, 2019.
- 1225 Seroussi, H., Nowicki, S., Payne, A. J., Goelzer, H., Lipscomb, W. H., Abe-Ouchi, A., Agosta, C., Albrecht, T., Asay-Davis, X., Barthel, A., Calov, R., Cullather, R., Dumas, C., Galton-Fenzi, B. K., Gladstone, R., Gollledge, N. R., Gregory, J. M., Greve, R., Hattermann, T., Hoffman, M. J., Humbert, A., Huybrechts, P., Jourdain, N. C., Kleiner, T., Larour, E., Leguy, G. R., Lowry, D. P., Little, C. M., Morlighem, M., Pattyn, F., Pelle, T., Price, S. F., Quiquet, A., Reese, R., Schlegel, N.-J., Shepherd, A., Simon, E., Smith, R. S., Straneo, F., Sun, S., Trusel, L. D., Van Breedam, J., van de Wal, R. S. W., Winkelmann, R., Zhao, C., Zhang, T., and Zwinger, T.: ISMIP6 Antarctica: a multi-model ensemble of the Antarctic ice sheet evolution over the 21st century, *The Cryosphere*, 14, 3033–3070, <https://doi.org/10.5194/tc-14-3033-2020>, 2020.

- 1230 Seroussi, H., Verjans, V., Nowicki, S., Payne, A. J., Goelzer, H., Lipscomb, W. H., Abe-Ouchi, A., Agosta, C., Albrecht, T., Asay-Davis, X., Barthel, A., Calov, R., Cullather, R., Dumas, C., Galton-Fenzi, B. K., Gladstone, R., Golledge, N. R., Gregory, J. M., Greve, R., Hattermann, T., Hoffman, M. J., Humbert, A., Huybrechts, P., Jourdain, N. C., Kleiner, T., Larour, E., Leguy, G. R., Lowry, D. P., Little, C. M., Morlighem, M., Pattyn, F., Pelle, T., Price, S. F., Quiquet, A., Reese, R., Schlegel, N.-J., Shepherd, A., Simon, E., Smith, R. S., Straneo, F., Sun, S., Trusel, L. D., Van Breedam, J., Van Katwyk, P., van de Wal, R. S. W., Winkelmann, R., Zhao, C., Zhang, T., and Zwinger, T.: Insights into the vulnerability of Antarctic glaciers from the ISMIP6 ice sheet model ensemble and associated uncertainty, *The Cryosphere*, 17, 5197–5217, <https://doi.org/10.5194/tc-17-5197-2023>, 2023.
- Slater, D. A., Straneo, F., Felikson, D., Little, C. M., Goelzer, H., Fettweis, X., and Holte, J.: Estimating Greenland tidewater glacier retreat driven by submarine melting, *The Cryosphere*, 13, 2489–2509, <https://doi.org/10.5194/tc-13-2489-2019>, 2019.
- Slater, D. A., Felikson, D., Straneo, F., Goelzer, H., Little, C. M., Morlighem, M., Fettweis, X., and Nowicki, S.: Twenty-first century ocean forcing of the Greenland ice sheet for modelling of sea level contribution, *The Cryosphere*, 14, 985–1008, <https://doi.org/10.5194/tc-14-985-2020>, 2020.
- Smith, A. F. M. and Gelfand, A. E.: Bayesian Statistics without Tears: A Sampling–Resampling Perspective, *The American Statistician*, 46, 84–88, <https://doi.org/10.1080/00031305.1992.10475856>, 1992.
- Sobol, I. M.: Global sensitivity indices for nonlinear mathematical models and their Monte Carlo estimates, *Mathematics and Computers in Simulation*, 55, 271–280, [https://doi.org/10.1016/S0378-4754\(00\)00270-6](https://doi.org/10.1016/S0378-4754(00)00270-6), 2001.
- 1245 Unger, D.: A method to estimate the continuous ranked probability score, in: Preprints, Ninth Conf. on Probability and Statistics in Atmospheric Sciences, pp. 206–213, American Meteorological Society, Virginia Beach, VA, 1985.
- Vernon, C. L., Bamber, J. L., Box, J. E., van den Broeke, M. R., Fettweis, X., Hanna, E., and Huybrechts, P.: Surface mass balance model intercomparison for the Greenland ice sheet, *The Cryosphere*, 7, 599–614, <https://doi.org/10.5194/tc-7-599-2013>, 2013.
- Weertman, J.: On the Sliding of Glaciers, *Journal of Glaciology*, 3, 33–38, <https://doi.org/10.3189/S0022143000024709>, 1957.
- 1250 Wernecke, A., Edwards, T. L., Nias, I. J., Holden, P. B., and Edwards, N. R.: Spatial probabilistic calibration of a high-resolution Amundsen Sea Embayment ice sheet model with satellite altimeter data, *The Cryosphere*, 14, 1459–1474, <https://doi.org/10.5194/tc-14-1459-2020>, 2020.
- Wood, M., Rignot, E., Fenty, I., An, L., Bjørk, A., van den Broeke, M., Cai, C., Kane, E., Menemenlis, D., Millan, R., Morlighem, M., Mouginot, J., Noël, B., Scheuchl, B., Velicogna, I., Willis, J. K., and Zhang, H.: Ocean forcing drives glacier retreat in Greenland, *Science Advances*, 7, eaba7282, <https://doi.org/10.1126/sciadv.aba7282>, 2021.
- 1255

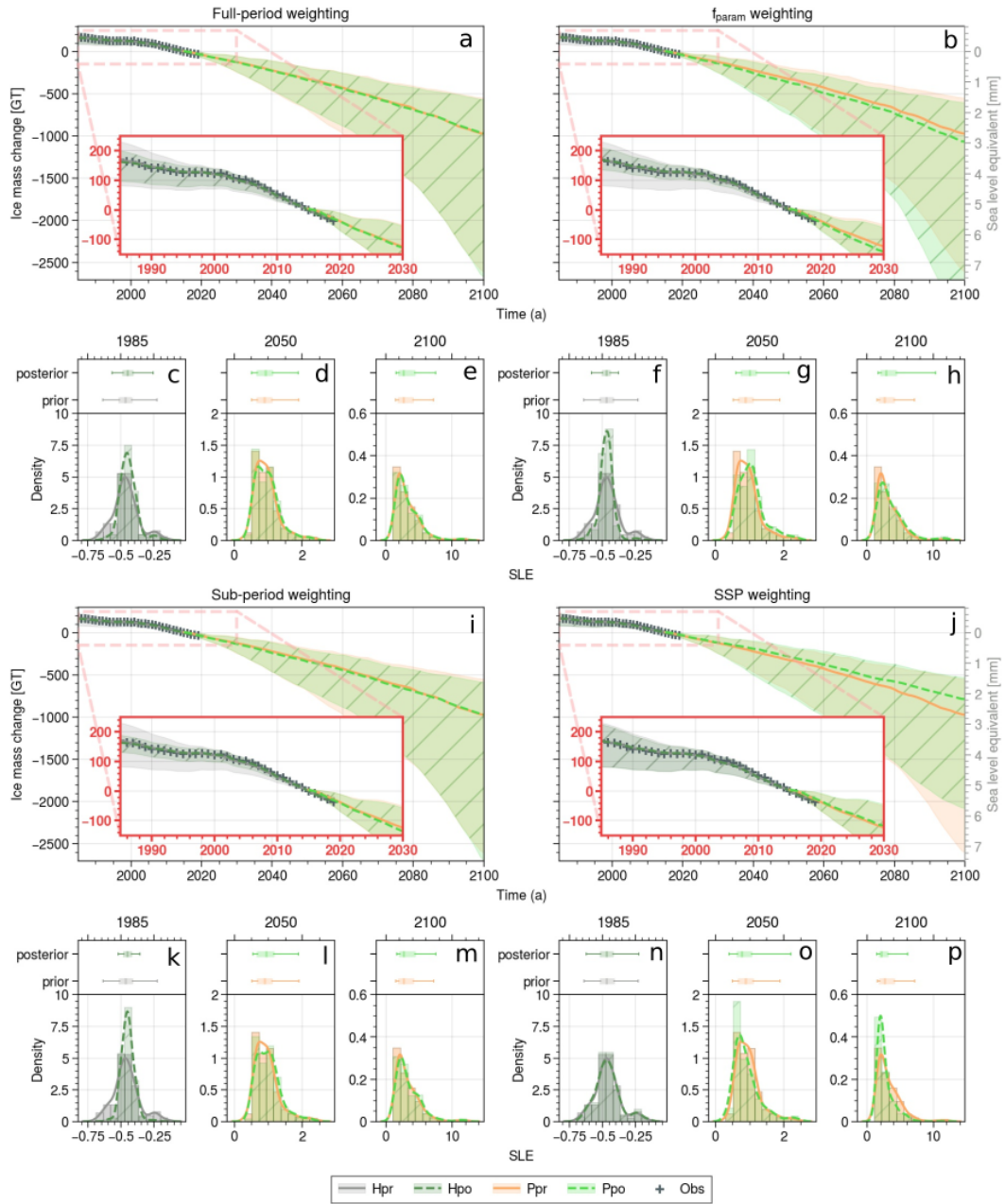


Figure 8. Evolution of Upernavik Isstrøm ice mass loss over the period 1985-2100 for the Hindcast prior (grey), the Hindcast posterior (dark green with /), the Predicted prior (orange), and the Predicted posterior (light green with /) prior for different weightings (Full-period weighting on [top-left a,c,d,e](#), f_{param} weighting on [top-right b,f,g,h](#), Sub-period weighting on [bottom-left i,k,l,m](#), and SSP weighting on [bottom-right j,n,o,p](#)). Each ensemble's median is represented by a solid (prior) or dotted (posterior) line, and the shaded area encompasses 95% of ensemble members. Observations from the 1985-2019 period are indicated by the symbol +. The red box highlights a zoomed view of the period 1985-2030. [Sub-plots c, d, e, f, g, h, k, l, m, n, o, p](#) show changes of histogram, distribution and box-plot (95% interval, interquartile interval and median) between SLE prior and posterior in 1985, 2050 and 2100.

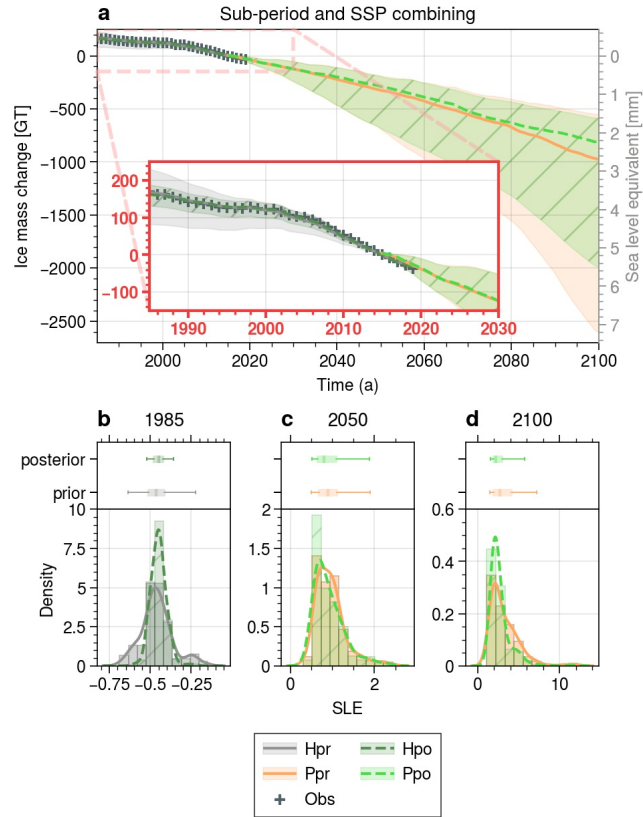


Figure 9. Evolution of UI ice mass loss over the period 1985-2100 for the Hindcast prior (grey), the Hindcast posterior (dark green with /), the Predicted prior (orange), and the Predicted posterior (light green with /) for the combined Sub-period and SSP weightings, achieved by multiplying the weights of these two weightings. For each ensemble, the median is represented in solid (prior) or dotted (posterior) line and the shading include 95% of the ensemble members. Observation of the 1985-2019 period are represented by +. The red box shows a zoom to 1985-2030 period. Sub-plots b, c, d show changes of histogram, distribution and box-plot (95% interval, interquartile interval and median) between SLE prior and posterior in 1985, 2050 and 2100.

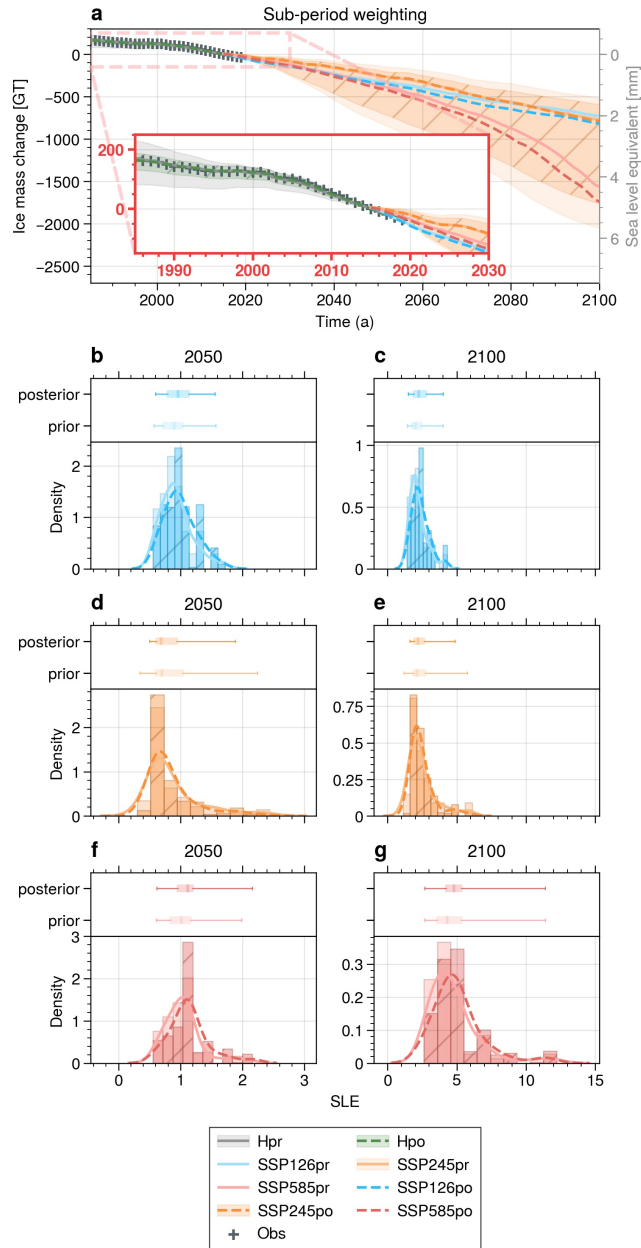


Figure 10. Evolution of UI ice mass loss over the period 1985-2100 (a) for the Hindcast prior (grey), the Hindcast posterior (dark green with /), the SSP1-2.6 prior and posterior (blue), the SSP2-4.5 prior (light orange) and posterior (dark orange with /), and the SSP5-8.5 prior and posterior (red) ensemble simulations for the Sub-period weighting. For each ensemble, the median is represented in solid (prior) or dotted (posterior) line and the shading include 95% of the ensemble members. Observation of the 1985-2019 period are represented by +. The red box shows a zoom to 1985-2030 period. Sub-plots b, c, d, e, f, g show changes of histogram, distribution and box-plot (95% interval, interquartile interval and median) between prior and posterior in 2050 and 2100.

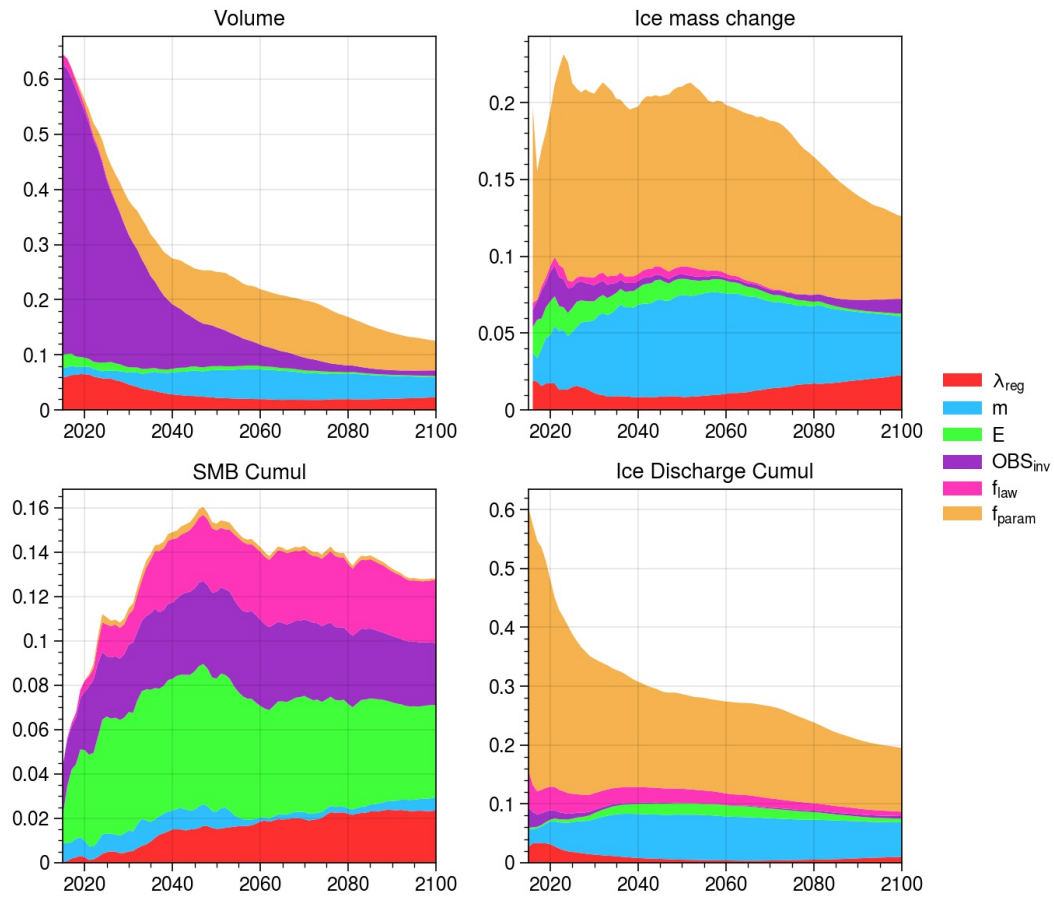


Figure C1. Sensitivity indices for the six ISM parameters of Ppr (λ_{reg} , m , E , OBS_{inv} , f_{law} , f_{param}) for the volume (a), the ice mass change relative to 2015 (b), the cumulative SMB since 2015 (c) and the cumulative ice discharge since 2015 (d).

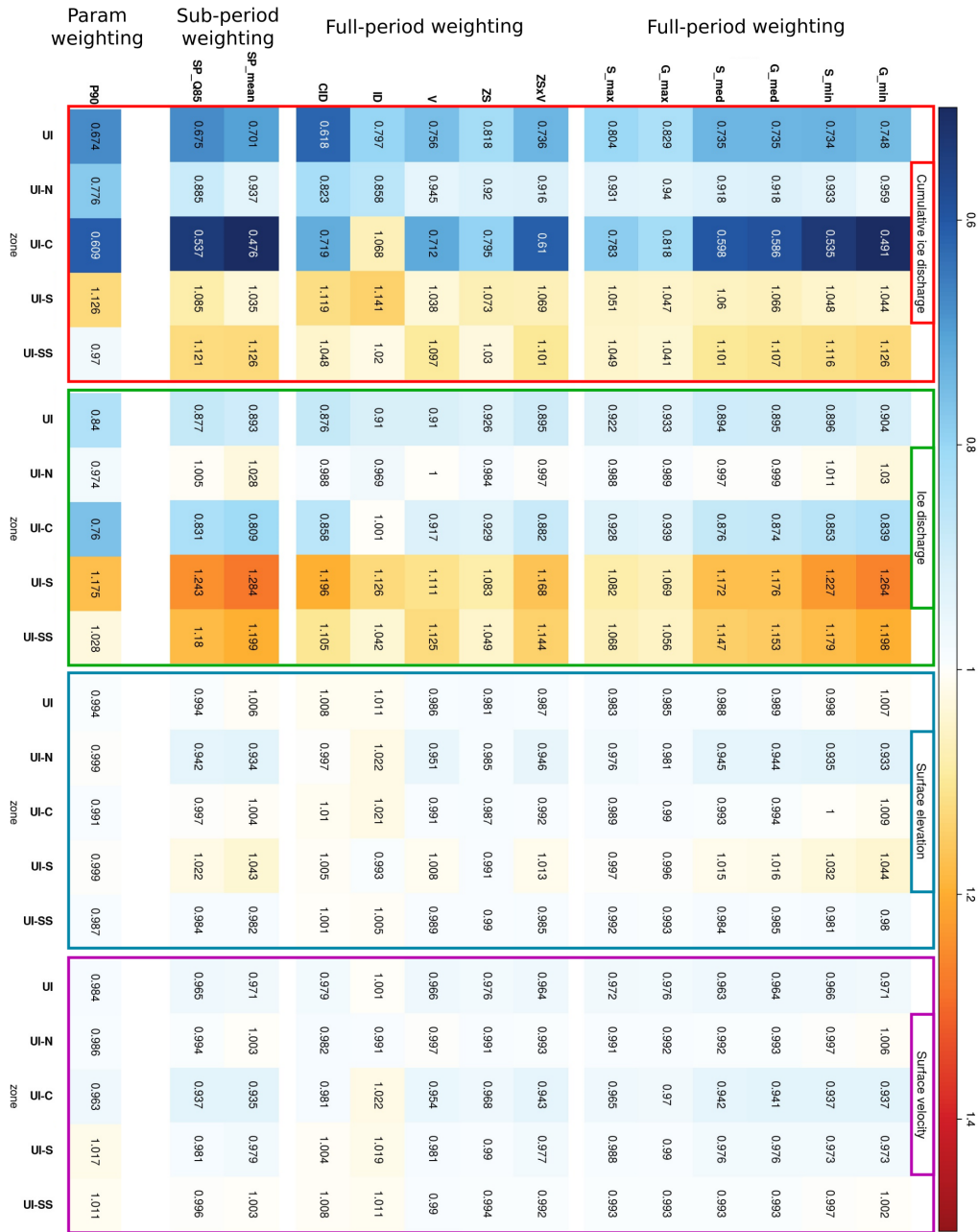


Figure D1. Normalized CRPS on cumulative ice discharge (red), ice discharge (green), surface elevation (blue) and surface velocity (purple) for different calibrated ensemble : Full-period weighting (G_min : Gaussian distribution with $\sigma = \min(RMSEs)$; G_max : Gaussian distribution with $\sigma = \max(RMSEs)$; G_med : Gaussian distribution with $\sigma = \text{median}(RMSEs)$; S_min : Student's distribution with $\sigma = \min(RMSEs)$; S_max : Student's distribution with $\sigma = \max(RMSEs)$; S_med : Student's distribution with $\sigma = \text{median}(RMSEs)$; ZSxV : calibration with RMSE on surface elevation and velocity; ZS : calibration with RMSE on surface elevation; V : calibration with RMSE on surface velocity), Sub-period weighting (SP_mean : $\sigma = \text{mean}(RMSEs)$; SP_Q75: $\sigma = \text{quantile}_{0.75}(RMSEs)$), f_{param} weighting (P100 : $w_i = 1$ if $f_{param}^i = True$, else $w_i = 0$; P90 : $w_i = 0.9$ if $f_{param}^i = True$, else $w_i = 0.1$; P80 : $w_i = 0.8$ if $f_{param}^i = True$, else $w_i = 0.2$). The "UI" line represents the calibration using data from **g**four sub-catchments and is evaluated over the entire validation area. On the other hand, the "UI-N," "UI-C," "UI-S," and "UI-SS" lines correspond to calibrations using data from the three other sub-catchments, and they are evaluated over their respective sub-catchments (Fig. 1).