

A global re-analysis of regionally resolved emissions and atmospheric mole fractions of SF₆ for the period 2005-2021

Martin Vojta¹, Andreas Plach¹, Saurabh Annadate^{2,3}, Sunyong Park⁴, Gawon Lee⁴, Pallav Purohit⁶, Florian Lindl⁶, Xin Lan⁸, Jens Mühle⁷, Rona L. Thompson⁵, and Andreas Stohl¹

¹Department of Meteorology and Geophysics, University of Vienna, Vienna, Austria

²Department of Pure and Applied Sciences, University of Urbino “Carlo Bo”, Urbino, Italy

³University School for Advanced Studies IUSS, 27100 Pavia, Italy

⁴Kyungpook National University, Department of Oceanography, School of Earth System Sciences, Daegu, South Korea

⁵NILU, Kjeller, Norway

⁶International Institute for Applied Systems Analysis (IIASA), Laxenburg, Austria

⁷Scripps Institution of Oceanography, University of California, San Diego, CA, 92037, USA

⁸NOAA Global Monitoring Laboratory, Boulder, CO, USA

Correspondence: Martin Vojta (martin.vojta@univie.ac.at)

Abstract. We determine the global emission distribution of the potent greenhouse gas sulfur hexafluoride (SF₆) for the period 2005-2021 using inverse modeling. The inversion is based on 50-day backward simulations with the Lagrangian Particle Dispersion Model (LPDM) FLEXPART and on a comprehensive observation data set of SF₆ mole fractions, in which we combine continuous with flask measurements sampled at fixed surface locations, and observations from aircraft and ship campaigns. We use a global distribution-based (GDB) approach to determine baseline mole fractions directly from global SF₆ mole fraction fields at the termination points of the backward trajectories. We compute these fields by performing an atmospheric SF₆ re-analysis, assimilating global SF₆ observations into modeled global three-dimensional mole fraction fields. Our inversion results are in excellent agreement with several regional inversion studies in the USA, Europe, and China. We find that (1) annual U.S. SF₆ emissions strongly decreased from 1.25 Gg in 2005 to 0.48 Gg in 2021, however, they were on average twice as high as the reported emissions to the United Nations. (2) SF₆ emissions from EU countries show an average decreasing trend of -0.006 Gg/yr during the period 2005 to 2021, including a substantial drop in 2018. This drop is likely a direct result of the EU’s F-gas regulation 517/2014, which bans the use of SF₆ for recycling magnesium die-casting alloys from 2018 and requires leak detection systems for electrical switch gear. (3) Chinese annual emissions grew from 1.28 Gg in 2005 to 5.16 Gg in 2021, with a trend of 0.21 Gg/yr, which is even higher than the average global total emission trend of 0.20 Gg/yr. (4) National reports for the USA, Europe, and China all underestimated their SF₆ emissions. (5) Our results indicate increasing emissions in poorly monitored areas (e.g. India, Africa, South America), however, these results are uncertain due to weak observational constraints, highlighting the need for enhanced monitoring in these areas. (6) Global total SF₆ emissions are comparable to estimates in previous studies but are sensitive to *a priori* estimates, due to the low network sensitivity in poorly monitored regions. (7) Monthly inversions indicate that SF₆ emissions in the Northern Hemisphere were on average higher in summer than in winter throughout the study period.

1 Introduction

Sulfur hexafluoride (SF₆) is the greenhouse gas (GHG) with the highest known Global Warming Potential (GWP), 24,300, over a 100-year time horizon (Smith et al., 2021). Once emitted, SF₆ accumulates in the atmosphere, as it is only slowly degraded via photolysis and electron attachment (Ravishankara et al., 1993) resulting in a very long atmospheric lifetime, with estimates ranging from 580 to 3200 years (Kovács et al., 2017; Patra et al., 1997; Ravishankara et al., 1993; Ray et al., 2017). The ocean also acts as a sink for atmospheric SF₆, however, its magnitude is debated, with estimates ranging up to 7% of the global annual emissions (Ni et al., 2023). Regardless of its exact lifetime and possible ocean sink, SF₆ emissions will cause a positive radiative forcing for hundreds of years.

Since the early 2000s, global mole fractions of SF₆ have undergone a rapid increase, more than doubling from roughly 4.5 ppt in 2000 to 10 ppt in 2020 (Lan et al., 2024). In 2020, the radiative forcing of SF₆ was 5.9 mW/m² (Laube et al., 2023). This value could surge tenfold by the end of the 21st century if the upward trend in global SF₆ emissions persists, as pointed out by Hu et al. (2023).

SF₆ plays a crucial role in various industrial applications due to its remarkable insulating properties and chemical stability (e.g. Cui et al., 2024). It is primarily used in high-voltage electrical equipment in the power industry, such as gas-insulated switch gears (IEEE, 2012), transmission lines (Koch, 2008), and transformers (Gouda et al., 2012), where it acts as a dielectric and insulator. Here, emissions occur primarily during leakage, maintenance, and decommissioning of equipment (Zhou et al., 2018). Furthermore, SF₆ finds applications in semiconductor manufacturing, facilitating precise etching processes (Lee et al., 2004) and serves for blanketing or degassing in the magnesium or aluminum metal industry (Maiss and Brenninkmeijer, 1998). Moreover, it is used in medicine (Lee et al., 2017; Brinton and Wilkinson, 2009), photovoltaic manufacturing (Andersen et al., 2014), military applications (Koch, 2004), particle accelerators (Lichter et al., 2023), soundproof glazing (Schwarz, 2005), sports shoes (Pedersen, 2000), car tyres (Schwaab, 2000), wind turbines (EPA, 2023), and as a tracer gas in the atmosphere (Martin et al., 2011), in groundwater (Okofe et al., 2022), rivers (Ho et al., 2002), and oceans (Tanhua et al., 2004).

SF₆ is regulated under the Kyoto Protocol. Thus, countries classified as Annex-I nations must submit reports detailing their SF₆ emissions to the United Nations Framework Convention on Climate Change (UNFCCC). These national inventories are almost exclusively created by bottom-up methods, wherein statistical data of industrial production and consumption are used along with source-specific emission factors to estimate the emissions. However, SF₆ emissions have been shown to be strongly underestimated by the bottom-up reports, underlining the need for independent verification methods (Levin et al., 2010). Therefore, top-down approaches such as inverse modeling on the basis of atmospheric measurements have been used in several studies to estimate SF₆ emissions (e.g., Brunner et al., 2017; Fang et al., 2014; Ganesan et al., 2014; Hu et al., 2023; Rigby et al., 2011; Simmonds et al., 2020; Vojta et al., 2022).

Around the year 2000, there was a notable shift in the global SF₆ emission pattern from a declining to an increasing trend, which has continued since then (Simmonds et al., 2020). This rising trend was primarily attributed to the increasing emissions from non-Annex-I Asian countries (Rigby et al., 2010). An inversion study by Fang et al. (2014) confirmed a strong increase in East Asian SF₆ emissions between 2006 and 2009, and found its contribution to the global total emissions to be 45%-49%

55 between 2009 and 2012, with China being the largest contributor. Several other inversion studies identified China as the major contributor to global SF₆ emissions (e.g., Ganesan et al., 2014; Rigby et al., 2011; Vojta et al., 2022). From 2007 to 2018 China's annual emissions increased from 1.4 to 3.2 Gg/yr accounting for 36% of the global total emissions in 2018, according to Simmonds et al. (2020). A recent inversion study by An et al. (2024) had access to data from a relatively dense monitoring network inside China and estimated even higher Chinese emissions, with an increase from 2.6 Gg/yr in 2011 to 5.1 Gg/yr in 60 2021. Simmonds et al. (2020) also constrained Western European SF₆ emissions for the years 2013-2018 using three different regional inversion systems. Two of these inversion systems closely matched the emissions reported to the UNFCCC, while the third one indicated substantially higher emissions. Brunner et al. (2017) found that Western European SF₆ emissions were 47% higher than reported to the UNFCCC for the year 2011. As part of the UK annual report to the UNFCCC, Manning et al. (2022) reported inversion results for SF₆ emissions in North-West Europe and found a decreasing trend, dropping from 0.37 Gg/yr 65 in 2004 to 0.18 Gg/yr in 2021. An atmospheric inversion study by Hu et al. (2023) found that annual U.S. SF₆ emissions decreased between 2007 and 2018 but were on an annual basis 40 – 250% higher than calculated by the U.S. Environmental Protection Agency's national inventory submitted to UNFCCC. They also suggested that U.S. SF₆ emissions were substantially higher in the winter than in the summer.

Although global SF₆ emissions can be well constrained by global box models, such as the AGAGE 12-box model (e.g., 70 Rigby et al., 2013), and regional inversion systems have been used to estimate SF₆ emissions in specific regions, there is no clear link between regional and global emissions and an updated, comprehensive top-down perspective of the global SF₆ emission distribution is missing. Moreover, existing inversion studies often only use data from continuous surface station measurements or from specific observation networks, potentially missing valuable information from other available observations. In the absence of accurate global SF₆ mole fraction fields, many studies use statistical observation-based methods to determine 75 initial conditions for their inversions, which are suspected of introducing systematic errors in the inversion results (Vojta et al., 2022). Lastly, the seasonality of SF₆ emissions has not been considered by inversion studies so far, with the exception of the recent study by Hu et al. (2023).

Our study offers a comprehensive global, regionally resolved top-down perspective of SF₆ emissions, using inverse modeling to determine the global emission distribution in the period between 2005 and 2021. We use all available SF₆ observations that 80 we could track down by merging continuous surface station measurements, flask measurements, and observations from aircraft and ship campaigns. We consider multiple *a priori* emission fields for our inversion. For the initial conditions (Vojta et al., 2022), we assimilate global SF₆ observations into modeled global three-dimensional SF₆ concentration fields, resulting in an atmospheric SF₆ re-analysis for the period 2005-2021. We investigate regional and national SF₆ emission trends with annual and also monthly resolution, and compare our results to various existing regional studies. Finally, we discuss our global total 85 emission trend and compare it to results from the AGAGE 12-box model and to global emissions directly calculated from annual increases in globally-averaged atmospheric SF₆ mole fractions provided by NOAA (Lan et al., 2024).

2 Methods

2.1 Measurement data

The SF₆ re-analysis (Sec. 2.3) and the atmospheric inversion (Sec. 2.5) are based on globally distributed atmospheric observations of SF₆ dry-air mole fractions collected during the period 2005 to 2021. Our data set combines both continuous on-line and instantaneous flask sample measurements from surface stations, with observations from moving platforms. Figure 1 shows all surface station sites included in the inversion and the re-analysis. Figure A1 gives an overview of all the measurements from moving platforms, highlighting the measurement date and altitude with different colors. In addition, Section S3 as well as Tables S1 (continuous surface stations), S2, S3 (flask measurement stations), and S4 (moving platforms) list all the data sets used and give further details. The measurements were provided by several independent organizations, and by international observation networks such as AGAGE and NOAA. Table S5 lists all the individual providers and their acronyms. Most of the data can be found in databases like WDCGG (di Sarra et al., 2022), EBAS (Tørseth et al., 2012), and CEDA (CEDA, 2023). We standardize all observations to the SIO-2005 calibration scale, as described in section S4.

For the inversion, continuous surface measurements were averaged over 3-hour intervals. Observations from moving platforms were averaged on a spatio-temporal grid with a temporal resolution of 3 hours and a spatial resolution of 0.5° in latitude, 0.5° in longitude, and 300 m in height. No observation averaging was performed for the re-analysis. In addition, we adopted a method by Stohl et al. (2009) to identify observations that cannot be brought into agreement with modeled mole fractions by the inversion, which we removed entirely (in contrast to Stohl et al. (2009), who assigned larger uncertainties to these observations). We utilized the kurtosis of the *a posteriori* error frequency distribution and iteratively excluded observations causing the largest absolute errors until the kurtosis of the remaining error values fell below 5, approximating a Gaussian distribution. Our complete dataset consists of around 2.7 million observations, while the averaged dataset comprises roughly 800,000 observations. Figure S1 shows the total number of annual observations available for (a) the entire dataset and (b) the averaged dataset.

2.2 Atmospheric transport

We use the Lagrangian particle dispersion model (LPDM) FLEXPART 10.4 (Pisso et al., 2019) to simulate the atmospheric transport of SF₆ between the emission sources and the measurement locations. The model does not account for removal processes, as SF₆ is almost inert in the troposphere to middle stratosphere. We run FLEXPART in backward mode releasing 50,000 particles continuously over 3-hour intervals from the measurement locations and tracking them backward in time for 50 days. The choice of the 50-day simulation period was motivated by the findings of Vojta et al. (2022) who tested the effect of different simulation periods (1-50 days), and found that 50-day simulations resulted in an improved model-measurement agreement and in more robust inversion results in comparison to shorter periods (e.g. 1, 5, 10, or 20 days). For the continuous and moving platform observations, the 3-hour intervals are identical to the 3-hour averaging windows mentioned above (Sec. 2.1). For the flask measurements, the 3-hour intervals are centered around the measurement time. FLEXPART determines emission sensitivities shown as linear operator \mathbf{H}_e , which allows us to relate mole fraction values

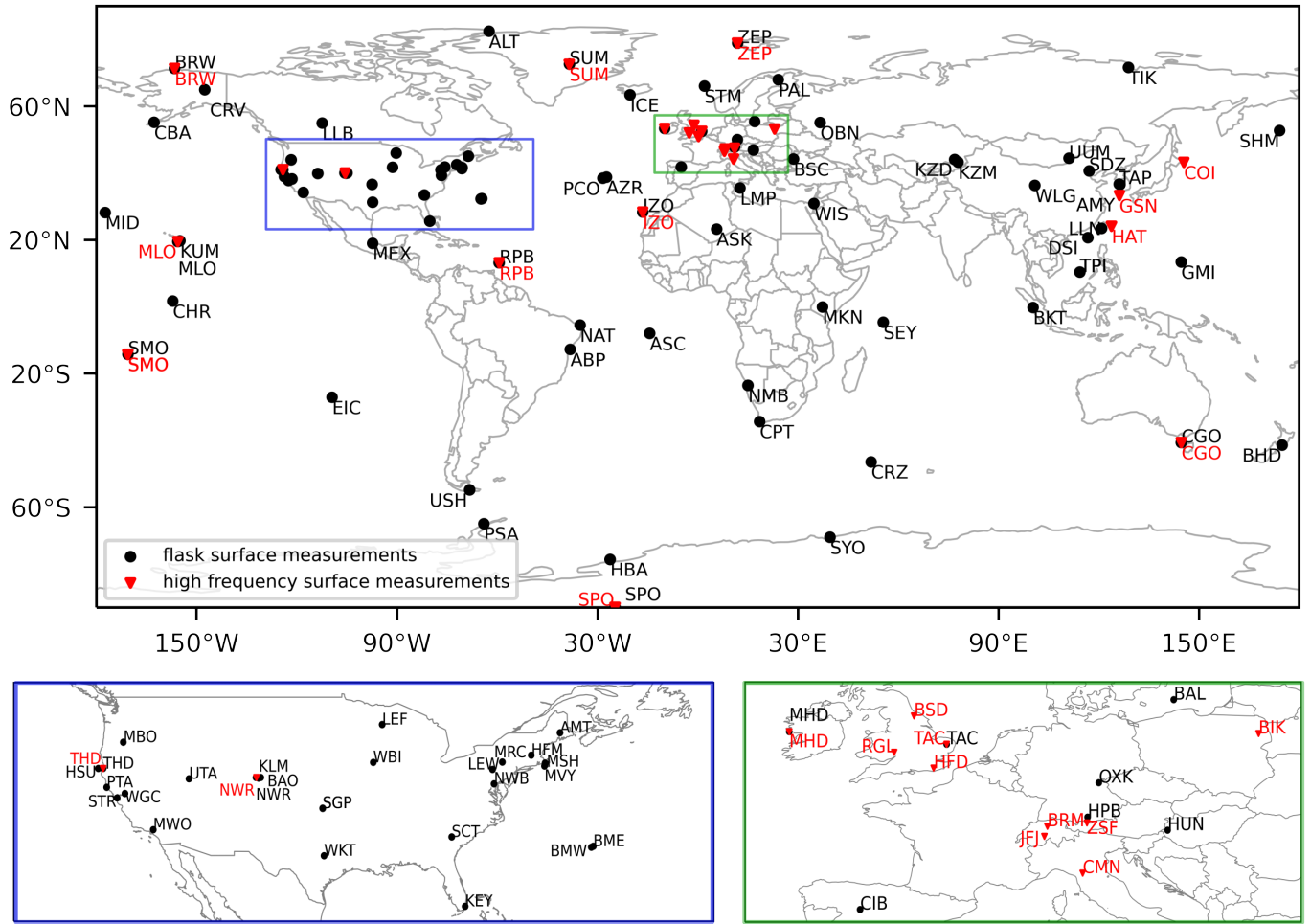


Figure 1. Locations of stations with continuous surface measurements (red triangles) and surface flask measurements (black dots) used in the inversion.

120 at the measurement location and time \mathbf{y} with the corresponding emissions \mathbf{e} occurring during the 50-day simulation period. The emissions prior to the simulation cannot be directly related, but still contribute to the measured mole fraction value and thus must be accounted for in the model as well (Sec. 2.2.2). Therefore, FLEXPART also determines sensitivities to the initial conditions, which are shown as linear operator \mathbf{H}_i , which is multiplied by a 3-d SF_6 mole fraction field \mathbf{y}_i (Sec. 2.3) 50 days before the respective measurement to obtain the baseline $\mathbf{H}_i\mathbf{y}_i$. The relationship between receptor mole fractions \mathbf{y} , initial

125 conditions \mathbf{y}_i and emissions \mathbf{e} is given by:

$$\mathbf{y} = \mathbf{H}_e\mathbf{e} + \mathbf{H}_i\mathbf{y}_i = \mathbf{H}\mathbf{x}, \quad (1)$$

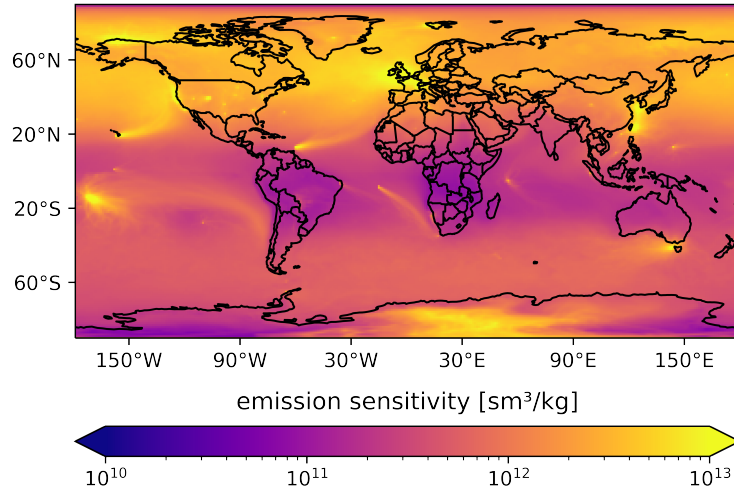


Figure 2. Annually averaged emission sensitivities for the example year 2019 obtained from FLEXPART 50-day backward simulations. Notice that values represent averages over all cases, for which FLEXPART calculations were made. Thus, sites with high-frequency on-line observations are weighted more strongly than sites where only flask measurements are made, or observations from moving platforms.

where \mathbf{H} is the complete atmospheric transport operator combining \mathbf{H}_e and \mathbf{H}_i , and \mathbf{x} is the state vector combining \mathbf{e} and \mathbf{y}_i . Note at this point, that for the optimization we aggregate grid cells of the emission grid (see Sec. 2.5), and that the just-defined variables $(\mathbf{H}_e, \mathbf{e}, \mathbf{H}_i, \mathbf{y}_i)$ refer to aggregated groups of grid cells. For a detailed description please see Thompson and Stohl (2014).

We run FLEXPART with hourly ECMWF ERA5 wind fields (Hersbach et al., 2018) with $0.5^\circ \times 0.5^\circ$ resolution, and 137 vertical levels. The global output grid has a resolution of $1^\circ \times 1^\circ$ and 18 vertical layers with interface heights at 0.1, 0.5, 1, 2, 3, 4, 5, 7, 9, 11, 13, 15, 17, 20, 25, 30, 40, and 50 km agl. The emission sensitivities were calculated only for the lowest layer from 0 to 100 m agl, where most emissions occur.

2.2.1 Emission sensitivities

Figure 2 shows the annual averaged emission sensitivities for all observations made in the example year 2019. Areas of high sensitivity are well covered by the measurement data set, so that emissions can be well constrained by the inversion. Emission sensitivities in the Northern Hemisphere are much higher than in the Southern Hemisphere, and the high SF_6 emitting countries China and USA are reasonably well covered. The largest values are observed in North-West Europe, which is very well monitored by the dense British observation network. However, large land areas in the Southern Hemisphere, including South America, Southern Africa, and Northern Australia, are poorly sampled due to a lack of continuous measurements. India, which is considered to have high SF_6 emissions, is also poorly covered. In these areas, the emissions may not be determined well by the inversion.

2.2.2 Initial conditions

145 Using a LPDM to calculate emission sensitivities for atmospheric inversions, we release virtual particles directly from the measurement location and benefit from almost infinite resolution at the receptor. The disadvantage of using a LPDM is that we have to deal with initial conditions, as virtual particles can be followed backward only for a limited period, due to computational costs. Only emissions that occur within this LPDM simulation period can be directly related to observed mole fraction values and are accessible to the inversion. We, therefore, need to define a baseline that accounts for all the emission contributions
150 prior to the simulation period that contribute to the observed mole fraction. In this study, we use the global-distribution based (GDB) method (Vojta et al., 2022) to determine the baseline. We couple the mole fraction sensitivity at the ending points of the FLEXPART back trajectories to a global field of SF₆ mole fractions (for more details see Thompson and Stohl, 2014). In essence, this propagates the time-resolved 3-d mole fractions in space and time along the 50-day trajectories to the receptor location and time. As pointed out by Vojta et al. (2022), the GDB method has many advantages over observation-based filtering
155 methods. GDB baselines are consistent with the LPDM backward simulation length, account for meteorological variability, and allow the inclusion of low-frequency measurements and measurements from moving platforms in the inversion. However, the method requires unbiased global time-resolved 3-d fields of SF₆.

2.3 Global SF₆ fields

In this study, we generate global fields of SF₆ mole fractions for the period between 2005 and 2021, using the LPDM FLEX-
160 PART 8-CTM-1.1 (Henne et al., 2018). The model is described by Groot Zwaafink et al. (2018), who tested its performance for CH₄, while Vojta et al. (2022) applied it to SF₆. We operate FLEXPART-CTM in a domain-filling mode, where 80 million virtual particles are dispersed globally in proportion to air density. The initialization is based on a latitudinal SF₆ profile determined by interpolation of surface measurements and accounts for the "Age of Air" (Stiller et al., 2021) at higher altitudes (for more details see Sec. S5 in the supplementary materials). Released particles are tracked forward in time and carry both
165 an air tracer and the chemical species SF₆. When they reside in the atmospheric boundary layer, the model accounts for SF₆ emissions by increasing the SF₆ masses of the respective particles. The emission uptake of the particles is driven by the "UP" *a priori* emission data set (see Sec. 2.4).

As model errors and inaccurate emission fields lead to errors and biases in the global SF₆ fields, a nudging routine is used to push the simulated mole fractions towards the observations within predefined kernels centered around the measurement loca-
170 tions. We include the entire observation data set in the nudging routine, comprising continuous surface station measurements, flask measurements, and observations from aircraft and ship campaigns. Furthermore, we assign different kernel sizes to individual observations, according to the observed variability in a selected time window for stationary sites, and according to the measurement height for moving platforms. Small kernels are attributed to observations with higher variability and observations close to the surface to preserve the spatial variability of SF₆ mole fractions over land masses. Detailed kernel configurations
175 can be found in Table S6. We run the model with the 0.5°×0.5° ERA5 data set and produce daily average output with a res-

Table 1. Overview of global SF₆ *a priori* emission fields used in this study

<i>a priori</i> emissions		
Inventory	variation	distribution of total national emissions
UNFCCC-ELE	UP	emissions distributed according to population density
	UN	emissions distributed according to night light remote sensing
EDGAR	E8	v8 - distribution provided by EDGAR
	E7P	v7 - emissions distributed according to population density
	E7N	v7 - emissions distributed according to night light remote sensing
GAINS	GS	distribution provided by GAINS

olution of $3^{\circ} \times 2^{\circ}$. The daily-resolved global SF₆ mole fraction fields between 2005 and 2021 can be freely downloaded from <https://doi.org/10.25365/phaidra.489>.

2.4 *A priori* emissions

We generate six different annually resolved global SF₆ emission fields for the period 2005 to 2021 that are used as *a priori* emissions in the inversions (Sec. 2.5). One of these fields is also used to drive FLEXPART-CTM (Sec. 2.3). Our six *a priori* emissions are based on three different inventories (see Table 1) and globally gridded based on different proxy information at a resolution of $1^{\circ} \times 1^{\circ}$.

UNFCCC-ELE

For every year, we gather total national SF₆ emissions reported to the UNFCCC (UNFCCC, 2021) and add total Chinese emissions estimated by Fang et al. (2014). We then subtract the total emissions of these countries from the total global SF₆ emissions calculated by Simmonds et al. (2020). The residual emissions are then distributed among all other countries proportionally to their national electricity generation. Gaps in the SF₆ emissions or electricity generation data are filled by linear interpolation. Lastly, the attributed total national SF₆ emissions are further distributed within the respective borders of each country according to two different proxy data sets: (1) the gridded population density (CIESIN, 2018) (UP) and (2) night light remote sensing data (Elvidge et al., 2021) (UN), thus resulting in two different UNFCCC-ELE *a priori* emission versions.

EDGAR

We use the gridded annual global SF₆ emission inventory provided by the Emissions Database for Global Atmospheric Research (EDGAR, 2023; Crippa et al., 2023), part of the recently updated data set EDGARv8.0 (E8). In addition, we also utilize the national annual totals of SF₆ emissions provided by EDGARv7.0 (EDGAR, 2022; Crippa et al., 2021), which are not gridded. As for the UNFCCC-ELE emissions, we distribute those national totals according to the gridded population density (CIESIN, 2018) (E7P) or night light remote sensing (Elvidge et al., 2021) (E7N).

GAINS

Furthermore, we use the GAINS gridded global emission inventory. This inventory is based on the study by Purohit and Höglund-Isaksson (2017) and was updated until 2020 as described in Section S6 in the supplementary material. The provided data set was extended to 2021 by linear extrapolation (GS).

Comparison

Emission fields from the three inventories (UNFCCC-ELE, EDGAR, and GAINS) show much stronger differences than the two variations of UNFCCC-ELE and EDGAR generated by using different proxy information for spatial distribution. In Fig. 3, we therefore only compare three *a priori* emissions (UP, E8, and GS) for 2019, as an example, while UN, E7N, and E7P are shown in the supplements (Fig. S25). It is noteworthy that all *a priori* emission fields show similar global total SF₆ emissions in 2019. Figure 3 shows significantly higher emissions in the Northern than in the Southern Hemisphere for all three fields, with China being the biggest emitter. Other high-emitting areas are Europe, the USA, and India. While emissions in Europe are comparable across all data sets, notable differences can be seen in other regions: (1) UNFCCC-ELE (electricity generation distributed data for non-reporting countries) shows relatively high emissions in India and the Southern Hemisphere compared to EDGAR and GAINS. (2) EDGAR shows higher emissions in the USA than the other two *a priori* fields, and (3) GAINS exhibits higher emissions in China than UNFCCC-ELE and EDGAR.

2.5 Inversion method

We employ the inversion framework FLEXINVERT+ (Thompson and Stohl, 2014) to calculate optimized emissions (*a posteriori* emissions). FLEXINVERT+ uses equation 1, the atmospheric transport operator \mathbf{H} , *a priori* emissions \mathbf{x}_p , initial conditions \mathbf{y}_i , and observed mole fractions \mathbf{y} to minimize the cost function \mathbf{J} (Eq. 2), which represents the negative exponent of the *a posteriori* emissions probability distribution, derived by Bayes' theorem (e.g., Tarantola, 2005). The *a posteriori* emissions defined by the maximum of the distribution are found by minimizing the mismatch between modeled and observed mole fractions weighted by the observation error covariance matrix \mathbf{R} , and the difference between emissions \mathbf{x} and their *a priori* values \mathbf{x}_p weighted by the *a priori* emission error covariance matrix \mathbf{B} :

$$\mathbf{J}(\mathbf{x}) = \frac{1}{2}(\mathbf{x} - \mathbf{x}_p)^T \mathbf{B}^{-1}(\mathbf{x} - \mathbf{x}_p) + \frac{1}{2}(\mathbf{H}\mathbf{x} - \mathbf{y})^T \mathbf{R}^{-1}(\mathbf{H}\mathbf{x} - \mathbf{y}) \quad (2)$$

We use the analytic solution to minimize \mathbf{J} , which reads:

$$\hat{\mathbf{x}} = \mathbf{x}_p + \mathbf{G}(\mathbf{y} - \mathbf{H}\mathbf{x}_p) \quad (3)$$

with the defined Gain matrix \mathbf{G} :

$$\mathbf{G} = \mathbf{B}\mathbf{H}^T(\mathbf{H}\mathbf{B}\mathbf{H}^T + \mathbf{R})^{-1} \quad (4)$$

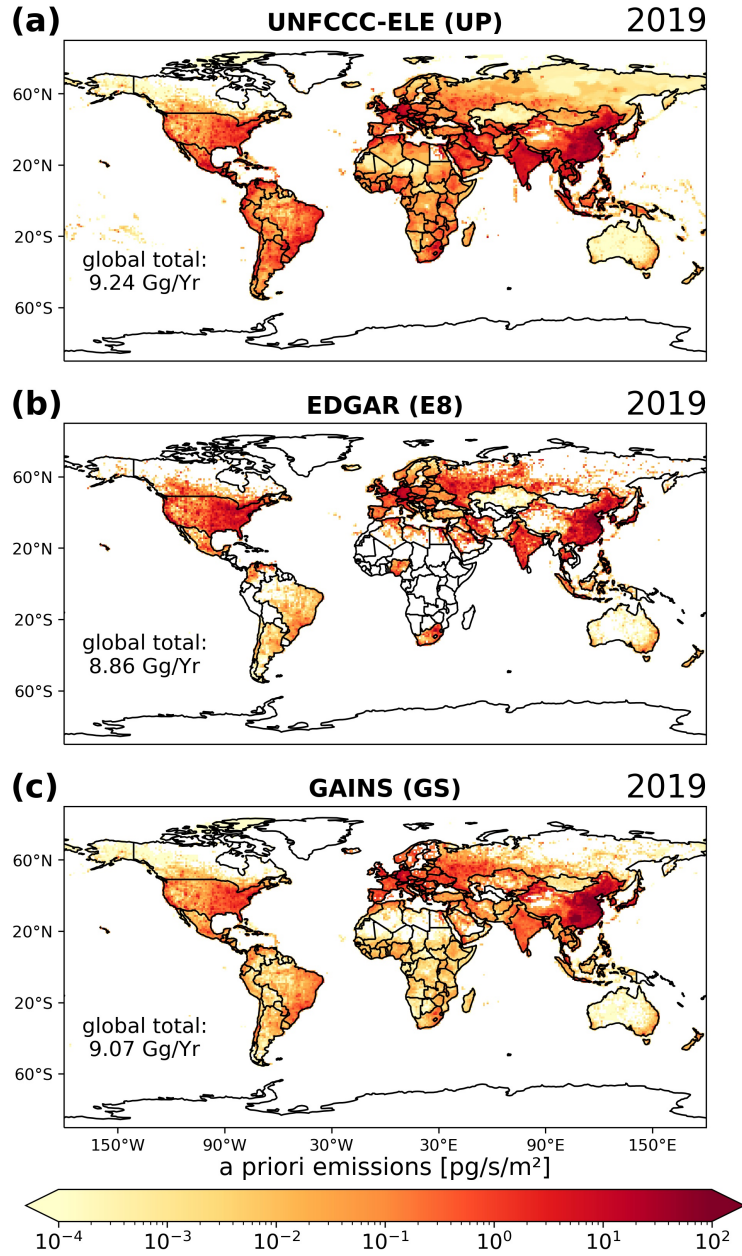


Figure 3. *A priori* emissions from the different sources (a) UNFCCC-ELE (UP), (b) EDGAR (E8), and (c) GAINS (GS) for the year 2019.

225 We optimize emissions on a 6-monthly basis and average the results for each year to obtain annual emissions between 2005 and 2021. In addition to the emissions, we also optimize the baseline (\mathbf{H}_{i,y_1}) in the inversion, where the whole field is adjusted on a monthly basis. The uncertainty of the baseline is set to 0.15 ppt. The *a priori* emission uncertainty is estimated to be 70%

of the *a priori* value in each grid cell with a minimum value of $1 \cdot 10^{-13} \frac{kg}{m^2h}$. Correlations between emission uncertainties are accounted for using an exponential decay model with a spatial scale length of 250 km and a temporal scale length of 90 days.

230 FLEXINVERT+ assumes a diagonal observation error covariance matrix \mathbf{R} , and therefore, does not account for possible error correlations between different observations. The diagonal elements represent the sum of measurement and model error, where we assume the latter to be dominant. Our error estimates are based on a number of initial inversion runs, where we assessed the model error according to the *a posteriori* model residuals (difference between observed and *a posteriori* simulated mole fractions), and such that the reduced chi-square value (the value of the cost function at minimum divided by the number of

235 observations and divided by 2) is close to 1. The *a posteriori* emission error covariance matrix $\hat{\mathbf{B}}$ is calculated as

$$\hat{\mathbf{B}} = \mathbf{B} - \mathbf{GHB} \quad (5)$$

The relative uncertainty reduction was calculated for every grid cell, based on the *a priori* and *a posteriori* emission uncertainties in the respective cell as: $1 - \frac{a \text{ posteriori uncertainty}}{a \text{ priori uncertainty}}$.

For the inversion, we use emission grids with different cell sizes (Fig. 4, Fig. S2, Fig. S3), defined by the aggregation of

240 grid cells with low emission contributions based on emission sensitivities and *a priori* emissions. Emissions in the fine grid are thereby weighted according to the ratio of the area of the fine grid to the variable-resolution coarse grid into which it is aggregated. After the inversion, optimized emissions in the variable grid were redistributed onto the fine grid according to the relative distribution of the *a priori* emissions (see Thompson and Stohl, 2014, for a detailed description). We also exclude grid cells over the oceans from the inversion. The global inversion grid has a resolution of 1° to 16° , and the total number

245 of grid cells varies between years, ranging from a minimum of 5841 (2005) to a maximum of 11901 (2016), which is related to the number of available observations in each year (see Fig. S1). To study the seasonal emission patterns, we also perform monthly inversions, using a coarser global inversion grid of 953 grid cells for all years and a time scale length of 30 days for the correlation between *a priori* emission uncertainties.

For SF_6 we only expect positive fluxes over land. However, the inversion algorithm may create negative *a posteriori* fluxes.

250 To address this issue, we apply an inequality constraint on the *a posteriori* emissions, using the truncated Gaussian approach by Thacker (2007). *A posteriori* emissions $\hat{\mathbf{x}}$ are corrected to positive values by applying inequality constraints as error-free observations:

$$\hat{\mathbf{x}} = \mathbf{x} + \mathbf{AP}^T(\mathbf{PAP}^T)^{-1}(\mathbf{c} - \mathbf{Px}), \quad (6)$$

where \mathbf{P} represents a matrix operator selecting the fluxes violating the inequality constraint, and \mathbf{c} a vector of the inequality

255 constraint. \mathbf{x} and \mathbf{A} represent the *a posteriori* emissions and error covariance matrix, respectively.

2.6 Sensitivity tests and setup

Before deciding on our final inversion setup, we performed several sensitivity tests. We tested different: (1) *a priori* emission uncertainties between 50% and 100% of the respective *a priori* values and minimal absolute uncertainties between $1 \cdot 10^{-14}$

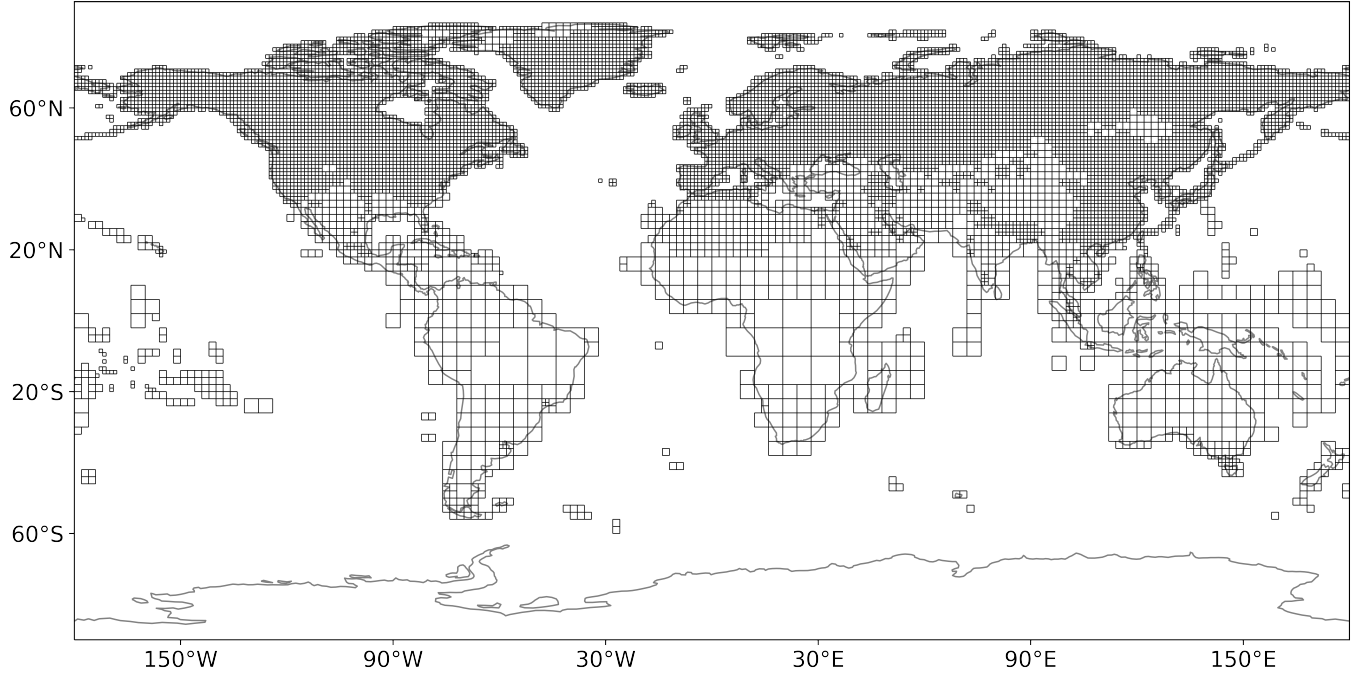


Figure 4. Global inversion grid with variable grid cell sizes for the example year 2019.

and $1 \cdot 10^{-12} \frac{kg}{m^2h}$, (2) spatial and temporal correlation scale lengths of the *a priori* uncertainties of 100 to 300 km, and 30 to 180
260 days, respectively, and (3) baseline uncertainties from 0.05 to 0.25 ppt. We found that inversion results were relatively stable
for these different settings (see Sec. S7) and that the choice of the *a priori* emission inventory (UNFCCC-ELE, EDGAR,
or GAINS) showed the biggest influence on the inversion results. While the inversion results were similar using different
variations of the UNFCCC-ELE (UP and UN) or EDGAR (E8, E7P, and E7N) *a priori* emissions (see Sec. 2.4), we found
substantial differences when switching between UNFCCC-ELE, EDGAR and GAINS. Therefore, we ran inversions with all
265 six variations listed in Table 1 individually and averaged the results of UP and UN, as well as E8, E7P, and E7N to compile
one inversion result for each *a priori* emission inventory (UNFCCC-ELE, EDGAR, and GAINS). Since it is challenging to
identify the most accurate inventory, we also provide an average of these three inversion results.

3 Results and discussion

3.1 Observed and modeled mole fractions

270 To illustrate the inversion optimization process, we compare observed and modeled mole fractions (before and after the in-
version) at the Gosan observation station (Fig. 5a), at the Ragged Point station (Fig. 5b), and all other continuous surface
measurement sites (Fig. A2, A3, and S4-S23), using the E7P emissions field as the *a priori* in the inversion. The Gosan station

is situated on the southwestern tip of the South Korean island Jeju, monitoring pollution events from East Asia. However, during the Asian summer monsoon, typically from June to September, clean air from the Southern Hemisphere, low in SF₆, is episodically passing over the station (e.g. Li et al., 2018), making it challenging to accurately define the baseline during this period. The background station Ragged Point, located on Barbados' eastern edge, primarily receives clean air masses from the Atlantic. It also exhibits intrusions of southern air masses that are low in SF₆ during the summer, resulting in distinct minima in the mole fraction time series, and a complex baseline. With the GDB method, we can address these challenges of complex baselines. As illustrated in Fig. 5, the calculated baselines capture the low summer observations, representing a significant advantage over statistical baseline methods. This advantage also becomes apparent for other stations with complex baselines such as Hateruma (Japan, Fig. A2) or Izaña (Tenerife, Fig. A3). Additionally, the optimization of the baseline shows relatively little impact at all stations, implying that the GDB method and the utilized global SF₆ mole fraction fields already lead to a well-fitting baseline that cannot be improved substantially by the inversion. Figure 5a also illustrates the emission improvement achieved by the inversion. The optimized *a posteriori* emissions result in mole fractions that are much closer to the observations than the *a priori* modeled values. For Gosan, the correlation (r^2) between (detrended; i.e. removing the 2005-2021 trend from the time series) observed and modeled values improves from 65% to 81% and the mean squared error (MSE) halves from 0.4 ppt² to 0.2 ppt². Table S7 and Fig. S24 demonstrate the statistical improvements at all continuous surface stations, emphasizing the proper functioning of the inversion.

3.2 Inversion increments and relative error reduction

Figure 6 shows the inversion increments (*a posteriori* minus *a priori* emissions) and the relative uncertainty reductions achieved by the inversion for the example year 2019, when using the *a priori* emission fields UP (UNFCCC-ELE), E8 (EDGAR) and GS (GAINS), while the results for UN, E7N, and E7P are shown in the supplements (Fig. S26). Across all cases, the emission optimization predominantly occurs in the Northern Hemisphere, characterized by non-zero inversion increments and large error reductions. The limited number of observations in the Southern Hemisphere results in small emission sensitivities there (see Fig. 2), limiting the effects of the inversion primarily to Northern Hemisphere emissions. Only in the case of the UNFCCC-ELE inventory, Fig. 6a shows (negative) inversion increments and notable error reduction in Southern regions like South America and South Africa. This might indicate that the UNFCCC-ELE *a priori* emissions are significantly overestimated in these areas. All three data sets show the biggest error reduction and inversion increments in the USA, Europe, and China, where the *a priori* emissions are high and many observations are available. While the increments look similar for the three *a priori* emissions for Europe and China, they are very different for the USA, where the inversion produces predominantly negative increments when using the EDGAR inventory, while only positive increments are obtained using UNFCCC-ELE and GAINS. These differences suggest that the true 2019 U.S. emissions lie between the high EDGAR and the lower UNFCCC-ELE/GAINS estimates.

3.3 National and regional emissions

Figure 7 illustrates the global SF₆ *a posteriori* emissions for the example year 2019, averaged over all emission fields as described in Sec. 2.6. The individual *a posteriori* emission fields using the different *a priori* emissions are shown in the supplements.

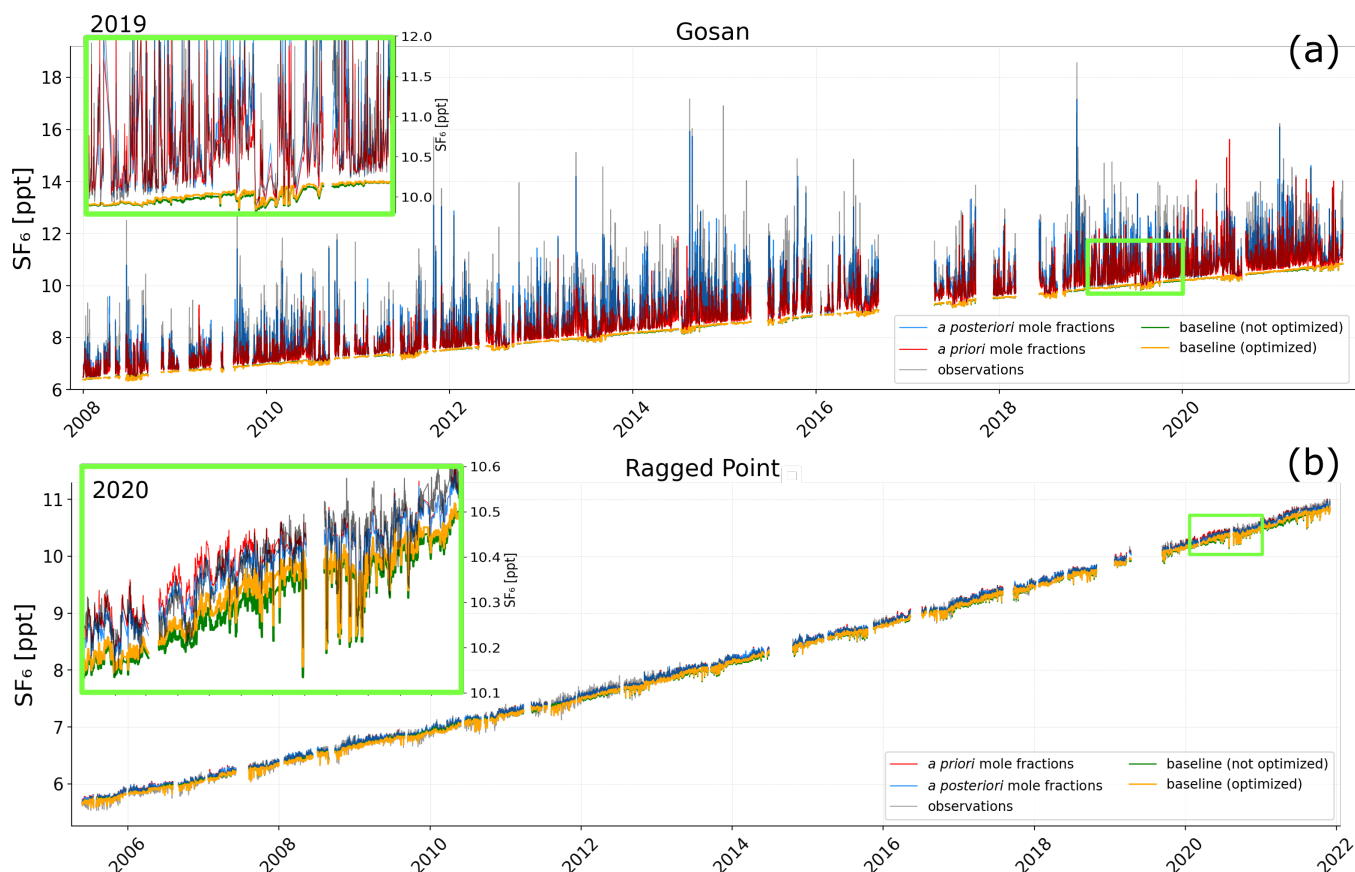


Figure 5. Mole fraction time series at the (a) Gosan and (b) Ragged Point measurement station. Red lines represent the modeled *a priori* mole fractions calculated with the E7P *a priori* emissions and blue lines represent the modeled *a posteriori* mole fractions. The green line illustrates the baseline derived by the GDB method and the orange line shows the optimized baseline. The grey line represents the observed mole fractions. The inset panels zoom into the year (a) 2019 (Gosan) and (b) 2020 (Ragged Point), as illustrated by the light green rectangles.

ments (Fig. S27). The highest SF_6 emissions can be seen in the USA, Europe, China, and India, while emissions are smaller in South America, Africa, and Australia. SF_6 emissions of these countries and regions are discussed in more detail in the following subsections, showing their national/regional emission time series between 2005 and 2021. National and regional emissions are calculated by aggregating the emissions within the respective grid cells of the corresponding country or region, employing a national identifier grid (CIESIN, 2018).

3.3.1 Emissions from the United States of America

Figure 8 shows the annual *a priori* and *a posteriori* U.S. SF_6 emissions for the different priors in the period between 2005 and 2021. The inversion results show a clearly declining annual emission trend of -0.054 Gg/yr, dropping from 1.25 [1.06-1.58] Gg

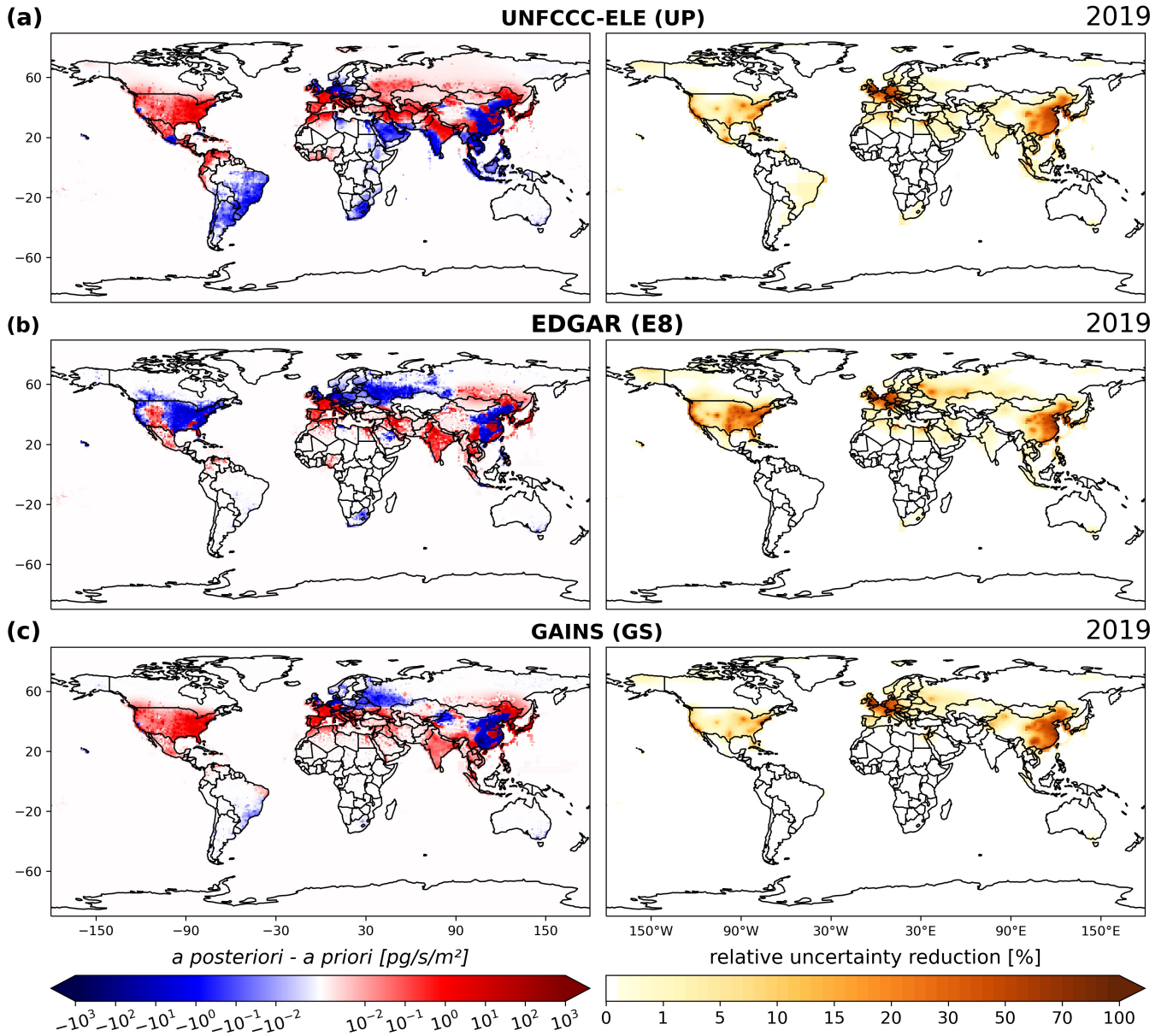


Figure 6. Inversion increments ($a_{\text{posteriori}}$ minus a_{priori} emissions; left panels) and the relative uncertainty reductions (right panels) shown when using the priors (a) UNFCCC-ELE (UP), (b) EDGAR (E8) and (c) GAINS (GS), for the example year of 2019.

in 2005 to 0.48 [0.36-0.71] Gg in 2021 (Fig. 8; $a_{\text{posteriori}}$ average). The uncertainty intervals represent the minimum and maximum 1- σ uncertainty limits across the inversion results, using the different a_{priori} inventories. The $a_{\text{posteriori}}$ emissions are larger (by a factor of 2 on average) than the emissions reported to UNFCCC (Fig. 8; a_{priori} UNFCCC-ELE) throughout

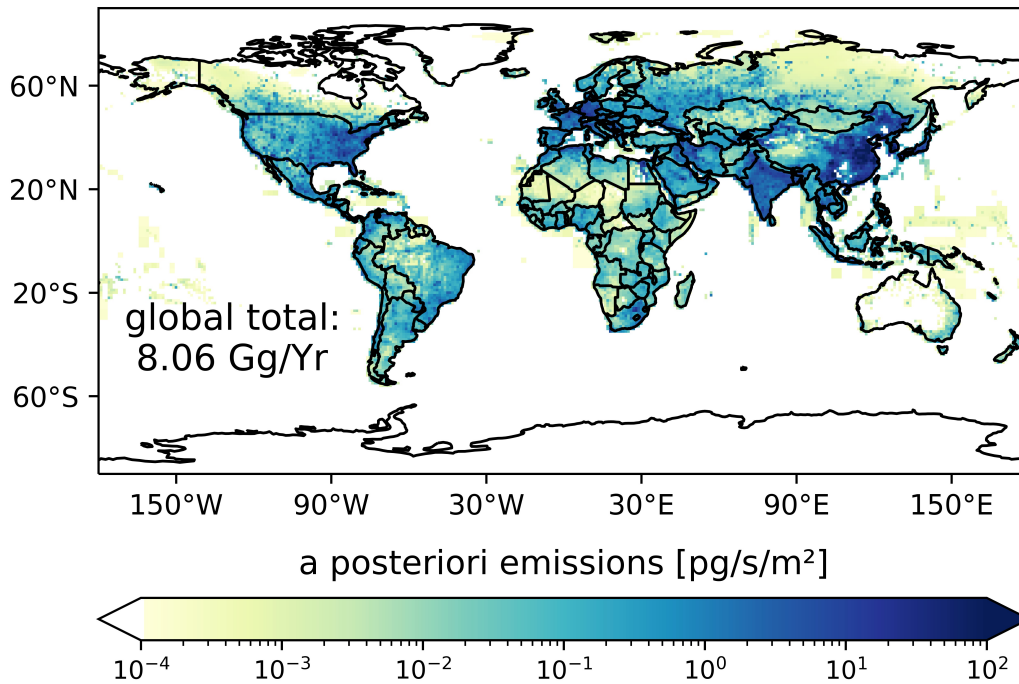


Figure 7. Global *a posteriori* emissions for the example year 2019, averaged over the inversion results using the six different *a priori* emissions.

the entire study period. While the different *a priori* emissions show big differences, *a posteriori* emissions agree much better. At the beginning of the study period, all three *a posteriori* emissions are substantially higher than the UNFCCC-reported *a priori* emissions, and closer to the EDGAR *a priori* estimates. Between 2005 and 2012 the *a posteriori* emissions show a substantial decrease, after which they approach the UNFCCC-reported values, but still remain higher. It also seems that the GAINS *a priori* emissions are far too low at the beginning of our study period, while the EDGAR *a priori* emissions are far too high at the end of our study period. Our results are a bit higher compared to the regional inversion study by Hu et al. (2023), however, show a remarkably similar declining trend in U.S. SF₆ emissions between 2007 and 2018.

3.3.2 Total emissions from EU countries

Figure 9 illustrates the total annual *a priori* and *a posteriori* SF₆ emissions from all EU countries¹. Here, the three *a priori* data sets show almost no trend and are very similar to each other throughout the study period, indicating a consistent framework for bottom-up reporting of EU emissions. The annual *a posteriori* emissions show a decreasing trend of -0.006 Gg/yr, dropping from 0.41 [0.35-0.46] Gg in 2005 to 0.25 [0.22-0.29] Gg in 2021 (Fig. 9; *a posteriori* average). While *a posteriori* emissions

¹Austria, Belgium, Bulgaria, Croatia, Cyprus, Czech Republic, Denmark, Estonia, Finland, France, Germany, Greece, Hungary, Ireland, Italy, Latvia, Lithuania, Luxembourg, Malta, Netherlands, Poland, Portugal, Romania, Slovakia, Slovenia, Spain, and Sweden

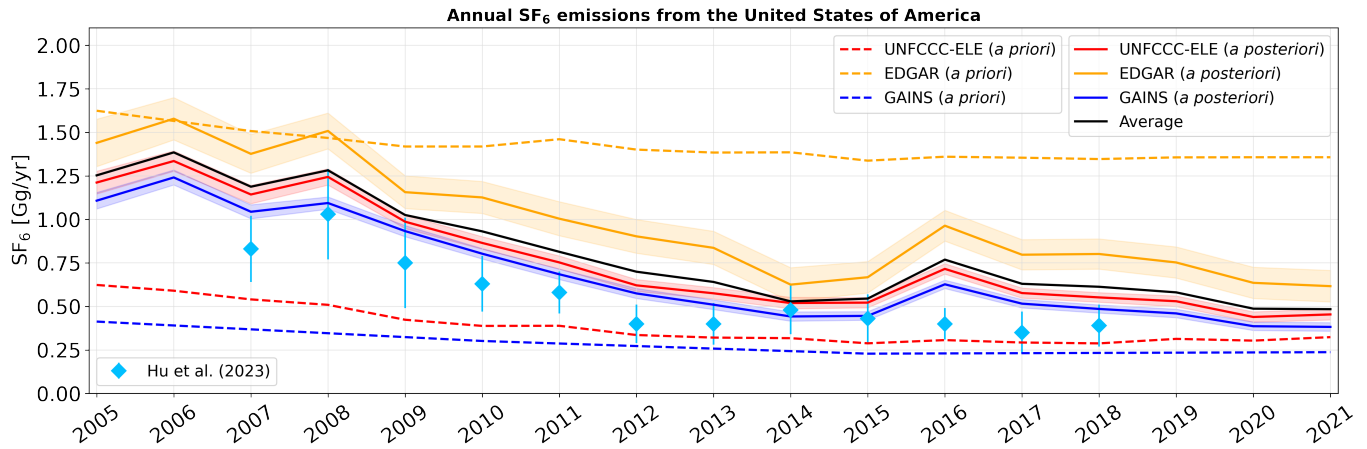


Figure 8. Annual *a priori* (dashed lines) and *a posteriori* (solid lines) SF₆ emissions in the U.S., shown for the period between 2005 and 2021 when using different *a priori* emissions (UNFCCC-ELE red, EDGAR orange, GAINS blue). A *a posteriori* emissions are illustrated together with their respective 1- σ uncertainties (colored shadings). The *a posteriori* emissions averaged over the inversion results using the different inventories are shown with a black solid line. The results of Hu et al. (2023) are shown with blue diamonds together with their respective 2- σ uncertainties.

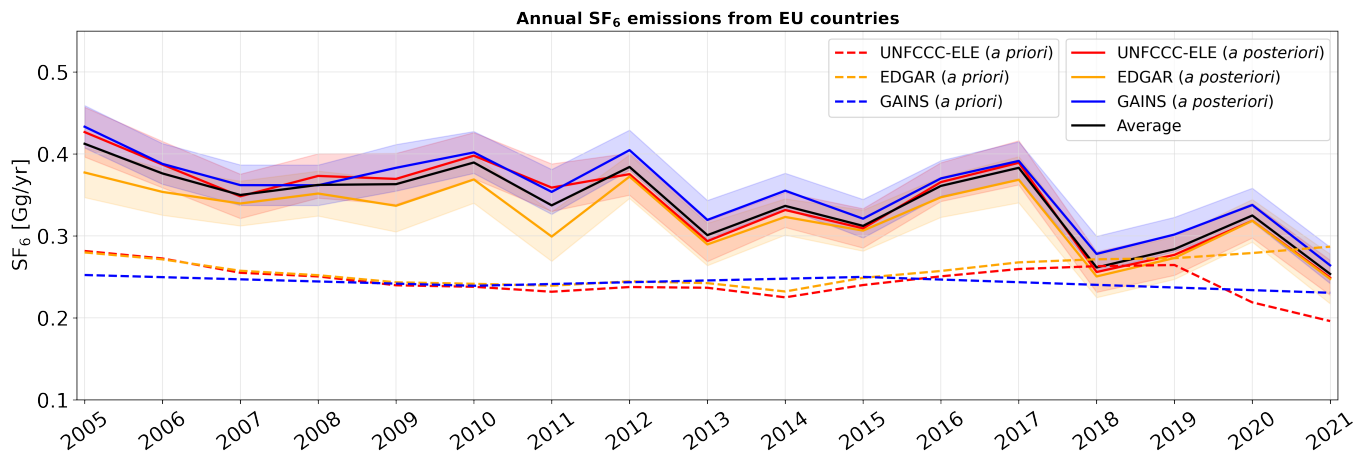


Figure 9. Annual *a priori* (dashed lines) and *a posteriori* (solid lines) SF₆ emissions aggregated for all EU countries, shown for the period between 2005 and 2021 when using different *a priori* emissions (UNFCCC-ELE red, EDGAR orange, GAINS blue). A *a posteriori* emissions are illustrated together with their respective 1- σ uncertainties (colored shadings) The *a posteriori* emissions averaged over the inversion results using the different inventories are shown with a black solid line.

are relatively stable and exceed the *a priori* emissions until 2017, there is a significant drop in 2018, after which they are closer to the *a priori* emissions. It seems plausible that this drop in SF₆ emissions in 2018 was a result of the EU's F-gas regulation 517/2014 (European Parliament and Council of the European Union, 2014), which requires new electrical switch gear put into

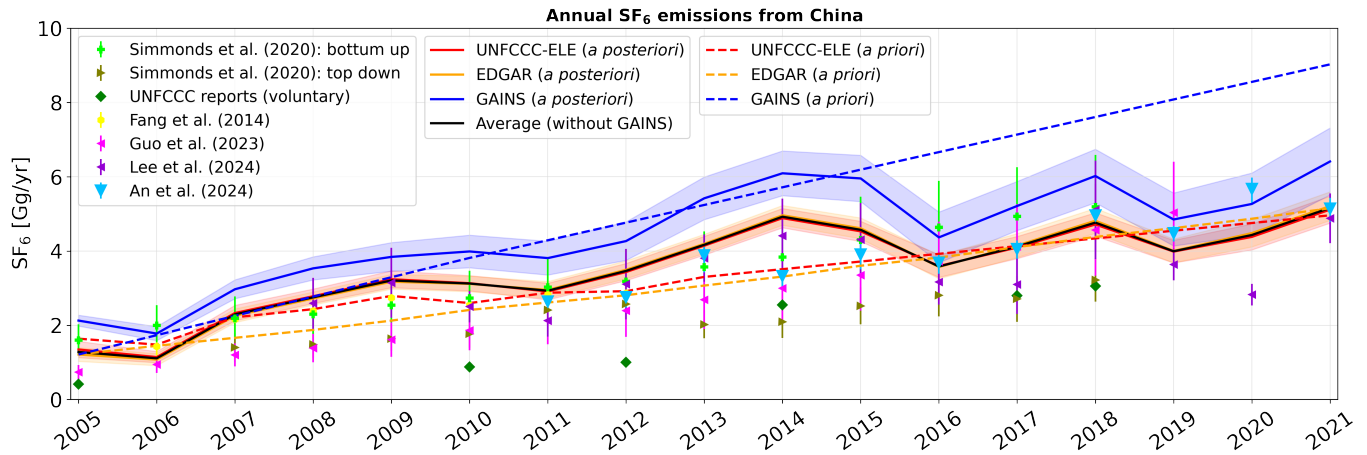


Figure 10. Annual *a priori* (dashed lines) and *a posteriori* (solid lines) SF₆ emissions from China, shown for the period between 2005 and 2021 when using different *a priori* emissions (UNFCCC-ELE red, EDGAR orange, GAINS blue). *A posteriori* emissions are illustrated together with their respective 1- σ uncertainties (colored shadings). The *a posteriori* emissions averaged over the inversion results using EDGAR and UNFCCC-ELE are shown with a black solid line.

service from 2017 onwards to be equipped with a leak detection system and bans the use of SF₆ for recycling magnesium die-casting alloys from 2018. Our results suggest that in their reports to the UNFCCC, EU countries underestimated their SF₆ emissions prior to 2018, but at the same time underestimated the positive effect of the F-gas regulation 517/2014 in cutting SF₆ emissions.

As one of only three countries, the United Kingdom also includes top-down inversion results in its annual UNFCCC reports (Manning et al., 2022). As part of this top-down approach, Manning et al. (2022) also reported emissions of North-West Europe², to which we compare our inversion results (Fig. A4). The *a posteriori* emissions from North-West Europe are generally similar to EU emissions shown in Fig. 9, however, they show an even clearer negative trend of -0.009 Gg/yr. Our results agree well, on average within 16% and better since 2012, with those reported by Manning et al. (2022). Furthermore, Simmonds et al. (2020) presented inversion-derived emissions for Western Europe³ for four different inversion setups. Our *a posteriori* emissions agree very well with three of these four inversions (Fig. A5). The fourth inversion shows consistently lower emissions, however, this inversion setup used fewer observation stations than the other three and is likely less accurate. It is likewise noteworthy that the first three inversions of Simmonds et al. (2020) show an emission drop in 2018, which we also find.

3.3.3 Emissions from China

Chinese *a priori* and *a posteriori* SF₆ emissions are illustrated in Fig. 10. The inversion-derived *a posteriori* emissions reveal a distinct positive trend of 0.21 Gg/yr (Fig. 10; *a posteriori* average without GAINS), with a particularly rapid increase between

²Ireland, the United Kingdom of Great Britain, France, Belgium, Netherlands, Luxembourg, and Germany

³United Kingdom of Great Britain, Ireland, Benelux, Germany, France, Denmark, Switzerland, Austria, Spain, Italy, and Portugal

2006 and 2014 (0.35 Gg/yr), followed by a stabilization thereafter. The UNFCCC-ELE *a priori* Chinese emissions slightly exceed the EDGAR *a priori* emissions between 2007 and 2011, after which they align well. UNFCCC-ELE and EDGAR *a posteriori* emissions show almost identical Chinese emissions that are also close to their *a priori* values. The GAINS *a priori* Chinese emissions differ significantly from the other two inventories. After 2005, the GAINS *a priori* emissions show a very strong upward trend, increasingly diverging from the other two priors until the end of the study period, at which point the GAINS Chinese emissions are almost twice as high as the other priors. In the GAINS inventory, China's 2021 emissions alone would account for almost all of the known total global SF₆ emissions (see Sec. 3.3.5), which seems unrealistic. The GAINS *a posteriori* emissions for China show lower values compared to the *a priori* emissions, however still exceed the UNFCCC-ELE- and EDGAR-derived results. It seems likely that the inversion improves the overestimated Chinese GAINS emissions, yet it may not entirely correct them, given the considerably overestimated *a priori* estimates. Due to these concerns about the Chinese GAINS *a priori* emissions, we provide both a Chinese *a posteriori* emissions average including (see Table A3) and excluding GAINS inversions (black solid line in Fig. 10).

China is not obliged to report its national emissions but it voluntarily reported bottom-up SF₆ estimates in their national communications and biennial updates to the UNFCCC for 2005 (China, 2012), 2010 (China, 2018a), 2012 (China, 2016), 2014 (China, 2018b), 2017 (China, 2023a), and 2018 (China, 2023b). These reported values are much smaller than our *a posteriori* emissions, especially in 2010, 2012, and 2014. The values from the more recent reports in 2017 and 2018 are, however, closer to our inversion results, indicating an improvement in Chinese reports. We also compare our results to various other studies of Chinese emissions, both using bottom-up and top-down approaches. Our results agree within 15% with the inversion study by Fang et al. (2014) who used a similar inversion setup, based on the continuous measurements in Gosan (South Korea), Hateruma (Japan) and Cape Ochiishi (Japan), and FLEXPART atmospheric transport modeling. Furthermore, our results align closely with a recent inversion study by An et al. (2024) (agreeing within 12%), who had access to data from a relatively dense monitoring network over China. Our results also agree well (within 15%) with the findings of Lee (2024), whose regional inversion study (in preparation) utilizes observations from Gosan to estimate emissions in South-East Asia. Note, that the patterns of our time series are very similar to the ones of Lee (2024), suggesting that our Chinese *a posteriori* emissions are highly influenced by the Gosan observations station. Our derived emissions also agree well within 8% with bottom-up estimates by Guo et al. (2023) after 2015 and within 18% with the bottom-up estimates by Simmonds et al. (2020). Our results are, however, higher than the bottom-up estimates by Guo et al. (2023) between 2008 and 2015 and the inversion-derived emissions by Simmonds et al. (2020). However, Simmonds et al. (2020) based their inversion results on only one station (Gosan), coarser meteorology, and an inversion domain representing only 34% of China's population, which could have resulted in a substantial underestimation of the emissions.

3.3.4 Other regions

In this section, we present the *a priori* and *a posteriori* SF₆ emissions from Africa, South America, Australia, and India. It is important to note that there are no emission reports to the UNFCCC for Africa, South America, and India. In these regions, the UNFCCC-ELE *a priori* emissions are derived by distributing the emissions residuals from the global total emissions

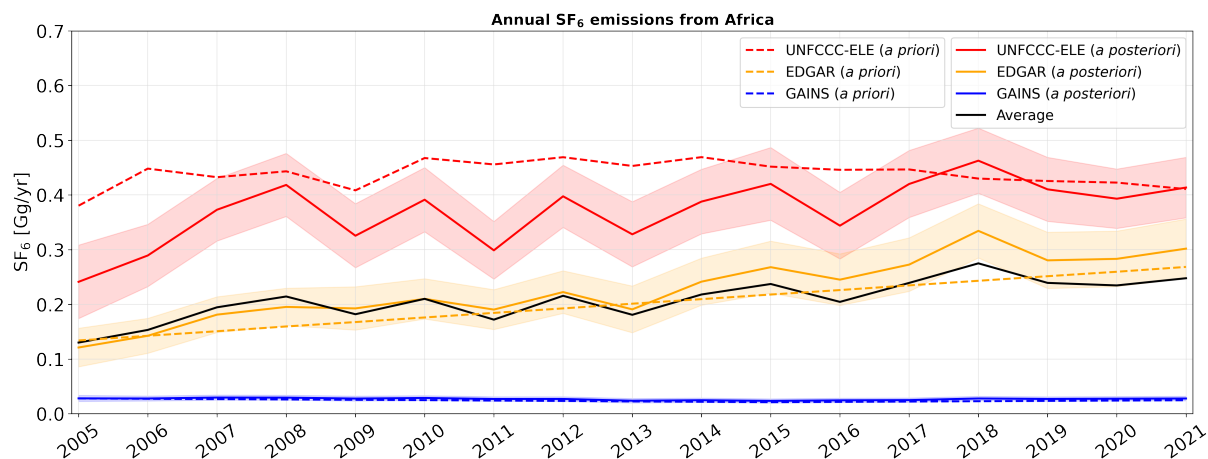


Figure 11. Annual *a priori* (dashed lines) and *a posteriori* (solid lines) SF₆ emissions from Africa, shown for the period between 2005 and 2021 when using different *a priori* emissions (UNFCCC-ELE red, EDGAR orange, GAINS blue). *A posteriori* emissions are illustrated together with their respective 1- σ uncertainties (colored shadings) The *a posteriori* emissions averaged over the inversion results using the different inventories are shown with a black solid line.

(Simmonds et al., 2020) when subtracting the cumulative reported emissions from Annex-I countries, according to the national electricity generation as described in Sec. 2.4.

Africa

Figure 11 shows African *a priori* and *a posteriori* SF₆ emissions. One can see that the GAINS inventory is very low and the UNFCCC-ELE inventory is very high in comparison to the EDGAR inventory. Before 2018, the UNFCCC-ELE *a posteriori* emissions are lower than the *a priori* values and align with them afterwards. EDGAR *a posteriori* emissions are overall higher than the respective *a priori* emissions. It seems likely that the inversion improves the UNFCCC-ELE overestimation and the EDGAR underestimation, however cannot entirely correct them, as large parts of Africa are poorly covered by the observation network (see Fig. 2). The GAINS *a posteriori* emissions are consistently higher than the GAINS *a priori* emissions but the increases are very small. It seems that the GAINS *a priori* emissions are too small and the inversion tries to increase them but is bound by the low uncertainties assumed, resulting only in minor corrections. Thus, even the GAINS *a posteriori* likely underestimate the true emissions. Note that both, UNFCCC-ELE and EDGAR *a posteriori* emissions show a larger positive trend than the *a priori* emissions. This is also true for the GAINS prior, however differences are very small. The averaged *a posteriori* emissions are close to the EDGAR inventory and show a slowly increasing trend of 0.006 Gg/yr, growing from 0.13 [0.02-0.31] Gg in 2005 to 0.25 [0.02-0.47] Gg in 2021.

South America

For South America (see Fig. A6), the UNFCCC-ELE inventory is more than 10 times higher than the EDGAR and GAINS inventory, and GAINS is on average 38% higher than EDGAR. Due to the narrow uncertainty bands and the poor observational coverage of South America, the inversion results stay close to the *a priori* emissions for EDGAR and GAINS. For UNFCCC-ELE *a posteriori* emissions are smaller than the *a priori* values, especially at the beginning of the study period. We therefore suspect a substantial overestimation by the UNFCCC-ELE *a priori* inventory, given that the UNFCCC-ELE *a posteriori* emissions are partly lowered considerably, despite the poor coverage. Note also that UNFCCC-ELE inversion results show a positive trend of 0.007 Gg/yr, in contrast to the *a priori* inventory.

Australia

Figure A7 shows Australian *a priori* and *a posteriori* SF₆ emissions. All *a priori* emission inventories show similar values throughout the whole study period, well below 0.01 Gg/yr. The inversion results stay close to the *a priori* values. Notice that our results are lower than the top-down estimates from Rigby et al. (2010), who estimated Oceanian (Australia plus New Zealand) emissions of roughly 0.02 Gg/yr between 2004 and 2008.

India

India can be identified as the most challenging region for SF₆ inverse modeling, where *a priori* emission inventories show substantial differences but where emissions could be of global significance (UNFCCC-ELE emissions are about 8% of global emissions in 2021) (Fig. A8). For the UNFCCC-ELE inventory, Indian inversion increments are much higher compared to EDGAR or GAINS (see Fig. 6), resulting in large discrepancies across the *a posteriori* emissions of the different inventories (Fig. A8). This can be related to the poor observational coverage (see Fig. 2) in combination with the relatively high UNFCCC-ELE *a priori* uncertainties, which might allow the algorithm to excessively relate the distant high East Asian measurements to Indian emissions. The GAINS inventory shows by far the lowest Indian *a priori* emission, while inversion results stay very close to the prior values, due to the small *a priori* uncertainty bands. However, all inversions show a much stronger trend in *a posteriori* SF₆ emissions than in the *a priori* emissions. A strong upward trend in SF₆ emissions may indeed be expected given that the installed electric power generation capacity in India has almost quadrupled between 2002 and 2022 (Government of India, 2023)

3.3.5 The global perspective

Our study aimed to incorporate all globally accessible SF₆ observations in the inversion, in combination with long backward trajectories of 50 days to make the best use of the observation network (Vojta et al., 2022). These are optimal conditions for constraining both regional and global SF₆ emissions. To judge the quality of our *a posteriori* global emission, we compare our results with the global emissions calculated by Simmonds et al. (2020) for the years 2005 to 2018 and updated until 2021 (An et al., 2024; Laube et al., 2023) using the AGAGE 12-box model (e.g., Rigby et al., 2013). Such box models are considered

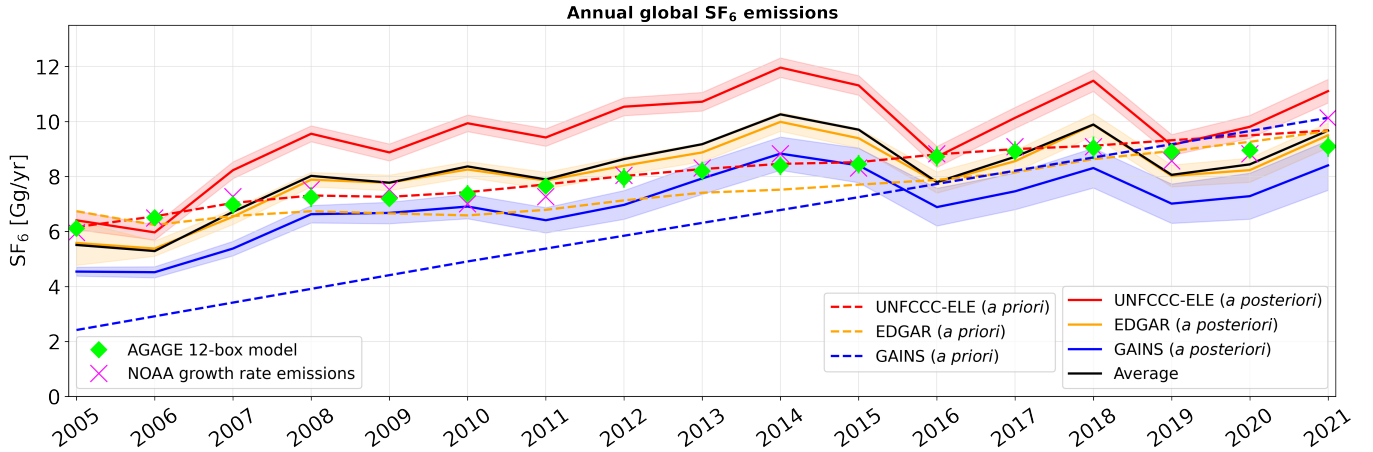


Figure 12. Annual total global *a priori* (dashed lines) and *a posteriori* (solid lines) SF₆ emissions in the period between 2005 and 2021. A *a posteriori* emissions are illustrated together with their respective 1- σ uncertainties (colored shadings). The *a posteriori* emissions averaged over the inversion results using the different inventories are shown with a black solid line. Reference values of the AGAGE 12-box model and NOAA growth rate emissions are shown with green diamonds/rectangles and purple crosses, respectively.

to be capable of constraining the global total SF₆ emissions within a few percent because the average atmospheric growth rate can be measured accurately and the very long atmospheric lifetime of SF₆ leads to small uncertainties in global total emissions. In addition, we compare our results with global emissions directly calculated from annual increases in globally-averaged atmospheric SF₆ mole fractions provided by NOAA (Lan et al., 2024), which we multiply by the factor $\frac{M_{SF_6}}{M_{air}} \cdot m_{atm}$, where M_{SF_6} and M_{air} represent the molecular weights of SF₆ and air, and m_{atm} is the mass of the atmosphere. We refer to these emissions as "NOAA growth rate emissions".

Figure 12 illustrates the *a priori* and *a posteriori* total global SF₆ emissions, compared to the reference values of the AGAGE 12-box model and the NOAA growth rate emissions. In general, the NOAA growth rate emissions agree well with the box model, however, show more temporal variability. The UNFCCC-ELE *a priori* global emissions coincide per definition with the AGAGE 12-box model (Sec. 2.4), while the UNFCCC-ELE *a posteriori* global emissions are on average 18% higher. The uncertainties stated for the AGAGE 12-box model are only about 3%, with an additional 1% that may be attributed to SF₆ lifetime uncertainties (Simmonds et al., 2020). Overall our UNFCCC-ELE *a posteriori* global emissions seem to be systematically too high. One possibility for explaining this discrepancy is a potential ocean sink of SF₆ that is not accounted for in the AGAGE 12-box model, leading to a potential underestimation of global emissions in the box model. Ni et al. (2023) recently suggested that such an ocean sink may account for about 7% of the global SF₆ emissions. They estimated this global oceanic sink by scaling up calculations of sea-air fluxes based on simultaneous measurements of SF₆ concentrations in the atmosphere and surface seawater of the Western Pacific and Eastern Indian Ocean. However, since the ocean fluxes are highly inhomogeneous (strong oceanic sources might exist in other regions), we suspect the up-scaled estimate to be very uncertain. Nevertheless, we tested the hypothesis by allowing for an oceanic sink in our inversion. However, the inversion-

derived oceanic *a posteriori* emissions showed either a lot of noise or no fluxes at all (in case of optimizing ocean fluxes in one aggregated oceanic grid cell). Therefore, we were unable to confirm the presence of oceanic SF₆ sinks with our inversion. Yet, another possible explanation for the increase of the global UNFCCC-ELE emissions by the inversion is the positivity constraint employed on the emissions over land, which might lead to a positive bias of the *a posteriori* global emissions. However, tests showed that the positivity constraint on the *a posteriori* emissions had very little effect (<1%) on the total global emissions. There is a better explanation for our too-high *a posteriori* UNFCCC-ELE emissions. As discussed in Sec. 3.2 the measurement data puts relatively strong constraints on the high emitting regions China, Europe and USA that are responsible for the biggest part of the global SF₆ emissions. National inversion results showed that reported UNFCCC emissions in these regions are predominantly underestimated. Consequently, to match the global total emission, our UNFCCC-ELE inventory attributed too high emissions to countries not reporting their emissions to the UNFCCC (e.g., in South America, Africa or India). Unfortunately, the emissions in these regions are very poorly constrained by the existing observation network (see Fig. 2). As shown in Sec. 3.3.4, the inversion can reduce large biases in these regions but we cannot expect it to remove them completely, and this leads to a positive bias in *a posteriori* global emissions.

The global GAINS *a priori* emissions are lower than all other inventories at the beginning of the study period, and its positive trend is larger than, and inconsistent with the global atmospheric SF₆ growth derived by the box model and the NOAA measurements. Due to this rapid increase, the GAINS *a priori* emissions converge with the other emission inventories by the end of the study period. The global GAINS *a posteriori* emissions are much closer to the AGAGE box model results and NOAA growth rate emissions than the *a priori* emissions and align well with their trends. However, *a posteriori* emissions are 15% lower on average, indicating that aggregated emissions are underestimated in poorly monitored areas. This claim can be supported by comparing the global GAINS and Chinese GAINS *a priori* emissions (Fig. 10). At the beginning of the study period GAINS seems to produce realistic Chinese emissions, while at the same time, global GAINS emissions are significantly underestimated. After rapid growth, global GAINS emissions are close to the reference box model value, while Chinese GAINS emissions are significantly overestimated at the end of the study period. In both cases, this suggests an underestimation of the emission residuals between the global and the Chinese emissions. Consequently, GAINS also provides the lowest *a posteriori* emission estimates in almost all shown regions except China, resulting in an underestimation of the global emissions.

In the case of EDGAR, both, the *a priori* and *a posteriori* emissions agree with the reference values of the AGAGE 12-box model and NOAA growth rate emissions within 8-9%. While the *a priori* emissions are on average biased low by 6%, the *a posteriori* emissions show on average almost no bias (<1%) compared to the reference values. We, therefore, conclude that EDGAR provides a good estimate for the accumulated SF₆ emissions also from poorly monitored areas, well suited for global inversions.

The average of the total global emissions of the different discussed cases provides a very good estimate for the global SF₆ emissions, showing average biases of +2.2% and 1.4% compared to the AGAGE box model and the NOAA growth rate emissions, with an agreement within 10%. Its trend shows an increase until 2014 followed by a stabilization thereafter (similar to the Chinese emission trend). This is a pattern that can be also observed for the annual increases in the globally-averaged

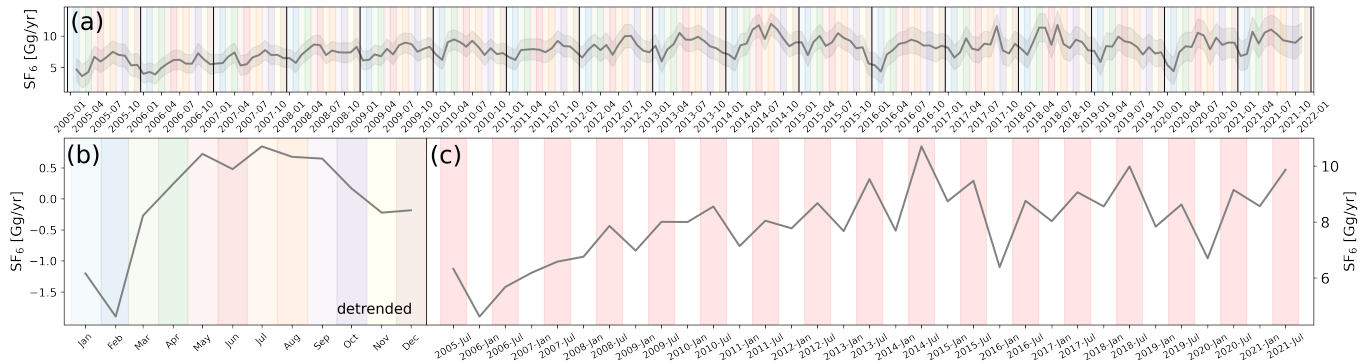


Figure 13. Inversion results from monthly SF₆ inversions for the Northern Hemisphere: (a) monthly *a posteriori* emission in the period 2005-2021, (b) detrended *a posteriori* emissions averaged for each month across all years, and (c) semi-annual *a posteriori* emissions. Distinct months are highlighted with different colors. In panel c, the specified summer (April - September) and winter periods (October - March) are shown in red and white respectively.

NOAA atmospheric SF₆ mole fractions, and derived emissions. Notice also that the average global trend (0.20 Gg/yr) is similar to the Chinese emission trend (0.21 Gg/yr).

Despite some potential problems with our inversion setup that can lead to biased *a posteriori* global emissions (as could be clearly seen and explained with the UNFCCC-ELE and GAINS *a priori* emissions in poorly-observed regions), overall our *a posteriori* global emissions seem to be quite accurate, with average biases to the box model and NOAA growth rate emissions of +18%, -15%, and <1% for UNFCCC-ELE, GAINS and EDGAR respectively. Even strongly biased global *a priori* emissions, as for GAINS until 2015, could be brought relatively close to these previous estimates. This is beneficial, since our regional estimates combined are then consistent with the global emissions. However, the uncertainties of the inversion-derived emissions remain large in India and the Southern Hemisphere. While the aggregated emission in these regions is also quite well known as the residual between global emissions and emissions in well-monitored areas, the distribution of the emissions between and within these regions is less well known.

3.3.6 Seasonality of SF₆ emissions

Our *a priori* emission data sets contain no seasonal information and are assumed to be constant throughout the year. Figure 13 shows the monthly resolved *a posteriori* total SF₆ emissions in the Northern Hemisphere using the E7P *a priori* emission inventory both for the whole time series (Fig. 13a) and as monthly averages over the whole time period, after detrending the time series (Fig. 13b). While different years have unique seasonal patterns, a notable emission minimum can be observed at the beginning of every year (January/February) and emissions tend to be highest in the summer. This is most clearly seen in the averaged seasonal cycle (Fig. 13b), which shows a minimum in February and a broad maximum from May to September. To better demonstrate the consistency of this seasonal cycle throughout the entire period of our study, Fig. 13c shows semi-annual SF₆ emissions in the Northern Hemisphere, derived by averaging seasonal emissions for winter (October - March) and

summer (April - September). In line with panels a) and b), Fig. 13c shows higher emissions in summer than in winter, and this pattern is found in almost every individual year. However, the seasonal SF₆ emission patterns vary by region (shown for China, USA, and EU in Fig. A9). For EU emissions no clear seasonal cycle can be seen. Notice at this point that SF₆ emissions from North-West Europe were found to maximize in the winter (Redington et al., 2019), however without showing a very systematic seasonal cycle. For Chinese SF₆ emissions, the seasonality is similar to the one in the Northern Hemisphere (Fig. 13b). For the USA, we find an even stronger seasonal variation with a May/June peak of SF₆ emissions. This result is in contradiction to Hu et al. (2023), who suggested U.S. SF₆ emissions to peak in winter. Hu et al. (2023) argued that many U.S. companies maintain electrical equipment in the winter rather than in the summer and that cold temperatures can cause sealing materials in electrical equipment to become brittle, resulting in more leaks. We suspect that the contradictions between our two studies are mainly due to the different baseline treatments. As discussed in Sec 3.1, our baseline lowers in the summer for several stations, a feature which we argued is realistic and reflects the transport of different, cleaner air masses over the respective stations. Neglecting such a lowered baseline would lead to underestimated summer emissions. In addition, high-frequency measurements from Trinidad Head (THD) and Niwot Ridge (NWR) have not been used by Hu et al. (2023). A possible explanation for the summer emission maximum might be the seasonal variability of electricity generation, which peaks in summer for most of the Northern Hemisphere (see e.g. <https://www.eia.gov/electricity/>). In addition, the increasing SF₆ pressure at high summer temperatures and heat stress of the electrical equipment could lead to more leakage. However, further research on the seasonal cycle of SF₆ emissions is needed to provide a more conclusive answer as to the cause(s).

4 Conclusions

Our inversion study provides observation-based, regionally resolved global SF₆ emission estimates for the period 2005 - 2021, using initial conditions based on an atmospheric SF₆ re-analysis. We further consider different *a priori* emission inventories and use a newly compiled, extensive observation data set along with 50-day LPDM backward simulations to provide accurate estimates of the global, spatially distributed SF₆ emissions. Our main findings are the following:

- The GDB approach is a robust method for estimating boundary conditions, especially at challenging measurement stations. We demonstrate that it successfully accounts for meteorological variability (e.g., the Asian summer monsoon) in the baseline, reducing the need for baseline optimization by the inversion.
- Our inversion produces regional *a posteriori* emissions that, taken together, are consistent within 10% with the well-known global emissions based on observed atmospheric growth rates.
- The global inversion shows the largest emission improvements in the high emitting regions China, USA, and Europe, where the observation networks used have good coverage. Our annual inversion results are in excellent agreement with several existing regional inversion studies focusing on these three regions.

- Annual U.S. SF₆ emissions strongly decreased from 1.25 [1.06-1.58] Gg in 2005 to 0.48 [0.36- 0.71] Gg in 2021, showing a trend of -0.054 Gg/yr. However, these inversion-derived emissions are on average twice as high as the emissions reported to the UNFCCC. Thus, we find that the U.S. are systematically underreporting their SF₆ emissions.
- 535 – Annual total SF₆ emissions from EU countries show a decreasing trend of -0.006 Gg/yr, from 0.41 [0.35-0.46] Gg in 2005 to 0.25 [0.22-0.29] Gg in 2021. However, also Europe systematically underreports their SF₆ emissions to UNFCCC.
- The European emissions show a substantial drop in 2018, resulting most likely from the EU’s F-gas regulation 517/2014 (European Parliament and Council of the European Union, 2014), which requires new electrical switch gear put into service from 2017 onwards to be equipped with a leak detection system and bans the use of SF₆ for recycling magnesium die-casting alloys from 2018. This might suggest that the EU’s new F-gas regulation was almost immediately successful in reducing SF₆ emissions.
- 540 – Chinese SF₆ emissions show an increasing trend of 0.21 Gg/yr, growing from 1.28 [1.03-1.57] Gg in 2005 to 5.16 [4.75- 5.60] Gg in 2021, with a particularly steep trend until 2014 and a flattening afterwards. China’s official voluntary reports substantially underestimate their SF₆ emissions (by more than 50%), however, the latest reports in 2017 and 2018 seem
- 545 to have improved.
- SF₆ emissions in the Southern Hemisphere and some other parts of the world (e.g., India) are hard to constrain due to insufficient coverage by observations. While the inversion most likely reduces large biases of *a priori* estimated emissions in Africa and South America, substantial uncertainties about these emissions remain. The EDGAR bottom-up inventory seems to provide a relatively good estimate for the total emissions aggregated over all the poorly monitored regions (residual between global emissions and emissions in well-monitored areas), as otherwise, the global *a posteriori*
- 550 emissions would be more strongly biased against the relatively well known global emissions based on atmospheric growth rates. Nevertheless, more observations are needed to investigate if also regional emission patterns in those areas are accurate.
- Our inversions suggest globally significant and strongly increasing emissions in India since 2005. However, the results
- 555 for this region are very uncertain because of a weak observational constraint. Adding monitoring capacity in this region should have a high future priority.
- Our monthly inversion results show overall higher SF₆ emissions in the summer (April - September) than in winter (October - March) in the Northern Hemisphere, with a distinct minimum at the beginning of the year. While America’s SF₆ emissions show a clear peak in May and June and China’s emission pattern is similar to the Northern Hemisphere,
- 560 no clear seasonal pattern is identified for Europe. As our findings for the U.S. are in contradiction to Hu et al. (2023), we suggest that more research on the seasonality of SF₆ emissions is needed.

565

- On the basis of the inversion results, we can neither confirm nor refute the hypothesis that the ocean sink of SF_6 is a substantial part (up to 7% according to Ni et al. (2023)) of the anthropogenic emission fluxes.
- Since we find that national reports for the U.S., Europe, and China all underreport their SF_6 emissions, while other countries with potentially high emissions (e.g., India) do not report their emissions at all, we suggest that bottom-up methods to determine the emissions need to be refined. This should include a better quantification of the processes causing the emissions that could explain the emission seasonality found here.

Code and data availability. Daily-resolved global SF₆ mole fraction fields between 2005 and 2021 from the global re-analysis are provided at <https://doi.org/10.25365/phaidra.489>. The used source code of FLEXPART 10.4 (described in detail by Pissot et al., 2019) can be found at <https://doi.org/10.5281/zenodo.3542278>. The used FLEXINVERT+ code (described in detail by Thompson and Stohl, 2014) together with setting files are provided at <https://doi.org/10.25365/phaidra.488>. The source code of FLEXPART 8-CTM-1.1 together with a user's guide can be freely downloaded at <https://doi.org/10.5281/zenodo.1249190> (Henne et al., 2018). Atmospheric mole fraction measurements of SF₆ used in this study are freely available from the following sources: AGAGE data: https://agage2.eas.gatech.edu/data_archive/agage/gc-ms-medusa/complete/ (Prinn et al., 2018); Heathfield Tall Tower data: <https://catalogue.ceda.ac.uk/uuid/df502fe4715c4177ab5e4e367a99316b> (Arnold et al., 2019); Bilsdale Tall Tower data: <https://catalogue.ceda.ac.uk/uuid/d2090552c8fe4c16a2fd7d616adc2d9f> (O'Doherty et al., 2019); Zepelin mountain data: <https://ebas-data.nilu.no/Pages/DataSetList.aspx?key=4548F59E3CBD48E0A505E8968BD268EB> (2005-2010 EBAS, 2024); NOAA/GML Chromatograph for Atmospheric Trace Species (CATS) program: https://gml.noaa.gov/dv/data/index.php?parameter_name=Sulfur%2BHexafluoride&type=Insitu&frequency=Hourly%2BAverages (all stations, hourly data Dutton and Hall, 2023); Monte Cimone, Cape Ochiishi, Izaña, Ragged Point, Zugspitze-Schneefernerhaus: <https://gaw.kishou.go.jp/search> (di Sarra et al., 2022); Atmospheric SF₆ Dry Air Mole Fractions from the NOAA GML Carbon Cycle Cooperative Global Air Sampling Network: https://gml.noaa.gov/aftp/data/greenhouse_gases/sf6/flask/surface/ (Lan et al., 2023; Dlugokencky et al., 2020); NOAA Global Greenhouse Gas Reference Network provided flask-air PFP sample measurements of SF₆ at Tall Towers and other Continental Sites https://gml.noaa.gov/aftp/data/greenhouse_gases/sf6/pfp/surface/ (Andrews et al., 2022); Atmospheric Sulfur Hexafluoride Dry Air Mole Fractions from the NOAA GML Carbon Cycle Aircraft Vertical Profile Network https://gml.noaa.gov/aftp/data/greenhouse_gases/sf6/pfp/aircraft/ (McKain et al., 2022); NOAA ObsPACK SF₆ data: https://gml.noaa.gov/ccgg/obspack/data.php?id=obspack_sf6_1_v2.1_2018-07-10 (NOAA Carbon Cycle Group ObsPack Team, 2018); IAGOS-CARIBIC Aircraft measurements: <https://zenodo.org/records/10495039> (Schuck and Obersteiner, 2024); NOAA/ESRL/GMD/HATS Trace Gas Measurements from Airborne Platforms: <https://gml.noaa.gov/aftp/data/hats/airborne/> (Elkins et al., 2020). For the observations at BIK (Popa et al., 2010), BRM (Rust et al., 2022), GSN (Kim et al., 2012), and HAT (Saikawa et al., 2012) we refer to E. Popa <epopa2@yahoo.com>, S. Reimann <stefan.reimann@empa.ch>, S. Park <sparky@knu.ac.kr>, and T. Saito <saito.takuya@nies.go.jp>, respectively.

Author contributions. MV, AP, and AS designed the study. MV performed the FLEXPART, FLEXPART CTM, and FLEXINVERT+ simulations. RT helped with the FLEXINVERT+ setup and simulation issues. MV made the figures with contributions from SA, JM, SP and GL provided atmospheric observation data. PP and FL provided GAINS emissions estimates. MV wrote the text with input from AP, SA, SP, GL, PP, FL, XL, JM, RT, and AS.

Competing interests. The authors declare that they have no conflict of interest.

Acknowledgements. We thank the whole AGAGE team for providing measurement data, including C.M.Harth, J. Mühle, P.K. Salameh, and R.F. Weiss (Scripps Institution of Oceanography, UCSD); P.B. Krummel, P.J. Fraser, L.P. Steele (CSIRO Environment); R.H.(J.) Wang (Georgia Institute of Technology); S. O'Doherty, D. Young, K.M. Stanley (University of Bristol); M.K. Vollmer, S. Reimann (EMPA: Swiss

Federal Laboratories for Materials Science and Technology); C.R. Lunder, O. Hermanson (NILU: Norwegian Institute for Air Research) and particularly all station managers and station operators. AGAGE operations at Mace Head, Trinidad Head, Cape Matatula, Ragged Point, and Cape Grim are supported by NASA (USA) grants to MIT (NAG5-12669, NNX07AE89G, NNX11AF17G, NNX16AC98G) and SIO (NNX07AE87G, NNX07AF09G, NNX11AF15G, NNX11AF16G, NNX16AC96G, NNX16AC97G), and also by: Department for Business, Energy & Industrial Strategy (BEIS, UK), Contract 5488/11/2021 to the University of Bristol for Mace Head and NOAA (USA), contract 1305M319CNRMJ0028 to the University of Bristol for Ragged Point; CSIRO, BoM, DCCEEW, RRA (Australia); NILU (Norway); KNU (Korea); CMA (China); NIES (Japan); and Urbino University (Italy). For Jungfraujoch funding is acknowledged for the project HALCLIM/CLIMGAS-CH by the Swiss Federal Office for the Environment (FOEN) and for ICOS (Integrated Carbon Observation System) by the Swiss National Science Foundation. In addition, measurements are supported by the International Foundation High Altitude Research Stations Jungfraujoch and Gornergrat (HFSJG). The Commonwealth Scientific and Industrial Research Organisation (CSIRO, Australia) and Bureau of Meteorology (Australia) are thanked for their ongoing long-term support and funding of the Cape Grim station and the Cape Grim science program. Operations of the Gosan station on Jeju Island, South Korea were supported by the National Research Foundation of Korea grant funded by the Korean government MSIT no. RS-2023-00229318. We also thank the NOAA Global Monitoring Laboratory for providing access to their data, including G. Dutton, J.W. Elkins, F. Moore, E. Hintsa, D. Hurst, B. Hall, K. McKain, S. Montzka, B. Miller, C. Sweeney, E. Dlugokencky, A. Andrews, D. Nance, C. M. Harth, and key partners: L. Huang (EC), K. Davis (PSU), Observations collected in the Southern Great Plains (SGP) by S. Biraud (Lawrence Berkeley National Laboratory, USA) were supported by the Office of Biological and Environmental Research of the US Department of Energy under contract DE-AC02-05CH11231 as part of the Atmospheric Radiation Measurement Program (ARM) and Environmental System Science (ESS) Program.

We further acknowledge the following people and institutions for sharing their observation data: T. Saito (National Institute for Environmental Studies, Japan); E. Cuevas (State Meteorological Agency, Spain); D. Say, (University of Bristol), J. Arduini (University of Urbino), C. Couret (German Environment Agency), Elena Popa (Utrecht University), S. Sugawara (Miyagi University of Education, Japan), A. Rauthe, J. Williams (Max Planck Institute for Chemistry), T. Schuck (Goethe University Frankfurt), F. Obersteiner (Karlsruhe Institute of Technology), C. Couret (German Federal Environmental Agency), L. Gatti (Instituto Nacional de Pesquisas Espaciais).

The computational results presented have been achieved in part using the Vienna Scientific Cluster (VSC), Project 71878: Demonstration of a Lagrangian re-analysis, to which we are grateful. Further acknowledgment is made for the use of ECMWF's computing and archive facilities provided through a special project (spatvojt) in this research. The study was supported by EYE-CLIMA, a European Union's Horizon Europe research and innovation programme under grant agreement No. 101081395. We thank L. Hu and C. Groot Zwaartink for the discussions. We further thank M. Dütsch, L. Bakels, S. Bucci, K. Baier, D. Tatsii, An. Raju, R. Subramanian, S. Wittig, O. Nabavi, I. Evangelou, M. Blaschek, A. Skorokhod, P. Seibert (University of Vienna) for their support.

Table A1. Inversion results for the annual SF₆ emissions from the United States of America in the period 2005-2021. Annual emissions are shown together with their 1- σ uncertainties, for different *a priori* emissions inventories. We also provide an average of the inversion results, while respective uncertainties represent the minimum and maximum uncertainty limits across the results.

annual total SF ₆ emissions from the United States of America				
year	UNFCCC-ELE [Gg/yr]	EDGAR [Gg/yr]	GAINS [Gg/yr]	average [Gg/yr]
2005	1.21 ± 0.07	1.44 ± 0.14	1.11 ± 0.05	1.25 [1.06, 1.58]
2006	1.34 ± 0.06	1.58 ± 0.12	1.24 ± 0.04	1.38 [1.20, 1.70]
2007	1.14 ± 0.05	1.38 ± 0.11	1.04 ± 0.04	1.19 [1.00, 1.49]
2008	1.24 ± 0.05	1.51 ± 0.10	1.09 ± 0.04	1.28 [1.06, 1.61]
2009	0.99 ± 0.04	1.16 ± 0.09	0.93 ± 0.03	1.03 [0.90, 1.25]
2010	0.86 ± 0.04	1.13 ± 0.09	0.80 ± 0.03	0.93 [0.77, 1.22]
2011	0.75 ± 0.04	1.00 ± 0.10	0.68 ± 0.03	0.81 [0.66, 1.10]
2012	0.62 ± 0.03	0.90 ± 0.10	0.57 ± 0.03	0.70 [0.55, 1.00]
2013	0.58 ± 0.03	0.84 ± 0.10	0.51 ± 0.03	0.64 [0.48, 0.93]
2014	0.52 ± 0.03	0.63 ± 0.10	0.44 ± 0.03	0.53 [0.42, 0.72]
2015	0.52 ± 0.03	0.67 ± 0.09	0.45 ± 0.02	0.55 [0.42, 0.76]
2016	0.72 ± 0.03	0.96 ± 0.09	0.63 ± 0.02	0.77 [0.60, 1.05]
2017	0.58 ± 0.03	0.80 ± 0.09	0.52 ± 0.02	0.63 [0.49, 0.88]
2018	0.55 ± 0.03	0.80 ± 0.09	0.49 ± 0.02	0.61 [0.46, 0.89]
2019	0.53 ± 0.03	0.75 ± 0.09	0.46 ± 0.02	0.58 [0.44, 0.84]
2020	0.44 ± 0.03	0.64 ± 0.09	0.39 ± 0.02	0.49 [0.36, 0.73]
2021	0.45 ± 0.03	0.62 ± 0.09	0.38 ± 0.02	0.48 [0.36, 0.71]

Table A2. Inversion results for the annual total SF₆ emissions from EU countries in the period 2005-2021. Annual emissions are shown together with their 1- σ uncertainties, for different *a priori* emissions inventories. We also provide an average of the inversion results, while respective uncertainties represent the minimum and maximum uncertainty limits across the results.

annual total SF ₆ emissions from EU countries				
year	UNFCCC-ELE [Gg/yr]	EDGAR [Gg/yr]	GAINS [Gg/yr]	average [Gg/yr]
2005	0.43 ± 0.03	0.38 ± 0.03	0.43 ± 0.03	0.41 [0.35, 0.46]
2006	0.39 ± 0.03	0.35 ± 0.03	0.39 ± 0.02	0.38 [0.33, 0.42]
2007	0.35 ± 0.03	0.34 ± 0.03	0.36 ± 0.02	0.35 [0.31, 0.39]
2008	0.37 ± 0.03	0.35 ± 0.03	0.36 ± 0.02	0.36 [0.32, 0.40]
2009	0.37 ± 0.03	0.34 ± 0.03	0.38 ± 0.03	0.36 [0.31, 0.41]
2010	0.40 ± 0.03	0.37 ± 0.03	0.40 ± 0.03	0.39 [0.34, 0.43]
2011	0.36 ± 0.03	0.30 ± 0.03	0.35 ± 0.03	0.34 [0.27, 0.39]
2012	0.38 ± 0.03	0.37 ± 0.03	0.40 ± 0.02	0.38 [0.35, 0.43]
2013	0.29 ± 0.02	0.29 ± 0.03	0.32 ± 0.02	0.30 [0.26, 0.34]
2014	0.33 ± 0.02	0.32 ± 0.02	0.36 ± 0.02	0.34 [0.30, 0.38]
2015	0.31 ± 0.02	0.31 ± 0.02	0.32 ± 0.02	0.31 [0.28, 0.34]
2016	0.37 ± 0.02	0.35 ± 0.02	0.37 ± 0.02	0.36 [0.32, 0.39]
2017	0.39 ± 0.03	0.37 ± 0.03	0.39 ± 0.02	0.38 [0.34, 0.42]
2018	0.26 ± 0.02	0.25 ± 0.03	0.28 ± 0.02	0.26 [0.22, 0.30]
2019	0.28 ± 0.02	0.27 ± 0.03	0.30 ± 0.02	0.28 [0.25, 0.32]
2020	0.32 ± 0.02	0.32 ± 0.03	0.34 ± 0.02	0.33 [0.29, 0.36]
2021	0.25 ± 0.02	0.25 ± 0.03	0.26 ± 0.02	0.25 [0.22, 0.29]

Table A3. Inversion results for the annual Chinese SF₆ emissions in the period 2005-2021. Annual emissions are shown together with their 1- σ uncertainties, for different *a priori* emissions inventories. We also provide an average of the inversion results, and an average excluding the GAINS-derived inversion, while uncertainties represent the minimum and maximum uncertainty limits across the results.

annual total SF ₆ emissions from China					
year	UNFCCC-ELE [Gg/yr]	EDGAR [Gg/yr]	GAINS [Gg/yr]	average [Gg/yr]	average without GAINS [Gg/yr]
2005	1.35 ± 0.22	1.21 ± 0.18	2.13 ± 0.15	1.56 [1.03, 2.27]	1.28 [1.03, 1.57]
2006	1.14 ± 0.15	1.08 ± 0.16	1.78 ± 0.19	1.33 [0.92, 1.97]	1.11 [0.92, 1.29]
2007	2.33 ± 0.21	2.26 ± 0.18	2.97 ± 0.25	2.52 [2.08, 3.22]	2.29 [2.08, 2.54]
2008	2.78 ± 0.19	2.72 ± 0.17	3.53 ± 0.31	3.01 [2.55, 3.84]	2.75 [2.55, 2.98]
2009	3.24 ± 0.23	3.17 ± 0.20	3.84 ± 0.38	3.42 [2.98, 4.23]	3.21 [2.98, 3.47]
2010	3.13 ± 0.21	3.12 ± 0.21	3.99 ± 0.44	3.41 [2.91, 4.43]	3.13 [2.91, 3.34]
2011	2.91 ± 0.22	2.95 ± 0.23	3.81 ± 0.45	3.22 [2.69, 4.26]	2.93 [2.69, 3.18]
2012	3.44 ± 0.23	3.50 ± 0.24	4.27 ± 0.52	3.73 [3.20, 4.79]	3.47 [3.20, 3.74]
2013	4.14 ± 0.25	4.19 ± 0.26	5.42 ± 0.57	4.59 [3.89, 5.99]	4.17 [3.89, 4.45]
2014	4.89 ± 0.26	4.96 ± 0.27	6.09 ± 0.60	5.31 [4.63, 6.70]	4.92 [4.63, 5.23]
2015	4.53 ± 0.27	4.61 ± 0.28	5.96 ± 0.62	5.03 [4.26, 6.58]	4.57 [4.26, 4.89]
2016	3.60 ± 0.31	3.57 ± 0.32	4.37 ± 0.68	3.85 [3.26, 5.05]	3.58 [3.26, 3.90]
2017	4.10 ± 0.30	4.15 ± 0.32	5.21 ± 0.66	4.49 [3.80, 5.87]	4.12 [3.80, 4.47]
2018	4.72 ± 0.32	4.82 ± 0.33	6.02 ± 0.72	5.18 [4.40, 6.74]	4.77 [4.40, 5.15]
2019	3.99 ± 0.30	4.00 ± 0.32	4.85 ± 0.71	4.28 [3.68, 5.56]	3.99 [3.68, 4.32]
2020	4.38 ± 0.35	4.48 ± 0.37	5.27 ± 0.83	4.71 [4.03, 6.10]	4.43 [4.03, 4.85]
2021	5.12 ± 0.36	5.21 ± 0.39	6.41 ± 0.90	5.58 [4.75, 7.31]	5.16 [4.75, 5.60]

Table A4. Inversion results for the annual global total SF₆ emissions in the period 2005-2021. Annual emissions are shown together with their 1- σ uncertainties, for different *a priori* emissions inventories. We also provide an average of the inversion results, while respective uncertainties represent the minimum and maximum uncertainty limits across the results.

Annual global total SF ₆ emissions				
year	UNFCCC-ELE [Gg/yr]	EDGAR [Gg/yr]	GAINS [Gg/yr]	average [Gg/yr]
2005	6.41 \pm 0.34	5.59 \pm 0.81	4.54 \pm 0.16	5.51 [4.38, 6.74]
2006	5.97 \pm 0.28	5.38 \pm 0.28	4.52 \pm 0.20	5.29 [4.32, 6.25]
2007	8.23 \pm 0.30	6.54 \pm 0.28	5.38 \pm 0.26	6.72 [5.12, 8.53]
2008	9.56 \pm 0.29	7.89 \pm 0.26	6.63 \pm 0.32	8.02 [6.32, 9.84]
2009	8.88 \pm 0.31	7.77 \pm 0.28	6.68 \pm 0.39	7.78 [6.29, 9.19]
2010	9.94 \pm 0.30	8.26 \pm 0.29	6.91 \pm 0.44	8.37 [6.47, 10.24]
2011	9.42 \pm 0.32	7.85 \pm 0.30	6.41 \pm 0.46	7.90 [5.95, 9.74]
2012	10.54 \pm 0.33	8.39 \pm 0.32	6.97 \pm 0.52	8.63 [6.45, 10.87]
2013	10.72 \pm 0.34	8.88 \pm 0.33	7.93 \pm 0.58	9.18 [7.35, 11.06]
2014	11.96 \pm 0.35	9.99 \pm 0.34	8.83 \pm 0.60	10.26 [8.23, 12.31]
2015	11.31 \pm 0.35	9.39 \pm 0.35	8.41 \pm 0.63	9.70 [7.78, 11.67]
2016	8.72 \pm 0.38	7.79 \pm 0.38	6.89 \pm 0.68	7.80 [6.20, 9.10]
2017	10.14 \pm 0.38	8.56 \pm 0.39	7.46 \pm 0.66	8.72 [6.80, 10.52]
2018	11.48 \pm 0.39	9.88 \pm 0.40	8.31 \pm 0.72	9.89 [7.59, 11.87]
2019	9.15 \pm 0.38	8.02 \pm 0.40	7.02 \pm 0.71	8.06 [6.30, 9.52]
2020	9.81 \pm 0.42	8.23 \pm 0.44	7.29 \pm 0.84	8.44 [6.45, 10.22]
2021	11.11 \pm 0.43	9.50 \pm 0.45	8.41 \pm 0.90	9.67 [7.50, 11.53]

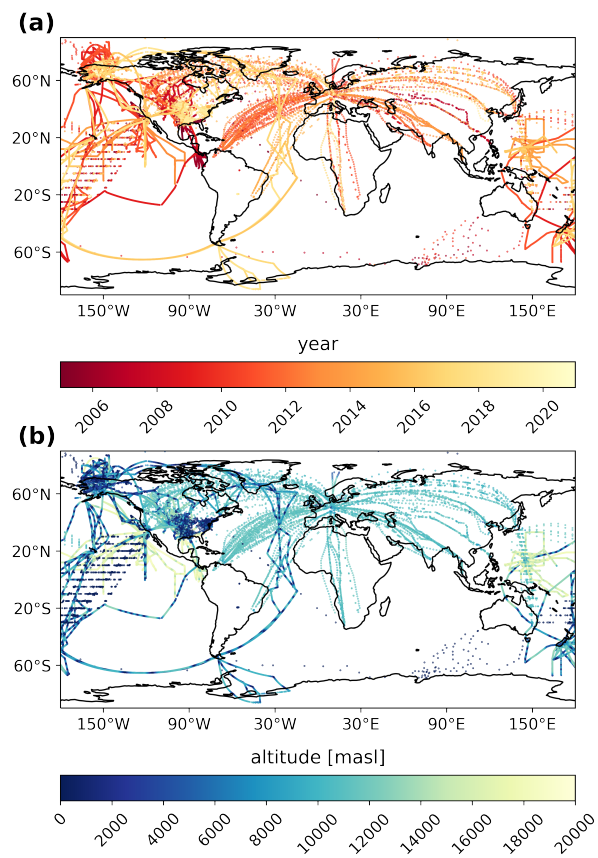


Figure A1. Observations from aircraft and ship campaigns from 2005 - 2021. The color bars indicate (a) the measurement date and (b) the altitude of the respective observations.

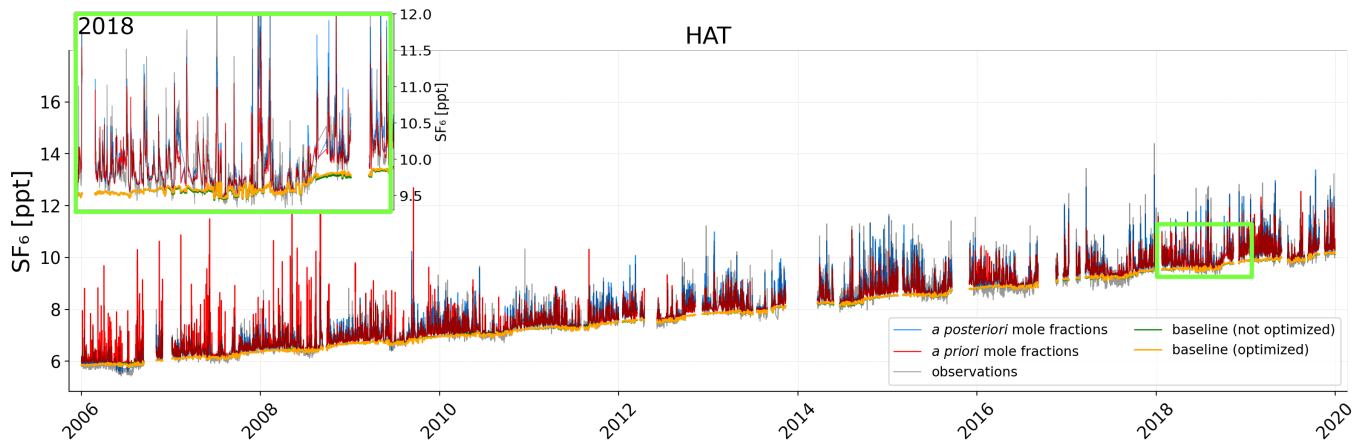


Figure A2. Mole fraction time series at the Hateruma (Japan) measurement station. Red lines represent the modeled *a priori* mole fractions calculated with the UP *a priori* emissions and blue lines represent the modeled *a posteriori* mole fractions. The green line illustrates the baseline derived by the GDB method and the orange line shows the optimized baseline. The grey line represents the observed mole fractions. The inset panel zooms into the year 2018, as illustrated by the lightgreen rectangle.

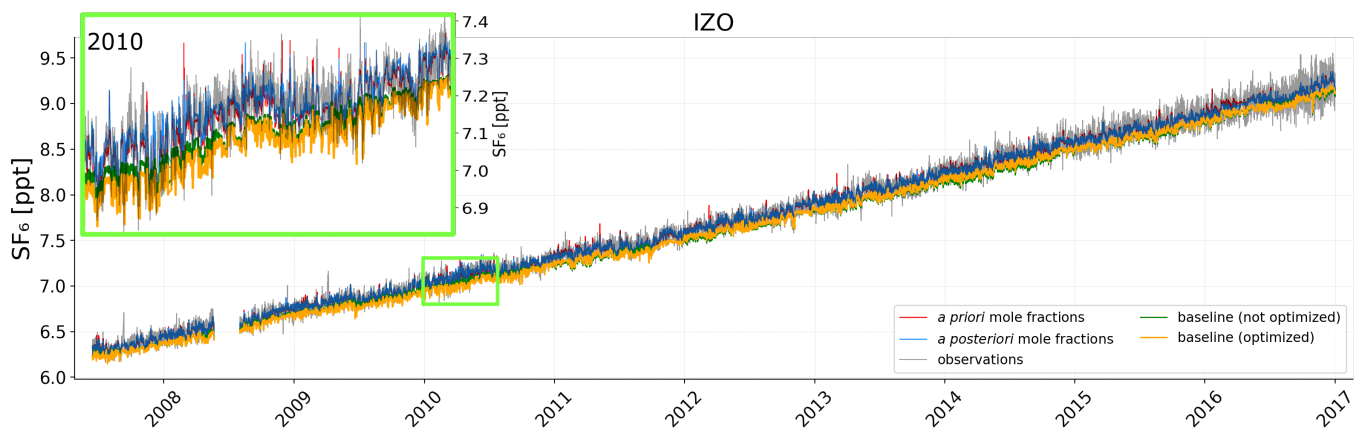


Figure A3. Mole fraction time series at the Izaña (Tenerife) measurement station. Red lines represent the modeled *a priori* mole fractions calculated with the UP *a priori* emissions and blue lines represent the modeled *a posteriori* mole fractions. The green line illustrates the baseline derived by the GDB method and the orange line shows the optimized baseline. The grey line represents the observed mole fractions. The inset panel zooms into the year 2010, as illustrated by the lightgreen rectangle.

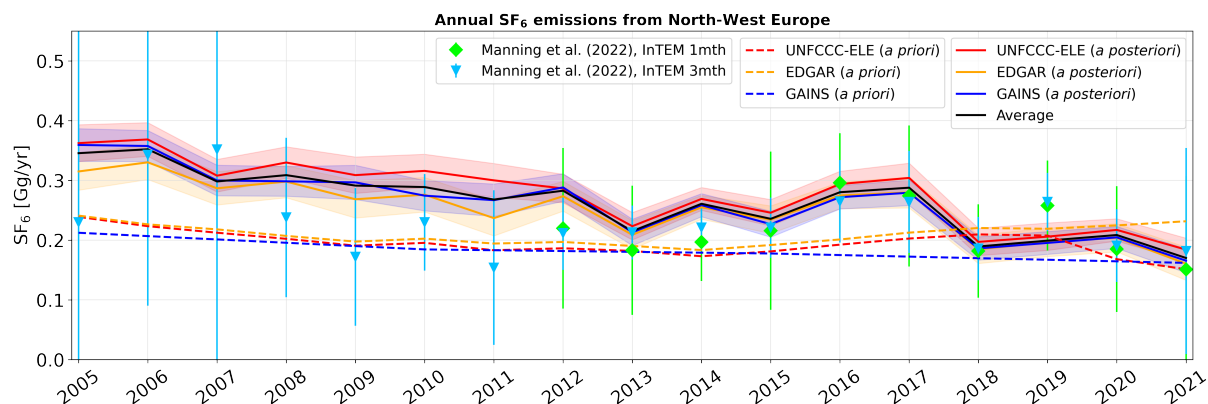


Figure A4. Annual *a priori* (dashed lines) and *a posteriori* (solid lines) SF₆ emissions from North-West Europe, shown for the period between 2005 and 2021 when using different *a priori* emissions (UNFCCC-ELE red, EDGAR orange, GAINS blue). *A posteriori* emissions are illustrated together with their respective 1- σ uncertainties (colored shadings). The *a posteriori* emissions averaged over the inversion results using the different inventories are shown with a black solid line. The blue rectangles and the green diamonds represent the results from Manning et al. (2022) using the InTEM (Inversion Technique for Emissions Modelling) model with inversion time frames set to 3- and 1-months, respectively

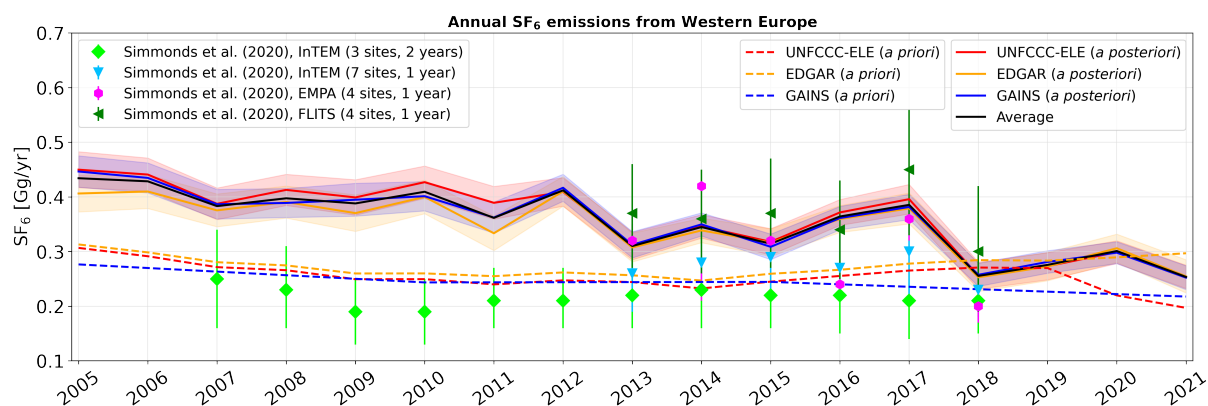


Figure A5. Annual *a priori* (dashed lines) and *a posteriori* (solid lines) SF₆ emissions from Western Europe, shown for the period between 2005 and 2021 when using different *a priori* emissions (UNFCCC-ELE red, EDGAR orange, GAINS blue). *A posteriori* emissions are illustrated together with their respective 1- σ uncertainties (colored shadings). The *a posteriori* emissions averaged over the inversion results using the different inventories are shown with a black solid line. Further, the results from Simmonds et al. (2020) are shown, using four different inversion setups.

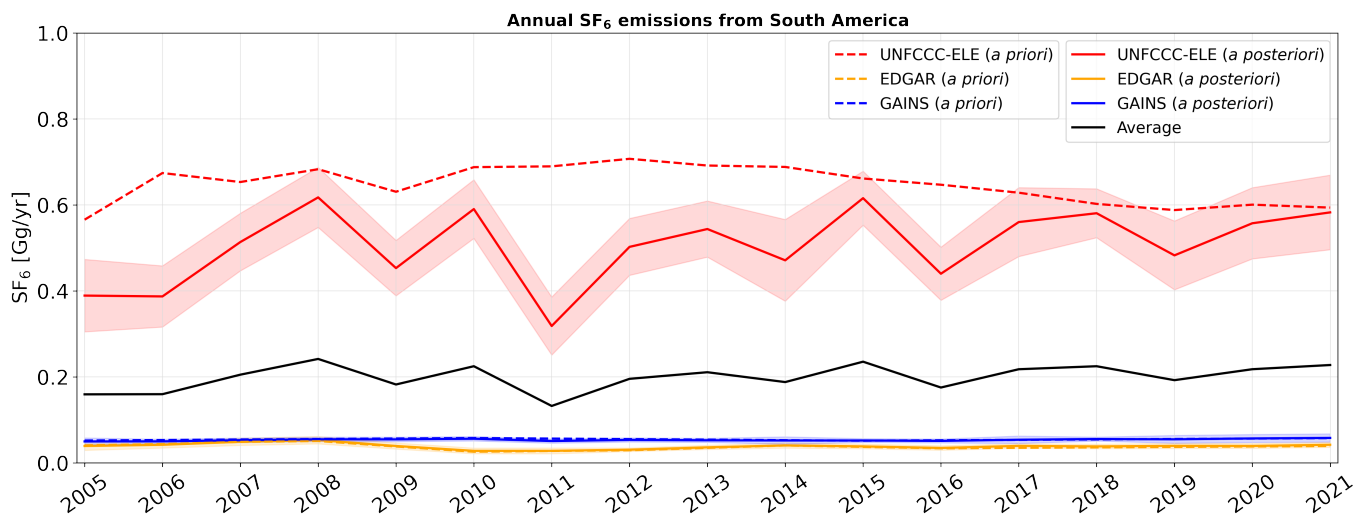


Figure A6. Annual *a priori* (dashed lines) and *a posteriori* (solid lines) SF_6 emissions from South America, shown for the period between 2005 and 2021 when using different *a priori* emissions (UNFCCC-ELE red, EDGAR orange, GAINS blue). *A posteriori* emissions are illustrated together with their respective 1- σ uncertainties (colored shadings). The *a posteriori* emissions averaged over the inversion results using the different inventories are shown with a black solid line.

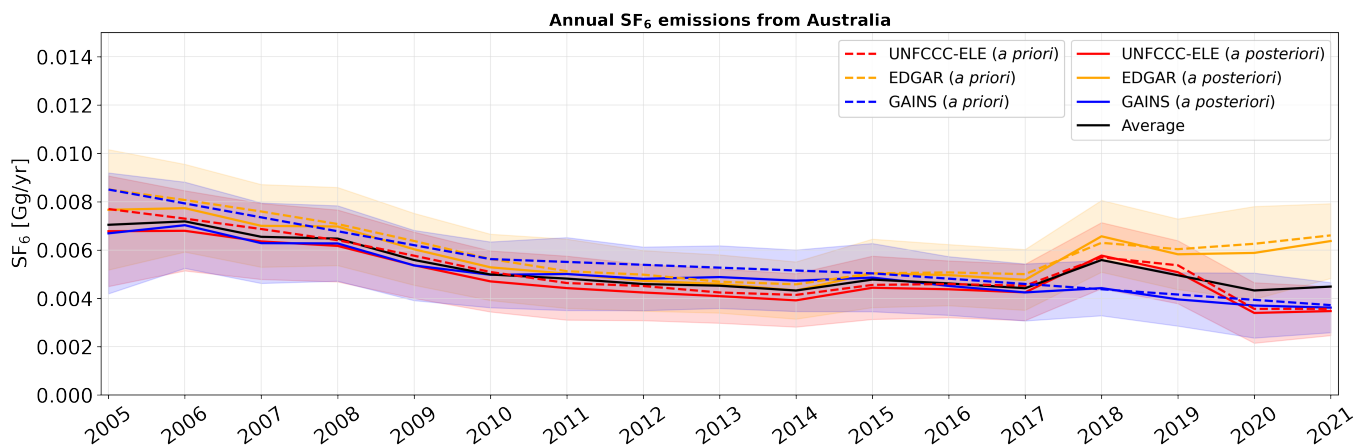


Figure A7. Annual *a priori* (dashed lines) and *a posteriori* (solid lines) SF_6 emissions from Australia, shown for the period between 2005 and 2021 when using different *a priori* emissions (UNFCCC-ELE red, EDGAR orange, GAINS blue). *A posteriori* emissions are illustrated together with their respective 1- σ uncertainties (colored shadings). The *a posteriori* emissions averaged over the inversion results using the different inventories are shown with a black solid line.

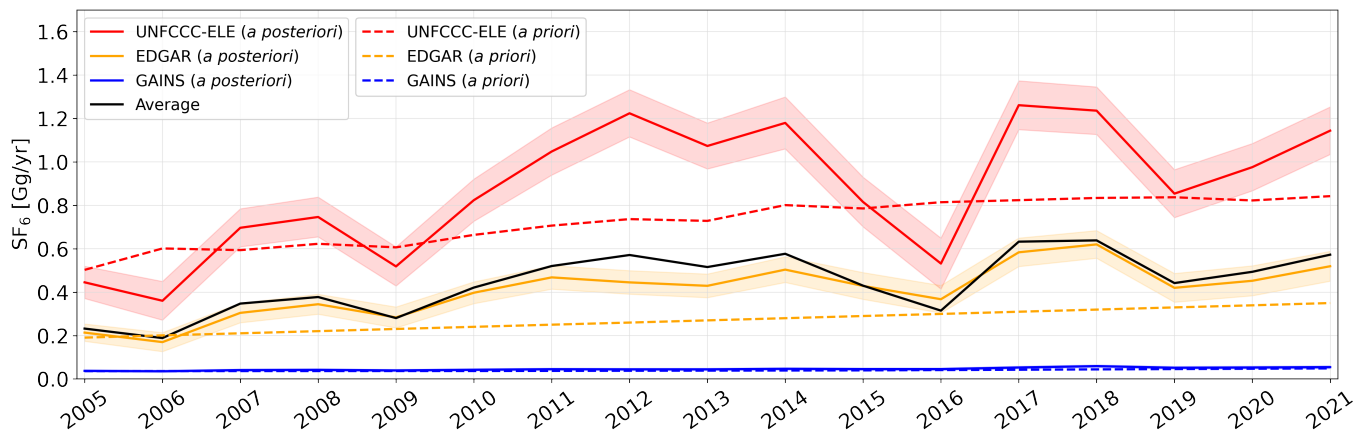


Figure A8. Annual *a priori* (dashed lines) and *a posteriori* (solid lines) SF_6 emissions from India, shown for the period between 2005 and 2021 when using different *a priori* emissions (UNFCCC-ELE red, EDGAR orange, GAINS blue). *A posteriori* emissions are illustrated together with their respective 1- σ uncertainties (colored shadings). The *a posteriori* emissions averaged over the inversion results using the different inventories are shown with a black solid line.

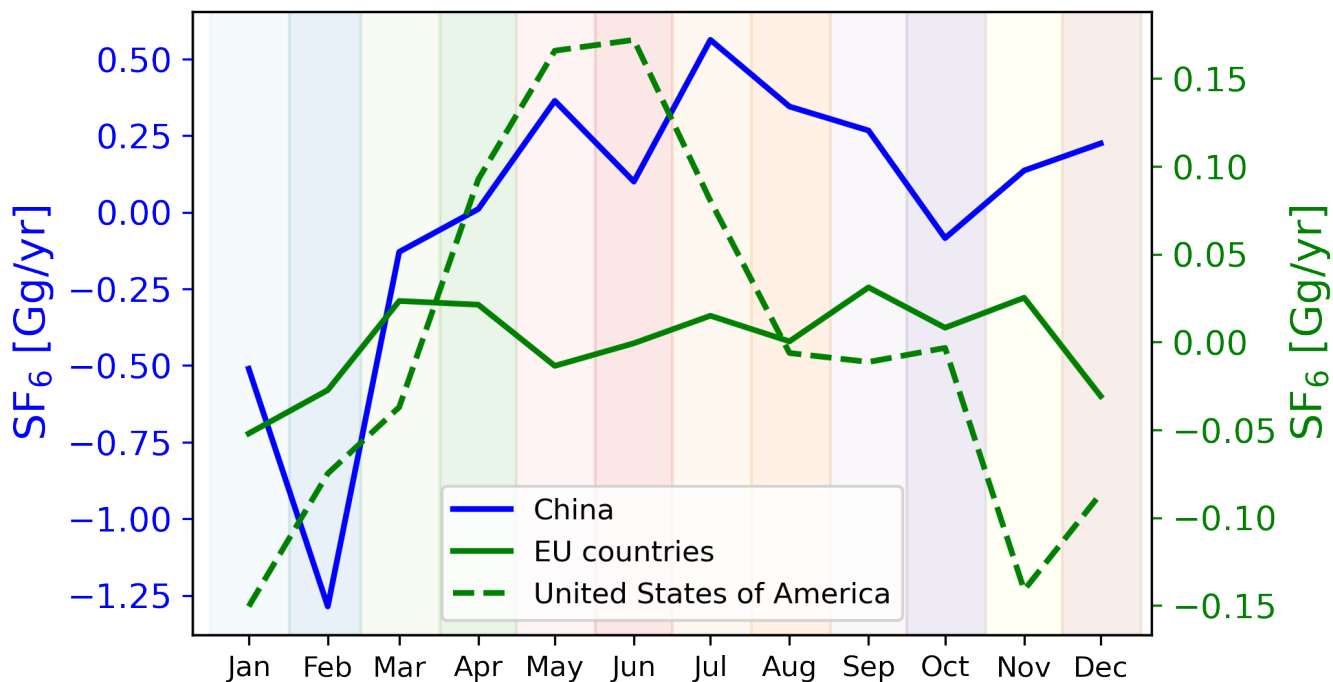


Figure A9. Seasonal variation of SF_6 emissions in China, the United States of America, and EU countries. The figure shows detrended monthly inversion results averaged for each month across all years in the period 2005-2021

References

- An, M., Prinn, R., Western, L., Zhao, X., Yao, B., Hu, J., Ganesan, A. L., Mühle, J., Weiss, R. F., Krummel, P. B., O'Doherty, S., Young, D., and Rigby, M.: Sustained growth of sulfur hexafluoride emissions in China inferred from atmospheric observations. *Nat Commun* 15, 1997, <https://doi.org/10.1038/s41467-024-46084-3>, 2024.
- Andersen, O., Gilpin, G., and Andrae, A. S.: Cradle-to-gate life cycle assessment of the dry etching step in the manufacturing of photovoltaic cells, *AIMS Energy*, 2, 410–423, <https://doi.org/10.3934/energy.2014.4.410>, 2014.
- Andrews, A., Crotwell, A., Crotwell, M., Handley, P., Higgs, J., Kofler, J., Lan, X., Legard, T., Madronich, M., McKain, K., Miller, J., Moglia, E., Mund, J., Neff, D., Newberger, T., Petron, G., Turnbull, J., Vimont, I., Wolter, S., and NOAA Global Monitoring Laboratory: NOAA Global Greenhouse Gas Reference Network Flask-Air PFP Sample Measurements of SF₆ at Tall Tower and other Continental Sites, 2005-Present [Data set]., Version: 2022-11-01., NOAA GML., <https://doi.org/10.15138/5R14-K382>, 2022.
- Arnold, T., Rennick, C., O'Doherty, S., Say, D., Young, D., Stavert, A., and Wenger, A.: Deriving Emissions related to Climate Change Network: CO₂, CH₄, N₂O, SF₆ and CO measurements from Heathfield Tall Tower, East Sussex. Centre for Environmental Data Analysis, <https://catalogue.ceda.ac.uk/uuid/df502fe4715c4177ab5e4e367a99316b>, last accessed: 2024-02-1, 2019.
- Brinton, D. A. and Wilkinson, C. P.: Retinal Detachment: Principles and Practice, vol. 1, Oxford University Press, 2009.
- Brunner, D., Arnold, T., Henne, S., Manning, A., Thompson, R. L., Maione, M., O'Doherty, S., and Reimann, S.: Comparison of four inverse modelling systems applied to the estimation of HFC-125, HFC-134a, and SF₆ emissions over Europe, *Atmospheric Chemistry and Physics*, 17, 10 651–10 674, <https://doi.org/10.5194/acp-17-10651-2017>, 2017.
- CEDA: World Data Centre for Greenhouse Gases, <https://archive.ceda.ac.uk/>, last accessed: 2023-09-10, 2023.
- China: The People's Republic of China second national communication on climate change, <https://unfccc.int/resource/docs/natc/chnnc2e.pdf>, last accessed: 2024-01-27, 2012.
- China: The People's Republic of China first biennial update report on climate change, https://unfccc.int/sites/default/files/resource/3_China_FSV_Presentation.pdf, last accessed: 2024-01-27, 2016.
- China: The People's Republic of China third national communication on climate change, <https://english.mee.gov.cn/Resources/Reports/reports/201907/P020190702566752327206.pdf>, last accessed: 2024-01-27, 2018a.
- China: The People's Republic of China second biennial update report on climate change, https://unfccc.int/sites/default/files/resource/China%202BUR_English.pdf, last accessed: 2024-01-27, 2018b.
- China: The People's Republic of China fourth national communication on climate change, https://unfccc.int/sites/default/files/resource/China_NC4_English.pdf, last accessed: 2024-01-27, 2023a.
- China: The People's Republic of China third biennial update report on climate change, https://unfccc.int/sites/default/files/resource/China_BUR3_English.pdf, last accessed: 2024-01-27, 2023b.
- CIESIN: Center for International Earth Science Information Network, Columbia University, Gridded Population of the World, Version 4 (GPWv4): Population Density, Revision 11. Palisades, NY: NASA Socioeconomic Data and Applications Center (SEDAC), <https://doi.org/10.7927/H49C6VHW>, last accessed: 2023-04-27, 2018.
- Crippa, M., Guizzardi, D., Solazzo, E., Muntean, M., Schaaf, E., Monforti-Ferrario, F., Banja, M., Olivier, J., Grassi, G., Rossi, S., and Vignati, E.: GHG emissions of all world countries - 2021 Report, EUR 30831 EN, Publications Office of the European Union, Luxembourg, ISBN 978-92-76-41547-3, <https://doi.org/10.2760/173513>, 2021.

Crippa, M., D., G., Pagani, F., Banja, M., Muntean, M., E., S., Becker, W., Monforti-Ferrario, F., Quadrelli, R., Risquez Martin, A., Taghavi-Moharamli, P., Köykkä, J., Grassi, G., Rossi, S., Brandao De Melo, J., Oom, D., Branco, A., San-Miguel, J., and Vignati, E.: GHG emissions of all world countries, Publications Office of the European Union, Luxembourg, 2023, <https://doi.org/10.2760/953322>, 2023.

Cui, Z., Li, Y., Xiao, S., Tian, S., Tang, J., Hao, Y., and Zhang, X.: Recent progresses, challenges and proposals on SF₆ emission reduction approaches, *Science of The Total Environment*, p. 167347, <https://doi.org/10.1016/j.scitotenv.2023.167347>, 2024.

di Sarra, A., Hall, B. D., Dylag, C., Couret, C., Lunder, C., Sweeney, C., Sferlazzo, D., Say, D., Mondeel, D. J., Young, D., Dlugokencky, E., Cuevas, E., Meinhardt, F., Technos, G. E., Dutton, G. S., Lee, H., Nance, J. D., Arduini, J., Pitt, J., Tsuboi, K., Stanley, K., Gatti, L. V., Steinbacher, M., Vollmer, M., Krummel, P., Rivas, P., Weiss, R. F., Wang, R., Chiavarini, S., Piacentino, S., O'Doherty, S., Reimann, S., A. Montzka, S., Saito, T., and Lan, X.: All SF₆ data contributed to WDCGG by GAW stations and mobiles by 2022-09-05, https://doi.org/10.50849/WDCGG_SF6_ALL_2022, 2022.

Dlugokencky, E., Crotnell, A., Mund, J., Crotnell, M., and Thoning, K.: Atmospheric Sulfur Hexafluoride Dry Air Mole Fractions from the NOAA GML Carbon Cycle Cooperative Global Air Sampling Network, 1997-2019, Version: 2020-07, <https://doi.org/10.15138/p646-pa37>, 2020.

Dutton, G. and Hall, B.: Global Atmospheric Sulfur hexafluoride Dry Air Mole Fractions from the NOAA GML Halocarbons in situ Network, 1998-2023, Version: 2023-04-13, <https://doi.org/10.7289/V5X0659V>, 2023.

EBAS: Measured sulfur hexafluoride mole fractions at the Zeppelin mountain (Ny-Ålesund) station [data-set] (2005 - 2010), <https://ebas-data.nilu.no/Pages/DataSetList.aspx?key=4548F59E3CBD48E0A505E8968BD268EB>, last accessed: 2024-02-1, 2024.

EDGAR: (Emissions Database for Global Atmospheric Research) Community GHG Database version 7.0, European Commission, Joint Research Centre (JRC), the International Energy Agency (IEA), Datasets, https://edgar.jrc.ec.europa.eu/dataset_ghg70, last accessed: 2024-01-27, 2022.

EDGAR: (Emissions Database for Global Atmospheric Research) Community GHG Database version 8.0, European Commission, Joint Research Centre (JRC), the International Energy Agency (IEA), Datasets, https://edgar.jrc.ec.europa.eu/dataset_ghg80, last accessed: 2024-01-27, 2023.

Elkins, J. W., Moore, F., Hints, E., Hurst, D., Hall, B., Montzka, S., Miller, B., Dutton, G., and Nance, D.: HATS Airborne Projects, www.esrl.noaa.gov/gmd/hats/airborne/, last accessed: 2024-02-1, 2020.

Elvidge, C. D., Zhizhin, M., Ghosh, T., Hsu, F.-C., and Taneja, J.: Annual time series of global VIIRS nighttime lights derived from monthly averages: 2012 to 2019, *Remote Sensing*, 13, 922, <https://doi.org/10.3390/rs13050922>, 2021.

EPA: Assessment of the Use of Sulfur Hexafluoride (SF₆) Gas Insulated Switchgears (GIS) within the Offshore Wind . Environmental Protection Agency (EPA), Eastern Research Group, <https://www.epa.gov/system/files/documents/2023-12/ocs-sf6.pdf>, last accessed: 2024-02-15, 2023.

European Parliament and Council of the European Union: Regulation (EU) No. 517/2014 of the European Parliament and of the Council on fluorinated greenhouse gases and repealing Regulation (EC) No. 842/2006. Official Journal of the European Union, L 150/195., <https://faolex.fao.org/docs/pdf/eur133686.pdf>, last accessed: 2024-01-31, 2014.

Fang, X., Thompson, R. L., Saito, T., Yokouchi, Y., Kim, J., Li, S., Kim, K. R., Park, S., Graziosi, F., and Stohl, A.: Sulfur hexafluoride (SF₆) emissions in East Asia determined by inverse modeling, *Atmospheric Chemistry and Physics*, 14, 4779–4791, <https://doi.org/10.5194/acp-14-4779-2014>, 2014.

Ganesan, A. L., Rigby, M., Zammit-Mangion, A., Manning, A. J., Prinn, R. G., Fraser, P. J., Harth, C. M., Kim, K.-R., Krummel, P. B., Li, S., Mühle, J., O'Doherty, S. J., Park, S., Salameh, P. K., Steele, L. P., and Weiss, R. F.: Characterization of uncertainties in atmospheric trace

- gas inversions using hierarchical Bayesian methods, *Atmospheric Chemistry and Physics*, 14, 3855–3864, <https://doi.org/10.5194/acp-14-3855-2014>, 2014.
- Gouda, O. E., Ali, M. D., and Ali-Hassan, A.-H.: Comparasion between Oil Immersed and SF6 Gas Power Transformers Ratings, *TELKOM-NIKA (Telecommunication Computing Electronics and Control)*, 10, 43–54, <https://doi.org/10.12928/telkomnika.v10i1.797>, 2012.
- Government of India: Growth of electricity sector in India from 1947-2023. Government of India, Ministry of Power, Central electricity authority, New Dehli, https://cea.nic.in/wp-content/uploads/pdm/2023/10/Growth_Book_2.pdf, last accessed: 2024-03-15, 2023.
- Groot Zwaaftink, C. D., Henne, S., Thompson, R. L., Dlugokencky, E. J., Machida, T., Paris, J.-D., Sasakawa, M., Segers, A., Sweeney, C., and Stohl, A.: Three-dimensional methane distribution simulated with FLEXPART 8-CTM-1.1 constrained with observation data, *Geoscientific Model Development*, 11, 4469–4487, <https://doi.org/10.5194/gmd-11-4469-2018>, 2018.
- Guo, L., Yang, Y., Fraser, P. J., Velders, G. J., Liu, Z., Cui, D., Quan, J., Cai, Z., Yao, B., Hu, J., et al.: Projected increases in emissions of high global warming potential fluorinated gases in China, *Communications Earth & Environment*, 4, 205, <https://doi.org/10.1038/s43247-023-00859-6>, 2023.
- Henne, S., Brunner, D., Groot Zwaaftink, C. D., and Stohl, A.: FLEXPART 8-CTM-1.1: Atmospheric Lagrangian Particle Dispersion Model for global tracer transport, <https://doi.org/10.5281/zenodo.1249190>, last accessed: 2022-04-27, 2018.
- Hersbach, H., de Rosnay, P., Bell, B., Schepers, D., Simmons, A., Soci, C., Abdalla, S., Alonso-Balmaseda, M., Balsamo, G., Bechtold, P., Berrisford, P., Bidlot, J.-R., de Boissésón, E., Bonavita, M., Browne, P., Buizza, R., Dahlgren, P., Dee, D., Dragani, R., Diamantakis, M., Flemming, J., Forbes, R., Geer, A., Haiden, T., Hólm, E., Haimberger, L., Hogan, R., Horányi, A., Janiskova, M., Laloyaux, P., Lopez, P., Munoz-Sabater, J., Peubey, C., Radu, R., Richardson, D., Thépaut, J.-N., Vitart, F., Yang, X., Zsótér, E., and Zuo, H.: Operational global reanalysis: progress, future directions and synergies with NWP, <https://doi.org/10.21957/tkic6g3wm>, series: ERA Report, 2018.
- Ho, D. T., Schlosser, P., and Caplow, T.: Determination of longitudinal dispersion coefficient and net advection in the tidal Hudson River with a large-scale, high resolution SF6 tracer release experiment, *Environmental science & technology*, 36, 3234–3241, <https://doi.org/https://doi.org/10.1021/es015814+>, 2002.
- Hu, L., Ottinger, D., Bogle, S., Montzka, S. A., DeCola, P. L., Dlugokencky, E., Andrews, A., Thoning, K., Sweeney, C., Dutton, G., et al.: Declining, seasonal-varying emissions of sulfur hexafluoride from the United States, *Atmospheric Chemistry and Physics*, 23, 1437–1448, <https://doi.org/10.5194/acp-23-1437-2023>, 2023.
- IEEE: IEEE Guide for Sulphur Hexafluoride (SF6) Gas Handling for High-Voltage (over 1000 Vac) Equipment, <https://doi.org/10.1109/IEEESTD.2012.6127885>, 2012.
- Kim, J., Li, S., Mühle, J., Stohl, A., Kim, S.-K., Park, S., Park, M.-K., Weiss, R. F., and Kim, K.-R.: Overview of the findings from measurements of halogenated compounds at Gosan (Jeju Island, Korea) quantifying emissions in East Asia, *Journal of Integrative Environmental Sciences*, 9, 71–80, <https://doi.org/10.1080/1943815X.2012.696548>, 2012.
- Koch, E.-C.: Special materials in pyrotechnics: III. Application of lithium and its compounds in energetic systems, *Propellants, Explosives, Pyrotechnics: An International Journal Dealing with Scientific and Technological Aspects of Energetic Materials*, 29, 67–80, <https://doi.org/10.1002/prep.200400032>, 2004.
- Koch, H.: Basic information on gas insulated transmission lines (GIL), in: 2008 IEEE Power and Energy Society General Meeting–Conversion and Delivery of Electrical Energy in the 21st Century, pp. 1–4, IEEE, <https://doi.org/10.1109/PESW.2000.850061>, 2008.
- Kovács, T., Feng, W., Totterdill, A., Plane, J., Dhomse, S., Gómez-Martín, J. C., Stiller, G. P., Haenel, F. J., Smith, C., Forster, P. M., et al.: Determination of the atmospheric lifetime and global warming potential of sulfur hexafluoride using a three-dimensional model, *Atmospheric Chemistry and Physics*, 17, 883–898, <https://doi.org/10.5194/acp-17-883-2017>, 2017.

- 740 Lan, X., Mund, J., Crotwell, A., Crotwell, M., Moglia, E., Madronich, M., Neff, D., and Thoning, K.: Atmospheric Sulfur Hexafluoride Dry Air Mole Fractions from the NOAA GML Carbon Cycle Cooperative Global Air Sampling Network, 1997-2022, Version: 2023-08-28, <https://doi.org/10.15138/p646-pa37>, 2023.
- Lan, X., Thoning, K., and Dlugokencky, E.: Trends in globally-averaged CH₄, N₂O, and SF₆ determined from NOAA Global Monitoring Laboratory measurements. Version 2024-02, <https://doi.org/10.15138/P8XG-AA10>, last accessed: 2024-02-19, 2024.
- 745 Laube, J. C., Tegtmeier, S., Fernandez, R. P., Harrison, J., Hu, L., Krummel, P., Mahieu, E., Park, S., and Western, L.: Update on Ozone-Depleting Substances (ODSs) and Other Gases of Interest to the Montreal Protocol, 978-9914-733-97-6, https://orbi.uliege.be/bitstream/2268/299913/1/Chapter_1_from%20Scientific-Assessment-of-Ozone-Depletion-2022.pdf, last accessed: 2024-02-15, 2023.
- Lee, G.: private communication, 05.03, 2024.
- Lee, H. J., Yoon, T.-J., and Yoon, Y. I.: Synthesis of ultrasound contrast agents: characteristics and size distribution analysis (secondary publication), *Ultrasonography*, 36, 378, <https://doi.org/10.14366/usg.17014>, 2017.
- 750 Lee, H. M., Chang, M. B., and Wu, K. Y.: Abatement of sulfur hexafluoride emissions from the semiconductor manufacturing process by atmospheric-pressure plasmas, *Journal of the Air & Waste Management Association*, 54, 960–970, <https://doi.org/10.1080/10473289.2004.10470963>, 2004.
- Levin, I., Naegler, T., Heinz, R., Osusko, D., Cuevas, E., Engel, A., Ilmberger, J., Langenfelds, R. L., Neininger, B., Rohden, C. v., et al.: The global SF₆ source inferred from long-term high precision atmospheric measurements and its comparison with emission inventories, *Atmospheric Chemistry and Physics*, 10, 2655–2662, <https://doi.org/10.5194/acp-10-2655-2010>, 2010.
- 755 Li, S., Park, S., Lee, J.-Y., Ha, K.-J., Park, M.-K., Jo, C., Oh, H., Mühle, J., Kim, K.-R., Montzka, S., et al.: Chemical evidence of inter-hemispheric air mass intrusion into the Northern Hemisphere mid-latitudes, *Scientific reports*, 8, 4669, <https://doi.org/10.1038/s41598-018-22266-0>, 2018.
- 760 Lichter, K. E., Bloom, J. R., Sheu, R.-D., Zalavari, L. T., Leung, K., Collins, A., Witztum, A., and Chuter, R.: Tracking and Reducing SF₆ Usage in Radiation Oncology: A Step Toward Net-Zero Health Care Emissions, *Practical Radiation Oncology*, 13, e471–e474, <https://doi.org/10.1016/j.prro.2023.06.003>, 2023.
- Maiss, M. and Brenninkmeijer, C. A.: Atmospheric SF₆: trends, sources, and prospects, *Environmental Science & Technology*, 32, 3077–3086, <https://doi.org/10.1021/es9802807>, 1998.
- 765 Manning, A., Redington, A., O'Doherty, S., Say, D., Young, D., Arnold, T., Rennick, C., Rigby, M., Wisher, A., and Simmonds, P.: Long-Term Atmospheric Measurement and Interpretation of Radiatively Active Trace Gases–Detailed Report (September 2019 to August 2020), Tech. rep., Department for Business, Energy & Industrial Strategy, <https://assets.publishing.service.gov.uk/media/62d7b9bee90e071e7e59c97e/verification-uk-greenhouse-gas-emissions-using-atmospheric-observations-annual-report-2021.pdf>, (last access 10 November 2023), 2022.
- 770 Martin, D., Petersson, K., and Shallcross, D.: The use of cyclic perfluoroalkanes and SF₆ in atmospheric dispersion experiments, *Quarterly Journal of the Royal Meteorological Society*, 137, 2047–2063, <https://doi.org/10.1002/qj.881>, 2011.
- McKain, K., Sweeney, C., Baier, B., Crotwell, A., Crotwell, M., Handley, P., Higgs, J., Legard, T. and Madronich, M., Miller, J. B., Moglia, E. and Mund, J. N. D., Newberger, T., Wolter, S., and Laboratory, N. G. M.: NOAA Global Greenhouse Gas Reference Network Flask-Air PFP Sample Measurements of CO₂, CH₄, CO, N₂O, H₂, SF₆ and isotopic ratios collected from aircraft vertical profiles [Data set]. Version: 2022-12-01, <https://doi.org/10.15138/39HR-9N34>, 2022.
- 775 Ni, J., Liu, S.-S., Lang, X.-P., He, Z., and Yang, G.-P.: Sulfur hexafluoride in the marine atmosphere and surface seawater of the Western Pacific and Eastern Indian Ocean, *Environmental Pollution*, 335, 122 266, <https://doi.org/10.1016/j.envpol.2023.122266>, 2023.

- NOAA Carbon Cycle Group ObsPack Team: Multi-laboratory compilation of atmospheric sulfur hexafluoride data for the period 1983–2017; obspacksf61v2.1.12018–08–17; NOAA Earth System Research Laboratory, Global Monitoring Division, <https://doi.org/10.15138/g3ks7p>, 2018.
- O'Doherty, S., Say, D., Stanley, K., Young, D., Pitt, J., and Wenger, A.: Deriving Emissions related to Climate Change Network: CO₂, CH₄, N₂O, SF₆ and CO measurements from Bilsdale Tall Tower, North York Moors National Park. Centre for Environmental Data Analysis, <https://catalogue.ceda.ac.uk/uuid/d2090552c8fe4c16a2fd7d616adc2d9f>, last accessed: 2024-02-1, 2019.
- Okofe, L. B., Adonadaga, M.-G., and Martienssen, M.: Groundwater age dating using multi-environmental tracers (SF₆, CFC-11, CFC-12, $\delta^{18}\text{O}$, and δD) to investigate groundwater residence times and recharge processes in Northeastern Ghana, *Journal of Hydrology*, 610, 127–141, <https://doi.org/10.1016/j.jhydrol.2022.127821>, 2022.
- Patra, P. K., Lal, S., Subbaraya, B., Jackman, C. H., and Rajaratnam, P.: Observed vertical profile of sulphur hexafluoride (SF₆) and its atmospheric applications, *Journal of Geophysical Research: Atmospheres*, 102, 8855–8859, <https://doi.org/10.1029/96JD03503>, 1997.
- Pedersen, P. H.: Ways of reducing consumption and emission of potent greenhouse gases (HFCs, PFCs and SF₆), Nordic Council of Ministers, <http://norden.diva-portal.org/smash/get/diva2:702766/FULLTEXT01.pdf>, last accessed: 2024-03-12, 2000.
- Pisso, I., Sollum, E., Grythe, H., Kristiansen, N. I., Cassiani, M., Eckhardt, S., Arnold, D., Morton, D., Thompson, R. L., Groot Zwaftink, C. D., Evangeliou, N., Sodemann, H., Haimberger, L., Henne, S., Brunner, D., Burkhardt, J. F., Fouilloux, A., Brioude, J., Philipp, A., Seibert, P., and Stohl, A.: The Lagrangian particle dispersion model FLEXPART version 10.4, *Geoscientific Model Development*, 12, 4955–4997, <https://doi.org/10.5194/gmd-12-4955-2019>, 2019.
- Popa, M., Gloor, M., Manning, A., Jordan, A., Schultz, U., Haensel, F., Seifert, T., and Heimann, M.: Measurements of greenhouse gases and related tracers at Bialystok tall tower station in Poland, *Atmospheric Measurement Techniques*, 3, 407–427, <https://doi.org/10.5194/amt-3-407-2010>, 2010.
- Prinn, R. G., Weiss, R. F., Arduini, J., Arnold, T., DeWitt, H. L., Fraser, P. J., Ganesan, A. L., Gasore, J., Harth, C. M., Hermansen, O., Kim, J., Krummel, P. B., Li, S., Loh, Z. M., Lunder, C. R., Maione, M., Manning, A. J., Miller, B. R., Mitrevski, B., Mühle, J., O'Doherty, S., Park, S., Reimann, S., Rigby, M., Saito, T., Salameh, P. K., Schmidt, R., Simmonds, P. G., Steele, L. P., Vollmer, M. K., Wang, R. H., Yao, B., Yokouchi, Y., Young, D., and Zhou, L.: History of chemically and radiatively important atmospheric gases from the Advanced Global Atmospheric Gases Experiment (AGAGE), *Earth System Science Data*, 10, 985–1018, <https://doi.org/10.5194/essd-10-985-2018>, 2018.
- Purohit, P. and Höglund-Isaksson, L.: Global emissions of fluorinated greenhouse gases 2005–2050 with abatement potentials and costs, *Atmospheric Chemistry and Physics*, 17, 2795–2816, <https://doi.org/10.5194/acp-17-2795-2017>, 2017.
- Ravishankara, A. R., Solomon, S., Turnipseed, A. A., and Warren, R. F.: Atmospheric lifetimes of long-lived halogenated species, *Science* (New York, N.Y.), 259, 194–199, <https://doi.org/10.1126/science.259.5092.194>, 1993.
- Ray, E. A., Moore, F. L., Elkins, J. W., Rosenlof, K. H., Laube, J. C., Röckmann, T., Marsh, D. R., and Andrews, A. E.: Quantification of the SF₆ lifetime based on mesospheric loss measured in the stratospheric polar vortex, *Journal of Geophysical Research: Atmospheres*, 122, 4626–4638, <https://doi.org/10.1002/2016JD026198>, 2017.
- Redington, A. L., Manning, A. J., O'Doherty, S. J., Say, D., Rigby, M., Hoare, D., Wisher, A., Rennick, C., Arnold, T., Young, D., and Simmonds, P. G.: Long-Term Atmospheric Measurement and Interpretation of Radiatively Active Trace Gases, Annual Report, Sept 2018 – Sept 2019, Department for Business, Energy and Industrial Strategy, London, UK, <https://assets.publishing.service.gov.uk/media/5eddf868d3bf7f4601e57730/verification-uk-greenhouse-gas-emissions-atmospheric-observations-annual-report-2018.pdf>, 2019.
- Rigby, M., Mühle, J., Miller, B. R., Prinn, R. G., Krummel, P. B., Steele, L. P., Fraser, P. J., Salameh, P. K., Harth, C. M., Weiss, R. F., Grealley, B. R., O'Doherty, S., Simmonds, P. G., Vollmer, M. K., Reimann, S., Kim, J., Kim, K.-R., Wang, H. J., Olivier, J. G. J., Dlugokencky,

- E. J., Dutton, G. S., Hall, B. D., and Elkins, J. W.: History of atmospheric SF₆; from 1973 to 2008, *Atmospheric Chemistry and Physics*, 10, 10 305–10 320, <https://doi.org/10.5194/acp-10-10305-2010>, 2010.
- Rigby, M., Manning, A., and Prinn, R.: Inversion of long-lived trace gas emissions using combined Eulerian and Lagrangian chemical transport models, *Atmospheric Chemistry and Physics*, 11, 9887–9898, <https://doi.org/10.5194/acp-11-9887-2011>, 2011.
- 820 Rigby, M., Prinn, R., O'Doherty, S., Montzka, S., McCulloch, A., Harth, C., Mühle, J., Salameh, P., Weiss, R., Young, D., et al.: Re-evaluation of the lifetimes of the major CFCs and CH₃CCl₃ using atmospheric trends, *Atmospheric Chemistry and Physics*, 13, 2691–2702, <https://doi.org/10.5194/acp-13-2691-2013>, 2013.
- Rust, D., Katharopoulos, I., Vollmer, M. K., Henne, S., O'doherty, S., Say, D., Emmenegger, L., Zenobi, R., and Reimann, S.: Swiss halocarbon emissions for 2019 to 2020 assessed from regional atmospheric observations, *Atmospheric Chemistry and Physics*, 22, 2447–2466, <https://doi.org/10.5194/acp-22-2447-2022>, 2022.
- 825 Saikawa, E., Rigby, M., Prinn, R. G., Montzka, S. A., Miller, B. R., Kuijpers, L. J. M., Fraser, P. J. B., Vollmer, M. K., Saito, T., Yokouchi, Y., Harth, C. M., Mühle, J., Weiss, R. F., Salameh, P. K., Kim, J., Li, S., Park, S., Kim, K.-R., Young, D., O'Doherty, S., Simmonds, P. G., McCulloch, A., Krummel, P. B., Steele, L. P., Lunder, C., Hermansen, O., Maione, M., Arduini, J., Yao, B., Zhou, L. X., Wang, H. J., Elkins, J. W., and Hall, B.: Global and regional emission estimates for HCFC-22, *Atmospheric Chemistry and Physics*, 12, 10 033–10 050, <https://doi.org/10.5194/acp-12-10033-2012>, 2012.
- Schuck, T. and Obersteiner, F.: IAGOS-CARIBIC whole air sampler data (v2024.01.12) [Data set]. Zenodo., <https://doi.org/10.5281/zenodo.10495039>, 2024.
- Schwaab, K.: Emissions Reduction Potentials for SF₆ in Germany, in: Conference Paper (EPA): SF₆ and the environment: Emission reduction strategies., Citeseer, <https://citeseerx.ist.psu.edu/document?repid=rep1&type=pdf&doi=d885668be934608b9a54db7ac2dc9ecdca6b26a>, last accessed: 2024-02-15, 2000.
- 835 Schwarz, W.: Emissions, activity data, and emission factors of fluorinated greenhouse gases (F-Gases) in Germany 1995–2002, Research Report 201 41 261/01, UBA-FB 000811/e, Umweltbundesamt, Berlin, <https://www.osti.gov/etdeweb/biblio/21154958>, last accessed: 2024-02-15, 2005.
- Simmonds, P. G., Rigby, M., Manning, A. J., Park, S., Stanley, K. M., McCulloch, A., Henne, S., Graziosi, F., Maione, M., Arduini, J., Reimann, S., Vollmer, M. K., Mühle, J., O'Doherty, S., Young, D., Krummel, P. B., Fraser, P. J., Weiss, R. F., Salameh, P. K., Harth, C. M., Park, M.-K., Park, H., Arnold, T., Rennick, C., Steele, L. P., Mitrevski, B., Wang, R. H. J., and Prinn, R. G.: The increasing atmospheric burden of the greenhouse gas sulfur hexafluoride (SF₆), *Atmospheric Chemistry and Physics*, 20, 7271–7290, <https://doi.org/10.5194/acp-20-7271-2020>, 2020.
- 840 Smith, C., Nicholls, Z., Armour, K., Collins, W., Forster, P., Meinshausen, M., Palmer, M., and Watanabe, M.: The Earth's Energy Budget, Climate Feedbacks, and Climate Sensitivity Supplementary Material. In *Climate Change 2021: The Physical Science Basis. Contribution of Working Group I to the Sixth Assessment Report of the Intergovernmental Panel on Climate Change* [Masson-Delmotte, V., P. Zhai, A. Pirani, S.L. Connors, C. Péan, S. Berger, N. Caud, Y. Chen, L. Goldfarb, M.I. Gomis, M. Huang, K. Leitzell, E. Lonnoy, J.B.R. Matthews, T.K. Maycock, T. Waterfield, O. Yelekçi, R. Yu, and B. Zhou (eds.)]. Available from <https://www.ipcc.ch>, 2021.
- Stiller, G., Harrison, J. J., Haenel, F., Glatthor, N., and Kellmann, S.: MIPAS monthly zonal mean Age of Air data, based on MIPAS SF₆ retrievals, processed at KIT-IMK, Karlsruhe, <https://doi.org/10.5445/IR/1000139453>, 2021.
- 850 Stohl, A., Seibert, P., Arduini, J., Eckhardt, S., Fraser, P., Grealley, B. R., Lunder, C., Maione, M., Mühle, J., O'Doherty, S., Prinn, R. G., Reimann, S., Saito, T., Schmidbauer, N., Simmonds, P. G., Vollmer, M. K., Weiss, R. F., and Yokouchi, Y.: An analytical inversion method

- for determining regional and global emissions of greenhouse gases: Sensitivity studies and application to halocarbons, *Atmospheric Chemistry and Physics*, 9, 1597–1620, <https://doi.org/10.5194/acp-9-1597-2009>, 2009.
- 855 Tanhua, T., Olsson, K. A., and Fogelqvist, E.: A first study of SF₆ as a transient tracer in the Southern Ocean, *Deep Sea Research Part II: Topical Studies in Oceanography*, 51, 2683–2699, <https://doi.org/10.1016/j.dsr2.2001.02.001>, 2004.
- Tarantola, A.: *Inverse Problem Theory and Methods for Model Parameter Estimation*, pp. 1–67, Society for Industrial and Applied Mathematics, <https://doi.org/10.1137/1.9780898717921>, 2005.
- Thacker, W. C.: Data assimilation with inequality constraints, *Ocean Modelling*, 16, 264–276, <https://doi.org/10.1016/j.ocemod.2006.11.001>,
860 2007.
- Thompson, R. L. and Stohl, A.: FLEXINVERT: an atmospheric Bayesian inversion framework for determining surface fluxes of trace species using an optimized grid, *Geoscientific Model Development*, 7, 2223–2242, <https://doi.org/10.5194/gmd-7-2223-2014>, 2014.
- Tørseth, K., Aas, W., Breivik, K., Fjæraa, A. M., Fiebig, M., Hjellbrekke, A.-G., Lund Myhre, C., Solberg, S., and Yttri, K. E.: Introduction to the European Monitoring and Evaluation Programme (EMEP) and observed atmospheric composition change during 1972–2009,
865 *Atmospheric Chemistry and Physics*, 12, 5447–5481, <https://doi.org/10.5194/acp-12-5447-2012>, 2012.
- UNFCCC: United Nations Framework Convention on Climate Change, https://di.unfccc.int/time_series, last accessed: 2023-03-10, 2021.
- Vojta, M., Plach, A., Thompson, R. L., and Stohl, A.: A comprehensive evaluation of the use of Lagrangian particle dispersion models for inverse modeling of greenhouse gas emissions, *Geoscientific Model Development*, 15, 8295–8323, <https://doi.org/10.5194/gmd-15-8295-2022>, 2022.
- 870 Zhou, S., Teng, F., and Tong, Q.: Mitigating sulfur hexafluoride (SF₆) emission from electrical equipment in China, *Sustainability*, 10, 2402, <https://doi.org/10.3390/su10072402>, 2018.