

Supplement of

Measurement report: Analysis of aerosol optical depth variation at Zhongshan Station in Antarctica

Lijing Chen et al.

Correspondence to: Minghu Ding (dingminghu@foxmail.com)

Supplementary Information

List of figures:

Figure S1. Number of observation data obtained from CE318-T at Zhongshan Station in (a) 2020, (b) 2021, (c) 2022, and (d) 2023, respectively.

Figure S2. (a)-(h) the frequency histograms of aerosol optical depth at 500 nm ($AOD_{500\text{ nm}}$) and Angstrom exponent at 440-870 nm ($AE_{440-870\text{ nm}}$) in spring, summer, autumn, and winter, respectively. The red dashed lines represent the lognormal fit curves in (a)-(d), and the normal fit curves in (e)-(h), respectively.

Figure S3. Time series of diurnal variations of $AOD_{500\text{ nm}}$ and $AE_{440-870\text{ nm}}$ on (a) high AOD days, and (b) low AOD days, respectively. The solid blue lines represent $AOD_{500\text{ nm}}$ and the solid red lines represent $AE_{440-870\text{ nm}}$.

Figure S4. HYSPLIT backward trajectory of (a) low AOD days and (b) high AOD days.

List of tables:

Table S1. Dates are classified as low AOD days and high AOD days, respectively. Note: The fifth percentile value of the AOD daily mean is 0.02446, and days with an AOD daily mean below this value are classified as low AOD days; The 95th percentile value of the AOD daily mean is 0.14739, and days with an AOD daily mean above this value are classified as high AOD days.

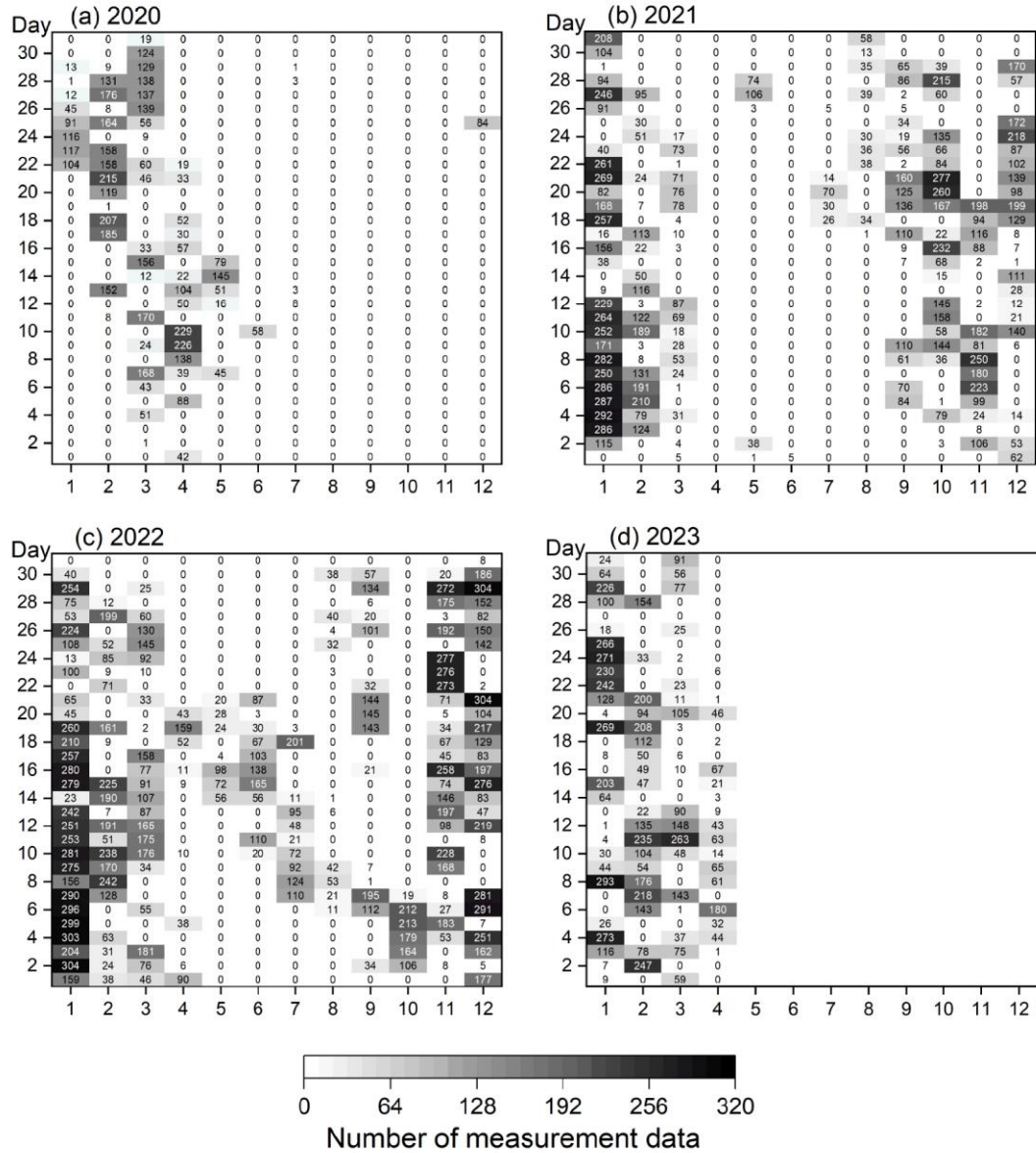


Figure S1. Number of observation data obtained from CE318-T at Zhongshan Station in (a) 2020, (b) 2021, (c) 2022, and (d) 2023, respectively.

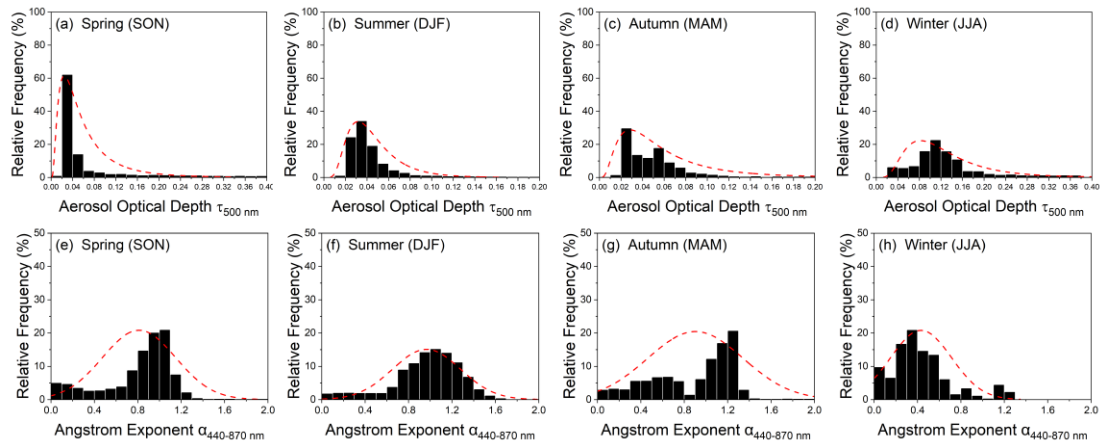


Figure S2. (a)-(h) the frequency histograms of aerosol optical depth at 500 nm ($AOD_{500\text{ nm}}$) and

Angstrom exponent at 440-870 nm ($AE_{440-870 \text{ nm}}$) in spring, summer, autumn, and winter, respectively. The red dashed lines represent the lognormal fit curves in (a)-(d), and the normal fit curves in (e)-(h), respectively.

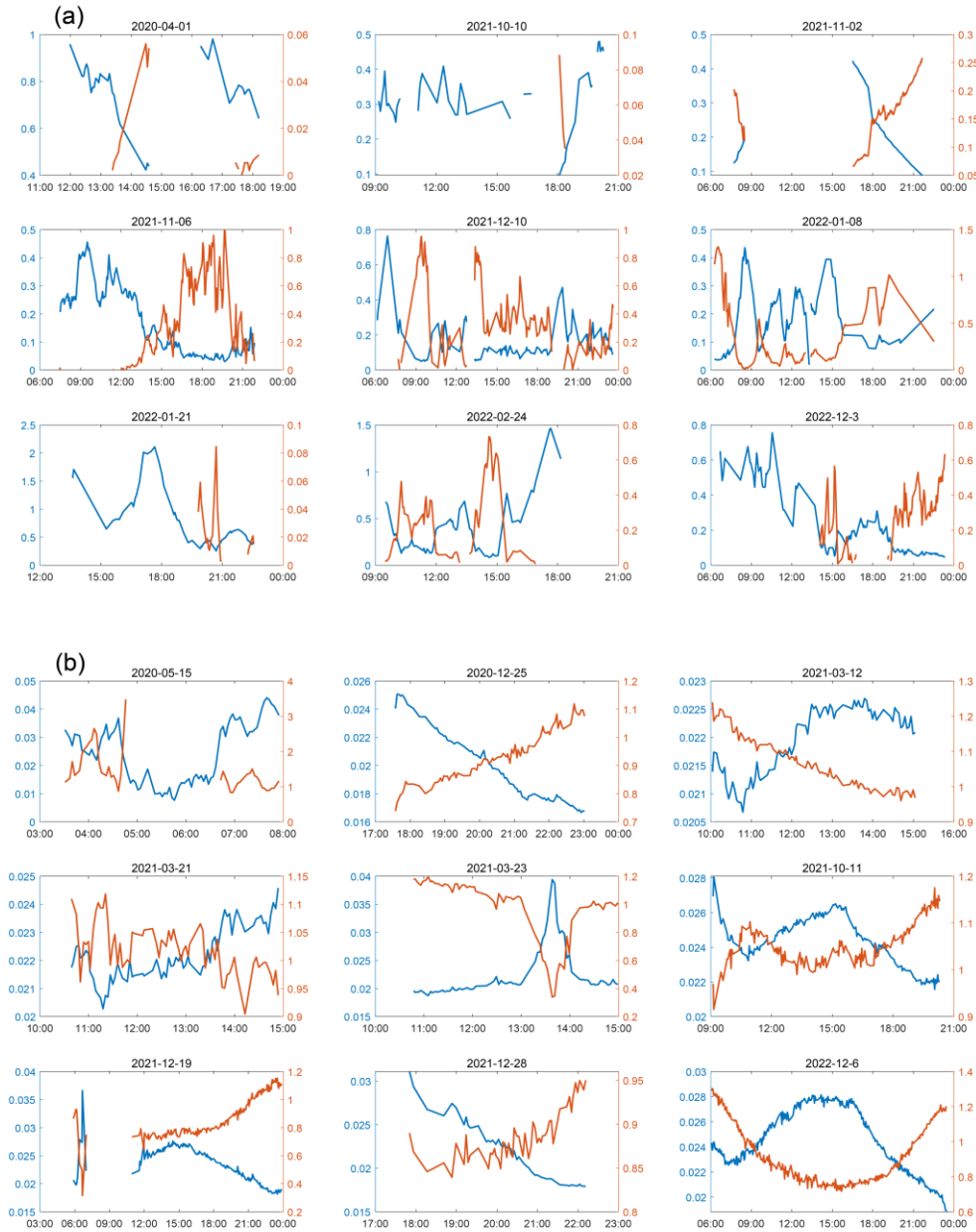


Figure S3. Time series of diurnal variations of $AOD_{500 \text{ nm}}$ and $AE_{440-870 \text{ nm}}$ on (a) high AOD days, and (b) low AOD days, respectively. The solid blue lines represent $AOD_{500 \text{ nm}}$ and the solid red lines represent $AE_{440-870 \text{ nm}}$.

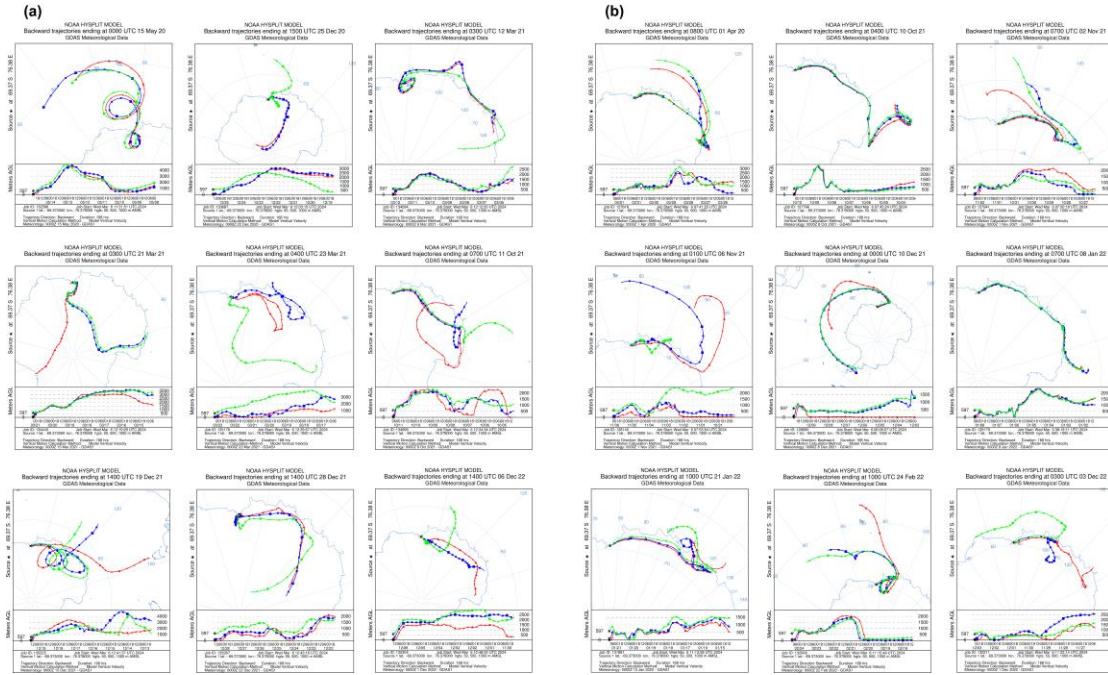


Figure S4. HYSPLIT backward trajectory of (a) low AOD days and (b) high AOD days.

Table S1. Dates are classified as low AOD days and high AOD days, respectively. Note: The fifth percentile value of the AOD daily mean is 0.02446, and days with an AOD daily mean below this value are classified as low AOD days; The 95th percentile value of the AOD daily mean is 0.14739, and days with an AOD daily mean above this value are classified as high AOD days.

Low AOD Date	AOD _{500 nm} mean	High AOD Date	AOD _{500 nm} mean
2020-05-15	0.02435	2020-04-01	0.76389
2020-12-25	0.02005	2021-10-10	0.32171
2021-03-12	0.02193	2021-11-02	0.20771
2021-03-21	0.0222	2021-11-06	0.16909
2021-03-23	0.02247	2021-12-10	0.14739
2021-10-11	0.02431	2022-01-08	0.17626
2021-12-19	0.02329	2022-01-21	0.80477
2021-12-28	0.02155	2022-02-24	0.34481
2022-12-6	0.02446	2022-12-3	0.18311

***The P5 of total AOD_{500 nm} mean: 0.02446 *The P95 of total AOD_{500 nm} mean: 0.14739**