

# Consistency between a Strain Rate Model and the ESHM20 Earthquake Rate Forecast in Europe: insights for seismic hazard

Donniol Jouve Bénédicte<sup>1</sup>, Socquet Anne<sup>1</sup>, Beauval Céline<sup>1</sup>, Piña Valdès Jesus<sup>2</sup>, and Danciu Laurentiu<sup>3</sup>

<sup>1</sup>Univ. Grenoble Alpes, Univ. Savoie Mont Blanc, CNRS, IRD, Univ. Gustave Eiffel, ISTERre, 38000 Grenoble, France

<sup>2</sup>Departamento de Ciencias Geodésicas y Geomática, Escuela de Ciencias y Tecnología, Universidad de Concepción Campus, Los Ángeles, Chile

<sup>3</sup>Swiss Seismological Service, ETH Zürich, Zürich, Switzerland

**Correspondence:** Donniol Jouve Bénédicte (benedicte.donniol@ikmail.com)

## Abstract.

This work aims at investigating the consistency between a strain rate model and a long-term earthquake forecast at the European scale. We take advantage of the release of geodetic strain rate models by Piña-Valdés et al. (2022), and the release of the European Seismic Hazard Model 2020 (ESHM20) by Danciu et al. (2024), to compare geodetic and seismic moment rates across Europe. Seismic moments are inferred from the magnitude-frequency distributions that constitute the ESHM20 source model. We explore the full ESHM20 source model logic tree to account for the epistemic uncertainties. On the geodesy side, we use the strain rates to calculate the geodetic moment for each source zone of the hazard model, considering associated epistemic uncertainties. We show that the parameters contributing the most to the overall uncertainty on the geodetic moment rate are the distance weighting scheme used in the spatial inversion, the equation used to convert surface strain to a scalar moment rate, and the effective seismic thickness. We compare the distributions of geodetic and seismic moment rates at different geographical scales. In highly seismic activity zones, such as the Apennines in Italy, Greece, the Balkans, and the Betics in Spain, primary compatibility between seismic and geodetic moment rates is evident. However, in some regions, significant differences emerge between the two moment rate estimates. Discrepancies emerge in low-to-moderate seismic activity zones, particularly in areas affected by the Scandinavian Glacial Isostatic Adjustment, where geodetic moment rates exceed seismic moment rates significantly. We show that considering broader zones enhances the match between geodetic and seismic moment rate distributions. Nevertheless, in most zones where ESHM20 magnitude-frequency distributions are well-constrained (established on more than 30 complete events), the distributions of seismic and geodetic moments usually overlap significantly, suggesting the potential for integrating geodetic data into hazard models, even in regions with low deformation.

## 1 Introduction

Nowadays, source models in up-to-date probabilistic seismic hazard assessment (PSHA) studies are based both on past seismicity and active tectonics datasets. For example, the source model logic tree in the European Seismic Hazard Model 2013 (Woessner et al., 2015) and in the updated European Seismic Hazard Model 2020 (Danciu et al., 2024) include two main branches, an area source model and a fault model. In regions where active faults are rather well-characterized, they must be

accounted for in the hazard estimations (e.g., Stirling et al., 2012; Field et al., 2014; Beauval et al., 2018). Fault models are mostly based on geologic information, covering much larger time windows than the available earthquake catalogs. Fault models thus bring insights on the generation of earthquakes that complement the catalog-based earthquake forecasts. However, fault databases are known to be incomplete, even in the best characterized regions, and earthquakes may occur on unknown faults, as demonstrated by several earthquakes in the past, such as the two 2002 Mw  $\approx$  5.7 Molise earthquakes (Valensise et al., 2004) in Italy or the Darfield Mw 7.1 earthquake in New Zealand (Hornblow et al., 2014).

A number of studies have analyzed the relationship between geodetic strain rates and observed seismicity (e.g., Zeng et al., 2018; Kreemer and Young, 2022; Riguzzi et al., 2012; Farolfi et al., 2020).

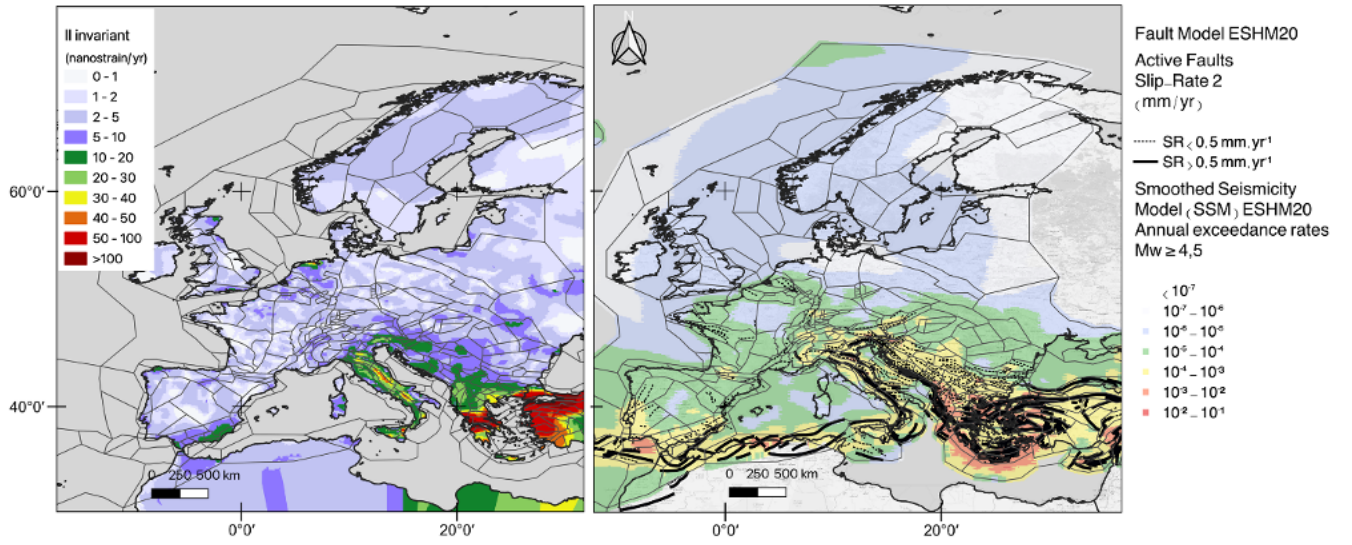
However, the use of geodetic data in the development of source models for PSHA has been limited up to now, although deformation rates based on velocities from the Global Navigation Satellite Systems (GNSS) constitutes a promising perspective for constraining earthquake recurrence models (Jenny et al., 2004; Shen et al., 2007). GNSS stations measure the present-day displacements at the surface of the earth. A convenient way to characterize the ground deformation is to invert the surface velocities measured by GNSS to compute strain rate maps, that are independent from the reference frame. The accuracy of the estimated strain rates depends on the spatial density of GNSS stations, the quality of the sites, and the duration of the records (Mathey et al., 2018). Along major interplate faults, such as subduction zones or lithospheric strike slip faults, interseismic velocities measured by GNSS are now commonly used to constrain the slip deficit on the fault associated with locking in between large seismic events, also referred to as interseismic coupling. In such highly active tectonic boundary regions, the interseismic slip deficit may be combined with the earthquake catalog to constrain earthquake recurrence (Avouac, 2015; Mariniere et al., 2021). In plate interiors, where the faults are moving at low slip rates and where fault mapping is incomplete, strain rate models can provide constraints on the seismic potential.

Indeed, the tectonic loading recorded by geodesy should be proportional to the energy released during earthquakes, under the assumption that the earth's crust behaves elastically (Reid, 1910). If this assumption is true and other factors such as aseismic deformation are not significant, then the rate at which energy is released during earthquakes (represented by the seismic moment rate) and the rate at which tectonic forces build up between earthquakes (represented by the geodetic moment rates) should be equal (Stevens and Avouac, 2021). This balance can be used to constrain magnitude-frequency distributions. In the last 30 years, a number of studies have analyzed catalog-based magnitude-frequency distributions with respect to the tectonic loading measured by geodesy. Based on the mapping of strain rates from geodesy in the Hellenic arc, Jenny et al. (2004) found that the maximum magnitudes required for the earthquake recurrence models to be moment-balanced were unrealistic and concluded that a large part of the strain is released in aseismic processes, following Papadopoulos (1989). In the India-Asia collision zone, Stevens and Avouac (2021) highlighted a correlation between earthquake rates and strain rates. They established moment-balanced recurrence models that fit both past seismicity and the geodetic moment, bounded by maximum magnitudes compatible with those expected in the region. They combine these moment-balanced earthquake recurrence models to ground-motion models to estimate probabilistic seismic hazard (e.g. Stevens and Avouac, 2021).

However, to our knowledge, in Europe, the only seismic hazard model that integrates a source model based on strain rates is the new Italian hazard model (Meletti et al., 2021). The gridded-seismicity model MG1 (Visini et al., 2021) relies on a strain rate tensor field calculated using the VISR software (Shen et al., 2015), similarly to Piña-Valdés et al. (2022). The rate of seismic moment is converted into earthquake rates assuming that earthquakes are distributed according to a tapered Gutenberg-Richter, considering two alternative seismogenic thicknesses (7 and 13 km). The total seismic rate is scaled to the seismic moment release of the Italian catalog (Visini et al., 2021). Meletti et al. (2021) also includes a second more complex geodetically-based source model, MG2. In this case, the model relies on the NeoKinema code (Bird, 2009) that delivers interseismic and long-term strain rates and velocities on a finite element grid (see Bird and Carafa, 2016).

Determining the extent to which the methods used to study highly active tectonic regions can be applied to areas with lower levels of seismic activity is an open research question. The present study is at the scale of the whole European continent, that is very heterogeneous in terms of tectonic activity. Southern Europe, with regions such as the Apennines, Greece and Turkey, is characterized by a high seismic activity and significant tectonic deformation (Nocquet, 2012; de Vicente and Vegas, 2009); whereas northern and central Europe is characterized by a low to moderate seismic activity (Kierulf et al., 2021; Lukk et al., 2019). We take advantage of two new studies performed at the scale of Europe: the release of the new probabilistic seismic hazard model for Europe (ESHM20, Danciu et al., 2024); and the strain rates models computed by Piña-Valdés et al. (2022) as presented in Figure 1. Our objective is to compare the ESHM20 earthquake rate forecast with the deformation rates obtained from the GNSS velocities, giving special attention to the estimation of uncertainties.

In a first step, we present the datasets and methods used to compute the seismic and geodetic moment rate distributions. Next, we compare the obtained seismic and geodetic moment rate distributions at the scale of the ESHM20 area source zones. We then discuss the parameters that most influence the compatibility in high as well as low to moderate seismicity regions.



**Figure 1.** Strain rate model for Europe and ESHM20 earthquake rate forecast (smoothed seismicity and fault model branch). (a) II invariant of the strain rate tensor (Piña-Valdés et al., 2022), with area sources of ESHM20 superimposed; (b) Smoothed seismicity model, earthquakes rates  $M_W \geq 4.5$ , faults included in the model are superimposed (Danciu et al., 2021, 2024)

## 2 Methods and Data

### 2.1 Seismic moment: moment distributions associated with the ESHM20 source model logic tree

ESHM20 aimed at delivering seismic hazard levels throughout Europe, using harmonized datasets and applying homogeneous methodologies (Danciu et al., 2024). The hazard model consists of two main components: a seismogenic source model forecasting earthquakes in space, time, and magnitude, and a ground-motion model predicting the ground-motions these earthquakes may generate. The present study deals with the seismogenic source model. The earthquake rate forecast includes all earthquake types, i.e., crustal, deep (Vrancea region, Romania), and subduction (Hellenic, Cyprian, Calabrian and Gibraltar Arcs) earthquakes. In this paper we focus on the contribution of crustal shallow seismogenic sources, that can be directly compared to surface strain rate.

The ESHM20's seismogenic source model is based on several updated datasets (Danciu et al., 2021, 2024): an earthquake catalog, covering the time window 1000-2014, including both historical (Rovida et al., 2022) and instrumental (Lammers et al., 2023) periods, and a fault database including potentially active faults, with their geometry and geologic or geodetic slip rates (European Fault-Source Model 2020 EFSM20, Basili et al., 2023). The source model logic tree accounts for alternative source models to capture the spatial and temporal variability of the earthquake rate forecast in Europe. It includes two main branches: an area source model and a hybrid model that combines active faults with a background smoothed seismicity model (Danciu et al., 2021).



The area source model consists of cross-border harmonized seismogenic sources whose geometry is guided by seismotectonic evidence such as potentially active faults, geologic features and seismicity patterns (Danciu et al., 2021, 2024). For each area source, a Gutenberg-Richter magnitude-frequency distribution (Gutenberg and Richter, 1944) has been evaluated from the earthquake catalog taking into account time windows of completeness. Two alternative models have been considered to account for the uncertainty in forecasting earthquake rates in the upper magnitude range:

- a magnitude-frequency distribution truncated at a maximum magnitude  $M_{max}$ , corresponding to Form 2 in Anderson and Luco (1983):

$$N(m) = 10^{a-b*m} + 10^{a-b*M_{max}} \text{ for } m \leq M_{max} \quad (1)$$

where  $N(m)$  represents the cumulative annual rate of events as a function of magnitude ( $m$ );  $a$  and  $b$  are the Gutenberg-Richter recurrence coefficients, respectively the productivity and the exponential coefficient; and  $M_{max}$  is the maximum magnitude.

- a tapered Pareto distribution (Kagan, 2002) which includes a bending of the recurrence model from a magnitude called the corner magnitude ( $M_c$ ). With respect to Anderson and Luco (1983) magnitude-frequency distribution, the sharp cutoff at a maximum magnitude in the truncated distribution is replaced by smooth tapering.

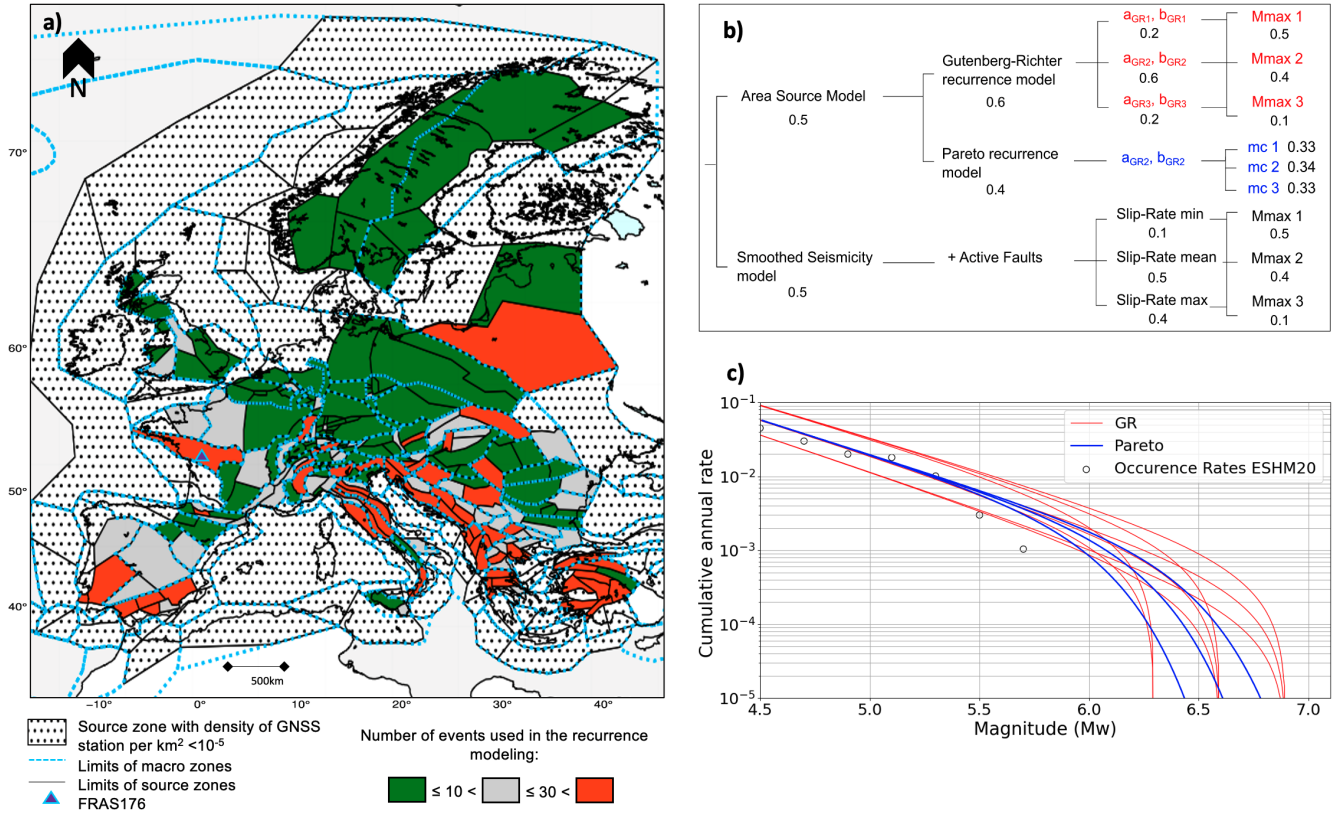
As an alternative to the area source model, the hybrid model consisting of active crustal faults combined with off-fault smoothed seismicity (Fig 2). For each fault, a moment-balanced magnitude-frequency distribution has been established, that accommodates the moment inferred from the slip rate and the geometry of the fault, assuming moment conservation principle.

The maximum magnitude is obtained applying the Leonard (2010, 2014) scaling relationships to the length, the width and the area of the fault (Basili et al., 2023). The smoothed seismicity model is built from the earthquake catalog and forecasts earthquake rates within spatial cells, using a grid with 0.1-degree spacing. This smoothed seismicity model is developed by optimizing the adaptive kernel bandwidth, the smoothing parameters and the declustering parameters. Training and validation sets are used to determine the optimal combination of parameters. To avoid double-counting, a buffer zone is applied around each fault. Details are provided in the EFEHR report (see Danciu et al., 2021).

The source model logic tree explores the uncertainty on the definition of the maximum (or corner) magnitude both in the area source model and in the fault model (Figure 2). For the area source model, the uncertainty on the estimation of  $a$ - and  $b$ -values is also considered (Gutenberg-Richter model branch). For the fault model, the uncertainty on the slip rate estimates is explored. Overall, the exploration of the logic tree leads to 21 alternative recurrence models, with different weights.

For every area source zone, 21 alternative estimates for the seismic moment are computed from the 21 alternative magnitude frequency distribution. Considering the Gutenberg-Richter and Pareto recurrence models, the total annual moment rate corresponds to the integral under the curve in terms of moment. In the case of the Gutenberg-Richter model (Form 2 in Anderson and Luco (1983)), the following equation is used (Mariniere et al., 2021):

$$\dot{M}_{0S} = \frac{b}{(c-b)} * 10^{a+d+(c-b)M_{max}} \quad (2)$$



**Figure 2.** ESHM20 source model (Danciu et al., 2024): (a) area sources (black polygons), and larger macrozones (dashed blue) used to infer the b-value in regions with poor earthquake data; orange: sources with at least 30 events used to establish the recurrence model, green: with less than 10 events, black dots: area sources not considered in the study (poorly constrained strain rates). (b) Source model logic tree, with the weights associated to the different branches. (c) Alternative earthquake recurrence models for the example source zone FRAS176 (southern Brittany in France, blue triangle), colors correspond to the branch combinations in the area source model, Fig. 2b. Area source zones polygons can also be found in Figure 6.

125 in  $N m yr^{-1}$ , with  $c = 1.5$  and  $d = 9.1$  the parameters used in the calculation of the seismic moment from the moment magnitude, Hanks and Kanamori (1979).

To compute the annual seismic moment rate from the smoothed seismicity and fault model, we sum the seismic moments associated to every spatial cell within the area source zone (one magnitude-frequency distribution per cell). When a fault straddles several zones, the seismic moment associated to the source zone is proportional to the length of the fault within the source zone.

For each source zone, a distribution of 21 seismic moments is obtained, representative of the uncertainties considered in the ESHM20 seismogenic source logic tree. A weighted mean seismic moment is calculated considering the weights associated to every branch combination (Fig 2). Besides, approximate 16<sup>th</sup> and 84<sup>th</sup> percentiles are inferred from the discrete distributions.

## 2.2 Geodetic moment computation from strain rates maps and uncertainty exploration

135 Our aim is to use the strain rates to estimate the geodetic moment rates within every area source of the ESHM20 source model. To achieve this goal, we start from the work of Piña-Valdés et al. (2022). They combined ten GNSS velocity fields with different spatial coverage in Europe. After filtering the velocity field to remove stations with highest uncertainties, they applied the Velocity Interpolation for Strain Rate (VISR) algorithm (Shen et al., 2015) to derive a strain rate model for Europe (a best estimate model). The algorithm VISR calculates horizontal strains through interpolation of a geodetic velocity field. It is an undetermined inverse problem: the algorithm uses the discretized geodetic observations as inputs and delivers smoothed distributed strain rates. Key decisions need to be taken on the exact weighting scheme to apply, that may impact the interpolation and the final strain rate estimates. In our case, rather than a best estimate, we need a distribution for the geodetic moment rate that is representative of the uncertainties.

### 2.2.1 Uncertainties on the strain rate estimates

145 Ideally, only the stations with the best constrained velocity estimates should be included for deriving strain rates. However a compromise must be obtained between discarding poorly constrained stations and keeping a reasonable number of stations for the analysis. Piña-Valdés et al. (2022) have classified the 4863 available stations into 4 categories, i.e. A, B, C, and remaining stations, depending on their noise level responsible for the uncertainty on the velocity (the noise and the uncertainty on the velocity increases from A class station ahead). To derive their best model, they decided to include all stations falling into categories A, B and C. Here, we are interested in quantifying how much this decision impacts the strain rate estimates and we explore the uncertainty related to the use of only class A stations (3377), of both A and B stations (4091), or all stations A, B and C (4468).

For the strain rates to be reliable, anomalous velocities must be identified and removed from the combined velocity field. Piña-Valdés et al. (2022) proposed to detect outliers based on an analysis of the spatial consistency of the velocities. For every station, the distribution of the velocities within a circular region around the station is obtained; stations with velocities in the tails of the distribution are considered outliers. Piña-Valdés et al. (2022) tested 4 different radius (50, 100, 150 and 200 km) and showed that when the radius increases, the number of outliers decreases. They used 150 km for deriving their best estimate

model, considering this radius **is** a compromise between the number of stations left (4238) and a reduction of the variance obtained on the final solution. Here, we keep track of the uncertainty associated with this decision, and we use alternatively the  
160 4 different radii to evaluate strain rates.

While applying the algorithm VISR, a number of required decisions may impact horizontal strain rates estimates: the distance and spatial weighting scheme, and the weighting threshold implied in the spatial inversion. Shen et al. (2015) show that the distance-dependent weighting can be achieved by employing either a gaussian or a quadratic decay function, and that for the spatially-dependent weighting either an azimuthal weighting or a Voronoi cell area weighting function can be applied. Another  
165 crucial parameter is the weighting threshold, which governs the smoothing of the inversion process. Here we include in the analysis both the uncertainty on the smoothing function and on the spatially dependent weighting, as well as three alternative weighting thresholds values (6, 12 and 24; see Shen et al. (2015) ).

### 2.2.2 Estimation of the geodetic moment rate within an area source zone

For each area source of the ESHM20 model, we determine a distribution for the geodetic moment rate. Figure 3 illustrates the  
170 different steps for the source zones in Northwestern France.

First, for each component of the strain rate tensor ( $\dot{\epsilon}_{xx}$ ,  $\dot{\epsilon}_{yy}$ ,  $\dot{\epsilon}_{xy}$ ), we determine the mean component from all grid cells falling within the source zone (Figs. 3a and 3b):

$$\overline{\dot{\epsilon}_{xx}} = \frac{\sum_{i=1}^{ncells} \dot{\epsilon}_{xx}(i)}{ncells} \quad (3)$$

With  $ncells$  the number of cells considered.

175 Then we calculate the principal components (eigenvalues) of the strain rate tensor within the area source:

$$\overline{\dot{\epsilon}_{max}} = MAX \left( \frac{\overline{\dot{\epsilon}_{xx}} + \overline{\dot{\epsilon}_{yy}}}{2} + \sqrt{\left( \frac{\overline{\dot{\epsilon}_{xx}} - \overline{\dot{\epsilon}_{yy}}}{2} \right)^2 + \overline{\dot{\epsilon}_{xy}}^2}; \frac{\overline{\dot{\epsilon}_{xx}} + \overline{\dot{\epsilon}_{yy}}}{2} - \sqrt{\left( \frac{\overline{\dot{\epsilon}_{xx}} - \overline{\dot{\epsilon}_{yy}}}{2} \right)^2 + \overline{\dot{\epsilon}_{xy}}^2} \right) \quad (4)$$

$$\overline{\dot{\epsilon}_{min}} = MIN \left( \frac{\overline{\dot{\epsilon}_{xx}} + \overline{\dot{\epsilon}_{yy}}}{2} + \sqrt{\left( \frac{\overline{\dot{\epsilon}_{xx}} - \overline{\dot{\epsilon}_{yy}}}{2} \right)^2 + \overline{\dot{\epsilon}_{xy}}^2}; \frac{\overline{\dot{\epsilon}_{xx}} + \overline{\dot{\epsilon}_{yy}}}{2} - \sqrt{\left( \frac{\overline{\dot{\epsilon}_{xx}} - \overline{\dot{\epsilon}_{yy}}}{2} \right)^2 + \overline{\dot{\epsilon}_{xy}}^2} \right) \quad (5)$$

As underlined by previous authors (e.g., Ward, 1998; Pancha, 2006), the conversion of surface strain to a scalar moment rate bears large uncertainties and there is no unique method. We use three different equations for calculating the moment rate,  
180 to propagate this uncertainty up to the final moment **rate** estimate:

- The Working Group on California Earthquake Probabilities (1995) uses the difference between the principal strain rates:

$$\dot{M}_{0G} = 2\mu AH(\overline{\dot{\epsilon}_{max}} - \overline{\dot{\epsilon}_{min}}) \quad (6)$$

- Savage and Simpson (1997) propose that the scalar moment rate is at least as large as:

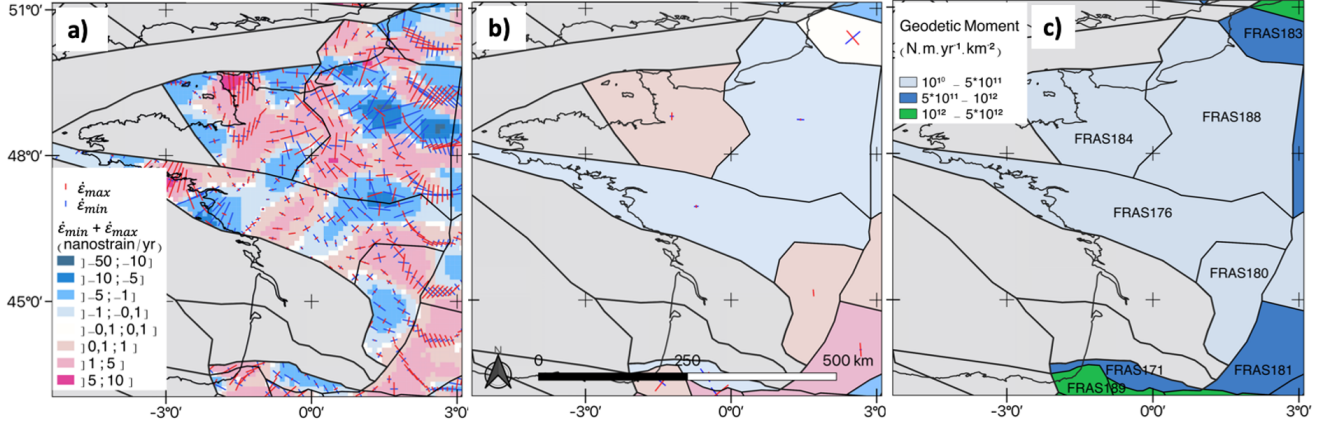
$$\dot{M}_{0G} = 2\mu AH \text{ MAX}(|\dot{\epsilon}_{max}|, |\dot{\epsilon}_{min}|, |\dot{\epsilon}_{max} - \dot{\epsilon}_{min}|) \quad (7)$$

- Stevens and Avouac (2021) uses the second invariant, which reflects the magnitude of the total strain rate:

$$\dot{M}_{0G} = C_g \mu AH \sqrt{\dot{\epsilon}_{xx}^2 + \dot{\epsilon}_{yy}^2 + 2\dot{\epsilon}_{xy}^2} \quad (8)$$

With  $A$  the area of the zone,  $\mu$  the shear modulus and  $H$  the seismogenic thickness.  $C_g$  is a geometric coefficient, which depends on the orientation and dip angle ( $\delta$ ) of the fault plane accommodating the strain. Following Stevens and Avouac (2021), for dip-slip faults with uniaxial compression,  $C_g = 1/[\sin(\delta) \cdot \cos(\delta)]$ . A dip of  $45^\circ$  corresponds to a geometric coefficient equal to 2, which is the value assumed by Working Group on California Earthquake Probabilities (1995) and Savage and Simpson (1997), as well as in a large part of the literature (e.g., Ward, 1998; Jenny et al., 2004; Bird and Liu, 2007; D'Agostino, 2014). In their study on the Himalayan region, Stevens and Avouac (2021) consider two values of  $C_g$ , corresponding to dips between  $45^\circ$  ( $C_g = 2$ ) and  $15^\circ$  ( $C_g = 4$ ), to account for the low-angle thrust faults in the region. Here we consider two  $C_g$  values, 2 and 2.6, which is the range corresponding to a dip between  $25^\circ$  and  $65^\circ$ , representing standard thrust and normal faults, respectively.

The uncertainty on the shear modulus is also taken into account, including two alternative values proposed for continental crust :  $3.3 \cdot 10^{10} \text{ N.m}^{-2}$  and  $3.0 \cdot 10^{10} \text{ N.m}^{-2}$  (e.g., Dziewonski and Anderson, 1981; Burov, 2011) and widely used in the literature (e.g., Stevens and Avouac, 2021; Working Group on California Earthquake Probabilities, 1995; Mazzotti and Adams, 2005). Whereas for the seismogenic thickness ( $H$  in Equations 6 to 8), we consider here the elastic thickness, i.e. the average thickness over which a region's principal faults store and release seismic energy (Ward, 1998). Only a fraction of the frictional slip takes place during earthquakes (Bird et al. 2002). Mazzotti and Adams (2005) define the "effective seismic thickness" as the thickness of the crust where deformation is fully accommodated by seismicity. In an application in eastern North America, they show that this effective seismic thickness may represent only 40% of the seismogenic thickness based on maximum and minimum depths of earthquakes. The thickness considered in the literature to evaluate seismic moment release from strain rates usually varies between 5 and 15 km. Pancha (2006) used a fixed seismogenic thickness of 15 km throughout the Basin and Range region in Western US. D'Agostino (2014) applied a thickness of  $10 \pm 2.5$  km throughout the Apennines in Italy. Stevens and Avouac (2021) have considered 15 km in the India-Asia collision zone. Carafa et al. (2017) estimated average coupled thicknesses between 3 and 8 km for faults in Italy. At last, using strain rates to forecast earthquakes in the Italian seismic hazard model, (Visini et al., 2021) assume elastic thickness equal to 7 and 13 km throughout Italy. As there is considerable uncertainty on this parameter, based on this literature review, we use three alternative values (5, 10, and 15 km) and propagate this uncertainty up to the geodetic moment rate estimates.



**Figure 3.** Scalar geodetic moment computed from a mean strain tensor, example for the source zones in Northwestern France. (a) Horizontal strain rate tensor from Piña-Valdés et al. (2022) best model, for each grid cell: principal components of the strain rate tensor ( $\dot{\epsilon}_{min}$  in red;  $\dot{\epsilon}_{max}$  in blue) and deformation style ( $\dot{\epsilon}_{min} + \dot{\epsilon}_{max}$ , red: extension, blue: compression). (b) Mean strain rate tensor per source zone, mean principal components in the source zone ( $\bar{\epsilon}_{min}$  and  $\bar{\epsilon}_{max}$ ) (Equation 4, 5). (c) One estimate for the geodetic moment rate within the source zone, using the strain rate best model of Piña-Valdés et al. (2022) and considering a depth of 10 km, a shear modulus of  $\mu = 3.3 \times 10^{10} \text{ N.m}^{-2}$ , the equation from Savage and Simpson (1997), and a geometric coefficient  $C_g$  equal to 2. Acronyms of ESHM20 area source zones are indicated.

### 2.2.3 A geodetic moment rate distribution per area source zone

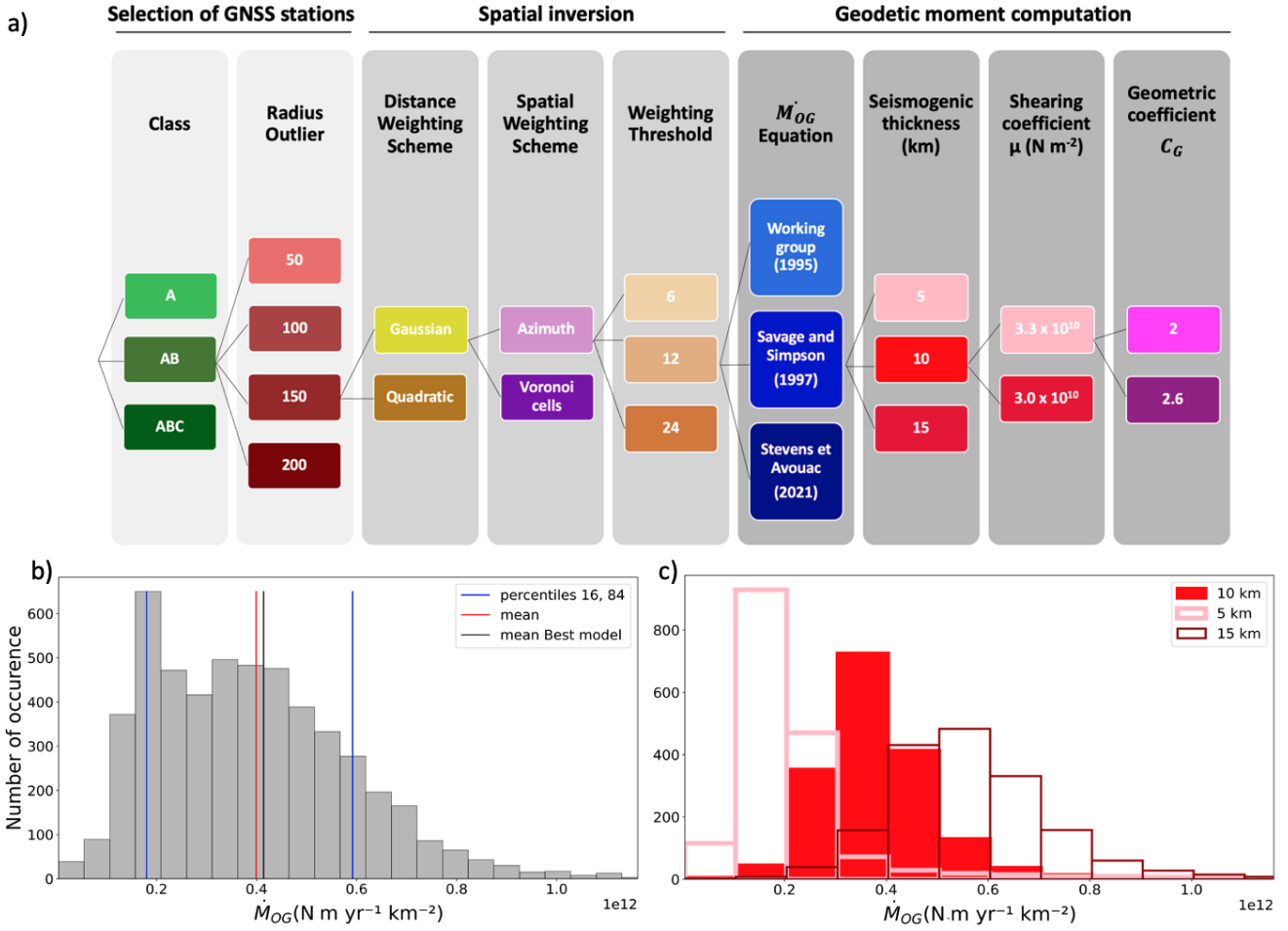
The aim is to obtain a distribution of the moment rate within an area source of ESHM20, that is representative of the uncertainties. Figure 4 displays the exploration tree set up to combine 12 different preprocessing parameters to filter the stations of the GNSS velocity fields (three selections of GPS stations times four outlier radii), with 12 different regularizations of the velocity fields inversion to determine strain rates (choice of the distance and spatial weighting scheme, choice of the weighting threshold) and with finally 36 different parametrizations to calculate the moment rate from the strain rates. For a given source zone area, we obtain 5184 alternative moment rate estimates ( $12 \times 12 \times 36$ ). Figure 4b displays the distribution obtained for the example area source zone hosting Paris in France. The variability of the moment rate is significant, the value corresponding to the percentile 84<sup>th</sup> is three times larger than the value corresponding to the percentile 16<sup>th</sup>.

To understand which parameters, or decisions, control mostly the overall variability on the geodetic moment, different parts of the tree are explored (Figure 5, see Mariniere et al., 2021). The analysis is displayed in 3 example area source zones characterized by different seismic activity: southern Brittany in France, located in an intracontinental region and characterized by a low seismic activity, a large source zone in Fennoscandia in a very low seismicity region, and northern Tuscany in Italy, a moderate seismicity region (see Fig. 6 for locations). For every parameter choice, the entire tree is explored keeping fixed the other parameters, then from the distribution obtained the mean as well as the percentiles 16<sup>th</sup> and 84<sup>th</sup> are estimated. For example, exploring separately the alternative branches corresponding to the three different selections of GPS stations yields

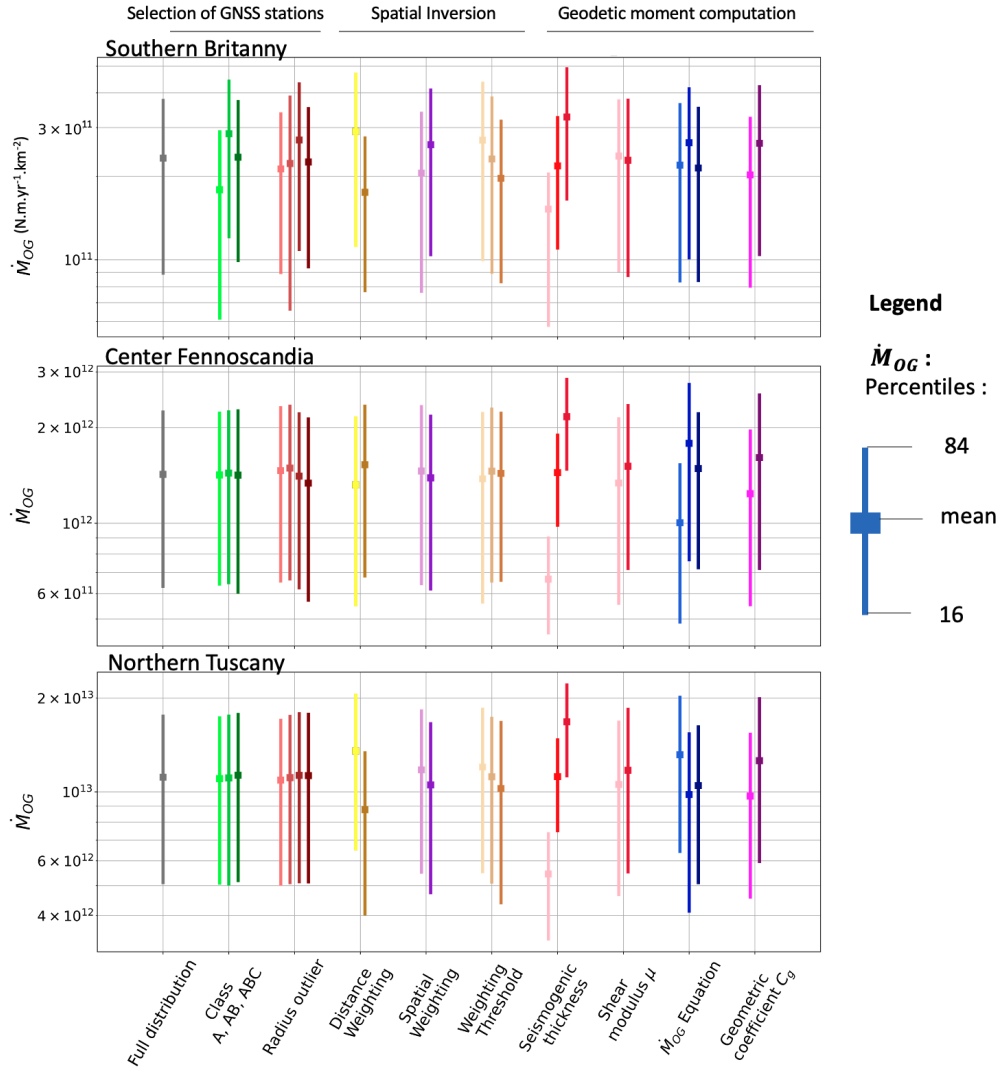


3 distributions, made of 1728 moment estimates each (in green). Exploring separately the branches based on the 2 alternative spatial weighting schemes yields 2 alternative distributions, made of 2592 moment estimates each (in purple). The larger is the dispersion obtained between the alternative mean values of the distributions, the larger is the contribution of this parameter uncertainty to the overall moment **rate** variability.

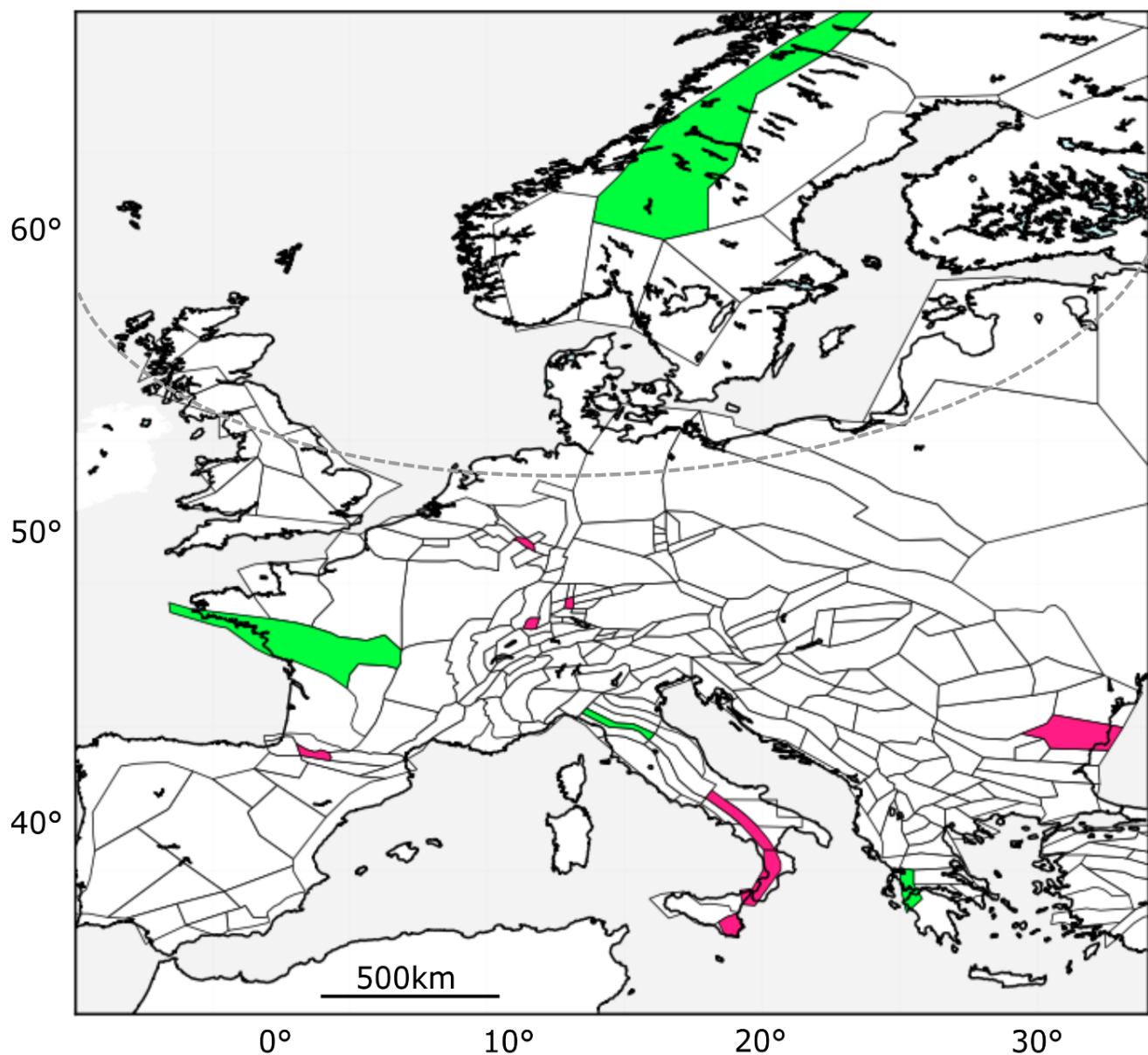
The results show that all parameters but the shear modulus contribute to the overall uncertainty on the geodetic moment rate. The parameter that contributes the most is the effective seismogenic thickness. The geodetic moment rate is linearly correlated with both the effective seismic thickness and the shear modulus. We accounted for only a small uncertainty in the shear modulus (ten per cent variability). It is interesting to note that the exact selection of GNSS stations, controlled by the selection steps related to the Class and the Radius Outlier, has an influence on the moment rate estimates only in low seismicity regions (Fennoscandia and Southern Brittany), but no impact in the moderate to high seismicity **regions** (such as northern Tuscany). This phenomenon can be attributed to the high strains in high-deformation zones, where even lower-quality stations provide accurate measurements at a first-order approximation. Conversely, in low-deformation areas, the measured signal is close to the noise level (hence, highly uncertain), and the exclusion or inclusion of one or more stations has a **strong** impact. Furthermore, it is noteworthy that the parameters involved in the spatial inversion, particularly the distance weighting scheme, have a significant impact on the overall uncertainty. This impact is more pronounced in regions with a relatively high density of GNSS stations, such as northern Tuscany and southern Brittany. The Gaussian function reduces data weight with distance faster than the Quadratic function, which can yield a smoother solution when dealing with heterogeneous data. In regions with a high density of stations, this may lead to higher strain rates calculated using the Gaussian function than those obtained with the Quadratic function. Additionally, the weighting threshold, which controls the smoothing of the solution, naturally has a greater impact in regions with a higher station density. The results also highlight that the equation used to convert surface strain into scalar moment rate can have a significant impact (in blue in Fig. 5). The uncertainty on the choice of the equation contributes to the overall variability of the moment rate.



**Figure 4.** Determination of a distribution for the moment rate per area source zone, taking into account the uncertainties on the different steps. (a) Exploration tree to account for the uncertainty on the exact set of GNSS stations used, on the technique applied to infer strain rates from the geodetic velocities, and on the parameters used to calculate the moment rate within an area source. **Exploration of the full tree results in  $3 \times 4 \times 2 \times 2 \times 3 \times 3 \times 2 \times 2 = 5184$  alternative moment rate estimates.** (b) distribution of the geodetic moment rate estimates (**histogram built from the 5184 values**) obtained for the example source zone Parisian Basin in France (FRAS188 in ESHM20), mean value (red) and percentiles 16<sup>th</sup> and 84<sup>th</sup> (blue). (c) Three alternative distributions for the moment rate estimates, depending on the choice of the seismogenic depth, example source zone Parisian Basin in France



**Figure 5.** Distribution for the geodetic moment rate ( $\dot{M}_{OG}$ ) and identification of controlling parameters, in 3 example source zones: southern Brittany (FRAS176), Fennoscandia (SEAS410), and Northern Tuscany in Italy (ITAS335), see location in Figure 6. Mean value (square), as well as 16<sup>th</sup> and 84<sup>th</sup> percentiles (vertical bar). “Full **distribution**”: full exploration of the tree (5184 branches’ combination and moment values). “Class A, AB, ABC”: 3 different sets of GNSS stations, according to quality (1728 values each). “Radius outlier”: choice of the spatial radius for discarding outliers (50, 100, 150, 200 km, from salmon to dark red, 1296 values each). “Distance weighting scheme”: choice of the decay function used for interpolation, whether Gaussian or Quadratic (2592 values each). “Spatial weighting scheme”: choice of the method for spatial inversion, whether Azimuth or Voronoi. “Weighting Threshold”: Choice of the threshold value on the distance weighting function (6, 12, 24, increasing smoothing, beige to brown, 1728 values each). “**Seismogenic thickness**”: **elastic thickness** (5, 10 and 15 km, pink to red, 1728 values each). “ $\mu$ ”: choice of shear modulus value ( $3.3 \times 10^{10}$  N.m (pink),  $3 \times 10^{10}$  N.m (red)). “ $\dot{M}_{OG}$  equation”: choice of the geodetic moment equation, see the text. “ $C_g$ ”. Choice of the geometric coefficient parameter, 2 (**light purple**) or 2.6 (**dark purple**)



**Figure 6.** Area source zones mentioned throughout the manuscript. In pink: the eight source zones where the geodetic moment estimates is much lower than the seismic moment estimates (section 3.1.3 and Fig. 10). 1: ITAS308 , 2: ITAS331, 3: ITAS339, 4: BGAS043, 5: FRAS164, 6: DEAS113, 7: DEAS109, 8: CHAS071. The grey dashed line represents the zones considered affected by the Scandinavian Glacial Isostatic Adjustment (GIA), including those intersecting this line and those located to the north of the line . The selection is based on the vertical velocity signal Piña-Valdés et al. (2022) and includes 18 zones. In green: example source zones in section 2.2.3 : 9: FRAS176 in Southern Brittany in France, 10: SEAS410 in Fennoscandia, 11: ITAS335 in northern Italy, as well as 12: GRAS257 in Greece in section 3.1.2.

### 3 Results

#### 3.1 Is ESHM20 earthquake rate forecast consistent with the tectonic loading measured by geodesy?

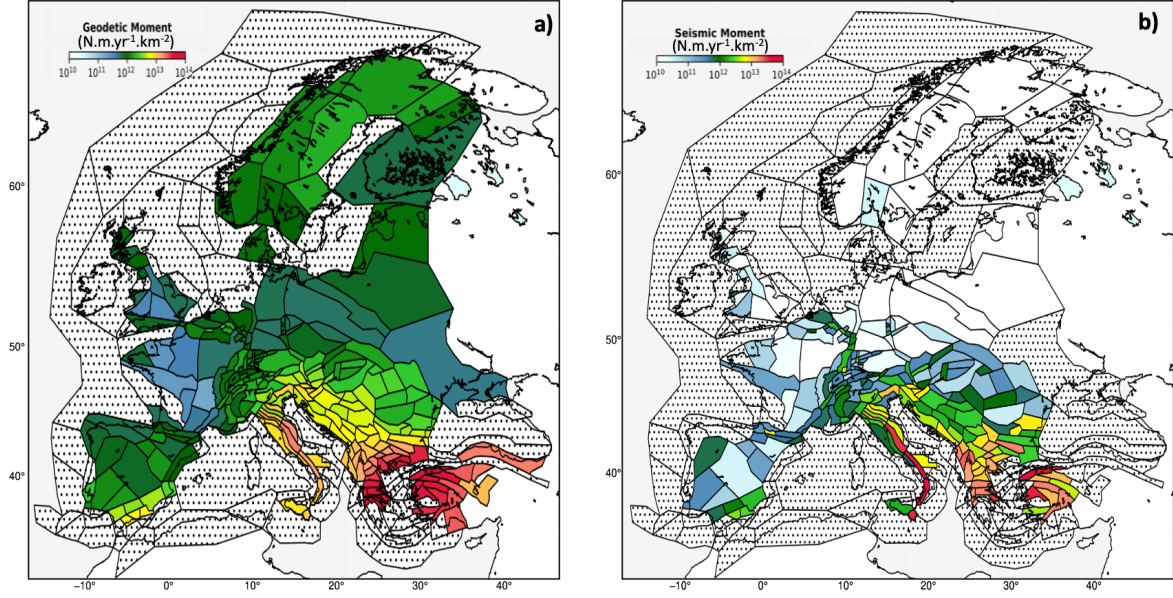
Our aim is to compare the moment rate corresponding to the long-term ESHM20 earthquake rate forecast with the geodetic moment rate. We acknowledge that the comparison between deformation measurements performed over a few decades and a seismogenic source model for a regional seismic hazard assessment must be done with caution. The ESHM20 earthquake rate forecast relies on earthquake catalogs extending over several centuries in most regions of the study area. The recurrence model is in general anchored on the observed earthquake rates extrapolated up to magnitudes that correspond to the largest possible events in the area sources. The model thus relies on both recent observations (instrumental earthquake catalogue) and past historical seismicity as well as on a wider analysis of the seismogenic potential of the area. The earthquake rate forecast model also includes our current knowledge about active faults (fault traces, segmentation, extension at depth, see Basili et al. (2023)). Geodetic information has been used in some cases for estimating the deformation accumulating along these faults (Basili et al., 2023). The strain model thus is not strictly independent from the source model, however GNSS velocities have not been directly used to build the ESHM20 source model. The strain rate model can be used to test the ESHM20 source model and evaluate how realistic it is.

##### 3.1.1 Correlation between geodetic and seismic moment rates at the scale of Europe

The geodetic moment rate quantifies the ground surface deformation, that encompasses both seismic and aseismic processes. The mean moment estimates obtained in every area source zone are displayed in Figure 7. Overall, geodetic moment rates appear larger or equal to seismic moment rates, similarly to the findings of many previous studies (e.g., Ward, 1998; Jenny et al., 2004; Mazzotti et al., 2011). Largest geodetic and seismic rates are found in Greece, in Italy and in the Balkans. The distribution in space of the geodetic moment rate is much more smoothed than the seismic moment rate. One explanation could be that the deformation measured by geodesy is more representative of long-term processes than the earthquake catalogs. If earthquake catalogs of much longer time windows were available (e.g. 100,000 years), would the spatial distribution of the seismic moment rates be more alike the spatial distribution of the geodetic moment rates? We don't know. Another explanation could be that the geodetic moment rate has a lower resolution in space than the seismic moment rate inferred from the modeling of earthquake recurrence. Due to the smoothing procedure applied to derive the strain rates, the geodetic moment is strongly correlated spatially.

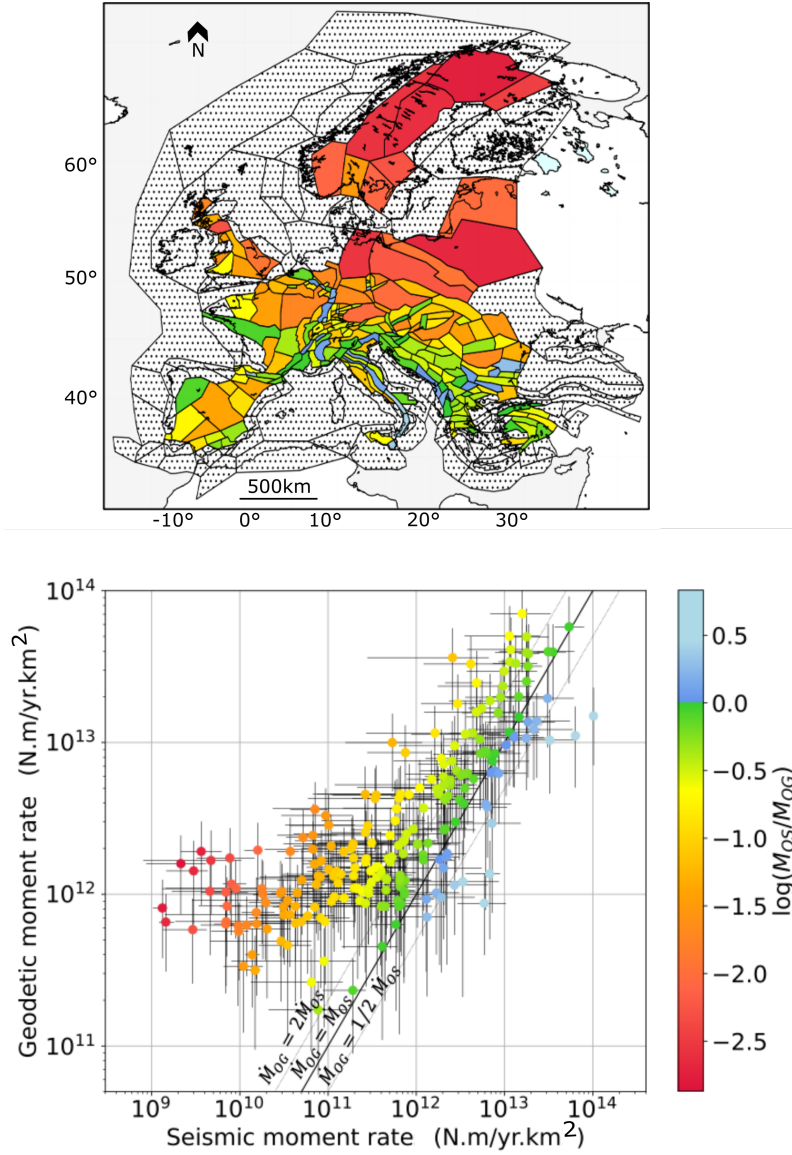
Figure 8 shows a comparison between geodetic and seismic mean moment in Europe at the scale of the ESHM20 area source zones. It demonstrates a remarkable linear correlation between the geodetic and seismic moment rates above  $\sim 2 \cdot 10^{11} N m yr^{-1} km^{-2}$ . In general, in the most active regions in Southern Europe, the geodetic moment rates are well correlated with the seismic moment rates. On the contrary, in the less active regions in northern Europe, above  $\sim 50^\circ$  latitude, the geodetic moment appears completely decorrelated from the seismic moment. Seismic moment rates decrease to levels as low as  $10^9 - 10^{10} N m yr^{-1} km^{-2}$ , whereas geodetic moment rates reach a plateau around  $10^{12} N m yr^{-1} km^{-2}$ . The deformation

measured in Fennoscandia and surrounding regions might be mostly related to the post-glacial rebound and only a very small part of it might be tectonic deformation (Keiding et al., 2015; Craig et al., 2016).



**Figure 7.** Mean geodetic and seismic moment rates within the ESHM20 area source zones. (a) Mean geodetic moment ( $\dot{M}_{0G}$ ) based on the strain rates, mean of the distribution obtained by exploring uncertainties; (b) Mean seismic moment ( $\dot{M}_{0S}$ ) estimated from the ESHM20 source model logic tree. Area sources with more than 35 % of surface off-shore, or where the density of GNSS station is too low ( $\leq 1$  station per 100000  $km^2$ ) are discarded. Area source zone polygons can also be found in Figure 6.





**Figure 8.** Comparison between geodetic and seismic moment rates in Europe at the scale of the ESHM20 source zones: mean  $\dot{M}_{0G}$  versus mean  $\dot{M}_{0S}$  at the scale of the source zone (uncertainty range 16<sup>th</sup> to 84<sup>th</sup> percentile indicated). Area source zone polygons can also be found in Figure 6.

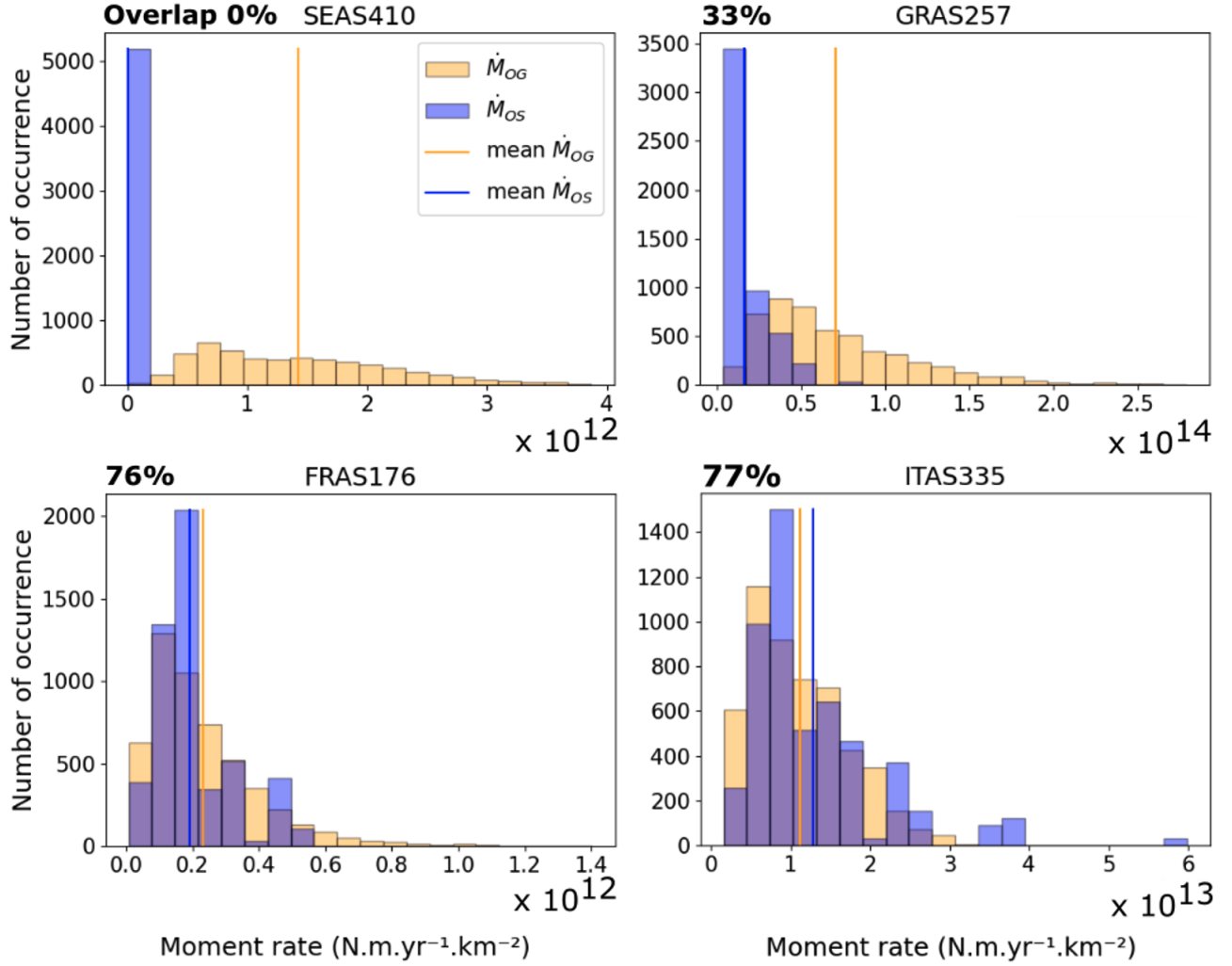
Rather than comparing only mean values of distributions, the comparison of the full distributions can be more instructive as the uncertainties are accounted for. For a given area source zone, the distribution for the geodetic moment rate relies on 5184 alternative values (see Section 2.2.3). The distribution for the seismic moment is built by exploring the ESHM20 source model logic tree, taking into account the weights associated to each branch.

290 In Fennoscandia, the geodetic moment estimates are on average one hundred to three hundred higher than the seismic moment estimates ( $\log_{10}(\dot{M}_{0S}/\dot{M}_{0G})$  varies between -2 and -2.5, in red in Fig. 8). The uncertainty on the geodetic moment is large, but still there is no overlap between the two distributions (example source zone SEAS410, Fig. 9). In most area sources below latitude  $52^\circ$ , geodetic moment estimates are larger or equal to seismic moment rates, up to five times higher on average than seismic moment rates ( $\log_{10}(\dot{M}_{0S}/\dot{M}_{0G})$  varies between 0 and -0.7, in green and yellow in Fig. 8). In some area sources  
 295 such as GRAS257 in Greece, the mean geodetic moment rate results five times higher than the mean seismic moment rate and their distributions only partially overlap. In other source zones, such as FRAS176 in France or ITAS335 in Italy, the seismic and geodetic distributions are very consistent.

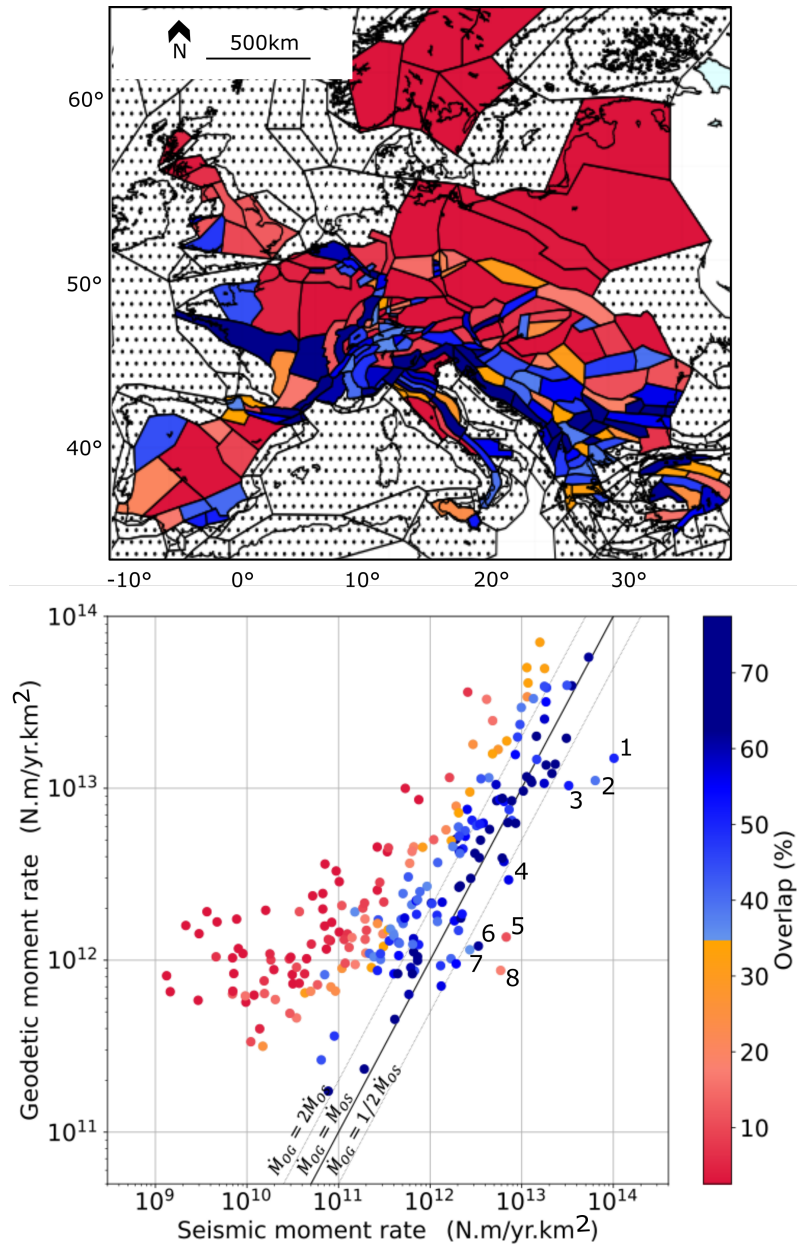
We quantify the overlap between the geodetic and the seismic distributions for all area sources (Fig. 10). As the distributions are in most cases unimodal, the overlap between the distributions usually improves with closer mean moment values. In the  
 300 most seismically active regions in Europe, i.e. in Greece, Italy, the Balkans, as well as in some parts of France and Switzerland, the seismic and geodetic moment estimates are rather consistent (overlap between 35 and 80%, in blue); whereas in most of northern Europe, the fit is quite poor (overlap lower than 30%, in red).

As the size of some source zones is too small for the comparison to be meaningful (see Section 3.1.3), we also perform the comparison at the scale of the macrozones. Macrozones include several area source zones. They are used at different levels  
 305 in the building of the ESHM20 source model, e.g. to determine spatial variations in the completeness time windows of the earthquake catalog, or to define tectonic similarities and maximum magnitude throughout Europe (Danciu et al., 2024; Basili et al., 2023).

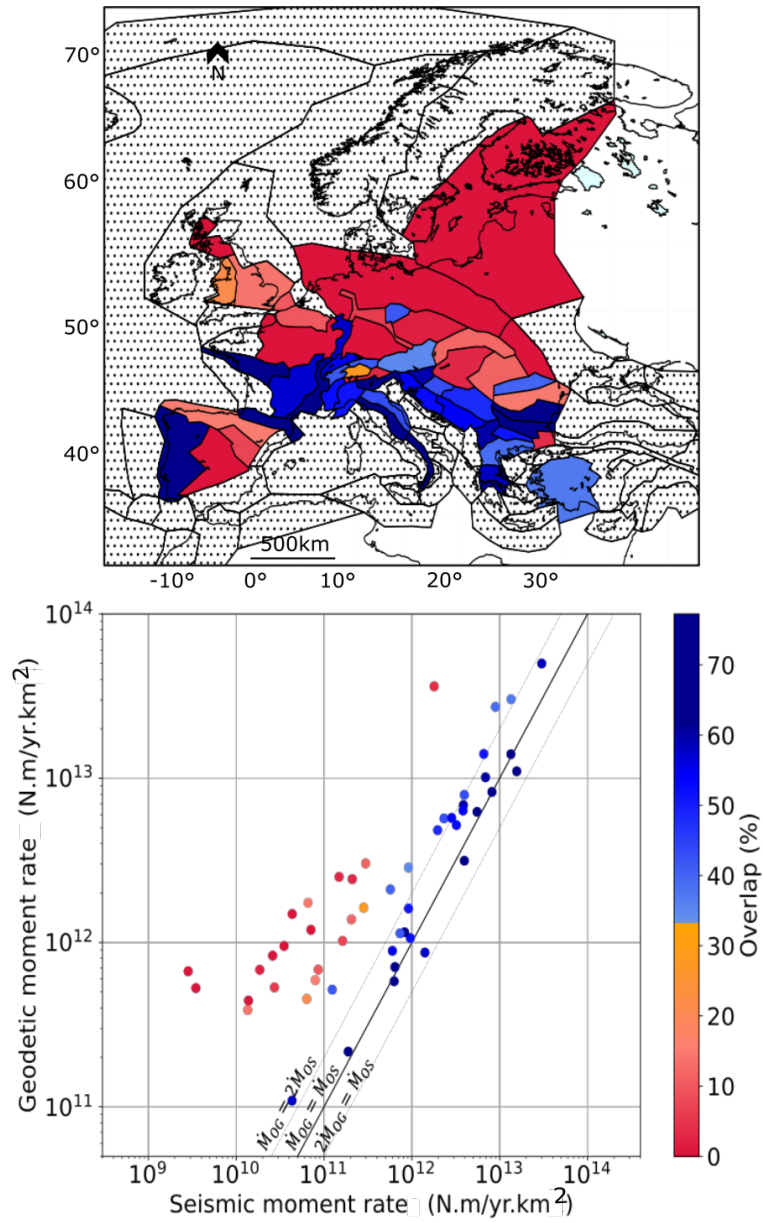
Here we use the macrozones named ‘TECTO’ which corresponds to a seismo-tectonic regionalization (Fig. 2). Danciu et al. (2021, 2024) used these macrozones to evaluate the b-value for the smoothed seismicity model, for the underlying crustal  
 310 active faults and to constrain recurrence parameters of area sources without sufficient number of earthquakes. As expected, at the scale of Europe, the correlation between the seismic and geodetic moment rates is slightly improved when considering the macrozones, that cover a much larger spatial region than the individual area source zones (see Fig. 2). In regions of northern Europe, the overlap between geodetic and seismic moment distributions is low (below 35 per cent, in red). A rather good fit is obtained for the Euro-Mediterranean region (overlap above 35 per cent, in blue), except in Spain (Fig. 11). A more detailed  
 315 analysis focusing on Spain would be necessary to understand why.



**Figure 9.** Comparison of seismic and geodetic moment rate distributions, for 4 example source zones in Fennoscandia (SEAS410), Greece (GRAS257), France (FRAS176) and Italy (ITAS335), source zones in Fig. 6. The percentage of overlap of both distributions is indicated in the title



**Figure 10.** Comparison between geodetic and seismic moment rate mean estimates, within the ESHM20 shallow area source zones (227 source zones considered), estimates for the overlap between the seismic and geodetic distributions. Shallow area source zones where the geodetic moment rate is much lower than the seismic moment rate: 1: ITAS308, 2: ITAS331, 3: ITAS339, 4: BGAS043, 5: FRAS164, 6: DEAS113, 7: DEAS109, 8: CHAS071 (see the text and Fig. 6).



**Figure 11.** Comparison between geodetic and seismic moment rate mean estimates, within the ESHM20 ‘TECTO’ macrozones (51 macrozones considered), the amount of overlap between the seismic and geodetic distributions is indicated.

### 3.1.3 A closer look to the area sources with a seismic moment much higher than the geodetic moment

In eight area source zones, the geodetic moment rate is, on average, significantly lower than the seismic moment rate (data points that are below the straight line  $\dot{M}_{0G} = \dot{M}_{0S}/2$  in Fig. 8).

These area sources fall in three categories:

- 320 1. Small size area, below the resolution of the geodetic signal (FRAS164, CHAS071, DEAS113, DEAS109). The source zone FRAS164 in Western Pyrenees is a small area with very high seismic activity in comparison with the neighboring area zones. The geodetic signal has a too large spatial wavelength to capture these rapid spatial changes. The source zones CHAS071 (Switzerland), DEAS113 and DEAS109 (Germany) are not as active as FRAS164, but they are very small size area sources. In these cases, the difference between the geodetic and the seismic moment estimates is expected.
- 325 2. Areas with poorly constrained earthquake recurrence model, due to insufficient number of events for statistical fitting (i.e., ITAS339, or BGAS043). In those areas, the resulting ESHM20 recurrence model fits the observed rates in the upper magnitude range, but predicts larger seismic rates than what has been observed in the past in the moderate magnitude range. There are too few data to constrain the model, the b-value is inferred from the larger macrozone, whereas the seismic activity is estimated by re-scaling the occurrence rates as a function of the number of complete earthquakes (the  
330 scaling factor is the ratio between the number of complete events in the area source and the number of complete events in the corresponding macrozone, Danciu et al., 2021).
- 335 3. Areas where unusual earthquake recurrence models have been proposed to account for two different slopes observed in the Gutenberg-Richter model (area model, ITAS331, ITAS308). In both area sources, the slope of the recurrence model in the upper magnitude range (mostly historical period) is lower than the slope in the moderate magnitude range (mostly instrumental period). This is not due to a lack of data. A double slope Gutenberg-Richter distribution has been used. It is interesting to note that the fault model branches overall provide a moment range that is consistent with the geodetic moment range, whereas the area model branches lead to much higher moment estimates.



### 3.1.4 The consistency between the geodetic and seismic moments depends on the activity level, the spatial scale, and the source model

340 Figure 12 provides an overall view on the comparison between geodetic and seismic moment estimates at the scale of Europe, and how this comparison varies when subsets of areas or branches of the ESHM20 source model logic tree are selected. Distributions for the ratio  $\log_{10}(\dot{M}_{0S}/\dot{M}_{0G})$  are characterised by mean values, as well as percentiles 16th and 84th (boxplots). When  $\log_{10}(\dot{M}_{0S}/\dot{M}_{0G})$  tends towards 0,  $\dot{M}_{0S}$  and  $\dot{M}_{0G}$  get closer. Area source zones are also grouped according to their level of geodetic moment estimates (dark green, light green, red), showing that, when all area source zones are considered, the consistency improves with increasing deformation rate.

In area source zones affected by the glacial isostatic adjustment (18 zones, selected based on their vertical velocity signal Piña-Valdés et al. (2022)), both the geodetic and the seismic moments are low, but the moment estimate based on modeled earthquake recurrence distributions is two orders of magnitude lower than the geodetic moment. This suggests that the deformation processes involved are mostly aseismic, which is compatible with the processes involved in glacial isostatic adjustment (GIA). GIA generates a viscous asthenospheric flow and a large scale flexure of the overlying elastic lithosphere that results in rather large wavelength deformation (i.e. the strain is distributed over a large area, Mazzotti et al. (2011); Piña-Valdés et al. (2022)). It should also be noted that the post-glacial rebound is a phenomenon that is not representative of the long term (a few Myrs) tectonics, but that it is a transient mechanism that started after the last glacial maximum,  $\approx 20,000$  years ago (Steffen and Wu, 2011). The cumulative deformation associated with the glacial isostatic adjustment may therefore not reach locally the strength threshold of the Fennoscandian lithosphere, although this may vary spatially depending on the elastic thickness of the crust (Perez-Gussinye et al., 2003). In those areas, the surface deformation measured by geodesy is therefore not a suitable proxy for the seismic activity and can not be used directly to constrain earthquake recurrence models.

Considering area sources with the best constrained recurrence models (at least 30 events used to estimate recurrence parameters, see Danciu et al. (2021)), the consistency between both moment rate estimates is strongly improved. In general, the zones with the largest number of events falling inside periods of completeness are the zones with highest seismic activity.

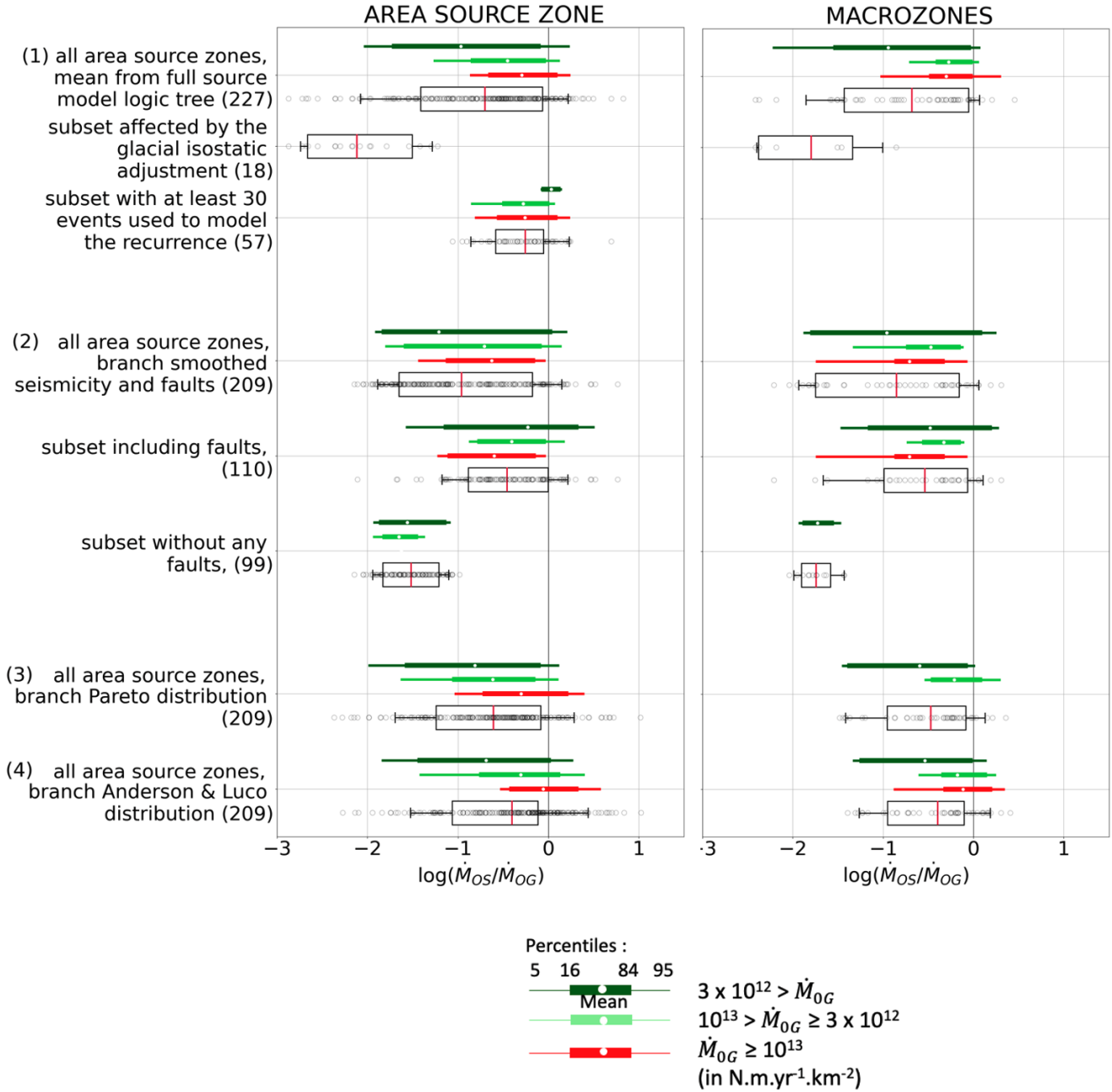
The compatibility between geodetic and seismic moment rates varies depending on the branch of the ESHM20 seismogenic source model logic tree (2, 3) and 4) in Figure 12), from which the zones affected by GIA have been removed. Considering the smoothed seismicity and fault model branch, the seismic moment rates are overall less consistent with the geodetic moment rates than in the area model. The comparison is done at the scale of the area sources. We group the area zones that include faults on one side, and the area zones that do not include any fault on the other side (see Figure 1). We observe that the geodetic and seismic moment rates are much more consistent in the first group, the faults have mostly been characterized in the most seismically active parts of Europe. Considering the area branch of ESHM20 model (3) and 4) in Figure 12), we check if the fit between geodetic and seismic moment rates varies with the model selected to extrapolate earthquake rates in the upper magnitude range. The fit results slightly better using the classical Anderson and Luco (1983) Form 2 than the Pareto distribution. This result is expected, as the Pareto distribution implies a stronger decrease of seismic rates in the upper magnitude range with respect to Anderson and Luco distribution (therefore a lower seismic moment rate). We also perform the

comparison at the scale of the macrozones (right column). The correlation between the seismic and geodetic moment rates is slightly improved, mean values of distributions tend to be closer to 0, macrozones cover a much larger spatial region than the individual area source zones.

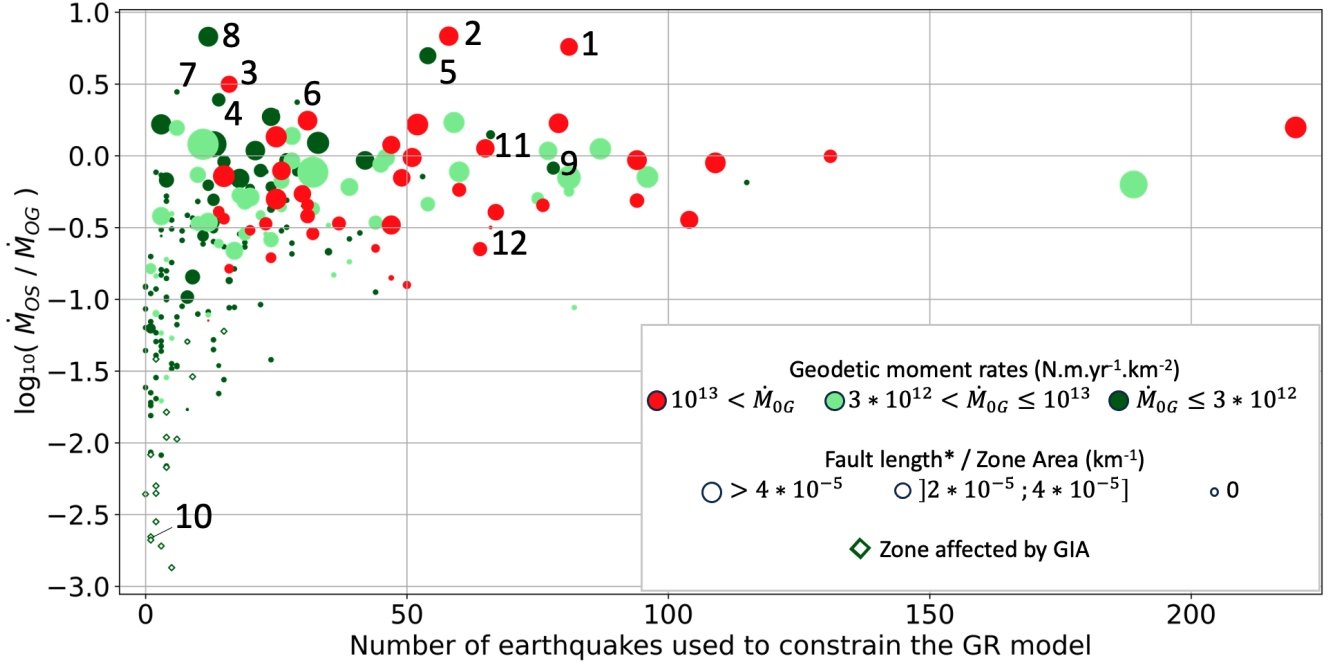
375 The improved consistency between seismic and geodetic moments with increasing deformation rates is also observable in Figure 13, that displays the ratio  $\log_{10}(\dot{M}_{0S}/\dot{M}_{0G})$  as a function of the number of earthquakes used to constrain the earthquake recurrence model in the corresponding area source. The size of the symbol increases with the density of faults in the zone, and the color reflects the level of geodetic moment (as in Figure 12). This figure shows mean values only. Zones with highest geodetic moment rates exhibit better consistency between  $\dot{M}_{0S}$  and  $\dot{M}_{0G}$  (all zones with  $\dot{M}_{0G} \geq 10^{13} N m yr^{-1} km^{-2}$ , in red, 380 fall within the  $\log_{10}(\dot{M}_{0S}/\dot{M}_{0G})$  interval of -1 to 0.5). Zones with  $\log_{10}(\dot{M}_{0S}/\dot{M}_{0G})$  below -1 are mostly characterized by low strain rates ( $\dot{M}_{0G} \leq 3 \cdot 10^{12} N m yr^{-1} km^{-2}$ ) and include areas affected by GIA. In areas where the recurrence model was constrained with at least 50 events (most active areas in Europe), the  $\log_{10}(\dot{M}_{0S}/\dot{M}_{0G})$  ratios fall mostly between -0.5 and 0.5 (i.e. the ratio between seismic and geodetic moments rates are within a factor 1/3 to 3).

Figure 13 also highlights the impact of active fault density on the consistency between geodetic moment rates. Active fault 385 density for each zone is defined as the length of faults with a slip rate exceeding 0.1 mm/yr, divided by the zone's area (expressed in  $km^{-1}$ ). Zones with a density above  $4 \cdot 10^{-5} km^{-1}$  display a  $\log_{10}(\dot{M}_{0S}/\dot{M}_{0G})$  between -1 and 1, with the majority falling within -0.5 and 0.5. In regions with higher active fault density, the compatibility between  $\dot{M}_{0S}$  and  $\dot{M}_{0G}$  is improved. Regions where a fault model can be included for seismic hazard assesement are in general seismically active regions.

Similar results are observed in Figure 12 (part 2) when we consider only the ESHM20 model branch based on smoothed 390 seismicity and faults (although this branch exhibits seismic and geodetic moment rate estimates that are overall less consistent than is other branches of ESHM20). We observe that the geodetic and seismic moment rates are much better correlated in the area zones that include faults than in area zones that do not include any fault in the model. This is correlated to the activity of the area, since the faults are easier to map and characterize in the seismically active region. However, in Figure 12 (2) and Figure 13, we can observe that in zones with lower strain ( $\dot{M}_{0G} \leq 3 \cdot 10^{12} N m yr^{-1} km^{-2}$ ), when either the fault density 395 or the number of earthquakes used to constrain the earthquake recurrence model increases, the  $\log_{10}(\dot{M}_{0S}/\dot{M}_{0G})$  gets closer to 0. Zones with  $\log_{10}(\dot{M}_{0S}/\dot{M}_{0G})$  below -1 are all characterized by a minimum fault density ( $\leq 2 \cdot 10^{-5} km^{-1}$ ) and less than 30 earthquakes used to constrain the earthquake recurrence model. This corroborates the idea that the inclusion of active faults may strengthen the earthquake recurrence model in areas that are characterized by both a slow deformation rate and rare seismic events. As a corollary, this may indicate that, in areas where enough active faults are identified and mapped, the 400 geodetic moment rate may be used as a proxy for the long term tectonic loading, even in areas where a limited number of earthquakes is available to constrain the recurrence model.



**Figure 12.** Consistency between  $\dot{M}_{0S}$  and  $\dot{M}_{0G}$  at the area source zone scale (left) and at the macrozone scale (right). Whisker plots indicate mean, as well as percentiles 16th and 84th, 5th and 95th. Black circles: individual ratio per source zone. Area sources are also grouped per increasing geodetic moment level: dark green  $\dot{M}_{0G} > 3 \times 10^{12} \text{ N.m.yr}^{-1} \text{ km}^{-2}$ , green  $3 \times 10^{12} < \dot{M}_{0G} < 10^{13} \text{ N.m.yr}^{-1} \text{ km}^{-2}$ , and red  $\dot{M}_{0G} \geq 10^{13} \text{ N.m.yr}^{-1} \text{ km}^{-2}$ . In subsets (2), (3) and (4), the 18 zones affected by the Fennoscandian Glacial Isostatic Adjustment (GIA) have been discarded (see Figure 6). 227 area source zones considered in total, including 18 considered affected by GIA, 57 well-constrained recurrence model, and 110 are including faults.



**Figure 13.** Mean  $\log_{10}(\dot{M}_{0S}/\dot{M}_{0G})$  for all source zones in Europe, as a function of the number of earthquakes used to constrain the earthquake recurrence model ( $M_W \geq 3.5$ ). The color represents the mean geodetic moment of the source zone area, and the size of the symbol is proportional to the density of the faults that have been included in the model, with slip rates higher than 0.1mm/yr (\*), in the ESHM20 fault model. Compatibility between geodetic and seismic moment rates increases with the geodetic moment rates, the number of earthquakes used to constrain the earthquake recurrence model, and the fault density. Area source zones where the geodetic moment rate is much lower than the seismic moment rate: 1: ITAS308 , 2: ITAS331 ; 3: ITAS339 , 4: BGAS043 , 5: FRAS164, 6: DEAS113, 7: DEAS109, 8: CHAS071 and example source zones in section 2.2.3: 9: FRAS176, 10: SEAS410, 11: ITAS335, 12: GRAS257 (see the text and Fig. 6).

## 4 Discussion

### 4.1 Focus in Italy

Figure 14a presents a magnified view of Figure 8a in central Italy. As highlighted previously, the central zone (ITAS317) demonstrates a mean seismic moment ( $\dot{M}_{0S}$ ) exceeding the mean geodetic moment ( $\dot{M}_{0G}$ ) ( $\log_{10}(\dot{M}_{0S}/\dot{M}_{0G}) > 0$ ). Conversely, the surrounding zones exhibit a geodetic moment significantly higher than the seismic moment ( $\log_{10}(\dot{M}_{0S}/\dot{M}_{0G}) \sim -1$ , overlap < 20%). Performing the comparison at the scale of the macrozones, this discrepancy is reduced because of the spatial smoothing of the signal (Fig. 11). In this section, we analyze the reasons for such peak of seismic release by examining the seismic moment against the geodetic moment along a profile across the Apennines passing through Rome (profile AB in Figure 14a and b).

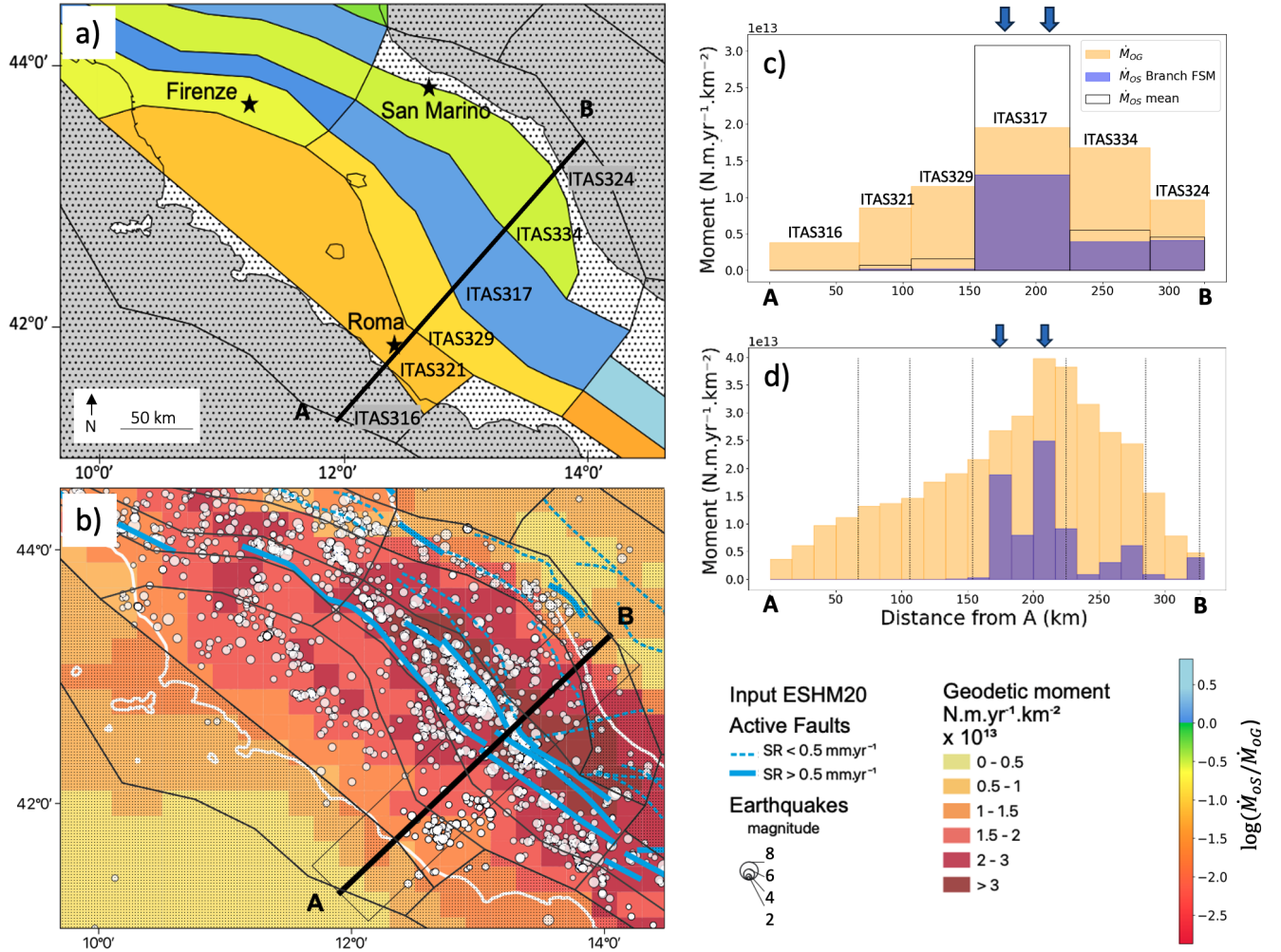
Figure 14a presents the ratio between the estimated  $\dot{M}_{0S}$  and  $\dot{M}_{0G}$  at the scale of the source zones. Figure 14c provides a view of how these moments are distributed as a function of the distance along the cross-section AB: the average geodetic ( $\dot{M}_{0G}$ ) and seismic ( $\dot{M}_{0S}$ ) moment rates are represented by plain orange bars and empty black bars, respectively.  $\dot{M}_{0G}$  exceeds the mean  $\dot{M}_{0S}$  in all source zones (5 to 10 times larger), except in the central source zone (ITAS317), which is the most  
415 seismically active and encompasses several faults. In this particular source zone,  $\dot{M}_{0S}$  exceeds  $\dot{M}_{0G}$ .

Then, we use the fault and smoothed seismicity model of ESHM20 to compare the seismic moments with the geodetic moments evaluated on the same spatial grid. It should however be noted that the fault and smoothed seismicity model (purple bars) exhibits seismic moments that are systematically lower than the mean inferred from the full ESHM20 source model logic tree (Figure 12, Figure 14).  $\dot{M}_{0S}$  and  $\dot{M}_{0G}$  are compared along a profile AB, averaged within spatial bins of 14 km (Figure 14d).  
420 This analysis at a finer scale reveals that  $\dot{M}_{0S}$  is concentrated on the fault traces, marked with small blue arrows.  $\dot{M}_{0G}$  exhibits a smoother behavior, and reaches its maximum ( $4 * 10^{13} N m yr^{-1} km^{-2}$ ) at the level of the eastern fault (similarly to  $\dot{M}_{0S}$ ).

Several propositions can be put forth to explain this observation. Firstly, we may question whether the spatial regularization scheme used during the strain map inversion could lead to a smoothing of the solution. In Italy the density of GPS stations is quite high with an interstation distance of 20 km on average, and the network should capture any spatial details larger than  
425 30 km in the deformation field (Piña-Valdés et al., 2022). The observed difference in spatial distribution between the seismic moment release and the geodetic moment is most likely real.

Another possible explanation is to invoke the elastic rebound theory. In areas affected by major active faults, the faults accumulate elastic strain that is then released into earthquakes. During the interseismic period, the deformation associated with the loading is usually modeled as a fault that is locked down to a given depth and that is creeping at the loading rate at greater  
430 depths (Avouac, 2015). This generates a surface deformation that has a large spatial wavelength. The deeper the locking, the wider the deformation across the fault. In elastic rebound theory (Reid, 1910), the slip deficit accumulated during the loading phase is then released into earthquakes located on the fault plane. The elastic rebound theory can therefore explain the observed differences of spatial distribution of  $\dot{M}_{0S}$  and  $\dot{M}_{0G}$  across the Apennines. In areas where the deformation mechanism is dominated by the seismic cycle on active faults, a proper modelling of the interseismic coupling on the faults would be better  
435 adapted (Mariniere, 2020; Mariniere et al., 2021).

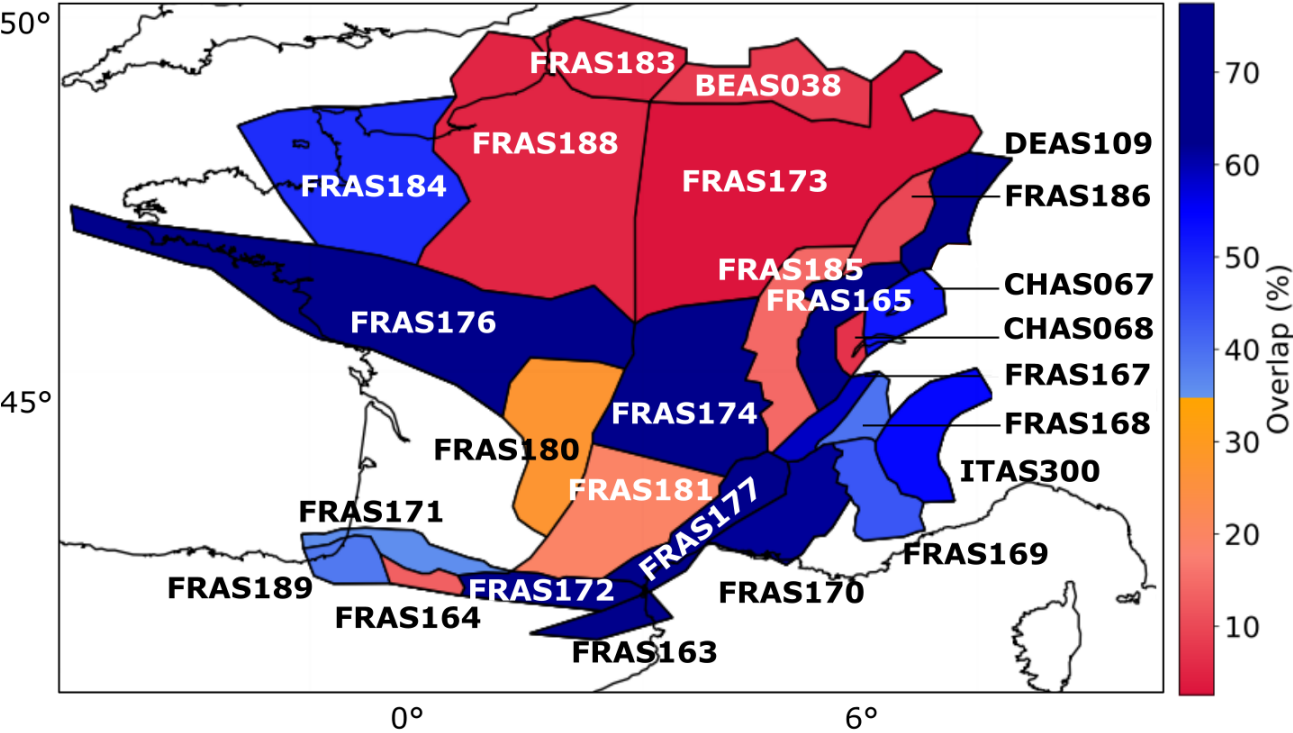
We can conclude that the scale at which deformation is observed is a crucial criterion for analyzing the compatibility between seismic and geodetic moments. Therefore, in places where source zones enclose active faults or areas with high seismic activity, the comparison between the geodetic moment and the seismic moment can be meaningful only if it is led at a large enough spatial scale.



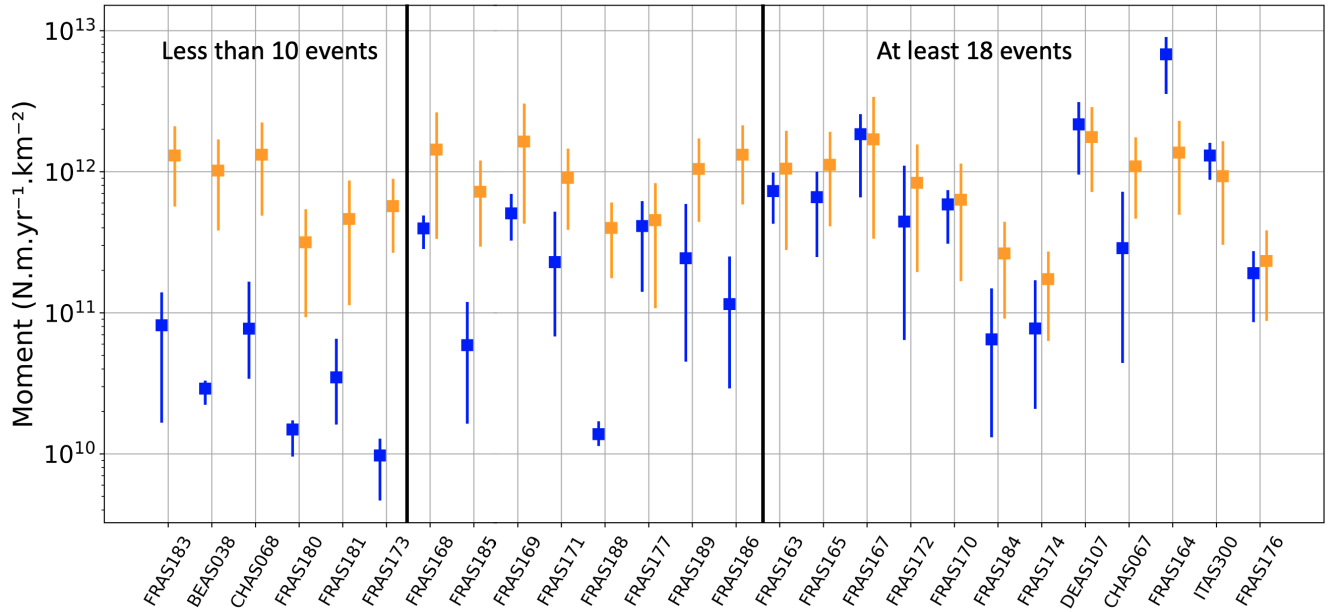
**Figure 14.** Spatial variability of geodetic deformation and seismic release in the central Apennines. a) Zoom of Figure 8.a: Mean ratio between  $\dot{M}_{OS}$  and  $\dot{M}_{OG}$  for area source zones in Central Italy. b) Mean geodetic moment rate per surface unit inferred from strain rates ; gray dots: earthquakes in the ESHM20 unified earthquake catalog; blue lines: active faults included in the EFSM20. c and d) Geodetic ( $\dot{M}_{OG}$ ) and seismic ( $\dot{M}_{OS}$ ) moment rates per kilometer along the cross-section AB: averaged within the source zones (c), or averaged within bins of 14 km along a 190 km-wide swath profile, represented by the thin gray rectangle (d) Blue arrows: location of the two main faults.



We focus on the area source zones included in metropolitan France or located on the border with neighboring countries (Figure 15). The distributions of the geodetic and seismic moments determined for each zone are compared in Figure 16, with sources zones ordered according to increasing number of earthquakes used to constrain the recurrence models in ESHM20. In regions of very low seismicity, with magnitude-frequency distributions relying on less than 10 events within completeness periods, the distribution of the seismic moment ( $\dot{M}_{0S}$ ) is systematically much lower than the distribution of geodetic moment ( $\dot{M}_{0G}$ ), with no overlap. In area sources with more than 18 events used to establish the recurrence model, both distributions tend to overlap. There are exceptions, such as FRAS164 in the Western Pyrenees, a small zone with a high seismic activity with respect to the rest of the Pyrenees (as explained in Section 3.1.3). France includes source zones where the fit between the distributions is rather good (in blue), similarly to the Euro-Mediterranean regions, as well as source zones where the geodetic moment rates are much higher than the seismic moment rates, similarly to the Fenoscandia region.



**Figure 15.** Consistency between between  $\dot{M}_{0G}$  and  $\dot{M}_{0S}$  distributions in France (estimation of the overlap between distributions), at the scale of the area source zones. Source zone acronyms as in ESHM20 model.



**Figure 16.** Comparison of geodetic moment rate (orange) and seismic moment rate (blue, inferred from the ESHM20 earthquake recurrence source model logic tree), for source zones in metropolitan France or on the border. mean values and percentiles 16<sup>th</sup> and 84<sup>th</sup>. The order from left to right correspond to an increasing number of events used for establishing the earthquake recurrence model, less than 10 events for sources FRAS183 to FRAS173, and 30 to 78 events for sources FRAS174 to FRAS176

## 5 Conclusions

Many studies have been published that study how GPS strain rate is correlated with changes in observed seismicity (Zeng et al., 2018). Far less studies have focused on the comparison between strain rates and long-term earthquake forecasts built for assessing probabilistic seismic hazard. These long-term earthquake forecasts rely strongly on past seismicity, whereas geodesy offers an independent view on the amount of deformation that might be released in the future. In the present study, we have compared the new European seismogenic source model (Danciu et al., 2024) with a strain rate model developed at the European scale (Piña-Valdés et al., 2022). The comparison is led in terms of moment rates.

For every area source zone of the ESHM20 source model, we have established a distribution for the geodetic moment rate, which accounts for uncertainties in the selection of GNSS stations, the calculation of the strain rates and the conversion into a moment rate. At the source zone scale, we compare the geodetic moment rate distribution with the seismic moment rate distribution, as inferred from ESHM20 source model logic tree. We show that the geodetic moment rate is rather well correlated with the seismic moment rate in the most seismically active regions of Europe (e.g. the Apennines, Greece, the Balkans, the Betics, southeastern France), whereas in the low seismicity regions the geodetic moment rate is much higher than the seismic moment rate (e.g. Parisian basin, northern and central Europe, Fennoscandia). Results show that both estimates are slightly more consistent when considering larger spatial regions. In moderate to high seismicity regions, the geodetic strain is in gen-

eral representative of the current horizontal tectonic stresses. In the very low seismicity region of Fennoscandia, the geodetic signal might be dominated by glacial isostatic adjustment and the strain does not represent the long-term tectonic loading.

470 More work is needed to understand the consistencies or discrepancies obtained between strain rate based moments and moments relying on the long-term magnitude-frequency distributions built for PSHA. Some parameters such as the seismic thickness will need to be better evaluated to refine the estimation of the moment rate from strain rates. In regions of very low seismicity where the geodetic moment rate appears disconnected from the seismic moment rate, for now this is not clear how geodetic data can contribute to establish long-term earthquake forecasts. However, in seismically active regions, our work demonstrates the strong correlation between long-term seismic moment rates and geodetic moment rates. In these regions, strain rates should be used to constrain earthquake forecasts for PSHA, either combined with earthquake catalog data, or as an  
475 alternative model independent from the earthquake catalog.

*Author contributions.* BDJ: data analysis, software, visualisation, writing and editing, AS and CB: data analysis, supervision and research initiation process, writing and editing, JPV: data analysis, processing and review and LD: model sharing and review

*Competing interests.* no competing interests are present

480 *Acknowledgements.* We are thankful to P. Gueguen, N. D'Agostino, A. Walpersdorf and A. Pothon for insightful discussions, as well as to three anonymous reviewers and Ilaria Mosca who provided detailed reviews that helped to improve the manuscript. This study was funded by the AXA Research Fund supporting the project "New Probabilistic Assessment of Seismic Hazard, Losses and Risks in Strong Seismic Prone Regions - SubRisk".

## References

- Anderson, J. G. and Luco, J. E.: Consequences of slip rate constraints on earthquake occurrence relations, *Bulletin of the Seismological Society of America*, 73, 471–496, <https://doi.org/10.1785/BSSA0730020471>, 1983.
- Avouac, J.-P.: From Geodetic Imaging of Seismic and Aseismic Fault Slip to Dynamic Modeling of the Seismic Cycle, *Annual Review of Earth and Planetary Sciences*, 43, 233–271, <https://doi.org/10.1146/annurev-earth-060614-105302>, 2015.
- Basili, R., Danciu, L., Beauval, C., Sesetyan, K., Vilanova, S. P., Adamia, S., Arroucau, P., Atanackov, J., Baize, S., Canora, C., Caputo, R., Carafa, M. M. C., Cushing, E. M., Custódio, S., Demircioglu Tumsa, M. B., Duarte, J. C., Ganas, A., García-Mayordomo, J., Gómez de la Peña, L., Gràcia, E., Jamšek Rupnik, P., Jomard, H., Kastelic, V., Maesano, F. E., Martín-Banda, R., Martínez-Loriente, S., Neres, M., Perea, H., Šket Motnikar, B., Tiberti, M. M., Tsereteli, N., Tsironi, V., Vallone, R., Vanneste, K., Zupančič, P., and Giardini, D.: The European Fault-Source Model 2020 (EFSM20): geologic input data for the European Seismic Hazard Model 2020, *Natural Hazards and Earth System Sciences Discussions*, pp. 1–44, <https://doi.org/10.5194/nhess-2023-118>, publisher: Copernicus GmbH, 2023.
- Beauval, C., Marinière, J., Yepes, H., Audin, L., Nocquet, J., Alvarado, A., Baize, S., Aguilar, J., Singaucha, J., and Jomard, H.: A New Seismic Hazard Model for Ecuador, *Bulletin of the Seismological Society of America*, 108, 1443–1464, <https://doi.org/10.1785/0120170259>, 2018.
- Bird, P.: Long-term fault slip rates, distributed deformation rates, and forecast of seismicity in the western United States from joint fitting of community geologic, geodetic, and stress direction data sets: FAULT SLIP AND DEFORMATION IN WESTERN UNITED STATES, *Journal of Geophysical Research: Solid Earth*, 114, <https://doi.org/10.1029/2009JB006317>, 2009.
- Bird, P. and Carafa, M. M. C.: Improving deformation models by discounting transient signals in geodetic data: 1. Concept and synthetic examples, *Journal of Geophysical Research: Solid Earth*, 121, 5538–5556, <https://doi.org/10.1002/2016JB013056>, 2016.
- Bird, P. and Liu, Z.: Seismic Hazard Inferred from Tectonics: California, *Seismological Research Letters*, 78, 37–48, <https://doi.org/10.1785/gssrl.78.1.37>, 2007.
- Burov, E. B.: Rheology and strength of the lithosphere, *Marine and Petroleum Geology*, 28, 1402–1443, <https://doi.org/10.1016/j.marpetgeo.2011.05.008>, 2011.
- Carafa, M. M. C., Valensise, G., and Bird, P.: Assessing the seismic coupling of shallow continental faults and its impact on seismic hazard estimates: a case-study from Italy, *Geophysical Journal International*, p. ggx002, <https://doi.org/10.1093/gji/ggx002>, 2017.
- Craig, T. J., Calais, E., Fleitout, L., Bollinger, L., and Scotti, O.: Evidence for the release of long-term tectonic strain stored in continental interiors through intraplate earthquakes: RELEASE OF LONG-TERM STRAIN, *Geophysical Research Letters*, 43, 6826–6836, <https://doi.org/10.1002/2016GL069359>, 2016.
- D’Agostino, N.: Complete seismic release of tectonic strain and earthquake recurrence in the Apennines (Italy), *Geophysical Research Letters*, 41, 1155–1162, <https://doi.org/https://doi.org/10.1002/2014GL059230>, 2014.
- Danciu, L., Nandan, S., Reyes, C., Basili, R., Weatherill, G., Beauval, C., Rovida, A., Vilanova, S., Sesetyan, K., Bard, P.-Y., Cotton, F., Wiemer, S., and Giardini, D.: ESHM20 - EFEHR Technical ReportThe 2020 update of the European Seismic Hazard Model - ESHM20: Model Overview, Tech. rep., EFEHR European Facilities of Earthquake Hazard and Risk, <https://doi.org/10.12686/A15>, 2021.
- Danciu, L., Giardini, D., Weatherill, G., Basili, R., Nandan, S., Rovida, A., Beauval, C., Bard, P.-Y., Pagani, M., Reyes, C. G., Sesetyan, K., Vilanova, S., Cotton, F., and Wiemer, S.: The 2020 European Seismic Hazard Model: Overview and Results, *Natural Hazards and Earth System Sciences*, 24, 3049–3073, <https://doi.org/10.5194/nhess-24-3049-2024>, 2024.

de Vicente, G. and Vegas, R.: Large-scale distributed deformation controlled topography along the western Africa–Eurasia limit: Tectonic constraints, *Tectonophysics*, 474, 124–143, <https://doi.org/10.1016/j.tecto.2008.11.026>, 2009.

Dziewonski, A. M. and Anderson, D. L.: Preliminary reference Earth model, *Physics of the Earth and Planetary Interiors*, 25, 297–356, [https://doi.org/10.1016/0031-9201\(81\)90046-7](https://doi.org/10.1016/0031-9201(81)90046-7), 1981.

Farolfi, G., Keir, D., Corti, G., and Casagli, N.: Spatial forecasting of seismicity provided from Earth observation by space satellite technology, *Scientific Reports*, 10, 9696, <https://doi.org/10.1038/s41598-020-66478-9>, publisher: Nature Publishing Group, 2020.

Field, E. H., Arrowsmith, R. J., Biasi, G. P., Bird, P., Dawson, T. E., Felzer, K. R., Jackson, D. D., Johnson, K. M., Jordan, T. H., Madden, C., Michael, A. J., Milner, K. R., Page, M. T., Parsons, T., Powers, P. M., Shaw, B. E., Thatcher, W. R., Weldon, R. J., and Zeng, Y.: Uniform California Earthquake Rupture Forecast, Version 3 (UCERF3)–The Time-Independent Model, *Bulletin of the Seismological Society of America*, 104, 1122–1180, <https://doi.org/10.1785/0120130164>, 2014.

Gutenberg, B. and Richter, C. F.: Frequency of earthquakes in California, *Bulletin of the Seismological Society of America*, 34, 185–188, <https://resolver.caltech.edu/CaltechAUTHORS:20140731-150249818>, number: 4 Publisher: Seismological Society of America, 1944.

Hanks, T. C. and Kanamori, H.: A moment magnitude scale, *Journal of Geophysical Research*, 84, 2348, <https://doi.org/10.1029/JB084iB05p02348>, 1979.

Hornblow, S., Quigley, M., Nicol, A., Van Dissen, R., and Wang, N.: Paleoseismology of the 2010 Mw 7.1 Darfield (Canterbury) earthquake source, Greendale Fault, New Zealand, *Tectonophysics*, 637, 178–190, <https://doi.org/10.1016/j.tecto.2014.10.004>, 2014.

Jenny, S., Goes, S., Giardini, D., and Kahle, H.-G.: Earthquake recurrence parameters from seismic and geodetic strain rates in the eastern Mediterranean, *Geophysical Journal International*, 157, 1331–1347, <https://doi.org/10.1111/j.1365-246X.2004.02261.x>, 2004.

Kagan, Y. Y.: Seismic moment distribution revisited: II. Moment conservation principle: Seismic moment distribution revisited: II, *Geophysical Journal International*, 149, 731–754, <https://doi.org/10.1046/j.1365-246X.2002.01671.x>, 2002.

Keiding, M., Kreemer, C., Lindholm, C., Gradmann, S., Olesen, O., and Kierulf, H.: A comparison of strain rates and seismicity for Fennoscandia: depth dependency of deformation from glacial isostatic adjustment, *Geophysical Journal International*, 202, 1021–1028, <https://doi.org/10.1093/gji/ggv207>, 2015.

Kierulf, H. P., Steffen, H., Barletta, V. R., Lidberg, M., Johansson, J., Kristiansen, O., and Tarasov, L.: A GNSS velocity field for geophysical applications in Fennoscandia, *Journal of Geodynamics*, 146, 101 845, <https://doi.org/10.1016/j.jog.2021.101845>, 2021.

Kreemer, C. and Young, Z. M.: Crustal Strain Rates in the Western United States and Their Relationship with Earthquake Rates, *Seismological Research Letters*, 93, 2990–3008, <https://doi.org/10.1785/0220220153>, 2022.

Lammers, S., Weatherill, G., Grünthal, G., and Cotton, F.: EMEC-2021 - The European-Mediterranean Earthquake Catalogue – Version 2021, <https://doi.org/10.5880/GFZ.EMEC.2021.001>, publisher: GFZ German Research Center for Geosciences, 2023.

Leonard, M.: Earthquake Fault Scaling: Self-Consistent Relating of Rupture Length, Width, Average Displacement, and Moment Release, *Bulletin of the Seismological Society of America*, 100, 1971–1988, <https://doi.org/10.1785/0120090189>, 2010.

Leonard, M.: Self-Consistent Earthquake Fault-Scaling Relations: Update and Extension to Stable Continental Strike-Slip Faults, *Bulletin of the Seismological Society of America*, 104, 2953–2965, <https://doi.org/10.1785/0120140087>, 2014.

Lukk, A. A., Leonova, V. G., and Sidorin, A. Y.: Revisiting the Origin of Seismicity in Fennoscandia, *Izvestiya, Atmospheric and Oceanic Physics*, 55, 743–758, <https://doi.org/10.1134/S000143381907003X>, 2019.

Mariniere, J.: Improving earthquake forecast models for PSHA with geodetic data, applied on Ecuador, phdthesis, Université Grenoble Alpes [2020-....], <https://theses.hal.science/tel-03276307>, 2020.

- Mariniere, J., Beauval, C., Nocquet, J.-M., Chlieh, M., and Yepes, H.: Earthquake Recurrence Model for the Colombia–Ecuador Subduction Zone Constrained from Seismic and Geodetic Data, Implication for PSHA, *Bulletin of the Seismological Society of America*, 111, 1508–1528, <https://doi.org/10.1785/0120200338>, 2021.
- Mathey, M., Walpersdorf, A., Baize, S., Sue, C., Doin, M.-P., and Potin, B.: 3D deformation in the South-Western European Alps (Briançon region) revealed by 20 years of geodetic data, p. 10415, <https://ui.adsabs.harvard.edu/abs/2018EGUGA..2010415M>, conference Name: EGU General Assembly Conference Abstracts ADS Bibcode: 2018EGUGA..2010415M, 2018.
- Mazzotti, S. and Adams, J.: Rates and uncertainties on seismic moment and deformation in eastern Canada, *Journal of Geophysical Research: Solid Earth*, 110, <https://doi.org/10.1029/2004JB003510>, <https://agupubs.onlinelibrary.wiley.com/doi/pdf/10.1029/2004JB003510>, 2005.
- 565 Mazzotti, S., Lambert, A., Henton, J., James, T. S., and Courtier, N.: Absolute gravity calibration of GPS velocities and glacial isostatic adjustment in mid-continent North America: AG CALIBRATION OF GPS AND PGR, *Geophysical Research Letters*, 38, n/a–n/a, <https://doi.org/10.1029/2011GL049846>, 2011.
- Meletti, C., Marzocchi, W., D’Amico, V., Lanzano, G., Luzi, L., Martinelli, F., Pace, B., Rovida, A., Taroni, M., Visini, F., and Group, M. W.: The new Italian seismic hazard model (MPS19), *Annals of Geophysics*, 64, 6, <https://doi.org/10.4401/ag-8579>, 2021.
- 570 Nocquet, J.-M.: Present-day kinematics of the Mediterranean: A comprehensive overview of GPS results, *Tectonophysics*, 579, 220–242, <https://doi.org/10.1016/j.tecto.2012.03.037>, 2012.
- Pancha, A.: Comparison of Seismic and Geodetic Scalar Moment Rates across the Basin and Range Province, *Bulletin of the Seismological Society of America*, 96, 11–32, <https://doi.org/10.1785/0120040166>, 2006.
- Papadopoulos, G. A.: Seismic and volcanic activities and aseismic movements as plate motion components in the Aegean area, *Tectonophysics*, 167, 31–39, [https://doi.org/10.1016/0040-1951\(89\)90292-8](https://doi.org/10.1016/0040-1951(89)90292-8), 1989.
- 575 Perez-Gussinye, M., Watts, A., and Lowry, A.: The effective elastic thickness of Fennoscandia and its relationship to rheology, p. 11635, 2003.
- Piña-Valdés, J., Socquet, A., Beauval, C., Doin, M.-P., D’Agostino, N., and Shen, Z.-K.: 3D GNSS Velocity Field Sheds Light on the Deformation Mechanisms in Europe: Effects of the Vertical Crustal Motion on the Distribution of Seismicity, *Journal of Geophysical Research: Solid Earth*, 127, e2021JB023451, <https://doi.org/10.1029/2021JB023451>, <https://onlinelibrary.wiley.com/doi/pdf/10.1029/2021JB023451>, 2022.
- 580 Reid: The mechanism of the earthquake, The California earthquake of April 18, 1906, Report of the Research Senatorial Commission, Carnegie Institution, Washington, D. C., 2, 16–18, <https://cir.nii.ac.jp/crid/1573668925455338752>, 1910.
- Riguzzi, F., Crespi, M., Devoti, R., Doglioni, C., Pietrantonio, G., and Pisani, A. R.: Geodetic strain rate and earthquake size: New clues for seismic hazard studies, *Physics of the Earth and Planetary Interiors*, 206–207, 67–75, <https://doi.org/10.1016/j.pepi.2012.07.005>, 2012.
- 585 Rovida, A., Antonucci, A., and Locati, M.: The European Preinstrumental Earthquake Catalogue EPICA, the 1000–1899 catalogue for the European Seismic Hazard Model 2020, *Earth System Science Data*, 14, 5213–5231, <https://doi.org/10.5194/essd-14-5213-2022>, publisher: Copernicus GmbH, 2022.
- Savage, J. C. and Simpson, R. W.: Surface strain accumulation and the seismic moment tensor, *Bulletin of the Seismological Society of America*, 87, 1345–1353, <https://doi.org/10.1785/BSSA0870051345>, 1997.
- 590 Shen, Z., Wang, M., Zeng, Y., and Wang, F.: Optimal Interpolation of Spatially Discretized Geodetic Data, *Bulletin of the Seismological Society of America*, 105, 2117–2127, <https://doi.org/10.1785/0120140247>, 2015.



- Shen, Z.-K., Jackson, D. D., and Kagan, Y. Y.: Implications of Geodetic Strain Rate for Future Earthquakes, with a Five-Year Forecast of M5 Earthquakes in Southern California, *Seismological Research Letters*, 78, 116–120, <https://doi.org/10.1785/gssrl.78.1.116>, 2007.
- 595 Steffen, H. and Wu, P.: Glacial isostatic adjustment in Fennoscandia—A review of data and modeling, *Journal of Geodynamics*, 52, 169–204, <https://doi.org/10.1016/j.jog.2011.03.002>, 2011.
- Stevens, V. L. and Avouac, J.-P.: On the relationship between strain rate and seismicity in the India–Asia collision zone: implications for probabilistic seismic hazard, *Geophysical Journal International*, 226, 220–245, <https://doi.org/10.1093/gji/ggab098>, 2021.
- Stirling, M., Mcverry, G., Gerstenberger, M., Litchfield, N., Dissen, R., Berryman, K., Barnes, P., Wallace, L., Villamor, P., Langridge, R., Lamarche, G., Nodder, S., Reyners, M., Bradley, B., Rhoades, D., Smith, W., Nicol, A., Petteing, J., Clark, K., and Jacobs, K.: National Seismic Hazard Model for New Zealand: 2010 Update, *Bulletin of the Seismological Society of America*, 102, 1514–1542, <https://doi.org/10.1785/0120110170>, 2012.
- 600 Valensise, G., Pantosti, D., and Basili, R.: Seismology and Tectonic Setting of the 2002 Molise, Italy, Earthquake, *Earthquake Spectra*, 20, 23–37, <https://doi.org/10.1193/1.1756136>, publisher: SAGE Publications Ltd STM, 2004.
- 605 Visini, F., Pace, B., Meletti, C., Marzocchi, W., Akinci, A., Azzaro, R., Barani, S., Barberi, G., Barreca, G., and Basili, R.: Earthquake Rupture Forecasts for the MPS19 Seismic Hazard Model of Italy, *Annals of Geophysics*, 64, SE220, 2021.
- Ward, S. N.: On the consistency of earthquake moment rates, geological fault data, and space geodetic strain: the United States, *Geophysical Journal International*, 134, 172–186, <https://doi.org/10.1046/j.1365-246x.1998.00556.x>, 1998.
- Woessner, J., Laurentiu, D., Giardini, D., Crowley, H., Cotton, F., Grünthal, G., Valensise, G., Arvidsson, R., Basili, R., Demircioglu, M. B., Hiemer, S., Meletti, C., Musson, R. W., Rovida, A. N., Sesetyan, K., Stucchi, M., and The SHARE Consortium: The 2013 European Seismic Hazard Model: key components and results, *Bulletin of Earthquake Engineering*, 13, 3553–3596, <https://doi.org/10.1007/s10518-015-9795-1>, 2015.
- 610 Working Group on California Earthquake Probabilities: Seismic hazards in Southern California: Probable earthquakes, 1994 to 2024, *Bulletin of the Seismological Society of America*, 85, 379–439, <https://doi.org/10.1785/BSSA0850020379>, 1995.
- Zeng, Y., Petersen, M. D., and Shen, Z.-K.: Earthquake Potential in California-Nevada Implied by Correlation of Strain Rate and Seismicity, *Geophysical Research Letters*, 45, 1778–1785, <https://doi.org/10.1002/2017GL075967>, doi/10.1002/2017GL075967, 2018.