

# Atmospheric Black Carbon in the metropolitan area of La Paz and El Alto, Bolivia: concentration levels and emission sources

Valeria Mardoñez-Balderrama<sup>1,2,a</sup>, Griša Močnik<sup>3,4,5</sup>, Marco Pandolfi<sup>6</sup>, Robin L. Modini<sup>7</sup>, Fernando Velarde<sup>2</sup>, Laura Renzi<sup>7,8</sup>, Angela Marinoni<sup>8</sup>, Jean-Luc Jaffrezo<sup>1</sup>, Isabel Moreno R.<sup>2</sup>, Diego Aliaga<sup>9</sup>,  
5 Federico Bianchi<sup>9</sup>, Claudia Mohr<sup>7,10,13</sup>, Martin Gysel-Ber<sup>7</sup>, Patrick Ginot<sup>1</sup>, Radovan Krejci<sup>10</sup>, Alfred Wiedensohler<sup>11</sup>, Gaëlle Uzu<sup>1</sup>, Marcos Andrade<sup>2,12</sup>, Paolo Laj<sup>1,9</sup>

<sup>1</sup>Institut des Géosciences de l'Environnement, Université Grenoble Alpes, CNRS, INRE, IRD, Grenoble INP, 38000 Grenoble, France.

<sup>2</sup>Laboratorio de Física de la Atmósfera, Instituto de Investigaciones Físicas, Universidad Mayor de San Andrés, La Paz,  
10 Bolivia.

<sup>3</sup>Center for Atmospheric Research, University of Nova Gorica, 5270 Ajdovščina, Slovenia

<sup>4</sup>Haze Instruments d.o.o., 1000 Ljubljana, Slovenia

<sup>5</sup>Jozef Stefan Institute, 1000 Ljubljana, Slovenia

<sup>6</sup>Institute of Environmental Assessment and Water Research (IDAEA-CSIC), Barcelona, 08034, Spain

<sup>7</sup>Laboratory of Atmospheric Chemistry, Paul Scherrer Institute, 5232 Villigen PSI, Switzerland

<sup>8</sup>Institute of Atmospheric Sciences and Climate, National Research Council of Italy (CNR-ISAC), 40129 Bologna, Italy

<sup>9</sup>Institute for Atmospheric and Earth System Research (INAR), and Department of Physics, University of Helsinki, 00014 Helsinki, Finland

<sup>10</sup>Department of Environmental Science & Bolin Centre for Climate Research, Stockholm University, 10691 Stockholm,  
20 Sweden

<sup>11</sup>Leibniz Institute for Tropospheric Research (TROPOS), 04318 Leipzig, Germany

<sup>12</sup>Department of Atmospheric and Oceanic Sciences, University of Maryland, College Park, MD 20742, United States of America

<sup>13</sup>Department of Environmental Systems Science, ETH Zurich, 8092 Zurich, Switzerland

<sup>a</sup> now at: Institute of Atmospheric Sciences and Climate, National Research Council of Italy (CNR-ISAC), 40129 Bologna, Italy  
25

*Correspondence to:* Valeria Mardoñez-Balderrama (v.mardonez@isac.cnr.it)

30 **Abstract.** Black carbon (BC) is a major component of sub-micron particulate matter (PM) with significant health and climate impacts. Many cities in emerging countries lack comprehensive knowledge about BC emissions and exposure levels. This study investigates BC concentration levels, identify its emission sources, and characterize the optical properties of BC at urban background sites of the two largest high-altitude Bolivian cities: La Paz (LP) (3600 m above sea level) and El Alto (EA) (4050 m a.s.l.) where atmospheric oxygen levels and intense radiation may affect BC production. The study relies on concurrent  
35 measurements of equivalent black carbon (eBC), elemental carbon (EC), and refractory black carbon (rBC), and their comparison with analogous data collected at the nearby Global Atmosphere Watch-Chacaltaya station (5240 m a.s.l.). The performance of two independent source-apportionment techniques was compared: a bilinear model and a least squares multilinear regression (MLR). Maximum eBC concentrations were observed during the local dry season (LP: eBC=1.5±1.6

40  $\mu\text{g m}^{-3}$ ; EA:  $1.9\pm 2.0 \mu\text{g m}^{-3}$ ). While eBC concentrations are lower at the mountain station, daily transport from urban areas is evident. Average mass absorption cross sections of  $6.6\text{-}8.2 \text{ m}^2\text{g}^{-1}$  were found in the urban area at 637 nm. Both source apportionment methods exhibited a reasonable level of agreement in the contribution of biomass burning (BB) to absorption. The MLR method allowed the estimation of the contribution and the source-specific optical properties for multiple sources including open waste burning.

## 1 Introduction

45 Black carbon (BC), a particulate byproduct of hydrocarbon-based fuel combustion, is not only considered one of the most important pollutants contributing to climate change (Bond et al., 2013), but also a threat to air quality and therefore to human health. Named as BC due to its dark appearance, it possesses the ability of absorbing radiation over a wide spectral range. This makes BC a very important short-lived climate forcing agent (Bond et al., 2013). Typically introduced into the atmosphere by vehicular, industrial and biomass burning emissions (whether for residential heating, agricultural purposes, or in wildfires),  
50 BC is often used as a good tracer for continental emissions when monitoring air quality (Seinfeld and Pandis, 2016; Bockhorn, 2013; Subramanian et al., 2006).

Due to their size, fine and ultrafine particles containing BC can be inhaled deeply into the lungs, reaching the blood stream and generating reactive oxygen species (ROS) (Janssen, et al., 2012; Janssen et al., 2014). This in turn can decrease lung function (Suglia et al., 2008), worsen preexisting cardiovascular conditions (Nichols et al., 2013) and increase the risk of  
55 chronic obstructive pulmonary disease hospitalizations and mortality (Gan et al., 2013). Moreover, due to its agglomerate structure and large surface area to volume ratio, BC is an efficient carrier of carcinogenic and mutagenic organic species (Moosmüller et al., 2009; NTP, 2011). In consequence, BC has become a pollutant of big concern in terms of air quality.

The inhalation of BC has been associated with different respiratory and cardiovascular diseases such as asthma, lung cancer and cardiac arrest (US EPA, 2011), and high altitude can increase the risk of exposure to atmospheric pollutants. People in the  
60 Andean highlands have developed different physiological mechanisms to cope with hypoxia. Amongst them are an increased lung capacity and an increased hemoglobin concentration in their blood. Even though, their resting ventilation has shown to remain the same as for people living at sea level, conditions that require a higher ventilation rate (e.g. physical activities, pregnancy) put highlanders at greater risk (Beall, 2007; Exposure Factors Handbook, 2022; Julian and Moore, 2019).

The formation of BC particles during combustion depends not only on the amount and type of fuel burnt but also on the amount  
65 of oxygen available in the bonding process of carbon and oxygen atoms when forming CO and CO<sub>2</sub> molecules. Hence, the reduced oxygen availability for combustion in high-altitude cities is expected to increase the production rate of carbonaceous particles (Seinfeld and Pandis, 2016). Furthermore, simulated and experimental studies have shown that the amount of PM particles produced by a diesel-fueled engine can increase from 1.2 to 4 times for an altitude up to 1800 m above sea level compared to the production of particles at sea level (He et al., 2011; Yu et al., 2014; Human et al., 1990; Chaffin and Ullman,  
70 1994; Graboski and McCormick, 1996).

Moreover, fast growing cities are often subject to a degrading air quality resulting from a growing vehicular fleet, especially in low and middle-income countries. Air quality studies in Latin-American high-altitude cities have shown that Elemental Carbon (EC, closely related to BC) and Organic Aerosol particles (OA) account for about 60% of the PM<sub>10</sub> mass concentrations in Bogota (2550 -2620 m a.s.l.) (Ramírez et al., 2018), with average EC concentrations of  $3.25 \pm 1.59 \mu\text{g m}^{-3}$ . In Quito (2850 m a.s.l.), traffic emissions have been shown to be responsible for almost 46% of the annual PM emissions (Raysoni et al., 2017). In the case of Mexico City (2280 m a.s.l.), Peralta et al. (2019) reported annual BC levels of  $2.95 \mu\text{g m}^{-3}$ , contributing to 16-20% of total PM<sub>2.5</sub> concentrations.

La Paz (between 3200-3600 m a.s.l.) and El Alto (4050 m a.s.l.) are two high-altitude Bolivian cities located in the Bolivian Andean region that form the second largest metropolitan area in the country. High altitude, and hence lower oxygen concentrations, can make the combustion processes even more complex. As recently shown by Mardoñez et al. (2023) and Wiedensohler et al. (2018), the air quality in these cities is predominantly influenced by local emissions, with vehicular traffic (>80% powered by gasoline) as the main source of absorbing aerosol particles, and responsible for 20-30% of the measured PM<sub>10</sub> concentrations in both cities. However, the cities are also subject to regional sources of pollution such as agricultural biomass burning, which is transported from the valleys and low lands across the Andes (Chauvigne et al., 2019; Mardoñez et al., 2023), and represents an important source of pollution at a regional level (Mataveli et al., 2021). In contrast, residential biomass burning for heating purposes is not a common practice in the region. Moreover, in Mardonez et al. (2023) was reported the presence of a third source of combustion related to open waste burning that contributes to the measured EC mass concentrations in the area and could potentially have an influence in the locally measured absorption.

Improving air quality in La Paz and El Alto is not a trivial task, and the effectiveness of any air quality action plan must be supported by sound scientific understanding of the lifecycle of the main pollutants in a high altitude and high solar radiation environment. Knowledge of BC emission sources and of its characteristics in the urban environment is key to assess the impact of air quality on health for the specific case of these high-altitude cities. Moreover, the conurbation of La Paz-El Alto (LP-EA) is located less than 20 km away from one of the three Global Atmospheric Watch (GAW) global stations in South America, the Chacaltaya mountain station (CHC-GAW). As previously evidenced by Wiedensohler et al. (2018), this station is often under the direct influence of the urban emissions for at least a few hours throughout the day, as the urban planetary boundary layer (PBL) develops in conjunction with advective winds that allow the fast transportation of urban local pollution towards the mountain station. Therefore, the characterization of the urban emissions and their transport to CHC-GAW is a crucial task to be able to distinguish between the influence of the urban emissions and the long-range transport of air masses reaching CHC-GAW.

This study aims to contribute to document the atmospheric concentration, the variability, and the physical properties of BC in the unique LP-EA conurbation and the global CHC-GAW station. Additionally, it seeks to determine the contribution of local and regional sources of BC in the urban area. To do so, this work makes use of a two-year record of BC and other pollutants measured at two urban background sites and at the mountain CHC-GAW station. The study also provides a spatial description of the BC concentrations and explores the effect of a half-kilometer altitude difference and different topographical

105 characteristics between La Paz and El Alto, thus paving the way for future studies on the potential health effects of air pollution  
in both cities.

## 2 Method

### 2.1 Site description

Having started as an extension of La Paz, El Alto has rapidly become the second largest city in Bolivia in terms of population,  
110 hosting over 1.1 million inhabitants (INE, 2012-2022, 2022). It is situated on the plateau formed between the two branches of  
the Andes, a very high, open, flat, and dry (hence dusty) area, with plenty of space for urban expansion. Hosting the second  
largest international airport in the country, El Alto constitutes one of the most important connections of the Bolivian seat of  
government (La Paz) to other regions within and outside the country. In contrast, La Paz is located in a river valley formed  
between the Altiplano plateau and the Oriental branch of the Andes. Characterized by its hilly topography, it hosts over 950  
115 thousand inhabitants (INE, 2012-2022, 2022), with limited space for urban growth.

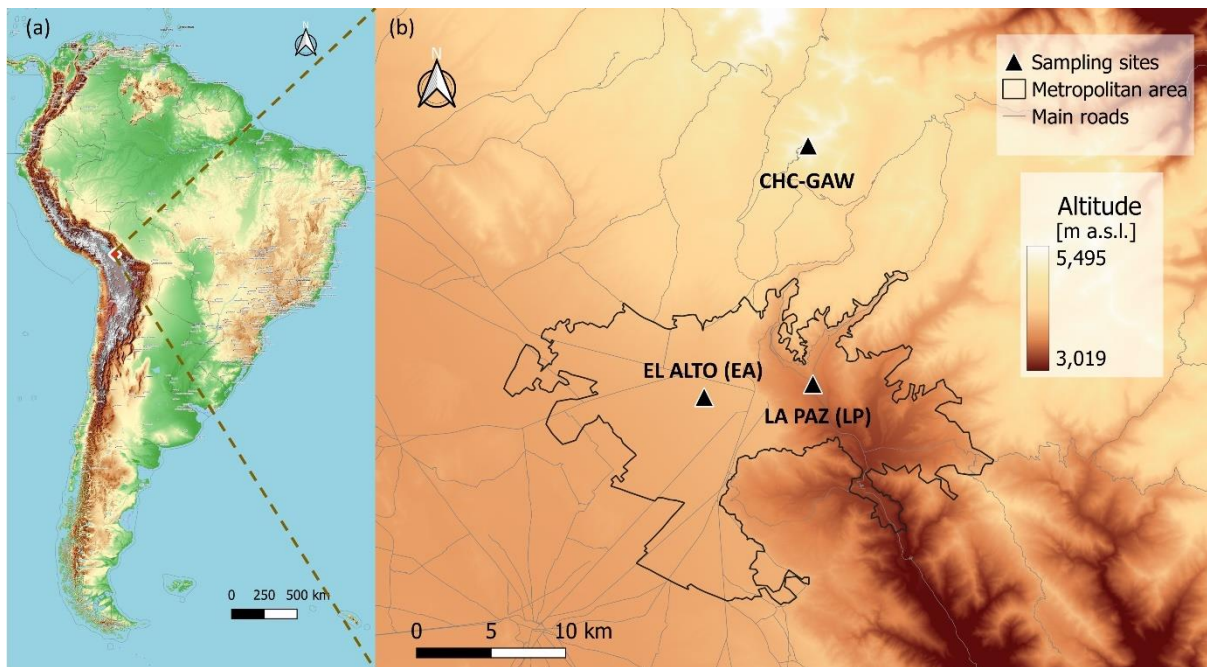
Meteorological seasons in LP-EA shift between a dry (May to August, austral winter) and a wet (December to March, austral  
summer) period, with relatively low temperatures throughout the year. However, the difference in altitude and topography  
produces very different local meteorological conditions. The mean annual temperature in El Alto is 8°C, whereas in La Paz it  
is 13°C. During the austral summer, mean temperatures only increase by one-degree with mean temperature amplitudes  
120 (difference between the maximum and the minimum temperature of the day) of 10 and 12 degrees along the day in El Alto  
and La Paz, respectively. In contrast, during the austral winter mean temperatures decrease by two degrees in both cities, and  
the diurnal temperature amplitudes increase to 17 and 15 degrees. The average annual rainfall between 2016 and 2018 was  
470 and 600 mm/year in El Alto and La Paz, respectively. Although not very frequent, precipitation in the form of snow is  
possible in El Alto during the transition periods. Moreover, wind patterns in La Paz are constrained by the North-South  
125 topographic features of the river valley. Average atmospheric pressure at La Paz and El Alto are around 664hPa and 630 hPa,  
respectively.

### 2.2 Sampling sites

Urban background sampling sites were chosen in each city to obtain representative measurements of the base state of the air  
quality. This was not the first campaign that addressed BC concentrations in La Paz and El Alto. In 2012, a shorter campaign  
130 provided the first characterization of BC in this high-altitude conurbation and its transport towards the CHC-GAW  
(Wiedensohler et al., 2018). The results of the short campaign provided insight to the present long-term campaign, and the  
same urban background sampling site in El Alto was maintained. In La Paz, the traffic sampling site described in Wiedensohler  
et al. (2018) was transferred to a more secluded site for the present study, away from direct vehicular emissions. The distance  
between the sampling sites LP-EA is approximately 8 km, and they are located 17-19 km from the CHC-GAW global  
135 monitoring station (Fig. 1) as described in Bianchi et al. (2022).

The La Paz measurement site (LP) was installed on the rooftop of the four-story building of the city's Museum Pipiripi (Espacio Interactivo Memoria y Futuro Pipiripi: 16.5013°S, 68.1259°W, 3600 m a.s.l.). This municipal building is located on a small hilltop in downtown La Paz and is approximately 70 m and 45 m from the nearest road (horizontal and vertical distance, respectively). Within a 1 km radius around the station, the LP site is surrounded by many busy roads and dense residential areas. However, the immediate surroundings (~100 m radius) are covered by green areas, with a parking lot for municipality buses at the base of the hill.

The El Alto station (EA) was placed at the ground level of the El Alto International Airport's meteorological observatory (16.5100° S, 68.1987° W, 4025 m a.s.l.). The building of the meteorological station is in an area restricted for the general public, 250 m away from the airport runway. The shortest distance to a major road is 500 m as was described elsewhere (Wiedensohler et al., 2018; Mardoñez et al., 2023). The station is surrounded by approximately 3.5 km<sup>2</sup> of an empty, dry, and arid field.



**Figure 1: (a) Geographical location of the sampling sites. (b) The locations of La Paz (LP) and El Alto (EA) have been enlarged and positioned with respect to the regional Chacaltaya GAW monitoring station (CHC-GAW). The color scale represents the altitude above sea level. ©OpenTopoMap (CC-BY-SA) (Mardoñez et al. 2023).**

Both urban stations were equipped with anemometers placed on the rooftops of the buildings where the rest of the instruments were installed, reporting wind speed and wind direction at a 15-min time resolution. For El Alto, pressure, temperature and relative humidity were measured and provided by the Airport's air navigation administration (Administración de Aeropuertos y Servicios Auxiliares a la Navegación Aérea, AASANA) with a 1-hour time resolution, and for La Paz, from the National Meteorology and Hydrology Service (Servicio Nacional de Meteorología e Hidrología, SENAMHI) (SENAMHI, n.d.) at a daily time resolution.

## 2.3 Sampling methods

The measurement campaigns took place between April 2016 and June 2018 with a similar instrumental setup at both urban background sites (LP and EA). Several simultaneous online and offline measurements of chemical and physical aerosol particle properties were continuously performed at both sites during this period, along with measurements of meteorological parameters. In addition, continuous measurements of atmospheric parameters are taken at the CHC-GAW station since 2012 (Table 1).

**Table 1. Summary table of the instrumentation placed at each of the stations, the analyzed period and time resolution. XR refers to the extended range version of the SP2 (SP2-XR).**

	<i>El Alto</i>	<i>La Paz</i>	<i>CHC-GAW</i>
<i>Aethalometer AE33</i>	Apr 2016 - Sep 2017 (1-min)	X	X
<i>Aethalometer AE31</i>	Jan 2018 - Jun 2018 (5-min)	Apr 2016 - Jun 2018 (5-min)	Apr 2016 - Jun 2018 (5-min)
<i>PM<sub>10</sub> filter samples</i>	Apr 2016 - Jun 2017 (24-h every 3rd day)	Apr 2016 - Jun 2018 (24-h every 3rd day) <sup>1</sup>	Apr 2016 - Aug 2017 (23:00-08:00 during a week)
<i>PM<sub>2.5</sub> filter samples</i>	Jun 2017 - Jun 2018 (24-h every 3rd day)	Jun 2017 - Jun 2018 (24-h every 3rd day)	X
<i>Single particle soot photometer (SP2)</i>	SP2-XR Apr 2018 - May 2018 (1-hour)	SP2-XR Apr 2018 - May 2018 (1-hour)	SP2-C Apr 2018 - May 2018 (1-hour)
<i>Meteorology</i>	Apr 2016 - Jun 2018 (1-hour)	Apr 2016 - Jun 2018 (1-day)	Apr 2016 - Jun 2018 (1-hour)

<sup>1</sup>After June 2017, only 25 PM<sub>10</sub> filter samples were intermittently collected due to technical problems.

### 2.3.1 High volume Samplers

High-Volume Samplers (MCV CAV-A/mb) were used at both sites to collect aerosol particles on pre-weighed quartz fiber-filters for later analysis. 24-hour filter samples were taken every 3 to 4 days at a flow rate of 30 m<sup>3</sup>h<sup>-1</sup> using PM<sub>10</sub> heads (MCV PM1025UNE) during the first 15 months of sampling at both sites. For the second year, the head was replaced with a PM<sub>2.5</sub> inlet (MCV PM1025UNE). Additionally, in La Paz, a second high-volume sampler was added during the second year of the campaign to collect samples of particles with aerodynamic diameters smaller than 10 and 2.5 μm. Sampling always started at 9:00 at both sites. During the campaign, a total of 422 filters were collected between both sites, which were later weighed to

quantify the PM mass concentrations through gravimetric standard procedures (following the EN14907 protocol), conditioning the filters before and after sampling at 20 °C and the RH between 30–35%. The filters were then analyzed for over 180 different chemical species, including EC, OC (through thermal-optical analysis (TOA) using a Sunset instrument and the EUSAAR2 protocol) (Cavalli et al., 2010) and several organic and inorganic source tracers. A more detailed description of the methodology and protocols can be found in Mardoñez et al. (2023). The ambient concentrations obtained from the collected filters were then multiplied by a factor of 1.66 and 1.60 in El Alto and La Paz, respectively, to convert them to STP conditions ( $\bar{T}=273$  K,  $\bar{P}=1013.5$  hPa).

Weekly PM<sub>10</sub> filter samples were also collected at the summit of Mount Chacaltaya between April 2016 and August 2017, as described by Moreno et al., (2024). The majority of the collected samples (42 out of 50 samples) were nocturnal samples (23:00-8:00/23:00-9:00), outside the hours when the station is directly influenced by the metropolitan area.

### 2.3.2 Single Particle Soot Photometer

The measurement period in the urban area ended with a one-month measurement period where refractory black carbon concentrations (rBC) were measured in LP and EA with Extended Range Single-Particle Soot Photometers (SP2-XR, Droplet Measurement Technologies). The SP2-XR is a new, more compact version of the original SP2 instrument (Baumgardner et al., 2004; Schwarz et al., 2006). During the same period, rBC concentrations were also measured at the CHC-GAW station with an SP2 (SP2 revision C). The SP2 and SP2-XR provide real-time measurements of rBC mass of individual particles, based on laser-induced incandescence signals. In the present study, all the SP2-based instruments were calibrated with fullerene soot (Baumgardner et al., 2012) size-selected with a differential mobility analyzer (with corresponding masses determined using the effective density approximation of Gysel et al. (2011), and the instrument operation and data analysis procedures were performed following Laborde et al. (2012). The LP and EA stations were each equipped with an SP2-XR unit and the CHC-GAW station with an SP2-C unit between April and May 2018, from which hourly rBC mass concentrations were retrieved and reported here. A more detailed description of the instruments and the analysis of the measurements can be found in Modini et al (in prep.) and Renzi et al (in prep.).

### 2.3.3 Aethalometers

Aethalometers are filter-based absorption photometers that measure light attenuation by atmospheric aerosol particles at 7 wavelengths in the visible/near-visible spectrum (370, 470, 520, 590, 660, 880, 950 nm). In this study we made use of the measurements taken with these instruments to determine the spectral dependence of light absorption. In addition, the measurements at 880 nm were used to obtain an estimate of the black carbon mass concentration. We followed the recommendation by Petzold et al. (2013) and use the term equivalent black carbon (eBC) to emphasize that this is an operationally defined quantity.

The Aethalometer, model AE33 (Magee Scientific, Drinovec et al., 2015, Tape: Pallflex TFE-coated glass fiber T60A20 /M8020), was used at the EA station at the minimum 1-minute time resolution provided by the instrument (Apr 2016 – Sep

205 2017). Due to technical problems, the instrument had to be replaced by an Aethalometer AE31 (Magee Scientific, Arnott et al., 2005, Tape: Pallflex Quartz fiber Q250F) for the end of the campaign (Jan – Jun 2018). The same model, AE31, was operated in La Paz during the entire campaign at its minimum 5-minute time resolution (June 2016- June 2018). Non-dried PM<sub>10</sub> aerosol particles were sampled at both sites throughout the campaign, except for the period from April 2017 to September 2017 where non-dried whole air was sampled at El Alto station. The PM<sub>10</sub> heads were installed at 2 m and 6 m above the instrument level for LP and EA, respectively. The instruments were set to report BC concentrations at standard conditions of temperature and pressure (STP) at both urban sites. In addition, the data recorded between April 2016 and July 2018 by an aethalometer AE31 at CHC-GAW station were downloaded from the EBAS database (<http://ebas.nilu.no/>) and were included in the analysis. The inlet in CHC-GAW consists of a custom-made, hooded, whole-air inlet that is heated when ambient relative humidity is >90%, leading to sampling conditions of RH<40%.

215 As for all filter-based instruments, instrumental artifacts needed to be accounted for in the post processing data analysis. Thus, the necessary corrections are then applied to the non-corrected attenuation coefficients ( $b_{ATN,NC}$ ) that are proportional to the change in attenuation (ATN) as defined in Eq. (1)

$$b_{ATN,NC}(\lambda) = \frac{A}{Q \cdot 100} \cdot \frac{ATN_t(\lambda) - ATN_{t-\Delta t}(\lambda)}{\Delta t}, \quad (1)$$

where ATN corresponds to the logarithm of the light intensity ratio reaching the detector after passing through the loaded filter, compared to the attenuation of the light passing through a clean portion of the filter; A is the area of the filter onto which particles are collected ( $A_{AE31} = 0.5 \text{ cm}^2$ ;  $A_{AE33} = 0.785 \text{ cm}^2$ ) and Q is the sample flow rate. These attenuation coefficients can be traced back from the BC mass concentrations reported by both models of aethalometer as shown in Eq. (2) and Eq. (3):

$$b_{ATN,NC,AE31}(\lambda) = BC_{AE31}(\lambda) \cdot \sigma_{AE31}(\lambda) = BC_{AE31}(\lambda) \cdot C_{f0,AE31} \cdot MAC_{AE}(\lambda), \quad (2)$$

$$b_{ATN,NC,AE33}(\lambda) = BC_{AE33}(\lambda) \cdot \sigma_{AE33}(\lambda) \cdot (1 - k(\lambda) \cdot ATN(\lambda)) = BC_{AE33}(\lambda) \cdot C_{f0,AE33} \cdot MAC_{AE}(\lambda) \cdot (1 - k(\lambda) \cdot ATN(\lambda)), \quad (3)$$

225 where  $\sigma_{AE31}(\lambda)$  are the mass attenuation coefficients, also expressed as the product of the default correction factor for multiple scattering ( $C_{f0}$ , which depends on the model of aethalometer, and the filter tape used (in the present study:  $C_{f0,AE31} = 2.14$ ,  $C_{f0,AE33} = 1.57$ ), and the default mass absorption cross-sections established by the manufacturer for each of the seven wavelengths ( $MAC_{AE,370nm} = 18.47 \text{ [m}^2\text{g}^{-1}]$ ;  $MAC_{AE,470nm} = 14.54 \text{ [m}^2\text{g}^{-1}]$ ;  $MAC_{AE,520nm} = 13.14 \text{ [m}^2\text{g}^{-1}]$ ;  $MAC_{AE,590nm} = 11.58 \text{ [m}^2\text{g}^{-1}]$ ;  $MAC_{AE,660nm} = 10.35 \text{ [m}^2\text{g}^{-1}]$ ;  $MAC_{AE,880nm} = 7.77 \text{ [m}^2\text{g}^{-1}]$ ;  $MAC_{AE,950nm} = 7.19 \text{ [m}^2\text{g}^{-1}]$ ). In Eq. (3),  $k$  is the loading correction factor reported by the instrument (Drinovec et al., 2015) which will be described in more detail below.

The measurements taken with the AE33 photometer exhibited notable noise levels when operated at the minimum time resolution (1 min). To address this issue, we applied the noise reduction technique outlined by Backman et al. (2017) and Springston and Sedlacek (2007), resulting in a significant reduction in noise while preserving the original temporal resolution. Briefly, the latter studies proposed to increase the period  $\Delta t$  from the original sampling time resolution to a higher time interval in Eq. (1). Therefore,  $b_{ATN,NC}$  were recalculated using a  $\Delta t = 30 \text{ min}$  for AE33 to efficiently reduce the noise of the data set. This



procedure was only applied to  $b_{ATN,NC}$  measured within the same filter-spot, hence, the  $\Delta t$  of the first 30 minutes of every new filter-spot were defined as  $\Delta t = t - t_0$ .

As the filter gets loaded, particles deposited on the filter may interact with the incoming light beam increasingly reducing the amount of light reaching the detector. This artifact is also known as “loading effect” and needs to be accounted for. The way this correction is performed constitutes the main difference between models AE31 and AE33. The aethalometer AE33 performs the loading correction online, thanks to its dual spot design (Drinovec et al., 2015). In contrast, measurements taken with the aethalometer AE31 need to be corrected as part of the post processing data analysis (Virkkula et al., 2015). However, an overcompensation of the loading effect was observed in the AE33 data output, therefore it was not used. Instead, the following correction scheme proposed by Virkkula et al. (2015) and Drinovec et al. (2015) was used to correct the data obtained from both aethalometer model (Eq. (4)):

$$b_{ATN}(\lambda) = \frac{b_{ATN,NC}(\lambda)}{(1 + \hat{k}(\lambda) \cdot ATN_t(\lambda))}, \quad (4)$$

where  $\hat{k}$  are the monthly loading correction factors, defined as the ratio of the slope over the intercept of the linear fit of the non-corrected BC mass concentrations (reported by the instrument) vs ATN (Drinovec et al., 2015).

Multiwavelength absorption coefficients ( $b_{abs}(\lambda)$ ) are typically estimated from  $b_{ATN}(\lambda)$  by correcting the latter for multiple the light scattering taking place within the filter fibers or between deposited particles and the filter fibers. This is done by normalizing  $b_{ATN}(\lambda)$  by the multiple scattering correction factor ( $C_f$ ), which depends on both the properties of the filter matrix and the optical properties of aerosol population (Eq. (5)).  $C_f$  is often considered independent of  $\lambda$  although that is likely not the case for AE33 (Yus-Díez et al., 2021).

$$b_{abs}(\lambda) = \frac{b_{ATN}(\lambda)}{C_f}, \quad (5)$$

Several studies have shown that the default  $C_{f0}$  factors provided by the manufacturer often underestimates the impact of multiple scattering happening in the filter matrix for both models of aethalometers when measuring ambient aerosol (Yus-Díez et al., 2021; Müller, 2015; Bernardoni et al., 2021; Valentini et al., 2020). Thus, a local  $C_f = 3.08$  was estimated for the AE31 operating in the urban stations. This value resulted from a Deming linear regression of the AE31 hourly attenuation coefficients measured at CHC-GAW station and the absorption coefficients measured simultaneously by a Multi Angle Absorption Photometer (MAAP) also operating continuously at the mountain station (Eq. (6), Fig. S1 in the Supplement), forcing the intercept through zero, as determined by previous studies (Valentini et al., 2020; Yus-Díez et al., 2021; Bernardoni et al., 2021):

$$b_{ATN,AE31,CHC}(637 \text{ nm}) = C_{f,AE31} \cdot 1.05 \cdot b_{abs,MAAP,CHC}(637 \text{ nm}), \quad (6)$$

The factor 1.05 included in Eq. (6) accounts for the difference between the measuring wavelength reported by the MAAP manufacturer (670 nm) and the actual wavelength (637 nm) measured by Müller et al. (2011). The attenuation coefficients measured by the AE31 at CHC-GAW and included in Eq. (6) were interpolated to MAAP’s wavelength using the calculated AAE corresponding to each data point (mean  $AAE_{CHC-GAW} = 1.0 \pm 0.5$ ). The extrapolation of this calculated  $C_f$  factor to the

urban background stations is done under the assumption that the cross-sensitivity to scattering does not change drastically  
270 between the urban background and the regional background sites. This is supported by the fact that the same model of  
aethalometer using the same filter type was employed at the three sites, and that the single scattering albedo (SSA) observed  
in CHC-GAW is in average 0.91 (Figure S11) and even lower during the time interval from 10:00 to 16:00. This specific time  
frame corresponds to the period in which the CHC-GAW station is typically under the influence of the urban PBL, as  
previously demonstrated by Andrade et al. (2015).

275 Systematic higher  $b_{\text{abs}}$  were observed at EA compared to LP when different models of aethalometers were employed, whereas  
a negligible difference was observed when using AE31 aethalometers at both urban sites. Moreover, no significant differences  
in the average concentrations of EC were found among the sites. This indicated that the observed difference was rather  
associated to differences between models AE33 and AE31. Since an absorption reference instrument was not available to  
assess the cross-sensitivity to scattering of AE33 at EA, we opted for selecting a suitable literature  $C_f$  factor of 2.78 for AE33,  
280 for it brought the  $b_{\text{abs}}$  estimated from both models of aethalometer closer together. The chosen  $C_f$  was reported by Bernardoni  
et al. (2021) at an urban background station in Milan during winter 2018 using the same type of filter tape as AE33 in the  
present study (T60A20), however, it is 21-40% larger than the values reported by Yus-Díez et al. (2021) for an urban  
background station in Barcelona using the same tape. Moreover, the  $C_f$  values applied in this study are significantly larger than  
the default values given by the manufacturer of 2.14 and 1.57 for AE31 and AE33, respectively. Therefore, the reported  $b_{\text{abs}}$   
285 in the present study are smaller than what they would be using the factory default  $C_f$  values. The difference between the  $b_{\text{abs}}$   
estimated using the  $C_f$  factors selected for each model of aethalometer decrease to roughly 27% when comparing similar  
periods of measurements in EA.

## 2.4 Intrinsic properties of BC

### 2.4.1 Absorption Angstrom Exponent (AAE)

290 The absorption efficiency of particulate matter varies throughout the visible spectrum of radiation and is determined by the  
chemical and physical properties of the aerosol particles. This wavelength dependency can often be described in good  
approximation by a power law with the Absorption Ångström Exponent (AAE) (Moosmüller et al., 2011) as exponent.  
Orthogonal non-linear least squares regressions were used to describe the power-law dependency of absorption with  
wavelength, Eq. (7):

$$295 \quad b_{\text{abs}}(\lambda) = a \cdot \lambda^{-AAE}, \quad (7)$$

Only wavelengths 2 to 7 (470 – 950 nm) were used in the regression such that the extreme wavelengths match the pair used  
for the BC source apportionment (Sect. 2.5.1). The obtained time series of AAE displayed the same noisy pattern as observed  
in the BC time series prior the noise reduction, therefore only AAE corresponding to absorption coefficients  $b_{\text{abs},880} > 2 \text{ Mm}^{-1}$   
were considered in the rest of the analysis for the urban sites. In the case of CHC-GAW, no lower cut was applied to the AAE  
300 values since average levels of  $b_{\text{abs}}$  were close to the threshold.

Among the major components of PM contributing to the absorption of visible radiation, AAE ~1 are typically observed in BC particles coming from vehicular emissions (Bond et al., 2013). In contrast, Brown Carbon (BrC, a combustion product containing organic material) has a stronger absorbance at shorter wavelengths. Hence, a wider range of AAE values have been observed associated to BrC, 0.9 to 2.2 depending on the type of soil and fuel burned, as well as on the combustion conditions (Kirchstetter et al., 2004; Sandradewi et al., 2008; Helin et al., 2021). Finally, dust particles have also been found to be capable of absorbing visible radiation depending on their chemical composition. Dust absorbs visible radiation more efficiently at shorter wavelengths, therefore AAE values usually > 2 are associated to these particles (Bergstrom et al., 2007; Caponi et al., 2017).

#### 2.4.2 Mass Absorption Cross-section (MAC)

The mass absorption cross-section (MAC) is an intrinsic property of absorbing aerosol particles that describes their absorption efficiency per unit of mass. This property depends on wavelength, aerosol type and particle mixing state, and constitutes the bridge between the optical and physical properties of absorbing aerosol particles. The MAC, thus, provides an insight of the particle mixing state (which is a function of aerosol ageing) and is defined as follows:

$$MAC(\lambda) [m^2 g^{-1}] = \frac{b_{abs}(\lambda) [Mm^{-1}]}{m [\mu g m^{-3}]}, \quad (8)$$

where  $b_{abs}$  is the absorption coefficient at wavelength  $\lambda$ , and  $m$  is the mass concentration of the absorbing particles. In the present study the MAC coefficients of BC were estimated by using  $b_{abs}$  (880 nm) in Eq. (8) (since at 880 nm absorption is dominated by BC), and the mass concentrations of refractory BC measured by thermal-optical methods (EC) and by laser-induced incandescence (rBC). For the complete extent of the campaign, daily  $MAC_{EC}$  were estimated using daily averaged  $b_{abs}$  (880 nm) in Eq. (8). Similarly, hourly  $MAC_{rBC}$  were calculated for the period in which the high-time resolution rBC was available, using hourly averages of  $b_{abs}$  (880 nm). For comparability with other studies, the obtained MAC values were interpolated to other wavelengths typically reported in the literature (550 and 637 nm) by interpolating the absorption coefficients through their corresponding absorption Ångström exponent.

When independent measurements of BC mass concentrations are not available, Eq. (8) also allows the estimation of the equivalent BC (eBC) mass concentrations, if a representative  $MAC_{eBC}$  is defined. Then eBC can be understood as the amount of BC necessary to absorb an equivalent amount of radiation as the one reported by the estimated  $b_{abs}$ . When measuring absorption coefficients using aethalometers, eBC is typically reported at 880 nm using the default manufacturer  $MAC_{AE,880nm}=7.77 [m^2g^{-1}]$ . Then, Eq. (8) becomes:

$$eBC = \frac{b_{abs}(880 \text{ nm})}{MAC_{AE,880nm}}, \quad (9)$$

## 2.5 Description of methods for performing Black Carbon source apportionment

### 330 2.5.1 Aethalometer method

Based on the differences in the source-specific AAE, a bilinear regression model was proposed by Sandradewi et al., 2008 in order to determine the contribution of each source to total absorption. Generally, this technique is used to apportion the contributions of vehicular emissions and biomass burning emissions or dust (Lanz et al., 2008; Sandradewi et al., 2008; Harrison et al., 2012; Zotter et al., 2017). This method is also known in the literature as the “Aethalometer method”.

335 Considering that:

$$b_{abs}(\lambda_i) = b_{abs,TR}(\lambda_i) + b_{abs,BB}(\lambda_i), \quad (10)$$

where the subscripts TR and BB represent absorption due to traffic and biomass burning, respectively, and the power law dependence of  $b_{abs}$  with wavelength described in Eq. (7):

$$\frac{b_{abs,TR}(\lambda_1)}{b_{abs,TR}(\lambda_2)} = \left(\frac{\lambda_1}{\lambda_2}\right)^{-AAE_{TR}}, \quad (11)$$

$$340 \frac{b_{abs,BB}(\lambda_1)}{b_{abs,BB}(\lambda_2)} = \left(\frac{\lambda_1}{\lambda_2}\right)^{-AAE_{BB}}, \quad (12)$$

The recombination of Eq. (10), Eq. (11) and Eq. (12) results in a 2-equation system with 4 unknowns. However, if the AAE values of the evaluated sources are known or assumed, the equation system can be solved. One step further, when the contributions of each of the sources to total absorption at  $\lambda_2$  are known, converted to  $eBC_{TR}$  and  $eBC_{BB}$  concentrations through Eq. (9), then the fractional contribution of  $eBC_{BB}$  to total  $eBC$  ( $eBC_{TOT}$ ) can be estimated as described by Zotter et al. (2017)

345 if the ratio of  $MAC_{BB}(\lambda_2)/MAC_{TR}(\lambda_2)$  is known or assumed:

$$\frac{eBC_{BB}}{eBC_{TOT}} = \frac{1}{1 + \frac{MAC_{BB}(\lambda_2) b_{abs,TR}(\lambda_2)}{MAC_{TR}(\lambda_2) b_{abs,BB}(\lambda_2)}}, \quad (13)$$

In the present study the assumption of  $MAC_{BB}(\lambda_2)/MAC_{TR}(\lambda_2)$  being  $\sim 1$  proposed by previous studies and tested by Zotter et al. (2017) was kept. The pair of wavelengths chosen to apply in this method to apportion the contribution of local vehicular emissions (also known as liquid fuel) from the regional agricultural biomass burning emissions (also known as solid fuel) were  
350 470 and 950 nm. The representative source specific AAE were chosen as the 5th and 99th percentiles of the frequency distribution of the hourly averages of the calculated AAE ( $AAE_{TR}=0.85$ ,  $AAE_{BB}=1.57$ ) (Fig. S2 in the Supplement). Given the observed large dispersion of the AAE values calculated at CHC-GAW, the urban values were extrapolated to the mountain site for the bilinear source apportionment of BC.

### 2.5.2 Multilinear Linear Regression method (MLR) for apportionment of light absorption to PM segregated by sources

355 One of the limitations of the previously described Aethalometer method for source apportioning is that it only allows to separate the contributions of two sources of aerosol particles to light absorption. Given that the contribution to  $PM_{10}$  of dust and BB increases during the dry season in both cities (Mardoñez et al., 2023), the aethalometer method cannot quantify nor separate their influence from the influence of traffic. Moreover, the result of the source apportionment through the Aethalometer model

is highly sensitive to the choice of the representative AAEs. Furthermore, source specific AAEs are highly dependent on the conditions under which combustion takes place and on chemical processing of the combustion emissions in the atmosphere. Hence, the selection of AAEs needed in the previous method can be somewhat arbitrary, and extrapolating literature values can significantly influence the results of the apportionment of BC. Thus, an alternative method was explored to calculate the source specific AAEs, as well as to identify other possible sources of absorbing aerosol particles and to verify the results obtained with the bilinear model.

Mardoñez et al. (2023) used the Positive Matrix Factorization tool (PMF v.5.0) to apportion the major sources of particulate matter, based on the chemical speciation of the PM<sub>10</sub> filter samples collected during the first 15 months of the campaign at both sites. The complete description of the factor analysis can be found in the mentioned article. Briefly, the temporal evolution of 40 chemical species including PM, EC, OC, water soluble ions, metals and source-specific organic tracers and their associated uncertainties were used as input in the receptor model, following a multisite approach. A statistically stable solution was found for 11 factors assessed by the bootstrap and displacement methods, following the European source apportionment recommendations described in Belis et al., (2019). The complete description of the factor analysis can be found in Mardoñez et al. (2023).

In the present study, a multilinear ordinary least-square regression (MLR) was performed to attribute the observed absorption coefficients ( $b_{\text{abs}}$ ) to the PMF-resolved sources of PM<sub>10</sub>. A similar approach was followed by Moschos et al. (2018) to apportion the sources of BrC in a rural and an urban background site in Switzerland. The calculated  $b_{\text{abs}}$  at each of the 7-wavelengths were used as dependent variables and the PMF-resolved source contributions as explanatory variables in Eq. (14):

$$b_{\text{abs}}(\lambda)_{m,1} = (G_{m,n} \times \beta(\lambda)_{n,1}) + \varepsilon(\lambda)_{m,1}, \quad (14)$$

where  $b_{\text{abs}}$  are the daily averaged absorption coefficients in Mm<sup>-1</sup> (starting at 9:00 to match the filter sampling time),  $G_{m,n}$  are the STP mass contributions of the  $n$  sources for each of the  $m$  filters in  $\mu\text{g m}^{-3}$ ,  $\beta$  are the proportionality coefficients that represent the absorption efficiency of each of the sources in m<sup>2</sup>g<sup>-1</sup>, and  $\varepsilon$  are the residuals that account for the difference between the observed and the modelled  $b_{\text{abs}}$ . The  $\beta$  coefficients described above, similar to MAC values, mathematically allow to relate  $b_{\text{abs}}$  to the mass of the particles contained in each of the factors included in the analysis, thus describing their absorption efficiency as an ensemble of particles. However, a clear distinction must be made between the two quantities as they are conceptually different even though they share the same units. The MAC values represent an intrinsic physical property of a material (BC). Conversely, the  $\beta$  proportionality coefficients found through the multilinear regression provide insight on the absorption efficiency per unit of mass of the collection of particles that constitute each factor (defined by the chemical profile that defines each factor), which also includes non-absorbing material. To avoid further confusion, the symbol  $\beta$  will be maintained when describing the absorption efficiency of the factors in the source apportionment of  $b_{\text{abs}}$ .

The uncertainties of the coefficients  $\beta$  obtained by the MLR were estimated by bootstrapping the solutions 500 times, randomly selecting 70% of the datapoints each time to account for possible influence of extreme events. The median values of the estimated  $\beta$  coefficients were then used to calculate the wavelength-dependent contributions to  $b_{\text{abs}}$  of the individual sources.

Finally, the source-specific AAE were calculated using the power-law non-linear regression of the source-specific  $MAC(\lambda)$  values obtained with respect to wavelength (Eq. 7).

395 Since the PMF analysis performed in Mardoñez et al. (2023) was done following a multisite approach, we chose to perform a multisite MLR in order to increase the number of data points included in the deconvolution. The hypothesis is therefore that BC presents the same optical properties at the two sites. Nevertheless, the contribution of each source to the measured mass of BC will be presented separately per site.

### 3 Results

#### 3.1 Observed BC concentration levels and variability

400 Table 2 displays the mean STP concentrations of eBC and EC measured in La Paz (LP), El Alto (EA) and Chacaltaya mountain station (CHC-GAW). EC concentrations were similar at both urban sites ( $EC_{PM_{10-LP}}: 2.1 \pm 1.2 \mu g m^{-3}$ ,  $EC_{PM_{10-EA}}: 2.4 \pm 1.1 \mu g m^{-3}$ ;  $EC_{PM_{2.5-LP}}: 1.5 \pm 0.9 \mu g m^{-3}$ ,  $EC_{PM_{2.5-EA}}: 1.6 \pm 0.8 \mu g m^{-3}$ ), whereas nocturnal EC concentrations in CHC-GAW were significantly lower ( $0.07 \pm 0.07 \mu g m^{-3}$ ). eBC mass concentrations were consistently lower than EC in La Paz and El Alto ( $eBC_{LP}: 1.1 \pm 1.2 \mu g m^{-3}$ ,  $eBC_{EA}: 1.6 \pm 1.7 \mu g m^{-3}$ ) but higher compared to EC in CHC-GAW ( $eBC_{CHC-GAW}: 0.2 \pm 0.3 \mu g m^{-3}$ ). This implies that the  $MAC_{AE,880nm}$  applied to derive eBC was too high for La Paz and El Alto and too low for Chacaltaya, when considering EC as  
405 the ground truth for BC mass, a finding confirmed in Section 3.2. Although the urban background eBC mass concentrations do not stand out as alarming, these concentrations can rapidly increase closer to the main roads as observed by Madueño et al (2020).

The CHC-GAW station is often influenced by urban emissions from LP and EA, as previously reported by Andrade et al  
410 (2015) and Wiedensohler et al (2018). These emissions get rapidly diluted on their way to CHC and arrive to the station with a lag of nearly three hours as a result of the diurnal PBL evolution above the Altiplano of the metropolitan area. The average concentrations of eBC measured at CHC-GAW are 12-15% of what is measured in the cities. However, during the hours when CHC-GAW is influenced by the mixing layer of the metropolitan area (10 - 16h), the concentrations in the mountain station are roughly 30% of what is measured in the city.

415 In comparison with the other two high-altitude Latin American cities where urban background concentrations of absorbing aerosol particles have been reported,  $EC_{STP}$  concentrations measured in La Paz and El Alto ( $PM_{10}$ ) are nearly two thirds of those reported in Bogota (Ramírez et al., 2018). Compared to Mexico City, the eBC mass concentrations in LP-EA are 37%-54% of the concentrations reported by Peralta et al. (2019) for 2016. As the latter study did not provide information on the temperature and pressure conditions under which the concentrations were measured, these percentages could potentially  
420 decrease to approximately 27%-40% if the eBC mass concentrations were reported under ambient conditions (using an annual mean temperature of 15.7 °C and a mean atmospheric pressure of 585 mmHg; Estrada et al., 2009; Hernández-Zenteno et al., 2002). Vehicle emissions have been identified as the main source of EC and eBC in these two metropolitan areas, with vehicle

425 fleets dominated by gasoline fueled vehicles as it is in La Paz and El Alto. However, despite the combined population of the La Paz-El Alto conurbation being more than four times smaller than that reported for Bogota or Mexico City at the time of the studies, the observed concentrations of eBC and EC are not proportionally lower. This phenomenon may be attributed to various factors, including distinctions in population density, vehicle fleet density, combustion efficiencies, the unique topographical features of the cities, notably in La Paz, and pollutant dispersion efficiencies. However, a comprehensive examination of these factors lies outside the scope of the current study.

430 **Table 2. Annual and seasonal average concentrations of eBC from the Aethalometer and EC from TOA in La Paz (LP), El Alto (EA) and Mount Chacaltaya (CHC-GAW). EC concentrations in CHC-GAW were obtained from weekly nighttime (23h-8h) filters collected between April 2016 and August 2017.**

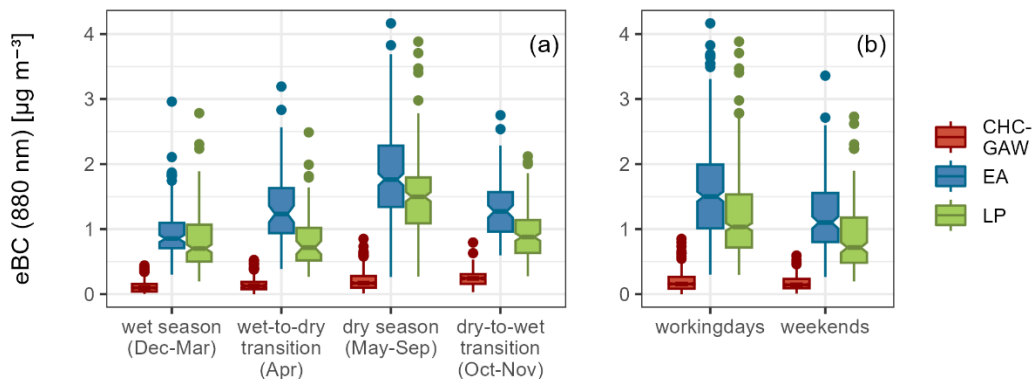
	mean ± sd [ $\mu\text{g m}^{-3}$ ]								
	<i>eBC (PM<sub>10</sub>)<sup>i</sup></i>				<i>EC (PM<sub>10</sub>)</i>			<i>EC (PM<sub>2.5</sub>)</i>	
	<b>CHC-GAW</b>	<b>CHC-GAW (Nighttime: 23h-8h)</b>	<b>El Alto</b>	<b>La Paz</b>	<b>CHC-GAW (Nighttime: 23h-8h)</b>	<b>El Alto</b>	<b>La Paz</b>	<b>El Alto</b>	<b>La Paz</b>
<b>annual</b>	0.2±0.2	0.1±0.1	1.6±1.7	1.1±1.2	0.07±0.07	2.4±1.1	2.1±1.2	1.6±0.8	1.5±0.9
<b>wet season (Dec-Mar)</b>	0.1±0.2	0.1±0.1	1.0±0.8	0.8±0.9	0.04±0.02	1.6±0.8	1.5±0.7	1.4±0.7	1.2±0.6
<b>wet-to-dry transition (Apr)</b>	0.1±0.2	0.1±0.1	1.5±1.5	0.8±1.0	0.04±0.07	2.6±1.1	2.5±1.3	1.2±0.2	1.0±0.3
<b>dry season (May-Aug)</b>	0.2±0.2	0.1±0.1	1.9±2.0	1.5±1.6	0.13±0.09	2.9±0.8	3.0±1.2	2.1±0.8	2.2±1.1
<b>dry-to-wet transition (Sep-Nov)</b>	0.2±0.2	0.1±0.1	1.3±1.3	0.9±0.9	0.08±0.07	1.7±0.5	1.6±0.8	1.2±0.7	1.2±0.6

<sup>i</sup> The PM<sub>10</sub> inlet was removed from April to September 2017 in EA, period in which non-dried whole air was sampled.

435 Equivalent black carbon mass concentrations (eBC) in La Paz and El Alto were strongly influenced by the local meteorology. Maximum concentrations are found during the dry season and the minimum concentrations take place during the wet season (Fig. 2.a). A significant decrease in concentrations can also be noted during the weekends compared to working days (Fig. 2.b), giving evidence of the presence of anthropogenic sources of BC. Figure 2 also displays an important difference between the eBC concentrations measured at the urban sites compared to the mountain station. As can be deduced from Table 2, this difference increased by a factor two when EC concentrations of the urban/mountain sites are compared. This is partly due to the site specificity of the MAC values, as will be developed in the following sections. Nevertheless, caution should be made

440

when comparing the average EC concentrations obtained from the 24-h filter samples collected in the urban sites and the ones obtained from the filter samples collected at nighttime in the GAW-CHC station.



445 **Figure 2. Boxplots describing (a) the seasonal variation, and (b) the difference between working days and weekends of the daily average concentrations of eBC in La Paz, El Alto and Chacaltaya. The horizontal bar in the box represents the median value, the lower (upper) hinge represents the percentile 25 (75), and the lower (upper) whiskers represent the smallest (largest) observation greater (less) than or equal to lower (upper) hinge  $\pm$  1.5 times the interquartile range (IQR).**

In terms of diurnal variation, a clear bimodal pattern is observed throughout the seasons, which is characteristic of sites influenced by vehicular emissions (Fig. 3 (a)). This pattern has already been described by Wiedensohler et al. (2018) in a shorter temporal scale at EA station (during the transition period to the wet season in 2012). A less pronounced bimodal behavior was observed by the same study in the road site station in La Paz installed during the 2012 short campaign. Henceforth, all the references to time in the present study will be in local time (UTC-4).

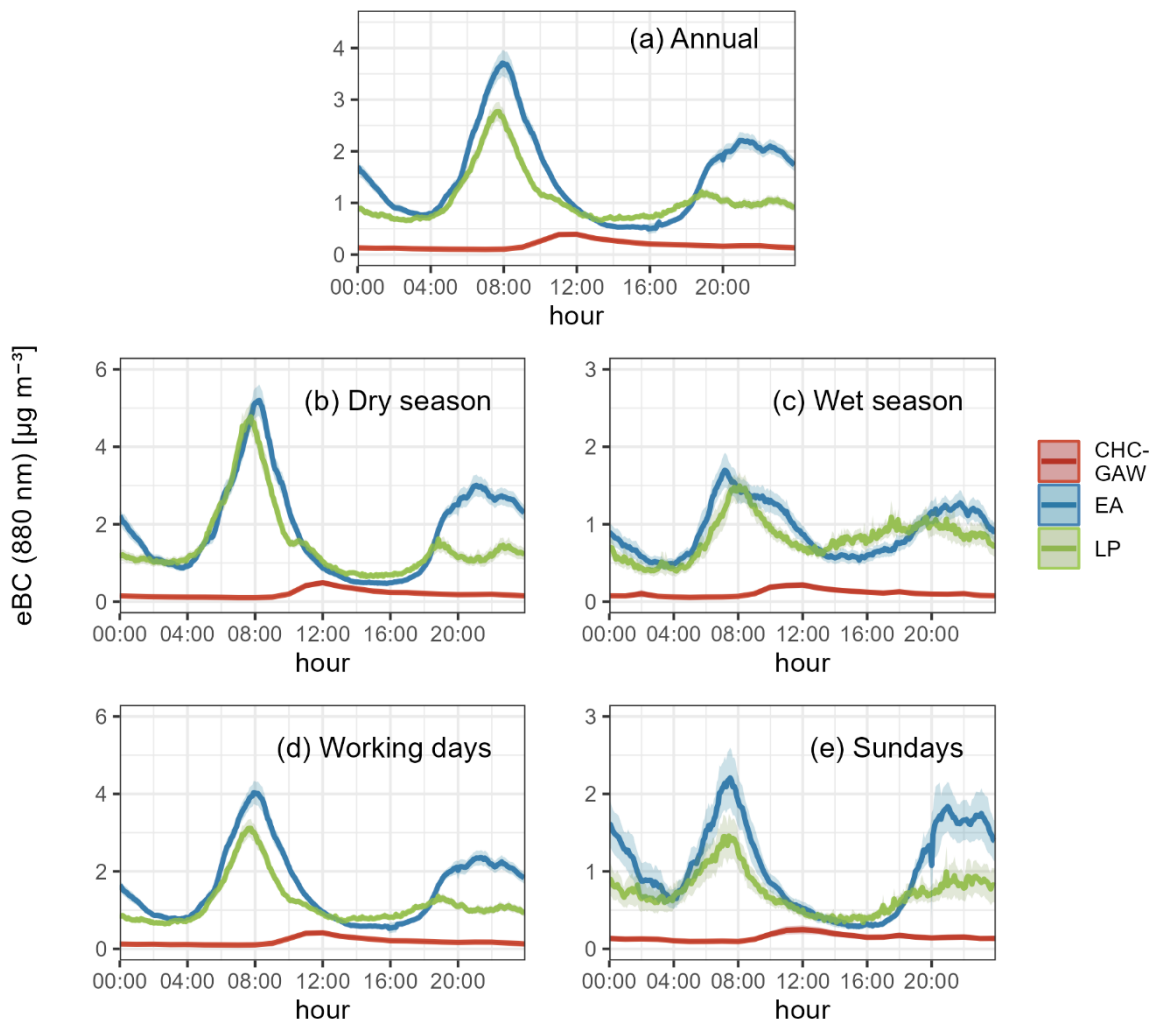
455 Maximum concentrations were observed during the morning rush-hour peak around 8:00 at both sites, followed by a rapid decrease towards the minimum diurnal concentrations. This rapid decrease in concentrations results from the efficient ventilation and dilution caused by thermal convection, advection, and growth of the boundary layer. During the midday minimum, lower concentrations are achieved at EA compared to LP, which could be related to a better ventilation in El Alto due to the openness of the site compared to the sheer sided canyon where the city of La Paz lies. At CHC-GAW, concentrations only start to increase at 9:00, when the urban boundary layer has expanded enough to reach the altitude of the station, peaking between 11:00 and 12:00. After mid-day, concentrations slowly decrease towards minimum concentrations during the evening.

460 While the maximum diurnal concentrations of eBC are similar at EA and LP sites, the magnitude of the evening peaks constitutes the largest difference in the diurnal variation of eBC between these two sites. This second mode is associated to the evening rush-hour vehicular emissions coupled with the re-stratification of the atmosphere when at sunset, when temperature decreases. At EA, the evening peak reaches almost 60% of the morning peak's magnitude, whereas at LP the evening peak represents only 40% of the morning peak's concentrations. Furthermore, the second mode in La Paz starts to steadily increase

465 around 16:00 whereas in El Alto it increases more abruptly around 18:00. This delay in the start of the evening mode is likely linked to a combination of the earlier sunset in the city of La Paz compared to El Alto (as a result of the difference in altitude



and geography), and the delay in El Alto's evening traffic rush-hour due to the time it takes to commute back from La Paz to the city of El Alto.

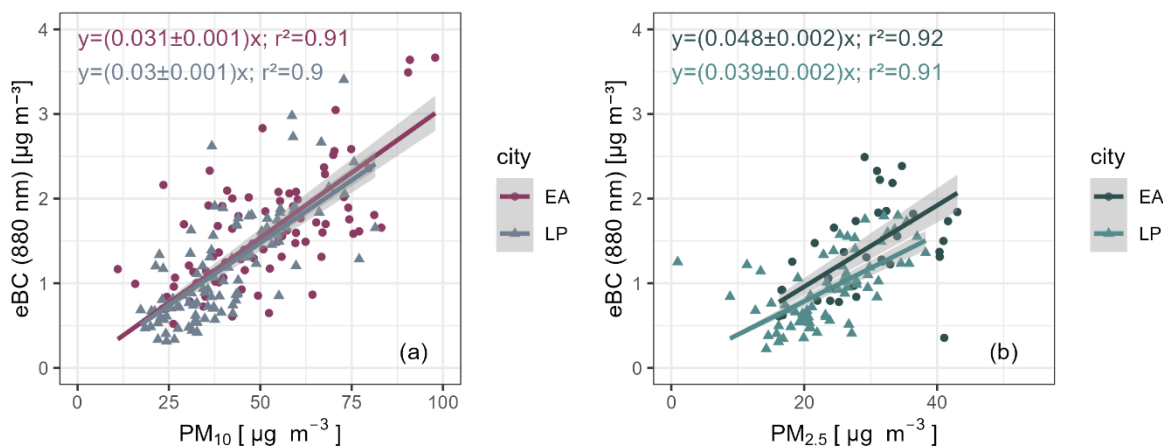


470 **Figure 3. Average diurnal variation of eBC concentration at the three sites during a) the complete sampling campaign, b) the dry season, c) the wet season, d) working days, and e) Sundays. The shaded areas around the mean values represent the 95% confidence interval. Note that the y-axes are scaled differently.**

Moreover, the evening mode in La Paz is composed of two smaller peaks: one occurring around 19:00 and the other around 23:00. This pattern is more pronounced during the dry season (austral winter) and is not discernible in El Alto (see Fig. 3(b) and 3(d)). The first peak of the second mode of eBC average diurnal concentrations in La Paz seems to correspond to the evening rush hour, hence, it is not observed on Sundays (Fig. 3(e)). Instead, evening concentrations on Sundays steadily increase until 23:00 in La Paz. In contrast, during the wet season (austral summer), the second evening peak is no longer observable, likely due to the increase in night-time temperatures during this period.

A reduction in vehicular traffic (as it can be expected during weekends) as well as changes in meteorology (higher temperatures together with wet deposition) are both capable of reducing the average concentrations by a factor two at all sites. In addition, the difference in magnitude between the morning and the evening peak is simultaneously modulated by the emitting sources and the meteorology. When the number of emitting sources is reduced, the difference between the morning and the evening peak is also reduced by 20% (Fig. 3(c) and 3(e)). Finally, the combinations of precipitation and higher temperatures makes the evening peak concentrations similar at both sites, but also makes the morning peak in El Alto less symmetrical. A slight lump with maximum concentrations between 6:00 and 8:00 can be noted during the wet season in the average diurnal pattern. This pattern was also observed in Wiedensohler et al. (2018) both for eBC mass concentrations and particle number concentrations (PNC).

Wiedensohler et al. (2018) also reported eBC mass concentrations at the road-site in La Paz being on average 3 to over 10 times higher throughout the day than the ones registered at EA station, with a less pronounced bimodal diurnal pattern. In the present study, the average concentrations at LP were not significantly different than at EA, both in concentrations and diurnal variability, except for the difference in the magnitude of the evening peak. This demonstrates that an increase in the distance between the sampling site and the nearest road in La Paz, from < 10 m (Wiedensohler et al. 2018) to ~ 70 m horizontally and 40 m vertically (present study), is enough to significantly dilute traffic emissions and make the observations at the LP background station comparable to the observations at the EA background station. Several previous studies, e.g. Alas et al., (2022) and Peters et al. (2014), have described similar rapid decreases in eBC mass concentrations between road and urban-background sites, as well as between traffic hotspots and less crowded routes located within a couple of hundred meters.



**Figure 4. Scatter plot of daily average eBC mass concentrations vs  $\text{PM}_{10}$  (a) and  $\text{PM}_{2.5}$  (b) concentrations at both sites (two outliers were excluded from the ordinary least square regression displayed in the right panel).**

When compared to PM concentrations measured from daily samples collected during the same period, eBC displays similar trends as PM, with high dispersion around the linear fit (Fig. 4). At both sites and for both  $\text{PM}_{10}$  and  $\text{PM}_{2.5}$ , eBC represents less than 5% of the total measured PM. Similar trends are observed when comparing EC and PM (Fig. S3 in the Supplement),

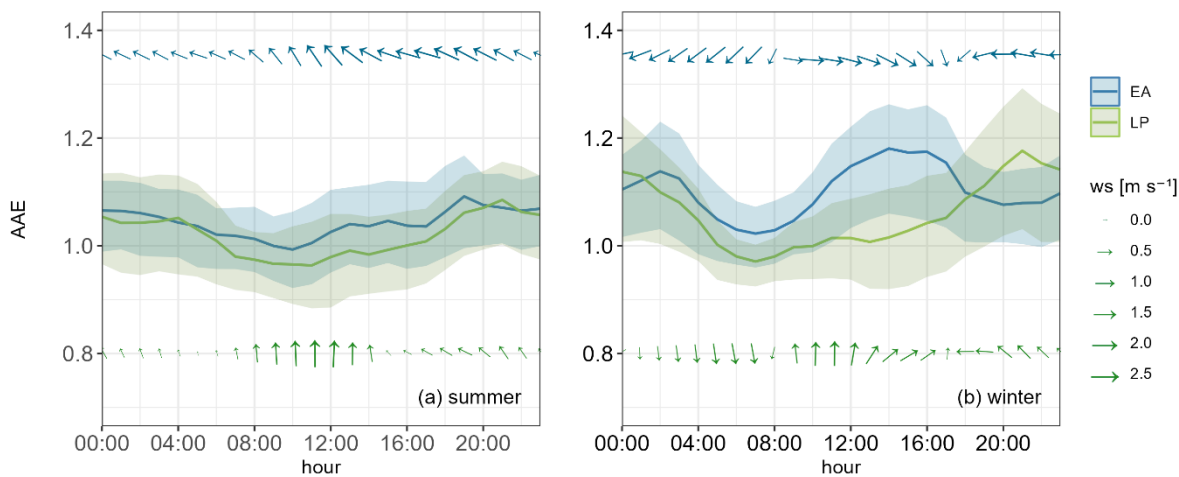
with contributions of roughly 5 and 6% to total  $PM_{10}$  and  $PM_{2.5}$ , respectively. Comparing the fraction of PM that corresponds to eBC and EC in other high-altitude cities we observe that according to Ramírez et al., 2018b, the contribution of EC to  $PM_{10}$  in Bogotá is almost 1.3 times higher (8.2%-9%) than in La Paz-El Alto. In contrast, in Mexico City, eBC contributions to  $PM_{2.5}$  reported by Peralta et al. (2019), were almost 5 times higher than the ones observed in LP-EA (16%, calculated from average concentrations of eBC and  $PM_{2.5}$ ).

### 3.2 Intrinsic aerosol and BC properties

The absorption Ångström exponent (AAE) and the Mass Absorption Coefficient of BC (MAC) of an aerosol sample are important aerosol parameters used for characterizing both source origin of BC, aging effects, and radiation impact. Here, we compute the variability of both parameters for the two cities using different methodologies according to Eq. (7) and Eq. (8). We also confronted such results with those from CHC under the specific conditions of advection from the metropolitan area, even though, as shown by Aliaga et al. (2021) air masses reaching CHC are typically a mix of different air masses.

#### 3.2.1 Aerosol Ångström Exponent (AAE)

Average AAE coefficients of  $1.1 \pm 0.2$  were found for both La Paz and El Alto and of  $1.0 \pm 0.3$  in CHC-GAW. AAE values in CHC reach their minimum values during the wet season and their maximum between July and September, the period in which the biomass burning emissions reach their maximum contribution to the CHC (Moreno et al., 2024). During the day, lower AAEs are observed in CHC-GAW between 6:00 and 18:00, with a minimum around 10:00, when the urban mixing layer develops enough to influence the mountain station and eBC mass concentrations reach their maximum (Fig. S4).



520

**Figure 5. Diurnal variation of the hourly median AAE (solid lines), and hourly average wind speed and wind direction (arrows above and below the solid lines, the arrowhead points to the direction to which the wind blows) at both sites during (a) winter and (b) summer. The shaded area behind the solid curves represents the 25 and 75 percentiles.**

The diurnal variability of AAE in the urban sites shows an overall decrease around the morning rush-hour peak towards the minimum values for both sites (Fig. 5). However, a difference in the evolution of this parameter throughout the day can be noticed between the sites during winter, the driest season of the year (Fig. 5(b)). A minor increment in the average AAE is discernible exclusively in winter at El Alto spanning from 9:00 to 18:00 (Fig. 5.b), period in which the average wind direction changes in El Alto from being mostly easterly/north-easterly to westerly/north-westerly. This change in the wind direction seems to allow the incursion of particles with different optical properties coming from the altiplano, e.g. dust. Given that the change in the AAE during this period of the day takes place when eBC mass concentrations reach their minimum, no significant impact in absorption was observed at 880 nm. This will be further confirmed in section 3.3.2. However, this also reveals that additional sources to traffic and biomass burning could potentially have an impact on absorption and emphasizes the limitation of the aethalometer model to address them. Further corroborating this phenomenon, in Fig. S5 in the Supplement, winter days are categorized according to their dust factor influence, which was resolved through the Positive Matrix Factorization (PMF) technique as described in Mardoñez et al. (2023). Marginally higher AAE values are discernible during daylight hours on winter-days that are characterized by dust factor mass concentrations exceeding the 0.75 percentile threshold (7 days in total). This trend also coincides with elevated wind speeds and changing wind direction. Conversely, winter days marked by dust factor contributions below the 0.25 percentile threshold (10 days in total) coincide with non-changing wind patterns and a less pronounced diurnal variation.

In La Paz, winds are practically bidirectional throughout the year due to the topography of the city, winds typically follow the direction of the canyon, blowing mainly from the south. No change in the AAE diurnal pattern is observed at this site besides the expected decrease of AAE during daytime resulting from fresh vehicular emissions.

### 3.2.2 Mass Absorption Cross-section (MAC)

The comparison of the daily averaged eBC mass concentrations to the measured EC concentrations obtained from the filter samples yielded good spearman correlations for all sampling sites ( $r \geq 0.7$ ), especially in La Paz ( $r \geq 0.9$ ) (Table S1 in the Supplement). The fitting parameters obtained from the least-squares regressions performed among both variables are very similar for both urban sites and for both size cuts with slopes between 0.49-0.54 and offsets between 0.15 and 0.32  $\mu\text{g m}^{-3}$ . In contrast, the weekly averaged eBC mass concentrations at CHC-GAW showed to be 1.7 times larger than the EC concentrations measured from the simultaneously collected filter samples, leading to outstandingly high MAC values (Table 3). As previously mentioned in section 3.1, this contrast shows that the  $\text{MAC}_{\text{AE},880\text{nm}}$  used to calculate eBC mass concentrations was not representative of the actual optical properties of the sampled aerosol particles, i.e. it overestimated the mixing state of the urban aerosol, whereas it underestimated the mixing state of the aerosol particles sampled in CHC-GAW.

The average ratio of the calculated absorption coefficients  $b_{\text{abs}}$  and EC mass concentration (using a  $C_f=2.78$  for AE33 and  $C_f=3.08$  for AE31), resulted in relatively low  $\text{MAC}_{\text{EC}}$  at the urban sites (Table 3). The average of the daily  $\text{MAC}_{\text{EC}}$  values found at both cities La Paz and El Alto are within those reported for urban and urban background areas where the absorbing particles had already undergone some mixing/aging processes (Kondo et al., 2009; You et al., 2016; Chen et al., 2017; Cui et

al., 2016). Despite intense radiation, the ageing process does not appear to be faster in the high altitude as respect to other places. Average  $MAC_{rBC}$  values obtained from the hourly ratios of absorption coefficients over rBC mass concentrations were similar to the  $MAC_{EC}$  for EA, but much higher values were obtained for LP. The latter result indeed comes from an instrumental limitation. The detection capability of SP2 outside the size range 80-650 nm is very limited (Pileci et al., 2021) thus the rBC mass is typically underestimated when the rBC mass distribution peaks below the 80 nm lower detection limit of the SP2-XR. This was the case for 90% of samples in La Paz, while in El Alto, rBC mass distributions were normally monomodal with a peak around 180 - 200 nm.

**Table 3. Average  $MAC_{EC}$  and  $MAC_{rBC}$  calculated following Eq. (8) using EC and rBC mass concentrations measured at the three sampling sites. The MAC values were extrapolated to other commonly reported wavelengths using the corresponding daily mean AAEs (with average values of  $1.1\pm 0.2$  in the urban area and  $1.0\pm 0.3$  in CHC-GAW).**

BC mass		$\lambda$ [nm]	CHC-GAW <sup>i</sup>	CHC-GAW	EA	LP <sup>ii</sup>
			Nighttime (23h-8h)	Daytime (10h-16h)		
<i>EC-PM<sub>10</sub></i>	$MAC_{EC}$	550	26.0±11.2	---	9.0±2.2	7.4 ±2.7
	±	637	21.4±9.3	---	7.7±1.9	6.6±2.4
	<b>SD</b> [m <sup>2</sup> g <sup>-1</sup> ]	880	14.8±6.9	---	5.4±1.3	4.5±1.7
<i>EC-PM<sub>2.5</sub></i>	$MAC_{EC}$	550	---	---	9.3±3.7	8.6±1.8
	±	637	---	---	8.2±3.1	7.6±1.7
	<b>SD</b> [m <sup>2</sup> g <sup>-1</sup> ]	880	---	---	5.8±2.2	5.1±1.1
<i>SP2-XR</i> ( <i>SP2-C in</i> <i>CHC</i> )	$MAC_{rBC}$ <sup>iii</sup>	550	28.3±8.5	22.6±4.9	8.8±2.3	---
	±	637	24.4±7.3	19.5±4.2	8.1±2.1	---
	<b>SD</b> [m <sup>2</sup> g <sup>-1</sup> ]	880	17.7±5.3	14.1±3.0	5.6±1.2	---

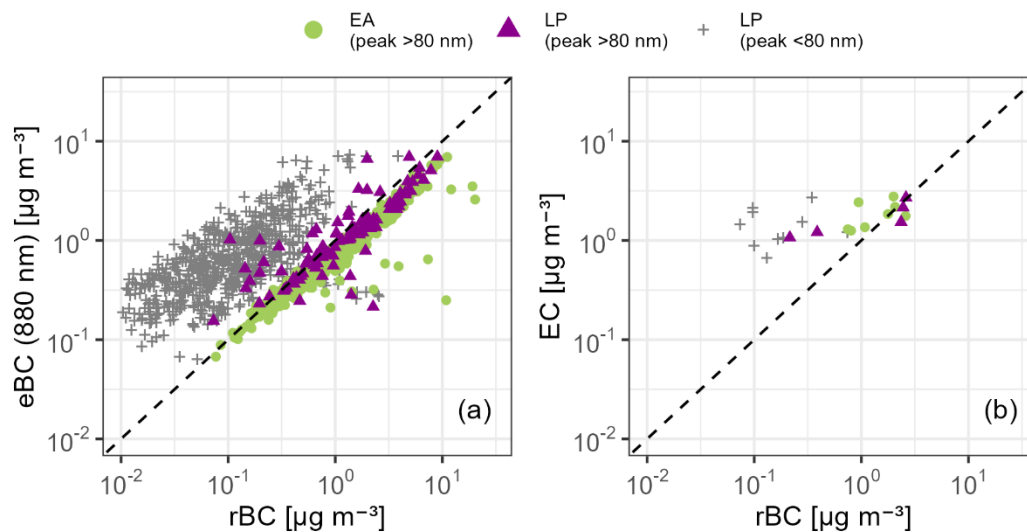
<sup>i</sup>  $MAC_{EC}$  in CHC-GAW are calculated only during night-time periods (23:00-8:00) between April 2016 and April, when the station is outside the direct influence of the urban mixing layer.  $MAC_{rBC}$  in CHC-GAW calculated during the period in which the station is under the direct influence of the urban mixing layer (10:00-16:00) between April and May 2018.

<sup>ii</sup> Median  $MAC_{rBC}$  in La Paz were calculated for the rBC mass concentrations that resulted from rBC mass-size distributions that peaked above the detection limit of the SP2\_XR (i.e. approx. 10% of the cases) and can be found in Table S2, in the Supplement.

<sup>iii</sup>  $MAC_{rBC}$  values for CHC-GAW obtained from Renzi et al. (in prep) and extrapolated to 550 nm and 880 nm through Eq. (7) assuming a constant AAE=1 that corresponds to the average AAE in CHC.

From Table 3 it can be observed that despite the EC and rBC concentrations having been measured during different periods of time, with different measuring techniques and different time resolutions, average  $MAC_{EC}$  and  $MAC_{rBC}$  remain consistent in EA and comparable in CHC. Nevertheless, the small differences between the calculated values for the two techniques

measuring mass concentrations (that are found within the levels of uncertainty) could also be influenced by the difference in the sampling period length. Therefore, caution should be taken not to over-interpret them.



580

**Figure 6. (a) Hourly average eBC and (b) daily average EC mass concentrations vs rBC concentrations measured during Apr-May 2018 at both sites. Color and shape distinguish mass size distributions of rBC that peaked within (LP: purple triangles and EA: green circles; corrected) or outside the size range of the SP2-XR (gray crosses; non corrected).**

Figure 6 displays the comparison of the simultaneous integrated mass concentrations of rBC compared to the optically estimated eBC and thermally/optically derived EC mass concentrations sampled in LP and EA between April and May 2018. In color are displayed the cases when in LP (purple triangles) and in El Alto (green circles) the mass size distributions peaked above the SP2 detection limit ( $>80$  nm), which account for the undetected mass of the particles in the size range outside the detection limit of the instrument through a lognormal fit of the rBC mass-size distribution. In gray (crosses) are the cases in LP where the distribution peaked below 80 nm, which cannot be accurately corrected for undetected mass. In the latter case, the rBC mass concentrations are highly underestimated, accounting for less than 15% of the mass of absorbing aerosol. Reliable  $\text{MAC}_{\text{rBC}}$  coefficients can therefore not be calculated for LP due to the large fraction of the mass missed, and no evident relation between meteorological parameters and the particle's aging state was observed in La Paz associated to these measurements. Nevertheless, this points out to major differences in the properties of BC between the two sites that will be further discussed in Modini et al. (in prep). In the context of the present study, we restricted the calculation of  $\text{MAC}_{\text{rBC}}$  to the cases when the size distribution of rBC peaked within the detection limit of the SP2-XR (Table 3). Given the low number of datapoints that meet this criterion in LP, mean values of  $\text{MAC}_{\text{rBC}}$  are strongly influenced by the few extreme events, resulting in higher  $\text{MAC}_{\text{rBC}}$  values. Median values are closer to the  $\text{MAC}_{\text{EC}}$  and  $\text{MAC}_{\text{rBC}}$  observed at EA (Table S2 in the Supplement). No substantial variability in the  $\text{MAC}_{\text{rBC}}$  values was observed on hourly timescales in EA. This indicates that the sources of emissions and the pathways through which they were transported to the EA site were relatively constant throughout the day and throughout the measurement period. Nevertheless, two minima are observed in the diurnal variation of  $\text{MAC}_{\text{rBC}}$  at EA,

600

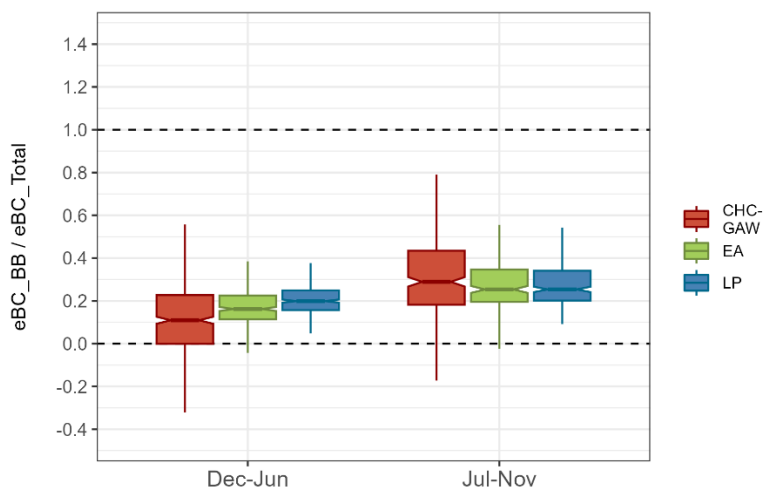
which correspond to the morning and evening rush-hour peaks (Fig. S6 in the Supplement). In contrast, the maximum  $MAC_{rBC}$  values observed throughout the day take place in the early morning and at midday. This provides evidence that fresh BC from traffic has low MAC, whereas aged BC has somewhat higher MAC, likely due to an increased degree of internal mixing. The diurnal variability in LP is not presented due to low statistical power.

605 Table 3 also displays for CHC-GAW the average nighttime  $MAC_{EC}$  values calculated for the period between April 2016 and August 2017 (when weekly nighttime  $PM_{10}$  filter samples were collected), and the average  $MAC_{rBC}$  values calculated for the period between April and May 2018 on an hourly basis during the hours in which the station is under the influence of the urban boundary layer (10-16 h) and during nighttime (23h-8h). It is possible to observe that the average (Table 3) and median (Table S2 in the Supplement) MAC values obtained from these two very different techniques for measuring rBC/EC mass  
610 concentrations, during different periods of the year and during different periods of the day, are comparable as highlighted by Figure 6 and quantitatively expressed in Table S2. However, they are outstandingly high compared to other European regional background stations, which according to Zanatta et al. (2016) are in average  $10.0 \text{ m}^2\text{g}^{-1}$ . The reasons behind this very high MAC values are further discussed in Renzi et al. (in prep.). Although relatively high MAC values have been observed in other stations, like Puy de Dôme (seasonal average at 637nm:  $13.4 \pm 1.6$ - $19.9 \pm 1.7$ , Zanatta et al., 2016), instrumental artifacts in the  
615 filter based measurements, resulting in very high MAC values, cannot be ruled out. A deepened discussion on this can be found at Renzi et al. (in prep.).

### 3.3 Intrinsic aerosol and BC properties

#### 3.3.1 Aethalometer model

The apportionment of the contribution of vehicular emissions and agricultural biomass burning emissions to absorption was  
620 calculated following the methodology described in section 2.5.1. Average contributions attributed to BB emissions present highest values during the BB season (Jul-Nov) and minimum values during the beginning of the wet season (Dec-Jan). The median contribution of BB to eBC mass concentrations based on the Aethalometer method was estimated to be 29% at CHC-GAW and 25% at the urban sites during the BB season (Fig. 7), and it decreased to 20%, 16% and 11% in LP, EA, and CHC-GAW, respectively, outside this period. Extremely low eBC mass concentrations measured at the CHC mountain station make  
625 the apportioned BB contributions to eBC to be widely spread around the median values in CHC-GAW. Even though, the percentage contributions are consistent among the three sites during the biomass burning season, the contributions of BB between December and June appear rather high since outside the biomass burning season little to no agricultural burning of crops is expected. This result is likely biased by the selection of  $AE_{TR}$  and  $AE_{BB}$  as will be shown in section 3.3.2. In Fig. S7 in the Supplement, the resulting time series of the apportioned eBC mass concentrations attributed to biomass burning practices  
630 are shown, which display similar seasonal trends throughout the years at the three sites.



635 **Figure 7. Box whiskers plot of the daily  $eBC_{BB}/eBC_{TOT}$  at 950 nm resulting from the bilinear Aethalometer method displaying maximum contributions during the biomass burning season (Jul-Nov). The horizontal bar in each box represents the median value. The lower (upper) hinge represents the percentile 25 (75), and the lower (upper) whiskers represent the smallest (largest) observation greater (less) than or equal to lower (upper) hinge  $\pm$  1.5 times the interquartile range (IQR).**

### 3.3.2 Estimation of source specific absorption efficiencies and AAE through multilinear regression

One of the limitations of the Aethalometer bilinear method is that it only allows the differentiation of two emission sources with significantly different optical properties, which might be suited for many cities in OECD countries. However, in La Paz/El Alto, this assumption does not necessarily hold, as other sources of BC may be impacting the urban air quality. Hence, we used the results from Mardoñez et al. (2023) where an integrated PMF approach was employed and 11 different sources of  $PM_{10}$  were identified.

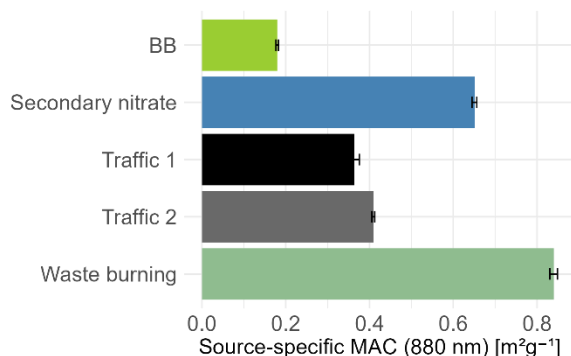
Briefly, out of the 11 resolved sources, dust and the ensemble of vehicular emissions (Traffic 1, traffic 2, lubricant oil, non-exhaust emissions) were found to be responsible for almost 50% of the measured mass concentrations of  $PM_{10}$ . The overall contribution of agricultural BB was ~8% with maximum contributions between June and September (during the biomass burning season that takes place during the dry season). Two other factors associated to secondary aerosol formation (secondary sulfate and secondary nitrate) were responsible for nearly 15% of  $PM_{10}$  mass on a yearly basis. However, the chemical profiles of both secondary factors evidenced an influence of traffic emissions by the presence of some species that are tracers for vehicular emissions, such as EC (in secondary nitrate), OC and alkanes. This suggested that the gaseous precursors of the tracers for the secondary factors (sulfate, nitrate, and ammonium) could be at least partly co-emitted with primary traffic emissions, and therefore the PMF is not able to fully separate them. A small factor in terms of percentage mass contribution was found to be associated to open waste burning predominantly in El Alto between May and August. Finally, the natural sources of aerosol particles accounted for the remaining ~17% of  $PM_{10}$  (Mardoñez et al., 2023).

In the present study, only the sources that contributed positively and that presented a  $p$ -value  $< 0.05$  at multiple wavelengths were included in Eq. (14) (section 2.5.2) for the analysis (i.e. biomass burning (BB), secondary-nitrate, traffic 1 (TR1), traffic



655 2 (TR2), waste burning). Although some evidence of the influence of dust was observed in the AAE in EA, the dust factor was not considered in the source apportionment since the p-value for this source was only significant for the shortest wavelength (370 nm). The natural primary and secondary factors did not significantly contribute to absorption, and neither did the factors associated to lubricant or non-exhaust emissions.

The regressions displayed correlations  $R^2 \geq 0.78$  for all wavelengths, with a reconstruction  $> 80\%$  of the observed absorption coefficients. The obtained source-specific  $\beta$  coefficients (absorption per mass unit of each source) are presented in Fig. 8. Open waste burning stands out as the most efficient source in terms of absorption, followed by sources directly or indirectly linked to traffic (TR1, TR2, secondary nitrate), and biomass burning.

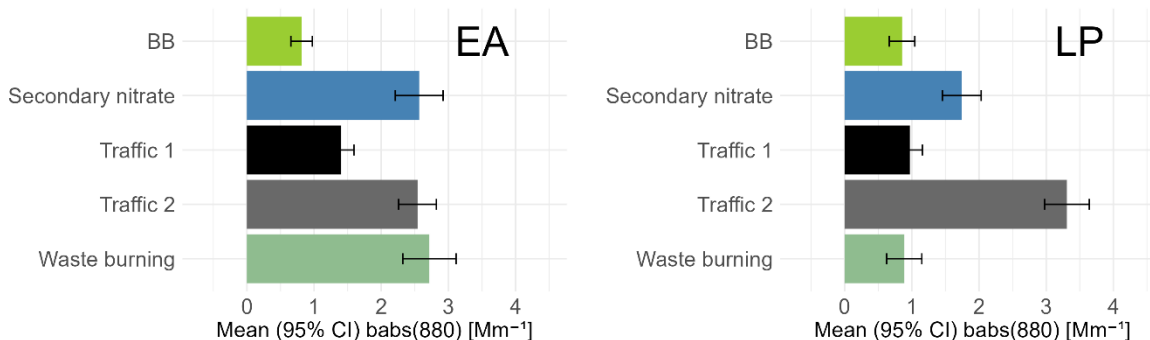


665 **Figure 8. Median source-specific mass absorption cross sections ( $\beta$ ) obtained from the multisite MLR between  $b_{\text{abs}}$  (880 nm) and the mass contribution of the six sources of  $\text{PM}_{10}$ , resolved by Mardoñez et al. (2023), that significantly contributed to the measured absorption coefficients. The black error bars represent the 95% CI of the median of the 500 bootstrap runs.**

In terms of their contribution to absorption at 880 nm (Fig. 9), i.e. source-specific  $\beta \times$  mass concentration of the factor, TR2, waste burning, and secondary nitrate stand out as the major sources of absorbing aerosols at both sites. It is important to highlight that the chemical profile of the secondary nitrate factor contained 10-20% of the total measured EC and OC, together with some alkanes. These components, tracers of traffic emissions, were not successfully separated from the tracers of secondary nitrate (ammonium and nitrate), thus, revealing its association to primary vehicular emissions. The chemical profile of the sources included in the MLR model can be found in Fig. S8 in the Supplement as well as the percentage mean contribution of EC and OC of each source factor to the mean  $\text{PM}_{10}$  concentrations attributed by the PMF to each factor (Table S3).

675 Having traffic and traffic related factors as the major sources responsible for absorbing aerosol particles is coherent with the results obtained by the aethalometer method, and with the mean AAEs  $\sim 1$  obtained at each site. However, at EA open waste burning becomes a dominant factor in terms of absorption, which only comes as a fourth in the sources ranking at LP. As stated by Mardoñez et al. (2023), open waste burning is not the institutional method for waste management in the urban areas, for which it is likely that these local emissions could originate from punctual sources of waste burning, or from the emissions of industrial and open commercial areas in El Alto. Regional BB comes as the fifth source at EA and fourth at LP (tying with TR1 and waste burning). It is noteworthy that open waste burning represented less than 5% of the total  $\text{PM}_{10}$  mass

concentrations at both sites (Mardoñez et al. 2023), however, it becomes one of the leading sources contributing to absorption in EA. Figure S9 in the Supplement displays the absorption contribution of each of the sources at 470 nm in which the ranking of the sources is maintained for EA, whereas in LP biomass burning becomes the third most important source in terms of absorption.



**Figure 9. Mean contribution to absorption at a wavelength of 880 nm of the five sources of PM<sub>10</sub> resolved by Mardoñez et al. (2023) (left: EA, right: LP) that presented a positive contribution to total absorption and a p-value <0.05 in the multilinear ordinary least-squares regression.**

Moreover, Table 4 presents the mean source specific AAE calculated, as described in Section 2.5.2, including all seven wavelengths as well as excluding the shortest one (370 nm). The highest (>> 1) AAE using the pair of wavelengths found corresponds to BB, which is at the lower end of the reported literature values, which is well explained by the co-emitted BrC. However, AAE for BB including 370 nm is closer to the values recommended by Zotter et al. (2017) for wood burning. The AAE value obtained excluding the shortest wavelength confirms the AAE<sub>BB</sub> selected for the Aethalometer method in section 2.5.1 and is comparable to the lower end of AAE values found by Rizzo et al. (2011) during the BB season in a Brazilian pasture site located in the Amazon. The remaining sources, influenced by local anthropogenic activities including vehicular emissions and open waste burning present an AAE close to 1, corresponding to freshly emitted, relatively pure, BC particles. The uniformity of AAE among sources, excluding biomass burning (BB), underscores the limitation of inferring additional source information through the incorporation of three or more sources and the consideration of three or more wavelengths in an advanced Aethalometer model. Consequently, there is a necessity for independently constrained source contributions when estimating aerosol mass.

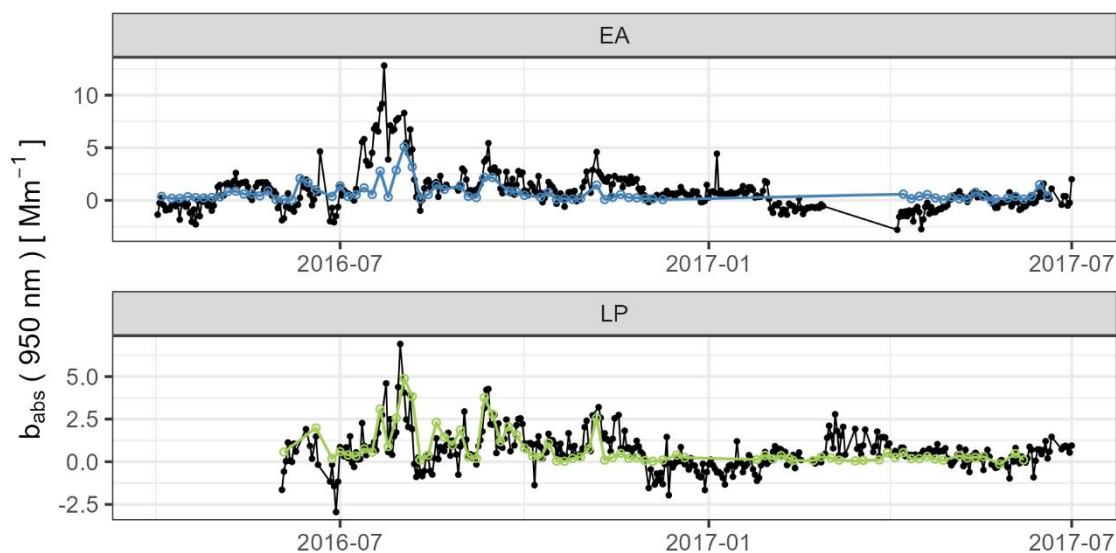
The presence of EC in the chemical profile of the open waste burning factor, as described in Mardoñez et al. (2023), and the AAE=1.1-1.2 associated to it suggest that this source could result from high temperature combustion processes. Furthermore, profile TR2 presents a lower AAE than TR1. Given that TR1 and TR2 presented different chemical profiles in Mardoñez et al. (2023), this difference in the wavelength dependency of their contributions to absorption could also give insights of a difference in the nature or the state of the absorbing aerosol particles emitted by these two sources. Based on the experiments of Schnaiter et al. (2005), Liu et al. (2018) has estimated AAE<1 for aged diesel BC particles (compact and coated). Other European studies have also reported low AAE in experiments that involved diesel buses (accelerating) (Helin et al., 2021) or

diesel dominated regions (Zotter et al., 2017). Nevertheless, given that the vehicle fleet, the fuel, and the combustion conditions in LP-EA are different than the ones in the mentioned studies, only an in-situ characterization of the exhaust emissions could unveil the identity of each factor. The pairwise source specific AAE calculated following the method used by Zotter et al. (2017) are displayed in Table S4, showing very similar results to those in Table 4, except for BB and waste burning. Waste burning AAEs were slightly lower compared to the nonlinear least-squares estimates, but closer to the values reported by Zotter et al. (2017).

**Table 4. Source-specific AAE obtained from the non-linear regression of the source-specific mass absorption MAC ( $\lambda$ ) cross-sections and wavelength.**

	<b>AAE (370 - 950 nm)</b>	<b>AAE (470 - 950 nm)</b>
<b>BIOMASS BURNING</b>	1.75±0.08	1.48±0.03
<b>TRAFFIC 1</b>	1.02±0.05	0.93±0.06
<b>TRAFFIC 2</b>	0.81±0.03	0.83±0.04
<b>SECONDARY NITRATE</b>	0.98±0.01	0.99±0.02
<b>WASTE BURNING</b>	1.17±0.03	1.12±0.05

The time series of the daily contribution of BB to absorption obtained by the two methods of BC source apportionment, MLR and Aethalometer method, are presented in Fig. S10. The apportioned absorption coefficients calculated through the Aethalometer method are clearly higher than those obtained from the MLR. However, when  $AAE_{TR}$  in the Aethalometer method is increased to 1 (the average AAE of the traffic and traffic influenced factors) the apportioned absorption coefficients attributed to biomass burning obtained from both methods are brought closer together (Fig. 10). This change in the predefined  $AAE_{TR}$  decreased the previously calculated median contribution of BB to absorption from 29% to 17% at CHC-GAW and from 25% to 12% at the urban sites during the BB season and resulted in a general agreement between both absorption apportioning methods at both sites (except for the maximum contributions obtained by the Aethalometer method at EA in 2016, and in March 2017 in La Paz). These discrepancies could be influenced by the presence of other confluent sources that have  $AAE > 1$  and an increase of their contributions during the same periods. Nevertheless, it is possible to observe that the efficiency of predicting low contributions of BB by the Aethalometer method results in noisy absorption coefficients below 0.



730 **Figure 10. Timeseries of the contribution of agricultural biomass burning to the absorption coefficients at 950 nm measured at the two urban background sites (LP and EA) using two different apportioning methods: Aethalometer method (black lines, using  $AAE_{TR}=1$  and  $AAE_{BB}=1.5$ , percentiles (1,99)) and MLR deconvolution from the mass contribution of  $PM_{10}$  sources resolved by Mardoñez et al. (2023) (colored lines).**

As demonstrated by Virkkula et al. (2021), Luo et al. (2023) and Luo et al. (2024), an added uncertainty needs to be considered when interpreting the results of the Aethalometer model, since AAE depends not only on the nature of the absorbing particle but also on several of its time-evolving microphysical parameters such as the mean core diameter, morphology, mixing state, coating thickness, coating material, among others. Since the aethalometer method heavily relies on the wavelength dependency of absorption, the variations of AAE due to the mentioned factors has shown to result in artificial positive and negative contributions of biomass burning (BB, also known as solid fuel combustion), even when no brown carbon (BrC) is present. In the present study, the  $AAE_{TR}$  and  $AAE_{BB}$  values selected to apply based on the AAE frequency distribution giving values of 0.85 and 1.57, respectively. This meant using an  $AAE_{TR}$  lower than what is typically used in the literature. As modelled by Virkkula et al. (2021) and Luo et al. (2023),  $AAE < 1$  are typically associated to compact BC particles that changed their original aggregate morphology due to the coating of other materials onto their surface, which might not be representative of the main population of BC in the urban sites. Using these values of AAE resulted in higher contributions of BB to absorption than those obtained from the second method of absorption source apportionment presented in the present study. These contributions remained  $>0$  even outside the biomass burning season and during the wet season, when traffic emissions are expected to be the main source of absorbing aerosol. Similarly, an incorrect attribution to BB was observed by Virkkula et al. (2021) and Luo et al. (2023), which was slightly higher when using the pair of lower AAE suggested by Zotter et al. (2017), 0.9 and 1.68, in the presence of non-absorbing material coating entirely (Virkkula, et al., 2021) or a fraction (Luo et al., 2023) of the BC cores. In the present study, when the average AAE of all the non-BB sources was used to represent traffic ( $AAE_{TR}=1$ ), which also is

750 closer to the mean of the frequency distribution of AAE, the agreement of both source apportionment methods improved. However, this change in  $AAE_{TR}$  resulted in negative contributions of BB to absorption of the order of ~5% during the wet season, period in which the removal efficiency of wet deposition is highest, and the presence of other combustion sources is minimum. This incorrect negative contribution of BB to absorption is in the range of the uncertainties associated to the application of the aethalometer method using an  $AAE_{TR}=1$  for freshly emitted BC found by Luo et al., (2024).

755

We can conclude that both source apportionment methods highlight local anthropogenic activities as the main sources responsible for the observed absorption, dominated by sources influenced by primary and secondary vehicular emissions. Nevertheless, the aethalometer method is sensitive to the assumed values of  $AAE_{TR}$  and  $AAE_{BB}$ . The contributions of coexisting sources with similar optical properties such as TR1, TR2 and waste burning can be masked in the two-source  
760 aethalometer model, partially leading to an overestimation of the contribution of BB to total absorption. In addition, BB is responsible for a small but significant fraction of the observed absorption despite its emitting sources being located hundreds of kilometers away from the urban centers to the other side of the Andes. Despite the large contribution of dust to PM mass concentrations, the chemical and optical properties of dust make its contribution to total absorption almost insignificant.

#### 4 Conclusions

765 Long-term records of eBC concentrations and properties in the high-altitude cities of La Paz (LP) and El Alto (EA) were documented for first time. The average background concentrations of eBC in La Paz (LP) and El Alto (EA) are comparable amongst the sites and lower than the concentrations reported for other high-altitude Latin-American megacities. The different local meteorological conditions make the concentrations of eBC in EA much higher during the evening compared to LP. A factor of two of difference in magnitude can be observed between working and non-working days at both sites, as well as  
770 between the dry and the wet season, indicating the important role that weekly anthropogenic activities and meteorology play in modulating the eBC mass concentrations. The influence of the conurbation can also be observed at the global station CHC-GAW, located ~20 km away, showing concentrations that are roughly 35% of what is measured simultaneously at the urban area (within the hours CHC-GAW is influenced by the urban mixing layer, ~10-16h). This illustrates the importance of the export of BC emissions from the LP-EA conurbation at the regional scale.

775 Despite the specific conditions of the urban sites, the intrinsic optical properties of BC in LP-EA are not fundamentally different than at other urban sites. The MAC values and the AAE estimated for both cities show that at an urban background level, eBC mass concentrations are dominated by relatively fresh vehicular emissions that do not undergo drastic ageing processes. Nevertheless, the peaking at low diameters of the BC mass size distributions in the city of La Paz is a phenomenon that is not expected at an urban background site and remains to be further investigated. Despite the presence of two major  
780 sources of (potentially) absorbing aerosols, dust and BB, the frequency distributions of AAE were narrow and dominated by traffic-like combustion sources. The relatively low estimated MACs and the size distributions of BC peaking below 80 nm

raise up the question if these characteristics are the result of combustion processes in extreme atmospheric conditions and remains to be investigated. Understanding better the combustion processes in high-altitude and their main sources could help improve and or adjust the locally existing air quality policies.

785 MAC values quickly increase in their ~20 km journey to CHC-GAW towards the highest values of MAC reported in the literature. This observed rapid increase by a factor ~3 in the estimated MAC values needs to be further studied. If common patterns are found amongst other regional sites, this absorption magnification would need to be considered in climate modelling.

The main sources of absorbing particulate matter in LP-EA are rather local. Vehicular emissions are the first target to tackle  
790 from an air quality perspective as well as to reduce the impact these emissions can have on climate. Other sources contributing to emitting BC are open waste burning (particularly in EA) and regional agricultural biomass burning happening in the lowlands across the Andes. Identifying the influence of open waste burning in absorption is noteworthy since it occurs in many cities in developing countries, in Bolivia and elsewhere. No significant contribution to absorption from dust was observed in the visible-IR range, despite being reported by previous studies as one of the mains sources of PM<sub>10</sub>, in the region.

795 It was observed that the Aethalometer method can overestimate the contributions of biomass burning, as predicted by previous studies, and more so in the presence of a third source of absorbing aerosol particles, such as open waste burning. The multilinear regression allowed to evaluate and constraint the results of the aethalometer method. In addition, it made possible the estimation of the source-specific MAC values, the source contribution to total absorption and the source-specific absorption Ångström exponent (AAE) of the sources directly or indirectly associated to vehicular emissions, biomass burning and open  
800 waste burning. We consider that this represents a relatively simple methodology for evaluating the results of the aethalometer method in measuring sites where a PMF analysis has been performed, and where concurrent influence of multiple sources can be expected.

Rigorous policies controlling the open waste burning and the size/state of the circulating vehicle fleet are therefore imperative to reduce the impact of BC on climate and on health of the inhabitants of the conurbation. Furthermore, the detection of  
805 ultrafine BC (Black Carbon) particles with exceptionally small diameters at an urban background site is a phenomenon that requires further investigation since it represents a potential higher risk of exposure to ultrafine particles of the local population.

### **Code availability**

All calculations were performed in R version 4.3.2 and the code is available upon request.

### **Authors contribution**

810 MA, PL, AW, GM, MP, AM, GU, JLJ, RK, FV, IM, and IM participated in the conceptualization of the experimental setup and design. VM participated in the data curation. VM, GM, MP, RM, and LR participated in the formal analysis and the

development of the methodology. GU, MA, PL, JLJ, AA, RK, AM, MGB and PG were involved in the funding and resource acquisition. PL, GM, MP, MA, GU helped with mentoring, supervision, and validation of the methodology, techniques, and results. VM was responsible for the data processing and the writing of the original manuscript draft. PL and GU revised the original draft. All the co-authors reviewed and edited the paper.

### **Competing interests**

The authors have the following competing interests: Griša Močnik is employed by Haze Instruments d.o.o., a manufacturer of the aerosol instrumentation. Droplet Measurement Techniques (DMT) provided an SP2-XR for the additional measurements in Pipiripi during the 2018 field campaign. Furthermore, at least one of the (co-)authors is a member of the editorial board of Atmospheric Chemistry and Physics

### **Acknowledgements**

The authors wish to thank all the people from the different laboratories (LFA, Idaea-CSIC, IGE, Air O Sol analytical platform) who actively contributed over the years in filter sampling and/or analysis. The engineer Celine Voiron who performed the OC/EC analysis is warmly recognized. Sergio Rios and Erika Miranda (deceased) of GAMLP (Gobierno Autónomo Municipal de La Paz) who provided access and facilitated tasks at Pipiripi; IIF personnel that helped in logistics during the campaign; Undergrad students who collected samples: Yaneth Laura, Grover Salvatierra, Manuel Roca, Dayana Calasich, Ever Huanca, Zarella Tuco, Santiago Herrera, Mónica Vicente, Monserrat Zapata, and Roxana Copa.

### **Financial support**

This research has been supported by the Institute de Recherche pour le Développement (IRD) France and IRD delegation in Bolivia, by Observatoire de Sciences de l'Univers de Grenoble (OSUG) partly through Labex OSUG@2020 (ANR10 LABX56), by CNRS/INSU and Ministère de l'Enseignement Supérieur et de la Recherche with contribution to ACTRIS-FR and SNO-CLAP, Slovenian research agency ARIS program P1-0385, by EU H2020 MSCA-RISE project PAPILA (Grant #: 777544) and by in-kind fundings by GU and JLJ. The PhD scholarship of Valeria Mardoñez was funded by the ARTS program of the Institute de Recherche pour le Développement (IRD) France. PSI's contribution received support from the ERC under grant ERC-CoG-615922-BLACARAT. The EC funded project EUROCHAMP-2020 (grant no.: 730997; now integrated in the ACTRIS ERIC) provided TNA support for AM to access the CCSM for training on and preparation of the SP2 for this campaign. LR received training at CCSM on SP2 data analysis, financed by Bologna University PhD program.

## References

- Alas, H. D., Stöcker, A., Umlauf, N., Senaweera, O., Pfeifer, S., Greven, S., and Wiedensohler, A.: Pedestrian exposure to  
840 black carbon and PM<sub>2.5</sub> emissions in urban hot spots: new findings using mobile measurement techniques and flexible Bayesian  
regression models, *J. Expo. Sci. Environ. Epidemiol.*, 32, 604–614, <https://doi.org/10.1038/s41370-021-00379-5>, 2021.
- Aliaga, D., Sinclair, V. A., Andrade, M., Artaxo, P., Carbone, S., Kadantsev, E., Laj, P., Wiedensohler, A., Krejci, R., and  
Bianchi, F.: Identifying source regions of air masses sampled at the tropical high-altitude site of Chacaltaya using WRF-  
FLEXPART and cluster analysis, *Atmos. Chem. Phys.*, 21, 16453–16477, <https://doi.org/10.5194/acp-21-16453-2021>, 2021.
- 845 Andrade, M., Zaratti, F., Forno, R., Gutiérrez, R., Moreno, I., Velarde, F., Ávila, F., Roca, M., Sánchez, M. F., Laj, P., Jaffrezo,  
J. L., Ginot, P., Sellegri, K., Ramonet, M., Laurent, O., Weinhold, K., Wiedensohler, A., Krejci, R., Bonasoni, P., Cristofanelli,  
P., and Whitema, O.: Puesta en marcha de una nueva estación de monitoreo climático en los andes centrales de Bolivia: la  
estación Gaw/Chacaltaya., *Rev. Boliv. Física*, 26(26), 6–15, 2015.
- Arnott, W. P., Hamasha, K., Moosmüller, H., Sheridan, P. J., and Ogren, J. A.: Towards aerosol light-absorption measurements  
850 with a 7-wavelength aethalometer: Evaluation with a photoacoustic instrument and 3-wavelength nephelometer, *Aerosol Sci.*  
*Technol.*, 39, 17–29, <https://doi.org/10.1080/027868290901972>, 2005.
- Baumgardner, D., Kok, G., and Raga, G.: Warming of the Arctic lower stratosphere by light absorbing particles, *Geophys.*  
*Res. Lett.*, 31, 10–13, <https://doi.org/10.1029/2003gl018883>, 2004.
- Baumgardner, D., Popovicheva, O., Allan, J., Bernardoni, V., Cao, J., Cavalli, F., Cozic, J., Diapouli, E., Eleftheriadis, K.,  
855 Genberg, P. J., Gonzalez, C., Gysel, M., John, A., Kirchstetter, T. W., Kuhlbusch, T. A. J., Laborde, M., Lack, D., Müller, T.,  
Niessner, R., Petzold, A., Piazzalunga, A., Putaud, J. P., Schwarz, J., Sheridan, P., Subramanian, R., Swietlicki, E., Valli, G.,  
Vecchi, R., and Viana, M.: Soot reference materials for instrument calibration and intercomparisons: A workshop summary  
with recommendations, *Atmos. Meas. Tech.*, 5, 1869–1887, <https://doi.org/10.5194/amt-5-1869-2012>, 2012.
- Beall, C. M.: Two routes to functional adaptation: Tibetan and Andean high-altitude natives, *Proc. Natl. Acad. Sci. U. S. A.*,  
860 104, 8655–8660, <https://doi.org/10.1073/pnas.0701985104>, 2007.
- Belis, C. A., Favez, O., Mircea, M., Diapouli, E., Manousakas, M.-I., S., V., Gilardoni, S., Paglione, M., Decesari, S., Mocnik,  
G., Mooibroek, D., Salvador, P., Takahama, S., Vecchi, R., and Paatero, P.: European guide on air pollution source  
apportionment with receptor models: revised version 2019., <https://doi.org/10.2760/439106>, 2019.
- Bergstrom, R. W., Pilewskie, P., Russell, P. B., Redemann, J., Bond, T. C., Quinn, P. K., and Sierau, B.: Spectral absorption  
865 properties of atmospheric aerosols, *Atmos. Chem. Phys.*, 7, 5937–5943, <https://doi.org/10.5194/acp-7-5937-2007>, 2007.
- Bernardoni, V., Ferrero, L., Bolzacchini, E., Corina Forello, A., Gregorič, A., Massabò, D., Mocnik, G., Prati, P., Rigler, M.,  
Santagostini, L., Soldan, F., Valentini, S., Valli, G., and Vecchi, R.: Determination of Aethalometer multiple-scattering  
enhancement parameters and impact on source apportionment during the winter 2017/18 EMEP/ACTRIS/COLOSSAL  
campaign in Milan, *Atmos. Meas. Tech.*, 14, 2919–2940, <https://doi.org/10.5194/amt-14-2919-2021>, 2021.



- 870 Bianchi, F., Sinclair, V. A., Aliaga, D., Zha, Q., Scholz, W., Wu, C., Heikkinen, L., Modini, R., Partoll, E., Velarde, F., Moreno, I., Gramlich, Y., Huang, W., Koenig, A. M., Leiminger, M., Enroth, J., Peräkylä, O., Marinoni, A., Xuemeng, C., Blacutt, L., Forno, R., Gutierrez, R., Ginot, P., Uzu, G., Facchini, M. C., Gilardoni, S., Gysel-beer, M., Cai, R., Petäjä, T., Rinaldi, M., Saathoff, H., Sellegri, K., Worsnop, D., Artaxo, P., Hansel, A., Kulmala, M., Wiedensohler, A., Laj, P., Krejci, R., Carbone, S., Andrade, M., and Mohr, C.: The SALTENA Experiment, *Bull. Am. Meteorol. Soc.*, 212–229, 2022.
- 875 Bockhorn, H.: *Soot formation in combustion: mechanisms and models*, Springer Science & Business Media, 2013.
- Bond, T. C., Doherty, S. J., Fahey, D. W., Forster, P. M., Berntsen, T., Deangelo, B. J., Flanner, M. G., Ghan, S., K?rcher, B., Koch, D., Kinne, S., Kondo, Y., Quinn, P. K., Sarofim, M. C., Schultz, M. G., Schulz, M., Venkataraman, C., Zhang, H., Zhang, S., Bellouin, N., Guttikunda, S. K., Hopke, P. K., Jacobson, M. Z., Kaiser, J. W., Klimont, Z., Lohmann, U., Schwarz, J. P., Shindell, D., Storelvmo, T., Warren, S. G., and Zender, C. S.: Bounding the role of black carbon in the climate system: 880 A scientific assessment, *J. Geophys. Res. Atmos.*, 118, 5380–5552, <https://doi.org/10.1002/jgrd.50171>, 2013.
- Caponi, L., Formenti, P., Massabó, D., Biagio, C. Di, Cazaunau, M., Pangui, E., Chevaillier, S., Landrot, G., Andreae, M. O., Kandler, K., Piketh, S., Saeed, T., Seibert, D., Williams, E., Balkanski, Y., Prati, P., Doussin, J., Atmosphériques, S., Cnrs, U. M. R., Créteil, U. P., Geowissenschaften, A., and Darmstadt, T. U.: Spectral- and size-resolved mass absorption efficiency of mineral dust aerosols in the shortwave spectrum : a simulation chamber study, 7175–7191, 2017.
- 885 Cavalli, F., Viana, M., Yttri, K. E., Genberg, J., and Putaud, J.-P.: Toward a standardised thermal-optical protocol for measuring atmospheric organic and elemental carbon: the EUSAAR protocol, *Atmos. Meas. Tech.*, 3, 79–89, <https://doi.org/10.5194/amt-3-79-2010>, 2010.
- Chaffin, C. A. and Ullman, T. L.: Effects of increased altitude on heavy-duty diesel engine emissions, *SAE Tech. Pap.*, <https://doi.org/10.4271/940669>, 1994.
- 890 Chauvigne, A., Aliaga, D., Sellegri, K., Montoux, N., Krejci, R., Mocnik, G., Moreno, I., Müller, T., Pandolfi, M., Velarde, F., Weinhold, K., Ginot, P., Wiedensohler, A., Andrade, M., and Laj, P.: Biomass burning and urban emission impacts in the Andes Cordillera region based on in situ measurements from the Chacaltaya observatory, Bolivia (5240a.s.l.), *Atmos. Chem. Phys.*, 19, 14805–14824, <https://doi.org/10.5194/acp-19-14805-2019>, 2019.
- Chen, B., Bai, Z., Cui, X., Chen, J., Andersson, A., and Gustafsson, Ö.: Light absorption enhancement of black carbon from 895 urban haze in Northern China winter, *Environ. Pollut.*, 221, 418–426, <https://doi.org/10.1016/j.envpol.2016.12.004>, 2017.
- Cui, X., Wang, X., Yang, L., Chen, B., Chen, J., Andersson, A., and Gustafsson, Ö.: Radiative absorption enhancement from coatings on black carbon aerosols, *Sci. Total Environ.*, 551–552, 51–56, <https://doi.org/10.1016/j.scitotenv.2016.02.026>, 2016.
- Drinovec, L., Močnik, G., Zotter, P., Prévôt, A. S. H., Ruckstuhl, C., Coz, E., Rupakheti, M., Sciare, J., Müller, T., Wiedensohler, A., and Hansen, A. D. A.: The “dual-spot” Aethalometer: An improved measurement of aerosol black carbon 900 with real-time loading compensation, *Atmos. Meas. Tech.*, 8, 1965–1979, <https://doi.org/10.5194/amt-8-1965-2015>, 2015.
- Estrada, F., Martínez-Arroyo, A., Fernández-Eguiarte, A., Luyando, E., and Gay, C.: Defining climate zones in México City using multivariate analysis, *Atmosfera*, 22, 175–193, 2009.

- Gan, W. Q., Fitzgerald, J. M., Carlsten, C., Sadatsafavi, M., and Brauer, M.: Associations of Ambient Air Pollution with Chronic Obstructive Pulmonary Disease Hospitalization and Mortality, *Am. J. Respir. Crit. Care Med.*, 905 <https://doi.org/10.1164/rccm.201211-2004OC>, 2013.
- Graboski, M. S. and McCormick, R. L.: Effect of diesel fuel chemistry on regulated emissions at high altitude, *SAE Tech. Pap.*, <https://doi.org/10.4271/961947>, 1996.
- Gysel, M., Laborde, M., Olfert, J. S., Subramanian, R., and Gréhn, A. J.: Effective density of Aquadag and fullerene soot black carbon reference materials used for SP2 calibration, *Atmos. Meas. Tech.*, 4, 2851–2858, [https://doi.org/10.5194/amt-4-2851-](https://doi.org/10.5194/amt-4-2851-2011) 910 2011, 2011.
- Harrison, R. M., Beddows, D. C. S., Hu, L., and Yin, J.: Comparison of methods for evaluation of wood smoke and estimation of UK ambient concentrations, *Atmos. Chem. Phys.*, 12, 8271–8283, <https://doi.org/10.5194/acp-12-8271-2012>, 2012.
- He, C., Ge, Y., Ma, C., Tan, J., Liu, Z., Wang, C., Yu, L., and Ding, Y.: Emission characteristics of a heavy-duty diesel engine at simulated high altitudes, *Sci. Total Environ.*, 409, 3138–3143, <https://doi.org/10.1016/j.scitotenv.2011.01.029>, 2011.
- 915 Helin, A., Virkkula, A., Backman, J., Pirjola, L., Sippula, O., Aakko-Saksa, P., Väätäinen, S., Mylläri, F., Järvinen, A., Bloss, M., Aurela, M., Jakobi, G., Karjalainen, P., Zimmermann, R., Jokiniemi, J., Saarikoski, S., Tissari, J., Rönkkö, T., Niemi, J. V., and Timonen, H.: Variation of Absorption Ångström Exponent in Aerosols From Different Emission Sources, *J. Geophys. Res. Atmos.*, 126, 1–21, <https://doi.org/10.1029/2020JD034094>, 2021.
- Hernández-Zenteno, R. J., Pérez-Padilla, R., and Vázquez, J. C.: Normal breathing during sleep at an altitude of 2,240 meters, 920 *Arch. Med. Res.*, 33, 489–494, [https://doi.org/10.1016/S0188-4409\(02\)00398-3](https://doi.org/10.1016/S0188-4409(02)00398-3), 2002.
- Human, D. M., Ullman, T. L., and Baines, T. M.: Simulation of high altitude effects on heavy-duty diesel emissions, in: *SAE Technical Papers*, <https://doi.org/10.4271/900883>, 1990.
- BOLIVIA: PROYECCIONES DE POBLACIÓN, SEGÚN DEPARTAMENTO Y MUNICIPIO, 2012-2022: <https://www.ine.gob.bo/index.php/censos-y-proyecciones-de-poblacion-sociales/>, last access: 15 April 2022.
- 925 Janssen, N. A., Gerlofs-Nijland, M. E., Lanki, T., Salonen, R. O., Cassee, F., Hoek, G., Fischer, P., Brunekreef, B. & Krzyzanowski, M.: Health Effects of Black Carbon, Copenhagen, Denmark, 1–86 pp., 2012.
- Janssen, N. A. H., Yang, A., Strak, M., Steenhof, M., Hellack, B., Gerlofs-Nijland, M. E., Kuhlbusch, T., Kelly, F., Harrison, R., Brunekreef, B., Hoek, G., and Cassee, F.: Oxidative potential of particulate matter collected at sites with different source characteristics, *Sci. Total Environ.*, 472, 572–581, <https://doi.org/10.1016/j.scitotenv.2013.11.099>, 2014.
- 930 Julian, C. G. and Moore, L. G.: Human Genetic Adaptation to High Altitude: Evidence from the Andes, <https://doi.org/10.3390/genes10020150>, 2019.
- Kirchstetter, T. W., Novakov, T., and Hobbs, P. V.: Evidence that the spectral dependence of light absorption by aerosols is affected by organic carbon, *J. Geophys. Res. D Atmos.*, 109, 1–12, <https://doi.org/10.1029/2004JD004999>, 2004.
- Kondo, Y., Sahu, L., Kuwata, M., Miyazaki, Y., Takegawa, N., Moteki, N., Imaru, J., Han, S., Nakayama, T., Oanh, N. T. K., 935 Hu, M., Kim, Y. J., and Kita, K.: Stabilization of the mass absorption cross section of black carbon for filter-based absorption

- photometry by the use of a heated inlet, *Aerosol Sci. Technol.*, 43, 741–756, <https://doi.org/10.1080/02786820902889879>, 2009.
- Laborde, M., Mertes, P., Zieger, P., Dommen, J., Baltensperger, U., and Gysel, M.: Sensitivity of the Single Particle Soot Photometer to different black carbon types, *Atmos. Meas. Tech.*, 5, 1031–1043, <https://doi.org/10.5194/amt-5-1031-2012>, 940 2012.
- Lanz, V. A., Weingartner, E., Baltensperger, U. R. S., Sandradewi, J., Prévôt, A. S. H., Szidat, S., Perron, N., and Alfarra, M. R.: Using aerosol light absorption measurements for the quantitative determination of wood burning and traffic emission contributions to particulate matter, *Environ. Sci. Technol.*, 42, 3316–23, 2008.
- Liu, C., Chung, C. E., Yin, Y., and Schnaiter, M.: The absorption Ångström exponent of black carbon : from numerical aspects, 945 6259–6273, 2018.
- Luo, J., Li, Z., Qiu, J., Zhang, Y., Fan, C., Li, L., Wu, H., Zhou, P., Li, K., and Zhang, Q.: The Simulated Source Apportionment of Light Absorbing Aerosols: Effects of Microphysical Properties of Partially-Coated Black Carbon, *J. Geophys. Res.-Atmos.*, 128, e2022JD037291, <https://doi.org/10.1029/2022JD037291>, 2023.
- Luo, J., Li, D., Wang, Y., Sun, D., Hou, W., Ren, J., Wu, H., Zhou, P., and Qiu, J.: Quantifying the effects of the microphysical 950 properties of black carbon on the determination of brown carbon using measurements at multiple wavelengths, *Atmos. Chem. Phys.*, 24, 427–448, <https://doi.org/10.5194/acp-24-427-2024>, 2024.
- Madueño, L., Kecorius, S., Andrade, M., and Wiedensohler, A.: Exposure and respiratory tract deposition dose of equivalent black carbon in high altitudes, *Atmosphere (Basel)*, 11, 1–14, <https://doi.org/10.3390/atmos11060598>, 2020.
- Mardoñez, V., Pandolfi, M., Borlaza, L. J. S., Jaffrezo, J., Alastuey, A., Besombes, J., Moreno R., I., Perez, N., Močnik, G., 955 Ginot, P., Krejci, R., Chrastny, V., Wiedensohler, A., Laj, P., Andrade, M., and Uzu, G.: Source apportionment study on particulate air pollution in two high-altitude Bolivian cities: La Paz and El Alto, *Atmos. Chem. Phys.*, 23, 10325–10347, <https://doi.org/10.5194/acp-23-10325-2023>, 2023.
- Mataveli, G. A. V., de Oliveira, G., Seixas, H. T., Pereira, G., Stark, S. C., Gatti, L. V., Basso, L. S., Tejada, G., Cassol, H. L. G., Anderson, L. O., and Aragão, L. E. O. C.: Relationship between biomass burning emissions and deforestation in amazonia 960 over the last two decades, *Forests*, 12, <https://doi.org/10.3390/f12091217>, 2021.
- Moosmüller, H., Chakrabarty, R. K., and Arnott, W. P.: Aerosol light absorption and its measurement: A review, <https://doi.org/10.1016/j.jqsrt.2009.02.035>, 2009.
- Modini, R.L., Marinoni, A., Renzi, L., Velarde, F., Mardoñez-Balderrama, V., Ginot, P., Uzu, G., Aliaga, D., Ciarelli, G., Moreno, I., Mohr, C., Bianchim F., Andrade, M., Laj, P., and Gysel-Ber, M.: High concentrations of ultrafine black carbon 965 aerosol particles observed in the world’s highest major city: La Paz, Bolivia (3600 m a.s.l.) [Manuscript in preparation], 2024
- Moosmüller, H., Chakrabarty, R. K., Ehlers, K. M., and Arnott, W. P.: Absorption Ångström coefficient, brown carbon, and aerosols: Basic concepts, bulk matter, and spherical particles, *Atmos. Chem. Phys.*, 11, 1217–1225, <https://doi.org/10.5194/acp-11-1217-2011>, 2011.

- Moreno, C. I., Krejci, R., Jaffrezo, J., Uzu, G., Alastuey, A., Mardóñez, V., Koenig, A. M., Aliaga, D., Mohr, C., Velarde, F.,  
970 Blacutt, L., Forno, R., Whiteman, D. N., Wiedensohler, A., Ginot, P., and Laj, P.: Tropical tropospheric aerosol sources and  
chemical composition observed at high-altitude in the Bolivian Andes, 2837–2860, <https://doi.org/https://doi.org/10.5194/acp-24-2837-2024>, 2024.
- Moschos, V., Kumar, N. K., Daellenbach, K. R., Baltensperger, U., Pre, A. S. H., and Haddad, I. El: Source Apportionment  
of Brown Carbon Absorption by Coupling Ultraviolet – Visible Spectroscopy with Aerosol Mass Spectrometry,  
975 <https://doi.org/10.1021/acs.estlett.8b00118>, 2018.
- Müller, T.: Development of correction factors for Aethalometers AE31 and AE33, ACTRIS-2 WP3 Work. Athens, 10-12  
Novemb. 2015, 2015.
- Müller, T., Henzing, J. S., De Leeuw, G., Wiedensohler, A., Alastuey, A., Angelov, H., Bizjak, M., Collaud Coen, M.,  
Engström, J. E., Gruening, C., Hillamo, R., Hoffer, A., Imre, K., Ivanow, P., Jennings, G., Sun, J. Y., Kalivitis, N., Karlsson,  
980 H., Komppula, M., Laj, P., Li, S. M., Lunder, C., Marinoni, A., Martins Dos Santos, S., Moerman, M., Nowak, A., Ogren, J.  
A., Petzold, A., Pichon, J. M., Rodriguez, S., Sharma, S., Sheridan, P. J., Teinilä, K., Tuch, T., Viana, M., Virkkula, A.,  
Weingartner, E., Wilhelm, R., and Wang, Y. Q.: Characterization and intercomparison of aerosol absorption photometers:  
Result of two intercomparison workshops, *Atmos. Meas. Tech.*, 4, 245–268, <https://doi.org/10.5194/amt-4-245-2011>, 2011.
- Nichols, J. L., Oesterling, E., Dutton, S. J., and Luben, T. J.: Systematic review of the effects of black carbon on cardiovascular  
985 disease among individuals with pre-existing disease, *Int. J. Public Health*, 58, 707–724, <https://doi.org/10.1007/s00038-013-0492-z>, 2013.
- NTP, N. T. P.: Polycyclic aromatic hydrocarbons: 15 Listings-benz [a] anthracene, benzo [b] fluoranthene, benzo [j]  
fluoranthene, benzo [k] fluoranthene, benzo [a] pyrene, dibenz [a, h] acridine, dibenz [a, j] acridine, dibenz [a, h] anthracene,  
7H-dibenzo [c, g] carbaz, *Rep. Carcinog. Carcinog. profiles*, 353–361, 2011.
- 990 Peralta, O., Ortíz-alvarez, A., Basaldud, R., Santiago, N., Alvarez-ospina, H., De, K., Barrera, V., De, M., Espinosa, L.,  
Saavedra, I., Castro, T., Martínez-arroyo, A., Páramo, V. H., Ruíz-suárez, L. G., Vazquez-galvez, F. A., and Gavilán, A.:  
Atmospheric black carbon concentrations in Mexico, *Atmos. Res.*, 230, 104626,  
<https://doi.org/10.1016/j.atmosres.2019.104626>, 2019.
- Peters, J., Van den Bossche, J., Reggente, M., Van Poppel, M., De Baets, B., and Theunis, J.: Cyclist exposure to UFP and BC  
995 on urban routes in Antwerp, Belgium, *Atmos. Environ.*, 92, 31–43, <https://doi.org/10.1016/j.atmosenv.2014.03.039>, 2014.
- Petzold, A., Ogren, J. A., Fiebig, M., Laj, P., Li, S. M., Baltensperger, U., Holzer-Popp, T., Kinne, S., Pappalardo, G.,  
Sugimoto, N., Wehrli, C., Wiedensohler, A., and Zhang, X. Y.: Recommendations for reporting black carbon measurements,  
*Atmos. Chem. Phys.*, 13, 8365–8379, <https://doi.org/10.5194/acp-13-8365-2013>, 2013.
- Pileci, R. E., Modini, R. L., Bertò, M., Yuan, J., Corbin, J. C., Marinoni, A., Henzing, B., Moerman, M. M., Putaud, J. P.,  
1000 Spindler, G., Wehner, B., Müller, T., Tuch, T., Trentini, A., Zanatta, M., Baltensperger, U., and Gysel-Beer, M.: Comparison  
of co-located refractory black carbon (rBC) and elemental carbon (EC) mass concentration measurements during field  
campaigns at several European sites, *Atmos. Meas. Tech.*, 14, 1379–1403, <https://doi.org/10.5194/amt-14-1379-2021>, 2021.

- Ramírez, O., Sánchez de la Campa, A. M., and de la Rosa, J.: Characteristics and temporal variations of organic and elemental carbon aerosols in a high-altitude, tropical Latin American megacity, *Atmos. Res.*, 210, 110–122, 1005 <https://doi.org/10.1016/j.atmosres.2018.04.006>, 2018a.
- Ramírez, O., Sánchez de la Campa, A. M., Amato, F., Catacolí, R. A., Rojas, N. Y., and De la Rosa, J.: Chemical composition and source apportionment of PM<sub>10</sub> at an urban background site in a high-altitude Latin American megacity (Bogota, Colombia), *Environ. Pollut.*, 233, 142–155, <https://doi.org/10.1016/j.envpol.2017.10.045>, 2018b.
- Raysoni, A. U., Armijos, R. X., Margaret Weigel, M., Echanique, P., Racines, M., Pingitore, N. E., and Li, W. W.: Evaluation of sources and patterns of elemental composition of PM<sub>2.5</sub> at three low-income neighborhood schools and residences in Quito, Ecuador, *Int. J. Environ. Res. Public Health*, 14, 1–26, <https://doi.org/10.3390/ijerph14070674>, 2017. 1010
- Renzi, L., Modini, R.L., Mardoñez-Balderrama, V., Zanatta, M., Gysel-Beer, M., Laj, P., Andrade, M., Bianchi, F., Mohr, C., Velarde, F., Aliaga, D., Ginot, P., and Marinoni, A.: Study of BC size distribution and mixing state in three different high altitude environments in the Bolivian Andean region. [Manuscript in preparation], 2024
- Rizzo, L. V, Correia, A. L., Artaxo, P., and Proc, A. S.: and Physics Spectral dependence of aerosol light absorption over the Amazon Basin, 8899–8912, <https://doi.org/10.5194/acp-11-8899-2011>, 2011. 1015
- Sandradewi, J., Prévôt, A. S. H., Weingartner, E., Schmidhauser, R., Gysel, M., and Baltensperger, U.: A study of wood burning and traffic aerosols in an Alpine valley using a multi-wavelength Aethalometer, *Atmos. Environ.*, 42, 101–112, <https://doi.org/10.1016/j.atmosenv.2007.09.034>, 2008.
- Schnaiter, M., Linke, C., Möhler, O., Naumann, K. H., Saathoff, H., Wagner, R., Schurath, U., and Wehner, B.: Absorption amplification of black carbon internally mixed with secondary organic aerosol, *J. Geophys. Res. D Atmos.*, 110, 1–11, <https://doi.org/10.1029/2005JD006046>, 2005. 1020
- Schwarz, J. P., Gao, R. S., Fahey, D. W., Thomson, D. S., Watts, L. A., Wilson, J. C., Reeves, J. M., Darbeheshti, M., Baumgardner, D. G., Kok, G. L., Chung, S. H., Schulz, M., Hendricks, J., Lauer, A., Kärcher, B., Slowik, J. G., Rosenlof, K. H., Thompson, T. L., Langford, A. O., Loewenstein, M., and Aikin, K. C.: Single-particle measurements of midlatitude black carbon and light-scattering aerosols from the boundary layer to the lower stratosphere, *J. Geophys. Res. Atmos.*, 111, 1–15, <https://doi.org/10.1029/2006JD007076>, 2006. 1025
- Seinfeld, J. and Pandis, S.: *Atmospheric chemistry and physics: from air pollution to climate change*, 3rd Editio., Wiley Interscience, 2016.
- Springston, S. R. and Sedlacek, A. J.: Noise characteristics of an instrumental particle absorbance technique, *Aerosol Sci. Technol.*, 41, 1110–1116, <https://doi.org/10.1080/02786820701777457>, 2007. 1030
- Subramanian, R., Donahue, N. M., Bernardo-Bricker, A., Rogge, W. F., and Robinson, A. L.: Contribution of motor vehicle emissions to organic carbon and fine particle mass in Pittsburgh, Pennsylvania: Effects of varying source profiles and seasonal trends in ambient marker concentrations, *Atmos. Environ.*, 40, 8002–8019, <https://doi.org/10.1016/j.atmosenv.2006.06.055>, 2006. 1035

- Suglia, S. F., Gryparis, A., Schwartz, J., and Wright, R. J.: Association between Traffic-Related Black Carbon Exposure and Lung Function among Urban Women, 1333–1337, <https://doi.org/10.1289/ehp.11223>, 2008.
- Exposure Factors Handbook: <https://www.epa.gov/sites/default/files/2015-09/documents/efh-chapter06.pdf>, last access: 13 April 2022.
- 1040 US EPA: Black Carbon Research and Future Strategies, 2011.
- Valentini, S., Barnaba, F., Bernardoni, V., Calzolari, G., Costabile, F., Di Liberto, L., Forello, A. C., Gobbi, G. P., Gualtieri, M., Lucarelli, F., Nava, S., Petralia, E., Valli, G., Wiedensohler, A., and Vecchi, R.: Classifying aerosol particles through the combination of optical and physical-chemical properties: Results from a wintertime campaign in Rome (Italy), *Atmos. Res.*, 235, 104799, <https://doi.org/10.1016/j.atmosres.2019.104799>, 2020.
- 1045 Virkkula, A., Chi, X., Ding, A., Shen, Y., Nie, W., Qi, X., Zheng, L., Huang, X., Xie, Y., Wang, J., Petäjä, T., and Kulmala, M.: On the interpretation of the loading correction of the aethalometer, *Atmos. Meas. Tech.*, 8, 4415–4427, <https://doi.org/10.5194/amt-8-4415-2015>, 2015.
- Virkkula, A.: Modeled source apportionment of black carbon particles coated with a light-scattering shell. *Atmospheric Measurement Techniques*, 14(5), 3707–3719, 2021.
- 1050 Wiedensohler, A., Andrade, M., Weinhold, K., Müller, T., Birmili, W., Velarde, F., Moreno, I., Forno, R., Sanchez, M. F., Laj, P., Ginot, P., Whiteman, D. N., Krejci, R., Sellegri, K., and Reichler, T.: Black carbon emission and transport mechanisms to the free troposphere at the La Paz/El Alto (Bolivia) metropolitan area based on the Day of Census (2012), *Atmos. Environ.*, 194, 158–169, <https://doi.org/10.1016/j.atmosenv.2018.09.032>, 2018.
- You, R., Radney, J. G., Zachariah, M. R., and Zangmeister, C. D.: Measured Wavelength-Dependent Absorption Enhancement of Internally Mixed Black Carbon with Absorbing and Nonabsorbing Materials, *Environ. Sci. Technol.*, 50, 7982–7990, <https://doi.org/10.1021/acs.est.6b01473>, 2016.
- Yu, L., Ge, Y., Tan, J., He, C., Wang, X., Liu, H., Zhao, W., Guo, J., Fu, G., Feng, X., and Wang, X.: Experimental investigation of the impact of biodiesel on the combustion and emission characteristics of a heavy duty diesel engine at various altitudes, *Fuel*, 115, 220–226, <https://doi.org/10.1016/j.fuel.2013.06.056>, 2014.
- 1060 Yus-Díez, J., Bernardoni, V., Močnik, G., Alastuey, A., Ciniglia, D., Ivančič, M., Querol, X., Perez, N., Reche, C., Rigler, M., Vecchi, R., Valentini, S., and Pandolfi, M.: Determination of the multiple-scattering correction factor and its cross-sensitivity to scattering and wavelength dependence for different AE33 Aethalometer filter tapes: a multi-instrumental approach, *Atmos. Meas. Tech.*, 14, 6335–6355, <https://doi.org/10.5194/amt-14-6335-2021>, 2021.
- Zanatta, M., Gysel, M., Bukowiecki, N., Müller, T., Weingartner, E., Areskou, H., Fiebig, M., Yttri, K. E., Mihalopoulos, N., 1065 Kouvarakis, G., Beddows, D., Harrison, R. M., Cavalli, F., Putaud, J. P., Spindler, G., Wiedensohler, A., Alastuey, A., Pandolfi, M., Sellegri, K., Swietlicki, E., Jaffrezo, J. L., Baltensperger, U., and Laj, P.: A European aerosol phenomenology-5: Climatology of black carbon optical properties at 9 regional background sites across Europe, *Atmos. Environ.*, 145, 346–364, <https://doi.org/10.1016/j.atmosenv.2016.09.035>, 2016.

Zotter, P., Herich, H., Gysel, M., El-Haddad, I., Zhang, Y., Mocnik, G., Hüglin, C., Baltensperger, U., Szidat, S., and Prévôt, A. S. H.: Evaluation of the absorption Ångström exponents for traffic and wood burning in the Aethalometer-based source apportionment using radiocarbon measurements of ambient aerosol, *Atmos. Chem. Phys.*, 17, 4229–4249, <https://doi.org/10.5194/acp-17-4229-2017>, 2017.