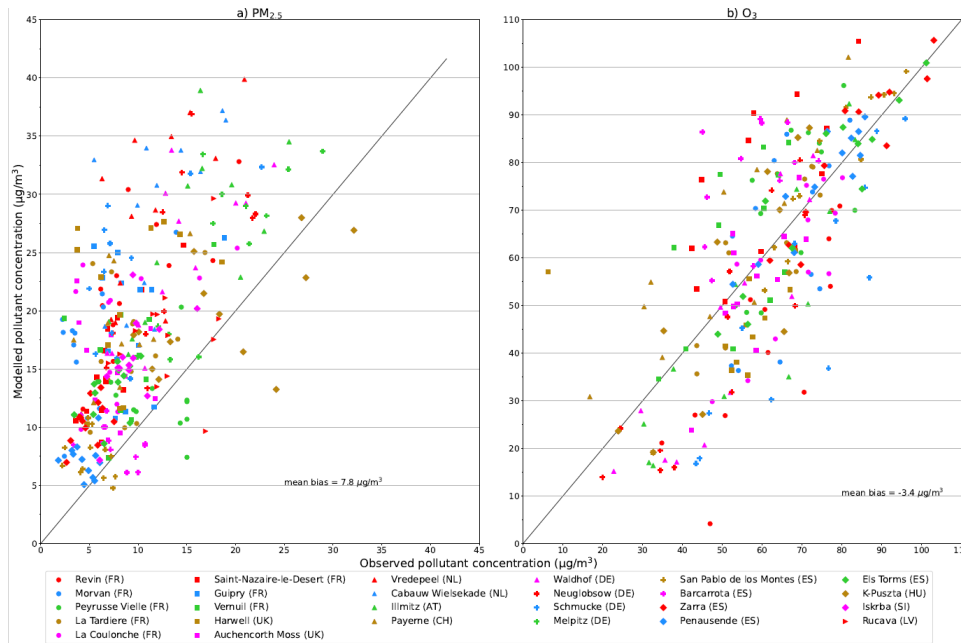
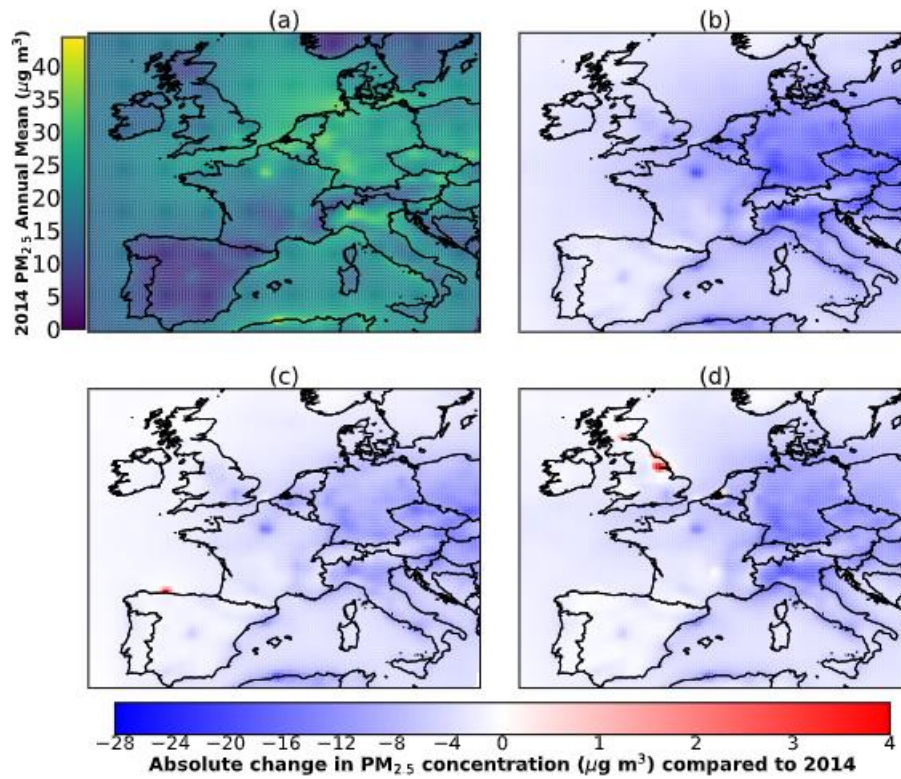
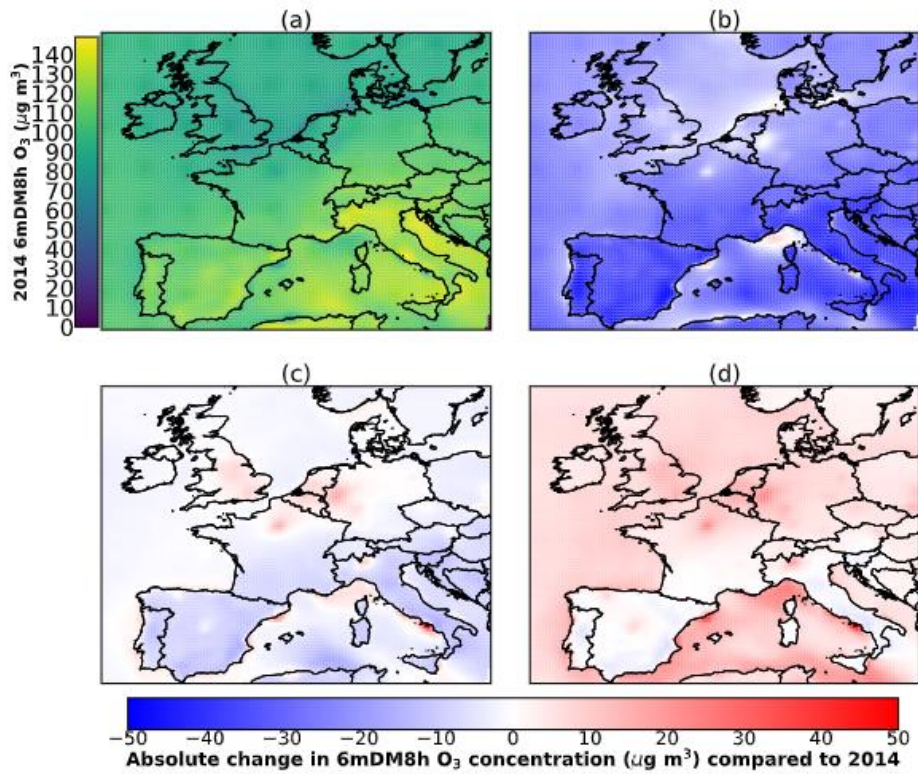


1) Updated figure 2 with bias and clearer symbols.



2 and 3) Absolute changes in PM_{2.5} and O₃ across scenarios.





Figures 4, 5 and 6) Changes in NH₃, NO_x and SO₂ emissions respectively between the present and all future scenarios

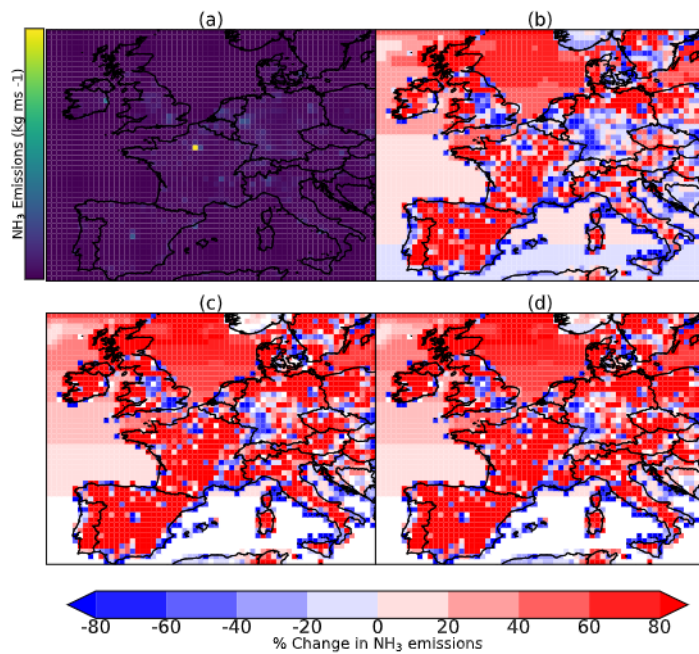


Figure A3. Annual mean NH₃ emissions for each scenario. (a) shows this metric for 2014. (b),(c) and (d) show the percentage change from this for SSP1-2.6, SSP2-4.5 and SSP3-7.0 in 2050 respectively.

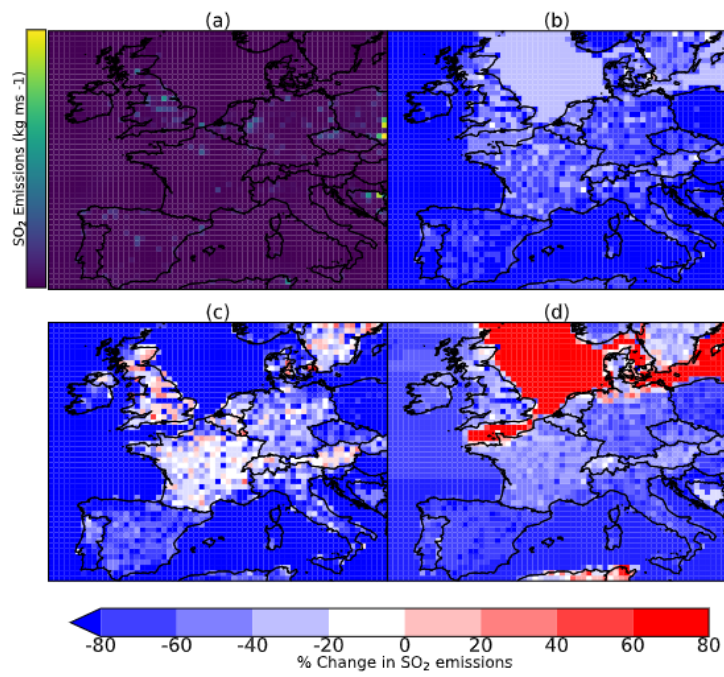
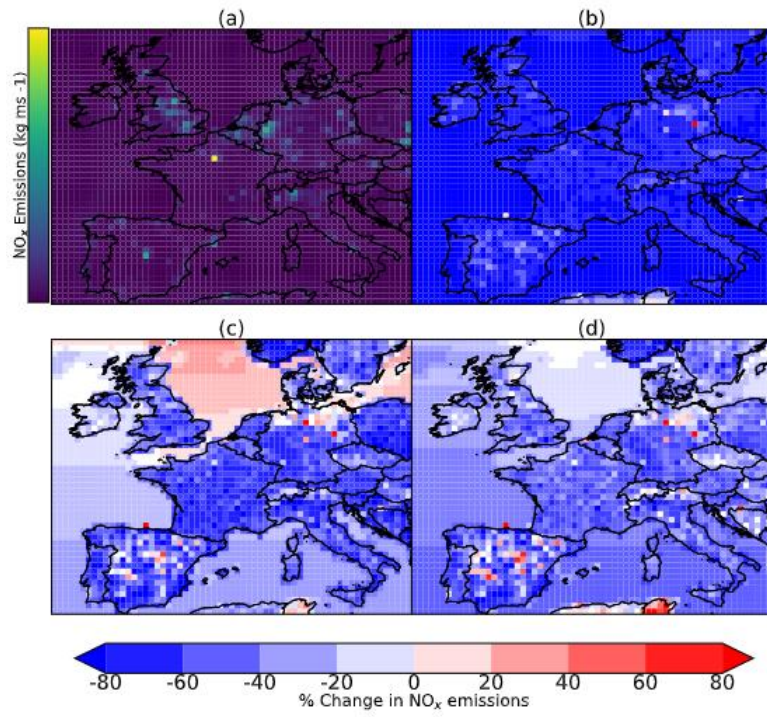


Figure 7) Change in NO₂ concentrations in all scenarios

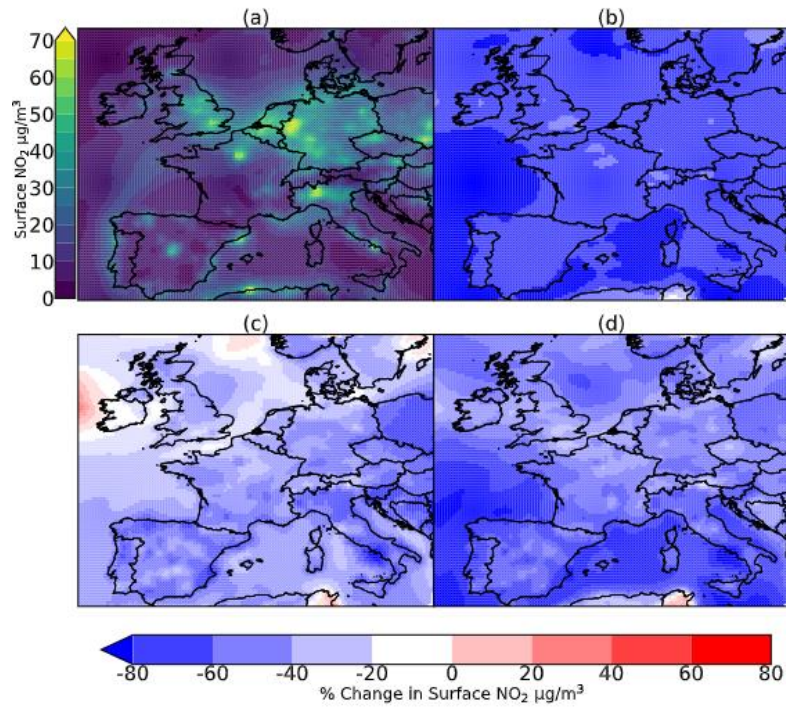


Figure A7. Annual mean NO₂ for each scenario. (a) shows this metric for the CMIP6 2014 simulation. (b),(c) and (d) show the percentage change from this for SSP1-2.6, SSP2-4.5 and SSP3-7.0 respectively.