

Figure R1. Example waveforms of the vertical component and corresponding spectrograms observed at station KRBG for 26 September 2019 ML=5.7 (top-left), 24 September 2020 ML=3.7 (top-right) and 5 January 2019 ML=4.1 (bottom) events.

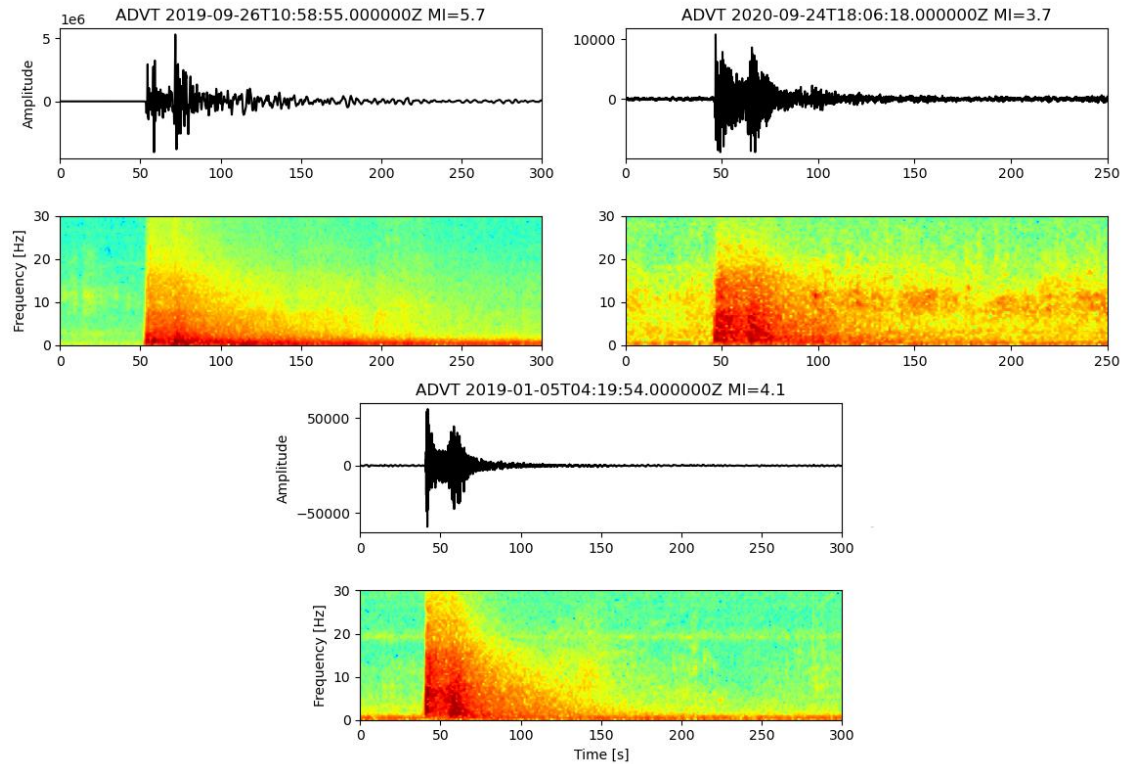


Figure R2. Example waveform of the vertical component and corresponding spectrograms observed at station ADVT for 26 September 2019 ML=5.7 (top-left), 24 September 2020 ML=3.7 (top-right) and 5 January 2019 ML=4.1 (bottom) events.