

## Response to anonymous referee #2

We thank Reviewer 2 for their time and effort to provide detailed and constructive feedback on the manuscript, which has improved the quality of the study. We have addressed all comments below and propose to implement the changes in a revised version of the manuscript.

Black: reviewer comment

Blue: author's response

Green: revised text (**bold: new text**)

The authors present an extensive analysis of existing and new data of stable water isotopes from precipitation, surface and subsurface snow samples collected next to the Dome C research station in Antarctica over the period from 2017 to 2021. They complement this data with a modelling approach – the Snow Isotopic Signal Generator (SISG) – which tries to simulate the observed isotopic composition with different input parameters. Additionally, they analyse the output from an isotope-enabled GMC (ECHAM6-wiso). The authors put a lot of effort into combining different isotope data sets from different campaigns. This data is very valuable for the community. I appreciate the dedication of this team to collect and measure these samples and to provide an in-depth analysis to

the community. Such data and the knowledge that the community gains from it are a necessary step to better understand the post-depositional processes on ice sheets and the climatic imprint in ice cores.

### Specific comments (major)

The manuscript reads lengthy in parts and explains very detailed the observations of precipitation, surface and subsurface snow isotopic composition as well as the modelling approach. In parts it is difficult to follow and to remember all details from the comparisons of different observations and the modelling results. The readability can be improved by shortening parts. Additionally, chapter 4.1 (*Contribution of precipitation to the snow isotopic composition*) shows even more new figures and information. To me, (part of) this section provides many results and does not necessarily discuss them. The authors might consider moving this (or part of this) part to the results section and focus on the comparison of their findings to other studies as well as on implications of their findings in the discussion (as they do from chapter 4.2 onwards).

Many thanks to the reviewer for these useful suggestions. We partly agree that Section 4.1 would fit better in the results section of the paper, but we see the argument of the reviewer that it would improve the organisation of the manuscript. We therefore propose to move the whole Section 4.1 to the results, as a new Section 3.4 keeping the title “Contribution of precipitation to the snow isotopic composition”. The discussion section will now be focusing on the comparison of our findings to other studies as well as on implications of our findings, as suggested by the reviewer.

Additionally, I would like to see comments or a chapter about the limitations of the study. Some limitations are mentioned in some parts, but I am missing a comprehensive analysis of the shortcomings and the reliability of their dataset and, especially, the assumptions on which their study is based on (e.g. isotopes represent local air temperature, scaling of ERA5 precipitation, large surface features and intermittent accumulation at their study site, etc).

Following the previous comment, we propose to reorganise the discussion and add a subsection focusing on the shortcomings and reliability of our dataset. The discussion is now organised as follows (Section 4.2. and onwards remain the same):

### **4.1. Limits of the methodological approach**

#### **4.1.1. Reliability of the datasets**

#### **4.1.2. SISG setup and inputs**

This new discussion will incorporate the reviewer's major comments addressed below. The new text in the subsections 4.1.1 and 4.1.2 is available below the next comment.

- Figure 8, for example, show a large variability between consecutive samples. This can be related to a large spatial heterogeneity in surface features (e.g. Picard et al., 2019), likely causing variability and noise in surface and subsurface snow isotopic compositions. How do you explain these differences? How realistic is it that these two samples, 50m apart, sampled twice a week, represent the local weather/climate, considering the reported surface processes and post-depositional processes (e.g. snow erosion and re-deposition)?

We agree with the reviewer's comment on the large variability between consecutive samples, and that this can be indeed due to large heterogeneity in surface features. We are discussing this point in Section 4.2.1 (1.693 forward) as a potential explanation for the short-term discrepancies between the snow surface signal and the incoming precipitation signal (represented as the synthetic snow). Here we consider erosion and re-deposition processes as one of the post-depositional processes that affects the snow isotopic composition.

We acknowledge the reviewer's concern that we don't discuss the reliability of using two samples collected 50 m apart and twice a week as a representation of the local weather and climate. In the manuscript we are only showing the average between the two sampling locations to describe the variability in  $\delta^{18}\text{O}$  and d-excess in the snow surface and subsurface. In order to understand whether this is realistic, we looked at the temporal variations of the two samples independently (locations 1 & 2, see Figure A1 below). We see that the variations in  $\delta^{18}\text{O}$  and d-excess at locations 1 and 2 generally follow each other, particularly for the snow surface samples and less clear for the snow subsurface samples. To go beyond the visual comparison and to determine the timescales at which the two samples show the same signal, we performed a wavelet coherence analysis (Grinsted et al., 2004) between the time series from the two locations (see Figure A2 below). We find a significant in-phase coherence between the two locations in the range of approximately 120 days and above throughout the 5-year period, for both  $\delta^{18}\text{O}$  and d-excess in the surface and subsurface samples. Note that this is a bit less clear for the d-excess in the subsurface samples. We also episodically see some coherence between the two locations at 30 to 60 days.

This analysis shows that the two samples collected 50 m apart present the same variations in  $\delta^{18}\text{O}$  and d-excess from intra-annual (sometimes down to 30 days) to multi-annual timescales, but not at shorter timescales. We argue that this shared signal between the two locations indicates that the variations in  $\delta^{18}\text{O}$  and d-excess observed in the snow samples do represent the local weather and climate driven isotopic signal in surface snow at intra-annual to multi-annual timescales. At shorter time scales (intra-monthly), it is most probably sampling noise that dominates the variations in the snow  $\delta^{18}\text{O}$  and d-excess, which can be induced by erosion and redistribution and reflects more the spatial variability than the temporal one. This short-term noise and variability are also the reason why we are not quantifying the post-depositional effects on intra-monthly to seasonal timescales, but solely the mean effect on the snow over five years.

We have included this analysis in the manuscript in a new Section 4.1.1 of the discussion (Reliability of the datasets, see text below).

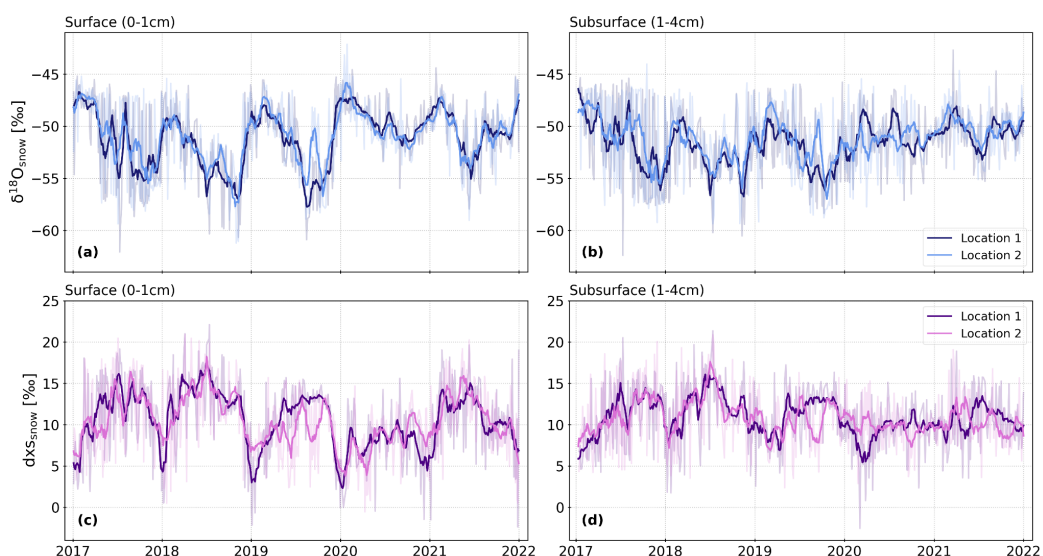


Figure A1: Snow isotopic compositions of the two samples collected 50 m apart (locations 1 & 2). Panels (a) and (b) show the time series for the snow surface and subsurface  $\delta^{18}\text{O}$ , respectively. Panels (c) and (d) show the time series for the snow surface and subsurface d-excess, respectively. In all four panels, the thin lines represent the original time series and the thick lines show the 30-day running means.

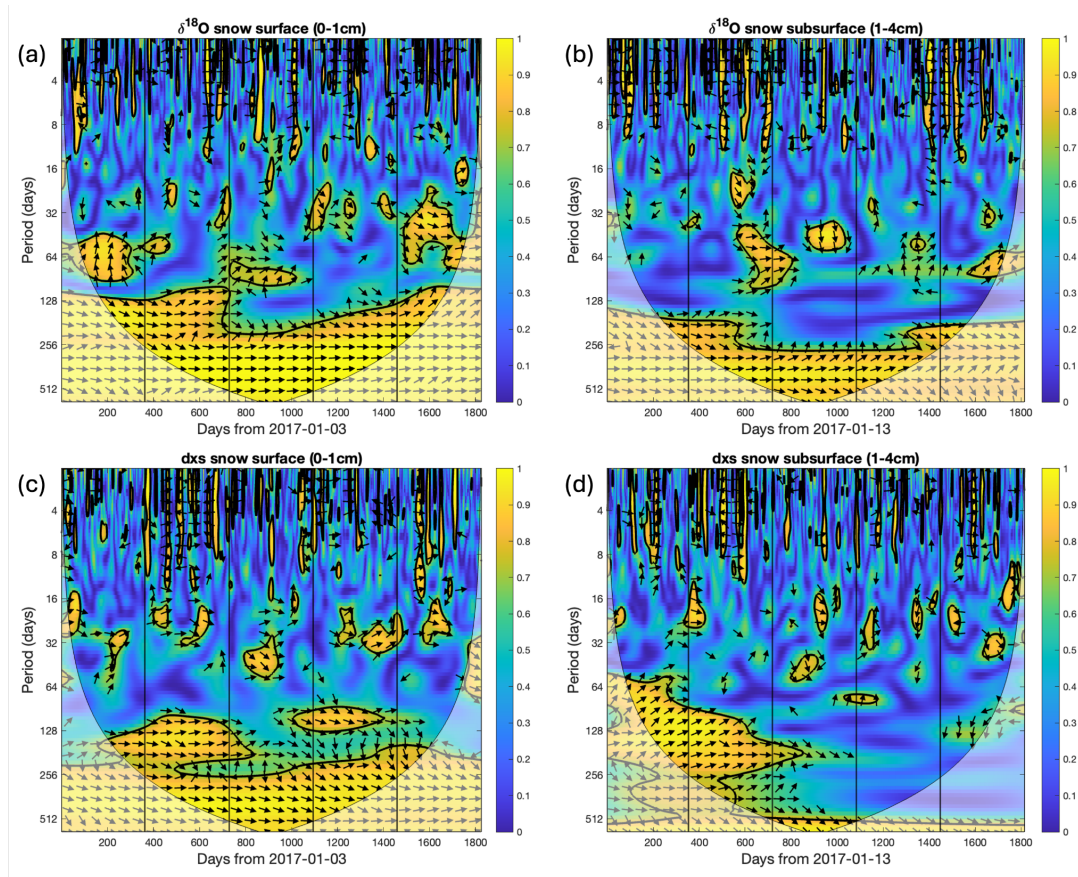


Figure A2: Squared Wavelet Coherence analysis between the two isotopic composition time series of the samples collected 50 m apart (locations 1 & 2) using the procedure of Grinsted et al. (2004). Panels (a) and (b) show the analysis for the snow surface and subsurface  $\delta^{18}\text{O}$ , respectively. Panels (c) and (d) show the analysis for the snow surface and subsurface d-excess, respectively. In all four panels, the 5% significance level against red noise is shown as a thick contour. The light white shade shows the cone of influence where edge effects might distort the picture. Arrows indicate phasing (angle corresponds to phase behaviour). The vertical black lines represent the first day of each year in the 5-year time series. Note that we linearly interpolated the four time series to daily time steps to be able to perform the analysis.

To address the reviewer's previous comments, we have implemented changes in the discussion which are provided below. Both figures A1 and A2 above were added to the Supplementary Materials (new figures S2 and S3).

#### 4.1. Limits of the methodological approach

##### 4.1.1. Reliability of the datasets

Our study of the snow water stable isotopic composition is based on snow samples collected regularly all-year round at Dome C. In Fig. 3, 8 and 9, we use the average of the two samples collected 50 m apart (Sect. 2.2) to describe the variability in  $\delta^{18}\text{O}$  and d-excess in the snow surface and subsurface. To ensure that the observed variations reflect a signal of local weather and climate rather than random noise, we analysed the temporal variations of the two samples independently (locations 1 & 2, Fig. S2 in Supplement S3). We see that the variations in  $\delta^{18}\text{O}$  and d-excess at the sampling locations 1 and 2 generally follow each other. Additionally, a wavelet coherence analysis (Grinsted et al., 2004) revealed significant in-phase coherence between both locations for  $\delta^{18}\text{O}$  and d-excess in the snow surface and subsurface samples, over approximately 120 days and above throughout the 5-year period (Fig. S3 in

Supplement S3). Note that this is a bit less evident for the d-excess in the subsurface samples. We also see some episodic coherence between the two locations at 30 to 60 days. We argue that this shared signal between both locations indicates that the intra-annual to multi-annual variations in  $\delta^{18}\text{O}$  and d-excess observed in the snow samples reflect a true temporal climate or weather driven signal. This brings confidence in using this dataset to investigate the formation of the isotopic signal in the snow. At shorter time scales (intra-monthly), the  $\delta^{18}\text{O}$  and d-excess variations that are not shared by both locations most likely reflect the spatial heterogeneity of the surface, arising from snow erosion and redistribution leading to an accumulation by patches (Picard et al., 2019). This is one aspect of post-depositional processes that is further discussed in Sect. 4.2.1.

Certain limitations should also be mentioned concerning the precipitation isotopic composition time series presented in Fig. 6. As detailed in Sect. 3.2, all the snow laying on the bench is collected, whether it is precipitation (including diamond dust), blown snow or hoar formed from atmospheric condensation. In addition, some of the samples might have been affected by ad hoc sublimation, especially during the summertime, due to their exposure to the atmosphere before sample collection. As already pointed out by Dreossi et al. (2023), the precipitation dataset might also be biased towards higher precipitation events, because it was not possible to collect or measure the isotopic composition of the sample when very little snow was present on the table, due to too little precipitation during the day or because the sample was blown away. Lastly, some days with precipitation are missing in the dataset, because the sample was simply not collected, due to harsh conditions for example. This also affects the observed precipitation amounts presented in Fig. 5, as they are inferred from the weights of the samples collected on site (Sect. 2.3 and 2.5.1).

Considering the points discussed and to avoid overinterpreting the differences in the isotopic compositions of the individual precipitation and snow samples, we instead use the full datasets presented here to quantify the mean effect of post-depositional processes over five years (Sect. 4.2.2).

#### 4.1.2. SISG setup and inputs

In Sect. 3.4.1 and 3.4.2, we showed that none of the five SISG experiments fully represent the variability observed in the snow surface and subsurface isotopic composition ( $\delta^{18}\text{O}$  and d-excess). **However, it should be mentioned that the results of the simple model used in our study come with some limitations.**

The model was designed with a fixed depth for both snow samples to best represent the observations, although the depths of the samples collected in the field might have varied over time (Sect. 2.2). Changing the sample depths in the SISG model does not significantly improve the agreement between the model results and the observations (Table S3 in Supplement S4.3), **however implementing a varying depth for each time step of the model could improve the concordance between the synthetic and observed snow layers.**

The inputs of the model might also explain some of the discrepancies between the observed and synthetic snow layers. For example, there are fewer small precipitation events in the observations than given by ERA5 and ECHAM6-wiso (Fig. 5b), **which reflects the possible bias of the observations towards higher precipitation events (Sect. 4.1.1).** This could lead to an underestimation of the contribution of smaller precipitation events (e.g. diamond dust) to the total accumulation and explain the differences between the experiments “iso from wg. mm and obs accu” and “iso from ar. mm and obs accu” and the observations (Fig. 8 and 9). **On the other hand, it might be ERA5 and ECHAM6-wiso that overestimate the contribution of smaller precipitation events to the total accumulation, due for example to too frequent precipitation days with low precipitation rates.** Some snowfall events in ERA5 and ECHAM6-wiso could also be occurring too early or too late and explain why the short-term increases and decreases in the snow isotopic composition are not reproduced in the experiments using ERA5 and ECHAM6-wiso precipitation amounts (Fig. 8a and c, Fig. 9a and c). In addition, we scaled up all three precipitation time series to match the mean annual accumulation of 8 cm year<sup>-1</sup> at Dome C (Sect. 2.5), although this value can vary and estimations over other time periods have given higher mean accumulation rates (e.g. Frezzotti et al., 2005). **One way to improve the model results would be to scale the precipitation time series with a different mean annual accumulation rate for each individual year using recent data from the GLACIOCLIM stake network (Genthon et al., 2015; <https://glacioclim.osug.fr/>).** Lastly, due to missing data in the observations of the daily precipitation isotopic composition, we used an artificial time series in three out of five experiments (Sect. 2.5), but none of these represent accurately the observations (Fig. S4 in Supplement S4.1). **This could also partly explain the differences between the observed and synthetic snow layers.**



For the different reasons stated above, we don't quantify the effect of post-depositional processes by comparing directly the model results and the observations, but rather use it as a tool to discuss the role of the different surface processes on the snow isotopic composition (Sect. 4.2.1).

- Sublimation is often discussed as a reason to alter the surface snow isotopic composition significantly throughout the 5-year period. The authors discuss the difference between surface and subsurface snow isotopic composition, but do not use or apply the mentioned model by Wahl et al. (2022) to simply estimate the depth of snow affected by sublimation. Moreover, they mention (l. 695ff.) that the location at Dome C on the East Antarctic Plateau has a very intermittent snow accumulation in time and space (which is well-known). Besides presenting the new datasets, this study does not provide more insights into the mechanism of post-depositional processes affecting the stored climatic information in stable water isotopes in such environments. Extending their simulations with e.g. diffusion and/or sublimation (models for both do already exist, (e.g. Münch et al., 2016; Wahl et al., 2022)) or simply estimating the effect of these processes, would help to quantify the role of these processes and to further disentangle ambient noise, post-depositional processes, and the climatic imprint in stable water isotopes in precipitation as well as in surface and subsurface snow.

We acknowledge that our study primarily focuses on the observational datasets from Dome C without applying any complex model to study the impact of the different post-depositional processes on the snow isotopic signals. However, we believe that the datasets presented are quite extensive and significant and therefore required a thorough investigation and discussion about their reliability, as also suggested by the reviewer. In addition, although we do not quantify its impact on the snow isotopic composition, we are providing a 3-year time series of water vapor fluxes at Dome C overlapping with the precipitation and snow samples collected on site, which paves the way for future studies investigating the role of water vapor fluxes on the snow isotopic composition at Dome C. The use of a more complex model and a full observation-model comparison is beyond the scope of this manuscript, but we agree with the reviewer that this is a necessary step forward and are working on a follow up study to further disentangle the processes building up the isotopic signal in the snow.

- ECHAM6-wiso is compared to the observations and the SISG simulations. What is the benefit of including a GCM here? Can you provide any suggestions for the modelling community how to improve the representation of isotopes in isotope-enabled GCMs? Why not using a smaller model, such as Wahl et al. (2022) or Dietrich et al. (2023) developed when they proved that they can reproduce observations?

In our study, the outputs from ECHAM6-wiso (precipitation amounts and isotopic composition) are first evaluated against observations and later on used as inputs to the simple SISG model. We included a GCM in our study for two reasons: (1) investigate possible biases and evaluate the model performance in representing the observed precipitation amounts (Section 3.3.1) and isotopic compositions (3.3.2) and (2) use the model outputs first in a simple model to compare the results with alternative inputs (Section 4.1.1 and 4.1.2).

We would like to stress that the modelling approaches in Wahl et al. (2022) and Dietrich et al. (2023) are used in two different contexts with two different versions of the SNOWISO model (latest version in Dietrich et al., 2023; see also our response to the reviewer's last comment below) and that in Dietrich et al. (2023), the model is driven by (but not only) outputs from a GCM. In our study, the aim was therefore to prepare the foundation for using GCM outputs as drivers of a snowpack model to simulate the effects of post-depositional processes on the isotopic signal found in the snow and firn, as done by Dietrich et al. (2023) for the Greenland Ice Sheet.

We acknowledge that we only briefly touch upon the origin of the observed biases between the observations and ECHAM6-wiso (l.760-766) but don't suggest any improvements for the representation of isotopes in the GCM. As also suggested by reviewer 1, we have now included in the manuscript some suggestions for the modelling community (l.763 forward):

“A thorough investigation of the biases in ECHAM6-wiso is beyond the scope of this study, but they might arise from different processes in the model, such as the environmental conditions at the moisture source region, the moisture transport and pathway, the supersaturation parametrization or the condensation height and temperature at Dome C. **The fourteen-year record of the precipitation isotopic composition (Dreossi et al., 2023 and this study) gives the opportunity to evaluate isotope-enabled GCMs and can be used to improve the tuning of the empirical parameterization of supersaturation in polar clouds (e.g. Risi et al., 2013).”**

#### Specific comments (minor)

- L. 59: lower atmosphere

Taken into account.

- L. 81: water stable isotopes -> stable water isotopes

Taken into account.

- L. 81f.: It is written “snow surface and subsurface” and later “surface snow and subsurface snow”. Please consistently use one term throughout the manuscript.

To be consistent we now only use the term “snow surface and subsurface” throughout the manuscript.

- L. 118: Is the uncertainty determined with an independent quality control sample?

The uncertainty stated here is estimated using sample replicates, standards with known isotopic composition and independent control samples. Please see two comments below for the text modification.

- L. 118: two standard deviations

This will now become “one standard deviation” (see comment below).

- L. 118 and l. 142: First, the uncertainty is given by two standard deviations and later, in l. 142, by one standard deviation of a quality standard. Why are you using different measure for uncertainty? It seems that the first uncertainty is lower when using one standard deviation, especially for dD ( $0.7\text{‰}/2 = 0.35\text{‰}$ ). Does this influence the d-excess presented in this study?

The uncertainties associated to the measurements of the snow and precipitation samples were estimated differently:

- Snow samples: the uncertainty is estimated using sample replicates, standards with known isotopic composition and independent control samples.
- Precipitation samples: the uncertainty is estimated by measuring several times a quality standard with known isotopic composition.

We agree with the reviewer that the text was misleading and there was also a mistake in the original manuscript. The uncertainties stated for the snow samples correspond to one standard deviation. We will keep one standard deviation for both the snow and precipitation samples, and round the uncertainty values of the precipitation samples (see modified text below).

From the uncertainties on  $\delta^{18}\text{O}$  and  $\delta\text{D}$ , we can estimate the uncertainties (one standard deviation) on d-excess, which is  $\pm 0.9\text{‰}$  for the snow samples and  $\pm 0.8\text{‰}$  for the precipitation samples. This doesn't influence the d-excess presented here, with variations of d-excess in the precipitation and in the snow higher than the uncertainties stated above.

To incorporate the reviewer's comment, we have improved the text as follows:

#### **l.118-119**

“The associated uncertainty (one standard deviation including quality control sample, standards and sample replicates) on these measurements is  $\pm 0.2\text{‰}$  for  $\delta^{18}\text{O}$  and  $\pm 0.7\text{‰}$  for  $\delta\text{D}$ , **which yields an uncertainty of  $\pm 0.9\text{‰}$  for d-excess (one standard deviation).**”

#### **l. 141-143**

“The associated uncertainty (one standard deviation of quality standard replicates) on these measurements is  $\pm 0.1\text{‰}$  for  $\delta^{18}\text{O}$  and  $\pm 0.7\text{‰}$  for  $\delta\text{D}$ , **which yields an uncertainty of  $\pm 0.8\text{‰}$  for d-excess (one standard deviation).**”

- L. 151: The time step is one hour. How is a 1-hour average calculated from a 1-hourly spaced timeseries?

We agree that this is confusing. Although the weather station measures more frequently, only the 1-hourly averaged data is available in open-access. We have modified the text l.151 as follows:

“Hourly data from the AWSIT is available in Grigioni et al. (2022).”

- L. 160: Why are you not averaging the data to 1-hour time steps as well (as the AWSIT data)?

We wanted to have the highest time resolution for the water vapor fluxes, and since the data from the USt is available in open access at 30 min time step, we chose this resolution instead of 1-hour time steps.

- L. 167 and 169: Which test was used to test for significance?

It is a misuse of the term “significant” because we didn’t perform any statistical test. We agree that this is an issue and therefore performed a correlation on the overlapping period and found a correlation (Pearson correlation coefficient) of 1.0. We have modified the text l.167 as follows:

“We found a linear correlation (Pearson correlation coefficient) of 1.0 between the datasets for both temperature and wind speed. Therefore, we use the temperature and wind records from the USt between 2017 and 2021 in our analysis.”

We notice that similarly, in l. 169 we use the term “no significant difference” without having performed a statistical test. We have modified this sentence as well as follows:

“The linear correlation (Pearson correlation coefficient) between the two temperature records is 0.99 (not shown).”

- L. 191: fluxes

Taken into account.

- Table 1: The sampling rate of the CALVA measurements is given as 30s. Here, you are referring to the used averages. “Measurement time step” is in my opinion not the correct term here. Maybe you can rephrase it.

This is a good point. We have changed the term “measurement time step” in the table caption by “averaging time step”.

- L. 287: Which relationship is used here to calculate d18O and dD from atmospheric temperature?

We use the linear relationships between  $\delta^{18}\text{O}$  and  $\delta\text{D}$  of the precipitation samples and the daily mean temperature at 3 m, as stated in the sentence l.286-287: “The precipitation isotopic composition is calculated from the atmospheric temperature, using the linear relationships between  $\delta^{18}\text{O}$  and  $\delta\text{D}$  of the precipitation samples and the 3 m daily mean temperature (Eq. 1 and 2 in Sect. 3.3.3).”

- L. 460: How do you explain the fact that the precip-weighted means are higher than the arithmetic means?

The precipitation-weighted overall  $\delta^{18}\text{O}$  means are higher than the overall arithmetic means, for both the observations and the model, because the lowest  $\delta^{18}\text{O}$  values in precipitation are associated with smaller precipitation amounts (skewed distribution, Figure A3 below), and therefore weigh less when computing the precipitation-weighted averages.

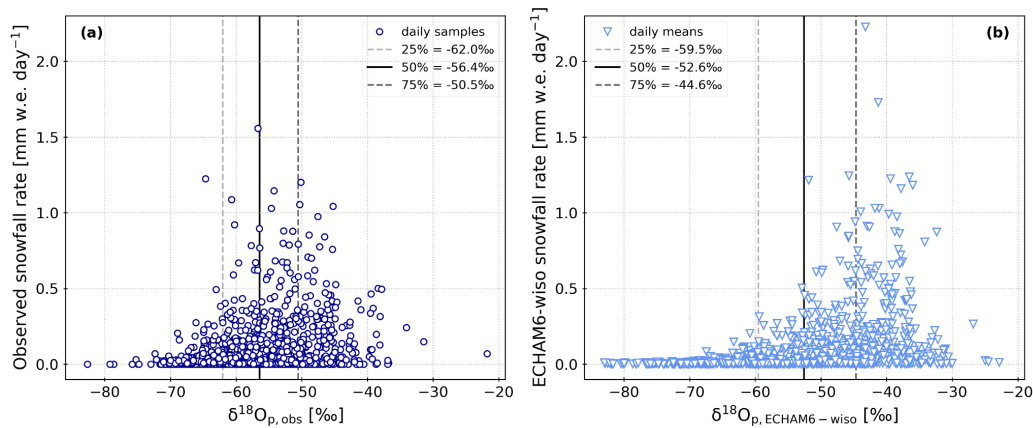


Figure A3: Daily precipitation  $\delta^{18}\text{O}$  versus daily precipitation amounts, for the observations in panel (a) and the ECHAM6-wiso outputs in panel (b). In both panels, the solid black line and dashed grey lines show the 25<sup>th</sup>, 50<sup>th</sup> and 75<sup>th</sup> percentiles.

We have included this explanation into the discussion (Section 4.2.2) improving the text 1.724 forward as follows:

“As shown in Section 3.3.2, the observed  $\delta^{18}\text{O}$  precipitation-weighted mean over five years is higher than the overall mean (-53.4 and -56.2‰, respectively). This is explained by the lowest  $\delta^{18}\text{O}$  values in precipitation being associated with smaller precipitation amounts (Fig. S8 in Supplement S6), and therefore weigh less when computing the precipitation-weighted average. The opposite applies for d-excess: the weighted overall mean is lower than the arithmetic overall mean (12.2 and 15.2‰, respectively) because high d-excess values are associated with lower precipitation amounts (Fig. S8 in Supplement S6).

Now because the snow surface layer represents the amount of snow accumulated over a certain period, its mean isotopic composition should reflect the weighted mean (by precipitation amounts) isotopic composition of precipitation. Therefore, we express the mean effect of post-depositional processes at Dome C as the difference between the observed 5-year weighted mean isotopic composition of precipitation and the observed 5-year mean isotopic composition of the surface snow.

Considering all precipitation and snow samples, the surface snow  $\delta^{18}\text{O}$  is 2.4‰ higher than in precipitation and the surface snow d-excess is 1.8‰ lower than in precipitation (Table 6). [...]”

- L. 469f.: You write that “the summertime” difference between observations and ECHAM6-wiso “decreases when the precipitation d18O is weighted by the precipitation amounts”. To me, this only accounts for December and January while the overall difference increases. Can you explain why? What is your conclusion here?

Both the observations and the model have higher precipitation amounts associated with higher  $\delta^{18}\text{O}$  (see previous comment), but the  $\delta^{18}\text{O}$  modelled by ECHAM6-wiso is in general higher than the observations (Fig. 6b) and high modelled  $\delta^{18}\text{O}$  values are associated with larger precipitation amounts than for the observations (Figure S8a and c below). Therefore, when weighted by precipitation amounts, the  $\delta^{18}\text{O}$  modelled by ECHAM6-wiso is increased more than the observations, leading to an increase in the overall difference.

For the summer months December and January, high and low  $\delta^{18}\text{O}$  values modelled by ECHAM6-wiso are associated with similar precipitation amounts (see Figure S8a and c below), while for observations, higher  $\delta^{18}\text{O}$  values are associated with higher precipitation amounts (similarly as for rest of the year). Therefore, in summer, the high and low  $\delta^{18}\text{O}$  values from ECHAM6-wiso weigh the same when doing the monthly weighted average, reducing the discrepancy with observations. This means that there is a compensation effect between the modelled  $\delta^{18}\text{O}$  and precipitation amounts during summertime. The opposite applies to d-excess: when computing the weighted monthly means, the overall difference decreases while the summertime difference increases (Fig. 6f, see also previous comment). This is explained by the distribution of d-excess values against precipitation amounts (Figure S8b and d below) in addition to modelled d-excess values lower than observations (Fig. 6e).

We have included this information into the Supplementary Materials and added a brief explanation in the discussion 1.760 forward as follows:



“The weighted-mean isotopic composition of precipitation modelled by ECHAM6-wiso over the whole period is 7.7‰ higher in  $\delta^{18}\text{O}$  and 7.1‰ lower in d-excess than the observed precipitation (Table 6, Fig. 6c and f). These large differences result from the biases identified in the model (Sect. 3.3.2, Fig. 6 and 7), combined with the distribution of the daily isotopic values against precipitation amounts (Fig. S8 in Supplement S6), which influences both the overall mean and the seasonal difference between the observations and the model (Fig. 6 and Supplement S6). This shows the limitations of using ECHAM6-wiso simulations [...]”

To accompany the new text implemented as our answer to the two previous comments, we also added the following figure in the Supplementary materials of the paper:

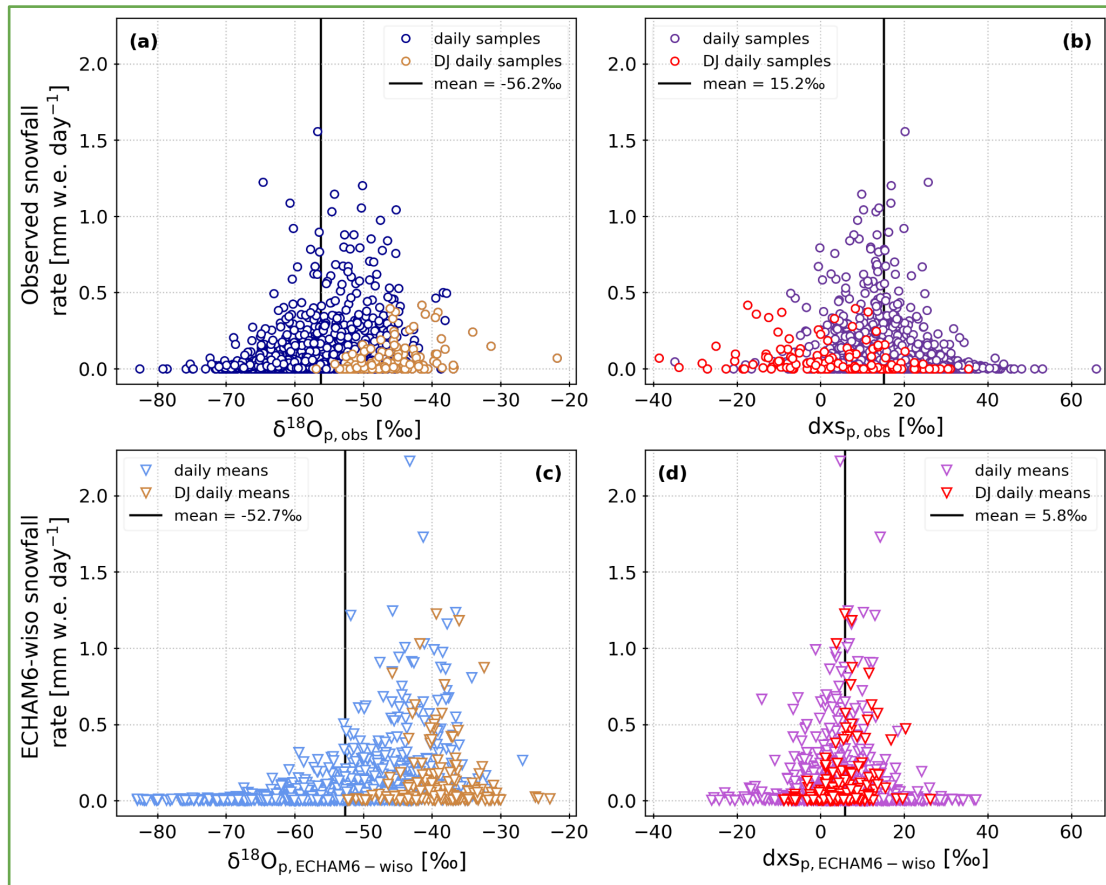


Figure S8: Daily precipitation isotopic composition ( $\delta^{18}\text{O}$  in panels (a) and (c), d-excess in panels (b) and (d)) versus daily precipitation amounts, for the observations in panels (a) and (b) and the ECHAM6-wiso outputs in panels (c) and (d). In all four panels, the solid black line shows the mean isotopic composition of daily precipitation and the coloured markers (brown in panels (a) and (c) and red in panels (b) and (d)) show the days in December and January.

- Figure 7:
  - Why are you only reporting the RMSE and not the correlation as well?

This is an oversight and we agree that the correlation coefficient is a valuable additional metric to evaluate the performance of the model. The Pearson correlation coefficients are now included in Figure 7, and the text below the figure has been modified accordingly:

l. 508-509

“The daily precipitation  $\delta^{18}\text{O}$  modelled by ECHAM6-wiso shows a good agreement with the observations, with a linear regression slope of  $0.84 \pm 0.03$  (1.0 being the perfect fit), a **Pearson correlation coefficient of 0.65** and a root mean square error (RMSE) of 8.8‰ (Fig. 7a).”

1.510-512

“For d-excess, the ECHAM6-wiso model results only poorly represent the observations, with a linear slope of  $0.1 \pm 0.02$ , **a Pearson correlation coefficient of 0.17** and a RMSE of 16.4‰ (Fig. 7b).”

- I assume that the data shown in the scatter plot are the same as in Figs. 6a and 6d. It seems that ECHAM6-wiso suggests more days with precipitation than the observations do. How are you handling this? Are you accounting for these or are you ignoring these days?

It is correct that the scatter plots in Figure 7 show the data from Figure 6a and b. However, there are gaps in the observed time series of the precipitation isotopic composition. This can be due to several reasons: either the sample collected on site was too small to perform an isotopic analysis on it, either the precipitation fallen on the sampling table was blown away and no sample could be collected, or the sample was simply not collected in the field (due to harsh weather for example). On the other hand, ECHAM6-wiso models the isotopic composition of precipitation for everyday over the period. As explained in Section 2.5.2 (1.296f), the model outputs are post-processed, so some days in the time series are also associated with missing isotopic values. We can only compare the days where we have both the observed and modelled precipitation isotopic composition, so the days without observation and/or model output are not included here. This means that in Figure 7a, 886/1826 days are shown and in Figure 7b, 882/1826 days are shown. We have updated the figure caption as follows:

“Figure 7. Daily observed precipitation  $\delta^{18}\text{O}$  (a) and d-excess (b) versus daily modelled precipitation isotopic composition at Dome C. All precipitation samples collected between 2017 and 2021 are shown (described in Sect. 2.3), together with the corresponding daily values from ECHAM6-wiso simulation results (described in Sect. 2.5). **Note that due to missing observations and post-processing of ECHAM6-wiso outputs, 886/1826 days are shown in panel (a) and 882/1826 days in panel (b).** The coloured lines correspond to the linear fits between the observations and the model results (slope coefficients given in legends, both linear regression coefficients are significant with a p-value  $< 0.001$ ).

On the post-processing of the ECHAM6-wiso outputs, we have omitted to mention an important point: all daily precipitation rates below 0.0016 mm w.e. per day ( $= 0.05 \text{ mm w.e. month}^{-1}$ ) are set to zero, and the associated isotopic composition of precipitation is set to “missing value”. This is to prevent unrealistic values in the precipitation isotopic compositions due to very low precipitation amounts (numerical effect). As East Antarctica is a very dry region, the threshold was chosen to be ten times lower than the one commonly used for rain gauges ( $0.5 \text{ mm w.e. month}^{-1}$ , used for example on the dataset from the Global Network of Isotopes in Precipitation). We have updated the text when describing the ECHAM6-wiso simulation as follows:

1.269 forward

“The fifth experiment uses the precipitation amounts given by the isotope-enabled global circulation model (GCM) ECHAM6-wiso (described in Cauquoin et al., 2019). The simulation was performed at a spatial resolution of  $0.9^\circ$  and nudged to ERA5 reanalyses (Cauquoin and Werner, 2021). The daily precipitation amounts were extracted for the grid point closest to Dome C. **As the days with very low precipitation rates are not considered as “precipitation days”, any precipitation rate below  $0.0016 \text{ mm w.e. day}^{-1}$  is set to zero. Because East Antarctica is a very dry region, this threshold was chosen to be ten times lower than the one commonly used for rain gauges ( $0.5 \text{ mm w.e. month}^{-1}$ , e.g. used for the Global Network of Isotopes in Precipitation data). Note that such a threshold was not applied to the precipitation amounts given by ERA5.**”

1.296 forward

“The fifth experiment uses the daily precipitation isotopic composition modelled by ECHAM6-wiso. **To prevent any unrealistic values because of a numerical effect when the precipitation amounts are very low, the days with precipitation amounts below  $0.0016 \text{ mm w.e.}$  (Section 2.5.1) were associated with missing values of the precipitation isotopic composition. In addition,** all data points outside of the 5-year average  $\pm$  three standard deviation range were discarded (six data points for  $\delta^{18}\text{O}$  and 20 data points for d-excess over five years). A comparison of the observed daily precipitation isotopic composition and ECHAM6-wiso simulations is shown in Fig. 6 (Sect. 3.3.2).”

- L. 528f: Are these the equations used in the ECHAM6-wiso model itself or are these empirically calculated?

Equations (3) and (4) are not used/coded in the model itself but calculated from the ECHAM6-wiso outputs of the precipitation  $\delta^{18}\text{O}$  and  $\delta\text{D}$  and the atmospheric temperature to compare with the relationships we find in the observations.

- L. 811ff.: My understanding of a proxy system model might be different than yours. Following Evans et al. (2013), for instance, a proxy system model may be defined as the complete set of forward and mechanistic processes by which the response of a sensor to environmental forcing is recorded and subsequently observed in a material archive. Wahl et al. (2022) and Dietrich et al. (2023) did a great job in coming up with statistical approaches to e.g. calculate expected isotopic variations in surface and subsurface snow from sublimation. However, I see their models rather as an input to more sophisticated (proxy system) models.

We acknowledge the reviewer's comment that the model initially developed by Wahl et al. (2022) for the surface snow and further developed by Dietrich et al. (2023) to simulate firn cores does not entirely meet the definition of a proxy-system model by Evans et al. (2013). Nonetheless, the latest version of the model (SNOWISO model, Dietrich et al., 2023) can be considered as a first step toward such a proxy-system model. We have slightly modified the text L.811 forward as follows:

"To progress towards an accurate quantitative interpretation of isotopes in ice cores, we recommend developing a *proxy system model* (Evans et al., 2013) that can be coupled to isotope-enabled GCMs. A **first step toward** such a model has been developed recently by Wahl et al. (2022) and Dietrich et al. (2023) for Greenland and includes mechanical processes leading to the recording of isotopes at the ice sheet's surface and in firn cores. The datasets presented in our study can therefore be useful to calibrate and validate this kind of model at intra-annual, seasonal, and inter-annual timescales at the deep drilling site of the EPICA Dome C ice core."

#### References:

Dietrich, L. J., Steen-Larsen, H. C., Wahl, S., Jones, T. R., Town, M. S., and Werner, M.: Snow-Atmosphere Humidity Exchange at the Ice 940 Sheet Surface Alters Annual Mean Climate Signals in Ice Core Records, *Geophysical Research Letters*, 50, e2023GL104249, <https://doi.org/10.1029/2023GL104249>, 2023.

Evans, M. N., Tolwinski-Ward, S. E., Thompson, D. M., & Anchukaitis, K. J.: Applications of proxy system modeling in high resolution paleoclimatology. *Quaternary science reviews*, 76, 16-28, 2013.

Münch, T., Kipfstuhl, S., Freitag, J., Meyer, H., and Laepple, T.: Regional climate signal vs. local noise: a two-dimensional view of water isotopes in Antarctic firn at Kohnen Station, Dronning Maud Land, *Clim. Past*, 12, 1565–1581, <https://doi.org/10.5194/cp-12-1565-2016>, 2016.

Picard, G., Arnaud, L., Caneill, R., Lefebvre, E., and Lamare, M.: Observation of the process of snow accumulation on the Antarctic Plateau by time lapse laser scanning, *The Cryosphere*, 13, 1983–1999, <https://doi.org/10.5194/tc-13-1983-2019>, 2019.

Wahl, S., Steen-Larsen, H. C., Hughes, A. G., Dietrich, L. J., Zuhr, A., Behrens, M., Faber, A. -K., and Hörhold, M.: Atmosphere-Snow Exchange Explains Surface Snow Isotope Variability, *Geophysical Research Letters*, 49, <https://doi.org/10.1029/2022GL099529>, 2022.

Genthon, C., Six, D., Sarchilli, C., Ciardini, V., and Frezzotti, M.: Meteorological and snow accumulation gradients across Dome C, East Antarctic plateau: Meteorological and snow accumulation gradients at Dome C, *Int. J. Climatol.*, 36, 455–466, <https://doi.org/10.1002/joc.4362>, 2015.

Grinsted, A., Moore, J. C., and Jevrejeva, S.: Application of the cross wavelet transform and wavelet coherence to geophysical time series, *Nonlin. Processes Geophys.*, 11, 561–566, <https://doi.org/10.5194/npg-11-561-2004>, 2004.

Risi, C., Landais, A., Winkler, R., and Vimeux, F.: Can we determine what controls the spatio-temporal distribution of  $\delta$ -excess and  $^{17}\text{O}$ -excess in precipitation using the LMDZ general circulation model?, *Clim. Past*, 9, 2173–2193, <https://doi.org/10.5194/cp-9-2173-2013>, 2013.

Servettaz, A. P. M., Agosta, C., Kittel, C., and Orsi, A. J.: Control of the temperature signal in Antarctic proxies by snowfall dynamics, *The Cryosphere*, 17, 5373–5389, <https://doi.org/10.5194/tc-17-5373-2023>, 2023.