

Supplement of *Preindustrial to present-day changes in atmospheric carbon monoxide: agreements and gaps between ice archives and global model reconstructions*

5

Xavier Faïn¹, Sophie Szopa², Vaishali Naik³, Patricia Martinerie¹, David M. Etheridge^{4,5}, Rachael H. Rhodes⁶, Cathy M. Trudinger^{4,5}, Vasilii V. Petrenko⁷, Kévin Fourteau⁸, Philip Place⁹

¹Univ. Grenoble Alpes, CNRS, INRAE, IRD, Grenoble INP, IGE, 38000 Grenoble, France

10 ²Laboratoire des Sciences du Climat et de l'Environnement, CEA, CNRS, UVSQ, Université Paris-Saclay, Gif-sur-Yvette, France

³NOAA Geophysical Fluid Dynamics Laboratory, Princeton, NJ, USA

⁴CSIRO Environment, Aspendale, Victoria, Australia

15 ⁵Australian Antarctic Program Partnership, Institute for Marine and Antarctic Studies, University of Tasmania, Hobart, Tasmania, Australia

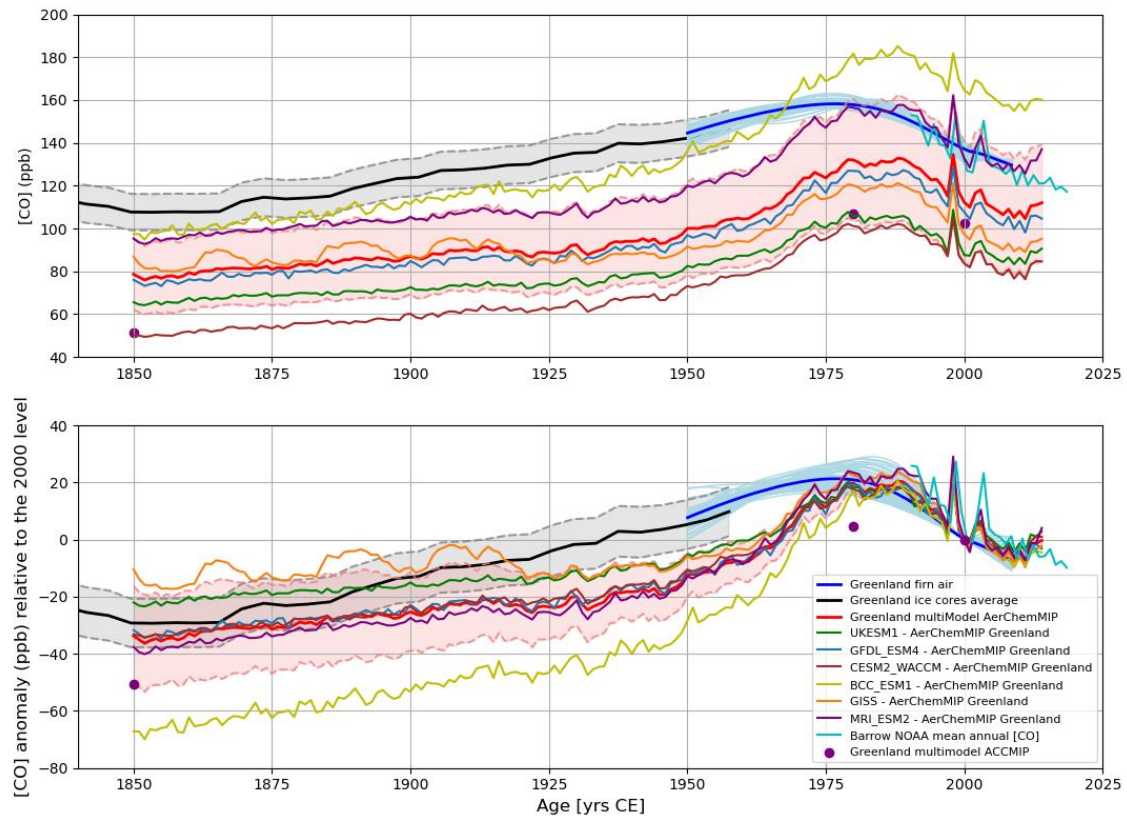
⁶Department of Earth Sciences, University of Cambridge, Cambridge, CB2 3EQ, UK

⁷Department of Earth and Environmental Sciences, University of Rochester, Rochester, NY 14627, USA

⁸Univ. Grenoble Alpes, Université de Toulouse, Météo-France, CNRS, CNRM, Centre d'Études de la Neige, Grenoble, France

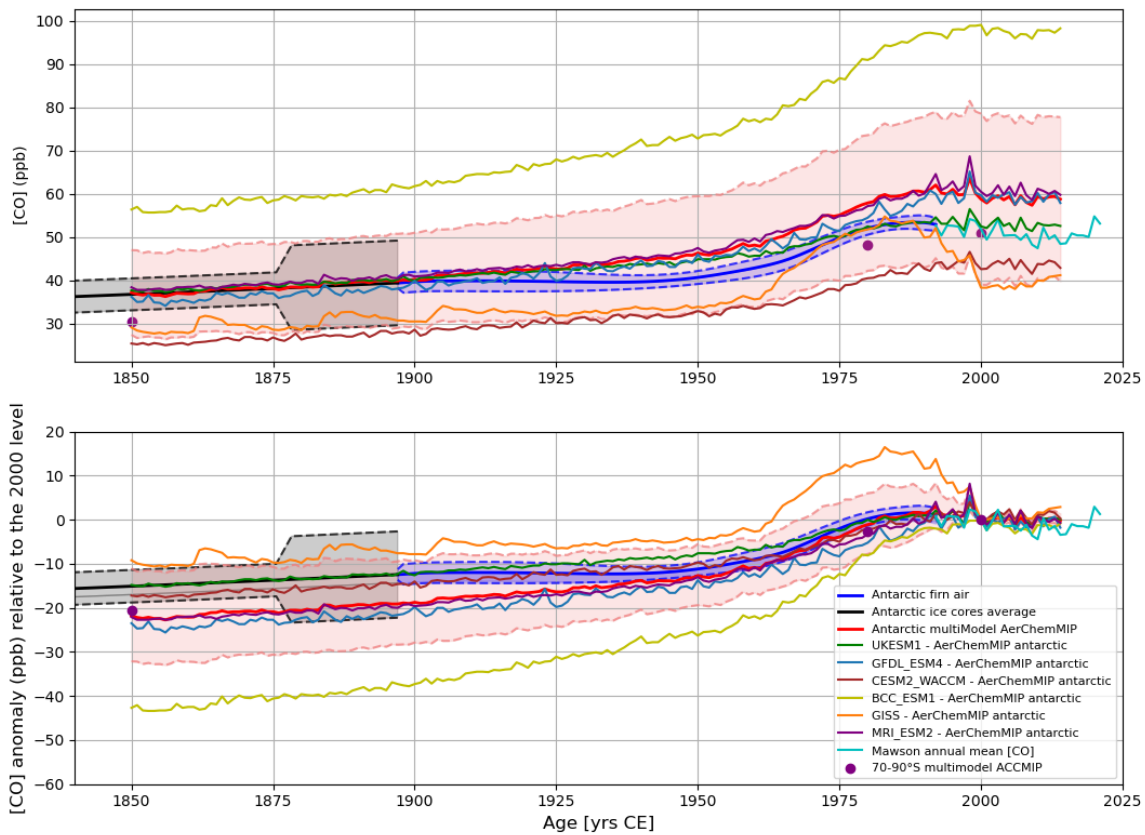
20 ⁹University Instrumentation Center, University of New Hampshire, Durham, NH, 03824, USA

Correspondence to: Xavier Faïn (xavier.fain@univ-grenoble-alpes.fr)



25

Figure S1. Individual AerChemMIP and ACCMIP model outputs included in this study for the Greenland area. Absolute values (upper panel) and anomalies relative to the 2000 CE levels (lower panel).



30

Figure S2. Individual AerChemMIP and ACCMIP model outputs included in this study for the Antarctica area. Absolute values (upper panel) and anomalies relative to the 2000 CE levels (lower panel).