



## NEIVAv1.0:

### Next-generation Emissions InVentory expansion of Akagi et al. version 1.0

5 Samiha Binte Shahid<sup>1</sup>, Forrest G. Lacey<sup>2,5</sup>, Christine Wiedinmyer<sup>3</sup>, Robert J. Yokelson<sup>4</sup>, Kelley C. Barsanti<sup>1,5</sup>

<sup>1</sup>Department of Chemical & Environmental Engineering, Center for Environmental Research & Technology, University of California-Riverside, Riverside, 92521, United States

<sup>2</sup>Research Applications Laboratory, U. S. National Science Foundation National Center for Atmospheric Research, Boulder, 80301, United States

10 <sup>3</sup>Cooperative Institute for Research in Environmental Sciences, University of Colorado-Boulder, Boulder, CO, 80309, United States

<sup>4</sup>Department of Chemistry, University of Montana, Missoula, 59812, United States

<sup>5</sup>Atmospheric Chemistry Observations and Modeling Laboratory, U. S. National Science Foundation National Center for Atmospheric Research, Boulder, 80301, United States

15 *Correspondence to:* Kelley C. Barsanti (barsanti@ucar.edu)

**Abstract.** Accurate representation of fire emissions is critical for modeling the in-plume, near-source, and remote effects of biomass burning (BB) on atmospheric composition, air quality, and climate. In recent years application of advanced instrumentation has significantly improved knowledge of the compounds emitted from fires, which coupled with a large number of recent laboratory and field campaigns, has facilitated the emergence of new emission factor (EF) compilations. The Next-generation Emissions InVentory expansion of Akagi (NEIVA) version 1.0 is one such compilation in which the EFs for 14 globally-relevant fuel and fire types have been updated to include data from recent studies, with a focus on gaseous non-methane organic compounds (NMOC<sub>g</sub>). The data are stored in a series of connected tables that facilitate flexible querying from the individual study level to recommended averages of all laboratory and field data by fire type. The querying features are enabled by assignment of unique identifiers to all compounds and constituents, including 1000s of NMOC<sub>g</sub>. NEIVA also includes chemical and physical property data and model surrogate assignments for three widely-used chemical mechanisms for each NMOC<sub>g</sub>. NEIVA EF datasets are compared with recent publications and other EF compilations at the individual compound level and in the context of overall volatility distributions and hydroxyl reactivity (OHR) estimates. The NMOC<sub>g</sub> in NEIVA include ~4-8 times more compounds with improved representation of intermediate volatility organic compounds resulting in much lower overall volatility (lowest volatility bin shifted by as much as three orders of magnitude) and significantly higher OHR (up to 90%) than other compilations. These updates can strongly impact model predictions of the effects of BB on atmospheric composition and chemistry.

20  
25  
30  
35



## 1. Introduction

40 The identification, quantification, and model representation of gaseous and particulate compounds emitted from fires are critical for modeling the effects of biomass burning (BB) on air quality and climate. BB occurs under a variety of conditions and involves a range of plant-based fuels, which vary greatly across the world's ecosystems. In the dry forests of the Western US, long-term policies of wildfire suppression and management practices have led to the accumulation of understory fuels in many forests (Collins et al., 2011). This decades-long shift in forest structure, coupled with a warming climate, greatly increases the potential for destructive wildfires (Stephens et al., 2014; North et al., 2015). Land use and climate trends have driven significant changes in BB in other parts of the world as well, with sometimes uncertain effects on air quality and climate (Doerr and Santín, 2016). Some examples include a lengthening of the fire season and increased area burned in boreal forests (de Groot et al., 2013; Jolly et al., 2015), an increase in fire severity and area burned in tropical peatlands (Page and Hooijer, 2016), and a decrease in area burned in sub-Saharan Africa with conversion of savanna to croplands (Andela and van der Werf, 2014; Hickman et al., 2021).

55 On a global scale, fires emit large amounts of trace gases, including nitrogen oxides ( $\text{NO}_x$ ), carbon monoxide (CO), and carbon dioxide ( $\text{CO}_2$ ); non-methane organic compounds (NMOCs); and primary (directly emitted) particulate matter (PM). Emission rates and properties of gaseous and particulate compounds are highly variable and largely dependent on fuel characteristics and burn conditions (Guyon et al., 2005; Yokelson et al., 2007; McMeeking et al., 2009; Jolleys et al., 2012; Urbanski, 2014; Liu et al., 2017). During plume dilution directly emitted PM, a large fraction of which is organic (Zhao et al., 2013; Liu et al., 2017), can evaporate reducing the amount of primary organic aerosol (POA), but also adding reactive gases, e.g., semi-volatile NMOCs (Bian et al., 2017; Hodshire et al., 2019). During plume evolution gaseous NMOCs (NMOC<sub>g</sub>) may react to form ozone ( $\text{O}_3$ ); secondary PM, more commonly referred to as secondary organic aerosol (SOA); and other secondary products that can degrade air quality and endanger human health (Crutzen and Andreae, 1990; Poschl, 2005; McClure and Jaffe, 2018; Buysse et al., 2019; Wei et al., 2023). Model representation of the NMOC<sub>g</sub> and the ambient conditions (e.g., light, oxidant, and  $\text{NO}_x$  levels), are important for accurate predictions of  $\text{O}_3$ , SOA, and other pollutants (Alvarado et al., 2009; Tkacik et al., 2017; Ahern et al., 2019; Hatch et al., 2019; Decker et al., 2019, 2021; Ninneman and Jaffe, 2021; Xu et al., 2021; Fredrickson et al., 2022).

70 Application of advanced instrumentation has significantly improved estimates of gaseous and particulate compounds emitted from fires in recent years. For example, high-resolution chemical ionization mass spectrometry, CIMS (Stockwell et al., 2015; Koss et al., 2018; Palm et al., 2020), and one- and two-dimensional gas chromatography with time-of-flight mass spectrometry, GC-TOF-MS and GC×GC-TOF-MS (Hatch et al., 2015; Gilman et al., 2015; Hatch et al., 2019; Jen et al., 2019; Liang et al., 2021) have expanded the capacity to measure organic compounds with diverse chemical and physical properties, making it possible to identify and quantify much of the previously-ubiquitous unknown emissions (Christian et al., 2003; Warneke et al., 2011). Laboratory studies that carefully simulated globally-relevant fuels and fire types enabled initial measurements with these new techniques (Stockwell et al., 2014; Hatch et al., 2015; Selimovic et al., 2018) and the development of comprehensive NMOC<sub>g</sub> datasets (Koss et al., 2018; Hatch et al., 2017). Incandescence (Schwarz et al., 2006) and photoacoustic (Lewis et al., 2008; Nakayama et al., 2015) techniques for measuring black carbon, BC, have overcome some of the limitations



85 with older thermal and thermal-optical approaches for measuring elemental carbon, EC (Li et al.,  
2019). Online aerosol measurements with the Aerodyne aerosol mass spectrometer (AMS), along  
with offline filter-based measurements, have greatly expanded particulate emissions datasets  
(Jayarathne et al., 2018; Jen et al., 2019). Application of these and other techniques during field  
campaigns have led to improved characterization of emissions from specific fuel and fire types,  
90 including peat fires in Borneo (Stockwell et al., 2016a; Yokelson et al., 2022); cooking fires,  
agricultural fires, and garbage burning in Nepal (Stockwell et al., 2016b); and most notably,  
wildfires and agricultural burns in the US (Liu et al., 2016, 2017; Permar et al., 2021; Gkatzelis et  
al., 2023; Travis et al., 2023).

95 The large number of laboratory and field campaigns, and rapid expansion of published BB  
emissions datasets, has facilitated the emergence of new emission factor (EF) compilations,  
including Andreae (2019) an update to the 2001 compilation of Andreae and Merlet (2001) and  
the Smoke Emissions Repository Application, SERA (Prichard et al., 2020) an update to the 2014  
Wildland Fire Emissions Database (Lincoln et al., 2014). The Andreae (2019) inventory includes  
100 EFs for 121 gas- and particle-phase species or constituents (i.e., total PM); the data are almost  
entirely from field measurements and include a range of globally-relevant fuel and fire types. The  
SERA database (Prichard et al., 2020) includes EFs for 276 gas- and particle-phase species or  
constituents; the focus of the database is North American wildland fuels and both laboratory and  
field data are included. Similarly to Andreae (2019) the NEIVA (Next-generation Emissions  
Inventory expansion of Akagi) database described herein includes EFs for globally-relevant fuel  
105 and fire types, but in contrast to Andreae (2019) 1000s of compounds and representative laboratory  
data were selectively included. Similarly to SERA (Prichard et al., 2020) NEIVA is an online,  
searchable database that includes source data and recommended average EFs across fuel and/or  
fire types. Additional features unique to NEIVA are summarized below, and detailed in the  
manuscript Sections 2-5, the Supplementary Information (SI), and on GitHub  
110 (<https://github.com/NEIVA-BB-Emissions-Inventory>).

In v1.0, NEIVA exists as a collection of datasets and Python script files (summarized in Table S1).  
The datasets include a primary database (multiple data tables) with collected and reformatted data  
from existing emission inventories and recent laboratory and field campaigns, and a recommended  
115 EF dataset (single data table) with EFs averaged across studies and summarized for 14 globally-  
relevant fuel and fire types. NEIVA also includes a property dataset that links each NMOC\_g with  
a suite of chemical and physical properties using unique identifiers. Because one function of  
emission inventories in models is to distribute the total gaseous NMOC emitted from fires among  
the suite of compounds or lumped model species represented in the model, each of the NMOC\_g  
120 in the NEIVA database has been mapped to SAPRC (Carter, 2010, 2020, 2023a), MOZART-  
T1 (Emmons et al., 2020), and GEOS-Chem (Bey et al., 2001; Carter et al., 2022) model surrogates.  
Using the Python script files, NEIVA can produce detailed NMOC\_g speciation profiles for  
different fuel and/or fire types, as well as lumped NMOC\_g speciation profiles in which individual  
compounds are mapped to model surrogates. The inclusion of recent laboratory and field data  
125 within NEIVA results in significant differences in the molar, mass, and property distributions of  
NMOC\_g as individual compounds and as mapped to model surrogates when compared with  
existing inventories. The data underlying NEIVA are described in Section 2. The structure and  
contents of NEIVA are described in Section 3. Evaluation of the data processing steps to generate  
the datasets within NEIVA and differences between NEIVA and existing EF compilations are



130 presented in Section 4, including implications of these differences on atmospheric composition  
and air quality predictions. Examples of querying commands and data products are presented in  
Section 5. Further details on the processes and procedures used to create the datasets, and  
additional verification and validation, are presented in the SI. NEIVA can be accessed through the  
GitHub page: <https://github.com/NEIVA-BB-Emissions-Inventory/NEIVAv1.0>, which includes  
135 detailed instructions and Jupyter notebooks for querying EF data and adding EF data using the  
associated script files.

## 2. Data

### 2.1 Legacy data and structure (“NEIVA legacy database”)

In 2011, Akagi et al. (2011) published a compilation and assessment of EFs for domestic and open  
140 BB and garbage burning (GB), which included recommended EFs based on literature averages.  
The overarching aim of the 2011 paper was to compile EF data from numerous field studies of  
fresh plumes, especially for NMOC<sub>g</sub>, that had been published in the ten years since the 2001  
Andreae and Merlet (2001) compilation. Some additional useful features in the 2011 paper include:  
1) discussions of BB terminology, combustion chemistry, photochemistry in young plumes,  
145 tracers, and other relevant topics; 2) a table of published measurements of fuel consumption per  
unit area for major types of open burning; 3) examples of scaling to global estimates; 4) methods  
to estimate unmeasured species; and 5) updated EFs for some species (notably formic acid and  
glycolaldehyde) based on new infrared reference data. In addition, as relevant to this work, Akagi  
et al. (2011) expanded from 7 to 14 representative fuel types, included more species, and provided  
150 estimated EFs for the sum of unknown species.

In Akagi et al. (2011) the selected EFs for each species in each study were explicitly shown in 14  
supplemental tables organized by fuel or fire type. Also shown in the supplemental tables was a  
reasonably-simple and transparent averaging scheme (detailed and justified in the Akagi et al.  
155 manuscript) designed to make the literature averages representative. Between 2014 and 2015,  
some of the SI tables were updated online (Wiedinmyer et al., 2014), specifically temperate forest  
and chaparral in 2014 and savanna in 2015. In these updates, compounds were listed in mass order  
while still providing common names, to solve the problem of multiple common names and to  
enhance the ability to quickly locate specific compounds. NEIVA builds on the Akagi et al. (2011)  
160 EF data and their updates through 2015. These data are referred to as the “legacy database” in  
NEIVA and are included as a series of 14 tables (listed in Table S2). Each table includes the data  
as presented by Akagi et al. (2011) (see Table S3), as well as unique identifiers assigned in this  
work to link datasets within NEIVA. Since 2015, lists of new papers with useful EFs were posted  
online and organized by the original 14 fuel and fire types in Akagi et al. (2011), and they included  
165 brief comments on paper content, while contemplating how best to progress given the frequent  
appearance of new data and the expanding number of compounds measured. The next section gives  
brief updates on the progress, or lack thereof, for each of these original 14 fuel and fire types.

### 2.2 New data and structure (“NEIVA raw database”)

Based largely on the lists posted online since 2015, data from a total of 30 publications associated  
170 with 12 of the 14 fuel and fire types have been compiled and are referred to here as the “raw



database”. Data from these publications were included in NEIVA as a series of 30 tables (listed in Table S5). The publications and data are introduced under the relevant fuel or fire categories below. One category, peatland, has been removed from the legacy fuel categories (see S2) and one category under domestic BB has been added (see S2, Table S7). These revisions and any other major changes to the categories are described in further detail below. The new data include field and laboratory data from single-institution studies to multi-institution campaigns, including the 4<sup>th</sup> Fire Laboratory at Missoula Experiment, FLAME-4 (Stockwell et al., 2014); Western Wildfire Experiment for Cloud chemistry, Aerosol Absorption, and Nitrogen, WE-CAN (Juncosa Calahorrano et al., 2021); Fire Influence on Regional to Global Environments and Air Quality, FIREX laboratory and FIREX-AQ field (Warneke et al., 2023); and Nepal Ambient Monitoring and Source testing Experiment, NAMaSTE (Jayarathne et al., 2018).

### 2.2.1 Savanna fires

The Akagi et al. (2011) savanna fire table was updated in February 2015 with extensive PTR-ToF-MS data from FLAME-4. There have been no large-scale field campaigns measuring fire EFs in tropical savannas since SAFARI 2000. However, Desservettaz et al. (2017) reported new BB EFs for several gaseous compounds and particulate constituents measured during a field study in Australian savannas and the data were included here. In addition, Travis et al. (2023) reported EFs for gaseous compounds and particulate constituents from prescribed burns of grasslands in the midwestern US that were included here.

### 2.2.2 Boreal forest

EFs were included here for over 190 gas- and particle-phase compounds or constituents reported by Hayden et al. (2022) based on airborne sampling of a smoldering boreal forest fire. In addition, black spruce from Alaska was burned during the FLAME-4 laboratory studies and the associated EFs reported by Stockwell et al. (2015) and Hatch et al. (2015) were included here (see Table S6 for mapping of individual fuels to the 14 representative fuel and fire types).

### 2.2.3 Tropical forest

Several new EFs were included for particulate compounds or constituents reported by Hodgson et al. (2018) for evergreen tropical forest and cerrado (seasonally dry tropical forest, aka “monsoon forest”) measured during the 2018 SAMMBA campaign.

### 2.2.4 Temperate forest

The Akagi et al. (2011) temperate forest table was updated in May of 2014. Since that update, several relevant papers have been published and the EF data were included here. Data were included for wildfires and prescribed burns (tagged accordingly in the datasets). Liu et al. (2017) reported EFs for many gas- and particle-phase species and constituents for western US wildfires from the 2013 SEAC<sup>4</sup>RS and BBOP field campaigns. Permar et al. (2021) reported EFs for 161 NMOC<sub>g</sub> and particle-phase constituents largely from wildfires sampled in the 2018 WE-CAN field campaign. Gkatzelis et al. (2023) reported EFs for 98 NMOC<sub>g</sub> and four particulate constituents (nitrate; ammonium; black carbon, BC; organic aerosol, OA) also largely from wildfires sampled during the 2019 FIREX-AQ campaign. Travis et al. (2023) reported EFs for 148 NMOC<sub>g</sub> and ten particulate constituents (PM<sub>≤1</sub> microns, PM<sub>1</sub>; BC; organic carbon, OC; OA;



ammonium chloride; potassium; nitrate; sulphate) for prescribed burns (slash, pile, and Blackwater River State Forest understory) of temperate forest fuels measured in the midwestern US during FIREX-AQ. Müller et al. (2016) published NMOC<sub>g</sub> EFs for a small prescribed fire in the SE US. The old nephelometer-based temperate forest prescribed fire PM<sub>2.5</sub> (PM ≤ 2.5 microns) EFs from  
215 Burling et al. (2011) were replaced with new PM<sub>1</sub> EFs for the same fires based on AMS data from May et al. (2014). Laboratory-based wildfire simulations were conducted during FLAME-4 (Stockwell et al., 2014) and FIREX (Selimovic et al., 2018), resulting in new EFs for gas- and particle-phase species and constituents (Stockwell et al., 2015; Hatch et al., 2015, 2017; Koss et al., 2018; Selimovic et al., 2018). EF data for relevant fuels from FLAME-4, ponderosa pine and  
220 juniper, and most of the FIREX laboratory burns were included here, as listed in Table S6.

### 2.2.5 Peat

Peat is often thought of as a single fuel that burns by smoldering in the field and therefore, in theory, should be easy to burn representatively in a laboratory (neglecting the challenge of obtaining international samples). However, in reality the type of peat varies with depth for  
225 undisturbed sites and in more complex ways for disturbed sites (Stockwell et al., 2016a), which translates into additional uncertainties for laboratory-based emissions measurements. Artificially low % C values reported in the literature for some peat samples suggests that such samples contained significant amounts of mineral soil and thus resulted in low bias for associated EFs. Further, peat ignition can be difficult, and aggressive ignition with a propane torch can lead to  
230 unrepresentative flaming. Such cases have been identified by high modified combustion efficiency (MCE) values, NO<sub>x</sub>, and/or high acetylene (C<sub>2</sub>H<sub>2</sub>) emissions (e.g., C<sub>2</sub>H<sub>2</sub>/C<sub>2</sub>H<sub>4</sub> > 1) and have been omitted here. In field studies, random sampling of real peat fires should return representative values, but interference from the emissions from other fuels can be difficult to avoid and potential storage artifacts for off-line analyses also may be unavoidable if shipping delays are encountered.  
235 After carefully screening for all these effects, some excellent new data emerged.

Four papers presented new field measurements of “pure” tropical peat fires. Jayarathne et al. (2018) reported comprehensive filter-based EFs (PM<sub>2.5</sub>, EC, OC, numerous organic compounds, metals, etc.) from measurements obtained during the 2015 El Niño in Borneo. Stockwell et al.  
240 (2016a) reported EFs for ~100 gases, BC, brown carbon (BrC), and aerosol optical properties from the same study. Smith et al. (2018) measured trace gas EFs on authentic peat fires in Malaysia and Roulston et al. (2018) measured PM<sub>2.5</sub> EFs on peat fires also in Malaysia. Data from all four publications were included here.

Laboratory studies of peat have provided much more detail than has been possible in field studies to date. Peat-fire EFs from both the FLAME-4 and FIREX laboratory studies were included here. As part of FLAME-4, Stockwell et al. (2015) reported EFs for an extensive list of gas-phase species from two samples each of temperate, boreal, and tropical peat based on PTR-TOF-MS and FTIR measurements. Also as part of FLAME-4, Hatch et al. (2015) used GC×GC-TOF-MS to add EF  
250 data for alkanes and other species not detected by PTR-MS or FTIR. They also speciated numerous isomers at exact masses where MS sees a single peak. This groundbreaking application of GC×GC led to EFs for > 600 NMOC<sub>g</sub> for an Indonesian peat sample. Aerosol optical properties and PM<sub>2.5</sub> EFs for peat from FLAME-4 reported by Jayarathne et al. (2014) and Pokhrel et al. (2016) were included here. More recently, the FIREX laboratory experiments resulted in EFs for an extensive  
255 list of gas-phase species for an Indonesian peat sample based on measurements described in



Selimovic et al. (2018) and Koss et al. (2018). The EFs in the latter study were recalculated here using the actual % C value for the peat provided in Selimovic et al. (2018). Watson et al. (2019) reported laboratory-based EFs for several trace gases for peat samples from the boreal through tropical zones, which were included here, with the exception of EFs for nitrous oxide (N<sub>2</sub>O) due to the difficulty of decoupling N<sub>2</sub>O from high levels of CO and CO<sub>2</sub> by infrared spectroscopy.

### 2.2.6 Chaparral

The Akagi et al. (2011) chaparral table was updated in May 2014. Since then, FIREX provided comprehensive EFs for gases reported by Koss et al. (2018) and Selimovic et al. (2018). In these laboratory studies, chaparral was represented by burning two dominant shrub species: manzanita and chamise. The EFs for NMOC<sub>g</sub> and particulate constituents reported by Travis et al. (2023) for prescribed burns of shrublands in the midwestern US also were included here, making this category representative of shrub types beyond chaparral.

### 2.2.7 Domestic biomass burning

Domestic (household) biofuel use includes many fuels and burning options that are primarily for cooking, but also heating. Akagi et al. (2011) presented study-level results (in their SI) and “global averages” for five domestic biofuel activities: 1) open cooking (e.g., three stone fires with wood fuel only, believed to be the most common type of domestic biofuel use), 2) wood cooking with improved stoves (including “rocket type” stoves only, which were believed to be the most common improved stove), 3) charcoal making, 4) charcoal burning (open or in improved stoves), and 5) dung burning (open or in improved stoves). Since 2011, many new improved stove designs have been developed and characterized, many new EFs have been measured, and results for mixed fuel cooking fires (e.g., wood and dung) have been published. To capture the new results slightly revised categories were established as follows (see Table S7): 1) open cooking (three stone and wood), 2) cookstove (traditional and modern), and 3) dung burning (w/ and w/o wood, traditional and modern). Since there is no systematic approach for grouping fuels and stoves in the literature, the above approach has been adopted here while tagging data appropriately in the raw database to facilitate custom selection of relevant data by users. The charcoal making and charcoal burning categories were retained.

**Open cooking:** The open cooking fire type includes all open wood cooking (i.e., three stone). Data from three new publications on various types of open cooking were included here. EFs for gases and aerosol optical properties for open cooking with wood were measured in-situ in Nepal as part of the NAMaSTE campaign and reported by Stockwell et al. (2016b). Gravimetric PM<sub>2.5</sub> data and chemical speciation of PM from the same study were reported by Jayarathne et al. (2018). EFs for CO<sub>2</sub>, CO, and PM<sub>2.5</sub> were measured for a variety of traditional and improved stoves in Ghana by Coffey et al. (2017) and the data for three stone wood burning were included here. Laboratory-based EFs were included here from the carefully-simulated open cooking during FLAME-4, with several wood species commonly used in Mexico, reported by Stockwell et al. (2015).

**Cookstoves:** Akagi et al. (2011) limited improved stove data to rocket stoves burning wood, but in NEIVA additional advanced stove types and fuels were included in the cookstove category. Stockwell et al. (2015, 2016b), Jayarathne et al. (2018), and Fleming et al. (2018) reported data



300 for many types of advanced stoves that were included here. For a subset of the same sources in Stockwell et al. (2015, 2016b) and Jayarathne et al. (2018), Goetz et al. (2018) reported EFs for OA, BC, sulfate, nitrate, chloride, ammonium, and polycyclic aromatic hydrocarbons (PAHs) that were included here. EFs for CO<sub>2</sub>, CO, and PM<sub>2.5</sub> for improved stoves reported by Coffey et al. (2017) were included here.

305 **Dung burning:** Data from several new studies with EFs for open dung burning, dung burning in stoves, and mixed dung/wood burning have been reported and were included here. Stockwell et al. (2016b), Jayarathne et al. (2018), Goetz et al. (2018), and Fleming et al. (2018) reported data from studies in Nepal and India. In addition, data were included from the open dung burning sampled in detail during the FIREX laboratory experiments as reported by Koss et al. (2018) and Selimovic et al. (2018).

**Charcoal making:** Literature searches suggest there are no new laboratory- or field-based EFs for charcoal making since Akagi et al. (2011) and thus this remains the least-characterized globally-relevant major fuel type.

315 **Charcoal burning:** Stockwell et al. (2016b) and Jayarathne et al. (2018) reported data for charcoal burning in the Nepal study and the reported EFs were included here. EFs for CO<sub>2</sub>, CO, and PM<sub>2.5</sub> for charcoal burning reported by Coffey et al. (2017) also were included.

## 320 2.2.8 Pasture maintenance

Literature searches suggest there are no new laboratory- or field-based EFs for pasture maintenance fires since Akagi et al. (2011).

## 2.2.9 Crop residue

325 Akagi et al. (2011) highlighted that the NMOC<sub>g</sub> EFs from pile burning of crop residue, which is associated with manual harvest and promotes smoldering, are much higher than those for burning residue loose in the field, which is associated with mechanized agriculture and promotes flaming. More recently, Lasko and Vadrevu (2018) estimated the relative amount of these two burning practices in Vietnam. In addition to the inclusion of new data, the Akagi et al. (2011) EFs were updated here to represent the evolving literature average % C. Following Stockwell et al. (2016a, b), the Mexican “loose in field” crop residue EFs from Yokelson et al. (2011) used in Akagi et al. (2011) and Andreae (2019), were normalized to lower fuel % C values (40 %) by multiplying the original Yokelson et al. (2011) values by 0.8.

335 Regarding new data, field measurements of loose and piled crop residue fires were carried out in Nepal with EFs for gases and aerosol optical properties reported by Stockwell et al. (2016b). EFs for PM constituents reported by Goetz et al. (2018) and EFs from filter-based PM<sub>2.5</sub> analyses reported by Jayarathne et al. (2018) were included here. Holder et al. (2017) used several platforms to measure emissions from burning residue in wheat and bluegrass fields in the NW US; the reported EFs from the individual observations and averaged across platforms were included here.

340 Also included were the EFs from field measurements of crop residue fires in the SE US made on the NASA-DC-8, from burning rice straw loose in the field, as part of SEAC<sup>4</sup>RS and reported by





Liu et al. (2016); and the EFs from field measurements of crop residue fires also in the midwestern US, mase as part of FIREX-AQ and reported by Travis et al. (2023). During FLAME-4, numerous types of crop residue were burned in the laboratory, both in piles and loose. The EFs for an extensive selection of gases and residue types reported by Stockwell et al. (2015) and the rice straw emissions reported by Hatch et al. (2015, 2017) were included here (see Table S6). Rice straw EFs measured during a FIREX laboratory pile-burning simulation also were included (Koss et al., 2018; Selimovic et al., 2018; Gkatzelis et al., 2023; Travis et al., 2023).

### 2.2.10 Garbage burning

The Akagi et al. (2011) recommended EFs for garbage burning (GB) were based almost entirely on one field campaign in Mexico (Christian et al., 2010). These data were incorporated into a global GB inventory by Wiedinmyer et al. (2014). New EFs for mixed garbage fires in Nepal for gases and aerosol optical properties reported by Stockwell et al. (2016b); gravimetric PM<sub>2.5</sub>, EC, OC, and chemical speciation reported by Jayarathne et al. (2018); and size distributions and a full suite of AMS species (OA, OC, ammonium, sulfate, chloride, and nitrate) reported by Goetz et al. (2018) were included here. In addition, laboratory-based GB EF data from Yokelson et al. (2013) and FLAME-4 reported by Stockwell et al. (2015) were included.

## 3. NEIVA structure and contents

### 3.1 Overview

A schematic of NEIVA is shown in Figure 1. NEIVAv1.0 is a collection of linked data tables. Groups of related tables are organized as a single database and include the legacy database and raw database described above in Sections 2.1 and 2.2, respectively, and the primary database described below in Section 3.2. Collections of related data tables are referred to as databases, while single data tables are referred to as datasets. Datasets in NEIVA include the integrated EF, processed EF, recommended EF, and chemical property and surrogate (“property\_surrogate”) datasets, which collectively comprise the output database and are described below in Section 3.3. Each of the databases and datasets are listed in Table 1. In this section, the structure and contents of the primary database and of the integrated EF, processed EF, recommended EF, and chemical property and surrogate datasets are further described, as well as the formatting and data processing steps that were performed to create each of the data tables. All of the datasets can be accessed through GitHub and the recommended EF dataset is also provided here as a Supplemental Table.

All of the compounds or constituents in the NEIVA database were assigned one of the following pollutant categories: inorganic gas, methane, gaseous non-methane organic compound (NMOC<sub>g</sub>), particulate non-methane organic compound (NMOC<sub>p</sub>), or particulate matter (PM). The PM was further differentiated as “size” (e.g., PM<sub>1</sub>, PM<sub>2.5</sub>, PM<sub>2.5</sub>\* (PM<sub>1-5</sub>), PM<sub>10</sub>), “organic” (e.g., OA, OC), “elemental” (e.g., EC, BC), “ion” (e.g., Na), “metal” (e.g., lead), and “optical” (e.g., absorption/backscattering coefficients at specific wavelengths). All tables in the legacy, raw, and primary databases include the following columns: molar mass (mm), chemical formula (formula), compound (compound name), pollutant category, EF, and unique ID for each compound or constituent. Additional information from the source publications was retained in the databases as described in S1. In the EF datasets, each row in a table represents a chemical



385 compound or constituent, and the columns represent attributes of that compound or constituent, primarily EFs. The algorithm and approach for assigning the unique IDs are described in S1. The unique IDs are one of the critical features for creating and linking the datasets.

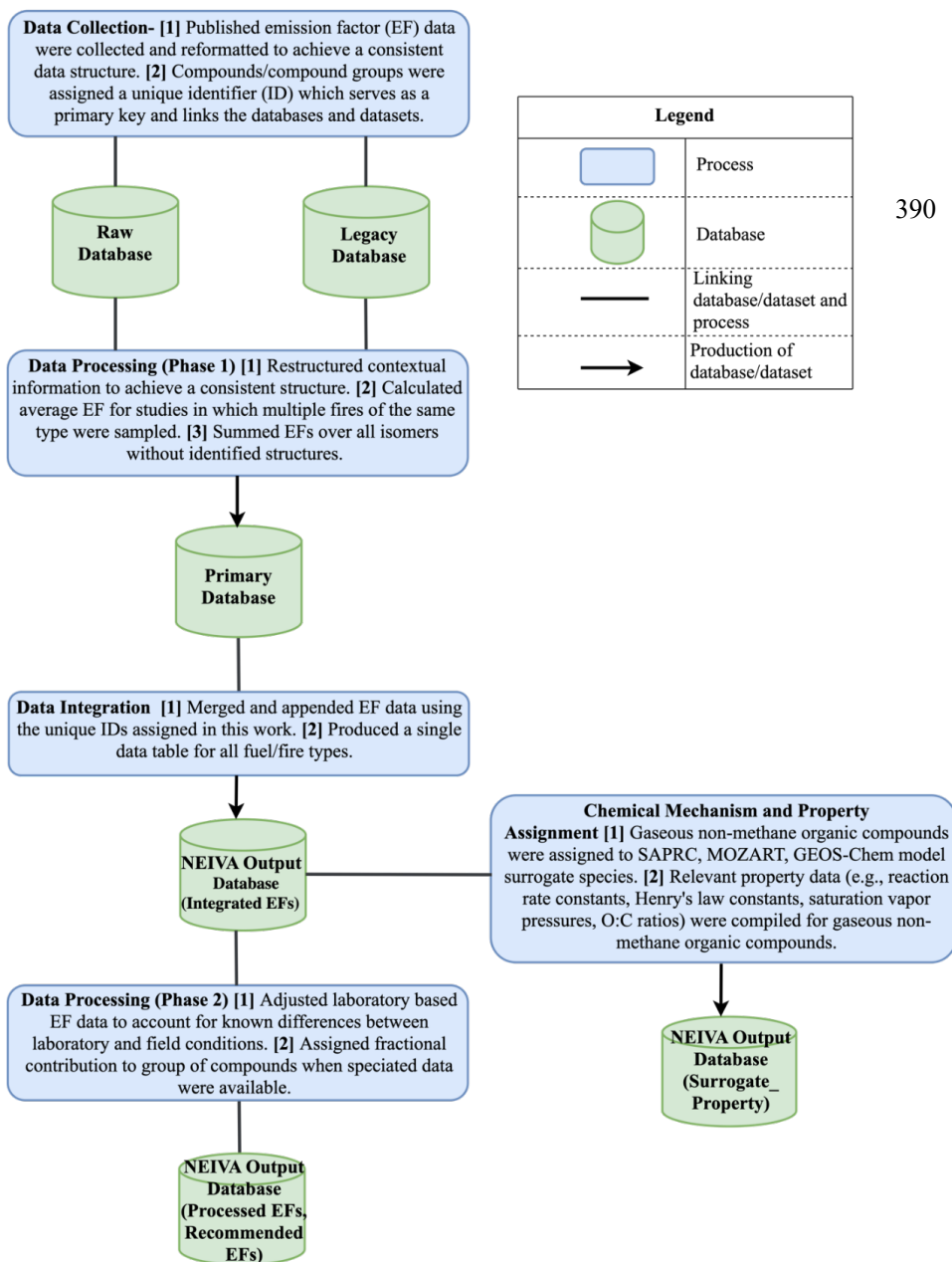


Figure 1: Schematic of NEIVA. The use of “contextual” here (data processing phase 1) refers to information to provide additional context for EF data including: measurement location (lab/field), fuel type, modified combustion efficiency (MCE), and publication identifiers (e.g., DOI, year).



**Table 1:** Description of the databases (multiple related data tables) and datasets (single data tables) that comprise NEIVA.

Data Storage Name	Description
Legacy database (ldb)	The Akagi et al. (2011) supplemental data, including 2014 and 2015 updates, are stored as tables in this repository. There are 14 tables, one for each fuel or fire type. All compounds and constituents were assigned a unique id. No data processing performed.
Raw database (rdb)	Data from selected publications (2015 or later) are stored as tables in this repository. There are 30 tables in this database: one for each of the publications added since Akagi et al.(2011). All compounds and constituents were assigned a unique id. No data processing performed.
Primary database (pdb)	Data from the legacy and raw database tables were reformatted to achieve a consistent structure and combined with some data processing as described in the manuscript and S2, namely updates to the % C for some reported fuels. The resultant 44 tables are stored in this repository.
NEIVA output database (odb)	Four datasets are stored in the NEIVA output database: <u>Integrated EFs:</u> EF data aggregated in the primary database were merged and stored in this single dataset for all fuel and fire types. The process for merging EFs is described in the manuscript and S3. <u>Processed EFs:</u> Additional data processing steps were performed on the integrated EF dataset prior to calculating recommended EFs, as described in S4. Laboratory data were adjusted to represent known differences in combustion conditions between laboratory and field studies. Groups of isomeric compounds were resolved and assigned fractional contributions when possible. <u>Recommended EFs:</u> The arithmetic means of the processed EFs for each compound or constituent in each of the 14 representative fuel or fire types are stored in this single dataset. Prior to averaging, NO <sub>x</sub> EFs were converted to “NO <sub>x</sub> as NO” EFs if NO and NO <sub>2</sub> data were available (see S5). <u>Property Surrogate:</u> For each of the gaseous organic compounds in these datasets, chemical and physical property data, as well as model surrogate assignments for specific chemical mechanisms, are stored in this single dataset (see S6).
Backend database (bdb)	Tables that are used in the Python scripts for data processing, listed and described in S8, are stored in this database. The tables in the backend database were used to create the output datasets but are not necessary for users to access the EF data.

### 3.2 Primary database

395 Prior to combining the legacy and raw databases to form the primary database, several formatting  
 and data processing steps were performed. The data processing steps on the legacy database  
 included removing peatland and the estimated temperate forest EFs that were included in Akagi et  
 al. (2011) (and were retained in the legacy database), removing EFs for unknown proton ion  
 transfer (PIT) masses for temperate forest and chaparral, combining isomers, and calculating a  
 400 study average for any studies that reported multiple EFs for a given fuel or fire type. From the raw  
 database, the EFs reported by Koss et al. (2018) were recalculated to reflect measured % C as  
 reported by Selimovic et al. (2018). Further detail on these and additional data processing steps is  
 provided in S2. The resultant primary database is comprised of 44 tables (listed in Table S8). The  
 tables represent the Akagi et al. (2011) EF data separated by fuel or fire type (14 tables) and the  
 EF data from publications since 2015 (30 tables). For publications that include data for a single  
 405 fuel or fire type, a fuel designation abbreviation precedes the table name, and otherwise for  
 publications that include data for multiple fuel or fire types, the table name only reflects the source  
 publication (see S2, Table S8 for examples).



### 3.3 Output database

Four datasets are stored in the output database, each of which are described in further detail below.

410 These include the integrated EF dataset, the processed EF dataset, the recommended EF dataset, and the chemical property and chemical mechanism assignment (model surrogate) dataset.

#### 3.3.1 Integrated EF dataset

The aggregated EF data from the tables in the primary database were merged across all studies into a single EF dataset. An algorithm was developed to merge data from individual studies across  
415 tables in the primary database. The algorithm uses a multistep process to group compounds across datasets, determine whether the compounds are the same or different, and then append each compound to the integrated dataset as a new row (indicating a new compound) and each EF as a new column (indicating a new EF). In this dataset, EFs are available for a total of 1311 compounds or constituents with up to 263 measurements (i.e., EFs) study-averaged for individual fuel types  
420 from the primary database. Details on the integration algorithm are provided in S3 and illustrated in Tables S11-S13.

#### 3.3.2 Processed EF dataset

Following integration, the EF data from laboratory studies were corrected to account for known differences between laboratory and field combustion conditions. The results of this correction are  
425 presented and discussed in 4.1, with further detail on the correction methods presented in S4. In addition, to minimize over- or under-counting of individual NMOC\_g and to increase the number of measured EFs per individual gaseous NMOC (and thus the statistical robustness), where applicable speciated EF data were used to assign fractional contributions to EFs representing groups of compounds that could not be differentiated using the published method of detection. For  
430 example, because methyl vinyl ketone (MVK) and methacrolein have the same molar mass they are not differentiable by PTR-MS, and thus are often reported as a sum (MVK + methacrolein). For fuel and fire types in which EFs were reported for MVK and methacrolein as a sum and as individual compounds (e.g., using GC×GC-TOF-MS, GC-PTR-MS), the relative EFs of the individual compounds were used to assign fractional contributions to the summed EF, resulting in  
435 two (or more) EFs for MVK and for methacrolein, and no EF for MVK + methacrolein in the processed data set. The results of assigning fractional contributions are presented and discussed in 4.2, with further detail on the fractional assignment presented in S4.

#### 3.3.3 Recommended EF dataset

440 The arithmetic means of the EFs in the processed dataset were calculated to obtain a single recommended EF for each compound or constituent in each of the 14 fuel or fire types, with equal weighting of the laboratory-adjusted and field EF data. These recommended EFs, along with standard deviation ( $1\sigma$ ), data count (number of studies), and emission ratios (ERs) to CO were stored in the recommended EF dataset and are available in the Supplemental Table. A subset of  
445 the Supplemental Table is represented in Tables 2 (EFs) and Table 3 (ERs) below; ERs may be particularly useful in modeling studies where emissions are not explicitly defined. Prior to calculating the recommended EF for each compound or constituent, one additional data processing



step was performed: for studies in which EFs for NO, NO<sub>2</sub>, and NO<sub>x</sub> were reported, NO<sub>x</sub> EFs were converted to “NO<sub>x</sub> as NO” EFs (see S5). In the recommended EF dataset, for savanna fires, the EF for OA is greater than the EF for PM<sub>2.5</sub>. The OA represents a single value reported by Travis et al. (2023). In their paper, the EFs for PM<sub>1</sub>, OA, and OC are self-consistent and reasonable. When averaged here with the other data, because there is only one EF for OA and many EFs for PM<sub>2.5</sub>, the Travis et al. (2023) data disproportionately affect the EF<sub>OA</sub>. The Travis et al. (2023) data were not considered outliers but representative of the natural variability of fuel and fire conditions, and thus the data were not removed.

**Table 2:** Recommended EFs (g/kg) for selected compounds and constituents.

	Savanna	Boreal Forest	Tropical Forest	Temperate Forest	Peat	Chaparral	Crop Residue	Garbage Burning
Carbon dioxide (CO <sub>2</sub> )	1.640×10 <sup>3</sup>	1.610×10 <sup>3</sup>	1.625×10 <sup>3</sup>	1.581×10 <sup>3</sup>	1.572×10 <sup>3</sup>	1.649×10 <sup>3</sup>	1.441×10 <sup>3</sup>	1.502×10 <sup>3</sup>
Carbon monoxide (CO)	8.10×10 <sup>1</sup>	1.00×10 <sup>2</sup>	1.11×10 <sup>2</sup>	9.60×10 <sup>1</sup>	2.25×10 <sup>2</sup>	6.66×10 <sup>1</sup>	5.75×10 <sup>1</sup>	5.20×10 <sup>1</sup>
Methane (CH <sub>4</sub> )	2.83×10 <sup>0</sup>	4.78×10 <sup>0</sup>	4.68×10 <sup>0</sup>	4.74×10 <sup>0</sup>	1.11×10 <sup>1</sup>	2.57×10 <sup>0</sup>	2.14×10 <sup>0</sup>	3.06×10 <sup>0</sup>
Nitric oxide (NO)	1.76×10 <sup>0</sup>	9.16×10 <sup>-1</sup>	9.00×10 <sup>-1</sup>	7.85×10 <sup>-1</sup>	3.21×10 <sup>-1</sup>	1.15×10 <sup>0</sup>	9.62×10 <sup>-1</sup>	8.10E-01
Nitrogen oxides (NO <sub>x</sub> as NO)	3.40×10 <sup>0</sup>	1.21×10 <sup>0</sup>	2.55×10 <sup>0</sup>	1.65×10 <sup>0</sup>	9.27×10 <sup>-1</sup>	2.42×10 <sup>0</sup>	2.05×10 <sup>0</sup>	2.31×10 <sup>0</sup>
Nitrogen dioxide (NO <sub>2</sub> )	2.60×10 <sup>0</sup>	9.22×10 <sup>-1</sup>	3.55×10 <sup>0</sup>	1.40×10 <sup>0</sup>	5.43×10 <sup>-1</sup>	1.02×10 <sup>0</sup>	1.96×10 <sup>0</sup>	2.34×10 <sup>0</sup>
Nitrous oxide (N <sub>2</sub> O)	1.40×10 <sup>-1</sup>	2.05×10 <sup>-1</sup>		1.55×10 <sup>-1</sup>		2.50×10 <sup>-1</sup>		
Nitrous acid (HONO)	4.99×10 <sup>-1</sup>	2.55×10 <sup>-1</sup>	1.18×10 <sup>0</sup>	3.78×10 <sup>-1</sup>	2.22×10 <sup>-1</sup>	5.52×10 <sup>-1</sup>	3.53×10 <sup>-1</sup>	2.51×10 <sup>-1</sup>
Sulphur dioxide (SO <sub>2</sub> )	9.44×10 <sup>-1</sup>	5.64×10 <sup>-1</sup>	4.03×10 <sup>-1</sup>	9.50×10 <sup>-1</sup>	2.06×10 <sup>0</sup>	5.53×10 <sup>-1</sup>	1.25×10 <sup>0</sup>	7.05×10 <sup>-1</sup>
Isocyanic acid (CHNO)	1.05×10 <sup>0</sup>	8.30×10 <sup>-2</sup>		4.05×10 <sup>-1</sup>	5.74×10 <sup>-1</sup>	3.02×10 <sup>-1</sup>	4.69×10 <sup>-1</sup>	1.29×10 <sup>-1</sup>
Ammonia (NH <sub>3</sub> )	6.59×10 <sup>-1</sup>	1.47×10 <sup>0</sup>	1.33×10 <sup>0</sup>	1.06×10 <sup>0</sup>	6.15×10 <sup>0</sup>	9.09×10 <sup>-1</sup>	9.68×10 <sup>-1</sup>	6.88×10 <sup>-1</sup>
Gaseous Non-Methane Organic Compounds (NMOC g)	3.73×10 <sup>1</sup>	4.05×10 <sup>1</sup>	2.53×10 <sup>1</sup>	4.25×10 <sup>1</sup>	7.37×10 <sup>1</sup>	2.17×10 <sup>1</sup>	3.81×10 <sup>1</sup>	3.36×10 <sup>1</sup>
PM <sub>2.5</sub> <sup>(a)</sup>	1.6×10 <sup>1</sup>	1.28×10 <sup>1</sup>	9.11×10 <sup>0</sup>	1.79×10 <sup>1</sup>	2.48×10 <sup>1</sup>	1.51×10 <sup>1</sup>	1.27×10 <sup>1</sup>	9.68×10 <sup>0</sup>
OA	2.73×10 <sup>1</sup> (b)	6.60×10 <sup>0</sup>		1.71×10 <sup>1</sup>		1.08×10 <sup>1</sup>	1.12×10 <sup>1</sup>	7.36×10 <sup>0</sup>
OC	6.49×10 <sup>0</sup>		3.99×10 <sup>0</sup>	1.04×10 <sup>1</sup>	1.32×10 <sup>1</sup>	1.08×10 <sup>1</sup>	9.47×10 <sup>0</sup>	5.47×10 <sup>0</sup>
BC	3.50×10 <sup>-1</sup>	1.30×10 <sup>-1</sup>	3.44×10 <sup>-1</sup>	4.35×10 <sup>-1</sup>	1.60×10 <sup>-2</sup>	6.24×10 <sup>-1</sup>	4.46×10 <sup>-1</sup>	1.98×10 <sup>0</sup>
EC					4.32×10 <sup>-1</sup>		4.99×10 <sup>-1</sup>	1.92×10 <sup>-1</sup>

(a)PM<sub>2.5</sub><sup>†</sup> includes PM<sub>1</sub>-PM<sub>5</sub>. (b) OA is a single value from Travis et al. (2023) that is less than PM<sub>1</sub> from the same study.



460

**Table 3:** Recommended ERs (ppb/ppm CO) to CO for selected compounds and constituents.

	Savanna	Boreal Forest	Tropical Forest	Temperate Forest	Peat	Chaparral	Crop Residue	Garbage Burning
Carbon dioxide (CO <sub>2</sub> )	1.289×10 <sup>4</sup>	1.020×10 <sup>4</sup>	9.335×10 <sup>4</sup>	1.049×10 <sup>4</sup>	4.447×10 <sup>3</sup>	1.576×10 <sup>4</sup>	1.594×10 <sup>4</sup>	1.837×10 <sup>4</sup>
Methane (CH <sub>4</sub> )	6.10×10 <sup>1</sup>	8.31×10 <sup>1</sup>	7.38×10 <sup>1</sup>	8.63×10 <sup>1</sup>	8.61×10 <sup>1</sup>	6.74×10 <sup>1</sup>	6.50×10 <sup>1</sup>	1.03×10 <sup>2</sup>
Nitric oxide (NO)	2.02×10 <sup>1</sup>	8.50×10 <sup>0</sup>	7.58×10 <sup>0</sup>	7.63×10 <sup>0</sup>	1.33×10 <sup>0</sup>	1.61×10 <sup>1</sup>	1.56×10 <sup>1</sup>	1.45×10 <sup>1</sup>
Nitrogen oxides (NO <sub>x</sub> as NO)	3.92×10 <sup>1</sup>	1.12×10 <sup>1</sup>	2.15×10 <sup>1</sup>	1.61×10 <sup>1</sup>	3.85×10 <sup>0</sup>	3.39×10 <sup>1</sup>	3.33×10 <sup>1</sup>	4.14×10 <sup>1</sup>
Nitrogen dioxide (NO <sub>2</sub> )	1.95×10 <sup>1</sup>	5.59×10 <sup>0</sup>	1.95×10 <sup>1</sup>	8.91×10 <sup>0</sup>	1.47×10 <sup>0</sup>	9.35×10 <sup>0</sup>	2.07×10 <sup>1</sup>	2.74×10 <sup>1</sup>
Nitrous oxide (N <sub>2</sub> O)	1.10×10 <sup>0</sup>	1.30×10 <sup>0</sup>		1.03×10 <sup>0</sup>		2.39×10 <sup>0</sup>		
Nitrous acid (HONO)	3.67×10 <sup>0</sup>	1.51×10 <sup>0</sup>	6.35×10 <sup>0</sup>	2.35×10 <sup>0</sup>	5.88×10 <sup>-1</sup>	4.94×10 <sup>0</sup>	3.65×10 <sup>0</sup>	2.87×10 <sup>0</sup>
Sulfur dioxide (SO <sub>2</sub> )	5.10×10 <sup>0</sup>	2.45×10 <sup>0</sup>	1.59×10 <sup>0</sup>	4.33×10 <sup>0</sup>	4.01×10 <sup>0</sup>	3.63×10 <sup>0</sup>	9.47×10 <sup>0</sup>	5.92×10 <sup>0</sup>
Isocyanic acid (CHNO)	8.45×10 <sup>0</sup>	5.38×10 <sup>-1</sup>		2.75×10 <sup>0</sup>	1.66×10 <sup>0</sup>	2.96×10 <sup>0</sup>	5.31×10 <sup>0</sup>	1.61×10 <sup>0</sup>
Ammonia (NH <sub>3</sub> )	1.34×10 <sup>1</sup>	2.41×10 <sup>1</sup>	1.97×10 <sup>1</sup>	1.82×10 <sup>1</sup>	4.51×10 <sup>1</sup>	2.25×10 <sup>1</sup>	2.77×10 <sup>1</sup>	2.18×10 <sup>1</sup>
Gaseous Non-Methane Organic Compounds (NMOC g)	2.31×10 <sup>2</sup>	1.99×10 <sup>2</sup>	1.35×10 <sup>2</sup>	2.04×10 <sup>2</sup>	1.67×10 <sup>2</sup>	1.66×10 <sup>2</sup>	3.10×10 <sup>2</sup>	3.45×10 <sup>2</sup>
<b>ERs (g/g CO)</b>								
PM <sub>2.5</sub> <sup>(a)</sup>	2.17×10 <sup>-1</sup>	1.27×10 <sup>-1</sup>	8.22×10 <sup>-2</sup>	1.85×10 <sup>-1</sup>	1.10×10 <sup>-1</sup>	2.25×10 <sup>-1</sup>	2.21×10 <sup>-1</sup>	1.86×10 <sup>-1</sup>
OA	3.38×10 <sup>-1</sup>	6.57×10 <sup>-2</sup>		1.78×10 <sup>-1</sup>		1.62×10 <sup>-1</sup>	1.95×10 <sup>-1</sup>	1.41×10 <sup>-1</sup>
OC	8.01×10 <sup>-2</sup>		3.60×10 <sup>-2</sup>	1.09×10 <sup>-1</sup>	5.86×10 <sup>-2</sup>	1.63×10 <sup>-1</sup>	1.65×10 <sup>-1</sup>	1.05×10 <sup>-1</sup>
BC	4.32×10 <sup>-3</sup>	1.29×10 <sup>-3</sup>	3.10×10 <sup>-3</sup>	4.54×10 <sup>-3</sup>	7.13×10 <sup>-5</sup>	9.36×10 <sup>-3</sup>	7.75×10 <sup>-3</sup>	3.80×10 <sup>-2</sup>
EC					1.92×10 <sup>-3</sup>		8.67×10 <sup>-3</sup>	3.68×10 <sup>-3</sup>

(a)PM<sub>2.5</sub>\* includes PM<sub>1</sub>-PM<sub>5</sub>.



### 3.3.4 Chemical property and model surrogate dataset

465 In many model applications, it is impractical to represent hundreds of individual organic  
compounds and thus lumping of compounds is often required. In gas-phase chemical mechanisms,  
it is typical to lump organic compounds based on their reaction rate constant with OH ( $k_{OH}$ ) and  
the oxidation products that they form. Groups of compounds may be represented by individual  
470 compounds or by model surrogates. To facilitate the use of the comprehensive EF data for  
NMOC\_g included in NEIVA, individual NMOC\_g were mapped to model surrogates for the  
common gas-phase chemical mechanisms SAPRC-07/-07T/-18/-22 (Carter, 2010, 2020, 2023a),  
MOZART-T1 (Emmons et al., 2020), and GEOS-Chem (Bey et al., 2001; Carter et al., 2022). The  
methods for assigning the model surrogates and sources for the property data are described in detail  
475 in S6. Briefly, compounds were first assigned to the SAPRC and MOZART-T1 mechanisms using  
the SAPRC Mechanism Generation (MechGen) System web interface (Carter, 2019) and the  
SAPRC model species assignment database ‘SpecDB’ (Carter, 2023b). The SAPRC and  
MOZART-T1 assignments were then used to determine the GEOS-Chem assignments (see Tables  
S18-S21), with additional reference to Hutzell et al. (2012), Li et al. (2014), and Carter et al.  
(2022). The model surrogate assignments are provided in a property dataset (see Table S22) that  
480 also includes oxidation rate constants with OH, O<sub>3</sub>, and NO<sub>3</sub> (cm<sup>3</sup>/molecule-s); vapor pressures  
(mm Hg); saturation vapor concentration ( $C^*$ , μg/m<sup>3</sup>); Henry’s Law constants (atm-m<sup>3</sup>/mole); O:C  
ratio; and average carbon oxidation state (Pence and Williams, 2010; NIST Chemistry WebBook,  
2022; US EPA, 2023; Kim et al., 2023; ChemSpider, 2024) linked to individual NMOCs by the  
unique ID.

## 4. Evaluation

### 485 4.1 Adjustment of Laboratory-Based Emission Factors and Integration of Laboratory and Field Data

Representative laboratory-based EFs were selectively included in NEIVA largely to capture the  
extensive speciation of gas- and particle-phase organic carbon (i.e., NMOC\_g and NMOC\_p) that  
490 has been achieved in laboratory studies. Laboratory studies also provide additional measurements  
for fuel and fire types that have a limited number of field-based EF measurements, and thus if  
representative, decrease the uncertainty associated with those EFs. While the designation of  
representative is subjective, studies were prioritized here that emphasized careful handling of  
relevant fuels (e.g., using fresh fuels from specific locations) and combustion in configurations  
495 that mimic natural conditions to the extent possible. Nonetheless, even in these representative  
laboratory studies, MCE values were typically higher than observed in the field. Therefore, the  
laboratory-based EFs for all fuels (with the exception of peat) were adjusted to account for the  
generally lower combustion efficiencies under field conditions. Briefly, to calculate the adjusted  
laboratory-based EFs, the laboratory-based ERs to CO were multiplied by the field-average EF<sub>CO</sub>  
500 for smoldering compounds; an analogous calculation was done for flaming compounds using  
EF<sub>CO2</sub>. The adjustments are described in further detail in S4. Results of the adjustment are shown  
here and in S4.

Figure 2 illustrates the magnitude of the adjustment to laboratory-based EFs for smoldering  
dominant compounds. For each fuel or fire type, the average field-based EF for CO is shown in  
505 dark grey and the laboratory-based EF for CO in light grey. The laboratory-based CO values are  
lower for most fuel or fire types, with the exception of boreal forest, charcoal burning, and crop



residue. For boreal forest, the relatively high laboratory-based CO value is largely driven by EFs measured in boreal peat studies and reported by Yokelson et al. (1997). For crop residue, the relatively high value is driven by laboratory-based pile burns of rice straw reported by Christian et al. (2003). For charcoal burning, there are a greater number of field studies (n = 5) than laboratory studies (n = 2) and the variability is larger for the field studies, with lower end CO values of 122 g/kg. The sum of the adjusted EFs for the smoldering dominant compounds thus increases for most fuel or fire types, consistent with the lower EF<sub>CO</sub> values measured under more flaming conditions in laboratory studies. For two fire types, boreal and temperate forest, the sum of the adjusted EFs does not decrease and increase (respectively) as expected. The reason for this is twofold: the number of compounds measured in laboratory studies is significantly larger than the number measured in the field and, in the case of temperate forest, the natural variability (driven by fuel and fire characteristics) is larger than the small difference between the average field and laboratory EF<sub>CO</sub>. Figure S2 is the analogous figure for the flaming dominant compounds (NO, NO<sub>2</sub>, NO<sub>x</sub> as NO, N<sub>2</sub>O, HONO, SO<sub>2</sub>, HCl, gaseous Hg).

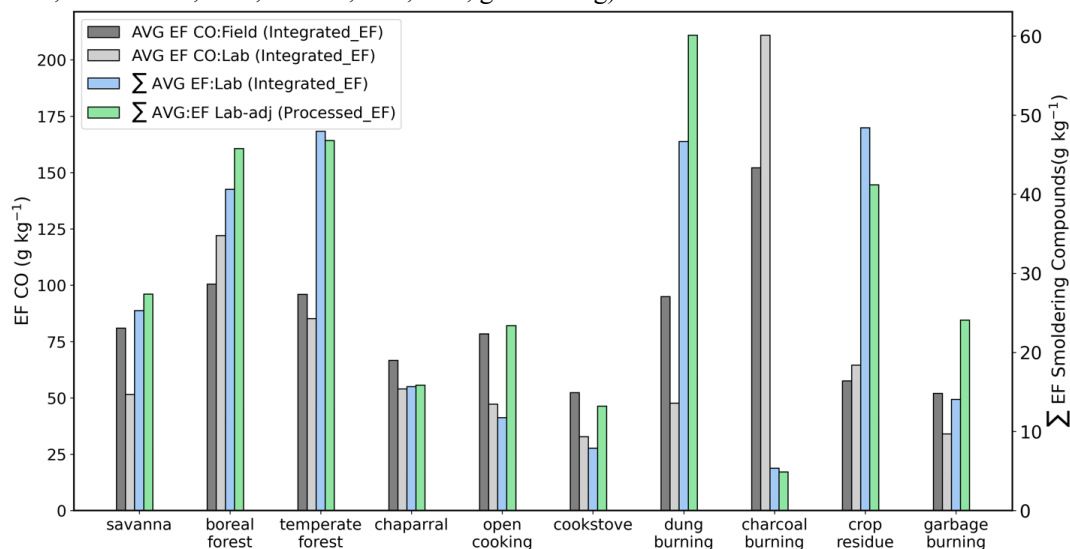


Figure 2: Averaged EF values for CO (field, dark grey; lab, light grey) and the sum of smoldering dominant compounds (excluding CO and CH<sub>4</sub>) pre-(blue) and post-(green) adjustment to account for differences in combustion conditions between laboratory and field studies. Integrated\_EF indicates data from the integrated EF dataset and Processed\_EF indicates data from the processed EF dataset.

In the processed EF dataset the adjusted laboratory-based EFs replace the unadjusted laboratory-based EFs from the integrated dataset and are used in the calculation of the recommended EFs. To more closely evaluate this adjustment on an individual compound level, Figure 3 shows the distribution of field and adjusted laboratory EFs (box and whiskers) for the 25 most abundant NMOC<sub>g</sub> in the temperate forest fire type. The mean value is equivalent to the recommended EF and is shown by the red line. Also shown are the average EF based on the unadjusted laboratory data only ('Average EF (lab)') and the field data only ('Average EF (field)'), as well as the EFs reported by Permar et al. (2021) for WE-CAN and Gkatzelis et al. (2023) for FIREX-AQ. A corresponding figure for the 25 compounds with the highest number of observations ("n") in the NEIVA integrated EF database, that are not shown in Fig. 3, is included in the SI (Figure S3), and equivalent figures for crop residue are also included in the SI (Figures S4, S5). While the





unadjusted laboratory EF averages are outside the upper (75%) and lower (25%) quartiles for five of the 25 compounds shown in Fig. 3 (and 11 of the 25 in Fig. S5), the mean EF values (which include adjusted laboratory EF) do not deviate significantly from the field-based averages. Agreement with the values reported by Permar et al. (2021) and Gkatzelis et al. (2023) is compound dependent, but generally those values are within the upper and lower quartiles of the NEIVA processed dataset. This analysis suggests that the inclusion of the adjusted laboratory data does not introduce unrepresentative values that are outside of the expected variability and/or uncertainty observed in the field data, and serves to increase the number of observations and compounds represented in the database.

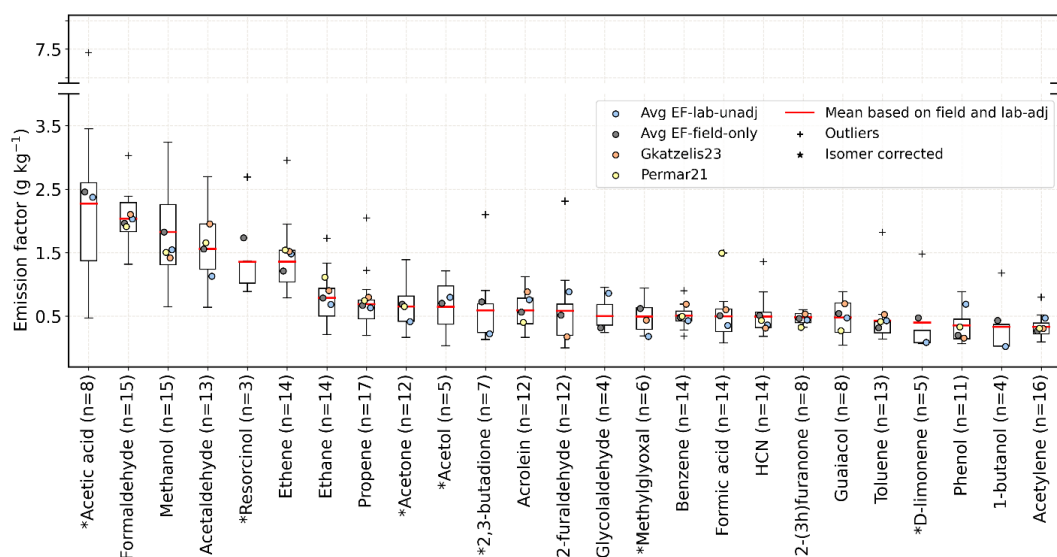


Figure 3: The 25 most abundant NMOC\_g EFs for temperate forest. The box and whiskers represent the values in the processed EF dataset and thus include the field EFs and the adjusted laboratory EFs. The outliers ( $> 1.5 \times$  above/below the interquartile range) in the processed EF dataset are indicated by the plus symbols. The red line indicates the mean value and is equivalent to the recommended EF. The number of observations is listed in parenthesis (“n”). Compounds marked with an asterisk before the name have had an additional correction, application of isomeric distributions described below.

#### 4.2 Assignment of Isomer Contributions to Exact Masses

In some cases, isomers that are not resolved using one analytical technique can be resolved using another analytical technique. Because the individual compounds in these unresolved mixtures may have very different chemical and physical properties, it is preferable to resolve the mixtures when possible. In addition, resolving mixtures leads to an increase in the number of observations for associated individual compounds. Therefore, prior to their inclusion in the recommended EF database, fractional distributions were assigned to mixtures as described in S4.

The summed EFs for groups of NMOC\_g in the NEIVA integrated dataset that were assigned fractional distributions are listed before and after processing in Table 4 for each fuel or fire type. Also included are the number of unique chemical formulas for which isomer contributions were assigned. The summed EFs for these NMOC\_g decreases with the application of the fractional distribution, largely due to double counting prior to assigning isomer contributions to groups of



565 NMOC<sub>g</sub>. There were no group assignments in open cooking or charcoal making so no isomer contribution assignments were made.

**Table 4:** The summed EFs for the subset of NMOC<sub>g</sub> to which isomeric contributions have been assigned, pre- and post- assignment of fractional contributions, shown for each fuel or fire type. Also shown are the number of unique chemical formulas for which fractional distributions were assigned.

Fuel or Fire Type	Summed Isomeric NMOC <sub>g</sub> EFs Pre-Fractional Contribution	Summed Isomeric NMOC <sub>g</sub> EFs Post-Fractional Contribution	Number of Unique Chemical Formulas
Savanna	12.23	7.02	11
Boreal forest	8.33	4.16	38
Tropical forest	1.47	0.74	2
Temperate forest	28.27	14.71	80
Peat	37.44	19.67	76
Chaparral	11.74	5.93	36
<b>Domestic Biomass Burning</b>			
Open cooking	0	0	0
Cookstove	0.47	0.20	4
Dung burning	22.56	12.22	15
Charcoal making	0	0	0
Charcoal burning	0.90	0.42	1
Pasture maintenance	0.17	0.09	1
Crop residue	28.05	13.93	85
Garbage burning	2.33	1.21	6

570 The laboratory-based EFs in the processed EF dataset were adjusted for MCE and, where applicable, assigned isomeric contributions. Figures 4 and 5 compare the NEIVA temperate forest EFs from the recommended EF database (includes laboratory-adjusted EFs) with EFs reported by Permar et al. (2021) for WE-CAN and Gkatzelis et al. (2023) for FIREX-AQ, respectively. For 115 of 145 overlapping gaseous compounds agreement is within a factor of two with Permar et al. (2021) and for 84 of 95 with Gkatzelis et al. (2023). Focusing on the compounds for which NEIVA is higher than Permar et al. (2021) and/or Gkatzelis et al. (2023) by a factor of two or more, there were no systematic biases or unexplained discrepancies in the laboratory data relative to the field data, supporting the inclusion of laboratory data in this EF compilation. For some compounds, higher EFs measured in laboratory studies, and in Gkatzelis et al. (2023) relative to Permar et al. (2021), can be explained by photochemical losses as a function of aging. In Figs. 4 and 5, marker colors are representative of  $k_{OH}$  values for the NMOC<sub>g</sub>, with red values indicating higher OH reactivity and blue values indicating lower OH reactivity. The loss of the more reactive compounds measured during WE-CAN relative to laboratory studies likely partially explains the higher EFs in NEIVA, and to a lesser extent the compounds measured during FIREX-AQ. Similar observations were made by Gkatzelis et al. (2023), that ERs for some highly reactive compounds in WE-CAN were lower than laboratory measurements and in FIREX-AQ higher than laboratory measurements, highlighting variability in oxidation and emissions in both laboratory and field studies. When multiple data points were available for comparison, high EF values were also reported for field studies (and low EF values for laboratory studies) representing diversity in fuels



burned and fires sampled. For some field studies, the higher EFs reflect greater sampling of smoldering fires (e.g., as reported by Yokelson et al. (2013)) and pile burns (e.g., as reported by Travis et al., 2023)). No laboratory data were omitted as a result of these comparisons.

590

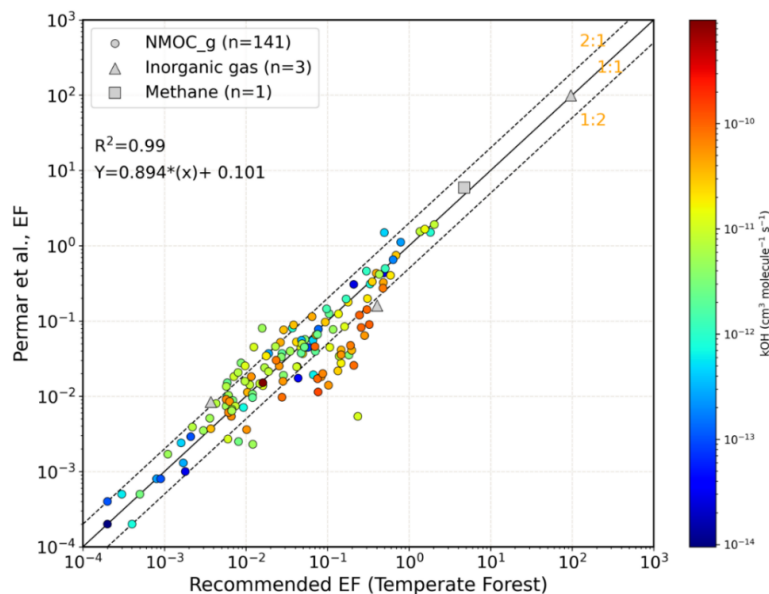
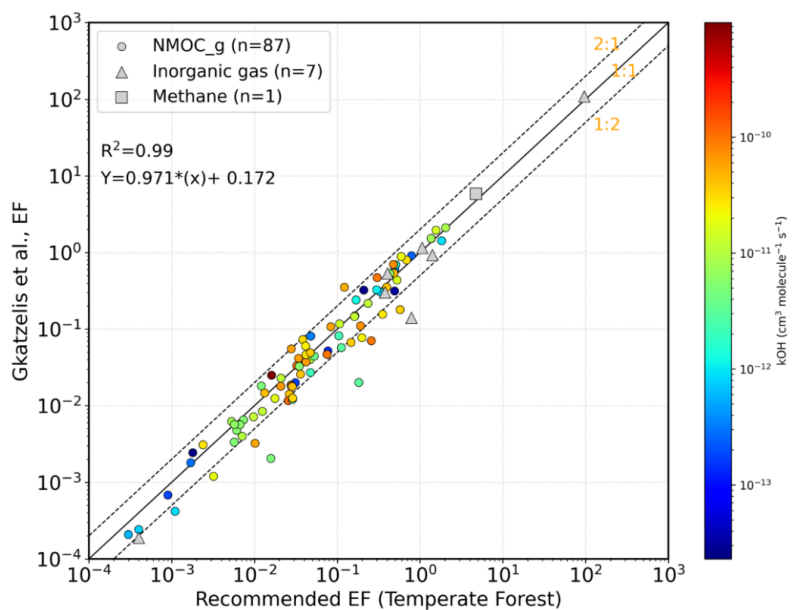


Figure 4: NEIVA temperate forest EFs (gaseous non-methane organic compounds, inorganic gases, methane) vs. EF data reported by Permar et al. (2021) from the WE-CAN field study. The equation is for the linear fit (not shown).



595 Figure 5: NEIVA temperate forest EFs (gaseous non-methane organic compounds, inorganic gases, methane) vs. EF reported by Gkatzelis et al. (2023) from the FIREX-AQ field study. The equation is for the linear fit (not shown).



### 4.3 Comparisons of Recommended EFs with EF Compilations of Akagi et al. 2011 and Andreae 2019

In 2019, Andreae (2019) published an update of the 2001 Andreae and Merlet (2001) EF compilation. Field data from over 370 publications were evaluated and the number of species included was increased from 93 to 121. Andreae (2019) compared EFs for a subset of compounds and constituents with Akagi et al. (2011). That comparison is expanded here, with an added emphasis on NMOC\_g. Figure 6 is similar to Figure 2 of Andreae (2019) and shows a comparison of NEIVA-based recommended EFs for selected inorganic gases and particulate constituents with Akagi et al. (2011) (green markers) and with Andreae (2019) (orange markers) for three fire types (represented by the different marker symbols). There appear to be no systematic biases with regard to specific EFs and specific fuel types. For many of the comparisons shown, the agreement is within a factor of two (indicated by the dashed lines). The methane EF for crop residue in the NEIVA recommended EF dataset is lower than both Andreae (2019) and Akagi et al. (2011) likely due to the inclusion of more data from loose burning in the field. In addition, the OC EFs are higher than Andreae (2019) for crop residue, which is likely due to inclusion of the Travis et al. (2023) data, in which the burns occurred under relatively wet conditions, promoting more smoldering combustion. The BC EFs in the NEIVA recommended EF dataset are lower than Andreae (2019) for temperate forest and significantly so for peat. The significantly lower BC EFs for peat in the NEIVA recommended EF dataset are largely due to exclusion of thermal EC data, which can result in artificially high EC/BC EFs due to charring of OC. Figures S6-S13 show additional comparisons between NEIVA and Andreae EF datasets for the most abundant compounds in temperate forest, peat, and crop residue fire types.

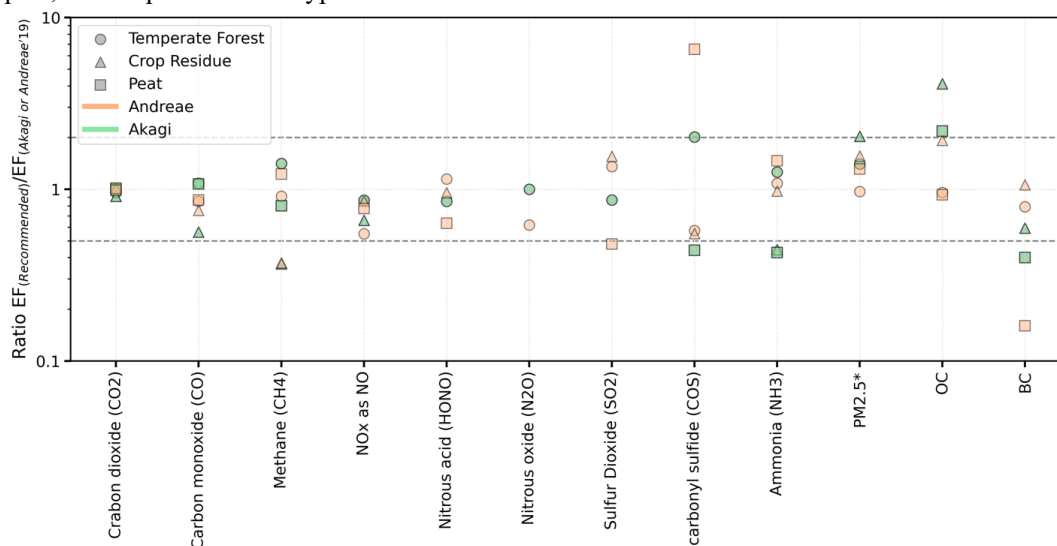
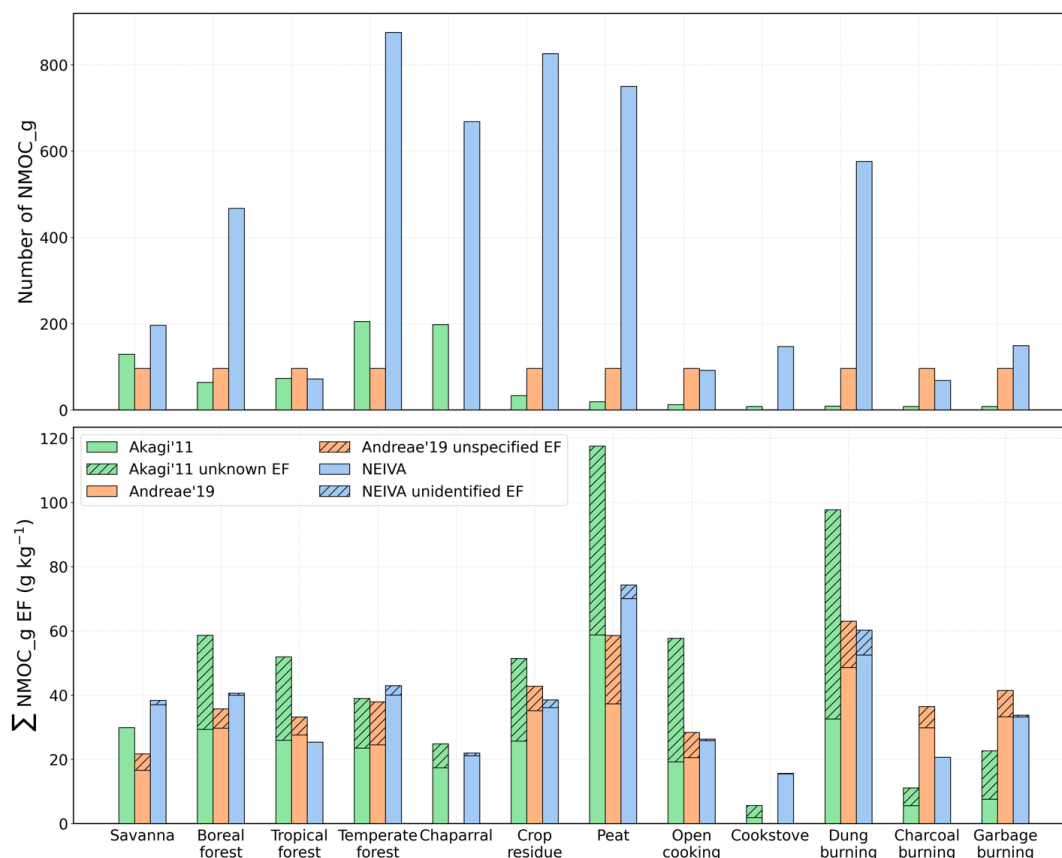


Figure 6: Ratio of recommended EFs based on NEIVA to EFs based on Akagi et al. (2011) (orange) and Andreae (2019) (green) for selected gases and particulate constituents in temperate forest, crop residue, and peat fire types. Agreement within a factor of two is shown by the dashed lines; PM<sub>2.5</sub>\* includes PM<sub>1-5</sub>.



625 **Figure 7: Number of compounds represented in NMOC\_g (top panel) and total NMOC\_g EF (bottom panel) in Akagi et al. (2011), Andreae (2019), and NEIVA. Andreae (2019) reported the total NMOC\_g EF from Akagi et al. (2011); here, the total NMOC\_g EF based on Andreae (2019) is the sum of individually reported NMOCs plus reported non-specified “VOC” (the latter shown by hashes).**

630 The inclusion of laboratory data in NEIVA leads to an unprecedented increase in the number of individual NMOC\_g represented for globally-relevant fuels and fire types. In Figure 7, the number of NMOC\_g (top panel) and total NMOC\_g EF (bottom panel) are compared with Akagi et al. (2011) and with Andreae (2019) across the 12 fuel and fire types updated in NEIVA (pasture maintenance and charcoal-making were not updated). Andreae (2019) does not include data for two of these fire types, chaparral (shrubland) and cookstoves. While the previously published compilations include approximately 100-200 NMOC\_g for most fire types (excluding cookstoves), NEIVA includes more compounds in nine of the fourteen fire types, with > 400 NMOC\_g for six of the fire types. Further, except for tropical forest, the increase in the number of NMOC\_g represented nearly eliminates the unknown NMOC\_g EF approximated by Akagi et al. (2011) (the total of which was also reported by Andreae (2019)). The differences between the total NMOC\_g EF based on Akagi et al. (2011) and based on NEIVA largely arise from the extent to which this unknown fraction was under- or over-estimated (which has not been investigated for tropical forest since Akagi et al. (2011)). For a few less-sampled fire types, Andreae (2019) has a slightly higher total EF NMOC\_g than NEIVA due to inclusion of summed non-specified VOCs.



In NEIVA there is still some fraction of  $\text{NMOC}_g \leq 5\%$  for most fire types, for which the molecular formula is known but compound class cannot be assigned (“unidentified”).

645 In Fig. 7, it can be seen that for some fire types (e.g., boreal forest, crop residue, dung burning) although the number of  $\text{NMOC}_g$  EF represented in NEIVA increases by a factor of four or more, the  $\text{NMOC}_g$  EF is less than the Akagi et al. (2011) total including estimated unknowns. In Figures 8-10, the total number of compounds that are required to represent 90% of the  $\text{NMOC}_g$  EF in NEIVA is shown for boreal forest, crop residue, and dung burning, respectively. Analogous figures for other fuel and fire types are in the SI (S14-S17). The threshold of 90% was chosen arbitrarily. 650 The figures illustrate that inclusion of ~100 compounds represents the majority of the total  $\text{NMOC}_g$  EF, and thus the  $\text{NMOC}_g$  EFs in Fig. 7b vary less than the number of compounds in Fig. 7a. Although a large number of compounds have small EFs, collectively they represent a non-negligible fraction of the total  $\text{NMOC}_g$ . Further, some representation of their chemical and 655 physical properties will be required for accurate predictions of smoke composition and concentration and of the effects of smoke on atmospheric composition, air quality, and climate.

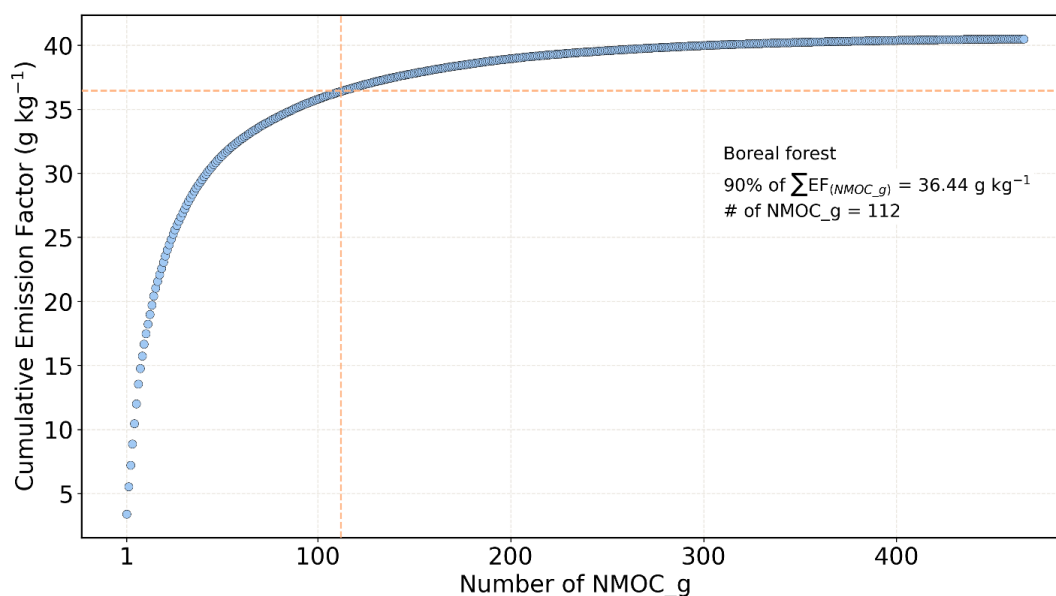
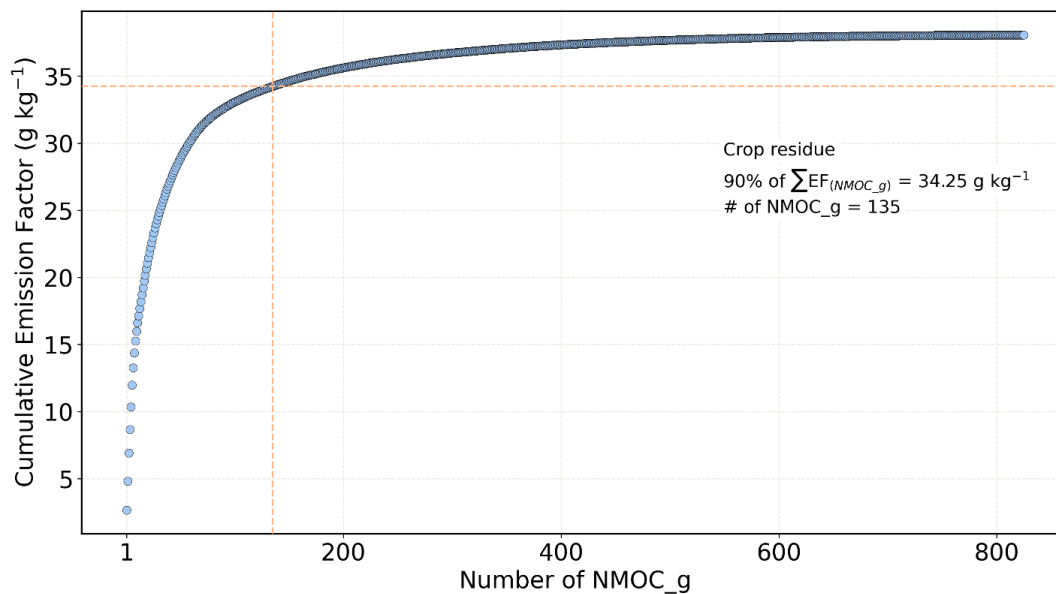
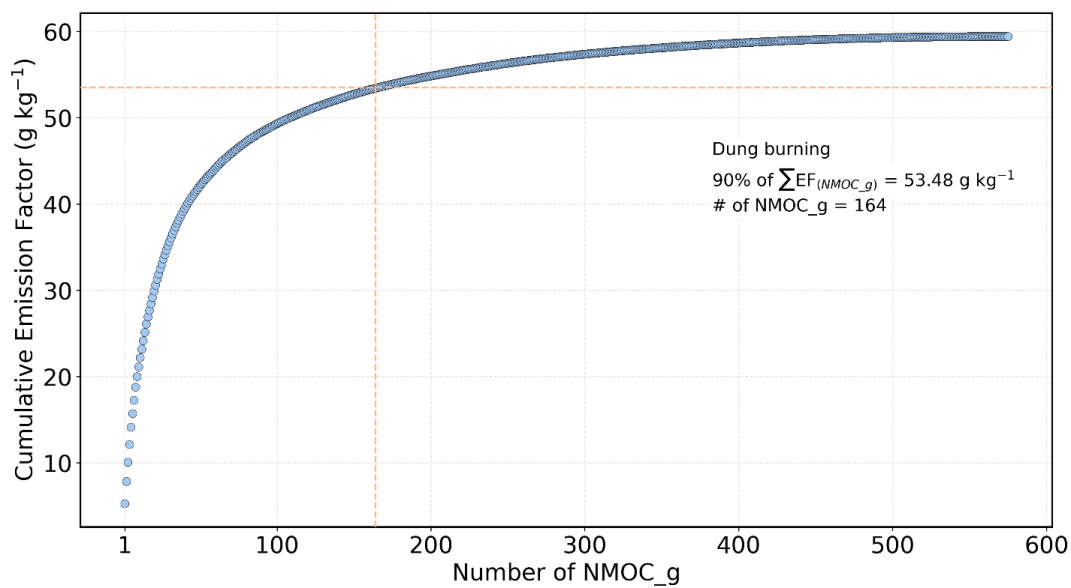


Figure 8: Number of compounds needed to represent 90% of the total boreal forest  $\text{NMOC}_g$  EF.



660

Figure 9: Number of compounds needed to represent 90% of the total crop residue NMOC\_g EF.



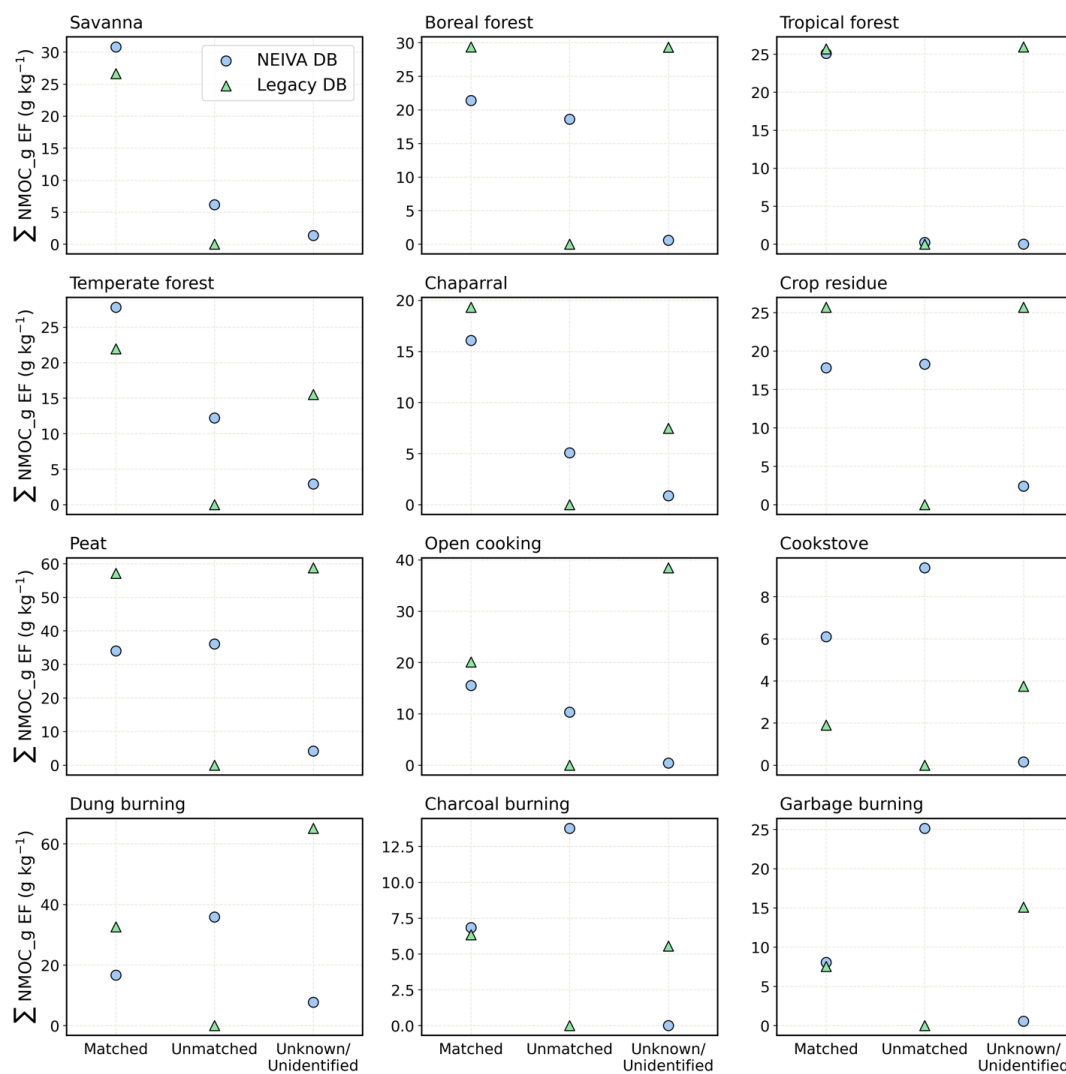
665

Figure 10: Number of compounds needed to represent 90% of the total dung burning NMOC\_g EF.



670 A more detailed comparison between Akagi et al. (2011) and NEIVA is shown in Figure 11. The  
EF is summed by individual compounds that are matched between the two datasets and individual  
675 compounds that are unmatched between the two datasets (i.e., appear in the NEIVA database but  
not in Akagi et al. (2011)). Also shown is a total EF representing unknown compounds in Akagi  
et al. (2011) and unidentified compounds in NEIVA (formula known but no functional group or  
structural assignment). For boreal forest, the summed NMOC\_g EF for matched compounds is  
680 lower in NEIVA than in Akagi due to the increased weighting of smoldering fires in Akagi et al.  
(2011). For temperate forest and for chaparral, the unknown EF in Akagi is similar to the  
unmatched EF in NEIVA, suggesting a reasonable approximation of unknowns for these fire types  
by Akagi et al. (2011). For crop residue, the EF for matched compounds is lower in NEIVA than  
in Akagi due to the reduced weighting of pile burns in NEIVA. For peat, the EF for matched  
680 compounds is lower in NEIVA than Akagi due to the inclusion of new EF data from several studies  
which are lower than those reported by Christian et al. (2010) and compiled in Akagi et al. (2011).  
There are no differences between the matched and unmatched compounds for tropical forest  
because no new NMOC\_g data were added.





685 **Figure 11: Comparison of the summed NMOC<sub>g</sub> for compounds that are matched and unmatched (i.e., in NEIVA but not in Akagi et al. (2011)) between NEIVA and Akagi et al. (2011), and the summed NMOC<sub>g</sub> that were unknown (approximated) in Akagi et al. (2011) and are unidentified (formula but no functional group, structural assignment) in NEIVA. The middle and right-hand column of each chart compare total unknown NMOC<sub>g</sub> mass estimated Akagi et al. (2011) to the mass of newly identified species included in this work.**



#### 4.4 Implications for Atmospheric Composition and Chemistry

690

Representation of a greater diversity of NMOC<sub>g</sub> has a number of potential implications for predictions of atmospheric composition, chemistry, and associated effects (e.g., Xu et al., 2021; Schwantes et al., 2022). The magnitude of the effects will depend on model complexity and resolution, and will be further investigated in forthcoming manuscripts. In lieu of a detailed modeling analysis, features of the distributions of NMOC<sub>g</sub> are presented here that can affect predictions of atmospheric composition and chemistry. The ability to generate property distributions for individual compounds and representative model surrogates is enabled by the chemical mechanism and property dataset that are linked to the EF datasets using unique IDs.

695

The volatility distribution of organic compounds, represented here by decadal spaced bins of saturation vapor concentration ( $C^*$ ), is important for predictions of SOA formation and deposition. Figures 12 and 13 show the volatility distribution of NMOC<sub>g</sub> normalized to the total NMOG in each inventory for temperate forest and crop residue fires based on NEIVA, Andreae (2019), and the EPA SPECIATE 5.2 database (Simon et al., 2010; Bray et al., 2019; SPECIATE, 2023) for temperate forest (profile 95424) and crop residue (profile 5564). The compounds are grouped by their  $C^*$  values in logarithmic bins. As demonstrated by Hatch et al. (2017), improved speciation of NMOC<sub>g</sub> leads to inclusion of lower volatility compounds than are currently represented in emissions inventories. Relative to the NEIVA database, the distributions of compounds in Andreae (2019) and the EPA SPECIATE 5.2 database (Simon et al., 2010; Bray et al., 2019; SPECIATE, 2023) are skewed towards higher volatility bins and the intermediate volatility compounds (IVOCs,  $3.5 < \log C^* < 6.5$ ) are underrepresented and in some cases entirely absent.

710

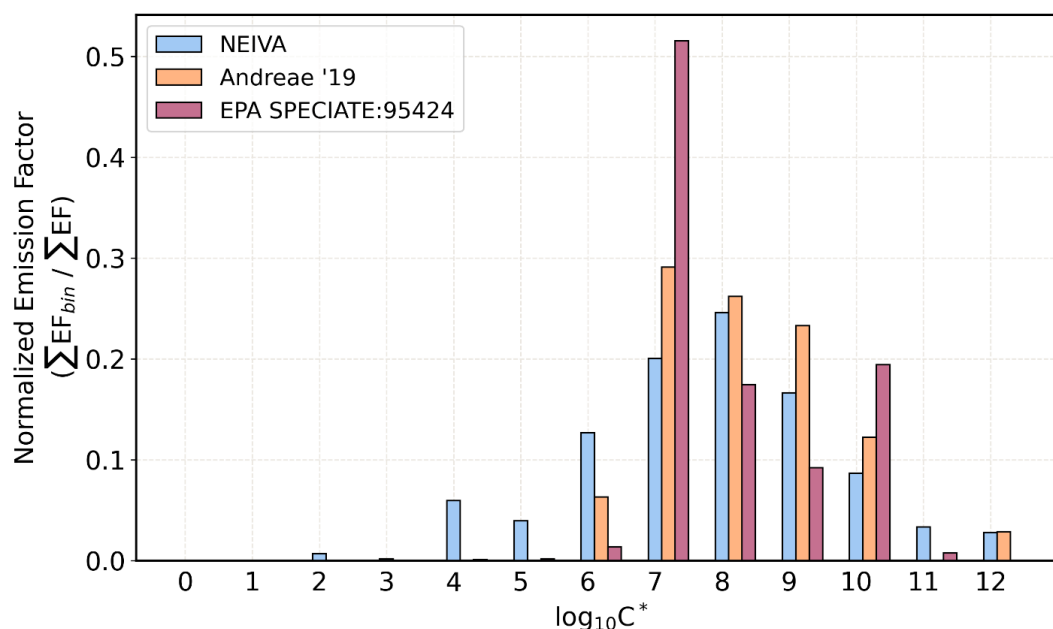


Figure 12: Normalized volatility distribution of temperate forest NMOC<sub>g</sub> EFs using NEIVA compared with Andreae (2019) and the EPA SPECIATE (Simon et al., 2010; Bray et al., 2019; SPECIATE, 2023) profile for western wildfire (#95424).

715

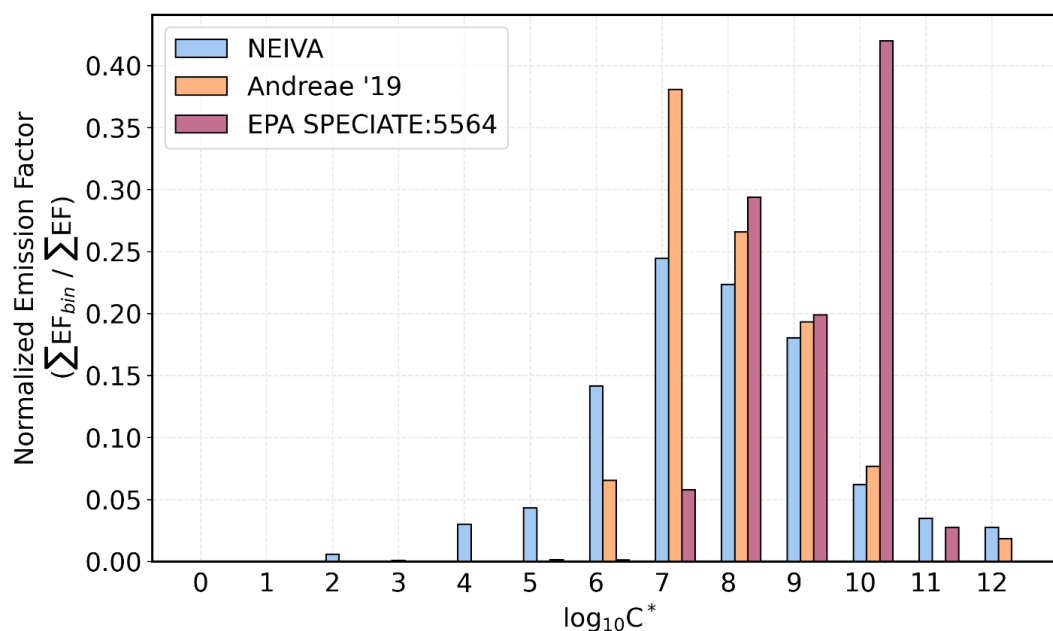


Figure 13: Normalized volatility distribution of temperate forest NMOC\_g EFs using NEIVA compared with Andreae (2019) and the EPA SPECIATE (Simon et al., 2010; Bray et al., 2019; SPECIATE, 2023) profile for crop/agriculture residue (#55644).

720

For many types of modeling, while some NMOC\_g are explicitly represented, most are mapped to model surrogate species that are specific to the chemical mechanism being used. In NEIVA v1.0, the NMOC\_g compounds were mapped to surrogate species for the following chemical mechanisms: SAPRC-07/-07 toxics (Carter, 2010), SAPRC-18 (Carter, 2020), SAPRC-22 (Carter, 2023a); MOZART-T1 (Emmons et al., 2020); and GEOS-Chem (Bey et al., 2001; Carter et al., 2022). The number of model surrogates used to represent these compounds is mechanism dependent and listed in Table S18. Figures 14 and 15 show the relative distribution, based on mole fraction, of NMOC\_g mapped to SAPRC-07 model compounds for temperate forest and crop residue. The distributions shown here are independent of the number of compounds represented in each EF compilation and of the total NMOC\_g EF, but are dependent on the identities of the individual compounds and their relative contributions to the total NMOC\_g EF in each inventory. For compounds that are listed as “unspecified” or “unidentified”, that mass was distributed equally among the model lumped categories as is typically done in model applications, though more recently published data (e.g., Stockwell et al., 2015; Koss et al., 2018) included here suggest the unidentified species are primarily high molecular mass oxygenated species consistent with the shift in  $C^*$  shown in Figs. 12 and 13.

725

730

735

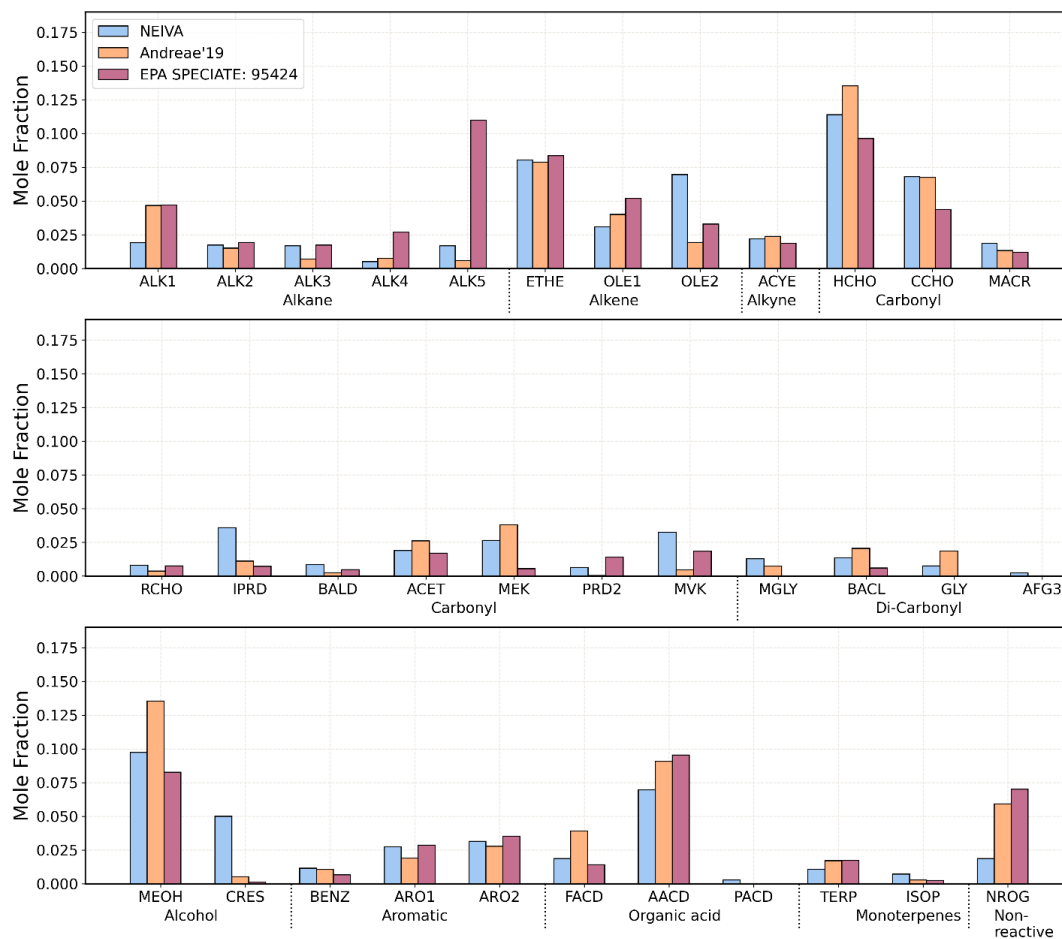
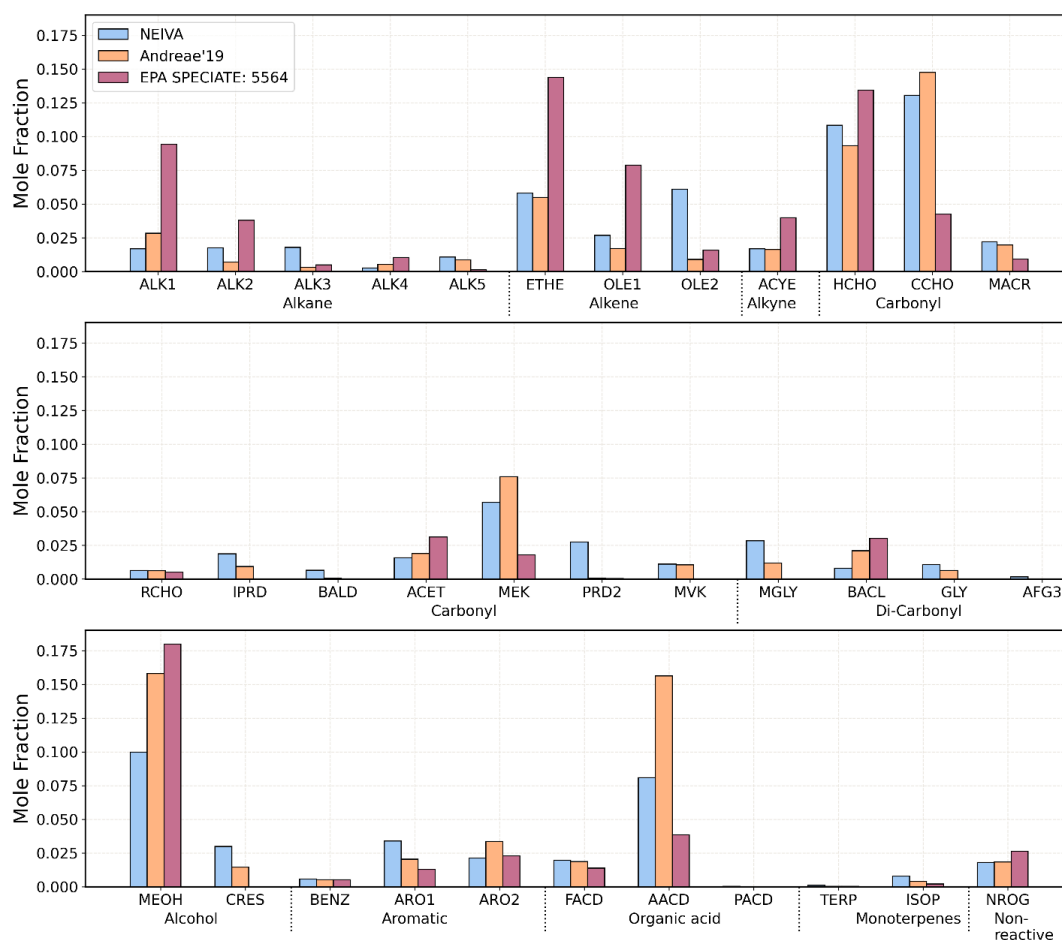


Figure 14: NMOCs mapped to SAPRC-07 model surrogate species based on NEIVA compared with Andreae (2019) and the EPA SPECIATE (Simon et al., 2010; Bray et al., 2019; SPECIATE, 2023) profile for western wildfire (95424).



740

**Figure 15: NMOG<sub>g</sub> mapped to SAPRC-07 model surrogate species based on NEIVA compared with Andreae (2019) and the EPA SPECIATE (Simon et al., 2010; Bray et al., 2019; SPECIATE, 2023) profile crop/agriculture residue (#55644).**

745

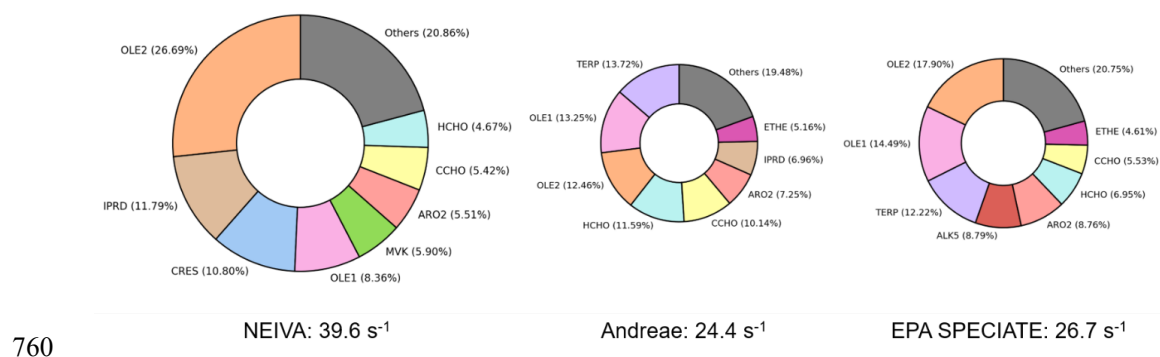
750

755

The compounds represented in NEIVA, Andreae (2019), and the EPA SPECIATE 5.2 database (Simon et al., 2010; Bray et al., 2019; SPECIATE, 2023), have distinctly different profiles when mapped to the 37 SAPRC-07 model species. Figures 16 and 17 show the calculated OH reactivity (OHR) as influenced by the different model surrogate distributions shown in Figures 14 and 15 for temperate forest and crop residue, respectively. The sizes of the charts are scaled by the total OHR ( $s^{-1}$ ) calculated for a representative NMOG<sub>g</sub> mixing ratio of ~90 ppb. The OH reaction rate constants were based on published literature for the respective chemical mechanisms and were not recalculated to represent the mixture of compounds mapped to each surrogate. The top 8 model species with the largest contributions to OHR are explicitly shown, and the contributions of the remaining 29 model species are summed and represented as “others”. The OHR calculated using the NEIVA-based distribution of model compounds is ~50-60% and ~60-90% higher than the OHR calculated using the Andreae (2019) and the EPA SPECIATE (Simon et al., 2010; Bray et al., 2019; SPECIATE, 2023) distributions for temperate forest and crop residue, respectively. This is largely driven by the greater mole fractions of model species OLE2 (more reactive alkenes,  $k_{OH}$

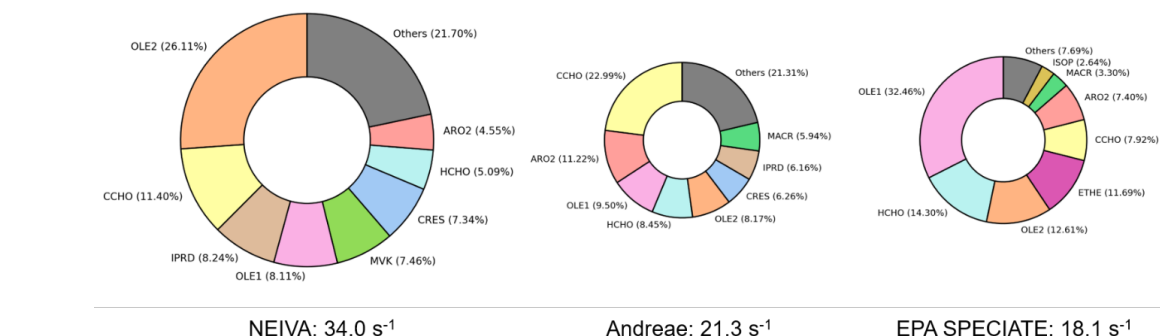


$> 4.8 \times 10^{-11} \text{ cm}^3 \text{ molec}^{-1} \text{ s}^{-1}$ ) and IPRD (unsaturated aldehydes) in both fire types, and additionally CRES (oxygenated aromatic hydrocarbons including phenols and cresols, but not furan or furan derivatives) in temperate forest.



760

Figure 16: OH reactivity calculated using the surrogate species distributions in Fig. 14; chart size is scaled to the OH reactivity value.



765

Figure 17: OH reactivity calculated using the surrogate species distributions in Fig. 15; chart size is scaled to the OH reactivity value.

## 5. Database Products

The NEIVA GitHub repository includes all of the database files in '.sql' and '.csv' format, and associated Python scripts (executable using the Python package `neivapy`) that were used to create the datasets, which also can be used to create new datasets upon the addition of new data, and to query the datasets. Jupyter notebooks are additionally shared in the NEIVA GitHub repository that demonstrate the features of the database, including adding new data and generating new datasets (`add_new_data.ipynb`) and example functions for querying the data (`NEIVA_query_mysql.ipynb`, `NEIVA_py_functions.ipynb`). These notebooks allow users to setup the NEIVA database in a Google Colab environment, execute

775



MySQL syntax, apply the `neivapy` functions, and download data. A full list of functions is provided in S9 (see Table S24). Some example functions are shown below.

### 5.1 Display information

780 The functions highlighted in this section are used to access and display information and labels.

`table_info(database, fire_type)`. This function returns a list of table names along with associated information such as measurement type, publication DOI, pollutant category for a specified database name (legacy database (ldb), raw database (rdb), and primary database (pdb),  
785 in acronym format (ldb, rdb, pdb) and fire type.

**Table 5:** The output of the `table_info()` function when using the parameters- rdb, garbage burning.

table_name	measurement_type	fire_type	pollutant_category	study	source	doi
rdb_gb_yokelson13	lab	garbage burning	inorganic gas, methane, NMOC_g, PM size	yokelson13	Table S1	doi.org/10.5194/acp-13-89-2013
rdb_goetz18	field	dung burning, cookstove, crop residue, garbage burning, charcoal burning	PM size, PM organic, PM elemental, PM ion	goetz18	Supplement section 3 and 4	doi.org/10.5194/acp-18-14653-2018
rdb_jayarathne18	field	garbage burning, cookstove, dung burning, crop residue, open cooking peat	PM size, PM organic, PM elemental, PM ion, PM metal, NMOC_p	jayarathne18	Table 2, 3.2 Emission of OC, EC and WSOC	doi.org/10.5194/acp-18-2585-2018
rdb_stockwell15	lab	crop residue, boreal forest, chaparral, cookstove, open cooking, temperate forest, peat, garbage burning	inorganic gas, methane, NMOC_g	stockwell15	Table S2	doi.org/10.5194/acp-15-845-2015
rdb_stockwell16	lab, field	dung burning, cookstove, open cooking, charcoal burning, crop residue, garbage burning, peat	inorganic gas, methane, NMOC_g, PM elemental, PM optical property	stockwell16	Table S8, Table S7, Table S9, Table 6	doi.org/10.5194/acp-16-11043-2016

`summary_table(fire_type, measurement_type)`. This function returns a list of emission factor column names in the integrated EF table along with information such as MCE, measurement type (lab or field study), fuel type, and additional information for specific fire types if available (e.g., cookstove name).  
790

**Table 6:** The output of the `summary_table()` function when using the parameters- peat, field.

efcol	measurement_type	MCE	fuel_type	study
EF_peat_jayarathne18	field	0.78	indonesian peat	jayarathne18
EF_tropical_peat_roulston18	field	0.83	indonesian peat	roulston18
EF_tropical_peat_smith17	field	0.80	indonesian peat	smith17
EF_peat_stockwell16	field	0.77	indonesian peat	stockwell16
EF_peat_north_carolina_pokhrel16	field	0.72	north carolina peat	pokhrel16
EF_peat_canada_pokhrel16	field	0.80	canada peat	pokhrel16
EF_peat_indonesia_pokhrel16	field	0.81	indonesian peat	pokhrel16



## 5.2 Query emission factor data

The functions highlighted here are used for querying EF data.

795

`select_pm_data(fire_type, table_name)`. This function returns the EFs in all PM subcategories (e.g., PM size, PM organic, PM elemental, PM ion, PM metal, NMOC\_p and PM optical property) for the specified fire type. In the example below, tables are separated for easier viewing and PM metal and NMOC\_p tables are in the SI (S9) due to their length.

800

**Table 7:** The output of `select_pm_data()` function when using the parameters- peat, integrated EF. The pollutant category-PM size is presented.

EF columns	PM2.5
EF_peat_jayarathne18	1.73E+01
EF_tropical_peat_roulston18	2.77E+01
EF_russia_watson19	4.26E+01
EF_siberia_watson19	3.39E+01
EF_northern_alaska_watson19	2.40E+01
EF_evergladesNP_florida_watson19	2.36E+01
EF_malaysia_watson19	2.24E+01

**Table 8:** The output of `select_pm_data()` function when using the parameters- peat, integrated EF. The pollutant category- PM organic is presented.

EF columns	OC	water-soluble OC fraction	water-insoluble OC fraction
EF_akagi11_indonesian_peat_christian03	6.02E+00		
EF_peat_jayarathne18	1.24E+01	1.98E+00	1.04E+01
EF_peat_stockwell16			
EF_russia_watson19	2.51E+01	1.55E+01	
EF_siberia_watson19	2.60E+01	8.65E+00	
EF_northern_alaska_watson19	1.74E+01	6.69E+00	
EF_evergladesNP_florida_watson19	1.90E+01	7.76E+00	
EF_malaysia_watson19	1.80E+01	3.60E+00	

**Table 9:** The output of `select_pm_data()` function when using the parameters- peat, integrated EF. The pollutant category- PM elemental is presented.

EF columns	BC	EC
EF_akagi11_indonesian_peat_christian03	4.00E-02	
EF_peat_jayarathne18		2.40E-01
EF_peat_stockwell16	1.00E-02	
EF_russia_watson19		7.70E-01
EF_siberia_watson19		6.90E-01
EF_northern_alaska_watson19		6.00E-01
EF_evergladesNP_florida_watson19		7.80E-01
EF_malaysia_watson19		2.80E-01





805

**Table 10:** The output of `select_pm_data()` function when using the parameters- peat, integrated EF. The pollutant category- PM ion is presented.

mm	formula	compound	EF_northern_alaska_watson19	EF_evergladesNP_florida_watson19	EF_malaysia_watson19
88.02	Cl-	chloride	5.77E-02	5.64E-02	3.02E-02
35.45	NO3-	nitrate	4.60E-02	4.38E-02	2.36E-02
62.01	O4P-3	phosphate			
94.97	O4S-2	sulfate	8.24E-02	1.81E-01	3.36E-02
96.07	Na	sodium			
22.99	H4N+	ammonium	1.58E-02	6.00E-04	5.00E-04
18.04	K	potassium	9.90E-03	6.20E-03	8.30E-03
39.10	Mg	magnesium			
24.31	Ca	calcium	6.40E-03		6.00E-04
40.08	Na+	sodium ion	7.30E-03	7.90E-03	3.80E-03
22.99	K+	potassium ion	7.40E-03	1.61E-01	8.60E-03
39.10	Mg+2	magnesium ion			
24.31	Ca+2	calcium ion			
40.08	Cl2	chlorine	3.32E-02	5.56E-02	1.80E-02

**Table 11:** The output of `select_pm_data()` function when using the parameters- peat, integrated EF. The pollutant category- PM ion is presented. (continued)

mm	formula	compound	EF_peat_jayarathne18	EF_russia_watson19	EF_siberia_watson19
88.02	Cl-	chloride	7.27E-02	8.72E-02	4.62E-02
35.45	NO3-	nitrate	2.80E-03	7.58E-02	4.68E-02
62.01	O4P-3	phosphate			
94.97	O4S-2	sulfate	2.44E-02	9.50E-02	9.52E-02
96.07	Na	sodium			
22.99	H4N+	ammonium	8.82E-02	5.02E-02	7.50E-03
18.04	K	potassium		1.47E-02	4.58E-02
39.10	Mg	magnesium			
24.31	Ca	calcium		1.07E-02	
40.08	Na+	sodium ion	9.00E-04	7.10E-03	1.41E-02
22.99	K+	potassium ion	4.50E-03	2.98E-02	7.30E-03
39.10	Mg+2	magnesium ion			
24.31	Ca+2	calcium ion			
40.08	Cl2	chlorine		6.30E-02	3.26E-02

**Table 12:** The output of `select_pm_data()` function when using the parameters- peat, integrated EF. The pollutant category- PM optical property is presented.

compound	EF_peat_stoc_kwell16	EF_peat_north_carolina_pokhrel16	EF_peat_canda_pokhrel16	EF_peat_indonesia_pokhrel16	EF_peat_kalimantan_mixed_sites_selimovic18
EF Babs 870 (m2 kg 1)	2.61E-02				1.23E-02
EF Bscat 870 (m 2 kg 1)	1.83E+01				3.14E+00
EF Babs 405 (m2 kg1)	1.35E+00				
EF Bscat 405 (m2 kg1)	5.06E+01				
EF Babs 405 just BrC (m2 kg1)	1.30E+00				
EF Babs 405 just BC (m2 kg1)	5.40E-02				
SSA 870 nm	9.98E-01				9.96E-01
SSA 405 nm	9.74E-01	9.43E-01	9.41E-01	9.34E-01	
AAE	4.97E+00	6.85E+00	6.25E+00	7.24E+00	
SSA 532		9.90E-01	9.93E-01	9.91E-01	
SSA 660		9.93E-01	9.94E-01	9.91E-01	



810 `ef_sorted_by_property(chem, model_surrogate, property_variable)`. This function returns the individual NMOC<sub>g</sub> EFs sorted by the specified property variable in ascending order. The NMOC<sub>g</sub> is filtered by the specified fire type, chemical mechanism, and model surrogate.

**Table 13:** The output of `ef_sorted_by_property()` function when using the parameters- S22, XYNL, hc.

mm	formula	compound	AVG <sub>temperate_forest</sub>	N <sub>temperate_forest</sub>	STD <sub>temperate_forest</sub>	S22	hc
122	C7H6O2	Salicylaldehyde	0.07	4	0.04	XYNL	6.00E-06
138	C8H10O2	Creosol	0.3	7	0.19	XYNL	1.00E-06
124	C7H8O2	2-methoxyphenol	0.48	8	0.31	XYNL	1.00E-06
122	C8H10O	2,5-dimethyl phenol	0.09	2	0.07	XYNL	1.00E-06
154	C8H10O3	Syringol	0.08	7	0.07	XYNL	2.00E-07
110	C6H6O2	Resorcinol	1.49	3	0.83	XYNL	1.00E-10

### 5.3 Query NMOC<sub>g</sub> speciation profiles

815 The functions highlighted here are used for querying attributes of the NMOC<sub>g</sub> speciation profiles.

`voc_profile(chem, fire_type)`. This function returns the EF, moles, and mole fraction by model surrogate for the specified chemical mechanism and fire type.

820

**Table 14:** The output of `voc_profile()` function when using the parameters- GEOSChem, peat.

GEOSChem	$\sum$ EF	weighted_mm	$\sum$ moles	mole_fraction
PRPE	1.25E+01	100.96	1.20E-01	1.30E-01
MOH	3.70E+00	31.00	1.20E-01	1.20E-01
ACTA	5.51E+00	60.00	9.00E-02	1.00E-01
C2H6	2.53E+00	30.00	8.00E-02	9.00E-02
ALK4	7.24E+00	105.08	7.00E-02	7.00E-02
C3H8	4.42E+00	69.67	6.00E-02	7.00E-02
C2H4	1.54E+00	28.00	5.00E-02	6.00E-02
CH2O	1.37E+00	29.50	5.00E-02	5.00E-02
ALD2	1.82E+00	44.00	4.00E-02	4.00E-02
CSL	4.41E+00	130.55	3.00E-02	3.00E-02
XYLE	3.77E+00	121.06	3.00E-02	3.00E-02
TOLU	3.64E+00	120.76	3.00E-02	3.00E-02
GLYC	1.53E+00	60.00	3.00E-02	3.00E-02
MVK	1.99E+00	80.67	2.00E-02	3.00E-02
BENZ	1.33E+00	78.00	2.00E-02	2.00E-02
HAC	1.26E+00	74.00	2.00E-02	2.00E-02
ACET	9.40E-01	58.00	2.00E-02	2.00E-02
OCS	7.30E-01	60.00	1.00E-02	1.00E-02
MEK	1.16E+00	107.89	1.00E-02	1.00E-02
ISOP	6.60E-01	68.00	1.00E-02	1.00E-02
HCOOH	4.20E-01	46.00	9.00E-03	1.00E-02
EOH	3.50E-01	46.00	8.00E-03	8.00E-03
MGLY	4.80E-01	79.00	6.00E-03	6.00E-03
MACR	3.60E-01	63.00	6.00E-03	6.00E-03
RCHO	5.10E-01	101.40	5.00E-03	5.00E-03



BALD	4.60E-01	128.00	4.00E-03	4.00E-03
MTPA	2.50E-01	136.00	2.00E-03	2.00E-03
R4N2	1.20E-01	114.50	1.00E-03	1.00E-03
NAP	1.20E-01	128.00	9.00E-04	1.00E-03
MTPO	1.70E-01	192.67	9.00E-04	9.00E-04
PYAC	6.00E-02	88.00	7.00E-04	7.00E-04
DMS	4.00E-02	62.00	6.00E-04	7.00E-04
CH3Br	3.00E-02	94.00	3.00E-04	3.00E-04
CH3I	2.00E-02	141.00	2.00E-04	2.00E-04
MP	2.00E-02	118.00	2.00E-04	2.00E-04

weighted\_property( fire\_type, chem). This function calculates the EF-weighted molar mass (mm), OH rate constant (kOH), logarithm of saturation concentration (cstar), and vapor pressure (vp) for the specified chemical mechanism and fire type.

825

**Table 15:** The output of weighted\_property() function when using the parameters- boreal forest, MOZART-T1.

MOZT1	mm	kOH	cstar	vp
BIGENE	75.64	6.00E-11	9.09	1067.17
CH3OH	31.00	9.00E-13	8.88	127.00
C2H4	28.21	8.00E-12	10.34	50000.00
CH3COOH	60.00	7.00E-13	7.64	15.70
CH2O	30.00	8.00E-12	9.78	3890.00
NROG	57.06	2.00E-12	9.87	1231.96
TOLUENE	92.62	3.00E-11	7.56	100.42
CH3CHO	44.00	1.00E-11	9.55	902.00
C2H6	30.00	2.00E-13	10.61	30000.00
C3H6	42.06	3.00E-11	10.06	8543.36
XYLENES	111.96	6.00E-11	7.24	33.77
MEK	95.92	2.00E-11	7.54	23.71
PHENOL	95.47	3.00E-11	6.81	0.34
C2H2	26.59	1.00E-12	10.27	40000.00
CH3COCH3	58.01	2.00E-13	9.06	229.83
GLYALD	60.00	1.00E-11	7.40	0.91
BIGALK	99.90	3.00E-11	8.43	341.32
BENZENE	78.03	1.00E-12	8.35	92.82
HCOOH	46.00	5.00E-13	7.79	42.60
BPIN	136.00	6.00E-11	7.49	2.72
C3H8	44.53	3.00E-12	10.06	6953.16
CH3COCHO	72.00	1.00E-11	8.64	121.00
CRESOL	128.67	6.00E-11	5.83	0.09
ISOP	68.00	1.00E-10	8.99	550.00
APIN	136.00	7.00E-11	7.48	4.11
MTERP	131.49	2.00E-10	7.71	3.72
HYAC	74.00	3.00E-12	7.09	1.74
MVK	70.00	2.00E-11	8.47	91.30
BZALD	115.48	2.00E-11	6.04	0.83
LIMON	136.00	2.00E-10	8.47	1.30
MYRC	136.00	2.00E-10	7.17	2.18
MACR	70.00	3.00E-11	8.71	155.00
C2H5OH	46.00	3.00E-12	8.63	59.30
BCARY	203.83	2.00E-10	6.01	0.03
TERPROD1	196.00	1.00E-11	5.93	0.23
ALKNIT	109.04	7.00E-13	7.99	46.57
BIGENE	75.64	6.00E-11	9.09	1067.17



## 6. Conclusions

830 NEIVA represents the most comprehensive EF compilation for globally-relevant fuel types, and  
uniquely includes selected laboratory data. NEIVA was created by integrating EF data from Akagi  
et al. (2011) and 30 papers published since the 2014 and 2015 updates to Akagi. The most  
835 significant expansion of data occurred for temperate forest, peat, and crop residue fires. EF data  
are stored in several datasets that represent varying levels of data processing, merging, and  
averaging. All datasets can be accessed through the NEIVA GitHub site. NEIVA has been  
structured so that new EF data can easily be added and recommended averages recalculated. EF  
data can be flexibly queried with varying levels of detail from the individual study level to  
840 averaged across all studies for a given fuel or fire type, and from the individual compound or  
constituent level to representative model surrogate species. In addition, NEIVA has been  
structured to enable efficient inclusion of EF data into chemical mechanisms allowing for better  
attribution of biomass burning emissions and impacts in future model studies.

Inclusion of adjusted laboratory data increases the number of data points and number of  
compounds represented without introducing variability or uncertainty outside of what is expected  
845 and what has been observed in field studies. The number of NMOC<sub>g</sub> represented in NEIVA is  
up to an order of magnitude higher than in the most recent EF compilations. Inclusion of this more  
diverse set of NMOC<sub>g</sub> changes property distributions that can affect predictions of atmospheric  
composition and chemistry, illustrated here using volatility and OHR. Further, mapping this more  
diverse set of NMOC<sub>g</sub> to model surrogates leads to distinct differences in the surrogate  
850 distributions when compared with other existing compilations that are likely to affect multiscale  
model predictions. NEIVA has a better representation of IVOCs, resulting in a shift in the volatility  
distribution to lower volatilities, with the lowest volatility bin shifted by up to three orders of  
magnitude. In addition, the NEIVA NMOC<sub>g</sub> speciation profiles when mapped to SAPRC-07  
model surrogates resulted in higher OHR by 40-90%, which likely is conservative since the  $k_{OH}$   
855 values were not updated to represent measured compound distributions and the greater  
NMOC<sub>g</sub>/CO ratio for some fuel types was not considered.



860 **Code and Data Availability**

The NEIVA datasets (SQL and CSV formats), Python script files used to generate the datasets, and Jupyter notebooks with instructions for adding new data and examples for querying the datasets and are freely available on GitHub (<https://github.com/NEIVA-BB-Emissions-Inventory/NEIVAv1.0>; last accessed February 2024). The datasets are also permanently archived on Zenodo via Binte Shahid et al. (2024) with the link <https://doi.org/10.5281/zenodo.10721105> under the GNU General Public License version 2.0 or later.

**Author Contributions**

870 K. C. B, C. W., and R. J. Y. conceived of the idea for a more flexible and sustainable emission factor database. C. W. and R. J. Y. provided input throughout the development of the database. S. B.-S. led development of the database, including writing associated Python script files and functions and devising methodologies for assigning unique identifiers, merging datasets, and mapping to model surrogates. S. B.-S. generated all figures for the manuscript. S. B.-S. developed the GitHub site and set up code and data archiving. F. G. L. provided input on the  
875 GitHub and Python scripts and model use-cases. K. C. B. led writing of the manuscript, with significant input from S. B.-S. K. C. B. and S. B.-S. led writing of the SI. All authors contributed to editing the manuscript and SI.

**Competing interests**

880 The contact author has declared that none of the authors has any competing interests.

**Acknowledgements**

885 K. C. B. and S. B.-S. were supported by NOAA AC4 grant NA17OAR4310007 and NSF CAREER grant AGS-1753364. R. J. Y. was supported by NSF grant AGS-1748266. F. G. L. was supported by a collaborative MOU with the CDC.



## References

- Ahern, A., Robinson, E., Tkacik, D., Saleh, R., Hatch, L., Barsanti, K., Stockwell, C., Yokelson, R., Presto, A., Robinson, A., Sullivan, R., and Donahue, N.: Production of secondary organic aerosol during aging of biomass burning smoke from fresh fuels and its relationship to VOC precursors, *J. Geophys. Res.-Atmospheres*, 124, 3583–3606, <https://doi.org/10.1029/2018JD029068>, 2019.
- 890
- Akagi, S. K., Yokelson, R. J., Wiedinmyer, C., Alvarado, M. J., Reid, J. S., Karl, T., Crouse, J. D., and Wennberg, P. O.: Emission factors for open and domestic biomass burning for use in atmospheric models, *Atmospheric Chem. Phys.*, 11, 4039–4072, <https://doi.org/10.5194/acp-11-4039-2011>, 2011.
- 895
- Alvarado, M., Wang, C., and Prinn, R.: Formation of ozone and growth of aerosols in young smoke plumes from biomass burning: 2. Three-dimensional Eulerian studies, *J. Geophys. Res.-Atmospheres*, 114, <https://doi.org/10.1029/2008JD011186>, 2009.
- 900
- Andela, N. and van der Werf, G. R.: Recent trends in African fires driven by cropland expansion and El Niño to La Niña transition, *Nat. Clim. Change*, 4, 791–795, <https://doi.org/10.1038/nclimate2313>, 2014.
- Andreae, M. O.: Emission of trace gases and aerosols from biomass burning – an updated assessment, *Atmospheric Chem. Phys.*, 19, 8523–8546, <https://doi.org/10.5194/acp-19-8523-2019>, 2019.
- 905
- Andreae, M. O. and Merlet, P.: Emission of trace gases and aerosols from biomass burning, *Glob. Biogeochem. Cycles*, 15, 955–966, <https://doi.org/10.1029/2000GB001382>, 2001.
- ChemSpider: <https://www.chemspider.com/Default.aspx>, last access: 29 January 2024.
- Bey, I., Jacob, D. J., Yantosca, R. M., Logan, J. A., Field, B. D., Fiore, A. M., Li, Q., Liu, H. Y., Mickley, L. J., and Schultz, M. G.: Global modeling of tropospheric chemistry with assimilated meteorology: Model description and evaluation, *J. Geophys. Res. Atmospheres*, 106, 23073–23095, <https://doi.org/10.1029/2001JD000807>, 2001.
- 910
- Bian, Q. J., Jathar, S. H., Kodros, J. K., Barsanti, K. C., Hatch, L. E., May, A. A., Kreidenweis, S. M., and Pierce, J. R.: Secondary organic aerosol formation in biomass-burning plumes: theoretical analysis of lab studies and ambient plumes, *Atmospheric Chem. Phys.*, 17, 5459–5475, <https://doi.org/10.5194/acp-17-5459-2017>, 2017.
- 915
- Binte Shahid, S., Barsanti, K., & Forrest G, L. (2024). Next Gen Emissions Inventory expansion of Akagi (NEIVA). Zenodo. <https://doi.org/10.5281/zenodo.10721105>.
- Bray, C. D., Strum, M., Simon, H., Riddick, L., Kosusko, M., Menetrez, M., Hays, M. D., and Rao, V.: An assessment of important SPECIATE profiles in the EPA emissions modeling platform and current data gaps, *Atmos. Environ.*, 207, 93–104, <https://doi.org/10.1016/j.atmosenv.2019.03.013>, 2019.
- 920



- 925 Burling, I., Yokelson, R., Akagi, S., Urbanski, S., Wold, C., Griffith, D., Johnson, T., Reardon, J., and Weise, D.: Airborne and ground-based measurements of the trace gases and particles emitted by prescribed fires in the United States, *Atmospheric Chem. Phys.*, 11, 12197–12216, <https://doi.org/10.5194/acp-11-12197-2011>, 2011.
- Byusse, C., Kaulfus, A., Nair, U., and Jaffe, D.: Relationships between particulate matter, ozone, and nitrogen oxides during urban smoke events in the Western US, *Environ. Sci. Technol.*, 53, 12519–12528, <https://doi.org/10.1021/acs.est.9b05241>, 2019.
- 930 Carter, T. S., Heald, C. L., Kroll, J. H., Apel, E. C., Blake, D., Coggon, M., Edtbauer, A., Gkatzelis, G., Hornbrook, R. S., Peischl, J., Pfannerstill, E. Y., Piel, F., Reijrink, N. G., Ringsdorf, A., Warneke, C., Williams, J., Wisthaler, A., and Xu, L.: An improved representation of fire non-methane organic gases (NMOGs) in models: emissions to reactivity, *Atmospheric Chem. Phys.*, 22, 12093–12111, <https://doi.org/10.5194/acp-22-12093-2022>, 2022.
- 935 Carter, W. P. L.: Development of the SAPRC-07 Chemical Mechanism, *Atmos. Environ.*, 44, 5324–5335, <https://doi.org/10.1016/j.atmosenv.2010.01.026>, 2010.
- Carter, W. P. L.: Documentation of the SAPRC-16 Mechanism Generation System, Draft interim report to California Air Resources Board Contract 11-761. May 25. Available at <https://intra.engr.ucr.edu/~carter/SAPRC/18/MechGen.pdf>, 2019.
- 940 Carter, W. P. L.: Documentation of the SAPRC-18 Mechanism, Report to California Air Resources Board Contract No. 11-761, May 29. Available at <https://intra.cert.ucr.edu/~carter/SAPRC/18/S18doc.pdf>, 2020.
- Carter, W. P. L.: Documentation of the SAPRC-22 Mechanisms, Report to the California Air Resources Board contract no. 21AQP011, May 15. Available at <https://intra.cert.ucr.edu/~carter/SAPRC/22/S22doc.pdf>, 2023a.
- 945 Carter, W. P. L.: Development of an Improved Chemical Speciation Database for Processing Emissions of Volatile Organic Compounds for Air Quality Models, Available at <https://intra.engr.ucr.edu/~carter/emitdb/>, 2023b.
- Carter, W. P. L.: The SAPRC Mechanism Generation System, Available at <https://intra.cert.ucr.edu/~carter/SAPRC/22/MechGen.pdf>, In Prep.
- 950 Christian, T., Kleiss, B., Yokelson, R., Holzinger, R., Crutzen, P., Hao, W., Saharjo, B., and Ward, D.: Comprehensive laboratory measurements of biomass-burning emissions: 1. Emissions from Indonesian, African, and other fuels, *J. Geophys. Res.- Atmospheres*, 108, <https://doi.org/10.1029/2003JD003704>, 2003.
- 955 Christian, T. J., Yokelson, R. J., Cardenas, B., Molina, L. T., and Engling, G.: Trace gas and particle emissions from domestic and industrial biofuel use and garbage burning in central Mexico, *Atmos Chem Phys*, 20, 2010.
- Coffey, E. R., Muvandimwe, D., Hagar, Y., Wiedinmyer, C., Kanyomse, E., Piedrahita, R., Dickinson, K. L., Oduro, A., and Hannigan, M. P.: New emission factors and efficiencies from in-



960 field measurements of traditional and improved cookstoves and their potential implications, *Environ. Sci. Technol.*, 51, 12508–12517, <https://doi.org/10.1021/acs.est.7b02436>, 2017.

Collins, B. M., Everett, R. G., and Stephens, S. L.: Impacts of fire exclusion and recent managed fire on forest structure in old growth Sierra Nevada mixed-conifer forests, *Ecosphere*, 2, 1–14, 2011.

965 Crutzen, P. J. and Andreae, M. O.: Biomass burning in the tropics - impact on atmospheric chemistry and biogeochemical cycles, *Science*, 250, 1669–1678, <https://doi.org/10.1126/science.250.4988.1669>, 1990.

Decker, Z. C. J., Zarzana, K. J., Coggon, M., Min, K.-E., Pollack, I., Ryerson, T. B., Peischl, J., Edwards, P., Dube, W. P., Markovic, M. Z., Roberts, J. M., Veres, P. R., Graus, M., Warneke, C.,  
970 de Gouw, J., Hatch, L. E., Barsanti, K. C., and Brown, S. S.: Nighttime chemical transformation in biomass burning plumes: A box model analysis initialized with aircraft observations, *Environ. Sci. Technol.*, 53, 2529–2538, <https://doi.org/10.1021/acs.est.8b05359>, 2019.

Decker, Z. C. J., Robinson, M. A., Barsanti, K. C., Bourgeois, I., Coggon, M. M., DiGangi, J. P., Diskin, G. S., Flocke, F. M., Franchin, A., Fredrickson, C. D., Gkatzelis, G., I., Hall, S. R.,  
975 Halliday, H., Holmes, C. D., Huey, L. G., Lee, Y. R., Lindaas, J., Middlebrook, A. M., Montzka, D. D., Moore, R., Neuman, J. A., Nowak, J. B., Palm, B. B., Peischl, J., Piel, F., Rickly, P. S., Rollins, A. W., Ryerson, T. B., Schwantes, R. H., Sekimoto, K., Thornhill, L., Thornton, J. A., Tyndall, G. S., Ullmann, K., Van Rooy, P., Veres, P. R., Warneke, C., Washenfelder, R. A., Weinheimer, A. J., Wiggins, E., Winstead, E., Wisthaler, A., Womack, C., and Brown, S. S.:  
980 Nighttime and daytime dark oxidation chemistry in wildfire plumes: an observation and model analysis of FIREX-AQ aircraft data, *Atmospheric Chem. Phys.*, 21, 16293–16317, <https://doi.org/10.5194/acp-21-16293-2021>, 2021.

Desservettaz, M., Paton-Walsh, C., Griffith, D. W. T., Kettlewell, G., Keywood, M. D., Vanderschoot, M. V., Ward, J., Mallet, M. D., Milic, A., Miljevic, B., Ristovski, Z. D., Howard,  
985 D., Edwards, G. C., and Atkinson, B.: Emission factors of trace gases and particles from tropical savanna fires in Australia, *J. Geophys. Res.-Atmospheres*, 122, 6059–6074, <https://doi.org/10.1002/2016JD025925>, 2017.

Doerr, S. H. and Santín, C.: Global trends in wildfire and its impacts: perceptions versus realities in a changing world, *Philos. Trans. R. Soc. B Biol. Sci.*, 371, 20150345,  
990 <https://doi.org/10.1098/rstb.2015.0345>, 2016.

Emmons, L. K., Schwantes, R. H., Orlando, J. J., Tyndall, G., Kinnison, D., Lamarque, J.-F., Marsh, D., Mills, M. J., Tilmes, S., Bardeen, C., Buchholz, R. R., Conley, A., Gettelman, A., Garcia, R., Simpson, I., Blake, D. R., Meinardi, S., and Pétron, G.: The chemistry mechanism in the Community Earth System Model version 2 (CESM2), *J. Adv. Model. Earth Syst.*, 12, e2019MS001882, <https://doi.org/10.1029/2019MS001882>, 2020.  
995

Fleming, L. T., Weltman, R., Yadav, A., Edwards, R. D., Arora, N. K., Pillarisetti, A., Meinardi, S., Smith, K. R., Blake, D. R., and Nizkorodov, S. A.: Emissions from village cookstoves in Haryana, India, and their potential impacts on air quality, *Atmospheric Chem. Phys.*, 18, 15169–15182, <https://doi.org/10.5194/acp-18-15169-2018>, 2018.





- 1000 Fredrickson, C., Palm, B., Lee, B., Zhang, X., Orlando, J., Tyndall, G., Garofalo, L., Pothier, M., Farmer, D., Decker, Z., Robinson, M., Brown, S., Murphy, S., Shen, Y., Sullivan, A., Schobesberger, S., and Thornton, J.: Formation and evolution of catechol-derived SOA mass, composition, volatility, and light Absorption, *ACS Earth Space Chem.*, 6, 1067–1079, <https://doi.org/10.1021/acsearthspacechem.2c00007>, 2022.
- 1005 Gilman, J. B., Lerner, B. M., Kuster, W. C., Goldan, P. D., Warneke, C., Veres, P. R., Roberts, J. M., de Gouw, J. A., Burling, I. R., and Yokelson, R. J.: Biomass burning emissions and potential air quality impacts of volatile organic compounds and other trace gases from fuels common in the US, *Atmospheric Chem. Phys.*, 15, 13915–13938, <https://doi.org/10.5194/acp-15-13915-2015>, 2015.
- 1010 Gkatzelis, G. I., Coggon, M. M., Stockwell, C. E., Hornbrook, R. S., Allen, H., Apel, E. C., Ball, K., Bela, M. M., Blake, D. R., Bourgeois, I., Brown, S. S., Campuzano-Jost, P., St. Clair, J. M., Crawford, J. H., Crouse, J. D., Day, D. A., DiGangi, J., Diskin, G., Fried, A., Gilman, J., Guo, H., Hair, J. W., Halliday, H. A., Hanisco, T. F., Hannun, R., Hills, A., Huey, G., Jimenez, J. L., Katich, J. M., Lamplugh, A., Lee, Y. R., Liao, J., Lindaas, J., McKeen, S. A., Mikoviny, T., Nault, B. A., Neuman, J. A., Nowak, J. B., Pagonis, D., Peischl, J., Perring, A. E., Piel, F., Rickly, P. S., Robinson, M. A., Rollins, A. W., Ryerson, T. B., Schueneman, M. K., Schwantes, R. H., Schwarz, J. P., Sekimoto, K., Selimovic, V., Shingler, T., Tanner, D. J., Tomsche, L., Vasquez, K., Veres, P. R., Washenfelder, R., Weibring, P., Wennberg, P. O., Wisthaler, A., Wolfe, G., Womack, C., Xu, L., Yokelson, R., and Warneke, C.: Parameterizations of US wildfire and prescribed fire emission ratios and emission factors based on FIREX-AQ aircraft measurements, *Gases/Field Measurements/Troposphere/Chemistry (chemical composition and reactions)*, <https://doi.org/10.5194/egusphere-2023-1439>, 2023.
- 1025 Goetz, J. D., Giordano, M. R., Stockwell, C. E., Christian, T. J., Maharjan, R., Adhikari, S., Bhave, P. V., Praveen, P. S., Panday, A. K., Jayarathne, T., Stone, E. A., Yokelson, R. J., and DeCarlo, P. F.: Speciated online PM<sub>1</sub> from South Asian combustion sources – Part 1: Fuel-based emission factors and size distributions, *Atmospheric Chem. Phys.*, 18, 14653–14679, <https://doi.org/10.5194/acp-18-14653-2018>, 2018.
- 1030 de Groot, W. J., Cantin, A. S., Flannigan, M. D., Soja, A. J., Gowman, L. M., and Newbery, A.: A comparison of Canadian and Russian boreal forest fire regimes, *For. Ecol. Manag.*, 294, 23–34, <https://doi.org/10.1016/j.foreco.2012.07.033>, 2013.
- Guyon, P., Frank, G. P., Welling, M., Chand, D., Artaxo, P., Rizzo, L., Nishioka, G., Kolle, O., Fritsch, H., Silva Dias, M. A. F., Gatti, L. V., Cordova, A. M., and Andreae, M. O.: Airborne measurements of trace gas and aerosol particle emissions from biomass burning in Amazonia, *Atmos Chem Phys*, 5, 2989–3002, <https://doi.org/10.5194/acp-5-2989-2005>, 2005.
- 1035 Hatch, L. E., Luo, W., Pankow, J. F., Yokelson, R. J., Stockwell, C. E., and Barsanti, K. C.: Identification and quantification of gaseous organic compounds emitted from biomass burning using two-dimensional gas chromatography-time-of-flight mass spectrometry, *Atmospheric Chem. Phys.*, 15, 1865–1899, <https://doi.org/10.5194/acp-15-1865-2015>, 2015.



- 1040 Hatch, L. E., Yokelson, R. J., Stockwell, C. E., Veres, P. R., Simpson, I. J., Blake, D. R., Orlando, J. J., and Barsanti, K. C.: Multi-instrument comparison and compilation of non-methane organic gas emissions from biomass burning and implications for smoke-derived secondary organic aerosol precursors, *Atmospheric Chem. Phys.*, 17, 1471–1489, <https://doi.org/10.5194/acp-17-1471-2017>, 2017.
- 1045 Hatch, L. E., Jen, C. N., Kreisberg, N. M., Selimovic, V., Yokelson, R. J., Stamatis, C., York, R. A., Foster, D., Stephens, S. L., Goldstein, A. H., and Barsanti, K. C.: Highly speciated measurements of terpenoids emitted from laboratory and mixed-conifer forest prescribed fires, *Environ. Sci. Technol.*, 53, 9418–9428, <https://doi.org/10.1021/acs.est.9b02612>, 2019.
- 1050 Hayden, K. L., Li, S.-M., Liggio, J., Wheeler, M. J., Wentzell, J. J. B., Leithead, A., Brickell, P., Mittermeier, R. L., Oldham, Z., Mihele, C. M., Staebler, R. M., Moussa, S. G., Darlington, A., Wolde, M., Thompson, D., Chen, J., Griffin, D., Eckert, E., Ditto, J. C., He, M., and Gentner, D. R.: Reconciling the total carbon budget for boreal forest wildfire emissions using airborne observations, *Atmospheric Chem. Phys.*, 22, 12493–12523, <https://doi.org/10.5194/acp-22-12493-2022>, 2022.
- 1055 Hickman, J. E., Andela, N., Dammers, E., Clarisse, L., Coheur, P.-F., Van Damme, M., Di Vittorio, C. A., Ossouhou, M., Galy-Lacaux, C., Tsigaridis, K., and Bauer, S. E.: Changes in biomass burning, wetland extent, or agriculture drive atmospheric NH<sub>3</sub> trends in select African regions, *Atmospheric Chem. Phys.*, 21, 16277–16291, <https://doi.org/10.5194/acp-21-16277-2021>, 2021.
- 1060 Hodgson, A., Morgan, W., O’Shea, S., Bauguitte, S., Allan, J., Darbyshire, E., Flynn, M., Liu, D., Lee, J., Johnson, B., Haywood, J., Longo, K., Artaxo, P., and Coe, H.: Near-field emission profiling of tropical forest and Cerrado fires in Brazil during SAMBBA 2012, *Atmospheric Chem. Phys.*, 18, 5619–5638, <https://doi.org/10.5194/acp-18-5619-2018>, 2018.
- 1065 Hodshire, A., Akherati, A., Alvarado, M., Brown-Steiner, B., Jathar, S., Jimenez, J., Kreidenweis, S., Lonsdale, C., Onasch, T., Ortega, A., and Pierce, J.: Aging effects on biomass burning aerosol mass and composition: A critical review of field and laboratory studies, *Environ. Sci. Technol.*, 53, 10007–10022, <https://doi.org/10.1021/acs.est.9b02588>, 2019.
- Holder, A. L., Gullett, B. K., Urbanski, S. P., Elleman, R., O’Neill, S., Tabor, D., Mitchell, W., and Baker, K. R.: Emissions from prescribed burning of agricultural fields in the Pacific Northwest, *Atmos. Environ.*, 166, 22–33, <https://doi.org/10.1016/j.atmosenv.2017.06.043>, 2017.
- 1070 Hutzell, W. T., Luecken, D. J., Appel, K. W., and Carter, W. P. L.: Interpreting predictions from the SAPRC07 mechanism based on regional and continental simulations, *Atmos. Environ.*, 46, 417–429, <https://doi.org/10.1016/j.atmosenv.2011.09.030>, 2012.
- NIST Chemistry WebBook: <https://webbook.nist.gov/chemistry/>, last access: 29 January 2024.
- 1075 Jayarathne, T., Stockwell, C., Yokelson, R., Nakao, S., and Stone, E.: Emissions of fine particle fluoride from biomass burning, *Environ. Sci. Technol.*, 48, 12636–12644, <https://doi.org/10.1021/es502933j>, 2014.



- 1080 Jayarathne, T., Stockwell, C., Bhave, P., Praveen, P., Rathnayake, C., Islam, M., Panday, A., Adhikari, S., Maharjan, R., Goetz, J., DeCarlo, P., Saikawa, E., Yokelson, R., and Stone, E.: Nepal Ambient Monitoring and Source Testing Experiment (NAMaSTE): emissions of particulate matter from wood- and dung-fueled cooking fires, garbage and crop residue burning, brick kilns, and other sources, *Atmospheric Chem. Phys.*, 18, 2259–2286, <https://doi.org/10.5194/acp-18-2259-2018>, 2018.
- 1085 Jen, C. N., Hatch, L. E., Selimovic, V., Yokelson, R. J., Weber, R., Fernandez, A. E., Kreisberg, N. M., Barsanti, K. C., and Goldstein, A. H.: Speciated and total emission factors of particulate organics from burning western US wildland fuels and their dependence on combustion efficiency, *Atmospheric Chem. Phys.*, 19, 1013–1026, <https://doi.org/10.5194/acp-19-1013-2019>, 2019.
- Jolleys, M. D., Coe, H., McFiggans, G., Capes, G., Allan, J. D., Crosier, J., Williams, P. I., Allen, G., Bower, K. N., Jimenez, J. L., Russell, L. M., Grutter, M., and Baumgardner, D.: Characterizing the aging of biomass burning organic aerosol by use of mixing Ratios: A meta-analysis of four regions, *Environ. Sci. Technol.*, 46, 13093–13102, <https://doi.org/10.1021/es302386v>, 2012.
- 1090 Jolly, W. M., Cochrane, M. A., Freeborn, P. H., Holden, Z. A., Brown, T. J., Williamson, G. J., and Bowman, D. M. J. S.: Climate-induced variations in global wildfire danger from 1979 to 2013, *Nat. Commun.*, 6, 7537, <https://doi.org/10.1038/ncomms8537>, 2015.
- 1095 Juncosa Calahorrano, J. F., Lindaas, J., O’Dell, K., Palm, B. B., Peng, Q., Flocke, F., Pollack, I. B., Garofalo, L. A., Farmer, D. K., Pierce, J. R., Collett Jr., J. L., Weinheimer, A., Campos, T., Hornbrook, R. S., Hall, S. R., Ullmann, K., Pothier, M. A., Apel, E. C., Permar, W., Hu, L., Hills, A. J., Montzka, D., Tyndall, G., Thornton, J. A., and Fischer, E. V.: Daytime oxidized reactive nitrogen partitioning in Western U.S. wildfire smoke plumes, *J. Geophys. Res. Atmospheres*, 126, e2020JD033484, <https://doi.org/10.1029/2020JD033484>, 2021.
- 1100 Kim, S., Chen, J., Cheng, T., Gindulyte, A., He, J., He, S., Li, Q., Shoemaker, B. A., Thiessen, P. A., Yu, B., Zaslavsky, L., Zhang, J., and Bolton, E. E.: PubChem 2023 update, *Nucleic Acids Res.*, 51, D1373–D1380, <https://doi.org/10.1093/nar/gkac956>, 2023.
- 1105 Koss, A. R., Sekimoto, K., Gilman, J. B., Selimovic, V., Coggon, M. M., Zarzana, K. J., Yuan, B., Lerner, B. M., Brown, S. S., Jimenez, J. L., Krechmer, J., Roberts, J. M., Warneke, C., Yokelson, R. J., and de Gouw, J.: Non-methane organic gas emissions from biomass burning: identification, quantification, and emission factors from PTR-ToF during the FIREX 2016 laboratory experiment, *Atmospheric Chem. Phys.*, 18, 3299–3319, <https://doi.org/10.5194/acp-18-3299-2018>, 2018.
- 1110 Lasko, K. and Vadrevu, K. P.: Biomass Burning Emissions Variation from Satellite-Derived Land Cover, Burned Area, and Emission Factors in Vietnam, in: *Land-Atmospheric Research Applications in South and Southeast Asia*, edited by: Vadrevu, K. P., Ohara, T., and Justice, C., Springer International Publishing, Cham, 171–201, [https://doi.org/10.1007/978-3-319-67474-2\\_9](https://doi.org/10.1007/978-3-319-67474-2_9), 2018.
- 1115 Lewis, K., Arnott, W. P., Moosmüller, H., and Wold, C. E.: Strong spectral variation of biomass smoke light absorption and single scattering albedo observed with a novel dual-wavelength photoacoustic instrument, *J. Geophys. Res. Atmospheres*, 113, <https://doi.org/10.1029/2007JD009699>, 2008.



- Li, H., Lamb, K. D., Schwarz, J. P., Selimovic, V., Yokelson, R. J., McMeeking, G. R., and May, A. A.: Inter-comparison of black carbon measurement methods for simulated open biomass burning emissions, *Atmos. Environ.*, 206, 156–169, <https://doi.org/10.1016/j.atmosenv.2019.03.010>, 2019.
- 1120 Li, M., Zhang, Q., Streets, D. G., He, K. B., Cheng, Y. F., Emmons, L. K., Huo, H., Kang, S. C., Lu, Z., Shao, M., Su, H., Yu, X., and Zhang, Y.: Mapping Asian anthropogenic emissions of non-methane volatile organic compounds to multiple chemical mechanisms, *Atmospheric Chem. Phys.*, 14, 5617–5638, <https://doi.org/10.5194/acp-14-5617-2014>, 2014.
- 1125 Liang, Y., Jen, C., Weber, R., Misztal, P., and Goldstein, A.: Chemical composition of PM<sub>2.5</sub> in October 2017 Northern California wildfire plumes, *Atmospheric Chem. Phys.*, 21, 5719–5737, <https://doi.org/10.5194/acp-21-5719-2021>, 2021.
- Lincoln, Emily N., Hao, WeiMin, Weise, David R., and Johnson, Timothy J.: Wildland fire emission factors database, *For. Serv. Res. Data Arch.*, <https://doi.org/10.2737/RDS-2014-0012>, 2014.
- 1130 Liu, X., Zhang, Y., Huey, L., Yokelson, R., Wang, Y., Jimenez, J., Campuzano-Jost, P., Beyersdorf, A., Blake, D., Choi, Y., St Clair, J., Crouse, J., Day, D., Diskin, G., Fried, A., Hall, S., Hanisco, T., King, L., Meinardi, S., Mikoviny, T., Palm, B., Peischl, J., Perring, A., Pollack, I., Ryerson, T., Sachse, G., Schwarz, J., Simpson, I., Tanner, D., Thornhill, K., Ullmann, K., Weber, R., Wennberg, P., Wisthaler, A., Wolfe, G., and Ziemba, L.: Agricultural fires in the southeastern US during SEAC(4)RS: Emissions of trace gases and particles and evolution of ozone, reactive nitrogen, and organic aerosol, *J. Geophys. Res.- Atmospheres*, 121, 7383–7414, <https://doi.org/10.1002/2016JD025040>, 2016.
- 1140 Liu, X. X., Huey, L. G., Yokelson, R. J., Selimovic, V., Simpson, I. J., Muller, M., Jimenez, J. L., Campuzano-Jost, P., Beyersdorf, A. J., Blake, D. R., Butterfield, Z., Choi, Y., Crouse, J. D., Day, D. A., Diskin, G. S., Dubey, M. K., Fortner, E., Hanisco, T. F., Hu, W. W., King, L. E., Kleinman, L., Meinardi, S., Mikoviny, T., Onasch, T. B., Palm, B. B., Peischl, J., Pollack, I. B., Ryerson, T. B., Sachse, G. W., Sedlacek, A. J., Shilling, J. E., Springston, S., St Clair, J. M., Tanner, D. J., Teng, A. P., Wennberg, P. O., Wisthaler, A., and Wolfe, G. M.: Airborne measurements of western US wildfire emissions: Comparison with prescribed burning and air quality implications, *J. Geophys. Res.-Atmospheres*, 122, 6108–6129, <https://doi.org/10.1002/2016jd026315>, 2017.
- 1145 May, A. A., McMeeking, G. R., Lee, T., Taylor, J. W., Craven, J. S., Burling, I., Sullivan, A. P., Akagi, S., Collett, J. L., Flynn, M., Coe, H., Urbanski, S. P., Seinfeld, J. H., Yokelson, R. J., and Kreidenweis, S. M.: Aerosol emissions from prescribed fires in the United States: A synthesis of laboratory and aircraft measurements, *J. Geophys. Res.-Atmospheres*, 119, 11826–11849, <https://doi.org/10.1002/2014jd021848>, 2014.
- McClure, C. and Jaffe, D.: Investigation of high ozone events due to wildfire smoke in an urban area, *Atmos. Environ.*, 194, 146–157, <https://doi.org/10.1016/j.atmosenv.2018.09.021>, 2018.
- McMeeking, G. R., Kreidenweis, S. M., Baker, S., Carrico, C. M., Chow, J. C., Collett, J. L., Hao, W. M., Holden, A. S., Kirchstetter, T. W., Malm, W. C., Moosmüller, H., Sullivan, A. P., and



- 1155 Wold, C. E.: Emissions of trace gases and aerosols during the open combustion of biomass in the laboratory, *J. Geophys. Res. Atmospheres*, 114, n/a-n/a, <https://doi.org/10.1029/2009JD011836>, 2009.
- Müller, M., Anderson, B. E., Beyersdorf, A. J., Crawford, J. H., Diskin, G. S., Eichler, P., Fried, A., Keutsch, F. N., Mikoviny, T., Thornhill, K. L., Walega, J. G., Weinheimer, A. J., Yang, M., Yokelson, R. J., and Wisthaler, A.: In situ measurements and modeling of reactive trace gases  
1160 \hack\breakin a small biomass burning plume, *Atmospheric Chem. Phys.*, 16, 3813–3824, <https://doi.org/10.5194/acp-16-3813-2016>, 2016.
- Nakayama, T., Suzuki, H., Kagamitani, S., Ikeda, Y., Uchiyama, A., and Matsumi, Y.:  
1165 Characterization of a Three Wavelength Photoacoustic Soot Spectrometer (PASS-3) and a Photoacoustic Extinctionmeter (PAX), *J. Meteorol. Soc. Jpn. Ser II*, 93, 285–308, <https://doi.org/10.2151/jmsj.2015-016>, 2015.
- Ninneman, M. and Jaffe, D.: Observed relationship between ozone and temperature for urban nonattainment areas in the United States, *Atmosphere*, 12, <https://doi.org/10.3390/atmos12101235>, 2021.
- 1170 North, M. P., Stephens, S. L., Collins, B. M., Agee, J. K., Aplet, G., Franklin, J. F., and Fulé, P. Z.: Reform forest fire management, *Science*, 349, 1280–1281, 2015.
- Page, S. E. and Hooijer, A.: In the line of fire: the peatlands of Southeast Asia, *Philos. Trans. R. Soc. B Biol. Sci.*, 371, 20150176, <https://doi.org/10.1098/rstb.2015.0176>, 2016.
- 1175 Palm, B., Peng, Q., Fredrickson, C., Lee, B., Garofalo, L., Pothier, M., Kreidenweis, S., Farmer, D., Pokhrel, R., Shen, Y., Murphy, S., Permar, W., Hu, L., Campos, T., Hall, S., Ullmann, K., Zhang, X., Flocke, F., Fischer, E., and Thornton, J.: Quantification of organic aerosol and brown carbon evolution in fresh wildfire plumes, *Proc. Natl. Acad. Sci. U. S. A.*, 117, 29469–29477, <https://doi.org/10.1073/pnas.2012218117>, 2020.
- 1180 Pence, H. E. and Williams, A.: ChemSpider: An Online Chemical Information Resource, *J. Chem. Educ.*, 87, 1123–1124, <https://doi.org/10.1021/ed100697w>, 2010.
- Permar, W., Wang, Q., Selimovic, V., Wielgasz, C., Yokelson, R., Hornbrook, R., Hills, A., Apel, E., Ku, T., Zhou, Y., Sive, B., Sullivan, A., Collett, J., Campos, T., Palm, B., Peng, Q., Thornton, J., Garofalo, L., Farmer, D., Kreidenweis, S., Levin, E., DeMott, P., Flocke, F., Fischer, E., and Hu, L.: Emissions of trace organic gases from Western US wildfires based on WE-CAN aircraft  
1185 measurements, *J. Geophys. Res.- Atmospheres*, 126, <https://doi.org/10.1029/2020JD033838>, 2021.
- Pokhrel, R., Wagner, N., Langridge, J., Lack, D., Jayarathne, T., Stone, E., Stockwell, C., Yokelson, R., and Murphy, S.: Parameterization of single-scattering albedo (SSA) and absorption Angstrom exponent (AAE) with EC / OC for aerosol emissions from biomass burning,  
1190 *Atmospheric Chem. Phys.*, 16, 9549–9561, <https://doi.org/10.5194/acp-16-9549-2016>, 2016.
- Poschl, U.: Atmospheric aerosols: Composition, transformation, climate and health effects, *Angew. Chem.-Int. Ed.*, 44, 7520–7540, <https://doi.org/10.1002/anie.200501122>, 2005.



- 1195 Prichard, S., O'Neill, S., Eagle, P., Andreu, A., Drye, B., Dubowy, J., Urbanski, S., and Strand, T.: Wildland fire emission factors in North America: synthesis of existing data, measurement needs and management applications, *Int. J. Wildland Fire*, 29, 132–147, <https://doi.org/10.1071/WF19066>, 2020.
- 1200 Roulston, C., Paton-Walsh, C., Smith, T. E. L., Guérette, É.-A., Evers, S., Yule, C. M., Rein, G., and Van der Werf, G. R.: Fine particle emissions from tropical peat fires decrease rapidly with time since ignition, *J. Geophys. Res. Atmospheres*, 123, 5607–5617, <https://doi.org/10.1029/2017JD027827>, 2018.
- 1205 Schwantes, R. H., Lacey, F. G., Tilmes, S., Emmons, L. K., Lauritzen, P. H., Walters, S., Callaghan, P., Zarzycki, C. M., Barth, M. C., Jo, D. S., Bacmeister, J. T., Neale, R. B., Vitt, F., Kluzek, E., Rood, B., Hall, S. R., Ullmann, K., Warneke, C., Peischl, J., Pollack, I. B., Flocke, F., Wolfe, G. M., Hanisco, T. F., Keutsch, F. N., Kaiser, J., Bui, T. P. V., Jimenez, J. L., Campuzano-Jost, P., Apel, E. C., Hornbrook, R. S., Hills, A. J., Yuan, B., and Wisthaler, A.: Evaluating the impact of chemical complexity and horizontal resolution on tropospheric ozone over the conterminous US with a global variable resolution chemistry model, *J. Adv. Model. Earth Syst.*, 14, e2021MS002889, <https://doi.org/10.1029/2021MS002889>, 2022.
- 1210 Schwarz, J. P., Gao, R. S., Fahey, D. W., Thomson, D. S., Watts, L. A., Wilson, J. C., Reeves, J. M., Darbeheshti, M., Baumgardner, D. G., Kok, G. L., Chung, S. H., Schulz, M., Hendricks, J., Lauer, A., Kärcher, B., Slowik, J. G., Rosenlof, K. H., Thompson, T. L., Langford, A. O., Loewenstein, M., and Aikin, K. C.: Single-particle measurements of midlatitude black carbon and light-scattering aerosols from the boundary layer to the lower stratosphere, *J. Geophys. Res. Atmospheres*, 111, <https://doi.org/10.1029/2006JD007076>, 2006.
- 1215 Selimovic, V., Yokelson, R. J., Warneke, C., Roberts, J. M., de Gouw, J., Reardon, J., and Griffith, D. W. T.: Aerosol optical properties and trace gas emissions by PAX and OP-FTIR for laboratory-simulated western US wildfires during FIREX, *Atmospheric Chem. Phys.*, 18, 2929–2948, <https://doi.org/10.5194/acp-18-2929-2018>, 2018.
- 1220 Simon, H., Beck, L., Bhave, P. V., Divita, F., Hsu, Y., Luecken, D., Mobley, J. D., Pouliot, G. A., Reff, A., Sarwar, G., and Strum, M.: The development and uses of EPA's SPECIATE database, *Atmospheric Pollut. Res.*, 1, 196–206, <https://doi.org/10.5094/APR.2010.026>, 2010.
- Smith, T. E. L., Evers, S., Yule, C. M., and Gan, J. Y.: In situ tropical peatland fire emission factors and their variability, as determined by field measurements in Peninsula Malaysia, *Glob. Biogeochem. Cycles*, 32, 18–31, <https://doi.org/10.1002/2017GB005709>, 2018.
- 1225 Stephens, S. L., Burrows, N., Buyantuyev, A., Gray, R. W., Keane, R. E., Kubian, R., Liu, S., Seijo, F., Shu, L., and Tolhurst, K. G.: Temperate and boreal forest mega-fires: characteristics and challenges, *Front. Ecol. Environ.*, 12, 115–122, 2014.
- 1230 Stockwell, C., Yokelson, R., Kreidenweis, S., Robinson, A., DeMott, P., Sullivan, R., Reardon, J., Ryan, K., Griffith, D., and Stevens, L.: Trace gas emissions from combustion of peat, crop residue, domestic biofuels, grasses, and other fuels: configuration and Fourier transform infrared (FTIR) component of the fourth Fire Lab at Missoula Experiment (FLAME-4), *Atmospheric Chem. Phys.*, 14, 9727–9754, <https://doi.org/10.5194/acp-14-9727-2014>, 2014.



- 1235 Stockwell, C. E., Veres, P. R., Williams, J., and Yokelson, R. J.: Characterization of biomass burning emissions from cooking fires, peat, crop residue, and other fuels with high-resolution proton-transfer-reaction time-of-flight mass spectrometry, *Atmospheric Chem. Phys.*, 15, 845–865, <https://doi.org/10.5194/acp-15-845-2015>, 2015.
- 1240 Stockwell, C. E., Jayarathne, T., Cochrane, M. A., Ryan, K. C., Putra, E. I., Saharjo, B. H., Nurhayati, A. D., Albar, I., Blake, D. R., Simpson, I. J., Stone, E. A., and Yokelson, R. J.: Field measurements of trace gases and aerosols emitted by peat fires in Central Kalimantan, Indonesia, during the 2015 El Nino, *Atmospheric Chem. Phys.*, 16, 11711–11732, <https://doi.org/10.5194/acp-16-11711-2016>, 2016a.
- 1245 Stockwell, C. E., Christian, T. J., Goetz, J. D., Jayarathne, T., Bhave, P. V., Praveen, P. S., Adhikari, S., Maharjan, R., DeCarlo, P. F., Stone, E. A., Saikawa, E., Blake, D. R., Simpson, I. J., Yokelson, R. J., and Panday, A. K.: Nepal Ambient Monitoring and Source Testing Experiment (NAMaSTE): emissions of trace gases and light-absorbing carbon from wood and dung cooking fires, garbage and crop residue burning, brick kilns, and other sources, *Atmospheric Chem. Phys.*, 16, 11043–11081, <https://doi.org/10.5194/acp-16-11043-2016>, 2016b.
- 1250 Tkacik, D. S., Robinson, E. S., Ahern, A., Saleh, R., Stockwell, C., Veres, P., Simpson, I. J., Meinardi, S., Blake, D. R., Yokelson, R. J., Presto, A. A., Sullivan, R. C., Donahue, N. M., and Robinson, A. L.: A dual-chamber method for quantifying the effects of atmospheric perturbations on secondary organic aerosol formation from biomass burning emissions, *J. Geophys. Res.-Atmospheres*, 122, 6043–6058, <https://doi.org/10.1002/2016jd025784>, 2017.
- 1255 Travis, K. R., Crawford, James. H., Soja, A. J., Gargulinski, E. M., Moore, R. H., Wiggins, E. B., Diskin, G. S., DiGangi, J. P., Nowak, J. B., Halliday, H., Yokelson, R. J., McCarty, J. L., Simpson, I. J., Blake, D. R., Meinardi, S., Hornbrook, R. S., Apel, E. C., Hills, A. J., Warneke, C., Coggon, M. M., Rollins, A. W., Gilman, J. B., Womack, C. C., Robinson, M. A., Katich, J. M., Peischl, J., Gkatzelis, G. I., Bourgeois, I., Rickly, P. S., Lamplugh, A., Dibb, J. E., Jimenez, J. L., Campuzano-Jost, P., Day, D. A., Guo, H., Pagonis, D., Wennberg, P. O., Crounse, J. D., Xu, L., Hanisco, T. F., Wolfe, G. M., Liao, J., St. Clair, J. M., Nault, B. A., Fried, A., and Perring, A. E.: Emission factors for crop residue and prescribed fires in the Eastern US During FIREX-AQ, *J. Geophys. Res. Atmospheres*, 128, e2023JD039309, <https://doi.org/10.1029/2023JD039309>, 2023.
- 1260 Urbanski, S.: Wildland fire emissions, carbon, and climate: Emission factors, *For. Ecol. Manag.*, 317, 51–60, <https://doi.org/10.1016/j.foreco.2013.05.045>, 2014.
- 1265 US EPA: Estimation Programs Interface Suite™ for Microsoft® Windows, v 4.11 or insert version used]. United States Environmental Protection Agency, Washington, DC, USA. 2023.
- SPECIATE: <https://www.epa.gov/air-emissions-modeling/speciate-4>, last access: 14 November 2023.
- 1270 Warneke, C., Roberts, J. M., Veres, P., Gilman, J., Kuster, W. C., Burling, I., Yokelson, R., and De Gouw, J. A.: VOC identification and inter-comparison from laboratory biomass burning using PTR-MS and PIT-MS, *Int. J. Mass Spectrom.*, 303, 6–14, <https://doi.org/10.1016/j.ijms.2010.12.002>, 2011.



- 1275 Warneke, C., Schwarz, J. P., Dibb, J., Kalashnikova, O., Frost, G., Al-Saadi, J., Brown, S. S., Brewer, Wm. A., Soja, A., Seidel, F. C., Washenfelder, R. A., Wiggins, E. B., Moore, R. H., Anderson, B. E., Jordan, C., Yacovitch, T. I., Herndon, S. C., Liu, S., Kuwayama, T., Jaffe, D., Johnston, N., Selimovic, V., Yokelson, R., Giles, D. M., Holben, B. N., Goloub, P., Popovici, I., Trainer, M., Kumar, A., Pierce, R. B., Fahey, D., Roberts, J., Gargulinski, E. M., Peterson, D. A., Ye, X., Thapa, L. H., Saide, P. E., Fite, C. H., Holmes, C. D., Wang, S., Coggon, M. M., Decker, Z. C. J., Stockwell, C. E., Xu, L., Gkatzelis, G., Aikin, K., Lefer, B., Kaspari, J., Griffin, D., Zeng, L., Weber, R., Hastings, M., Chai, J., Wolfe, G. M., Hanisco, T. F., Liao, J., Jost, P. C., Guo, H., Jimenez, J. L., and Crawford, J.: Fire Influence on Regional to Global Environments and Air Quality (FIREX-AQ), *J. Geophys. Res. Atmospheres*, n/a, e2022JD037758, <https://doi.org/10.1029/2022JD037758>, n.d.
- 1285 Watson, J. G., Cao, J., Chen, L.-W. A., Wang, Q., Tian, J., Wang, X., Gronstal, S., Ho, S. S. H., Watts, A. C., and Chow, J. C.: Gaseous, PM<sub>2.5</sub> mass, and speciated emission factors from laboratory chamber peat combustion, *Atmospheric Chem. Phys.*, 19, 14173–14193, <https://doi.org/10.5194/acp-19-14173-2019>, 2019.
- 1290 Wei, J., Wang, J., Li, Z., Kondragunta, S., Anenberg, S., Wang, Y., Zhang, H., Diner, D., Hand, J., Lyapustin, A., Kahn, R., Colarco, P., da Silva, A., and Ichoku, C.: Long-term mortality burden trends attributed to black carbon and PM<sub>2.5</sub> from wildfire emissions across the continental USA from 2000 to 2020: a deep learning modelling study, *Lancet Planet. Health*, 7, e963–e975, [https://doi.org/10.1016/S2542-5196\(23\)00235-8](https://doi.org/10.1016/S2542-5196(23)00235-8), 2023.
- Wiedinmyer, C., Yokelson, R. J., and Gullett, B. K.: Global emissions of trace gases, particulate matter, and hazardous air pollutants from open burning of domestic waste, *Environ. Sci. Technol.*, 48, 9523–9530, <https://doi.org/10.1021/es502250z>, 2014.
- 1295 Xu, L., Crouse, J. D., Vasquez, K. T., Allen, H., Wennberg, P. O., Bourgeois, I., Brown, S. S., Campuzano-Jost, P., Coggon, M. M., Crawford, J. H., DiGangi, J. P., Diskin, G. S., Fried, A., Gargulinski, E. M., Gilman, J. B., Gkatzelis, G. I., Guo, H., Hair, J. W., Hall, S. R., Halliday, H. A., Hanisco, T. F., Hannun, R. A., Holmes, C. D., Huey, L. G., Jimenez, J. L., Lamplugh, A., Lee, Y. R., Liao, J., Lindaas, J., Neuman, J. A., Nowak, J. B., Peischl, J., Peterson, D. A., Piel, F., Richter, D., Rickly, P. S., Robinson, M. A., Rollins, A. W., Ryerson, T. B., Sekimoto, K., Selimovic, V., Shingler, T., Soja, A. J., St. Clair, J. M., Tanner, D. J., Ullmann, K., Veres, P. R., Walega, J., Warneke, C., Washenfelder, R. A., Weibring, P., Wisthaler, A., Wolfe, G. M., Womack, C. C., and Yokelson, R. J.: Ozone chemistry in western U.S. wildfire plumes, *Sci. Adv.*, 7, eabl3648, <https://doi.org/10.1126/sciadv.abl3648>, 2021.
- 1300
- 1305 Yokelson, R. J., Susott, R., Ward, D. E., Reardon, J., and Griffith, D. W. T.: Emissions from smoldering combustion of biomass measured by open-path Fourier transform infrared spectroscopy, *J. Geophys. Res. Atmospheres*, 102, 18865–18877, <https://doi.org/10.1029/97JD00852>, 1997.
- 1310 Yokelson, R. J., Karl, T., Artaxo, P., Blake, D. R., Christian, T. J., Griffith, D. W. T., Guenther, A., and Hao, W. M.: The tropical forest and fire emissions experiment: Overview and airborne fire emission factor measurements, *Atmos Chem Phys*, 7, 5175–5196, <https://doi.org/10.5194/acp-7-5175-2007>, 2007.





- 1315 Yokelson, R. J., Burling, I. R., Urbanski, S. P., Atlas, E. L., Adachi, K., Buseck, P. R., Wiedinmyer, C., Akagi, S. K., Toohey, D. W., and Wold, C. E.: Trace gas and particle emissions from open biomass burning in Mexico, *Atmospheric Chem. Phys.*, 11, 6787–6808, <https://doi.org/10.5194/acp-11-6787-2011>, 2011.
- 1320 Yokelson, R. J., Burling, I. R., Gilman, J. B., Warneke, C., Stockwell, C. E., de Gouw, J., Akagi, S. K., Urbanski, S. P., Veres, P., Roberts, J. M., Kuster, W. C., Reardon, J., Griffith, D. W. T., Johnson, T. J., Hosseini, S., Miller, J. W., Cocker, D. R., Jung, H., and Weise, D. R.: Coupling field and laboratory measurements to estimate the emission factors of identified and unidentified trace gases for prescribed fires, *Atmospheric Chem. Phys.*, 13, 89–116, <https://doi.org/10.5194/acp-13-89-2013>, 2013.
- 1325 Yokelson, R. J., Saharjo, B. H., Stockwell, C. E., Putra, E. I., Jayarathne, T., Akbar, A., Albar, I., Blake, D. R., Graham, L. L. B., Kurniawan, A., Meinardi, S., Ningrum, D., Nurhayati, A. D., Saad, A., Sakuntaladewi, N., Setianto, E., Simpson, I. J., Stone, E. A., Sutikno, S., Thomas, A., Ryan, K. C., and Cochrane, M. A.: Tropical peat fire emissions: 2019 field measurements in Sumatra and Borneo and synthesis with previous studies, *Atmospheric Chem. Phys.*, 22, 10173–10194, <https://doi.org/10.5194/acp-22-10173-2022>, 2022.
- 1330 Zhao, Y. L., Kreisberg, N. M., Worton, D. R., Isaacman, G., Gentner, D. R., Chan, A. W. H., Weber, R. J., Liu, S., Day, D. A., Russell, L. M., Hering, S. V., and Goldstein, A. H.: Sources of organic aerosol investigated using organic compounds as tracers measured during CalNex in Bakersfield, *J. Geophys. Res.-Atmospheres*, 118, 11388–11398, <https://doi.org/10.1002/jgrd.50825>, 2013.