

# Quantifying uncertainties of satellite NO<sub>2</sub> superobservations for data assimilation and model evaluation

Pieter Rijsdijk<sup>1,2,3,\*</sup>, Henk Eskes<sup>2,\*</sup>, Arlene Dingemans<sup>1,◇</sup>, K. Folkert Boersma<sup>2,4</sup>, Takashi Sekiya<sup>5</sup>, Kazuyuki Miyazaki<sup>6</sup>, and Sander Houweling<sup>3,1</sup>

<sup>1</sup>SRON Netherlands Institute for Space Research, Leiden, Netherlands

<sup>2</sup>Satellite Observations department, Royal Netherlands Meteorological Institute, De Bilt, The Netherlands

<sup>3</sup>Department of Earth Sciences, Vrije Universiteit, Amsterdam, the Netherlands

<sup>4</sup>Meteorology and Air Quality group, Wageningen University, Wageningen, The Netherlands

<sup>5</sup>Japan Agency for Marine-Earth Science and Technology, Yokohama, Japan

<sup>6</sup>Jet Propulsion Laboratory/California Institute for Technology, Pasadena, California, USA

\*These authors contributed equally to this work.

◇Currently at Koninklijke luchmacht

**Correspondence:** Pieter Rijsdijk (P.Rijsdijk@sron.nl)

## Abstract.

Satellite observations of tropospheric trace gases and aerosols are evolving rapidly. Recently launched instruments provide increasingly higher spatial resolutions with footprint diameters in the range of 2-8 km, with daily global coverage for polar orbiting satellites or hourly observations from geostationary orbit. Often the modelling system has a lower spatial resolution than the satellites used, with a model grid size in the range of 10-100 km. When the resolution mismatch is not properly bridged, the final analysis based on the satellite data may be degraded. Superobservations are averages of individual observations matching the model's resolution and are functional to reduce the data load on the assimilation system. In this paper, we discuss the construction of superobservations, their kernels and uncertainty estimates. The methodology is applied to nitrogen dioxide tropospheric column measurements of the TROPospheric Monitoring Instrument (TROPOMI) instrument on the Sentinel-5P satellite. In particular, the construction of realistic uncertainties for the superobservations is non-trivial and crucial to obtaining close to optimal data assimilation results. We present a detailed methodology to account for the representation error when satellite observations are missing due to e.g. cloudiness. Furthermore, we account for systematic errors in the retrievals leading to error correlations between nearby individual observations contributing to one superobservation. Correlation information is typically missing in the retrieval products where an error estimate is provided for individual observations. The various contributions to the uncertainty are analysed: from the spectral fitting, the estimate of the stratospheric contribution to the column and the air-mass factor, for which we find a typical correlation length of 32km. The method is applied to TROPOMI data but can be generalised to other trace gases such as HCHO, CO, SO<sub>2</sub> and other instruments such as the Ozone Monitoring Instrument (OMI), the Geostationary Environment Monitoring Spectrometer (GEMS) and the Tropospheric Emissions: Monitoring of POLLution instrument (TEMPO). The superobservations and uncertainties are tested in the Multi-mOdel Multi-cOnstituent Chemical data assimilation (MOMO-Chem) ensemble Kalman filter system. These are shown to improve forecasts compared to thinning or compared to assuming fully correlated or uncorrelated uncertainties within the

superobservation. The use of realistic superobservations within model comparisons and data assimilation in this way aids the quantification of air pollution distributions, emissions and their impact on climate.

## 1 Introduction

25 The capabilities of satellite instruments to measure trace gases in the atmosphere have increased greatly in recent years. Instruments measuring from the ultra-violet (UV) to infrared and microwave (<https://earthobservations.org/>, <https://ceos.org/ourwork/virtual-constellations/acc/>), allow the retrieval of concentrations of a large number of gases including O<sub>3</sub>, NO<sub>2</sub>, SO<sub>2</sub>, CO, CH<sub>4</sub> and CO<sub>2</sub>. While a previous generation was providing measurements with footprint diameters of order 15-50 km, instruments like the polar orbiting spectrometer TROPOMI (Veefkind et al., 2012) and the recently launched geostationary instruments GEMS (Kim et al., 2020) and TEMPO (Zoogman et al., 2017) provide observations with a spatial resolution around 30 5 km, allowing the identification of plumes originating from individual major emitters and the estimation of their emissions (Streets et al., 2013; Georgoulias et al., 2020). At the same time, these instruments provide daily global coverage (TROPOMI) or regional hourly observations (GEMS, TEMPO) resulting in large data volumes (e.g. about half a Tb per day for TROPOMI). Making good use of all this information is a major challenge.

35 In parallel, global atmospheric composition analysis systems have been developed which use data assimilation techniques to assimilate the available satellite data. In Europe, the Copernicus Atmosphere Monitoring System (CAMS)(Peuch et al., 2022) is assimilating about 24 satellite datasets in real time to constrain concentrations of reactive gases, aerosols and greenhouse gases (Inness et al., 2019b). Multi-decadal reanalyses have been generated by CAMS (Inness et al., 2019a) or by the MOMO-Chem data assimilation system (Miyazaki et al., 2020a).

40 The recent advances in satellite instruments have led to a mismatch in resolution between models and observations. For example, the TROPOMI instrument has footprints of 5.5 by 3.5 kilometres at nadir (about 20 km<sup>2</sup>), whereas the CAMS model grid-cells are roughly 0.4 by 0.4 degrees (about 2,000 km<sup>2</sup>). As a result, a single model grid-cell may be covered by order 100 observations, which will lead to large differences between individual observations and interpolated model values because trace gas concentrations vary strongly linked to the distribution of (point) air pollution sources. The large number 45 of satellite observations (about one million cloud-free NO<sub>2</sub> observations per day) make the assimilation of all observations numerically very costly. Also regional data assimilation or inverse modelling applications, e.g. van der A et al. (2024), often are implemented with a resolution of order 0.2 degree or coarser, with order 10-20 TROPOMI observations per grid-cell. This mismatch is the main reason to introduce superobservations, averages of the individual observations which are representative of the scales that are resolved by the model.

50 Crucial for a successful analysis is high-quality information on both the uncertainties in the model forecast (the error covariance matrix) as well as in the observations. Too optimistic observation errors will lead to spurious impacts in the model degrading the quality of the analyses, while an overestimate of the observation error implies that the observations are not used to their full potential.

The model to data mismatch, or departure  $\mathbf{d}$ , in equation 1 is a key quantity in data assimilation (Kalnay, 2002). Here  $\mathbf{y}$  is the observation vector, and  $H$  is the observation operator converting the model state vector  $\mathbf{x}$  to the observations.

$$\mathbf{d} = \mathbf{y} - H[\mathbf{x}] \quad (1)$$

There are three sources of error contributing to non-zero  $\mathbf{d}$  values: the error in the observation  $\mathbf{y}$ , the forecast error in  $\mathbf{x}$  and the errors in the observation operator, which are often combined with the observation error. The error in  $H$  describes how accurately the measurement can be reconstructed from the model state represented on a finite-resolution grid. This representation error, although sometimes neglected, will often be the dominant error source. Various terms may contribute to this error, including horizontal spatial representation errors (Janjić et al., 2018; Schutgens et al., 2016; Miyazaki et al., 2012a), temporal errors (Boersma et al., 2016), vertical interpolation errors, smoothing errors (when averaging kernels are not used, see Rodgers (2000)) and forward modelling errors (errors in the radiative transfer model included in  $H$  to describe the (satellite) observation).

In this paper, we focus on the horizontal spatial representation error (RE) because this is a major source of error in case of large sub-grid variability and partial coverage. Also, this error is straightforward to simulate and quantify in the framework of superobservations.

In data assimilation applications the uncertainties of the observations are often assumed to be uncorrelated in space because of its complexity. Satellite retrieval products generally contain detailed retrieval error estimates, but these are available for individual observations and typically there is no information on how much errors in nearby observations may be correlated. If such correlations are neglected the individual observations will too strongly impact the analysis. Thinning the observational dataset, using only a subset of the observations often improves the data assimilation results, and reduces correlated errors through data density reduction, while reducing computational cost in data assimilation (Liu and Rabier, 2002, 2003). However, thinning does not decrease the uncorrelated part of the uncertainty (H. Berger, 2003) and leads to a loss of information as well. In the case of a short-lived tracer like  $\text{NO}_2$  with local sources the variability within a grid-cell of  $40 \times 40 \text{ km}^2$  is large, and is picked up by TROPOMI. Randomly selecting one observation in a grid-cell, or within a correlation length scale, implies throwing away most of the subgrid information and leads to very noisy comparisons because the model does not resolve the fine-scale variability, especially around inhomogeneous point sources. A better approach is selecting the single observation closest to the mean or median of the observations within the grid-cell (Plauchu et al., 2024), but note that this approach makes use of the information of all these observations.

An alternative to thinning is ‘superobbing’. In this approach, multiple observations are clustered and averaged to a single superobservation. The superobservations then replace the original observations in data assimilation applications as illustrated in figure 1. This makes for a more representative and less noisy comparison, while also reducing the correlation in uncertainties between superobservations

Superobbing can also prevent biases. The uncertainty of individual observations often scales with the column amount. This is the case for  $\text{NO}_2$  column retrievals, related to uncertainties in the air-mass factor. If all individual observations with their individual uncertainties are assimilated in a model with a coarser resolution than the satellite, this leads to low-biased analyses,

because more weight is given to low observations with a small uncertainty. With the superobservation approach described in this paper, such persistent low biases are largely avoided.

90 Satellite trace gas retrieval products often contain a significant number of negative values. This may result from small signal-to-noise ratios (for instance for HCHO and SO<sub>2</sub> column retrievals) or from a subtraction of two large numbers (the total and stratospheric columns in the case of tropospheric NO<sub>2</sub>). These negative values are, however, essential to maintain statistical consistency and prevent biases when averaging the observations. Data assimilation systems for atmospheric chemistry are often unable to use negative values, instead discarding them. But this practice will result in positive biases, for instance over remote regions in the case of NO<sub>2</sub>. The process of creating superobservations implies an averaging over individual positive  
95 and negative values, which reduces the relative percentage of negative observations. This is another advantage of using superobservations.

Various methods of superobbing exist. The clustering of observations inside the optimal interpolation analysis is introduced in Lorenc (1981), but Purser et al. (2000) points out two disadvantages with this method: Firstly the superobservations are not independent from the assimilation system and secondly, creating superobservations requires a statistical description of  
100 the forecast system, which is not always available. Another example is the 10s observations constructed for OCO-2 (Crowell et al., 2019). Superobbing methods generally consist of three components: A method to cluster the observations, to average the observations and to average the uncertainties.

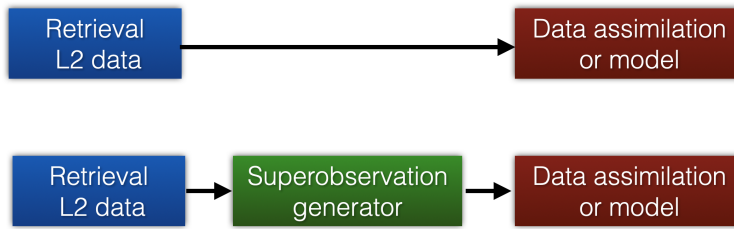
A simple way to cluster observations is by using a pre-determined grid, such as a model grid (Jeuken et al., 1999; Boersma et al., 2016). This minimises the RE between the superobservations and the model. Another approach involves clustering  
105 observations based on proximity to a model point in both space and time. Alternatively, clustering observations based on information density can be preferable depending on the desired properties (Duan et al., 2018; Purser, 2015). Detail is retained where necessary, and more of the structures of the original observations are preserved. This method can retain more information with fewer data points, especially for data with a heterogeneous information density, such as wind data. However, it yields an irregular grid, which may be undesirable. The irregular grid increases the RE between the superobservations and the model.

110 Several methods exist for averaging the clustered observations. The simplest method is to take a mean of all observations part of a superobservation cluster. Crowell et al. (2019) use the uncertainty of the observation as weights. Miyazaki et al. (2012a) and Boersma et al. (2016) average the observations with the overlap of the observation footprint with the superobservation grid as weights.

Various methods to compute the superobservation uncertainty have been introduced in the past. Uncertainties may be averaged in the same way as the observations (Inness et al., 2019b). On the other hand Crowell et al. (2019) calculate their  
115 uncertainty as the largest of the square root of the mean variance or the observations standard deviation. H. Berger (2003) and Miyazaki et al. (2012a) introduce spatial error correlations between individual observations and combine the uncertainties based on these correlations. Determining the correlation between the uncertainties is difficult and can be qualitative (Miyazaki et al., 2012a).

120 The inflation of uncertainties is another method that is often employed to address the problem of correlated uncertainties. Chevallier (2007) demonstrated that inflating observational uncertainties gives good results. This method is often combined





**Figure 1.** The superobservation approach implies that the direct assimilation of level-2 retrievals (top) is replaced by a pre-processing step where a superobservation generator is applied to form an intermediate set of clustered observations with the spatial resolution of the data assimilation system, which is subsequently assimilated or compared with model output (bottom).

with thinning to account for the fact that thinned observations are still correlated (Heilliette and Garand, 2015; Bédard and Buehner, 2020). Inflation can also be used in conjunction with superobservations, as superobservation uncertainties are still spatially correlated.

125 In this paper, we improve and formalize the superobservation method used by Miyazaki et al. (2012a) and Boersma et al. (2016) and apply it to TROPOMI tropospheric  $\text{NO}_2$  observations for data assimilation applications. The correlations between the retrieval uncertainties are quantified to calculate the superobservation uncertainty more accurately. Also, we derive an equation for the representation error, which has only been parameterized until now. Furthermore, we apply a correction to take into account systematic sampling. We study superobservations with  $\text{NO}_2$  because it is one of the trace gases most affected by correlated uncertainties and representation errors, due to its short residence time and large variation in both time and space. Also, the high signal-to-noise ratio of the retrieval makes systematic errors dominant over random errors, which makes correctly handling the correlation between uncertainties more important. In particular, we discuss in detail the construction of the superobservation uncertainty, explicitly treating correlations between nearby observations, and the horizontal representativity term. The applications that we have in mind for the superobservations are the assimilation of high-resolution satellite observations with global analysis systems, model validation of global chemistry-transport models or general circulation models including chemistry. These are applications that make use of the averaging kernels.

130  
135

In section 2 we give background information on the TROPOMI  $\text{NO}_2$  product. Section 3 contains the method we use for superobservation construction and explains the choices for the method. We add to the existing method in sections 4 and 5 by quantifying the correlations between observational uncertainties and the horizontal representation error. In section 6 we test different methods of constructing the superobservation uncertainty by assimilating the superobservations into the MOMO-Chem data assimilation system.

140

## 2 Sentinel-5P TROPOMI $\text{NO}_2$ observations

The TROPOMI instrument (Veefkind et al., 2012) is a push-broom spectrometer and is the single payload on the Sentinel-5P satellite, which is part of the fleet of Sentinel satellites of the EU Copernicus programme. Four aspects make TROPOMI

145 unique: 1. The large swath width and resulting daily global coverage; 2. The large spectral range from the UV to the short-wave infrared, allowing the retrieval of a large number of trace gases like O<sub>3</sub>, NO<sub>2</sub>, SO<sub>2</sub>, HCHO, CO, CH<sub>4</sub>, as well as aerosol properties; 3. The very high signal-to-noise ratio which allows the retrieval of these gases with a high precision; and 4. The small pixels of down to 3.5 x 5.5 km<sup>2</sup> at nadir.

The TROPOMI NO<sub>2</sub> product data usage and details of the retrieval are provided in the Product Readme File (Eskes and  
150 Eichmann, 2022), the Product User Manual (Eskes et al., 2022) and the Algorithm Theoretical Baseline Document (van Geffen et al., 2022a). The Sentinel-5P Validation Data Analysis Facility (<https://s5p-mpc-vdaf.aeronomie.be/>) is providing routine validation results with quarterly validation updates.

Two versions of the product are used in this paper. Processor version 2.2.0 became operational in the Summer of 2021, including a new implementation of the cloud retrieval, leading to a substantial increase of the tropospheric columns retrieved  
155 (van Geffen et al., 2022b). In combination with high-resolution a-priori information (Douros et al., 2023) this improved the comparisons to ground-based remote sensing observations (Verhoelst et al., 2021). An intermediate consistent reprocessing of the NO<sub>2</sub> data became available on the S5P-PAL server (<https://data-portal.s5p-pal.com/products/no2.html>). In July 2022 TROPOMI v2.4.0 became operational, including a replacement of the OMI and the Global Ozone Monitoring Experiment 2 (GOME-2) derived Lambertian-equivalent Reflectivity (LER) albedos in the UV-visible and near-infrared spectral ranged by  
160 the TROPOMI Directional Lambertian-Equivalent Reflectivity (DLER) database (Tilstra, 2023). An official reprocessing of the full mission dataset (30 April 2018 - present) has become available in March 2023. This most recent upgrade is relevant for this paper because it allows us to study the sensitivity of the tropospheric columns and air-mass factors to uncertainties in the input databases. At the start of this research, the v2.4 reprocessing was not yet publicly available. Instead, we make use of a pre-release processing dataset used for final evaluation. This data is identical to the release data but limited in scope to the first  
165 14 days of September in 2018, 2019, 2020, 2021 and 2022. Thus the analyses in this paper are limited to this timeframe.

A crucial input for estimating the superobservation uncertainty is the error analysis of the individual tropospheric columns. For NO<sub>2</sub> the error budget is particularly complex since many aspects contribute significantly to the uncertainty  $\sigma_{N_t}$  of the retrieved tropospheric vertical column  $N_t$ . This follows the error propagation approach developed in Boersma et al. (2004).

$$\sigma_{N_t}^2 = \left( \frac{\partial N_t}{\partial N_{slant}} \right)^2 \sigma_{N_{slant}}^2 + \left( \frac{\partial N_t}{\partial N_{strat}} \right)^2 \sigma_{N_{strat}}^2 + \left( \frac{\partial N_t}{\partial M_t} \right)^2 \sigma_{M_t}^2 \quad (2)$$

170 The equation distinguishes error contributions from the slant column  $N_{slant}$  (uncertainties in the Differential Optical Absorption Spectroscopy (DOAS) spectral fit), the estimate of the stratospheric contribution  $N_{strat}$  to the total column, and the uncertainties in the tropospheric air-mass factor  $M_t$ . The partial derivatives are the error propagation terms or sensitivity of the retrieval to the various sources of uncertainty.

Note that in this equation there is no distinction between random and systematic components of the errors. All terms have  
175 quasi-systematic components, e.g. the input surface albedo is available as monthly datasets with a limited spatial resolution which introduces systematic errors, but the satellite sampling of the albedo introduces a random component. For the NO<sub>2</sub>

slant column retrievals the random and systematic components have been discussed in Zara et al. (2018) and van Geffen et al. (2020).

The tropospheric air-mass factor  $M_t$  depends itself on the a priori  $\text{NO}_2$  profile  $x_a$  as well as several input parameters  $b$ ,

$$180 \quad M_t = M_t(\mathbf{x}_a, \mathbf{b}) = M_t(\mathbf{x}_a, f_c, z_c, a_s), \quad (3)$$

where  $f_c$  is the (effective) cloud fraction,  $z_c$  is the (effective) cloud height, and  $a_s$  is the surface albedo. Note that aerosols are not treated explicitly in the  $\text{NO}_2$  retrieval but are implicitly accounted for by the effective cloud fraction and height (Boersma et al., 2004, 2011).

A basic assumption in the error estimation Eq. 2 is that all terms are uncorrelated. There is one exception: a correlation term which is introduced between the cloud fraction and albedo. An error in the albedo has a direct impact on the air-mass factor, but also an indirect impact through the retrieved cloud fraction, partly compensating the direct error (Boersma et al., 2004). Despite this extra correlation term, the uncertainties in the air-mass factor may be overestimated. In the v2 retrievals, high biases in the albedo (or LER/DLER) are corrected by matching the observed and computed radiance levels for cloud-free pixels, which further lowers the impact of the (D)LER input on the final result (van Geffen et al., 2022b). The reduction in uncertainty due to the albedo adjustment is not accounted for in the v2 uncertainty analysis. The air-mass factor uncertainties will be further discussed below in section 4.3.

The air-mass factor also depends on the a priori  $\text{NO}_2$  profile. However, as shown in Eskes and Boersma (2003), relative comparisons between a model and the  $\text{NO}_2$  satellite observations become independent of the prior when the averaging kernel is used in the observation operator. Since the superobservations are constructed for model validation and data assimilation applications, the kernels should always be applied. Therefore we omit errors related to the a-priori in the remainder of this study.

The  $\text{NO}_2$  data product includes averaging kernel vectors  $\mathbf{A}$  linking model profiles to the retrieved (tropospheric) columns. According to optimal estimation theory, these kernels are part of the observation operator and are used to compute a model-equivalent  $y_m$  of the retrieval  $y$  by the following equation,

$$200 \quad y_m = x_a + \mathbf{A}(\mathbf{x} - \mathbf{x}_a). \quad (4)$$

Here  $\mathbf{x}$  is the tropospheric  $\text{NO}_2$  vertical profile from the model colocated in space and time to the footprint of the satellite and  $\mathbf{x}_a$  is the vertical profile of layer contributions to the column. Because for the  $\text{NO}_2$  retrieval (which is to a good approximation linear) we have  $(\mathbf{I} - \mathbf{A})\mathbf{x}_a = 0$ , where  $\mathbf{I}$  is a vector with elements 1 (Eskes and Boersma, 2003), this reduces to,

$$y_m = \mathbf{A}\mathbf{x}. \quad (5)$$

205 Note that in this paper,  $\mathbf{A}$  refers to the  $\text{NO}_2$  tropospheric column averaging kernel. These are computed from the total column averaging kernel by multiplying with the ratio of the total and tropospheric air mass factor (Eskes et al., 2022). Values above the troposphere as calculated by the Tracer Model 5 Massive Parallel (TM5-MP) are set to 0.

### 3 Constructing superobservations: the tiling approach

Superobservation construction consists of three components: clustering, averaging and uncertainty averaging. The TROPOMI observations are clustered to the grid of the model the superobservations will be used with, which minimizes the representation error. Additionally, this removes the need for grid interpolation during assimilation. Clustering also significantly reduces the number of TROPOMI observations.

#### 3.1 Averaging approach

We average by using the overlap of the individual observations with the grid-cell as weights (eq. 6) (Miyazaki et al., 2012a; Boersma et al., 2016).

$$y_S = \frac{\sum_i^n w_i y_i}{\sum_i^n w_i} \quad (6)$$

In our formulation, the superobservation is the best possible estimate of the model grid box average NO<sub>2</sub> column given  $n$  satellite observations. The weights  $w_i$  are obtained by covering (tiling) the grid box with the TROPOMI observations, as shown in Fig. 2. They are equal to the area overlap between the footprint of the TROPOMI observation  $y_i$  and the selected model grid box. An example of this method is shown in figure 3. This method of averaging is similar to spatial binning using the HARP toolbox (<http://stcorp.github.io/harp/doc/html/algorithms/regridding.html#spatial-binning>). In the rest of this paper normalized weights are used (eq. 7)

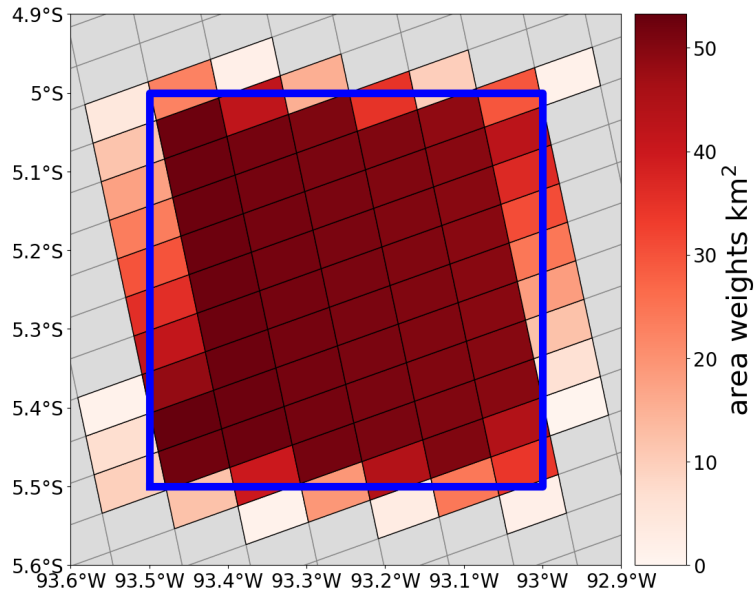
$$\tilde{w}_i = \frac{w_i}{\sum_i^n w_i} \quad (7)$$

The tiling method has three main advantages over other averaging methods. Firstly, it takes into account that observations which only partially overlap with the superobservation area should contribute less to the superobservation average. This is especially relevant for smaller superobservations where the difference in overlap becomes more pronounced. Secondly, the tiling method is not sensitive to creating biases. Lastly, the tiling method has a clear physical interpretation, with a closed mass balance. The total amount of tropospheric NO<sub>2</sub> in a superobservation is the sum of the tropospheric NO<sub>2</sub> of the observations comprising the superobservation. The main alternative of using precision weights assumes every observation within a superobservation is an independent measurement of the superobservation (Taylor, 1997). This is not the case here as different pixels are independent measurements looking at different air masses.

To compare a superobservation against a model we also need a corresponding averaging kernel, which is averaged in the same way as the observations. Multiplying Eq. 1 with  $w_i$  and summing over the satellite observations we get:

$$\sum_i^n \tilde{w}_i d_i = \sum_i^n \tilde{w}_i y_i - \sum_i^n \tilde{w}_i \mathbf{A}_i \mathbf{H}_{v,interpol,i}[\mathbf{x}] = d_S \quad (8)$$

Here  $\mathbf{x}$  is the vector of modelled NO<sub>2</sub> partial columns in the vertical layers of the model for the chosen horizontal model grid box,  $\mathbf{A}_i$  is the averaging kernel of observation  $y_i$  and  $H_{v,interpol,i}$  is the vertical interpolation between the satellite averaging kernel pressure levels and the model pressure levels.



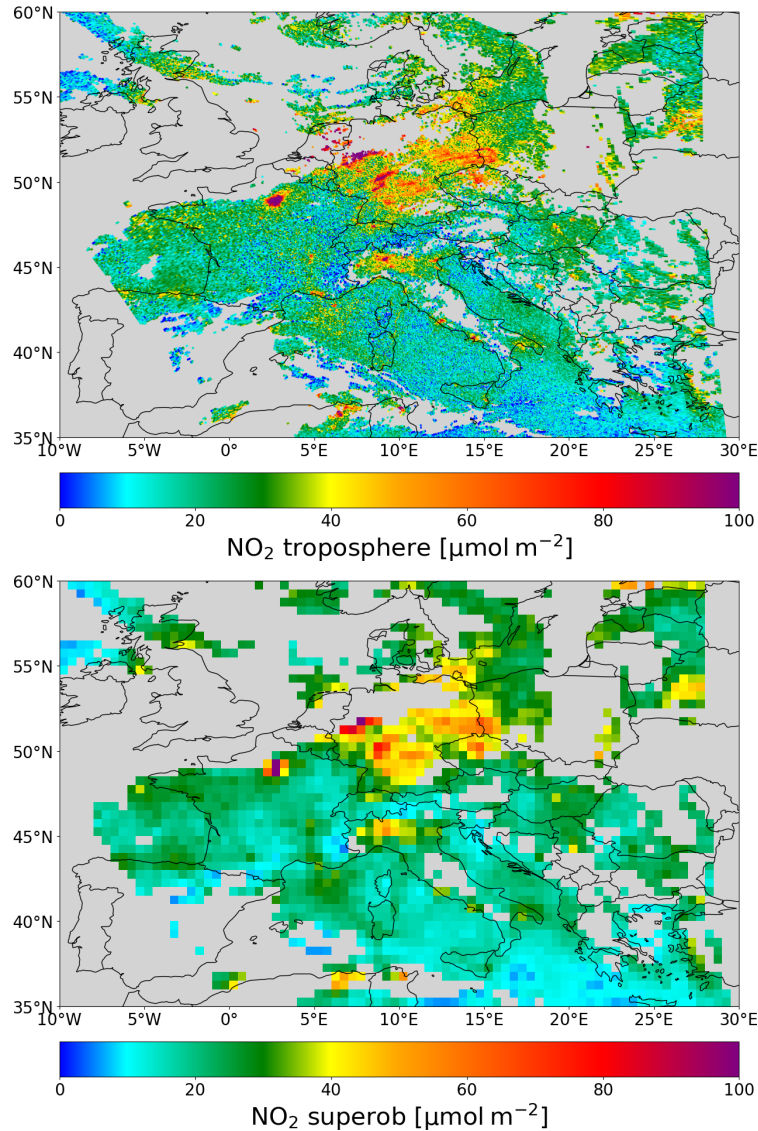
**Figure 2.** The tiling approach: a model grid-cell mean  $\text{NO}_2$  tropospheric column amount is constructed as an overlap area-weighted average of the satellite footprints covering the model grid-cell. The colours indicate the weights  $w_i$ , which are the area overlap ( $\text{km}^2$ ) between the superobservation grid-cell and satellite observation footprint. The grid-cell boundary is indicated in blue.

A horizontal interpolation operator is missing because  $y_S$  is compared with the model using a single profile of model values for the selected horizontal model grid-cell. This is in contrast to an assimilation of individual observations where typically a  
 240 bi-linear interpolation operator is introduced involving neighbouring horizontal model grid-cells.

$$d_S = y_S - \mathbf{A}_S \mathbf{H}_{v,interpol} \mathbf{x}; \quad \mathbf{A}_S = \sum_i^n \tilde{w}_i \mathbf{A}_i. \quad (9)$$

Thus, the averaging kernel of the superobservation (the "superkernel"  $\mathbf{A}_S$ ) is constructed in the same way as the superobservation, using the weights  $w_i$ . Note that, because all individual observations are by construction compared with the same model value, we do not have to worry about correlations between  $\mathbf{A}_i$  and  $\mathbf{x}$  (von Clarmann and Glatthor, 2019).

245 Note that each TROPOMI observation comes with a unique surface pressure, which may differ substantially between neighbouring pixels over mountain terrain. To conserve the total column in the model-satellite comparison, we will follow the TROPOMI  $\text{NO}_2$  product user manual and align the surface pressures by replacing the retrieval surface pressure with the surface pressure of the model grid-cell before comparing. In this way, the kernels of all observations contributing to the superobservation will have the same pressure levels and can be averaged as in equation 9. Note that the shape of the kernel is only  
 250 weakly dependent on changes in the surface pressure.



**Figure 3.** An example orbit of TROPOMI on 2018-09-08  $\text{NO}_2$  over Europe (top) and the corresponding superobservations (bottom) for a model grid of  $0.5 \times 0.5$  degrees constructed with the tiling approach. Cloud-covered observations have been filtered out by using only observations with a qa-value  $> 0.75$ . Locations without data are coloured grey.

### 3.2 Uncertainty averaging

A realistic superobservation uncertainty estimate is essential to guide the data assimilation and to find the right balance between the model forecast and the observations in the analysis. The total uncertainty of the superobservation  $\sigma_S$  is the combination of the measurement error and representation error terms, assuming these are uncorrelated (eq. 10).

$$255 \quad \sigma_S = \sqrt{\sigma_{obs}^2 + \sigma_{RE}^2}. \quad (10)$$

The observational uncertainty of the superobservation depends on the uncertainty of the individual observations as well as their correlation. To calculate the former, we apply the method from Sekiya et al. (2022) who calculate the retrieval contribution to the superobservation uncertainty using equation 11. This assumes a representative uniform correlation factor  $c$ , which is applied to all uncertainties within a superobservation. Here the observational uncertainty is a combination of an uncorrelated part and a correlated part. The uncorrelated part tends towards zero as the number of observations increases because the square of the standardized weights  $\tilde{w}_i^2$  decreases. On the other hand, the correlated part does not change much when adding more observations. As a result, the correlated part puts a lower limit on the uncertainty, which is roughly  $\sigma\sqrt{c}$ .

$$260 \quad \sigma_{obs}^2 = (1 - c) \sum_{i=1}^N \tilde{w}_i^2 \sigma_i^2 + c \left( \sum_{i=1}^N \tilde{w}_i \sigma_i \right)^2 \quad (11)$$

#### 4 Uncertainty estimate for TROPOMI NO<sub>2</sub>

265 As mentioned in section 3.2, the superobservation uncertainty depends on the observational uncertainties and their correlation  $c$  (Eq.11). As shown in equation 2 the tropospheric column uncertainty consists of 3 separate sources of uncertainty: The stratospheric uncertainty, the slant column uncertainty and the air mass factor uncertainty. The superobservation uncertainty of these components is calculated separately because they have different correlations, which means their uncertainty propagates differently. Every component and its correlation is discussed individually in the sections below. Note that these components are not provided separately in the retrieval, but using the methods from the algorithm theoretical basis document (ATBD) (van Geffen et al., 2022a) they can be reconstructed using the available information.

##### 4.1 Stratospheric uncertainty

The tropospheric NO<sub>2</sub> column is obtained by subtracting an estimated stratospheric column from the total observed column. The stratospheric column is obtained by TM5-MP model simulations while assimilating TROPOMI NO<sub>2</sub> column observations (Huijnen et al., 2010; Dirksen et al., 2011). With the method, the stratospheric column is constrained by the TROPOMI observations, with strong forcings in the assimilation over unpolluted areas, such as the oceans, and small adjustments over polluted regions. Subtracting the modelled stratospheric slant column from the total slant column and dividing the tropospheric air mass factor gives tropospheric NO<sub>2</sub> (eq 12).

$$275 \quad N_{trop} = \frac{N_{slant} - N_{s, strat}}{M_{trop}} \quad (12)$$

280 The resolution of the (TM5-MP) model is 1x1 degree, and the horizontal correlation length scale used in the assimilation is about 500km, both coarser than the superobservations sizes considered in this paper. Therefore, the stratospheric uncertainty is assumed to be fully correlated ( $c=1$ ) between observations that are part of one superobservation.

Because fully correlated terms will influence the final superobservation error stronger than uncorrelated or partially correlated terms, the stratospheric estimate will become relatively more important compared to other sources of uncertainty. 285 Therefore it is relevant to investigate this term in more detail.

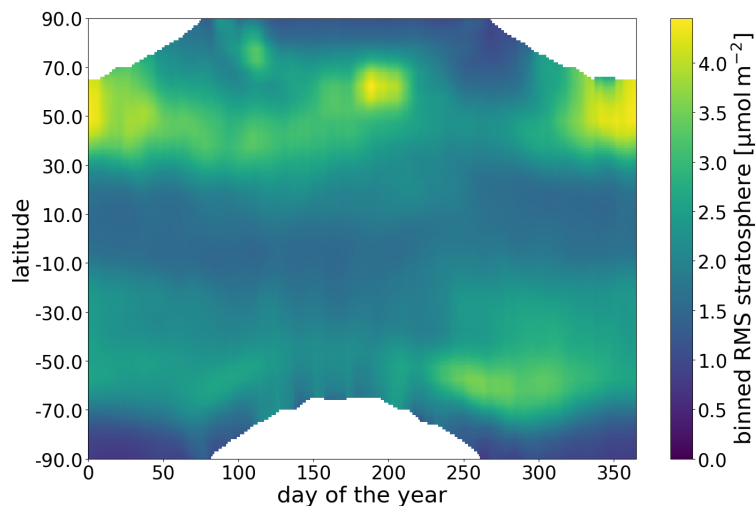
There is seasonal and latitudinal variation in the stratospheric uncertainty. However, the TROPOMI  $\text{NO}_2$  retrieval approximates the stratospheric uncertainty using a constant mean value. To improve on this, we analyse the observation - forecast (OmF) departure between the TROPOMI and model column, using a geometric air-mass factor for both (eq. 13 using solar zenith angle  $\Theta_0$  and viewing zenith angle  $\Theta$ ). The Root Mean Square Error (RMSE) is calculated daily over 5-degree latitudinal bands, highlighting latitudinal and temporal uncertainties. Only areas with an average model-estimated tropospheric  $\text{NO}_2$  290 column lower than  $30 \mu\text{mol m}^{-2}$  are included to minimize the effect of the troposphere. Figure 4 shows clear latitudinal and seasonal variations of the TROPOMI and TM5 differences. To reduce noise in the data a block function convolution is applied to smooth the data over 15 degrees and two weeks. The smoothed data is oversampled into bins of two degrees by one day. To calculate the geometric stratospheric uncertainty  $\sigma_{Stratgeo}$  for an observation this data is linearly interpolated to its day 295 and latitude. If an observation occurs outside of the bounds of the data it is set to the maximum of the data. These gaps result from the lack of observations during polar nights. Equation 14 converts the geometric stratospheric RMSE to the stratospheric uncertainty (van Geffen et al., 2022a).

$$M_{geo} = \frac{1}{\cos \Theta_0} + \frac{1}{\cos \Theta} \quad (13)$$

$$\sigma_{strat} = \frac{\sigma_{Stratgeo} \times M_{geo}}{M_{trop}} \quad (14)$$

300 Compared to the constant  $\sigma_{Stratgeo}$  of  $3.32 \mu\text{mol m}^{-2}$  of the data product, the new uncertainty is generally lower, especially at the equator. Areas closer to the poles can have a higher RMSE, depending on the season. This is more pronounced in the northern hemisphere because the higher  $\text{NO}_2$  concentrations in the northern hemisphere increase the absolute errors. In winter the polar region is not observed, and model biases will build up, affecting concentration estimates in late winter. Also, there is seasonal variation in the high latitudes which relates to the formation and breaking of the polar vortex during winter, leading 305 to larger errors. Gradients around the Antarctic vortex are also challenging to predict, particularly during souther-hemisphere spring. Because the Antarctic vortex is more stable, these errors are less pronounced and occur during the southern hemisphere spring. High latitude summer  $\text{NO}_2$  levels are also difficult to predict. This relates to Arctic fire emissions from Siberia and Alaska. In TM5-MP these are based on climatological fire intensities from the Global Fire Emissions Database (GFED)(van der Werf et al., 2017), meaning the model is not capable of accurately predicting individual fire events and the corresponding total 310 and stratospheric column. In contrast, in the tropics, the RMS results are better than the mean value because of the relatively small natural variability there.



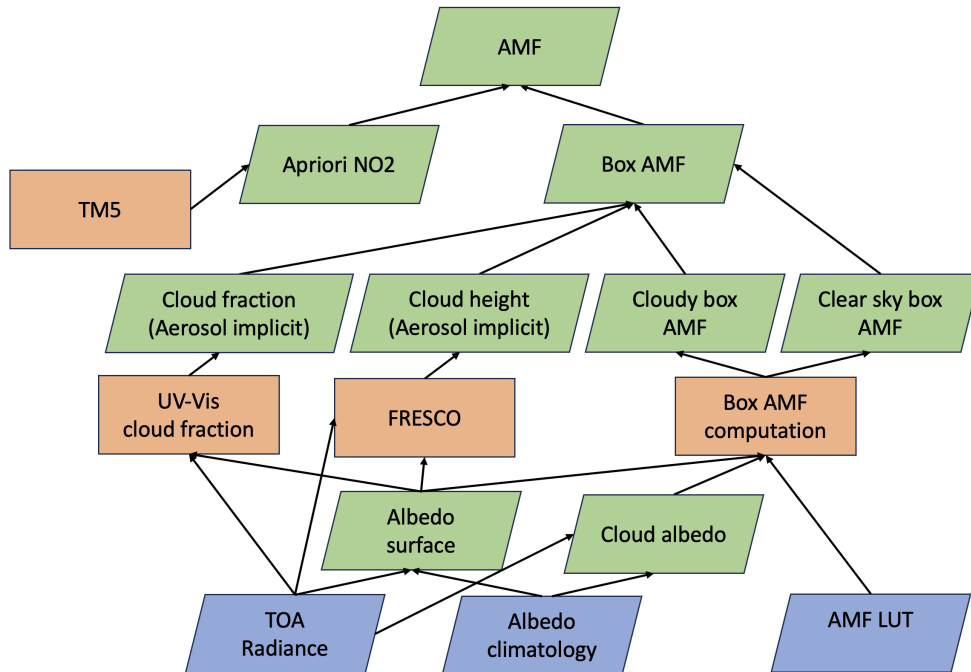


**Figure 4.** Zonal average of the observation - forecast root mean square error of the TROPOMI total column - TM5 total column, averaged over multiple years (2018-2022). Data is smoothed over 15 degrees and two weeks and averaged into bins of one degree by one day. This result is used as the geometric stratospheric uncertainty  $\sigma_{Stratgeo}$  instead of the constant in the retrieval.

## 4.2 Slant column

Measurement noise is contributing to the slant column uncertainty. van Geffen et al. (2020) finds an average random slant column uncertainty of  $10.23 \mu\text{mol m}^{-2}$  for cloud-free scenes. Apart from a random component to the slant column uncertainty, there will also be a (regionally) systematic component. The systematic component consists of gaps in knowledge, such as missing cross sections, inaccurate Ring coefficients in the DOAS fit or the lack of an intensity offset and a correction for vibrational Raman scattering. (Richter et al., 2011). These systematic effects are most pronounced over the sea in clear-sky conditions. In such circumstances, the systematic uncertainty can be larger than the random uncertainty. But because these are low  $\text{NO}_2$  environments the impact on the retrieval is limited.

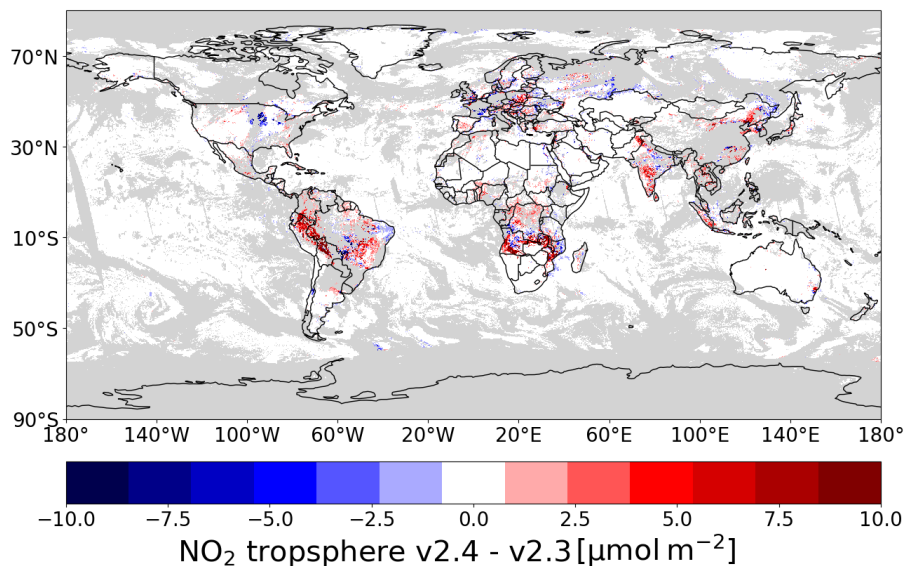
Any systematic error on the slant column also influences the quantification of the stratospheric error discussed in the previous section because the slant column is assimilated for the quantification of the stratosphere. Moreover, the transport of the systematic error within the model results in a further increase in the (OmF) RMSE. Considering that the effect of the systematic error is already (partially) included in the stratospheric (OmF) RMS discussed above, we do not separately quantify the effect of the systematic retrieval error. Instead, only the random part of the slant column uncertainty from the level two data is converted to a tropospheric column uncertainty through the tropospheric air-mass factor (AMF) and averaged as uncorrelated using equation 11.



**Figure 5.** Diagram showing the dependencies (arrows) in the calculation of the air-mass factor (AMF) as part of the TROPOMI NO<sub>2</sub> tropospheric column retrieval. Shown in blue are the input data (TROPOMI radiances, albedo climatology and static data), in orange are the processing blocks (cloud properties and box AMF lookup table evaluation, TM5 CTM) and in green are the (intermediate) products.

### 4.3 Air mass factor uncertainty

To calculate the superobservation uncertainty resulting from the air mass factor uncertainty we use the uncertainty from the retrieval, together with a correlation  $c$ . Note that the AMF uncertainty is not part of the level 2 product, but can be calculated using the available information (van Geffen et al., 2022a). Calculating the associated spatial correlation between observations is not trivial because the tropospheric air-mass factor  $M_t$  is calculated through several inputs, algorithms, dependencies and feedbacks, as shown in figure 5. One of these complicating factors is the use that is made of the top-of-atmosphere (TOA) radiance to correct the albedo climatology for dark scenes. Uncertainties in the algorithms and input variables induce uncertainty in the AMF. Of these uncertainties, the a priori NO<sub>2</sub> profile is a large contribution, typically ranging from 5-20% in polluted regions. These are most affected because the low resolution of the a-priori profile may result in the underestimation of hotspots (Douros et al., 2023). However, as shown in Eskes and Boersma (2003), relative comparisons between a model and the NO<sub>2</sub> satellite observations become independent of the a priori profile shape when the averaging kernel is used in the observation operator. Since the superobservations are constructed for model validation and data assimilation applications, the kernels should always be applied. Therefore we omit errors related to the a priori in the discussion below.



**Figure 6.** Difference between the tropospheric column of the v2.3.1 and v2.4 products on 14-09-2018. Data is filtered for QA > 0.75 (grey areas indicate cloud cover). White colours range from -8 to 8.  $\mu\text{mol m}^{-2}$

340 Other large sources of uncertainty are the effective cloud cover, the effective cloud height and the surface albedo (or the Lambertian Equivalent Reflectivity, LER). Aerosols are treated implicitly through the effective cloud fractions and cloud height, which introduces a minor uncertainty (Boersma et al., 2004, 2011). All three of these variables depend on a climatological surface albedo dataset. For S5P-PAL  $\text{NO}_2$  processor version 2.3.1 these are derived from OMI (440nm) and GOME-2 (758nm) while for v2.4.0 it is derived from TROPOMI spectra. A typical RMS difference between these two albedo datasets at 440nm is

345 0.015, or about 25% for a typical albedo of 0.06. Furthermore, the uncertainties are spatially correlated, first of all, because of the relatively low resolution of the LER database, but also because surface modifying conditions are often spatially extensive. For example, droughts impact the surface albedo in a large area. Luckily the retrieval algorithm can partially compensate for errors in the climatological surface albedo. If the TOA radiance is lower than expected based on the albedo, the albedo is adjusted downwards. On the other hand, if the TOA radiance is higher than expected it is attributed to "effective" clouds. If

350 these clouds are placed at the correct heights (e.g. at the surface for a high albedo anomaly), this yields approximately the same AMF as with a perfect surface albedo (Riess et al., 2022).

To estimate the spatial correlation required to estimate the superobservation uncertainty we compare versions 2.3.1 and 2.4 of the retrieval. We use the data of the first two weeks of September for 2018-2022 because these were processed as validation before the product was made publically available. The difference between the datasets should be representative of

355 the uncertainty resulting from the climatological surface albedo, as both datasets are valid inputs. Albedo is also a key input for the cloud retrieval, so this replacement also generates differences in cloud fraction and cloud pressure. One may argue that the comparison is not a good estimate of the uncertainty in v2.4, because the new TROPOMI surface albedo is likely superior.

Thus the uncertainties obtained here are overestimated. However, both maps are still climatological. This absence of temporally explicit data is probably a major source of uncertainty, making both maps uncertain.

360 Figure 6 shows the difference in  $\text{NO}_2$  on 14-09-2018. These differences, caused by the replacement of the albedo climatology, are spatially correlated. A correlation length is calculated as outlined in appendix A. This correlation length is then used to calculate the average correlation of a superobservation for use with equation 11. Using a correlation length is preferable over using an average correlation because it takes into account that high-latitude superobservations have a smaller surface area than low-latitude ones and thus should have a higher average correlation if other factors are equal. Also, a correlation length is resolution agnostic, which allows for an easy change of the superobservation resolution and a properly behaved limit towards smaller superobservations. The correlation  $C$  between two points at a distance  $d$  for a correlation length  $l$  is calculated using the exponential form,  $C = \exp(-d/l)$

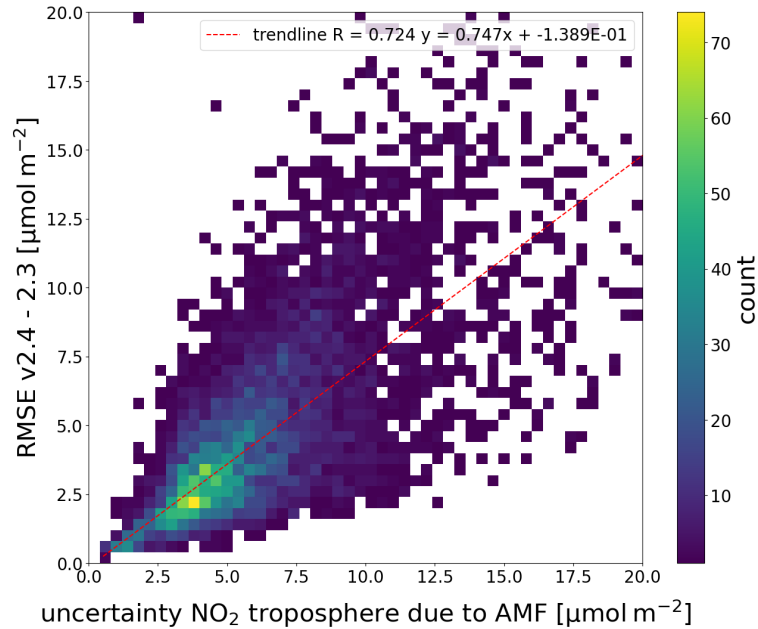
We calculate the correlation for every distance within a superobservation and multiply this with the probability density function of points within a box (Philip, 1991). Integrating this yields the average correlation within a superobservation. Note that strictly speaking the PDF from Philip (1991) is for a cartesian plane, not for a sphere, but grid-cells are rectangular to a good approximation except very close to the pole.

The difference between the versions is compared to the uncertainty due to the AMF, as estimated by the retrieval. The RMSE is calculated per swath in a 1-by-1-degree grid and then averaged. The uncertainty is averaged to the same grid. Figure 7 shows the relationship between these variables. There is a relationship between them with an R-value of 0.724. On average the uncertainty estimated by the retrieval is higher than the RMSE, with a slope of 0.747 of the Theil-sen estimator. Note that factors other than the surface albedo contribute to the uncertainty, such as the choice of radiative transfer model, the wavelength at which the AMF is calculated, sphericity corrections and systematic aspects in the cloud retrieval (Lorente et al., 2017). Based on this information the difference between v2.4 and v2.3 is consistent with the retrieval uncertainty. Thus, the obtained correlation length is likely representative of AMF uncertainty.

## 380 5 Representation error

When making superobservations the data are clustered within a pre-defined grid. Ideally we would always have complete coverage, and thus complete information, of the grid-cell. However, this is not the case as satellite observations are often flagged due to quality concerns, for instance, linked to the presence of clouds obscuring pollution close to the surface.

In the case of incomplete information, the grid-cell mean concentration can still be estimated using the available sample of observations, but the area-weighted average will be an estimate of the true average. The difference between the (population) average of the entire grid-cell and the estimate using an incomplete (sample) average is the (horizontal) representation error, which we quantify in this section.



**Figure 7.** Binned scatter plot between the retrieved average tropospheric uncertainty resulting from the AMF and the average RMSE of the difference between the retrieval versions. Calculated using available data globally. Trendline fit using a Theil-sen estimator.

### 5.1 Representation error due to a random removal of observations

By comparing the mean of a completely covered grid-cell to a random sample mean we can calculate the representation error (RE) for the situation, which is given by:

$$RE = |\mu - \bar{x}_n| \quad (15)$$

With the true mean  $\mu$  and an estimate of the mean  $\bar{x}_n$ , which depends on the number of sample observations  $n$ . To quantify the error we perform experiments by taking a fully covered grid-cell and removing random observations to calculate the RE for  $n$  observations. Because the order in which we remove observations results in different estimates, we repeat the experiment for  $I$  number of iterations. Figure 8a shows the results of this experiment as grey lines, with every line representing one iteration.

The uncertainty  $\sigma_{RE,n}$  associated with this error is the standard deviation of the estimated mean  $\bar{x}_n$  around the true mean  $\mu$ :

$$\sigma_{RE,n} = \sqrt{\frac{1}{I} \sum_{i=1}^{i=I} (\mu - \bar{x}_n^i)^2} \quad (16)$$

This standard deviation is plotted as the green line in figure 8a. Increasing  $n$  improves our estimate of  $\mu$ , decreasing  $\sigma_{RE,n}$ . When  $n$  equals the total number of observations  $N$  in the grid-cell, the estimate  $\bar{x}_n^i$  equals  $\mu$  and the uncertainty becomes 0.

400 Notice that  $\sigma_{RE,n}$  is the standard deviation of the sample mean to the true mean, also known as the standard error (SE). To calculate  $\sigma_{RE}$  we can use the formula for the standard error, with a correction factor because the population of observations within a superobservation ( $N$ ) is finite (Bondy and Zlot, 1976; Isserlis, 1918). With this correction factor  $\sigma_{RE}$  becomes:

$$\sigma_{RE,n} = SE = \frac{\sigma}{\sqrt{n}} \sqrt{\frac{N-n}{N-1}} \quad (17)$$

405 The results from the equation are shown in figure 8a as the blue line. The theoretical blue line is on top of the experimental green line, which means equation 8a describes  $\sigma_{RE}$  very well.

Equation 17 indicates that  $\sigma_{RE,n}$  is proportional to the standard deviation  $\sigma$  of the observations within the grid-cell. In figure 8 the results are divided by this grid-cell dependent standard deviation such that different TROPOMI superobservations can be compared. For calculating the absolute value of  $\sigma_{RE}$  estimating the standard deviation  $\sigma$  is crucial, as discussed in section 5.3. Equation 17 also shows that the uncertainty resulting from random thinning ( $n = 1$ ) is equal to the standard deviation of the area the thinned observation represents.

410 There are some difficulties in applying equation 17 to the superobservation RE because it applies to the standard error to the mean, not a weighted average. This is also the reason why the blue and green lines in figure 8a do not match perfectly. For an unweighted average they would converge with enough iterations. Generally this only results in minor differences between the predictions and the experiments, but these errors become more pronounced if the difference in weights between observations increases. This error is most present in smaller superobservations because they have relatively more partially overlapping observations.

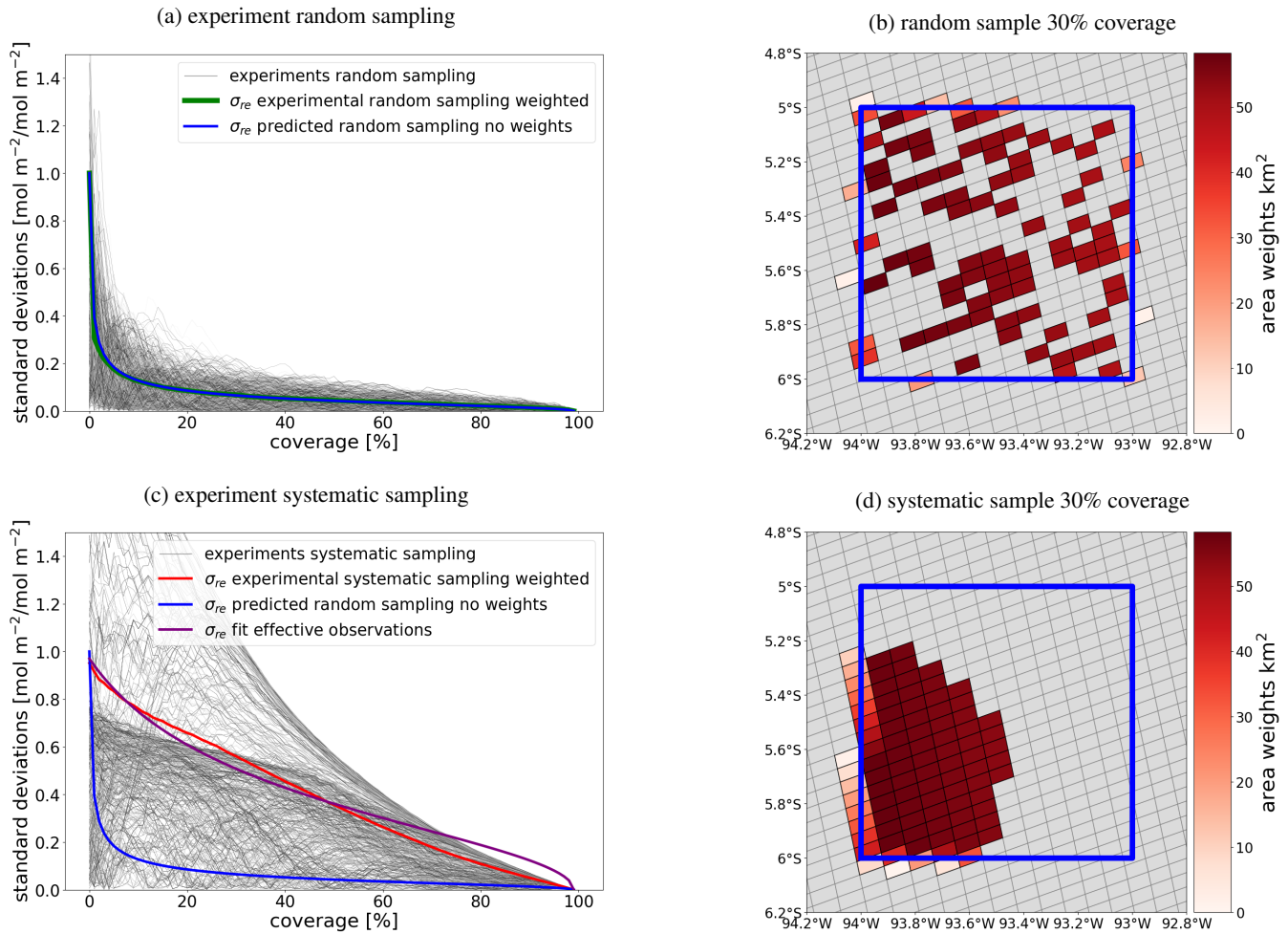
415 In appendix B we derive a formulation of the representation error that works with observations with different weights by introducing fractional observations. This results in equation 18:

$$\sigma_{RE,n} = \frac{\sigma}{\sqrt{N_f f_{z,n} + 1 - f_{z,n}}} \sqrt{\frac{N_f - (N f_{z,n} + 1 - f_{z,n})}{N_f - 1}} \quad (18)$$

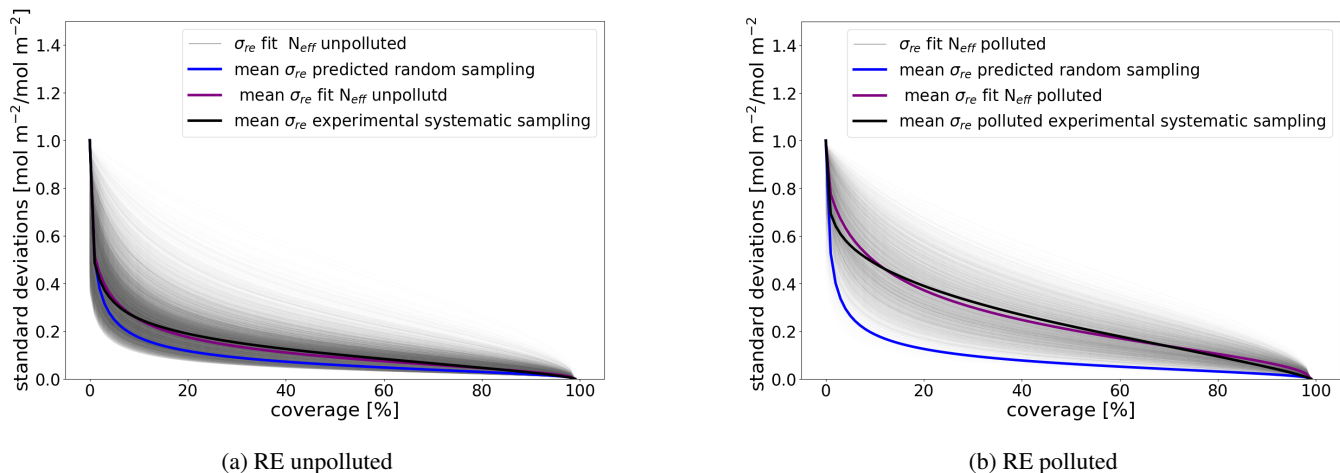
420 Here  $f_{z,n}$  is the coverage fraction of the superobservation grid from 0-1 and  $N_f$  is the fractional population size. Note that  $n$  in equation 17 is replaced by  $N_f f_{z,n}$

## 5.2 Representation error due to a systematic removal of observations

425 A major complicating factor is that the coverage of the superobservation is not random. A cloud field could cover the northern half of the superobservation. The valid observations then only cover the southern half of the superobservation making it less representative of the grid-cell as a whole than a random sample. We repeat the experiment from section 5.1 but instead, sample systematically. The systematic sampling of a grid-cell starts by picking a random observation from the grid-cell. Then the nearest observation is added to the sample, which is repeated until the grid-cell is filled. This is done for multiple iterations, resulting in figure 8, bottom panel, with the iterations in grey and the experimental  $\sigma_{RE}$  in red. As expected, the systematic experiment produces a higher representation error.



**Figure 8.** Results of repeatedly sampling a single grid-cell to calculate  $\sigma_{RE}$ . (a) random sampling of a single superobservation. The thin grey lines represent individual random experiments for the superobservation. The green line is the mean of the samples, and the blue line is the theoretical result from equation 17 (b) example of a random sample at 30% coverage (c) Systematic sampling of a single superobservation. The red line is the mean of the samples, and the blue line is the theoretical result for the random case. The purple line shows the fit to the systematic mean by fitting  $N_{eff}$ . In this case the fitted  $N_{eff}$  is 5.5 compared to 536 observations. (d) Example of a systematic sample for 30% coverage.



**Figure 9.** Result of systematically sampling multiple cells. The thin grey lines are the fit of a single cell using the number of effective observations, similar to the purple line from figure 8. The purple lines show the average fit for unpolluted cells(a) and polluted cells(b). The blue lines are the predicted averages over multiple superobservations using equation 17. The black lines are the averages over multiple superobservations when sampling systematically, for unpolluted cells in a and polluted cells in b.

430 This increase in RE is parameterized by fitting the total population size  $N$  in the first term of equation 18. By lowering  
the population size  $\sigma_{RE}$  increases for the same coverage, which allows us to match the curve obtained in the systematic  
sampling experiment. We call this fitted population size the effective population size  $N_{eff}$ . It is not necessary to modify  
the finite population correction term (second term) because this term accounts for having more complete information of the  
superobservation as the number of observations approaches the population size. This effect remains unchanged with systematic  
435 sampling.

$$\sigma_{RE,n} = \frac{\sigma}{\sqrt{N_{eff}f_{z,n} + 1 - f_{z,n}}} \sqrt{\frac{N - (Nf_{z,n} + 1 - f_{z,n})}{N - 1}} \quad (19)$$

Fitting the number of observations using equation 19 results in the purple line in figure 8c. The line fits well but not perfect.

The effective population size of a superobservation has a physical interpretation. Imagine a superobservation containing two  
distinct regions: a city with high tropospheric  $\text{NO}_2$  levels and a rural area outside the city with low tropospheric  $\text{NO}_2$ . If we  
440 were to sample the entire city (including the pollution plume from the city), the estimate of the superobservation average is not  
much better than with a single sample over the city. Effectively, there are only two independent observations, the city and the  
rural area. As the example illustrates, the effective population size of observations in a superobservation depends on its spatial  
structure. If the effective population size is the same as the regular population size there is no effect of systematic sampling on  
the superobservation. This occurs over areas such as the oceans and the Sahara, where observed tropospheric  $\text{NO}_2$  is similar  
445 and noise-dominated. If the values within the superobservation are random, systematic sampling has no effect. On the other  
hand, source regions are sensitive to systematic sampling and applying it gives very different results. Major population centres,



such as China, the Middle East and Europe, all have a significantly lower effective population size than the actual population size. Regions with fire emissions, such as the savannahs in Africa, are also sensitive to systematic sampling. The effective population is a property of a location and can be quantified for that location.

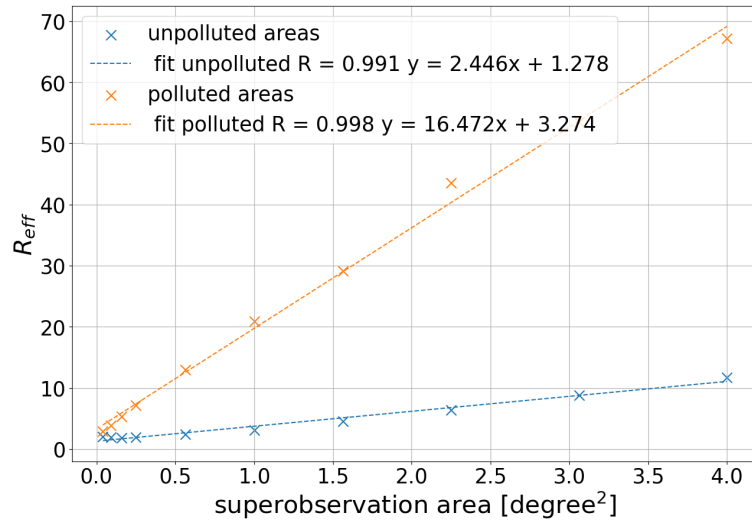
450 To calculate a representative effective population size for a location,  $\sigma_{RE,n}/\sigma$  on that location is calculated and averaged over the dataset. The average is used to fit an effective population  $N_{eff}$  for that location, which we compare to the average population size for the location. The ratio  $R_{eff}$  between the time-averaged population size  $\langle N \rangle$  and the effective population size  $N_{eff}$  captures how sensitive that location is to systematic sampling ( $R_{eff} = \langle N \rangle / N_{eff}$ ).

While it is possible to calculate  $R_{eff}$  for every superobservation, this quantification would be grid-dependent, which would  
455 make the method inflexible. Instead, we calculate an average ratio  $R_{eff}$  for polluted superobservations and unpolluted superobservations at multiple resolutions. Superobservations over  $30 \mu\text{mol m}^{-2}$  are classified as polluted and are expected to be sensitive to systematic sampling. First, we calculate  $R_{eff}$  for every 1-degree superobservation for both the polluted and unpolluted case. The resulting fits are shown as the thin lines in Fig. 9. Note there are fewer fits for the polluted case because many locations are never polluted. Then we average  $R_{eff}$ , which gives an  $R_{eff}$  of 21 and 3 for polluted and unpolluted 1-degree  
460 superobservation respectively. The purple line in Fig. 9 shows the average result of the fits, which matches well with the average experimental value in black for both the unpolluted and polluted case. These figures also show the average effect of systematic sampling. At 50% coverage, the increase in RE when sampling systematically instead of random is 54% for unpolluted areas and 263% for polluted areas.

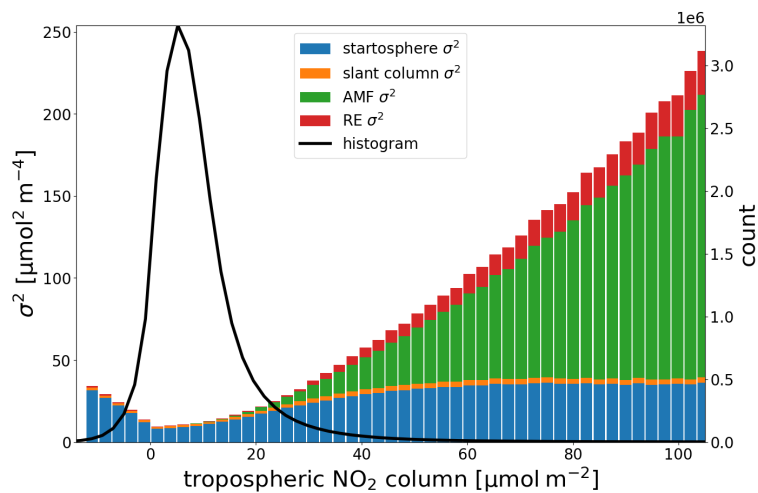
Figure 10 shows the  $R_{eff}$  as a function of the superobservation area, which increases as the area increases for both polluted  
465 and unpolluted superobservations. Increasing the area of a superobservation increases the distance between observations. As a result they become more sensitive to systematic sampling. Within our software, we use the trendlines in Fig. 10 in combination with the distinction between polluted and unpolluted superobservations to quantify the  $R_{eff}$  of a superobservation. This allows us to calculate  $R_{eff}$  for different grids and to take into account latitudinal variations in grid-cell size.

### 5.3 Sample standard deviation

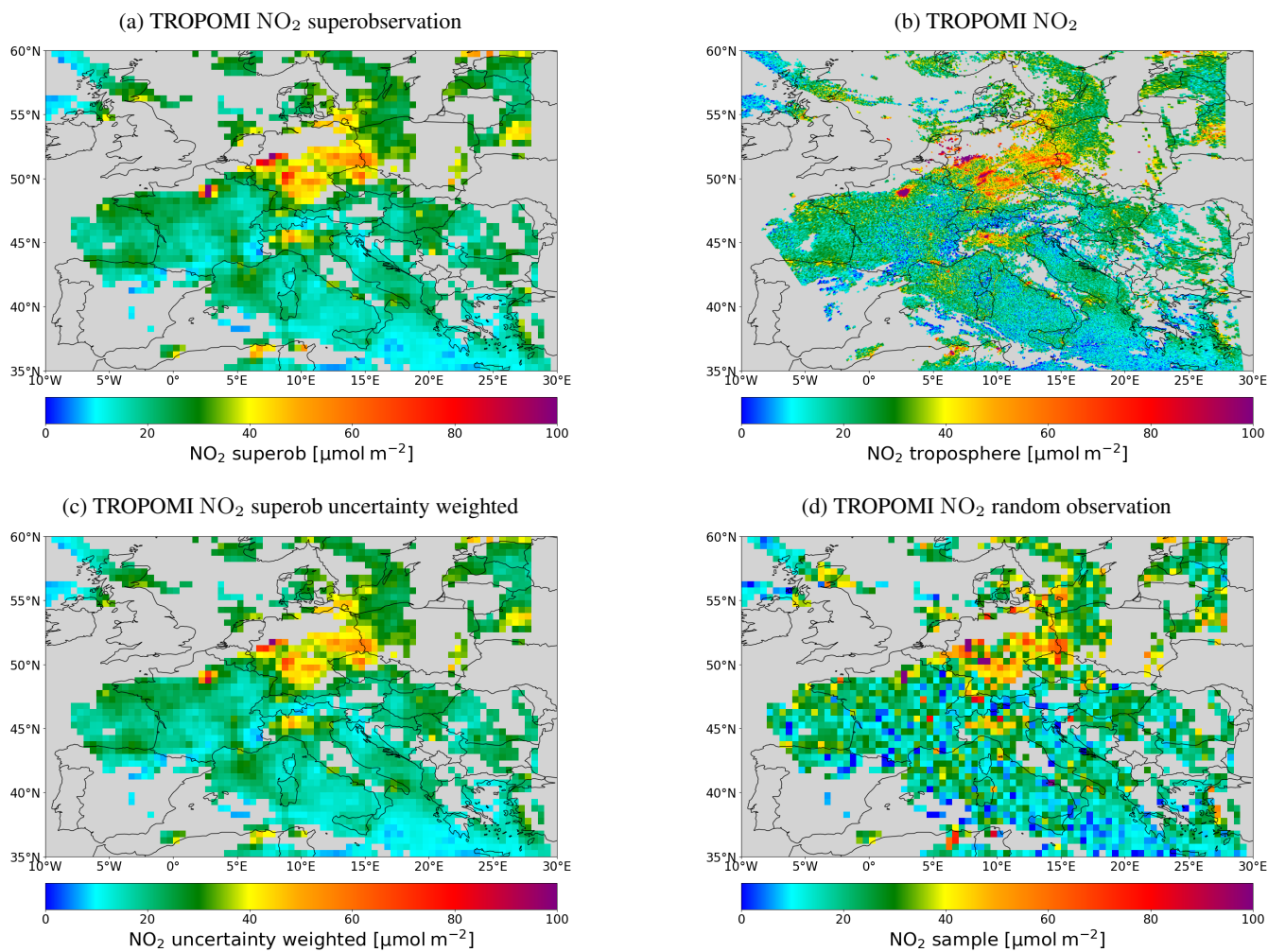
470 Thus far, the RE has been expressed in terms of the standard deviation of the observations (tropospheric  $\text{NO}_2$ ) within each grid-cell. This standard deviation is estimated using the measurement variability for each superobservation individually. In practice this procedure works well for coverages up to 30% for 0.5 degree superobservations. This coverage corresponds to the point where on average the sample standard deviation would be more accurate than a climatological standard deviation. With this coverage, it is still possible that there are not enough available data points to calculate a reliable standard deviation,  
475 in particular for smaller superobservations. For smaller superobservations a minimum coverage of 50% or even 70% may be appropriate. The optimal coverage may also vary between assimilation systems, applications and instruments. It is a tradeoff between data quantity and quality. When fewer than 5 data points are available it is impossible to calculate a reliable standard deviation. Instead we set the standard deviation to 0.4 times the tropospheric column +  $2.5 \mu\text{mol m}^{-2}$ . This is based on the relation between the standard deviation and tropospheric column as shown in figure C1 in appendix C.



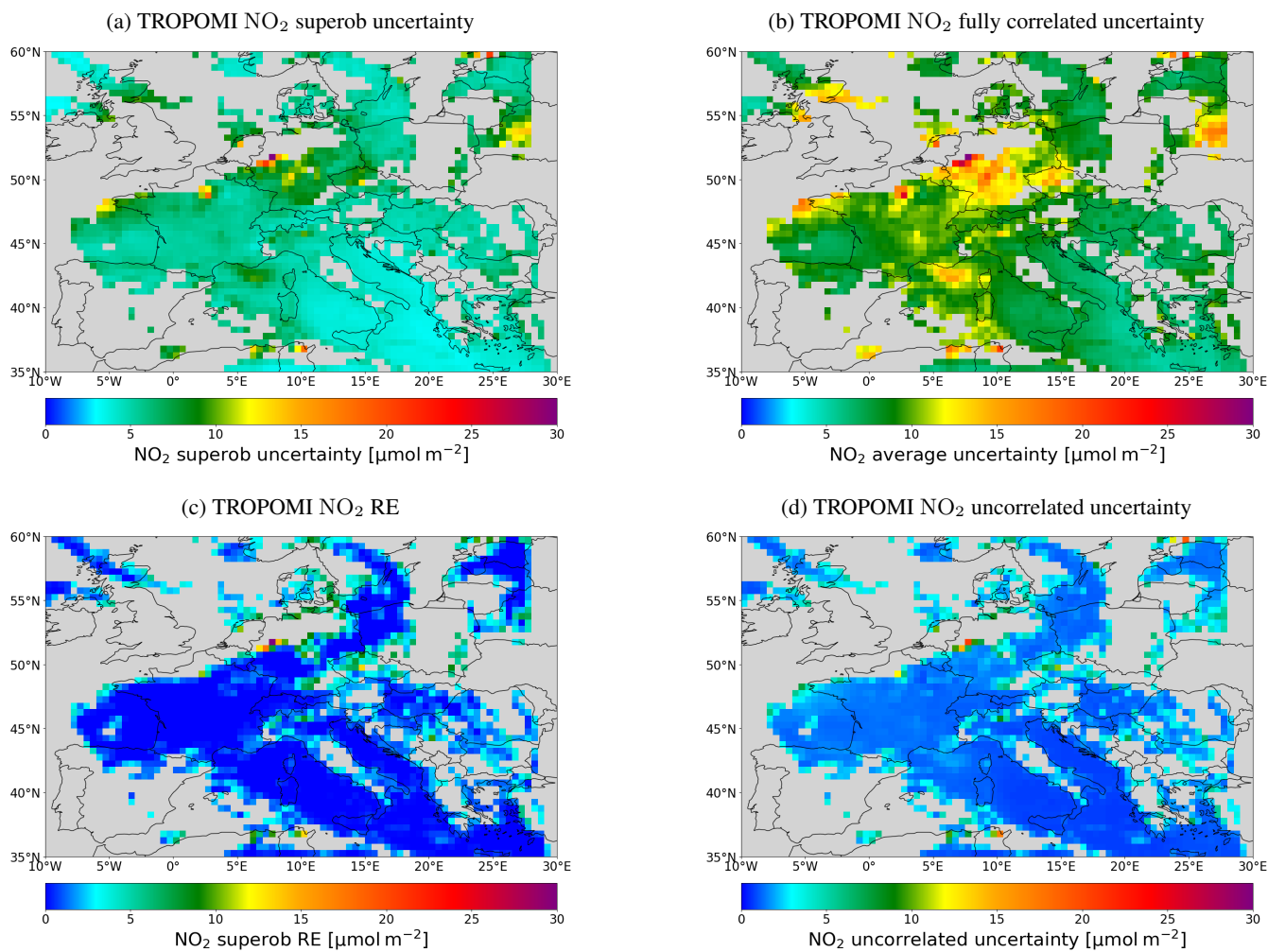
**Figure 10.** Resolution dependency of the correction for systematic sampling, as a function of the area of the superobservation up to a resolution of two degrees. The plot distinguishes between polluted ( $>30 \mu\text{mol m}^{-2}$ ; orange curve) and unpolluted (blue curve) grid boxes.



**Figure 11.** The division of the superobservation error variance into its components: stratosphere (blue), slant column (orange), air mass factor (green) and representivity (red). Computed from TROPOMI  $\text{NO}_2$  at a 0.5 degree resolution. Note that the figure depicts the error variance uncertainty instead of the uncertainty because the variance is a direct sum of its contributions. The black line shows the number of observations within each column bin.



**Figure 12.** Panel showing various methods of pre-processing observations for data assimilation on 2018-09-08 for  $q_a > 0.75$ . (a) superobservations constructed for this research (b) regular TROPOMI observations (c) uncertainty-weighted superobservations, instead of the area weights used by this research (d) Random sample from the observations within the model grid.



**Figure 13.** Panel showing various methods of pre-processing uncertainties for data assimilation and the RE on 2018-09-08 for  $q_a > 0.75$ . (a) superobservation uncertainty constructed for this research (b) fully correlated uncertainty (c) representation error (d) uncorrelated uncertainty.

## 480 6 Combined uncertainty of the superobservations

Figure 11 shows the contributions to the superobservation uncertainty ( $\sigma_{sob}^2$ ) as a function of the tropospheric  $\text{NO}_2$  column. For low tropospheric columns the uncertainty is dominated by the stratospheric uncertainty, while for high tropospheric columns, it is impacted most by the air mass factor with still a major contribution from the stratospheric uncertainty. The RE is only a minor contribution to the average uncertainty, but it varies significantly by location depending on the coverage and standard deviation (as illustrated in Fig. 13c below) and becomes important at the edges of cloud fields. The slant column uncertainty has almost no impact on the average uncertainty, even though it is a major source of uncertainty for individual observations over clean areas. Because the slant column uncertainty is treated as dominantly uncorrelated it is reduced significantly by the averaging process. Note that the systematic slant column uncertainty is (partly) included in the stratospheric uncertainty.

We constructed and created superobservations by combining all sources of uncertainty, as described in sections 3.2 and 490 5. Figure 12a shows the constructed tropospheric  $\text{NO}_2$  superobservations on a grid of  $0.5 \times 0.5$  degree<sup>2</sup> for the overpass on 8 September 2018. Additionally, Fig. 12 shows superobservations created using weights determined from the uncertainty of the individual observations ( $w_i = 1/\sigma_i^2$ ) (Fig. 12c) and by using random observations (analogous to thinning), Fig. 12d. For comparison, the satellite observations have also been included (Fig. 12b). The regular superobservations and the uncertainty superobservations are similar. Both give a realistic low-resolution representation of the original satellite data. But, as expected, 495 the uncertainty-weighted superobservations have systematically lower values because the weights favour the smaller columns, though the difference remains subtle. The difference is most clearly observed above Paris and North Africa. On average the uncertainty weighted superobservation in Figure 12 have a tropospheric column of  $22.4 \mu\text{mol m}^{-2}$ , compared to  $23.0 \mu\text{mol m}^{-2}$  of the normal superobservations, which is a reduction of 2.7%. Over polluted areas with a tropospheric  $\text{NO}_2$  column over  $30 \mu\text{mol m}^{-2}$  this reduction is 5%. With the tiling approach, we avoid such a systematic low bias. The randomly sampled 500 observations provide a noisy picture of the data, making it much less reliable than the other methods, demonstrating the large sub-grid variability.

The spatial structure of the superobservation uncertainty is illustrated in Fig. 13a, and is compared to two simplified methods of calculating the superobservation uncertainty. The associated RE is shown separately in Fig. 13c. Note how the RE is mainly present at the edges of cloud fields due to the low coverage there. Also, note how the RE is higher in high  $\text{NO}_2$  areas due to the higher variation in measurement in these areas. This is particularly visible over Tunis and the Ruhr area. 505

The assumption that the observational uncertainty is fully correlated in space results in the uncertainties shown in Fig. 13b. Uncertainties using this approach are much higher than Fig. 13a and are likely overestimated. Assuming the uncertainty is fully uncorrelated results in a much lower uncertainty, as shown in Fig. 13d. In this case, the total uncertainty is dominated by the number of observations in the grid-cell, somewhat reflecting the RE. This is a strong underestimation as compared to the 510 uncertainty shown in panel 13a.

## 6.1 Data assimilation experiments

The impact of superobservations and their uncertainties on NO<sub>2</sub> analysis from NO<sub>x</sub> emission optimization is evaluated in a state-of-the-art chemical data assimilation framework. The data assimilation system used is described in Sekiya et al. (2022) and (Miyazaki et al., 2020b), which use the CHASER 4.0 chemical transport model (Sudo et al., 2002; Sekiya et al., 2018) at 515 1.125x1.125 degree resolution as the forecast model and the local ensemble transform Kalman filter (LETKF) data assimilation technique (Hunt et al., 2007). The assimilation was performed with 32 ensemble members and a two-hour assimilation window. Covariance localization was applied based on species-dependent localization scales, that were derived from sensitive tests in Miyazaki et al. (2012b). Covariance inflation was also applied by inflating emission factor uncertainties (ie. ensemble spread), to a minimum predefined value. Additionally, a multiplicative covariance inflation of 7% was applied to the concentrations. 520 In addition to NO<sub>2</sub>, the assimilated measurements included total columns from the thermal-infrared (TIR)/near-infrared (NIR) band of the Measurement of Pollution in the Troposphere instrument (MOPITT) (Deeter et al., 2017), OMI SO<sub>2</sub> planetary boundary layer vertical columns (Li et al., 2020), and Aura Microwave Limb Sounder (MLS) O<sub>3</sub> and HNO<sub>3</sub> profiles (Livesey et al., 2022).

To demonstrate the impact of different superobservation settings the following 4 sensitivity runs were done for July 2019, 525 only varying the NO<sub>2</sub> observations:

1. The superobservations and their uncertainties as described by this paper (figures 12a, 13a).
2. The superobservations with uncorrelated errors: The standard superobservations, with modified uncertainty assuming that the observations are fully uncorrelated in space (fig. 13d).
3. The superobservations with correlated errors: The standard superobservations with modified uncertainty assuming that 530 the individual observations are fully correlated in space (fig. 13b). This is analogous to the variance-averaged uncertainty.
4. Thinning: Thinned observations for which the values of one superobservation were taken randomly as one of the available observations within a model grid-cell, similar to figure 12d. The uncertainty is the corresponding retrieval uncertainty of this observation.

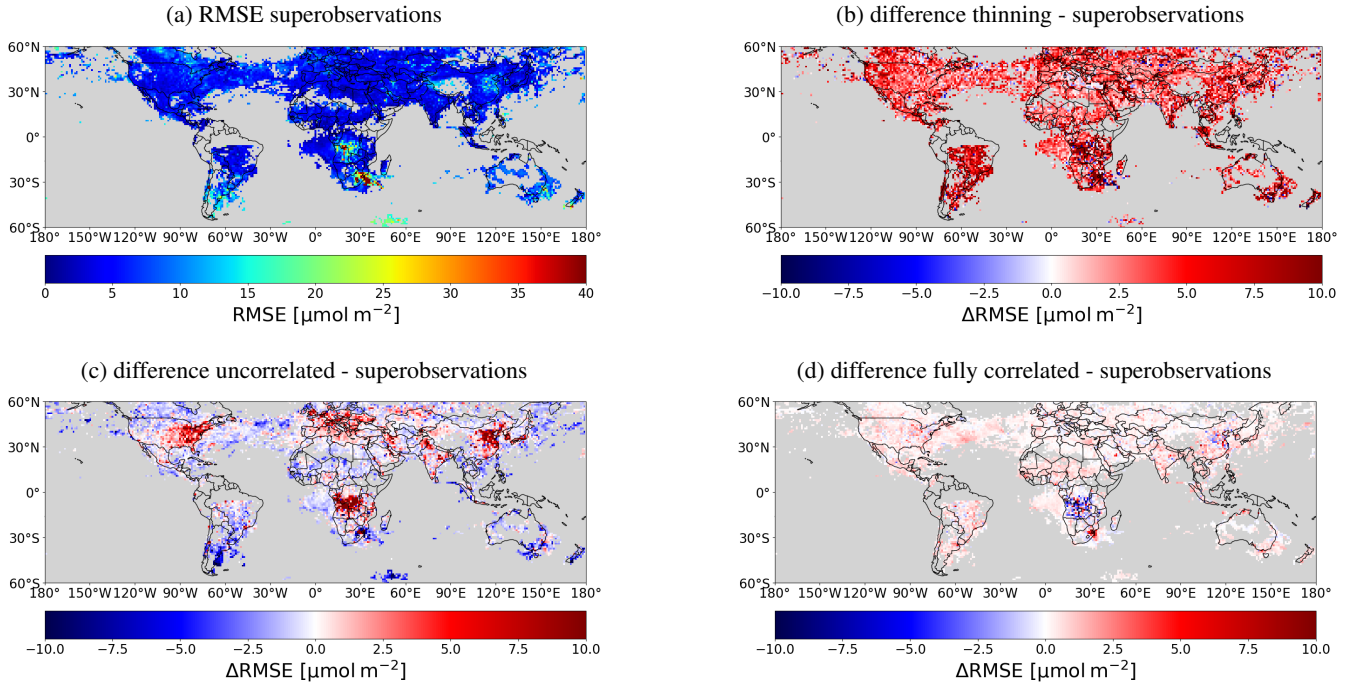
Note that the RE for thinned observations is expected to be higher than the standard superobservations. Nevertheless, the RE 535 was set to be the same among experiments to assess the impacts of the superobservation uncertainty itself.

The effectiveness of the assimilation for these four experiments was evaluated with the observation-minus-forecast RMSE,

$$RMSE_{x,y} = \sqrt{\frac{1}{t} \sum_1^t (O_{t,x,y} - F_{t,x,y})^2} \quad (20)$$

and the results are shown in fig. 14. The relative adjustments made by data assimilation is evaluated by comparing the analysis ( $A_t$ ) and forecasts ( $F_t$ ) as follows:

$$540 \text{ Impact}[\%] = \frac{1}{t} \sum_1^t \frac{|A_t - F_t|}{F_t} * 100 \quad (21)$$



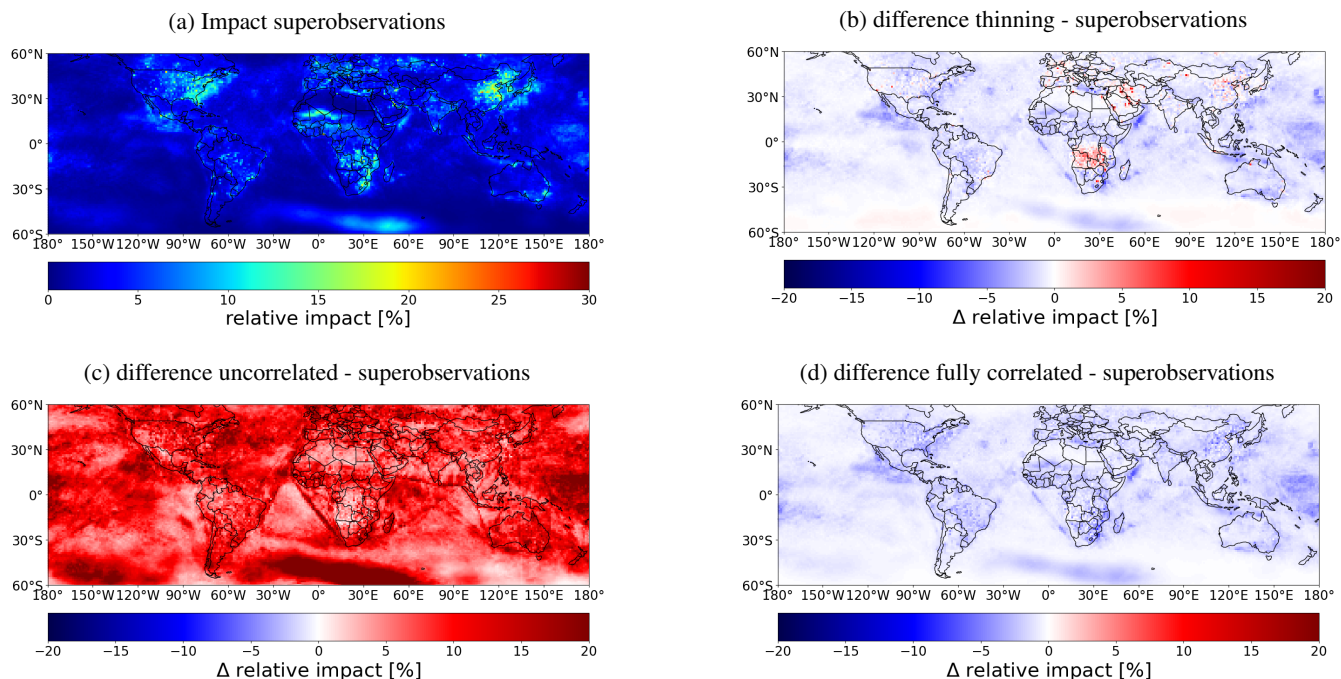
**Figure 14.** Panel showing the RMSE of the observation - forecast for the superobservations and how it compares to the other experiments. The RMSE is calculated over the time dimension, using only grid-cells for which the tropospheric column is over  $17 \mu\text{mol m}^{-2}$  (eq. 20 (a)) RMSE of the superobservations. (b) difference RMSE thinning - superobservations. (c) difference RMSE uncorrelated - superobservations (d) difference RMSE fully correlated - superobservations.

The results are shown in fig 15. Additionally, the mean absolute difference (MAD),

$$MAD = \frac{1}{n} \sum_1^n \left| \frac{1}{t} \sum_1^t O_{t,x,y} - F_{t,x,y} \right| \quad (22)$$

RMSE and  $\chi^2$  metrics were evaluated for the different experiments, see table 1. The  $\chi^2$  value is the ratio between the observation-forecast errors (actual errors) and the model plus observational uncertainties (estimated uncertainty). A  $\chi^2$  of one means the residuals and uncertainties are balanced, while a higher chi-square value indicates uncertainties are underestimated and vice versa. It is calculated as in Sekiya et al. (2022); Zupanski and Zupanski (2006).  $\chi^2$  was estimated only over highly polluted areas with observation concentrations higher than  $17 \mu\text{mol m}^{-2}$ . The impact calculation uses data between 11 and 17 hours local time, which is the time window when TROPOMI observations are available.

The  $\chi^2$  value of the standard superobservations (Obs-1) is 1.8, which means either the model or observational uncertainties (or both) are somewhat underestimated.  $\chi^2$  value can be sensitive to the choice of covariance inflation factor through its impacts on background error covariance (i.e. model errors), as indicated by Sekiya et al. (2022). We have conducted several sensitivity calculations by perturbing the covariance inflation factor and found that the impact on  $\chi^2$  is limited because the increase in



**Figure 15.** Panel showing the relative impact of the superobservations on the data assimilation system, and how this compares to the other experiments (a) relative impact of the superobservations. (b) difference relative impact thinning - superobservations. (c) uncorrelated - superobservations. (d) fully correlated - superobservations.

Experiment	RMSE [ $\mu\text{mol m}^{-2}$ ]	$\chi^2$ [-]	MAD [ $\mu\text{mol m}^{-2}$ ]
Superobs	8.7	1.8	5.2
Thinning	15.7	1.7	9.5
Uncorrelated	12.1	111.0	4.8
Correlated	9.0	0.7	5.4

**Table 1.** Metrics of the data assimilation experiments

background error covariance is compensated by an increase in the observation-forecast error. The increase in spread from the covariance inflation results in a poorer forecast. The reason why  $\chi^2$  is higher than 1 can be due to a variety of model forecast or observation errors that are not accounted for in the covariances, such as transport errors and error correlations between superobservations.

Both the MAD and RMSE are largest in the thinning case (Table 1). The decreased RMSE when using the superobservations indicates that averaging satellite observations leads to values which are closer to the scale that is represented by the model. The larger MAD in the thinning case reflects the fact that randomly selecting observations often results in negative tropospheric



560 NO<sub>2</sub> columns, which are rejected by the assimilation system, resulting in a positive sampling bias. This effect is particularly obvious over remote areas with some negative values due to the retrieval uncertainties. In the case of superobservations, the proportion of observations with negative tropospheric columns and their value are both significantly reduced.

The standard superobservation case had the smallest RMSE compared to both the fully correlated and the uncorrelated cases. Given the common tropospheric NO<sub>2</sub> fields, the difference is attributed to the differences in the superobservation uncertainty. 565 In the uncorrelated case, corresponding to the smaller uncertainties, the data assimilation adjustments become larger than the standard superobservation case (fig. 15c), with larger RMSEs in highly polluted areas, probably due to overcorrections (Fig. 14c). In remote areas, the RMSE improves with smaller uncertainties, suggesting that the standard superobservations overestimate its uncertainty in remote areas. The smaller MAD in the uncorrelated case reflects the reduced RMSEs in remote areas.

570 On the other hand, in the correlated case, the uncertainty is large, which reduced the data assimilation impact and somewhat increased the RMSE and MAD. This shows that assuming the uncertainties are fully correlated is not so unrealistic, but it does lead to a reduction in performance almost everywhere. One exception to this is Central Africa, where the lower uncertainty significantly improves the RMSE. Note that there is only a small decrease in the relative impact in this area going from the superobservations to the correlated experiment. Despite the fact there is almost no uncertainty reduction from the superob- 575 servations the uncertainty is still too low. It is likely that further increasing the uncertainty yields even better results than the correlated experiment. Because this effect is so strong and local we believe it is not related to the superobservation method, but instead results from fire-related errors in the observation uncertainty or model. The high absolute errors in the area make for a large impact on the RMSE and MAD, despite a small difference in the relative impact. As a result the superobservations probably do not compare as well to the uncorrelated experiment in Table 1 as they should

580 The uncertainty is similar between the thinning and fully correlated cases because the retrieval uncertainty is not as noisy as the retrieval concentrations. Correspondingly, the effect of the observations on the assimilation should be similar between the thinning and correlated cases. This is mostly true, except for some high-emission areas, such as central Africa, the Middle East and eastern China. Here the larger OmF and RMSE between the model and observations increases the impact of the observations on the assimilation. Also, note that thinning results in a similar  $\chi^2$  value to the superobservations. The larger 585 OmF and uncertainty maintain the ratio between the two.

## 7 Discussion

In this paper we presented a detailed methodology to construct superobservations and their errors and averaging kernels, improving upon the superobservations used previously by Miyazaki et al. (2012a); Boersma et al. (2016); Sekiya et al. (2022); van der A et al. (2024). These superobservations are constructed in particular for data assimilation, inverse modelling and model 590 evaluation applications. The first aspect of this is an improved estimation of the superobservation uncertainties stemming from the observational uncertainties for individual TROPOMI NO<sub>2</sub> observations. This is achieved by quantifying the correlation between observations, allowing for a more accurate propagation of the observational uncertainties and the spatial distribution

of these uncertainties. The spatial correlations for the slant column, stratosphere and air-mass factor contributions are estimated and treated separately. Uncertainties relating to the prior are not discussed because it is assumed the kernels will be used during assimilation or model evaluation. As shown by the data assimilation experiments, realistic uncertainties are of key importance for the optimal performance of the assimilation system. The correlated experiment leads to an overestimation of the uncertainty. This is similar to the method of Inness et al. (2019b) and the Data harmonization toolset for scientific earth observation data (HARP) spatial binning method for total uncertainty variables (<http://stcorp.github.io/harp/doc/html/algorithms/regridding.html#spatial-binning>). On the other hand, the uncorrelated experiment underestimates the uncertainty. It is similar to the HARP spatial binning method for random uncertainty variables. Both an over- and underestimation of the uncertainty degrade the short-term forecast in the MOMO-Chem data assimilation system, as demonstrated above.

The quantification of the spatial error correlation is complicated and remains uncertain. Correlations between retrieval uncertainties of nearby satellite pixels may be caused by spatially correlated biases in the characterisation of the surface reflectance or LER, aerosol and cloud properties and may depend on the weather. For instance, rainfall or drought may locally impact the albedo, which is not described by the albedo climatology used in the retrieval. Estimating a correlation for the AMF uncertainty is particularly difficult because it results from complex interactions between algorithms and variables such as surface albedo, cloud albedo and cloud height, and unspecified systematic retrieval errors. The way these variables are spatially correlated propagates to the correlation of the AMF uncertainty.

The stratospheric uncertainty treatment was updated. For individual observations, the stratosphere does not contribute much to the uncertainty, but for the clustered superobservations the stratosphere is a prime source of error. We quantified a longitude and seasonal dependent stratospheric uncertainty, replacing the default constant uncertainty present in the TROPOMI data product. As a result, lower latitudes have significantly lower stratospheric uncertainties. Uncertainties for the higher latitudes are generally lower than the default uncertainty but can also be higher depending on the season.

We also improved the existing method of calculating the (horizontal) RE. A simple constant parameterization was used before by Miyazaki et al. (2012a); Boersma et al. (2016). We presented a mathematical derivation for the RE in the case of random missing observation. This allows for easier and more accurate computation of the RE. Additionally, we have quantified a systematic sampling correction for the case when the missing observations are clustered, as would be the case when clouds cover part of the superobservation area. This leads to higher uncertainties and a lower impact of low-coverage superobservations. The RE derivation also shows that a thinning approach (keeping just one observation per grid-cell) would add a large uncertainty to the observation equal to the standard deviation of the observations within a model grid-cell.

Compared to Miyazaki et al. (2012a), who postulated a fixed correlation of 0.15, our superobservations are somewhat more uncertain. However, due to the separation of the different components, the uncertainty correlation in our superobservations is spatially heterogeneous and has a different behaviour over the ocean than over polluted regions. In a further development (Sekiya et al., 2022) already separated the stratospheric error, treating it as fully correlated. However, Sekiya et al. (2022) still uses the postulated correlation of 0.15 for the remaining observational uncertainties. This means that the slant column uncertainties presented here are lower than theirs, but our AMF uncertainty is higher (except for very large superobservations).

Compared to Sekiya et al. (2022) our superobservations are somewhat more impactful over clean areas, and somewhat less over polluted areas.

When compared to thinning the superobservations are a much less noisy representation of the satellite data, and thereby improve the performance of the data assimilation. The uncertainty-weighted superobservations also provide a realistic average of the data, but they favour the small column retrievals and are therefore low-biased, which is a feature we avoid using the tiling approach.

The superobservations resolve the correlations between observations within the superobservation grid-cell. However, it does not describe a remaining correlation between adjacent superobservations. Inflating the superobservation uncertainty could improve the results of the assimilation depending on the size of the superobservations.

We have focused on constructing superobservations of the same size as the grid-cell of the model they will be compared against. However, it is not obvious that this would be the most optimal configuration. According to Nyquist (Shannon, 1949), in order to capture all the variability at the size of the superobservations we would need to oversample by introducing extra superobservations shifted in space. One may argue that for a species like  $\text{NO}_2$  with a very inhomogeneous fine-scale distribution, interpolation in model space is not useful without knowledge of the subgrid distribution of the emission sources. Data assimilation implementations typically introduce spatial correlation lengths covering multiple grid-cells in the modelling of the background (forecast) covariance matrix  $\mathbf{B}$ . These correlations act as low-pass filters and the fine-scale variability for smaller length scales is not constrained in the analysis. In that case, constructing superobservations larger than a single model grid-cell could be explored, as long as the horizontal correlation lengths of the assimilation system are appropriately oversampled. These coarser superobservations could be useful for satellite data with a high relative noise level (e.g. HCHO and  $\text{SO}_2$  column observations) or to reduce correlated uncertainties between observations while at the same time lowering computational costs.”

## 8 Conclusion

In conclusion, this research has improved and formalized existing methods of creating superobservations. Superobservation uncertainties have been quantified by analysing the various aspects leading to systematic and random uncertainties in the satellite retrieval, and by mathematically deriving a realistic representation error. Data assimilation experiments show that the uncertainties derived in this way lead to better forecast results than postulating either fully correlated or uncorrelated uncertainties. A thinning of the observations results in very noisy patterns of  $\text{NO}_2$  and degraded assimilation results compared to the superobservations. Thus we recommend the use of superobservations with quantitative uncertainties for the assimilation of atmospheric  $\text{NO}_2$  and other trace gases.

The superobservation methodology is generic, and will be applied in the future to other species, like HCHO,  $\text{SO}_2$ , CO,  $\text{O}_3$ ,  $\text{CH}_4$  and  $\text{CO}_2$  and to other satellite instruments like OMI, GEMS or TEMPO. All of the concepts and mathematics described in this paper are broadly applicable. This includes the method of clustering, averaging and uncertainty averaging. The latter does require the quantification of correlations. Calculating the RE is also species-agnostic, with only the systematic correction requiring extra quantification.

660 Another possible application for superobservations is the creation of level-3 data. These methods provide satellite information on regular grids. Our superobservation approach provides realistic error estimates of the grid box mean value in case the level-3 gridboxes contain multiple satellite footprints, and have a lower resolution than the satellite. This is a first step towards a consistent averaging of the satellite data into monthly, seasonal and yearly averages and specifying meaningful uncertainties for such averages. Additional considerations are needed to quantify the temporal representation and temporal correlations.

665 Also, in our work, targeting model comparisons and data assimilation, we did not consider the a-priori uncertainties which may need to be quantified for level-3 data, depending on the application.

*Code and data availability.* The code used in this paper to generate the superobservation data is available on Zenodo [doi.org/10.5281/zenodo.10726644](https://doi.org/10.5281/zenodo.10726644). The TROPOMI NO<sub>2</sub> L2 datasets used in this paper are made available operationally through the ESA Sentinel-5P data hub (<https://s5phub.copernicus.eu>, last access: 25 Jan 2023). The S5P-PAL NO<sub>2</sub> dataset is available from the S5P-PAL website (<https://data-portal.s5p-pal.com/products/no2.html>, last access: 25 January 2023), and was generated with version 2.3 of the TROPOMI processor. Note that this dataset will be replaced by the latest reprocessing based on processor version 2.4.

670

## Appendix A: Correlation calculation

### A1 Calculation of the gridbox-mean correlation from the correlation length

The mean correlation  $C$  between pairs of observations within a superobservation is calculated as an average of the correlation between all pairs of points in a superobservation. This is obtained by multiplying the probability density function (PDF) of the distance between all points in a square with the correlation as a function of the distance and integrating the result. The PDF of all points in a rectangle is taken from Philip (1991) and the correlations are calculated for a distance  $d$  and a correlation length  $l$  assuming an exponential decay,  $C = e^{-d/l}$ . The correlation length  $l$  is computed using the TROPOMI v2.4 - v2.3.1 differences.

For example, a 1-degree superobservation at 29 degrees latitude is a 113 by 99 kilometre rectangle resulting in a PDF as shown in Fig. A1a. A correlation length of 32 kilometres yields Fig. A1b. Multiplying the two functions creates figure A1c, and integrating this results in a correlation of 0.24 (Fig. A1d).

### A2 Calculation of the correlation length

The correlation length is calculated using the inverse of the method for calculating the correlation, where a correlation is converted to a correlation length based on the PDF of distances. This requires a representative correlation of the dataset, with a representative grid-cell. The autocorrelation of the v2.4 - v2.3.1 tropospheric column differences within a 1-degree superobservation is calculated using equation A1, for  $n$  number of tropospheric columns  $x$  in a superobservation indexed by  $i$  and  $j$ . This is a special case of the Pearson correlation where we assume the mean of the v2.4-v2.3.1 retrieval difference is 0.

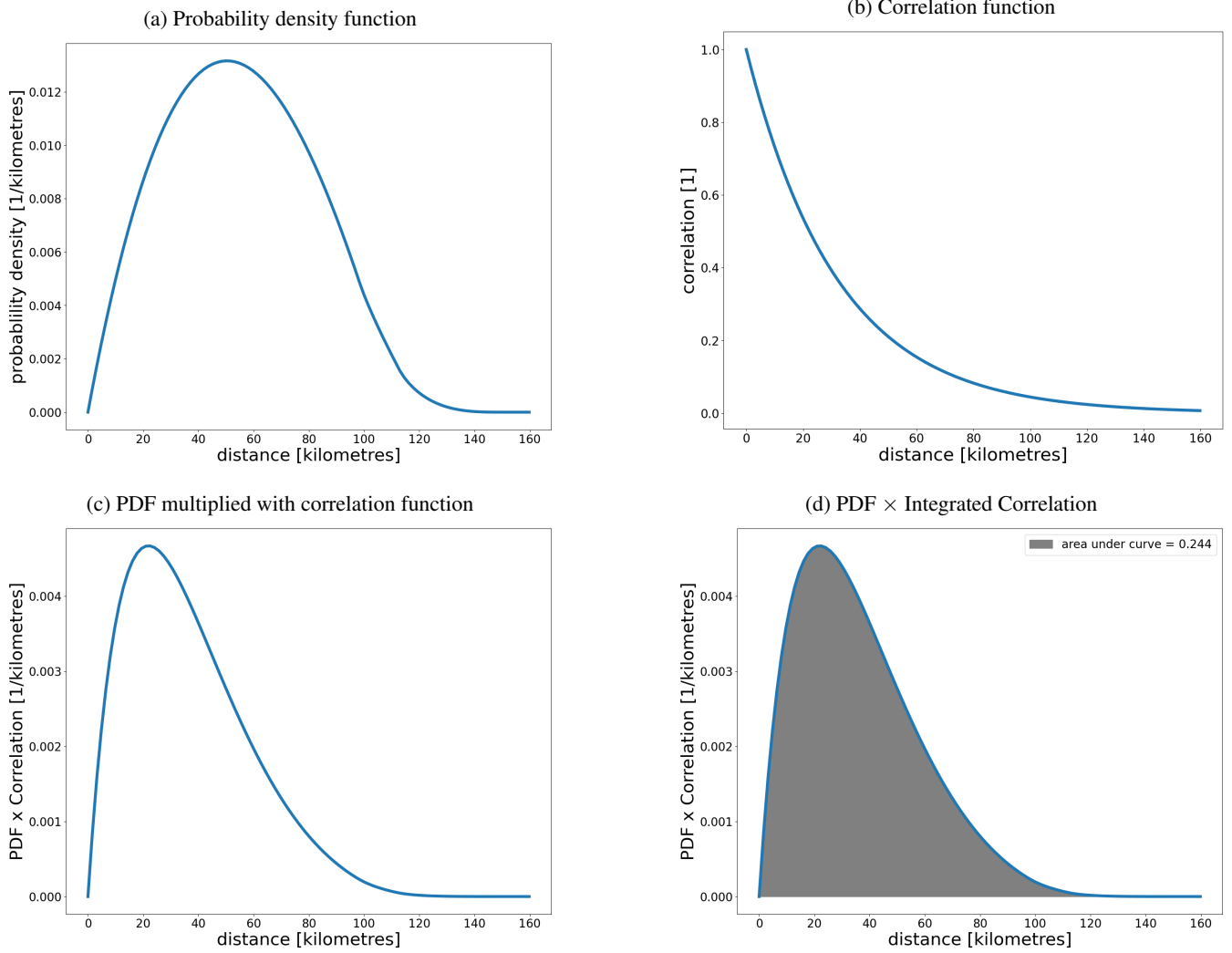
$$C_{x,x} = \frac{\sum_i^n \sum_j^n x_i x_j}{\sum_i^n x_i^2} \quad (\text{A1})$$

Correlations are computed within single superobservations. Figure A2b shows the difference and the correlation on a single day. Averaging the correlation over the available data gives figure A2c. Because the AMF is most important for polluted observations we filter this result for areas with an average tropospheric  $\text{NO}_2$  concentration over  $30 \mu\text{mol m}^{-2}$ , figure A2d. The average correlation of the remaining data is 0.244 at an average grid-box size of  $113 \times 99 \text{ km}^2$ . Applying the inverse method of section A1 gives a correlation length of 32 kilometres.

## Appendix B: Fractional representation error

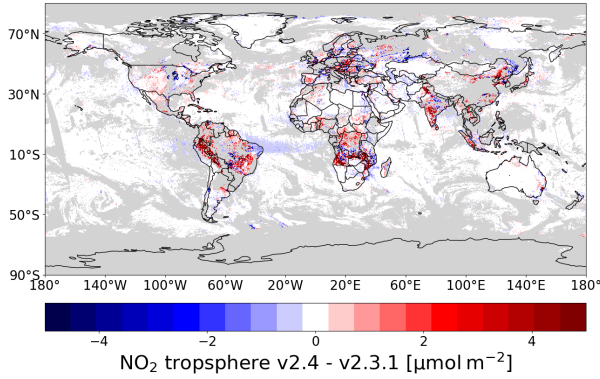
To use the formula of the representation error (eq. 17) with observations with different weights we reformulate the equation using fractional observations ( $n_f$ ). Here partially overlapping observations are counted based on the fraction of overlap ( $o$ ). The overlap of an observation is the ratio between the area inside the superobservation grid ( $a_{in,i}$ ) to the total area ( $a_{tot,i}$ )

$$o_i = \frac{a_{in,i}}{a_{tot,i}} \quad (\text{B1})$$

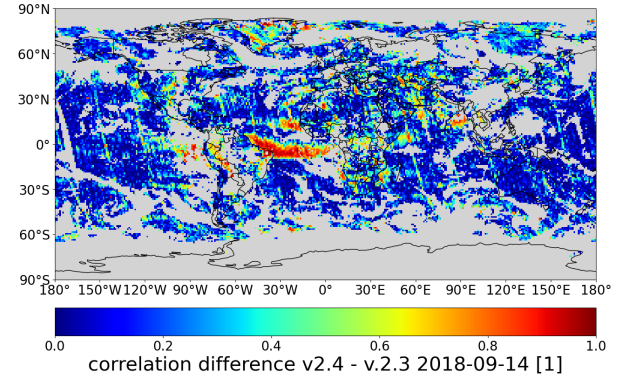


**Figure A1.** Panels showing the computation of the superobservation correlation from a correlation length and latitude. (a) The probability density function for the distance between two points in a 1-degree superobservation at 29 degrees latitude. (b) Correlation function for a correlation length of 32 kilometres. (c) Multiplication of the PDF in panel a and the correlation function in panel b. (d) Integration of the curve from panel c. The area under the curve gives the correlation of the superobservation.

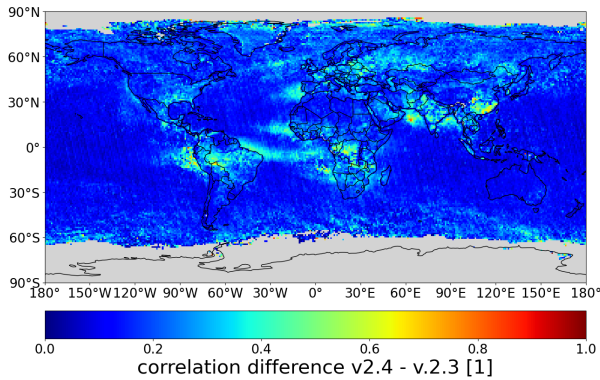
(a) Difference in tropospheric NO<sub>2</sub> v2.4-v2.3 ,2018-09-14.



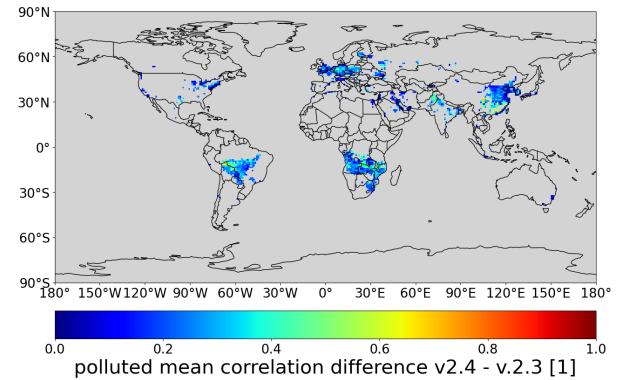
(b) Correlation 1-degree superobservations 2018-09-14.



(c) Mean correlation 1-degree superobservations.



(d) Polluted areas mean correlation.



**Figure A2.** Panels showing the calculation of a representative correlation for the purpose of calculating a representative correlation length. (a) difference between the v2.4 and v2.3 observations. (b) Correlations within 1-degree superobservations relative to dataset. (c) Average correlation in the month of September for 2018-2022. (d) Average correlation of polluted areas.

700 An observation with a 20% overlap only counts as 0.2 observations. To take into account the size differences between satellite observations we also normalize the overlap by the average area of the observations (including the parts outside of the superobservation).

The number of fractional observations ( $n_{f,n}$ ) of within a superobservation is the sum of the observation area divided by the average area and multiplied by the observation overlaps:

$$705 \quad n_{f,n} = \sum_i^n o_i \frac{\tilde{a}_i}{\tilde{a}_{avg}} \quad (\text{B2})$$

In this formulation an average sized observation that completely overlaps the superobservation will count as one observation, while smaller or partially overlapping observations count for less. The total population size of fractional observations ( $N_f$ ) is the sum over all observations within the superobservation:

$$N_f = \sum_i^N o_i \frac{\tilde{a}_i}{\tilde{a}_{avg}} \quad (\text{B3})$$

710 To facilitate the comparison between superobservations with different population sizes  $N$ , the RE can be expressed in terms of a fractional coverage  $f$  ranging from 0 to 1:

$$f_n = \frac{n_{f,n}}{N_f} \quad (\text{B4})$$

Replacing  $n$  by  $n_{f,n}$  and substituting  $n_{f,n}$  by  $n_{f,n} = N f_n$ ,  $\sigma_{RE}$  becomes:

$$\sigma_{RE,n} = \frac{\sigma}{\sqrt{N_f f_n}} \sqrt{\frac{N_f - N f_n}{N_f - 1}} \quad (\text{B5})$$

715 However expressing the RE in terms of fractional observations or coverage has two problems:

1. Because different configurations of observations have a different number of fractional observations, it is not possible to experimentally calculate  $\sigma_{RE,n}$  using equation 16 because the values on the x-axis are different. Interpolating the values solves this except for the case where  $n = 1$  because there are no values for 0 observations.

720 2. There are situations where  $n_{f,1} < 1$ , which results in  $\sigma_{RE,1} > \sigma$ . This should not happen because it is not possible to have less than one observation. In figure 8a we also see that  $\sigma_{RE,1}$  (green line) does not exceed 1 standard deviation.

Both of these problems require that for one observation  $n_{f,1}$  or  $N f_1$  is equal to one, irrespective of the actual  $n_f$ . More formally there is a constraint where

$$N f_1 = 1 \quad (\text{B6})$$

First we redefine the fractional coverage to 0 for  $n = 1$  using the following formula:

$$725 \quad f_{z,n} = (f - f_1) * \frac{1}{1 - f_1} \quad (\text{B7})$$

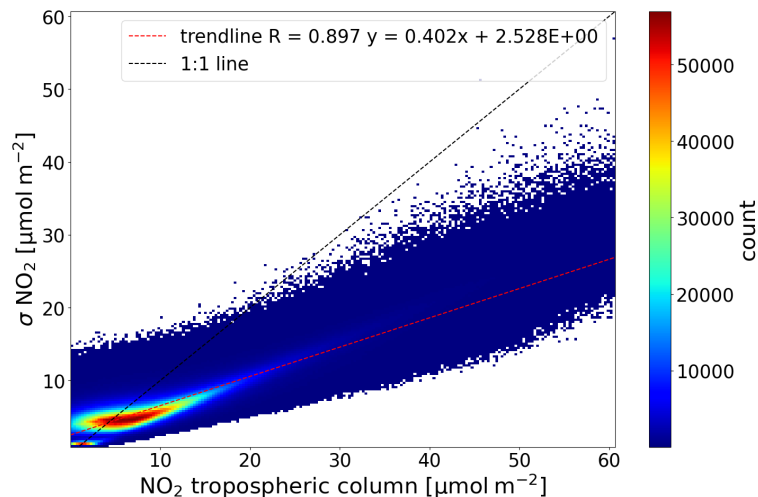
We call this new fractional coverage  $f_{z,n}$ . Essentially this stretches the  $\sigma_{RE,n}$  to always range from 0 to 1 fractional coverage. Because  $f_{z,1} = 0$  the following equation satisfies the constraint:

$$N f_n = N f_{z,n} + 1 - f_{z,n} \quad (\text{B8})$$

Substituting Eq. B8 into Equation B5 yields the final equation for the random representation error:

$$730 \quad \sigma_{RE,n} = \frac{\sigma}{\sqrt{N_f f_{z,n} + 1 - f_{z,n}}} \sqrt{\frac{N_f - (N_f f_{z,n} + 1 - f_{z,n})}{N_f - 1}} \quad (\text{B9})$$





**Figure C1.** Relationship between the superobservation tropospheric column and standard deviation for a 0.3 degree superobservation.

### Appendix C: Fallback standard deviation

For the case when there are insufficient observations to calculate a meaningful standard deviation for a grid-cell we implemented a fallback option where the superobservation standard deviation is estimated as 0.4 times the tropospheric column + 2.5  $\mu\text{mol m}^{-2}$ , based on the trendline in figure C1. This relationship has a Pearson correlation of 0.9. We calculated the fallback  
 735 using 0.3 degree superobservations, which contain on average 25 TROPOMI observations at the equator.

*Author contributions.* HE and KFB wrote the original Fortran software package to generate superobservations. AD and PR further developed this code, and PR developed a Python version. PR and HE wrote most of the text of the paper, and PR made most of the images. TS and KM helped with the setup of the assimilation system and the interpretation of the results from the system. SH contributed ideas and discussions for estimating the observational correlations and the RE.

740 *Competing interests.* The contact author has declared that none of the authors has any competing interests.

*Acknowledgements.* Sentinel-5 Precursor is a European Space Agency (ESA) mission on behalf of the European Commission (EC). The TROPOMI payload is a joint development by ESA and the Netherlands Space Office (NSO). The Sentinel-5 Precursor ground segment development has been funded by ESA and with national contributions from the Netherlands, Germany, and Belgium. This work contains modified Copernicus Sentinel-5P TROPOMI data (2018–2023), processed in the operational framework or locally at KNMI.

745 HE acknowledges financial support from the CAMEO project (grant agreement No 101082125) funded by the European Union. Views and opinions expressed are however those of the author(s) only and do not necessarily reflect those of the European Union or the Commission. Neither the European Union nor the granting authority can be held responsible for them.

A part of the research was conducted at the Jet Propulsion Laboratory, California Institute of Technology, under a contract with NASA.

## References

- 750 Boersma, K. F., Eskes, H. J., and Brinksma, E. J.: Error analysis for tropospheric NO<sub>2</sub> retrieval from space, *Journal of Geophysical Research: Atmospheres*, 109, <https://doi.org/https://doi.org/10.1029/2003JD003962>, 2004.
- Boersma, K. F., Eskes, H. J., Dirksen, R. J., van der A, R. J., Veefkind, J. P., Stammes, P., Huijnen, V., Kleipool, Q. L., Sneep, M., Claas, J., Leitão, J., Richter, A., Zhou, Y., and Brunner, D.: An improved tropospheric NO<sub>2</sub> column retrieval algorithm for the Ozone Monitoring Instrument, *Atmospheric Measurement Techniques*, 4, 1905–1928, <https://doi.org/10.5194/amt-4-1905-2011>, 2011.
- 755 Boersma, K. F., Vinken, G. C. M., and Eskes, H. J.: Representativeness errors in comparing chemistry transport and chemistry climate models with satellite UV–Vis tropospheric column retrievals, *Geoscientific Model Development*, 9, 875–898, <https://doi.org/10.5194/gmd-9-875-2016>, 2016.
- Bondy, W. H. and Zlot, W.: The Standard Error of the Mean and the Difference between Means for Finite Populations, *The American Statistician*, 30, 96–97, <https://doi.org/10.1080/00031305.1976.10479149>, 1976.
- 760 Bédard, J. and Buehner, M.: A practical assimilation approach to extract smaller-scale information from observations with spatially correlated errors: An idealized study, *Quarterly Journal of the Royal Meteorological Society*, 146, 468–482, <https://doi.org/https://doi.org/10.1002/qj.3687>, 2020.
- Chevallier, F.: Impact of correlated observation errors on inverted CO<sub>2</sub> surface fluxes from OCO measurements, *Geophysical Research Letters*, 34, <https://doi.org/https://doi.org/10.1029/2007GL030463>, 2007.
- 765 Crowell, S., Baker, D., Schuh, A., Basu, S., Jacobson, A. R., Chevallier, F., Liu, J., Deng, F., Feng, L., McKain, K., Chatterjee, A., Miller, J. B., Stephens, B. B., Eldering, A., Crisp, D., Schimel, D., Nassar, R., O’Dell, C. W., Oda, T., Sweeney, C., Palmer, P. I., and Jones, D. B. A.: The 2015–2016 carbon cycle as seen from OCO-2 and the global in situ network, *Atmospheric Chemistry and Physics*, 19, 9797–9831, <https://doi.org/10.5194/acp-19-9797-2019>, 2019.
- Deeter, M. N., Edwards, D. P., Francis, G. L., Gille, J. C., Martínez-Alonso, S., Worden, H. M., and Sweeney, C.: A climate-scale satellite record for carbon monoxide: the MOPITT Version 7 product, *Atmospheric Measurement Techniques*, 10, 2533–2555, <https://doi.org/10.5194/amt-10-2533-2017>, 2017.
- 770 Dirksen, R. J., Boersma, K. F., Eskes, H. J., Ionov, D. V., Bucsela, E. J., Levelt, P. F., and Kelder, H. M.: Evaluation of stratospheric NO<sub>2</sub> retrieved from the Ozone Monitoring Instrument: Intercomparison, diurnal cycle, and trending, *Journal of Geophysical Research: Atmospheres*, 116, <https://doi.org/https://doi.org/10.1029/2010JD014943>, 2011.
- 775 Douros, J., Eskes, H., van Geffen, J., Boersma, K. F., Compernelle, S., Pinardi, G., Blechschmidt, A.-M., Peuch, V.-H., Colette, A., and Veefkind, P.: Comparing Sentinel-5P TROPOMI NO<sub>2</sub> column observations with the CAMS regional air quality ensemble, *Geoscientific Model Development*, 16, 509–534, <https://doi.org/10.5194/gmd-16-509-2023>, 2023.
- Duan, B., Zhang, W., and Dai, H.: ASCAT Wind Superobbing Based on Feature Box, *Advances in Meteorology*, 2018, 3438501, <https://doi.org/10.1155/2018/3438501>, 2018.
- 780 Eskes, H., van Geffen, J., Boersma, F., Eichmann, K.-U., Apituley, A., Pedernana, M., Sneep, M., Veefkind, J. P., and Loyola, D.: Sentinel 5 precursor TROPOMI Level 2 Product User Manual Nitrogen Dioxide, Tech.rep., ESA, <https://sentinel.esa.int/documents/247904/2474726/Sentinel-5P-Level-2-Product-User-Manual-Nitrogen-Dioxide.pdf>, 2022.
- Eskes, H. J. and Boersma, K. F.: Averaging kernels for DOAS total-column satellite retrievals, *Atmospheric Chemistry and Physics*, 3, 1285–1291, <https://doi.org/10.5194/acp-3-1285-2003>, 2003.

- 785 Eskes, H. J. and Eichmann, K.-U.: S5P Mission Performance Centre Nitrogen Dioxide [L2\_NO2\_\_\_] Readme, Tech.rep., ESA, <https://sentinel.esa.int/documents/247904/3541451/Sentinel-5P-Nitrogen-Dioxide-Level-2-Product-Readme-File>, 2022.
- Georgoulas, A. K., Boersma, K. F., van Vliet, J., Zhang, X., van der A, R., Zanis, P., and de Laat, J.: Detection of NO<sub>2</sub> pollution plumes from individual ships with the TROPOMI/S5P satellite sensor, *Environmental Research Letters*, 15, 124 037, <https://doi.org/10.1088/1748-9326/abc445>, 2020.
- 790 H. Berger, M. F.: Satellite Wind Superobbing, Tech. rep., Met Office, Exeter UK, [https://digital.nmla.metoffice.gov.uk/download/file/IO\\_ea4b7eb9-cac6-4519-9253-cdcddf38bdba](https://digital.nmla.metoffice.gov.uk/download/file/IO_ea4b7eb9-cac6-4519-9253-cdcddf38bdba), 2003.
- Heilliette, S. and Garand, L.: Impact of accounting for interchannel error covariances at the Canadian Meteorological Center, in: Proc. 2015 EUMETSAT Meteorological Satellite Conf, p. 8, 2015.
- Huijnen, V., Williams, J., van Weele, M., van Noije, T., Krol, M., Dentener, F., Segers, A., Houweling, S., Peters, W., de Laat, J., Boersma, F., Bergamaschi, P., van Velthoven, P., Le Sager, P., Eskes, H., Alkemade, F., Scheele, R., Nédélec, P., and Pätz, H.-W.: The global chemistry transport model TM5: description and evaluation of the tropospheric chemistry version 3.0, *Geoscientific Model Development*, 3, 445–473, <https://doi.org/10.5194/gmd-3-445-2010>, 2010.
- 795 F., Bergamaschi, P., van Velthoven, P., Le Sager, P., Eskes, H., Alkemade, F., Scheele, R., Nédélec, P., and Pätz, H.-W.: The global chemistry transport model TM5: description and evaluation of the tropospheric chemistry version 3.0, *Geoscientific Model Development*, 3, 445–473, <https://doi.org/10.5194/gmd-3-445-2010>, 2010.
- Hunt, B. R., Kostelich, E. J., and Szunyogh, I.: Efficient data assimilation for spatiotemporal chaos: A local ensemble transform Kalman filter, *Physica D: Nonlinear Phenomena*, 230, 112–126, <https://doi.org/https://doi.org/10.1016/j.physd.2006.11.008>, data Assimilation, 2007.
- 800 Inness, A., Ades, M., Agustí-Panareda, A., Barré, J., Benedictow, A., Blechschmidt, A.-M., Dominguez, J. J., Engelen, R., Eskes, H., Flemming, J., Huijnen, V., Jones, L., Kipling, Z., Massart, S., Parrington, M., Peuch, V.-H., Razinger, M., Remy, S., Schulz, M., and Suttie, M.: The CAMS reanalysis of atmospheric composition, *Atmospheric Chemistry and Physics*, 19, 3515–3556, <https://doi.org/10.5194/acp-19-3515-2019>, 2019a.
- Inness, A., Flemming, J., Heue, K.-P., Lerot, C., Loyola, D., Ribas, R., Valks, P., van Roozendael, M., Xu, J., and Zimmer, W.: Monitoring and assimilation tests with TROPOMI data in the CAMS system: near-real-time total column ozone, *Atmospheric Chemistry and Physics*, 19, 3939–3962, <https://doi.org/10.5194/acp-19-3939-2019>, 2019b.
- 805 Isserlis, L.: On the Value of a Mean as Calculated from a Sample, <https://doi.org/10.2307/2340569>, 1918.
- Janjić, T., Bormann, N., Bocquet, M., Carton, J. A., Cohn, S. E., Dance, S. L., Losa, S. N., Nichols, N. K., Potthast, R., Waller, J. A., and Weston, P.: On the representation error in data assimilation, *Quarterly Journal of the Royal Meteorological Society*, 144, 1257–1278, <https://doi.org/https://doi.org/10.1002/qj.3130>, 2018.
- 810 Jeuken, A. B. M., Eskes, H. J., van Velthoven, P. F. J., Kelder, H. M., and Hólm, E. V.: Assimilation of total ozone satellite measurements in a three-dimensional tracer transport model, *Journal of Geophysical Research: Atmospheres*, 104, 5551–5563, <https://doi.org/https://doi.org/10.1029/1998JD100052>, 1999.
- Kalnay, E.: Atmospheric Modeling, Data Assimilation and Predictability, Cambridge University Press, <https://doi.org/10.1017/CBO9780511802270>, 2002.
- 815 Kim, J., Jeong, U., Ahn, M.-H., Kim, J. H., Park, R. J., Lee, H., Song, C. H., Choi, Y.-S., Lee, K.-H., Yoo, J.-M., Jeong, M.-J., Park, S. K., Lee, K.-M., Song, C.-K., Kim, S.-W., Kim, Y. J., Kim, S.-W., Kim, M., Go, S., Liu, X., Chance, K., Miller, C. C., Al-Saadi, J., Veihelmann, B., Bhartia, P. K., Torres, O., Abad, G. G., Haffner, D. P., Ko, D. H., Lee, S. H., Woo, J.-H., Chong, H., Park, S. S., Nicks, D., Choi, W. J., Moon, K.-J., Cho, A., Yoon, J., kyun Kim, S., Hong, H., Lee, K., Lee, H., Lee, S., Choi, M., Veeffkind, P., Levelt, P. F., Edwards, D. P., Kang, M., Eo, M., Bak, J., Baek, K., Kwon, H.-A., Yang, J., Park, J., Han, K. M., Kim, B.-R., Shin, H.-W., Choi, H., Lee, E., Chong, J., Cha, Y., Koo, J.-H., Irie, H., Hayashida, S., Kasai, Y., Kanaya, Y., Liu, C., Lin, J., Crawford, J. H., Carmichael, G. R., Newchurch, M. J., Lefer, B. L., Herman, J. R., Swap, R. J., Lau, A. K. H., Kurosu, T. P., Jaross, G., Ahlers, B., Dobber, M., McElroy, C. T., and Choi, Y.:

- New Era of Air Quality Monitoring from Space: Geostationary Environment Monitoring Spectrometer (GEMS), *Bulletin of the American Meteorological Society*, 101, E1 – E22, <https://doi.org/https://doi.org/10.1175/BAMS-D-18-0013.1>, 2020.
- 825 Li, C., Krotkov, N. A., Leonard, P. J. T., Carn, S., Joiner, J., Spurr, R. J. D., and Vasilkov, A.: Version 2 Ozone Monitoring Instrument SO<sub>2</sub> product (OMSO2 V2): new anthropogenic SO<sub>2</sub> vertical column density dataset, *Atmospheric Measurement Techniques*, 13, 6175–6191, <https://doi.org/10.5194/amt-13-6175-2020>, 2020.
- Liu, Z.-Q. and Rabier, F.: The interaction between model resolution, observation resolution and observation density in data assimilation: A one-dimensional study, *Quarterly Journal of the Royal Meteorological Society*, 128, 1367–1386, 830 <https://doi.org/https://doi.org/10.1256/003590002320373337>, 2002.
- Liu, Z.-Q. and Rabier, F.: The potential of high-density observations for numerical weather prediction: A study with simulated observations, *Quarterly Journal of the Royal Meteorological Society*, 129, 3013–3035, <https://doi.org/https://doi.org/10.1256/qj.02.170>, 2003.
- Livesey, N., Read, W., Wagner, P., Froidevaux, L., Lambert, A., Manney, G., Millán Valle, L., Pumphrey, H., Santee, M., Schwartz, M., Wang, S., Fuller, R. A., Jarnot, R. F., Knosp, B. W., Martinez, E., and Lay, R. R.: Earth Observing System (EOS) and Aura Microwave 835 Limb Sounder (MLS) Version 4.2x Level 2 and data quality and description document., Tech.rep., JPL, [https://mls.jpl.nasa.gov/data/v4-2\\_data\\_quality\\_document.pdf](https://mls.jpl.nasa.gov/data/v4-2_data_quality_document.pdf), 2022.
- Lorenc, A. C.: A Global Three-Dimensional Multivariate Statistical Interpolation Scheme, *Monthly Weather Review*, 109, 701 – 721, [https://doi.org/10.1175/1520-0493\(1981\)109<0701:AGTDMS>2.0.CO;2](https://doi.org/10.1175/1520-0493(1981)109<0701:AGTDMS>2.0.CO;2), 1981.
- Lorente, A., Folkert Boersma, K., Yu, H., Dörner, S., Hilboll, A., Richter, A., Liu, M., Lamsal, L. N., Barkley, 840 M., De Smedt, I., Van Roozendael, M., Wang, Y., Wagner, T., Beirle, S., Lin, J.-T., Krotkov, N., Stammes, P., Wang, P., Eskes, H. J., and Krol, M.: Structural uncertainty in air mass factor calculation for NO<sub>2</sub> and HCHO satellite retrievals, *Atmospheric Measurement Techniques*, 10, 759–782, <https://doi.org/10.5194/amt-10-759-2017>, 2017.
- Miyazaki, K., Eskes, H. J., and Sudo, K.: Global NO<sub>x</sub> emission estimates derived from an assimilation of OMI tropospheric NO<sub>2</sub> columns, 845 *Atmospheric Chemistry and Physics*, 12, 2263–2288, <https://doi.org/10.5194/acp-12-2263-2012>, 2012a.
- Miyazaki, K., Eskes, H. J., Sudo, K., Takigawa, M., van Weele, M., and Boersma, K. F.: Simultaneous assimilation of satellite NO<sub>2</sub>, O<sub>3</sub>, CO, and HNO<sub>3</sub> data for the analysis of tropospheric chemical composition and emissions, *Atmospheric Chemistry and Physics*, 12, 9545–9579, <https://doi.org/10.5194/acp-12-9545-2012>, 2012b.
- Miyazaki, K., Bowman, K., Sekiya, T., Eskes, H., Boersma, F., Worden, H., Livesey, N., Payne, V. H., Sudo, K., Kanaya, Y., Takigawa, M., 850 and Ogochi, K.: Updated tropospheric chemistry reanalysis and emission estimates, TCR-2, for 2005–2018, *Earth System Science Data*, 12, 2223–2259, <https://doi.org/10.5194/essd-12-2223-2020>, 2020a.
- Miyazaki, K., Bowman, K. W., Yumimoto, K., Walker, T., and Sudo, K.: Evaluation of a multi-model, multi-constituent assimilation framework for tropospheric chemical reanalysis, *Atmospheric Chemistry and Physics*, 20, 931–967, <https://doi.org/10.5194/acp-20-931-2020>, 2020b.
- 855 Peuch, V.-H., Engelen, R., Rixen, M., Dee, D., Flemming, J., Suttie, M., Ades, M., Agustí-Panareda, A., Ananasso, C., Andersson, E., Armstrong, D., Barré, J., Bousserez, N., Dominguez, J. J., Garrigues, S., Inness, A., Jones, L., Kipling, Z., Letertre-Danczak, J., Parrington, M., Razinger, M., Ribas, R., Vermoote, S., Yang, X., Simmons, A., de Marcilla, J. G., and Thépaut, J.-N.: The Copernicus Atmosphere Monitoring Service: From Research to Operations, *Bulletin of the American Meteorological Society*, 103, E2650 – E2668, <https://doi.org/https://doi.org/10.1175/BAMS-D-21-0314.1>, 2022.

- 860 Philip, J.: The probability distribution of the distance between two random points in a box, Tech. rep., KTH mathematics, Royal Institute of Technology, 1991.
- Plauchu, R., Fortems-Cheiney, A., Broquet, G., Pison, I., Berchet, A., Potier, E., Dufour, G., Coman, A., Savas, D., Siour, G., and Eskes, H.: NO<sub>x</sub> emissions in France in 2019–2021 as estimated by the high-spatial-resolution assimilation of TROPOMI NO<sub>2</sub> observations, *Atmospheric Chemistry and Physics*, 24, 8139–8163, <https://doi.org/10.5194/acp-24-8139-2024>, 2024.
- 865 Purser, R. J.: A theoretical examination of the construction and characterization of super-observations obtained by optimality principles guided by information theory, <https://repository.library.noaa.gov/view/noaa/6983>, office Note, 2015.
- Purser, R. J., Parrish, D. F., and Masutani, M.: Meteorological observational data compression; an alternative to conventional "super-obbing", <https://repository.library.noaa.gov/view/noaa/11413>, office Note, 2000.
- Richter, A., Begoin, M., Hilboll, A., and Burrows, J. P.: An improved NO<sub>2</sub> retrieval for the GOME-2 satellite instrument, *Atmospheric Measurement Techniques*, 4, 1147–1159, <https://doi.org/10.5194/amt-4-1147-2011>, 2011.
- 870 Riess, T. C. V. W., Boersma, K. F., van Vliet, J., Peters, W., Sneep, M., Eskes, H., and van Geffen, J.: Improved monitoring of shipping NO<sub>2</sub> with TROPOMI: decreasing NO<sub>x</sub> emissions in European seas during the COVID-19 pandemic, *Atmospheric Measurement Techniques*, 15, 1415–1438, <https://doi.org/10.5194/amt-15-1415-2022>, 2022.
- Rodgers, C. D.: *Inverse Methods for Atmospheric Sounding*, WORLD SCIENTIFIC, <https://doi.org/10.1142/3171>, 2000.
- 875 Schutgens, N. A. J., Gryspeerdt, E., Weigum, N., Tsyro, S., Goto, D., Schulz, M., and Stier, P.: Will a perfect model agree with perfect observations? The impact of spatial sampling, *Atmospheric Chemistry and Physics*, 16, 6335–6353, <https://doi.org/10.5194/acp-16-6335-2016>, 2016.
- Sekiya, T., Miyazaki, K., Ogochi, K., Sudo, K., and Takigawa, M.: Global high-resolution simulations of tropospheric nitrogen dioxide using CHASER V4.0, *Geoscientific Model Development*, 11, 959–988, <https://doi.org/10.5194/gmd-11-959-2018>, 2018.
- 880 Sekiya, T., Miyazaki, K., Eskes, H., Sudo, K., Takigawa, M., and Kanaya, Y.: A comparison of the impact of TROPOMI and OMI tropospheric NO<sub>2</sub> on global chemical data assimilation, *Atmospheric Measurement Techniques*, 15, 1703–1728, <https://doi.org/10.5194/amt-15-1703-2022>, 2022.
- Shannon, C.: Communication in the Presence of Noise, *Proceedings of the IRE*, 37, 10–21, <https://doi.org/10.1109/JRPROC.1949.232969>, 1949.
- 885 Streets, D. G., Canty, T., Carmichael, G. R., de Foy, B., Dickerson, R. R., Duncan, B. N., Edwards, D. P., Haynes, J. A., Henze, D. K., Houyoux, M. R., Jacob, D. J., Krotkov, N. A., Lamsal, L. N., Liu, Y., Lu, Z., Martin, R. V., Pfister, G. G., Pinder, R. W., Salawitch, R. J., and Wecht, K. J.: Emissions estimation from satellite retrievals: A review of current capability, *Atmospheric Environment*, 77, 1011–1042, <https://doi.org/https://doi.org/10.1016/j.atmosenv.2013.05.051>, 2013.
- Sudo, K., Takahashi, M., Kurokawa, J.-i., and Akimoto, H.: CHASER: A global chemical model of the troposphere I. Model description, *Journal of Geophysical Research: Atmospheres*, 107, ACH 7–1–ACH 7–20, <https://doi.org/https://doi.org/10.1029/2001JD001113>, 2002.
- 890 Taylor, J. R.: Error analysis, chapter 7, vol. 20, Univ. Science Books, Sausalito, California, 1997.
- Tilstra, G.: TROPOMI ATBD of the directionally dependent surface Lambertian equivalent reflectivity, Tech.rep., ESA, [https://www.temis.nl/surface/albedo/tropomi\\_ler.php](https://www.temis.nl/surface/albedo/tropomi_ler.php), 2023.
- van der A, R. J., Ding, J., and Eskes, H.: Monitoring European anthropogenic NO<sub>x</sub> emissions from space, *EGUsphere*, 2024, 1–20, <https://doi.org/10.5194/egusphere-2023-3099>, 2024.
- 895

- van der Werf, G. R., Randerson, J. T., Giglio, L., van Leeuwen, T. T., Chen, Y., Rogers, B. M., Mu, M., van Marle, M. J. E., Morton, D. C., Collatz, G. J., Yokelson, R. J., and Kasibhatla, P. S.: Global fire emissions estimates during 1997–2016, *Earth System Science Data*, 9, 697–720, <https://doi.org/10.5194/essd-9-697-2017>, 2017.
- van Geffen, J., Boersma, K. F., Eskes, H., Sneep, M., ter Linden, M., Zara, M., and Veefkind, J. P.: S5P TROPOMI NO<sub>2</sub> slant column retrieval: method, stability, uncertainties and comparisons with OMI, *Atmospheric Measurement Techniques*, 13, 1315–1335, <https://doi.org/10.5194/amt-13-1315-2020>, 2020.
- van Geffen, J., Eskes, H., Boersma, K., and Veefkind, J.: TROPOMI ATBD of the total and tropospheric NO<sub>2</sub> data products, Tech.rep., ESA, <https://sentinel.esa.int/documents/247904/2476257/sentinel-5p-tropomi-atbd-no2-data-products>, 2022a.
- van Geffen, J., Eskes, H., Compernolle, S., Pinardi, G., Verhoelst, T., Lambert, J.-C., Sneep, M., ter Linden, M., Ludewig, A., Boersma, K. F., and Veefkind, J. P.: Sentinel-5P TROPOMI NO<sub>2</sub> retrieval: impact of version v2.2 improvements and comparisons with OMI and ground-based data, *Atmospheric Measurement Techniques*, 15, 2037–2060, <https://doi.org/10.5194/amt-15-2037-2022>, 2022b.
- Veefkind, J., Aben, I., McMullan, K., Förster, H., de Vries, J., Otter, G., Claas, J., Eskes, H., de Haan, J., Kleipool, Q., van Weele, M., Hasekamp, O., Hoogeveen, R., Landgraf, J., Snel, R., Tol, P., Ingmann, P., Voors, R., Kruizinga, B., Vink, R., Visser, H., and Levelt, P.: TROPOMI on the ESA Sentinel-5 Precursor: A GMES mission for global observations of the atmospheric composition for climate, air quality and ozone layer applications, *Remote Sensing of Environment*, 120, 70–83, <https://doi.org/https://doi.org/10.1016/j.rse.2011.09.027>, the Sentinel Missions - New Opportunities for Science, 2012.
- Verhoelst, T., Compernolle, S., Pinardi, G., Lambert, J.-C., Eskes, H. J., Eichmann, K.-U., Fjæraa, A. M., Granville, J., Niemeijer, S., Cede, A., Tiefengraber, M., Hendrick, F., Pazmiño, A., Bais, A., Bazureau, A., Boersma, K. F., Bogner, K., Dehn, A., Donner, S., Elokhov, A., Gebetsberger, M., Goutail, F., Grutter de la Mora, M., Gruzdev, A., Gratsea, M., Hansen, G. H., Irie, H., Jepsen, N., Kanaya, Y., Karagiozidis, D., Kivi, R., Kreher, K., Levelt, P. F., Liu, C., Müller, M., Navarro Comas, M., Piters, A. J. M., Pommereau, J.-P., Portafaix, T., Prados-Roman, C., Puentedura, O., Querel, R., Remmers, J., Richter, A., Rimmer, J., Rivera Cárdenas, C., Saavedra de Miguel, L., Sinyakov, V. P., Stremme, W., Strong, K., Van Roozendaal, M., Veefkind, J. P., Wagner, T., Wittrock, F., Yela González, M., and Zehner, C.: Ground-based validation of the Copernicus Sentinel-5P TROPOMI NO<sub>2</sub> measurements with the NDACC ZSL-DOAS, MAX-DOAS and Pandonia global networks, *Atmospheric Measurement Techniques*, 14, 481–510, <https://doi.org/10.5194/amt-14-481-2021>, 2021.
- von Clarmann, T. and Glatthor, N.: The application of mean averaging kernels to mean trace gas distributions, *Atmospheric Measurement Techniques*, 12, 5155–5160, <https://doi.org/10.5194/amt-12-5155-2019>, 2019.
- Zara, M., Boersma, K. F., De Smedt, I., Richter, A., Peters, E., van Geffen, J. H. G. M., Beirle, S., Wagner, T., Van Roozendaal, M., Marchenko, S., Lamsal, L. N., and Eskes, H. J.: Improved slant column density retrieval of nitrogen dioxide and formaldehyde for OMI and GOME-2A from QA4ECV: intercomparison, uncertainty characterisation, and trends, *Atmospheric Measurement Techniques*, 11, 4033–4058, <https://doi.org/10.5194/amt-11-4033-2018>, 2018.
- Zoogman, P., Liu, X., Suleiman, R., Pennington, W., Flittner, D., Al-Saadi, J., Hilton, B., Nicks, D., Newchurch, M., Carr, J., Janz, S., Andraschko, M., Arola, A., Baker, B., Canova, B., Chan Miller, C., Cohen, R., Davis, J., Dussault, M., Edwards, D., Fishman, J., Ghulam, A., González Abad, G., Grutter, M., Herman, J., Houck, J., Jacob, D., Joiner, J., Kerridge, B., Kim, J., Krotkov, N., Lamsal, L., Li, C., Lindfors, A., Martin, R., McElroy, C., McLinden, C., Natraj, V., Neil, D., Nowlan, C., O’Sullivan, E., Palmer, P., Pierce, R., Pippin, M., Saiz-Lopez, A., Spurr, R., Szykman, J., Torres, O., Veefkind, J., Veihelmann, B., Wang, H., Wang, J., and Chance, K.: Tropospheric emissions: Monitoring of pollution (TEMPO), *Journal of Quantitative Spectroscopy and Radiative Transfer*, 186, 17–39, <https://doi.org/https://doi.org/10.1016/j.jqsrt.2016.05.008>, satellite Remote Sensing and Spectroscopy: Joint ACE-Odin Meeting, October 2015, 2017.

Zupanski, D. and Zupanski, M.: Model Error Estimation Employing an Ensemble Data Assimilation Approach, *Monthly Weather Review*, 935 134, 1337 – 1354, <https://doi.org/10.1175/MWR3125.1>, 2006.