

Separating snow and ice melt using water stable isotopes and glacio-hydrological modelling: towards improving the application of isotope analyses in highly glacierized catchments

Tom Müller^{1,2}, Mauro Fischer^{2,3}, Stuart N. Lane¹, and Bettina Schaeffli^{1,2,3}

¹Institute of Earth Surface Dynamics, University of Lausanne, Lausanne, Switzerland

²Institute of Geography, University of Bern, Bern, Switzerland

³Oeschger Centre for Climate Change Research, University of Bern, Bern, Switzerland

Correspondence: Tom Müller (tom.muller1@gmail.com)

Abstract.

Glacio-hydrological models are widely used for estimating current and future streamflow across spatial scales, utilizing various data sources, notably observed streamflow and snow/ice accumulation and ablation observations. However, modeling highly glacierized catchments poses challenges due to data scarcity and complex spatio-temporal meteorological conditions, leading to input data uncertainty and potential misestimation of the contribution of snow and ice melt proportions to streamflow. Some studies propose using water stable isotopes to estimate water-shares of rain, snow, and ice in streamflow, yet the choice of the isotopic composition of these water sources significantly impacts results.

This study presents a combined isotopic and glacio-hydrological model to determine which provides a catchment-integrated snow and ice melt isotopic compositions during an entire melting season. These isotopic compositions are then used to estimate the seasonal shares of snow and ice melt in streamflow for the Otemma catchment in the Swiss Alps. The model leverages available meteorological station data (air temperature, precipitation, and radiation), ice mass balance data and snow cover maps to model and automatically calibrate the catchment-scale snow and ice mass balances. The isotopic module, building on prior work by Ala-aho et al. (2017), estimates seasonal isotopic compositions of precipitation, snow, and ice. The runoff generation and transfer model module relies on a combined routing and reservoir approach and is calibrated based on measured streamflow and isotopic data.

Results reveal challenges in distinguishing snow and ice melt isotopic values in summer, rendering a reliable separation between the two sources difficult. The modelling of catchment-wide snow melt isotopic composition proves challenging due to uncertainties in precipitation lapse rate, mass exchanges during rain-on-snow events, and snow fractionation. The study delves into these processes, their impact on model results, and suggests guidelines for future models. It concludes that water stable isotopes alone cannot reliably separate snow and ice melt shares for temperate alpine glaciers. However, combining isotopes with glacio-hydrological modeling enhances hydrologic parameter identifiability, in particular those related to runoff transfer to the stream, and improves mass balance estimations.

Keywords. combined isotopic and glacio-hydrological model, snow hydrology, snow and ice melt, water isotopes, highly glacierized catchments

25 1 Introduction

Highly glacierized catchments are rapidly changing due to climate change and subsequent glacier retreat (Huss and Hock, 2018; Zekollari et al., 2019). Reduced ice melt contribution, combined with more liquid precipitation and earlier snow melt, will significantly affect water resource availability (Berghuijs et al., 2014; Beniston et al., 2018). These changes will have a serious impact on downstream ecosystems (Milner et al., 2017), water usage for irrigation (Viviroli et al., 2020; Shokory et al., 2023), hydropower (Schaeffli et al., 2019), or other domestic water uses (Immerzeel et al., 2020), both in densely populated lowlands (Pritchard, 2019; Biemans et al., 2019) or in small communities at high elevation (Buytaert et al., 2017). Accurate estimates of current and future snow and ice melt amounts are, therefore, vital to mitigating climate change effects.

In this context, glacio-hydrological models have been developed to assess current and future streamflow changes (e.g., Farinotti et al., 2012; Muelchi et al., 2022). ~~Such models are usually calibrated based on different observational data sets, the most common being streamflow, followed by ice and snow related data (van Tiel et al., 2020b). The resulting streamflow projection corresponds to the statistically best possible representation of the calibration or evaluation datasets, but the underlying physical streamflow generation processes remain simplified (Schaeffli et al., 2011). In addition, field observations in high mountain catchments, where access is difficult and environmental conditions are harsh, are usually sparse, while the measured parameters may be subject to large spatio-temporal variations. The~~ The main drivers of annual glacier mass balance variability and glacier evolution are well documented (e.g., Huss et al., 2021). ~~However,~~ However, complex spatio-temporal processes and the lack of direct observations of processes, spatially distributed observations below the ground or ~~ice surface leads at the ice surface lead~~ to model simplifications, such as for instance the effect of debris transport and. Streamflow projection corresponds to the statistically best possible representation of the calibration or evaluation datasets, but the underlying physical streamflow generation processes remain simplified (Schaeffli et al., 2011). Such processes include the effect of supraglacial debris cover (Jouvet et al., 2011; Ayala et al., 2016), lateral subsurface flow (Carroll et al., 2019), permafrost melt (Rogger et al., 2017) or superficial and deep groundwater recharge and exfiltration (Hood and Hayashi, 2015; Penna et al., 2017). As a result, models may (i) wrongly represent the competing amounts of modelled snow and ice accumulation and melt, (ii) compensate runoff errors in the glacierized and non-glacierized parts of the catchment (van Tiel et al., 2020b) or (iii) overlook or oversimplify processes which may become more dominant in the future such as for e.g. water storage and delayed water release (Somers and McKenzie, 2020). ~~In addition, the associated uncertainties in the predicted catchment-scale streamflow remains difficult to evaluate.~~

~~The use of other types of glacio-hydrological information (in addition to streamflow and snow or ice melt data), such as the share of different water sources in streamflow (rainfall, older groundwater), can provide additional constraints to improve the representation of internal processes in glacio-hydrological models and rain.~~ Water stable isotopes can provide an alternative approach to estimate the shares of snow melt, ice melt, ~~older groundwater~~, can provide additional constraints to improve the representation of internal processes in glacio-hydrological models and rain. In snow-dominated, non-glacierized catchments, stable isotopes of water have been used to build mixing models which estimate the shares of ~~snow and rainfall in streams or groundwater~~ (Ala-aho et al., 2017; Carroll et al., 2018; Beria et al., 2020). Indeed, the water isotopic composition of snow is more depleted in heavy isotopes (^{18}O and ^2H) versus light isotopes (^{16}O and ^1H) compared to rainfall. This phenomenon called fractionation

occurs because, as air temperature decreases, lower cloud condensation temperature leads to more vapor condensation and a preferential loss of heavy isotopes from the air masses to the liquid phase. This results in an air mass becoming gradually more depleted in heavy isotopes (more negative $\delta^2\text{H}$) as condensation occurs.

The isotopic signature of water is expressed as the ratio of heavy over light isotopes compared to the Vienna Standard Mean Ocean Water (VSMOW) (see Eq. ??), and has usually a negative value indicating the degree of depletion in heavy isotopes (Beria et al., 2018). In hydrological studies, the water isotopic signature appears as an ideal tracer, as water conserves the isotopic composition from its source (rain, snow or ice melt) along hydrological flowpaths. Mixing models have been used to estimate the share of the the different water sources in the stream based on the isotopic composition of the stream water and of the possible sources of water that compose it (such as snow, rainfall or groundwater; the so-called "end-members") :-

$$\delta^2 H = \frac{\left(\frac{^2\text{H}}{^1\text{H}}\right)_{\text{sample}} - \left(\frac{^2\text{H}}{^1\text{H}}\right)_{\text{VSMOW}}}{\left(\frac{^2\text{H}}{^1\text{H}}\right)_{\text{VSMOW}}}$$

(Ala-aho et al., 2017; Carroll et al., 2018; Beria et al., 2020). Such models can estimate water shares without complex hydrological models and may avoid modelling problems mentioned above. In glacierized catchments, only a few studies have attempted to use water isotopes to provide an estimate of the shares of snow and ice melt at the time of sampling (e.g., Engel et al., 2016; Penna et al., 2017). Despite the emergence of encouraging research, many challenges regarding the use of water isotopes for snow and ice dominated catchments have been discussed remain. Spatial variations in the ice and snow melt isotopic signature may be large and a limited number of samples may lead to biases (Engel et al., 2016; Schmieder et al., 2018; Zuecco et al., 2019). The snowpack isotopic signature tends to become more enriched in heavy isotopes over the melting season due to snow fractionation (Beria et al., 2018). The temporal evolution of the isotopic signal of snow appears therefore melt is difficult to characterize, and the choices of the selected "end-member" values lead to a significant trade-off between snow and ice melt contributions (Penna et al., 2017). Finally, snow melt isotopic signature may become similar to ice melt during the melting season, rendering their separation difficult.

The complex snow isotopic processes have been studied experimentally (e.g., Taylor et al., 2001; Carroll et al., 2022a; Sprenger et al., 2022), and equations characterizing the isotopic enrichment of snow have been proposed (Feng et al., 2002; Ala-aho et al., 2017). In addition, a limited number of studies have successfully used water isotopes for glacio-hydrological model evaluation (Hindshaw et al., 2011) or calibration (He et al., 2019; Nan et al., 2022). These studies show promising results, with a reduction of reducing the uncertainties in both the estimation of estimating model parameters and the shares of the water sources when water isotopes are used for calibration.

In this study, we aim to further explore the use of water isotopes in glacierized catchments and to ultimately assess how water isotopes can be used to better approximate the shares of, in particular, aim to address the following questions : (i) Can we model the catchment-integrated snow and ice melt . This requires in particular a detailed spatio-temporal representation of the snow melt isotopic composition, a characterization of the ice melt isotopic composition and an assessment of the contribution of rain events at the outlet. isotopic compositions during an entire year using a parsimonious model? (ii) Can we separate snow

and ice shares in streamflow at catchment-scale based on water isotopes data alone ? (iii) What are the benefits of integrating isotopes in a glacio-hydrological models, and can it contribute to better separate modelled snow and ice melt shares?

For this purpose, we adapted the parsimonious model proposed by Ala-aho et al. (2017) to the case of a heavily glacierized catchment in the Swiss Alps and ~~propose a proposed a new~~ combined isotopic and glacio-hydrological model ~~which precisely estimate the temporal isotopic enrichment of snow-melt based on physical processes. The main processes included in the model are-. The model is composed of three standalone modules, which are calibrated separately :~~ (i) ~~rain-on-snow refreezing in the snowpack,~~ (ii) ~~snow sublimation where isotopically lighter water tends to leave the snowpack, resulting in an isotopically heavier snowpack (less negative $\delta^2\text{H}$, proportionally enriched in heavy isotopes) and (iii) snow melt from the snowpack resulting also in a isotopically heavier snowpack.-~~

~~Since data collection is challenging in high mountain environments, we first develop a combined mass balance and isotopic model-~~ an hourly, spatially distributed mass balance module based on meteorological ~~and,~~ glacier mass balance observations and ~~a reasonable number of isotopic samples, which can be easily applied to other catchments. Measured discharge at the glacier portal is used in a second step to simulate water transfer to the-~~ detailed snow cover maps; (ii) for each model cell, an isotopic module which aims to produce a detailed spatio-temporal representation of the isotopic compositions of snow and rain; (iii) a transfer module which conveys water (snow melt, ice melt, rain) amounts and isotopic signatures from each model cell to the catchment outlet (via hillslope, snowpack and glacier routing), ~~which-~~

The main goal of the model is to simulate the catchment-integrated isotopic compositions of the different water sources at the outlet as precisely as possible. This allows us to ~~assess the impact of delayed water transport on the-~~ characterize the isotopic behavior of the water sources during a melting season and to highlight better the challenges linked to isotope modelling in glacierized catchments. In particular, our catchment-integrated signals allow us to avoid the typical problems of isotope analysis (e.g. Penna et al., 2017; Schmieder et al., 2018; Zuecco et al., 2019) which rely on strong assumptions regarding the definition of the isotopic composition of the ~~stream~~ end-members when only few point field samples are available. Finally, we ~~compare results obtained from an-~~ show how a simple end-member mixing model based on ~~isotopes only-~~ our catchment-integrated isotopic signals can estimate the shares of snow and ice at the river outlet compared with the results from the glacio-hydrological model ~~and propose guidelines for a robust definition of isotopic end-members in highly glacierized catchments.~~

2 Study site and experimental methods

2.1 The Otemma glacier

The Otemma glacier is located in the southwestern Swiss Alps (45°57'00"N, 7°26'51"E) and is amongst the 15 largest Swiss glaciers (Linsbauer et al., 2021). The glacier is characterized by a long and flat main lobe flowing in a northeast-southwest direction ~~,~~ and several steeper tributary glaciers to the southeast (Fig. 1). Due to its limited area at high elevation and its large proportion of the remaining ice volume within the ablation area, Otemma glacier has shown rapid retreat (2500 m or about 40 m per year since the 1970s, GLAMOS (1881-2020)) and comparatively large volume and mass loss (Fischer et al., 2015) in recent decades. Most of the glacier is projected to completely melt already by 2060 under current climate change ~~,~~ and to completely

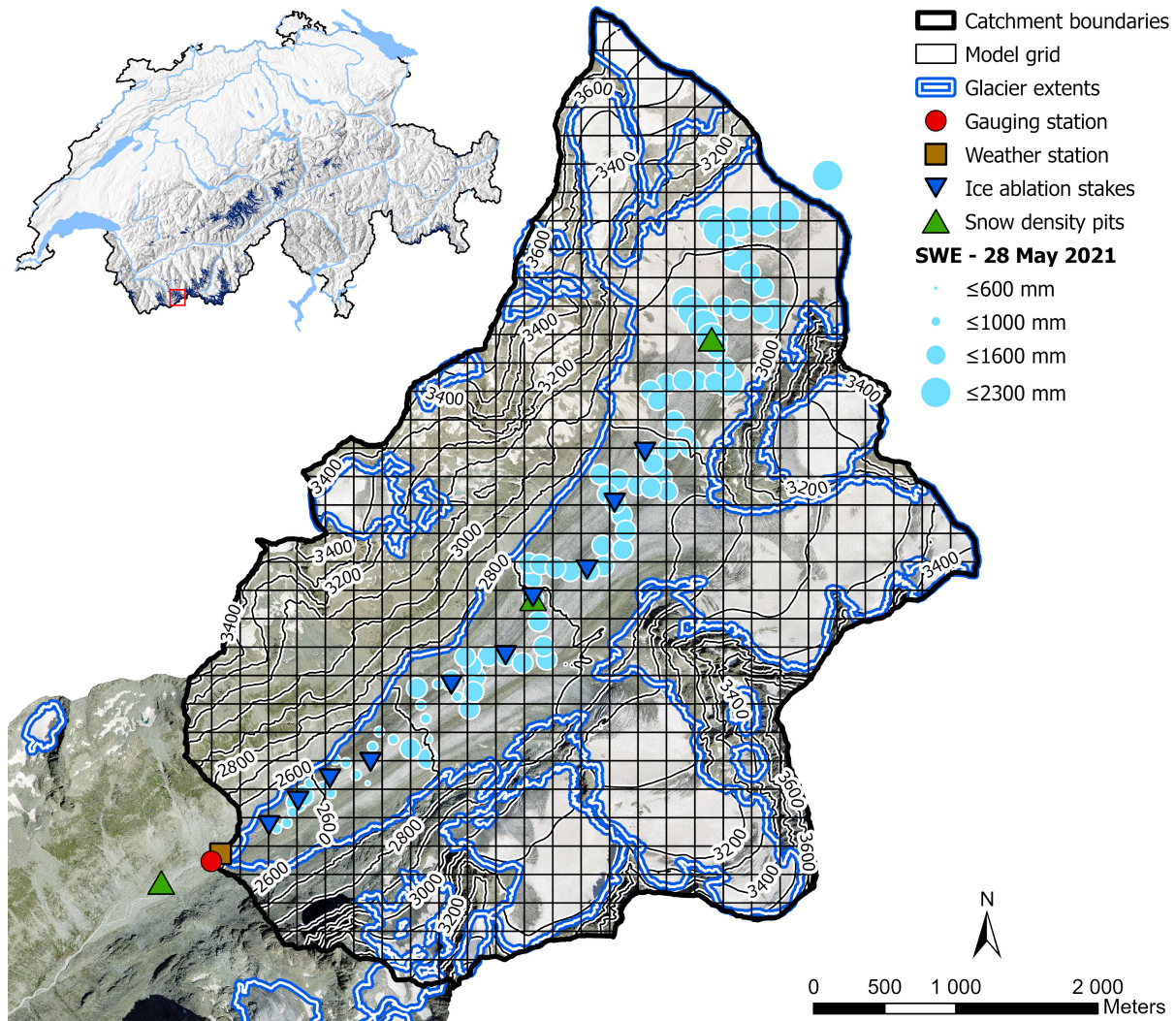


Figure 1. The Otemma glacierized catchment with the locations of i) the gauging station close to the glacier portal, ii) the weather station, iii) 10 ablation stakes used for summer surface ice melt measurements and iv) two snow pits for average end-of-winter (28.05.2021) snow density estimation and isotope sampling as well as 92 end-of-winter snow accumulation measurements (28.05.2021, in snow water equivalent (SWE)). **A-The glacier forefield also shows a third snow pit used for isotopic sampling is also shown in the glacier forefield.** The black grid represents the perimeter and cell size for mass balance and snow isotopic composition modelling. The small inset indicates the location of the Otemma glacier in Switzerland (red rectangle). Orthoimage provided by swisstopo (2019). Glacier extents adapted from Linsbauer et al. (2016).

disappear by the end of the century (Gabbi et al., 2012). Two medial moraines deliver supra- and englacial sediments to the
 125 glacier terminus, especially in its more shaded southern part, where the terminus gradually becomes heavily debris-covered.

Except for this area, the glacier ~~mostly~~ mainly consists of relatively clean ice ~~;~~ and has a relative debris cover of about 12 % (estimated from Linsbauer et al., 2021).

The catchment boundary was defined about 100 m below the location of the main glacier portal in 2019, where a gauging station was installed (Fig. 1). It has an area of 20.8 km² ~~;~~ and a mean elevation of 3080 m a.s.l. (2470 to 3730 m a.s.l.) and a glacier coverage of 56 % in 2019 (adapted from Linsbauer et al., 2021). The underlying bedrock consists of orthogneiss and metagranodiorites (Burri et al., 1999), overlain by coarse superficial sediment deposits with limited vegetation development.

2.2 Meteorological observations

In September 2019, a weather station was installed 50 m from the glacier terminus ~~;~~ at an elevation of 2450 m a.s.l. (Fig. 1), and continuously recorded meteorological data with a resolution of 5 minutes until October 2021 with a 5 minutes resolution. Liquid precipitation was measured with a Davis tipping rain gauge, air temperature, relative humidity and air pressure with a Decagon VP-4, and incoming shortwave radiation with ~~a~~ an SP-110-SS from Apogee Instruments. Solid winter precipitation was extrapolated to the analysed catchment from two nearby MeteoSwiss automatic weather stations: from Otemma (~5 km downvalley, at 2357 m a.s.l.) for the winter 2019/2020, and from Arolla (~10 km northeast, at 2005 m a.s.l.) for the winter 2020/2021. Wind speed was only available for the MeteoSwiss weather station of Grand St-Bernard (2472 m a.s.l.) about 20 km west of the Otemma glacier. All meteorological data have already been published (Müller, 2022).

2.3 Stream discharge

In July 2020, a stream gauging station was installed 100 m downstream of the glacier portal (Fig. 1) ~~;~~ in a bedrock-constrained river section to ~~insure~~ ensure the collection of all upstream flow. Stream discharge was estimated using a stage-discharge relationship (Müller et al., 2022). ~~River~~ The river stage was measured continuously at ~~10-minute~~ 10-minute intervals with a Keller DCX-22AA-CTD datalogger. Discharge was estimated by dilution gauging using Rhodamine WT 20 % dye. The fluorescent dye concentration was measured with a Fluorometer (Albillia GGUN-FL30). Based on 21 gaugings in 2020 and 15 in 2021, the estimated mean discharge uncertainty (95 % confidence) was $\pm 0.55 \text{ m}^3 \text{ s}^{-1}$ ~~;~~ but tends to increase for peak discharge with an uncertainty of $\pm 2 \text{ m}^3 \text{ s}^{-1}$ for a river discharge of $13.5 \text{ m}^3 \text{ s}^{-1}$. All stream data have already been published (Müller and Miesen, 2022).

150 2.4 Mass balance observations and dye tracing

In-situ monitoring of the seasonal surface mass balance of the Otemma glacier was started in 2020 by M. Fischer using the direct glaciological method (Kurzböck and Huss, 2021). For this study, snow depth measurements were performed manually at 5 locations on 26 June 2020 and 92 locations on 28 May 2021 across the entire main lobe of the glacier (from 2560 to 3020 m a.s.l., Fig. 1). Snow density was estimated on the same dates by measuring the average density of the whole snowpack with a snow sampler in the centre of the main glacier lobe in 2020 and at two locations in 2021 (Fig. 1). Snow water equivalent

(SWE) values were calculated by multiplying the measured snow depths with the average density value from the closest snow pit.

End of June 2020, 10 PVC ablation stakes covering the ablation area of the main glacier lobe from an elevation of 2590 to 2890 m a.s.l. (Fig. 1) were installed using a Kovacs ice drill and 8 m drilling rods. Snow and ice melt ~~was measured~~ were measured at each stake by measuring the decrease of the snow/ice surface. Ablation measurements were performed 3 times ~~in summer~~ during the summer of 2020 and 7 times ~~in summer 2021~~ during the summer of 2021, covering the whole melt season. An ice density of 900 g L^{-1} was assumed to convert measured ablation values in ice equivalent to water equivalent following Huss et al. (2008).

Between July and August 2020, dye tracing experiments were carried out by injecting Sulforhodamine WT into 6 moulins in the lower part of the glacier ~~at a~~ at a 370 to 1100 m distance from the glacier portal. The transit time of the dye to the glacier portal was measured to characterize the englacial water drainage velocity.

2.5 Theoretical background on water stable isotopes

The isotopic signature of water is expressed as the ratio of heavy (^{18}O and ^2H) over light (^{16}O and ^1H) isotopes compared to the Vienna Standard Mean Ocean Water (VSMOW). It usually has a negative value indicating the degree of depletion in heavy isotopes (Beria et al., 2018).

The water isotopic composition of snow appears usually more depleted in heavy isotopes versus light isotopes compared to rainfall. This phenomenon called fractionation occurs because, as air temperature decreases, lower cloud condensation temperature leads to more vapor condensation and a preferential loss of heavy isotopes from the air masses to the liquid phase. This results in an air mass becoming gradually more depleted in heavy isotopes (more negative $\delta^2\text{H}$) as condensation occurs. The isotopic signature of global precipitation follows a linear relationship called the global meteoric water line (GMWL) with $\delta^2\text{H} = 8\delta^{18}\text{O} + 10$. The intercept of the GMWL is called d-excess ($\text{d-excess} = \delta^2\text{H} - 8\delta^{18}\text{O}$).

The isotopic composition of the snowpack also tends to evolve over time as mass exchanges between the solid, liquid and vapor phases occur. During the melting season, snow evaporation leads to a preferential loss of light isotopes to the vapor phase, leading to a snowpack more enriched in heavy isotopes. This process is called snow fractionation (Beria et al., 2018).

During non-equilibrium processes such as snow evaporation and sublimation, the snowpack becomes more rapidly enriched in ^2H than ^{18}O , leading to a decrease in the d-excess value compared to its reference value of 10 (see Beria et al. (2018) for a more complete review). D-excess therefore relates to the degree of evaporation that occurs in the snowpack.

2.6 Water sampling for stable isotope measurements

Snow for stable isotope analyses was mainly sampled in spring during two periods: from the glacier snout to the highest ablation stake between 24 and 30 June 2020 and across the main lobe of the glacier on 28 May 2021 (Fig. 1). Snow was sampled systematically at various locations by extracting the first five centimeters of the snowpack, which we define as *Snow surface*, and by sampling snow between 10 and 20 cm below the snow surface, called *Snow 10 cm*. ~~Isotopic snow profiles~~ Snow profiles for isotopic analysis were carried out on 28 May 2021 in two snow density pits, where snow was sampled every 50 cm

in depth from the surface to the bottom of the snowpack. The [isotopic-snow](#) profile of a third snow pit was sampled [for isotopes](#)
190 just below the glacier terminus on 10 June 2021. There, we also sampled snow melt that formed a thin saturated layer at the
base of the snowpack. In summer, the snow surface was sampled on the glacier in mid-July at four locations in 2020 and two
locations in 2021. After July, snow only remained on inaccessible parts of the catchment at high elevation.

Ice samples for isotope measurements were collected at various random locations on the glacier surface during two to four
sampling campaigns in each summer from 2019 to 2021. Ice cores were extracted using a manual 20 cm ice screw. On 30 June
195 2021, two ice cores of 5 and 8 m depth were drilled using a Kovacs ice drill at the location of the 2nd and 8th ice ablation
stakes from the glacier terminus (Fig. 1). Ice was sampled by taking a bulk sample of the ice core every meter. Ice melt water
from small supraglacial channels was also sampled on the glacier, at least one kilometer away from the temporal snowline to
avoid potential mixing with snow melt water. All ice and snow samples were completely melted in a sealed plastic bag in-situ
and then transferred into 12 mL glass vials.

200 Stream water at the glacier portal was sampled automatically two to three times a day during low and high flows from mid-
June to end of September in 2020 and 2021 using an ISCO 6712 full-size portable water sampler with 24 1L bottles, which
were half filled. Water bottles were transferred to 12 mL glass vials every one to two weeks. The sampler was placed in a
protected, shaded location to avoid water evaporation and the average summer air temperature measured at the nearby weather
station was 7 °C between July and September 2021.

205 From 2019 to 2021, we collected 39 liquid precipitation samples near the weather station at the glacier terminus (Fig. 1).
Rain water was sampled using a simple PVC funnel, which diverted rain into a plastic bag through a 2 mm plastic tube. All
samples represent the bulk isotopic composition of single rain events and were usually collected the day after the end of a
rain event. We defined rain events as days with rain, separated by at least one day without rain. In winter, we also sampled
fresh snow directly after a few snow events. Due to air temperatures below 0 °C, we assume that little snow transformation or
210 fractionation occurred, and that these samples therefore represent the isotopic composition of solid precipitation events.

All liquid samples were stored in 12 mL amber glass vials in the field, with air-tight screw caps containing a silicone rubber
septa. Glass vials were flushed with the sample water prior to sample storage to avoid contamination. All water vials were
brought to the laboratory and kept in a cold chamber until analysis. Water stable isotopes were measured using a Wavelength-
Scanned Cavity Ring Down Spectrometer (Picarro 2140i). The median analytical standard deviation of all samples was 0.04
215 and 0.25 ‰ (maximum standard deviation of 0.11 and 0.65 ‰) for $\delta^{18}\text{O}$ and $\delta^2\text{H}$, respectively. All values are expressed
relative to the international Vienna Standard Mean Ocean Water (VSMOW) standards (Coplen, 1994). All isotopic data as well
as detailed maps of sampling location have been published in Müller (2023a).

3 Numerical isotopic and glacio-hydrological modelling

We propose here a framework to model the share of snow melt, ice melt and rain of water reaching the portal of the Otemma
220 glacier. The model is separated in three main modules, which are calibrated [individually step wise, one after the other](#) (Fig. 2).
The first module corresponds to the mass balance model which simulates snow and ice melt. The mass balance model is val-

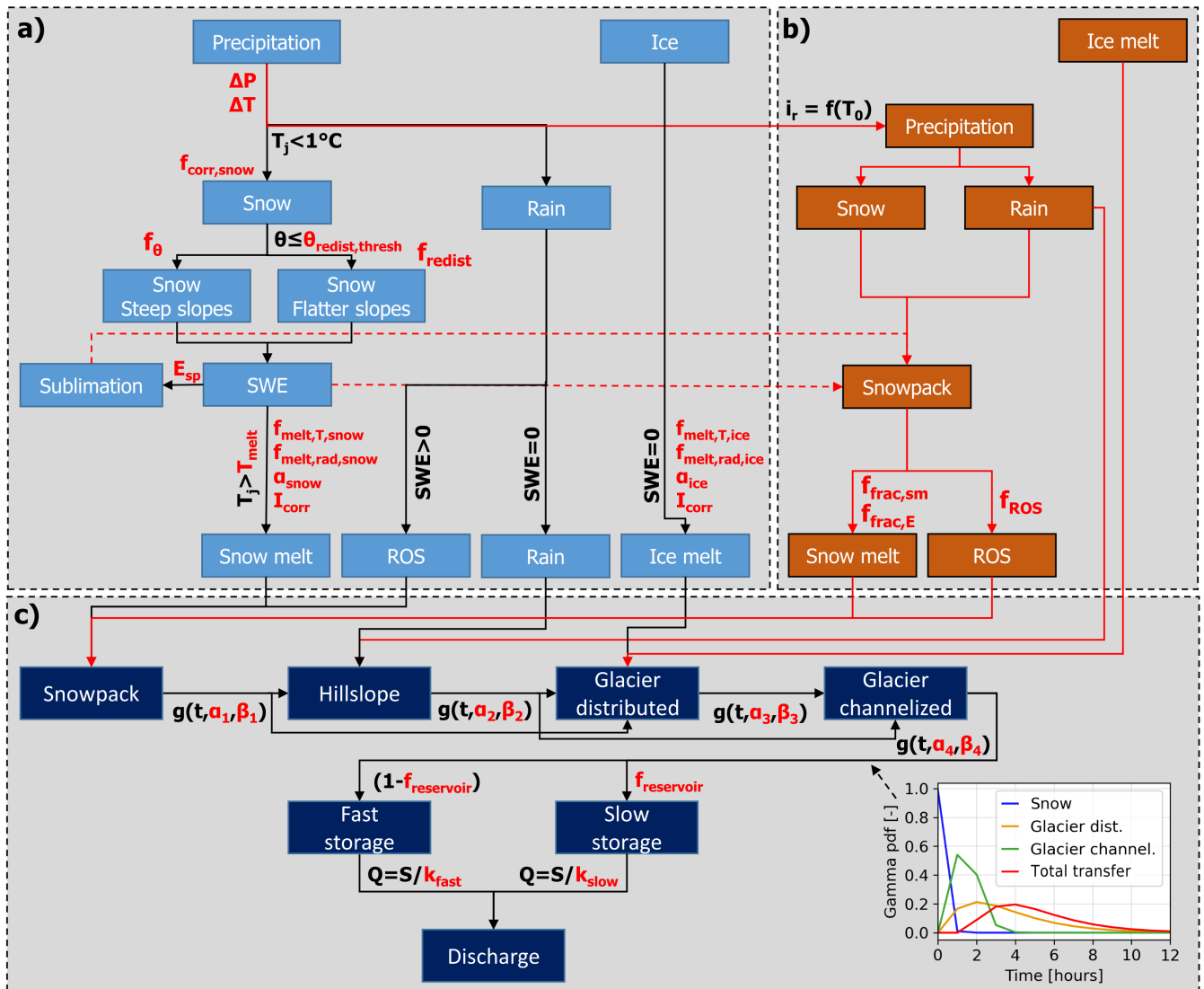


Figure 2. Schematic representation of the main modelling blocks of the combined isotope and glacio-hydrological model, divided into the independently calibrated main modules. Main calibration parameters are highlighted in red. (a) The mass balance module estimates amounts of snow melt, ice melt, rain-on-snow (ROS) and rain for each grid cell. (b) The isotopic module uses a calibration curve with air temperature (T_0) to estimate $\delta^2\text{H}$ of precipitation, while $\delta^2\text{H}$ of ice melt is defined based on ice melt samples on the glacier. (c) The hydrological transfer module consists of routing the water using a convolution of the water input and gamma distributions ($g(t, \alpha, \beta)$) which represent the travel time distributions of water through four different landcover types in the catchment. Water is finally transferred through a "glacial" fast and slow reservoir. The bottom right figure illustrates the gamma distributions for one specific cell.

idated with the measured streamflow at the glacier portal over the observed years. The second module estimates the isotopic composition of each water source based on the mass balance calculations, and the third module implements a hydrological

transfer routine that transfers water sources simulated for each model cell of the catchment to the glacier portal. All abbrevia-
225 tions, parameters and variables of the model are summarized in Table A1, including corresponding units.

The model domain, discretized into 200 x 200 m grid cells (total of 586 grid cells), corresponds to the catchment limits upstream of the glacier portal, where all water drained in the glacierized catchment converges (Fig. 1). For each cell, the mean elevation, slope and aspect were estimated using a 2 m resolution DEM of 2019 from swisstopo (2019).

~~Schematic representation of the main modelling blocks of the combined isotope and glacio-hydrological model, divided into
230 the independently calibrated main modules. Main calibration parameters are highlighted in red. (a) The mass balance module estimates amounts of snow melt, ice melt, rain-on-snow (ROS) and rain for each grid cell. (b) The isotopic module uses a calibration curve with air temperature (T_0) to estimate $\delta^2\text{H}$ of precipitation, while $\delta^2\text{H}$ of ice melt is defined based on ice melt samples on the glacier. (c) For each cell, the hydrological transfer module consists of routing the water using a convolution of the water input and gamma distributions ($g(t, \alpha, \beta)$) which represent the travel time distributions of water through four
235 different landcover types in the catchment. Water is finally transferred through a "glacial" fast and slow reservoir. The bottom right figure illustrates the gamma distributions for one specific cell. The following sections provide all model equations and assumptions. Apart from the mass balance model calibration using multi-objective functions (Sect. 3.1.7) and the snow isotopic module (Sect. 3.2) the glacio-hydrological is not particularly innovative and we encourage the readers to skip those parts for a faster read.~~

240 3.1 Mass balance model

Snow water equivalent (SWE) within the entire catchment was estimated at an hourly time step from October 2019 to October 2021 based on solid precipitation accumulation and ~~snow melt~~ an enhanced temperature-index snow melt model. Snow redistribution, snow sublimation or deposition are also accounted for.

3.1.1 Air temperature

245 For each cell j , air temperature (T_j) is estimated using measured air temperature (T_0) close to the glacier portal (2450 m a.s.l., Fig. 1) and corrected with the mean cell elevation (z_j) using a calibrated temperature lapse rate (Δ_T) following Eq. (1).

$$T_j = T_0 - \Delta_T \frac{z_j - 2450}{100} \quad (1)$$

We allow the temperature lapse rate to change seasonally because in alpine glacierized areas higher lapse rates occur in summer compared to winter (Rolland, 2003; Marshall et al., 2007). It is set to resemble a gaussian shaped function depending
250 on the day of the year (DOY) (Eqs. 2 & 3):

$$g(\text{DOY}) = \frac{1}{\sigma_{\Delta_T} \sqrt{2\pi}} e^{-\frac{1}{2} \left(\frac{\text{DOY} - \mu_{\Delta_T}}{\sigma_{\Delta_T}} \right)^2} \quad (2)$$

$$\Delta_T(\text{DOY}) = \frac{g(\text{DOY})}{\max(g(\text{DOY}))} f_{\Delta_T, \text{range}} + f_{\Delta_T, \text{inc}} \quad (3)$$

All four parameters of Eqs. (2) & (3) (μ_{Δ_T} , σ_{Δ_T} , $f_{\Delta_T, \text{range}}$, $f_{\Delta_T, \text{inc}}$) are calibrated for each year. An illustration of the calibrated functions is provided in Fig. D1c.

255 3.1.2 Incoming shortwave radiation

For each model cell, the corrected incoming shortwave radiation (I_{corr}) is estimated based on the measured incoming shortwave radiation measured at the weather station (I_0) by taking into account the terrain slope (θ in degree) and aspect (γ in degree) (Eq. 4). First, the radiation is increased with steeper slope by a certain factor ($f_{\text{rad}, \text{slope}}$) until a maximum slope threshold ($\theta_{\text{max}, \text{rad}}$) is reached (Eq. 5). Then, a factor ($\gamma_{\text{max}, \text{rad}}$) is subtracted to account for aspect. It corresponds to 0 when aspect is
 260 180 ° (south-facing slopes) and is increased linearly with terrain aspect facing north until it reaches a maximal calibrated factor ($\gamma_{\text{max}, \text{rad}}$). This factor is then scaled with slope, so that steep cells are more affected by aspect than flatter cells (Eq. 6). An illustration of the resulting function is provided in Fig. D1d.

$$I_{\text{corr}} = I_0 (f_{\text{rad}, \text{slope}, \text{tot}} - f_{\text{rad}, \text{aspect}, \text{tot}}) \quad (4)$$

$$f_{\text{rad}, \text{slope}, \text{tot}} = 1 + \cos\left(\frac{90}{\theta_{\text{max}, \text{rad}}} (\theta - \theta_{\text{max}, \text{rad}})\right) f_{\text{rad}, \text{slope}} \quad (5)$$

$$265 f_{\text{rad}, \text{aspect}, \text{tot}} = \gamma_{\text{max}, \text{rad}} \frac{|\gamma - 180|}{180} \sin(\theta) \quad (6)$$

3.1.3 Liquid and solid precipitation estimation

The temperature thresholds to separate liquid from solid precipitation are set to a lower value of 1 °C (below only snow) and an upper value of 2 °C (above only rain), with a linear fraction in between. For liquid precipitation, we use rain measurements (P_0) from the weather station at the glacier portal (2450 m a.s.l., Fig. 1). For solid precipitation, snowfall is inferred from the
 270 nearest automatic weather stations (P_{meteo}) located in Otemma for 2019/2020 and Arolla for 2020/2021 (cf. Sect. 2.2). A fixed snow correction factor ($f_{\text{corr}, \text{snow}}$) for the whole winter is calibrated for each year (Eq. 7). We then correct precipitation (P_j) for each cell j with elevation (z_j) based on a precipitation lapse rate (Δ_P) calibrated for each year.

$$P_j = \begin{cases} P_0 \left(1 + \Delta_P \frac{z_j - 2450}{100}\right) & \text{if } T_0 > 1^\circ\text{C} \\ f_{\text{corr}, \text{snow}} P_{\text{meteo}} \left(1 + \Delta_P \frac{z_j - 2450}{100}\right) & \text{if } T_0 \leq 1^\circ\text{C} \end{cases} \quad (7)$$

3.1.4 Snow redistribution

275 We account for snow redistribution based on terrain slope (θ) by defining a calibrated slope threshold ($\theta_{\text{redist,thresh}}$) above which snow redistribution occurs (Eq. 8). Above this threshold, we decrease the amount of solid precipitation (P_j) received by each model cell by a certain factor (f_θ). We then redistribute the corresponding total amount to all other cells by defining a redistribution function which uses an increase factor (f_{redist}) for solid precipitation (Eq. 8).

$$P_{\text{sf}} = \begin{cases} P_j(1 - f_\theta(\tan(\theta - \theta_{\text{redist,thresh}}))) & \text{if } \theta > \theta_{\text{redist,thresh}} \\ P_j f_{\text{redist}} & \text{if } \theta \leq \theta_{\text{redist,thresh}} \end{cases} \quad (8)$$

280 The value of f_{redist} for each cell is calibrated by defining a calibration objective function where the total monthly amount of solid precipitation removed from steep slopes ($\theta > \theta_{\text{redist,thresh}}$) equals the monthly total amount redistributed to all other cells based on their elevation. This method conserves the total mass of solid precipitation in a simple way without an estimation of curvature of connected cells, and compensates for local anomalies between observed and modelled SWE. An illustration of the resulting functions is provided in Fig. D1a & b.

285 3.1.5 Snow and ice melt

Snow melt is estimated using an enhanced temperature-index melt model (Gabbi et al., 2014) (Eq. 9). Ice melt at the glacier surface was estimated using the same equation with different parameter values.

$$M = \begin{cases} f_{\text{melt,T}} T_j + f_{\text{melt,rad}}(1 - \alpha_{\text{snow}}) I_{\text{corr}} & \text{if } T_j > T_{\text{melt}} \\ 0 & \text{if } T_j \leq T_{\text{melt}}, \end{cases} \quad (9)$$

$$\alpha_{\text{snow}} = 0.86 - 0.155 \log_{10}(T_{\text{acc}}) \quad (10)$$

290 where I_{corr} is the corrected incoming shortwave radiation (see also Eq. 4) and T_j the air temperature for the cell j . Snow albedo (α_{snow}) was estimated following the work of Gabbi et al. (2014). It is assumed to decrease from a value of 0.86 as a function of the accumulated daily maximum positive air temperature (T_{acc}) since the last snowfall (Eq. 10). The threshold temperature (T_{melt}) distinguishing between melt and no melt is a calibration parameter. The temperature melt factor ($f_{\text{melt,T}}$) as well as the shortwave radiation factor ($f_{\text{melt,rad}}$) were calibrated for snow and ice separately. The albedo of ice is set to 0.25
295 (Gabbi et al., 2014).

3.1.6 Sublimation and deposition

An estimation of the snow sublimation rate was required in this work since it may significantly impact the snowpack isotopic signature due to fractionation (Ala-Aho et al., 2017). Sublimation is estimated following Todd Walter et al. (2005) based on the difference of vapor density between the snow surface and the air divided by the resistance to vapor exchange, which requires

300 wind speed data and, in particular, an estimation of the snow surface temperature (T_{sp}). Wind speed is roughly estimated using
 data from the most nearby automatic weather station (see Sect. 2.2). Since no snow surface temperature data are available,
 we propose to estimate T_{sp} by first defining snow surface temperature similar to air temperature (T_j). Then, we estimate a
 simplified snow surface energy balance (E_{net}) based on its two main terms: net shortwave (S_{net}) and net longwave (L_{net})
 radiation (Stigter et al., 2021). When E_{net} is positive, usually due to the atmospheric shortwave radiation during clear-sky days,
 305 we assume that air and snow temperature are similar. When E_{net} is negative, usually during clear-sky nights when outgoing
 longwave radiation from the snow surface is the major energy flux, T_{sp} cools more than air. This cooling effect is calibrated by
 a temperature factor (f_E) following Eqs. (11) to (15). During cloudy nights and days, E_{net} usually remains close to zero due to
 limited incoming shortwave radiation (but increased atmospheric longwave radiation) and T_{sp} is close to T_j . More details on
 the snow energy balance and snow surface temperature can be found in the work of Stigter et al. (2021).

$$310 \quad T_{sp} = \min(T_j + E_{net}f_E ; 0^\circ C) \quad (11)$$

$$E_{net} = \min(S_{net} + L_{net} ; 0 \text{ J m}^{-2}) \quad (12)$$

$$S_{net} = (1 - \alpha_{snow})I_{corr} \quad (13)$$

$$L_{net} = \epsilon_{air}\sigma T_j^4 - \epsilon_{snow}\sigma T_{sp}^4 \quad (14)$$

$$\epsilon_{air} = (0.72 + 0.005T_j)(1 - 0.84f_{cloud}) + 0.84f_{cloud} \quad (15)$$

315 where σ is the Stefan–Boltzmann constant and $\epsilon_{snow} = 0.97$ is the emissivity of the snow surface. The emissivity of air (ϵ_{air})
 is estimated based on the fraction of cloud cover (f_{cloud}). The fraction of cloud cover was assessed by dividing the measured
 shortwave radiation (I_0) with the theoretical maximal shortwave radiation. f_{cloud} was set to 1 when less than 50 % of theoretical
 maximal shortwave radiation was measured at the weather station and was set to 0 otherwise (Todd Walter et al., 2005).

3.1.7 Calibration

320 Prior to calibration of the mass balance model, we initialised the model values for SWE and δ^2H by first running the model for
 one year with initial SWE = 0 for all cells (and uncalibrated model parameter values).

Mass balance model parameters calibration was then performed using PEST-HP. This model-independent algorithm itera-
 tively minimizes the variance of the error between model outputs and corresponding field observations via inverse estimation
 (Doherty, 2015). We defined three data sets of field observations. The first corresponds to the measured end-of-winter SWE on
 325 the main lobe of the glacier. The second data set corresponds to the annual ice melt measured at the ablation stakes at the end
 of each summer (Fig. 1). The third data set of field observations corresponds to maps of the temporal snow cover during the
 entire ablation periods. We used daily 3 m resolution Planet satellite imagery (PlanetScope Scene (Team Planet, 2017)) and
 manually identified clear sky days during the summer months of 2020 and 2021. We then automatically identified snow cover
 using a K-Means unsupervised learning algorithm from Google Earth Engine (Arthur and Vassilvitskii, 2007) and created,
 330 for approximately every second week during the melting seasons, maps of snow presence/absence for our discretised model

domain. We set PEST-HP to minimize the error between modelled and observed snow presence/absence for each grid cell and all available snow maps (maps with dates of calibration are available in Fig. E2 to E5). This procedure leads to a better determination of the temporal evolution of the snowline and should improve the modelled SWE estimation especially in zones where no direct SWE observations are possible (Barandun et al., 2018).

335 PEST-HP is used to optimize a multi-objective function based on the three field datasets. The weight of the snow cover objective function was set six and three times higher than the other two objective functions for 2020 and 2021 respectively (see also Sect. 5.1). All 26 calibration parameters of the model were calibrated separately for each hydrological year (starting October 1st) but the calibration procedure was performed by simulating both years at once and calibrating twice all parameters, so that SWE and snow cover simulated at the end of the first year are used as initial values for the second simulation year.

340 Model parameters were calibrated for both years in order to model the stream isotopic composition precisely and because both years showed different weather conditions (2020 was drier than 2021). Table A1 summarizes the results of the calibration procedure.

3.2 Snow isotopic module

3.2.1 Basic model formulation

345 Due to the strong correlation between water stable isotopes of oxygen ($\delta^{18}\text{O}$) and deuterium (and $\delta^2\text{H}$), we base the rest of this study on $\delta^2\text{H}$ only.

Using SWE values from the mass balance model, we estimate the mean snowpack isotopic composition (i_{sp}) for each model cell (Fig. 2). The same approach as proposed by Ala-Aho et al. (2017) is used to estimate the isotopic composition of the snowpack and of snow melt over time. An amount-weighted approach based on a precipitation input in the form of rain (P_r) or snowfall (P_{sf}), snow sublimation (E_{sp}) and snow melt (M_{snow}) is applied (Eq. 20). A simple fractionation routine is used

350 for snow melt (i_{sm}) and snow sublimation (i_{E}) using two calibration parameters ($f_{\text{frac,sm}}$, $f_{\text{frac,E}}$) and n_{melt} , the number of days since the beginning of snow melt (Eqs. 16 & 17).

$$i_{\text{sm}} = i_{\text{sp}} - \frac{f_{\text{frac,sm}}}{n_{\text{melt}}} \quad (16)$$

$$i_{\text{E}} = i_{\text{sp}} - f_{\text{frac,E}} \quad (17)$$

355 $i_r = a_r + b_r T_0 \quad (18)$

$$i_{\text{ROS}} = i_{\text{sp}} f_{\text{ROS}} + i_r (1 - f_{\text{ROS}}) \quad (19)$$

$$i_{\text{sp}}^t = \frac{i_{\text{sp}}^{t-1} h_{\text{SWE}}^{t-1} + i_r^t f_{\text{ROS}} P_r^t + i_{\text{sf}}^t P_{\text{sf}}^t - i_{\text{E}}^t E_{\text{sp}}^t - i_{\text{sm}}^t M_{\text{snow}}^t}{h_{\text{SWE}}^{t-1} + f_{\text{ROS}} P_r^t + P_{\text{sf}}^t - E_{\text{sp}}^t - M_{\text{snow}}^t} \quad (20)$$

The year-round isotopic composition of the precipitation as rain (i_r) or snowfall (i_{sf}) is determined by computing a linear regression curve between the measured air temperature at the weather station (T_0) and the isotopic composition of sampled

360 precipitation events (Eq. 18, see also Sect. 3.2.2).

3.2.2 Air temperature and precipitation stable isotopes relationship

To estimate the snowpack isotopic composition, we relate the isotopic composition of each precipitation event to air temperature. For each precipitation sample, the corresponding temperature of the event is estimated by calculating the average air temperature weighed by the amount of precipitation measured each 10 minutes during the previous day. No clear trend in $\delta^2\text{H}$ with elevation could be observed from rain samples obtained 8 times during the melt season at both 2450 and 2800 m a.s.l. For this reason, no isotopic lapse rate is used and the isotopic composition of precipitation events was similar for the entire catchment. This choice is discussed in Sect. 5.3.

In order to assess the uncertainty in the relationship between air temperature and precipitation $\delta^2\text{H}$, we define a normally distributed error for both parameters. We apply a Gaussian distribution with a standard deviation (σ) of 1 °C for air temperature and 5 ‰ for $\delta^2\text{H}$. We then perform 5000 iterations for which we randomly picked values in their distributions and then calculated a linear fit each time. These 5000 realizations are assumed to represent the uncertainty range of this relationship. This uncertainty margin is used to provide a sensitivity analysis of the impact of the air temperature and precipitation $\delta^2\text{H}$ relationship on the isotopic snow melt model results.

3.2.3 Rain-on-Snow (ROS)

ROS incorporation in the snowpack and its water release is a complex process, which may have a strong impact on the snowpack isotopic composition, depending on whether rain water leaks through the snowpack, is stored or refreezes in the snowpack (Juras et al., 2017; Beria et al., 2018). The isotopic model from Ala-Aho et al. (2017) assumes a complete ~~incorporation of the rain in~~ mass exchange (hereafter described as isotopic mixing) between rain and the snowpack, ~~however field-based studies have highlighted partial~~ so that the snowpack isotopic composition results from the water equivalent-weighted average of rain and snow. Field-based studies have however highlighted partial isotopic mixing of rain and snowmelt in the snowpack (Juras et al., 2017; Rucker et al., 2019a). To account for the latter, we introduce a factor (f_{ROS}) which defines the fraction of rain water which is ~~incorporated isotopically mixed~~ in the snowpack ~~and which contributes to modifying its isotopic composition~~ (Eq. 19). As observed in the work of Juras et al. (2017), we assume that ~~the total amount of all~~ ROS event water is released from the snowpack ~~but part of this release (equivalent to $f_{\text{ROS}}P_{\text{ROS}}$) is composed of previously stored snow-melt water pushed~~ out of the snowpack. ~~The~~ with a delay based on a transfer function (see Sect. 3.3.2). However, ~~the~~ isotopic composition of the ~~rain water leaving the snowpack~~ ROS water (i_{ROS}) is then composed of ~~released from the snowpack is~~ a mix of ~~snow-melt water and rain water~~ (rain water which did not isotopically mix in the snowpack (equivalent to $i_r(1 - f_{\text{ROS}})$) and fully mixed water (see Eq. 19). We defined a simple calibration function between SWE and f_{ROS} , where f_{ROS} increases with lower SWE. This relationship is based on the assumption that, during the melting season, thicker snowpacks are less ripe (due to less melt) ~~and~~. In unripe snowpack, Juras et al. (2017) showed that water infiltration is faster because of more preferential flow paths ~~so that the incorporation of rain water in the snowpack is only partial and that less isotopic mixing occurs~~. In thinner snowpacks, we assume that snow is ripe, which ~~leads to more rain water trapped and mixed~~ was shown to lead to more isotopic mixing of the rain within the snowpack (Juras et al., 2017).

3.2.4 Snow isotopic module calibration

395 The three isotope parameters ($f_{\text{frac,E}}$, $f_{\text{frac,sm}}$, f_{ROS}) were calibrated manually following simple rules. First, the resulting snow melt $\delta^2\text{H}$ value should remain below the measured stream $\delta^2\text{H}$ during the early melting season since snow melt is isotopically lighter than ice melt (snow melt is the end-member with the most negative values). Secondly, at the based on the following rules. At the onset of snow melt, when snow still covers the glacier (in June in this work), snow melt $\delta^2\text{H}$ should be close to stream $\delta^2\text{H}$ since snow melt is the major contributor at that time. Then if snowpack data are available, the modelled snowpack
400 $\delta^2\text{H}$ at a grid cell should also be similar to the measured depth-averaged isotopic composition of the corresponding snowpit (Fig. 1). Finally, during the first half of the melting season (July here), we observed that daily isotopic variations in the stream showed a minimum (more depleted) in the morning and a maximum (more enriched) during the afternoon. This is likely due to an increased contribution from ice melt in the afternoon compared to snow melt since ice melt shows a less depleted $\delta^2\text{H}$ value than snow melt at that time. During the late melting season (mid/end August to September), the stream isotopic minimum
405 occurs in the afternoon, indicating here that the snow melt isotopic composition has become more enriched than ice melt, due to snow fractionation and rain-on-snow. The moment when the stream $\delta^2\text{H}$ signal switches from a minimum in the morning to a minimum in the afternoon indicates when snow melt $\delta^2\text{H}$ becomes isotopically heavier than ice melt. In our case, snowpack or snow melt data were limited and we lacked data for the late summer. For this reason, we first calibrated the hydrological transfer module without isotopes (based on discharge data only, see also Sect. 3.3.6). This allowed us to compare the modelled
410 and measured isotopic composition of the stream (see Fig. 8) and then to adapt the isotope parameters to minimize the error between both curves.

3.3 Hydrological transfer module

A simple hydrological transfer scheme is used to transfer water with its isotopic composition from its input grid cell to the catchment outlet. In this module, we do not consider any interactions between hydrologically connected cells but only use the
415 hydrological path length from each cell to the catchment outlet. We divided the hydrological paths in four different categories: (1) flow through the snowpack; (2) flow through the hillslope sediments (if outside of the glacier); (3) flow through the en-/subglacial distributed system, and (4) flow through the en-/subglacial channelized system. The total flow path from each grid cell to the glacier portal was calculated using the Flow Distance tool (ArcGIS Pro v2.3) and a 2 m DEM of 2019 (swisstopo, 2019). For each category, we apply a convolution between the water input at time t and a time-dependent gamma distribution
420 probability density function ($g(t, \alpha_g, \beta_g)$) as described in Eqs. 21 & 22. Here, the gamma function is used to reproduce a realistic transit time distribution (TTD) of the water input (McGuire and McDonnell, 2006). The convolution of the TTD at each time step provides the total TTD of the water from each grid cell to the glacier portal (Fig. 2).

$$\delta_{out}(t) = \int_0^{\infty} g(\tau)\delta_{in}(t-\tau)d\tau = g(t) * \delta_{in}(t), \quad (21)$$

$$g(t, \alpha_g, \beta_g) = \frac{\beta_g^{\alpha_g} t^{(\alpha_g-1)} e^{-\beta_g t}}{\Gamma(\alpha_g)}, \quad (22)$$

425 where $(\delta_{in}(t))$ is any given input of water at time t and $(\delta_{out}(t))$ is the output water flux.

To estimate the TTD, the parameters of the gamma distribution need to be defined. For each of the four hydrological flow categories, we estimate the mean transit time (t_{MTT}) of the water based on physical properties of each category and use this travel time to define the mode of the gamma distribution ($t_{MTT} = \frac{\alpha_g-1}{\beta_g}$). The dispersion of the flow for the gamma distribution is defined by a dispersion factor ($D = \alpha_g-1$).

430 3.3.1 Hillslope routing

We assume that the landcover outside glacierized areas is mainly composed of hillslope sediments. [Those coarse sediments act as a rapid groundwater reservoir that infiltrates all rain and snow melt water \(Müller et al., 2022\)](#). In some steep parts, bedrock is apparent and therefore the estimated transit time may be somewhat slower than in reality as water flows faster on the bedrock. However, this simplification should not lead to a large bias as sediments still dominate the hillslopes (Müller et al.,
435 2022). For the latter, the average transit time (t_{MTT}) from each grid cell to the glacier surface was calculated using an estimated groundwater pore velocity (Eq. 23). Pore velocity is defined for kinematic subsurface saturated flow (MacDonald et al., 2012) as a function of slope (θ), aquifer distance (L_a), aquifer porosity (η) and hydraulic conductivity (K_s). We selected a porosity of 0.3 and a hydraulic conductivity for talus slopes of $5 \times 10^{-2} \text{ m s}^{-1}$ based on previous research (Müller et al., 2022).

$$t_{MTT} = \frac{L_a}{v_p} = \frac{L_a \eta}{K_s \sin(\theta)} \quad (23)$$

440 3.3.2 Snowpack routing

For snow melt or ROS events, a TTD through the snowpack is used. Here, we calibrated an average pore velocity in the snowpack with an initial velocity of 1200 mm h^{-1} following Juras et al. (2017). As for hillslope, the average transit time (t_{MTT}) through the snowpack is used to define the mode of the gamma distribution. Since SWE evolves with time, the TTD through the snowpack changes with time and was recalculated for each day.

445 3.3.3 Glacier routing

Once the flowpath reaches the glacier ice surface, we defined two different water flow categories. The en-/subglacial drainage system was considered to be either distributed or channelized. During the winter, less melt and creep closure occurs due to ice dynamics (Flowers, 2015). Subglacial channels tend to close, leading to an inefficient distributed drainage system characterized by slow water flow. During summer, larger conduit-like subglacial channels tend to develop and extend up-glacier with the

450 recession of the temporal snowline (Nienow et al., 1998). Therefore, based on the temporal snow cover estimated with the mass balance model, we calculated the mean distance between the glacier portal and the first 5 grid cells on the glacier with snow cover to define the length of the channelized flow. We neglect supraglacial meltwater runoff here. However, the calibration of the glacier routing may compensate for this simplification by artificially increasing the subglacial velocity. The length of the channelized flow and the corresponding TTD for each grid cell changes through time since it is based on the temporal snow
 455 cover evolution. The length of the distributed flow is computed as the difference between the total flow length on the glacier and the channelized flow length.

For the snow-covered distributed en-/subglacial system, the mean velocity could not be measured directly. Here, an initial value of 0.1 m s^{-1} was used following Nienow et al. (1998). For the summer channelized system, the velocity was defined based on 25 dye tracing injections. Measured velocity ranged between 0.29 and 0.83 m s^{-1} and a velocity of 0.8 m s^{-1} was
 460 selected to represent a fully channelized system.

3.3.4 Total runoff transfer to the outlet

The convolution of the combined gamma distributions (snow, hillslope, distributed subglacial drainage, channelized subglacial drainage) with the different water sources time series (rainfall ($P_{r,j}$), ROS, ($P_{ROS,j}$), snow melt ($M_{\text{snow},j}$), or ice melt ($M_{\text{ice},j}$)) obtained from the mass balance model for each grid cell j with an area (A_j) provides the estimated discharge contribution at
 465 the catchment outlet per water source and per cell. The sum over all grid cells corresponds to the total discharge from each water source. The case for snow melt is illustrated in Eqs. 24 & 25.

$$Q_{\text{sm,tot}} = \sum_{\text{cell}=1}^{\text{cell}=n} \left(g_j(t, \alpha_g, \beta_g) * (M_{\text{snow},j} A_j) \right) \quad (24)$$

where $Q_{\text{sm,tot}}$ is the total discharge from snow melt at the catchment outlet. The same approach can be applied to estimate the mean isotopic composition of the other water sources by applying the same convolution to the multiplication of the precipitation
 470 or melt time series and the isotopic signal (i_{sm} , i_{ROS} and i_r). This assumes that the isotopic composition of a water input is transported and redistributed to the catchment outlet following the same TTDs. The sum of each grid cell divided by the total discharge corresponds to the amount-weighted average isotopic composition of the corresponding water source (Eq. 25 for the case of snow melt).

$$i_{\text{sm,tot}} = \frac{\sum_{j=1}^n \left(g_j(t, \alpha_g, \beta_g) * (i_{\text{sm},j} M_{\text{snow},j} A_j) \right)}{Q_{\text{sm,tot}}} \quad (25)$$

475 3.3.5 Fast and slow glacier storage

It is likely that part of the water is temporally stored in some areas of the en-/subglacial drainage network. To account for this, we ultimately define two reservoirs which represent a fast and slow linear storage. The integrated discharge of all water sources after the convolution with the gamma distributions is then separated between both reservoirs based on a calibrated fraction

($f_{\text{reservoir}}$), which assigns how much goes into the slow reservoir. The outflow discharge of each reservoir finally depends on a
480 calibrated response time constant (k). For the fast reservoir, this results in (Eq. 26).

$$Q_{\text{fast}} = \frac{S_{\text{fast}}}{k_{\text{fast}}}, \quad (26)$$

where S_{fast} is the filling of the reservoir. The slow reservoir response is computed in analogy to the equation above. The isotopic composition of each reservoir is separated between all water sources and is assumed to be fully mixed at each time step.

3.3.6 Hydrological transfer calibration

485 The calibration of the entire hydrological transfer module (including hillslope routing, snow routing, routing of distributed subglacial drainage and of channelized subglacial drainage and transfer via two linear reservoirs) was also performed using the optimisation algorithm PEST-HP, as already proposed in other glacio-hydrological studies (e.g., Immerzeel et al., 2012). We set three objective functions. The first function minimizes the error between observed and simulated discharge at the catchment outlet at an hourly time step. The second function optimizes the amplitude of daily stream discharge variations, which is
490 a typical feature of glacier streams and which tends to increase during the summer season (Nienow et al., 1998; Lane and Nienow, 2019). Finally, the last objective function aims to minimize the difference between the observed and modelled $\delta^2\text{H}$ of the stream.

~~We finally tested the differences in model performance by using only the discharge data or by adding~~ The model was first calibrated based on discharge data only (first two objective functions). In a second phase, the water isotopes ~~for the~~
495 ~~calibration objective function was also included in order to compare the model performance (see Fig. 6).~~ The calibration was performed by only including data for the summer 2020 (26 June to 15 September) and 2021 (8 June to 20 June). The first two weeks of June 2021 were included as they were not recorded in 2020 and represent the initial significant increase in streamflow after winter (when discharge becomes larger than $1 \text{ m}^3 \text{ s}^{-1}$). The period from 20 June 2021 to 15 September 2021 was then used to evaluate the model performance.

500 3.4 Mixing model for water sources using water stable isotopes

In order to estimate the contribution from rain, snow and ice melt, a three components mixing model needs to rely on two independent tracers. Here, since we only rely on water stable isotopes, we propose estimating the shares of rain (ϕ_{rain}) and rain-on-snow (ϕ_{ROS}) using the output discharge of the hydrological transfer module divided by the total modelled discharge at the glacier portal. Then, we only use isotopes to estimate the share of snow (ϕ_{snow}) and of ice melt (ϕ_{ice}) following Eq. 27. The
505 isotopic composition of rain (i_r) and snow (i_{sm}) is estimated using the isotopic model. The isotopic composition of ice melt (i_{ice}) is defined as constant through the year based on our measurements.

$$\phi_{\text{ice}} = \frac{i_{\text{stream}} - i_{\text{sm}} - (i_{\text{r}} - i_{\text{sm}})\phi_{\text{rain}} - (i_{\text{ROS}} - i_{\text{sm}})\phi_{\text{ROS}}}{i_{\text{ice}} - i_{\text{sm}}} \quad (27)$$

$$\phi_{\text{rain}} = \frac{Q_{\text{rain}}}{Q_{\text{stream}}} \quad (28)$$

$$\phi_{\text{ROS}} = \frac{Q_{\text{ROS}}}{Q_{\text{stream}}} \quad (29)$$

510 4 Results

4.1 Isotopic measurements in the field

Between July 2019 and October 2021, we measured the water $\delta^2\text{H}$ as well as the water electrical conductivity (EC) at different locations within the catchment. We summarize all results in Fig. 3. The rain water EC has a median value of $26 \mu\text{S cm}^{-1}$.

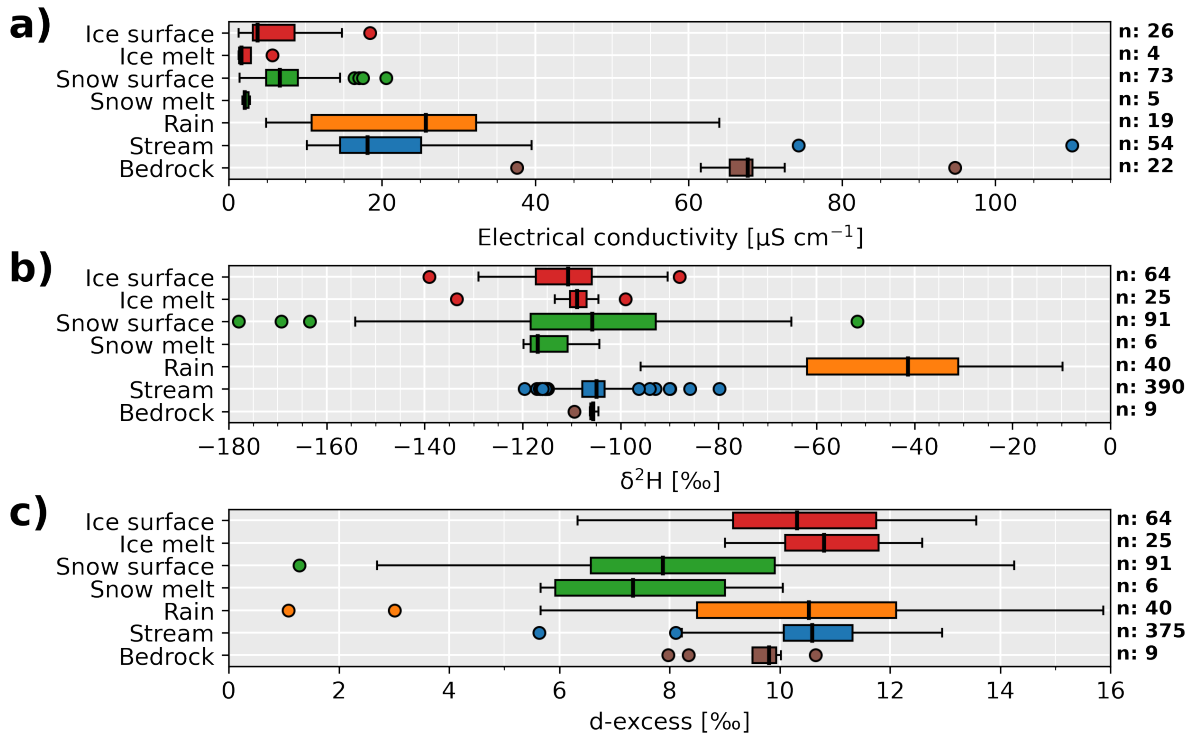


Figure 3. Boxplots of all water sources collected between July 2019 and October 2021 including water exfiltrations from the bedrock sidewalls. **(a)** Measured water electrical conductivity; **(b)** $\delta^2\text{H}$ of water stable isotopes and **(c)** corresponding d-excess. The total number of samples (n) is indicated on the right.

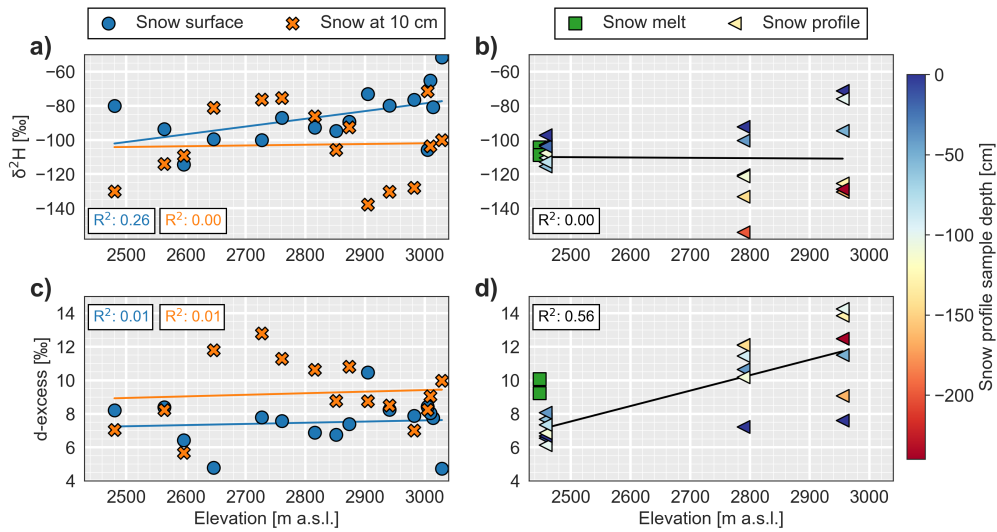


Figure 4. Isotopic composition of snow samples with elevation collected on 28 May 2021 on the main glacier lobe (Fig. 1). (a) Snow samples collected at the surface and at the same location between 10 and 20 cm depth. (b) Snow profiles with sampling depth (0 to -250 cm) indicated by the colorbar. The snow melt found at the bottom of the lowermost profile is also indicated (green rectangles). (c) & (d) Corresponding results for d-excess. Linear regression curves for sample class with their coefficient of determination (R^2) are also shown.

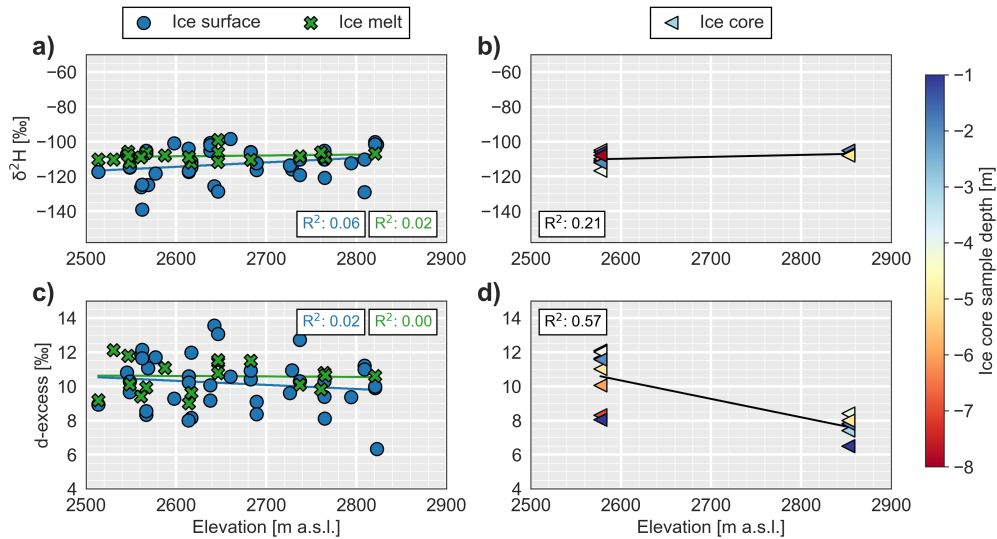


Figure 5. Isotopic composition of ice samples with elevation collected between 2020 and 2021 on the main glacier lobe (Fig. 1). The scale of the y-axes is similar to Fig. 4 for comparison. (a) Solid ice samples collected at the glacier surface and ice melt water samples collected in gullies at the glacier surface. (b) Ice core samples with sampling depth (-1 to -8 m) indicated by the colorbar. (c) & (d) Corresponding results for d-excess. Linear regression curves for each sample class with their coefficient of determination (R^2) are also shown.

Snow and ice samples have lower EC values, usually below $10 \mu\text{S cm}^{-1}$, likely due to the preferential elution of solutes in the snowpack (Costa et al., 2020). Interestingly, the glacial meltwater stream shows systematically higher EC values than the snow and ice samples, even during the peak snow and ice melt period. Regarding water stable isotopes, only rain has a significantly different composition (Fig. 3). The surface snow and ice samples have similar $\delta^2\text{H}$ ranges and show a large scatter, which completely overlap with the stream signal. As suggested in other studies (e.g., Beria et al., 2018), the $\delta^2\text{H}$. The composition of the snow melt samples shows less scatter than the snow surface samples. In addition to $\delta^2\text{H}$, we also report d-excess ($\text{d-excess} = \delta^2\text{H} - 8\delta^{18}\text{O}$). The isotopic signature of global precipitation follows a linear relationship called the global meteoric water line with $\delta^2\text{H} = 8\delta^{18}\text{O} + 10$. During non-equilibrium processes such as snow sublimation, the snowpack becomes more rapidly enriched in ^2H than ^{18}O , leading to a decrease in the d-excess value compared to its reference value of 10 (see Beria et al. (2018) for a more complete review). Therefore, the snow surface and snow melt d-excess values appear lower than the other water sources (Fig. 3).

Close to the date of maximum end-of-winter snow accumulation on 28 May 2021, snow surface samples show a large $\delta^2\text{H}$ variability with no clear tendency with elevation ($R^2=0.26$, Fig. 4a). Snow samples at the same locations but at a depth of 10 cm have different values with no clear trend. The snowpack $\delta^2\text{H}$ profiles appear stratified with a tendency towards more isotopically depleted snow with depth, reflecting the colder air temperature of the snowfall in the early winter season, which was conserved in the snowpack.

D-excess at the snow surface shows no particular trend with elevation but appears lower than for samples at 10 cm depth (Fig. 4c). This is likely due to snow sublimation at the surface. The d-excess of the snow profiles shows a more significant trend with elevation, likely due to more evaporative fractionation at low elevation and potential condensation and deposition of depleted water vapor at higher elevation. A d-excess lapse rate with elevation has been reported for other high mountain catchments (Carroll et al., 2022b; Sprenger et al., 2023).

From all snow samples collected each year, no significant seasonal trend can be observed (Fig. C1). It was expected that the snowpack would become gradually more enriched in heavier isotopes due to ROS events (Juras et al., 2017) and fractionation from snow sublimation and melt (Beria et al., 2018). Such behavior is difficult to observe for surface snow samples since the spatial variance of their isotopic composition is large and not representative of the whole snowpack composition.

The $\delta^2\text{H}$ of the surface ice shows a smaller variability than surface snow and no trend with elevation (Fig. 5). Superficial ice melt samples show the least scatter likely due to more mixing of the ice melt water at the surface (Fig. 5). Least scatter than surface ice. Two ice cores reaching 5 and 8 meters below the ice surface were also analyzed and show limited variations in $\delta^2\text{H}$ with depth, while their average value is close to the ice melt samples. There seems to be a more significant trend in d-excess for the ice cores with elevation but this trend relies only on two sampling locations.

Isotopic composition of snow samples with elevation collected on 28 May 2021 on the main glacier lobe (Fig. 1). (a) Snow samples collected at the surface and at the same location between 10 and 20 cm depth. (b) Snow profiles with sampling depth (0 to 250 cm) indicated by the colorbar. The snow melt found at the bottom of the lowermost profile is also indicated (green rectangles). (c) & (d) Corresponding results for d-excess. Linear regression curves for sample class with their coefficient of determination (R^2) are also shown.

550 Isotopic composition of ice samples with elevation collected between 2020 and 2021 on the main glacier lobe (Fig. 1). The scale of the y-axis is similar to Fig. 4 for comparison. (a) Solid ice samples collected at the glacier surface and ice melt water samples collected in gullies at the glacier surface. (b) Ice core samples with sampling depth (-1 to -8 m) indicated by the colorbar. (c) & (d) Corresponding results for d-excess. Linear regression curves for each sample class with their coefficient of determination (R^2) are also shown.

4.2 Mass balance model calibration results

555 The mass balance model parameters were calibrated for both years against measured SWE, measured ice melt and mapped seasonal snow cover (Table A1). The calibrated temperature lapse rate shows a maximum around late May to early June, a mean value of 0.42 and 0.48 °C per 100 m for 2020 and 2021, and a maximal seasonal variation of 0.18 °C per 100 m (Fig. D1c). Regarding snow redistribution, both calibration years show a similar slope correction factor, with a slope threshold of 32 ° above which snow redistribution occurs towards gentler slopes (Fig. D1a). The calibration of the snow redistribution is relatively similar for both years, with some redistribution near the glacier terminus and above an elevation of 2800 m a.s.l. (Fig. D1b). An important snow redistribution occurs only in 2021 at high elevations (3400 to 3600 m a.s.l.), which mainly corresponds to few very small high-elevated hanging glaciers, where snow redistribution from the nearby steep rock walls is likely. These elevated zones represent a limited total area of the catchment (3 %) so that the impact on the total mass balance is limited. The radiation correction factor varies between 1 for flat slopes and 2.5 for south-facing slopes around 60° (Fig. D1d).
565 Finally, a precipitation lapse rate of 2.2 and 2.6 % per 100 m for 2020 and 2021 was found (Table A1).

Overall, the model shows good performance for SWE, although the model results show less variation with elevation local variations than the point SWE measurements which are more spatially variable (Fig. E1). The Therefore, the root mean square errors (RMSE) for SWE are 97.9 and 100.3 mm over the hydrological years (starting October 1st) 2019/2020 and 2020/2021 respectively. Those results are similar to other advanced snow models where RMSE values are in the range of 75 to 150 mm w.e. for such elevated catchments (Mott et al., 2023). The RMSE values for ice ablation are 237.5 mm (in water equivalent, hereafter w.e.) for 2019/2020 and 263.8 mm w.e. for 2020/2021. The mean error of the snow and ice mass balance calculations is close to 0 mm w.e., except for the snow mass balance in 2020, for which the model seems to overestimate SWE with a mean error of 45.7 mm. The mapped temporal snow cover evolution is well represented by the model during the entire melting season, showing similar patterns of melt, with earlier snow disappearance on steep south-facing slopes (Fig. E2 to E5). In 2020, one summer snow event seems underestimated by the model, leading to a constant bias in the modelled snow cover fraction after July 2020 (Fig. E6). In 2021, the modelled snow cover evolution fits well with the mapped extents during the whole melting season, with a somewhat earlier snow disappearance at high elevation, potentially due to precipitation underestimation in this zone.

575 Catchment-wide average snow melt over the hydrological years is 1860 and 1527 mm w.e. for 2019/2020 and 2020/2021, and 1265 and 958 mm w.e. for ice melt. Catchment-wide liquid precipitation amounts to 227 and 320 mm, snow sublimation to 84 and 82 mm w.e., and snow deposition to 34 and 14 mm w.e. for 2019/2020 and 2020/2021. Although sublimation losses

were simulated with a simple routine, modelled amounts and rates are in a similar range compared to other studies in high mountain catchments (e.g., Strasser et al., 2008; Stigter et al., 2018).

585 Finally, the results of the modelled mass balance losses (through rainfall, snow melt and ice melt) at a daily timescale appear to match well with the measured discharge at the glacier portal (Fig. D2). In particular, the cumulative mass balance follows well the cumulative measured discharge, except for September 2020, when the modelled mass balance is overestimated compared to the measured discharge.

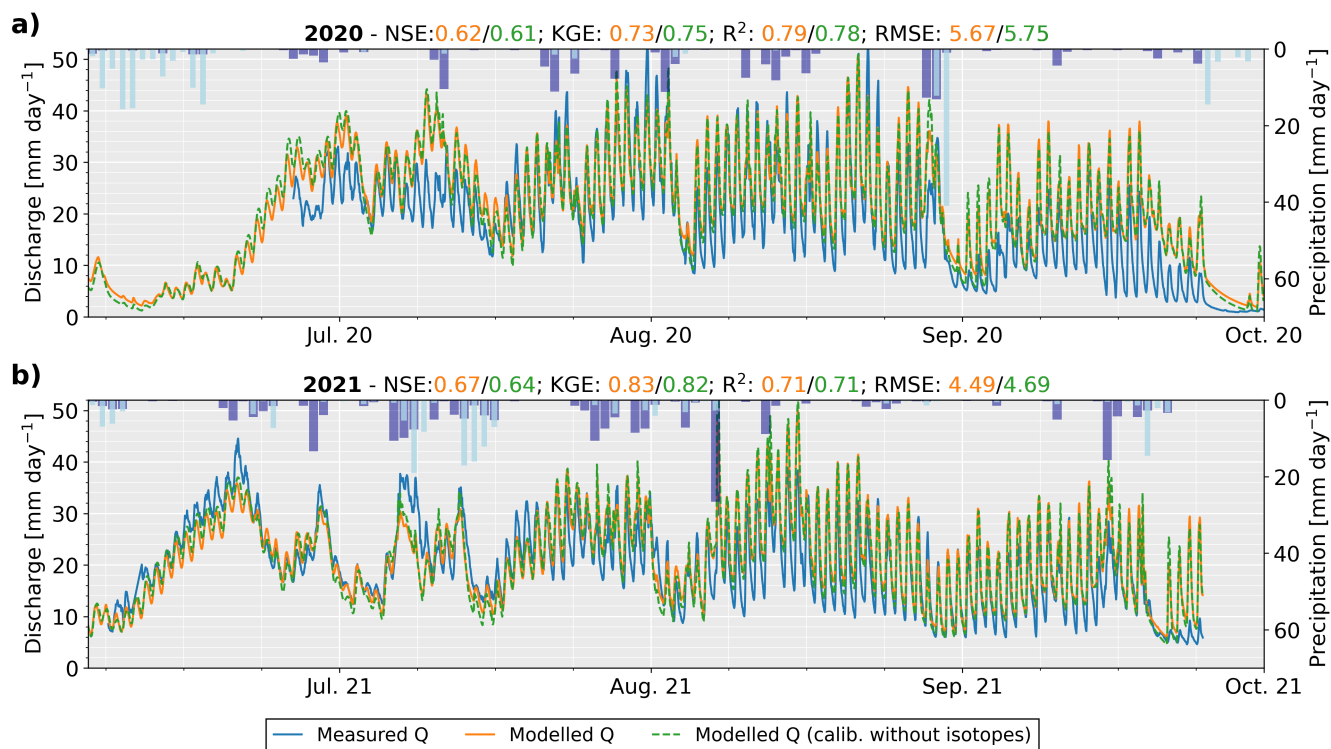


Figure 6. Comparison between hourly measured discharge (Q) at the glacier portal and modelled discharge from the combined mass balance and transfer model for the melting season of 2020 (a) and 2021 (b). Modelled discharge is shown when calibrating the hydrological transfer module with all three objective functions with the stream isotope dataset (orange curve) or without the stream isotopes (dashed green curve). Discharge is expressed in mm per day and corresponds to liters per day divided by the catchment area in m². For each year, we show the Nash-Sutcliffe efficiency (NSE) and Kling-Gupta efficiency (KGE), as well as the coefficient of determination (R²) and the root mean square error (RMSE). The color corresponds to the model discharge with or without isotopes for calibration. Daily solid (light blue) and liquid (dark blue) precipitations are shown as inverted bars.

4.3 Hydrological transfer module results

The calibration of the hydrological transfer parameters was performed in a second separate step following the mass balance model calibration. ~~Parameters~~ We tested calibration with and without including stream $\delta^2\text{H}$ as an objective function in PEST-HP. Calibrated parameters are summarized in Table A1 ~~–~~

~~Hillslope parameters calibration leads to a lower K_s value than initialized, which significantly smoothes out the response from the hillslope water inputs. The channelized en-/subglacial routing shows a similar calibrated velocity ($v_{\text{channelized}}$) as measured, with limited dispersion ($D_{\text{channelized}}$, dispersion decreases with increasing value). The distributed en-/subglacial routing has a slower velocity ($v_{\text{distributed}}$) than the channelized system, with more dispersion ($D_{\text{distributed}}$). The rain and snow melt infiltration ($v_{\text{ROS}}, v_{\text{sp}}$) through the snowpack is fast and leads to a transit time of less than an hour for all model grid cells. The parameter estimation of the fast reservoir indicates that it collects 55 % of all water and has a response time constant (k_{fast}) of 1 hour. The rest of the inflow is stored in a slow reservoir for which a response time (k_{slow}) of 51 hours is estimated via calibration.~~–

~~The final discharge results for the calibration with isotopes. Results~~ are shown in Fig. 6. ~~The routing time estimated from $D_{\text{channelized}}$ and $D_{\text{distributed}}$ combined with the seasonal evolution of their water flowpath length results in an accurate representation of~~

~~Over the entire melting season, the calibration of the transfer module led to a satisfying modelled discharge at an hourly time step. In particular, the increase in the magnitude of daily discharge fluctuations occurring during the melting season as discussed by Lane and Nienow (2019), during the melt season due to a switch from a distributed to a channelized system (Lane and Nienow, 2019) was well reproduced. This suggests that the modelled evolution of the glacier drainage system based on the distance of the snow line limit was a satisfying proxy for the channelized system.~~ Discharge recessions during short cold spells are also well simulated thanks to the slow reservoir. The hydrological transfer model was only calibrated against data from 2020, but the model performance appears ~~as good even slightly better~~ for 2021. This behaviour is confirmed by the Nash-Sutcliffe efficiency (NSE) and Kling-Gupta efficiency (KGE) criteria (see Gupta et al. (2009) for references) of 0.62 for NSE and 0.67 for KGE in 2020 and ~~0.75 and 0.84~~ 0.73 and 0.83 in 2021 (Fig. 6).

~~Compared to other glacio-hydrological models based on enhanced temperature-index (ETI) equations, our model efficiency for the NSE of 0.67 is lower, as most models obtained NSE values in the range of 0.7 to 0.9 (e.g., Schaeffli et al., 2005; Huss et al., 2008; Ma~~ . They are however all calibrated against discharge data, while our mass balance module only relies on snow, ice and weather data. We found only one research by Shakoor et al. (2018), who used an ETI model combined to the distributed snow model Alpine3D. Here, they obtained an NSE value of 0.77 for a similar glacierized catchment but relied on more extensive in-situ field weather and snow data for model calibration.

~~The modelled discharge with (orange curve, Fig. 6) or without (dashed green curve, Fig. 6) including stream isotopes for calibration was very similar, although both NSE et KGE were slightly higher for the calibration with isotopes. While discharge results are similar, notable changes in the model parameters were observed, highlighting the typical problem of equifinality (Acero Triana et al., 2019). In particular, with isotope calibration, the drainage of the hillslope rain water appears ten times~~

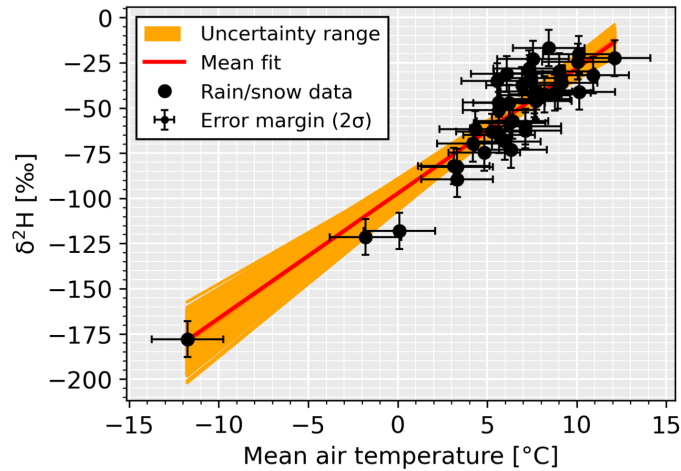


Figure 7. Relationship between air temperature measured at the weather station (Fig. 1) and the isotopic composition of 39 precipitation events between 2019 and 2021. For each point, we defined a normally distributed error margin of two standard deviations (2σ). The orange area represents the 5000 linear regressions obtained by randomly picking a set of values in the error margin of all points. The red line corresponds to the mean regression.

slower with more dispersion than without isotope calibration. To compensate this effect on modelled discharge at the glacier portal, it seems that rain infiltration through the snowpack was faster with isotope calibration than without.

4.4 Air temperature and relationship to isotopic composition of precipitation

625 The relationship between air temperature and precipitation $\delta^2\text{H}$ appears to be linear with a coefficient of determination (R^2) of 0.85 for the mean regression (red line in Fig. 7). However, most of our samples cover the summer season, thus the linear trend is strongly influenced by the limited number of winter precipitation samples. We therefore, therefore, also highlight the uncertainty margin which was then used to assess the sensitivity of the modelled snow and stream isotopic behavior to this relationship (see Sect. 2.5.3).

630 ~~Relationship between air temperature measured at the weather station (Fig. 1) and the isotopic composition of 39 precipitation events between 2019 and 2021. For each point we defined a normally distributed error margin of two standard deviations (2σ). The orange area represents the 5000 linear regressions obtained by randomly picking a set of values in the error margin of all points. The red line corresponds to the mean regression.~~

4.5 Isotopic model results

635 ~~Results of the isotopic model. (a) Measured and modelled stream $\delta^2\text{H}$ at the glacier portal as well as constant $\delta^2\text{H}$ value assumed for the ice melt composition and the modelled evolution of the snow melt $\delta^2\text{H}$. Daily solid (light blue) and liquid (dark blue) precipitations are shown as inverted bars. (b) Estimated mixing ratios between ice melt, snow melt, rain and ROS~~

based on the measured stream $\delta^2\text{H}$ and the modelled $\delta^2\text{H}$ of the water sources. The shares of rain and ROS were estimated by the transfer model. The black dots indicate the dates of each stream water sample used to estimate the mixing ratios. Grey areas represent periods when no samples were available for more than a day. (c) Mixing ratios estimated from the combined mass balance and transfer model only.

Based on the mean $\delta^2\text{H}$ of supraglacial ice melt samples, the ice melt $\delta^2\text{H}$ was set to a fixed value of -109‰ which also reflected the minimum stream $\delta^2\text{H}$ in late summer, when snow cover is lowest. The snow melt $\delta^2\text{H}$ was calibrated manually (Sect. 3.2.1).

The calibrated modelled snowpack $\delta^2\text{H}$ on 28 May 2021 (-118.4 and -119.1‰) matched well with the two available depth-averaged mean snowpits $\delta^2\text{H}$ (-117 and -125‰ , see Fig. 4). Over the whole melting season, the modelled stream $\delta^2\text{H}$ also matched well with the measured stream $\delta^2\text{H}$ (Fig. 8a). Parameter $f_{\text{frac,sm}}$ was set to 16‰ for $\delta^2\text{H}$ but had little impact on the results as also shown by Ala-aho et al. (2017). The sublimation parameter $f_{\text{frac,E}}$ was set to 8‰ . This represents a rather low fractionation compared to Ala-aho et al. (2017). f_{ROS} was manually calibrated to 1 when SWE was below 200 mm w.e. and increased linearly until a SWE value of 2000 mm w.e. was reached, then remained constant. This emulates that a thicker snowpack (>2000 mm w.e.), which usually underwent less melt in summer, only partially mixes with the rain, leading to a smaller increase in $\delta^2\text{H}$ during ROS events than for shallower snowpacks for which the snowpack $\delta^2\text{H}$ mixes more with the rain $\delta^2\text{H}$ input.

The resulting snow melt $\delta^2\text{H}$ is shown in Fig. 8a. Snow melt $\delta^2\text{H}$ is slightly lower than similar to the measured stream $\delta^2\text{H}$ in the early melting season, early June and increases during the melting season due to fractionation and ROS events and, as a result, becomes isotopically less depleted than ice melt. This enrichment snow evaporative fractionation and the isotopic mixing of the snowpack with rain water (which has an isotopic composition mainly ranging between -80 and -20‰ in summer, see Fig. 7). This increase is faster in 2021 than in 2020 due to much more precipitation and ROS amounts. In 2020, the modelled stream $\delta^2\text{H}$ appears to fit well with the stream $\delta^2\text{H}$ observations, although daily $\delta^2\text{H}$ variations in July are not marked in the model the results appear less similar during rain events. In early July 2021, stream $\delta^2\text{H}$ is rapidly overestimated by the model, likely due to the complexity of the ROS processes corresponding to a period of important summer snow fall and ROS events. In the second part of August 2021, when less rain-precipitation occurred, stream $\delta^2\text{H}$ appears better represented. During some important rain/snow events, in particular in mid-July 2021, snow melt $\delta^2\text{H}$ increases shortly after summer precipitation events. This is due to the short-term deposition and subsequent melt of summer snow at low elevation (where snow was absent) which has a higher $\delta^2\text{H}$ composition than the older remaining winter snowpack at higher elevation. This fresh snow disappears in a few days, after which the snow melt $\delta^2\text{H}$ gradually returns to the composition of older snow.

4.6 Estimation of mixing ratios

We compare the mixing ratios between the four different water sources (rain, ROS, snow melt and ice melt), either estimated based on the simulated discharge of each source (using the mass balance and transfer model) or based on the modelled isotopic compositions of the water sources. As detailed in Sect. 3.4, since we only use water isotopes as tracer, only two components can be separated (snow and ice melt), while we use the results of the mass balance and transfer model to estimate the water

fractions of rain and ROS. The results of the mass balance model (Fig. 8c) show a gradual transition from a snow-dominated discharge towards more ice melt in the late melting season. The estimated contributions of rain and ROS remain usually below 20 %, except for large events ($>15 \text{ mm d}^{-1}$), during which the peak contribution reaches up to 50 %. The results of the mixing model based on isotopes (Fig. 8b) are more variable. For both years, mixing ratios for the early and late melting seasons are in

675

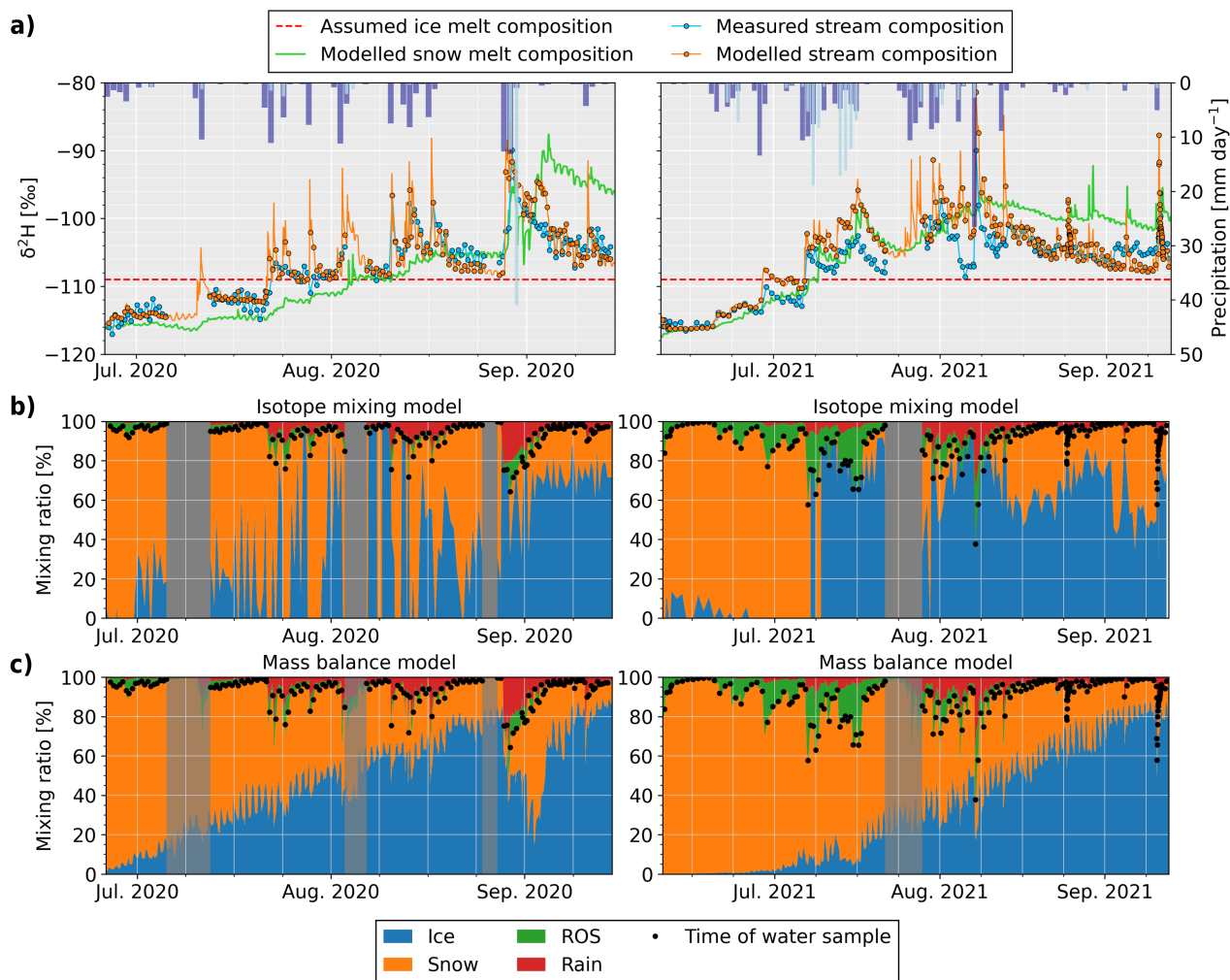


Figure 8. Results of the isotopic model. (a) Measured and modelled stream $\delta^2\text{H}$ at the glacier portal as well as constant $\delta^2\text{H}$ value assumed for the ice melt composition and the modelled evolution of the snow melt $\delta^2\text{H}$. Daily solid (light blue) and liquid (dark blue) precipitations are shown as inverted bars. (b) Estimated mixing ratios between ice melt, snow melt, rain and ROS based on the measured stream $\delta^2\text{H}$ and the modelled $\delta^2\text{H}$ of the water sources. The shares of rain and ROS were estimated using the transfer model. The black dots indicate the dates of each stream water sample used to estimate the mixing ratios. Grey areas represent periods when no samples were available for more than a day. (c) Mixing ratios were estimated from the combined mass balance and transfer model only.

a similar range as those calculated from the mass balance model. In the middle of the melting seasons, the estimated ratios of snow and ice melt appear much more variable and difficult to interpret.

5 Discussion

5.1 Mass balance model limitations

680 We created a simple mass balance model relying on readily available point-based data (precipitation, air temperature, incoming solar radiation). Catchment-wide spatio-temporal variations in temperature and precipitation was modelled using seasonal elevation lapse rates while incoming solar radiation was adapted using a high-resolution DEM to account for slope and aspect. The spatial extrapolation of the meteorological input data relies on an effective calibration procedure that allows the model to be applied to other locations. Some key aspects of the model are discussed hereafter.

685 The calibrated seasonal temperature lapse rates showed steeper gradients in summer than winter (Fig. D1c), similar to other studies (e.g., Rolland, 2003; Marshall et al., 2007). At high ~~elevation~~elevations, the colder summer temperatures obtained with a varying lapse rate compared to a constant lapse rate led to less melt, which in turn influenced the calibration of the precipitation lapse rate. Precipitation lapse rate decreased indeed from about 10 % per 100 m with a constant temperature lapse rate to about 2 % with a varying lapse rate, which is closer to observations reported over other glaciers (Schaepli et al., 2011).

690 The snow loss and redistribution function on steep slopes, combined with the radiation correction function based on slope and aspect, was essential to correctly represent the timing of the presence/absence of snow on the north- and south-facing slopes. Although snow redistribution was only based on slope, it provides a simple and fast way to redistribute snow without accounting for complex wind processes or the topography of connected cells. The calibration of the snow redistribution was relatively similar for both years, confirming the consistency of the method (Fig. D1b). Most redistribution occurred near the glacier terminus and above an elevation of 2800 m a.s.l. A stronger redistribution was calibrated at high elevations in 2021 (3400 to 3600 m a.s.l.), corresponding to a few small high elevated hanging glaciers, where snow redistribution from the nearby steep rock walls is likely.

695 Snow sublimation and deposition ~~was also modelled~~were also modelled using a simple method. The amount of snow mass loss due to sublimation remained small compared to snow melt (<5 %) and is in a similar range compared to other studies in high mountain catchments (e.g., Strasser et al., 2008; Stigter et al., 2018). Modelling this process also required additional meteorological data such as wind speed, relative humidity and surface snow temperature. While we proposed a simple procedure to estimate snow surface temperature, wind speed may vary spatially due to katabatic winds in particular (Greuell and Böhm, 1998; Shaw et al., 2024). ~~Finally, we lack data other than SWE to efficiently calibrate the sublimation function which snow losses may become wrongly attributed to snow melt losses. Snowpack d-excess may provide an interesting additional source of information as it is mostly sensitive to sublimation. Snow sublimation remains~~ Snow sublimation remained uncertain and was 705 here mainly required to estimate the isotopic fractionation in the snowpack rather than to improve the mass balance model.

~~Some melt processes were not included in our model. For instance, it does not modify melt over debris-covered glacier areas because they remain limited on Otemma glacier (~12%, Linsbauer et al. (2021)). Moreover, our model does not include~~

710 ~~potential snow melt (Mazurkiewicz et al., 2008) or ice melt (Saberri et al., 2019) caused by warm rain events because their contribution to melt is comparatively very small (Mazurkiewicz et al., 2008; Pomeroy et al., 2016). Residual melt in winter is also not accounted for in our model, although~~

High-resolution daily satellite images from Team Planet (2017) allowed for generating approximately weekly cloud-free snow maps. Including these snow cover maps as calibration objective function constrained the calibration parameters of our model on steep slopes where no SWE measurements are available, leading to a better representation of the spatial processes (Fig. E2 to E5). For example, in 2020, with very limited in-situ measured SWE data, we put six times more weight on the snow cover objective function than on the SWE objective function. Compared to having a similar weight between both objective functions, this led to modelled mass losses closer to measured discharge, even if it increased the error on measured SWE (Fig. E1c). Therefore, snow cover maps may be highly valuable for mass balance model calibration if limited SWE data are available.

720 5.2 The role of groundwater

In winter, we measured a winter stream discharge at the glacier portal reaching a minimum of about 0.24 mm d⁻¹ (Fig. B1). This residual streamflow is probably due to two main causes. Basal melt in winter could provide such limited flow, creating a thin water film (Flowers and Clarke, 2002), slowly draining through subglacial till or at the contact with bedrock. Alternatively, groundwater contribution from a deeper aquifer could provide such baseflow (see Sect. 5.2). ~~As illustrated in~~ To some extent, delayed lateral subsurface flow (Carroll et al., 2019) from elevated snow melt transmitted through the hillslopes is estimated by the hillslope and snow routing modules, but bedrock exfiltration was not modelled.

Groundwater contributions from the bedrock may not be completely negligible as the discussion of groundwater storage has recently shown for Swiss alpine glaciers (Müller et al., 2022; Oestreicher et al., 2021). For our catchment, it is possible that a part of the early snow melt contributes to recharge the highly fractured bedrock and is then redistributed towards the late melting season when snow cover is limited. In Otemma, a winter dynamic bedrock storage was estimated to be equivalent to 40 mm of water stored over the entire catchment (Müller et al., 2022). This seasonal storage may increase to about 60 to 100 mm in spring due to snow melt recharge as suggested for other glacierized catchments (Hood and Hayashi, 2015; Oestreicher et al., 2021). ~~This recharge is potentially visible in Fig. D2c & d, seasonal discharge obtained from our mass balance model matches very well with the observed discharge. This seems to further support the assumption that groundwater, basal melt or rain-induced snow melt represent only a marginal water input in summer.~~ d (cumulative discharge from 0 to 500 mm), as the cumulative modelled discharge in the early melting season is about 50 mm larger than measured, which could be due to some snow melt water infiltrating into the bedrock and not being routed to the glacier portal. Later in the melting season, groundwater bedrock drainage may then lead to higher modelled discharge than measured (Fig. D2d, cumulative discharge from 1000 to 1500 mm). This amount of storage release lies in the same range as the RMSE of the differences between observed and modelled SWE in 2021 (Fig. E1b), and can therefore not be clearly identified.

~~High-resolution daily satellite images from Team Planet (2017) allowed for generation of approximately weekly cloud-free snow maps. Including these snow cover maps as calibration objective function constrained the calibration parameters of our~~

model on steep slopes where no SWE measurements are available, leading to a better representation of the spatial processes. For example, for 2020 with very limited in-situ measured SWE data, we put 5 times more weight on the snow cover objective function than on the SWE objective function. Compared to having a similar weight between both objective functions, this led to modelled mass losses closer to measured discharge even if it increased the error on measured SWE. Stream EC was always higher than ice and snow melt EC (Fig. B1), and largely increased in winter, which also points to the potential contribution of a groundwater reservoir. However, as highlighted in some studies (e.g., Sharp et al., 1995; Hindshaw et al., 2011), subglacial weathering at contact with the bedrock or sediments leads to an increase in solutes in the meltwater. Since EC is not a conservative tracer, groundwater estimation via EC measurements may lead to much larger uncertainty than some studies suggest, as subglacial weathering cannot be easily quantified.

In any case, groundwater storage remains very limited, representing only about 2 % of the total snow and ice melt estimated over one melt season. It should also not impact the stream $\delta^2\text{H}$, as the $\delta^2\text{H}$ of bedrock leakages was found to be close to ice melt $\delta^2\text{H}$ (Fig. E1e). It appears therefore that snow cover maps may be highly valuable for mass balance model calibration if limited SWE data are available. 3).

5.3 Isotopic model sensitivity analysis

5.4 **Isotopic model limitations and model sensitivity**

5.3.1 **Ice melt isotopic composition**

In this work, we chose a constant ice melt $\delta^2\text{H}$ composition. Different spatio-temporal studies on ice melt isotopes show conflicting temporal results, with ice becoming either enriched (Penna et al., 2017), depleted (Schmieder et al., 2018) or showing no trends in $\delta^2\text{H}$ (Maurya et al., 2011). For the Swiss Alps, Jenk et al. (2009) analyzed a an 80 m deep ice core and showed some $\delta^2\text{H}$ variations but no particular trends with depth, except for a shift at the glacier bed. This suggests that older, deeper ice does not have a significantly different isotopic composition. This may also be true for the surface ice melt, as also supported by Fig. 5, where no change in surface ice melt $\delta^2\text{H}$ with elevation can be observed, as also observed in the Italian Alps (Zuocco et al., 2019). In addition, no clear temporal ice melt $\delta^2\text{H}$ trend could be observed (Fig. C2). Therefore, using a constant seasonal ice melt $\delta^2\text{H}$, equivalent to the mean $\delta^2\text{H}$ of surface ice melt samples, is considered reasonable for alpine temperate glaciers. Alternatively, using the end-of-summer stream $\delta^2\text{H}$ at the glacier portal to approximate the ice melt $\delta^2\text{H}$ composition led to a similar value, although. However, residual snow cover at high elevation elevations may still contribute to discharge, as illustrated in our case by the 20 % snow contribution in September 2020 before the first snowfall (Fig. 8).

770 5.3.2 **Stream Snow melt isotopic sensitivity to precipitation $\delta^2\text{H}$**

Several assumptions were made to model the isotopic composition of the snowpack and snow melt, which in turn strongly influenced the modelled stream $\delta^2\text{H}$ composition. In Fig. 9, we performed a sensitivity analysis by modifying key model parameters to assess their impact on the modelled stream snow melt $\delta^2\text{H}$.

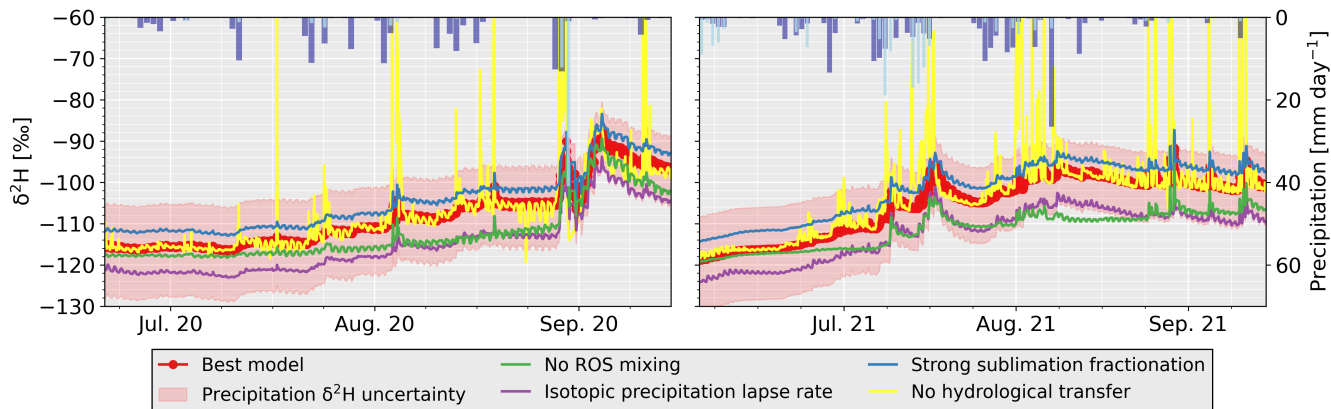


Figure 9. Sensitivity analysis of the modelled stream-catchment-integrated snow melt $\delta^2\text{H}$ at the glacier portal over the melting seasons 2020 and 2021. The curves shown are: Best calibrated model (Best model); uncertainty margin from the relationship between precipitation $\delta^2\text{H}$ and air temperature (see Fig. 7); model without ROS $\delta^2\text{H}$ mixing in the snowpack (No ROS mixing, $f_{\text{ROS}} = 0$); model with an isotopic precipitation $\delta^2\text{H}$ lapse rate of $-1 \text{ ‰ per } 100 \text{ m}$; model with a strong isotopic sublimation fractionation ($f_{\text{frac,E}} = 80 \text{ ‰}$); model without hydrological transfer (No transfer). Daily solid (light blue) and liquid (dark blue) precipitations are shown as inverted bars.

The largest uncertainty in the modelled stream-snow melt $\delta^2\text{H}$ results from the relationship between air temperature and precipitation $\delta^2\text{H}$ (red area in Fig. 9). Indeed, a change in slope in their linear regression strongly impacts the modelled snowpack $\delta^2\text{H}$ at peak snow accumulation, ~~which in turn strongly modifies the stream $\delta^2\text{H}$ at the onset of snow melt.~~ Moreover, precipitation $\delta^2\text{H}$ may be influenced by other parameters than air temperature. In this study, the limited number of bulk snowpack $\delta^2\text{H}$ samples limits the calibration/evaluation of this approach. Nonetheless, at least one recent study providing a much more in-depth analysis of snowpack $\delta^2\text{H}$ profiles validated the strong relationship between the snowpack $\delta^2\text{H}$ and air temperature (Carroll et al., 2022a).

In addition, precipitation $\delta^2\text{H}$ may also vary with elevation. No isotopic precipitation lapse rate was used in this work, as it could not be observed. This lack of $\delta^2\text{H}$ lapse rate may be due to the complex air flow above a high elevation terrain, where air parcels may stagnate or flow down-valley (Schäppi, 2013). This modifies vapor condensation and thus invalidates the relationship between elevation and a depletion of heavy isotopes in the water vapor (Galewsky, 2009). Such an absence of $\delta^2\text{H}$ lapse rate trend was also observed from high elevation precipitation data in Switzerland, especially in winter (Kern et al., 2014). Nonetheless, at least one recent study provided a detailed description of multiple snow profiles with elevation (Carroll et al., 2022a). While they measured a $\delta^2\text{H}$ precipitation lapse rate of $-1.28 \text{ ‰ per } 100 \text{ m}$, they ~~show~~ showed no statistically significant differences with elevation in the snowpack bulk isotopic composition at the time of maximum end-of-winter snow accumulation. They attribute this to the persistence of warm, enriched early winter snow at high ~~elevation~~ elevations and different rates of snow accumulation and sublimation in winter. In our model, including a $\delta^2\text{H}$ lapse rate of $-1 \text{ ‰ per } 100 \text{ m}$ leads to a more depleted snowpack before the onset of snowmelt (purple curve in Fig. 9). It also reduces the increase of stream snow melt $\delta^2\text{H}$ in summer due to ROS events. A winter $\delta^2\text{H}$ lapse rate may lead to a too depleted snowpack compared to

observed (purple curve in Fig. 9). However, a summer $\delta^2\text{H}$ lapse rate may be required to better represent the stream $\delta^2\text{H}$ during wet summers such as 2021, where the effect of ROS (without $\delta^2\text{H}$ lapse rate) led to a too rapidly enriched modelled snow melt and stream $\delta^2\text{H}$ (Fig. 8a).

5.3.3 Stream-Snow melt isotopic sensitivity to ROS

ROS is also influenced by the summer precipitation lapse rate ~~which is~~, which was assumed to be similar to winter snowfall (increase of 2 % per 100 m). Similar to the $\delta^2\text{H}$ lapse rate, precipitation lapse rates may become flat or even negative in the Swiss Alps in summer above 2500 m a.s.l. (e.g., Schächli, 2013). It is therefore likely that precipitation shows a smaller increase with elevation in summer than in winter, resulting in an overestimation of the summer precipitation amounts when using a fixed annual lapse rate. This impacts how much ROS mixes within the snowpack and how it modifies the snowpack $\delta^2\text{H}$. Both precipitation amounts and $\delta^2\text{H}$ precipitation lapse rates appear therefore challenging to accurately model, which may lead to large uncertainties even for relatively dry years such as 2020.

In addition, how ROS mixes, refreezes, or leaks through the snowpack remains a major question. Neglecting ROS $\delta^2\text{H}$ mixing in the snowpack ($f_{\text{ROS}} = 0$) leads to a much slower enrichment of the snowpack in heavy isotopes during the melting season. This process appears to be the main driver of the seasonal increase in the stream-snow melt $\delta^2\text{H}$ value (green curve in Fig. 9). Only limited experimental work exists on this topic. For instance, for an in-situ ROS experiment, Juras et al. (2017) showed preferential flow of rain water in that rain water showed limited isotopic mixing in a 50 cm thick non-ripe cold snow and limited time for isotopic exchange with the snowpack snowpack and exfiltrated rapidly while retaining its original $\delta^2\text{H}$ composition. They attributed this effect to the formation of preferential flow in colder snowpack and measured an infiltration velocity ten times higher than in ripe snowpack. For a ripe snowpack, they showed that less than 50 % of rain water was directly released from the snowpack, leading to partial isotopic mixing of the rain water with the snowpack. In another in-situ study, Rucker et al. (2019a) showed that interactions between rain water and the snowpack were mostly-mainly influenced by the residence time of the rain water in the snowpack, which mostly depended on snow depth and rainfall amounts.

In this work, we attempted to provide a simple formula for the mixing of ROS in the snowpack based on the SWE amounts (see Sect. 3.2.3), and the best calibration was achieved with a complete incorporation of ROS in the snowpack when the snowpack was thin and likely isothermal (<200 mm w.e.) and a partial mixing of 50 % when the snowpack was thick (>2000 mm w.e.). ~~The validity of such~~ Such a simple approach ~~should, however, be explored in further work.~~ can, of course, be questioned. There is indeed no clear evidence that a thicker snowpack is less ripe by assumption. At least in our case, a 2000 mm snowpack was only modelled at high elevations where ripe conditions are unlikely. In our case, however, the calibration of this function led to satisfying results, and our function had the advantage of being simple, whereas estimating the snow energy state hourly at each grid cell seemed too complex.

5.3.4 Stream-Snow melt isotopic sensitivity to snow fractionation

Based on our calibration, we used a rather low sublimation fractionation factor ($f_{\text{frac,E}} = 8 \%$) compared to Ala-aho et al. (2017), so that the differences with no sublimation are limited. Using a ten times higher sublimation fractionation factor (blue

curve in Fig. 9) leads to a more enriched snowpack before July but does not particularly impact the stream-snow melt $\delta^2\text{H}$ evolution in summer, which conserves a winter $\delta^2\text{H}$ offset compared to the best model. This is due to the fact that the because the modelled sublimation mostly occurs during spring when cold dry air has a lower vapor density than the snow surface. We also estimated a small deposition amount (34 and 14 mm w.e. for 2020 and 2021), but deposition was not included in
830 the isotopic module as the isotopic composition of the water vapor in the air appears very complex as discussed above for precipitation. Its effect on snow fractionation remains therefore unclear.

Similar to Ala-aho et al. (2017), the parameter governing liquid fractionation of the snowpack ($f_{\text{frac,sm}}$, not shown in Fig. 9) had only limited influence on the modelled summer stream-snow melt $\delta^2\text{H}$. Nonetheless, some studies (e.g., Taylor et al., 2001) have reported liquid fractionation during melt as an important driver of isotopic enrichment. For this work, however, this
835 process defined by Eq. 17 seems to play a minor role due to the rapid increase in the number of melt days (d_{melt}). While we retained the original equation from Ala-aho et al. (2017), its validity could be further explored.

5.3.5 Stream isotopic sensitivity to snow melt transfer

The use of d-excess to constrain sublimation in the modelling framework as proposed by Carroll et al. (2022b) could be explored in future work. Indeed, while the d-excess of surface snow showed no trend with elevation, the d-excess of snow
840 profiles increased with elevation (Fig. 4d)), which may suggest more evaporative fractionation at lower elevations and deposition of depleted air vapor at higher elevations, as discussed by Sprenger et al. (2024). The processes of vapor transport and vapor deposition in the snowpack $\delta^2\text{H}$ are however complex (Lambán et al., 2015) and remain challenging to model precisely.

5.3.5 Snow melt isotopic sensitivity to snow melt transfer

Finally, we show the isotopic composition of snow melt if we simply take the average value of all snow melt grid cells without
845 the transfer module (yellow curve in Fig. 9). In this case, the signal shows more variability and small peaks, mainly due to the effect of summer snowfall or ROS events. The snow transfer to the outlet contributes to smoothing out short term variations in $\delta^2\text{H}$, while the signal remains similar when no precipitation occurs.

5.3.6 Snow isotopic module calibration challenges and opportunities

5.4 Limitations of the hydrological transfer model

~~We modelled water transfer from its point of mobilisation to the catchment outlet based on an estimation of the mean transit time of the water through four different landcover types using gamma distributions. While this approach is somewhat different from more widely used bucket-type approaches (e.g., Schaeffli et al., 2005), it leads to relatively similar results, as the spread of the gamma distribution can be related to a storage recession time constant. This approach assumes that the water transfer is driven by advection but does not depend on previous conditions such as antecedent wetness or the amount of storage~~
850 ~~in a compartment (snowpack, groundwater or en-/subglacial system). It was, however, largely shown in the hydrological literature that older water tends to be rapidly and preferentially released to the stream during rain events, suggesting that~~

"new" water inputs in a catchment tend to activate and push "older" pre-event water out of soils and groundwater reservoirs (e.g., McDonnell, 1990; Kirchner, 2003). Such mechanisms are usually not well represented in hydrological transfer models but can be assessed using water isotopes.

860 In Calibrating the catchment-scale snow melt $\delta^2\text{H}$ remains challenging. We have shown that relying on surface snow isotopic data is not advisable, as surface snow shows a large scatter (Fig. 11, we highlighted three periods during the early, mid and late melting season during which rain events occurred. In the upper plots, discharge response to rain events appears fast (within an hour) during all periods and streamflow seems only shortly influenced by rain events (during about a day). However, when looking at the stream isotopic response (second row of plots in Fig. 11), it appears that the stream $\delta^2\text{H}$ seems to be longer
865 influenced by the rain (higher $\delta^2\text{H}$ value) before it goes back to its pre-event composition. This is especially visible for the second half of July 2020 (Fig. 11a). There, the measured stream $\delta^2\text{H}$ appears to increase more gradually than discharge in response to rain events and only return to the baseline value about 5 days later. This highlights the typical old water paradox mentioned before, for which hydrograph response is swift but the water is composed of more pre-event water (Kirchner, 2003). Finally, in the lower panel of Fig. 11a, we show that our hydrologic transfer model fails to correctly represent the fraction of
870 rain event water.

Comparison of the estimated fraction of the total discharge originating from rain events during the early 2020 (a), mid 2020 (b) and late 2021 melting season (c). The upper figures show the measured discharge (blue curve) at the glacier portal and the sum of rain and ROS discharge (event discharge) estimated from the model (orange). The red curve shows the measured discharge without the modelled event water. The central figures show the measured stream $\delta^2\text{H}$ (green) and an estimation of
875 the pre-event $\delta^2\text{H}$ based on a simple linear interpolation between the pre- and post-event stream compositions. If pre-event stream $\delta^2\text{H}$ showed small daily variations (due to the increase of ice melt during the day), this behavior was added to the linear interpolation to better represent the baseline $\delta^2\text{H}$ composition. Lower figures show the fraction of event water (rain and ROS) in the streamflow estimated either based on the modelled event discharge (see upper figures) or based on isotopes (see central figures).

880 Later in the summer, in mid-August 2020 (Fig. 11b), the response to rain events seems better represented by our model. Finally, during September 2021 (Fig. 11c), the isotopic signal shows a fast decrease within about one day, with a first peak rapidly after the rain event and a second peak about 6 hours later, while no increase in discharge is observed. This second peak seems to come from delayed snow melt, given that 4a). This scatter is likely due i) different rates of snow fractionation at the surface (as suggested by the lower d-excess during this peak significantly decreased to 5 ‰, while it returns to its baseline
885 value of 10 ‰ within the next 3 hours, synchronous with the end of the isotope peak (not shown here).

The slower release of event water occurs mainly during the early season and is faster in August. This suggests that this phenomenon is linked to a seasonal water storage which decreases over the season. We hypothesise that this storage could be either linked to the seasonal switch from an inefficient distributed en-/subglacial drainage system to a more efficient channelized system or to the gradual disappearance of the snow cover. In our modelling framework, we implemented a fast and slow storage
890 which collects the water before reaching the glacier outlet (see Sect. 3.3.5). Nonetheless, it appears that using a fully mixed

storage was not adequate and that this storage should allow the release of older water to represent the isotopic signal more accurately.

To better represent this mechanism, we also attempted to calibrate the hydrologic transfer parameters with and without including stream $\delta^2\text{H}$ as an objective function. Overall, discharge NSE and KGE were similar for both calibrations. Parameter estimation was not particularly different except for hillslope parameters, which led to a slower transmission of water with a slower decrease in discharge when isotopes were used for calibration. This results in a more dampened stream isotopic response during rain events, closer to the measured stream $\delta^2\text{H}$. Including isotopes for calibration modifies therefore the internal mechanisms of the hydrological transfer model, but it remains unclear if such changes reflect more realistic processes or a simple trade-off due to the inability of the model structure to represent the preferential release of older water.

900 5.4 The role of groundwater

The contribution from groundwater sources was not included in our modelling approach. To some extent, delayed lateral subsurface flow (Carroll et al., 2019) from elevated snow melt transmitted through the hillslopes is estimated by the hillslope and snow routing modules, but bedrock exfiltration was not considered. Groundwater contributions from the bedrock may not be completely negligible as the discussion of groundwater storage has recently shown for Swiss alpine glaciers (Müller et al., 2022; Oestreicher et al., 2022). For our catchment, it is possible that a part of the early snow melt contributes to recharge the highly fractured bedrock and is then redistributed towards the late melting season when snow cover is limited. In Otemma, a winter dynamic bedrock storage was estimated to be equivalent to 40 mm of water stored over the entire catchment (Müller et al., 2022). This seasonal storage may increase in spring to about 60 [at the snow surface \(Fig. 4c\); ii\) surface snow originating from different precipitation events due](#) to 100 mm as a result of snow melt recharge as suggested for other glacierized catchments (Hood and Hayashi, 2015; Oestreicher et al., 2022). This recharge is potentially visible in Fig. D2d (cumulative discharge from 0 to 500 mm), as the cumulative modelled discharge in the early melting season is about 50 mm larger than measured, which could be due to some snow melt water infiltrating into the bedrock and not being routed to the glacier portal. Later in the melting season, groundwater bedrock drainage may then lead to higher modelled discharge than measured (Fig. D2d, cumulative discharge from 1000 to 1500 mm). However, this amount of storage release lies in the same range as the RMSE of the differences between observed and modelled SWE in 2021 (Fig. E1b), although the mean error is close to 0. Therefore, the amount of groundwater storage in the bedrock remains in the statistical error margin of the model.

Stream EC was always higher than ice and snow melt EC (Fig. B1), and largely increased in winter, which also points to the potential contribution of a groundwater reservoir. However, as highlighted in some studies (e.g., Sharp et al., 1995; Hindshaw et al., 2011), subglacial weathering at the contact with the bedrock or sediments leads to an increase in solutes in the meltwater. Since EC is not a conservative tracer, groundwater estimation via EC measurements may lead to much larger uncertainty than what some studies may suggest, as subglacial weathering cannot be easily quantified. In any case, groundwater contribution should not largely impact the stream $\delta^2\text{H}$, as the $\delta^2\text{H}$ of bedrock leakages was found to be close to ice melt $\delta^2\text{H}$ (Fig. 3).

5.4 Towards a better estimation of the snow isotopic composition

925 From the discussion above, it appears that reconstructing snowpack $\delta^2\text{H}$ based on meteorological data and a mass balance model is possible but large uncertainties may arise from the definition of parameters as shown in Fig. 9. We suggest that bulk snow samples estimating the average $\delta^2\text{H}$ of the snowpack are one prerequisite to evaluate this approach. At the time of maximum end-of-winter snow accumulation during four years, Carroll et al. (2022a) showed relatively limited bulk $\delta^2\text{H}$ differences for about 13 repeated snowpack profiles. This suggests that a limited number of bulk snow samples may be sufficient to calibrate or evaluate the winter isotopic model. Ideally, simple snow lysimeters could also be installed (Rücker et al., 2019b).

930 The snowpack $\delta^2\text{H}$ evolution during the melting season remains more challenging to model, mainly because of the complex processes involved during ROS events. In our case, snow melt and snow redistribution. Bulk snowpack $\delta^2\text{H}$ data appear more useful, but sampling at high elevations may be compromised by difficult access. In addition, the large spatio-temporal variability of the snow data may strongly influence the results.

In this work, we have shown an alternative method to model snow melt, which appears promising but still relies on complex modelling and multiple data sources. In the early melting season (when the catchment is fully snow-covered), stream $\delta^2\text{H}$ was similar to snow melt $\delta^2\text{H}$, which provides a simple target for calibration. During the mid- and late melting season, we relied on high-resolution stream $\delta^2\text{H}$ our model to minimize the error between modelled and observed stream $\delta^2\text{H}$. This involves calibrating a hydrological transfer module against discharge data, which helped to constrain the snow melt evolution by setting simple rules: snow melt $\delta^2\text{H}$ should always be lower than stream $\delta^2\text{H}$ in the early melting season if there is strong evidence that snow is the more depleted end-member. Later in the melting season, stream $\delta^2\text{H}$ was less useful as snow melt $\delta^2\text{H}$ was more enriched than ice melt $\delta^2\text{H}$. Additional bulk snow samples could help to better calibrate the model, but snowpack sampling at high elevation may be compromised by difficult access. are difficult to acquire for high-elevated and more remote catchments.

945 Based However, based on the results of the hydrological transfer module, the delay between snow melt and its arrival at the catchment outlet was usually less than a day. As a result, the snow melt $\delta^2\text{H}$ at the catchment outlet modelled using the calibrated transfer scheme was close to the $\delta^2\text{H}$ value calculated using the a simple daily melt amount-weighted mean snow melt $\delta^2\text{H}$ of all grid cells (Fig. 9). This suggests that the hydrological transfer may not be necessary to estimate the daily snow melt $\delta^2\text{H}$ value at the catchment outlet. During rain events, the hydrological transfer allows improved smoothing of the signal, but relatively similar results could likely be obtained by applying a low-pass filter to the weighted mean snow melt $\delta^2\text{H}$ data.

950 Therefore, it seems possible to estimate the temporal evolution of the outlet catchment-integrated snow melt $\delta^2\text{H}$ based solely and that it can be obtained solely based on mass balance modelling (with necessary meteorological data) and snow observations, without relying on discharge data, which are required to calibrate a full hydrological transfer model and are usually difficult to acquire for high-elevated and more remote catchments: stream $\delta^2\text{H}$ samples.

955 Finally, incorporating d-excess in the modelling framework as proposed by Carroll et al. (2022b) may provide additional information concerning the rate of sublimation in the snowpack and contribute to better calibrate the model. D-excess may also be used as an additional tracer along $\delta^2\text{H}$ for mixing models to separate snow melt from ice melt as proposed by

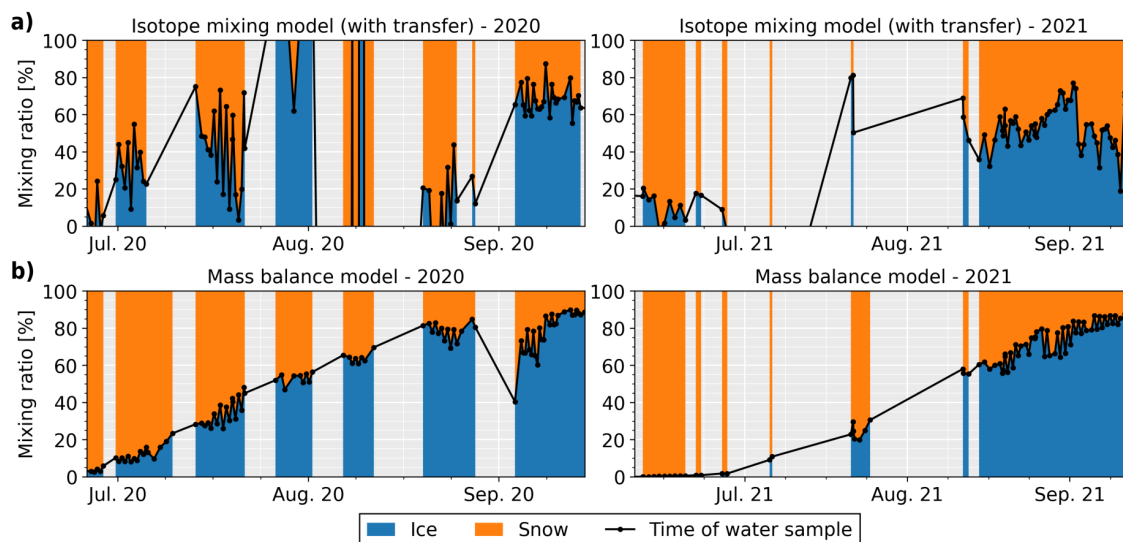


Figure 10. Mixing ratio between snow and ice melt at the catchment outlet when rain contribution to streamflow is less than 5 %. **(a)** Results based on snow-a mixing model based on measured stream $\delta^2\text{H}$ and where the two end-members are ice melt $\delta^2\text{H}$ estimated by (with a simple weighted-average fixed value of all model grid-cells (without transfer 109 %)). **(b)** Results when and the modelled snow melt $\delta^2\text{H}$ is routed to the glacier terminus. **(c)** Results from the discharge volumes estimated based on the mass balance and transfer model-modules without using isotopes. Black points show dates when stream $\delta^2\text{H}$ samples were taken.

Sprenger et al. (2023). However, processes of sublimation and deposition affecting the snowpack $\delta^2\text{H}$ are complex (Lambán et al., 2015) and remain challenging to model precisely.

5.4 Mixing model limitations Water isotopes and end-member mixing models in glacierized catchment

In this research, we have proposed a way to better characterize the temporal evolution of snow melt $\delta^2\text{H}$ in the snow melt
 960 $\delta^2\text{H}$ at the outlet of a highly glacierized catchments. This method, especially if validated with more snowpack or snow melt observations, should contribute to limit snow melt isotopic uncertainties due to the spatio-temporal variability of the snowpack $\delta^2\text{H}$. Nonetheless, even with such an approach, answering the question of water sources mixing ratios at the catchment outlet based on isotopes (Fig. 8b) an isotope end-member mixing model appears very challenging. As discussed in Sect. 5.5, during rain and ROS events, the transfer of water to the stream may be complex, with a preferential release of older water (from the snow or from the hillslopes), which may not be captured by our model, and may strongly influence the estimated mixing ratios.
 965 In Fig. 10, we provide an analysis of the ice and snow melt shares when we estimated a the estimated rain water fraction of was less than 5 %. Even in that case, water sources mixing results based on when limited rain drains at the outlet, water shares based on water isotopes (Fig. 10a&b) appear very variable, especially during the mid melting season. It appears therefore that Indeed, during the mid melting season, snow melt $\delta^2\text{H}$ increases and reaches values close to ice melt $\delta^2\text{H}$, so that even
 970 a slight error in the estimation of their $\delta^2\text{H}$ values leads to a large uncertainty in their estimated shares using a mixing model

approach. Mixing estimations for the early or late melting seasons were more similar to the estimation based on discharge volumes estimated using the mass balance and routing modules.

975 ~~Finally, no significant mixing differences can be observed with~~ Mixing results based on a relatively simple combined mass-balance and routing model remain more accurate overall (Fig. 10b) or without hydrological transfer (Fig. 10a) for snow melt, which illustrates again that snow melt transfer may not be necessary to estimate the snow melt $\delta^2\text{H}$ in small highly glacierized catchments. This is encouraging since the mass-balance model calibration was performed based on weather data and snow observations, without relying on discharge data, which remains the most time and cost-intensive dataset to acquire in mountainous catchments. Discharge was only used for water routing and, at least in such a small catchment, water transfer was fast and does not significantly affect results on a daily time-scale.

980 ~~We conclude that separating the shares of ice and snow melt in the glacier meltwater stream with isotopes remains a very difficult task, and a simple mass balance approach likely leads to better results on a weekly scale. Nonetheless, the stream $\delta^2\text{H}$ signal provides interesting insights in some of the internal mechanisms which modulate the glacio-hydrological response on a sub-daily scale, and may therefore contribute to develop more sound physically-based models. Outside of~~

5.5 Water isotopes for hydrological routing in glacierized catchment

985 In this paper, we focused on modelling the water shares of snow and ice melt using either mass balance modelling or based on isotopes. We showed that the use of isotopes to separate snow and ice melt is not encouraged. However, water isotopes may still provide useful constraints for better calibrating glacio-hydrological models. In Fig. 6, we showed that calibration with or without isotopes led to relatively similar results. However, as also suggested in an other study by (Nan et al., 2022), including isotopes for calibration may improve the model parameters uncertainty. In our case, although snow and ice melt
990 $\delta^2\text{H}$ compositions were similar, isotopes may improve the parameterization of the water transfer of precipitation event water because precipitation $\delta^2\text{H}$ is usually much higher (more enriched in heavy isotopes) than the melt water.

In our water transfer equations, we assume that the ~~main melting season, discharge becomes lower and other marginal sources of water, such as groundwater, may become relatively more important and should not be neglected.~~ water transfer is driven by an advective flux but does not depend on previous conditions, such as antecedent wetness or the amount of
995 storage in a compartment (snowpack, groundwater or en-/subglacial system). It was, however, largely shown in the hydrological literature that older water tends to be rapidly and preferentially released to the stream during rain events, suggesting that "new" water inputs in a catchment tend to activate and push "older" pre-event water out of soils and groundwater reservoirs (e.g., McDonnell, 1990; Kirchner, 2003).

1000 This mechanism can be observed in our results using isotope data. Indeed, during rain events, stream $\delta^2\text{H}$ response is more dampened than the corresponding discharge response. We illustrate this effect in Fig. 11, where we highlighted three periods during the early, mid and late melting season during which rain events occurred. In the upper plots, discharge response to rain events appears fast (within an hour) during all periods and streamflow seems only shortly influenced by rain events (during about a day). However, when looking at the stream isotopic response (green curve in the second row of plots in Fig. 11), it appears that the stream $\delta^2\text{H}$ seems to be influenced by the rain (with higher $\delta^2\text{H}$ value) during several days before it goes back

1005 to its pre-event composition. This is especially visible for the second half of July 2020 (Fig. 11a). This highlights the typical
 old water paradox mentioned before, for which hydrograph response is swift but the water is composed of more pre-event
 water (Kirchner, 2003). Finally, in the lower panel of Fig. 11a, we show how our transfer model estimate the fraction of rain
 event water. It appears that event water is usually overestimated by our model (orange curve in lower plots of Fig. 11). When
 involving isotopes for calibration, PEST-HP attempts to reduce the rapid increase of stream $\delta^2\text{H}$ during rain events by adapting
 1010 the parameters controlling the water drainage from the hillslope. This leads to a slower velocity with more dispersion for the
 hillslope parameters than without calibration against isotopes (see Sect. 4.3).

Based on this example, involving isotopes for calibration clearly modifies the internal processes within the model, although
 the effects on stream discharge are negligible. A more robust representation of the model parameters provides better model
 performance during validation periods and may be useful when models are used to predict the future state of glacierized
 catchments (He et al., 2019; van Tiel et al., 2020a). The accurate results during the validation of the year 2021 for our data
 1015 (Fig. 6b) seem to confirm this statement, although we lack a longer time series to provide a more robust statistical analysis.

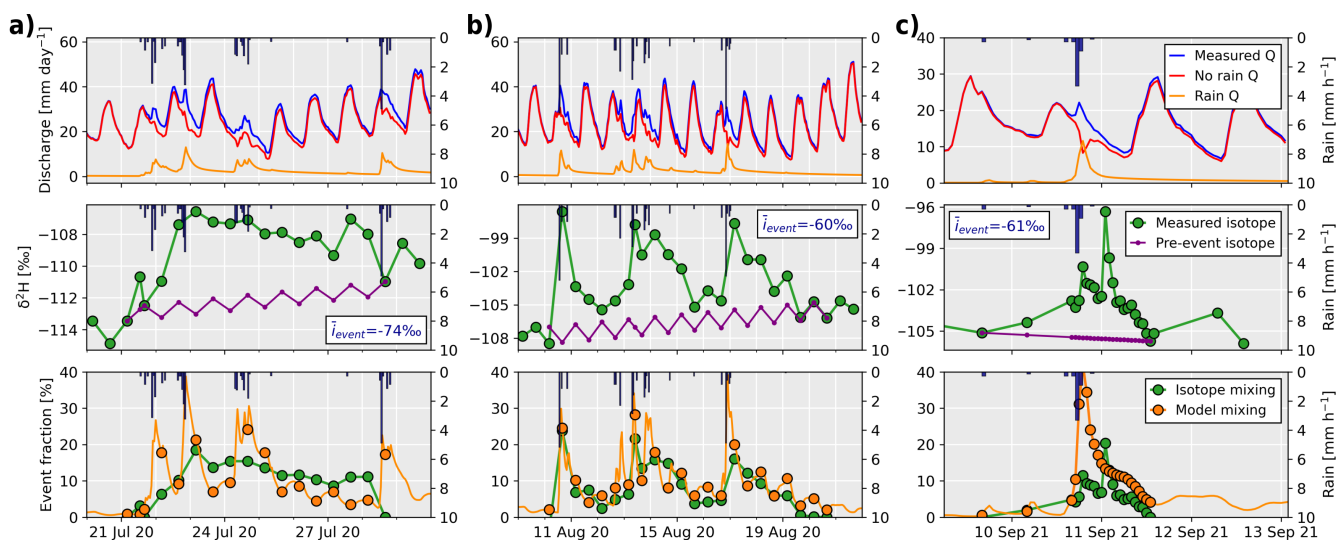


Figure 11. Comparison of the estimated fraction of the total discharge originating from rain events during early 2020 (a), mid 2020 (b) and late 2021 melting season (c). The upper figures show the measured discharge (blue curve) at the glacier portal and the sum of rain and ROS discharge (event discharge) estimated from the model (orange). The red curve shows the measured discharge without the modelled event water. The central figures show the measured stream $\delta^2\text{H}$ (green) and an estimation of the pre-event $\delta^2\text{H}$ based on a simple linear interpolation between the pre- and post-event stream compositions. If pre-event stream $\delta^2\text{H}$ showed small daily variations (due to the increase of ice melt during the day), this behavior was added to the linear interpolation to better represent the baseline $\delta^2\text{H}$ composition. The mean precipitation $\delta^2\text{H}$ of the event (i_{event}) is indicated in the inserted box. Lower figures show the fraction of event water (rain and ROS) in the streamflow estimated either based on the modelled event discharge (see upper figures) or based on isotopes (see central figures).

1020 Finally, although isotopes may contribute to better model parameterization, the prerequisite is that model equations allow for a correct representation of water transfer. In our case, it remains unclear if the hillslope parameters' adaptation improves the model's physical processes, or if it simply corrects for a lack of adequate equations to represent the preferential release of older pre-event water.

6 Conclusions

The aim of this research was to (i) provide a framework ~~for extrapolating point-based water stable isotope data to an entire highly glaciated catchment,~~ (ii) ~~model their signal transfer to the catchment outlet, and (iii) assess how water isotopes to model the catchment-integrated snow and ice melt isotopic compositions during a whole year using a parsimonious model,~~ (ii) assess if water stable isotopes alone can be used to estimate the ~~proportions of different water sources shares of snow and ice melt in the streamflow~~ at the outlet, and (iii) assess the benefits of integrating isotopes in a glacio-hydrological models.

~~In glacierized catchment, the use of water isotopes remains challenging as the isotopic composition of the water sources shows strong spatio-temporal variability and their composition may partially overlap, leading to large uncertainties in the use of mixing models (e.g., Schmieder et al., 2016, 2018; Zucco et al., 2019; Penna et al., 2017).~~

1030 Our field data highlighted the large isotopic spatial variability of the surface snow samples, which showed no particular trend with elevation and completely different values than the snowpack at 10 to 20 cm depth. This suggests that only bulk samples of the entire snowpack should be sampled to represent the snowpack. ~~As such~~ Since isotopic data are difficult to obtain in the field and may ~~evolve over time, change over time and space, and limited data were available for our case study,~~ we proposed to estimate the catchment-wide ~~snowpack snow melt~~ $\delta^2\text{H}$ based on a mass balance approach coupled to a snow isotopic module

1035 based on the previous work of Ala-aho et al. (2017).

~~This modelling framework aims to limit the collection of snowpack data over the season by using more readily available meteorological observations but still requires a number of SWE and ice ablation data for calibration. When limited SWE and ice ablation data are available, we showed the benefit of using an automatic optimisation algorithm such as PEST-HP to better constrain model parameters, and also showed how high spatio-temporal satellite products contributed to an efficient model calibration.~~ Seasonal ~~Seasonal measured~~ streamflow volumes agreed well with the melt contribution estimated by the mass balance model, and discharge data was only required to calibrate an hourly water transfer module accounting for hillslope, snow and glacier routing. Modelled streamflow $\delta^2\text{H}$ at the outlet agreed well with observations, suggesting that snow melt $\delta^2\text{H}$ can be relatively well modelled with our framework.

~~To correctly model the snowpack $\delta^2\text{H}$ during the accumulation period, we used on a regression curve between precipitation $\delta^2\text{H}$ and air temperature. Although other factors, such as the origin of the moisture source, may influence the precipitation $\delta^2\text{H}$, the relationship with air temperature was significant and sufficient to reproduce the snowpack $\delta^2\text{H}$. Here, the use of bulk snow $\delta^2\text{H}$ samples is recommended to validate the snowpack $\delta^2\text{H}$ around the period of maximum end-of-winter snow accumulation. The resulting modelled stream $\delta^2\text{H}$ at the catchment outlet agreed well with observed streamflow during the melt season, except for periods when ROS was important. How ROS is integrated and released from the snowpack during~~

1045

1050 ~~the melt season also appears to be difficult to model, affecting the composition of streamflow $\delta^2\text{H}$ and thus limiting the use of mixing models during ROS events. Although stream $\delta^2\text{H}$ is modelled correctly in absence of ROS, the results of a mixing model solely based on the modelled isotopic composition of rain, snow and ice melt led to unrealistic results for most of the melt season. In fact, Modelled snow melt $\delta^2\text{H}$ could, however, only be calibrated using our glacio-hydrological model as well as stream discharge and isotopic observations to constrain the isotopic model uncertainties. Indeed, many snowpack processes~~
1055 ~~are difficult to characterize and would require more research with extensive on-site field data which may be site-specific : (i) how vapor transport influences snow sublimation and deposition and how it affects isotopic fractionation and d-excess; (ii) how precipitation lapse rates amounts and $\delta^2\text{H}$ evolve with elevation during different season and (iii) how rain on snow isotopically mixes within a ripe or cold snowpack. In addition to those uncertainties, we showed that, for highly glacierized catchments, the gradual snow $\delta^2\text{H}$ enrichment during the melt season leads to a snow melt $\delta^2\text{H}$ signal close to ice melt $\delta^2\text{H}$, which in~~
1060 ~~turn makes hydrograph separation based solely on isotopes very challenging and therefore not advisable. limiting their use to separate their respective contributions to streamflow.~~

~~Finally, our~~ The key conclusions of the paper are summarized hereafter :

- ~~– Snow melt $\delta^2\text{H}$ can be successfully modelled using our glacio-hydrological model combined with streamflow $\delta^2\text{H}$ may provide interesting insights into the physical mechanisms of water release and transfer to the outlet. For example, we showed that during rain events, older pre-event water was preferentially released during the early hydrograph response, with a slower release of event water than observed in the hydrograph, suggesting the presence of a temporary storage that diminished during the melt season. model, which relies on parsimonious field-based snow, ice and weather data only if calibration against stream $\delta^2\text{H}$ and discharge can be performed (see Sect. 5.3).~~
1065 ~~We conclude that mixing models based on water isotope samples in highly glacierized catchment should only be considered where~~
- ~~– Due to snow melt, $\delta^2\text{H}$ modelling uncertainties and a similar composition to ice melt $\delta^2\text{H}$ during the melt season, we do not advise the use of water isotopes in glacierized catchments when the goal is to separate snow and ice melt $\delta^2\text{H}$ have clearly different values. For more complex glacio-hydrological models, the inclusion of water contributions (see Sect. 5.4).~~
- ~~– Water isotopes may provide additional data to better constrain model parameters but their use to better constrain the shares of snow and ice may be limited. To improve the use of water isotopes in models, more work is needed to characterise the complex processes associated with the precipitation isotope lapse rates, with wind dynamics on glaciers and with ROS incorporation into the snowpack. useful information to inform glacio-hydrological models to better characterize and constrain water transfer of precipitation events through the catchment, which may provide more robust predictive results for discharge (see Sect. 5.5).~~
1075
1080

Appendix A: List of glacio-hydrological model parameters

Table A1. Glacio-hydrological model parameters with initial and calibrated values for 2020 and 2021.

Model parameters	Units	Initial value	Calibration 2020	Calibration 2021
Mass balance model parameters				
Temperature lapse rate parameter 1 ($\mu_{\Delta T}$)	[days]	150	136.6	156.0
Temperature lapse rate parameter 2 ($\sigma_{\Delta T}$)	[days]	75	77.6	58.5
Temperature lapse rate parameter 3 ($f_{\Delta T, \text{range}}$)	[°C per 100 m]	0.2	0.180	0.180
Temperature lapse rate parameter 4 ($f_{\Delta T, \text{inc}}$)	[°C per 100 m]	0.35	0.417	0.484
Precipitation lapse rate (Δ_P)	[% per 100 m]	2	2.16	2.63
Snow precipitation factor ($f_{\text{corr, snow}}$)	[-]	2	1.90	2.33
Temperature melt threshold (T_{melt})	[°C]	1	0.97	1.28
Temperature factor ($f_{\text{melt, T, snow}}$)	[mm h ⁻¹ °C ⁻¹]	0.13	0.127	0.132
Shortwave radiation factor ($f_{\text{melt, rad, snow}}$)	[mm m ² h ⁻¹ W ⁻¹]	3.50E-03	3.40E-03	3.49E-03
Temperature factor ($f_{\text{melt, T, ice}}$)	[mm h ⁻¹ °C ⁻¹]	0.3	0.307	0.301
Shortwave radiation factor ($f_{\text{melt, rad, ice}}$)	[mm m ² h ⁻¹ W ⁻¹]	1.00E-03	1.32E-03	1.50E-03
Sublimation factor (E_{sp})	[°C]	8	7.0	7.4
Slope factor (f_{θ})	[-]	1.25	1.27	1.41
Slope threshold ($\theta_{\text{redist, thresh}}$)	[°]	30	31.9	31.7
Radiation slope factor ($f_{\text{rad, slope}}$)	[-]	1.5	1.71	1.41
Radiation slope threshold ($\theta_{\text{max, rad}}$)	[°]	60	67.2	59.8
Radiation aspect factor ($\gamma_{\text{max, rad}}$)	[-]	3	2.72	1.97
Isotope model parameters				
Snowpack melt fractionation factor ($f_{\text{frac, sm}}$)	[‰]	8	16	16
Snowpack sublimation fractionation factor ($f_{\text{frac, E}}$)	[‰]	40	8	8
Rain on snow incorporation factor (f_{ROS})	[-]	1	0.5 (SWE>2000 mm) to 1 (SWE<200 mm)	0.5 (SWE>2000 mm) to 1 (SWE<200 mm)
Transfer model parameters				
Hillslope dispersion coefficient ($D_{\text{hillslope}}$)	[-]	1	0.5	0.5
Hillslope hydraulic conductivity (K_s)	[m s ⁻¹]	0.05	0.01	0.01
Channelized system dispersion coef. ($D_{\text{channelized}}$)	[-]	1	19.98	19.98
Channelized system velocity ($v_{\text{channelized}}$)	[m s ⁻¹]	0.8	0.99	0.99
Distributed system dispersion coef. ($D_{\text{distributed}}$)	[-]	0.5	1.08	1.08
Distributed system velocity ($v_{\text{distributed}}$)	[m s ⁻¹]	0.1	0.26	0.26
Snowpack dispersion coefficient (D_{sp})	[-]	1	2.09	2.09
Snowpack infiltration velocity (v_{sp})	[mm h ⁻¹]	1200	10000	10000
Rain on snow dispersion coef. (D_{ROS})	[-]	1	1.80	1.80
Rain on snow infiltration velocity (v_{ROS})	[mm h ⁻¹]	1200	6042	6042
Slow reservoir response time constant (k_{slow})	[h]	40	83.3	83.3
Fast reservoir response time constant (k_{fast})	[h]	2	1.47	1.47
Slow reservoir fraction ($f_{\text{reservoir}}$)	[-]	0.5	0.47	0.47

Appendix B: Stream data

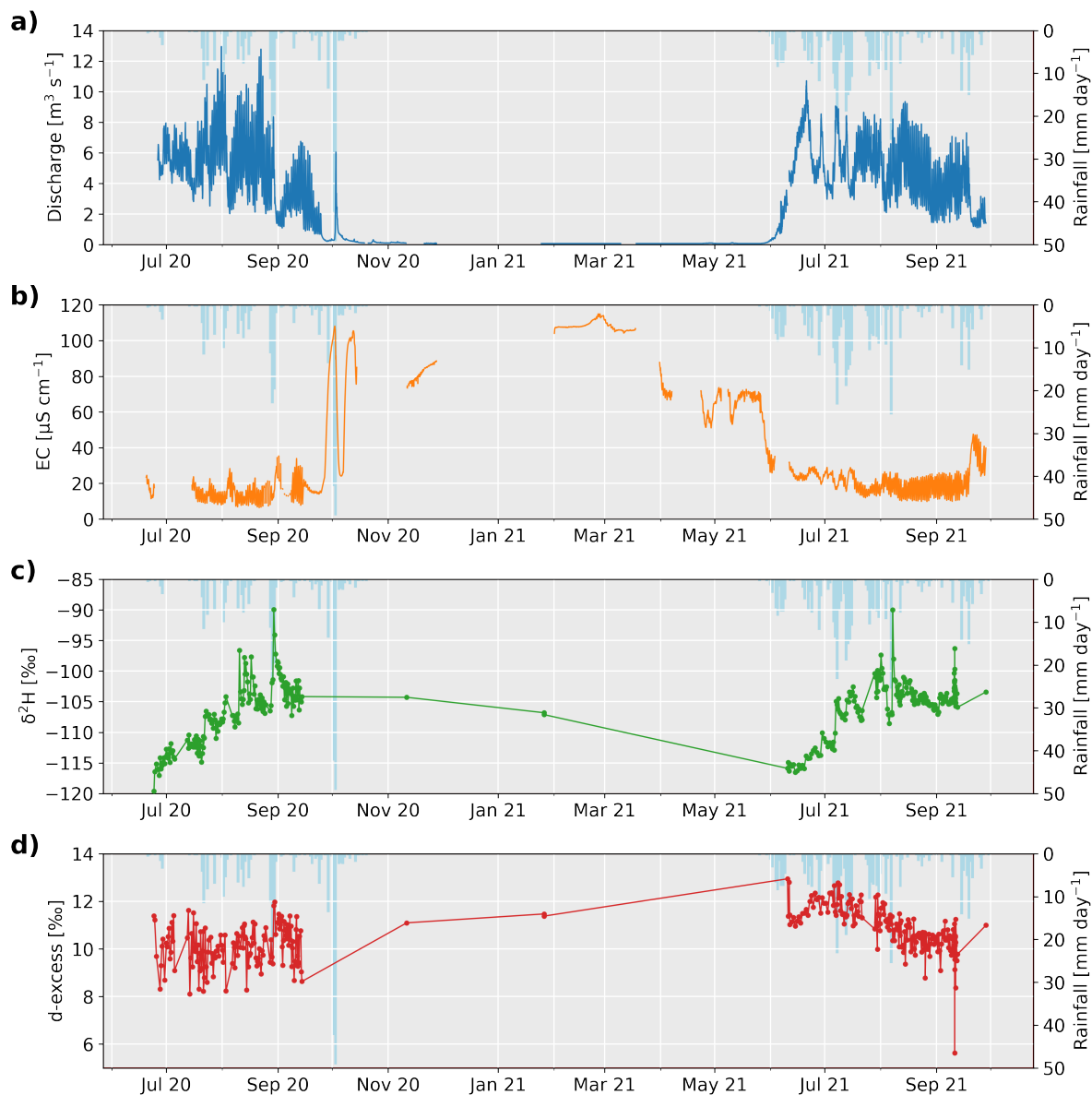


Figure B1. Measurements performed from late June 2020 to mid-September 2021 in the glacial stream directly at the glacier portal. **(a)** Estimated discharge data based on stream stage and a discharge rating curve. **(b)** Water electrical conductivity (EC). **(c)** Water stable isotopes ($\delta^2\text{H}$) measurements with dots representing the date of the sampling (usually twice a day in summer). **(d)** Corresponding isotopic d-excess. The inverted blue bars show the measured daily rainfall amounts measured at the weather station.

Appendix C: Stable water isotope measurements of snow and ice over time

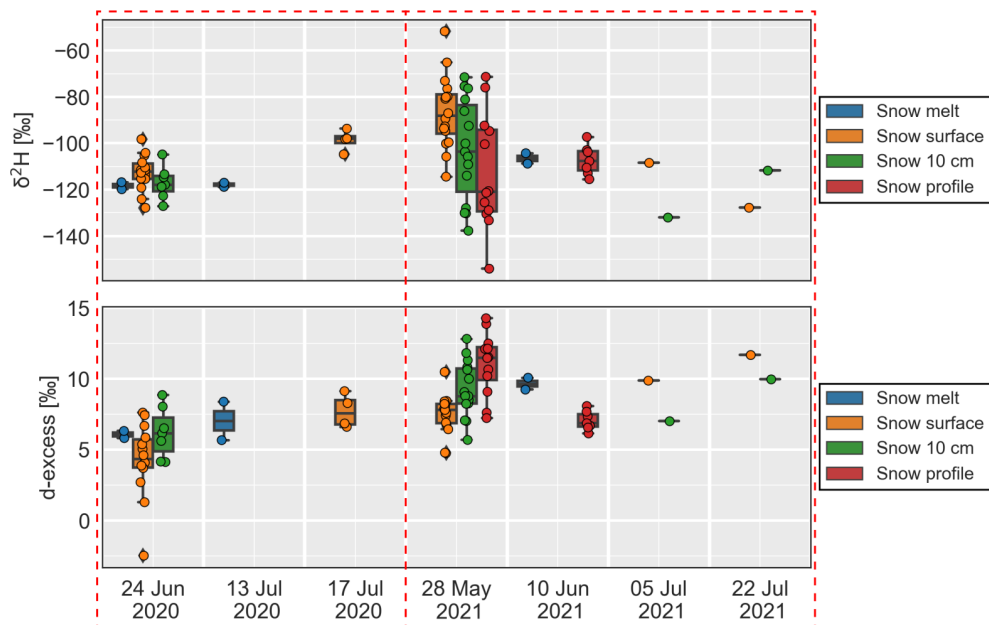


Figure C1. Temporal isotopic ($\delta^2\text{H}$) and d-excess evolution of snow samples for each sampling dates. Dots show the values distribution. The red dashed squares separate each year of data.

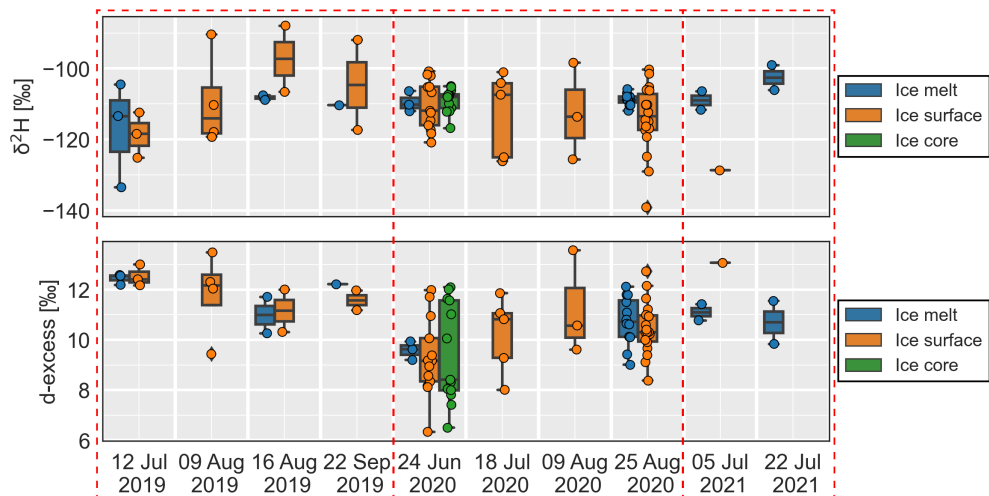


Figure C2. Temporal isotopic ($\delta^2\text{H}$) and d-excess evolution of ice samples for each sampling dates. Dots show the values distribution. The red dashed squares separate each year of data.

Appendix D: Calibrated snow mass balance functions

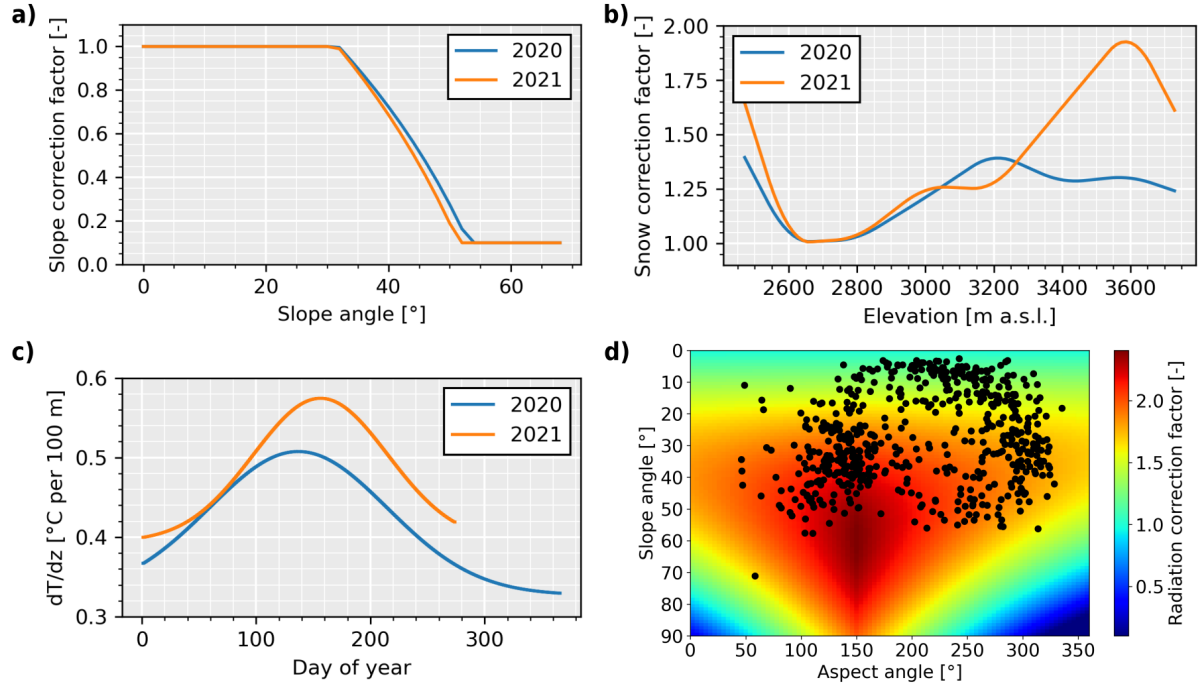


Figure D1. Results of the calibrated mass balance functions for 2020 and 2021 derived using PEST-HP. **(a)** Slope correction factor showing where snow reduction occurs (if the terrain slope angle is higher than $\theta_{\text{redist,thresh}}$, with a reduction rate f_{θ} . **(b)** Corresponding snow correction function (f_{redist}) if slope is smaller than $\theta_{\text{redist,thresh}}$. Snow redistribution is estimated based on a simple relationship with terrain elevation. **(c)** Temperature lapse rate (Δ_T) calibration for both years. **(d)** Radiation correction factor ($f_{\text{rad,slope,tot}} - f_{\text{rad,aspect,tot}}$) for 2021 based on terrain slope and aspect. Black dots correspond to all grid cells of the model discretization.

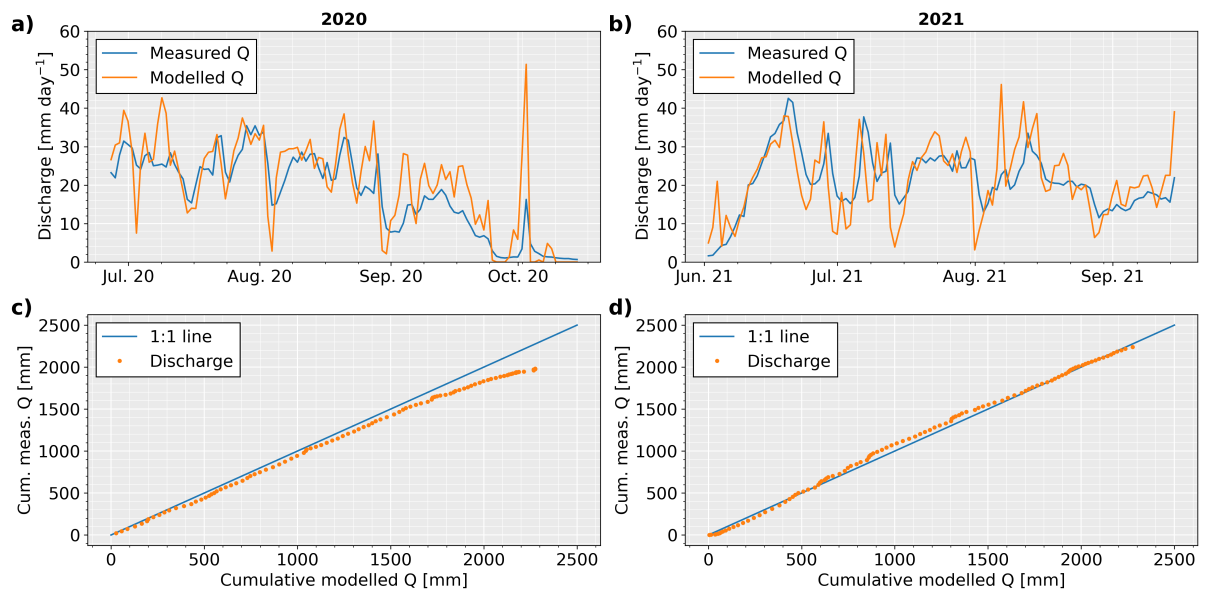


Figure D2. Measured and modelled (from rainfall, snow melt, ice melt) discharge (Q) at the catchment outlet for the melting season in 2020 (a),(c) and 2021 (b),(d). (c),(d) show the comparison of the cumulative total modelled discharge versus measured discharge at the glacier portal.

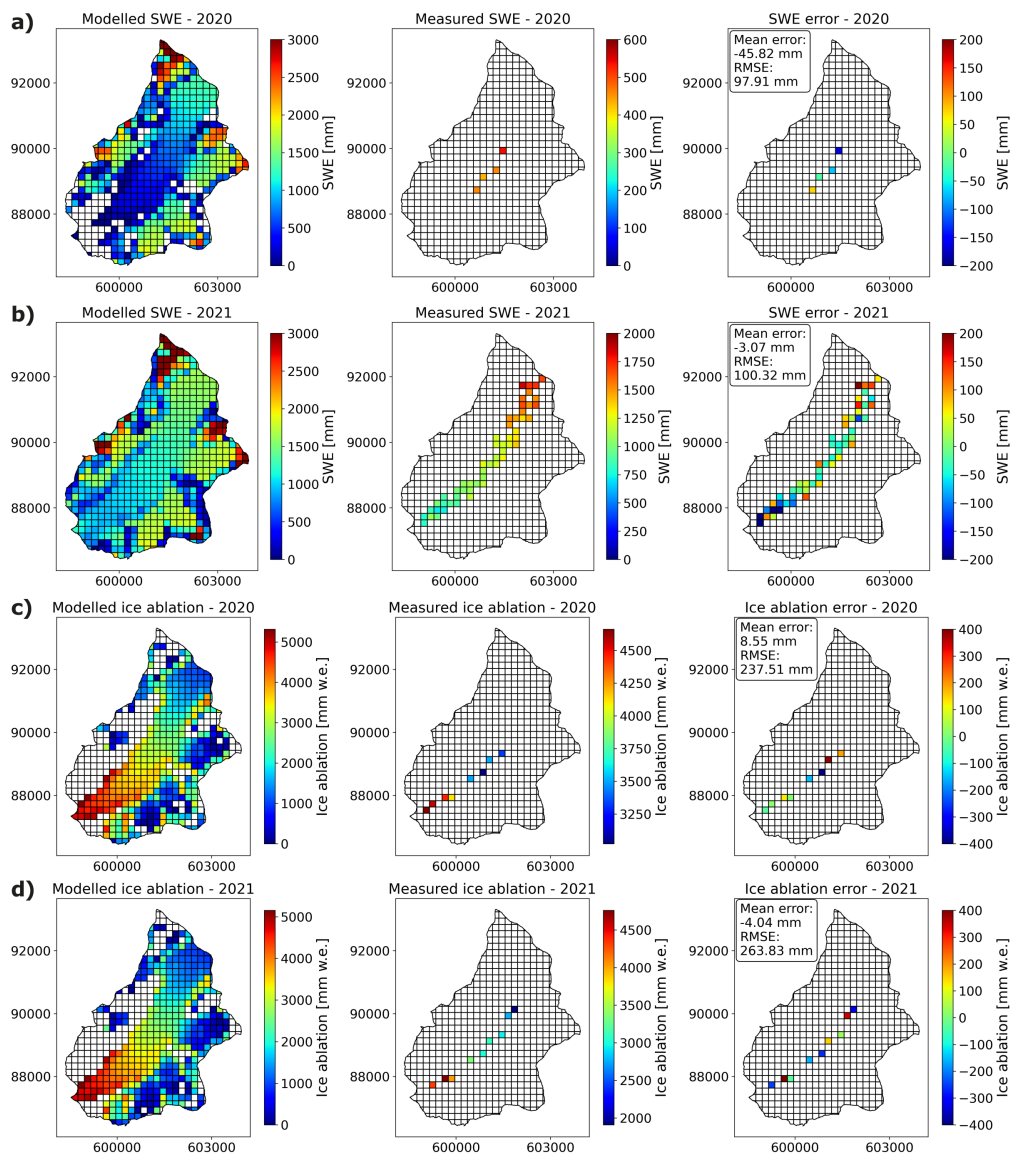


Figure E1. Modelled and measured snow accumulation for 2020 (a) and 2021 (b) and ice ablation for 2020 (c) and 2021 (d). The left figures show the modelled snow accumulation (SWE) or ice ablation for the corresponding year. The middle figures show the measured point mass balances (winter mass balance in spring ((a),(b)) and annual mass balance in late summer ((c),(d))). The right figures show the difference between measured and modelled mass balance. The corresponding mean error and root mean square error for each map is also highlighted (all values in w.e.). For the modelled snow accumulation (SWE), 2020 corresponds to the measurement date of 29.06.2020, and 2021 to 28.05.2021. Ice ablation corresponds to the measured annual ablation from 01.10.2019 to 18.09.2020 for 2020 and to the measured annual ablation from 18.09.2020 to 24.09.2021 for 2021.

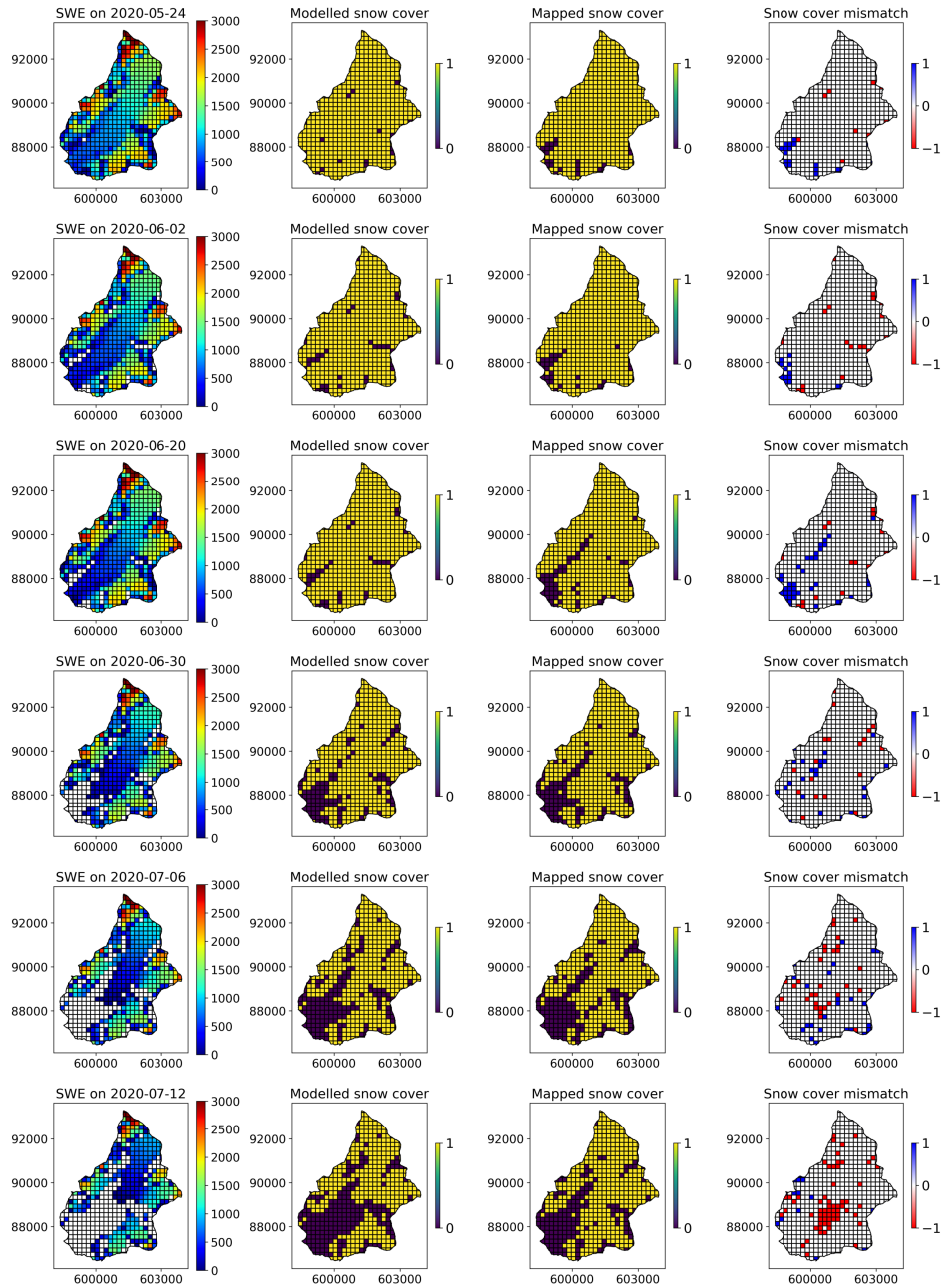


Figure E2. Modelled and mapped snow cover 2020 (part 1). The left figures show the modelled SWE with the corresponding date. The second figure row shows the modelled snow presence (1) or absence (0). The third figure row shows the mapped snow presence (1) or absence (0) based on Planet satellite imagery. The last (right) row shows the mismatch between mapped and modelled snow presence and absence (1 for wrong modelled snow cover presence, -1 for wrong modelled snow cover absence). The figure lines show different dates as indicated on the left row map titles.

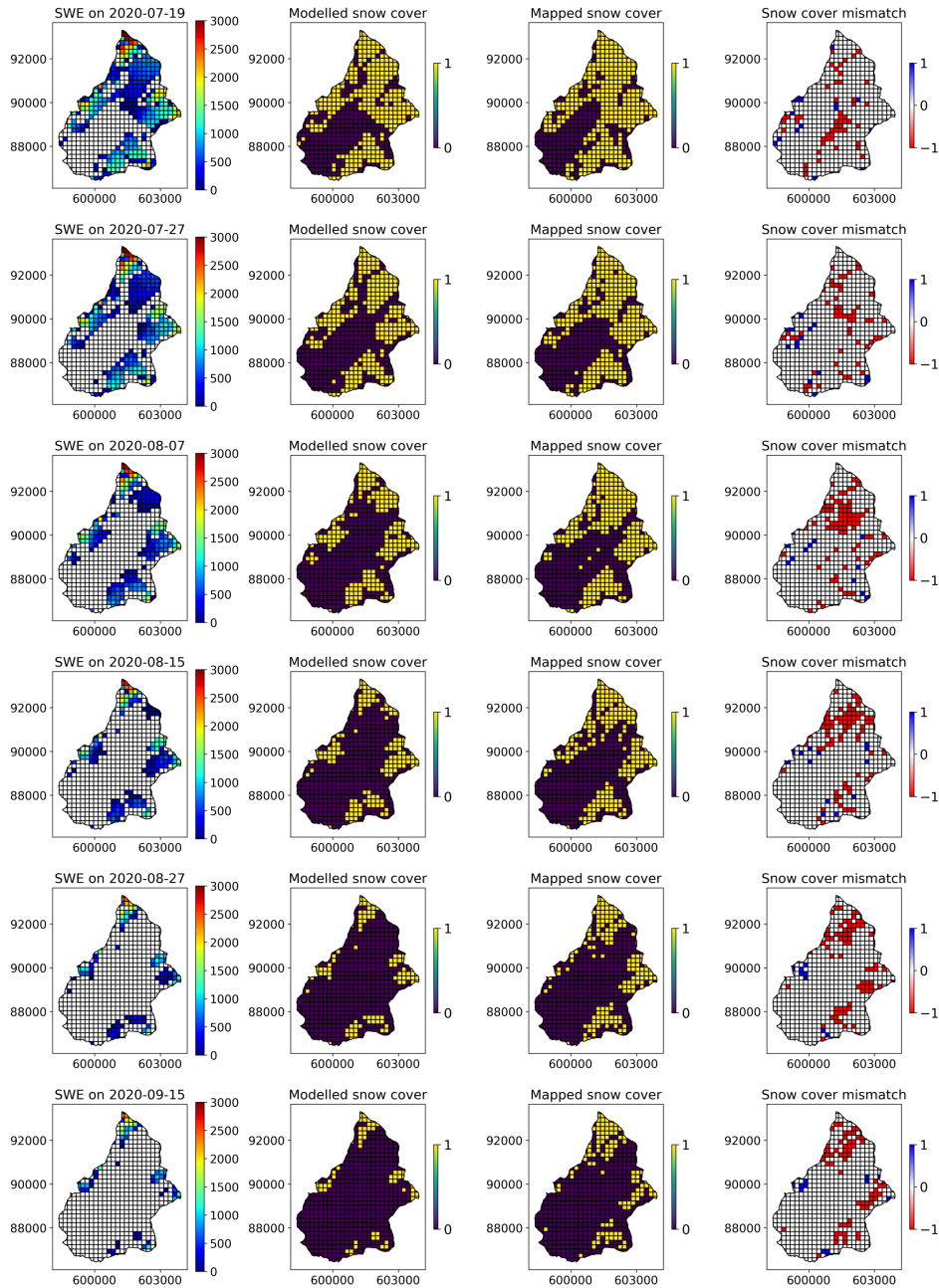


Figure E3. Modelled and mapped snow cover 2020 (part 2). The left figures show the modelled SWE with the corresponding date. The second figure row shows the modelled snow presence (1) or absence (0). The third figure row shows the mapped snow presence (1) or absence (0) based on Planet satellite imagery. The last (right) row shows the mismatch between mapped and modelled snow presence and absence (1 for wrong modelled snow cover presence, -1 for wrong modelled snow cover absence). The figure lines show different dates as indicated on the left row map titles.

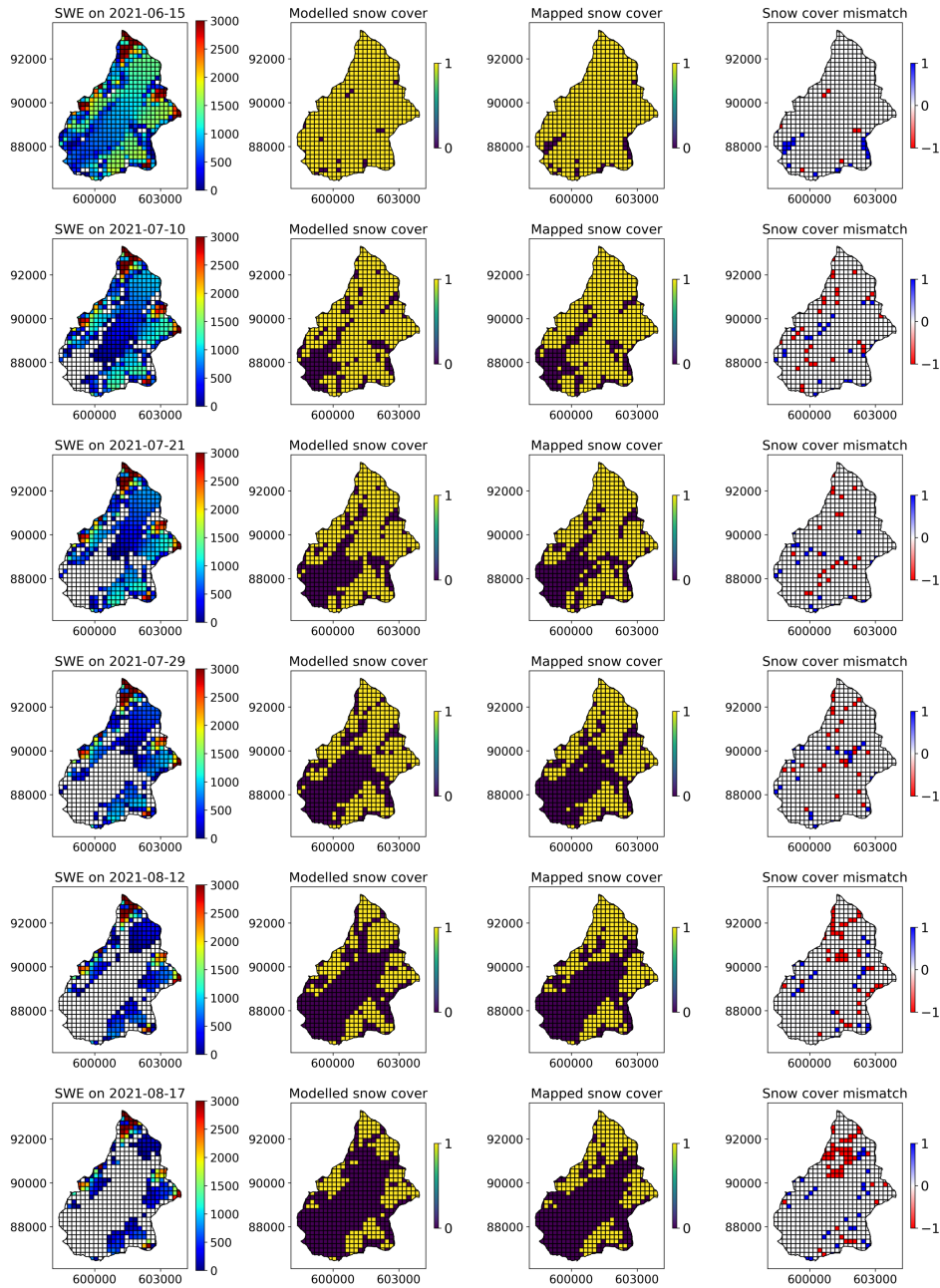


Figure E4. Modelled and mapped snow cover 2021 (part 1). The left figures show the modelled SWE with the corresponding date. The second figure row shows the modelled snow presence (1) or absence (0). The third figure row shows the mapped snow presence (1) or absence (0) based on Planet satellite imagery. The last (right) row shows the mismatch between mapped and modelled snow presence and absence (1 for wrong modelled snow cover presence, -1 for wrong modelled snow cover absence). The figure lines show different dates as indicated on the left row map titles.

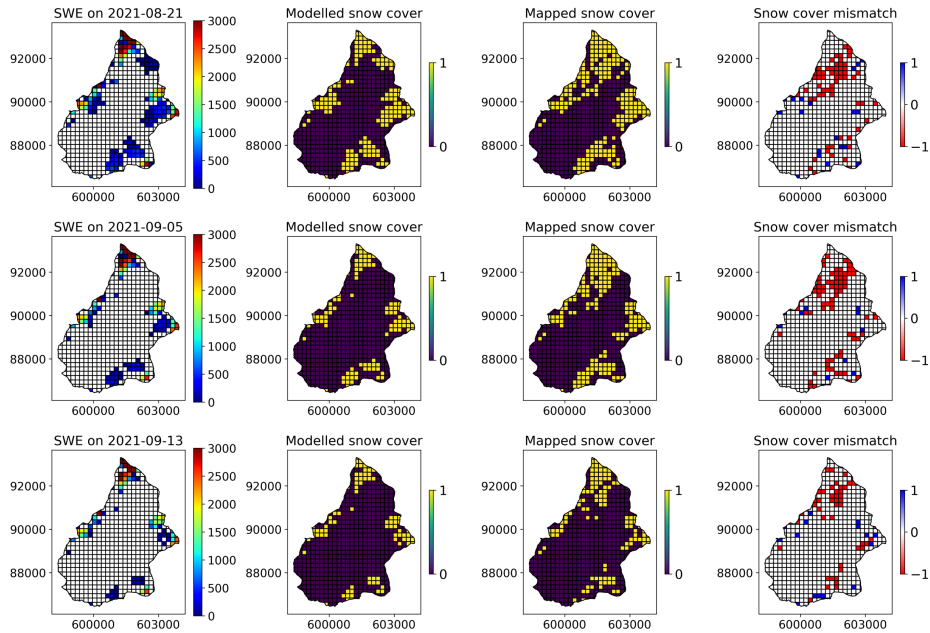


Figure E5. Modelled and mapped snow cover 2021 (part 2). The left figures show the modelled SWE with the corresponding date. The second figure row shows the modelled snow presence (1) or absence (0). The third figure row shows the mapped snow presence (1) or absence (0) based on Planet satellite imagery. The last (right) row shows the mismatch between mapped and modelled snow presence and absence (1 for wrong modelled snow cover presence, -1 for wrong modelled snow cover absence). The figure lines show different dates as indicated on the left row map titles.

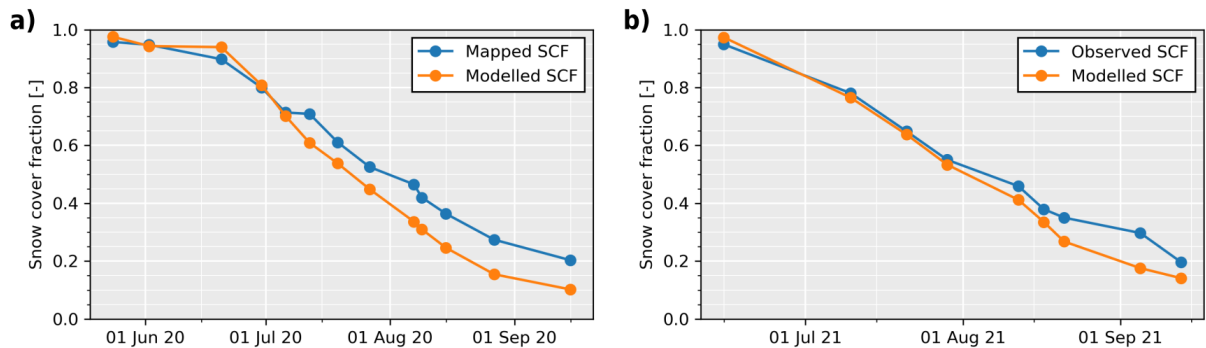


Figure E6. Modelled and mapped snow cover fraction (SCF) for (a) 2020 and (b) 2021 based on mapped snow cover from planet satellite imagery and as modelled by the mass balance model.

Code and data availability. All isotopes data are available under (Müller, 2023b), weather data under (Müller, 2022) and river data under (Müller and Miesen, 2022). The codes for the glacio-hydrological model were written in python using Jupyter Notebook and are provided in the Supplement as well as all PEST calibration files.

1090 *Author contributions.* T.M. conducted all the data collection and data analysis, produced all the figures and wrote the manuscript draft. B.S. proposed the general research topic and acquired the funding. S.L. and his team organised field work logistics. M.F. organized all mass balance related field work and provided point and glacier-wide surface mass balance data for the Otemma glacier. B.S. and S.L. jointly supervised the research. M.F., S.L. and B.S. edited the manuscript draft version. All authors have read and agreed to the current version of the manuscript.

Competing interests. The contact author has declared that none of the authors has any competing interests.

1095 *Acknowledgements.* T.M. and M.F. thank Vera Girod who helped with the field work in 2020 and Valentin Tanniger who carried out the dye tracing work. T.M. also thanks all Bachelor, Master and PhD students from the University of Lausanne who helped with data collection, and in particular Floreana Miesen who organised field logistics and participated in field data collection on the Otemma glacier.

Financial support. This research has been supported by the Schweizerischer Nationalfonds zur Förderung der Wissenschaftlichen Forschung (grant no. 200021_182065).

1100 References

- Acero Triana, J. S., Chu, M. L., Guzman, J. A., Moriasi, D. N., and Steiner, J. L.: Beyond model metrics: The perils of calibrating hydrologic models, *Journal of Hydrology*, 578, 124 032, <https://doi.org/10.1016/j.jhydrol.2019.124032>, 2019.
- Ala-aho, P., Tetzlaff, D., McNamara, J. P., Laudon, H., Kormos, P., and Soulsby, C.: Modeling the isotopic evolution of snowpack and snowmelt: Testing a spatially distributed parsimonious approach, *Water Resources Research*, 53, 5813–5830, <https://doi.org/10.1002/2017WR020650>, 2017.
- 1105 Ala-Aho, P., Tetzlaff, D., McNamara, J. P., Laudon, H., and Soulsby, C.: Using isotopes to constrain water flux and age estimates in snow-influenced catchments using the STARR (Spatially distributed Tracer-Aided Rainfall-Runoff) model, *Hydrology and Earth System Sciences*, 21, 5089–5110, <https://doi.org/10.5194/hess-21-5089-2017>, 2017.
- Arthur, D. and Vassilvitskii, S.: k-means++: the advantages of careful seeding, pp. 1027–1035, *Society for Industrial and Applied Mathematics*, ISBN 978-0-898716-24-5, 2007.
- 1110 Ayala, A., Pellicciotti, F., MacDonell, S., McPhee, J., Vivero, S., Campos, C., and Egli, P.: Modelling the hydrological response of debris-free and debris-covered glaciers to present climatic conditions in the semiarid Andes of central Chile, *Hydrological Processes*, 30, 4036–4058, <https://doi.org/10.1002/hyp.10971>, 2016.
- Barandun, M., Huss, M., Usabaliyev, R., Azisov, E., Berthier, E., Kääh, A., Bolch, T., and Hoelzle, M.: Multi-decadal mass balance series of three Kyrgyz glaciers inferred from modelling constrained with repeated snow line observations, *Cryosphere*, 12, 1899–1919, <https://doi.org/10.5194/tc-12-1899-2018>, 2018.
- 1115 Beniston, M., Farinotti, D., Stoffel, M., Andreassen, L. M., Coppola, E., Eckert, N., Fantini, A., Giacona, F., Hauck, C., Huss, M., Huwald, H., Lehning, M., López-Moreno, J. I., Magnusson, J., Marty, C., Morán-Tejeda, E., Morin, S., Naaim, M., Provenzale, A., Rabatel, A., Six, D., Stötter, J., Strasser, U., Terzago, S., and Vincent, C.: The European mountain cryosphere: A review of its current state, trends, and future challenges, *Cryosphere*, 12, 759–794, <https://doi.org/10.5194/tc-12-759-2018>, 2018.
- 1120 Berghuijs, W. R., Woods, R. A., and Hrachowitz, M.: A precipitation shift from snow towards rain leads to a decrease in streamflow, *Nature Climate Change*, 4, 583–586, <https://doi.org/10.1038/nclimate2246>, 2014.
- Beria, H., Larsen, J. R., Ceperley, N. C., Michelon, A., Vennemann, T., and Schaepli, B.: Understanding snow hydrological processes through the lens of stable water isotopes, *Wiley Interdisciplinary Reviews: Water*, 5, 1–23, <https://doi.org/10.1002/wat2.1311>, 2018.
- 1125 Beria, H., Larsen, J. R., Michelon, A., Ceperley, N. C., and Schaepli, B.: HydroMix v1.0: A new Bayesian mixing framework for attributing uncertain hydrological sources, *Geoscientific Model Development*, 13, 2433–2450, <https://doi.org/10.5194/gmd-13-2433-2020>, 2020.
- Biemans, H., Siderius, C., Lutz, A. F., Nepal, S., Ahmad, B., Hassan, T., von Bloh, W., Wijngaard, R. R., Wester, P., Shrestha, A. B., and Immerzeel, W. W.: Importance of snow and glacier meltwater for agriculture on the Indo-Gangetic Plain, *Nature Sustainability*, 2, 594–601, <https://doi.org/10.1038/s41893-019-0305-3>, 2019.
- 1130 Burri, M., Allimann, M., Chessex, R., Piaz, G. V. D., Valle, G. D., Bois, L. D., Gouffon, Y., A., G., Hagen, T., Krummenacher, D., and Looser, M.-O.: Chanrion (CN 1346) avec partie nord de la feuille Mont Vélan (CN 1366), *Atlas géologique de la Suisse 1:25 000*, 1999.
- Buytaert, W., Moulds, S., Acosta, L., De Bièvre, B., Olmos, C., Villacis, M., Tovar, C., and Verbist, K. M. J.: Glacial melt content of water use in the tropical Andes, *Environmental Research Letters*, 12, <https://doi.org/10.1088/1748-9326/aa926c>, 2017.
- 1135 Carroll, R. W., Deems, J. S., Niswonger, R., Schumer, R., and Williams, K. H.: The Importance of Interflow to Groundwater Recharge in a Snowmelt-Dominated Headwater Basin, *Geophysical Research Letters*, 46, 5899–5908, <https://doi.org/10.1029/2019GL082447>, 2019.

- Carroll, R. W. H., Bearup, L. A., Brown, W., Dong, W., Bill, M., and Williams, K. H.: Factors controlling seasonal groundwater and solute flux from snow-dominated basins, *Hydrological Processes*, 32, 2187–2202, <https://doi.org/10.1002/hyp.13151>, 2018.
- Carroll, R. W. H., Deems, J., Maxwell, R., Sprenger, M., Brown, W., Newman, A., Beutler, C., Bill, M., Hubbard, S. S., and Williams, K. H.: Variability in observed stable water isotopes in snowpack across a mountainous watershed in Colorado, *Hydrological Processes*, 36, <https://doi.org/10.1002/hyp.14653>, 2022a.
- Carroll, R. W. H., Deems, J., Sprenger, M., Maxwell, R., Brown, W., Newman, A., Beutler, C., and Williams, K. H.: Modeling Snow Dynamics and Stable Water Isotopes Across Mountain Landscapes, *Geophysical Research Letters*, 49, <https://doi.org/10.1029/2022GL098780>, 2022b.
- Coplen, T. B.: Reporting of stable hydrogen, carbon, and oxygen isotopic abundances (Technical Report), *Pure and Applied Chemistry*, 66, 273–276, <https://doi.org/10.1351/pac199466020273>, 1994.
- Costa, D., Sextone, G. A., Pomeroy, J. W., Campbell, D. H., Clow, D. W., and Mast, A.: Preferential elution of ionic solutes in melting snowpacks: Improving process understanding through field observations and modeling in the Rocky Mountains, *Science of The Total Environment*, 710, 136–147, <https://doi.org/10.1016/j.scitotenv.2019.136273>, 2020.
- Doherty, J.: Calibration and Uncertainty Analysis for Complex Environmental Models. Watermark Numerical Computing, Brisbane, Australia, 2015.
- Engel, M., Penna, D., Bertoldi, G., Dell’Agnese, A., Soulsby, C., and Comiti, F.: Identifying run-off contributions during melt-induced run-off events in a glacierized alpine catchment, *Hydrological Processes*, 30, 343–364, <https://doi.org/10.1002/hyp.10577>, 2016.
- Farinotti, D., Usselman, S., Huss, M., Bauder, A., and Funk, M.: Runoff evolution in the Swiss Alps: projections for selected high-alpine catchments based on ENSEMBLES scenarios, *Hydrological Processes*, 26, 1909–1924, <https://doi.org/10.1002/hyp.8276>, 2012.
- Feng, X., Taylor, S., Renshaw, C. E., and Kirchner, J. W.: Isotopic evolution of snowmelt 1. A physically based one-dimensional model, *Water Resources Research*, 38, 35–1–35–8, <https://doi.org/10.1029/2001WR000814>, 2002.
- Fischer, M., Huss, M., and Hoelzle, M.: Surface elevation and mass changes of all Swiss glaciers 1980–2010, *The Cryosphere*, 9, 525–540, <https://doi.org/10.5194/tc-9-525-2015>, 2015.
- Flowers, G. E.: Modelling water flow under glaciers and ice sheets, *Proceedings of the Royal Society A: Mathematical, Physical and Engineering Sciences*, 471, 20140907, <https://doi.org/10.1098/rspa.2014.0907>, 2015.
- Flowers, G. E. and Clarke, G. K. C.: A multicomponent coupled model of glacier hydrology 1. Theory and synthetic examples, *Journal of Geophysical Research: Solid Earth*, 107, ECV 9—1—ECV 9—17, <https://doi.org/10.1029/2001jb001122>, 2002.
- Gabbi, J., Farinotti, D., Bauder, A., and Maurer, H.: Ice volume distribution and implications on runoff projections in a glacierized catchment, *Hydrology and Earth System Sciences*, 16, 4543–4556, <https://doi.org/10.5194/hess-16-4543-2012>, 2012.
- Gabbi, J., Carezzo, M., Pellicciotti, F., Bauder, A., and Funk, M.: A comparison of empirical and physically based glacier surface melt models for long-term simulations of glacier response, *Journal of Glaciology*, 60, 1199–1207, <https://doi.org/10.3189/2014JG14J011>, 2014.
- Galewsky, J.: Orographic precipitation isotopic ratios in stratified atmospheric flows: Implications for paleoelevation studies, *Geology*, 37, 791–794, <https://doi.org/10.1130/G30008A.1>, 2009.
- GLAMOS (1881–2020): The Swiss Glaciers 1880–2018/19, *Glaciological Reports No 1–140*, Yearbooks of the Cryospheric Commission of the Swiss Academy of Sciences (SCNAT), published since 1964 by VAW / ETH Zurich, https://doi.org/10.18752/glrep_series.
- Greuell, W. and Böhm, R.: 2 m temperatures along melting mid-latitude glaciers, and implications for the sensitivity of the mass balance to variations in temperature, *Journal of Glaciology*, 44, 9–20, <https://doi.org/10.3189/S0022143000002306>, 1998.

- Gupta, H. V., Kling, H., Yilmaz, K. K., and Martinez, G. F.: Decomposition of the mean squared error and NSE performance criteria: Implications for improving hydrological modelling, *Journal of Hydrology*, 377, 80–91, <https://doi.org/10.1016/j.jhydrol.2009.08.003>, 2009.
- 1175 He, Z., Unger-Shayesteh, K., Vorogushyn, S., Weise, S. M., Kalashnikova, O., Gafurov, A., Duethmann, D., Barandun, M., and Merz, B.: Constraining hydrological model parameters using water isotopic compositions in a glacierized basin, Central Asia, *Journal of Hydrology*, 571, 332–348, <https://doi.org/10.1016/j.jhydrol.2019.01.048>, 2019.
- Hindshaw, R. S., Tipper, E. T., Reynolds, B. C., Lemarchand, E., Wiederhold, J. G., Magnusson, J., Bernasconi, S. M., Kretzschmar, R., and Bourdon, B.: Hydrological control of stream water chemistry in a glacial catchment (Damma Glacier, Switzerland), *Chemical Geology*, 1180 285, 215–230, <https://doi.org/10.1016/j.chemgeo.2011.04.012>, 2011.
- Hood, J. L. and Hayashi, M.: Characterization of snowmelt flux and groundwater storage in an alpine headwater basin, *Journal of Hydrology*, 521, 482–497, <https://doi.org/10.1016/j.jhydrol.2014.12.041>, 2015.
- Huss, M. and Hock, R.: Global-scale hydrological response to future glacier mass loss, *Nature Climate Change*, 8, 135–140, <https://doi.org/10.1038/s41558-017-0049-x>, 2018.
- 1185 Huss, M., Farinotti, D., Bauder, A., and Funk, M.: Modelling runoff from highly glacierized alpine drainage basins in a changing climate, *Hydrological Processes*, 22, 3888–3902, <https://doi.org/10.1002/hyp.7055>, 2008.
- Huss, M., Bauder, A., Linsbauer, A., Gabbi, J., Kappenberger, G., Steinegger, U., and Farinotti, D.: More than a century of direct glacier mass-balance observations on Claridenfirn, Switzerland, *Journal of Glaciology*, 67, 697–713, <https://doi.org/10.1017/jog.2021.22>, 2021.
- Immerzeel, W. W., van Beek, L. P. H., Konz, M., Shrestha, A. B., and Bierkens, M. F. P.: Hydrological response to climate change in a 1190 glacierized catchment in the Himalayas, *Climatic Change*, 110, 721–736, <https://doi.org/10.1007/s10584-011-0143-4>, 2012.
- Immerzeel, W. W., Lutz, A. F., Andrade, M., Bahl, A., Biemans, H., Bolch, T., Hyde, S., Brumby, S., Davies, B. J., Elmore, A. C., Emmer, A., Feng, M., Fernández, A., Haritashya, U., Kargel, J. S., Koppes, M., Kraaijenbrink, P. D. A., Kulkarni, A. V., Mayewski, P. A., Nepal, S., Pacheco, P., Painter, T. H., Pellicciotti, F., Rajaram, H., Rupper, S., Sinisalo, A., Shrestha, A. B., Viviroli, D., Wada, Y., Xiao, C., Yao, T., and Baillie, J. E. M.: Importance and vulnerability of the world’s water towers, *Nature*, 577, 364–369, <https://doi.org/10.1038/s41586-019-1822-y>, 2020.
- 1195 Jenk, T. M., Szidat, S., Bolius, D., Sigl, M., Gäggeler, H. W., Wacker, L., Ruff, M., Barbante, C., Boutron, C. F., and Schwikowski, M.: A novel radiocarbon dating technique applied to an ice core from the Alps indicating late Pleistocene ages, *Journal of Geophysical Research Atmospheres*, 114, 1–8, <https://doi.org/10.1029/2009JD011860>, 2009.
- Jouvet, G., Huss, M., Funk, M., and Blatter, H.: Modelling the retreat of Grosser Aletschgletscher, Switzerland, in a changing climate, *Journal of Glaciology*, 57, 1033–1045, <https://doi.org/10.3189/002214311798843359>, 2011.
- 1200 Juras, R., Würzer, S., Pavlásek, J., Vitvar, T., and Jonas, T.: Rainwater propagation through snowpack during rain-on-snow sprinkling experiments under different snow conditions, *Hydrology and Earth System Sciences*, 21, 4973–4987, <https://doi.org/10.5194/hess-21-4973-2017>, 2017.
- Kern, Z., Kohán, B., and Leuenberger, M.: Precipitation isoscape of high reliefs: Interpolation scheme designed and tested for 1205 monthly resolved precipitation oxygen isotope records of an Alpine domain, *Atmospheric Chemistry and Physics*, 14, 1897–1907, <https://doi.org/10.5194/acp-14-1897-2014>, 2014.
- Kirchner, J. W.: A double paradox in catchment hydrology and geochemistry, *Hydrological Processes*, 17, 871–874, <https://doi.org/10.1002/hyp.5108>, 2003.
- Kurzböck, C. and Huss, M.: Measurement, documentation and evaluation of glacier monitoring data, 2021.

- 1210 Lambán, L., Jódar, J., Custodio, E., Soler, A., Sapriza, G., and Soto, R.: Isotopic and hydrogeochemical characterization of high-altitude karst aquifers in complex geological settings. The Ordesa and Monte Perdido National Park (Northern Spain) case study, *Science of The Total Environment*, 506–507, 466–479, <https://doi.org/10.1016/j.scitotenv.2014.11.030>, 2015.
- Lane, S. N. and Nienow, P. W.: Decadal-Scale Climate Forcing of Alpine Glacial Hydrological Systems, *Water Resources Research*, 55, 2478–2492, <https://doi.org/10.1029/2018WR024206>, 2019.
- 1215 Linsbauer, A., Frey, H., Haeberli, W., Machguth, H., Azam, M. F., and Allen, S.: Modelling glacier-bed overdeepenings and possible future lakes for the glaciers in the Himalaya-Karakoram region, *Annals of Glaciology*, 57, 119–130, <https://doi.org/10.3189/2016AoG71A627>, 2016.
- Linsbauer, A., Huss, M., Hodel, E., Bauder, A., Fischer, M., Weidmann, Y., Bärtschi, H., and Schmassmann, E.: The New Swiss Glacier Inventory SGI2016: From a Topographical to a Glaciological Dataset, *Frontiers in Earth Science*, 9, 1–22, <https://doi.org/10.3389/feart.2021.704189>, 2021.
- 1220 MacDonal, A. M., Maurice, L., Dobbs, M. R., Reeves, H. J., and Auton, C. A.: Relating in situ hydraulic conductivity, particle size and relative density of superficial deposits in a heterogeneous catchment, *Journal of Hydrology*, 434–435, 130–141, <https://doi.org/10.1016/j.jhydrol.2012.01.018>, 2012.
- Magnusson, J., Farinotti, D., Jonas, T., and Bavay, M.: Quantitative evaluation of different hydrological modelling approaches in a partly glacierized Swiss watershed, *Hydrological Processes*, 25, 2071–2084, <https://doi.org/https://doi.org/10.1002/hyp.7958>, 2011.
- 1225 Marshall, S. J., Sharp, M. J., Burgess, D. O., and Anslow, F. S.: Near-surface-temperature lapse rates on the Prince of Wales Icefield, Ellesmere Island, Canada: implications for regional downscaling of temperature, *International Journal of Climatology*, 27, 385–398, <https://doi.org/10.1002/joc.1396>, 2007.
- Maurya, A. S., Shah, M., Deshpande, R. D., Bhardwaj, R. M., Prasad, A., and Gupta, S. K.: Hydrograph separation and precipitation source identification using stable water isotopes and conductivity: River Ganga at Himalayan foothills, *Hydrological Processes*, 25, 1521–1530, <https://doi.org/10.1002/hyp.7912>, 2011.
- 1230 Mazurkiewicz, A. B., Callery, D. G., and McDonnell, J. J.: Assessing the controls of the snow energy balance and water available for runoff in a rain-on-snow environment, *Journal of Hydrology*, 354, 1–14, <https://doi.org/10.1016/j.jhydrol.2007.12.027>, 2008.
- McDonnell, J. J.: A Rationale for Old Water Discharge Through Macropores in a Steep, Humid Catchment, *Water Resources Research*, 26, 2821–2832, <https://doi.org/https://doi.org/10.1029/WR026i011p02821>, 1990.
- 1235 McGuire, K. J. and McDonnell, J. J.: A review and evaluation of catchment transit time modeling, *Journal of Hydrology*, 330, 543–563, <https://doi.org/10.1016/j.jhydrol.2006.04.020>, 2006.
- Milner, A. M., Khamis, K., Battin, T. J., Brittain, J. E., Barrand, N. E., Füreder, L., Cauvy-Fraunié, S., Gíslason, G. M., Jacobsen, D., Hannah, D. M., Hodson, A. J., Hood, E., Lencioni, V., Ólafsson, J. S., Robinson, C. T., Tranter, M., and Brown, L. E.: Glacier shrinkage driving global changes in downstream systems, *Proceedings of the National Academy of Sciences*, 114, 9770–9778, <https://doi.org/10.1073/pnas.1619807114>, 2017.
- 1240 Mott, R., Winstral, A., Cluzet, B., Helbig, N., Magnusson, J., Mazzotti, G., Quéno, L., Schirmer, M., Webster, C., and Jonas, T.: Operational snow-hydrological modeling for Switzerland, *Frontiers in Earth Science*, 11, <https://doi.org/10.3389/feart.2023.1228158>, 2023.
- Muelchi, R., Rössler, O., Schwanbeck, J., Weingartner, R., and Martius, O.: An ensemble of daily simulated runoff data (1981–2099) under climate change conditions for 93 catchments in Switzerland (Hydro-CH2018-Runoff ensemble), *Geoscience Data Journal*, 9, 46–57, <https://doi.org/10.1002/gdj3.1117>, 2022.
- 1245

- Müller, T.: Weather dataset from Otemma glacier forefield, Switzerland (from 14 July 2019 to 18 November 2021) (v1.2021.02), Zenodo [Data set], <https://doi.org/10.5281/zenodo.6106778>, 2022.
- Müller, T.: Water stable isotope, temperature and electrical conductivity dataset (snow, ice, rain, surface water, groundwater) from a high alpine catchment (2019-2021) (v1.2023.01), Zenodo [Data set], <https://doi.org/10.5281/zenodo.7529792>, 2023a.
- Müller, T.: Water stable isotope, temperature and electrical conductivity dataset (snow, ice, rain, surface water, groundwater) from a high alpine catchment (2019-2021). (v1.2023.01), Zenodo [Data set], <https://doi.org/10.5281/zenodo.7529792>, 2023b.
- Müller, T. and Miesen, F.: Stream discharge, stage, electrical conductivity & temperature dataset from Otemma glacier forefield, Switzerland (from July 2019 to October 2021) (v1.2021.02), Zenodo [Data set], <https://doi.org/10.5281/zenodo.6202732>, 2022.
- Müller, T., Lane, S. N., and Schaeffli, B.: Towards a hydrogeomorphological understanding of proglacial catchments: an assessment of groundwater storage and release in an Alpine catchment, *Hydrology and Earth System Sciences*, 26, 6029–6054, <https://doi.org/10.5194/hess-26-6029-2022>, 2022.
- Nan, Y., He, Z., Tian, F., Wei, Z., and Tian, L.: Assessing the influence of water sampling strategy on the performance of tracer-aided hydrological modeling in a mountainous basin on the Tibetan Plateau, *Hydrology and Earth System Sciences*, 26, 4147–4167, <https://doi.org/10.5194/hess-26-4147-2022>, 2022.
- Nienow, P., Sharp, M., and Willis, I.: Seasonal changes in the morphology of the subglacial drainage system, Haut Glacier d’Arolla, Switzerland, *Earth Surface Processes and Landforms*, 23, 825–843, [https://doi.org/10.1002/\(SICI\)1096-9837\(199809\)23:9<825::AID-ESP893>3.0.CO;2-2](https://doi.org/10.1002/(SICI)1096-9837(199809)23:9<825::AID-ESP893>3.0.CO;2-2), 1998.
- Oestreicher, N., Loew, S., Roques, C., Aaron, J., Gualandi, A., Longuevergne, L., Limpach, P., and Hugentobler, M.: Controls on Spatial and Temporal Patterns of Slope Deformation in an Alpine Valley, *Journal of Geophysical Research: Earth Surface*, 126, <https://doi.org/10.1029/2021JF006353>, 2021.
- Penna, D., Engel, M., Bertoldi, G., and Comiti, F.: Towards a tracer-based conceptualization of meltwater dynamics and streamflow response in a glacierized catchment, *Hydrology and Earth System Sciences*, 21, 23–41, <https://doi.org/10.5194/hess-21-23-2017>, 2017.
- Pomeroy, J. W., Fang, X., and Marks, D. G.: The cold rain-on-snow event of June 2013 in the Canadian Rockies - characteristics and diagnosis, *Hydrological Processes*, 30, 2899–2914, <https://doi.org/10.1002/hyp.10905>, 2016.
- Pritchard, H. D.: Asia’s shrinking glaciers protect large populations from drought stress, *Nature*, 569, 649–654, <https://doi.org/10.1038/s41586-019-1240-1>, 2019.
- Rogger, M., Chirico, G. B., Hausmann, H., Krainer, K., Brückl, E., Stadler, P., and Blöschl, G.: Impact of mountain permafrost on flow path and runoff response in a high alpine catchment, *Water Resources Research*, 53, 1288–1308, <https://doi.org/10.1002/2016WR019341>, 2017.
- Rolland, C.: Spatial and Seasonal Variations of Air Temperature Lapse Rates in Alpine Regions, *Journal of Climate*, 16, 1032–1046, [https://doi.org/10.1175/1520-0442\(2003\)016<1032:SASVOA>2.0.CO;2](https://doi.org/10.1175/1520-0442(2003)016<1032:SASVOA>2.0.CO;2), 2003.
- Rücker, A., Boss, S., Kirchner, J. W., and Freyberg, J. V.: Monitoring snowpack outflow volumes and their isotopic composition to better understand streamflow generation during rain-on-snow events, *Hydrology and Earth System Sciences*, 23, 2983–3005, <https://doi.org/10.5194/hess-23-2983-2019>, 2019a.
- Rücker, A., Zappa, M., Boss, S., and von Freyberg, J.: An Optimized Snowmelt Lysimeter System for Monitoring Melt Rates and Collecting Samples for Stable Water Isotope Analysis, *Journal of Hydrology and Hydromechanics*, 67, 20–31, <https://doi.org/10.2478/johh-2018-0007>, 2019b.

- Saberi, L., McLaughlin, R. T., Crystal Ng, G. H., La Frenierre, J., Wickert, A. D., Baraer, M., Zhi, W., Li, L., and Mark, B. G.: Multi-scale temporal variability in meltwater contributions in a tropical glacierized watershed, *Hydrology and Earth System Sciences*, 23, 405–425, <https://doi.org/10.5194/hess-23-405-2019>, 2019.
- Schaefli, B., Hingray, B., Niggli, M., and Musy, A.: A conceptual glacio-hydrological model for high mountainous catchments, *Hydrology and Earth System Sciences*, 9, 95–109, <https://doi.org/10.5194/hess-9-95-2005>, 2005.
- Schaefli, B., Harman, C. J., Sivapalan, M., and Schymanski, S. J.: HESS Opinions: Hydrologic predictions in a changing environment: Behavioral modeling, *Hydrology and Earth System Sciences*, 15, 635–646, <https://doi.org/10.5194/hess-15-635-2011>, 2011.
- Schaefli, B., Manso, P., Fischer, M., Huss, M., and Farinotti, D.: The role of glacier retreat for Swiss hydropower production, *Renewable Energy*, 132, 615–627, <https://doi.org/10.1016/j.renene.2018.07.104>, 2019.
- Schmieder, J., Hanzer, F., Marke, T., Garvelmann, J., Warscher, M., Kunstmann, H., and Strasser, U.: The importance of snowmelt spatiotemporal variability for isotope-based hydrograph separation in a high-elevation catchment, *Hydrology and Earth System Sciences*, 20, 5015–5033, <https://doi.org/10.5194/hess-20-5015-2016>, 2016.
- Schmieder, J., Garvelmann, J., Marke, T., and Strasser, U.: Spatio-temporal tracer variability in the glacier melt end-member - How does it affect hydrograph separation results?, *Hydrological Processes*, 32, 1828–1843, <https://doi.org/10.1002/hyp.11628>, 2018.
- Schäppi, B.: Measurement and analysis of rainfall gradients along a hillslope transect in the Swiss Alps, Doctoral thesis, ETH Zurich, Zürich, <https://doi.org/10.3929/ethz-a-009913260>, 2013.
- Shakoor, A., Burri, A., Bavay, M., Ejaz, N., Ghumman, A. R., Comola, F., and Lehning, M.: Hydrological response of two high altitude Swiss catchments to energy balance and temperature index melt schemes, *Polar Science*, 17, 1–12, <https://doi.org/https://doi.org/10.1016/j.polar.2018.06.007>, 2018.
- Sharp, M., Brown, G. H., Tranter, M., Willis, I. C., and Hubbard, B.: Comments on the use of chemically based mixing models in glacier hydrology, *Journal of Glaciology*, 41, 241–246, <https://doi.org/10.1017/S0022143000016142>, 1995.
- Shaw, T. E., Buri, P., McCarthy, M., Miles, E. S., and Pellicciotti, F.: Local Controls on Near-Surface Glacier Cooling Under Warm Atmospheric Conditions, *Journal of Geophysical Research: Atmospheres*, 129, e2023JD040214, <https://doi.org/https://doi.org/10.1029/2023JD040214>, e2023JD040214 2023JD040214, 2024.
- Shokory, J. A. N., Schaefli, B., and Lane, S. N.: Water resources of Afghanistan and related hazards under rapid climate warming: a review, *Hydrological Sciences Journal*, pp. 1–19, <https://doi.org/10.1080/02626667.2022.2159411>, 2023.
- Somers, L. D. and McKenzie, J. M.: A review of groundwater in high mountain environments, *WIREs Water*, 7, e1475, <https://doi.org/https://doi.org/10.1002/wat2.1475>, 2020.
- Sprenger, M., Carroll, R., Marchetti, D., Bern, C., Beria, H., Brown, W., Newman, A., Beutler, C., and Williams, K.: Stream water sourcing from high elevation snowpack inferred from stable isotopes of water: A novel application of *d-excess* values, *EGU Sphere*, 2023, 1–19, <https://doi.org/10.5194/egusphere-2023-1934>, 2023.
- Sprenger, M., Carroll, R. W. H., Marchetti, D., Bern, C., Beria, H., Brown, W., Newman, A., Beutler, C., and Williams, K. H.: Stream water sourcing from high-elevation snowpack inferred from stable isotopes of water: a novel application of d-excess values, *Hydrology and Earth System Sciences*, 28, 1711–1723, <https://doi.org/10.5194/hess-28-1711-2024>, 2024.
- Stigter, E. E., Litt, M., Steiner, J. F., Bonekamp, P. N., Shea, J. M., Bierkens, M. F., and Immerzeel, W. W.: The Importance of Snow Sublimation on a Himalayan Glacier, *Frontiers in Earth Science*, 6, <https://doi.org/10.3389/feart.2018.00108>, 2018.

- 1320 Stigter, E. E., Steiner, J. F., Koch, I., Saloranta, T. M., Kirkham, J. D., and Immerzeel, W. W.: Energy and mass balance dynamics of the seasonal snowpack at two high-altitude sites in the Himalaya, *Cold Regions Science and Technology*, 183, 103–233, <https://doi.org/https://doi.org/10.1016/j.coldregions.2021.103233>, 2021.
- Strasser, U., Bernhardt, M., Weber, M., Liston, G. E., and Mauser, W.: Is snow sublimation important in the alpine water balance?, *The Cryosphere*, 2, 53–66, <https://doi.org/10.5194/tc-2-53-2008>, 2008.
- 1325 swisstopo: swissALTI3D - The high precision digital elevation model of Switzerland. Federal Office of Topography (swisstopo). Available at <https://www.swisstopo.admin.ch/en/geodata/height/alti3d.html> (last accessed 11 May 2021), 2019.
- Taylor, S., Feng, X., Kirchner, J. W., Osterhuber, R., Klaue, B., and Renshaw, C. E.: Isotopic evolution of a seasonal snowpack and its melt, *Water Resources Research*, 37, 759–769, <https://doi.org/10.1029/2000WR900341>, 2001.
- Team Planet: Planet Application Program Interface: In *Space for Life on Earth*, <https://api.planet.com>, 2017.
- 1330 Todd Walter, M., Brooks, E. S., McCool, D. K., King, L. G., Molnau, M., and Boll, J.: Process-based snowmelt modeling: Does it require more input data than temperature-index modeling?, *Journal of Hydrology*, 300, 65–75, <https://doi.org/10.1016/j.jhydrol.2004.05.002>, 2005.
- van Tiel, M., Kohn, I., Van Loon, A. F., and Stahl, K.: The compensating effect of glaciers: Characterizing the relation between interannual streamflow variability and glacier cover, *Hydrological Processes*, 34, 553–568, <https://doi.org/10.1002/hyp.13603>, 2020a.
- van Tiel, M., Stahl, K., Freudiger, D., and Seibert, J.: Glacio-hydrological model calibration and evaluation, *WIREs Water*, 7, e1483, <https://doi.org/https://doi.org/10.1002/wat2.1483>, 2020b.
- 1335 Viviroli, D., Kummu, M., Meybeck, M., Kallio, M., and Wada, Y.: Increasing dependence of lowland populations on mountain water resources, *Nature Sustainability*, 3, 917–928, <https://doi.org/10.1038/s41893-020-0559-9>, 2020.
- Zekollari, H., Huss, M., and Farinotti, D.: Modelling the future evolution of glaciers in the European Alps under the EURO-CORDEX RCM ensemble, *The Cryosphere*, 13, 1125–1146, <https://doi.org/10.5194/tc-13-1125-2019>, 2019.
- 1340 Zuecco, G., Carturan, L., De Blasi, F., Seppi, R., Zanoner, T., Penna, D., Borga, M., Carton, A., and Dalla Fontana, G.: Understanding hydrological processes in glacierized catchments: Evidence and implications of highly variable isotopic and electrical conductivity data, *Hydrological Processes*, 33, 816–832, <https://doi.org/10.1002/hyp.13366>, 2019.