

Spurious numerical mixing under strong tidal forcing : a case study in the South East Asian Seas using the Symphonie model (v3.1.2)

Adrien Garinet^{1,2}, Marine Herrmann¹, Patrick Marsaleix¹, and Juliette Pénicaud¹

¹Université de Toulouse, LEGOS (CNES/CNRS/IRD/UT3), Toulouse, France

²Direction Générale de l'Armement, Ministère des Armées, Paris, France

Correspondence: Adrien Garinet (adrien.garinet@polytechnique.edu)

Abstract. The role of mixing between layers of different density is key to how the ocean works and interacts with other components of the Earth System. Accounting correctly for its effect in numerical simulations is therefore of utmost importance. However, numerical models are still plagued with spurious sources of mixing, originating mostly from the vertical advection schemes in the case of fixed coordinates models. As the number of phenomenon explicitly resolved by models increases, so does the amplitude of resolved vertical motions and the amount of spurious numerical mixing; and regional models are no exception to this. This papers provides a clear illustration of this phenomenon in the context of simulation of the South East Asian Seas, along with a simple way to reduce it. This region is known for its particularly strong internal tides and the fundamental role they play in the dynamic of the region. Using the Symphonie ocean model, simulations including and excluding tides and using a pseudo third-order upwind advection scheme on the vertical are compared to several reference datasets, and the impact on water masses in assessed. The high diffusivity of this advection scheme is demonstrated, along with the importance of accounting for tidal mixing for a correct representation of water masses. Simultaneously, we present an improvement of this advection scheme to make it more suitable for use on the vertical. Simulations with the new formulation are added in the comparison. We conclude that the use of a higher order numerical diffusion operator greatly improves the overall performance of the model.

15 1 Introduction

Diapycnal mixing plays a fundamental role in the ocean, and precise quantification, localisation and understanding of its mechanism are still active topics of research (Oce, 2022). Considering its major role in the heat uptake of the ocean, its correct representation in climate models is of utmost importance. Yet, a major flaws of ocean models is the tendency of numerical methods used to solve the equations on discrete grids to produce numerical errors resulting in an excessive diffusion of tracer fields often referred to as *numerical mixing*. Considering the sensitivity of numerical models outputs to vertical mixing (Bryan, 1987), this spurious phenomenon becomes particularly troublesome when it occurs across isopycnals, since the physical mixing is much lower in this direction than along the isopycnals and numerical mixing can therefore easily dominates. In this context, the discretization of the vertical tracer advection equation in fixed coordinates model - being terrain following or geopotential

coordinates - and the resulting spurious diapycnal fluxes have long been identified as a major source of spurious numerical
25 mixing (Griffies et al., 2000); and it is still considered as a major issue (Klingbeil et al., 2019).

Due to its advective origin, this spurious mixing is strongly linked to the strength of the flow, and is therefore more sensitive in
situations of strong vertical displacements. Even if "quasi-eulerian" coordinates (Leclair and Madec, 2011) adjusting vertically
with the motion of the free surface are now commonly used in ocean models, being terrain following or geopotential (see e.g.
Adcroft and Campin, 2004, for the adaptation to geopotential coordinates), therefore reducing the vertical velocity relative to
30 the mesh, spurious mixing is still troublesome in the current class of global ocean models (Megann, 2018; Holmes et al., 2021).
Besides, it might become even worse as the resolution increases and more physical processes are being resolved explicitly -
such as submesoscale and the strong vertical speeds anomalies associated with e.g. frontogenesis (Siegelman et al., 2020); or
tides and the associated internal waves field, especially in regions of strong internal tide activity. In this sense, regional ocean
models are particularly at risk, especially when run over long periods of time.

If the issue is known in the community of model developers, it is unsure whether the fast growing community of model *users*
is fully aware of this issue. Since the early 2000's, a number of studies have indeed focused on diagnosing spurious numerical
mixing in idealised simulations (see for instance Burchard and Rennau, 2008; Klingbeil et al., 2014; Ilıcak et al., 2012; Gibson
et al., 2017). However, the literature on spurious mixing in realistic simulation is still sparse (e.g. Lee et al., 2002; Megann,
2018; Holmes et al., 2021), is focused mainly on relatively coarse resolution global models and relies on rather complex indirect
40 estimates of mixing through water mass transformation analysis. Furthermore, none of the models used included explicit tidal
forcing. Yet, owing to the advances in simulating tides in ocean models over the last decades (see e.g. Arbic, 2022) and
the role they play in setting the global state of the ocean (Wunsch and Ferrari, 2004), more and more realistic simulations
account for tidal forcing and the first few baroclinic modes are now routinely resolved in most regional applications. There is
therefore a need to explicitly demonstrate the spurious numerical effect tides can have on tracer fields, even in relatively high
45 resolution models forced at their lateral boundaries. Also, though less precise, comparison against observations - made possible
for instance by the growing amount of ARGO profiles in the ocean and availability of high-resolution satellite products - and
parameter sensitivity study can help to provide a clear picture of the effect of spurious mixing in realistic simulations.

Now, with the steady increase in available computing power, one can expect the spurious vertical mixing to be eventually
reduced to acceptable levels (Holmes et al., 2021), especially since advection schemes are rarely of first order. The number of
50 vertical levels has indeed increased by up to a factor of 10 over the last decades. This however relies on the assumption that
the range of vertical speeds resolved by the model does not depend too much on the vertical grid spacing. Furthermore, always
increasing the resolution might not be desirable nor achievable in a foreseeable future for every research team and projects
around the world, and therefore cannot be regarded as a definitive solution to the issue. Finally, the cost-effectiveness of an
increase in resolution depends largely on the order of the schemes used, and both still have to be considered simultaneously
55 (Sanderson, 1998).

Considering the fact that the issue of spurious numerical mixing generated by vertical advection is tightly linked to the
(quasi-)eulerian nature of fixed coordinates, moving toward more lagrangian coordinates seems to have been a preferred option
in recent years. Such approaches seem promising and have indeed demonstrated capabilities in reducing spurious diapycnal

mixing (Gibson et al., 2017; Megann et al., 2022). In a recent paper, Megann (2024) demonstrated the ability of so called
60 $z - \tilde{}$ coordinates (Leclair and Madec, 2011) to effectively reduce spurious numerical mixing in a global eddy simulation
forced with tides. However, if they formally cancel the issue of spurious vertical mixing inherent to fixed coordinates models,
these approaches come at the cost of a whole range of new issues and limitations that remain a topic of active research, owing
to their relative youth (Fox-Kemper et al., 2019; Griffies et al., 2020). Moreover, their implementation into already existing
numerical codes requires sustained effort by model developers over years in order to be used in realistic simulations.

65 There is therefore a need to expand the range of tools available for fixed coordinates ocean models. The goal of this paper is
twofold : a new, less diffusive, formulation for advection schemes based on a scheme already implemented in the Symphonie
model is proposed; validation of the method through the case study of simulations of the South East Asian Seas is then
proposed, providing a clear illustration of both the spurious numerical effect of tides in a regional model and their relevance in
the accurate depiction of the region.

70 **2 Model configuration**

2.1 The South-East Asian Seas

2.1.1 Regional context

Many locations have been shown to exhibit intense internal tides activity (Zaron, 2019), correlated with the existence of large
areas of strong topographic gradients. Amongst them are the South East Asian (SEA) Seas (see Fig.1), a large region of
75 numerous deep marginal seas and shallow straits connecting the Western Pacific to the Indian Ocean through an on-average
westward circulation know as the Indonesian Throughflow (ITF) (Sprintall et al., 2019). Due to this complex bathymetry, the
region has long been known as a hotspot of internal tides generation (e.g. Apel et al., 1985), and their dissipation in the various
semi-enclosed basins has been recognized as a major driver of the intensified mixing observed there (Ffield and Gordon, 1996).
It leads to a sensible transformation of water masses on their way from the Pacific to the Indian Ocean, forming a unique water
80 mass that can be tracked across the basin and beyond, up to the Agulhas Current (Gordon, 2005). This intensified mixing
also acts to cool the sea surface temperature (SST) in the region (Susanto and Ray, 2022) and modify the atmospheric deep
convection, which in turn impacts the regional and global climate (Koch-Larrouy et al., 2010; Sprintall et al., 2019). Interannual
and climatic projections therefore need an accurate modelization of the ocean in the SEA region; and this cannot be achieved
without an accurate representation of tidal mixing.

85 2.1.2 Modelling

In average, the vertical diffusivity over the region is indeed increased by more than one order of magnitude when compared
with open-ocean estimates (Ffield and Gordon, 1992), with a high spatial variability (Purwandana et al., 2020); and it has
been demonstrated in many studies that models not accounting for tides-induced mixing fail at representing correctly the water
masses along the course of the ITF (Koch-Larrouy et al., 2007; Jochum and Potemra, 2008; Nugroho et al., 2018; Sasaki et al.,

2018; Katavouta et al., 2022). Parameterization of tidally driven mixing has been successfully implemented in regional models (see e.g. Koch-Larrouy et al., 2007), but still exhibit some weaknesses (Iskandar et al., 2023). Also, such an approach misses the dynamical effect of tides, which is suspected to play a non-negligible role in the horizontal mixing of water mass properties via the interaction of tidal currents with the complex topography of the region (Hatayama et al., 1996; Nagai et al., 2021), especially for high resolution models. With the increase in computational capacities allowing for simulations to be run on finer
95 grids, thus enabling the explicit resolution of more baroclinic modes, explicit tidal forcing is therefore being used more and more in regional models of the SEA region (Castruccio et al., 2013; Tranchant et al., 2016; Katavouta et al., 2022).

It must be noted however that most of the numerical codes used in those studies solve the primitive equations under hydrostatic assumptions. Considering the resolution of such large regional models, it is likely that this approximation remains valid, insofar as non-hydrostatic phenomenon such as small scales overturning are not resolved. Indeed, differences between
100 hydrostatic and non-hydrostatic models are sensible only when the model horizontal resolution is below a few tens of meters (see e.g. Berntsen et al., 2009; Álvarez et al., 2019); and the good capabilities of such hydrostatic models forced explicitly by tides in reproducing *in situ* observations at a regional scale has been demonstrated in several studies (amongst others, see Tranchant et al., 2016; Katavouta et al., 2022; Thakur et al., 2022; Gonzalez et al., 2023; Bendinger et al., 2023).

Nonetheless, one may wonder how hydrostatic models actually represent tides induced mixing. Formally, intensified mixing
105 is achieved through enhancement of the diffusivity computed either by frictions of tidal currents at the bottom or by the turbulent closure schemes, such as $k - \epsilon$, either through the buoyancy flux or the shear production terms (Gonzalez et al., 2023); and the results have been shown to compare reasonably well with specifically designed internal tide mixing parameterizations (see e.g. Nugroho, 2017; Gonzalez, 2023, chapters 5). However, the question whether this is the fortunate result of several errors compensating each others or if the existing models can actually capture the essential physical aspects of internal waves leading
110 to mixing is still open - especially considering the fact that turbulent closure schemes, although based on first principles, have been designed and calibrated at a time where internal tides were hardly resolved by ocean models. Still, such considerations, though of major interest for the community, are out of scope of the present study, in which we will focus on numerical mixing.

2.2 Model configuration and overview

The model employed in this study is the Symphonie ocean model (Damien et al., 2017, and references therein), a three dimensional ocean circulation model solving the primitive equations under Boussinesq and hydrostatic approximations. Symphonie
115 has been used in the past over Southeast Asia at several spatial scales, from the Gulf of Tonkin shelf scale (Piton et al., 2021; Nguyen-Duy et al., 2021) and South Vietnam upwelling coastal scale (To Duy et al., 2022; Herrmann et al., 2023) to the South China Sea regional scale (Trinh et al., 2024). Turbulent closure is achieved through the $k - \epsilon$ scheme (Burchard and Bolding, 2001). Integration in time is performed using a leapfrog time-stepping algorithm together with a Robert-Asselin filter
120 to damp out spurious numerical modes. Barotropic and baroclinic modes are handled separately following a mode splitting procedure (Blumberg and Mellor, 1987). Momentum is advected via a fourth-order central differencing scheme along with an explicit biharmonic diffusion term, with a viscosity derived from the one developed in Griffies and Hallberg (2000). Since tracer advection schemes are the focus of this paper, the one used in Symphonie are discussed in Sec.2.3.

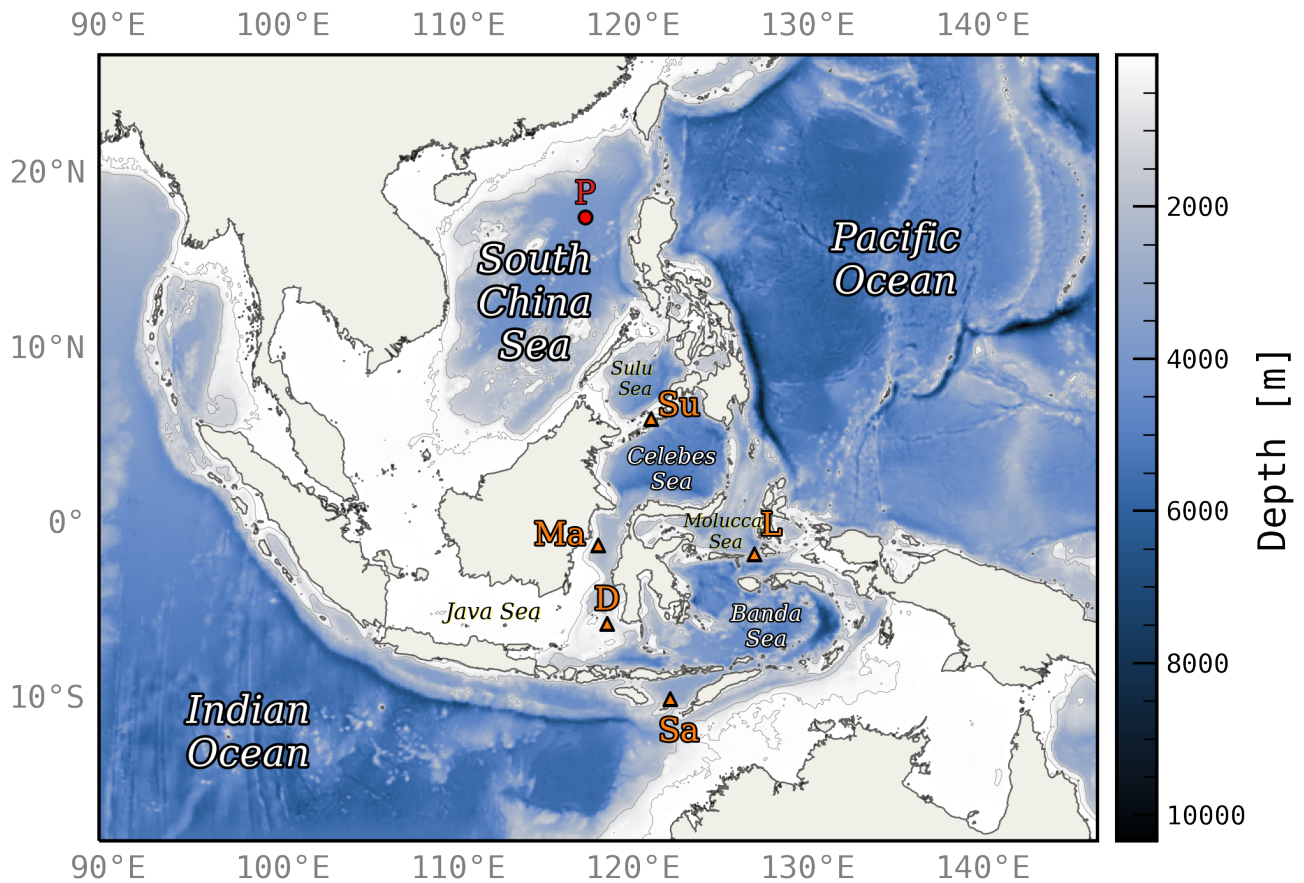


Figure 1. Bathymetry of the SEA configuration. The 100 and 1000 m isobaths are represented in fine grey lines. The triangle between the Sulawesi and Java Sea indicates the location of the Makassar Strait. Locations Su, Sa, L, D, Ma B, C, D corresponds respectively to the Sulu islands chain, the Savu Sea, the Lifamatola Passage and the Dewakang Sill. Point P refers to the location of the profile which evolution is shown in Fig.3.

Owing to the complex bathymetry of the region, equations are solved on a staggered Arakawa C-grid covering the entire South-East Asian region (see Fig.1) using a rather high regular resolution of about 5 km on the horizontal. This resolution is relatively high compared to previous regional studies (Nugroho et al., 2018; Katavouta et al., 2022) and allows for a better representation of the many narrow straits in the region, especially along the Sunda Islands that separate the Indonesian Seas from the Indian Ocean. To reduce truncature errors of sigma-coordinates while maintaining an accurate description of the complex bathymetry, vanishing quasi-sigma (VQS) coordinates are used on the vertical (Dukhovskoy et al., 2009; Estournel et al., 2021), with 60 levels. Since the coordinates are terrain following, vertical resolution varies across the domain, ranging from around 2 m at the surface to up to 600 m for the last level at the deepest locations.

Currents and tracers are initialized using the $1/12^\circ \times 50$ fields from the Global Ocean Physics Reanalysis from the Copernicus Marine Service (GLORYS12V1, <https://doi.org/10.48670/moi-00021>), hereafter called GLORYS, interpolated on our higher resolution grid. Daily averages of temperature, salinity, sea surface height, and currents are then provided by the same model and applied at lateral boundaries. Tides are forced by harmonics M2, N2, S2, K2, K1, O1, P1, Q1 and M4 from the tide atlas FES2014 (Lyard et al., 2021). Along with the 5 km resolution, the configuration should be able to resolve between 80 to 90% of the barotropic to baroclinic conversion rate, following Niwa and Hibiya (2011), though the exact location of energy dissipation is still unclear. Surface fluxes are computed from the bulk formulae of Large and Yeager (2004) using variables from the European Centre for Medium Range Weather Forecasts (ECMWF) operational forecasts at $1/8^\circ$ horizontal resolution and 3 hours temporal resolution (<https://www.ecmwf.int/>). Three hundred and eight rivers are considered in the region. Discharge flux time series are computed every five days and are derived from the 10 km resolution hydrological analysis GLOFAS(Alfieri et al., 2013). More details on the practical implementation of rivers in Symphonie are provided in Nguyen-Duy et al. (2021), Appendix B.

Given the relatively low amount of validation data in the region (Sprintall et al., 2019), simulations have been chosen to coincide with the peak of ARGO floats profiles in the region, and are therefore run on the 2017-2018 period. No ARGO floats were indeed available in two major passages of the ITF before these years, namely the Makassar Strait (linking the Sulawesi Sea to the Java Sea) and the Banda Sea. See Fig.A1 for locations of ARGO floats in the region. Daily averages of each variables are saved for analysis. In total, four simulations have been run - T0, T1, NT0 and NT1 - which details will be described in Sec.3

2.3 Advection

In the following, we briefly describe the advection scheme used in Symphonie and the method implemented to improve the diffusive properties of the vertical component. We begin by describing the general framework in which the discussion is set and define the notations used. We then present the advection scheme already in use in Symphonie. Its numerical diffusivity is estimated and compared to physical mixing. A method is finally proposed to improve its diffusive properties and make it usable on the vertical.

As the issue we are dealing with arises from the vertical component of the tracer transport, we will restrict our analysis to a one dimensional situation and use notations considered standard for the vertical. We will also make use of $\Im(\cdot)$ and $\Re(\cdot)$ to denote the imaginary and real part of a complex number, respectively; and *hats* will be used to indicate the Fourier mode representation of a linear operator, e.g. \hat{f} for a given operator f .

160 The continuous advection of a tracer \tilde{s} by an incompressible flow of velocity field \tilde{w} is expressed by the following equation :

$$\partial_t \tilde{s} = -\partial_z(\tilde{w}\tilde{s}) \quad (1)$$

Tilde are used to distinguish continuous fields from their discrete counterparts. On a staggered regular grid $\{z_j\}$ with constant spacing Δz , discretization of the equation in space in a finite volume formulation for the discrete field $s = \{s_j\}$ advected by a
165 velocity field $w = \{w_j\}$ writes

$$\frac{ds_j}{dt} = -\frac{(F_{j+} - F_{j-})}{\Delta z} \quad (2)$$

where F_{j+} (resp. F_{j-}) conceptually represents the value of the flux field $F = \tilde{w}\tilde{s}$ at the interface between cells j and $j+1$ (resp. cells $j-1$ and j). In such a formulation, w_j represents the velocity field \tilde{w} sampled at location $z_j - \Delta z/2$ while s_j represents the amount of tracer \tilde{s} in grid cell j , ie.

$$170 \quad s_j(t) = \frac{1}{\Delta z} \int_{z_j - \Delta z/2}^{z_j + \Delta z/2} \tilde{s}(t, z) dx \quad (3)$$

Hence, since F represents the flux at the interface, an estimate s_{j+} of $\tilde{s}(t, z_j + \Delta z/2)$ will have to be reconstructed from the values of $\{s_j\}$ via a given *scheme*. Advection schemes used nowadays in ocean models usually originate from standard interpolations procedures, or weighted (often with non-linear weights) combinations of several other interpolations in order for the computed solution to satisfy certain desired properties.

175 Note that since quasi-eulerian coordinates are used, the vertical velocity to be considered in practice in the discretization of the vertical advection is actually the *eulerian* velocity w'_j , that is the field obtained after removing the vertical displacements of the coordinates due to the moving free surface. Now, for large vertical displacements in the ocean interior caused for instance by strong internal tides, surface displacements are a few order of magnitudes lower than vertical displacements at a few hundred meters depth, and the resulting difference between the true and relative fields is weak there. Thus, and since the theoretical
180 framework used here is rather ideal, we will abusively use w_j (or W when the velocity is considered constant) in the following to refer to this velocity relative to the grid points to simplify the notations.

2.3.2 Advection of tracer in Symphonie

Horizontal advection of tracer is carried out using a pseudo-QUICKEST scheme, inspired from the QUICKEST scheme by Leonard (1979), and hereafter referenced to as QKE. Its flux formulation writes formally

$$185 \quad F^{\text{QKE}} = (1 - (2n_c)^2)F^{\text{UP3}} + (2n_c)^2F^{\text{UP1}} \quad (4)$$

where n_c is the Courant number on the corresponding direction and F^{UP1} , F^{UP3} the fluxes for the first order and third order upwind advection schemes, respectively. Following Webb et al. (1998), the UP3 scheme is split into a fourth-order centered advection part (C_4) and a bilaplacian diffusive part (D_4), and the D_4 part is evaluated at time step $t - 1$ during the leapfrog integration, so as to ensure conditional stability. The UP1 part is fully evaluated at time step $t - 1$.

190 The scheme behaves like a UP3 scheme for low Courant numbers, while for Courant numbers close to 0.5 (i.e. $2n_c \sim 1$), the scheme turns into the forward integration of a first order upwind discretization integrated with time step $2\Delta t$, known to transport perfectly in those conditions. This hybrid behaviour increases the range of stability of the model and allows it to handle more robustly the few hotspots of strong Courant numbers. This scheme has demonstrated its robustness in the past applications of Symphonie, where vertical motions were either relatively low or the size of the domains allowed for a rapid regeneration of
195 water masses by forcing at the boundaries, two assumptions that do not hold anymore in the present configuration.

Vertical advection of tracer in Symphonie is traditionally carried out with a second order centered advection scheme. However, under strong vertical motions, dispersive errors can have spurious effects on the density field, especially on the long run (see e.g. Griffies et al., 2000; Hecht, 2010) and some kind of numerical diffusion is therefore required to prevent small scales density instabilities from developing, either by introducing linear diffusion operators (often implicitly included in upwind for-
200 mulations) or by using non-linear limiting procedures such as TVD schemes (Cushman-Roisin and Beckers, 2011) or their stronger version, FCT schemes (Zalesak, 1979), in order to enforce some kind of monotonicity in the evolution of the field. We opted for the first approach by building on a linear scheme already implemented in Symphonie and trying to improve its diffusive properties through a lightweight formulation to make it usable on the vertical at rather low additional computational cost.

205 2.3.3 Excessive diffusion on the vertical

We can simplify the analytical discussion by considering that along the vertical, Eq.4 essentially boils down to the formulation of a UP3 scheme in the regions of interest of the model. Indeed, using typical numerical values for internal tides of $W \approx 10^{-3} - 10^{-4} \text{ m.s}^{-1}$, $\Delta z \approx 10^1 - 10^2 \text{ m}$ and a time-step $\Delta t = 180 \text{ s} \approx 2 \times 10^2 \text{ s}$, we get $n_c \approx 10^{-2} - 10^{-5}$, so that $n_c \ll (1 - (2n_c)^2) \sim 1$ and the role played by the UP1 part can be neglected, at least in the ocean interior. Though of higher order
210 than the UP1, the UP3 scheme is nonetheless known to be still excessively diffusive (see e.g. Madec et al., 2022).

To quantitatively illustrate this behaviour, we derive the dispersion relation for a single Fourier mode $s_j \propto s_k e^{i(kj\Delta z - \omega t)}$, linking ω to k and expressing how a given harmonic wave with wavenumber k evolves over time. In a such a spectral framework,

the diffusive aspect of a scheme is expressed by the addition of a damping term in the corresponding dispersion relation. More specifically, writing this dispersion relation in its canonical form $\omega(k) = \Omega(k) - i\gamma(k)$, with Ω and γ real valued functions of k , the scheme is said to be diffusive when the damping coefficient $\gamma(k)$, that quantifies the typical time $\tau = 1/\gamma$ at which a given wavelength is being damped out, is strictly positive.

If the scheme can be split as the sum of a purely dispersive part $\mathcal{A}[s]_j$ and a purely dissipative part $\mathcal{D}[s]_j$, i.e.

$$\frac{d}{dt}[s_j] = \mathcal{A}[s]_j + \mathcal{D}[s]_j \quad (5)$$

it follows immediately that $\Omega(k) = -\Im(\hat{\mathcal{A}}(k))$ and $\gamma(k) = -\Re(\hat{\mathcal{D}}(k))$, as the pure dispersion and pure dissipation assumptions ensure that both $\Re(\hat{\mathcal{A}}[k])$ and $\Im(\hat{\mathcal{D}}[k])$ are zero (see e.g. Webb et al. (1998) or Soufflet et al. (2016) for more details).

Let us now focus more specifically on the damping coefficient obtained for the UP3 scheme. The full discretization of this scheme can be found in both Webb et al. (1998) and Marchesiello et al. (2009). Here, only its dissipative parts D_4 is needed, and it writes

$$D_4[s]_j = \frac{1}{12} \frac{|W|}{\Delta z} (-s_{j+2} + 4s_{j+1} - 6s_j + 4s_{j-1} - s_{j-2}) \quad (6)$$

Replacing each s_j by its Fourier mode value, assuming for simplicity the vertical speed W to be constant and using the normalized form $\theta = k\Delta z$ for the wavenumber, we have

$$\hat{D}_4(\theta) = -\frac{W}{6\Delta z} (3 + \cos 2\theta - 4 \cos \theta) \quad (7)$$

This finally leads to the most compact form of the damping coefficient

$$\gamma^{\text{UP3}}(\theta) = \frac{W}{3\Delta z} (1 - \cos \theta)^2 \quad (8)$$

For the largest wavelengths, i.e. $\theta \rightarrow 0$, we have $\gamma^{\text{UP3}}(\theta) \rightarrow 0$, which is expected since we do not want the largest scales to be damped out; while for the smallest wavelengths, i.e. $\theta \rightarrow \pi$, the damping is maximal and equal to $\frac{4W}{3\Delta z}$: the smallest, noisy, wavelengths are damped out. Comparing this to the damping coefficient obtained for the simplest physical diffusion term $\kappa \partial_{zz} s$, κ being the vertical diffusion coefficient computed from the turbulence closure scheme, discretized in its usual form $\kappa(s_{j+1} - 2s_j + s_{j-1})/(\Delta z)^2$ that leads to a physical damping coefficient

$$\gamma^{\text{phy}}(\theta) = \frac{2\kappa}{\Delta z^2} (1 - \cos \theta) \quad (9)$$

the ratio of numerical to physical damping $\Gamma_{\text{UP3}} = \gamma^{\text{UP3}}/\gamma^{\text{phy}}$ writes

$$\Gamma_{\text{UP3}} = \frac{W\Delta z}{6\kappa} (1 - \cos \theta) = \frac{P_e}{6} (1 - \cos \theta) \quad (10)$$

where P_e is the grid Peclet number. Typical values of P_e found in the model can be obtained using the same numerical values as before and considering a value of $\kappa \approx 10^{-5} \text{ m}^2 \cdot \text{s}^{-1}$ typical for vertical diffusivity in the ocean interior (e.g. Polzin et al., 1997; Alford et al., 1999). This leads to $P_e \approx 10^2 - 10^4$. For intermediate wavelengths $N = 2\pi/\theta$ of a ten of grid points,

that is $\theta = 2\pi/10$, typical of the number of grid points used to represent a thermocline, we have then $\Gamma_{\text{UP3}} \approx 3 - 300$. This means that the numerical mixing resulting from the discrete vertical advection is at least three times larger than the physical mixing at this scale, even under relatively conservative assumptions about the quantitative values, and can even be two orders of magnitude larger. The numerical diffusion is thus not *selective enough*, in the sense that it spuriously damps physical scales.

245 In the following, we propose a method to improve this selectivity.

2.3.4 Filtered diffusion

As discussed previously, UP3 can be written as the sum of a purely dispersive (C_4) and a purely dissipative (D_4) components. Since the damping originates from D_4 , we now aim at making this term more scale-selective. This can be achieved through a filtering process : assuming a high-pass filter Φ that applies on the tracer field s , the idea is to apply the diffusive operator on
 250 the filtered field only, i.e. turn $D_4[s]$ into $D_4[\Phi[s]]$, so that only the high spatial frequencies (smaller scales) are dissipated. In spectral space, since D_4 is linear, the damping coefficient for this scheme becomes formally

$$\gamma(\theta) = -\Re(\hat{D}_4(\theta))\hat{\Phi}(\theta) \quad (11)$$

Therefore, for large scales where $\hat{\Phi}(\theta) \sim 0$, $\gamma(\theta)$ will be almost zero, while for small scales where $\hat{\Phi}(\theta) \sim 1$, $\gamma(\theta)$ will remain unchanged. We assumed here $\hat{\Phi}(\theta)$ to be real valued, an assumption justified by the fact that it would otherwise
 255 introduce spurious lag in the filtered signal. Theoretically, many filters could fit. However, we now focus on the specific filter with which the method has been primarily developed and other formulations will be discussed in Sec.4. Inspired by a formalism proposed in Juricke et al. (2020b) in the context of the momentum equation, we define a filter $\Phi = \mathbf{1} - \phi$ where ϕ is a *low-pass* filter and $\mathbf{1}$ the identity operator. Formally, we rewrite the formulation of the UP3 in what will be referred to later as the *filtered* formulation :

$$260 \text{ UP3}[s] = C_4[s] + D_4[s] - D_4 \cdot \phi[s] \quad (12)$$

Eq.11 then becomes

$$\gamma(\theta) = -\Re(\hat{D}_4(\theta))(1 - \hat{\phi}(\theta)) \quad (13)$$

Note that the original formulation of Juricke et al. (2020b) makes use of a more general filtering, namely

$$\Phi_\alpha = \mathbf{1} - \alpha\phi \quad (14)$$

265 where $\alpha > 0$ is a parameter. α allows to control the strength of the filtering, $\alpha = 0$ corresponding to a no-filter situation while $\alpha = 1$ corresponds to a fully active filter. The latter corresponds to our filtered formulation. The interesting aspect of the original formulation lies in the use of a value $\alpha > 1$. Such a regime could be interesting for the tracer equation, but since it comes with several issues, we restrict ourselves in this paper to the simpler case $\alpha = 1$.

For our practical analysis, we introduce the three-points filter $\phi_3[s]_j = (s_{j+1} + 2s_j + s_{j-1})/4$. If any low-pass filter can be
 270 chosen in theory, we have used this one for several reasons : it is the same as the one used in Juricke et al. (2020a); its simplicity

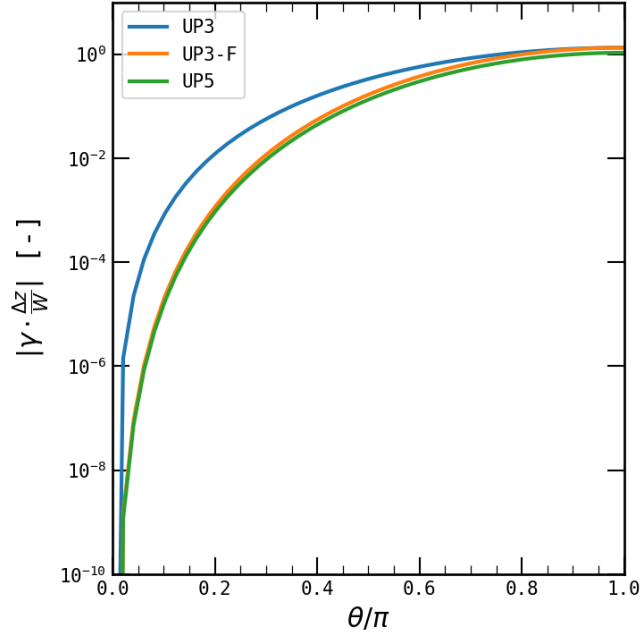


Figure 2. Comparison of normalized damping coefficients $\gamma W/\Delta z$ as a function of θ/π for several advection schemes. The y-scale is logarithmic.

allows for straightforward theoretical developments; and finally its limited stencil size does not increase the computational cost of the scheme too much (the full stencil size for computation of the advection term increases from 7 to 9 grid points), which may be desirable if the model is to be run over long time periods. This choice is further discussed in Sec.4. Its spectral representation writes $\hat{\phi}_3(\theta) = (1 + \cos\theta)/2$. This leads to the following damping coefficient for the filtered UP3 scheme (hereafter UP3-F) :

$$275 \quad \gamma^{\text{UP3-F}}(\theta) = \frac{W}{3\Delta z}(1 - \cos\theta)^2\left(1 - \frac{1}{2}(1 + \cos\theta)\right) = \frac{W}{6\Delta z}(1 - \cos\theta)^3 \quad (15)$$

The relative damping for the filtered formulation $\Gamma_{\text{UP3-F}} = \gamma^{\text{UP3-F}}/\gamma^{\text{phy}}$ becomes therefore

$$\Gamma_{\text{UP3-F}} = \frac{P_e}{12}(1 - \cos\theta)^2 \quad (16)$$

280 Comparison of γ^{UP3} and $\gamma^{\text{UP3-F}}$ are provided in Fig.2 Considering again a wavelength of 10 grid points and using the same numerical values as before, we have $\Gamma_{\text{UP3-F}} \approx 0.3 - 30$. The damping at large scales as been reduced by one order of magnitude, and for the range of P_e of concern, the numerical dissipation can be now as high as or lower than the physical one. Numerical diffusion will now exceed physical diffusion were the vertical grid spacing is the coarsest, that is at depth. Indeed, $\Delta z = 100$ m is reached at 1000 m depth in our model, and at this depth, tracer profiles are already smooth enough so that their second or higher order derivatives are almost zero and diffusion, even numerical, is not really active at all. We therefore consider those values as being *a priori* acceptable. The scheme finally used for vertical tracer equation will be referred to as the QKE-F

285 scheme. The flux evaluation in Eq.4 is thus finally modified as such :

$$F^{\text{QKE}} = (1 - (2n_c)^2)F^{\text{UP3-F}} + (2n_c)^2F^{\text{UP1}} \quad (17)$$

The CFL stability condition of the resulting scheme is not modified. Indeed, following Lemarié et al. (2015), the CFL constraint of the UP3 integrated as in our simulations using a leapfrog time-stepping with Robert-Asselin filtering and coefficient taken equal to 0.1 and lagging the evaluation of the diffusive term in time is $n_c \leq 0.472$. Using the same method, we can show that
290 the constraint for UP3-F is $n_c \leq 0.507$. Since the UP1 term is lagged in time, it is as if it was integrated using a forward time stepping with time step $2\Delta t$, and the CFL constraint for this term is 0.5, close to 0.472 and 0.507. Now, for $n_c \sim 0.5$, the UP1 term largely dominates in QKE and sets therefore the stability constraint, which is thus $n_c \leq 0.5$ for both QKE and QKE-F, as confirmed by a more formal stability analysis (not shown).

3 Results

295 A simplified one-dimensional framework such as the one presented above is essential for gaining insight into the actual behaviour of a numerical method (Griffies et al., 2000). However, this theoretical development relies on limiting assumptions intended to maintain analytical simplicity and, therefore, cannot be the only basis for designing practical advection schemes. This section provides a real case study for the validation of the method, illustrated as a way to improve water masses representation in simulations of the SEA Seas using the Symphonie model. We start by discussing briefly the way spurious mixing will be
300 diagnosed in the model. A presentation of the results obtained from simulations with and without filtering is then presented and compared to their counterparts without tidal mixing. Doing so, we illustrate clearly the negative impact of numerical mixing and the improvement offered by our method in terms of representations of the water masses.

3.1 Diagnosing numerical mixing

Several frameworks for diagnosing numerical mixing have been proposed in the literature (e.g. Griffies et al., 2000; Lee et al.,
305 2002; Burchard and Rennau, 2008; Gibson et al., 2017), each with their own strengths and weaknesses. These frameworks are however designed for inter-comparisons in a theoretical context of numerical methods for which the analytical computation of diffusion is not always possible, such as for non-linear schemes. As we focus here on the practical application of the method, we choose here to proceed in a similar way as in Marchesiello et al. (2009) and to use anomalies in tracer fields (especially salinity, which exhibits a complex vertical structure with local maxima and minima) as a proxy for spurious mixing.

310 Several datasets are used for validation, namely GLORYS reanalysis, ARGO profiles (Wong et al., 2020) as well as OSTIA SST (Donlon et al., 2012) and SMAP/SMOS sea surface salinity (Kolodziejczyk et al., 2021) gridded products. Details on the data and processing are given when first used.

3.2 Effect of the QUICKEST scheme without the filtered formulation

To explicitly illustrate the excessive diffusivity of the QKE scheme on the vertical when used along with tidal forcing as well as the improvements brought by the filtered formulation, two reference simulations are first run with the filtered formulation turned off ($\alpha = 0$, equivalent to using QKE in its simplest formulation): one with (T0) and one without tides (NT0).

3.2.1 Salinity and temperatures profiles

Comparison to GLORYS data is first carried out to assess the ability of the model to maintain the salinity field in the South China Sea (SCS) over time (Fig.3). Considering the higher availability of ARGO floats in this basin (see Appendix A), it is assumed that GLORYS data offer a good and easy-to-handle reference for the state of the ocean. To allow for a more compact representation, the focus is laid on the 50 – 350 m layer, where differences between simulations are the most salient. Simply using the QKE scheme leads to an expected unrealistical erosion of the salinity maxima observed in Pacific waters in the northern South China Sea over the course of the first months of simulation in the T0 simulation (forced with tides). The salinity maximum of about 34.7 psu in the 100 – 200 m layer inherited from the initialization with GLORYS and visible at the very beginning of the simulation disappears to form a nearly isohaline profile below 100 m after a few months, with salinity below 34.6 psu. On the other hand, NT0 simulation is able to maintain the salinity peak, comparable to GLORYS reference.

Secondly, comparison of mean temperature and salinity profiles to ARGO data available in the region over the period of interest are carried out (Fig.4). For each simulation, a dataset of simulation profiles collocated to the ARGO profiles in the zone - in terms both of space and time - is built. The profiles are split in several clusters corresponding roughly to the major basins sampled in the zone (see Fig.A1). They are then interpolated on the same grid over the first 500 m and a mean profile is finally computed for each simulation and each cluster for comparison. The focus is laid on the first 500 m where the temperature and salinity profiles exhibit their richest spatial structure, and as the ITF is also mostly located in this layer. In Fig.4, we display only profiles in the Molucca Sea for clarity (see Fig.1), since the results in this basin are representative of the overall trend. However, the same analysis has been conducted in each basin of the Southeast Asia region and will be discussed later on in the light of other simulations.

As suggested by the drift observed for the South China Sea profile, the mean salinity between 100 m and 300 m in T0 (light grey line, panel (b)) is strongly underestimated with respect to ARGO data, with a bias around -0.15 psu at 125 m depth. The salinity maxima found between 100 – 200 m in observations and characteristic from Pacific Waters has completely disappeared. In panel (a), the temperature gradient in the 10-300 m is also slightly less steep, and the temperature in the upper 100 m in the T0 simulation also displays a negative bias of up to 2° C at the surface.

Conversely, the salinity bias in the thermocline for the simulation without tides NT0 (light orange) with respect to observations is positive, and the salinity maximum at 120 m is overestimated by about $0.1 - 0.2$ psu. Differences in surface salinity are more complex to analyse and are discussed in more details in Sec.3.4. Differences in the temperature profiles are less obvious than for T0, even though a slight positive bias can be observed at the surface. Those differences result from an underestimation of physical mixing in NT0, that results in a misrepresentation of water masses in the region : as tides and the associated internal

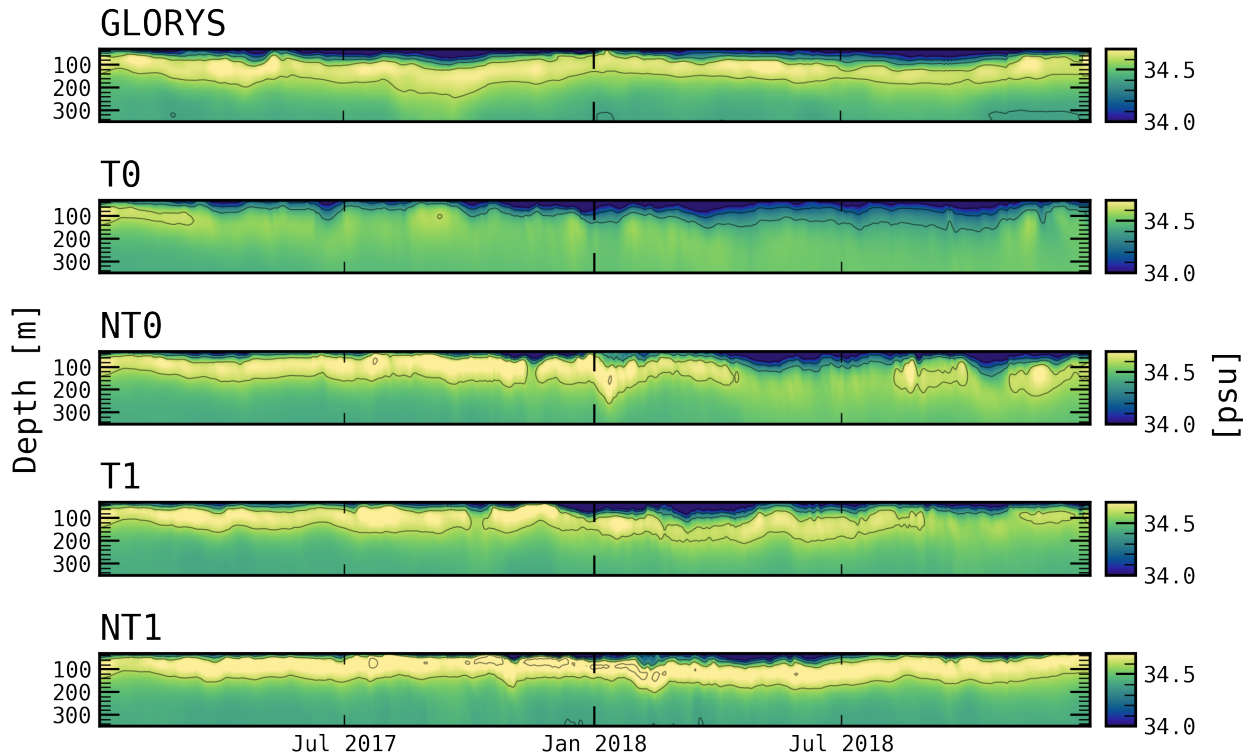


Figure 3. Temporal evolution of a salinity profile (50 – 350 m) averaged over a 1° box in the South China Sea, at location P in Fig.1, in both GLORYS reanalysis and several Symphonie simulations. Contours are plotted every 0.2 psu

waves field are not taken into account, highly saline waters coming from the Pacific are not well mixed, which biases the model output.

3.2.2 Comparison to satellite sea surface temperature data

Finally, the *Operational Sea Surface Temperature and Sea Ice Analysis* (OSTIA) Level 4 Sea Surface Temperature daily product is also used for comparison. This product has been obtained by mapping existing observations from several instruments on a regular $1/20^\circ$ grid with optimal interpolation, and daily averaging results. Its resolution is therefore comparable in both space and time to our simulations output. As with every highly processed product, care has to be taken not to put excessive confidence in such data, since biases can exist, especially on small coastal features (see e.g. To Duy et al., 2022). Large scale trends are however well captured by OSTIA, and comparison is therefore carried out by computing the mean bias over the entire simulation period between simulations and OSTIA. Results are displayed in Fig.5. Since errors in the Pacific and Indian Ocean are more likely caused by open-boundaries forcing, the focus is laid on the interior basins, where most of the differences are concentrated.

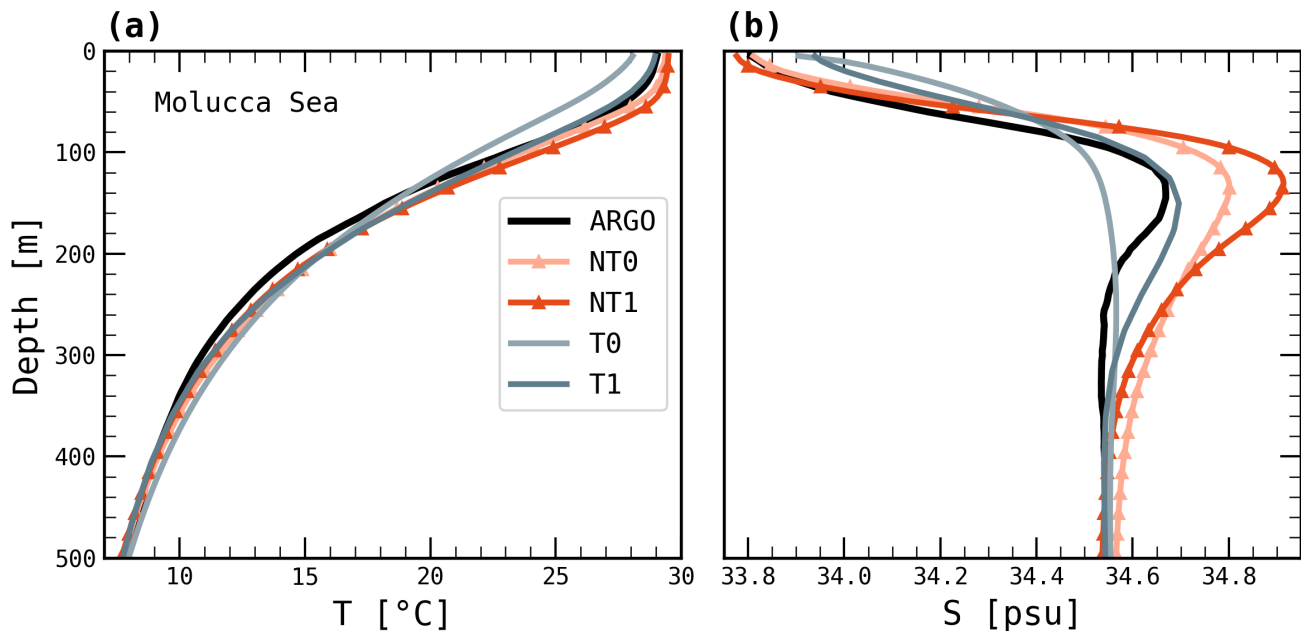


Figure 4. Mean (a) temperature and (b) salinity profiles over the first 500 m in the Molucca Sea for simulations T0, NT0, T1, NT1 and ARGO profiles.

A cold negative bias of up to 2°C spans the entire Indonesian Seas in simulation T0 (bottom left panel), especially marked over the Savu Sea, the Dewakang Sill as well as along the islands south of the Sulu Sea (see Fig.1, top left panel for details on the locations). Conversely, NT0 displays a warm positive large scale SST bias of up to 1°C with respect to the reference dataset, with maximum positive biases at the same locations where maximum negative biases are observed in T0. Both locations are known for being strong internal waves generation sites (Apel et al., 1985; Nagai and Hibiya, 2020) and exhibiting strong SST variations due to internal tides activity (Ray and Susanto, 2016). This confirms the conclusions obtained by examining salinity profiles : the (numerical) mixing is too strong in the presence of tides in T0, bringing colder water from below to the surface, thus cooling the simulated SST; conversely, the (physical) mixing is overly too weak in NT0 due to the absence of tides-induced mixing, therefore preventing warmer surface waters to be mixed with colder waters at depth.

3.3 Effect of the QKE-F scheme

To assess the effect of the filtered formulation, two new simulations are run with the filtered formulation turned on ($\alpha = 1$) : one including tides (T1), along with its counterpart without tides (NT1). Differences with T0 and NT0 simulations on the same diagnostics as described above are presented in the following section. The main differences between the various simulations are summarized in Tab.1.

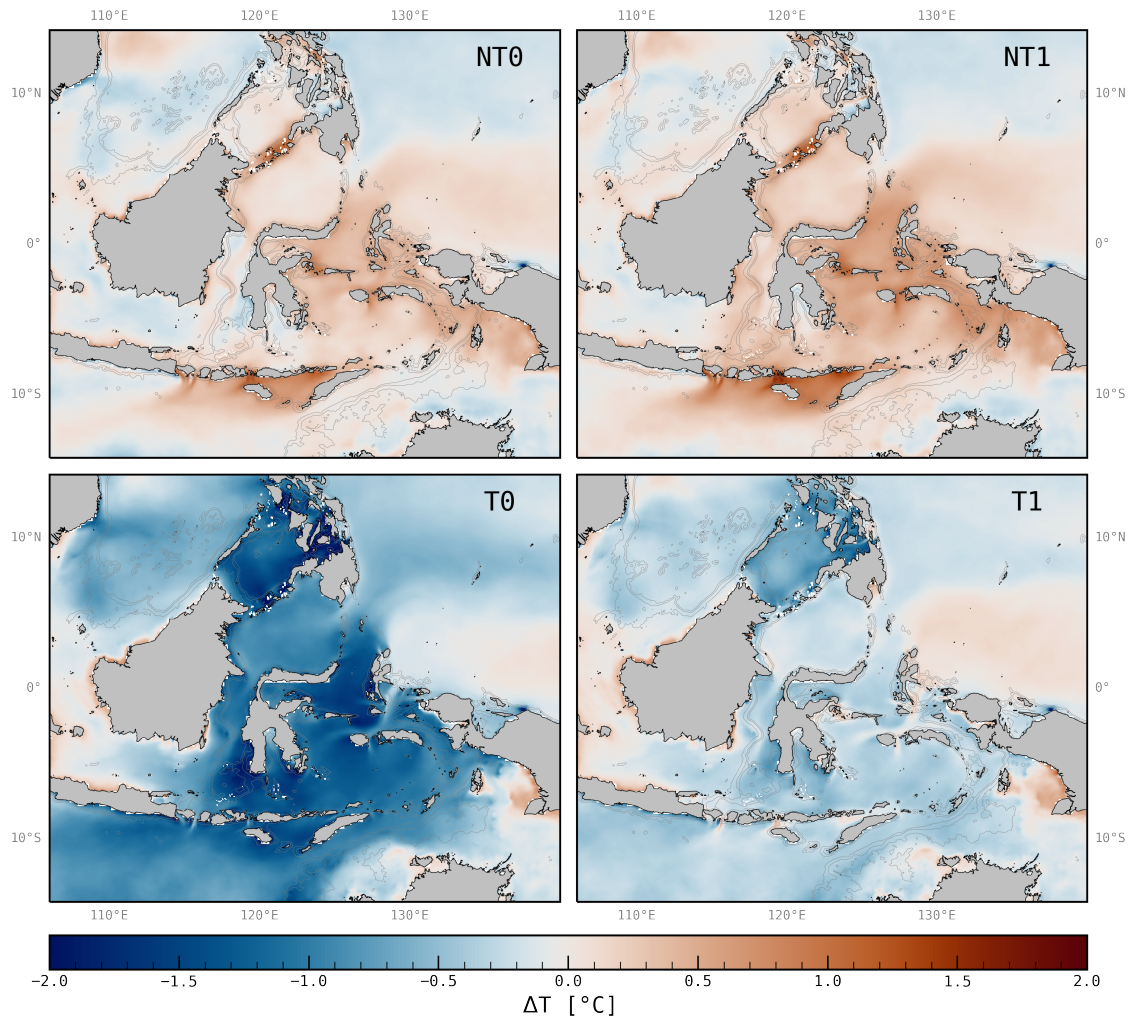


Figure 5. Mean SST bias with respect to the OSTIA dataset ($\Delta T = \text{SST}(\text{SYMPHONIE}) - \text{SST}(\text{OSTIA})$) for simulations T0, NT0, T1, NT1, computed over years 2017-2018. Positive values correspond to an overestimation of model output. The 100, 500 and 1000 m isobaths are also displayed (fine grey lines).

	QKE	QKE-F
Tides	T0	T1
No tides	NT0	NT1

Table 1. Summary of all the simulations run in this study along with their main differences. Columns correspond to the advection scheme used, i.e. either QKE or QKE-F, while rows indicate if tidal forcing was used or not.

3.3.1 Salinity and temperature profiles

Looking at the evolution of the salinity profile in the South China Sea in Fig.3, the salinity maximum in T1 has been restored with respect to T0, and the evolution of the profile over the course of the T1 simulation lies much closer to GLORYS reference dataset, but also to NT0. This implies first that tides do not play a significant role in the (trans)formation of water masses at this location; and second that the difference between T0 and NT0 is caused by the excessive numerical diffusion occurring when tides are added. Concerning simulations without tides, the salinity evolution for NT1 depicted in Fig.3 is also qualitatively better than for NT0, implying that there is still spurious mixing happening in NT0 in the South China Sea. This is to be expected, since even simulations without tides can display transient relatively high vertical velocities (on the order of a few tens of meter per day) and therefore spurious mixing, especially at eddy-resolving resolution (see Megann et al., 2022).

Results in terms of mean profiles in the Molucca Sea are also reported in Fig.4 for T1 and NT1. T1 performs better than T0 and overall follows the ARGO reference more closely: the negative $\sim 1^\circ\text{C}$ temperature bias at the surface in T0 and the negative ~ 0.1 psu salinity bias in thermocline waters disappears in T1. The implemented filtered formulation has thus effectively reduced the spurious mixing developing in the context of strong tidal forcing down to acceptable levels. The picture is different for simulations without tides, NT0 and NT1. In terms of salinity, NT1 performs worse than the other simulations, even when compared to NT0, with an increased positive bias of 0.3 psu at 120 m depth, against ~ -0.15 , 0.01 and $+0.2$ psu for T0, T1 and NT0, respectively. Tidal mixing indeed takes place in the Molucca Sea and drives the transformation of water masses (see e.g. Koch-Larrouy et al., 2007). The weaker bias from NT0 in comparison to NT1 is due to the fact that the spurious numerical mixing in NT0 is higher than in NT1, thus making up for a part of the lacking tides-driven physical mixing. This shows again that even without tidal motions, a sensible amount of spurious mixing is still taking place in NT0. With fewer numerical mixing in NT1, the underestimation of physical mixing is made all the more salient, which increases the bias and overestimation of the salinity maximum in NT1 compared to all other simulations.

To provide a more synoptic picture of the effectiveness of the filtered scheme, we carry out a comparison of all simulations in every basins of the zone. For a given simulation and zone we define an integrated metric of the performances in terms of water mass representation, to allow for a more direct and quantitative comparison than through visual inspection solely. In each zone, a weighted root mean squared error between each simulation and the reference ARGO profile is computed for the mean profile.

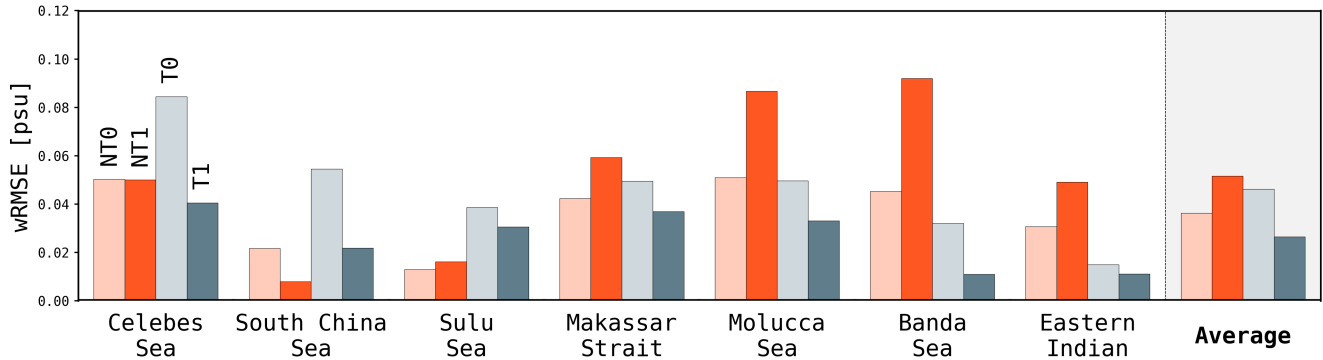


Figure 6. wRMSE between mean salinity profiles for simulations T0, NT0, T1 and NT1 (for each zone, left to right bar respectively) for each of the ARGO subgroups. The last column displays the metric averaged over all zones.

As the variations in the upper layers are of higher magnitude than in the deeper layers, we weight accordingly the error by reducing the importance given to values where the variation is higher. The resulting metric is referred to as wRMSE, and more details on its computation are provided in Appendix B. Here, the focus is laid on salinity as the effect of numerical mixing on these profiles is more obvious (see Fig.4), but the same computations have been made for the temperature with similar results (not shown).

Results of wRMSE computations on the salinity profiles for all simulations output for the various zones are displayed in Fig.6. Values lie between 0.01 and 0.1 psu. Comparing the integrated wRMSE scores in the Molucca Sea with the profiles provided in Fig.4, our metric indeed quantitatively translates the qualitative observation that in this zone, T1 performs the best and NT1 performs the worst while T0 and NT0 are in-between.

Comparison between T0 and T1 shows systematically improved wRMSE in T1 in each zone, with much greater difference in zones directly neighbouring the Pacific (Celebes and SCS) : around 0.04 psu in the SCS, and only 0.01 psu in the Makassar Strait. Except for the Sulu Sea, T1 also improves the results with respect to NT0. The difference is however usually smaller, except in the exit basins (Bandas Sea and Indian Ocean) where the difference is sensible : wRMSE for T1 is 0.02 – 0.03 psu lower than for NT0 in those basins.

Performances of NT1 relatively to the other simulations greatly vary with the location of the zone along the course of the ITF, that is from the Pacific to the Indian Ocean through the Celebes Sea, the Makassar Strait and the Banda Sea. NT1 performances in the basins of the downwind of the ITF (Makassar strait, Banda Sea, Eastern Indian), where tidal mixing plays an important role, are by far the worse : around 0.08 psu between T1 and NT1 in the Banda Sea, and 0.4 psu in the Eastern Indian Ocean. However, in the SCS, NT1 performs better than all the others. The reason behind this best performance of NT1 in the SCS is still unclear, and might be linked to some other factors, including the details of the configuration. Similarly, best performances of NT0 and NT1 in the Sulu Sea are somewhat unexpected, and this feature will be discussed below in the light of comparison to satellite data.

Figure 6 also displays the average over all basins of the wRMSE for each simulation, with a uniform weighting for each zone. Using this SEA average metric, T1 performs overall best than the others, while NT1 performs the worst. The wRMSE could have also been computed for each simulation by comparing the average profile over all available profiles over the ensemble of the basins to the same profile obtained with ARGO data; however, this would have led the results to be strongly biased towards
425 zones with the most data - in particular the SCS. The underlying assumptions here are that the amount of profiles available in each basin is sufficiently high so that comparisons can be trusted equally and that the correct representation of each basin is of equal importance.

3.3.2 Comparison to sea surface temperature data

Finally, we also validate the filtered formulation against OSTIA SST data. The mean SST in T1 is greatly improved compared
430 to T0 (Fig. 5) : the negative bias over the SEA Seas is lower by one order of magnitude, and is now on the same order as errors made in the Pacific Oceans, that is a few tenths of Celsius. This further confirms that our filtered formulation improves the representation of sea surface temperature in the context of strong tidal mixing.

The SST in the Sulu and Philippine Seas however still exhibits a strong cold bias in T1, up to 1° C locally, weaker than in T0 but stronger than in NT0 and NT1. The explanation for this behaviour has been traced to an overestimation of tidal
435 currents in this basin due to an imperfect representation of the numerous islands and channels around it, especially in the Philippine Archipelago. Manual modification of the land mask to improve the representation of the zone had been carried out, with sensible improvements when compared to the first tests, but tidal amplitudes remain too strong there. This results in an overestimation of the naturally strong internal tide activity in the area (Apel et al., 1985), which can only dissipate within the basin due to its enclosed nature, thus increasing the mixing. As a result, tidal vertical mixing is overestimated there, leading to
440 spurious damping of the profiles and SST underestimation. This is slightly "corrected" when the filtering is activated (T1 vs. T0), and even greatly "corrected" when tides are turned off (NT0 vs. T0, NT1 vs. T1).

Besides, the previously described positive SST biases in NT0 simulation shown in Fig.5 are slightly increased in NT1, indicative of weaker vertical mixing in the interior basins - namely along the Sulu islands chain, the Savu Sea as well as around the Lifamatola Passage. Those results are again related to a reduction in spurious numerical mixing induced by the filtered
445 scheme in NT1 compared to NT0, that partly compensates for the lack of tides-induced *physical* mixing in NT0, and makes it more salient in NT1.

3.4 Non-linear effect of spurious numerical mixing on sea surface salinity

The results concerning numerical mixing presented so far - higher SST and strong erosion of the salinity maxima - can be explained in the simple framework of one dimensional vertical diffusion, interpreting spurious numerical mixing as simply a
450 higher diffusion, smoothing gradients and mixing properties throughout the column. In a realistic ocean model however, many components interact, often in non-linear ways, and simple errors generated by one component can result in *a priori* unexpected behaviours. We discuss briefly an example of this in the case of air-sea interactions by comparing simulations output to sea surface salinity (SSS) products obtained from the SMOS and SMAP missions. The dataset used is the SSS SMOS/SMAP OI

L4 product, such as described in Kolodziejczyk et al. (2021). Symphonie simulations output are downsampled at the same
455 weekly frequency and interpolated on the same 25 km resolution grid. Results are displayed in Fig.7.

A thorough discussion of all the biases in the region is out of scope of this study, and we will comment instead on the large
scales pattern. Overall, the bias is mostly lower than ± 0.25 psu, but can be locally increased up to ± 1 psu. A common pattern
throughout all simulations is that several coastal regions exhibits large fresh biases, especially around Borneo, resulting from
overestimated river discharges.

460 Differences between NT0 and NT1 are negligible, and fall within the error margin of such highly processed SSS products,
especially in a region such as SEA, with its numerous islands and complex coastal features. Unlike for SST, which was
overestimated in both those simulations due to a lack of physical mixing, SSS bias doesn't exhibit any easily distinguishable
pattern in simulation without tides.

As for simulations with tides, a large fresh bias spans the entire Indonesian seas region in T0, and is sensibly increased at
465 locations of increased tidal mixing (locations Su, L, Sa in Fig.1), reaching negative salinity biases of up to 1 psu. This bias
varies seasonally, with a large intensification of the pattern north of the equator during boreal summer and south of the equator
for boreal winter (not shown).

Those differences are in fact the result of the air-sea interactions. Since surface fluxes, including latent heat flux (LH), are
computed from bulk formulae, they adjust to the surface fields of the model - classically only SST - in a highly non-linear fash-
470 ion caused notably by atmosphere stability considerations (see Large and Yeager, 2004). More precisely, the freshwater input
at the surface in the absence of rivers is the difference between evaporation and precipitations. Precipitations are prescribed
directly and do not change throughout the various simulations. Conversely, evaporation is proportional to the LH which is itself
a complex function of the forced atmospheric variables and the SST (which, as previously shown in Fig.5, varies between the
simulations). Mean values over the interior basins of LH as computed by the model for the various simulations are displayed
475 in Fig.8. Since LH is by convention positive towards the ocean and usually negative, lower absolute values of LH implies less
loss of energy from the ocean to the atmosphere, and therefore less evaporation. As expected, LH values for NT0 and NT1
are quite similar, though the mean in NT1 is slightly higher, due to the slightly higher SST (see Sec.3.3.2). In T0, the absolute
LH is considerably lower than in other simulations ($\sim 40 \text{ W.m}^2$ lower than NT1). Lower latent heat flux leading to a much
weaker evaporation in T0 thus induces an excess of freshwater atmospheric input in the region, and explains the observed bias.
480 Nevertheless, this mechanism alone cannot explain all the differences. Indeed, though the LH is also slightly weaker in T1
with respect to NT0 and NT1, surface waters in T1 are slightly too salty, though the magnitude of the bias is much lower than
the one in T0. This results from the intensified numerical mixing caused by internal tides, even when QKE-F is used, bringing
saltier water from deeper levels to the surface, in a similar fashion as for the SST. This tidal mixing induced salinity input
compensates the lower evaporation caused by colder surface waters in T0 (see Fig.5).

485 A precise diagnostic aiming at distinguishing between atmospheric fluxes and diffusive fluxes would need to be carried out
in order to draw more precise conclusions on their relative roles. Such a diagnostic is however not possible with daily averaged
output and would require the implementation of online diagnostics as well as running new simulations, a task that has not been
carried out in the scope of this study.

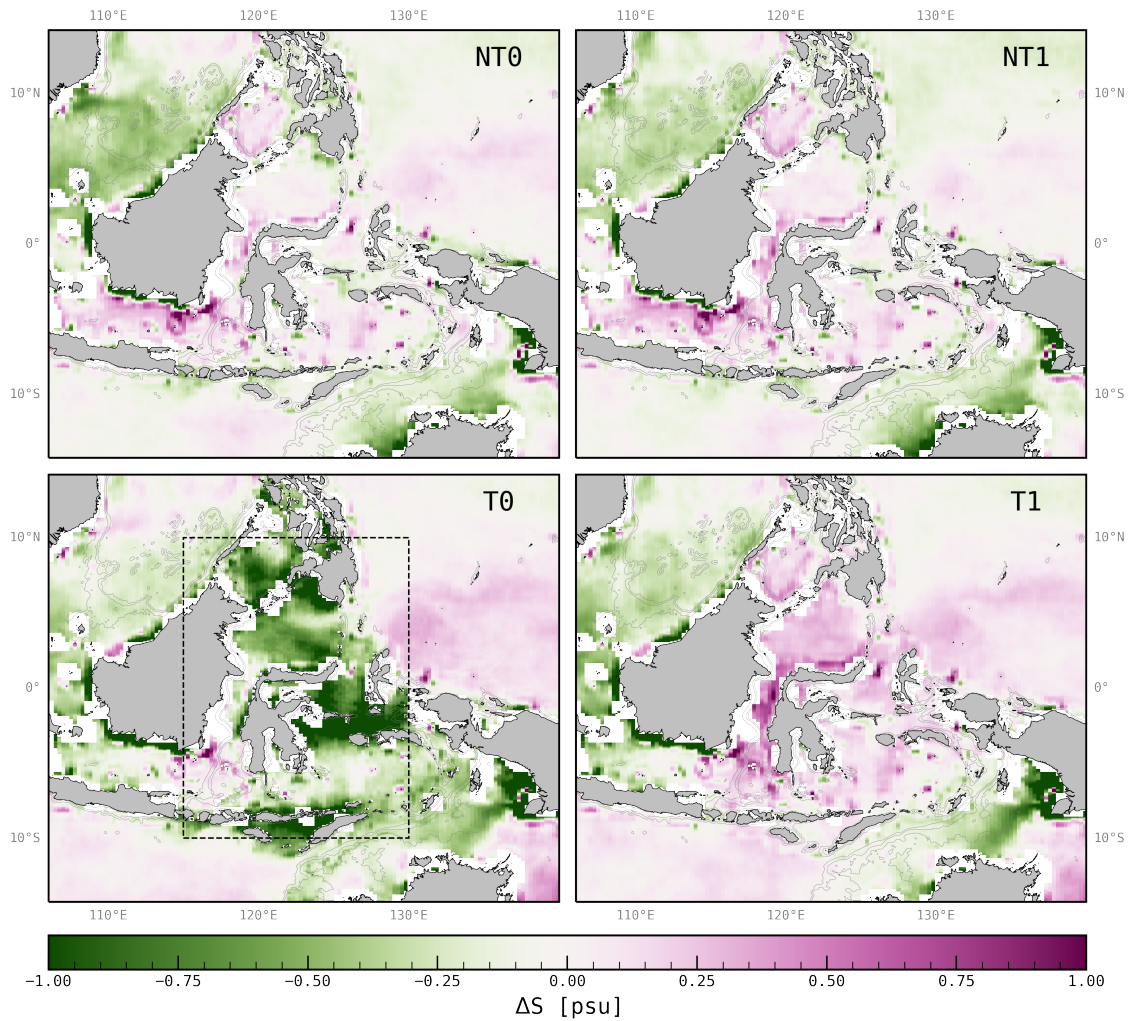


Figure 7. Mean SSS bias with respect to the SMAP/SMOS dataset ($\Delta S = \text{SSS}(\text{SYMPHONIE}) - \text{SST}(\text{SMAP/SMOS})$) for simulations T0, NT0, T1, NT1, computed over years 2017-2018. Positive values correspond to an overestimation of model output. The 100, 500 and 1000 m isobaths are also displayed (fine grey lines).

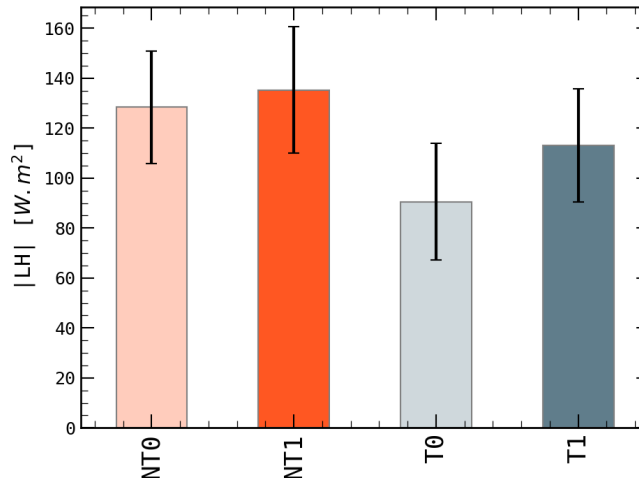


Figure 8. Absolute mean latent heat flux (in $W \cdot m^{-2}$) computed over the zone defined by the square in Fig.7 for all the simulations. Error-bars correspond to 1 standard deviation, computed over monthly averaged values and the same spatial domain.

4 Discussion

490 Comparisons of a set of four sensitivity simulations, with and without tides and with and without activation of the filtered formulation, with available ARGO temperature and salinity profiles and OSTIA sea surface temperature data showed that the filtered formulation brings numerical diffusion down to a level allowing for a correct representation of water masses in our simulations over the Southeast Asia Seas, even under strong tidal motions. Through a comparison with the highly diffusive QKE scheme in its raw formulation and with simulations without tides, we have highlighted the spurious numerical effect
 495 that tides can have, while stressing their physical importance in transforming the water masses. Nevertheless, some questions remain open.

First of all, the choice of the filter in Eq.12 is still weakly constrained. For simplicity and to stick to the original formulation proposed in Juricke et al. (2020a), we chose a simple three-points average, and achieved satisfying results. We can however
 500 wonder if another filter could be better suited. Basically, we would like the filter to have its cutoff wavenumber θ_c to be equal to the lowest wavenumber that the advective part \mathcal{A} of the scheme can effectively resolve, in order to ensure that all the noise is effectively dissipated while the well represented scales are protected from spurious damping. It is debatable whether such a clear separation between noise and physics can be drawn, as it will always rely on the definition of an arbitrary condition (such as in Kent et al. (2014) or Winther et al. (2007)). Nonetheless, following computations made by Winther et al. (2007),
 505 the minimum wavelength accurately represented by a fourth-order central differencing scheme is approximately $N = 4.4$ grid points. Defining the cutoff wavenumber of a filter in a standard way as the wavenumber θ_c at which $\hat{\phi}(\theta_c) \approx 1/\sqrt{2}$ (as is commonly done in signal processing), we have, for ϕ_3 , a cutoff wavelength $N_c = 2\pi/\theta_c \approx 5.5$ grid points. That is, the cutoff

of our filter is slightly greater than the actual accuracy of the advective part, ensuring that all the noisy wavelengths are effectively filtered out. On the contrary, for a higher order filter of the form

$$510 \quad \phi_{5*}[s]_j = s_i + \frac{1}{16}(-s_{j+2} + 4s_{j+1} - 6s_j + 4s_{j-1} - s_{j-2}) \quad (18)$$

which transfer function writes

$$\hat{\phi}_{5*}[k] = 1 - \frac{1}{4}(1 - \cos\theta)^2 \quad (19)$$

the cutoff wavelength is approximately $N_c = 3.8$ grid points. This is slightly lower than, but comparable to the above defined accuracy of 4.4 grid points. Considering the rather approximative aspect of these computations, we could thus still consider
 515 this other filter valid. However, the stencil required to compute such a filter is wider than for ϕ_3 (five grid points for ϕ_{5*} vs. three for ϕ_3), increasing the computational cost and numerical complexity, especially when computing boundary conditions. The ϕ_3 filter is therefore a rather good compromise, even though other filters have not been tested in the scope of this study; but we cannot exclude that other, possibly non-linear, filters might be better suited in other situations.

520 Second, the choice of this filter leads to an interesting result that raises the question of choosing the UP3-F vs. UP5 scheme. Looking at Eq.15, it turns out that except for the multiplying coefficient 1/6, the damping coefficient for the filtered formulation of the UP3 scheme $\gamma^{\text{UP3-F}}$ is equal to the damping coefficient for a fifth-order upwind biased scheme (UP5), namely :

$$\gamma^{\text{UP5}} = \frac{8W}{60\Delta z}(1 - \cos\theta)^3 \quad (20)$$

See for instance Soufflet et al. (2016) for the derivation of γ^{UP5} . This is also illustrated in Fig.2. Basically, this means that
 525 the diffusive part of our filtered formulation of the UP3 scheme is equivalent to the diffusive part of a UP5 scheme, that is, a trilateral operator. This result is similar to the one described in Juricke et al. (2020a), where the filtered harmonic diffusion boils down to a biharmonic diffusion when α is set to 1. We can therefore wonder if it would not be preferable to use directly a UP5 scheme instead of a filtered scheme, since it should achieve overall a higher order of accuracy. The answer is : most likely. There are however several aspects to be considered here. Though it might be negligible in comparison to the cost of computing
 530 other components of the model, the computational cost of the UP5 scheme is slightly higher than the one of the UP3-F formulation, since in UP3-F, only the dissipative component uses a larger stencil. But more importantly, the base scheme actually used in Symphonie is QKE. It should be possible to build a scheme similar to QKE on the UP5, but some additional work would be necessary and has not been carried out in the scope of this study. Moreover, we should keep in mind that Eq.15 is derived from Eq.14 in the particular case where $\alpha = 1$. Though other values of α have not been discussed here, formulations where
 535 $\alpha \neq 1$ (and especially $\alpha > 1$) are believed to have some potential in further reducing numerical mixing, and will be investigated in further studies. Taking a step back, this result nevertheless suggests that a bilaplacian diffusion is still too dissipative, while a trilateral operator could achieve better results, at least in the situation studied here. This result might be of importance for existing and upcoming numerical cores, since increasing the order of the diffusion might be a rather affordable option.

540 5 Conclusions

In this paper, we have presented a new way of formulating the vertical advection scheme in the Symphonie model that builds on a previously available scheme and aims at making its diffusive component more scale-selective, thus reducing spurious numerical mixing, especially in a context where tides are explicitly resolved. This method has then been validated in a regional model of the South-East Asian Seas, known to be the generation site of strong internal tides that dissipate in the semi-enclosed basins of the region. By running simulations with and without tides and with the new formulation turned on and off, we have shown that the numerical diffusion is reduced enough so that the model is able to satisfyingly represent observed water masses throughout the various seas and surface fields. At the same time, we provided a clear illustration of the spurious effect that tides can have in a fixed coordinates model, even in a regional model forced at its lateral boundaries. The impact of spurious mixing on the SST is particularly important, considering its non-linear interactions with the atmosphere, as illustrated by the large fresh bias at the surface observed in the highly diffusive simulation. The effect can be even worse in fully coupled atmosphere-ocean simulations, as the whole atmosphere will adjust to the modified SST, potentially biasing the entire response of the model.

This issue of spurious numerical mixing induced by tides, although previously known, has, to our knowledge, not been as explicitly reported before as in this study. We believe this to be helpful for the growing community of model users not necessarily well-versed in numerical modelling. We advocate for a better recognition of spurious vertical mixing and its effect, especially in the context of long simulations run with explicit tidal forcing, and of the importance of choosing carefully the proper numerical methods.

Some aspects however still remain uncertain and call for further work. spurious effect of numerical mixing on tracer fields is rather coarse and qualitative. A more thorough quantification might be however of valuable insight to further disentangle the numerical from the physical mixing, and assess the relative contribution of each processes in the observed results, from surface fields to tracer profiles. The choice of such a method is however not straightforward, each exhibiting their own strengths and limitations (see e.g. Banerjee et al., 2023).

Focusing more specifically on the advection scheme presented in this paper, the choice of the filter to be used is still weakly constrained, thus calling for further investigations. A comparison to other standard schemes, though out of scope of this paper, could also be carried out. At the same time, owing to the variety of approaches in ocean modelling, defining a universal advection scheme is still difficult, if not delusional. The choice of a method indeed always involves a compromise between the quality of the solution - which is by itself oddly defined and depends on the problem itself - algorithmic complexity - which might prevent the use of a particular method on a particular set of coordinates for example - and computational cost. This is also the reason why modern dynamical cores usually offer users the possibility to choose between several advection schemes, depending on their needs. As stated in Gerdes et al. (1991), as long as the theoretical basis of a scheme is justified, the realism of the resulting simulation when compared to observations is the only way to define what's "best". The method presented here should therefore be seen more as a new element in a much wider toolbox of solutions aiming at reducing numerical errors in ocean models rather than a definitive solution to the issue of spurious vertical mixing.

Code and data availability. The code to plot the figures can be downloaded on the following github repository : <https://github.com/Clapinet/SpuriousMixingSEA>. Preprocessed Symphonie and ARGO data as well as the source code of the model (v312) are accessible via the following url <https://doi.org/10.5281/zenodo.10715502>. Considering their size, raw 3D model outputs are not stored publicly, but are available upon request. More information on the Symphonie model can be found on the SIROCCO group website : <https://sirocco.obs-mip.fr/>. GLORYS data are accessible via <https://doi.org/10.48670/moi-00021>. OSTIA data are accessible via <https://doi.org/10.48670/moi-00168>. ARGO data have been downloaded from <https://dataselection.euro-argo.eu/>.

Appendix A: Location and amount of ARGO floats in the region

580 Figure A1 shows the distribution of ARGO profiles in the region. In the interior basins, all data over the period of interest have been selected. In the Eastern Indian Ocean, considering the large amount of data available, only a subset of profiles sampling the exit of the ITF has been selected.

Appendix B: Metric for profiles comparison

For each zone b and each depth level k , the standard deviation σ_k^b of the ARGO data in the zone is computed. The RMSE is then computed by weighting each depth level k by $w_k^b = (1/\sigma_k^b)/(\sum_j 1/\sigma_j^b)$. This modified metric is referred to as *weighted* RMSE (wRMSE), and writes as follow :

$$\text{wRMSE}[X_b^s, X_b^r] = \sqrt{\sum_k w_k^b (X_b^s[k] - X_b^r[k])^2} \quad (\text{B1})$$

where $\{X_b^s[k]\}_k$ is a profile sampled at m depth levels $\{k\}$ in zone b for a given simulation s and $\{X_b^r[k]\}_k$ a reference profile (e.g. ARGO). Choosing weights as such means that less importance, compared to classical RMSE, is given to depth levels where the *observed* variations quantified by σ_k are greater; and conversely more importance is given to levels with less variation between the various profiles.

Author contributions. AG, PM and MH contributed to the design of the study. MH, JP and PM designed the configuration. MH ran the simulations. PM implemented the methods. AG analysed the simulations, carried out the theoretical work and wrote the manuscript with contributions from all coauthors.

595 *Competing interests.* The authors declare no competing interests.

Disclaimer.

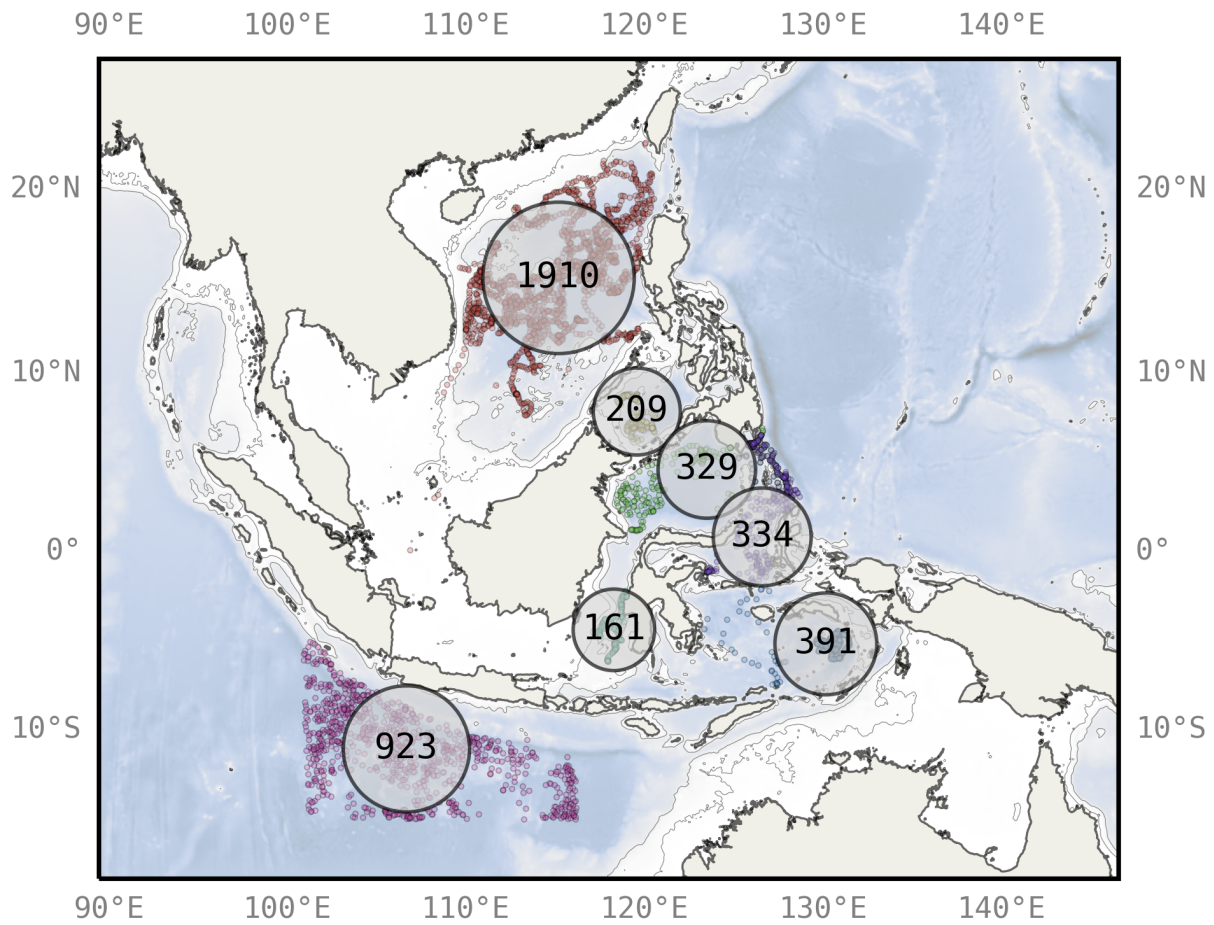


Figure A1. Locations and number of ARGO floats in each basin of the region over the 2017-2018 period. Individual profiles are represented by colored points, while the numbers in larger circles indicate the number of profiles in each basin over the period of interest. Basin names are provided in Fig.1.

Acknowledgements. The authors would like to thank the team of the Calmip computer for their support (project p20055). Analysis of simulations output was carried out using `python` the `xarray` library (Hoyer and Hamman, 2017). Heavy use of the `cmocean` package (<https://matplotlib.org/cmoccean/>) was also made; and we would like to cite Rougier (2021) as a source of inspiration. AG finally thanks
600 Franck Dumas, Yves Morel and Rosemary Morrow for the fruitful discussions.

References

- Ocean Mixing, Elsevier, ISBN 978-0-12-821512-8, <https://doi.org/10.1016/C2019-0-03674-6>, 2022.
- Adcroft, A. and Campin, J.-M.: Rescaled Height Coordinates for Accurate Representation of Free-Surface Flows in Ocean Circulation Models, *Ocean Modelling*, 7, 269–284, ISSN 1463-5003, <https://doi.org/10.1016/j.ocemod.2003.09.003>, 2004.
- 605 Alfieri, L., Burek, P., Dutra, E., Krzeminski, B., Muraro, D., Thielen, J., and Pappenberger, F.: GloFAS - Global Ensemble Streamflow Forecasting and Flood Early Warning, *Hydrology and Earth System Sciences*, 17, 1161–1175, ISSN 1027-5606, <https://doi.org/10.5194/hess-17-1161-2013>, 2013.
- Alford, M. H., Gregg, M. C., and Ilyas, M.: Diapycnal Mixing in the Banda Sea: Results of the First Microstructure Measurements in the Indonesian Throughflow, *Geophysical Research Letters*, 26, 2741–2744, ISSN 1944-8007, <https://doi.org/10.1029/1999GL002337>, 1999.
- 610 Álvarez, Ó., Izquierdo, A., González, C. J., Bruno, M., and Mañanes, R.: Some Considerations about Non-Hydrostatic vs. Hydrostatic Simulation of Short-Period Internal Waves. A Case Study: The Strait of Gibraltar, *Continental Shelf Research*, 181, 174–186, ISSN 0278-4343, <https://doi.org/10.1016/j.csr.2019.05.016>, 2019.
- Apel, J. R., Holbrook, J. R., Liu, A. K., and Tsai, J. J.: The Sulu Sea Internal Soliton Experiment, *Journal of Physical Oceanography*, 15, 1625–1651, ISSN 0022-3670, 1520-0485, [https://doi.org/10.1175/1520-0485\(1985\)015<1625:TSSISE>2.0.CO;2](https://doi.org/10.1175/1520-0485(1985)015<1625:TSSISE>2.0.CO;2), 1985.
- 615 Arbic, B. K.: Incorporating Tides and Internal Gravity Waves within Global Ocean General Circulation Models: A Review, *Progress in Oceanography*, 206, 102 824, ISSN 0079-6611, <https://doi.org/10.1016/j.pocean.2022.102824>, 2022.
- Banerjee, T., Danilov, S., and Klingbeil, K.: Discrete Variance Decay Analysis of Spurious Mixing, 2023.
- Bendinger, A., Cravatte, S., Gourdeau, L., Brodeau, L., Albert, A., Tchilibou, M., Lyard, F., and Vic, C.: Regional Modeling of Internal-Tide Dynamics around New Caledonia – Part 1: Coherent Internal-Tide Characteristics and Sea Surface Height Signature, *Ocean Sci.*, 19, 620 1315–1338, ISSN 1812-0792, <https://doi.org/10.5194/os-19-1315-2023>, 2023.
- Berntsen, J., Xing, J., and Davies, A. M.: Numerical Studies of Flow over a Sill: Sensitivity of the Non-Hydrostatic Effects to the Grid Size, *Ocean Dynamics*, 59, 1043–1059, ISSN 1616-7341, 1616-7228, <https://doi.org/10.1007/s10236-009-0227-0>, 2009.
- Blumberg, A. F. and Mellor, G. L.: A Description of a Three-Dimensional Coastal Ocean Circulation Model, in: *Three-Dimensional Coastal Ocean Models*, pp. 1–16, American Geophysical Union (AGU), ISBN 978-1-118-66504-6, <https://doi.org/10.1029/CO004p0001>, 1987.
- 625 Bryan, F.: Parameter Sensitivity of Primitive Equation Ocean General Circulation Models, *Journal of Physical Oceanography*, 17, 970–985, ISSN 0022-3670, 1520-0485, [https://doi.org/10.1175/1520-0485\(1987\)017<0970:PSOPEO>2.0.CO;2](https://doi.org/10.1175/1520-0485(1987)017<0970:PSOPEO>2.0.CO;2), 1987.
- Burchard, H. and Bolding, K.: Comparative Analysis of Four Second-Moment Turbulence Closure Models for the Oceanic Mixed Layer, *Journal of Physical Oceanography*, 31, 1943–1968, ISSN 0022-3670, 1520-0485, [https://doi.org/10.1175/1520-0485\(2001\)031<1943:CAOFSM>2.0.CO;2](https://doi.org/10.1175/1520-0485(2001)031<1943:CAOFSM>2.0.CO;2), 2001.
- 630 Burchard, H. and Rennau, H.: Comparative Quantification of Physically and Numerically Induced Mixing in Ocean Models, *Ocean Modelling*, 20, 293–311, ISSN 1463-5003, <https://doi.org/10.1016/j.ocemod.2007.10.003>, 2008.
- Castruccio, F. S., Curchitser, E. N., and Kleypas, J. A.: A Model for Quantifying Oceanic Transport and Mesoscale Variability in the Coral Triangle of the Indonesian/Philippines Archipelago, *Journal of Geophysical Research: Oceans*, 118, 6123–6144, ISSN 2169-9291, <https://doi.org/10.1002/2013JC009196>, 2013.
- 635 Cushman-Roisin, B. and Beckers, J.-M.: *Introduction to Geophysical Fluid Dynamics: Physical and Numerical Aspects*, no. v. 101 in *International Geophysics Series*, Academic Press, Waltham, MA, 2nd ed edn., ISBN 978-0-12-088759-0, 2011.

- Damien, P., Bosse, A., Testor, P., Marsaleix, P., and Estournel, C.: Modeling Postconvective Submesoscale Coherent Vortices in the Northwestern Mediterranean Sea, *Journal of Geophysical Research: Oceans*, 122, 9937–9961, ISSN 2169-9291, <https://doi.org/10.1002/2016JC012114>, 2017.
- 640 Donlon, C. J., Martin, M., Stark, J., Roberts-Jones, J., Fiedler, E., and Wimmer, W.: The Operational Sea Surface Temperature and Sea Ice Analysis (OSTIA) System, *Remote Sensing of Environment*, 116, 140–158, ISSN 0034-4257, <https://doi.org/10.1016/j.rse.2010.10.017>, 2012.
- Dukhovskoy, D. S., Morey, S. L., Martin, P. J., O'Brien, J. J., and Cooper, C.: Application of a Vanishing, Quasi-Sigma, Vertical Coordinate for Simulation of High-Speed, Deep Currents over the Sigsbee Escarpment in the Gulf of Mexico, *Ocean Modelling*, 28, 250–265, ISSN 1463-5003, <https://doi.org/10.1016/j.ocemod.2009.02.009>, 2009.
- 645 Estournel, C., Marsaleix, P., and Ulses, C.: A New Assessment of the Circulation of Atlantic and Intermediate Waters in the Eastern Mediterranean, *Progress in Oceanography*, 198, 102 673, ISSN 0079-6611, <https://doi.org/10.1016/j.pocean.2021.102673>, 2021.
- Ffield, A. and Gordon, A. L.: Vertical Mixing in the Indonesian Thermocline, *Journal of Physical Oceanography*, 22, 184–195, ISSN 0022-3670, 1520-0485, [https://doi.org/10.1175/1520-0485\(1992\)022<0184:VMITIT>2.0.CO;2](https://doi.org/10.1175/1520-0485(1992)022<0184:VMITIT>2.0.CO;2), 1992.
- 650 Ffield, A. and Gordon, A. L.: Tidal Mixing Signatures in the Indonesian Seas, *J. Phys. Oceanogr.*, 26, 1924–1937, ISSN 0022-3670, 1520-0485, [https://doi.org/10.1175/1520-0485\(1996\)026<1924:TMSITI>2.0.CO;2](https://doi.org/10.1175/1520-0485(1996)026<1924:TMSITI>2.0.CO;2), 1996.
- Fox-Kemper, B., Adcroft, A., Böning, C. W., Chassignet, E. P., Curchitser, E., Danabasoglu, G., Eden, C., England, M. H., Gerdes, R., Greatbatch, R. J., Griffies, S. M., Hallberg, R. W., Hanert, E., Heimbach, P., Hewitt, H. T., Hill, C. N., Komuro, Y., Legg, S., Le Sommer, J., Masina, S., Marsland, S. J., Penny, S. G., Qiao, F., Ringler, T. D., Treguier, A. M., Tsujino, H., Uotila, P., and Yeager, S. G.: Challenges and Prospects in Ocean Circulation Models, *Frontiers in Marine Science*, 6, ISSN 2296-7745, 2019.
- 655 Gerdes, R., Köberle, C., and Willebrand, J.: The Influence of Numerical Advection Schemes on the Results of Ocean General Circulation Models, *Climate Dynamics*, 5, 211–226, ISSN 1432-0894, <https://doi.org/10.1007/BF00210006>, 1991.
- Gibson, A. H., Hogg, A. M., Kiss, A. E., Shakespeare, C. J., and Adcroft, A.: Attribution of Horizontal and Vertical Contributions to Spurious Mixing in an Arbitrary Lagrangian–Eulerian Ocean Model, *Ocean Modelling*, 119, 45–56, ISSN 1463-5003, <https://doi.org/10.1016/j.ocemod.2017.09.008>, 2017.
- 660 Gonzalez, N.: Modélisation Multi-Échelle Du Déroit de Gibraltar et de Son Rôle de Régulateur Du Climat Méditerranéen, Ph.D. thesis, 2023.
- Gonzalez, N., Waldman, R., Sannino, G., Giordani, H., and Somot, S.: Understanding Tidal Mixing at the Strait of Gibraltar: A High-Resolution Model Approach, *Progress in Oceanography*, p. 102980, ISSN 0079-6611, <https://doi.org/10.1016/j.pocean.2023.102980>, 2023.
- 665 Gordon, A.: Oceanography of the Indonesian Seas and Their Throughflow, *oceanog*, 18, 14–27, ISSN 10428275, <https://doi.org/10.5670/oceanog.2005.01>, 2005.
- Griffies, S. M. and Hallberg, R. W.: Biharmonic Friction with a Smagorinsky-Like Viscosity for Use in Large-Scale Eddy-Permitting Ocean Models, *Monthly Weather Review*, 128, 2935–2946, ISSN 1520-0493, 0027-0644, [https://doi.org/10.1175/1520-0493\(2000\)128<2935:BFWASL>2.0.CO;2](https://doi.org/10.1175/1520-0493(2000)128<2935:BFWASL>2.0.CO;2), 2000.
- 670 Griffies, S. M., Pacanowski, R. C., and Hallberg, R. W.: Spurious Diapycnal Mixing Associated with Advection in a Z-Coordinate Ocean Model, *Monthly Weather Review*, 128, 538–564, ISSN 1520-0493, 0027-0644, [https://doi.org/10.1175/1520-0493\(2000\)128<0538:SDMAWA>2.0.CO;2](https://doi.org/10.1175/1520-0493(2000)128<0538:SDMAWA>2.0.CO;2), 2000.

- Griffies, S. M., Adcroft, A., and Hallberg, R. W.: A Primer on the Vertical Lagrangian-Remap Method in Ocean Models Based on Finite
675 Volume Generalized Vertical Coordinates, *Journal of Advances in Modeling Earth Systems*, 12, e2019MS001954, ISSN 1942-2466,
<https://doi.org/10.1029/2019MS001954>, 2020.
- Hatayama, T., Awaji, T., and Akitomo, K.: Tidal Currents in the Indonesian Seas and Their Effect on Transport and Mixing, *Journal of
Geophysical Research: Oceans*, 101, 12 353–12 373, ISSN 2156-2202, <https://doi.org/10.1029/96JC00036>, 1996.
- Hecht, M. W.: Cautionary Tales of Persistent Accumulation of Numerical Error: Dispersive Centered Advection, *Ocean Modelling*, 35,
680 270–276, ISSN 1463-5003, <https://doi.org/10.1016/j.ocemod.2010.07.005>, 2010.
- Herrmann, M., To Duy, T., and Estournel, C.: Intraseasonal Variability of the South Vietnam Upwelling, South China Sea: Influence of
Atmospheric Forcing and Ocean Intrinsic Variability, *Ocean Science*, 19, 453–467, ISSN 1812-0784, <https://doi.org/10.5194/os-19-453-2023>, 2023.
- Holmes, R. M., Zika, J. D., Griffies, S. M., Hogg, A. McC., Kiss, A. E., and England, M. H.: The Geography of Numerical Mix-
685 ing in a Suite of Global Ocean Models, *Journal of Advances in Modeling Earth Systems*, 13, e2020MS002333, ISSN 1942-2466,
<https://doi.org/10.1029/2020MS002333>, 2021.
- Hoyer, S. and Hamman, J.: Xarray: N-D Labeled Arrays and Datasets in Python, 5, 10, ISSN 2049-9647, <https://doi.org/10.5334/jors.148>,
2017.
- Ilicak, M., Adcroft, A. J., Griffies, S. M., and Hallberg, R. W.: Spurious Dianeutral Mixing and the Role of Momentum Closure, *Ocean
690 Modelling*, 45–46, 37–58, ISSN 1463-5003, <https://doi.org/10.1016/j.ocemod.2011.10.003>, 2012.
- Iskandar, M. R., Jia, Y., Sasaki, H., Furue, R., Kida, S., Suga, T., and Richards, K. J.: Effects of High-Frequency Flow Variability
on the Pathways of the Indonesian Throughflow, *Journal of Geophysical Research: Oceans*, 128, e2022JC019610, ISSN 2169-9291,
<https://doi.org/10.1029/2022JC019610>, 2023.
- Jochum, M. and Potemra, J.: Sensitivity of Tropical Rainfall to Banda Sea Diffusivity in the Community Climate System Model, *Journal of
695 Climate*, 21, 6445–6454, ISSN 0894-8755, 1520-0442, <https://doi.org/10.1175/2008JCLI2230.1>, 2008.
- Juricke, S., Danilov, S., Koldunov, N., Oliver, M., Sein, D. V., Sidorenko, D., and Wang, Q.: A Kinematic Kinetic Energy Backscat-
ter Parametrization: From Implementation to Global Ocean Simulations, *Journal of Advances in Modeling Earth Systems*, 12,
e2020MS002175, ISSN 1942-2466, <https://doi.org/10.1029/2020MS002175>, 2020a.
- Juricke, S., Danilov, S., Koldunov, N., Oliver, M., and Sidorenko, D.: Ocean Kinetic Energy Backscatter Parametrization on Unstructured
700 Grids: Impact on Global Eddy-Permitting Simulations, *Journal of Advances in Modeling Earth Systems*, 12, e2019MS001855, ISSN
1942-2466, <https://doi.org/10.1029/2019MS001855>, 2020b.
- Katavouta, A., Polton, J. A., Harle, J. D., and Holt, J. T.: Effect of Tides on the Indonesian Seas Circulation and Their Role on the Volume,
Heat and Salt Transports of the Indonesian Throughflow, *Journal of Geophysical Research: Oceans*, 127, e2022JC018524, ISSN 2169-
9291, <https://doi.org/10.1029/2022JC018524>, 2022.
- 705 Kent, J., Whitehead, J. P., Jablonowski, C., and Rood, R. B.: Determining the Effective Resolution of Advection Schemes. Part I: Dispersion
Analysis, *Journal of Computational Physics*, 278, 485–496, ISSN 0021-9991, <https://doi.org/10.1016/j.jcp.2014.01.043>, 2014.
- Klingbeil, K., Mohammadi-Aragh, M., Gräwe, U., and Burchard, H.: Quantification of Spurious Dissipation and Mixing – Discrete Variance
Decay in a Finite-Volume Framework, *Ocean Modelling*, 81, 49–64, ISSN 1463-5003, <https://doi.org/10.1016/j.ocemod.2014.06.001>,
2014.

- 710 Klingbeil, K., Burchard, H., Danilov, S., Goetz, C., and Iske, A.: Reducing Spurious Diapycnal Mixing in Ocean Models, in: Energy Transfers in Atmosphere and Ocean, edited by Eden, C. and Iske, A., Mathematics of Planet Earth, pp. 245–286, Springer International Publishing, Cham, ISBN 978-3-030-05704-6, https://doi.org/10.1007/978-3-030-05704-6_8, 2019.
- Koch-Larrouy, A., Madec, G., Bouruet-Aubertot, P., Gerkema, T., Bessières, L., and Molcard, R.: On the Transformation of Pacific Water into Indonesian Throughflow Water by Internal Tidal Mixing, *Geophys. Res. Lett.*, 34, L04 604, ISSN 0094-8276, 715 <https://doi.org/10.1029/2006GL028405>, 2007.
- Koch-Larrouy, A., Lengaigne, M., Terray, P., Madec, G., and Masson, S.: Tidal Mixing in the Indonesian Seas and Its Effect on the Tropical Climate System, *Clim Dyn*, 34, 891–904, ISSN 1432-0894, <https://doi.org/10.1007/s00382-009-0642-4>, 2010.
- Kolodziejczyk, N., Hamon, M., Boutin, J., Vergely, J.-L., Reverdin, G., Supply, A., and Reul, N.: Objective Analysis of SMOS and SMAP Sea Surface Salinity to Reduce Large-Scale and Time-Dependent Biases from Low to High Latitudes, *Journal of Atmospheric and Oceanic* 720 *Technology*, 38, 405–421, ISSN 0739-0572, 1520-0426, <https://doi.org/10.1175/JTECH-D-20-0093.1>, 2021.
- Large, G. and Yeager, S.: Diurnal to Decadal Global Forcing for Ocean and Sea-Ice Models: The Data Sets and Flux Climatologies, <https://doi.org/10.5065/D6KK98Q6>, 2004.
- Leclair, M. and Madec, G.: $Z\sim$ -Coordinate, an Arbitrary Lagrangian–Eulerian Coordinate Separating High and Low Frequency Motions, *Ocean Modelling*, 37, 139–152, ISSN 1463-5003, <https://doi.org/10.1016/j.ocemod.2011.02.001>, 2011.
- 725 Lee, M.-M., Coward, A. C., and Nurser, A. J. G.: Spurious Diapycnal Mixing of the Deep Waters in an Eddy-Permitting Global Ocean Model, *Journal of Physical Oceanography*, 32, 1522–1535, ISSN 0022-3670, 1520-0485, [https://doi.org/10.1175/1520-0485\(2002\)032<1522:SDMOTD>2.0.CO;2](https://doi.org/10.1175/1520-0485(2002)032<1522:SDMOTD>2.0.CO;2), 2002.
- Lemarié, F., Debreu, L., Madec, G., Demange, J., Molines, J. M., and Honnorat, M.: Stability Constraints for Oceanic Numerical Models: Implications for the Formulation of Time and Space Discretizations, *Ocean Modelling*, 92, 124–148, ISSN 1463-5003, 730 <https://doi.org/10.1016/j.ocemod.2015.06.006>, 2015.
- Leonard, B. P.: A Stable and Accurate Convective Modelling Procedure Based on Quadratic Upstream Interpolation, *Computer Methods in Applied Mechanics and Engineering*, 19, 59–98, ISSN 0045-7825, [https://doi.org/10.1016/0045-7825\(79\)90034-3](https://doi.org/10.1016/0045-7825(79)90034-3), 1979.
- Lyard, F. H., Allain, D. J., Cancet, M., Carrère, L., and Picot, N.: FES2014 Global Ocean Tide Atlas: Design and Performance, *Ocean Science*, 17, 615–649, ISSN 1812-0784, <https://doi.org/10.5194/os-17-615-2021>, 2021.
- 735 Madec, G., Bourdallé-Badie, R., Chanut, J., Clementi, E., Coward, A., Ethé, C., Iovino, D., Lea, D., Lévy, C., Lovato, T., Martin, N., Masson, S., Mocavero, S., Rousset, C., Storkey, D., Müeller, S., Nurser, G., Bell, M., Samson, G., Mathiot, P., Mele, F., and Moulin, A.: NEMO Ocean Engine, Tech. rep., Zenodo, 2022.
- Marchesiello, P., Debreu, L., and Couvelard, X.: Spurious Diapycnal Mixing in Terrain-Following Coordinate Models: The Problem and a Solution, *Ocean Modelling*, 26, 156–169, ISSN 1463-5003, <https://doi.org/10.1016/j.ocemod.2008.09.004>, 2009.
- 740 Megann, A.: Estimating the Numerical Diapycnal Mixing in an Eddy-Permitting Ocean Model, *Ocean Modelling*, 121, 19–33, ISSN 1463-5003, <https://doi.org/10.1016/j.ocemod.2017.11.001>, 2018.
- Megann, A.: Quantifying Numerical Mixing in a Tidally Forced Global Eddy-Permitting Ocean Model, *Ocean Modelling*, 188, 102 329, ISSN 1463-5003, <https://doi.org/10.1016/j.ocemod.2024.102329>, 2024.
- Megann, A., Chanut, J., and Storkey, D.: Assessment of the $Z\sim$ Time-Filtered Arbitrary Lagrangian-Eulerian Coordinate in a 745 *Global Eddy-Permitting Ocean Model*, *Journal of Advances in Modeling Earth Systems*, 14, e2022MS003 056, ISSN 1942-2466, <https://doi.org/10.1029/2022MS003056>, 2022.

- Nagai, T. and Hibiya, T.: Combined Effects of Tidal Mixing in Narrow Straits and the Ekman Transport on the Sea Surface Temperature Cooling in the Southern Indonesian Seas, *Journal of Geophysical Research: Oceans*, 125, e2020JC016314, ISSN 2169-9291, <https://doi.org/10.1029/2020JC016314>, 2020.
- 750 Nagai, T., Hibiya, T., and Syamsudin, F.: Direct Estimates of Turbulent Mixing in the Indonesian Archipelago and Its Role in the Transformation of the Indonesian Throughflow Waters, *Geophysical Research Letters*, 48, e2020GL091731, ISSN 1944-8007, <https://doi.org/10.1029/2020GL091731>, 2021.
- Nguyen-Duy, T., Ayoub, N. K., Marsaleix, P., Toubanc, F., De Mey-Frémaux, P., Piton, V., Herrmann, M., Duhaut, T., Tran, M. C., and Ngo-Duc, T.: Variability of the Red River Plume in the Gulf of Tonkin as Revealed by Numerical Modeling and Clustering Analysis, *Frontiers in Marine Science*, 8, ISSN 2296-7745, 2021.
- 755 Niwa, Y. and Hibiya, T.: Estimation of Baroclinic Tide Energy Available for Deep Ocean Mixing Based on Three-Dimensional Global Numerical Simulations, *J Oceanogr*, 67, 493–502, ISSN 1573-868X, <https://doi.org/10.1007/s10872-011-0052-1>, 2011.
- Nugroho, D.: *La Marée Dans Un Modèle de Circulation Générale Dans Les Mers Indonésiennes*, Ph.D. thesis, Université de Toulouse, Université Toulouse III - Paul Sabatier, 2017.
- 760 Nugroho, D., Koch-Larrouy, A., Gaspar, P., Lyard, F., Reffray, G., and Tranchant, B.: Modelling Explicit Tides in the Indonesian Seas: An Important Process for Surface Sea Water Properties, *Marine Pollution Bulletin*, 131, 7–18, ISSN 0025-326X, <https://doi.org/10.1016/j.marpolbul.2017.06.033>, 2018.
- Piton, V., Herrmann, M., Marsaleix, P., Duhaut, T., Ngoc, T. B., Tran, M. C., Shearman, K., and Ouillon, S.: Influence of Winds, Geostrophy and Typhoons on the Seasonal Variability of the Circulation in the Gulf of Tonkin: A High-Resolution 3D Regional Modeling Study, *Regional Studies in Marine Science*, 45, 101 849, ISSN 2352-4855, <https://doi.org/10.1016/j.rsma.2021.101849>, 2021.
- 765 Polzin, K. L., Toole, J. M., Ledwell, J. R., and Schmitt, R. W.: Spatial Variability of Turbulent Mixing in the Abyssal Ocean, *Science*, 276, 93–96, <https://doi.org/10.1126/science.276.5309.93>, 1997.
- Purwandana, A., Cuyppers, Y., Bouruet-Aubertot, P., Nagai, T., Hibiya, T., and Atmadipoera, A. S.: Spatial Structure of Turbulent Mixing Inferred from Historical CTD Datasets in the Indonesian Seas, *Progress in Oceanography*, 184, 102 312, ISSN 00796611, <https://doi.org/10.1016/j.pocean.2020.102312>, 2020.
- 770 Ray, R. D. and Susanto, R. D.: Tidal Mixing Signatures in the Indonesian Seas from High-Resolution Sea Surface Temperature Data, *Geophysical Research Letters*, 43, 8115–8123, ISSN 1944-8007, <https://doi.org/10.1002/2016GL069485>, 2016.
- Rougier, N. P.: *Scientific Visualization: Python + Matplotlib*, 2021.
- Sanderson, B. G.: Order and Resolution for Computational Ocean Dynamics, *Journal of Physical Oceanography*, 28, 1271–1286, ISSN 0022-3670, 1520-0485, [https://doi.org/10.1175/1520-0485\(1998\)028<1271:OARFCO>2.0.CO;2](https://doi.org/10.1175/1520-0485(1998)028<1271:OARFCO>2.0.CO;2), 1998.
- 775 Sasaki, H., Kida, S., Furue, R., Nonaka, M., and Masumoto, Y.: An Increase of the Indonesian Throughflow by Internal Tidal Mixing in a High-Resolution Quasi-Global Ocean Simulation, *Geophysical Research Letters*, 45, 8416–8424, ISSN 1944-8007, <https://doi.org/10.1029/2018GL078040>, 2018.
- Siegelman, L., Klein, P., Rivière, P., Thompson, A. F., Torres, H. S., Flexas, M., and Menemenlis, D.: Enhanced Upward Heat Transport at Deep Submesoscale Ocean Fronts, *Nat. Geosci.*, 13, 50–55, ISSN 1752-0908, <https://doi.org/10.1038/s41561-019-0489-1>, 2020.
- 780 Soufflet, Y., Marchesiello, P., Lemarié, F., Jouanno, J., Capet, X., Debret, L., and Benshila, R.: On Effective Resolution in Ocean Models, *Ocean Modelling*, 98, 36–50, ISSN 1463-5003, <https://doi.org/10.1016/j.ocemod.2015.12.004>, 2016.
- Sprintall, J., Gordon, A. L., Wijffels, S. E., Feng, M., Hu, S., Koch-Larrouy, A., Phillips, H., Nugroho, D., Napitu, A., Pujiana, K., Susanto, R. D., Sloyan, B., Peña-Molino, B., Yuan, D., Riama, N. F., Siswanto, S., Kuswardani, A., Arifin, Z., Wahyudi, A. J., Zhou, H., Nagai,

- 785 T., Ansong, J. K., Bourdalle-Badié, R., Chanut, J., Lyard, F., Arbic, B. K., Ramdhani, A., and Setiawan, A.: Detecting Change in the Indonesian Seas, *Front. Mar. Sci.*, 6, 257, ISSN 2296-7745, <https://doi.org/10.3389/fmars.2019.00257>, 2019.
- Susanto, R. D. and Ray, R. D.: Seasonal and Interannual Variability of Tidal Mixing Signatures in Indonesian Seas from High-Resolution Sea Surface Temperature, *Remote Sensing*, 14, 1934, ISSN 2072-4292, <https://doi.org/10.3390/rs14081934>, 2022.
- Thakur, R., Arbic, B. K., Menemenlis, D., Momeni, K., Pan, Y., Peltier, W. R., Skitka, J., Alford, M. H., and Ma, Y.: Impact of Vertical Mixing
790 Parameterizations on Internal Gravity Wave Spectra in Regional Ocean Models, *Geophysical Research Letters*, 49, e2022GL099614, ISSN 1944-8007, <https://doi.org/10.1029/2022GL099614>, 2022.
- To Duy, T., Herrmann, M., Estournel, C., Marsaleix, P., Duhaut, T., Bui Hong, L., and Trinh Bich, N.: The Role of Wind, Mesoscale Dynamics, and Coastal Circulation in the Interannual Variability of the South Vietnam Upwelling, South China Sea – Answers from a High-Resolution Ocean Model, *Ocean Science*, 18, 1131–1161, ISSN 1812-0784, <https://doi.org/10.5194/os-18-1131-2022>, 2022.
- 795 Tranchant, B., Reffray, G., Greiner, E., Nugroho, D., Koch-Larrouy, A., and Gaspar, P.: Evaluation of an Operational Ocean Model Configuration at 1/12° Spatial Resolution for the Indonesian Seas (NEMO2.3/INDO12) Part 1: Ocean Physics, *Geoscientific Model Development*, 9, 1037–1064, ISSN 1991-959X, <https://doi.org/10.5194/gmd-9-1037-2016>, 2016.
- Trinh, N. B., Herrmann, M., Ulses, C., Marsaleix, P., Duhaut, T., To Duy, T., Estournel, C., and Shearman, R. K.: New Insights into the South China Sea Throughflow and Water Budget Seasonal Cycle: Evaluation and Analysis of a High-Resolution Configuration of the Ocean
800 Model SYMPHONIE Version 2.4, *Geoscientific Model Development*, 17, 1831–1867, ISSN 1991-959X, <https://doi.org/10.5194/gmd-17-1831-2024>, 2024.
- Webb, D. J., de Cuevas, B. A., and Richmond, C. S.: Improved Advection Schemes for Ocean Models, *Journal of Atmospheric and Oceanic Technology*, 15, 1171–1187, ISSN 0739-0572, 1520-0426, [https://doi.org/10.1175/1520-0426\(1998\)015<1171:IASFOM>2.0.CO;2](https://doi.org/10.1175/1520-0426(1998)015<1171:IASFOM>2.0.CO;2), 1998.
- Winther, N. G., Morel, Y. G., and Evensen, G.: Efficiency of High Order Numerical Schemes for Momentum Advection, *Journal of Marine
805 Systems*, 67, 31–46, ISSN 0924-7963, <https://doi.org/10.1016/j.jmarsys.2006.08.004>, 2007.
- Wong, A. P. S., Wijffels, S. E., Riser, S. C., Pouliquen, S., Hosoda, S., Roemmich, D., Gilson, J., Johnson, G. C., Martini, K., Murphy, D. J., Scanderbeg, M., Bhaskar, T. V. S. U., Buck, J. J. H., Merceur, F., Carval, T., Maze, G., Cabanes, C., André, X., Poffa, N., Yashayaev, I., Barker, P. M., Guinehut, S., Belbéoch, M., Ignaszewski, M., Baringer, M. O., Schmid, C., Lyman, J. M., McTaggart, K. E., Purkey, S. G., Zilberman, N., Alkire, M. B., Swift, D., Owens, W. B., Jayne, S. R., Hersh, C., Robbins, P., West-Mack, D., Bahr, F., Yoshida, S., Sutton,
810 P. J. H., Cancouët, R., Coatanoan, C., Dobbler, D., Juan, A. G., Gourrion, J., Kolodziejczyk, N., Bernard, V., Bourlès, B., Claustre, H., D’Ortenzio, F., Le Reste, S., Le Traon, P.-Y., Rannou, J.-P., Saout-Grit, C., Speich, S., Thierry, V., Verbrugge, N., Angel-Benavides, I. M., Klein, B., Notarstefano, G., Poulain, P.-M., Vélez-Belchí, P., Suga, T., Ando, K., Iwasaka, N., Kobayashi, T., Masuda, S., Oka, E., Sato, K., Nakamura, T., Sato, K., Takatsuki, Y., Yoshida, T., Cowley, R., Lovell, J. L., Oke, P. R., van Wijk, E. M., Carse, F., Donnelly, M., Gould, W. J., Gowers, K., King, B. A., Loch, S. G., Mowat, M., Turton, J., Rama Rao, E. P., Ravichandran, M., Freeland, H. J., Gaboury,
815 I., Gilbert, D., Greenan, B. J. W., Ouellet, M., Ross, T., Tran, A., Dong, M., Liu, Z., Xu, J., Kang, K., Jo, H., Kim, S.-D., and Park, H.-M.: Argo Data 1999–2019: Two Million Temperature-Salinity Profiles and Subsurface Velocity Observations From a Global Array of Profiling Floats, *Frontiers in Marine Science*, 7, ISSN 2296-7745, 2020.
- Wunsch, C. and Ferrari, R.: Vertical Mixing, Energy, and the General Circulation of the Oceans, *Ann. Rev. Fluid Mech.*, 36, 2004.
- Zalesak, S. T.: Fully Multidimensional Flux-Corrected Transport Algorithms for Fluids, *Journal of Computational Physics*, 31, 335–362,
820 ISSN 0021-9991, [https://doi.org/10.1016/0021-9991\(79\)90051-2](https://doi.org/10.1016/0021-9991(79)90051-2), 1979.
- Zaron, E. D.: Baroclinic Tidal Sea Level from Exact-Repeat Mission Altimetry, *Journal of Physical Oceanography*, 49, 193–210, ISSN 0022-3670, 1520-0485, <https://doi.org/10.1175/JPO-D-18-0127.1>, 2019.