

Simulating record-shattering cold winters of the beginning of the 21st century in France

Camille Cadiou¹ and Pascal Yiou¹

¹Laboratoire des Sciences du Climat et de l'Environnement, UMR 8212 CEA-CNRS-UVSQ, IPSL and U Paris-Saclay, 91191 Gif-sur-Yvette CEDEX, France

Correspondence: Camille Cadiou (camille.cadiou@lsce.ipsl.fr)

Abstract. Extreme winter cold temperatures in Europe have huge societal impacts ~~on society~~. Being able to simulate worst-case scenarios of such events for present and future climates is hence crucial for short and long-term adaptation. In this paper, we are interested in low-probability cold events, whose probability is deemed to decrease with climate change. Large ensembles of simulations allow to better analyse the mechanisms and characteristics of such events, but can require ~~a lot of~~ significant computational resources. Rather than simulating very large ensembles of normal climate trajectories, rare event algorithms allow sampling the tail of distributions more efficiently. Such algorithms have been applied to simulate extreme heat waves. They have emphasized the role of atmospheric circulation in such extremes. The goal of this study is to evaluate the dynamics of extreme cold spells simulated by a rare event algorithm. We focus ~~first on~~ winter cold temperatures that have occurred in France from 1950 to 2021. We investigate winter mean temperatures ~~in France~~ (December, January, and February) and identify a record-shattering event in 1963. We find that, although the frequency of extreme cold spells decreases with time, their intensity is stationary. We ~~applied~~ apply a stochastic weather generator approach with importance sampling, to simulate the coldest winters that could occur in a factual and counterfactual climate. We hence ~~simulated~~ simulate ensembles of worst winter cold spells that are consistent with reanalyses. We find that a few simulations reach colder temperatures than the record-shattering event of 1963. Present day conditions are sufficient to trigger winters as cold as that record, despite global warming.

15 The atmospheric circulation that prevails during those events is analyzed and compared to the observed circulation during the record-breaking events.

1 Introduction

Winter cold spells in the mid latitudes have had wide-ranging impacts, affecting agriculture (Trnka et al., 2011; Vogel et al., 2019), health (Gasparrini et al., 2015; Smith and Sheridan, 2019), infrastructures (Chang et al., 2007), or energy systems (Añel et al., 2017; Bessec and Fouquau, 2008; Van Der Wiel et al., 2019). Cold events are expected to decrease both in terms of intensity and frequency with climate change in most regions of the world (Seneviratne et al., 2021), which could lead to an overall reduction of their impacts. In the last decades a decrease in intensity has been recorded in the Western European region (Cattiaux et al., 2010; Seneviratne et al., 2021; Smith and Sheridan, 2020; Van Oldenborgh et al., 2019). But even if their probability decreases, extreme cold winter events still occur and can cause major disruptions, like winter 2010 in Western

25 Europe (Cattiaux et al., 2010) or the cold snap of February 2021 in Texas (Doss-Gollin et al., 2021). Winter 2010 was perceived
as extremely cold in Europe and rose questions in the media and general public about the occurrence of extreme cold events
under climate change. Cattiaux et al. (2010) showed that winter 2010 was actually not as extreme as records of the previous
decades and would have been much more extreme given the same atmospheric conditions if it had occurred in a past climate
with a lower influence of climate change. This is consistent with the general upward trend of winter minimum temperatures,
30 as shown in Fig. 1a for various lengths of cold episodes.

However, uncertainties remain about the potential dynamical effects of climate change on severe winter mid-latitudes
weather (Cohen et al., 2020; Horton et al., 2015; Overland et al., 2016; Shepherd, 2015). ~~The~~ Arctic Amplification (AA)
is a mechanism that may lead to an increase in severe winter weather in the mid-latitudes (Cohen et al., 2014; Francis et al.,
2018; Francis and Vavrus, 2012; Vavrus, 2018). ~~But~~, but its potential effect is intertwined with other hemispheric drivers
35 of decadal variability and the quantification of its influence remains debated (Blackport and Screen, 2020; Cohen et al., 2020;
Francis, 2017). Several studies have also shown that winter warming and winter anomalies trends are not as large as the upward
trend of summer warm anomalies in the northern hemisphere (Robeson et al., 2014) and more specifically in France (Ribes
et al., 2022). The decrease in winter cold spells would consequently not be as significant as the increase in summer heat waves.

The goal of this study is to assess ~~what would the coldest winters possible be in France in~~ whether we could simulate a winter
40 as cold a 20th century-like cold winter record using present-day climate conditions, and how their intensity and mechanisms
are affected by climate change. We aim at building *storylines* of a worst-case winter scenario in France (here, "worst-case"
scenario is meant to identify conditions leading to events that are colder than already observed). Storylines are "physically
self-consistent unfolding of past events, or of plausible future events or pathways". They aim at better understanding the
driving factors of high-impact events with deep uncertainties in a way that is more understandable by people than a purely
45 probability-based risk assessment, and exploring the "boundaries of plausibility" (Shepherd et al., 2018).

To assess worst-case scenario winter temperatures in France, we use the winter of 1962-1963 (hereafter referred as winter
1963) as a reference event. Winter 1963 yielded an exceptionally low mean temperature anomaly over December, January
and February (DJF) of -3.4σ below the seasonal average (Fig. 1a). 1963 was also extreme by its spatial scale, with negative
temperatures covering most of Europe (Greatbatch et al., 2015; Hirschi and Sinha, 2007; O'connor, 1963). This led to ex-
50 ceptional weather across the continent: large lakes, like Lake Constance or Lake Zurich, froze entirely and widespread and
persistent snow coverage was observed in the British Isles. According to the Met office, it was the coldest winter since 1740
in the United Kingdom. In France, a first intense cold wave occurred at the end of December, lasting one week, followed by
a second more prolonged cold wave with negative daily mean temperature over France from the 11th of January to the 6th of
February (Fig. 1b). Winter 1963 was associated with a negative North Atlantic Oscillation (NAO) index, indicating lower than
55 normal pressure difference between the Iceland low and Azores high-pressure systems (Cattiaux et al., 2010; Greatbatch et al.,
2015). A persistent negative NAO phase is usually associated with the development of North-Atlantic atmospheric blockings
(Shabbar et al., 2001), and a weakening of the westerlies allowing outbreaks of cold air coming from the Arctic or Russia into
Western Europe (Greatbatch, 2000; Hurrell et al., 2003).

According to the definition of Fischer et al. (2021), winter 1963 was a record-shattering event in France, i.e. the record of low temperatures was broken with a large margin of several standard deviations (Fig. 1a). Therefore, winter 1963 was an extremely low probability event, even considering the colder climate (than in the 21st century) in which it occurred. If the average winter temperature follows a Gaussian distribution, this corresponds to a return period larger than 10^3 years, which is longer than the observational periods. The objective of this study is to examine whether:

1. ~~whether~~ a winter as cold as that of 1963 can be ~~reached without information on this event,~~
2. ~~and whether~~ generated by a statistical model given information that excludes that specific winter, and
3. such a winter ~~is still possible in the 21st century, considering the warmer climate in western Europe in present times~~ can still be simulated given climate information from recent decades, during which climate is warmer.

Simulating ensemble of events whose return period is larger than the observational period, or the typical length of climate model simulations (e.g. ~~≈200–250~~ years for simulations from the Coupled Model Intercomparison Project phase 6 (CMIP6) (Eyring et al., 2016), and concatenating "historical" (1850–2014) and "scenario" (2015–2100) simulations) requires intensive computing resources. Even if a large ensemble of simulations is considered (e.g. up to ≈ 50 in the CMIP6 archive), the 2000–2050 ~~decade-period~~ would yield $\approx 50 \times 50$ years of simulations (e.g. with the CESM2 model (Danabasoglu et al., 2020)), which would lead to 2–3 examples of events with a return period of 10^3 years, such as the winter of 1963. Several methods based on principles of statistical physics have been developed to provide fast and realistic simulations of large values of atmospheric variables. Rare events algorithm using importance sampling (e.g. Ragone et al., 2018) have been designed to specifically simulated extreme heat waves from a climate model. A simplified simulation approach was proposed by ~~Sippel et al.~~ ~~at-REF~~ Gessner et al. (2021), by carefully selecting trajectories of a climate model that lead to lower temperatures over a given region (Germany). An alternative approach is based on Stochastic Weather Generators (SWG). SWGs are Markov processes used to generate large ensembles of atmospheric trajectories with realistic statistical properties, at a low computational cost (Ailliot et al., 2015). Yiou and Jézéquel (2020) combined an SWG based on analogs of circulation (i.e. days with a similar atmospheric simulation) developed by (Yiou, 2014) and the importance sampling principle exposed in (Ragone and Bouchet, 2021) to specifically simulate extreme summer heat waves from analogs of circulation. This method allows to simulate ensemble of physically consistent trajectories of extreme events at a very low computational cost. In this study, we adapt the analog-based stochastic weather generator with importance sampling of Yiou and Déandréis (2019) to the simulation of low-likelihood, high-impact extreme winter events.

We use SWG simulations based on reanalysis data in order to assess the intensity of the worst-case winter scenario in France in a counterfactual period (with lower influence of climate change) and a factual period representing the present-day climate with more detectable influence of climate change. Therefore, we examine how climate change affects the intensity of worst case cold winters that can hit France, and in what extent extreme cold winters like 1963 could still be possible in the present-day climate.

A study by Sippel et al. (2023) has conducted a similar analysis of winter 1963 for Germany, using both ensemble boosting of the CESM2-ETH model and the SWG displayed in this paper. This paper provided an investigation of such winters focusing

on France and a more in-depth analysis of the use of the analogues-SWG. The present paper details the SWG methodology and shows an application for France.

95 The paper is organized as follows. Section 2 presents the datasets used in the paper and details the analog-based stochastic weather generator model for sampling cold winters. Section 3 shows the results of the simulations of extreme winters. Section 4 discusses the main results of the study.

2 Data and Methods

2.1 Data

100 Daily mean surface temperature (TG) data were obtained from the 5th version (ERA5) of the atmospheric reanalysis of the European Centre for Medium-Range Weather Forecasts (ECMWF) (Hersbach et al., 2020). Data from 1950 to 2021 has been retrieved with a spatial resolution of $0.25^\circ \times 0.25^\circ$. Daily temperature fields ~~were~~ have been averaged over the smallest spatial domain including metropolitan France ($5^\circ\text{W} - 9^\circ\text{E}$; $42^\circ\text{N} - 52^\circ\text{N}$). ERA5 was chosen for its large time coverage and its high horizontal resolution of 0.25° .

105 We compute running averages of temperature for four time scales ($r = 3, 10, 30$ and 90 days) and determine the minimum value for each winter (from December to February). This corresponds to identifying the coldest r -day period for each year, or TG rd_t . For an even r , this is the minimum over t of:

$$\text{TGrd}_t = \frac{1}{r} \sum_{i=-r/2}^{(r/2)-1} \text{TG}_{t+i} \quad (1)$$

where TG_t is the daily average temperature at time step t . For an odd value of r , the equivalent sum is centered around r . Fig. 1a shows the variations of TG rd time series for France. ~~We observe a upward trends~~ Additional information on the associated distributions is whown in A We observe an upward trend of TG rd at the four time scales r . The records at each time scale occurred before 1990. However, extreme cold events still happened in the 21st century: winter 2012 witnessed the 5th coldest 10-day and the 8th coldest 3-day cold spells of the 1950-2021 period. At the 30-day time scale, February 1956 and January 1963 were two very extreme events, with temperature anomalies to the 1950-2021 trend of respectively -2.9σ and -2.8σ . 115 One event stands out in the 90-day winter temperatures: winter 1963 is at 3.7σ from the trend of winter mean temperatures and 2.2σ under the second coldest winter in 1950-2021, winter 1952-1953. For conciseness, this paper focuses on TG90d, i.e. DJF average temperatures. This Gaussian interpretation for the distribution of TG rd is experimentally justified in Appendix A.

For the computation of analogs of circulation, we use daily geopotential height at 500 hPa (Z500) from ERA5 reanalysis from 1950 to 2021. Z500 was chosen over SLP because of its lower sensibility to perturbations from the surface roughness and 120 its common use on weather regime studies (Corti et al., 1999; Yiou and Nogaj, 2004; Jézéquel et al., 2018; Dawson et al., 2012). Jézéquel et al. (2018) also showed it was better suited to simulate temperature anomalies, although that study investigated warm temperatures. Z500 data were regridded on a $1^\circ \times 1^\circ$ grid to reduce computation time since a higher resolution has little impact on the analogs calculation because of the smooth spatial variability of Z500 fields. We considered the Z500 field over the North

Atlantic region ($20^{\circ}\text{W} - 30^{\circ}\text{E}$; $30^{\circ}\text{N} - 70^{\circ}\text{N}$) to compute circulation analogs. This domain offers a compromise between a
125 spatial coverage large enough to study the role of the synoptic circulation but small enough not to drown out the signal in the
too complex hemispheric circulation.

2.2 **Methods:** Analogs of circulation

We first compute a database of analogs of circulation following the procedure of (Yiou and Jézéquel, 2020). For a given day t ,
we compute the Euclidean distance of the Z500 fields between t and all days t' that are not in the same year or season (astride
130 two following years) and within a calendar distance to t inferior to 30 days, (i.e. the difference in days between two days,
regardless of the year). The K [analog analog](#) days of t are the K days for which the distance from t is the smallest. We chose
 $K = 20$ analogs, as advocated in previous studies (Krouma et al., 2022; Platzer et al., 2021).

The circulation analogs were computed using the "Blackswan" Web Processing Service (Hempelmann et al., 2018). We
consider three different analog data sets, depending on the time period in which the analogs are selected:

- 135 1. 1950-2021: the whole length of available ERA5 data,
2. 1950-1999: the past period, as a counterfactual, with less influence of anthropogenic climate change.
3. 1972-2021: the present period, as a factual, with a significant signal from climate change.

The analog periods were chosen to have sufficient length to be representative of all the possible states of the atmospheric
patterns while being characteristic of climate periods that are significantly different. We were constrained by the length of the
140 ERA5 data available (only 71 years). Therefore we chose a compromise between analog depth and low overlap by considering
two 50-year periods (1950-1999 and 1972-2021). [The distribution of analogs years and their quality is detailed in Appendix B](#)

2.3 **Methods:** Stochastic Weather Generator and importance sampling

The analog-based stochastic weather generator (hereafter referred as SWG) developed by Yiou (2014) uses stochastic reshuf-
fling of daily atmospheric fields to generate atmospherically-consistent alternative trajectories of climate events. This algorithm
145 was adapted by Yiou and Jézéquel (2020) to simulate extreme heat waves using a principle of importance sampling. The goal
is to simulate L day trajectories of a model while [optimizing-maximizing](#) an observable. Here we focus on a modified version
of the so-called "dynamic" type of simulations, developed by Yiou (2014), which computes alternative atmospheric trajectories
starting with the same initial conditions as an observed event. Each time step is the combination of an atmospheric circulation
(characterized by Z500) and a variable of interest, such as temperature. The SWG starts at a given initial condition and goes
150 from one time step to the following using analogs of circulation according to the process described hereafter. The resulting
simulation is a constrained reshuffling of days of the input dataset. We start at an initial condition t_0 , which thus constitutes the
first time step of the simulation. To simulate temperature for the day after t_0 ($t = t_0 + 1$), we randomly pick one analog among
the K best analogs of the observed Z500 field on day $t_0 + 1$. The geopotential height at 500hPa (Z500) and the 2m temperature
(TG) fields of this analog day constitute the simulated day t' . For the next time step, t is replaced by $t' + 1$, the day following

155 t' . This random process is repeated sequentially for L time steps, the length of the simulation. This defines a Markov chain of TG, with latent states provided by the analogs of Z500.

At each time step, the selection of the analog day follows several constraints and weights controlled by the parameters that are described hereafter. To better follow the seasonal cycle of the simulated season, we use K weights $\omega_{cal}^{(k)}$ ($k \in \{1, \dots, K\}$) on the analog selection that depend on a parameter α_{cal} which favours analog days that are closest to the calendar date (i.e. day of year, regardless of the year) of time step t :

$$\omega_{cal}^{(k)} = A_{cal} e^{-\alpha_{cal} d_k} \quad (2)$$

where A_{cal} is a normalizing constant, $\alpha_{cal} \geq 0$ is the calendar weight and d_k is the number of calendar days between the k^{th} analog day and t . [The resulting seasonal cycle of the SWF is shown in Appendix C.](#)

To favour the simulation of the most extreme events, importance sampling weights $\omega_T^{(k)}$ are introduced, with a control parameter $\alpha_T \geq 0$. The higher α_T , the more the stochastic weather generator favours analog days with extreme temperatures. The K analogs of t are sorted in ascending order of temperature with ranks R_k ($k \in \{1, \dots, K\}$), so that the coldest analog day has a rank of 1. Hence the weight associated to the k^{th} analog day of t is:

$$\omega_T^{(k)} = A_T e^{-\alpha_T R_k} \quad (3)$$

where A_T a normalizing constant, α_T is the importance sampling weight and R_k is the rank (in ascending order) of the k^{th} analog day among the K analogs. If $\alpha_T = 0$, there is no importance sampling and the SWG is the same as in (Yiou, 2014). [As explained by Yiou and Jézéquel \(2020\), using the ranks of temperature instead of their absolute values avoids discussions about scaling due to the units of the variable. It also ensures that simulations are biased in the same way, as importance sampling weights are the same at each time steps \(the ranks are simply all integers between 1 and \$K = 20\$ \).](#)

The SWG with importance sampling is obtained by combining the weights on the calendar and importance sampling. The k^{th} analog day of day t has a probability of:

$$\omega_k = A e^{-\alpha_{cal} d_k} e^{-\alpha_T R_k} \quad (4)$$

where A is a normalizing constant so that $\sum_{k=1}^K \omega_k = 1$.

175 2.4 SWG configurations

We have refined the original methodology proposed by Yiou and Jézéquel (2020) by introducing a modified approach for simulating trajectories with the analogs-based SWG. Our primary objective is to generate extreme winter events that are characteristic specific climate periods, essentially seeking to estimate the extremes attainable within a climate state characterized by a defined level of warming. Given a reference record-shattering event, we want to assess the likelihood of a similar event occurring within a given climate period, without specific information about the event itself.

To achieve this objective, we have made a crucial adjustment to the original SWG configuration (configuration 1, which considers the entire data in the simulations). This new configuration (configuration 2) no longer considers analogs that coincide

with the reference event. At each time step, the selection process is based on the K best analogs, but the weights ω_k of analog days that fall within the observed event are set to zero. For example, if we initiate a simulation on December 1st, 1962, spanning
185 $L = 90$ days, all analog days falling between December 1st, 1962, and March 1st, 1963, are excluded from consideration. Days of the same year were already excluded during the analog computation process, but they can still be selected in simulations as analogs of days in other years. This procedural adjustment ensures that our simulations are solely driven by the initial conditions and the state of the climate, and do not rely on any specific information pertaining to the observed event (apart from the first day). In other words, we are assessing whether a record-shattering event can be inferred from information related to
190 less extreme events.

We also adapted this stochastic weather generator from the one of Yiou and Jézéquel (2020), which was designed to simulate summer heat waves, to the version used in this analysis tailored for simulating winter cold spells. Consequently, the importance sampling weights now favour the coldest analogs instead of the warmest ones.

2.5 Consistency of SWG trajectories

195 To control the consistency of the atmospheric trajectories produced by the SWG, we compute the derivatives of the resulting time series of Z500 and temperature. The derivatives are compared on the one hand to the ones of observed winter and on the other hand to time series computed by randomly picked winter days in the ERA5 dataset. The results are shown in Fig. 2a and b. Because of the approximation by analogs, the SWG loses a bit of continuity, which appears in the derivative calculation. But the ratio of Z500 derivatives standard deviation between the simulations and the observations is of ≈ 1.2 , which is far
200 less than the same ratio computed from random time series (≈ 3.5). It illustrates that the SWG trajectories are atmospherically consistent and realistic. The same analysis for daily temperature derivative shows a larger difference between the reanalysis and the SWG simulations, which can be explained by the fact that the analogs-SWG trajectories are based on an atmospheric trajectories constraint first. The resulting temperature time series are still more consistent compared to time series of random winter days (the ratio of standard deviation derivatives with the reanalysis of respectively of ≈ 1.8 and ≈ 3.2). Therefore, the
205 short-term variability (i.e., a few days) is deemed to be relevant from the mathematical point of view.

Finally, we compare the mean temperatures of 1000 SWG trajectories with α_T set to 0.5 to the mean temperatures of 10^7 control SWG trajectories with α_T set to 0 (i.e. without importance sampling) and with analogs in 1950-1999 (Fig. 2c). In the control simulations, the SWG covers the range of observed winter TG90d, apart for very extreme values in the tail of the distribution, as for winter 1963. The median of simulations with importance sampling is close to the coldest control simulation.
210 The SWG with importance sampling simulates very extreme events in the tail of the distribution, and is able to reach values of the same order of magnitude as winter 1963. The difficulty to obtain winters as cold as 1963 without importance sampling shows the added value of this method for record-shattering events. The resulting distributions are comparable to the ones obtained for heat waves with a rare event algorithm in (Ragone and Bouchet, 2021), and a control simulation of a climate model.

215 We verify in Appendix B that the selection of analogs does not yield obvious biases towards the earlier parts of each analog period, and that the quality of analogs is stationary in time across the two periods. Appendix C compares the climatological variations of the SWG without importance sampling with the original ERA5 data.

2.6 ~~Simulation protocole~~Protocol

First we tune the α_T and α_{cal} parameters for winter DJF simulations. We simulated ensembles of trajectories of 90 days
220 starting on Dec. 1st of each year, with different values of parameter α_{cal} . Figure 3a shows the percentage of simulations for which the last day of the simulations falls after the 15th of February. With too low calendar weight (e.g. $\alpha_{cal} = 1$), fewer than half of the simulations end with a calendar day after the 15th of February. This means that the trajectories of the simulated events with $\alpha_{cal} = 1$ are less consistent with the seasonal cycle. With an α_{cal} parameter greater than 5, more than 75% of the simulations have their last day falling after the 15th of February. Therefore we use $\alpha_{cal} = 5$ in the following. We run the SWG
225 with parameter values $\alpha_T \in \{0, 0.1, 0.2, 0.5, 0.75, 1\}$, starting on each 1st of December, between 1950 and 2021. Figure 3b shows that for $\alpha_T = 0$, the SWG simulates events covering the range of winter mean temperatures from 1950-1951 to 2020-2021, apart from winter 1962-1963. For $\alpha_T = 0.2$, a few outlier simulations reach winter 1963 temperatures. A value of α_T greater than 0.5 allows the simulation of a greater proportion of extreme events. The difference for α_T greater than 0.5 being less significant, we chose for the following $\alpha_T = 0.5$.

230 To compare the configuration of the SWG excluding information from the event of reference from the previous configuration of (Yiou and Jézéquel, 2020), we use both to simulate worst-case winter scenario from 1950 to 2021. For each winter from 1950 to 2021, the simulation starts at t_0 — the 1st of December — and run for $L = 90$ days over DJF (December, January and February). $n = 100$ simulations are run by winter year, hence 100×71 events are simulated for each experiment.

Then we focus on the record-shattering event of winter 1963. Winter 1963 being our reference as a record-shattering event,
235 we simulate alternative extreme winters in the counterfactual and factual climates without using the information from winter 1963 to evaluate to what extent such a winter can be extrapolated from available data in both climate periods. Simulations are also made using the two sets of analogs — the counterfactual and factual periods. Hence the simulated events are events that could have occurred in the analog period used for the simulations. This allows simulating worst case events from the same initial conditions but considering different states of the climate. We run $n = 1000$ simulations starting in December the 1st
240 1962, using as previously, the factual and counterfactual sets of analogs. This allows having a wider ensemble of possible winter temperatures starting from the initial conditions of winter 1963.

3 Results

3.1 Sensitivity to SWG configurations

In this subsection, we simulate cold winters of 90 days starting on a 1st of December of each year from 1950 to 2021. Analog
245 can be selected in any year from 1950 to 2021. We evaluate the impact of the possibility to sample analogs from the reference

event on the winter average temperature: the SWG configuration of Yiou and Jézéquel (2020), versus the one of the present paper.

Figure 4 shows the results of simulations from 1951 to 2021 using respectively configuration 1 (Fig. 4a) and configuration 2 (Fig. 4b) in Section 2, with analogs sampled in 1950-2021. The SWG successfully simulates extremely cold winters, with simulations being respectively 3.9°C (Fig. 4a) and 3.1°C (Fig. 4b) colder overall compared to the long-term mean of ERA5 temperatures. 40% of all simulations reach a mean temperature as cold as the 1963 record with configuration 1, while only 13% of them are as cold using configuration 2.

The variability of the simulations performed with configuration 1 follows closely the variability of historical winter temperatures due to the possibility of selecting analogs falling in the observed event with this configuration. The medians of simulations made with configuration 1 are highly correlated ($r = 0.88$) to the observed temperatures. With configuration 2 there is no correlation between the median of simulations and the observed temperature, which is the consequence of configuration 2 not using information from the observed event apart from the initial conditions. The simulation length of 90 days being higher than the decorrelation time of atmospheric dynamics, the resulting events should not be highly influenced by their initial conditions. The standard deviation of the medians of the boxplots obtained with configuration 2 is also very low: 0.15°C, compared to the 0.44°C obtained with configuration 1. This is coherent with the chaotic internal variability of the climate system, resulting in simulated events being representative of the climate analogs period used rather than the initial conditions.

The mean of boxplots median is also higher by 0.77°C with configuration 2 compared to configuration 1, which can be explained by the fact that configuration 1 allows more days to be selected during the importance sampling process so that the coldest days can be selected during the simulations by construction, while some analogs days are excluded when using configuration 2.

3.2 Focus on winter 1963

In this subsection, we simulate winters, starting on Dec. 1st 1962, and consider circulation analogs in the counterfactual and factual periods. Here, we simulate 1000 winters that "could have been" in 1962/1963, with Z500 analogs in two periods. Figure 5a focuses on those simulations for both the factual and counterfactual analogs periods. The first quartile of simulations does not reach 1963 mean values both in the factual and counterfactual periods (boxplots in Figure 5a). 1963 was already a very rare event in the 1950-1999 climate but remains reachable using only 1971-2021 analogs, in a climate with more global warming. The observed increase in mean winter temperatures between the counterfactual and factual periods is not reproduced if we consider extreme winters as simulated by the SWG, even if we exclude winter 1963 from the counterfactual period (configuration 2). We observe an increase of 0.44°C in TG90d between the two periods, while the difference is of only 0.13°C between the two ensembles of extreme winters. In other words, winter extreme temperatures do not warm at the same rate as winter mean temperatures.

Figure 5b summarizes the time series of daily average temperatures associated with 1963 simulations. The temperatures of winter 1963 are below the seasonal cycle for most of the season. The temperatures of simulated events for both the factual and counterfactual periods are also overall below the seasonal mean for the all length of the event. The median fluctuates around

280 2°C, while the 5th percentile of all simulation reaches −5°C during most of the winter. The 95th percentile stays under 2°C
above the seasonal average, while the 5th percentile reaches −4°C during most of the event, which corresponds to the coldest
daily mean temperatures observed in 1963. Overall the range of daily winter temperatures as simulated for extreme winter
temperatures in the factual and counterfactual periods matches the range of daily mean temperatures observed in the reference
event in 1963. Hence a winter like the one of 1962-1963, even if of very low probability, ~~could still be possible under a~~ can still
285 be reached using data from the warmer climate of the 21st century. We find that the probability of reaching such cold winters
barely decreases with time, as the distributions of simulated temperatures are very similar for the two analog periods.

3.3 Atmospheric dynamics during winter 1963

During winter 1963, a strong and persisting anticyclonic anomaly prevailed over Iceland. It was associated with a negative
Z500 anomaly over continental Europe, the Azores and the Glacial Arctic Ocean, leading to a weakening of the westerlies and
290 advection of cold air from the Arctic (Fig. 6a).

Here, we compute the composites of Z500 and Z500 anomalies over a region that is larger than the region for which
the analogs are computed. The Z500 composite over DJF does not correspond directly to a North Atlantic weather pattern
(negative phase of the North Atlantic Oscillation (NAO)), as for instance obtained by Cattiaux et al. (2010). The low over
Europe is located more to the East than for an NAO— weather pattern, while the positive Z500 anomaly over Iceland is located
295 more to the north than it would be in an Atlantic ridge weather regime. The respectively positive and negative Z500 anomalies
over Iceland and the Azores are however characteristic of a negative NAO index which is often, even if not systematically, an
indicator of colder than usual winter temperature over Europe (Hirschi and Sinha, 2007).

Z500 anomalies of SWG simulations for winter 1963 are smoother than the ERA5 field for the same winter. This can be
explained by the fact that the map is averaged over 100 (10% of 1000 simulations) different simulations and that simulations
300 are less auto-correlated than observed events would be, thus having more spatial variability. Hence, we compute the Z500 and
Z500 anomaly composites of SWG simulations for the 10% coldest members of the ensemble starting on Dec. 1st 1962. For
comparison purposes with winter 1963, this selection is reasonable because 75% of simulations are warmer than this record
event (Fig. 5a), and we want to focus on the coldest members of the ensemble. Appendix D also shows that average maps are
representative of individual events. We find that the pattern of a strong negative anomaly over Western Europe and a positive
305 anomaly over Iceland is still reflected in the 10% coldest events simulated with the SWG in both the counterfactual (Fig. 6b)
and factual (Fig. 6c) simulations. The intensity and position of the Z500 low over the Barents sea and the high over western
Russia seen in ERA5 seem to have a lower contribution to the intensity of the event as they are weaker and less marked in the
SWG simulated events.

4 Conclusions

310 This paper presents how an analog stochastic weather generator can be used to simulate ensembles of extreme cold winters in
continental France. We adapted the method developed by Yiou and Jézéquel (2020) (to simulate extreme heat waves) to the

simulation of extreme cold events. In particular, this paper explicitly addresses the question of simulating the most extreme winter without using information from the observed record. The paper displays a proof of concept using ERA5 data for the simulation of extreme winter temperatures in France between 1950 and 2021.

315 The SWG for the simulation of extreme cold spells inherits some of the technical caveats already pointed out by Yiou and Jézéquel (2020) for the simulation of extreme heat waves. This SWG method is limited by the length of the data set used as input, so that it may not sample completely the atmospheric dynamics of the climate system. The average of resampled analogs is however bounded to a lesser extent and can reach values far more extreme than the most extreme ones in the input data set. The SWG allows simulation of extreme events outside the observed range but is still limited by the length of available data.

320 The length of the factual and counterfactual periods considered was a compromise between the length of available data (70 years), the non-stationarity of temperatures and the overlapping of the two periods. We needed periods of sufficient length to sample correctly the climate considered. But to have significant differences between the factual and counterfactual periods it was better that they would overlap as little as possible. The non stationarity of climate also means that the longer the periods, the less homogeneous they are in terms of level of warming. 50-year periods yield good results in terms of both extremeness (the
325 data set is large enough to simulated very cold winters) and significant enough difference between the factual and counterfactual periods. Moreover we verified that the analog days are evenly distributed over the two climate periods and evenly picked during the simulation process. Therefore we consider that the events simulated are representative of the entire analogs period used in the SWG.

This method does not allow to disentangle anthropogenic warming from others forcings and natural multi-decadal variability
330 of the climate system. But it gives an estimation of the worst-case winter temperatures scenario for a given climate period. Another caveat is that the method is mainly based on the use of flow analogs to assess temperatures. It focuses on the link between atmospheric circulation and temperatures and does not take into account other drivers and feed-backs. For instance, snow cover is not considered in the simulations even though it can have a significant impact on extreme winter temperatures (Orsolini et al., 2013).

335 We showed that winter as cold as the record event of 1963 or even colder could still occur in the current climate, at a higher level of warming. This does not mean than such an event will happen in the near future but it remains possible at the considered level of warming and is relevant from an adaptation point of view. A winter as cold as 1963 would indeed have major impacts on society, especially on the energy system (Añel et al., 2017). For instance, Doss-Gollin et al. (2021) showed that the February 2021 Texas cold snap, which resulted in major failures of the energy system causing energy, food
340 and water shortages, was actually not unprecedented both in terms of temperature anomalies and resulting heating demand per capita. The lack of preparedness and greater exposure of the energy system due to increasing population and electrification led to disproportionate impacts. In France, the electricity transmission system operator RTE (Réseau de Transport d'Électricité) estimates the sensitivity of electricity consumption to temperature to be 2400 MW/°C in winter (RTE, 2021). Hence, it might be desirable that energy systems and logistics are scaled for worst case winter scenario in the current or future climate conditions
345 and exposure as the ones simulated in this study.

The possible occurrence of unprecedented cold winter temperatures in France as simulated in this paper is not inconsistent with the already observed decrease in cold spells intensity in the northern mid-latitudes as exposed by Van Oldenborgh et al. (2019). We focus on very low-likelihood winters, with a return period of over 10^3 years. This is not representative of meteorological cold waves. For instance in France a cold wave is defined by Météo France as an episode of at least three days of the international thermal indicator under -2°C (Météo France, 2020). A decrease in shorter events or an increase in the mean in not contradictory to the low increase in extreme long-lasting winter temperature.

The absence of significant changes in the atmospheric circulation leading to the extreme winters simulated is in line with the *typicality* of large and persistent temperature anomalies as shown using large deviation theory (Galfi and Lucarini (2020); Gálfi et al. (2021)). The same atmospheric conditions usually lead to the most extreme events. However these results are valid in a stationary system and obtained using steady state model simulations. Climate change can lead to important shifts in atmospheric dynamics that could affect the frequency and intensity of extreme events, as well as the dynamics leading to them. The present paper shows no significant shift in the atmospheric circulation of record-breaking winters between the factual and counterfactual periods, which have a difference 0.72°C in terms of level of warming. However these results cannot be extended to a higher shift in global warming level. Simulations of extreme cold spells using of the Coupled Model Intercomparison Project phase 6 (CMIP6) simulations (Eyring et al., 2016) would therefore be an extension of this study in order to further explore the evolution of extreme winter temperatures in the mid-latitudes in the future — according to different emissions pathways (Riahi et al., 2017) — and the associated atmospheric trajectories.

In this paper, we focused on cold winters (90 days: TG90d) in France. The method can be adapted to simulate cold events of different duration, or in other regions. The worst cold spells recorded in France were February 1956 — the coldest month of the 20st century (Andrews, 1956; Dizerens et al., 2017) — and January 1985 (Météo France, 2022a, b). These events caused major disruptions and had a wide health impact (Huynen et al., 2001). The energy sector has been sensitive to 15-day events. The cold spell of 3rd – 17th January 1985 is used as the event of reference by the French electrical network company. A similar event triggered an unprecedented impulse of solidarity, following Abbé Pierre’s call in France for the help of the homeless during winter 1954.

Winter 1963 was the coldest winter recorded in France and a record-shattering event. Using an analog stochastic weather generator with importance sampling for the simulation of an extremely cold winter, we show that winter 1963 temperatures were already exceptional in the lower level of warming in which it occurred. Estimations of the possibility of such an extreme event occurring in the recent climate show that it is still possible to have a winter as cold as in 1963, even if it would remain a highly exceptional event. This paper hence provides a *storyline* for extremely cold winters in France (Sillmann et al., 2021).

Code and data availability. The ERA5 reanalysis data are publicly available at <https://cds.climate.copernicus.eu/>. The Ana-SWG code, the processed temperature time series and the analogues files are available on github at <https://doi.org/10.5281/zenodo.10726791>.

Appendix A: Probability distributions of TGrd according to r

380 We compute the distribution of the annual minima of TGrd for the four r values considered in the article (3, 10, 30, 90 days). We obtain empirical probability distributions of TGrd in Fig A1. As anticipated, the variance of TGrd decreases with increasing r . The probability distribution for $r = 90$ (i.e., the distribution of yearly winter mean temperatures) yields a p-value lower than 0.05 when conducting a Shapiro-Wilk normality test, which indicates that it follows a Gaussian distribution. As for the other scales, we compute the minimum of TGrd over a yearly block, the resulting distribution should tend to a Generalized Extreme Value (GEV) distribution for lower r (Coles, 2001). However, given the non-stationarity of the data and the relatively small sample sizes ($n = 71$), it is challenging to draw any definitive conclusion for lower values of r .

385 Appendix B: Analogs quality

ERA5 data is not stationary, because of climate change between 1950 and 2020. This is illustrated for temperature time series at different time scales in Fig 1. This also appears on Z500 variations due to thermal expansion of the atmosphere. Thus we first checked that the non-stationarity does not affect the distribution and quality of the analogs. Fig B1a shows the year of the 20 best analogs of each winter day of 1950-2021, either in 1951-1999 or 1972-2021. Fig B1b compares the quality of the same
390 two sets of analogs (through the value of the Euclidean distance). We verify that there is no major difference between the two periods and that analog years show no meaningful trend. Regarding the analogs selected during the SWG simulations, there may indeed be a slight bias towards earlier years in the dataset, but this is not meaningful. The median and mean of the selected analog years are 1972 and 1973, respectively, for the 1951-1999 period, and 1992 and 1994, respectively, for the 1972-2021 period. Therefore, we conclude that the SWG simulations are representative of the climate period of the analogs.

395 Appendix C: Climatology of the SWG

The purpose of the α_{cal} weights is to ensure that the simulations progress in time and adhere to the seasonal cycle, thereby generating realistic events that do not resemble an "eternal winter" scenario with persistently extreme cold temperatures. You and Jézéquel (2020) developed this calendar weighting approach to achieve this objective, and the proportion of days falling at the end of the period of the event is a method they previously proposed to control how simulated events do not
400 deviate from the seasonal cycle. A climatology of the SWG is implicitly computed in Fig. C1, when we initialize the SWG from all 1st of December (1951 to 2021) in the ERA5 reanalysis with a calendar constraint but without importance sampling (i.e. $\alpha_T = 0$). Seasonal cycles are not smoothed. The figure shows that the SWG reproduces a seasonal cycle, although the mean seasonal cycle is not as cold as in ERA5. This indicates that the winter simulated yields realistic variations around the seasonal cycle, but also that the SWG results are conservative and that colder events may be possible.

405 Appendix D: Maps of individual SWG events

Here, we empirically verify that simulations initiated from different conditions yield similar atmospheric patterns. Fig. 6 presents the average composite maps of the 10% coldest SWG simulations for each period. Fig. D1 demonstrates that these average maps are quite representative of individual events and that the simulated individual extremes tend to resemble each other. For instance, the Z500 mean maps of the 9 coldest simulations from the SWG using analogues from 1972-2021 are shown.

Author contributions. CC and PY conceived the experiments from the original code of PY. CC produced the numerical experiments and analyses. Both authors contributed to writing the manuscript.

Competing interests. The authors declare that they have no known competing financial interests or personal relationships that could have appeared to influence the work reported in this paper.

415 *Acknowledgements.* The authors acknowledge the support of the grant ANR-20-CE01-0008-01 (SAMPRACE: PY, CC). This work also received support from the European Union's Horizon 2020 research and innovation programme under grant agreement No. 101003469 (XAIDA: PY).

References

- Ailliot, P., Allard, D., Monbet, V., and Naveau, P.: Stochastic weather generators: an overview of weather type models, *Journal de la Société Française de Statistique*, https://www.researchgate.net/publication/272504645_Stochastic_weather_generators_An_overview_of_weather_type_models, pages: 101-113 Volume: 156 Issue: 1 ISSN: 1962-5197, 2015.
- Andrews, J. F.: THE WEATHER AND CIRCULATION OF FEBRUARY 1956: Including a Discussion of Persistent Blocking and Severe Weather in Europe, *Monthly Weather Review*, 84, 66–74, [https://doi.org/10.1175/1520-0493\(1956\)084<0066:TWACOF>2.0.CO;2](https://doi.org/10.1175/1520-0493(1956)084<0066:TWACOF>2.0.CO;2), publisher: American Meteorological Society Section: Monthly Weather Review, 1956.
- Añel, J. A., Fernández-González, M., Labandeira, X., López-Otero, X., and De la Torre, L.: Impact of Cold Waves and Heat Waves on the Energy Production Sector, *Atmosphere*, 8, 209, <https://doi.org/10.3390/atmos8110209>, number: 11 Publisher: Multidisciplinary Digital Publishing Institute, 2017.
- Bessec, M. and Fouquau, J.: The non-linear link between electricity consumption and temperature in Europe: A threshold panel approach, *Energy Economics*, 30, 2705–2721, <https://doi.org/10.1016/j.eneco.2008.02.003>, 2008.
- Blackport, R. and Screen, J. A.: Insignificant effect of Arctic amplification on the amplitude of midlatitude atmospheric waves, *Science Advances*, 6, eaay2880, <https://doi.org/10.1126/sciadv.aay2880>, publisher: American Association for the Advancement of Science, 2020.
- Cattiaux, J., Vautard, R., Cassou, C., Yiou, P., Masson-Delmotte, V., and Codron, F.: Winter 2010 in Europe: A cold extreme in a warming climate, *Geophysical Research Letters*, 37, 20704, <https://doi.org/10.1029/2010GL044613>, publisher: John Wiley & Sons, Ltd, 2010.
- Chang, S. E., McDaniels, T. L., Mikawoz, J., and Peterson, K.: Infrastructure failure interdependencies in extreme events: power outage consequences in the 1998 Ice Storm, *Natural Hazards*, 41, 337–358, <https://doi.org/10.1007/s11069-006-9039-4>, 2007.
- Cohen, J., Screen, J. A., Furtado, J. C., Barlow, M., Whittleston, D., Coumou, D., Francis, J., Dethloff, K., Entekhabi, D., Overland, J., and Jones, J.: Recent Arctic amplification and extreme mid-latitude weather, *Nature Geoscience*, 7, 627–637, <https://doi.org/10.1038/ngeo2234>, publisher: Nature Publishing Group, 2014.
- Cohen, J., Zhang, X., Francis, J., Jung, T., Kwok, R., Overland, J., Ballinger, T. J., Bhatt, U. S., Chen, H. W., Coumou, D., Feldstein, S., Gu, H., Handorf, D., Henderson, G., Ionita, M., Kretschmer, M., Laliberte, F., Lee, S., Linderholm, H. W., Maslowski, W., Peings, Y., Pfeiffer, K., Rigor, I., Semmler, T., Stroeve, J., Taylor, P. C., Vavrus, S., Vihma, T., Wang, S., Wendisch, M., Wu, Y., and Yoon, J.: Divergent consensus on Arctic amplification influence on midlatitude severe winter weather, *Nature Climate Change*, 10, 20–29, <https://doi.org/10.1038/s41558-019-0662-y>, number: 1 Publisher: Nature Publishing Group, 2020.
- Coles, S.: An introduction to statistical modeling of extreme values, vol. 208, Springer, London, 2001.
- Corti, S., Molteni, F., and Palmer, T.: Signature of recent climate change in frequencies of natural atmospheric circulation regimes, *Nature*, 398, 799–802, 1999.
- Danabasoglu, G., Lamarque, J.-F., Bacmeister, J., Bailey, D. A., DuVivier, A. K., Edwards, J., Emmons, L. K., Fasullo, J., Garcia, R., Gettelman, A., Hannay, C., Holland, M. M., Large, W. G., Lauritzen, P. H., Lawrence, D. M., Lenaerts, J. T. M., Lindsay, K., Lipscomb, W. H., Mills, M. J., Neale, R., Oleson, K. W., Otto-Bliesner, B., Phillips, A. S., Sacks, W., Tilmes, S., van Kampenhout, L., Versteijn, M., Bertini, A., Dennis, J., Deser, C., Fischer, C., Fox-Kemper, B., Kay, J. E., Kinnison, D., Kushner, P. J., Larson, V. E., Long, M. C., Mickelson, S., Moore, J. K., Nienhouse, E., Polvani, L., Rasch, P. J., and Strand, W. G.: The Community Earth System Model Version 2 (CESM2), *Journal of Advances in Modeling Earth Systems*, 12, e2019MS001916, <https://doi.org/10.1029/2019MS001916>, <https://onlinelibrary.wiley.com/doi/pdf/10.1029/2019MS001916>, 2020.

- Dawson, A., Palmer, T. N., and Corti, S.: Simulating regime structures in weather and climate prediction models, *Geophysical Research Letters*, 39, <https://doi.org/https://doi.org/10.1029/2012GL053284>, 2012.
- 455 Dizerens, C., Lenggenhager, S., Schwander, M., Buck, A., and Foffa, S.: The 1956 Cold Wave in Western Europe, *Geographica Bernensia*, <https://doi.org/10.4480/GB2017.G92.09>, 2017.
- Doss-Gollin, J., Farnham, D. J., Lall, U., and Modi, V.: How unprecedented was the February 2021 Texas cold snap?, *Environmental Research Letters*, 16, 064056, <https://doi.org/10.1088/1748-9326/ac0278>, publisher: IOP Publishing, 2021.
- 460 Eyring, V., Bony, S., Meehl, G. A., Senior, C. A., Stevens, B., Stouffer, R. J., and Taylor, K. E.: Overview of the Coupled Model Intercomparison Project Phase 6 (CMIP6) experimental design and organization, *Geoscientific Model Development*, 9, 1937–1958, <https://doi.org/10.5194/GMD-9-1937-2016>, publisher: Copernicus GmbH, 2016.
- Fischer, E. M., Sippel, S., and Knutti, R.: Increasing probability of record-shattering climate extremes, *Nature Climate Change*, 11, 689–695, <https://doi.org/10.1038/s41558-021-01092-9>, publisher: Nature Publishing Group, 2021.
- 465 Francis, J. A.: Why Are Arctic Linkages to Extreme Weather Still up in the Air?, *Bulletin of the American Meteorological Society*, 98, 2551–2557, <https://doi.org/10.1175/BAMS-D-17-0006.1>, publisher: American Meteorological Society Section: Bulletin of the American Meteorological Society, 2017.
- Francis, J. A. and Vavrus, S. J.: Evidence linking Arctic amplification to extreme weather in mid-latitudes, *Geophysical Research Letters*, 39, <https://doi.org/10.1029/2012GL051000>, publisher: John Wiley & Sons, Ltd, 2012.
- 470 Francis, J. A., Skific, N., and Vavrus, S. J.: North American Weather Regimes Are Becoming More Persistent: Is Arctic Amplification a Factor?, *Geophysical Research Letters*, 45, 11,414–11,422, <https://doi.org/10.1029/2018GL080252>, [_eprint: https://onlinelibrary.wiley.com/doi/pdf/10.1029/2018GL080252](https://onlinelibrary.wiley.com/doi/pdf/10.1029/2018GL080252), 2018.
- Galfi, V. M. and Lucarini, V.: Fingerprinting Heatwaves and Cold Spells and Assessing Their Response to Climate Change using Large Deviation Theory, *Physical Review Letters*, 127, <https://doi.org/10.1103/PhysRevLett.127.058701>, arXiv: 2010.08272v1 Publisher: American
- 475 Physical Society, 2020.
- Gasparrini, A., Guo, Y., Hashizume, M., Lavigne, E., Zanobetti, A., Schwartz, J., Tobias, A., Tong, S., Rocklöv, J., Forsberg, B., Leone, M., Sario, M. D., Bell, M. L., Guo, Y.-L. L., Wu, C.-f., Kan, H., Yi, S.-M., Coelho, M. d. S. Z. S., Saldiva, P. H. N., Honda, Y., Kim, H., and Armstrong, B.: Mortality risk attributable to high and low ambient temperature: a multicountry observational study, *The Lancet*, 386, 369–375, [https://doi.org/10.1016/S0140-6736\(14\)62114-0](https://doi.org/10.1016/S0140-6736(14)62114-0), publisher: Elsevier, 2015.
- 480 Gessner, C., Fischer, E. M., Beyerle, U., and Knutti, R.: Very Rare Heat Extremes: Quantifying and Understanding Using Ensemble Reinitialization, *Journal of Climate*, 34, 6619–6634, <https://doi.org/10.1175/JCLI-D-20-0916.1>, publisher: American Meteorological Society Section: Journal of Climate, 2021.
- Greatbatch, R. J.: The North Atlantic Oscillation, *Stochastic Environmental Research and Risk Assessment*, 14, 213–242, <https://doi.org/10.1007/s004770000047>, 2000.
- 485 Greatbatch, R. J., Gollan, G., Jung, T., and Kunz, T.: Tropical origin of the severe European winter of 1962/1963, *Quarterly Journal of the Royal Meteorological Society*, 141, 153–165, <https://doi.org/10.1002/qj.2346>, [_eprint: https://onlinelibrary.wiley.com/doi/pdf/10.1002/qj.2346](https://onlinelibrary.wiley.com/doi/pdf/10.1002/qj.2346), 2015.
- Gálfi, V. M., Lucarini, V., Ragone, F., and Wouters, J.: Applications of large deviation theory in geophysical fluid dynamics and climate science, *La Rivista del Nuovo Cimento*, 44, 291–363, <https://doi.org/10.1007/s40766-021-00020-z>, 2021.

- 490 Hempelmann, N., Ehbrecht, C., Alvarez-Castro, C., Brockmann, P., Falk, W., Hoffmann, J., Kindermann, S., Koziol, B., Nangini, C., Radanovics, S., Vautard, R., and Yiou, P.: Web processing service for climate impact and extreme weather event analyses. *Flyingpigeon* (Version 1.0), *Computers & Geosciences*, 110, 65–72, <https://doi.org/10.1016/j.cageo.2017.10.004>, 2018.
- Hersbach, H., Bell, B., Berrisford, P., Hirahara, S., Horányi, A., Muñoz-Sabater, J., Nicolas, J., Peubey, C., Radu, R., Schepers, D., Simons, A., Soci, C., Abdalla, S., Abellan, X., Balsamo, G., Bechtold, P., Biavati, G., Bidlot, J., Bonavita, M., De Chiara, G., Dahlgren, P., Dee, D., Diamantakis, M., Dragani, R., Flemming, J., Forbes, R., Fuentes, M., Geer, A., Haimberger, L., Healy, S., Hogan, R. J., Hólm, E., Janisková, M., Keeley, S., Laloyaux, P., Lopez, P., Lupu, C., Radnoti, G., de Rosnay, P., Rozum, I., Vamborg, F., Villaume, S., and Thépaut, J. N.: The ERA5 global reanalysis, *Quarterly Journal of the Royal Meteorological Society*, 146, 1999–2049, <https://doi.org/10.1002/QJ.3803>, publisher: John Wiley and Sons Ltd, 2020.
- 495 Hirschi, J. J.-M. and Sinha, B.: Negative NAO and cold Eurasian winters: how exceptional was the winter of 1962/1963?, *Weather*, 62, 43–48, <https://doi.org/10.1002/wea.34>, eprint: <https://onlinelibrary.wiley.com/doi/pdf/10.1002/wea.34>, 2007.
- 500 Horton, D. E., Johnson, N. C., Singh, D., Swain, D. L., Rajaratnam, B., and Diffenbaugh, N. S.: Contribution of changes in atmospheric circulation patterns to extreme temperature trends, *Nature*, 522, 465–469, <https://doi.org/10.1038/nature14550>, 2015.
- Hurrell, J. W., Kushnir, Y., Ottersen, G., and Visbeck, M.: An Overview of the North Atlantic Oscillation, in: *The North Atlantic Oscillation: Climatic Significance and Environmental Impact*, pp. 1–35, American Geophysical Union (AGU), ISBN 978-1-118-66903-7, <https://doi.org/10.1029/134GM01>, eprint: <https://onlinelibrary.wiley.com/doi/pdf/10.1029/134GM01>, 2003.
- 505 Huynen, M. M., Martens, P., Schram, D., Weijenberg, M. P., and Kunst, A. E.: The impact of heat waves and cold spells on mortality rates in the Dutch population., *Environmental Health Perspectives*, 109, 463–470, <https://doi.org/10.1289/ehp.01109463>, publisher: Environmental Health Perspectives, 2001.
- Jézéquel, A., Yiou, P., and Radanovics, S.: Role of circulation in European heatwaves using flow analogues, *Climate Dynamics*, 50, 1145–1159, <https://doi.org/10.1007/s00382-017-3667-0>, publisher: Springer Verlag, 2018.
- 510 Krouma, M., Yiou, P., Déandreis, C., and Thao, S.: Assessment of stochastic weather forecast of precipitation near European cities, based on analogs of circulation, *Geoscientific Model Development*, 15, 4941–4958, <https://doi.org/10.5194/gmd-15-4941-2022>, publisher: Copernicus GmbH, 2022.
- Met office: Severe Winters, <https://www.metoffice.gov.uk/weather/learn-about/weather/case-studies/severe-winters>.
- 515 Météo France: Qu’est-ce qu’une vague de froid ?, <https://meteofrance.com/comprendre-la-meteo/temperatures/quest-ce-quune-vague-de-froid>, 2020.
- Météo France: Hivers : où sont passées les vagues de froid ?, <https://meteofrance.com/actualites-et-dossiers/magazine/hivers-ou-sont-passees-les-vagues-de-froid>, 2022a.
- Météo France: Retour sur la vague de froid de janvier 1987, <https://meteofrance.com/actualites-et-dossiers/magazine/retour-sur-la-vague-de-froid-de-janvier-1987>, 2022b.
- 520 O’connor, J. F.: THE WEATHER AND CIRCULATION OF JANUARY 1963: One of the Most Severe Months on Record in the United States and Europe, *Monthly Weather Review*, 91, 209–218, [https://doi.org/10.1175/1520-0493\(1963\)091<0209:TWAC0J>2.3.CO;2](https://doi.org/10.1175/1520-0493(1963)091<0209:TWAC0J>2.3.CO;2), publisher: American Meteorological Society Section: Monthly Weather Review, 1963.
- Orsolini, Y. J., Senan, R., Balsamo, G., Doblas-Reyes, F. J., Vitart, F., Weisheimer, A., Carrasco, A., and Benestad, R. E.: Impact of snow initialization on sub-seasonal forecasts, *Climate Dynamics*, 41, 1969–1982, <https://doi.org/10.1007/s00382-013-1782-0>, 2013.
- 525

- Overland, J. E., Dethloff, K., Francis, J. A., Hall, R. J., Hanna, E., Kim, S.-J., Screen, J. A., Shepherd, T. G., and Vihma, T.: Nonlinear response of mid-latitude weather to the changing Arctic, *Nature Climate Change*, 6, 992–999, <https://doi.org/10.1038/nclimate3121>, number: 11 Publisher: Nature Publishing Group, 2016.
- 530 Platzer, P., Yiou, P., Naveau, P., Tandeo, P., Filipot, J.-F., Ailliot, P., and Zhen, Y.: Using Local Dynamics to Explain Analog Forecasting of Chaotic Systems, *Journal of the Atmospheric Sciences*, 78, 2117–2133, <https://doi.org/10.1175/JAS-D-20-0204.1>, publisher: American Meteorological Society Section: Journal of the Atmospheric Sciences, 2021.
- Ragone, F. and Bouchet, F.: Rare Event Algorithm Study of Extreme Warm Summers and Heatwaves Over Europe, *Geophysical Research Letters*, 48, e2020GL091197, <https://doi.org/10.1029/2020GL091197>, [_eprint: https://onlinelibrary.wiley.com/doi/pdf/10.1029/2020GL091197](https://onlinelibrary.wiley.com/doi/pdf/10.1029/2020GL091197), 2021.
- 535 Ragone, F., Wouters, J., and Bouchet, F.: Computation of extreme heat waves in climate models using a large deviation algorithm, *Proceedings of the National Academy of Sciences of the United States of America*, 115, 24–29, <https://doi.org/10.1073/pnas.1712645115>, arXiv: 1709.03757 Publisher: National Academy of Sciences, 2018.
- Riahi, K., van Vuuren, D. P., Kriegler, E., Edmonds, J., O'Neill, B. C., Fujimori, S., Bauer, N., Calvin, K., Dellink, R., Fricko, O., Lutz, W., Popp, A., Cuaresma, J. C., KC, S., Leimbach, M., Jiang, L., Kram, T., Rao, S., Emmerling, J., Ebi, K., Hasegawa, T., Havlik, P., 540 Humpenöder, F., Da Silva, L. A., Smith, S., Stehfest, E., Bosetti, V., Eom, J., Gernaat, D., Masui, T., Rogelj, J., Strefler, J., Drouet, L., Krey, V., Luderer, G., Harmsen, M., Takahashi, K., Baumstark, L., Doelman, J. C., Kainuma, M., Klimont, Z., Marangoni, G., Lotze-Campen, H., Obersteiner, M., Tabeau, A., and Tavoni, M.: The Shared Socioeconomic Pathways and their energy, land use, and greenhouse gas emissions implications: An overview, *Global Environmental Change*, 42, 153–168, <https://doi.org/10.1016/J.GLOENVCHA.2016.05.009>, publisher: Elsevier Ltd, 2017.
- 545 Ribes, A., Boé, J., Qasmi, S., Dubuisson, B., Douville, H., and Terray, L.: An updated assessment of past and future warming over France based on a regional observational constraint, *Earth System Dynamics*, 13, 1397–1415, <https://doi.org/10.5194/esd-13-1397-2022>, publisher: Copernicus GmbH, 2022.
- Robeson, S. M., Willmott, C. J., and Jones, P. D.: Trends in hemispheric warm and cold anomalies, *Geophysical Research Letters*, 41, 9065–9071, <https://doi.org/10.1002/2014GL062323>, [_eprint: https://onlinelibrary.wiley.com/doi/pdf/10.1002/2014GL062323](https://onlinelibrary.wiley.com/doi/pdf/10.1002/2014GL062323), 2014.
- 550 RTE: Bilan électrique 2020, Tech. rep., RTE, <https://bilan-electrique-2020.rte-france.com/#>, 2021.
- Seneviratne, S., Zhang, X., Adnan, M., Badi, W., Dereczynski, C., Di Luca, A., Ghosh, S., Iskandar, I., Kossin, J., Lewis, S., Otto, F., Pinto, I., Satoh, M., Vicente-Serrano, S., Wehner, M., and Zhou, B.: Weather and Climate Extreme Events in a Changing Climate, in: *Climate Change 2021: The Physical Science Basis. Contribution of Working Group I to the Sixth Assessment Report of the Intergovernmental Panel on Climate Change*, edited by Masson-Delmotte, V., Zhai, P., Pirani, A., Connors, S., Péan, C., Berger, S., Caud, N., Chen, Y., Goldfarb, L., Gomis, M., Huang, M., Leitzell, K., Lonnoy, E., Matthews, J., Maycock, T., Waterfield, T., 555 Yelekçi, O., Yu, R., and Zhou, B., pp. 1513–1766, Cambridge University Press, Cambridge, United Kingdom and New York, NY, USA, <https://doi.org/10.1017/9781009157896.013>, 2021.
- Shabbar, A., Huang, J., and Higuchi, K.: The relationship between the wintertime North Atlantic oscillation and blocking episodes in the North Atlantic, *International Journal of Climatology*, 21, 355–369, <https://doi.org/10.1002/joc.612>, publisher: John Wiley & Sons, Ltd, 560 2001.
- Shepherd, T. G.: The dynamics of temperature extremes, *Nature*, 522, 425–427, <https://doi.org/10.1038/522425a>, 2015.
- Shepherd, T. G., Boyd, E., Calel, R. A., Chapman, S. C., Dessai, S., Dima-West, I. M., Fowler, H. J., James, R., Maraun, D., Martius, O., Senior, C. A., Sobel, A. H., Stainforth, D. A., Tett, S. F. B., Trenberth, K. E., van den Hurk, B. J. J. M., Watkins, N. W., Wilby, R. L., and

- Zenghelis, D. A.: Storylines: an alternative approach to representing uncertainty in physical aspects of climate change, *Climatic Change*, 151, 555–571, <https://doi.org/10.1007/s10584-018-2317-9>, 2018.
- 565 Sillmann, J., Shepherd, T. G., van den Hurk, B., Hazeleger, W., Martius, O., Slingo, J., and Zscheischler, J.: Event-Based Storylines to Address Climate Risk, *Earth's Future*, 9, e2020EF001783, <https://doi.org/10.1029/2020EF001783>, publisher: John Wiley & Sons, Ltd, 2021.
- Sippel, S., Barnes, C., Cadiou, C., Fischer, E., Kew, S., Kretschmer, M., Philip, S., Shepherd, T. G., Singh, J., Vautard, R., and Yiou, P.: An extreme cold Central European winter such as 1963 is unlikely but still possible despite climate change, *EGUsphere*, pp. 1–24, <https://doi.org/10.5194/egusphere-2023-2523>, publisher: Copernicus GmbH, 2023.
- 570 Smith, E. T. and Sheridan, S. C.: The influence of extreme cold events on mortality in the United States, *Science of The Total Environment*, 647, 342–351, <https://doi.org/10.1016/j.scitotenv.2018.07.466>, 2019.
- Smith, E. T. and Sheridan, S. C.: Where Do Cold Air Outbreaks Occur, and How Have They Changed Over Time?, *Geophysical Research Letters*, 47, e2020GL086983, <https://doi.org/10.1029/2020GL086983>, _eprint: <https://onlinelibrary.wiley.com/doi/pdf/10.1029/2020GL086983>, 2020.
- 575 Trnka, M., Olesen, J. E., Kersebaum, K. C., Skjelvåg, A. O., Eitzinger, J., Seguin, B., Peltonen-Sainio, P., Rötter, R., Iglesias, A., Orlandini, S., Dubrovský, M., Hlavinka, P., Balek, J., Eckersten, H., Cloppet, E., Calanca, P., Gobin, A., Vučetić, V., Nejedlik, P., Kumar, S., Lalic, B., Mestre, A., Rossi, F., Kozyra, J., Alexandrov, V., Semerádová, D., and Žalud, Z.: Agroclimatic conditions in Europe under climate change, *Global Change Biology*, 17, 2298–2318, <https://doi.org/10.1111/j.1365-2486.2011.02396.x>, _eprint: <https://onlinelibrary.wiley.com/doi/pdf/10.1111/j.1365-2486.2011.02396.x>, 2011.
- 580 Van Der Wiel, K., Bloomfield, H. C., Lee, R. W., Stoop, L. P., Blackport, R., Screen, J. A., and Selten, F. M.: The influence of weather regimes on European renewable energy production and demand, *Environmental Research Letters*, 14, <https://doi.org/10.1088/1748-9326/ab38d3>, 2019.
- 585 Van Oldenborgh, G. J., Mitchell-Larson, E., Vecchi, G. A., De Vries, H., Vautard, R., and Otto, F.: Cold waves are getting milder in the northern midlatitudes, *Environmental Research Letters*, 14, 114004, <https://doi.org/10.1088/1748-9326/ab4867>, publisher: IOP Publishing, 2019.
- Vavrus, S. J.: The Influence of Arctic Amplification on Mid-latitude Weather and Climate, *Current Climate Change Reports*, 4, 238–249, <https://doi.org/10.1007/s40641-018-0105-2>, 2018.
- 590 Vogel, E., Donat, M. G., Alexander, L. V., Meinshausen, M., Ray, D. K., Karoly, D., Meinshausen, N., and Frieler, K.: The effects of climate extremes on global agricultural yields, *Environmental Research Letters*, 14, 054010, <https://doi.org/10.1088/1748-9326/ab154b>, publisher: IOP Publishing, 2019.
- Yiou, P.: AnaWEGE: A weather generator based on analogues of atmospheric circulation, *Geoscientific Model Development*, 7, 531–543, <https://doi.org/10.5194/gmd-7-531-2014>, 2014.
- 595 Yiou, P. and Déandréis, C.: Stochastic ensemble climate forecast with an analogue model, *Geoscientific Model Development*, 12, 723–734, <https://doi.org/10.5194/gmd-12-723-2019>, publisher: Copernicus GmbH, 2019.
- Yiou, P. and Jézéquel, A.: Simulation of extreme heat waves with empirical importance sampling, *Geoscientific Model Development*, 13, 763–781, <https://doi.org/10.5194/gmd-13-763-2020>, publisher: Copernicus GmbH, 2020.
- Yiou, P. and Nogaj, M.: Extreme climatic events and weather regimes over the North Atlantic: When and where?, *Geophysical Research Letters*, 31, <https://doi.org/10.1029/2003GL019119>, publisher: John Wiley & Sons, Ltd, 2004.
- 600

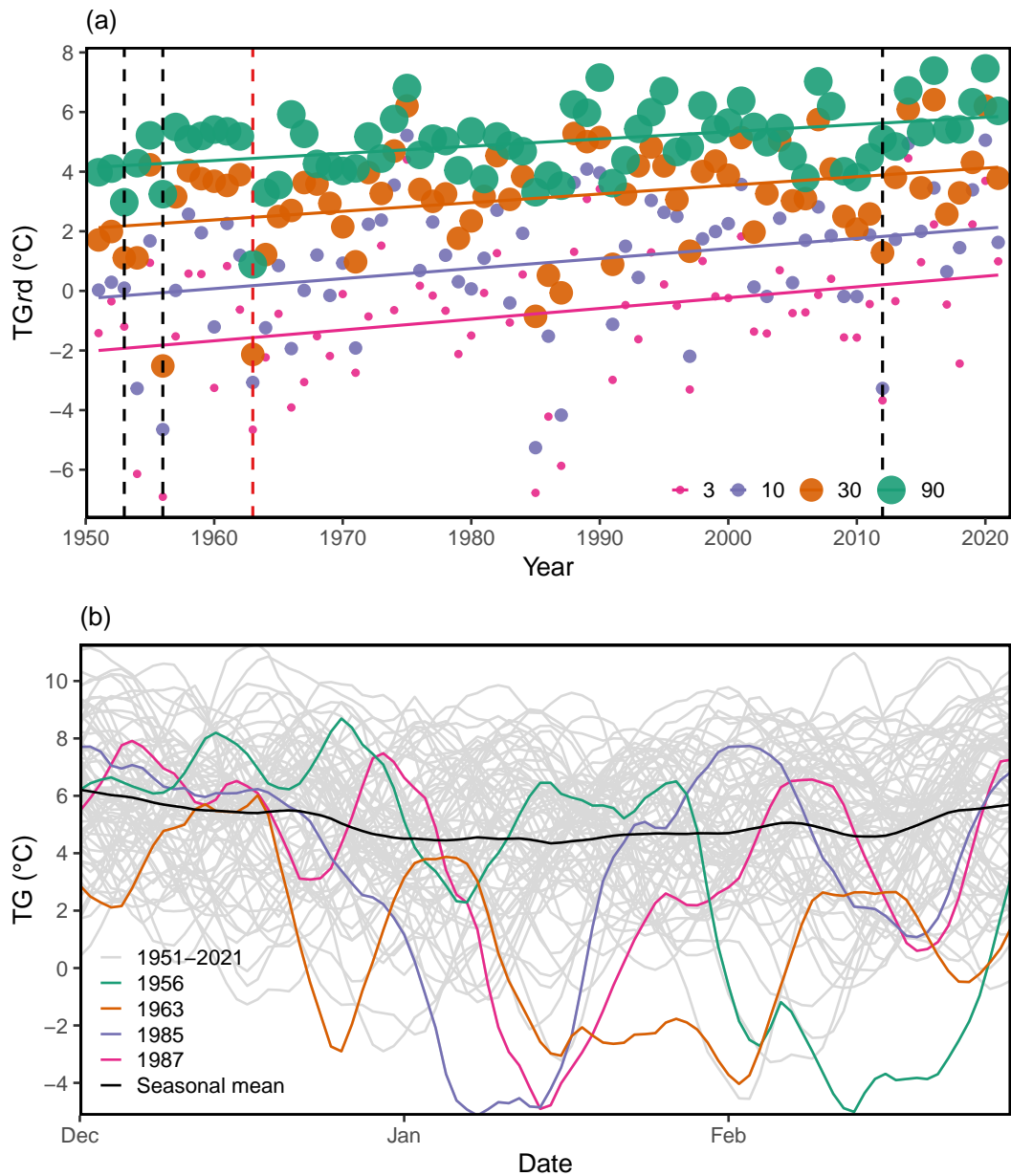


Figure 1. (a) Minimum of winter temperature over DJF for four time scales in continental France. For each winter we compute the n -day running mean of daily mean temperature (TG) for $n \in \{3, 10, 30, 90\}$ days and select the minimum value. The colored lines are linear regressions of the temperature averages. The [red vertical dashed line](#) outlines 1963 (coldest winter in France). [The black vertical dashed lines outline the winters of 1953, 1956 and 2012.](#) (b) Time series of DJF 7-days running mean TG from 1950 to 2021 in continental France. The curves in colour are for the four coldest years (1956, 1963, 1985 and 1987) and the black curve is for the seasonal mean computed over 1951-2021.

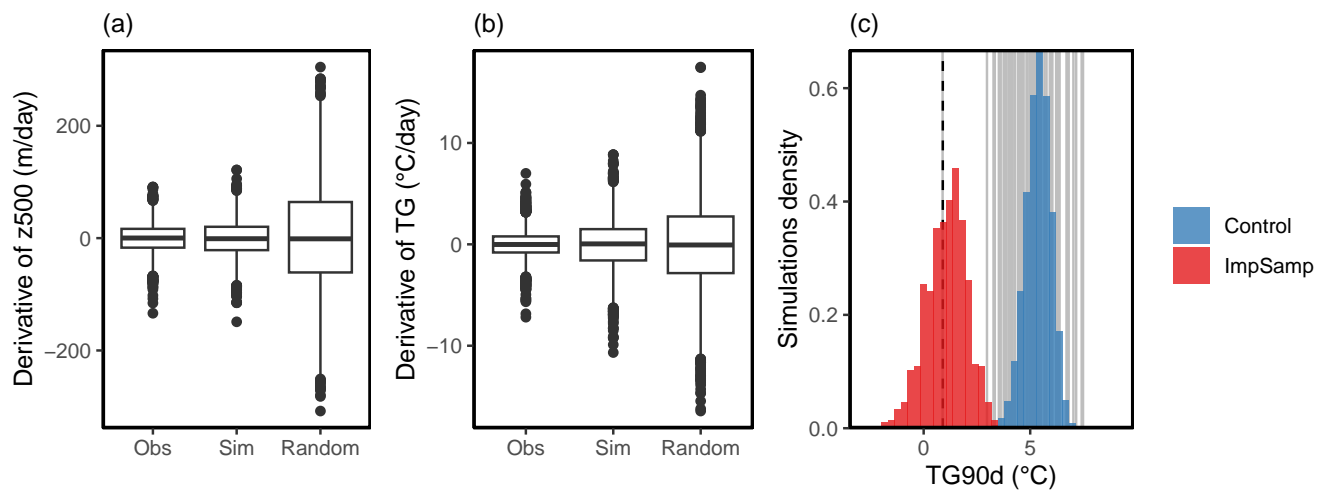


Figure 2. Daily derivatives of Z500 (in m/day) **(a)** and TG (in °C/day) **(b)** for winters in ERA5, in the SWG simulations and in random trajectories. **(c)** Normalized distribution of the TG90d of 1000 SWG simulations with $\alpha_{cal} = 0.5$ (red histogram, with importance sampling) and 10^7 SWG simulations with $\alpha_{cal} = 0$ (blue histogram, without importance sampling). The grey vertical lines display the observed TG90d in ERA5. The black dashed line outlines winter 1963 value.

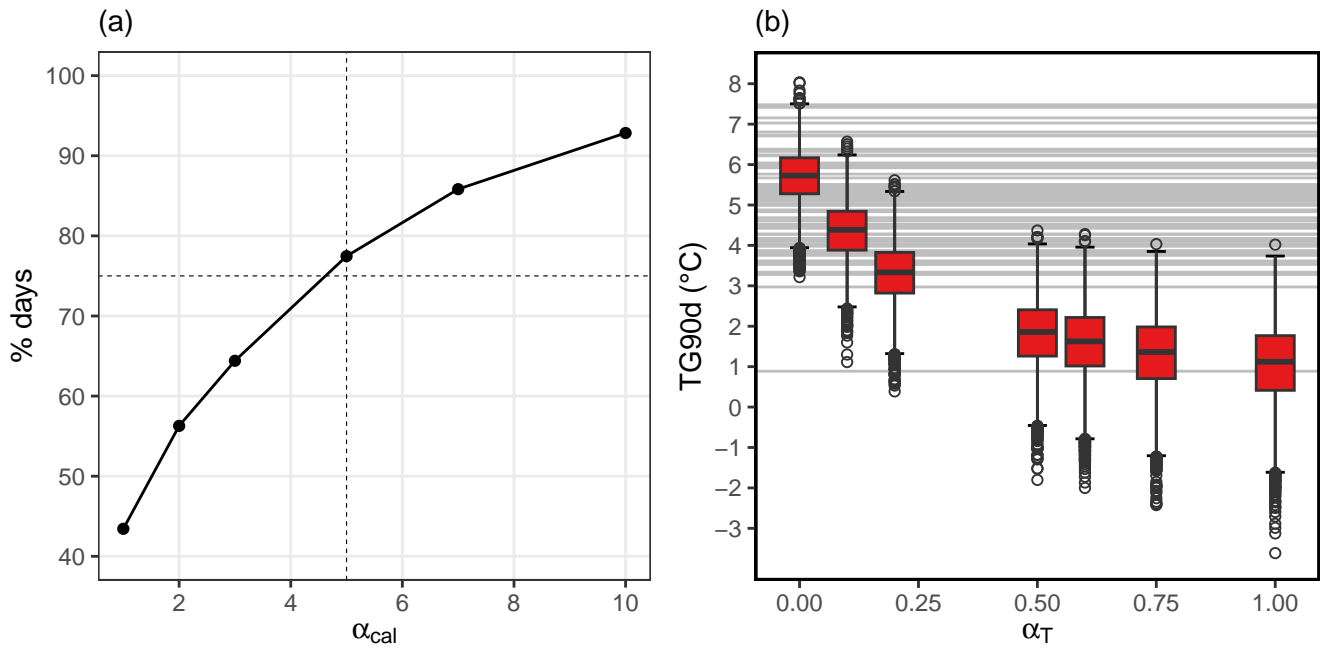


Figure 3. (a) Percentage of simulations of extreme winters for which the last day falls after the 15th of February, as a function of the α_{cal} parameter. (b) Temperature (TG) distribution of 100 simulations (configuration 2) for each winter between 1950-1951 and 2020-2021 ($100 \times 70 = 7000$ simulations total per box-plot) done for various values of the α_T parameter ($\alpha_T \in \{0, 0.1, 0.2, 0.5, 0.75, 1\}$). Horizontal lines represent the winter mean temperature of each winter from 1950-1951 to 2020-2021 in ERA5 data. Boxplots are computed as in Fig. 3b.

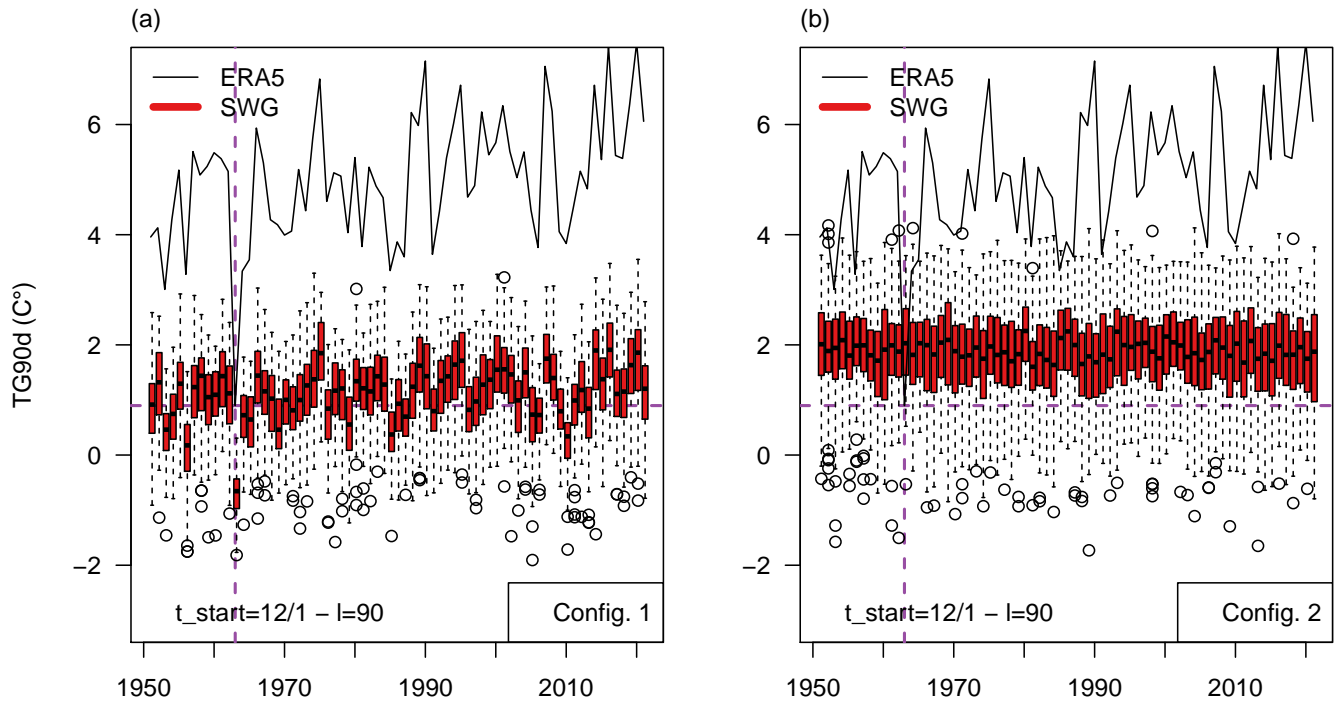


Figure 4. Results of 100 SWG simulations from winter 1950-1951 to winter 2020-2021 with configuration 1 (a) and configuration 2 (b). The black continuous line represents the time series of winter mean 2m-temperature over France from ERA5 data. The box plots represent the ensemble variability of the simulations for each year. The boxes of box plots indicate the median (q_{50}), the lower and upper hinges indicate the first (q_{25}) and third (q_{75}) quartiles. The upper whiskers indicate $\min[\max(T), q_{75} + 1.5 \times (q_{75} - q_{25})]$. The lower whisker has a symmetric formulation. The points are the outlying values that are above or below the defined whiskers. The vertical purple dashed line highlights winter 1963 while the ~~vertical~~horizontal purple dashed line shows the mean temperature of the same winter.

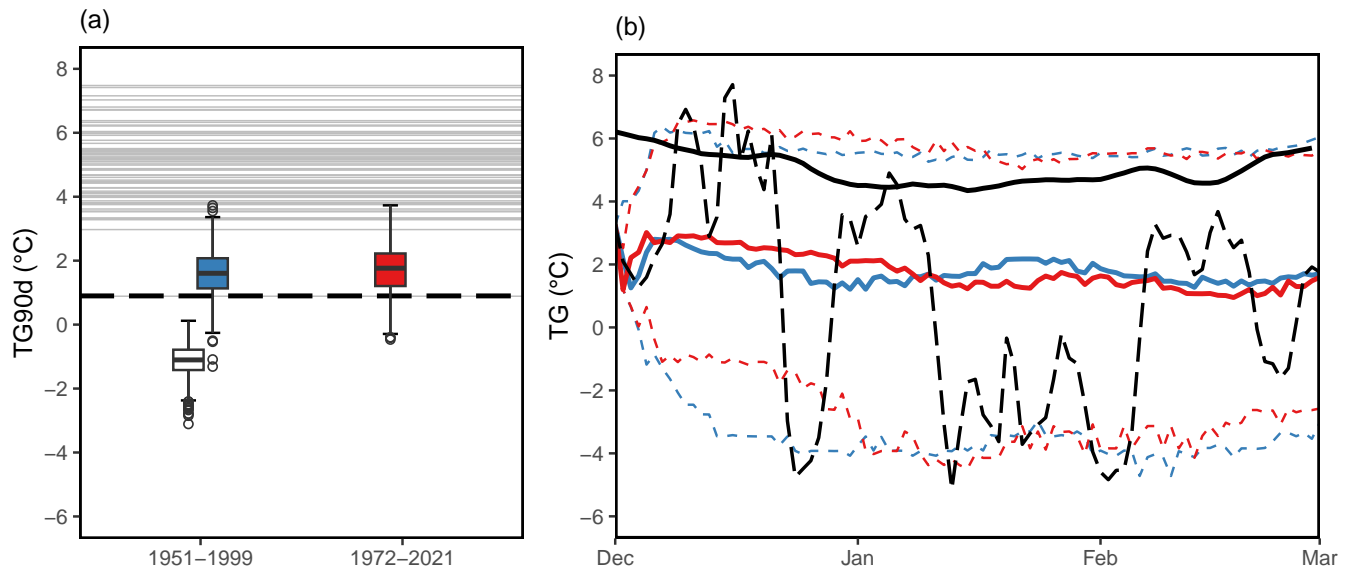


Figure 5. (a) Temperature (TG) distribution of 1000 SWG simulations of winter 1963 with analogs from 1950-1999 (left) or 1972-2021 (right) in ERA5 data using configuration 1 (white boxplots) and configuration 2 (color filled boxplots). Horizontal lines represent the winter mean temperature of each winter from 1950 to 2021 in ERA5 data. The dashed black line is the value that was observed in 1962-1963. (b) Time series of 7-day running mean of daily mean temperatures for winter 1963 (dashed black line), SWG median (plain line), q05 and q95 (dashed lines) temperatures of the thousand 1962-1963 simulations with configuration 2 using 1950-1999 analogs (blue lines) and 1972-2021 analogs (red lines), and seasonal cycle as computed from 1950-2021 (plain black line).

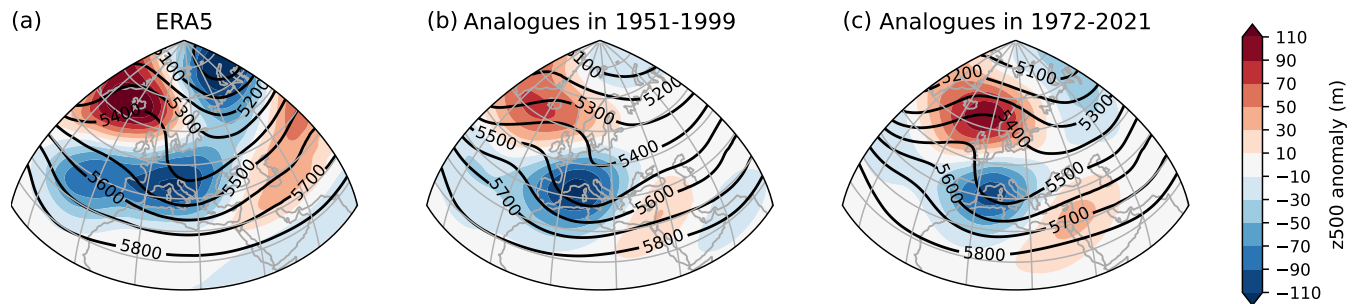


Figure 6. Absolute values (contours, in m) and anomalies (in m) with respect to 1950-2021 (shaded areas) of 500-hPa geopotential height (Z500) average over DJF for winter 1963 as observed in ERA5 (a) and simulated by the SWG with counterfactual (b) and factual (c) analogs using configuration 2 (*sine data*). For the simulations, the composite maps are computed from the 10% coldest simulations among the 1000 (i.e. 100 simulations per map).

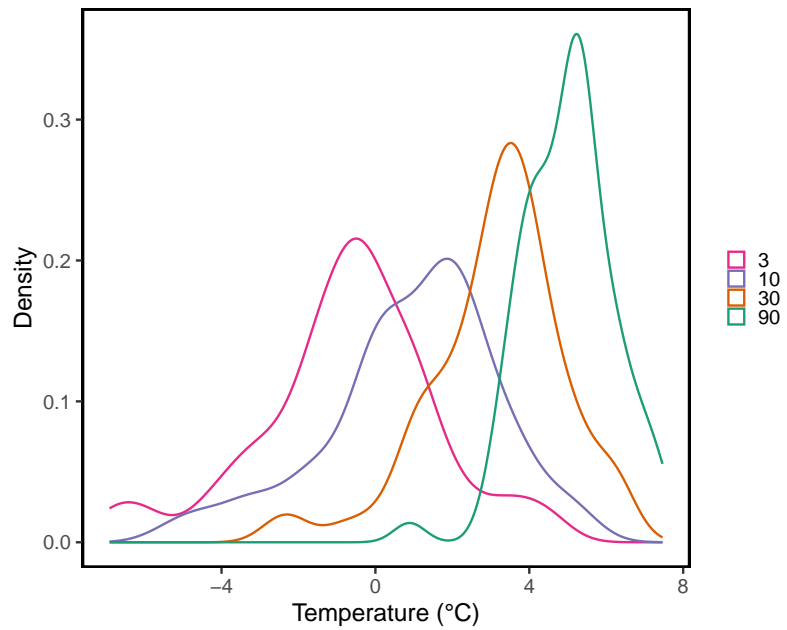


Figure A1. Empirical probability distribution functions of TGrd temperatures with $r \in \{3, 10, 30, 90\}$ days. The probability density functions are obtained from TG in the ERA5 reanalysis.

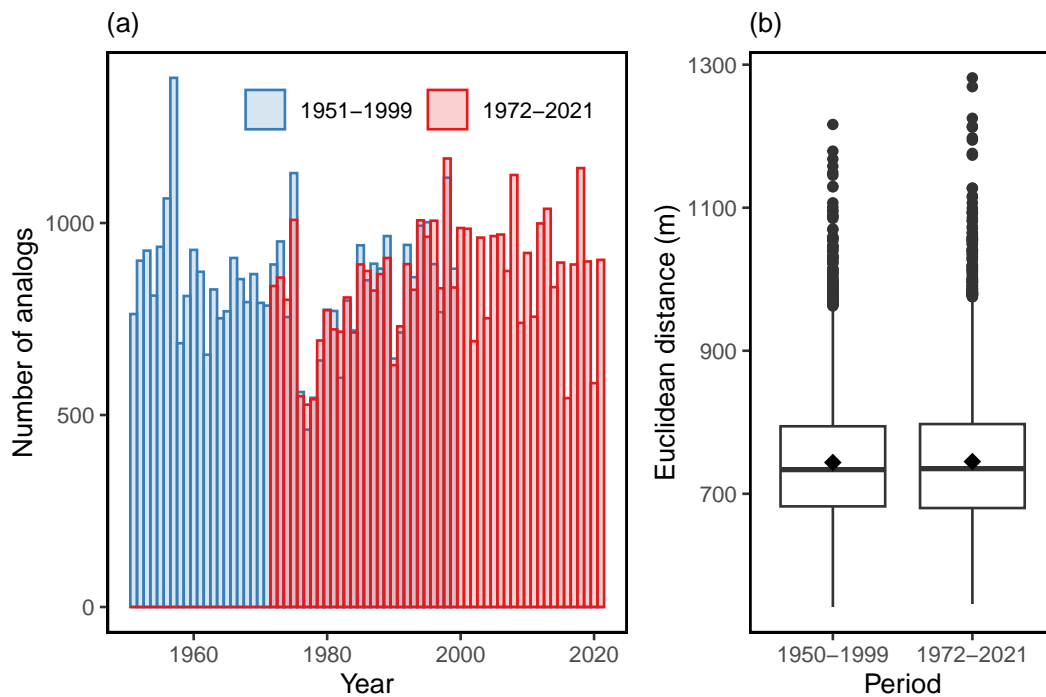


Figure B1. (a) Histograms of years of the $K = 20$ best analogs for each day of the 1951-2021 in October to March, in either 1951-1999 (blue) and 1972-2021 (red). (b) Euclidean distances between Z500 fields (m) of the analogs in the same two periods.

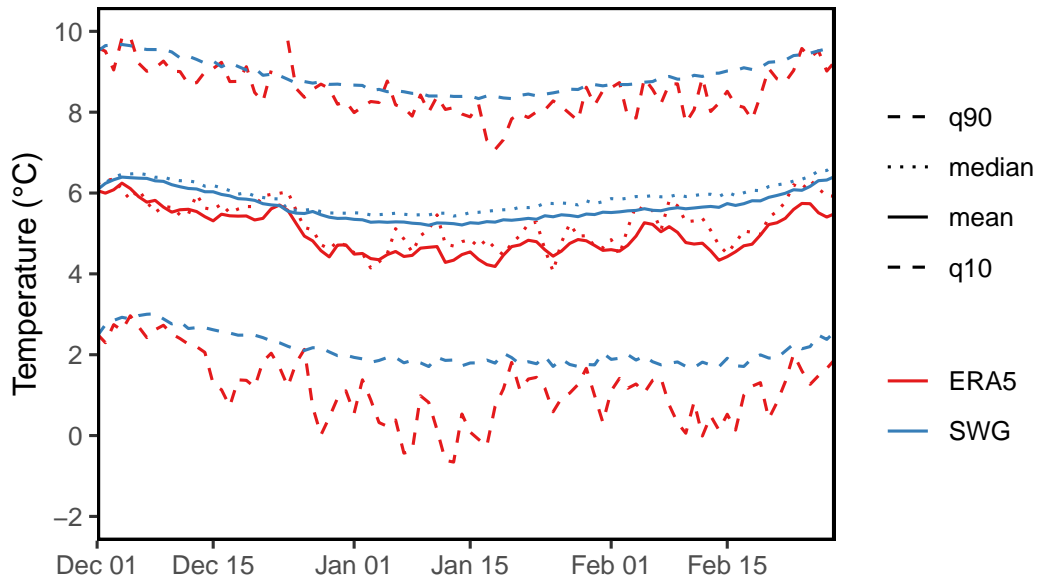


Figure C1. Winter seasonal cycle time series, as computed from winters from 1951 to 2021 in ERA5 (red) or from SWG simulations (blue) initialized at the start of the same winters (1000 simulations per winter). For both, the mean (plain lines), the median and the 10th and 90th percentiles (dashed lines) are displayed.

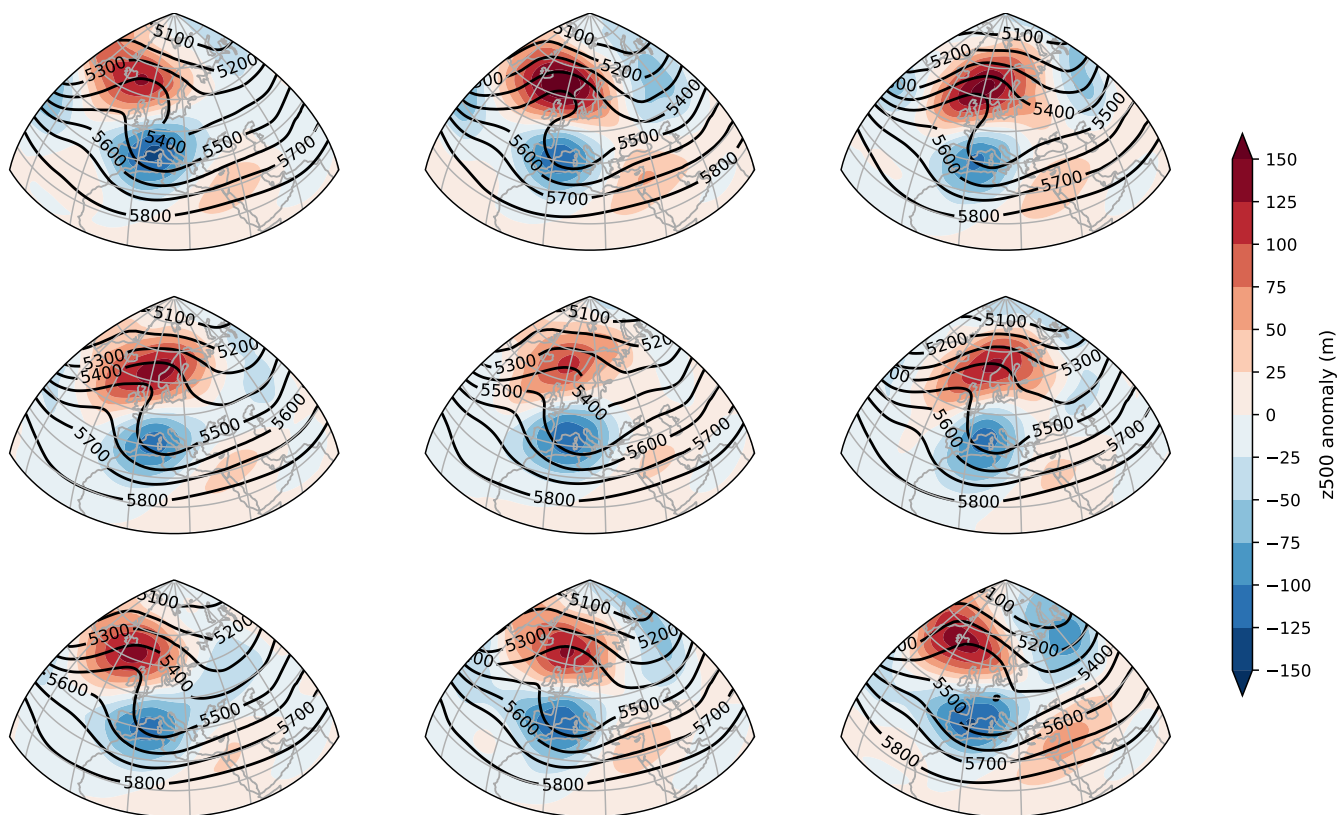


Figure D1. Composites of Z500 for the nine coldest individual SWG simulations made from 1972-2021 analogs. The color scales are the same as in Fig. 6 for.