

Retrieval pseudo BRDF-adjusted surface reflectance at 440nm from Geostationary Environmental Monitoring Spectrometer (GEMS)

Suyoung Sim¹, Sungwon Choi², Daeseong Jung¹, Jongho Woo¹, Nayeon Kim³, Seongwoo Park¹, Honghee Kim¹, Ukkyo Jeong¹, Hyunkee Hong⁴, and Kyung-soo Han¹

¹Division of Earth Environmental System Science (Major of Spatial Information System Engineering), Pukyong National University, Busan, Republic of Korea

²Pukyong National University Industry-University Cooperation Foundation, Busan, Republic of Korea

³Marine Bigdata & A.I. Center, Korea Institute of Ocean Science and Technology, Busan, Republic of Korea

⁴Environmental Satellite Center, National Institute of Environmental Research, Incheon, Republic of Korea

Correspondence: Kyung-soo Han (kyung-soo.han@pknu.ac.kr)

Abstract. In satellite remote sensing applications, enhancing the precision of level 2 (L2) algorithms relies heavily on the accurate estimation of the surface reflectance across the ultraviolet (UV) to visible (VIS) spectrum. However, the mutual dependence between the L2 algorithms and surface reflectance retrieval poses challenges, necessitating an alternative approach. To address this issue, many satellite algorithms generate Lambertian Equivalent Reflectivity (LER) products as a priori surface reflectance data; however, this often results in an underestimation of these data. This study is the first to assess the applicability of background surface reflectance (BSR), derived using a semi-empirical Bidirectional Reflectance Distribution Function (BRDF) model, in an operational environmental satellite algorithm. This study pioneered the application of the BRDF model to hyperspectral satellite data at 440 nm, aiming to provide more realistic preliminary surface reflectance data. In this study, the Geostationary Environment Monitoring Spectrometer (GEMS) data was used, and a comparative analysis of the GEMS BSR and GEMS LER retrieved in this study revealed an improvement in the relative Root Mean Squared Error (rRMSE) accuracy of 3 %. Additionally, a time-series analysis across diverse land types indicated a greater stability exhibited by the BSR than by the LER. For further validation, the BSR was compared with other LER databases using ground-truth data, yielding superior simulation performance. These findings present a promising avenue for enhancing the accuracy of surface reflectance retrieval from hyperspectral satellite data, thereby advancing the practical applications of satellite remote sensing algorithms.

1 Introduction

Surface reflectance, the fraction of solar radiation reflected by the Earth's surface, is a key parameter in meteorology, environmental studies, and climate research (Dickinson, 1983). Because surface reflectance is utilized in remote-sensing systems to derive various geophysical, chemical, and biological variables (Veefkind et al., 2006; Noguchi et al., 2014), accurate satellite observations of land surface reflectance are essential for developing accurate satellite remote-sensing algorithms. Ultraviolet (UV)-to-visible (VIS) surface reflectance is of great importance for atmospheric component retrieval algorithms and related

studies, especially as an input to various level 2 (L2) algorithms, including aerosols, clouds, ozone, and gas tracers (Lin et al., 2015; Lorente et al., 2018).

However, it is difficult to determine the calculation precedence between these L2 algorithms and surface reflection algorithms. Surface reflectance is the fundamental input data for other L2 algorithms, and L2 data are also essential for surface reflectance retrieval algorithms. In the retrieval of surface reflectance, aerosol optical depth (AOD) and atmospheric gas products (such as ozone, total precipitable water (TPW), nitrogen dioxide (NO₂), etc.) are fundamental parameters. Simultaneously, surface reflectance is crucial for the retrieval of these atmospheric constituents and forms an essential component of their product. This reciprocal relationship has a significant effect on the accuracy of the calculated data. Therefore, a background field for AOD and atmospheric products should be established when calculating surface reflectance, or conversely, a background field for surface reflectance should be developed when calculating AOD and atmospheric substances. Therefore, several studies have calculated and applied alternative surface reflectance data to overcome this dilemma.

Most satellite algorithms that focus on observing the UV-VIS region, such as the Total Ozone Mapping Spectrometer (TOMS) (Herman and Celarier, 1997), Global Ozone Monitoring Experiment (GOME) (Koelemeijer et al., 2003), and Ozone Monitoring Instrument (OMI) (Kleipool et al., 2008) produce a priori surface reflectance products called Lambertian Equivalent Reflectivity (LER). The LER archive is a climatology database calculated using the minimum reflectance method under the assumption of a Lambertian surface. The minimum reflectance technique uses the lowest observed ground reflectance for the same pixel within the compositing period. This technique assumes that the minimum value of the surface reflectance generated during the synthesis period minimizes the effects of the atmosphere and clouds, and adopts it as a stable value in a clear sky. This method has the advantage of being simple to implement, but has a limitation in that it cannot consider realistic surface reflection properties and can easily underestimate the actual surface reflectance. Occasionally, overcalculations can occur because of a failure to reflect the characteristics of changes in the indicators in real time. Therefore, to identify more realistic surface signal, the GOME-2 (Tilstra et al., 2017) LER products have introduced the "MODE-LER" method alongside the "MIN-LER" approach. While the MIN-LER method selects the minimum reflectance observed during the synthesis period as well known, the MODE-LER method identifies the most frequently occurring reflectance value. This approach provides a more representative measure of typical surface reflectance, especially in regions with highly variable surface conditions. Although the MODE-LER method offers improvements rather than minimum reflectance method, it remains a climatological dataset and cannot fully parameterize the anisotropic reflectance properties of surfaces, which change in real time

Under- and over-estimated surface reflectance arising from neglecting surface anisotropy can significantly compromise the accuracy of other satellite-derived products such as AOD (Kaufman et al., 1997), formaldehyde (HCHO) (De Smedt et al., 2018; Howlett et al., 2023), NO₂ and SO₂ (Leitão et al., 2010; McLinden et al., 2014). For instance, an underestimated surface reflectance may result in an overestimation of the AOD (Mei et al., 2014), affecting the accuracy of aerosol concentration estimate. Conversely, if the surface reflectance is overestimated, the opposite effects would occur (Chen et al., 2021; Wang et al., 2019). Li et al. (2012) found that a variation of 0.05 in the surface reflectance in the blue channel can lead to an underestimation of approximately -0.17 in the range where the AOD is less than 0.4. Veefkind et al. (2000) indicated that an error of 0.01 in the surface reflectance in the UV region results in an AOD error of 0.1. Furthermore, Platnick et al. (2001); Letu et al. (2020)

observed that errors in cloud retrieval can also occur, affecting cloud properties such as cloud fraction and optical thickness. According to Lorente et al. (2018), clear-sky air mass factors (AMF) are up to 20 % higher and cloud radiance fractions up to 40 % lower if surface anisotropic reflectance is considered. Furthermore, biases may arise in the estimation of trace gas concentrations, affecting the reliability of the NO₂ and SO₂ measurements, which are sensitive to AMF (Lin et al., 2014).
60 According to Noguchi et al. (2014), neglecting surface reflectance anisotropy can lead to AMF errors of more than 10 %, particularly in areas with high NO₂ concentrations near the surface. These issues highlight the critical role of accurate surface reflectance data in ensuring the reliability of satellite-derived atmospheric and surface properties. Therefore, several studies have claimed that anisotropic effects, such as the Bidirectional Reflectance Distribution Function (BRDF), should be considered in satellite-based cloud and trace gas retrieval (Lin et al., 2015; Vasilkov et al., 2017).

65 Therefore, increasing recognition of the importance of considering surface anisotropy in surface reflectance retrieval has led to various research efforts. These efforts have resulted in institutions producing and providing products that account for the BRDF effects based on existing LER databases. This is exemplified by the geometry-dependent surface Lambertian-equivalent reflectivity (GLER) (Vasilkov et al., 2017; Qin et al., 2019) and the directionally dependent Lambertian-equivalent reflectivity (DLER) (Tilstra et al., 2021, 2023). The National Aeronautics and Space Administration (NASA) provides a GLER database
70 reprocessed with the Moderate Resolution Imaging Spectroradiometer (MODIS) BRDF based on the OMI LER (Qin et al., 2019). This dataset provides the reflectance considering the BRDF effects at 440 and 466 nm by applying the MODIS BRDF products to the existing LER database. An advantage of this dataset is its direct applicability to OMI observation scenes, enabling its use in calculating the reflectance for every scene observed by the OMI. The wavelength range provided by MODIS BRDF used in GLER retrieval is from 459 to 479 nm, which encompasses the 466 nm output from OMI GLER, allowing for direct
75 application of these data. However, the 440 nm wavelength falls outside the range covered by MODIS, making it impossible to use these data directly. To address this, the ratio of LER at 466 and 440 nm was used to apply the MODIS BRDF data to the calculation of GLER. Concerns arise from this method because it may overlook the BRDF dependency on certain wavelengths, assuming linear behavior across wavelengths.

In addition, the Satellite Application Facility on Atmospheric Composition Monitoring (AC SAF) and the European Space
80 Agency (ESA) provided a DLER database that considers the viewing geometry from GOME-2 (Tilstra et al., 2021) and the TROPospheric Monitoring Instrument (TROPOMI) (Tilstra et al., 2023). DLER data, similar to existing LER data, is reproduced based on reflectance accumulated over several years. What differs from LER is that it takes into account the BRDF effect according to the satellite's viewing angles. The DLER database introduced by (Tilstra et al., 2021) considers anisotropic features at various viewing angles as an advantage of polar and sun-synchronous orbit satellites. For example, GOME-2 and TROPOMI
85 DLER calculations were performed using the regression coefficients calculated for the 5 and 9 view containers, respectively, allowing them to simulate BRDF effects influenced by the satellite's viewing angles. Therefore, unlike GLER may overlook the BRDF effects that change with wavelengths, DLER can simulate BRDF effects for all individual wavelengths. However, these data are constructed from climatology, such as the LER database, and are not updated annually but are provided only once a month, making it difficult to reflect the changing land surface characteristics in real time. In addition, there are limitations to

90 reflecting the characteristics of indicators that change every time with a single fixed coefficient, and it is difficult to consider the influence of other geometric conditions (such as the solar zenith angle).

In this study, we suggest the retrieval of an alternative pseudo BRDF-adjusted surface reflectance called Background Surface Reflectance (BSR). This approach reflects both the high temporal resolution of GLER and the advantages of DLER's own BRDF consideration, while solving the limitations of both. This algorithm concept has now been applied to various satellites to retrieve surface albedo, which must simulate multiple angles (Schaaf et al., 2002; Lee et al., 2018), and cloud detection (Kim et al., 2017; Yeom et al., 2020). However, UV-VIS satellites, particularly hyperspectral satellites, have not yet been investigated. Therefore, in this study, we propose, for the first time, the application of the BRDF model to hyperspectral satellite data for more realistic preliminary surface reflectance data. In this study, we focused on 440 nm, which is used as an input from NO₂, clouds, and aerosols. This algorithm consists of two main steps: atmospheric correction, BRDF modeling and BSR retrieval. The purpose of this study is to enhance the accuracy of satellite-derived prior surface reflectance data by addressing BRDF effects through a method that incorporates the strengths of both GLER and DLER while addressing their limitations. This is crucial for improving the reliability of atmospheric and surface property retrievals from hyperspectral satellite data. A detailed description of each step of the proposed algorithm is provided in Section 3. Section 2 covers the data and study area, and Section 4 presents the results and discussion.

105 2 Materials and Study area

2.1 Geostationary Environment Monitoring Spectrometer (GEMS)

A Geostationary Environment Monitoring Spectrometer (GEMS) is a hyperspectral spectrometer mounted on GeoKompsat2B (GK-2B) that covers the UV-VIS region (300–500 nm) with a full width at half maximum (FWHM) 0.6 nm. It maintains a spatial resolution of 7 × 8 km for gas products and 3.5 × 8 km for other products per pixel at Seoul (Choi et al., 2018; Kim et al., 2020). The primary objective of the GEMS is to provide air quality (AQ) components, such as ozone, aerosols, and gas tracers, at high temporal and spatial resolutions. In this study, GEMS-derived Level 1C data (radiance and irradiance) (Kang et al., 2020, 2021) were employed, enabling measurements of both hourly radiance and daily irradiance. Land/sea mask, snow cover, angular components (solar and viewing geometry), and terrain height data served as additional auxiliary data within GEMS L1C. Furthermore, for atmospheric correction purposes, three GEMS L2 products were utilized: cloud (CLD) (Kim et al., 2024), aerosol (AERAOD) (Cho et al., 2023), and total column ozone (TCO) (Baek et al., 2023).

CLD data from GEMS were employed to identify and exclude cloudy pixels during the atmospheric correction process. The GEMS CLD product is an optical quantity observed at UV-VIS wavelengths, which may differ from the physical properties of real clouds; therefore, it does not provide an official detection data like those from multi-spectral sensors such as MODIS (Frey et al., 2008) and GK-2A (Lee and Choi, 2021) Cloud detection data, often referred to as a “cloud mask,” classifies whether clouds are present within a given pixel. Instead, GEMS utilizes thresholds based on variables such as Effective Cloud Fraction (ECF) and Cloud Centroid Pressure (CCP) to classify pixels as clear-sky or cloudy. Most GEMS field algorithms use ECF data to mitigate cloud effects, with thresholds varying from 0.2 to 0.4. Within the quality flag of GEMS CLD algorithm theoretical

basis documents (ATBD) (Choi et al., 2020), pixels are classified as clear-sky when ECF is less than 0.2 or CCP is equal to 1013 hPa. CCP indicates the location of clouds, with values closer to 1013 hPa signifying clouds closer to the ground. While ground-level clouds can be ignored in algorithms calculating atmospheric aerosols and gases, they can significantly affect algorithms calculating ground reflectance. Therefore, in this study, we adopted the following criteria to exclude clouds very close to the ground: (1) pixels are classified as clear-sky if ECF is less than 0.2, and (2) pixels are classified as cloudy if CCP is greater than 1000 hPa, even if ECF is less than 0.2.

The GEMS AERAOD data provided AOD values for three wavelengths (354, 443, and 550 nm). The GEMS AOD at 443 nm shows high accuracy with a strong positive correlation coefficient (r) of about 0.89 and a low root mean squared error (RMSE) of 0.15 after validation with the AERONET observed AOD (Cho et al., 2023). In this study, we utilized 550 nm AOD data to perform atmospheric correction. Most satellite AOD algorithms calculate the 550 nm AOD due to its significant scattering in the atmosphere and its widespread use in various chemical models. Additionally, the 6SV RTM used for atmospheric correction in this study is designed to input the AOD value at 550 nm.

The GEMS TCO product was used to access the entire column of ozone data for atmospheric calibration. GEMS TCO showed a high correlation coefficient (r) of 0.97 and a low RMSE of 1.3 Dobson Unit (DU) when compared to Pandora TCO measurements, which is approximately the same or better than comparisons with the Ozone Mapping and Profiler suite (OMPS) and TROPOMI (Baek et al., 2023).

2.2 Study area

This study focuses on of this study encompasses Northeast Asia, which extends from 20° to 45° north latitude and 100° to 140° east longitude. The temporal scope of the study spans one year, specifically from January 1 to December 31, 2021. This spatial and temporal framework provides a comprehensive basis for analyzing and understanding the atmospheric and environmental dynamics within this region over a specified period.

2.3 Copernicus Atmosphere Monitoring Service (CAMS) near-real-time data

Surface reflectance can only be calculated for pixels that are classified as clear in the CLD data and when both AOD and TCO data are available. However, the processing method for pixel quality in the GEMS AOD product differs from that of other products, which can result in missing calculations in certain areas, even in clear skies. To address this issue, we used additional AOD from the Copernicus Atmospheric Monitoring Service (CAMS). The CAMS AOD data were available in a daily, 0.25-degree grid format provided by the European Center for Medium-Range Weather Forecasts (ECMWF). When a pixel was classified as clear in the CLD algorithm but lacked in GEMS AOD data, interpolation was performed using the CAMS AOD.

2.4 Radiometric Calibration Network (RadCalNet) ground measurement data: For validation

Radiometric Calibration Network (RadCalNet), an acronym for radiometric calibration networks, serves as a pivotal resource for Earth observation satellites by measuring and furnishing land surface reflectance values at five strategically positioned

measurement points worldwide (Bouvet et al., 2019). The primary objective of RadCalNet is to facilitate the calibration process, and it has already been proven to be instrumental in validating ground reflectance data for prominent satellites, such as Landsat (Voskanian et al., 2023) and Sentinel (Gao et al., 2021). The land surface reflectance data provided by RadCalNet encompassed surface reflectance observed at 10 nm wavelength intervals ranging from 400 nm to 2500 nm at 30-min intervals spanning from 01:00 to 07:00 UTC. Among the five designated measurement sites, Baotou (BTCN) and Baotou Sand (BSCN) are located in the Baotou region of China and fall within the coverage area of the GEMS satellite. Because the BTCN is primarily used for calibrating high-resolution optical satellite imagery, the BSCN, which is located in a desert area, was used for validation in this study. Consequently, for this study, data from the BSCN site were meticulously collected and employed to verify ground reflectance, contributing to the robustness of the research findings.

3 Background Surface Reflectance (BSR) retrieval algorithm

Figure 1 depicts a comprehensive flow chart of the BSR retrieval algorithm, which comprises two primary steps: (1) atmospheric correction and (2) BRDF modeling and BSR retrieval. The Top-Of-Canopy (TOC) reflectance from GEMS represents the actual surface reflectance derived through atmospheric correction when AOD, CLD, and O3T products are available. To evaluate the applicability of the BSR derived in this study, validations were performed against the GEMS TOC data as reference data. Additionally, a comparison was made with the LER data generated using the minimum reflectance method which is used for a variety of LER datasets (Kleipool et al. (2008); Koelemeijer et al. (2003); Tilstra et al. (2017)) and was first introduced in the work of Eck et al. (1987). Both GEMS BSR and LER were validated against the GEMS TOC data to compare their accuracy, followed by a direct comparison between BSR and LER. The detailed methodology and underlying assumptions are provided in the subsequent subsections.

3.1 Atmospheric correction

Atmospheric correction plays a pivotal role in satellite remote sensing by rectifying distortions caused by atmospheric effects, which can vary based on different geometries and atmospheric conditions. These atmospheric effects introduce significant uncertainties when the Earth's surface is observed using satellite imagery. Thus, atmospheric correction is crucial for accurately determining surface reflectance. In most satellite data-processing methods, atmospheric correction is achieved using Radiative Transfer Models (RTMs). Top-Of-Atmosphere (TOA) reflectance can be calculated using the atmospheric correction coefficients derived from the RTM, it is possible to calculate the TOC reflectance from the TOA reflectance. The Second Simulation of the Satellite Signal in the Solar Spectrum Vector (6SV) RTM (Vermeote et al., 2006) was employed for atmospheric correction, which was utilized in MODIS, the Visible Infrared Imaging Radiometer Suite (VIIRS) (Roger et al., 2016), and the Geostationary Operational Environmental Satellite (GOES) (Peng et al., 2020) data. The 6SV RTM divides the wavelength into intervals of 2.5 nm and computes the scattering and absorption effects in the atmosphere caused by aerosols and their geometric components. By employing the three atmospheric correction coefficients (x_{ap} , x_b , and x_c) derived from the 6SV RTM, the TOC reflectance can be calculated from the TOA reflectance. The surface reflectance was then calculated from the TOA reflectance, as expressed

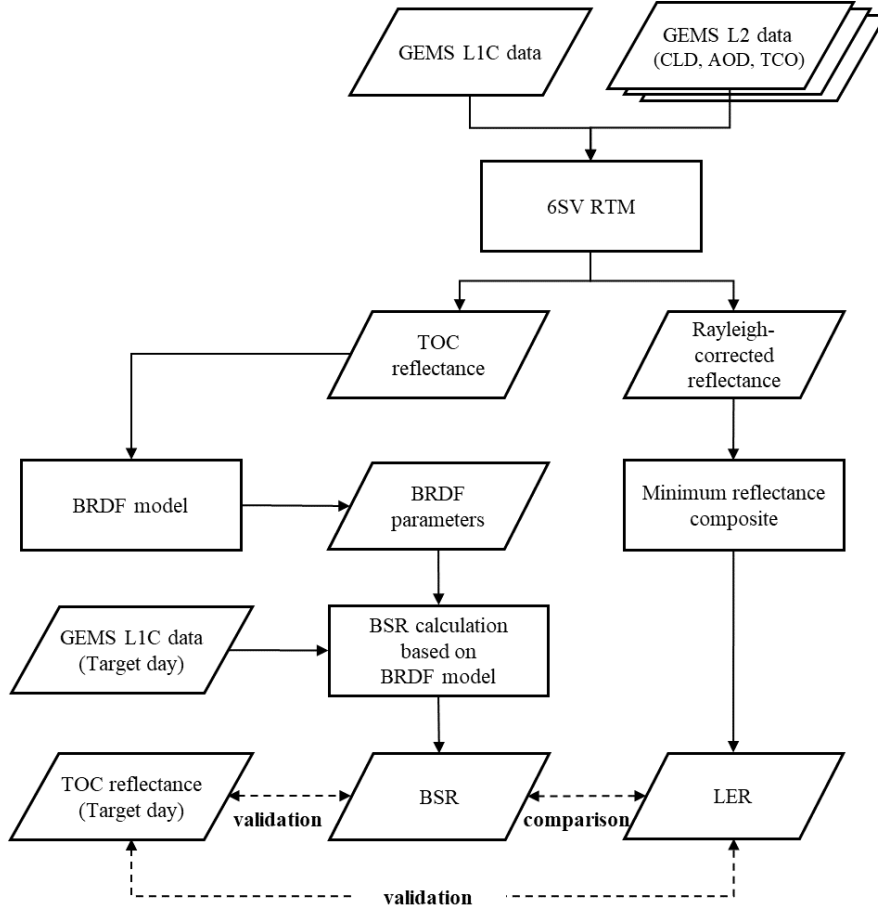


Figure 1. Flowchart of GEMS BSR algorithm

in Equation (1). The atmospheric correction coefficients xap , xb , and xc can be computed using Equations (2), (3), and (4), where they represent the inverse of the transmittance, scattering term of the atmosphere, and spherical albedo, respectively. In these equations, $\rho_s(\theta_s, \theta_v, \phi)$, $\rho_A(\theta_s, \theta_v, \phi)$, θ_s , θ_v , ϕ , $T^\uparrow(\theta_s)$, $T^\downarrow(\theta_v)$, T_g , and S denote TOC reflectance, TOA reflectance, the Solar Zenith Angle (SZA), Viewing Zenith Angle (VZA), and Relative Azimuth Angle (RAA), atmospheric transmittance (sun to target), atmospheric transmittance (target to sun), total gas transmittance, and spherical albedo, respectively.

$$\rho_s(\theta_s, \theta_v, \phi) = \frac{xap \cdot \rho_A(\theta_s, \theta_v, \phi) - xb}{1 + xc(xap \cdot \rho_A(\theta_s, \theta_v, \phi) - xb)} \quad (1)$$

$$xap = \frac{1}{T_g(\theta_s, \theta_v) T^\uparrow(\theta_s) T^\downarrow(\theta_v)} \quad (2)$$

$$xb = \frac{\rho_a(\theta_s, \theta_v, \phi)}{T^\uparrow(\theta_s)T^\downarrow(\theta_v)} \quad (3)$$

$$xc = S \quad (4)$$

195 Although the RTM offers high accuracy in surface reflectance calculations, its computational complexity and time requirements are significant. To address this challenge, surface reflectance algorithms often use pre-simulated lookup tables (LUTs) generated using RTMs under various conditions. During LUT configuration, careful selection of input variables is crucial, as they directly impact the accuracy of atmospheric correction and surface reflectance calculations. In alignment with the characteristics of the GEMS, six input variables were chosen for LUT construction: SZA, VZA, RAA, TCO, AOD, and terrain height. Table 1
 200 outlines the range and intervals of these input variables for LUT construction with reference to previous studies on LUT-based surface reflectance calculations (Peng et al., 2020; Lee et al., 2020). Nevertheless, even with detailed interval adjustments, rapid changes at high angles can lead to discontinuities and degradation of the surface reflectance. Therefore, to ensure smooth and accurate results when calculating the surface reflectance based on the LUT, real-time interpolation was performed for all input components (SZA, VZA, RAA, TCO, AOD, and terrain height).

Table 1. 6SV-based LUT input variables and its interval

Input parameter (unit)	Min	Max	Increment
SZA (degree)	0	80	0-70(5), 70-80(2)
VZA (degree)	0	80	5
RAA (degree)	0	180	10
TCO (DU)	250	350	50
Terrain height (km)	0	3.5	0.5
AOD	0.01, 0.05, 0.1, 0.15, 0.2, 0.3, 0.4, 0.6, 0.8, 1.0, 1.5		
Aerosol type	Continental		

205 3.2 BSR retrieval through BRDF modeling

The computation of surface reflectance through atmospheric correction presents a significant limitation: its effectiveness is restricted to cloud-free regions and is influenced by the observational geometry at the time of measurement. Consequently, there is a critical need for a methodology capable of simulating the surface reflectance across diverse angular conditions to accurately compute the BSR. Thus, prior studies that required the simulation of surface reflectance at various angles, such as

210 albedo calculations, have characterized the anisotropic properties of surfaces by utilizing the BRDF model (Gao et al., 2003; Wen et al., 2018). BRDF models can be classified into three categories: physical, empirical, and semi-empirical. Although a physical model can express the inherent physical meaning of each parameter mathematically, its versatility is limited because of its computationally intensive nature. The empirical model utilizes observation-based empirical formulas, making it suitable for situations with limited observations; however, it requires a substantial number of observations and does not elucidate the
215 underlying physical background. Consequently, semi-empirical BRDF models are widely employed in satellite remote sensing.

In this algorithm, the semi-empirical Roujean Bidirectional Reflectance Distribution Function (BRDF) model (Roujean et al., 1992) was utilized for BRDF modeling. The Roujean BRDF model defines surface reflectance as a combination of isotropic, geometric, and volumetric scattering components. It comprises two physical kernels (f_1 and f_2) and three empirical coefficients (K_0, K_1, K_2 ; BRDF parameters) that describe the mechanism of each component, as shown in Equation 5. The two physical
220 kernels of the Roujean BRDF model were defined under the assumption of irregularly spaced rectangular protrusions on a flat ground surface, neglecting all shadow interactions. The two physical kernels are calculated based on the angular component at the time of the observation (formulas are detailed in Roujean et al. (1992)).

$$R(\theta_s, \theta_v, \phi) = K_0 + K_1 \cdot f_1(\theta_s, \theta_v, \phi) + K_2 \cdot f_2(\theta_s, \theta_v, \phi) \quad (5)$$

The observed surface reflectance can be decomposed into two kernels and three variables, as described by Equation 5. Since
225 the two kernels can be computed from the angular components, the BRDF parameters which characterize the anisotropic reflection based on multiple observations collected over a synthesis period can be calculated using the method of least squares. This method assumes a relatively stable anisotropic reflection behavior of the surface over short periods in the absence of significant disturbances such as forest fires or floods. Therefore, these variables can be applied within a short timeframe, enabling the simulation of surface reflectance under clear-sky conditions across all angular configurations within the target
230 scene. Consequently, once the BRDF parameters are computed, by providing solely on the angular component of the observed target scene, the BSR at any angle can be simulated.

In this algorithm, the "target scene" refers to the day following the completion of BRDF synthesis. Figure 2 illustrates the synthesis period of 15 days and the retrieval cycle used for BRDF modeling in the algorithm. The BRDF synthesis period spans 15 days and encompasses all observed hourly data within this timeframe. This enabled the resulting BRDF composites to be
235 applied to the subsequent day, allowing for the simulation of hourly BSR based solely on the angular components observed the following day. These BRDFs were generated in a daily cycle, with the synthesis period shifted by one day. This methodology enables comprehensive reconstruction of the surface reflection characteristics at various angles, offering valuable insights into the directional reflection behavior of the surface.

Insufficient observations lead to uncalculated BRDF parameters, resulting in missing BSR values, which are crucial for other
240 L2 algorithms. To address this, a gap-filling process was implemented, utilizing the "Age" variable in BRDF modeling. This method uses previously calculated BRDF parameters up to 5 days of age to fill gaps when current parameters are unavailable. In this process, the Age variable was defined and utilized, indicating how many days old the BRDF parameters used for gap-filling

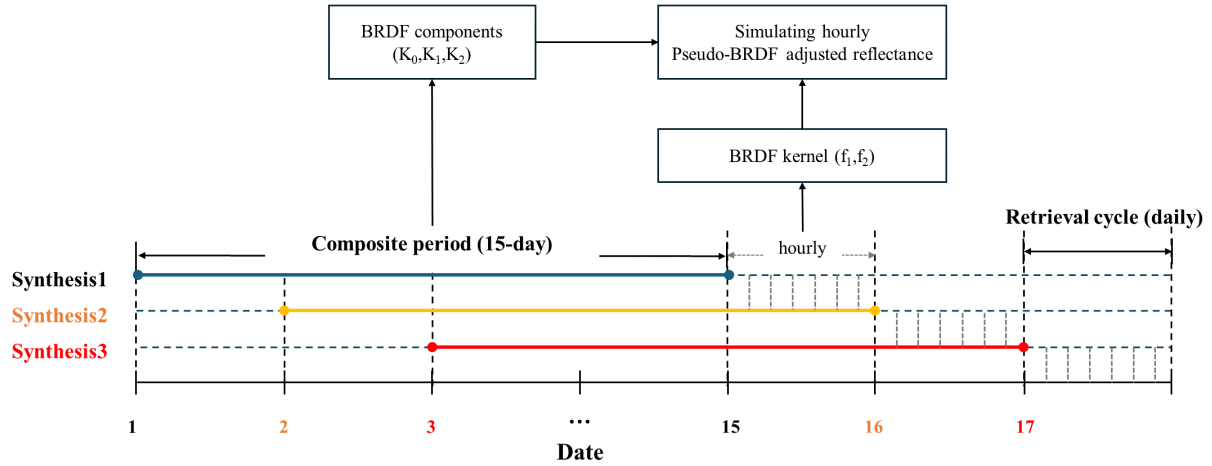


Figure 2. Schematic of 15-day composite period and retrieval cycle for BRDF modeling

are. For example, if BRDF parameters from 3 days ago are used, the Age variable is assigned a value of 3. If the next day also BRDF parameters are not be calculated, and uses the same date's BRDF parameters, the Age variable is assigned a value of 4. Conversely, if new BRDF parameters are calculated, the Age variable is reset to 0. If the Age variable exceeds 5, the parameters are no longer used. To summarize, the Age variable indicates the number of days since the last valid BRDF calculation, reset to 0 after 5 days, or upon the BRDF parameter is calculated.

3.3 GEMS LER assumption

The GEMS LER was derived from the Rayleigh-corrected reflectance, which was computed by assuming a Rayleigh atmosphere to eliminate aerosol effects during atmospheric correction. This calculation utilized the same LUT as the TOC reflectance calculation with the AOD set to zero. It was assumed that the formulas for calculating the LER and 6SV-based atmospheric corrections were nearly identical. Equations 6 and 7 summarize these formulas, where ρ_{6SV} and ρ_{LER} represent the 6SV-based TOC and LER calculation formulas (Kleipool et al., 2008), respectively. In this study, ρ_{6SV} was designated as the Rayleigh-corrected reflectance for the scene. The "GEMS LER" was determined to be the minimum reflectance over a 15-day period to match the BRDF synthesis period. A 15-day synthesis period was also found by Park et al. (2023) to be an effective balance between minimizing cloud contamination and maintaining consistent surface reflectance in the application of the minimum reflectance method. The resulting GEMS LER was used for additional gap filling in cases where the GEMS BSR was consistently missing despite utilizing the age variable.

$$\rho_{6sv} = \frac{\rho'_s}{1 + \rho'_s S} \quad \text{with} \quad \rho'_s = \frac{\rho_A(\theta_s, \theta_v, \theta_\phi) - \rho_a(\theta_s, \theta_v, \theta_\phi)}{T^\downarrow(\theta_s) T^\uparrow(\theta_v)} \quad (6)$$

$$260 \quad \rho_{LER} = \frac{\rho_A(\theta_s, \theta_v, \theta_\phi) - \rho_a(\theta_s, \theta_v, \theta_\phi)}{T^\downarrow(\theta_s)T^\uparrow(\theta_v) + S(\rho_A(\theta_s, \theta_v, \theta_\phi) - \rho_a(\theta_s, \theta_v, \theta_\phi))} \quad (7)$$

4 Results

4.1 BSR validation with TOC reflectance

4.1.1 Quantitative validation of GEMS BSR and LER

The purpose of the BSR data was to simulate reflectance as similar as possible to the TOC reflectance calculated based on
 265 actual observation conditions in advance and use it as an input for other L2 products. Therefore, verification was performed by
 comparing the TOC calculated after the L2 products (CLD, AOD, and TCO) utilized for the TOC reflectance calculation were
 produced with the BSR simulated in advance as a reference value. We have produced TOC reflectance and BSR data for one
 year, from January 1 to December 31, 2021, and performed BSR verification based on these data.

The BSR validation was limited to instances of high quality, with the quality criteria defined based on the number of
 270 observations and RMSE during the BRDF modeling. The number of observations refers to the number of valid pixels used within
 the same pixel for BRDF modeling, whereas the BRDF RMSE signifies the RMSE between the actual observed reflectance
 and simulated reflectance. In this context, the simulated reflectance represents the value that emulates the reflectance back to
 the angular component of the actual observation condition based on the BRDF parameters derived through BRDF modeling.
 The GK-2A AMI albedo product establishes the standard for good quality BSR, requiring seven or more observations and a
 275 BRDF RMSE of 0.07 or lower (Lee et al., 2020). In addition, MODIS Albedo considers an RMSE value within 10 % of the
 channel-specific reflectance distribution as indicative of good quality (Román et al., 2013). Consequently, the BSR quality
 criterion in this study was defined as requiring seven or more observations and a BRDF RMSE of 0.03 or lower, given that the
 GEMS 440 nm BSR typically reaches a maximum value of 0.3. All subsequent quantitative analyses were conducted exclusively
 using good-quality data.

280 Figure 3 presents a comparison between GEMS BSR and GEMS LER using the GEMS TOC reflectance as a reference,
 encompassing all hourly data from January to December 2021. The comparison revealed that the GEMS BSR simulated the
 TOC values more closely than the GEMS LER. To quantify this comparison, we evaluated the RMSE, relative-RMSE (rRMSE),
 and bias. The rRMSE was computed by dividing the RMSE by the average reference data value, which served as an indicator of
 overall relative accuracy. For the GEMS BSR, the RMSE was 0.015, rRMSE was 19.38 %, and bias was 0.002. Conversely, for
 285 GEMS LER, the RMSE was 0.017, the rRMSE was 22.17 %, and the bias was -0.009. These results suggest that the GEMS BSR
 exhibited a lower rRMSE of 3 % and a lower bias value of 0.007 (based on the absolute value), indicating superior simulation
 performance compared to the minimum reflectance.

Table 2 presents a quantitative comparison between GEMS BSR and LER for each season. The seasons are represented as
 DJF, MAM, JJA, and SON, corresponding to December-January-February, March-April-May, June-July-August, and September-
 290 October-November, respectively, and denote winter, spring, summer, and fall, respectively. The RMSE, rRMSE, and bias values

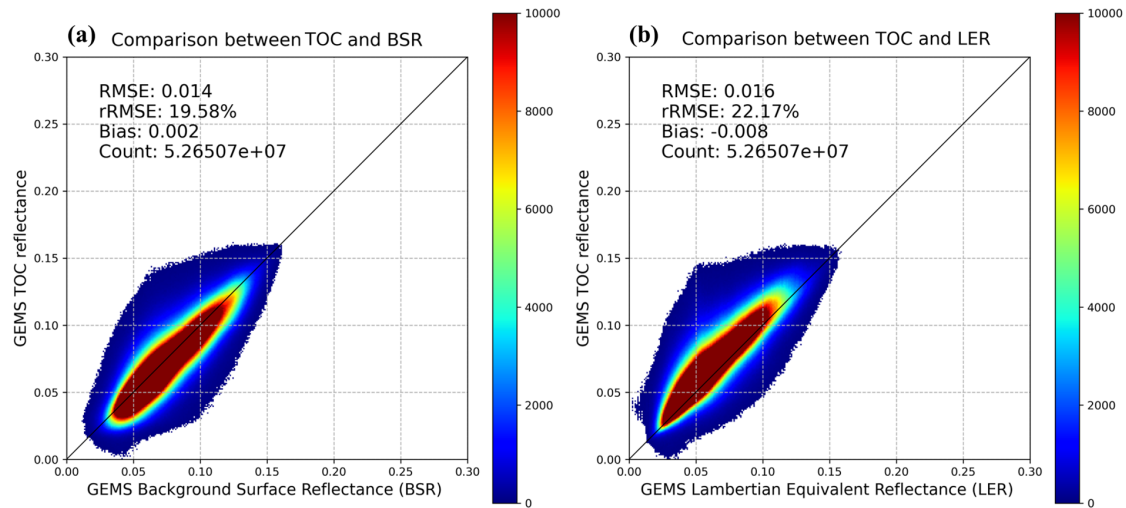


Figure 3. Assessment of GEMS BSR and LER accuracy relative to GEMS TOC reflectance

Table 2. Seasonal quantitative comparison of GEMS BSR and LER with GEMS TOC reflectance as reference (DJF means December-January-February, MAM means March-April-May, JJA means June-July-August and SON means September-October-November)

period	DJF		MAM		JJA		SON	
Reflectance data	BSR	LER	BSR	LER	BSR	LER	BSR	LER
RMSE	0.012	0.013	0.016	0.017	0.017	0.019	0.012	0.013
rRMSE(%)	18.89	21.9	20.5	20.85	21.73	24.16	18.19	20.08
Bias	-0.002	-0.006	0.007	-0.009	0.004	-0.009	-0.002	-0.007

for BSR are 0.012, 0.016, 0.017, and 0.012 for RMSE; 18.89, 20.5, 21.73 and 18.19 % for rRMSE; and -0.002, 0.007, 0.004, and -0.002 for bias, respectively, in the order of winter, spring, summer, and fall. For the GEMS LER, the RMSE values were 0.013, 0.017, 0.019, and 0.013, respectively; the rRMSE values were 21.9, 20.85, 24.16, and 20.08 %, respectively; and the bias values were -0.006, -0.009, -0.009, and -0.007 for each season, respectively. BSR exhibited lower RMSE, rRMSE, and bias values than LER, indicating the superior simulation performance of BSR in all seasons. Both data sources show the highest RMSE in summer compared to the other seasons. However, the difference in rRMSE compared to RMSE did not change much across the seasons because the reflectance in winter and fall was relatively lower than that spring and summer.

4.1.2 Qualitative validation of GEMS BSR and LER

After completing the quantitative analysis, we conducted a qualitative comparison between the GEMS TOC, BSR, and LER to evaluate their spatial distribution. Figure 4 illustrates this qualitative analysis, with each row displaying the GEMS TOC,

BSR, LER, and the difference between BSR and LER relative to TOC for the same date and time. Subfigures (a)–(d) in Figure 4 represent the calculations for February 20 at 0245 UTC, May 1 at 0345 UTC, August 9 at 0245 UTC, and November 10, 2021, at 0545 UTC.

305 TOC reflectance is applicable only under clear-sky conditions and can be computed only in areas where all necessary inputs, such as AOD and TCO, are available, resulting in numerous areas with missing data. The difference between the BSR and LER data in terms of TOC was examined only for areas where the GEMS TOC was calculated. For BSR, a mixed trend of underestimation and overestimation was observed; however, in July, most areas exhibited higher reflectance than TOC. In contrast, the LER showed a consistent trend of underestimation in most areas, except for October, which aligns with our expectations. However, in October, LER exhibited a similar trend to BSR, but with a stronger magnitude, indicating that even
310 applying minimum reflectance can result in higher values than those from BRDF modeling. This again highlights the importance of considering the BRDF when calculating land surface reflectance.

A qualitative analysis was also conducted between the BSR and LER for areas where TOC reflectance was not calculated. The greatest difference between the two sources was observed in July (summer), compared with the spring, summer, and fall results in February, April, and October, respectively. In July, the LER consistently simulated lower reflectance than the BSR
315 across the entire region, particularly in the central and eastern parts of the country. These areas experience frequent cloud cover and fog throughout the year, making it challenging to obtain clear-sky pixel counts during all seasons. However, this challenge is exacerbated in summer months when clouds are more prevalent. If clouds are not detected in the cloud product, high reflectance can be inputted into the BRDF model and mistakenly interpreted as clear-sky reflectance, leading to simulation errors. Conversely, the minimum reflectance technique tends to adopt the lowest reflectance value during the synthesis period,
320 even in the presence of clouds and shadows, resulting in a lower reflectance.

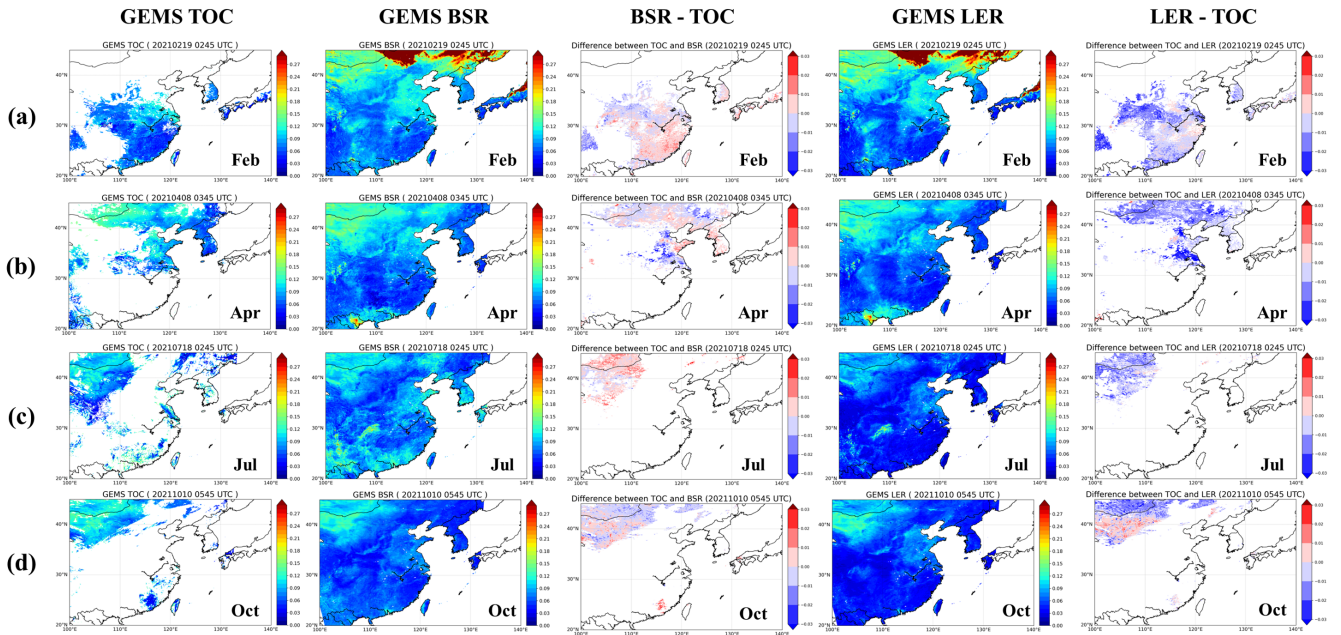


Figure 4. Qualitative comparison of GEMS TOC, BSR, and LER. (a) GEMS TOC; (b) GEMS BSR; (c) difference between BSR and TOC; (d) GEMS LER; (e) difference between LER and TOC.

4.2 Analyzing surface reflectance variation across land types

4.2.1 Time series consistency analysis by land types

To assess the simulation performance based on the time series of the BSR, we analyzed the time series stability across four land types (grassland, cropland, shrubland, and urban) using MODIS land cover data. The dataset utilized in this study is derived from the MODIS/Terra+Aqua Land Cover Type Yearly L3 Global 0.05Deg CMG V061 (MCD12C1) product (Strahler et al., 1994). The classification follows the International Geosphere-Biosphere Programme (IGBP) scheme within the MODIS Land cover dataset. Specifically, we employed the land cover data from the year 2021. Figure 5 illustrates the time series of GEMS TOC, BSR, and LER analyzed for each land type, where subfigures (a)–(d) correspond to grassland, cropland, shrubland, and urban areas, respectively. These values were averaged over all good-quality pixels for each land type based on MODIS land cover. In this analysis, the LER was excluded if it did not meet the criteria for good-quality BSR to mitigate the impact of clouds.

The blue squares in Figure 5 represent the reference TOC values, green circles represent the LER values, and red circles represent the BSR values. The analysis indicated that for all four land types, both BSR and LER exhibited stable time-series distributions, mirroring the TOC trend. However, when compared with the TOC distribution, the BSR appeared to track the trend slightly better than the LER across all land types. This was most evident between May and October, as LER consistently simulated a lower reflectance than TOC. In addition, in the shrublands during this period, LER tended to consistently adopt nearly identical values, whereas TOC and BSR showed variability in reflectance.

However, for grassland, the trend was opposite to that of LER, with BSR consistently simulating a higher reflectance than TOC during the summer months. While there was a clear tendency for the BSR to simulate higher reflectance, this was similar to the observed range of the TOC reflectance distribution and was not considered a significant error. Therefore, this analysis
340 confirms that the BSR tends to follow the TOC reflectance more reliably than the LER over time.

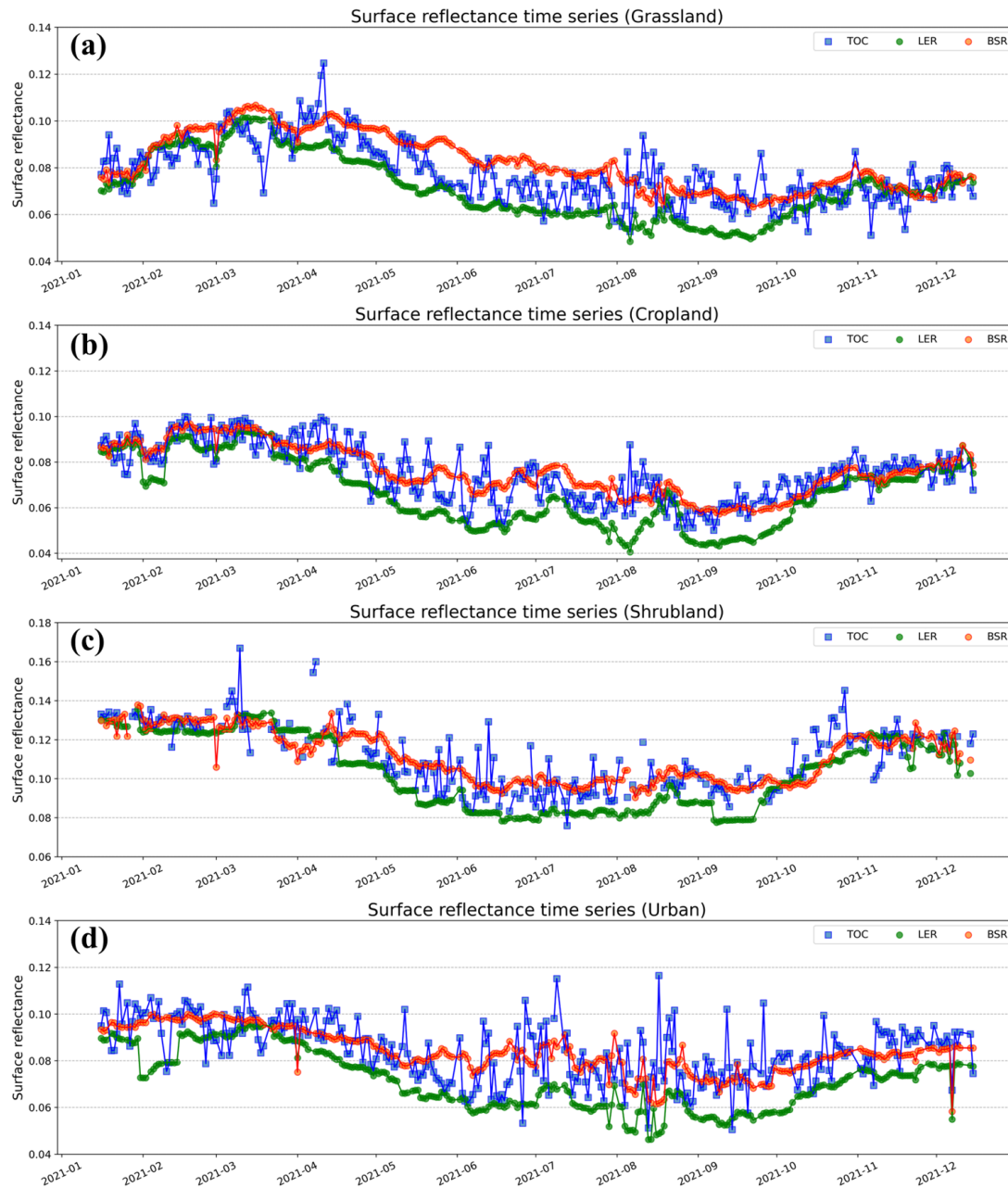


Figure 5. Time series distribution of TOC, BSR, and LER by land type. (a) Grassland; (b) Cropland; (c) Shrubland; (d) Urban

4.2.2 Surface reflectance influence on AOD variability in cropland and urban areas

(Li et al., 2012) provided quantitative figures for the variability of the AOD output with reflectance changes in the blue channel. The analysis focused on different AOD ranges ($AOD < 0.4$, $0.4 < AOD < 0.8$, $0.8 < AOD < 1.2$, $1.2 < AOD < 1.6$, $1.6 < AOD < 2.0$) according to the degree of ground reflectance change (ranging from 0.001 to 0.05). To quantitatively evaluate the advantage of
345 BSR over LER in terms of AOD, we reanalyzed the results of (Li et al., 2012) using the findings of this study. The analysis was limited to the AOD value is 0.4, and the variability was analyzed and converted into percent error using a quadratic regression equation based on the change in AOD value corresponding to the change in ground surface reflectance as presented in the study. In this context, the amount of AOD change refers to the difference in AOD values when using BSR and LER data compared to when using TOC, assuming that the AOD output value when using TOC is 0.4. The percent error of AOD can be calculated using
350 Equation 8, where $AOD_{reference}$ is the AOD value when using TOC (AOD is fixed at 0.4 in this study) and $AOD_{observed}$ is the AOD value when using BSR and LER. However, as Li's study only analyzed urban and rural areas in China, it also focused on cropland and urban land types.

$$Percenterror_{AOD} = \frac{AOD_{observed} - AOD_{reference}}{AOD_{reference}} * 100 \quad (8)$$

Figure 6 presents the seasonal RMSE, bias, and AOD percent error results, with Figures 6(a) and 6(b) representing the results
355 for cropland and urban areas, respectively. In each figure, the first to third columns denote the RMSE, bias, and AOD percentage error based on TOC, respectively. Both RMSE and bias values were expressed by multiplying the calculated value by 100. Throughout all seasons, BSR consistently exhibited lower RMSE and bias values than LER. LER tended to show a negative bias, whereas BSR showed a positive bias. Interestingly, both datasets demonstrated high RMSE values in summer, with the BSR tending to overestimate and the LER tending to underestimate. This inverse behavior is in line with the trends observed in the
360 previous time-series graphs. Specifically, in the cropland and urban areas, the BSR maintained a low bias of 0.0022 or less, except in summer. In contrast, LER exhibited a negative bias of more than 0.084 in most cases, except in winter in the croplands.

Analysis of the AOD percent error revealed that LER exhibited higher error values than BSR across all seasons. Due to the high RMSE values observed in summer for both datasets, the AOD percentage error also tended to increase during this season. However, excluding summer, BSR consistently demonstrated better AOD percentage error values than LER, with improvements
365 of up to 7.4% in spring for croplands, and 10.9% in winter for urban areas. These findings suggest that the BSR has the potential to generate more stable AOD outputs than the LER.

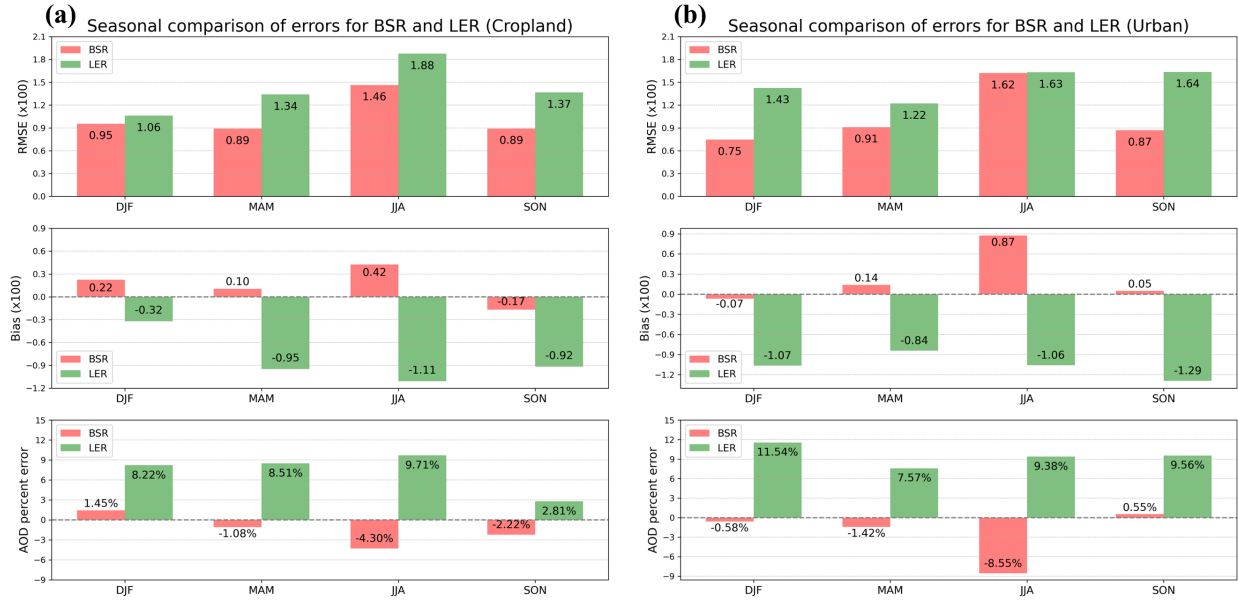


Figure 6. RMSE and bias in cropland and urban by season, and the resulting AOD percent error. (a) Cropland; (b) Urban

4.3 Accuracy evaluation using ground measurements

To conduct a thorough and precise validation of GEMS BSR, comparisons and validations were performed using RadCalNet ground observations. RadCalNet data utilized ground reflectance observations from the BSCN sites, and only data within 15 min of the observation time were used because of the sensitivity of ground reflectance to temporal changes. In addition, various LER databases currently available in the field were used for verification to assess the performance of the BSR. These include the OMI LER, GLER, TROPOMI DLER, GOME-2 LER, and SCIAMACHY LER. OMI GLER and DLER considered surface BRDF effects and conducted observations over the study area, mostly between 03:00 and 05:00 UTC. Therefore, the validation was limited to data from 03:45-05:45 UTC based on RadCalNet. For TROPOMI DLER, the BRDF effect on the viewing geometry can be accounted for using four coefficients. These coefficients can be derived from the LER and converted into the DLER using the following formula 9: For comparison and validation, the GEMS VZA at 0445 UTC was multiplied by the corresponding coefficients to calculate the TROPOMI DLER. θ_v in the formula is the GEMS VZA and from c_0 to c_4 are the TROPOMI DLER coefficients.

$$\rho_{DLER} = \rho_{LER} + c_0 + c_1 \cdot \theta_v + c_2 \cdot \theta_v^2 + c_3 \cdot \theta_v^3 \quad (9)$$

Figure 7 illustrates the results of the validation of the LER databases, including the GEMS BSR, based on RadCalNet observations. Figure 7(a) compares OMI GLER, TROPOMI DLER, and GEMS BSR with the RadCalNet data, whereas Figure 7(b) compares OMI, GOME-2, SCIAMACHY LER, and GEMS BSR. The RMSE, rRMSE, and bias between each dataset and RadCalNet are presented in Table 3. The analysis revealed that the RMSE of OMI GLER, TROPOMI DLER, and GEMS

BSR were 0.018, 0.009, and 0.007, respectively, with rRMSE values of 21.42, 10.57, and 8.59 %, and bias values of -0.008, -0.006, and 0.001, respectively. These results indicate that the GEMS BSR is more accurate than the OMI GLER and TROPOMI DLER in terms of RMSE, rRMSE, and bias, with an 13 % improvement over the OMI GLER and 2 % improvement over the TROPOMI DLER based on the rRMSE.

Furthermore, OMI GLER exhibited a significantly wider distribution than the RadCalNet reflectance occurrence range, whereas TROPOMI DLER had almost the same reflectance adopted multiple times. This suggests that similar DLER values were calculated multiple times in the same month because of the nature of the LER database data, as the GEMS satellite is geostationary and the VZA varies little at the same observation time. Similar trends were observed when comparing the three LER databases (OMI, GOME-2, and SCIAMACHY), with RMSE values of 0.025, 0.013, 0.014, rRMSE values of 29.82, 16.2, 16.81 %, and bias values of -0.024, -0.012, -0.01, respectively.

In conclusion, considering BRDF effects, such as BSR, GLER, and DLER, rather than utilizing LER databases for alternative land surface reflectance calculations, can provide more realistic reflectance simulations, with GEMS BSR demonstrating the best performance among the six sources analyzed.

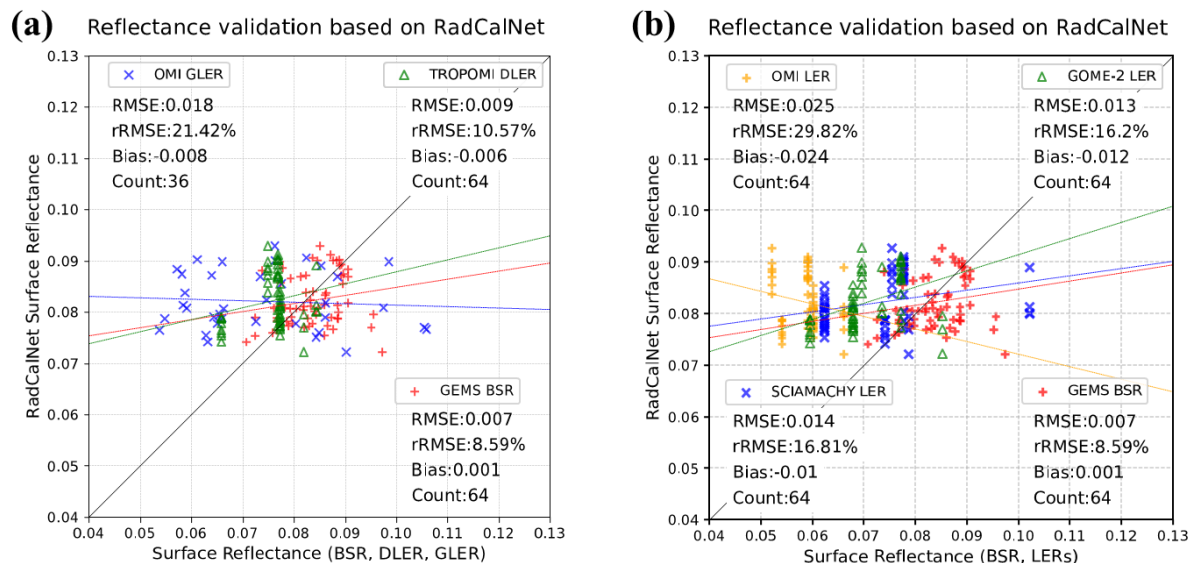


Figure 7. Validation of surface reflectance databases using RadCalNet observations. (a) Validation of OMI GLER, TROPOMI DLER and GEMS BSR; (b) Validation of OMI LER, GOME-2 LER, SCIAMACHY LER, and GEMS BSR.

Table 3. GEMS BSR and LER database accuracy evaluation based on RadCalNet ground observation data

Data	GEMS BSR	OMI GLER	TROPOMI DLER	OMI LER	GOME-2 LER	SCIAMACHY LER
RMSE	0.007	0.018	0.009	0.025	0.013	0.014
rRMSE(%)	8.59	21.42	10.57	29.82	16.2	16.81
Bias	0.001	-0.008	-0.006	-0.024	-0.012	-0.01

4.4 Intercomparison between GEMS BSR and LER database (OMI GLER, TROPOMI DLER)

TROPOMI and OMI performed observations between 0345 and 0545 UTC during GEMS observations in the study area, with the largest number of observations occurring at 0445 UTC. Therefore, a comparison of the GEMS BSR with the DLER and
 400 GLER was conducted at 0445 UTC. Consistent with the analysis in the previous section, OMI GLER was calculated using only the data within 15 min of the GEMS observations, whereas TROPOMI DLER was calculated using GEMS VZA. Figure 8 compares GEMS TOC with GEMS BSR, TROPOMI DLER, and OMI GLER. Figure 9 presents the intercomparison between BSR and OMI GLER, as well as BSR and TROPOMI DLER.

Compared to GEMS TOC, BSR, DLER, and GLER were 17.78, 22.32, and 41.51 % based on the rRMSE, with biases of
 405 0.003, -0.002, and -0.025, respectively. The GEMS BSR tended to exhibit a positive bias, whereas the DLER and GLER tended to display a negative bias. When analyzing the graph distribution, we observed a significant clustering of values below 0.05 in the OMI GLER data. Owing to the inherent differences in assumptions between the GLER and DLER databases and BSR, direct quality verification through comparison is challenging. However, this suggests that the BSR is capable of simulating reflectance that closely aligns with TOC reflectance, indicating its potential for realistic reflectance simulation.

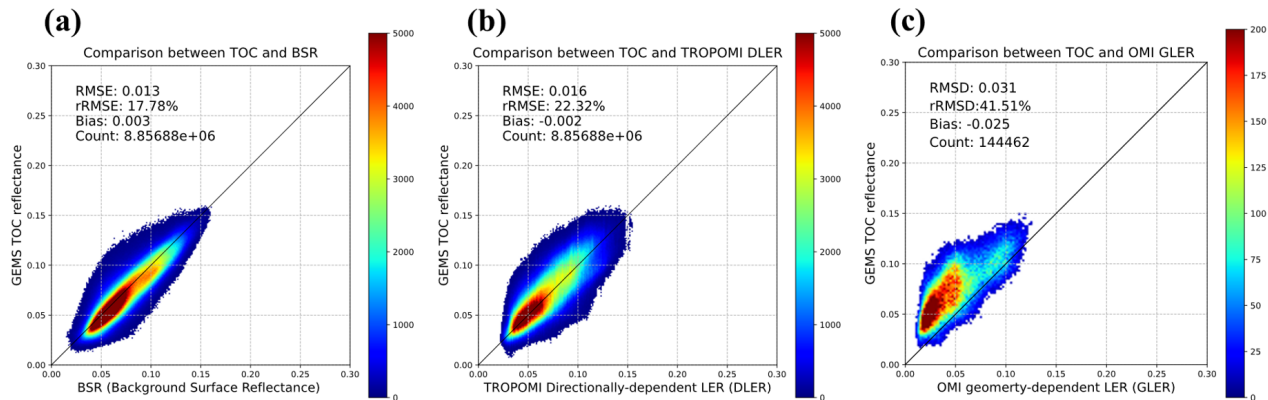


Figure 8. Distribution density plot of GEMS BSR, TROPOMI DLER, and OMI GLER based on GEMS TOC observations. (a) GEMS BSR; (b) TROPOMI DLER; (c) OMI GLER

410 Figure 9 shows a density plot and histogram comparing BSR with OMI GLER and TROPOMI DLER. Subfigures (a) and (c) show a comparison with GLER, whereas (b) and (d) show a comparison with DLER. The correlation coefficient (R) for GLER was 0.7, with a root mean square difference (RMSD) of 0.035 and a bias of 0.028. For DLER, R, RMSD, and bias were 0.81, 0.017, and 0.006, respectively, indicating a strong positive correlation for both data sources. The histograms reveal that the distributions of the DLER and BSR values are quite similar, whereas GLER is more concentrated at low ground reflectance
 415 than BSR. This suggests that BSR yields results that are more akin to those of DLER than those of GLER. Although the BSR showed relatively high values when the GLER and DLER were near 0.05 in the density plot distribution, it was not considered a significant error owing to its small magnitude.

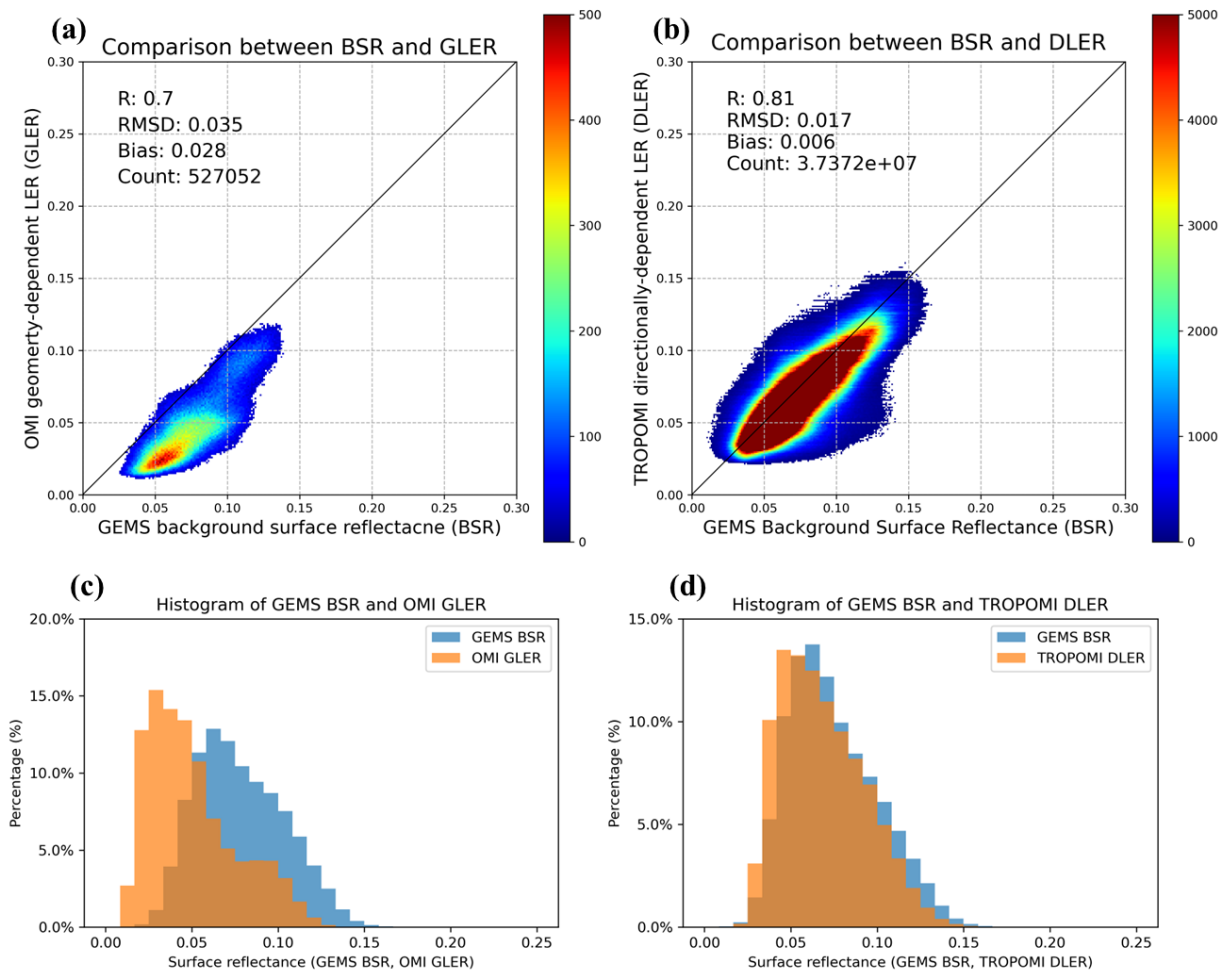


Figure 9. Quantitative comparison of GEMS BSR, TROPOMI DLER, and OMI GLER value distributions (a) Density plot of BSR and GLER; (b) Density plot of BSR and DLER; (c) Histogram of BSR and GLER; (d) Histogram of BSR and DLER

Figure 10 presents a qualitative comparison of the reflectances of GEMS BSR, TROPOMI DLER, and OMI GLER. The columns represent BSR, DLER, and GLER from left to right, and rows (a)–(c) represent dates 2021.03.26, 2021.06.23, and 2021.09.23, respectively. From the qualitative comparison, we can see that BSR and DLER have fairly similar distributions of values, whereas GLER tends to produce relatively low reflectance values in China compared with the other two datasets. However, as mentioned in the previous analysis, the BSR simulates a slightly higher reflectance during the summer months, with its values being relatively higher than those of the other dates. However, all three datasets had very similar distributions, albeit with slight differences in their absolute values. This analysis provides further evidence that the BSR effectively simulates the reflectance properties of the ground surface, similar to the DLER and GLER.

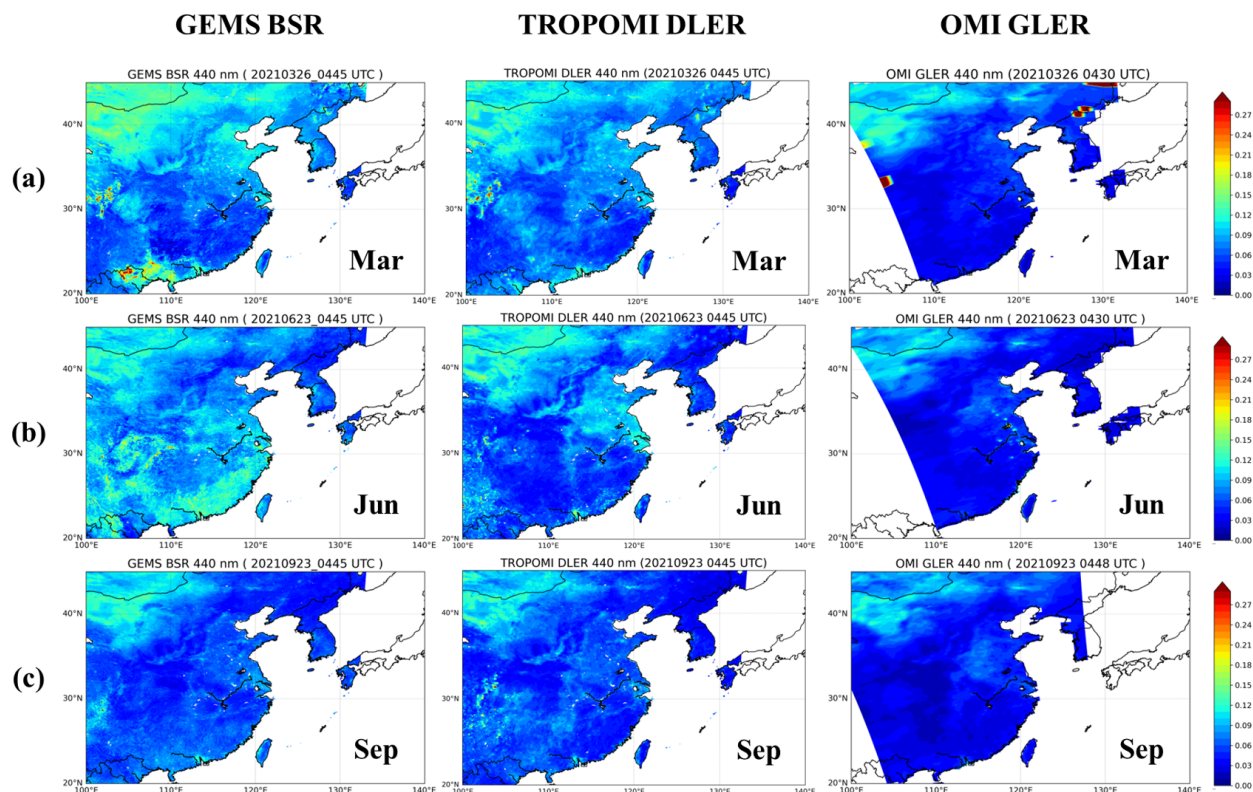


Figure 10. Qualitative comparison of GEMS BSR, TROPOMI DLER, and OMI GLER distributions in March, June, and September. The table rows correspond to GEMS BSR, TROPOMI DLER, and OMI GLER, in that order. (a) 2021.03.26; (b) 2021.06.23; (c) 2021.09.23

5 Conclusion and Discussion

This study represents the first practical application of BSR as an alternative output to resolve the output precedence dilemma between land surface reflectance and other L2 outputs applied to GEMS at 440 nm, evaluating its feasibility for operational

use. This concept, often referred to as BSR, involves a preliminary simulation of realistic ground reflectance before atmospheric
430 correction. This simulation was based on variables reflecting the BRDF effect on the ground surface calculated through BRDF
modeling. BSR overcomes the limitation of underestimating ground reflectance that may occur with the minimum reflectance
technique.

Various analytical methods were employed to evaluate the simulation performance of the BSR. The purpose of the BSR output
was to simulate the TOC reflectance more realistically in advance using the actual observed values required for atmospheric
435 corrections, such as CLD, AOD, and TCO. Therefore, TOC reflectance was used as a reference for evaluating the simulation
performance of the BSR. The simulation performance of the GEMS BSR was 3 % more accurate than that of the GEMS LER
data in terms of the rRMSE over the entire study period based on TOC. The bias was -0.007 for LER and 0.002 for BSR,
indicating an improvement in the underestimation of surface reflectance when BSR is applied.

The stability of the BSR calculation over time was also verified by analyzing the trend of the reflectance distribution according
440 to MODIS land cover. For the selected terrains (grassland, cropland, shrubland, and urban), the BSR tracked the TOC trend
better than the LER. In summer, a tendency for BSR to be overestimated compared to TOC was observed in grasslands. In
contrast, LER was significantly underestimated compared to BSR in all land types, especially between May and September,
confirming the temporal stability of the BSR.

Furthermore, after validation with TOC, comparison and validation were performed with other LER databases available in the
445 field based on ground observations from RadCalNet. The OMI, GOME-2, SCIAMACHY LER, OMI GLER, and TROPOMI
DLER data were used in the analysis. For the RadCalNet-based land surface reflectance validation, GEMS BSR exhibited the
best simulation performance among the six databases, with an rRMSE of 8.59 % and a bias of 0.001. When comparing the
results of OMI GLER and LER validation, OMI GLER had an rRMSE of 21.42 % and a bias of -0.008, while OMI LER had an
rRMSE of 29.82 % and a bias of -0.024. This indicates that accounting for surface BRDF effects in the calculation of ground
450 reflectance provides a more realistic reflectance simulation.

A comparison of GEMS BSR with TROPOMI DLER and OMI GLER based on TOC reflectance revealed that BSR tended to
exhibit a positive bias, whereas DLER and GLER tended to display a negative bias. Despite the challenges in directly verifying
the quality, the analysis suggests that BSR can simulate reflectance closely aligned with TOC reflectance, indicating its potential
for realistic reflectance simulation. Additionally, the comparison between DLER and GLER based on BSR showed strong
455 positive correlations, with BSR exhibiting distributions more similar to those of DLER. Overall, the BSR demonstrated the
capability to effectively simulate ground surface reflectance properties, similar to the DLER and GLER.

Although limitations exist, such as the challenge of capturing sudden changes in surface characteristics such as snow or
ice cover. And also, to enhance stability, we designed a method to use CAMS AOD data in the absence of GEMS AOD,
acknowledging the presence of some bias. Despite this limitation, we prioritized maintaining a stable dataset. Our research is
460 pioneering in its application to BRDF modeling and evaluation in hyperspectral observation satellite studies. We are committed
to further refining our approach and will strive to address these biases in future research to improve calculation accuracy.

In conclusion, our study demonstrated that BSR can effectively simulate realistic reflectance, surpassing the minimum
reflectance approach used in many existing studies. By combining the high temporal and spatial resolution of GLER with the

BRDF considerations of DLER, we laid the foundation for improved accuracy in the AQ output. Our findings suggest that the
465 utilization of BSR, a dataset reflecting realistic reflectance with BRDF effects, can enhance various climate analysis studies,
marking a significant advancement in the field.

Data availability. The data used in this study are accessible from the links below. GEMS Level-2 data (AERAOD, TCO, CLD) (<https://nesc.nier.go.kr/en/html/datasvc/index.do>); OMI/Aura Global Geometry-dependent surface LER (GLER)(https://disc.gsfc.nasa.gov/datasets/OMGLER_003/); TROPOMI directionally dependent Lambertian-equivalent reflectivity (DLER) (https://www.temis.nl/surface/albedo/tropomi_ler.php); OMI surface LER database (https://www.temis.nl/surface/albedo/omi_ler.php); SCIAMACHY surface LER database
470 (https://www.temis.nl/surface/albedo/scia_ler.php); GOME-2 surface LER database (https://www.temis.nl/surface/albedo/gome2_ler.php); CAMS global atmospheric composition forecasts dataset (<https://ads.atmosphere.copernicus.eu/>); RadCalNet data (<https://www.radcalnet.org/>)

Author contributions. S.S., and K-S.H. conceptualized and designed the study, collected and analyzed the data, and wrote the manuscript. S.C. and D.J. contributed to the study design, conducted the statistical analysis, and critically reviewed the manuscript. J.W., and H.K. assisted
475 in data interpretation and manuscript preparation. N.K., and S.P., provided expertise in experimental procedures and contributed to the data collection. U.J., and H.H. contributed to the study design and provided intellectual input throughout the research process. All authors read and approved the final manuscript.

Competing interests. No potential conflict of interest was reported by the authors.

Special issue statement. This article is part of the special issue “GEMS: first year in operation (AMT/ACP inter-journal SI)”. It is not
480 associated with a conference.

Financial support. This research was supported by a grant from the National Institute of Environmental Research (NIER), funded by the Korea Ministry of Environment (MOE) of the Republic of Korea (NIER-2023-04-02-050).

Acknowledgements. The all authors acknowledge the contribution of the NIER–ESC for providing GEMS data. The GEMS data used in this study were provided by the GEMS Algorithm Team for validation and improvement research purposes.

485 **References**

- Baek, K., Kim, J. H., Bak, J., Haffner, D. P., Kang, M., and Hong, H.: Evaluation of total ozone measurements from Geostationary Environmental Monitoring Spectrometer (GEMS), *Atmospheric Measurement Techniques*, 16, 5461–5478, 2023.
- Bouvet, M., Thome, K., Berthelot, B., Bialek, A., Czapla-Myers, J., Fox, N. P., Goryl, P., Henry, P., Ma, L., Marcq, S., et al.: RadCalNet: A radiometric calibration network for Earth observing imagers operating in the visible to shortwave infrared spectral range, *Remote Sensing*, 11, 2401, 2019.
- 490 Chen, L., Wang, R., Han, J., and Zha, Y.: Influence of observation angle change on satellite retrieval of aerosol optical depth, *Tellus B: Chemical and Physical Meteorology*, 73, 1–14, 2021.
- Cho, Y., Kim, J., Go, S., Kim, M., Lee, S., Kim, M., Chong, H., Lee, W.-J., Lee, D.-W., Torres, O., et al.: First Atmospheric Aerosol Monitoring Results from Geostationary Environment Monitoring Spectrometer (GEMS) over Asia, *Atmospheric Measurement Techniques Discussions*, 2023, 1–29, 2023.
- 495 Choi, W. J., Moon, K.-J., Yoon, J., Cho, A., Kim, S.-k., Lee, S., Ko, D. h., Kim, J., Ahn, M. H., Kim, D.-R., et al.: Introducing the geostationary environment monitoring spectrometer, *Journal of Applied Remote Sensing*, 12, 044 005–044 005, 2018.
- Choi, Y.-S., Kim, G., Kim, B.-R., Kwon, M.-J., Kim, Y., Yoon, J., won Lee, D., and Kim, J.: Geostationary Environment Monitoring Spectrometer (GEMS) Algorithm Theoretical Basis Document: Cloud Retrieval Algorithm, Tech. rep., Environmental Satellite Center, National Institute of Environmental Research, Ministry of Environment, South Korea, file:///mnt/data/atbd_cld.pdf, version 1.1, Approved by Jhoon Kim on 03 Feb 2021, 2020.
- 500 De Smedt, I., Theys, N., Yu, H., Danckaert, T., Lerot, C., Compernelle, S., Van Roozendael, M., Richter, A., Hilboll, A., Peters, E., et al.: Algorithm theoretical baseline for formaldehyde retrievals from S5P TROPOMI and from the QA4ECV project, *Atmospheric Measurement Techniques*, 11, 2395–2426, 2018.
- 505 Dickinson, R. E.: Land surface processes and climate—Surface albedos and energy balance, in: *Advances in geophysics*, vol. 25, pp. 305–353, Elsevier, 1983.
- Eck, T., Bhartia, P., Hwang, P., and Stowe, L.: Reflectivity of Earth’s surface and clouds in ultraviolet from satellite observations, *Journal of Geophysical Research: Atmospheres*, 92, 4287–4296, 1987.
- Frey, R. A., Ackerman, S. A., Liu, Y., Strabala, K. I., Zhang, H., Key, J. R., and Wang, X.: Cloud detection with MODIS. Part I: Improvements in the MODIS cloud mask for collection 5, *Journal of atmospheric and oceanic technology*, 25, 1057–1072, 2008.
- 510 Gao, C., Liu, Y., Wu, Z., Ma, L., Qiu, S., Li, C., Zhao, Y., Han, Q., Zhao, E., Qian, Y., et al.: An approach for evaluating multisite radiometry calibration of Sentinel-2B/MSI using RadCalNet sites, *IEEE Journal of Selected Topics in Applied Earth Observations and Remote Sensing*, 14, 8473–8483, 2021.
- Gao, F., Schaaf, C., Strahler, A., Jin, Y., and Li, X.: Detecting vegetation structure using a kernel-based BRDF model, *Remote Sensing of Environment*, 86, 198–205, 2003.
- 515 Herman, J. and Celarier, E.: Earth surface reflectivity climatology at 340–380 nm from TOMS data, *Journal of Geophysical Research: Atmospheres*, 102, 28 003–28 011, 1997.
- Howlett, C., González Abad, G., Chan Miller, C., Nowlan, C. R., Ayazpour, Z., and Zhu, L.: The influence of snow cover on Ozone Monitor Instrument formaldehyde observations, *Atmósfera*, 37, 2023.
- 520 Kang, M., Ahn, M.-H., Liu, X., Jeong, U., and Kim, J.: Spectral calibration algorithm for the geostationary environment monitoring spectrometer (GEMS), *Remote Sensing*, 12, 2846, 2020.

- Kang, M., Ahn, M.-H., Kim, J., Nicks, D., Eo, M., Lee, Y., Moon, K.-J., Lee, D.-W., et al.: Characteristics of the spectral response function of Geostationary Environment Monitoring Spectrometer analyzed by ground and in-orbit measurements, *IEEE Transactions on Geoscience and Remote Sensing*, 60, 1–16, 2021.
- 525 Kaufman, Y. J., Wald, A. E., Remer, L. A., Gao, B.-C., Li, R.-R., and Flynn, L.: The MODIS 2.1- μm channel-correlation with visible reflectance for use in remote sensing of aerosol, *IEEE transactions on Geoscience and Remote Sensing*, 35, 1286–1298, 1997.
- Kim, B.-R., Kim, G., Cho, M., Choi, Y.-S., and Kim, J.: First results of cloud retrieval from the Geostationary Environmental Monitoring Spectrometer, *Atmospheric Measurement Techniques*, 17, 453–470, 2024.
- Kim, H.-W., Yeom, J.-M., Shin, D., Choi, S., Han, K.-S., and Roujean, J.-L.: An assessment of thin cloud detection by applying bidirectional reflectance distribution function model-based background surface reflectance using Geostationary Ocean Color Imager (GOCI): A case study for South Korea, *Journal of Geophysical Research: Atmospheres*, 122, 8153–8172, 2017.
- 530 Kim, J., Jeong, U., Ahn, M.-H., Kim, J. H., Park, R. J., Lee, H., Song, C. H., Choi, Y.-S., Lee, K.-H., Yoo, J.-M., et al.: New era of air quality monitoring from space: Geostationary Environment Monitoring Spectrometer (GEMS), *Bulletin of the American Meteorological Society*, 101, E1–E22, 2020.
- 535 Kleipool, Q., Dobber, M., de Haan, J., and Levelt, P.: Earth surface reflectance climatology from 3 years of OMI data, *Journal of Geophysical Research: Atmospheres*, 113, 2008.
- Koelemeijer, R., De Haan, J., and Stammes, P.: A database of spectral surface reflectivity in the range 335–772 nm derived from 5.5 years of GOME observations, *Journal of Geophysical Research: Atmospheres*, 108, 2003.
- Lee, C. S., Han, K.-S., Yeom, J.-M., Lee, K.-s., Seo, M., Hong, J., Hong, J.-W., Lee, K., Shin, J., Shin, I.-C., et al.: Surface albedo from the geostationary Communication, Ocean and Meteorological Satellite (COMS)/Meteorological Imager (MI) observation system, *GIScience & Remote Sensing*, 55, 38–62, 2018.
- 540 Lee, K.-S., Chung, S.-R., Lee, C., Seo, M., Choi, S., Seong, N.-H., Jin, D., Kang, M., Yeom, J.-M., Roujean, J.-L., et al.: Development of land surface albedo algorithm for the GK-2A/AMI instrument, *Remote Sensing*, 12, 2500, 2020.
- Lee, S. and Choi, J.: Daytime cloud detection algorithm based on a multitemporal dataset for GK-2A imagery, *Remote Sensing*, 13, 3215, 545 2021.
- Leitão, J., Richter, A., Vrekoussis, M., Kokhanovsky, A., Zhang, Q., Beekmann, M., and Burrows, J.: On the improvement of NO₂ satellite retrievals–aerosol impact on the airmass factors, *Atmospheric Measurement Techniques*, 3, 475–493, 2010.
- Letu, H., Yang, K., Nakajima, T. Y., Ishimoto, H., Nagao, T. M., Riedi, J., Baran, A. J., Ma, R., Wang, T., Shang, H., et al.: High-resolution retrieval of cloud microphysical properties and surface solar radiation using Himawari-8/AHI next-generation geostationary satellite, 550 *Remote Sensing of Environment*, 239, 111 583, 2020.
- Li, S., Chen, L., Tao, J., Han, D., Wang, Z., Su, L., Fan, M., and Yu, C.: Retrieval of aerosol optical depth over bright targets in the urban areas of North China during winter, *Science China Earth Sciences*, 55, 1545–1553, 2012.
- Lin, J.-T., Martin, R., Boersma, K., Sneep, M., Stammes, P., Spurr, R., Wang, P., Van Roozendaal, M., Clémer, K., and Irie, H.: Retrieving tropospheric nitrogen dioxide from the Ozone Monitoring Instrument: effects of aerosols, surface reflectance anisotropy, and vertical profile 555 of nitrogen dioxide, *Atmospheric Chemistry and Physics*, 14, 1441–1461, 2014.
- Lin, J.-T., Liu, M.-Y., Xin, J.-Y., Boersma, K., Spurr, R., Martin, R., and Zhang, Q.: Influence of aerosols and surface reflectance on satellite NO₂ retrieval: seasonal and spatial characteristics and implications for NO_x emission constraints, *Atmospheric Chemistry and Physics*, 15, 11 217–11 241, 2015.

- Lorente, A., Boersma, K. F., Stammes, P., Tilstra, L. G., Richter, A., Yu, H., Kharbouche, S., and Muller, J.-P.: The importance of surface reflectance anisotropy for cloud and NO₂ retrievals from GOME-2 and OMI, *Atmospheric Measurement Techniques*, 11, 4509–4529, 2018.
- 560 McLinden, C., Fioletov, V., Boersma, K., Kharol, S., Krotkov, N., Lamsal, L., Makar, P., Martin, R., Veefkind, J., and Yang, K.: Improved satellite retrievals of NO₂ and SO₂ over the Canadian oil sands and comparisons with surface measurements, *Atmospheric Chemistry and Physics*, 14, 3637–3656, 2014.
- Mei, L., Xue, Y., Kokhanovsky, A. A., von Hoyningen-Huene, W., De Leeuw, G., and Burrows, J.: Retrieval of aerosol optical depth over land surfaces from AVHRR data, *Atmospheric Measurement Techniques*, 7, 2411–2420, 2014.
- 565 Noguchi, K., Richter, A., Rozanov, V., Rozanov, A., Burrows, J., Irie, H., and Kita, K.: Effect of surface BRDF of various land cover types on geostationary observations of tropospheric NO₂, *Atmospheric Measurement Techniques*, 7, 3497–3508, 2014.
- Park, S. S., Yu, J.-E., Lim, H., and Lee, Y. G.: Temporal variation of surface reflectance and cloud fraction used to identify background aerosol retrieval information over East Asia, *Atmospheric Environment*, 309, 119 916, 2023.
- 570 Peng, J., Yu, Y., Liang, S., Wang, D., He, T., and Zhang, Y.: GOES-R Advanced Baseline Imager (ABI) Algorithm Theoretical Basis Document for Surface Albedo, Tech. rep., NOAA NESDIS Center for Satellite Applications and Research, University of Maryland, 2020.
- Platnick, S., Li, J., King, M., Gerber, H., and Hobbs, P.: A solar reflectance method for retrieving the optical thickness and droplet size of liquid water clouds over snow and ice surfaces, *Journal of Geophysical Research: Atmospheres*, 106, 15 185–15 199, 2001.
- Qin, W., Fasnacht, Z., Haffner, D., Vasilkov, A., Joiner, J., Krotkov, N., Fisher, B., and Spurr, R.: A geometry-dependent surface Lambertian-equivalent reflectivity product for UV–Vis retrievals—Part 1: Evaluation over land surfaces using measurements from OMI at 466 nm, *Atmospheric Measurement Techniques*, 12, 3997–4017, 2019.
- 575 Roger, J., Vermote, E., Devadiga, S., and Ray, J.: Suomi-NPP VIIRS Surface Reflectance User’s Guide, V1 Re-processing (NASA Land SIPS), 2016.
- Román, M. O., Gatebe, C. K., Shuai, Y., Wang, Z., Gao, F., Masek, J. G., He, T., Liang, S., and Schaaf, C. B.: Use of in situ and airborne multiangle data to assess MODIS-and Landsat-based estimates of directional reflectance and albedo, *IEEE Transactions on Geoscience and Remote Sensing*, 51, 1393–1404, 2013.
- 580 Roujean, J.-L., Leroy, M., and Deschamps, P.-Y.: A bidirectional reflectance model of the Earth’s surface for the correction of remote sensing data, *Journal of Geophysical Research: Atmospheres*, 97, 20 455–20 468, 1992.
- Schaaf, C. B., Gao, F., Strahler, A. H., Lucht, W., Li, X., Tsang, T., Strugnell, N. C., Zhang, X., Jin, Y., Muller, J.-P., et al.: First operational BRDF, albedo nadir reflectance products from MODIS, *Remote sensing of Environment*, 83, 135–148, 2002.
- 585 Strahler, A., Moody, A., Lambin, E., Huete, A., Justice, C., Muller, J., Running, S., Salomonson, V., Vanderbilt, V., and Wan, Z.: MODIS land cover product: Algorithm theoretical basis document, MODIS documentation, 1994.
- Tilstra, L., Tuinder, O., Wang, P., and Stammes, P.: Surface reflectivity climatologies from UV to NIR determined from Earth observations by GOME-2 and SCIAMACHY, *Journal of Geophysical Research: Atmospheres*, 122, 4084–4111, 2017.
- 590 Tilstra, L. G., Tuinder, O. N., Wang, P., and Stammes, P.: Directionally dependent Lambertian-equivalent reflectivity (DLER) of the Earth’s surface measured by the GOME-2 satellite instruments, *Atmospheric Measurement Techniques*, 14, 4219–4238, 2021.
- Tilstra, L. G., de Graaf, M., Trees, V., Litvinov, P., Dubovik, O., and Stammes, P.: A directional surface reflectance climatology determined from TROPOMI observations, *Atmospheric Measurement Techniques Discussions*, 2023, 1–29, 2023.
- Vasilkov, A., Qin, W., Krotkov, N., Lamsal, L., Spurr, R., Haffner, D., Joiner, J., Yang, E.-S., and Marchenko, S.: Accounting for the effects of surface BRDF on satellite cloud and trace-gas retrievals: a new approach based on geometry-dependent Lambertian equivalent reflectivity applied to OMI algorithms, *Atmospheric Measurement Techniques*, 10, 333–349, 2017.
- 595

- Veefkind, J. P., de Leeuw, G., Stammes, P., and Koelemeijer, R. B.: Regional distribution of aerosol over land, derived from ATSR-2 and GOME, *Remote Sensing of Environment*, 74, 377–386, 2000.
- 600 Veefkind, J. P., de Haan, J. F., Brinksma, E. J., Kroon, M., and Levelt, P. F.: Total ozone from the Ozone Monitoring Instrument (OMI) using the DOAS technique, *IEEE transactions on geoscience and remote sensing*, 44, 1239–1244, 2006.
- Vermote, E., Tanré, D., Deuzé, J., Herman, M., Morcrette, J., and Kotchenova, S.: Second simulation of a satellite signal in the solar spectrum-vector (6SV), *6S User Guide Version*, 3, 1–55, 2006.
- Voskanian, N., Thome, K., Wenny, B. N., Tahersima, M. H., and Yarahmadi, M.: Combining RadCalNet Sites for Radiometric Cross Calibration of Landsat 9 and Landsat 8 Operational Land Imagers (OLIs), *Remote Sensing*, 15, 5752, 2023.
- 605 Wang, Y., Yuan, Q., Li, T., Shen, H., Zheng, L., and Zhang, L.: Evaluation and comparison of MODIS Collection 6.1 aerosol optical depth against AERONET over regions in China with multifarious underlying surfaces, *Atmospheric Environment*, 200, 280–301, 2019.
- Wen, J., Liu, Q., Xiao, Q., Liu, Q., You, D., Hao, D., Wu, S., and Lin, X.: Characterizing land surface anisotropic reflectance over rugged terrain: A review of concepts and recent developments, *Remote Sensing*, 10, 370, 2018.
- 610 Yeom, J.-M., Roujean, J.-L., Han, K.-S., Lee, K.-S., and Kim, H.-W.: Thin cloud detection over land using background surface reflectance based on the BRDF model applied to Geostationary Ocean Color Imager (GOCI) satellite data sets, *Remote Sensing of Environment*, 239, 111 610, 2020.