

~~A statistical analysis~~ **Impact of mountain-wave-induced temperature fluctuations on the occurrence of polar stratospheric ice clouds: A statistical analysis based on MIPAS satellite observations and the ERA5 reanalysis data**

Ling Zou^{1,3}, Reinhold Spang^{2,3}, Sabine Griessbach^{1,3}, Lars Hoffmann^{1,3}, Farahnaz Khosrawi^{1,3}, Rolf Müller^{2,3}, and Ines Tritscher^{2,3}

¹Jülich Supercomputing Centre (JSC), Forschungszentrum Jülich, Jülich, Germany

²Institute of Energy and Climate Research (IEK-7), Forschungszentrum Jülich, Jülich, Germany

³Center for Advanced Simulation and Analytics (CASA), Forschungszentrum Jülich, Jülich, Germany

Correspondence: Ling Zou (l.zou@fz-juelich.de), Lars Hoffmann (l.hoffmann@fz-juelich.de)

Abstract. ~~Small-scale temperature fluctuations~~ Temperature fluctuations induced by mountain waves can play a crucial role in the ~~occurrence of ice clouds~~. This formation of polar stratospheric clouds (PSCs). In particular, the cold phase of the waves can lower local temperatures sufficiently to trigger PSC formation even when large-scale background temperatures are too high. To provide new quantitative constraints on the relevance of this effect, this study analyzes a decade ~~of ice polar stratospheric clouds (PSCs) occurrence (2002–2012) of ice PSC detections~~ obtained from Michelson Interferometer for Passive Atmospheric Sounding (MIPAS/Envisat) measurements. ~~The points with the smallest temperature difference ($\Delta T_{\text{ice_min}}$) between the frost point temperature (T_{ice}) and and ERA5 reanalysis data in the polar winter lower stratosphere. In the environmental temperature along the limb line of sight are proposed here to identify the location of ice PSC observations. In MIPAS observations, we find approximately 56 that approximately 52 % of the Arctic and 2826 % of the Antarctic ice PSCs are detected at temperatures above the local T_{ice} based on ERA5 data at $\Delta T_{\text{ice_min}}$. Ice PSCs above T_{ice} are concentrated around mountain mountainous regions and their downwind directions. A backward trajectory analysis deduced from ERA5 reanalysis is performed to investigate the temperature history of each ice PSC observation. Based on 24-hour backward trajectories, the The cumulative fraction of ice PSCs above T_{ice} increases as the trajectory gets closer to the observation point. The most significant change of the fraction of ice PSCs above T_{ice} occurs within the 6 h preceding the observations. There is an impact of previous temperature fluctuations on the interpretation of MIPAS ice PSC observations.~~ At the observation point, the mean fractions of ice PSCs above T_{ice} , taking into account temperature fluctuations along the backward trajectory, are 33 % in the Arctic and 9 % in the Antarctic. The results provide quantitative assessments of the correlation between orographic waves with a quantitative assessment of the occurrence of ice PSCs above T_{ice} based on the Lagrangian model by using MIPAS measurements and ERA5 reanalysis data in connection with orographic waves. Additionally, the observational statistics presented can be utilized for comparison with chemistry-climate simulations.

1 Introduction

Polar stratospheric clouds (PSCs) form in winter and early spring in the polar stratosphere. Supercooled ternary solution (STS) droplets, nitric acid trihydrate (NAT), and ice particles are the three main types of PSCs. The ~~surfaces of PSCs enable surface~~ of PSC particles enables heterogeneous chemical reactions that convert reservoir species into chlorine radicals, subsequently leading to ozone depletion in the polar winter stratosphere (Solomon et al., 1986; Solomon, 1999). Denitrification through the sedimentation of large NAT PSC particles also contributes to prolonged ozone depletion, as it reduces the concentration of NO₂ while increasing Cl₂. The formation processes and conditions are summarized in Lambert et al. (2012) and Tritscher et al. (2021), highlighting the pivotal role of temperature in these processes.

~~In the Antarctic~~ In the polar regions, synoptic low temperatures ~~typically occur in midwinter~~ occur in winter and spring, causing temperatures to drop well below the formation thresholds and resulting in substantial formation of ice PSCs (Campbell and Sassen, 2008). ~~However, temperature perturbations can also~~

Atmospheric gravity waves are oscillations in the Earth's atmosphere caused by buoyancy and gravity acting on air parcels displaced from their equilibrium positions. They can significantly affect local pressure, temperature, winds, and other meteorological variables. Gravity waves play a critical role in the transfer of energy and momentum between different layers of the atmosphere, i. e., they can significantly affect the temperature structure and general circulation of the atmosphere (Fritts and Alexander, 2003; Alexander, 2000). Gravity waves typically originate from sources such as mountain ranges, where air flow is disturbed and lifted; thunderstorms, where convective activity is generated; and frontal systems, where air masses are disturbed from geostrophic equilibrium. Understanding gravity waves is essential for accurate weather forecasting and broader atmospheric dynamics. Properly representing the effects of gravity waves in general circulation and chemical transport models is challenging because coarse-grid global models typically lack the spatial resolution needed to resolve the small-scale perturbations of gravity waves. In this study, we are particularly interested in atmospheric gravity waves in the polar winter lower stratosphere, because temperature perturbations due to gravity waves can trigger the development of PSCs in the cold phase of these waves, even in cases where background or synoptic-scale temperatures are higher than the their formation thresholds (Carslaw et al., 1998b; Rivière et al., 2000; Dörnbrack et al., 2020; Orr et al., 2020). Missing these waves in coarse-resolution global chemistry-climate simulations or reanalysis-driven chemistry-transport simulations will affect the PSC representation.

PSCs triggered by small-scale temperature fluctuations have been observed predominantly in various mountain regions, including Greenland and Scandinavia in the Arctic, as well as the Antarctic Peninsula and the Transantarctic Mountains in the Antarctic. For example, over the Antarctic Peninsula, the Cloud-Aerosol Lidar Infrared Pathfinder Satellite Observations (CALIPSO) detected 63 % of ice PSC volumes during gravity wave events ~~over~~ during the 2006–2010 Antarctic winters (Noel and Pitts, 2012). The mountain waves were also verified by Höpfner et al. (2006) and Eckermann et al. (2009) as a trigger for the appearance of the Antarctic NAT belt, originating from ice particles over the Antarctic Peninsula in June 2003, as evidenced by measurements from the Michelson Interferometer for Passive Atmospheric Sounding (MIPAS). Analyses based on ~~four years of~~ CALIPSO data revealed that 75 % of ice PSCs and 50 % of NAT mixtures in both hemispheres during the Antarctic (2007–2010) and Arctic (2006/2007 to 2009/2010) winter seasons were closely linked to mountain wave activity (Alexander

55 et al., 2013). ~~The influence~~ Due to the importance of wave-generated ice PSCs, Pitts et al. (2013) introduced an additional class in their PSC characterisation scheme specifically for wave ice PSCs. The pivotal role of gravity waves, which result in small-scale temperature fluctuations triggering the formation of PSCs, has been discussed in WMO (2018). Additionally, WMO (2022) has addressed that the occurrence of PSCs over the Antarctic Peninsula is linked to frequent mountain wave activities.

60 ~~Trajectories simulated by Lagrangian models offer valuable~~ By tracking the trajectories of air parcels, Lagrangian models provide insights into the nucleation, growth, sedimentation, and evaporation of PSC particles, offering a detailed view of the formation and evolution of PSCs (Santee et al., 2002; Lambert et al., 2012; Hoffmann et al., 2017b; Tritscher et al., 2019). By combining satellite observations with trajectory modeling, Wegner et al. (2013) have been able to assess phenomena like vortex-wide chlorine activation by mesoscale PSC events, showcasing the utility of this approach in studying complex atmospheric processes. More recently, the Hybrid Single-Particle Lagrangian Integrated Trajectory dispersion model (HYSPLIT) has been employed to perform trajectory calculations, aiding in understanding the widespread presence of PSCs during certain Arctic winters (Voigt et al., 2018). The Chemical Lagrangian Model of the Stratosphere (CLaMS) is also capable of simulating the intricate processes involved in PSC development along individual trajectories (Tritscher et al., 2019). Here, we are particularly interested in using Lagrangian trajectory analyses for assessing the temperature history along backward trajectories from ice PSC observations. Based on multiple Arctic vortex trajectories, Carslaw et al. (1999) ~~has~~ have unveiled the significance of temperature perturbations induced by mountain waves in generating solid PSC particles in the east of Greenland, the Norwegian mountains, and the Urals during December 1994 and January 1995. ~~Temperature perturbations identified along trajectories have emerged as a crucial factor influencing PSC formation (Lambert et al., 2016).~~ However, the ~~subgrid-scale~~ ~~small-scale~~ temperature fluctuations related to ~~gravity waves may not be fully resolved or underestimated~~ mountain waves are often underestimated or not fully resolved in global reanalyses or coarse-resolution chemistry-climate models (Orr et al., 2015; Hoffmann et al., 2017b; Orr et al., 2020; Weimer et al., 2021).

In this study, our primary focus is to investigate and provide new quantitative estimates of the occurrence of ice PSCs ~~observed by Envisat MIPAS (Spang et al., 2004, 2018) and characterized by~~ as observed by the Envisat MIPAS satellite experiment (Spang et al., 2004, 2018; Höpfner et al., 2018) and how they relate to atmospheric temperatures above the ice existence threshold (T_{ice}), as derived from ~~by~~ the European Centre for Medium-Range Weather Forecasts (ECMWF) ERA5 reanalysis (Hersbach et al., 2020). ~~Ice PSCs are observed~~ Assessing the fraction of MIPAS ice PSC detections at synoptic scale temperatures well above the ERA5 derived frost point temperature helps to characterize the crucial role of unresolved or only poorly resolved subgrid-scale temperature fluctuations due to gravity waves in the ERA5 reanalysis. This study provides quantitative information on the effects of unresolved temperature fluctuations in the ERA5 reanalysis, which is of particular interest for evaluating chemistry-transport or climate model simulations of polar stratospheric ozone.

85 Here, we also propose a new method to better locate the MIPAS ice PSC observations. Previous studies using MIPAS data usually assumed that PSCs are homogeneously stratified and located at the tangent point of the instrument's line of sight. Considering the broad vertical field of view of MIPAS (3–4 km) and the potential variability of PSC occurrence and composition within the field of view and along the line of sight, we propose to consider the location of the minimum of

90 the temperature difference of $T - T_{\text{ice}}$ as the most likely location of the PSC. Here, ice PSCs are analyzed at temperature-based sampling points during the Arctic (November – February) and Antarctic (June – September) winters, covering the ~~period~~ full-time period of MIPAS measurements from 2002 to 2012. Additionally, leveraging the capabilities of the Massive-Parallel Trajectory Calculations (MPTRAC) model (Hoffmann et al., 2016, 2022) developed at the Jülich Supercomputing Centre, we explore the temperature variations along the backward trajectories driven by ERA5 data as an indicator of gravity wave activity
95 to comprehend their impact on ice PSC occurrence.

The study begins with a comprehensive overview of the data and methodology, detailing the retrieval of ice PSCs from MIPAS, introducing the MPTRAC model, and describing the detection of temperature fluctuations (Sect. 2). Spatio-temporal features of ice PSCs are analyzed in Sect. 3.1, followed by an examination of ice PSC observations above T_{ice} in Sect. 3.2. The Lagrangian history and temperature fluctuations of ice PSCs in connection with ice PSC observations above T_{ice} are explored in
100 Sect. 3.3 and 3.4, respectively. The ~~correlation between ice PSC occurrence~~ occurrence of ice PSC above T_{ice} and in connection with mountain waves is investigated in Sect. 3.5. Uncertainties inherent in the study are discussed in Sect. 4, while the main conclusions drawn from the analysis are summarized in Sect. 5.

2 Data and method

2.1 MIPAS observations of PSCs

105 The Michelson Interferometer for Passive Atmospheric Sounding (MIPAS) ~~onboard~~ on board the Envisat satellite measured ~~high-resolution~~ limb infrared spectra in the 4 – 15 μm wavelength range with high-resolution from the mid-troposphere to the mesosphere (Fischer et al., 2008). The Envisat satellite, which was in a sun-synchronous low Earth orbit (98.4° inclination), was able to capture measurements with coverage up to both poles, attributable to an extra poleward tilt of the primary mirror. From 2002 to 2004, MIPAS collected samples with a resolution of 3 km (vertical) \times 30 km (horizontal) at the tangent point.
110 Later, between January 2005 and April 2012 the vertical sampling below 21 km was optimized to 1.5 km in the nominal measurement mode. MIPAS ceased operation on 8 April 2012 due to the sudden loss of contact with Envisat.

The Spang et al. (2001) introduced a simple and reliable method for detecting clouds in infrared limb sounder measurements by comparing the mean radiances of two different spectral wavelength regions. Each region responds differently to clouds in the field of view. The first region, 788 – 796 cm^{-1} , is primarily influenced by CO_2 emissions and shows little change in the presence of optically thin clouds. In contrast, the second region, 832 – 834 cm^{-1} , is located in an atmospheric window region and mainly influenced by aerosol and cloud emissions. The ratio of radiances, called the cloud index (CI) (Spang et al., 2001), is high for cloud-free conditions ($\text{CI} > 4$), close to one for optically thick conditions, and falls in between for the transition from optically thin to thick clouds.
115

The CI is known to be sensitive to PSCs (Spang et al., 2004). A fast prototype processor for retrieving cloud parameters
120 from MIPAS (MIPclouds) is described in Spang et al. (2012), where PSC detections and their cloud top heights are obtained by a step-like data processing approach of up to five detection methods, including the CI. More than 600,000 modeled MIPAS-like spectra are included to represent PSC composition (Spang et al., 2012). A Bayesian probabilistic scheme identifies the

different types of PSCs in MIPAS measurements based on the combination of CI, NAT-index (NI), and brightness temperature differences (Spang et al., 2016). Eight classes (-1: unclassified (non-cloudy), 0: unknown, 1: ice, 2: NAT, 3: STS, 4: ICE_NAT, 5: STS_NAT, and 6: ICE_STS) are defined based on the normalized product probability for each spectrum (Spang et al., 2016, 2018). Class 1-3 are pure type classes, while class 4-6 are mixed type classes.

In this study, ice PSCs were extracted from the MIPAS/Envisat Observations of Polar Stratospheric Clouds dataset (Spang, 2020). Typically, the tangent point, which is the point closest to the Earth's surface along the line of sight ~~that penetrates the atmosphere down to a minimum altitude~~, serves as the reference point for MIPAS observations of PSC locations (Fischer et al., 2008). However, this is not optimal for cloud observations in the limb, where the precise location of the cloud along the line of sight remains uncertain. Depending on the atmospheric conditions, the cloud's location could deviate by several hundred kilometers horizontally, either in front or behind the tangent point. Therefore, instead of using the tangent point of the sample, we employ the point ~~with the minimum~~ where the temperature difference (ΔT_{ice_min}) between the frost point temperature (T_{ice}) and the environmental temperature along the line of sight ~~, (T_{LoS}) is minimal:~~

$$\Delta T_{ice_min} = \min(T_{LoS} - T_{ice}) \quad (1)$$

Equation 1 was evaluated up to a maximum altitude of 30 km, ~~to identify the most probable position of.~~ Assigning the ice PSC ~~observation. Observations at~~ observations to ΔT_{ice_min} ~~help to identify.~~ instead of the tangent point, places them at the most favorable ~~conditions for the ice PSCs~~ and probable condition along the line of sight. Here, T_{ice} and the temperature along the line of sight were derived from ~~ERA-Interim reanalysis for the identification of ΔT_{ice_min} of the MIPAS observations~~ meteorological reanalysis data (Sect. 2.3).

In addition, only data with a CI > 1.2 (not completely optically thick) and CI < 4 (detection threshold) were used in this study. All detected ice PSCs met the conditions for potential vorticity ≥ 4 PVU, heights between 14 and 30 km, and only at ~~altitudes up to~~ an altitude of 6.1 km below the cloud top. All of the above criteria helped to ensure that measurements are located in the stratosphere and that potentially optically thick cases were excluded. Northern hemispheric (NH) PSCs were based on data for the Arctic winter (December – February), and ~~southern~~ Southern hemispheric (SH) PSCs were based on data for the Antarctic winter (June – September) at latitudes higher than 50° N/S from December 2002 to February 2012. Data from 2002, 2004 in the Antarctic and 2003 in the Arctic were excluded due to many missing observations.

2.2 The MPTRAC model ~~and the reanalyses~~

Lagrangian particle dispersion models can precisely represent atmospheric transport processes by computing air parcel trajectories. The ~~Massive-Parallel-Trajectory-Caleulations (MPTRAC)~~ MPTRAC model (Hoffmann et al., 2016, 2022) was developed to study large-scale atmospheric transport in the free troposphere and stratosphere. The MPTRAC model includes a variety of modules and tools, ~~i.e.e.g.~~, modules of advection, turbulent diffusion, subgrid-scale wind fluctuations, convection, sedimentation, wet and dry deposition, hydroxyl chemistry, exponential decay, and boundary conditions. In the advection module, air parcel trajectories are calculated based on given wind fields from meteorological data sets. Following the ~~FLEXPART~~ Flexible Particle dispersion (FLEXPART) model (Stohl et al., 2005), turbulent diffusion and subgrid-scale wind fluctuations

are simulated by MPTRAC by adding stochastic perturbations to the trajectories. The MPTRAC model was applied to calculate trajectories for MIPAS PSC observations [Hoffmann et al. \(2017b\)](#) ([Hoffmann et al., 2017b](#)) and the trajectories calculated from the MPTRAC model were evaluated by superpressure balloons for the polar lower stratosphere [\(Hoffmann et al., 2017a\)](#). In this study, the advection module of MPTRAC is applied to calculate backward trajectories based on PSC observations. The tool for meteorological data sampling is used to obtain corresponding meteorological data for the MIPAS PSC observations, including the temperature, humidity, and frost point along the trajectories (Hoffmann et al., 2022).

~~The ERA-Interim reanalysis (Dee et al., 2011) was used only for identifying the location of ice PSCs (ΔT_{ice_min}) along the line of sight of MIPAS in this study. This reanalysis was conducted by the European Centre for Medium-Range Weather Forecasts (ECMWF) using the Integrated Forecast System (IFS) Cycle 31r2, released in December 2006. ERA-Interim provides 6-hourly data spanning from January 1979 to August 2019, with a horizontal resolution of approximately 79 km and 60 model levels from the surface up to 0.1 hPa.~~

~~Other analyses, i.e. the T_{ice} and trajectory calculations in this study were based on the~~

2.3 [Meteorological reanalysis](#)

[The](#) fifth-generation reanalysis (ERA5 Hersbach et al., 2020) from ECMWF ~~.ERA5~~ provides hourly meteorological data with a horizontal resolution of about 31 km on 137 hybrid sigma/pressure levels vertically from the surface to 0.01 hPa. ~~The evaluation of~~ [It was used for identifying the location of ice PSCs \(\$\Delta T_{ice_min}\$ \) along the line of sight of MIPAS and calculating \$T_{ice}\$ in this study. The trajectory calculations with MPTRAC were also based on ERA5 reanalysis. The](#) MPTRAC trajectory calculations ~~was were~~ assessed by using different meteorological reanalyses (Hoffmann et al., 2017b; Rößler et al., 2018; Hoffmann et al., 2019). ~~By comparing the ERA5 and ERA-Interim reanalyses, the Lagrangian transport was found to be significantly impacted~~ [It was found that Lagrangian transport simulations are significantly improved](#) by the ERA5 data ([Hoffmann et al., 2019](#)). ~~compared to ERA-Interim data (Hoffmann et al., 2019). For instance, it was found that there is better conservation of potential temperature along the ERA5 trajectories than the ERA-Interim trajectories in the lower stratosphere.~~

2.4 Ice PSCs and detection of temperature fluctuations

~~In this study, we aim to conduct a statistical analysis of ice PSCs~~ [To assess the impact of temperature fluctuations caused by gravity waves on PSCs we used MIPAS measurements and ERA5 data. First, we identified ice PSC observations](#) where the temperature at the [location of the](#) MIPAS observation is above the frost point temperature (T_{ice}) ~~derived from ERA5 reanalyses.~~ T_{ice} was calculated from pressure and H_2O ~~in~~ [derived from ERA5 reanalyses](#) using the equation proposed by ~~(Marti and Mauersberger, 1993)~~ [Marti and Mauersberger \(1993\)](#), which is derived from direct measurements of the vapor pressure down to temperatures of 170 K. The ice frost point indicates the temperature threshold below which ice particles can exist.

~~Ice particles nucleate homogeneously at temperatures 3–4 K below T_{ice} (Koop et al., 2000), and heterogeneously on solid hydrates at temperatures 0.1–1.3 K below T_{ice} (Carslaw et al., 1998a; Koop et al., 1998; Fortin et al., 2003; Engel et al., 2013; Voigt et al.,~~

~~Therefore, in addition to the temperature threshold of T_{ice} , we also considered temperature thresholds ($T_{ice} - 3$ K and $T_{ice} - 1.5$ K) in our statistical assessment of the PSC occurrence. 1000~~

The variance of the temperature cooling rate over 6 hours was used to identify temperature fluctuations along the kinematic backward trajectory. We empirically identified potentially significant temperature fluctuations using a variance of the temperature cooling rate ~~exceeding~~ greater than $0.9 \text{ K}^2 \text{ h}^{-2}$ and a temperature ~~less than~~ within 10 K above T_{ice} as the selection criteria. It is important to note that the amplitudes of temperature fluctuations are often underestimated in the ERA5 reanalysis (Hoffmann et al., 2017b; Orr et al., 2020; Weimer et al., 2021). Therefore, small thresholds are needed to detect potentially relevant wave events ~~for PSC occurrence~~.

3 Results

3.1 Ice PSCs detected by MIPAS PSC observations

~~Instead of the tangent point, we used the point with the minimum temperature difference (ΔT_{ice_min}) between T_{ice} and the environmental temperature T along the line of sight up to a maximum altitude of 30 km to obtain the position of the ice PSC observation. The spatial~~ The horizontal and vertical distribution of the ~~multi-year averaged average~~ occurrence frequency of ice PSCs ~~from MIPAS at ΔT_{ice_min} derived from MIPAS measurements for the period from 2002–2012~~ is presented in Fig. 1. Our results of the ice PSC distributions are in general agreement with the respective occurrence frequencies shown in Tritscher et al. (2021). In the Antarctic, ice PSCs are observed at all latitudes south of 65°S , but favor the ~~longitude range~~ $\pm 90^\circ \text{W}$ to 90°E longitude range with the highest occurrence frequency ~~over of up to~~ up to 16 %. Over the ~~seasons~~ course of a year, ice PSCs are predominantly observed during ~~midwinter~~ mid-winter, from late June to September, and are mostly detected ~~at in~~ the altitude range of 22 km to 28 km. In the Arctic, ice PSCs are mainly observed within the longitude range of 60°W to 120°E with the highest occurrence frequency of about 2 %, which is a favored region for the locations of the Arctic ~~vortex and polar vortex and mountain~~ wave activities (Alexander et al., 2009; Zhang et al., 2016). Note that while the Antarctic polar vortex is centred over the pole, the Arctic polar vortex is displaced from the pole due to frequent disturbances from sudden stratospheric warmings (SSWs) caused by planetary wave activity (Vaugh and Randel, 1999; Baldwin et al., 2021). The highest occurrence frequencies of ice PSCs in the Arctic are found in February at an altitude range of 22 km to 26 km (Fig. 1d).

Figure 2 shows the averaged (2002–2012) occurrence frequency of ice PSCs as a function of the temperature difference to T_{ice} ~~during the period 2002–2012. In both polar regions, ice PSCs observed at ΔT_{ice_min} are predominantly found below the frost point temperature. However, ice PSCs in the Arctic have higher temperatures than those in the Antarctic.~~ There are approximately ~~56~~ 52 % ~~, and 28 and 26~~ % of ice PSCs in the Arctic and Antarctic, respectively, detected at temperatures ~~higher than~~ above the local frost point temperature (T_{ice}) ~~derived from the ERA5 reanalysis. Since ice PSC particles nucleate at temperatures slightly lower than particles nucleate homogeneously at temperatures 3–4 K below T_{ice} (Voigt et al., 2005) (Koop et al., 2000), and heterogeneously on solid hydrates at temperatures 0.1–1.3 K below T_{ice} (Carslaw et al., 1998a; Koop et al., 1998; Fortin et al., 2003; E~~ , we included the two temperature thresholds, ~~denoted as~~ $T_{ice} - 3$ K for homogeneous nucleation and $T_{ice} - 1.5$ K for heterogeneous nucleation, in addition to the temperature threshold of T_{ice} . Regarding nucleation temperatures, ~~the frequency of~~

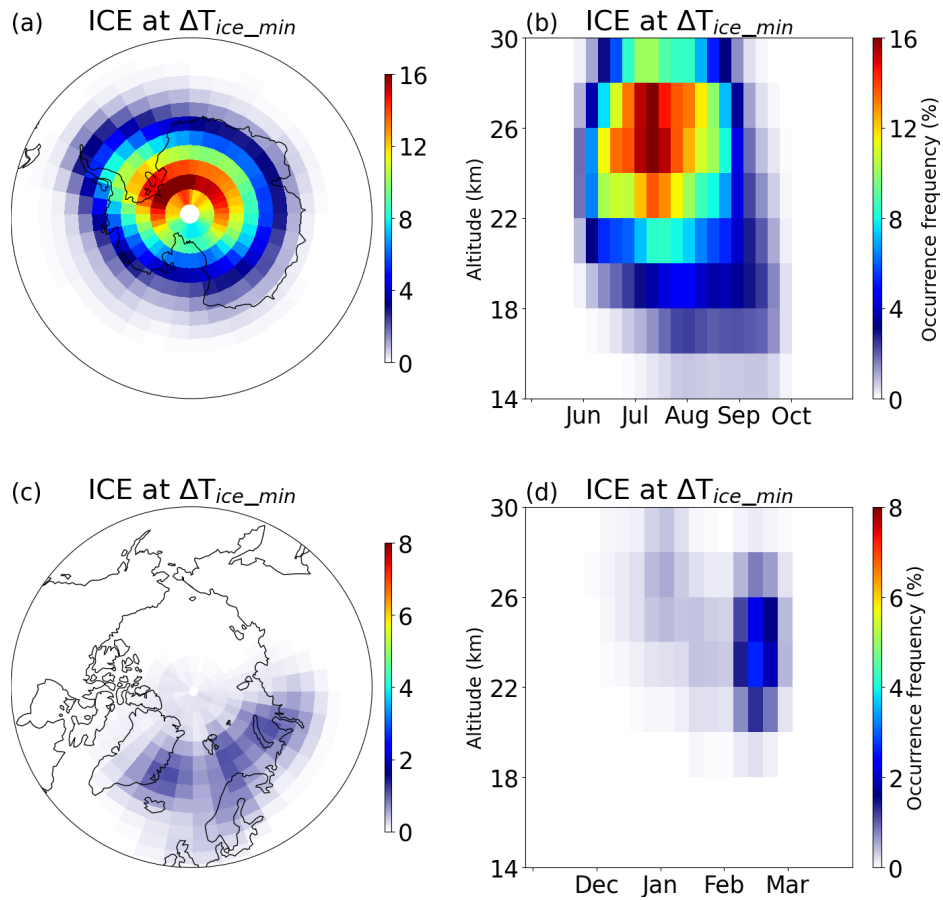


Figure 1. Occurrence frequency of ice PSCs (detected PSCs with respect to all measurements) at the point with where the minimum temperature difference between T_{ice} and T along the line of sight (ΔT_{ice_min}) is at its minimum. The ice PSCs were derived from MIPAS observations for the period from 2002 to 2012. The data is gridded on $3^\circ \times 5^\circ$ boxes and the time series are averaged over 7 days and 2 km height bins.

ice PSCs exceeds more than 90% when temperatures are above $T_{ice} - 1.5$ of the ice PSCs were observed at a temperature above $T_{ice} - 1.5$ K in both hemispheres and surpass even 100% when temperatures are above $T - T_{ice} - 3$ of the ice PSCs were observed at a temperature above $T_{ice} - 3$ K). This implies that the majority of ice PSCs were above their nucleation temperature,

220 based on the temperature and water vapor data from the ERA5 reanalysis.

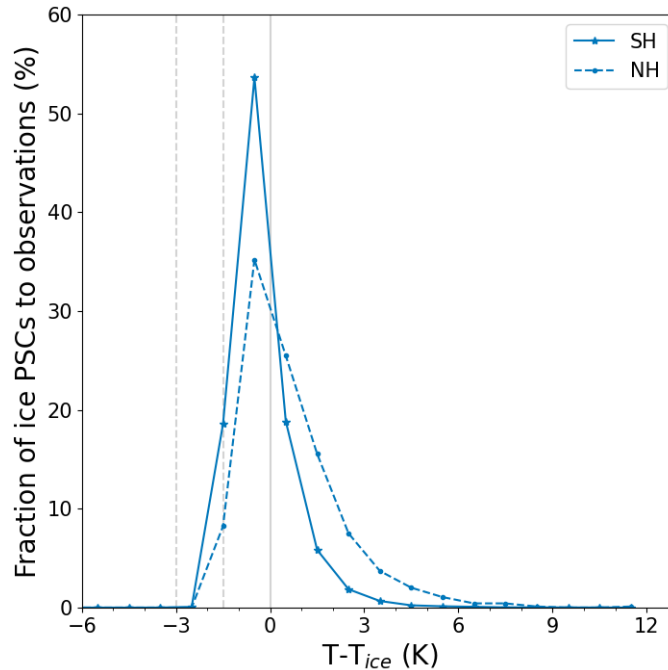


Figure 2. Occurrence frequency of ice PSCs as a function of the temperature difference ($T - T_{ice}$) with a bin size of 1 K. Solid lines represent data from the Antarctic, while the blue dashed lines represent data from the Arctic. Two vertical lines are included to indicate the homogeneous and heterogeneous nucleation temperatures, $T - T_{ice} = -3$ K and $T - T_{ice} = -1.5$ K for reference, respectively.

3.2 Characteristics of ice PSC observations above T_{ice}

In the Antarctic, ice PSCs above T_{ice} are predominantly concentrated around the Antarctic Peninsula and its downwind direction with a peak value of about 5%, notably towards the Weddell Sea (see Fig. 3a). In the Arctic, the spatial distribution pattern of ice PSCs above T_{ice} is similar to that of all the observed ice PSCs, which are distributed across areas such as East Greenland and Scandinavia with peak values of about 1%, along with their respective downwind directions (see Fig. 3c). The vertical and temporal evolution of ice PSCs above T_{ice} shows that they are mainly concentrated in deep winter, spanning from July to the middle of August in the Antarctic. Ice PSCs above T_{ice} (Fig. 3b) demonstrate a descending trend in altitude show a decrease in height as late winter approaches, particularly in August and September. A similar pattern is observed in the Arctic, where the polar vortex warms from above, leading to a downward shift in later winter (Rosenfield et al., 1994) of the coldest temperatures later in the winter due to diabatic descent (Rosenfield et al., 1994). Low fractions (about 1%) of ice PSCs are present in the Arctic, which are similar to CALIOP results (Alexander et al., 2013).

Figure 4 shows the fractions of ice PSCs above T_{ice} with respect to all detected PSCs as a function of winter months and years. In the Antarctic (Fig. 4a,b), the fraction of ice PSCs above T_{ice} increases from 15% in June to 60% in September,

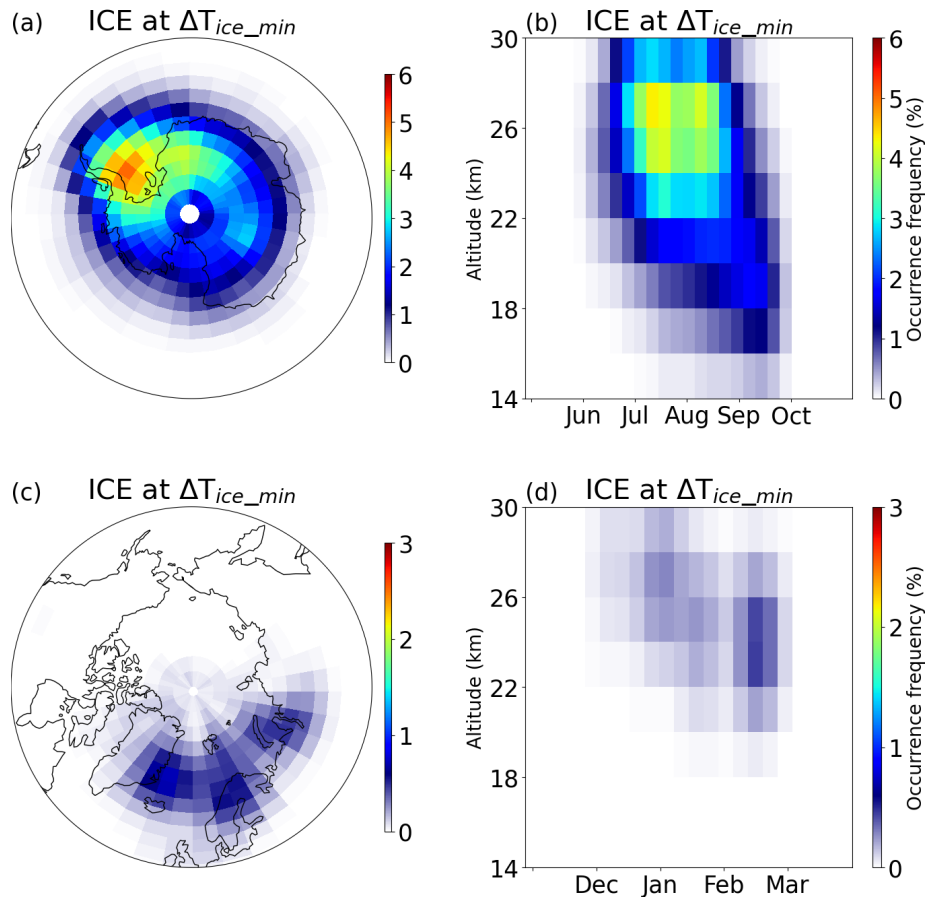


Figure 3. Similar to Same as Fig. 1, but for the occurrence frequency of ice PSCs above T_{ice} at ΔT_{ice_min} only.

remaining relatively stable across the years. In the Arctic (Fig. 4c,d), the fraction of ice PSCs above T_{ice} is comparable-51%
 235 in January and February and relatively-high-70% in December due to less ice PSC observations in this month. However, their
 fraction shows substantial variability from year to year. Notably, there is a lower occurrence of ice PSCs above T_{ice} in the years
 2005 and 2011. The Arctic winters of 2004/2005 and 2010/2011, which is probably due to the few were both distinguished by
 exceptionally low temperatures and substantial ozone depletion (e.g. Feng et al., 2007; Manney et al., 2011). Thus, ice PSCs
 observed in those two years these two winters rather occurred at temperatures below T_{ice} than above T_{ice} . The peak value
 240 observed in 2008 could be linked to the eruption of the Kasatochi volcano (Waythomas et al., 2010). The larger temperature
 variability and less stable polar vortex in the Arctic (Newman et al., 2001) compared to the Antarctic cause larger variability in
 ice PSC occurrence in the Arctic than in the Antarctic. When-considering-Considering the application of nucleation temperature
 thresholds ($T_{ice} - 3$ K and $-T_{ice} - 1.5$ K), the fraction of ice PSCs above $T_{ice} - 3$ K and $-1.5T_{ice} - 1.5$ K significantly-increases
 -In-both-hemispheres,-this-increases-significantly. This fraction exceeds 95% in both hemispheres.

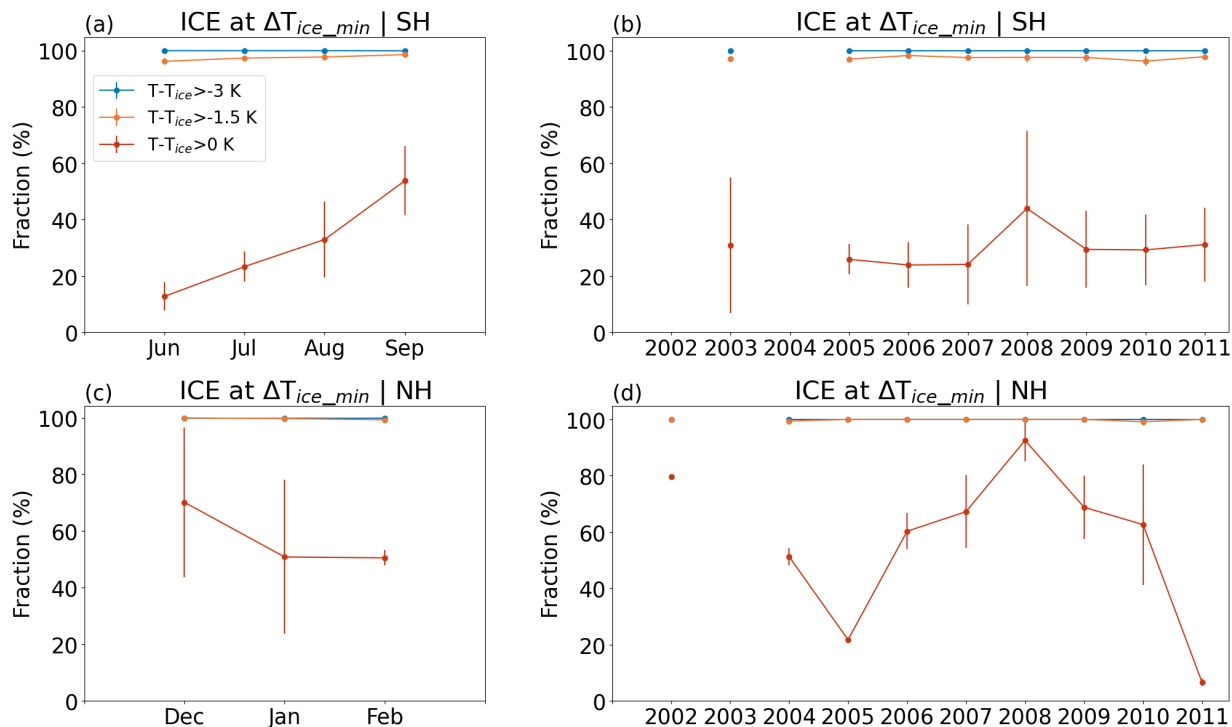


Figure 4. Fraction of ice PSCs above T_{ice} to all detected PSCs across different months and years [for the Antarctic \(a,b\) and the Arctic \(c, d\)](#). Red lines represent the fractions with $T - T_{ice} > 0$ K, while orange and blue lines represent the fractions with $T - T_{ice} > -1.5$ K and $T - T_{ice} > -3$ K, respectively. The data for the Antarctic in 2002 and 2004, as well as for the Arctic in 2003, are missing due to missing MIPAS observations.

245 3.3 Temperature history of ice PSC observations above T_{ice}

To gain deeper insights into the history of the ice [PSCs-PSC](#) observations above T_{ice} , we employed the MPTRAC model to calculate 24-hour backward trajectories from the point of observation (at ΔT_{ice_min}). Fig. 5 displays the fraction of ice PSCs above T_{ice} along the backward trajectories, ranging from time (t) $t = -24$ (h) to $t = 0$. [The most significant decrease of the fraction to 0 h. Along the 24-hour backward trajectories, the temperature of most ice PSCs is below \$T_{ice}\$. Nevertheless, there](#)

250 [is a significant increase in the fraction that occurs within the 6 hours preceding the observations. During this period, the](#) The fractions of ice PSCs above T_{ice} [decrease by about 17 percentage points \(pp\) and 10 increase from 35 pp in the Arctic and Antarctic, respectively, from the observation point at \$\Delta T_{ice_min}\$ to % at \$t = -6\$ h to 52 % at the observation point in the Antarctic and from 16 % to 26 % in the Arctic.](#) A similar [trend-behaviour](#) is observed for ice PSCs with the [temperature threshold respect to the heterogeneous nucleation threshold \(\$T = T_{ice} - 1.5\$ K\)](#), albeit with [relatively smaller fractions. It means](#)

255 [that 6 h before the observation, temperatures of most ice PSCs \(about 65 % in the Arctic and 85 % in the Antarctic\) are below](#)

T_{ice} . Nevertheless, a portion of the ice PSCs (17 pp and 10 pp in the Arctic and Antarctic) experienced a temperature decrease below T_{ice} from the MIPAS observation point to 6 hours preceding the observations, a relatively smaller increase.

Fraction of ice PSCs above T_{ice} within 24-hour backward trajectory with respect to all detected ice PSCs.

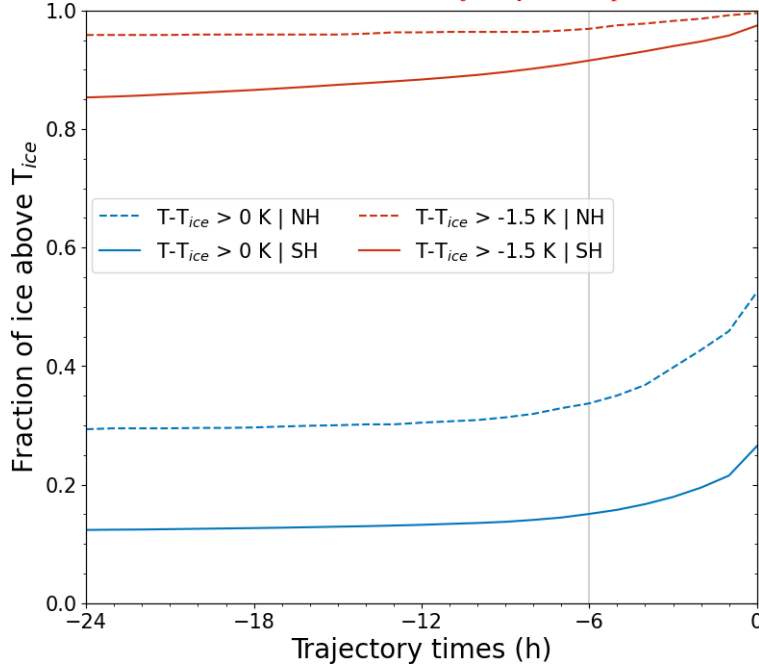


Figure 5. Fraction of ice PSCs at temperatures above T_{ice} and above the heterogeneous nucleation threshold along 24-hour backward trajectories, relative to the total number of ice PSC observations. The solid lines indicate Antarctic data and the dashed lines indicate Arctic data. Blue lines represent temperatures above T_{ice} , while red lines represent temperatures above $T - T_{ice} > -1.5$ K.

3.4 Temperature fluctuations along the backward trajectories

Gravity waves are recognized as a key driver for the occurrence of ice PSCs above T_{ice} in warmer environments. Monitoring temperature fluctuations provides a valuable indicator for assessing the influence of gravity waves on PSC occurrence. Detecting these temperature fluctuations is therefore crucial for gaining insights into the history and evolution of ice PSCs above T_{ice} . In this study, ERA5 temperature data was used to assess the influence of temperature fluctuations on the

Here, we computed the variance of the cooling rates along the backward trajectories over a 6 h running window, where the variance within each window is assigned to the starting time of that window as it progresses over time. Then, we applied a variance threshold of $0.9 \text{ K}^2 \text{ h}^{-2}$ to detect the presence of significant temperature fluctuations associated with a gravity wave event. Note that while meteorological reanalyses are often capable of reproducing gravity wave events at the right time and place, especially for mountain waves, the wave amplitudes in the reanalyses are typically damped compared to the real atmospheric conditions (Schroeder et al., 2009; Jewtoukoff et al., 2015; Hoffmann et al., 2017b). The degree of underestimation

270 depends on the resolution and numerical filters of the forecast model used to generate the reanalysis and on the spectral characteristics of the gravity waves. Therefore, the simple variance filter method applied here is generally suitable to detect the occurrence of ice PSCs along the trajectories wave events in the atmosphere. However, the detection sensitivity depends critically on the variance threshold. A sensitivity test regarding the choice of the variance threshold is discussed in Sect. 4.4.

An example is presented in Fig. 6 to show how we detected temperature fluctuations along the backward trajectories. The temperature cooling rate and its variance were calculated to identify the temperature fluctuations of the ice PSCs. In this example, temperature fluctuations were found over $t = -10$ h to $t = -10$ to 0 h, when the temperature cooling rate variance exceeds is larger than $0.9 \text{ K}^2 \text{ h}^{-2}$, and the temperature is no more less than 10 K above T_{ice} . Those detected temperature fluctuations coincide with areas exhibiting high $4.3 \mu\text{m}$ brightness temperature (BT) variances as retrieved from NASA's Atmospheric Infrared Sounder (AIRS, Fig. 6b), indicating the presence of stratospheric gravity waves (Hoffmann et al., 2013, 2017b). In this particular example, the ERA5 temperature fluctuation over the east coast of Greenland coincides with variations in AIRS 280 brightness temperature, attributed to the influence of gravity waves. This correlation coincidence suggests a potential connection to the occurrence of ice PSCs.

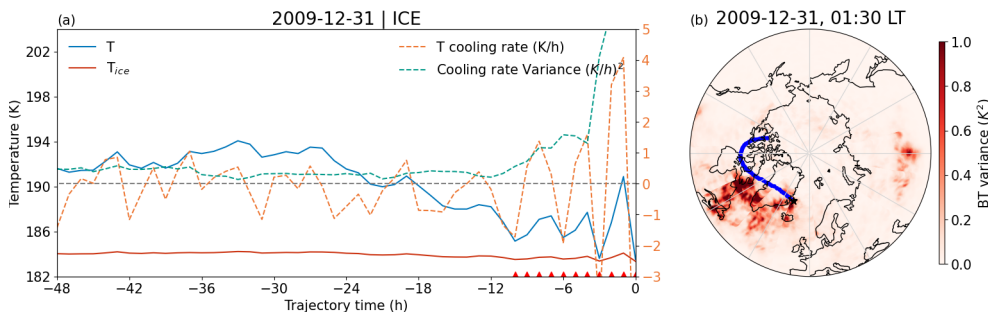


Figure 6. Example of detecting temperature fluctuations along backward trajectories. The example shows an ice PSC above T_{ice} observed on December 31, 2009. a) The temperature (temperatures T) and T_{ice} from ERA5 are shown as solid blue and orange lines, and the temperature cooling rate and its variance are dashed orange and green lines. Red triangles indicate the detected temperature fluctuations along the backward trajectory over $t = -10$ h to $t = -0$ h. b) The brightness temperature (BT) variances detected by AIRS at local time 01:30 are shown as a contour surface in the map. The blue curve shows the backward trajectory of ice PSC, and the red star indicates the location of the observed ice PSC at $\Delta T_{\text{ice}, \text{min}}$.

The cumulative fraction of ice PSCs above T_{ice} with temperature fluctuations relative to all ice PSCs above T_{ice} is presented in Fig. 7. Generally, this cumulative fraction increases as we trace backward in time. At the observation points, the mean fractions of ice PSCs above T_{ice} with temperature fluctuations are 33 % in the Arctic and 9 % in the Antarctic. As we progress 285 to $t = -24$ h (24 hours before the MIPAS observation), approximately 74 % of ice PSCs above T_{ice} in the Arctic, and about 22 % in the Antarctic, could be related to temperature fluctuations (see Table 1). This suggests that the temperature fluctuations as resolved time and location of temperature variations in ERA5 play a significant role in can still be related to the presence of ice PSCs above T_{ice} , particularly especially in the Arctic, even if we consider that gravity wave amplitudes may be underestimated.

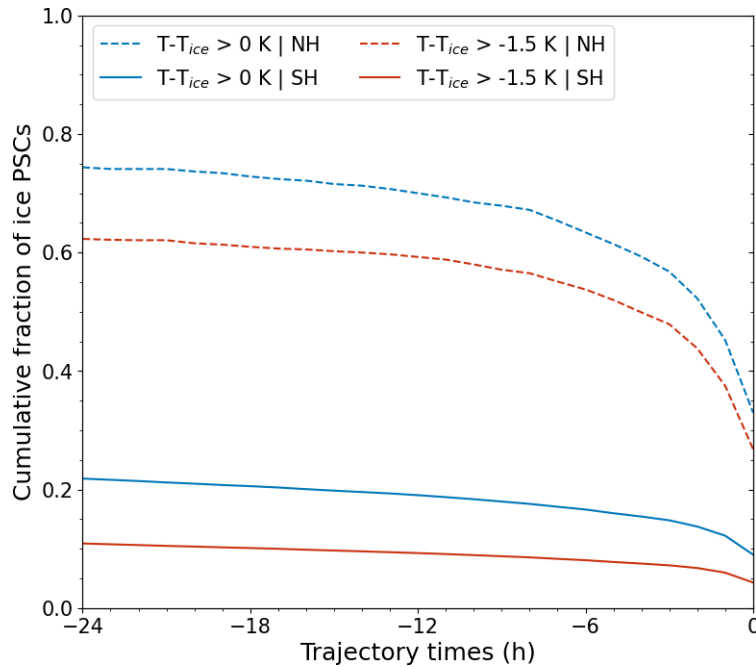


Figure 7. The cumulative fraction of ice PSCs above T_{ice} with temperature fluctuations ~~along the backward trajectory with respect to all ice PSCs above T_{ice} over the backward trajectory~~. Blue lines represent temperatures above T_{ice} , while red lines represent temperatures $> T_{ice} - 1.5$ K.

Figure 8 presents the spatial distribution of ice PSCs above T_{ice} with temperature fluctuations at the observation point. The patterns closely resemble the occurrence frequency of ice PSCs above T_{ice} . In the Antarctic, ice PSCs above T_{ice} with temperature fluctuations are primarily concentrated at and around the Antarctic Peninsula and the Weddell Sea. Notably, two prominent hotspots of ice PSCs above T_{ice} with temperature fluctuations are situated downwind of the Antarctic Peninsula and Victoria Land. In the Arctic, ice PSCs above T_{ice} with temperature fluctuations are observed within the longitude range of 60°W to 120°E , encompassing the east coast of Greenland and Northern Scandinavia. In summary, the presence of ice PSCs above T_{ice} with temperature fluctuations is associated with mountain regions and their downwind areas. ~~This observation strongly suggests a correlation with orographic waves with ice PSCs above T_{ice} .~~

3.5 ~~Correlation between~~ Simultaneous occurrence of mountain waves and ice PSCs above T_{ice}

To further explore the potential ~~correlation of orographic waves and the~~ occurrence of ice PSCs above T_{ice} ~~in connection with orographic waves~~, we selected two mountain regions in the Antarctic and one in the Arctic (indicated by red boxes in Fig. 8). The defined mountain regions are the Antarctic Peninsula (AP: [58° – 83°S , 35° – 80°W]), the Transantarctic Mountains (TM: [62° – 85°S , 165°W – 150°E]) and mountain regions in the Northern Hemisphere (NH-M: [55° – 85°N , 45°W – 90°E]). To

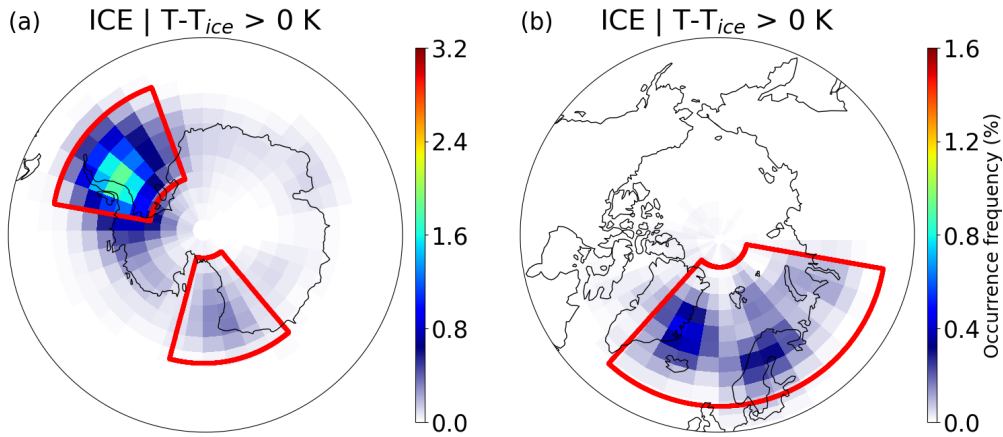


Figure 8. Occurrence frequency of ice PSCs above T_{ice} with temperature fluctuations at the observation point relative to all measurements in the Antarctic (a) and the Arctic (b), respectively. Three specific mountain regions, the Antarctic Peninsula (AP), the Transantarctic Mountains (TM), and the mountain region in the Northern Hemisphere (NH-M), are marked with red boxes.

quantify the potential influence of mountain waves on the occurrence of ice PSCs above T_{ice} , we present the fractions of ice PSCs above T_{ice} over these specified mountain regions in Table 1, columns 3–5.

The fractions Along the trajectories the fraction of ice PSCs above T_{ice} related to mountain waves decrease-decreases as it gets closer to the observation point. At $t = -24t = -24\text{ h}$, the cumulative fraction-fractions of ice PSCs above T_{ice} related to mountain waves are 9.4 % over the AP and 3.2 % over the TM. However, at the observation point ($t = 0t = 0\text{ h}$), these fractions are considerably smaller. The fractions in-related to the Arctic mountain regions are notably higher than those in the Antarctic, reaching 59 % at $t = -24-24\text{ h}$. This difference can be attributed to the more frequent occurrence-higher importance of gravity wave activity on ice PSC occurrence in the Northern Hemisphere, although the size of the selected area also influences the results. In conclusion, ice PSCs above T_{ice} in the Arctic are more susceptible to the effects of mountain waves.

Table 1. Cumulative fraction of ice PSCs above T_{ice} related to mountain waves at different backward trajectory times relative to all ice PSCs observed at temperatures above T_{ice} . Mountain regions are the Antarctic Peninsula (AP), the Transantarctic Mountains (TM) and mountain regions in the Northern Hemisphere (NH-M).

Time	Ice PSCs at ΔT_{ice_min}				
	SH	NH	AP	TM	NH-M
$t = t = 0\text{ h}$	9.0%	33.0%	4.3%	0.9%	27.0%
$t = t = -6\text{ h}$	16.6%	63.4%	7.6%	1.6%	50.3%
$t = t = -12\text{ h}$	19.0%	70.0%	8.5%	2.0%	55.9%
$t = t = -18\text{ h}$	20.6%	72.8%	9.0%	2.6%	57.6%
$t = t = -24\text{ h}$	21.8%	74.4%	9.4%	3.2%	58.7%

4 Discussion

4.1 PSC ~~detections at~~ detection in warm environment

In this study, we analyzed the MIPAS-observed ice PSCs and their relation to temperature fluctuations and stratospheric gravity waves. We found that in the Arctic approximately ~~56~~52 % ~~,~~ and in the Antarctic ~~28~~approximately 26 % of the observed ice PSCs
315 are detected at temperatures above T_{ice} derived from the ERA5 reanalysis. The occurrence of ice PSCs ~~on warm large spatial scales has in warm environments have~~ already been reported in previous studies. ~~For instance, Pitts et al. (2018, Fig. 12) present~~ Based on CALIPSO measurements, Pitts et al. (2018, Fig. 12) found that about 30 % of ~~ice PSCs observed above the T_{ice} the~~ ice PSCs in the Arctic and Antarctic ~~based on CALIPSO measurements and are observed above T_{ice}~~ . Spang et al. (2018, Fig. 3) showed that about 20 % of ice PSCs ~~((Spang et al., 2018, Fig. 3)) in the Antarctic~~ are observed above T_{ice} ~~in the Antarctic~~ from
320 MIPAS observations at the tangent point over the years 2006 to 2012. Additionally, ~~ice PSCs individual cases of ice PSC detections~~ from MIPAS observations are reported in warm environments with temperatures around or warmer than T_{NAT} . T_{NAT} , i. e., 5 K or more above T_{ice} , based on the ERA-Interim reanalysis (Hoffmann et al., 2017b, Fig.11). Even if ice PSCs are ~~found-observed~~ in synoptic-scale warm environments, it is crucial to note that small-scale temperature fluctuations associated with ~~orographic and gravity waves~~ gravity waves can still significantly influence the occurrence of ice PSCs (Dörnbrack
325 et al., 2002; Alexander et al., 2013; Hoffmann et al., 2017b). While global reanalyses or coarse-resolution chemistry-climate models may not fully resolve subgrid-scale temperature fluctuations associated with gravity waves, ERA5 exhibits improved spatiotemporal resolution compared to ERA-Interim. However, ~~it ERA5~~ still tends to underestimate ~~temperature fluctuations. The real temperature fluctuations in the polar lower stratosphere. The statistical~~ analysis applied in this study (see previous sections) provides important information on the frequency ~~and significance of these discrepancies of these events and once~~
330 again points out the significance of the discrepancies between observed ice PSCs and temperatures derived from meteorological reanalysis.

4.2 Sampling uncertainty in MIPAS for ice PSC detection

To account for the uncertainty in cloud location within MIPAS observations, we ~~have proposed a new reference point as an alternative to the tangent point. This reference point is defined as the location with minimum temperature difference (ΔT_{ice_min})~~
335 ~~between the frost point temperature (T_{ice}) and the environmental temperature along the line of sight. Compared to~~ present the ice PSCs detected at the tangent point ~~shown in Figure 9 in Fig. 9. Generally,~~ the altitudes of ice PSCs at ΔT_{ice_min} (Fig. 1) are consistently higher ~~,~~ and the ~~than at the tangent point. The~~ highest occurrence frequency of ice PSCs is approximately 4 km higher in the Antarctic at ΔT_{ice_min} than at the tangent point, and around 2 km higher in the Arctic. When comparing ice PSC observations derived from CALIOP (Pitts et al., 2018, Fig. 16 c), occurrence frequencies of ice PSCs derived from
340 MIPAS are relatively higher at the ΔT_{ice_min} . This discrepancy may be attributed to the large vertical field of view and coarse vertical sampling resolution of MIPAS. Consequently, cloud top heights of optically thick clouds in MIPAS are probably overestimated, on average by 0.75 km (Sembhi et al., 2012; Griessbach et al., 2020). Conversely, cloud top heights of optically

thin PSCs observed at the tangent point are, on average, underestimated by 0–2 km and may reach up to 8 km compared to CALIOP (Höpfner et al., 2009).

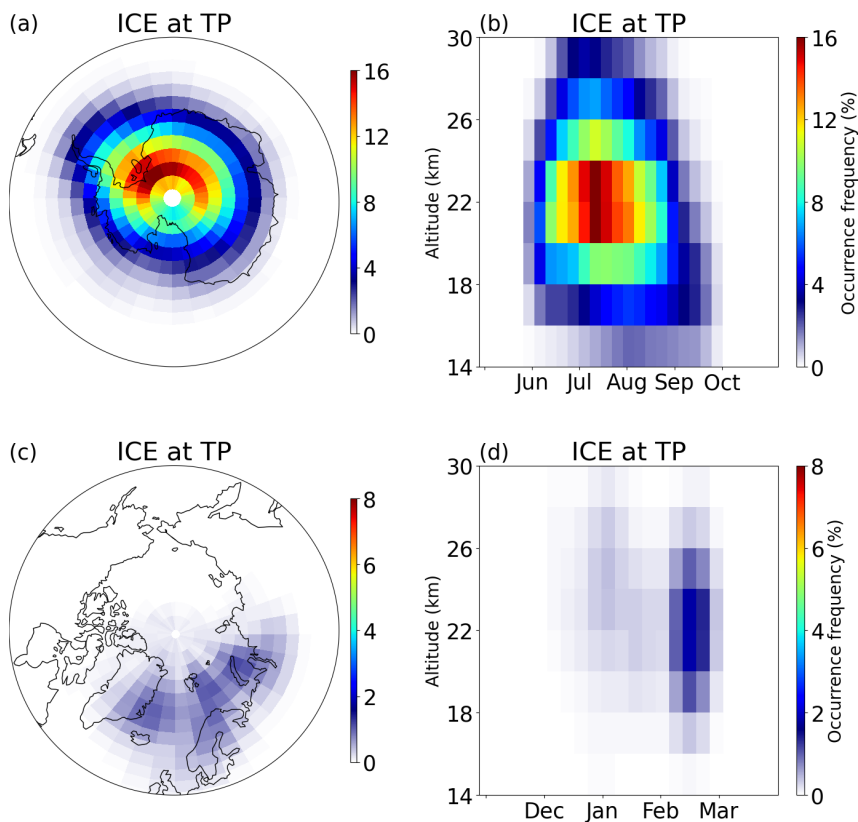


Figure 9. Occurrence frequency of ice PSCs (detected PSCs with respect to all measurements) at the tangent point derived from MIPAS observations (2002-2012) for the Antarctic (a, b) and Arctic (c, d). The data grid on the map is with horizontal, size of, c), the data is gridded on $3^\circ \times 5^\circ$ boxes. In the vertical, b), d), the vertical bin size is 2 km and time series are the data was averaged over 7 days. It compares with This figure shows the same as Fig. 1, showing the same statistics but for $\Delta T_{\text{ice_min}}$ the tangent point.

345 Furthermore, when considering ice PSC observations as a function of $T - T_{ice}$, we observe that more ice PSCs are located above T_{ice} at the tangent point (red lines in Fig. 10) than at ΔT_{ice_min} (gray lines) in both polar regions. The distribution of ice PSCs at ΔT_{ice_min} as a function of $T - T_{ice}$ is more comparable to the CALIOP observations (Pitts et al., 2018, Fig. 12) and (Tritscher et al., 2021, Fig. 14 a and c) than that at the tangent point. Despite the height discrepancy, the location of ΔT_{ice_min} is more reasonable for the existence of ice PSCs, as MIPAS is more sensitive to optically thin PSCs than CALIOP
 350 (Sembhi et al., 2012; Griessbach et al., 2020). The method to detect PSC locations in MIPAS observations, based on ΔT_{ice_min} , complements the conventional tangent point approach and aids in determining cloud positions within this study.

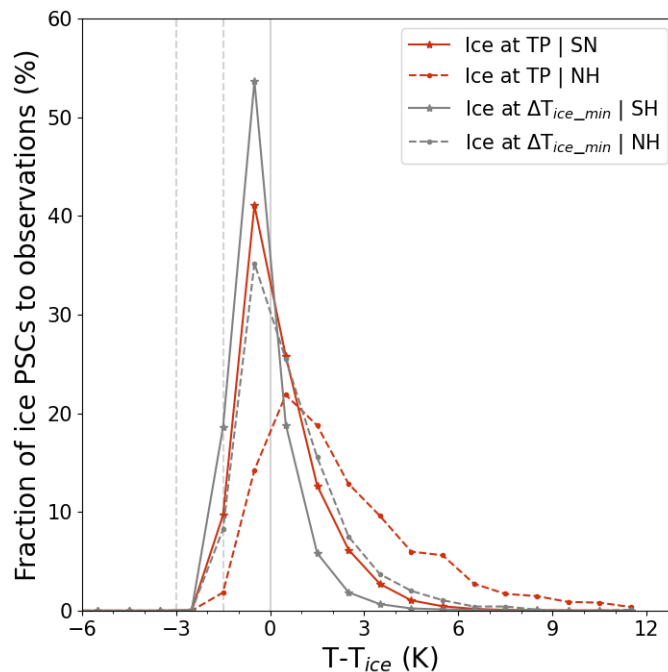


Figure 10. Occurrence frequency of ice PSCs detected at the tangent point (red lines) as a function of the temperature difference ($T - T_{ice}$). The red lines indicate the distribution at the tangent point. For comparison, the grey lines for the observations at ΔT_{ice_min} are the same as in Fig. 2. The solid lines indicate data from the Antarctic and the dashed lines indicate data from the Arctic.

4.3 Temperature and T_{ice} uncertainties in the ERA5 reanalysis

In this study, ambient temperatures of MIPAS observation points are interpolated from the ERA5 reanalysis, which offers significantly improved spatial and temporal resolution compared to ERA-Interim (Hoffmann et al., 2019; Hersbach et al., 2020).
 355 Nevertheless, it is essential to acknowledge that the ERA5 reanalysis provides a global mean temperature estimate with an uncertainty of approximately 0.2 K compared to radiosonde measurements in the low and middle stratosphere (Simmons et al., 2020). Additionally, it is crucial to note that the ERA5 reanalysis may not fully resolve temperature perturbations associated with various factors such as convective updrafts, gravity waves, and other meso- to synoptic-scale features, as discussed in

Hoffmann et al. (2019). In particular, wave amplitudes are often underestimated. Consequently, there is a possibility that some temperature fluctuations are not resolved in ERA5 as discussed in Sect. 3.4.

In addition to ambient temperature, the calculation of T_{ice} utilizes water vapor data (H_2O) from ERA5 and pressure, applying the equation proposed by Marti and Mauersberger (1993). However, the uncertainties in water vapor data from ERA5 remain unclear. Different methods for calculating T_{ice} may introduce additional uncertainty in identifying ice PSCs above T_{ice} . Figure 11 presents a sensitivity analysis of how T_{ice} varies with water vapor content and pressure depending on the calculation method. Taking the example of a pressure level equal to 50 hPa (about 20 km of height), the T_{ice} uncertainty is less than 2 K when the water vapor content ranges between typical stratospheric values of 2 ppm and 5 ppm. Different calculation methods for T_{ice} result in negligible uncertainty, even though T_{ice} calculated by Marti and Mauersberger (1993) is slightly warmer than following more recent methods (Murphy and Koop, 2005; WMO, 2008).

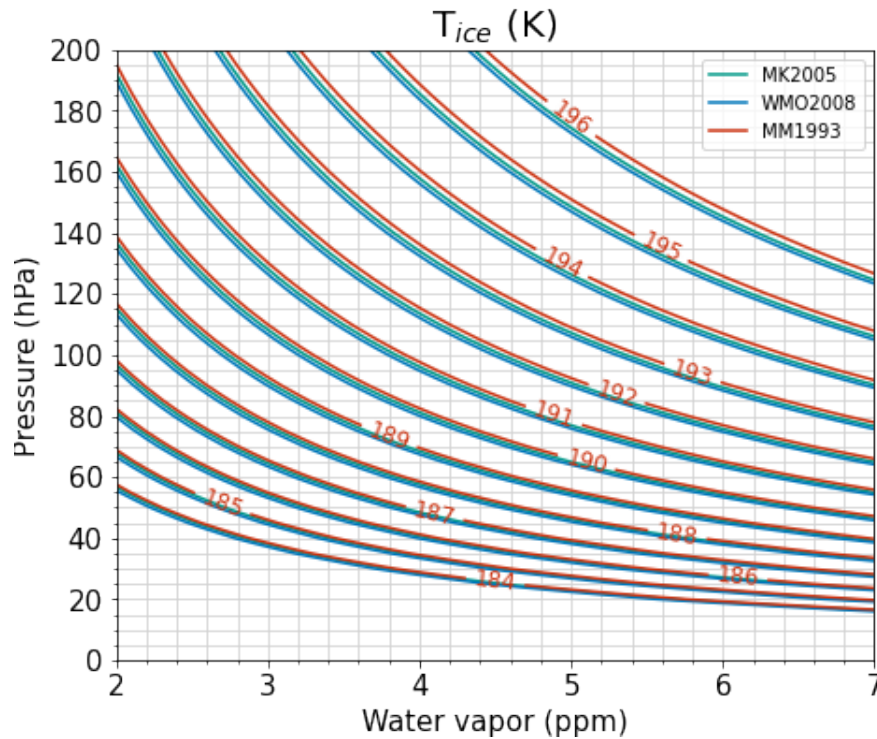


Figure 11. T_{ice} uncertainty for different Sensitivity of T_{ice} as a function of water vapor content and to various calculation methods. MM1993, MK2005 and WMO2008 are methods proposed by Marti and Mauersberger (1993), Murphy and Koop (2005) and WMO (2008), respectively.

4.4 Temperature fluctuation uncertainty

The uncertainty in the selection of the threshold for the variance of the temperature cooling rate to detect temperature fluctuation events is illustrated in Fig. 12, where different thresholds for temperature cooling rate variance (T_{crv}) are examined, ranging from $0.6 K^2 h^{-2}$ to $1.2 K^2 h^{-2}$ in increments of $0.1 K^2 h^{-2}$. As T_{crv} increases, fewer temperature fluctuations are detected. For

instance, the highest fraction of ice PSCs above T_{ice} with temperature fluctuations is observed at $T_{crv} = 0.6 \text{ K}^2 \text{ h}^{-2}$, where the fraction is approximately 30 % at $t = -24.24 \text{ h}$. Conversely, the smallest fraction is found at $T_{crv} = 1.2 \text{ K}^2 \text{ h}^{-2}$, with a fraction of 18 % at $t = -24.24 \text{ h}$. However, the uncertainty in the choice of T_{crv} decreases as the time approaches the observation point. At the MIPAS observation point, the uncertainty of T_{crv} is within 1 [pp-percentage point](#) in the Antarctic and 2 [pp-percentage point](#) in the Arctic, with increments of $0.1 \text{ K}^2 \text{ h}^{-2}$.

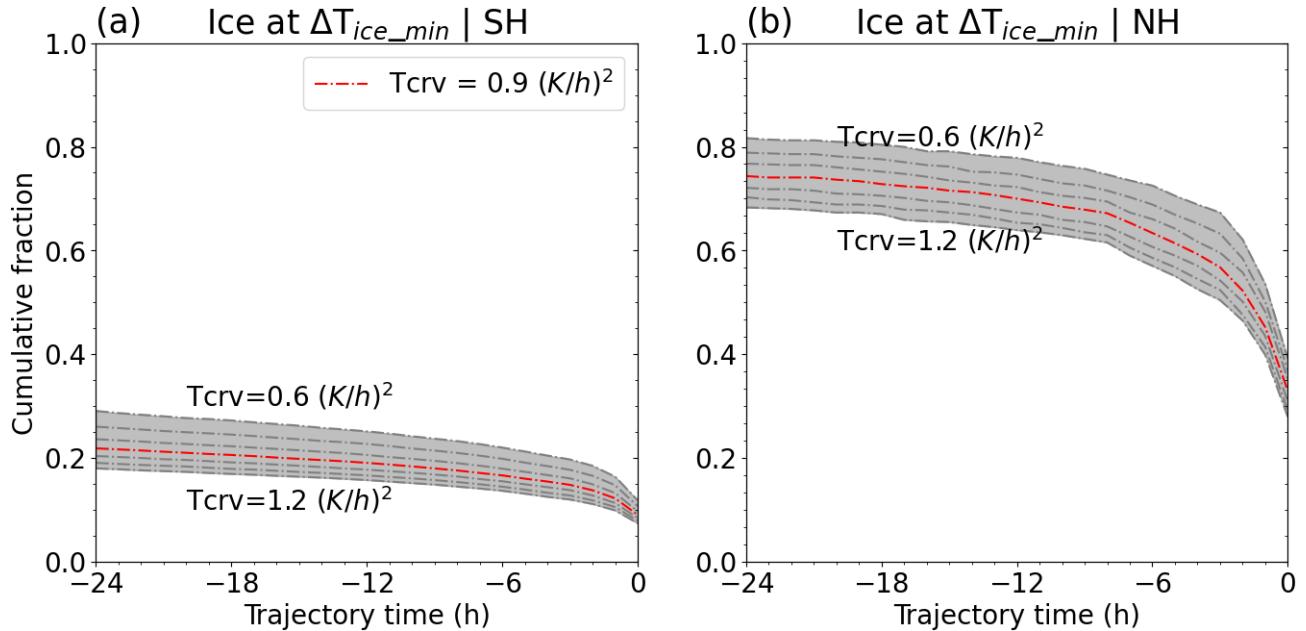


Figure 12. Cumulative fraction of ice PSCs above T_{ice} with different temperature cooling rate variance thresholds (T_{crv}) for temperature fluctuation detection. $T_{crv} = 0.9, \dots, 1.2 \text{ K}^2 \text{ h}^{-2}$, the red dashed line is $T_{crv} = 0.9 \text{ K}^2 \text{ h}^{-2}$ as selected for the statistical assessment.

The fractions of all ice PSCs above T_{ice} passing through the defined mountain regions along the backward trajectory are summarized in Table 2. These values exhibit a substantial increase compared to the fractions of ice PSCs above T_{ice} with temperature fluctuations in mountain regions (Table 1). For example, at the MIPAS observation point in the AP region, the fraction of ice PSCs above T_{ice} is 18.2 %, whereas the fraction with temperature fluctuations is only 4.3 % as shown in Table 1. Comparing the values in Table 1 and Table 2, we find that although the majority of ice PSCs above T_{ice} pass through specified mountain regions, only a limited number of them exhibit temperature fluctuations (Table 1). One possible reason for this discrepancy is that the temperature fluctuations detected in our study may be underestimated due to the selected T_{crv} threshold. Once again, unresolved temperature fluctuations in ERA5 reanalysis may contribute to these differences. [Other reasons, such as the formation mechanism of gravity waves \(Dörnbrack et al., 2001\), could also affect the results, but taking these into account is beyond the scope of this study.](#)

Table 2. Fraction of ice PSCs above T_{ice} passing through specified mountain regions at different backward trajectory times.

Time	Ice PSCs at ΔT_{ice_min}		
	AP	TM	NH-M
$t = 0$ h	18.2%	8.2%	73.9%
$t = -6$ h	20.7%	11.7%	79.6%
$t = -12$ h	22.6%	16.4%	83.7%
$t = -18$ h	24.0%	22.7%	83.9%
$t = -24$ h	25.3%	30.0%	84.1%

5 Conclusions

This study examines a decade-long (2002–2012) record of ice PSCs derived from MIPAS/Envisat measurements. The points with the smallest temperature difference (ΔT_{ice_min}) between the frost point temperature (T_{ice}) and the environmental temperature along the line of sight ~~, are proposed to provide the better~~ have been proposed and shown to provide a better estimate of the location of ice PSC observation from MIPAS. The temperature at the ice PSC observations is analyzed based on the ERA5 reanalysis. Following this, we investigated the temperature history of the ice PSCs detected above T_{ice} at the observation points along 24-hour backward trajectories.

In the MIPAS observations, ice PSCs are mostly observed in the longitude range of $\pm 90^\circ$ W to 90°E in the Antarctic with peak values over 16 %, and between 60° W to 120° E in the Arctic during midwinter with peak values of about 2 %. Ice PSCs at ΔT_{ice_min} are mostly detected in the altitude range of 22 km to 26 km, which is about 2–4 km ~~higher~~ above the tangent point.

The occurrence frequencies of ice PSCs as a function of temperature difference to T_{ice} during the period 2002–2012 show that approximately ~~5652 %~~ and 2826 % of the ice PSCs in the Arctic and Antarctic, respectively, are detected at temperatures ~~higher than above~~ the local T_{ice} ~~based on the derived from~~ temperature and water vapor data from ~~the~~ ERA5 ~~reanalysis~~. In the Antarctic, ice PSCs above T_{ice} are predominantly located around the Antarctic Peninsula and its downwind direction, notably towards the Weddell Sea. In the Arctic, ice PSCs above T_{ice} are distributed across mountain areas such as East Greenland and northern Scandinavia, along with their respective downwind directions. The ice PSCs above T_{ice} are mainly concentrated in deep winter and ~~demonstrate a descending trend in altitude as late winter approaches~~ descend in altitude during the course of the winter.

24-hour backward trajectories ~~of the ice PSCs above T_{ice} are were~~ calculated by using the MPTRAC model from the ~~point of observation~~ ice PSC observations at ΔT_{ice_min} . The most significant change of the fraction of ice PSCs above T_{ice} occurs within the 6 hours preceding the observations, in which ~~17~~ the fractions increase from 35 pp and 10% at $t = -6$ h to 52 pp of ice PSCs % at the observation point in the Antarctic and from 16 % to 26 % in the Arctic ~~and Antarctic experienced a temperature decrease below T_{ice}~~ .

Furthermore, temperature fluctuations in along the backward trajectories were identified by the temperature cooling rate and its variance. At the observation point, the mean fractions of ice PSCs above T_{ice} with temperature fluctuations are 33 % in the

Arctic and 9 % in the Antarctic. 24 hours before the MIPAS observation the fraction of ice PSCs that have experienced temperature fluctuations increased to approximately 74 % in the Arctic and about 22 % in the Antarctic. Despite being underestimated
415 in their magnitude, the temperature fluctuations in ERA5 have a significant ~~correlation~~ coincident occurrence with the presence of ice PSCs above T_{ice} , particularly in the Arctic. The ice PSCs above T_{ice} with temperature fluctuations ~~at the observation point~~ along the backward trajectories are primarily concentrated ~~in and around over~~ the Antarctic Peninsula and the Weddell Sea in the Antarctic and encompass the east coast of Greenland and Northern Scandinavia in the Arctic. ~~This observation strongly suggests a correlation with orographic waves with ice PSCs above T_{ice} , which are known hotspots of mountain wave activity.~~

420 Across specified mountain regions, the fractions of ice PSCs above T_{ice} related to mountain waves are 9.4 % over the AP and 3.2 % over the TM for observations at ΔT_{ice_min} at $t = -24$. 24 h. However, at the observation point ($t = -t = 0$ h), these fractions are considerably smaller. The fractions in the Arctic mountain regions, reaching 59 %, are notably higher than those in the Antarctic. This difference can be attributed to the larger role of gravity wave activity in the occurrence of ice PSCs in the Northern Hemisphere ~~and also to its larger selected region.~~ This is due to the generally higher temperatures in this hemisphere,
425 which often require mountain wave-induced temperature fluctuations to initiate ice PSC formation. However, the larger size of the selected region may also contribute to the hemispheric differences.

Our results are subject to several uncertainties. The uncertainties of temperature and water vapor in ERA5 data impact the identification of ice PSCs. We may also miss or underestimate many small-scale temperature fluctuations along the backward trajectories, which are not fully resolved in the ERA5 data, and the choice of the temperature cooling rate variance threshold
430 for detecting gravity wave events has also an impact on the results. Furthermore, substantial differences in cloud heights exist between MIPAS observations assigned to ΔT_{ice_min} or assigned to the tangent point. Also, MIPAS measurements are integrated along the long limb path, but temperatures retrieved from ERA5 are for a spatial resolution of 31 km (ΔT_{ice_min} or tangent point), which produces an uncertainty for identifying the distribution of ice PSCs relative to T_{ice} . Investigating the source of the discrepancies between ice PSC observations and warm temperatures is pertinent for understanding the formation of ice PSCs,
435 as they require ~~even lower temperatures~~ temperatures that are significantly below T_{ice} .

Code and data availability. The MIPAS operational data are provided by the European Space Agency. The MIPAS PSC data product version 1.2 used in this study is accessible at <https://datapub.fz-juelich.de/slcs/mipas/psc/index.html> (Spang, 2020). The ERA5 data are provided by the the European Centre for Medium-Range Weather Forecasts, see <https://www.ecmwf.int/en/forecasts/datasets> (Hersbach et al., 2020). The MPTRAC model used in this study has been archived on Zenodo (Hoffmann et al., 2021, <https://zenodo.org/records/5714528>).

440 *Author contributions.* The conceptualization was conducted by L.Z., R.S., L.H., S.G., F.K., R.M., and I.T. R.S. provided the PSCs data repository retrieved from MIPAS and L.H. provided the MPTRAC model, while L.Z. processed the data and compiled all results. L.Z. wrote the manuscript with contributions from all co-authors.

Competing interests. At least one of the (co-)authors is a member of the editorial board of Atmospheric Chemistry and Physics. Otherwise the authors declare no competing interests.

445 *Acknowledgements.* This research was supported by the Helmholtz Association of German Research Centres (HGF) through the Joint Laboratory for Exascale Earth System Modeling (JL-ExaESM) at Forschungszentrum Jülich. The authors are grateful to the Jülich Supercomputing Center for providing computing time and storage resources on the JUWELS supercomputer.

References

- Alexander, M. J., Geller, M., McLandress, C., Polavarapu, S., Preusse, P., Sassi, F., Sato, K., Eckermann, S., Ern, M., Hertzog, A., Kawatani, Y., Pulido, M., Shaw, T. A., Sigmund, M., Vincent, R., and Watanabe, S.: Recent developments in gravity-wave effects in climate models and the global distribution of gravity-wave momentum flux from observations and models, *Quart. J. Roy. Meteorol. Soc.*, 136, 1103–1124, 2010.
- Alexander, S. P., Klekociuk, A. R., and Tsuda, T.: Gravity wave and orographic wave activity observed around the Antarctic and Arctic stratospheric vortices by the COSMIC GPS-RO satellite constellation, *J. Geophys. Res.*, 114, D17 103, <https://doi.org/10.1029/2009JD011851>, 2009.
- Alexander, S. P., Klekociuk, A. R., McDonald, A. J., and Pitts, M. C.: Quantifying the role of orographic gravity waves on polar stratospheric cloud occurrence in the Antarctic and the Arctic, *J. Geophys. Res.*, 118, 11,493–11,507, <https://doi.org/10.1002/2013JD020122>, 2013.
- Baldwin, M. P., Ayarzagüena, B., Birner, T., Butchart, N., Butler, A. H., Charlton-Perez, A. J., Domeisen, D. I. V., Garfinkel, C. I., Garny, H., Gerber, E. P., Hegglin, M. I., Langematz, U., and Pedatella, N. M.: Sudden stratospheric warmings, *Rev. Geophys.*, 59, <https://doi.org/https://doi.org/10.1029/2020RG000708>, 2021.
- Campbell, J. R. and Sassen, K.: Polar stratospheric clouds at the South Pole from 5 years of continuous lidar data: Macrophysical, optical, and thermodynamic properties, *J. Geophys. Res.*, 113, D20 204, <https://doi.org/10.1029/2007JD009680>, 2008.
- Carslaw, K. S., Wirth, M., Tsias, A., Luo, B. P., Dörnbrack, A., Leutbecher, M., Volkert, H., Renger, W., Bacmeister, J. T., and Peter, T.: Particle microphysics and chemistry in remotely observed mountain polar stratospheric clouds, *J. Geophys. Res.*, 103, 5785–5796, <https://doi.org/10.1029/97JD03626>, 1998a.
- Carslaw, K. S., Wirth, M., Tsias, A., Luo, B. P., Dörnbrack, A., Leutbecher, M., Volkert, H., Renger, W., Bacmeister, J. T., Reimer, E., and Peter, T.: Increased stratospheric ozone depletion due to mountain-induced atmospheric waves, *Nature*, 391, 675–678, <https://doi.org/10.1038/35589>, 1998b.
- Carslaw, K. S., Peter, T., Bacmeister, J. T., and Eckermann, S. D.: Widespread solid particle formation by mountain waves in the Arctic stratosphere, *J. Geophys. Res.*, 104, 1827–1836, <https://doi.org/10.1029/1998JD100033>, 1999.
- Dee, D. P., Uppala, S. M., Simmons, A. J., Berrisford, P., Poli, P., Kobayashi, S., Andrae, U., Balmaseda, M. A., Balsamo, G., Bauer, P., Bechtold, P., Beljaars, A. C. M., van de Berg, L., Bidlot, J., Bormann, N., Delsol, C., Dragani, R., Fuentes, M., Geer, A. J., Haimberger, L., Healy, S. B., Hersbach, H., Hólm, E. V., Isaksen, I., Kållberg, P., Köhler, M., Matricardi, M., McNally, A. P., Monge-Sanz, B. M., Morcrette, J.-J., Park, B.-K., Peubey, C., de Rosnay, P., Tavolato, C., Thépaut, J.-N., and Vitart, F.: The ERA-Interim reanalysis: configuration and performance of the data assimilation system, *Quart. J. Roy. Meteorol. Soc.*, 137, 553–597, <https://doi.org/10.1002/qj.828>, 2011.
- Dörnbrack, A., Leutbecher, M., Reichardt, J., Behrendt, A., Müller, K.-P., and Baumgarten, G.: Relevance of mountain wave cooling for the formation of polar stratospheric clouds over Scandinavia: Mesoscale dynamics and observations for January 1997, *J. Geophys. Res.*, 106, 1569–1581, <https://doi.org/10.1029/2000JD900194>, 2001.
- Dörnbrack, A., Birner, T., Fix, A., Flentje, H., Meister, A., Schmid, H., Browell, E. V., and Mahoney, M. J.: Evidence for inertia gravity waves forming polar stratospheric clouds over Scandinavia, *J. Geophys. Res.*, 107, SOL 30–1–SOL 30–18, <https://doi.org/10.1029/2001JD000452>, 2002.
- Dörnbrack, A., Kaifler, B., Kaifler, N., Rapp, M., Wildmann, N., Garhammer, M., Ohlmann, K., Payne, J. M., Sandercock, M., and Austin, E. J.: Unusual appearance of mother-of-pearl clouds above El Calafate, Argentina (50°21'S, 72°16'W), *Weather*, 75, 378–388, <https://doi.org/10.1002/wea.3863>, 2020.

- 485 Eckermann, S. D., Hoffmann, L., Höpfner, M., Wu, D. L., and Alexander, M. J.: Antarctic NAT PSC belt of June 2003: Observational validation of the mountain wave seeding hypothesis, *Geophys. Res. Lett.*, 36, L02 807, <https://doi.org/10.1029/2008GL036629>, 2009.
- Engel, I., Luo, B. P., Pitts, M. C., Poole, L. R., Hoyle, C. R., Grooß, J.-U., Dörnbrack, A., and Peter, T.: Heterogeneous formation of polar stratospheric clouds – Part 2: Nucleation of ice on synoptic scales, *Atmos. Chem. Phys.*, 13, 10 769–10 785, <https://doi.org/10.5194/acp-13-10769-2013>, 2013.
- 490 Feng, W., Chipperfield, M. P., Davies, S., von der Gathen, P., Kyrö, E., Volk, C. M., Ulanovsky, A., and Belyaev, G.: Large chemical ozone loss in 2004/2005 Arctic winter/spring, *Geophys. Res. Lett.*, 34, <https://doi.org/doi:10.1029/2006GL029098>, 2007.
- Fischer, H., Birk, M., Blom, C., Carli, B., Carlotti, M., Von Clarmann, T., Delbouille, L., Dudhia, A., Ehhalt, D., Endemann, M., Flaud, J. M., Gessner, R., Kleinert, A., Koopman, R., Langen, J., López-Puertas, M., Mosner, P., Nett, H., Oelhaf, H., Perron, G., Remedios, J., Ridolfi, M., Stiller, G., and Zander, R.: MIPAS: An instrument for atmospheric and climate research, *Atmos. Chem. Phys.*, 8, 2151–2188, <https://doi.org/10.5194/acp-8-2151-2008>, 2008.
- 495 Fortin, T. J., Drdla, K., Iraci, L. T., and Tolbert, M. A.: Ice condensation on sulfuric acid tetrahydrate: Implications for polar stratospheric ice clouds, *Atmos. Chem. Phys.*, 3, 987–997, <https://doi.org/10.5194/acp-3-987-2003>, 2003.
- Fritts, D. C. and Alexander, M. J.: Gravity wave dynamics and effects in the middle atmosphere, *Rev. Geophys.*, 41, 1003, <https://doi.org/10.1029/2001RG000106>, 2003.
- 500 Griessbach, S., Hoffmann, L., Spang, R., Achtert, P., von Hobe, M., Mateshvili, N., Müller, R., Riese, M., Rolf, C., Seifert, P., and Vernier, J.-P.: Aerosol and cloud top height information of Envisat MIPAS measurements, *Atmos. Meas. Tech.*, 13, 1243–1271, <https://doi.org/10.5194/amt-13-1243-2020>, 2020.
- Hersbach, H., Bell, B., Berrisford, P., Hirahara, S., Horányi, A., Muñoz-Sabater, J., Nicolas, J., Peubey, C., Radu, R., Schepers, D., Simmons, A., Soci, C., Abdalla, S., Abellan, X., Balsamo, G., Bechtold, P., Biavati, G., Bidlot, J., Bonavita, M., De Chiara, G., Dahlgren, P., Dee, D., Diamantakis, M., Dragani, R., Flemming, J., Forbes, R., Fuentes, M., Geer, A., Haimberger, L., Healy, S., Hogan, R. J., Hólm, E., Janisková, M., Keeley, S., Laloyaux, P., Lopez, P., Lupu, C., Radnoti, G., de Rosnay, P., Rozum, I., Vamborg, F., Villaume, S., and Thépaut, J.-N.: The ERA5 global reanalysis, *Quart. J. Roy. Meteorol. Soc.*, 146, 1999–2049, <https://doi.org/10.1002/qj.3803>, 2020.
- 505 Hoffmann, L., Xue, X., and Alexander, M. J.: A global view of stratospheric gravity wave hotspots located with Atmospheric Infrared Sounder observations, *J. Geophys. Res.*, 118, 416–434, <https://doi.org/10.1029/2012JD018658>, 2013.
- 510 Hoffmann, L., Röbber, T., Griessbach, S., Heng, Y., and Stein, O.: Lagrangian transport simulations of volcanic sulfur dioxide emissions: Impact of meteorological data products, *J. Geophys. Res.*, 121, 4651–4673, <https://doi.org/10.1002/2015JD023749>, 2016.
- Hoffmann, L., Hertzog, A., Röbber, T., Stein, O., and Wu, X.: Intercomparison of meteorological analyses and trajectories in the Antarctic lower stratosphere with Concordiasi superpressure balloon observations, *Atmos. Chem. Phys.*, 17, 8045–8061, <https://doi.org/10.5194/acp-17-8045-2017>, 2017a.
- 515 Hoffmann, L., Spang, R., Orr, A., Alexander, M. J., Holt, L. A., and Stein, O.: A decadal satellite record of gravity wave activity in the lower stratosphere to study polar stratospheric cloud formation, *Atmos. Chem. Phys.*, 17, 2901–2920, <https://doi.org/10.5194/acp-17-2901-2017>, 2017b.
- Hoffmann, L., Günther, G., Li, D., Stein, O., Wu, X., Griessbach, S., Heng, Y., Konopka, P., Müller, R., Vogel, B., and Wright, J. S.: From ERA-Interim to ERA5: the considerable impact of ECMWF’s next-generation reanalysis on Lagrangian transport simulations, *Atmos. Chem. Phys.*, 19, 3097–3124, <https://doi.org/10.5194/acp-19-3097-2019>, 2019.
- 520 Hoffmann, L., Clemens, J., Holke, J., Liu, M., and Mood, K. H.: slcs-jsc/mptrac: v2.2, <https://doi.org/10.5281/zenodo.5714528>, 2021.

- Hoffmann, L., Baumeister, P. F., Cai, Z., Clemens, J., Griessbach, S., Günther, G., Heng, Y., Liu, M., Haghighi Mood, K., Stein, O., Thomas, N., Vogel, B., Wu, X., and Zou, L.: Massive-Parallel Trajectory Calculations version 2.2 (MPTRAC-2.2): Lagrangian transport simulations on graphics processing units (GPUs), *Geosci. Model Dev.*, 15, 2731–2762, <https://doi.org/10.5194/gmd-15-2731-2022>, 2022.
- 525 Höpfner, M., Larsen, N., Spang, R., Luo, B. P., Ma, J., Svendsen, S. H., Eckermann, S. D., Knudsen, B., Massoli, P., Cairo, F., Stiller, G., v. Clarmann, T., and Fischer, H.: MIPAS detects Antarctic stratospheric belt of NAT PSCs caused by mountain waves, *Atmos. Chem. Phys.*, 6, 1221–1230, <https://doi.org/10.5194/acp-6-1221-2006>, 2006.
- Höpfner, M., Pitts, M. C., and Poole, L. R.: Comparison between CALIPSO and MIPAS observations of polar stratospheric clouds, *J. Geophys. Res.*, 114, <https://doi.org/10.1029/2009JD012114>, 2009.
- 530 Höpfner, M., Deshler, T., Pitts, M., Poole, L., Spang, R., Stiller, G., and von Clarmann, T.: The MIPAS/Envisat climatology (2002–2012) of polar stratospheric cloud volume density profiles, *Atmos. Meas. Tech.*, 11, 5901–5923, <https://doi.org/https://doi.org/10.5194/amt-11-5901-2018>, 2018.
- Jewtoukoff, V., Hertzog, A., Plougonven, R., Cámara, A. d. I., and Lott, F.: Comparison of gravity waves in the Southern Hemisphere derived from balloon observations and the ECMWF analyses, *J. Atmos. Sci.*, 72, 3449–3468, 2015.
- 535 Koop, T., Ng, H. P., Molina, L. T., and Molina, M. J.: A new optical technique to study aerosol phase transitions: The nucleation of ice from H₂SO₄ aerosols, *J. Phys. Chem.*, 102, 8924–8931, <https://doi.org/10.1021/jp9828078>, 1998.
- Koop, T., Luo, B., Tsias, A., and Peter, T.: Water activity as the determinant for homogeneous ice nucleation in aqueous solutions, 406, 611–614, <https://doi.org/10.1038/35020537>, 2000.
- Lambert, A., Santee, M. L., Wu, D. L., and Chae, J. H.: A-train CALIOP and MLS observations of early winter Antarctic polar stratospheric clouds and nitric acid in 2008, *Atmos. Chem. Phys.*, 12, 2899–2931, <https://doi.org/10.5194/acp-12-2899-2012>, 2012.
- 540 Lambert, A., Santee, M. L., and Livesey, N. J.: Interannual variations of early winter Antarctic polar stratospheric cloud formation and nitric acid observed by CALIOP and MLS, *Atmos. Chem. Phys.*, 16, 15 219–15 246, <https://doi.org/10.5194/acp-16-15219-2016>, 2016.
- Manney, G. L., Santee, M. L., Rex, M., Livesey, N. L., Pitts, M. C., Veefkind, P., Nash, E. R., Woltmann, I., Lehmann, R., Froidevaux, L., Poole, L. R., Schoeberl, M. R., Haffner, D. P., Davies, J., Dorokhov, V., Gernandt, H., Johnson, B., Kivi, R., Kyrö, E., Larsen, N., Levelt,
- 545 P. F., Makshtas, A., McElroy, C. T., Nakajima, H., Concepcion Parrondo, M., Tarasick, D. W., von der Gathen, P., Walker, K. A., and Zinoviev, N. S.: Unprecedented Arctic ozone loss in 2011, *Nature*, p. 469–475, <https://doi.org/https://doi.org/10.1038/nature10556>, 2011.
- Marti, J. and Mauersberger, K.: A survey and new measurements of ice vapor pressure at temperatures between 170 and 250 K, *Geophys. Res. Lett.*, 20, 363–366, <https://doi.org/10.1029/93GL00105>, 1993.
- Murphy, D. M. and Koop, T.: Review of the vapour pressures of ice and supercooled water for atmospheric applications, *Quart. J. Roy. Meteorol. Soc.*, 131, 1539–1565, <https://doi.org/10.1256/qj.04.94>, 2005.
- 550 Newman, P. A., Nash, E. R., and Rosenfield, J. E.: What controls the temperature of the Arctic stratosphere during the spring?, *J. Geophys. Res.*, 106, 19 999–20 010, <https://doi.org/10.1029/2000JD000061>, 2001.
- Noel, V. and Pitts, M.: Gravity wave events from mesoscale simulations, compared to polar stratospheric clouds observed from spaceborne lidar over the Antarctic Peninsula, *J. Geophys. Res.*, 117, D11 207, <https://doi.org/10.1029/2011JD017318>, 2012.
- 555 Orr, A., Hosking, J. S., Hoffmann, L., Keeble, J., Dean, S. M., Roscoe, H. K., Abraham, N. L., Vosper, S., and Braesicke, P.: Inclusion of mountain-wave-induced cooling for the formation of PSCs over the Antarctic Peninsula in a chemistry–climate model, *Atmos. Chem. Phys.*, 15, 1071–1086, <https://doi.org/10.5194/acp-15-1071-2015>, 2015.

- Orr, A., Hosking, J. S., Delon, A., Hoffmann, L., Spang, R., Moffat-Griffin, T., Keeble, J., Abraham, N. L., and Braesicke, P.: Polar stratospheric clouds initiated by mountain waves in a global chemistry–climate model: a missing piece in fully modelling polar stratospheric ozone depletion, *Atmos. Chem. Phys.*, 20, 12 483–12 497, <https://doi.org/10.5194/acp-20-12483-2020>, 2020.
- Pitts, M. C., Poole, L. R., Lambert, A., and Thomason, L. W.: An assessment of CALIOP polar stratospheric cloud composition classification, *Atmos. Chem. Phys.*, 13, 2975–2988, <https://doi.org/https://doi.org/10.5194/acp-13-2975-2013>, 2013.
- Pitts, M. C., Poole, L. R., and Gonzalez, R.: Polar stratospheric cloud climatology based on CALIPSO spaceborne lidar measurements from 2006 to 2017, *Atmos. Chem. Phys.*, 18, 10 881–10 913, <https://doi.org/10.5194/acp-18-10881-2018>, 2018.
- 565 Rivièrè, E. D., Huret, N., G-Taupin, F., Renard, J.-B., Pirre, M., Eckermann, S. D., Larsen, N., Deshler, T., Lefèvre, F., Payan, S., and Camy-Peyret, C.: Role of lee waves in the formation of solid polar stratospheric clouds: Case studies from February 1997, *J. Geophys. Res.*, 105, 6845–6853, <https://doi.org/10.1029/1999JD900908>, 2000.
- Rosenfield, J. E., Newman, P. A., and Schoeberl, M. R.: Computations of diabatic descent in the stratospheric polar vortex, *J. Geophys. Res.*, 99, 16 677–16 689, <https://doi.org/10.1029/94JD01156>, 1994.
- 570 Rößler, T., Stein, O., Heng, Y., Baumeister, P., and Hoffmann, L.: Trajectory errors of different numerical integration schemes diagnosed with the MPTRAC advection module driven by ECMWF operational analyses, *Geosci. Model Dev.*, 11, 575–592, <https://doi.org/10.5194/gmd-11-575-2018>, 2018.
- Santee, M. L., Tabazadeh, A., Manney, G. L., Fromm, M. D., Bevilacqua, R. M., Waters, J. W., and Jensen, E. J.: A Lagrangian approach to studying Arctic polar stratospheric clouds using UARS MLS HNO₃ and POAM II aerosol extinction measurements, *J. Geophys. Res.*, 107, ACH 4–1–ACH 4–13, <https://doi.org/10.1029/2000JD000227>, 2002.
- 575 Schroeder, S., Preusse, P., Ern, M., and Riese, M.: Gravity waves resolved in ECMWF and measured by SABER, *Geophys. Res. Lett.*, 36, L10805, <https://doi.org/10.1029/2008GL037054>, 2009.
- Sembhi, H., Remedios, J., Trent, T., Moore, D. P., Spang, R., Massie, S., and Vernier, J.-P.: MIPAS detection of cloud and aerosol particle occurrence in the UTLS with comparison to HIRDLS and CALIOP, *Atmos. Meas. Tech.*, 5, 2537–2553, [https://doi.org/10.5194/amt-5-](https://doi.org/10.5194/amt-5-2537-2012)
- 580 2537-2012, 2012.
- Simmons, A., Soci, C., Nicolas, J., Bell, B., Berrisford, P., Dragani, R., Flemming, J., Haimberger, L., Healy, S., Hersbach, H., et al.: Global stratospheric temperature bias and other stratospheric aspects of ERA5 and ERA5.1, <https://doi.org/10.21957/rcxqfmg0>, 2020.
- Solomon, S.: Stratospheric ozone depletion: A review of concepts and history, *Rev. Geophys.*, 37, 275–316, <https://doi.org/10.1029/1999RG900008>, 1999.
- 585 Solomon, S., Garcia, R. R., Rowland, F. S., and Wuebbles, D. J.: On the depletion of Antarctic ozone, *Nature*, 321, 755–758, <https://doi.org/10.1038/321755a0>, 1986.
- Spang, R.: MIPAS/Envisat Observations of Polar Stratospheric Clouds, <https://doi.org/10.17616/R3BN26>, last accessed: 2022-08-22, 2020.
- Spang, R., Riese, M., and Offermann, D.: CRISTA-2 observations of the south polar vortex in winter 1997: A new dataset for polar process studies, *Geophys. Res. Lett.*, 28, 3159–3162, <https://doi.org/10.1029/2000GL012374>, 2001.
- 590 Spang, R., Remedios, J., and Barkley, M.: Colour indices for the detection and differentiation of cloud types in infra-red limb emission spectra, *Adv. Space Res.*, 33, 1041–1047, [https://doi.org/10.1016/S0273-1177\(03\)00585-4](https://doi.org/10.1016/S0273-1177(03)00585-4), climate Change Processes in the Stratosphere, Earth-Atmosphere-Ocean Systems, and Oceanographic Processes from Satellite Data, 2004.
- Spang, R., Arndt, K., Dudhia, A., Höpfner, M., Hoffmann, L., Hurley, J., Grainger, R. G., Griessbach, S., Poulsen, C., Remedios, J. J., Riese, M., Sembhi, H., Siddans, R., Waterfall, A., and Zehner, C.: Fast cloud parameter retrievals of MIPAS/Envisat, *Atmos. Chem. Phys.*, 12, 7135–7164, <https://doi.org/10.5194/acp-12-7135-2012>, 2012.
- 595

- Spang, R., Hoffmann, L., Höpfner, M., Griessbach, S., Müller, R., Pitts, M. C., Orr, A. M. W., and Riese, M.: A multi-wavelength classification method for polar stratospheric cloud types using infrared limb spectra, *Atmos. Meas. Tech.*, 9, 3619–3639, <https://doi.org/10.5194/amt-9-3619-2016>, 2016.
- Spang, R., Hoffmann, L., Müller, R., Groöß, J.-U., Tritscher, I., Höpfner, M., Pitts, M., Orr, A., and Riese, M.: A climatology of polar stratospheric cloud composition between 2002 and 2012 based on MIPAS/Envisat observations, *Atmos. Chem. Phys.*, 18, 5089–5113, <https://doi.org/10.5194/acp-18-5089-2018>, 2018.
- 600 Stohl, A., Forster, C., Frank, A., Seibert, P., and Wotawa, G.: Technical note: The Lagrangian particle dispersion model FLEXPART version 6.2, *Atmos. Chem. Phys.*, 5, 2461–2474, <https://doi.org/10.5194/acp-5-2461-2005>, 2005.
- Tritscher, I., Groöß, J.-U., Spang, R., Pitts, M. C., Poole, L. R., Müller, R., and Riese, M.: Lagrangian simulation of ice particles and resulting dehydration in the polar winter stratosphere, *Atmos. Chem. Phys.*, 19, 543–563, <https://doi.org/10.5194/acp-19-543-2019>, 2019.
- 605 Tritscher, I., Pitts, M. C., Poole, L. R., Alexander, S. P., Cairo, F., Chipperfield, M. P., Groöß, J.-U., Höpfner, M., Lambert, A., Luo, B., Molleker, S., Orr, A., Salawitch, R., Snels, M., Spang, R., Woiwode, W., and Peter, T.: Polar stratospheric clouds: Satellite observations, processes, and role in ozone depletion, *Rev. Geophys.*, 59, e2020RG000702, <https://doi.org/10.1029/2020RG000702>, 2021.
- Voigt, C., Schlager, H., Luo, B. P., Dörnbrack, A., Roiger, A., Stock, P., Curtius, J., Vössing, H., Borrmann, S., Davies, S., Konopka, P., Schiller, C., Shur, G., and Peter, T.: Nitric Acid Trihydrate (NAT) formation at low NAT supersaturation in Polar Stratospheric Clouds (PSCs), *Atmos. Chem. Phys.*, 5, 1371–1380, <https://doi.org/10.5194/acp-5-1371-2005>, 2005.
- 610 Voigt, C., Dörnbrack, A., Wirth, M., Groß, S. M., Pitts, M. C., Poole, L. R., Baumann, R., Ehard, B., Sinnhuber, B.-M., Woiwode, W., and Oelhaf, H.: Widespread polar stratospheric ice clouds in the 2015–2016 Arctic winter – implications for ice nucleation, *Atmos. Chem. Phys.*, 18, 15 623–15 641, <https://doi.org/10.5194/acp-18-15623-2018>, 2018.
- 615 Waugh, D. W. and Randel, W. J.: Climatology of Arctic and Antarctic polar vortices using elliptical diagnostics, *jas*, 56, 1594–1613, [https://doi.org/https://doi.org/10.1175/1520-0469\(1999\)056<1594:COAAAP>2.0.CO;2](https://doi.org/https://doi.org/10.1175/1520-0469(1999)056<1594:COAAAP>2.0.CO;2), 1999.
- Waythomas, C. F., Scott, W. E., Prejean, S. G., Schneider, D. J., Izbekov, P., and Nye, C. J.: The 7–8 August 2008 eruption of Kasatochi Volcano, central Aleutian Islands, Alaska, *J. Geophys. Res.*, 115, B00B06, <https://doi.org/10.1029/2010JB007437>, 2010.
- Wegner, T., Kinnison, D. E., Garcia, R. R., and Solomon, S.: Simulation of polar stratospheric clouds in the specified dynamics version of the whole atmosphere community climate model, *J. Geophys. Res.*, 118, 4991–5002, <https://doi.org/10.1002/jgrd.50415>, 2013.
- 620 Weimer, M., Buchmüller, J., Hoffmann, L., Kirner, O., Luo, B., Ruhnke, R., Steiner, M., Tritscher, I., and Braesicke, P.: Mountain-wave-induced polar stratospheric clouds and their representation in the global chemistry model ICON-ART, *Atmos. Chem. Phys.*, 21, 9515–9543, <https://doi.org/10.5194/acp-21-9515-2021>, 2021.
- WMO: Guide to instruments and methods of observation, WMO-No. 8 (CIMO Guide), Appendix 4B, 2008.
- 625 WMO: Scientific Assessment of Ozone Depletion: 2018, Global Ozone Research and Monitoring Project–Report No. 58, Geneva, Switzerland, 588 pp., 2018.
- WMO: Scientific Assessment of Ozone Depletion: 2022, GAW Report No. 278, Geneva, 520 pp., 2022.
- Zhang, J., Tian, W., Chipperfield, M. P., Xie, F., and Huang, J.: Persistent shift of the Arctic polar vortex towards the Eurasian continent in recent decades, *Nature Climate Change*, 6, 1094–1099, <https://doi.org/10.1038/nclimate3136>, 2016.