

# Long-term changes in the ocean tide at Port Louis, Falkland Islands

Philip L. Woodworth<sup>1</sup>

<sup>1</sup>National Oceanography Centre, Joseph Proudman Building, 6 Brownlow Street, Liverpool, L3 5DA, United Kingdom

Correspondence to: Philip L. Woodworth (plw@noc.ac.uk)

**Abstract.** The historic tide gauge measurements at Port Louis in the Falkland Islands made by James Clark Ross in 1842 have been used to see whether there have been long-term changes in the ocean tide at that location. The conclusion is that there is no evidence for any significant change, which contrasts with tide gauge findings from other parts of the world over similar timescales. As by-products, the study has also been instructive in providing an example of how to obtain accurate tidal information from tabulations of high and low waters and from short tide gauge records.

## 1. Introduction

There is great interest in obtaining a better understanding of the changes in the ocean tide which have been observed at many locations around the world during the past century, especially their relationship to changes in ocean climate and sea level (Haigh et al., 2020). Many of these observations have come from tide gauges located along northern hemisphere coastlines, which have often been subject to engineering changes through the years. Therefore, there is particular interest in discovering whether there have also been long-term changes in the tide at pristine, remote locations, such as at islands in the southern hemisphere. Indeed, one might say that it was through such a study at a remote location (that of changes in the tide at St. Helena since 1761 by Cartwright, 1971, 1972) that this area of research began.

The present paper investigates whether there have been tidal changes since 1842 at Port Louis, located at the head of an inlet called Berkeley Sound on the east coast of East Falkland in the Falkland Islands in the SW Atlantic Ocean (Figure 1). Findings from the historical tidal observations of James Clark Ross have been compared to those obtained from a number of temporary tide gauge installations in the last few decades at Port Louis and nearby, with a focus on the predominant lunar semidiurnal tidal component (M2). ~~As by-products, the study has provided lessons on how to obtain reliable tidal information from the processing of short tide gauge records and from records of high and low waters.~~

As by-products, the study has provided lessons on how to obtain reliable tidal information from historical records of high and low waters and from the processing of short, modern tide gauge records. The former have presented a particular challenge: as will be seen, it would have been more preferable if we had been able to analyse Ross's original half-hourly sea level measurements, but that was not possible. Alternative methods for dealing with the high and low waters are presented. The latter refers to the analysis of several short, modern records from Port Louis which requires consideration of the relative importance of different tidal constituents, the relationships between them differing from those usually assumed from the equilibrium tide.

Section 2 describes the available tidal data sets, which are analysed in Sect. 3 to provide estimates of the historical and modern amplitudes and phase lags of the predominant M2 tidal component. The conclusions drawn from these separate analyses are given in Sect. 4.

---

## 40 2. Tidal Data Sets at Port Louis

### 2.1 The 1842 Data of James Clark Ross

James Clark Ross and the crews of his two ships (*Erebus* and *Terror*) had an extended stay in 1842 at Port Louis during their famous voyage of discovery and research in the Southern Ocean (Ross, 1847a,b). Ross installed a magnetic observatory at the site and undertook a set of astronomical, oceanographic and meteorological measurements. Tidal measurements were made between 10 May and 15 December, probably using a tide board (tide staff) or a form of float and stilling well gauge, with sea levels measured with respect to a nearby benchmark. The measurements were made every half an hour, and more frequently around the times of every high and low water, although with major gaps between September and December when Ross took his ships to Tierra del Fuego to make simultaneous measurements of the magnetic field in South America and the Falklands. As a result, only the measurements up to the end of August are useful.

An understanding of just how much ‘more frequently’ the measurements were made around high and low water will be important below. This is simply how Ross described them in Ross (1847b). However, in an undated letter to Sir George Biddell Airy headed “Copy of Note on Tides at Port Louis”, held in box 499, number 177 in the archives of the Royal Greenwich Observatory at Cambridge University Library, Ross referred to them more precisely as ‘every quarter of an hour’.

Ross’s original journal, containing the entire set of half-hourly measurements at Port Louis and the associated quarter-hourly values, is believed to have been destroyed accidentally by the UK Hydrographic Office (UKHO) during the 1990s. Fortunately, the journal was inspected in some detail by William Whewell and coworkers at Trinity College, Cambridge, during the nineteenth century, and a record of the heights and times of each high and low (HL) water was kept in Whewell’s research notes that are preserved in the Wren Library. Those tabulations of heights and times were converted into computer files by the National Oceanography Centre (NOC) and formed the basis of the study of changes in mean sea level at Port Louis since 1842 by Woodworth et al. (2010).

The fact that access to the original half-hourly measurements is no longer possible means that we cannot undertake a modern harmonic tidal analysis of the data. Fortunately, the Port Louis 1842 half-hourly record was analysed in the 19<sup>th</sup> century by Edward Roberts and published by Baird and Darwin (1885). These scientists were very much experts in tidal analysis and their findings can be relied upon. In addition, the HL values of Whewell provide a separate source of information on the tide that we do nowadays have access to. It will be seen that, when one considers how Whewell (or more likely one of his assistants) came to make the HL tabulations, that findings from them are consistent with those published by Baird and Darwin many years ago.

The amplitude of M2 estimated from the HL waters has to be adjusted for nodal and seasonal variations, given that the record spans only a short period in May-August 1842. The nodal adjustment assumes that the observed M2 amplitude varies over 18.6 years as in the equilibrium tide, which should be a reasonable assumption at an ocean island. The seasonal adjustment makes use of the annual amplitudes of variation in M2 estimated from each of 18 years of data from the permanent tide gauge at Port Stanley located 25 km southeast of Port Louis. The tide at Port Stanley is similar in magnitude to that at Port Louis, and it was considered that the two locations were near enough that their seasonal variations in M2 would be similar also.–

Formatted: Space Before: 0 pt, After: 0 pt

80 One might enquire about the accuracy of the findings of the various tidal analyses of Ross's data, given  
that they would have all been based on his visual measurements of water level. This technique is still employed  
today, for example when performing geodetic levelling of various types of tide gauge, or for the control of tide  
gauge sensor drift (Míguez et al., 2012; Pugh and Woodworth, 2014). From experience, we can estimate that his  
individual half-hourly measurements would have had several centimetre accuracy, depending on the wave and  
weather conditions (e.g. Herschel, 1849 and see Table 2.2 of Pugh and Woodworth, 2014). Consequently, one  
85 might expect a harmonic analysis of a record with a length similar to that of Ross's data set to yield tidal parameters  
with approximately centimetre accuracy. However, the use of high and low waters, rather than the original half-  
hourly values, adds a further complication, as discussed below.

## 2.2 Recent Tide Gauge Deployments

The six sets of recent tide gauge measurements, of which four consist of two pairs of simultaneous recordings at  
90 slightly different locations, are listed in Table 1, and the locations of the tide gauges at the head of Berkeley Sound  
are shown in Figure 1(c). Record 1 was obtained from a float gauge operated by the UKHO with data recovered  
in 1982 by HMS Endurance following the Falklands war. All the other records were obtained from sensors  
operated by NOC. The gauges included ones which delivered sea levels in centimetres (the float and differential  
sensors) and ones which delivered absolute pressure values in mbar. Fortunately, conversion of one parameter to  
95 the other, involving the product of water density times acceleration due to gravity, results in a scaling factor of  
almost exactly 1.0. Therefore, cm and mbar can be considered to be the same unit at this location. In principle,  
the M2 amplitudes and phase lags obtained from the absolute sensors should be adjusted for the M2 tide in local  
air pressure, if they are to be taken as the true M2 ocean tide. However, the M2 air tide is considerably smaller  
than any uncertainty in the tide gauge measurements (amplitude of the order of 1 Pa or 0.01 cm, see Figure 16.6  
100 of Schindelegger et al., 2023). Further details of each tide gauge deployment can be found in Woodworth et al.  
(2010).

## 3. Comparison of Historical and Modern M2

### 3.1 Harmonic analysis of the 1842 data

As mentioned above, the researchers of the 19<sup>th</sup> century had access to the original half-hourly data set of James  
105 Clark Ross. This was analysed on behalf of the British Association by Edward Roberts in 1878 and his findings  
were reported by Baird and Darwin (1885, pages 139 and 198) with only a simple change in the units used for  
amplitude. This analysis will have included nodal adjustments as expected from the equilibrium tide (see page  
136). The 4 major constituents in their listing of amplitudes (H) and phase lags ( $\kappa$ ) were as follows:

110

Constituent	H(ft)	(cm)	$\kappa$ (°)
M2	1.544	47.1	157
S2	0.492	15.0	195
K1	0.358	10.9	37

115

O1 0.451 13.7 4

with a ratio of N2 and M2 amplitudes of 0.217. The phase lags employed by Baird and Darwin ( $\kappa$ ) refer to local mean time at a particular longitude (58° W). Special Publication No. 26 (1963) of the International Hydrographic Organization contained the same information as Baird and Darwin, giving the latter as its source (with one misprint).

Between 1948 and 1984, the Admiralty Tide Tables (ATT) contained Port Louis amplitudes (H) and phase lags (g) derived from Ross's data as follows:

Constituent	H(cm)	g (°)	G(°)
M2	47	157	273
S2	15	192	312
K1	11	35	95
O1	14	7	63

where this type of phase lag (g) refers to a particular timezone, being GMT+4 in this case. (This notation follows the sign convention used in the ATT tables, meaning 4 hours behind Greenwich Mean Time.) These values are almost the same as those of Baird and Darwin, but it is possible that the Hydrographic Office undertook their own separate analysis of Ross's data, obtaining similar findings. If they simply copied Baird and Darwin, it seems that 58° W must have been considered to be close enough to 60° W for the reported phase lags to be taken as being in GMT+4 (hence  $\kappa$  and g being the same). These g values would then correspond to Greenwich phase lags (G) as shown. The UKHO subsequently stopped making use of Ross's 1842 data, and, for ATT purposes, employed harmonic constants obtained from measurements at Green Patch (record 1 in Table 1).

### 3.2 Use of 1842 HL values

#### 3.2.1 The Use of Mean Tidal Range

Mean Tidal Range (MTR) is defined by Mean High Water (MHW) minus Mean Low Water (MLW) and is approximately twice the amplitude of M2. Averages of the 1842 HL values were 185.3 cm for MHW (from 218 individual high waters) and 80.3 cm for MLW (from 219 individual low waters), both being measured to the same datum (which need not concern us here). Therefore, MTR is 105.0 cm implying a first estimate of M2 amplitude of 52.5 cm.

However, there are several contributions from other components of the tide which result in this obtained MTR being larger than twice M2 amplitude. These contributions stem primarily from the other semidiurnal tidal components (i.e. S2, N2, K2 etc.) and, to a lesser extent, from the diurnal components and from harmonics of M2 (i.e. M4, M6 etc.). They can be computed readily from the results of harmonic analysis of modern data as described by Doodson and Warburg (1941) and Woodworth et al. (1991, Appendix A). Of course, this procedure assumes that these aspects of the tide have not changed since 1842. In this case, the results of the 1984 tidal analysis show that the contributions amount to 7.6 cm, resulting in an adjusted MTR of 97.4 cm, or adjusted M2 amplitude of 48.7 cm.

Two further adjustments are necessary. One is due to the nodal variation of M2, the amplitude of which in the equilibrium tide varies by 3.7% about its average value over a period of 18.6 years. An assumption that the

nodal variation at Port Louis is similar to that in the equilibrium tide is supported by inspection of the 18 years of M2 amplitude from Port Stanley, which shows no evidence for a residual nodal signal once amplitudes are adjusted by the equilibrium amount (Figure 2a). The Ross measurements in mid-1842 occurred approximately 160 5.75 years before nodal maximum for M2, and so nearer to nodal minimum than nodal maximum. Therefore, the estimate of the average M2 amplitude has to be increased by  $3.7 \cos(2\pi \cdot 5.75/18.6)$  or 1.34%, resulting in a further adjusted amplitude of 49.4 cm.

The second adjustment is due to the fact that M2 amplitude varies through the year. The same 18 years of data from Port Stanley show that the amplitude of the annual variation in M2 there is typically 0.47 cm with 165 M2 amplitude peaking around the end of August or beginning of September (Figure 2b). An assumption that M2 at Port Louis varies seasonally in a similar way to that at Port Stanley then results in its average amplitude being further revised, downwards by 0.3 cm in this case, resulting in a final estimation of historical M2 amplitude of approximately 49 cm.

### 3.2.2 Comparison to Tidal Predictions

170 In this second analysis of the HL information, a calculation was made of MHW-MLW (or MTR) from the 1842 HL values minus those from predictions based on the harmonic constants computed from tidal analysis of the 1984 data, assuming that all components of the tide were the same in 1842 as in 1984, except for the amplitude of M2. In a first run, the M2 amplitude was assumed to be the same, but in subsequent runs it was allowed to vary in increments of 0.5 mm from that in 1984. No concerns about nodal variability are necessary in this case, as such 175 variations are taken care of automatically in the computation of the predictions. Table 3(a)2 shows the findings, which suggest that the best fit to the 1842 value of MTR requires an M2 amplitude 2.25 cm larger than that used in the predictions based on 1984 data i.e.  $2.25 + 48.04 = 50.29$  cm.

A similar procedure was undertaken for M2 phase lag, assuming the larger M2 amplitude of 50.29 cm and varying the phase lag obtained from tidal analysis of the 1984 data in increments of  $1^\circ$ , and computing the 180 average difference in the times of high and low waters between those in the Ross data set and the predictions (Table 3(b)3). The HW values suggest that the historical phase lag was  $1^\circ$  larger in 1842 than in 1984, while the LW values suggest a  $2^\circ$  larger historical phase lag. Taking into account the uncertainties in timings that are inherent in all tide gauge records, we can conclude that these findings are consistent with zero phase lag difference.

### 3.2.3 Explanation of a Larger M2 Amplitude using the HL Tabulations

185 An explanation of why the M2 amplitude calculated from the HL tabulations in Sects. 3.2.1 and 3.2.2 is larger than that found from the nineteenth-century harmonic analysis by Edward Roberts (Sect. 3.1) is as follows. Whewell and his assistants extracted tables of HL values for many stations around the world as part of their research on the tides. In the present case, the only feasible way that the tables for Port Louis could have been made is by inspection of the several quarter-hour values obtained by Ross around each expected astronomical high and 190 low water. Whewell could only have picked out the highest (lowest) value in each group and entered that into the table as being the actual observed high (low) water value. He would not have had time, or the computational ability, to have put a smooth spline through the noise in the several quarter-hour measurements in each group and so arrive at an interpolated height estimate.

In practice, one could imagine that high-frequency, non-tidal variability could have resulted in one of the 195 quarter-hourly values either side of a tidal HL being higher (lower) than that at the time of astronomical tidal HL,

and so being tabulated as the actual, observed HL value. This would be the case if, for example, there was considerable variability on timescales of an hour or two, and it would result in estimates of tidal MHW being biased slightly too high and tidal MLW being biased slightly too low. This suggestion is illustrated schematically in Figure 3.

200 In support of this theory, one can look at the power spectrum of the 1984 record which shows a broad peak of energy centred on 0.5 cph (Figure 4), consistent with the seiche-type signals to be seen in all of the Port Louis records, with amplitudes of several cm and periods of about 2 hours. The root-mean-square of variability within this band (0.3-0.65 cph) is 3.5 cm. The suggestion that this variability is due to a seiche in Berkeley Sound is supported by knowledge of its dimensions (approximately 31.3 km long and 50 m deep at the mouth, see UKHO, 205 1989) and with the use of the ‘rectangular/rectangular’ formula of Wilson (1972, page 40) for a quarter-wavelength resonance with maximum amplitude at the head of the inlet:

$$T = 2.618 (2 L) / \sqrt{(g h)}$$

210 where L is the length of the inlet, h the depth at its mouth, g acceleration due to gravity and T is the period of the resonance. The latter is thereby calculated to be 2.03 hours, or a frequency of 0.492 cph.

As a test, each of the 1984 half-hourly values nearest to high (or low) astronomical tide were inspected to see whether there was another half-hourly level within one hour which was larger (smaller) than this one. If this one had indeed been the largest (smallest) of the group of five considered, then one could have imagined  
215 Whewell selecting that one as the official HL value straightforwardly. But if one ~~if~~ of the other four in the group was larger (smaller) because of the high-frequency variability, then that one would have been selected for tabulation instead. In fact, the test showed that there would have been biases of 2.9 cm (upwards) and 2.6 cm (downwards) in the calculation of MHW and MLW respectively, or 5.5 cm in MTR and so 2.7 cm in M2 amplitude. Now, Whewell would have had quarter-hourly values available, not half-hourly, so one would expect  
220 any biases from his tabulations to be smaller than this. But the general idea is the same, and it is feasible to expect that the use of his tabulations would have resulted in positive biases in M2 amplitude of ~1 cm.

### 3.3 Comparison to Modern Values of M2

Table 24 shows the findings for M2 from tidal analyses of the modern data sets; listings of all constituents from the analyses can be found in the Supplementary Material. The analyses took the form of conventional harmonic  
225 analysis with a number of constituents appropriate for the record lengths, longer records enabling the amplitudes and phase lags of more constituents to be determined independently (Bell et al., 1999; Pugh and Woodworth, 2014). For the shortest records (numbers 5 and 6 in particular), some semidiurnal constituents cannot be determined independently of M2 and so their amplitudes have to be specified in terms of ‘related constituents’ in the harmonic fit. For example, N2 has an amplitude of 0.1915 of that of M2 in the equilibrium tide, and that is  
230 indeed found at many locations around the world. However, analysis of records 1, 2, 3 and 4 and the historical analysis of Baird and Darwin (1885) indicated that at Port Louis the ratio is closer to 0.25 (Table 24). Therefore, the relationships for N2, NU2 and L2 relative to M2, obtained from the analysis of the longer record 2, were employed in the tidal analyses of records 5 and 6.

The average of the resulting six amplitudes of M2 in Table 24 is 47.5 cm, with a scatter between them of 0.5 cm. Such a small scatter is to be expected, as M2 is known to fluctuate from year to year depending on varying meteorological and oceanographic forcings (cf. Figure 2a for Port Stanley and see Pugh and Woodworth, 2014), and given that measurements were obtained using different tide gauges and at slightly different locations. Nodal variation is accommodated automatically in the tidal analyses, so the individual amplitudes and their average do not have to be adjusted further for this variation. Seasonal adjustments might increase the average by several mm, as records 1, 5 and 6 in particular are short and occur at the start of the year; that would raise the average M2 amplitude to approximately 48 cm, which is almost identical to that for 1842 in the ATT tables calculated from Ross's data (Sect. 3.1). The average Greenwich phase lag is 276.4° with two individual values within 1° of the average and all within 2°. This scatter is actually smaller than that which might be expected from the 0.5 cm scatter in the amplitudes and so can be considered as being rather small indeed.

### 3.4 Comparison to Modern Values of S2, K1 and O1

Average values for the amplitudes and Greenwich phase lags of the other main semidiurnal constituent (S2) and the two main diurnal constituents (K1 and O1) can also be obtained from the six modern records:

Constituent	H(cm)	G(°)
M2	47.5	276.4
S2	16.9	311.9
K1	12.7	101.8
O1	15.1	57.8

which indicates differences of only 1-2 cm in amplitude and several degrees in phase lag for S2, K1 and O1 from those reported above for 1842 in the ATT tables (Sect. 3.1). Such small differences in these smaller constituents, in phase lag in particular, cannot be regarded as significant given the year-to-year variability in the ocean and in measurement techniques.

## 4. Conclusions

The modern values for M2 (amplitude 48 cm and 276.4° phase lag) can be compared to those obtained from harmonic analysis of the 1842 data as reported by Baird and Darwin (1885) and included in the ATT tables, which indicated an M2 amplitude of 47 cm and Greenwich phase lag of 273°. In addition, analyses of the MTR tabulations described in Sects. 3.2.1 and 3.2.2 suggest an M2 amplitude of 49 or 50 cm, which may be over-estimated by ~1 cm for the reasons given in Sect. 3.2.3. Meanwhile, the phase lag analysis of Sect. 3.2.2 suggests that the M2 phase lag in 1842 was only 1 or 2° larger than the 277.1° in 1984.

Therefore, the main conclusion of this study is that there is no evidence that the ocean tide at Port Louis has changed significantly since 1842; almost no change in amplitude and only several degrees in phase lag at most. This contrasts with findings elsewhere, and especially in the northern hemisphere, where significant changes have been observed (Woodworth, 2010; Haigh et al., 2020). However, this could, of course, be simply part of a complicated worldwide pattern of tidal changes. It will be particularly interesting to combine the findings of the



present study with those from elsewhere in the region; for example, tides measured by the French Expedition to Orange Bay near Cape Horn in the early 1880s as part of the First International Polar Year are presently under investigation (Laurent Testut, private communication). On a more technical level, the present study has also been  
275 useful in providing an example of obtaining accurate tidal information from tabulations of HL waters and from short tide gauge records.

**Supplementary Material.** The archive 'supplement.zip' includes one file containing the 1842 Ross HL values, six containing the modern records of Table 1, one containing full listings of the tidal analyses of the 6 records and a 'readme' information file.

280

**Competing interests.** The author declares that he has no conflict of interest.

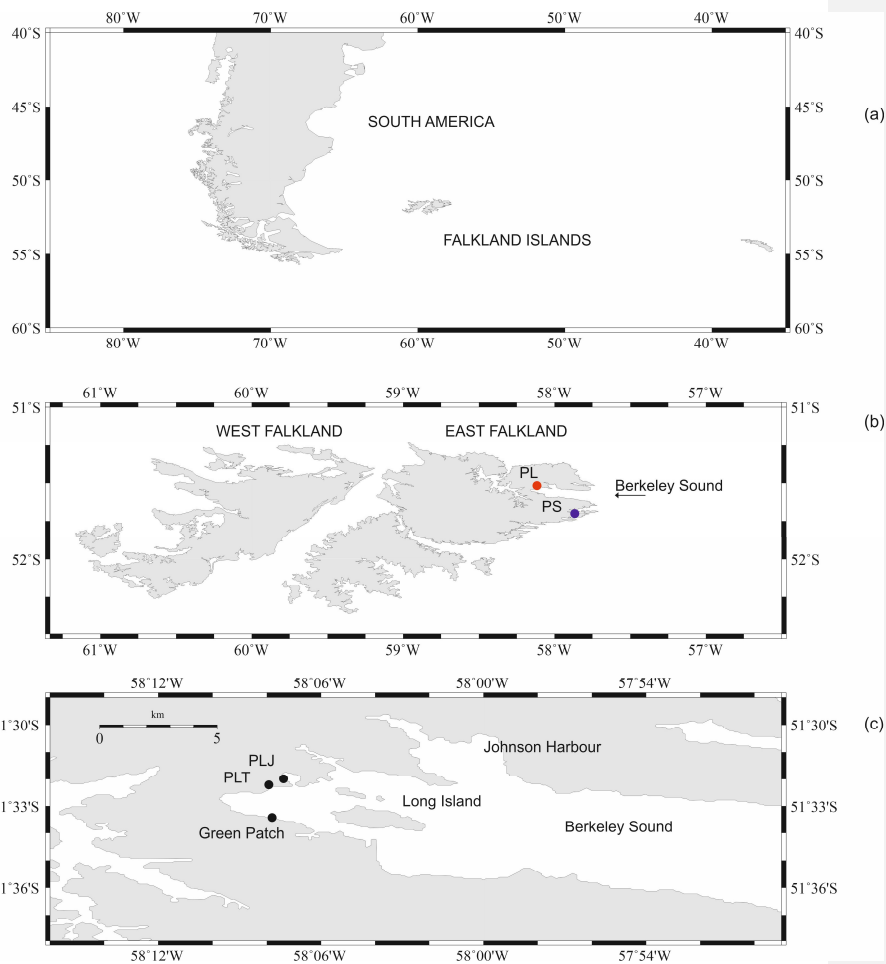
**Author contribution.** PLW performed the analyses described above and wrote the paper.

285 **Acknowledgements.** I would like to record the contributions of my colleague David Pugh who died in 2022. David instigated or undertook most of the measurements in Table 21. I had great pleasure in going on fieldwork to the Falklands with him in 2009 during which records 5 and 6 in Table 1 were obtained. I am grateful to many colleagues at the NOC and Ross ~~Chaloner~~Chaloner and colleagues at the Falkland Islands Public Works Department for all their help. Christopher Jones of the UKHO is thanked for information and advice about the  
290 1981-2 tide gauge data and many other matters. Also I am grateful to Paul Hughes (formerly Liverpool John Moores University) who discovered the Ross high and low water records in the Wren Library. Laurent Testut is thanked for comments on an earlier version of this paper. This work was funded partly by the U.K. Natural Environment Research Council. Some figures were generated using the Generic Mapping Tools (Wessel and Smith, 1998).

295

## References

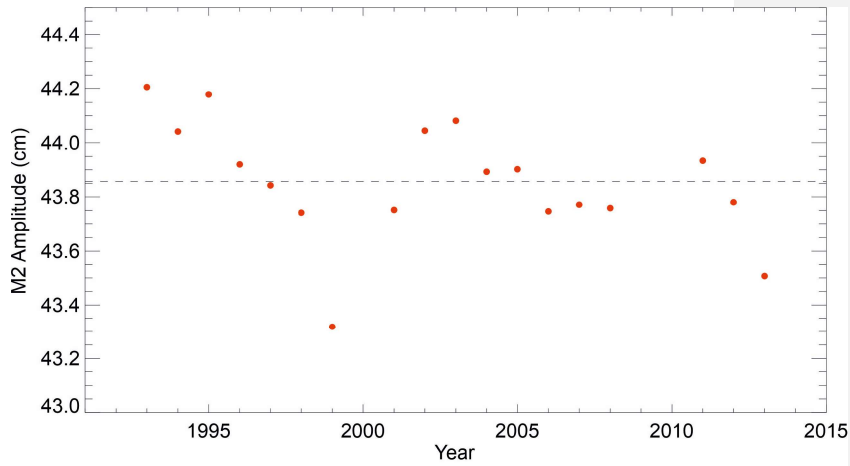
- Baird, A.W. and Darwin, G.H.: Results of the harmonic analysis of tidal observations, *Philos. T. Roy. Soc.*, 34, 135-207, <https://doi.org/10.1098/rsp1.1885.0009>, 1885.
- Bell, C., Vassie, J.M., and Woodworth, P.L.: The TASK-2000 (Tidal Analysis Software Kit 2000). National  
300 Oceanography Centre, Liverpool, 21pp, 1999.
- Cartwright, D.E.: Tides and waves in the vicinity of Saint Helena, *Philos. T. Roy. Soc., A*, 270, 603-649, <https://doi.org/10.1098/rsta.1971.0091>, 1971.
- Cartwright, D. E.: Some ocean tide measurements of the eighteenth century, and their relevance today, *P. R. Soc. Edinb. B: Biological Sciences*, 72, 331–339, <https://doi.org/10.1017/S0080455X00001892>, 1972.
- 305 Doodson, A.T. and Warburg, H.D.: Admiralty Manual of Tides, His Majesty's Stationery Office, 270pp, 1941.
- Haigh, I.D., Pickering, M.D., Green, J.A.M., Arbic, B.K., Arns, A., Dangendorf, S., Hill, D., Horsburgh, K., Howard, T., Idier, D., Jay, D.A., Lee, S.B., Müller, M., Schindelegger, M., Talke, S.A., Wilmes, S-B., and Woodworth, P.L.: The tides they are a-changin': A comprehensive review of past and future nonastronomical changes in tides, their driving mechanisms and future implications, *Rev. Geophys.*, 57, e2018RG000636,  
310 <https://doi.org/10.1029/2018RG000636>, 2020.
- [Herschel, J.F.W. \(Ed.\): A manual of scientific enquiry. Prepared for the use of Her Majesty's Navy and travellers in general, John Murray, London, 488 pp., 1849.](#)
- [Míguez, B.M., Testut, L., and Wöppelmann, G. Performance of modern tide gauges: towards mm-level accuracy, \*Sci. Mar.\*, 76S1, 221-228, <https://doi.org/10.3989/scimar.03618.18A>, 2012.](#)
- 315 Pugh, D.T. and Woodworth, P.L.: Sea-level science: Understanding tides, surges, tsunamis and mean sea-level changes, Cambridge University Press, Cambridge, ISBN 9781107028197. 408pp., 2014.
- Ross, J. C.: A Voyage of Discovery and Research in the Southern and Antarctic Regions, During the Years 1839–43, Vol. 1, London, John Murray, 1847a.
- Ross, J. C.: A Voyage of Discovery and Research in the Southern and Antarctic Regions, During the Years 1839–  
320 43, Vol. 2, London, John Murray, 1847b.
- Schindelegger, M., Sakazaki, T., and Green, M.: Atmospheric tides - An Earth system signal. Chapter 18 (pp. 389-418) in *A Journey Through Tides* (eds. M. Green and J.C. Duarte), Amsterdam. Elsevier, pp.445., 2023.
- UKHO, 1989: Admiralty Charts and Publications 2512, United Kingdom Hydrographic Office, Taunton, Somerset TA1 2DN, UK.
- 325 Wessel, P. and Smith, W.H.F.: New, improved version of generic mapping tools released, *EOS Transactions of the American Geophysical Union*, 79, 579-579, 1998.
- Wilson, B. W.: Seiches, *Adv. Hydrosoci.*, 8, 1–94, 1972.
- Woodworth, P.L., Shaw, S.M., and Blackman, D.B.: Secular trends in mean tidal range around the British Isles and along the adjacent European coastline, *Geophys. J. Int.*, 104, 593-610, [https://doi.org/10.1111/j.1365-  
330 246X.1991.tb05704.x](https://doi.org/10.1111/j.1365-246X.1991.tb05704.x), 1991.
- Woodworth, P.L., Pugh, D.T., and Bingley, R.M.: Long term and recent changes in sea level in the Falkland Islands, *J. Geophys. Res.*, 115, C09025, <https://doi.org/10.1029/2010JC006113>, 2010.



335

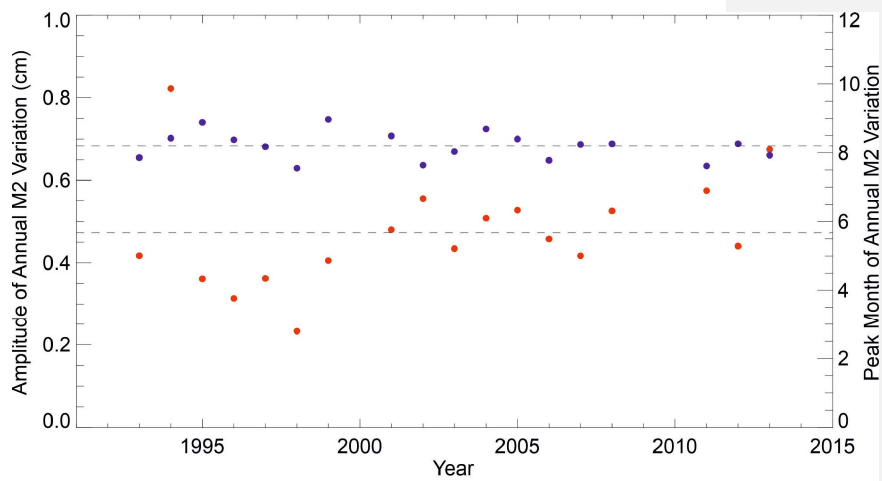
Figure 1. (a) Relationship of the Falkland Islands to the coast of South America in the SW Atlantic Ocean, (b) Map of West and East Falkland showing the positions of Berkeley Sound and Port Louis (PL, red dot) and Port Stanley (PS, blue dot), (c) Locations of Port Louis Jetty (PLJ), which is in a small inlet, Port Louis Tablet (PLT) and Green Patch at the head of Berkeley Sound.

340



(a)

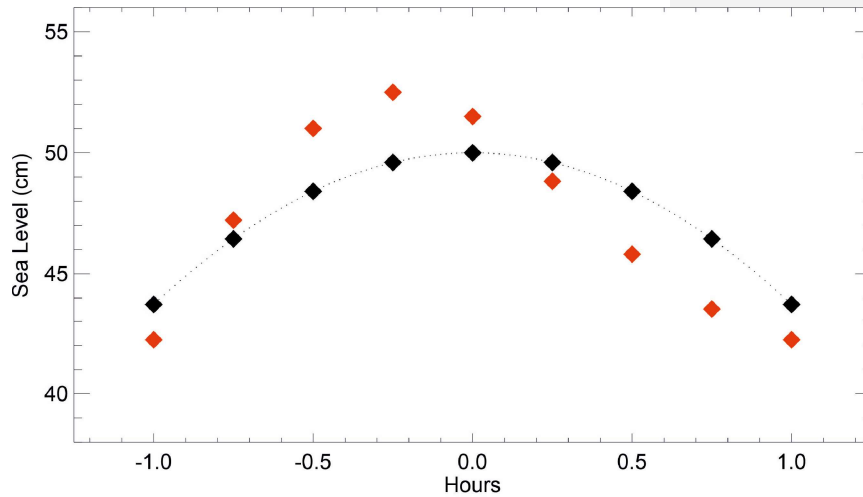
345



(b)

Figure 2. (a) Amplitude of the M2 component of the ocean tide at Port Stanley, 25 km southeast of Port Louis, computed from 18 separate annual tidal analyses between 1993 and 2015, each adjusted for nodal variation as in the equilibrium tide. Values fluctuate from year to year about the average (dashed line) but no residual nodal signal is evident. (b) Amplitude (red dots, left hand scale) and peak month (blue dots, right hand scale) from the 18 separate annual tidal analyses. The average of each quantity is shown by the dashed lines.

350



355

Figure 3. A schematic example of how high water tabulated by Whewell might have been biased high because of high-frequency variability. The black curve shows a tide with an amplitude of 50 cm around the time of high tide, peaking at time zero. A curve similar to this occurs if the only processes involved are the astronomical tides, low-frequency storm surges and changes in mean sea level. In these cases, 15-minute measurements will sample the curve as shown by the black diamonds, and the highest of these will define the recorded high water. But if there is also sufficient high-frequency variability present on timescales shorter than the flattish upper part of the curve, simulated here by an oscillation with a period of 2 hours and amplitude of 3 cm peaking a short time before time zero, there would have been some occasion in the flattish part when there was a red diamond (the total level) that was higher than the highest black one. In this case, Whewell would have tabulated the highest red value as the high water.

360

365

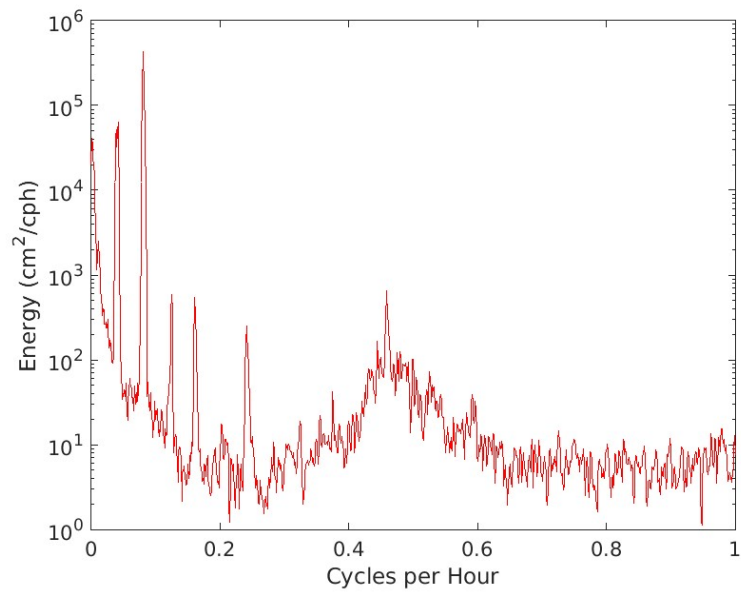


Figure 4. Power spectrum of the half-hourly 1984 sea level record (record 2 in Table 21). The spikes on the left are due to the main diurnal and semidiurnal tides and their harmonics, while the broad enhancement centred around 0.5 cpd is due to the seiche activity in Berkeley Sound.

370

375 Table 1. Recent observations of the ocean tide from tide gauges at or near to Port Louis in Berkeley Sound, East Falkland showing durations of the measurements, locations (Figure 1), gauge types and recording frequencies.

Record Freq.	Duration (years/days)	Location	Gauge Type	Rec. (min)
380 1.	1981/339 - 1982/87	Green Patch	Float gauge	30
385 2.	1984/143-252	Port Louis Jetty	Bubbler pressure gauge	30
3.0	2003/110-265	Port Louis Jetty	Absolute pressure gauge	6
390 4.	2003/110-265	Green Patch	Absolute pressure gauge	6
395 5.	2009/55-70	Port Louis Tablet	Absolute pressure gauge	6
6.	2009/55-70	Port Louis Jetty	Differential pressure gauge	1

400

405

~~Table 2.2. Amplitude (H) and Greenwich phase lag (G) of the M2 component of the ocean tide determined from the tide gauge records in Table 1. The number of major and related harmonic constituents used in each analysis is shown together with analysis comments.~~

<del>Record</del>	<del>Amplitude</del>	<del>Phase Lag</del>	<del>No. Major</del>	<del>No. Rel.</del>	<del>Comments</del>
<del>H (cm)</del>	<del>G (°)</del>	<del>Con.</del>	<del>Con.</del>		
<del>1.</del>	<del>47.5</del>	<del>277.9</del>	<del>27</del>	<del>8</del>	<del>N2/M2 = 0.261</del>
<del>2.</del>	<del>48.0</del>	<del>277.7</del>	<del>55</del>	<del>2</del>	<del>N2/M2 = 0.245</del>
<del>3.</del>	<del>47.7</del>	<del>277.3</del>	<del>55</del>	<del>2</del>	<del>N2/M2 = 0.253</del>
<del>4.</del>	<del>47.6</del>	<del>275.5</del>	<del>55</del>	<del>2</del>	<del>N2/M2 = 0.254</del>
<del>5.</del>	<del>47.1</del>	<del>274.4</del>	<del>16</del>	<del>15</del>	<del>N2, NU2 and L2 related to M2 as determined in the 1984 analysis</del>
<del>6.</del>	<del>46.9</del>	<del>275.3</del>	<del>16</del>	<del>15</del>	<del>ditto</del>

415

420



425 ~~Table 3a~~. The difference between MTR measured in 1842 minus that predicted using 1984 data, incrementing the M2 amplitude used in the predictions (48.04 cm) by small amounts.

	Amplitude Increment (mm)	MTR Difference (cm)
430	0	4.14
	10	2.31
	15	1.39
	20	0.47
	21.5	0.20
435	22	0.10
	22.5	0.01
	23	-0.08
	23.5	-0.17
	24	-0.27
440	25	-0.45

Table 3b3. Average difference (min) between the times of high and low waters in the Ross data set and those in predictions for 1842 based on the 1984 data set, considering increments (°) on the M2 phase lag obtained in 1984 (277.1°).

	Phase Lag Increment (°)	Time Diff. (min)	Time Diff. (min)
		HW	LW
450	-2	5.35	8.20
	0	1.49	4.42
	1	-0.53	2.54
	2	-2.41	0.48
	3	-4.42	-1.51
455	4	-6.48	-3.40

460 Table 4. Amplitude (H) and Greenwich phase lag (G) of the M2 component of the ocean tide  
determined from the tide gauge records in Table 1. The number of major and related harmonic  
constituents used in each analysis is shown together with analysis comments.

Record	Amplitude H (cm)	Phase Lag G (°)	No. Major Con.	No. Rel. Con.	Comments
465 1.	47.5	277.9	27	8	N2/M2 = 0.261
2.	48.0	277.7	55	2	N2/M2 = 0.245
470 3.	47.7	277.3	55	2	N2/M2 = 0.253
4.	47.6	275.5	55	2	N2/M2 = 0.254
475 5.	47.1	274.4	16	15	N2, NU2 and L2 related to M2 as determined in the 1984 analysis
480 6.	46.9	275.3	16	15	ditto