

The comparative role of physical system processes in Hudson Strait ice stream cycling: a comprehensive model-based test of Heinrich event hypotheses

Kevin Hank¹ and Lev Tarasov¹

¹Department of Physics and Physical Oceanography, Memorial University of Newfoundland, St. John's, NL, A1B 3X7, Canada

*khank@mun.ca

Correspondence: Kevin Hank (khank@mun.ca)

Abstract. Despite their recognized significance on global climate and extensive research efforts, the mechanism(s) driving Heinrich Events remain(s) a subject of debate. Here, we use the 3D thermo-mechanically coupled Glacial Systems Model (GSM) to examine Hudson Strait ice stream surge cycling as well as the role of 3 factors previously hypothesized to play a critical role in Heinrich events: ice shelves, glacial isostatic adjustment, and sub-surface ocean temperature forcings. In contrast to all previous modeling studies examining HEs, the GSM uses a transient last glacial cycle climate forcing, global visco-elastic glacial isostatic adjustment model, and sub-glacial hydrology model. The results presented here are based on a high-variance sub-ensemble retrieved from North American history matching for the last glacial cycle.

Over our comparatively wide sampling of the potential parameter space (52 ensemble parameters for climate forcing and process uncertainties), we find two modes of Hudson Strait ice streaming: classic binge-purge versus near continuous ice streaming with occasional shutdowns and subsequent surge onset overshoot. Our model results indicate that large ice shelves covering the Labrador Sea during the last glacial cycle only occur when extreme calving restrictions are applied. The otherwise minor ice shelves provide insignificant buttressing for the Hudson Strait ice stream. While sub-surface ocean temperature forcing leads to minor differences regarding surge characteristics, glacial isostatic adjustment does have a significant impact. Given input uncertainties, the strongest controls on ice stream surge cycling are the poorly constrained deep geothermal heat flux under Hudson Bay and Hudson Strait and the basal drag law. Decreasing the geothermal heat flux within available constraints and/or using a Coulomb sliding law instead of a Weertman-type power law leads to a shift from the near-continuous streaming mode to the binge-purge mode.

Copyright statement. TEXT

1 Introduction

20 Heinrich Events (HEs) offer a near unique opportunity to explore a coupled ice-climate-ocean instability that operates on the order of centuries to millennia ([Heinrich, 1988](#)). HEs are generally attributed to large armadas of icebergs drifting from Hudson Strait across the North Atlantic (40° - 55°N) while depositing sediment layers of Ice-Rafted Debris (IRD). At least six of these Heinrich Layers have been identified between 60 kyr BP (before present) and 15 kyr BP, but there is evidence for earlier events (Table 6.3 in Bradley, 2014, and references therein). Heinrich Layers are usually characterized by high detrital
25 carbonate concentration, low abundance of organic carbon and terrigenous lipids, and high magnetic susceptibility (Hemming, 2004). Mineralogical inferences from IRD records indicate a Hudson Strait/Hudson Bay provenance, but there is also evidence for Icelandic and European source regions for at least 2 HEs (Grousset et al., 1993; Gwiazda et al., 1996; Hemming, 2004). HEs generally coincide with the coldest phases of the Dansgaard-Oeschger (DO) cycles, followed by a sharp temperature increase (e.g., Hemming, 2004; Clement and Peterson, 2008; Hodell et al., 2010). Marine records indicate a weakening of the Atlantic
30 Meridional Overturning Circulation (AMOC) and an increase in sub-surface ocean temperatures leading up to HEs (Marcott et al., 2011, and references therein).

Despite over 50 years of research, the exact mechanism behind HEs remains unclear. The proposed hypotheses include an internally driven binge-purge model (MacAyeal, 1993; Payne, 1995; Calov et al., 2002), an [atmospherically synchronized surge mechanism](#) ([Schannwell et al., 2024](#)), an ice shelf buildup-collapse mechanism (Hulbe, 1997; Hulbe et al., 2004), and
35 ~~a hypothesis encompassing underwater melt~~ [an underwater melt-driven grounding line retreat](#) modulated by glacial isostatic adjustment (~~GIA, Bassis et al., 2017~~) ([GIA, Bassis et al., 2017](#)). However, an extensive study simultaneously investigating the relative role of each proposed HE hypothesis is still missing. Furthermore, previous model-based tests of HE-related Hudson Strait surge cycling have ~~not addressed~~ [largely ignored](#) uncertainties in key potentially relevant processes and inputs. These include the deep geothermal heat flux under Hudson Strait, glacio-isostatic adjustment, and the form of the basal drag law
40 employed.

Here we run sensitivity experiments with the 3D thermo-mechanically coupled glacial systems model (~~GSM, Tarasov et al., 2024, in prep~~) ([GSM, Tarasov et al., 2024](#)) and a high-variance (with respect to ensemble parameters and ice sheet configuration) ensemble-based approach to determine the role that relevant physical system processes play in HEs. A challenge in this context is the robust modeling of ice stream cycling associated with 2 of the 3 hypotheses discussed herein. This challenge is largely due to
45 the abrupt changes with ice stream activation/de-activation, resulting in potentially high sensitivity to the implementation and discretization of the relevant dynamical equations (Hank et al., 2023). As a step towards addressing this, we use **Minimum Numerical Error Estimates** (MNEEs) as a threshold for the numerical significance of model results.

In particular, we address the following research questions.

50 Q_1 *What are the characteristics of Hudson Strait ice stream surges and how do they depend on the geothermal heat flux and basal drag law?*

Given the critical role of basal temperature and basal drag on ice stream cycling, we examine the to-date ~~unassessed effect of various GHF input fields~~ mostly unassessed sensitivity of Hudson Strait ice stream surge characteristics to deep GHF input uncertainty and different basal sliding laws ~~on Hudson Strait ice stream surge characteristics~~.

Q₂ Can the sudden reduction of the buttressing effect of ice shelves trigger Hudson Strait ice stream surging?

55 A 2°C increase in the sub-surface ocean temperature has been shown to cause a 6 fold increase in the ice shelf basal melt rates in front of Hudson Strait ($\sim 6 \text{ m yr}^{-1}$ to $35\text{-}40 \text{ m yr}^{-1}$) in simulations with an ocean/ice-shelf model (Marcott et al., 2011). Such an increase can significantly degrade the buttressing effect of a confined ice shelf and, thereby, potentially trigger ice stream activation or surging (e.g., Álvarez-Solas et al., 2011). To test this scenario, forced ocean warming experiments are carried out with forcing timing set to that of the HE record (timing based on average of Table 6.3 in
60 Bradley (2014), “HE shelf forcing”).

Q₃ Can a sudden breakup of fringing ice shelves along the Canadian coast explain the IRD records (without the need for surges)?

HEs occurred during extremely cold climates. Hulbe et al. (2004) propose that these cold conditions led to the formation of fringing ice shelves along the Canadian coast. A sudden disintegration of the ice shelves would provide a source for
65 Canadian-source icebergs (Hulbe, 1997) and could potentially explain the IRD records found in ocean sediment cores from the North Atlantic.

Q₄ How does sub-surface ocean warming affect HEs?

In the HE mechanism proposed by Bassis et al. (2017), a glacial isostatic uplifted bed topography at the Hudson Strait mouth protects the retreated ice sheet front from sub-surface ocean warmings (SSOWs) attributed to Dansgaard–Oeschger events (DO events). The ice sheet grows, eventually depressing the bed topography. Once the bed
70 topography is depressed below the upper limit of the SSOW, the ice sheet front is vulnerable to ocean forcing. Due to a retrograde sloping bed, the ice sheet rapidly retreats during the next SSOW, allowing the bed topography to rise and isolate the ice sheet front from ocean forcing.

Due to the numerous differences in the model setup (e.g., model domain considered, grid discretization near the ground-
75 ing line, GIA model, calving and sub-shelf melt implementations, and the lack of ice thermodynamics in Bassis et al. (2017)), we do not aim to directly replicate the experiments in Bassis et al. (2017). Instead, we examine the role of SSOW in a HE context by applying a sub-surface ocean temperature increase for every DO event (similar to the approach used by, e.g., Álvarez-Solas et al. (2010, 2013)).

Q₅ What is the role of GIA in a HE context?

80 Due to its effect on, e.g., relative sea level changes and ice sheet mass balance, GIA has long been known to have a significant impact on ice sheet evolution (e.g., Tarasov and Peltier, 1997). ~~Herein, we~~ It also plays a central role in the HE hypothesis of Bassis et al. (2017). We assess the impact of GIA representation, associated earth model uncertainties, and GIA absence on Hudson Strait ice stream surge cycling.

Starting with a brief description of the GSM, the most relevant model features in a HE context are outlined in Sec. 2.1. A complete list of model features is described in Tarasov et al. (2024). The applied geothermal heat flux and ocean temperature forcing are detailed in Sec. 2.2 and 2.3, respectively. Sec. 2.1 to 2.3 also outline how the model setup for the corresponding sensitivity experiments differ from the GSM reference setup. The experimental design (summary table of all sensitivity experiments, derivation of reference parameter ensemble, MNEEs, and run comparison analysis) is summarized in Sec. 2.4. Following the structure of the research questions (Q_1 to Q_5), the results of the sensitivity experiments are presented in Sec. 3 and discussed in Sec. 4. The supplementary material referenced throughout this text (indicated by a capital S) provides additional information to support the corresponding claim but is not essential to the understanding of this study.

2 Methods

2.1 Modeling approach

2.1 Glacial Systems Model

All experiments within this study are conducted with the glacial systems model (GSM Tarasov and Peltier, 1999, 2007; Pollard and DeConto, 2012). The GSM is initialized from ice-free conditions at 122 kyr BP and is run to present day with a maximum ice dynamics time step size of 1 yr (automatically decreased to meet CFL constraint or when the matrix solver fails to converge). The reference setup has a horizontal grid resolution of $\Delta_{lon} = 0.5^\circ$, and is run to present day with a maximum ice dynamics time step size of 1 yr. The ice dynamics time step size is automatically decreased to meet CFL constraint or when the matrix solver fails to converge. Model runs automatically terminate once the time step size is reduced below the set minimum of 0.015625 yr. Such (“crashed”) runs are not considered for any analysis conducted within this study. The horizontal grid resolution is $\Delta_{lon} = 0.5^\circ$, $\Delta_{lat} = 0.25^\circ$ (finer horizontal grid resolutions are currently computationally unfeasible in the context of this study as the GSM is not parallelizable). The topography and sediment cover of the entire model domain are shown in Fig. S1. (finer horizontal grid resolutions are currently computationally unfeasible in the context of this study as the GSM in its current incarnation is not parallelized).

Model initialization

The GSM is initialized from ice-free conditions at 122 kyr BP and is run to present day with a maximum ice dynamics time step size of 1 yr (automatically decreased to meet CFL constraint or when the matrix solver fails to converge). The reference setup has a horizontal grid resolution of $\Delta_{lon} = 0.5^\circ$, and is run to present day with a maximum ice dynamics time step size of 1 yr. The ice dynamics time step size is automatically decreased to meet CFL constraint or when the matrix solver fails to converge. Model runs automatically terminate once the time step size is reduced below the set minimum of 0.015625 yr. Such (“crashed”) runs are not considered for any analysis conducted within this study. The horizontal grid resolution is $\Delta_{lon} = 0.5^\circ$, $\Delta_{lat} = 0.25^\circ$ (finer horizontal grid resolutions are currently computationally unfeasible in the context of this study as the GSM is not parallelizable). The topography and sediment cover of the entire model domain are shown in Fig. S1. (finer horizontal grid resolutions are currently computationally unfeasible in the context of this study as the GSM in its current incarnation is not parallelized).

Modeling sensitivities and numerical requirements for a model configuration that had reduced grid resolution dependence in an ice stream surge cycling context were determined based on an slightly earlier version of the GSM (Hank et al., 2023).

115 The inclusion of basal sliding at sub-freezing temperatures, a basal hydrology representation, and the dampening effect of a bed thermal model on basal temperature changes significantly affect the surge characteristics. To account for these modeling aspects, the GSM version used within this study is run with a resolution-dependent basal temperature ramp, a local basal hydrology model (Drew and Tarasov, 2023), and a 4 km deep bed thermal model.

120 Additionally, the GSM incorporates, among other components, an asynchronously coupled global visco-elastic GIA solver (Tarasov and Peltier, 1997) and an asynchronously coupled geographically-resolved energy balance climate model (Deblonde et al., 1992). Instead of a constant climate forcing (e.g., Roberts et al., 2016) or only varying the ocean forcing (e.g., Alvarez-Solas et al., 2013; Bassis et al., 2018), we apply a transient last glacial cycle climate forcing. Furthermore, we use a 20 member high-variance ensemble (with respect to ensemble parameters and ice sheet configuration) instead of just a single parameter vector to partly address potential non-linear dependencies of model results on ensemble parameters.

125 2.2 Ensemble parameter vectors

The source ensemble is from a North American history-matching for 52 GSM parameters (Tarasov et al., in preparation, Tarasov and Goldsack, 2024). For the experiments herein, ~ 15000 coarse resolution ($\Delta_{lon} = 1^\circ$, $\Delta_{lat} = 0.5^\circ$) GSM runs from the history matching are initially sieved for total North American ice volume (V_{tot}) and area (A_{tot}) at specific time steps, the last time the center of Hudson Bay (lat = 61.25°N , lon = 84.5°W) became free of grounded ice ($t_{ice,HB}$), the southernmost ice extent between 130 94.7°W and 80.3°W (lat_{ice}), and the southernmost ice extent at 69.7°W ($lat_{ice,Q}$). The exact sieves are $V_{tot,110} > 0.29 \cdot 10^7 \text{ km}^3$, $V_{tot,100} < (V_{tot,110} - 0.15 \cdot 10^7 \text{ km}^3)$, $V_{tot,60} > 0.6 \cdot 10^7 \text{ km}^3$, $V_{tot,30} < (V_{tot,20} - 0.1 \cdot 10^7 \text{ km}^3)$, $A_{tot,20} > 12 \cdot 10^3 \text{ km}^2$, $9.0 \text{ kyr BP} > lat_{ice} < 39^\circ\text{N}$, and $lat_{ice,Q} < 45.6^\circ\text{N}$ (Tarasov, 2024, in preparation). The numbers in the sub-scripts indicate the time step in kyr BP.

For the remaining ~ 10000 runs, we use a peak prominence algorithm to determine surges (SciPy version 1.6.3, Virtanen et al., 2020). This is similar to the approach used in (Hank et al., 2023). However, due to the more realistic model domain used herein, not every increase in mid-Hudson Strait ice flux corresponds to a decrease in Hudson Strait ice thickness and vice-versa. Since we are most interested in ice flux changes, the algorithm is applied directly to mid-Hudson Strait ice flux (minimum threshold of 0.0035 Sv) instead of the mean Hudson Strait ice thickness time series (as in Hank et al., 2023). We use mid-Hudson Strait ice flux instead of, e.g., the ice flux across the Hudson Strait grounding line, as it is less noisy and a more reliable indicator of large-scale surges. 2 different sieves are then applied to the surge characteristics. The runs pass if at least one of the following conditions is met:

1. $3 \leq \#surges \leq 10$, $0.2 \text{ kyr} \leq \text{mean surge duration}$, $5.0 \text{ kyr} \leq \text{mean periodicity} \leq 11.0 \text{ kyr}$ (for surges between 100 kyr BP and 15 kyr BP), and/or
2. $3 \leq \#surges \leq 10$ (for surges between 65 kyr BP and 10 kyr BP).

145 The second sieve is added to increase the number of runs that show surges within the period set by HE proxy records (e.g., Hemming, 2004). The bounds for the mean duration and period are based on the literature HE estimates in Table 2.

The remaining ~ 200 runs are re-submitted at a finer horizontal grid resolution ($\Delta_{\text{lon}} = 0.5^\circ$, $\Delta_{\text{lat}} = 0.25^\circ$). As for the coarse resolution runs, we apply the peak prominence algorithm to mid-Hudson Strait ice flux to determine surges. Since we are now most interested in surges that could explain the IRD layers observed in the North Atlantic (rather than simply sieving for runs that show surges), we reject surges for which any of the following conditions is fulfilled:

1. change in mid-Hudson Strait ice flux < 0.0025 Sv (previously 0.0035 Sv, across black vertical line (*HS*) in Fig. 2)
2. surge duration > 3 kyr (maximum estimated duration of 2.3 kyr in Hemming, 2004)
3. change in Hudson Strait ice volume $> 5 \cdot 10^3$ km³ (only within area outlined by the *Hudson Strait mask* in Fig. 2)

As there is no proxy record for directly inferring the change in mid-Hudson Strait ice flux or Hudson Strait ice volume during HEs, the above thresholds were chosen after testing various values. They led to the most consistent (with respect to the surge mode across all runs) detection of surges while ensuring that mid-Hudson Strait ice flux increases and Hudson Strait ice volume decreases.

Based on the remaining surges in the fine resolution runs, we hand-pick a high variance (with respect to the surge characteristics) sub-ensemble of 10 runs with less than 3 surges and 10 runs with with more than 2 surges (between 100 kyr BP and 10 kyr BP). The ensemble members that show ≤ 2 surges at the fine resolution (but > 2 surges at the coarse resolution) are considered as *likely to surge* and are included to test if, e.g., the repetitive removal of the buttressing effect of an ice shelf can cause ice stream surge cycling in Hudson Strait.

2.2 Model description

Ice dynamics

The GSM uses hybrid shallow shelf/ice physics based on the ice dynamical core originally developed by Pollard and DeConto (2012). The hybrid ice dynamics are activated once the shallow-ice approximation basal velocity within a grid cell exceeds 30 m yr^{-1} over soft sediments and 200 m yr^{-1} over hard bedrock. The default basal drag law for our experiments is a Weertman-type power law,

$$\mathbf{u}_b = C_b |\boldsymbol{\tau}_{b,W}|^{n_b-1} \boldsymbol{\tau}_{b,W}, \quad (1)$$

where \mathbf{u}_b is the basal sliding velocity (imposed upper limit of 40 km yr^{-1}), $\boldsymbol{\tau}_{b,W}$ the basal stress, and n_b the bed power strength. In contrast to the version used in Hank et al. (2023), n_b has separate hard and soft bed values (see $n_{b,\text{hard}} = 4$ (Maier et al., 2021) and ensemble parameter $n_{b,\text{soft}}$ in Table S1). To indirectly account for sub-temperate sliding, the basal sliding coefficient C_b is calculated according to

$$C'_b = \underline{1 - \max} \left[F_{\text{warm}} C_{\text{froz}} + F_{\text{warm}}; C_{\text{warm froz}} \right], \quad (2)$$

where C'_b is the basal sliding coefficient in an intermediate calculation step and F_{warm} the estimated warm-based fraction of a grid cell (Hank et al., 2023). $C_{\text{froz}} = 2 \cdot 10^{-4} \text{ m yr}^{-1} (5 \cdot 10^{-6} \text{ Pa}^{-1})^4$ is the fully cold-based sliding coefficient (needed

for numerical regularization) and C_{warm} is the fully warm-based sliding coefficient (depending on the bed properties; with dependence on bed properties:

$$180 \quad C_{\text{warm,soft}} = C_{\text{rmu}} \cdot \min \left[1; \max \left[0.2; \frac{F_{\text{sub,till}}}{0.01 \sigma_{\text{hb}}} \right] \right] \quad (3a)$$

$$C_{\text{warm,hard}} = C_{\text{slid}} \cdot \min \left[1; \max \left[0.1; \frac{F_{\text{sub,slid}}}{0.01 \sigma_{\text{hb}}} \right] \right] \cdot (1 + 20 F_{\text{sed}}). \quad (3b)$$

Here C_{rmu} and C_{slid} are the ensemble parameters for the Weertman soft- and hard-bed sliding coefficients, respectively (Table S1). The ensemble parameters $F_{\text{sub,till}}$ and $F_{\text{sub,slid}}$ (Table S1) impose the Weertman basal drag dependencies on the subgrid standard deviation of the bed elevation σ_{hb} and F_{sed} is the subgrid fraction of soft bed cover. C_{b} is further affected by also dependent on the effective pressure N_{eff}

$$185 \quad C_{\text{b}} = C'_{\text{b}} \cdot \min \left[10; \max \left[0.5; \frac{N_{\text{eff,Fact}}}{N_{\text{eff}} + N_{\text{eff,min}}} \right] \right], \quad (4)$$

where $N_{\text{eff,Fact}}$ is the effective-pressure factor (ensemble parameter, Table S1). $N_{\text{eff,min}} = 10$ kPa enforces that N_{eff} never falls below the set threshold, regularizes the dependence of basal drag on effective pressure.

The effective pressure itself is calculated according to is given by an empirically-derived dependence (Flowers, 2000) on basal water thickness h_{wb} :

$$190 \quad N_{\text{eff}} = g \rho_{\text{ice}} H \cdot \left(1 - \min \left[\frac{h_{\text{wb}}}{h_{\text{wb,Crit}}}; 1.0 \right] \right)^{3.5}, \quad (5)$$

where $g = 9.81 \text{ m s}^{-2}$ is the acceleration due to gravity, $\rho_{\text{ice}} = 910 \text{ kg m}^{-3}$ the ice density, H the ice thickness, h_{wb} the basal water thickness, and $h_{\text{wb,Crit}}$ an estimated effective bed roughness scale (ensemble parameter in Table S1, see also Drew and Tarasov, 2023; ensemble parameter in Table S1, see also Flowers and Clarke, 2002; Drew and Tarasov, 2023). The local basal hydrology model nominally sets the time derivative of h_{wb} to the difference between the basal melt rate M_{b} (from conservation of energy at the ice sheet base) and a constant bed drainage rate $R_{\text{b,drain}}$ (ensemble parameter, Table S1). The basal water thickness is limited to $h_{\text{wb,max}} = 10$ m and is set to $h_{\text{wb}} = 0$ m where the ice thickness is less than $h_{\text{hyd,lim}} = 10$ m and where the temperature with respect to the pressure melting point (T_{bp}) is below $T_{\text{bp,lim}} = -0.1^\circ\text{C}$. Previous experiments showed changes in $h_{\text{wb,max}}$, $h_{\text{hyd,lim}}$, and $T_{\text{bp,lim}}$ do not significantly affect surge characteristics (Hank et al., 2023). Additional experiments using $h_{\text{hyd,lim}} = 100$ m conducted within this study support this finding (Fig. S2 and S3).

To determine/examine the effects of the choice of basal drag law on surge characteristics, we also run experiments with a Coulomb sliding law

$$\tau_{\text{b,C}} = \max [1 \text{ kPa}; N_{\text{eff}} C_c \tan (\Theta_t)], \quad (6a)$$

or in a much more numerically stable regularized form:

$$205 \quad \tau_{\text{b,C}} = \max \left[1 \text{ kPa}; N_{\text{eff}} C_c \tan (\Theta_t) \left(\frac{u_{\text{b}}^2}{u_{\text{b}}^2 + UV_{\text{C,reg}}} \right)^{1/6} \right], \quad (6b)$$

where C_c is a variable drag coefficient (scalar ensemble parameter, Table S1) and Θ_t the elevation-dependent till friction angle, and $UV_{C,\text{reg}}$ a regularization parameter (Tarasov et al., 2024, in preparation). To account for possible Weertman-type sliding when (Tarasov et al., 2024). According to CFL constraints, we expect even the regularized Coulomb law (Eq. 6b) to be more unstable than the Weertman law, because it negligibly increases basal drag for basal velocities beyond the order of the regularization threshold $UV_{C,\text{reg}} = 20 \text{ m yr}^{-1}$. This is compounded by the grounding-line flux iteration in the SSA solution.

When Coulomb drag is high, Weertman-type enhanced deformation around controlling obstacles can still occur (especially given the physical separation of the Coulomb plastic deformation process within the till layer) and dominate the basal sliding. Therefore, the basal shear stress used in the GSM when the Coulomb drag option is activated is set to follow Tsai et al. (2015):

$$\tau_b = \min[\tau_{b,W}; \tau_{b,C}]. \quad (7)$$

The calculation of the ice flux across the grounding line in the GSM is independent of the choice of sliding law for the rest of the ice sheet. In the reference setup (Weertman-type power law only, Eq. 1), the basal shear stress at the grounding line $\tau_{b,GL}$ follows Eq. 7. To determine the implications of this grounding line ice flux implementation on surge characteristics, we also run experiments with $\tau_{b,GL} = \tau_{b,W}$. Furthermore, the GSM reference setup uses the Schoof (2007) grounding line flux condition as implemented in Pollard and DeConto (2012). When using this approach, issues can arise for complex 2D geometries (likely of most consequence for Antarctica; Reese et al., 2018). Therefore, we examine the effect of using a revised validated treatment (Pollard and DeConto, 2020). The surge characteristics are not significantly affected by the revised grounding line treatment (GLT, Fig. S2 and S3).

The GSM includes the dynamics of Marine Ice Cliff Instability (MICI, DeConto and Pollard, 2016), but only for ice-covered grid cells adjacent to neighbouring open ocean.

Heinrich Event-relevant model features

Modeling sensitivities and numerical requirements for a model configuration that had reduced grid resolution dependence in an ice stream surge cycling context were determined based on a slightly earlier version of the GSM (Hank et al., 2023). The inclusion of basal sliding at sub-freezing temperatures (Hank et al., 2023), a basal hydrology representation, and the dampening effect of a bed thermal model on basal-temperature changes significantly affect the surge characteristics. To account for these modeling aspects, the GSM version used within this study is run with a resolution-dependent basal temperature ramp, a local basal hydrology model (Drew and Tarasov, 2023), and a 4 km deep bed thermal model.

Additionally, the GSM configuration within this study incorporates an asynchronously coupled global visco-elastic GIA solver (Tarasov and Peltier, 1997) and an asynchronously coupled geographically-resolved energy balance climate model (EBM; Deblonde et al., 2023). The time step size for the GIA solver and EBM is 100 yr (compared to a maximum ice dynamics time step size of 1 yr). The global GIA solver uses ice sheet chronologies from recently completed history matching for all ice sheets not within the model domain. To determine the effect of the global GIA solver, we run sensitivity experiments without GIA and with a simple local relaxation time-based GIA model (relaxation time constant $\tau = [3, 4, 5] \text{ kyr}$). Instead of a constant climate forcing

(e.g., Roberts et al., 2016) or only varying the ocean forcing (e.g., Alvarez-Solas et al., 2013; Bassis et al., 2017), we apply a transient last glacial cycle climate forcing.

2.2 Geothermal heat flux

The deep geothermal heat flux (GHF) input used in the GSM is constant in time but varies spatially (left panel default GHF shown in Fig. 1a). It provides the lower boundary flux condition for a 4 km deep bed thermodynamic model fully embedded in the ice thermodynamic solver. The default GHF input field is from Davies (2013) and represents an upper bound of the literature estimates. However, GHF data in Hudson Bay and Hudson Strait are sparse, and the estimated values differ significantly (Fig. ?? and, e.g., Pollack et al., 1993; Shapiro and Ritzwoller, 2004; Goutorbe et al., 2011; Lucazeau, 2019; Cuesta-Valero et al., 2021) (Fig. S4a,b and, e.g., Jessop and Judge, 1971; Pollack et al., 1993; Shapiro and Ritzwoller, 2004; Blackwell and Richards, 2004; Levy et al., 2015). To determine the sensitivity of model results to the GHF, we weigh the default GHF field GHF_{def} against a modified input GHF_{mod} (right panel in Fig. 1 given the lower regional values in Blackwell and Richards, 2004) (Fig. 1b given the lower regional values in Levy et al., 2015).

$$\text{GHF} = w_{\text{GHF}} \cdot \text{GHF}_{\text{def}} + (1 - w_{\text{GHF}}) \cdot \text{GHF}_{\text{mod}}, \quad (8)$$

where w_{GHF} is the weight ranging from 0 to 1. The reference GSM setup uses $w_{\text{GHF}} = 1$. We run sensitivity experiments for $w_{\text{GHF}} = [0, 0.2, 0.4, 0.6, 0.8]$ applied to both Hudson Bay and Hudson Strait as well as $w_{\text{GHF}} = 0$ applied separately to Hudson Strait (Fig. ??S4c) and Hudson Bay (Fig. ??S4d). When only considering grid cells affected by the GHF modifications (Fig. 1b), the w_{GHF} values for the combined Hudson Bay and Hudson Strait experiments correspond to a mean GHF of $\text{GHF}_{\text{ave}} \approx [15, 26, 37, 48, 59] \text{ mW m}^{-2}$ ($\text{GHF}_{\text{ave}} \approx 70 \text{ mW m}^{-2}$ for reference setup). Additionally, we determine the effects of a smaller GHF when applied to a larger area (Fig. ??S4e,f).

2.3 Ocean temperature forcing and marine mass loss processes

This section describes both the default and additional ocean temperature forcings employed herein. The additional forcings are only used in specific experiments to determine the effects of ice shelves (HE ocean-forcing-shelf forcing T_{HE} , Sec. 2.3.1) and sub-surface ocean warmings attributed to DO events (T_{DO} , Sec. 2.3.2) in a HE context. To increase confidence in the results of these experiments and bound the effects of ocean forcings in a HE context, we run additional experiments with more extreme scenarios (end-member scenarios in Sec. 2.3.2, 3.3).

The default ocean temperature T_{ocean} in the GSM is based on the summer weighted ocean temperature field $(0.5 \cdot (T_{\text{ave,Jul:Oct}} + T_{\text{ave,Jan:Dec}}))$ derived from the TraCE deglacial simulation run with the Community Climate System Model Version 3 (CCSM3, Liu et al., 2009). Using a glacial index approach, the ocean temperature chronology is interpolated between full glacial (last glacial maximum) and present day conditions for all other time slices (Tarasov et al., 2024, in preparation) (Tarasov et al., 2024). Within a limited ocean forcing area (Fig. 2) and below the upper depth limit of d_{OF} (default value is 250 m), the 2 types of additional ocean temperature forcing described below (T_{HE} and T_{DO}) are added to the background ocean temperature for grid cells with floating ice.

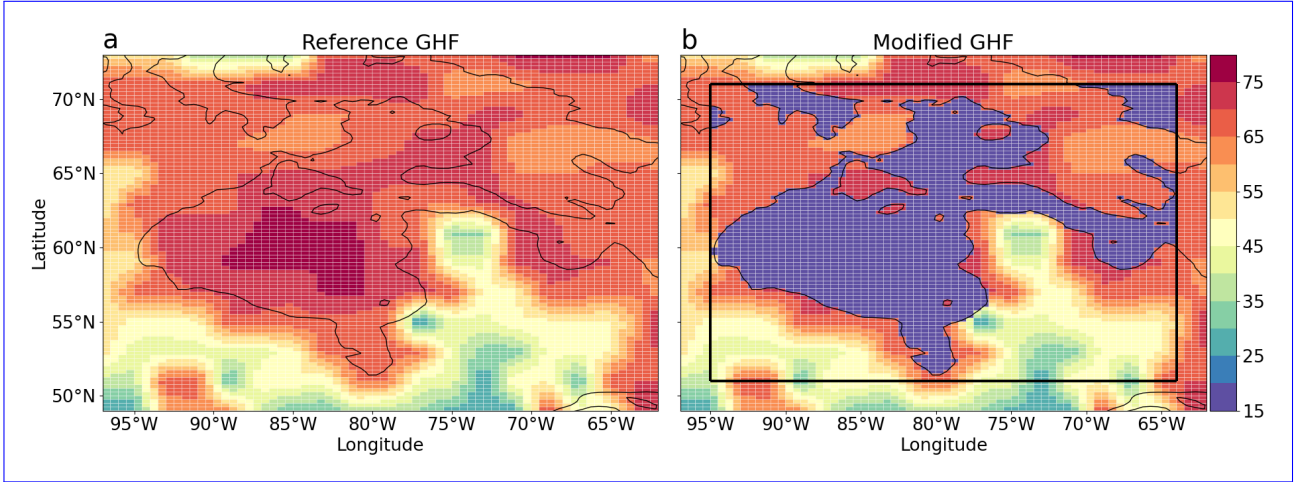


Figure 1. GSM input geothermal heat flux (GHF) applied at 4 km depth in mW m^{-2} . The left panel Panel a shows the default-reference input field (Davies, 2013), whereas the right-panel b shows the modified map used for the weighting of the GHF sensitivity experiments (Sec. 2.2). In the modified field, we set $\text{GHF} = 15 \text{ mW m}^{-2}$ for all grid cells below present-day sea level and within the black square. The black contour line shows the present-day sea level (coastline) used in the GSM.

The ocean temperature at the relevant depth is then used to calculate the sub-shelf melt M_{SSM} and terminus face melt M_{face} . The GSM determines M_{SSM} based on a parametrization of buoyant meltwater plumes (Lazeroms et al., 2018) and parameter ranges set so that computed melt brackets present-day observations for major Antarctic ice shelves (e.g., Depoorter et al., 2013; Enderlin and Howat, 2013; Alley et al., 2015). For a floating ice grid cell, the sub-shelf melt is given by:

$$275 \quad M_{\text{SSM}} = (C_{\text{SSM}} + d \cdot A_{\text{WF}} \cdot (f_{\text{SGWF}})^{0.39}) \cdot T_{\text{ocean,SSM}} \cdot F_{\text{slope}}(\text{SL}) \cdot f_{\text{SSM,slope}} \quad (9)$$

and 0 m yr^{-1} otherwise. C_{SSM} is the scaled ensemble parameter for the sub-shelf melt (Table S1), f_{SGWF} the basal meltwater flux into the sub-shelf melt convection cell, A_{WF} is a scaling coefficient for the meltwater dependence, and d is the depth. $T_{\text{ocean,SSM}}$ is the ocean temperature at the depth of the ice shelf base and $f_{\text{SSM,slope}}$ is an overall scaling coefficient (Tarasov et al., 2024, in preparation)(Tarasov et al., 2024). F_{slope} is a nonlinear function of the maximum lower ice surface slope SL (across the grid cell interfaces with adjacent ice).

Face melt is determined only at the marine ice margin. It is calculated according to

$$M_{\text{face}} = (C_{\text{face}} \cdot H_{\text{eff}} + d \cdot A_{\text{WF}} \cdot (f_{\text{SGWF}})^{0.39}) \cdot T_{\text{ocean,face}}, \quad (10)$$

where C_{face} is the scaled ensemble parameter for the face melt (Table S1). $T_{\text{ocean,face}}$ is the ocean temperature adjacent to the ice face. This is set with the assumption that face melt water consists of equal parts of local water and shelf water. H_{eff} is the effective terminal ice thickness defined as $H_{\text{eff}} = \max[0.95 \cdot H; 200 \text{ m}]$.

Calving in the GSM is based on a ~~erevass~~-crevasse propagation parameterization (Pollard et al., 2015). To account for the impact of land-fast perennial sea ice, calving is inhibited when the mean 2 m summer (JJA) temperature falls below

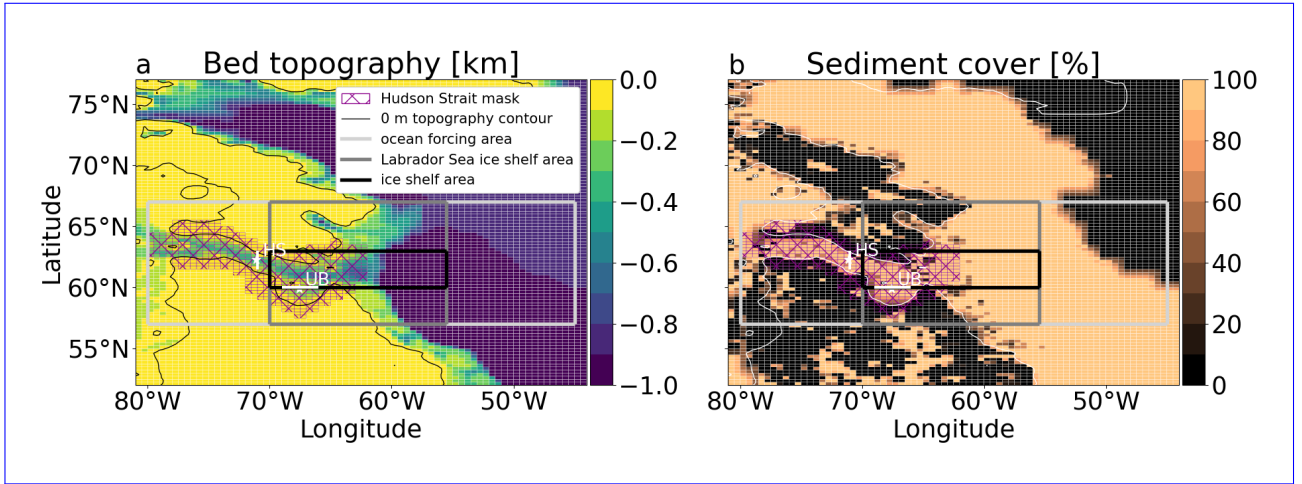


Figure 2. GSM input present-day bed topography and sediment cover. The **black (left) and white (right)** asterisks and lines indicate the location of Hudson Strait (*HS*) and Ungava Bay (*UB*) ice thickness calculation and flux gate, respectively. The *Hudson Strait mask* is used to determine Hudson Strait ice volume, mean and max basal ice velocity, and warm-based area. The **black (left) and white (right) thin contour line shows lines show** the present-day sea level (coastline) used in the GSM. The *Hudson Strait area* is used to calculate Hudson Strait ice shelf area, ice shelf volume, and the backstress exerted by the floating ice on the Hudson Strait ice stream. The *ocean forcing area* outlines the region affected by the ocean temperature increases discussed in Sec. 2.3. **Finally, the magenta box** *The Labrador Sea ice shelf area* outlines the area within which the Labrador Sea ice shelf area and volume are calculated. **Finally, the Hudson Strait area is used to calculate Hudson Strait ice shelf area, ice shelf volume, and the backstress exerted by the floating ice on the Hudson Strait ice stream.** To prevent ice sheet growth beyond a stub North-West Greenland, the surface elevation in the corresponding area has been set to well below sea level.

-2.0°C (Tarasov et al., 2024, in preparation)(Tarasov et al., 2024). However, calving has no temperature control once the ice shelf extends beyond the continental shelf break (present-day depth > 860 m).

290 2.3.1 Ice shelf removal

For experiments testing the impact of floating ice removal near Hudson Strait, an increase in the ocean temperature is imposed during HEs (Fig. 3 T_{HE}). The ocean forcing is applied to either the entire water column ($d_{\text{OF}} = 0$ m) or to an upper ocean forcing limit of $d_{\text{OF}} = 250$ m. **To calculate the HE shelf forcing, we first define a rectangular function for the i th HE according to**

$$295 \quad T_{\text{HE},i} = \begin{cases} T_{\text{max,HE}} & \text{if } t_{\text{HE},i,\text{start}} \leq t \leq t_{\text{HE},i,\text{end}} \\ 0 & \text{otherwise,} \end{cases}$$

where $T_{\text{max,HE}} = [1, 2, 3]^{\circ}\text{C}$ are the Sensitivity experiments are conducted for maximum ocean temperature increases tested (amplitudes based on Gibb et al., 2014) of $T_{\text{max,HE}} = [1, 2, 3]^{\circ}\text{C}$ ($T_{\text{max,HE}} = 2^{\circ}\text{C}$ shown in Fig. 3, amplitudes based on Gibb et al., 2014). To test for a potential warm bias of the GSM ocean temperatures **temperature forcing**, we also run a reverse experiment with

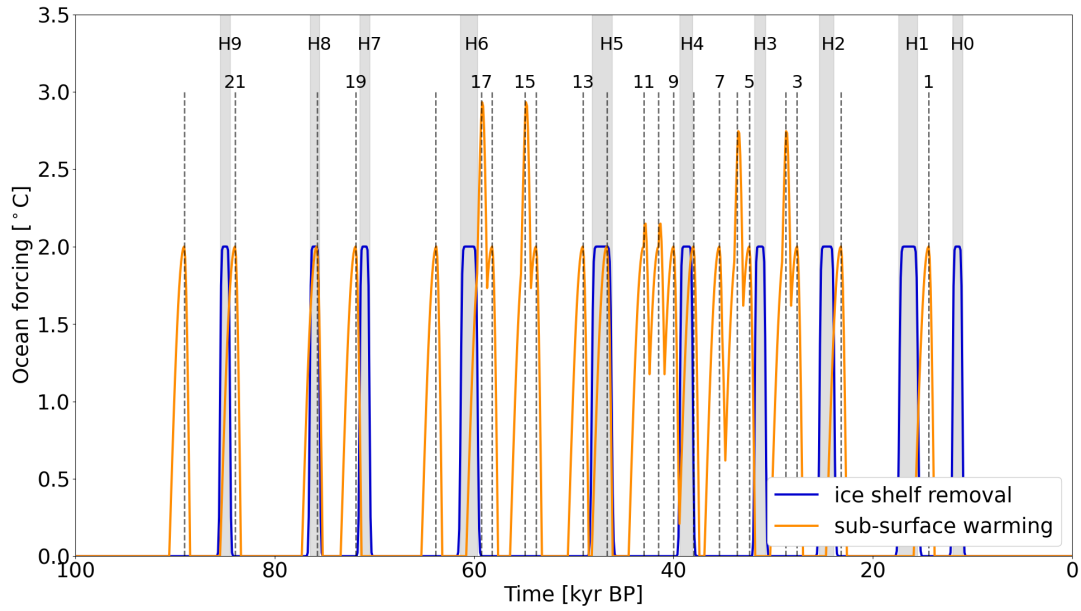


Figure 3. 2°C ocean temperature forcing used to remove the ice shelves (T_{HE} , entire water column) and for the sub-surface ocean warming (T_{DO} , below depth $d_{\text{OF}} = 250$ m in reference setup). The shaded gray areas represent the timing of HEs based on the average of Table 6.3 in Bradley (2014). The vertical dashed lines indicate the timing of DO events based on peaks in the NGRIP $\delta^{18}\text{O}$ time series (Bazin et al., 2013; Veres et al., 2013).

a maximum ocean temperature decrease $T_{\text{max,HE}} = -2^{\circ}\text{C}$ during HEs. t is the time ranging from 0 to 100 kyr with a 100-yr
 300 increment, and $t_{\text{HE},i,\text{start}}$ and $t_{\text{HE},i,\text{end}}$ are the start and end time of the i th HE. The timing and duration of HEs are based on
 the average of Table 6.3 in Bradley (2014). For HEs without an estimated duration, we use 1 kyr (centered around the HE time
 estimate). To get a more gradual ocean temperature increase and decrease, we convolute $T_{\text{HE},i}$ with a Gaussian function of the
 form-

$$y_{\text{Gauss},i,\text{tmp}} = \exp\left(\frac{-x_{\text{Gauss},i}^2}{2}\right)$$

305
$$y_{\text{Gauss},i} = \frac{y_{\text{Gauss},i,\text{tmp}}}{\max(y_{\text{Gauss},i,\text{tmp}})} \cdot T_{\text{max,HE}},$$

where $x_{\text{Gauss},i}$ ranges from -10π to 10π over the duration of the i th HE and is 0 otherwise. The convoluted time series of the
 i th HE is then-

$$T_{\text{HE},i,\text{conv}} = \begin{cases} T_{\text{HE},i} * y_{\text{Gauss},i} & \text{if } t_{\text{HE},i,\text{start}} \leq t \leq t_{\text{HE},i,\text{end}} \\ 0 & \text{otherwise.} \end{cases}$$

The final HE shelf forcing time series is obtained by adding the contributions of all individual HEs:

$$310 \quad T_{\text{HE}} = \sum_i T_{\text{HE},i,\text{conv}}.$$

Since individual HEs do not overlap, the maximum ocean temperature increase does not exceed $T_{\text{max,HE}}$. Further details on the calculation of the ice shelf removal ocean forcing are provided in Sec. S4.1.

2.3.2 Sub-surface ocean warming

Similar to the preceding ice shelf removal experiments, the sub-surface warming preceding DO events (T_{DO}) is implemented as ocean temperature anomalies (OTAs, Fig. 3). The specification of the OTAs are based on proxies from marine cores in the North Atlantic and the Nordic Seas at mid depths (Rasmussen and Thomsen, 2004; Marcott et al., 2011). In the reference setup initial OTA sensitivity experiment, the maximum increase of sub-surface (below depth $d_{\text{OF}} = 250$ m) temperatures of a single OTA is set to $T_{\text{max,DO}} = 2^\circ\text{C}$ (Fig. 3), but experiments are conducted for different sub-surface warming depths ($d_{\text{OF}} = [100, 500]$ m) and maximum temperature increases ($T_{\text{max,DO}} = [1, 3]^\circ\text{C}$). The OTAs last for a total of $t_{\text{D,tot}} = 2200$ yr, with an $t_{\text{Inc}} = 1600$ yr long temperature increase and $t_{\text{Dec}} = 600$ yr decrease. According to Rasmussen and Thomsen (2004), rapid DO warmings occur when the water column destabilizes and the warm sub-surface water rises to the surface. Since the warm sub-surface water is then mixed with the cold surface water (decreasing the sub-surface temperature), we align the maximum temperature increase of the OTAs with the DO event time estimates. Due to overlaps of individual OTAs, the final temperature increase can exceed the chosen $T_{\text{max,DO}}$ (Fig. 3). Following the above, the OTA attributed to the i th DO event is calculated according to

$$325 \quad T_{\text{DO},i} = \begin{cases} T_{\text{max,DO}} \cdot \sin\left(\frac{\pi}{2} \frac{t_{\text{Inc}} - (t - t_{\text{DO},i})}{t_{\text{Inc}}}\right) & \text{if } t_{\text{DO},i} \leq t \leq t_{\text{DO},i} + t_{\text{Inc}} \\ T_{\text{max,DO}} \cdot \sin\left(\frac{\pi}{2} \frac{t_{\text{Dec}} - (t_{\text{DO},i} - t)}{t_{\text{Dec}}}\right) & \text{if } t_{\text{DO},i} - t_{\text{Dec}} \leq t < t_{\text{DO},i} \\ 0 & \text{otherwise,} \end{cases}$$

where $t_{\text{DO},i}$ is the time of the i th DO event. Note that due to the implementation of the OTAs in Eq. ??, the values of $T_{\text{DO},i}$ at $t_{\text{DO},i} + t_{\text{Inc}}$ and $t_{\text{DO},i} - t_{\text{Dec}}$ are 0°C . For a time step of 100 yr, the actual duration of increased sub-surface water temperature is, therefore, $t_{\text{D}} = 2000$ yr. Following Bassis et al. (2017), the contributions of overlapping OTAs are added

$$330 \quad T_{\text{DO}} = \sum_i T_{\text{DO},i}$$

Therefore, T_{DO} can exceed $T_{\text{max,DO}}$ (Fig. 3) warming are provided in Sec. S4.2.

2.3.3 Bounding experiments End-member scenarios

~~To increase confidence in our model results and bound the effects of ocean forcings in a HE context (Sec. 2.3.1 and 2.3.2), we~~
335 ~~run additional experiments with more extreme scenarios.~~ For all experiments within this section, the ~~ocean forcing is additional~~
~~ocean forcings (T_{add} , T_{DO} , and T_{HE}) are~~ applied to the whole water column ($d_{\text{OF}} = 0$ m) and for all grid cells within the *ocean*
forcing area (Fig. 2, not only the grid cells with floating ice). The experiments are:

EMS₁: DO event ocean forcing (T_{DO} , $T_{\text{max,DO}} = 2^\circ\text{C}$)

EMS₂: HE shelf forcing (T_{HE} , $T_{\text{max,HE}} = 2^\circ\text{C}$)

340 EMS₃: ~~-2°C ocean forcing~~ ~~additional ocean forcing~~ $T_{\text{add}} = -2^\circ\text{C}$ applied after 100 kyr BP

EMS₄: no calving after 100 kyr BP

EMS₅: HE shelf forcing (T_{HE} , $T_{\text{max,HE}} = 2^\circ\text{C}$) with ~~-2°C ocean forcing~~ applied outside of HEs and after 100 kyr BP

EMS₆: HE shelf forcing (T_{HE} , $T_{\text{max,HE}} = 2^\circ\text{C}$) with no calving outside of HEs and after 100 kyr BP

Experiments ~~BE₁ and BE₂~~ ~~EMS₁ and EMS₂~~ examine the effect of the ocean forcing restriction to grid cells with floating ice.
345 Experiment ~~BE₃~~ ~~EMS₃~~ aims to decrease sub-shelf melt, face melt, and calving to enable the growth of larger ice shelves. In the
more extreme experiment ~~BE₄~~ ~~EMS₄~~, the growth of larger ice shelves is enabled by inhibiting calving entirely. Experiments
~~BE₅ and BE₆~~ ~~EMS₅ and EMS₆~~ target the collapse of larger ice shelves, with experiment ~~BE₆~~ ~~EMS₆~~ being the more extreme
scenario.

2.4 ~~Run comparison~~ Experimental design

350 The GSM configuration in this study uses 52 model input parameters (ensemble parameters). The ensemble parameter space
covered within this study is summarized in detail in Tab. S1. A parameter vector holds one value for each of these ensemble
parameters. As such, each parameter vector fully specifies how the configuration of the GSM varies between ensemble
members. To partly address potential non-linear dependencies of model results on the ensemble parameters, we use a 20
member (20 parameter vectors) high-variance reference ensemble (with respect to ensemble parameters and ice sheet configuration)
355 instead of just a single reference run (1 parameter vector). The creation of the reference ensemble is described in detail in
Sec. 2.4.1. The ice volume time series and the ice sheet surface elevation over the entire model domain at 60 and 24 kyr BP
are shown for all 20 parameter vectors in Fig. S5 to S7.

For every sensitivity experiment (e.g., different basal sliding law), we then re-run the GSM for all 20 parameter vectors. A
list of all sensitivity experiments conducted within this study is shown in Tab. 1. The analysis of each sensitivity experiment in
360 comparison to the reference ensemble is described in detail in Sec. 2.4.2.

2.4.1 Reference ensemble

The source ensemble is from a North American history-matching for 52 GSM parameters (Tarasov et al., 2024; Tarasov and Goldstein, 202
. For the experiments herein, ~ 15000 coarse resolution ($\Delta_{\text{lon}} = 1^\circ$, $\Delta_{\text{lat}} = 0.5^\circ$) GSM runs from the history matching are

Sensitivity experiment	# (# _{lowGHF})	Difference to reference model setup
horizontal grid resolution	1	$\Delta_{\text{lon}} = 1.0^\circ$, $\Delta_{\text{lat}} = 0.5^\circ$
stricter numerical convergence (Sec. 2.4.2)	2 (2)	MNEE_C and MNEE_{C+I}
geothermal heat flux (Sec. 2.2)	2	GHF _{ave} = [15, 25] mW m ⁻² (set values, e.g., Fig. 1b for 15 mW m ⁻²)
	4	GHF _{ave} ≈ [26, 37, 48, 59] mW m ⁻² (weighting between Fig. 1a and b)
	1	GHF _{ave,HSonly} = 15 mW m ⁻² (Fig. S4c)
	1	GHF _{ave,HBonly} = 15 mW m ⁻² (Fig. S4d)
	1	revised GHF (Fig. S4e)
	1	lower revised GHF (Fig. S4f)
basal sliding law (Sec. 2.2)	2	(regularized) Coulomb sliding law (Eq. 6)
	1	$\tau_{b,GL} = \tau_{b,w}$ instead of Eq. 7
	1	$h_{\text{hyd,lim}} = 100$ m
	1	Pollard and Deconto (2020) GLT
ice shelf removal (HE shelf forcing, Sec. 2.3.1)	1	$d_{\text{OF}} = 250$ m and $T_{\text{max,HE}} = 2^\circ\text{C}$ (Eq. S1)
	4 (1)	$d_{\text{OF}} = 0$ m and $T_{\text{max,HE}} = [-1, 1, 2, 3]^\circ\text{C}$ (Eq. S1)
	1	$d_{\text{OF}} = 0$ m, $T_{\text{max,HE}} = 3^\circ\text{C}$, and no imposed calving restriction (Sec. 2.3)
sub-surface ocean warming (DO event ocean forcing, Sec. 2.3.2)	3 (1)	$d_{\text{OF}} = 250$ m and $T_{\text{max,DO}} = [1, 2, 3]^\circ\text{C}$ (Eq. S5)
	2	$d_{\text{OF}} = [100, 500]$ m and $T_{\text{max,DO}} = 2^\circ\text{C}$ (Eq. S5)
end-member scenarios (Sec. 2.3.3)	6 (6)	EMS₁ to EMS₆
glacial isostatic adjustment (Sec. 2.2)	1 (1)	no GIA
	9	global visco-elastic GIA with different earth rheologies (Fig. S37)
	3 (1)	local GIA with $\tau = [3, 4, 5]$ kyr

Table 1. Sensitivity experiments conducted within this study. Each sensitivity experiment differs from the reference model setup only by the changes highlighted here. The reference model setup uses $\Delta_{\text{lon}} = 0.5^\circ$, $\Delta_{\text{lat}} = 0.25^\circ$, $\text{GHF}_{\text{ave}} = 70 \text{ mW m}^{-2}$, the Weertman-type power law (Eq. 1), Eq. 7 at the grounding line (GL), $h_{\text{hyd,lim}} = 10$ m, Schoof (2007) grounding line treatment (GLT), no additional ocean forcing, and global visco-elastic glacial isostatic adjustment (GIA). Sensitivity experiments highlighted in bold (last column) were repeated with $\text{GHF}_{\text{ave}} = 25 \text{ mW m}^{-2}$. # and #_{lowGHF} represent the number of sensitivity experiments and number of sensitivity experiments repeated with $\text{GHF}_{\text{ave}} = 25 \text{ mW m}^{-2}$ corresponding to each row, respectively. In total, this study encompasses 60 sensitivity experiments run with the same 20 parameter vectors (Sec. 2.4.1, total of 1200 model runs).

365 initially sieved for total North American ice volume (V_{tot}) and area (A_{tot}) at specific time steps, the last time the center of Hudson Bay (lat = 61.25°N, lon = 84.5°W) became free of grounded ice ($t_{\text{ice,HB}}$), the southernmost ice extent between 94.7°W and 80.3°W (lat_{ice}), and the southernmost ice extent at 69.7°W (lat_{ice,Q}). The exact sieves are $V_{\text{tot},110} > 0.29 \cdot 10^7 \text{ km}^3$, $V_{\text{tot},100} < (V_{\text{tot},110} - 0.15 \cdot 10^7 \text{ km}^3)$, $V_{\text{tot},60} > 0.6 \cdot 10^7 \text{ km}^3$, $V_{\text{tot},30} < (V_{\text{tot},20} - 0.1 \cdot 10^7 \text{ km}^3)$, $A_{\text{tot},20} > 12 \cdot 10^3 \text{ km}^2$, 9.0 kyr BP > lat_{ice} < 39°N, and lat_{ice,Q} < 45.6°N. The numbers in the sub-scripts indicate the time step in kyr BP.

370 For the remaining ~ 10000 runs, we use a peak prominence algorithm to determine surges (SciPy version 1.6.3, Virtanen et al., 2020). This is similar to the approach used in (Hank et al., 2023). However, due to the more realistic model domain used herein, not every increase in mid-Hudson Strait ice flux (determined at the Hudson Strait flux gate shown in Fig. 2) corresponds to a

decrease in Hudson Strait ice thickness and vice versa. Since we are most interested in ice flux changes, the algorithm is applied directly to mid-Hudson Strait ice flux (minimum threshold of 0.0035 Sv, across black vertical line (*HS*) in Fig. 2) instead of the mean Hudson Strait ice thickness time series (as in Hank et al., 2023). We use mid-Hudson Strait ice flux instead of, e.g., the ice flux across the Hudson Strait grounding line, as it is less noisy and a more reliable indicator of large-scale surges. 2 different sieves are then applied to the surge characteristics. The runs pass if at least one of the following conditions is met:

1. $3 \leq \#surges \leq 10$, $0.2 \text{ kyr} \leq \text{mean surge duration} \leq 5.0 \text{ kyr}$, $5.0 \text{ kyr} \leq \text{mean periodicity} \leq 11.0 \text{ kyr}$ (for surges between 100 kyr BP and 15 kyr BP), and/or
2. $3 \leq \#surges \leq 10$ (for surges between 65 kyr BP and 10 kyr BP),

where $\#surges$ represents the number of surges in a run. The second sieve is added to increase the number of runs that show surges within the period set by HE proxy records (e.g., Hemming, 2004). The bounds for the mean duration and period are based on the literature HE estimates in Table 2.

The ~ 200 not ruled out yet (NROY) runs are re-submitted at a finer horizontal grid resolution ($\Delta_{lon} = 0.5^\circ$ and $\Delta_{lat} = 0.25^\circ$, corresponding to $\sim 25 \times 25$ km in Hudson Strait). As for the coarse resolution runs, we apply the peak prominence algorithm to mid-Hudson Strait ice flux to determine surges. Since we are now most interested in surges that could explain the IRD layers observed in the North Atlantic (rather than simply sieving for runs that show surges), we reject surges for which any of the following conditions are fulfilled:

1. change in mid-Hudson Strait ice flux $< 0.0025 \text{ Sv}$ ($\sim 25\%$ of average marine isotope stage 3 (MIS3), ~ 57 to 27 kyr BP, Lisiecki and
- mid-Hudson Strait ice flux in the GSM)
2. surge duration $> 3 \text{ kyr}$ (maximum estimated duration of 2.3 kyr in Hemming, 2004)
3. change in Hudson Strait ice volume $> -5 \cdot 10^3 \text{ km}^3$ (only within area outlined by the *Hudson Strait mask* in Fig. 2, $\sim 0.8\%$ of average MIS3 Hudson Strait ice volume in the GSM)

As there is no proxy record for directly inferring the change in mid-Hudson Strait ice flux or Hudson Strait ice volume during HEs, the above thresholds were chosen after testing various values. They led to the most consistent (with respect to the surge mode across all runs) detection of surges while ensuring that mid-Hudson Strait ice flux increases and Hudson Strait ice volume decreases.

Based on the remaining surges in the fine resolution runs, we hand-pick a high variance (with respect to the surge characteristics) sub-ensemble of 10 runs with less than 3 surges and 10 runs with more than 2 surges between 100 kyr BP and 10 kyr BP ($\sim 50\%$ of all fine resolution runs). The ensemble members that show ≤ 2 surges at the fine resolution (but > 2 surges at the coarse resolution) are considered as *likely to surge* and are included to test if, e.g., the repetitive removal of the buttressing effect of an ice shelf can cause ice stream surge cycling in Hudson Strait.

Crashed runs are not considered in any of the above steps. Therefore, the reference ensemble only contains parameter vectors with a successful run completion at the fine horizontal grid resolution.

405 2.4.2 Run comparison

Ensemble-Reference ensemble members with ≤ 2 and > 2 surges are generally analyzed separately. For runs with > 2 surges, percentage differences in surge characteristics (number of surges, mean surge duration, mean period between surges, mean increase in Hudson Strait ice flux, and mean Hudson Strait ice volume change during a surge) for every sensitivity/reference run pair are computed individually and then averaged over all runs (further details in Sec. S5 in Hank et al., 2023). MNEEs
410 are computed by imposing Since a sensitivity experiment/reference run pair uses the same parameter vector, the differences in model results are caused by the sensitivity experiment in question and not, e.g., different climate forcings. Averaging over all sensitivity experiment/reference run pairs (albeit partly) accounts for uncertainties in ensemble parameters. This increases confidence in the identified significant physical processes in a HE context and reduces the possibility that the modeling response is only due to, e.g., the chosen climate forcing.

415 To determine if a change in model setup (sensitivity experiment) leads to numerically significant differences in the surge characteristics, we use the Minimum Numerical Error Estimates (MNEEs) threshold initially developed in Hank et al. (2023). The MNEEs are essentially the model response to a sensitivity experiment with imposed stricter (than default) numerical convergence criteria in the ice dynamics solver. As in Hank et al. (2023) More specifically, the final MNEEs for the surge characteristics (SC) in question (shaded grey regions in Fig. 6) are the maximum percentage difference for the metric in
420 question of a setup

$$\text{MNEE}(\text{SC}) = \max[\text{MNEE}_C(\text{SC}); \text{MNEE}_{C+I}(\text{SC})], \quad (11)$$

where MNEEs_C are the percentage differences of a sensitivity experiment with stricter numerical convergence and a setup MNEEs_{C+I} the percentage differences of a sensitivity experiment with stricter numerical convergence with increased maximum iterations for the outer Picard loop (from 2 to 3, solving for the ice thickness) and the non-linear elliptic SSA (Shallow-
425 Shelf Approximation) equation (from 2 to 4, solving for horizontal ice velocities). These MNEEs are then used as a threshold to determine if a change in model configuration leads to numerically significant differences in the surge characteristics. Differences smaller than the MNEEs should be interpreted as model response not resolvable given the numerical sensitivities. To further increase confidence in model numerics, we extracted yearly ice stream velocities (default time series output is 100 yr) for a few diagnostic grid cells (including Hudson Strait and Hudson Bay) from the reference ensemble and found no significant
430 high-frequency instability (“noisy” ice streams).

For runs with ≤ 2 surges, the percentage differences in surge characteristics are large due to the small number of surges or impossible to determine for reference runs with $\#surges = 0$. Therefore, we use alternative approaches (e.g., kernel density and time series plots) to determine the effects of physical system processes for the ≤ 2 surges sub-ensemble. For the kernel density plots, we use the Python module *seaborn* (version 0.12.2), which uses a Gaussian kernel and automatically sets the
435 bandwidth according to the *SciPy* (version 1.6.3) function *gaussian_kde(bw_method='scott')* (yielded the overall best data representation of all bandwidths tested). The density in each panel of a kernel density plot is scaled so that the sum of all individual integrals within this panel is 1.

3 Results

3.1 Hudson Strait ice stream surges

440 The Hudson Strait ice stream is active for most of the last glacial cycle when using the default GHF map (e.g., Fig. 4a). This is contrary to the pattern of long quiescent intervals interspersed by short-lived surges proposed by, e.g., MacAyeal (1993); Payne (1995); Calov et al. (2002). Instead, the surges are preceded by a reduction (e.g., surges [SP0](#), [SP7](#) to [SP9](#) for parameter vector 1 shown in Fig. 4a) or complete de-activation ([Sor shutdown; P1](#) to [SP6](#)) of the Hudson Strait ice stream. Depending on the background ice flux before the surge, the following ice flux increase occurs either rapidly ([SP0](#) to [SP7](#)) or more gradually
445 ([SP8](#) and [SP9](#)). As per our criteria (Sec. 2.4.1), all identified surges have a decrease in Hudson Strait ice volume. The change is especially pronounced for surges preceded by a complete de-activation of the Hudson Strait ice stream. Times of complete Hudson Strait ice stream de-activation generally coincide with increased buttressing (shown as fraction of the grounding line longitudinal stress, Fig. 4f). The decreased ice shelf volume indicates that [this-the increase in buttressing](#) is due to a decrease in the longitudinal stress rather than an increase in the back stress. Therefore, the changes in buttressing are a consequence of
450 the small Hudson Strait ice flux and not the cause. Instead, the de-activation of the Hudson Strait ice stream is caused by a decrease in the warm-based area (Fig. 4c).

The more gradual increases in Hudson Strait ice flux ([SP8](#) and [SP9](#)) are linked to surges in Ungava Bay (Fig. 4e and S8). Due to the rapid increase in ice flux in Ungava Bay, these surges are still in line with the concept of rapid surge onset, although the resultant increase in Hudson Strait ice flux is more gradual.

455 Some of the detected surges show an increase in Hudson Strait ice flux without a significant change in the effective pressure or the warm-based area in Hudson Strait (e.g., [SP1](#) to [SP3](#) in Fig. S9). During these surges, ice transport from Hudson Bay and Foxe Basin through Hudson Strait (and other outlets) towards the ice sheet margin increases (e.g., Fig. S10). The increased downstream ice transport and consequential increase in driving stress eventually increase the ice flux in Hudson Strait itself. Therefore, these surges originate further upstream and are initiated by ice and climate dynamics outside of Hudson Strait.

460 Surges, particularly those preceded by a complete de-activation of the Hudson Strait ice stream, tend to occur before 65 kyr BP (e.g., Fig. 4). The absence of complete cessation of ice streaming during [marine isotope stage 3 \(MIS3, ~57 to 27 kyr BP, Lisiecki & Moore, 2005\)](#) when using the default deep GHF map is due to increased basal temperatures. This is a result of the growing ice volume and, thereby, thicker ice and larger supply of warm-based upstream ice. The increased basal temperatures also lead to longer surges with reduced ice volume change (Fig. S11).

465 To get a better understanding of the physical mechanism behind Hudson Strait surges, we analyze surge [SP1](#) of parameter vector 1 in greater detail (Fig. 5 and video 01 of Hank, 2023). At 87.5 kyr BP, the ice sheet in Hudson Strait is warm-based, enabling basal melting. Basal water thicknesses reach up to 10 m (upper limit of local sub-glacial hydrology model), leading to small effective pressures and, consequently, high basal ice velocities. Due to a combination of cold ice advection from further upstream and/or from the ice stream margins, thinning of the ice stream, and flattening of the ice sheet surface (hence reduced
470 gravitational driving), the basal temperature eventually falls below the pressure melting point. The basal water refreezes and

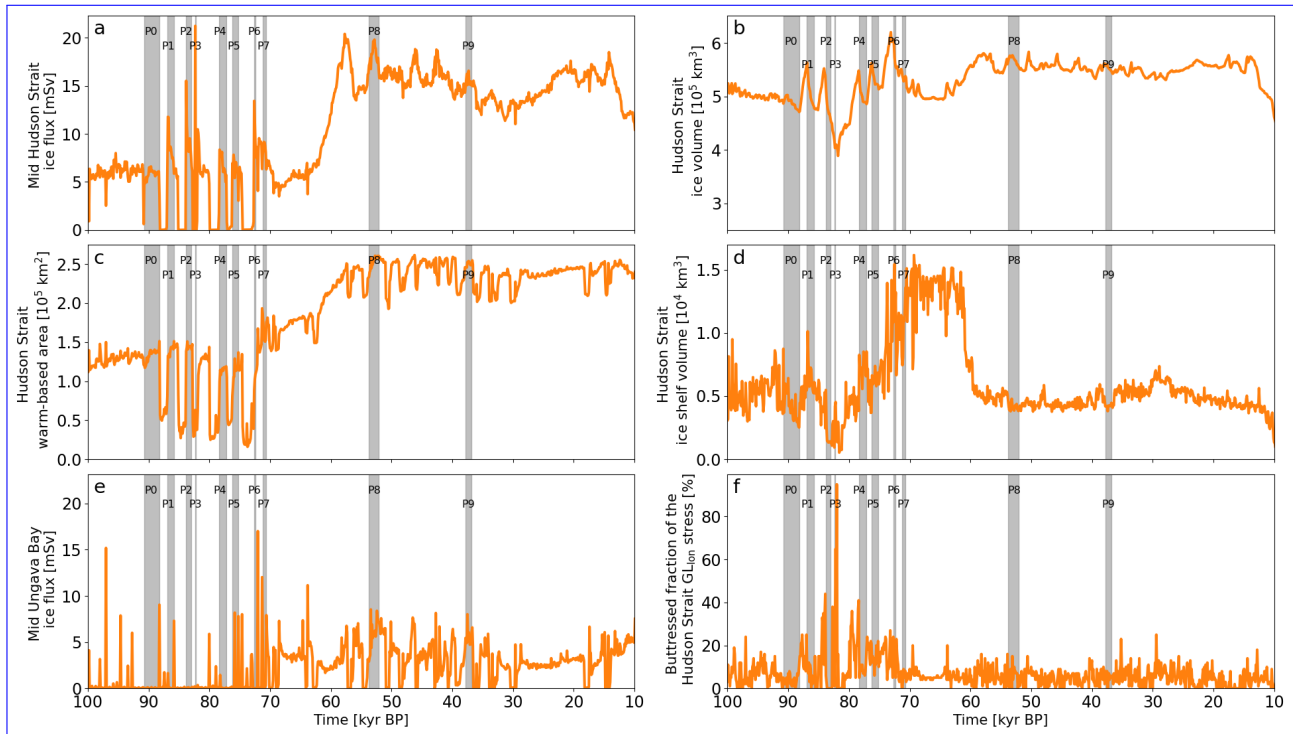


Figure 4. Time series of parameter vector 1. The shaded ~~gray~~-grey areas and black numbers mark Hudson Strait ice stream surges as determined by the automated detection algorithm (Sec. 2.4.1). Hudson Strait ice flux ($1 \text{ mSv} = 10^{-3} \text{ Sv} = 10^3 \text{ m}^3 \text{ s}^{-1}$) is determined at the flux gate marked with *HS* in Fig. 2. The Hudson Strait ice volume and warm-based area are calculated within the *Hudson Strait mask* (Fig. 2). The Hudson Strait ice shelf volume is determined within the *Hudson Strait* area (Fig. 2). The mean buttressing along the Hudson Strait grounding line (only within *Hudson Strait* area in Fig. 2) is given as fraction of the grounding line longitudinal (GL_{lon}) stress ($\left(\frac{\tau_{xx}}{\tau_f}\right)^{\frac{n}{n_s+1}}$ in Pollard and DeConto (2012)). The last panel shows the northward Ungava Bay ice flux determined at the flux gate marked with *UB* in Fig. 2. Note that the automated detection algorithm does not identify all smaller increases in mid-Hudson Strait ice flux (e.g., between 50 and 40 kyr BP) due to the additional requirement of a Hudson Strait ice volume decrease of at least $5 \cdot 10^3 \text{ km}^3$ (Sec. 2.4.1).

the effective pressure increases by an order of magnitude, increasing the basal drag (87.0 kyr BP). The ice streaming ceases, allowing the ice thickness to increase.

Due to increased insulation from the cold surface temperatures (thicker ice sheet) and heat contribution from the deformation work, the upstream basal temperature increases (video 02 of Hank, 2023). Once the basal temperature is close to the pressure melting point, basal sliding contributes further heat and the warm-based area starts to extend downstream (video 02 of Hank, 2023). Basal melting then leads to the build-up of a sub-glacial water layer, decreasing the effective pressure and enabling high basal ice velocities. Due to the built-up ice, Hudson Strait ice flux initially increases beyond the pre-ice stream de-activation values before gradually returning to similar ice fluxes, and completing the cycle (86.1 kyr BP).

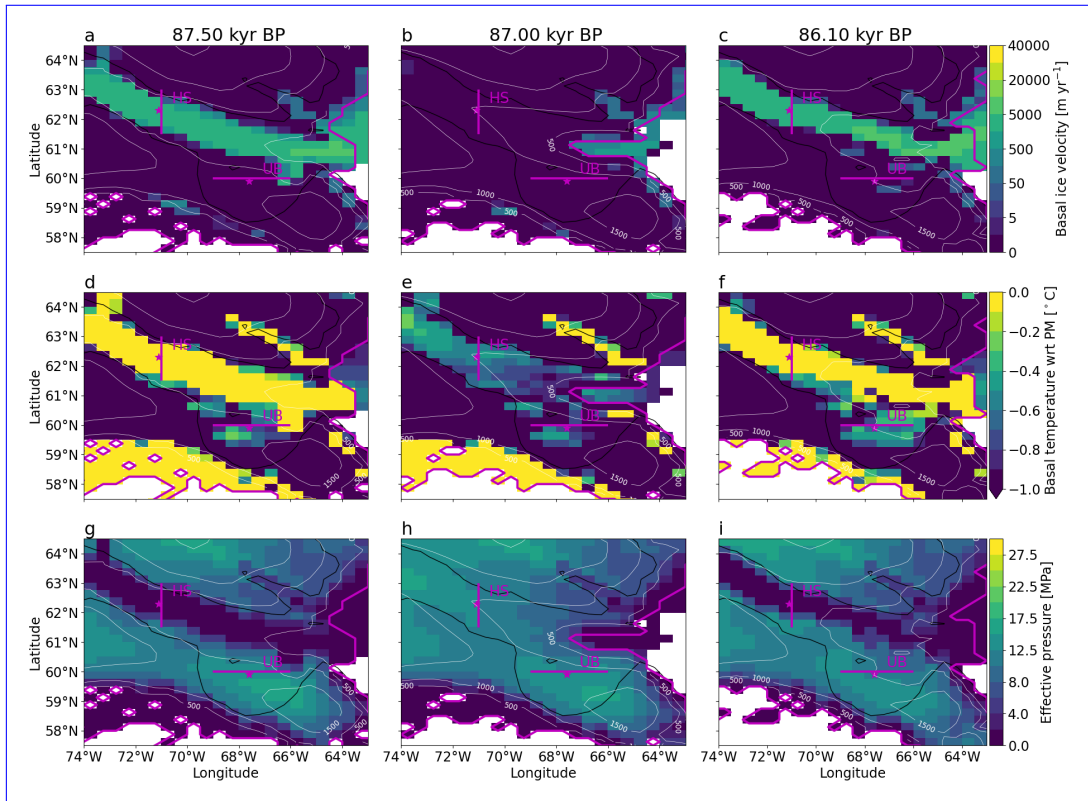


Figure 5. Basal ice velocity ([first row](#)), basal temperature with respect to the pressure melting point ([second row](#)), and effective pressure ([third row](#)) for surge [SP1](#) of parameter vector 1 (Fig. 4). The 3 time slices ([columns](#)) show the active ice stream before the surge (87.5 kyr BP), the quiescent period (87.0 kyr BP), and the surge at its maximum ice flux (86.1 kyr BP). The [magenta asterisks and lines indicate the location of Hudson Strait \(HS\) and Ungava Bay \(UB\) ice thickness calculation and flux gate, respectively](#). The [magenta and white contour lines represent the grounding line and ice sheet surface elevation in meters, respectively](#). The black contour is the present-day [sea level \(coastline provided by cartopy \(Met Office, 2010–2015\)\)](#) used in the GSM.

Overall, the mean surge characteristics of the reference setup for the sub-ensemble with more than 2 surges are in agreement with HE estimates in the literature (Table 2). However, the predominance of complete de-activation surges (generally the surges with the largest ice volume change) prior to 65 kyr BP is a major discrepancy (Fig. S11). One inferential caveat is that proxy records can provide only indirect bounds on Hudson Strait ice flux and ice volume change. A comparison to other ice sheet modeling studies (e.g., Schannwell et al., 2023) is not straightforward, as the considered metrics vary significantly (e.g., Hudson Strait area). Using an intermediate mid-Hudson Strait ice flux during a surge (0.01 Sv, e.g., Fig. 4a) and the mean surge duration (1.4 kyr, Table. 2) yields an ice volume discharge of $\sim 44 \cdot 10^4 \text{ km}^3$. This value is well within the range set by modeling and proxy estimates in the literature ($3 \cdot 10^4$ to $946 \cdot 10^4 \text{ km}^3$, Roberts et al., 2014, and references therein).

Due to the inclusion of a resolution-dependent basal temperature ramp (Hank et al., 2023), the differences in surge characteristics between the coarse resolution runs (horizontal grid resolution of $\Delta_{\text{lon}} = 1.0^\circ$, $\Delta_{\text{lat}} = 0.5^\circ$) and the reference runs

Metric	reference setup (mean \pm SD)	literature HE estimate
number of surges	5.4 ± 2.5	6 to 10 (Table 6.3 in Bradley, 2014)
period	13.6 ± 8.8 kyr	4 to 15 kyr, mean = 8.0 ± 2.7 kyr (Table 6.3 in Bradley, 2014)
duration	1.4 ± 0.4 kyr	0.2 to 2.3 kyr (Hemming, 2004)
Hudson Strait ice flux increase	$4.9 \pm 2.0 \cdot 10^{-3}$ Sv	-
Hudson Strait ice volume change	$-3.6 \pm 2.3 \cdot 10^4$ km ³	-

Table 2. Surge characteristics of the reference setup compared to literature estimates. Only runs with #surges > 2 (between 100 kyr BP and 10 kyr BP) are considered. The literature HE estimates are also based on the time between 100 kyr BP and 10 kyr BP. As the automated detection algorithm determines the increase in mid-Hudson Strait ice flux (not the total flux) and the change in Hudson Strait ice volume (not the total discharge), we refrain from providing literature estimates for these two metrics here. Refer to the [text Sec. 3.1](#) for a comparison of the ice volume discharge.

($\Delta_{\text{lon}} = 0.5^\circ$, $\Delta_{\text{lat}} = 0.25^\circ$) are generally within the MNEEs (Fig. 6). While finer (than the reference setup) horizontal grid
490 resolutions are currently unfeasible in the context of this study, given the results of resolution response testing of surge cycling
down to 3.125 km horizontal grid resolution in Hank et al. (2023), the differences in surge characteristics for finer resolutions
are also expected to be within the MNEEs.

3.2 Geothermal heat flux

Since the Hudson Strait ice stream is active for most of the last glacial cycle and the GHF is poorly constrained in this
495 area, a lower GHF could increase the time of ice stream inactivation. Therefore, we examine the effect of smaller average
Hudson Bay/Hudson Strait GHFs (GHF_{ave}) on the surge characteristics. Sensitivity experiments are run for $\text{GHF}_{\text{ave}} \approx$
[15, 26, 37, 48, 59] mW m⁻² (Sec. 2.2).

In general, decreasing the GHF in Hudson Strait and Hudson Bay leads to a decrease in the basal temperature, a smaller
warm-based area, and, consequently, a decrease in mid-Hudson Strait ice flux. For small enough GHFs (15 mW m⁻²), 9 pa-
500 rameter vectors have fully transitioned from an almost continuously active Hudson Strait ice stream to the classic binge-purge
surge mode (e.g., Fig. 7a). The exact transition point depends on the parameter vector in question but generally requires a Hud-
son Strait/Hudson Bay $\text{GHF}_{\text{ave}} \leq 37$ mW m⁻² ($w_{\text{GHF}} = 0.4$). The #surges > 2 and #surges ≤ 2 sub-ensembles both show
significant increases in the number of surges and mean Hudson Strait ice volume change for decreasing GHFs (Fig. S13 and
S14, Table 3). On the other hand, the mean surge duration significantly decreases for smaller GHFs. Therefore, the colder basal
505 temperatures and increased Hudson Strait ice volume lead to stronger and more rapid surges (e.g., Fig. 7a,b,c).

A key feature of the binge-purge mode is the increase of [stronge-strong](#) Hudson Strait surges during MIS3 compared to the
number of surges for the near continuous ice streaming mode (e.g., Fig. 7a, S11, and S12). This is in closer correspondence
with the actual IRD record.

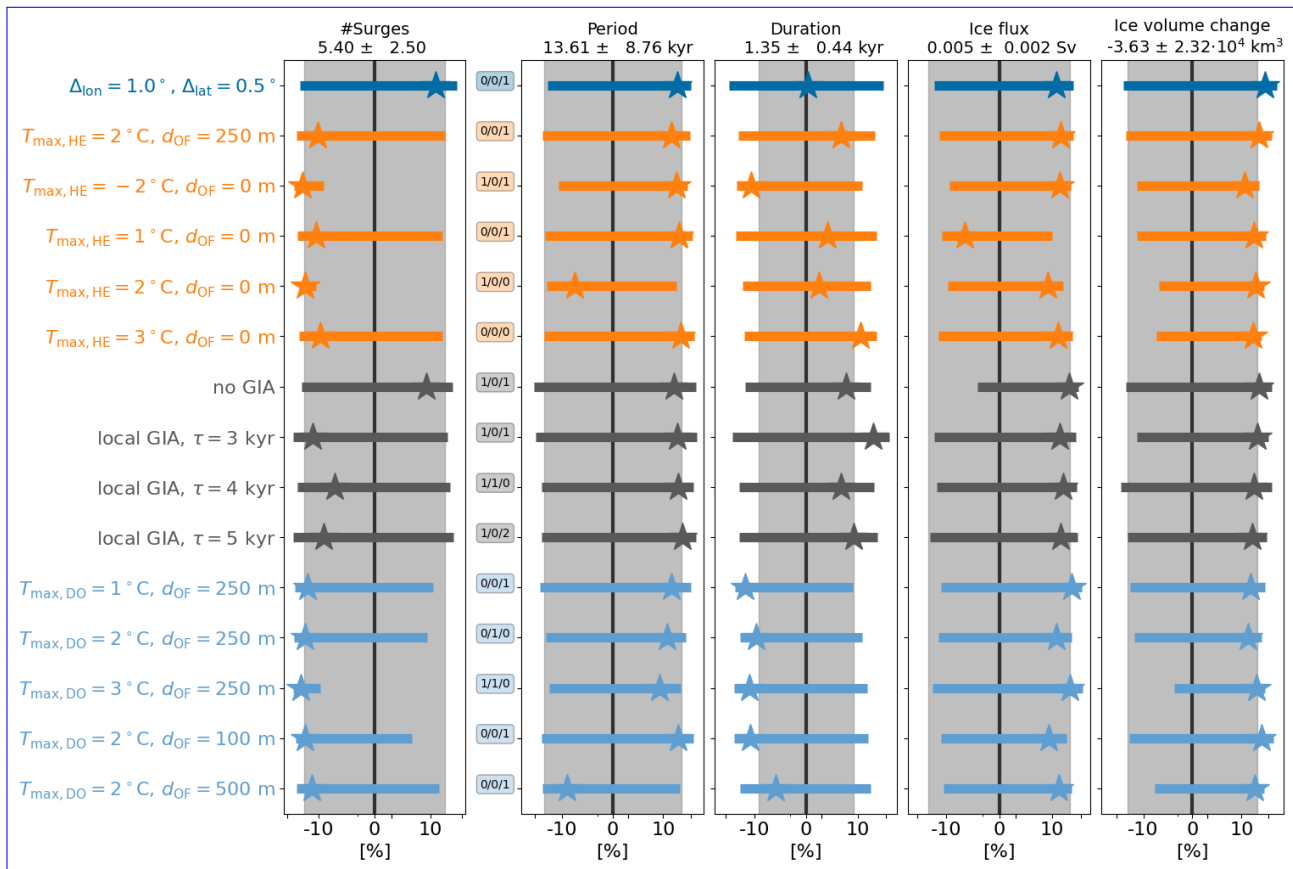


Figure 6. Percentage differences in surge characteristics compared to the reference setup for the > 2 #surges sub-ensemble. The shaded regions represent the MNEEs. The different colors provide visual alignment of the individual model setups. The stars and horizontal bars are the > 2 #surges sub-ensemble mean percentage differences and standard deviations, respectively. The three numbers between the first and second column show the number of crashed runs, the number of runs without a surge, and the number of runs with only one surge in the comparison setup. The x-axes are logarithmic. The model setups, from top to bottom, are: $\Delta_{lon} = 1^\circ$, $\Delta_{lat} = 0.5^\circ$ horizontal grid resolution, Heinrich Event shelf forcing ($T_{max,HE} = 2^\circ\text{C}$, $d_{OF} = 250$ m), whole water column Heinrich ($d_{OF} = 0$ m) Heinrich Event shelf forcing with $T_{max,HE} = [-2, 1, 2, 3]^\circ\text{C}$ (Sec. 2.3.1), no GIA model, local GIA model that is simply a damped-return to isostatic equilibrium with relaxation time constant $\tau = [3, 4, 5]$ kyr, DO event sub-surface ocean forcing with $T_{max,DO} = [1, 2, 3]^\circ\text{C}$ and $d_{OF} = [100, 250, 500]$ m (Sec. 2.3.2).

510 Separately modifying the GHF in Hudson Strait and Hudson Bay indicates that the GHF modification in Hudson Strait generally has a larger impact than modifications in Hudson Bay (Fig. S15 and S16). However, GHF modifications in both regions are required to obtain continuous binge-purge surge cycling. GHF modifications applied to a larger region (Fig. S4e,f, based on Blackwell and Richards (2004)) lead to similar conclusions (Fig. S17). Therefore both types of Hudson Strait ice stream surge cycling are consistent within available GHF constraints.

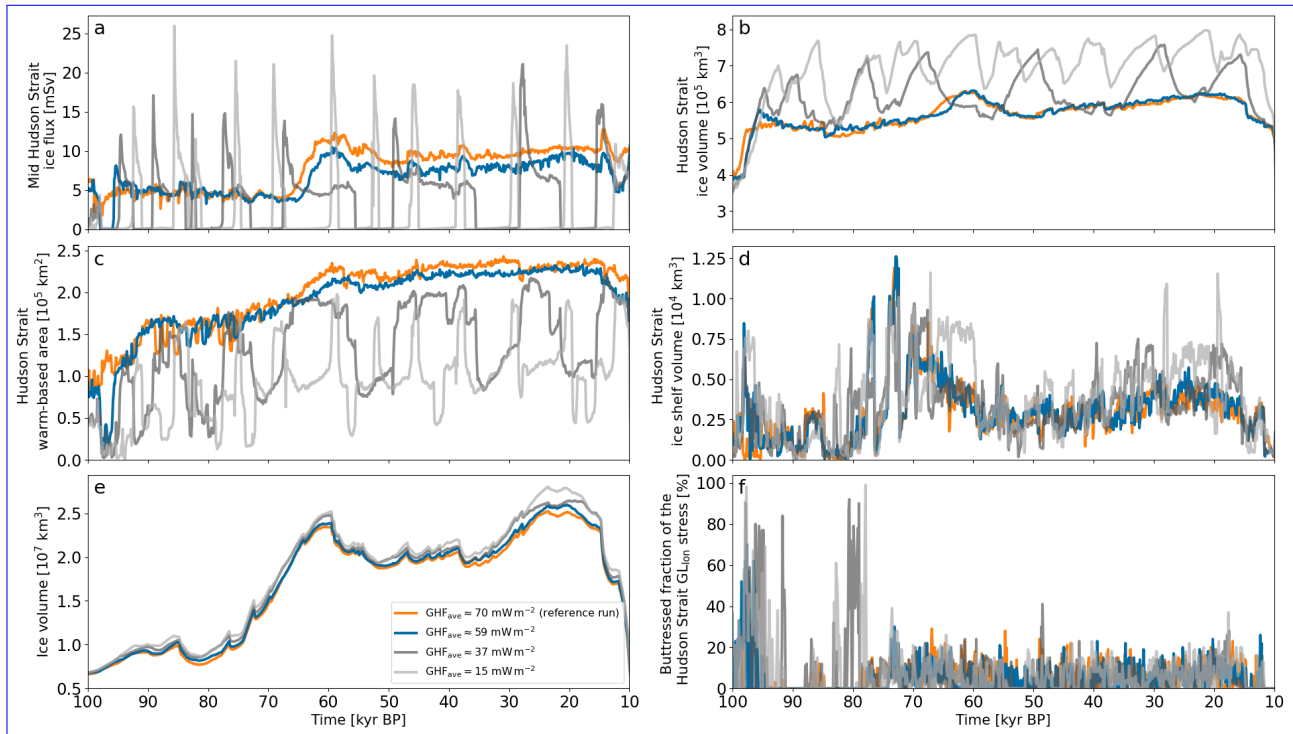


Figure 7. Time series of parameter vector 18 for different GHFs. The Hudson Strait ice stream surges are not highlighted for clarity. **The bottom-left panel Panel e** shows the overall North American ice volume. Otherwise as Fig. 4.

Metric	reference setup (mean \pm SD)	GHF _{ave} = 15 mW m ⁻² (mean \pm SD)	regularized Coulomb sliding law (mean \pm SD)
number of surges	5.4 \pm 2.5	10.6 \pm 5.3	52.4 \pm 18.8
period	13.6 \pm 8.8 kyr	10.7 \pm 5.5 kyr	1.6 \pm 0.5 kyr
duration	1.4 \pm 0.4 kyr	0.7 \pm 0.3 kyr	0.3 \pm 0.2 kyr
Hudson Strait ice flux increase	4.9 \pm 2.0 \cdot 10 ⁻³ Sv	23.0 \pm 13.0 \cdot 10 ⁻³ Sv	27.8 \pm 8.8 \cdot 10 ⁻³ Sv
Hudson Strait ice volume change	-3.6 \pm 2.3 \cdot 10 ⁴ km ³	-6.6 \pm 1.1 \cdot 10 ⁴ km ³	-4.1 \pm 1.3 \cdot 10 ⁴ km ³

Table 3. Surge characteristics for 3 different setups: the reference setup, a setup with the GHF in Hudson Bay and Hudson Strait set to 15 mW m⁻² (Sec. 2.2), and a setup using a combination of the default Weertman-type power law (Eq. 1 and regularized Coulomb sliding law (Eq. 6b and 7). Only runs with #surges > 2 (between 100 kyr BP and 10 kyr BP) are considered (10 for the reference setup, 13 for GHF_{ave} = 15 mW m⁻², 7 for the regularized Coulomb sliding law).

Our analyses below are based on the GSM default GHF map. However, similar conclusions are obtained when applying
 515 GHF_{ave} = 25 mW m⁻² to Hudson Bay and Hudson Strait (Fig. S18, S19, S33, and S34). Any differences in model response are outlined in the specific sections.

3.3 Basal sliding law

As it is unclear which sliding law should be used in a surge cycling context, we examine the impact of using a (regularized) Coulomb sliding law (Eq. 6) in combination with the default Weertman-type power law (Eq. 1 and 7). Generally, the Coulomb sliding law experiments are numerically more unstable, leading to only 6 successfully completed runs for the Coulomb (Eq. 6a, 14 runs crashed) and 7 for the regularized Coulomb sliding law (Eq. 6b, 13 runs crashed). Additionally, the remaining runs show an average increase in the model run time of $\sim 447.5\%$ and $\sim 32.5\%$ for the Coulomb and regularized Coulomb sliding law, respectively.

The limited number of successful runs and increase in model run time hinder determining the effects of a Coulomb sliding law, especially in the case without regularization (Fig. S20 and S21). Therefore, the analysis below only examines the regularized Coulomb sliding law. However, both forms of Coulomb basal drag law lead to a noisy (large number of peaks in short succession) mid-Hudson Strait ice flux time series (e.g., Fig. 8a), posing a challenge for the automated peak prominence detection algorithm (with potential overestimation of the number of surges and overlap of surges). While smoothing the mid-Hudson Strait ice flux time series and/or adding an additional requirement (e.g., minimum time difference between detected peaks) would likely minimize these issues, it would also lead to a loss of information and obscure the comparison to the other setups. Therefore, we continue the analysis without these changes.

The most significant impact of using the regularized Coulomb sliding law is a shift to the classic binge-purge surge cycling (e.g., Fig. 8a). While a change in surge mode also occurs for a lower GHF, using the regularized Coulomb sliding law leads to more frequent binge-purge surges (Table 3, Fig. 8a and 9). This conclusion holds even when considering an overestimation of the detected surges due to the noisy mid-Hudson Strait ice flux time series when using the regularized Coulomb sliding law. All successful regularized Coulomb sliding law runs show surges, even those with parameter vectors that have a continuous ice stream in the $\text{GHF}_{\text{ave}} = 15 \text{ mW m}^{-2}$ experiment (e.g., Fig. S22).

Due to the large increase in the number of surges, the mean period for the regularized Coulomb sliding law is well below the literature estimates (Table 2 and 3). Given the differences in the basal sliding law, an assessment of whether the two different basal sliding laws (Weertman and Coulomb) are implemented with scale-matched parameter values would be ambiguous. However, the regularized Coulomb (with default GHF) and $\text{GHF}_{\text{ave}} = 15 \text{ mW m}^{-2}$ (with Weertman-type power law) ensembles have comparable ranges for Hudson Strait ice flux increases, while the latter has larger mean Hudson Strait ice volume changes during surges (primarily due to the longer surge duration, Table 3). Furthermore, our chosen basal drag coefficient ensemble parameters cover typical ranges (Table S1).

Only using the Weertman-type power law to calculate the ice flux across the grounding line ($\tau_{\text{b, GL}} = \tau_{\text{b, W}}$ instead of Eq. 7) and otherwise the reference setup (Eq. 1) has no significant effect on the surge characteristics (Fig. S20 and S21). Therefore, uncertainties in the appropriate grounding line ice flux treatment are not critical.

Due to the numerically more unstable runs, the large increase in model run time, and the surge detection issues, we refrain from repeating all sensitivity experiments within this study with a (regularized) Coulomb sliding law.

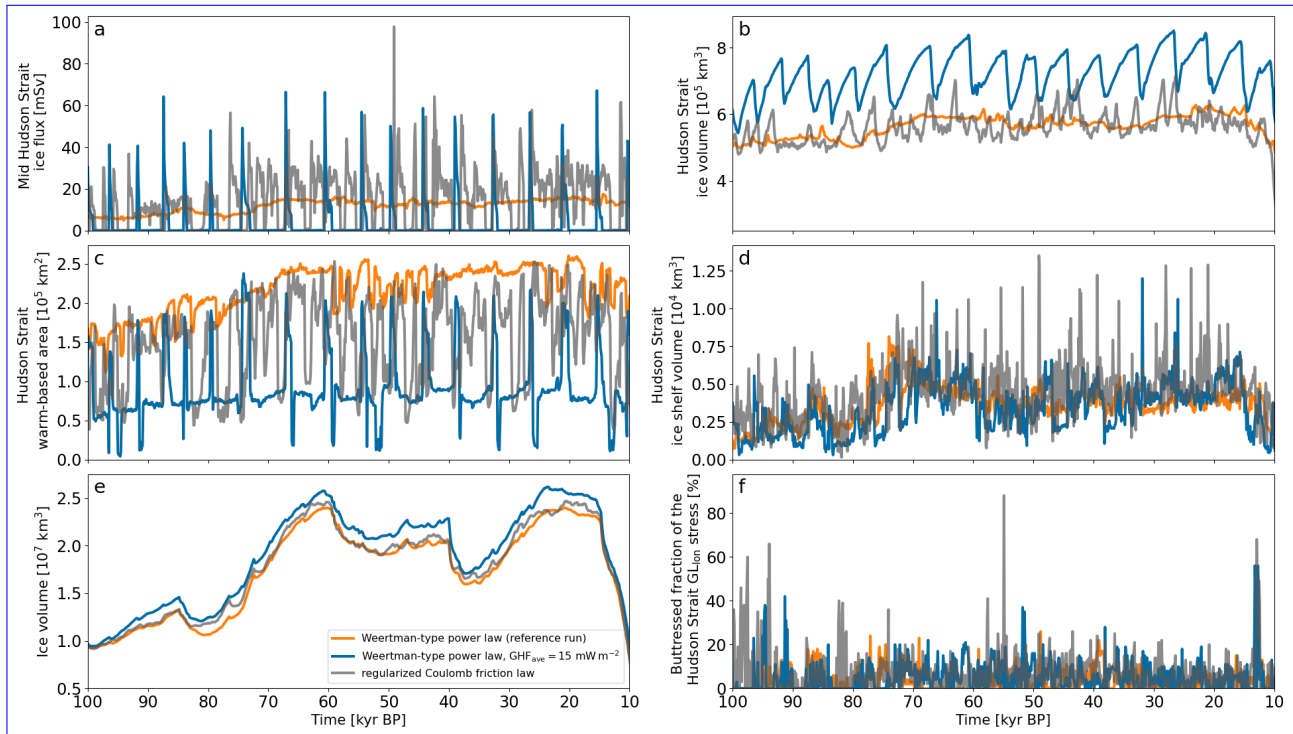


Figure 8. Time series of parameter vector 16 for different sliding laws (Weertman-type power law exponent is 2) and geothermal heat fluxes. The bottom-left panel Panel e shows the overall North American ice volume. Otherwise as Fig. 4.

550 3.4 Ice shelf removal

The hypothesized ice shelf collapse trigger for surge initiation is contingent on a large enough ice shelf to provide adequate buttressing of the Hudson Strait ice stream. However, the maximum area covered by an ice shelf across all reference runs is $\sim 0.5 \cdot 10^5$ and $\sim 1.0 \cdot 10^5$ km² (Fig. 10) of *Hudson Strait* (total area of $\sim 2.6 \cdot 10^5$ km², Fig. S23) and the *Labrador Sea ice shelf area* (total area of $\sim 8.7 \cdot 10^5$ km², Fig. 11), respectively (both areas outlined in Fig. 2). The mean ice shelf cover never exceeds $0.4 \cdot 10^5$ km² in the *Labrador Sea ice shelf area*. These rather small ice shelves have only limited potential to buttress the Hudson Strait ice stream.

Ice sheet surface elevation at 70 kyr BP (time step closest to the maximum Hudson Strait ice shelf area; reference run in Fig. S24) for parameter vector 1.

Given system uncertainties, we examine the change in ice shelf area when decreasing the ocean temperature by 2°C (entire water column, BE₃-EMS₃ in Sec. 2.3.3) and inhibiting calving in the *ocean forcing area* (BE₄-EMS₄ in Sec. 2.3.3, area outlined in Fig. 2). Decreasing the ocean temperature leads only to a minor increase in Labrador Sea ice shelf cover (Fig. 12). When completely inhibiting calving, the Labrador Sea ice shelf cover increases by at least a factor of 4, at times covering all grid cells in the *Labrador Sea ice shelf area* not covered by grounded ice (maximum of $\sim 4.0 \cdot 10^5$ km², Fig. 12). However, even

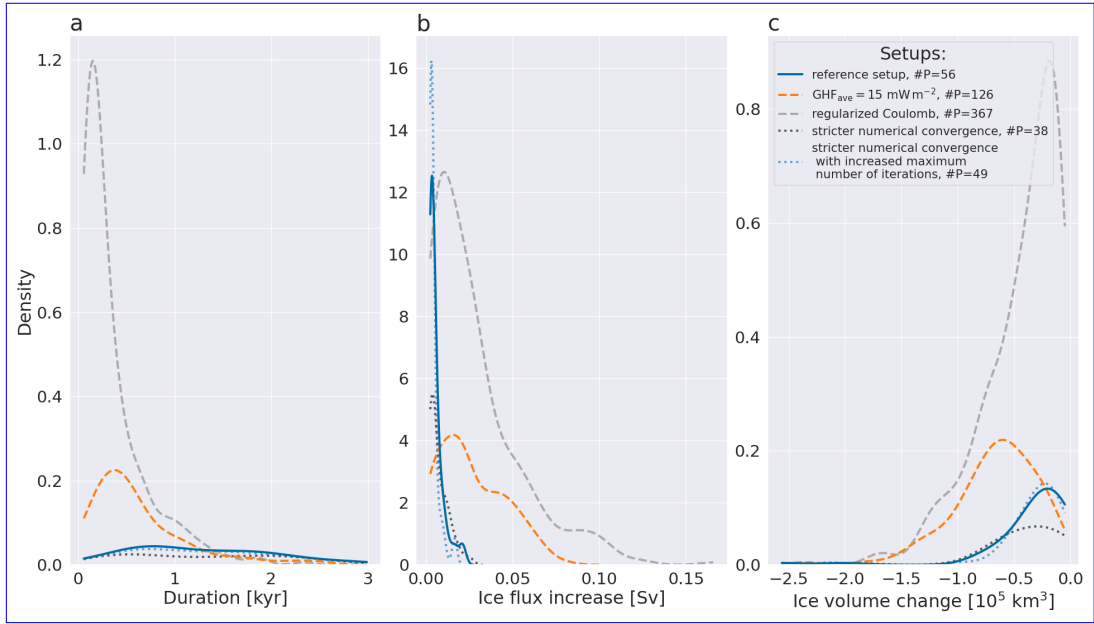


Figure 9. Kernel density plot for the whole ensemble (20 parameter vectors). The $\text{GHF}_{\text{ave}} = 15 \text{ mW m}^{-2}$ and MNEEs setups use the Weertman-type power law. Note that 2 runs crashed for the $\text{GHF}_{\text{ave}} = 15 \text{ mW m}^{-2}$ setup and 13 for the regularized Coulomb sliding law. Crashed runs are not considered here. #S-P indicates the total number of surges across all successful runs of the sub-ensemble. The density in each frame of the kernel density plot is scaled so that the sum of all individual integrals within this frame is 1 corresponding ensemble.

with this the extreme calving restriction, some parameter vectors show only minor Labrador Sea ice shelves (e.g., Fig. S30).
 565 This demonstrates the breadth of sub-shelf melt across our ensemble (maximum melt rates in BE₄EMS₄ runs vary between $\sim 22 \text{ myr}^{-1}$ (1.6°C ocean temperature) and $\sim 165 \text{ myr}^{-1}$ (4.7°C ocean temperature)) and the resultant bound of process uncertainties. Nonetheless, as the maximum ocean temperature in the Labrador Sea ice shelf area when applying $T_{\text{add}} = -2^\circ\text{C}$ (EMS₃) is within 1°C of the freezing point for 10 (out of 20) runs, calving is the main restricting factor for the growth of large ice shelves.

570 To test the role of ice shelf buttressing (along with potential grounding line destabilization from submarine melt) in a Heinrich Event context, we apply different ocean temperature forcings (with default calving). In particular, we adjust the ocean temperature during HEs by a maximum temperature change $T_{\text{max,HE}} = 2^\circ\text{C}$ below 250 m of the sea level, and $T_{\text{max,HE}} = [-2, 1, 2, 3]^\circ\text{C}$ for the entire water column (Sec. 2.3.1 and 2.3.3). Except for the surge duration, none of these “HE shelf forcing” experiments significantly affects the surge characteristics of the > 2 #surges sub-ensemble (Fig. 6 as well as BE₂ and
 575 BE₅EMS₂ and EMS₅ in S31). Even at $T_{\text{max,HE}} = 3^\circ\text{C}$, there are only minor differences between the reference and HE shelf forcing runs (e.g., Fig. S24).

The ≤ 2 #surges sub-ensemble generally shows only small changes in the number of surges for the “HE shelf forcing” experiments (Fig. S25 as well as BE₂ and BE₅EMS₂ and EMS₅ in Fig. S32). The maximum difference (increase in the total

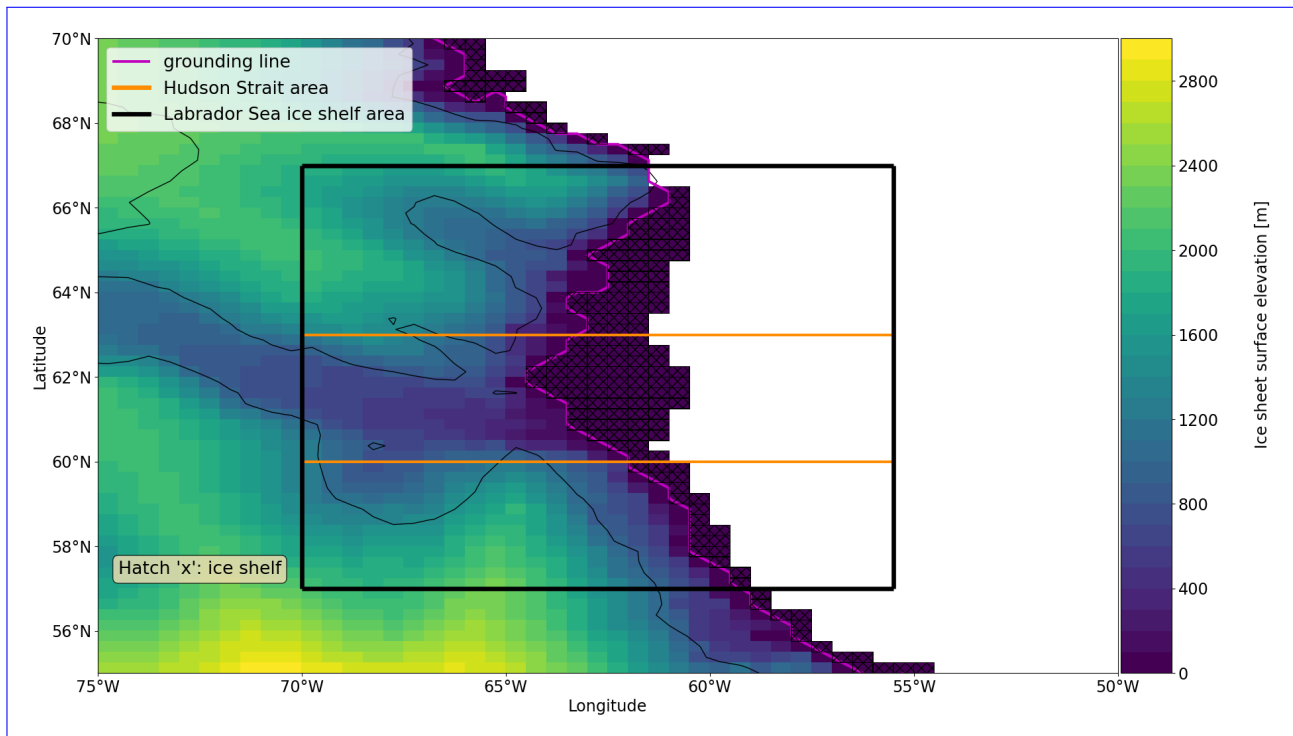


Figure 10. [Ice sheet surface elevation at 70 kyr BP \(time step closest to the maximum Hudson Strait ice shelf area; reference run in Fig. S24\) for parameter vector 1.](#) The black contour is the present-day sea level (coastline) used in the GSM.

number of surges in the sub-ensemble from 2 to 7) occurs for $T_{\max, \text{HE}} = 1^\circ\text{C}$ and below depth $d_{\text{OF}} = 0$ m. In comparison, the
 580 minimum increase in the total number of surges over the whole ≤ 2 #surges sub-ensemble (10 runs) for the GIA experiments
 is 10, and the MNEE experiments show a maximum difference of 2 (Fig. 16). Furthermore, the onset of the additional surges
 does not necessarily align with the ocean forcing (e.g., Fig. S26). The increase in surge number is a result of slightly different
 ice configurations rather than a direct response to the removal of the ice shelves and their potential buttressing.

During cold climatic conditions, the 2 m summer surface temperatures near the ice shelves stay below -2.0°C , allowing
 585 calving only where the ice shelf extends beyond the continental shelf break (e.g., Fig. S27, see Sec. 2.3 for details). To ensure
 the minor ice shelf sensitivity to ocean temperature changes during HEs is not solely a consequence of this calving restriction,
 we also run an experiment with a maximum ocean temperature forcing during HEs $T_{\max, \text{HE}} = 3^\circ\text{C}$ applied to the whole water
 column ($d_{\text{OF}} = 0$ m) and without any imposed restriction on calving within the *ocean forcing area* (Fig. 2). This has no
 significant effect (Fig. S28).

590 Therefore, the small effect of the ocean temperature forcing on surges of the Hudson Strait ice stream is a consequence of
 the relatively small ice shelf in front of Hudson Strait, providing insignificant buttressing. While the experiments with colder
 ocean temperatures (-2°C only during HEs and -2°C after 100 kyr BP) slightly increase the ice shelf cover, a complete
 calving shutdown is required to build up large ice shelves (e.g., Fig. 12). The larger ice shelves provide increased buttressing,

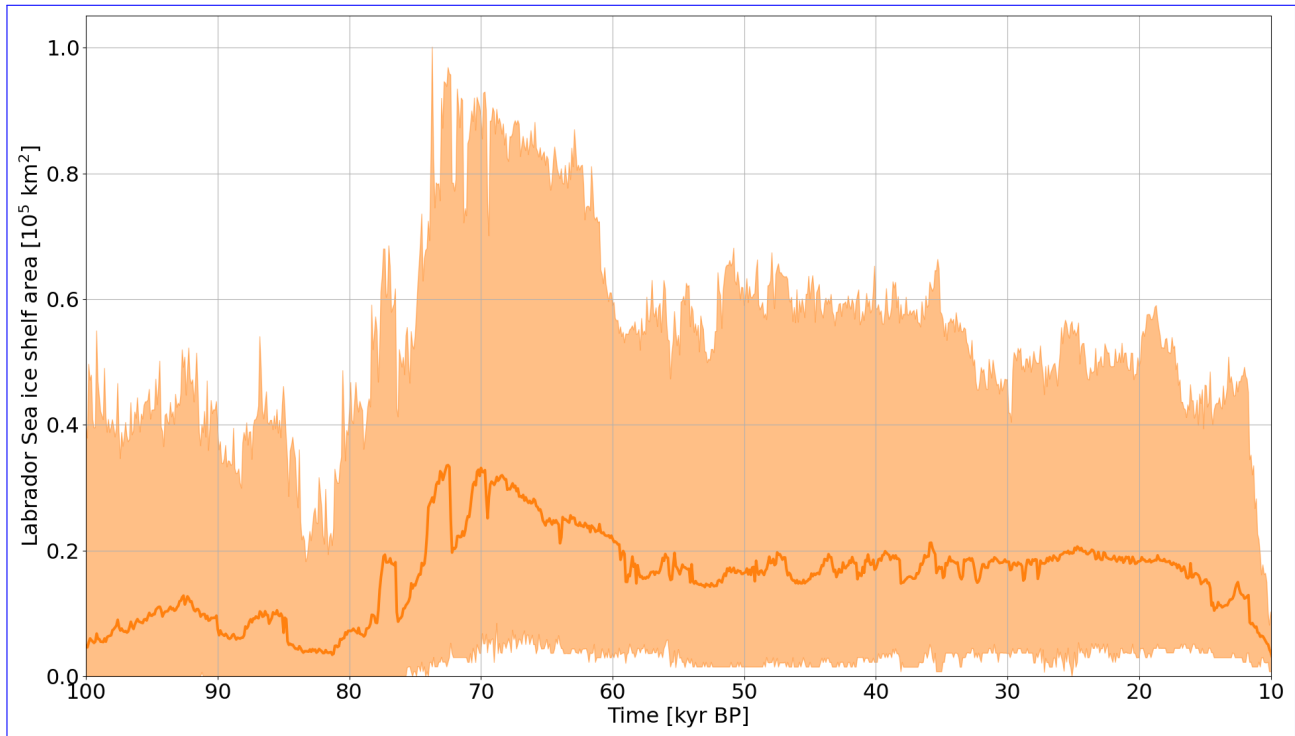


Figure 11. Labrador Sea ice shelf cover in the *Labrador Sea ice shelf area* outlined in Fig. 2 (total area of $\sim 8.7 \cdot 10^5 \text{ km}^2$). The thick line represents the mean of the 20 run ensemble. The shaded area marks the minimum and maximum of the ensemble. The maximum ice shelf area at 70 kyr BP is shown in Fig. 10.

leading to more gradual changes in mid-Hudson Strait ice flux, a more stable Hudson Strait ice volume, and consequentially fewer surges (Fig. S31 and S35).

Using the HE ocean forcing with a maximum temperature increase of $T_{\text{max,HE}} = 2^\circ\text{C}$ and no calving outside of HEs-HE forcing and after 100 kyr BP (BE₆EMS₆) leads to a rapid collapse of the large ice shelves during HEs-HE forcing intervals (due to calving and warmer ocean temperatures, Fig. 13)-d). The ice shelf disintegration increases Hudson Strait ice flux, decreasing Hudson Strait ice volume. While-even-Even in this extreme scenario, mid-Hudson Strait ice flux and Hudson Strait ice volume changes are relatively small (e.g., Fig. 13)a,b). However, the timing of at least 1 mid-Hudson Strait surge is directly affected by the ocean forcing and consequential reduction in buttressing for 10 (out of 20) parameter vectors.

3.5 Adding underwater warming pulses

As for the ocean forcing associated with HEs, the more frequent DO event sub-surface ocean warming has no significant effect on the surge characteristics, except for the surge duration (Fig. 6 and BE_TEMS₁ in Fig. S31). Similarly, the ≤ 2 #surges sub-ensemble show minor changes in the number of surges when applying the DO event ocean forcing (Fig. 14 and BE_TEMS₁ Fig. S32). The only exception is $T_{\text{max,DO}} = 2^\circ\text{C}$, $d_{\text{OF}} = 250 \text{ m}$, which increases the total number of surges across the

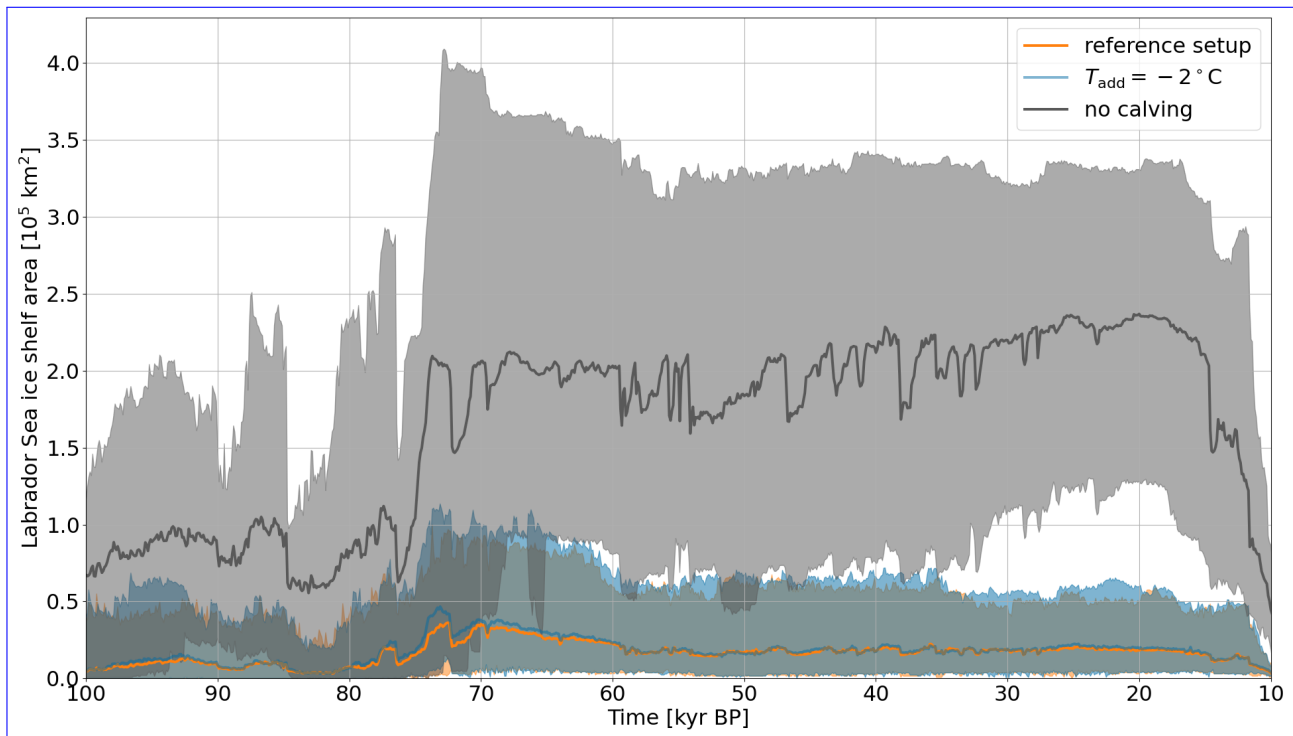


Figure 12. Labrador Sea ice shelf cover in the *Labrador Sea ice shelf area* for the reference setup compared to setups with 2°C colder ocean temperatures and without calving in the *ocean forcing area* ([EMS₃](#) and [EMS₄](#); both areas outlined in Fig. 2). The thick line represents the mean of 18 runs (the runs for parameter vectors 8 and 15 crashed in both comparison setups and were not included [for all setups shown](#)). The shaded area marks the minimum and maximum of the remaining runs.

sub-ensemble from 2 to 11 (spread across 3 runs, maximum increase of 4 surges per run). Considering that there are 22 ocean temperature increases per run, this is still a rather small increase. Furthermore, the additional events do not necessarily align with increased ocean temperatures. As for the ice shelf removal experiments, the increase in surges is a consequence of small changes in the overall ice configuration, particularly in Hudson Strait, rather than a direct response to the ocean forcing itself (e.g., Fig. S29).

Therefore, the ocean forcing and the consequential increase in sub-shelf melt and face melt are insufficient to significantly affect the surge characteristics (number of surges, mean surge duration, mean period between surges, mean increase in Hudson Strait ice flux, and mean Hudson Strait ice volume change during a surge) or trigger new surges. **This is mainly a consequence of small ice shelves in the Labrador Sea across all runs (Fig. 11).** However, sub-surface ocean warming can indirectly affect the overall timing of surges through changes in ice sheet evolution.

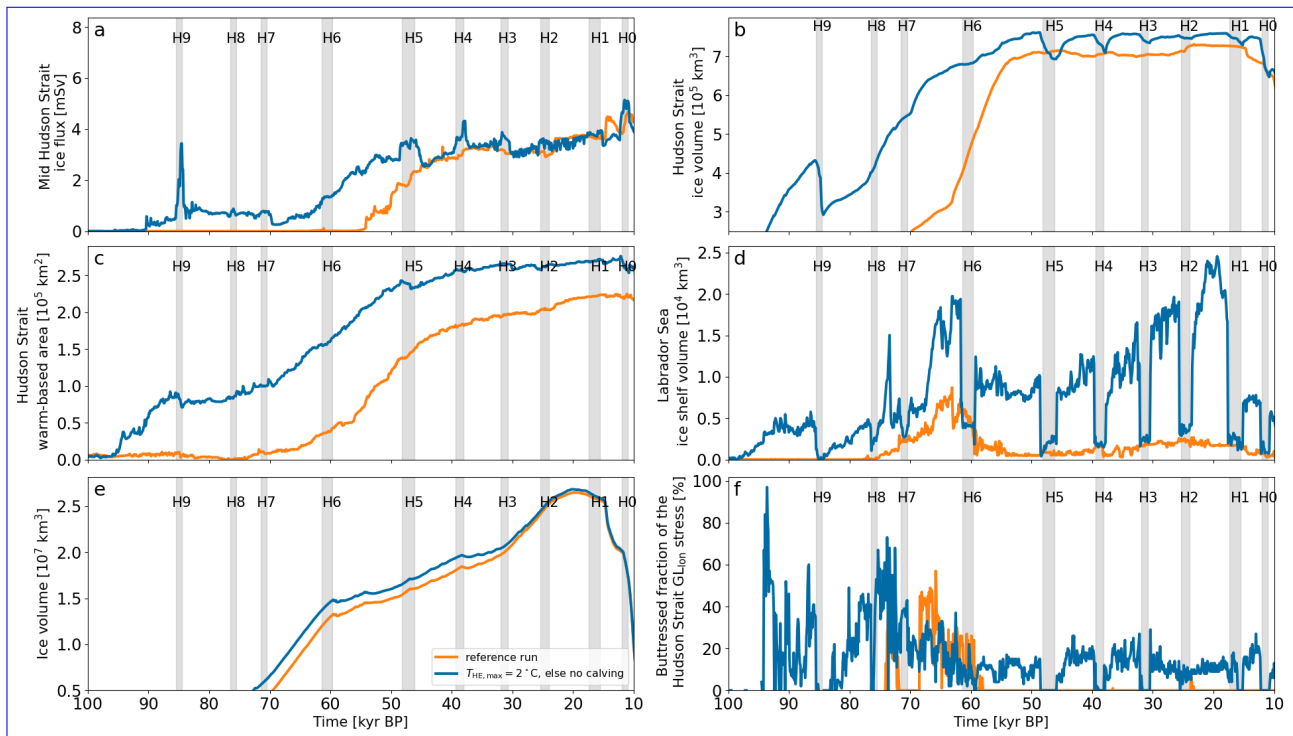


Figure 13. Time series of parameter vector 14 for the reference setup compared to the HE ocean forcing with a maximum temperature increase of $T_{\max,HE} = 2^{\circ}\text{C}$ (shaded grey areas) and no calving outside of HEs and after 100 kyr BP (BE_6 – EMS_6 in Sec. 2.3.3). The Labrador Sea instead of Hudson Strait ice shelf volume is shown. The bottom left (panel d). Panel e shows the overall North American ice volume. Otherwise as Fig. 4.

3.6 GIA Glacial isostatic adjustment

At first, we determine the effects of GIA on the overall ice sheet by comparing the reference setup to runs without GIA. On average, GIA leads to thicker ice sheets (Fig. 15c). The bed depression caused by the weight of the ice sheet lowers the ice sheet surface elevation. Due to the atmospheric lapse rate and the Clausius–Clapeyron formula for saturation vapor pressure, accumulation vapour pressure, precipitation (and therefore accumulation over most of the ice sheet) generally increases for a decreasing surface elevation (except where orographic forcing is strong), allowing for a. This leads to an overall thicker ice sheet than without GIA (Fig. 15). b.c).

Close to the ice sheet margin, a reduced ice sheet surface elevation (due to GIA) has the potential to increase the ablation zone. However, the reduced ice sheet surface elevation could also lower the driving stress near the margin and decrease the ice flux to the ablation zone. While the bed topography under the ice sheet, including the marginal areas, is generally depressed (Fig. S36, leading to a lower ice sheet surface elevation for the same ice thickness), the total melt tends to be slightly smaller

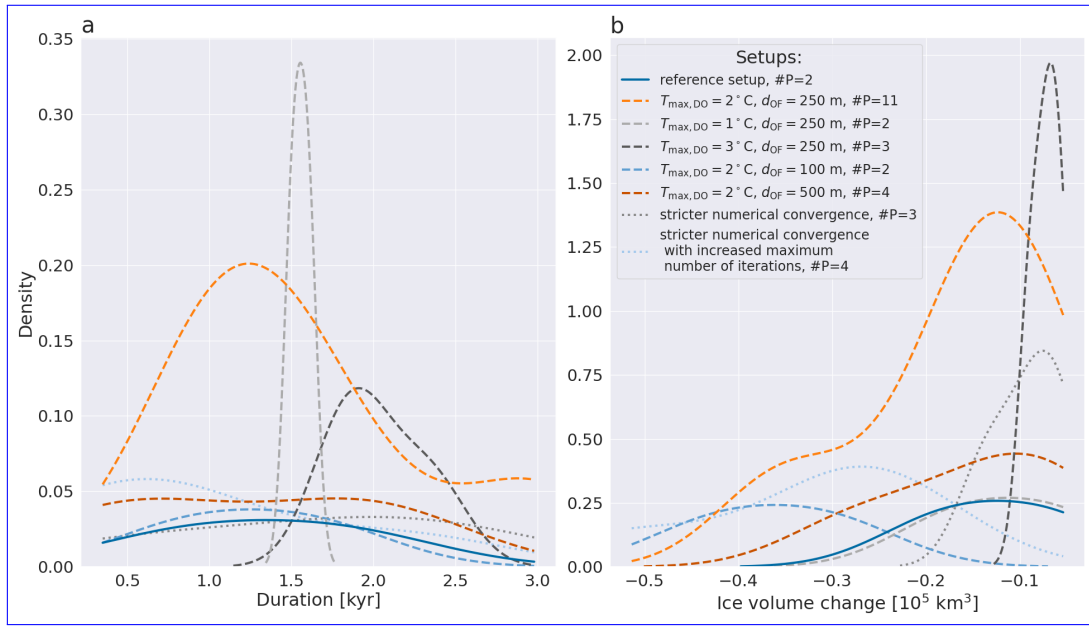


Figure 14. Kernel density plot for the ≤ 2 surges sub-ensemble (10 parameter vectors). The reference and MNEEs setups do not use an additional ocean forcing. #S-P indicates the total number of surges across all runs of the sub-ensemble.

with GIA (Fig. 15)-d). It is difficult to disentangle the exact underlying cause as various processes affect surface melt. As this is not our primary focus, we defer exploring the nuanced effects of GIA on surface melt to future studies.

630 Before analyzing the effects of GIA on the surge characteristics, we determine the ice sheet's sensitivity to different earth rheology models. All 20 parameter vectors (full-whole ensemble) were run with 9 different earth rheologies. The rheologies differ in the thickness of the Lithosphere (d_L), and the viscosity of the upper and lower mantle (η_{um} and η_{lm} , respectively). The sensitivity of the mean (across all 20 parameter vectors) North American ice volume to the earth rheology is generally small. The largest differences occur between 60 and 40 kyr BP, with a maximum difference of $0.3 \cdot 10^7 \text{ km}^3$ at ~ 50 kyr BP
 635 (Fig. S37). Similarly, the surge characteristics show minor sensitivities to a change in the earth rheology. However, a thinner Lithosphere and a smaller upper mantle viscosity tend to favor-favour shorter surges (Fig. S38).

The number of surges in runs with ≤ 2 surges (the ≤ 2 surges sub-ensemble) increases significantly for all experiments with local GIA (a damped-return to isostatic equilibrium with relaxation time constant $\tau = [3, 4, 5]$ kyr) and without GIA (Fig. 16). This is likely due to a smaller North American and Hudson Strait ice volume and the resulting change in basal temperature (e.g., Fig. S39). The larger ice sheet in the reference setup (global GIA) leads to more stable basal temperatures and a continuously active Hudson Strait ice stream. On the other hand, the smaller ice sheet in runs with local GIA and without GIA leads to colder basal temperatures, reduced Hudson Strait warm-based area (Fig. S40), and at times complete de-activation of the Hudson Strait ice stream. As described in Sec. 3.1, this de-activation eventually leads to a surge.
 640

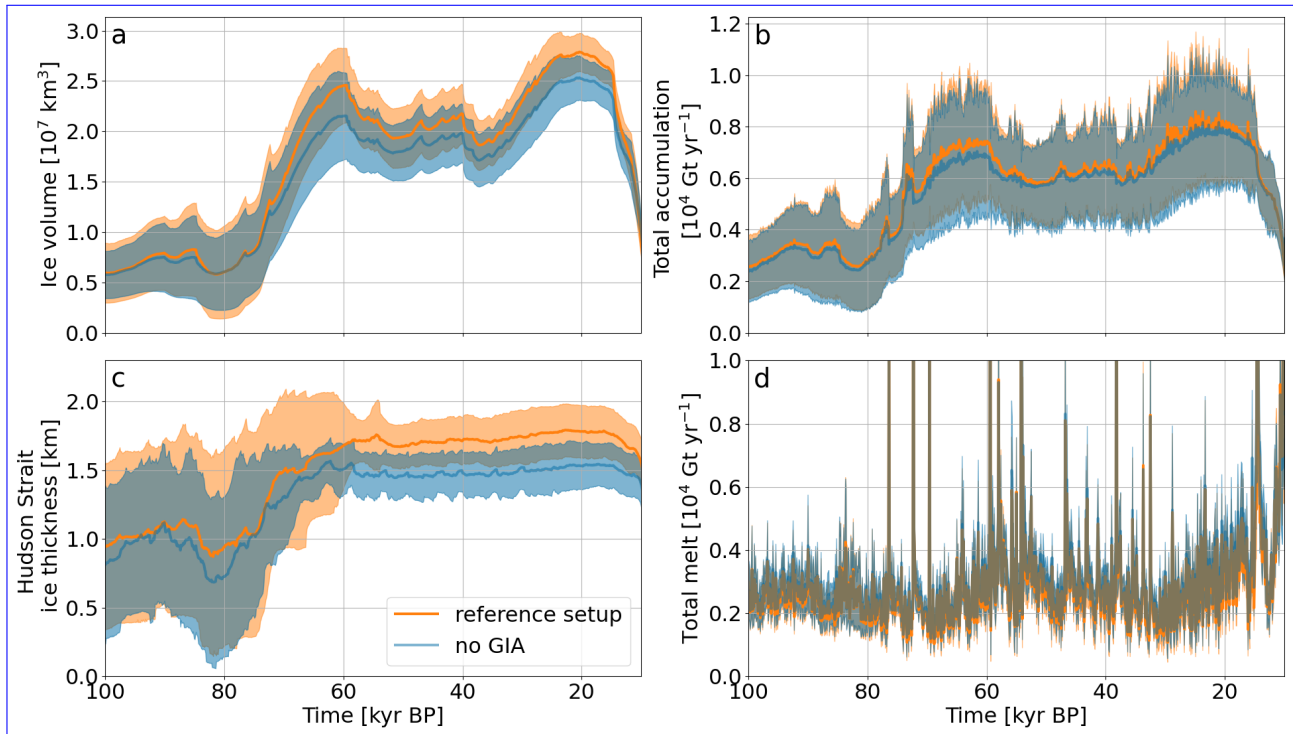


Figure 15. Ice sheet volume, total ice sheet accumulation, Hudson Strait ice thickness (Hudson Strait mask outlined in Fig. 2), and total ice sheet melt for the reference setup (global GIA model) and runs without GIA. The thick lines and shaded areas represent the mean and mean \pm standard deviation of 18 runs, respectively (the runs for parameter vectors 8 and 15 crashed in the comparison setup and were not included).

For the > 2 #surges sub-ensemble, using local GIA leads to a similar response as completely deactivating GIA, except for the number of surges. The number of surges increases without GIA and decreases for all local GIA models, but the differences are smaller than the MNEEs (Fig. 6). The different response is caused by a change in ice configuration. For example, local GIA ($\tau = 4$ kyr) significantly reduces Hudson Strait ice volume before 80 kyr BP, leading to a smaller but more stable warm-based area (e.g., no rapid changes due to advection of cold ice) and consequentially a continuously active ice stream instead of activation/de-activation cycles (Fig. S41). Therefore, a change in ice stream ~~behavior~~behaviour can be caused by differences in Hudson Strait basal temperature due to glacial isostatically driven ice volume changes (e.g., decreased insulation due to a thinner ice sheet). The mean period, duration, increase in Hudson Strait ice flux, and mean ice volume change show an increase for experiments with local and without GIA, but most differences are smaller than the MNEEs.

In summary, the GIA experiments with the default GHF indicate that the occurrence of Hudson Strait ice stream surges is sensitive to the overall North American ice configuration. The surge characteristics, however, show only minor changes. In contrast, the experiments with local GIA and without GIA lead to more significant changes for the classic binge-purge surge mode (Fig. S18 and S19). The surge duration decreases, while the number of surges, increase in mid-Hudson Strait ice flux,

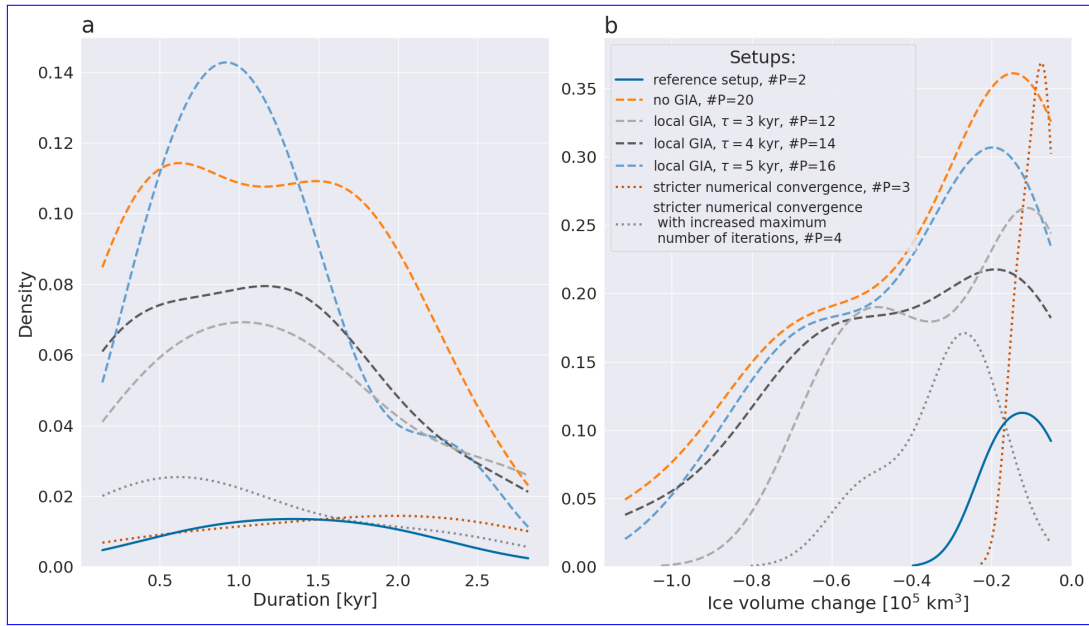


Figure 16. Kernel density plot for the ≤ 2 surges sub-ensemble. The reference and MNEEs setups use a global GIA model. #S/P indicates the total number of surges across all runs of the sub-ensemble.

and Hudson Strait ice volume change increase. The different model response for high and low GHFs is due to the differences in thermal conditions at the ice sheet base (e.g., Fig. S15).

4 Discussion

660 Q_1 What are the characteristics of Hudson Strait ice stream surges and how do they depend on the geothermal heat flux and basal drag law?

The surge characteristics are sensitive to the applied GHF and sliding law. Use of either a regularized Coulomb sliding law (Eq. 6) in combination with the default Weertman-type power law (Eq. 1 and 7) or a lower GHF each lead to a similar shift in surge mode (from nearly continuous Hudson Strait ice streaming to long quiescent periods interspersed with short surges) and surge characteristics (more surges, shorter duration, larger increase in mid-Hudson Strait ice flux, Table 3).

665 For the default GHF input field and Weertman-type power law, the Hudson Strait ice stream is almost continuously active throughout the last glacial cycle. Surges occur after a short quiescent period or as an increase above the background ice flux. Furthermore, the strongest surges (preceded by a complete de-activation of the Hudson Strait ice stream) occur before MIS3. While there is evidence for pre-MIS3 HEs (e.g., Table 6.3 in Bradley, 2014), HEs are usually associated

670

with MIS3. The limited number of strong surges within MIS3 is a consequence of increased basal temperatures (increased insulation due to a thicker ice sheet), leading to a continuously active ice stream (no ice build-up before surge).

Geothermal heat flux

675 Decreasing the GHF in Hudson Bay/Hudson Strait below $\sim 37 \text{ mW m}^{-2}$ leads to a surge mode consistent with the originally proposed binge-purge mechanism (long quiescent periods interspersed with short surges, MacAyeal, 1993), [increasing the Hudson Strait ice flux and ice volume discharge. This shift in surge mode is in agreement with the results of a previous study examining the effect of GHF on HEs \(Schannwell et al., 2023\)](#). Depending on the parameter vector, the surges can now occur continuously between ~ 110 and ~ 10 kyr BP (surges before 100 kyr BP are not considered in the surge characteristics). Critically, the binge-purge mode increases the number of strong surges during MIS3 (compared to the near continuous ice streaming mode), which is more in accord with the timing of Heinrich Layers in sediment cores (e.g., Hemming, 2004).

685 During a surge, both low and high GHF scenarios lead to a Hudson Strait ice flux and ice volume discharge consistent with literature estimates (Roberts et al., 2014, and references therein). As HEs are identified by IRD layers, the applied GHF must enable the entrainment of enough sediment. However, depending on the mechanism considered, sediment can be entrained for a cold-based (e.g., Meyer et al., 2019) as well as warm-based Hudson Bay/Hudson Strait (Drew, 2023). What ultimately controls the sediment discharge during a surge is the sediment availability. Furthermore, depending on the study and method used, GHF estimates in Hudson Bay and Hudson Strait vary between 20 and 80 mW m^{-2} (e.g., Pollack et al., 1993; Shapiro and Ritzwoller, 2004; Blackwell and Richards, 2004; Davies, 2013; Lucazeau, 2019); [\(e.g., Jessop and Judge, 1971; Pollack et al., 1993; Shapiro and Ritzwoller, 2004; Blackwell and Richards, 2004; Levy et al., 2010;](#)

690

Therefore, both surge modes occur within GHF constraints and are consistent with proposed sediment entrainment mechanisms.

695 When using the default GHF, the GSM temperatures in the bed are colder or similar to borehole measurements south of Hudson Bay (Fig. S42 and S43). While these boreholes indicate a negative GHF gradient toward the North and older bedrock material tends to be colder (less radioactive decay), no deep boreholes are available in Hudson Bay and Hudson Strait. Therefore, better constraints on the GHF in Hudson Bay and Hudson Strait as well as inclusion of a fully coupled sediment model are required to better determine the most likely surge mode.

Basal sliding law

700 Similar to the effects of a lower GHF in Hudson Strait and Hudson Bay, using a regularized Coulomb sliding law leads to a shift to the binge-purge mode and a large increase in surges, including the number of strong surges during MIS3. While the increase in mid-Hudson Strait ice flux and Hudson Strait ice volume change during a surge are within

literature estimates (Roberts et al., 2014, and references therein), the large increase in the number of surges and, therefore, the shorter periods are not (Table 2 and 3). This is in contrast to the lower GHF ensembles, rendering the regularized Coulomb sliding law experiments a less likely representation of the binge-purge mode.

705 *Q₂ Can the sudden reduction of the buttressing effect of ice shelves trigger Hudson Strait ice stream surging?*

In line with both proxy data indicating ice shelf free conditions during most of the last glacial cycle (Hillaire-Marcel et al., 1994; Hesse et al., 1999; De Vernal et al., 2000; Gibb et al., 2014) and other modeling studies (Schannwell et al., 2023), there is no significant Labrador Sea ice shelf in the GSM runs. This conclusion still holds even when running the GSM with a full North American and Greenland ice sheet configuration ([Fig. S44](#), instead of just the stub North-West Greenland shown in Fig. S1).

710

The relatively small ice shelves in front of the Hudson Strait terminus provide only minor buttressing and are barely affected by the applied ocean temperature forcing. Reducing the ocean temperature by -2°C leads to minor ice shelf growth, [as calving remains a restricting factor](#). Even when completely inhibiting calving in front of Hudson Strait ([but using the default ocean forcing](#)), not all parameter vectors yield ice shelves large enough to be buttressed against Green-

715

land. Ice shelf collapse in runs that have large ice shelves does lead to minor increases in mid-Hudson Strait ice flux. Our overall results indicate that [collapse of buttressing ice shelves](#) are likely not the main trigger of Hudson Strait ice stream surging but, depending on the parameter vector, can affect the timing of surges. [While changes in whole ice sheet evolution caused by the applied ocean forcing contribute to the differences in surge timing, there is no clear causal relationship between the timing of ocean forcing and the surge cycling response.](#)

720

This is in contrast to the findings of Alvarez-Solas et al. (2013, Hudson Strait surge induced by collapse of buttressing ice shelf), which use fixed glacial climatic boundary conditions except for changes in the sub-surface ocean temperature. However, the ice shelf in their simulation covers the entire area between Hudson Strait and Greenland, significantly increasing the buttressing and enabling a larger Hudson Strait ice volume (larger surges when removing the buttressing). As discussed above, this scenario is inconsistent with available marine records. ~~Furthermore, this scenario is not supported by the bounding experiments within this study, especially given the range of sub-shelf melt rates across the ensemble.~~

725

Q₃ Can a sudden breakup of fringing ice shelves along the Canadian coast explain the IRD records (without the need for surges)?

730

Based on assumptions about the terrigenous material transported by floating ice during HEs (100 km^3 , Alley and MacAyeal, 1994), the debris concentration in basal glacier ice (5 to 35 %, Lawson et al., 1998), and the accreted ice thickness (1 % of total ice thickness), Hulbe et al. (2004) estimate that a minimum ice shelf volume of $2.8 \cdot 10^4$ to $20 \cdot 10^4 \text{ km}^3$ is required to explain the IRD records by disintegration of fringing ice shelves. The maximum Labrador sea ice shelf volume across all reference runs is $2.5 \cdot 10^4 \text{ km}^3$ ([Fig. S44](#); $12.6 \cdot 10^4 \text{ km}^3$ when calving is completely inhibited

735 in the *ocean forcing area* outlined in Fig. 2). Even when considering fringing ice shelves along the Canadian coast (52.5 to 75.0°N), the maximum ice shelf volume between 100 and 10 kyr BP across all reference runs is only $6.2 \cdot 10^4 \text{ km}^3$ and is below the minimum estimate of Hulbe et al. (2004) for 12 (out of 20) runs. Therefore, it is unlikely that the IRD layers found in the North Atlantic are solely a consequence of ice shelf disintegration. However, this conclusion neglects potential contributions of other source regions with similar geological material, such as the Boothia ice stream (Sanford and Grant, 1998; Hulbe et al., 2004; Naafs et al., 2013). Future work, e.g. ice sheet modeling with a fully coupled sediment model, is required to determine the contributions of individual source regions.

Q₄ How does sub-surface ocean warming affect HES?

745 In the idealized setup of Bassis et al. (2017), underwater melt grounding line retreat driven by underwater melt and, in turn, modulated by GIA leads to ~~pseudo-Hudson-Hudson~~ Strait surges. Although not exactly replicating the experiments of Bassis et al. (2017), we examine the effect of sub-surface ocean warming in a HE context by applying sub-surface ocean forcings of different magnitudes at varying depths. In general, applying a similar sub-surface ocean forcing in the GSM does not significantly affect the surge characteristics and does not trigger new Hudson Strait surges. ~~However, it can~~ As for the collapse of buttressing ice shelves, sub-surface ocean forcing can significantly affect the timing of ~~Hudson Strait surges~~ surge cycling (e.g., Fig. S29), but there is no clear relationship between the timing of sub-surface ocean forcing and the surge cycling response. Furthermore, sub-surface ocean forcing also affects whole ice sheet evolution, further complicating the interpretation of the causal relationship.

750 Depending on the ~~sub-shelf melt coefficient~~ melt coefficients and the ocean temperature (Sec. 2.3), ~~the sub-shelf~~ sub-marine melt can reach up to 400 m yr^{-1} in our ~~simulations~~ end-member scenario simulations (specifically designed to increase the melt rate; melt rates in the reference setup are generally below 100 m yr^{-1}), indicating that the minor model response concerning surges is not an issue of insufficient sub-shelf melt. The different model response is likely a consequence of the less idealized model setup and the large variety of physical system processes affecting the surges in the GSM that are not present in the modeling of Bassis et al. (2017, such as their lack of ice thermodynamics). Different implementations of GIA and calving along with different grid resolutions further contribute to the different results.

Q₅ What is the role of GIA in a HE context?

760 GIA leads to lower ice sheet surface elevations, increased accumulation, and consequently, larger ice sheets (Fig. 15). The reduction in overall North American and Hudson Strait ice volume when using a local or no GIA model leads to, on average, lower basal temperatures (Fig. S40) and fosters surges in runs that otherwise show a continuous Hudson Strait ice stream.

765 Analyzing the surge characteristics with the default GHF shows a tendency towards longer and stronger surges for simulations with local or no GIA. The differences are caused by the change in ice configuration but are generally on the same order of magnitude as the MNEEs. Changes in the earth rheology used by the global GIA model have minor impact.

The classic binge-purge surge mechanism in the low GHF experiments is more sensitive to GIA. Due to the different thermal conditions at the ice sheet base, the experiments with local or without GIA now lead to shorter but stronger surges.

Due to its effect on the overall North American ice volume, the consequential change in basal temperatures in Hudson Strait, and the limited range of ice sheet configurations for which Hudson Strait ice stream surges occur, global GIA plays a critical role in modeling ice stream activation/de-activation cycles. These results are especially relevant for interpreting HE modeling experiments that do not use a physically-based GIA scheme.

775 5 Conclusions

Within this study, we investigate Hudson Strait ice stream surges and determine the role of geothermal heat flux (GHF), basal sliding laws, ice shelves, glacial isostatic adjustment (GIA), and sub-surface ocean temperature forcings in a HE context. The model results are based on the first HE simulations with transient last glacial cycle climate forcing, global visco-elastic glacial isostatic adjustment model, sub-glacial hydrology model, and high-variance sub-ensemble retrieved from North American history matching for the last glacial cycle.

Consistent with proxy records, no large ice shelves develop in the Labrador Sea (unless extreme calving restrictions are applied), leading to minor buttressing effects. Even when completely inhibiting calving in the Labrador Sea, the collapse of large ice shelves leads to only a minor increase in mid-Hudson Strait ice flux. Except for the exact timing of surges, sub-surface ocean warming does not significantly affect the surge characteristics. ~~Due to its significant effect on the overall ice sheet configuration, GIA can increase the number and resulting change in basal temperature. Since the ice shelf volume along the Canadian coast is generally smaller than the estimated minimum required for HEs, and since the fringing ice shelves in front of Hudson Strait surges but does not significantly affect the surge characteristics.~~

~~Based on our results, provide only minor buttressing, our results indicate that even when considering a combined mechanism of sub-surface ocean warming, breakup of fringing ice shelves, and consequential sudden reduction of the buttressing effect, HEs can not be explained without Hudson Strait ice stream surge cycling is the most likely Heinrich Event mechanism, but ocean forcings can affect the timing of surges and provide a means to synchronize HEs with the coldest phases of the Bond cycles.~~

However, the surge pattern is highly sensitive to the basal sliding law and the GHF in Hudson Bay and Hudson Strait. The GHF estimates for this region vary by a factor of 4. While better constraints on the GHF are essential to determine the likelihood of the classic binge-purge mechanism compared to a near continuous ice stream with pre-Heinrich Event shutdowns, the increased number of strong surges during MIS3 in the binge-purge mode suggests that the deep GHF for Hudson Bay and Hudson strait is under 35 mW m^{-2} . Using a regularized Coulomb sliding law also leads to a shift to the binge-purge mode and increases the number of strong surges during MIS3. However, the overall large increase in surges leads to periods well below

800 those inferred for HEs. In contrast, the period and duration of the reference and low GHF setup are in agreement with literature estimates.

805 A key Overall, our experiments indicate that Hudson Strait ice stream surge cycling is the most likely primary Heinrich Event mechanism, but ocean forcings can indirectly affect the timing of surges through a change in ice sheet evolution. The key HE characteristic our experiments have not resolved is HE synchronization with the coldest phases of the Bond cycles (though not always the case, e.g., HE1). While ice shelf collapse and ocean forcing are insufficient to synchronize Hudson Strait ice stream surge cycling in the experiments presented here, a synchronization mechanism without the need for a trigger event during the stadial (Schannwell et al., 2024) could potentially provide the missing link and should be explored in future studies. A further caveat is the usual assumption that IRD flux is approximately proportional to ice flux (be it from Hudson Strait ice stream surge cycling or collapsing ice shelves). A follow-up submission with a fully coupled sediment model will
810 evaluate the correlation between ice and sediment discharge and better link the glacial processes examined here to the IRD layers.

Code availability. TEXT

Data availability. TEXT

815 *Code and data availability.* Data is available upon request from the corresponding author. After acceptance for publication in CP, an archive of a representative sample of simulation output will be made available in a public archive. A recent version of the GSM code (as used for Hank et al., 2023) is available at <https://doi.org/10.5281/zenodo.7668472> (Tarasov et al., 2023). A description of the current version of the GSM will soon be submitted to GMD with a complete code archive.

Sample availability. TEXT

Video supplement. Supplementary videos are available online at: <https://doi.org/10.5281/zenodo.10214928> (Hank, 2023).

820 *Author contributions.* KH prepared the experimental design, ran the model, and analyzed the results. Both authors contributed to the interpretation of the results and writing of the paper. LT provided the source parameter vector ensemble.

Competing interests. The authors have no competing interests.

Disclaimer. TEXT

Acknowledgements. The authors thank Anne de Vernal and Claude Hillaire Marcel for their guidance on the interpretation of marine proxy
825 records in a Heinrich Event context.

References

- Alley, R. B. and MacAyeal, D. R.: Ice-rafted debris associated with binge/purge oscillations of the Laurentide Ice Sheet, *Paleoceanography*, 9, 503–511, <https://doi.org/https://doi.org/10.1029/94PA01008>, 1994.
- Alley, R. B., Anandakrishnan, S., Christianson, K., Horgan, H. J., Muto, A., Parizek, B. R., Pollard, D., and Walker, R. T.:
830 Oceanic forcing of ice-sheet retreat: West Antarctica and more, *Annual Review of Earth and Planetary Sciences*, 43, 207–231, <https://doi.org/10.1146/annurev-earth-060614-105344>, 2015.
- Alvarez-Solas, J., Charbit, S., Ritz, C., Paillard, D., Ramstein, G., and Dumas, C.: Links between ocean temperature and iceberg discharge during Heinrich events, *Nature Geoscience*, 3, 122–126, <https://doi.org/10.1038/ngeo752>, 2010.
- Álvarez-Solas, J., Montoya, M., Ritz, C., Ramstein, G., Charbit, S., Dumas, C., Nisancioglu, K., Dokken, T., and Ganopolski, A.: Heinrich
835 event 1: An example of dynamical ice-sheet reaction to oceanic changes, *Climate of the Past*, 7, 1297–1306, <https://doi.org/10.5194/cp-7-1297-2011>, 2011.
- Alvarez-Solas, J., Robinson, A., Montoya, M., and Ritz, C.: Iceberg discharges of the last glacial period driven by oceanic circulation changes, *Proceedings of the National Academy of Sciences of the United States of America*, 110, 16350–16354, <https://doi.org/10.1073/pnas.1306622110>, 2013.
- 840 Bassis, J. N., Petersen, S. V., and Mac Cathles, L.: Heinrich events triggered by ocean forcing and modulated by isostatic adjustment, *Nature*, 542, 332–334, <https://doi.org/10.1038/nature21069>, 2017.
- Bazin, L., Landais, A., Lemieux-Dudon, B., Toyé Mahamadou Kele, H., Veres, D., Parrenin, F., Martinerie, P., Ritz, C., Capron, E., Lipenkov, V., Loutre, M.-F., Raynaud, D., Vinther, B., Svensson, A., Rasmussen, S. O., Severi, M., Blunier, T., Leuenberger, M., Fischer, H., Masson-Delmotte, V., Chappellaz, J., and Wolff, E.: An optimized multi-proxy, multi-site Antarctic ice and gas orbital chronology (AICC2012):
845 120 - 800 ka, *Climate of the Past*, 9, 1715–1731, <https://doi.org/10.5194/cp-9-1715-2013>, 2013.
- Blackwell, D. and Richards, M.: Geothermal Map of North America, AAPG Map, scale 1:6,500,000, Product Code 423, https://www.smu.edu/-/media/Site/Dedman/Academics/Programs/Geothermal-Lab/Graphics/Geothermal_MapNA_7x10in.gif, 2004.
- Bradley, R.: *PALEOCLIMATOLOGY* (3rd edition), 2014.
- Calov, R., Ganopolski, A., Petoukhov, V., Claussen, M., and Greve, R.: Large-scale instabilities of the Laurentide ice sheet simulated in a
850 fully coupled climate-system model, *Geophysical Research Letters*, 29, 1–4, <https://doi.org/10.1029/2002GL016078>, 2002.
- Clement, A. C. and Peterson, L. C.: Mechanisms of abrupt climate change of the last glacial period, *Reviews of Geophysics*, 46, <https://doi.org/10.1029/2006RG000204>, 2008.
- Cuesta-Valero, F. J., García-García, A., Beltrami, H., González-Rouco, J. F., and García-Bustamante, E.: Long-term global ground heat flux and continental heat storage from geothermal data, *Climate of the Past*, 17, 451–468, <https://doi.org/10.5194/cp-17-451-2021>, 2021.
- 855 Davies, J. H.: Global map of solid Earth surface heat flow, *Geochemistry, Geophysics, Geosystems*, 14, 4608–4622, <https://doi.org/10.1002/ggge.20271>, 2013.
- De Vernal, A., Hillaire-Marcel, C., Turon, J. L., and Matthiessen, J.: Reconstruction of sea-surface temperature, salinity, and sea-ice cover in the northern North Atlantic during the last glacial maximum based on dinocyst assemblages, *Canadian Journal of Earth Sciences*, 37, 725–750, <https://doi.org/10.1139/cjes-37-5-725>, 2000.
- 860 Deblonde, G., Peltier, W. R., and Hyde, W. T.: Simulations of continental ice sheet growth over the last glacial-interglacial cycle: Experiments with a one level seasonal energy balance model including seasonal ice albedo feedback, 98, 37–55, 1992.

- DeConto, R. M. and Pollard, D.: Contribution of Antarctica to past and future sea-level rise, *Nature*, 531, 591–597, <https://doi.org/10.1038/nature17145>, 2016.
- 865 Depoorter, M. A., Bamber, J. L., Griggs, J. A., Lenaerts, J. T., Ligtjenberg, S. R., Van Den Broeke, M. R., and Moholdt, G.: Calving fluxes and basal melt rates of Antarctic ice shelves, *Nature*, 502, 89–92, <https://doi.org/10.1038/nature12567>, 2013.
- Drew, M.: The role of fully coupled ice sheet basal processes in quaternary glacial cycles, Ph.D. thesis, <https://doi.org/10.48336/74Z6-9585>, 2023.
- Drew, M. and Tarasov, L.: Surging of a Hudson Strait-scale ice stream: subglacial hydrology matters but the process details mostly do not, *The Cryosphere*, 17, 5391–5415, <https://doi.org/10.5194/tc-17-5391-2023>, 2023.
- 870 Enderlin, E. M. and Howat, I. M.: Submarine melt rate estimates for floating termini of Greenland outlet glaciers (2000–2010), *Journal of Glaciology*, 59, 67–75, <https://doi.org/10.3189/2013JoG12J049>, 2013.
- Flowers, G. E.: A multicomponent coupled model of glacier hydrology, Ph.D. thesis, University of British Columbia, <https://doi.org/http://dx.doi.org/10.14288/1.0053158>, 2000.
- Flowers, G. E. and Clarke, G. K. C.: A multicomponent coupled model of glacier hydrology 1. Theory and synthetic examples, *Journal of Geophysical Research: Solid Earth*, 107, <https://doi.org/10.1029/2001jb001122>, 2002.
- 875 Gibb, O. T., Hillaire-Marcel, C., and de Vernal, A.: Oceanographic regimes in the northwest Labrador Sea since Marine Isotope Stage 3 based on dinocyst and stable isotope proxy records, *Quaternary Science Reviews*, 92, 269–279, <https://doi.org/10.1016/j.quascirev.2013.12.010>, 2014.
- Goutorbe, B., Poort, J., Lucazeau, F., and Raillard, S.: Global heat flow trends resolved from multiple geological and geophysical proxies, *Geophysical Journal International*, 187, 1405–1419, <https://doi.org/10.1111/j.1365-246X.2011.05228.x>, 2011.
- Grousset, F. E., Labeyrie, L., Sinko, J. a., Bond, G., Duprat, J., and Cortijo, E.: Patterns of Ice-Rafted Detritus in the Glacial North Atlantic (40–55°N), *Atlantic*, 8, 175–192, <https://doi.org/10.1029/92PA02923>, 1993.
- Gwiazda, R., Hemming, S., and Broecker, W.: Provenance of icebergs during Heinrich Event 3 and the contrast to their sources during other Heinrich episodes, *Paleoceanography*, 11, 371–378, <https://doi.org/10.1029/96PA01022>, 1996.
- 885 Hank, K.: Supplementary material for "The comparative role of system processes in Hudson Strait ice stream cycling: a comprehensive model-based test of Heinrich event hypotheses", <https://doi.org/10.5281/zenodo.10214928>, 2023.
- Hank, K., Tarasov, L., and Mantelli, E.: Modeling sensitivities of thermally and hydraulically driven ice stream surge cycling, *Geoscientific Model Development*, 16, 5627–5652, <https://doi.org/10.5194/gmd-16-5627-2023>, 2023.
- Heinrich, H.: Origin and consequences of cyclic ice rafting in the Northeast Atlantic Ocean during the past 130,000 years, *Quaternary Research*, 29, 142–152, [https://doi.org/10.1016/0033-5894\(88\)90057-9](https://doi.org/10.1016/0033-5894(88)90057-9), 1988.
- 890 Hemming, S.: Heinrich events: Massive late Pleistocene detritus layers of the North Atlantic and their global climate imprint, *Reviews of Geophysics - REV GEOPHYS*, 42, <https://doi.org/10.1029/2003RG000128>, 2004.
- Hesse, R., Klauk, I., Khodabakhsh, S., and Piper, D.: Continental slope sedimentation adjacent to an ice margin. III. The upper Labrador Slope, *Marine Geology*, 155, 249–276, [https://doi.org/10.1016/S0025-3227\(98\)00054-1](https://doi.org/10.1016/S0025-3227(98)00054-1), 1999.
- 895 Hillaire-Marcel, C., De Vernal, A., Bilodeau, G., and Wu, G.: Isotope stratigraphy, sedimentation rates, deep circulation, and carbonate events in the Labrador Sea during the last ~200 ka, *Canadian Journal of Earth Sciences*, 31, 63–89, <https://doi.org/10.1139/e94-007>, 1994.
- Hodell, D., Evans, H., Channell, J., and Curtis, J.: Phase relationships of North Atlantic ice-rafted debris and surface-deep climate proxies during the last glacial period, *Quaternary Science Reviews*, 29, 3875–3886, <https://doi.org/10.1016/j.quascirev.2010.09.006>, 2010.
- Hulbe, C.: An ice shelf mechanism for Heinrich layer production, *Paleoceanography*, 12, 711–717, <https://doi.org/10.1029/97PA02014>, 1997.

- 900 Hulbe, C. L., MacAyeal, D. R., Denton, G. H., Kleman, J., and Lowell, T. V.: Catastrophic ice shelf breakup as the source of Heinrich event icebergs, *Paleoceanography*, 19, n/a–n/a, <https://doi.org/10.1029/2003pa000890>, 2004.
- Jaupart, C., Mareschal, J. C., Bouquerel, H., and Phaneuf, C.: The building and stabilization of an Archean Craton in the Superior Province, Canada, from a heat flow perspective, *Journal of Geophysical Research: Solid Earth*, 119, 9130–9155, <https://doi.org/10.1002/2014JB011018>, 2014.
- 905 Jessop, A. M. and Judge, A. S.: Five Measurements of Heat Flow in Southern Canada, *Canadian Journal of Earth Sciences*, 8, 711–716, <https://doi.org/10.1139/e71-069>, 1971.
- Lawson, D. E., Strasser, J. C., Evenson, E. B., Alley, R. B., Larson, G. J., and Arcone, S. A.: Glaciohydraulic supercooling: a freeze-on mechanism to create stratified, debris-rich basal ice: I. Field evidence, *Journal of Glaciology*, 44, 547–562, <https://doi.org/10.3189/S0022143000002069>, 1998.
- 910 Lazeroms, W. M., Jenkins, A., Hilmar Gudmundsson, G., and Van De Wal, R. S.: Modelling present-day basal melt rates for Antarctic ice shelves using a parametrization of buoyant meltwater plumes, *Cryosphere*, 12, 49–70, <https://doi.org/10.5194/tc-12-49-2018>, 2018.
- Levy, F., Jaupart, C., Mareschal, J. C., Bienfait, G., and Limare, A.: Low heat flux and large variations of lithospheric thickness in the Canadian Shield, *Journal of Geophysical Research: Solid Earth*, 115, 1–23, <https://doi.org/10.1029/2009JB006470>, 2010.
- Lisiecki, L. E. and Raymo, M. E.: A Pliocene-Pleistocene stack of 57 globally distributed benthic $\delta^{18}O$ records, *Paleoceanography*, 20, <https://doi.org/10.1029/2004PA001071>, 2005.
- 915 Liu, Z., Otto-Bliesner, B. L., He, F., Brady, E. C., Tomas, R., Clark, P. U., Carlson, A. E., Lynch-Stieglitz, J., Curry, W., Brook, E., and et al.: Transient Simulation of Last Deglaciation with a New Mechanism for Bolling-Allerod Warming, *Science*, 325, 310314, <https://doi.org/10.1126/science.1171041>, 2009.
- Lucazeau, F.: Analysis and Mapping of an Updated Terrestrial Heat Flow Data Set, *Geochemistry, Geophysics, Geosystems*, 20, 4001–4024, <https://doi.org/10.1029/2019GC008389>, 2019.
- 920 MacAyeal, D. R.: Binge/purge oscillations of the Laurentide Ice Sheet as a cause of the North Atlantic’s Heinrich events, *Paleoceanography*, 8, 775–784, <https://doi.org/10.1029/93PA02200>, 1993.
- Maier, N., Gimbert, F., Gillet-Chaulet, F., and Gilbert, A.: Basal traction mainly dictated by hard-bed physics over grounded regions of Greenland, *Cryosphere*, 15, 1435–1451, <https://doi.org/10.5194/tc-15-1435-2021>, 2021.
- 925 Marcott, S. A., Clark, P. U., Padman, L., Klinkhammer, G. P., Springer, S. R., Liu, Z., Otto-Bliesner, B. L., Carlson, A. E., Ungerer, A., Padman, J., He, F., Cheng, J., and Schmittner, A.: Ice-shelf collapse from subsurface warming as a trigger for Heinrich events, *Proceedings of the National Academy of Sciences of the United States of America*, 108, 13415–13419, <https://doi.org/10.1073/pnas.1104772108>, 2011.
- Met Office: Cartopy: a cartographic python library with a Matplotlib interface, Exeter, Devon, <https://scitools.org.uk/cartopy>, 2010 - 2015.
- 930 Meyer, C. R., Robel, A. A., and Rempel, A. W.: Frozen fringe explains sediment freeze-on during Heinrich events, *Earth and Planetary Science Letters*, 524, 115725, <https://doi.org/10.1016/j.epsl.2019.115725>, 2019.
- Naafs, B. D., Hefter, J., and Stein, R.: Millennial-scale ice rafting events and Hudson Strait Heinrich(-like) Events during the late Pliocene and Pleistocene: A review, *Quaternary Science Reviews*, 80, 1–28, <https://doi.org/10.1016/j.quascirev.2013.08.014>, 2013.
- Payne, A. J.: Limit cycles in the basal thermal regime of ice sheets, 1995.
- 935 Pollack, H. N., Hurter, S. J., and Johnson, J. R.: Heat flow from the Earth’s interior: Analysis of the global data set, *Reviews of Geophysics*, 31, 267–280, <https://doi.org/https://doi.org/10.1029/93RG01249>, 1993.

- Pollard, D. and DeConto, R. M.: Description of a hybrid ice sheet-shelf model, and application to Antarctica, *Geoscientific Model Development*, 5, 1273–1295, <https://doi.org/10.5194/gmd-5-1273-2012>, 2012.
- Pollard, D. and DeConto, R. M.: Improvements in one-dimensional grounding-line parameterizations in an ice-sheet model with lateral variations (PSUICE3D v2.1), *Geoscientific Model Development*, 13, 6481–6500, <https://doi.org/10.5194/gmd-13-6481-2020>, 2020.
- 940 Pollard, D., DeConto, R. M., and Alley, R. B.: Potential Antarctic Ice Sheet retreat driven by hydrofracturing and ice cliff failure, *Earth and Planetary Science Letters*, 412, 112–121, <https://doi.org/10.1016/j.epsl.2014.12.035>, 2015.
- Rasmussen, T. L. and Thomsen, E.: The role of the North Atlantic Drift in the millennial timescale glacial climate fluctuations, *Palaeogeography, Palaeoclimatology, Palaeoecology*, 210, 101–116, <https://doi.org/10.1016/j.palaeo.2004.04.005>, 2004.
- 945 Reese, R., Winkelmann, R., and Hilmar Gudmundsson, G.: Grounding-line flux formula applied as a flux condition in numerical simulations fails for buttressed Antarctic ice streams, *Cryosphere*, 12, 3229–3242, <https://doi.org/10.5194/tc-12-3229-2018>, 2018.
- Roberts, W. H., Valdes, P. J., and Payne, A. J.: A new constraint on the size of Heinrich Events from an iceberg/sediment model, *Earth and Planetary Science Letters*, 386, 1–9, <https://doi.org/10.1016/j.epsl.2013.10.020>, 2014.
- Roberts, W. H., Payne, A. J., and Valdes, P. J.: The role of basal hydrology in the surging of the Laurentide Ice Sheet, *Climate of the Past*, 950 12, 1601–1617, <https://doi.org/10.5194/cp-12-1601-2016>, 2016.
- Sanford, B. and Grant, A.: Paleozoic and Mesozoic geology of the Hudson and southeast Arctic Platforms, Geological Survey of Canada, 1998.
- Schannwell, C., Mikolajewicz, U., Ziemen, F., and Kapsch, M.-L.: Sensitivity of Heinrich-type ice-sheet surge characteristics to boundary forcing perturbations, *Climate of the Past*, 19, 179–198, <https://doi.org/10.5194/cp-19-179-2023>, 2023.
- 955 Schannwell, C., Mikolajewicz, U., Kapsch, M. L., and Ziemen, F.: A mechanism for reconciling the synchronisation of Heinrich events and Dansgaard-Oeschger cycles, *Nature Communications*, 15, 1–8, <https://doi.org/10.1038/s41467-024-47141-7>, 2024.
- Schoof, C.: Marine ice-sheet dynamics. Part 1. The case of rapid sliding, *Journal of Fluid Mechanics*, 573, 27–55, <https://doi.org/10.1017/S0022112006003570>, 2007.
- Shapiro, N. M. and Ritzwoller, M. H.: Inferring surface heat flux distributions guided by a global seismic model: Particular application to Antarctica, *Earth and Planetary Science Letters*, 223, 213–224, <https://doi.org/10.1016/j.epsl.2004.04.011>, 2004.
- 960 Tarasov, L.: North American history matching, 2024.
- Tarasov, L. and Goldstein, M.: Assessing uncertainty in past ice and climate evolution: overview, stepping-stones, and challenges, *Climate of the Past Discussions*, 2021, 1–54, <https://doi.org/10.5194/cp-2021-145>, 2021.
- Tarasov, L. and Peltier, W. R.: A high-resolution model of the 100 ka ice-age cycle, *Annals of Glaciology*, 25, 58–65, <https://doi.org/10.3189/s026030550001380x>, 1997.
- 965 Tarasov, L. and Peltier, W. R.: Impact of thermomechanical ice sheet coupling on a model of the 100 kyr ice age cycle, *Journal of Geophysical Research Atmospheres*, 104, 9517–9545, <https://doi.org/10.1029/1998JD200120>, 1999.
- Tarasov, L. and Peltier, W. R.: Coevolution of continental ice cover and permafrost extent over the last glacial-interglacial cycle in North America, *Journal of Geophysical Research: Earth Surface*, 112, 1–13, <https://doi.org/10.1029/2006JF000661>, 2007.
- 970 Tarasov, L., Hank, K., and Lecavalier, B. S.: GSMv01.31.2023 code archive for LISq experiments, <https://doi.org/10.5281/zenodo.7668472>, 2023.
- Tarasov, L., Lecavalier, B. S., Hank, K., and Pollard, D.: The glacial systems model (GSM), <https://www.physics.mun.ca/~lev/GSM.pdf>, 2024.

- Tsai, V. C., Stewart, A. L., and Thompson, A. F.: Marine ice-sheet profiles and stability under Coulomb basal conditions, *Journal of Glaciology*, 61, 205–215, <https://doi.org/10.3189/2015JoG14J221>, 2015.
- 975 Veres, D., Bazin, L., Landais, A., Toyé Mahamadou Kele, H., Lemieux-Dudon, B., Parrenin, F., Martinerie, P., Blayo, E., Blunier, T., Capron, E., Chappellaz, J., Rasmussen, S. O., Severi, M., Svensson, A., Vinther, B., and Wolff, E. W.: The Antarctic ice core chronology (AICC2012): an optimized multi-parameter and multi-site dating approach for the last 120 thousand years, *Climate of the Past*, 9, 1733–1748, <https://doi.org/10.5194/cp-9-1733-2013>, 2013.
- 980 Virtanen, P., Gommers, R., Oliphant, T. E., Haberland, M., Reddy, T., Cournapeau, D., Burovski, E., Peterson, P., Weckesser, W., Bright, J., van der Walt, S. J., Brett, M., Wilson, J., Millman, K. J., Mayorov, N., Nelson, A. R. J., Jones, E., Kern, R., Larson, E., Carey, C. J., Polat, I., Feng, Y., Moore, E. W., VanderPlas, J., Laxalde, D., Perktold, J., Cimrman, R., Henriksen, I., Quintero, E. A., Harris, C. R., Archibald, A. M., Ribeiro, A. H., Pedregosa, F., van Mulbregt, P., Vijaykumar, A., Bardelli, A. P., Rothberg, A., Hilboll, A., Kloeckner, A., Scopatz, A., Lee, A., Rokem, A., Woods, C. N., Fulton, C., Masson, C., Häggström, C., Fitzgerald, C., Nicholson, D. A., Hagen, D. R., Pasechnik, D. V., Olivetti, E., Martin, E., Wieser, E., Silva, F., Lenders, F., Wilhelm, F., Young, G., Price, G. A., Ingold, G.-L., Allen, G. E., Lee, G. R., Audren, H., Probst, I., Dietrich, J. P., Silterra, J., Webber, J. T., Slavič, J., Nothman, J., Buchner, J., Kulick, J., Schönberger, J. L., de Miranda Cardoso, J. V., Reimer, J., Harrington, J., Rodríguez, J. L. C., Nunez-Iglesias, J., Kuczynski, J., Tritz, K., Thoma, M., Newville, M., Kümmerer, M., Bolingbroke, M., Tartre, M., Pak, M., Smith, N. J., Nowaczyk, N., Shebanov, N., Pavlyk, O., Brodtkorb, P. A., Lee, P., McGibbon, R. T., Feldbauer, R., Lewis, S., Tygier, S., Sievert, S., Vigna, S., Peterson, S., More, S., Pudlik, T., 985 Oshima, T., Pingel, T. J., Robitaille, T. P., Spura, T., Jones, T. R., Cera, T., Leslie, T., Zito, T., Krauss, T., Upadhyay, U., Halchenko, Y. O., Vázquez-Baeza, Y., and Contributors, S. .: SciPy 1.0: fundamental algorithms for scientific computing in Python, *Nature Methods*, 17, 261–272, <https://doi.org/10.1038/s41592-019-0686-2>, 2020.