

Fig. S1. Alpha diversity of each sample shown by Hill numbers 0D , 1D and 2D based on 82.5% sample coverage. Color scheme shows location.

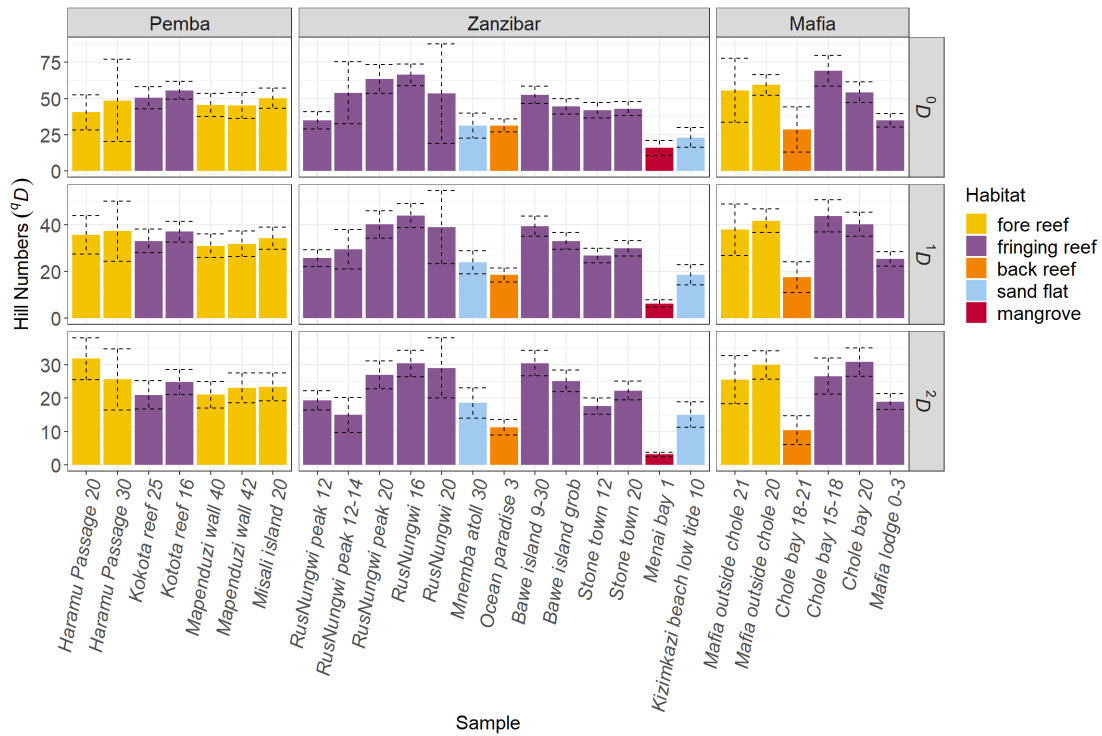


Fig. S2. Alpha diversity of each sample shown by Hill numbers 0D , 1D and 2D based on 82.5% sample coverage. Color scheme shows habitat type.

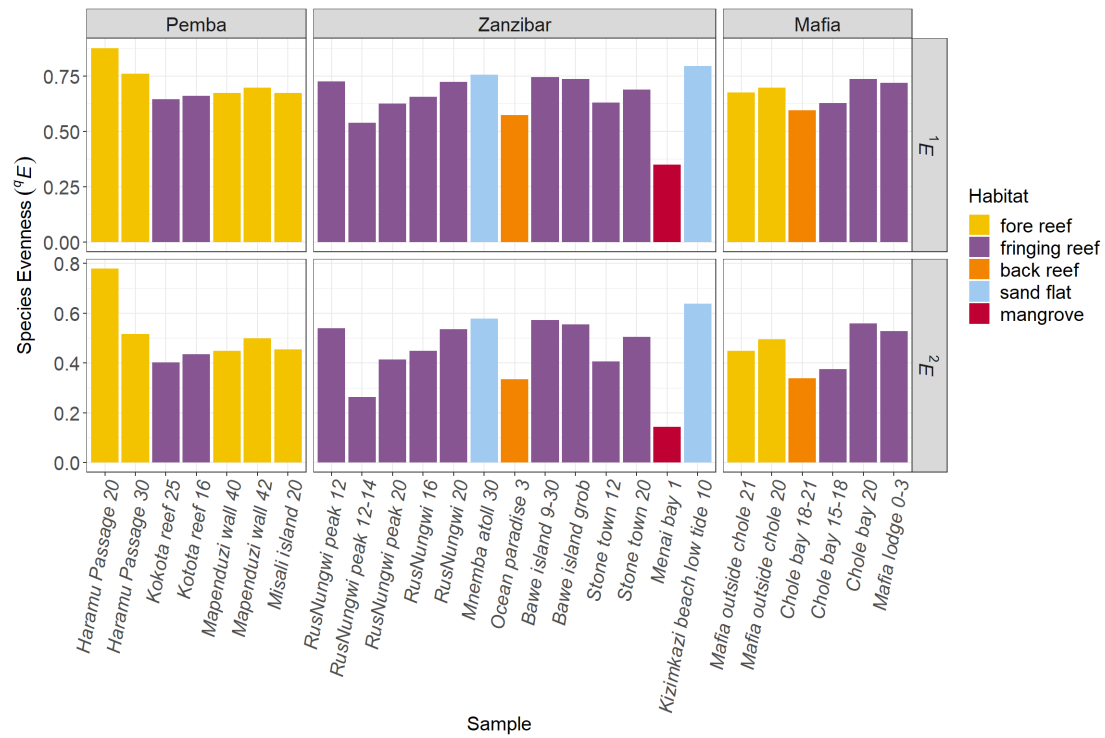


Fig. S3. Evenness as the normalized slope of Hill number profile for order $q=1$ (top) and order $q=2$ (bottom) based on 82.5% sample coverage. Color scheme shows habitat type.

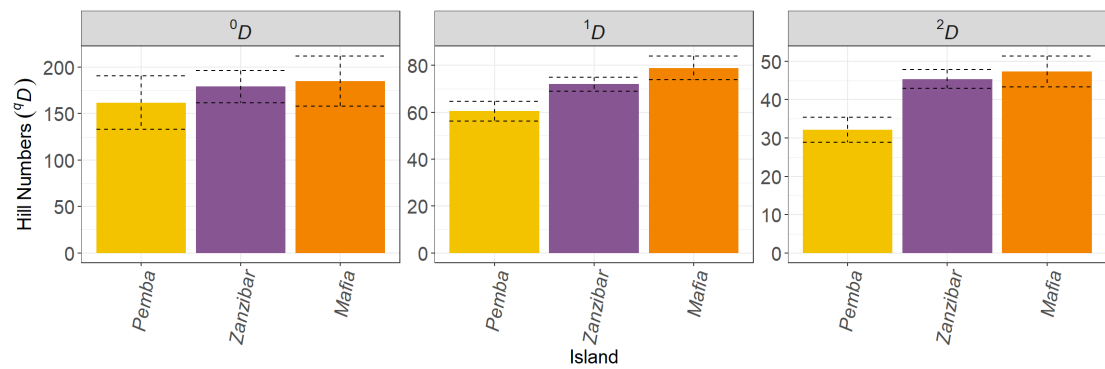


Fig. S4. Gamma diversity of each island shown by Hill numbers 0D , 1D and 2D based on 98.6% sample coverage.

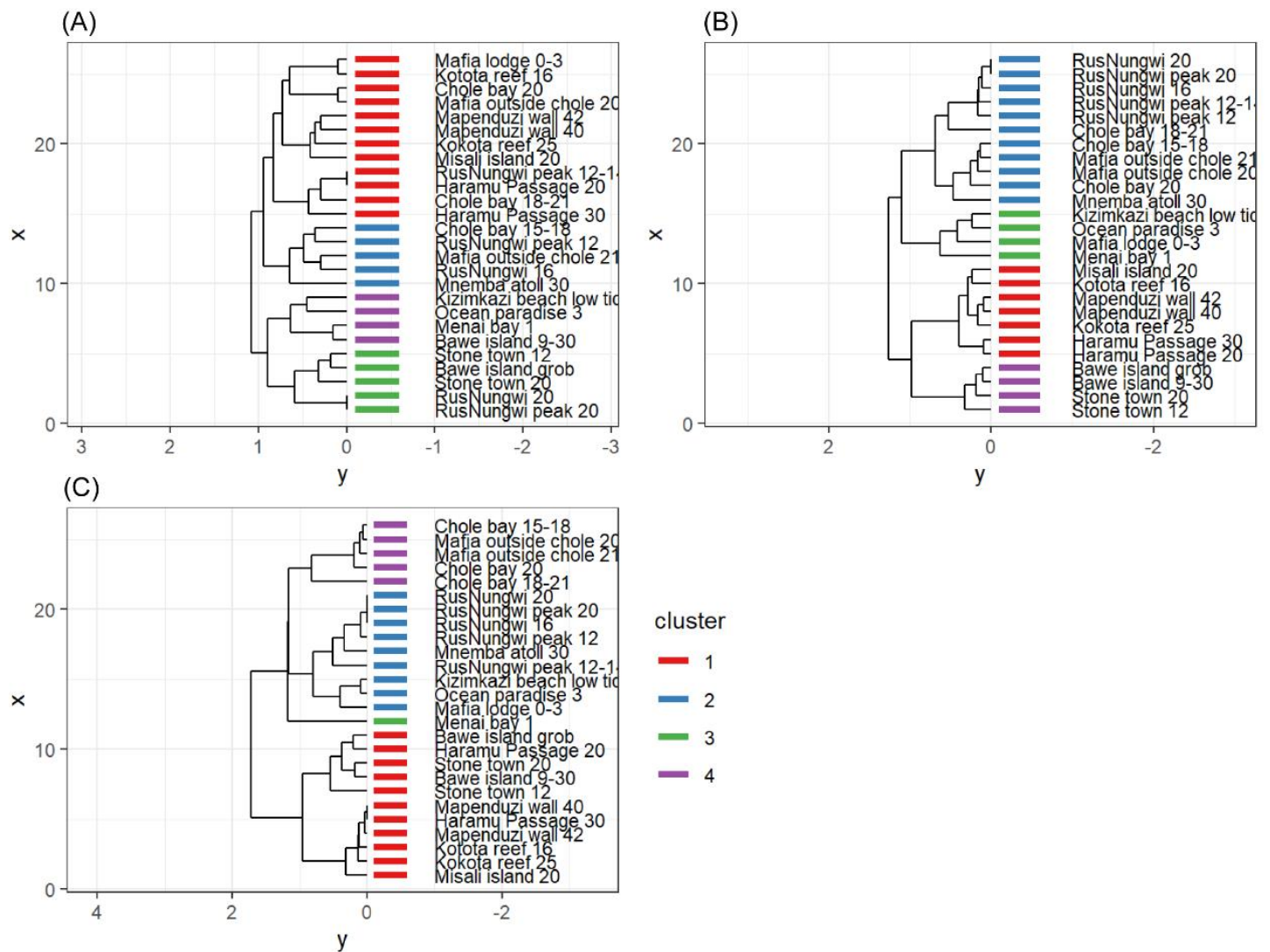


Fig. S5. Ward's minimum variance cluster dendrograms showing the separation of four biofacies based on (A) Sørensen, (B) Horn, and (C) Morisita-Horn dissimilarities. Note that the color schemes are independent among panels; thus, the biofacies based on different dissimilarities are not necessarily related.