



The Glacial Paleolandscapes of Southern Africa: the Legacy of the Late Paleozoic Ice Age

5 Pierre Dietrich^{1,2,3*}, François Guillocheau¹, Guilhem A. Douillet², Neil P. Griffis⁴, Guillaume
Baby⁵, Daniel P. Le Héron⁶, Laurie Barrier⁷, Maximilien Mathian⁸, Isabel P. Montañez⁹,
Cécile Robin¹, Thomas Gyomlai^{1,7}, Christoph Kettler⁶, & Axel Hofmann³

¹ Univ Rennes, CNRS, Géosciences Rennes, UMR 6118, 35000 Rennes, France

² Institut für Geologie, Universität Bern, Baltzerstrasse 1+3, Bern, CH 3012, Switzerland

10 ³ Department of Geology, Auckland Park Kingsway Campus, University of Johannesburg,
Johannesburg, 2006, South Africa

⁴ United States Geologic Survey, Geology Geochemistry and Geophysics Science Center, Lakewood,
CO 80225, USA

15 ⁵ Physical Science and Engineering Division, King Abdullah University of Science and Technology,
Thuwal, Saudi Arabia

⁶ Department of Geology, University of Vienna, Vienna, Austria

⁷ Université Paris Cité, Institut de Physique du Globe de Paris, CNRS, UMR 7154, Paris, France

⁸ Université de la Nouvelle-Calédonie, ISEA, EA 7484, BPR4, 98851, Noumea, New Caledonia,
France

20 ⁹ Department of Earth and Planetary Sciences, University of California, Davis, California 95616, USA

Correspondence to: Pierre Dietrich (pierre.dietrich@univ-rennes.fr)

Keywords: paleolandscapes, glacial erosion, Africa, Late Paleozoic Ice Age, paleofjords

Abstract

25 The modern relief of Southern Africa is characterised by stepped plateaus bordered by escarpments.
This morphology is thought to result from stepwise uplift and ensuing continental-scale erosion of the
region as it rode over Africa's mantle 'superplume' following the break-up of Gondwana, i.e. since the
mid-Mesozoic. We demonstrate in this contribution that this modern morphology of Southern Africa is
in fact largely inherited from glacial erosion associated to the Late Paleozoic Ice Age (LPIA) that
30 occurred between 370 and 260 Myr ago, during which Gondwana – which included Southern Africa –
was covered in thick ice masses. Southern Africa hosts vast (up to 10⁶ km²) and thick (up to 5 km)
sedimentary basins ranging from the Carboniferous, represented by glaciogenic sediments tied to the
LPIA, to the Jurassic-Cretaceous. These basins are separated by intervening regions largely underlain
by Archean to Paleoproterozoic cratonic areas that correspond to paleohighlands that preserve much of



35 the morphology that existed when sedimentary basins formed, and particularly glacial landforms. In
this contribution, we review published field and remote data and provide new large-scale interpretation
of the geomorphology of these paleohighlands of Southern Africa. Our foremost finding is that over
Southern Africa, vast surfaces, tens to hundreds of thousands km² (71.000-360.000 km²) are exhumed
glacial landscapes tied to the LPIA. These glacial landscapes manifest in the form of cm-scale striated
40 pavements, m-scale fields of *roches moutonnées*, whalebacks and crag-and-tails, narrow gorges cut
into high-standing mountain ranges, and km-scale planation surfaces and large U-shaped valleys,
overdeepenings, fjords and troughs up to 200 km in length. Many modern savannahs and desertic
landscapes of Southern Africa are therefore relict glacial landscapes and relief ca. 300 Myr old. These
exhumed glacial relief moreover exerts a strong control on the modern-day aspect of the
45 geomorphology of Southern Africa as (1) some escarpments that delineate high-standing plateaux
from valleys and coastal plains are inherited glacial relief in which glacial valleys are carved, (2) some
hill or mountain ranges already existed by LPIA times and were likely modelled by glacial erosion,
and (3) the drainage network of many of the main rivers of Southern Africa is funnelled through
ancient glacial valleys. This remarkable preservation allowed us to reconstruct the paleogeography of
50 Southern Africa in the aftermath of the LPIA, consisting of highlands over which ice masses nucleated
and from which they flowed through the escarpments and toward lowlands that now correspond to
sedimentary basins.

Our findings therefore indicate that glacial landforms and relief of continental-scale can survive
over tens to hundreds of million years. This preservation and modern exposure of the glacial
paleolandscapes were achieved through burial under piles of Karoo sediments and lavas over ca. 120
55 to 170 million years and a subsequent exhumation since the middle Mesozoic owing to the uplift of
Southern Africa. Owing to strong erodibility contrasts between resistant Precambrian bedrock and
softer sedimentary infill, the glacial landscapes have been exhumed and rejuvenated.

We therefore emphasise the need of considering the legacy of glacial erosion processes and the
60 resulting presence of glacial landscapes when assessing the post-Gondwana-breakup evolution of
Southern African topography and its resulting modern-day aspect, as well as inferences about climate
changes and tectonic processes. Finally, we explore the potential pre-LPIA origin for some of the
landscapes. In the Kaoko region of northern Namibia, the escarpments into which glacial valleys are
carved may correspond to a reminiscence of the Kaoko Pan-African Belt, whose crustal structures
65 were either reactivated or where relief persisted since then. In South Africa, the escarpment bordering
the paleohighland corresponds to crustal-scale faults that might have been reactivated during LPIA by
subsidence processes. These inherited morphological or crustal features may have been re-exploited
and enhanced by glacial erosion during the LPIA, as it is the case for some Quaternary glacial
morphology.



70 1. Introduction

Glacial erosion processes profoundly shape the relief of glaciated continents and continental shelves. For instance, planation surfaces, U-shaped valleys and fjords, overdeepenings and cross-shelf troughs that dominate the current morphology of northern North America, Greenland, Scandinavia and Antarctica largely result from glacial erosion occasioned by the expansion and demise of Cenozoic and Quaternary ice sheets (see contributions in this special issue; Sugden and Denton, 2004; Jamieson et al., 2008; Steer et al., 2012; Medvedev et al., 2013; Herman et al., 2015; Dowdeswell et al., 2016; Egholm et al., 2017; Paxman et al., 2018, 2019; Bernard et al., 2020; Couette et al., 2022; Vérité et al., 2021, 2023, 2024). Southern Africa was also covered in continental-scale ice masses, twice over the Phanerozoic during icehouse climate periods, on the occasion of the Ordovician (445 Myr ago) and 80 Late Paleozoic ice ages (370-260 Myr ago, Ghienne et al., 2007; Le Heron et al., 2009; Montañez, 2021). Considering the antiquity of these ice ages, their contribution to the modern-day morphology of southern Africa is generally neglected. Indeed, the morphological footprint of glacial erosion processes are generally considered to be largely transient at geological time scales, prone to be rapidly 85 African topography and the resultant modern-day landscapes are therefore viewed as originating from erosion-sedimentation processes and lithospheric uplifts in response to tectonic and non-glacial climate forcings over the Cenozoic and the Mesozoic (Burke and Gunnell, 2008; Feakins and Demenocal, 2012; Kamp and Owen, 2013; Paul, 2021). The high-standing plateaux, pediments and coastal plains separated by intervening escarpments and valleys that characterize the peculiar 90 morphology of southern African are indeed interpreted as mostly originating from Atlantic rifting and continental break-up processes (Dauteuil et al., 2013; Salomon et al., 2015). Such phenomenon are denudation, fluvial erosion and scarp retreat paced by anorogenic uplifts tied to the polyphase activity of the African mantle plume since 130 Myr (Moucha and Forte, 2011; Braun et al., 2014; Goudie and Viles, 2015; Mvondo Owono et al., 2016; Braun, 2018; Guillocheau et al., 2018; Margirier et al., 95 2019). Yet, many regions of southern Africa bear planation surfaces, U-shaped valleys and m- to km-scale landforms that happen to be glacially-scoured paleorelief tied to the Late Paleozoic Ice Age (Lister, 1987; Visser, 1987a; Andrews et al., 2019; Dietrich and Hofmann, 2019; Le Heron et al., 2019, 2022, 2024; Dietrich et al., 2021), suggesting that the contribution of glacial erosion processes in shaping the modern morphology of Southern Africa has largely been underestimated.

100 Here we test the idea that the current relief and landscapes of Southern Africa are largely inherited from late Paleozoic glacial erosion processes. For doing so, we present new field and remote sensing geomorphic observations along with a compilation of existing studies and geological and GIS-based mapping, which we integrate with sedimentologic studies to test the origin of landscapes scattered across southern Africa and apprise their origin (Fig. 1). This combined approach revealed the 105 presence of vast (10^3 - 10^5 km²) glacial paleolandscapes carved during the Late Paleozoic Ice Age or

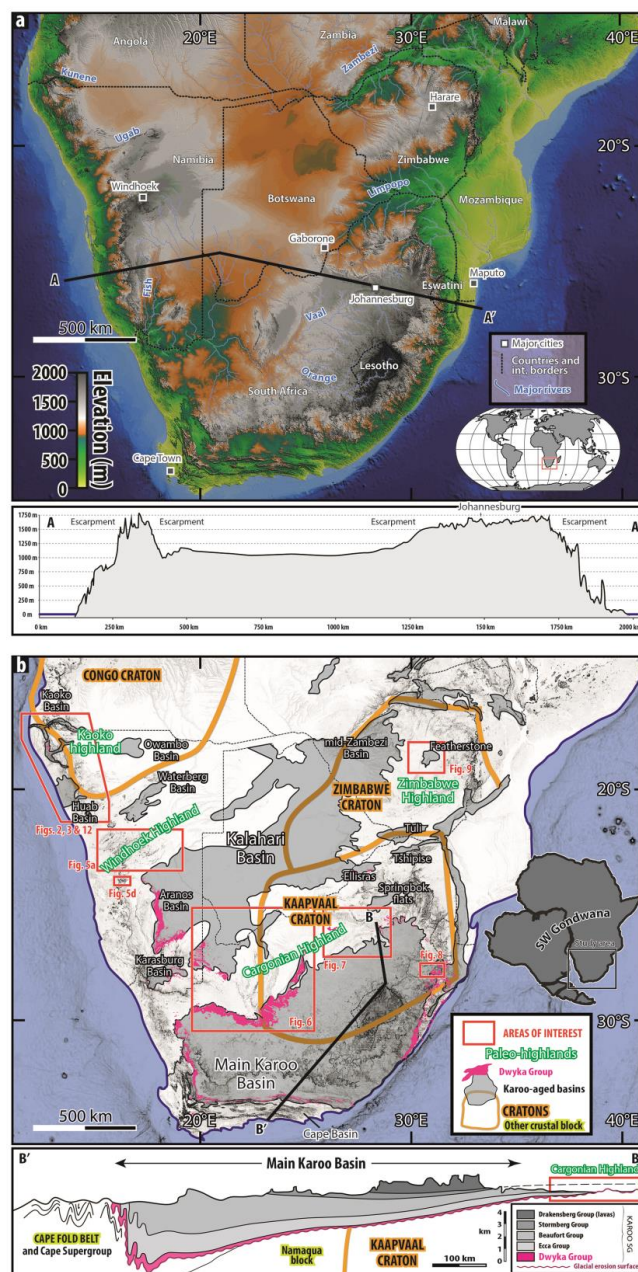


Fig. 1: (a) Modern relief of Southern Africa shown by Digital Elevation Model (DEM) from Shuttle Radar Topographic Mission (<https://www2.jpl.nasa.gov/srtm/>) along with major river networks, international borders and main cities. The transect highlights the high-standing plateaus. (b) Southern Africa with regions of interest discussed in the text shown by red frame. The Archean to Paleoproterozoic Congo, Kaapvaal and Zimbabwe cratons are evidenced by thick orange lines and Karoo-aged sedimentary basins are represented by grey shaded area. The glaciogenic Dwyka group is represented by pink colour. Inset map shows western Gondwana formed by Africa and South America and the four paleohighlands discussed in the text are evidenced in green. Transect displays the thickness and sedimentary succession of Main Karoo Basin (MKB) of South Africa, the glaciogenic Dwyka Group in pink, the glacial erosion surface (wavy pink line) at the base of the Karoo Supergroup and the underlying basement structure (cratons vs. accreted terranes). Transect modified after Johnson et al., 1996 and Karoo-aged basins after Catuneanu et al., 1998.



terrains forming the three cratons situated in Southern Africa, the Kaapvaal, Zimbabwe and Congo cratons. Our study therefore revives the concept of ancestral landsurfaces over Southern African cratons (the ‘Gondwana Surface’ of King, 1948, 1949, 1982; see also Twidale, 2003; Doucouré and de Wit, 2003; Guillocheau et al., 2018) and even extend it further back in time. Secondly, compiling thermochronometrical and stratigraphic data, we address the preservation of these relict glacial landscapes -how they escaped being erased for over hundreds of millions of years- through burial and their renewal through continental-scale erosion, owing to strong erodibility contrast between the substrate and sedimentary infill of these paleorelief. We also emphasise the need to consider ancient glacial erosion morphological features as a major component of the modern-day African landscapes to reconstruct long-term topographic evolution of the African surfaces and to quantify source-to-sink budgets, themselves serving as inferring past climate changes, base level variations and tectonic processes (Gilchrist et al., 1994; Rouby et al., 2009a; Kamp and Owen, 2013; Mvondo Owono et al., 2016; Baby et al., 2018a, 2018b, 2020a; Grimaud et al., 2018).

2. State-of-the-Art: the relief and geology of Southern Africa and the record of the ice ages

2.1. General physiography

We refer here to Southern Africa as a *ca.* 4.000.000 km² region shared by South Africa, Namibia, Botswana, Zimbabwe, Mozambique, Lesotho and Eswatini (Fig. 1a). The morphology of this region is characterized by high-standing plateaus lying above 1000 m.a.s.l. and frequently above 2000 m.a.s.l. (Fig. 1a). These plateaus are surrounded by steep escarpments leading downward to stepped plateaus (planation surfaces) of lower elevation and ultimately to the coastal plains (see Braun et al., 2014; Guillocheau et al., 2018; Baby et al., 2018a, 2018b, 2020 and references therein for details). The escarpments are dissected by valleys focusing the drainage network, such as the Orange-Vaal-Fish and Ugab and Kunene rivers to the West in the Atlantic, Zambezi and Limpopo to the East in the Indian Ocean and endorheic system at the center (Baby et al., 2020).

2.2. Geological setting

Southern Africa is rooted by three Archean to Paleoproterozoic cratons -the Kaapvaal, Zimbabwe and Congo cratons (Fig. 1b)- that amalgamated via younger terranes during orogenic events throughout the Proterozoic (Tankard et al., 2009; Begg et al., 2015; Torsvik and Cocks, 2016). As part of SW Gondwana during the Paleozoic and early Mesozoic, Southern Africa was mostly subsiding which permitted the deposition of thick sediment piles that form the Cape and Karoo Supergroups. Later,



140 during the late Mesozoic and Cenozoic, after the dislocation of Gondwana, anorogenic uplift related to
Indian and Atlantic oceans break-ups and post-rift mantle dynamics led to the inversion of the
sedimentary basins and widespread, continental-scale erosion and planation (Veevers et al., 1994;
Lithgow-Bertelloni and Silver, 1998; Moulin et al., 2010; Braun et al., 2014; Linol and Wit, 2016a;
Braun, 2018; Guillocheau et al., 2018). With the notable exception of the Cape Fold Belt, situated at
the southern tip of South Africa, an orogen tied to the subduction of the Panthalassic Ocean that
initiated during the Permian-Triassic (Hansma et al., 2016), no orogenic event affected the rest of
145 Southern Africa throughout the Phanerozoic.

Over the basement lie vast, 10^3 - 10^6 km², sedimentary basins referred to as 'Karoo-aged basins'.
They are named after the Main Karoo Basin (MKB) of South Africa, the thickest, largest (ca. 700.000
km²), and most studied of these basins, investigated since at least the mid-XIXth (see Linol and de Wit,
2016). Together, the Karoo-aged basins of southern Africa cover an area of ca. 1.600.000 km², among
150 which ca. 800.000 km² are subcrop, mostly covered by younger sediments of the Kalahari Desert (Fig.
1b, Catuneanu et al., 2005; Haddon, 2005). The volcano-sedimentary pile that forms these Karoo-aged
basins -the Karoo Supergroup- can be up to 5 km thick and ranges in age from Carboniferous to
Jurassic (in South Africa and Zimbabwe) or Cretaceous (in northern Namibia) (Stratten, 1977; Smith,
1990; Smith et al., 1993a; Johnson et al., 1996; Catuneanu et al., 2005; Milani and De Wit, 2008;
155 Franchi et al., 2021). Depositional environments within the Karoo Supergroup range, from base to top,
from glacial (the Dwyka Group), marine (Ecca & Beaufort groups), continental and aeolian
(Stormberg Group) and finally subaerial lava outpouring (Drakensberg and Etendeka Groups) (Fig.
1b; Johnson et al., 1996). As such, these basins record the intracratonic nature of Southern Africa, the
Cape orogeny and the Drakensberg and Etendeka lavas topping the Karoo Supergroup related to the
160 break-up of Gondwana. The Main Karoo and Kalahari basins have been interpreted as a foreland to
the Cape orogeny (Visser, 1992, 1993; Johnson et al., 1997; Catuneanu et al., 1998; Catuneanu, 2004;
Isbell et al., 2008), or as resulting from a deflection of the lithosphere due to mantle flow coupled to
the adjacent subduction of the Panthalassic ocean (Pysklywec and Mitrovica, 1999). Stratigraphically
below the MKB lies the Cape Basin formed by the Cape Supergroup, ca. 3.000 m-thick and ranging in
165 age from the Cambrian to the lower Carboniferous, deposited over a continental platform, today
cropping out at the southern tip of South Africa over ca. 90.000 km², and highly deformed during the
Cape orogeny (Fig. 1b, Streef and Theron, 1999; Shone and Booth, 2005; Thamm and Johnson, 2006;
Tankard et al., 2009).

2.3. The record of the ice ages

170 During the Paleozoic, Southern Africa as part of SW Gondwana experienced two distinct and
extensive glaciations, with ice extent of 10^5 - 10^7 km²: the short-lived Late Ordovician episode (445 Ma,



Deynoux and Ghienne, 2004; Ghienne et al., 2007; le Heron and Dowdeswell, 2009; Le Heron et al., 2009) and the protracted Late Palaeozoic Ice Age, hereafter referred as LPIA (ca. 370-260 Ma, Isbell et al., 2012, 2021; Montañez and Poulsen, 2013; Griffis et al., 2019a, 2019b, 2021, 2023; Montañez, 175 2021). Southern Africa witnesses these two glacial episodes under the form of glaciogenic sedimentary successions within the Cape and Karoo supergroups and/or relict glacial erosion features carved on the bedrock.

2.3.1. The Late Ordovician glacial episode

The Ordovician glacial episode is recorded within the Cape Supergroup under the form of a thin (<50 180 m) layer of diamictite, corresponding to an unsorted mixture of fine- and coarse-grained sediments, named the Pakhuis Pass Formation, and interpreted as having been deposited under a flowing ice sheet (Thamm and Johnson, 2006; Blignault and Theron, 2010). A single outcrop displays a striated glacial pavement at the Pakhuis Pass of the Cederberg region (Deynoux and Ghienne, 2004). High-amplitude (50 m) folds are present below the Pakhuis Pass formation and are linked to the activity of a glacier 185 flowing over waterlain soft sediments (Backeberg and Rowe, 2009; Blignault and Theron, 2010, 2017; Rowe and Backeberg, 2011). No major relict glacial erosion landforms are associated to this glacial episode. Although renown for topping the iconic Table Mountain overhanging the city of Cape Town, the sedimentary record of the Ordovician glacial episode is spatially restricted to the Cape Fold Belt in South Africa (Thamm and Johnson, 2006; Ghienne et al., 2007; Fourie et al., 2010; Meadows and 190 Compton, 2015; Davies et al., 2020).

2.3.2. The Late Paleozoic Ice Age (LPIA)

The lowermost sedimentary unit of the Karoo Supergroup, directly lying on the bedrock, is Carboniferous-Permian in age and has a glaciogenic origin, deposited by ice sheets during the LPIA (the pink layer within Fig. 1b; Visser, 1990; Johnson et al., 1996; Cairncross, 2001; Catuneanu et al., 195 2005; Griffis et al., 2018, 2019a, 2021). This glaciogenic sedimentary unit is extensively present in southern Africa and crops out or has been identified through drilling in all Karoo-aged basins (Fig. 1b, Smith, 1994; Catuneanu et al., 2005). It is named Dwyka Group within the MKB after the Dwyka River crossing the Cape Mountain in the Western Cape Province (Dunn, 1886; Pfaffl and Dullo, 2023) and its equivalents within other Karoo-aged basins have different, locally-sourced names such as 200 Dukwi, Waterkloof, Gibeon, Malogong or Tshidzi (Haughton, 1963; Smith, 1994; Johnson et al., 1997; Modie, 2002, 2008; Catuneanu et al., 2005; Bordy, 2018). For sake of clarity, we will refer to it as the Dwyka Group throughout the manuscript, independently of the basin considered. The Dwyka Group within the MKB and the Aranos Basin of Namibia is typically several hundreds of meters thick but has been found as thin as a few cm in some other Karoo-aged basins (Visser, 1987a, 1987b, 1997; 205 Isbell et al., 2008; Stollhofen et al., 2008; Miller, 2011; Dietrich and Hofmann, 2019). The lithologies and facies encountered within the Dwyka Group are very diverse, but commonly consist of diamictites, clast-bearing mudstones and conglomerates, interpreted as representing various glacial-



related depositional environments, and have been the focus of a plethora of studies (Martin and Schalk, 1959; Crowell and Frakes, 1972; Stratten, 1977; Visser, 1982, 1983, 1987a, 1987b, 1994, 1997; Visser and Kingsley, 1982; Visser and Hall, 1985; Visser and Looock, 1987; Smith et al., 1993b; Brunn et al., 1994; Veevers et al., 1994; Johnson et al., 1996, 2006a; Von Brunn, 1996; Haldorsen et al., 2001; Werner and Lorenz, 2006; Fielding et al., 2008; Isbell et al., 2008; López-Gamundí and Buatois, 2010; Miller, 2011; Linol and Wit, 2016; Dietrich and Hofmann, 2019; Dietrich et al., 2019, 2021; Menozzo da Rosa et al., 2023; Fedorchuk et al., 2023; Fernandes et al., 2023). Glacial striae, grooves and lineations carved by flowing glaciers within soft sediments are common features of the Dwyka Group (Dietrich and Hofmann, 2019; Le Heron et al., 2019). Interestingly, these coarse-grained deposits associated to glacial pavements have long been attributed a glacial origin (Sutherland, 1868, 1870; Dunn, 1886, 1898; Molengraaf, 1898; Cloos, 1915; Wagner, 1915; Du Toit, 1921; Pfaffl and Dullo, 2023). Also, the glaciogenic Dwyka Group and its South American equivalent, on the other side of the Atlantic Ocean, largely led South African geologist Alexander L. Du Toit (1878-1948) and German geologist Henno Martin (1910-1998), at some stage director of the Geological Survey of Namibia, to be early supporters of Wegener's theory of continental drift (Du Toit, 1921, 1927, 1933, 1937; Martin and Schalk, 1959; Martin, 1961, 1973b, 1973a; see also Haughton, 1949; Milani and De Wit, 2008; Miller, 2011; Linol and de Wit, 2016; Pfaffl and Dullo, 2023)

The Karoo-aged basins are separated by cratonic regions over which no or very thin Dwyka and Karoo deposits lie. Wedging out and onlap of Karoo strata against these regions and depositional environments of the Dwyka Group pointing toward a continental ice sheet together indicate that these 'no or thin Dwyka' areas correspond to regions of no or little sediment deposition, i.e. highlands that already existed during the deposition of the Dwyka Group, and hereafter referred to as *paleohighlands* (Fig. 1b, Visser, 1985, 1987a, 1987b, 1997; Smith et al., 1993a; Catuneanu et al., 1998, 2005; Isbell and Cole, 2008). Four paleohighlands exist over Southern Africa: the Kaoko, Windhoek, Cargonian and Zimbabwe, underlain by resistant Archean to Paleoproterozoic basement rocks that form craton and/or shield areas (Fig. 1b). Over these paleohighland substrates are carved glacial landforms and erosion surfaces. These surfaces, either sculpted by direct glacial abrasion or eroded by meltwater, encompass a range of landform types and shapes ranging from small (10^{-2-0} m: striae and grooves) to intermediate (10^{0-3} m: *roches moutonnées*, cirques, whalebacks, and crag-and-tails), and large scale (10^{4-6} m: fjords, troughs, and glacial overdeepenings) glacial forms and landsurfaces (Benn and Evans, 2010). These glacial erosion forms are the main focus of the present contribution for which a review and new constrains are provided below (section 3 and figures 2 to 8). These glacial erosion surfaces and paleolandsurfaces have been named 'ancestral glacial pre-Karoo peneplain' (Wellington, 1937), or 'pre-Dwyka topography' (Du Toit, 1954; von Gottberg, 1970b). It is indeed generally assumed that they were carved during the LPIA, immediately before the deposition of the Karoo Supergroup that started with the glaciogenic Dwyka Group, although their potential pre-LPIA origin is discussed below



(section 4.2). In the center of the Karoo-aged basins, the glacial landforms are believed to be still
245 covered by thick sedimentary piles of the Karoo Supergroup and therefore await renewal through
exhumation (see transect on Fig. 1b).

As no major horizontal tectonic event affected the region after the deposition of the Karoo
Supergroup (Torsvik and Cocks, 2016), except for the localized Permian-Triassic Cape orogeny,
glacial paleoreliefs have preserved their original shape and orientation and Dwyka strata lie mostly
250 horizontally. Slight and local tilt of the Karoo strata are due to vertical motions of the lithosphere
induced by the activity of the African superplume or isostatic processes linked to the Atlantic passive
margin.

2.4. Post Gondwana-breakup history of the Southern Africa Plateau

Following the break-up of Gondwana, which milestones are the opening of the Indian and Atlantic
255 oceans in the early Jurassic and early Cretaceous (Frizon De Lamotte et al., 2015; Thompson et al.,
2019; Roche et al., 2021; Roche and Ringenbach, 2022), lithospheric movements were mostly vertical
in response to the African mantle ‘superplume’. Pulses in the activity of this plume led to episodes of
swelling and uplift of Southern Africa. This stepwise uplift induced multiple phases (polycyclic) of
erosion and planation of the interior of the continent, including the inversion of the Cape and Karoo
260 basins, retreat of the passive margin escarpments and export of sediments thus produced to the
continental margins (e.g., Partridge and Maud, 1987, 2000; van der Beek et al., 2002, Braun, 2010,
2018; Braun et al., 2014; Baby et al., 2018a, 2018b, 2020; Guillocheau et al., 2018; Stanley et al.,
2021). By quantifying and budgeting onshore erosion (through geomorphology and
thermochronometry) and offshore sediment accumulation (through seismic stratigraphy), sediment
265 fluxes have been reconstructed which together with other inferences (assessment of sediment routing,
characterization of kimberlite pipes etc.) allowed to reconstruct the post Gondwana-breakup history of
the Southern African Plateau, as summarized thereafter.

- During the lower Cretaceous, erosion of the Southern African plateau was spatially restricted
and erosion products were funneled eastward through a proto Orange River system in the South and
270 eastward through the proto Zambezi-Limpopo drainage in the North (De Wit, 1999; Moore and
Larkin, 2001; Baby, 2017; Ponte, 2018; Baby et al., 2020; Stanley et al., 2021).

- A first period of accelerated denudation of the margins of the plateau followed, at ~150-120
Ma, tied to continental breakup and post-rift erosion of the rift shoulders, as indicated by
thermochronometric data (e.g., Gallagher and Brown, 1999; Brown et al., 2002; Tinker et al., 2008b;
275 Kounov et al., 2009, 2013; Stanley et al., 2013, 2015, 2021; Wildman et al., 2016, 2015a; Green et al.,
2017). A second pulse of denudation took place at ~100-70 Myr and coincides with acceleration of
offshore sediment flux (Walford et al., 2005; Tinker et al., 2008a; Rouby et al., 2009; Guillocheau et



al., 2012; Said et al., 2015; Baby et al., 2020). This second pulse of denudation likely resulted from the
tilting of the plateau to the west that steepened the slopes across the sub-continent and enhanced a
widespread and fast erosion response, notably of the passive margins escarpments (Braun et al., 2014;
280 Baby et al., 2018b; Ding et al., 2019; Stanley et al., 2021). In this context, Wellington (1955) and
Braun et al. (2014) highlighted the importance of the erodibility contrast between the soft Karoo
sedimentary cover and the underlying harder basement.

- By the end of the Cretaceous, the western side of the plateau was uplifted, as suggested by
285 offshore stratigraphic observations (Aizawa et al., 2000; Paton et al., 2008; Baby et al., 2018b) and
onshore kimberlites pipes ages distribution (Jelsma et al., 2004; Braun et al., 2014). This could have
resulted in a symmetrical configuration of the Southern African plateau (similar to the modern one),
which would have strongly reduced the erosion potential by reducing the slope of a large portion of
the sub-continent interior (Braun et al., 2014; Baby et al., 2020; Stanley et al., 2021). This scenario is
290 supported by a drop in offshore sediment flux (Baby et al., 2020), the preservation of crater-lake
sediments in ~75-65 Myr kimberlite pipes (Moore and Verwoerd, 1985; Scholtz, 1985; Smith, 1986),
and the onset of the Kalahari Basin aggradation (Haddon and McCarthy, 2005).

- Thermochronometric data and offshore sediment fluxes point to limited erosion of the plateau
during the Cenozoic (Stanley et al., 2021 and references therein). Recent low-temperature
295 thermochronological data show that Cenozoic erosion focused along the present-day river valleys
rather than being broadly distributed as during the Middle Cretaceous (Stanley and Flowers, 2023).

Although each pulse of uplift and therefore erosion is thought to be recorded as a planation
surface, it has been suggested that very ancient, possibly Jurassic or older, landsurfaces are preserved
across southern Africa, older than the initiation of uplift of southern Africa and predating the
300 dislocation of Gondwana, and called the ‘Gondwana surface’ (Du Toit, 1933; King, 1949a, 1949b,
1982; Doucouré and de Wit, 2003).

3. Glacial paleoreliefs of Southern Africa

In the following, we describe and review the geomorphology and sedimentary infill of glacial
landforms preserved across the paleohighlands of Namibia (the Kaoko and Windhoek highlands,
305 section 3.1 and 3.2), South Africa and Botswana (the Cargonian Highland, section 3.3) and Zimbabwe
(the Zimbabwe Highland, section 3.4) (Fig. 1). This is done by combining novel field and
aerial/satellite observations, digital elevation model (DEM) from Shuttle Radar Topographic Mission
(SRTM, <https://www2.jpl.nasa.gov/srtm/>) and geological maps analysis as well as an assessment of
existing literature. We provide morphostratigraphic transects evidencing the presence of glacially-
310 carved reliefs and the presence of glaciogenic Dwyka sediments based on geological maps and digital
elevation models (fig. 3 to 9).



Based on these data, we provide description and interpretation of the glacial paleoreliefs and the glaciogenic sedimentary rocks occupying the glacial reliefs wherever present. For each study sites, we showcase indisputable evidences for a glacial origin (plain pink line on transects on fig. 2 to 9) or, 315 for suspected glacial landscapes, we provide supporting data and discuss their potential glacial origin (dotted pink line on transects on fig. 2 to 9). For these latter cases, additional field-based examinations

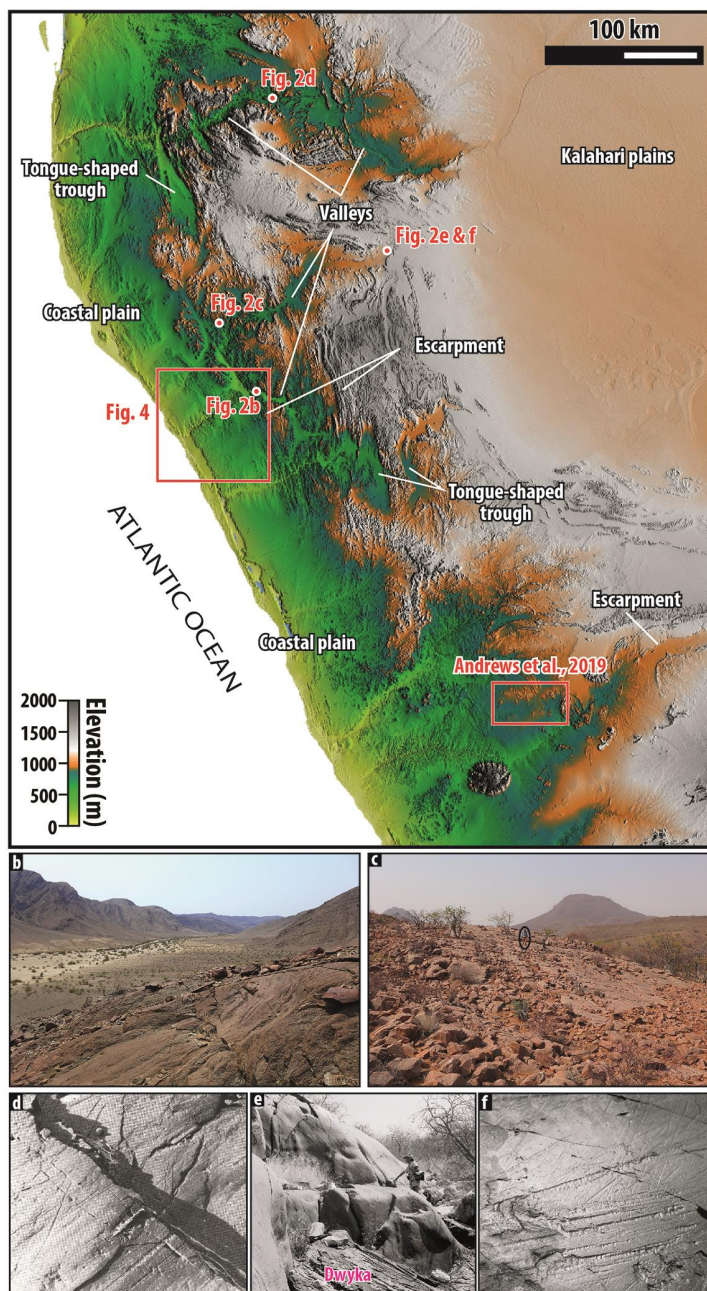


Fig. 2: (a) DEM of the Kaoko region of Northern Namibia, corresponding to the Kaoko paleohighland. The escarpments, valleys and tongue-shaped troughs discussed in the text are arrowed. Location of the pictures are also indicated. Figure 1b for location. (b) the Gomatum valley corresponds to a fjord carved during the LPIA, later sealed and exhumed in recent times. See Dietrich et al., 2021 for further details. Valley is ca. 2.5 km wide and 550 m deep. (c) A field of *roches moutonnées* and whalebacks characterized by glacial striae and grooves and polished floors covered in places by boulder pavement, evidencing a westward ice movement. Circled geologist for scale, see Le Heron et al. (2024) for details. (d) Striated floor in the Kunene valley, plucking at the joint shows ice movement from east to west. Picture from Martin, 1961; (e) Glacially polished walls and (f) floor in NE Kaoko. Pictures taken by K.E.L. Schalk, geologist Henno Martin for scale, see Miller (2011).



targeting striated pavements or other evidence for glacial activity would be required to confirm their
320 glaciogenic nature. Erosion and resulting landforms of mountain glaciers that existed locally during
the Quaternary will not be considered in this study (Hall and Meiklejohn, 2011; Knight and Grab,
2015).

3.1. The Kaoko Highland

The Kaoko region of NW Namibia is formed by a plateau that stands at ~1000 m above the sea-level
325 and is located at the boundary between the Congo Craton and Panafrican orogenic belts (Figs. 1 and
2). This plateau is bordered to the west by a steep escarpment leading to the Atlantic Ocean through a
gently inclined, ~50 km-wide coastal plain. Eastward, the plateau leads toward the even relief of the
Kalahari plains. On the northern half of the Kaoko region, a network of E-W-oriented valleys in which
modern rivers flow toward the Atlantic deeply dissect both the plateau and the escarpment. Here, the
330 escarpment is two-stepped. Tongue-shaped troughs, N-S-oriented, are also incised within the highland
or at the feet of the escarpments. These troughs either connect with the river network or are endorheic.
The southern half of the Kaoko region is characterized by a plateau separated on its western side from
the coastal plain by a single escarpment.

In the northern region of the Kaoko Highland, a network of E-W oriented valleys between the
335 Kunene River to the North and the Hoanib River to the South has been interpreted by Dietrich et al.
(2021) as an exhumed glacial landscape (Figure 3). These valleys are U-shaped and their floors and
subvertical flanks display abundant small-scale hard-bed glacial erosion features such as striae,
grooves, whalebacks and *roches moutonnées* (Fig. 2, see also Fedorchuk et al., 2023). Paleovalleys in
Angola that cut through the escarpment may also correspond to glacial valleys (Moragas et al., 2023).
340 In places, these glacial erosion features are covered with remnants of glaciogenic sediments of the
Dwyka Group (Fig. 3), including frontal and lateral moraines and glaciomarine sediments such as ice-
rafted debris scattered in shales (Fig. 2; see also Martin and Schalk, 1959; Dietrich et al., 2021;
Menozzo da Rosa et al., 2023), and fig. 16.1 in Miller (2011). These glaciogenic sediments are
typically found abutting against the valley walls (Fig. 3; Le Heron et al., 2024). Based on the relict
345 glaciogenic forms and associated rocks, these modern valleys were interpreted as exhumed paleofjords
whose modern U-shaped profiles reflects their original glacial morphologies (Dietrich et al., 2021, see
also Martin, 1953, 1961, 1968, 1973b, 1981; Martin and Schalk, 1959). Moreover, Dietrich et al.
(2021) demonstrated that the Purros escarpment separating the high standing plateau to the coastal
plain already existed by the LPIA as indicated by glacial striae found on the scarp (Fig. 2). The glacial
350 origin for the network of glacial valleys and the escarpment indicate that the Kaoko plateau already
existed by LPIA times which formed the Kaoko paleohighland. In this same region, at the downstream
end of some of the aforementioned U-shaped valleys are deep and encased bedrock canyons, such as
the Purros and Khowarib canyons. Geological maps indicate scattered glaciogenic sedimentary rocks



355 within these canyons (Fig. 4). We therefore suggest that these canyons forming the downstream
continuation of exhumed glacial valleys may correspond to gorges similar to those characterizing the
base of Quaternary glacial valleys found in almost all terrains that experienced repeated Quaternary
glaciations (e.g., Lajeunesse, 2014; Livingstone et al., 2017). Such an interpretation however awaits
confirmation by further sedimentological and geomorphological characterization. Moreover, the N-S-
oriented tongue-shaped troughs, such as the Omarumba-Omutirapo, the Sesfontein and Warmquelle at
360 the head of the Hoanib valley, and the Otjinjange (Fig. 2 & 3) were interpreted as glacial cirques by
Martin (1953, 1961, 1968, see also Hoffman et al., 2021 pages 105-106). Here though, no glaciogenic
sediments or morphological features have so far been described or reported, hindering a definitive
interpretation. To summarize, the network of valleys dissecting the northern half of the Kaoko
highland as well as the Purros escarpment are true relicts of a glacial landscape; in this same region, it
365 remains unclear whether the interfluves between the exhumed glacial valleys, the tongue-shaped
troughs and the canyons are glacial in origin, as they might have been lowered down by erosion in
post-LPIA times

Further south, in the Huab-Uniab regions (Figs. 2 and 3), outliers of Karoo sediments and
Cretaceous Etendeka lavas topping the Karoo succession form the western part of the plateau, and rest
370 on highly uneven basement rocks dipping southward (transects 4 and 5 on figure 3). This volcano-
sedimentary pile, reaching 1000 m in maximum thickness to the south, thins toward the north: the
basal sedimentary units are present only in the deepest part of these basins, formed by the Huab and
Lower Ugab to the south. The pile of sedimentary rocks wedges out northward to the Unihab Basin
where Etendeka lava rests directly on the bedrock. Numerous remnants of glaciogenic rocks and
375 features are directly resting on the bedrock in the Huab Basin (transect 5 on Fig. 3), whereas none is
mapped at the interface between the lavas and the bedrock further north (at the border between the
Uniab and Hoanib basins, transect 5 on fig. 3). Based on these observations, we suggest that this
uneven bedrock topography covered by glaciogenic sediments corresponds to an exhumed landscape,
glaciogenic in origin. Given its dimension, i.e. at least 150 km wide and 1000 m deep, we interpreted
380 this glacial topographic depression that form the Huab and Lower Ugab basins (Figs. 2 and 3), as a
glacial overdeepening or trough *sensu* Benn & Evans (2010). The deepest parts of this large glacially-
carved depression were filled by sediments of the lower Karoo Supergroup (Holzförster et al., 2000),
which probably promoted preservation of the glaciogenic sediments and landforms. Shallower parts to
the north remained protruding until the outpouring of the Etendeka lavas some 165 Myr after the
385 glaciation, which likely obliterated all evidence for glacial activity. Furthermore, Andrews et al.
(2019) argued that profiled, elongated hills of the middle Ugab basin are glacial megalineations and
megawhalebacks indicative of paleo ice streams (Fig. 2; see also Heron et al., 2022, 2024). Few
studies have tackled the upper Ugab river valley south of the Otavi Range (Fig. 3), characterized by an



inner V-shaped gorge in which the modern river flows, at the bottom of a more subdued U-shaped valley with a very steep northern flank and gently-sloping southern flank. The infill of Cenozoic

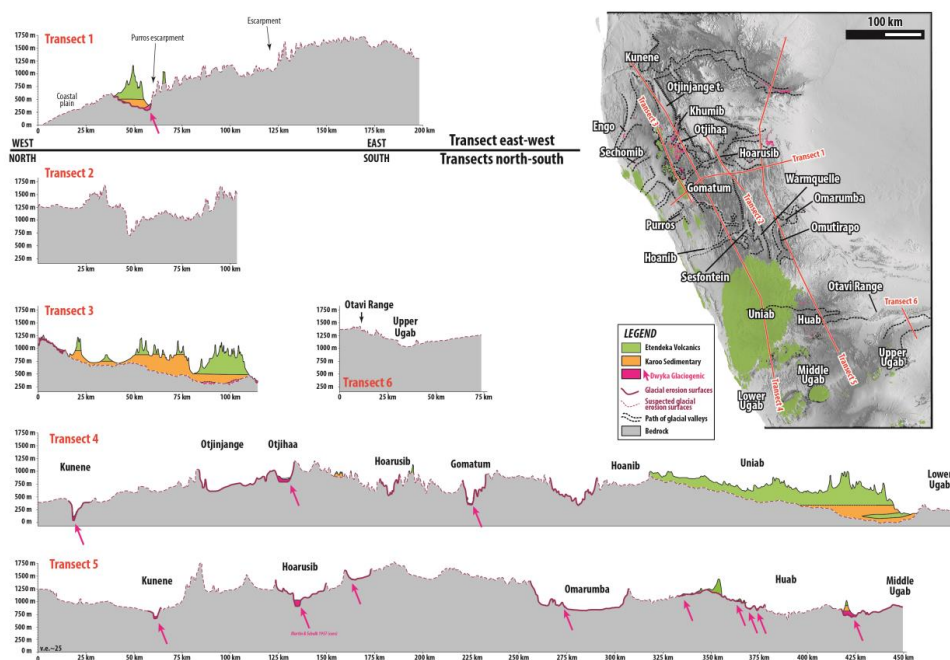


Fig. 3: Geological map indicating the Karoo Supergroup and morphostratigraphic transects across the Kaoko highland, highlighting the morphology of the Kunene, Kaoko, Huab-Ugab regions and the associated glacial valleys and troughs. Etendeka lavas are represented in green, non-glaciogenic Karoo sediments in yellow and Dwyka glaciogenics in pink, or indicated by pink arrows. Black dashed lines on the map represent outlines of exhumed glacial reliefs and valleys; solid purple lines on morphostratigraphic transects represent glacial surfaces and dashed purple lines represent suspected glacial surfaces. Bedrock in grey indicates substrate older than the Karoo Supergroup. Note that this colouration is consistently used throughout the manuscript. Fig. 1b for location.

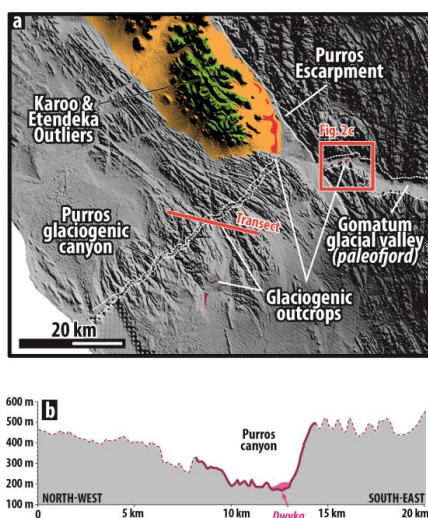


Fig. 4: (a) DEM of the western coastal Kaoko region and (b) morphostratigraphic transect. In the Purros canyon are remnants of glaciogenic sediments, and therefore the canyon is tentatively interpreted here as a relict glacial landform. See Fig. 2 for location.



sediments and the absence of Paleozoic strata as well as Mesozoic weathering processes (the northern flank of the U) led Mabbutt (1951) to posit that ‘the pre-Karoo planation was not advanced’. However, the general shape (degraded U-shaped) of the valley might suggest a degraded glacial origin latter reused by Cenozoic deposition processes. In such a case, the Otavi range already existed by LPIA times. Further studies are required to confirm such a hypothesis.

3.2 The Windhoek Highland

The Windhoek highland lies at the center of Namibia and almost reaches 2000 m above sea level (Fig. 4). The substrate is here made of the Neoproterozoic Damara Fold Belt (Begg et al., 2009). Numerous valleys dissect and radiate outward from the Windhoek highland. Most of these valleys have been interpreted or inferred as exhumed glacial valley by Martin (1975, 1981, see also Miller, 2011). However, the only irrefutable evidence for a glacial origin is the N-S-oriented Black Nossob River valley which has a U-shaped cross-profile, 7-km wide and 30-m deep, at the bottom of which are remnants of glaciogenic sediments preserved, as indicated by geological maps (transect 2 on Fig. 4). The other river valleys dissecting the Windhoek highland, the upper and lower Swakop and its tributary, the Okahandja-Windhoek and the Kurikaub, as well as southward-flowing Skaap, Usip and Nausgamab and the westward-flowing Kuiseb have also been interpreted as glacial in origin by Martin (1975, 1981). Although these valleys have conspicuous U-shaped cross-profile (Fig. 4c), no glaciogenic sediments or morphologies have been mapped or described in the literature or observed during our own fieldwork within the thalweg of these valleys. A Dwyka outcrop has been described in the vicinity of the Nausgamab valley (Fig. 4, Faupel, 1974), which would witness at least local glacial processes; we however did not locate these deposits during own field campaign. The Okahandja-Usip is sometimes interpreted as a graben tied to Mesozoic-Cenozoic extensive processes (the Windhoek graben, Schneider, 2004; Waren et al., 2023) whereas the other valleys seem to follow grain of the underlying basement: N-S-oriented valleys follow a network of faults whilst NE-SW oriented valleys follow lithological boundaries. Further field studies are therefore required to confirm a glacial origin of the network of valleys dissecting the Windhoek Highland. Further south, Korn and Martin (1959) and Martin (1959, 1961) indicate that the encased U-shaped, E-W-oriented Tsondab valley that crosscuts the Naukluft Mountains is a glacial valley, as remnants of Dwyka sediments occur within the valley thalweg (Fig. 5d, e & f). Geological map also indicates glaciogenic sediments on the interfluvium of the valley (Fig. 5d). We therefore suggest that the modern Naukluft is the southern extension of the Windhoek Highland in which glacial valleys are carved. The very name of the Naukluft which means ‘narrow gorge’ in Namibian German is literally after the presence of glacial valleys.

425

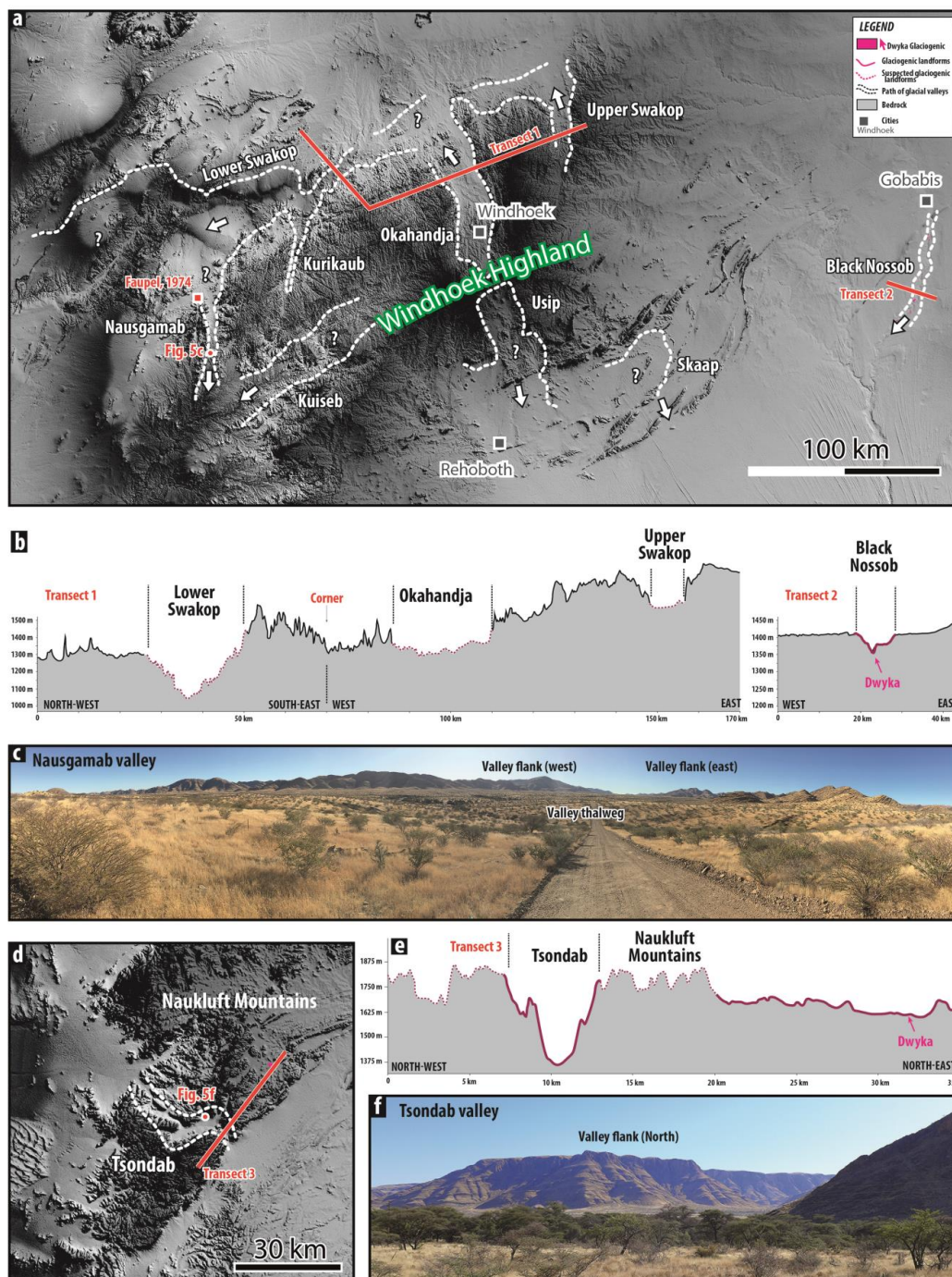


Fig. 5: (a) DEM of the Windhoek highland (central Namibia), (b) their morphostratigraphic transects. And (c) mosaic picture of the U-shaped Nausgamab valley interpreted by Martin (1961) as a potential glacial valley (see also Miller, 2011). Faupel (1974) reported glaciogenic sediments in the vicinity of this valley; (d) DEM of the Naukluft mountain crosscut by the U-shaped Tsondab valley interpreted by Korn & Martin (1959) and Martin (1961) as a glacial valley. (e) morphostratigraphic transect and (f) picture of the Tsondab valley. Fig. 1b for location.



3.3. The Cargonian Highland

430 In South Africa, between the MKB and the Kalahari Basin (Fig. 1), large areas of the Archean to Paleoproterozoic Kaapvaal Craton correspond to exhumed glacial landscapes (Fig. 5, 6 & 7). Portions of the Ghaap plateau and the Kaap-Orange river valleys (Fig. 6) as well as the Highveld, Witbank, Bushveld and Mooi-Harts areas in the Johannesburg-Pretoria region and the Vredefort Dome (Fig. 7) are part of the extensive Cargonian paleohighland. Cargonian stands for the contraction between
435 Carboniferous and Gondwanian (Visser, 1987a). The Buffalo-Tugela river valleys, at the southeasternmost edge of the craton, also exhibits widespread glacial landscapes (Fig. 8). Over these areas, vast relict planation surfaces, U-shaped valleys, fjords, inlets, embayments and troughs, eskers and canyons were carved by direct glacial action (Visser, 1983b, 1985, 1987a, 1997; von Brunn, 1983, 1994, 1996, Haldorsen et al., 2001; Dietrich & Hofmann, 2019). The preservation of these glacial
440 landscapes spans a large range from poorly-preserved to outstandingly-exposed, whose review based on geological maps, literature and own field investigations is provided below.

The most extensive relict glacial relief occurs in the confluence region between the Orange and Vaal river valleys (Fig. 6). Before joining the Vaal, the Harts River flows in a 20-30 km wide and 280-km long, NNE-SSW-oriented valley, the Kaap valley. DEM and geological maps reveal that the
445 valley cross profile, roughly U-shaped, is asymmetric (transect 2 on fig. 6). The eastern flank of the valley has a shallow slope (1-2%) and is formed by a ridge made up of Archean andesite of the Ventersdorp Supergroup, leading eastward to an uneven relief upon which remnants of Karoo sediments rest. Glaciogenic sediments rest in the valley axis, drape the valley flanks and, on the eastern bank, occur as pockets in paleotopographic lows that develop on the bedrock (Visser and
450 Loock, 1988). Here, the Nooitgedacht glacial pavement records a WSW glacial movement (Fig. 6; Slater et al., 1932; Du Toit, 1954; Visser and Loock, 1988; Master, 2012). The western flank of the valley is steep (up to 11%), 100-200 m-high and cut into Paleoproterozoic dolomites of the Griqualand West Basin forming the karstified Ghaap plateau, over which no glaciogenic sediments are mapped. The Kaap valley has therefore been interpreted as a relict paleotopography by Visser, (1987a), namely
455 an exhumed glacial valley carved at the interface between the Griqualand West and the Ventersdorp basins, and flowing southward from the Cargonian paleohighland. As such, this exhumed glacial valley echoes the similar, although still covered by Karoo sediment, Virginia valley inferred further east (Visser and Kingsley, 1982; Visser, 1987a, 1987b). The Hotazel valley (Fig. 6) and the valleys flowing northwestward from the Cargonian Highland toward the Kalahari basin are also interpreted as
460 relict glacial valleys (Visser, 1987a, 1987b, 1997). The uneven relief east of the Kaap valley onto



which glacial pavements developed and glaciogenic sediments occur is also interpreted as a relict, exhumed glacial planation surface. On the contrary, in the absence of glaciogenic sediments on the

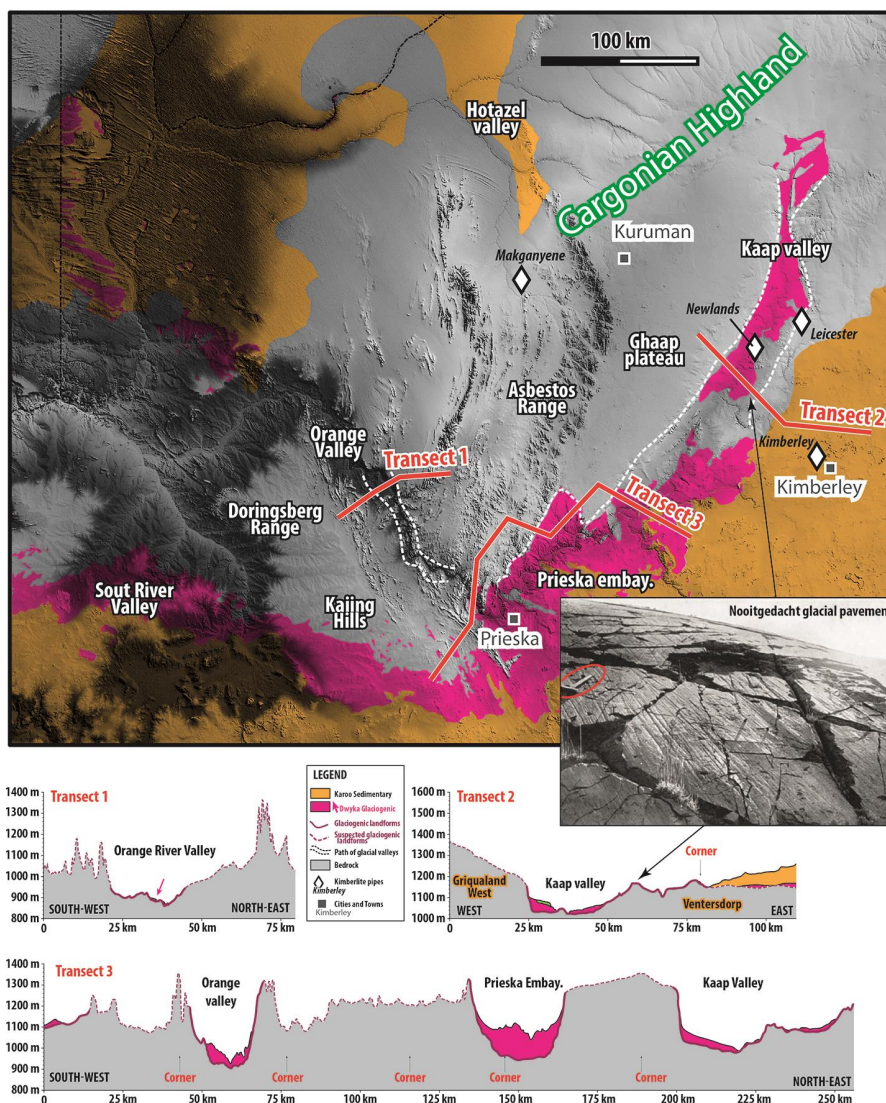


Fig. 6: DEM of the SW Cargonian Highland (central South Africa and southern Botswana; Fig. 1b for location) and associated geological transects. Widespread Dwyka outcrops in the Kaap valley visible in the landscape interpreted here as an exhumed glacial valley. Diamonds represent kimberlite pipes used for reconstruction in fig. 11. Inset photo: close-up view of the Nooitgedacht glacial pavement (whaleback) in Slater (1932). Circled hammer on the left for scale.



Ghaap plateau, it remains unclear whether this surface corresponds to a pristine glacial planation
465 surface or if has been reworked since (see discussion in De Wit, 2016). Further south, the Prieska
embayment is a topographic depression formed between promontories of the Ghaap plateau delineated
by steeply dipping (up to 23%), 300-m high escarpments against which the 5-120 m-thick glaciogenic
Dwyka Group onlaps and pinches out. The Prieska embayment is interpreted as a relict embayment or
glacial overdeepening (see Visser, 1987b) which formed a depocenter for accumulation of the Dwyka
470 glaciogenics (Visser, 1982, 1985). The Orange River itself, downstream the town of Prieska, flows in
a valley we interpret as glacial in origin: whilst remnants of glaciogenic sediments occur in the valley
thalweg, the surrounding bedrock peaks of the Doringsberg and Asbestos ranges tower some 400 m
above (transect 1 on fig. 6). This indicates that modern Orange River drainage follows an ancient
glacial trough rejuvenated by the removal of soft Karoo sedimentary rocks. The Doringsberg and
475 Asbestos range also already existed per se by LPIA times, and had *at least* the height they have today,
and could then have formed nunataqs if the ice was at some point during the LPIA thinner than the
height of these peaks, e.g. during recessional phases. Further west, Visser (1985) indicates that the
northwesternmost edge of the MKB consists of a succession of glacially carved basins, valleys and
embayments, such as the Sout River Valley and the Namaqua Basin, as well as promontories, ridges
480 and spurs, like the Kaiing hills, the Poffader Ridge and the Langberg mountains (Fig. 6). Finally, at
the westernmost end of South Africa, south of the Orange River, in the Richtersveld region, which might
correspond to the westward continuation of the Karasburg Basin, remnants of a N-S-oriented glacial
valley have been described (Fig. 1, Reid, 2015).

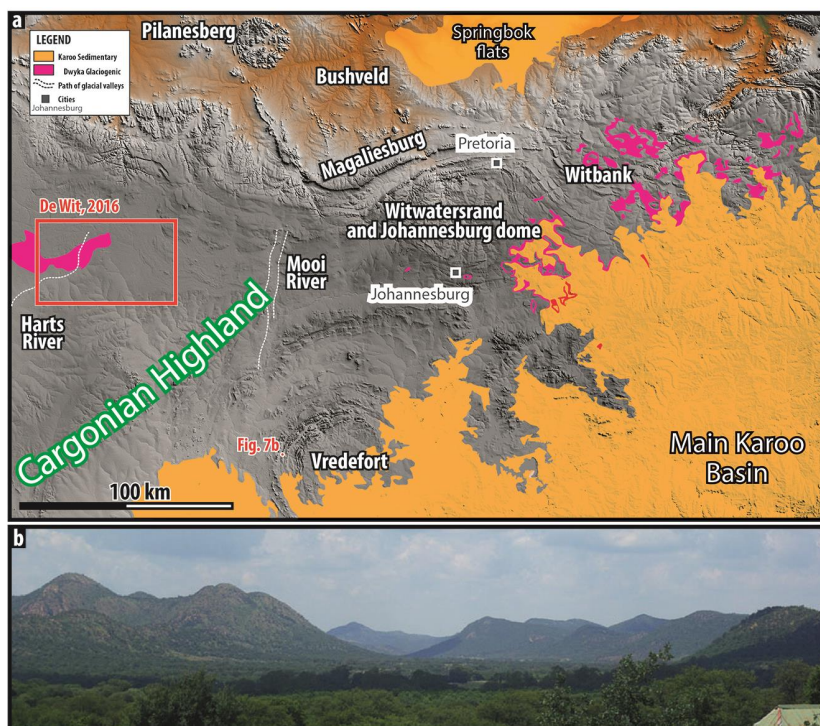


Fig. 7: (a) DEM of the central Cargonian Highland (Johannesburg-Pretoria-Witwatersrand area on the Kaapvaal craton, central South Africa). Fig. 1b for location. The Mooi and Harts river valleys, highlighted by white dashed lines, and the surrounding areas, are interpreted by De Wit (2016) as an exhumed glacial surface. Similarly, the Witbank region to the east, and the Vredefort dome to the south are also interpreted as exhumed glacial surfaces (see text for detail). In between, the Witwatersrand region, the Magaliesburg range, the Pilanesberg dome and the cities of Johannesburg and Pretoria also probably sit on a glacial surface, although further work need to be done to confirm such a hypothesis. (b) View of the Vredefort dome area where the Vaal river valley shows a U-shaped profile reminiscent of glacial erosion. A small portion of the Vaal River floodplain is seen at centre-right (Fig. 4.5 in Gibson & Reimold, 2015)

485 The area surrounding Johannesburg and Pretoria, including Archean basement of the
 Johannesburg Dome, Archean-Paleoproterozoic strata of the Witwatersrand and Transvaal
 supergroups forming the forming the Witwatersrand and Magaliesberg mountain ranges, southern part
 of the Paleoproterozoic Bushveld igneous province and the Mesoproterozoic Pilanesberg alkaline ring
 complex (Fig. 6), is thought to correspond to an exhumed glacial landscape (Wellington, 1937). In this
 490 region, direct evidence for glacial processes occur on the interfluvium between the Harts and Mooi River
 valleys. This even surface is characterized by numerous striated glacial pavements interpreted as a
 surface of glacial erosion, covered in places by sinuous, diamond-bearing sediment ribbons interpreted
 as eskers (De Wit, 2016; Fig. 7). The Harts and Mooi river valleys, incised within gently-, southward-
 sloping Transvaal Supergroup dolomite, have U-shaped cross-profiles and the Harts River corresponds
 495 to the northward extension of the aforementioned Virginia glacial valley. East of the city of
 Johannesburg, the Witbank coal field also constitutes a pre-Karoo glacial irregular topography. In this



region, coal seams of the postglacial Vryheid Formation (Ecca Group) either rest conformably on glaciogenic deposits of the Dwyka Group and fill local hollows and depressions, 10-60 m deep, of the paleotopography inherited from glacial erosion, or directly lies on the bedrock on paleohighs (Le Blanc Smith and Eriksson, 1979; Le Blanc Smith, 1980; Cairncross and Cadle, 1988; Holland et al., 1989; Götz et al., 2018). The mining of coal seams rejuvenates the pre-Karoo topography. Further work may reveal that this assemblage of paleotopographic highs and lows may correspond to large-scale *roches moutonnées* or even crag-and-tails similar to those encountered in Canada or Scotland and tied to the Quaternary glacial epoch. Geological maps indicate that small patches of Dwyka deposits also occur in the Johannesburg region. Less direct morphological pieces of evidence suggest that encased ravines and canyons that dissect the cuestas formed by the Magaliesberg mountain range correspond to subglacial canyons carved during LPIA times, as suggested by Wellington (1937). Similarly, Cawthorn et al. (2015) suggested that the Pilanesberg complex forming a 100-500 m high, near-perfect circle of concentric rings of hills surrounding flat terrains of the Bushveld complex has gained its surficial morphology and drainage pattern by the scouring of glacial ice during the LPIA. Here, however, no direct evidence for glacial action (striated pavements, glaciogenic sediments) was found.

Further south, the Vredefort dome, the central basement uplift of a 2.1 Ga-old impact structure, displays numerous remnants of glacial erosion processes such as striae, grooves and profiled hills, and patches of glaciogenic sediments as well as far-travelled boulders. The upper Vaal River which crosscuts parts of the impact structure has a U-shaped profile which can be interpreted as the remnant of a glacial valley (Fig. 7b). Together, this indicates that the modern landscape of the Vredefort dome corresponds to a fossil, pre-Karoo glacial landscape (King, 1951; von Gottberg, 1970a; Gibson and Reimold, 2015).

At the easternmost edge of the Main Karoo Basin (Fig. 1 & 8), the removal of less-resistant Karoo strata rejuvenates LPIA glacial landscapes sculpted into the resistant Archean granites, greenstones and quartzites (Dietrich and Hofmann, 2019). The Buffalo River valley follows an inherited 100-140 m deep glacial trough carved into Pongola Supergroup quartzites, abrupt valley flanks (30-60°) made of quartzites are draped by glaciogenic clast-rich diamictites that become horizontal in the valley thalweg (Fig. 8b). In the intervening interfluvies, the landscape of rolling hills made of Archean quartzites and greenstone belt volcanics constitute a rejuvenated glacial landscape as indicated by pockets of glaciogenic sediments in paleotopographic depressions whereas paleohighs are made of basement rocks (Fig. 8c), which occasionally display hard-bed striated pavements (Fig. 8d & 8e). As for the Witbank coal field, these hills and hollows may represent crag-and-tails or field of large *roches moutonnées*. An exhumed U-shaped glacial trough, 800 m wide, 100 m deep and 2-km in which remnants of glaciogenic sediments occur has also been observed (Fig. 8f, Dietrich and Hofmann, 2019).



535 The northern margin of the Main Karoo Basin hosts glaciogenic Dwyka Group rocks which
reflects a threefold segmentation with regard to the paleotopography, as emphasised by numerous
authors (Visser, 1987a, 1987c; Brunn et al., 1994; Von Brunn, 1996; Haldorsen et al., 2001a; Johnson
et al., 2006; Isbell et al., 2008; Tankard et al., 2009; Dietrich and Hofmann, 2019; Griffis et al., 2019a,
2021): (1) The *basement-high* facies association, deposited on the Cargonian paleohighland described
above, seldom exceeding a few meters in thickness, is represented by massive to poorly stratified
diamictites representing subglacial till or esker deposited on land (De Wit, 2016), (2) *The valley-fill*
540 *facies association* (sometimes referred to as the Mbizane Formation), up to 300 m in thickness but
characterized by rapid thickness changes, consists of an alternation between massive and stratified
diamictites, sandstones and conglomerates, whose deposition was largely structurally-controlled and
reflects the underlying corrugated topography such as escarpments and valley walls carved into the
escarpment delineating the paleohighland. (3) *The platform-basin facies association* (Elandsvlei
545 Formation) is recognized at the centre of the Main Karoo Basin, commonly reaching 800 m in
thickness, in which four deglacial sequences, consisting of alternation between diamictite and
mudstones (marine to glaciomarine) units deposited in deep glaciomarine environments (outwash fans,
grounding zone wedges, meltwater plumes) represent ancient lowlands.



550

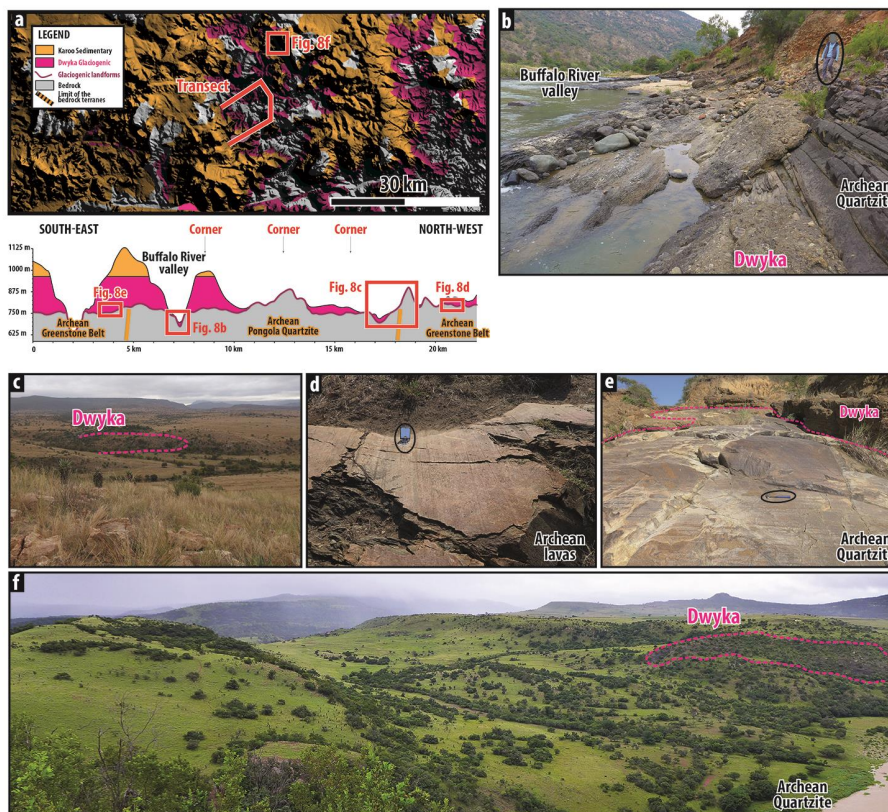


Fig. 8: (a) DEM of the eastern Cargonian Highland (edge of the Main Karoo Basin; Kaapvaal craton, eastern South Africa) and morphostratigraphic transect highlighting the Tugela valley as an exhumed glacial landscape. Fig. 1b for location. See Details in Dietrich & Hofmann (2019). (b) Bank of the Buffalo River exhuming a glacial valley. Stratified, steeply-dipping rock on the right corresponds to Archean Pongola Supergroup quartzite into which steep-flanked relief were carved and upon which coarse-grained deposits corresponding to glaciogenics of the Dwyka Group are plastered. Although the Dwyka sediments are steeply-dipping on the flank of the (paleo)valley, they become horizontal in the river thalweg. Circled geologist for scale; (c) Landscapes of rolling hills corresponding to an exhumed glacial landscape. The relief is carved into Archean Pongola quartzite seen in the foreground: topographic lows preserve remnants of glaciogenic sediments whose bulk has been eroded away by recent erosion, resurrecting the glacial landscape. Striated pavements, such as the ones showcase on fig. 7d and 7e, characterize basement floors. (d) Striated floors carved onto volcanic rocks of Archean greenstone belt, plucking of the joint at the foreground indicate an SSW ice movement. (e) Striated and polished glacial floor exposed in a stream, and showcasing a small-scale *roche moutonnée* behind the circled hammer, evidencing an ice movement to the SSW. The glacial floor is still covered in place by remnants of glaciogenic sediments. (f) A U-shaped trough, 800 m wide and 100 m deep carved by glacial erosion into Archean Pongola quartzites. Remnants of glaciogenic sediments are still present. Picture from Dietrich & Hofmann (2019).



3.4. The Zimbabwe Highland

The Zimbabwe highland develops over the central region of Zimbabwe that corresponds to the Zimbabwe Craton (Fig. 1 & 9). This highland is floored by Archean greenstone belts and granites that were intruded during the late Archean by the layered complex of the Great Dyke (Mukasa et al., 1998). For the most part, it forms now a prominent morphological ridge that stands well above the surrounding basement-floored rocks of central Zimbabwe (Fig. 9). Over the Zimbabwe Highland, the Karoo Supergroup is represented by extremely thin (ca. 100 m) and isolated outcrops capped by 50-100 m thick Jurassic lavas of the Drakensberg Group (Rhodesia Geol. Map 1971: <https://zimgeoportal.org.zw>). In the Featherstone region, east of the Great Dyke, the Archean Mwanesi Greenstone Belt also forms a prominent ridge against which the Karoo sediments onlap (Fig. 9). Although no glaciogenic sedimentary series have formally been identified on geological maps ('undifferentiated Karoo') and no field study has reported glaciogenic sediments, to our knowledge, the surrounding sedimentary basins encompass evidence for glacial processes (mid-Zambezi: Bond and Stockmayer, 1967; Cabora Bassa: Oesterlen and Millsted, 1994; Fernandes et al., 2023; Somabula: Moore and Moore, 2006; Tuli: Bordy and Catuneanu, 2003). We therefore posit that the Mwanesi Greenstone Belt and the Great Dyke, formed prominent reliefs during LPIA times. This relief, sealed by Karoo rocks, is now being exposed by the erosion of the sedimentary rocks and basalts. Furthermore, Moore et al. (2009) suggested that U-shaped valleys, canyons, defiles and ravines (locally named 'poort', meaning gateway in Afrikaans) incised through this greenstone belt as well as through the Great Dyke within which modern streams flow do not match any structural pattern and cannot have been cut by these streams. Rather, the incision corresponds to exhumed glacial valleys that are now used by streams to cross the topographic barriers (Moore et al., 2009). Assuming that the Great Dyke already existed by LPIA times implies it may have formed a nunatak when the ice was thinner than the height of the ridge.

Further SW, in the Somabula region (Fig. 9), patches of diamond-bearing sediments attributed to Dwyka-filled hollows and topographic depressions are carved into Archean granite (Moore and Moore, 2006). The uneven topography onto which the Dwyka lies therefore corresponds to a glacial topography. We propose that the modern topography between these two localities, ca. 125 km apart, and more generally the Zimbabwe highland made of granite and greenstone belts therefore most likely correspond to the pre-Karoo glacial landscape (Moore et al., 2009). This pre-Karoo glacial landscape should be more degraded where removal of the Karoo cover occurred earlier but at proximity of Karoo outliers, the glacial landscape must be pristine (Lister, 1987). Future field campaigns may reveal glacial features that may provide valuable clues on glacial processes and associated paleolandscapes.

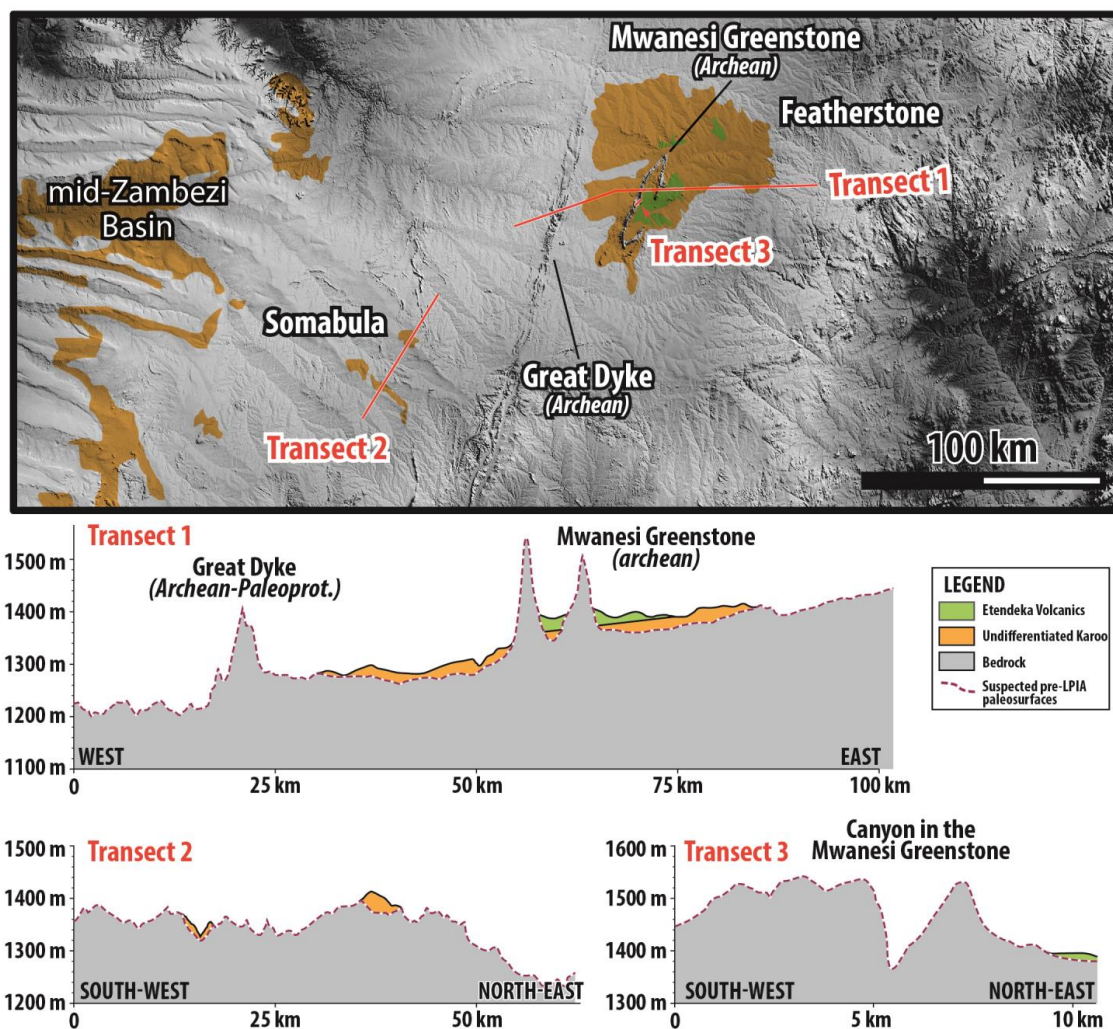


Fig. 9: DEM of the Zimbabwe Highland (central Zimbabwe) and morphostratigraphic transects across the Great Dyke, the Mwanesi Greenstone Belt and the Somabula region. The reader is redirected to Moore & Moore (2006), Moore et al. (2009) and Lister (1986) for further details. Fig. 1b for location



3.5. Synthesis and implications: critical analysis of the glacial paleolandscapes of Southern Africa and paleogeographic reconstruction

3.5.1. The glacial paleolandscapes of Southern Africa

We have replaced and compiled the glacial paleolandscapes presented above and distinguished the indisputable from the suspected ones at the scale of Southern Africa, as presented figure 10a. The main and foremost finding deduced from our analysis is that, over Southern Africa, an area of ca. 71.000 km² consists in indisputable exhumed glacial landscapes and 360.000 km² correspond to suspected glacial landscapes, which together correspond to ca. 10% of the total area of the region (Fig. 10a). Compared to area flooded by a substrate older than the Karoo Supergroup, i.e. older than ca. 300 Myr (ca. 1.700.000 km²), this proportion rises to ca. 25%, as the glacial paleolandscapes are mostly found on the paleohighlands formed by Archean and Paleoproterozoic terrains. It must be noted however that the exact delimitations and extent of the suspected glacial landscapes on figure 10a have been plotted on the basis of morphological features described above but may require local reassessments.

From that map, it appears that many prominent aspects of the modern morphology of Southern Africa in fact correspond to ancient, rejuvenated paleolandscapes. Notably, some modern escarpments are in fact exhumed paleoescarpments delineating the paleohighlands from the basins, such as in the Kaoko region of Namibia or along the Kaap Valley in South Africa. In other instance, the escarpment is still buried under Karoo sediments, such as in central South Africa and Lesotho and southern Botswana, deduced from abrupt increase in thickness in Dwyka glaciogenic sediments toward the south, as observed from drilling (Fig. 10a; see Visser, 1987a, 1987b). Also, the modern river drainage follows the pattern of inherited glacial relief: the Vaal River in the Kaap Valley and the Orange River in the Orange Valley (South Africa), the Kunene and other NW Namibian rivers in the fossil fjords as well the Ugab, Swakop and Black Nossob rivers and the Zambezi River funneled by the Zambezi escarpment (Zimbabwe). In addition, narrow ravines cut into prominent topographic barriers, such as the Great Dyke and Mwanesi in Zimbabwe, the Magaliesberg and Doringsberg-Asbestos mountains in South Africa and the Naukluft in Namibia, seem to correspond to exhumed glacial gorges. Our study therefore highlights the absolute necessity of integrating the morphological legacy of the Late Paleozoic Ice Age when assessing the evolution and modern aspect of the landscapes of Southern Africa (see below discussion section 4.1).

It must also be stressed that the exhumation of the glacial relief may provide valuable clues about paleoaltitudes and finite uplift of the African continent since the late Paleozoic, only rarely constrained and quantified (Simoes et al., 2010; Braun, 2018). Indeed, the paleofjords of Namibia bear



sedimentological evidences for coastal, and sometimes even intertidal, environments (Dietrich et al., 2021), providing valuable clues about the paleo zero altitude. Even though postglacial eustatic and isostatic processes likely modified the relative sea level at this time, by at most a few hundreds of meters (Montañez and Poulsen, 2013; Dietrich et al., 2018, 2021), the presence of coastal sediments tied to the LPIA nowadays observed at 300-400 meters above modern sea levels within the paleofjords indicate that 1. the finite uplift of Southern Africa since the Late Paleozoic was of a similar value, and 2. the interfluvial of the paleofjords immediately after the LPIA stood at an altitude corresponding to *at least* the elevation difference between them and the valley thalwegs, considering that the interfluvials may have been eroded and levelled down since then. Similar findings would most likely be unravelled in every glacial paleovalley of Southern Africa.

3.5.2. Paleogeography

Based on the map of exhumed glacial paleolandscapes (Fig. 10a), on the compilation of sedimentary facies as well as on previous local paleogeographic reconstitutions (e.g., Smith, 1984; Lister, 1987; Visser, 1983b, 1985, 1987a, 1987b, 1989, 1992, 1993, 1997; Daly et al., 1989; von Brunn, 1991, 1993; Veevers et al., 1994; Smith et al., 1993; Johnson et al., 1996, 1997; Haldorsen et al., 2001; Isbell et al., 2008; Dietrich et al., 2019a, 2021), we have attempted to reconstruct the paleogeographic configuration at the scale of Southern Africa at the end of the LPIA, as presented figure 10b. A threefold morphological pattern is evident, consisting of (1) highlands locally covered with hill and mountain ranges; (2) escarpments into which glacial valleys and fjords are incised, and that lead downstream to (3) sedimentary basins (the Karoo-aged basins) that correspond to the lowland counterparts of the highlands. It must be noted that this map is interpretative and many uncertainties remain. Notably, we propose that the original extent of the Karoo-aged sedimentary basins was greater than their modern outcrops, as offshore data indicate the presence of Karoo sediments on the modern continental margin. As the offshore Walvis and Lüderitz Basins hosts Karoo sediments (Clemson et al., 1997, 1999; Aizawa et al., 2000; Baby et al., 2018b; 2020), we have extended the Aranos and Kaoko basins further west and connected them to their offshore counterparts. Martin (1973b) states that, as no glacial erratics sourced from the Kaoko have been found in the Parana Basin, the Brazilian Karoo equivalent, a topographic depression or a basin, perhaps oceanic, should have existed between Namibia and Brazil during the LPIA, likely corresponding to the northern realm of the Walvis Basin. And he concludes that '*paleogeographic evidence does not easily fit into the concept of a direct join of the African and the South American continental plates*'. Griffis et al. (2021) moreover indicate that only Gondwanan-scale deglacial events permitted the delivery of African-sourced sediments into the Parana Basin while glacial flows between Africa and South America were hindered, suggesting the presence of substantial topographic barriers such as a basin that would have deflected/hindered ice flows. For the connection between the Aranos and Lüderitz basins and their extent further west, the

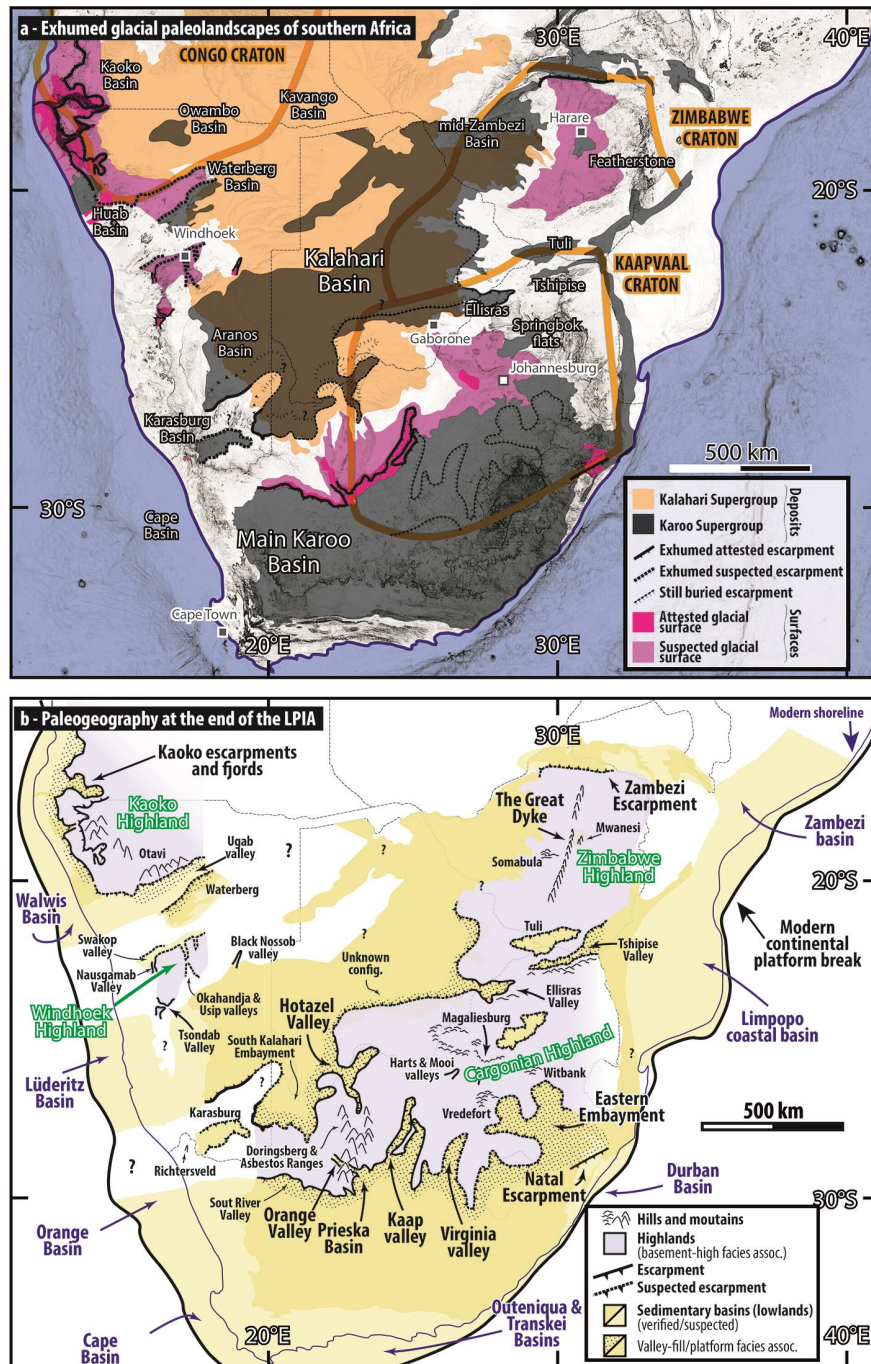


Fig. 10: (a) Synthesis of glacial paleolandscapes at the scale of Southern Africa. Dark pink indicates attested glacial surface and light pink suspected glacial surfaces whose compilation is based on the presence of glacial morphological features (see text for details). Dark grey regions are Karoo-aged basins. Exhumed paleo-escarpments are represented by black bold lines and escarpments still buried under sediments are after Visser, 1987a, 1987b. Light orange region corresponds to surficial sediments of the Kalahari Desert, after Haddon (2005). (b) Proposed paleogeographic reconstruction of Southern Africa at the end of the LPIA. Blue-grey areas represent highlands whose names are written in green, sedimentary basins are represented in dark yellow where attested or light yellow where suspected. Escarpments delineating the highlands from the basins and glacial valleys carved into it are represented as bold solid lines where attested or as dashed lines where suspected (see Visser, 1987a, 1987b). Hills or mountainous regions are also indicated. Region where no data is available mostly correspond to the Kalahari Desert – see fig. 10a above. Names of glacial valleys and escarpments refer to those discussed in the text to which the reader is redirected for further details.



660 absence of sediments between these offshore-onshore realms would be explained by their removal
through the post Gondwana-breakup functioning of the escarpment passive margin (see above section
2.4; Braun et al., 2014; Braun, 2018a), which nowadays delineates the western border of the Aranos
Basin. This very escarpment therefore postdates the LPIA. In line with this, Visser (1987b) states that
*‘Towards the west, [the Kalahari] basin probably opened into a sea. Martin (1973b) favoured the
665 extension of the Kalahari basin into South America as goniatites of the same subgenus were found in
Uruguay and Namibia in very similar stratigraphic positions. Those deposits, however, formed during
an interglacial when large parts of SW Gondwana were inundated as a result of sea-level rise’*. It
must be noted that the tectonic nature of the Lüderitz and Walvis Basins, the offshore counterpart of
the Aranos and Kaoko basins, remains contentious, as they may relate to the functioning of the Parana
and Karoo basins (Pysklywec and Quintas, 1999; Pysklywec and Mitrovica, 1999; Catuneanu, 2004;
670 Catuneanu et al., 2005c) or to a Late Paleozoic rift system (see below discussion section 4.2; Clemson
et al., 1997, 1999; Aizawa et al., 2000).

About the offshore continuation of the Main Karoo Basin, Karoo sediments have also been found
both in the offshore Orange Basin to the west (the South Atlantic Sea Arm of Visser, 1987b, sea also
Baby et al., 2018b) and in the Durban Basin (Baby et al., 2020) and on the Falklands-Malvinas Islands
675 (the Dwyka-equivalent Fitzroy tillite), whose restored position is off the modern SE coast of South
Africa (Hyam and Marshall, 1997; Meadows, 1999; Stone, 2016). Here also, the removal of the
connection between the onshore and offshore basins would relate to post Gondwana-breakup history
and erosion of the plateau and removal of the sedimentary cover near the uplifted passive margins and
in the Cape Fold Belt orogeny (Wildman et al., 2016). Finally, the Karoo sediments may have
680 extended up to the modern coast of Mozambique, as Karoo sediments crop out at the South Africa-
Mozambique border, dipping west (Viljoen, 2015) and Karoo sediments and volcanics are observed on
seismic imagery at the base of the Limpopo and Zambezi coastal basins (Salman and Abdula, 1995;
Ponte et al., 2019; Senkans et al., 2019; Roche et al., 2021; Roche and Ringenbach, 2022). As for the
Namibian margins, the tectonic nature of these coastal Mozambique Karoo-aged basins remains
685 unknown, and may also relate to a Late Paleozoic rift system (the Karoo I rift of Frizon de Lamotte et
al., 2015).

Another uncertainty concerns the nature and origin of the Upper Ugab and Waterberg valleys of
Northern Namibia, the Karasburg Basin of Southern Namibia (a glacial overdeepening for Martin,
1973b, see also Visser, 1987b) as well as the Tshipise, Tuli, Ellisras and Springbok Flats basins of
690 South Africa and Zimbabwe. Although some authors invoke rift processes in the genesis of these
basins (Daly et al., 1989; Smith and Swart, 2002; Frizon De Lamotte et al., 2015; Guillocheau, 2018),
the reduced thickness of the entire Karoo Supergroup (100-200 m) within these basins (Holzförster
et al., 2000; Smith and Swart, 2002; Bordy and Catuneanu, 2003; Johnson et al., 2006; Bordy, 2018),



695 indicating very low accommodation and subsidence, and in some cases the absence of faults bordering these Karoo strata question such an interpretation.

In spite of the uncertainties, our reconstruction may serve as the basis to provide clues into the dynamics of the associated ice sheets controlled by local-regional topography. In such a configuration, the highlands would correspond to ice divides and the ice would have been drained through the escarpments toward the basins and carved the valleys which in turn further promoted the funneling of the ice (for example, see fig. 5 in Smith et al., 1993; fig. 4 in Isbell et al., 2008; Griffis et al., 2021). Also, the presence of topographic escarpments may have locally acted as pinning point for ice margins during periods of ice retreat (Haldorsen et al., 2001; Dietrich et al., 2017; Lajeunesse et al., 2018). Importantly, the presence of vast and well-preserved glacial paleoreliefs along with their related glaciogenic sedimentary deposits in the basins, as showcased on Fig. 10b, make Southern Africa the ideal place to establish the first-ever quantification of source to sink budgets through a complete icehouse cycle, over tens of millions of years. Such a finding would be indispensable to include long-term glacial erosion and sedimentation processes within global assessment of landscape evolution and sediment fluxes through hundreds of millions of years (Salles et al., 2023). In turn, this glacial erosion and the resulting production and export of sediment may have acted as a significant long-term carbon sink through weathering of the newly eroded substrate and sediments and burial within glacially-carved reliefs (Smith et al., 2015; Cui et al., 2016, 2022) that may explain secular climate change during the LPIA (Montañez et al., 2016; Myers, 2016; Goddérís et al., 2017).

4. From LPIA to present: burial and exhumation history, preservation and rejuvenation of glacial landscapes

715

The preservation through geological times of the fossil glacial landscape -the paleoreliefs- described above and their present-day exposure (Fig. 10a) require that they have been buried under younger sediments or lava flows after their carving and later exhumed and stripped off their infill, owing to strong erodibility contrast between their substrate (resistant crystalline and metamorphic rocks) and infill (erodible and weatherable volcano-sedimentary rocks). In the following, we provide burial-exhumation histories of these glacial landscapes (Fig. 11) on the basis of local/regional sedimentological, stratigraphic, magmatic, geomorphologic and thermochronometrical data as well as other available information for constraining uplift and erosion, such as the location, ages and exhumation history of kimberlite pipes and erosion-deposition budgets (see section 2.4). The burial-exhumation history is given for the Kaoko paleohighland (Fig. 11a), the southern margin of the Cargonian paleohighland (Fig. 11b) and the Zimbabwe paleohighland (Fig. 11c). For the need of the reconstruction of the burial-exhumation history from thermochronometrical data (apatite and zircon

720
725



730 fission tracks, (U-Th-Sm)/He on apatite), geothermal gradients of $25^{\circ}\text{C.km}^{-1}$ are assumed for the Kaoko, and Zimbabwe and Cargonian highlands (Mackintosh et al., 2019; Macgregor et al., 2020). As an example, a warming/cooling of 100°C would indicate a burial/exhumation of 4 km. The history proposed here spans the whole period between the LPIA (ca. 300 Ma) and today. Given the discrepancies in data availability between these three regions, the level of details is significantly

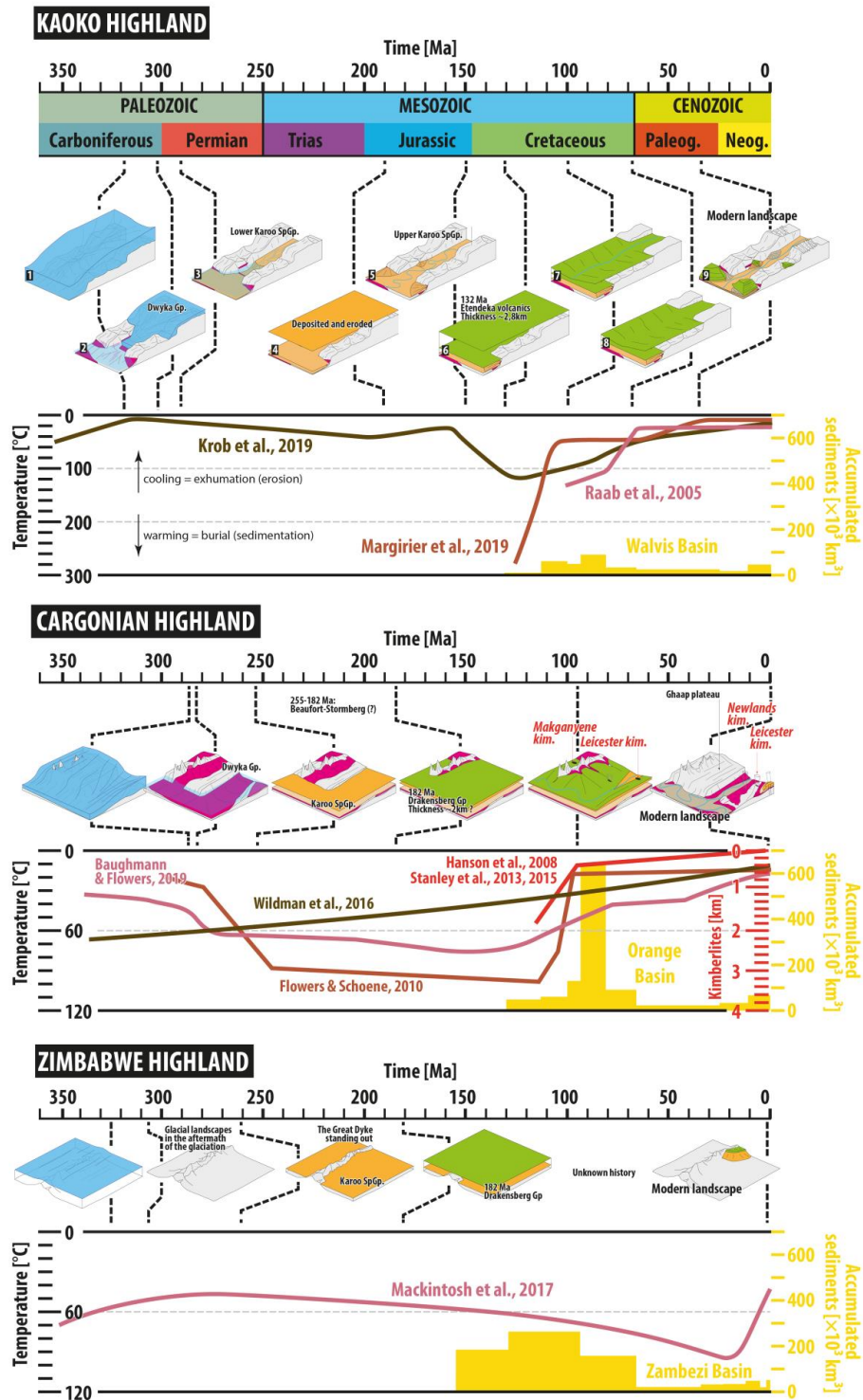


Fig. 11: Burial-exhumation history models the Kaoko (Fig. 2), Cargonian (Fig. 6) and Zimbabwe (Fig. 9) highlands. Thermochronological inferences are provided in the graphs, exhumation evidenced from kimberlites for the Cargonian Highlands are displayed in red and sediment volume accumulated on the continental margins are showcased in yellow. Raab et al. (2005), Krob et al. (2019) and Margirier et al. (2019) for the Kaoko; Stanley et al. (2015, 2019, 2021) and Wildman et al., 2015 for central South Africa and Mackintosh et al. (2017) for central Zimbabwe.



735 different and the stages/ages highlighted may not be equivalent. Finally, we would like to stress that
assessing the controversial exhumation history of this region is beyond the scope of the paper and we
objectively provide information we have at hand.

4.1. The Kaoko highland

740 The burial-exhumation history of this region (Fig. 11a) is provided on the basis of extensive
sedimentological and geomorphologic findings (Figs. 3 and 4) as well as thermochronometrical
constraints. Margirier et al. (2019) was used since the early Cretaceous, where Raab et al. (2005) and
Krob et al. (2020) were used since the LPIA, although the geological set-up in Krob et al. (2020) may
be too restrictive.

4.1.1. Burial history

745 In the Kaoko region, the LPIA is represented by glaciogenic landforms and by thin, less than
20 m-thick glaciogenic sedimentary rocks confined within the paleofjords. From the demise of the
LPIA until Early Jurassic (190 Ma), i.e. for 110 Ma, thermochronological data indicate a warming of
ca. 35°C (Krob et al., 2020), i.e. a burial of 1.4 km considering the thermic gradient described before.
750 This burial corresponds to the deposition of the lower Karoo Supergroup. At this stage, remnants of
pre-Karoo glacial topography would be largely buried. Depositional environments associated to this
accumulation are largely unknown as few remnants of these strata remain, apart from the lowermost
succession (“undifferentiated Karoo” Fig. 2), immediately overlying the glaciogenics, consisting of
marine and deltaic facies. Clues about detailed timing and depositional environments may arise from
the neighbouring Huab Basin (Fig. 1) where the lower Karoo Supergroup consists in fluvial
755 (Verbrandeberg Fm), deltaic (Tasrabis Fm), shallow marine (Huab Fm), lacustrine (Gai-As Fm) and
fluvial (Doros Fm) sediments of lower to middle Permian (Holzförster et al., 2000) that onlap on LPIA
paleo-topography (Erlank et al., 1984).

Thereafter, between 190 and 150 Ma, a cooling of 25°C is indicated by Krob et al. (2020),
corresponding to a denudation of 1 km. This erosion renewed the pre-Karoo landscape for the first
760 time. This is attested by the presence of alluvial (formation not named, Schreiber, 2011), locally
aeolian (Twyfelfontein Fm.) and particularly colluvial sediments, encompassing locally-derived,
highly immature clasts, that are present in the valleys, well below the interfluves. Meandering rivers
flowed in the valley axis whilst colluvial aprons, similar to the modern ones (Fig. 2c), abutted against
valley walls that provided materials. These alluvial/colluvial sediments form the Upper Karoo
765 Supergroup that unconformably cover the Lower Karoo Supergroup (Jerram et al., 1999, 2000). The
origin of this denudation event is poorly understood but might be related to regional uplift prior to the
Etendeka volcanic eruption. Sediments forming the Upper Karoo Supergroup are themselves



underlying, and sometimes interdigitated with, the Etendeka lavas, indicating an age of 135 Ma. In total, the Karoo Supergroup in the Kaoko region is 250-350 m thick and spanned 165 Ma, from ca. 300 to 135 Ma.

The outpouring of the up to 2.8 km thick Etendeka volcanics at 135-132 Ma, part of the Paraná-Etendeka Large Igneous Province (Dodd et al., 2015; Gomes and Vasconcelos, 2021) covered and sealed the Karoo sediments and the remaining pre-Karoo topography, against which the lavas overlapped. Maximum thickness was therefore likely emplaced in topographic depression whereas highs were covered in thinner lavas (Margirier et al., 2019).

4.1.2. Exhumation history

Thermochronological data along the Kaoko Belt indicate a progressive cooling of 160°C from 130 Myr to today (Krob et al., 2020). Partly contradictory thermochronological data from Margirier et al. (2019) indicate a two-step cooling history over the same period, reaching about 290°C of cooling. According to these authors, the period between 135 and 100 Myr is characterized by a cooling of ca. 250°C, interpreted as ca. 900 m of erosion coupled to a decrease in the geothermal gradient due to magmatic cooling after the Etendeka LIP eruption. Margirier et al. (2019) then indicate that between 100 and 65 Ma, little to virtually no denudation occurred while Raab et al. (2005) indicate major exhumation of 1.5 km between 80 and 60 Ma. Denudation then resumed, by ca. 1.6 km of erosion (40°C of cooling), until 35 Ma, when most removal of the highly weatherable Etendeka lavas occurred, most likely enhanced by a humid and warm climate as suggested by the abundant detrital kaolinite in well data from the offshore Walvis Basin (Holtar, Forsberg, 2000). Siliciclastic volumes preserved in the Walvis Basin show an increase in sedimentation during the Upper Cretaceous, coinciding with the first pulse of denudation revealed by thermochronological data. The acceleration of the denudation during the Paleogene highlighted by Margirier et al. (2019) is not detected in the basin. The humid climatic conditions at this time in southern Africa (Braun et al., 2014) can explain this contradiction by enhancing the chemical erosion. From 35 Myr to the present-day, cooling was virtually non-existent, suggesting limited erosion in the region, which has allowed the preservation of the pre-Karoo glacial landforms. This is consistent with the climate aridification of the region during the Middle-Late Miocene (Pickford and Senut, 1997) coinciding with the establishment of the offshore Benguela Current (Siesser, 1980; Diester-Haass et al., 1990).

4.2. The Cargonian Highland

The burial-exhumation history of the glacial landscapes of the Kaapvaal craton showcased here focuses on the Kaap and Orange river valleys and the adjoining Ghaap plateau and Asbestos range (Fig. 11b). This history is based on thermochronological data (Flowers and Schoene, 2010; Kounov et al., 2013; Wildman et al., 2015, 2016, 2017; Baughman and Flowers, 2020 and references therein),



dating and erosion of kimberlite pipes (Partridge, 1998; James, 2003; Hanson et al., 2009; Stanley et al., 2013, 2015, 2021) and stratigraphic inferences and dating of ash layers present throughout the Karoo Supergroup succession (Bangert et al., 1999; Johnson et al., 2006; Fildani et al., 2007, 2009; Mckay et al., 2015; Belica et al., 2017; Griffis et al., 2018, 2021). The following burial-exhumation history until nowadays seems to be twofold in this region, characterized by an early burial (the deposition of the Karoo sediments and volcanics accumulated in the aftermath of the LPIA until 183 Ma, date of the outpouring of the Drakensberg LIP) and a late exhumation tied to the polyphase activity of the African Superplume.

810 4.2.1. Burial history

The burial history of this region relates to the evolution of the Main Karoo Basin (MKB) topped by the Drakensberg Group lavas. The Karoo sediments pinch out to the north (Johnson et al., 1997), from 8-9 km in thickness at the center of the Basin to 1.5 km south of Johannesburg (Fig. 1), the modern limit of the basin being erosional.

815 The onset of the MKB started with the demise of the LPIA dated to 296 Myr ago (Griffis et al., 2019a, 2021). Spatial extension of the Dwyka sediments is unknown: although it accumulated in the valleys (valley-fill facies association), no evidence indicates that the Ghaap plateau and Asbestos range were covered in glaciogenics. Sediments and lava of the Karoo Supergroup then accumulated; whereas thickest accumulation occurs at the center of the MKB, little is known about the thickness that accumulated on the paleohighlands (see figure 6 in Hanson et al., 2009). Thermochronological data are partly contradictory. Wildman et al. (2017) indicate that a linear cooling of 60°C occurred from 350 Myr to today, which would imply 2.4 km of erosion. In line with this, Hanson et al. (2009) and Stanley et al. (2013, 2015) postulate on the basis of kimberlite pipes that ca. 1.5-2 km of Karoo sediments have been eroded from the Ghaap plateau, as indicated by the hypabyssal facies of the 825 Makganyene kimberlite cropping out at the surface. Downrafted clasts derived from the surface at the time of kimberlite emplacement indicate that *at least* the Drakensberg basalts covered the paleohighland (Hanson et al., 2009). Contradictory to this model, Baughman and Flowers (2020) and Flowers & Schoene (2010) indicate an abrupt warming of 60°C between 280 and 250 Ma, followed by a quiescent period until 100 Ma. We posit that the whole Karoo Supergroup that existed over the 830 paleohighland must have been thinner than its counterpart in the basin by *at least* the difference in altitude between the paleohighland and the basin (ie the original height of the escarpment). Based on these findings, we have chosen to limit the extent of the sedimentary Karoo to the sedimentary basins whereas the Drakensberg basalts covers the entire study area, including the Ghaap plateau.

4.2.2. Exhumation history

835 The stratigraphy of the margin at the mouth of the Orange River demonstrates the presence of a proto-Orange delta from the uppermost Lower Cretaceous draining a large portion of the subcontinent (see Figure 4 in Baby et al., 2018b). This agrees with the thermochronological data from the southern



margin of the Cargonian Highland, which indicates denudation has started from 115 Myr (Flowers and Schoene, 2010), in agreement with the denudation pattern inferred from kimberlites erosion (Hanson et al., 2009; Stanley et al., 2013; Wildman et al., 2015). On a broader scale, thermochronometric data from Stanley et al. (2021) reveal two denudation pulses coinciding with an acceleration in offshore siliciclastic sedimentation rates (Baby et al., 2020), interpreted as reflecting the growth of the South African Plateau (Braun et al., 2014). The first major pulse occurred between 90 and 70 Myr (700 to 1200 m of exhumation) and a secondary one between 30 and 10 Myr (500 m) (Stanley et al., 2021).

845 4.3. Zimbabwe Highland

The burial-exhumation history of Zimbabwe is less well-constrained than its Namibian and South African counterparts, notably as no detailed stratigraphic surveys have been conducted. Strong discrepancies and contradiction moreover exist between geological and thermochronometrical data. The burial-history, as detailed below, is two-fold (Fig. 11c).

850 4.3.1. Burial history

In Zimbabwe, the precise age of the demise of the LPIA as well as glacial dynamics (ice flow directions, ice margin fluctuations etc.) and ice thicknesses are unknown. After glacial retreat, the landforms were covered by Karoo fluvial sediments of late Triassic age (Seward and Holtum, 1921) whose thickness is extremely restricted, from 0 (Somabula area, MacGregor, 1921) to 30 m (Featherstone area, Anderson, 1978). In Zimbabwe, sedimentary equivalent of the Main Karoo Basin of South Africa is either missing or highly condensed. The overlying Karoo basalts are also very thin, 10-50 m preserved in the Featherstone area (Anderson, 1978). Thermochronological data from Macintosh et al. (2017) indicate that a ca. 50°C warming occurred, from 300 to ca. 40-25 Ma, corresponding to a burial of 2 km. Compared to the preserved sediment thickness, thermochronological data would imply that a an almost 2 km-thick accumulation of Karoo sediments and/or basalts have been eroded away.

860 4.3.2. Exhumation history

Exhumation history is provided by thermochronological data (Macintosh et al., 2017) that indicate that denudation started around 40-25 Myr most likely due to uplift of the region. This is in good agreement with the initiation of the modern Zambezi Delta whose catchment area includes the studied area around 35 Myr (Salman and Abdula, 1995; Ponte et al., 2019). As for the Cargonian Highlands, the offshore stratigraphy of the margin surrounding Southern Africa can provides clues to the history of denudation on land. Thus, the sedimentary isopach map from Baby's (2017) (Figure 7.5 in Baby, 2017 and Figure 7.2 in Ponte, 2018), demonstrates the existence of a Limpopo proto-delta whose watershed may have drained the Zimbabwe region as early as the Lower Cretaceous.



5. Implication and Discussion

5.1. Post-LPIA evolution: rejuvenation of glacial surfaces, implication for paleoaltitudes and finite uplift of Southern Africa

We have shown that high-standing plateaus of southern Africa floored by Archean and Proterozoic rocks are exhumed glacial landscapes dating back *at least* 300 Ma, and therefore relate to the Gondwanan surfaces of King (1948), Twidale (1998) and others (e.g. Aizawa et al., 2000). Glacial landforms define a ‘surface of glacial landscape’ that used to be covered by thin Karoo sediments whose lowermost unit is the glaciogenic Dwyka Group deposited during the Late Paleozoic Ice Age (LPIA). Accordingly, this surface has been termed ‘ancestral glacial pre-Karoo peneplain’ (Wellington, 1937), ‘sub-Karoo surface’ (King, 1948) or more specifically ‘pre-Dwyka topography’ (du Toit, 1954; von Gottberg, 1970). Therefore, this ‘pre-Dwyka topography’ was carved through glacial scouring during the LPIA.

The preservation and latter rejuvenation of these glacial paleolandscapes are tied to a complex burial and exhumation history. It has been stated by Lister (1987) that these relict glacial landforms are ‘*most accurately seen in proximity to their contact with the cover*’. Therefore, these relict glacial landsurfaces are preserved and cropping out owing to the combination of three parameters:

- (i) The glacial landsurfaces were sufficiently covered by (Karoo) sediments that protected them from erosion and further obliteration.
- (ii) The sedimentary piles that once covered these surfaces were, on the other hand, thin enough, on paleo-upland and/or area characterized by weak subsidence, to have been eroded away by post-LPIA erosion, in order to expose the relict surfaces (Fig. 1b). These areas of limited sedimentary accumulation and rejuvenated glacial surface contrast with the center of the Karoo-aged basins where the sedimentary piles are too thick to have been eroded away in recent times. At the other end of the spectrum, areas that experienced early exhumation, because having been covered by only thin sediments, not covered at all, or experienced early tectonic uplift, have been eroded away and overprinted by more recent erosion processes. Lister (1987) summarized this concept as ‘*Older landsurfaces [...] are thereby buried or fossilized until such time as the overlying sediments or lavas are removed, thus permitting the older landsurfaces to become subaerial once again. Modern erosion quickly destroys the resurrected landsurfaces so that their original form is most accurately seen in proximity to their contact with the cover*’
- (iii) The erodibility contrast between the weathering-resistant Archean to Proterozoic basement into which the glacial reliefs developed, and the weaker, prone to erosion sedimentary and volcanic cover likely played a significant role in rejuvenating these surfaces (see also Braun et



905 al., 2014). Accordingly, post-LPIA erosion was likely significantly slowed down when
reaching the basement that therefore acted as a structurally-controlled erosion surface.
Therefore, these surfaces characterized by glacial landforms call into question their previous
interpretation as pediment (flat erosional surfaces bounded by escarpment but eroded in arid or humid
condition *sensu* Guillocheau et al., 2018) tied to the activity of the African superplume that led to
910 stepwise uplift of southern Africa since the Mesozoic (Braun et al., 2014; Guillocheau et al., 2018;
Baby et al., 2020). These paleolandscapes were characterized by stepped surfaces, escarpments and
valleys which cannot therefore be interpreted as planation surfaces and pediments (Guillocheau et al.,
2018). Care must therefore be taken when using the glacial surfaces as proxies for uplift of southern
Africa or when budgeting Mesozoic-Cenozoic erosion-sedimentation between land and continental
915 margins (Baby et al., 2020). Our study therefore emphasis the absolute need of considering the
morphological legacy of the Late Paleozoic Ice Age when assessing the evolution and modern aspect
of the landscapes of Southern Africa.

5.2. Pre-LPIA evolution: existing reliefs amplified by glacial erosion?

Three morphological segments are delineated within the ‘pre-Dwyka topography’ formed by glacial
920 erosion and planation processes during the LPIA, namely (1) the highlands, (2) the escarpments into
which glacial valleys and fjords are incised, and (3) the sedimentary basins (Fig. 10, 11 & 12). An
array of sedimentological, thermochronometrical, structural and chronological data however suggest
that glacial planation processes may have in fact reshaped and/or amplified an even older landscape
that existed before LPIA times, as it has been emphasized by various authors over the last century.
925 Below is a discussion on the origin of this threefold segmentation with regard to crustal and basement
structures, tectonic history and pre-LPIA erosion processes. As detailed below, the pre-Dwyka glacial
landscape likely resulted from a combination of ice sheet dynamics, pre-glacial landscape evolution
and underlying geology just as it is the case for Quaternary glacial landscapes (Jess et al., 2019).

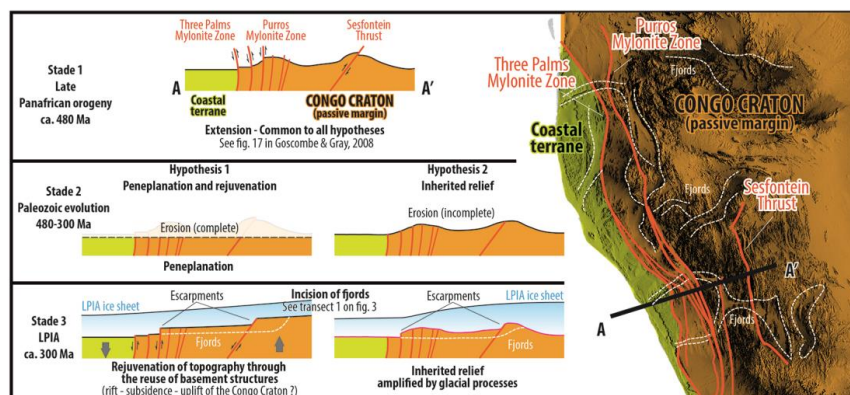
5.2.1. Highlands: planation surfaces, peneplains or rift shoulders reshaped by glacial 930 processes?

Over the Cargonian highland of the Kaapvaal craton, thermochronometrical data (Baughman
and Flowers, 2020) indicate that cooling, which reflects exhumation and erosion, prevailed since 1 Ga
until the LPIA, suggesting that the LPIA was the ultimate episode of a 700 Ma-long history of erosion
and planation. Furthermore, Archean rocks at the center of the Kaapvaal Craton yield apatite fission
935 track (AFT) ages of 331.0 ± 11.0 Myr and 379.0 ± 23.0 Myr (Wildman et al., 2017). In line with this,
De Wit (2016) suggested that the pre-Karoo surface is a palimpsest that corresponds in fact to an older
surface that already developed before the deposition of the Pretoria Group (Transvaal Supergroup)



during the Paleoproterozoic, was rejuvenated in pre-Karoo times by the scouring action of glaciers, and nowadays again cropping out (Eriksson et al., 2001).

940



945

950

Fig. 12: Structural map of the Kaoko Highland (Figs 2 and 3), faults are after Goscombe & Gray (2008) and two alternative models for the evolution of the escarpments and the associated valleys before the LPIA, as follows: Hypothesis 1 implies that the relief created at the end of the Panafrican orogeny around 480 Myr was entirely levelled down (peneplanation) before the LPIA and rejuvenated owing to vertical crustal movements during or immediately prior the LPIA whose ice flow carved valleys into it. Hypothesis 2 implies that the relief created by the Panafrican orogeny was only partly eroded during the time interval between the Panafrican orogeny and the LPIA and was amplified by glacial processes. The first stage representing the end of the Panafrican orogeny – extension tied to post-orogenic collapse – is common to both hypothesis and derived from the Goscombe & Gray (2008). See text for details.

955

The Kaoko region of NW Namibia corresponds tectonically to the Kaoko Branch of the Panafrican orogen that developed between the Congo Craton and other terranes 580-480 Myr ago (Goscombe and Gray, 2008). Therefore, the region may have been flattened through >180 Myr of peneplanation that had followed the orogeny until the LPIA. In that case, the Late Paleozoic highland would originate from the uplift of this peneplain immediately prior to, or during the LPIA. An alternative hypothesis would be that the Kaoko highland had remained high since the Cambrian (Doucouré and de Wit, 2003). This would require that the Kaoko relief was inherited from and compensated by the crustal structure of the Panafrican Orogen. Such a hypothesis of a very ancient isostatic support for high topography have been put forward by Pedersen et al. (2016) that postulate that the crustal structure that relates to the Caledonian orogeny, 400 Myr old, permitted to maintain the modern Scandinavian margin into which Quaternary fjords were carved at high elevation ever since.

965

It has been postulated that the northern rim of the Zimbabwe Highland was affected by rift processes in the Late Carboniferous, i.e. at the time of the LPIA (Daly et al., 1989; Nyambe, 1999; Mackintosh et al., 2017; Lopes et al., 2021). The Zimbabwe highland may therefore correspond to the shoulder of this E-W-oriented rift basin upon which the ice masses would have developed and

970



maintained (Eyles, 1993). Such a high-standing plateau would also explain the presence of a very thin
975 layer of Karoo Supergroup sediments, only a few tens of meters, for 120 Myr of evolution (see also
Macintosh et al., 2017).

Together, these lines of evidences strongly suggest that glacial processes reshaped an older
surface whose exact nature, most likely polygenic and polyphased, has yet to be unravelled. It must
finally be stated that even if little evidence for Ordovician (445 Myr) glacial activity is found over
980 Southern Africa, scouring action of Ordovician glaciers may have contributed to the shaping of the
landsurfaces within a period otherwise dominated by uplift and erosion processes, as indicated by
thermochronometrical constraints (Kounov et al., 2013; Baughman and Flowers, 2020, see also
Tankard et al., 2009), and therefore poor potential of preservation (Prasicek et al., 2015).

5.2.2. Escarpments and valleys: fault-controlled topographic steps localizing glacial 985 erosion?

The topographic escarpments at the edge of the modern highlands are conventionally interpreted as
scarps between planation surfaces, and the valleys incised within these scarps are sometimes taken for
pediments and pedivalleys that originated in the Cenozoic break-up system (Guillocheau et al., 2018).
In Namibia for example, the escarpment has been suggested to partly relate to Cretaceous rift
990 processes (Salomon et al., 2015). As it has been shown, these escarpments already existed by LPIA
times. In most instances over Southern Africa, the escarpments edging the highlands are surficial
expression of crustal-scale faults, either delineating the cratons and their surroundings accreted
terranes, intra-cratons faults or Paleozoic rift structures (Figs. 12 & 13; Daly et al., 1989; Tankard et
al., 2009a; Begg et al., 2015). These faults may have therefore been reused by glacial processes.

995 In Namibia, the escarpments edging the Kaoko highland into which paleofjords are carved
correspond to faults delineating the Congo Craton to the east and the Kaoko belt to the west (Fig. 12;
Goscombe & Gray, 2008). Therefore, considering the crustal structure and the structural evolution of
the region prior and during the LPIA, two hypotheses for the genesis of the escarpment and the
existence of the high ground are suggested, as summarized in figure 12:

1000 **(1) Hypothesis 1, peneplanation and rejuvenation:** In this hypothesis, relief generated
during the Pan-African orogeny that terminated around 480 Myr would have been flattened
through peneplanation for 180 Ma, until the LPIA. Immediately before or during the LPIA,
tectonic processes such as subsidence of the Kaoko belt that produced the Karoo-aged
basins and/or uplift of the Congo craton, reactivated basement structures and faults
1005 inherited from the Panafrican orogen and rejuvenated their surficial expression (Daly et al.,
1989; Pysklywec & Mitrovica, 1999; Pysklywec & Quintas, 1999; Tankard et al., 2009).
Tectonism and fault reactivation may relate to the extension as Karoo-aged rift systems
have been proposed for Northern Namibia (Daly et al., 1989; Clemson et al., 1997, 1999;
Aizawa et al., 2000). Such a Late Paleozoic rift system would be signified by



1010 thermochronometric data that indicate a period of enhanced exhumation during the
 Devonian-Carboniferous after a quiescent period that lasted between the Cambrian and the
 Devonian, itself following a period of exhumation (Late Neoproterozoic to Cambrian)
 interpreted as the peneplanation period (curves 1, 2 & 3 in figure 11 of Krob et al., 2020).

1015 **(2) Hypothesis 2, inherited high topography:** The alternative hypothesis is that the
 topographic escarpment formed during the Panafrican orogeny, marking the topographic
 boundary between different tectonic provinces, the Coastal Terrane and the Congo Craton,
 and persisted since then owing to incomplete peneplanation. This would indicate that the
 modern relief of the Kaoko is very old, dating to the early Phanerozoic, as it has also been
 suggested for the Scandinavian Margin by Pedersen et al. (2016) or the Canadian Shield by
 1020 (Ambrose, 1964)

These two hypotheses could also have existed jointly, as ‘King’s (1951) view is that the Great
 Escarpment is an amalgamation of different palaeotopographic elements’ (Aizawa et al., 2000).
 Moreover, the incision of fjords through the escarpment may have amplified the topography through
 isostatic uplift (Fig. 12; Medvedev et al., 2018; Pedersen et al., 2019). At this stage, it remains unclear
 1025 what controlled the path of local ice flows and its funnelling into what later became the fjords
 punctured through the escarpment (Kessler et al., 2008). These ice flow paths may correspond to zone
 of weakness in the underlying basement (e.g., different lithologies, pre-existing weathered areas,
 faults) or already existing relief possibly fluvial in origin (Visser, 1987a; Jamieson et al., 2008; Benn
 and Evans, 2010; Livingstone et al., 2017; Bernard et al., 2021); this later hypothesis is particularly
 1030 relevant when assuming the Kaoko as an ancient topography which experienced long surface exposure
 prior to the LPIA (hypothesis 1 above; fig. 12 left).

The southern flank of the Cargonian Highland in South Africa is also marked by an

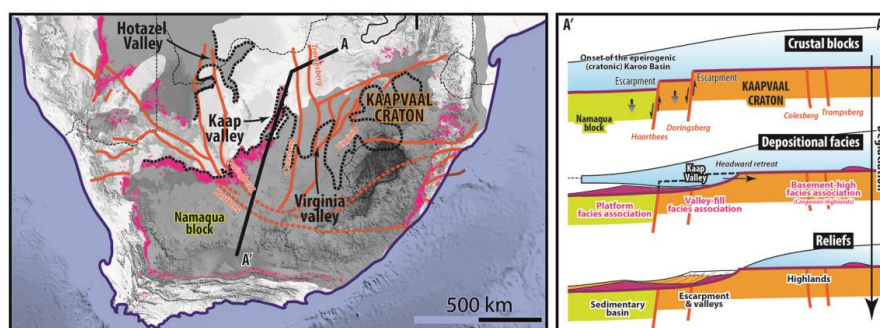


Fig. 13: (a) Structural map of the Main Karoo Basin and the Cargonian Highlands; faults are after Tankard et al. (2009); (b) proposed model for the carving of the Kaap valley (Fig. 6) that corresponds to a headward retreat of the valley due to glacial erosion from the offsetting Doringsberg fault. See text for details.



escarpment into which large glacial valleys are carved (the Kaap and Virginia valleys, fig. 13). These valleys funnelled ice flows and controlled mode of glaciogenic sedimentation. Here, the escarpments correspond to crustal structures (Fig. 13). Tankard et al. (2009) indicate that subsidence of the MKB started during the LPIA and was initially characterized by vertical motion of rigid crustal blocks that correspond to terranes accreted to the Kaapvaal craton, accommodated by crustal-scale faults between these terranes in an epeirogenic context. On the one hand, in the central MKB, the Virginia glacial valley is fault-controlled as well as the promontory between the Virginia and Kaap valleys (Fig. 13). The Kaap valley does not seem however to be associated to a fault and may therefore correspond to the headvalley retreat that originated from the escarpment formed by the offset of the Doringsberg fault (Fig. 13). On the other hand, in the eastern Karoo, the Natal escarpment into which smaller glacial valleys are carved (Fig. 10) corresponds to a basement step formed by the Tugela thrust front, delineating the Kaapvaal craton to the north and Natal Province to the South (see figure 13 in Tankard et al., 2009). We therefore posit that the escarpments and some glacial valleys correspond to surficial expression of basement structures (faults) reactivated immediately before or during the LPIA and exploited and enhanced by glacial erosion.

5.2.3. Karoo-aged sedimentary basins: dynamic subsidence or foreland?

Over Southern Africa, thermochronometrical data indicate that the Carboniferous-Permian period, ie the time of the LPIA, corresponds to a period of tectonic upheaval, namely a transition from compressional regime and uplift and erosion before the LPIA to a regional extensional subsidence and sedimentation and burial after the LPIA (Fig. 11) which likely allowed for preservation of the glacial erosion surfaces (Fig. 1). The pre-LPIA uplift likely resulted from the assembly of Pangea (Veevers et al., 1994; Tankard et al., 2009a). Afterwards, two subsidence mechanisms were proposed for the existence of the Main Karoo Basin of South Africa. Johnson et al. (1997), Catuneanu (2004), Catuneanu et al. (2005) and Isbell et al. (2008) postulated that subsidence originated from the isostatic and flexural deflection tied to the Cape Orogeny. However, orogeny likely started around the Permian-Triassic boundary, ca. 250 Myr ago, date at which the MKB started to function as a foreland (Linol & DeWit, 2016). Before this tectonic event, it has been proposed that the MKB originated from a lithospheric deflection pulled down by subduction-driven mantle flow, dynamic subsidence (Pysklywec and Mitrovica, 1999; Pysklywec and Quintas, 1999; Tankard et al., 2009). This dynamic subsidence was first marked by foundering of rigid crustal blocks along pre-existing crustal structures such as faults and then by long-wavelength subsidence (see details in Tankard et al., 2009).

1065



6. Conclusions and perspectives

1070 Linley A. Lister (née King, 1936-2016) wrote in 1987 in her treatise on ‘The Erosion surfaces of Zimbabwe’ that *In many respects the Pre-Karoo landscape of Zimbabwe was remarkably similar to that existing at the present day*. In the present contribution, we have demonstrated that the same applies to most cratonic areas floored by Archean to Proterozoic rocks over southern Africa. Our findings showcase that late Paleozoic glaciers shaped the Earth surface. Nowadays, after a 300 Ma-long history of burial and exhumation, preserving them from weathering and erosion, these glacial landscapes have been resurrected and characterize the modern landscape of southern Africa.

1075 These observations partly call into question the geomorphological studies carried out in southern Africa, which have interpreted the shelving of the subcontinent as reflecting successive phases of uplift since the break-up of Gondwana (e.g., Partridge and Maud, 1997, 2000; van der Beek et al., 2002; Burke and Gunnell, 2008, Guillocheau et al., 2018). Here, we highlight the importance of volcanic and sedimentary cover in preserving the ancient landforms that must be restored to understand the evolution of the southern African relief.

1080 Whilst our findings apply for southern Africa, similar inferences most likely hold for other cratonic areas that experienced the late Paleozoic Ice Age, as demonstrated by widespread striated surfaces and glacial morphological features or suggested by ancient (Carboniferous-Permian) thermochronometric ages:

- 1085 • In South America, where paleofjords characterize the edge of Karoo-aged basins (Kneller et al., 2004; Rosa et al., 2016; Tedesco et al., 2016; Mottin et al., 2018; Assine et al., 2018).
- Vast regions of Central Africa host relict glacial morphological features and glaciogenic sediments (Studt, 1913; Dixey, 1937; Boutakoff, 1948; Wopfner and Kreuser, 1986; Ring, 1995; Wopfner and Diekmann, 1996; Catuneanu et al., 2005b) and Carboniferous-Permian thermochronometric ages have been inferred for widespread erosion surfaces such as in Malawi (McMillan et al., 2022, see also Mathian et al., in press)
- 1090 • Likely in Madagascar, where glacial strata are found at the very base of the Karoo-aged Majunga and Morondava sedimentary basins (Rakotosolofo et al., 1999)
- 1095 • In India, where Dwyka-equivalent strata lie on the cratonic bedrock (Casshyap and Srivastava, 1987; Dasgupta, 2020)
- In Australia, where vast sedimentary basins bear Dwyka-equivalent strata over cratonic areas (Fielding et al., 2023)
- And in Antarctica where Rolland et al. (2019) postulate the presence of vast glacial landscapes inherited from the LPIA. It may even be conceivable that Cenozoic glacial erosion reused and superimposed glacial reliefs carved during the LPIA (e.g., Carter et al., 2023, this volume).
- 1100



Competing interests

The contact author has declared that none of the authors has any competing interests

1105 Acknowledgements

P. Dietrich and D. Le Heron acknowledge funding from the South Africa–Austria joint project of the National Research Foundation (NRF) of South Africa and the *Österreichischer Austauschdienst* of Austria (OEAD project ZA 08/2019). We dedicate this paper to Alexander du Toit (1878-1948), Henno Martin (1910-1998), Lester King (1907-1989), Linley Lister (1936-2016), Maarten de Wit
1110 (1947-2020), and Johann Visser whose work laid the groundwork of the ‘ancestral landscapes’ of southern Africa.

Figure captions

Fig. 1: (a) Modern relief of Southern Africa shown by Digital Elevation Model (DEM) from Shuttle Radar Topographic Mission (<https://www2.jpl.nasa.gov/srtm/>) along with major river networks,
1115 international borders and main cities. The transect highlights the high-standing plateaus. (b) Southern Africa with regions of interest discussed in the text shown by red frame. The Archean to Paleoproterozoic Congo, Kaapvaal and Zimbabwe cratons are evidenced by thick orange lines and Karoo-aged sedimentary basins are represented by grey shaded area. The glaciogenic Dwyka group is represented by pink colour. Inset map shows western Gondwana formed by Africa and South America
1120 and the four paleohighlands discussed in the text are evidenced in green. Transect displays the thickness and sedimentary succession of Main Karoo Basin (MKB) of South Africa, the glaciogenic Dwyka Group in pink, the glacial erosion surface (wavy pink line) at the base of the Karoo Supergroup and the underlying basement structure (cratons vs. accreted terranes). Transect modified after Johnson et al., 1996 and Karoo-aged basins after Catuneanu et al., 1998.

1125 Fig. 2: (a) DEM of the Kaoko region of Northern Namibia, corresponding to the Kaoko paleohighland. The escarpments, valleys and tongue-shaped troughs discussed in the text are arrowed. Location of the pictures are also indicated. Figure 1b for location. (b) the Gomatum valley corresponds to a fjord carved during the LPIA, later sealed and exhumed in recent times. See Dietrich et al., 2021 for further
1130 details. Valley is ca. 2.5 km wide and 550 m deep. (c) A field of *roches moutonnées* and whalebacks characterized by glacial striae and grooves and polished floors covered in places by boulder pavement, evidencing a westward ice movement. Circled geologist for scale, see Le Heron et al. (2024) for details. (d) Striated floor in the Kunene valley, plucking at the joint shows ice movement from east to west. Picture from Martin, 1961; (e) Glacially polished walls and (f) floor in NE Kaoko. Pictures taken
1135 by K.E.L. Schalk, geologist Henno Martin for scale, see Miller (2011).



1140 Fig. 3: Geological map indicating the Karoo Supergroup and morphostratigraphic transects across the Kaoko highland, highlighting the morphology of the Kunene, Kaoko, Huab-Ugab regions and the associated glacial valleys and troughs. Etendeka lavas are represented in green, non-glaciogenic Karoo sediments in yellow and Dwyka glaciogenics in pink, or indicated by pink arrows. Black dashed lines on the map represent outlines of exhumed glacial reliefs and valleys; solid purple lines on morphostratigraphic transects represent glacial surfaces and dashed purple lines represent suspected glacial surfaces. Bedrock in grey indicates substrate older than the Karoo Supergroup. Note that this colouration is consistently used throughout the manuscript. Fig. 1b for location.

1145

Fig. 4: (a) DEM of the western coastal Kaoko region and (b) morphostratigraphic transect. In the Purros canyon are remnants of glaciogenic sediments, and therefore the canyon is tentatively interpreted here as a relict glacial landform. See Fig. 2 for location.

1150

Fig. 5: (a) DEM of the Windhoek highland (central Namibia), (b) their morphostratigraphic transects. And (c) mosaic picture of the U-shaped Nausgamab valley interpreted by Martin (1961) as a potential glacial valley (see also Miller, 2011). Faupel (1974) reported glaciogenic sediments in the vicinity of this valley; (d) DEM of the Naukluft mountain crosscut by the U-shaped Tsondab valley interpreted by Korn & Martin (1959) and Martin (1961) as a glacial valley. (e) morphostratigraphic transect and

1155

(f) picture of the Tsondab valley. Fig. 1b for location.

Fig. 6: DEM of the SW Cargonian Highland (central South Africa and southern Botswana; Fig. 1b for location) and associated geological transects. Widespread Dwyka outcrops in the Kaap valley visible in the landscape interpreted here as an exhumed glacial valley. Diamonds represent kimberlite pipes used for reconstruction in fig. 11. Inset photo: close-up view of the Nooitgedacht glacial pavement (whaleback) in Slater (1932). Circled hammer on the left for scale.

1160

Fig. 7: (a) DEM of the central Cargonian Highland (Johannesburg-Pretoria-Witwatersrand area on the Kaapvaal craton, central South Africa). Fig. 1b for location. The Mooi and Harts river valleys, highlighted by white dashed lines, and the surrounding areas, are interpreted by De Wit (2016) as an exhumed glacial surface. Similarly, the Witbank region to the east, and the Vredefort dome to the south are also interpreted as exhumed glacial surfaces (see text for detail). In between, the Witwatersrand region, the Magaliesburg range, the Pilanesberg dome and the cities of Johannesburg and Pretoria also probably sit on a glacial surface, although further work need to be done to confirm such a hypothesis. (b) View of the Vredefort dome area where the Vaal river valley shows a U-shaped profile reminiscent of glacial erosion. A small portion of the Vaal River floodplain is seen at centre-right (Fig. 4.5 in Gibson & Reimold, 2015)

1165

1170



1175

Fig. 8: (a) DEM of the eastern Cargonian Highland (edge of the Main Karoo Basin; Kaapvaal craton, eastern South Africa) and morphostratigraphic transect highlighting the Tugela valley as an exhumed glacial landscape. Fig. 1b for location. See Details in Dietrich & Hofmann (2019). (b) Bank of the Buffalo River exhuming a glacial valley. Stratified, steeply-dipping rock on the right corresponds to Archean Pongola Supergroup quartzite into which steep-flanked relief were carved and upon which coarse-grained deposits corresponding to glaciogenics of the Dwyka Group are plastered

1180

Although the Dwyka sediments are steeply-dipping on the flank of the (paleo)valley, they become horizontal in the river thalweg. Circled geologist for scale; (c) Landscapes of rolling hills corresponding to an exhumed glacial landscape. The relief is carved into Archean Pongola quartzite

1185

seen in the foreground: topographic lows preserve remnants of glaciogenic sediments whose bulk has been eroded away by recent erosion, resurrecting the glacial landscape. Striated pavements, such as the ones showcase on fig. 7d and 7e, characterize basement floors. (d) Striated floors carved onto volcanic rocks of Archean greenstone belt, plucking of the joint at the foreground indicate an SSW ice movement. (e) Striated and polished glacial floor exposed in a stream, and showcasing a small-scale

1190

roche moutonnée behind the circled hammer, evidencing an ice movement to the SSW. The glacial floor is still covered in place by remnants of glaciogenic sediments. (f) A U-shaped trough, 800 m wide and 100 m deep carved by glacial erosion into Archean Pongola quartzites. Remnants of glaciogenic sediments are still present. Picture from Dietrich & Hofmann (2019).

1195

Fig. 9: DEM of the Zimbabwe Highland (central Zimbabwe) and morphostratigraphic transects across the Great Dyke, the Mwanesi Greenstone Belt and the Somabula region. The reader is redirected to Moore & Moore (2006), Moore et al. (2009) and Lister (1986) for further details. Fig. 1b for location.

1200

Fig. 10: (a) Synthesis of glacial paleolandscapes at the scale of Southern Africa. Dark pink indicates attested glacial surface and light pink suspected glacial surfaces whose compilation is based on the presence of glacial morphological features (see text for details). Dark grey regions are Karoo-aged basins. Exhumed paleo-escarpments are represented by black bold lines and escarpments still buried under sediments are after Visser, 1987a, 1987b. Light orange region corresponds to surficial sediments of the Kalahari Desert, after Haddon (2005). (b) Proposed paleogeographic reconstruction of Southern Africa at the end of the LPIA. Blue-grey areas represent highlands whose names are written in green, sedimentary basins are represented in dark yellow where attested or light yellow where suspected.

1205

Escarpments delineating the highlands from the basins and glacial valleys carved into it are represented as bold solid lines where attested or as dashed lines where suspected (see Visser, 1987a, 1987b). Hills or mountainous regions are also indicated. Region where no data is available mostly



correspond to the Kalahari Desert – see fig. 10a above. Names of glacial valleys and escarpments refer
1210 to those discussed in the text to which the reader is redirected for further details.

Fig. 11: Burial-exhumation history models the Kaoko (Fig. 2), Cargonian (Fig. 6) and Zimbabwe (Fig.
9) highlands. Thermochronological inferences are provided in the graphs, exhumation evidenced from
kimberlites for the Cargonian Highlands are displayed in red and sediment volume accumulated on the
1215 continental margins are showcased in yellow. Raab et al. (2005), Krob et al. (2019) and Margirier et
al. (2019) for the Kaoko; Stanley et al. (2015, 2019, 2021) and Wildman et al., 2015 for central south
Africa and Mackintosh et al. (2017) for central Zimbabwe.

Fig. 12: Structural map of the Kaoko Highland (Fig. 2 and 3), faults are after Goscombe & Gray
1220 (2008) and two alternative models for the evolution of the escarpments and the associated valleys
before the LPIA, as follows: Hypothesis 1 implies that the relief created at the end of the Panafrican
orogeny around 480 Myr was entirely levelled down (peneplanation) before the LPIA and rejuvenated
owing to vertical crustal movements during or immediately prior the LPIA whose ice flow carved
valleys into it. Hypothesis 2 implies that the relief created by the Panafrican orogeny was only partly
1225 eroded during the time interval between the Panafrican orogeny and the LPIA and was amplified by
glacial processes. The first stage representing the end of the Panafrican orogeny – extension tied to
post-orogenic collapse – is common to both hypothesis and derived from the Goscombe & Gray
(2008). See text for details.

1230 Fig. 13: (a) Structural map of the Main Karoo Basin and the Cargonian Highlands; faults are after
Tankard et al. (2009); (b) proposed model for the carving of the Kaap valley (Fig. 6) that corresponds
to a headward retreat of the valley due to glacial erosion from the offsetting Doringsberg fault. See
text for details.

Reference cited

1235 **Aizawa, M., Bluck, B.J., Cartwright, J., Milner, S., Swart, R., and Ward, J.D.**, 2000, Constraints
on the geomorphological evolution of Namibia from the offshore stratigraphic record:
Communications Geological Survey Namibia, v. 12, p. 38–393.

Ambrose, J. W., 1964, Exhumed paleoplains of the Precambrian Shield of North America: American
Journal of Science, v. 262, p. 817–857.

1240 **Anderson, C.**, 1978, THE GEOLOGY OF THE EAST CHARTER AREA: THE GEOLOGY OF
THE EAST CHARTER AREA.,

Andrews, G.D., McGrady, A.T., Brown, S.R., and Maynard, S.M., 2019, First description of



subglacial megalineations from the late Paleozoic ice age in southern Africa: PLoS ONE, v. 14, p. 1–10.

- 1245 **Assine, M.L., de Santa Ana, H., Veroslavsky, G., and Vesely, F.F.**, 2018, Exhumed subglacial landscape in Uruguay: Erosional landforms, depositional environments, and paleo-ice flow in the context of the late Paleozoic Gondwanan glaciation: *Sedimentary Geology*, v. 369, p. 1–12.
- Baby, G.**, 2017, Mouvements verticaux des marges passives d’Afrique australe depuis 130 Ma, étude couplée : stratigraphie de bassin - analyse des formes du relief: Université de Rennes 1, 369 p.
- 1250 **Baby, G., Guillocheau, F., Boulogne, C., Robin, C., and Dall’Asta, M.**, 2018a, Uplift history of a transform continental margin revealed by the stratigraphic record: The case of the Agulhas transform margin along the Southern African Plateau: *Tectonophysics*, v. 731–732, p. 104–130.
- Baby, G., Guillocheau, F., Morin, J., Ressouche, J., Robin, C., Broucke, O., and Dall’Asta, M.**, 2018b, Post-rift stratigraphic evolution of the Atlantic margin of Namibia and South Africa: Implications for the vertical movements of the margin and the uplift history of the South African Plateau: *Marine and Petroleum Geology*, v. 97, p. 169–191.
- 1255 **Baby, G., Guillocheau, F., Braun, J., Robin, C., and Dall’Asta, M.**, 2020, Solid sedimentation rates history of the Southern African continental margins: Implications for the uplift history of the South African Plateau: *Terra Nova*, v. 32, p. 53–65.
- 1260 **Backeberg, N.R., and Rowe, C.D.**, 2009, Mega-scale (~50m) Ordovician load casts at de balie, South Africa: Possible sediment fluidization by thermal destabilisation: *South African Journal of Geology*, v. 112, p. 187–196.
- Bangert, B., Armstrong, R., Stollhofen, H., Lorenz, V., and Armstrong, R.**, 1999, The geochronology and significance of ash-fall tuffs in the glaciogenic Carboniferous-Permian Dwyka Group of Namibia and South Africa: *Journal of African Earth Sciences*, v. 29, p. 33–49.
- 1265 **Baughman, J.S., and Flowers, R.M.**, 2020, Mesoproterozoic burial of the Kaapvaal craton, southern Africa during Rodinia supercontinent assembly from (U-Th)/He thermochronology: *Earth and Planetary Science Letters*, v. 531.
- van der Beek, P., Summerfield, M.A., Braun, J., Brown, R.W., and Fleming, A.**, 2002, Modeling postbreakup landscape development and denudational history across the southeast African (Drakensberg Escarpment) margin: *Journal of Geophysical Research: Solid Earth*, v. 107, p. ETG 11-1-ETG 11-18.
- 1270 **Begg, G.C. et al.**, 2009, The lithospheric architecture of Africa: Seismic tomography, mantle petrology, and tectonic evolution: *Geosphere*, v. 5, p. 23–50.



- 1275 **Belica, M.E., Tohver, E., Poyatos-Moré, M., Flint, S., Parra-Avila, L.A., Lanci, L., Denyszyn, S., and Pisarevsky, S.A.**, 2017, Refining the chronostratigraphy of the Karoo Basin, South Africa: Magnetostratigraphic constraints support an early Permian age for the Eccra Group: *Geophysical Journal International*, v. 211, p. 1354–1374.
- Benn, D.I., and Evans, D.J.A.**, 2010, *Glaciers and glaciation*: London, Hodder Edition, 817 p.
- 1280 **Bernard, M., Steer, P., Gallagher, K., and Egholm, D.L.**, 2020, Modelling the effects of ice transport and sediment sources on the form of detrital thermochronological age probability distributions from glacial settings: *Earth Surface Dynamics*, v. 8, p. 931–953.
- Bernard, M., Steer, P., Gallagher, K., and Egholm, D.L.**, 2021, The Impact of Lithology on Fjord Morphology: *Geophysical Research Letters*, v. 48, p. 1–10.
- 1285 **Blignault, H.J., and Theron, J.N.**, 2017, Diapirism and the fold zone controversy of the ordovician glaciomarine pakhuis formation, South Africa: *South African Journal of Geology*, v. 120, p. 209–222.
- Blignault, H.J., and Theron, J.N.**, 2010, Reconstruction of the ordovician pakhuis ice sheet, South Africa: *South African Journal of Geology*, v. 113, p. 335–360.
- 1290 **Bond, G., and Stockmayer, V.R.C.**, 1967, Possible ice-margin fluctuations in the Dwyka series in Rhodesia: *Palaeogeography, Palaeoclimatology, Palaeoecology*, v. 3, p. 433–446.
- Bordy, E.M.**, 2018, Lithostratigraphy of the Tshidzi Formation (Dwyka Group, Karoo Supergroup), South Africa: *South African Journal of Geology*, v. 121, p. 109–118.
- Bordy, E.M., and Catuneanu, O.**, 2003, Sedimentology of the lower Karoo Supergroup fluvial strata in the Tuli Basin, South Africa: *Journal of African Earth Sciences*, v. 35, p. 503–521.
- 1295 **Boutakoff, N.**, 1948, Les Formations glaciaires et postglaciaires fossilifères, d'âge permo-carbonifère (Karoo Inférieur) de la région de Walikale (Kivu, Congo Belge): *Mémoire de l'institut Géologique de l'Université de Louvain*, v. 9, p. 124.
- Braun, J.**, 2018, A review of numerical modeling studies of passive margin escarpments leading to a new analytical expression for the rate of escarpment migration velocity: *Gondwana Research*, v. 53, p. 209–224.
- 1300 **Braun, J.**, 2010, The many surface expressions of mantle dynamics: *Nature Geoscience*, v. 3, p. 825–833.
- Braun, J., Guillocheau, F., Robin, C., Baby, G., and Jelsma, H.**, 2014, Rapid erosion of the southern African Plateau as it climbs over a mantle superplume: *Journal of Geophysical*
- 1305



Research: Solid Earth, v. 119, p. 6093–6112.

- Brown, R.W., Summerfield, M.A., and Gleadow, A.J.W.**, 2002, Denudational history along a transect across the Drakensberg Escarpment of southern Africa derived from apatite fission track thermochronology: *Journal of Geophysical Research: Solid Earth*, v. 107.
- 1310 **Burke, K., and Gunnell, Y.**, 2008, The African Erosion Surface: A Continental-Scale Synthesis of Geomorphology, Tectonics, and Environmental Change over the Past 180 Million Years: *Memoir of the Geological Society of America*, v. 201, p. 1–66.
- Cairncross, B.**, 2001, An overview of the Permian (Karoo) coal deposits of southern Africa: *Journal of African Earth Sciences*, v. 33, p. 529–562.
- 1315 **Cairncross, B., and Cadle, A.B.**, 1988, Palaeoenvironmental control on coal formation, distribution and quality in the Permian Vryheid Formation, East Witbank Coalfield, South Africa: v. 9, p. 343–370.
- Carter, C. M., Bentley, M. J., Jamieson, S. S. R., Paxman, G. J. G., Jordan, T. A., Bodart, J. A., Ross, N., & Napoleoni, F.** [preprint], Extensive palaeo-surfaces beneath the Evans-Rutford region of the West Antarctic Ice Sheet control modern and past ice flow, *EGUsphere*, <https://doi.org/10.5194/egusphere-2023-2433>, 2023
- 1320
- Casshyap, S.M., and Srivastava, V.K.**, 1987, Glacial and proglacial Talchir sedimentation in Son-Mahanadi Gondwana Basin: Paleogeographic reconstruction: *Gondwana Six: Stratigraphy, Sedimentology, and Paleontology*, Volume 41,.
- Catuneanu, O.**, 2004, Basement control on flexural profiles and the distribution of foreland facies: The Dwyka Group of the Karoo Basin, South Africa: *Geology*, v. 32, p. 517–520.
- 1325
- Catuneanu, O., Hancox, P.J., and Rubidge, B.S.**, 1998, Reciprocal flexural behaviour and contrasting stratigraphies: A new basin development model for the Karoo retroarc foreland system, South Africa: *Basin Research*, v. 10, p. 417–439.
- 1330 **Catuneanu, O., Wopfner, H., Eriksson, P.G., Cairncross, B., Rubidge, B.S., Smith, R.M.H.H., and Hancox, P.J.**, 2005, The Karoo basins of south-central Africa: *Journal of African Earth Sciences*, v. 43, p. 211–253.
- Cawthorn, R.G., Knight, J., and McCarthy, T.S.**, 2015, Geomorphological Evolution of the Pilanesberg, *in* *World Geomorphological Landscapes*, Springer, Cham, p. 39–46.
- 1335 **Clemson, J., Cartwright, J., and Booth, J.**, 1997, Structural segmentation and the influence of basement structure on the Namibian passive margin: *Journal of the Geological Society*, v. 154, p. 477–482.



- Clemson, J., Cartwright, J., and Swart, R.**, 1999, The Namib Rift: a rift system of possible Karoo age, offshore Namibia: Geological Society Special Publication, v. 153, p. 381–402.
- 1340 **Cloos, H.**, 1915, Die unterkarbonischen Glazialbildungen des Kaplandes: Geologische Rundschau, v. 6, p. 337–351.
- Couette, P.O., Lajeunesse, P., Ghienne, J.F., Dorschel, B., Gebhardt, C., Hebbeln, D., and Brouard, E.**, 2022, Evidence for an extensive ice shelf in northern Baffin Bay during the Last Glacial Maximum: Communications Earth and Environment, v. 3.
- 1345 **Crowell, J.C., and Frakes, L.A.**, 1972, Late paleozoic glaciation: Part V, Karroo Basin, South Africa: Bulletin of the Geological Society of America, v. 83, p. 2887–2919.
- Cui, X. et al.**, 2022, Global fjords as transitory reservoirs of labile organic carbon modulated by organo-mineral interactions: Science Advances, v. 8.
- Cui, X., Bianchi, T.S., Savage, C., and Smith, R.W.**, 2016, Organic carbon burial in fjords: Terrestrial versus marine inputs: Earth and Planetary Science Letters, v. 451, p. 41–50.
- 1350 **Daly, M.C., Chorowicz, J., and Fairhead, J.D.**, 1989, Rift basin evolution in Africa: The influence of reactivated steep basement shear zones: Geological Society Special Publication, v. 44, p. 309–334.
- Dasgupta, P.**, 2020, Formation of intracratonic Gondwana basins: Prelude of Gondwana fragmentation? Journal of Mineralogical and Petrological Sciences, v. 115, p. 192–201.
- 1355 **Dauteuil, O., Deschamps, F., Bourgeois, O., Mocquet, A., and Guillocheau, F.**, 2013, Post-breakup evolution and palaeotopography of the North Namibian Margin during the Meso-Cenozoic: Tectonophysics, v. 589, p. 103–115.
- Davies, N.S., Shillito, A.P., and Penn-clarke, C.R.**, 2020, Cold Feet : trackways and burrows in ice-marginal strata of the end-Ordovician glaciation (Table Mountain Group , South Africa):
- 1360 **Deynoux, M., and Ghienne, J.F.**, 2004, Late Ordovician glacial pavements revisited: A reappraisal of the origin of striated surfaces: Terra Nova, v. 16, p. 95–101.
- Diester-Haass, L., Meyers, P.A., and Rothe, P.**, 1990, Miocene history of the Benguela Current and Antarctic ice volumes: Evidence from rhythmic sedimentation and current growth across the Walvis Ridge (Deep Sea Drilling Project Sites 362 and 532): Paleoceanography, v. 5, p. 685–707.
- 1365 **Dietrich, P., Franchi, F., Setlhabi, L., Prevec, R., and Bamford, M.**, 2019, The nonglacial diamictite of Toutswe mogala Hill (Lower Karoo Supergroup, Central Botswana): Implications



- 1370 on the extent of the Late Paleozoic ice age in the Kalahari–Karoo basin: *Journal of Sedimentary Research*, v. 89, p. 875–889.
- Dietrich, P., Ghienne, J.-F., Lajeunesse, P., Normandeau, A., Deschamps, R., and Razin, P.**, 2018, Deglacial sequences and glacio-isostatic adjustment: Quaternary compared with Ordovician glaciations: Geological Society, London, Special Publications, v. 475, p. SP475.9.
- 1375 **Dietrich, P., Ghienne, J.F., Schuster, M., Lajeunesse, P., Nutz, A., Deschamps, R., Roquin, C., and Düringer, P.**, 2017, From outwash to coastal systems in the Portneuf–Forestville deltaic complex (Québec North Shore): Anatomy of a forced regressive deglacial sequence (C. Fielding, Ed.): *Sedimentology*, v. 64, p. 1044–1078.
- 1380 **Dietrich, P., Griffis, N.P., Le Heron, D.P., Montañez, I.P., Kettler, C., Robin, C., and Guillocheau, F.**, 2021, Fjord network in Namibia: A snapshot into the dynamics of the late Paleozoic glaciation: *Geology*, v. 49, p. 1521–1526.
- Dietrich, P., and Hofmann, A.**, 2019, Ice-margin fluctuation sequences and grounding zone wedges: The record of the Late Palaeozoic Ice Age in the eastern Karoo Basin (Dwyka Group, South Africa): *The Depositional Record*, v. 5, p. 247–271.
- 1385 **Ding, X., Salles, T., Flament, N., Mallard, C., and Rey, P.F.**, 2019, Drainage and Sedimentary Responses to Dynamic Topography: *Geophysical Research Letters*, v. 46, p. 14385–14394.
- Dixey, F.**, 1937, The pre-Karoo landscape of the Lake Nyasa Region, and a comparison of the karroo structural directions with those of the Rift Valley: *Quarterly Journal of the Geological Society of London*, v. 93, p. 77–93.
- 1390 **Dodd, S.C., Mac Niocaill, C., and Muxworthy, A.R.**, 2015, Long duration (>4 Ma) and steady-state volcanic activity in the early Cretaceous Paraná–Etendeka Large Igneous Province: New palaeomagnetic data from Namibia: *Earth and Planetary Science Letters*, v. 414, p. 16–29.
- Doucouré, C.M., and de Wit, M.J.**, 2003, Old inherited origin for the present near-bimodal topography of Africa: *Journal of African Earth Sciences*, v. 36, p. 371–388.
- 1395 **Dowdeswell, J.A., Canals, M., Jakobsson, M., Todd, B.J., Dowdeswell, E.K., and Hogan, K.A.**, 2016, Atlas of Submarine Glacial Landforms: Modern, Quaternary and Ancient: Geological Society, London, Memoirs, v. 46, p. NP.1–NP.
- Dunn, J.E.**, 1898, Northward extension of Derrinal Conglomerate (Glacial): *Proceedings Royal Society Victoria*, v. 10, p. 204.
- 1400 **Dunn, J.E.**, 1886, Report on a supposed extensive deposit of coal underlying the central district of the Colony (R. and Sons, Ed.): Cape Town.



- Egholm, D.L., Jansen, J.D., Brædstrup, C.F., Pedersen, V.K., Andersen, J.L., Ugelvig, S. V., Larsen, N.K., and Knudsen, M.F.**, 2017, Formation of plateau landscapes on glaciated continental margins: *Nature Geoscience*, v. 10, p. 592–597.
- Eriksson, P.G., Altermann, W., Catuneanu, O., Van der Merwe, R., and Bumby, A.J.**, 2001, 1405 Major influences on the evolution of the 2.67-2.1 Ga Transvaal basin, Kaapvaal craton: *Sedimentary Geology*, v. 141–142, p. 205–231.
- Erlank, A.J., Marsh, J.S., Duncan, A.R., Miller, R.M., and Hawkesworth, C.J.**, 1984, 1410 Geochemistry and petrogenesis of the Etendeka volcanic rocks from SWA/Namibia. In: *Petrogenesis of the volcanic rocks of the Karoo Province: Geological Society of South Africa (Special Publication)*, v. 13, p. 185–247.
- Eyles, N.**, 1993, Earth's glacial record and its tectonic setting: *Earth Science Reviews*, v. 35, p. 1–248.
- Faupel, J.**, 1974, *Geologisch-mineralogische Untersuchungen am Donkerhoek-Granit(Karibib-District, Südwest-Afrika): Göttinger Arb. Geol. Paläont.*, v. 15, p. 95.
- Feakins, S.J., and Demenocal, P.B.**, 2012, Global and African Regional Climate during the 1415 Cenozoic, *in Cenozoic Mammals of Africa*, University of California Press, p. 45–56.
- Fedorchuk, N.D., Isbell, J.L., Rosa, E.L.M., Swart, R., and McNall, N.B.**, 2023, Reappraisal of exceptionally preserved s-forms, striae, and fractures from late Paleozoic subglacial surfaces in paleofjords, NW Namibia: *Sedimentary Geology*, v. 456.
- Fernandes, P., Hancox, P.J., Mendes, M., Pereira, Z., Lopes, G., Marques, J., Jorge, R.C.G.S., and Albardeiro, L.**, 2023, The age and depositional environments of the lower Karoo Moatize Coalfield of Mozambique: insights into the postglacial history of central Gondwana: *Palaeoworld*.
- Fielding, C.R., Frank, T.D., and Birgenheier, L.P.**, 2023, A revised, late Palaeozoic glacial time-space framework for eastern Australia, and comparisons with other regions and events: *Earth-Science Reviews*, v. 236. 1425
- Fielding, C.R., Frank, T.D., and Isbell, J.L.**, 2008, The late Paleozoic ice age; a review of current understanding and synthesis of global climate patterns: *Special Paper - Geological Society of America*, v. 441, p. 343–354.
- Fildani, A., Drinkwater, N.J., Weislogel, A., McHargue, T., Hodgson, D.M., and Flint, S.S.**, 2007, 1430 Age Controls on the Tanqua and Laingsburg Deep-Water Systems: New Insights on the Evolution and Sedimentary Fill of the Karoo Basin, South Africa: *Journal of Sedimentary Research*, v. 77, p. 901–908.



- Fildani, A., Weislogel, A., Drinkwater, N.J., McHargue, T., Tankard, A., Wooden, J., Hodgson, D., and Flint, S.**, 2009, U-Pb zircon ages from the southwestern Karoo Basin, South Africa - Implications for the Permian-Triassic boundary: *Geology*, v. 37, p. 719–722.
1435
- Flowers, R.M., and Schoene, B.**, 2010, (U-Th)/He thermochronometry constraints on unroofing of the eastern Kaapvaal craton and significance for uplift of the southern African plateau: *Geology*, v. 38, p. 827–830.
- Fourie, P.H. et al.**, 2010, Glacial Ordovician new evidence in the Pakhuis Formation, South Africa : sedimentological investigation and palaeo-environmental reconstruction: *South African Journal of Geology*, v. 114, p. 2009–10536.
1440
- Franchi, F., Kelepile, T., Di Capua, A., De Wit, M.C.J., Kemiso, O., Lasarwe, R., and Catuneanu, O.**, 2021, Lithostratigraphy, sedimentary petrography and geochemistry of the Upper Karoo Supergroup in the Central Kalahari Karoo Sub-Basin, Botswana: *Journal of African Earth Sciences*, v. 173, p. 104025.
1445
- Frizon De Lamotte, D., Fourdan, B., Leleu, S., Leparmentier, F., and De Clarens, P.**, 2015, Style of rifting and the stages of Pangea breakup: *Tectonics*, v. 34, p. 1009–1029.
- Gallagher, K., and Brown, R.**, 1999, The Mesozoic denudation history of the Atlantic margins of southern Africa and southeast Brazil and the relationship to offshore sedimentation: *Geological Society Special Publication*, v. 153, p. 41–53.
1450
- Ghienne, J., Le Heron, D.P., Moreau, J., Denis, M., and Deynoux, M.**, 2007, The Late Ordovician glacial sedimentary system of the North Gondwana platform: *International Association of Sedimentologists Special Publications*,.
- Gibson, R.L., and Reimold, W.U.**, 2015, Landscape and Landforms of the Vredefort Dome: Exposing an Old Wound: *World Geomorphological Landscapes*, p. 31–38.
1455
- Gilchrist, A.R., Kooi, H., and Beaumont, C.**, 1994, Post-Gondwana geomorphic evolution of southwestern Africa: implications for the controls on landscape development from observations and numerical experiments: *Journal of Geophysical Research*, v. 99.
- Goddéris, Y., Donnadiou, Y., Carretier, S., Aretz, M., Dera, G., MacOuin, M., and Regard, V.**, 2017, Onset and ending of the late Palaeozoic ice age triggered by tectonically paced rock weathering: *Nature Geoscience*, v. 10, p. 382–386.
1460
- Gomes, A.S., and Vasconcelos, P.M.**, 2021, Geochronology of the Paraná-Etendeka large igneous province: *Earth-Science Reviews*, v. 220, p. 103716.
- Goscombe, B.D., and Gray, D.R.**, 2008, Structure and strain variation at mid-crustal levels in a



- 1465 transpressional orogen : A review of Kaoko Belt structure and the character of West Gondwana
 amalgamation and dispersal: v. 13.
- von Gottberg, B.**, 1970, The occurrence of Dwyka Rocks and glacial topography in the South-
Western Transvaal: Transactions of the geological Society of South Africa,.
- Götz, A.E., Ruckwied, K., and Wheeler, A.**, 2018, Marine flooding surfaces recorded in Permian
1470 black shales and coal deposits of the Main Karoo Basin (South Africa): Implications for basin
 dynamics and cross-basin correlation: International Journal of Coal Geology, v. 190, p. 178–190.
- Goudie, A., and Viles, H.**, 2015, Landscapes and Landforms of Namibia:
- Green, P.F., Duddy, I.R., Japsen, P., Bonow, J.M., and Malan, J.A.**, 2017, Post-breakup burial and
exhumation of the southern margin of Africa: Basin Research, v. 29, p. 96–127.
- 1475 **Griffis, N.P., Mundil, R., Montañez, I.P., Isbell, J., Fedorchuk, N., Vesely, F., Iannuzzi, R., and
 Yin, Q.Z.**, 2018, A new stratigraphic framework built on U-Pb single-zircon TIMS ages and
 implications for the timing of the penultimate icehouse (Paraná Basin, Brazil): Bulletin of the
 Geological Society of America, v. 130, p. 848–858.
- Griffis, N.P. et al.**, 2019a, Coupled stratigraphic and U-Pb zircon age constraints on the late Paleozoic
1480 icehouse-to-greenhouse turnover in south-central Gondwana: Geology, v. 47, p. 1146–1150.
- Griffis, N.P. et al.**, 2019b, Isotopes to ice: Constraining provenance of glacial deposits and ice centers
in west-central Gondwana: Palaeogeography, Palaeoclimatology, Palaeoecology, v. 531, p.
108745.
- Griffis, N. et al.**, 2021, High-latitude ice and climate control on sediment supply across SW
1485 Gondwana during the late Carboniferous and early Permian: Bulletin of the Geological Society
 of America, v. 133, p. 2113–2124.
- Griffis, N., Mundil, R., Montañez, I., Le Heron, D., Dietrich, P., and Iannuzzi, R.**, 2023, A
Carboniferous apex for the late Paleozoic icehouse: Geological Society, London, Special
Publications, v. 535, p. 117–129.
- 1490 **Grimaud, J.L., Rouby, D., Chardon, D., and Beauvais, A.**, 2018, Cenozoic sediment budget of
 West Africa and the Niger delta: Basin Research, v. 30, p. 169–186.
- Guillocheau, F.**, 2018, La diversité de l’architecture des bassins de rift: Géochronique, v. 145, p. 52–
56.
- Guillocheau, F., Rouby, D., Robin, C., Helm, C., Rolland, N., Le Carlier de Veslud, C., and
1495 Braun, J.**, 2012, Quantification and causes of the terrigenous sediment budget at the scale of a



continental margin: A new method applied to the Namibia-South Africa margin: *Basin Research*, v. 24, p. 3–30.

Guillocheau, F., Simon, B., Baby, G., Bessin, P., Robin, C., and Dauteuil, O., 2018, Planation surfaces as a record of mantle dynamics: The case example of Africa: *Gondwana Research*, v. 53, p. 82–98.

Haddon, I.G., 2005, The Sub-Kalahari Geology and Tectonic Evolution of the Kalahari Basin, Southern Africa: Thesis, p. 1–360.

Haddon, I.G., and McCarthy, T.S., 2005, The Mesozoic-Cenozoic interior sag basins of Central Africa: The Late-Cretaceous-Cenozoic Kalahari and Okavango basins: *Journal of African Earth Sciences*, v. 43, p. 316–333.

Haldorsen, S., von Brunn, V., Maud, R., and Truter, E.D., 2001, A Weichselian deglaciation model applied to the Early Permian glaciation in the northeast Karoo Basin, South Africa: v. 16, p. 583–593.

Hall, K., and Meiklejohn, I., 2011, Glaciation in Southern Africa and in the Sub-Antarctic: Elsevier, v. 15, 1081–1085 p.

Hansma, J., Tohver, E., Schrank, C., Jourdan, F., and Adams, D., 2016, The timing of the Cape Orogeny: New 40 Ar / 39 Ar age constraints on deformation and cooling of the Cape Fold Belt, South Africa: *Gondwana Research*, v. 32, p. 122–137.

Hanson, E.K., Moore, J.M., Bordy, E.M., Marsh, J.S., Howarth, G., and Robey, J.V.A., 2009, Cretaceous erosion in central South Africa: Evidence from upper-crustal xenoliths in kimberlite diatremes: *South African Journal of Geology*, v. 112, p. 125–140.

Haughton, S.H., 1949, Obituary - Alexander Logie Du Toit, 1878-1948: Biographical memoirs of the fellows of the Royal Society, v. 6, p. 384–395.

Haughton, S.H., 1963, Stratigraphic history of Africa South of the Sahara (Oliver & Boyd, Ed.): London.

Herman, F., Beyssac, O., Brughelli, M., Lane, S.N., Leprince, S., Adatte, T., Lin, J.Y.Y., Avouac, J.P., and Cox, S.C., 2015, Erosion by an Alpine glacier: *Science*, v. 350, p. 193–195.

Le Heron, D.P. Busfield, M.E., Chen, X., Corkeron, M., Davies, B.J., and Dietrich, P., 2022, New Perspectives on Glacial Geomorphology in Earth's Deep Time Record: v. 10, p. 1–17.

Le Heron, D.P., Craig, J., and Etienne, J.L., 2009, Ancient glaciations and hydrocarbon accumulations in North Africa and the Middle East: *Earth-Science Reviews*, v. 93, p. 47–76.



- Le Heron, D.P., Dietrich, P., Busfield, M.E., Kettler, C., Bermanschläger, S., and Grasemann, B.**, 2019, Scratching the surface: Footprint of a late carboniferous ice sheet: *Geology*, v. 47, p. 1034–1038.
- 1530 **le Heron, D.P., and Dowdeswell, J.A.**, 2009, Calculating ice volumes and ice flux to constrain the dimensions of a 440 Ma North African ice sheet: *Journal of the Geological Society*, v. 166, p. 277–281.
- Le Heron, D.P., Kettler, C., Dietrich, P., Griffis, N.P., Montanez, I.P. and Wohlschlägl, R.** 2024 Decoding the late Palaeozoic glaciated landscape of Namibia: a photogrammetric journey; 1535 *Sedimentary Geology*, 106592
- Hoffman, P.F. et al.**, 2021, Snowballs in Africa: sectioning a long-lived Neoproterozoic carbonate platform and its bathyal foreslope (NW Namibia): *Earth-Science Reviews*, v. 219.
- Holland, M.J., Cadle, A.B., Pinheiro, R., and Falcon, R.M.S.**, 1989, Depositional environments and coal petrography of the Permian Karoo Sequence: Witbank Coalfield, South Africa: *International* 1540 *Journal of Coal Geology*, v. 11, p. 143–169.
- Holtar, E. Forsberg, W.**, 2000, Postrift Development of the Walvis Basin, Namibia: Results from the Exploration Campaign in Quadrant 1911, *in* Mello, M.R. and Katz, B.J. eds., AAPG Memoir 73 - Petroleum systems of South Atlantic margins, p. 429–446.
- Holzförster, F., Stollhofen, H., and Stanistreet, I.**, 2000, Lower Permian deposits of the Huab area, 1545 Namibia: a continental to marine transition: *Communications of the Geological Survey Namibia*, v. 12, p. 247–257.
- Hyam, D.M., and Marshall, J.E.A.**, 1997, Carboniferous diamictite dykes in the Falkland Islands: v. 25, p. 505–517.
- Isbell, J.L. et al.**, 2021, Evaluation of physical and chemical proxies used to interpret past glaciations 1550 with a focus on the late Paleozoic Ice Age: *Earth-Science Reviews*, v. 221, p. 103756.
- Isbell, J.L., Cole, D.I., and Catuneanu, O.**, 2008, Carboniferous-Permian glaciation in the main Karoo Basin, South Africa: Stratigraphy, depositional controls, and glacial dynamics: *Special Paper 441: Resolving the Late Paleozoic Ice Age in Time and Space*, v. 441, p. 71–82.
- Isbell, J.L., Henry, L.C., Gulbranson, E.L., Limarino, C.O., Fraiser, M.L., Koch, Z.J., Ciccioli, P.L., and Dineen, A.A.**, 2012, Glacial paradoxes during the late Paleozoic ice age: Evaluating 1555 the equilibrium line altitude as a control on glaciation: *Gondwana Research*, v. 22, p. 1–19.
- James, D.E.**, 2003, Imaging crust and upper mantle beneath southern Africa: The southern Africa broadband seismic experiment: *The Leading Edge*, v. 22, p. 238–249.



- 1560 **Jamieson, S.S.R., Hulton, N.R.J., and Hagdorn, M.**, 2008, Modelling landscape evolution under ice sheets: *Geomorphology*, v. 97, p. 91–108.
- Jamieson, S.S.R., Sugden, D.E., and Hulton, N.R.J.**, 2010, The evolution of the subglacial landscape of Antarctica: *Earth and Planetary Science Letters*, v. 293, p. 1–27.
- 1565 **Jelsma, H.A., de Wit, M.J., Thiart, C., Dirks, P.H.G.M., Viola, G., Basson, I.J., and Anckar, E.**, 2004, Preferential distribution along transcontinental corridors of kimberlites and related rocks of Southern Africa: *South African Journal of Geology*, v. 107, p. 301–324.
- Jerram, D., Mountney, N., Holzförster, F., and Stollhofen, H.**, 1999, Internal stratigraphic relationships in the Etendeka group in the Huab Basin, NW Namibia: understanding the onset of flood volcanism: *Journal of Geodynamics*, v. 28, p. 393–418.
- 1570 **Jerram, D.A., Mountney, N., Howell, J., and Stollhofen, H.**, 2000, The Fossilised Desert: recent developments in our understanding of the Lower Cretaceous deposits in the Huab Basin, NW Namibia: *Communs geol. Surv. Namibia*, v. 12, p. 303–313.
- Jess, S., Stephenson, R., Jess, S., Stephenson, R., Roberts, D.H., and Brown, R.**, 2019, Differential erosion of a Mesozoic rift flank : Establishing the source of topography across Karrat , central West Greenland *Geomorphology* Differential erosion of a Mesozoic rift fl ank : Establishing the source of topography across Karrat , central West : *Geomorphology*, v. 334.
- 1575
- Johnson, M., Van Vuuren, C., Hegenberger, W.F., Key, R., and Shoko, U.**, 1996, Stratigraphy of the Karoo Supergroup in southern Africa: an overview: *Journal of African Earth Sciences*, v. 23, p. 3–15.
- 1580 **Johnson, M.R., Van Vuuren, C.J., Visser, J.N.J., Cole, D.I., Wickens, H.D. V., Christie, A.D.M., and Roberts, D.L.**, 1997, Chapter 12 The foreland karoo basin, south africa: *Sedimentary Basins of the World*, v. 3, p. 269–317.
- Johnson, M., van Vuuren, C.J., Visser, J.N.J., Cole, D.I., Wickens, H. de V., Christie, A.D.M., Roberts, D.L., and Brandl, G.**, 2006, Sedimentary rocks of the Karoo Supergroup, *in* Johnson, M.R., Anhaeusser, C.R., and Thomas, R.J. eds., *Geology of South Africa*, Johannesburg, Council for Geoscience, p. 461–500.
- 1585
- Kamp, U., and Owen, L.A.**, 2013, Polygenetic Landscapes: *Treatise on Geomorphology*, v. 5, p. 370–393.
- Kessler, M.A., Anderson, R.S., and Briner, J.P.**, 2008, Fjord insertion into continental margins driven by topographic steering of ice: *Nature Geoscience*, v. 1, p. 365–369.
- 1590 **King, L.C.**, 1948, On The ages of African land-surfaces: *Quarterly Journal of the Geological Society*



- of London, v. 104, p. 439–459.
- King, L.C.**, 1949a, On the ages of African landscapes: Geological Society of London Quarterly Journal, v. 104, p. 439–459.
- King, L.C.**, 1951, South African Scenery: A textbook of geomorphology: London.
- 1595 **King, L.C.**, 1982, The natal monocline - explaining the origin and scenery of Natal, South Africa: Pietermaritzburg, 144 p.
- King, L.**, 1949b, The Pediment Landform: Some Current Problems: Geological Magazine, v. 86, p. 245–250.
- 1600 **Kneller, B., Milana, J.P., Buckee, C., and al Ja’aidi, O.**, 2004, A depositional record of deglaciation in a paleofjord (Late Carboniferous [Pennsylvanian] of San Juan Province, Argentina): The role of catastrophic sedimentation: Bulletin of the Geological Society of America, v. 116, p. 348–367.
- Knight, J., and Grab, S.**, 2015, The Drakensberg Escarpment: Mountain Processes at the Edge: World Geomorphological Landscapes, p. 47–55.
- 1605 **Korn, H., and Martin, H.**, 1959, Gravity tectonics in the Naukluft Mountains of South West Africa: Bulletin of the Geological Society of America, v. 70, p. 1047–1078.
- Kounov, A., Viola, G., Dewit, M., and Andreoli, M.A.G.**, 2009, Denudation along the Atlantic passive margin: New insights from apatite fission-track analysis on the western coast of south africa: Geological Society Special Publication, p. 287–306.
- 1610 **Kounov, A., Viola, G., Dunkl, I., and Frimmel, H.E.**, 2013, Southern African perspectives on the long-term morpho-tectonic evolution of cratonic interiors: Tectonophysics, v. 601, p. 177–191.
- Krob, F.C., Eldracher, D.P., Glasmacher, U.A., Husch, S., Salomon, E., Hackspacher, P.C., and Titus, N.P.**, 2020, Late Neoproterozoic-to-recent long-term t–T-evolution of the Kaoko and Damara belts in NW Namibia: International Journal of Earth Sciences, v. 109, p. 537–567.
- 1615 **Lajeunesse, P.**, 2014, Buried preglacial fluvial gorges and valleys preserved through Quaternary glaciations beneath the eastern Laurentide Ice Sheet: Bulletin of the Geological Society of America, v. 126, p. 447–458.
- Lajeunesse, P., Dietrich, P., and Ghienne, J.-F.**, 2018, Late Wisconsinan grounding zones of the Laurentide Ice Sheet margin off the Québec North Shore (NW Gulf of St Lawrence): Geological Society, London, Special Publications, v. 475.
- 1620 **Le Blanc Smith, G.**, 1980, Genetic stratigraphy for the Witbank coalfield: Transactions of the geological Society of South Africa, v. 83, p. 313–326.



- Le Blanc Smith, G., and Eriksson, K. A.,** 1979, A fluvioglacial and glaciolacustrine deltaic depositional model for Permo-Carboniferous coals of the Northeastern Karoo Basin, South Africa: *Palaeogeography Palaeoclimatology Palaeoecology*, v. 27, p. 67–84.
- 1625 **Linol, B., and Wit, M.J. De,** 2016a, Origin and Evolution of the Cape Mountains and Karoo Basin (R. Oberhänsli, M. J. de Wit, & F. M. Roure, Eds.): Springer.
- Lister, L.A.,** 1987a, The Erosion Surfaces of Zimbabwe: Zimbabwe Geological Survey Bulletin No. 90,.
- 1630 **Lithgow-Bertelloni, C., and Silver, P.G.,** 1998, Dynamic topography, plate driving forces and the African superswell: *Nature* 1998 395:6699, v. 395, p. 269–272.
- Livingstone, S.J., Chu, W., Ely, J.C., and Kingslake, J.,** 2017, Paleofluvial and subglacial channel networks beneath Humboldt Glacier, Greenland: *Geology*, v. 45, p. 551–554.
- Lopes, G., Pereira, Z., Fernandes, P., Marques, J., Mendes, M., and Götz, A.E.,** 2021, Permian stratigraphy and palynology of the Lower Karoo Group in Mozambique – a 2020 perspective:
- 1635 **López-Gamundí, O.R., and Buatois, L.A.,** 2010, Late Paleozoic glacial events and postglacial transgressions in Gondwana:
- Mabbutt, J.A.,** 1951, The evolution of the middle Ugab valley, Damaraland, South West Africa: *Transactions of the Royal Society of South Africa*, v. 33, 333–365 p.
- MacGregor, A.M.,** 1921, The geology of the diamond-bearing gravels of the Somabula Forest: Zimbabwe Geological Survey, Bulletin, v. 8, p. 38.
- 1640 **Macgregor, D.S.** 2020, Regional variations in geothermal gradient and heat flow across the African plate: *Journal of African Earth Sciences*, v. 171, 103950
- Mackintosh, V., Kohn, B., Gleadow, A., and Gallagher, K.,** 2019, Tectonophysics Long-term reactivation and morphotectonic history of the Zambezi Belt , northern Zimbabwe , revealed by multi-method thermochronometry: v. 750, p. 117–136.
- 1645 **Mackintosh, V., Kohn, B., Gleadow, A., and Tian, Y.,** 2017, Phanerozoic Morphotectonic Evolution of the Zimbabwe Craton: Unexpected Outcomes From a Multiple Low-Temperature Thermochronology Study: *Tectonics*, 36, p. 2044–2067.
- Margirier, A., Braun, J., Gautheron, C., Carcaillet, J., Schwartz, S., Pinna Jamme, R., and Stanley, J.,** 2019, Climate control on Early Cenozoic denudation of the Namibian margin as deduced from new thermochronological constraints: *Earth and Planetary Science Letters*, v. 527.
- 1650 **Martin, H.,** 1953, Notes on the Dwyka Succession and on some Pre-Dwyka Valleys in South West



Africa.pdf: Geological Society of South Africa, v. 56, p. 37–41.

Martin, V.H., 1968, Pal ~ iomorphologische Formelelemen ' te in den Landschaften Siidwest-Afrikas:

1655 **Martin, H.**, 1973a, Palaeozoic, Mesozoic and Cenozoic deposits on the coast of South-West Africa, *in* Sedimentary Basins of the African Coasts, Paris, Union Internationale des Sciences Géologiques - Association of African Geological Surveys.

Martin, H., 1973b, The Atlantic margin of southern Africa between Latitude 17° south and the Cape of Good Hope, *in* Nairn, A.E.M. and Stehli, F.G. eds., The ocean basins and margins - Volume 1
1660 The South Atlantic,.

Martin, H., 1961, The hypothesis of continental drift in the light of recent advances of geological knowledges Brazil and South-West Africa, *in* Alex. L. du Toit Memorial Lectures No. 7, v. LXIV.

Martin, B.H., 1981, The late Palaeozoic Gondwana glaciation:

1665 **Martin, H., and Schalk, K.**, 1959, Gletscherschliffe an der Wand eines U-Tales im nördlichen Kaokofeld, Südwestafrika: Geologische Rundschau, v. 46, p. 571–575.

Master, S., 2012, Hertzian fractures in the sub-dwyka nooitgedacht striated pavement, and implications for the former thickness of karoo strata near Kimberley, South Africa: South African Journal of Geology, v. 115, p. 561–576.

1670 **Mckay, M.P. et al.**, 2015, U-PB zircon tuff geochronology from the Karoo Basin , South Africa : implications of zircon recycling on stratigraphic age controls: International Geology Review, v. 57, p. 393–410.

McMillan, M.F., Boone, S.C., Kohn, B.P., Gleadow, A.J., and Chindandali, P.R., 2022, Development of the Nyika Plateau, Malawi: A Long Lived Paleo-Surface or a Contemporary
1675 Feature of the East African Rift?: Geochemistry, Geophysics, Geosystems, v. 23, e2022GC010390

Meadows, N.S., 1999, Basin evolution and sedimentary fill in the Palaeozoic sequences of the Falkland Islands: Geological Society Special Publication, v. 153, p. 445–464.

Meadows, M.E., and Compton, J.S., 2015, Table Mountain: Wonder of Nature at the Foot of Africa:
1680 World Geomorphological Landscapes, p. 95–102.

Medvedev, S., Hartz, E.H., and Faleide, J.I., 2018, Erosion-driven vertical motions of the circum Arctic: Comparative analysis of modern topography: Journal of Geodynamics, v. 119, p. 62–81.

Medvedev, S., Souche, A., and Hartz, E.H., 2013, Influence of ice sheet and glacial erosion on



passive margins of Greenland: *Geomorphology*, v. 193, p. 36–46.

- 1685 **Menoza da Rosa, E., Isbell, J.L., McNall, N., Fedorchuk, N., and Swart, R.**, 2023, Gravitational re-sedimentation as a fundamental process in filling fjords: Lessons from outcrops from a late Palaeozoic fjord in Namibia: *Sedimentology*,.
- Milani, E.J., and De Wit, M.J.**, 2008, Correlations between the classic Paraná and Cape–Karoo sequences of South America and southern Africa and their basin infills flanking the Gondwanides: *du Toit revisited*: Geological Society, London, Special Publications, v. 294, p. 319–342.
- 1690 **Miller, R.**, 2011, Karoo Supergroup, *in* The Geology of Namibia, Ministry of Mines and Energy - Geological Survey of Namibia, p. 115.
- Modie, B.N.**, 2002, Glacial records in Botswana: , p. 2002.
- 1695 **Modie, B.**, 2008, The palaeozoic palynostratigraphy of the Karoo supergroup and palynofacies insight into palaeoenvironmental interpretations , Kalahari Karoo Basin , Botswana
- Molengraaf, G.A.F.**, 1898, The glacial origin of the Dwyka Conglomerate: *Transactions of the geological Society of South Africa*, v. IV, p. 103–115.
- Montañez, I.P.**, 2021, Current synthesis of the penultimate icehouse and its imprint on the Upper Devonian through Permian stratigraphic record: *in* Lucas, SG, Schneider, J.W., Wang, X and Nikoleva, S (eds) *The Carboniferous Timescale*. Geological Society, London, Special Publication, v. 512.
- 1700 **Montañez, I.P., McElwain, J.C., Poulsen, C.J., White, J.D., Dimichele, W.A., Wilson, J.P., Griggs, G., and Hren, M.T.**, 2016, Climate, pCO₂ and terrestrial carbon cycle linkages during late Palaeozoic glacial-interglacial cycles: *Nature Geoscience*, v. 9, p. 824–828.
- 1705 **Montañez, I.P., and Poulsen, C.J.**, 2013, The late Paleozoic ice age: An evolving paradigm: *Annual Review of Earth and Planetary Sciences*, v. 41, p. 629–656.
- Moore, A.E., Cotterill, F.P.D., Broderick, T., and Plowes, D.**, 2009, Landscape evolution in Zimbabwe from the permian to present, with implications for kimberlite prospecting: *South African Journal of Geology*, v. 112, p. 65–88.
- 1710 **Moore, A.E., and Larkin, P.A.**, 2001, Drainage evolution in south-central Africa since the breakup of Gondwana: *South African Journal of Geology*, v. 104, p. 47–68.
- Moore, A., and Moore, J.**, 2006, A glacial ancestry for the Somabula diamond-bearing alluvial deposit, Central Zimbabwe: *South African Journal of Geology*, v. 109, p. 625–636.



- 1715 **Moore, A.E., and Verwoerd, W.J.**, 1985, The olivine melilitite - kimberlite Carbonatite suite of Namaqualand and Bushmanland, South Africa: Transactions of the geological Society of South Africa, p. 281–294.
- Moragas, M. et al.**, 2023, Paleoenvironmental and diagenetic evolution of the Aptian Pre-Salt succession in Namibe Basin (Onshore Angola): Marine and Petroleum Geology, v. 150.
- 1720 **Mottin, T.E., Vesely, F.F., de Lima Rodrigues, M.C.N., Kipper, F., and de Souza, P.A.**, 2018, The paths and timing of late Paleozoic ice revisited: New stratigraphic and paleo-ice flow interpretations from a glacial succession in the upper Itararé Group (Paraná Basin, Brazil): Palaeogeography, Palaeoclimatology, Palaeoecology, v. 490, p. 488–504.
- Moucha, R., and Forte, A.M.**, 2011, Changes in African topography driven by mantle convection: Nature Geoscience, v. 4, p. 707–712.
- 1725
- Moulin, M., Aslanian, D., and Unternehr, P.**, 2010, A new starting point for the South and Equatorial Atlantic Ocean: Earth-Science Reviews, v. 98, p. 1–37.
- Mukasa, S.B., Wilson, A.H., and Carlson, R.W.**, 1998, A multielement geochronologic study of the Great Dyke, Zimbabwe: Significance of the robust and reset ages: Earth and Planetary Science Letters, v. 164, p. 353–369.
- 1730
- Mvondo Owono, F., Ntamak-Nida, M.J., Dauteuil, O., Guillocheau, F., and Njom, B.**, 2016, Morphology and long-term landscape evolution of the South African plateau in South Namibia: Catena, v. 142, p. 47–65.
- Myers, T.S.**, 2016, Palaeoclimate: CO₂ and late Palaeozoic glaciation: Nature Geoscience, v. 9, p. 803–804.
- 1735
- Nyambe, I.A.**, 1999, Tectonic and climatic controls on sedimentation during deposition of the Sinakumbe Group and Karoo Supergroup, in the mid-Zambezi Valley Basin, southern Zambia: Journal of African Earth Sciences, v. 28, p. 443–463.
- Oesterlen, P.M., and Millsted, B.D.**, 1994, Lithostratigraphy, palaeontology, and sedimentary environments of the western Cabora Bassa Basin, Lower Zambezi Valley, Zimbabwe: South African Journal of Geology, v. 97, p. 205–224.
- 1740
- Partridge, T.C.**, 1998, Of diamonds , dinosaurs and diastrophism : 150 million years of landscape evolution in southern Africa: v. 01, p. 167–184.
- Partridge, T.C., and Maud, R.R.**, 1987, Geomorphic evolution of southern Africa since the Mesozoic No Title: South African Journal of Geology, v. 90, p. 179–208.
- 1745



- Partridge, T.C., and Maud, R.R.**, 2000, Macroscale geomorphic evolution of southern Africa, *in* Partridge, T.C. and Maud, R.R. eds., *The Cenozoic of Southern Africa*, New York, Oxford University Press, p. 3–18.
- 1750 **Paton, D.A., van der Spuy, D., di Primio, R., and Horsfield, B.**, 2008, Tectonically induced adjustment of passive-margin accommodation space; influence on the hydrocarbon potential of the Orange Basin, South Africa: *American Association of Petroleum Geologists Bulletin*, v. 92, p. 589–609.
- Paul, J.D.**, 2021, Controls on eroded rock volume, a proxy for river incision, in *Africa: Geology*, v. 49, p. 422–427.
- 1755 **Paxman, G.J.G., Jamieson, S.S.R., Ferraccioli, F., Bentley, M.J., Ross, N., Armadillo, E., Gasson, E.G.W., Leitchenkov, G., and DeConto, R.M.**, 2018, Bedrock Erosion Surfaces Record Former East Antarctic Ice Sheet Extent: *Geophysical Research Letters*, v. 45, p. 4114–4123.
- Paxman, G.J.G., Jamieson, S.S.R., Hochmuth, K., Gohl, K., Bentley, M.J., Leitchenkov, G., and Ferraccioli, F.**, 2019, Reconstructions of Antarctic topography since the Eocene–Oligocene boundary: *Palaeogeography, Palaeoclimatology, Palaeoecology*, v. 535, p. 109346.
- 1760 **Pedersen, V.K., Huismans, R.S., and Moucha, R.**, 2016, Isostatic and dynamic support of high topography on a North Atlantic passive margin: *Earth and Planetary Science Letters*, v. 446, p. 1–9.
- Pedersen, V.K., Larsen, N.K., and Egholm, D.L.**, 2019, The timing of fjord formation and early glaciations in North and Northeast Greenland: *Geology*, v. 47, p. 682–686.
- 1765 **Pfaffl, F.A., and Dullo, W.C.**, 2023, Early investigations of the Permo-Carboniferous glaciation of South Africa: *International Journal of Earth Sciences*, v. 112, p. 2199–2204.
- Pickford, M., and Senut, B.**, 1997, Cainozoic mammals from coastal Namaqualand, South Africa: *Palaeontologia Africana*, v. 34, p. 199–217.
- 1770 **Ponte, J.**, 2018, La marge africaine du canal du Mozambique, le système turbiditique du Zambèze : une approche “ source to sink” au Méso-Cénozoïque: *Université de Rennes 1*.
- Ponte, J., Robin, C., Guillocheau, F., Popescu, S., and Suc, J.**, 2019, The Zambezi delta (Mozambique channel , East Africa): High resolution dating combining bio- orbital and seismic stratigraphies to determine climate (palaeoprecipitation) and tectonic controls on a passive margin: *Marine and Petroleum Geology*, v. 105, p. 293–312.
- 1775 **Prasicek, G., Larsen, I.J., and Montgomery, D.R.**, 2015, Tectonic control on the persistence of glacially sculpted topography: *Nature Communications*, v. 6.



- Pysklywec, R.N., and Mitrovica, J.X.**, 1999, The role of subduction-induced subsidence in the evolution of the Karoo Basin: *Journal of Geology*, v. 107, p. 155–164.
- 1780 **Pysklywec, R.N., and Quintas, M.C.L.**, 1999, A mantle flow mechanism for the late Paleozoic subsidence of the Parana Basin: *Journal of Geophysical Research*, v. 105, p. 16,359–16,370.
- Raab, M.J., Brown, R.W., Gallagher, K., Weber, K., and Gleadow, A.J.W.**, 2005, Denudational and thermal history of the Early Cretaceous Brandberg and Okenyenya igneous complexes on Namibia's Atlantic passive margin: *Tectonics*, v. 24, p. 1–15.
- 1785 **Rakotosolofa, N.A., Torsvik, T.H., Ashwal, L.D., Eide, E.A., and De Wit, M.J.**, 1999, The Karoo Supergroup revisited and Madagascar-Africa fits, *in* *Journal of African Earth Sciences*, v. 29, p. 135–151.
- Reid, D.L.**, 2015, The Richtersveld: An Ancient Rocky Wilderness, *in* *World Geomorphological Landscapes*, Springer, Cham, p. 75–83.
- 1790 **Ring, U.**, 1995, Tectonic and lithological constraints on the evolution of the Karoo graben of northern Malawi (East Africa): *Geologische Rundschau*, v. 84, p. 607–625.
- Roche, V., Leroy, S., Guillocheau, F., Revillon, S., Ruffet, G., Watremez, L., d'Acremont, E., Nonn, C., Vetel, W., and Despinois, F.**, 2021, The Limpopo Magma-Rich Transform Margin, South Mozambique – 2: Implications for the Gondwana Breakup: *Tectonics*, v. 40, p. 1–23.
- 1795 **Roche, V., and Ringenbach, J.C.**, 2022, The Davie Fracture Zone: A recorder of continents drifts and kinematic changes: *Tectonophysics*, v. 823, p. 229188.
- Rolland, Y., Bernet, M., van der Beek, P., Gautheron, C., Duclaux, G., Bascou, J., Balvay, M., Héraudet, L., Sue, C., and Ménot, R.P.**, 2019, Late Paleozoic Ice Age glaciers shaped East Antarctica landscape: *Earth and Planetary Science Letters*, v. 506, p. 123–133.
- 1800 **Rosa, E.L.M. da, Vesely, F.F., and França, A.B.**, 2016, A review on late Paleozoic ice-related erosional landforms in the Paraná Basin: origin and paleogeographical implications: *Brazilian Journal of Geology*, v. 46, p. 147–166.
- Rouby, D., Bonnet, S., Guillocheau, F., Gallagher, K., Robin, C., Biancotto, F., Dauteuil, O., and Braun, J.**, 2009, Sediment supply to the Orange sedimentary system over the last 150 My: An evaluation from sedimentation/denudation balance: *Marine and Petroleum Geology*, v. 26, p. 782–794.
- 1805 **Rowe, C.D., and Backeberg, N.R.**, 2011, Discussion on: Reconstruction of the Ordovician Pakhuis ice sheet, South Africa by H.J. Blignault and J.N. Theron: *South African Journal of Geology*, v. 114, p. 95–102.



- 1810 **Said, A., Moder, C., Clark, S., and Ghorbal, B.**, 2015, Cretaceous-Cenozoic sedimentary budgets of the Southern Mozambique Basin: Implications for uplift history of the South African Plateau: *Journal of African Earth Sciences*, v. 109, p. 1–10.
- Salles, T., Husson, L., Rey, P., Mallard, C., Zahirovic, S., Boggiani, B.H., Coltice, N., and Arnould, M.**, 2023, Hundred million years of landscape dynamics from catchment to global scale: *Science*, v. 379, p. 918–923.
- 1815
- Salman, G., and Abdula, I.**, 1995, Development of the Mozambique and Ruvuma sedimentary basins, offshore Mozambique: *Sedimentary Geology*, v. 96, p. 7–41.
- Salomon, E., Koehn, D., and Passchier, C.**, 2015, Brittle reactivation of ductile shear zones in NW Namibia in relation to South Atlantic rifting: *Tectonics*, v. 34, p. 70–85.
- 1820 **Schneider, G.**, 2004, *The roadside Geology of Namibia*: Berlin-Stuttgart, Gebr Borntraeger, 294 p.
- Scholtz, A.**, 1985, The palynology of the Upper lacustrine sediments of the Arnot Pipe, Banke, Namaqualand: *Annals of the South African Museum*, v. 95, p. 1–109.
- Schreiber, U.M.**, 2011, Sheet 1812 - Opuwo: Geological Map of Namibia - 1 : 250000,.
- Senkans, A., Leroy, S., d’Acremont, E., Castilla, R., and Despinois, F.**, 2019, Polyphase rifting and break-up of the central Mozambique margin: *Marine and Petroleum Geology*, v. 100, p. 412–433.
- 1825
- Seward, A.C., and Holtum, B.A.**, 1921, On a collection of fossil plants from southern Rhodesia: *Zimbabwe Geological Survey, Bulletin*, v. 8, p. 39–45.
- Shone, R.W., and Booth, P.W.K.**, 2005, The Cape Basin, South Africa: A review: *Journal of African Earth Sciences*, v. 43, p. 196–210.
- 1830
- Siesser, W.G.**, 1980, Late Miocene Origin of the Benguela Upwelling System off Northern Namibia: *Science*, v. 208, p. 283–285.
- Simoes, M., Braun, J., and Bonnet, S.**, 2010, Continental-scale erosion and transport laws: A new approach to quantitatively investigate macroscale landscapes and associated sediment fluxes over the geological past: *Geochemistry, Geophysics, Geosystems*, v. 11.
- 1835
- Slater, G., du Toit, A.L., and Haughton, S.H.**, 1932, The glaciated surfaces of nooitgedacht, near kimberley, and the upper dwyka boulder shales of the eastern part of griqualand west (cape province), 1929: *Transactions of the Royal Society of South Africa*, v. 20, p. 301–325.
- Smith, R.M.H.**, 1990, A review of stratigraphy and sedimentary environments of the Karoo Basin of South Africa: *Journal of African Earth Sciences (and the Middle East)*, v. 10, p. 117–137.
- 1840



- Smith, R.A.**, 1994, The lithostratigraphy of the Karoo Supergroup in Botswana (R. O. THE MINISTRY OF MINERAL RESOURCES AND WATER AFFAIRS & BOTSWANA, Eds.): Director, Geological Survey Department, Private Bag 14, Lobatse, Botswana, 256 p.
- SMITH, R.M.H.**, 1986, Sedimentation and palaeoenvironments of Late Cretaceous crater-lake deposits in Bushmanland, South Africa: *Sedimentology*, v. 33, p. 369–386.
- 1845
- Smith, R.W., Bianchi, T.S., Allison, M., Savage, C., and Galy, V.**, 2015, High rates of organic carbon burial in fjord sediments globally: v. 8.
- Smith, R.M.H., Eriksson, P.G.G., Botha, W.J.J., Smrrh, R.M.H., Epaksson, P.G., and Ha, W.J.B.**, 1993, A review of the stratigraphy and sedimentary environments of the Karoo-aged basins of Southern Africa: *Journal of African Earth Sciences*, v. 16, p. 143–169.
- 1850
- Smith, R.M.H., and Swart, R.**, 2002, Changing Fluvial Environments and Vertebrate Taphonomy in Response to Climatic Dring in a Mid- Triassic Rift Valley Fill : The Omingonde Formation (Karoo Supergroup) of Central Namibia:
- Stanley, J.R., Braun, J., Baby, G., Guillocheau, F., Robin, C., Flowers, R.M., Brown, R., Wildman, M., and Beucher, R.**, 2021, Constraining Plateau Uplift in Southern Africa by Combining Thermochronology, Sediment Flux, Topography, and Landscape Evolution Modeling: *Journal of Geophysical Research: Solid Earth*, v. 126.
- 1855
- Stanley, J.R., and Flowers, R.M.**, 2023, Localized Cenozoic erosion on the southern African Plateau: A signal of topographic uplift? *Geology*, v. 51, p. 549–553.
- 1860
- Stanley, J.R., Flowers, R.M., and Bell, D.R.**, 2015, Erosion patterns and mantle sources of topographic change across the southern African Plateau derived from the shallow and deep records of kimberlites: *Geochemistry, Geophysics, Geosystems*, v. 16, p. 3235–3256.
- Stanley, J.R., Flowers, R.M., and Bell, D.R.**, 2013, Kimberlite (U-Th)/He dating links surface erosion with lithospheric heating, thinning, and metasomatism in the southern African Plateau: *Geology*, v. 41, p. 1243–1246.
- 1865
- Steer, P., Huismans, R.S., Valla, P.G., Gac, S., and Herman, F.**, 2012, Bimodal plio-quaternary glacial erosion of fjords and low-relief surfaces in Scandinavia: *Nature Geoscience*, v. 5, p. 635–639.
- Stollhofen, H., Werner, M., Stanistreet, I.G., and Armstrong, R. a**, 2008, Single-zircon U-Pb dating of Carboniferous-Permian tuffs, Namibia, and the intercontinental deglaciation cycle framework: *Geological Society of America Special Papers*, v. 441, p. 83–96.
- 1870
- Stone, P.**, 2016, Geology reviewed for the Falkland Islands and their offshore sedimentary basins,



- South Atlantic Ocean: Earth and Environmental Science Transactions of the Royal Society of Edinburgh, v. 106, p. 115–143.
- 1875 **Stratten, T.**, 1977, Conflicting directions of ice flow in the western Cape Province and southern West Africa: Transactions of the Geological Society of South Africa, v. 80, p. 79–86.
- Streel, M., and Theron, J.N.**, 1999, The Devonian-Carboniferous boundary in South Africa and the age of the earliest episode of the Dwyka glaciation: New palynological result: Episodes, v. 22, p. 41–44.
- 1880 **Studd, F.E.**, 1913, The Geology of Katanga and Northern Rhodesia : An outline of the Geology of South Central Africa: Transactions of the Geological Society of South Africa, v. 16, p. 44–80.
- Sugden, D., and Denton, G.**, 2004, Cenozoic landscape evolution of the Convoy Range to Mackay Glacier area, Transantarctic Mountains: Onshore to offshore synthesis: Bulletin of the Geological Society of America, v. 116, p. 840–857.
- 1885 **Sutherland, P.C.**, 1870, Notes on an ancient boulder-clay of Natal: Geological Society of London, Quarterly Journal, v. 26.
- Sutherland, P.C.**, 1868, The Geology of Natal (South Africa) (A. and Co, Ed.): Durban.
- Tankard, A., Welsink, H., Aukes, P., Newton, R., and Stettler, E.**, 2009, Tectonic evolution of the Cape and Karoo basins of South Africa: Marine and Petroleum Geology, v. 26, p. 1379–1412.
- 1890 **Tedesco, J., Cagliari, J., Coitinho, J. dos R., da Cunha Lopes, R., and Lavina, E.L.C.**, 2016, Late Paleozoic paleofjord in the southernmost Parana Basin (Brazil): Geomorphology and sedimentary fill: Geomorphology, v. 269, p. 203–214.
- Thamm, A., and Johnson, M.R.**, 2006, The Cape Supergroup, *in* The Geology of South Africa, p. 443–460.
- 1895 **Thompson, J.O., Moulin, M., Aslanian, D., de Clarens, P., and Guillocheau, F.**, 2019, New starting point for the Indian Ocean: Second phase of breakup for Gondwana: Earth-Science Reviews, v. 191, p. 26–56.
- Tinker, J., de Wit, M., and Brown, R.**, 2008a, Linking source and sink: Evaluating the balance between onshore erosion and offshore sediment accumulation since Gondwana break-up, South Africa: Tectonophysics, v. 455, p. 94–103.
- 1900 **Tinker, J., de Wit, M., and Brown, R.**, 2008b, Mesozoic exhumation of the southern Cape, South Africa, quantified using apatite fission track thermochronology: Tectonophysics, v. 455, p. 77–93.



- 1905 **Du Toit, A.L.**, 1921, The Carboniferous glaciation of South Africa: *South African Journal of Geology*, v. 24, p. 188–227.
- Du Toit, A.L.**, 1927, A geological comparison of South America with South Africa: Carnegie Institution of Washington, Publication 381, 157 p.
- Du Toit, A.L.**, 1933, Crustal movement as a factor in the geographical evolution of South Africa: *The South African Geographical Journal*, v. XVI.
- 1910 **Du Toit, A.L.**, 1937, Our wandering continents: an hypothesis of continental drifting (Oliver & Boyd, Eds.): Edinburgh, 366 p.
- Du Toit, A.L.**, 1954, *The Geology of South Africa* (S. H. Haughton, Ed.): London, Oliver and Boyd, 611 p.
- Torsvik, T.H., and Cocks, L.R.M.**, 2016, *Earth History and Palaeogeography*:
- 1915 **Twidale, C.R.**, 1998, Antiquity of landforms: An ‘extremely unlikely’ concept vindicated: *Australian Journal of Earth Sciences*, v. 45, p. 657–668.
- Twidale, C.R.**, 2003, “Canons” revisited and reviewed: Lester King’s views of landscape evolution considered 50 years later: *Bulletin of the Geological Society of America*, v. 115, p. 1155–1172.
- Veevers, J.J., Cole, D.I., and Cowan, E.J.**, 1994, Southern Africa: Karoo Basin and Cape Fold Belt: *Memoir of the Geological Society of America*, v. 184, p. 223–279.
- 1920 **Vérité, J., Ravier, E., Bourgeois, O., Pochat, S., Lelandais, T., Mourgues, R., Clark, C.D., Bessin, P., Peigné, D. & Atkinson, N.**, 2021, Formation of ribbed bedforms below shear margins and lobes of paleo-ice streams: *The Cryosphere*, v. 15, p. 2889–2916.
- Vérité, J., Ravier, E., Bourgeois, O., Bessin, P. & Pochat, S.**, 2023, New metrics reveal the evolutionary continuum behind the morphological diversity of subglacial bedforms: *Geomorphology*, v. 427, 108627.
- 1925 **Vérité, J., Ravier, E., Bourgeois, O., Pochat, S., & Bessin, P.**, 2024, The kinematic significance of subglacial bedforms and their use in palaeo-glaciological reconstructions: *Earth and Planetary Science Letters*, v. 626, 118510
- 1930 **Viljoen, M.**, 2015, The Kruger National Park: Geology and the Geomorphology of the Wilderness, *in* Grab, S., Knight, J. ed., *Landscapes and Landforms of South Africa*, Springer International Publishing, p. 111–120.
- Visser, J.N.J.**, 1982, Upper Carboniferous glacial sedimentation in the Karoo Basin near Prieska, South Africa: *Palaeogeography Palaeoclimatology Palaeoecology*, v. 38, p. 63–92.



- 1935 **Visser, J.N.J.**, 1983, Glacial-Marine Sedimentation in the Late Paleozoic Karoo Basin, Southern Africa, *in* Glacial-Marine Sedimentation, Boston, MA, Springer US, p. 667–701.
- Visser, J.N.J.**, 1985, The Dwyka Formation along the north-western margin of the Karoo Basin in the Cape Province, South Africa: *South African Journal of Geology*, v. 88, p. 37–48.
- Visser, J.N.J.**, 1987a, The influence of topography on the Permo-Carboniferous glaciation in the Karoo Basin and adjoining areas, southern Africa, *in* Garry D. McKenzie ed., *Gondwana Six: Stratigraphy, Sedimentology, and Paleontology*, Volume 41, American Geophysical Union, v. 41, p. 123–129.
- 1940
- Visser, J.N.J.**, 1987b, The palaeogeography of part of southwestern Gondwana during the Permo-Carboniferous glaciation: *Palaeogeography, Palaeoclimatology, Palaeoecology*, v. 61, p. 205–219.
- 1945
- Visser, J.N.J.**, 1989, The Permo-Carboniferous Dwyka Formation of Southern Africa: deposition by a predominantly subpolar ice sheet: *Palaeogeography, Palaeoclimatology, Palaeoecology*, v. 70, p. 377–391.
- Visser, J.**, 1990, The age of the late Palaeozoic glaciogene deposits in southern Africa: *South African Journal of Geology*, v. 93, p. 366–375.
- 1950
- Visser, J.N.J.**, 1992, Deposition of the early to late Permian Whitehill Formation during a sea-level highstand in a juvenile foreland basin: *South African Journal of Geology*, v. 95, p. 181–193.
- Visser, J.N.J.**, 1993, Sea-level changes in a back-arc-foreland transition; the Late Carboniferous Permian Karoo Basin of South Africa: *Sedimentary Geology*, v. 83, p. 115–131.
- 1955
- Visser, J.N.J.**, 1994, The interpretation of massive rain-out and debris-flow diamictites from the glacial marine environment, *in* *Earth's Glacial Record*, p. 83–94.
- Visser, J.N.J.**, 1997, Deglaciation sequences in the Permo-Carboniferous Karoo and Kalahari basins of southern Africa: A tool in the analysis of cyclic glaciomarine basin fills: *Sedimentology*, v. 44, p. 507–521.
- 1960
- Visser, J.N.J., and Hall, K.J.**, 1985, Boulder beds in the glaciogenic Permo-Carboniferous Dwyka Formation in South Africa: *Sedimentology*, v. 32, p. 281–294.
- Visser, J.N.J., and Kingsley, C.S.**, 1982, Upper Carboniferous glacial valley sedimentation in the Karoo Basin, Orange Free State: *Transactions of the geological Society of South Africa*, v. 85, p. 71–79.
- 1965
- Visser, J.N.J., and Loock, J.C.**, 1987, Ice margin influence on glaciomarine sedimentation in the



- Permo—Carboniferous Dwyka Formation from the southwestern Karoo, South Africa: *Sedimentology*, v. 34, p. 929–941.
- Visser, J.N.J., and Loock, J.**, 1988, Sedimentary facies of the Dwyka Formation associated with the Nootgedacht glacial pavements, Barkly West District: *South African Journal of Geology*, v. 91, p. 38–48.
- 1970
- Von Brunn, V.** 1994, Glaciogene deposits of the Permo–Carboniferous Dwyka Group in the eastern region of the Karoo Basin, South Africa (M. Deynoux, J. M. G. Miller, E. W. Domack, N. Eyles, I. Fairchild, & G. M. Young, Eds.): *Earth’s Glacial Record*, v. 5, p. 60–69.
- Von Brunn, V.**, 1996, The Dwyka Group in the northern part of Kwazulu/Natal, South Africa: Sedimentation during late palaeozoic deglaciation: *Palaeogeography, Palaeoclimatology, Palaeoecology*, v. 125, p. 141–163.
- 1975
- Wagner, P.A.**, 1915, The Dwyka series in South-West Africa: *Transactions of the geological Society of South Africa*,.
- Walford, H.L., White, N.J., and Sydow, J.C.**, 2005, Solid sediment load history of the Zambezi Delta: v. 238, p. 49–63.
- 1980
- Waren, R., Cartwright, J.A., Daly, M.C., and Swart, R.**, 2023, Late Cretaceous to Early Cenozoic initiation of rifting of the Windhoek Graben, Namibia: *South African Journal of Geology*, v. 126, p. 195–216.
- Wellington, J.H.**, 1955, Southern Africa: a Geographical study, *in* *Physical Geography*, New York, Cambridge University Press, p. 528 pp.
- 1985
- Wellington, J.H.**, 1937, The Pre-Karoo peneplain in the South-Central Transvaal: *South African Journal*, v. XXXIII, p. 281–295.
- Werner, M., and Lorenz, V.**, 2006, The stratigraphy, sedimentology, and age of the Late Palaeozoic Mesosaurus Inland Sea, SW-Gondwana: *Geological Institute*, p. 428.
- 1990
- Wildman, M., Brown, R., Watkins, R., Carter, A., Gleadow, A., and Summerfield, M.**, 2015, Post break-up tectonic inversion across the southwestern cape of South Africa: New insights from apatite and zircon fission track thermochronometry: *Tectonophysics*, v. 654, p. 30–55.
- Wildman, M., Brown, R., Beucher, R., Persano, C., Stuart, F., Gallagher, K., Schwanethal, J., and Carter, A.**, 2016, The chronology and tectonic style of landscape evolution along the elevated Atlantic continental margin of South Africa resolved by joint apatite fission track and (U-Th-Sm)/He thermochronology: *Tectonics*, v. 35, p. 511–545.
- 1995



- 2000 **Wildman, M., Brown, R., Persano, C., Beucher, R., Stuart, F.M., Mackintosh, V., Gallagher, K., Schwanethal, J., and Carter, A.**, 2017, Contrasting Mesozoic evolution across the boundary between on and off craton regions of the South African plateau inferred from apatite fission track and (U-Th-Sm)/He thermochronology: *Journal of Geophysical Research: Solid Earth*, v. 122, p. 1517–1547.
- 2005 **De Wit, M.C.J.**, 2016, Early permian diamond-bearing proximal eskers in the Lichtenburg/Ventersdorp area of the North West province, South Africa: *South African Journal of Geology*, v. 119, p. 585–606.
- 2005 **De Wit, M.C.J.**, 1999, Post-Gondwana drainage and the development of diamond placers in western South Africa: *Economic Geology*, v. 94, p. 721–740.
- 2010 **Wopfner, H., and Diekmann, B.**, 1996, The Late Palaeozoic Idusi Formation of southwest Tanzania: A record of change from glacial to postglacial conditions: *Journal of African Earth Sciences*, v. 22, p. 575–595.
- 2010 **Wopfner, H., and Kreuser, T.**, 1986, Evidence for late palaeozoic glaciation in southern Tanzania: *Palaeogeography, Palaeoclimatology, Palaeoecology*, v. 56, p. 259–275.