

# FINE AND COARSE DUST RADIATIVE IMPACT DURING AN INTENSE SAHARAN DUST OUTBREAK OVER THE IBERIAN PENINSULA. SHORT-WAVE DIRECT RADIATIVE EFFECT

5 María-Ángeles López-Cayuela<sup>1</sup>, Carmen Córdoba-Jabonero<sup>1\*</sup>, Michaël Sicard<sup>2,#</sup>, Jesús Abril-Gago<sup>3,4</sup>,  
Vanda Salgueiro<sup>5,6</sup>, Adolfo Comerón<sup>2</sup>, María José Granados-Muñoz<sup>3,4</sup>, María João Costa<sup>5,6</sup>, Constantino  
Muñoz-Porcar<sup>2</sup>, Juan Antonio Bravo-Aranda<sup>3,4</sup>, Daniele Bortoli<sup>5,6</sup>, Alejandro Rodríguez-Gómez<sup>2</sup>, Lucas  
Alados-Arboledas<sup>3,4</sup> and Juan Luis Guerrero-Rascado<sup>3,4</sup>

<sup>1</sup>Instituto Nacional de Técnica Aeroespacial (INTA), Atmospheric Research and Instrumentation Branch, Torrejón de Ardoz,  
28850-Madrid, Spain

<sup>2</sup>CommSensLab, Dept. of Signal Theory and Communications, Universitat Politècnica de Catalunya (UPC), 08034-Barcelona,  
Spain.

<sup>3</sup>Andalusian Institute for Earth System Research (IISTA-CEAMA), 18006-Granada, Spain

<sup>4</sup>Department of Applied Physics, University of Granada (UGR), 18071-Granada, Spain

<sup>5</sup>Institute of Earth Sciences (ICT) and Earth Remote Sensing Laboratory (EaRSLab), Évora, Portugal

<sup>6</sup>Department of Physics, University of Évora, 7000-671, Évora, Portugal

<sup>#</sup>Now at: Laboratoire de l'Atmosphère et des Cyclones (LACy), Université de La Réunion, Saint Denis, France

Correspondence to: Carmen Córdoba-Jabonero ([cordobajc@inta.es](mailto:cordobajc@inta.es))

**Abstract.** Mineral dust has a key role in the Earth's radiative balance, and it has become significant over the Iberian Peninsula (IP), where Saharan dust outbreaks seem to increase in frequency and intensity. This study quantifies the dust direct radiative effect (DRE) in the short-wave range (SW) during an intense persistent springtime dust episode over the IP. Particularly, the vertical distribution of dust optical properties was derived at five lidar stations, and the Global Atmospheric Model (GAME) was used for radiative transfer simulations. Moreover, this study innovates by simulating the SW DRE using two distinct methodologies. The novel approach separates the impact of both fine (Df) and coarse (Dc) dust components and calculates the total DRE as their combined sum. In contrast, the commonly used one directly simulates the DRE for the total dust as a whole. Along the dust pathway crossing the IP, the SW DRE consistently registered a pattern of aerosol-induced cooling at both surface (BOA) and top-of-the-atmosphere (TOA). Results reveal that the Df role must be highlighted, as Df particles contributed nearly half of the total SW DRE at BOA and TOA, particularly for this event. DRE simulations based on the separation of dust modes for SZA < 70° show that nearly 75% out of DRE values are (negatively) higher (i.e., overestimated) with respect to those obtained by considering the total dust as a whole. However, relative differences between approaches are not highly significant in general (-3% and -6%, on average, at both BOA and TOA, respectively). Indeed, by separating both dust components, it may lead to DRE overestimation (in absolute units) under medium/high aerosol load conditions, being this effect more pronounced at TOA than at BOA, probably due to the presence of dust at higher levels than those usual in the troposphere. This fact can introduce relevant implications for radiometric measurements from satellite instrumentation.

According to the latest Intergovernmental Panel on Climate Change technical report (IPCC, 2023), not only is the Earth's global average temperature rising, but an increase in the frequency, intensity, and duration of extreme hot events and extreme precipitation has also been observed over several zones in the last few years. In this context of climate change, aerosols play a crucial role in climate forcing, both through their direct impact by interacting with radiation (aerosol-radiation interactions, ARI) and their indirect effect by serving as cloud condensation nuclei and ice nucleating particles (aerosol-cloud interactions, ACI). From 1750 to 2014, aerosols contributed to the global effective radiative forcing at the top of the atmosphere (TOA) by  $-1.3 \text{ W m}^{-2}$ , resulting in a cooling effect (Arias et al., 2021), which partially compensates for the warming effect by increasing greenhouse gas emissions.

Among aerosol particles, mineral dust is one of the most abundant and widely distributed in the Earth's atmosphere. Significant uncertainties remain in the estimation of the dust radiative effect, mostly due to the lack of observational constraints. Regarding the SW range, the balance between scattering and absorption is determined by the dust particle size and mineralogy, and the underlying surface's albedo determines the extent to which both processes impact the TOA radiative flux (Kok et al., 2023). In particular, the Sahara desert and Sahel regions are the major contributors to mineral dust lifting, accounting for over 50 % of global emissions (Kok et al., 2021). On one hand, the geographical proximity of the Iberian Peninsula (IP) to North Africa, as well as the persistence of certain favourable weather patterns (Russo et al., 2020; Couto et al., 2021), make the IP one of the main pathway regions for Saharan desert dust transport towards Europe. On the other hand, Sánchez-Benítez et al. (2020) found that Iberian heatwave events are primarily linked to anomalous atmospheric circulation, typically characterized by a pronounced positive 500 hPa geopotential height anomaly (Z500) aloft. In particular, an analysis of daily weather regimes during Iberian heatwave days reveals a marked dominance of positive Z500 anomalies over western Europe, resembling the occurrence of Euro-Atlantic subtropical ridges. The frequency of this occurrence during heatwave days is observed to double relative to climatological averages. Last studies linked both processes, showing robust evidence for increases in maximum temperatures and the frequency of heatwaves over Europe (IPCC, 2023), which can be partially associated with dust intrusions (Sousa et al., 2019; Fernandes and Fragoso, 2021; Barriopedro et al., 2023). While there are certain indications that future global dust aerosol concentrations may increase (Allen et al., 2016; Tegen and Schepanski, 2018), this likelihood is notably contingent upon alterations in precipitation patterns and atmospheric circulation (IPCC, 2023). Consequently, the radiative consequences of such potential changes remain unclear (Allen et al., 2016; Kok et al., 2018). Since pre-industrial times, the dust mass that has lifted into the atmosphere in those North African regions has increased by 46% (Kok et al., 2023). Moreover, there is not only an increasing frequency of Saharan dust outbreaks over the IP, when compared with long-term records (Sousa et al., 2019; Salvador et al., 2022), but also in the number of studies reporting extreme and intense dust episodes in the region (e.g. Guerrero-Rascado et al., 2009; Preißler et al., 2011; Santos et al., 2013; Cazorla et al., 2017; Sorribas et al., 2017; Titos et al., 2017; Valenzuela et al., 2017; Córdoba-Jabonero et al., 2019, 2021; Fernández et al., 2019; López-Cayuela et al., 2023).

This study focuses on the interaction of Saharan dust with radiation, i.e., on the direct radiative effect (DRE) of dust particles. By using observational measurements, the estimation of the DRE is performed, underscoring the importance of determining their radiative properties and accurately quantifying their direct radiative impact on the Earth-atmosphere radiative budget.

70 This work aims to study the DRE during an exceptionally intense and long-lasting (14 days, from 25 March to 7 April 2021) Saharan dust event over the IP, allowing the study of changes in the radiative properties across both temporal and spatial dimensions. This event was well characterized in the work of López-Cayuela et al. (2023) by determining the vertical behaviour of the optical and microphysical dust properties and using data obtained from five Iberian lidar stations. This study focuses on the direct radiative effect of the dust particles in the short-wave (SW) spectral range.

75 The use of lidar measurements should be emphasised as an added value of this study. Thanks to the application of the POLIPHON algorithm (Polarisation Lidar photometer Networking method; Mamouri and Ansmann, 2014, 2017; Ansmann et al., 2019) to the polarized lidar measurements, it is possible to separate the fine and coarse dust contributions (Df and Dc, respectively) to the total DRE. In this work, the Df particle role has been highlighted in contrast to other studies, **in which the potential impact of Df particles on the total radiative effect has not been separately underlined**. The reason for overlooked Df

80 contribution is that dust intrusions are typically dominated by large particles (Dc), in particular, near the source. Indeed, the DRE of total dust (DD) has been extensively studied in both SW and LW spectral ranges (e.g. Sicard et al., 2014a, 2016; Barragán et al., 2016; Granados-Muñoz et al., 2019) but only a few studies have addressed this issue by separating both dust components. For instance, Sicard et al. (2014b) reported that Dc particles primarily affect LW solar radiation, while Df is primarily responsible for SW radiative modulation. Furthermore, the impact of Df particles in the SW spectral range of the

85 solar radiation is greater at the top-of-atmosphere (TOA) than at the surface (BOA) (Córdoba-Jabonero et al., 2021), while the contribution of the Dc particles in the LW solar spectral range at the TOA is lesser than at the BOA (Sicard et al., 2022). Hence, it is essential to study both Df and Dc particles separately when estimating individual radiative effects.

It should be highlighted that in dust climate models, the separation can be particularly helpful for analysing DRE per size mode. On one hand, when dust is treated as a singular entity (total dust), the contribution of fine dust can be masked, as the

90 radiative properties input into radiative transfer models tend to be skewed towards the characteristics of coarse dust. On the other hand, recent studies have found evidence that Dc is inadequately represented in global atmospheric models (Adebiyi and Kok, 2020). In particular, the mass of coarse dust in the atmosphere could be about four times greater than simulated in current AeroCom climate models (<https://aerocom.met.no/>). Since Dc warms by absorbing both SW and LW radiation (Kok et al., 2017), the underestimation of Dc by both climate models indicate that the net DRE could be more warming than has been

95 previously estimated. Overall, the atmosphere appears to contain approximately 40% more dust (both Df and Dc) than what is simulated by AeroCom models, accounting for about 80% of the total particulate mass load in the atmosphere (Textor et al., 2007; Adebiyi and Kok, 2020). Thus, Df and Dc distinction is particularly relevant for data assimilation processes in climate models, where accurately representing the radiative properties of different dust components is critical for improving model performance and predictions. As an added value, this study introduces the novelty of simulating SW dust DRE using two

100 distinct approaches. On the one hand, by simulating the contribution of  $D_f$  and  $D_c$  components separately, and then estimating the total dust DRE as their sum ( $DD = D_f + D_c$ ). On the other hand, the DRE is directly simulated for the total dust component. The paper is organized as follows. The GAME radiative transfer model and the parametrizations used in terms of SW range are described in Section 2. An overview of the dust outbreak can be found in Section 3. In Section 4 the results and discussion are exposed. Finally, the main conclusions of this study are found in Section 5.

## 105 2. Methodology

### 2.1 Radiative transfer model: GAME

GAME (Global Atmospheric Model) is the radiative transfer model (RTM) used in this study for computing the solar radiation fluxes. Particularly in this work, they are simulated in the SW spectral range (0.2 to 4.0  $\mu\text{m}$ , with a wavenumber resolution of 400  $\text{cm}^{-1}$  from 0.2 to 0.7  $\mu\text{m}$  and 100  $\text{cm}^{-1}$  from 0.7 to 4.0  $\mu\text{m}$ ). Hereafter, for simplicity, the ‘SW’ notation is omitted. GAME  
110 was developed by Dubuisson et al. (1996, 2004) and employs the discrete ordinates method (DISORT; Stamnes et al., 1988) to compute the solar flux at the boundary of homogenous and plane atmospheric layers. The SW radiation flux is calculated for 18 layers of the atmosphere ranging from ground level to an altitude of 20 km height.

This RTM accounts for the absorption of gases, specifically  $\text{H}_2\text{O}$ ,  $\text{CO}_2$ ,  $\text{O}_3$ ,  $\text{N}_2\text{O}$ ,  $\text{CO}$ ,  $\text{CH}_4$ , and  $\text{N}_2$ , using the correlated k distribution (Lacis and Oinas, 1991). Additional information on the calculation of the gas transmission functions can be found  
115 in Dubuisson et al. (2004) and Sicard et al. (2014b). The parameterization of gas absorption is based on pressure, temperature, and relative humidity profiles. Particularly, the data from the Global Data Assimilation System (GDAS), provided by the National Oceanic and Atmospheric Administration (NOAA) are used (<ftp.arl.noaa.gov/archives/gdas1/>; last access: 28 February 2023). Additionally, the model requires input from the spectrally resolved surface albedo (SA), whose data are obtained from MODIS (Moderate Resolution Imaging Spectrometer; <https://modis.gsfc.nasa.gov>; last access: 28 March 2023).  
120 The input parameters and radiative properties as introduced in the GAME model for the SW spectral range and the databases used are summarized in Table 1.

#### 2.1.1 AERONET properties used as input in GAME

In GAME model, aerosols are included by comprehensively parameterizing their radiative properties in terms of the spectral dust extinction coefficient ( $\alpha$ ), single scattering albedo ( $\omega$ ), and asymmetry factor ( $g$ ). This section focuses on both  $\omega$  and  $g$   
125 taken from NASA's AERONET (AErosol RObotic NETwork; <http://aeronet.gsfc.nasa.gov>) Version 3 Level 2.0 data inversion products (last access: 18 February 2023). At the time of writing this study, fewer or no AERONET Level 2.0 data were available for all the stations. In such cases, AERONET Level 1.5 data were used instead. Those AERONET  $g$  and  $\omega$  are given with an uncertainty of  $\pm 0.03$  and  $\pm 0.04$ , respectively, for dust particles (Dubovik et al., 2000, 2002).

Both  $\omega$  and  $g$  values are assumed to be vertically constant, and equal to the columnar values of  $\omega$  and  $g$ . In addition, they are  
130 interpolated at the model wavelengths up to the largest SW wavelength provided by AERONET (1020 nm) and assumed to be

constant beyond. In addition, they are hourly averaged, and interpolated in case those hourly values are missing. Also note that  $g$  is given separately for the fine, coarse and total modes.

### 2.1.2 Lidar-derived extinction used as input in GAME

Since the focus of this work is to obtain the DRE while considering the separation between Df and Dc, continuous hourly-averaged lidar measurements together with POLIPHON (Mamouri and Ansmann, 2017; Córdoba-Jabonero et al., 2018) method were applied to obtain the vertical profiles of the dust extinction coefficient at 532 nm ( $\alpha^{532}$ ), instead of using the aerosol optical depth given by AERONET. The POLIPHON approach relies entirely on empirically obtained dust input parameters, specifically the dust depolarization ratio and dust lidar ratio, without the need for a particle shape model. This method has undergone extensive validation and applied in several works (Ansmann et al., 2017; Mamouri and Ansmann, 2017; Córdoba-Jabonero et al., 2018, 2021; Couto et al., 2021; Salgueiro et al., 2021; Sicard et al., 2022). In the first step of POLIPHON, dust particles are separated from the remaining aerosol particles. In the second step, Df and Dc are identified, enhancing the analysis of the backscatter profile. Once separated by particle modes,  $\alpha^{532}$  for each component is obtained by considering the specific particle lidar ratio at 532 nm for each one (Ansmann et al., 2019). The uncertainties in the calculation of  $\alpha^{532}$  using this methodology are 30%-50%, 20%-30%, and 15%-25%, for Df, Dc and total dust, respectively (Ansmann et al., 2019).

The coarse and fine lidar-derived  $\alpha^{532}$  profiles were previously obtained in López-Cayuela et al. (2023) (see Sect. 3). As those profiles have different vertical resolutions depending on the lidar system used, they have been degraded to the 18 model layers (ranging from the surface up to 20 km height) through trapezoidal numerical integration in order to homogenize all the datasets. In addition, the lidar-derived  $\alpha^{532}$  profiles are used together with the AERONET Ångström exponent at 440-870 nm ( $AE^{440-870}$ ) to derive the height-resolved dust extinction at other wavelengths within the SW range. Finally, hourly dust optical depth (DOD) values for both modes and for the total dust (DD) are computed by vertically-integrating those spectrally-estimated dust extinction coefficient profiles.

### 2.2 Dust radiative effect estimation

The aerosol direct radiative effect (ARE) is particularly obtained for dust as the dust direct radiative effect (DRE), which can be defined at a given height ( $z$ ) as follows (Córdoba-Jabonero et al., 2021; Sicard et al., 2022),

$$DRE(z) = [F_d^\downarrow(z) - F_d^\uparrow(z)] - [F_0^\downarrow(z) - F_0^\uparrow(z)], \quad (1)$$

where  $F_d$  and  $F_0$  denote the solar radiative flux ( $W m^{-2}$ ) as computed by GAME, respectively, with (d) and without (0) dust occurrence. The  $\downarrow$  and  $\uparrow$  arrows indicate whether the fluxes are downward or upward, respectively. The first ( $[F_d^\downarrow(z) - F_d^\uparrow(z)]$ ) and second ( $[F_0^\downarrow(z) - F_0^\uparrow(z)]$ ) terms of Equation (1) represent, respectively, the net flux with and without dust presence.

According to that definition, a negative/positive DRE value would represent a cooling/warming effect. In this study, the DRE is shown at both TOA and BOA. The dust contribution in the overall atmospheric column is evaluated by quantifying the atmospheric radiative effect, DRE(ATM), which is defined as follows,

$$DRE(ATM) = DRE(TOA) - DRE(BOA), \quad (2)$$

Note that  $\alpha$  profiles are obtained from ‘hourly’ lidar measurements, and the DRE values denote ‘instantaneous’ simulated radiative values as obtained from those hourly  $\alpha$  profiles; hence, for simplicity, both terms are removed. The fine-to-total ratio (Df/DD) of DRE (ftr\_DRE) is also calculated, together with a linear fitting analysis of that variable over time. The slope of this linear fitting, denoted as  $\delta DRE$ , represents a measure of the temporal rate of the relative Df contribution to the DRE. Besides, the daily-averaged DRE is computed as follows:

$$DRE^{daily} = \frac{N_d \sum_{i=1}^N DRE^{hourly}}{24 N}, \quad (3)$$

where N is the number of hourly DRE values as computed for each day, and  $N_d$  is the total number of hours with solar zenith angles (SZA)  $< 90^\circ$  along the day (i.e.  $N_d = 12$  in this work). Moreover, the episode-averaged DRE is computed as the average of the daily-averaged DRE values for the entire event. For simplicity, hourly DRE will be denoted by DRE hereafter, if unless otherwise specified.

The dust radiative efficiency (DREff) is defined as the ratio of the DRE to DOD<sup>532</sup> values along the day. Hence, the daily DREff is obtained from the slope of their linear fitting of DRE values with respect to DOD<sup>532</sup>, forced to zero for each day.

### 2.3 Comparison between different approaches

The dust-induced DRE is calculated using two different approaches:

- 1) the previously exposed one, i.e., considering the contribution of the Df and Dc particles separately in the DRE, following the expression below:

$$DRE^{(I)} = DRE^{DD} = DRE^{Df} + DRE^{Dc}, \quad (4)$$

- 2) DRE is obtained from the contribution of the total dust in overall,

$$DRE^{(II)} = DRE^{total}. \quad (5)$$

That notation will be employed throughout the entire paper. That is, ‘DD’ will refer to variables obtained by summing Df and Dc components, and ‘total dust’ will denote variables obtained without considering the mode separation.

195 The main distinction between the two approaches lies in certain radiative inputs used in the simulations. Specifically, in the first approach ( $DRE^{(I)}$ ), both  $g$  and  $\alpha$  properties are introduced as separate fine and coarse components, whereas in the second approach ( $DRE^{(II)}$ ), these variables are introduced as their total component. All other variables are consistent for both approaches. Further details can be found in Table 1. Note that the second approach ( $DRE^{(II)}$ ) is the most used in the literature. However, the novelty of this study lies in showing that the first approach ( $DRE^{(I)}$ ) enables the dust DRE computation by using  
200 the optical properties of each dust mode separately (Sicard et al., 2014b; Córdoba-Jabonero et al., 2021; Sicard et al., 2022) assuming that the dust-induced diffuse radiation from one of the modes does not interact with the other one. Moreover, it should be considered that the uncertainties in  $DRE^{(I)}$  should be higher than in  $DRE^{(II)}$ , as derived from the uncertainties in the calculation of the POLIPHON  $\alpha^{532}$ , which are higher for Df and Dc modes than for total dust (see Sect. 2.1.2).  
Finally, the differences found in the dust-induced DRE ( $\Delta DRE$ ), and the relative differences ( $\Delta^{rel} DRE$ ), between the two  
205 approaches can be calculated using the following equations:

$$\Delta DRE = DRE^{(I)} - DRE^{(II)}, \quad (6)$$

$$\Delta^{rel} DRE (\%) = 100 \frac{(DRE^{(I)} - DRE^{(II)})}{DRE^{(II)}}, \quad (7)$$

210

In this study, it can be considered that the difference between both methodologies is not significant for  $\Delta^{rel} DRE < 15\%$ . By considering that DRE values are negative, positive  $\Delta^{rel} DRE$  values imply that  $DRE^{(I)}$  overestimates  $DRE^{(II)}$ , i.e.,  $DRE^{(I)}$  shows higher (negative) values than  $DRE^{(II)}$ .

### 3. Overlook of the dust outbreak crossing the Iberian Peninsula

215 During spring 2021, the IP experienced a significant and prolonged dust intrusion (25 March – 7 April). This event was closely monitored and analysed by five stations strategically located across the IP, namely El Arenosillo/Huelva (ARN), Granada (GRA), Torrejón/Madrid (TRJ), and Barcelona (BCN) in Spain, and Évora (EVO) in Portugal. Figure 1 shows the geographical position of each station in the IP. All these stations share the commonality of being dedicated to aerosol-cloud monitoring. Among several instrumentation, each station is equipped with an AERONET photometer (or is close to an AERONET station)  
220 and a lidar system. Those five stations share a common exposure to Saharan dust outbreaks, particularly during spring and summer months, albeit with varying frequencies (i.e., Córdoba-Jabonero et al., 2021; López-Cayuela et al., 2023). Moreover, each station exhibits a unique aerosol background. Particularly, the aerosol background at the ARN station is mostly from marine and rural origin, as ARN is placed in a rural environment at the southwestern IP, and less than 1 km from the Atlantic



coastline. EVO station is located in a rural region with limited industrialization and low levels of anthropogenic aerosol concentrations (Pereira et al., 2009; Preissler et al., 2013). Both GRA and TRJ stations are located in populated cities, and their background aerosols are of anthropogenic origin (Lyamani et al., 2012; Molero et al., 2014). Finally, BCN station is located on the northeast coast of the IP, within a densely populated and industrialized region, being thus the background aerosol load predominantly composed by urban and marine aerosols (Sicard et al., 2011).

Focusing on the dust intrusion studied in this work, a deep analysis of the synoptic situation and back-trajectory analysis revealed that the dust intrusion originated in the Saharan region and traversed the IP from the southwest to the northeast. The dust event was accompanied by an extended cloud cover across all five Iberian lidar stations, resulting in the unavailability of some lidar retrievals. Consequently, the dataset exhibits certain gaps, along with periods of no lidar measurements.

The extensive study of the dust outbreak can be found in López-Cayuela et al. (2023), together with the methodology to obtain the optical and mass properties derived from the polarized lidar measurements. This section aims to summarise the most significant results for the optical properties, which are essential for the development and discussion of the current study.

This dust event is particularly noteworthy not only due to the intensity of the dust outbreak but also because the prevailing meteorological situation conditioned the main findings. Among those, there were: 1) the detection of dust at upper layers of the troposphere in the northern half of the IP (reaching up to 10 km height), caused by the atmospheric instability that induced vertical motions of the air parcels, and 2) the absence of uniform gravitational settling observed throughout the IP, that is the Df/DD proportion remained nearly constant along the dust pathway across the IP (López-Cayuela et al., 2023), which contrasts with the long-range dust events observed in central Europe.

An overview of the temporal evolution of the dust outbreak crossing the IP in terms of the extinction ( $\alpha$ ,  $\text{km}^{-1}$ ) over the five Iberian lidar stations is shown in Figure 2. Particularly, the hourly-mean DD  $\alpha$  at 532 nm ( $\alpha_{DD}^{532}$ ) are shown. Despite some data gaps due to either no inversion possible or no lidar measurements, the transport of dust particles can be appreciated by looking at the behaviour of  $\alpha_{DD}^{532}$  along the south-west IP (Fig. 2e) to the north-east IP (Fig. 2a) pathway of the dust intrusion during the overall dusty period (25 March – 7 April 2021). In terms of the episode-averaging, DD DOD<sup>532</sup> decreases as latitude increases, particularly ranging from 0.34 at ARN to 0.14 at BCN, without significant differences in the Df/DD ratio (ftr\_DOD) between the stations (approximately 30%, see Table 2).

In this work, the hourly-averaged DOD<sup>532</sup> values are considered low when  $\text{DOD}^{532} < 0.20$ , moderately intense when  $0.2 \leq \text{DOD}^{532} < 0.50$ , intense when  $0.50 \leq \text{DOD}^{532} < 1.00$  and extreme for  $\text{DOD}^{532} \geq 1.00$ . Thus, this episode spans the full range, highlighting high and extreme DD DOD<sup>532</sup> values on the days of maximal incidence (29 March – 1 April). The mean and maximum hourly-averaged DOD<sup>532</sup> values for Df, Dc and DD components during the entire episode are shown in Table 2.

#### 4. Results and discussion

This section is divided into an analysis of the specific radiative dust properties introduced in the model (Sect. 4.1), the DRE as estimated considering approach 1 (Sect. 4.2), and the discrepancies found by estimating the DRE from the two considered



approaches (Sect. 4.3). GAME calculations are performed when the Sun is above the horizon ( $\text{SZA} < 90^\circ$ ). The DRE is calculated by using Equations (1) and (2), separately for the Df, Dc and total dust components (see Sect. 2.2).

#### 4.1 Radiative properties during the dust episode

##### 4.1.1 Surface albedo (SA)

260 For each station considered in this study, the SA values corresponding to the dust episode reveal a symmetric distribution (regardless of the wavelength under consideration). In fact, for each wavelength, the relative differences in SA throughout the episode at the same station are less than 0.1%. For this reason, although hourly values are considered for the simulations, Figure 3a represents the mean value of SA per wavelength and station.

265 However, and regarding the SA values (Fig 3a), a similar pattern across all sites is found, with SA increasing with wavelength until 870 nm, reaching the maximum values at that wavelength. Within the visible range (VIS, wavelengths  $< 780$  nm) the values increase with latitude, showing  $\text{SA}^{480} = 0.04$  at ARN and  $\text{SA}^{480} = 0.07$  at BCN. This characteristic is not preserved at the Near-Infrared range (NIR, 780-2500 nm). EVO and TRJ show maximum SA values of 0.33-0.36 at 870 nm, which ranges from 0.26 to 0.20 for the other stations. Along the rest of the NIR range, the SA values decrease until  $\text{SA}_{\text{max}}^{2130} = 0.13$ -0.18. Notably, the SA values in this study align with those found in Granados-Muñoz et al. (2019) and Córdoba-Jabonero et al. (2021) for GRA and BCN, respectively, in summertime.

270 Larger SA values indicate that, at a given wavelength and constant incoming radiation reaching the surface, more radiation will be reflected upward. Overall, minimum SA values are found in BCN, while maximum ones are found at TRJ and EVO stations. The differences between the five lidar stations are lower than 5% in the VIS range and for wavelengths greater than 1650 nm. At the beginning of the NIR range (870-1240 nm), EVO and TRJ reflect 7-15% more radiation than the other stations.

275 As exposed in Sect. 3, the stations are located in a variety of places, from rural sites with different types of vegetation to urban sites. Thus, variations in SA values between stations are expected, as SA depends on the surface coverage.

##### 4.1.2 Asymmetry factor ( $g$ ) and single scattering albedo ( $\omega$ )

Conducting the same analysis for the parameters  $g$  and  $\omega$ , a skewed distribution is obtained for each station and wavelength, with maximum relative differences during the dust episode of 1.5 and 2.5%, respectively. For this reason, and although once again the hourly-averaged value of these variables is used for each simulation, Figures 3b-3c depict an hourly data snapshot from the days of highest incidence, i.e., 1 April at 10 UTC for BCN station and 31 March at 12 UTC for the rest of the sites. The  $g$  and  $\omega$  histograms for the five lidar stations can be found in the Supplementary Material (Figs. S1-S5).

280 The  $g$  values decrease with the wavelength, being the forward scattering approximately 1.3 times greater for the coarse mode (coarse  $g^{440} = 0.82$ -0.86) than for the fine mode (fine  $g^{440} = 0.67$ -0.70). As explained in Córdoba-Jabonero et al. (2021), this result implies that the solar radiation scattered to the surface is greater for the coarse mode than for the fine mode, keeping a constant AOD and at low solar zenith angles (SZA), independently of the wavelength. Regarding the total  $g$ , its values range

between those for the fine and coarse modes (total  $g^{440} = 0.75-0.80$ ). The variability of  $\omega$  is also low between the stations, increasing with wavelength. Particularly,  $\omega^{440}$  ranges from 0.90 to 0.93, being representative of weak absorbing particles. From 675 nm to NIR,  $\omega$  increases until values of 0.98-0.99 for all stations.

290 Figure 4 shows the temporal evolution of  $g^{440}$  for the fine and coarse components, together with both  $g^{440}$  and  $\omega^{440}$  for the total component at the five lidar stations. Along the entire dust outbreak, these properties remain relatively constant at each station. The variability observed is minimal, with values below 5 and 3% for both  $g^{440}$  and  $\omega^{440}$ , respectively. It should be noted that, in this study, the variability has been quantified as the percentage ratio between the standard deviation and the mean value along the entire episode for each station. Specific values are detailed in Table 3.

295 As aforementioned, the coarse component of  $g$  presents the most influence on scattered radiation. The lowest values of this parameter were observed in ARN and BCN, while the highest values are evident in GRA stations. Thus, the solar radiation scattered to the surface is lower for ARN and BCN than for GRA stations. Conversely, the pattern is reversed for  $\omega$ . However, it can be considered that the differences among the stations are marginal, displaying relative differences in the episode-average values of less than 3% for the total component in both  $g^{440}$  and  $\omega^{440}$ . Regarding the separation of the dust components, the differences in the episode-averaged  $g^{440}$  were 1.5 and 4% for Df and Dc, respectively.

300 In summary, the results for  $g$  and  $\omega$  are similar for all the stations, showing typical values expected for dust (Dubovik et al., 2002). Indeed, the differences between the stations are less than 5%, regardless of the variable and wavelength being examined. Thus, the differences expected in DRE between stations should mostly rely on the specific values of SA for each station (Sect. 4.1.1), and the variability of dust extinction between the stations and during the dusty episode. A summary of the evolution of the dust extinction can be found in Section 3, and a complete analysis can be found in López-Cayuela et al., (2023).

## 4.2 Dust-induced direct radiative effect

This section is devoted to describing the episode in terms of the evolution of the dust properties and DRE across the stations considered. Figure 5 shows the temporal evolution of the DRE and the  $\text{ftr\_DRE}$ , at ARN station as an example. To avoid an excessively lengthy paper, the graphics for the rest of the stations can be found in the Supplementary Material (Figs. S6-S9).

310 Figure 6-left shows DRE as function of  $\text{DOD}^{532}$  at ARN, for instance, and Figure 6-right the  $\text{DREff}$  values as obtained for all the five lidar stations. Moreover, the specific episode-averaged and maximum DRE values together with  $\text{DREff}$ ,  $\text{ftr\_DRE}$  and  $\delta\text{DRE}$  for each station, are shown in Table 4.

### 4.2.1 DRE at BOA

315 The DRE is negative at all stations, during the entire dusty period, indicating dust-induced cooling (see Fig. 5a and S6a-S9a, in purple). The intensity of the episode in terms of the radiative forcing is directly correlated with the  $\text{DOD}^{532}$ , being greater for Dc compared to Df particles. Thus, during the first part of the episode (until 1 April) the dust event was moderate, showing hourly Df (Dc) DRE values above  $-10 \text{ W m}^{-2}$  ( $-20 \text{ W m}^{-2}$ ). During the rest of the episode, the dust event is weaker, showing

hourly DRE values 50% lower. On some specific days (27 and 31 March), the event is notably intense at ARN and TRJ stations (mean AOD  $\sim 0.80$ ), reaching hourly Df (Dc) DRE values below  $-40$  and  $-20 \text{ W m}^{-2}$  ( $-60$  and  $-40 \text{ W m}^{-2}$ ). Indeed, the maximum  
320 hourly DRE for the dust episode is found in ARN ( $\text{DOD}^{532} = 1.30$ ), while the rest of the stations exhibit maximum values of approximately 30%-50% lower (Table 4).

The intensity of the overall dust episode can be understood by averaging the daily DRE values (episode-averaged DRE, see Sect. 3.2). The highest episode-averaged DRE values for DD are found at the southern and central stations, decreasing 40% at EVO and 50% at BCN (see Table 2 and 4), with differences mainly due to the decrease in DOD with latitude. As expected,  
325 the differences found between stations are mainly related to the DOD decrease with latitude (see Table 2 and 4). Indeed, Meloni et al. (2005) found that the radiative forcing at both the TOA and BOA varies almost linearly with AOD, and the strong dependence of the DRE on AOD is well documented (Prasad et al., 2007; Sicard et al., 2014b; Lolli et al., 2018; Meloni et al., 2018; Granados-Muñoz et al., 2019).

This study compares DRE values with other authors' findings by comparing results over the IP. Córdoba-Jabonero et al. (2021)  
330 studied a moderately intense dust episode over BCN (maximum hourly-averaged  $\text{DOD}^{532}$  of 0.60), by separating the Df and Dc components. The daily-averaged DRE results are similar for similar daily-averaged  $\text{DOD}^{532}$  conditions. By considering other studies when the Df and Dc separation were not applied, for similar intense dust aerosol load conditions the daily total DRE reported on those studies are almost 50% greater than in the present study (Cachorro et al. 2008; Valenzuela et al., 2017). However, similar results are found for extreme dust aerosol conditions (Bazo et al. 2023).

This study also analyse the DREff for Df, Dc and DD particles. The results show an excellent degree of confidence, with a correlation coefficient greater than 0.80 in all stations. By averaging those DREff values for the five lidar stations, a mean value of  $-138.5 \pm 20.3 \text{ W m}^{-2} \tau^{-1}$  ( $-95.3 \pm 5.5 \text{ W m}^{-2} \tau^{-1}$ ) is obtained for Df (Dc) particles. However, by considering the stations separately, the DREff slightly increases with latitude (i.e., from ARN to BCN) up to a maximum of 10% for all particle modes (see Table 4; Figure 6). GRA station deserves special mention, located at a similar latitude as ARN and with similar  
340 dust optical properties (see Fig. 3) and Df/DD proportions, shows 5%-10% lower DREff values for Df and Dc particles. This difference may be due to the limited data available in the study, resulting in a smaller range of DODs. Comparing our results with other studies over the IP, similar results are found, with maximum differences in DREff of 10% (Obregón et al., 2015; Sicard et al., 2016; Granados-Muñoz et al., 2019; Córdoba-Jabonero et al., 2021).

Finally, and regarding the contribution of the Df particles, the mean daily  $\text{fr\_DRE}$  at five lidar stations is around 40%,  
345 indicating that Df particles contribute almost half of the total DRE at BOA. Although there is a slight increase in  $\delta\text{DRE}$  during the dust outbreak period, it remains below  $+1\% \text{ day}^{-1}$  (Fig. 5c; Table 4).

#### 4.2.2 DRE at TOA and in the atmosphere

This study shows that the DRE at TOA is negative at all stations, indicating a dust-induced cooling effect (see Figs. 5 and S6-S9). Similarly to results found at BOA, the first part of the dust outbreak was moderate in terms of the radiative forcing  
350 (Córdoba-Jabonero et al., 2021) and weaker for the rest of the episode, showing slightly lower values than at BOA. Once again,

the greatest hourly DRE values were found at ARN and TRJ on 27 and 31 March (see Figs. 5 and S6; Table 5). Overall, the stations exhibit maximum daily DRE values of approximately 35-70% lower than ARN. Newly, the highest episode-averaged DRE values for DD are found at the southern and central stations, decreasing 50% at EVO and BCN (see Table 5). In comparison with other similar studies in similar dust load conditions over the IP, similar daily-averaged DRE results are found for Df and Dc particles (Córdoba-Jabonero et al., 2021), but 20%-30% lower for DD particles (Cachorro et al., 2008; Valenzuela et al., 2017).

The linear regression analysis shows a slight positive trend in the contribution of Df particles to total dust DRE during dust outbreaks, with higher  $\delta DRE$  values at TRJ. However, GRA station shows negative values of almost 3% day<sup>-1</sup> (see Table 5). The episode-averaged ftr\_DRE shows similar values of approximately 45% at all lidar stations, suggesting that Df particles can induce almost half of the total dust DRE at TOA.

As for the BOA analysis, that linear fitting between DOD and DRE shows a good degree of confidence, with a correlation coefficient greater than 0.80. By averaging those values for all the five stations, a mean DREff of  $-107.1 \pm 10.4 \text{ Wm}^{-2} \tau^{-1}$  ( $-57.5 \pm 3.3 \text{ Wm}^{-2} \tau^{-1}$ ) for Df (Dc) particles are found, highlighting the higher variability of Df compared to Dc particles, indicated by the standard deviation. The study of DREff allows assessing the radiative effect by eliminating the aerosol burden variable. However, not only is the aerosol load significant of DRE calculations, but also the structure and altitude at which the dust is located. The most notable difference among the studies from the literature is the dust layering. In this work, the dust particles reached several times the higher troposphere (over 6 km above sea level) over certain stations (TRJ and BCN). Thus, DRE is more pronounced and DREff is greater at DOD constant than a dust layer located at lower altitudes. For this reason, our results could differ from other studies, presenting values 9% and 30% greater for Df and Dc DREff (Córdoba-Jabonero et al., 2021) and until 3 times greater for DD DREff (Granados-Muñoz et al., 2019); or even 15% lower for DD particles (Sicard et al., 2016).

By contrast with the DRE at BOA and TOA, the DRE is positive for the entire episode, indicating an atmospheric dust-induced heating, as  $DRE(BOA) > DRE(TOA)$  in absolute values (see Eq. 2). Regarding the episode average DRE, highest values are found at ARN and GRA decreasing with latitude, i.e., 50% at EVO, 25% at TRJ and 65% at BCN (see Table 6). Moreover, the maximum hourly-averaged DRE value is found at ARN, being 55%-80% lower for the rest of the stations (Table 6). Similar results are found in terms of the atmospheric ftr\_DRE ratio, showing approximately values in the 27-33% range.

#### 4.3 Differences between approaches for DRE estimation in SW radiative flux simulations

##### 4.3.1 Potential limitations in the radiative properties

As described in Section 2.3, a comparative analysis is performed for the dust-induced DRE as obtained using two different approaches. That is, either the separated contribution of each of the two dust modes ( $DRE^{(I)}$ ) or the contribution of the total dust overall ( $DRE^{(II)}$ ) is considered. Note that the second approach is assumed as the reference in the comparison (see Eqs. 6

and 7) as widely used by other authors. Potential limitations in this methodology should be considered, as they could affect the differences in DRE simulations found between both approaches used in this study.

First, it should be taken into account that particular sensitivities to coarse and super coarse dust particles could be differentiated between passive sensors (as sun/sky photometers) and active ones (as lidar systems). Specifically, the properties of particles with radii exceeding 15  $\mu\text{m}$  are not retrieved by the AERONET inversion algorithm. However, Ryder et al. (2019) demonstrated that dust particles with a radius greater than 15  $\mu\text{m}$  contribute only 1%-3% to the particle extinction coefficient at 550 nm. This indicates that this size cutoff effect in the AERONET data inversion procedure has a negligible impact on the AERONET inversion products. Thus, the coarse components as regarded by AERONET and lidar inversion is comparable despite the potential different sensitivities between both sensors.

It is worth remembering another important difference by applying both approaches in the DRE simulations. In DRE<sup>(I)</sup> both  $g$  and  $\alpha$  are introduced for the fine and coarse modes separately, whereas in DRE<sup>(II)</sup> these variables are introduced for the total dust. Oppositely, AERONET  $\omega$  is provided only for the total mode (no separation; see Table 1). To assess the impact of using a single total  $\omega$  instead of separate components, the parametrizations proposed by Wang et al., (2019) were applied. In that study, an efficient approach of the parameterization of dust aerosols in SW bands is provided. The differences between coarse  $\omega$  obtained using the parametrizations and total  $\omega$  of AERONET are less than 1% on average, except for the 440 nm wavelength, which rose to 3%. Those results are aligned with AERONET own uncertainty of  $\omega$ . Thus, using total  $\omega$  in both Df and Dc DRE<sup>(I)</sup> simulations should not have a significant impact.

As far as the fine mode is concerned, the AERONET fine  $g$  value is introduced in GAME for computing the DRE related to the Df component, as exposed in Section 2.1.1. However, it should be taken into account that the fine  $g$  is influenced by the total fine mode, i.e. both Df and background aerosols. In addition, assuming a vertically uniform  $g$  for the Df component could have substantial consequences, mainly because fine  $g$  values can be strongly affected by background aerosols, which are also mostly confined to the boundary layer. Therefore, a complementary study has been conducted to study the degree of suitability of applying AERONET fine  $g$  values for DRE computation of the Df component. This way, hourly fine  $g$  values for those cases reported under dust-dominated conditions (i.e., cases where the AERONET Fine Mode Fraction is less than 40%) were compared with respect to the fine  $g$  values reported for all cases during the study period (25 March to 7 April 2021). In summary, results indicated that differences in fine  $g$  between cases under dust-dominated and all conditions were not significantly high for those obtained at each station during the study period as well as regarding the period-averaged fine  $g$  differences between stations. Specifically, the relative differences ranged between -3.4% and +0.4%. Therefore, it can be assumed that the contribution of background aerosols to the fine  $g$  can be considered negligible, and then its values can be used for the Df component. This outcome could be, to some extent, expected since background aerosols generally exhibit very low linear depolarization ratios, as they are predominantly small and spherical particles with a minimal contribution to the  $g$  parameter. Hence, at least in this specific dust event, the assumption of a constant  $g$  value for the Df component (i.e., AERONET fine  $g$ ) throughout the entire atmospheric column can be considered reliable.

### 415 4.3.2 Comparative analysis

The comparison of the DRE computation at both BOA and TOA as obtained from the two approaches is based on examining their relative differences ( $\Delta^{\text{rel}}DRE$ ; %) (see Eq. 7), as shown in Figure 7 as a function of SZA from 25 March to 7 April 2021 for all five lidar stations involved in this study. The dependence on the DD  $DOD^{532}$  is also highlighted. Approximately 20% and 40% of the hourly DRE values at BOA and TOA, respectively, exceeded a  $\Delta^{\text{rel}}DRE$  threshold band of  $\pm 15\%$  for all SZAs. Those percentages even increased at high SZA ( $> 70^\circ$ ), being  $DRE^{(I)}$  values overestimated with respect to  $DRE^{(II)}$ . Large values found in the relative differences between methodologies at high SZA could be expected, since the intrinsic uncertainty in GAME simulations is greater at those angles by considering a plane-parallel atmosphere in the model (see Sect. 2.1). Indeed, for  $SZA < 70^\circ$ , only 11.5% of  $\Delta^{\text{rel}}DRE$  values fall outside the threshold band of  $\pm 15\%$ , below  $-15\%$  indeed, indicating an underestimation of the  $DRE^{(I)}$  with respect to  $DRE^{(II)}$  at TOA. In contrast, the percentage of  $\Delta^{\text{rel}}DRE$  that falls outside this threshold for BOA is negligible. Therefore, dismissing the comparison for  $SZA > 70^\circ$ ,  $DRE^{(I)}$  values on average are negatively overestimated with respect to  $DRE^{(II)}$  (i.e.,  $DRE^{(I)}$  shows higher negative values than  $DRE^{(II)}$ ), with mean  $\Delta^{\text{rel}}DRE$  around  $-3\%$  and  $-6\%$  on average at BOA and TOA, respectively.

Figure 8 shows the differences in DRE as obtained between the two approaches ( $\Delta DRE$ , see Eq. 6) as a function of  $DRE^{(II)}$  at both BOA and TOA for all five lidar stations. Approximately 75% out of  $DRE^{(I)}$  values are negatively higher than  $DRE^{(II)}$  ones at both BOA and TOA. It should be noted that the observed  $DRE^{(I)}$  overestimation tends to be higher with larger  $\Delta DRE$  as  $DRE^{(II)}$  increases in absolute values (note the SW dust DRE is negative, i.e., dust induces a cooling effect at both BOA and TOA). In addition, as  $\Delta DRE$  (negatively) increased as  $DOD^{532}$  increased ( $> 0.50$ ), in general;  $\Delta DRE$  were mostly close to zero at lower  $DOD$  ( $< 0.2$ ), and reached maximum values of nearly  $-20 \text{ W m}^{-2}$  at both BOA and TOA. In particular, when  $DRE^{(II)} > -20 \text{ W m}^{-2}$  (point shown by a dashed line in Fig. 8), mean  $\Delta DRE$  values are  $0.5 \pm 0.4 \text{ W m}^{-2}$  for both BOA and TOA, meanwhile for  $DRE^{(II)} \leq -20 \text{ W m}^{-2}$   $\Delta DRE$  show mean values of  $-1.9 \pm 2.9$  and  $-2.2 \pm 3.2 \text{ W m}^{-2}$  at both BOA and TOA, respectively.

The differences found between  $DRE^{(I)}$  and  $DRE^{(II)}$  can be explained by the uncertainties inherent to the radiative properties ( $g$ ,  $\omega$ ) introduced as inputs in the model. Andrews et al. (2006) determined with a sensitivity analysis that a 10% decrease in total  $g$  would correspond to 13 and 19% reductions in BOA and TOA forcing, respectively. On the one hand, AERONET total  $g$  and  $\omega$  are given with an uncertainty of  $\pm 0.03$  and  $\pm 0.04$  (approximately 4% for both  $g$  and  $\omega$ ), respectively, for dust particles (Dubovik et al., 2000, 2002). On the other hand, it is worth examining the differences between the total and coarse  $g$ , considering that the contribution of  $D_c$  plays a significant role in DRE in cases with medium and high  $DOD$ . In particular, the coarse  $g$  used in  $D_c$  simulations are, on average, from 8% to 10% greater than total  $g$ . Thus, the results found in our study agree with those obtained by Andrews et al. (2006).

Moreover, the  $D_f$  role cannot be disregarded. In this work, the impact of  $D_f$  particles to DD DRE has been highlighted, even in cases with medium and high  $DOD$ , when the  $D_c$  contribution is plausibly dominating. It is possible that the  $D_f$  contribution to the total DRE could be systematically underestimated by applying the  $DRE^{(II)}$  approach.

## 5. Summary and conclusions

This work serves as a complement to the study conducted by López-Cayuela et al. (2023), where the vertical distribution of both the fine- and coarse-mode dust during an intense dust episode that took place between 25 March and 7 April 2021 crossing over the Iberian Peninsula was described in detail. Now, this study focuses on the estimation of temporal variations in the instantaneous and daily direct radiative effects of dust in the short-wave spectral range during the same dust event. The investigation is carried out using data obtained from five lidar stations situated in El Arenosillo/Huelva, Granada, Torrejón/Madrid and Barcelona in Spain, as well as Évora in Portugal, whose observations were also used in that previous study. The main findings are summarised next.

- Across all the stations examined in this study, the DRE remains negative throughout the dusty period at both BOA and TOA, indicating aerosol-induced cooling at these levels. Conversely, the DRE shows a positive trend, indicating an atmospheric aerosol-induced heating. The results are similar with those reported by a wide range of studies that can be found in the literature.
- On some specific days, DRE values were considerably high, corresponding to DODs greater than 0.80. Particularly, this work shows maximum hourly averaged DRE values of  $-54.1 \text{ W m}^{-2}$  ( $-96.3 \text{ W m}^{-2}$ ) and  $-35.9 \text{ W m}^{-2}$  ( $-53.5 \text{ W m}^{-2}$ ) as induced by Df (Dc) particles at BOA and TOA, respectively. Regarding the Df impact, they induce almost half of the total DRE. Particularly, Df contributions of 40% and 45% are found at both BOA and TOA, respectively. Thus, despite dust intrusions are primarily governed by the coarse dust mode, the contribution of the fine mode plays a relevant role in DRE estimations.
- In terms of DREff, similar values are found at every station, with variation lesser than 10% between them. By comparing with other authors, this study shows DREff values slightly higher for Df particles ( $< 10\%$ ) at both BOA and TOA. However, the difference increases for Dc particles, with DREff values being a 15% and 30% greater at BOA and TOA, respectively, than those reported by other works. In terms of DD particles, the DREff results are similar to those reported at BOA, and higher than those at TOA.
- DRE simulations based on the separation of dust modes, as described in this work, once disregarding values at  $\text{SZA} > 70^\circ$ , show that nearly 75% out of DRE values are (negatively) higher (i.e., overestimated) with respect to those obtained by considering the total dust as a whole (denoted as  $\text{DRE}^{(\text{II})}$  in this work). Relative differences between approaches are -3% and -6%, on average for  $\text{SZA} < 70^\circ$ , at both BOA and TOA, respectively. In addition, it is important to highlight those differences are not significant in general, as they do not exceed a threshold band of  $\pm 15\%$  for 100% and 88% out of all DRE values at BOA and TOA, respectively.
- By separating both dust components, as described by the methodology used in this work, it may lead to an overestimation (in absolute units) of the total DRE under medium/high aerosol load conditions. In this study, that effect is more pronounced at the TOA than at the BOA, probably due to the presence of dust at higher levels than



those usual in the troposphere. This fact can introduce relevant implications for radiometric measurements from satellite instrumentation.

For future work, it would be relevant to perform the same study, but under dusty conditions with rather variable  $\text{ftr\_DOD}$ , to comprehensively assess the role of the fine particles in DRE by using two different conceptual approaches. This would allow determining how dust aging affects the DRE, as considered looking at the proportion of Df particles relative to DD. It is important to note that the methodology used in this work combines lidar data, which provide vertical aerosol profiles, with photometer data, which derive columnar aerosol radiative properties. One way to improve this methodology would be to use height-resolved key radiative parameters such as  $\omega$  and  $g$  profiles, which would be particularly useful in cases where either background aerosols play a significant role, or in scenarios involving a mixture of aerosol types. The use of multiwavelength lidars instead of single-wavelength lidar systems together with particular inversion methods could provide those required  $\omega$  and  $g$  profiles.

#### Data availability

EARLINET lidar files are available from the EARLINET Data Portal (<https://data.earlinet.org/>, last access: 21 December 2021; Pappalardo et al., 2014). The accessibility of these files is limited based on the EARLINET criteria. Part of the data used in this publication was obtained as part of the AERONET network and is publicly available. For additional lidar data or information, please contact the corresponding author.

#### Author contributions

MÁLC, CCJ and JLGR conceptualized the study. MÁLC, CCJ, MS and JLGR were responsible for the formal analysis. MÁLC wrote the original draft of the paper and applied the software. MÁLC, CCJ, MS, and JLGR carried out the investigation. MÁLC, CCJ, MS, VS, MJGM, AC, FTC, JABA, CMP, MJC, ARG, DB, JAG, LAA and JLGR reviewed and edited the paper. CCJ, MJGM, ARG and DB were responsible for data curation. CCJ, LAA, AC and MJC provided the resources. CCJ and JLGR supervised the investigation. All authors have read and agreed upon the published version of the paper.

#### Competing interests

The contact author has declared that none of the authors has any competing interests.

#### Acknowledgements

This work was funded by MCIN/AEI/10.13039/501100011033 and FEDER ‘Una manera de hacer Europa’ (grants PID2023-151666NB-I00, PID2020-117825GB-C21, PID2020-117825GB-C22, PID2020-120015RB-I00, PID2019-104205GB-C21,

PID2019-103886RB-I00, EQC2018-004686-P, RED2022-134824-E), and supported by the University of Granada (grant A-RNM-430-UGR20, Singular Laboratory programme LS2022-1, Scientific Units of Excellence Program grant UCE-PP2017-02), and partially by EU H2020 (ACTRIS GA 871115). PT team is co-funded by national funds through FCT in the framework of the ICT projects (grants UIDB/04683/2020 and UIDP/04683/2020). MS acknowledges the support of the European Commission through the REALISTIC project (GA 101086690). MÁLC is supported by the INTA predoctoral contract programme. MÁLC thanks to ATMO-ACCESS for the TNA LIRTASOM (‘Lidar data in Radiative Transfer model for dust direct radiative effect estimation and evaluation against solar measurement’) project, supported by the European Commission (H2020-INFRAIA-2020-1, grant 101008004). JAG thanks the Spanish Ministry of Universities for the grant FPU 21/01436. The BCN team thanks Ellsworth J. Welton for providing the MPL unit in place at the Barcelona site. Ellsworth J. Welton and Sebastian A. Stewart are warmly acknowledged for their continuous help in keeping the MPL systems up to date. Authors gratefully acknowledge the PIs and technical staff of all the lidar and AERONET stations for maintenance support of the instrumentation involved in this work.

## References

- Adebiyi, A. A., and Kok, J. F.: Climate models miss most of the coarse dust in the atmosphere, *Science Adv.*, 6, 15, doi:10.1126/sciadv.aaz9507, 2020.
- Allen, R. J., Landuyt, W., and Rumbold, S. T.: An increase in aerosol burden and radiative effects in a warmer world, *Nat. Clim. Change*, 6, 269–274, doi:10.1038/nclimate2827, 2016.
- Andrews, E., Sheridan, P.J., Fiebig, M., McComiskey, A., Ogren, J. A., Arnott, P., Covert, D., Elleman, R., Gasparini, R., Collins, D., Jonsson, H., Sechmid, B., and Wang, J.: Comparison of methods for deriving aerosol asymmetry parameters, *J. Geophys. Res.*, 111, D05S04, doi:10.1029/2004jd005734, 2006.
- Ansmann, A., Mamouri, R.-E., Hofer, J., Baars, H., Althausen, D., and Abdullaev, S. F.: Dust mass, cloud condensation nuclei, and ice-nucleating particle profiling with polarization lidar: updated POLIPHON conversion factors from global AERONET analysis, *Atmospheric Meas. Tech.*, 12, 4849–4865, doi:10.5194/amt-12-4849-2019, 2019.
- Arias, P., Bellouin, N., Coppola, E., Jones, R., Krinner, G., Marotzke, J., Naik, V., Palmer, M., Plattner, G.-K., Rogelj, J., Rojas, M., Sillmann, J., Storelvmo, T., Thorne, P., Trewin, B., Achutarao, K., Adhikary, B., Allan, R., Armour, K., Bala, G., Barimalala, R., Berger, S., Canadell, J. G., Cassou, C., Cherchi, A., Collins, W. D., Collins, W. J., Connors, S., Corti, S., Cruz, F., Dentener, F. J., Dereczynski, C., Di Luca, A., Diongue Niang, A., Doblas-Reyes, P., Dosio, A., Douville, H., Engelbrecht, F., Eyring, V., Fischer, E. M., Forster, P., Fox-Kemper, B., Fuglestad, J., Fyfe, J., Gillett, N., Goldfarb, L., Gorodetskaya, I., Gutierrez, J. M., Hamdi, R., Hawkins, E., Hewitt, H., Hope, P., Islam, A. S., Jones, C., Kaufmann, D., Kopp, R., Kosaka, Y., Kossin, J., Krakovska, S., Li, J., Lee, J.-Y., Masson-Delmotte, V., Mauritsen, T., Maycock, T., Meinshausen, M., Min, S., Ngo Duc, T., Otto, F., Pinto, I., Pirani, A., Raghavan, K., Ranasighe, R., Ruane, A., Ruiz, L., Sallée, J.-B., Samset, B. H., Sathyendranath, S., Monteiro, P. S., Seneviratne, S. I., Sörensson, A. A., Szopa, S., Takayabu, I., Treguier, A.-M., van den

- Hurk, B., Vautard, R., Von Schuckmann, K., Zaehle, S., Zhang, X., and Zickfeld, K.: Climate Change 2021: The Physical Science Basis. Contribution of Working Group I to the Sixth Assessment Report of the Intergovernmental Panel on Climate Change; Technical Summary, The Intergovernmental Panel on Climate Change AR6, Remote, 2021.
- Barragan, R., Romano, S., Sicard, M., Burlizzi, P., Perrone, M. R., and Comeron, A.: Estimation of mineral dust direct radiative forcing at the European Aerosol Research Lidar NETwork site of Lecce, Italy, during the ChArMEx/ADRIMED summer 2013 campaign: Impact of radiative transfer model spectral resolutions, *J. Geophys. Res. Atmospheres*, 121, 10,237-10, 261, doi:10.1002/2016JD025016, 2016.
- Barriopedro, D., García-Herrera, R., Ordóñez, C., Miralles, D. G., and Salcedo-Sanz, S.: Heat waves: Physical understanding and scientific challenges, *Rev. Geophys.*, 61, e2022RG000780, doi:10.1029/2022RG000780, 2023.
- Bazo, E., Granados-Muñoz, M. J., Román, R., Bravo-Aranda, J. A., Cazorla, A., Valenzuela, A., González, R., Olmo, F. J., and Alados-Arboledas, L.: Evaluation of the vertically-resolved aerosol radiative effect on shortwave and longwave ranges using sun-sky photometer and ceilometer measurements, *Atmospheric Res.*, 282, 106517, doi:10.1016/j.atmosres.2022.106517, 2023.
- Cachorro, V. E., Toledano, C., Prats, N., Sorribas, M., Mogo, S., Berjón, A., Torres, B., Rodrigo, R., Rosa, J. de la, and Frutos, A. M. D.: The strongest desert dust intrusion mixed with smoke over the Iberian Peninsula registered with Sun photometry, *J. Geophys. Res. Atmospheres*, 113, doi:10.1029/2007JD009582, 2008.
- Cazorla, A., Casquero-Vera, J. A., Román, R., Guerrero-Rascado, J. L., Toledano, C., Cachorro, V. E., Orza, J. A. G., Cancillo, M. L., Serrano, A., Titos, G., Pandolfi, M., Alastuey, A., Hanrieder, N., and Alados-Arboledas, L.: Near-real-time processing of a ceilometer network assisted with sun-photometer data: monitoring a dust outbreak over the Iberian Peninsula, *Atmospheric Chem. Phys.*, 17, 11861–11876, doi:10.5194/acp-17-11861-2017, 2017.
- Córdoba-Jabonero, C., Sicard, M., Ansmann, A., Águila, A. del, and Baars, H.: Vertical separation of the atmospheric aerosol components by using poliphon retrieval in polarized micro pulse lidar (P-MPL) measurements: case studies of specific climate-relevant aerosol types, *EPJ Web Conf.*, 176, 05041, doi:10.1051/epjconf/201817605041, 2018.
- Córdoba-Jabonero, C., Sicard, M., del Águila, A., Jiménez, M., and Zorzano, M.-P.: Performance of a dust model to predict the vertical mass concentration of an extreme Saharan dust event in the Iberian Peninsula: Comparison with continuous, elastic, polarization-sensitive lidars, *Atmos. Environ.*, 214, 116828, doi:10.1016/j.atmosenv.2019.116828, 2019.
- Córdoba-Jabonero, C., Sicard, M., López-Cayuela, M.-Á., Ansmann, A., Comerón, A., Zorzano, M.-P., Rodríguez-Gómez, A., and Muñoz-Pocar, C.: Aerosol radiative effect during the summer 2019 heatwave produced partly by an inter-continental Saharan dust outbreak. 1. Shortwave dust-induced direct impact, *Atmospheric Chem. Phys.*, 21, 6455–6479, doi:10.5194/acp-2020-1013, 2021.
- Couto, F.T., Cardoso, E., Costa, M. J., Salgado, R., Guerrero-Rascado, J. L., Salgueiro, V.: How a mesoscale cyclonic vortex over Sahara leads to a dust outbreak in South-western Iberia, *Atmos. Res.*, 249, 105302, doi:10.1016/j.atmosres.2020.105302, 2021.

- Dubovik, O., Smirnov, A., Holben, B. N., King, M. D., Kaufman, Y. J., Eck, T. F., and Slutsker, I.: Accuracy assessments of aerosol optical properties retrieved from Aerosol Robotic Network (AERONET) Sun and sky radiance measurements, *J. Geophys. Res. Atmospheres*, 105, 9791–9806, doi:10.1029/2000JD900040, 2000.
- Dubovik, O., Holben, B., Eck, T. F., Smirnov, A., Kaufman, Y. J., King, M. D., Tanré, D., and Slutsker, I.: Variability of absorption and optical properties of key aerosol types observed in worldwide locations, *J. Atmospheric Sci.*, 59, 590–608, doi:10.1175/1520-0469(2002)059<0590:VOAAOP>2.0.CO;2, 2002a.
- Dubuisson, P., Buriez, J. C., and Fouquart, Y.: High spectral resolution solar radiative transfer in absorbing and scattering media: Application to the satellite simulation, *J. Quant. Spectrosc. Radiat. Transf.*, 55, 103–126, doi:10.1016/0022-4073(95)00134-4, 1996.
- Dubuisson, P., Dessailly, D., Vesperini, M., and Frouin, R.: Water vapor retrieval over ocean using near-infrared radiometry, *J. Geophys. Res. Atmospheres*, 109, doi:10.1029/2004JD004516, 2004.
- Fernandes, R., and R. Frago, M.: Assessing Heatwaves and Their Association with North African Dust Intrusions in the Algarve (Portugal), *Atmosphere*, 12(9), 1090, doi:10.3390/atmos12091090, 2021.
- Fernández, A. J., Sicard, M., Costa, M. J., Guerrero-Rascado, J. L., Gómez-Amo, J. L., Molero, F., Barragán, R., Basart, S., Bortoli, D., Bedoya-Velásquez, A. E., Utrillas, M. P., Salvador, P., Granados-Muñoz, M. J., Potes, M., Ortiz-Amezcu, P., Martínez-Lozano, J. A., Artíñano, B., Muñoz-Porcar, C., Salgado, R., Román, R., Rocadenbosch, F., Salgueiro, V., Benavent-Oltra, J. A., Rodríguez-Gómez, A., Alados-Arboledas, L., Comerón, A., and Pujadas, M.: Extreme, wintertime Saharan dust intrusion in the Iberian Peninsula: Lidar monitoring and evaluation of dust forecast models during the February 2017 event, *Atmospheric Res.*, 228, 223–241, doi:10.1016/j.atmosres.2019.06.007, 2019.
- Granados-Muñoz, M. J., Sicard, M., Román, R., Benavent-Oltra, J. A., Barragan, R., Brogniez, G., Denjean, C., Mallet, M., Formenti, P., Torres, B., and Alados-Arboledas, L.: Impact of mineral dust on shortwave and longwave radiation: evaluation of different vertically resolved parameterizations in 1-D radiative transfer computations, *Atmospheric Chem. Phys.*, 19, 523–542, doi:10.5194/acp-19-523-2019, 2019.
- Fu, Q., Thorsen, T.J., Su, J., Ge, J. M., and Huang, J. P.: Test of Mie-based single-scattering properties of non-spherical dust aerosol in radiative flux calculations, *J. Quant. Spectros. Radiat. Transf.*, 110, 1640–1653, doi:10.1016/j.jqsrt.2009.03.010, 2009.
- Guerrero-Rascado, J. L., Olmo, F. J., Avilés-Rodríguez, I., Navas-Guzmán, F., Pérez-Ramírez, D., Lyamani, H., and Alados Arboledas, L.: Extreme Saharan dust event over the southern Iberian Peninsula in september 2007: active and passive remote sensing from surface and satellite, *Atmospheric Chem. Phys.*, 9, 8453–8469, doi:10.5194/acp-9-8453-2009, 2009.
- IPCC 2021: Climate Change 2021: The Physical Science Basis. Contribution of Working Group I to the Sixth Assessment Report of the Intergovernmental Panel on Climate Change [Masson-Delmotte, V., P. Zhai, A. Pirani, S.L. Connors, C. Péan, S. Berger, N. Caud, Y. Chen, L. Goldfarb, M.I. Gomis, M. Huang, K. Leitzell, E. Lonnoy, J.B.R. Matthews, T.K. Maycock, T. Waterfield, O. Yelekçi, R. Yu, and B. Zhou (eds.)]. Cambridge University Press, Cambridge, United Kingdom and New York, NY, USA, 2391 pp., doi:10.1017/9781009157896, 2023.

- 605 Kok, J. F., Ward, D. S., Mahowald, N. M., and Evan, A. T.: Global and regional importance of the direct dust-climate feedback, *Nat. Commun.*, 9, 241, doi:10.1038/s41467-017-02620-y, 2018.
- Kok, J. F., Adebisi, A. A., Albani, S., Balkanski, Y., Checa-Garcia, R., Chin, M., Colarco, P. R., Hamilton, D. S., Huang, Y., Ito, A., Klose, M., Li, L., Mahowald, N. M., Miller, R. L., Obiso, V., Pérez García-Pando, C., Rocha-Lima, A., and Wan, J. S.: Contribution of the world's main dust source regions to the global cycle of desert dust, *Atmospheric Chem. Phys.*, 21, 8169–8193, doi:10.5194/acp-21-8169-2021, 2021.
- 610 Kok, J. F., Ridley, D. A., Zhou, Q., Miller, R. L., Zhao, C., Heald, C. L., Ward, D. S., Albani, S., Haustein, K.: Smaller desert dust cooling effect estimated from analysis of dust size and abundance, *Nat. Geosci.*, 10, 274–278, doi:10.1038/ngeo2912, 2017.
- Kok, J. F., Storelvmo, T., Karydis, V. A., Adebisi, A. A., Mahowald, N. M., Evan, A. T., He, C., and Leung, D. M.: Mineral dust aerosol impacts on global climate and climate change, *Nat. Rev. Earth Environ.*, 4, 71–86, doi:10.1038/s43017-022-00379-5, 2023.
- 615 Lacis, A. A. and Oinas, V.: A description of the correlated k distribution method for modeling nongray gaseous absorption, thermal emission, and multiple scattering in vertically inhomogeneous atmospheres, *J. Geophys. Res. Atmospheres*, 96, 9027–9063, doi:10.1029/90JD01945, 1991.
- 620 Lolli, S., Madonna, F., Rosoldi, M., Campbell, J. R., Welton, E. J., Lewis, J. R., Gu, Y., and Pappalardo, G.: Impact of varying lidar measurement and data processing techniques in evaluating cirrus cloud and aerosol direct radiative effects, *Atmospheric Meas. Tech.*, 11, 1639–1651, doi:10.5194/amt-11-1639-2018, 2018.
- López-Cayuela, M. Á., Córdoba-Jabonero, C., Bermejo-Pantaleón, D., Sicard, M., Salgueiro, V., Molero, F., Carvajal-Pérez, C. V., Granados-Muñoz, M. J., Comerón, A., Couto, F. T., Barragán, R., Zorzano, M.-P., Bravo-Aranda, J. A., Muñoz-Porcar, C., Costa, M. J., Artíñano, B., Rodríguez-Gómez, A., Bortoli, D., Pujadas, M., Abril-Gago, J., Alados-Arboledas, L., and Guerrero-Rascado, J. L.: Vertical characterization of fine and coarse dust particles during an intense Saharan dust outbreak over the Iberian Peninsula in springtime 2021, *Atmospheric Chem. Phys.*, 23, 143–161, doi:10.5194/acp-23-143-2023, 2023.
- 625 Lyamani, H., Fernández-Gálvez, J., Pérez-Ramírez, D., Valenzuela, A., Antón, M., Alados, I., Titos, G., Olmo, F. J., and Alados-Arboledas, L.: Aerosol properties over two urban sites in South Spain during an extended stagnation episode in winter season, *Atmos. Environ.*, 62, 424–432, doi:10.1016/j.atmosenv.2012.08.050, 2012.
- 630 Mamouri, R. E. and Ansmann, A.: Fine and coarse dust separation with polarization lidar, *Atmospheric Meas. Tech.*, 7, 3717–3735, doi:10.5194/amt-7-3717-2014, 2014.
- Mamouri, R.-E. and Ansmann, A.: Potential of polarization/Raman lidar to separate fine dust, coarse dust, maritime, and anthropogenic aerosol profiles, *Atmospheric Meas. Tech.*, 10, 3403–3427, doi:10.5194/amt-10-3403-2017, 2017.
- 635 Meloni, D., di Sarra, A., Di Iorio, T., and Fiocco, G.: Influence of the vertical profile of Saharan dust on the visible direct radiative forcing, *J. Quant. Spectrosc. Radiat. Transf.*, 93, 397–413, doi:10.1016/j.jqsrt.2004.08.035, 2005.
- Meloni, D., di Sarra, A., Brogniez, G., Denjean, C., De Silvestri, L., Di Iorio, T., Formenti, P., Gómez-Amo, J. L., Gröbner, J., Kouremeti, N., Liuzzi, G., Mallet, M., Pace, G., and Sferlazzo, D. M.: Determining the infrared radiative effects of Saharan

- dust: a radiative transfer modelling study based on vertically resolved measurements at Lampedusa, *Atmospheric Chem. Phys.*, 18, 4377–4401, doi:10.5194/acp-18-4377-2018, 2018.
- Molero, F., Andrey, F. J., Fernandez, A. J., Parrondo, M. D. C., Pujadas, M., Córdoba-Jabonero, C., Revuelta, M. A., and Gomez-Moreno, F. J.: Study of vertically resolved aerosol properties over an urban background site in Madrid (Spain), *Int. J. Remote Sens.*, 35(6), 2311–2326, doi:10.1080/01431161.2014.894664, 2014.
- Obregón, M. A., Pereira, S., Salgueiro, V., Costa, M. J., Silva, A. M., Serrano, A., Bortoli, D.: Aerosol radiative effects during two desert dust events in August 2012 over the southwestern Iberian Peninsula, *Atmos. Res.*, 153, 404–415, doi:10.1016/j.atmosres.2014.10.007, 2015.
- Pereira, S. N., Wagner, F., and Silva, A. M.: Continuous measurements of near surface aerosols in the south-western European (Portugal) region in 2006–2008, *Adv. Sci. Res.*, 3(1), 1–4, doi:10.5194/asr-3-1-2009, 2009.
- Prasad, A. K., Singh, S., Chauhan, S. S., Srivastava, M. K., Singh, R. P., and Singh, R.: Aerosol radiative forcing over the Indo-Gangetic plains during major dust storms, *Atmos. Environ.*, 41, 6289–6301, doi:10.1016/j.atmosenv.2007.03.060, 2007.
- Preißler, J., Wagner, F., Guerrero-Rascado, J. L., and Silva, A. M.: Two years of free-tropospheric aerosol layers observed over Portugal by lidar, *J. Geophys. Res. Atmos.*, 118(9), 3676–3686, doi:10.1002/jgrd.50350, 2013.
- Preißler, J., Wagner, F., Pereira, S. N., and Guerrero-Rascado, J. L.: Multi-instrumental observation of an exceptionally strong Saharan dust outbreak over Portugal, *J. Geophys. Res. Atmospheres*, 116, doi:10.1029/2011JD016527, 2011.
- Russo, A., Sousa, P. M., Durão, R. M., Ramos, A. M., Salvador, P., Linares, C., Díaz, J., and Trigo, R. M.: Saharan dust intrusions in the Iberian Peninsula: Predominant synoptic conditions, *Sci. Total Environ.*, 717, 137041, doi:10.1016/j.scitotenv.2020.137041, 2020.
- Ryder, C. L., Highwood, E. J., Walser, A., Seibert, P., Philipp, A., and Weinzierl, B.: Coarse and giant particles are ubiquitous in Saharan dust export regions and are radiatively significant over the Sahara, *Atmos. Chem. Phys.*, 19, 15353–15376, doi:10.5194/acp-19-15353-2019, 2019.
- Salgueiro, V., Costa, M. J., Guerrero-Rascado, J. L., Couto, F. T., and Bortoli, D.: Characterization of forest fire and Saharan desert dust aerosols over South-western Europe using a multi-wavelength Raman lidar and Sun-photometer, *Atmos. Environ.*, 252, 118346, doi:10.1016/j.atmosenv.2021.118346, 2021.
- Salvador, P., Pey, J., Pérez, N., Querol, X., and Artíñano, B.: Increasing atmospheric dust transport towards the western Mediterranean over 1948–2020, *Npj Clim. Atmospheric Sci.*, 5, 1–10, doi:10.1038/s41612-022-00256-4, 2022.
- Santos, D., Costa, M. J., Silva, A. M., Guerrero-Rascado, J. L.: Modeling Saharan desert dust radiative effects on clouds, *Atmos. Res.*, 127, doi:10.1016/j.atmosres.2012.09.024, 2013.
- Sánchez-Benítez, A., Barriopedro, D., García-Herrera, R.: Tracking Iberian heatwaves from a new perspective, *Weather and Climate Extremes*, 28, 100238, doi:j.wace.2019.100238, 2020.
- Sicard, M., Rocadenbosch, F., Reba, M. N. M., Comerón, A., Tomás, S., García-Vizcaino, D., Batet, O., Barrios, R., Kumar, D., and Baldasano, J. M.: Seasonal variability of aerosol optical properties observed by means of a Raman lidar at an EARLINET site over Northeastern Spain, *Atmos. Chem. Phys.*, 11(1), 175–190, doi:10.5194/acp-11-175-2011, 2011.

- Sicard, M., Bertolín, S., Mallet, M., Dubuisson, P., and Comerón, A.: Estimation of mineral dust long-wave radiative forcing: sensitivity study to particle properties and application to real cases in the region of Barcelona, *Atmospheric Chem. Phys.*, 14, 9213–9231, doi:10.5194/acp-14-9213-2014, 2014a.
- Sicard, M., Bertolín, S., Muñoz, C., Rodríguez, A., Rocadenbosch, F., and Comerón, A.: Separation of aerosol fine- and coarse-mode radiative properties: Effect on the mineral dust longwave, direct radiative forcing, *Geophys. Res. Lett.*, 41, 6978–6985, doi:10.1002/2014GL060946, 2014b.
- Sicard, M., Barragan, R., Dulac, F., Alados-Arboledas, L., and Mallet, M.: Aerosol optical, microphysical and radiative properties at regionalbackground insular sites in the western Mediterranean, *Atmospheric Chem. Phys.*, 16, 12177–12203, doi:10.5194/acp-16-12177-2016, 2016.
- Sicard, M., Córdoba-Jabonero, C., López-Cayuela, M.-Á., Ansmann, A., Comerón, A., Zorzano, M.-P., Rodríguez-Gómez, A., and Muñoz-Porcar, C.: Aerosol radiative impact during the summer 2019 heatwave produced partly by an inter-continental Saharan dust outbreak – Part 2: Long-wave and net dust direct radiative effect, *Atmospheric Chem. Phys.*, 22, 1921–1937, doi:10.5194/acp-22-1921-2022, 2022.
- Sorribas, M., Adame, J. A., Andrews, E., and Yela, M.: An anomalous African dust event and its impact on aerosol radiative forcing on the Southwest Atlantic coast of Europe in February 2016, *Sci. Total Environ.*, 583, 269–279, doi:10.1016/j.scitotenv.2017.01.064, 2017.
- Sousa, P. M., Barriopedro, D., Ramos, A. M., García-Herrera, R., Espírito-Santo, F., and Trigo, R. M.: Saharan air intrusions as a relevant mechanism for Iberian heatwaves: The record breaking events of August 2018 and June 2019, *Weather and Climate Extremes*, 26, 100224, doi:10.1016/j.wace.2019.100224, 2019.
- Stamnes, K., Tsay, S.-C., Wiscombe, W., and Jayaweera, K.: Numerically stable algorithm for discrete-ordinate-method radiative transfer in multiple scattering and emitting layered media, *Appl. Opt.*, 27, 2502, doi:10.1364/AO.27.002502, 1988.
- Tegen, I. and Schepanski, K.: Climate Feedback on Aerosol Emission and Atmospheric Concentrations, *Curr. Clim. Change Rep.*, 4, 1–10, doi:10.1007/s40641-018-0086-1, 2018.
- Textor, C., Schulz, M., Guibert, S., Kinne, S., Balkanski, Y., Bauer, S., Bernsten, T., Berglen, T., Boucher, O., Chin, M., Dentener, F., Diehl, T., Feichter, J., Fillmore, D., Ginoux, P., Gong, S., Grini, A., Hendricks, J., Horowitz, L., Huang, P., Isaksen, I. S. A., Iversen, T., Kloster, S., Koch, D., Kirkevåg, A., Kristjansson, J. E., Krol, M., Lauer, A., Lamarque, J. F., Liu, X., Montanaro, V., Myhre, G., Penner, J. E., Pitari, G., Reddy, M. S., Seland, Ø., Stier, P., Takemura, T., Tie, X.: The effect of harmonized emissions on aerosol properties in global models – an AeroCom experiment, *Atmos. Chem. Phys.*, 7, 4489–4501, doi:10.5194/acp-7-4489-2007, 2007.
- Titos, G., Ealo, M., Pandolfi, M., Pérez, N., Sola, Y., Sicard, M., Comerón, A., Querol, X., and Alastuey, A.: Spatiotemporal evolution of a severe winter dust event in the western Mediterranean: Aerosol optical and physical properties, *J. Geophys. Res. Atmospheres*, 122, 4052–4069, doi:10.1002/2016JD026252, 2017.
- Valenzuela, A., Costa, M. J., Guerrero-Rascado, J. L., Bortoli, D., and Olmo, F. J.: Solar and thermal radiative effects during the 2011 extreme desert dust episode over Portugal, *Atmos. Environ.*, 148, 16–29, doi:10.1016/j.atmosenv.2016.10.037, 2017.



Wang, M., Su, J., Li, X., Wang, C., and Ge J.: Parametrization of the single-scattering properties of dust aerosol in Radiative flux Calculations, *Atmosphere*, 10(12), 728, doi:10.3390/atmos10120728, 2019.

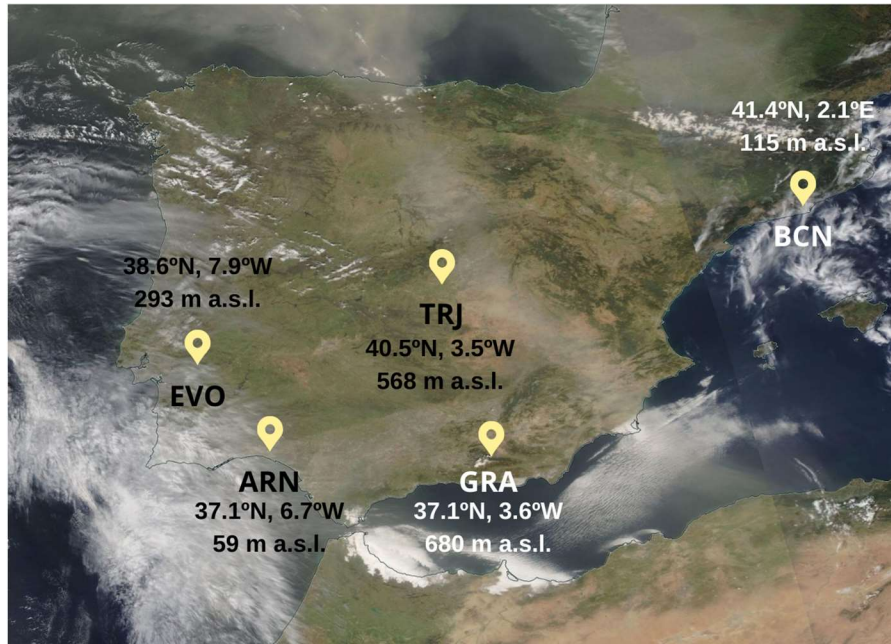
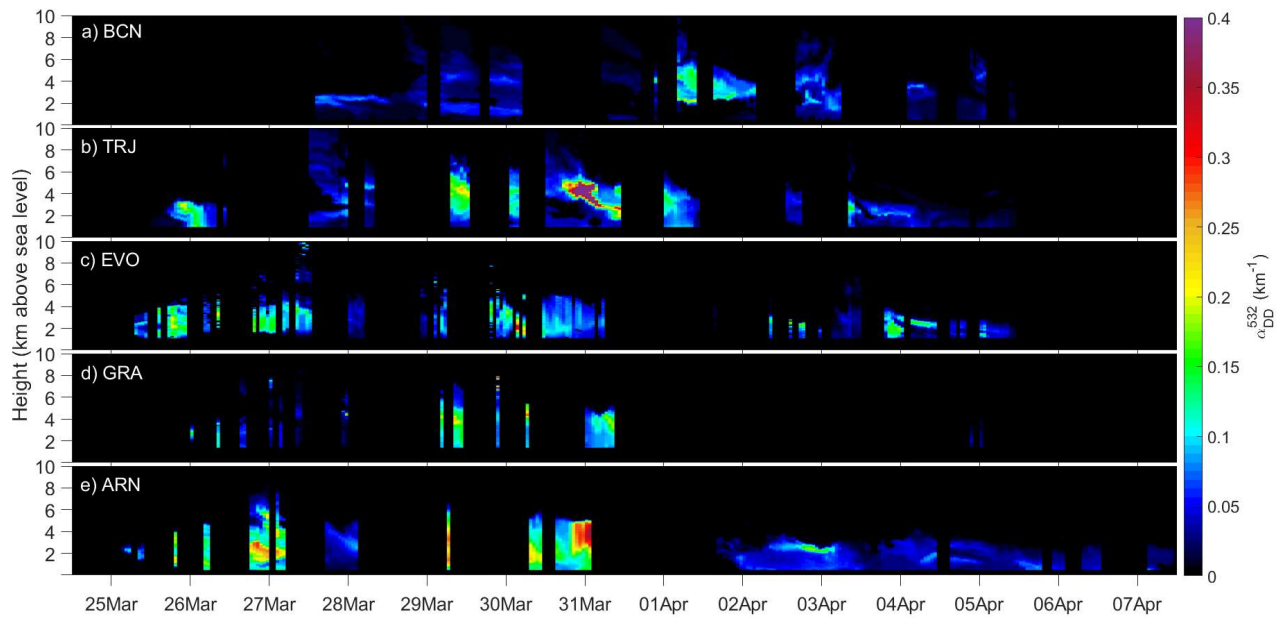
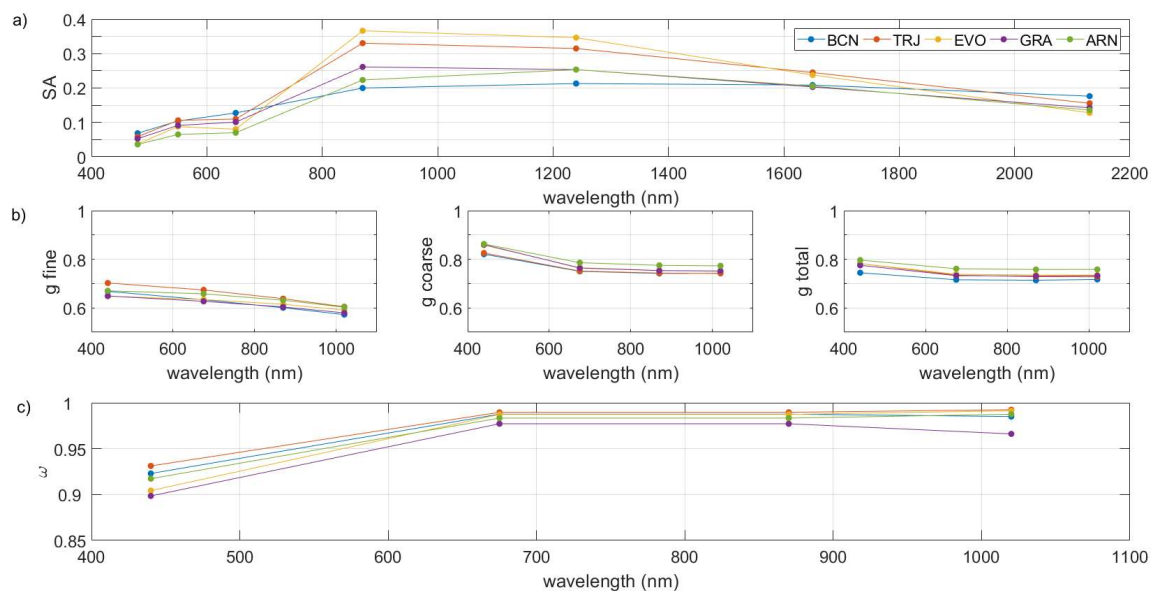


Figure 1: MODIS Terra/Aqua corrected reflectance over the Iberian Peninsula on 31 March 2021. The five lidar stations are marked with a yellow pin. From south-west to north-east: El Arenosillo/Huelva (ARN), Évora (EVO), Granada (GRA), Torrejón/Madrid (TRJ) and Barcelona (BCN) sites. The coordinates and altitude are also included.

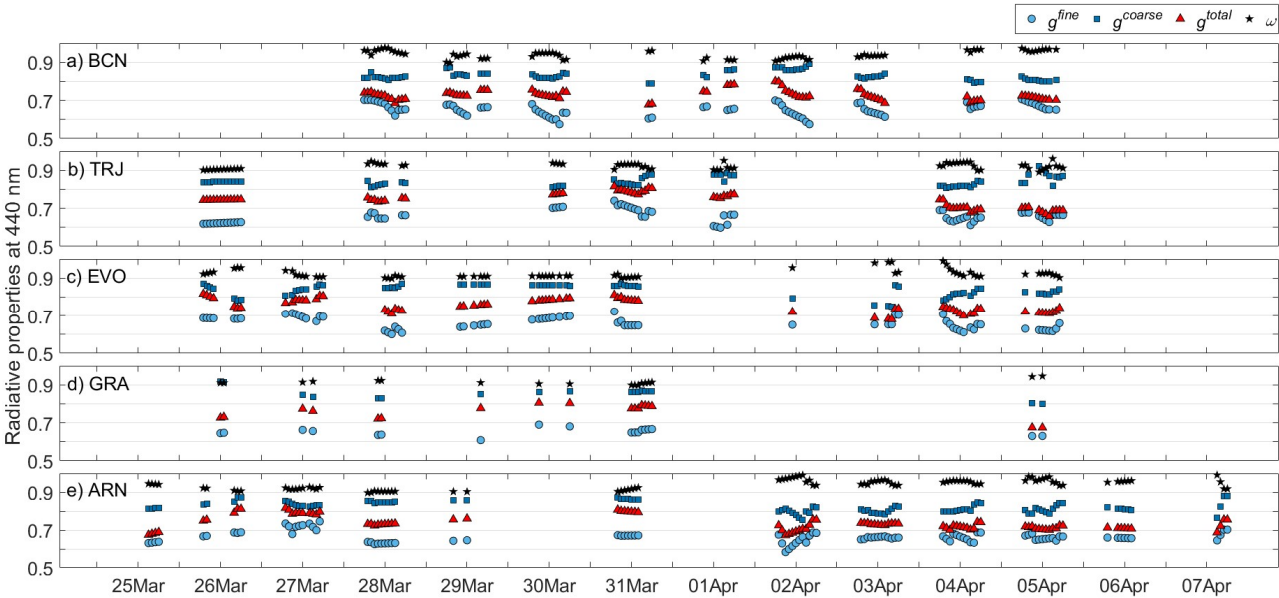


720 **Figure 2: Temporal evolution of the DD extinction coefficient ( $\alpha_{DD}^{532}$ ,  $\text{km}^{-1}$ ) at the five Iberian lidar stations (from North-East to South-West IP, by decreasing latitude): a) Barcelona (BCN), b) Torrej3n/Madrid (TRJ), c) 3vora (EVO), d) Granada (GRA) and e) El Arenosillo/Huelva (ARN). Profile gaps correspond to either no inversion available or no lidar measurements.**

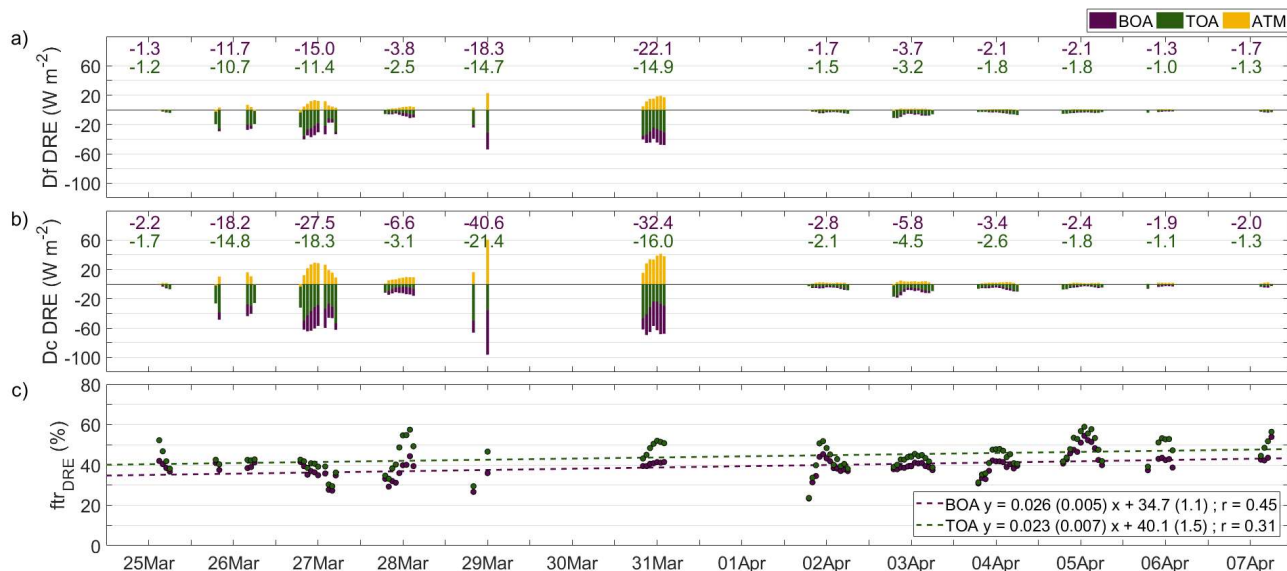
725



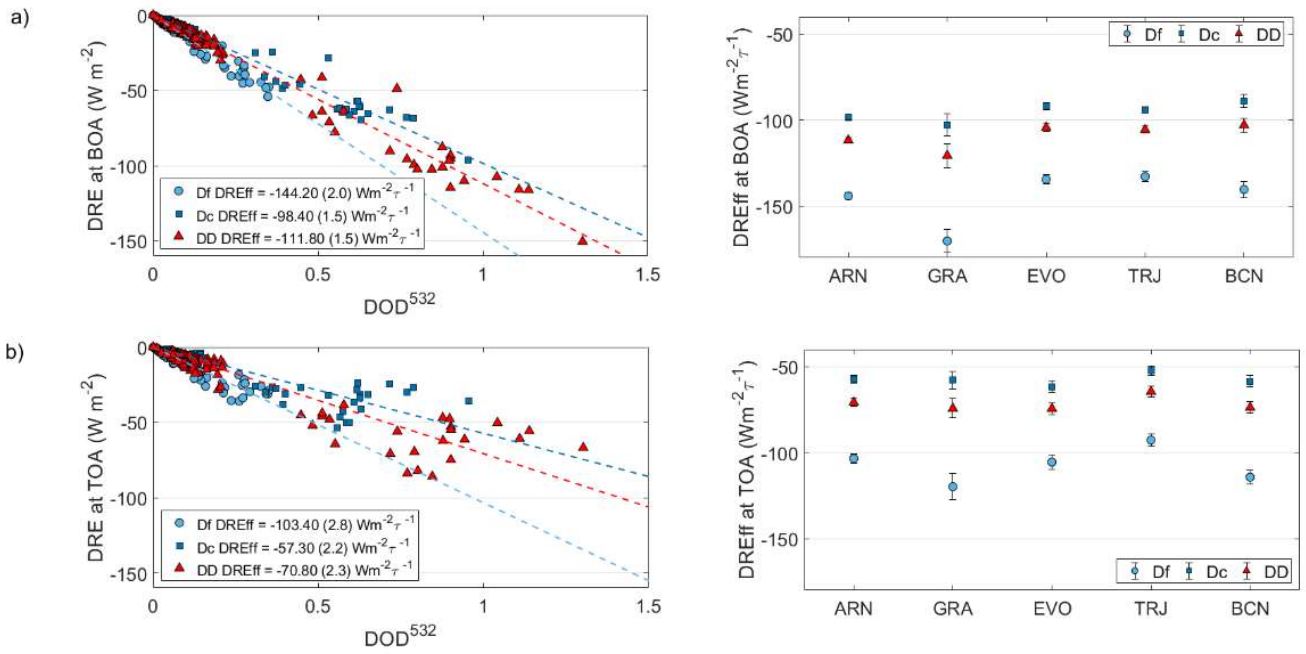
**Figure 3: Spectral behaviour of (a) the mean of the MODIS surface albedo (SA) distribution, (b) AERONET asymmetry factor ( $g$ ) for fine, coarse and total modes, and (c) AERONET single scattering albedo ( $\omega$ ) at the five Iberian lidar stations: Barcelona (BCN, blue), Torrejón/Madrid (TRJ, orange), Évora (EVO, yellow), Granada (GRA, purple) and El Arenosillo/Huelva (ARN, green). The date and time chosen is 1 April at 10 UTC for BCN station and 31 March at 12 UTC for the rest of the sites.**



**Figure 4: Overview of the temporal evolution of the radiative properties of fine, coarse and total g, and for  $\omega$  at 440 nm at the five lidar stations, i.e., (a) BCN, (b) TRJ, (c) EVO, (d) GRA and (e) ARN.**

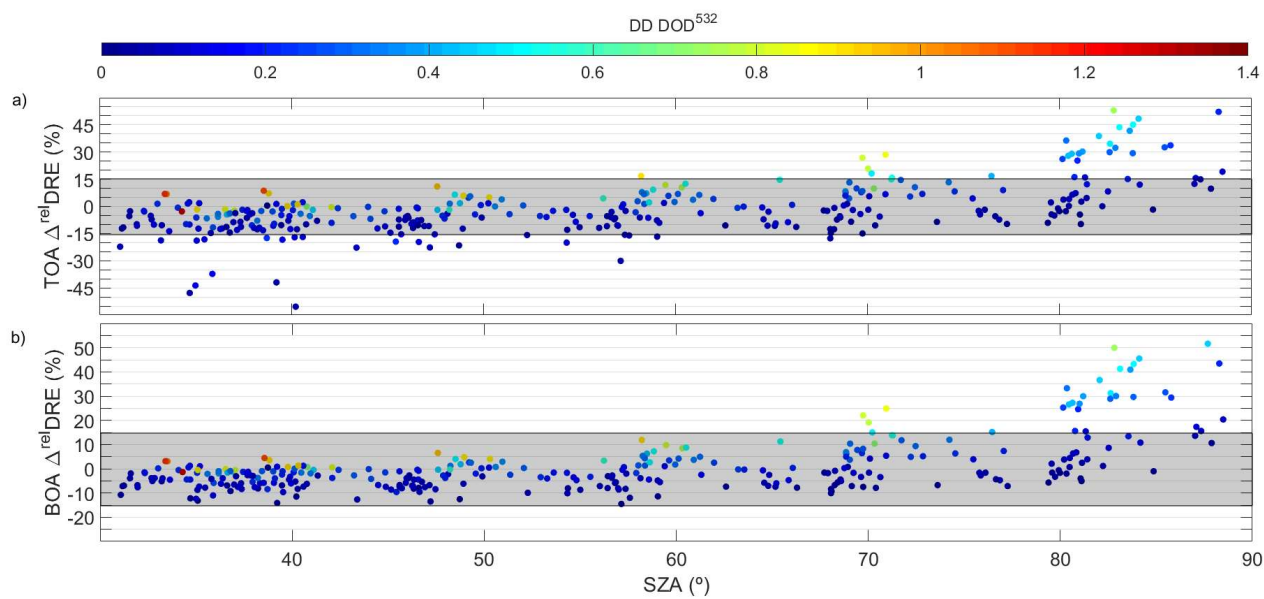


**Figure 5: Dust direct radiative effect (DRE,  $\text{W m}^{-2}$ ) at BOA (purple), TOA (green) and in the atmosphere (ATM, yellow) at the ARN station, for instance, as induced by the (a) fine dust (Df) and (b) coarse dust particles. Daily mean values are also included above (keeping the same colours). (c) Fine-to-total (Df/DD) ratio of the dust DRE ( $ftr_{\text{DRE}}$ ) at BOA (purple) and TOA (green), together with their linear fit between 25 March and 7 April. The standard deviation of the slope and intercept are shown in brackets. The absolute temporal rate of the  $ftr_{\text{DRE}}$  ratio ( $\delta DRE$ ) at BOA (TOA) is  $+0.026\% \text{ h}^{-1}$  ( $+0.023\% \text{ h}^{-1}$ ), being equivalent to an increase of  $+0.62\% \text{ day}^{-1}$  ( $+0.55\% \text{ day}^{-1}$ ).**

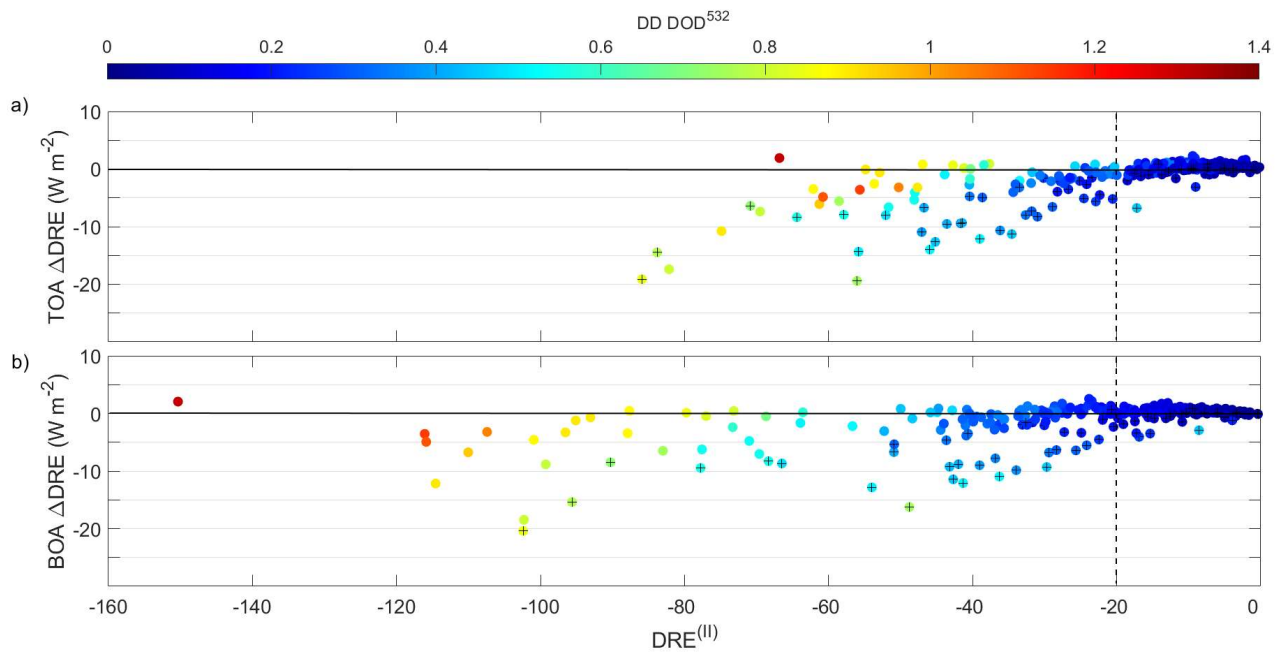


**Figure 6: Dust direct radiative effect (DRE) as a function of  $DOD^{532}$ , for instance, at ARN station (left panels), together with the DREff values as obtained for each station (right panels), at a) BOA, and b) TOA. Both are shown separately for the fine dust (Df, blue circles), coarse dust (Dc, dark blue squares) and total dust (DD, red triangles). The error of the DREff are shown in brackets in the left panels, and by bars in the right panels. The period consider is from 25 March to 7 April 2021.**





**Figure 7. Relative differences in DRE ( $\Delta^{\text{rel}} \text{DRE}$ ; %) as obtained between the two approaches as a function of SZA at: a) BOA and b) TOA for all the five lidar stations involved in this study, from 25 March to 7 April 2021. The dependence on DD  $\text{DOD}^{532}$  is shown by a colour-scaled bar. The shadowed box marks the threshold of  $\Delta^{\text{rel}} \text{DRE} = \pm 15\%$ .**



**Figure 8. Differences in DRE ( $\Delta DRE$ ;  $W\ m^{-2}$ ) as obtained between the two approaches ( $DRE^{(I)} - DRE^{(II)}$ ; see Eq. 6) at: a) BOA, and b) TOA for all the five lidar stations involved in this study, from 25 March to 7 April 2021. The dependence on the  $DD\ DOD^{532}$  is shown by a colour-scaled bar. The profiles with  $SZA > 70^\circ$  are marked with a cross.**

**Table 1: Input parameters and radiative properties for the GAME model and databases in the SW spectral range. Note that  $z$  denotes the vertical dependence.  $DRE^{(I)}$  and  $DRE^{(II)}$  denotes the particular approach used for DRE simulation, considering either dust component separation (Dc, Df) or total dust (DD, no separation), respectively.**

	Parameters		Database / instrumentation
	$DRE^{(I)}$	$DRE^{(II)}$	
Atmosphere and Land	SA		MODIS
	Atmospheric profiles		U.S. std. atm. + 3h GDAS profiles
	Gas concentration profiles		U.S. std. atm. + 3h GDAS profiles
	Absorption coefficients		HITRAN
Aerosols	Df or Dc $\alpha^{532}(z)$	DD $\alpha^{532}(z)$	Lidar
	Df or Dc DOD	DD DOD	Lidar
	fine or coarse $g$	total $g$	Sun-photometer
	total $\omega$		Sun-photometer
	$AE^{440-870}$		Sun-photometer

785 **Table 2: Dust optical depth at 532 nm ( $DOD^{532}$ ) for the dust fine (Df) and coarse (Dc) components and DD ( $DD = Df + Dc$ ) at the five lidar stations (from left to right as latitude increases).  $ftr\_DOD$  denotes the Df-to-DD ratio (in %).  $\bar{X}$  indicates the average for the whole dust event (the standard deviation is also shown) and  $X^{max}$  refers to the maximal hourly value within the dusty period.**

	<i>ARN</i>	<i>GRA</i>	<i>EVO</i>	<i>TRJ</i>	<i>BCN</i>
$\overline{Df}$	$0.10 \pm 0.10$	$0.08 \pm 0.06$	$0.06 \pm 0.03$	$0.08 \pm 0.07$	$0.04 \pm 0.02$
$\overline{Dc}$	$0.24 \pm 0.25$	$0.20 \pm 0.16$	$0.15 \pm 0.08$	$0.19 \pm 0.15$	$0.10 \pm 0.06$
$\overline{DD}$	$0.34 \pm 0.35$	$0.28 \pm 0.22$	$0.21 \pm 0.11$	$0.27 \pm 0.22$	$0.14 \pm 0.08$
$ftr\_DOD$ (%)	29.4	28.6	30.0	28.5	28.6
$Df^{max}$	0.35	0.18	0.19	0.27	0.16
$Dc^{max}$	0.95	0.49	0.42	0.61	0.38
$DD^{max}$	1.30	0.65	0.61	0.88	0.54

790 **Table 3: Radiative properties at 440 nm at the five lidar stations (from left to right as latitude increases). Particularly, the parameters are: the dust fine (Df) and coarse (Dc) components of the asymmetry factor ( $g$ ); and the total dust component for both  $g$  and single scattering albedo ( $\omega$ ). The symbol  $\bar{X}$  indicates the average for the whole dust event (the standard deviation is also shown) and  $X^{max}$  and  $X^{min}$  refers to the maximal and minimal hourly value within the dusty period, respectively.**

		<i>ARN</i>	<i>GRA</i>	<i>EVO</i>	<i>TRJ</i>	<i>BCN</i>
$g^{440}$	$\overline{Df}$	$0.662 \pm 0.029$	$0.652 \pm 0.020$	$0.661 \pm 0.031$	$0.658 \pm 0.033$	$0.652 \pm 0.032$
	$Df^{max}$	0.746	0.691	0.722	0.740	0.706
	$Df^{min}$	0.575	0.599	0.601	0.599	0.575
	$\overline{Dc}$	$0.822 \pm 0.028$	$0.856 \pm 0.030$	$0.837 \pm 0.031$	$0.841 \pm 0.025$	$0.829 \pm 0.024$
	$Dc^{max}$	0.881	0.917	0.870	0.920	0.892
	$Df^{min}$	0.755	0.798	0.750	0.807	0.788
	$\overline{total\ dust}$	$0.735 \pm 0.037$	$0.759 \pm 0.041$	$0.754 \pm 0.035$	$0.740 \pm 0.038$	$0.728 \pm 0.026$
	$total\ dust^{max}$	0.817	0.805	0.816	0.815	0.800
	$total\ dust^{min}$	0.672	0.675	0.681	0.659	0.678
$\omega^{440}$	$\overline{total\ dust}$	$0.941 \pm 0.026$	$0.914 \pm 0.013$	$0.922 \pm 0.022$	$0.921 \pm 0.016$	$0.941 \pm 0.021$
	$total\ dust^{max}$	0.992	0.946	0.990	0.960	0.976
	$total\ dust^{min}$	0.897	0.898	0.897	0.890	0.897

795

800 Table 4: Episode-averaged hourly values of the dust radiative effect (DRE, in  $\text{W m}^{-2}$ ) and their standard deviation on the surface (BOA) as induced by fine (Df), coarse (Dc) and total dust (DD) at the five Iberian lidar stations.  $\bar{X}$  indicates the average for the whole event (standard deviations are also shown), and  $X^{max}$  refers to the maximal value. The DREff (in  $\text{W m}^{-2} \tau^{-1}$ ) denotes the DRE efficiency. The ftr\_DRE denotes the Df-to-total dust ratio (in %,) and  $\delta DRE$  (in  $\% \text{ day}^{-1}$ ) is the slope of the linear fitting analysis of the hourly averaged ftr\_DRE along time, considering a minimum of six ftr\_DRE each day.

		ARN	GRA	EVO	TRJ	BCN
Df	$\overline{DRE}$	$-7.1 \pm 7.6$	$-5.9 \pm 4.6$	$-3.8 \pm 1.9$	$-5.9 \pm 3.8$	$-3.1 \pm 1.9$
	$DRE^{max}$	-54.1	-28.8	-17.8	-32.5	-27.9
	DREff	$-144.2 \pm 2.0$	$-170.3 \pm 6.5$	$-134.5 \pm 2.6$	$-132.9 \pm 2.8$	$-140.4 \pm 4.8$
Dc	$\overline{DRE}$	$-12.2 \pm 13.9$	$-10.4 \pm 8.6$	$-6.3 \pm 3.5$	$-9.6 \pm 6.6$	$-5.2 \pm 3.1$
	$DRE^{max}$	-96.3	-52.2	-28.0	-55.4	-41.7
	DREff	$-98.4 \pm 1.5$	$-102.9 \pm 6.6$	$-92.0 \pm 2.0$	$-94.0 \pm 1.7$	$-89.0 \pm 3.7$
DD	$\overline{DRE}$	$-19.2 \pm 21.4$	$-16.0 \pm 13.2$	$-10.1 \pm 5.4$	$-15.5 \pm 10.3$	$-8.3 \pm 5.0$
	$DRE^{max}$	-150.3	-77.6	-45.9	-87.9	-69.6
	DREff	$-111.8 \pm 1.5$	$-120.7 \pm 6.8$	$-104.4 \pm 2.1$	$-105.7 \pm 2.0$	$-103.0 \pm 4.0$
ftr_DRE		38.6	38.0	41.5	38.5	37.6
$\delta DRE$		0.62	0.02	0.43	0.77	0.26

805

**Table 5: The same as Table 4, but on the top-of-the-atmosphere (TOA).**

		ARN	GRA	EVO	TRJ	BCN
Df	$\overline{DRE}$	$-5.5 \pm 5.6$	$-4.0 \pm 3.7$	$-2.8 \pm 1.6$	$-4.2 \pm 2.8$	$-2.5 \pm 1.6$
	$DRE^{max}$	-35.9	-28.8	-17.7	-23.4	-23.2
	DREff	$-103.4 \pm 2.8$	$-119.8 \pm 7.6$	$-105.5 \pm 4.1$	$-92.7 \pm 3.6$	$-114.2 \pm 3.9$
Dc	$\overline{DRE}$	$-7.4 \pm 7.8$	$-5.2 \pm 5.8$	$-3.9 \pm 2.8$	$-5.3 \pm 4.2$	$-3.4 \pm 2.2$
	$DRE^{max}$	-53.5	-27.6	-29.2	-35.8	-30.6
	DREff	$-57.3 \pm 2.2$	$-57.9 \pm 5.0$	$-61.6 \pm 3.5$	$-52.4 \pm 2.8$	$-58.4 \pm 3.2$
DD	$\overline{DRE}$	$-12.9 \pm 13.3$	$-9.2 \pm 9.4$	$-6.7 \pm 4.3$	$-9.5 \pm 7.1$	$-6.0 \pm 3.7$
	$DRE^{max}$	-85.9	-48.1	-47.1	-58.6	-51.7
	DREff	$-70.8 \pm 2.3$	$-74.3 \pm 5.6$	$-74.4 \pm 3.6$	$-64.5 \pm 3.0$	$-73.8 \pm 3.3$
frt_DRE		43.8	45.5	42.2	44.6	43.3
$\delta DRE$		0.55	-2.90	0.67	2.64	0.70



**Table 6: The same as Table 4, but in the atmosphere (ATM).**

		ARN	GRA	EVO	TRJ	BCN
Df	$\overline{DRE}$	$1.5 \pm 2.0$	$1.9 \pm 1.2$	$1.0 \pm 0.5$	$1.5 \pm 1.2$	$0.6 \pm 0.4$
	$DRE^{max}$	22.9	8.9	7.9	12.1	5.1
Dc	$\overline{DRE}$	$4.4 \pm 6.5$	$4.9 \pm 3.1$	$2.4 \pm 1.2$	$3.7 \pm 2.9$	$1.8 \pm 1.2$
	$DRE^{max}$	60.6	25.7	17.6	26.0	13.3
DD	$\overline{DRE}$	$5.9 \pm 8.4$	$6.8 \pm 4.2$	$3.4 \pm 1.7$	$5.2 \pm 4.1$	$2.4 \pm 1.6$
	$DRE^{max}$	83.5	33.0	25.6	38.1	18.0
ftr_DRE		27.4	28.5	28.8	29.6	25.0