

# Investigating the celerity of propagation for small perturbations and dispersive sediment aggradation under a supercritical flow

Hasan Eslami<sup>1</sup>, Erfan Poursoleymanzadeh<sup>1,2</sup>, Mojtaba Hiteh<sup>1,3</sup>, Keivan Tavakoli<sup>1,4</sup>, Melika Yavari Nia<sup>1,5</sup>, Ehsan Zadehali<sup>1,6</sup>, Reihaneh Zarrabi<sup>1,7</sup>, Alessio Radice<sup>1</sup>

<sup>1</sup>Dept. of Civil and Environmental Engineering, Politecnico di Milano, Milan, 20133, Italy  
<sup>2</sup>Dept. of Civil Engineering and Management (CEM), University of Twente, Enschede 7522NB, The Netherlands  
<sup>3</sup>Dept. Civil and Coastal Engineering, University of Florida, Gainesville, FL 32611, US  
<sup>4</sup>Dept of Geography and the Environment, University of Texas at Austin, Austin, TX 78712 – 1697, US  
<sup>5</sup>Dept. Soil, Water and Ecosystem Sciences, University of Florida, Gainesville, FL 32611, US  
<sup>6</sup>Dept. of Civil, Environmental, and Geo-Engineering, University of Minnesota Twin Cities, Minneapolis, MN 55455, US  
<sup>7</sup>Dept. of Geography and Environment, University of Alabama, Tuscaloosa, AL 35487, US

Correspondence to: Alessio Radice (alessio.radice@polimi.it)

**Abstract.** The manuscript presents an investigation of the scales of propagation for sediment aggradation in an overloaded channel. The process has relevant implications for land protection, since bed aggradation reduces channel conveyance and thus increases inundation hazard; knowing the time needed for the aggradation to take place is important for undertaking suitable actions. Attention is here focused on supercritical flow, under which the process is dispersive and a depositional front cannot be clearly recognized; in these conditions, one needs to define propagation scales locally and instantaneously. Based on spatial and temporal rates of variation of the bed elevation, we quantify a celerity of propagation for the sediment aggradation wave. Furthermore, considering that morphological processes are modeled by differential equations, the eigenvalues of the latter's system are the celerities of the so-called small perturbations. After a review of existing approaches to determine the celerity of small perturbations taking into account or discarding the concentration of transported sediment, the manuscript considers a laboratory experiment with temporally and spatially detailed measurements, whose results are representative of those of several others as shown in supplementary material. The relationships between the local and instantaneous Froude number, celerity of small perturbations, and the celerity of the aggradation wave are explored. The celerity of the aggradation wave is correlated to that of the small perturbations, while their values differ by orders of magnitude. Scatter plots indicate that accounting or not for the solid concentration in the governing equations does not significantly impact the correlation between the two types of celerities, even if one of the eigenvalues changes significantly in value. Finally, a bulk value of a dimensionless aggradation celerity is provided, that can serve as a rule-of-thumb estimation, useful for engineering purposes.

## 1 Introduction

River sediment transport is one of the key processes shaping the Earth's surface and has a number of implications for human life (Dotterweich, 2008; Mazzorana et al., 2013; Haddadchi et al., 2014; Longoni et al., 2016; Pizarro et al., 2020). The morphologic evolution of rivers can be studied at a huge range of scales, the longest and shortest ones being related to geology/geomorphology and particle mechanics, respectively (e.g., Aksoy and Kavvas, 2005; Ancy, 2020, respectively). This paper is focused on the bed aggradation that results from an imbalance between an amount of supplied sediment and the transport capacity of the flow within a generic extreme event. We focus on situations where the morphologic changes take place in a relatively short timeframe, such as during flash floods. It is well established that, in such events, sediment aggradation can cause a rapid rise in riverbed elevation, thereby reducing the channel's conveyance. Therefore, in the present study, the engineering relevance of the aggradation process lies in its ability to increase hydraulic hazard during a calamitous event (Sear et al., 1995; Stover and Montgomery, 2001; Lane et al., 2007). For example, Neuhold et al. (2009) studied the Ill river in Austria and reported that incorporating sediment transport in hazard assessment increases the probability of dyke overtopping. Radice et al. (2013) performed a back analysis of a past event for the Mallero river (Italy), which induced aggradation of up

Eliminato: <sup>2</sup>

Eliminato: <sup>3</sup>

Eliminato: <sup>4</sup>

Formattato: Apice

Formattato: Non Apice / Pedice

Eliminato: <sup>2</sup>

Eliminato: Florida

Formattato: Non Apice / Pedice

Eliminato:

Eliminato: <sup>3</sup>

Eliminato: Florida

Formattato: Non Apice / Pedice

Formattato: Non Apice / Pedice

Eliminato: <sup>4</sup>

Eliminato: Alabama

Eliminato: With reference to

Eliminato: and after a review of existing approaches to determine the celerity of small perturbations considering or discarding the concentration of transported sediment, the manuscript shows

Eliminato: how the celerities of propagation correlate with one another

Eliminato: It is argued

Eliminato: The s

Eliminato: s

Eliminato: provided

Eliminato: the correlation trends

Eliminato: ,

Eliminato:

Eliminato: In particular, w

Eliminato: -

Eliminato: capacity

Eliminato:

Eliminato: this

Eliminato: has been demonstrated by a number of studies discussing how, during a calamitous event, sediment aggradation may

Eliminato: ; Radice et al., 2013

to 4 m in an in-town reach with 5-m banks. Pender et al. (2016) studied the Caldew river in England and showed how channel aggradation can provoke flooding for events that would not induce it in the absence of morphological changes. Besides the magnitude of morphologic changes, the scales of the progressive evolution of the process are also important. In fact, when a channel is overloaded with sediment, an aggradation wave propagates with a certain celerity along the reach. Knowing the celerity of propagation is crucial for estimating when an aggradation wave will reach any key spot along the stream, thus increasing locally the hydraulic hazard. Again, this knowledge is particularly valuable for engineering purposes, as it enables for better planning and risk assessment in managing sediment-related changes in river systems.

Sediment aggradation has been studied in the past for both the effects of pulsed sediment supply (e.g., Cui et al., 2003; Cui and Parker, 2005; Sklar et al., 2009) and the formation of depositional fronts (e.g., Soni, 1981; Yen et al., 1992; Alves and Cardoso, 1999; Zanchi and Radice, 2021). Cui et al. (2003) and Cui and Parker (2005) found that sediment entering into mountain stream in pulses cause topographic disturbances that are eliminated through translation (downstream movement) and dispersion (gradual fading). They discovered that pulse migration was primarily dispersive, although both translation and dispersion occurred when pulses supplied finer sediment than the surrounding material. Sklar et al. (2009) also found that sediment pulses on an armored bed evolved through both translation and dispersion. Furthermore, Soni (1981), Yen et al. (1992) and Alves and Cardoso (1999) provided quick predictors of a bulk celerity for a formed aggradation front; these formulae may be used to provide expeditious estimates of the time an aggradation wave would need to move from a sediment source to a critical point. Aggrading fronts induced by sediment overloading may also be either translational or dispersive (Lisle et al., 2001). A translational front appears as a sharp discontinuity in the bed elevation. In a dispersive process, instead, a depositional wedge becomes progressively longer and thinner downstream. Zanchi and Radice (2021), based on laboratory experiments in subcritical conditions, could estimate the celerity of the aggradation wave by applying a tracing method since the sediment front was translational and thus reliably detectable in the performed experiments. They argued that translational features are favored by low Froude number and high overloading ratio (the ratio between the sediment inflow discharge and the initial sediment transport capacity of the flow), the opposite holding for dispersive features. In a supercritical flow, given a relatively high value of the Froude number, one expects a dispersive process to take place. In such a condition, due to the absence of a sharp sediment front, it is not possible to track the latter to estimate the celerity of propagation of the aggradation wave. Therefore, alternative methods are needed. The present manuscript indeed considers sediment aggradation in supercritical flow with the purpose of investigating its propagations scales as, to the best of our knowledge, prior investigations have been conducted for subcritical conditions.

From a mathematical point of view, several studies have been performed to simulate the sediment transport process in rivers by using a quasi-two-phase approach in a one-dimensional framework (e.g., De Vries, 1965, 1971, 1973, 1993; Armanini and Di Silvio, 1988; Sieben, 1997, 1999; Kassem and Chaudry, 1998; Lyn and Altinakar, 2002; Lee and Hsieh, 2003; Rosatti et al., 2005; Rosatti and Fraccarollo, 2006; Goutière et al., 2008; Armanini et al., 2009; Garegnani et al., 2011; Armanini, 2018). In a quasi-two-phase approach, the hydro-morphologic evolution of the bed and water surfaces is depicted by a hyperbolic system of partial differential equations, including mass and momentum conservation equations for the mixture phase and one continuity equation (the Exner equation) for the sediment phase. The equations will be presented in detail in section 2. Furthermore, several authors have argued that the eigenvalues of the hyperbolic system represent the celerity of propagation of “small perturbations” in bed and water. These “small” or “infinitesimal” disturbances are waves with limited amplitude generated when the surface of bed or water are perturbed locally (e.g., Rosatti et al., 2004). A classic example of such small-scale, local waves is that of the concentric ripples formed when a stone is thrown into water, propagating in different directions (e.g., Cengel and Cimbala, 2006). The volumetric concentration of the transported sediment, defined as the ratio of sediment discharge to the water-sediment mixture discharge, plays an important role in the formulation of the system of equations and in the determination of its eigenvalues. In fact, when this concentration is negligible, the system may be transformed into another one containing mass and momentum conservation equations for the clear water (i.e., the Saint-Venant equations) and

**Spostato (inserimento) [1]**

**Spostato (inserimento) [2]**

**Eliminato:** T

**Eliminato:**

**Eliminato:** in mountain streams,

**Eliminato:** s

**Eliminato:** ,

**Eliminato:** ing

**Eliminato:** deformation

**Eliminato:** were

**Eliminato:** sediment

**Spostato in su [1]:** Besides the magnitude of morphologic changes, the scales of the progressive evolution of the process are also important. In fact, when a channel is overloaded with sediment, an aggradation wave propagates with a certain celerity along the reach. Knowing the celerity of propagation is crucial for estimating when an aggradation wave will reach any key spot along the stream.

**Spostato in su [2]:** This knowledge is particularly valuable for engineering purposes, as it enables for better planning and risk assessment in managing sediment-related changes in river systems.

**Eliminato:** In this regard

**Eliminato:** . T

**Eliminato:** ¶

**Eliminato:** ¶

**Eliminato:** A

**Eliminato:** therefore

**Eliminato:** ,

**Eliminato:** most (if not all)

**Eliminato:** for example,

**Eliminato:**

**Eliminato:** When t

**Eliminato:** The volumetric concentration of the transported sediment, (that is defined as the ratio of sediment discharge to the water-sediment mixture discharge,) plays an important role in the formulation of this system. When this concentration is negligible, this system may be transformed into another one containing mass and momentum conservation equations for the clear water (i.e., the Saint-Venant equations) and the Exner equation. De Vries (1965) proposed to consider the sediment concentration negligible below a threshold value of around 0.002, while Garegnani et al. (2011, 2013) introduced a higher threshold of 0.01. The issue will be discussed in detail in section 2.

**Eliminato:** However, s

**Spostato (inserimento) [3]**

**Eliminato:** It is worth noting that in the literature, t

**Eliminato:** refer to the

**Eliminato:** 17

**Eliminato:** )

the Exner equation. De Vries (1965) proposed to consider the sediment concentration negligible below a threshold value of around 0.002, while Garegnani et al. (2011, 2013) introduced a higher threshold of 0.01. Additionally, some studies have proposed approximate determinations of the eigenvalues of a simplified system of equations for negligible sediment concentration (De Vries, 1965, 1971, 1973; Lyn, 1987; Lyn and Altinakar, 2002; Goutière et al., 2008; Armanini, 2018). By contrast, Morris and Williams (1996) argued that the assumption of a negligible concentration is not appropriate for many natural streams and, based on that, provided an equation to estimate the eigenvalues of the full system of equations as the celerity of small perturbations.

An aggradation wave is a large-scale process that cannot be considered as a small perturbation, as a flood wave is much larger than the small ripples mentioned above. The celerity of propagation of this large-scale phenomenon may thus differ from that of small perturbations, because different processes can propagate at different velocities. As a result, one would reasonably expect that the aggradation wave celerity cannot be quantified by the eigenvalues of the system of governing equations. Determining the celerity of an aggradation wave necessitates a different quantitative approach, as will be explored in a following section of the manuscript.

Based on the arguments above, the present manuscript is articulated around the following questions: (1) How can one quantify the celerity of propagation of an aggradation wave? (2) How does the aggradation wave celerity correlate with the celerity of small perturbations determined by the eigenvalues of the governing equations? (3) Which is the impact of considering or discarding the sediment concentration on the previous point? These issues are investigated with reference to a prototypal aggradation experiment performed in a laboratory flume. The manuscript is structured as follows: Section 2 provides a review of how the eigenvalues of the hyperbolic equations have been treated by several studies with or without an assumption of negligible sediment concentration. Section 3 borrows from hydro-dynamics a method to estimate the local and instantaneous celerity of propagation of an aggradation wave. In section 4, the experimental setup and the measurement techniques are presented; furthermore, the section describes the methods for the quantitative determination of the different celerities. Sections 5 and 6 contain the experimental results and a discussion, respectively. Finally, the key conclusions of the study are provided.

## 2 Mathematical modeling of channel morphologic evolution: a review of quasi-two-phase approaches and the celerity of small perturbations

In a fully-two-phase approach, the governing equations for one-dimensional modeling of channel morphologic evolution comprehend four partial differential equations (e.g., Greco et al., 2012), including two mass and momentum equations for the mixture phase and the same equations for the solid phase. However, since in the literature a quasi-two-phase approach has been widely taken to simulate mobile-bed flows, we follow this approach also in this study. A quasi-two-phase model for river morphology is based on two main hypotheses (e.g., Garegnani et al., 2013). First, if the volumetric concentration of the transported sediment,  $c_s$ , remains below a certain threshold, then the bed shear stress may be computed using the same equations one uses for clear-water conditions. For example, Armanini et al. (2009) proposed a threshold value of 0.05. The second hypothesis is that water and sediment move at almost the same velocity. In a quasi-two-phase approach, a hyperbolic system of partial differential equations includes one continuity equation for the mixture, one momentum equation for the mixture, and one continuity equation for the bed sediment (Exner equation). The two equations for the mixture can be simplified to the well-known Saint-Venant equations for clear water if the solid concentration is negligible. The next sub-sections separately review the cases for negligible and non-negligible sediment concentration.

### 2.1 Governing equations and eigenvalue analysis for negligible $c_s$

Several authors (e.g., De Vries, 1965, 1971, 1973, 1993; Sieben, 1997, 1999; Armanini, 2018; Goutière et al., 2008; Garegnani et al., 2011, 2013) have argued that in fluvial environments the volumetric solid concentration may be assumed to be very

**Eliminato:** In this context

**Eliminato:** ,

**Eliminato:** Furthermore,

**Eliminato:** s

**Eliminato:** ;

**Eliminato:** However

**Eliminato:** by contrast

**Spostato in su [3]:** It is worth noting that in the literature, the “small” or “infinitesimal” disturbances refer to the waves with limited amplitude generated when the surface of bed or water are perturbed locally (e.g., Rosatti et al., 2004). A classic example of such small-scale, local waves is the concentric ripples formed when a stone is thrown into water, propagating in different directions (Çengel and Cimbala, 2017).

**Eliminato:** , on the other hand, represents

**Eliminato:** r-

**Eliminato:** compared to small-scale perturbations

**Eliminato:** , similar to the large waves seen in fixed-bed flood wave models

**Eliminato:**

**Eliminato:** requires distinct determination

**Eliminato:** Estimating

**Eliminato:** sediment involved in the aggradation process

**Eliminato:** which may be achieved by analysing the spatial and temporal variation in bed elevation

**Eliminato:** The celerity of propagation of small perturbations is not the celerity of propagation of the aggradation wave, as also happens considering water in a fixed-bed flood wave model. Therefore, if one needs to provide a celerity for the sediment involved in the aggradation process, something different is needed and may be quantified considering the spatial and temporal rate of variation of the bed elevation. A key objective of the present study is investigating the correlation between the celerity of propagation of the aggradation wave (determined as just mentioned) and the celerity of small perturbations that are (determined as the eigenvalues of the system).

**Eliminato:** two scales

**Eliminato:** celerities in aggradation process

**Eliminato:** the scales of propagation in an aggradation process

**Eliminato:** What is the relationship between the aggradation celerity and the celerity of small perturbations

**Eliminato:** and finally

**Eliminato:** not

**Eliminato:** n

**Eliminato:** shows how one may

**Eliminato:** , based on the measurement of the bed elevation,

**Eliminato:** scales of propagation are described

**Eliminato:** , such as 0.05 as proposed by Armanini et al. (2009) does not exceed a certain value (for example, Armanini et al., 2009 proposed a threshold at 0.05),

**Eliminato:** S

**Eliminato:** ,

**Eliminato:** As mentioned above, i

**Eliminato:** due to the second assumption,

small. With this assumption, the Saint-Venant and Exner equations are obtained for a unit-width rectangular channel as follows:

$$\begin{cases} \frac{\partial h}{\partial t} + \frac{\partial(uh)}{\partial x} = 0 \\ \frac{\partial(uh)}{\partial t} + \frac{\partial(u^2h)}{\partial x} + gh \left( \frac{\partial h}{\partial x} + \frac{\partial z_b}{\partial x} \right) = -ghS_f \\ (1-p_0) \frac{\partial z_b}{\partial t} + \frac{\partial q_s}{\partial x} = 0 \end{cases} \quad (1)$$

where  $h$  = water depth;  $u$  = depth-averaged water velocity;  $g$  = gravity acceleration;  $z_b$  = bed elevation;  $S_f$  = friction slope;  $p_0$  = bed porosity; and  $q_s$  = sediment discharge per unit width. This system contains five unknowns, namely  $h, u, z_b, S_f, q_s$ , and only three equations; therefore, in order to ensure the existence of a solution two other equations, working as closure relationships, are needed. The latter express  $S_f$  and  $q_s$ . For the friction slope, the Manning formula is frequently used:

$$S_f = \frac{n^2 u^2}{R_H^{4/3}} \quad (2)$$

where  $n$  = Manning's coefficient; and  $R_H$  = hydraulic radius. To evaluate the sediment discharge,  $q_s$ , many formulae are available. For example, Goutière et al. (2008) expanded the formula of Meyer-Peter and Müller (1948) as follows:

$$q_s(q, h) = 8 \sqrt{g(s-1)d_{50}^3} \left( \frac{n^2 q^2}{(s-1)d_{50} h^{7/3}} - 0.047 \right)^{3/2} \quad (3)$$

where  $q = uh$  = water discharge per unit width;  $s = \rho_s/\rho$  = relative sediment density ( $\rho_s$  and  $\rho$  represent the sediment and water densities, respectively); and  $d_{50}$  = median grain diameter.

Exploiting a compound derivative for  $\partial q_s/\partial x$  and the derivation of the product for  $\partial(uh)/\partial x$ , system (1) becomes:

$$\begin{cases} \frac{\partial h}{\partial t} + u \frac{\partial h}{\partial x} + h \frac{\partial u}{\partial x} = 0 \\ \frac{\partial u}{\partial t} + g \frac{\partial h}{\partial x} + u \frac{\partial u}{\partial x} + g \frac{\partial z_b}{\partial x} = -gS_f \\ \frac{\partial z_b}{\partial t} + \frac{1}{(1-p_0)} \frac{\partial q_s}{\partial h} \frac{\partial h}{\partial x} + \frac{1}{(1-p_0)} \frac{\partial q_s}{\partial u} \frac{\partial u}{\partial x} = 0 \end{cases} \quad (4)$$

System (4) can be written in the vector form as (Armanini, 2018):

$$\frac{\partial \mathbf{U}}{\partial t} + \mathbf{A}_U \frac{\partial \mathbf{U}}{\partial x} + \mathbf{S}_U = 0 \quad (5)$$

where:

$$\mathbf{U} = \begin{bmatrix} h \\ u \\ z_b \end{bmatrix} \quad \mathbf{A}_U = \begin{bmatrix} u & h & 0 \\ g & u & g \\ \frac{1}{(1-p_0)} \frac{\partial q_s}{\partial h} & \frac{1}{(1-p_0)} \frac{\partial q_s}{\partial u} & 0 \end{bmatrix} \quad \mathbf{S}_U = \begin{bmatrix} 0 \\ gS_f \\ 0 \end{bmatrix} \quad (6)$$

are the vector of unknowns, the matrix of coefficients, and the vector of known terms, respectively.

The eigenvalues ( $\lambda_1, \lambda_2$ , and  $\lambda_3$ ) of the coefficient matrix  $\mathbf{A}_U$  represent the slope of the so-called characteristic lines. The latter are described by the equation  $\lambda_i = dx/dt$  for  $i=1,2,3$ , along which discontinuities, such as infinitesimal perturbations in the system variables, can propagate (Armanini, 2018). Lyn and Altinakar (2002) discussed that, after linearizing the system, the eigenvectors of the system determine the Riemann invariants. They interpreted the Riemann invariants as quantities that travel along the characteristic lines at speeds equal to the eigenvalues. Building on these insights, several studies (e.g., De Vries, 1965, 1971, 1973; Lyn, 1987; Lyn and Altinakar, 2002; Goutière et al., 2008; Armanini, 2018) have treated the eigenvalues of the system as the celerity of propagation of small perturbations in the bed and water surfaces. For the more simple case of

Eliminato: ×

Eliminato: One can then determine t

Eliminato: ,

Formattato: Tipo di carattere: Times New Roman, Non Grassetto, Non Corsivo

Eliminato: ,

Eliminato: that

Eliminato: s

Eliminato:

Eliminato: curves

Eliminato: In other words, t

Formattato: Tipo di carattere: Times New Roman

Eliminato: characteristic lines

Formattato: Tipo di carattere: Times New Roman, Non Grassetto, Non Corsivo

Eliminato: after linearizing the system,

Eliminato: curves

Eliminato: and

Eliminato:

Eliminato: according to the literature

Eliminato: ,

Eliminato: Another reason that justifies considering eigenvalues as the celerity of small perturbations is as follows: as mentioned, a

water ripples, mentioned above, it can be demonstrated that the eigenvalues of the governing system of equations,  $u \pm \sqrt{gh}$ , indeed coincide with the celerity one obtains imposing the conservation of mass and energy (e.g., Chanson, 2004, p. 225; Çengel and Cimbala, 2006, p. 685; Munson et al., 2013, p. 556).

The three eigenvalues of the system can be obtained by solving the following equation:

$$\det(\mathbf{A}_0 - \lambda \mathbf{I}) = 0 \quad (7)$$

where  $\mathbf{I}$  is the identity matrix. By developing (7) one obtains a cubic equation which is known as the characteristic polynomial equation (Armanini, 2018):

$$p(\lambda) = -\lambda^3 + 2u\lambda^2 + (gh - u^2 + ghA_\lambda)\lambda - gh u(A_\lambda - B_\lambda) = 0 \quad (8)$$

where:

$$A_\lambda = \frac{1}{(1-p_0)h} \frac{\partial q_s}{\partial u}, \quad B_\lambda = \frac{1}{(1-p_0)u} \frac{\partial q_s}{\partial h} \quad (9)$$

are dimensionless parameters. Though the three real and distinct eigenvalues of the system can be computed exactly by solving this cubic equation (e.g., Rosatti and Fraccarollo, 2006), approximated solutions may be useful for interpretation purposes (Lyn, 1987). Numerous studies have thus been performed to investigate the characteristic lines (Lyn and Altinakar, 2002) and present approximated formulations for  $\lambda_1$ ,  $\lambda_2$ , and  $\lambda_3$ . In the following, some of them are reviewed. It is noted that the approximated solutions may sometimes yield non-real roots, depending on the Froude number ( $Fr = u/\sqrt{gh}$ ).

### 2.1.1 De Vries' approach

De Vries (1965, 1971, 1973, 1993) referred to the eigenvalues of the system as the “celerities of the surface and bed waves in mobile-bed flows”. To estimate them, he proposed an approximated solution valid for Froude numbers lower than 0.8 or higher than 1.2:

$$\begin{cases} \lambda_1 \cong \left[1 + \frac{1}{Fr}\right]u \\ \lambda_2 \cong \left[1 - \frac{1}{Fr}\right]u \\ \lambda_3 \cong \frac{u}{1 - Fr^2}(A_\lambda - B_\lambda) \end{cases} \quad (10)$$

In Eq. (10), one recognizes that  $\lambda_1$  and  $\lambda_2$  are the well-known surface wave celerities for the Saint-Venant equations representing water flow. In this approach, therefore, for a flow sufficiently distant from the critical conditions and negligible solid concentration, the first two eigenvalues are not affected by the presence of sediment transport. Instead,  $\lambda_3$  was considered as the celerity of the bed surface perturbations.

The eigenvalues  $\lambda_2$  and  $\lambda_3$  have a different sign in subcritical and supercritical flow. Therefore, an alternative version of Eq. (10) was proposed to obtain eigenvalues with the same sign ( $\lambda_1 > 0$ ,  $\lambda_2 < 0$ ,  $\lambda_3 > 0$ ) for both the flow conditions:

$$Fr < 0.8 \quad \begin{cases} \lambda_1 \cong \left[1 + \frac{1}{Fr}\right]u \\ \lambda_2 \cong \left[1 - \frac{1}{Fr}\right]u \\ \lambda_3 \cong \frac{u}{1 - Fr^2}(A_\lambda - B_\lambda) \end{cases} \quad Fr > 1.2 \quad \begin{cases} \lambda_1 \cong \left[1 + \frac{1}{Fr}\right]u \\ \lambda_2 \cong \frac{u}{1 - Fr^2}(A_\lambda - B_\lambda) \\ \lambda_3 \cong \left[1 - \frac{1}{Fr}\right]u \end{cases} \quad (11)$$

**Eliminato:** example of small perturbations is the wave created on the surface of the water when a stone is thrown into it. Using the principles of mass and momentum conservation, it is demonstrated that the celerity of this small wave's propagation is equal to  $u \pm \sqrt{gh}$  (Çengel and Cimbala, 2017), which coincides with the eigenvalues of the system under clear water conditions

**Formattato:** Inglese (Stati Uniti)

**Eliminato:** (Rosatti and Fraccarollo, 2006)

**Eliminato:** curves

**Eliminato:** to

**Eliminato:** ( $Fr = u/\sqrt{gh}$ )

**Eliminato:** has been

### 2.1.2 Lyn and Altinakar's approach

330 Lyn (1987), then followed by Lyn and Altinakar (2002), presented different approximations to estimate the three eigenvalues for near-critical flows ( $0.8 \leq Fr^2 \leq 1.2$ ):

$$\begin{cases} \lambda_1 \cong \left[ \frac{3}{2} + \frac{1}{2Fr} \right] u \\ \lambda_2 \cong \left[ \frac{1}{4} \left( 1 - \frac{1}{Fr^2} \right) - \frac{1}{4} \sqrt{\left( 1 - \frac{1}{Fr^2} \right)^2 + \frac{8A_\lambda}{Fr^2}} \right] u \\ \lambda_3 \cong \left[ \frac{1}{4} \left( 1 - \frac{1}{Fr^2} \right) + \frac{1}{4} \sqrt{\left( 1 - \frac{1}{Fr^2} \right)^2 + \frac{8A_\lambda}{Fr^2}} \right] u \end{cases} \quad (12)$$

Lyn and Altinakar (2002) argued that  $\lambda_2$  and  $\lambda_3$  are not devoted merely to a surface wave or a bed wave but, rather, they represent the celerity of propagation of both surface and bed waves. This finding is somehow consistent with Sieben's (1997, 1999) statement that in near-critical regimes the bed waves interact strongly with the surface waves.

### 335 2.1.3 Goutière et al.'s approach

Goutière et al. (2008) developed approximated formulations for the eigenvalues of a system of partial differential equations slightly different from (1), where  $h$ ,  $q$  and  $z_b$  were the main dependent variables:

$$\begin{cases} \frac{\partial h}{\partial t} + \frac{\partial q}{\partial x} = 0 \\ \frac{\partial q}{\partial t} + \frac{\partial}{\partial x} \left( \frac{q^2}{h} \right) + gh \left( \frac{\partial h}{\partial x} + \frac{\partial z_b}{\partial x} \right) = -ghS_f \\ (1 - p_0) \frac{\partial z_b}{\partial t} + \frac{\partial q_s}{\partial x} = 0 \end{cases} \quad (13)$$

To estimate the three eigenvalues of the system they proposed the following equations:

$$\begin{cases} \lambda_1 \cong \left[ 1 + \frac{1}{Fr} \right] u \\ \lambda_2 \cong \frac{1}{2} \left[ \left( 1 - \frac{1}{Fr} \right) - \sqrt{\left( 1 - \frac{1}{Fr} \right)^2 - \frac{4(A_\lambda - B_\lambda)}{(Fr^2 + Fr)}} \right] u \\ \lambda_3 \cong \frac{1}{2} \left[ \left( 1 - \frac{1}{Fr} \right) + \sqrt{\left( 1 - \frac{1}{Fr} \right)^2 - \frac{4(A_\lambda - B_\lambda)}{(Fr^2 + Fr)}} \right] u \end{cases} \quad (14)$$

Differently from the approaches of De Vries and Lyn and Altinakar, Eq. (14) are to be intended as valid for the whole range of Froude numbers.

### 2.2 Governing equations and eigenvalue analysis for non-negligible $c_s$

Morris and Williams (1996) argued that an assumption of negligible solid concentration is not appropriate for many natural streams and, therefore, determined the eigenvalues of a system of equations considering a finite  $c_s$ . The continuity and momentum equations of the mixture and the continuity equation for the sediment in Morris and Williams' approach are as follows:

345

**Formattato:** Tipo di carattere: (Predefinito) Times New Roman

$$\begin{cases} \frac{\partial(uh)}{\partial x} + \frac{\partial h}{\partial t} + \frac{\partial z_b}{\partial t} = 0 \\ \frac{\partial u}{\partial t} + u \frac{\partial u}{\partial x} + g \frac{\partial h}{\partial x} + \frac{(\rho_s - \rho)gh}{2\rho_m} \frac{\partial c_s}{\partial x} - \frac{[(1-p_0)\rho_s + p_0\rho]u}{\rho_m h} \frac{\partial z_b}{\partial t} + g \frac{\partial z_b}{\partial x} = -gS_f \\ \frac{\partial(uhc_s)}{\partial x} + \frac{\partial(hc_s)}{\partial t} + (1-p_0) \frac{\partial z_b}{\partial t} = 0 \end{cases} \quad (15)$$

where,  $c_s = q_s/(q_s + q)$ , and  $\rho_m = c_s\rho_s + (1 - c_s)\rho$  is the density of the mixture. Since the solid concentration is not negligible, the water and sediment discharge per unit width are obtained from the following equations (always assuming that the solid particles move with the same velocity of water):

$$q = uh(1 - c_s) \quad (16)$$

$$q_s = uhc_s \quad (17)$$

The system can be again closed using Eq. (2) and Eq. (3), as the latter furnishes a mean to compute  $c_s$  from Eq. (17).

350 The eigenvalues of the system (15) are determined by solving the following cubic equation:

$$\begin{aligned} & \lambda^3 \left\{ Bu \frac{\partial c_s}{\partial u} - h \frac{\partial c_s}{\partial h} - [c_s - (1 - p_0)] \right\} + \lambda^2 \left\{ \{Agh[c_s - (1 - p_0)] - 2Bu^2\} \frac{\partial c_s}{\partial u} + (2 + B)uh \frac{\partial c_s}{\partial h} + \right. \\ & 2u[c_s - (1 - p_0)] \left. \right\} + \lambda \left\{ (Bu^3 - ugh\{1 + A[c_s - (1 - p_0)]\}) \frac{\partial c_s}{\partial u} - ((1 + B)u^2h - gh^2\{1 + \right. \\ & A[c_s - (1 - p_0)]\}) \frac{\partial c_s}{\partial h} - (u^2 - gh)[c_s - (1 - p_0)] \left. \right\} + ugh \left( u \frac{\partial c_s}{\partial u} - h \frac{\partial c_s}{\partial h} \right) = 0 \end{aligned} \quad (18)$$

where  $A = (\rho_s - \rho)/(2\rho_m)$  and  $B = ((1 - p_0)\rho_s + p_0\rho)/\rho_m$  are dimensionless parameters. Differently from the previous approaches for negligible  $c_s$ , this last one does not carry explicit approximated equations for the  $\lambda$  values. [For the sake of completeness, an extended report of Morris and Williams' derivations is included in Supplemental 1.](#)

### 3 Estimation of the local and instantaneous celerity of propagation of sediment aggradation

355 To determine the celerity of propagation of a certain quantity  $X$ , that varies in space and time, [we](#) borrow the developments provided for unsteady flow by, for example, Chow et al. (1988, [p. 284](#)) or Jain (2001, [p. 240](#)). The celerity of propagation is defined as the velocity at which a given value of that quantity migrates along the system with respect to a still observer or, conversely, the velocity [at which](#) an observer needs to move to see a constant value for the quantity. [According to this definition, the celerity of propagation of  \$X\$ ,  \$C\_X\$ , can be obtained by imposing that the total differential of the quantity is zero over an infinitesimal time interval, which corresponds to  \$dX/dt = 0\$ .](#)

$$\frac{dX}{dt} = \frac{\partial X}{\partial t} + \frac{\partial X}{\partial x} \frac{dx}{dt} = 0 \rightarrow C_X = \frac{dx}{dt} = -\frac{\partial X / \partial t}{\partial X / \partial x} \quad (19)$$

In a clear-water wave model, suitable quantities to be used as  $X$  are, for example, water depth or discharge; [in a kinematic-wave model the celerities of these two quantities are equal, while in a diffusive wave they are different \(see again Chow et al.'s and Jain's books\)](#). In the present case, any quantity related to the morphologic process may be used; in the next section we will [choose to use](#) the bed elevation.

### 365 4 Materials and methods

The aggradation experiment presented in this paper [was conducted](#) at the Mountain Hydraulics Laboratory of the Politecnico di Milano, Lecco campus (Italy). [It was one of twenty-five experiments within an experimental campaign, and it is used as a proof of concept in the manuscript. Supplemental 2 provides experimental parameters and results for the others, as a support](#)

**Eliminato:** (for the sake of completeness, an extended report of Morris and Williams' derivations is included in Supplemental 1)

**Eliminato:** In the previous section and as will be discussed in sub-section 4.4, part of the first question of the study, concerning the determination of the celerity of small perturbations, is addressed. This section, along with sub-section 4.3, instead focuses on another aspect of the first question, involving the quantitative method used to estimate the propagation celerity of the aggradation wave.

**Eliminato:** one can

**Eliminato:** that

**Eliminato:** at

**Eliminato:** derived

**Eliminato:** One can thus obtain the celerity of propagation of  $X$  as follows:

**Eliminato:** motivate a choice of using

**Eliminato:** , after a presentation of the experimental methods

**Eliminato:** has been

**Eliminato:** run

**Eliminato:** i

**Eliminato:** the

**Eliminato:** the

**Eliminato:** the

**Eliminato:** for each run, along with the

**Eliminato:** from several of them



of the interpretation and conclusions drawn in the manuscript. The experimental setup and procedures are briefly reported below, referring to prior work for details.

#### 4.1 Experimental setup, procedures, and measuring methods

The configuration of the used flume is shown in Fig. 1. The flume has a length of 5.2 m, a width of 0.3 m, a bank height of 0.45 m, and is entirely made of Plexiglas. The water discharge,  $Q$ , pumped from an underground container into an upstream tank, is adjusted using a guillotine valve and measured by an electromagnetic flowmeter. The erodible channel bed has a thickness of 0.15 m and is made of Polyvinyl Chloride (PVC), uniform sediment cylinders with a density  $\rho_s$  of 1443 kg/m<sup>3</sup>, an equivalent diameter (computed for a sphere with the same volume of a cylinder)  $d$  of 3.8 mm, porosity  $p_0$  of 0.45 (Unigarro Villota, 2017), and a Manning roughness coefficient  $n$  of 0.015 s/m<sup>1/3</sup> (as determined during preliminary tests by Zanchi and Radice, 2021). A sediment feeding system with a vibrating channel and a hopper is employed upstream. At the downstream end, the channel is equipped with sediment collectors. The bed is fixed in an upstream and a downstream portion to avoid undesired scour. A laser distance sensor is installed to continuously measure the water elevation in the inlet tank.

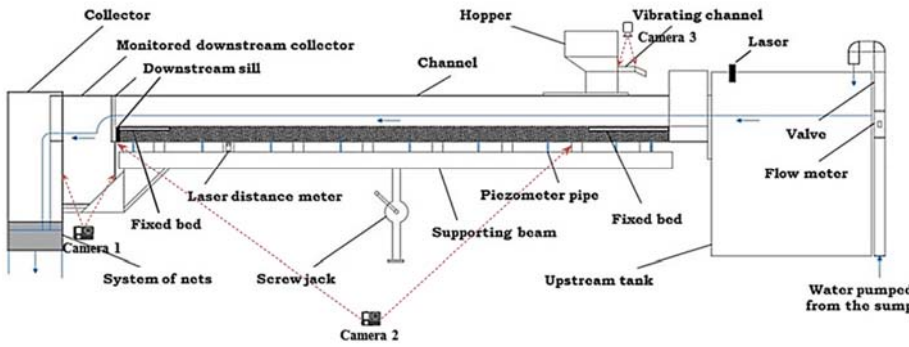


Figure 1. Flume used for the aggradation experiment. Camera 1 shoots the collector; camera 2 shoots the channel from the side; camera 3 shoots the vibrating channel of the sediment feeding system.

Prior to executing an experiment, the sediment bed is leveled and sprayed with water to avoid surface tension effects at water arrival. Then, the water pumping system is switched on and the flume is filled at negligible discharge to avoid any significant disturbance to the sediment. In this term, several cameras placed around the flume (see again Fig. 1) are turned on. After saturation of the bed, which typically takes some minutes, the water discharge is increased to the test value in roughly one minute; in this phase, the continuous reading of the discharge measured by the flowmeter and the laser measurement of the water elevation in the inlet tank furnish the necessary data to compute the temporal evolution of the flow rate entering the flume. When the sediment in the flume starts being transported, the sediment feeding is activated (the time at which the feeder is turned on is considered the initial time of the experiment). During the experiment, the hopper is refilled manually, and the experiment ends when no more sediment material is available (the duration of the aggradation phase is generally less than 10 minutes).

All the measurements are taken by image analysis, using the videos acquired by the various cameras. First, the sediment feeding rate,  $Q_{s-in}$ , is obtained from the videos recorded by camera 3 placed above the vibrating channel. Particle image velocimetry is used to measure the velocity of the particles moving along the vibrating channel; then, this velocity is converted into a sediment feeding rate using a predetermined transfer function (for details on the calibration of the method the reader can refer to Radice and Zanchi, 2018).

Second, in order to measure the bed and water elevation during the experiment, a motion-detection method is applied to the videos captured by camera 2 placed beside the channel. For the measurement of the bed elevation, this method is based on the



concept that the bed-load layer is part of the mixture flow while the bed is atop the still sediment in the bottom layer; according to that, the bed is located at the maximum elevation where no sediment motion occurs (see Eslami et al., 2022). For the measurement of the water surface elevation, instead, the method relies on detecting the motion of sediment particles sparsely transported within the flow. Two subsequent frames of the movie are subtracted from each other and imposing a threshold value to the resulting difference determines the border between motion and stillness; the upper and lower edges of the detected motion layer are considered as the water and bed surface elevations, respectively. To validate the method, manual measurements were also taken during the experiment. Before starting the experiment, three rulers were installed at the upstream, middle, and downstream sections of the flume. Three observers were positioned at these locations, ensuring they avoided interfering with the cameras' field of view. During the experiment, the observers recorded the water and bed surface levels at various time instants using the rulers. At the end of the experiment, the results obtained from the automatic bed and water detection method were compared with the manually recorded values at corresponding times and locations. The comparisons showed satisfactory agreement, with mean squared errors of  $4.0 \text{ mm}^2$  for the bed surface and  $1.5 \text{ mm}^2$  for the water surface.

Third, the sediment transport capacity of the initial flow,  $Q_{s0}$ , is measured by two methods, one relying on the sediment volume progressively accumulated into the downstream collector and one obtaining the sediment volume leaving the flume from those fed and accumulated in the channel (thus applying the mass conservation principle). Full details are also provided in Eslami et al. (2022). The measurement of  $Q_{s0}$  is necessary to obtain the sediment overloading ratio  $Lr = Q_{s-in}/Q_{s0}$ .

#### 4.2 Aggradation experiment and raw results

Table 1 lists the control parameters of the aggradation experiment. Symbols not already defined in the text are  $T$ , representing the experiment duration;  $S_0$ , the initial slope of the channel;  $Q$ , the water discharge.  $H$  and  $U$  denote water depth and velocity, respectively, calculated using the Gauckler-Strickler formula under the assumption of uniform flow; consequently, the Froude number in this table is calculated as  $Fr = U/\sqrt{gH}$ , and  $Re = \rho UH/\mu$  is the Reynolds number, where  $\rho$  and  $\mu$  are density and dynamic viscosity of water.

Table 1. Parameters of the aggradation experiment performed in the present study.

$T(s)$	$S_0(\%)$	$Q(m^3/s)$	$Q_{s-in}(m^3/s)$	$Q_{s0}(m^3/s)$	$Lr$	$H(m)$	$U(m/s)$	$Fr$	$Re$
316	1.37	0.007	4.28E-04	1.33E-04	3.22	0.033	0.705	1.236	19113

Figures 2(a) and 2(b) present the spatial evolution profiles of the bed and water surface at some specific time instants for the presented experiment. The profiles are provided for the channel portion, starting at 140 cm from the inlet, that was shot by camera 2 of Figure 1; aggradation also occurred upstream of the field of view of the camera. The bed elevation progressively increased over time, with a more pronounced rise upstream than downstream, causing the slope to increase. This slope adjustment enhanced the sediment transport rate; the latter tended to reach the sediment feeding rate, leading the channel towards an equilibrium condition. The elevation rose rapidly at the beginning of the experiment, but gradually slowed for larger time. The channel reached an equilibrium state around 190 seconds, after which the profiles showed no further evolution. A sediment front was not clearly detectable from the bed surface profiles during the experiment, due to dispersive aggradation induced by a relatively high flow velocity, as reported in Table 1.

**Eliminato:** . The method has been validated against manual measurements taken during the experimental campaign that includes the run presented in this manuscript

**Eliminato:** 0.0

**Eliminato:** c

**Eliminato:** 0.015 c

**Eliminato:** performed in the current work

**Eliminato:** (

**Eliminato:** s

**Eliminato:** include

**Eliminato:**

**Eliminato:** that

**Eliminato:** as the experiment duration,  $S_0$  as the initial channel slope, and  $Q$  as the flow rate).

**Eliminato:**  $T(s)$

**Tabella formattata**

**Tabella formattata**

**Formattato:** Allineato al centro

**Eliminato:** performed

**Eliminato:** from the x-coordinate (increasing from upstream to downstream) equal to 140 cm (distance from the upstream) because the channel is monitored by the camera from this coordinate (it should be mentioned that the x-coordinate of the channel feeding point is equal to 30 cm)

**Eliminato:** As it is observed from the bed surface profiles, t

**Eliminato:** s

**Eliminato:** steepen

**Eliminato:** s

**Eliminato:** capacity until it approximates

**Eliminato:** rises

**Eliminato:** start

**Eliminato:** s

**Eliminato:** as it nears equilibrium

**Eliminato:** s

**Eliminato:** It is also noted that aggradation observed in the non-monitored section of the channel aligns with this process. Furthermore, evident from the bed surface profiles, a

**Eliminato:** is

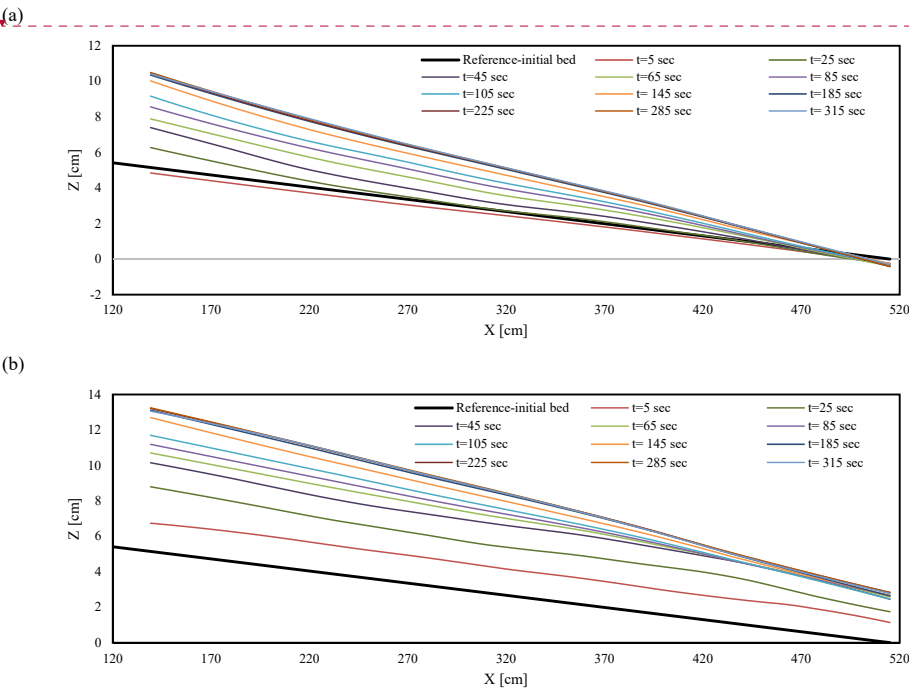
**Eliminato:** in

**Eliminato:** i.e., it is of a

**Eliminato:** type, since the experiment was performed with

**Eliminato:** Furthermore, after a time of around 190 s, the profiles do not further evolve, indicating the achievement of an equilibrium condition.

505



510 **Figure 2. Spatial profiles of (a) bed elevation (b) water elevation, during the experiment.**

Figure 3 depicts color gradient maps for the elevations of the bed and water surface, to appreciate spatial and temporal evolutions simultaneously. The contour lines become vertical for times larger than 190 s, again demonstrating the achievement of morphological equilibrium in the performed experiment.

Finally, Fig. 4 depicts the color gradient map of the Froude number, obtained from local and instantaneous velocity and depth.

515 The Froude number was larger than 1 for most of the experiment (with a mean value of 1.3 for the entire map), corresponding to a supercritical flow condition.

520

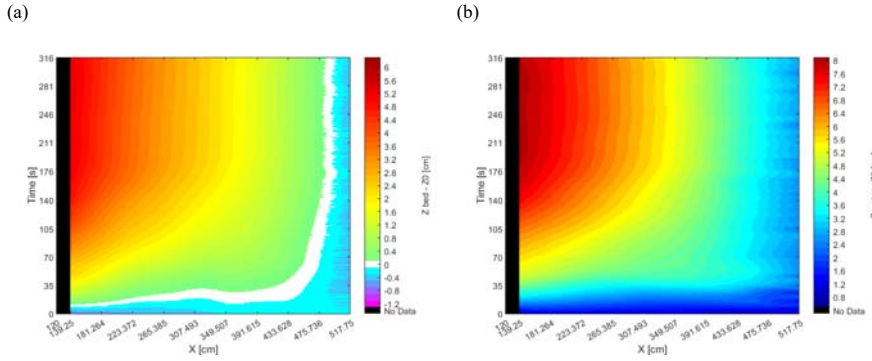


Figure 3. Color gradient maps of (a) bed elevation (b) water elevation, for the performed experiment.

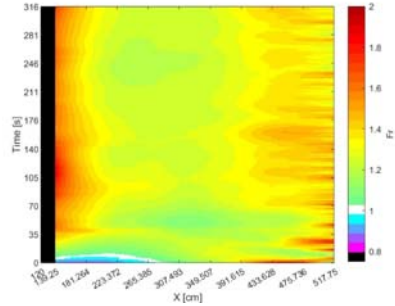


Figure 4. Color gradient map of Froude number for the performed experiment.

#### 4.3 Determination of the local and instantaneous celerity of propagation of sediment aggradation

Eq. (19) is applied to the bed elevation  $z_b$  that is the most suitable quantity to determine the celerity of the sediment wave. The bed elevation was preferred to, for example, the sediment transport rate because it was directly measured during the experiment with high spatial and temporal resolution. To exploit the equation for the present purposes, it was converted into a discrete form:

$$C = -\frac{\Delta z_b / \Delta t}{\Delta z_b / \Delta x} \quad (20)$$

where  $\Delta t$  and  $\Delta x$  are suitable time and space steps. In this work,  $\Delta t$  and  $\Delta x$  are chosen as equal to 1 s and 1.8 cm, respectively.

The determinations of celerity by (20) were compared to alternative ones picking a certain value of bed elevation in the bed profile for a certain time, and looking for the same value in the bed profile for a following time; the ratio of a determined travelled distance to the time interval separating the two profiles yielded a value of  $C$ . The exercise confirmed the expected suitability of eq. (20) for the determination of the local and instantaneous celerity of the aggradation wave. In the context of the initial questions of the paper, the use of eq. (20) thus constitutes our answer to question 1.

#### 4.4 Eigenvalue determination using approaches for negligible and non-negligible sediment concentration

Within the approaches for negligible solid concentration, the equations proposed by Goutière et al. (2008) are used in this study, since these equations are valid for the entire range of the Froude number providing determinations very similar to those from the exact solution of Eq. (8) with three real roots. Since all the quantities involved in the eigenvalue determination vary in space and time, one obtains a corresponding space-time variation of the  $\lambda$  values. In order to make the eigenvalue

Eliminato: Estimation

Eliminato: s

Formattato: Tipo di carattere: Corsivo

determination fully consistent with the performed experiment, Eq. (3) was preliminarily calibrated introducing a bed-load factor  $\alpha$  and an equivalent Manning coefficient accounting for sediment transport (excluding for simplicity the threshold Shields number from the calibration parameters):

$$q_s(q, h) = \alpha 8 \sqrt{g(s-1)d_{50}^3} \left( \frac{n_{calibrated}^2 q^2}{(s-1)d_{50} h^{7/3}} - 0.047 \right)^{3/2} \quad (21)$$

Following Eslami et al. (2022), the calibration was performed by using Eq. (21) in a numerical simulation of the experiment and achieving a good consistency between experimental and numerical profiles of the bed and water surface. The values obtained for  $\alpha$  and  $n_{calibrated}$  were equal to 1.73 and 0.017 s/m<sup>1/3</sup>, respectively. Furthermore, by substituting  $q = uh$  in Eq. (21), explicit equations for  $\partial q_s / \partial u$  and  $\partial q_s / \partial h$  were obtained to determine  $A_\lambda$  and  $B_\lambda$  from Eq. (10). Finally,  $\lambda_1, \lambda_2$ , and  $\lambda_3$  could be computed by Eq. (14).

There is no explicit equation in the literature to estimate  $\lambda_1, \lambda_2$ , and  $\lambda_3$  for non-negligible solid concentration; therefore, in the current study, the eigenvalues were determined by finding the roots of Eq. (18). Furthermore, since the sediment transport rate was expressed by Eq. (21), an equation for sediment concentration was obtained from that one as:

$$c_s(u, h) = \frac{8\alpha \sqrt{g(s-1)d_{50}^3} \left( \frac{n_{calibrated}^2 (uh(1-c_s))^2}{(s-1)d_{50} h^{7/3}} - 0.047 \right)^{3/2}}{uh} \quad (22)$$

to be solved iteratively to determine  $c_s$ . Furthermore, Eq. (18) required the derivatives  $\partial c_s / \partial u$  and  $\partial c_s / \partial h$ , that were obtained introducing a function  $F(u, h, c_s)$  as follows:

$$F(u, h, c_s) = \frac{8\alpha \sqrt{g(s-1)d_{50}^3} \left( \frac{n_{calibrated}^2 (uh(1-c_s))^2}{(s-1)d_{50} h^{7/3}} - 0.047 \right)^{3/2}}{uh} - c_s \quad (23)$$

and, finally, determining the needed derivatives

$$\frac{\partial c_s}{\partial u} = - \frac{\partial F(u, h, c_s) / \partial u}{\partial F(u, h, c_s) / \partial c_s} \quad (24)$$

$$\frac{\partial c_s}{\partial h} = - \frac{\partial F(u, h, c_s) / \partial h}{\partial F(u, h, c_s) / \partial c_s} \quad (25)$$

## 5 Results

### 5.1 Local and instantaneous celerity of propagation of sediment aggradation

The color gradient map of  $C$  as obtained by Eq. (20) is depicted in Fig. 5(a) with a dimensionless counterpart in Fig. 5(b). To provide the dimensionless map, the local and instantaneous flow velocity was used as a normalization parameter. The space-time distribution of the celerity values was smoothed by replacing any 64 values (8×8 values in space and time) with their average.

The local and instantaneous celerity tends to reach a zero value at the time around 190 s, coinciding with the previously mentioned achievement of a morphologic equilibrium. In fact, as the system tends to equilibrium, the temporal rate of bed elevation change diminishes, leading the propagation celerity to also approach zero. While the average values of the celerity and dimensionless celerity by considering the whole duration of the experiment are equal to 0.393 cm/s and around 0.006, respectively, they are equal to 0.642 cm/s and 0.010 considering only times lower than 190 s (in both cases, all the locations along the channel are considered).

Eliminato: are

Eliminato: Since

Eliminato: requires

Eliminato: (using the local and instantaneous flow velocity as a normalization parameter)

Eliminato: The

Eliminato: This smoothing operation does not alter the key result but obviously provides a nicer plot for the following interpretation.

Eliminato: evidently

Eliminato: nears

Eliminato: aggradation

Eliminato:

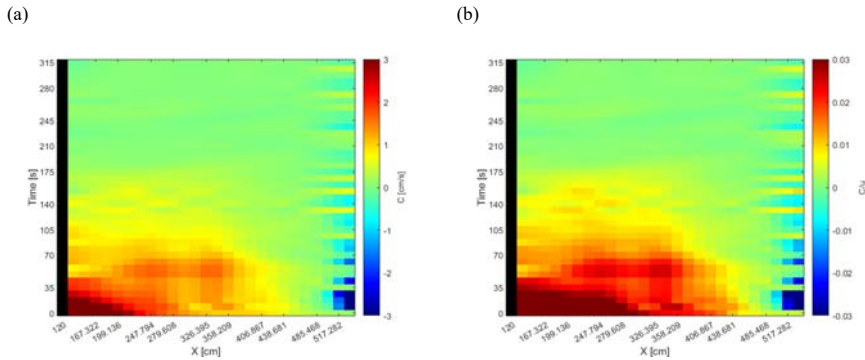


Figure 5. Color gradient maps of (a) dimensional and (b) dimensionless local and instantaneous celerity of propagation of sediment aggradation.

## 5.2 Eigenvalues of the system of PDEs

Figure 6(a, b, c) shows the color gradient maps of the dimensionless eigenvalues,  $\lambda_1/u$ ,  $\lambda_2/u$ , and  $\lambda_3/u$ , obtained from the approximated solutions proposed by Goutière et al. (2008) and from the exact solutions of the equation obtained by Morris and Williams (1996). The smoothing, described above for the mass celerity, was also applied to these celerities of small perturbations. The average values of  $\lambda_1/u$ ,  $\lambda_2/u$ , and  $\lambda_3/u$  for the entire duration of the experiment and until the equilibrium time are equal to 1.77, -0.21 and 0.43 and to 1.77, -0.13 and 0.46, respectively, for the approaches of Goutière et al. (2008) and Morris and Williams (1996). Therefore, as part of addressing the third study question concerning the impact of including or excluding solid concentration in the governing equations, one may say that the eigenvalues  $\lambda_1$  and  $\lambda_3$  show negligible differences, while a significant variation is obtained for  $\lambda_2$ .

Eliminato: Smoothened c

Eliminato: (left and right panels, respectively)

Eliminato: Therefore,

Eliminato: t

Eliminato: he values are quite similar for

Eliminato: difference

Eliminato: ¶

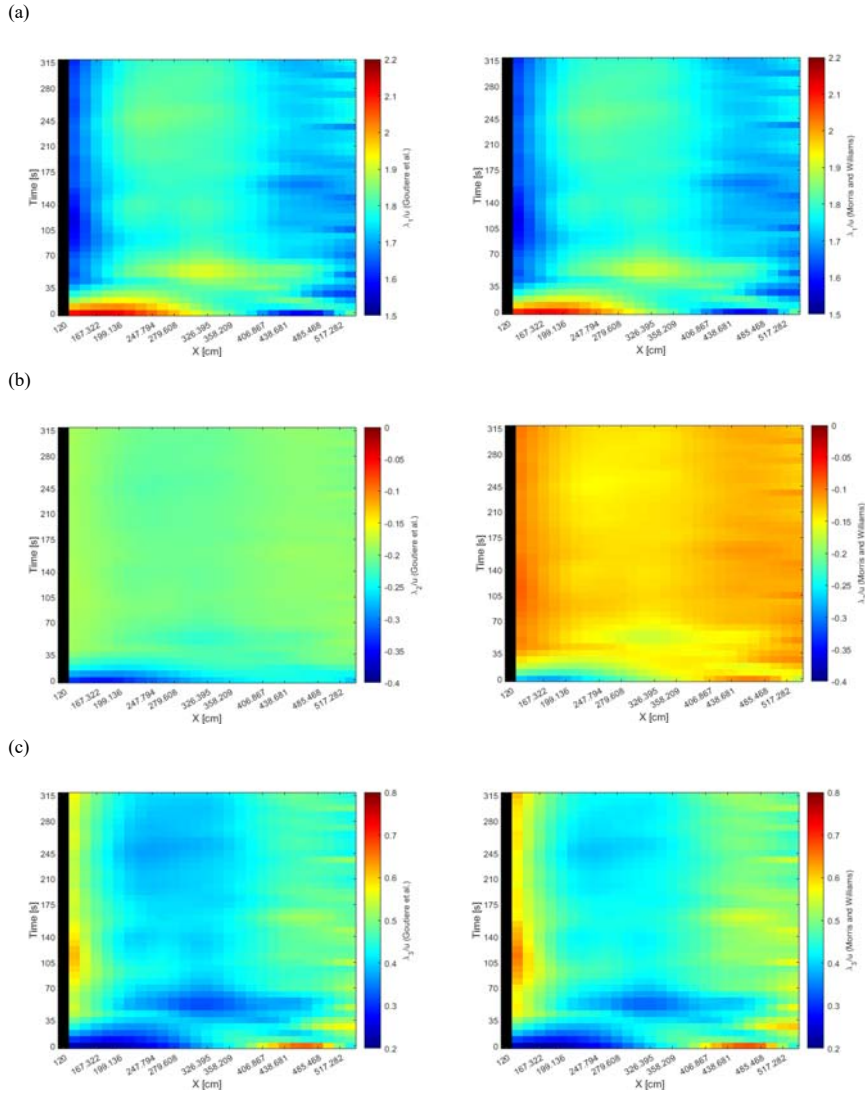


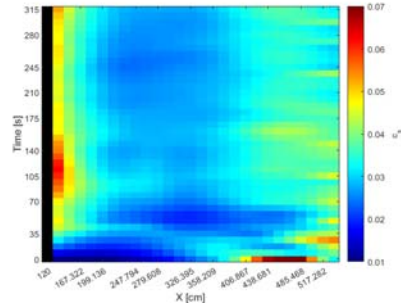
Figure 6. Comparison between the color gradient maps of (a)  $\lambda_1/u$ , (b)  $\lambda_2/u$  and (c)  $\lambda_3/u$ . The left graphs are obtained from the approximated solutions proposed by Goutière et al. (2008) and the right graphs are derived from the exact solution of Morris and Williams' (1996) approach.

Eliminato: smoothed

### 5.3 Quantification of sediment concentration

The smoothed color gradient map of the volumetric sediment concentration as obtained using Eq. (22) is depicted in Fig. 7. The average value of  $c_s$  for the whole duration of the experiment and also until the equilibrium time is around 0.032, indicating that, according to the criteria proposed by De Vries (1965) with maximum  $c_s=0.002$  and by Garegnani et al. (2011, 2013) with maximum  $c_s=0.01$ , the solid concentration was not negligible in the performed experiment. However, the average value of  $c_s$  does not exceed the maximum value of 0.05 that was proposed by Armanini et al. (2009) for the validity of the quasi-two-phase approach.

Eliminato: ,



615 Figure 7. Color gradient map of the volumetric solid concentration.

#### 5.4 Relationships between the two types of celerities and the Froude number

Figure 8 presents a scatter plot showing the correlation between the Froude number and the dimensionless local and instantaneous celerity of the aggradation wave during the experiment. For the sake of this comparison, the  $Fr$  map of Fig. 4 was also smoothened as those of Fig. 5 and 6. Since the celerity tends to zero after the achievement of an equilibrium condition, only the points for  $t < 190$  s along the analyzed channel portion (e.g., 140 to 520 cm) are included in this plot. A general decrease of dimensionless celerity for increasing Froude number is observed. An opposite trend is seen for the highest points in the scatter, that are related to the initial stages of the experiment with a flow rate that was still increasing to the test value.

620

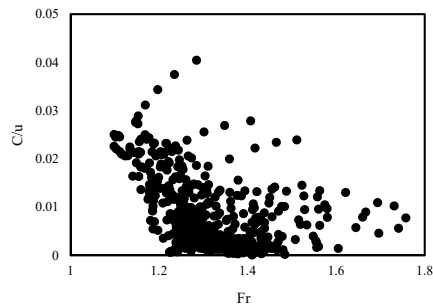


Figure 8. Scatter plot showing the correlation between the Froude number and the local and instantaneous celerity of aggradation.

625 The relationships between the Froude number and the dimensionless eigenvalues are presented in Fig. 9 for both the Goutière et al.'s and Morris and Williams' approaches. This depiction aligns with the typical curves presented in mathematical studies (e.g., Lyn and Altinakar, 2002, fig. 1; Garegnani et al., 2013, fig. 2), with the values that in the present paper were obtained from experimental parameters. The results further demonstrate the difference between the values obtained for  $\lambda_2$  considering or discarding the sediment concentration.

Eliminato: Smoothened c

Eliminato: Correlations

Eliminato: shows

Eliminato:

Eliminato: entire

Eliminato: channel

Eliminato: evident

Eliminato: ; (this opposite trend is present also in the correlation plots that will be shown later, but will not be discussed again

Eliminato: )

Eliminato: Supplemental 2 provides comparable plots for several other experiments.

Eliminato: C

Eliminato: corresponds to

Eliminato: the typical curves shown in mathematical studies

Eliminato: , (e.g., among others, figure 1 of Lyn and Altinakar (2002) and figure 2 of Lyn and Altinakar, 200 2; Garegnani et al. (2013)

Eliminato: al., 2013)

Eliminato: coming

Eliminato: this case

Eliminato:



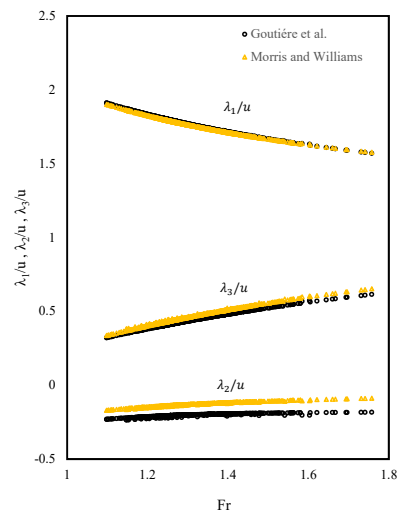
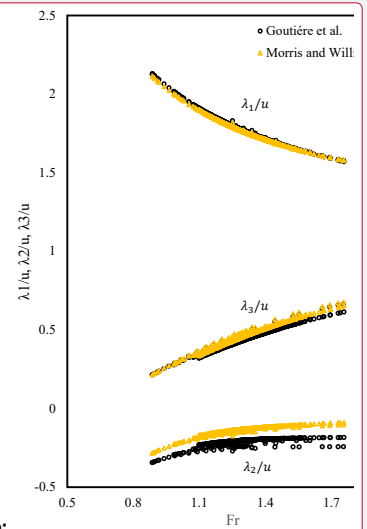
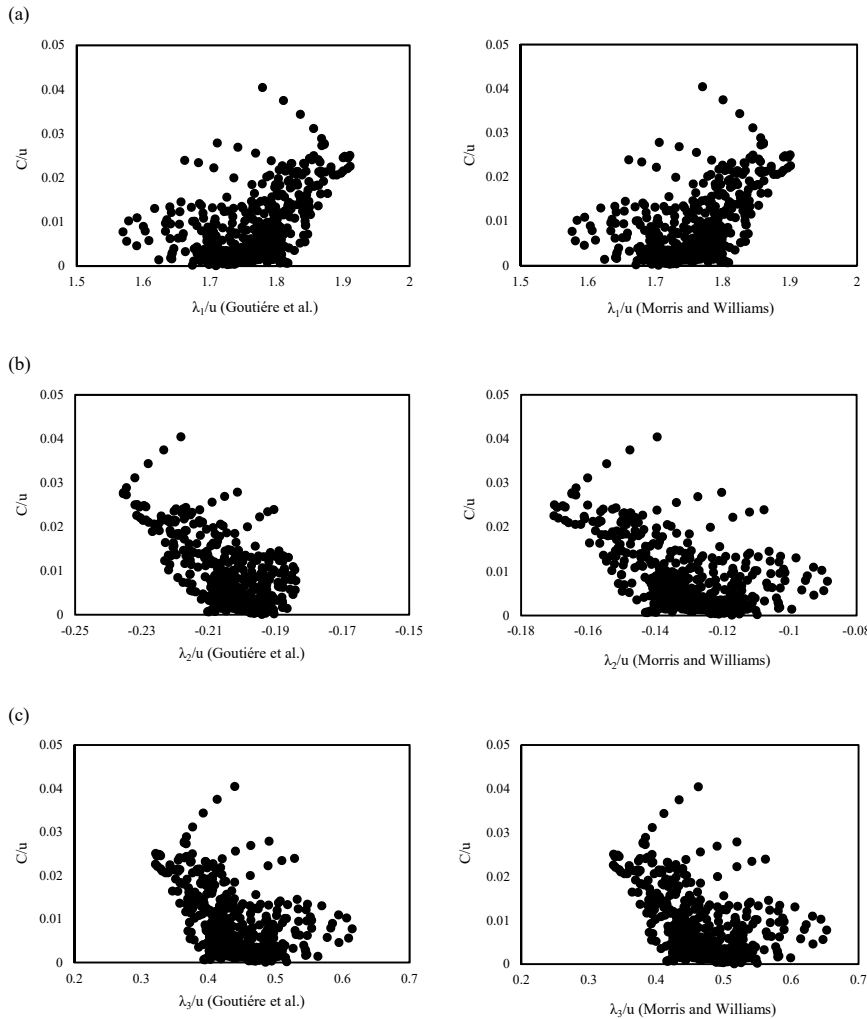


Figure 9. Scatter plot showing the correlation between the Froude number and the dimensionless eigenvalues.



Eliminato:

Eliminato: C



**Figure 10. Scatter plots showing the correlations between the dimensionless eigenvalues and celerity of the aggradation wave. The left graphs are obtained from the approximated solutions proposed by Goutière et al. (2008) and the right graphs are derived from the exact solution of Morris and Williams' (1996) approach.**

Finally, Fig. 10(a, b, and c) shows how the dimensionless celerity of small perturbations and the dimensionless celerity of aggradation correlate with one another, again for both the Goutière et al.'s and Morris and Williams' approaches (left and right panels, respectively). These scatter plots address the second question of the present study, demonstrating that the dimensionless celerity of the aggradation wave increases with the dimensionless  $\lambda_1$  and with the module of dimensionless  $\lambda_2$  (that is negative), while it decreases with the dimensionless  $\lambda_3$ . Additionally, in response to the third question above, and complementing the findings in Sub-section 5.2, Fig. 10 highlights that considering or excluding sediment concentration in the governing equations does not alter the qualitative relationships between the different celerities. Only, Fig. 10(b) indicates that the variation of  $\lambda_2$  is larger in the approach for non-negligible concentration than in the other one for negligible concentration. To illustrate the strength of the relationship between  $C/u$  and  $Fr$ , as well as  $C/u$  and  $\lambda_i/u$  (Fig. 8 and 10), the Pearson correlation

Eliminato: C

Eliminato: study

Eliminato:

Eliminato: T

Eliminato: study

Eliminato: , though

Eliminato: varies more significantly under Morris and Williams' approach

Formattato: Inglese (Regno Unito)

coefficient was calculated for the corresponding plots. Table 2 presents the correlation coefficients, which range between 0.4 and 0.6 for all plots, indicating a moderate correlation between the variables.

Table 2. Pearson's correlation coefficient between the dimensionless local and instantaneous celerity of the aggradation wave and the Froude number, as well as the dimensionless eigenvalues, for the presented experiment.

	Goutière et al. (2008)				Morris and Williams (1996)		
	$Fr$	$\lambda_1/u$	$\lambda_2/u$	$\lambda_3/u$	$\lambda_1/u$	$\lambda_2/u$	$\lambda_3/u$
$C/u$	-0.40	0.46	-0.62	-0.42	0.46	-0.52	-0.43

## 6 Discussion

The measurement and analysis methods used in the present manuscript have enabled a depiction of the spatial and temporal evolutions of various quantities. In particular, based on the measured data, a local and instantaneous determination was achieved for the celerity of propagation of an aggradation wave and the eigenvalues of the equations modeling the process, representative of the celerity of small perturbations.

We have used three types of scatter plots showing the correlation between different variables:  $Fr - \lambda/u$  (Fig. 9),  $Fr - C/u$  (Fig. 8),  $\lambda/u - C/u$  (Fig. 10). The different trends of correlation are consistent with one another: for example,  $Fr$  correlates negatively with both  $\lambda/u$  and  $C/u$ , thus  $\lambda/u$  and  $C/u$  are positively correlated with each other. Similar cross-relationships are valid for the other eigenvalues and are reflected by the values of the Pearson coefficient in Table 2. The first type of correlation ( $Fr - \lambda/u$ ) has been already presented and discussed in works related to the mathematical modelling of the hydro-morphologic process. The others, involving  $C$  as determined by Eq. (20), are instead an original depiction of this study and are discussed below.

On the one hand, the negative correlation between  $Fr$  and  $C/u$  can be justified considering that (i) the Froude number increased during the experiment as a result of the slope increase and (ii) the celerity decreased towards a zero value at morphological equilibrium. On the other hand, one would expect propagation to be enhanced by an increasing velocity, but this may be somehow masked by any scale used for normalization. Indeed, the appearance of  $u$  at the numerator of  $Fr$  and at the denominator of  $C/u$  has determined the obtained trend because with increasing flow velocity,  $C$  was increasing less than  $u$ . The trends ( $\lambda_i/u - C/u$ ) depict the relationship between the celerity of small perturbations and that of the aggradation wave. The first eigenvalue,  $\lambda_1$ , is positive and thus directed to the downstream; reasonably, one thus justifies its enhancement of downstream propagation. This eigenvalue is normally attributed to water surface perturbations (De Vries, 1965, 1971, 1973, 1993; Sieben, 1997, 1999; Lyn and Altinakar, 2002; Rosatti and Fraccarollo, 2006; Goutière et al., 2008; Armanini, 2018), therefore a higher celerity of propagation of small perturbations will correspond to a higher celerity of the sediment aggradation wave. The eigenvalues  $\lambda_2$  and/or  $\lambda_3$  are instead attributed to bed perturbations, even if there is no complete agreement in the literature, as mentioned above, while De Vries (1965, 1971, 1973, 1993) mentioned that just  $\lambda_3$  relates to bed surface perturbations, Goutière et al. (2008) and Armanini (2018) argued that both  $\lambda_2$  and  $\lambda_3$  correspond to bed perturbations, and Lyn and Altinakar (2002) and Sieben (1997, 1999) considered that  $\lambda_2$  and  $\lambda_3$  may be attributed to both bed and water surface perturbations in near-critical conditions. The eigenvalue  $\lambda_2$  is directed to the upstream. In numerical studies, the eigenvalues are associated with the propagation of the effects of the boundary conditions into the domain (e.g., Fasolato et al., 2009). A negative value of  $\lambda_2$  would thus indicate that this eigenvalue propagates the downstream boundary condition into the domain. An equilibrium condition is frequently imposed at the downstream end of a modelled channel (i.e., no variation in the bed elevation), which aligns with our experimental setup using a downstream sill (see profiles in Fig. 2(a)). In this context, a higher  $|\lambda_2|$  would propagate faster a condition of minimum elevation and thus tend to increase the local channel slope, with an effect

Formattato: Inglese (Regno Unito)

Formattato: Allineato al centro

Tabella formattata

Formattato: Allineato al centro

Formattato: Allineato al centro

Formattato: Normale

Eliminato: ¶

Eliminato: experimental parameters

Eliminato:

Eliminato: shown

Eliminato: plots

Eliminato: obviously

Eliminato: . In particular, if

Eliminato: with both

Eliminato:  $i$

Eliminato: it follows that

Eliminato:  $i$

Eliminato: would also correlate in a manner consistent with their individual relationships with  $Fr$ .

Eliminato: one

Eliminato: ¶

Eliminato: The

Formattato: Tipo di carattere: Corsivo

Formattato: Tipo di carattere: Corsivo

Formattato: Tipo di carattere: Corsivo

Eliminato: second correlation ( $Fr - C/u$ ) has returned the (... [2])

Eliminato: tendencies (i) of

Eliminato: number to

Eliminato: an

Eliminato: (because the channel needs to achieve a sediment (... [3])

Eliminato: , evidently,

Eliminato: (

Eliminato: )

Eliminato: would attribute to it an

Eliminato: In fact, this is the detected trend (Fig. 10a).

Eliminato: but

Eliminato: velocity

Eliminato: also induce

Eliminato: ; in this regard,

Eliminato: discussed

Eliminato: is the celerity of

Eliminato: concluded

Eliminato: argued

Eliminato:

Eliminato: boundary condition

Eliminato: effect of

Eliminato: s

Eliminato: simulated

Eliminato: would tend to transport

Eliminato: no aggradation

Eliminato: and in turn

765 on the aggradation celerity. Finally,  $\lambda_3$  is directed to the downstream, but an increase of  $\lambda_3$  determines a reduction of  $C$ ; since  $\lambda_3$  is positively correlated with the Froude number, arguments proposed above for the  $Fr - C/u$  correlation may also apply to the present one.

In the context of a relationship between the  $\lambda$  and  $C$ , the possibility or not to discard the sediment concentration when expressing the eigenvalues loses its merit. In fact, on the one hand, formulating the eigenvalues discarding the concentration or not changes their values (even by 50 – 100% for  $\lambda_2$ , that is the eigenvalue most affected by the sediment concentration). On the other hand, the values of the Pearson correlation coefficient in Table 2 do not change much choosing one option or the other one, and in both cases one can find a relationship between the celerities of the small perturbations and the celerity of the aggradation wave. The points before the water discharge achieves its nominal value show opposite trends to the others. The approaches introduced above are for unsteady flows, so the different trend cannot be attributed to a limitation of the mathematical depiction. The different trend thus needs to be attributed to the swift change of the flow rate at the very beginning of the experiment. The above arguments constitute the answers that the present manuscript furnishes to the research questions posed in the Introduction. The results presented for the proof-of-concept experiment are extended to other experiments of the campaign in Supplemental 2.

780 The celerities of the small perturbations and of the aggradation wave are largely different in value, and follow a general trend of ‘the smaller, the faster’. Morpho-dynamic processes, indeed, frequently involve a superimposition of different forms. For example, Yalin (1992, p. 12) presented a conceptual sketch with small ripples superimposed to bed-load dunes; Radice (2021) conceptualized a multi-scale propagation for bed-load dunes with different features propagating at different celerity. Furthermore, Zanchi and Radice (2021) mentioned that, in some of their experiments, dunes were superimposed to an aggradation front, even if they did not perform a specific analysis to quantify a different celerity for the dunes.

785 From an engineering point of view, the mismatch between the celerity of the small perturbation and that of the aggradation wave implies that one cannot rely on the eigenvalues to determine when sediment supplied into a river will reach any certain point, possibly increasing the hydraulic hazard at that spot. The needed parameter for managing hazard is, instead, the celerity of propagation of the aggradation wave. For the experiment presented in the manuscript,  $C/u$  was less than 0.05. Also this result is generally confirmed by all the runs of the experimental campaign, as presented in Supplemental 2. Extensive analysis shall reveal how a bulk celerity may depend on the control parameters, following earlier investigations for sediment plumes or fronts under subcritical flow. In this respect, it is noted that the aggradation front celerity measured by Zanchi and Radice (2021) was also generally below 0.05 times the flow velocity characterizing their runs, indicating that this finding may be valid for a wider range of conditions than that considered in the present manuscript. Necessary extension of the results of these experimental campaigns to more complicated or field cases requires care, even if the hydro-dynamic conditions applied in this manuscript resemble those of upland rivers with intense sediment transport.

## 7 Conclusions

800 If a high detail is maintained in an aggradation experiment for measuring the bed and water surface elevations in space and time, a corresponding spatial and temporal evolution can be obtained for a dimensionless celerity of propagation of the aggradation wave. This celerity can be, in fact, quantified through the spatial and temporal derivatives of the bed elevation, and by the local and instantaneous flow velocity. Besides, within a quasi-two-phase approach, an experimental quantification can be obtained for the eigenvalues of the governing equations, that represent the celerity of small perturbations. Thanks to this, in the present study we successfully explored the correlation between the celerities of small perturbations and of an aggradation wave, reaching the following major conclusions:

**Eliminato:** and thus one would think that a higher  $|\lambda_2|$  value would induce lower  $C$ . The result is contrary to this expectation.

**Eliminato:** , again challenging the interpretation of the result

**Eliminato:** However, one may consider two aspects: (i) the Froude number increases as time goes on, and (ii) the data points corresponding with higher  $C/u$  values are associated with the early stages of the experiment; therefore, the initial time of the experiment in Fig. 10(a) is positioned on the right side of the graphs and in Fig. 10(b) and 10(c) is located on the left side of the graphs. As mentioned, the dimensionless celerity has a decreasing relative ... [4]

**Formattato:** Tipo di carattere: Inglese (Stati Uniti)

**Eliminato:** while expressing the eigenvalues

**Eliminato:** Obviously,

**Eliminato:** F

**Eliminato:** f

**Eliminato:** with or without

**Eliminato:** , but

**Eliminato:** ,

**Eliminato:** but in a quasi-two-phase approach where  $c_s$  ret ... [5]

**Eliminato:** consistent

**Eliminato:** trend linking

**Eliminato:** , regardless of whether  $c_s$  is included in the gov ... [6]

**Spostato (inserimento) [4]**

**Eliminato:** ¶

**Spostato in su [4]:** The points before the water discharge

**Eliminato:** ¶

**Eliminato:** two types

**Eliminato:** (as an example for all, this is conceptually exp ... [7]

**Eliminato:** like

**Eliminato:** , spotted in different ways also for other process ... [8]

**Eliminato:** means

**Eliminato:** create problems

**Eliminato:** at

**Eliminato:**

**Eliminato:** (because the estimate would result in negligible ... [9]

**Eliminato:**

**Eliminato:** A bulk result obtained in the present work is that

**Eliminato:** is

**Eliminato:** 04

**Eliminato:** This

**Eliminato:** , shown here for a single experiment,

**Eliminato:** in

**Eliminato:** the

**Eliminato:** was confirmed by the others run in the current ... [10]

**Eliminato:** This is a crucial piece of information one need ... [11]

**Eliminato:** will

**Eliminato:** this

**Eliminato:** Finally, the system of the governing differenti ... [12]

**Eliminato:** analogous

**Eliminato:** under a quasi-two-phase approach

**Eliminato:** these eigenvalues representing

**Eliminato:** ¶

**Eliminato:** the two types and has led to ... [13]

(i) The celerity of aggradation is correlated with the eigenvalues of the governing equations, thus with the celerity of the so-called small perturbations; the general trends show  $C$  increasing with  $\lambda_1$  and  $|\lambda_2|$  and decreasing with  $\lambda_3$ .

(ii) Even though there is a correlation between the  $C$  and  $\lambda$ , they are largely different in magnitude, with the celerity of the aggradation wave being much smaller than the others.

915 (iii) From a mathematical point of view, using a model that considers or not the solid concentration may lead to different results for the eigenvalues of the system, while  $\lambda_1$  is almost the same for the two approaches and a slight difference exists in  $\lambda_3$ , a major difference is observed for  $\lambda_2$  that has a higher absolute value when the concentration is discarded. However, considering or not the solid concentration in the governing equations does not affect the qualitative relationships between the different celerities, nor the associated correlation coefficients.

920 (iv) The celerity of aggradation,  $C$ , is in the order of  $10^{-2}$  times the bulk water velocity for the aggradation process that was simulated in the laboratory and presented in this study.

Eliminato: through the Froude number

Eliminato: and

Eliminato: obviously

Eliminato: (

Eliminato: )

Eliminato: run that was used

#### Data availability statement

The raw data of the experiment are provided here: <https://doi.org/10.5281/zenodo.10641001>.

#### Author contribution

925 Conceptualization: H.E., A.R.; Methodology: H.E., A.R.; Software: E.P., E.Z.; Formal analysis and Visualization: H.E., E.P., M.H., K.T., M.Y.N., E.Z., R.Z.; Writing – original draft preparation: H.E.; Writing: review & editing: H.E., A.R.; Funding acquisition: A.R.

#### Competing interests

The authors declare that they have no conflict of interest.

#### 930 Acknowledgments

The present study has been financially supported by the Italian Ministry of University and Research through the Ph.D. scholarship of H.E. and by the European Union – Next Generation EU through the PRIN project “Sediment Transport REsearch for cAtchments Management” (STREAM), CUP (Univocal Project Code) D53D23003990006. We gratefully acknowledge two anonymous reviewers who spent time and effort to stimulate the improvement of the manuscript.

Eliminato: project no. 2022SAFKS4

#### 935 References

Aksoy, H., & Kavvas, M. L. (2005). A review of hillslope and watershed scale erosion and sediment transport models. *CATENA*, 64(2), 247–271. <https://doi.org/10.1016/j.catena.2005.08.008>

Alves, E., & Cardoso, A. (1999). Experimental study on aggradation. *International Journal of Sediment Research*, 14(1): 1–15.

940 Ancy, C. (2020). Bedload transport: a walk between randomness and determinism. Part 1. The state of the art. *Journal of Hydraulic Research*, 58(1), 1–17. <https://doi.org/10.1080/00221686.2019.1702594>

Armanini, A. (2018). Principles of River Hydraulics. Chapter 7. Mathematical Models of Riverbed Evolution (pp. 131–172). Springer International Publishing. [https://doi.org/10.1007/978-3-319-68101-6\\_7](https://doi.org/10.1007/978-3-319-68101-6_7)

Eliminato: .

Eliminato: .

Eliminato: .,

Formattato: Inglese (Stati Uniti)

- Armanini, A., Fraccarollo, L., & Rosatti, G. (2009). Two-dimensional simulation of debris flows in erodible channels. *Computers & Geosciences*, 35(5), 993–1006. <https://doi.org/10.1016/j.cageo.2007.11.008>
- Armanini, A., & Di Silvio, G. (1988). A one-dimensional model for the transport of a sediment mixture in non-equilibrium conditions. *Journal of Hydraulic Research*, 26(3), 275–292. <https://doi.org/10.1080/00221688809499212>
- Cengel, Y. A., & Cimbala, J. M. (2006). *Fluid mechanics*. McGraw-Hill. ISBN: 0072472367.
- Chanson, H. (2004). *Environmental hydraulics of open channel flows*. Elsevier Butterworth-Heinemann. ISBN: 0750661658.
- Chow, V. T., Maidment, D. R. & Mays, L. W. (1988). *Applied hydrology*. McGraw-Hill. ISBN: 0070108102.
- Cui, Y., & Parker, G. (2005). Numerical Model of Sediment Pulses and Sediment-Supply Disturbances in Mountain Rivers. *Journal of Hydraulic Engineering*, 131(8), 646–656. [https://doi.org/10.1061/\(ASCE\)0733-9429\(2005\)131:8\(646\)](https://doi.org/10.1061/(ASCE)0733-9429(2005)131:8(646))
- Cui, Y., Parker, G., Lisle, T. E., Gott, J., Hansler-Ball, M. E., Pizzuto, J. E., Allmendinger, N. E., & Reed, J. M. (2003). Sediment pulses in mountain rivers: 1. Experiments. *Water Resources Research*, 39(9). <https://doi.org/10.1029/2002WR001803>
- de Vries, M. (1965). Consideration about non-steady bed-load-transport in open channels. *Proc. of the 11th Congress of IAHR*, Leningrad, 3.8.1–3.8.8
- de Vries, M. (1971). Solving river problems by hydraulic and mathematical models. *Delft Hydraulic Laboratory Publications*, Delft, The Netherlands
- de Vries, M. (1973). River-bed variations-aggradation and degradation. *Delft Hydraulic Laboratory Publications*, Delft, The Netherlands
- de Vries, M. (1993). River Engineering: Lecture notes f10. *Delft University of Technology, Faculty of Civil Engineering Department of Hydraulic Engineering*, Delft, The Netherlands
- Dotterweich, M. (2008). The history of soil erosion and fluvial deposits in small catchments of central Europe: Deciphering the long-term interaction between humans and the environment — A review. *Geomorphology*, 101(1), 192–208. <https://doi.org/10.1016/j.geomorph.2008.05.023>
- Eslami, H., Yousefyani, H., Yavary Nia, M., & Radice, A. (2022). On how defining and measuring a channel bed elevation impacts key quantities in sediment overloading with supercritical flow. *Acta Geophysica*, 70(5), 2511–2528. <https://doi.org/10.1007/s11600-022-00851-2>
- Fasolato, G., Ronco, P., & Di Silvio, G. (2009). How fast and how far do variable boundary conditions affect river morphodynamics? *Journal of Hydraulic Research*, 47(3), 329–339. <https://doi.org/10.1080/00221686.2009.9522004>
- Garegnani, G., Rosatti, G., & Bonaventura, L. (2011). Free surface flows over mobile bed: Mathematical analysis and numerical modeling of coupled and decoupled approaches. *Communications in Applied and Industrial Mathematics*, 2(1), 1–22. <https://doi.org/10.1685/journal.caim.371>
- Garegnani, G., Rosatti, G., & Bonaventura, L. (2013). On the range of validity of the Exner-based models for mobile-bed river flow simulations. *Journal of Hydraulic Research*, 51(4), 380–391. <https://doi.org/10.1080/00221686.2013.791647>
- Goutière, L., Soares-Frazão, S., Savary, C., Laraichi, T., & Zech, Y. (2008). One-Dimensional Model for Transient Flows Involving Bed-Load Sediment Transport and Changes in Flow Regimes. *Journal of Hydraulic Engineering*, 134(6), 726–735. [https://doi.org/10.1061/\(ASCE\)0733-9429\(2008\)134:6\(726\)](https://doi.org/10.1061/(ASCE)0733-9429(2008)134:6(726))
- Greco, M., Iervolino, M., Leopardi, A., & Vacca, A. (2012). A two-phase model for fast geomorphic shallow flows. *International Journal of Sediment Research*, 27(4), 409–425. [https://doi.org/10.1016/S1001-6279\(13\)60001-3](https://doi.org/10.1016/S1001-6279(13)60001-3)
- Haddadchi, A., Nosrati, K., & Ahmadi, F. (2014). Differences between the source contribution of bed material and suspended sediments in a mountainous agricultural catchment of western Iran. *CATENA*, 116, 105–113. <https://doi.org/10.1016/j.catena.2013.12.011>
- Jain, S.C. (2001). *Open-channel flow*. John Wiley & Sons. ISBN: 0471356417.

**Formattato:** Inglese (Regno Unito)

**Formattato:** Inglese (Stati Uniti)

**Formattato:** Tipo di carattere: Corsivo, Inglese (Stati Uniti)

**Formattato:** Inglese (Stati Uniti)

**Formattato:** Inglese (Stati Uniti)

**Formattato:** Tipo di carattere: Corsivo

**Eliminato:** Culling, W. E. H. (1960). Analytical theory of erosion. *Journal of Geology*, 68(3), 336–344. <https://doi.org/10.1086/626663>

**Formattato:** Inglese (Stati Uniti)

**Formattato:** Inglese (Stati Uniti)

**Formattato:** Tipo di carattere: Corsivo

**Formattato:** Tipo di carattere: Corsivo

**Formattato:** Tipo di carattere: (Predefinito) Times New Roman, Colore carattere: Automatico, Inglese (Stati Uniti)

**Formattato:** Inglese (Stati Uniti)

**Eliminato:** Gill, M. A. (1983). Diffusion model for aggrading channels. *Journal of Hydraulic Research*, 21(5), 355–367. <https://doi.org/10.1080/00221688309499457>

**Eliminato:** ,

Kassem, A. A., & Chaudhry, M. H. (1998). Comparison of coupled and semicoupled numerical models for alluvial channels. *Journal of Hydraulic Engineering*, 124(8), 794–802. [https://doi.org/10.1061/\(ASCE\)0733-9429\(1998\)124:8\(794\)](https://doi.org/10.1061/(ASCE)0733-9429(1998)124:8(794))

1005 Lane, S. N., Tayefi, V., Reid, S. C., Yu, D., & Hardy, R. J. (2007). Interactions between sediment delivery, channel change, climate change and flood risk in a temperate upland environment. *Earth Surface Processes and Landforms*, 32(3), 429–446. <https://doi.org/10.1002/esp.1404>

Lee, H.-Y., & Hsieh, H. (2003). Numerical simulations of scour and deposition in a channel network. *International Journal of Sediment Research*, 18(1), 32–49.

1010 Lisle, T. E., Cui, Y., Parker, G., Pizzuto, J. E., & Dodd, A. M. (2001). The dominance of dispersion in the evolution of bed material waves in gravel-bed rivers. *Earth Surface Processes and Landforms*, 26(13), 1409–1420. <https://doi.org/10.1002/esp.300>

Longoni, L., Papini, M., Brambilla, D., Barazzetti, L., Roncoroni, F., Scaioni, M., & Ivanov, V. I. (2016). Monitoring riverbank erosion in mountain catchments using terrestrial laser scanning. *Remote Sensing*, 8(3), 241. <https://doi.org/10.3390/rs8030241>

1015 Lyn, D. A. (1987). Unsteady sediment-transport modeling. *Journal of Hydraulic Engineering*, 113(1), 1–15. [https://doi.org/10.1061/\(ASCE\)0733-9429\(1987\)113:1\(1\)](https://doi.org/10.1061/(ASCE)0733-9429(1987)113:1(1))

Lyn, D. A., & Altinakar, M. (2002). St. Venant–Exner equations for near-critical and transcritical flows. *Journal of Hydraulic Engineering*, 128(6), 579–587. [https://doi.org/10.1061/\(ASCE\)0733-9429\(2002\)128:6\(579\)](https://doi.org/10.1061/(ASCE)0733-9429(2002)128:6(579))

1020 Mazzorana, B., Comiti, F., & Fuchs, S. (2013). A structured approach to enhance flood hazard assessment in mountain streams. *Natural Hazards*, 67(3), 991–1009. <https://doi.org/10.1007/s11069-011-9811-y>

Morris, P. H., & Williams, D. J. (1996). Relative celerities of mobile bed flows with finite solids concentrations. *Journal of Hydraulic Engineering*, 122(6), 311–315. [https://doi.org/10.1061/\(ASCE\)0733-9429\(1996\)122:6\(311\)](https://doi.org/10.1061/(ASCE)0733-9429(1996)122:6(311))

1025 Munson, B. R., Okiishi, T. H., Huebsch, W. W., & Rothmayer, A. P. (2013). *Fundamentals of fluid mechanics*. John Wiley & Sons. ISBN: 9781118116135.

Neuhold, C., Stanzel, P., & Nachtenebel, H. P. (2009). Incorporating river morphological changes to flood risk assessment: uncertainties, methodology and application. *Natural Hazards and Earth System Sciences*, 9, 789–799. <https://doi.org/10.5194/nhess-9-789-2009>

1030 Pender, D., Patidar, S., Hassan, K., & Haynes, H. (2016). Method for incorporating morphological sensitivity into flood inundation modeling. *Journal of Hydraulic Engineering*, 142(6), 04016008. [https://doi.org/10.1061/\(ASCE\)HY.1943-7900.0001127](https://doi.org/10.1061/(ASCE)HY.1943-7900.0001127)

Pizarro, A., Manfreda, S., & Tubaldi, E. (2020). The science behind scour at bridge foundations: A review. *Water*, 12(2). <https://doi.org/10.3390/w12020374>

1035 Radice, A. (2021). An experimental investigation of sediment kinematics and multi-scale propagation for laboratory bed-load dunes. *Sedimentology*, 68(7), 3476–3493. <https://doi.org/10.1111/sed.12906>

Radice, A., & Zanchi, B. (2018). Multicamera, multimethod measurements for hydromorphologic laboratory experiments. *Geosciences*, 8. <https://doi.org/10.3390/geosciences8050172>

Radice, A., Rosatti, G., Ballio, F., Franzetti, S., Mauri, M., Spagnolatti, M., & Garegnani, G. (2013). Management of flood hazard via hydro-morphological river modelling. The case of the Mallero in Italian Alps. *Journal of Flood Risk Management*, 6(3), 197–209. <https://doi.org/10.1111/j.1753-318X.2012.01170.x>

1040 Rosatti, G., Fraccarollo, L., & Armanini, A. (2004). Behaviour of small perturbations in 1d mobile-bed models. *Proc. of River Flow 2004, II International Conference on Fluvial Hydraulics, Naples, Italy*.

Rosatti, G., Chemotti, R., & Bonaventura, L. (2005). High order interpolation methods for semi-Lagrangian models of mobile-bed hydrodynamics on Cartesian grids with cut cells. *International Journal for Numerical Methods in Fluids*, 47(10–11), 1269–1275. <https://doi.org/10.1002/fld.910>

1045

**Eliminato:** Jaramillo, W. F., & Jain, S.C. (1984). Aggradation and degradation of alluvial-channel beds. *Journal of Hydraulic Engineering*, 110(8), 1072–1085. [https://doi.org/10.1061/\(ASCE\)0733-9429\(1984\)110:8\(1072\)](https://doi.org/10.1061/(ASCE)0733-9429(1984)110:8(1072))

**Eliminato:** Lanzoni, S., Siviglia, A., Frascati, A., & Seminara, G. (2006). Long waves in erodible channels and morphodynamic influence. *Water Resources Research*, 42(6). <https://doi.org/10.1029/2006WR004916>

**Formattato:** Italiano (Italia)

**Formattato:** Inglese (Stati Uniti)

**Formattato:** Tipo di carattere: Corsivo

**Formattato:** Inglese (Stati Uniti)

**Formattato:** Inglese (Stati Uniti)

**Formattato:** Tipo di carattere: Corsivo

**Formattato:** Tipo di carattere: Corsivo

**Formattato:** Car. predefinito paragrafo, Inglese (Regno Unito)

**Formattato:** Tipo di carattere: Times New Roman, 10 pt, Colore carattere: Automatico, Inglese (Stati Uniti), Motivo: Trasparente

**Formattato:** Tipo di carattere: Corsivo

**Formattato:** Tipo di carattere: Corsivo

**Formattato:** Tipo di carattere: (Predefinito) +Corpo (Times New Roman), Inglese (Stati Uniti)

**Formattato:** Tipo di carattere: (Predefinito) +Corpo (Times New Roman), Italiano (Italia)

**Formattato:** Italiano (Italia)

**Formattato:** Inglese (Stati Uniti)

**Formattato:** Inglese (Stati Uniti)

**Formattato:** Tipo di carattere: Corsivo, Inglese (Stati Uniti)

**Formattato:** Inglese (Stati Uniti)

**Formattato:** Inglese (Stati Uniti)



1055 Rosatti, G., & Fraccarollo, L. (2006). A well-balanced approach for flows over mobile-bed with high sediment-transport. *Journal of Computational Physics*, 220(1), 312–338. <https://doi.org/10.1016/j.jcp.2006.05.012>

Sear, D. A., Newson, M. D., & Brookes, A. (1995). Sediment-related river maintenance: The role of fluvial geomorphology. *Earth Surface Processes and Landforms*, 20(7), 629–647. <https://doi.org/10.1002/esp.3290200706>

Sieben, J. (1997). Modelling of Hydraulics and Morphology in Mountain Rivers. PHD thesis, *Delft University of Technology, Faculty of Civil Engineering*, Delft, The Netherlands

1060 Sieben, J. (1999). A theoretical analysis of discontinuous flow with mobile bed. *Journal of Hydraulic Research*, 37(2), 199–212. <https://doi.org/10.1080/00221689909498306>

Sklar, L. S., Fadde, J., Venditti, J. G., Nelson, P., Wydzga, M. A., Cui, Y., & Dietrich, W. E. (2009). Translation and dispersion of sediment pulses in flume experiments simulating gravel augmentation below dams. *Water Resources Research*, 45(8). <https://doi.org/10.1029/2008WR007346>

1065 Soni, J. P. (1981). Laboratory study of aggradation in alluvial channels. *Journal of Hydrology*, 49(1), 87–106. [https://doi.org/10.1016/0022-1694\(81\)90207-9](https://doi.org/10.1016/0022-1694(81)90207-9)

Stover, S. C., & Montgomery, D. R. (2001). Channel change and flooding, Skokomish River, Washington. *Journal of Hydrology*, 243(3), 272–286. [https://doi.org/10.1016/S0022-1694\(00\)00421-2](https://doi.org/10.1016/S0022-1694(00)00421-2)

Unigarro Villota, S. (2017). Laboratory study of channel aggradation due to overloading. [M.Sc. thesis, Politecnico di Milano.](#)

1070 Yalin, M.S. (1992). *River mechanics*. Pergamon Press. ISBN: 0080401902.

Yen, C., Chang, S., & Lee, H. (1992). Aggradation-degradation process in alluvial channels. *Journal of Hydraulic Engineering*, 118(12), 1651–1669. [https://doi.org/10.1061/\(ASCE\)0733-9429\(1992\)118:12\(1651\)](https://doi.org/10.1061/(ASCE)0733-9429(1992)118:12(1651))

Zanchi, B., & Radice, A. (2021). Celerity and height of aggradation fronts in gravel-bed laboratory channel. *Journal of Hydraulic Engineering*, 147(10), 4021034. [https://doi.org/10.1061/\(ASCE\)HY.1943-7900.0001923](https://doi.org/10.1061/(ASCE)HY.1943-7900.0001923)

**Eliminato:** Soni, J. P., Garde, R. J., & Ranga Raju, K. G. (1980). Aggradation in streams due to overloading. *Journal of the Hydraulics Division, ASCE*, 106(1), 117-132. <https://doi.org/10.1061/JYCEAJ.0005338>

**Formattato:** Italiano (Italia)

**Formattato:** Inglese (Stati Uniti)

**Formattato:** Inglese (Stati Uniti)

**Eliminato:** Zhang, H., & Kahawita, R. (1987). Nonlinear model for aggradation in alluvial channels. *Journal of Hydraulic Engineering*, 113(3), 353–369. [https://doi.org/10.1061/\(ASCE\)0733-9429\(1987\)113:3\(353\)](https://doi.org/10.1061/(ASCE)0733-9429(1987)113:3(353))

<b>Pagina 9: [1] Eliminato</b>	<b>Hasan Eslami</b>	<b>07/12/2024 10:44:00</b>
--------------------------------	---------------------	----------------------------

$T$ (s)	$S_0$ (%)	$Q$ (l/s)	$Q_{s-in}$ (m <sup>3</sup> /s)	$Q_{s0}$ (m <sup>3</sup> /s)	$Lr$
316	1.37	7.0	$4.28 \times 10^{-4}$	$1.33 \times 10^{-4}$	3.2

<b>Pagina 18: [2] Eliminato</b>	<b>Alessio Radice</b>	<b>12/12/2024 16:24:00</b>
---------------------------------	-----------------------	----------------------------

second correlation ( $Fr - C/u$ ) has returned the dimensionless celerity as a decreasing function of the Froude number. On the one hand, this reflects the obvious

<b>Pagina 18: [3] Eliminato</b>	<b>Alessio Radice</b>	<b>12/12/2024 16:25:00</b>
---------------------------------	-----------------------	----------------------------

(because the channel needs to achieve a sediment transport capacity equal to the imposed feeding rate by increasing its slope) and (ii) of

<b>Pagina 19: [4] Eliminato</b>	<b>Alessio Radice</b>	<b>14/12/2024 07:40:00</b>
---------------------------------	-----------------------	----------------------------

However, one may consider two aspects: (i) the Froude number increases as time goes on, and (ii) the data points corresponding with higher  $C/u$  values are associated with the early stages of the experiment; therefore, the initial time of the experiment in Fig. 10(a) is positioned on the right side of the graphs and in Fig. 10(b) and 10(c) is located on the left side of the graphs. As mentioned, the dimensionless celerity has a decreasing relationship with the Froude number (Fig. 8) and decreases during the experiment. Considering the two above-mentioned aspects, this trend can be recognized also in all graphs of Fig. 10. Furthermore, Fig. 9 shows that, while  $\lambda_1$  and  $|\lambda_2|$  decrease with  $Fr$ ,  $\lambda_3$  increases with  $Fr$ . Once again, by considering the mentioned aspects, these relationships between  $\lambda_i$  and  $Fr$  are realized in the graphs of Fig. 10, where,  $\lambda_1$  and  $|\lambda_2|$  decrease as time elapses (which coincides with increasing  $Fr$ ) and,  $\lambda_3$  increases over time. In summary, one may conclude that the celerities of small perturbations are linked to the celerity of the aggradation wave through the Froude number.

<b>Pagina 19: [5] Eliminato</b>	<b>Alessio Radice</b>	<b>12/12/2024 16:47:00</b>
---------------------------------	-----------------------	----------------------------

but in a quasi-two-phase approach where  $c_s$  remains below a certain threshold such as 0.05 (Armanini et al., 2009), as in our experimental campaign (see Supplemental 2), it will be always possible to find

<b>Pagina 19: [6] Eliminato</b>	<b>Alessio Radice</b>	<b>12/12/2024 16:50:00</b>
---------------------------------	-----------------------	----------------------------

, regardless of whether  $c_s$  is included in the governing equations

<b>Pagina 19: [7] Eliminato</b>	<b>Alessio Radice</b>	<b>14/12/2024 07:26:00</b>
---------------------------------	-----------------------	----------------------------

(as an example for all, this is conceptually expected for the properties of the quantities at equilibrium, where  $C$  tends to 0 while the eigenvalues do not)

<b>Pagina 19: [8] Eliminato</b>	<b>Alessio Radice</b>	<b>14/12/2024 07:26:00</b>
---------------------------------	-----------------------	----------------------------

, spotted in different ways also for other processes (e.g., Lanzoni et al., 2006; Radice, 2021).

<b>Pagina 19: [9] Eliminato</b>	<b>Alessio Radice</b>	<b>12/12/2024 16:57:00</b>
---------------------------------	-----------------------	----------------------------

(because the estimate would result in negligible time available for action), and gives merit to the experimental determination of

<b>Pagina 19: [10] Eliminato</b>	<b>Hasan Eslami</b>	<b>09/12/2024 13:53:00</b>
----------------------------------	---------------------	----------------------------

was confirmed by the others run in the current experimental campaign

<b>Pagina 19: [11] Eliminato</b>	<b>Alessio Radice</b>	<b>12/12/2024 16:59:00</b>
----------------------------------	-----------------------	----------------------------

This is a crucial piece of information one needs to assess if supplied sediment will reach some key spots along a channel.

Finally, the system of the governing differential equations has been considered in this study in terms of its eigenvalues. The literature shows that several research efforts have been focused on simplifying the above-mentioned hyperbolic system of partial differential equations to a single parabolic diffusion equation and presenting an analytical solution for this simplified equation, under the main assumptions of quasi-steady flow, quasi-uniform flow conditions, and the constancy of the roughness coefficient (e.g., Culling, 1960; Soni et al., 1980; Gill, 1983; Jaramillo and Jain, 1984; Zhang and Kahawita, 1987). The existence of these contributions offers additional means for comparison and interpretation of the present experimental results.

The analysis performed in the present work has been focused on the