

How well can persistent contrails be predicted? — An update

Sina Hofer¹, Klaus Gierens¹, and Susanne Rohs²

¹Deutsches Zentrum für Luft- und Raumfahrt, Institut für Physik der Atmosphäre, Oberpfaffenhofen, Germany

²Forschungszentrum Jülich, IEK-8, Jülich, Germany

Correspondence: Sina Hofer (sina.hofer@dlr.de)

Abstract.

The total aviation effective radiative forcing is dominated by non – CO₂ effects. The largest contributors to the non – CO₂ effects are contrails and contrail cirrus. There is the possibility of reducing the climate effect of aviation by avoiding flying through ice supersaturated regions (ISSRs), where contrails can last for hours (so-called persistent contrails). Therefore, a
5 precise prediction of the specific location and time of these regions is needed. But a prediction of the frequency and degree of ice supersaturation (ISS) on cruise altitudes is currently very challenging and associated with great uncertainties because of the strong variability of the water vapour field, the low number of humidity measurements at air traffic altitude, and the oversimplified parameterisations of cloud physics in weather models.

Since ISS is more common in some dynamical regimes than in others, the aim of this study is to find variables/proxies that are
10 related to the formation of ISSRs and to use these for a regression method to predict persistent contrails. To find the best suited proxies for regressions, we use various methods of information theory. These include the log-likelihood ratios, known from the Bayes' theorem, a modified form of the Kullback-Leibler divergence and the mutual information. The variables (the relative humidity with respect to ice $RH_{i_{ERA5}}$, the temperature T , the vertical velocity ω , the divergence DIV , the relative vorticity ζ , the potential vorticity PV , the normalised geopotential height Z and the local lapse rate γ) come from ERA5 and $RH_{i_{M/I}}$,
15 which we assume as the truth, comes from MOZAIC/IAGOS (commercial aircraft measurements).

It turns out, that $RH_{i_{ERA5}}$ is the most important predictor of ice supersaturation, in spite of its weaknesses, and all other variables do not help much to achieve better results. Without $RH_{i_{ERA5}}$, a regression to predict ISSRs is not successful. Certain modifications of $RH_{i_{ERA5}}$ before the regression (as suggested in recent papers) do not lead to improvements of ISSR prediction. Applying a sensitivity study with artificially modified $RH_{i_{ERA5}}$ distributions point to the origin of the problems
20 with the regression: the conditional distributions of $RH_{i_{ERA5}}$ (conditioned on ISS and non-ISS, from $RH_{i_{M/I}}$) overlap too heavily in the range 70-100%, such that for any case in that range it is not clear whether it belongs to an ISSR or not. Evidently, this renders the prediction of contrail persistence very difficult.

1 Introduction

In order to avoid persistent (warming) contrails, it is necessary that they can be reliably predicted. For this aim, three conditions
25 need to be fulfilled. First, the formation of contrails has to be predicted with a reasonable skill. Contrails form if (super-) saturation with respect to water occurs during the mixing process of the ambient air with the exhaust gases from the aircraft.

This criterion is called the Schmidt-Appleman criterion (SAC, see Schmidt, 1941; Appleman, 1953; Schumann, 1996). Second, contrails need ice supersaturation (ISS) to be persistent. So, this state must be represented and reliably predicted in weather models. Third, in order to determine in advance whether a contrail will be warming or cooling, some kind of radiative transfer calculation or a corresponding regression formula (e.g., Corti and Peter, 2009; Schumann et al., 2012; Wolf et al., 2023a) is required.

While the first of these conditions, the ability to predict the SAC, is generally fulfilled with a satisfying quality, this is not the case for the prediction of ice supersaturation (Gierens et al., 2020). Predicting ice supersaturation at air traffic cruise levels presents major difficulties. Gierens et al. (2020) compared temperature and humidity data obtained from instrumented passenger aircraft with reanalysis data interpolated in space and time to the measurement locations. They came to the result that currently the forecast of ice supersaturation at given times and locations (for flight routing purposes) is almost like tossing a coin. In contrast, the forecast of ISS is much easier for larger regions and periods of time (e.g. for planning measurement campaigns, see Voigt et al., 2017). In the present paper, we investigate the problem of the forecast of ISS in more detail and we will not cover the first and third condition.

There are several reasons why the prediction of persistent contrails is currently challenging. The main reason is the strong variability of the water vapour field in the atmosphere. This is because water substance is present in three aggregation states, it is involved in chemical and aerosol processes and thus it varies greatly in the atmosphere. This problem is intensified by the low number of humidity measurements at cruise levels for data assimilation. Data assimilation is necessary to keep the simulation of a complex system close to measured reality. Therefore, more data on relative humidity at flight levels are urgently needed. Note that satellite data cannot fill this gap since their vertical resolution is insufficient (Gierens and Eleftheratos, 2020). A third reason for the challenging prediction of persistent contrails is that current parameterisations of ice cloud physics in weather models are generally kept simple enough in order to not spend too much computing time for a part of the atmosphere that so far was usually not the main focus of weather prediction. ISS hardly affects the weather on the ground. Thus, it was not represented in numerical weather prediction (NWP) models until about 25 years ago (Wilson and Ballard, 1999; Tompkins et al., 2007), and its representation is still generally too crude for a reliable prediction of ice supersaturation and contrail persistence.

However, there is nowadays growing interest in reducing the climate impact of aviation, and a relatively straightforward possibility would be the avoidance of the formation of persistent contrails if only ice supersaturation could be predicted with the precision necessary for flight routing. Because of the challenges mentioned before, the relative humidity field is insufficient for this purpose and we need either corrections to the humidity field (Teoh et al., 2020, 2022) or other quantities that help in the prediction of ISS. Gierens and Brinkop (2012) and Wilhelm et al. (2022) show that ISS is typically related to certain dynamical regimes, e.g. anticyclonic divergent uplift. This triggered the idea that using dynamical fields can indeed help in contrail forecast. We pursue this idea in the present study and show how far we can get with dynamical proxies together with modern regression methods. The results turn out to be considerably better than without such methods, but they are still not satisfying. A sensitivity study shows what impedes better results and where the source of the problem lies.

In the present paper, we concentrate on the prediction of ice supersaturation, respectively the prediction of persistent contrails. For this purpose, we use data obtained from instrumented passenger aircraft and reanalysis data, which are explained in

section 2. We test different methods for predicting persistent contrails, which is the content of section 3 as well as the results we obtained. Later on in section 4, we concentrate on modifying the relative humidity of ERA5 and on different sensitivity tests to artificially separate the conditional RHi -distributions of ERA5. Finally, we summarise our results and conclude in section 5.

65 2 Data

Various data sources are utilised in this study. These are briefly described in the following subsections 2.1 and 2.2.

2.1 Data from Commercial Aircraft

In this study we use pressure and relative humidity with respect to ice ($RHi_{M/I}$) data collected from 16,588 flights during 10 years (2000 - 2009) of MOZAIC (Measurement of Ozone and Water Vapour on Airbus In-service Aircraft, Marengo et al. (1998)) measurements. As MOZAIC was transferred to the European infrastructure IAGOS (In-service Aircraft for a Global Observing System, Petzold et al. (2015)) in 2011 we refer to the data as MOZAIC/IAGOS (www.iagos.org). MOZAIC/IAGOS operates autonomous in-situ instruments installed on long-range commercial aircraft. Due to this, it has the highest data density in the flight corridors of the mid-latitudes, making it an ideal data set for the investigation of contrail-forming regions. MOZAIC/IAGOS in-situ measurements are available every four seconds. This corresponds to a flight distance of around one 75 kilometer. We randomly select only one percent of the data points (around every 100th point) to avoid autocorrelation. This means the temporal distance is around 400 seconds on average.

For this study we have chosen aerial boundaries of 30° to 70° latitude and -125° to 145° longitude at cruise levels between 310 and 190 hPa, thus, a region with heavy air traffic. We use these data as a basic truth to determine whether the formation of a persistent contrail is possible or not at a specific position and time.

80 2.2 Reanalysis Data

In addition to the data from commercial aircraft, hourly ERA5 high resolution realisation (HRES) reanalysis data (Hersbach et al., 2018a, b, 2020) of the relative humidity with respect to ice RHi_{ERA5} , the temperature T , the vertical velocity ω , the divergence DIV , the relative vorticity ζ , the potential vorticity PV and the normalised geopotential height Z for 200, 225, 250, and 300 hPa from ECMWF (European Centre for Medium-Range Weather Forecast) from the Copernicus Data Service 85 (Copernicus Climate Change Service (C3S) (2017)) is retrieved and interpolated to the exact position and time of the aircraft. The chosen pressure range from 300 to 200 hPa covers approximately the flight levels of 300 to 390 hft. The spatial resolution of these data is $1^\circ \times 1^\circ$. With the pressure and temperatures on two adjacent levels, also the local lapse rate γ at the aircraft positions is calculated (Gierens et al., 2022). The selection of these particular variables comes from Wilhelm et al. (2022).

3 Methods and Results

90 In this work, we consider whether it is possible to use the dynamical proxies suggested by Wilhelm et al. (2022) to improve the forecast of ice supersaturation and contrail persistence. To quantify the success (or not) of several approaches we took, we use the equitable thread score, ETS, as in Gierens et al. (2020). The motivation for this choice of score value, the defining equations and interpretation of the ETS are given below in subsection 3.2.3.

The most simple way to map the values of the six dynamical proxies to probabilities for ice supersaturation or contrail persistence is to divide the phase space into 6-dimensional rectangles/blocks (6 because of the 6 suggested dynamical proxies by Wilhelm et al. (2022)), to count in each block the number of cases with persistent contrails and to divide it by the total number of data in that block. The blocks should not be too large so that the probabilities are specific for certain circumstances. Simultaneously, the blocks must not be too small, such that the number of events in each block allows one to determine the probability with some statistical reliability. Unfortunately, it turns out that even almost 400 thousand data points are insufficient for this simple and most straightforward method; many blocks are either empty or do not have enough data points unless we use quite large blocks and lose precision. Therefore, we cannot use this simple method and have to try others, like Bayesian learning or modern non-linear regression methods.

3.1 Bayesian Learning

3.1.1 Theory

105 We are interested in whether persistent contrails are possible or not, i.e. whether there is ice supersaturation or not. Unfortunately, the moisture field in the models is not accurate enough for that purpose. So, how can we solve this problem?

It is known that ISS is more frequent in some dynamic situations than in others (Gierens and Brinkop, 2012; Gierens et al., 2022; Wilhelm et al., 2022). One can try to exploit that: There are certain dynamical quantities X , whose conditional probability densities $f_X(x|ISS)$ and $f_X(x|\overline{ISS})$ differ more or less from each other (read: $f_X(x|ISS)$ as probability density for a quantity X at the special value x in cases where ISS prevails. $f_X(x|\overline{ISS})$ is the analogue for cases where non-ISS (\overline{ISS}) prevails.).

Let us assume there is a value x of a variable X and this particular value is compatible with both ISS and \overline{ISS} . Then the question arises: Which statements can be made about ice supersaturation using this quantity? Is it more likely or less likely when $X = x$?

115 Naively, one could compare $f_X(x|ISS)$ and $f_X(x|\overline{ISS})$ and choose the larger of the two values. However, this ignores that \overline{ISS} cases are much more frequent than ISS cases when no further circumstances are considered, the so-called *a priori* probability. The latter is taken into account by Bayes' theorem in the following form:

$$P(ISS|X = x) = \frac{P(x|ISS) \cdot P(ISS)}{P(x|ISS) \cdot P(ISS) + P(x|\overline{ISS}) \cdot P(\overline{ISS})}, \quad (1)$$

where $P(ISS)$ is the a priori probability for ice supersaturation. $P(x|ISS) = f_X(x|ISS) dx$ and $P(x|\overline{ISS}) = f_X(x|\overline{ISS}) dx$.
 120 In Equation 1, the dx are canceled out and on the right side of the equation, $P(x|ISS)$ and $P(x|\overline{ISS})$ can be replaced by the corresponding densities $f_X(x|ISS)$ and $f_X(x|\overline{ISS})$.

Another possibility to frame Bayes' theorem for the present problem is to use the odds ratio:

$$\frac{P(ISS|x)}{P(\overline{ISS}|x)} = \frac{f_X(x|ISS)}{f_X(x|\overline{ISS})} \cdot \frac{P(ISS)}{P(\overline{ISS})}. \quad (2)$$

The first factor on the right side of Equation 2 is the likelihood ratio, which represents the gain (> 1) or loss (< 1) in
 125 confidence for ISS that we get by learning the current value of X . A likelihood ratio exceeding 1 does not mean that ISS is more likely than \overline{ISS} , but the probability of ISS increases. ISS is only more likely than \overline{ISS} if the factor on the left side, the a posteriori odds ratio, is > 1 . The second factor on the right side is the prior odds ratio. In our case, $P(ISS)$ is given by the ratio of the number of data with ISS and the total number of data (according to MOZAIC/IAGOS), which is 0.125. So, only 12.5% of our data belong to the ISS class. The prior odds ratio is therefore $0.125/0.875 \approx 0.14$. This means that the likelihood
 130 ratio has to be larger than $1.0/0.14 = 7.14$ to make ISS more probable than \overline{ISS} . Instead of the odds ratio, one often uses its logarithm, which leads to log-likelihood ratios (also known as logits) with values symmetric around zero (instead of values asymmetric around one). That is, positive logits increase the probability for ISS and negative logits decrease the probability for ISS. As mentioned before, the a posteriori odds ratio has to be > 1 to make ISS more probable than \overline{ISS} . This also means that the logarithm of the a posteriori ratio has to be positive to make ISS more likely than \overline{ISS} . As the logarithm of the prior odds
 135 ratio is $\ln(0.125/(1 - 0.125)) \approx -2$, the logit must exceed 2 to make ISS more probable than \overline{ISS} .

As long as there is only one special value x of a dynamical variable X , we are finished and this is already the result. Now, assume that there are two quantities X and Y and one wants to know, which of these quantities carries more information about the probability of ice supersaturation. Obviously, it is the quantity whose logits deviate stronger from zero in both the positive and negative directions, or the quantity for which the absolute values of the logits are larger on average over the ranges of x
 140 and y . Taking the averages has to be done with a weighting that accounts for the values of the variables that actually occur in a given situation, e.g.

$$E_{AL}(f_{X|ISS}||f_{X|\overline{ISS}}) = \int f_X(x|ISS) \cdot \left| \ln \left(\frac{f_X(x|ISS)}{f_X(x|\overline{ISS})} \right) \right| dx. \quad (3)$$

As one does not know in advance whether a situation is ISS or not, it is the best to also use the corresponding expectation of the absolute logit $E_{AL}(f_{X|\overline{ISS}}||f_{X|ISS})$ (where ISS and \overline{ISS} are interchanged) and to average the two results. Let the result
 145 for X be $E_{AL}(X)$. It may be called the expectation of the absolute logit. The quantity that yields the largest $E_{AL}(X)$ has the largest learning effect for the question of ISS or not.

Note that $E_{AL}(\cdot||\cdot)$ has some resemblance to a quantity known as Kullback-Leibler divergence $D_{KL}(f_{X|ISS}||f_{X|\overline{ISS}})$ (the same expression without the absolute sign), and the corresponding symmetric form (the mean value of the two asymmetrical divergences $D_{KL}(f_{X|ISS}||f_{X|\overline{ISS}})$ and $D_{KL}(f_{X|\overline{ISS}}||f_{X|ISS})$) is known as Jeffries divergence in information theory. For

150 quantities that are not related to supersaturation, $f_X(x|ISS) = f_X(x|\overline{ISS}) = f_X(x)$, and the logit is zero. Thus, $E_{AL}(X) = 0$ as well, which signifies that one cannot learn anything about the presence of ISS using such a quantity.

3.1.2 Application

The conditional probability densities of the dynamical proxies of ERA5 for ISS and \overline{ISS} cases (depending on whether the relative humidity with respect to ice of MOZAIC/IAGOS $RH_{i_{M/I}}$ is ≥ 1.0 or < 1.0) are calculated using the Epanechnikov smoothing kernel with 300 equally spaced points between the minimum and maximum of the respective proxy. The log-likelihood ratios for some dynamical quantities are shown in Figure 1. ISS gains in probability relative to the low prior probability if the log-likelihood ratio is positive and vice versa (solid line in the diagrams). However, it needs to exceed 2 to make ISS more probable than \overline{ISS} (dashed lines). Obviously, this threshold is only exceeded in quite small ranges of the proxies or not at all. Only where RHi from ERA5 exceeds 100%, the logit exceeds 2; this says that ISS and persistent contrails are more probable than not (the wiggles in the curve at even higher RHi are considered noise). The low values of the logits of the other variables indicate that the dynamical proxies do not help much in predicting ice supersaturation via the Bayesian law. Obviously, the strong separation of their conditional distributions is only a necessary but not a sufficient condition for good proxies.

For the calculation of the expectation of the absolute logit $E_{AL}(X)$ (cf. Equation 3), the absolute values of the different logit functions are needed. These are shown in orange in Figure 2 for different proxies. The products of these functions with either of the conditional densities are shown as well in light blue and dark purple. The integrals of these functions are given in Table 1 for the relative humidity with respect to ice $RH_{i_{ERA5}}$, the temperature T , the vertical velocity ω , the divergence DIV , the relative vorticity ζ , the potential vorticity PV , the lapse rate γ and the normalised geopotential height Z . The averages of the first two rows of each column are the desired $E_{AL}(X)$. High values for $RH_{i_{ERA5}}$, ζ , and γ are noticeable for the ISS case, and high values for $RH_{i_{ERA5}}$, PV , and γ for \overline{ISS} . Therefore, according to our analysis, $RH_{i_{ERA5}}$, ζ , γ , and PV seem to be the best-suited proxies for our purpose, but, as stated, they should be tried rather for regression and not for Bayesian learning. The high value of $E_{AL}(PV)$ is probably due to the fact that a high PV indicates the stratosphere where ISS hardly occurs. So, for tropospheric situations (low PV cases) this finding is not very helpful, and accordingly, the high $E_{AL}(PV)$ must not be over-interpreted.

175 To apply the Bayesian law for several proxies simultaneously, e.g. as for $P(ISS|RH_{i_{ERA5}}, \zeta, \gamma)$, would need a much larger amount of data to compute the likelihood ratios with some robustness over the whole domain. Instead, we try now to apply non-linear regression.

Table 1. Expectation values for absolute logit of the different proxies. $E_{AL}(\cdot)$ is the mean of $E_{AL}(f_{X|ISS}|f_{X|\overline{ISS}})$ and $E_{AL}(f_{X|\overline{ISS}}|f_{X|ISS})$, so: $E_{AL}(\cdot) = \frac{1}{2} \cdot (E_{AL}(f_{X|ISS}|f_{X|\overline{ISS}}) + E_{AL}(f_{X|\overline{ISS}}|f_{X|ISS}))$.

quantity	RHi_{ERA5}	T	ω	DIV	ζ	PV	γ	Z
$E_{AL}(f_{X ISS} f_{X \overline{ISS}})$	1.75	0.34	0.56	0.42	0.96	0.90	0.96	0.52
$E_{AL}(f_{X \overline{ISS}} f_{X ISS})$	3.41	0.38	0.43	0.33	1.20	2.07	1.24	0.88
$E_{AL}(\cdot)$	2.58	0.36	0.50	0.38	1.08	1.49	1.10	0.70

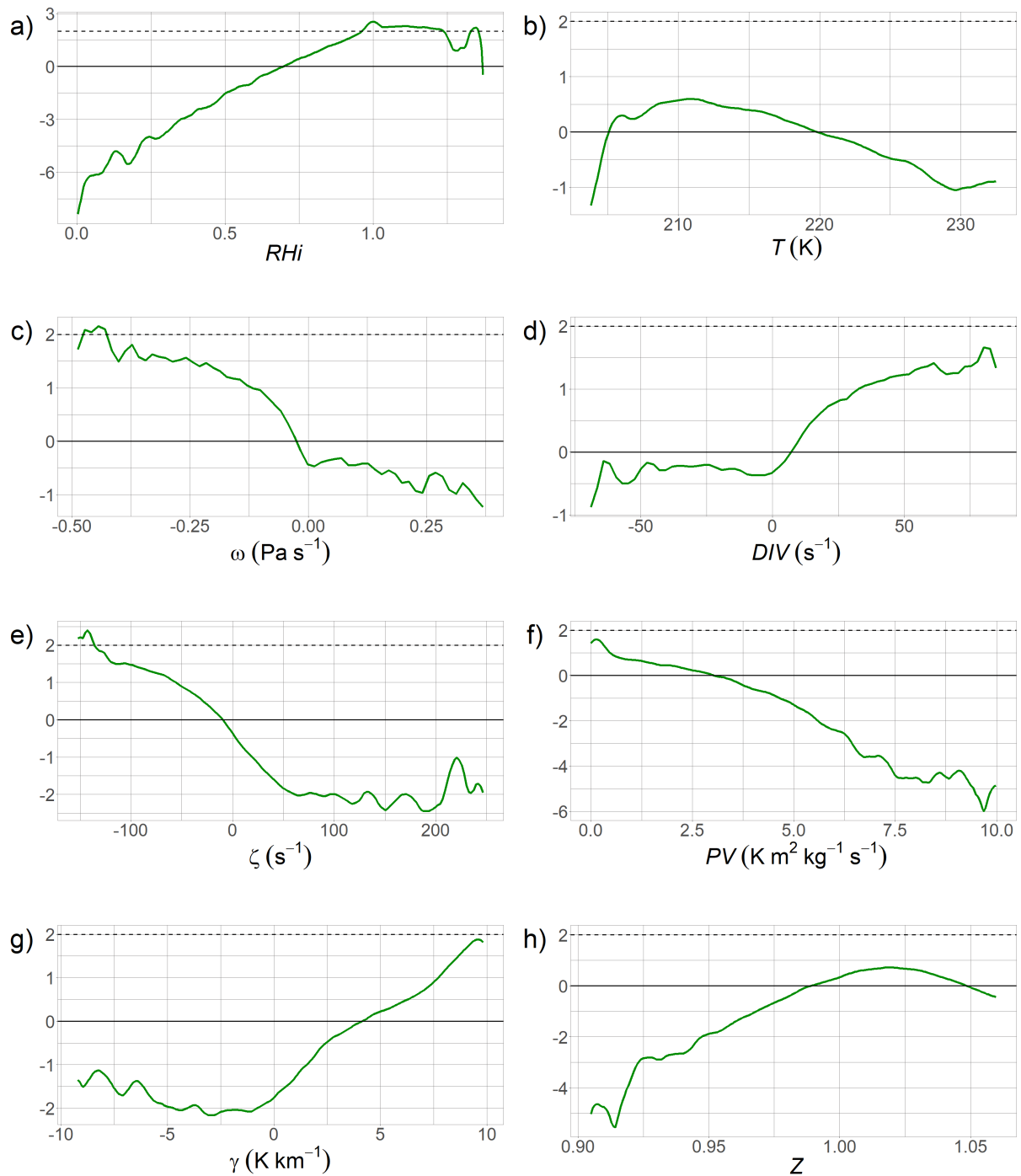


Figure 1. Log-likelihood ratios for dynamical quantities. Positive values raise the probability for ISS, negative values lower it. The probability for ISS exceeds the probability for \overline{ISS} only in the small ranges where the log-likelihood reaches values above 2 (marked by the dashed lines).

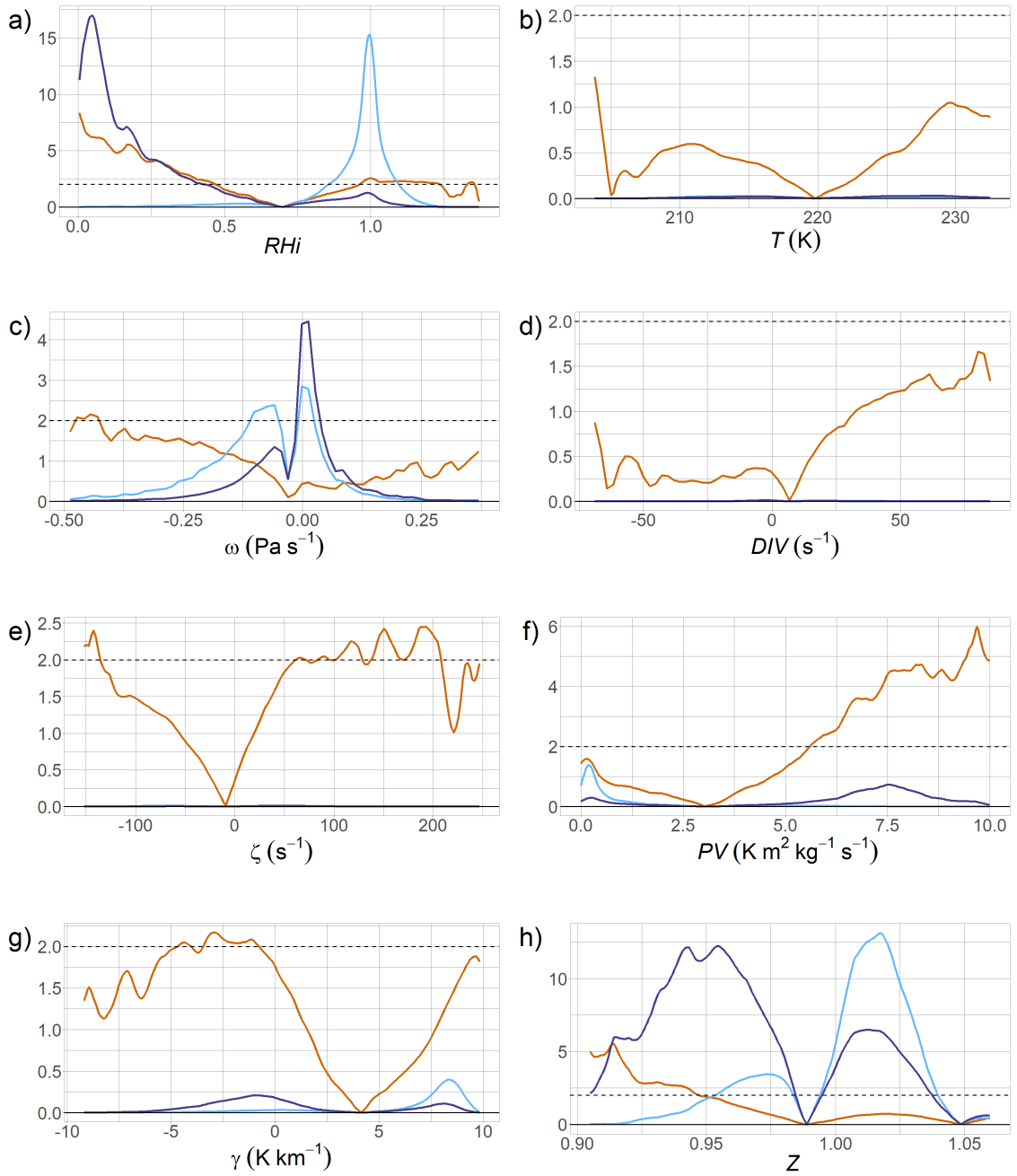


Figure 2. The absolute logarithm of the quotient of the densities for ISS and $\overline{\text{ISS}}$ cases (orange), the absolute logarithm of the quotient of the densities for ISS and $\overline{\text{ISS}}$ cases times the density for ISS cases (light blue), and the absolute logarithm of the quotient of the densities for $\overline{\text{ISS}}$ and ISS cases times the density for $\overline{\text{ISS}}$ cases (dark purple) (cf. Equation 3).

3.2 Non-linear Regression

The dynamical candidate proxies are not independent quantities, and one has to take care that a regression is not formulated with redundant information. But, of course, a variable that has some relation with (i.e. information on) the relative humidity is welcome. Above we have seen that RHi_{ERA5} , ζ , and γ are promising in this respect. Also, PV has a quite large absolute logit, but that comes mainly from the \overline{ISS} cases, where it is an expression of the fact that dry stratospheric air (with $PV > 3.5$) is rarely found in a supersaturated state (Neis, 2017; Petzold et al., 2020). Here we will apply another measure. Usually, one uses the linear correlation between the input data, but this does not work if the quantities are related in a non-linear fashion. Therefore, it is necessary to use a more general measure of correlation, namely the mutual information from information theory.

3.2.1 Mutual Information

The mutual information is a measure of information that one variable, X , can provide about another, Y . Its formulation uses the joint distribution of X and Y and both marginal distributions:

$$I(X;Y) = \iint f_{X \cap Y}(x,y) \cdot \log \left(\frac{f_{X \cap Y}(x,y)}{f_X(x) \cdot f_Y(y)} \right) dx dy, \quad (4)$$

where $f_{X \cap Y}(x,y)$ is the joint probability density for X and Y . In case that X and Y are independent, the joint density equals the product of the marginal densities and the logarithm is zero. Then the mutual information between X and Y is zero as well. In all other cases, it is positive and it is the expected value of $\log(\frac{f_{X \cap Y}}{f_X f_Y})$ with the joint distribution as the weight function.

Since we assume the humidity of MOZAIC/IAGOS ($RHi_{M/I}$) is the truth, we calculate the mutual information of $RHi_{M/I}$ with other quantities and compare them with each other. The results of the computed mutual information $I(RHi_{M/I}; Y)$ for different variables Y are shown in the first row in Table 2. The highest values of the mutual information are reached by RHi_{ERA5} (1.26 bits), PV (0.57 bits), γ (0.38 bits) and ζ (0.37 bits). This means, according to the mutual information, RHi_{ERA5} , PV , γ and ζ seem well-suited as proxies for regressions.

To be a good proxy for a regression, it must not only be well correlated with $RHi_{M/I}$ (i.e. have a high value of mutual information $I(RHi_{M/I}; Y)$), but at the same time, it should not be correlated with other variables (i.e. a low value of mutual information with the other proxies $I(X; Y)$) to avoid redundant information. The values of the individual mutual information $I(X; Y)$ can be found on the right side in Table 2. The matrix is symmetrical, so for a better overview only one side is filled.

As mentioned before, from all quantities, RHi_{ERA5} , PV , γ and ζ have the highest mutual information with $RHi_{M/I}$. However, PV and γ are themselves quite strongly correlated (1.07 bits). So, because $I(RHi_{M/I}; PV) > I(RHi_{M/I}; \zeta)$, but $I(PV; \zeta)$ is also very high, ζ should be omitted when using PV as a proxy.

Table 2. Mutual information matrix $I(X;Y)$ to identify the correlations of the variables with each other. The first row of the matrix, $I(RHi_{M/I};Y)$, shows the correlation of $RHi_{M/I}$ and the other proxies and the columns the correlations between the variables among themselves.

$I(X;Y)$ in bits	$RHi_{M/I}$	RHi_{ERA5}	T	ω	DIV	ζ	PV	γ	Z
$RHi_{M/I}$		1.26	0.29	0.06	0.04	0.37	0.57	0.38	0.23
RHi_{ERA5}			0.35	0.08	0.06	0.43	0.61	0.43	0.25
T				0.02	0.02	0.12	0.16	0.05	0.36
ω					0.21	0.04	0.09	0.10	0.06
DIV						0.03	0.04	0.04	0.03
ζ							0.73	0.43	0.19
PV								1.07	0.54
γ									0.54
Z									

205 3.2.2 Generalised Additive Model

A generalised additive model (GAM) is a regression method for predicting a response Y based on non-linear functions of several predictors $X = (X_1, X_2, \dots, X_p)$. In meteorology, for instance, it has been successfully used for the prediction of thunderstorms (Rädler et al., 2018). The general formula for GAMs is:

$$\log\left(\frac{P(ISS|X)}{1 - P(ISS|X)}\right) = \beta_0 + s_1(X_1) + s_2(X_2) + \dots + s_p(X_p). \quad (5)$$

210 $\frac{P(ISS|X)}{1 - P(ISS|X)}$ is the posterior odds ratio $P(ISS|X)/P(\overline{ISS}|X)$. The GAM thus constructs a relation between the (posterior) odds ratio and a linear combination of functions of the predictors X . For the functions we use smoothing splines $s(X)$. Here, we test six different GAMs with combinations of various dynamical proxies (input parameters) to predict whether persistent contrails are possible:

- 215 – GAM₀ with RHi_{ERA5} ,
- GAM₁ with T, RHi_{ERA5} ,
- GAM₂ with PV, T, RHi_{ERA5} ,
- GAM₃ with PV, T, ζ, RHi_{ERA5} ,
- GAM₄ with γ, T, Z, PV, ζ , and
- 220 – GAM₅ with $\gamma, T, Z, PV, \zeta, RHi_{ERA5}$.

The procedure is as follows: For the tests, 395,576 independent data points are used. First, we divide the data set (MOZAIC/IAGOS and ERA5 data) into a training and test data set (training data set $\sim 80\%$ and test data set $\sim 20\%$ of the whole data set). The presence of persistent contrails is known from the MOZAIC/IAGOS data, as described in subsection 2.1. Next, we train the model, which means, we find the best coefficients for the relationships between the proxies and prediction using the training data set and a software environment for statistical computing called *R* (R. Ihaka and R. Gentleman, 1993). Then we use the gained best coefficients and functions to predict the presence of persistent contrails in the test data set. At the end, we validate the forecast by comparing the predictions with the truth and calculating the so-called equitable threat score (see subsection 3.2.3).

3.2.3 Equitable Threat Score

In this study, the equitable threat score (ETS) is used to validate and compare the prediction accuracy of the different GAMs (with varied input parameters) and of the raw data. For the calculation of the ETS (Gierens et al., 2020), the events are summed up according to the contingency table (see Table 3), where a distinction is made between "potential persistent contrails predicted" yes/no and "persistent contrails observed" yes/no.

Table 3. Contingency table for predicting and observing persistent contrails.

		potential persistent contrails predicted	
		yes	no
persistent contrails observed	yes	correct (<i>a</i>)	false negative (<i>b</i>)
	no	false positive (<i>c</i>)	correct (<i>d</i>)

The sum of the events is labeled as *a* (contrails are predicted and observed), *b* (no contrails are predicted but observed), *c* (contrails are predicted but not observed), and *d* (contrails are neither predicted nor observed). For the calculation of the ETS, the numbers of the events *a*, *b*, *c*, and *d* and the following equation are used:

$$ETS = \frac{a - r}{a + b + c - r} \quad (6)$$

with

$$r = \frac{(a + b) \cdot (a + c)}{a + b + c + d}. \quad (7)$$

240

If the prediction agrees perfectly with the observation, $ETS = 1$. For a completely inverse relation, ETS is negative, and for a random relation, $ETS = 0$. The advantage of using ETS instead of another skill score is that the influence of a predominant no/no case (large value of *d*) is minimised, which we have here, since \overline{ISS} is much more probable than ISS.

245 In order to fill the contingency table, it is necessary to decide on a conditional probability threshold $P(ISS|X)$ up to which \overline{ISS} and from which on ISS is predicted. To determine the threshold, one generally uses the value that gives the best ETS. In the present case, this threshold probability is 0.34. That is, with a given vector X of proxies, we predict contrail persistence or ice supersaturation if $P(ISS|X) > 0.34$ (and vice versa).

3.2.4 Regression Results

250 Table 4 shows the results of the application of six different general additive models (GAM₀ to GAM₅). Note that β_0 is different for every GAM even if it is abbreviated in the same way in all GAMs. In the first (white) row, the ETS value of 0.198 is given, which is obtained when only RHi_{ERA5} and $RHi_{M/I}$ are compared (without applying a GAM to it). In that case, we only check how well the prediction of ISS in ERA5 matches the observation of ISS of MOZAIC/IAGOS. So, it is only examined how often $RHi_{ERA5} \geq 1.0$ matches $RHi_{M/I} \geq 1.0$. The SAC is not taken into account.

255 In GAM₀, we only use RHi_{ERA5} and get an ETS value of 0.337. In GAM₁, we also take T into account, since the temperature and the humidity are the two important variables to compute whether contrails form (using the SAC). With these proxies we get an ETS of 0.372, which is a little bit higher than in GAM₀, but not significantly.

As we saw in subsection 3.2.1, when calculating the mutual information, RHi_{ERA5} , PV , ζ and γ show particularly high values with $RHi_{M/I}$ ($I(RHi_{M/I}; RHi_{ERA5}) = 1.26$ bits, $I(RHi_{M/I}; PV) = 0.57$ bits, $I(RHi_{M/I}; \gamma) = 0.38$ bits and
 260 $I(RHi_{M/I}; \zeta) = 0.37$ bits) and are therefore very suitable as proxies. But when looking at the mutual information among these proxies, then it is noticeable that in particular PV and γ correlate strongly (1.07 bits). That is why γ can be omitted when using PV . $I(PV; \zeta)$ is also very high (0.73 bits), which is why we only use the PV in GAM₂ (in addition to T and RHi_{ERA5}). The resulting ETS value is also 0.372.

For GAM₃ we use PV , T , ζ and RHi_{ERA5} because we want to take even more proxies into the GAM as inputs according to
 265 the mutual information. So, we do the same GAM as before but we also use ζ , because $I(RHi_{M/I}; \zeta)$ is also very high and $I(PV; \zeta) < I(PV; \gamma)$. The ETS in this case is 0.373. We see, that GAM₂ and GAM₃ hardly differ from GAM₁ in terms of their ETS values. The reason for this is, even if $I(RHi_{M/I}; PV)$ is very high, the PV is already very strongly correlated with RHi_{ERA5} ($I(RHi_{ERA5}; PV) = 0.61$ bits). This means that not much more additional information is provided by PV (and the other variables even provide less).

270 Next, we use all proxies that show separate distributions in their probability density functions (PDFs, not shown) $P(X|ISS)$ vs. $P(X|\overline{ISS})$, but, as an experiment, we omit RHi_{ERA5} in GAM₄. So, we use as inputs: γ , T , Z , PV and ζ . The ETS only reaches a value of 0.197. This shows us two important things:

- i) Even if we supposedly put more information into the GAM by using more proxies, the ETS does not increase.
- ii) The relative humidity can not be ignored as an input variable. This indicates that even if the relative humidity is an imprecise
 275 variable, it must not be excluded, otherwise, the ETS value will drastically decrease.

These two new insights may be explained by the log-likelihood ratios (Figure 1): Only RHi_{ERA5} shows values above 2 for a large range, so ISS is more probable in this range. This is probably the reason why RHi_{ERA5} has to be used as an input for the GAMs. All other quantities either show no values above 2 at all or only for a very small range.

By using the same proxies as before and adding RHi_{ERA5} (GAM_5), the corresponding ETS reaches a value of 0.378.

280 It seems that the use of dynamical proxies in the GAMs does not outperform by much a simple GAM that uses only relative humidity and temperature. At least, the ETS values obtained via the GAMs (that is, for prediction of potential persistent contrails) distinctively exceed those obtained from a simple check of the ISS prediction, as from the study of Gierens et al. (2020, ETS = 0.08 for a relatively small set of data from 2014) and from the present much larger data set (ETS = 0.198). This means that even if a value of 0.378 seems small at first glance, it is still larger than if the prediction of ice supersaturation is purely
285 based on the relative humidity with respect to ice from the ERA5 data.

Note that despite T is not particularly prominent, neither in the E_{AL} nor in its mutual information with $RHi_{M/I}$, we use it in GAM_1 to GAM_5 because it is such an important quantity in the SAC and we use the proxies to provide further information (in addition to T and RHi_{ERA5}). So, when running our best GAM (GAM_5), but this time without T , the ETS reaches a value of 0.357. T does not increase the ETS significantly, but we leave it in for the reasons mentioned above.

290 Since, as we have seen, the relative humidity should definitely be used as an input for a GAM, although it is not very precise, the questions arise: Is it possible to improve the regression results using corrections to the relative humidity field from the weather forecast models and what is the reason why even the most advanced regression methods are not able to yield better ETS values? These questions are dealt with in the next section.

Table 4. Results of comparing RHi_{ERA5} and $RHi_{M/I}$ with each other and of different GAMs.

Comparison of raw data (assessment of the ISS-prediction; without using a GAM)		ETS
RHi_{ERA5} and $RHi_{M/I}$		0.198
Prediction of potential persistent contrails using proxies and GAMs: $\log\left(\frac{p(X)}{1-p(X)}\right) =$		ETS
GAM_0	$\beta_0 + s(RHi_{ERA5})$	0.337
GAM_1	$\beta_0 + s(T) + s(RHi_{ERA5})$	0.372
GAM_2	$\beta_0 + s(PV) + s(T) + s(RHi_{ERA5})$	0.372
GAM_3	$\beta_0 + s(PV) + s(T) + s(\zeta) + s(RHi_{ERA5})$	0.373
GAM_4	$\beta_0 + s(\gamma) + s(T) + s(Z) + s(PV) + s(\zeta)$	0.197
GAM_5	$\beta_0 + s(\gamma) + s(T) + s(Z) + s(PV) + s(\zeta) + s(RHi_{ERA5})$	0.378

4 Sensitivity Tests

295 If weather forecasts were perfect, contrail persistence could easily be predicted using temperature and relative humidity alone and it would not be necessary to use any proxies. Unfortunately, it seems that in particular the predicted humidity field (at least from ERA5, but certainly from other weather models as well) is not good enough to allow such a forecast for single flights, that is, waypoint to waypoint (Gierens et al., 2020). There are plausible reasons for this, in particular a lack of in-situ observations of humidity at cruise levels and outdated cirrus parameterisations in numerical weather prediction models
300 (Sperber and Gierens, 2023). In the following we perform regression tests with artificially changed distributions of relative

humidity. We first assume that the two conditional RHi_{ERA5} distributions $P(RHi_{\text{ERA5}}|ISS)$ and $P(RHi_{\text{ERA5}}|\overline{ISS})$ were more separated (less overlap) than they are (ideally the overlap should be very small, including only sublimating contrails in the ISS-conditioned PDF and supersaturated, but too warm cases in the \overline{ISS} -conditioned PDF). Second, we test two different methods of humidity corrections to see whether they help to reach higher ETS values in the regression models.

305 4.1 Separating the probability density functions conditioned on persistence

We guess that the root of the problem of predicting ice supersaturation and contrail persistence is the too strong overlap of the two conditional humidity PDFs, namely $f_{RHi_{\text{ERA5}}}(r|ISS)$ and $f_{RHi_{\text{ERA5}}}(r|\overline{ISS})$, where r is a special value of RHi_{ERA5} . This substantial overlap can be seen in panel f) of Figure 3. Now we artificially separate these two distributions using a perfectly separated pair of distributions, a log-normal distribution f_{PC} cut-off at 0.8 and 1.5 for cases that allow persistent contrails (PC), and a second one, f_{noPC} ranging from 0.0 and 0.8 for cases that do not (no PC). Then we mix the original conditional probability distributions of all data, both in the training and test data set, more and more into the artificial distributions, namely using a weighting factor $0 \leq a \leq 1$ as follows:

$$\begin{aligned} f(r|\overline{ISS}, a) &= a f_{\text{noPC}} + (1 - a) f_{RHi_{\text{ERA5}}}(r|\overline{ISS}), \\ f(r|ISS, a) &= a f_{\text{PC}} + (1 - a) f_{RHi_{\text{ERA5}}}(r|ISS). \end{aligned} \quad (8)$$

315 Some examples of these artificial distributions are shown in Figure 3. From these distributions, we draw random humidity values and replace the original ones with them keeping their ISS and \overline{ISS} label (i.e. either persistent contrail, RHi_a drawn from $f(r|ISS, a)$, or non-persistent or no contrail drawn from $f(r|\overline{ISS}, a)$). This data set is then again divided into a training (80%) and test data (20%) set and GAMs (with T and RHi_a , like in GAM_1) and the corresponding ETS are computed for every value of a .

320 The results are shown in Table 5. It is noticeable that even with a small shift in the relative humidity data, the ETS value increases drastically. This can be observed especially for small values of a , which means that if the original RHi_{ERA5} data were just slightly more separated, the results would be drastically improved. This is good news since it shows that the model prediction of RHi_{ERA5} does not need to be perfect. Very good ETS values already appear for conditional distributions that are a little less separated than they actually are. Note that the further increase of ETS for $a > 0.5$ is quite weak since ETS ($a = 0.5$) already exceeds 0.9.

325

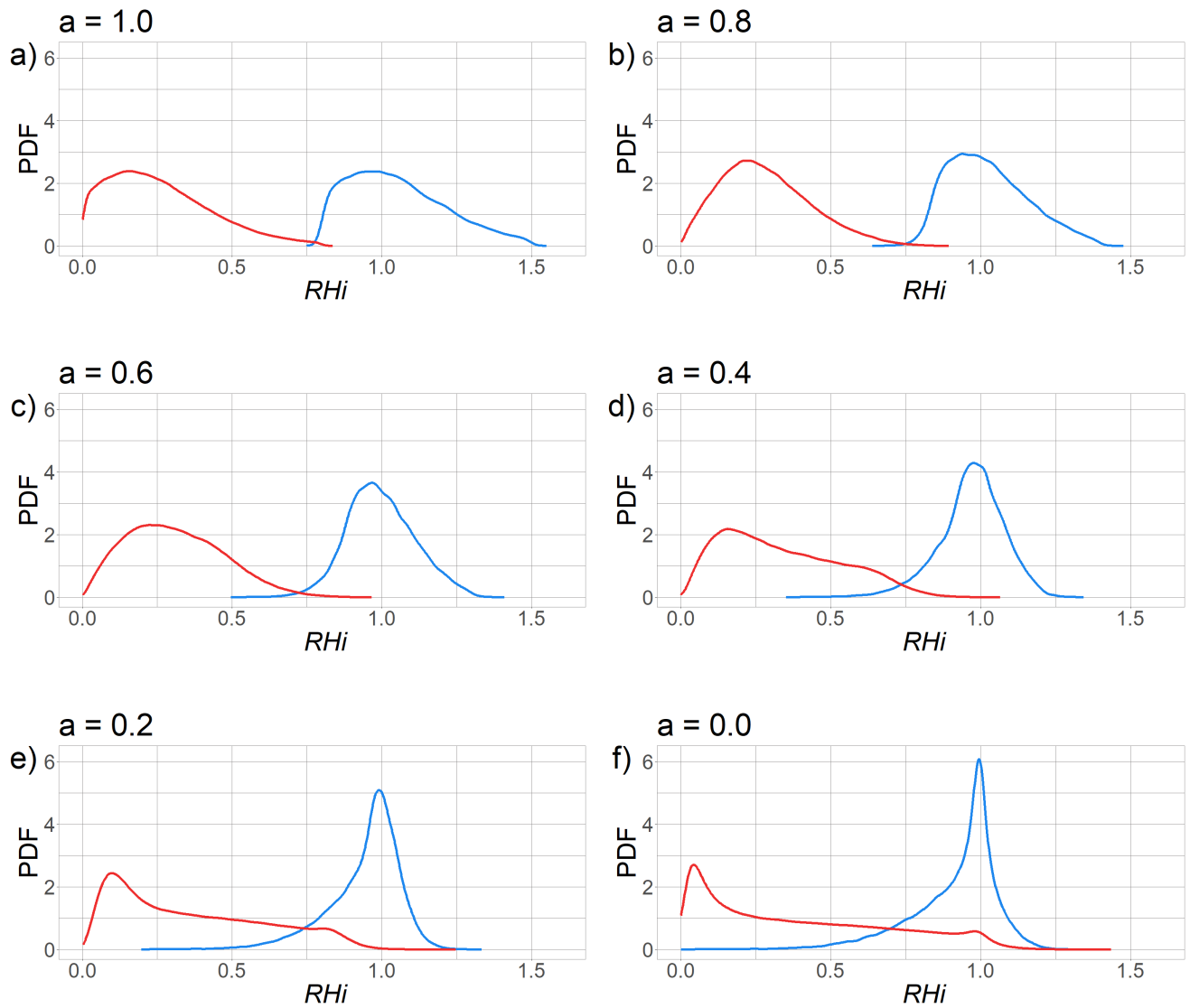


Figure 3. Conditional probability density functions $f(r|ISS, a)$ (blue) and $f(r|\overline{ISS}, a)$ (red) for different values of a . Note that the original distributions $f_{RH_i_{ERA5}}(r|\overline{ISS})$ and $f_{RH_i_{ERA5}}(r|ISS)$ are retained with $a = 0.0$ in panel f).

Table 5. Results of the sensitivity test

a	1.0	0.9	0.8	0.7	0.6	0.5	0.4	0.3	0.2	0.1	0.0
ETS	1.0	0.996	0.989	0.976	0.956	0.921	0.863	0.765	0.639	0.484	0.372

4.2 Correction Formulas

As subsection 4.1 shows, there is a strong increase in the ETS for decreasing overlap. For this reason, two different methods are being tested to further separate the two conditional distributions, $f_{RH_{i_{ERA5}}}(r|ISS)$ and $f_{RH_{i_{ERA5}}}(r|\overline{ISS})$, using corrections to the modelled relative humidity values. These correction methods are quantile mapping based on the present data sets (e.g. 330 Gierens and Eleftheratos, 2017; Wolf et al., 2023b) and the RHi -modification used by Teoh et al. (2022).

4.2.1 Quantile Mapping

The quantile mapping procedure uses the two cumulative distributions of RHi , the one from the MOZAIC/IAGOS data and the corresponding one from ERA5, see Figure 4. Evidently, the two distributions differ, in particular around saturation. This is therefore the range of values, where corrections have the greatest effect. The procedure is quite simple: for each RHi_{ERA5} 335 the corresponding quantile value (the value on the y -axis) is looked up and the the corresponding $RHi_{M/I}$, that has the same quantile value, is taken as the corrected RHi_{QM} . This is illustrated by the black arrows in Figure 4. We note that saturation ($RHi_{QM} = 1$) is already reached at the predicted (i.e. ERA5) relative humidity of $RHi_{ERA5} = 0.934$, using this method.

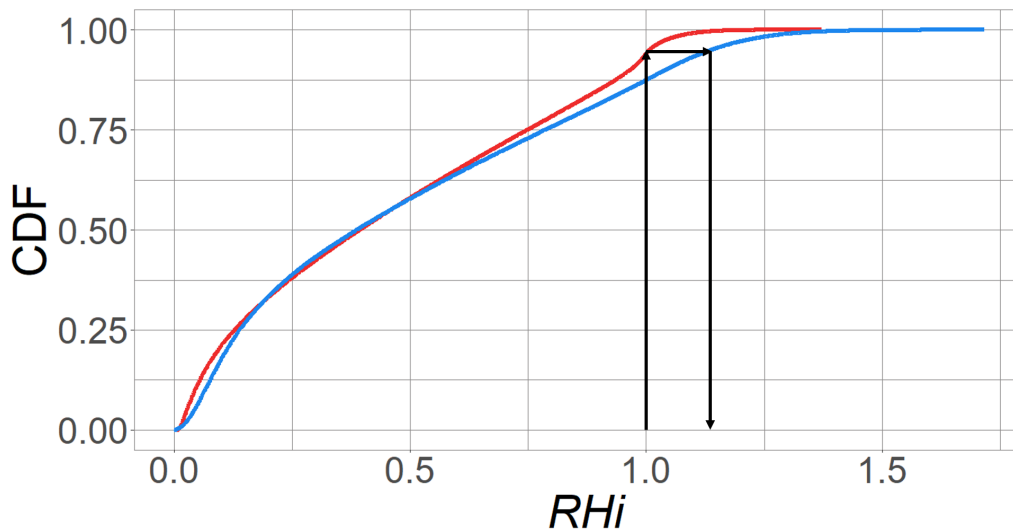


Figure 4. Illustration of quantile mapping for $RH_{i_{ERA5}}$. The red curve illustrates the cumulative distribution function (CDF) of $RH_{i_{ERA5}}$ and the blue one the CDF of $RH_{i_{M/I}}$.

4.2.2 RHi -modification by Teoh et al. (2022)

In a study by Teoh et al. (2022), the ERA5 ice supersaturation over the North Atlantic was adjusted to the corresponding 340 MOZAIC/IAGOS supersaturation by introducing two factors with whom the $RH_{i_{ERA5}}$ is scaled:

$$\begin{aligned}
RH_{i_{\text{TEOH}}} &= \frac{RH_{i_{\text{ERA5}}}}{a} & \text{if } \frac{RH_{i_{\text{ERA5}}}}{a} \leq 1 \\
RH_{i_{\text{TEOH}}} &= \min \left[\left(\frac{RH_{i_{\text{ERA5}}}}{a} \right)^b, 1.65 \right] & \text{if } \frac{RH_{i_{\text{ERA5}}}}{a} > 1,
\end{aligned} \tag{9}$$

with $a = 0.9779$ and $b = 1.635$. Here we try whether this modification can lead to improvements in our regression models.

4.2.3 Results using corrections

345 Table 6 shows the results of comparing the observed ice supersaturation $RH_{i_{\text{M/I}}}$ with the modified relative humidities with respect to ice, $RH_{i_{\text{QM}}}$ and $RH_{i_{\text{TEOH}}}$, and the results of using these corrected humidities in the best GAM we have found before (see subsection 3.2.4). To recall the results to be compared, which we have already described, the ETS of the comparison of $RH_{i_{\text{ERA5}}}$ and $RH_{i_{\text{M/I}}}$ and also the original GAM_5 have been added to the table.

We check how good the prediction of ice supersaturation is, using the corrected versions of $RH_{i_{\text{ERA5}}}$. When comparing the data of $RH_{i_{\text{M/I}}}$ with the modified relative humidity with respect to ice using the quantile mapping method, $RH_{i_{\text{QM}}}$, the ETS reaches a value of 0.344. If the relative humidity with respect to ice is modified according to the formula of Teoh $RH_{i_{\text{TEOH}}}$ and compared to $RH_{i_{\text{M/I}}}$, than the ETS is 0.284.

Table 6. Results of comparing $RH_{i_{\text{M/I}}}$ and the modified humidities $RH_{i_{\text{QM}}}$ and $RH_{i_{\text{TEOH}}}$ and of GAMs using $RH_{i_{\text{QM}}}$ and $RH_{i_{\text{TEOH}}}$.

Comparison of raw data (assessment of the ISS-prediction; without using a GAM)		ETS
$RH_{i_{\text{ERA5}}}$ and $RH_{i_{\text{M/I}}}$		0.198
$RH_{i_{\text{QM}}}$ and $RH_{i_{\text{M/I}}}$		0.344
$RH_{i_{\text{TEOH}}}$ and $RH_{i_{\text{M/I}}}$		0.284
Prediction of potential persistent contrails using proxies and GAMs: $\log \left(\frac{p(X)}{1-p(X)} \right) =$		ETS
GAM_5	$\beta_0 + s(\gamma) + s(T) + s(Z) + s(PV) + s(\zeta) + s(RH_{i_{\text{ERA5}}})$	0.378
$\text{GAM}_{5,\text{QM}}$	$\beta_0 + s(\gamma) + s(T) + s(Z) + s(PV) + s(\zeta) + s(RH_{i_{\text{QM}}})$	0.377
$\text{GAM}_{5,\text{TEOH}}$	$\beta_0 + s(\gamma) + s(T) + s(Z) + s(PV) + s(\zeta) + s(RH_{i_{\text{TEOH}}})$	0.376

Now, we use the same proxies as in GAM_5 but we replace $RH_{i_{\text{ERA5}}}$ with $RH_{i_{\text{QM}}}$ gained by quantile mapping, and for the other case with $RH_{i_{\text{TEOH}}}$ using the formula by Teoh. The relative humidity of the whole data set is adapted. When $RH_{i_{\text{ERA5}}}$ is modified by quantile mapping, we get an ETS value of 0.377 and for a change in humidity according to Teoh, the ETS value is 0.376.

Unfortunately, it turns out that neither a GAM produced with quantile-mapped ERA5 humidity values nor a GAM where the Teoh et al. (2022) corrections have been applied, leads to larger ETS values than a GAM without the corrections (reminder: the ETS of the original GAM_5 with the original $RH_{i_{\text{ERA5}}}$ is 0.378). In comparison to the ETS of 0.344 (quantile mapping)

360 and 0.284 (Teoh) mentioned above, when only the modified humidities are compared with $RHi_{M/I}$, the GAMs with the best suited proxies and the modified humidities affect the ETS values hardly.

The probable reason for this negative result is seen in Figure 5, which shows the original conditional PDFs (red and blue) together with those obtained when the corrections are applied. Evidently, there is some shift in particular for the PDFs conditioned on ISS, but the overlap between the distribution pairs still remains considerable, too substantial for a better result.

365 Another reason for the insensitivity of the GAMs to these corrections may be that they absorb such modifications in the coefficients of the non-linear smooth functions. This may become clearer, if one thinks of a linear regression ($Y = \beta_0 + \beta_1 X + \varepsilon$) where a linear correction of the predictor X , that is $X' = a + bX$, would also be simply absorbed in the regression coefficients β_0, β_1 . That is, they would simply take different values but the form of the regression and the ETS would not change.

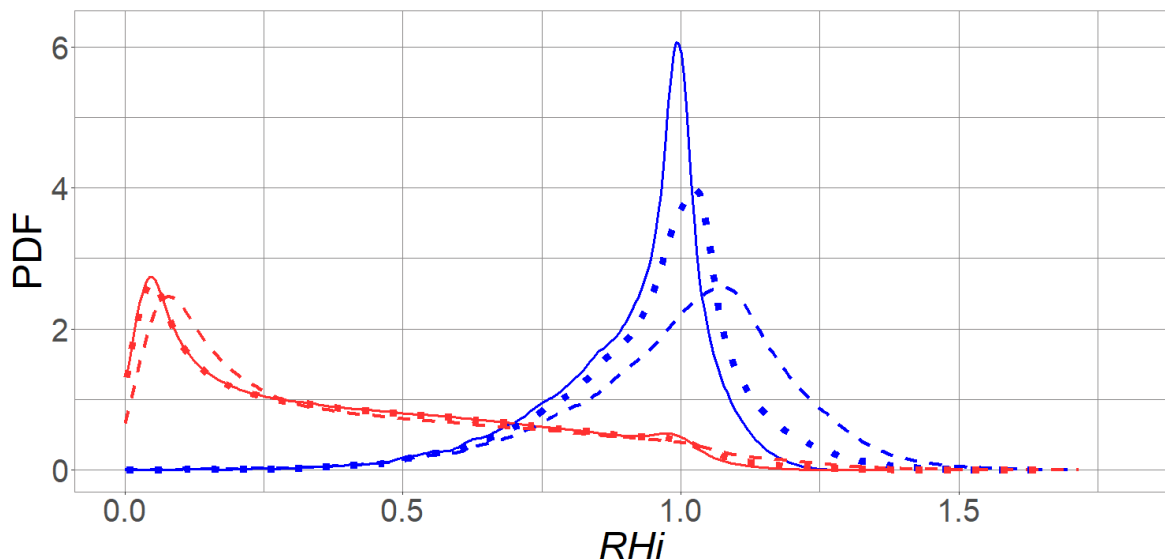


Figure 5. The conditioned PDFs $P(RHi|ISS)$ (blue) and $P(RHi|\overline{ISS})$ (red) of different RHi distributions are shown. The solid curves are the PDFs of the original RHi_{ERA5} of the whole data set for \overline{ISS} and ISS. The other curves represent RHi -corrections: The dashed lines are the conditioned PDFs of RHi_{QM} modified by the quantile mapping method. The dotted curves represent the conditioned PDFs of RHi_{TEOH} modified by the Teoh formula.

5 Summary and Conclusions

370 There are various approaches to minimise the climate impact of aviation. One of these approaches is to prevent the formation of persistent contrails by avoiding flying through ice supersaturated regions where contrails can last for hours. For implementing such aircraft diversions, these regions have to be predicted accurately in terms of time and location, which is currently associated with difficulties and uncertainties. This is mainly due to the inaccurate forecast of the relative humidity. Since ice

supersaturation (ISS) is more common in some dynamical regimes than in others, we use different dynamical proxies (in addition to the relative humidity with respect to ice $RH_{i_{ERA5}}$ and to the temperature T) as inputs for various approaches and methods to improve the prediction of these regions. These methods include a Bayesian approach and different regression models. The data of the variables/proxies come from ERA5, the observation comes from MOZAIC/IAGOS, which we assume as the truth. With the data of MOZAIC/IAGOS we can make the distinction between ISS and \overline{ISS} . The evaluation of the different methods is carried out with a score value (ETS) that checks how well the prediction matches the observation.

To find out which dynamical variables are best suited for the regressions and which do not provide redundant information, we use various methods of information theory and test them. These include the log-likelihood ratios, known from the Bayes' theorem, a modified form of the Kullback-Leibler divergence, which we call the expectation of the absolute logit, and the mutual information.

Log-likelihood ratios with values > 2 indicate that ISS is more likely than \overline{ISS} . Only $RH_{i_{ERA5}}$ delivers values above 2 in a larger range, which indicates that ISS is more likely there than \overline{ISS} . The vertical velocity ω and the relative vorticity ζ show also values above 2, but in a very small range. All other log-likelihood ratios are always below 2, which means that their effect on updating the prior odds ratio is quite small.

Particularly high values of the expectation for absolute logits are found for $RH_{i_{ERA5}}$, the lapse rate γ and the relative vorticity ζ , which means that these proxies have the greatest learning effect when assessing whether ISS or \overline{ISS} .

Furthermore, to estimate the suitability of a proxy for a regression, we use the mutual information, which is a measure of how much information one variable X can provide about another variable Y . To be a good predictor of ISS, it is important that the variable is both very well correlated with the relative humidity of the MOZAIC/IAGOS data, $RH_{i_{M/I}}$ (which we assume as the truth), and at the same time as uncorrelated as possible with the other variables. $RH_{i_{ERA5}}$, PV , γ and ζ have the highest mutual information to $RH_{i_{M/I}}$ but especially PV and γ are themselves quite strongly correlated, so it is sufficient for a regression to use PV and omit γ because of the higher mutual information of PV with $RH_{i_{M/I}}$.

We use the most promising variables in several regression models to predict ISS. Through the regressions we find out that no matter which and how many dynamical proxies are added as an input, they do only provide little new information regarding ISS. With only the raw $RH_{i_{ERA5}}$ and T data of ERA5, Gierens et al. (2020) could achieve an ETS value of 0.08 for the prediction of ice supersaturation. For the present data set it is 0.198. The best regression that we can find, achieves an ETS of 0.378. We consider this as not satisfying for flight routing.

It turns out that the dynamical proxies hardly provide information to the question of ISS or \overline{ISS} , although the mutual information between in particular $RH_{i_{ERA5}}$ and $RH_{i_{M/I}}$ and between PV and $RH_{i_{M/I}}$ is quite large. Furthermore, we see that of all variables only $RH_{i_{ERA5}}$ has a range of values with the logit function exceeding the critical level of 2 and that a regression without $RH_{i_{ERA5}}$ is not successful. Thus, it turns out that the relative humidity $RH_{i_{ERA5}}$ at flight level is essential in our regressions in spite of its weaknesses. We suspect, that the main problem with predicting ISS is the strong overlap of the conditional probability density functions $P(RH_{i_{ERA5}}|ISS)$ and $P(RH_{i_{ERA5}}|\overline{ISS})$, especially in the critical region around $RH_{i_{ERA5}} = 70\%$ to 100% . Sensitivity tests show that the ETS increases strongly with a decrease in the overlap, which means that if $P(RH_{i_{ERA5}}|ISS)$ and $P(RH_{i_{ERA5}}|\overline{ISS})$ were just slightly more separated, the results would drastically improve.

While corrections of $RH_{i_{ERA5}}$ lead to better predictions of ice supersaturation (increase in the ETS values) for comparing
410 $RH_{i_{M/I}}$ with the modified relative humidities, they only slightly improve the forecast of potential persistent contrails (based
on the ETS of the ISS-prediction) using regression methods, the proxies that turned out to be the most suitable ones and
the modified relative humidities. This is due to the fact that also the overlap of the conditional PDFs $P(RH_i|ISS)$ and
 $P(RH_i|\overline{ISS})$ of the modified relative humidities is hardly reduced, and probably also because the corrections are absorbed by
the regressions and thus they do not become effective.

415 In the present paper we have used the meteorological data only at the point and time where the prediction of ice super-
saturation is required. One can increase the effort and use additionally forecast data from earlier points in time and locations
upstream of the location of interest (e.g. Duda and Minnis, 2009a, b). Wang et al. (2022) report that the humidity forecast of the
ECMWF model can be improved by application of a random forest fed with data from previous atmospheric states (a couple
of hours) and covering about 100 hPa in vertical distance, in order to account for the past vertical motion that led to the current
420 state. While this is certainly a possibility to improve the predicted humidity field *per se*, it is not clear whether the methods
are fast and accurate enough for flight planning. Duda and Minnis (2009b) conclude that "reductions in the uncertainties of
meteorological variables to a point where acceptable contrail forecasts are produced would be a good goal for NWA (numerical
weather analysis) modelers".

We conclude that the representation of RH_i in models of numerical weather prediction need to be improved. There are
425 several ways to do this, but it will take some time to realise it. Cloud physics in numerical weather models is greatly simplified.
This was justified for a long time because of the constraints of computing time and because the processes at flight level were
not in the focus of weather prediction. However, as aviation needs to reduce its climate impact, avoidance of contrails gets
interesting for airlines and thus the prediction of ice supersaturation needs improvement. Furthermore, computer power is
rising and additional resources can be used to improve the description of physical processes. A recent example is the concept
430 of a one-moment scheme by Sperber and Gierens (2023). Furthermore, we think that more aircraft need to be equipped with
hygrometers to measure humidity at flight altitudes for data assimilation. This would enable numerical weather models to
improve the prediction of relative humidity for flight routing.

Code availability. R codes can be shared on request.

Data availability. ERA5 data can be obtained from the Copernicus Climate Data Service at <https://cds.climate.copernicus.eu>. MOZAIC/I-
435 AGOS data are available from <https://iagos.aeris-data.fr>.

Author contributions. This paper is part of Sina Hofer's PhD thesis. SH wrote the codes, ran the calculations, analysed the results and produced the figures. KG supervises her research. Both authors discussed the methods and results and wrote the paper. SR curated the MOZAIC/IAGOS data.

Competing interests. The authors declare no competing interests.

440 *Acknowledgements.* The research described in this paper contributes to the Horizon 2020 project ACACIA (Grant No. 875036). The authors would like to thank Prof. Robert Sausen for the helpful discussion and Johanna Mayer for her thorough reading and commenting a draft manuscript.

References

- Appleman, H.: The formation of exhaust condensation trails by jet aircraft, *Bull. Amer. Met. Soc.*, 34, 14–20, 1953.
- 445 Copernicus Climate Change Service (C3S): ERA5: Fifth generation of ECMWF atmospheric reanalyses of the global climate, Copernicus Climate Change Service Climate Data Store (CDS), last access April 2020, <https://cds.climate.copernicus.eu/cdsapp#!/home>, 2017.
- Corti, T. and Peter, T.: A simple model for cloud radiative forcing, *Atmos. Chem. Phys.*, 9, 5751—5758, <https://doi.org/10.5194/acp-9-5751-2009>, 2009.
- Duda, D. and Minnis, P.: Basic Diagnosis and Prediction of Persistent Contrail Occurrence Using High-Resolution Numerical Weather
450 Analyses/Forecasts and Logistic Regression. Part I: Effects of Random Error, *J. Appl. Meteorol. Climatol.*, 48, 1780–1789, 2009a.
- Duda, D. and Minnis, P.: Basic Diagnosis and Prediction of Persistent Contrail Occurrence Using High-Resolution Numerical Weather Analyses/Forecasts and Logistic Regression. Part II: Evaluation of Sample Models, *J. Appl. Meteorol. Climatol.*, 48, 1790–1802, 2009b.
- Gierens, K. and Brinkop, S.: Dynamical characteristics of ice supersaturated regions, *Atmos. Chem. Phys.*, 12, 11 933–11 942, 2012.
- Gierens, K. and Eleftheratos, K.: Technical Note: On the intercalibration of HIRS channel 12 brightness temperatures following the transition
455 from HIRS 2 to HIRS 3/4 for ice saturation studies, *Atmos. Meas. Tech.*, 10, 681–693, <https://doi.org/10.5194/amt-2016-289>, 2017.
- Gierens, K. and Eleftheratos, K.: The contribution and weighting functions of radiative transfer — theory and application to the retrieval of upper-tropospheric humidity, *Meteorol. Z.*, 29, 10 pp., <https://doi.org/10.1127/metz/2020/0985>, 2020.
- Gierens, K., Matthes, S., and Rohs, S.: How well can persistent contrails be predicted?, *Aerospace*, 7, 169, <https://doi.org/10.3390/aerospace7120169>, 2020.
- 460 Gierens, K., Wilhelm, L., Hofer, S., and Rohs, S.: The effect of ice supersaturation and thin cirrus on lapse rates in the upper troposphere, *Atmos. Chem. Phys.*, 22, 7699–7712, <https://doi.org/10.5194/acp-22-7699-2022>, 2022.
- Hersbach, H., Bell, B., Berrisford, P., Biavati, G., Horányi, A., Muñoz Sabater, J., Nicolas, J., Peubey, C., Radu, R., Rozum, I., Schepers, D., Simmons, A., Soci, C., Dee, D., and Thépaut, J.-N.: ERA5 hourly data on single levels from 1979 to present, Tech. rep., Copernicus Climate Change Service (C3S) Climate Data Store (CDS), <https://doi.org/10.24381/cds.adbb2d47>, accessed on 14-Jul-2021, 2018a.
- 465 Hersbach, H., Bell, B., Berrisford, P., Biavati, G., Horányi, A., Muñoz Sabater, J., Nicolas, J., Peubey, C., Radu, R., Rozum, I., Schepers, D., Simmons, A., Soci, C., Dee, D., and Thépaut, J.-N.: ERA5 hourly data on pressure levels from 1979 to present, Tech. rep., Copernicus Climate Change Service (C3S) Climate Data Store (CDS), <https://doi.org/10.24381/cds.bd0915c6>, accessed on 14-Jul-2021, 2018b.
- Hersbach, H., Bell, B., Berrisford, P., Hirahara, S., Horányi, A., Muñoz Sabater, J., Nicolas, J., Peubey, C., Radu, R., Schepers, D., Simmons, A., Soci, C., Abdalla, S., Abellan, X., Balsamo, G., Bechtold, P., Biavati, G., Bidlot, J., Bonavita, M., De Chiara, G., Dahlgren, P., Dee,
470 D., Diamantakis, M., Dragani, R., Flemming, J., Forbes, R., Fuentes, M., Geer, A., Haimberger, L., Healy, S., Hogan, R. J., Hólm, E., Janisková, M., Keeley, S., Laloyaux, P., Lopez, P., Lupu, C., Radnoti, G., de Rosnay, P., Rozum, I., Vamborg, F., Villaume, S., and Thépaut, J.-N.: The ERA5 global reanalysis, *Quart. J. Roy. Met. Soc.*, 146, 1999–2049, <https://doi.org/10.1002/qj.3803>, 2020.
- Marengo, A., Thouret, V., Nedelec, P., Smit, H., Helten, M., Kley, D., Karcher, F., Simon, P., Law, K., Pyle, J., Poschmann, G., Wrede, R. V., Hume, C., and Cook, T.: Measurement of ozone and water vapor by Airbus in-service aircraft: The MOZAIC airborne program, An
475 overview, *J. Geophys. Res.*, 103, 25 631–25 642, 1998.
- Neis, P.: Water vapour in the UTLS — climatologies and transport, Ph.D. thesis, Johannes Gutenberg-Universität Mainz, Germany, 2017.
- Petzold, A., Thouret, V., Gerbig, C., Zahn, A., Brenninkmeijer, C., Gallagher, M., Hermann, M., Pontaud, M., Ziereis, H., Boulanger, D., Marshall, J., Nedelec, P., Smit, H., Friess, U., Flaud, J.-M., Wahner, A., Cammas, J.-P., and Volz-Thomas, A.: Global-scale atmosphere

- 480 monitoring by in-service aircraft - current achievements and future prospects of the European Research Infrastructure IAGOS, *Tellus B*,
67, <https://doi.org/10.3402/tellusb.v67.28452>, 2015.
- Petzold, A., Neis, P., Rütimann, M., Rohs, S., Berkes, F., Smit, H., Krämer, M., Spelten, N., Spichtinger, P., Nedelec, P., and Wahner, A.:
Ice-supersaturated air masses in the northern mid-latitudes from regular in situ observations by passenger aircraft: vertical distribution,
seasonality and tropospheric fingerprint, *Atmos. Chem. Phys.*, 20, 8157–8179, <https://doi.org/10.5194/acp-20-8157-2020>, 2020.
- R. Ihaka and R. Gentleman: The R Project for Statistical Computing, The R Project for Statistical Computing, last access January 2024,
485 <https://www.r-project.org/>, 1993.
- Rädler, A., Groenemeijer, P., Faust, E., and Sausen, R.: Detecting Severe Weather Trends Using an Additive Regressive Convective Hazard
Model (AR-CHaMo), *Journal of Applied Meteorology and Climatology*, 57, 569–587, <https://doi.org/10.1175/JAMC-D-17-0132.1>. ISSN
1558-8424, 2018.
- Schmidt, E.: Die Entstehung von Eisnebel aus den Auspuffgasen von Flugmotoren, *Schriften der deutschen Akademie der Luftfahrt-*
490 *forschung*, 44, 1–15, 1941.
- Schumann, U.: On conditions for contrail formation from aircraft exhausts, *Meteorol. Z.*, 5, 4–23, 1996.
- Schumann, U., Mayer, B., Graf, K., and Mannstein, H.: A parametric radiative forcing model for contrail cirrus, *J. Appl. Meteorol. Climatol.*,
51, 1391–1406, 2012.
- Sperber, D. and Gierens, K.: Towards a more reliable forecast of ice supersaturation: Concept of a one-moment ice cloud scheme that avoids
495 saturation adjustment, *Atmos. Chem. Phys.*, 23, 15 609—15 627, <https://doi.org/10.5194/acp-23-15609-2023>, 2023.
- Teoh, R., Schumann, U., Majumdar, A., and Stettler, M.: Mitigating the climate forcing of aircraft contrails by small-scale diversions and
technology adoption, *Environ. Sci. Technol.*, 54, 2941–2950, <https://doi.org/10.1021/acs.est.9b05608>, 2020.
- Teoh, R., Schumann, U., Gryspeerdt, E., Shapiro, M., Molloy, J., Koudis, G., Voigt, C., and Stettler, M.: Aviation contrail climate effects in
the North Atlantic from 2016 to 2021, *Atmos. Chem. Phys.*, 22, 10919—10935, <https://doi.org/10.5194/acp-22-10919-2022>, 2022.
- 500 Tompkins, A., Gierens, K., and Rädler, G.: Ice supersaturation in the ECMWF Integrated Forecast System, *Quart. J. Roy. Met. Soc.*, 133,
53–63, 2007.
- Voigt, C., Schumann, U., Minikin, A., Abdelmonem, A., Afchine, A., Borrmann, S., Boettcher, M., Buchholz, B., Bugliaro, L., Costa, A.,
Curtius, J., Dollner, M., Dörnbrack, A., Dreiling, V., Ebert, V., Ehrlich, A., Fix, A., Forster, L., Frank, F., Fütterer, D., Giez, A., Graf,
K., Groß, J.-U., Groß, S. M., Heimerl, K., Heinold, B., Hüneke, T., Järvinen, E., Jurkat, T., Kaufmann, S., Kenntner, M., Klingebiel,
505 M., Klimach, T., Kohl, R., Krämer, M., Krisna, T. C., Luebke, A., Mayer, B., Mertes, S., Molleker, S., Petzold, A., Pfeilsticker, K., Port,
M., Rapp, M., Reutter, P., Rolf, C., Rose, D., Sauer, D., Schäfler, A., Schlage, R., Schnaiter, M., Schneider, J., Spelten, N., Spichtinger,
P., Stock, P., Walser, A., Weigel, R., Weinzierl, B., Wendisch, M., Werner, F., Wernli, H., Wirth, M., Zahn, A., Ziereis, H., and Zöger,
M.: ML-CIRRUS: The Airborne Experiment on Natural Cirrus and Contrail Cirrus with the High-Altitude Long-Range Research Aircraft
HALO, *Bulletin of the American Meteorological Society*, 98, 271–288, <https://elib.dlr.de/114713/>, 2017.
- 510 Wang, Z., Bugliaro, L., Gierens, K., and Voigt, C.: A machine learning approach to improve ECMWF humidity datasets in the upper
troposphere and lower stratosphere, in: living planet symposium - taking the pulse of our planet from space, https://lps22.ollyservices.com/index.php?page_id=18446&v=List&do=15&day=3995&ses=20717.html, 2022.
- Wilhelm, L., Gierens, K., and Rohs, S.: Meteorological conditions that promote persistent contrails, *Appl. Sci.*, 12, 4450,
<https://doi.org/10.3390/app12094450>, 2022.
- 515 Wilson, D. and Ballard, S.: A microphysically based precipitation scheme for the UK meteorological office unified model, *Quart. J. Roy.
Met. Soc.*, 125, 1607–1636, <https://doi.org/10.1002/qj.49712555707>, 1999.

Wolf, K., Bellouin, N., and Boucher, O.: Sensitivity of cirrus and contrail radiative effect on cloud microphysical and environmental parameters, *Atmos. Chem. Phys.*, 23, 14 003—14 037, <https://doi.org/10.5194/acp-23-14003-2023>, 2023a.

520 Wolf, K., Bellouin, N., Boucher, O., Rohs, S., and Li, Y.: Correction of temperature and relative humidity biases in ERA5 by bivariate quantile mapping: Implications for contrail classification, *EGUsphere*, Preprint, <https://doi.org/10.5194/egusphere-2023-2356>, 2023b.