

# A new drought monitoring network in the state of Brandenburg (Germany) using cosmic-ray neutron sensing

Maik Heistermann<sup>1</sup>, Daniel Altdorff<sup>1,2</sup>, Till Francke<sup>1</sup>, Martin Schrön<sup>2</sup>, Sabine Attinger<sup>2</sup>, Albrecht Bauriegel<sup>3</sup>, Frank Beyrich<sup>4</sup>, Peter Biró<sup>1</sup>, Peter Dietrich<sup>2</sup>, Rebekka Eichstädt<sup>5</sup>, Peter M. Grosse<sup>1</sup>, Arvid Markert<sup>3</sup>, Jakob Terschläsen<sup>1</sup>, Ariane Walz<sup>6</sup>, Steffen Zacharias<sup>2</sup>, and Sascha E. Oswald<sup>1</sup>

<sup>1</sup>Institute of Environmental Science and Geography, University of Potsdam, Potsdam, Germany

<sup>2</sup>UFZ - Helmholtz Centre for Environmental Research GmbH, Permoserstr. 15, Leipzig, Germany

<sup>3</sup>Landesamt für Bergbau, Geologie und Rohstoffe Brandenburg, Inselstraße 26, Cottbus, Germany

<sup>4</sup>Deutscher Wetterdienst, Meteorologisches Observatorium Lindenberg - Richard-Aßmann-Observatorium, Am Observatorium 12, 15848 Tauche, Germany

<sup>5</sup>Landesamt für Umwelt Brandenburg, Seeburger Chaussee 2, Potsdam, Germany

<sup>6</sup>Ministerium für Landwirtschaft, Umwelt und Klimaschutz, Henning-von-Tresckow-Straße 2-13, Potsdam, Germany

**Correspondence:** Maik Heistermann (maik.heistermann@uni-potsdam.de)

## **Abstract.**

In the recent years, the German federal state of Brandenburg has been particularly impacted by soil moisture droughts. To support the timely and informed management of such water-related risks, we introduce a novel soil moisture and drought monitoring network based on cosmic-ray neutron sensing ([CRNS](#)) technology. This initiative is driven by a joint collaboration of research institutions and federal state agencies, and it is the first of its kind in Germany to have started operation. **By mid** [In](#) 2024, eight sites were instrumented across Brandenburg; four more are **planned for** [about to be deployed by mid](#) 2025. The data **will be openly accessible** [is openly accessible in order](#) to foster applications and collaboration right from the start. [In this paper, we present the network design, evaluate the CRNS-based soil moisture estimation, and demonstrate how the inherent limitations of a sparse instrumental soil moisture network - such as limited temporal and spatial coverage - could be mitigated by the use of a soil hydrological model. We further discuss practical lessons learned from the establishment and operation of the network, as well as potential future applications.](#)

## **1 Introduction**

Soil moisture acts as a key state variable in the earth system: it exerts a major control on evapotranspiration, and hence the exchange of water and energy between soil and atmosphere. Furthermore, soil moisture affects the vitality [and productivity](#) of natural vegetation as well as **the productivity of agricultural crops** [agricultural systems](#), and influences groundwater recharge, runoff formation, and the emission and sequestration of soil organic carbon.

The importance of soil moisture, and hence its monitoring, becomes specifically obvious in Brandenburg as one of the driest federal states in Germany. Large parts of the state are governed by relatively low annual precipitation sums (between 500 and 700 mm/a) and permeable sandy soils with low water retention capacity. This combination entails various drought-related

20 hazards which became ~~specifically-particularly~~ obvious in the years 2018 to 2022. In this period, Brandenburg was affected by declining groundwater tables (Pohle et al., 2024; Warter et al., 2024), wild fires (Priesner et al., 2024), forest degradation (Horn et al., 2025; Priesner et al., 2024), and crop yield losses (Brill et al., 2024). While locations with a deep groundwater table are particularly prone to drought effects on vegetation, Brandenburg additionally features extensive lowland and wetland areas with ~~a-shallow-groundwater-tables~~shallow groundwater tables. In these areas, evapotranspiration in summer is particularly high, 25 which causes a substantial pressure on water availability in lakes and rivers (Pohle et al., 2024; Warter et al., 2024). Again, this process is regulated by root-zone soil moisture.

Although the necessity of soil moisture monitoring is widely acknowledged (Oswald et al., 2024), it remains a notorious challenge to obtain timely and reliable data at useful spatio-temporal coverage and resolution. Conventional point-scale sensors are invasive and suffer from a lack of spatial representativeness, while remote sensing products are limited by shallow 30 penetration depths, low overpass frequencies, and vegetation-related uncertainties (Babaeian et al., 2019; Schmidt et al., 2024; Oswald et al., 2024).

Within the past decade, cosmic-ray neutron sensing (CRNS) has emerged as a promising alternative (Andreasen et al., 2017). It allows for continuous and non-invasive monitoring of soil moisture with a measurement depth of tens of centimeters ("the root zone") and a footprint area of approximately 10 hectares (e.g. Schrön et al., 2017). When operated in mobile mode, the 35 spatial extent of the CRNS measurement can be ~~further-increased~~increased substantially, depending on the carrying vehicle (~~Altdorff et al., 2023~~)(e.g., Altdorff et al., 2023).

With these features, CRNS is an ideal candidate to ~~bridge-the~~fill a critical scale gap in soil moisture observations, as it enables robust estimates that are representative at the scale of agricultural fields, hydrotopes, or typical landscape parcels. In a densely instrumented agricultural research site near Potsdam (Brandenburg), Heistermann et al. (2023) already demonstrated 40 the capability of multiple CRNS sensors to consistently capture the prolonged soil moisture droughts during the years 2019, 2020, and 2022.

~~(a) Current locations in the CRNS-based soil moisture monitoring network (pink dots), nearest DWD climate stations (turquoise squares), forest coverage (green shade, © OpenStreetMap contributors, 2024, distribution under ODbL license), and rail-based CRNS network (brown). The labels show the location IDs in reference to Tab. 1. (b-d) Additional geographical 45 features across Brandenburg: mean annual precipitation (1991-2020, based on DWD's HYRAS-PRE data), top soil water retention capacity (LBGR, 2024), and depth to the groundwater table (LfU, 2013).~~

So far, ~~data from CRNS sites have been mainly used in research contexts. Some~~ however, CRNS has mainly been used in experimental contexts, i.e. measurements are often carried out for limited periods of time, and resulting soil moisture time series are often not shared with the general public. Only few countries have already established long-term CRNS monitoring 50 networks at the national scale (e.g., the ~~United States~~USA, UK). For Germany, such a ~~national-scale~~nationally coordinated effort is not yet in place(~~although several academically-centered activities exist~~). ~~In 2024, however,~~ although some regions have been instrumented as part of the TERENO observatories (Zacharias et al., 2024). In the agricultural context, CRNS is already being used to monitor selected cropland sites in parts of the federal state of North Rhine-Westphalia (Ney et al., 2021)

~

55 The first attempt in Germany to systematically apply CRNS technology at the federal state level was initiated in 2024 when  
a consortium of research institutions and state agencies ~~launched~~ was formed in order to design, implement and maintain  
a CRNS-based soil moisture and drought monitoring network for the state of Brandenburg. ~~In this paper, we describe the~~  
~~monitoring design of the stationary and mobile CRNS systems in Brandenburg, share first insights into the time-series data,~~  
~~and discuss potential applications of such a network.~~ The aim of this network is to provide a comprehensive monitoring  
60 approach at the state level, covering landscape units that are representative for the main land use and soil types and also for  
diverse groundwater conditions found in Brandenburg.

At the same time, any such instrumental effort for soil moisture monitoring is necessarily and inherently limited: concerning  
its temporal, vertical and horizontal coverage as well as with regard to its ability to represent the surface water balance.  
Hydrological models have the potential to overcome such limitations (Oswald et al., 2024), yet the lack of representativeness  
65 of conventional point-based soil moisture sensors has so far limited the potential of putting model and observation into context.  
The advent of CRNS and its statewide deployment might present a new opportunity for such endeavours.

Hence, the specific aims of this paper are as follows:

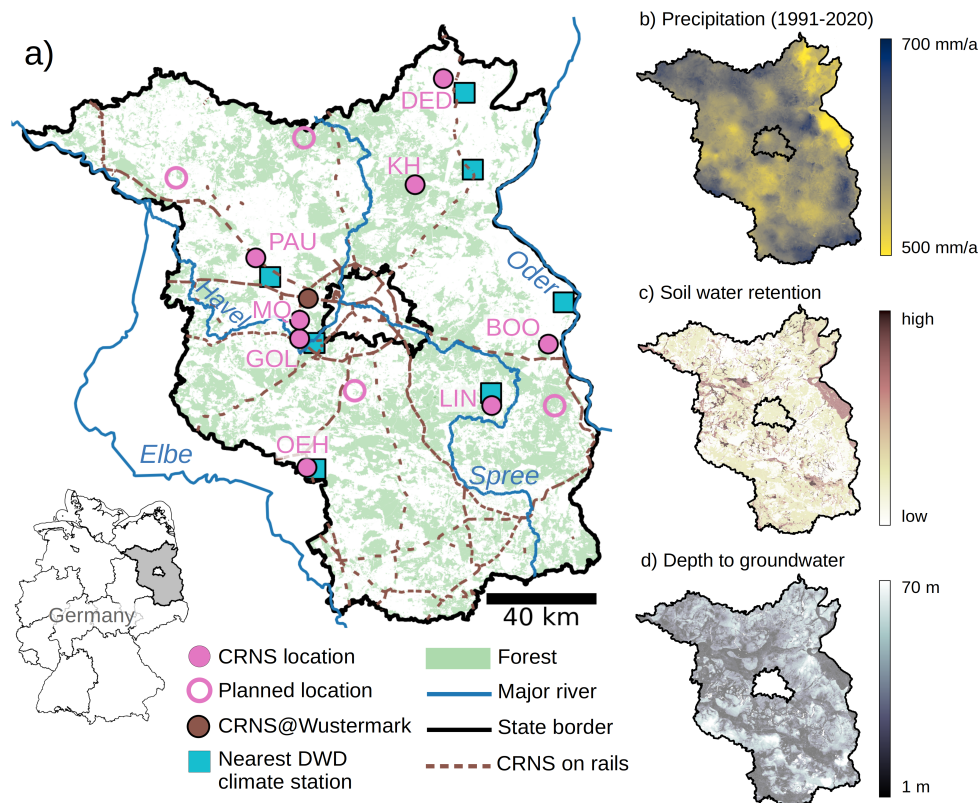
1. To introduce the new CRNS-based soil moisture monitoring network in Brandenburg to the community as a contribution  
for future research and applications;
- 70 2. To demonstrate the estimation of soil moisture from neutron count rates based on a procedure referred to as general  
calibration (Heistermann et al., 2024), and evaluate these estimates based on independent reference observations;
3. To demonstrate the potential of contextualising model and observation: to that end, we implement a soil hydrological  
model at each monitoring location, evaluate its performance by using the observed soil moisture, and exemplify its ability  
to extend the spatial and temporal coverage of the measurements;
- 75 4. To discuss some practical lessons learned from the establishment and operation of the network, as well as potential future  
applications.

## 2 ~~The monitoring network~~ Data and methods

~~In an effort that is, so far, unique in Germany,~~

### 2.1 The monitoring network

80 In a transdisciplinary effort, five institutions have combined their resources to establish a CRNS-based network for soil moisture  
and drought monitoring in Brandenburg: the Helmholtz Centre for Environmental Research (UFZ), the University of Potsdam  
(UP), the Ministry of Agriculture, Environment and Climate Protection (MLUK), the State Agency for Mining, Geology and  
Resources (~~LGBR~~ LBGR), and the State Environment Agency (LfU). ~~The actual implementation has also been supported~~  
~~by further research institutions and land owners~~ Other institutions (namely the Leibniz Centre for Agricultural Landscape



**Figure 1.** (a) Current locations of CRNS-based soil moisture monitoring network (filled pink dots), planned locations (hollow pink dots) nearest DWD climate stations (turquoise squares), forest coverage (green shade, © OpenStreetMap contributors, 2024, distribution under ODbL license), and rail-based CRNS network (brown). The labels show the location IDs in reference to Tab. 1. (b–d) Spatial distribution of other geographical attributes across Brandenburg: mean annual precipitation (1991–2020, based on DWD’s HYRAS-PRE data), top soil water retention capacity (LBGR, 2024), and depth to the groundwater table (LfU, 2013).

85 Research, and the State Forestry Agency) as well as private land owners contributed by providing the permission to use suitable monitoring sites. The network is designed as a long-term monitoring effort, facilitated by the close collaboration between federal-state agencies and research institutions in which the latter took the initial lead in instrumentation, maintenance, data processing, and dissemination, while the state agencies are progressively assuming such responsibilities.

In the first half of 2024, nine-eight locations (see Fig. 1 and Tab. 1) were equipped with a CRNS station. This-Such a station includes a neutron detector, logger and telemetry, solar power supply, and sensors for barometric pressure, temperature, and humidity, as well as conventional point-scale sensors of soil moisture in various measurement depths as an additional reference. Six-Five of these stations were instrumented in the first half of 2024, three had already been operational before (Lindenberg

90



since 2020, Marquardt and Oehna since 2022). Four additional locations are designated for instrumentation ~~by early in spring~~ 2025. For the selection of sites, various criteria had to be accounted for:

- 95     – The locations should represent ~~different~~ combinations of landscape attributes such as land use (e.g., coniferous forest, meadow, cropland), soil types, or depth of the groundwater table that are representative for the state of Brandenburg.
- ~~Relative homogeneity of the sensor footprint~~ Sensor footprint that are homogeneous with regard to these attributes ~~simplifies are preferable with regard to~~ the interpretation of the CRNS signal.
- Accessibility and permission of the land owner to place ~~a sensor system~~ and maintain a CRNS station.
- 100   – Availability of security measures against theft or vandalism, typically by fences and limited visibility of the equipment from roads and other public places.
- ~~Existing~~ Sufficient network coverage for remote data transmission.
- Existing additional instrumentation (e.g., by groundwater level sensors, lysimeters, climate gauges, complementary soil moisture measurements) was not mandatory, but advantageous.
- 105   – Another optional criterion was the relative proximity to railway tracks. A pilot study ~~from in~~ the Harz mountains in central Germany has recently demonstrated that rail-based CRNS can monitor soil moisture along landscape transects of several ~~kilometers~~ kilometres at daily resolution (Altdorff et al., 2023). Building on this concept, four additional rail-based CRNS systems are now operational in Brandenburg (Fig. 1) and adjacent federal states. Almost each day, these systems collect soil moisture data along hundreds of ~~kilometers~~ kilometres (although the routes vary, depending
- 110   on the operational schedule), and transmit the data in near real-time. Although this approach is still in its early stage, monitoring locations placed close to railway tracks will enable future comparisons of measurements by overlapping sensor footprints.

### 3 ~~Conversion of CRNS observations to soil moisture~~

#### 2.1 Retrieval and evaluation of soil moisture estimates from CRNS observations

- 115 Cosmic-Ray Neutron Sensing (CRNS) is based on the detection of neutrons generated by the interaction of cosmic radiation with Earth's atmosphere. At ground level, the intensity of these neutrons is inversely related to the abundance of hydrogen in the near-surface environment (Desilets et al., 2010). While soil water typically constitutes the largest hydrogen pool, other occurrences of hydrogen ~~might may~~ have to be accounted for (such as in vegetation, soil organic matter, or snow).

- ~~The retrieval of~~ We estimate volumetric soil moisture ~~estimates (from neutron intensities ( $\theta_{\text{CRNS}}$ ,  $\text{m}^3/\text{m}^3$ ) from neutron~~ intensities was outlined by Heistermann et al. (2024)  $\text{m}^{-3}$ ) according to a procedure referred to as "general calibration" (Heistermann et al.,
- 120 . In essence, the observed neutron intensities are converted to volumetric soil moisture by means of a non-linear transformation

**Table 1.** Overview of CRNS-based monitoring locations. [Land use from OpenStreetMap contributors \(2024\)](#); soil texture classes from BUEK300 (LBGR, 2024): ~~S13~~: ~~S12~~ (loamy sand), fSms ~~÷~~ (fine sand), mSfs ~~÷~~ (medium sand); [depth to the groundwater table obtained from LfU \(2013\)](#). “”Additional instrumentation” indicates the availability of hydrometeorological or hydrological monitoring by the site owners (such as eddy flux towers, lysimeter, groundwater observation wells) in addition to the CRNS station itself.

ID	Location name	CRNS system	Land use	Soil texture	Depth to groundwater (m)	Additional instrumentation
BOO	<del>Be</del> Booßen	StyX S2	Cropland	<del>S13</del> - <del>S12</del>	10	No
GOL	Golm	StyX S2	Grassland	fSms	<del>1-2</del> - <del>2</del>	No
PAU	Paulinenaue	StyX S2	Grassland	<del>mSfs</del> fSms	<del>2-3</del> - <del>2</del>	Yes
DED	Dedelow	StyX S2	Cropland	<del>S13</del> - <del>S12</del>	10	Yes
KH	Kienhorst	StyX S2	Pine forest	mSfs	5-7.5	Yes
MQ <sup>1</sup>	Marquardt	CRS-1000	Cropland	<del>S13</del> - <del>S12</del>	10-15	Yes
LIN	Lindenberg	CRS-2000	Grassland	<del>S13</del> - <del>S12</del>	3	Yes
OE <sup>2</sup>	Oehna	CRS-1000	Cropland	<del>S13</del> - <del>S12</del>	10-15	No

~~WUS<sup>3</sup>-Wustermark StyX S2 Industrial - 3 No Yes-height~~

<sup>1</sup> not part of the CRNS cluster described by Heistermann et al. (2023); <sup>2</sup> intermittent pivot irrigation in dry periods; ~~<sup>3</sup>main-reference location for rail-CRNS, internal use only~~

function ~~. Before that conversion, however, the observations need to be corrected for (Desilets et al., 2010), using a uniform (“general”) value of 2306 cph for the calibration parameter  $N_0$ . In order to allow for the application of such a uniform  $N_0$ , the sensitivity of the neutron detector, the dynamic effects of incoming cosmic radiation (as quantified by the global observed~~  
125 ~~neutron intensities have to be standardised by accounting for a range of effects which we will only briefly summarize here (see Heistermann et al., 2024, for details):~~

- ~~– The sensitivity of the neutron detector~~ relative to a known reference is required to standardize neutron count rates to a common level. To obtain the relative sensitivity, each sensor of the network was collocated to a sensor of known sensitivity for at least two days. The resulting relative sensitivity factors  $f_s$  are presented in Tab. 3 in section 3.1.
- 130 ~~– The spatial variation of incoming cosmic radiation~~ was accounted for by using the PARMA model (Sato, 2015) while the temporal variation was corrected for by using time series of the neutron monitor on the Jungfraujoeh ("JUNG" in the neutron monitor database, NMDB), barometric pressure and atmospheric humidity (both recorded locally ), as well as for the effects of other relevant hydrogen pools (which are typically assumed to be static). To that end, additional data need to be obtained to characterize the local measurement footprint, namely soil dry bulk density (<https://www.nmdb.eu/nest>).
- 135 ~~– For eliminating the temporal effects of barometric pressure and atmospheric humidity~~, we used time series that were recorded locally at each CRNS station.

- **Soil organic carbon (SOC)** and **lattice water (LW)** content ( $\text{kg kg/m}^3$ ), ~~organic carbon content ( $^{-1}$ )~~ as well **soil dry bulk density** ( $\rho_b$ ,  $\text{kg/kg}$ ), ~~and dry above-ground biomass density ( $\text{kg/m}^2$ )  $\text{m}^{-3}$ )~~ in the sensor footprint were obtained during soil sampling campaigns: at a minimum of four locations within the sensor footprint, cylinder samples were extracted from the upper 30 cm of the soil at increments of 5 cm. For obtaining average values of these variables for the sensor footprint, we followed the weighting procedure outlined by Schrön et al. (2017).
- Heistermann et al. (2024) showed that the effect of **biomass** on the uncertainty of CRNS-based soil moisture estimates is negligible for grassland and cropland sites. For such sites (see Tab. 1), dry above-ground biomass (AGB) density was set to a constant value of  $1 \text{ kg m}^{-2}$ . For the forest site (Kienhorst), the average dry AGB density was determined to a value of  $11 \text{ kg m}^{-2}$ , based on allometric relationships together with extensive measurements of the breast height diameter of *Pinus sylvestris* at the Level II monitoring plots of the UNECE Convention on Long-range Transboundary Air Pollution (ICP Forests) to which the Kienhorst site belongs.

To evaluate the CRNS-based soil moisture estimates ( $\theta_{\text{CRNS}}$ ), reference observations within each CRNS footprint were obtained from the aforementioned soil sampling campaigns: Following Fersch et al. (2020), first, volumetric soil moisture was obtained for each of the four profiles sampled with cylinders; second, soil moisture profiles (30 cm depth, 5 cm increments) were measured by impedance-based soil moisture sensors (ThetaProbe ML2x, ~~either from local field campaigns, soil maps, or literature.~~ Delta-T Devices LLC, Cambridge, UK) at a minimum of 18 additional locations per footprint. The impedance-based measurements were calibrated to the collocated cylinder-based measurements. The cylinder- and impedance-based measurements were then averaged vertically and horizontally by using the weighting functions established by Schrön et al. (2017), resulting in an average value of  $\theta_{\text{REF}}$  that is considered as the reference value representative for the CRNS footprint. This reference value will be used to assess the performance of the aforementioned estimation procedure.

### 3 Case study: learning from the combination of model and observation

#### 2.1 Soil hydrological model set-up and evaluation

~~Continuous soil moisture observations can provide valuable insights into terrestrial water storage and drought conditions. Yet, the usefulness of such data can be enhanced if combined with simulation models, which enable spatial and temporal extrapolation, and allow for a consistent representation of vertical water fluxes and the local water balance.~~

~~In a case study, we employed the~~ We employed the 1-dimensional Soil-Water-Atmosphere-Plant model (SWAP, van Dam et al., 2008) to simulate soil water dynamics ~~at the monitoring locations, and to compare the results to preliminary soil moisture estimates as retrieved from the CRNS measurements and water fluxes at each monitoring location.~~ SWAP calculates vertical soil water movement by solving the Richards equation ~~which accounts for processes such as,~~ and hence accounts for infiltration and capillary rise. ~~The simulation of evapotranspiration is based on~~ on the basis of soil hydraulic properties and governing boundary conditions. Evapotranspiration is estimated using the Penman-Monteith 's equation, ~~and considers~~ equation, considering factors such as soil moisture content, ~~interception by vegetation, root water uptake,~~ vegetation type, and atmospheric conditions. This

170 dual focus on soil hydrology and atmospheric interactions allows for a detailed analysis of the surface water balance and the movement of water through the unsaturated zone towards or from the groundwater table which is, in our model setup, considered as static (see Tab. 1) and implemented as a Dirichlet boundary condition.

The model was parameterized to reflect surface conditions at the monitoring locations: soil hydraulic parameters were set by combining soil texture data from the state’s soil map (BUEK300, LBGR, 2024) with a pedotransfer function (ROSETTA, Schaap et al., 2000); vegetation parameters such as seasonal leaf area index and rooting depth were set based on literature values. As atmospheric forcing, we used daily climate observations of the German Meteorological Service (Deutscher Wetterdienst, DWD henceforth) at the nearest climate station while for precipitation, (Fig. 1) for the following daily variables: minimum and maximum air temperature (°C), average relative air humidity (%), sunshine hours (h), and average wind speed (m s<sup>-1</sup>). For precipitation, we applied DWD’s radar-based quantitative precipitation product RADOLAN (DWD, 2022) was applied in order to better capture small-scale convective rainfall during the 2024 small-scale convective rainfall at the monitoring locations especially during the summer season. Tab. 2 highlights important vegetation-related model parameters that were used for our study, including the corresponding literature references.

**Table 2.** Soil water dynamics at the monitoring locations in 2024. Upper rows: observed (CRNS) and modelled (Overview of key SWAP model parameters related to vegetation and corresponding references.

Parameter name	Meaning
<b>Leaves and roots</b>	
GCTB	Max. leaf area index, LAI (-) soil water content (SWC)
RDTB	Rooting depth (cm)
<b>Evapotranspiration</b>	
RSC	Minimum canopy resistance (s/m)
<b>Interception acc. to...</b>	
<b>...Von Hoyningen-Huene (1983)</b>	
COFAB	Interception coefficient (cm)
<b>...Gash et al. (1995)</b>	
PFREE	Free throughfall coefficient (-) , as well as CRNS measurement depth (D86, i.e. the depth that accounts for 86 % of
PSTEM	Stem flow coefficient (-) and daily precipitation depths; note that CRNS-based SWC is not shown for January due
SCANOPY	Storage capacity of canopy (cm)
AVPREC	Avg. rainfall intensity (cm/d)
AVEVAP	Avg. evaporation int. during rain (cm/d)

Finally, soil hydraulic parameters (SHP) need to be set in order to represent the relationship between matric potential ( $\psi$ , hPa) and volumetric soil water content (SWC, m<sup>3</sup>/m<sup>3</sup>) as well as hydraulic conductivity ( $K_s$ , cm d<sup>-1</sup>). Using to the model of van Genuchten and Mualem (van Genuchten, 1980), the SHP correspond to five parameters: residual water content ( $\theta_r$ , m<sup>3</sup> m<sup>-3</sup>), saturated water content ( $\theta_s$ , m<sup>3</sup> m<sup>-3</sup>), air entry point ( $\alpha$ , cm<sup>-1</sup>), and the shape parameter of the retention curve ( $n$ ,

dimensionless). To obtain SHP values at the monitoring locations, we applied the widely used pedotransfer function ROSETTA (Schaap et al., 2001). As input, ROSETTA requires the fractions of sand, silt and clay, which we obtained from the texture attribute of the state's soil map BUEK300 (LBGR, 2024, see also Tab. 1). This soil map, however, only represents a qualitative soil texture class which, in turn, implies typical ranges of sand, silt and clay content according to BGR (2005). In order to set specific values *within these ranges* at each monitoring location, we fixed the clay content  $T$  to a value of 5 percent and then adjusted the sand content  $S$  to a value that maximises the agreement between simulated soil moisture ~~is difficult to estimate.~~ Lower rows show the soil water balance as simulated by SWAP; solid lines: cumulative precipitation, evapotranspiration,  $\theta_{\text{SWAP}}$  and ~~flux at 2~~ CRNS-based soil moisture  $\theta_{\text{CRNS}}$ . The silt content  $U$  then results as the remainder  $100\% - S - T$ . This procedure could be framed as a "fine-tuning" of the sand content for a given soil texture class, ensuring SHP sets consistent with the soil map. The resulting model performance was evaluated based on the Nash-Sutcliffe-Efficiency (NSE), the mean absolute error (MAE) and the percent bias (PBIAS, i.e. the mean error relative to the observed mean), based on the comparison between simulated soil moisture and CRNS-based soil moisture. To allow for that comparison, the simulated vertical soil moisture profile (at cm-resolution down to a depth of 50 ~~m depth; grey shade: soil water storage in the upper meter; the dashed~~ lines refer to the water balance components-cm) at each daily time step was vertically weighted using the weighting function introduced by Schrön et al. (2017).

### 3 Results and discussion

#### 3.1 CRNS-based soil moisture estimation

As pointed out in section 2.1, we applied the so-called general calibration function (Heistermann et al., 2024) in order to estimate the volumetric soil water content  $\theta_{\text{CRNS}}$  from observed neutron count rates. The main motivation behind this approach is to avoid point measurements of SWC as a source of uncertainty for the local calibration of the conversion function. To apply the general calibration function, however, we require the sensitivity of the ~~same color, but represent as a reference~~ neutron detector relative to a reference detector ( $f_s$ ), and several site-specific variables such as the gravimetric soil water equivalents of soil organic carbon and lattice water ( $\theta_{\text{SOC}}^g$  and  $\theta_{\text{LW}}^g$ ), dry AGB density, and soil dry bulk density ( $\rho_b$ ). Based on the data collection outlined in section 2.1, Tab. 3 reports the site specific values of these parameters, as well as  $\theta_{\text{REF}}$  obtained from manual sampling at the date of the sampling campaign, and the ~~average values per day of year~~ corresponding value of  $\theta_{\text{CRNS}}$ .

Fig. ?? shows the resulting dynamics for seven different variables: the observed (CRNS-based) soil moisture, the measurement depth of the CRNS, the vertically-weighted average of simulated soil moisture (using weights that mimic the vertical sensitivity of the CRNS), the soil water storage in the uppermost meter, and the cumulative fluxes of precipitation, evapotranspiration, and the flux across the depth of 2m. As we are not using  $\theta_{\text{REF}}$  for local calibration, we can use it to assess the validity of the general calibration procedure, albeit being aware that  $\theta_{\text{REF}}$  is also subject to considerable uncertainty. Overall, the absolute difference between  $\theta_{\text{CRNS}}$  and  $\theta_{\text{REF}}$  is always lower than  $0.05 \text{ m}^3 \text{ m}^{-3}$ . The mean absolute error (MAE) amounts to  $0.034 \text{ m}^3 \text{ m}^{-3}$  which is, in our view, a good agreement given the absence of any local calibration. The mean error (ME) of  $-0.025 \text{ m}^3 \text{ m}^{-3}$ , however, indicates that a large portion of the MAE is due to a systematic underestimation of the soil moisture by  $\theta_{\text{CRNS}}$ . This result is in

**Table 3.** Parameters for CRNS-based SWC estimation (see main text),  $\theta_{\text{CRNS}}$  and  $\theta_{\text{REF}}$  at the sampling dates and the corresponding difference  $\theta_{\text{CRNS}} - \theta_{\text{REF}}$  between these values.

ID	$f_s^{-1}$ (DOY-) over the last 30 years (1994–2023)	$\theta_{\text{SQM}}^g + \theta_{\text{LW}}^g$ (kg/kg)	$\rho_b$ (kg m <sup>-3</sup> )	Sampling date	$\theta_{\text{CRNS}}$ (m <sup>3</sup> m <sup>-3</sup> )	$\theta_{\text{REF}}$ (m <sup>3</sup> m <sup>-3</sup> )	$\theta_{\text{CRNS}} - \theta_{\text{REF}}$ (m <sup>3</sup> m <sup>-3</sup> )
BOO	1.20	0.016	1420	2024-09-04	0.020	0.069	−0.049
GOL	1.13	0.045	1080	2024-09-03	0.084	0.120	−0.036
PAU	1.15	0.060	1510	2024-09-19	0.142	0.190	−0.048
DED	1.06	0.018	1470	2024-10-16	0.155	0.200	−0.045
KH	1.13	0.017	1030	2024-09-18	0.050	0.076	−0.026
MQ	0.49	0.015	1280	2023-05-17	0.132	0.097	0.035
LIN	0.87	0.014	1430	2021-11-19	0.165	0.199	−0.034
OEH	0.45	0.009	1500	2024-04-05	0.149	0.148	0.001
							MAE = 0.034
							ME = −0.025

line with some recent studies, including Heistermann et al. (2024), which suggest the use of a new type of conversion function recently published by Köhli et al. (2021). The original functional form suggested by Desilets et al. (2010) and also adopted by Heistermann et al. (2024) tends to underestimate soil moisture under dry conditions (as typical for Brandenburg). For future applications, we hence recommend to systematically assess the function from Köhli et al. (2021) for CRNS-based soil moisture estimation in Brandenburg.

### 3.2 Model evaluation

According to the state’s soil map (LBGR, 2024), each of the eight monitoring locations belongs to one of the following three soil texture classes (see Tab. 1): slightly loamy sand (class SI2), medium sand with parts of fine sand (mSfs), and fine sand with parts of medium sand (fSms). In section 2.1, we elaborated how soil hydraulic parameters (SHP) were obtained from these texture classes for each monitoring location. Tab. 4 summarizes the results of this procedure, including the corresponding model performance metrics.

~~The figure provides an extensive set of details to examine. In the context of this study, we highlight only a few findings:~~ According to the NSE and Moriasi et al. (2015), the model performance is satisfactory (NSE > 0.5) for six locations and good (NSE > 0.7) for two locations. The NSE amounts to a value of 0.77 (very good) if computed for all locations together which indicates that the model is able to capture the variability between the monitoring locations well. The MAE is relatively low (around 0.02 m<sup>3</sup> m<sup>-3</sup>), and the percent bias (PBIAS) is low to moderate with a slight tendency towards an underestimation (strongest underestimation with -14.4 % at the the Booßen location).

~~Given that no systematic model calibration was carried out, model~~ Fig. 2 shows the resulting CRNS-based ( $\theta_{\text{CRNS}}$ ) and simulated ( $\theta_{\text{SIM}}$ ) time series of SWC. In accordance with the performance metrics in Tab. 4, the seasonal and event dynamics

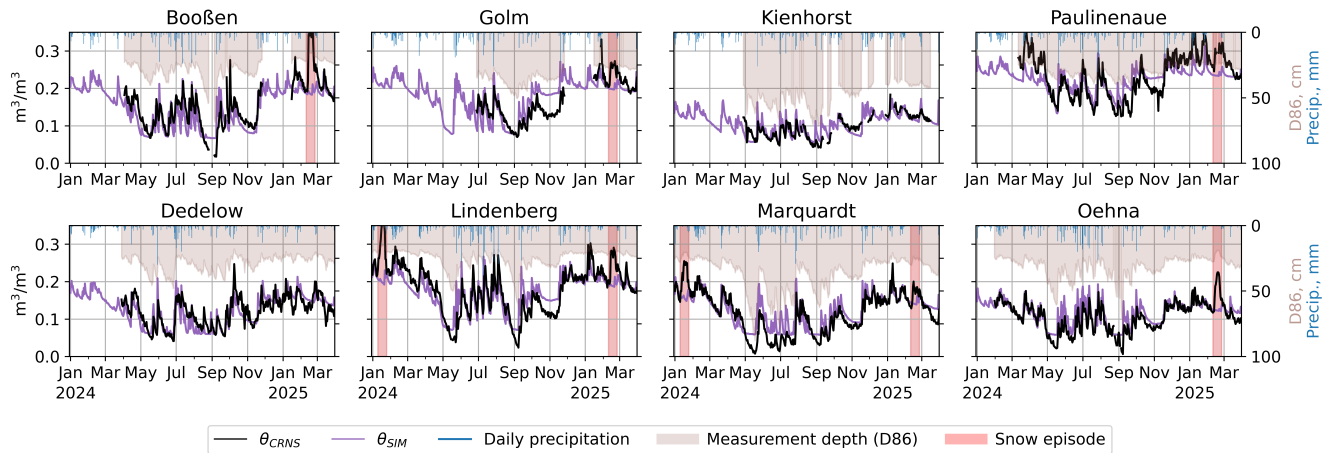


**Table 4.** The column block "Soil texture" documents the ranges of sand, silt and clay contents for the soil texture classes SI2, mSfs, and fSms (BGR, 2005), and the adjusted sand, silt and clay contents as obtained by fine-tuning the sand content. The column block "SHP" quantifies the resulting values for the soil-hydraulic properties. The block "Metrics" shows the corresponding model performance metrics (NSE: Nash-Sutcliffe Efficiency, MAE: mean absolute error, PBIAS: percent bias).

ID	Soil texture		SHP			
	class from soil map and S, U, T ranges (%)	S, U, T adjusted (%)	$\theta_r$ (m <sup>3</sup> m <sup>-3</sup> )	$\theta_s$ (m <sup>3</sup> m <sup>-3</sup> )	$\alpha$ (cm <sup>-1</sup> ) (often considered a proxy for groundwater recharge)	n
BOO	SI2: 67-85, 10-25, 5-8	75,20,5	0.05	0.38	0.022	1.6
DED		82,13,5	0.05	0.37	0.025	1.7
MQ		83,12,5	0.05	0.37	0.026	1.8
LIN		75,20,5	0.05	0.38	0.022	1.6
OEH		85,10,5	0.05	0.37	0.027	1.9
KH	mSfs: 85-100, 0-10, 0-5	87,08,5	0.05	0.37	0.028	2.0
GOL	fSms: 65-75, 20-35, 0-5	75,20,5	0.05	0.38	0.022	1.6
PAU		66,29,5	0.05	0.39	0.017	1.5

are captured fairly well by the model. For the rare snow episodes since early 2024, the CRNS-based soil moisture estimate should not be interpreted (periods highlighted by light red shading). Apart from the general agreement, various discrepancies also highlight the need for improvements in the model and possibly also in the CRNS-based SWC estimation. Given the results from the previous section 3.1, we know that the way we calculated  $\theta_{\text{CRNS}}$  tends to systematically underestimate the SWC. This puts the disagreement between  $\theta_{\text{SIM}}$  and ~~observation are quite consistent. This strengthens our confidence in the model's validity, so we can also appreciate the additional information it provides beyond what is captured by the~~ observations. ~~This includes temporal interpolation and extrapolation of  $\theta_{\text{CRNS}}$  for very dry conditions into perspective (see e.g. Booßen, Lindenberg, Marquardt and Oehna).~~ For the locations Golm, Paulinenaue and Lindenberg (all of them grassland sites), there is a period from early October to mid November during which  $\theta_{\text{CRNS}}$  becomes much lower than  $\theta_{\text{SIM}}$  which might indicate that the parameterisation of the late season vegetation dynamics and hence evapotranspiration are not adequately represented.

At this point, we should reiterate that the focus of this paper is to introduce the new soil moisture monitoring network in Brandenburg. The modelling analysis merely serves the purpose to demonstrate, on a case study basis, how a hydrological model could be used to increase the value of our CRNS-based soil moisture ~~for periods before sensors were deployed or when data were missing. Furthermore,~~ observations. Based on the above evaluation, we maintain that the model is able to reproduce the observed soil moisture dynamics in the upper 30–50 cm of the soil at a satisfactory to good level after model parameters were derived from literature values (vegetation) and the state's soil map (soil texture), with only a minimum level of calibration (fine-tuning of sand content within the ranges specified by local soil texture). The model hence can serve the purpose of being



**Figure 2.** Observed (black) and simulated (purple) soil water dynamics at the monitoring locations, as well as CRNS measurement depth (D86, i.e. the depth that accounts for 86 % of the signal) and daily precipitation depths. Extended snow episodes are marked by the blue shade. During these times, the CRNS signal should not be interpreted in terms of soil moisture.

applied in a case study, as presented in the subsequent section, in order to support the analysis of soil water dynamics at the monitoring locations beyond the inherently limited scope of the observations.

### 3.3 Extending the scope of soil moisture observations by hydrological modelling

In the long term, the model allows us to assess water storage at greater depths (e.g. down to CRNS-based soil moisture monitoring could provide new insights into terrestrial water storage and drought conditions – simply because soil moisture has not yet been systematically monitored in Brandenburg at this level of horizontal and vertical representativeness. Still, the instrumental monitoring is inherently limited with regard to temporal and spatial coverage as well as concerning the actually observed variable. In the following, we will discuss how a soil hydrological model such as the one presented above might help to mitigate some of these limitations.

#### Increasing spatial coverage

It is possible to fully cover landscape parcels of up to 1 km<sup>2</sup> with CRNS sensors (see, e.g., Fersch et al., 2020; Heistermann et al., 2022, 2023). It is impossible, though, to scale this approach to a federal state such as Brandenburg with an area of almost 30,000 km<sup>2</sup>. At that scale, any instrumental soil monitoring network will necessarily remain sparse. Model input data such as soil texture, land use, depth to groundwater, and hydro-meteorological forcing are, however, available at a much higher coverage (in terms of underlying sampling points and their spatial representativeness). Given the satisfactory to good model performance for the first, rather simplistic model parametrization (NSE of 0.77 when evaluating all locations together, see section 3.2), the prospects for model-based upscaling

are tangible (although still limited to environmental conditions for which the model has been evaluated in the context of the present monitoring network). As a first upscaling application, Francke and Heistermann (2025) already used the model to assess the impact of climate change on groundwater recharge for five catchments across the state of Brandenburg. Undoubtedly, any model-based upscaling will also benefit from additional monitoring locations that supplement or extend the diversity of site characteristics currently covered by the network (see also section 4).

Additionally, the model enables us to infer water fluxes, such as evapotranspiration and percolation towards the groundwater. For instance, we can confirm relatively low percolation rates in forested areas (e.g., Kienhorst), seasonal shifts from downward to upward water fluxes at locations close to the groundwater table (e.g.,

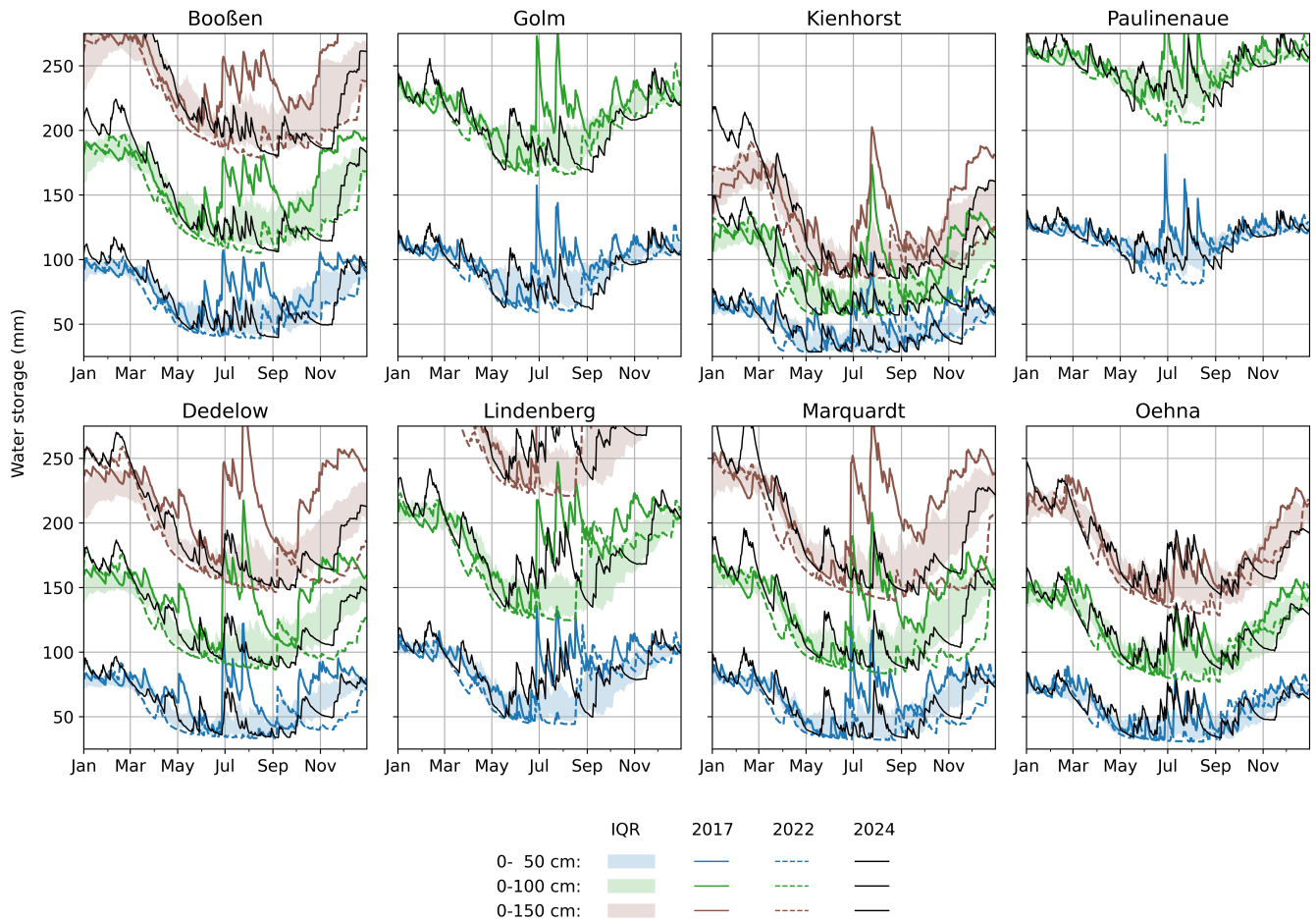
### Increasing temporal coverage

Some locations exhibit considerable data gaps in terms of neutron time series (see specifically Booßen, Golm, Paulinenaue, and Lindenberg), or irrigation activities during the second half of August at the Oehna location (by comparing model and observation) Kienhorst), which are caused, e.g., by shortages in solar power supply, sensor failures, or disruptions of remote data transmission. These gaps can be bridged by the hydrological model (see Fig. 2). Yet, the more significant type of gap arises from the fact that obviously no observations are available before the installation of the sensors. Here, the model can be particularly helpful to put current dynamics or specific years in context with the statistical properties of longer historical periods. For instance, Figs. 3 and 4 (see the next two paragraphs) contrast one very dry and one very wet year (2017 and 2022, respectively) as well as the first monitoring year (2024) with the typical seasonal dynamics of soil water storage and groundwater recharge between 1994 and 2023.

Still, we notice various types of discrepancies between model and observations, including systematic biases (e.g., Booßen, Paulinenaue), mismatches at very dry conditions (e.g., Lindenberg) or at moisture peaks (e.g., Kienhorst). These disagreements provide an intuitive guidance in which locations or periods the data need to be interpreted with particular caution. This, in turn, helps us to refine both, model and observation—as it should be kept in mind that our "observation" is an indirect measure of

### Enhancing information along the vertical dimension

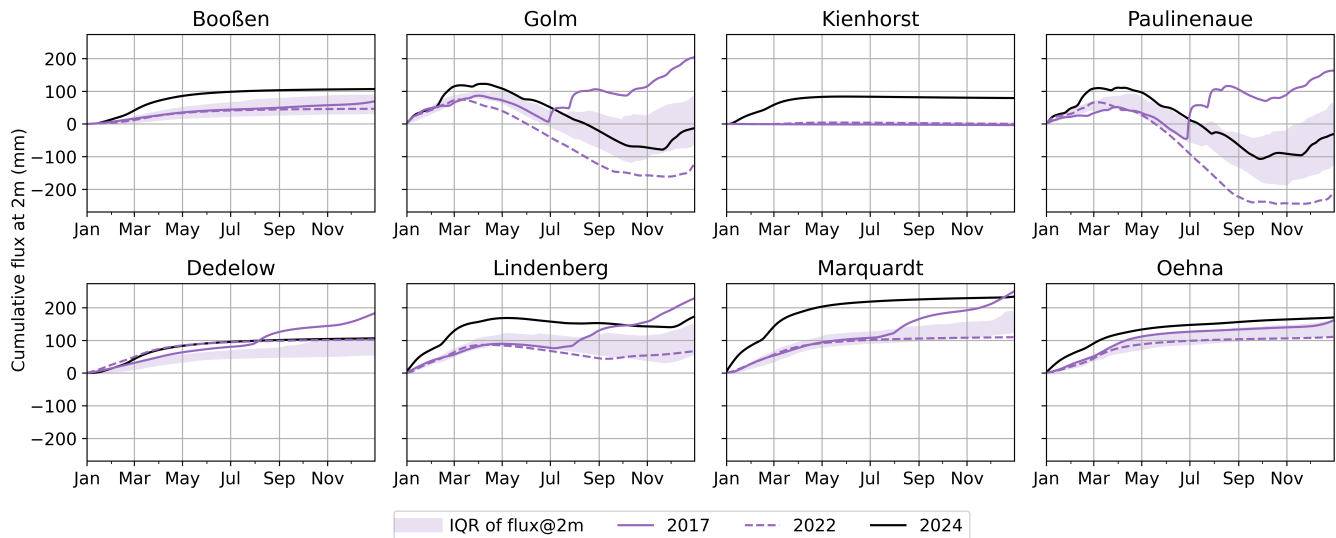
$\theta_{\text{CRNS}}$  provides a depth-integrated estimate of soil moisture. The measurement depth is dynamic (see Fig. 2) as it depends itself on soil moisture. Some applications, however, would not only require integration depths other than the one provided by the CRNS sensor, but also integration depths that are, for the sake of comparability, invariant across time. Both could be provided by a hydrological model that is able to sufficiently resolve the vertical soil moisture dynamics. Fig. 3 demonstrates how the model could be used to quantify soil water storage for different integration depths (0-50 cm, 0-100 cm, and 0-150 cm) and, at the same time, to extend such information to time periods in which the sensor network had not yet been established (see previous paragraph). While we cannot appreciate the figure in full detail in the scope of this paper, we can maintain that the water storage varies considerably in space (between locations) and time (between seasons and years). The highest contrast in storage is between the Kienhorst location (pine forest on middle sand with a deep groundwater table) and the locations Golm and Paulinenaue (grassland on very fine sand with a shallow groundwater table). There is also a strong variability across



**Figure 3.** Model-derived soil water storage (in mm) for different integration depths (0-50 cm, 0-100 cm, 0-150 cm). The coloured shaded areas show the interquartile range of soil water storage for the 30 year period 1994-2023. The solid lines show the seasonal dynamics for the year 2017 (very wet), the dashed lines for the year 2022 (very dry), the black solid line for year 2024. Note that storage for the upper 150 cm is not fully shown for some locations (Golm, Paulinenaue, Lindenberg) because we used a uniform y-axis scaling (to allow comparability) while limiting the y-axis range to allow for better distinguishing temporal dynamics at different depths.

Brandenburg in the development of soil water storage in the very wet year 2017 and the very dry year 2022: for the Oehna location, both years were rather average, while the contrast between 2017 and 2022 is specifically distinct for the locations Dedelow and Marquardt. This demonstrates the need to account for both spatial and temporal variability. The example of the year 2022 also shows how the persistence of water deficits depends on integration depth: at the locations Dedelow and Marquardt, the upper 50 cm of the soil already recover to average conditions at the end of the year 2022 while the storage in the upper 100 and 150 cm are still within the lowest quartile. Conversely, at the Lindenberg location, the ~~target-variable-and~~ ~~subject-to-various-uncertainties~~ (Heistermann et al., 2024).

310



**Figure 4.** Modelled cumulative net flux across a soil depth of 2 m, as a proxy for groundwater recharge. Positive values indicate a net flux towards the groundwater table while negative value indicate a flux in the opposite direction, i.e. towards the soil surface. The purple shades shows the interquartile range of the annual cumulative flux in the period from 1994 to 2023. The lines show selected years (2017: wet year, 2022: dry year, 2024: first monitoring year).

The dashed lines in the bottom rows of Fig. ?? also show the average seasonal cycles of 2022 drought already ended in August after a series of heavy rainfall events.

### 315 Reconstruction of water fluxes

For water resources management, water fluxes (such as groundwater recharge), are often even more relevant than soil water storage. Fig. 4 shows the modelled cumulative net water flux across a soil depth of 2 m. This variable is typically used as a proxy for groundwater recharge, so we will refer to it as GWR in the following. As before, the figure contrasts the typical behaviour from 1994-2023 (in terms of the interquartile range) with three selected years (2017 as a wet year, 2022 as a dry year, and 2024 as the first monitoring year). While a comprehensive discussion of the figure is beyond the scope of this article, we can confirm a strong variability of GWR across time (years) and space (locations). For most locations, 2024 features an exceptional level of GWR which is, to a large extent, the consequence of an extraordinarily wet December 2023. The peculiarity of the year 2024 becomes specifically obvious in the Kienhorst location, a dry pine forest for which annual GWR is typically close to zero. In locations with a close groundwater table (most notably in Golm and Paulinenaue, less pronounced in Lindenberg), the seasonal dynamics of GWR are very different from those locations with a deep groundwater table. This is caused by an upward flux from the groundwater table to the root zone during the summer, even causing a negative cumulative water balance in some years (most clearly in 2022). The figure again highlights that the summer of 2017 was remarkable as it featured a positive net flux across the 2 m depth for many locations (Golm, Paulinenaue, Dedelow, Lindenberg, Marquardt) - a process

that is typically limited to the winter season. Altogether, it should be maintained that due to the low storage capacity of soils in Brandenburg, precipitation anomalies tend to affect vertical fluxes stronger than soil water storage and water fluxes as obtained from SWAP simulations over the past 30 years (1994–2023), and that temporal dynamics of soil water storage do not allow for any direct inference of vertical fluxes. The comparison to

### 3.4 Lessons learned from the first year of operation

Apart from the solid lines confirms that 2024 was a rather wet year. Still, a remarkable dry spell occurred in August. aforementioned theoretical findings (sections 3.1-3.3), the first year of network operation also brought some practical and organisational experiences which we would like to share in brief.

Altogether, these initial findings demonstrate the potential of integrating instrumental and model-based soil moisture

- Working together with state government agencies from the very beginning helped to align the outcome of the monitoring effort with the requirements of the actual users, starting from the selection of monitoring locations (see also section 2.1) and not ending with the development and presentation of monitoring products. This co-design approach should also help to make the effort more sustainable, anchoring it in institutional structures that are more long-lived than research contexts, and also taking advantage of synergies with existing monitoring infrastructures.
- Collocating the CRNS sensors with a neutron detector of known sensitivity *before* the sensors are installed in the field helps to detect, track and understand any later changes in sensitivity (e.g. from drift or firmware updates, see next points).
- As with any sensor operated under outdoor conditions, CRNS instruments are prone to a range of issues, such as, e.g., failures of remote data transmission in areas with poor network coverage, failures or limitations in solar power supply for specific environments (namely forests) or seasons (namely winter), or sensor drift and instability. For the timely detection of any of these issues, it was vital to set up, from the beginning, a routine near-real time data retrieval and processing workflow, including a visualisation that allows for an intuitive detection of gaps or inhomogeneities. Specifically for CRNS sensors, this includes an early implementation of soil moisture retrieval since implausible records become more obvious for a rather intuitive variable such as soil moisture in comparison to a more complex variable such as neutron intensity.
- In the same vein, it is helpful to implement and operate a soil hydrological model for the monitoring locations as early as possible. This does not only provide an added value from the scientific perspective (as outlined in section 3.3), but also allows for the detection of more subtle sensor issues. For instance, in the context of a series of firmware updates for some of the sensors, the comparison to the routine model output allowed for a timely detection of changes in sensor sensitivity which propagated to the soil moisture estimates in a substantial, but less obvious way.



- Given the previous two items, we set up a platform for visualising and sharing both observational and simulated data (<https://cosmic-sense.github.io/brandenburg>) with relatively short latency. The platform is under continuous development, specifically with regard to data presentation formats, and open to suggestions by interested users.

#### 4 Conclusions and outlook

In this study, we introduced a new network for long-term soil moisture and drought monitoring in Brandenburg~~while also highlighting several promising directions for future research and practical applications.~~, using cosmic-ray neutron sensing (CRNS) technology. The launch of this network in 2024 resulted from a joint effort of research institutions and state government agencies that is, so far, unique in Germany. In 2024, eight locations were instrumented, and four more were about to follow in 2025.

#### 5 ~~Opportunities for future research and applications~~

We consider the ~~presented~~ monitoring network as an important asset to ~~address~~ support the management of water-related risks in Brandenburg. ~~To maximize its impact in research and applications, we are committed to openly provide both raw observational data and soil moisture estimates in near real-time, and to involve research institutions, authorities, and end users in an interdisciplinary collaboration,~~ as it represents the unique regional characteristics in terms of climate, soils, land use, and distance to the groundwater table. We also demonstrated that the value of the observational data can be enhanced by a soil hydrological model, allowing for an increase in temporal, horizontal and vertical coverage as well as for the reconstruction of vertical water fluxes. We would like to emphasize, though, that the combination of model and data is only one way to make use of this observational network, and that our model application should be seen as a case study rather than any final analysis, which would benefit from longer collected time series and more sophisticated model adjustments. In order to stimulate future applications in various related fields, and to allow for any interested parties to use the data according to their priorities, we openly share the observational and the simulated data on a public platform (see section "Data availability"), and invite collaboration in the improvement, enhancement, and integration of our network. That way, various opportunities arise, which could include, but are ~~certainly~~ not limited to:

- ~~Hazard-specific monitoring products~~ Improving soil moisture retrieval from CRNS: in close collaboration with the sensor manufacturers, the long-term operation of CRNS sensors should help us to identify, understand and fix sensor issues that are, e.g., related to signal stability and traceability. Furthermore, there is a considerable potential to further improve the CRNS-based soil moisture estimation. For the relatively dry conditions in Brandenburg, a new conversion function recently suggested by Köhli et al. (2021) appears particularly promising. To that end, it would be desirable to combine this function with attempts to generalize the estimation of soil moisture from neutron intensities (Heistermann et al., 2024).

- **User-oriented monitoring products:** The integration of ~~observation and model~~ model and observation should allow to ~~design products that address hazard-specific custom-tailor data products to specific~~ user requirements. For instance, different ~~integration depths~~ vertical integration depths or temporal aggregation levels of soil water storage might be relevant in the context of wild fire hazards, agricultural management (e.g., timing of field operations, including irrigation), water resources management, or flood hazards (e.g., capacity for soil water retention, although flood generation is not a primary concern in Brandenburg). The design of such products should be subject to a continuous dialogue with potential users in the aforementioned sectors, including the involved federal state agencies, but also, e.g., farming or forestry companies.
- **Groundwater recharge:** Similarly, combining model and observational data should enable more accurate estimates of groundwater recharge rates under different conditions, including scenario analysis of land use and climate change.
- **Upscaling and ~~transferability~~ transferability:** the results of our ~~case study demonstrate some validity of the model parameters (with regard to, e.g., soil and vegetation) at the monitoring locations. This suggests some level of transferability at least to similar location types.~~ model evaluation (section 3.2) suggested the model to be transferable to locations that are similar in terms of climate, soil, land use and groundwater table depth. In addition to model-based upscaling, there are ~~several other~~ promising opportunities for integrating soil moisture observations across larger spatial scales. While previous efforts focused on remote sensing, ~~a more recent approach combines stationary CRNS observations with an emerging perspective for future research is~~ rail-borne CRNS ~~. To this end, the University of Potsdam and UFZ are partnering with the Havelländische Eisenbahn AG to equip locomotives with CRNS sensors. This allows for monitoring roving: several locomotives of a regional rail company have recently been equipped with CRNS sensors in order to monitor~~ spatio-temporal soil moisture ~~dynamics patterns~~ along selected railway tracks (see Fig. 1). ~~While those of our monitoring locations which are close to these railway tracks (Tab. 1) could be used to verify the spatiotemporal integrity of the railborne data products, the latter could, in turn, be used to validate or train other model-based or data-driven upscaling approaches.~~
- **Improving soil moisture retrieval from CRNS:** ~~as already shown in the case study, the long-term operation of CRNS sensors can help us to identify issues with the neutron measurements or the subsequent soil moisture retrieval. For example, the very low soil moisture estimates in Lindenberg under dry conditions suggest a weakness in the original transformation function (Desilets et al., 2010) for which Köhli et al. (2021) recently proposed an alternative. This new functional relationship could be particularly useful under the dry conditions in large parts of Brandenburg.~~
- **Network extension:** it is planned to expand the network in Brandenburg, and we encourage other institutions to integrate their sensors or to propose suitable locations for deployment. Similar efforts are underway in other federal states, e.g., ~~Thuringia and Saxony~~ Saxony (Schrön et al., 2025). Collaboration and integration with these initiatives could be a pathway towards a prospective nation-wide monitoring.

In this study, we introduced a network for long-term soil moisture and drought monitoring in Brandenburg, using cosmic-ray neutron sensing (CRNS) technology. The launch of this network in 2024 resulted from a joint effort of research institutions and state government agencies that is, so far, unique in Germany. By mid-2024, eight locations were instrumented, and four more will follow until early 2025. The data will be openly shared in order to stimulate applications in various fields, but with a focus on water resources and drought risk management, e.g. with regard to monitoring and mitigation of wild fire hazards, agricultural yield losses, or hazards to natural ecosystems and groundwater recharge. In any case, the CRNS-based soil moisture monitoring network is intended as a long-term activity, and will also increase its value as the length of the observational time series increases and hence covers a higher diversity of hydro-climatological conditions.

Obviously, the limited number of monitoring locations will not be able to capture all relevant combinations of landscape attributes and their inherent variability in Brandenburg. Hence, a key challenge will be to upscale the information obtained from this necessarily sparse network in order to unfold statewide benefits. This could be possible with the support of the railway CRNS system, remote sensing products, and hydrological models. A first case study has already shown the potential of combining the observations with the SWAP model.

*Data availability.* Raw CRNS observations, CRNS-based soil moisture estimates, and simulated soil water content are openly available for download at <https://cosmic-sense.github.io/brandenburg>.

*Author contributions.* DA, AB, AM, and SO designed and established the CRNS monitoring network, with contributions from all co-authors. MH carried out the data analysis and modelling, created the figures and drafted the manuscript, with support from TF. All co-authors contributed to writing and reviewing the manuscript.

*Competing interests.* The contact author has declared that neither they nor their co-authors have any competing interests.

*Acknowledgements.* This research was funded by the Helmholtz-Centre for Environmental Research GmbH - UFZ, the Ministerium für Landwirtschaft, Umwelt und Klimaschutz des Landes Brandenburg (MLUK, Ministry of Agriculture, Environment, and Climate Protection of the federal state of Brandenburg) as well as by the Deutsche Forschungsgemeinschaft (DFG, German Research Foundation) – research unit FOR 2694 "Cosmic Sense", project number 357874777.

We gratefully acknowledge the landowners and organisations granting access to the sites: Axel Behrendt, Gernot Verch (ZALF), Rainer Hentschel, Paul Reibetanz, Jens Hanneman (State Forestry Office Brandenburg), Ronny Henkel (Rail & Logistik Center Wustermark), Agro Uetz-Bornim GmbH, Oehneland Agrar GmbH, Christiane Sengebusch, and Philip Golo. The authors furthermore acknowledge the support from the Havelländische Eisenbahn Gesellschaft (HVLE), Wustermark, Germany, particularly from Dirk Brandenburg, Uwe Wullstein, Bastian Weber, Oliver Georgius and Stadler Rail, David Sorribes, ~~and Bastian Weber.~~

We thank Markus Köhli and Jannnis Weimar (StyX Neutronica) for technical support with some of the sensors.

## 450 References

- Altdorff, D., Oswald, S. E., Zacharias, S., Zengerle, C., Dietrich, P., Mollenhauer, H., Attinger, S., and Schrön, M.: Toward Large-Scale Soil Moisture Monitoring Using Rail-Based Cosmic Ray Neutron Sensing, *Water Resources Research*, 59, e2022WR033514, <https://doi.org/10.1029/2022WR033514>, 2023.
- Andreasen, M., Jensen, K. H., Desilets, D., Franz, T. E., Zreda, M., Bogen, H. R., and Looms, M. C.: Status and Perspectives on the  
455 Cosmic-Ray Neutron Method for Soil Moisture Estimation and Other Environmental Science Applications, *Vadose Zone Journal*, 16, 1–11, <https://doi.org/10.2136/vzj2017.04.0086>, 2017.
- Babaeian, E., Sadeghi, M., Jones, S. B., Montzka, C., Vereecken, H., and Tuller, M.: Ground, Proximal, and Satellite Remote Sensing of Soil Moisture, *Reviews of Geophysics*, 57, 530–616, <https://doi.org/10.1029/2018RG000618>, 2019.
- BGR: Bundesanstalt für Geowissenschaften und Rohstoffe (Ed.), *Manual of soil mapping*, 5th Ed. (KA5), Hanover, Germany, ISBN: 978-3-  
460 510-95920-4, 2005.
- Brill, F., Alencar, P. H. L., Zhang, H., Boeing, F., Hüttel, S., and Lakes, T.: Exploring drought hazard, vulnerability, and related impacts on agriculture in Brandenburg, *Natural Hazards and Earth System Sciences*, 24, 4237–4265, <https://doi.org/10.5194/nhess-24-4237-2024>, 2024.
- Desilets, D., Zreda, M., and Ferré, T. P. A.: Nature’s neutron probe: Land surface hydrology at an elusive scale with cosmic rays, *Water  
465 Resources Research*, 46, W11 505, <https://doi.org/10.1029/2009WR008726>, 2010.
- DWD: Historical hourly RADOLAN grids of precipitation depth, [https://opendata.dwd.de/climate\\_environment/CDC/grids\\_germany/hourly/radolan/historical/](https://opendata.dwd.de/climate_environment/CDC/grids_germany/hourly/radolan/historical/), last accessed: 18 September 2024, 2022.
- Fersch, B., Francke, T., Heistermann, M., Schrön, M., Döpper, V., Jakobi, J., Baroni, G., Blume, T., Bogen, H., Budach, C., Gränzig, T., Förster, M., Güntner, A., Hendricks Franssen, H.-J., Kasner, M., Köhli, M., Kleinschmit, B., Kunstmann, H., Patil, A., Rasche, D.,  
470 Scheffele, L., Schmidt, U., Szulc-Seyfried, S., Weimar, J., Zacharias, S., Zreda, M., Heber, B., Kiese, R., Mares, V., Mollenhauer, H., Völksch, I., and Oswald, S.: A dense network of cosmic-ray neutron sensors for soil moisture observation in a highly instrumented pre-Alpine headwater catchment in Germany, *Earth System Science Data*, 12, 2289–2309, <https://doi.org/10.5194/essd-12-2289-2020>, 2020.
- Francke, T. and Heistermann, M.: Groundwater recharge in Brandenburg is declining – but why?, *EGUsphere* [preprint], 2025, 1–28, <https://doi.org/10.5194/egusphere-2025-222>, 2025.
- 475 Gash, J. H. C., Lloyd, C. R., and Lachaud, G.: Estimating sparse forest rainfall interception with an analytical model, *Journal of Hydrology*, 170, 79–86, [https://doi.org/10.1016/0022-1694\(95\)02697-N](https://doi.org/10.1016/0022-1694(95)02697-N), 1995.
- Guan, H. and Wilson, J. L.: A hybrid dual-source model for potential evaporation and transpiration partitioning, *Journal of Hydrology*, 377, 405–416, <https://doi.org/10.1016/j.jhydrol.2009.08.037>, 2009.
- Guerrero-Ramírez, N. R., Mommer, L., Freschet, G. T., Iversen, C. M., McCormack, M. L., Kattge, J., Poorter, H., van der Plas, F., Bergmann, J., Kuyper, T. W., York, L. M., Brulheide, H., Laughlin, D. C., Meier, I. C., Roumet, C., Semchenko, M., Sweeney, C. J., van Ruijven, J., Valverde-Barrantes, O. J., Aubin, I., Catford, J. A., Manning, P., Martin, A., Milla, R., Minden, V., Pausas, J. G., Smith, S. W., Soudzilovskaia, N. A., Ammer, C., Butterfield, B., Craine, J., Cornelissen, J. H. C., de Vries, F. T., Isaac, M. E., Kramer, K., König, C., Lamb, E. G., Onipchenko, V. G., Peñuelas, J., Reich, P. B., Rillig, M. C., Sack, L., Shipley, B., Tiedersoo, L., Valladares, F., van Bodegom, P., Weigelt, P., Wright, J. P., and Weigelt, A.: Global root traits (GRooT) database, *Global Ecology and Biogeography*, 30,  
485 25–37, <https://doi.org/10.1111/geb.13179>, 2021.

- Heistermann, M., Bogen, H., Francke, T., Güntner, A., Jakobi, J., Rasche, D., Schrön, M., Döpper, V., Fersch, B., Groh, J., Patil, A., Pütz, T., Reich, M., Zacharias, S., Zengerle, C., and Oswald, S.: Soil moisture observation in a forested headwater catchment: combining a dense cosmic-ray neutron sensor network with roving and hydrogravimetry at the TERENO site Wüstebach, *Earth System Science Data*, 14, 2501–2519, <https://doi.org/10.5194/essd-14-2501-2022>, 2022.
- 490 Heistermann, M., Francke, T., Scheiffele, L., Dimitrova Petrova, K., Budach, C., Schrön, M., Trost, B., Rasche, D., Güntner, A., Döpper, V., Förster, M., Köhli, M., Angermann, L., Antonoglou, N., Zude-Sasse, M., and Oswald, S. E.: Three years of soil moisture observations by a dense cosmic-ray neutron sensing cluster at an agricultural research site in north-east Germany, *Earth System Science Data*, 15, 3243–3262, <https://doi.org/10.5194/essd-15-3243-2023>, 2023.
- Heistermann, M., Francke, T., Schrön, M., and Oswald, S. E.: Technical Note: Revisiting the general calibration of cosmic-ray neutron sensors to estimate soil water content, *Hydrology and Earth System Sciences*, 28, 989–1000, <https://doi.org/10.5194/hess-28-989-2024>, 2024.
- 495 Horn, K. H., Vulova, S., Li, H., and Kleinschmit, B.: Modelling current and future forest fire susceptibility in north-eastern Germany, *Natural Hazards and Earth System Sciences*, 25, 383–401, <https://doi.org/10.5194/nhess-25-383-2025>, 2025.
- Kroes, J., van Dam, J., Bartholomeus, R., Groenendijk, P., Heinen, M., Hendriks, R., Mulder, H., Supit, I., and van Walsum, P.: SWAP version 4 - Theory description and user manual, Wageningen Environmental Research Report 2780, [https://swap.wur.nl/Documents/Kroes\\_etal\\_2017\\_SWAP\\_version\\_4\\_ESG\\_Report\\_2780.pdf](https://swap.wur.nl/Documents/Kroes_etal_2017_SWAP_version_4_ESG_Report_2780.pdf), last accessed: 23 April 2025, 2017.
- 500 Köhli, M., Weimar, J., Schrön, M., Baatz, R., and Schmidt, U.: Soil Moisture and Air Humidity Dependence of the Above-Ground Cosmic-Ray Neutron Intensity, *Frontiers in Water*, 2, <https://doi.org/10.3389/frwa.2020.544847>, 2021.
- LBGR: Landesamt für Bergbau, Geologie und Rohstoffe Brandenburg, Bodenübersichtskarte des Landes Brandenburg im Maßstab 1:300,000, <https://geo.brandenburg.de/?page=LBGR-Webservices>, last accessed: 23 April 2025, 2024.
- 505 LFB: Landesbetrieb Forst Brandenburg, Level II monitoring sites of the UNECE Convention on Long-range Transboundary Air Pollution (ICP Forests), [http://www.forstliche-umweltkontrolle-bb.de/r1\\_lage\\_l2.php](http://www.forstliche-umweltkontrolle-bb.de/r1_lage_l2.php), last access: April 2025., 2025.
- LFU: Landesamt für Umwelt Brandenburg, Mächtigkeit der ungesättigten Bodenzone, <https://metaver.de/trefferanzeige?docuuiid=06BE213C-BE2F-4009-8208-C58771700A33>, last accessed: 23 April 2025, 2013.
- 510 Moriasi, D. N., Gitau, M. W., Pai, N., and Daggupati, P.: Hydrologic and water quality models: performance measures and evaluation criteria, *Transactions of the ASABE*, 58, 1763–1785, <https://doi.org/10.13031/trans.58.10715>, 2015.
- Ney, P., Köhli, M., Bogen, H., and Goergen, K.: CRNS-based monitoring technologies for a weather and climate-resilient agriculture: realization by the ADAPTER project, in: 2021 IEEE International Workshop on Metrology for Agriculture and Forestry (MetroAgriFor), pp. 203–208, <https://doi.org/10.1109/MetroAgriFor52389.2021.9628766>, 2021.
- 515 OpenStreetMap contributors: Planet dump retrieved from <https://planet.osm.org>, <https://www.openstreetmap.org>, last access: October 2024., 2024.
- Oswald, S. E., Angermann, L., Bogen, H., Förster, M., García-García, A., Lischeid, G., Paton, E. N., Altdorff, D., Attinger, S., Güntner, A., Hartmann, A., Franssen, H.-J. H., Hildebrandt, A., Kleinschmit, B., Orth, R., Peng, J., Ryo, M., Schrön, M., Wagner, W., and Wagener, T.: Hydrology on solid grounds? Integration is key to closing knowledge gaps concerning landscape subsurface water storage dynamics, *Hydrol. Processes*, 38, e1530, <https://doi.org/10.1002/hyp.15320>, commentary, 2024.
- 520 Pohle, I., Zeilfelder, S., Birner, J., and Creutzfeldt, B.: The 2018–2023 drought in Berlin: impacts and analysis of the perspective of water resources management, *Natural Hazards and Earth System Sciences Discussions*, 2024, 1–28, <https://doi.org/10.5194/nhess-2024-187>, 2024.



- Priesner, J., Sakschewski, B., Billing, M., von Bloh, W., Fiedler, S., Bereswill, S., Thonicke, K., and Tietjen, B.: What if extreme droughts occur more frequently? – Mechanisms and limits of forest adaptation in pine monocultures and mixed forests in Berlin-Brandenburg, Germany, *EGUsphere*, 2024, 1–28, <https://doi.org/10.5194/egusphere-2024-3066>, 2024.
- Russ, A., Riek, W., Kallweit, R., Einert, P., Jochheim, H., Lüttschwager, D., Hannemann, J., and Becker, F.: "Wasserhaushalt von Standorten des Level II-Programms in Brandenburg", in: "30 Jahre forstliches Umweltmonitoring in Brandenburg, Eberswalder Forstliche Schriftenreihe Band 63", edited by Kallweit, R. and Engel, J., pp. 135–152, "Ministerium für Ländliche Entwicklung, Umwelt und Landwirtschaft des Landes Brandenburg", 2016.
- Sato, T.: Analytical Model for Estimating Terrestrial Cosmic Ray Fluxes Nearly Anytime and Anywhere in the World: Extension of PARMA/EXPACS, *PLOS ONE*, 10, 1–33, <https://doi.org/10.1371/journal.pone.0144679>, 2015.
- Schaap, M. G., Leij, F. J., and van Genuchten, M. T.: rosetta: a computer program for estimating soil hydraulic parameters with hierarchical pedotransfer functions, *Journal of Hydrology*, 251, 163–176, [https://doi.org/10.1016/S0022-1694\(01\)00466-8](https://doi.org/10.1016/S0022-1694(01)00466-8), 2001.
- Schmidt, T., Schrön, M., Li, Z., Francke, T., Zacharias, S., Hildebrandt, A., and Peng, J.: Comprehensive quality assessment of satellite- and model-based soil moisture products against the COSMOS network in Germany, *Remote Sensing of Environment*, 301, 113 930, <https://doi.org/10.1016/j.rse.2023.113930>, 2024.
- Schrön, M., Altdorff, D., Marx, A., Samaniego, L., Zacharias, S., Dietrich, P., and Bumberger, J.: MOWAX - Monitoring- and modelling concepts as a basis for water budget assessments in Saxony, project webpage, <https://www.ufz.de/index.php?en=51826>, last access: April 2025., 2025.
- Schrön, M., Köhli, M., Scheffele, L., Iwema, J., Bogen, H. R., Lv, L., Martini, E., Baroni, G., Rosolem, R., Weimar, J., Mai, J., Cuntz, M., Rebmann, C., Oswald, S. E., Dietrich, P., Schmidt, U., and Zacharias, S.: Improving calibration and validation of cosmic-ray neutron sensors in the light of spatial sensitivity, *Hydrology and Earth System Sciences*, 21, 5009–5030, <https://doi.org/10.5194/hess-21-5009-2017>, 2017.
- van Dam, J. C., Groenendijk, P., Hendriks, R. F., and Kroes, J. G.: Advances of Modeling Water Flow in Variably Saturated Soils with SWAP, *Vadose Zone Journal*, 7, 640–653, <https://doi.org/10.2136/vzj2007.0060>, 2008.
- van Genuchten, M. T.: A Closed-form Equation for Predicting the Hydraulic Conductivity of Unsaturated Soils, *Soil Science Society of America Journal*, 44, 892–898, <https://doi.org/10.2136/sssaj1980.03615995004400050002x>, <https://onlinelibrary.wiley.com/doi/pdf/10.2136/sssaj1980.03615995004400050002x>, 1980.
- Von Hoyningen-Huene, J.: Die Interzeption des Niederschlages in landwirtschaftlichen Pflanzenbeständen, *Die Interzeption des Niederschlages in landwirtschaftlichen Pflanzenbeständen*, pp. 1–53, 1983.
- Warter, M. M., Tetzlaff, D., Marx, C., and Soulsby, C.: Impact of drought hazards on flow regimes in anthropogenically impacted streams: an isotopic perspective on climate stress, *Natural Hazards and Earth System Sciences Discussions*, 2024, 1–30, <https://doi.org/10.5194/nhess-2024-44>, 2024.
- Zacharias, S., Loescher, H. W., Bogen, H., Kiese, R., Schrön, M., Attinger, S., Blume, T., Borchardt, D., Borg, E., Bumberger, J., Chwala, C., Dietrich, P., Fersch, B., Frenzel, M., Gaillardet, J., Groh, J., Hajnsek, I., Itzerott, S., Kunkel, R., Kunstmann, H., Kunz, M., Liebner, S., Mirtl, M., Montzka, C., Musolff, A., Pütz, T., Rebmann, C., Rinke, K., Rode, M., Sachs, T., Samaniego, L., Schmid, H. P., Vogel, H., Weber, U., Wollschläger, U., and Vereecken, H.: Fifteen Years of Integrated Terrestrial Environmental Observatories (TERENO) in Germany: Functions, Services, and Lessons Learned, *Earth's Future*, 12, <https://doi.org/10.1029/2024EF004510>, 2024.