

SUPPLEMENTARY MATERIAL:

Reduced microbial respiration sensitivity to soil moisture following long-term N fertilization enhances soil C retention in a boreal Scots pine forest

5

Boris Āupek¹, Aleksu Lehtonen¹, Stefano Manzoni², Elisa Bruni³, Petr Baldrian⁴, Etienne Richy⁴, Bartosz Adamczyk¹, Bertrand Guenet³, and Raisa Mäkipää¹

¹Natural Resources Institute Finland (LUKE), Helsinki, 00790, Finland

10 ²Department of Physical Geography and Bolin Centre for Climate Research, Stockholm University, Stockholm, 10691, Sweden.

³Laboratoire de Géologie, École Normale Supérieure (ENS), Paris, 75005, France

⁴Laboratory of Environmental Microbiology, Institute of Microbiology of the Czech Academy of Sciences, Prague, 14200, Czech Republic

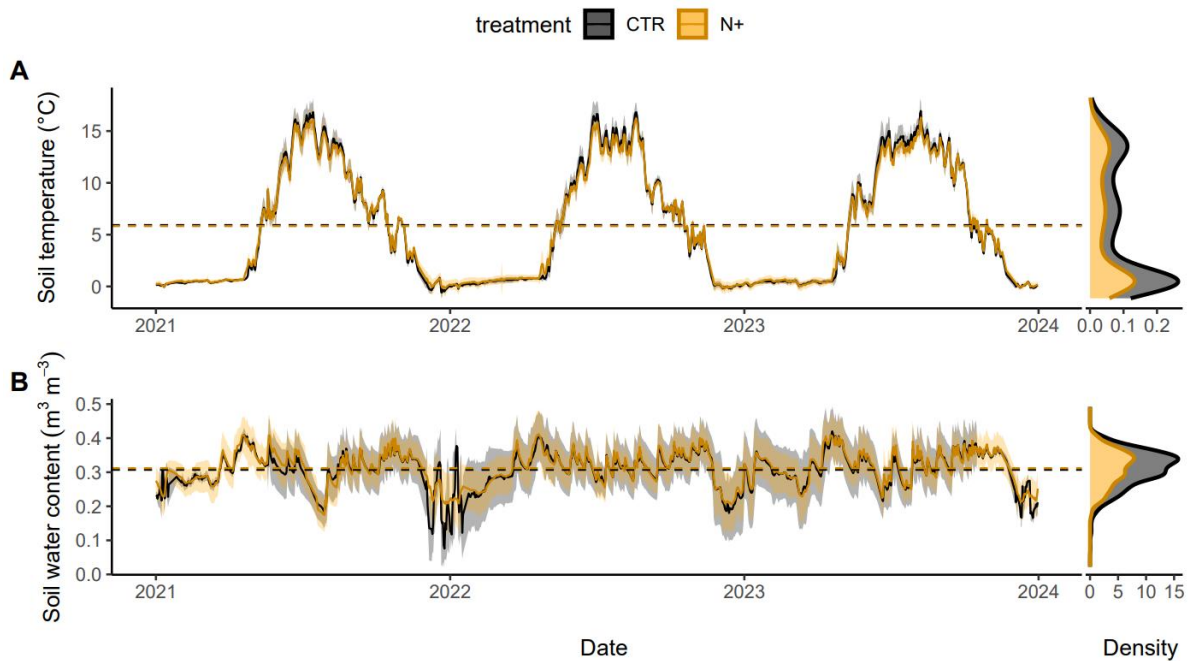
Correspondence to: Boris Āupek (boris.tupek@luke.fi)

15

Table S1. Goodness of fit statistics of NLS models based on $R_{h/SOC}(T)$ (Eq. 1), and $R_{h/SOC}(T, SWC)$ (Eq. 2) after 10-fold cross validation: the root mean square error (RMSE), the mean absolute error (MAE), and their standard deviation (SD). All values are in $\mu\text{g C g}^{-1} \text{SOC h}^{-1}$.

Treatment	Models	RMSE	RMSESD	MAE	MAESD
		$\mu\text{g C g}^{-1} \text{SOC h}^{-1}$		$\mu\text{g C g}^{-1} \text{SOC h}^{-1}$	
CTR	T	17.20	2.82	13.42	2.09
	T, SWC	15.53	2.28	11.53	1.42
N+	T	12.99	2.80	9.00	1.77
	T, SWC	13.04	2.37	9.02	1.18

20



25 **Figure S1.** The daily mean timeseries and their density plots of **A** soil temperature at 5 cm depth (°C) and **B** soil volumetric water content at 5 cm depth (m³ m⁻³) for control (CTR) and N fertilized (N+) plots during the period from Jan 2021 to Dec 2023. The full line shows the daily mean, the ribbon is the SE of plots, and the dashed line is the mean over the whole period.

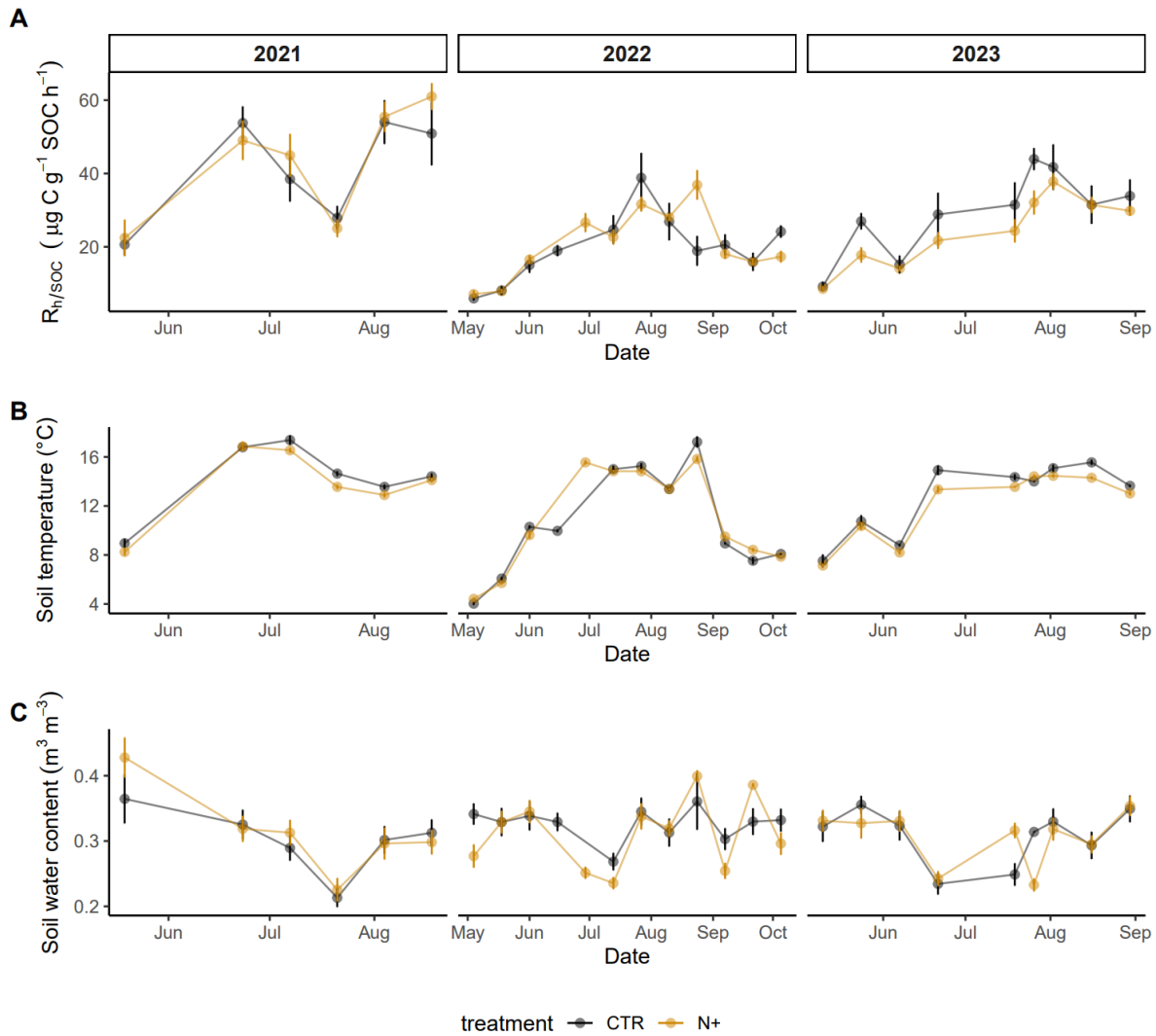


Figure S2. The weekly mean measured timeseries of **A** soil microbial respiration normalized by SOC ($R_{n/SOC}$, $\mu\text{g C g}^{-1} \text{SOC h}^{-1}$), **B** soil temperature at 5 cm depth ($^{\circ}\text{C}$) and **C** soil volumetric water content at 5 cm depth ($\text{m}^3 \text{m}^{-3}$) for control (CTR) and N fertilized (N+) plots during the period from May 2021 to September 2023. The error bars show the SE of the mean of plots.