



# Seafloor marine heatwaves outpace surface events in future on the northwest European shelf

Robert J. Wilson<sup>1</sup>, Yuri Artioli<sup>1</sup>, Giovanni Galli<sup>1,2</sup>, James Harle<sup>3</sup>, Jason Holt<sup>4</sup>, Ana M. Queirós<sup>1,5</sup>, and Sarah Wakelin<sup>4</sup>

5 <sup>1</sup>Plymouth Marine Laboratory, Prospect Place, Plymouth PL1 3DH, United Kingdom

<sup>2</sup>National Institute of Oceanography and Applied Geophysics (OGS), Section of Oceanography, via Beirut 2, Trieste, 34014, Italy

<sup>3</sup>National Oceanography Centre (NOC), European Way, Southampton, SO14 3ZH,

<sup>4</sup>UK National Oceanography Centre (NOC), Joseph Proudman Building, 6 Brownlow Street, Liverpool, L3 5DA, UK

10 <sup>5</sup>Faculty of Environment, Science and Economy, University of Exeter, UK

*Correspondence:* Robert J Wilson (rwi@pml.ac.uk)

**Abstract.** Marine heatwaves are increasingly frequent across the world's oceans. As a result, there are growing impacts on marine ecosystems due to temperatures exceeding the thermal niche and historical exposure of many species. Anticipating the future frequency and severity of marine heatwaves is necessary. Here we provide the first projections of future marine heatwaves for the sea surface and seafloor across the northwest European Shelf, which is a critically important marine ecosystem. We use an ensemble of five dynamically downscaled hydrodynamic models under the high emissions scenario RCP 8.5. Heatwaves were defined as events lasting at least 5 days where temperatures exceed the 90th percentile of a historical baseline period. The frequency of marine heatwaves at the surface and seafloor is projected to increase significantly during the 21st century under RCP 8.5, with most of the year projected to be in heat wave conditions by the end of the century. Critically, we find that marine heatwaves are projected to increase in frequency to a greater extent at the seafloor compared with the sea surface due to their lower levels of natural temperature variation. Similarly, we find that the severity of summer heatwaves at the surface is projected to be lower than that of heatwaves during the rest of the year, due to lower climatological variation in temperature outside the summer. The impacts of marine heatwaves on shelf seas are therefore likely to be much more complex than anticipated heretofore, when taking a view beyond the ocean surface and summer.

## 1 Introduction

Marine heatwaves are defined as prolonged periods where the sea is anomalously warm (Oliver et al. 2021). Since Pearce et al. (2011) first used the term, there has been a rapid growth in our understanding of their causes and how they impact ecosystems. In recent decades, rising temperatures have caused marine heatwaves to become more and more frequent around the world (Oliver et al. 2019, Oliver et al. 2018a, Marin et al. 2021, Oliver et al., 2018b, Scannell et al., 2016, Darmaraki et

al. 2019, Yao et al., 2023). They have multiple causes, ranging from the occurrence of atmospheric heatwaves, changes in wind speeds, and variations in ocean mixing (sen Gupta et al., 2020, Amaya et al., 2020).

35 Marine heatwaves have largely negative impacts on marine ecosystems (Smith et al. 2022). Negative impacts on seaweeds (Thomsen et al. 2019, Gurgel et al. 2020, Arafeh-Dalmau et al., 2019, Filbee-Dexter et al. 2020), seagrasses (Arias-Ortiz et al. 2018, Styrdom et al. 2020), seabirds (Jones et al. 2018, Piatt et al., 2020), coral reefs (Leggat et al. 2019, Le Nohaïc et al. 2017), crustaceans (Chandrapavan et al. 2019), fish (Wild et al. 2019, Roberts et al. 2019), and plankton (Brodeur et al. 2019, Nielsen et al., 2021) have been recorded, among others. However, the impacts of marine heatwaves are complex and  
40 vary across ecosystems (Smale et al. 2017) and it remains unclear to what extent ecosystems can adapt to the continued rise in their frequency (Pershing et al. 2018).

The impacts of marine heatwaves on the sea surface and seafloor are likely to be distinct. Pelagic species are typically advected or can swim across large regions and can therefore acclimate or reorganize in response to climate change relatively quickly. In contrast, benthic and demersal species tend to have limited mobility, such that tracking optimal thermal habitat  
45 e.g. though the deepening of assemblages is seen as more challenging. It is thus more likely that negative impacts are observed (e.g. Queiros et al. 2021, 2023), especially in species with slow growth rates which slow the ability to respond to disturbance (Ceccherelli et al. 2007). Effective management of these species and habitats thus necessitates that projections of future marine heatwaves at both the ocean surface and the seafloor are considered. While most of the marine heat wave assessments to date have been looking at sea surface temperature data, recent studies suggest that sub-surface heat waves can  
50 be equally relevant (He et al. 2023, Sun et al. 2023).

A large body of work has used global climate models to project how future marine heatwaves are expected to increase this century (Azarian et al. 2023, Cheng et al. 2023, Oliver et al. 2019, Plecha et al. 2019, Qiu et al. 2021, Rosselló et al. 2023, Sun et al. 2023, Xue et al. 2023). However, global models are substantially limited in their ability to project marine heatwaves at both the sea surface and seafloor on shelf seas. Global models typically have coarse spatial resolution, which  
55 can result in poor representation of ocean shelf processes, and the representation of critical processes such as riverine inputs which affect key processes in shelf environments are poor (Holt et al. 2017, Kay et al. 2023). In combination, this results in poor representation of processes such as seasonal thermal stratification of the water column, resulting in modelling projections which do not provide sufficiently credible representation of coastal processes. Finally, marine heatwave calculations require daily temperature data (Hobday et al. 2016). This is available for the sea surface for many global climate  
60 models (Wilson et al. 2024), however daily near-bottom temperatures are not available in those, including the models used in the global climate change modelling standard, the Coupled Model Intercomparison Project Phases 5 and 6 (CMIP5 and 6). This leads to an unavailability of reliable ocean modelling projections from which to derive marine heatwave estimations to inform marine science, policy and industry development operating at international, national, and sub-national level.

The limitations of global climate models on continental shelves can largely be resolved using dynamical downscaling (e.g.  
65 Drenkard et al 2021), whereby a regional model with higher horizontal and vertical resolution is used to project future changes in ocean physics and biogeochemistry (e.g., Butenschön et al. 2016). Through this approach, a regional model is forced at the boundaries, i.e., at the air-surface boundary and the geographic limits of the regional model domain, by the

outputs of a global model, offering a higher resolution of processes within the region of interest, whilst being consistent with the broader processes simulated in the global model. Here we apply this approach to understand future marine heatwaves on the northwest European shelf.

The northwest European shelf is an important marine ecosystem that provides ecological, cultural, and economic services to many countries (Culhane et al., 2020). It is one of the world's most heavily fished regions (Halpern et al. 2008) and has the world's largest and fastest growing offshore wind industry. Understanding how climate change will impact the region is thus critical to enable effective spatial and fisheries management into the future (Queirós et al. 2021).

In the north-west European shelf, a suite of dynamically downscaled projections exists and have been used to consider the impacts of climate change on sea-level rise (Hermans et al. 2020), changes in oxygen concentration (Wakelin et al. 2020, Galli et al., 2024), changes in circulation patterns (Holt et al. 2018), and the impacts of climate change on primary production (Holt et al. 2016). Those have further been used to consider impacts on higher trophic levels and human uses of the marine environment, such as fisheries, aquaculture, conservation, as well as on the full marine ecosystem (Palmer et al. 2021, Queirós et al. 2021, Queiros et al. 2023, du Pontavice et al. 2023, Townhill et al. 2023).

The key aim of this study is to understand how future marine heatwaves will change in northwest Europe under a high emissions greenhouse gas scenario. We separately assess the future evolution of marine heatwaves at the surface and the seafloor and furthermore disaggregate changes seasonally. This assessment will provide a more nuanced and complete understanding of future marine heatwaves on shelf seas.

## 2 Methods

### 2.1 Physical models and climate change scenario

Future marine heatwaves on the northwest European Shelf were projected using the high emissions climate change scenario Representative Concentration Pathway 8.5 (RCP 8.5) (van Vuuren et al. 2011) using an existing ensemble of dynamically downscaled global climate models. Each global climate model used for the downscaling (Holt et al. 2022) is from the CMIP5 project (Taylor et al. 2012) and was downscaled using the Atlantic Margin Model at 7 km resolution based on the Nucleus of a European Model of the Ocean (NEMO). A detailed explanation of this model can be found in O'Dea et al. (2017). The model employs an equal-angle quadrilateral C-grid mesh with a spatial resolution of  $1/15^\circ$  latitude (7.4 km) and  $1/9^\circ$  longitude (ranging from 5.2 km to 9.4 km), and it features 51 terrain-following vertical levels. The model's geographic domain covers  $20^\circ\text{W}$  to  $13^\circ\text{E}$  and  $40^\circ\text{N}$  to  $65^\circ\text{N}$ . For the purposes of heatwave calculations, we defined the northwest European Shelf as the region shallower than 200 m, and also considered the Norwegian Trench.

In the downscaling approach described by Holt et al. (2022) the surface and lateral boundary conditions, such as air temperature, and initial conditions are taken from the global climate model without bias correction. Due to the poor representation of the boundary connecting the North and the Baltic Seas, a present-day climatology (Gräwe et al. 2015) was used to define the boundary connecting them. This downscaling approach enables the large-scale atmospheric changes projected by the global climate model to transfer to the fine scale changes projected by the regional model. The ensemble of

dynamically downscaled projections is fully described in Holt et al. (2022), who produced a 7-member ensemble of future projections that reasonably represent seasonal stratification and present-day temperature. This 7-member ensemble included two pairs of models which used global models which were either closely related to each other or were identical models of differing spatial resolution. We therefore reduced the ensemble to 5 members to ensure full independence. The global climate models included in the downscaling were as follows: CanESM2 (Swart et al., 2019), CNRM-CM5 (Voldoire et al. 2013), GFDL-ESM2M (Dunne et al. 2020), IPSL-CM5A-MR (Boucher et al., 2019) and MIROC-ESM (Watanabe et al. 2011). In each case, the downscaled projections were run from 1980 to 2099.

## 2.2 Calculation of marine heatwaves

The aim of this study is to provide ecologically relevant projections of future marine heatwaves. In general, the ability of ecosystems to adapt to warming is thought to be slower than the current and projected future rates of warming (Oliver et al. 2021). We therefore chose to calculate marine heatwaves using a fixed climatology and not using a rolling baseline.

Marine heatwaves were defined and classified based on the methodology of Hobday et al. (2016). Heatwaves were defined as periods where temperatures were above historically high levels for a prolonged period. Historically “high” temperatures were defined as the 90th percentile of temperature within an 11-day window centred on each day of the year for a pre-defined baseline period. For this study we defined the baseline period to be the years 1990-2009, which is typically viewed as a large enough climatological period for assessing projected changes (Kajtar et al., 2022). The baseline period includes a period of historical forcing 1990-2004 and 5 years of scenario forcing, i.e., assumed and not actual atmospheric CO<sub>2</sub> emissions etc. However, the scenario assumptions are identical in each model run, making the model runs directly comparable.

Furthermore, we classified heatwaves as Moderate, Strong, Severe or Extreme using the approach of Hobday et al. (2018). In this approach heatwaves are classified based on multiples of the differences between the 90th percentile and the climatological average temperature on each day of the year. A heatwave of maximum temperature which represents the equivalent of a multiple of 1-2 times this difference is classified as moderate, strong is 2-3, severe is 3-4 and extreme is >4. So, for example, if the 90th percentile historically represented a temperature anomaly of 1 C, a heatwave with a maximum anomaly of 1.5 C would be classified as moderate, whereas a heatwave of maximum anomaly of 3.5 C would be classified as severe. As with the historical percentiles, we calculated the historical average temperature using an 11-day window for the baseline period.

The ability of the models to reproduce historical (1990-2009) variation in surface temperature during summer was assessed by comparing the anomaly of the historical heatwave temperature threshold in the model with observations. The anomaly is defined as the daily threshold – the average temperature on each day. Historical daily sea surface (at a spatial resolution of 0.05 by 0.05°) was acquired from the Operational Sea Surface Temperature and Sea Ice Analysis system (OSTIA) (Good et al., 2020) provided by the United Kingdom Met Office. This was downloaded from the Copernicus Marine Environment Monitoring Service (CMEMS: [marine.copernicus.eu](http://marine.copernicus.eu); <https://doi.org/10.48670/moi-00168>).



135 While the impact of winter heatwaves has been observed in the region in a small number of instances (e.g. Atkinson et al.,  
2020), negative impacts of marine heatwaves have almost exclusively been assessed during the warm seasons, during the  
months of spring and summer (e.g., Bass et al. 2023). Marine heatwave projections should therefore be disaggregated  
seasonally (Li et al. 2023, Song et al. 2023) to separate warm season (e.g., summer) heatwaves, which have well established  
negative consequences, from the rest of the year, when they have poorly understood consequences. We therefore separated  
heatwaves by season.

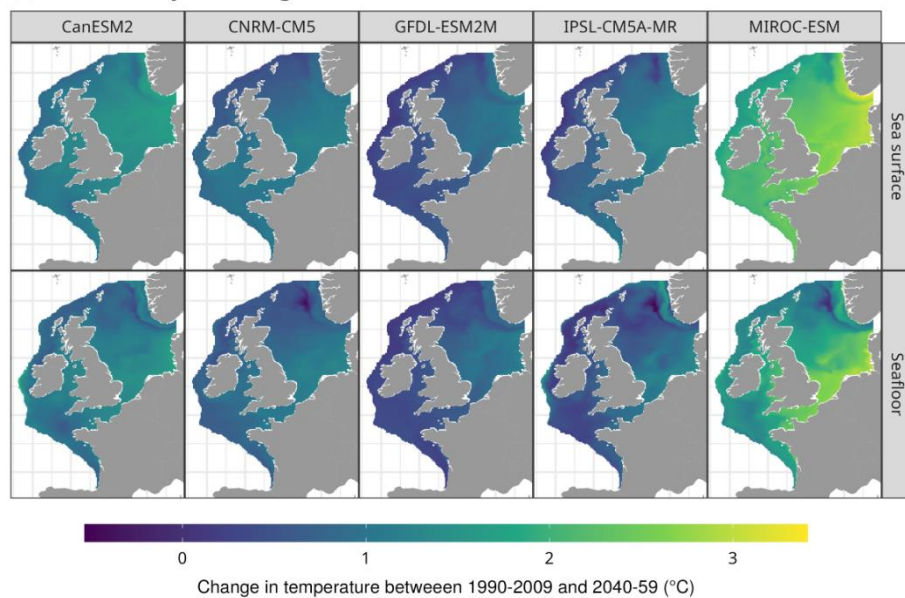
140

### 3 Results

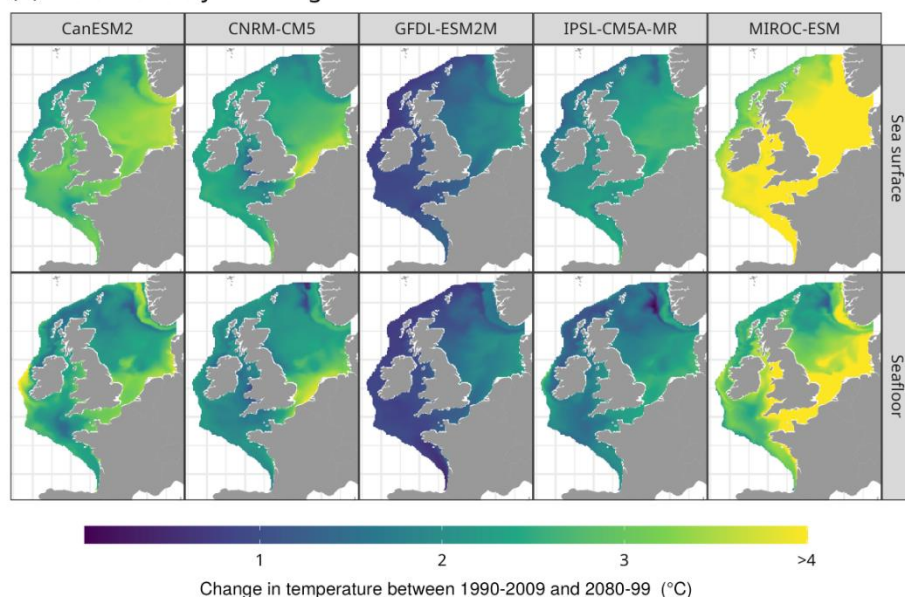
In line with expectations, all models project an increase in sea temperatures across the northwest European shelf by the end  
of the 21st Century (Figure 1). Reflecting the fact that climate models have broad climate sensitivities (Scafetta, 2022),  
145 projected temperature increases vary across the ensemble. The lowest average projected increase in surface temperature  
between 1990-2009 and 2080-2099 is 1.34°C in GFDL-ESM2M and the highest is 4.14 °C in the MIROC-ESM model, with  
an average of 2.55 °C across the 5-member ensemble. Notably, across all models, there is a higher level of warming in the  
seasonally stratified surface waters, which is notable in the northern North Sea (Figure 1), compared with the seafloor. This  
reflects how increased thermal stratification (Holt et al., 2022) will result in less warming translating to deeper waters in the  
150 future compared with today. Across the ensemble surface warming during summer is projected to be 0.88 °C higher than at  
the seafloor, while differences in warming in winter are negligible (Figure S1).



(a) Mid-century warming



(b) End of century warming



155 **Figure 1: Projected change in average temperature between a historical baseline period of 1990-2009 and mid-century (2040-59) and end-century (2080-99) periods from five dynamically downscaled climate models under the climate change scenario RCP 8.5. The column names list the global climate model used in the downscaling.**

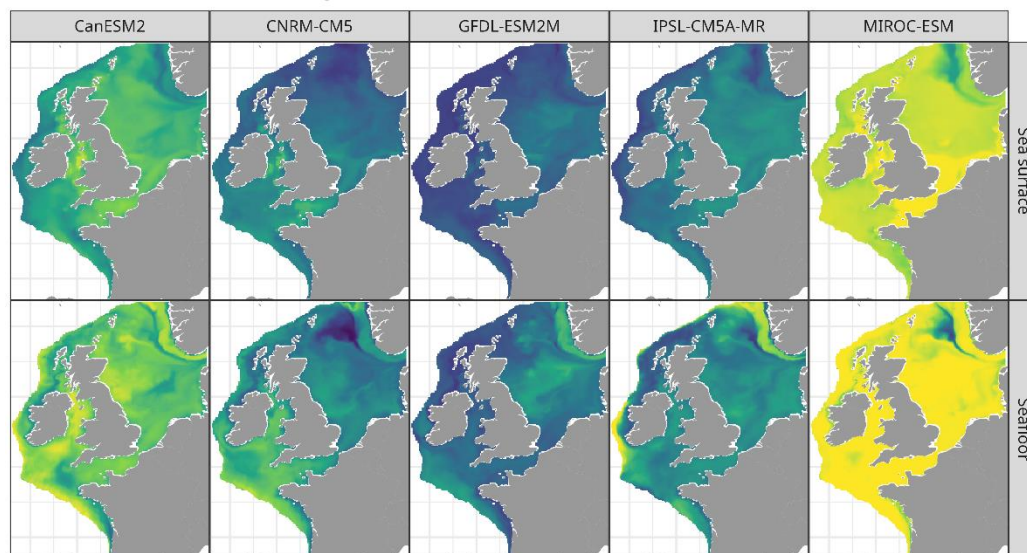
This large level of ocean warming translates to a large and sometimes rapid increase in annual marine heatwave frequency across the northwest European Shelf across model runs (Figure 2, 3 and 4, table 1). In line with warming levels, the MIROC-



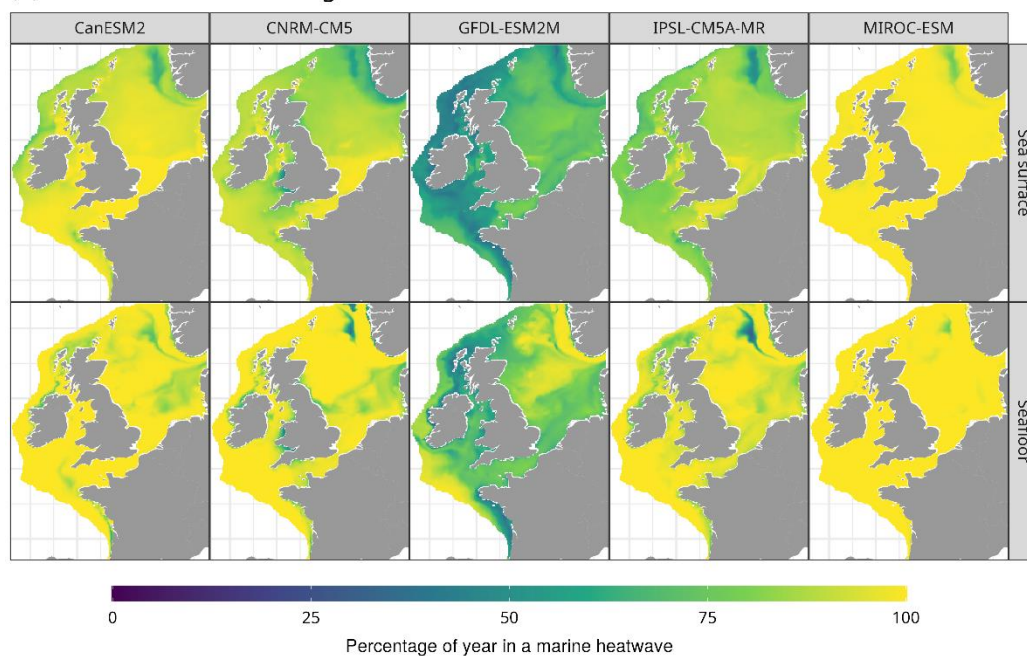
160 ESM run projects the highest levels of heatwave frequency, with them occurring almost year-round by the end of the 21st  
Century across much of the shelf at the sea surface. Similarly, the GFDL-ESM2M model projection shows the lowest future  
frequency of marine heatwaves, but it still projects surface heatwaves to occur approximately 63% of the year at the end of  
the 21st Century on average across the shelf. The shelf average annual frequency of marine heatwaves at the surface in mid-  
century ranges from 29.5 -90.5% and from 63.3-99.03% at the end of the century. Similarly, the annual frequency of marine  
165 heatwaves at the seafloor in mid-century ranges from 39.66-96.4% and from 77.22-99.69% at the end of the century.



(a) Marine heatwaves during 2040-2059



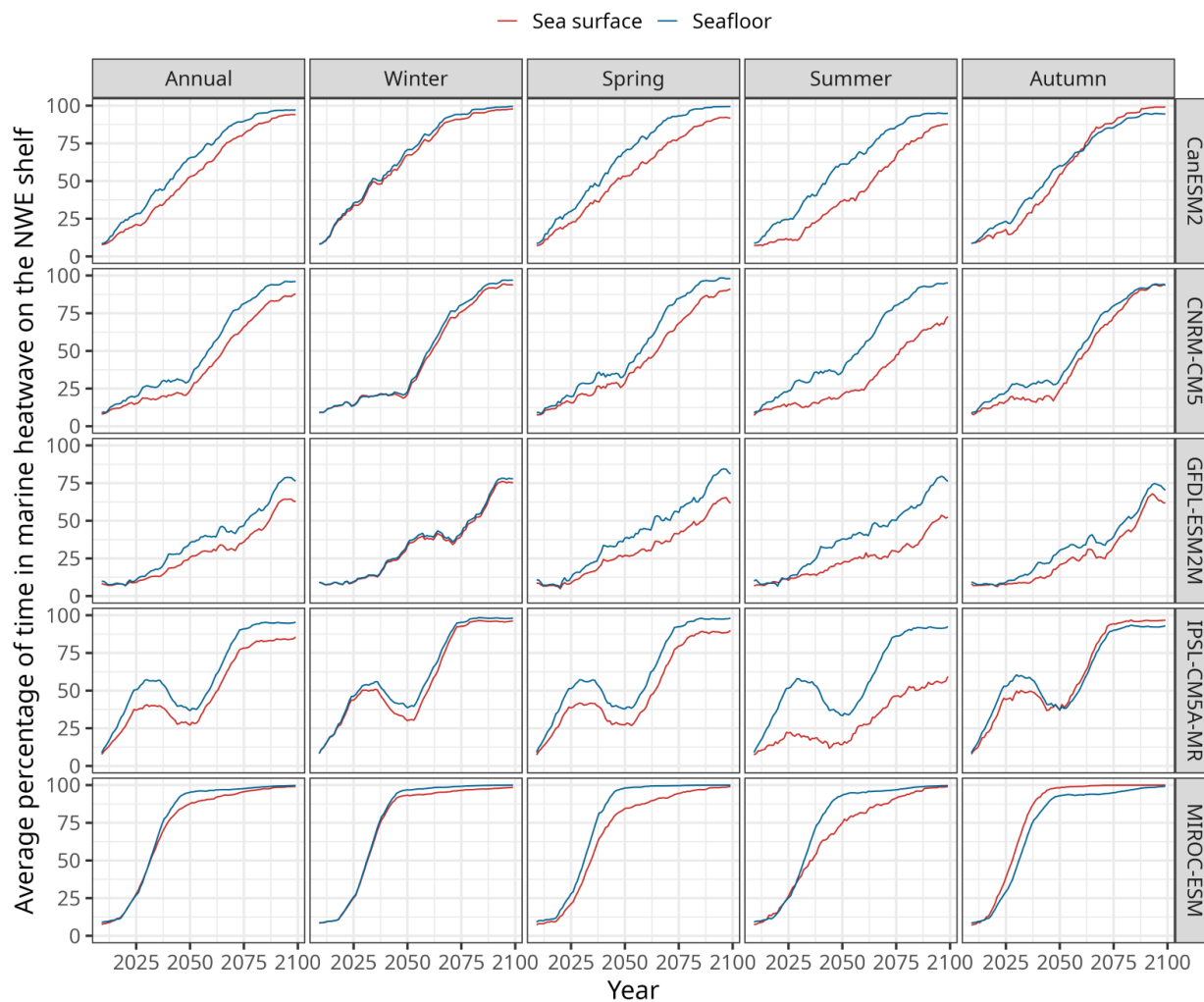
(b) Marine heatwaves during 2080-2099



**Figure 2: Projected annual heat waves in mid-century (2040-2059) and end of century (2080-2099), as derived from five dynamically downscaled climate models under RCP 8.5. Heat waves were defined as periods lasting at least 5 days where the daily temperature is greater than the 90th percentile of temperature in the baseline climatological period of 1990-2009.**

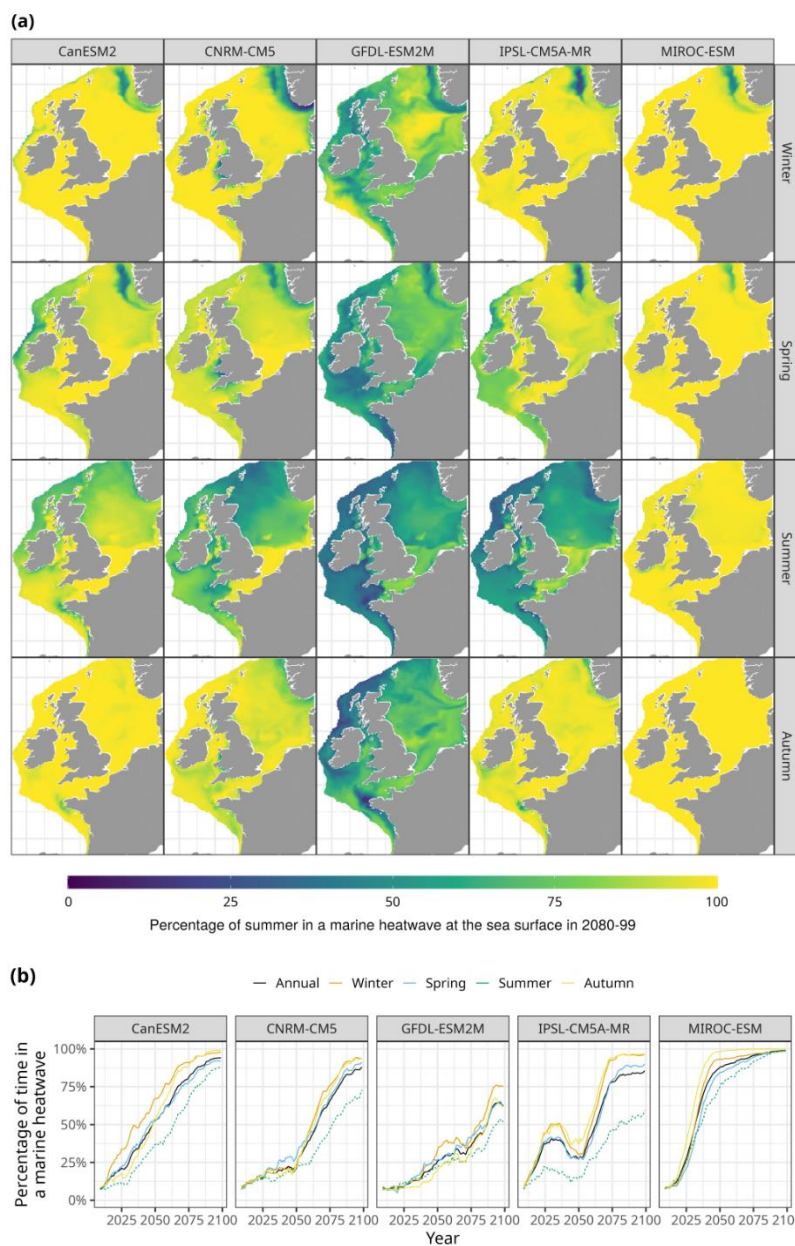
170





**Figure 3: Projected average frequency, using a 20-year rolling average, of marine heatwaves on the North West European Shelf annually and in each season from 1990-2100, using five dynamically downscaled climate models under climate change scenario RCP 8.5.**

175



180 **Figure 4: a** Projected average marine heatwave frequency at the sea surface for each season in 2080-2099 using five dynamically downscaled climate models and climate change scenario RCP 8.5. Each column shows the projection from one model. **b**) Average shelf-wide marine heatwave frequency from 1990-2099 using a 20-year rolling average, for each season and annually. Summer is shown with a dashed line.



Surface	Model	Period	Annual	Winter	Spring	Summer	Autumn	
heatwaves	CNRM-CM5	2040-59	39.4	45.43	42.79	24.5	44.9	
		2080-99	87.33	93.84	90.57	71.1	93.8	
	CanESM2	2040-59	62.72	76.75	61.91	43.09	69.12	
		2080-99	94.06	97.68	91.92	87.6	99.05	
	GFDL-ESM2M	2040-59	29.52	38.46	31.11	25.09	23.41	
		2080-99	63.03	75.33	63.1	51.7	62	
	IPSL-CM5A-MR	2040-59	41.84	48.67	37.31	26.59	54.81	
		2080-99	84.45	96.08	88.76	56.34	96.62	
	MIROC-ESM	2040-59	90.59	94	87.58	81.65	99.13	
		2080-99	99.03	98.4	98.94	98.8	99.99	
	Seafloor	Model	Period	Annual	Winter	Spring	Summer	Autumn
	heatwaves	CNRM-CM5	2040-59	51.35	48.81	53.68	52.15	50.76
2080-99			96.04	96.97	97.98	95.07	94.14	
CanESM2		2040-59	74.47	80.63	79.11	68.62	69.55	
		2080-99	97.05	99.51	99.43	94.78	94.49	
GFDL-ESM2M		2040-59	39.66	40.21	44.87	41.54	32.03	
		2080-99	77.22	77.87	82.24	77.32	71.44	
IPSL-CM5A-MR		2040-59	50.66	56.41	50.98	45.3	49.96	
		2080-99	95	98	97.67	91.68	92.64	
MIROC-ESM		2040-59	96.41	97.82	99.12	95.21	93.5	
		2080-99	99.68	99.97	99.99	99.64	99.11	

**Table 1: Projected percentage of time marine heatwaves occur in the future on the northwest European shelf annually and across each season for the middle and end of the 21<sup>st</sup> Century.**

185

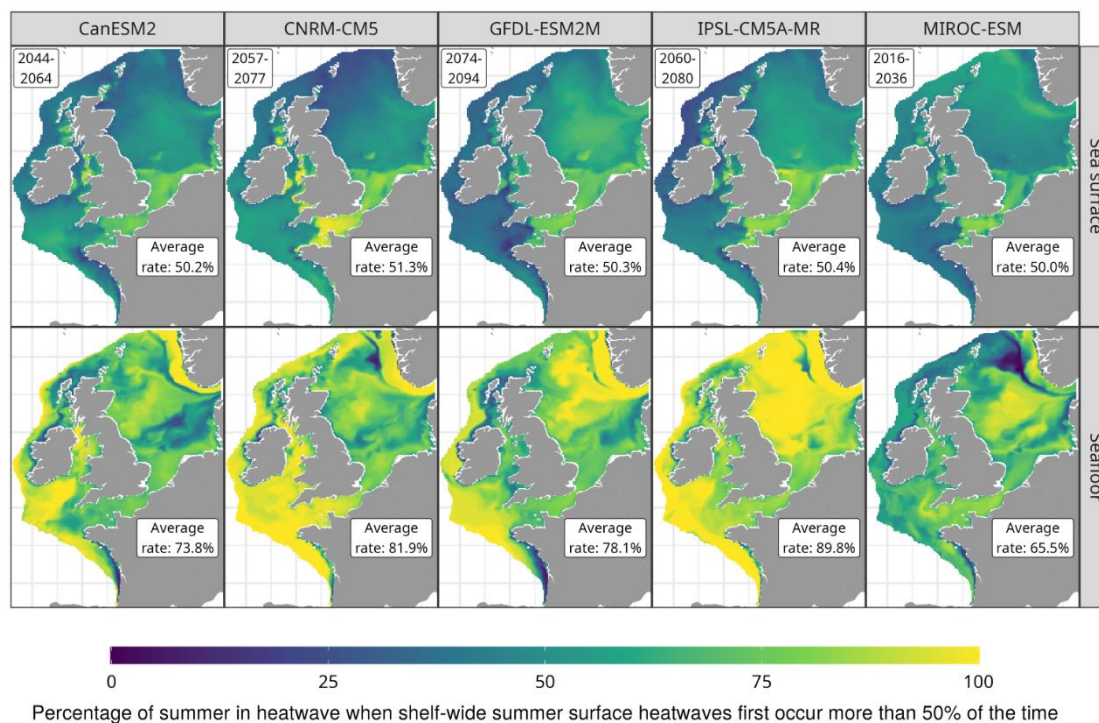
While the pattern of increased heatwave occurrences is evident at both the sea surface and seafloor, the projections show that the increase is expected to be larger at the seafloor. This is reflected by mapped changes (figure 2) and time series of average changes in heatwaves (figure 3). Overall, the model projections show a clear pattern where there are minimal differences in projected heatwaves at the sea surface and seafloor during winter when stratification is negligible, while there are pronounced differences in summer when waters are stratified (figures 3 and 4). We illustrated these differences by identifying the first 20-year period when, on average, surface waters are in heatwave conditions for at least 50% of the summer. This highlights the magnitude of differences when temperatures will exceed upper thermal thresholds for species. Figure 5 shows that during these 20-year periods summer heatwaves in deep waters are much more frequent than at the surface. The most extreme difference is the projection from IPSL-CM5A-MR, which shows that in 2060-80 that, on average the sea surface will be in heatwave conditions 50.4% of the summer, but the seafloor will be in heatwave conditions 89.9%

190

195



of the summer. Furthermore, these differences are most pronounced in seasonally stratified waters, while permanently mixed waters such as the southern North Sea see smaller differences between the surface and seafloor.



200 **Figure 5: Heatwaves at the sea surface and seafloor in the first 20-year period when, on average, heatwaves occur more than 50% of the summer at the surface. The 20-year period shown in the top-left of each panel indicates when the 50% threshold is first exceeded. In the bottom-right of each plot, the average fraction of time the shelf is in a heatwave at the surface or seafloor is shown.**

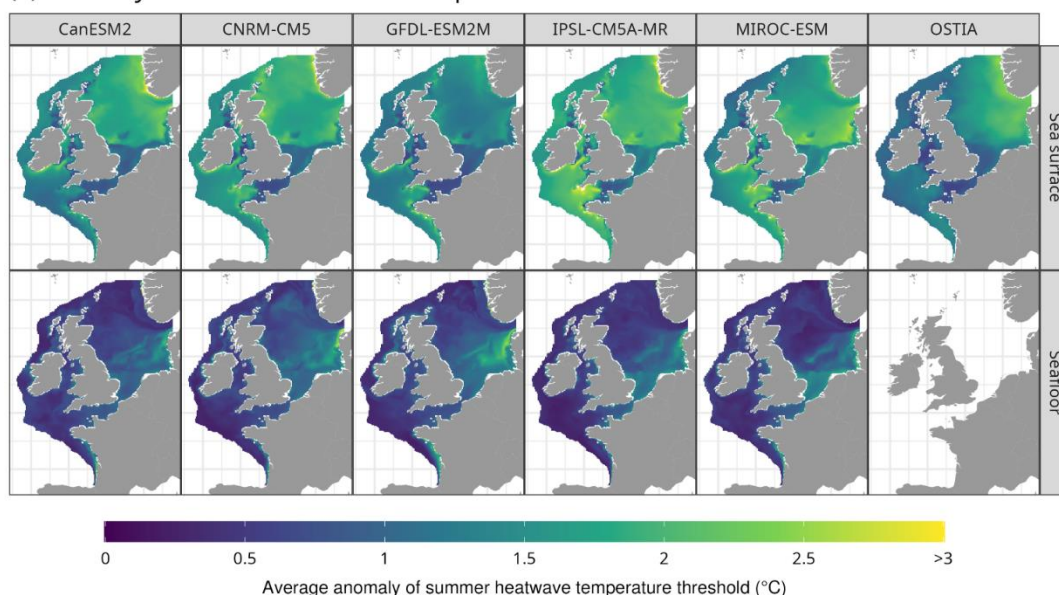
205

210 This difference between heatwaves at the surface and seafloor runs counter to the fact that warming is projected to be higher at the surface than the seafloor. Instead, it should be viewed as consequence of the lower natural inter-annual variability of temperature at the seafloor. This is shown in Figure 6, which shows how much warmer, on average, heatwave temperature thresholds are than the average temperature in the models and observational data. In seasonally stratified waters, the 90th percentile threshold is much lower relative to average conditions at the seafloor than at the surface. Consequently, it takes lower warming levels to translate into more frequent heat waves. Critically, we also find that the ability of the models to

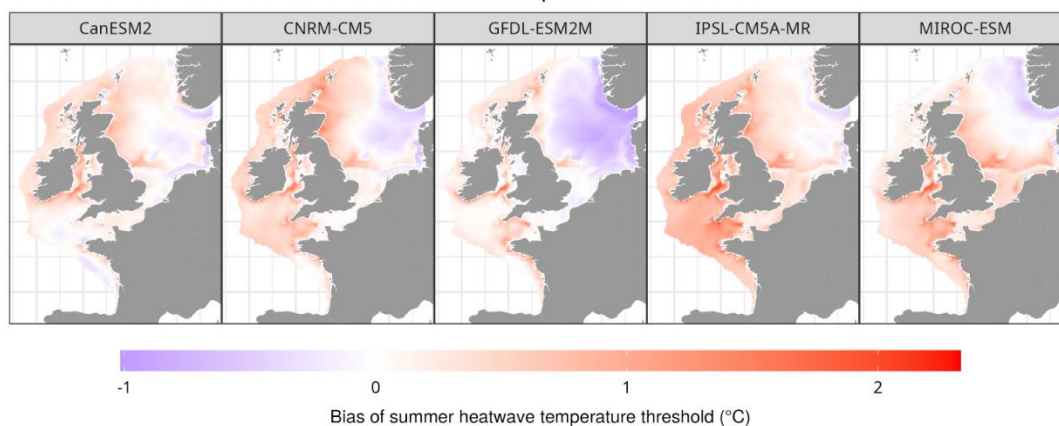


215 represent inter-annual variability in surface temperature varies, as measured by comparing the temperature anomaly of the  
90th percentile threshold with an observational figure (figure 6). Specific geographic features of individual projections may  
therefore be partly due to biases in the representation of inter-annual variability. For example, in the northern North Sea, the  
GFDL-ESM2M has lower inter-annual variability in summer than is observed, which partly translates into higher future  
surface heatwaves than would otherwise be expected. These differences highlight the importance of an ensemble approach to  
220 projecting heatwaves.

(a) Anomaly of summer heatwave temperature thresholds



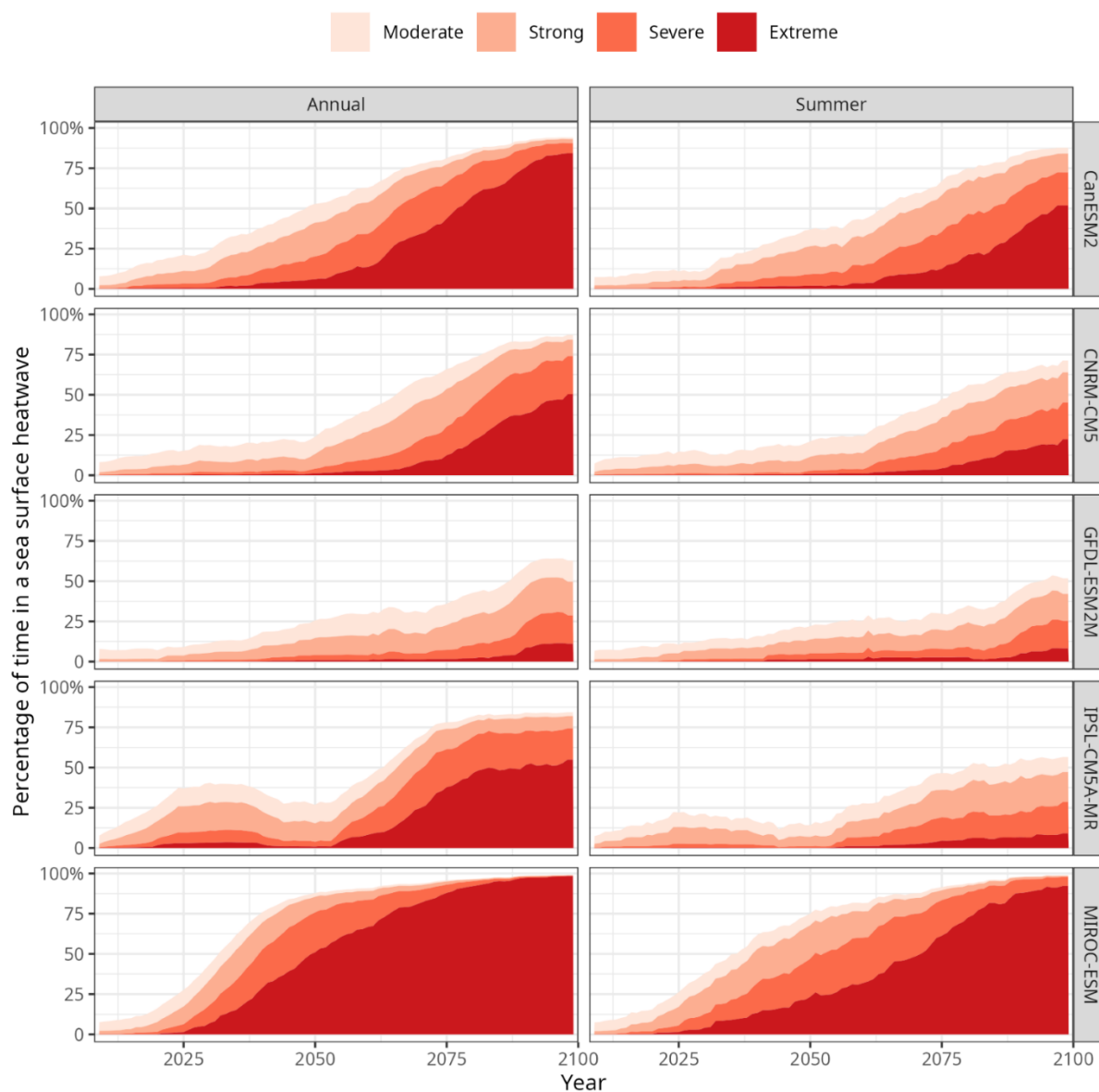
(b) Bias of summer sea surface heatwave temperature threshold



**Figure 6: Average anomaly of climatological heatwave temperature threshold during summer, as derived from five dynamically downscaled climate models. The threshold is defined as the 90th percentile of climatological temperature on each day in the baseline period of 1990-2009 using an 11-day window centered on each day. The anomaly is**



- 225 **defined as the difference between the threshold and the average temperature on each day. Surface layer represents the sea surface cell in model output, while bottom layer represents the model cell closest to the seafloor. Column labels name the downscaled global climate model used, with OSTIA representing the thresholds derived from satellite sea surface temperature. Bias represents the difference between model and satellite threshold, i.e., a negative bias implies the model's temperature variability during summer is too low.**
- 230 These differences in inter-annual variability have further consequences. Summer temperatures vary more than in the rest of the year (Fig S2). As a consequence, we find that heatwaves increase in frequency more slowly during summer than in the rest of the year (Figures 3 and 4. Table 1). This is most pronounced at the surface, where across the ensemble, sea surface heatwaves occur on average 40.2% of the time during summer and 52.8% of the time annually in 2040-59 and 73.1% of the time during summer and 85.6% of the time annually in 2080-98. The impact of these differences is even more pronounced
- 235 when the severity of heatwaves is considered (Figure 7), where extreme sea surface heatwaves are much less likely in summer than they are on average. Notably, in four of the model projections, extreme surface heatwaves are less than 50% as frequent in summer than in the rest of the year at the end of the century. This indicates that marine heatwaves need to be categorized at a seasonal level to accurately assess their impact.



240

245

**Figure 7: Projected average frequency of marine heat waves by category at the sea surface, averaged across the northwest European Shelf, using five dynamically downscaled climate models under RCP 8.5. Heat waves are stacked by colour, i.e., the total frequency of heat waves is shown by the top line. The left column shows the average frequency of heatwaves each year, and the right column shows the frequency during summer. A 20-year rolling average is shown, with the output aligned to the final year in each 20-year period.**



#### 4 Discussion

Up until now, most research projecting future marine heatwaves in the world's oceans has focused on the sea surface and changes are typically not disaggregated seasonally. We have shown that this may lead to an incomplete picture on shelf seas.

250 On the northwest European shelf, future seafloor heatwaves are expected to grow at a significantly faster rate than at the sea surface, while summer heatwaves are expected to be less frequent than in the rest of the year. This has nuanced implications for marine ecosystems.

Our study highlights the complex relationship between rising temperatures and marine heatwaves, and how focusing on temperature change alone may mask many nuances. We find that across the northwest European Shelf, seafloor temperatures  
255 are projected to rise at a lower rate than at the surface due to increasing thermal stratification (Holt et al., 2022). However, a lower level of warming on the seafloor may not translate to lower levels of future marine heatwaves. In fact, due to the lower variability of seafloor temperatures, we find that lower levels of warming are required to shift them to heatwave conditions compared to surface waters, and therefore that it is more likely that seafloor habitats will experience more frequent heatwave events than the surface ocean in the region. This indicates that assessing future heatwaves purely based on surface waters is  
260 likely to significantly underestimate future heatwave impacts on many benthic communities in shelf waters. This finding has important implications for seafloor communities and processes in the region, especially for species where population dynamics and lower genetic plasticity resulting from millions of years of more stable thermal conditions may limit the ability of communities to adapt (Somero et al. 2010, Hiddink et al. 2014).

A critical finding in this study is that summer heatwaves in northwest Europe are projected to be relatively less frequent and  
265 potentially significantly less severe than during the rest of the year. This is not because summer warming is expected to be less severe per se, but because of how heatwave calculations are affected by present-day temperature variability. This indicates that assessing the impacts of marine heatwaves purely based on annual changes may overestimate their impacts, on the assumption that marine heatwaves primarily have a significant negative impact in summer. To date, assessments of the ecological impacts of marine heatwaves have largely focused on warm summer months (Smith et al. 2022) when  
270 temperatures reach their highest, there is still much sparser data about the potential ecological heatwaves in cooler months (e.g., Shanks et al. 2019). It is therefore critical that research establish whether heatwave impacts largely reside in summer months when temperatures are highest.

Increasing attention has been placed on defining marine heatwaves in ways meaningful to ecosystem management, with some arguing that a shifting baseline should supplement the fixed baseline approach (Amaya et al. 2023), the latter being  
275 carried out here. A shifting baseline approach is likely to be of significant value for pelagic ecosystems, which as suggested by marine ecosystem models, can reorganize very rapidly to climate change. Pelagic ecosystems are likely to be adapted to a climate resembling a shifting baseline. However, it is unclear if the shifting baseline approach is sensible for all ecological systems, and particularly benthic systems. Seabed benthic species may have poor ability to track more suitable habitat in response to extreme weather events, due to organisms having low dispersal potential or being adapted to historically stabler,  
280 deeper water environments (Somero 2010). This may partially explain why seabed invertebrates in the North Sea have been found to have poor ability to shift range distributions in response to seabed temperature changes (Hiddink et al. 2014).





Identifying regions that are more resilient to climate change is an important task in providing scientific projections of relevance to marine management (Queiros et al. 2021). Notably, our multi-model ensemble shows that some seafloor regions, such as northwest Ireland and the area west of the Norwegian Trench in the North Sea is less impacted by future marine heatwaves than most of the northwest European shelf. This finding indicates that some regions could be reasonably resilient to future heatwaves.

Our study highlights the importance of looking at heatwave impacts on waters deeper than the sea surface. The general conclusion of the study that seafloor heatwaves are likely to be greater in future than at the surface is likely to be transfer to most shelf seas due to the common existence of seasonal stratification. However, future research should consider the magnitude of the difference in other regions. Furthermore, our conclusion sits within the context of a growing body of research indicating that the subsurface heatwaves have grown more rapidly than the surface (Sun et al. 2023, He et al. 2023). This study provides the most comprehensive assessment to date of future heatwaves on the northwest European shelf. However, a number of aspects require future attention. For ecosystems and species that can reorganize quickly in response to climate change, projections using a shifting baseline (Giménez et al. 2024) may be more informative. Secondly, many species have critical temperatures, which can either trigger key life cycle events (Wilson et al. 2024) or represent thermal limits, above which there is rapid mortality or tissue damage (Savva et al. 2018). Projecting future heatwaves, based on known thermal thresholds for key species is therefore the next step in understanding how marine ecosystems will change in future.

*Data Availability.* The projections for sea surface and seafloor temperatures are openly available: <https://gws-access.jasmin.ac.uk/public/recycle/>.

*Author contributions.* RJW, AMQ and YA conceived the research. RJW wrote the paper, with input and revisions from all authors.

*Competing interests.* The authors decline that they have no competing interests.

*Acknowledgements.* This project has received funding from the European Union's Horizon 2020 research and innovation programme under grant agreement no. 820989 (project COMFORT, Our common future ocean in the Earth system – quantifying coupled cycles of carbon, oxygen, and nutrients for determining and achieving safe operating spaces with respect to tipping points) and from the NERC projects RECICLE (Resolving Climate Impacts on shelf and Coastal sea Ecosystems; NE/M004120/1 and NE/M003477/2), FOCUS (Future states Of the global Coastal ocean: Understanding for Solutions; NE/X006271/1) CLASS (Climate Linked Atlantic Sector Science; NE/R015953/1), and MSPACE (Marine Spatial Planning Addressing Climate Effects, NE/V016725/1).



## References

- 315 Amaya, D. J., Miller, A. J., Xie, S. P., and Kosaka, Y.: Physical drivers of the summer 2019 North Pacific marine heatwave. *Nat. Commun.*, 11, 1, <https://doi.org/10.1038/s41467-020-15820-w>, 2020.
- Amaya, D. J., Jacox, M. G., Alexander, M. A., Scott, J. D., Deser, C., Capotondi, A., and Phillips, A. S.: Bottom marine heatwaves along the continental shelves of North America, *Nat. Commun.*, 14, 1, <https://doi.org/10.1038/s41467-023-36567-0>, 2023.
- 320 Amaya, D.J., Jacox, M.G., Fewings, M.R., Saba, V.S., Stuecker, M.F., Rykaczewski, R.R., Ross, A.C., Stock, C.A., Capotondi, A., Petrik, C.M., and Bograd, S.J.: Marine heatwaves need clear definitions so coastal communities can adapt, *Nature*, 616(7955), 29-32, 2023.
- Arafeh-Dalmau, N., Montaña-Moctezuma, G., Martinez, J. A., Beas-Luna, R., Schoeman, D. S., and Torres-Moye, G.: Extreme Marine Heatwaves alter kelp forest community near its equatorward distribution limit, *Front. Mar. Sci.*, 6  
325 <https://doi.org/10.3389/fmars.2019.00499>, 2019.
- Arias-Ortiz, A., Serrano, O., Masqué, P., Lavery, P. S., Mueller, U., Kendrick, G. A., Rozaimi, M., Esteban, A., Fourqurean, J. W., Marbà, N., Mateo, M. A., Murray, K., Rule, M. J., and Duarte, C. M.: A marine heatwave drives massive losses from the world's largest seagrass carbon stocks, *Nat. Clim. Change*, 8(4), 338–344, <https://doi.org/10.1038/s41558-018-0096-y>, 2018.
- 330 Atkinson, J., King, N. G., Wilmes, SB., and Moore, P. J.: Summer and Winter Marine Heatwaves Favor an Invasive Over Native Seaweeds, *J. Phycol.*, 56, 1591–1600, 2020.
- Azarian, C., Bopp, L., Pietri, A., Sallée, J. B., and d'Ovidio, F.: Current and projected patterns of warming and marine heatwaves in the Southern Indian Ocean, *Prog. Oceanogr.*, 215, <https://doi.org/10.1016/j.pocean.2023.103036>, 2023.
- 335 Bass, A. V., Smith, K. E., and Smale, D. A.: Marine heatwaves and decreased light availability interact to erode the ecophysiological performance of habitat-forming kelp species, *J. Phycol.*, 59(3), 481-495, 2023.
- Boucher, O., Servonnat, J., Albright, A. L., Aumont, O., Balkanski, Y., et al.: Presentation and Evaluation of the IPSL-CM6A-LR Climate Model, *J. Adv. Model. Earth Syst.*, 12(7), 1–52, <https://doi.org/10.1029/2019MS002010>, 2020.
- Brodeur, R. D., Auth, T. D., and Phillips, A. J.: Major shifts in pelagic micronekton and macrozooplankton community  
340 structure in an upwelling ecosystem related to an unprecedented marine heatwave, *Front. Mar. Sci.*, 6(APR), <https://doi.org/10.3389/fmars.2019.00212>, 2019.
- Butenschön, M., Clark, J., Aldridge, J. N., Allen, J. I., Artioli, Y., Blackford, J., et al.: ERSEM 15.06: a generic model for marine biogeochemistry and the ecosystem dynamics of the lower trophic levels, *Geosci. Model Dev.*, 9(4), 1293-1339, 2016.
- 345 Ceccherelli, G., Campo, D. and Milazzo, M.: Short-term response of the slow growing seagrass *Posidonia oceanica* to simulated anchor impact, *Mar. Env. Res.*, 63(4), pp.341-349, 2007.
- Chandrapavan, A., Caputi, N., and Kangas, M. I.: The decline and recovery of a crab population from an extreme marine heatwave and a changing climate, *Front. Mar. Sci.*, 6(AUG), <https://doi.org/10.3389/fmars.2019.00510>, 2019.



- 350 Cheng, Y., Zhang, M., Song, Z., Wang, G., Zhao, C., Shu, Q., Zhang, Y., and Qiao, F.: A quantitative analysis of marine heatwaves in response to rising sea surface temperature, *Sci. Total Environ.*, 881, <https://doi.org/10.1016/j.scitotenv.2023.163396>, 2023.
- Culhane, F.E., Frid, C.L., Gelabert, E.R., Piet, G., White, L. and Robinson, L.A.: Assessing the capacity of European regional seas to supply ecosystem services using marine status assessments, *Ocean Coast. Manag.*, 190, p.105-154, 2020.
- 355 Darmaraki, S., Somot, S., Sevault, F., and Nabat, P.: Past Variability of Mediterranean Sea Marine Heatwaves. *Geophys. Res. Lett.*, 46(16), 9813–9823, <https://doi.org/10.1029/2019GL082933>, 2019.
- Drenkard, E.J., Stock, C., Ross, A.C., Dixon, K.W., Adcroft, A., Alexander, M., Balaji, V., Bograd, S.J., Butenschön, M., Cheng, W. and Curchitser, E.: Next-generation regional ocean projections for living marine resource management in a changing climate, *ICES J. Mar. Sci.*, 78(6), pp.1969-1987, 2021.
- 360 Dunne, John P., L. W. Horowitz, A. J. Adcroft, P. Ginoux, I. M. Held, J. G. John, John P. Krasting et al.: The GFDL Earth System Model version 4.1 (GFDL-ESM 4.1): Overall coupled model description and simulation characteristics, *J. Adv. Model. Earth Syst.* 12, 11, e2019MS002015, 2020.
- Dunne, J. P., John, J. G., Adcroft, A. J., Griffies, S. M., Hallberg, R. W., Shevliakova, E., Stouffer, R. J., Cooke, W., Dunne, K. A., Harrison, M. J., Krasting, J. P., Malyshev, S. L., Milly, P. C. D., Phillipps, P. J., Sentman, L. T., Samuels, B.
- 365 L., Spelman, M. J., Winton, M., Wittenberg, A. T., and Zadeh, N.: GFDL’s ESM2 global coupled climate-carbon earth system models. Part I: Physical formulation and baseline simulation characteristics. *J. Clim.*, 25(19), 6646–6665, <https://doi.org/10.1175/JCLI-D-11-00560.1>, 2012.
- du Pontavice, H., Gascuel, D., Kay, S., and Cheung, W. W. L.: Climate-induced changes in ocean productivity and food-web functioning are projected to markedly affect European fisheries catch, *Mar. Ecol. Prog. Ser.*, 713, 21–37, <https://doi.org/10.3354/meps14328>, 2023.
- 370 Dufresne, J. L., Foujols, M. A., Denvil, S., Caubel, A., Marti, O., et al.: Climate change projections using the IPSL-CM5 Earth System Model: From CMIP3 to CMIP5, *Clim. Dyn.*, 40(9–10), 2123–2165, <https://doi.org/10.1007/s00382-012-1636-1>, 2013.
- Edwards, K. P., Barciela, R., and Butenschön, M.: Validation of the NEMO-ERSEM operational ecosystem model for the North West European continental shelf, *Ocean Sci.*, 8(6), 983–1000, <https://doi.org/10.5194/os-8-983-2012>, 2012.
- 375 Filbee-Dexter, K., Wernberg, T., Grace, S. P., Thormar, J., Fredriksen, S., et al.: Marine heatwaves and the collapse of marginal North Atlantic kelp forests, *Sci. Rep.*, 10(1), <https://doi.org/10.1038/s41598-020-70273-x>, 2020.
- Fragkopoulou, E., sen Gupta, A., Costello, M. J., Wernberg, T., Araújo, M. B., et al.: Marine biodiversity exposed to prolonged and intense subsurface heatwaves, *Nat. Clim. Change*, 13(10), 1114–1121, <https://doi.org/10.1038/s41558-023-01790-6>, 2023.
- 380 Galli, G., Wakelin, S., Harle, J., Holt, J., and Artioli, Y.: Multi-model comparison of trends and controls of near-bed oxygen concentration on the northwest European continental shelf under climate change, *Biogeosciences*, 21, 2143–2158, <https://doi.org/10.5194/bg-21-2143-2024>, 2024.



- 385 Garrabou, J., Gómez-Gras, D., Medrano, A., Cerrano, C., Ponti, M., et al.: Marine heatwaves drive recurrent mass mortalities in the Mediterranean Sea, *Glob. Change Biol.*, 28(19), 5708–5725, <https://doi.org/10.1111/gcb.16301>, 2022.
- Good, S., Fiedler, E., Mao, C., Martin, M. J., et al.: The current configuration of the OSTIA system for operational production of foundation sea surface temperature and ice concentration analyses. *Remote Sens.*, 12(4), <https://doi.org/10.3390/rs12040720st>, 2020.
- 390 Gräwe, U., Holtermann, P., Klingbeil, K., and Burchard, H.: Advantages of vertically adaptive coordinates in numerical models of stratified shelf seas, *Ocean Model.*, 92, 56–68, <https://doi.org/10.1016/j.ocemod.2015.05.008>, 2015.
- Giménez, L., Boersma, M., and Wiltshire, K. H.: A multiple baseline approach for marine heatwaves, *Limnol. Oceanogr.*, 69(3), 638–651, 2024.
- Gurgel, C. F. D., Camacho, O., Minne, A. J. P., Wernberg, T., and Coleman, M. A.: Marine Heatwave Drives Cryptic Loss  
395 of Genetic Diversity in Underwater Forests. *Curr. Biol.*, 30(7), 1199–1206.e2, <https://doi.org/10.1016/j.cub.2020.01.051>, 2020.
- Halpern, B.S., Walbridge, S., Selkoe, K.A., Kappel, C.V., Micheli, F., d'Agrosa, C., Bruno, J.F., Casey, K.S., Ebert, C., Fox, H.E. and Fujita, R.: A global map of human impact on marine ecosystems, *Science*, 319, 5865, 948–952, 2008.
- He, Q., Zhan, W., Feng, M. et al.: Common occurrences of subsurface heatwaves and cold spells in ocean eddies, *Nature*  
400 634, 1111–1117, <https://doi.org/10.1038/s41586-024-08051-2>, 2024.
- Hermans, T. H. J., Tinker, J., Palmer, M. D., Katsman, C. A., Vermeersen, B. L. A., and Slangen, A. B. A.: Improving sea-level projections on the Northwestern European shelf using dynamical downscaling, *Clim. Dyn.*, 54(3–4), 1987–2011, <https://doi.org/10.1007/s00382-019-05104-5>, 2020.
- Hobday, A. J., Alexander, L. v., Perkins, S. E., Smale, D. A., et al.: A hierarchical approach to defining marine heatwaves.  
405 *Prog. Oceanogr.*, 141, 227–238, <https://doi.org/10.1016/j.pocean.2015.12.014m>, 2016.
- Hobday, A. J., Spillman, C. M., Eveson, J. P., Hartog, J. R., Zhang, X., and Brodie, S.: A framework for combining seasonal forecasts and climate projections to aid risk management for fisheries and aquaculture, *Front. Mar. Sci.*, 5(APR), <https://doi.org/10.3389/fmars.2018.00137>, 2018.
- Holt, J. T., and James, I. D.: An s coordinate density evolving model of the northwest European continental shelf 1, Model  
410 description and density structure, *J. Geophys. Res. Oceans*, 106(C7), 14015–14034, <https://doi.org/10.1029/2000jc000304>, 2001.
- Holt, J., Schrum, C., Cannaby, H., Daewel, U., Allen, I., Artioli, Y., Bopp, L., et al.: Potential impacts of climate change on the primary production of regional seas: A comparative analysis of five European seas. *Prog. Oceanogr.*, 140, 91–115, <https://doi.org/10.1016/j.pocean.2015.11.004>, 2016.
- 415 Holt, J., Hyder, P., Ashworth, M., Harle, J., Hewitt, H. T. et al.: Prospects for improving the representation of coastal and shelf seas in global ocean models, *Geosci. Model Dev.*, 10, 499–523, <https://doi.org/10.5194/gmd-10-499-2017>, 2017.



- Holt, J., Polton, J., Huthnance, J., Wakelin, S., O’Dea, E., Harle, J., Yool, A., Artioli, Y., Blackford, J., Siddorn, J., and Inall, M.: Climate-Driven Change in the North Atlantic and Arctic Oceans Can Greatly Reduce the Circulation of the North Sea, *Geophys. Res. Lett.*, 45(21), 11,827–11,836, <https://doi.org/10.1029/2018GL078878>, 2018.
- Holt, J., Harle, J., Wakelin, S., Jardine, J., and Hopkins, J.: Why Is Seasonal Density Stratification in Shelf Seas Expected to Increase Under Future Climate Change? *Geophys. Res. Lett.*, 49(23), <https://doi.org/10.1029/2022GL100448>, 2022.
- Jones, C. D., Hughes, J. K., Bellouin, N., Hardiman, S. C., Jones, G. S., et al.: The HadGEM2-ES implementation of CMIP5 centennial simulations. *Geosci. Model Dev.*, 4(3), 543–570, <https://doi.org/10.5194/gmd-4-543-2011>, 2011.
- 425 Jones, T., Parrish, J. K., Peterson, W. T., Bjorkstedt, E. P., Bond, N. A., et al.: Massive Mortality of a Planktivorous Seabird in Response to a Marine Heatwave, *Geophys. Res. Lett.*, 45(7), 3193–3202, <https://doi.org/10.1002/2017GL076164>, 2018.
- Kay, S., Avillanos, A.L., Cheung, V.V., Dao, H.N., Gonzales, B.J., Palla, H.P., Praptiwi, R.A., Queiros, A.M., Sailley, S.F., Sumeldan, J.D. and Syazwan, W.M.: Projected effects of climate change on marine ecosystems in Southeast Asian seas, *Front. Mar. Sci.*, 10, p.495, 2023.
- 430 Kajtar, J.B., Hernaman, V., Holbrook, N.J. and Petrelli, P.: Tropical western and central Pacific marine heatwave data calculated from gridded sea surface temperature observations and CMIP6. *Data Br.*, 40, p.107694, 2022.
- Laufkötter, C., Zscheischler, J. and Frölicher, T.L.: High-impact marine heatwaves attributable to human-induced global warming, *Science*, 369(6511), pp.1621–1625., 2020.
- 435 Leggat, W. P., Camp, E. F., Suggett, D. J., Heron, S. F., Fordyce, A. J., et al.: Rapid Coral Decay Is Associated with Marine Heatwave Mortality Events on Reefs, *Curr. Biol.*, 29(16), 2723–2730.e4, <https://doi.org/10.1016/j.cub.2019.06.077>, 2019.
- le Nohaïc, M., Ross, C. L., Cornwall, C. E., Comeau, S., Lowe, R., McCulloch, M. T., and Schoepf, V.: Marine heatwave causes unprecedented regional mass bleaching of thermally resistant corals in northwestern Australia. *Scie. Rep.*, 440 7(1), <https://doi.org/10.1038/s41598-017-14794-y>, 2017.
- Li, X., and Donner, S.: Assessing Future Projections of Warm-Season Marine Heatwave Characteristics With Three CMIP6 Models, *J. Geophys. Res. Oceans*, 128(5), <https://doi.org/10.1029/2022JC019253>, 2023.
- Madec, G., Romain, B.-B., Jérôme, C., Emanuela, C., Andrew, C., Christian, E., Doroteaciro, I., Dan, L., Claire, L., Tomas, L., Nicolas, M., Sébastien, M., Silvia, M., Clément, R., Dave, S., Martin, V., Simon, M., George, N., Mike, B., and 445 Guillaume, S.: NEMO ocean engine, <https://doi.org/10.5281/zenodo.3878122>, 2019.
- Marin, M., Feng, M., Phillips, H. E., and Bindoff, N. L.: A Global, Multiproduct Analysis of Coastal Marine Heatwaves: Distribution, Characteristics, and Long-Term Trends, *J. Geophys. Res. Oceans*, 126(2), <https://doi.org/10.1029/2020JC016708>, 2021.
- 450 Nielsen, J. M., Rogers, L. A., Brodeur, R. D., Thompson, A. R., Auth, T. D., Deary, A. L., Duffy-Anderson, J. T., Galbraith, M., Koslow, J. A., and Perry, R. I.: Responses of ichthyoplankton assemblages to the recent marine heatwave and



- previous climate fluctuations in several Northeast Pacific marine ecosystems, *Glob. Change Biol.*, 27(3), 506–520, <https://doi.org/10.1111/gcb.15415>, 2021.
- 455 O'Dea, E., Furner, R., Wakelin, S., Siddorn, J., While, J., Sykes, P., King, R., Holt, J., and Hewitt, H.: The CO5 configuration of the 7 km Atlantic Margin Model: large-scale biases and sensitivity to forcing, physics options and vertical resolution, *Geosci. Model Dev.*, 10, 2947–2969, <https://doi.org/10.5194/gmd-10-2947-2017>, 2017.
- Oliver, E. C. J., Donat, M. G., Burrows, M. T., Moore, P. J., Smale, D. A., Alexander, L. v., Benthuisen, J. A., Feng, M., sen Gupta, A., Hobday, A. J., Holbrook, N. J., Perkins-Kirkpatrick, S. E., Scannell, H. A., Straub, S. C., and Wernberg, T.: Longer and more frequent marine heatwaves over the past century. *Nat. Comm.*, 9(1),  
460 <https://doi.org/10.1038/s41467-018-03732-9>, 2018a.
- Oliver, E. C. J., Lago, V., Hobday, A. J., Holbrook, N. J., Ling, S. D., and Mundy, C. N.: Marine heatwaves off eastern Tasmania: Trends, interannual variability, and predictability. *Prog. Oceanogr.*, 161, 116–130, <https://doi.org/10.1016/j.pocean.2018.02.007>, 2018b.
- Oliver, E. C. J., Benthuisen, J. A., Darmaraki, S., Donat, M. G., Hobday, A. J., Holbrook, N. J., Schlegel, R. W., and Gupta, A. sen.: Marine Heatwaves. *Ann. Rev. Mar. Sci.*, 13, 313–342, <https://doi.org/10.1146/annurev-marine-032720>,  
465 2021.
- Oliver, E. C. J., Burrows, M. T., Donat, M. G., sen Gupta, A., Alexander, L. v., Perkins-Kirkpatrick, S. E., Benthuisen, J. A., Hobday, A. J., Holbrook, N. J., Moore, P. J., Thomsen, M. S., Wernberg, T., and Smale, D. A.: Projected Marine Heatwaves in the 21st Century and the Potential for Ecological Impact, *Front. Mar. Sci.*, 6, 734,  
470 <https://doi.org/10.3389/fmars.2019.00734>, 2019.
- Palmer, S. C. J., Barillé, L., Kay, S., Ciavatta, S., Buck, B., and Gernez, P.: Pacific oyster (*Crassostrea gigas*) growth modelling and indicators for offshore aquaculture in Europe under climate change uncertainty, *Aquaculture*, 532, <https://doi.org/10.1016/j.aquaculture.2020.736116>, 2021.
- Pearce, A.: The “marine heat wave” off Western Australia during the summer of 2010/11. Western Australian Fisheries and  
475 Marine Research Laboratories, 2011.
- Pershing, A. J., Mills, K. E., Dayton, A. M., Franklin, B. S., and Kennedy, B. T.: Evidence for adaptation from the 2016 marine heatwave in the Northwest Atlantic Ocean, *Oceanogr.* 31(2), 152–161, <https://doi.org/10.5670/oceanog.2018.213>, 2018.
- Piatt, J. F., Parrish, J. K., Renner, H. M., Schoen, S. K., Jones, T. T., et al.: Extreme mortality and reproductive failure of  
480 common murrets resulting from the northeast Pacific marine heatwave of 2014–2016, *PLoS ONE*, 15, 1, <https://doi.org/10.1371/journal.pone.0226087>, 2020.
- Plecha, S. M., and Soares, P. M. M.: Global marine heatwave events using the new CMIP6 multi-model ensemble: From shortcomings in present climate to future projections, *Environ. Res. Lett.*, 15(12), <https://doi.org/10.1088/1748-9326/abc847>, 2019.
- 485 Qiu, Z., Qiao, F., Jang, C. J., Zhang, L., and Song, Z.: Evaluation and projection of global marine heatwaves based on CMIP6 models, *Deep-Sea Res. II: Top. Stud. Oceanogr.*, 194, <https://doi.org/10.1016/j.dsr2.2021.104998>, 2021.



- Queirós, A. M., Talbot, E., Beaumont, N. J., Somerfield, P. J., Kay, S., et al.: Bright spots as climate-smart marine spatial planning tools for conservation and blue growth, *Glob. Change Biol.*, 27(21), 5514–5531, <https://doi.org/10.1111/gcb.15827>, 2021.
- 490 Queirós, A.M., Tait, K., Clark, J.R., Bedington, M., Pascoe, C., et al.: Identifying and protecting macroalgae detritus sinks toward climate change mitigation, *Ecol. App.*, 33(3), p.e2798, 2023.
- Roberts, S. D., van Ruth, P. D., Wilkinson, C., Bastianello, S. S., and Bansemer, M. S.: Marine Heatwave, Harmful Algae Blooms and an Extensive Fish Kill Event During 2013 in South Australia, *Front. Mar. Sci.*, 6, <https://doi.org/10.3389/fmars.2019.00610>, 2019.
- 495 Rosselló, P., Pascual, A., and Combes, V.: Assessing marine heat waves in the Mediterranean Sea: a comparison of fixed and moving baseline methods, *Front. Mar. Sci.*, 10, <https://doi.org/10.3389/fmars.2023.1168368>, 2023.
- Savva, I., Bennett, S., Roca, G., Jordà, G., and Marbà, N.: Thermal tolerance of Mediterranean marine macrophytes: Vulnerability to global warming, *Ecol. Evol.*, 8(23), 12032–12043, 2018.
- Scannell, H. A., Pershing, A. J., Alexander, M. A., Thomas, A. C., and Mills, K. E.: Frequency of marine heatwaves in the North Atlantic and North Pacific since 1950, *Geophys. Res. Lett.*, 43(5), 2069–2076, <https://doi.org/10.1002/2015GL067308m>, 2016.
- 500 Scafetta, N.: Advanced Testing of Low, Medium, and High ECS CMIP6 GCM Simulations Versus ERA5-T2m, *Geophys. Res. Lett.*, 49(6), 1–13, <https://doi.org/10.1029/2022GL097716>, 2022.
- sen Gupta, A., Thomsen, M., Benthuisen, J. A., Hobday, A. J., Oliver, E., et al. Drivers and impacts of the most extreme marine heatwaves events, *Sci. Rep.*, 10(1), <https://doi.org/10.1038/s41598-020-75445-3>, 2020.
- 505 Shanks AL, Rasmuson LK, Valley JR, Jarvis MA, Salant C, et al.: Marine heat waves, climate change, and failed spawning by coastal invertebrates, *Limnol. Oceanogr.*, 65(3):627–36, 2020.
- Smale, D. A., Wernberg, T., and Vanderklift, M. A.: Regional-scale variability in the response of benthic macroinvertebrate assemblages to a marine heatwave, *Mar. Ecol. Prog. Ser.*, 568, 17–30, <https://doi.org/10.3354/meps12080>, 2017.
- 510 Smith, K.E., Burrows, M.T., Hobday, A.J., King, N.G., Moore, P.J., Sen Gupta, A., Thomsen, M.S., Wernberg, T. and Smale, D.A.: Biological impacts of marine heatwaves, *Ann. Rev. Mar. Sci.*, 15(1), pp.119–145, 2023.
- Somero, G. N.: The physiology of climate change: how potentials for acclimatization and genetic adaptation will determine ‘winners’ and ‘losers’, *J. Exp. Biol.*, 213.6, 912–920, 2010.
- Song, Q., Yao, Y., and Wang, C.: Response of Future Summer Marine Heatwaves in the South China Sea to Enhanced Western Pacific Subtropical High. *Geophys. Res. Lett.*, 50(14), <https://doi.org/10.1029/2023GL103667>, 2023.
- 515 Strydom, S., Murray, K., Wilson, S., Huntley, B., Rule, M., et al.: Too hot to handle: Unprecedented seagrass death driven by marine heatwave in a World Heritage Area, *Glob. Change Biol.*, 26(6), 3525–3538, <https://doi.org/10.1111/gcb.15065>, 2020.
- Sun, W., Yin, L., Pei, Y., Shen, C., Yang, Y., Ji, J., Yang, J., and Dong, C. Marine heatwaves in the Western North Pacific Region: Historical characteristics and future projections, *Deep-Sea Res. I: Oceanogr. Res. Pap.*, 200, <https://doi.org/10.1016/j.dsr.2023.104161>, 2023.
- 520



- Sun, D., Li, F., Jing, Z. et al.: Frequent marine heatwaves hidden below the surface of the global ocean, *Nat. Geosci.* 16, 1099–1104, <https://doi.org/10.1038/s41561-023-01325-w>, 2023.
- Swart, N.C., Cole, J.N.S., Kharin, V.V., Lazare, M., Scinocca, J. F., et al.: The Canadian Earth System Model version 5 (CanESM5.0.3), *Geosci. Model Dev.*, 12(11), 4823–4873, <https://doi.org/10.5194/gmd-12-4823-2019>, 2019.
- 525 Taylor, K. E., Stouffer, R. J., and Meehl, G. A.: An overview of CMIP5 and the experiment design, *Bull. Am. Meteor. Soc.*, 93(4), 485-498, 2012.
- Thomsen, M. S., Mondardini, L., Alestra, T., Gerrity, S., Tait, L., South, P. M., Lilley, S. A., and Schiel, D. R.: Local Extinction of bull kelp (*Durvillaea* spp.) due to a marine heatwave, *Front. Mar. Sci.*, 6(MAR), <https://doi.org/10.3389/fmars.2019.00084>, 2019.
- 530 Thoralf, F., Montie, S., Thomsen, M. S., Tait, L. W., Pinkerton, M. H., and Schiel, D. R.: Unravelling seasonal trends in coastal marine heatwave metrics across global biogeographical realms, *Sci. Rep.*, 12(1), <https://doi.org/10.1038/s41598-022-11908-z>, 2022.
- Townhill, B. L., Couce, E., Tinker, J., Kay, S., and Pinnegar, J. K.: Climate change projections of commercial fish distribution and suitable habitat around north western Europe. *Fish Fish.*, 24(5), 848–862, <https://doi.org/10.1111/faf.12773>, 2023.
- 535 van Vuuren, D. P., Edmonds, J., Kainuma, M., Riahi, K., Thomson, A., et al.: The representative concentration pathways: An overview, *Climatic Change*, 109(1), 5–31, <https://doi.org/10.1007/s10584-011-0148-z>, 2011.
- Voltaire, A., Sanchez-Gomez, E., Salas y Mélia, D., Decharme, B., et al.: The CNRM-CM5. 1 global climate model: description and basic evaluation, *Clim. Dyn.*, 40, 2091-2121, 2013.
- 540 Wakelin, S. L., Artioli, Y., Holt, J. T., Butenschön, M., and Blackford, J.: Controls on near-bed oxygen concentration on the Northwest European Continental Shelf under a potential future climate scenario, *Prog. Oceanogr.*, 187, <https://doi.org/10.1016/j.pocean.2020.102400>, 2020.
- Watanabe, S., Hajima, T., Sudo, K., Nagashima, T., Takemura, T., Okajima, H., Nozawa, T., Kawase, H., Abe, M., Yokohata, T., Ise, T., Sato, H., Kato, E., Takata, K., Emori, S., and Kawamiya, M.: MIROC-ESM 2010: model description and basic results of CMIP5-20c3m experiments, *Geosci. Model Dev.*, 4, 845–872, <https://doi.org/10.5194/gmd-4-845-2011>, 2011.
- 545 Wild, S., Krützen, M., Rankin, R. W., Hoppitt, W. J. E., Gerber, L., and Allen, S. J.: Long-term decline in survival and reproduction of dolphins following a marine heatwave, *Curr. Biol.*, 29, R239–R240, <https://doi.org/10.1016/j>, 2019.
- 550 Wilson, R. J., Kay, S., and Ciavatta, S.: Partitioning climate uncertainty in ecological projections: Pacific oysters in a hotter Europe, *Ecol. Inf.*, 80, <https://doi.org/10.1016/j.ecoinf.2024.102537m>, 2024.
- Xue, J., Shan, H., Liang, J. H., and Dong, C.: Assessment and Projections of Marine Heatwaves in the Northwest Pacific Based on CMIP6 Models, *Remote Sens.*, 15(12), <https://doi.org/10.3390/rs15122957>, 2023.
- Yao, Y., Wang, C., and Wang, C.: Record-breaking 2020 summer marine heatwaves in the western North Pacific, *Deep-Sea Res. II: Top. Stud. Oceanogr.* 209, <https://doi.org/10.1016/j.dsr2.2023.105288>, 2023.
- 555





- Yool, A., Popova, E. E., and Coward, A. C.: Future change in ocean productivity: Is the Arctic the new Atlantic?, *J. Geophys. Res. Oceans*, 120(12), 7771–7790, <https://doi.org/10.1002/2015JC011167>, 2015.
- Zhang, Y., Du, Y., Feng, M., and Hobday, A. J.: Vertical structures of marine heatwaves. *Nat. Comm.*, 14(1), <https://doi.org/10.1038/s41467-023-42219-0>, 2023.