

Automated detection of regions with persistently enhanced methane concentrations using Sentinel-5 Precursor satellite data

Steffen Vanselow¹, Oliver Schneising¹, Michael Buchwitz¹, Maximilian Reuter¹, Heinrich Bovensmann¹, Hartmut Boesch¹, and John P. Burrows¹

¹Institute of Environmental Physics (IUP), University of Bremen FB1, Bremen, Germany

Correspondence: Steffen Vanselow (vanselow@iup.physik.uni-bremen.de)

Abstract. Methane (CH_4) is an important anthropogenic greenhouse gas and its rising concentration in the atmosphere contributes significantly to global warming. A comparatively small number of highly emitting persistent methane sources is responsible for a large share of global methane emissions. The identification and quantification of these sources, which often show large uncertainties regarding their emissions or locations, is important to support mitigating climate change. Daily global column-averaged dry air mole fractions of atmospheric methane (XCH_4) are retrieved from radiance measurements of the TROPOspheric Monitoring Instrument (TROPOMI) on board on the Sentinel-5 Precursor (S5P) satellite with a moderately high spatial resolution, enabling the detection and quantification of localized methane sources. We developed a fully automated algorithm to detect regions with persistent methane enhancement and to quantify their emissions using a monthly TROPOMI XCH_4 dataset from the years 2018-2021. We detect 217 potential persistent source regions (PPSRs), which account for approximately 20% of the total bottom-up emissions. By comparing the PPSRs in a spatial analysis with anthropogenic and natural emission databases we conclude that 7.8% of the detected source regions are dominated by coal, 7.8% by oil and gas, 30.4% by other anthropogenic sources like landfills or agriculture, 7.3% by wetlands and 46.5% by unknown sources. Many of the identified PPSRs are well-known source regions, like the Permian Basin in the USA, which is a large production area for oil and gas, the Bowen Basin coal mining area in Australia, or the Pantanal wetlands in Brazil. We perform a detailed analysis of the PPSRs with the 10 highest emission estimates, including the Sudd Wetland in South Sudan, an oil and gas dominated area on the west coast in Turkmenistan, and one of the largest coal production areas in the world, the Kuznetsk Basin in Russia. The calculated emission estimates of these source regions are in agreement within the uncertainties with results from other studies, but are in most of the cases higher than the emissions reported by emission databases. We demonstrate that our algorithm is able to automatically detect and quantify persistent localized methane sources of different source type and shape, including larger-scale enhancements such as wetlands or extensive oil and gas production basins.

1 Introduction

Methane (CH₄) is the second most important anthropogenic greenhouse gas after carbon dioxide (CO₂) and its increasing concentration in the atmosphere, which has accelerated in recent years, contributes significantly to global warming (Lan et al., 2021). Due to its shorter lifetime and higher global warming potential compared to CO₂, the reduction of methane emissions
25 can contribute to mitigation of global warming (Shoemaker et al., 2013).

Almost half of the global methane emissions originate from anthropogenic sources, which are dominated by fossil fuel exploitation, livestock, rice cultivation and landfills, whereas the natural emissions mainly originate from wetlands (Saunois et al., 2020). To efficiently reduce methane emissions, a comprehensive understanding of the natural and anthropogenic methane sources and sinks is required. However, global methane emissions are characterized by large uncertainties, as can be seen in
30 bottom-up inventories which have uncertainties of 20 – 35% for anthropogenic emissions regarding agriculture, fossil fuel and waste and 50% for wetland emissions (Saunois et al., 2020). These uncertainties are strongly related to emissions from individual sources, which are highly uncertain or even partly unknown, especially on a regional scale (Saunois et al., 2020). Consequently, the explanation of the observed atmospheric methane trends remains challenging. For example, the abundance of atmospheric methane grew until 1998, remained at a constant plateau until 2006, and then started to grow again. The reasons
35 for this unique behavior are still highly debated (Nisbet et al., 2016; Turner et al., 2019). Also, the accelerated increase in recent years is still subject of ongoing research with several studies concluding that the rise was dominated by an increase in wetland emissions (Lan et al., 2021; Peng et al., 2022; Zhao et al., 2020).

In particular, strongly emitting methane sources have a substantial impact on global methane emissions. These include small-scale point sources, so-called super-emitters, such as individual coal mines, natural gas compressor stations or landfills
40 (He et al., 2024; Lauvaux et al., 2022; Maasackers et al., 2022; Schuit et al., 2023; Varon et al., 2019). A comparatively small number of those super-emitters are responsible for a large proportion of methane emissions associated with oil and gas exploitation, coal mining and waste (Frankenberg et al., 2016; Jacob et al., 2016; Lauvaux et al., 2022; Zavala-Araiza et al., 2015). In addition to the super-emitters, larger-scale, but localized source regions also contribute a large share to global methane emissions. These include large oil and gas fields, where smaller sources can emit a huge amount of methane in aggregate, but
45 also regions with high agricultural productivity (rice cultivation, livestock), as well as wetland areas (Buchwitz et al., 2017; Chen et al., 2024; Naus et al., 2023; Pandey et al., 2021; Schneising et al., 2020). The detection and quantification of these small-scale super-emitters and larger-scale source areas is essential to assess the contribution of these sources to the global methane emissions and to identify their inherent potential for reducing the global emissions.

Ground-based and aircraft measurements have been used to quantify localized methane sources, but are limited in time
50 and/or space, making (frequent) observations of remote source regions difficult (Borchardt et al., 2021; Frankenberg et al., 2016; Krautwurst et al., 2021). Satellite measurements, such as from SCIAMACHY (Burrows et al., 1995; Bovensmann et al., 1999) or GOSAT (Kuze et al., 2009, 2016), offer the possibility to globally detect and quantify localized emission sources through temporally frequent global measurements of atmospheric methane (Buchwitz et al., 2017; Jacob et al., 2016, 2022; Sherwin et al., 2024; Thorpe et al., 2023). One important breakthrough in satellite remote sensing of methane in recent years

55 was achieved by the successful launch of the Sentinel-5 Precursor (S5P) satellite in October 2017. Onboard S5P is the TRO-
POspheric Monitoring Instrument (TROPOMI), which is a nadir viewing spectrometer (Veefkind et al., 2012). It provides
observations in the shortwave infrared (SWIR) spectral range with a spatial resolution of $5.5 \times 7 \text{ km}^2$ from which column-
averaged dry air mole fractions of atmospheric methane (XCH_4) can be retrieved. Due to the high sensitivity to near-surface
60 have already been used to quantify emissions on global and regional scale, including a wide variety of methane sources, such
as transient gas leaks, oil and gas fields, coal mining and urban areas, as well as wetland regions (Liu et al., 2021; Naus et al.,
2023; Qu et al., 2021; Pandey et al., 2019; Plant et al., 2022; Schneising et al., 2020; Varon et al., 2023; Veefkind et al., 2023).
In addition to emission quantification, various studies have shown that TROPOMI can be used to identify point sources on
a global scale via plume detection (Lauvaux et al., 2022; Schuit et al., 2023) or via combining with model forecasts (Barré
65 et al., 2021). For example, Barré et al. (2021) created a monitoring methodology to detect CH_4 concentration anomalies by
comparing TROPOMI data with high-resolution CH_4 forecast from the Copernicus Atmosphere Monitoring Service (CAMS).
This method can be used to detect missing, underreported and overreported CH_4 anomalies in the CAMS data worldwide.
Lauvaux et al. (2022) detected methane super-emitters associated with oil and gas production and exploitation for 2019-2020
by analyzing daily TROPOMI data using a plume detection algorithm based on the calculation of local XCH_4 enhancements
70 and plume segmentation. The super-emitters were mostly detected over the largest oil and gas basins in Russia, Turkmenistan,
USA, Algeria and Middle East and amount to 8–12% of the global oil and gas emissions. Schuit et al. (2023) used TROPOMI
data to identify anthropogenic super-emitters including emissions from the sectors coal, oil, gas and landfills for 2021 using a
machine-learning approach based on a convolutional neural network to detect plume-like structures and a support vector clas-
sifier to distinguish between real plumes and retrieval artifacts. Methane plumes originating from super-emitters worldwide
75 were identified, mostly from persistent emission clusters, but also from transient sources.

The focus of the studies from Barré et al. (2021), Lauvaux et al. (2022) and Schuit et al. (2023) is on the detection of strong
emitting anthropogenic points sources, for example via plume detection. But besides super-emitters, numerous larger-scale
strong source regions of different source types exist, in which the emissions do not have a plume-like structure as the signals
of individual sources within the regions can interfere. This can be the case, for example, in large oil and gas fields or wetlands
80 (Lauvaux et al., 2022; Naus et al., 2023; Pandey et al., 2021). To include such source regions in a detection procedure was
an important motivation for this study. Therefore, we developed an automated algorithm to detect and quantify source regions
with various sizes, regardless of their source type, including small-scale super-emitters such as coal mine ventilation shafts, but
also larger-scale source areas such as wetland areas and large oil and gas fields. Since source regions with strong and persistent
methane enhancements contribute significantly to global methane emissions, we have focussed on such source regions in this
85 study. TROPOMI has been providing a vast amount of daily methane data since its launch in 2017. To allow the detection of
methane source regions in this large dataset on a global scale, we fully automated our detection algorithm. The data-driven
detection algorithm is based on several steps, including high-pass filtering of the TROPOMI data and masking of regions with
persistent methane enhancements by applying different threshold criteria. In addition to detection, our algorithm includes a

characterization of the source regions, in which the dominant source type is assigned and an emission estimate for each source
90 region is determined.

This study is structured as follows. In section 2, we first present the data that we used for the detection and characterization of the source regions. In Section 3, we describe the algorithm. In Section 4, we present our results, including a global overview of the detected source regions and a detailed analysis of the source regions with the 10 highest emission estimates by comparing our results with emission databases and results from recent studies. At the end, in Section 5, we present our conclusions.

95 2 Data

2.1 TROPOMI/WFMD XCH₄ data product

The Sentinel-5 Precursor (S5P) satellite with the TROPOspheric Monitoring Instrument (TROPOMI) onboard was launched in October 2017 in a near-polar, sun-synchronous orbit with an equatorial crossing of the ascending node at 13:30 local solar time. TROPOMI is a nadir viewing spectrometer and operates in a push-broom configuration with a swath width of 2600 km,
100 enabling daily global coverage. It measures solar radiation reflected at the earth’s surface in the ultraviolet (267 – 332 nm), ultraviolet-visible (305 – 499 nm), near-infrared (661 – 786 nm) and shortwave infrared (2300 – 2389 nm) spectral channels (Veefkind et al., 2012). The measurements of TROPOMI in the shortwave infrared (SWIR) spectral range enable the retrieval of column-averaged dry-air mole fractions of atmospheric methane (XCH₄) with a horizontal resolution of $5.5 \times 7 \text{ km}^2$ ($7 \times 7 \text{ km}^2$ before August 2019). The radiation backscattered from the earth’s surface and measured at the top of the atmosphere has
105 passed through the planetary boundary layer. Therefore, TROPOMI’s measurements yield the gas absorption throughout the atmosphere and importantly close to the earth’s surface (Schneising et al., 2019). Consequently, the retrieved XCH₄ can be used to detect methane enhancements originating from localized methane sources at the earth’s surface.

In this study, we use a multi-year (2018-2021) TROPOMI XCH₄ dataset retrieved with the Weighting Function Modified Differential Optical Absorption Spectroscopy (WFMD) retrieval algorithm (Buchwitz et al., 2006; Schneising et al.,
110 2011, 2014), which has been adapted and optimized for use on TROPOMI data (Schneising et al., 2019). We use the latest version v1.8 of the TROPOMI/WFMD product (Schneising et al., 2023) and average the data to monthly XCH₄ maps with a spatial resolution of $0.1^\circ \times 0.1^\circ$. In addition to the XCH₄, the dataset also includes two variables that are needed for the detection and characterization of the source regions. These variables are: (i) The retrieved surface albedo in the SWIR spectral range and (ii) for each monthly averaged XCH₄ grid cell the number of days N_{days} with TROPOMI measurements from which the
115 monthly mean was calculated. In the following, we refer to this dataset consisting of the $0.1^\circ \times 0.1^\circ$ monthly maps of XCH₄, SWIR albedo, and N_{days} , as XCH₄ dataset.

2.2 Wind data

Wind data are required to calculate emissions. The European Centre for Medium-Range Weather Forecasts (ECMWF) reanalysis (ERA5) wind product (Hersbach et al., 2020) provides hourly wind data with a horizontal resolution of $0.25^\circ \times 0.25^\circ$ on

120 model levels. From this dataset, we computed boundary layer averaged wind speed at the overpass time of TROPOMI for each TROPOMI sounding. The resulting winds are then gridded as the XCH₄ dataset to monthly maps with a spatial resolution of 0.1° × 0.1°. In addition to the monthly averaged wind speeds, we computed the standard deviation of the wind speed within the months for each grid cell.

2.3 Surface elevation and roughness

125 The Global Multi-resolution Terrain Elevation Data 2010 (GMTED 2010) is a dataset containing global surface elevation data available at three different resolutions (approximately 250, 500 and 1,000 m) from various data sources (Danielson and Gesch, 2011). We use the GMTED 2010 to assign the mean surface elevation and the standard deviation of the surface elevation (surface roughness) within the grid cells to the 0.1° × 0.1° grid cells of the XCH₄ dataset.

2.4 Emission databases

130 We use the following emission databases to determine the dominant source types of the detected potential source regions by comparing the emissions of the databases.

2.4.1 EDGAR

The Emissions Database for Global Atmospheric Research (EDGAR) v6.0 (Ferrario et al., 2021) is a bottom-up inventory providing detailed information about global anthropogenic emissions of various air pollutants and greenhouse gases. The 135 yearly emission data have a spatial resolution of 0.1° × 0.1° and are available from 1970 to 2018. The emissions of a specific gas are calculated using international activity data and emission factors using the IPPC (2006) methodology. Activity data describes the activities producing emissions such as the amount of fossil fuel which is exploited or the number of animals on a farm. Emission factors are coefficients that relate the emitted amount of a specific gas to a certain activity or process. The required data to calculate the emissions is collected from a variety of sources, including international organizations such as the 140 International Energy Agency (IEA), national emission inventories and industry reports. EDGAR is well-suited to determine the anthropogenic source types of the detected potential since this inventory provides sector-specific emissions, which enables the differentiation between individual source types within the source regions. For methane, EDGAR v6.0 provides sector-specific anthropogenic emissions from, for example, enteric fermentation, landfills, rice cultivation and fossil fuel exploitation, which are further separated into coal, oil and gas emissions. We use the EDGAR v6.0 methane data for 2018.

145 2.4.2 GFEI

The Global Fuel Emission Inventory (GFEI) v2.0 (Scarpelli et al., 2022) is a methane emission database providing global anthropogenic emissions regarding the fossil fuel sectors coal, oil and gas. The emission data are gridded to yearly maps (2010-2019) with a resolution of 0.1° × 0.1°. GFEI v2.0 uses fossil fuel-related emission data reported by countries to the United Nations Framework Convention on Climate Change (UNFCCC), separates the emissions to sectors coal, oil and gas

150 and assigns the data to the appropriate infrastructure locations like coal mines or oil and gas wells. The infrastructure data are taken from several databases. For countries that do not report their emissions to the UNFCCC, the emissions are calculated using IPCC (2006) methods and activity data from the US Energy Information Administration (EIA). Due to the different methods and data used for emission quantification in EDGAR v6.0 and GFEI v2.0, both databases show differences in their fossil fuel emissions, especially on a regional scale. Therefore, GFEI v2.0 can be used as a useful supplementary database to
155 assign the appropriate fossil fuel source type to the detected source regions. We use GFEI v2.0 data for 2019.

2.4.3 WetCHARTs

WetCHARTs v1.3.1 is a global wetland methane emission ensemble which provides monthly emissions with a resolution of $0.5^\circ \times 0.5^\circ$ for the time period 2001-2019 (Bloom et al., 2021). The ensemble is based on different wetland extent scenarios, multiple terrestrial biosphere models and various temperature dependence parameterizations, resulting in 18 different model
160 configurations. We use WetCHARTs to include also wetlands as a potential dominant source type of a source region. To compare the wetland emissions from WetCHARTs with the other emission databases, we create a yearly averaged wetland emission map for 2019 with a resolution of $0.1^\circ \times 0.1^\circ$, by averaging the emissions of all configurations and months.

3 Methods

We have developed a data-driven Persistent Hotspot Detection (PHD) algorithm to automatically detect regions with persistent
165 XCH_4 enhancements, to estimate their emissions, and to assign a source type to these regions. The individual steps of the detection algorithm are shown in Figure 1. As input to the PHD algorithm, we use the XCH_4 dataset (Sect. 2.1), the wind dataset (Sect. 2.2), the surface elevation data according to GMTED 2010 (Sect. 2.3), and the two anthropogenic emission inventories EDGAR v6.0 and GFEI v2.0, as well as the wetland emission dataset WetCHARTs v1.3.1 (Sect. 2.4). First, we process the XCH_4 dataset (Sect. 3.1). This step includes filtering out grid cells with too few XCH_4 data. For the detection
170 of localized enhancements, we filter out large-scale XCH_4 variations by applying a high-pass filter with five different kernel sizes to each monthly XCH_4 map (Sect. 3.2), resulting in five datasets, which contain the local anomalies ΔXCH_4 . In the next step, we analyze the ΔXCH_4 datasets to detect persistent source regions (Sect. 3.3). For this, we first identify individual grid cells with persistent enhancement and then merge them into potential source regions. Afterwards, we conservatively filter out detected source regions, which may be false positives due to challenging surface features. For each of the five ΔXCH_4
175 datasets, we obtain one global map of the detected potential source regions. In the next step, we combine all of the detected source regions into one map (Sect. 3.4), before we estimate their emissions (Sect. 3.5). In the final step, we determine the dominant source types of the source regions by applying a spatial analysis based on the comparison of the methane emission databases within the source regions. As a result of the PHD algorithm, we obtain a list with the characteristics of the detected source regions. The list includes the locations, the estimated emissions, and the assigned dominant source types of the source
180 regions. In the following, we describe the steps of the algorithm in more detail.

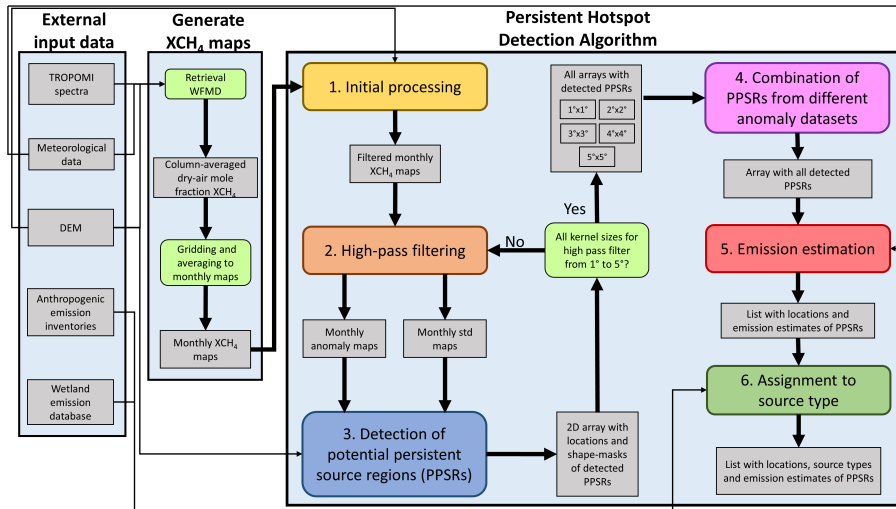


Figure 1. Flowchart of the Persistent Hotspot Detection (PHD) algorithm version 1.0. The colored boxes symbolize the steps in which data is processed and analyzed. The gray boxes describe the input/output data of these steps. For a detailed description of the algorithm see Sections 3.1-3.6.

3.1 Initial processing

To optimize the XCH₄ dataset (Sect. 2.1) for the detection of persistent XCH₄ enhancements, we transform it into a new dataset XCH₄*. For this, we apply a filtering and a so-called elevation correction, which is described in the following. For the detection of persistent source regions, we only consider grid cells in which the monthly XCH₄ means were calculated from
 185 more than 3 days of TROPOMI measurements ($N_{\text{days}} > 3$).

Changes in surface elevation and tropopause height lead to variations in the tropospheric fraction of the XCH₄ (Kort et al., 2014; Buchwitz et al., 2017). Because the mean mixing ratio of methane is higher in the troposphere than in the stratosphere, the XCH₄ over a valley is enhanced compared to its surrounding area, even if the valley is not a source region. To correct for these topography-related variations, we apply an elevation correction to the XCH₄ (Buchwitz et al., 2017). We normalize the
 190 XCH₄ to mean sea level by adding 8.5 ppb per kilometer above mean sea level to the XCH₄ of the grid cells. We calculated this value by following the approach of Buchwitz et al. (2017). To determine the surface elevation of the grid cells, we use the surface elevation data described in Sect. 2.3.

We denote the filtered and elevation corrected data as XCH₄*. Figure 2 shows the global maps for 2018-2021 of XCH₄ and XCH₄*. The data gaps in Fig. 2 (b) are due to the removal of grid cells with too few data. The effect of the elevation correction
 195 can be seen in Fig. 2 (b) by higher XCH₄ over areas with high surface elevation (e.g. Himalaya) compared to the uncorrected dataset. In the following sections, we always refer to XCH₄* when we mention XCH₄.

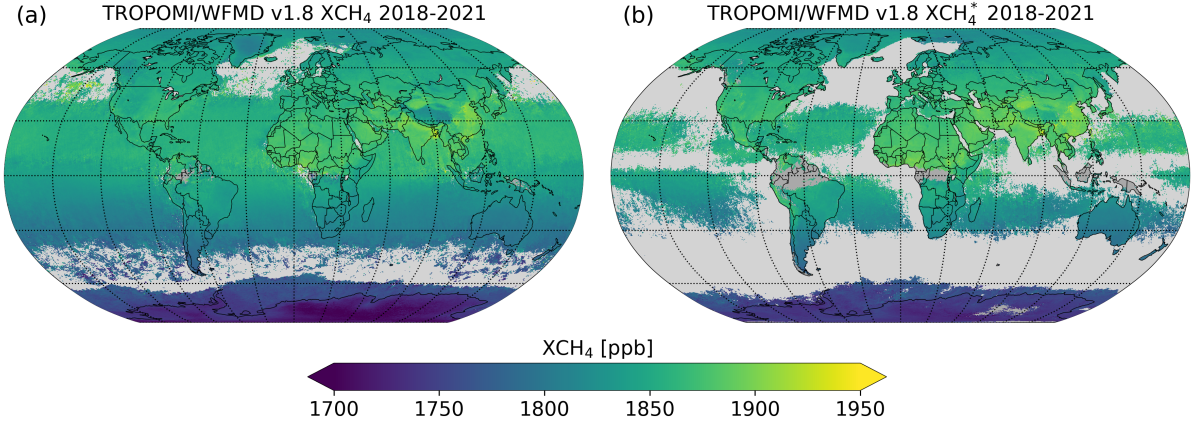


Figure 2. (a) Multi-year (2018-2021) XCH_4 and (b) the corresponding filtered and elevation corrected XCH_4^* .

3.2 High-pass filtering

The spatial distribution of global methane concentration shows large-scale methane variations, such as the interhemispheric gradient (Figure 2 (a)). To better detect localized XCH_4 enhancements, we minimize these large-scale variations by applying a high-pass filter with five different kernel sizes to each monthly XCH_4 map (see Sect. 3.1). For each kernel size, we obtain one dataset, which consists of monthly maps showing only the local XCH_4 variations. The high-pass filtering comprises three steps and is applied to each grid cell of a monthly XCH_4 map as follows. First, we define an area of size $n^\circ \times n^\circ$ around the considered grid cell, denoted as high-pass filter area (HPFA(n)), with $n \in \{1, 2, 3, 4, 5\}$. Second, the HPFA(n) has to be filled with at least 25% data. Otherwise, the considered grid cell is removed. Third, we calculate the so-called methane anomaly ΔXCH_4 by calculating the difference of the XCH_4 of the grid cell with the corresponding median $\widetilde{XCH_4}$ in the HPFA(n):

$$\Delta XCH_4 = XCH_4 - \widetilde{XCH_4}|_{HPFA} \quad (1)$$

The steps of the anomaly calculation are illustrated in Fig. 3 (a)-(c). In the next sections, we use the anomalies to identify potential source regions. For this, the used HPFA(n) has to be larger than the source regions to contain XCH_4 which is not enhanced. Otherwise, the anomalies only describe the variations within the source regions and not their enhancements. However, the HPFA(n) must not be too large as it could contain XCH_4 that is influenced by other nearby sources. Since the potential source regions to be detected have different spatial extents, ranging from small point sources to larger-scale areas, we choose five different HPFA(n) sizes from $n = 1^\circ$ to $n = 5^\circ$ to consider source regions with various sizes.

Figure 4 shows two multi-year ΔXCH_4 maps on global and regional scales, calculated with HPFA sizes of 1° and 5° (bottom), and the corresponding XCH_4 map (top). On the left side, the global maps are shown. It can be seen that the large-scale variations have been minimized in the ΔXCH_4 maps. The ΔXCH_4 maps contain less data compared to the XCH_4 map because grid cells are filtered out whose HPFA(n) does not contain the minimum number of XCH_4 data. On the right side of Fig. 4 we show a zoom to the South Sudan region, which is a well-known source region (Pandey et al., 2021). The strong

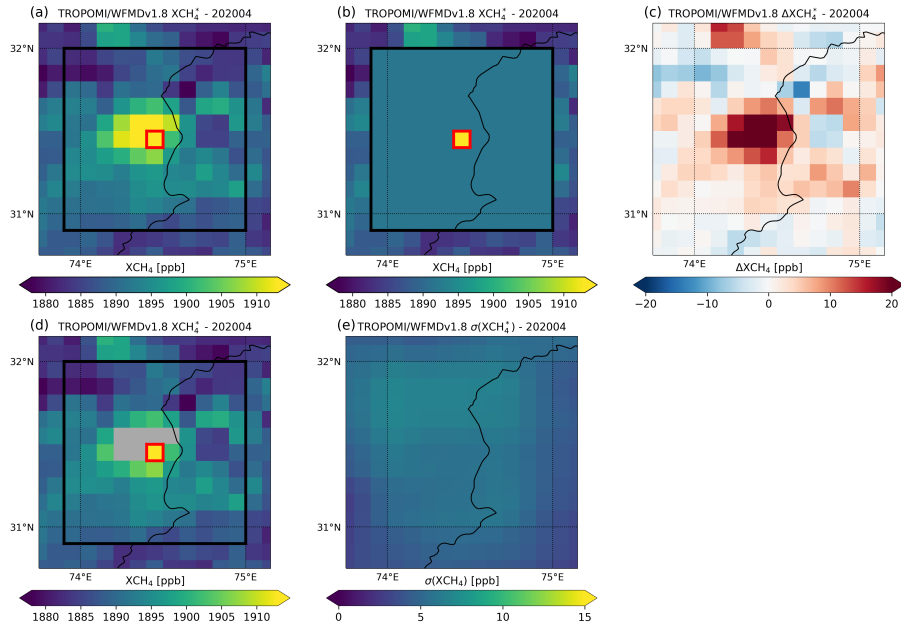


Figure 3. Illustration of the steps to calculate the methane anomaly and standard deviation maps described in Sect. 3.2. (a) XCH₄ for April 2020 for a region close to the border of Pakistan/India. The anomaly calculation process is illustrated for one grid cell shown in red. First, the HPFA(*n*) is defined, which is 1° × 1° in this example. (b) The median of the XCH₄ values in the HPFA is calculated, with the XCH₄ of the considered grid cell excluded from the calculation. The anomaly of the considered grid cell is computed using Eq. 1. (c) ΔXCH₄ for April 2020 calculated using a HPFA of 1° × 1°. The anomalies illustrate the XCH₄ enhancement in (a). (d) Illustration of the process to calculate the standard deviation of the XCH₄ values in the HPFA. First, the 95th percentile of the XCH₄ values within the HPFA is computed. All XCH₄ values above the 95th percentile are excluded from the standard deviation calculation to reduce the impact of local enhancements. (e) Standard deviation of the XCH₄ in the HPFA of 1° × 1° for April 2020.

wetland emissions of the region can be seen in the resulting XCH₄ enhancements (Fig. 4 (b)). If we compare the anomalies calculated with different HPFA of 1° and 5° (Fig. 4 (d) and (f)), we can see that the HPFA(1°) is too small to detect the large-scale XCH₄ enhancements of this source region.

In addition to the anomalies, we calculate for each grid cell the standard deviation of the XCH₄ in the corresponding HPFA(*n*). With that, we can determine if an anomaly is significantly enhanced compared to the variation of the surrounding XCH₄. To reduce the impact of local XCH₄ enhancements on the standard deviation, we use only the XCH₄ values of the HPFA(*n*) that are smaller than the 95th percentile of the XCH₄ distribution. In addition, we ignore the XCH₄ value of the grid cell for which the standard deviation is calculated. The calculation of the standard deviation is illustrated in Fig. 3 (d) - (e).

In total, we generate five anomaly datasets consisting of monthly ΔXCH₄ maps and monthly standard deviation (σ) maps, each corresponding to one of the five selected HPFA(*n*).

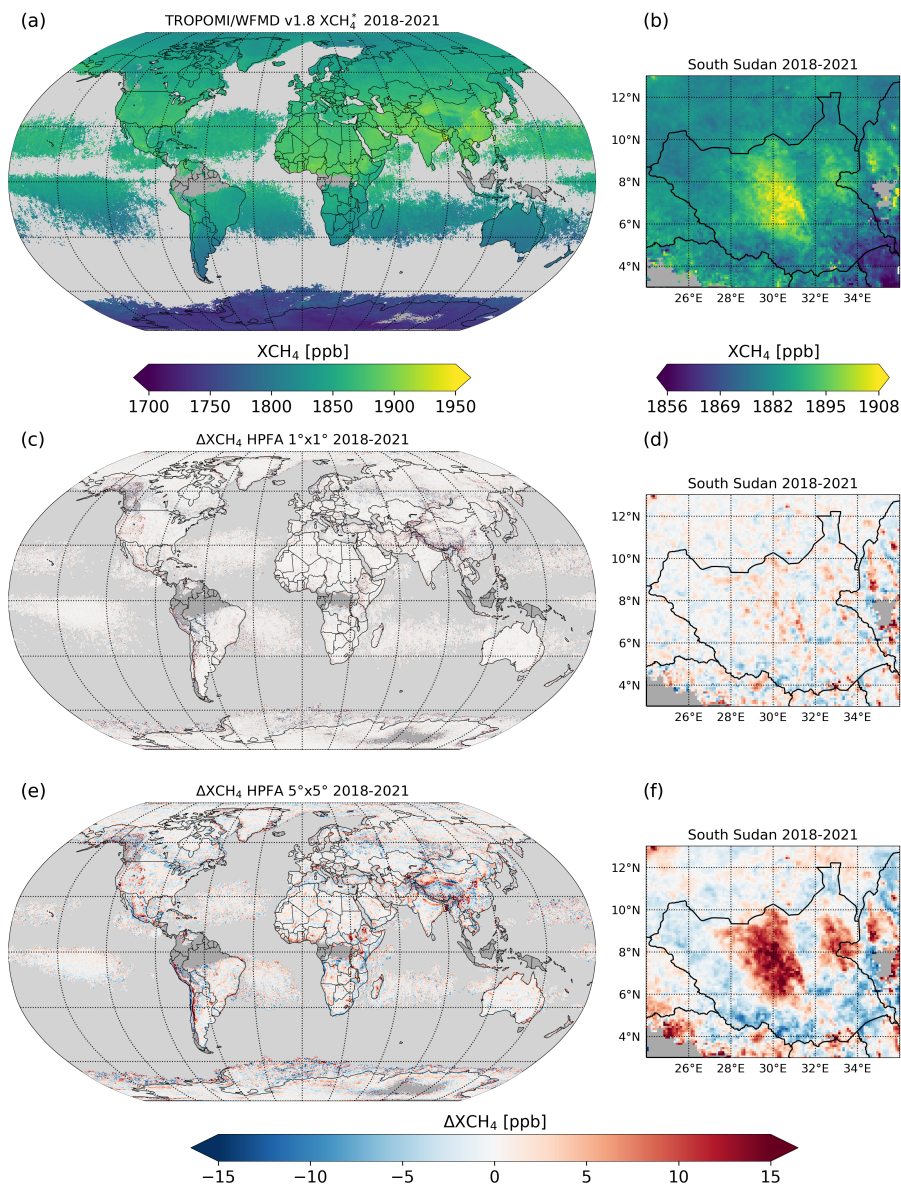


Figure 4. Comparison of global (left) and regional (right) multi-year (2018-2021) XCH₄ and ΔXCH₄ maps. (a) Same as Fig. 2 (b). (b) Corresponding zoom to South Sudan. (c) ΔXCH₄ calculated with a HPFA of 1° × 1°. (d) Zoom to South Sudan of 1° × 1° ΔXCH₄ map. (e) As (c) but for a HPFA of 5° × 5°. (f) Zoom to South Sudan of 5° × 5° ΔXCH₄ map.

3.3 Detection of persistent potential source regions

In the third step of the PHD algorithm, we identify regions with persistent ΔXCH_4 enhancement in each of the five anomaly
230 datasets calculated in Sect. 3.2. We refer to these regions as potential persistent source regions (PPSRs). To detect PPSRs in an
anomaly dataset, we apply the following steps:

1. We analyze the monthly anomalies of small areas to mask PPSRs (Sect. 3.3.2)
2. We refine the detected PPSR masks (Sect. 3.3.3)
3. We filter out PPSRs with complicated surface properties (Sect. 3.3.4)

235 As result, for each of the five anomaly datasets, we obtain one global map containing the masks that define the PPSRs.

3.3.1 Definition of a PPSR

A PPSR is characterized by showing enhanced anomalies at a certain frequency over a certain time period. Therefore, to define
a PPSR, we have to specify the term enhanced anomaly and to introduce variables to quantify how often the region shows
enhanced anomalies. We define an anomaly as enhanced, if:

$$240 \quad \Delta\text{XCH}_4 \geq N_\sigma \cdot \sigma \quad (2)$$

We set $N_\sigma = 2$. The σ is the standard deviation of the XCH_4 in the HPFA(n) around the analyzed grid cell (Sect. 3.2).

To characterize the persistent enhancement of a certain region, e.g. consisting of several grid cells, we first define the number
of months, in which the region contains at least one anomaly (measurement) as N_{meas} . In addition, the number of months, in
which the region contains at least one enhanced anomaly is defined as N_{enh} . As measure for the persistence of enhancements,
245 we define the fraction $F_{enh} = N_{enh}/N_{meas}$, which characterizes in how many of the months with measurements at least one
of the anomalies is enhanced. Fig. 5 (a)-(c) illustrates the calculation of these variables for a region of 3×3 grid cells. We
define a region as PPSR, if:

$$F_{enh} \geq F_{enh,min}, \quad N_{meas} \geq N_{meas,min} \quad (3)$$

The parameter $F_{enh,min}$ and $N_{meas,min}$ define the lower limits of F_{enh} and N_{meas} . We set $F_{enh,min} = 0.5$ and $N_{meas,min} =$
250 16. This means that a region is defined as PPSR if it contains data in at least 16 of the 48 months and also contains an enhanced
anomaly in at least half of the months, in which an anomaly is in the region.

We have chosen $F_{enh,min} = 0.5$ for the following reasons. Persistent methane sources do not always show enhanced methane
anomalies in all months. For example, some sources show seasonal variations in emissions such as wetlands or rice paddies.
Emissions from coal mines can also vary over time, as they depend on mining activity. In addition, we also want to take into
255 account persistent sources in the detection process that started emitting during 2018-2021 and therefore do not show emissions
over the entire period. With $N_{meas,min} = 16$, we also take into account regions that do not contain data in all 48 months.

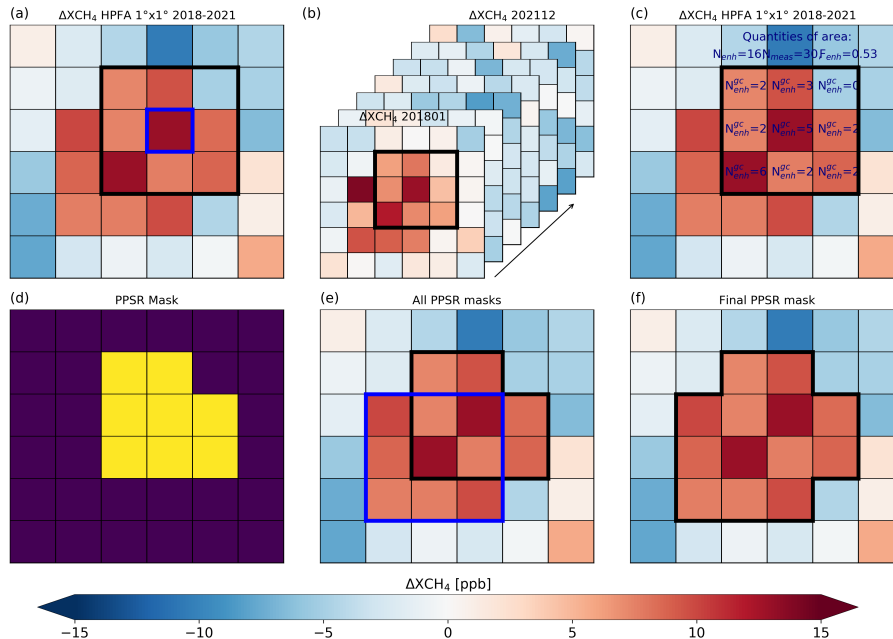


Figure 5. Illustration of the process to identify a potential persistent source region (PPSR). (a) 2018-2021 ΔXCH_4 calculated with a HPFA of $1^\circ \times 1^\circ$. The detection process is illustrated for the blue outlined grid cell. First, an area of 3×3 grid cells (outlined in black) is defined around the considered grid cell. (b) Next, the anomalies within the black-outlined area are analyzed for all monthly ΔXCH_4 and σ maps from 2018-2021 to calculate N_{meas} , N_{enh} and $F_{enh} = N_{enh}/N_{meas}$ (definition in Sect. 3.3.2). In addition, for each grid cell within the 3×3 area, N_{enh}^{gc} is counted. (c) Multi-year ΔXCH_4 with the results from the analysis described in (b). In each grid cell of the black outlined area N_{enh}^{gc} is shown. The 3×3 area fulfills the conditions for a PPSR from Eq. 3, since $F_{enh} \geq 0.5$, $N_{meas} \geq 16$ and N_{enh}^{gc} of central grid box ≥ 1 . (d) Resulting mask (yellow grid cells) of the detected PPSR. Only the grid cells are considered for the mask, that have an enhanced anomaly in at least one month ($N_{enh}^{gc} > 0$). (e) Multi-year ΔXCH_4 with all detected PPSR masks in that region. The algorithm is applied to each grid cell, resulting in an additional PPSR being detected (outlined in blue). (f) Multi-year ΔXCH_4 with the final PPSR mask, which is created by merging PPSRs that are directly adjacent or overlapping.

3.3.2 Mask potential persistent source regions

To detect PPSRs in an anomaly dataset, we define small areas around every grid cell of the dataset and calculate for each of those areas the number of months with at least one anomaly N_{meas} , the number of months with enhanced anomalies N_{enh} and the fraction of months with enhanced anomalies F_{enh} by analyzing the monthly XCH_4 and σ maps from 2018-2021. In detail, for each grid cell, we apply the following steps, which are illustrated in Fig. 5. We first define an area of 3×3 grid cells consisting of the considered grid cell itself and the directly adjacent grid cells (black-outlined area in Fig. 5 (a)). We are using a small 3×3 area for the calculation of N_{meas} , N_{enh} and F_{enh} , rather than only analyzing a single grid cell for the following reason. The ΔXCH_4 enhancements within a persistent source region depend on the source itself and the meteorological conditions. Therefore, enhancements show temporal and spatial variability. Consequently, the ΔXCH_4

enhancements can occur at different grid cells in different months of the persistent source region. To account for this in the detection process, we analyze the ΔXCH_4 and σ maps of multiple grid cells simultaneously rather than considering each grid cell independently. We use an area of 3×3 to take into account that the varying meteorological situations in the monthly XCH_4 maps are not as strong as in the daily XCH_4 data. In the monthly maps, the daily plumes, which vary with wind strength and
 270 direction, typically average out and result in a XCH_4 enhancement over the source region, which shows only slight monthly variability.

After defining the 3×3 area, we analyze all monthly ΔXCH_4 and σ maps from 2018-2021 for the 3×3 area to calculate N_{meas} , N_{enh} and F_{enh} (Fig. 5 (b) and (c)). We also count for each grid cell of the 3×3 area the number of months N_{enh}^{gc} in which the anomaly in the grid cell is enhanced. If the 3×3 area fulfills the persistence conditions from Eq. 3 and if the center
 275 grid cell shows an enhanced anomaly in at least one month, we mask the area as PPSR (yellow area in Fig. 5 (d)). To label a 3×3 area as PPSR, we mark all grid cells within the area that show an enhanced anomaly in at least one month ($N_{enh}^{gc} \geq 1$). Thus, grid cells with $F_{enh} < 0.5$ can also be part of a PPSR, if their enhancements contribute to the 3×3 area being marked as a PPSR. We only consider 3×3 areas as PPSRs that have no complicated topography (median of surface roughness < 80 m and standard deviation of the surface elevation < 150 m). As can be seen in Fig. 5 (c), the analysis of an area rather than a single
 280 grid cell enables the detection of source regions in which the individual grid cells show no persistent enhancement, but the area does. This means, that the enhanced anomalies need not to occur at the same grid cell every month, but can vary monthly within the area.

PPSRs that are directly adjacent or overlapping are merged into one PPSR (Fig. 5 (e) and (f)). For this, we apply a labeling algorithm in which each individual PPSR is assigned its own number, with directly adjacent or overlapping PPSRs getting the
 285 same number. In the end, we get a global map containing the separated and labeled PPSRs of the considered anomaly dataset.

We apply the detection process to the five anomaly datasets and obtain five global maps with the detected PPSRs.

3.3.3 Refinement of PPSR masks

The detected PPSR masks describe the locations and shapes of the corresponding source regions. However, some of the masks do not cover the entire spatial extent of the source regions. Therefore, in the next step, we refine the PPSR masks. One example
 290 is shown in Fig. 6 (a). It can be seen that the two PPSR masks do not contain all the grid cells that would be identified by eye as part of the source regions, because their fractions F_{enh} do not exceed the threshold $F_{enh,min} = 0.5$ required for the detection (Eq. 3). These grid cells are nevertheless part of the source region since they have a high fraction F_{enh} and are located in the immediate surroundings of the source regions. To add them to the source regions, we could lower the $F_{enh,min}$ parameter. But this would imply a change in the persistence condition. To determine the total spatial extent of the source
 295 regions without changing the persistence condition, we choose the following approach. We add grid cells to the PPSR masks that are in the immediate vicinity and whose fractions F_{enh} indicate that they are part of the source. For this, we identify all grid cells with $F_{enh} \geq 0.33$ that also fulfill all other conditions from Eq. 3. We refer to these grid cells as toseeds (green grid cells in Fig. 6 (b)). The grid cells detected with $F_{enh,min} = 0.5$ are called seeds (yellow grid cells in Fig. 6 (b)). We chose 0.33 as lower threshold, since $F_{enh} \geq 0.33$ indicates that the grid cells show enhanced anomalies in a certain number of months

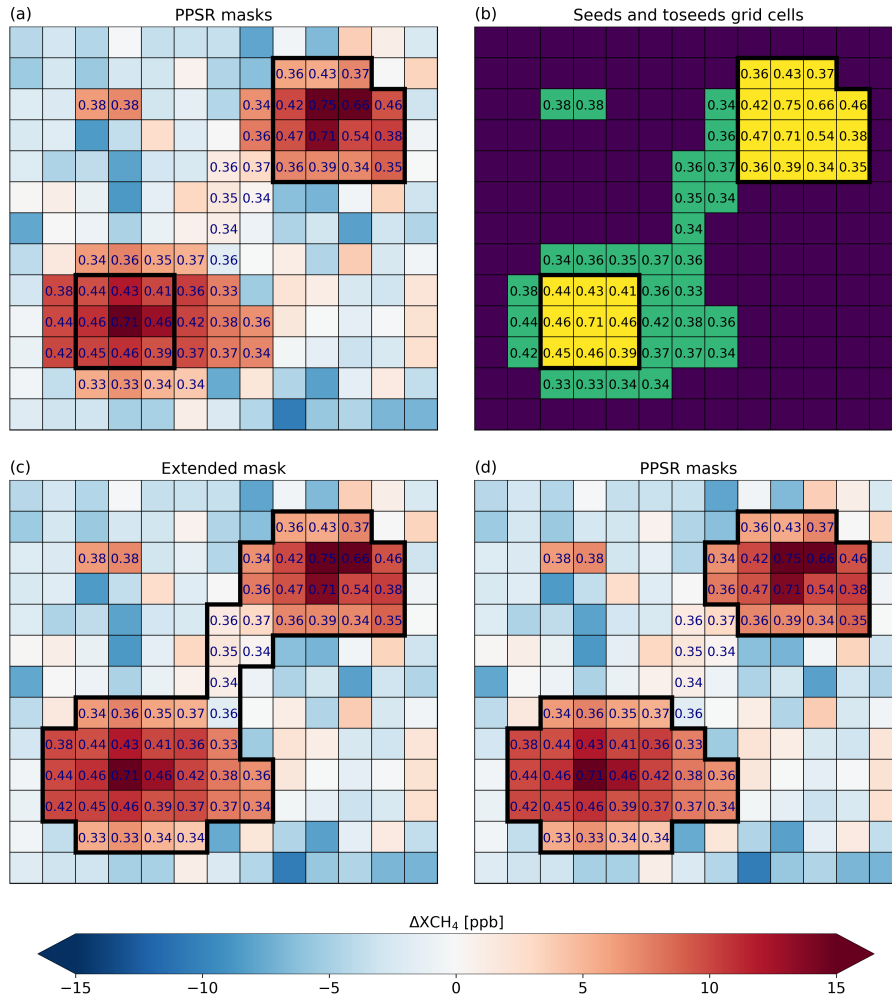


Figure 6. Illustration of the process to refine PPSR masks. (a) Multi-year (2018-2021) ΔXCH_4 . In each grid cell, the fraction F_{enh} is shown, which is calculated for the 3×3 area of the respective grid cell (see Sect. 3.3.2). Grid cells that do not contain a fraction do not fulfill any of the persistence conditions from Eq. 3. The detected PPSRs (black-outlined) are the result of the detection process described in Sect. 3.3.2. Some grid cells with $F_{enh} < 0.5$ and a high multi-year ΔXCH_4 mean would be assigned by eye as part of the source region. To add them to the masks we use the following steps. (b) First, mark also toseeds (shown in green, definition in Sect. 3.3.3). The seeds are shown in yellow. (c) The toseeds are assigned to the seeds using a random walker algorithm. (d) In the final step, the grid cells with a multi-year ΔXCH_4 mean less than 25% of the maximum multi-year ΔXCH_4 mean within the mask are removed from the mask. The final masks describe the refined PPSRs.

300 and are therefore still strongly influenced by the sources within the PPSR, although its F_{enh} is smaller than 0.5. Grid cells with $F_{enh} < 0.33$ indicate a weaker influence of the sources on the grid cells, which is why we did not include them in the refining process. Next, we apply a random walker algorithm (Grady, 2006) to assign the toseeds to the seeds. A random walker

algorithm is an image segmentation algorithm, which can divide an image into several sections based on threshold values. A first threshold is used to define the pixels of the image that represent the foreground of the image and are called seeds (the grid cells detected with $F_{enh,min}$). The seeds can have different labels so that the foreground can be divided into different areas. With a second threshold, which is below the first one, the pixels of the background are defined which are not to be considered further. The pixels between the first and second threshold are the so-called undefined pixel that the random walker algorithm assigns to the corresponding seeds by using a diffusion equation (the grid cells with $0.33 \leq F_{enh} \leq 0.5$). Based on the gradient between an undefined pixel and the different seeds and the distance between them, the probability is calculated to which seed the respective undefined pixel is assigned. The lower the gradient, i.e. the more similar the values of the undefined pixel and a seed are, the higher the probability that this pixel will be assigned to this seed. Undefined pixels that do not have a contiguous path to at least one seed are discarded. As a basis on which the grid cells detected with $F_{enh,min}$ are assigned to the PPSRs, we use the multi-year (2018-2021) ΔXCH_4 of the analyzed anomaly dataset. Fig. 6 (c) shows the mask created by assigning the toseeds to the seeds. It can be seen that the spatial extent of the source regions is now better described by the masks and that grid cells are added, which connect the separate source regions. But some of the toseeds have a low multi-year ΔXCH_4 mean compared to the seeds. Here, we only want to consider toseeds as part of the source region that have comparable high multi-year ΔXCH_4 and remove added toseeds with ΔXCH_4 smaller than 25% of the maximum ΔXCH_4 of the seeds. In the end, we obtain the refined PPSR masks, which now better describe the spatial extent of the source regions (Fig. 6 (d)). We emphasize, that the example shown in Fig. 6, in which two PPSRs are first merged and then separated, does not appear often. We only used it to illustrate all the steps of the refinement process for one region. Due to the refinement, the number of final PPSRs can differ from the number of PPSRs detected in Sect. 3.3.2. On the one hand, multiple PPSRs can be combined into one PPSR by adding new grid cells to the masks. On the other hand, a PPSR can be split into multiple PPSRs by removing grid cells with too low 2018-2021 ΔXCH_4 mean. We apply the refinement to each of the five global maps containing the detected PPSRs (Sect. 3.3.2).

3.3.4 Filtering of potential false positives

Much effort was made to minimize systematic biases when generating the WFMD v1.8 XCH_4 data product (Schneising et al., 2023). However, it is not guaranteed that the WFMD v1.8 product is entirely unbiased. This means that despite the good quality of the product, it is not certain that every individual XCH_4 enhancement has its origin in a real methane source. For example, localized XCH_4 enhancements could be caused by scenes with inhomogeneous albedo (e.g. coastal regions, lakes and rivers) and complex topography. To take this into account, the PPSRs are filtered for surface features, which potentially lead to a false positive detection. We use a conservative approach and prefer to accept false negatives rather than false positives. We decide whether a PPSR has challenging surface features based on the following properties: The correlation between SWIR surface albedo and XCH_4 , the standard deviation of the surface elevation within the PPSR mask, the frequency of months in which the largest XCH_4 enhancements occur in or adjacent to grid cells with high surface roughness, the fraction of coastal grid cells in the PPSR mask and the frequency of months in which the largest XCH_4 enhancements occur over or next to water grid cells. If a PPSR is identified by one of these criteria then it is filtered and not considered further. Excluded from this are PPSRs in

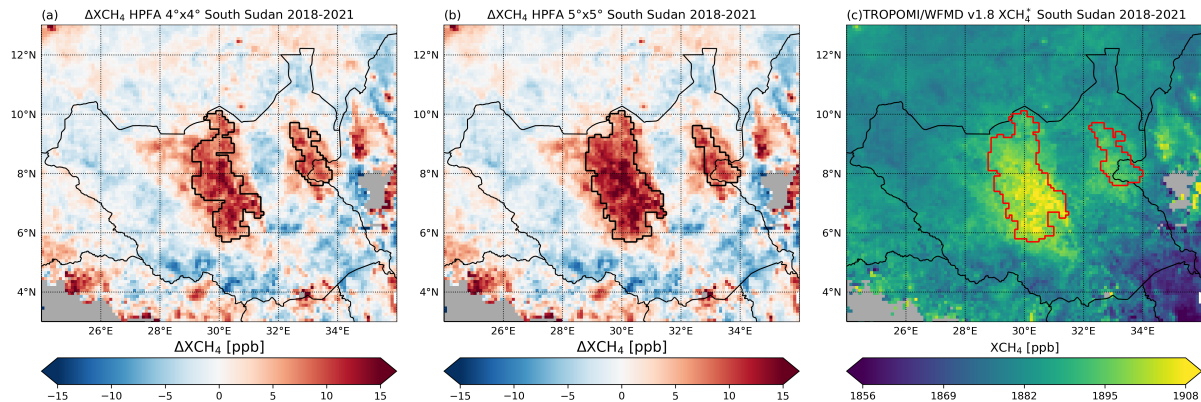


Figure 7. Example of PPSRs detected in two different anomaly datasets. (a) Multi-year (2018-2021) ΔXCH_4 of South Sudan region calculated with a HPFA of $4^\circ \times 4^\circ$. The detected PPSRs (outlined in black) have already been filtered (see Sect. 3.3.4). (b) Same as (a) but for HPFA of $5^\circ \times 5^\circ$. (c) Corresponding 2018-2021 XCH_4 . The final PPSR masks of the combined masks from different anomaly datasets.

which very strong XCH_4 enhancements occur. By this, we ensure that important source regions are not excluded due to their surface features. As we focus in this study on source regions that contribute significantly to the global methane budget, we filter out PPSRs with weak XCH_4 enhancements. Additionally, we filter out PPSRs that occur in the Bodélé Depression in Chad. This is a region where strong dust storms occur on average 100 days per year, always directed towards the southwest and with a plume-like structure. Analyses of the WFMD data product have shown that these special conditions, which only occur in this region, can lead to false positive detections. We apply the filtering to each detected PPSR of each anomaly dataset to obtain five global maps comprising the refined and filtered PPSR masks, respectively.

3.4 Combination of PPSRs from different anomaly datasets

We used five different HPFA(n) for the calculation of the ΔXCH_4 maps to detect source regions with various sizes (see Sect. 3.2). As a result, we identified different PPSRs in each anomaly dataset. To consider all PPSRs collectively, we combine them into one global map. For this, we must take into account that the same source region can be detected in multiple anomaly datasets and is thus described by more than one mask. In such a case we merge all detected masks of the PPSR to one new mask. An example of the combination process is illustrated in Fig. 7. Here we show the well-known source regions in South Sudan (see Sect. 3.2), which we detect in the HPFA(4°) and HPFA(5°) anomaly datasets, and the combined masks of the individual source regions. Finally, we obtain one global map, in which each detected source region is described by one mask. The masks of some PPSRs are shown in Fig. 8 including some well-known source regions, such as the oil and gas fields in the Permian Basin in the USA (Schneising et al., 2020; Zhang et al., 2020; Varon et al., 2023; Veefkind et al., 2023), the natural gas fields Galkynish and Dauletabad in Turkmenistan (Schneising et al., 2020) and the coal mining area in the Bowen Basin in Queensland in Australia (Sadavarte et al., 2021).

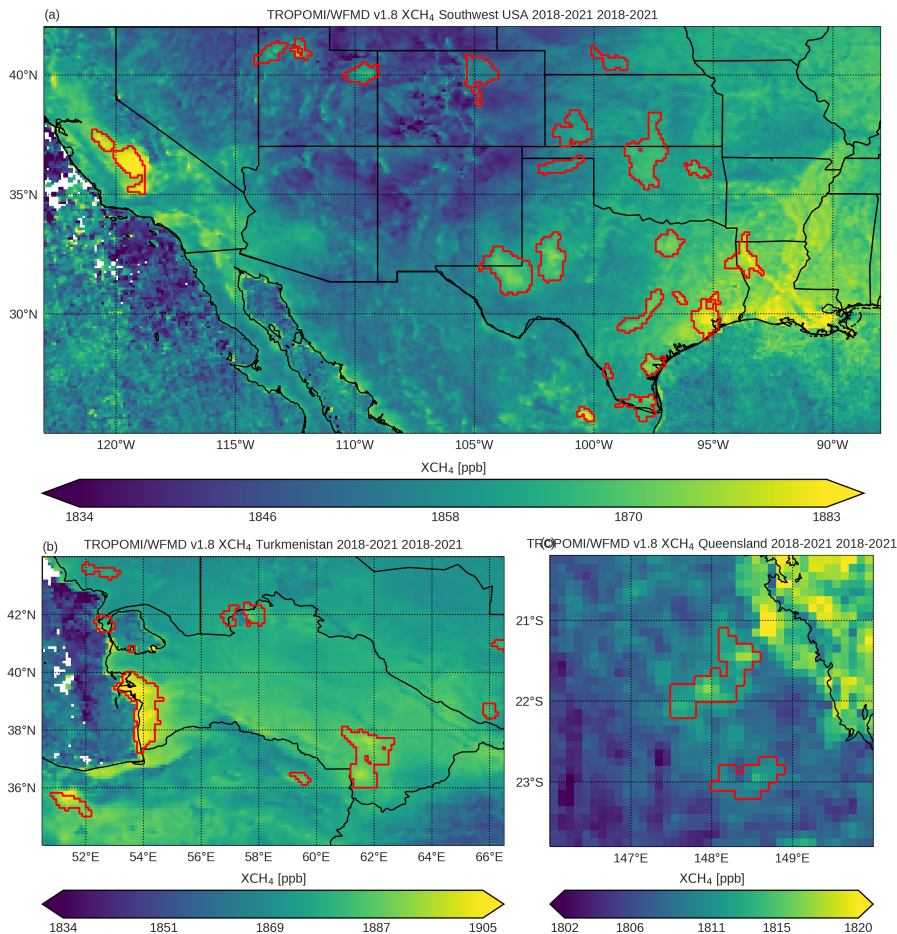


Figure 8. Final PPSR masks (outlined in red) after filtering (Sect. 3.3.4) and combining (Sect. 3.4) processes shown for several regions of the world. (a) 2018-2021 XCH_4 for the southwestern part of the USA and northern Mexico. Some of the PPSRs are located in well-known oil and gas basins like the Permian, Anadarko, Barnett, Haynesville, Denver and San Joaquin. (b) Same as (a) but for Turkmenistan, parts of Iran, Uzbekistan, and Kazakhstan. One of the detected PPSRs includes two of the largest natural gas fields in the world, Galkynish and Dauletabad. (c) Same as (a) but for parts of Queensland in Australia. Two PPSRs are detected, which are located in the Bowen Basin, a well-known coal mining area.

3.5 Emission estimation

To compute emission estimates for each of the detected PPSRs, we apply the fast data-driven method of Buchwitz et al. (2017). This method is designed to calculate averaged long-term emission estimates from time-averaged XCH_4 maps. It uses a conversion factor to convert an XCH_4 enhancement over a source region into an emission estimate. This implies the assumption that emissions from an isolated source result in an XCH_4 enhancement, δXCH_4 , over the source region compared to the surrounding region. To determine the monthly emission estimate E ($Mt\ yr^{-1}$) of a PPSR, we apply the method to the monthly

averaged XCH₄ maps using the following equation:

$$E = \delta\text{XCH}_4 \cdot M \cdot M_{exp} \cdot L \cdot V \cdot 2 \quad (4)$$

The δXCH_4 (ppb) describes the XCH₄ enhancement of the PPSR and is calculated by computing the difference of the mean
 365 XCH₄ over the source region with the mean XCH₄ over the surrounding region. The surrounding region is defined as described
 in Fig. 9. We only consider the grid cells in the surrounding region that are not part of other PPSRs in the surrounding region.
 We estimate the emissions only if the PPSR, as well as the surrounding region, are each filled with at least 25% data. To
 convert the mole fraction change δXCH_4 over the source region into a methane mass change per area, M and M_{exp} are used.
 M ($5.345 \cdot 10^{-9} \text{MtCH}_4 \text{km}^{-2} \text{ppb}^{-1}$) is the methane mixing ratio enhancement to mass enhancement conversion factor for
 370 standard conditions, i.e. for a surface pressure of 1013.25 hPa. Since the actual mass change M_i of the i th grid cell depends
 on the surface pressure p_i (hPa) of the grid cell, Buchwitz et al. (2017) additionally used the dimensionless conversion factor
 M_{exp} , which is defined as:

$$M_{exp} = \frac{\langle M_i \rangle}{M} \approx \frac{\langle p_i \rangle}{1013.25} \approx \langle e^{-z_i/H} \rangle \quad (5)$$

With surface elevation z_i (km) of the i th grid cell, the scale height H (8.5 km) and $\langle \rangle$ denoting the mean over all grid cells
 375 of the source region. L (km) in Eq. 4 is the effective length of the source region, which we calculate as the square root of the
 PPSR size. V (km yr^{-1}) is the wind speed from Sect. 2.2 averaged over the source region. The reason for adding factor 2 is
 described in detail in Buchwitz et al. (2017), but is briefly explained in the following. When an air parcel travels with constant
 wind speed across the source region, it accumulates methane, which results in an XCH₄ enhancement when it exits the source
 region ($\delta\text{XCH}_{4,exit}$). However, δXCH_4 from Eq. 4 describes the mean XCH₄ enhancement over the source region and not
 380 $\delta\text{XCH}_{4,exit}$. Assuming a linear XCH₄ increase while traveling across the source region (see Fig. 3 in Buchwitz et al. (2017)),
 these two enhancements are linked via $\delta\text{XCH}_4 = 0.5 \cdot \delta\text{XCH}_{4,exit}$. Therefore, the δXCH_4 has to be multiplied by 2 to describe
 the XCH₄ enhancement of the air parcel which results from the emission of the source region.

We calculate the 1σ uncertainty of the monthly emission estimate E , u_E , by computing the sum of the squared uncertainties
 of the XCH₄ enhancement, $u_{\delta\text{XCH}_4}$, and the wind speed, u_v , with respect to their mean values via

$$385 \left(\frac{u_E}{E}\right)^2 = \left(\frac{u_{\delta\text{XCH}_4}}{\delta\text{XCH}_4}\right)^2 + \left(\frac{u_v}{V}\right)^2 \quad (6)$$

We calculate $u_{\delta\text{XCH}_4}$ by varying the size of the surrounding region and calculating the standard deviation of the resulting
 δXCH_4 enhancements. We vary the region by adding to the northernmost, southernmost, westernmost, and easternmost coordi-
 nates of the surrounding region all possible combinations of 0 and $2 \times L_{surr}$, where L_{surr} is the length used to define the
 surrounding region (see Fig. 9). The square of the uncertainty of the wind is the sum of the squared standard deviation of the
 390 monthly wind speeds within the source region, and the squared mean of the standard deviations of the wind speeds within the
 months for each grid cell.

We calculate the averaged long-term emission estimate \bar{E} of a PPSR by averaging all monthly emission estimates for
 the period 2018-2021. For the corresponding uncertainty of the long-term emission estimate we use error propagation by

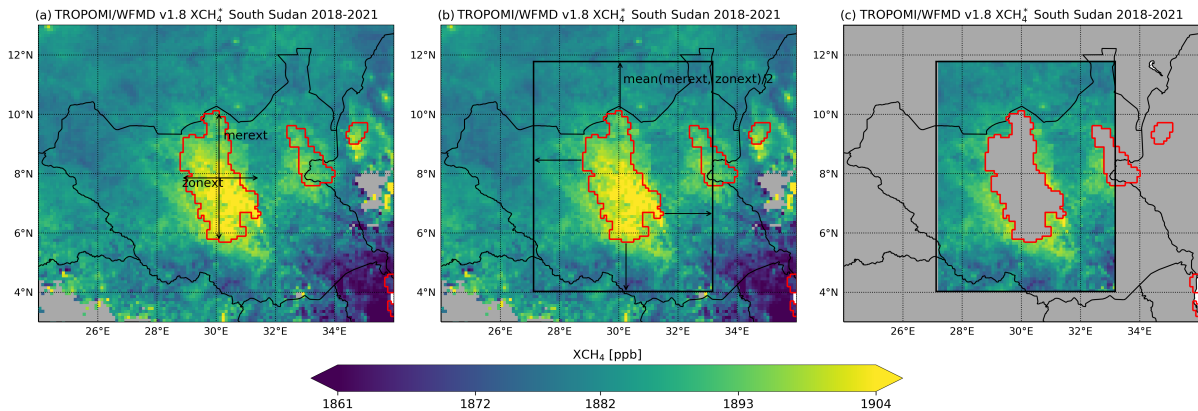


Figure 9. Illustration of the automated calculation of the surrounding area for a PPSR. (a) 2018-2021 XCH_4 . The detected and unfiltered PPSRs in the HPFA(5°) anomaly dataset for the South Sudan region are shown (outlined in red). The surrounding region for the central PPSR is calculated as follows. First the maximum extents in meridional (merext) and zonal (zonext) direction of the PPSR are calculated. (b) Next, a rectangle (black-outlined area) is defined around the PPSR by expanding the northernmost, southernmost, westernmost and easternmost coordinates by L_{surrr} , which is half of the mean of merext and zonext. If L_{surrr} is smaller than 0.5° , we set it to 0.5° to provide a reasonable size of the surrounding region. (c) In the last step, all grid cells outside the rectangle and all grid cells inside a source region are removed. The grid cells with XCH_4 are defined as the surrounding area of the central PPSR.

395 computing the ratio of the root of the sum of the squared monthly uncertainties u_E and the effective number of months n_{eff} contributing to the mean estimate

$$u_{\bar{E}} = \frac{\sqrt{\sum_j u_{E,j}^2}}{n_{eff}}. \quad (7)$$

With n_{eff} we consider the correlation between the monthly emission estimates. n_{eff} is equal to 1 means that all emission estimates are correlated and n_{eff} is equal to the total number of emission estimates means that all emission estimates are uncorrelated. We choose n_{eff} with the assumption that the blocks of quarter-yearly emission estimates are uncorrelated. n_{eff} 400 is therefore the number of quarter-yearly data blocks in which at least one emission estimate contributes to the mean.

3.6 Assignment to source type

To determine the dominant methane source type in the detected PPSRs, we compare sector-specific emissions from different emission databases. We distinguish between the source types coal, oil and gas, other anthropogenic sources, wetlands and unknown (see Table 1). We use the emission data regarding coal and oil and gas from EDGAR v6.0 2018 and GFEI v2.0 405 2019 (Sect. 2.4). To determine the emissions originating from other anthropogenic sources, we use anthropogenic methane emissions from all sectors excluding fossil fuel from EDGAR v6.0 2018. For wetland emissions, we use the ensemble of WetCHARTs v1.3.1 for 2019 (Sect. 2.4). We assign the source type with the highest emissions as the dominant source type of the corresponding PPSR. For this we sum up the emissions in the PPSR for each source type, using an expanded PPSR mask,

Table 1. Dominant source types of PPSRs and the corresponding databases used to estimate the sector-specific emissions.

Source type	Database
Coal	EDGAR v6.0 2018 coal, GFEI v2.0 2019 coal
Oil and gas	EDGAR v6.0 2018 oil and gas, GFEI v2.0 2019 oil and gas
Other anthropogenic	EDGAR v6.0 2018 all sectors excluded fossil fuel
Wetland	WetCHARTs v1.3.1 2019
Unknown	No database shows emissions higher 50kt yr^{-1} in PPSR

which includes the directly adjacent outer grid cells to account for variations in the locations of the sources in the databases.

410 We assign the type “unknown” to a PPSR if the total emissions in the respective PPSR mask are less than 50kt yr^{-1} for all three emission databases. It should be noted that no uncertainties are specified in the used databases, which means that the uncertainties cannot be considered in the source type assignment. Therefore, we have only taken into account possible uncertainties of the databases in the sense of underestimation of emissions by setting the threshold value to be exceeded for source type assignment (50kt yr^{-1}) to be significantly lower than the lowest mean emissions estimate of 2018-2021 detected

415 by us (120kt yr^{-1}). With 50kt yr^{-1} , however, we also ensure that the databases also have a certain minimum emission when assigning a PPSR to a source type.

4 Results

In this section, we present the results of the PHD algorithm, which we use to detect potential persistent source regions (PPSRs). We provide a global overview of the detected PPSRs by describing the distribution of the PPSRs among the different source

420 types coal, oil and gas, other anthropogenic, and wetlands, as well as a rough total emission estimate of all the detected PPSRs (Sect. 4.1). We then analyze the 10 PPSRs with the highest emission estimates in more detail (Sect. 4.2). These include the Sudd Wetlands in South Sudan (Sect. 4.2.1), the west coast in Turkmenistan (Sect. 4.2.2), the Iberá wetlands in Argentina (Sect. 4.2.3), several regions in China (Sect. 4.2.4 and 4.2.5), the city Dhaka in Bangladesh and its surrounding area (Sect. 4.2.6), the Kuznetsk Basin in Russia (Sect. 4.2.7) and the Permian Basin in the United States (Sect. 4.2.8).

425 4.1 Global overview

We applied the PHD algorithm as described in Sect. 3 and detected a total of 217 PPSRs, whose global distribution and assigned source types are shown in Fig. 10. Based on the comparison of the emission databases, the fraction of dominant source types is 7.8% coal, 7.8% oil and gas, 30.4% other anthropogenic sources, 7.3% wetlands and 46.5% unknown.

Some of the detected source regions are well-known coal production sites, which already have been subject of several

430 studies, such as the region Shanxi in China (Chen et al., 2022), the Bowen Basin in Queensland in Australia (Sadavarte et al., 2021), and the Upper Silesia Coal Basin in Poland (Tu et al., 2022). Other PPSRs related to coal mining activities include the Kuznetsk Basin in Russia, regions in and around Johannesburg in South Africa, the Appalachia Coal Basin in the United

PHD v1.0 potential persistent methane source regions 2018-2021

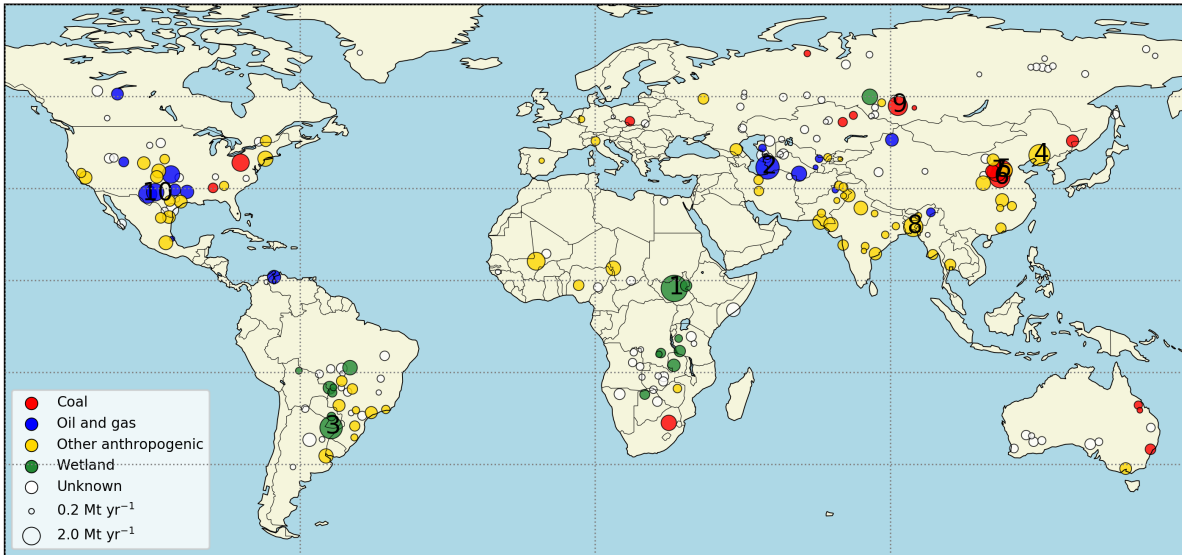


Figure 10. All PPSRs detected with the PHD algorithm grouped by the different dominant source types. The sizes of the circles scale with the emission estimates for 2018-2021 of the PPSRs. The 10 PPSRs with the highest emission estimates are indicated with a number.

States, and the Ekibastuz Coal Basin in Kazakhstan. We also detect several PPSRs located in known oil and gas basins including the Permian (Schneising et al., 2020; Zhang et al., 2020; Varon et al., 2023; Veeffkind et al., 2023), Uintah (de Gouw et al., 435 2020), Haynesville (Shen et al., 2022), and Anadarko (Schneising et al., 2020) in the USA, as well as two of the world’s largest natural gas fields, Galkynish and Dauletabad in Turkmenistan (Schneising et al., 2020). A large number of the detected PPSRs are assigned to the source type other anthropogenic sources. These include regions used for agriculture, such as the Po Valley in Italy, and regions including large cities, such as Dhaka in Bangladesh, Mumbai and Delhi in India, Madrid in Spain, Buenos Aires in Argentina and Rio de Janeiro in Brazil. The emissions in these cities can originate from anthropogenic 440 sources of different types. For example, Maasackers et al. (2022) analyzed the methane emissions of several cities, including Mumbai, Delhi and Buenos Aires, and showed that landfills contribute to a large amount to the total emissions of these cities. In addition to anthropogenic source regions, we also detected PPSRs in wetland regions. These include well-known methane source regions like the Sudd wetlands in South Sudan (Pandey et al., 2021), the Pantanal wetlands in Brazil and the wetlands formed by the Paraná river in Argentina (Parker et al., 2018). Often, source regions contain multiple sources of different types, 445 which is not indicated in the global map of Fig. 10. For example, we identified a source region at Lake Chad where the emission databases indicate strong anthropogenic emissions but also strong wetland emissions. Another example is a source region in the Central Valley in the USA, which is an oil and gas production site, but also known for its livestock farming (Buchwitz et al., 2017). 46.5% of the identified PPSRs are not assigned to any source type. By analyzing these in more detail, we find that most of them occur in regions with wetlands, but in which WetCHARTs v1.3.1 shows emissions lower than the used threshold of

450 50 kt yr⁻¹, which needs to be exceeded to assign a PPSRs to the corresponding source type (see Sect. 3.6). For example, we detected four PPSRs in Zambia, which are all known wetland methane source regions (Shaw et al., 2022), but only one of them was categorized as type wetland, while the others were assigned to type unknown. We also detected some unknown PPSRs that are located in fossil fuel production regions, such as the Cesar-Ranchería Basin in Colombia or the Surat Basin in Queensland, and some unknown PPSRs in urban areas, such as in Tulsa (USA) or in Calgary (Canada). As reported in Foy et al. (2023),
455 the emissions from urban areas are often underestimated in EDGAR, which may be the reason that these PPSRs could not be assigned to the other anthropogenic type.

The sum of the 2018-2021 mean emission estimates of all detected PPSRs is approximately 150 Mt yr⁻¹, of which 13.0% are associated with emissions from source type coal, 12.5% from type oil and gas, 35.4% from type other anthropogenic, 11.9% from type wetland and 27.2% from type unknown. We compared our total emission estimates with the calculated bottom-up
460 methane budget for 2017 from Saunio et al. (2020). The detected PPSRs account for 20.1% of the total bottom-up emissions (747 Mt yr⁻¹), for 24.1% of the emissions related to anthropogenic sources (380 Mt yr⁻¹) and for 4.9% of the emissions related to natural sources (367 Mt yr⁻¹). An analysis of the anthropogenic emissions shows that the PPSRs assigned to fossil fuel account for 28.4% of the total fossil fuel emissions (135 Mt yr⁻¹) reported in Saunio et al. (2020), describing 44.5% of coal-related emissions (44 Mt yr⁻¹) and 22.3% of oil and gas-related emissions (84 Mt yr⁻¹). The other anthropogenic PPSRs
465 account for 21.8% of the bottom-up anthropogenic emissions that are not related to fossil fuel (245 Mt yr⁻¹). Compared to Lauvaux et al. (2022) and Schuit et al. (2023), the emissions of our detected source regions account for a larger percentage of the reported anthropogenic emissions. The detected oil and gas methane ultra-emitters by Lauvaux et al. (2022) account for 8 – 12% of the oil and gas emissions reported by national inventories. In Schuit et al. (2023), anthropogenic super-emitters are detected, accounting for 2.7% of the total anthropogenic emissions reported by Saunio et al. (2020). In addition to the
470 different methodology and data product, the higher percentage of emissions detected in our study can be explained by the focus on persistent methane sources and the additional consideration of larger-scale source regions rather than only detecting point sources.

We only detected a fraction of the global total emissions, because we only considered source regions that are localized and have a persistent enhancement, which is above a threshold. In addition, the sources can only be detected if sufficient TROPOMI
475 measurements are available, which depends, for example, on the presence of clouds in the considered region. Thus, emissions from sources that do not meet these criteria, such as source regions that only show strong emissions in one of the four years, cannot be detected with this method. For the calculation of the total emissions, we have to consider that a few of the detected PPSRs can be false positives, even though we applied a filtering of PPSRs in Sect. 3.3.4. If some of the PPSRs are false positives, then the calculated total emissions are overestimated.

480 Figure 11 shows the distribution of the 2018-2021 mean emission estimates of all detected PPSRs and the corresponding cumulative distribution. The majority of the detected PPSRs, 63.6%, have a mean emission estimate between 0.1 and 0.6 Mt yr⁻¹. Although the PPSRs with emission estimates greater than 0.6 Mt yr⁻¹ account for only 36.4% of the detected PPSRs, they are responsible for 66.8% of the total detected emission estimates. Most of the PPSRs with a higher emission estimate than 0.6 Mt yr⁻¹ were assigned to a source type, which indicates that the emission databases also report enhanced methane emis-

Distribution of emission estimates of the potential persistent methane source regions

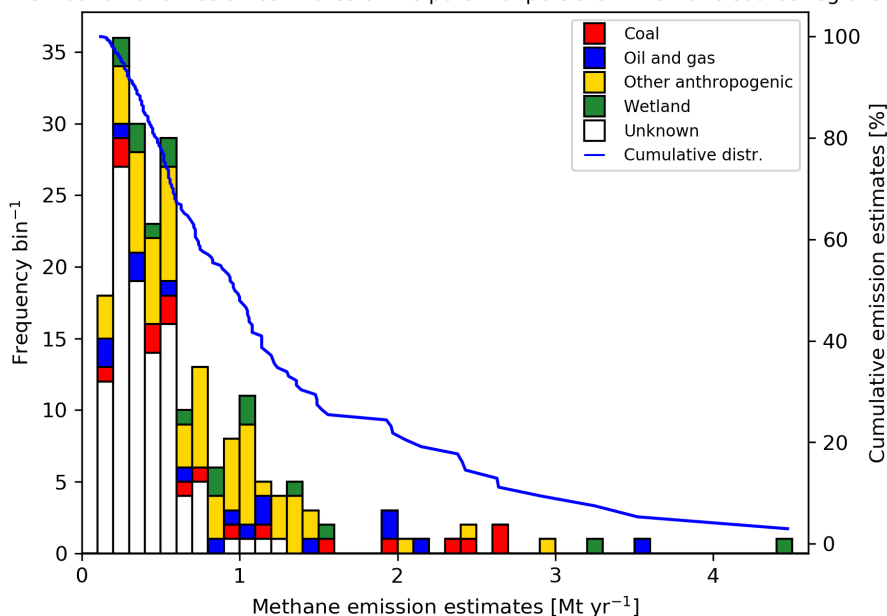


Figure 11. Distribution of the 2018-2021 emission estimates of the detected PPSRs, as well as the corresponding cumulative distribution (blue line). The frequency per 0.1 Mt yr^{-1} bin associated with the distribution of the emission estimates is shown on the left y-axis and the percentage share of the cumulative emission estimate of the total emission estimate is shown on the right y-axis. In each bin, the source types of the PPSRs contributing to that bin are shown with the corresponding color.

485 sions in the corresponding regions. In contrast, 64.5% of the PPSRs with emission estimates below 0.6 Mt yr^{-1} are assigned to the unknown source type, which account for 88.1% of all unknown PPSRs. In general, the shape of the distribution is in agreement with other studies describing a heavy-tailed distribution of strongly emitting methane emitters (Frankenberg et al., 2016; Jacob et al., 2016; Lauvaux et al., 2022; Zavala-Araiza et al., 2015).

For several of the detected PPSRs the emission estimates show a good agreement with emissions quantified in other studies. 490 These include, for example, the Upper Silesia Coal Basin in Southern Poland and the Bowen Basin in Queensland in Australia. The Upper Silesia Coal Basin in Poland is one of Europe's strongest methane emission hotspots due to its intense coal mining activities. For the PPSR in this area, we calculate an emission estimate of $0.59 \pm 0.11 \text{ Mt yr}^{-1}$, which is in good agreement with emissions calculated in Tu et al. (2022) of $0.50 \pm 0.02 \text{ Mt yr}^{-1}$ for the period from November 2017 to December 2020 and with emissions quantified using methane observations conducted from aircraft measurements in June 2018 during the 495 CoMet (Carbon Dioxide and Methane Mission) campaign of $0.44 \pm 0.14 \text{ Mt yr}^{-1}$ and $0.48 \pm 0.13 \text{ Mt yr}^{-1}$ (Fiehn et al., 2020; Fix et al., 2018). Another well-known methane source region is the Bowen Basin in Queensland in Australia, which is a coal mining area. Here we detected two PPSRs for which the combined emission estimate is $0.63 \pm 0.16 \text{ Mt yr}^{-1}$ for 2018-2021,

Table 2. Summary of the results of the 10 PPSRs with the highest methane emission estimates for 2018-2021 detected by the PHD algorithm. The \pm represents the corresponding uncertainty of the long-term emission estimate calculated via Eq. 7.

Source region	Lat. (°)	Lon. (°)	Emissions (Mt yr ⁻¹)	XCH ₄ (ppb)	Wind speed (m s ⁻¹)	area (·10 ² km ²)	Source type
1 South Sudan - Sudd	7.95	30.15	4.5 ± 0.9	12.9 ± 1.3	3.9 ± 0.6	759.9	Wetland
2 Turkmenistan - Coast	38.65	53.85	3.5 ± 0.9	17.5 ± 1.4	4.3 ± 1.0	198.3	Oil and gas
3 Argentina - Iberá	-27..35	302.95	3.3 ± 1.0	8.9 ± 1.9	5.7 ± 1.3	406.5	Wetland
4 China - Liaoning	41.75	122.95	2.9 ± 0.9	8.2 ± 1.6	6.5 ± 1.4	290.4	Other anthr.
5 China - Shanxi 1	36.05	112.85	2.6 ± 0.8	25.1 ± 2.5	5.1 ± 1.5	80.0	Coal
6 China - Shanxi 2	37.85	113.45	2.6 ± 0.7	20.6 ± 1.8	5.9 ± 1.3	42.9	Coal
7 China - Shanxi 3	37.55	112.15	2.4 ± 0.7	22.3 ± 2.5	4.7 ± 1.2	63.8	Coal
8 Bangladesh - Dhaka	23.55	90.85	2.4 ± 0.5	21.4 ± 2.0	2.9 ± 0.6	137.0	Other anthr.
9 Russia - Kuznetsk Basin	54.25	86.95	2.4 ± 0.5	17.3 ± 0.6	4.3 ± 0.9	112.2	Coal
10 USA - Permian Delaware	31.85	256.35	2.2 ± 0.6	7.5 ± 0.6	5.8 ± 1.5	272.9	Oil and gas

which also agrees well within the uncertainties with the calculated emissions in Sadavarte et al. (2021) of 0.57 ± 0.10 Mt yr⁻¹ for 2018-2019.

500 4.2 PPSRs with highest emission estimates

An overview of the results of the 10 PPSRs with the highest emission estimates is summarized in Table 2. In the following, each PPSR is discussed in detail, including the 2018-2021 times series for the emission estimates, XCH₄ enhancements and mean wind speed, and a comparison of the results with the emissions from EDGAR v6.0, GFEI v2.0, WetCHARTs v1.3.1 and related studies.

505 4.2.1 South Sudan - Sudd wetland

The PPSR with the highest emission estimate for 2018-2021, called PPSR 1, is detected in the Sudd in central South Sudan, one of the world's largest wetlands. The South Sudan, and in particular its wetland region, is a well-known methane source region that has been subject of several studies (Frankenberg et al., 2011; Hu et al., 2018; Lunt et al., 2019; Pandey et al., 2021). By comparing the emission databases within the PPSR 1 as described in Sect. 3.6, we determine its dominant source
510 type as wetland, which corresponds to its location in the Sudd. In Figure 11 we show an overview of the PPSR 1 results. Fig. 12 (a) shows the 2018-2021 XCH₄ of the South Sudan region, including the detected PPSR 1 mask, as well as one other identified PPSR in eastern South Sudan. It can be seen that the XCH₄ within the PPSR 1 is strongly enhanced compared to its surroundings. The area outlined in black in Fig. 12 (a) indicates the surrounding region, which is used to calculate the XCH₄ enhancements δ XCH₄ of the PPSR 1 (see Sect. 3.5). The corresponding time series of the δ XCH₄ for 2018-2021 is shown in

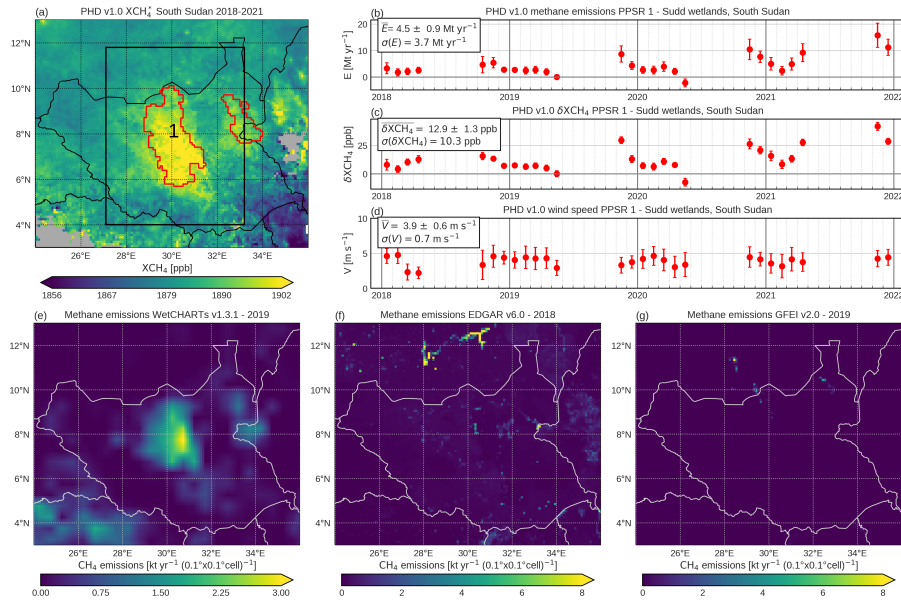


Figure 12. Results for the South Sudan region. (a) 2018-2021 XCH₄ with the detected PPSR masks outlined in red. The “1” indicates that this region is the PPSR with the highest emission estimate for 2018-2021 detected with the PHD algorithm. The black-outlined area defines the surrounding region used to calculate the XCH₄ enhancements δXCH_4 . (b) Time series (2018-2021) of the emission estimates E, (c) XCH₄ enhancements δXCH_4 and (d) mean wind speed V. (e) Methane emissions from WetCHARTs v1.3.1 for 2019, (f) from EDGAR v6.0 for 2018 and (g) from GFEI v2.0 for 2019. The emission estimate of the PPSR for 2018-2021 is $4.5 \pm 0.9 \text{ Mt yr}^{-1}$ and the corresponding emissions of the databases in this PPSR are: 0.88 Mt yr^{-1} for WetCHARTs, 0.17 Mt yr^{-1} for EDGAR and 0.01 Mt yr^{-1} for GFEI.

515 Fig. 12 (c). The mean for the entire time period is $12.9 \pm 1.3 \text{ ppb}$ and a standard deviation of 10.3 ppb . The δXCH_4 shows a seasonal cycle with its peak enhancement at the end of each year, as well as a strong increase since the end of 2020. Due to the frequent occurrence of clouds during the wet season from April to November, few data are available for this period of the year. In Fig. 12 (b) we show the emission estimates of PPSR 1 for 2018-2021, which we calculated as described in Sect. 3.5. The mean of the emission estimates is $4.5 \pm 0.9 \text{ Mt yr}^{-1}$, where \pm indicates the long-term emission estimate uncertainty

520 calculated via Eq. 7. By comparing the time series in Fig. 12 (b) - (d), it can be seen, that due to the small variations of the mean wind speed V , the δXCH_4 variations determine the temporal variations of the emission estimates, including the strong increase since the end of 2020. This strong increase is in good agreement with the finding that tropical wetlands are a major contributor to the strong methane growth rate in 2020 and 2021 (Peng et al., 2022; Lin et al., 2023).

Pandey et al. (2021) estimated the methane emissions of the entire wetland region in South Sudan, including the Sudd and

525 other wetlands, to be $8.0 \pm 3.2 \text{ Mt yr}^{-1}$ for 2018-2019. In a study from Lunt et al. (2019) emissions of the Sudd region were estimated using GOSAT XCH₄ data resulting in $5.2 - 6.9 \text{ Mt yr}^{-1}$ for 2016. Our estimate is lower compared to the two results, which can be explained by the smaller source region of this study. By combining the PPSR 1 with the PPSR, which we detected

in the east of South Sudan ($0.8 \pm 0.4 \text{ Mt yr}^{-1}$ for 2018-2021), we get the total emission estimate of $5.3 \pm 1.3 \text{ Mt yr}^{-1}$, which is in agreement within the uncertainties to the emissions calculated in Pandey et al. (2021) and Lunt et al. (2019).

530 The Emissions from the databases WetCHARTs v1.3.1, EDGAR v6.0 and GFEI v2.0 for the South Sudan region are shown in Fig. 12 (e) - (g). We compute the emissions of the databases in a PPSR by adding all emissions within the extended mask of the PPSR (see Sect. 3.6), which include the directly adjacent outer grid cells of the PPSR, to consider possible source location variations in the databases. WetCHARTs emissions for 2019 in the PPSR 1 are 0.88 Mt yr^{-1} . EDGAR's emissions for 2018 for the PPSR 1, which are mostly from the agriculture sector, combine to 0.17 Mt yr^{-1} and the emissions from GFEI for 2019
535 are 0.01 Mt yr^{-1} . It can be seen, that the emissions from the databases show a large difference with the emission estimates of this study and with those of Pandey et al. (2021) and Lunt et al. (2019).

4.2.2 Turkmenistan - West coast

The PPSR with the second highest emission estimate for 2018-2021, called PPSR 2, is detected on the west coast of Turkmenistan, in the Balkan province, which borders the Caspian Sea. The dominant source type is determined as oil and gas. The
540 west coast of Turkmenistan is a methane source region with oil and gas infrastructure over almost the entire coastal belt, including oil and gas power plants, compressor stations and pipelines (Irakulis-Loitxate et al., 2022). An overview of the results for PPSR 2, as well as the mask that defines the PPSR, can be seen in Fig. 13. The mean emission estimate for 2018-2021 is 3.5 Mt yr^{-1} with an uncertainty of 0.9 Mt yr^{-1} and a standard deviation of 0.6 Mt yr^{-1} . All months except January and February 2018 contribute to the emission estimate. The mean of the δX_{CH_4} for the time period is $17.5 \pm 1.4 \text{ ppb}$ and the mean
545 wind speed $4.3 \pm 1.0 \text{ m s}^{-1}$, where \pm indicates the corresponding uncertainties.

Methane emissions on the west coast of Turkmenistan have been detected in recent studies (He et al., 2024; Irakulis-Loitxate et al., 2022; Barré et al., 2021; Schuit et al., 2023; Varon et al., 2019). In Irakulis-Loitxate et al. (2022), areas within the west coast were identified as hotspot regions using TROPOMI, where hyperspectral (ZY1 and PRISMA) and multispectral (Sentinel-2) satellites detected several localized emission events in the range of kilo tons per year from January 2017 to November 2020.
550 In Varon et al. (2019), a methane source was detected at a compressor station in Korpezhe, in the middle of the west coast of Turkmenistan. Using TROPOMI data, the total emissions within a $12 \times 12 \text{ km}^2$ region around this source was calculated to be 0.45 Mt yr^{-1} ($0.19 - 0.75$) for December 2017 to January 2019. The emissions calculated in these studies refer to individual events or to smaller regions of the west coast and therefore cannot be directly used for comparison with the emission estimates calculated in this study, but provide an overview of the magnitude of the emissions.

555 The spatial distribution of methane emissions from EDGAR v6.0 for 2018 and GFEI v2.0 for 2019 for the considered region are shown in Fig. 13 (e) - (g). The emissions from EDGAR of 0.64 Mt yr^{-1} and GFEI of 0.62 Mt yr^{-1} for the entire PPSR 3 are significantly lower than our estimate of $3.5 \pm 1.8 \text{ Mt yr}^{-1}$. Several studies suggested that the inventories may underestimate Turkmenistan's emissions (Lauvaux et al., 2022; Buchwitz et al., 2017; Shen et al., 2023). For example, Shen et al. (2023) calculated emissions of $3.6 \pm 1.3 \text{ Mt yr}^{-1}$ related to oil and gas in Turkmenistan using TROPOMI, which is higher
560 as the emissions reported by GFEI of 1.5 Mt yr^{-1} . If we add the mean emission estimates of all oil and gas-related PPSRs in

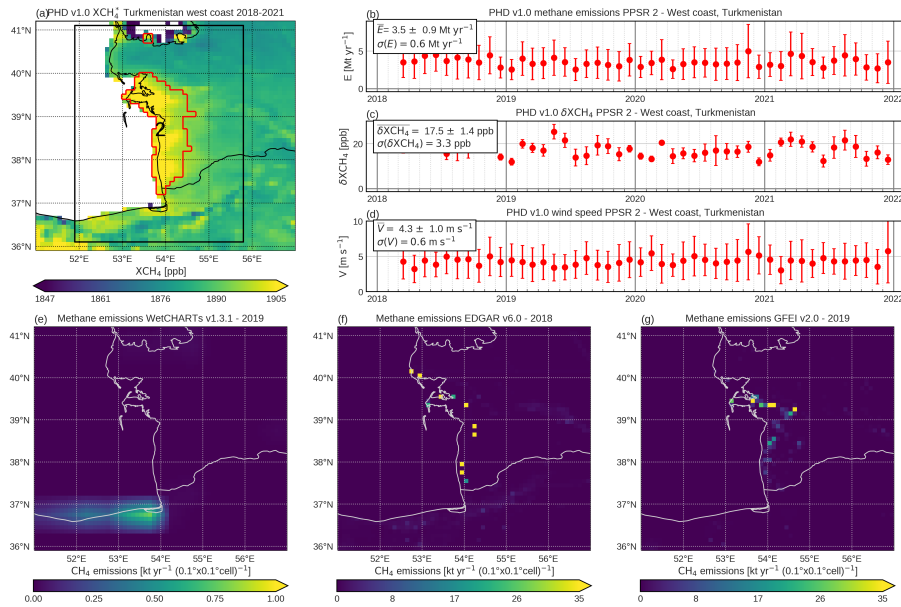


Figure 13. As Fig. 12 but for the west coast in Turkmenistan, where the PPSR with the second highest emission estimate of $3.5 \pm 0.9 \text{ Mt yr}^{-1}$ for 2018-2021 is detected. The corresponding emissions of the databases in the PPSR 2 are: 0.0 Mt yr^{-1} for WetCHARTs, 0.64 Mt yr^{-1} for EDGAR and 0.62 Mt yr^{-1} for GFEI.

Turkmenistan, we get a total emissions estimate of $5.0 \pm 1.4 \text{ Mt yr}^{-1}$ which is in agreement within the uncertainties with Shen et al. (2023).

4.2.3 Argentina - Iberá wetland

The PPSR with the third highest emission estimate for 2018-2021, called PPSR 3, is detected in the region of the border between northeastern Argentina and southern Paraguay and is assigned to type wetland. The PPSR 3 is located in the northern part of the Paraná region, a well-known methane source region, which extends from the Iberá wetland in the north, the second largest wetland in the world, to the area where the Paraná river flows into the Atlantic Ocean (Parker et al., 2018). In Figure 14 we show an overview of the results of the PPSR 3. The mean emission estimate for 2018-2021 is $3.3 \pm 1.1 \text{ Mt yr}^{-1}$ with a standard deviation of 1.3 Mt yr^{-1} and the mean of the corresponding δXCH_4 is $8.9 \pm 1.9 \text{ ppb}$. The emissions show a seasonal cycle, which also can be seen in the δXCH_4 time series and which is in good agreement with the wet season (Ortega et al., 2022; Parker et al., 2018). Furthermore, the emission estimates show a slight decrease from 2020 onward, which agrees with the results in Lin et al. (2023), where methane emission changes between 2019 and 2021 are analyzed, including the emission changes in the Paraná region.

WetCHARTs v1.3.1 shows enhanced methane emissions for the entire Paraná region, especially for the Iberá wetland, whereas the anthropogenic databases indicate only low emissions (Fig. 14 (e) - (g)). WetCHARTs emissions for PPSR 3 are

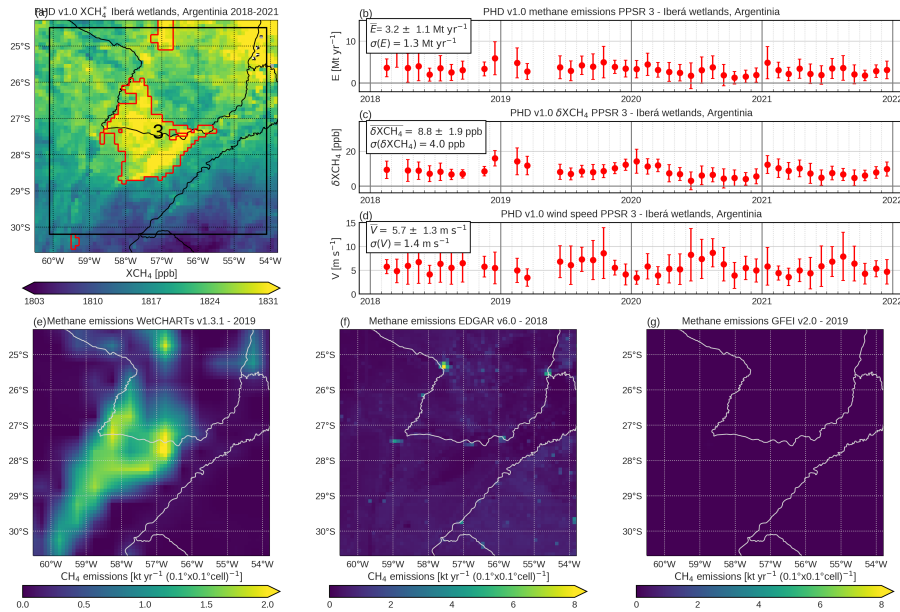


Figure 14. As Fig. 12 but for the Iberá wetlands in Argentina, where the PPSR with the third highest emission estimate of $3.3 \pm 1.0 \text{ Mt yr}^{-1}$ for 2018-2021 is detected. The corresponding emissions of the databases in the PPSR 3 are: 0.64 Mt yr^{-1} for WetCHARTs, 0.18 Mt yr^{-1} for EDGAR and 0.0 Mt yr^{-1} for GFEI.

0.64 Mt yr^{-1} , which is below our emission estimate. Although the Paraná region is a known methane source region, until now, no studies have calculated absolute values of the emissions from this region, that we can use to further assess our emission estimates. For example, in Parker et al. (2018), XCH_4 retrieved from GOSAT observations is used to analyze how well the methane inter-annual variability is described by model simulations for several regions, including the Paraná, without reporting explicit emission estimates.

4.2.4 China - Liaoning

The PPSR with the fourth highest emission estimate for 2018-2021, called PPSR 4, is detected in the Liaoning province in Northeast China and is assigned to type other anthropogenic. Liaoning is known for its high agricultural production (e.g. rice cultivation and livestock) as well as for its large heavy industry, including strong coal mining activities. The results of the PPSR 4 are shown in Figure 15. The PPSR mask covers the region of the Liaoning province where most of the rice production takes place and where a majority of the coal mines are located (Ma et al., 2021; Sheng et al., 2019). The mean emission estimate is 2.9 Mt yr^{-1} with an uncertainty of 0.9 Mt yr^{-1} and a standard deviation of 1.0 Mt yr^{-1} . The δXCH_4 has a mean of $8.1 \pm 1.6 \text{ ppb}$ and shows strong variability over the years with a standard deviation of 2.5 ppb , with the minimum usually in spring. In all months from 2018-2021, the PPSR, as well as in the background region, are filled with sufficient XCH_4 values to calculate the δXCH_4 and the emission estimates.

So far, there are only a few studies that have analyzed or identified methane emissions in the considered region. For example, two plumes were detected in 2021 by Schuit et al. (2023), which are located in the PPSR, with one plume of the dominant source type coal and one of type landfill. In Sheng et al. (2019), coal-related emissions in 2011 for China, including the Liaoning region, were estimated by analyzing reports from over 10000 coal mines in China. For Liaoning, the coal-related emissions were calculated to be 1.04 Mt yr^{-1} . The different time periods, as well as the larger region considered in Sheng et al. (2019) make it difficult to compare the results with the results of this study. In Foy et al. (2023) emissions of urban areas were estimated using TROPOMI data and compared with EDGAR, including the Shenyang region in Liaoning, where the emissions were estimated to 1.6 Mt yr^{-1} . If we take into account that the Shenyang region is smaller than PPSR 5 and thus some emissions from the surrounding area are not included in the estimate, our result is in good agreement with that of Foy et al. (2023).

It can be seen from Fig. 15 (e) - (g), that anthropogenic emissions are the dominant source type in this region. Emissions from EDGAR for PPSR 4 are 1.3 Mt in total for 2018, with large emissions seen in Shenyang, the capital of Liaoning. Of the 1.3 Mt , 52% are from the category of other anthropogenic sources, which are composed of emissions from several sectors, such as rice cultivation or landfills. The remaining emissions from EDGAR are related to the fossil fuel sector, mainly to coal production, which is in the range of the fossil fuel-related emissions from GFEI in 2019 for the PPSR of 0.49 Mt yr^{-1} . The emissions from the databases are significantly lower than the emissions calculated in this study of $2.9 \pm 0.9 \text{ Mt yr}^{-1}$, which is also reported in Foy et al. (2023) for their emission estimate of the Shenyang region.

4.2.5 China - Shanxi

The PPSR with the fifth, sixth and seventh highest emission estimate for 2018-2021, called PPSR 5, 6 and 7, are detected in the Shanxi province in North China. The Shanxi province is a known methane source region with emissions resulting primarily from high coal mining activity (Peng et al., 2023). This corresponds to the determined dominant source type of the three PPSRs, which is coal. An overview of the results of the individual PPSRs is shown in Figure 16. Fig. 16 (a) shows the 2018-2021 XCH_4 for Shanxi and the surroundings, including the detected PPSR masks, as well as the corresponding background regions for the PPSR 5, 6 and 7. It can be seen that the XCH_4 in the PPSRs is enhanced compared to the XCH_4 in the surrounding regions. The time series of the δXCH_4 for the PPSRs are shown in Fig. 16 (c). The PPSR 5 has a mean δXCH_4 for 2018-2021 of $25.1 \pm 2.5 \text{ ppb}$, PPSR 6 of $20.6 \pm 1.8 \text{ ppb}$ and the PPSR 7 of $22.3 \pm 2.2 \text{ ppb}$, which are the highest mean δXCH_4 values of all detected PPSRs. The δXCH_4 shows a strong variability in all three PPSRs with standard deviations of 10.4 ppb for PPSR 5, 6.5 ppb in PPSR 6 and 4.8 ppb in PPSR 7. This variability can also be seen in the emission estimates of the PPSRs shown in Fig. 16 (b). The mean emission estimates are $2.6 \pm 0.8 \text{ Mt yr}^{-1}$ for PPSR 5, $2.6 \pm 0.7 \text{ Mt yr}^{-1}$ for PPSR 6 and $2.4 \pm 0.7 \text{ Mt yr}^{-1}$ for PPSR 7 and in all three PPSRs almost all months contribute to the corresponding mean emission estimate.

Methane emissions in Shanxi have already been detected in several studies. The main focus was on the detection of individual plumes, which were identified, for example, by analyzing TROPOMI data as in Schuit et al. (2023) and Lauvaux et al. (2022), by data from the Worldview 3 satellite as in Sánchez-García et al. (2022) or by data from the PRISMA satellite mission as in Guanter et al. (2021). The detected transient plumes in these studies are not suitable for comparison with our emission

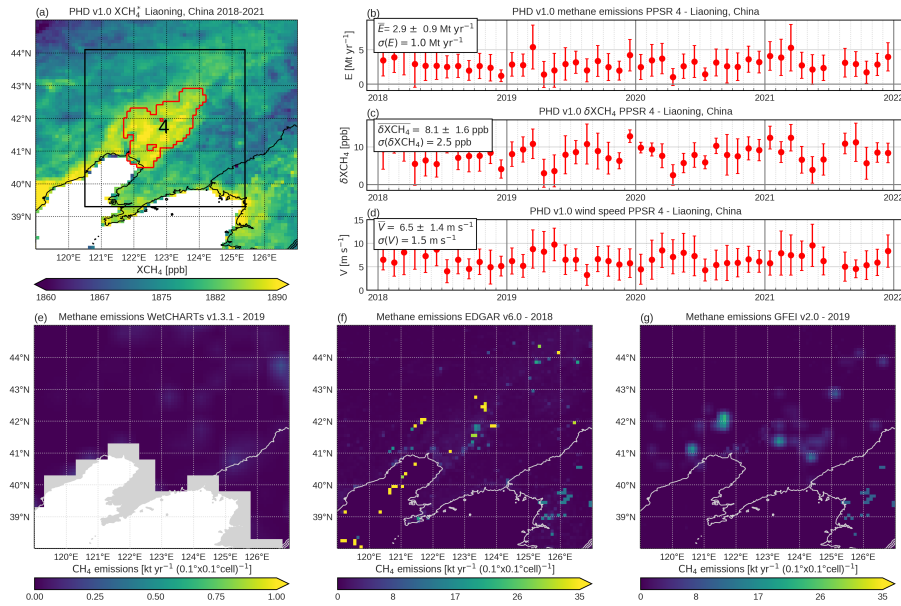


Figure 15. As Fig. 12 but for the Liaoning region in China, where the PPSR with the fourth highest emission estimate of $2.9 \pm 0.9 \text{ Mt yr}^{-1}$ for 2018-2021 is detected. The corresponding emissions of the databases in the PPSR 4 are: 0.0 Mt yr^{-1} for WetCHARTs, 1.3 Mt yr^{-1} for EDGAR and 0.49 Mt yr^{-1} for GFEI.

625 estimates, which were evaluated for persistent hotspot regions for several years. But this is the case for the study by Peng
 et al. (2023), in which the coal-related methane emissions for the entire Shanxi region for the years 2019 and 2020 were
 calculated by inversion of TROPOMI data. Peng et al. (2023) estimated emissions for 2019 of $8.5 \pm 0.6 \text{ Mt yr}^{-1}$ and for 2020
 of $8.6 \pm 0.6 \text{ Mt yr}^{-1}$. To compare, we computed the sum of the emissions of all the detected PPSRs in Shanxi (PPSRs 5, 6,
 7 and one other PPSR with a mean emission estimate of $1.1 \pm 0.3 \text{ Mt yr}^{-1}$ for 2018-2021, see Fig. 16 (a)) and obtained an
 630 emission estimate of $8.8 \pm 2.4 \text{ Mt yr}^{-1}$ for the period 2018-2021, which is in agreement within the uncertainties with the results
 from Peng et al. (2023). Moreover, by considering the emission estimates for 2019 and 2020, we obtained $8.5 \pm 2.1 \text{ Mt yr}^{-1}$
 for 2019 and $8.7 \pm 1.8 \text{ Mt yr}^{-1}$ for 2020 for the combined PPSRs in Shanxi. In Peng et al. (2023), the entire Shanxi region
 is considered, while we only focused on parts of the region. However, if we assume that our identified hotspots in the Shanxi
 region contain the majority of methane emissions, the comparison of the two results is reasonable.

635 Fig. 16 (e) - (g) shows the methane emissions of WetCHARTs v1.3.1, EDGAR v6.0 and GFEI v2.0 for Shanxi and the
 surrounding area. It can be seen that the region is dominated by anthropogenic emissions. The emissions for 2018 from EDGAR
 are mainly related to coal production and are 1.2 Mt yr^{-1} for PPSR 5, 2.8 Mt yr^{-1} in PPSR 6 and 1.2 Mt yr^{-1} in PPSR 7 in the
 corresponding extended PPSR masks. In total, the EDGAR emissions of all PPSRs in Shanxi combine to 5.2 Mt yr^{-1} , which
 is below our emission estimate of $8.8 \pm 2.4 \text{ Mt yr}^{-1}$ for 2018-2021. The emissions from GFEI for 2019 are mostly related
 640 to the coal sector and are concentrated in a few hotspots, which correlate with the locations of the detected PPSRs. For the

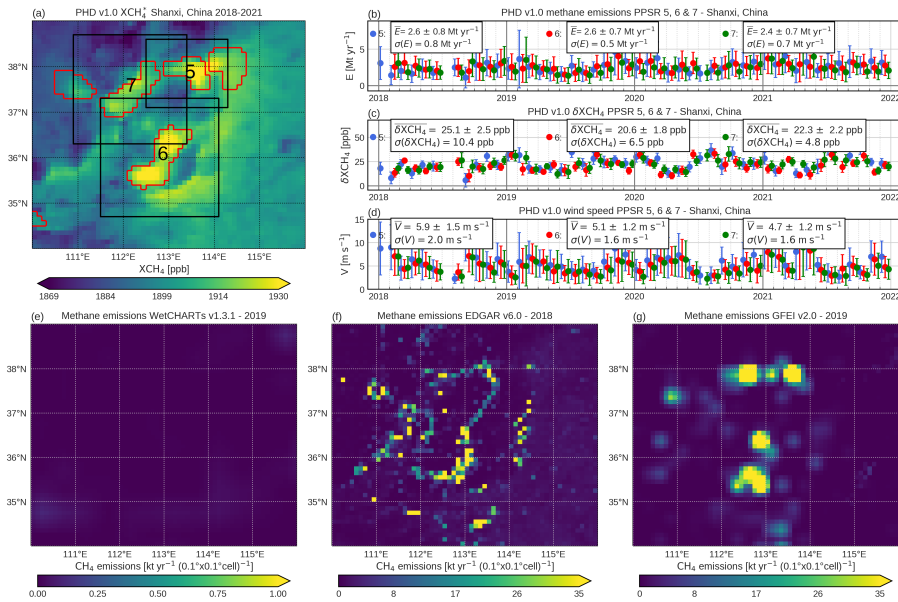


Figure 16. As Fig. 12 but for the Shanxi region in China, where the PPSRs with the fifth ($2.6 \pm 0.8 \text{ Mt yr}^{-1}$), sixth ($2.6 \pm 0.7 \text{ Mt yr}^{-1}$) and seventh ($2.4 \pm 0.7 \text{ Mt yr}^{-1}$) highest emission estimate for 2018-2021 are detected. The corresponding emissions of the databases in the PPSR 5, 6 and 7 are: 0 Mt yr^{-1} for WetCHARTs, 1.2 Mt yr^{-1} (PPSR 5), 2.8 Mt yr^{-1} (PPSR 6) and 1.2 Mt yr^{-1} (PPSR 7) for EDGAR and 1.5 Mt yr^{-1} (PPSR 5), 2.5 Mt yr^{-1} (PPSR 6) and 1.9 Mt yr^{-1} (PPSR 7) for GFEI.

PPSR 5, the GFEI emissions are 1.5 Mt yr^{-1} , 2.5 Mt yr^{-1} for PPSR 6 and 1.9 Mt yr^{-1} for PPSR 7. The total GFEI emissions of the considered PPSRs are 5.9 Mt yr^{-1} , which is slightly higher than the emissions reported by EDGAR but lower than the emission estimates of this study and the study by Peng et al. (2023).

4.2.6 Bangladesh - Dhaka and surrounding area

645 The PPSR with the eighth highest emission estimate for 2018-2021, called PPSR 8, is detected in a region enclosing Dhaka, the capital of Bangladesh, which is one of the most populated cities in the world. The dominant source type is determined as other anthropogenic sources. Dhaka and the surrounding area are a known methane source region with the main sources being agricultural production (rice, livestock) and waste management (wastewater, landfills), but also with contributions from wetlands (Foy et al., 2023; Toha and Rahman, 2023). The results for the PPSR 8 are shown in Fig. 17. The 2018-2021 XCH_4 shows a strong enhancement in the PPSR, especially in and around Dhaka, compared to the XCH_4 of the surrounding area (see Fig. 17 (a)). The δXCH_4 values for 2018-2021 are shown in Fig. 17 (c), averaging to a mean of $21.4 \pm 2.0 \text{ ppb}$, which is in the range of the enhancements of the PPSRs in the Shanxi region. For the considered years, no XCH_4 is present for the period from March/April to October/November due to the monsoon season and the resulting frequent high cloud coverage. Fig. 17 (b) shows the emission estimates for 2018-2021 with a mean of $2.4 \pm 0.5 \text{ Mt yr}^{-1}$ and increasing values from October/November

650

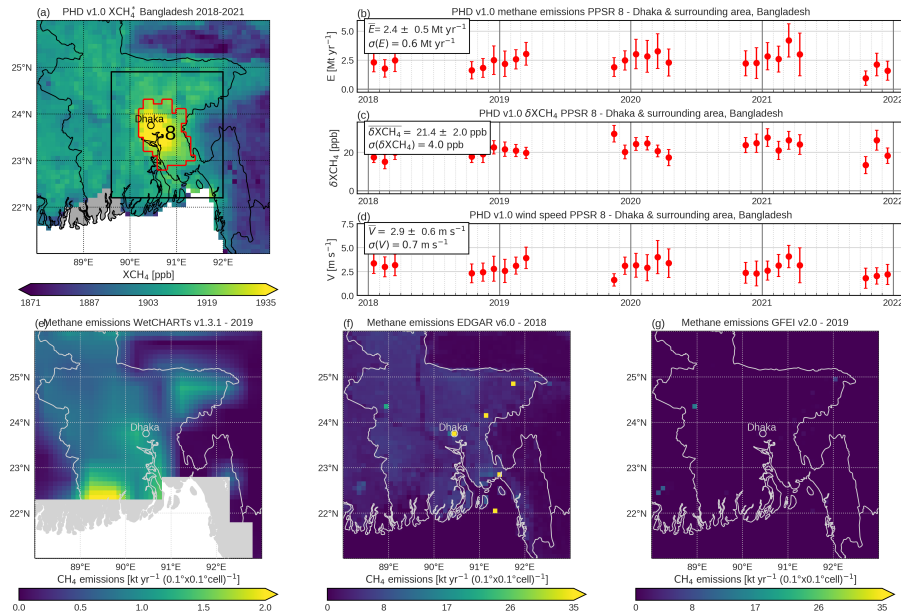


Figure 17. As Fig. 12 but for the region in and around Dhaka in Bangladesh, where the PPSR with the eighth highest emission estimate of $2.4 \pm 0.5 \text{ Mt yr}^{-1}$ for 2018-2021 is detected. The corresponding emissions of the databases in the PPSR 8 are: 0.13 Mt yr^{-1} for WetCHARTs, 0.92 Mt yr^{-1} for EDGAR and 0.02 Mt yr^{-1} for GFEI.

655 until April/May of the following year. This period is also one of two phases, in which the rice is cultivated in Bangladesh. The first phase is in summer, which starts around June and ends in October with the harvest. The second phase is during the winter from November to April, when the fields are artificially irrigated (Rahman et al., 2023).

Methane emissions in Dhaka have already been detected and quantified in several studies (Foy et al., 2023; Schuit et al., 2023). Schuit et al. (2023) used TROPOMI data to detect plumes worldwide and detected in Dhaka as many plumes as in any other urban area. The emissions from Dhaka are calculated in Foy et al. (2023) by using TROPOMI data and a two-dimensional plume model, resulting in emissions of 1.3 Mt yr^{-1} , which is lower than our estimate of $2.4 \pm 0.5 \text{ Mt yr}^{-1}$. It must be taken into account that our region is larger than that of Foy et al. (2023) and can therefore include emissions from other cities in the surrounding area, as well as wetland emissions from the Ganges delta.

660 Fig. 17 (e) - (g) show the emissions from WetCHARTs v1.3.1, Edgar v6.0 and GFEI v2.0 for the Dhaka region. For WetCHARTs, the emissions in the PPSR amount to 0.13 Mt for 2019, for EDGAR to 0.92 Mt for 2018 and for GFEI to 0.02 Mt for 2019. The emissions from EDGAR are mainly from the agricultural sector with 0.38 Mt yr^{-1} from rice production and 0.15 Mt yr^{-1} from enteric fermentation and are lower than our calculated emission estimate. In Foy et al. (2023) the calculated emissions were also higher compared to EDGAR. They concluded that part of the difference between EDGAR and their emission estimate is due to the fact that untreated wastewater is not taken into account, which can be a major factor, especially in very densely populated cities such as Dhaka.

670

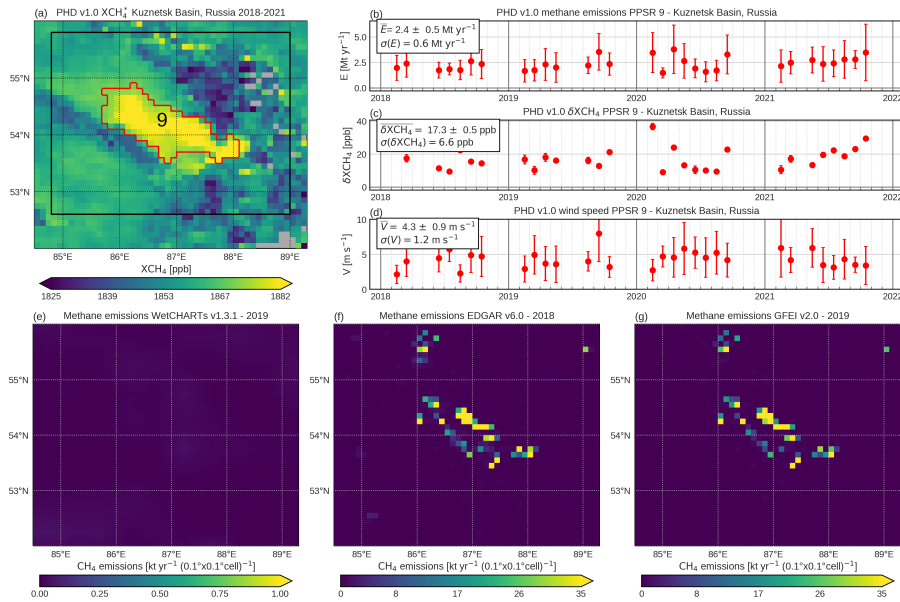


Figure 18. As Fig. 12 but for the Kuznetsk Basin in Russia, where the PPSR with the ninth highest emission estimate of $2.4 \pm 0.5 \text{ Mt yr}^{-1}$ for 2018-2021 is detected. The corresponding emissions of the databases in the PPSR 9 are: 0.0 Mt yr^{-1} for WetCHARTs, 1.6 Mt yr^{-1} for EDGAR and 1.4 Mt yr^{-1} for GFEI.

4.2.7 Russia - Kuznetsk Basin

The PPSR with the ninth highest emission estimate for 2018-2021, called PPSR 9, is detected in the Kuznetsk Basin (also called Kuzbass) in southwestern Siberia, Russia. Its dominant source type is determined as coal, which coincides with the fact that Kuzbass is one of the largest coal production areas worldwide (Labzovskii et al., 2022). Figure 18 shows an overview of the results for the PPSR 9. In the 2018-2021 $X\text{CH}_4$ map shown in Fig. 18 (a), a strong enhancement can be seen in the entire PPSR mask compared to the $X\text{CH}_4$ of the surrounding area. To quantify the $X\text{CH}_4$ enhancements within the PPSR, we computed the monthly $\delta X\text{CH}_4$ for the time period 2018-2021, which are on average $17.3 \pm 0.6 \text{ ppb}$ with a standard deviation of 6.6 ppb . The mean emission estimate is 2.4 Mt yr^{-1} with an uncertainty of 0.5 Mt yr^{-1} , which is computed from emission estimates of 30 months (Fig. 18 (b)).

Even though the Kuzbass is one of the largest coal production areas worldwide, there is still a need for studies reporting methane emissions from this region. In Schuit et al. (2023), methane plumes are detected in this region, but not discussed in more detail. Due to the limited number of studies, we only compare our emission estimate with the emissions from the databases, which are shown in Figure 18 (e) - (g) for the considered region. It can be seen that the emissions from the databases are dominated by anthropogenic activity and that the emission hotspots reported by EDGAR and GFEI show a high spatial correlation. EDGAR reports emissions of 1.6 Mt for 2018 and GFEI of 1.4 Mt for 2019, whereby the emissions from both

databases are mainly related to the coal sector. Compared to the emission estimate of this study, the emissions from EDGAR and GFEI are lower, but still within the uncertainty.

4.2.8 USA - Permian Basin

The PPSR with the tenth highest emission estimate for 2018-2021, called PPSR 10, is detected in the Permian Basin in the USA and is assigned to the source type oil and gas. The Permian Basin is the most prolific oil field in the USA and also a high-producing natural gas region, which is located in western Texas and eastern New Mexico. The Permian Basin consists of several sub-basins, including the Delaware Basin in the west and the Midland Basin in the east of the Permian, where mostly non-conventional exploitation techniques, such as hydraulic fracturing, are used. An overview of the results for PPSR 10 are shown in Fig. 19. It can be seen that we detect two regions in the Permian Basin. The PPSR 10 in the Delaware Basin and a PPSR in the Midland Basin, which shows the thirteenth strongest emission estimate. Since the literature often refers to the emissions of the entire Permian Basin, we analyze these two PPSRs together. The monthly emission estimates for 2018-2021 are shown in Fig. 19 (b). The mean emission estimate for PPSR 10 is $2.2 \pm 0.6 \text{ Mt yr}^{-1}$ and $2.0 \pm 0.5 \text{ Mt yr}^{-1}$ for PPSR 13, which leads to a combined mean emission estimate of $4.1 \pm 1.1 \text{ Mt yr}^{-1}$ for 2018-2021 (taking into account the second decimal place). The δXCH_4 time series for 2018-2021 for PPSR 10 and 13 can be seen in Fig. 19 (c). The mean δXCH_4 enhancement for PPSR 10 is $7.5 \pm 0.6 \text{ ppb}$ with a standard deviation of 3.3 ppb and $7.2 \pm 0.6 \text{ ppb}$ for PPSR 13 with a standard deviation of 1.7 ppb .

Methane emissions from the Permian Basins have already been quantified in several studies (Schneising et al., 2020; Shen et al., 2022; Varon et al., 2023; Veeffkind et al., 2023; Zhang et al., 2020). In the studies by Schneising et al. (2020) and Veeffkind et al. (2023), emissions were calculated based on the TROPOMI/WFMD XCH_4 data product. Schneising et al. (2020) used a Gaussian integral method and estimated emissions of $3.2 \pm 1.1 \text{ Mt yr}^{-1}$ for the period 2018-2019, whereas Veeffkind et al. (2023) calculated emissions of $3.0 \pm 0.7 \text{ Mt yr}^{-1}$ for 2019 using a divergence method. The emissions reported in the studies by Zhang et al. (2020), Shen et al. (2022) and Varon et al. (2023) are based on the operational TROPOMI data product and different inversion frameworks. Zhang et al. (2020) calculated emissions of $2.9 \pm 0.5 \text{ Mt yr}^{-1}$ for the period from May 2018 to March 2019, whereas Shen et al. (2022) estimated emissions of $2.9 \pm 0.4 \text{ Mt yr}^{-1}$ for the period from May 2018 to February 2020 and of $3.7 \pm 0.5 \text{ Mt yr}^{-1}$ for the same period but with an adjusted prior. In Varon et al. (2023), the period from May 2018 to October 2020 is considered and mean emissions of $3.7 \pm 0.9 \text{ Mt yr}^{-1}$ are reported, which is higher than the previous emission estimates. The emission estimate of $4.1 \pm 1.1 \text{ Mt yr}^{-1}$ for 2018-2021 calculated in this study is slightly higher than the emissions of the presented studies but agrees within the uncertainties.

The emissions from EDGAR v6.0, GFEI v2.0 and WetCHARTs v1.3 are shown in Fig. 19 (e) - (g). For EDGAR, the emissions within the extended PPSRs mask (see Sect. 3.6) are 1.2 Mt yr^{-1} and 0.2 Mt yr^{-1} for GFEI and relate to the oil and gas sector. The emissions of both databases are significantly lower than the emission estimates of this study and the other studies mentioned above. The emissions of these two databases also differ from one another.

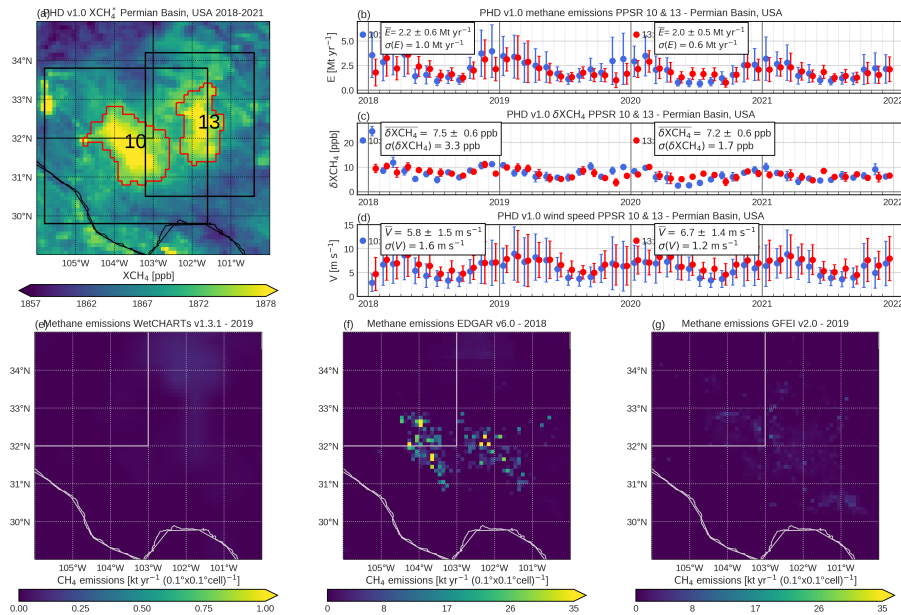


Figure 19. As Fig. 12 but for the Permian Basin in USA, where the PPSRs with the tenth and thirteenth highest emission estimate for 2018-2021 are detected. The corresponding emissions of the databases in the PPSR 10 (blue, $2.2 \pm 0.6 \text{ Mt yr}^{-1}$) and 13 (red, $2.0 \pm 0.5 \text{ Mt yr}^{-1}$) are: 0.0 Mt yr^{-1} for WetCHARTs, 1.2 Mt yr^{-1} (PPSR 10) and 0.59 Mt yr^{-1} (PPSR 13) for EDGAR and 0.21 Mt yr^{-1} (PPSR 10) and 0.14 Mt yr^{-1} (PPSR 13) for GFEI.

5 Conclusions

We developed an automated algorithm that uses TROPOMI XCH_4 data to identify potential persistent methane source regions (PPSRs), to estimate their emissions and to assign a source type to them. We applied the algorithm to a dataset comprising of monthly averaged XCH_4 maps at $0.1^\circ \times 0.1^\circ$ spatial resolution from 2018-2021, which we generated by gridding the TROPOMI WFMD v1.8 data product. The detection process involves two key steps: (i) the generation of monthly methane anomaly maps (ΔXCH_4), which indicate how “high” or “low” a local XCH_4 value is compared to the median of the surrounding XCH_4 , and (ii) the analysis of these anomaly maps. In the letter, we characterized each region by several quantities, such as the number of months in which the region shows enhanced anomalies, to then identify regions with a persistent enhancement by defining threshold values for the corresponding quantities. The algorithm is designed in a way that the thresholds can be adjusted depending on the focus of the source regions to be detected. For the automated emission estimates of the individual PPSRs, we used a fast data-driven mass balance method, which is designed to calculate emission estimates from time-averaged XCH_4 maps. For more precise emission estimates, we recommend conducting more detailed analyses based on daily data. To determine the dominant source types of the PPSRs, we compared the emissions from several databases (WetCHARTs v1.3.1, EDGAR v6.0 and GFEI v2.0) within the PPSRs masks.

We detected a total of 217 PPSRs, of which 17 have the dominant source type coal, 17 oil and gas, 66 other anthropogenic sources, 16 wetland and 101 an unknown source type. We showed that TROPOMI data can be used to detect a variety of well-known methane source regions such as large oil and gas fields in Turkmenistan and the USA, but also small-scale source regions like coal mines in Queensland in Australia. The emission estimates of all detected PPSRs amount to about 150 Mt yr^{-1} , which corresponds to approximately 20% of the bottom-up emissions reported in Sauniois et al. (2020). We found that the majority of emissions (35.4%) is associated with PPSRs dominated by other anthropogenic sources, followed by PPSRs of unknown type (27.2%), type coal (13.0%), oil and gas (12.5%) and wetland (11.9%). The coal-dominated source regions describe almost half (44.5%) of global coal emissions of Sauniois et al. (2020), while those from oil and gas (22.3%), as well as other anthropogenic sources (21.8%), also account for a large share of their sectors' emissions. This demonstrates that a comparatively small number of high-emitting source regions contribute a large proportion to the global methane emissions, underlining the importance of their detection and quantification for improving the understanding of the global methane emissions. The detected wetland regions account for 4.9% of the total natural emissions reported in Sauniois et al. (2020). However, we note that in some known wetland areas, such as Lake Chad or the Inner Niger Delta (Mali), strongly emitting PPSRs were detected, but were assigned to other source types due to the comparatively lower emissions in the wetland database. In addition, a more detailed analysis showed that many of the PPSRs with unknown source type are wetland regions. In total, 46.5% of the PPSRs show emissions of less than 50 kt yr^{-1} in the emission databases and were thus labeled as source regions with an unknown source type. The emission estimates of the unknown PPSRs range from $0.12\text{--}1.2 \text{ Mt yr}^{-1}$, indicating that in these regions the emission estimates of this study and the emissions in the databases have large differences. Some of the unknown PPSRs have been identified as methane sources in other studies, such as the PPSRs we detected in the Surat Basin in Australia or in the wetland region in Zambia. We found differences between the emissions of the databases and our emission estimates not only for the PPSRs with an unknown source type but also for some of the PPSRs with the 10 highest mean emission estimates for 2018-2021. These regions are located in the Sudd wetlands in South Sudan, in the west coast of Turkmenistan, which is an area dominated by oil and gas infrastructure, the Iberá wetland in Argentina, in the Liaoning and Shanxi province in China, which are known rice and coal production areas, in the city of Dhaka and its surroundings in Bangladesh, in the Kuznetsk Basin in Russia, one of the largest coal production areas in the world, and in the Permian Basin, a large oil and gas field in the United States. For many of these PPSRs, the emission estimates are in agreement within the uncertainties with emission estimates from other studies. In the emission databases, these PPSRs are also indicated as methane hotspots, but their emissions are significantly lower compared to our emission estimates. Further studies are needed to analyze these differences between the emissions of the databases and emission estimates in this and other studies in more detail. Furthermore, we cannot exclude that some of the detected PPSRs may be false positives. To improve the filtering of potential false positives, additional parameters, such as the aerosol optical thickness, could be considered in the analysis. Since the distinction between a true and a false positive detection is not trivial in many cases, it often requires detailed analyses. For example, in Schuit et al. (2023), as well as in Lauvaux et al. (2022) human observers subsequently verify each detected plume. Such an approach was omitted in this work in order to provide a fully automated algorithm.

Each of the detected PPSRs is a potential source region that needs to be examined in more detail, for example using a similar analyses as conducted for the PPSRs with the ten highest emission estimates. Furthermore, an additional analysis of the daily data can provide new insights into the characteristics of the regions. This includes the potential to use other methods for the calculation of the emission estimates (e.g., a gaussian integral method) or to perform detailed analyses to classify the PPSRs
770 in terms of a false positive detection. For example, preliminary analyses of PPSRs 165 and 217 in Germany have shown that their emission estimates of $0.29 \pm 0.07 \text{ Mt yr}^{-1}$ (PPSR 165) and $0.12 \pm 0.03 \text{ Mt yr}^{-1}$ (PPSR 217) are likely too high because of potential retrieval biases and/or accumulation of methane in the coal pits, which means that the assumptions of the method for calculating emissions do not match the characteristics of these regions. Methane retrievals directly over the coal pits are challenging due to complex and evolving topography and reflectivity variations.

775 Moreover, a more detailed comparison between the regions detected in this study and the results from the studies from Schuit et al. (2023) and Lauvaux et al. (2022), in which also methane hotspots were detected using TROPOMI data, is of interest. The studies differ in their focus on the type of hotspot to be detected. In Schuit et al. (2023) and Lauvaux et al. (2022) the focus is on plumes originating from point sources, including short-term emissions such as gas well blowouts, while in this study persistent source regions are detected, which also include larger-scale source regions in addition to point sources. Despite these
780 differences, a detailed comparison of these studies offers the opportunity to optimize the respective detection algorithms. The detection of known and unknown methane hotspots and the estimation of their emissions by algorithms such as those described in this study provide important knowledge about both anthropogenic and natural sources of methane. Their operational use in the future has the potential to significantly improve the emission inventories and thus contribute to a better understanding of the evolving sources of methane in a warming world.

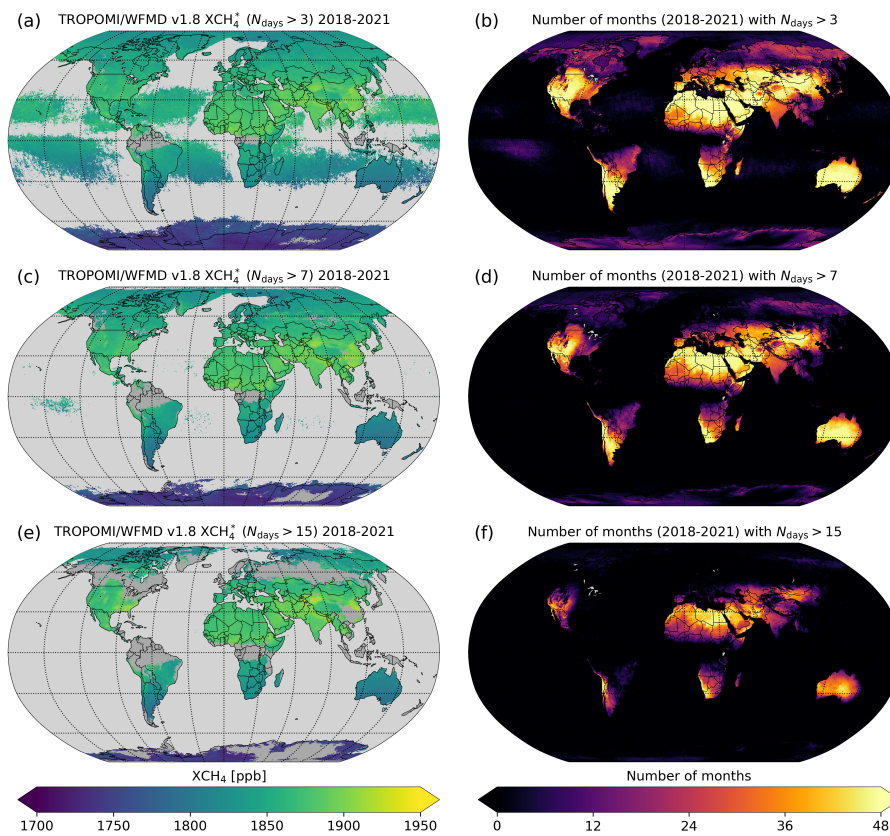


Figure A1. (left) 2018-2021 filtered XCH₄* calculated from monthly means in which the number of days of TROPOMI measurements within the month (N_{days}) is at least (a) 4 (as Fig. 2 (b)), (c) 8 and (e) 16. (right) The corresponding number of months contributing to the multi-year mean.

Data availability. The TROPOMI/WFMD XCH₄ data product is available at https://www.iup.uni-bremen.de/carbon_ghg/products/tropomi_wfmd/. EDGAR v6.0 data is available at <http://data.europa.eu/89h/97a67d67-c62e-4826-b873-9d972c4f670b>. GFEI v2.0 data is available at <https://doi.org/10.7910/DVN/HH4EUM>. WetCHARTs v1.3.1 data is available at https://daac.ornl.gov/cgi-bin/dsviewer.pl?ds_id=1915. GMTEd 2010 data are available at <https://doi.org/10.5066/F7J38R2N>. The ERA5 meteorological dataset is available at the Copernicus Climate Change Service (C3S) Climate Data Store (CDS) at <https://cds.climate.copernicus.eu>. The dataset of detected potential persistent source regions is available on request.

Author contributions. SV, OS and MB designed the study. SV performed the data analysis and interpreted the results with inputs from OS and MB. SV wrote the paper with inputs from all co-authors. OS prepared the WFMD data product. HBov, HBoe, JPB and MR contributed with conceptual inputs to the improvement of the paper.

795 *Competing interests.* The authors have no conflict of interest to declare.

Acknowledgements. This publication contains modified Copernicus Sentinel data (2018-2021). Sentinel-5 Precursor is an ESA mission implemented on behalf of the European Commission. The TROPOMI payload is a joint development by the ESA and the Netherlands Space Office (NSO). The Sentinel-5 Precursor ground-segment development has been funded by the ESA and with national contributions from the Netherlands, Germany and Belgium. We thank the EDGAR, GFEI and WetCHARTs teams for making their data publicly available. We also
805 thank ECMWF and Copernicus for the ERA5 data set. The authors wish to thank Jochen Landgraf (SRON, Leiden) for helpful comments and inputs during an early stage of this study.

Financial support. Financially support was provided in parts by the Deutsche Zentrum für Luft- und Raumfahrt (DLR) project “S5P Datennutzung” (grant number 50EE1811A), from the European Space Agency (ESA) via the projects GHG-CCI+ and MethaneCAMP (ESA contract nos. 4000126450/19/I-NB and 4000137895/22/I-AG), from the Federal Ministry of Education and Research (BMBF) within its
805 project ITMS via grant no. 01 LK2103A, from the Bremer Aufbau Bank (BAB) within the project LURAFO 4009B and the University of Bremen. The TROPOMI/WFMD retrievals used in this study were performed on HPC facilities of the IUP, University of Bremen, funded under DFG/FUGG grant nos. INST 144/379-1 and INST 144/493-1.

References

- 810 Barré, J., Aben, I., Agustí-Panareda, A., Balsamo, G., Bousseres, N., Dueben, P., Engelen, R., Inness, A., Lorente, A., McNorton, J., Peuch, V.-H., Radnoti, G., and Ribas, R.: Systematic detection of local CH₄ anomalies by combining satellite measurements with high-resolution forecasts, *Atmospheric Chemistry and Physics*, 21, 5117–5136, <https://doi.org/10.5194/acp-21-5117-2021>, publisher: Copernicus GmbH, 2021.
- Bloom, A. A., Bowman, K. W., Lee, M., Turner, A. J., Schroeder, R., Worden, J. R., Weidner, R. J., McDonald, K. C., and Jacob, D. J.: CMS: Global 0.5-deg Wetland Methane Emissions and Uncertainty (WetCHARTs v1.3.1), ORNL DAAC, 815 <https://doi.org/10.3334/ORNLDAAC/1915>, 2021.
- Borchardt, J., Gerilowski, K., Krautwurst, S., Bovensmann, H., Thorpe, A. K., Thompson, D. R., Frankenberg, C., Miller, C. E., Duren, R. M., and Burrows, J. P.: Detection and quantification of CH₄ plumes using the WFM-DOAS retrieval on AVIRIS-NG hyperspectral data, *Atmospheric Measurement Techniques*, 14, 1267–1291, <https://doi.org/10.5194/amt-14-1267-2021>, publisher: Copernicus GmbH, 2021.
- 820 Bovensmann, H., Burrows, J. P., Buchwitz, M., Frerick, J., Noël, S., Rozanov, V. V., Chance, K. V., and Goede, A. P. H.: SCIAMACHY: Mission Objectives and Measurement Modes, *Journal of the Atmospheric Sciences*, 56, 127–150, [https://doi.org/10.1175/1520-0469\(1999\)056<0127:SMOAMM>2.0.CO;2](https://doi.org/10.1175/1520-0469(1999)056<0127:SMOAMM>2.0.CO;2), publisher: American Meteorological Society Section: Journal of the Atmospheric Sciences, 1999.
- Buchwitz, M., de Beek, R., Noël, S., Burrows, J. P., Bovensmann, H., Schneising, O., Khlystova, I., Bruns, M., Bremer, H., Bergamaschi, 825 P., Körner, S., and Heimann, M.: Atmospheric carbon gases retrieved from SCIAMACHY by WFM-DOAS: version 0.5 CO and CH₄ and impact of calibration improvements on CO₂ retrieval, *Atmospheric Chemistry and Physics*, 6, 2727–2751, <https://doi.org/10.5194/acp-6-2727-2006>, publisher: Copernicus GmbH, 2006.
- Buchwitz, M., Schneising, O., Reuter, M., Heymann, J., Krautwurst, S., Bovensmann, H., Burrows, J. P., Boesch, H., Parker, R. J., Somkuti, P., Detmers, R. G., Hasekamp, O. P., Aben, I., Butz, A., Frankenberg, C., and Turner, A. J.: Satellite-derived methane hotspot emission 830 estimates using a fast data-driven method, *Atmospheric Chemistry and Physics*, 17, 5751–5774, <https://doi.org/10.5194/acp-17-5751-2017>, publisher: Copernicus GmbH, 2017.
- Burrows, J. P., Hölzle, E., Goede, A. P. H., Visser, H., and Fricke, W.: SCIAMACHY—scanning imaging absorption spectrometer for atmospheric cartography, *Acta Astronautica*, 35, 445–451, [https://doi.org/10.1016/0094-5765\(94\)00278-T](https://doi.org/10.1016/0094-5765(94)00278-T), 1995.
- Chen, Z., Jacob, D. J., Nesser, H., Sulprizio, M. P., Lorente, A., Varon, D. J., Lu, X., Shen, L., Qu, Z., Penn, E., and Yu, X.: Methane 835 emissions from China: a high-resolution inversion of TROPOMI satellite observations, *Atmospheric Chemistry and Physics*, 22, 10 809–10 826, <https://doi.org/10.5194/acp-22-10809-2022>, publisher: Copernicus GmbH, 2022.
- Chen, Z., Balasus, N., Lin, H., Nesser, H., and Jacob, D. J.: African rice cultivation linked to rising methane, *Nature Climate Change*, 14, 148–151, <https://doi.org/10.1038/s41558-023-01907-x>, publisher: Nature Publishing Group, 2024.
- Danielson, J. J. and Gesch, D. B.: Global multi-resolution terrain elevation data 2010 (GMTED2010), Tech. Rep. 2011-1073, U.S. Geological 840 Survey, <https://doi.org/10.3133/ofr20111073>, iSSN: 2331-1258 Publication Title: Open-File Report, 2011.
- de Gouw, J. A., Veefkind, J. P., Roosenbrand, E., Dix, B., Lin, J. C., Landgraf, J., and Levelt, P. F.: Daily Satellite Observations of Methane from Oil and Gas Production Regions in the United States, *Scientific Reports*, 10, 1379, <https://doi.org/10.1038/s41598-020-57678-4>, number: 1 Publisher: Nature Publishing Group, 2020.

- Eggleston, H. S., Buendia, Miwa, K., Ngara, T., and Tanabe, K.: IPCC: 2006 IPCC guidelines for national greenhouse gas inventories, prepared by the national greenhouse gas inventories program, <https://www.ipcc-nggip.iges.or.jp/public/2006gl/vol2.html>, 2006.
- Ferrario, F. M., Crippa, M., Guizzardi, D., Muntean, M., Schaaf, E., Vullo, E. L., Solazzo, E., Olivier, J., and Vignati, E.: EDGAR v6.0 Greenhouse Gas Emissions, <http://data.europa.eu/89h/97a67d67-c62e-4826-b873-9d972c4f670b>, publisher: European Commission, Joint Research Centre (JRC), 2021.
- Fiehn, A., Kostinek, J., Eckl, M., Klausner, T., Gałkowski, M., Chen, J., Gerbig, C., Röckmann, T., Maazallahi, H., Schmidt, M., Korbeń, P., Nećki, J., Jagoda, P., Wildmann, N., Mallaun, C., Bun, R., Nickl, A.-L., Jöckel, P., Fix, A., and Roiger, A.: Estimating CH₄, CO₂ and CO emissions from coal mining and industrial activities in the Upper Silesian Coal Basin using an aircraft-based mass balance approach, *Atmospheric Chemistry and Physics*, 20, 12 675–12 695, <https://doi.org/10.5194/acp-20-12675-2020>, publisher: Copernicus GmbH, 2020.
- Fix, A., Amediek, A., Bovensmann, H., Ehret, G., Gerbig, C., Gerilowski, K., Pfeilsticker, K., Roiger, A., and Zöger, M.: CoMet: an airborne mission to simultaneously measure CO₂ and CH₄ using lidar, passive remote sensing, and in-situ techniques, *EPJ Web of Conferences*, 176, 02 003, <https://doi.org/10.1051/epjconf/201817602003>, publisher: EDP Sciences, 2018.
- Foy, B. d., Schauer, J. J., Lorente, A., and Borsdorff, T.: Investigating high methane emissions from urban areas detected by TROPOMI and their association with untreated wastewater, *Environmental Research Letters*, 18, 044 004, <https://doi.org/10.1088/1748-9326/acc118>, publisher: IOP Publishing, 2023.
- Frankenberg, C., Aben, I., Bergamaschi, P., Dlugokencky, E. J., van Hees, R., Houweling, S., van der Meer, P., Snel, R., and Tol, P.: Global column-averaged methane mixing ratios from 2003 to 2009 as derived from SCIAMACHY: Trends and variability, *Journal of Geophysical Research: Atmospheres*, 116, <https://doi.org/10.1029/2010JD014849>, <https://onlinelibrary.wiley.com/doi/pdf/10.1029/2010JD014849>, 2011.
- Frankenberg, C., Thorpe, A. K., Thompson, D. R., Hulley, G., Kort, E. A., Vance, N., Borchardt, J., Krings, T., Gerilowski, K., Sweeney, C., Conley, S., Bue, B. D., Aubrey, A. D., Hook, S., and Green, R. O.: Airborne methane remote measurements reveal heavy-tail flux distribution in Four Corners region, *Proceedings of the National Academy of Sciences*, 113, 9734–9739, <https://doi.org/10.1073/pnas.1605617113>, publisher: Proceedings of the National Academy of Sciences, 2016.
- Grady, L.: Random Walks for Image Segmentation, *IEEE Transactions on Pattern Analysis and Machine Intelligence*, 28, 1768–1783, <https://doi.org/10.1109/TPAMI.2006.233>, conference Name: IEEE Transactions on Pattern Analysis and Machine Intelligence, 2006.
- Guanter, L., Irakulis-Loitxate, I., Gorroño, J., Sánchez-García, E., Cusworth, D. H., Varon, D. J., Cogliati, S., and Colombo, R.: Mapping methane point emissions with the PRISMA spaceborne imaging spectrometer, *Remote Sensing of Environment*, 265, 112 671, <https://doi.org/10.1016/j.rse.2021.112671>, 2021.
- He, T.-L., Boyd, R. J., Varon, D. J., and Turner, A. J.: Increased methane emissions from oil and gas following the Soviet Union’s collapse, *Proceedings of the National Academy of Sciences*, 121, e2314600 121, <https://doi.org/10.1073/pnas.2314600121>, publisher: Proceedings of the National Academy of Sciences, 2024.
- Hersbach, H., Bell, B., Berrisford, P., Hirahara, S., Horányi, A., Muñoz-Sabater, J., Nicolas, J., Peubey, C., Radu, R., Schepers, D., Simmons, A., Soci, C., Abdalla, S., Abellan, X., Balsamo, G., Bechtold, P., Biavati, G., Bidlot, J., Bonavita, M., De Chiara, G., Dahlgren, P., Dee, D., Diamantakis, M., Dragani, R., Flemming, J., Forbes, R., Fuentes, M., Geer, A., Haimberger, L., Healy, S., Hogan, R. J., Hólm, E., Janisková, M., Keeley, S., Laloyaux, P., Lopez, P., Lupu, C., Radnoti, G., de Rosnay, P., Rozum, I., Vamborg, F., Villaume, S., and Thépaut, J.-N.: The ERA5 global reanalysis, *Quarterly Journal of the Royal Meteorological Society*, 146, 1999–2049, <https://doi.org/10.1002/qj.3803>, <https://onlinelibrary.wiley.com/doi/pdf/10.1002/qj.3803>, 2020.

- Hu, H., Landgraf, J., Detmers, R., Borsdorff, T., Aan de Brugh, J., Aben, I., Butz, A., and Hasekamp, O.: Toward Global Mapping of Methane With TROPOMI: First Results and Intersatellite Comparison to GOSAT, *Geophysical Research Letters*, 45, 3682–3689, <https://doi.org/10.1002/2018GL077259>, eprint: <https://onlinelibrary.wiley.com/doi/pdf/10.1002/2018GL077259>, 2018.
- 885 Irakulis-Loitxate, I., Guanter, L., Maasakkers, J. D., Zavala-Araiza, D., and Aben, I.: Satellites Detect Abatable Super-Emissions in One of the World’s Largest Methane Hotspot Regions, *Environmental Science & Technology*, 56, 2143–2152, <https://doi.org/10.1021/acs.est.1c04873>, publisher: American Chemical Society, 2022.
- Jacob, D. J., Turner, A. J., Maasakkers, J. D., Sheng, J., Sun, K., Liu, X., Chance, K., Aben, I., McKeever, J., and Frankenberg, C.: Satellite observations of atmospheric methane and their value for quantifying methane emissions, *Atmospheric Chemistry and Physics*, 16, 14371–14396, <https://doi.org/10.5194/acp-16-14371-2016>, 2016.
- 890 Jacob, D. J., Varon, D. J., Cusworth, D. H., Dennison, P. E., Frankenberg, C., Gautam, R., Guanter, L., Kelley, J., McKeever, J., Ott, L. E., Poulter, B., Qu, Z., Thorpe, A. K., Worden, J. R., and Duren, R. M.: Quantifying methane emissions from the global scale down to point sources using satellite observations of atmospheric methane, *Atmospheric Chemistry and Physics*, 22, 9617–9646, <https://doi.org/10.5194/acp-22-9617-2022>, publisher: Copernicus GmbH, 2022.
- Kort, E. A., Frankenberg, C., Costigan, K. R., Lindenmaier, R., Dubey, M. K., and Wunch, D.: Four corners: The largest US methane anomaly viewed from space, *Geophysical Research Letters*, 41, 6898–6903, <https://doi.org/10.1002/2014GL061503>, eprint: <https://onlinelibrary.wiley.com/doi/pdf/10.1002/2014GL061503>, 2014.
- 895 Krautwurst, S., Gerilowski, K., Borchardt, J., Wildmann, N., Gałkowski, M., Swolkień, J., Marshall, J., Fiehn, A., Roiger, A., Ruhtz, T., Gerbig, C., Necki, J., Burrows, J. P., Fix, A., and Bovensmann, H.: Quantification of CH₄ coal mining emissions in Upper Silesia by passive airborne remote sensing observations with the Methane Airborne MAPper (MAMAP) instrument during the CO₂ and Methane (CoMet) campaign, *Atmospheric Chemistry and Physics*, 21, 17345–17371, <https://doi.org/10.5194/acp-21-17345-2021>, publisher: Copernicus GmbH, 2021.
- 900 Kuze, A., Suto, H., Nakajima, M., and Hamazaki, T.: Thermal and near infrared sensor for carbon observation Fourier-transform spectrometer on the Greenhouse Gases Observing Satellite for greenhouse gases monitoring, *Applied Optics*, 48, 6716–6733, <https://doi.org/10.1364/AO.48.006716>, publisher: Optica Publishing Group, 2009.
- 905 Kuze, A., Suto, H., Shiomi, K., Kawakami, S., Tanaka, M., Ueda, Y., Deguchi, A., Yoshida, J., Yamamoto, Y., Kataoka, F., Taylor, T. E., and Buijs, H. L.: Update on GOSAT TANSO-FTS performance, operations, and data products after more than 6 years in space, *Atmospheric Measurement Techniques*, 9, 2445–2461, <https://doi.org/10.5194/amt-9-2445-2016>, publisher: Copernicus GmbH, 2016.
- Labzovskii, L. D., Belikov, D. A., and Damiani, A.: Spaceborne NO₂ observations are sensitive to coal mining and processing in the largest coal basin of Russia, *Scientific Reports*, 12, 12597, <https://doi.org/10.1038/s41598-022-16850-8>, number: 1 Publisher: Nature Publishing Group, 2022.
- 910 Lan, X., Nisbet, E. G., Dlugokencky, E. J., and Michel, S. E.: What do we know about the global methane budget? Results from four decades of atmospheric CH₄ observations and the way forward, *Philosophical Transactions of the Royal Society A: Mathematical, Physical and Engineering Sciences*, 379, 20200440, <https://doi.org/10.1098/rsta.2020.0440>, publisher: Royal Society, 2021.
- Lauvaux, T., Giron, C., Mazzolini, M., d’Aspremont, A., Duren, R., Cusworth, D., Shindell, D., and Ciais, P.: Global assessment of oil and gas methane ultra-emitters, *Science*, 375, 557–561, <https://doi.org/10.1126/science.abj4351>, publisher: American Association for the Advancement of Science, 2022.
- Lin, X., Peng, S., Ciais, P., Hauglustaine, D., Lan, X., Liu, G., Ramonet, M., Xi, Y., Yin, Y., Zhang, Z., Bösch, H., Bousquet, P., Chevallier, F., Dong, B., Gerlein-Safdi, C., Halder, S., Parker, R. J., Poulter, B., Pu, T., Remaud, M., Runge, A., Saunois, M., Thompson, R. L., Yoshida,

- Y., and Zheng, B.: Recent methane surges reveal heightened emissions from tropical inundated areas, <https://eartharxiv.org/repository/view/5895/>, publisher: EarthArXiv, 2023.
- 920 Liu, M., van der A, R., van Weele, M., Eskes, H., Lu, X., Veefkind, P., de Laat, J., Kong, H., Wang, J., Sun, J., Ding, J., Zhao, Y., and Weng, H.: A New Divergence Method to Quantify Methane Emissions Using Observations of Sentinel-5P TROPOMI, *Geophysical Research Letters*, 48, e2021GL094151, <https://doi.org/10.1029/2021GL094151>, _eprint: <https://onlinelibrary.wiley.com/doi/pdf/10.1029/2021GL094151>, 2021.
- 925 Lunt, M. F., Palmer, P. I., Feng, L., Taylor, C. M., Boesch, H., and Parker, R. J.: An increase in methane emissions from tropical Africa between 2010 and 2016 inferred from satellite data, *Atmospheric Chemistry and Physics*, 19, 14 721–14 740, <https://doi.org/10.5194/acp-19-14721-2019>, publisher: Copernicus GmbH, 2019.
- Ma, B., Yang, X., Yu, Y., Shu, Y., and Che, D.: Investigation of Vegetation Changes in Different Mining Areas in Liaoning Province, China, Using Multisource Remote Sensing Data, *Remote Sensing*, 13, 5168, <https://doi.org/10.3390/rs13245168>, number: 24 Publisher: Multidisciplinary Digital Publishing Institute, 2021.
- 930 Maasackers, J. D., Varon, D. J., Elfarsdóttir, A., McKeever, J., Jervis, D., Mahapatra, G., Pandey, S., Lorente, A., Borsdorff, T., Foorthuis, L. R., Schuit, B. J., Tol, P., van Kempen, T. A., van Hees, R., and Aben, I.: Using satellites to uncover large methane emissions from landfills, *Science Advances*, 8, eabn9683, <https://doi.org/10.1126/sciadv.abn9683>, publisher: American Association for the Advancement of Science, 2022.
- 935 Naus, S., Maasackers, J. D., Gautam, R., Omara, M., Stikker, R., Veenstra, A. K., Nathan, B., Irakulis-Loitxate, I., Guanter, L., Pandey, S., Girard, M., Lorente, A., Borsdorff, T., and Aben, I.: Assessing the Relative Importance of Satellite-Detected Methane Superemitters in Quantifying Total Emissions for Oil and Gas Production Areas in Algeria, *Environmental Science & Technology*, 57, 19 545–19 556, <https://doi.org/10.1021/acs.est.3c04746>, publisher: American Chemical Society, 2023.
- Nisbet, E. G., Dlugokencky, E. J., Manning, M. R., Lowry, D., Fisher, R. E., France, J. L., Michel, S. E., Miller, J. B., White, J. W. C., Vaughn, B., Bousquet, P., Pyle, J. A., Warwick, N. J., Cain, M., Brownlow, R., Zazzeri, G., Lanoisellé, M., Manning, A. C., Gloor, E., Worthy, D. E. J., Brunke, E.-G., Labuschagne, C., Wolff, E. W., and Ganesan, A. L.: Rising atmospheric methane: 2007–2014 growth and isotopic shift, *Global Biogeochemical Cycles*, 30, 1356–1370, <https://doi.org/10.1002/2016GB005406>, _eprint: <https://onlinelibrary.wiley.com/doi/pdf/10.1002/2016GB005406>, 2016.
- 940 Ortega, L., Miller, J., Araguás-Araguás, L., Zabala, M. E., Vives, L., Mira, A., Rodríguez, L., Heredia, J., Armengol, S., and Manzano, M.: Unravelling groundwater and surface water sources in the Esteros del Iberá Wetland Area: An isotopic approach, *Science of The Total Environment*, 846, 157 475, <https://doi.org/10.1016/j.scitotenv.2022.157475>, 2022.
- Pandey, S., Gautam, R., Houweling, S., van der Gon, H. D., Sadavarte, P., Borsdorff, T., Hasekamp, O., Landgraf, J., Tol, P., van Kempen, T., Hoogeveen, R., van Hees, R., Hamburg, S. P., Maasackers, J. D., and Aben, I.: Satellite observations reveal extreme methane leakage from a natural gas well blowout, *Proceedings of the National Academy of Sciences*, 116, 26 376–26 381, <https://doi.org/10.1073/pnas.1908712116>, publisher: Proceedings of the National Academy of Sciences, 2019.
- 950 Pandey, S., Houweling, S., Lorente, A., Borsdorff, T., Tsvilidou, M., Bloom, A. A., Poulter, B., Zhang, Z., and Aben, I.: Using satellite data to identify the methane emission controls of South Sudan’s wetlands, *Biogeosciences*, 18, 557–572, <https://doi.org/10.5194/bg-18-557-2021>, publisher: Copernicus GmbH, 2021.
- Parker, R. J., Boesch, H., McNorton, J., Comyn-Platt, E., Gloor, M., Wilson, C., Chipperfield, M. P., Hayman, G. D., and Bloom, A. A.: Evaluating year-to-year anomalies in tropical wetland methane emissions using satellite CH₄ observations, *Remote Sensing of Environment*, 211, 261–275, <https://doi.org/10.1016/j.rse.2018.02.011>, 2018.
- 955

- Peng, S., Lin, X., Thompson, R. L., Xi, Y., Liu, G., Hauglustaine, D., Lan, X., Poulter, B., Ramonet, M., Saunois, M., Yin, Y., Zhang, Z., Zheng, B., and Ciais, P.: Wetland emission and atmospheric sink changes explain methane growth in 2020, *Nature*, 612, 477–482, <https://doi.org/10.1038/s41586-022-05447-w>, number: 7940 Publisher: Nature Publishing Group, 2022.
- 960 Peng, S., Giron, C., Liu, G., d'Aspremont, A., Benoit, A., Lauvaux, T., Lin, X., de Almeida Rodrigues, H., Saunois, M., and Ciais, P.: High-resolution assessment of coal mining methane emissions by satellite in Shanxi, China, *iScience*, 26, 108375, <https://doi.org/10.1016/j.isci.2023.108375>, 2023.
- Plant, G., Kort, E. A., Murray, L. T., Maasakkers, J. D., and Aben, I.: Evaluating urban methane emissions from space using TROPOMI methane and carbon monoxide observations, *Remote Sensing of Environment*, 268, 112756, <https://doi.org/10.1016/j.rse.2021.112756>,
965 2022.
- Qu, Z., Jacob, D. J., Shen, L., Lu, X., Zhang, Y., Scarpelli, T. R., Nesser, H., Sulprizio, M. P., Maasakkers, J. D., Bloom, A. A., Worden, J. R., Parker, R. J., and Delgado, A. L.: Global distribution of methane emissions: a comparative inverse analysis of observations from the TROPOMI and GOSAT satellite instruments, *Atmospheric Chemistry and Physics*, 21, 14159–14175, <https://doi.org/10.5194/acp-21-14159-2021>, publisher: Copernicus GmbH, 2021.
- 970 Rahman, N. M. F., Malik, W. A., Kabir, M. S., Baten, M. A., Hossain, M. I., Paul, D. N. R., Ahmed, R., Biswas, P. S., Rahman, M. C., Rahman, M. S., Iftekharuddaula, K. M., Hadasch, S., Schmidt, P., Islam, M. R., Rahman, M. A., Atlin, G. N., and Piepho, H.-P.: 50 years of rice breeding in Bangladesh: genetic yield trends, *Theoretical and Applied Genetics*, 136, 18, <https://doi.org/10.1007/s00122-023-04260-x>, 2023.
- Sadavarte, P., Pandey, S., Maasakkers, J. D., Lorente, A., Borsdorff, T., Denier van der Gon, H., Houweling, S., and Aben, I.: Methane
975 Emissions from Superemitting Coal Mines in Australia Quantified Using TROPOMI Satellite Observations, *Environmental Science & Technology*, 55, 16573–16580, <https://doi.org/10.1021/acs.est.1c03976>, publisher: American Chemical Society, 2021.
- Saunois, M., Stavert, A. R., Poulter, B., Bousquet, P., Canadell, J. G., Jackson, R. B., Raymond, P. A., Dlugokencky, E. J., Houweling, S., Patra, P. K., Ciais, P., Arora, V. K., Bastviken, D., Bergamaschi, P., Blake, D. R., Brailsford, G., Bruhwiler, L., Carlson, K. M., Carrol, M., Castaldi, S., Chandra, N., Crevoisier, C., Crill, P. M., Covey, K., Curry, C. L., Etiope, G., Frankenberg, C., Gedney, N., Hegglin, M. I., Höglund-Isaksson, L., Hugelius, G., Ishizawa, M., Ito, A., Janssens-Maenhout, G., Jensen, K. M., Joos, F., Kleinen, T., Krummel, P. B., Langenfelds, R. L., Laruelle, G. G., Liu, L., Machida, T., Maksyutov, S., McDonald, K. C., McNorton, J., Miller, P. A., Melton, J. R., Morino, I., Müller, J., Murguia-Flores, F., Naik, V., Niwa, Y., Noce, S., O'Doherty, S., Parker, R. J., Peng, C., Peng, S., Peters, G. P., Prigent, C., Prinn, R., Ramonet, M., Regnier, P., Riley, W. J., Rosentreter, J. A., Segers, A., Simpson, I. J., Shi, H., Smith, S. J., Steele, L. P., Thornton, B. F., Tian, H., Tohjima, Y., Tubiello, F. N., Tsuruta, A., Viovy, N., Voulgarakis, A., Weber, T. S., van Weele, M., van der Werf, G. R., Weiss, R. F., Worthy, D., Wunch, D., Yin, Y., Yoshida, Y., Zhang, W., Zhang, Z., Zhao, Y., Zheng, B., Zhu, Q., Zhu, Q., and Zhuang, Q.: The Global Methane Budget 2000–2017, *Earth System Science Data*, 12, 1561–1623, <https://doi.org/10.5194/essd-12-1561-2020>,
985 publisher: Copernicus GmbH, 2020.
- Scarpelli, T. R., Jacob, D. J., Grossman, S., Lu, X., Qu, Z., Sulprizio, M. P., Zhang, Y., Reuland, F., Gordon, D., and Worden, J. R.: Updated
990 Global Fuel Exploitation Inventory (GFEI) for methane emissions from the oil, gas, and coal sectors: evaluation with inversions of atmospheric methane observations, *Atmospheric Chemistry and Physics*, 22, 3235–3249, <https://doi.org/10.5194/acp-22-3235-2022>, publisher: Copernicus GmbH, 2022.
- Schneising, O., Buchwitz, M., Reuter, M., Heymann, J., Bovensmann, H., and Burrows, J. P.: Long-term analysis of carbon dioxide and methane column-averaged mole fractions retrieved from SCIAMACHY, *Atmospheric Chemistry and Physics*, 11, 2863–2880, <https://doi.org/10.5194/acp-11-2863-2011>, publisher: Copernicus GmbH, 2011.

- 995 Schneising, O., Burrows, J. P., Dickerson, R. R., Buchwitz, M., Reuter, M., and Bovensmann, H.: Remote sensing of fugitive methane emissions from oil and gas production in North American tight geologic formations, *Earth's Future*, 2, 548–558, <https://doi.org/10.1002/2014EF000265>, eprint: <https://onlinelibrary.wiley.com/doi/pdf/10.1002/2014EF000265>, 2014.
- Schneising, O., Buchwitz, M., Reuter, M., Bovensmann, H., Burrows, J. P., Borsdorff, T., Deutscher, N. M., Feist, D. G., Griffith, D. W. T., Hase, F., Hermans, C., Iraci, L. T., Kivi, R., Landgraf, J., Morino, I., Notholt, J., Petri, C., Pollard, D. F., Roche, S., Shiomi, K., Strong, K., Sussmann, R., Velazco, V. A., Warneke, T., and Wunch, D.: A scientific algorithm to simultaneously retrieve carbon monoxide and methane from TROPOMI onboard Sentinel-5 Precursor, *Atmospheric Measurement Techniques*, 12, 6771–6802, <https://doi.org/10.5194/amt-12-6771-2019>, publisher: Copernicus GmbH, 2019.
- 1000 Schneising, O., Buchwitz, M., Reuter, M., Vanselow, S., Bovensmann, H., and Burrows, J. P.: Remote sensing of methane leakage from natural gas and petroleum systems revisited, *Atmospheric Chemistry and Physics*, 20, 9169–9182, <https://doi.org/10.5194/acp-20-9169-2020>, publisher: Copernicus GmbH, 2020.
- 1005 Schneising, O., Buchwitz, M., Hachmeister, J., Vanselow, S., Reuter, M., Buschmann, M., Bovensmann, H., and Burrows, J. P.: Advances in retrieving XCH₄ and XCO from Sentinel-5 Precursor: improvements in the scientific TROPOMI/WFMD algorithm, *Atmospheric Measurement Techniques*, 16, 669–694, <https://doi.org/10.5194/amt-16-669-2023>, publisher: Copernicus GmbH, 2023.
- Schuit, B. J., Maasackers, J. D., Bijl, P., Mahapatra, G., van den Berg, A.-W., Pandey, S., Lorente, A., Borsdorff, T., Houweling, S., Varon, D. J., McKeever, J., Jervis, D., Girard, M., Irakulis-Loitxate, I., Gorroño, J., Guanter, L., Cusworth, D. H., and Aben, I.: Automated detection and monitoring of methane super-emitters using satellite data, *Atmospheric Chemistry and Physics*, 23, 9071–9098, <https://doi.org/10.5194/acp-23-9071-2023>, publisher: Copernicus GmbH, 2023.
- 1010 Shaw, J. T., Allen, G., Barker, P., Pitt, J. R., Pasternak, D., Bauguitte, S. J.-B., Lee, J., Bower, K. N., Daly, M. C., Lunt, M. F., Ganesan, A. L., Vaughan, A. R., Chibesakunda, F., Lambakasa, M., Fisher, R. E., France, J. L., Lowry, D., Palmer, P. I., Metzger, S., Parker, R. J., Gedney, N., Bateson, P., Cain, M., Lorente, A., Borsdorff, T., and Nisbet, E. G.: Large Methane Emission Fluxes Observed From Tropical Wetlands in Zambia, *Global Biogeochemical Cycles*, 36, e2021GB007261, <https://doi.org/10.1029/2021GB007261>, eprint: <https://onlinelibrary.wiley.com/doi/pdf/10.1029/2021GB007261>, 2022.
- Shen, L., Gautam, R., Omara, M., Zavala-Araiza, D., Maasackers, J. D., Scarpelli, T. R., Lorente, A., Lyon, D., Sheng, J., Varon, D. J., Nesser, H., Qu, Z., Lu, X., Sulprizio, M. P., Hamburg, S. P., and Jacob, D. J.: Satellite quantification of oil and natural gas methane emissions in the US and Canada including contributions from individual basins, *Atmospheric Chemistry and Physics*, 22, 11203–11215, <https://doi.org/10.5194/acp-22-11203-2022>, publisher: Copernicus GmbH, 2022.
- 1020 Shen, L., Jacob, D. J., Gautam, R., Omara, M., Scarpelli, T. R., Lorente, A., Zavala-Araiza, D., Lu, X., Chen, Z., and Lin, J.: National quantifications of methane emissions from fuel exploitation using high resolution inversions of satellite observations, *Nature Communications*, 14, 4948, <https://doi.org/10.1038/s41467-023-40671-6>, number: 1 Publisher: Nature Publishing Group, 2023.
- 1025 Sheng, J., Song, S., Zhang, Y., Prinn, R. G., and Janssens-Maenhout, G.: Bottom-Up Estimates of Coal Mine Methane Emissions in China: A Gridded Inventory, Emission Factors, and Trends, *Environmental Science & Technology Letters*, 6, 473–478, <https://doi.org/10.1021/acs.estlett.9b00294>, publisher: American Chemical Society, 2019.
- Sherwin, E. D., El Abbadi, S. H., Burdeau, P. M., Zhang, Z., Chen, Z., Rutherford, J. S., Chen, Y., and Brandt, A. R.: Single-blind test of nine methane-sensing satellite systems from three continents, *Atmospheric Measurement Techniques*, 17, 765–782, <https://doi.org/10.5194/amt-17-765-2024>, publisher: Copernicus GmbH, 2024.
- 1030

- Shoemaker, J. K., Schrag, D. P., Molina, M. J., and Ramanathan, V.: What Role for Short-Lived Climate Pollutants in Mitigation Policy?, *Science*, 342, 1323–1324, <https://doi.org/10.1126/science.1240162>, publisher: American Association for the Advancement of Science, 2013.
- 1035 Sánchez-García, E., Gorroño, J., Irakulis-Loitxate, I., Varon, D. J., and Guanter, L.: Mapping methane plumes at very high spatial resolution with the WorldView-3 satellite, *Atmospheric Measurement Techniques*, 15, 1657–1674, <https://doi.org/10.5194/amt-15-1657-2022>, publisher: Copernicus GmbH, 2022.
- Thorpe, A. K., Green, R. O., Thompson, D. R., Brodrick, P. G., Chapman, J. W., Elder, C. D., Irakulis-Loitxate, I., Cusworth, D. H., Ayasse, A. K., Duren, R. M., Frankenberg, C., Guanter, L., Worden, J. R., Dennison, P. E., Roberts, D. A., Chadwick, K. D., Eastwood, M. L., Fahlen, J. E., and Miller, C. E.: Attribution of individual methane and carbon dioxide emission sources using EMIT observations from space, *Science Advances*, 9, eadh2391, <https://doi.org/10.1126/sciadv.adh2391>, publisher: American Association for the Advancement of Science, 2023.
- 1040 Toha, M. and Rahman, M. M.: Estimation and prediction of methane gas generation from landfill sites in Dhaka city, Bangladesh, *Case Studies in Chemical and Environmental Engineering*, 7, 100302, <https://doi.org/10.1016/j.csee.2023.100302>, 2023.
- Tu, Q., Schneider, M., Hase, F., Khosrawi, F., Ertl, B., Necki, J., Dubravica, D., Diekmann, C. J., Blumenstock, T., and Fang, D.: Quantifying CH₄ emissions in hard coal mines from TROPOMI and IASI observations using the wind-assigned anomaly method, *Atmospheric Chemistry and Physics*, 22, 9747–9765, <https://doi.org/10.5194/acp-22-9747-2022>, publisher: Copernicus GmbH, 2022.
- 1045 Turner, A. J., Frankenberg, C., and Kort, E. A.: Interpreting contemporary trends in atmospheric methane, *Proceedings of the National Academy of Sciences*, 116, 2805–2813, <https://doi.org/10.1073/pnas.1814297116>, publisher: Proceedings of the National Academy of Sciences, 2019.
- 1050 Varon, D. J., McKeever, J., Jervis, D., Maasackers, J. D., Pandey, S., Houweling, S., Aben, I., Scarpelli, T., and Jacob, D. J.: Satellite Discovery of Anomalously Large Methane Point Sources From Oil/Gas Production, *Geophysical Research Letters*, 46, 13507–13516, <https://doi.org/10.1029/2019GL083798>, _eprint: <https://onlinelibrary.wiley.com/doi/pdf/10.1029/2019GL083798>, 2019.
- Varon, D. J., Jacob, D. J., Hmiel, B., Gautam, R., Lyon, D. R., Omara, M., Sulprizio, M., Shen, L., Pendergrass, D., Nesser, H., Qu, Z., Barkley, Z. R., Miles, N. L., Richardson, S. J., Davis, K. J., Pandey, S., Lu, X., Lorente, A., Borsdorff, T., Maasackers, J. D., and Aben, I.: Continuous weekly monitoring of methane emissions from the Permian Basin by inversion of TROPOMI satellite observations, *Atmospheric Chemistry and Physics*, 23, 7503–7520, <https://doi.org/10.5194/acp-23-7503-2023>, publisher: Copernicus GmbH, 2023.
- 1055 Veefkind, J. P., Aben, I., McMullan, K., Förster, H., de Vries, J., Otter, G., Claas, J., Eskes, H. J., de Haan, J. F., Kleipool, Q., van Weele, M., Hasekamp, O., Hoogeveen, R., Landgraf, J., Snel, R., Tol, P., Ingmann, P., Voors, R., Kruizinga, B., Vink, R., Visser, H., and Levelt, P. F.: TROPOMI on the ESA Sentinel-5 Precursor: A GMES mission for global observations of the atmospheric composition for climate, air quality and ozone layer applications, *Remote Sensing of Environment*, 120, 70–83, <https://doi.org/10.1016/j.rse.2011.09.027>, 2012.
- 1060 Veefkind, J. P., Serrano-Calvo, R., de Gouw, J., Dix, B., Schneising, O., Buchwitz, M., Barré, J., van der A, R. J., Liu, M., and Levelt, P. F.: Widespread Frequent Methane Emissions From the Oil and Gas Industry in the Permian Basin, *Journal of Geophysical Research: Atmospheres*, 128, e2022JD037479, <https://doi.org/10.1029/2022JD037479>, _eprint: <https://onlinelibrary.wiley.com/doi/pdf/10.1029/2022JD037479>, 2023.
- 1065 Zavala-Araiza, D., Lyon, D. R., Alvarez, R. A., Davis, K. J., Harriss, R., Herndon, S. C., Karion, A., Kort, E. A., Lamb, B. K., Lan, X., Marchese, A. J., Pacala, S. W., Robinson, A. L., Shepson, P. B., Sweeney, C., Talbot, R., Townsend-Small, A., Yacovitch, T. I., Zimmerle, D. J., and Hamburg, S. P.: Reconciling divergent estimates of oil and gas methane emissions, *Proceedings of the National Academy of*

- Sciences, 112, 15 597–15 602, <https://doi.org/10.1073/pnas.1522126112>, publisher: Proceedings of the National Academy of Sciences, 2015.
- 1070 Zhang, Y., Gautam, R., Pandey, S., Omara, M., Maasackers, J. D., Sadavarte, P., Lyon, D., Nesser, H., Sulprizio, M. P., Varon, D. J., Zhang, R., Houweling, S., Zavala-Araiza, D., Alvarez, R. A., Lorente, A., Hamburg, S. P., Aben, I., and Jacob, D. J.: Quantifying methane emissions from the largest oil-producing basin in the United States from space, *Science Advances*, 6, eaaz5120, <https://doi.org/10.1126/sciadv.aaz5120>, publisher: American Association for the Advancement of Science, 2020.
- 1075 Zhao, Y., Saunio, M., Bousquet, P., Lin, X., Berchet, A., Hegglin, M. I., Canadell, J. G., Jackson, R. B., Dlugokencky, E. J., Langenfelds, R. L., Ramonet, M., Worthy, D., and Zheng, B.: Influences of hydroxyl radicals (OH) on top-down estimates of the global and regional methane budgets, *Atmospheric Chemistry and Physics*, 20, 9525–9546, <https://doi.org/10.5194/acp-20-9525-2020>, publisher: Copernicus GmbH, 2020.