

Retrieval of stratospheric aerosol extinction coefficients from sun-normalized OMPS-LP measurements

Alexei Rozanov¹, Christine Pohl¹, Carlo Arosio¹, Adam Bourassa², Klaus Bramstedt¹, Elizaveta Malinina^{1,3}, Landon Rieger², and John P. Burrows¹

¹Institute of Environmental Physics, University of Bremen, Germany

²University of Saskatchewan, Canada

³now at Canadian Centre for Climate Modeling and Analysis (CCCma), Environment and Climate Change Canada (ECCC), Canada

Correspondence: Alexei Rozanov (alex@iup.physik.uni-bremen.de)

Abstract. A new retrieval algorithm approach to obtain vertical profiles of the aerosol extinction coefficient from the measurements of the scattered solar light in the limb viewing geometry made by the OMPS-LP instrument is presented. ~~The method employs the normalization of the limb radiances to the solar irradiance in contrast to~~ In contrast to many other published limb-scatter retrievals, our new algorithm does not employ the normalization by a limb measurement at an upper tangent height, ~~which is used by most of the other published limb-scatter retrievals.~~ Instead, the measured limb radiances are normalized to the solar irradiance. The main advantage of this approach ~~is a nearly~~ is an almost complete elimination of the dependence of the retrieval results on the prior aerosol extinction profile used in the retrieval. This makes the retrieval ~~well-suitable to analyze the~~ better suited for the analysis of the observation scenes with highly elevated aerosol plumes as occurred after the Hunga Tonga–Hunga Ha'apai volcanic eruption in January 2022. The results from the new approach were compared to ~~independent data~~ the vertical profiles of the aerosol extinction coefficients retrieved from SAGE III/ISS and OSIRIS. In general, an agreement within 25% between the different data products was observed in the 18 - 23 km altitude range although larger differences were seen after very strong volcanic eruptions and wildfires. In comparison with OSIRIS, larger differences are seen at southern high latitudes (above 60°S). The new data product was used to investigate the evolution of the aerosol plume after the Hunga Tonga–Hunga Ha'apai volcanic eruption.

15 *Copyright statement.* TEXT

1 Introduction

Stratospheric aerosols directly influence the radiative budget of the Earth's atmosphere by scattering the incident solar radiation back to the space in the UV-Vis-NIR spectral range and by absorbing the radiation upwelling from the troposphere in the thermal infrared spectral range. As discussed, e.g. by Solomon et al. (2011), the presence of ~~a large~~ an increased amount of aerosols in the stratosphere leads to a global cooling. The cooler temperatures increase the rate of formation of ozone

(O₃) (Groves et al., 1978; Groves and Tuck, 1979) and probably decrease the rate of catalytic removal of O₃. In addition, stratospheric aerosols serve as nuclei for the formation of the polar stratospheric clouds (PSCs) or directly provide surface for heterogeneous reactions releasing photo-labile halogens (Cl₂, Br₂ and I₂, but noting that only small amounts of I reach the stratosphere) and inter-halogens (BrCl, ICl and IBr), which are photolyzed and yield halogen atoms. These react with O₃ generating halogen oxides. Aerosols also take up HNO₃ reducing the amount of NO_x. At sufficiently low NO_x, the ClO disproportionation reaction and the reaction of BrO with ClO participate in additional catalytic cycles, which leads to the formation of the ozone holes in the polar regions (Solomon et al., 1986; Portmann et al., 1996; Tritscher et al., 2021). At high aerosol loading, similar processes might become significant also at extra-polar latitudes, ~~for~~. For example, a ~~significant ozone loss was observed~~ remarkable ozone loss of up to 18 Dobson units was identified in the southern mid-latitudes after the 2020 Australian wildfires ~~and in tropics~~ (Solomon et al., 2023) while (Evan et al., 2023) reported a decrease in the stratospheric O₃ above the tropical southwestern Pacific and Indian Ocean region by 5% after the 2022 Hunga Tonga–Hunga Ha'apai eruption (Solomon et al., 2023; Evan et al., 2023). In addition, ~~.~~ However, as discussed by (Zhu et al., 2023), the latter decrease was mainly caused by the injection of a large amount of water vapour with injection of ClO, which led to the chlorine activation in the heterogenic reactions. Thus, the ozone decrease reported by (Evan et al., 2023) seems to be specific to the Hunga Tonga–Hunga Ha'apai eruption. Besides the temperature and stratospheric ozone amount, the global precipitation, sea level pressure and circulation patterns, El Niño and climate extremes were reported to be affected by volcanic eruptions, see e.g. (Fyfe et al., 2013; Khodri et al., 2017; Paik and Min, 2018).

Despite its high scientific importance, the availability of information about the stratospheric aerosols on the global scale is quite limited. One of the widely used characteristics of the stratospheric aerosol, which is available from several space-borne instruments currently in operation, is the stratospheric aerosol extinction coefficient. As discussed by several authors, this quantity can be used to calculate the radiative forcing due to stratospheric aerosols, see e.g. (Hansen et al., 2005; von Savigny et al., 2015; Kloss et al., 2020; Malinina et al., 2021). Global vertical distributions of the stratospheric aerosol extinction coefficient can only be retrieved from space borne measurements. Most robust are the data from solar occultation measurements as ~~performed e.g. by SAGE II (McCormick, 1987) and SAGE III (Chu et al., 1997) instruments, as~~ measured spectra are self-calibrated through exo-atmospheric measurements and the corresponding retrievals do not use any strong assumptions in the forward modeling. ~~These data products~~ Such measurements, for example, were performed quasi-globally since 1979 by the SAGE instrument series (McCormick, 1987; McCormick et al., 1989; Chu et al., 1997). Data products from occultation instruments are well suited for the use as a validation source but suffer from a relatively sparse spatial sampling and coverage. Much more dense spatial sampling is provided by the aerosol extinction data retrieved from measurements of the scattered solar light in limb viewing geometry ~~as done made~~ by OSIRIS (Llewellyn et al., 2004), SCIAMACHY (Burrows et al., 1995; Bovensmann et al., 1999) and OMPS-LP (Flynn et al., 2014) instruments. In contrast to the solar occultation measurements, the retrieval of the aerosol extinction coefficients from limb-scatter measurements requires assumptions about the aerosol particle size distribution and aerosol amount around the normalization tangent height, if this kind of the normalization is applied, see e.g. (Rieger et al., 2015). Furthermore, the limb-scatter radiance strongly depends on the reflectance of the troposphere and surface. In the nadir viewing geometry, the aerosol extinction coefficient is retrieved from active remote sensing measurements

performed by lidar instruments, such as CALIOP (Winker et al., 2009). Lidar retrievals also employ normalization to measurements at high altitudes resulting in a sensitivity to the aerosol ~~in this range~~at normalization altitude. The major source of uncertainty for lidar instrument is a lack of the knowledge of the lidar ratio, see e.g. (Young et al., 2013).

This study focuses on the retrieval of the aerosol extinction coefficient from space borne limb-scatter measurements. Although several algorithms ~~to perform such kind of retrievals exist~~for such retrievals have been successfully developed (Bourassa et al., 2012; von Savigny et al., 2015; Rieger et al., 2019; Malinina et al., 2021; Taha et al., 2021; Bourassa et al., 2023) all of them are optimized to mitigate the influence of the surface reflectance and some also minimize error arising from the usage of a fixed aerosol particle size distribution. In this study we present a new algorithm to retrieve vertical distributions of the aerosol extinction coefficient from limb-scatter measurements made by the OMPS-LP instrument. The algorithm has been developed at the University of Bremen. One of its objectives is to minimize the influence of the unknown aerosol loading at high altitudes. This is especially crucial in the case of volcanic eruptions that reach high altitudes, such as the Hunga Tonga–Hunga Ha’apai in January 2022. The latter was the strongest volcanic eruption in the 21st century with a highest volcanic plume observed in the satellite era and injected ~~a significant amount~~0.4 – 0.9 Tg of SO₂ to altitudes up to ~32 km and a huge amount of the water vapor to altitudes up to ~50 km, see e.g. (~~Carr et al., 2022; Legras et al., 2022; Millán et al., 2022; Proud et al., 2022~~)
(Carn et al., 2022; Carr et al., 2022; Duchamp et al., 2023; Legras et al., 2022; Millán et al., 2022; Proud et al., 2022; Xia et al., 2024)

~~Besides~~In addition to the OMPS-LP retrieval developed at the University of Bremen and described in this study, algorithms from NASA (Taha et al., 2021) and the University of Saskatchewan (Bourassa et al., 2023) also exist. An intercomparison of the extinction profiles generated by the three algorithms is not straightforward due to the different assumptions about particle size distribution used in the NASA retrieval and the tomographic approach employed in the retrieval developed by the University of Saskatchewan. This intercomparison is a subject of a dedicated study, which is currently ongoing. The CALIOP aerosol extinction profile data (Young et al., 2018) is also available but not used in this study~~because of~~. This is because a very different measurement principle, much smaller footprint in the cross track direction resulting in a significantly sparser coverage, uncertainty from the lidar ratio, and typically low signal to noise ratio in the stratosphere ~~would make the interpretation of~~
the obtained results and attribution of the differences much more ambiguous as compared to the selected datasets (OSIRIS and SAGE III). CALIOP data might be extremely valuable for comparisons exercises dedicated to the latitudes, where SAGE III data are not available (e.g. winter high latitudes) or regions where a discrimination between the aerosol types or between aerosol and cirrus clouds is essential (e.g. tropical UTLS). Detailed comparisons of this kind are, however, outside the scope of this study.

The manuscript is structured as follows. In Sect. 2 the observational data used for the retrieval and comparisons are described. Section 3 presents a detailed description of the retrieval algorithm. The selection of the retrieval wavelength is justified in Sect. 4. The main advantages of the new retrieval algorithm are discussed in Sect. 5. Comparisons with independent data are discussed in Sect. 6. Application of the new data set for tracing the evolution of the aerosol plume after the Hunga Tonga–Hunga Ha’apai eruption is presented in Sect. 7. Conclusions are presented in Sect. 8.

90 2 Measurement data

The Ozone Mapping and Profiler Suite (OMPS) was launched in October 2011 onboard the Suomi NPP satellite, [a joint venture](#) of NOAA/NASA (Flynn et al., 2014). The satellite flies in a sun-synchronous orbit with 98.78° inclination at the altitude of about 800 km. OMPS comprises three instruments: the Nadir Mapper (NM), the Nadir Profiler (NP) and the Limb Profiler (LP). In this study, only the measurements from the latter instrument, OMPS-LP, are used. The OMPS-LP instrument observes solar radiance scattered by the Earth's atmosphere including that passing through the atmosphere downwards and reflected back by the underlying surface. The radiance from the atmosphere enters the instrument through three slits pointing in the direction opposite to that of the satellite's flight. By using two-dimensional charged-coupled device (CCD) detectors, measurements are ~~done-made~~ simultaneously in the altitude range from approximately 0 to 100 km with a vertical sampling of 1 km. Because of ~~remaining-unresolved~~ calibration issues, only the measurements from the central slit are used in this study. OMPS-LP instrument is a prism spectrometer covering the 280 - 1000 nm spectral range with a spectral resolution increasing with the wavelength from 1 nm in the UV to about 30 nm in the near-IR region. The vertical field of view of each detector pixel is about 1.5 km. In this study, the Level ~~1~~¹IG data V2.6 provided by NASA are used. [The dataset contains both sun-normalized and unnormalized radiances.](#)

The Stratospheric Aerosol and Gas Experiment (SAGE) III instrument has been operating since February 2017 onboard the International Space Station (ISS). The ISS flies at ~ 400 km altitude and its orbit has an inclination of 51.6° . SAGE III/ISS instrument performs solar occultation measurements during sunrise and sunset. The aerosol extinction coefficients are provided at 9 wavelengths: 384, 449, 520, 602, 676, 756, 869, 1021, and 1544 nm. The retrievals cover the range from the cloud top to about 45 km altitude at a vertical resolution of about 0.75 km. In this study Level 2 V5.3 data from the SAGE III/ISS instrument were used. No cloud filtering was applied. Negative values in SAGE III/ISS data were not filtered out to avoid creating a positive bias.

The Optical Spectrograph and InfraRed Imaging System (OSIRIS) instrument (Llewellyn et al., 2004) was launched in November 2001 onboard the Swedish Odin satellite. The satellite flies in a sun-synchronous orbit with 98.78° inclination at the altitude of about 600 km. The instrument combines a grating UV/Vis spectrograph and an IR imager and observes the solar radiance scattered by the Earth's atmosphere including that reflected by the underlying surface. The observations are done in the altitude range between about 0 and 100 km with a vertical sampling of ~ 2 km and similar vertical resolution. The optical spectrograph, whose data were used in this study, measures the spectral radiance in the 280–800 nm range with a resolution of 1–2 nm. OSIRIS retrieval provides vertical profiles of the stratospheric aerosol extinction coefficient at a wavelength of 750 nm between about 8 and 40 km with a vertical resolution of about 2 km. In this study, OSIRIS cloud cleared Level 2 data of V7.3 were used (Rieger et al., 2019). Because of issues identified by the University of Saskatchewan team in the vertical profiles of the aerosol extinction coefficient retrieved after the Hunga Tonga–Hunga Ha'apai eruption, only data before January 2022 are considered.

3 Retrieval algorithm

In this section, a detailed description of the new OMPS-LP retrieval algorithm of the University of Bremen (V2.1) is presented.

125 The retrieval approach is based on a regularized non-linear inversion¹. The algorithm is similar to those employed for the retrieval of vertical distributions of atmospheric species by the University of Bremen team and many other authors, e.g. Glatthor et al. (2006); Livesey et al. (2006); Rozanov et al. (2011); Malinina et al. (2018); Rieger et al. (2019); Mettig et al. (2021); Keppeler et al. (2021). This kind of the algorithms is also referred to as the global fit approach because all available spectral data are fitted together at once and no separation into spectral and vertical steps is done.

In general, the following quadratic form needs to be minimized to obtain the solution (see, e.g. Rodgers (2000)):

$$130 \quad \| y - F(x_0) - K(x - x_0) \|_{S_y^{-1}} + \| x - x_0 \|_{S_r}, \quad (1)$$

where x is the resulting state vector, i.e. the solution to be obtained, x_0 is the initial guess (a priori) state vector, $K = \left. \frac{\delta F(x)}{\delta x} \right|_{x=x_0}$ is the Jacobian of the forward model operator also referred to as the weighting function, y is the measurement vector constructed from the observed values, $F(x_0)$ is the measurement vector simulated by the forward model assuming the initial guess atmospheric state, S_y^{-1} is the noise covariance matrix and S_r is the regularization matrix.

135 The state vector contains aerosol extinction coefficient values at altitude levels corresponding to the measurement tangent heights and the effective Lambertian surface albedo. The initial guess values for the aerosol profile are set in accordance with an arbitrary profile extracted from the SAGE II aerosol climatology published by Bingen et al. (2004). As the retrieval depends only weakly on the initial guess profile (see below), selection of any particular profile is rather unimportant. For the effective surface albedo, the initial guess value is set to 0.5. The initial guess state vector is the same for all retrievals. The aerosol extinction coefficient and the scattering phase function are calculated employing Mie theory. ~~We assume that a) the aerosol consists of spherical droplets made of~~ assuming a spherical shape of aerosol droplets. Optical properties of the aerosol particles are taken from the OPAC data base (?) for the "sulfate droplets" aerosol type. This aerosol type corresponds to background stratospheric aerosols (75% solution of H₂SO₄, b). The calculations are made for the relative humidity of the ambient air ~~is of 0%, and c) the droplets have a~~ A unimodal log-normal particle size distribution (PSD) with fixed parameters (median radius, 145 R_{med} , of 0.08 μm and geometrical standard deviation, σ , of 1.6) ~~is assumed for all calculations.~~ The latter PSD parameters are taken from an arbitrary balloon-borne in-situ measurement for background aerosol conditions reported by Deshler (2008). An aerosol layer between 0 and 50 km and an aerosol free atmosphere above are assumed.

The measurement vector contains logarithms of the limb radiance in the tangent height range 8.5 – 48.5 km (with 1 km sampling) normalized by the solar irradiance. This normalization approach ~~makes is~~ the main difference between the new 150 retrieval and the previous version of the OMPS-LP retrieval of the University of Bremen (V1.0.9) published by Malinina et al. (2021), where the normalization used a limb measurement at an upper tangent height. As the normalization by the solar irradiance instead of the reference tangent height makes the retrievals more sensitive to the surface reflectance, the approach to retrieve the effective Lambertian surface albedo was optimized as follows. In the new retrieval, the effective surface albedo is

¹One of the popular techniques of this type is the maximum a posteriori information approach described by Rodgers (2000)

Table 1. Retrieval settings in OMPS-LP V2.1 and V1.0.9 algorithms of the University of Bremen.

	Old retrieval version: V1.0.9	New retrieval version: V2.1
Retrieval wavelength	869 nm	869 nm
Tangent height range	12.5 – 37.5 km	8.5 – 48.5 km
Normalization approach	Limb measurement at the normalization tangent height (37.5 km)	Solar irradiance
Retrieval approach	Regularized non-linear inversion	Regularized non-linear inversion using Levenberg-Marquardt approach
Regularization	Zeroth and first order Tikhonov regularization w.r.t. the solution at a previous iterative step	Zeroth and first order Tikhonov regularization w.r.t. the solution at a previous iterative step
Radiative transfer model	SCIATRAN, approximate spherical mode	SCIATRAN, full spherical mode
Assumed aerosol layer	12 – 45 km	0 – 50 km
Assumed aerosol PSD	unimodal log-normal distribution, fixed parameters: $R_{med} = 0.08 \mu\text{m}$, $\sigma = 1.6$	unimodal log-normal distribution, fixed parameters: $R_{med} = 0.08 \mu\text{m}$, $\sigma = 1.6$
Aerosol/albedo retrieval	Independent at each step, alternated	Joint, simultaneous
Measurements used for the surface albedo retrieval	Limb measurement at the normalization tangent height (37.5 km)	All tangent heights included in the retrieval (8.5 – 48.5 km)

included in the state vector and retrieved simultaneously with the aerosol extinction coefficients. Measurements at all tangent
155 heights in 8.5 – 48.5 km range are used to retrieve the effective surface albedo. In contrast, the V1.0.9 approach performed alternating independent retrievals of the aerosol extinction coefficients and of the effective surface albedo. The latter retrieval used only the limb measurement at the reference tangent height. In addition, V2.1 approach is more sensitive to the quality of the radiative transfer modeling. For this reason, the fully spherical mode of the SCIATRAN radiative transfer model (Combined Differential-Integral approach involving the Picard Iterative approximation, CDIPI) was used for the forward modeling rather
160 than the approximate spherical mode (Combined Differential-Integral approach, CDI) used in V1.0.9 algorithm. A detailed description of the CDI and CDIPI modes of SCIATRAN can be found in (Rozanov et al., 2000, 2001). We note that the use of the solar normalization makes the retrieval more sensitive to the quality of the absolute calibration of the measurements. In particular, an error can be expected if the absolute calibration of the limb spectra and that of the solar irradiance spectra differ. Although absolute calibration errors are typically independent of the incoming signal, they might be differently re-
165 distributed by the retrieval between the retrieved parameters (aerosol extinction coefficient and effective surface albedo in our case) depending on the observational geometry and surface reflectivity. This makes them difficult to be identified. In a case of a degradation of the detector a drift in the data might be expected. A degradation of detectors is, however, more an issue in the UV spectral range rather than in near-IR used in this study. For now, no indications for any issues in the absolute calibration of OMPS-LP instrument or degradation of the detectors are identified.

170 The retrieval is done for the relative changes in the aerosol extinction coefficient, $([x]_i - [x_0]_i)/[x_0]_i$, and absolute changes in the effective surface albedo, $[x]_j - [x_0]_j$. In the formulas above, the square brackets denote the componentwise operation, i runs through all aerosol levels included into the retrieval and j is the number of the effective surface albedo component in the

state vector. The regularization is based on the Tikhonov approach with zeroth and first order terms:

$$S_r = S_a^{-1} + \gamma^{-2} S_d^T S_d. \quad (2)$$

175 The zeroth order Tikhonov term, S_a^{-1} , acts in a similar way as the a priori covariance matrix in the maximum a posteriori method described by Rodgers (2000). The diagonal elements of the matrix S_a are set to 0.3 for the aerosol extinction coefficients and to 0.01 for the effective surface albedo. The off-diagonal elements are selected assuming a 1 km correlation radius for the aerosol extinction coefficients and no correlation between the aerosol extinction and the effective surface albedo. The matrix S_d in the first order Tikhonov term is the first derivative matrix. Detailed formulas to calculate the elements of the regularization matrices can be found in (Rozanov et al., 2011). The Tikhonov parameter, γ , is set to 0.2. The noise covariance matrix is a diagonal matrix with diagonal elements corresponding to a signal-to-noise ratio of 200, independent of the tangent height. This value as well as the values of Tikhonov parameters were selected empirically as a trade-off between the stability and sensitivity of the retrievals. Taking into account that the regularization strength is determined by the ratio of the noise covariance and Tikhonov parameters rather than their absolute values, we prefer to use an empirical value for the signal-to-noise ratio rather than the reported measurement errors. This keeps the regularization strength similar for all retrievals.

The non-linearity of the inverse problem defined by Eq. 1 is accounted for by employing an iterative scheme. The Levenberg-Marquardt algorithm is used to obtain the final solution. At each iterative step, the solution of the non-linear inverse problem is written as (see, e.g. (Rodgers, 2000) for details):

$$x_{i+1} = x_i + [K_i^T S_y^{-1} K_i + S_r + \lambda S_a^{-1}]^{-1} K_i^T S_y^{-1} (y - F(x_i)), \quad (3)$$

190 where i is the iteration number and λ in the Levenberg-Marquardt parameter with an initial guess of 1. We note that the regularization is done with respect to the solution at the previous iterative step rather than with respect to the initial guess atmospheric state. With that, a constraint to the magnitude and shape of the difference profile is applied only within a single iterative step making the difference between the final solution and the initial guess state much less constrained. The iterative process stops if the aerosol extinction coefficient at two subsequent iterative steps does not change by more than 2% between 15 and 28 km or if the relative change in the total root mean square difference is below 0.001. The convergence criteria are selected empirically taking into account the targeted precision of the retrieved aerosol extinction profiles of about 10%. The results are rejected if the retrieval requires more than 100 iterations to converge. [About 80% of the retrieval runs converged within 17 iterations \(histograms of the number of iterations needed for the convergence are presented in Fig. S1 in the supplement\).](#)

200 The averaging kernels, which describe the sensitivity of the retrieval to the true state, are calculated at the last (n-th) iteration by using the following formula:

$$A = [K_{n-1}^T S_y^{-1} K_{n-1} + S_r + \lambda S_a^{-1}]^{-1} K_{n-1}^T S_y^{-1} K_{n-1}. \quad (4)$$

The most important settings used in the new OMPS-LP retrieval approach of the University of Bremen (V2.1) and those of its precursor version (V1.0.9) are summarized in Table 1.

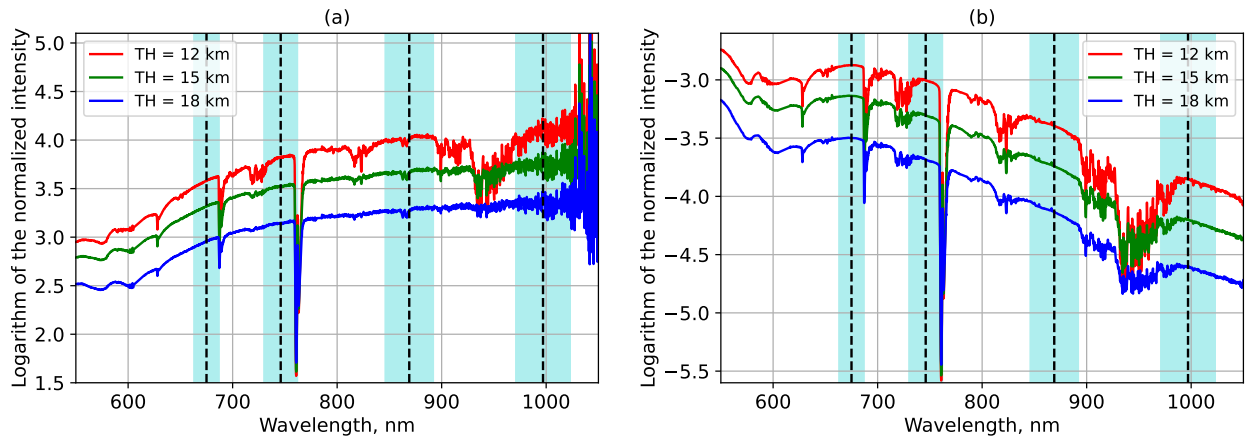


Figure 1. Spectra of limb-scatter radiance at different tangent heights normalized by the limb measurement at the reference tangent height ([left panel \(a\)](#)) and by the solar irradiance spectrum ([right panel \(b\)](#)). Dashed lines depict selected central wavelengths used by the NASA aerosol retrieval (675, 745, 869 and 997 nm). The cyan shadings mark ranges of \pm FWHM of the OMPS-LP instrument around the central wavelengths of the NASA aerosol retrieval.

4 Optimization of the retrieval wavelength

205 The optimal wavelength for the OMPS-LP V2.1 aerosol retrieval of the University of Bremen is selected by (i) analyzing possible contamination of the measured signal by interfering spectral signatures of other atmospheric constituents and (ii) investigating the sensitivity of limb-scatter measurements to the vertical distribution of the stratospheric aerosol.

To investigate [the](#) potential influence of interfering absorbers, a measured or modeled atmospheric spectrum, which has higher spectral resolution and sampling than that of OMPS-LP, is required. To ensure that all relevant spectral signatures from all atmospheric constituents are taken into account and their strength is representative for real observational conditions, we decided to analyze a measured spectrum rather than the modeled one. A suitable spectral information was provided by the SCIAMACHY spectrometer, which flew onboard the European Envisat satellite from March 2002 to April 2012 and had a similar observational geometry to that of the OMPS-LP instrument. While the most recent version of the University Bremen retrieval described in this study uses the sun-normalized limb-scatter measurements, all previous retrieval versions as well as most of the other limb-scatter stratospheric aerosol retrievals use the limb radiances normalized by the limb measurements at an upper tangent height (also referred to as the reference tangent height). For this reason, below we analyze the spectral behavior of both the sun-normalized and reference tangent height normalized radiance.

Figure 1 shows spectra of the limb-scatter radiance at different tangent heights normalized by the limb measurement at the reference tangent height of 35 km ([left panel \(a\)](#)) and by the solar irradiance spectrum ([right panel \(b\)](#)). The spectra were obtained from the SCIAMACHY measurement performed on January 7th, 2004 at 16:24:37 UTC with [the](#) tangent point ground coordinates 26°S, 5°W. The vertical dashed lines mark the wavelengths of 675, 745, 869 and 997 nm, which were

used by the NASA OMPS-LP V2.0 stratospheric aerosol extinction retrieval (Taha et al., 2021). The cyan shadings mark the areas smeared by the spectral response function (SRF) of the OMPS-LP instruments. The width of the shadings is selected as \pm FWHM (full width at half maximum of the SRF). The latter were estimated from Fig. 1-3 in (Rault et al., 2010) as 12, 16, 23 and 26 nm at 675, 745, 869 and 997 nm, respectively. The figure reveals that the band centered at 675 nm touches at its long-wave edge the O₂-~~A~~-~~B~~ absorption band centered at ~~690~~-~~688~~ nm. A similar situation is observed for 745 nm. At this wavelength, the measurements might be affected by the strong absorption in O₂-~~B~~-~~A~~ band centered at 762 nm. A potential influence of the ozone absorption is similar for radiances normalized by the measurement at the reference tangent height and by the solar irradiance spectrum. The band centered at 869 nm approaches at its long-wave edge the water vapor absorption band, however the potential interference is rather small. It might be advantageous to slightly shift the wavelength band towards the shorter wavelengths. However, due to a sparse spectral sampling of the OMPS-LP Level 1 data, this is not possible without including the water vapor band on the short-wavelength side. For the reference tangent height normalization, a small spectral feature is present in the middle of the band, which is not present for the sun-normalized radiance. This is most probably an emission signature propagating from the measurement at the reference tangent height. At 997 nm, the measurements might be affected by the water vapor absorption at the short-wave edge of the band. This influence seems to be stronger for the sun-normalized radiance. The reason for that is a partial canceling of the tropospheric signal when using the reference tangent height normalization. A strong increase of the measurement noise towards the longer wavelengths in the case of the reference tangent height normalization is typical for SCIAMACHY. For the OMPS-LP instrument, the signal-to-noise ratio at 997 nm is about a factor of two lower than that at 869 nm. Because of a stronger overlap with absorption features of atmospheric gases and lower signal-to-noise ratio as compared to other wavelengths, we exclude the 997 nm wavelength from the further consideration.

To investigate the sensitivity of the OMPS-LP V2.1 aerosol retrieval to changes in the vertical distribution of the aerosol extinction coefficient, the averaging kernels (see Eq. 4) at different wavelengths were analyzed for an example OMPS-LP measurement performed on January 6th, 2018 at 15:04:37 UTC with the tangent point ground coordinates 51°S, 14°W. The results are presented in Fig. 2. The averaging kernels (AKs) for wavelengths of 675, 745 and 869 nm are presented in ~~the left panel~~-panel (a) of the plot. For clarity reason, only ~~each~~-every third AK between 9.5 and 33.5 km is plotted. It is seen that the AKs for 675 nm (red) are always smaller than those for 745 nm (green) and 869 nm (blue) and significantly degrade below 15 km. This highlights is evidence of a lower sensitivity of the retrieval at 675 nm with respect to the other two wavelengths at all altitudes. At the lowermost altitude shown in the plot (9.5 km), the AK for 675 nm is very small and its peak is strongly displaced from the nominal altitude, which is an indication of a nearly complete loss of sensitivity below 10 km. Comparing AKs for 745 and 869 nm, we see that the former are only slightly lower than those for 869 nm at almost all altitudes and even slightly higher above 30 km. For both wavelengths, AKs peak at their nominal altitudes.

The middle panel-Panel (b) of Fig. 2 shows the vertical resolution of the retrieval for different wavelengths. It is calculated as a reciprocal of the diagonal elements of the AK matrix multiplied by the step of the retrieval vertical grid (1 km in our case). Confirming the conclusions drawn from the left panel of the plot, the vertical resolution of the retrieval at 675 nm is only a bit lower compared to that at the two other wavelengths down to 13.5 km and starts to degrade rapidly below this altitude

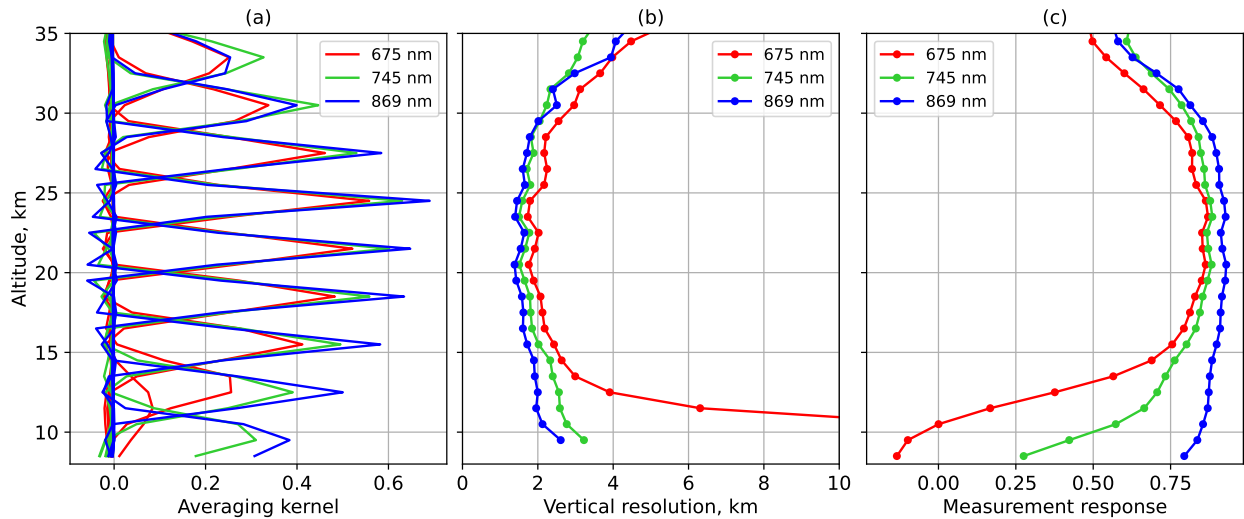


Figure 2. Characteristics of the OMPS-LP V2.1 aerosol extinction coefficient retrieval of the University of Bremen for different wavelengths. **Left panel** Panel (a): averaging kernels. **Middle panel** Panel (b): vertical resolution. **Right panel** Panel (c): measurement response.

exceeding the value of 10 km at 11.5 km altitude level. The vertical resolution of the retrieval at 745 nm is slightly worse than that at 869 nm below 30 km and is slightly better above. A similar behavior is seen for the measurement response shown in the **right panel** panel (c) of Fig. 2 and calculated as a sum of the elements in the AK matrix rows. The measurement response for the retrieval at 869 nm is close to the ideal value of one with values better than 0.75 below 31.5 km altitude. At both 675 and 745 nm, the measurement response starts to degrade at lower altitudes crossing the 0.5 level at about 13 km for the former and about 10 km for the latter wavelengths.

Based on From the discussion in this section we consider the wavelength of 869 nm to be optimal for the retrieval of vertical profiles of the stratospheric aerosol extinction coefficient from limb-scatter measurements performed by the OMPS-LP instrument.

5 Main advantages of the new retrieval algorithm

Several advantages are associated with the normalization of the limb radiance by the solar irradiance as it is done in the new V2.1 retrieval of the University of Bremen with respect to the normalization by the limb measurement at the reference tangent height as it was done in the precursor V1.0.9 retrieval described by Malinina et al. (2021) and other limb-scatter stratospheric aerosol retrievals (Bourassa et al., 2008; von Savigny et al., 2015; Taha et al., 2021). First, limb measurements at upper tangent heights generally have lower signal to noise ratios and are more contaminated by the stray light as compared to measurements at lower tangent heights. Thus, dividing all measurements by one at an upper tangent height generally degrades the quality of all data used in the retrieval. Second, a presence of an unknown signal from the aerosol scattering at the reference tangent

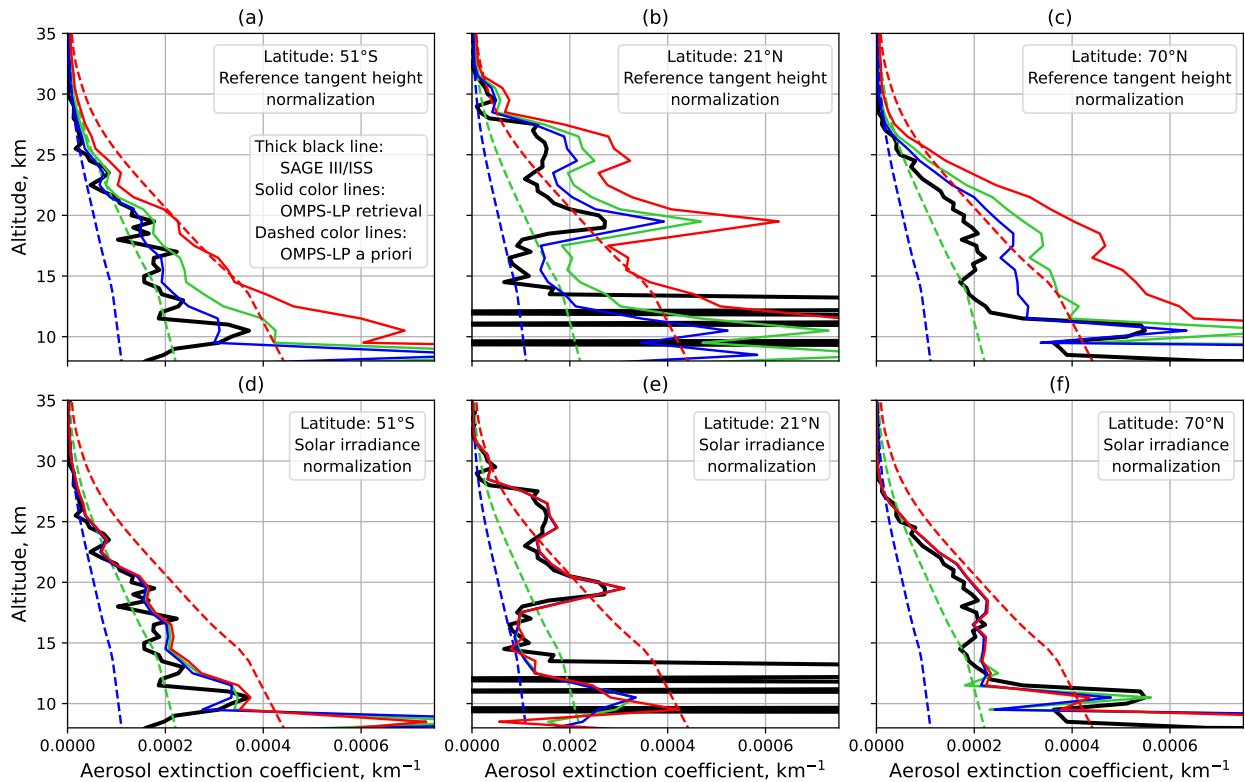


Figure 3. Dependence of the retrieval results on the a priori aerosol extinction profile for the University of Bremen [retrievals](#) using the normalization to the limb measurement at the reference tangent height [\(top row panels \(a\) – \(c\)\)](#) and to the solar irradiance spectrum [\(bottom row panels \(d\) – \(f\)\)](#). The comparisons are done for three example OMPS-LP measurements. [Left column Panels \(a\) and \(d\)](#): January 6, 2018, 15:04:37 UTC; 51°S, 14°W. [Middle column Panels \(b\) and \(e\)](#): January 22, 2018, 10:20:45 UTC; 22°N, 43°E. [Right column Panels \(c\) and \(f\)](#): July 25, 2018, 04:39:29 UTC; 70°N, 107°E.

height might bias the retrieval if the a priori aerosol content used in the forward model significantly differs from the real one. In addition, the reference tangent height is often used to estimate the effective Lambertian albedo of the underlying scene and a wrong assumption about the aerosol scattering contribution at this tangent height might bias the retrieved value of the effective albedo, which might additionally bias the retrieved vertical profile of the aerosol extinction coefficient.

The increase of the measurement noise when using the reference tangent height normalization approach is clearly seen [on the example of SCIAMACHY measurements shown](#) in Fig. 1. The spectra in [the left panel \(a\)](#) of the plot are obviously noisier compared to those in [the right panel \(b\)](#), especially for the longer wavelengths. [Although, results from SCIAMACHY cannot be directly transferred to other instruments, a degradation of the measurement quality with an increasing tangent height is rather common for limb-scatter observations.](#)

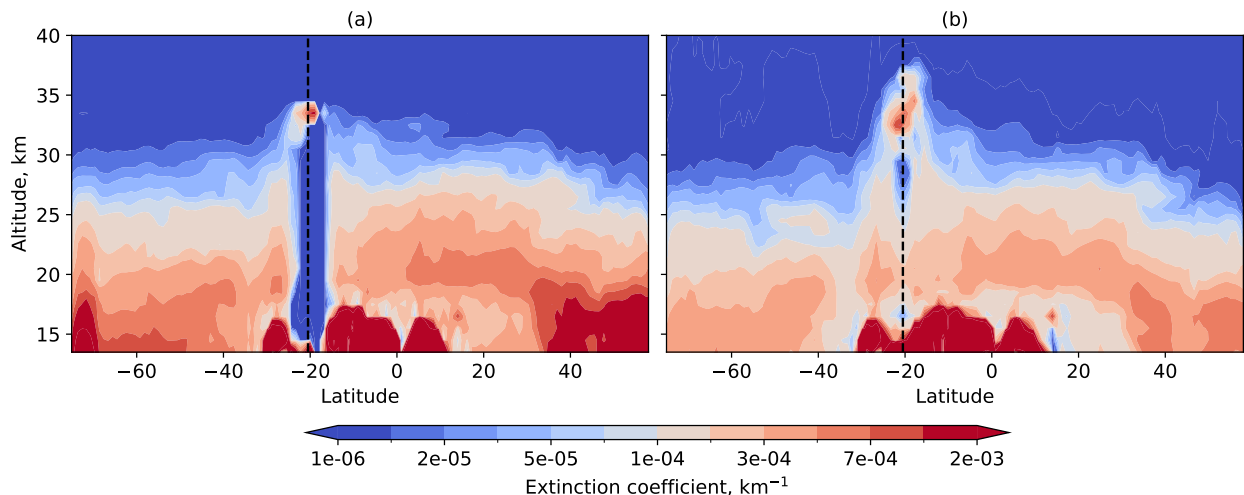


Figure 4. Aerosol extinction coefficient at 869 nm retrieved from OMPS-LP measurements during the orbit 52974 on January 17th, 2022. Left panel Panel (a): using V1.0.9, which uses normalization to the reference tangent height. Panel (V1.0.9b). Right panel: using V2.1, which uses normalization to the solar irradiance (V2.1). Dashed lines mark the location of the Hunga Tonga–Hunga Ha'apai volcano.

To illustrate the dependence of the retrievals using different normalization approaches on the a priori aerosol extinction profile, we performed retrievals for three example measurements of OMPS-LP using three different a priori profiles: the standard one, halved for all altitudes and doubled for all altitudes. The results of this investigation are shown in Fig. 3. We note that all results shown in this plot were obtained with V2.1 retrieval using either the normalization to the reference tangent height or to the solar irradiance, all other settings remained unchanged. The plot reveals that the results obtained using the normalization to the reference tangent height (top-row) panels (a) – (c) strongly depend on the a priori profile used in the retrieval. We note that the bulk effect comes from the scaling of the a priori profile at the altitude level corresponding to the reference tangent height –(results obtained by scaling the a priori profile only at and above the reference tangent height and only below it are shown in the supplement, Fig. S2). In contrast, the retrieval results obtained using the normalization to the solar irradiance (bottom-row) panels (d) – (f) are almost independent from the a priori profile. In this case, small deviations between the results obtained for different a priori profiles are only seen below about 12.5 km altitude. The results for altitudes above 30 km are shown in Fig. S3 in the supplement. For a comparison, results obtained with V1.0.9 retrieval (but using the same Level 1 data as V2.1) are shown in Fig. S4 in the supplement. The values for the effective surface albedo retrieved for different test cases are shown in Table S1 in the supplement.

The dependence of the V1.0.9 retrieval, which uses the reference tangent hight normalization, on the aerosol amount around the tangent tangent-height of the reference measurement results in retrieval artifacts if a strong aerosol plume resides in this altitude range. This effect is illustrated in Fig. 4, where retrieval results for an OMPS-LP single orbit shortly after the Hunga Tonga–Hunga Ha'apai eruption (January 2022) are presented. We note that here and below we use original V1.0.9 results rather than any adjustment of V2.1 to V1.0.9 settings. It is seen from the plot that V1.0.9 retrieval (left panel-panel (a)) shows

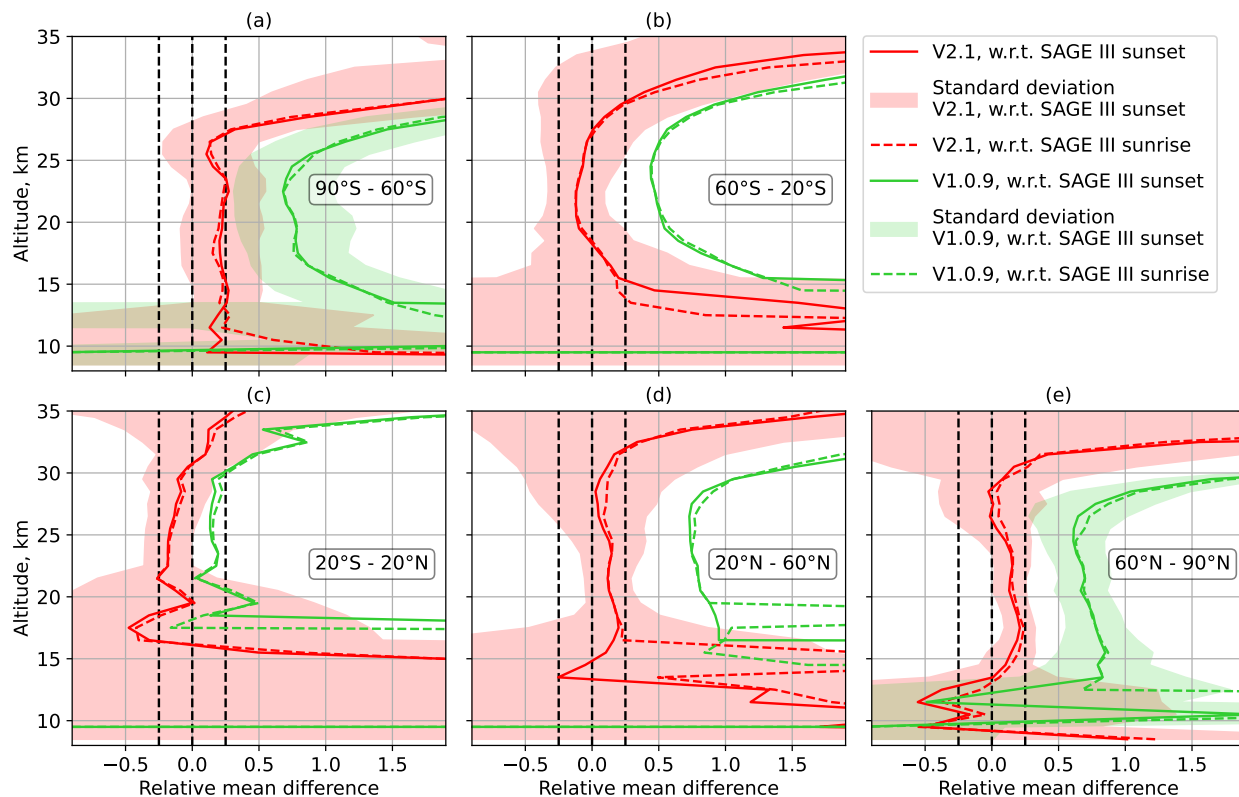


Figure 5. Comparison of V2.1 and V1.0.9 OMPS-LP retrieval results with colocated SAGE III/ISS data for 2018 for different latitude bands. The vertical black dashed lines mark 0% and $\pm 25\%$ levels.

unrealistically low values below the aerosol plume located in the reference tangent height region (38.5 km). As seen from ~~the right-panel-panel (b)~~ of the plot, this artifact is not present in the V2.1 retrieval, which uses the normalization to the solar irradiance. There is still a range of quite small values below the aerosol plume seen in the ~~right-panel-panel (b)~~ of the plot.

305 For now, we cannot definitely say whether it is a real minimum in the aerosol extinction or a remaining retrieval artifact. It is also seen ~~form from~~ the plot that V2.1 retrieval shows generally lower values than V1.0.9. As discussed below, these lower values are in a better agreement with reference measurements ~~highlighting-, which demonstrates~~ another advantage of the new approach.

6 Comparison with other datasets

310 To assess the quality of the new retrieval and demonstrate the achieved improvement, the OMPS-LP results of versions 2.1 and 1.0.9 were compared to the colocated data from SAGE III/ISS. The criteria to select colocated pairs of measurements were maximum differences of 5 degrees in latitude, of 10 degrees in longitude and of 12 hours. For this comparison no

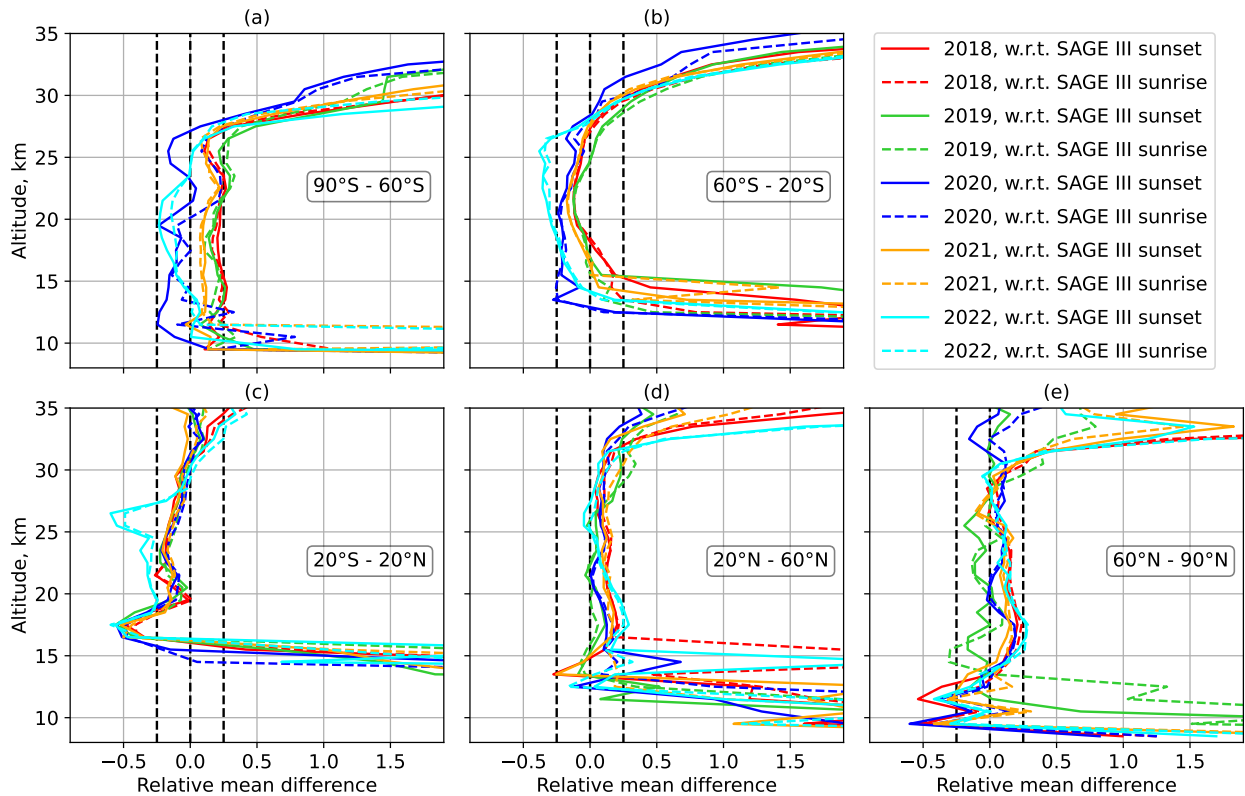


Figure 6. Comparison of V2.1 OMPS-LP retrieval results with colocated SAGE III/ISS data for different years and different latitude bands. The vertical black dashed lines mark 0% and $\pm 25\%$ levels.

cloud filtering was applied for both data products. The comparison of the aerosol extinction coefficients at 869 nm from both instruments for the year 2018 (arbitrarily selected) in different latitude bands is presented in Fig. 5. The relative difference was calculated as $(\text{OMPS-LP} - \text{SAGE_III})/\text{SAGE_III}$. The comparisons were done independently for SAGE III/ISS sunset (solid lines) and sunrise (dashed lines) measurements. For reasons of clarity, the standard deviation of the differences is shown only for collocations with the SAGE III/ISS sunset measurements. The plot demonstrates that V2.1 retrieval generally shows lower values than those from V1.0.9 significantly reducing differences to the SAGE III/ISS results for most of the latitude bands. In the tropics, the agreement with SAGE III/ISS data is similar for both V2.1 and V1.0.9 results with differences changing from mostly positive for V1.0.9 to mostly negative for V2.1. Typically, V2.1 OMPS-LP retrieval agrees within 25% with SAGE III/ISS data between 18 and 30 km. Only in high southern latitudes the agreement starts degrading already above 27 km [\(see panel \(a\) of Fig. 5\)](#). In the lower stratosphere, a good agreement is seen down to about 13 km in the northern extra-tropics (about 16 km for sunrise collocations in the northern mid-latitudes), [see panels \(d\) and \(e\) of Fig. 5](#), down to 15 km in the southern mid-latitudes [\(panel \(b\)\)](#) and down to 8(12) km for sunset(sunrise) collocations in the southern high latitudes [\(panel \(a\)\)](#).

Figure 6 presents relative mean differences between the aerosol extinction coefficients at 869 nm retrieved from OMPS-LP and SAGE III/ISS observations for different years. ~~Here, only~~ Only the V2.1 of OMPS-LP retrieval is shown. The plot reveals that differences between OMPS-LP and SAGE III data are very similar for most of the years and latitude bands. Exceptions are seen for (i) the tropics and southern extra-tropics in 2022 (panels (a) - (c)), where the influence of the Hunga Tonga–Hunga Ha'apai eruption is the strongest, (ii) the southern extra-tropics (panels (a) and (b)) in 2020, which is most probably explained by the strong aerosol pollution from Australian wildfires, and (iii) the northern high latitudes (panel (e)) in 2019, most probably because of the Raikoke eruption. In general, the differences in the anomalous years are more negative indicating that OMPS-LP V2.1 aerosol extinction product is lower than SAGE III/ISS data in cases of ~~stronger~~ a higher aerosol load in the stratosphere.

To evaluate a time evolution of the stratospheric aerosol extinction coefficients in more details, monthly zonal mean time series from OMPS-LP V2.1 retrievals were compared with the results from SAGE III/ISS and OSIRIS instruments. A rough cloud filtering was done when calculating OMPS-LP V2.1 monthly zonal mean data by rejecting the extinction coefficient values larger than 0.1. To perform the comparison, the OMPS-LP data were converted to the wavelengths of 750 nm using the Ångström exponent calculated for 750 and 869 nm employing the Mie theory. The calculations were done assuming a fixed particle size distribution with the median radius of 0.08 μm and a standard deviation in the logarithmic space of 1.6 (same as used in the retrieval, see Sect. 3). This results in a constant conversion factor of 1.477 when transforming data from 869 to 750 nm. For SAGE III/ISS the aerosol extinction coefficients at 756 nm were used without any adjustment. As mentioned in Sect.2, the University of Saskatchewan team does not recommend the usage of OSIRIS data after 2021. For this reason the comparison with OSIRIS is limited to the 2012–2021 period.

Comparison of the monthly zonal mean aerosol extinction coefficients at 750 nm from OMPS-LP (V2.1), OSIRIS and SAGE III/ISS at an altitude of 21.5 km is shown in Fig. 7 for different latitude ranges. ~~Left panels~~ Panels (a) – (e) show the extinction coefficient time series while ~~right panels~~ panels (f) – (j) depict relative differences between the respective time series and OMPS-LP data calculated as $2 \cdot (\text{OMPS-LP} - \text{Instrument}) / (\text{OMPS-LP} + \text{Instrument})$. Generally, a good agreement between the results from different instruments is observed with relative differences ranging mostly within $\pm 25\%$, which is consistent with the results presented in Figs. 5 and 6. After the Hunga Tonga–Hunga Ha'apai eruption, the agreement between the results from OMPS-LP and SAGE III/ISS is worse in the $40^\circ\text{S} - 30^\circ\text{S}$ ~~and~~ (panels (b) and (g)) and $0^\circ\text{N} - 10^\circ\text{N}$ (panels (c) and (h)) latitude bands. OMPS-LP values generally tend to be smaller than those from SAGE III/ISS. In the $50^\circ\text{N} - 60^\circ\text{N}$ latitude band (panels (e) and (j)), OMPS-LP shows an increased aerosol loading in the beginning of 2023 which is not seen in SAGE III/ISS data. This might be caused by a coarser sampling of the latter instrument. In general, OMPS-LP results in this latitude band are slightly higher than those from SAGE III/ISS and OSIRIS. We note, that the OMPS-LP retrievals in this latitude band have the strongest sensitivity to the aerosol particle size distribution because of a small scattering angle. In the $30^\circ\text{N} - 40^\circ\text{N}$ ~~and~~ (panels (d) and (i)) and $0^\circ\text{N} - 10^\circ\text{N}$ (panels (c) and (h)) latitude bands, OMPS-LP data seem to show somewhat stronger seasonal cycle in comparison with both OSIRIS and SAGE III/ISS measurements and the pattern of the relative difference seems to be dominated by the seasonal cycle. The observed difference in the seasonal cycle is most probably caused by the dependence on the scattering angle of the retrieval error associated with an assumption of a fixed aerosol particle size distribution. As expected, for small scattering angles as occurs at the middle and high northern latitudes for OMPS-LP observational geometry,

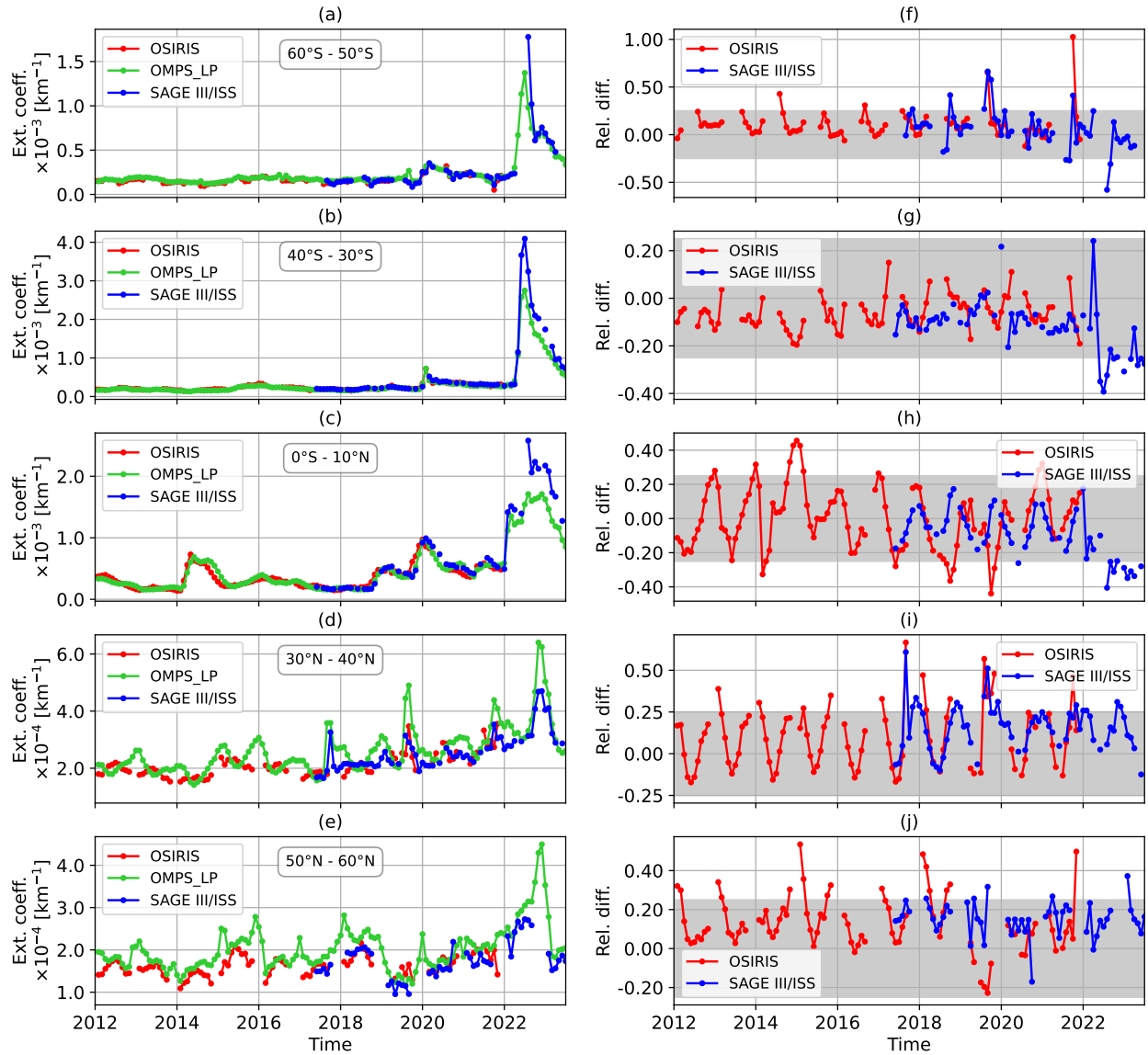


Figure 7. Comparison of monthly zonal mean aerosol extinction coefficients at 750 nm from OMPS-LP V2.1, OSIRIS and SAGE III/ISS data at an altitude of 21.5 km. **Left panels** [Panel \(a\) – \(e\)](#): aerosol extinction coefficient time series. **Right panels** [Panel \(f\) – \(j\)](#): relative differences. The rows show the results for different latitude bands [\(from top to bottom\): 60°S–50°S \(panels \(a\) and \(f\)\), 40°S–30°S \(panels \(b\) and \(g\)\), 0°N–10°N \(panels \(c\) and \(h\)\), 30°N–40°N \(panels \(d\) and \(i\)\) and 50°N–60°N \(panels \(e\) and \(j\)\)](#). Grey areas mark $\pm 25\%$ range.

this dependence is higher resulting in a pronounced seasonal variation of the differences between the results [form from OMPS-](#)

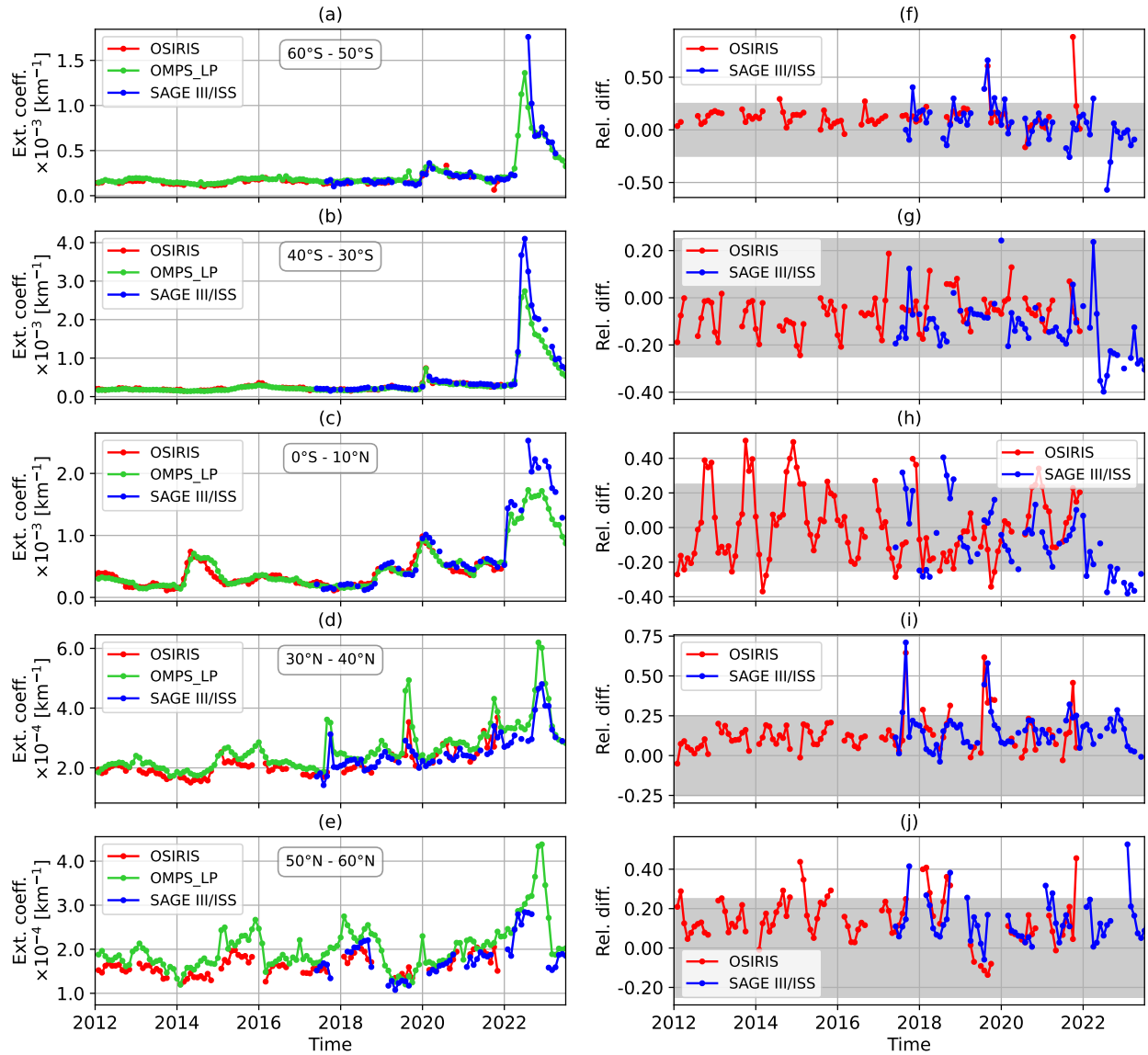


Figure 8. Same as Fig. 7 but for deseasonalized time series.

LP and those from SAGE III/ISS and OSIRIS. We note that OSIRIS instrument observes the atmosphere at a narrower range of scattering angles ($60^\circ - 120^\circ$) in comparison to that of OMPS-LP ($25^\circ - 160^\circ$).

To analyze the influence of seasonal variations, deseasonalized time series were investigated in addition. These were obtained by calculating absolute anomalies of the time series, i.e. by subtracting from each monthly value the mean value for this month in the considered observation period, and then adding a mean value (its own for each instrument) over all months in the observational period. The comparison results for deseasonalized time series are presented in Fig. 8. The plot reveals that the

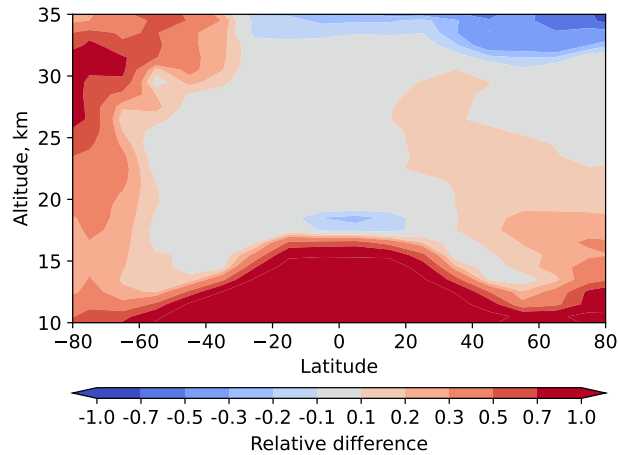


Figure 9. Comparison of zonal mean aerosol extinction coefficients at 750 nm from OMPS-LP V2.1 and OSIRIS data (2012 – 2021).

differences are generally lower for the deseasonalized time series, especially in the 30°N–40°N latitude band (panels (d) and (i)). In contrast, the oscillating structure seen in the 0°N–10°N latitude band (panels (c) and (h)) before 2016 is not removed by the deseasonalizing procedure, indicating that these differences are most probably not related to the seasonal variations. We note, however, that due to an orbit drift, the equator crossing time of OSIRIS changes with the time. Therefore, depending on the time and latitude, either the measurement at the ascending node of the orbit or that at the descending node of both of them are made in the illuminated part of the atmosphere and their results are included into the total data product. This might influence the efficiency of the deseasonalizing procedure.

Figure 9 presents an overview of the relative **mean** differences between the OMPS-LP V2.1 and OSIRIS data as a function of the altitude and latitude. The differences were obtained by averaging all data in the 2012 – 2022-2021 period. Below 60° latitude in the altitude range between the tropopause and about 30 km the differences between the results from both instruments are mostly within 10%. In contrast, higher differences are observed at latitudes above 60° below 20 km in the northern hemisphere and in the whole altitude range with the maximum around 30 km in the southern hemisphere. These differences might be related to the sampling issues of both instruments at high latitudes and to retrieval issues associated with a high surface albedo and large solar zenith angles. As expected, high differences in the troposphere are observed because of a different treatment of the clouds.

Relative **mean** differences between the OMPS-LP V2.1 and OSIRIS data as a function of the altitude and time are shown in Fig. 10 for three different latitude ranges: southern mid-latitudes (60°S–20°S), tropics (20°S–20°N) and northern mid-latitudes (20°N–60°N). The left panels Panels (a) – (c) of the plot show the results for original time series while the right panels panels (d) – (f) present the differences for deseasonalized time series. In the southern mid latitudes (top row of the plot) panels (a) and (d), both datasets agree typically within 10% in the altitude region between 20 and 27 km. Somewhat higher differences are seen in 2020, where the stratospheric aerosol loading was increased as a results of Australian wildfires. Above 27 km and

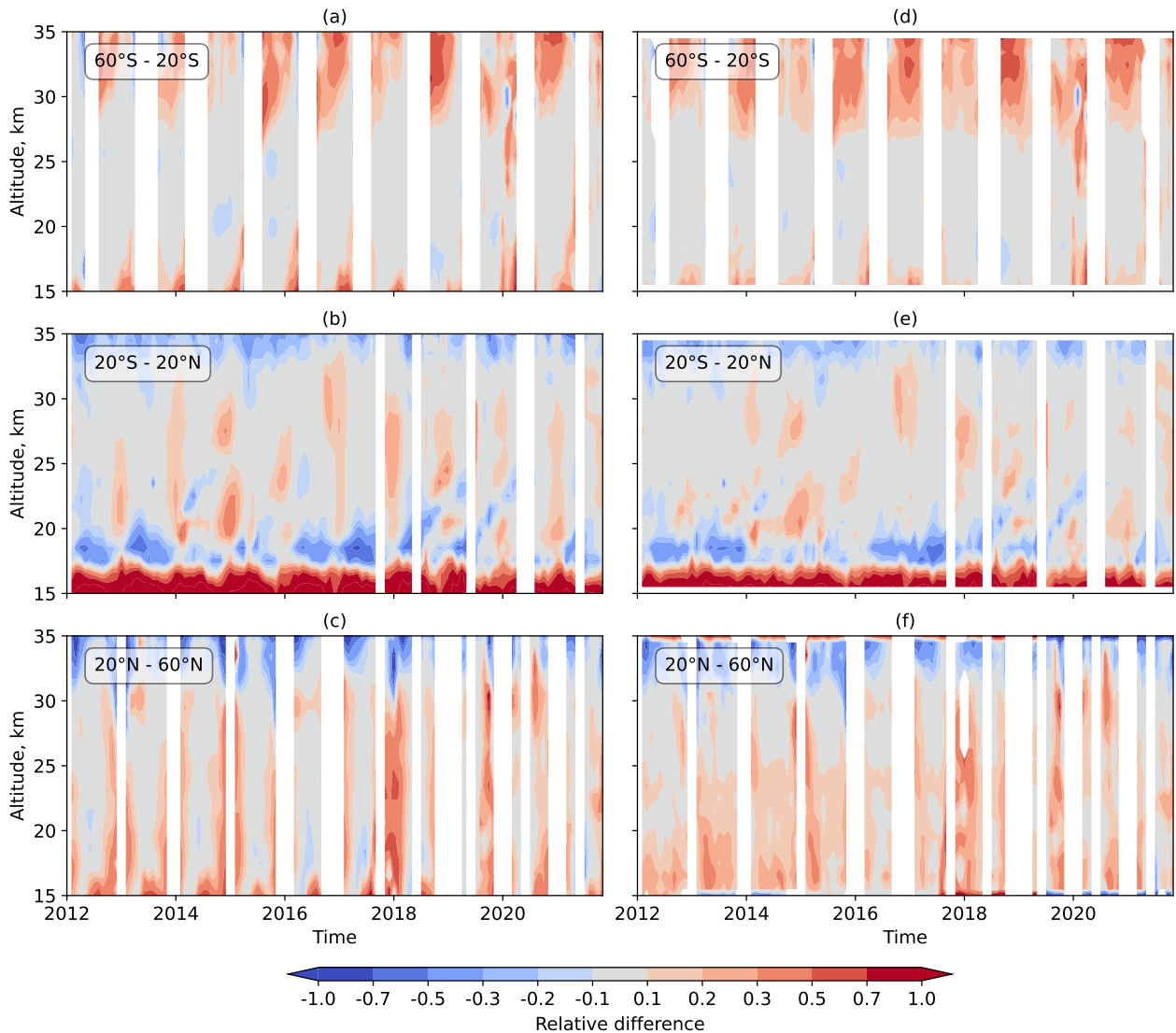


Figure 10. Relative **mean**-differences of the monthly zonal mean aerosol extinction coefficients at 750 nm from OMPS-LP V2.1 and OSIRIS data for different latitude ranges (**from top to bottom**): 60°S–20°S (**panels (a) and (d)**), 20°S–20°N (**panels (b) and (e)**), 20°N–60°N **–Left (panels (c) and (f))**. **Right panels (panels (d) – (f))**: deseasonalized time series.

below 20 km pronounced seasonal variations are seen in the relative differences with areas of higher differences grouping
 390 around the gaps in OSIRIS observations in the austral winter months. Deseasonalizing the time series reduces the differences
 below 21 km to less than 20% but does not seem to have any effect above 27 km. In the tropics (**middle row of the plot**)
panels (b) and (e), the results from OMPS-LP and OSIRIS agree typically within 10–20% in the altitude region between 20
 and 33 km. For the deseasonalized time series, the differences are slightly lower, however, the general picture remains almost

the same. In the northern mid-latitudes (~~bottom row of the plot~~ panels (c) and (f)) stronger seasonal oscillations are seen in
395 the relative differences with areas of higher differences mostly grouped around the gaps in OSIRIS observations in the boreal
winter months. Somewhat higher differences are seen at the end of 2017 and the beginning of 2018, most probably associated
with British Columbia forest fires. For the deseasonalized time series, the differences are largely smoothed and do not show
any pronounced peaks with exception of the last months of the time series. Overall the OMPS-LP results are biased positively
with respect to the OSIRIS data but the relative differences do not typically exceed 20% in the altitude range between 15 and
400 30 km.

7 Evolution of the aerosol plume from the Hunga Tonga–Hunga Ha'apai eruption

In this section the newly generated OMPS-LP V2.1 aerosol extinction coefficient product is used to investigate the evolution
of the aerosol plume after the Hunga Tonga–Hunga Ha'apai eruption in January 2022. For this purpose a dataset of zonal mean
aerosol extinction coefficients at 869 nm with an increased temporal resolution (10 days mean) was created. The altitude-time
405 cross sections of the aerosol extinction coefficient for different latitude ranges are shown in ~~the left panels~~ panels (a) – (c)
of Fig. 11. In the tropics (~~top panel~~ panel (a)) the aerosol extinction coefficient raises right after the strongest eruption of the
Hunga Tonga–Hunga Ha'apai occurred on January 15th, 2022 (marked by the vertical dashed line in the plots). A significant
perturbation in the vertical distribution of the extinction coefficient is seen up to about 33 km. It should be noted here, that the
extinction observed right after the eruption is strongly affected by the ash plume and ice clouds, which might result in high
410 retrieval errors caused by a wrong assumption about the aerosol composition in the Mie scattering calculations of the forward
model. In about one time step, i.e. 10 days, a strong increase in the aerosol extinction coefficient is observed, which is most
probably caused by a creation of a significant amount of the sulfate aerosols from the sulfur injected into the stratosphere by
the volcanic eruption. As reported e.g. by Legras et al. (2022), ash and ice clouds were rapidly removed within the first day
after the eruption while the conversion of SO₂ to sulfates started immediately after the eruption. Thus we can assume that
415 from the second time bin after the eruption the extinction by sulfate aerosols dominates and the retrieval results are robust.
It is seen from the plot that the maximum of the extinction coefficient is observed between about 21 and 26 km. The plume
remains stable until about the middle of April 2022 and then starts sinking. Above about 22 km the values quite rapidly relax
to quasi-stationary levels, which are significantly higher than those before the eruption.

In the southern mid-latitudes, as shown in ~~the middle left panel~~ panel (b) of the figure, a similar immediate increase of the
420 aerosol extinction coefficient after the Hunga Tonga–Hunga Ha'apai eruption as in tropics is observed. However, rather few
sulfate aerosols are observed 10-20 days after the eruption. A stronger increase in the aerosol extinction coefficient is seen only
after the middle of April, when the aerosol plume in tropics started sinking and was transported into the southern mid-latitudes.
Thereafter, the evolution of the plume was quite similar to that in the tropics. The plume was sinking and the values near the
upper boundary of the plume quite rapidly relaxed to quasi-stationary elevated values. In the northern mid-latitudes, as shown
425 in the bottom left panel, no instantaneous response to the Hunga Tonga–Hunga Ha'apai eruption is observed. Elevated values
are observed at lower altitudes since November 2022, which are most probably caused by the transport of the Hunga Tonga–

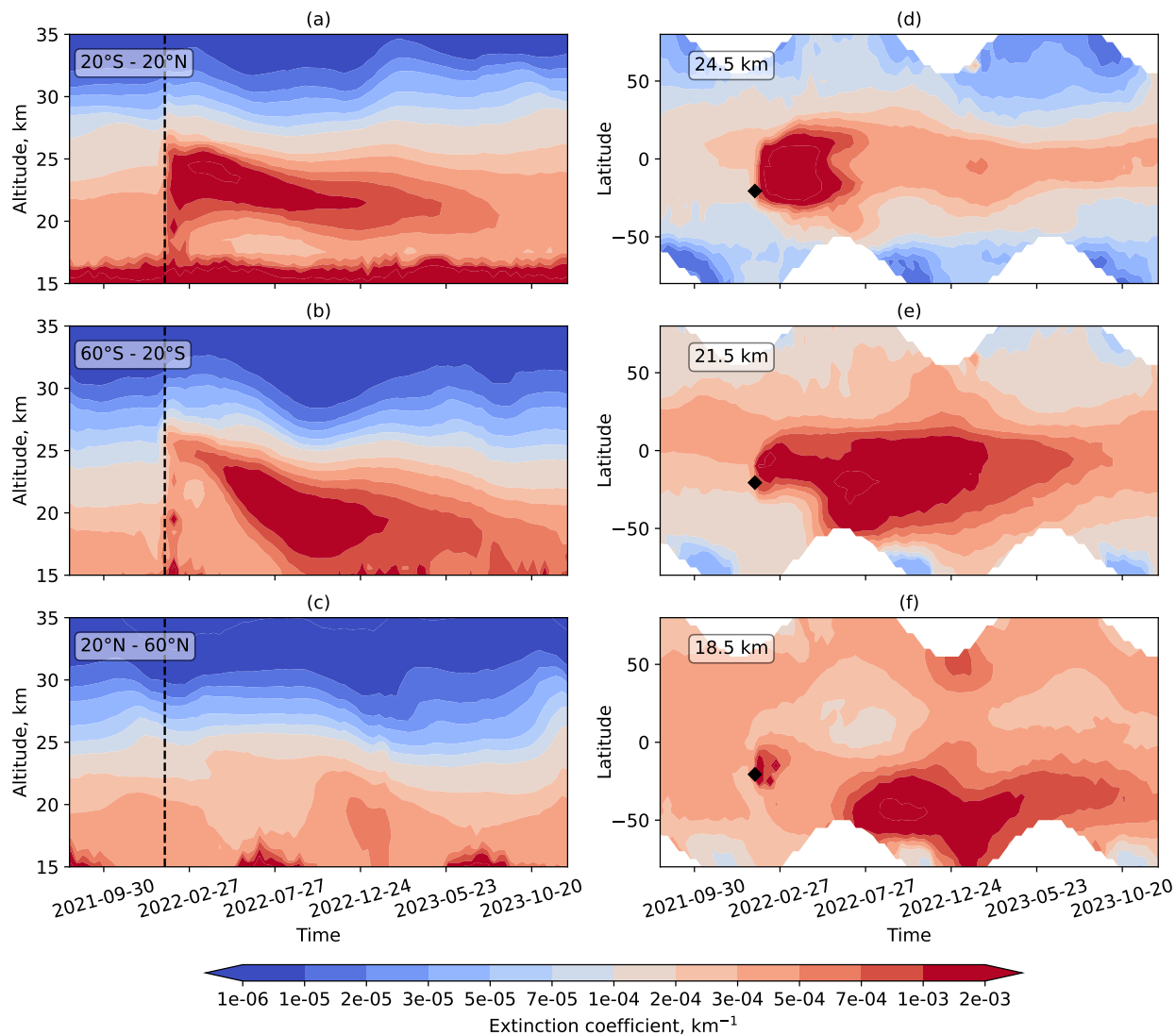


Figure 11. Evolution of the aerosol plume in different latitude bands and at different altitude levels. **Left panels** Panels (a) – (c): 10 days zonal mean aerosol extinction coefficient at 869 nm in different latitude bands (from top to bottom): 20°S–20°N (panel (a)), 60°S–20°S (panel (b)), 20°N–60°N (panel (c)). The black dashed line mark the time of the strongest Hunga–Tonga eruption (January 15th, 2022). **Right panels** Panels (d) – (f): 10 days zonal mean aerosol extinction coefficient at 869 nm at different altitude layers (from top to bottom): 24.5 (panel (d)), 21.5 (panel (e)), 18.5 km (panel (f)). The black rhombus marks the position of the Hunga Tonga–Hunga Ha’apai volcano and date of its strongest eruption. The OMPS-LP data of V2.1 were used for all plots.

Hunga Ha’apai aerosols from the tropics. As discussed below, this statement is confirmed by the evolution of the aerosol plume observed in the latitude-time cross section plot at 21.5 km (right middle panel panel (e)).

In ~~the right panels~~ panels (d) – (f) of Fig. 11, the latitude-time cross sections of the aerosol extinction coefficient for different altitudes are shown. The latitude of the Hunga Tonga–Hunga Ha'apai volcano and the date of its strongest eruption are marked by the black rhombus. At 24.5 km (~~top panel~~ panel (d)), large amounts of the aerosols were created about 10 days after the eruption. The strongly elevated aerosol plume formed over the entire tropical region and partially penetrated to the southern sub-tropics. In the first four months after the eruption, the plume did not extend much in the latitudinal direction and resided mainly in the tropical region. Thereafter, a propagation of the aerosol plume to the southern mid-latitudes is observed. From June 2022, the aerosol extinction coefficient started rapidly to decrease reaching a quasi-stationary elevated level at the end of July. In spring 2023, the plume starts ~~disappearing~~ disappearing in the southern sub-tropics and mid-latitudes but remains stable until the end of the analyzed record (December 2023) in the tropics.

At 21.5 km (~~middle panel~~ panel (e)), the aerosol plume was localized in tropics within the first three months after the eruption. In May 2022, the plume rapidly propagated southwards and spread over the entire southern mid-latitudes. No propagation to the northern extratropics is seen until October 2022. Thereafter, the plume spread to the northern hemisphere.

At 18.5 km (~~bottom panel~~ panel (f)), a strong increase of the extinction is seen right after the eruption. Elevated values can only be observed until the end of March, before the concentration fell back to the pre-eruption level. From the beginning of June 2022, the high aerosol amounts, which propagated to the southern mid-latitudes from tropic at around 21.5 km altitude, sank to 18.5 km leading to a strong increase of the aerosol extinction in the almost entire southern hemisphere. These increased values resided at this altitude until May 2023. ~~Thereafte~~ Thereafter a relaxation process is observed. At the end of the analyzed period (December 2023) some increase in the aerosol extinction coefficient is still observed. In the northern hemisphere, increased values of the aerosol extinction coefficient are observed at the end of 2022 and the beginning of 2023. It is, however, unclear whether these values are related to the Hunga Tonga–Hunga Ha'apai eruption plume.

The results presented in this section are in a good agreement with the findings of other studies on the evolution of the stratospheric aerosol after the Hunga Tonga–Hunga Ha'apai volcanic eruption. For example, using a ground-based lidar, Baron et al. (2023) observed a strong aerosol plume with a maximum just below 30 km on January 21st, 2022 (5 days after the eruption) over Reunion island (21°S, 55°E). Within the next few days, aerosol plumes with the altitude decreasing to about 20 km were observed. This agrees with an aerosol extinction peak at altitudes up to about 30 km and an increase in aerosols over the entire altitude range shortly after the eruption seen in panels (a) and (b) of Fig. 11. Analyzing SAGE III/ISS data, Duchamp et al. (2023) report a strong increase of the aerosol extinction shortly after the eruption in 30°S – 10°S and 10°S – 10°N latitude ranges with peak altitudes between 20 and 26 km. The maximum altitude of the plume remains stable until May-June 2022 then the plume starts descending. These findings are in agreement with the results presented in panel (a) of Fig. 11. At southern mid-latitudes (50°S – 30°S), Duchamp et al. (2023) report a strong increase of the aerosol extinction starting from about May 2022 with the peak altitude descending from about 24 to 18 km and an onset of the relaxation after January 2023. A very similar behavior is observed in our Fig. 11 (panel (b)). In accordance with the plots presented by Taha et al. (2022), who analyzed the OMPS-LP data (NASA retrieval), in the first 5 months after the eruption the aerosol plume in tropics resided between about 19 and 26 km altitude. No significant changes in its vertical extent and maximum altitude were observed. This agrees very well with our findings in panel (a) of Fig. 11. Furthermore, Taha et al. (2022) show that in the first

465 5 months the plume was always to the south of 20°N and started propagating southwards of 30°S after about 4 months after the eruption. This behavior also agrees well with our findings in panel (d) – (f) of Fig. 11.

8 Conclusions

In this study we have introduced a new retrieval algorithm developed to obtain vertical distributions of the aerosol extinction coefficient from limb-scatter measurements of the OMPS-LP instrument. The main change with respect to the algorithms used by other scientific groups as well as with respect to the previous version of the University of Bremen retrieval is the
470 normalization of the limb measurements by the solar irradiance rather than by a limb measurements at an upper tangent height. As normalizing to the solar irradiance increases the sensitivity of the retrieval to the reflectance of the underlying scene, an optimized scheme to derive the effective Lambertian surface albedo has been implemented.

The employed normalization approach makes the retrieval results from OMPS-LP V2.1 algorithm almost independent on the prior profile of the aerosol extinction coefficient used in the retrieval. In contrast, an adequate knowledge of the aerosol
475 extinction at altitudes around the normalization tangent height is crucial for algorithms using the normalization to a limb measurement at an upper tangent height. Furthermore, as the quality of limb measurements decreases with increasing tangent height and the influence of the stray light increases, skipping the normalization to an upper tangent height enables us to extend the vertical range of the retrieval to 8.5 - 48 km in comparison with 12.5 - 37.5 km retrieval range of the previous version of the University of Bremen retrieval, published by Malinina et al. (2021). This makes the retrieval applicable to the scenes with
480 high aerosol plume elevation, as it was the case after the Hunga Tonga–Hunga Ha'apai eruption in January 2022.

The new dataset of the OMPS-LP aerosol extinction coefficient V2.1 covering the period from February 2012 to December 2023 was verified using the data from the solar occultation SAGE III/ISS and limb-scatter OSIRIS instruments. Comparison of the newly generated OMPS-LP V2.1 data product with that of SAGE III/ISS shows a good overall agreement within typically
485 25% between 15 and 30 km. Similarly, the comparison with OSIRIS data generally shows a good agreement of the temporal behavior and values. Within strong aerosol plumes, larger disagreement between the data from different instruments (OMPS-LP, OSIRIS, SAGE III/ISS) were identified. This is most probably related to the assumption about the aerosol particle size distribution used in the limb-scatter retrievals (OMPS-LP and OSIRIS), which was originally selected for background aerosol conditions and might be sub-optimal for strong volcanic eruption conditions.

The OMPS-LP V2.1 aerosol extinction coefficient dataset was used to investigate the evolution of the aerosol plume after
490 the Hunga Tonga–Hunga Ha'apai eruption. The perturbation of the aerosol layer is seen up to the altitude of about 33 km. A strong increase in the aerosol loading is seen up to the altitude of 27 km. About two weeks after the eruption the maximum of the aerosol absorption is seen in tropics between 21 and 26 km altitude. About 4 months after the eruption, the aerosol plume started rapidly sinking. At higher altitudes (23 -25 km) the plume mainly resided in tropics, while at lower altitudes (around 18 km) the aerosol was transported southwards and spread over almost the entire southern hemisphere. At higher altitudes the
495 relaxation already started, but at the end of the analyzed period (December 2023) the aerosol level in tropics still remained elevated in comparison to the pre-eruption level.

The OMPS-LP V2.1 aerosol extinction coefficient dataset described in this manuscript is available for the scientific community via the web page of the University of Bremen (see data availability section below).

Data availability. The OMPS-LP V2.1 aerosol extinction coefficient of IUP Bremen is available at <https://www.iup.uni-bremen.de/DataRequest>

500 *Author contributions.* AR developed the OMPS-LP V2.1 retrieval algorithm, generated the data set, evaluated the results and written the initial text of the manuscript. CP participated in the algorithm developments and made initial evaluation. CA prepared tools for an initial processing of OMPS-LP Level-1 data, KB provided access to all necessary Level-1 and Level-2 data. AB and LR provided Level-2 OSIRIS data and support on their usage. EM developed OMPS-LP V1.0.9 data set and provided the data for the comparison. JB did an overall scientific supervision of the study. All authors contributed to the discussion and improvement of the initial manuscript.

505 *Competing interests.* The authors declare that they have no conflict of interest.

Acknowledgements. This study was funded in parts by the European Space Agency (ESA) via CREST project, by the German Research Foundation (DFG) via the Research Unit VolImpact (grant no. FOR2820), and by the University and State of Bremen. The authors gratefully acknowledge the computing time granted by the Resource Allocation Board and provided on the supercomputer Lise and Emmy at NHR@ZIB and NHR@Göttingen as part of the NHR infrastructure. The calculations for this research were conducted with computing
510 resources under the project hbk00098.

References

- Baron, A., Chazette, P., Khaykin, S., Payen, G., Marquestaut, N., Bègue, N., and Duflot, V.: Early Evolution of the Stratospheric Aerosol Plume Following the 2022 Hunga Tonga-Hunga Ha'apai Eruption: Lidar Observations From Reunion (21°S, 55°E), *Geophysical Research Letters*, 50, e2022GL101751, <https://doi.org/https://doi.org/10.1029/2022GL101751>, 2023.
- 515 Bingen, C., Fussen, D., and Vanhellemont, F.: A global climatology of stratospheric aerosol size distribution parameters derived from SAGE II data over the period 1984–2000: 2. Reference data, *Journal of Geophysical Research: Atmospheres*, 109, <https://doi.org/https://doi.org/10.1029/2003JD003511>, 2004.
- Bourassa, A. E., Degenstein, D. A., and Llewellyn, E. J.: Retrieval of stratospheric aerosol size information from OSIRIS limb scattered sunlight spectra, *Atmospheric Chemistry and Physics*, 8, 6375–6380, <https://doi.org/10.5194/acp-8-6375-2008>, 2008.
- 520 Bourassa, A. E., Rieger, L. A., Lloyd, N. D., and Degenstein, D. A.: Odin-OSIRIS stratospheric aerosol data product and SAGE III inter-comparison, *Atmos. Chem. Phys.*, 12, 605–614, 2012.
- Bourassa, A. E., Zawada, D. J., Rieger, L. A., Warnock, T. W., Toohey, M., and Degenstein, D. A.: Tomographic Retrievals of Hunga Tonga-Hunga Ha'apai Volcanic Aerosol, *Geophysical Research Letters*, 50, e2022GL101978, <https://doi.org/https://doi.org/10.1029/2022GL101978>, 2023.
- 525 Bovensmann, H., Burrows, J., Buchwitz, M., Frerick, J., Noël, S., Rozanov, V., Chance, K., and Goede, A.: SCIAMACHY: Mission objectives and measurement modes, *J. Atmos. Sci.*, 56, 127–150, 1999.
- Burrows, J., Hölzle, E., Goede, A., Visser, H., and Fricke, W.: SCIAMACHY-scanning imaging absorption spectrometer for atmospheric cartography, *Acta Astronautica*, 35, 445–451, [https://doi.org/https://doi.org/10.1016/0094-5765\(94\)00278-T](https://doi.org/https://doi.org/10.1016/0094-5765(94)00278-T), earth Observation, 1995.
- Carn, S. A., Krotkov, N. A., Fisher, B. L., and Li, C.: Out of the blue: Volcanic SO₂ emissions during the 2021 – 2022 eruptions of Hunga
530 Tonga – Hunga Ha'apai (Tonga), *Frontiers in Earth Science*, 10, <https://doi.org/10.3389/feart.2022.976962>, 2022.
- Carr, J. L., Horváth, A., Wu, D. L., and Friberg, M. D.: Stereo Plume Height and Motion Retrievals for the Record-Setting Hunga Tonga-Hunga Ha'apai Eruption of 15 January 2022, *Geophysical Research Letters*, 49, e2022GL098131, <https://doi.org/https://doi.org/10.1029/2022GL098131>, e2022GL098131 2022GL098131, 2022.
- Chu, W. P., McCormick, M. P., Zawodny, J. M., and III, L. E. M.: Stratospheric aerosol and gas experiment III, in: *Earth Observing Systems II*,
535 edited by Barnes, W. L., vol. 3117, pp. 11 – 18, International Society for Optics and Photonics, SPIE, <https://doi.org/10.1117/12.283815>, 1997.
- Deshler, T.: A review of global stratospheric aerosol: Measurements, importance, life cycle, and local stratospheric aerosol, *Atmospheric Research*, 90, 223–232, <https://doi.org/https://doi.org/10.1016/j.atmosres.2008.03.016>, 17th International Conference on Nucleation and Atmospheric Aerosols, 2008.
- 540 Duchamp, C., Wrana, F., Legras, B., Sellitto, P., Belhadji, R., and von Savigny, C.: Observation of the Aerosol Plume From the 2022 Hunga Tonga – Hunga Ha'apai Eruption With SAGE III/ISS, *Geophysical Research Letters*, 50, e2023GL105076, <https://doi.org/https://doi.org/10.1029/2023GL105076>, 2023.
- Evan, S., Brioude, J., Rosenlof, K. H., Gao, R.-S., Portmann, R. W., Zhu, Y., Volkamer, R., Lee, C. F., Metzger, J.-M., Lamy, K., Walter, P., Alvarez, S. L., Flynn, J. H., Asher, E., Todt, M., Davis, S. M., Thornberry, T., Vömel, H., Wienhold, F. G., Stauffer, R. M., Millán,
545 L., Santee, M. L., Froidevaux, L., and Read, W. G.: Rapid ozone depletion after humidification of the stratosphere by the Hunga Tonga Eruption, *Science*, 382, eadg2551, <https://doi.org/10.1126/science.adg2551>, 2023.

- Flynn, L., Long, C., Wu, X., Evans, R., Beck, C., Petropavlovskikh, I., McConville, G., Yu, W., Zhang, Z., Niu, J., Beach, E., Hao, Y., Pan, C., Sen, B., Novicki, M., Zhou, S., and Seftor, C.: Performance of the ozone mapping and profiler suite (OMPS) products, *J. Geophys. Res.-Atmos.*, 119, 6181–6195, 2014.
- 550 Fyfe, J. C., von Salzen, K., Cole, J. N. S., Gillett, N. P., and Vernier, J.-P.: Surface response to stratospheric aerosol changes in a coupled atmosphere-ocean model, *Geophysical Research Letters*, 40, 584–588, <https://doi.org/https://doi.org/10.1002/grl.50156>, 2013.
- Glatthor, N., von Clarmann, T., Fischer, H., Funke, B., Gil-López, S., Grabowski, U., Höpfner, M., Kellmann, S., Linden, A., López-Puertas, M., Mengistu Tsidu, G., Milz, M., Steck, T., Stiller, G. P., and Wang, D.-Y.: Retrieval of stratospheric ozone profiles from MIPAS/ENVISAT limb emission spectra: a sensitivity study, *Atmospheric Chemistry and Physics*, 6, 2767–2781, [https://doi.org/10.5194/acp-6-2767-](https://doi.org/10.5194/acp-6-2767-2006)
555 2006, 2006.
- Groves, K. S. and Tuck, A. F.: Simultaneous effects of CO₂ and chlorofluoromethanes on stratospheric ozone, *Nature*, 280, 127–129, <https://doi.org/https://doi.org/10.1038/280127a0>, 1979.
- Groves, K. S., Mattingly, S. R., and Tuck, A. F.: Increased atmospheric carbon dioxide and stratospheric ozone, *Nature*, 273, 711–715, <https://doi.org/https://doi.org/10.1038/273711a0>, 1978.
- 560 Hansen, J., Sato, M., Ruedy, R., Nazarenko, L., Lacis, A., Schmidt, G. A., Russell, G., Aleinov, I., Bauer, M., Bauer, S., Bell, N., Cairns, B., Canuto, V., Chandler, M., Cheng, Y., Del Genio, A., Faluvegi, G., Fleming, E., Friend, A., Hall, T., Jackman, C., Kelley, M., Kiang, N., Koch, D., Lean, J., Lerner, J., Lo, K., Menon, S., Miller, R., Minnis, P., Novakov, T., Oinas, V., Perlwitz, J., Perlwitz, J., Rind, D., Romanou, A., Shindell, D., Stone, P., Sun, S., Tausnev, N., Thresher, D., Wielicki, B., Wong, T., Yao, M., and Zhang, S.: Efficacy of climate forcings, *Journal of Geophysical Research: Atmospheres*, 110, <https://doi.org/https://doi.org/10.1029/2005JD005776>, 2005.
- 565 Keppens, A., Di Pede, S., Hubert, D., Lambert, J.-C., Veeffkind, P., Sneep, M., De Haan, J., ter Linden, M., Leblanc, T., Compernelle, S., Verhoelst, T., Granville, J., Nath, O., Fjæraa, A. M., Boyd, I., Niemeijer, S., Van Malderen, R., Smit, H. G. J., Dufлот, V., Godin-Beekmann, S., Johnson, B. J., Steinbrecht, W., Tarasick, D. W., Kollonige, D. E., Stauffer, R. M., Thompson, A. M., Dehn, A., and Zehner, C.: 5 years of Sentinel-5P TROPOMI operational ozone profiling and geophysical validation using ozonesonde and lidar ground-based networks, *Atmospheric Measurement Techniques*, 17, 3969–3993, <https://doi.org/10.5194/amt-17-3969-2024>, 2024.
- 570 Khodri, M., Izumo, T., Vialard, J., Janicot, S., Cassou, C., Lengaigne, M., Mignot, J., Gastineau, G., Guilyardi, E., Lebas, N., Robock, A., and McPhaden, M. J.: Tropical explosive volcanic eruptions can trigger El Niño by cooling tropical Africa, *Nature Communications*, 8, 778, <https://doi.org/10.1038/s41467-017-00755-6>, 2017.
- Kloss, C., Sellitto, P., Legras, B., Vernier, J.-P., Jégou, F., Venkat Ratnam, M., Suneel Kumar, B., Lakshmi Madhavan, B., and Berthet, G.: Impact of the 2018 Ambae Eruption on the Global Stratospheric Aerosol Layer and Climate, *Journal of Geophysical Research: Atmospheres*, 125, e2020JD032410, <https://doi.org/https://doi.org/10.1029/2020JD032410>, 2020.
575
- Legras, B., Duchamp, C., Sellitto, P., Podglajen, A., Carboni, E., Siddans, R., Groß, J.-U., Khaykin, S., and Ploeger, F.: The evolution and dynamics of the Hunga Tonga–Hunga Ha’apai sulfate aerosol plume in the stratosphere, *Atmospheric Chemistry and Physics*, 22, 14957–14970, <https://doi.org/10.5194/acp-22-14957-2022>, 2022.
- Livesey, N., Van Snyder, W., Read, W., and Wagner, P.: Retrieval algorithms for the EOS Microwave limb sounder (MLS), *IEEE Transactions on Geoscience and Remote Sensing*, 44, 1144–1155, <https://doi.org/10.1109/TGRS.2006.872327>, 2006.
580
- Llewellyn, E. J., Lloyd, N. D., Degenstein, D. A., Gattinger, R. L., Petelina, S. V., Bourassa, A. E., Wiensz, J. T., Ivanov, E. V., McDade, I. C., Solheim, B. H., McConnell, J. C., Haley, C. S., von Savigny, C., Sioris, C. E., McLinden, C. A., Griffioen, E., Kaminski, J., Evans, W. F., Puckrin, E., Strong, K., Wehrle, V., Hum, R. H., Kendall, D. J., Matsushita, J., Murtagh, D. P., Brohede, S., Stegman, J., Witt, G., Barnes, G., Payne, W. F., Piché, L., Smith, K., Warshaw, G., Deslauniers, D. L., Marchand, P., Richardson, E. H., King, R. A., Wevers,

- 585 I., McCreath, W., Kyrölä, E., Oikarinen, L., Leppelmeier, G. W., Auvinen, H., Mégie, G., Hauchecorne, A., Lefèvre, F., de La Nöe, J., Ricaud, P., Frisk, U., Sjöberg, F., von Schéele, F., and Nordh, L.: The OSIRIS instrument on the Odin spacecraft, *Canadian Journal of Physics*, 82, 411–422, <https://doi.org/10.1139/p04-005>, 2004.
- Malinina, E., Rozanov, A., Rozanov, V., Liebing, P., Bovensmann, H., and Burrows, J. P.: Aerosol particle size distribution in the stratosphere retrieved from SCIAMACHY limb measurements, *Atmospheric Measurement Techniques*, 11, 2085–2100, <https://doi.org/10.5194/amt-11-2085-2018>, 2018.
- 590 Malinina, E., Rozanov, A., Niemeier, U., Wallis, S., Arosio, C., Wrana, F., Timmreck, C., von Savigny, C., and Burrows, J. P.: Changes in stratospheric aerosol extinction coefficient after the 2018 Ambae eruption as seen by OMPS-LP and MAECHAM5-HAM, *Atmospheric Chemistry and Physics*, 21, 14 871–14 891, <https://doi.org/10.5194/acp-21-14871-2021>, 2021.
- McCormick, M.: Sage II: An overview, *Advances in Space Research*, 7, 219–226, [https://doi.org/https://doi.org/10.1016/0273-1177\(87\)90151-7](https://doi.org/https://doi.org/10.1016/0273-1177(87)90151-7), 1987.
- 595 McCormick, M., Zawodny, J., Veiga, R., Larsen, J., and Wang, P.: An overview of sage I and II ozone measurements, *Planetary and Space Science*, 37, 1567–1586, [https://doi.org/https://doi.org/10.1016/0032-0633\(89\)90146-3](https://doi.org/https://doi.org/10.1016/0032-0633(89)90146-3), special Issue G.M.B. Dobson: Atmospheric Ozone Issue, 1989.
- Mettig, N., Weber, M., Rozanov, A., Arosio, C., Burrows, J. P., Veefkind, P., Thompson, A. M., Querel, R., Leblanc, T., Godin-Beekmann, S., Kivi, R., and Tully, M. B.: Ozone profile retrieval from nadir TROPOMI measurements in the UV range, *Atmospheric Measurement Techniques*, 14, 6057–6082, <https://doi.org/10.5194/amt-14-6057-2021>, 2021.
- 600 Millán, L., Santee, M. L., Lambert, A., Livesey, N. J., Werner, F., Schwartz, M. J., Pumphrey, H. C., Manney, G. L., Wang, Y., Su, H., Wu, L., Read, W. G., and Froidevaux, L.: The Hunga Tonga-Hunga Ha’apai Hydration of the Stratosphere, *Geophysical Research Letters*, 49, e2022GL099 381, <https://doi.org/https://doi.org/10.1029/2022GL099381>, e2022GL099381 2022GL099381, 2022.
- 605 Paik, S. and Min, S.-K.: Assessing the Impact of Volcanic Eruptions on Climate Extremes Using CMIP5 Models, *Journal of Climate*, 31, 5333 – 5349, <https://doi.org/https://doi.org/10.1175/JCLI-D-17-0651.1>, 2018.
- Portmann, R. W., Solomon, S., Garcia, R. R., Thomason, L. W., Poole, L. R., and McCormick, M. P.: Role of aerosol variations in anthropogenic ozone depletion in the polar regions, *Journal of Geophysical Research: Atmospheres*, 101, 22 991–23 006, <https://doi.org/https://doi.org/10.1029/96JD02608>, 1996.
- 610 Proud, S. R., Prata, A. T., and Schmauß, S.: The January 2022 eruption of Hunga Tonga-Hunga Ha’apai volcano reached the mesosphere, *Science*, 378, 554–557, <https://doi.org/10.1126/science.abo4076>, 2022.
- Rault, D. F., Loughman, R., Taha, G., and Fleig, A. J.: Algorithm Theoretical Basis Document (ATBD) for the Environment Data Record (EDR) Algorithm of the Ozone Mapping and Profiler Suite (OMPS) Limb Profiler National Polar-Orbiting Operational Environmental Satellite System (NPOESS) Program, https://ozoneaq.gsfc.nasa.gov/media/docs/EDR_ATBD_baseline_version1.pdf, 2010.
- 615 Rieger, L. A., Bourassa, A. E., and Degenstein, D. A.: Merging the OSIRIS and SAGE II stratospheric aerosol records, *J. Geophys. Res. Atmos.*, 120, 8890–8904, 2015.
- Rieger, L. A., Zawada, D. J., Bourassa, A. E., and Degenstein, D. A.: A Multiwavelength Retrieval Approach for Improved OSIRIS Aerosol Extinction Retrievals, *Journal of Geophysical Research: Atmospheres*, 124, 7286–7307, <https://doi.org/https://doi.org/10.1029/2018JD029897>, 2019.
- 620 Rodgers, C. D.: *Inverse methods for atmospheric sounding: Theory and practice*, World Scientific, 2000.
- Rozanov, A., Rozanov, V., and Burrows, J. P.: Combined differential-integral approach for the radiation field computation in a spherical shell atmosphere: Non-limb geometry, *J. Geophys. Res.*, 102, 22 937–22 942, 2000.

- Rozanov, A., Rozanov, V., and Burrows, J. P.: A numerical radiative transfer model for a spherical planetary atmosphere: Combined differential–integral approach involving the Picard iterative approximation, *J. Quant. Spectrosc. Radiat. Transfer*, 69, 491–512, 2001.
- 625 Rozanov, A., Kühn, S., Doicu, A., McLinden, C., Puķīte, J., Bovensmann, H., Burrows, J. P., Deutschmann, T., Dorf, M., Goutail, F., Grunow, K., Hendrick, F., von Hobe, M., Hrechanyy, S., Lichtenberg, G., Pfeilsticker, K., Pommereau, J. P., Van Roozendael, M., Stroh, F., and Wagner, T.: BrO vertical distributions from SCIAMACHY limb measurements: comparison of algorithms and retrieval results, *Atmospheric Measurement Techniques*, 4, 1319–1359, <https://doi.org/10.5194/amt-4-1319-2011>, 2011.
- Solomon, S., Garcia, R. R., Sherwood, R. F., and Wuebbles, D. J.: On the depletion of Antarctic ozone, *Nature*, 321, 755–758, <https://doi.org/https://doi.org/10.1038/321755a0>, 1986.
- 630 Solomon, S., Daniel, J. S., Neely, R. R., Vernier, J.-P., Dutton, E. G., and Thomason, L. W.: The Persistently Variable "Background" Stratospheric Aerosol Layer and Global Climate Change, *Science*, 333, 866–870, <https://doi.org/10.1126/science.1206027>, 2011.
- Solomon, S., Stone, K., Yu, P., Murphy, D. M., Kinnison, D., Ravishankara, A. R., and Wang, P.: Chlorine activation and enhanced ozone depletion induced by wildfire aerosol, *Nature*, 615, 259–264, <https://doi.org/10.1038/s41586-022-05683-0>, 2023.
- 635 Taha, G., Loughman, R., Zhu, T., Thomason, L., Kar, J., Rieger, L., and Bourassa, A.: OMPS LP Version 2.0 multi-wavelength aerosol extinction coefficient retrieval algorithm, *Atmospheric Measurement Techniques*, 14, 1015–1036, <https://doi.org/10.5194/amt-14-1015-2021>, 2021.
- Taha, G., Loughman, R., Colarco, P. R., Zhu, T., Thomason, L. W., and Jaross, G.: Tracking the 2022 Hunga Tonga-Hunga Ha’apai Aerosol Cloud in the Upper and Middle Stratosphere Using Space-Based Observations, *Geophysical Research Letters*, 49, e2022GL100091, <https://doi.org/https://doi.org/10.1029/2022GL100091>, 2022.
- 640 Tritscher, I., Pitts, M. C., Poole, L. R., Alexander, S. P., Cairo, F., Chipperfield, M. P., Groß, J.-U., Höpfner, M., Lambert, A., Luo, B., Molleker, S., Orr, A., Salawitch, R., Snels, M., Spang, R., Woiwode, W., and Peter, T.: Polar Stratospheric Clouds: Satellite Observations, Processes, and Role in Ozone Depletion, *Reviews of Geophysics*, 59, e2020RG000702, <https://doi.org/https://doi.org/10.1029/2020RG000702>, 2021.
- 645 von Savigny, C., Ernst, F., Rozanov, A., Hommel, R., Eichmann, K.-U., Rozanov, V., Burrows, J. P., and Thomason, L. W.: Improved stratospheric aerosol extinction profiles from SCIAMACHY: validation and sample results, *Atmospheric Measurement Techniques*, 8, 5223–5235, <https://doi.org/10.5194/amt-8-5223-2015>, 2015.
- Winker, D. M., Vaughan, M. A., Omar, A., Hu, Y., Powell, K. A., Liu, Z., Hunt, W. H., and Young, S. A.: Overview of the CALIPSO Mission and CALIOP Data Processing Algorithms, *Journal of Atmospheric and Oceanic Technology*, 26, 2310 – 2323, <https://doi.org/https://doi.org/10.1175/2009JTECHA1281.1>, 2009.
- 650 Xia, C., Liu, C., Cai, Z., Wu, H., Li, Q., and Gao, M.: Tracking SO₂ plumes from the Tonga volcano eruption with multi-satellite observations, *iScience*, 27, 109446, <https://doi.org/https://doi.org/10.1016/j.isci.2024.109446>, 2024.
- Young, S. A., Vaughan, M. A., Kuehn, R. E., and Winker, D. M.: The Retrieval of Profiles of Particulate Extinction from Cloud-Aerosol Lidar and Infrared Pathfinder Satellite Observations (CALIPSO) Data: Uncertainty and Error Sensitivity Analyses, *Journal of Atmospheric and Oceanic Technology*, 30, 395 – 428, <https://doi.org/https://doi.org/10.1175/JTECH-D-12-00046.1>, 2013.
- 655 Young, S. A., Vaughan, M. A., Garnier, A., Tackett, J. L., Lambeth, J. D., and Powell, K. A.: Extinction and optical depth retrievals for CALIPSO’s Version 4 data release, *Atmospheric Measurement Techniques*, 11, 5701–5727, <https://doi.org/10.5194/amt-11-5701-2018>, 2018.

Zhu, Y., Portmann, R. W., Kinnison, D., Toon, O. B., Millán, L., Zhang, J., Vömel, H., Tilmes, S., Bardeen, C. G., Wang, X., Evan, S.,
660 Randel, W. J., and Rosenlof, K. H.: Stratospheric ozone depletion inside the volcanic plume shortly after the 2022 Hunga Tonga eruption,
Atmospheric Chemistry and Physics, 23, 13 355–13 367, <https://doi.org/10.5194/acp-23-13355-2023>, 2023.