

Technical note: a Weighing Forest Floor Grid-Lysimeter

Heinke Paulsen¹, Markus Weiler¹

¹Chair of Hydrology, Albert-Ludwigs-Universität Freiburg, Freiburg, 79098, Germany

Correspondence to: Heinke Paulsen (Heinke.paulsen@hydrology.uni-freiburg.de)

5 **Abstract.** The forest floor (FF) is dominated by plant litter and its decomposition products, thereby it differs significantly from
the mineral soil. Because of its wider range of pore sizes and overall high porosity, it has a large capacity to retain water and
thus plays an important role in redistributing water to the mineral soil beneath. Until now most studies have focused on the
behaviour of the organic layer when wetted and dried in a laboratory setting. Alternatively, field fresh samples were collected
to determine the water storage potential. We present a novel low-cost grid-lysimeter designed specifically for the FF, but also
10 suitable for other organic soil layers. It can continuously measure all water balance components of the FF. The lysimeter
detects precipitation with an accuracy of 0.03 mm outperforming most rain gauges. The developed setup allows for further
customization of in-situ water quality measurements. This technical note describes the setup of the lysimeter and presents
performance metrics from laboratory results and initial field data.

1 Introduction

15 The forest floor (FF) is hydrologically highly relevant but is only partially explored (Floriancic et al., 2023). This organic layer
covering forest soils offers a huge potential to store and retain water and also plays an important role in the redistribution of
water to deeper soil horizons. Consequently, it affects infiltration patterns and might also reduce runoff generation. For
example, FF interception has a large influence on the water balance as it alters water amount available for soil infiltration and
runoff (Guevara-Escobar et al., 2007). Just like the canopy the FF affects the temporal, spatial distribution but also the chemical
20 composition of soil water recharge.

FF can reduce the amount of water reaching the soil, how much depends on the physical features of the FF and rainfall
characteristics. Several studies revealed, that the storage capacity of FF is proportional to mass and thickness (Putuhena and
Cordery, 1996; Zaggyvai-Kiss et al., 2019), while the capacity of broadleaves to intercept water is greater than the one of needle
litter due to a higher surface area to weight ratio (Li et al., 2020; Walsh and Voigt, 1977; Zhao et al., 2022). The studies
25 investigated the behaviour of the organic layer under wetting and drying conditions in laboratory settings, utilizing rainfall
simulator experiments, or collected field samples post-rainfall events, subsequently oven-drying them to assess water storage
potential.

Currently, there is limited data regarding the potential dynamics of the FFs contribution to the forests water cycle. First
approaches were undertaken by Gerrits et al. (2007), who developed a simple weighing device, similar to a lysimeter, to
30 directly measure evaporation from the FF in the field. Floriancic et al. (2023) conducted a comparative analysis of soil moisture

dynamics with and without FF coverage. They found that FF interception can reach up to 20-50 % of the total precipitation (Gerrits et al., 2007) and retains water for up to 2 days and longer (Florincic et al., 2023). The results indicate that neglecting FF interception in modelling, alongside canopy interception or treating it as a static percentage, may lead to significant overestimations of recharge and transpiration rates in water balance assessments.

35 Our objective was to develop a device for investigating the dynamics of the water balance components of a FF. Weighing lysimeters are a well-established method to measure water fluxes in agricultural contexts (von Unold and Fank, 2008). They allow for direct assessment of all water balance components, including various forms of precipitation (like rain, dew, and rime), drainage, evapotranspiration, and storage (Reth et al., 2021). Since lysimeters provide measurement at ground level their results are close to the “true” precipitation as the precipitation measurements are unaffected by wind or precipitation intensity, unlike traditional rain gauges (Schnepper et al., 2022). Based on this we developed the cost-effective Forest Floor Grid-Lysimeter (FFGL), a weighing lysimeter with limited depth (covering only the organic layer plus the uppermost mineral soil) facilitating the deployment of multiple devices across various locations. In contrast to existing devices the FFGL is adaptable to slope, which allows for surface alignment even on steep hillslopes. With its smaller surface area, a fourth of the device developed by Gerrits et al. (2007), and the separation into four grids and individual percolation measurements, it allows
40 for exploring the heterogeneity of water fluxes at an even smaller spatial scale. With the combination of 3D printed parts and a customized microcontroller board, the costs could be reduced allowing comparative observations among many sites. Additionally, the FFGL also allows for the later adaption to measure water quality parameters like electrical conductivity or concentrations of dissolved organic carbon (DOC).

2 Methods

50 2.1 General setup

The Forest Floor Grid-Lysimeter (FFGL) was designed to generate data with high temporal resolution across multiple locations and varying spatial scales. Therefore, a low-cost setup to install multiple lysimeters at several study sites was necessary. To explore the small-scale heterogeneity of infiltration patterns, we partitioned the lysimeter into four grids, facilitating a typical grid lysimeter approach that enables the observation of outflow from each grid independently. Fig. 1 illustrates the FFGL,
55 comprising three main parts: a weighted container (1) containing the FF, a frame (2) supporting the measurement equipment and securing the system in the soil, and the control unit (3). The FFGL covers an area of 25 cm x 100 cm. In our case it is filled with forest floor, but could contain variable fillings, depending on the application (e.g. plants, deadwood, etc.). The FFGL quantifies the main water fluxes of the FF: precipitation (throughfall when beneath the canopy), evaporation (evapotranspiration in case of ground vegetation), interception of the FF (storage) and percolation to the mineral soil (generally
60 equivalent to infiltration into the soil).

(1) The container constructed from stainless steel, has a height of 25 cm and a maximum volume of 62.5 l. The bottom plate of the box is inclined, resulting in the formation of four grids, each draining through distinct openings. Additionally, these

four grids are divided by plastic partition walls that can be easily cut for easy adjustment to different slopes in the field. On top of these dividing walls lies a perforated metal sheet wrapped with geotextile to retain the forest floor material, which is placed on top. Like this there is no disruption of the FF and we can potentially show redistribution of water induced by the FF layer. The container is placed on the load cells, which are affixed to the frame.

- (2) The frame supports the measurement equipment. The container rests on four load cells (LCs) mounted into the corners of the frame. Thereby the weight of the lysimeter can be continuously measured. Water is collected by a funnel into a measurement unit (MU) beneath each grid hole. This unit controls the intensity of water flow onto the tipping buckets (TBs), thereby enhancing measurement accuracy. Additionally, the MU allows for adaption to also measure water quality parameters like temperature, electrical conductivity (EC) etc. The TBs measure the amount of draining water. Some lysimeters were equipped with a water collector at the bottom for subsequent laboratory analysis, while others are designed to allow water to infiltrate freely.
- (3) The control unit will be explained in the next section.

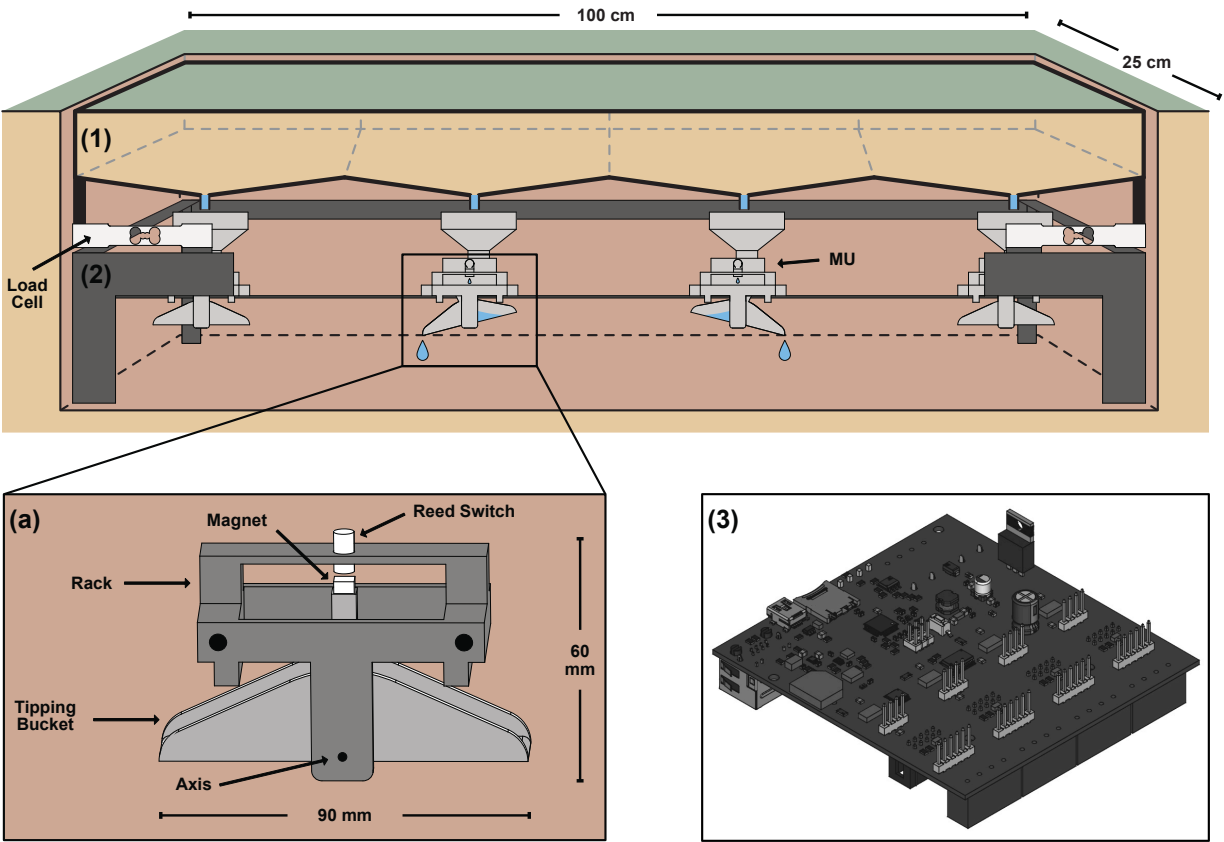


Figure 1: Schematic drawing of the lysimeter setup. Containing the (1) container and (2) frame holding the load cells and (a) tipping buckets. (3) shows the customized microcontroller board.

2.2 Control Unit

2.2.1 Hardware

80 The electronics of the lysimeter were designed to meet user-friendly and economic criteria. Therefore, we used cost-effective hardware and a microcontroller compatible with the Arduino IDE. The objective was to achieve high energy efficiency, since the lysimeters are located far from a power source and must autonomously measure continuously for at least one month. The computing unit must efficiently perform floating-point calculations to directly process the measurements. We opted for commercially available micro SD cards for data storage. A real-time clock (RTC) was incorporated to associate the measurements with a timestamp. In environmental applications the use of SDI-12 sensors is very common, since they use a common digital protocol for interconnection of sensors and dataloggers and are characterized by low energy consumption. This is why we incorporated this feature into our board to enable the use of the FFGL as an SDI-12 sensor. System-relevant parameters such as the SDI-12 bus address are stored on the board.

The connectivity of the circuit board includes the following ports:

90 For lysimeter measurements:

- 4x load cell inputs
- 4x temperature measurements
- 4x EC analog input
- 4x pulse input for reed contacts of the tipping buckets

95 For control and data output:

- 1x SDI-12
- 1x USB
- 1x SD-Slot
- 1x RTC

100 2.2.2 Microcontroller, IDE & Software

To accelerate the development process, we decided to use the Arduino IDE and its supported hardware. This platform is broadly used in environmental monitoring and supports various microcontrollers (MCUs). After testing various microcontrollers supported by the Arduino platform, the ATSAM21G18A-48 proved to be the most suitable and cost-effective option. The microcontroller, produced by AVR/Microchip, incorporates a M0+ processor along with adequate flash memory and RAM. The advantage of this microcontroller is its high compatibility with old Arduino libraries while offering many new features with its Cortex architecture. This MCU operates at 3.3 V with a clock speed of 48 MHz and is 32-bit, allowing for fast and energy-efficient evaluation of measured values. The ADC has a high resolution at 12-bit. The controller is used in some official Arduino boards like the Arduino Zero or the industrial series Arduino MKR. However, since these boards do not fulfil our specifications, we have created our own board that accommodates the controller along with the necessary peripherals. To program our board, we simply flash the bootloader of the MKR Zero and program it like an MKR

Zero but with the advantages of our own hardware peripherals. The board was created using Altium Designer layout and schematic software.

115 The microcontroller was programmed using Arduino IDE due to its user-friendly interface, ease of learning, open-source nature, and compatibility with various hardware components. We developed a program that reads the sensors in defined timesteps. In combination with event-based programming and depending on the electrical power supply, data can be collected more often (i.e. every minute) during rain events and less often (i.e. every 10 minutes) during drier periods. This contributes to energy conservation. Program code, STL files for printing and board design can be found on <https://github.com/HeinkePaulsen/Forest-Floor-Grid-Lysimeter>.

2.3 Load Cells

120 For the mass measurement of the FFGL container we used four load cells (LCs) H10A from BOSCHE with a single weighing range of 15 kg together with HX711 loadcell amplifiers. These LCs operate with strain gauges. They transform forces, in our case pressure, into an electrical output that can be measured and standardized. The change in resistance of the strain gauges can be quantified as voltage. This change in voltage is proportional to the amount of force applied to the cell, thus the mass of the FF can be calculated from the LC output.

125 Each LC was calibrated individually to attain high accuracy by applying a known mass and averaging five analogue readings. To obtain the calibration factor that needs to be put into the program, the known weight is divided by this analog value. We conducted precision tests to assess the accuracy and resolution of mass measurements for the lysimeter container. Therefore, we placed masses ranging from 0 and 10,000 g in the center of the lysimeter. Additionally, we made some tests where we placed the mass in the four different grids of the lysimeter.

130 2.4 Tipping Bucket

The tipping bucket (TB) consists of a 3D printed bucket and frame. These parts are connected with a metal pin. Additional parts include a magnet and a reed switch. The TB can easily accommodate larger or smaller tipping volumes by replacing it with differently-scaled TBs without further changes of the overall set-up. The principle of a tipping bucket is straightforward. The water accumulates in one chamber of the bucket until it reaches the weight to induce tipping subsequently allowing the

135 other chamber to fill. The tipping is recorded when the magnet closes the reed switch during tipping.

We used either Bambulab P1P or a Prusa MK2 for our 3D printing process. To guarantee high stability and long-term robustness in the environment we used PETG (polyethylene terephthalate glycol) filament, which delivers a significant chemical resistance, durability and formability and shows no interference with water quality measurements. Since we want to achieve a very small tipping volume, it is important to use the feature “ironing” for 3D-printing the tipping buckets. This

140 ensures a smooth surface and reduces adhesion of water to the material. To avoid back-bouncing of the TB against the frame whilst tipping - which generates erroneous double tips - small shock absorbers made from hot glue were added at the frame contacts.

Various experiments were conducted for the static calibration of the tipping buckets. Continuous dripping with a pipette, 20 g and 50 g. As typical for TBs, the tip volume depends on the water intensity flowing into the TB. But since in our lysimeter the water has to pass through the forest floor, we assume dropping water rather than high flow rates onto the TB. Also, the MU is created to have a rather small outlet which restricts the intensity to a specific level, thereby enhancing the system's accuracy. Due to the aggregation of tips during the measurement interval we neglect the degradation in precision by this restriction. The outflow still allows for a correct measurement in a 10-minute interval of 3 liters which would be equivalent to 48 mm water depth, which is typically much higher than extreme 10-minute precipitation events.

150 2.5 Filling of Lysimeters and Location/Positioning in the field

The FFGL boxes were filled during the summer of 2023 (August to October). The objective was to fill the lysimeters with FF-material as undisturbed as possible and to recreate the soil layers to avoid big rocks and roots redirecting water fluxes. We decided to fill the boxes with the upper 15 cm of material from the surface accommodating litter fall in autumn. First, we sliced off the FF layer (typical Moder) in one piece and put it aside. The soil below was taken into boxes in 5 cm layers to a depth of 15 cm for subsequent reconstruction. The perforated metal sheet in the container was aligned to the actual surface slope in the field using the separating plastic walls. On top, we laid a water permeable geotextile onto which we reconstructed the soil layer by layer within the box. The undisturbed O-layer was placed on top (Fig. 2).

To fit the lysimeter frame and box into the location where we removed the FF, the excavation pit was enlarged to 50 cm depth and slightly wider, ensuring the surface of the lysimeter aligns with the surrounding FF. The excavation hole walls were reinforced with wooden plates to prevent contact between the lysimeter walls and the surrounding soil. Then the frame was inserted and aligned for balance. Then the electronics were connected and the box inserted. Lifting the container onto the frame from the top allows for easy access for cleaning purposes and maintenance. A lysimeter container used for testing in the laboratory was equally filled and then transported to the laboratory for functionality tests.



165 **Figure 2: Top: Lysimeter container on the frame, bottom: fully installed FFGL aligned to the location.**

2.6 Water Balance Calculation

The measurements of a weighing lysimeter can be used to determine the water balance of the FF for each observed time step. The amount of water percolating to the deeper soil D can be determined by multiplying the number of tipping bucket tips n with the tipping volume. With an average tipping volume of 2.1 cm^3 and the area covered by each lysimeter grid we reach a
 170 resolution of 0.03 mm for the draining water.

$$D = n * \frac{2.1 \text{ cm}^3}{625 \text{ cm}^2}, \quad (1)$$

The load cells continuously measure the storage S and, consequently, the mass of the lysimeter. If there is no drainage and the weight change is negative, we know that this change is due to evaporation E from the FF.
 175

$$\text{If } D = 0 \text{ \& } \frac{\Delta S}{\Delta t} < 0,$$

$$E = \frac{\Delta S}{\Delta t}, \quad (2)$$

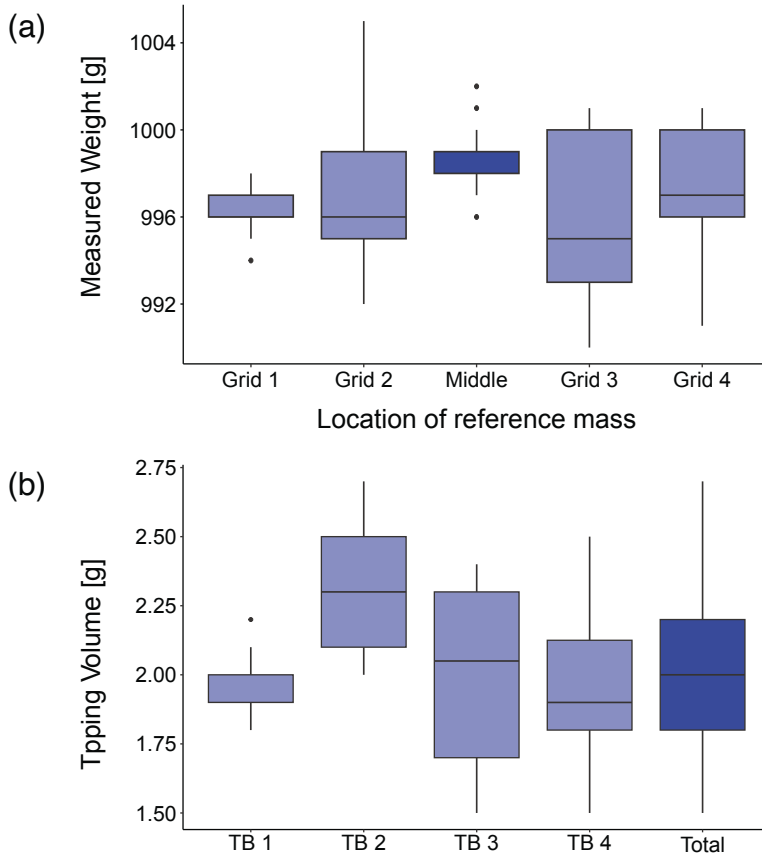
A positive storage change is a signal for precipitation in our case canopy throughfall (P_{TF}). Under the assumption there is no
 180 evaporation during a precipitation event this precipitation/canopy throughfall can be calculated as:

$$P_{TF} = E + D + \frac{\Delta S}{\Delta t}. \quad (3)$$

3 Results

185 3.1 Mass quantification with Load Cells

To evaluate the accuracy of the mass quantification, we filled the container with known masses ranging between zero to 10 kg in 500 g steps and conducted 20 measurements. The mass measurement accuracy achieved is 0.3%. A second test was conducted to confirm this, in which a fixed mass of 1000 g was placed at various positions within the container, specifically at the center of each grid and at the overall center of the container (Fig. 3a). This test yields an overall precision and standard deviation of 2.0 g, corresponding to 0.008 mm of precipitation. Figure 3a also shows that the position of the mass in the lysimeter has an influence on the measured mass. Therefore, the mass of the filled container should be distributed quite evenly on all four LCs to ensure accurate results.



195 **Figure 3: (a) Weighing precision of load cells, depending on the location of the reference mass (1000 g) in the container and (b) tipping volume of four single tipping buckets below one lysimeter.**

3.2 Quantification of percolating water with Tipping Buckets

The calibration of the TBs yields a mean tipping volume of 2.1 ml (Fig. 3b), corresponding to a drainage resolution of 0.03 mm per grid (25 x 25 cm). The standard deviation lies at 0.3 ml equivalent to 0.0048 mm. The error is 2%. We also show here the differences among different tipping buckets. For the four tested TBs the mean tipping volumes lie between 1.9 and 2.3 ml, equivalent to 0.031 mm and 0.037 mm. The observed minor differences are probably caused by the printing accuracy of the 3D printer. The resolution is comparable and acceptable when compared to other TBs mounted in rain gauges. For example the commercially available HOBO Raingauge Data Logger RG3 has a resolution of 0.1 mm with an error of 1% and the tipping bucket raingauge by ecoTech also has a resolution of 0.1 mm. Lysimeters employed in Ruth et al. (2018) quantify draining

200

water with a 50-mL tipping bucket, they yield a resolution of approximately 0.016 mm and with a Mini-Lysimeter the resolution was 0.5 g, corresponding to a water column of approximately 0.007 mm.

3.3 Irrigation experiment

We performed an irrigation experiment in the laboratory to test the performance and accuracy of the whole lysimeter setup under controlled conditions. The results are presented in Table 1. The mass of the empty box is 13.5 kg. We filled it with 21 kg of FF consisting of mineral soil and organic layers. We irrigated a total amount of 4875 ml, corresponding to 19.5 mm of precipitation. We separated the irrigation into three artificial events.

Table 1: Results of the irrigation experiment.

Event	Time	Applied P [mm]	Measured P [mm]	Accuracy [%]	D [mm]
1	11-12:30	11.4	11.7	-2,6	1.6
2	12:30-15:00	3.8	3.8	0	1.8
3	15-16:30	4,3	3.7	14.0	2.4
Total	11-16:30	19.5	19.2	1.5	5.8

In Fig. 4 we plotted the amount of measured precipitation and draining water, as well as the cumulative fluxes during the irrigation in 10-minute increments. Due to the dried-out material, drainage started after 16 minutes and 8.6 mm of water applied. For the second and third event the drainage occurred much faster (3 minutes, with 0.5 & 0.2 mm water applied) due to the higher initial water content. Also, during these two events a larger part of the irrigated water drained from the box. Comparing the cumulative fluxes, a major part of the irrigated water (70.1%) remained stored in the FF and did not percolate. The overall statistics reveal that we applied 19.5 mm water, but the lysimeter only measured 19.2 mm, resulting in a 1.5% divergence from the applied amount. This difference could be explained by evaporation during the irrigation which cannot be measured due to the measuring principle of the lysimeter and also water missing the lysimeter due to an imprecise nozzle of the irrigation device. In the following ten hours after the last TB tip, we could observe a further decline in mass without any further water drainage. Based on this, we can deduce that approximately 1.8 mm of water was evaporated from the lysimeter container, accounting for 13% of the irrigated water.

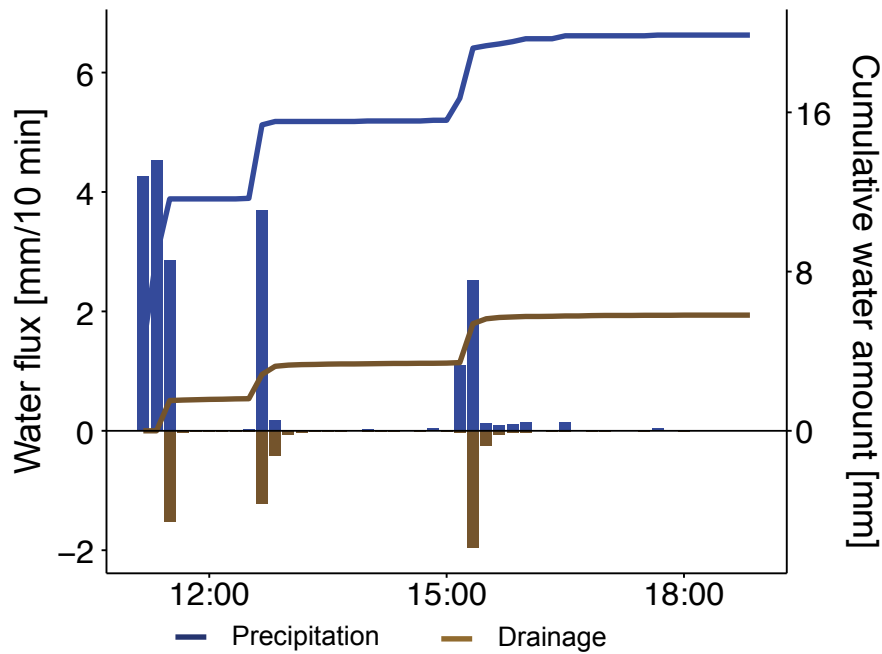


Figure 4: Results of the irrigation experiment; water fluxes (bars) as well as accumulated fluxes (lines) in 10-minute time steps.

3.4 Initial field results

To demonstrate the performance of the FFGL in field conditions, we provide the results of two lysimeters located in the Conventwald, an experimental site in a mixed forest stand of the University of Freiburg in the Black Forest over a 10 day period. The site is located 20 km east of Freiburg at 840 m a.s.l. and has a mean annual precipitation of 1749 mm. The occurring humus form is a typical Moder. More site characteristics can be found in Rinderer et al. (2021). We positioned the FFGLs under two spruce trees - one under the crown edge (SCE) and one in the crown middle (SCM) area - 1.5 m apart from each other. In Fig.5 we compare the lysimeter data to the above canopy precipitation. The total amount of above canopy rainfall (P) during the observed time period was 101.4 mm. We split it into four separate rainfall events (Table 2). With the lysimeters at the two locations SCE and SCM we measured 81.1 mm and 62.1 mm in total throughfall (P_{TF}), respectively. That equals to a canopy interception loss of 20.0% and 38.8% for the two locations, which is comparable to other studies. For example, Gerrits et al. (2010) observed losses of 18% in broadleaved stand while Andreasen et al. (2023) observed 35 % loss in broadleaf and 44 % in coniferous forest stands.

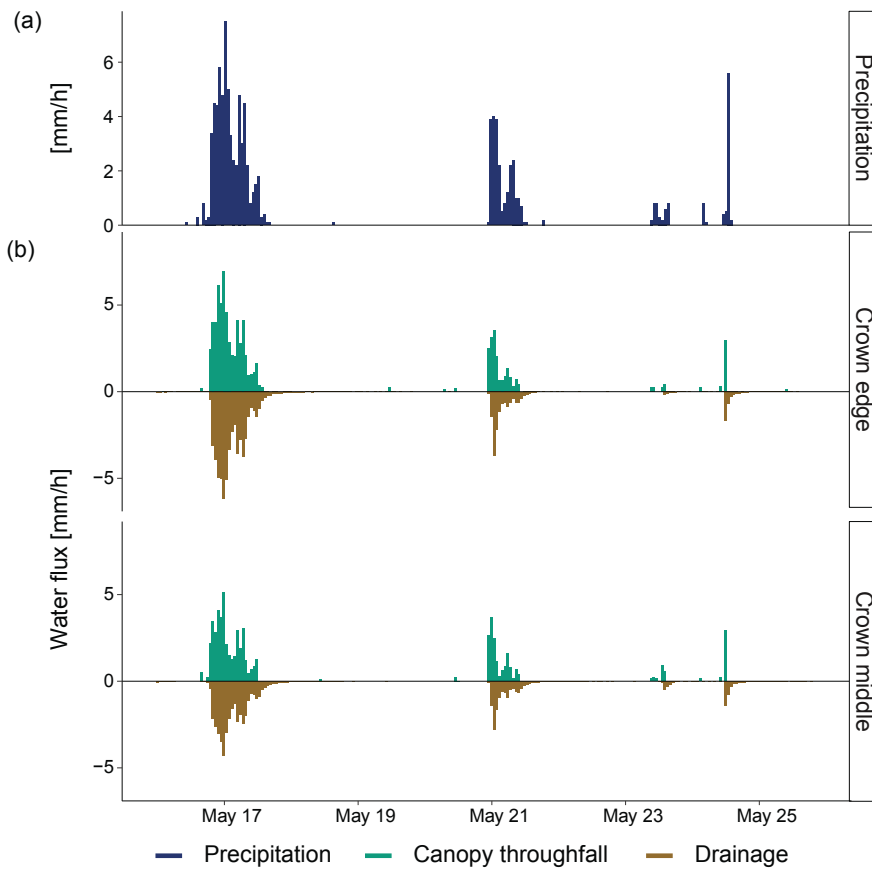


Figure 5: Hourly (a) Precipitation (P) measured above canopy and (b) Canopy throughfall (P_{TF}) and Drainage (D) measured by the two lysimeters below the crown edge and middle of a spruce tree.

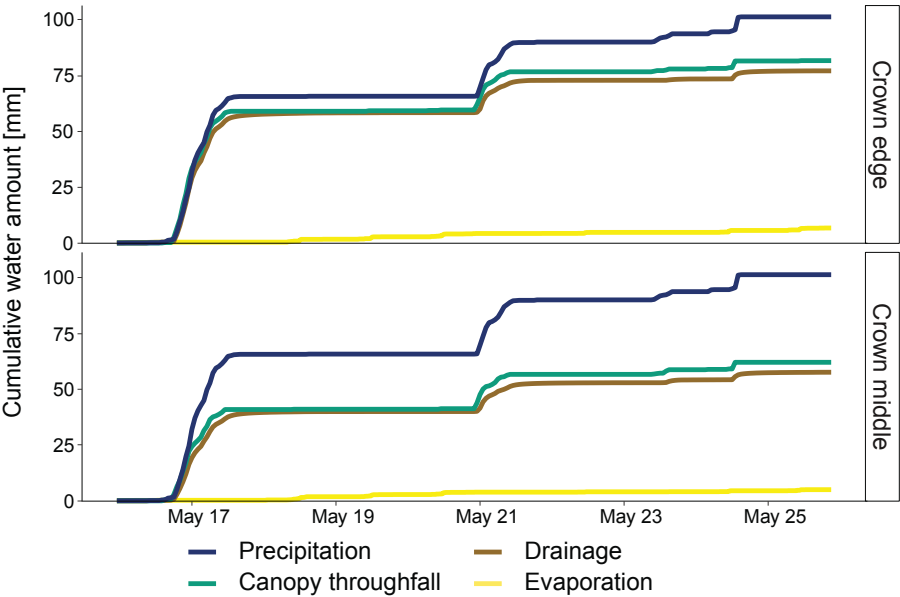
Looking at the individual events (Table 2) it becomes evident, that the fraction of rainfall reaching the ground is highly dependent on both the event and the position of the lysimeter. The fraction of the P_{TF} reaching a lysimeter fluctuates between 35 and 90% during the analyzed time period due to the shape of the crown and varying rainfall conditions (wind speed, drop size, wind direction). Smaller rainfall events cause a smaller partition of canopy throughfall, resulting in less percolation to deeper soil horizons.

255

Table 2: Observed water fluxes (P: precipitation, P_{TF} : canopy throughfall, D: drainage) in mm and the proportion of throughfall to precipitation (P_{TF}/P) the proportion of drainage to canopy throughfall (D/P_{TF}) in % for the two lysimeters during the 10 day period, sectioned into four events.

	Crown edge					Crown middle				
	P	P_{TF}	P_{TF}/P [%]	D	D/P_{TF} [%]	P_{TF}	P_{TF}/P [%]	D	D/P_{TF} [%]	
Event 1	65.8	59.1	89.8	58.3	98.6	41.1	62.5	40.0	97.3	
Event 2	24.3	17.7	72.8	14.6	82.5	15.6	64.2	12.7	81.4	260
Event 3	3.7	1.3	35.1	0.6	46.2	2.1	56.8	1.5	71.4	
Event 4	7.5	3.8	50.7	3.6	94.7	3.3	44.0	3.4	103.0	
Total	101.4	81.1	80.0	77.2	95.2	62.1	61.2	57.7	92.9	

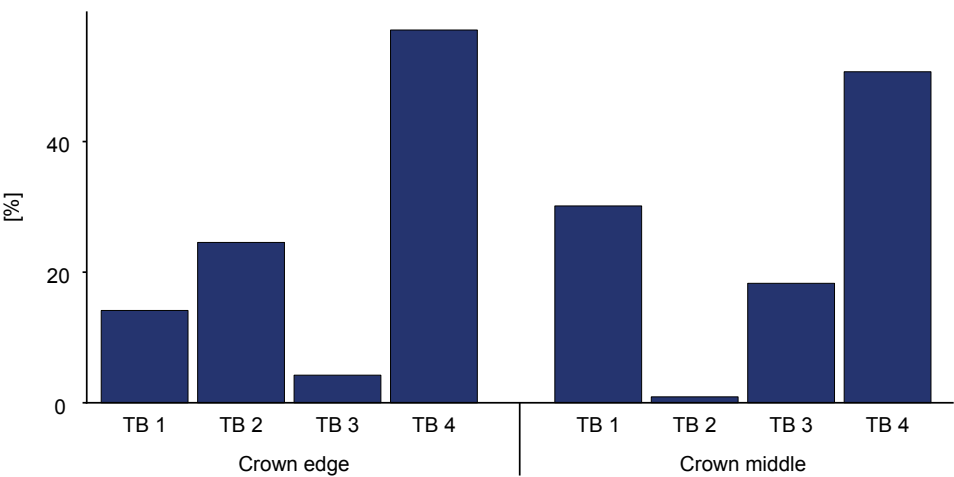
265 Drainage occurs with a delay to the start of each precipitation event, showing that it needs time for the water to flow through the FF. The cumulative fluxes in Fig. 6 show that there is a divergence in both time and amount. Only 95.2 and 92.9 % of P_{TF} become D, respectively. Not all of the P reaching the ground does infiltrate to deeper soil horizons but is stored in the FF and might later evaporate. In the study period only 3.3 and 1.5 mm evaporated, respectively, accounting for 4.1 and 2.4 % of P_{TF} . Evaporation could be higher in drier and warmer seasons when potential evaporation rates are higher.



270

Figure 6: Cumulative water amounts including precipitation above canopy (P), canopy throughfall (P_{TF}), drainage (D) and evaporation (E) measured by the two lysimeters during the 10 day period.

275 P_{TF} accounts for a major part of P , and might depend on the position of the lysimeter under the trees. In addition, due to the spatial heterogeneity in throughfall, the FF further influences infiltration pathways. This becomes clear when looking at the percentage of drainage through the various lysimeter outflows. It becomes clear that some of the grids have much higher amounts of drainage than others (Fig. 7). For example, during the study period, the outermost right grid (TB 4) of SCM received over 50% of the draining water while TB 3 had only 5%. One could state that this occurs due to spatial heterogeneity in P_{TF} , but since the mass gain on all four LCs was similar, we conclude that this deviation in infiltration must be due to rerouting pathways in the FF itself.



280 **Figure 7: Percental share of percolation to the soil through the different grids of the two lysimeters. TB1-TB4 indicating the four grids from left to right.**

Figure 8 compares the soil moisture data collected by the SMT100, measured 50 cm upslope of the lysimeters at 5 and 15 cm depth to the water stored in the lysimeter container. An increase in stored water of 5 mm compares to an increase in soil moisture of approximately 10 %. Soil moisture and storage are higher at the crown edge compared to the crown middle. The storage dynamics measured in the lysimeters is more pronounced compared to the more dampened signal of the soil moisture readings.

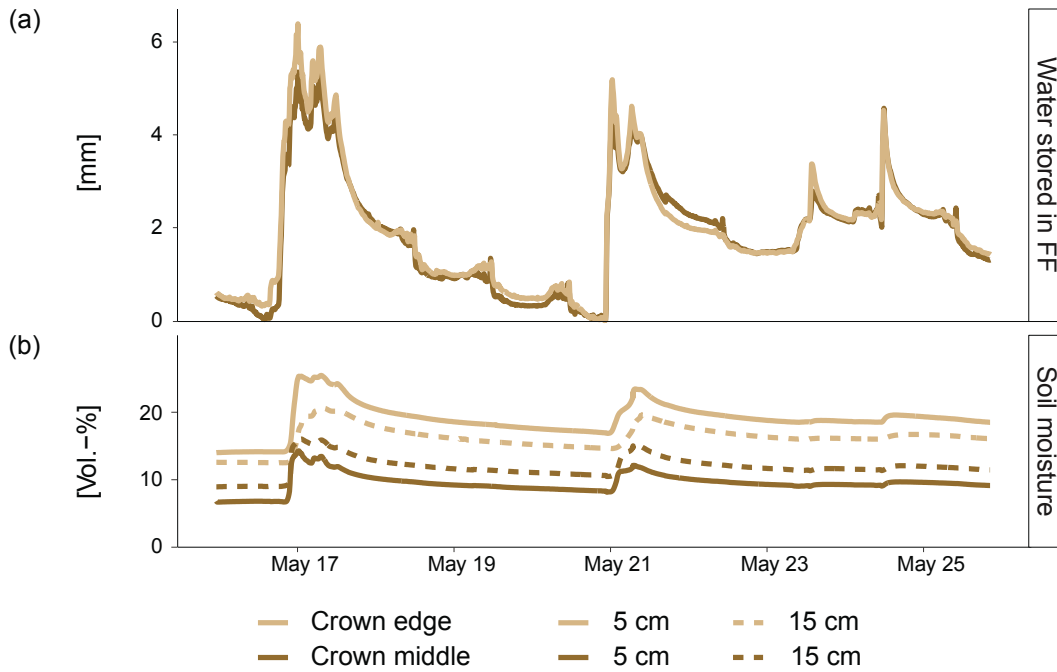


Figure 8: (a) Relative amount of water in mm stored in the FF observed during the 10 day period quantified by the lysimeter and (b) soil moisture content (Vol.-%) next to the lysimeters.

4 Discussion

The lysimeter data proves to be a very valuable addition to existing approaches such as grab sampling or rainfall simulator experiments (Li et al., 2020; Putuhena and Cordery, 1996; Walsh and Voigt, 1977; Zhao et al., 2022). Evaporation, retention, and storage processes are assessed in actual field conditions, while environmental factors like climatic conditions, pre-wetness, canopy structure, litter composition, soil structure, etc. stay incorporated. Still, data needs quality/plausibility checks and validation by supplementary measurements or data from the site. For example, during long term observation it is important to consider the weight loss of the decomposing FF material. Weight increases may result from the relocation of material caused by falling branches, leaves, and other debris being moved in and out of the box by wind. The typical factors of these lysimeters have been previously described by Gerrits et al. (2007). They state that many factors can influence the accuracy and errors of a forest floor lysimeter, like evaporation during a rainfall event, measurement noise, falling branches/leaves, small animals, dew and heterogeneity of throughfall. Another disadvantage of lysimeters is that only one specific surface and volume is taken into account, which might not cover the overall heterogeneity at different spatial scales (von Unold and Fank, 2008). We installed multiple lysimeters for direct comparison among the FFGLs at each site and to validate with above-canopy precipitation. So, we can make sure that a sudden storage change might not be caused by precipitation but rather by some form of disturbance.

Even smaller spatial heterogeneity, with a spatial scale of 0.0125 m^2 , will be displayed through the grids of the lysimeter. When incoming precipitation is evenly distributed over the lysimeter area, which becomes evident in similar weight changes of the single LCs, diverging portions of drainage in the TBs are a sign of redistribution by the FF. Our initial data indicate that even on a small scale, there are significant differences in drainage, with one grid exhibiting over 50% of total drainage and another only 5%.

Usually lysimeters are very costly and extensive to construct and install. Bello and Van Rensburg (2017) conducted a review of small lysimeter costs, which ranged from US\$ 1,000 to US\$ 5,500. Initial efforts are being made to create low-cost lysimeters. Bello and Van Rensburg (2017) built a lysimeter for US\$ 520 and Dong and Hansen (2023) built a lysimeter station including four separate lysimeters for US\$ 1,310. Due to specific requirements for our lysimeter, including grids for spatial heterogeneity, shallow depth to cover only the upper field capacity, and adaptability for steep research sites, we opted to explore a DIY low-cost setup, as customized lysimeters are typically costly. The manufacturing price of our FFGL is currently US\$ 750, with the stainless-steel container accounting for US\$ 550 of this cost. Utilising an alternative material for the container could significantly reduce costs.

The results presented show that water flux measurements with the FFGL are very precise. We achieve a total resolution of 0.03 mm for precipitation detection with a SD of 0.0048 mm and an error of 2%, when we combine the measurements by the LCs and the TBs. Small precipitation (rime, fog, dew) that doesn't produce drainage from the lysimeter and evaporation can be measured with a resolution of 0.008 mm. This is comparable to other lysimeter studies. Bello and Van Rensburg (2017) developed a small lysimeter with a resolution of 0.123 mm, Dong and Hansen (2023) achieved a resolution of 0.3 mm and Ruth et al. (2018) used lysimeters with a resolution of approximately 0.016 mm and a Mini-Lysimeter with a resolution of 0.5 g, equivalent to a water column of approximately 0.007 mm. Seuntjens et al. (2001) conducted a comparison of the precision across various lysimeter studies, revealing that the precision for lysimeters with a cross-sectional area less than 1 m^2 varied between 0.025 mm and 0.5 mm. It needs to be taken into account that lysimeters with a smaller surface area show more dominant edge effects. The overall size of 0.25 m^2 in our setup was selected in order to install the lysimeter in different sloped terrain, so we decided on a compromise. Additionally, our goal was to develop a low-cost setup that wasn't too big in size and weight and could still be handled by maximum two people for maintenance.

To enhance future measurements, we will include specific calibrations for each TB and not use one mean tipping volume for all TBs. Segovia et al. (2021) discuss issues related to tipping bucket results, including heterogeneity in bucket manufacturing, the initial wetness or dryness of the bucket, and the tension between the reed switch and magnet. Since we realized a temperature effect in our field weight measurements we performed some temperature and stability tests of our LCs (S. 1). The change in weight did not occur then, showing the effect in our data was caused by shifting of the lysimeter container due to thermal expansion and suboptimal force application to the LC due to wrong positioning of the box. For future measurements we adapted the setup. Additionally, it is necessary to test the long-term stability of load cells. We do this by repeatably placing a known weight on the lysimeters during maintenance to test the long-term stability in the field. These adjustments will help

to improve measurements and also make it possible to precisely measure evaporation as well as to detect non-rainfall precipitation such as dew and rime.

5 Conclusion and Outlook

This technical note describes the development of the low-cost weighing Forest Floor Grid Lysimeter (FFGL). We present accuracy tests for the different water flux quantifications, infiltration measured with the 3D-printed tipping buckets and storage weight measurements, resulting in a total resolution of 0.03 mm for precipitation detection with a SD of 0.0048 mm and an error of 2%. The separately draining grids without walls between the compartments dividing the FF allow for quantification of redistribution induced by the FF.

The FFGL underwent successful field testing and will now be installed at various sites and in different positions relative to trees. The objective is to gather data on the effects of climatic conditions, tree species, crown position, and forest floor (FF) composition on the water balance of the FF. Additionally, we aim to investigate the variability of infiltration patterns resulting from throughfall patterns and FF composition. The tested setup facilitates the future integration of water quality measurements into the existing measurement units. The development of automated in situ measurements for water temperature, electrical conductivity (EC), and dissolved organic carbon (DOC) in the grid-lysimeter is currently underway.

Code availability

<https://github.com/HeinkePaulsen/Forest-Floor-Grid-Lysimeter>

355 Data availability

Forstliche Versuchs- und Forschungsanstalt, Abt. Boden und Umwelt (Forest Research Institute Baden-Württemberg, Dept. Soil and Environment)

<https://github.com/HeinkePaulsen/Forest-Floor-Grid-Lysimeter>

Author contribution

360 MW and HP designed the setup. HP developed the Lysimeter setup. HP prepared the manuscript with contributions from all co-authors.

Competing interests

At least one of the (co-)authors is a member of the editorial board of Hydrology and Earth System Sciences.

Acknowledgements

365 *This project was carried out in the framework of the Research unit 5315 “Forest Floor: Functioning, Dynamics, and Vulnerability in a Changing World” funded by DFG.*

References

- Andreasen, M., Christiansen, J. R., Sonnenborg, T. O., Stisen, S., and Looms, M. C.: Seasonal dynamics of canopy interception loss within a deciduous and a coniferous forest, *Hydrol. Process.*, 37, e14828, <https://doi.org/10.1002/hyp.14828>, 2023.
- 370 Bello, Z. A. and Van Rensburg, L. D.: Development, calibration and testing of a low-cost small lysimeter for monitoring evaporation and transpiration: Development, calibration and testing of a low cost small lysimeter, *Irrig. Drain.*, 66, 263–272, <https://doi.org/10.1002/ird.2095>, 2017.
- Dong, Y. and Hansen, H.: Development and design of an affordable field scale weighing lysimeter using a microcontroller system, *Smart Agric. Technol.*, 4, 100147, <https://doi.org/10.1016/j.atech.2022.100147>, 2023.
- 375 Floriancic, M. G., Allen, S. T., Meier, R., Truniger, L., Kirchner, J. W., and Molnar, P.: Potential for significant precipitation cycling by forest-floor litter and deadwood, *Ecohydrology*, 16, <https://doi.org/10.1002/eco.2493>, 2023.
- Gerrits, A. M. J., Savenije, H. H. G., Hoffmann, L., and Pfister, L.: New technique to measure forest floor interception – an application in a beech forest in Luxembourg, *Hydrol. Earth Syst. Sci.*, 11, 695–701, <https://doi.org/10.5194/hess-11-695-2007>, 2007.
- 380 Gerrits, A. M. J., Pfister, L., and Savenije, H. H. G.: Spatial and temporal variability of canopy and forest floor interception in a beech forest, *Hydrol. Process.*, 24, 3011–3025, <https://doi.org/10.1002/hyp.7712>, 2010.
- Guevara-Escobar, A., Gonzalez-Sosa, E., Ramos-Salinas, M., and Hernandez-Delgado, G. D.: Experimental analysis of drainage and water storage of litter layers, *Hydrol Earth Syst Sci*, 2007.
- Li, Q., Lee, Y. E., and Im, S.: Characterizing the Interception Capacity of Floor Litter with Rainfall Simulation Experiments, 385 *Water*, 12, 3145, <https://doi.org/10.3390/w12113145>, 2020.
- Putuhen, W. M. and Cordery, I.: Estimation of interception capacity of the forest floor, *J. Hydrol.*, 180, 283–299, [https://doi.org/10.1016/0022-1694\(95\)02883-8](https://doi.org/10.1016/0022-1694(95)02883-8), 1996.
- Reth, S., Perez-Priego, O., Coners, H., and Nolz, R.: Lysimeter, in: *Springer Handbook of Atmospheric Measurements*, edited by: Foken, T., Springer International Publishing, Cham, 1569–1584, https://doi.org/10.1007/978-3-030-52171-4_58, 2021.
- 390 Rinderer, M., Krüger, J., Lang, F., Puhlmann, H., and Weiler, M.: Subsurface flow and phosphorus dynamics in beech forest hillslopes during sprinkling experiments: how fast is phosphorus replenished?, *Biogeosciences*, 18, 1009–1027, <https://doi.org/10.5194/bg-18-1009-2021>, 2021.
- Ruth, C. E., Michel, D., Hirschi, M., and Seneviratne, S. I.: Comparative Study of a Long-Established Large Weighing Lysimeter and a State-of-the-Art Mini-lysimeter, *Vadose Zone J.*, 17, 1–10, <https://doi.org/10.2136/vzj2017.01.0026>, 2018.
- 395 Schnepfer, T., Groh, J., Gerke, H. H., Reichert, B., and Pütz, T.: Evaluation of precipitation measurement methods using data

from precision lysimeter network, Hydrometeorology/Instruments and observation techniques, <https://doi.org/10.5194/hess-2022-370>, 2022.

Segovia-Cardozo, D. A., Rodríguez-Sinobas, L., Díez-Herrero, A., Zubelzu, S., and Canales-Ide, F.: Understanding the Mechanical Biases of Tipping-Bucket Rain Gauges: A Semi-Analytical Calibration Approach, *Water*, 13, 2285, <https://doi.org/10.3390/w13162285>, 2021.

Seuntjens, P., Mallants, D., Toride, N., Cornelis, C., and Geuzens, P.: Grid lysimeter study of steady state chloride transport in two Spodosol types using TDR and wick samplers, *J. Contam. Hydrol.*, 51, 13–39, [https://doi.org/10.1016/S0169-7722\(01\)00120-6](https://doi.org/10.1016/S0169-7722(01)00120-6), 2001.

von Unold, G. and Fank, J.: Modular Design of Field Lysimeters for Specific Application Needs, *Water Air Soil Pollut. Focus*, 8, 233–242, <https://doi.org/10.1007/s11267-007-9172-4>, 2008.

Walsh, R. P. D. and Voigt, P. J.: Vegetation Litter: An Underestimated Variable in Hydrology and Geomorphology, *J. Biogeogr.*, 4, 253, <https://doi.org/10.2307/3038060>, 1977.

Zhao, L., Meng, P., Zhang, J., Zhang, J., Sun, S., and He, C.: Effect of slopes on rainfall interception by leaf litter under simulated rainfall conditions, *Hydrol. Process.*, 36, e14659, <https://doi.org/10.1002/hyp.14659>, 2022.