

5  
10  
15  
20  
25  
30  
35  
40  
45  
50

## **High-resolution 4D ERT and below-ground point sensor monitoring of High Arctic deglaciated sediments captures zero curtain effects, freeze-thaw transitions and mid-winter thawing**

Mihai O. Cimpoiasu<sup>1</sup>, Oliver Kuras<sup>1</sup>, Harry Harrison<sup>1</sup>, Paul B. Wilkinson<sup>1</sup>, Phillip Meldrum<sup>1</sup>, Jonathan E. Chambers<sup>1</sup>, Dane Liljestrand<sup>2</sup>, Carlos Oroza<sup>2</sup>, Steven K. Schmidt<sup>3</sup>, Pacifica Sommers<sup>3</sup>, Lara Vimercati<sup>3</sup>, Trevor P. Irons<sup>4</sup>, Zhou Lyu<sup>5</sup>, Adam Solon<sup>5</sup>, and James A. Bradley<sup>5,6</sup>

<sup>1</sup> Environmental and Engineering Geophysics, British Geological Survey, United Kingdom

<sup>2</sup> University of Utah, Salt Lake City, Utah, United States of America

<sup>3</sup> University of Colorado, Boulder, Colorado, United States of America

<sup>4</sup> Montana Technical University, Butte, Montana, United States of America

<sup>5</sup> School of Biological and Behavioural Sciences, Queen Mary University of London, London, UK

<sup>6</sup> Aix Marseille University, Université de Toulon, CNRS, IRD, MIO, Marseille, France

*Correspondence to:* Mihai O. Cimpoiasu ([mcim@bgs.ac.uk](mailto:mcim@bgs.ac.uk))

Deleted: recently deglaciated sediments undergoing freeze-thaw transitions in the High Arctic

**Abstract.** Arctic regions are under immense pressure from a continuously warming climate. Understanding the physical mechanisms and processes that determine soil liquid moisture availability contributes to the way we conceptualize and understand the development and functioning of terrestrial Arctic ecosystems. However, harsh weather and logistical constraints limit opportunities to directly observe subsurface processes year-round, hence automated and uninterrupted strategies of monitoring soil physicochemical properties are essential. Geoelectrical monitoring using electrical resistivity tomography (ERT) has proven to be an effective method to capture soil moisture distribution in time and space. ERT instrumentation has been adapted for year-round operation in high-latitude weather conditions. We installed two geoelectrical monitoring stations on the forefield of a retreating glacier on Svalbard, consisting of semi-permanent surface ERT arrays and co-located soil sensors, which track seasonal changes in 3D of soil electrical resistivity, moisture and temperature. One of the stations observes recently exposed sediments (5-10 years since deglaciation), whilst the other covers more established sediments (50 years since deglaciation). We obtained a one-year continuous measurement record (Oct 2021–Sep 2022), which produced 4D images of soil freeze-thaw transitions with unprecedented detail, allowing us to calculate the velocity of the thawing front in 3D. At its peak, this was found to be 1 m/day for the older sediments and 0.4 m/day for the younger sediments. Records of soil moisture and thermal regime obtained by sensors help define the conditions under which snowmelt takes place. Our data reveal that the freeze-thaw shoulder period, during which the surface soils experienced the zero-curtain effect, lasted 23 days at the site closer to the glacier, but only 6 days for the older sediments. Furthermore, we used unsupervised clustering to classify areas of the soil volume according to their electrical resistivity coefficient of variance, which enables us to understand spatial variations in susceptibility to water phase transition. Novel insights about soil moisture dynamics throughout the spring melt will help parameterize models of biological activity to build a more predictive understanding of newly emerging terrestrial landscapes and their impact on carbon and nutrient cycling.

1 Introduction

The Arctic has experienced increases in average air temperature and annual precipitation in recent decades (Rapaić et al., 2015; Rawlins et al., 2010). This has led to a reduction of the permanent ice volume and ice covered area, with the Svalbard Archipelago alone losing approximately 5,000 km<sup>2</sup> of terrestrial glacier cover since the beginning of the 20<sup>th</sup> century (Martin-Moreno et al., 2017). Arctic soils are significant regulators of the global carbon budget as they are estimated to store approximately 1035 ± 150 Pg C in the uppermost 3 meters – an amount equivalent to roughly a third of the global soil C pool (Hugelius et al., 2014). Glacier retreat exposes sediments which undergo succession (Bradley et al., 2014; Schmidt et al., 2008; Wojcik et al., 2021), with deeper layers of the soil likely to be carbon-limited due to a lack of photosynthetically derived organic carbon (Freeman et al., 2009), and undergoing successional and corresponding physicochemical changes more slowly than surface layers (Rime et al., 2015).

Recent studies have observed continuous soil respiration fluxes from Arctic soils during winter periods (Arndt et al., 2020; Natali et al., 2019) as well as bursts of carbon emitted from soils following early spring thawing (Nielsen et al., 2001; Raz-Yaseef et al., 2017; Teepe & Ludwig, 2004). Records have also captured considerable CO<sub>2</sub> emissions from Arctic soils during both of the shoulder seasons – i.e., not only during the springtime thawing, but also during fall freezing (Commane et al., 2017; Zona et al., 2016). Soil moisture content availability and temperature are known to strongly influence soil biological activity and consequently respiration (Brooks et al., 1997; Elberling & Brandt, 2003; Schmidt et al., 2008). Quantifying moisture variability across pioneer soils along with occurrences of spring snowmelt would greatly improve our understanding of where, when, and for how long, microbial communities are active in these early successional landscapes, and thus can contribute to biologically driven carbon transformations. However, repeat surveying or sampling in the Arctic can be challenging due to harsh weather conditions (especially under snow cover during winter months) and distance from population centres; thus, a remote, autonomous method of monitoring such environments is desirable.

The emergence of year-round data (e.g., Boike et al., 2018) will undoubtedly enable an improved understanding and prediction of the fate of Arctic soils under future warming scenarios. Long-term studies have used repeated probing to determine the evolution of active layer thickening (Strand et al., 2021) or microclimate loggers to quantify spatial variability in near surface temperature (Tyystjärvi et al., 2024). Through a four-year long data series obtained from shallow thermistors (down to 150 cm), Kasprzak and Szymanowski, (2023) verify how topographic parameters determine the spatial variation of near-surface ground temperature on a mountain catchment in southwest Spitsbergen, Svalbard. However, point sensors can only achieve a high spatial resolution over a limited region rather than continuously at the field scale, making it difficult to observe dynamic 3D processes such as water infiltration.

**Moved down [3]:** Deeper layers of the soil undergo successional changes more slowly than surface layers (Rime et al., 2015) and are likely to be carbon-limited due to a lack of photosynthetically derived organic carbon (Freeman et al., 2009). Deeper layers may therefore be less sensitive to changes in key drivers of soil biological activity such as moisture and temperature.

**Deleted: ¶**  
The till-covered landscapes emerging from beneath the retreating ice are rapidly colonized by microorganisms during the initial stages of soil formation (Schmidt et al., 2008; Bradley et al., 2014) and are sensitive to further climatological changes (Bradley et al., 2017). Deeper layers of the soil undergo successional changes more slowly than surface layers (Rime et al., 2015) and are likely to be carbon-limited due to a lack of photosynthetically derived organic carbon (Freeman et al., 2009). Deeper layers may therefore be less sensitive to changes in key drivers of soil biological activity such as moisture and temperature.¶  
Arctic

**Deleted:** with mean annual temperatures below freezing (< 0°C) ...

**Deleted:** considered to be essential for

**Deleted:** world

**Deleted:** anAn enormous carbon pool

**Deleted:** is estimated to be stored in Arctic soils with mean annual temperatures below freezing (< 0°C)

**Moved (insertion) [3]**

**Deleted:** These soils are highly vulnerable to climate warming, which causes thawing of permafrost and accelerates carbon mobilization and decomposition processes, thus elevating rates of carbon exchange between soil and the atmosphere. D

**Deleted:** D

**Deleted:** and are likely to be carbon-limited due to a lack of photosynthetically derived organic carbon (Freeman et al., 2009). Deeper layers may therefore be less sensitive to changes in key drivers of soil biological activity such as moisture and temperature.

**Deleted:** ¶

**Deleted:** 9

**Formatted:** Font color: Auto

**Formatted:** Font: 10 pt, Font color: Auto

**Formatted:** Font color: Auto

**Formatted:** Font: 10 pt, Font color: Auto

**Formatted:** Font color: Auto

**Formatted:** Font: 10 pt, Font color: Auto

Electrical resistivity tomography (ERT) is a ground investigation method that provides a fast, cost-effective and minimally invasive way of imaging and monitoring soil moisture in 4D (Michot et al., 2003; Cimpoiasu et al., 2021). ERT has an extensive track record of applications in the field (Loke et al., 2013), including polar environments where it was used for its sensitivity to ice content (Wu et al., 2013, 2017), a weak electrolyte (Farzaman et al., 2020; Hauck et al., 2002; Kasprzak, 2015). Approaches to system development have included both the adaption of commercial resistivity survey instrumentation for monitoring purposes (Daily et al., 2004) and the development of purpose-built resistivity monitoring systems (LaBregue et al., 2004). Hilbich et al., 2011 was one of the first studies that used an automated electrical resistivity instrument to monitor frozen ground. One of such automated ERT monitoring devices, is the PRoactive Infrastructure Monitoring and Evaluation (PRIME) system, successfully used for monitoring hydrogeological processes over space and time, including in remote and cold environments (Uhlemann et al., 2021; Holmes et al., 2022; Cimpoiasu et al., 2024). Alongside ERT arrays, point sensors are often used in order to obtain in-situ calibrations between electrical resistivity and direct measurements of moisture content (Garré et al., 2013). The aim of this work is to obtain a better understanding of moisture availability in sediments at different stages of development since deglaciation, as well as the variability of moisture across seasons. We therefore seek to unravel how much, where and when liquid water can be detected alongside the factors contributing to liquid moisture availability. To achieve this we present and examine a year-long (summer 2021– summer 2022) time series of geophysical data obtained from two sensor array installations located on the forefield of Midtre Lovénbreen, a retreating glacier in Spitsbergen (Svalbard). The dataset comprises records of soil temperature, soil water content and snow depth, which complement 4D time-lapse images of subsurface electrical resistivity. We describe patterns in the soil point sensor data regarding an anomalous spring melt event and the spring freeze-thaw transition. We analyzed 4D ERT models in the context of local physical and topographical conditions in order to quantify the location, direction and rate of progress of the spring thaw front and used unsupervised automated clustering in order to classify regions of the subsurface more susceptible to liquid moisture content change, a known driver for soil biological activity.

**2 Methodology**  
**2.1 Study sites**

Midtre Lovénbreen (ML) is a polythermal non-surge-type valley glacier (Hambrey et al., 1999) with a north-facing catchment located on the island of Spitsbergen, Svalbard Archipelago (Fig. 1a), approximately 5 km SE of Ny-Ålesund (78°53' N, 11°59' E). The glacier has retreated approximately 1.5 km since its neoglacial maximum attained in 1890 (Hambrey, 1894), uncovering a succession of sediments in different stages of development since deglaciation (“chronosequence”). We selected two sites across the glacier forefield based on the time elapsed since deglaciation, reflecting soil ages of 10 and 50 years, respectively. Apart from time, the position on the glacier forefield and topography of the sites are instrumental in shaping the physical properties of the plots (Cimpoiasu et al., 2024). Site 1 sediments are found to be alkaline, with a low cation exchange capacity, large vesicles and minerals trapped in a loam texture. Site 2 sediments, in comparison, contain less silt, but more sand, and have a higher porosity, smaller minerals and vesicles. Site 1 showed a more homogeneous structure with higher moisture availability and saturation whereas Site 2 has revealed a stratified structure with higher moisture variability, potentially explained by greater hydraulic conductivity.

**2.2 Point sensor measurements**

At both locations we augered four ~ 15 cm diameter boreholes of approximately 1 m depth. In each borehole we installed six Teros-11 sensors (24 in total per site). The point sensors were factory calibrated to an accuracy of ±3% over an operational range of -40 to +60 C°. To convert from raw sensor output (RAW) to volumetric water content (θ) the following equation was used:

$$\theta = 3,879 \times 10^{-4} \times RAW \times -0,6956 \tag{1}$$

We did not use any sediment specific calibration curves due to sample unavailability at the time of analyses. The boreholes were backfilled with the sediment extracted during drilling. Overlooking the boreholes, a snow depth sensor was installed. All sensors are attached to a Campbell Scientific CR1000X Datalogger, powered from a 210 Ah battery bank and sustained by a 10 W solar panel. The Teros sensors record hourly data of soil volumetric water content (VWC) and temperature. On each sensor towers (Fig. 1b) we also installed a Browning Recon Force Elite HP4 nature camera, which take daily photographs of the site, from approximately 2 m height, to complement the snow depth readings.

- Deleted:
- Deleted: 0
- Deleted:
- Deleted: Recent advancements in ERT technology have led to the emergence of
- Deleted: such as
- Deleted: 3
- Deleted: Additionally
- Deleted: in combination with ERT deployments
- Deleted: In order to
- Deleted: soils
- Deleted: the landscape
- Deleted: and
- Deleted: can we detect liquid moisture
- Deleted: In order t
- Deleted: ,
- Deleted: crem
- Deleted: determining
- Deleted: ir
- Deleted:
- Deleted: (2023) describe the physical properties of the two sites in more detail
- Deleted: ¶  
Investigations of
- Deleted: (Cimpoiasu et al., 2023)
- Deleted: .
- Deleted:
- Formatted: Superscript
- Formatted: Font: Italic
- Formatted: Font: Italic
- Formatted: Font: Italic
- Formatted: Font: 10 pt, Italic
- Formatted: Font: 10 pt
- Formatted: Font: 10 pt, Italic
- Formatted: Font: 10 pt, Italic
- Formatted: Font: 10 pt, Italic, Superscript
- Formatted: Font: 10 pt, Italic
- Formatted: Font: 10 pt
- Formatted: Font: 10 pt, Italic
- Formatted: Font: 12 pt
- Formatted: Default
- Deleted:
- Deleted: We did not use any liner and t

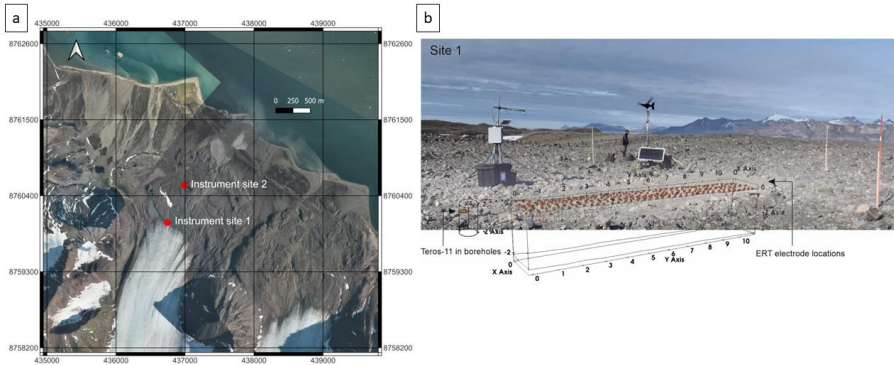


Figure 1: (a) Topographic map of the study area (© NPI, 2023) (b) Photograph of Site 1 showing the instrumental setup and the corresponding schematics of the underground sensor installation and the ERT investigation volume (axes units are metres).

### 2.3 Electrical resistivity tomography

At both sites we installed 222 stainless steel tubular electrodes (high surface area) arranged in 6 lines of 37 electrodes, with 30 cm inline and interline spacing. In the absence of accurate differential GPS positioning, the location and height of the electrodes were recorded manually with a tape measure and laser level. The electrical resistivity measurements are conducted with the PRIME system (Cimpoiasu et al., 2024), which is powered from a 315 Ah battery bank. Battery charge is sustained during the summer months by a 150 W solar panel and during the dark winter months by a 300 W wind turbine. One complete set of measurements took approximately four hours, with a measurement frequency of 25 Hz, and contains 12,300 datapoints distributed over a shallow subsurface volume of approximately  $11 \times 1.5 \times 2 \text{ m}^3$ . In order to extend battery life for data collection in the event of a disruption to the power supply, we acquired measurements at a rate of once every four days during the fall and winter months, when the ground is frozen, and changes are minimal. This pattern was followed by more frequent daily measurements starting 1<sup>st</sup> April 2022 for a greater temporal resolution over the anticipated snow melt period. For each individual measurement, four electrodes are automatically selected by a pre-defined command sequence. As low injection currents and high contact resistances between the electrodes were expected during the winter months (Hilbich et al., 2011; Doetsch et al., 2015), we chose a Multiple Gradient electrode configuration for its spatial resolution properties and greater signal-to-noise ratio (Dahlin and Zhou, 2006). Sensitivity of the measurement sequence was calculated by observing the procedures implemented by Oldenburg and Li (1999). The full dataset was filtered post-acquisition using the processing workflow detailed in Cimpoiasu et al. (2024). Once pre-processed, the data were inverted using a 4D algorithm implemented in the Res3DInvx64 software from Geotomo (Loke, 2017), as described by Wilkinson et al. (2022).

### 2.4 Relationship between soil electrical resistivity and moisture content

According to Archie's law (Archie, 1942) the electrical resistivity  $\rho$  of soils can be expressed as:

$$\rho = \rho_w a S^m \Phi^n,$$

where  $\rho_w$  is the resistivity of the pore fluid,  $a$  is the tortuosity factor,  $S$  is the saturation,  $\Phi$  is the porosity and  $m$  and  $n$  are empirical fitting parameters. Archie's Law is most applicable when the soil and rock matrix can be assumed to be non-electrically conductive. The glacial till sediments in the ML forefield are silty with relatively low clay content, justifying this assumption (Cimpoiasu et al., 2024).

We divided the ERT volume into three layers of equal thickness, each layer spanning the depth range of two of the six point sensors in every borehole (0-33 cm, 33-66 cm, 66 cm-1m). For every ERT timestep we computed the average electrical resistivity value of each layer and the average corresponding VWC over the day of ERT recording. We then split the range of VWC values into 30 equal 0.01 size bins and computed for every bin the average VWC and its corresponding average electrical resistivity. To these data we fitted Archie's relationship using laboratory-derived porosity values (as listed in Cimpoiasu et al., 2024), an assumed pore fluid resistivity value of  $100 \Omega\text{m}$  based on previous values of sediment sample EC determined by Kwon et al. (2015) and empirical values of  $a$ ,  $m$  and  $n$  as fitting parameters.

Deleted: 2.3

Formatted: Outline numbered + Level: 2 + Numbering Style: 1, 2, 3, ... + Start at: 2 + Alignment: Left + Aligned at: 0 cm + Indent at: 0.63 cm

Deleted: locations

Deleted: 3

Deleted: and temperature-corrected

Deleted: 3

Deleted: 2.4

Formatted: Font: 10 pt

Formatted: Outline numbered + Level: 2 + Numbering Style: 1, 2, 3, ... + Start at: 2 + Alignment: Left + Aligned at: 0 cm + Indent at: 0.63 cm

Deleted: 1

Deleted: 03

Deleted: 3

Deleted: estimated

Formatted: Font: Italic

Formatted: Font: Italic

Formatted: Font: Italic

290 **2.5 Movement of the thaw front**

Analysing timelapse ERT records, we made the assumption that the onset of soil thaw can be identified by a steep drop in electrical resistivity. This allowed us to select a threshold electrical resistivity value, which marks the point before the drop, of 1,000 Ωm for Site 1 and 5,000 Ωm for Site 2. It is worth noting that because these threshold values were established empirically, if the sediment water saturation were to change a different threshold electrical resistivity value would be selected. We used these values to track movements of the thawing front in three dimensions, by counting and identifying the location (local Cartesian coordinates, where the origin [0, 0, 0] is one corner of the ERT volume) of all ERT model cells with values below the estimated thresholds. We determined the location of the cell centres by computing an average of the cell coordinates for every timestep, allowing us to calculate distance, rate of progress (gradient of distance) and direction of movement of the thawing front.

Deleted: et

Deleted: 3

300 **2.6 k-means clustering**

Unsupervised automated algorithms are useful for identifying patterns in large datasets (Berkhin, 2006). A k-means clustering algorithm partitions  $n$  observations into  $k$  clusters, in which each observation belongs to the cluster with the nearest mean (cluster centers) (Berkhin, 2006). This method has been proven to be effective in geoelectrical data classification (Audebert et al., 2014; Giuseppe et al., 2014, 2018). As described by Delforge et al. (2021), time-lapse ERT datasets can be classified after the Coefficient of Variance ( $CV$ ) of every model cell, expressed as:

310  $CV = \sigma / \mu,$

(3)

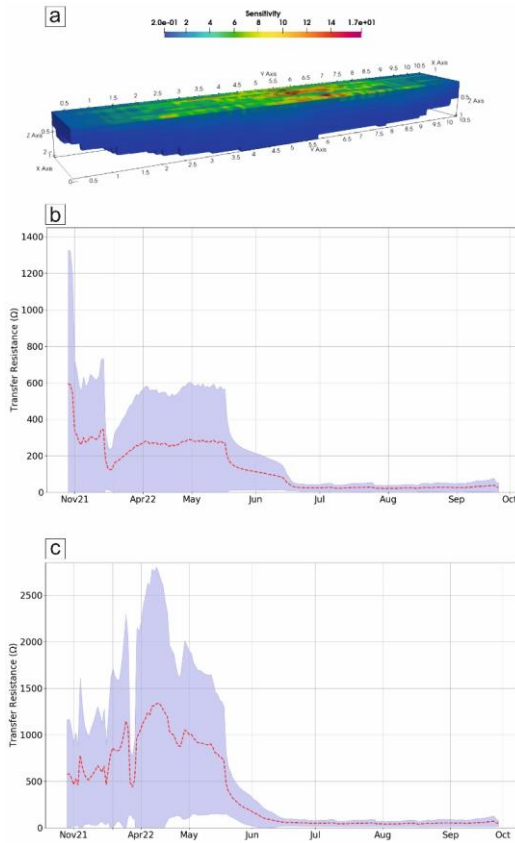
Deleted: 2

where  $\sigma$  and  $\mu$  are the standard deviation and average, respectively, of electrical resistivity values associated with a model cell. Firstly, an appropriate number of clusters was determined using the elbow method, where inertia (sum of squared distance of samples to their closest cluster center) is plotted against the number of clusters and the elbow of the obtained curve is selected as the number of clusters to use. Secondly, for every time step, we computed the average resistivity values of all the cells within each cluster and the corresponding standard deviation.

### 3 Results

#### 3.1 4D ERT measurements

325 We have acquired 197 individual timesteps for Site 1 and 200 timesteps for Site 2. Figure 2a shows the distribution of the model cells' sensitivity with values of 0.2 and above. During strong winter storms with high wind speeds, an overvoltage protection mechanism switched off the PRIME system during the acquisition window on some occasions, resulting in several missing datasets during the winter months. The system was subsequently reconfigured in March 2022, which should minimise this issue in the future.



330 **Figure 2: (a) 3D Sensitivity plot corresponding to the measurement sequence used at both sites. Evolution of transfer resistance ( $\Omega$ ) at (b) Site 1 and (c) Site 2. Red dotted line represents the mean transfer resistance, and the shaded purple area represents the transfer resistance data distribution within one standard deviation.**

335 During the winter and spring months, we record high values ( $>500 \Omega$  for Site 1 and  $>1000 \Omega$  for Site 2) of transfer resistance (Fig. 2), with Site 2 showing higher overall values. Both sites record a drop in transfer resistance in mid-March followed by a steep recovery. Site 1 records its highest values ( $1300 \Omega$ ) in late October 2021, whereas Site 2 records its highest values ( $2650 \Omega$ ) in April 2022. In May 2022, Site 2 experienced a gradual decrease in resistance, whereas Site 1 experienced a two-step drop. Data standard deviation is lower when the average resistance is lower, with Site 2 showing larger overall standard deviations. Contact resistance values ranged between  $1\text{-}2 \text{ k}\Omega$  in the summer months and  $50\text{-}60 \text{ k}\Omega$  during the winter. Due to high contact resistance values, data retention after filtering and quality control dropped from 97 % during the summer to 62 % during the winter (a complete metadata record is available upon request). Figure 3 shows a selection of inversion results for four ERT timesteps. Data for the first timestep was captured in February when the shallow subsurface is expected to

Deleted: ¶

Deleted: <object>

Deleted: apparent

Deleted: a

Deleted: b

Deleted: apparent resistivity

Deleted: apparent

Deleted:

Deleted: apparent

Deleted: apparent

Deleted: W

Deleted: W

355 be frozen. The images show elevated values of electrical resistivity at both sites. Site 2 exhibited higher and more uniformly distributed values. A low soil temperature during winter determines strong positive changes in electrical resistivity, (in this case the reference dataset was acquired in the summer when the soil is expected to be unfrozen). The other three timesteps show a progressively thawing soil volume, indicated by the gradual drop in absolute resistivity values throughout the volume and the migration towards zero relative change.

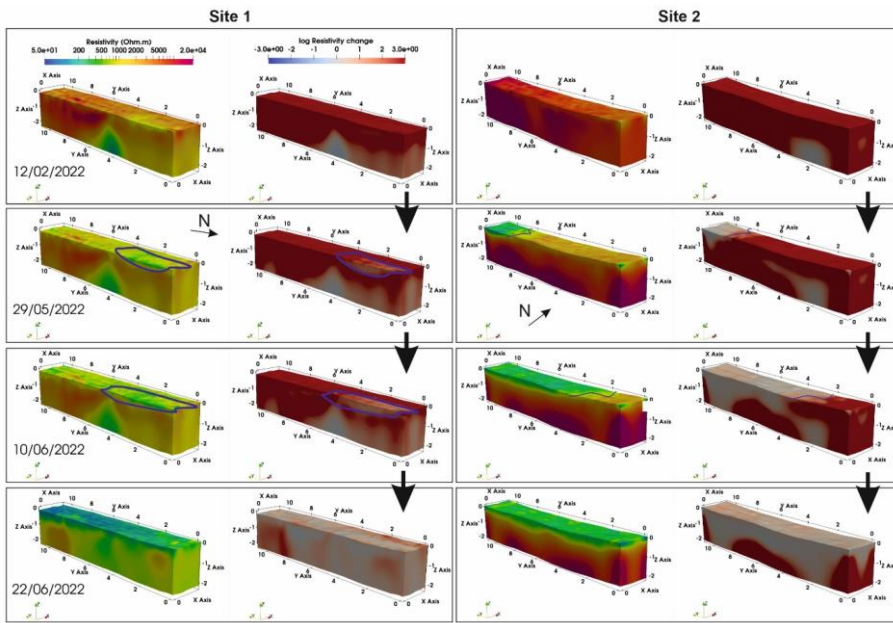
Deleted: S

Deleted: can indicate ice formation

360 As the sediments thawed, we observe changes in electrical resistivity throughout the respective 3D image volumes recorded at these timepoints (highlighted by purple lines in Figure 3). At Site 2 in the top 40 cm, a distinctive layer of low resistivity forms and extends throughout the volume as time progresses, whereas at Site 1 changes are more uniform. A physically distinct surface layer could be the result of extensive weathering and redeposition of the periglacial deposits, as Site 2 sediments have been exposed approximately 40-45 years longer than the ones found at Site 1.

Moved (insertion) [1]

365 found at Site 1.



Deleted: <object>

370 **Figure 3: Inversion results for four selected ERT timesteps. A 3D model of absolute electrical resistivity values is shown on the left-hand side of the subplots and resistivity change relative to ERT data recorded on 2<sup>nd</sup> Aug 2021 on the right-hand side. Axes are in metres. Purple line delineates zones of interest where changes in resistivity are detected.**

Deleted: Black dots on the surface of the models represent the position of the electrodes

Deleted: .

### 3.2 Point sensor measurements

Teros-11 sensors measured continuously from August 2021 to October 2022 (Fig. 4). Both sites experienced data loss due to battery failures. As a result, at Site 1 there are gaps in the data between 3<sup>rd</sup> Dec 2021 to 7<sup>th</sup> Mar 2022 and 25<sup>th</sup> May to 1<sup>st</sup> June, and at Site 2 between 30<sup>th</sup> Sep to 26<sup>th</sup> Oct and between 23<sup>rd</sup> Dec 2022 to 7<sup>th</sup> Mar 2022. This meant that the soil freeze, occurring between 10<sup>th</sup> and 19<sup>th</sup> of October 2021, could not be captured at Site 2 during this time interval.

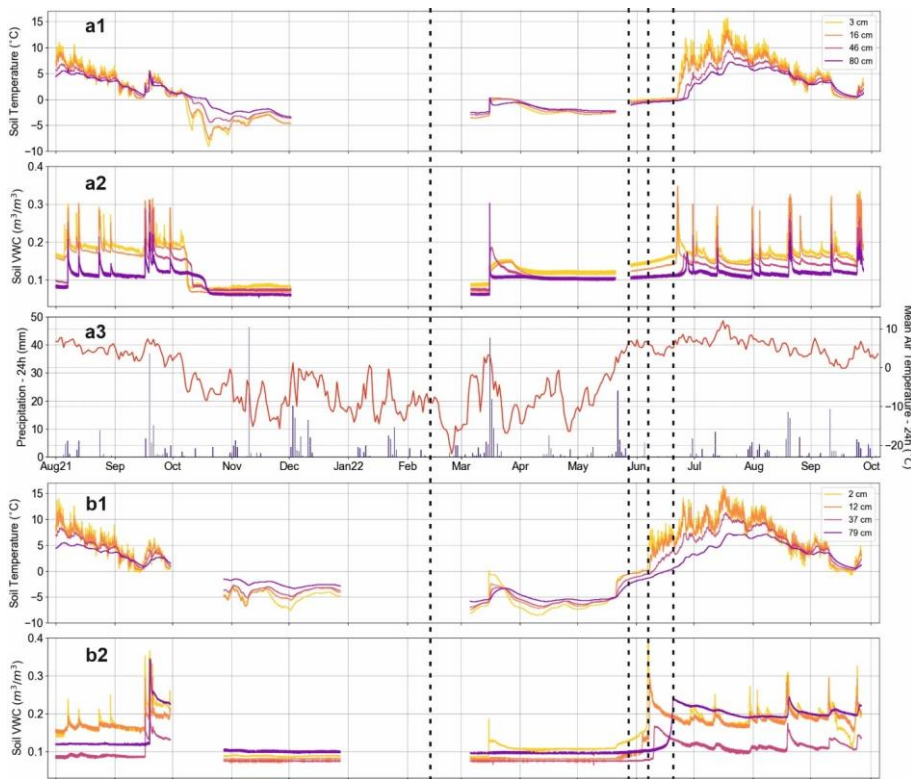


Figure 4: Point sensor data from Sites 1 and 2 showing soil temperature (a1, b1) and soil VWC (a2, b2) between Aug 2021 and Oct 2022, together with air temperature and precipitation (a3) recorded by the Ny-Ålesund weather station (Seklíma, 2023). Dotted lines mark the four ERT timesteps shown in Fig. 1.

385

When the recorded soil temperature rises above 0 °C we observe a steep increase in VWC values as more liquid water becomes available. According to weather records (Fig. 4 a3), air temperature consistently stays above 0 °C starting 17<sup>th</sup> of May 2022, but this date does not coincide with the soil freeze-thaw transition at either of the sites, even though soil temperature at Site 2 concurrently starts to increase (records unavailable at Site 1). At both sites, thaw onset occurs earlier in the year for the layers closer to the ground surface. Soil temperature decreases with depth at both sites, with Site 2 warmer in the summer months, and Site 1 generally warmer in the winter months. During the summer months, daily variations in temperature are visible in the uppermost two layers and are seemingly attenuated with depth. September 2021 VWC levels are generally similar to summer 2022 levels. VWC spikes during the summer months coincide with large values in the precipitation record. Site 1 sees larger VWC spikes than Site 2 during such events. VWC at Site 2 in the uppermost two layers is generally higher than at Site 1 in 2022.

390

395

Both stations have captured an anomalous event in mid-Spring 2022 (Fig. 5), manifested by a sudden increase in soil temperature and VWC, confirmed in the weather records with sustained air temperatures above 0 °C for approximately four days and 85 mm of precipitation over the whole week (11<sup>th</sup> Mar – 18<sup>th</sup> Mar), with a maximum of 40 mm recorded on the 15<sup>th</sup> of March. At Site 1 soil temperature has reached 0 °C at all depths monitored, coinciding with a spike in the VWC recordings. Once the event ended and the temperature dropped below 0 °C, values of VWC were higher than before the event at all depths. At Site 2 only the shallowest sensor detected a soil temperature above 0 °C during the event, which also caused a spike in VWC values at this depth.

400

Deleted: Soil thawing occurs at each site w

Deleted: . This is confirmed by



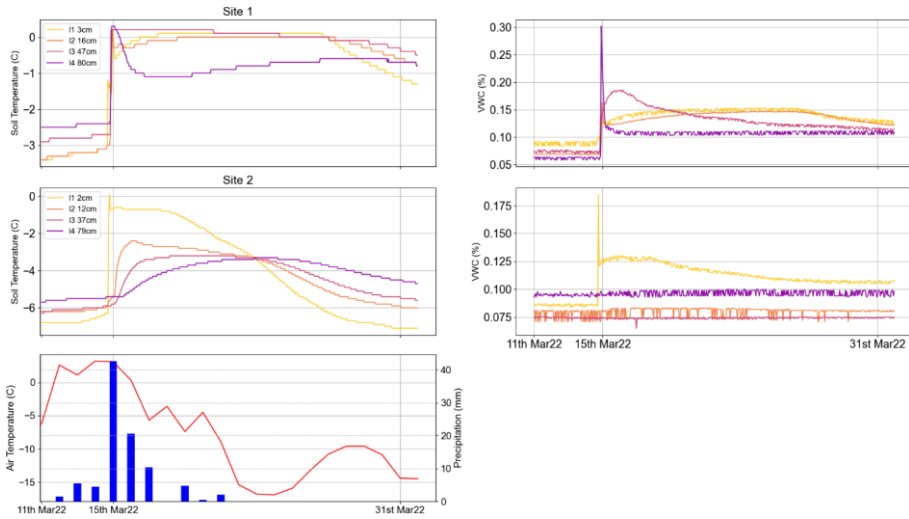


Figure 5: Soil temperature and soil VWC at Sites 1 and 2 during the mid-March thaw event, shown together with corresponding air temperature (red line) and precipitation (blue bars) records (Seklima, 2023).

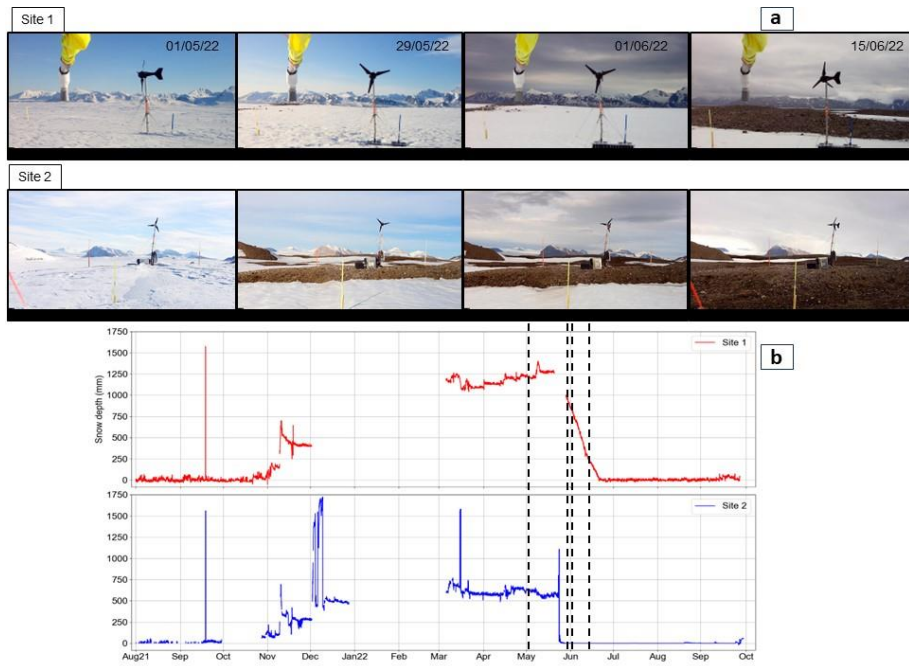


Figure 6: (a) Nature camera photographs of the two sites. (b) Snow depth measurements corresponding to Sites 1 and 2. Dotted lines in B indicate the dates the photographs were taken.

410

We present the freeze-thaw transition above ground in greater detail (Fig. 6), as photographs obtained by the nature cameras display the gradual reduction in snow cover. This visual observation is confirmed above ground by direct measurements of snow depth, and below ground by the buried point sensors (Fig. 7). We recorded a

415 snow depth of 1,250 mm when the snowpack was at its maximum at Site 1 and approximately 600 mm at Site 2.  
 We also observed a faster reduction of snowpack thickness at Site 2 after the air temperatures rose above 0 °C and  
 a 13-day delay in soil thaw between sites, indicated by steep spikes in soil temperature and VWC values. By  
 contrast, Site 1 shows a more gradual reduction in snow cover. VWC increases due to the freeze-thaw transition  
 420 occurring on different dates for different soil layers. There is a larger delay between layers at Site 2 as compared  
 to Site 1, with the largest delay of seven days recorded between 37 and 79 cm at Site 2. VWC values spike once  
 the soil temperature rises above 0 °C. At Site 1 we observe greater VWC spikes of 0.15-0.2 recorded by the top  
 two sensors, compared to the ones recorded by the bottom two sensors of only 0.05. Shortly afterwards  
 (approximately one day), the VWC values revert to values 0.02-0.03 higher than prior to thaw. At Site 2 we  
 observe similar 0.15-0.2 spikes in VWC for the top two sensors, but slightly higher values for the bottom sensors  
 of 0.07 and 0.18, respectively. After the thaw transition, the decrease in VWC is much slower than at Site 1, taking  
 425 up to two weeks to record constant values of VWC. Furthermore, the VWC values post-thaw are higher than the  
 ones recorded before, 0.08 for the top three sensors and 0.12 for the deepest sensor.

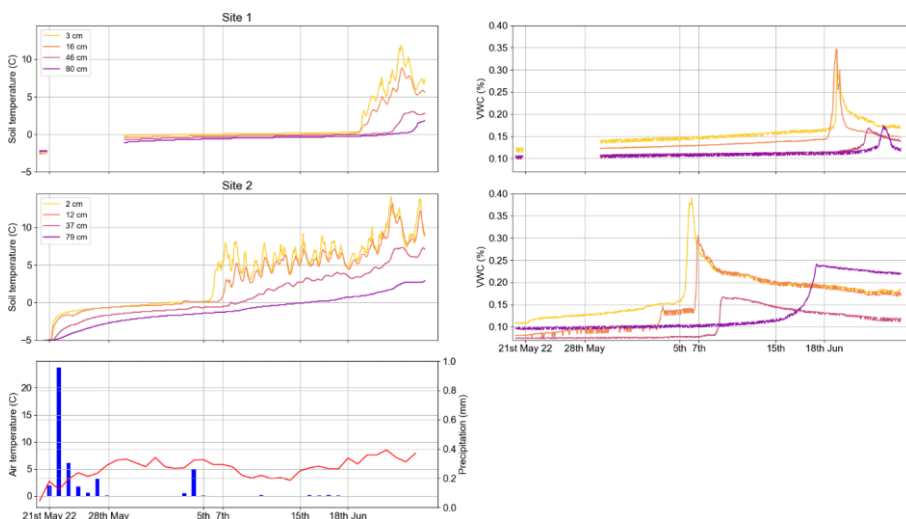


Figure 7: Soil temperature and soil VWC at Sites 1 and 2 during the late May–mid June freeze-thaw transition, together with corresponding air temperature and precipitation records (Seklina, 2023).

### 3.3 Relationship between electrical resistivity and moisture content

430 Figure 8 shows the relationship between ER and VWC based on in-situ measurements. Archie's law was fitted  
 with the following parameters: Site 1 layer 1 ( $a=0.36, m=2.10, n=2.34$ ), Site 1 layer 2 ( $a=0.32, m=1.95, n=2.58$ ),  
 Site 1 layer 3 ( $a=0.28, m=1.85, n=2.59$ ), Site 2 layer 1 ( $a=0.55, m=2.65, n=1$ ), Site 2 layer 2 ( $a=0.58, m=2.76, n=1$ ),  
 Site 2 layer 3 ( $a=0.64, m=2.94, n=1$ ). VWC recordings range between 0.07 and 0.27. Only for Site 2 layer 3  
 we notice a narrower range of 0.09-0.27. At Site 1 the Archie curves for different layers have similar shapes.  
 435 The uppermost layer shows less resistive values when compared to layers 2 and 3, which exhibit a very similar  
 distribution. The calibrated Archie curve misfit is generally low (p-values for layers 1-3: 0.56, 0.62, 0.52), albeit  
 slightly underestimating resistivity values in layers 2 and 3 at high VWCs. Site 2 appears more resistive than Site  
 1 at equivalent values of VWC. Furthermore, Site 2 shows Archie curves with distinct differences between layers,  
 with values of resistivity increasing with depth throughout the VWC range. The curve does not fit the data as well  
 440 as for Site 1 (p-values for layers 1-3: 0.60, 0.46, 0.73), with measurement values in the range 0.14-0.18 not  
 following the Archie model (Laloy et al., 2011).

Deleted: 3.3

Formatted: Outline numbered + Level: 2 + Numbering  
 Style: 1, 2, 3, ... + Start at: 2 + Alignment: Left + Aligned  
 at: 0 cm + Indent at: 0.63 cm

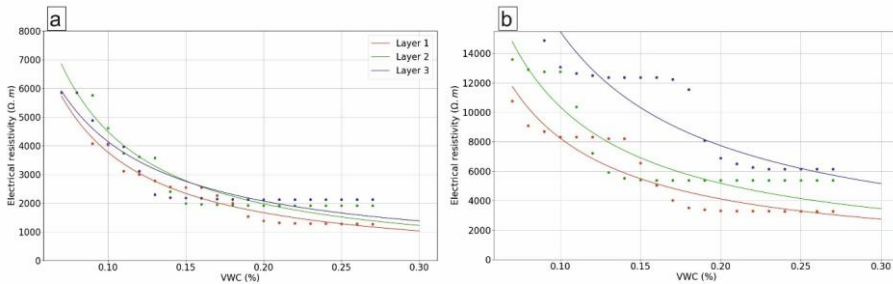


Figure 8: Best fit of Archie's law (curves) to in-situ measurements of electrical resistivity and soil VWC (dots). (a) Site 1 layers 1-3, (b) Site 2 layers 1-3.

Archie's law enables us to formulate a site-specific relationship between the electrical resistivity of the observed sediments and their moisture content. We obtained similar relationships with good data fits for the three layers present at Site 1, which is further corroborating evidence for its greater spatial homogeneity. Relationships corresponding to layers 2 and 3 underestimate the resistivity values associated with higher values of moisture content. This is because we had very limited data at that end of the VWC range, with VWC values above 0.2 only recorded during brief summer precipitation events with little impact on the average resistivity of a sediment layer, especially at depth. Archie relationships at Site 2 show a comparatively worse fit due to a data gap during the October 2021 freeze, which could have provided thaw-freeze transitional values of moisture content. Overall, older sediments show greater sensitivity of electrical properties to changes in VWC, which suggests that they dry and freeze faster, shortening the transitional period for microbiological activity within them.

### 3.4 Thawing front progression

Figure 9 presents a visualisation of the thawing front progression at the two sites. The ERT models appear truncated because cells with resistivity values above at chosen thresholds are masked. As time progresses, the visible cells have lower resistivity values and new cells emerge, as their resistivities fall below the selected threshold. At Site 2 we observe a clear progression of the thawing front from NE to SW. At Site 1 the progression of the thawing front is not as evident in the timeframe selected as at Site 2, although the emergence of new cells can also be observed. The presence of uneroded boulders and rocks with a different thermal mass than the surrounding glacial diamiction determines an uneven thawing front, especially at Site 1.

The spatial progression of the thaw front is shown in Fig. 10. The Cartesian coordinates of the cell centre define the direction of the front. We show the position of the cell centre in the XY plane (a2) and YZ (a3) plane. At Site 1 cell centre moves more in the X direction than at Site 1, whereas the cell centre at Site 2 moves predominantly in the Y direction. At Site 2 the movement of the cell centre starts in late May, marked by a steep movement in the Y direction (along the length of the model) at a rate of up to 1 m/day at its peak (Fig. 10 c2), and in the Z direction (in depth) at a rate of up to 0.02 m/day (Fig. 10 c3). Towards the end of the monitoring period, the cell centre tends towards the centre of the model (0.75 m in X, 5.5 m in Y and 0.5 m in Z) as all the cells have now passed the thaw threshold. For Site 1 we observe two periods of movement; the first concurrent with the movement detected at Site 2, and the second observed in the second half of June. Gradient measurements (Fig. 10 d1-d3) indicate that during the first period of displacement the cell centre has moved at a greater rate (up to 0.059 m/day in X, 0.41 m/day in Y, 0.073 m/day in Z) than during the second period (0.018 m/day in X, 0.1 m/day in Z, 0.04 m/day in Z). In the Z direction (Fig. 10 a3, b3, and c3), the cell centre has moved up during the first period of movement and down during the second period. Figure 10 a1 shows thaw cell proportion over time across different layers and the whole model volume. Towards the end of the monitoring window, during the summer when all cells should be below the threshold, the thaw cell proportion is at 100%. At the beginning of the monitoring window, the proportion is not at 0% for all layers shown because some of the model cells had lower resistivities pre-thaw. Site 1, despite seeing a delayed cell proportion increase, reaches 100% proportion before Site 2, which has an initial fast increase phase, followed by a slower gradual increase in the second half of June. Cell proportion dips below 100% in July at Site 1 only to recover towards the end of the month. Surface layers (numbered 1 in Fig. 10) show a faster increase in thaw cell proportion, with Site 2 layer 1 the fastest. By contrast, the deepest layers (numbered 3 in Fig. 10) show a slower increase, with Site 1 layer 3 the slowest.

Moved (insertion) [2]

Deleted: ¶

Deleted: 3.4

Formatted: Outline numbered + Level: 2 + Numbering Style: 1, 2, 3, ... + Start at: 2 + Alignment: Left + Aligned at: 0 cm + Indent at: 0.63 cm

Deleted: (Fig. 10 a2-a4, b2-b4)

Deleted: b1 and b3

Deleted: b4

Deleted: b

Deleted: 2

Deleted: b4

Deleted: a4

Deleted: b4

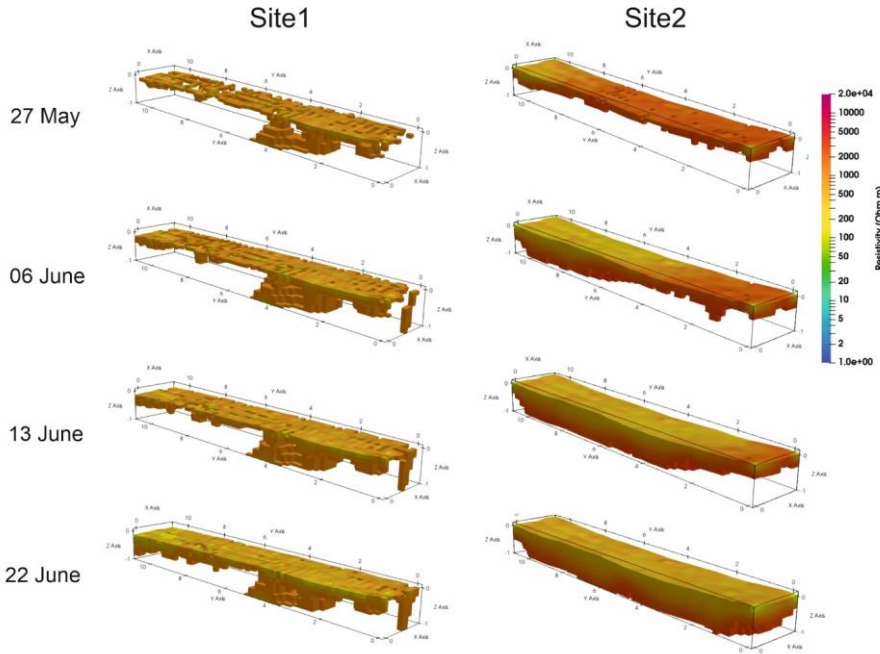


Figure 9: Four selected ERT timesteps showing only model cells with resistivities below the site-specific thaw threshold values.

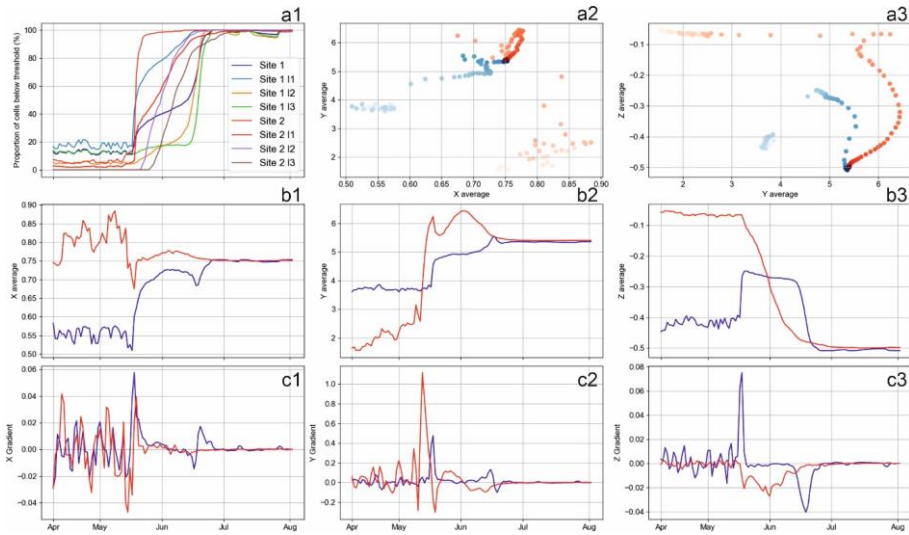


Figure 10: Thaw cells distribution across the ERT volume. (a1) Number of thaw cells as proportion of the ERT volume and the three layers of equal thickness (I1-I3) described in 2.4. For the following subplots, site 1 is represented by colour blue and site 2 by colour red. (a2) X vs Y coordinate of the cell centre over time and (a3) Y vs Z coordinate of the cell centre over time. Fainter colour shades indicate an earlier timestep and stronger colour shades indicate a later timestep.

Deleted: <object>

Deleted:

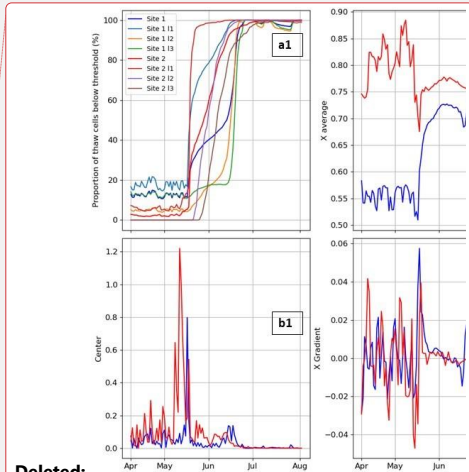
Deleted: C

Deleted: ,

Deleted: C

Formatted: Font: Italic

Deleted: and



510  
515  
520  
525  
530

(b1) X coordinate, (b2) Y coordinate and (b3) Z coordinate of the thaw cells' centre. (c1) Movement gradient in X, (c2) Movement gradient in Y and (c3) Movement gradient in Z direction of the model cells' centre.

### 3.5 k-means clustering

The coefficient of variance (CV) distribution within the ERT volume space is shown for both sites in Fig. 11. There are overall higher values of CV at Site 2 than at Site 1, with very high values (>2) at the edge of the model. There are generally higher CV values within the first meter below the model surface at both sites. However, Site 2 shows higher values in some regions below 1 m depth. At Site 1 the median CV value is 0.78 and at Site 2 it is approximately 1. For Site 1, all model cell values are within two standard deviations from the median, whereas for Site 2 there are several model cell values outside this range.

Three clusters have been determined as optimal for the existing datasets (Fig. 12 a3). The spatial division of the model cells by corresponding cluster is shown in Fig. 12 a1, a2. For Site 1, clusters 1 and 3 show similar average resistivity values over time during the winter, whereas cluster 2 shows resistivity values that are lower in comparison. However, post-thaw, during the summer months, all clusters had similar values. Cluster 3 shows the highest values of standard deviation and cluster 2 the lowest. Values of standard deviation are higher during the winter months for all clusters. All clusters also show a similar drop rate in resistivity when soil thaw begins at Site 1 in mid-June. This continues until the last week of June 2022. Furthermore, all clusters show a dip in resistivity during March 2022, coinciding with the anomalous warm event. For Site 2, all clusters show comparatively higher values of average resistivity and standard deviation than the Site 1 clusters during the winter months, with cluster 2 registering the highest values. A drop in average resistivity values in all clusters marks the onset of soil thaw in late May 2022. The drop has a lower rate than at Site 1 and lasts comparatively longer until the first week of July 2022. After thaw onset, cluster 3 shows the highest standard deviation values. Finally, similarly to Site 1, we find a dip in average resistivity values in March 2022.

- Deleted: a4
- Deleted: Z
- Deleted: C
- Deleted: of the thaw cells' centre.
- Deleted: 1
- Deleted: Movement distance of the thaw cells' centre. (b2) ...
- Deleted: ,
- Deleted: b3
- Deleted: b4

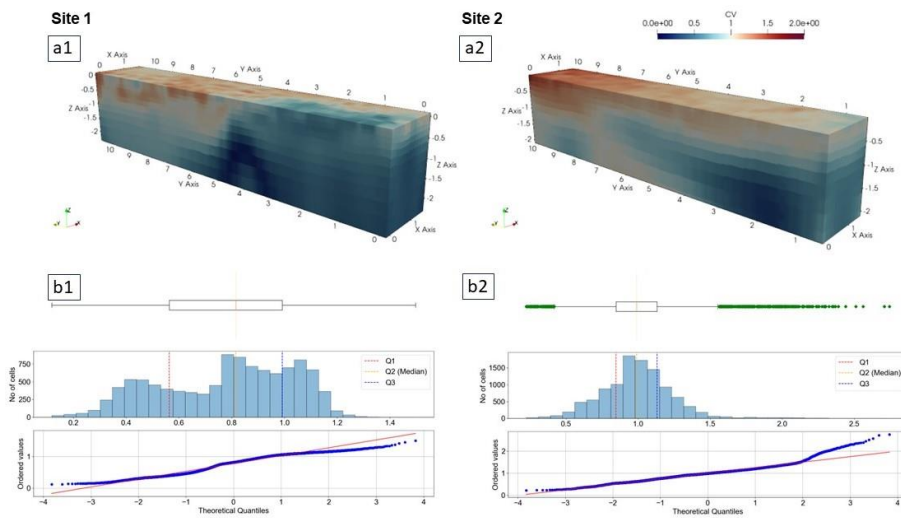
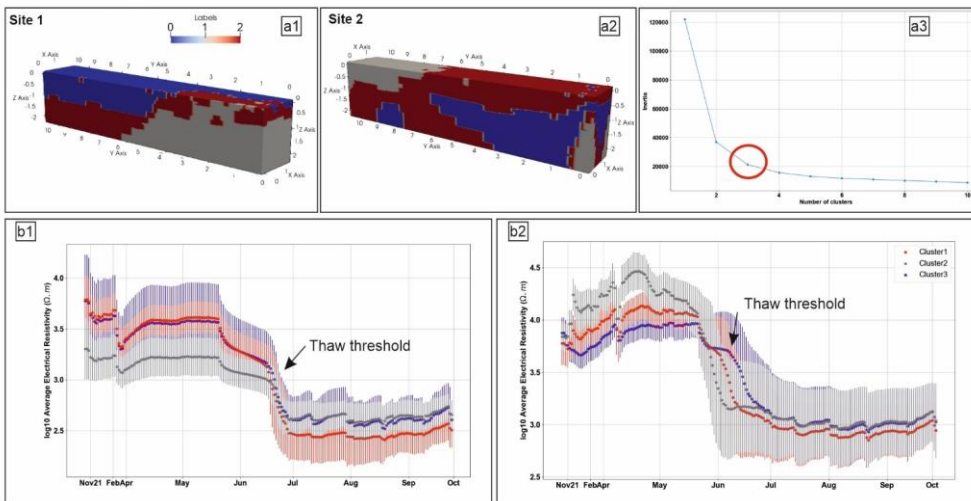


Figure 11: Spatial distribution of CV values corresponding to (a1) Site 1 and (a2) Site 2. Boxplot, histogram distribution and quantile-quantile plot with respective quartiles of CV values corresponding to (b1) Site 1 and (b2) Site 2.



545 **Figure 12:** Spatial cluster division of ERT model cells in reference to their CV value corresponding to (a1) Site 1 and  
 (a2) Site 2. (a3) Results of the elbow method with the chosen number of clusters highlighted by the red circle. Average  
 resistivity and standard deviation values recorded between November 2021 and October 2022 corresponding to (b1)  
 Site 1 and (b2) Site 2 clusters.

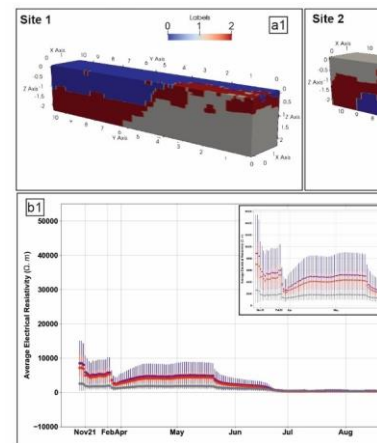
#### 4. Discussion

##### 4.1 Anomalous snowmelt event

550 The detection of the snowmelt event in mid-March 2022 presents us with the opportunity to analyze the effects  
 that enabled its occurrence. There were several other instances when air temperature increased above 0 °C (e.g.  
 555 December 5<sup>th</sup> 2021), but there was minimal observed impact on soil temperature or ice content. However, the  
 duration of these events was much shorter than what was recorded in March, when 96 hours of sustained air  
 temperatures above 0 °C caused snowmelt, which occurred during a time of high precipitation. Consequently,  
 melt water infiltrated sediment layers, and we observed an increase in soil temperature and liquid water content.  
 At Site 1, the top 60 cm of the subsurface was maintained at around 0 °C temperature for almost a week, even  
 after air temperatures dropped below freezing. Furthermore, the liquid water content levels of the sediments  
 560 remained elevated for the rest of the spring. Serreze et al. (2021) recognize the increased occurrence of rain on  
 snow events in the Arctic, where warm spells bring precipitation that percolates through the snowpack and pool  
 at the ground surface. Following the event, air temperature drops below 0 °C, and water refreezes at the ground  
 surface warming the underlying sediments with latent heat, which could explain the elevated levels post the  
 anomalous event of near surface temperature and moisture content.

##### 4.2 Soil freeze-thaw transition

565 Point sensor loggers recorded an extensive dataset over a full yearly cycle, capturing the freeze-to-thaw transition  
 of the sediments present at both study sites. As proposed in Cimpoiasu et al. (2024), proximity to the glacier and  
 local topography is responsible for different thermal gradients and precipitation influxes between sites. This is  
 corroborated by higher soil temperatures at Site 2 and greater VWC spikes at Site 1 during the summer months.  
 Variations in snow accumulation and rate of snowmelt are further evidence of the differences in thermal gradient  
 and precipitation influx between sites. Site 1 experienced greater snow depths and a longer period of snow cover  
 570 than Site 2, likely driven by generally lower air temperatures at Site 1 that are regulated by the presence of the  
 glacier and the flat topography, which promotes snow accumulation. A prolonged snow cover implies prolonged  
 thermal insulation for underlying sediments, which then led to a delayed freeze-thaw transition at Site 1. This is  
 consistent with the argument put forward by Zhang et al. (2005) that seasonal snow cover can result in an increase  
 575 of the mean annual ground surface temperature by several degrees and can substantially reduce the seasonal  
 freezing depth.



**Deleted:**

**Deleted:** conditions

**Deleted:** 2021

**Deleted:** elevated

**Deleted:** This has direct consequences on soil biological activity, carbon and nutrient cycling (Brooks et al., 1997; Schmidt et al., 2009).

**Deleted:** 3

585 [Water availability is a key driver for biological activity and soil crust development in Arctic regions \(Borchhardt et al., 2017\)](#). Therefore, an additional 13 days with temperatures below freezing may [modify ecosystem dynamics including](#) imposing limitations to soil biological activity [and rates](#) of soil development. However, point sensors detected an increase in soil temperature and VWC under the snowpack even before its melt. This implies that a fraction of the frozen pore water in the sediment transitioned into liquid phase even before the ground surface was completely exposed. Soil biological activity may occur when liquid water is present, even in pore water – and therefore may persist for a period of 29 days at Site 1 and 15 days at Site 2, respectively, whilst soils remain at temperatures below 0 °C.

590 We observed an intermediate period during the soil freeze-thaw transition when the soil temperature stayed around the 0 °C isotherm (Fig. 7), occurring at Site 1 between 28<sup>th</sup> May–19<sup>th</sup> June (23 days) and at Site 2 between 1<sup>st</sup> June–6<sup>th</sup> June (6 days). This phenomenon is known as the zero-curtain effect and, in this case, occurs when the soil water phase transition to liquid is slowed down by the release of latent heat from the soil to the snowpack (Zhang, 2005). On this basis, a thicker snow layer at Site 1 likely extended the zero-curtain period. Similar zero-curtain patterns have been observed in the soil temperature data recorded by Boike et al. (2018) at a location a few [kilometers north-west from our sites](#). Here, during the first week of June 2019, the shallow soil (5 cm depth) temperature stayed around the 0 °C isotherm for approximately 4 days.

#### 4.3 Spatial and temporal behaviour of electrical resistivity

As shown in Fig. 12, electrical resistivity closely followed the events and patterns observed in the point sensor data. This is to be expected, given that electrical resistivity is strongly influenced by liquid water availability (Samouëlian et al., 2005). Throughout the year, we captured higher electrical resistivity values at Site 2. The location is warmer and drier during the summer months and colder during the winter months, which would imply less available liquid water for electrical conduction; this is due to a larger proportion of the pore space being air-filled during the summer and ice-filled during the winter. [However, liquid water availability is determined by specific substrate physicochemical properties of respective sites detailed in Cimpoiasu et al. \(2024\) \(Site 1 has a lower porosity and a higher silt:sand proportion\) which are shown here to impact not only the response to summer precipitation events but also the way the sediments respond to the freeze-thaw transition \(visually represented by the Archie curves\)](#).

Four dimensional ERT enables us to track electrical resistivity changes spatially and temporally over the study volume. The resulting models corresponding to both sites contain regions that experience only marginal resistivity changes throughout the year. According to Irvine-Flynn et al. (2011), this could be explained by the presence of buried ice or large boulders within the matrix of the glacial diamiction and reworked sediments, both of which would be less susceptible to fluctuations in temperature and VWC. [In support of this statement, at site, large boulders can often be seen on the ground's surface \(Figure 1\)](#). Edges and corners of the ERT models show anomalously high values of resistivity, which is especially apparent at Site 2 (Figure 3, 29/05 and 10/06). This can be explained by poorer sensitivity of the sensor array to those regions, with data cover being more limited towards the outer edges of the model (Figure 2a). [Rotem et al. \(2023\) concludes that recently exposed areas may still go through permafrost aggradation even under the current global warming. However, at the current vertical resolution of our geoelectrical installation we could not observe a clear interface boundary between a top active layer and an underlying permafrost. Nonetheless, future geoelectrical installations in similar Arctic settings are encouraged to explore the full extent of the active layer if resolution allows.](#)

#### 4.4 Tracking the thaw front

Throughout the winter months, a certain proportion of ice to liquid water content is maintained at a constant level in the pore space throughout the monitored soil volume, as shown by the point measurements of VWC. By attributing a bulk electrical resistivity value to such a constant proportion in the soil volume, we established a numerical threshold between what can be considered sediments under frozen conditions and sediments undergoing thaw, which will exhibit electrical resistivities below the threshold value. The appearance of new cells in the Fig. 9 timesteps visualises the progression of the thaw front at both sites. Several snow-soil interface cells in the shallow layer (top 20 cm) have electrical resistivity values below the threshold, even before the nominal date when soil temperature rises above freezing. On 6<sup>th</sup> June at Site 2, we observed that the thaw front had progressed at depth and it continued laterally over the following days. However, at Site 1 we did not observe the same effect; rather the first signs of depth propagation can be seen in the 22<sup>nd</sup> June timestep, concurrent with point sensor records that mark the first soil temperature above freezing on the 19<sup>th</sup> June.

Deleted: has been established to be

Deleted: and diversity

Deleted: A

Deleted: e

Deleted: , and therefore impede the r

Deleted: According to Elberling and Brandt (2003), microbial activity may continue in unfrozen soils whilst the diffusion and advection of the produced CO<sub>2</sub> may be obstructed by the freezing fronts and overlying snowpack.

Deleted: kilometers north-west from our sites.

Deleted: .

Moved up [1]: As the sediments thawed, we observe changes in electrical resistivity throughout the respective 3D image volumes recorded at these timepoints. At Site 2 in the top 40 cm, a distinctive layer of low resistivity forms and extends throughout the volume as time progresses, whereas at Site 1 changes are more uniform. A physically distinct surface layer could be the result of extensive weathering and redeposition of the periglacial deposits, as Site 2 sediments have been exposed approximately 40–45 years longer than the ones found at Site 1. ¶

Moved up [2]: Archie's law enables us to formulate a site-specific relationship between the electrical resistivity of the observed sediments and their moisture content. We obtained similar relationships with good data fits for the three layers present at Site 1, which is further corroborating evidence for its greater spatial homogeneity. Relationships corresponding to layers 2 and 3 underestimate the resistivity values associated with higher values of moisture content. This is because we had very limited data at that end of the VWC range, with VWC values above 0.2 only recorded during brief summer precipitation events with little impact on the average resistivity of a sediment layer, especially at depth. Archie relationships at Site 2 show a comparatively worse fit due to a data gap during the October 2021 freeze, which could have provided thaw-freeze transitional values of moisture content. Overall, older sediments show greater sensitivity of electrical properties to changes in VWC, which suggests that they dry and freeze faster, shortening the transitional period for microbiological activity within them. ¶

680 Despite commencing later than at Site 2, the thaw at Site 1 covers the entire imaged volume first, as shown in Fig. 10 a1. This can be explained by a greater quantity of snowmelt, which infiltrated into the soil and lowered the bulk electrical resistivity of the shallow subsurface. Furthermore, the flat topography of Site 1 suggests that a greater proportion of the snowmelt will infiltrate the soil rather than generating surface run-off redirected into melt channels. The latter is more likely to occur at Site 2, driven by its hummocky topography.

685 The Site 1 thaw progression shows two stages of movement; first in mid-May, coinciding with the rise of air temperature above freezing, and then in mid-June when the snow cover disappeared. Between the two stages, the zero-curtain effect maintained the temperature of the shallow subsurface around 0 °C with minimal changes to electrical resistivity. A positive cell centre gradient in Z (Fig. 10 c3) indicates that changes in the first stage of thaw happened at the surface of the monitored volume, followed by a negative change, indicating propagation of thaw vertically downwards. The latter is faster than what we observed at Site 2 (4 cm/day versus 2 cm/day, respectively), illustrating the meltwater infiltration effect discussed above.

690 Despite being covered by a thinner layer of snow, Site 2 showed generally a faster movement of the thaw front, with the cell center moving by up to 120 cm in one day. However, the movement was primarily lateral (largest gradient values seen in the Y-direction – Fig. 10 b2 and c2) along the length of the monitored volume. This highlights the directionality of the snowmelt, which progressed towards the melt channel located at the far end of the electrode array (Fig. 3). Similarly, monitoring a discontinuous permafrost environment in Alaska, Uhlemann et al. (2021) present a record of timelapse 2D ERT images that capture the lateral flow of snowmelt infiltration underlining its role in the formation and development of taliks.

695 Layers 2 and 3 changed more slowly compared with the surface layer (Fig. 10 a1), and the deepest layer (>70 cm) experienced a reduction in gradient only once all the overlying snow had melted in mid-June. These observations strongly suggest that thaw in the near subsurface is driven primarily by meltwater. Therefore, factors such as topography and snow thickness need to be taken into account when investigating the timing of soil biological activity, particularly at depth. Yi et al. (2015) drew a similar conclusion, as their model results showed that increased snow cover promotes soil respiration at depth.

#### 4.5 CV and unsupervised clustering

705 Coefficients of Variance at Site 2 were generally greater than at Site 1 (Fig. 11 b2). This can be explained by elevated values of hydraulic conductivity at Site 2. Values outside two standard deviations correspond to cells at the edge of the model, where due to reduced sensitivity electrical resistivity change is overestimated. Regions in both models with very low CV are likely indicating the location of buried boulders or ice, which did not see significant change over the monitoring period. The histogram and quantile-quantile plot in Fig. 11 show a normal distribution at Site 2, whereas those at Site 1 exhibit a more uniform distribution, implying that the younger sediments have a wider range of electrical resistivity variance values. At both sites we notice CV outlier values, towards the high end of the spectrum, manifested by strong deviations from the 1:1 quantile line. The retreating glacier uncovered a mixture of silty and sandy sediments, along with gravels and boulders. Subsurface volumes with varying proportions of sediment to boulders will exhibit different water storage capacities and hence different variance of electrical resistivity. At Site 2 we found more aggregated sediments with smaller and fewer boulders present, resulting from years of erosion. This generates a more uniform spatial change in electrical resistivity (Cimpoiasu et al., 2024).

715 K-means clustering divided the two monitored volumes into three clusters (Fig. 12 a1-2). The clusters appeared to be localized and did not extend over the entire length or depth of the model. All clusters had large standard deviations during the winter months due to poor data quality, explained by very high contact resistances (~50 kΩ) between the electrodes and the frozen ground, which allowed only very small currents (0.5 mA) to be injected for each measurement. Site 1 Cluster 3 cells were likely clustered due to the increased moisture content in that region of the model, with the lowest values of electrical resistivity observed during the summer months and the highest during the winter months. Site 1 Cluster 2 represents the region with the smallest change. Site 1 Cluster 1 appears to group cells with intermediate values of CV, however it appears to be a close extension of Cluster 3, given the similarity in average resistivity values. Site 2 Cluster 2 contains cells with the highest values of CV, average resistivity and standard deviation. This far end of the model is in closer proximity to the melt channel and experienced the highest fluctuation during freeze-thaw transitions. The standard deviation in Site 2 Cluster 3 increased right after the spring melt onset, with a peak at the beginning of June, directly correlated with the flow of meltwater perturbing the recordings of electrical resistivity. Site 1 Cluster 3 is the cluster with the largest number of cells, grouping the cells with median values of CV (Fig. 11 b2).

Deleted: b

Deleted: 4

Deleted: 2

Deleted: -

Deleted: 4

Formatted: Font: 9 pt

Deleted:

Deleted: 3



The clustering algorithm provides an unsupervised method of selecting regions of the model that are more or less dynamic. In our context, it identifies the regions most affected by meltwater infiltration and the regions which are less likely to change. Kasprzak and Szymanowski, (2023) point out that topographic parameters in an Arctic mountain catchment setting determine the spatial variation of near-surface ground temperature. In our study, local variations in topography and glacier proximity determine differences in the way water is routed and retained in the near subsurface. However, this study and Kasprzak and Szymanowski (2023) investigate processes at different scales. We stress that local and regional effects on sediment properties have to be simultaneously evaluated in order to obtain a comprehensive understanding of sediment development.

740

745 **Conclusions**

A better appraisal of year-round liquid water availability in recently deglaciated sediments will contribute to a more comprehensive understanding of Arctic soil evolution. In this study we observe two sites in the forefield of the retreating Midtre Lovénbreen glacier, Svalbard, at different stages of development using ERT monitoring technology, complemented by point sensors in order to capture deglaciated soil temperature, moisture content and electrical resistivity across one calendar year (Aug 2021–Aug 2022).

750

Collocated measurements of electrical resistivity and volumetric water content allowed us to obtain site and depth specific Archie's law pedophysical relationships. Continuous sensor records allowed us to capture on record, during the Arctic spring, elevated levels of soil moisture and temperature which we associated with an anomalous rain on snow event. Normally more common in the Arctic autumn and winter, such occurrence signifies ever increasing pressure on the stability of the Arctic climate.

755

During the shoulder period between freeze and thaw, deglaciated sediments experienced the zero-curtain effect. The time the sediments spent around the 0 °C isotherm depends on the snow cover thickness, in this instance determined by the local topography and the site's position on the glacier forefield.

760

Our ERT monitoring stations were successful in obtaining almost uninterrupted timelapse recordings, which revealed unprecedented 4D images of the Arctic soil freeze-thaw transition. Such records allow one to calculate the speed, direction, and magnitude of the thawing front. Older sediments were predominated by a lateral thaw propagation that was strongly shaped by topography and snow thickness, whereas the younger sediments showed a predominantly vertical thaw propagation. Finally, unsupervised k-means clustering proved to be an effective method of classifying regions of the imaged sediment volume according to their electrical resistivity coefficient of variance, indicating how local site conditions affect water storage variability.

765

The length of the zero-degree curtain, instances of large melt events, and heterogeneity of soil freezing all have implications for liquid water availability of newly exposed Arctic soils. As air temperatures and precipitation continue to increase in the High Arctic, leading to further ice loss and exposing more underlying sediments, further research on continuous freeze-thaw dynamics in three-dimensional volumes of soil will be important to better constrain the superficial hydrological regime of the newly exposed landscapes.

770

**Author contribution**

MOC - Responsible with fieldwork planning, field installation (BGS PRIME), data acquisition, data processing and manuscript writing. OK - Responsible with project management (co-PI), fieldwork planning and manuscript editing. HH - Responsible with fieldwork planning, field installation (BGS PRIME), data acquisition and manuscript editing. PBW - Responsible with initial system design (BGS PRIME), data processing (BGS PRIME) and manuscript editing. PM - Responsible with initial system design (BGS PRIME) and fieldwork planning. JEC - Responsible with fieldwork planning, data interpretation and manuscript editing. DL - Responsible with fieldwork planning, field installation, data acquisition and instrument maintenance (University of Utah point sensors). CO - Responsible with project management (co-PI), initial system design (University of Utah point sensors), fieldwork planning and instrument maintenance. SKS - Responsible with project management (co-PI), fieldwork planning and field installation. PS - Responsible with project management (co-PI), fieldwork planning, field installation and manuscript editing. TPI - Responsible with project management (co-PI), fieldwork planning, field installation and manuscript editing. ZL - Responsible with instrument maintenance. AS - Responsible with instrument maintenance and manuscript editing. JAB - Responsible with project management (co-PI), fieldwork planning, field installation and manuscript editing.

775

780

785

**Formatted:** Font: (Default) Times New Roman

**Formatted:** Font: (Default) Times New Roman

**Deleted:** local

**Deleted:** conducted

**Formatted:** Font: (Default) Times New Roman

**Formatted:** Font: (Default) Times New Roman

**Deleted:** Therefore, we believe I

**Deleted:** Older sediments show similar CV values within Cluster 1 across all depths of the model. This implies that seasonal water availability regimes are similar across this region, and although concentrated in the top 1 m of sediment, soil biological activity can potentially extend down to 2 m in depth.

**Deleted:** In

**Deleted:** on

**Deleted:** e

**Deleted:** an

**Deleted:** system

**Deleted:** monitor

**Formatted:** Superscript

**Deleted:** their

**Deleted:** During this time, the soil microbial communities are potentially active under the snowpack. Finally,

**Moved (insertion) [4]**

**Deleted:** We ob

**Deleted:** ed

**Deleted:** ERT

**Deleted:** s

**Deleted:** Furthermore, this enabled us

**Deleted:** , and compare them across the two sites

**Deleted:** S

**Deleted:** , at its peak, older sediments were predominated byhad a lateral thaw propagation

**Deleted:** of 1 m/day

**Deleted:** exhibited a

**Deleted:** of 0.4 m/day

**Deleted:** We installed two sensor stations on the forefield of Midtre Lovénbreen, a retreating glacier located on Spitsbergen, Svalbard archipelago, overlaying sediments deglaciated approximately 10 and 50 years ago respectively (...)

**Moved up [4]:** We obtained almost uninterrupted ERT

**Deleted:** We obtained almost uninterrupted ERT recording (...)

**Deleted:** the soil biological activity that is enabled by

**Deleted:** , and thus the carbon dynamics o

**Deleted:** impacts

**Deleted:** on global carbon fluxes

**Deleted:** ¶

### Data availability

Data is available upon request.

### Competing interests

895 The authors declare they have no conflict of interests.

### Acknowledgements

900 This work was funded by the NSF-UKRI Signals in the Soil program (award numbers, NERC: NE/T010967/1, NE/T010568/1; NSF: 1935651, 2015329, 1935689), and also received financial support from the NERC Covid fund (administered by the British Antarctic Survey). Our work also benefited from Trans-National Access support (project AMBER-ICE) from the European Union's Horizon 2020 project INTERACT, under grant agreement No. 730938 to JB, [SIOS \(Svalbard Integrated Arctic Earth Observing System\) \(project: CAP-BIO\) to PS, JB, SS, TI, CO, JC and OK](#), and the CNRS Chaires de Professeur Junior (CPJ) to JB. We thank the UK NERC Arctic Research Station and the Norwegian Polar Institute Sverdrup Station in Ny-Ålesund, Svalbard, as well as Kings Bay Research for sharing their extensive local knowledge and logistical support. We would also like to thank Juan Carlos Trejos-[Espoleta](#), Justin Byington and Michael Jarzin Jr. for assistance and logistical support in the field. The paper is published with the permission of the Executive Director, British Geological Survey (UKRI-NERC).

Formatted: Font: (Default) Times New Roman

Formatted: Font: (Default) Times New Roman

Formatted: Font: (Default) Times New Roman

Formatted: Font: (Default) Times New Roman

Formatted: Font: (Default) Times New Roman, 10 pt

### References

910 Archie, G.E.: The electrical resistivity log as an aid in determining some reservoir characteristics. Transactions of the American Institute of Mining, Metallurgical and petroleum Engineers, 146, 54–62, 1942.

915 Arndt, K.A., Lipson, D.A., Hashemi, J., Oechel, W.C. and Zona, D.: Snow melt stimulates ecosystem respiration in Arctic ecosystems. *Global Change Biology*, 26(9), pp.5042-5051, 2020.

Audebert, M., Clément, R., Touze-Foltz, N., Günther, T., Moreau, S., Duquennoi, C.: Time-lapse ERT interpretation methodology for leachate injection monitoring based on multiple inversions and a clustering strategy (MICS). *J. Appl. Geophys.*, 111, 320–333. <https://doi.org/10.1016/j.jappgeo.2014.09.024>, 2014.

920 Berkhin, P.: A survey of clustering data mining techniques. *Grouping Multidimensional Data*. Springer-Verlag, pp. 25–71, [https://doi.org/10.1007/3-540-28349-8\\_2](https://doi.org/10.1007/3-540-28349-8_2), 2006.

925 Boike, Julia; Nitzbon, Jan; Anders, Katharina; Grigoriev, Mikhail N; Bolshiyarov, Dimitry Yu; Langer, Moritz; Lange, Stephan; Bornemann, Niko; Morgenstern, Anne; Schreiber, Peter; Wille, Christian; Chadburn, Sarah; Gouttevin, Isabelle; Burke, Eleanor J; Kutzbach, Lars: A 16-year record (2002–2017) of permafrost, active-layer, and meteorological conditions at the Samoylov Island Arctic permafrost research site, Lena River delta, northern Siberia: an opportunity to validate remote-sensing data and land surface, snow, and permafrost models, *Earth System Science Data*, 11(1), 261-299, <https://doi.org/10.5194/essd-11-261-2019>, 2019.

930 [Borchhardt, N., Baum, C., Mikhailuyuk, T., & Karsten, U.: Biological soil crusts of arctic svalbard-water availability as potential controlling factor for microalgal biodiversity. \*Frontiers in Microbiology\*, 8\(AUG\). <https://doi.org/10.3389/fmicb.2017.01485>, 2017.](#)

935 Bradley James A., Singarayer Joy S. and Anesio Alexandre M.: Microbial community dynamics in the forefield of glaciers. *Proc. R. Soc. B*. 2812014088220140882. <http://doi.org/10.1098/rspb.2014.0882>, 2014.

Brooks, P.D., Schmidt, S.K. and Williams, M.W.: Winter production of CO<sub>2</sub> and N<sub>2</sub>O from alpine tundra: environmental controls and relationship to inter-system C and N fluxes. *Oecologia*, 110(3), pp.403-413, 1997.

940 Cimpoiașu, M. O., Kuras, O., Pridmore, T., & Mooney, S. J.: Potential of geoelectrical methods to monitor root zone processes and structure: A review. *Geoderma*, 365. <https://doi.org/10.1016/j.geoderma.2020.114232>, 2020.

Formatted: Font: (Default) Times New Roman, 10 pt, Ligatures: None

Formatted: Normal, Justified

Formatted: Font: (Default) Times New Roman, 10 pt, Not Italic, Ligatures: None

Formatted: Font: (Default) Times New Roman, 10 pt, Ligatures: None

Formatted: Font: (Default) Times New Roman, 10 pt, Not Italic, Ligatures: None

Formatted: Font: (Default) Times New Roman, 10 pt, Ligatures: None

Formatted: English (United Kingdom)

Deleted: ¶

Deleted: ¶  
Bradley, JA; Anesio, AM; Arndt, S.: Microbial and biogeochemical dynamics in glacier forefields are sensitive to century-scale climate and anthropogenic change, *Frontiers in Earth Science*, v.5, p.26, 2017.¶

- 950 Cimpoiășu, M. O., Kuras, O., Wilkinson, P. B., Pridmore, T., & Mooney, S. J.: Hydrodynamic characterization of soil compaction using integrated electrical resistivity and X-ray computed tomography. *Vadose Zone Journal*, 20(4), 1–15, <https://doi.org/10.1002/vzj2.20109>, 2021.
- 955 Cimpoiășu, M. O., Kuras, O., Harrison, H., Wilkinson, P., Meldrum, P., Chambers, J., Oroza, C., Liljestrand, D., Irons, T., Schmidt, S., Sommers, P. and Bradley, J.: Characterisation of a deglaciated sediment chronosequence in the High Arctic Using Near-Surface Geophysical Monitoring, *Permafrost and Periglacial processes*, Accepted for publication, 2024.
- 960 Commane, R., Lindaas, J., Benmergui, J., Luus, K.A., Chang, R.Y.W., Daube, B.C., Euskirchen, E.S., Henderson, J.M., Karion, A., Miller, J.B. and Miller, S.M.: Carbon dioxide sources from Alaska driven by increasing early winter respiration from Arctic tundra. *Proceedings of the National Academy of Sciences*, 114(21), pp.5361–5366, 2017.
- 965 Dahlin, T., & Zhou, B.: Multiple-gradient array measurements for multichannel 2D resistivity imaging. *Near Surface Geophysics*, 4(2), 113–123. <https://doi.org/10.3997/1873-0604.2005037>, 2006.
- 970 Delforge, D., Watlet, A., Kaufmann, O., van Camp, M., & Vanclooster, M.: Time-series clustering approaches for subsurface zonation and hydrofacies detection using a real time-lapse electrical resistivity dataset. *Journal of Applied Geophysics*, 184. <https://doi.org/10.1016/j.jappgeo.2020.104203>, 2021.
- 975 Doetsch, J., Ingeman-Nielsen, T., Christiansen, A. v., Fiandaca, G., Auken, E., & Elberling, B.: Direct current (DC) resistivity and induced polarization (IP) monitoring of active layer dynamics at high temporal resolution. *Cold Regions Science and Technology*, 119, 16–28. <https://doi.org/10.1016/j.coldregions.2015.07.002>, 2015.
- 980 Farzamian, M., Vieira, G., Monteiro Santos, F. A., Yaghoobi Tabar, B., Hauck, C., Catarina Paz, M., ... Angel De Pablo, M.: Detailed detection of active layer freeze-thaw dynamics using quasi-continuous electrical resistivity tomography (Deception Island, Antarctica), *Cryosphere*, 14(3), 1105–1120. <https://doi.org/10.5194/tc-14-1105-2020>, 2020.
- 985 Freeman, K.R., Pescador, M.Y., Reed, S.C. *et al.*: Soil CO<sub>2</sub> flux and photoautotrophic community composition in high-elevation, “barren” soils. *Environmental Microbiology*, 11, 674–686, 2009.
- 990 Elberling, B. and Brandt, K.K.: Uncoupling of microbial CO<sub>2</sub> production and release in frozen soil and its implications for field studies of arctic C cycling. *Soil Biology and Biochemistry*, 35(2), pp.263–272, 2003.
- 995 Freeman, K.R., Pescador, M.Y., Reed, S.C. *et al.*: Soil CO<sub>2</sub> flux and photoautotrophic community composition in high-elevation, “barren” soils. *Environmental Microbiology*, 11, 674–686, 2009.
- 1000 Garré, S., Coteur, I., Wonglecharoen, C., Hussain, K., Omsunarn, W., Kongkaew, T., Hilger, T., Diels, J., & Vanderborght, J.: Can We Use Electrical Resistivity Tomography to Measure Root Zone Dynamics in Fields with Multiple Crops? *Procedia Environmental Sciences*, 19(0), 403–410. <https://doi.org/10.1016/j.proenv.2013.06.046>, 2013.
- 1005 Giuseppe, M.G.D., Troiano, A., Troise, C., Natale, G.D.: K-Means clustering as tool formultivariate geophysical data analysis. An application to shallow fault zone imaging. *J. Appl. Geophys.* 101, 108–115. <https://doi.org/10.1016/j.jappgeo.2013.12.004>, 2014.
- 1010 Giuseppe, M.G.D., Troiano, A., Patella, D., Piochi, M., Carlino, S.: A geophysical k-means cluster analysis of the Solfataro-Pisciarelli volcano-geothermal system Campi Flegrei (Naples, Italy). *J. Appl. Geophys.* 156, 44–54. <https://doi.org/10.1016/j.jappgeo.2017.06.001>, 2018.
- 1015 Hamberg, A.: En resa till norra Ishafvet sommaren 1892, *Ymer*, 14, 25–61, 1894.
- 1020 Hambrey, M. J., M. R. Bennett, J. A. Dowdeswell, N. F. Glasser and D. Huddart: Debris entrainment and transfer in polythermal valley glaciers, *J. Glaciol.*, 45(149), 69–86, 1999.

Hauck, C.: Frozen ground monitoring using DC resistivity tomography, *Geophysical Research Letters*, v.29(21), p.12–1–12–4, 2002.

1010 Hilbich, C., Fuss, C., & Hauck, C.: Automated time-lapse ERT for improved process analysis and monitoring of frozen ground. *Permafrost and Periglacial Processes*, 22(4), 306–319. <https://doi.org/10.1002/ppp.732>, 2011.

Hodkinson, I. D., Coulson, S. J., & Webb, N. R.: Community assembly along proglacial chronosequences in the high Arctic: Vegetation and soil development in north-west Svalbard, *Journal of Ecology*, 91(4), 651–663, <https://doi.org/10.1046/j.1365-2745.2003.00786.x>, 2003.

1015 Holmes, J., Chambers, J., Wilkinson, P., Meldrum, P., Cimpoiaşu, M., Boyd, J., ... Donohue, S.: Application of petrophysical relationships to electrical resistivity models for assessing the stability of a landslide in British Columbia, Canada, *Engineering Geology*, 301(July 2021). <https://doi.org/10.1016/j.enggeo.2022.106613>, 2022.

1020 Hugelius, G., Strauss, J., Zubrzycki, S., Harden, J.W., Schuur, E.A.G., Ping, C.L., Schirmer, L., Grosse, G., Michaelson, G.J., Koven, C.D. and O'Donnell, J.A.: Estimated stocks of circumpolar permafrost carbon with quantified uncertainty ranges and identified data gaps. *Biogeosciences*, 11(23), pp.6573–6593, 2014.

1025 Irvine-Fynn, T.D.L., Moorman, B.J., Sjogren, D.B., Walter, F.S.A., Willis, I.C., Hodson, A.J., Williams, J.L.M., Mumford, P.N.: Cryological processes implied in Arctic proglacial stream sediment dynamics using principal components analysis and regression. In: Harris, C., Murton, J. (Eds.), *Cryospheric Systems: Glaciers and Permafrost*, Geological Society Special Publication, London, pp. 83–98, 2005.

Kasprzak, M.: High-resolution electrical resistivity tomography applied to patterned ground, Wedel Jarlsberg Land, south-west Spitsbergen, *Polar Research*, v.34(1), p.25678, 2015.

1030 [Kwon, H. Y., Jung, J. Y., Kim, O. S., Laffly, D., Lim, H. S., & Lee, Y. K. Soil development and bacterial community shifts along the chronosequence of the midtre lovénbreen glacier foreland in svalbard. \*Journal of Ecology and Environment\*, 38\(4\), 461–476. <https://doi.org/10.5141/ecoenv.2015.049>, 2015.](https://doi.org/10.5141/ecoenv.2015.049)

1035 [LaBrecque, D.J., Heath, G., Sharpe, R., Versteeg, R.: Autonomous monitoring of fluid movement using 3-D electrical resistivity tomography. \*Journal of Environmental and Engineering Geophysics\*, 9\(3\), 167–176, 2004.](https://doi.org/10.1007/s12665-004-0004-0)

1040 Laloy, E., Javaux, M., Vanclooster, M., Roisin, C., & Biielders, C. L.: Electrical Resistivity in a Loamy Soil: Identification of the Appropriate Pedo-Electrical Model. *Vadose Zone Journal*, 10(3), 1023–1033. <https://doi.org/10.2136/vzj2010.0095>, 2011.

1045 Loke, MH, Chambers, JE; Rucker, DF; Kuras, O; Wilkinson, PB: Recent developments in the direct-current geoelectrical imaging method, *Journal of Applied Geophysics*, v.95, p.135–156, 2013.

Loke, MH: RES3DINVx64 ver. 4.07 with multi-core and 64-bit support for Windows XP/Vista/7/8/10. Rapid 3-D Resistivity & IP inversion using the least-squares method. *Geoelectrical Imaging 2-D and 3-D*. Geotomo Software, 2017.

1050 Martín-Moreno, R., Allende Álvarez, F., Hagen, J.O.: Little Ice Age' glacier extent and subsequent retreat in Svalbard archipelago. *The Holocene* 27 (9):1–12, <https://doi.org/10.1177/0959683617693904>, 2017.

1055 Michot, D., Dorigny, A., & Benderitter, Y.: Mise en évidence par résistivité électrique des écoulements préférentiels et de l'assèchement par le maïs d'un CALCISOL de Bauce irrigué. *Sciences de La Terre et Des Planètes*, 332, 29–36, 2001.

Natali, S.M., Watts, J.D., Rogers, B.M., Potter, S., Ludwig, S.M., Selbmann, A.K., Sullivan, P.F., Abbott, B.W., Arndt, K.A., Birch, L. and Björkman, M.P.: Large loss of CO<sub>2</sub> in winter observed across the northern permafrost region. *Nature Climate Change*, 9(11), pp.852–857, 2019.

1060 Nielsen, C.B., Groffman, P.M., Hamburg, S.P., Driscoll, C.T., Fahey, T.J. and Hardy, J.P.: Freezing effects on carbon and nitrogen cycling in northern hardwood forest soils. *Soil Science Society of America Journal*, 65(6), pp.1723–1730, 2001.

**Formatted:** Font: (Default) Times New Roman, 10 pt, Ligatures: None

**Formatted:** Normal

**Formatted:** Font: (Default) Times New Roman, 10 pt, Not Italic, Ligatures: None

**Formatted:** Font: (Default) Times New Roman, 10 pt, Ligatures: None

**Formatted:** Font: (Default) Times New Roman, 10 pt, Not Italic, Ligatures: None

**Formatted:** Font: (Default) Times New Roman, 10 pt, Ligatures: None

**Formatted:** English (United Kingdom)

1065 NPI:Geologi,Svalbard,[https://geodata.npolar.no/arcgis/rest/services/Basisdata/NP\\_Basiskart\\_Svalbard\\_WMTS\\_25833/MapServer/WMTS/1.0.0/WMTSCapabilities.xml](https://geodata.npolar.no/arcgis/rest/services/Basisdata/NP_Basiskart_Svalbard_WMTS_25833/MapServer/WMTS/1.0.0/WMTSCapabilities.xml), last accessed 16<sup>th</sup> November 2023.

1070 Rapačić, M., Brown, R., Markovic, M. and Chaumont, D.: An evaluation of temperature and precipitation surface-based and reanalysis datasets for the Canadian Arctic, 1950–2010. *Atmosphere-Ocean*, 53(3), pp.283-303, 2015.

1075 Rawlins, M.A., Steele, M., Holland, M.M., Adam, J.C., Cherry, J.E., Francis, J.A., Groisman, P.Y., Hinzman, L.D., Huntington, T.G., Kane, D.L. and Kimball, J.S.: Analysis of the Arctic system for freshwater cycle intensification: Observations and expectations. *Journal of Climate*, 23(21), pp.5715-5737, 2010.

Raz-Yaseef, N., Torn, M.S., Wu, Y., Billesbach, D.P., Liljedahl, A.K., Kneafsey, T.J., Romanovsky, V.E., Cook, D.R. and Wulfschleger, S.D.: Large CO<sub>2</sub> and CH<sub>4</sub> emissions from polygonal tundra during spring thaw in northern Alaska. *Geophysical Research Letters*, 44(1), pp.504-513, 2017.

1080 Rime, T., Hartmann, M., Brunner, I., Widmer, F., Zeyer, J. and Frey, B.: Vertical distribution of the soil microbiota along a successional gradient in a glacier forefield *Molecular Ecology*, 24: 1091-1108, 2015.

1085 [Rotem, D., Lyakhovskiy, V., Christiansen, H. H., Harlavan, Y., and Weinstein, Y.: Permafrost saline water and Early to mid-Holocene permafrost aggradation in Svalbard, \*The Cryosphere\*, 17, 3363–3381, <https://doi.org/10.5194/tc-17-3363-2023>, 2023.](https://doi.org/10.5194/tc-17-3363-2023)

1090 Samouëlian, A., Cousin, I., Richard, G., Tabbagh, A., & Bruand, A.: Electrical resistivity imaging for detecting soil cracking at the centimetric scale, *Soil Science Society of America Journal*, 67(5), 1319–1326. <https://doi.org/10.2136/sssaj2003.1319>, 2003.

Schmidt, S.K., S.C. Reed, D.R. Nemergut, C.C Cleveland, E.K. Costello, M.N. Weintraub, A.F. Meyer, A.P. Martin & J.C. Neff.: The earliest stages of ecosystem succession in high-elevation, recently de-glaciated soils, *Proc. Royal Society B*, 275: 2793-2802, 2008.

1095 Seklima: Observations and weather statistics. [online] Available at: <<https://seklima.met.no/>> [Accessed 10<sup>th</sup> June 2023].

1100 [Serreze, M. C., Gustafson, J., Barrett, A. P., Druckenmiller, M. L., Fox, S., Voveris, J., Stroeve, J., Sheffield, B., Forbes, B. C., Rasmus, S., Laptander, R., Brook, M., Brubaker, M., Temte, J., McCrystall, M. R., & Bartsch, A.: Arctic rain on snow events: Bridging observations to understand environmental and livelihood impacts. \*Environmental Research Letters\*, 16\(10\). <https://doi.org/10.1088/1748-9326/ac269b>, 2021.](https://doi.org/10.1088/1748-9326/ac269b)

1105 [Strand, S. M., Christiansen, H. H., Johansson, M., Åkerman, J., & Humlum, O.: Active layer thickening and controls on interannual variability in the Nordic Arctic compared to the circum-Arctic. \*Permafrost and Periglacial Processes\*, 32\(1\), 47–58. <https://doi.org/10.1002/ppp.2088>, 2021.](https://doi.org/10.1002/ppp.2088)

1110 Teepe, R. and Ludwig, B.: Variability of CO<sub>2</sub> and N<sub>2</sub>O emissions during freeze-thaw cycles: results of model experiments on undisturbed forest-soil cores. *Journal of Plant Nutrition and Soil Science*, 167(2), pp.153-159, 2004.

1115 [Tyystjärvi, V., Niittynen, P., Kemppinen, J., Luoto, M., Rissanen, T., and Aalto, J.: Variability and drivers of winter near-surface temperatures over boreal and tundra landscapes. \*The Cryosphere\*, 18, 403–423, <https://doi.org/10.5194/tc-18-403-2024>, 2024.](https://doi.org/10.5194/tc-18-403-2024)

Uhlemann, S., Dafflon, B., Peterson, J., Ulrich, C., Shirley, I., Michail, S., & Hubbard, S. S.: Geophysical Monitoring Shows that Spatial Heterogeneity in Thermohydrological Dynamics Reshapes a Transitional Permafrost System, *Geophysical Research Letters*, 48(6), 1–11. <https://doi.org/10.1029/2020GL091149>, 2021.

**Formatted:** Font: (Default) Times New Roman, 10 pt, Font color: Auto

**Formatted:** Authors, Left, Space After: 0 pt

**Formatted:** Font: (Default) Times New Roman, 10 pt, Font color: Auto, Ligatures: None

**Formatted:** Normal, Justified, Space After: Auto

**Deleted:** ¶

**Formatted:** Font: (Default) Times New Roman, Ligatures: None

**Formatted:** Font: (Default) Times New Roman, 10 pt, Font color: Auto

**Formatted:** Font: 8 pt

**Formatted:** Font: (Default) Times New Roman, 10 pt, Ligatures: None

**Formatted:** Normal

**Formatted:** English (United Kingdom), Pattern: Clear

**Formatted:** Font: (Default) Times New Roman, 10 pt, Ligatures: None

**Formatted:** Normal

**Formatted:** Font: (Default) Times New Roman, 10 pt, Not Italic, Ligatures: None

**Formatted:** Font: (Default) Times New Roman, 10 pt, Ligatures: None

**Formatted:** English (United Kingdom), Pattern: Clear

**Formatted:** Font: (Default) Times New Roman, 10 pt, Font color: Auto

**Formatted:** Font: 8 pt

Wilkinson, P. B., Chambers, J. E., Meldrum, P. I., Kuras, O., Inauen, C. M., Swift, R. T., Curioni, G., Uhlemann, S., Graham, J., & Atherton, N.: Windowed 4D inversion for near real-time geoelectrical monitoring applications. *Frontiers in Earth Science*, 10. <https://doi.org/10.3389/feart.2022.983603>, 2022.

1125 [Wojcik, R., Eichel, J., Bradley, J. A., & Benning, L. G.: How allogenic factors affect succession in glacier fore-](https://doi.org/10.1016/j.earscirev.2021.103642)  
1130 [fields. \*Earth-Science Reviews\*, 218, 103642. <https://doi.org/10.1016/j.earscirev.2021.103642>, 2021.](https://doi.org/10.1016/j.earscirev.2021.103642)

1135 Wu, Y., Hubbard, S. S., Ulrich, C., & Wulfschleger, S. D.: Remote Monitoring of Freeze-Thaw Transitions in Arctic Soils Using the Complex Resistivity Method. *Vadose Zone Journal*, 12(1), vzj2012.0062.  
1140 <https://doi.org/10.2136/vzj2012.0062>, 2013.

1145 Wu, Y., Nakagawa, S., Kneafsey, T. J., Dafflon, B., & Hubbard, S.: Electrical and seismic response of saline permafrost soil during freeze - Thaw transition. *Journal of Applied Geophysics*, 146, 16–26.  
<https://doi.org/10.1016/j.jappgeo.2017.08.008>, 2017.

1150 Yi, Y., Kimball, J. S., Rawlins, M. A., Moghaddam, M., and Euskirchen, E. S.: The role of snow cover affecting boreal-arctic soil freeze–thaw and carbon dynamics, *Biogeosciences*, 12, 5811–5829, <https://doi.org/10.5194/bg-12-5811-2015>, 2015.

1155 Zhang, T.: Influence of the seasonal snow cover on the ground thermal regime: An overview. *Reviews of Geophysics*, 43(4), 2005.

1160 Zona, D., Gioli, B., Commare, R., Lindaas, J., Wofsy, S.C., Miller, C.E., Dinardo, S.J., Dengel, S., Sweeney, C., Karion, A. and Chang, R.Y.W.: Cold season emissions dominate the Arctic tundra methane budget. *Proceedings of the National Academy of Sciences*, 113(1), pp.40-45, 2016.

- Formatted: Font: 10 pt
- Formatted: Font: 10 pt
- Formatted: Font: 10 pt, Not Italic
- Formatted: Font: 10 pt
- Formatted: Font: 10 pt, Not Italic
- Formatted: Font: 10 pt
- Formatted: Hyperlink, Font: (Default) +Body (Calibri), 10 pt, Ligatures: Standard + Contextual
- Formatted: Font: 10 pt
- Field Code Changed