

Phylogeochimistry: exploring evolutionary constraints on belemnite rostrum element composition

Alexander Pohle¹, Kevin Stevens¹, René Hoffmann¹, and Adrian Immenhauser^{1,2}

¹Institute of Geology, Mineralogy and Geophysics, Ruhr University Bochum, Universitätsstraße 150, 44799 Bochum, Germany

²Fraunhofer IEG (Fraunhofer Institution for Energy Infrastructures and Geothermal Systems), Am Hochschulcampus 1, 44801 Bochum, Germany

Correspondence: Alexander Pohle (alexander.pohle@rub.de)

Abstract. The biogenic carbonate hardparts of a large range of marine organisms are among the most important geochemical archives of Earth's climate dynamics through time and the evolution of life. That said, biomineralization pathways, i.e., the secretion of mineral phases by organisms, are complex and may differ significantly between different taxa. In light of this, it is critically important to evaluate if related taxa might display similar hard parts geochemistry. If so, this relation might bear information on evolutionary relationships and has great significance in carbonate archive research. Here, we test the evolutionary constraints on element/Ca ratios of belemnite rostra using Bayesian phylogenetic tools. For this purpose, we assembled a large dataset on element ratios from 2241 published samples of belemnite rostra. We used comparative Bayesian phylogenetic tools to reconstruct ancestral states and evolutionary rates of these geochemical data based on trees inferred from morphological data. While Mn/Ca and Fe/Ca appear to be taxon-independent and probably mainly reflect environmental and diagenetic effects, Mg/Ca and Sr/Ca display stronger taxon-specific patterns, even though their interpretation remains complex. The evolutionary rates are high, with average estimated changes in element ratios of 12.4% (Mg/Ca; confidence interval 9.0-16.9%) and 12.3% (Sr/Ca; confidence interval 5.5-18.3%) of the overall mean element ratio within 1 million years (Myr). While the distribution of Sr/Ca ratios is relatively homogeneous across the tree, Mg concentrations are divided among two distinct groups (< 5.5 and >7.5 mmol/mol, respectively), with at least five evolutionary transitions between them. Beyond carbonate archive research, our phylogenetic analysis provides insights into the evolution of belemnites. This study highlights the complex interplay between evolutionary, ontogenetic, environmental and diagenetic effects and calls for caution when using belemnite element ratios as proxies for palaeoclimatic studies. We propose the term 'phylogeochimistry' for the investigation of geochemical data using phylogenetic modelling techniques.

1 Introduction

Belemnites are a group of coleoid cephalopods, likely representing stem group decabrachians (today's squids, cuttlefishes and relatives) that were particularly abundant and diverse in mainly open marine waters of the Jurassic and Cretaceous oceans (Hoffmann and Stevens, 2020 and references therein). Their calcitic internal skeletal element, the rostrum, is a common fossil in Mesozoic marine sedimentary rocks and a widely used carbonate archive (e.g., Urey, 1948; Urey et al., 1951; Lowenstam and

Epstein, 1954; Spaeth, 1971; Rosales et al., 2004; Dutton et al., 2007; Arabas, 2016). Palaeoenvironmental parameters based
25 on belemnite archive calcite include seawater oxygenation level, seawater temperature, alkalinity (pH) or seawater isotope
and elemental data, among others (Wierzbowski, 2004; Gómez et al., 2008). Further, the calcite of a belemnite rostrum from
the Upper Cretaceous Peedee Formation also served as the base for the PeeDee Belemnite standard (now Vienna PeeDee
Belemnite, VPDB; Slater et al., 2001) in analytical geochemistry. Despite their wide distribution in (hemi)pelagic sections
worldwide, and regardless of many decades of dedicated research, the interpretation of belemnite geochemical data is still
30 fraught with complications.

Specifically, complexity results from (i) metabolic processes, i.e., biomineralization strategies, likely resulting in ontogenetic
trends in sclerochronologically sampled rostra (Spaeth, 1971; Vonhof et al., 2011; Ullmann et al., 2015; Immenhauser et al.,
2016). (ii) Further, the complex rostrum calcite ultrastructure is not well understood. High-resolution petrographic studies of
rostra from multiple belemnite genera revealed the presence of two distinct calcite phases (Benito et al., 2016; Hoffmann et al.,
35 2016, 2021). The first phase represents an (arguably porous) biomineral fabric secreted during the lifetime of the animal from
extrapallial fluids (geochemically close to the ambient seawater), while the second phase is less well constrained in terms of its
formation time and arguably had an amorphous precursor phase (Hoffmann et al., 2021). (iii) Post-mortem diagenetic alteration
processes commonly complicate these patterns. Specifically, the organic-rich layers in the rostrum were subject to microbial
biodegradation, with microbes targeting the organic matter. The relation between organic matter, biodegradation and diagenetic
40 alteration is a typical feature of all marine skeletal carbonates (Lange et al., 2018). During the subsequent burial, alteration
is most pronounced and can cause the recrystallisation of portions (or all) of the rostrum (Wierzbowski and Joachimski,
2009; Immenhauser et al., 2016). Numerous geochemical and optical screening methods have been proposed to separate well-
preserved from altered material (e.g., Veizer, 1974, 1983; Saelen, 1989; Ullmann and Korte, 2015; Stevens et al., 2017).
(iv) Moreover, significant variation in geochemical proxies, such as element concentrations or isotope data between different
45 belemnite species sampled at the same stratigraphical level, was observed (Spaeth et al., 1971; Niebuhr and Joachimski, 2002;
McArthur et al., 2004, 2007; Mutterlose et al., 2010; Li et al., 2013; Stevens et al., 2022). This is particularly noteworthy
as trace element concentrations have been shown to be phylogenetically correlated in living calcifying organisms (Ulrich
et al., 2021), and taxon-specific signals in element/Ca ratios have been shown in brachiopods (e.g., Grossman et al., 1996;
Ullmann et al., 2017). [Furthermore, a recent study showed consistent, lineage-dependent offsets of Mg/Ca and \$\delta^{18}\text{O}\$ data
50 in Miocene to extant foraminifera \(Boscolo-Galazzo et al., 2025\).](#) In a similar context, recent studies have documented that
biomineralization patterns are strongly constrained by phylogeny. Examples include the calcite-aragonite ratios in modern
bryozoans (Piwoni-Piórewicz et al., 2024) or the crystal orientation in conodont dental elements (Shirley et al., 2024). However,
a similar phylogenetic perspective on element incorporation into belemnite rostra has not been studied systematically.

This omission forms a strong motivation for the present paper proposing the term ‘phylogeochimistry’ for the rigorous
55 combination of phylogenetic tools and geochemical proxy data in rostra. The working hypothesis is that the rostra of different
clades of belemnites differ in their geochemical properties. If that axiom holds, and acknowledging the intrinsic complexity
of belemnite geochemistry in general, then these data have the potential to be used as a character in elucidating phylogenetic
relationships of belemnites, which are currently challenging to constrain due to the scarcity of morphological characters. First

quantitative efforts in this direction have only been explored recently (Stevens et al., 2023). Beyond phylogenetic relationships, understanding taxonomic patterns in belemnite rostrum geochemistry has wide significance for studies with a focus on palaeoceanography.

This paper has the following aims: (i) A large (literature) dataset of taxon-specific element/Ca ratios and the application of ancestral state estimation approaches serves to test whether these proxy data are phylogenetically constrained. Importantly, this means that we do not use geochemical data to infer phylogenetic relationships, but rather compare how they change across a tree reconstructed by morphological data. (ii) Based on this, we explore how to interpret geochemical data from an evolutionary perspective. For the sake of focus, we limit this study to a set of element/Ca ratios (Mg/Ca, Sr/Ca, Fe/Ca and Mn/Ca). The application of phygeochemistry to isotope data from belemnite rostra must be the focus of forthcoming work.

Our article is aimed at researchers with different scientific backgrounds, such as evolutionary biologists and palaeontologists on the one hand and geochemists and oceanographers on the other hand. This might imply that part of the terminology will be unfamiliar to potential readers. To improve the accessibility of the science presented here, we provide definitions of important terms in Table 1. For further reading, we recommend scholarly overview papers of the respective literature for Bayesian phylogenetics (e.g., Wright, 2019; Wright et al., 2022), belemnite palaeobiology (Hoffmann and Stevens, 2020) and geochemical proxy data and their interpretation (e.g., Veizer, 1974; Rosales et al., 2004; Schöne, 2008; Swart, 2015; Ullmann et al., 2015; Immenhauser et al., 2016; Immenhauser, 2022, and references therein).

2 Methodology

An overview of the methodology applied is given in Fig. 1. The approach used is divided into three main work packages: (i) acquisition of geochemical data from the literature (Fig. 1f-i), (ii) Bayesian inference of an updated belemnite phylogeny to include taxa for which geochemical data is available, based on morphological characters (Fig. 1a-e) and (iii) evolutionary rate estimation and ancestral state reconstructions (Fig. 1j-l) based on trees from (i) and data from (ii). Details on each of these work packages are given below.

2.1 Element/Ca ratio data

We compiled a large belemnite rostrum dataset of element concentrations (expressed as element/Ca ratios) from the published literature (Table 2, Fig. 1f). Specifically, we compiled Mg/Ca, Sr/Ca, Fe/Ca and Mn/Ca ratios, in addition to the elemental concentrations for Ca (in wt%), Mg, Sr, Fe and Mn (usually in ppm = $\mu\text{g/g}$), where available. We only included data from studies that identified rostra at least to the genus level. We excluded data when the authors found evidence for incipient to pervasive diagenetic alteration. That said, we cannot rule out that some of the data from rostra - that were considered as well-preserved by the authors - yielded variable (undetected) alteration features and, hence, reset elemental concentrations. After some consideration, this potential shortcoming was accepted because we aimed to (i) maximise the dataset, (ii) cover a large range in sampling localities across the world and from different stratigraphic levels, (iii) include several genera recorded from multiple studies and collection sites. Furthermore, to avoid circular reasoning and to keep the values comparable between

Table 1. Definition of important terms and concepts used in this paper. See Felsenstein (2003) for a comprehensive introduction to phylogenetic methods. Further references are listed below (see also references therein).

Term	Explanation
Tip	The endpoints of a phylogenetic tree, usually representing species or other taxonomic units (operational taxonomic unit = OTU).
Internal node	The points of divergence within a phylogenetic tree. Each node represents a bifurcation with exactly one parent node (internal node or sampled ancestor) and two child nodes (tip, internal node or sampled ancestor).
Branch	The connections between tips, internal nodes and sampled ancestors, essentially representing unsampled lineages.
Tree topology	The shape of a phylogenetic tree, i.e., how tips, internal nodes and sampled ancestors are connected, irrespective of branch lengths.
Posterior sample	The outcome of a Bayesian analysis, containing a distribution of values (or trees) for each parameter of interest that reflect uncertainty in the results. (Wright, 2019)
Ancestral state reconstruction	A set of techniques that aim to reconstruct the ancestral condition (= state) of a trait (= character) at internal nodes of a (usually fixed) tree. The conditions may be known in tips and sampled ancestors, from which the condition in all nodes and OTUs with unknown states is inferred. It is also possible to simulate changes along branches. (Joy et al., 2016)
Evolutionary rate (Brownian motion)	In the context of this paper, evolutionary rate refers to σ^2 , which is the rate of change in a continuous character (here: element/Ca ratios). Specifically, the character evolves on a branch of length t with an average change of 0.0 and a variance of $t \times \sigma^2$. Thus, the standard deviation of the character (i.e., the average absolute change) within 1 Myr is σ , and $\sqrt{(10 \times \sigma^2)}$ within 10 Myr.
Diagenesis	All chemical, mineralogical, physical, and (micro)biological changes underwent by a sediment after its initial deposition or biological secretion and during and after its lithification, exclusive of weathering and preceding very low-grade metamorphism (Immenhauser, 2022).
Non-equilibrium (kinetic) carbonate precipitation	Precipitation of carbonate (bio)minerals from a fluid, including bodily fluids that are reproducibly out of isotopic equilibrium with the environmental solution (Arvidson and Mackenzie, 1999).
Biomineralization	The process in which living organisms produce minerals or induce mineralization via their metabolic products. Organisms have been producing mineralized skeletons for the past 570 Myr (Cuif et al., 2010).
Carbonate archive	Biogenic and abiogenic carbonate phases and their proxy data represent snap-shots of the evolution of Earth's surface palaeoenvironments. A fossil carbonate archive can potentially be dated and serves as a source of proxy data (geochemical or petrographic evidence). By means of proxy data, a desired but no longer accessible environmental parameter (such as seawater temperature and the like; Mueller et al., 2024) can be, under favourable conditions, reconstructed.

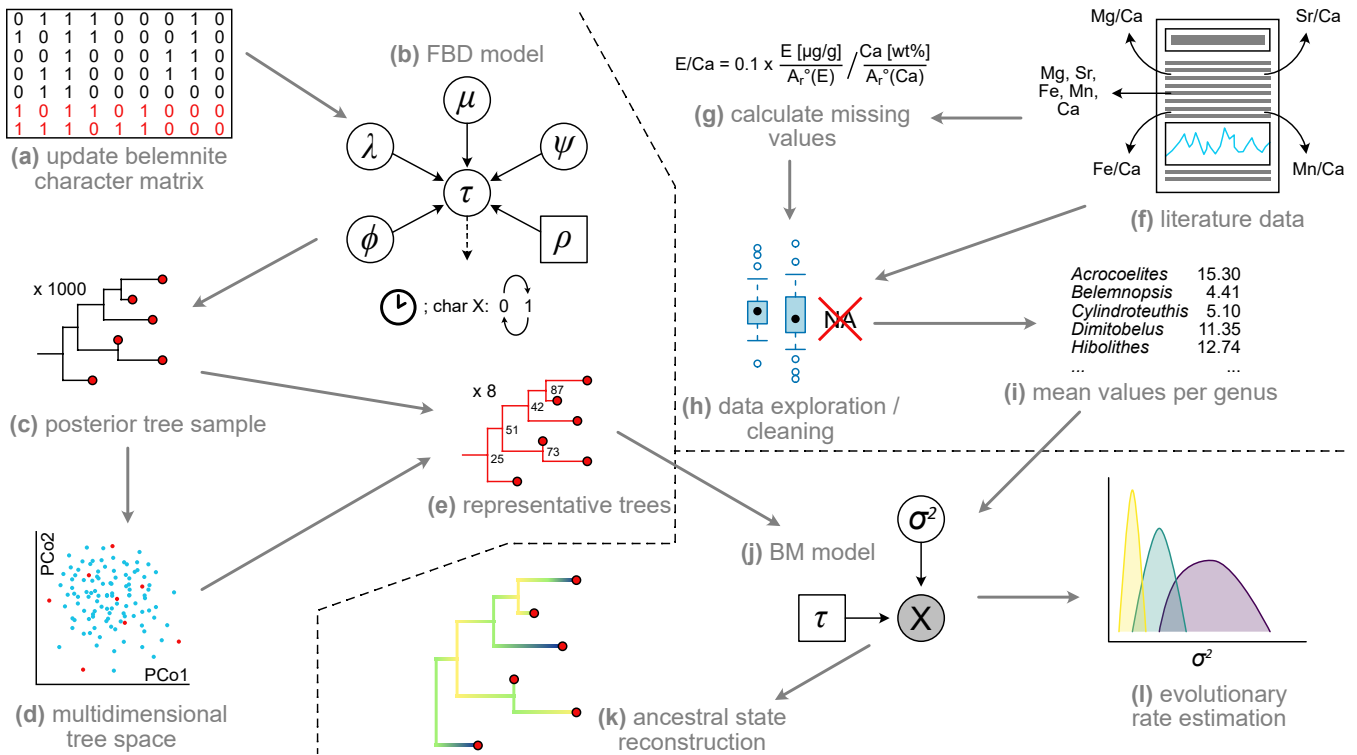


Figure 1. Workflow of the present study. (a) Collecting additional data for morphological character matrix to include taxa for which element ratio data are available. (b) Inference of tree topology (τ) in RevBayes using the fossilised birth-death (FBD) model, consisting of extinction rate (μ), speciation rate (λ), fossilisation rate (ψ), extant sampling rate (ρ) and origin time (ϕ) in combination with the clock and character models (see Höhna et al., 2014 for details on graphical model representation). (c) Reduction of posterior trees to random sample of 1000 trees. (d) Multidimensional scaling (= principal coordinate analysis, PCo) of tree space to investigate topological differences between trees. (e) Choose representative trees from posterior tree sample, based on multidimensional scaling. (f) Literature survey, extracting element ratios and raw element concentrations. (g) Calculate element/Ca ratios where only raw values were given. (h) Remove non-informative values, compare element ratios between genera, localities, etc. (i) Calculate mean values for each genus. (j) Brownian Motion (BM) model consisting of the single parameter σ^2 and a fixed tree topology from previous steps. (k) Ancestral state reconstruction of element ratios in R. (l) Estimation of evolutionary rates in RevBayes.

studies, we decided to still include some data points where alteration had been suspected based on specific threshold values of element/Ca ratios ~~alone~~ (e.g., Sørensen et al., 2015, ; see Discussion chapter herein). ~~The latter data points also represented only a small fraction (less than 5%) of the complete dataset~~ Excluding data points based on the Mn/Ca threshold in the latter study shows that the impact is minimal. The median Mg/Ca ratio of the data from Sørensen et al. (2015) would accordingly only change from 11.6 mmol/mol to 11.5 mmol/mol, and the Sr/Ca ratio from 2.07 mmol/mol to 2.12 mmol/mol, despite 27% of the data being affected. Thus, despite some inherent potential for a diagenetic bias, our dataset is expected to represent an acceptable approximation of what might have been the element ratio distributions at the time of the secretion of the rostra.

We also included a sensitivity test that randomly altered the original data to see whether slightly biased data would affect the results (see below).

100 As expected, the reporting of elemental concentrations was inconsistent between the different sources used. Some authors reported all values of interest, while others reported raw values, relatively commonly omitting raw Ca content. For cases with all raw values known, we calculated the missing ratios as follows (Fig. 1g):

First, the molar amount of Ca ~~per 1 g sample~~ was calculated using the amount of Ca (m_{Ca}) in g, derived from the weight percentage of Ca (w_{Ca}) per 1 g sample, and the molar weight of Ca (M_{Ca}) according to the equation

$$105 \quad n_{Ca}[mol] = \frac{m_{Ca}[g]}{M_{Ca}[\frac{g}{mol}]} \quad (1)$$

Second, the molar amount of Sr was calculated using the ~~amount-concentration~~ of Sr (m_{Sr}) in μg , ~~derived from the concentration/g, and the molar weight~~ of Sr (M_{Sr}) in $\mu\text{g/g}$ using the formula

$$n_{Sr}[mol] = \frac{m_{Sr}[\mu\text{g}] \times 10^{-6}}{M_{Sr}[\frac{g}{mol}]} \frac{C_{Sr}[\frac{\mu\text{g}}{g}] \times 10^{-6}[g]}{M_{Sr}[\frac{g}{mol}]} \quad (2)$$

Third, the molar ratio of Ca to Sr (Sr/Ca) in mmol/mol was calculated according to

$$110 \quad \frac{Sr}{Ca}[\frac{mmol}{mol}] = \frac{n_{Sr}[mol] \times 1000}{n_{Ca}[mol]} \quad (3)$$

The molar amount of Fe, Mn and Mg, as well as the molar ratios of Fe, Mn and Mg to Ca, were calculated accordingly.

In cases where both the raw element concentrations and the element/Ca ratios were given, we still calculated the element/Ca ratios according to the above formula to compare them to the published values. Where a mismatch was detected, we gave priority to the calculated values, as the element/Ca ratios may be affected by conversion errors or rounding. We thereby detected incorrectly calculated Sr/Ca ratios of Arabas et al. (2017) and a Mn/Ca ratio mismatch in Stevens et al. (2022; note that erroneous calculations were restricted to the supplement file, figures were not affected).

115

Table 2. Literature sources for belemnite geochemical data. Abbreviations of genus names: *Acc.* = *Acrocoelites*, *Act.* = *Acroteuthis*, *Adi.* = *Adiakritobelus*, *Aul.* = *Aulacoteuthis*, *Bai.* = *Bairstowius*, *Ber.* = *Berriasibelus*, *Blp.* = *Belemnopsis*, *Blt.* = *Belemnites*, *Blx.* = *Belemnelloca-*
max, *Brv.* = *Brevibelus*, *Con.* = *Conohibolites*, *Cst.* = *Castellanibelus*, *Cyl.* = *Cylindroteuthis*, *Dim.* = *Dimitobelus*, *Duv.* = *Duvalia*, *Hib.* =
Hibolithes, *Hlc.* = *Holcobelus*, *Hst.* = *Hastites*, *Lag.* = *Lagonibelus*, *Mes.* = *Mesohibolites*, *Mir.* = *Mirabelobelus*, *Nan.* = *Nannobelus*, *Neo.*
= *Neohibolithes*, *Oxy.* = *Oxyteuthis*, *Pas.* = *Passaloteuthis*, *Per.* = *Peratobelus*, *Pox.* = *Praeoxyteuthis*, *Ppa.* = *Parapassaloteuthis*, *Psb.* =
Pseudobelus, *Psd.* = *Pseudoduvalia*, *Sim.* = *Simpsonibelus*, *Vau.* = *Vaunagites*, *Yng.* = *Youngibelus*

Reference	Geography	Stratigraphy	Genera	Elements
Alberti et al. (2021a) ^a	Indian Himalaya	Callovian-Tithonian	<i>Blp.</i> ?	Ca, Mg, Sr, Fe, Mn
Alberti et al. (2021b)	Neuquén Basin, Argentina	Bajocian-Tithonian	<i>Blp.</i> , <i>Brv.</i> , <i>Hib.</i>	Ca, Mg, Sr, Fe, Mn
Arabas (2016)	Carpathians, Poland / Slovakia	Aalenian-Tithonian	<i>Blp.</i> , <i>Duv.</i> , <i>Hib.</i>	Ca, Mg, Sr, Fe, Mn
Arabas et al. (2017)	Carpathians, Ukraine / Slovakia	Pliensbachian, Aalenian	<i>Acc.</i> , <i>Hlc.</i> , <i>Ppa.</i> , <i>Pas.</i>	Ca, Mg, Sr, Fe, Mn
Armendáriz et al. (2012) ^a	Asturian Basin, Spain	Pliensbachian	<i>Pas.</i> ?	Ca, Mg, Sr, Fe, Mn
Benito and Reolid (2012) ^a	Betic Cordillera, Spain	Oxfordian-Kimmeridgian	<i>Hib.</i> ?	Ca, Mg, Sr, Fe, Mn
Dutton et al. (2007)	Seymour Island, Antarctica	Maastrichtian	<i>Dim.</i>	Ca, Mg, Sr, Fe, Mn
Li et al. (2012)	Yorkshire coast, England, UK	Toarcian	<i>Acc.</i> , <i>Sim.</i> , <i>Yng.</i>	Ca, Mg, Sr, Fe, Mn
Li et al. (2013)	Dorset coast, England, UK / Vocontian Basin, France	Pliensbachian, Callovian, Valanginian	<i>Bai.</i> , <i>Ber.</i> , <i>Cst.</i> , <i>Cyl.</i> , <i>Duv.</i> , <i>Hst.</i> , <i>Hib.</i> , <i>Nan.</i> , <i>Pas.</i>	Ca, Mg, Sr, Fe, Mn
Malkoč et al. (2010) ^a	Hannover, Germany	Barremian-Aptian	<i>Aul.</i> ?, <i>Neo.</i> ?, <i>Oxy.</i> ?, <i>Pox.</i> ?	Ca, Mg, Sr, Fe, Mn
McArthur et al. (2004)	Yorkshire coast, England, UK	Valanginian-Barremian	<i>Act.</i> , <i>Aul.</i> , <i>Hib.</i> , <i>Oxy.</i> , <i>Pox.</i>	Ca, Mg, Sr, Fe, Mn
McArthur et al. (2007)	Betic Cordillera, Spain / Vocontian Basin, France	Berriasian-Hauterivian	<i>Adi.</i> , <i>Ber.</i> , <i>Cst.</i> , <i>Duv.</i> , <i>Hib.</i> , <i>Mir.</i> , <i>Psb.</i>	Ca, Mg, Sr, Fe, Mn
Pirrie et al. (2004) ^b	Lago San Martin, Argentina	Albian	<i>Dim.</i>	Mg, Sr, Fe, Mn
Price and Mutterlose (2004) ^b	Yatria River, Western Siberia, Russia	Berriasian-Hauterivian	<i>Act.</i> , <i>Cyl.</i> , <i>Lag.</i>	Mg, Sr, Fe, Mn
Price et al. (2009) ^b	Wiltshire, England, UK	Oxfordian-Kimmeridgian	<i>Cyl.</i>	Mg, Sr, Fe, Mn

continued on next page

continued from previous page

Reference	Geography	Stratigraphy	Genera	Elements
Price et al. (2011)	Gerecse Mountains, Hungary	Valanginian-Barremian	<i>Adi.</i> , “ <i>Blt.</i> ”, <i>Con.</i> , <i>Duv.</i> , <i>Hib.</i> , <i>Mes.</i> , <i>Psb.</i> , <i>Psd.</i> , <i>Vau.</i>	Ca, Mg, Sr, Fe, Mn
Price et al. (2012)	Carnarvon & Eromanga Basins, Australia	Barremian-Cenomanian	<i>Dim.</i> , <i>Per.</i>	Ca, Mg, Sr, Fe, Mn
Sørensen et al. (2015)	Kristianstad Basin, Sweden	Campanian	<i>Blx.</i>	Ca, Mg, Sr, Mn
Stevens et al. (2014)	Nusplingen, Germany	Kimmeridgian	<i>Hib.</i>	Ca, Mg, Sr, Fe, Mn
Stevens et al. (2017)	Münsterland, Germany	Albian	<i>Neo.</i>	Ca, Mg, Sr, Fe, Mn
Stevens et al. (2022)	Polski Trambesh, Bulgaria	Aptian	<i>Duv.</i> , <i>Mes.</i>	Ca, Mg, Sr, Fe, Mn
Ullmann et al. (2013)	NW North Island, Zealand	Kimmeridgian-Tithonian	<i>Blp.</i> , <i>Hib.</i>	Ca, Sr, Mn
Ullmann et al. (2014)	Yorkshire coast, England, UK	Toarcian	<i>Acc.</i> , <i>Ppa.</i> , <i>Pas.</i> , <i>Yng.</i>	Ca, Mg, Sr, Mn
Ullmann et al. (2015)	Yorkshire coast, England, UK	Toarcian	<i>Pas.</i>	Ca, Mg, Sr, Mn
Ullmann and Pogge von Strandmann (2017)	Yorkshire coast, England, UK	Toarcian	<i>Pas.</i>	Ca, Mg, Sr, Mn
van de Schootbrugge et al. (2000) ^b	Vocontian Basin, France	Valanginian-Hauterivian	<i>Ber.</i> , <i>Cst.</i> , <i>Duv.</i> , <i>Hib.</i> , <i>Psb.</i>	Mg, Sr, Fe, Mn
Vickers et al. (2021)	Christian Malford, England, UK	Callovian	<i>Cyl.</i>	Ca, Mg, Sr, Fe, Mn
Wierzbowski and Joachimski (2007) ^b	Jura Chain, Poland	Bajocian-Bathonian	<i>Blp.</i> , <i>Hib.</i>	Mg, Sr, Fe, Mn
Wierzbowski and Rogov (2011)	Volga Basin, SW Russia	Callovian-Oxfordian	<i>Cyl.</i> , <i>Hib.</i>	Ca, Mg, Sr, Fe, Mn

^a Generic affinity uncertain for all taxa in publication, no data included in our analyses.

^b Only raw element concentrations given, but not for Ca, no element ratios calculated.

120

125

Despite the fact that geochemical data have been collected from a large number of species, we restricted our analyses to the genus level (Fig. 1i). This is because we assume that the [interspecific](#) variation within the same genus is comparatively small. Moreover, this approach provides larger sample sizes for each taxon. We then inspected and cleaned this dataset according to several criteria (Fig. 1h): In most cases, identifications are given without any detailed justifications or images. Accordingly, it seems possible that the original authors included isolated cases of misidentifications. To mitigate this problem, we excluded

specimens where the authors only tentatively assigned the specimens to a certain genus (but retained them when only the species level was uncertain). Large interspecific variation within genera could potentially cause biased average element ratios in these genera. However, there is currently no large belemnite phylogeny available that goes down to the species level and could be used as a basis for comparative phylogenetic studies. In any case, for many of the species reported in the literature, only a few data points are available, so results derived from a species-level analysis would be fraught with uncertainty. To ensure basic statistical robustness, we only included taxa with more than ~~10 specimens~~ five measurements in the dataset. To assess the significance of basin and intra-basin effects, we compared data from the same section, where several different genera were reported. Lastly, we also compared data from genera that were reported from multiple localities.

135 2.2 Morphology-based phylogeny

We used the morphological character matrix from Stevens et al. (2023) as a basis for our analyses (Fig. 1a). Several genera for which element ratios are available are missing from that phylogeny. Consequently, we updated the character matrix and ran a new analysis to include the missing taxa. The additional taxa and the corresponding references are listed in Table 3. We removed aulacoceratids (*Atractites*, *Aulacoceras* and *Palaeobelemnopsis*) and sinobelemnitids (*Sinobelemnites* and *Tohokubelus*) from the analysis because geochemical data have not been reported for any of these taxa. Aulacoceratids also have a primary aragonitic rather than calcitic rostrum (Dauphin and Cuif, 1980). Both groups are considered to be ancestral to other belemnitids: aulacoceratids are likely stem coleoids (Mariotti et al., 2021; Hoffmann et al., 2022; Stevens et al., 2023), while sinobelemnitids are probably paraphyletic, basal to other belemnitids (Iba et al., 2012; Niko and Ehiro, 2022; Stevens et al., 2023). In the original character matrix, *Neohibolites minimus* was scored as ‘absent’ for the primary character ‘ventral alveolar furrow(s)’ but included secondarily dependent characters that were not scored as ‘inapplicable’. This (unintentional) character scoring represents a logically impossible character state combination (see Sereno, 2007) and was therefore corrected. Accordingly, we changed the primary character to ‘present’. Otherwise, we left the character coding and scoring unchanged, apart from the addition of new species and the removal of phylogenetically uninformative characters (i.e., characters that were only relevant for sinobelemnitids and aulacoceratids).

150 The morphological character matrix was analysed with Bayesian phylogenetic inference using the software REVBayes 1.2.1 (Höhna et al., 2016). The following parameter settings were therefore relevant in a first step of the study to recover trees without involving geochemical data (Fig. 1b) and roughly follow what was used in Stevens et al. (2023). We supply brief explanations for each model component but refer the reader to the literature for further methodological background (e.g., Wright, 2019; Wright et al., 2022). We applied the fossilised birth-death (FBD) model (Stadler, 2010; Gavryushkina et al., 2014; Heath et al., 2014) with exponential priors on extinction and speciation rate with $\lambda = 10$, respectively, the same for the fossil recovery rate. Extinction and speciation rates here model the underlying diversification process, while the fossil recovery rate represents sampling in the FBD model. Another exponential prior with $\lambda = 0.1$ and an offset of 201.4 was put on origin time (i.e., the time where the diversification process started [in Ma](#)), corresponding to the appearance of the oldest belemnite in our sample and the oldest known non-sinobelemnitid belemnite in general, *Schwegleria feifeli* (Schlegelmilch, 1998, Hettangian). Priors represent the distributions from which model parameters are drawn. The exclusively binary morphological characters were

Table 3. List of additional species for the updated phylogeny, with references used to collect morphological data.

Species	Family	Age	References
<i>Acroteuthis arctica</i> Blüthgen, 1936	Cylindroteuthidae	Berriasian-Valangian	Stolley (1911); Sachs and Nal'nyaeva (1966)
<i>Bairdowius junceus</i> (Phillips, 1867)	Hastitidae	Late Pliensbachian	Doyle (1994); Schlegelmilch (1998)
<i>Belemnellocamax mammillatus</i> (Nilsson, 1826)	Belemnitellidae	Late Campanian	Christensen (1975, 1997)
<i>Berriasibelus exstinctorius</i> (Raspail, 1829)	Duvaliidae	Early Valangian	Combémoré (1973); Janssen (2003)
<i>Brevibelus breviformis</i> (Voltz, 1830)	Acrocoelitidae	Late Toarcian	Schlegelmilch (1998)
<i>Castellanibelus orbignyianus</i> (Duval-Jouve, 1841)	Duvaliidae	Early Valangian	Combémoré (1973)
<i>Conohibolites escargollensis</i> (Delattre, 1952)	Belemnopseidae	Late Barremian	Janssen and Főzy (2005)
<i>Lagonibelus gustomesovi</i> Sachs & Nal'nyaeva, 1964	Cylindroteuthidae	Early Berriasian	Sachs and Nal'nyaeva (1964)
<i>Nannobelus acutus</i> (Miller, 1826)	Passaloteuthidae	Late Sinemurian	Schlegelmilch (1998)
<i>Peratobelus oxys</i> Tenison-Woods, 1883	Dimitobelidae	Aptian	Williamson (2006)
<i>Praeoxyteuthis pugio</i> (Stolley, 1925)	Oxyteuthidae	Early Barremian	Mutterlose (1983)
<i>Pseudobelus brevis</i> Paquier, 1900	Duvaliidae	Hauterivian	Combémoré (1973)
<i>Simpsonibelus dorsalis</i> (Phillips, 1867)	Acrocoelitidae	Toarcian	Doyle (1991); Schlegelmilch (1998)
<i>Youngibelus simpsoni</i> (Mayer-Eymar, 1883)	Acrocoelitidae	Early Toarcian	Doyle (1991); Schlegelmilch (1998)

modelled using the Mkv model (Lewis, 2001), which represents a simple model of morphological evolution where the transition rates between character states (e.g., loss or gain of a structure) are assumed to be equal. As not all characters are expected to evolve at the same rate, we used a discretised Gamma distribution with four rate categories to model rate heterogeneity across characters. A lognormal morphological clock was then applied to account for variable rates across branches, i.e., the morphological rates also vary between different lineages. Finally, to account for uncertainties in the stratigraphic ages of the taxa, we applied operators for variable tip dates (Barido-Sottani et al., 2019, 2020). This provides minimum and maximum age constraints for each taxon in the analysis. Importantly, because sampling is modelled as a single event for each taxon, a different age (complying with these constraints) of the taxon was drawn for each iteration of the algorithm. With all of these settings, we ran four independent replicates with 100,000 generations, each using a random move schedule, sampling every 10 generations and discarding 25% of the samples as burn-in. Convergence was assessed using TRACER 1.7.2 (Rambaut et al., 2018) by visual inspection and checking that all parameters reached effective sampling sizes above 200.

The result of a Bayesian phylogenetic analysis is a large sample of trees, which is non-trivial to summarise (e.g., Heled and Bouckaert, 2013; O'Reilly and Donoghue, 2018; Berling et al., 2024). Ancestral state estimation aims to reconstruct the

evolutionary changes of a trait along a given tree. This is typically performed on a single fixed tree, which may not be a good
175 representative of the tree sample. On the other hand, performing ancestral state reconstruction on a larger sample of trees is
challenging to interpret, as a summary tree with mapped character changes can include reconstructions from very different
topologies. For these reasons, we opted for a middle ground between these approaches, using different trees from the posterior
sample that are representative of (i) the entire sample, (ii) identified clusters of the multidimensional tree space, and (iii) the
extremes of the sampled tree space. To select these trees, we used the package TREESPACE 1.1.4.2 (Jombart et al., 2017) in
180 R 4.3.0 (R Core Team, 2018). For computational reasons, we selected a random sample of 1000 trees from the posterior trees
(Fig. 1c). Pairwise distances were calculated for these trees using the quartet distance metric in the package QUARTET 1.2.6
(Smith, 2019), which overcomes some of the limitations of several other tree metrics (Smith, 2020, 2022). Examples include
the Kendall-Colijn metric (Kendall and Colijn, 2016) and the Robinson-Foulds distance (Robinson and Foulds, 1979, 1981),
which are implemented as a standard in TREESPACE (Jombart et al., 2017). Analogous to functions in TREESPACE, the resulting
185 distance matrix was first transformed into a Euclidean distance matrix using the package ADE4 1.7.22 (Dray and Dufour, 2007).

We then performed metric multidimensional scaling (= principal coordinate analysis) on this distance matrix (Fig. 1d),
as implemented in TREESPACE and identified clusters of trees (denoted as A, B, C) using Ward's method (Ward, 1963). To
compare the distribution of clade supports among these clusters, we used the package APE 5.7.1 (Paradis and Schliep, 2019).
We calculated the proportion of trees that contained an identical clade (i.e., the posterior probability of the clade, PP) for every
190 clade in every tree and the average value for each tree. We additionally calculated partial posterior probabilities of clades,
where we only considered trees that belong to the same cluster as identified above. These partial posterior probabilities are
then compared to the total posterior probability of the clade to gain insights into what degree the tree clusters supported
certain topologies. Posterior clade probabilities of the total posterior tree sample are abbreviated as PP_{tot}, and partial posterior
probabilities of the corresponding clusters are PP_A, PP_B, PP_C, respectively.

195 After exploring the tree landscape as described above, we selected eight trees as representatives for our subsequent analyses
of ancestral state reconstruction and evolutionary rates (Fig. 1e):

1. The median tree of the entire tree sample (see Jombart et al., 2017).
2. The maximum clade credibility (MCC) tree of cluster A.
3. The MCC tree of cluster B. This tree coincides with the MCC tree from the entire tree sample.
- 200 4. The MCC tree of cluster C.
5. The tree with the smallest value for principal coordinate axis 1.
6. The tree with the highest value for principal coordinate axis 1.
7. The tree with the smallest value for principal coordinate axis 2.
8. The tree with the highest value for principal coordinate axis 2.

205 Branch lengths were not rescaled but kept at the values of the original trees, i.e., the timing of branching events (nodes) in these trees are not averaged over all trees. Instead, each tree represents a single sample from the posterior.

2.3 Ancestral states and evolutionary rates

210 Fe/Ca and Mn/Ca ratios did not yield reliable data, as the values were commonly below the detection limits (the detection limit varied depending on the study cited); therefore, we only used Mg/Ca and Sr/Ca ratios for the analysis of ancestral states and evolutionary rates (Fig. 1j-l). As input for each taxon, we used the median of the element ratio within the genus. Taxa that did not have any data for the corresponding element ratios were removed prior to the analyses (e.g., *Megateuthis* for both element ratios or *Holcobelus* for Sr/Ca). Consequently, the analyses for Mg/Ca and Sr/Ca ratios were based on a tree with 25 and 24 taxa, respectively.

215 We reconstructed ancestral states (Fig. 1k) using the ‘fastAnc’ function in the R-package PHYTOOLS 2.1.1 (Revell, 2024). For visualisation, we also plotted a phenogram using the same package. The latter plots the continuous trait values of all taxa on the y-axis, and time on the x-axis. The taxa are then connected by their phylogenetic relationships, as indicated in the corresponding tree. For the sake of brevity, we only used the overall MCC tree as input for this analysis.

220 The estimation of evolutionary rates was performed in REVBAYES 1.2.1 (Höhna et al., 2016), with one analysis fixing each of the eight trees mentioned in the previous section (Fig. 1l). To all combinations of the trees and the two element ratios, we applied a simple evolutionary model of Brownian motion (Felsenstein, 1985), with the rate σ^2 as the only parameter (Fig. 1j). Thus, for simplicity, the evolutionary rate was assumed to be constant throughout the tree. We placed a log-uniform prior between 10 and 100 on σ^2 to allow for a wide range of values. For each analysis, we ran two independent replicates using a random move schedule for 50,000 generations after a burn-in of 5,000 generations, sampling every 10 generations. As for the tree inference, convergence was checked using TRACER (Rambaut et al., 2018).

225 Although a step forward from the inference based on a single tree, the above-described eight trees still only reflect point estimates of the tree space. For this reason, we repeated the same procedure for the random subsample of posterior trees from the tree space analysis, resulting in 2000 additional analyses (note that the exemplar trees are contained within the posterior tree sample; 16 analyses were, therefore, technically duplicated). We compared the distribution of σ^2 of Mg/Ca and Sr/Ca in the exemplar trees to its distribution across all trees. We also tested whether different tree clusters implied different evolutionary rates. The advantage of having analyses based on a small number of trees alongside the full tree sample is that it allows for a more direct comparison with tree topology while at the same time accounting for uncertainty across tree space.

230 To test the sensitivity of our models, we applied another test where the primary data (i.e., the median values of Mg/Ca and Sr/Ca for each taxon) were randomly altered. For the [list of vectors containing the](#) median values of Mg/Ca and Sr/Ca per taxon, we applied the following R [commands-script](#) to retrieve randomly altered values:

```
1: abs(Mg_ratio + (sample(c(-1, 1), 1) * rexp(length(Mg_ratio), 1)))
2: abs(Sr_ratio + (sample(c(-1, 1), 1) * rexp(length(Sr_ratio), 10)))
3: n_Mg <- length(Mg_ratio)
4: n_Sr <- length(Sr_ratio)
```

240 5: abs(Mg_ratio + (sample(c(-1, 1), n_Mg, replace = TRUE) * rexp(n_Mg, 1)))
6: abs(Sr_ratio + (sample(c(-1, 1), n_Sr, replace = TRUE) * rexp(n_Sr, 10)))

This means that a random number was drawn from an exponential distribution and either added or subtracted (with equal probability) from the original value. The rate parameter of the exponential distribution was 1 for the Mg/Ca ratio and 10 for the Sr/Ca ratio, i.e., with expected mean values of 1 and 0.1, respectively. Thus, the median values for each taxon were altered on average by the latter values, which roughly corresponds to 10% of the mean of these element ratios (see Table 4). This is intended to model a situation where some of the data may be affected by diagenetic alteration, with most of the data being close to the original data, but a some data points changed by a larger amount. We repeated this process 100 times for each element and ran the analyses with the same settings as above, fixing the MCC tree of the entire sample. These results were then compared with the results from the analysis of cluster B's MCC tree, which used the unaltered data on the same tree.

3 Results

3.1 Element/Ca ratio data

In total, we compiled element ratio data from 29 published studies (Table 2). Four studies were discarded because they contained only taxa with uncertain generic assignments or genera with less than ~~10 specimens~~ five measurements in the entire dataset. Five studies could not be used because the authors neither supplied element ratios nor raw Ca concentrations. Without these data, we were unable to calculate element ratios. The total dataset included 2749 individual data points. After excluding the studies mentioned above and data as specified in the methods, our dataset included 2241 data points.

A statistical summary of the element ratios is given in Table 4. For all four element ratios, belemnite genera showed distinct, although partly overlapping distributions (Fig. 2; [Table A1](#)). The total ranges of element ratios within each genus were relatively wide, especially where rostra had been sampled ontogenetically (e.g., Ullmann et al., 2013, 2015; Sørensen et al., 2015; Ullmann and Pogge von Strandmann, 2017; Stevens et al., 2017, 2022). The second quartile and third quartile (i.e., the central 50% of the data) were relatively narrow for Mg/Ca and Sr/Ca in most genera.

In the case of Fe/Ca and Mn/Ca, extremely positive outliers were much more common. The mean skewness of the element ratio data per genus amounts to 0.42 for Mg/Ca, 0.31 for Sr/Ca, 2.39 for Fe/Ca, and 3.12 for Mn/Ca. A skewness of 0.0 represents a balanced distribution, while negative values indicate left skew and positive values right skew. Higher values indicate an increasingly longer tail of the distribution. The skewness becomes even stronger when considering that many values were excluded because they were below the detection limits. Thus, a large portion of the Fe/Ca and Mn/Ca ratios were close to zero. These element ratios were not used in the remainder of the analyses because the skew may reduce the representativeness of mean or median values for the genera. In addition, the Fe/Ca and Mn/Ca ratios were more homogeneous between genera; this induces difficulty when aiming to recognise a phylogenetic pattern.

For Mg/Ca and Sr/Ca ratios, the variation within genera, as expressed by the standard deviation, was generally lower than the variation between genera, i.e., the range of median values per genus (Fig. S2). Thus, the median ranged between 3.0 and

Table 4. Statistical summary of element ratios of [the](#) entire dataset.

Ratio	n	min	25%Q	median	mean	75%Q	max
Mg/Ca	2152	1.527 <u>1.53</u>	8.403 <u>8.40</u>	10.398 <u>10.40</u>	10.750 <u>10.75</u>	12.943 <u>12.94</u>	28.100 <u>28.10</u>
Sr/Ca	2241	0.392 <u>0.39</u>	1.387 <u>1.39</u>	1.520 <u>1.52</u>	1.597 <u>1.60</u>	1.762 <u>1.76</u>	3.300 <u>3.30</u>
Mn/Ca	1585	0.010 <u>0.01</u> ^a	0.007 <u>0.01</u>	0.013 <u>0.01</u>	0.091 <u>0.09</u>	0.041 <u>0.04</u>	4.580 <u>4.58</u>
Fe/Ca	1062	0.000 <u>0.00</u> ^a	0.011 <u>0.01</u>	0.040 <u>0.04</u>	0.679 <u>0.68</u>	0.141 <u>0.14</u>	26.668 <u>26.66</u>

^a Ratios are taken directly from the original publications, likely representing values below detection limit, but not referenced as such. These are included in the statistical summary here, though neither ancestral state analyses nor evolutionary rate estimations were performed for Mn/Ca and Fe/Ca.

275 [16.6 for Mg/Ca ratios and between 1.0 and 2.7 for Sr/Ca ratios, while the standard deviation ranged between 0.8 and 4.5 for Mg/Ca ratios and between 0.1 and 0.6 for Sr/Ca ratios. A contrasting pattern was observed in Fe/Ca and Mn/Ca ratios, where the median ranged between 0.01 and 0.40, and between 0.004 and 0.18, respectively, while the corresponding standard deviation was between 0.002 and 10.3, and between 0.002 and 0.9, respectively. This variability implies that taxonomy is a poor predictor for Fe/Ca and Mn/Ca ratios, and these are most likely mainly controlled by other factors such as diagenesis.](#)

Distributions of element ratios had strong overlap within species of the same genus (Fig. 3). Specimens in open nomenclature (i.e., only determined to genus level) showed a wider range of Mg/Ca ratios than identified species in *Hibolithes* (Fig. 3a) and 280 *Duvalia* (Fig. 3b). In the latter case, the average Mg/Ca ratios were distinctly lower than in identified species of the genus. The pattern in *Passaloteuthis* shows a clear bimodal distribution, with *Passaloteuthis bisculata*, *P. elongata*, *P. cuspidatus* and specimens in open nomenclature containing higher Mg/Ca ratios than other species (Fig. 3c). Note that *Passaloteuthis* specimens with lower Mg/Ca ratios came from the same study that includes data on the early to late Pliensbachian at the locality Priborzhavske in Ukraine (Arabas et al., 2017). All other data for *Passaloteuthis* come from two localities in the UK, spanning 285 the Pliensbachian and early Toarcian (Li et al., 2013; Ullmann et al., 2014, 2015; Ullmann and Pogge von Strandmann, 2017). It is thus possible that some of the identifications were incorrect or that there were other factors involved in the anomalous values of the former study. [The conversion of Sr and Ca concentrations to Sr/Ca ratios is incorrect in Arabas et al. \(2017\), see Supplementary File S1 \(Pohle et al., 2024, columns S and T, rows 119-157\). Unfortunately, the supplementary material of Arabas et al. \(2017\) does not provide raw Mg concentrations and thus, it is difficult to test whether the lower Mg/Ca ratios in](#) 290 [these *Passaloteuthis* specimens was caused by a calculation error. Nevertheless, as the correct Sr/Ca ratios can be calculated by multiplying the published values with \$\(M_{Ca}\)^2 / \(M_{Sr}\)^2 = 18.3\$, it appears that Mg/Ca ratios in Arabas et al. \(2017\), and potentially also values given in Arabas \(2016\) may also be modified by a corresponding factor of \$\(M_{Ca}\)^2 / \(M_{Mg}\)^2 = 2.8\$. If this is the case, the Mg/Ca ratios of *Passaloteuthis* in Arabas et al. \(2017\) would fall within the same range of values as other *Passaloteuthis* species. However, as these specimens make up only a small fraction of the *Passaloteuthis* specimens in the](#) 295 [dataset, we kept the published values in a conservative manner.](#)

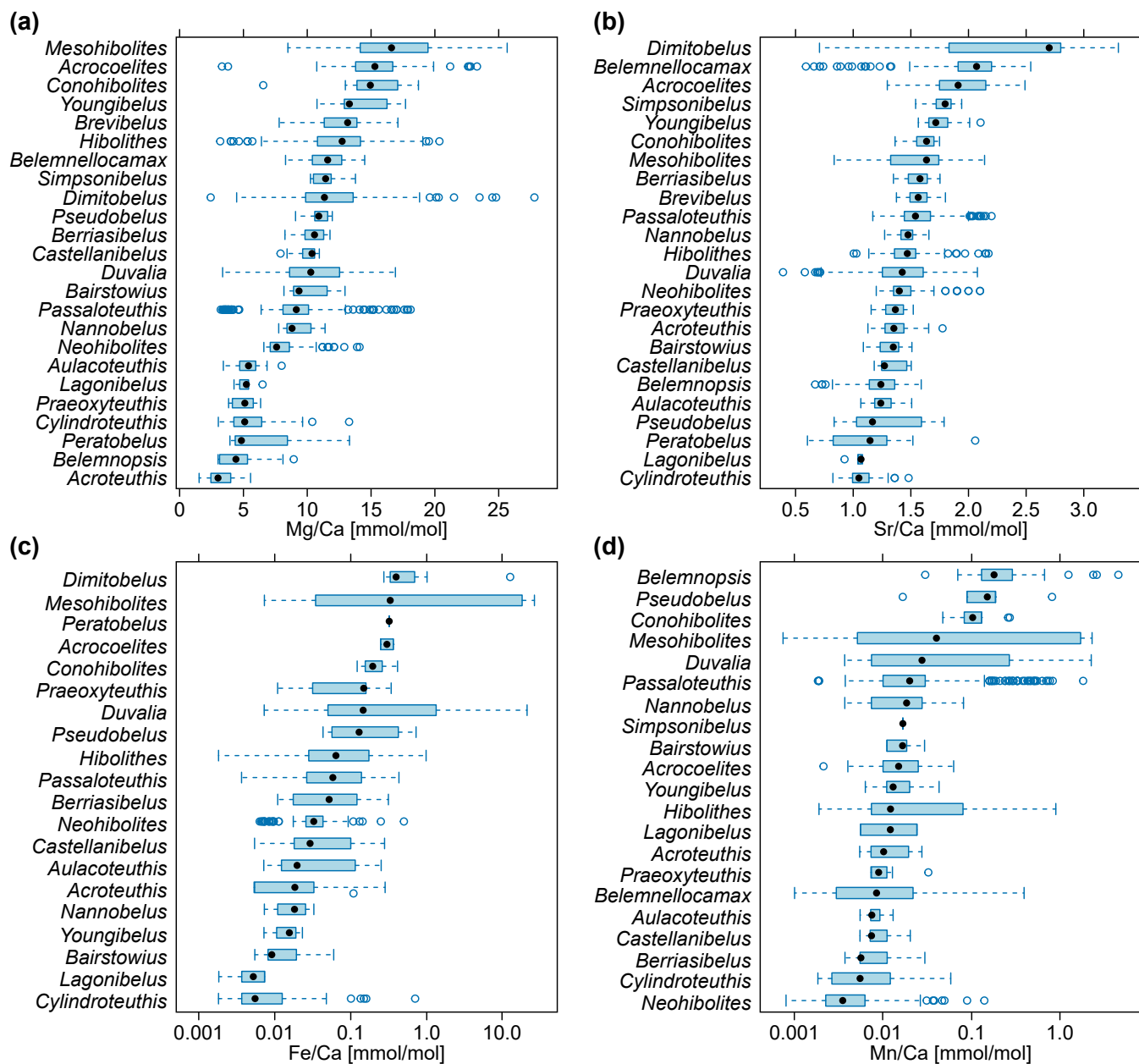


Figure 2. Belemnite rostrum element ratio distributions per genus. **(a)** Mg/Ca ratios. **(b)** Sr/Ca ratios. **(c)** Fe/Ca ratios, log scale. **(d)** Mn/Ca ratios, log scale. Data taken from entire literature dataset, see text for references.

The distributions of Mg/Ca ratios were taxon-specific within the same locality and congruent between localities (Fig. 4). This pattern was independent of the stratigraphic position. For example, at Dubki (Russian Platform), *Hibolithes* rostra occur throughout the section but do not overlap in their distribution of Mg/Ca ratios with the co-occurring *Lagonibelus* and *Cylindro-*

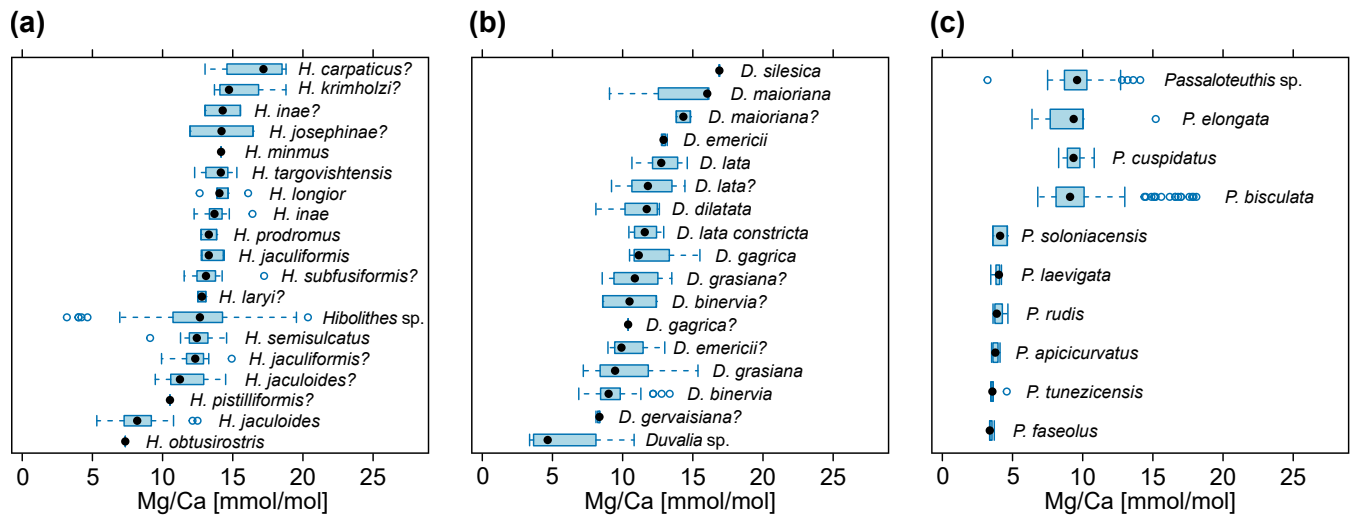


Figure 3. Belemnite rostrum Mg/Ca ratios of species within the same genus. **(a)** Species of *Hibolithes*, Callovian to Barremian (van de Schootbrugge et al., 2000; McArthur et al., 2004, 2007; Wierzbowski and Joachimski, 2007; Price et al., 2011; Li et al., 2013; Ullmann et al., 2013; Stevens et al., 2014; Arabas, 2016; Alberti et al., 2021b). **(b)** Species of *Duvalia*, Oxfordian to Aptian (van de Schootbrugge et al., 2000; McArthur et al., 2007; Price et al., 2011; Li et al., 2013; Arabas, 2016; Stevens et al., 2022). **(c)** Species of *Passaloteuthis*, Pliensbachian to Toarcian (Li et al., 2013; Ullmann et al., 2014, 2015; Arabas et al., 2017; Ullmann and Pogge von Strandmann, 2017).

teuthis (data from Wierzbowski and Rogov, 2011). Conversely, specimens of *Hibolithes*, *Duvalia* and *Belemnopsis* at Stankowa
 300 Skala (Poland) from several stratigraphic positions have almost identical Mg/Ca ratios (data from Arabas, 2016).

3.2 Morphology-based phylogeny

Overall, our morphological phylogenetic analyses recovered similar topologies as in Stevens et al. (2023), although the topological uncertainties were generally high. Multidimensional scaling revealed three clusters of trees, here termed clusters A, B and C (Fig. 5). The first two clusters make up the largest portion of tree space, with 41% of the trees falling into cluster A and
 305 49% into cluster B, the remaining 10% make up cluster C. The boundaries between the clusters are gradual in all investigated PCo axes. It is notable that cluster C is less dense and occupies an intermediate position between the other clusters in PCo axis 1 (Fig. 5b, c). This implies that clusters A and B have higher posterior densities and represent opposite optimal islands. Transitional topologies are represented by cluster C and are less frequent. In PCo axis 2 (Fig. 5b, d), all three clusters overlap; therefore, this axis does not account for differences between the clusters. PCo axis 3 shows a separation of cluster C from the
 310 other two clusters (Fig. 5c, d). The average posterior probabilities across all clades calculated for each tree did not fall outside the interval between 0.1 and 0.4. Trees in clusters A and B have higher average posterior probabilities due to a higher density of similar trees (Fig. 5a).

The selected exemplar trees provide an overview of the topological variation between tree clusters (Fig. 6). For ease of comparison, we designated four monophyletic clades in the general MCC tree (which is equivalent to the MCC tree from cluster B; Fig. 6b):

1. Pseudoalveolata (see definition in Stevens et al., 2023), $PP_{\text{tot}} = 0.64$.
2. Belemnitina, including Megateuthidae and Passaloteuthidae, $PP_{\text{tot}} = 0.06$.
3. A clade here referred to as DuvPO, comprising Duvaliidae, *Praeoxyteuthis* and *Oxyteuthis*, $PP_{\text{tot}} = 0.44$.
4. A clade here referred to as CylABY, encompassing Cyllindroteuthidae, *Aulacoteuthis*, *Bairstowius* and *Youngibelus*, $PP_{\text{tot}} = 0.16$.

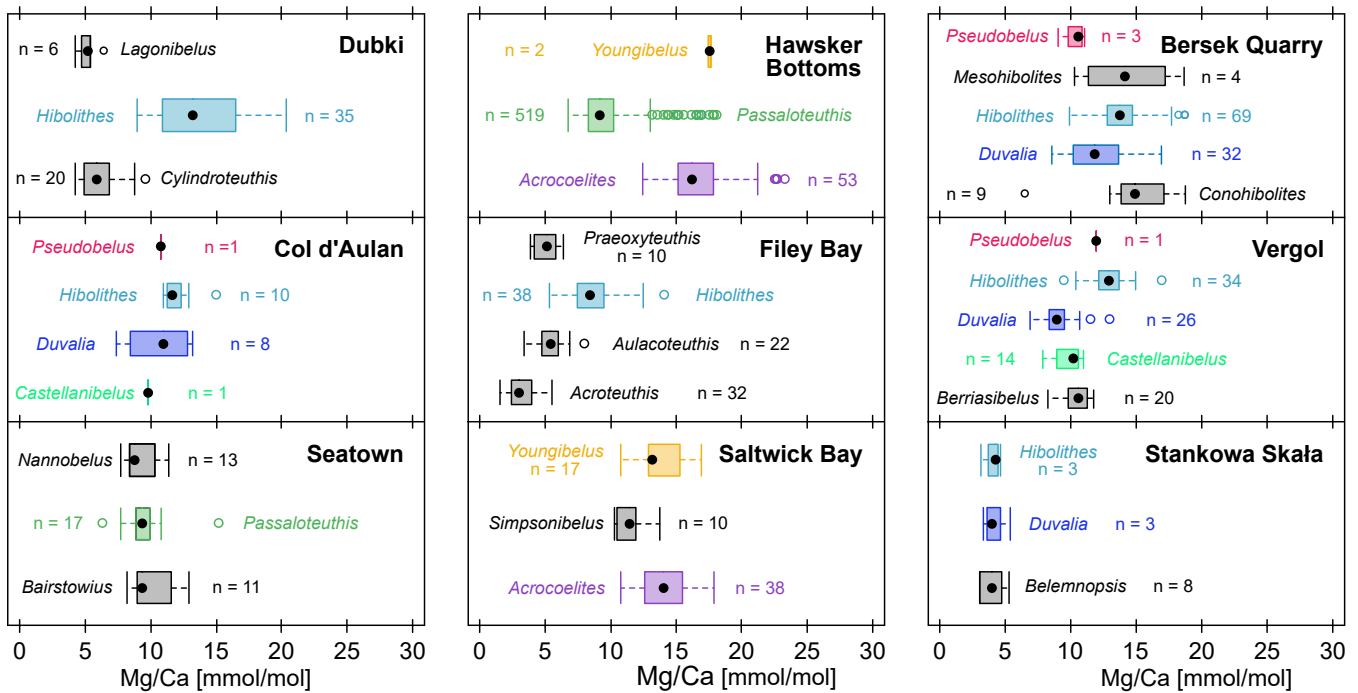


Figure 4. Mg/Ca ratios per genus within the same locality. Colours represent unique genera that occur in more than a single locality. Genera in black only occur once in this comparison. Note that we do not account for time averaging here, and individual genera may show non-overlapping stratigraphic ranges. Localities: Dubki, Russian Platform, late Callovian to early Oxfordian (Wierzbowski and Rogov, 2011); Col d'Aulan, Southeastern France, early to late Valanginian (McArthur et al., 2007); Seatown, Southern England, Pliensbachian (Li et al., 2013); Hawsker Bottoms, Northern England, Early Toarcian (Ullmann et al., 2014, 2015; Ullmann and Pogge von Strandmann, 2017); Filey Bay, Northern England, Valanginian to Barremian (McArthur et al., 2004); Saltwick Bay, Northern England, Early Toarcian (Li et al., 2012; Ullmann et al., 2014); Bersek Quarry, Northern Hungary, late Valanginian to Barremian (Price et al., 2011); Vergol, Southeastern France, early to late Valanginian (McArthur et al., 2007; Li et al., 2013). Stankowa Skała, Southern Poland, late Oxfordian to early Kimmeridgian (Arabas, 2016).

Note that except for the Pseudoalveolata, we do not consider any of these clades as definite taxonomic units due to the high uncertainties. Rather, we use them to facilitate comparison with alternative topological configurations across tree space. The posterior support for the Pseudoalveolata was variable between tree clusters ($PP_A = 0.83$; $PP_B = 0.53$; $PP_C = 0.37$; $PP_{tot} = 0.64$). This is partly caused by the uncertainty in the position of the DuvPO clade, which was occasionally recovered as forming
325 part of the Pseudoalveolata ($PP_{tot} = 0.16$). Alternative positions of DuvPO included a sister group relationship with some of the Cylindroteuthidae ($PP_{tot} = 0.18$), which was more prevalent in tree cluster A, resulting in $PP_A = 0.43$ for the same clade (Fig. 6a).

Likewise, in cluster A, CylABY was paraphyletic, but a monophyletic clade uniting the Cylindroteuthidae and DuvPO received higher support than in the total tree sample ($PP_A = 0.48$; $PP_{tot} = 0.19$). DuvPO was paraphyletic in tree cluster C (Fig.
330 6c), with *Praeoxyteuthis* and *Oxyteuthis* forming a monophyletic clade together with the Pseudoalveolata ($PP_C = 0.70$; $PP_{tot} = 0.10$). Therefore, the two genera occupied a more nested position within the Pseudoalveolata rather than being its sister group (i.e., monophyletic Pseudoalveolata: $PP_C = 0.37$) in about half of the trees in cluster C. Concurrently, the Duvaliidae received considerably higher support in cluster C than in the total tree sample ($PP_C = 0.80$; $PP_{tot} = 0.44$). The support values in tree
335 cluster C thus differ strongly from the total posterior tree sample. However, cluster C accounts only for a small proportion of the trees; thus, deviations in clade probabilities are to be expected. In comparison with tree clusters A and B, the MCC tree of cluster C contains several clades which are not supported by the total tree sample. These clades had posterior probabilities below 0.01, which means that out of 1000 trees, less than 10 trees shared an identical clade. The Cylindroteuthidae were more frequently monophyletic in tree cluster B ($PP_B = 0.78$; $PP_{tot} = 0.57$), which also applied to the CylABY, although with higher uncertainty ($PP_B = 0.23$; $PP_{tot} = 0.16$).

340 As the median tree was part of cluster C, its topological configurations resembled the MCC tree of cluster C (Fig. 6d). The clades in the median tree had even lower posterior probabilities, with 10 out of 35 nodes having posterior probabilities of 0.01 or below. As a comparison, the MCC tree from cluster C contained three nodes with $PP_{tot} \leq 0.01$, while the MCC trees from clusters A and B contained none. This suggests that the median tree is a very poor point estimate of the general tree topology despite its central position within the tree space.

345 The trees representing the limits of tree space (Fig. 6e-h) had a generally similar arrangement of the clades as the MCC trees of their respective clusters. However, the number of barely supported clades was higher (between 5 and 9 nodes with $PP_{tot} \leq 0.01$). Accordingly, the maximum trees of the PCo1 and PCo2 axes, as part of cluster A, contained a monophyletic clade containing a paraphyletic DuvPO and part of the CylABY. This clade was more closely related to the Belemnitina in the PCo1 maximum tree with negligible support ($PP_{tot} = 0.01$). In the PCo2 maximum tree, this mixed DuvPO-CylABY clade formed
350 a monophyletic group together with *Belemnopsis* as the sister group to the Pseudoalveolata ($PP_{tot} = 0.01$). Note that the latter tree recovered *Cylindroteuthis* itself elsewhere. As part of cluster B, the minimum tree of the PCo1 axis recovered a monophylum uniting DuvPO and Pseudoalveolata. In contrast to the MCC tree, DuvPO was paraphyletic and not the sister group of the (polyphyletic) Pseudoalveolata. Lastly, in the minimum tree of the PCo2 axis, DuvPO and CylABY were polyphyletic. Meanwhile, Belemnitina and Pseudoalveolata were paraphyletic in the same tree.

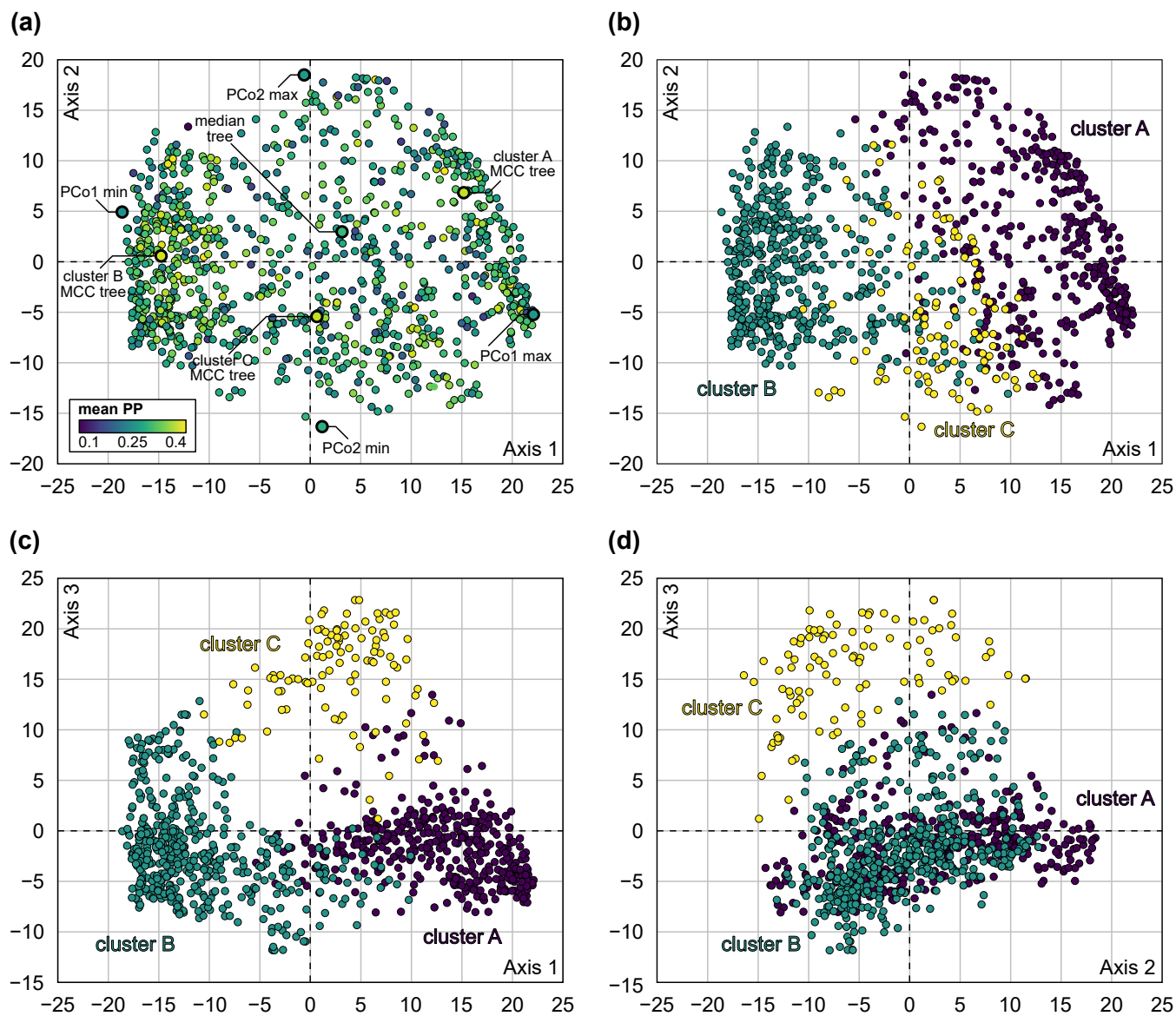


Figure 5. Principal coordinate analysis (PCo, multidimensional scaling) of tree space of subsample of 1000 trees, based on quartet distance. (a) PCo axes 1 and 2, coloured by mean posterior probability of corresponding tree, with position of exemplar trees highlighted. (b) PCo axes 1 and 2, coloured by tree cluster. (c) PCo axes 1 and 3, coloured by tree cluster. (d) PCo axes 2 and 3, coloured by tree cluster.

355 In summary, the topology of the two main clusters differs mainly in the position of DuvPO. This clade is more closely related to the Cylindroteuthidae in cluster A but more closely related to the Pseudoalveolata in cluster B. Differences in posterior probabilities are partially caused by different branching positions of DuvPO, breaking up the monophyly of other clades. The minor cluster C splits DuvPO into two clades: one related to the Pseudoalveolata, while the position of the other

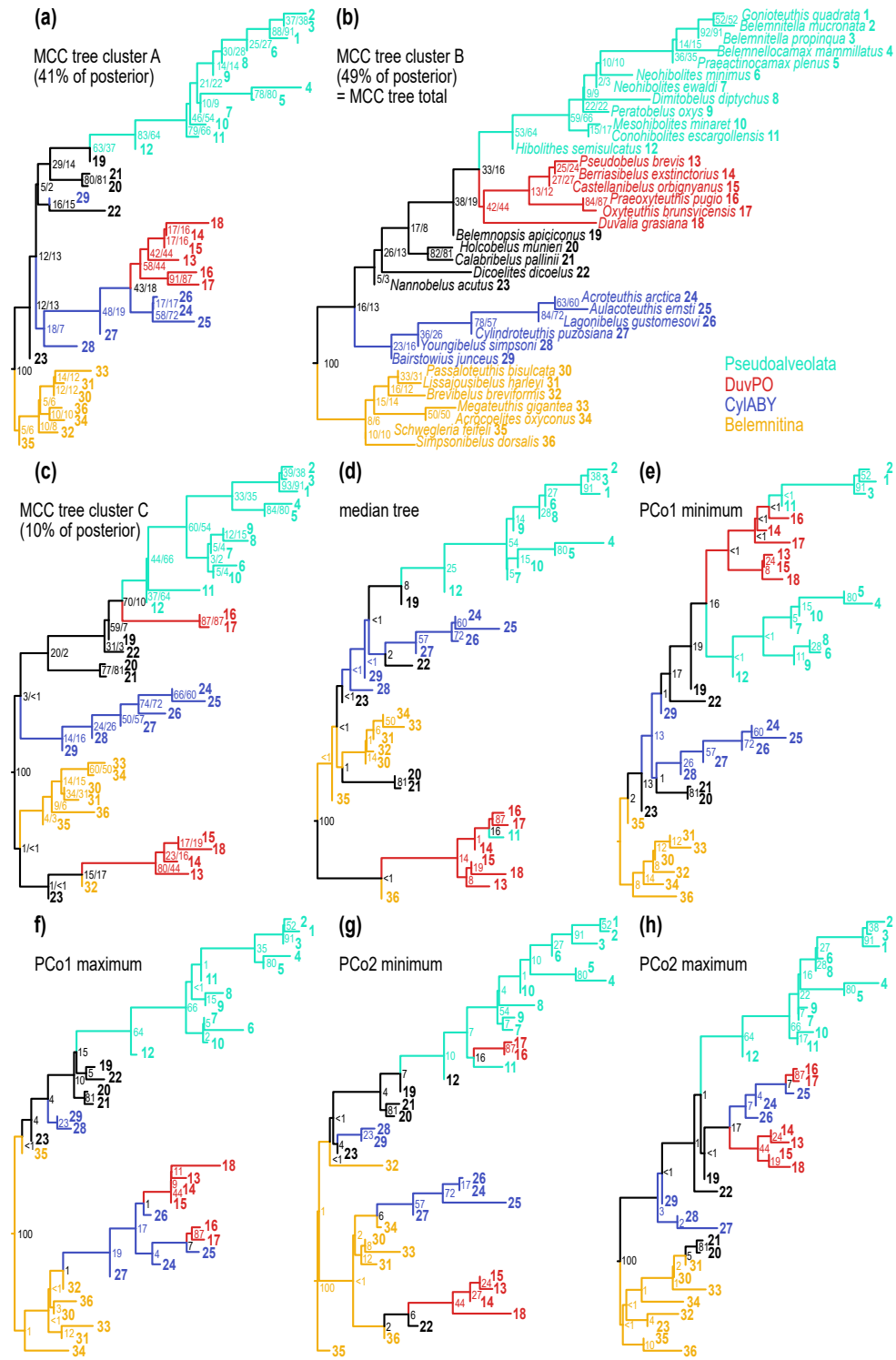


Figure 6. Sampled trees from the tip-dated analyses. Values at nodes represent proportion of trees that recover the same clade as monophyletic, i.e., the posterior probability of the clade. Where two values are given, the first value represents the proportion of agreeing clades within the same cluster, while the second value refers to the entire dataset. **(a-c)** Maximum clade credibility trees for each of the three tree clusters in the posterior (see Fig. 5). Note that the MCC tree of cluster B is identical to the MCC tree of the entire dataset. Percentages refer to the proportion of trees within the same cluster. **(d)** Median tree, calculated from the entire dataset. This tree represents an average estimate of the phylogeny within tree space. **(e-h)** Extreme topological limits of the first two axes tree space (see Fig. 5). These trees represent opposite outliers of the posterior sample, showing the range of expected topological configurations.

clade is volatile. Outlier trees contain a relatively high number of aberrant clades that are only present in a tiny fraction of the
360 trees.

3.3 Ancestral states and evolutionary rates

When plotting element ratios as a phenogram on the MCC tree, it becomes obvious that these data are inconsistently distributed across the tree (Fig. 7). For Mg/Ca, there appear to be two distinct groups: (i) one group with consistently low ratios, i.e., between 3.0 mmol/mol (*Acroteuthis*) and 5.3 mmol/mol (*Aulacoteuthis*) and (ii) one with Mg elemental concentrations being
365 higher, between 7.6 mmol/mol (*Neohibolites*) and 16.6 mmol/mol (*Mesohibolites*) (Fig. 7a). This pattern is not only restricted to the average values per genus. Comparing the distributions of each genus reveals the same gap with relatively little overlap between the two groups, although outliers exist in both directions (Fig. 2a).

In the phenogram, Mg/Ca ratios contain rapid changes between neighbouring nodes, e.g., between *Cylindroteuthis* and its sampled ancestor, *Youngibelus*. On this branch, Mg/Ca ratios decrease from 13.3 mmol/mol to 5.1 mmol/mol within approxi-
370 mately 15 Myr (Fig. 7a). The two groups only weakly reflect phylogeny, as the transition from high to low Mg happened at least ~~four~~ five times independently. Meanwhile, only a single reversal occurs at the base of the clade comprising Pseudoalveolata and DuvPO. However, note that this observation is based only on the MCC tree and does not account for topological uncertainty.

Conversely, Sr/Ca does not show distinct groups but also generally smaller changes between neighbouring tips (Fig. 7b). Most Sr/Ca are confined to an interval between 1.0 and 2.0 mmol/mol. A few outliers deviate from this pattern with elevated
375 ratios compared to their nearest relatives, such as *Dimitobelus* (2.70 mmol/mol) and *Belemnelloccamax* (2.07). A drop from 1.72 to 1.05 mmol/mol in Sr/Ca ratio was found from the sampled ancestor *Youngibelus* and its descendant *Cylindroteuthis*.

Ancestral state reconstructions draw a similar picture (Fig. 8). Mg/Ca ratios of 10.1 mmol/mol are reconstructed at the root (sd = 2.9 mmol/mol). The mean Mg/Ca ratio of all internal nodes was 9.2 mmol/mol and 9.6 mmol/mol when excluding
380 sampled ancestors (sd = 1.9 mmol/mol). The two groups of lower and higher Mg concentrations are visible as well, although except for the node including *Holcobelus* and its sister group, all internal nodes fall into the lower part of the high Mg group, i.e., between 8 and 12 mmol/mol (Fig. 8c). There are two transitions to low ratios (< 6.0 mmol/mol) at the base of larger clades. These are found in the clade comprising the sister group of *Youngibelus* (Cylindroteuthidae) and the sister group of *Nannobelus*. In the latter case, this is followed by a reversal to Mg/Ca ratios of 8.4 mmol/mol (sd = 1.8 mmol/mol) in the

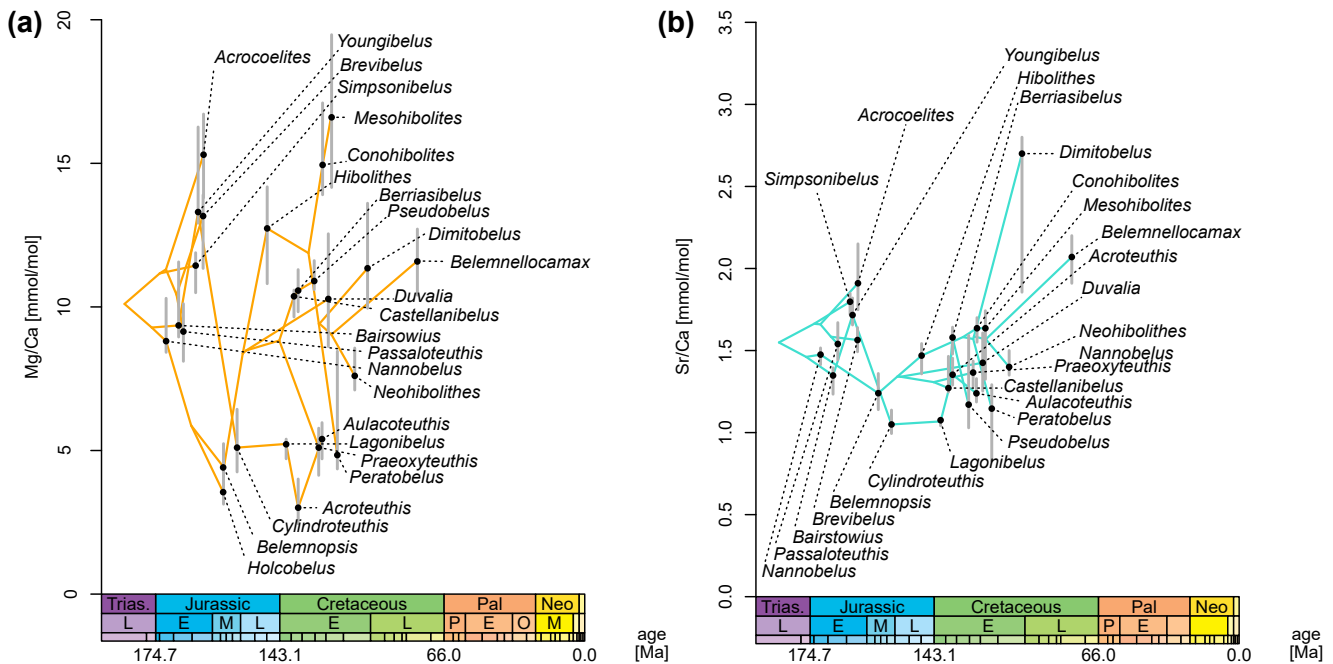


Figure 7. Phenogram of element ratios, plotted to MCC tree. Grey bars represent 75% quantiles of the data (cf. boxes in Fig. 2). **Note that time is represented in million years since the root of the tree, which is set at 216.3 Ma** [Chronostratigraphy after Gradstein and Ogg \(2020\)](#). **The youngest taxon in this tree, *Belemnellocomax mammillatus*, occurs at 78.9 Ma.** (a) Mg/Ca ratio. (b) Sr/Ca ratio.

sister group of *Belemnopsis* (Pseudoalveolata and DuvPO). The other two transitions to low Mg/Ca ratios were restricted to
 385 *Praeoxyteuthis* (5.1 mmol/mol) and *Peratobelus* (4.8 mmol/mol), respectively.

Ancestral states of Sr/Ca ratios were reconstructed as relatively homogeneous across the majority of the branches with only gradual changes except for the outliers mentioned above (Fig. 8b). The mean Sr/Ca ratio was 1.45 mmol/mol across all nodes (sd= 0.099 mmol/mol) and 1.55 at the root (sd = 0.086 mmol/mol). The ancestral states of Sr/Ca ratios at the nodes fall between 1.05 and 1.72 mmol/mol.

390 Overall, our simulations of evolutionary rates of Mg/Ca ratios inferred a mean of $\sigma^2 = 1.70$, which means that the standard deviation of change (i.e., the average absolute change, mean change is 0.0 mmol/mol) per 1 Myr is $\sigma = 1.30$ mmol/mol, and $\sigma = 4.12$ mmol/mol per 10 Myr. Given that the mean Mg/Ca ratio is 10.51 mmol/mol, these evolutionary rates suggest a change of 12.4 % of the mean value per 1 Myr. The inferred values of σ^2 for Mg/Ca ratios are consistent regardless of the exemplar tree. The mean of σ^2 ranges between 0.97 for the MCC tree of cluster B and 2.38 for the median tree (Fig. 9a). Across the
 395 sample of 1000 trees from the posterior, the 95% confidence interval of mean values from all trees was between 0.90 and 3.17 (σ between 0.95 mmol/mol and 1.78 mmol/mol per 1 Myr, or 9.0-16.9% of the mean). Notably, the MCC tree of cluster B, which coincides with the overall MCC tree, resulted in a comparatively low mean value of σ^2 with a narrow confidence interval for both Mg/Ca (Fig. 9a) and Sr/Ca (Fig. 9b).

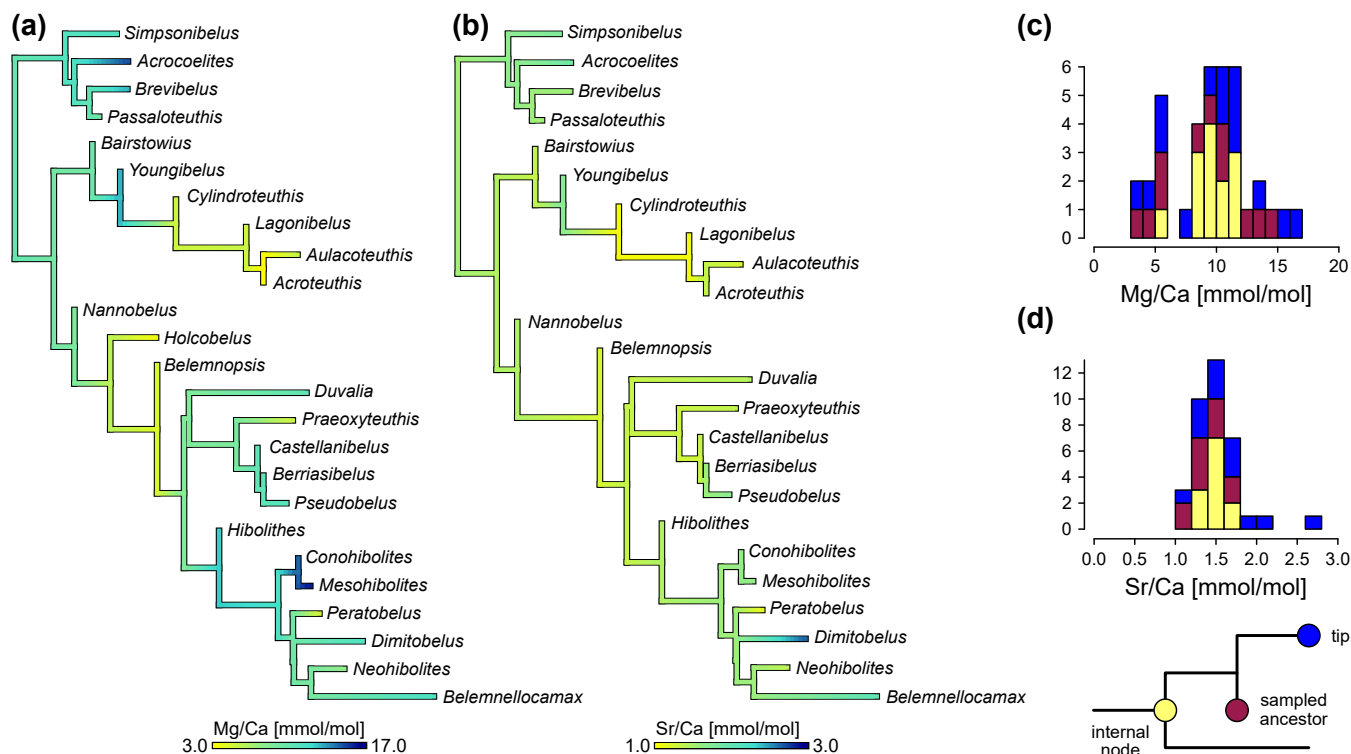


Figure 8. Ancestral state reconstructions of elemental ratios, based on MCC tree. **(a)** Mg/Ca ratio. **(b)** Sr/Ca ratio. **(c)** Histogram of Mg/Ca values, coloured by internal node, sampled ancestor and tip. **(d)** Histogram of Sr/Ca values, coloured by internal nodes, sampled ancestors and tips. Note that values at tips and sampled ancestors are directly measured, while internal nodes use average values from ancestral state reconstruction.

The evolutionary rates of Sr/Ca ratios are lower than those of Mg/Ca, but only when given as absolute values. For the entire sample, we inferred a mean value of $\sigma^2 = 0.04$. In analogy to the above, this corresponds to an average absolute change of $\sigma = 0.2$ mmol/mol per 1 Myr and $\sigma = 0.63$ mmol/mol per 10 Myr. The overall mean of Sr/Ca was 1.62 mmol/mol across all rostra in our dataset, i.e., σ reflects a change of 12.3 % of the mean per 1 Myr. This percentage is close to the corresponding value for Mg/Ca ratios. Variations in σ^2 between trees were higher for Sr/Ca than for Mg/Ca, with only slightly or non-overlapping distributions (Fig. 9b). Mean values of σ^2 in the exemplar trees ranged between 0.010 for the MCC tree of cluster B and 0.628 for the tree with the maximum value on the PCo1 axis. Across the mean values from all posterior samples, the 95% confidence contained values between 0.008 and 0.088 (σ between 0.089 mmol/mol and 0.297 mmol/mol per 1 Myr, or 5.5-18.3% of the mean).

When all posterior samples are combined, the distributions of σ^2 values based on trees from clusters A and B show almost complete congruence, while those inferred from trees of cluster C display a slightly shifted distribution for both Mg/Ca and Sr/Ca ratios (Fig. 10). Note that cluster A and B are roughly similar in size, comprising together about 90% of the trees and cluster C is less dense and occupies an intermediate position in tree space (Fig. 5).

Randomly altered data (Fig. A2) led to slightly higher values of σ^2 than the original data for the MCC tree of cluster B (Fig. 9, compare mccB vs. rdat). This pattern was observed for both Mg/Ca and Sr/Ca. The variation between the original data and randomly altered data was distinctly smaller than the differences observed using the original data but fixing different trees.

415 4 Discussion

4.1 Rostrum phylogeochimistry

Elemental concentrations of belemnite rostrum calcite are influenced by the ambient chemistry of seawater, as well as by kinetic, biological, and post-mortem (diagenetic) factors. Because of the complex interplay of different factors, reconstruction of potential evolutionary constraints (i.e., biological factors) is challenging but crucial for the interpretation of geochemical proxy data derived from these archives (e.g., Ullmann et al., 2015; Immenhauser et al., 2016; Ullmann and Pogge von Strandmann, 2017; Hoffmann and Stevens, 2020, and references therein). Results documented here are in agreement with a taxon-specific distribution of rostrum elemental ratios (McArthur et al., 2007; Wierzbowski and Joachimski, 2009; Li et al., 2013; Stevens et al., 2022). The rostra of *Cylindroteuthis*, *Belemnopsis*, *Acroteuthis* and others show particularly low Mg/Ca ratios (between 3.0 and 5.3 mmol/mol), while those of, e.g., *Acrocoelites*, *Hibolites* and *Mesohibolites* display higher Mg concentrations (between 7.6 and 16.6 mmol/mol). The distribution of Sr/Ca ratios is comparably homogenous across different taxa and plots into a relatively narrow window between 1.0 and 2.0 mmol/mol. Exceptions include high Sr/Ca ratios in *Dimitobelus* and *Belemnellocamax*. With regard to Fe/Ca and Mn/Ca ratios, the variability is found to be more significant within the same taxon compared to that between different taxa, which is what would be expected if diagenesis were the primary controlling factor. Another possible interpretation of this pattern is a stronger biomineralization effect, perhaps combined with kinetic factors.

430 The analyses presented here imply that element ratios in belemnite rostra were subject to high evolutionary rates. The simple Brownian Motion model assumes a constant evolutionary rate across the tree but this is likely a simplification. In particular, short-term environmental disturbances would have probably led to sudden changes in proxy data. Nevertheless, it is important to understand the evolutionary rate as an increase in variance through time, and not as projected absolute changes in the trait value (i.e., element/Ca). Specifically, under our model, the expected average change for element/Ca within 1 Myr is 0.0, 435 meaning that positive and negative changes cancel each other out. The expected absolute average change is $\sigma = 1.30$, which means that there would be lineages expected with stasis or minor changes, as well as lineages with larger changes. Thus, the evolutionary rate estimates should not be taken literally for individual lineages but understood in the context of the model specifications as a global average of a stochastic process. We also stress that σ^2 is simply a metric for the tempo of changes in the trait value, independently of the underlying causes.

440 As for the primary data, differences in element ratios may be, in part, biased by differences in the seawater properties inhabited by the belemnites or inherent variability in the form of variable degrees of diagenetic alteration overprinting the primary geochemical composition of the rostra.

Nevertheless, our sensitivity tests with randomly altered data suggest that the estimation of evolutionary rates is robust against the inclusion of some samples that may be diagenetically altered. Especially in taxa with a high number of samples, it

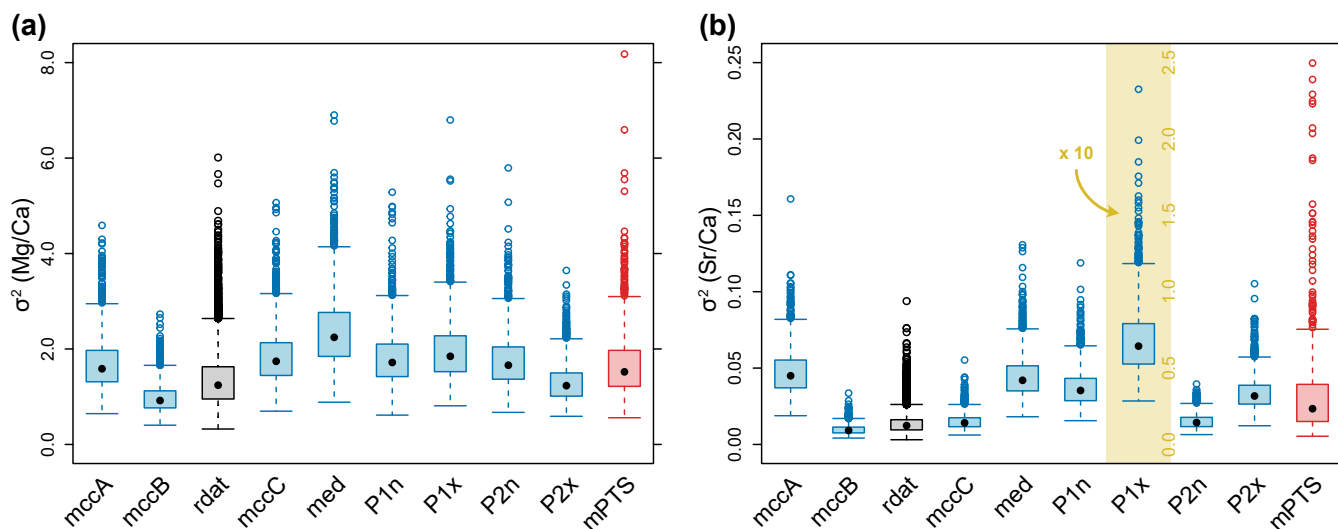


Figure 9. Evolutionary rates (σ^2) of element ratios. Blue boxplots represent posterior distributions inferred from a single tree, while the red boxplot includes the mean of every analysis for each tree from the posterior tree sample (mean posterior tree samples = mPTS). Thus, the mean of each blue boxplot corresponds to a single point of mPTS. The grey boxplot (rdat) corresponds to the analyses of randomly altered data, using the MCC tree of the entire tree sample (= mccB). Note that σ^2 of rdat is subsampled to correspond to the same sample size as mccB. (a) Evolutionary rate of Mg/Ca ratio. (b) Evolutionary rate of Sr/Ca ratio. Note that for display reasons, the boxplot in the yellow area (P1x) is rescaled, see corresponding axis labels.

445 would take a lot of data points to significantly affect the median of the Mg/Ca or Sr/Ca ratios. In comparison, uncertainty in tree topology had a larger effect on σ^2 (Fig. 9). As the values for σ^2 reported above account for uncertainty in tree topology, we consider these estimates to be reliable despite some inherent potential for biased data. The inclusion of geochemical data from further taxa would likely refine the estimates. As the estimated rates appear to be independent of topological uncertainty to some degree, more precise estimates may be achieved even if phylogenetic relationships are not always known in detail.

450 Seawater properties (water depth, latitudinal differences, basin-specific properties of aquafacies etc.) influenced the composition of the body fluids of belemnites, from which the rostrum was precipitated. Thus, these environmental properties are thought to have a direct impact on the chemical signature of the rostrum (Gröcke and Gillikin, 2008; Immenhauser et al., 2016). Even though these represent non-genetic and, therefore, phylogeny-independent factors, we argue that reconstructing evolutionary rates can still be meaningful. This is because it seems unlikely that the geochemical proxy data of different taxa would
 455 record sudden and non-systematic shifts in seawater properties, with the possible exception of major short-term disturbances (e.g., the Toarcian Oceanic Anoxic Event, see Ullmann et al., 2014). Moreover, due to the stratigraphically and geographically restricted ranges of belemnite taxa, a single species would not be expected to record significantly differing seawater properties. Widely distributed generalist and long-ranging taxa are expected to display a broader distribution in elemental ratios. Evolutionary rates would arguably reflect the frequency of habitat shifts (coastal versus open oceanic settings). Nevertheless, as

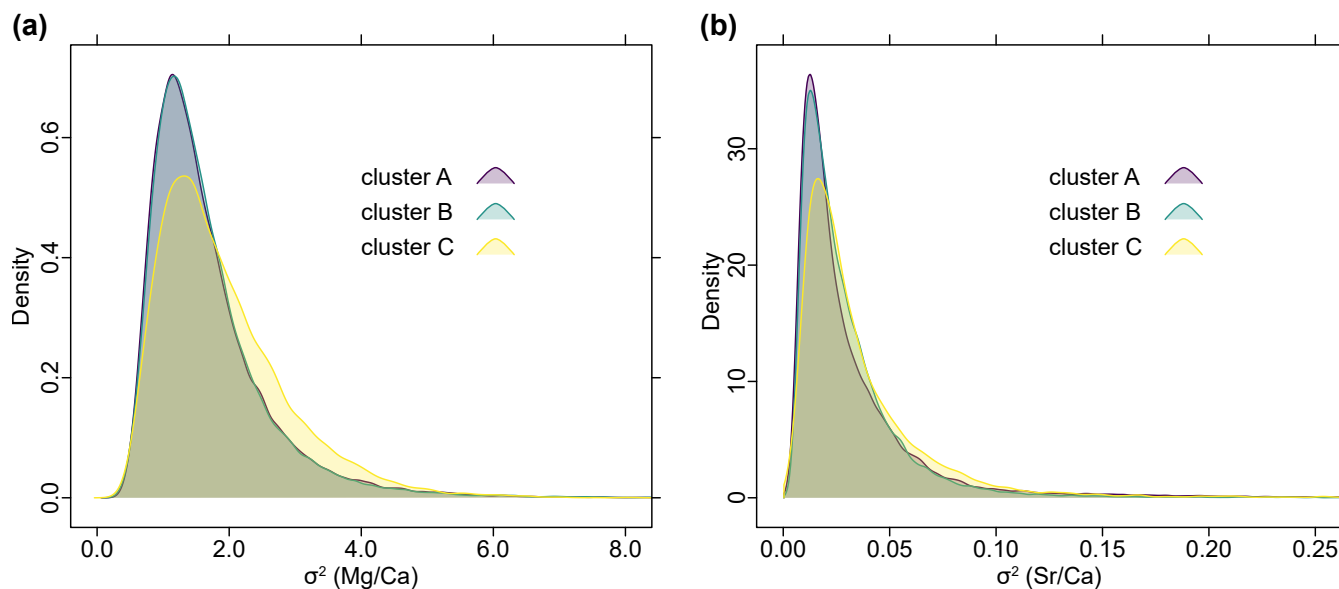


Figure 10. Density plots of combined posterior samples of σ^2 inferred from all trees, grouped after tree clusters (see Fig. 5). Note that cluster A and cluster B almost entirely overlap, while cluster C is slightly shifted. **(a)** Distribution of evolutionary rate of Mg/Ca ratios. **(b)** Distribution of evolutionary rate of Sr/Ca ratios.

460 differences in element ratios of belemnite taxa from the same locality exist (Fig. 4), seawater properties are probably not the only contributing factor.

Post-mortem (diagenetic) alteration and poorly constrained kinetic (disequilibrium) effects are significant problems in the analysis of evolutionary rates. That said, it seems likely that the proxy data analysed should display some degree of homogenisation of the differences between taxa if diagenetic resetting were a dominant control. Diagenetic homogenisation would be most pronounced for specimens in a given section that has seen above-average diagenetic overprint (i.e., deep burial and hydrothermal or meteoric alteration, etc.), independent of taxonomy. Note that this would likely also result in a larger scatter of the proxy data on the individual scale.

The ancestral state reconstructions and inferred evolutionary rates suggest that element ratios show a complex pattern with frequent clade-independent changes despite their taxon-specific distributions. There are several, not mutually exclusive explanations for this pattern:

475 1) *High evolutionary rates are a genuine feature of belemnite rostrum geochemistry.* Given that the dataset used includes a limited amount of taxa, the changes are perhaps too rapid to be accurately detected. A much denser species sampling would be required to support or reject this hypothesis. Given that the amount of available characters is limited, producing a phylogeny with the required level of accuracy is challenging. In addition, for many species, only a limited number of well-constrained elemental concentrations are available in the literature.

Moreover, the identification of species in published works is often difficult to confirm. This is because sample extraction (usually drilling of powder samples or crushing of bulk rostra) is a destructive process. Not every specimen is documented both before and after sampling. Moreover, the identification at the species level was not necessarily the aim of the published studies, many of which focussed on palaeoceanographic aspects and often lacked guidance by belemnite taxonomists. This effect is demonstrated by the fact that taxa in open nomenclature (i.e., only identified to genus level) have relatively wide ranges of element ratios (Fig. 3). This indicates that the specimens may belong to different species.

A wide range of Mg/Ca data for persistent and widespread taxa like *Hibolites* might also be caused by hidden genetic diversity that is not observable in rostrum morphology alone. It always has to be kept in mind that the rostrum represents a phylogenetically informative character, but every ‘rostrataxon’ probably contains several ‘biological taxa’ and potentially vice versa. This can be compared to the situation in sepiids, in which the congruence of taxa (genera/subgenera/species) based on genetic markers and cuttlebone morphology is complex (e.g., Lupše et al., 2023). A better understanding of the chemical signatures of different species is urgently needed for geochemical studies but may also have some taxonomic relevance. We thus encourage the inclusion of geochemical data in taxonomic studies, if available. If homologous spatial and ontogenetic areas of the rostrum are targeted, it may be possible to identify ‘chemospecies’ within a contemporary assemblage.

2) *The elemental concentrations are strongly ontogenetically and spatially controlled.* Differences in proxy data related to ontogenetic stages and position within the rostrum are not always reported. That said, there is evidence that element ratios of rostra vary during ontogeny and a trend towards higher Mg/Ca ratios in early ontogenetic stages and close to the apical line of several taxa was reported (Ullmann et al., 2015; Stevens et al., 2017, 2022; Ullmann and Pogge von Strandmann, 2017). Depending on the volume of the subsamples drilled, later ontogenetic stages and parts that are further away from the apical line might be overrepresented in our data as these form larger portions of the rostrum and, hence, are more likely sampled or dominate the signature of bulk sampled rostra. Examples of sampling that include highly resolved ontogenetic and spatial data are *Passaloteuthis* (Ullmann et al., 2015), *Neohibolites* (Stevens et al., 2017) and *Duvalia* (Stevens et al., 2022), all of which contain outliers in Mg/Ca and to a lesser degree in Sr/Ca. However, the bulk of the data overlaps with data from other genera that were not sampled with a focus on ontogenetic stages (Fig. 2a).

3) *Patterns in rostrum proxy data reflect genuine patterns in seawater hydrogeochemistry* (see Hoffmann and Stevens, 2020 for discussion and critique). If this holds, element concentrations, and hence ratios, are expectedly controlled by phenotypic plasticity as opposed to evolutionary (i.e., genetic) constraints. Detecting plasticity in the fossil record is challenging because genetic and environmental factors are not easily separated (Lister, 2021). Recent coleoid cephalopods are known for increased levels of plasticity (e.g., Boyle and von Boletzky, 1996), which may, in part, be due to extensive amounts of RNA editing (Liscovitch-Brauer et al., 2017). It may also be possible that each belemnite taxon has a distinct partition coefficient for each element, which may be used to calculate seawater properties. However, ~~this view is likely too simple, as complex pathways the pathways that~~ form mollusc biominerals are complex, and bodily fluids differ in their elemental composition from seawater (Immenhauser et al., 2016). Thus, calculating such coefficients ~~would be non-trivial and difficult to test since the original seawater composition is unknown~~ is challenging and requires a much wider sampling coverage than is currently available.

510 4) The *heterogeneous* dataset *includes a wide range of taxa* *is too heterogeneous and obscures any underlying pattern*. This heterogeneity might include a sampling and analytical bias. Even if most studies use the same analytical method (e.g., wet chemical analysis), minor technical differences such as experimental protocols, equipment or even human factors might play a small role. In the case of sample material that was drilled mechanically from rostra, the position of the sampling point and the volume of subsamples might affect the resulting data (see, e.g., Ullmann et al., 2015). If all data were collected for a single
515 study, good scientific practice would dictate that the same protocol would be used for every sample. For obvious reasons, this was not possible for our study. All of these features are difficult to constrain, but it is argued that the effect is likely negligible but, if present, should be non-systematic (i.e., ~~not biased in a particular direction, but at most produce more noisy data~~ affects all specimens regardless of their taxonomic position).

Besides the phylogenetic patterns, we noted that there is a strong correlation between the evolutionary rate σ^2 of the Mg/Ca
520 and Sr/Ca ratios (Spearman's rank correlation: $\rho = 0.57$, p-value < 0.001; Fig. 11b). It seems likely that this feature is caused by the general correlation of Mg/Ca and Sr/Ca ratios across all belemnite rostra in our dataset (Spearman's rank correlation: $\rho = 0.49$, p-value < 0.001; Fig. 11a). Alternatively, it might also be argued that if element ratios (of individual specimens) would be distributed independently of phylogeny and taxonomy, a direct link with evolutionary rates (the average of individual trees) is not necessarily to be expected. At the level of a working hypothesis, we take this notion as evidence for a taxon-specific vital
525 effect of element ratios. Another possibility is that this pattern is caused by extreme outliers being relatively short-lived – since Mg/Ca and Sr/Ca are correlated, a peak would decrease more rapidly in both, while lower element ratios would remain stable for a longer period.

Our study shows that rostrum Mg/Ca ratios if properly understood, need to be interpreted in an evolutionary context. Cylindroteuthids appear to contain relatively low Mg/Ca ratios, while the Pseudoalveolata and Belemnitina have relatively high
530 Mg/Ca ratios. However, these are general trends, and the changes are rapid in some cases. There is a strong overlap between individual taxa, suggesting that identifications based on element ratios alone are not possible. Thus, element ratios should be used carefully as a character in phylogenetic analyses. It also shows the importance of identifying belemnite material as accurately as possible before using it for geochemical studies.

In contrast, they are well suited for the reconstruction of ancestral states and inference of evolutionary rates. Future studies
535 may also investigate their potential in species-level analyses, where rapid changes can be more easily detected, and the amount of characters is particularly poor. In contrast, Sr/Ca ratios appear to be relatively independent of phylogeny, although they still show a more or less taxon-specific distribution. Comparing the two elemental ratios implies that there was some genetic control on the incorporation of Mg into the rostrum. Presumably, this is related to the biomineralization strategy that underwent evolutionary changes between taxa. Alternatively, the discrepancy might be related, at least in part, to solid solution geochemistry;
540 specifically, the ionic radii of Mg and Sr. Mg ionic radii (0.72 Å) are more suitable to substitute Ca (1.0 Å) in the calcite crystal lattice. In contrast, Sr ionic radii (1.31 Å) are more suitable for substituting Ca in the aragonite crystal lattice (see Immenhauser et al., 2016 for details and explanation). For the calcitic belemnite rostra, this means that (arguably) the amount of Mg was more variable than Sr, ~~requiring fewer genetic modifications in the biomineralization apparatus~~ allowing for a higher number of different expressions in the genetics in the biomineralization apparatus with respect to its incorporation.

545 In conclusion, rostrum element ratios likely represent a complex interplay of evolutionary, ontogenetic, environmental, kinetic and diagenetic factors, which all need to be accounted for if these archives are to be used as geochemical proxies. Diagenetic bias can be reduced by various screening processes, including cathodoluminescence analysis, although there are potential pitfalls (see Stevens et al., 2022). Ontogenetic variation can be accounted for by appropriate sampling strategies and either compare their trajectories or only compare similar ontogenetic stages (e.g., Ullmann et al., 2013, 2015; Sørensen et al., 550 2015; Stevens et al., 2017, 2022; Ullmann and Pogge von Strandmann, 2017). The sampling position within the rostrum needs to be specifically tailored to align with the research goal, i.e., a study on environmental effects will likely require a broader sampling. In contrast, for phylogenetic studies, sampling the same position and the same ontogenetic stage is important due to homology. To account for evolutionary constraints, the taxonomy of the studied specimens should be precisely controlled, ideally with well-documented reference images and/or measurements. This complexity calls for a greater interdisciplinary 555 effort to collaborate between geochemists, oceanographers and palaeontologists when interpreting proxy data from belemnite rostra.

Due to uncertainties in their phylogenetic relationships, taxonomic identity of taxa used for proxy data and complications arising from the nektic lifestyle of belemnites, the use of phylogeochimistry in this group currently only provides incomplete information. Nevertheless, there is hardly any other group for which a large and well-constrained set of proxy data and 560 time-calibrated phylogenies are available at the same time. Thus, belemnites still represent one of the currently best systems to test applications of phylogeochimistry. It will be therefore of interest to further expand and align taxonomic, phylogenetic and geochemical work on belemnites.

4.2 Belemnite phylogeny

Reconstructing a well-supported phylogeny was not a primary goal of this study, though extending previous results from Stevens et al. (2023) was a necessary first step. Consequently, our results provide additional insights into this still largely un- 565 charted area. We find further support for the Pseudoalveolata (Stevens et al., 2023), while the position of the Duvaliidae remains obscure, with some support for its closer association with the Pseudoalveolata. The decreased support of the Pseudoalveolata in comparison with Stevens et al. (2023) is partly caused by the uncertainty in the position of the DuvPO clade, which was occasionally recovered as forming part of the Pseudoalveolata. This question requires further investigation, e.g., by analysing 570 the rostrum microstructures of additional species. Improved species sampling may also be useful, as the number of Jurassic and Early Cretaceous pseudoalveolates and duvaliids is still rather low in our matrix.

In comparison with the earlier study, our analysis also included a denser sampling of Duvaliidae, Cyliindroteuthidae and Oxyteuthidae. These three families previously formed a (poorly supported) monophyletic clade together with *Dicoelites* (Stevens et al., 2023) but were here resolved differently. Instead of being a sister group to the Cyliindroteuthidae, our results suggest 575 that *Oxyteuthis* and *Praeoxyteuthis* are more closely related to the (paraphyletic) Duvaliidae, while *Aulacoteuthis* received high support as a member of the Cyliindroteuthidae. Mutterlose and Baraboshkin (2003) suggested that the Hauterivian boreal *Aulacoteuthis absolutiformis* belongs to the Cyliindroteuthidae, while the mid-Barremian *Aulacoteuthis* from northwestern Europe (which is included here with *A. ernsti*) was thought to be a member of the endemic Oxyteuthidae. Our results imply a

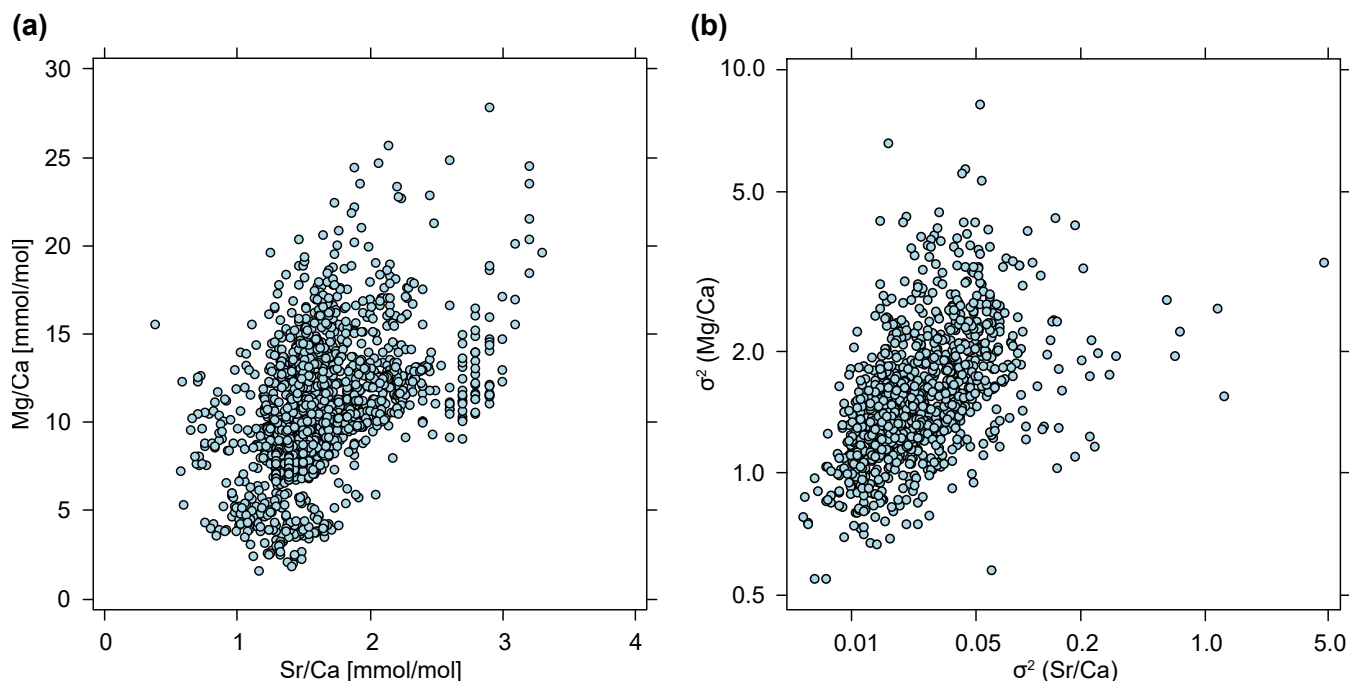


Figure 11. Correlation between element ratios and their evolutionary rates. **(a)** Element ratios as raw values, taken from entire data set, i.e., each point represents a single measurement from a belemnite rostrum ($n = 2241$). **(b)** Evolutionary rates (σ^2), taken as means of posterior samples, i.e., each point represents the average evolutionary rate inferred for a single tree ($n = 1000$). Note that B is shown on a double logarithmic scale.

possible alternative, with the cylindroteuthid *Aulacoteuthis* migrating into Europe during the mid-Barremian, contrasting with
 580 the conclusion of Mutterlose (1983) based on a biometric, stratophenetic approach.

The previous analysis suggested a monophyletic Belemnitina that excludes the families Cyllindroteuthidae and Oxyteuthidae (Stevens et al., 2023). Our results suggest alternative scenarios where the ‘Belemnitina’ represent an ancestral paraphyletic group from which later belemnitid lineages evolved. However, topological uncertainties are particularly high near the base of the tree. Note that we excluded sinobelemnitids here, which may be relevant for the early diversification of the group but
 585 are still poorly known (Zhu and Bian, 1984; Iba et al., 2012; Ma et al., 2023). Neither microstructures nor geochemistry of sinobelemnitids have been investigated so far.

The volatility of belemnitid relationships retrieved from this study and compared to the previous analysis highlights that further research is needed. The number of characters needs to be expanded in the future, e.g., by implementing geometric morphometric data (e.g., Dera et al., 2016). Further insights may also be gained by including taxa from several currently
 590 un(der)sampled families (e.g., Hastidae, Salpingoteuthidae).

Beyond belemnitid relationships, our study serves as a practical example of how topological uncertainties within a posterior tree sample may be investigated using available tools of tree space analysis. In palaeontological phylogenetic studies, only a

single reference tree is usually given with support values reflecting uncertainty, e.g., posterior probability in trees inferred with Bayesian methods or bootstrap support in Parsimony trees (e.g., O'Reilly and Donoghue, 2018). Summary trees, however, represent only a point estimate, and clade supports are difficult to interpret because alternative topological configurations are not obvious. By using multidimensional scaling and analysing individual tree clusters (Jombart et al., 2017), we show how to investigate the extent and potential sources of topological incongruence in trees resulting from a single analysis. In particular, we suggest that using partial posterior probabilities of clades only within clusters of trees is helpful in identifying clades with conflicting positions between tree clusters. For example, a clade may show weak overall support but highly supported, incompatible positions in different tree clusters. The approach thus allows us to explicitly formulate alternative phylogenetic configurations rather than generally reporting high topological uncertainty. Furthermore, by reporting trees with maximum and minimum values on the principal coordinate axes, it is possible to assess the limits of the topological variation within the posterior tree sample.

4.3 Implications for chemical diagenesis-screening of belemnite rostra

Screening of belemnite rostra calcite for evidence of post-mortem alteration (note, diagenetic modification of biominerals can commence during the lifetime of an organism, Immenhauser et al., 2016) has been a topic for many decades. Besides optical methods such as SEM imaging and cathodoluminescence (e.g., Saelen, 1989; Barbin et al., 1991), element concentrations were introduced as a sensitive tool to assess alteration (Veizer, 1974). The increase of Mn and Fe elemental concentrations and the decrease of Sr and Mg concentrations are thought to indicate diagenetic alteration (e.g., Veizer, 1983; Ullmann and Korte, 2015). The threshold limits were set at variable values, depending on the local context (cf. Dutton et al., 2007; Price and Mutterlose, 2004; Wierzbowski and Joachimski, 2007). Moreover, recent work has documented that diagenesis may result in fabric-retentive carbonates with altered geochemical proxy values or, *vice versa*, in fabric-destructive carbonates with largely preserved marine geochemical signatures (Bernard et al., 2017; Immenhauser, 2022; Mueller et al., 2024).

The results shown here are in agreement with the work by Stevens et al. (2022), suggesting that the threshold limits for Mn and Fe elemental concentrations have ~~usually-often~~ been set too high in ~~many~~-earlier studies. This may be, in part, caused by underlying assumptions on the (unknown) original composition of the belemnite rostrum. Due to potential environmental (different water masses with different geochemical properties through which the nekctic belemnites move), kinetic (non-equilibrium fractionation) and biological (biomineralization strategies) impact on Mg/Ca and Sr/Ca ratios, we ~~question the validity of specific-urge for caution when using~~ threshold limits on screening approaches. We ~~tentatively-propose that the~~ propose that taxonomy should be taken into account when defining threshold limits, in addition to the local diagenetic context and depending on the proxy of interest. Tentatively, the values indicated in Table 4 might give hints for more refined threshold limits for Mn/Ca and Fe/Ca ratios. Additionally, Fe/Ca and Mn/Ca ratios may also be compared at the genus level (Fig. 2c, d; Table A1). However, we highlight that in state-of-the-art diagenesis screening of fossil biominerals, screening techniques should not be used in isolation, and chemical assessments need to be combined with thorough analyses by microstructural, SEM-based methods or cathodoluminescence microscopy.

5 Conclusions

‘Phylogeochimistry’ is here proposed as a new term for the application of Bayesian phylogenetic tools to study evolutionary pathways of the chemical composition of fossil biomineralising organisms. [The term may even be defined more broadly, when considering macroevolutionary patterns of geochemical proxy data \(e.g., Boscolo-Galazzo et al., 2025\).](#) Here, we tested the utility of element/Ca ratio data as a phylogenetic character. Our results show that evolutionary rates of Mg/Ca and Sr/Ca ratios in belemnites are relatively high, so they are likely of limited use in reconstructing evolutionary relationships unless applied at a high taxonomic resolution. The heterogeneous changes in Mg/Ca provide insights into the evolution of biomineralization patterns. Our study highlights that care must be taken when interpreting geochemical data of belemnite rostra, as evolutionary constraints cause biased element ratios, particularly if samples are taken from distantly related taxa. Therefore, it is crucial to accurately document the taxonomic identity of the analysed material in geochemical studies. [Although not all proxy data are necessarily affected by primary taxonomic differences, and taxonomy may be irrelevant to the goals of the respective study, this allows re-usability of the data for other studies where it may be relevant.](#) For future research, we propose detailed analyses on a lower taxonomic level to analyse short-term changes in element compositions.

Phylogeochimistry has a high potential for future studies, as using this approach makes it possible to link proxy data with taxa in a time-calibrated phylogeny directly. Thus, rather than comparing a phylogenetic tree to a (global) curve of proxy data, each tip in the phylogeny will have associated proxy data, ideally reflecting local environmental conditions. This opens the door for a large amount of potential applications by adding an evolutionary dimension. Potential applications are, e.g., testing the influence of local temperatures on extinction or speciation rates or the frequency of evolutionary transitions between cold water and warm water clades. Naturally, this kind of study requires either strongly environmentally-driven proxy data or a profound understanding of their evolutionary constraints. Performing comparable studies for isotope data ($\delta^{13}\text{C}$, $\delta^{18}\text{O}$) is, therefore, an obvious next step. Our methodology can also easily be transferred to other groups of fossil or even living biomineralising organisms. Last but not least, the flexibility of Bayesian techniques allows for extending the complexity of the models, e.g., by incorporating locality-specific factors to account for environmental effects or testing alternative evolutionary models that allow for variable rates (relaxed Brownian Motion) or evolutionary optima (Ornstein-Uhlenbeck). This study thus represents an important starting point for an evolutionary perspective on geochemical archive data and offers a plethora of opportunities for further research.

Appendix A: Data variability and model sensitivity

Table A1. Statistical summary of element/Ca ratios and sample size per genus, listing median (= med), standard deviation (= sd) and sample size (= n). All values are rounded, but the highest available precision was used for subsequent analyses. Note that sample size refers to the total number of measurement points, but individual measurements per genus may be lower.

Genus	Mg/Ca			Sr/Ca			Fe/Ca			Mn/Ca		
	med	sd	n	med	sd	n	med	sd	n	med	sd	sd
<i>Acrocoelites</i>	15.3	3.06	101	1.91	0.25	109	0.31	0.08	2	0.01	0.01	82
<i>Acroteuthis</i>	3.0	1.05	32	1.35	0.15	32	0.02	0.07	32	0.01	0.01	32
<i>Aulacoteuthis</i>	5.4	1.08	22	1.24	0.12	22	0.02	0.09	22	0.01	0.00	22
<i>Bairstowius</i>	9.4	1.74	11	1.35	0.14	11	0.01	0.02	11	0.02	0.01	11
<i>Belemnellocamax</i>	11.6	1.33	206	2.07	0.36	206	-	-	0	0.01	0.07	206
<i>Belemnopsis</i>	4.4	2.08	10	1.24	0.20	85	-	-	0	0.18	0.61	83
<i>Berriasibelus</i>	10.6	0.98	20	1.58	0.10	20	0.05	0.08	20	0.01	0.01	20
<i>Brevibelus</i>	13.2	2.08	31	1.56	0.11	31	-	-	0	-	-	0
<i>Castellanibelus</i>	10.4	0.94	17	1.27	0.11	17	0.03	0.07	17	0.01	0.00	17
<i>Conohibolites</i>	14.9	3.57	9	1.64	0.13	9	0.20	0.09	9	0.10	0.08	9
<i>Cylindroteuthis</i>	5.1	1.97	52	1.05	0.13	52	0.01	0.10	52	0.01	0.01	52
<i>Dimitobelus</i>	11.3	4.28	128	2.70	0.63	127	0.40	4.35	8	-	-	0
<i>Duvalia</i>	10.3	2.57	127	1.43	0.35	124	0.15	4.61	124	0.03	0.42	124
<i>Hibolites</i>	12.7	3.03	237	1.47	0.17	235	0.06	0.16	225	0.01	0.14	228
<i>Lagonibelus</i>	5.2	0.76	6	1.07	0.06	6	0.01	0.00	6	0.01	0.01	6
<i>Mesohibolites</i>	16.6	4.45	50	1.64	0.37	50	0.33	10.29	50	0.04	0.91	50
<i>Nannobelus</i>	8.8	1.16	13	1.48	0.11	13	0.02	0.03	13	0.02	0.02	13
<i>Neohibolites</i>	7.6	1.68	84	1.40	0.20	84	0.03	0.06	84	0.00	0.02	84
<i>Passaloteuthis</i>	9.1	2.21	568	1.54	0.18	568	0.06	0.09	43	0.02	0.13	567
<i>Peratobelus</i>	4.8	2.98	13	1.15	0.38	13	0.32	-	1	-	-	0
<i>Praeoxyteuthis</i>	5.1	0.94	10	1.37	0.11	10	0.15	0.11	10	0.01	0.01	10
<i>Pseudobelus</i>	10.9	1.00	6	1.17	0.36	6	0.13	0.27	6	0.15	0.29	6
<i>Simpsonibelus</i>	11.4	1.14	10	1.80	0.13	10	-	-	0	0.02	-	1
<i>Youngibelus</i>	13.3	2.09	19	1.72	0.14	19	0.02	0.01	3	0.01	0.01	9

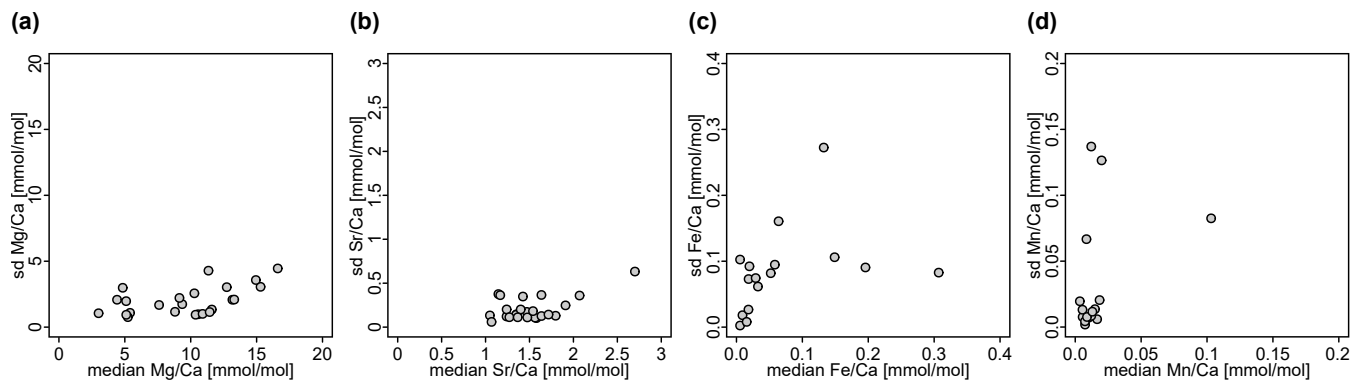


Figure A1. Intra- and intergeneric variation of element/Ca ratios, with the standard deviation (= sd) plotted against the median for each genus. Note that the range of standard deviation is lower than the range of median values for Mg/Ca and Sr/Ca, implying that variation between genera is larger than variation within genera. The opposite is the case for Fe/Ca and Mn/Ca. (a) Mg/Ca. (b) Sr/Ca. (c) Fe/Ca. (d) Mn/Ca.

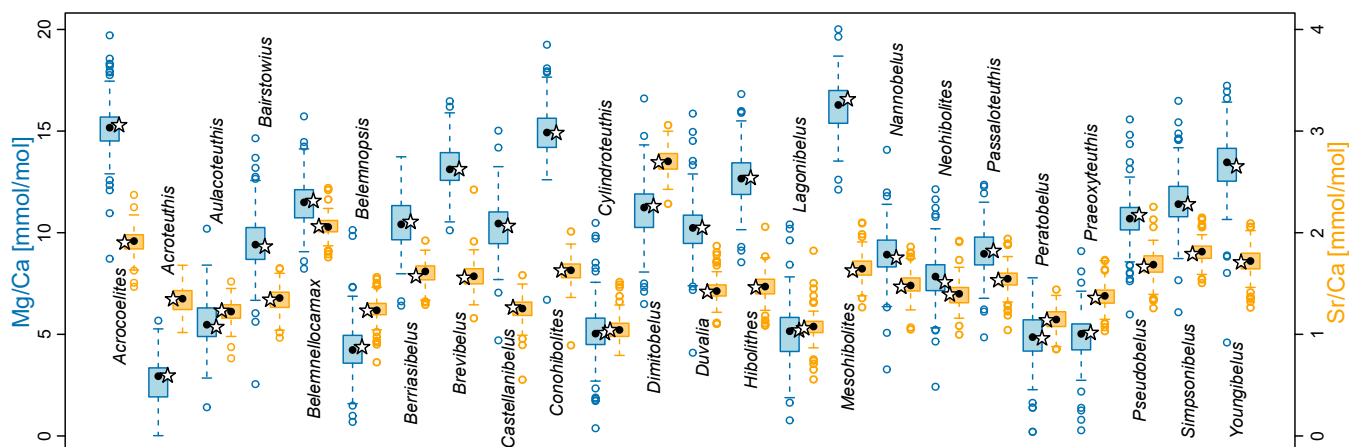


Figure A2. Randomly altered data for sensitivity test. Stars represent the original input values for the analyses, i.e., the median of the element/Ca ratios for each taxon. Boxplots represent the distribution of the 100 random iterations of altered data, each of which were then used as input for a separate analysis to test the sensitivity of the results.

Code and data availability. All script and data files are available in the supplementary material at <https://doi.org/10.5281/zenodo.14004248> (Pohle et al., 2024). File S1 includes the literature dataset of element ratios of belemnite rostra (including calculated missing values). Note
655 that the literature dataset is much more inclusive and not all data therein were used for the analyses. Excluded data are thus highlighted in red. S2 is a zip file that contains the RevBayes scripts files used for the phylogenetic analyses and estimation of evolutionary rates, the nexus file containing the morphological character matrix and the output log and trees files. Mg/Ca and Sr/Ca ratios for all genera and estimated values at nodes are listed in file S3.

Author contributions. KS, AP and RH conceptualised the study; AP assembled literature data with the help of KS and RH, developed the
660 methods, wrote the script files, analysed the data and produced the figures; KS and AI acquired funding; AP wrote the initial manuscript with input from KS, RH and AI; all authors revised and edited the manuscript.

Competing interests. The authors declare that they have no conflict of interest.

Acknowledgements. We thank Laura Jonas for her help with calculations of some of the compiled element ratios. We are grateful for the reviews by C. V. Ullmann and M. Vickers, who greatly helped to improve the final version of the manuscript. This study was funded by DFG
665 project no. 507867999.

References

- Alberti, M., Fürsich, F. T., Pandey, D. K., Andersen, N., Garbe-Schönberg, D., Bhosale, S., Chaskar, K., and Habermann, J. M.: First record of stable isotopes ($\delta^{13}\text{C}$, $\delta^{18}\text{O}$) and element ratios (Mg/Ca, Sr/Ca) of Middle to Late Jurassic belemnites from the Indian Himalayas and their potential for palaeoenvironmental reconstructions, *Journal of Palaeogeography*, 10, 24, <https://doi.org/10.1186/s42501-021-00103-2>, 2021a.
- 670 Alberti, M., Parent, H., Garrido, A. C., Andersen, N., Garbe-Schönberg, D., and Danise, S.: Stable isotopes ($\delta^{13}\text{C}$, $\delta^{18}\text{O}$) and element ratios (Mg/Ca, Sr/Ca) of Jurassic belemnites, bivalves and brachiopods from the Neuquén Basin (Argentina): challenges and opportunities for palaeoenvironmental reconstructions, *Journal of the Geological Society*, 178, jgs2020–163, <https://doi.org/10.1144/jgs2020-163>, 2021b.
- Arabas, A.: Middle–Upper Jurassic stable isotope records and seawater temperature variations: New palaeoclimate data from marine carbonate and belemnite rostra (Pieniny Klippen Belt, Carpathians), *Palaeogeography, Palaeoclimatology, Palaeoecology*, 446, 284–294, <https://doi.org/10.1016/j.palaeo.2016.01.033>, 2016.
- 675 Arabas, A., Schlögl, J., and Meister, C.: Early Jurassic carbon and oxygen isotope records and seawater temperature variations: Insights from marine carbonate and belemnite rostra (Pieniny Klippen Belt, Carpathians), *Palaeogeography, Palaeoclimatology, Palaeoecology*, 485, 119–135, <https://doi.org/10.1016/j.palaeo.2017.06.007>, 2017.
- 680 Armendáriz, M., Rosales, I., Bádenas, B., Aurell, M., García-Ramos, J. C., and Piñuela, L.: High-resolution chemostratigraphic records from Lower Pliensbachian belemnites: Palaeoclimatic perturbations, organic facies and water mass exchange (Asturian basin, northern Spain), *Palaeogeography, Palaeoclimatology, Palaeoecology*, 333–334, 178–191, <https://doi.org/10.1016/j.palaeo.2012.03.029>, 2012.
- Arvidson, R. S. and Mackenzie, F. T.: The dolomite problem; control of precipitation kinetics by temperature and saturation state, *American Journal of Science*, 299, 257–288, <https://doi.org/10.2475/ajs.299.4.257>, 1999.
- 685 Barbin, V., Ramseyer, K., Debenay, J. P., Schein, E., Roux, M., and Decrouez, D.: Cathodoluminescence of Recent biogenic carbonates: environmental and ontogenetic fingerprint, *Geological Magazine*, 128, 19–26, <https://doi.org/10.1017/S001675680001801X>, 1991.
- Barido-Sottani, J., Aguirre-Fernández, G., Hopkins, M. J., Stadler, T., and Warnock, R.: Ignoring stratigraphic age uncertainty leads to erroneous estimates of species divergence times under the fossilized birth–death process, *Proceedings of the Royal Society B: Biological Sciences*, 286, 20190685, <https://doi.org/10.1098/rspb.2019.0685>, 2019.
- 690 Barido-Sottani, J., van Tiel, N. M. A., Hopkins, M. J., Wright, D. F., Stadler, T., and Warnock, R. C. M.: Ignoring Fossil Age Uncertainty Leads to Inaccurate Topology and Divergence Time Estimates in Time Calibrated Tree Inference, *Frontiers in Ecology and Evolution*, 8, 1–13, <https://doi.org/10.3389/fevo.2020.00183>, 2020.
- Benito, M. I. and Reolid, M.: Belemnite taphonomy (Upper Jurassic, Western Tethys) part II: Fossil–diagenetic analysis including combined petrographic and geochemical techniques, *Palaeogeography, Palaeoclimatology, Palaeoecology*, 358–360, 89–108, <https://doi.org/10.1016/j.palaeo.2012.06.035>, 2012.
- 695 Benito, M. I., Reolid, M., and Viedma, C.: On the microstructure, growth pattern and original porosity of belemnite rostra: insights from calcitic Jurassic belemnites, *Journal of Iberian Geology*, 42, 201–226, https://doi.org/10.5209/rev_JIGE.2016.v42.n2.53232, 2016.
- Berling, L., Klawitter, J., Bouckaert, R., Xie, D., Gavryushkin, A., and Drummond, A. J.: A tractable tree distribution parameterized by clade probabilities and its application to Bayesian phylogenetic point estimation, preprint, *Bioinformatics*, <https://doi.org/10.1101/2024.02.20.581316>, 2024.
- 700 Bernard, S., Daval, D., Ackerer, P., Pont, S., and Meibom, A.: Burial-induced oxygen-isotope re-equilibration of fossil foraminifera explains ocean paleotemperature paradoxes, *Nature Communications*, 8, 1134, <https://doi.org/10.1038/s41467-017-01225-9>, 2017.

- Boscolo-Galazzo, F., Evans, D., Mawbey, E. M., Gray, W. R., Pearson, P. N., and Wade, B. S.: Exploring macroevolutionary links in multi-species planktonic foraminiferal Mg/Ca and $\delta^{18}\text{O}$ from 15 Ma to recent, *Biogeosciences*, 22, 1095–1113, <https://doi.org/10.5194/bg-22-1095-2025>, 2025.
- 705 Boyle, P. R. and von Boletzky, S.: Cephalopod populations: definition and dynamics, *Philosophical Transactions of the Royal Society of London. Series B: Biological Sciences*, 351, 985–1002, <https://doi.org/10.1098/rstb.1996.0089>, 1996.
- Christensen, W. K.: Upper Cretaceous belemnites from the Kristianstad area in Scania, no. no. 7 in *Fossils and strata*, Universitetsforlaget, Oslo, ISBN 978-82-00-09374-9, 1975.
- 710 Christensen, W. K.: The Late Cretaceous belemnite family Belemnitellidae: Taxonomy and evolutionary history, *Bulletin of the Geological Society of Denmark*, 44, 59–88, <https://doi.org/10.37570/bgsd-1998-44-04>, 1997.
- Combémoré, R.: Les Duvaliidae Pavlow (Belemnitida) du Crétacé inférieur français [The Duvaliidae Pavlow (Belemnitida) from the French Lower Cretaceous], *Documents des Laboratoires de Géologie de la Faculté des Sciences de Lyon, Notes et Mémoires*, 57, 131–186, 1973.
- Cuif, J.-P., Dauphin, Y., and Sorauf, J. E.: *Biominerals and Fossils Through Time*, Cambridge University Press, 1 edn., ISBN 978-0-521-715 87473-1 978-0-511-78107-0, <https://doi.org/10.1017/CBO9780511781070>, 2010.
- Dauphin, Y. and Cuif, J. P.: Implications systématiques de l'analyse microstructurale des rostres de trois genres d'Aulacocérédés triasiques (Cephalopoda — Coleoidea) [Systematic implications of the microstructural analysis of rostra of three genera of Triassic aulacoerids (Cephalopoda — Coleoidea)], *Palaeontographica Abteilung A*, 169, 28–50, 1980.
- Dera, G., Toumoulin, A., and De Baets, K.: Diversity and morphological evolution of Jurassic belemnites from South Germany, *Palaeogeography, Palaeoclimatology, Palaeoecology*, 457, 80–97, <https://doi.org/10.1016/j.palaeo.2016.05.029>, 2016.
- 720 Doyle, P.: The British Toarcian (Lower Jurassic) belemnites - part 2, *Monographs of the Palaeontographical Society*, 145, 50–75, <https://doi.org/10.1080/25761900.2022.12131770>, 1991.
- Doyle, P.: Aspects of the distribution of Early Jurassic belemnites, *Palaeopelagos Special Publication*, 1, 109–120, 1994.
- Dray, S. and Dufour, A.-B.: The ADE4 package: implementing the duality diagram for ecologists, *Journal of Statistical Software*, 22, 725 <https://doi.org/10.18637/jss.v022.i04>, 2007.
- Dutton, A., Huber, B. T., Lohmann, K. C., and Zinsmeister, W. J.: High-resolution stable isotope profiles of a dimitobelid belemnite: implications for paleodepth habitat and late Maastrichtian climate seasonality, *Palaios*, 22, 642–650, <https://doi.org/10.2110/palo.2005.p05-064r>, 2007.
- Felsenstein, J.: Phylogenies and the comparative method, *The American Naturalist*, 125, 1–15, <https://doi.org/10.1086/284325>, 1985.
- 730 Felsenstein, J.: *Inferring Phylogenies*, Oxford University Press, Oxford, New York, ISBN 978-0-87893-177-4, 2003.
- Gavryushkina, A., Welch, D., Stadler, T., and Drummond, A. J.: Bayesian inference of sampled ancestor trees for epidemiology and fossil calibration, *PLoS Computational Biology*, 10, e1003 919, <https://doi.org/10.1371/journal.pcbi.1003919>, 2014.
- Gómez, J., Goy, A., and Canales, M.: Seawater temperature and carbon isotope variations in belemnites linked to mass extinction during the Toarcian (Early Jurassic) in Central and Northern Spain. Comparison with other European sections, *Palaeogeography, Palaeoclimatology, Palaeoecology*, 258, 28–58, <https://doi.org/10.1016/j.palaeo.2007.11.005>, 2008.
- 735 Gradstein, F. M. and Ogg, J. G.: The Chronostratigraphic Scale, in: *Geologic Time Scale 2020, Volume 1*, edited by Gradstein, F. M., Ogg, J. G., Schmitz, M. D., and Ogg, G. M., pp. 21–32, Elsevier, ISBN 978-0-12-824360-2, <https://doi.org/10.1016/B978-0-12-824360-2.00002-4>, 2020.
- Gröcke, D. R. and Gillikin, D. P.: Advances in mollusc sclerochronology and sclerochemistry: tools for understanding climate and environment, *Geo-Marine Letters*, 28, 265–268, <https://doi.org/10.1007/s00367-008-0108-4>, 2008.
- 740

- Grossman, E. L., Mii, H.-S., Zhang, C., and Yancey, T. E.: Chemical variation in Pennsylvanian brachiopod shells – diagenetic, taxonomic, microstructural, and seasonal effects, *Journal of Sedimentary Research*, 66, 1011–1022, <https://doi.org/10.1306/D4268469-2B26-11D7-8648000102C1865D>, 1996.
- 745 Heath, T. A., Huelsenbeck, J. P., and Stadler, T.: The fossilized birth-death process for coherent calibration of divergence-time estimates, *Proceedings of the National Academy of Sciences*, 111, E2957–E2966, <https://doi.org/10.1073/pnas.1319091111>, 2014.
- Heled, J. and Bouckaert, R. R.: Looking for trees in the forest: Summary tree from posterior samples, *BMC Evolutionary Biology*, 13, 221, <https://doi.org/10.1186/1471-2148-13-221>, 2013.
- Hoffmann, R. and Stevens, K.: The palaeobiology of belemnites – foundation for the interpretation of rostrum geochemistry, *Biological Reviews*, 95, 94–123, <https://doi.org/10.1111/brv.12557>, 2020.
- 750 Hoffmann, R., Richter, D., Neuser, R., Jöns, N., Linzmeier, B., Lemanis, R., Füsseis, F., Xiao, X., and Immenhauser, A.: Evidence for a composite organic–inorganic fabric of belemnite rostra: Implications for palaeoceanography and palaeoecology, *Sedimentary Geology*, 341, 203–215, <https://doi.org/10.1016/j.sedgeo.2016.06.001>, 2016.
- Hoffmann, R., Linzmeier, B. J., Kitajima, K., Nehrke, G., Dietzel, M., Jöns, N., Stevens, K., and Immenhauser, A.: Complex biomineralization pathways of the belemnite rostrum cause biased paleotemperature estimates, *Minerals*, 11, 1406, <https://doi.org/10.3390/min11121406>, 2021.
- 755 Hoffmann, R., Howarth, M. K., Fuchs, D., Klug, C., and Korn, D.: The higher taxonomic nomenclature of Devonian to Cretaceous ammonoids and Jurassic to Cretaceous ammonites including their authorship and publication, *Neues Jahrbuch für Geologie und Paläontologie - Abhandlungen*, 305, 187–197, <https://doi.org/10.1127/njgpa/2022/1085>, 2022.
- Höhna, S., Heath, T. A., Boussau, B., Landis, M. J., Ronquist, F., and Huelsenbeck, J. P.: Probabilistic Graphical Model Representation in *Phylogenetics, Systematic Biology*, 63, 753–771, <https://doi.org/10.1093/sysbio/syu039>, 2014.
- 760 Höhna, S., Landis, M. J., Heath, T. A., Boussau, B., Lartillot, N., Moore, B. R., Huelsenbeck, J. P., and Ronquist, F.: RevBayes: Bayesian Phylogenetic Inference Using Graphical Models and an Interactive Model-Specification Language, *Systematic Biology*, 65, 726–736, <https://doi.org/10.1093/sysbio/syw021>, 2016.
- Iba, Y., Sano, S.-i., Mutterlose, J., and Kondo, Y.: Belemnites originated in the Triassic—A new look at an old group, *Geology*, 40, 911–914, <https://doi.org/10.1130/G33402.1>, 2012.
- 765 Immenhauser, A.: On the delimitation of the carbonate burial realm, *The Depositional Record*, 8, 524–574, <https://doi.org/10.1002/dep2.173>, 2022.
- Immenhauser, A., Schöne, B. R., Hoffmann, R., and Niedermayr, A.: Mollusc and brachiopod skeletal hard parts: Intricate archives of their marine environment, *Sedimentology*, 63, 1–59, <https://doi.org/10.1111/sed.12231>, 2016.
- 770 Janssen, N. M. M.: Mediterranean Neocomian belemnites, part 2: the Berriasian-Valanginian boundary in southeast Spain (Río Argos, Cañada Lengua and Tornajo), *Scripta Geologica*, 126, 121–183, 2003.
- Janssen, N. M. M. and Főzy, I.: Neocomian belemnites and ammonites from the Bersek-hegy (Gerecse Mountains, Hungary), part II: Barremian, *Fragmenta Palaeontologica Hungarica*, 23, 59–86, 2005.
- Jombart, T., Kendall, M., Almagro-Garcia, J., and Colijn, C.: TREESPACE: Statistical exploration of landscapes of phylogenetic trees, *Molecular Ecology Resources*, 17, 1385–1392, <https://doi.org/10.1111/1755-0998.12676>, 2017.
- 775 Joy, J. B., Liang, R. H., McCloskey, R. M., Nguyen, T., and Poon, A. F. Y.: Ancestral reconstruction, *PLOS Computational Biology*, 12, e1004763, <https://doi.org/10.1371/journal.pcbi.1004763>, 2016.

- Kendall, M. and Colijn, C.: Mapping phylogenetic trees to reveal distinct patterns of evolution, *Molecular Biology and Evolution*, 33, 2735–2743, <https://doi.org/10.1093/molbev/msw124>, 2016.
- 780 Lange, S. M., Krause, S., Ritter, A.-C., Fichtner, V., Immenhauser, A., Strauss, H., and Treude, T.: Anaerobic microbial activity affects earliest diagenetic pathways of bivalve shells, *Sedimentology*, 65, 1390–1411, <https://doi.org/10.1111/sed.12428>, 2018.
- Lewis, P. O.: A likelihood approach to estimating phylogeny from discrete morphological character data, *Systematic Biology*, 50, 913–925, <https://doi.org/10.1080/106351501753462876>, 2001.
- Li, Q., McArthur, J., and Atkinson, T.: Lower Jurassic belemnites as indicators of palaeo-temperature, *Palaeogeography, Palaeoclimatology, Palaeoecology*, 315–316, 38–45, <https://doi.org/10.1016/j.palaeo.2011.11.006>, 2012.
- 785 Li, Q., McArthur, J., Doyle, P., Janssen, N., Leng, M., Müller, W., and Reboulet, S.: Evaluating Mg/Ca in belemnite calcite as a palaeo-proxy, *Palaeogeography, Palaeoclimatology, Palaeoecology*, 388, 98–108, <https://doi.org/10.1016/j.palaeo.2013.07.030>, 2013.
- Liscovitch-Brauer, N., Alon, S., Porath, H. T., Elstein, B., Unger, R., Ziv, T., Admon, A., Levanon, E. Y., Rosenthal, J. J., and Eisenberg, E.: Trade-off between transcriptome plasticity and genome evolution in cephalopods, *Cell*, 169, 191–202.e11, <https://doi.org/10.1016/j.cell.2017.03.025>, 2017.
- 790 Lister, A. M.: Phenotypic plasticity in the fossil record, in: *Phenotypic plasticity & evolution*, pp. 267–297, CRC Press, <https://doi.org/10.1201/9780429343001>, 2021.
- Lowenstam, H. A. and Epstein, S.: Paleotemperatures of the post-Aptian Cretaceous as determined by the oxygen isotope method, *The Journal of Geology*, 62, 207–248, <https://doi.org/10.1086/626160>, 1954.
- 795 Lupše, N., Reid, A., Taite, M., Kubodera, T., and Allcock, A. L.: Cuttlefishes (Cephalopoda, Sepiidae): the bare bones—an hypothesis of relationships, *Marine Biology*, 170, 93, <https://doi.org/10.1007/s00227-023-04195-3>, 2023.
- Ma, Z., Zhang, T., Chen, J., Popa, M. E., Li, H., Li, S., Zeng, J., and Zhang, X.: The earliest belemnite linked with the Carnian Pluvial Episode, *Frontiers in Ecology and Evolution*, 11, 1236 222, <https://doi.org/10.3389/fevo.2023.1236222>, 2023.
- Malkoć, M., Mutterlose, J., and Pauly, S.: Timing of the Early Aptian $\delta^{13}\text{C}$ excursion in the Boreal Realm, *Newsletters on Stratigraphy*, 43, 800 251–273, <https://doi.org/10.1127/0078-0421/2010/0043-0251>, 2010.
- Mariotti, N., Pignatti, J. S., and Riegraf, W.: Part M, Chapter 23B: Systematic descriptions: Aulacoceratida, *Treatise Online*, 148, 1–18, <https://doi.org/10.17161/to.vi.15255>, 2021.
- McArthur, J., Mutterlose, J., Price, G., Rawson, P., Ruffell, A., and Thirlwall, M.: Belemnites of Valanginian, Hauterivian and Barremian age: Sr-isotope stratigraphy, composition ($^{87}\text{Sr}/^{86}\text{Sr}$, $\delta^{13}\text{C}$, $\delta^{18}\text{O}$, Na, Sr, Mg), and palaeo-oceanography, *Palaeogeography, Palaeoclimatology, Palaeoecology*, 202, 253–272, [https://doi.org/10.1016/S0031-0182\(03\)00638-2](https://doi.org/10.1016/S0031-0182(03)00638-2), 2004.
- 805 McArthur, J., Janssen, N., Reboulet, S., Leng, M., Thirlwall, M., and Van De Schootbrugge, B.: Palaeotemperatures, polar ice-volume, and isotope stratigraphy (Mg/Ca, $\delta^{18}\text{O}$, $\delta^{13}\text{C}$, $^{87}\text{Sr}/^{86}\text{Sr}$): The Early Cretaceous (Berriasian, Valanginian, Hauterivian), *Palaeogeography, Palaeoclimatology, Palaeoecology*, 248, 391–430, <https://doi.org/10.1016/j.palaeo.2006.12.015>, 2007.
- Mueller, M., Walter, B., Giebel, R., Beranoaguirre, A., Swart, P., Lu, C., Riechelmann, S., and Immenhauser, A.: Towards a better understanding of the geochemical proxy record of complex carbonate archives, *Geochimica et Cosmochimica Acta*, 376, 68–99, <https://doi.org/10.1016/j.gca.2024.04.029>, 2024.
- 810 Mutterlose, J.: Phylogenie und Biostratigraphie der Unterfamilie Oxyteuthinae (Belemnitida) aus dem Barreme (Unter-Kreide) NW-Europas [Phylogeny and biostratigraphy of the subfamily Oxyteuthinae (Belemnitida) from the Barremian (Lower Cretaceous) of NW Europe], *Palaeontographica Abteilung A*, 180, 1–90, 1983.

- 815 Mutterlose, J. and Baraboshkin, E. J.: Taxonomy of the Early Cretaceous belemnite species *Aulacoteuthis absolutiformis* (Sinzow, 1877) and its type status, *Berliner paläobiologische Abhandlungen*, 3, 179–187, 2003.
- Mutterlose, J., Malkoc, M., Schouten, S., Sinninghe Damsté, J. S., and Forster, A.: TEX₈₆ and stable $\delta^{18}\text{O}$ paleothermometry of early Cretaceous sediments: Implications for belemnite ecology and paleotemperature proxy application, *Earth and Planetary Science Letters*, 298, 286–298, <https://doi.org/10.1016/j.epsl.2010.07.043>, 2010.
- 820 Niebuhr, B. and Joachimski, M. M.: Stable isotope and trace element geochemistry of Upper Cretaceous carbonates and belemnite rostra (Middle Campanian, north Germany), *Geobios*, 35, 51–64, [https://doi.org/10.1016/S0016-6995\(02\)00009-8](https://doi.org/10.1016/S0016-6995(02)00009-8), 2002.
- Niko, S. and Ehiro, M.: *Tohokubelus* gen. nov., the oldest belemnite from the Olenekian (Lower Triassic) of Northeast Japan, *Paleontological Research*, 26, <https://doi.org/10.2517/PR200036>, 2022.
- O'Reilly, J. E. and Donoghue, P. C. J.: The efficacy of consensus tree methods for summarizing phylogenetic relationships from a posterior
825 sample of trees estimated from morphological data, *Systematic Biology*, 67, 354–362, <https://doi.org/10.1093/sysbio/syx086>, 2018.
- Paradis, E. and Schliep, K.: ape 5.0: an environment for modern phylogenetics and evolutionary analyses in R, *Bioinformatics*, 35, 526–528, <https://doi.org/10.1093/bioinformatics/bty633>, 2019.
- Pirrie, D., Marshall, J., Doyle, P., and Riccardi, A.: Cool early Albian climates; new data from Argentina, *Cretaceous Research*, 25, 27–33, <https://doi.org/10.1016/j.cretres.2003.10.002>, 2004.
- 830 Piwoni-Piórewicz, A., Liow, L. H., Krzemińska, M., Chelchowski, M., Iglíkowska, A., Ronco, F., Mazurkiewicz, M., Smith, A. M., Gordon, D. P., Waeschenbach, A., Najorka, J., Figuerola, B., Boonzaaier-Davids, M. K., Achilleos, K., Mello, H., Florence, W. K., Vieira, L. M., Ostrovsky, A. N., Shunatova, N., Porter, J. S., Sokolover, N., Cumming, R. L., Novosel, M., O'Dea, A., Lombardi, C., Jain, S. S., Huang, D., and Kukliński, P.: Skeletal mineralogy of marine calcifying organisms shaped by seawater temperature and evolutionary history—A case study of cheilostome bryozoans, *Global Ecology and Biogeography*, 33, e13 874, <https://doi.org/10.1111/geb.13874>, 2024.
- 835 Pohle, A., Stevens, K., Hoffmann, R., and Immenhauser, A.: Supplementary material: Phylogeochimistry: exploring evolutionary constraints on belemnite rostrum element composition [Data set], <https://doi.org/10.5281/zenodo.14004248>, 2024.
- Price, G. and Mutterlose, J.: Isotopic signals from late Jurassic–early Cretaceous (Volgian–Valanginian) sub-Arctic belemnites, Yatria River, Western Siberia, *Journal of the Geological Society*, 161, 959–968, <https://doi.org/10.1144/0016-764903-169>, 2004.
- Price, G., Wilkinson, D., Hart, M., Page, K., and Grimes, S.: Isotopic analysis of coexisting Late Jurassic fish otoliths and molluscs: Implications for upper-ocean water temperature estimates, *Geology*, 37, 215–218, <https://doi.org/10.1130/G25377A.1>, 2009.
- 840 Price, G., Fözy, I., Janssen, N., and Pálffy, J.: Late Valanginian–Barremian (Early Cretaceous) palaeotemperatures inferred from belemnite stable isotope and Mg/Ca ratios from Bersek Quarry (Gerecse Mountains, Transdanubian Range, Hungary), *Palaeogeography, Palaeoclimatology, Palaeoecology*, 305, 1–9, <https://doi.org/10.1016/j.palaeo.2011.02.007>, 2011.
- Price, G., Williamson, T., Henderson, R., and Gagan, M.: Barremian–Cenomanian palaeotemperatures for Australian seas based
845 on new oxygen-isotope data from belemnite rostra, *Palaeogeography, Palaeoclimatology, Palaeoecology*, 358–360, 27–39, <https://doi.org/10.1016/j.palaeo.2012.07.015>, 2012.
- R Core Team: R: A Language and Environment for Statistical Computing, R Foundation for Statistical Computing, <https://www.r-project.org/>, 2018.
- Rambaut, A., Drummond, A. J., Xie, D., Baele, G., and Suchard, M. A.: Posterior Summarization in Bayesian Phylogenetics Using Tracer
850 1.7, *Systematic Biology*, 67, 901–904, <https://doi.org/10.1093/sysbio/syy032>, 2018.
- Revell, L. J.: phytools 2.0: an updated R ecosystem for phylogenetic comparative methods (and other things), *PeerJ*, 12, e16 505, <https://doi.org/10.7717/peerj.16505>, 2024.

- Robinson, D. F. and Foulds, L. R.: Comparison of weighted labelled trees, in: Combinatorial Mathematics VI, edited by Horadam, A. F. and Wallis, W. D., vol. 748, pp. 119–126, Springer, Berlin, Heidelberg, ISBN 978-3-540-09555-2 978-3-540-34857-3, 855 <https://doi.org/10.1007/BFb0102690>, 1979.
- Robinson, D. F. and Foulds, L. R.: Comparison of phylogenetic trees, *Mathematical Biosciences*, 53, 131–147, [https://doi.org/10.1016/0025-5564\(81\)90043-2](https://doi.org/10.1016/0025-5564(81)90043-2), 1981.
- Rosales, I., Quesada, S., and Robles, S.: Paleotemperature variations of Early Jurassic seawater recorded in geochemical trends of belemnites from the Basque–Cantabrian basin, northern Spain, *Palaeogeography, Palaeoclimatology, Palaeoecology*, 203, 253–275, 860 [https://doi.org/10.1016/S0031-0182\(03\)00686-2](https://doi.org/10.1016/S0031-0182(03)00686-2), 2004.
- Sachs, V. N. and Nal’nyaeva, T. I.: Verkhneyurskie i nizhnemelovye belemnity severa SSSR: rody *Cylindroteuthis* i *Lagonibelus* [Upper Jurassic and Lower Cretaceous belemnites from the northern USSR: genera *Cylindroteuthis* and *Lagonibelus*], Izdatelstvo Akademiyi Nauk SSSR, Moscow, 1964.
- Sachs, V. N. and Nal’nyaeva, T. I.: Verkhneyurskie i nizhnemelovye belemnity severa SSSR: rody *Pachyteuthis* i *Acroteuthis* [Upper Jurassic 865 and Lower Cretaceous belemnites from the northern USSR: genera *Pachyteuthis* and *Acroteuthis*], Izdatelstvo Akademiyi Nauk SSSR, Moscow, 1966.
- Saelen, G.: Diagenesis and construction of the belemnite rostrum, *Palaeontology*, 32, 765–798, 1989.
- Schlegelmilch, R.: Die Belemniten des süddeutschen Jura [The belemnites of the South German Jurassic], Gustav Fischer Verlag, Stuttgart, ISBN 978-3-8274-3082-3 978-3-8274-3083-0, <https://doi.org/10.1007/978-3-8274-3083-0>, 1998.
- Schöne, B. R.: The curse of physiology—challenges and opportunities in the interpretation of geochemical data from mollusk shells, *Geo-Marine Letters*, 28, 269–285, <https://doi.org/10.1007/s00367-008-0114-6>, 2008.
- Sereno, P. C.: Logical basis for morphological characters in phylogenetics, *Cladistics*, 23, 565–587, <https://doi.org/10.1111/j.1096-0031.2007.00161.x>, 2007.
- Shirley, B., Leonhard, I., Murdock, D. J. E., Repetski, J., Świś, P., Bestmann, M., Trimby, P., Ohl, M., Plümper, O., King, 875 H. E., and Jarochowska, E.: Increasing control over biomineralization in conodont evolution, *Nature Communications*, 15, 5273, <https://doi.org/10.1038/s41467-024-49526-0>, 2024.
- Slater, C., Preston, T., and Weaver, L. T.: Stable isotopes and the international system of units, *Rapid Communications in Mass Spectrometry*, 15, 1270–1273, <https://doi.org/10.1002/rcm.328>, 2001.
- Smith, M. R.: Quartet: comparison of phylogenetic trees using quartet and split measures. R package version 1.2.2, 880 <https://doi.org/10.5281/zenodo.2536318>, 2019.
- Smith, M. R.: Information theoretic generalized Robinson–Foulds metrics for comparing phylogenetic trees, *Bioinformatics*, 36, 5007–5013, <https://doi.org/10.1093/bioinformatics/btaa614>, 2020.
- Smith, M. R.: Robust analysis of phylogenetic tree space, *Systematic Biology*, 71, 1255–1270, <https://doi.org/10.1093/sysbio/syab100>, 2022.
- Sørensen, A. M., Ullmann, C. V., Thibault, N., and Korte, C.: Geochemical signatures of the early Campanian belemnite *Belemnelloca-* 885 *max mammillatus* from the Kristianstad Basin in Scania, Sweden, *Palaeogeography, Palaeoclimatology, Palaeoecology*, 433, 191–200, <https://doi.org/10.1016/j.palaeo.2015.05.025>, 2015.
- Spaeth, C.: Aragonitische und calcitische Primärstrukturen im Schalenbau eines Belemniten aus der englischen Unterkreide [Aragonitic and calcitic primary structures in the shell construction of a belemnite from the English Lower Cretaceous], *Paläontologische Zeitschrift*, 45, 33–40, 1971.

- 890 Spaeth, Chr., Hoefs, J., and Vetter, U.: Some aspects of isotopic composition of belemnites and related paleotemperatures, *Geological Society of America Bulletin*, 82, 3139, [https://doi.org/10.1130/0016-7606\(1971\)82\[3139:SAOICO\]2.0.CO;2](https://doi.org/10.1130/0016-7606(1971)82[3139:SAOICO]2.0.CO;2), 1971.
- Stadler, T.: Sampling-through-time in birth–death trees, *Journal of Theoretical Biology*, 267, 396–404, <https://doi.org/10.1016/j.jtbi.2010.09.010>, 2010.
- Stevens, K., Mutterlose, J., and Schweigert, G.: Belemnite ecology and the environment of the Nusplingen Plattenkalk (Late Jurassic, southern Germany): evidence from stable isotope data, *Lethaia*, 47, 512–523, <https://doi.org/10.1111/let.12076>, 2014.
- 895 Stevens, K., Griesshaber, E., Schmahl, W., Casella, L. A., Iba, Y., and Mutterlose, J.: Belemnite biomineralization, development, and geochemistry: The complex rostrum of *Neohibolites minimus*, *Palaeogeography, Palaeoclimatology, Palaeoecology*, 468, 388–402, <https://doi.org/10.1016/j.palaeo.2016.12.022>, 2017.
- Stevens, K., Mutterlose, J., Ohnemus, B., Idakieva, V., and Ivanov, M.: Microstructures of Early Cretaceous belemnite rostra and their diagenesis, *Cretaceous Research*, 137, 105–259, <https://doi.org/10.1016/j.cretres.2022.105259>, 2022.
- 900 Stevens, K., Pohle, A., Hoffmann, R., and Immenhauser, A.: Bayesian inference reveals a complex evolutionary history of belemnites, *Palaeontologia Electronica*, 26, a13, <https://doi.org/10.26879/1239>, 2023.
- Stolley, E.: Studien an den Belemniten der unteren Kreide Norddeutschlands [Studies on the belemnites of the Lower Cretaceous of northern Germany], *Jahresberichte des Niedersächsischen geologischen Vereins*, 4, 174–189, 1911.
- 905 Swart, P. K.: The geochemistry of carbonate diagenesis: The past, present and future, *Sedimentology*, 62, 1233–1304, <https://doi.org/10.1111/sed.12205>, 2015.
- Ullmann, C., Frei, R., Korte, C., and Hesselbo, S.: Chemical and isotopic architecture of the belemnite rostrum, *Geochimica et Cosmochimica Acta*, 159, 231–243, <https://doi.org/10.1016/j.gca.2015.03.034>, 2015.
- Ullmann, C., Frei, R., Korte, C., and Lüter, C.: Element/Ca, C and O isotope ratios in modern brachiopods: Species-specific signals of biomineralization, *Chemical Geology*, 460, 15–24, <https://doi.org/10.1016/j.chemgeo.2017.03.034>, 2017.
- 910 Ullmann, C. V. and Korte, C.: Diagenetic alteration in low-Mg calcite from macrofossils: a review, *Geological Quarterly*, 59, 3–20, <https://doi.org/10.7306/gq.1217>, 2015.
- Ullmann, C. V. and Pogge von Strandmann, P. A. E.: The effect of shell secretion rate on Mg / Ca and Sr / Ca ratios in biogenic calcite as observed in a belemnite rostrum, *Biogeosciences*, 14, 89–97, <https://doi.org/10.5194/bg-14-89-2017>, 2017.
- 915 Ullmann, C. V., Campbell, H. J., Frei, R., Hesselbo, S. P., Pogge von Strandmann, P. A., and Korte, C.: Partial diagenetic overprint of Late Jurassic belemnites from New Zealand: Implications for the preservation potential of $\delta^7\text{Li}$ values in calcite fossils, *Geochimica et Cosmochimica Acta*, 120, 80–96, <https://doi.org/10.1016/j.gca.2013.06.029>, 2013.
- Ullmann, C. V., Thibault, N., Ruhl, M., Hesselbo, S. P., and Korte, C.: Effect of a Jurassic oceanic anoxic event on belemnite ecology and evolution, *Proceedings of the National Academy of Sciences*, 111, 10 073–10 076, <https://doi.org/10.1073/pnas.1320156111>, 2014.
- 920 Ulrich, R. N., Guillemeric, M., Campbell, J., Hakim, A., Han, R., Singh, S., Stewart, J. D., Román-Palacios, C., Carroll, H. M., De Corte, I., Gilmore, R. E., Doss, W., Tripathi, A., Ries, J. B., and Eagle, R. A.: Patterns of element incorporation in calcium carbonate biominerals recapitulate phylogeny for a diverse range of marine calcifiers, *Frontiers in Earth Science*, 9, 641–760, <https://doi.org/10.3389/feart.2021.641760>, 2021.
- Urey, H. C.: Oxygen isotopes in nature and in the laboratory, *Science*, 108, 489–496, <https://doi.org/10.1126/science.108.2810.489>, 1948.
- 925 Urey, H. C., Lowenstam, H. A., Epstein, S., and McKinney, C. R.: Measurement of paleotemperatures and temperatures of the Upper Cretaceous of England, Denmark, and the southeastern United States, *Geological Society of America Bulletin*, 62, 399, [https://doi.org/10.1130/0016-7606\(1951\)62\[399:MOPATO\]2.0.CO;2](https://doi.org/10.1130/0016-7606(1951)62[399:MOPATO]2.0.CO;2), 1951.

- van de Schootbrugge, B., Föllmi, K. B., Bulot, L. G., and Burns, S. J.: Paleocyanographic changes during the early Cretaceous (Valanginian–Hauterivian): evidence from oxygen and carbon stable isotopes, *Earth and Planetary Science Letters*, 181, 15–31, 930 [https://doi.org/10.1016/S0012-821X\(00\)00194-1](https://doi.org/10.1016/S0012-821X(00)00194-1), 2000.
- Veizer, J.: Chemical diagenesis of belemnite shells and possible consequences for paleotemperature determinations, *Neues Jahrbuch für Geologie und Paläontologie, Abhandlungen*, 147, 91–111, 1974.
- Veizer, J.: Chemical diagenesis of carbonates: Theory and trace element technique, pp. 3–3–100, no. 10 in *SEPM Short Courses*, SEPM (Society for Sedimentary Geology), Dallas, ISBN 978-1-56576-239-8, <https://doi.org/10.2110/scn.83.10>, 1983.
- 935 Vickers, M. L., Bernasconi, S. M., Ullmann, C. V., Lode, S., Looser, N., Morales, L. G., Price, G. D., Wilby, P. R., Hougård, I. W., Hesselbo, S. P., and Korte, C.: Marine temperatures underestimated for past greenhouse climate, *Scientific Reports*, 11, 19109, <https://doi.org/10.1038/s41598-021-98528-1>, 2021.
- Vonhof, H., Jagt, J., Immenhauser, A., Smit, J., Van Den Berg, Y., Saher, M., Keutgen, N., and Reijmer, J.: Belemnite-based strontium, carbon and oxygen isotope stratigraphy of the type area of the Maastrichtian Stage, *Netherlands Journal of Geosciences - Geologie en Mijnbouw*, 940 90, 259–270, <https://doi.org/10.1017/S0016774600001141>, 2011.
- Ward, J. H.: Hierarchical grouping to optimize an objective function, *Journal of the American Statistical Association*, 58, 236–244, <https://doi.org/10.1080/01621459.1963.10500845>, 1963.
- Wierzbowski, H.: Carbon and oxygen isotope composition of Oxfordian–Early Kimmeridgian belemnite rostra: palaeoenvironmental implications for Late Jurassic seas, *Palaeogeography, Palaeoclimatology, Palaeoecology*, 203, 153–168, [https://doi.org/10.1016/S0031-0182\(03\)00673-4](https://doi.org/10.1016/S0031-0182(03)00673-4), 2004.
- 945 Wierzbowski, H. and Joachimski, M. M.: Reconstruction of late Bajocian–Bathonian marine palaeoenvironments using carbon and oxygen isotope ratios of calcareous fossils from the Polish Jura Chain (central Poland), *Palaeogeography, Palaeoclimatology, Palaeoecology*, 254, 523–540, <https://doi.org/10.1016/j.palaeo.2007.07.010>, 2007.
- Wierzbowski, H. and Joachimski, M. M.: Stable isotopes, elemental distribution, and growth rings of belemnite rostra: proxies for belemnite life habitat, *Palaios*, 24, 377–386, <https://doi.org/10.2110/palo.2008.p08-101r>, 2009.
- 950 Wierzbowski, H. and Rogov, M.: Reconstructing the palaeoenvironment of the Middle Russian Sea during the Middle–Late Jurassic transition using stable isotope ratios of cephalopod shells and variations in faunal assemblages, *Palaeogeography, Palaeoclimatology, Palaeoecology*, 299, 250–264, <https://doi.org/10.1016/j.palaeo.2010.11.006>, 2011.
- Williamson, T.: Systematics and biostratigraphy of Australian Early Cretaceous belemnites with contributions to the timescale and palaeoenvironmental assessment of the Australian Early Cretaceous System derived from stable isotope proxies, Doctoral thesis, James Cook University, Australia, <https://researchonline.jcu.edu.au/4906/>, 2006.
- 955 Wright, A. M.: A systematist’s guide to estimating Bayesian phylogenies from morphological data, *Insect Systematics and Diversity*, 3, 2, <https://doi.org/10.1093/isd/ixz006>, 2019.
- Wright, A. M., Bapst, D. W., Barido-Sottani, J., and Warnock, R. C.: Integrating fossil observations into phylogenetics using the fossilized birth–death model, *Annual Review of Ecology, Evolution, and Systematics*, 53, 251–273, <https://doi.org/10.1146/annurev-ecolsys-102220-030855>, 2022.
- 960 Zhu, K.-Y. and Bian, Z.-X.: Sinobelemitidae, a new family of Belemnitida from the Upper Triassic of Longmenshan, Sichuan, *Acta Palaeontologica Sinica*, 23, 300–317, 1984.