

High sensitivity of simulated fog properties to parameterized aerosol activation in case studies from ParisFog

Pratapaditya Ghosh^{1,2}, Ian Boutle³, Paul Field^{3,4}, Adrian Hill^{3,5}, Anthony Jones³, Marie Mazoyer⁶, Katherine J Evans⁷, Salil Mahajan⁷, Hyun-Gyu Kang⁷, Min Xu⁷, Wei Zhang⁷, Noah Asch^{1,2}, and Hamish Gordon^{8,2}

¹Department of Civil and Environmental Engineering, Carnegie Mellon University, 5000 Forbes Avenue, Pittsburgh, 15213, United States

²Center for Atmospheric Particle Studies, Carnegie Mellon University, 5000 Forbes Avenue, Pittsburgh, 15213, United States

³Met Office, Fitzroy Road, Exeter, EX1 3PB, United Kingdom

⁴School of Earth and Environment, University of Leeds, Leeds, LS2 9JT, United Kingdom

⁵European Center for Medium-Range Weather Forecasting, Reading, UK

⁶CNRM, Université de Toulouse, Météo-France, CNRS, Toulouse, France

⁷Oak Ridge National Laboratory, Oak Ridge, TN, 37831, USA

⁸Department of Chemical Engineering, Carnegie Mellon University, 5000 Forbes Avenue, Pittsburgh, 15213, United States

Correspondence: Hamish Gordon (gordon@cmu.edu)

Abstract. Aerosols influence fog properties such as visibility and lifetime by affecting fog droplet number concentrations (N_d). Numerical weather prediction (NWP) models often represent aerosol-fog interactions using highly simplified approaches. Incorporating prognostic size-resolved aerosol microphysics from climate models could allow them to simulate N_d and aerosol-fog interactions without incurring excessive computational expense. However, microphysics code designed for coarse spatial resolution may struggle with sub-kilometer-scale grid spacings. Here we test the ability of the UK Met Office Unified Model to simulate aerosol and fog properties during case studies from the ParisFog field campaign in 2011. We examine the sensitivity of fog properties to variations in N_d caused by modifications to simulated aerosol activation.

Our model with 500 m horizontal resolution and interactive aerosol and cloud microphysics significantly underpredicts N_d , although only slightly underestimates the cloud condensation nuclei concentration. With an updated version of the Abdul-Razzak and Ghan (2000) activation scheme, we produce N_d that are more consistent with those predicted by a cloud parcel model under fog-like conditions. We activate droplets only by adiabatic cooling. We incorporate more realistic hygroscopicities for sulfate and organic aerosols and explore the sensitivity of simulated N_d to unresolved updrafts. We find that both N_d and simulated fog liquid water content are very sensitive to the updated activation scheme but remain ~~unaffected~~less affected by the update to hygroscopicities. Our improvements offer insights into the physical processes regulating N_d in stable conditions, potentially laying foundations for improved operational fog forecasts that incorporate interactive aerosol simulations or aerosol climatologies.

1 Introduction

Fog events are associated with reduced visibility that affects road, water and air transportation. Behind freezing conditions, fog is the second leading cause of weather delays and cancellations at major airports across the United States (Goodman and Griswold, 2019). At the Paris-Charles-de-Gaulle airport, the frequency of takeoffs and landings is reduced by half when visibility drops below 600 m due to fog (Roquelaure and Bergot, 2009). Therefore, accurate operational weather forecasts for fog are necessary.

Aerosol particles activate to form fog droplets, affecting visibility and fog life cycle (Stolaki et al., 2015; Boutle et al., 2018; Poku et al., 2019; Wainwright et al., 2021; Yan et al., 2021; Poku et al., 2021; Duplessis et al., 2021). These droplets in turn can influence light extinction, sedimentation and evaporation rates (Ackerman et al., 2004; Hill et al., 2009) based on their concentration. Therefore, numerical weather prediction models are starting to use interactive prognostic aerosol microphysics schemes to improve the representation of aerosols and therefore better forecast fog (Jayakumar et al., 2021). In climate models, it is important to simulate droplet concentrations accurately in low-level clouds, which include different types of fog (for example radiation fog or advection fog), in order to simulate the indirect effects of aerosols on climate. Since weather and climate models are becoming increasingly unified, consistent representations of aerosol-fog interactions that will work in both weather and climate models are desirable. If we can demonstrate that a comprehensive prognostic aerosol scheme can improve simulations, it would then be possible to test possible simplifications that would save computational expense for specific operational settings, for example using aerosol climatologies.

However, while low clouds have much in common with fog, there are also important differences, especially in how aerosols affect clouds and fog. For the same aerosol concentration, fog droplet concentrations (N_d) are expected to be lower than droplet concentrations in clouds. The main physical reason for the low N_d is that in fog, updraft speeds are generally lower than in clouds, reducing aerosol activation rates. Activation is likely to occur at least in part due to radiative cooling (Gultepe et al., 2007; Wærsted et al., 2017; Poku et al., 2021) rather than vertical air motion.

In this study, we improve the simulated fog droplet number concentration in the UK Met Office Unified Model (UM) for fog cases observed near Paris in 2011. We are inspired by several previous specific studies: for example, using a single column model, Stolaki et al. (2015) found that doubling the number of cloud condensation nuclei concentration (CCN) in a subset of the days we use in our case study from the ParisFog campaign led to a 60% increase in the liquid water path. Simulating actual supersaturation and condensational growth of aerosols in a large eddy simulation (LES) model, Boutle et al. (2018) found that the onset of well-mixed fog (in which the vertical profile of liquid water content (LWC) is near adiabatic) was dependent on aerosol activation. The interaction of the land surface with radiation led to the initial fog formation, while the fog layer itself started interacting with radiation only when a substantial fraction of the population of the largest aerosols activated, resulting in optically thicker fog. WRF-Chem modeling studies by Yan et al. (2021) and Jia et al. (2019) found that an increase in the number of cloud condensation nuclei concentrations could advance fog formation, delay fog dissipation (by about an hour), enhance fog intensity and generate long and severe fog events. An LES study by Vié et al. (2024) found significant improvements in simulations of fog in the UK could be achieved by modifying the cooling rates used in aerosol activation,

which were previously overestimated. The high sensitivity of fog properties, including even thermodynamic profiles, to the simulated cooling rates used in the activation scheme also highlights the importance of aerosol-fog interactions.

Weather and climate models that represent aerosols prognostically (e.g. Jayakumar et al., 2021; Lohmann, 2002) use aerosol activation parameterizations as the source of cloud and fog droplets. The parameterizations typically balance a source of supersaturation, usually only adiabatic cooling due to updrafts, with a sink due to condensation on activating aerosol particles. The parameterizations are needed because changes in supersaturation generated by updrafts typically occur on timescales of a few seconds, too short to be explicitly resolved by large-scale models. The widely used Abdul-Razzak and Ghan (2000) activation scheme, henceforth ‘ARG’, was originally developed for boundary layer stratiform clouds and can also be applied for cumulus clouds (Ghan et al., 2011). It calculates N_d from cooling due to vertical air motion, temperature, the aerosol size distribution, and their hygroscopicity. Similarly to most climate models, many cloud-resolving scale modeling studies, including those of fog, use the ARG activation scheme (e.g. Chapman et al., 2009; Jia et al., 2019). However, the parameterization of visibility in numerical weather prediction models is sometimes an exception in that the ARG scheme is not always used. In the UM, for example, visibility is parameterized as a function of aerosol mass loading and relative humidity, via a scheme that is similar to a simplified diagnostic representation of aerosol activation (Clark et al., 2008) that does not depend on vertical air motion. However, this parameterization assumes that the aerosols are monodisperse. If possible, it would be preferable to calculate the visibility of the prognostic N_d and LWC from a cloud microphysics parameterization that handled all types of cloud, including fog, with a consistent activation scheme that takes into account aerosol properties such as size and hygroscopicity.

To represent the cloud microphysics of fog in a weather prediction or climate model, several other assumptions are also needed. One important assumption is that the fog size distribution has a single droplet mode, as these models generally have ‘bulk microphysics schemes’ without size sections or multiple modes for cloud droplets. However, two droplet modes, both below $30\text{ }\mu\text{m}$ diameter, are frequently observed during fog (Mazoyer et al., 2022). The error in approximating the fog droplets with a single mode remains to be quantified. Related to this is the assumption that unactivated haze aerosols and droplets are distinct entities. The wet critical diameter (threshold diameter of a wet particle beyond which it can grow spontaneously and form a droplet) can be around $3\text{--}5\text{ }\mu\text{m}$ (Mazoyer et al., 2022), a factor of 10 greater than the dry critical diameter (threshold diameter of a dry aerosol before condensation, beyond which spontaneous growth happens) (Mazoyer et al., 2019). Bulk aerosol microphysics coupled to bulk cloud microphysics schemes are well known to struggle to fully capture the details of the activation and deactivation of haze (Yang et al., 2023), long recognized as a difficult problem in cloud modeling (e.g. Árnason and Brown, 1971). This is especially challenging without representing complex mixing interactions or accounting for surface tension changes due to surfactants. A key aim of this paper is to examine whether bulk microphysics is nonetheless a sensible pragmatic solution to modeling aerosol-fog interactions despite these shortcomings.

~~In addition to these assumptions, shorter timesteps are typically required to maintain numerical stability as grid resolutions become finer. In large eddy simulations of fog with timesteps smaller than 10s, Thouron et al. (2012) and Schwenkel and Maronga (2019) found that the frequently applied saturation adjustment approximation, which assumes supersaturations are removed in one timestep, resulted in overestimated N_d . In LES simulations with an 0.1s timestep, Schwenkel and Maronga (2019) find N_d is 60% higher than when it was simulated without assuming saturation adjustment. However, in lower-resolution models with~~

timesteps of around 30 s or longer, saturation adjustment is unlikely to introduce large biases unless the fog is very thin, such that the sink of water vapor to droplets and aerosols is very small and the timescale for saturation to reduce to zero exceeds the model timestep (Thouren et al., 2012; Gordon et al., 2020). For example, in a fog with $N_d = 100 \text{ cm}^{-3}$ and a droplet radius of 5 μm , the relaxation timescale would be around 14 s (Politovich and Cooper, 1988; Grabowski and Wang, 2013).

90 Here we use a regional configuration of the Unified Model to investigate aerosol activation in case studies of fog over Paris. Similar simulation systems are used for the operational forecasting of fog over London (Boutle et al., 2016) and Delhi (Jayakumar et al., 2021), although the published systems did not use double-moment cloud microphysics. We use observational data from the ParisFog field campaign (Haeffelin et al., 2010) at the Instrumented Site for Atmospheric Remote Sensing Research (SIRTA) in November 2011. The occurrence of 11 fog cases in two weeks with detailed observations of aerosol and fog mi-
95 crophysics makes the campaign preferred for our study (although other field campaigns such as LANFEX in the UK (Price et al., 2018) or WiFEX in New Delhi (Ghude et al., 2017) could also have been used). In this paper, Part I, we simulate fog N_d using adiabatic cooling as a source of supersaturation, in a 500 m resolution simulation with double-moment aerosol and cloud microphysics, nested inside lower-resolution simulations. We focus on improving the parameterization of activation without changing the fundamental mechanism of supersaturation generation by adiabatic cooling. Although it is likely that adiabatic
100 cooling is not the dominant source of supersaturation in all the fog cases we study, adiabatic cooling is the simplest and most widely used approach to activation in models.

We evaluate simulated aerosol and fog droplet concentrations using the ParisFog observations and test the existing activation scheme in our model. We discuss the observational data and details of several instruments in Section 2. The setup of our model is discussed in Section 3. Section 4 explains our model developments that affect N_d in fog. In Section 5, we discuss the model
105 evaluation and the results. Finally, in Section 6, we present our conclusions.

In the companion paper (Ghosh et al., 2024b) we examine more exploratory model developments. We add radiative cooling as a source of supersaturation in the ARG scheme and study the fog lifecycle simulated in the model. We also design several sensitivity studies to address missing sinks and model artefacts that might affect the droplet budget in the model. Finally, we calculate the relative importance of the adiabatic and radiative cooling components of activation in the droplet budget.

110 2 Measurements and Case Study

In this study, we use measurements from the ParisFog field campaign to evaluate our model. ParisFog refers to several field campaigns that have taken place at the Instrumented Site for Atmospheric Remote Sensing Research (SIRTA) since 2006 to understand the lifecycle of fog. Haeffelin et al. (2005) describe the SIRTA observatory (48.713° N, 2.208° E), located near the Ecole Polytechnique Palaiseau, on the Saclay plateau at 160 m above sea level about 20 km southwest of Paris city center,
115 which is mostly around 35 m above sea level. The site is located in a semi-urban environment composed of roughly equal portions of agricultural fields, wooded areas, housing, and industrial developments. Prevailing winds advect clean air from the Atlantic Ocean towards the site. Winds from the North-East carry pollutants from the Paris metropolitan area, affecting the aerosol composition over SIRTA.

We show observations of 11 fog events between 15 and 25 November 2011 in this paper. Mazoyer et al. (2019) categorizes the four fog events on 16 (afternoon), 24 (morning and afternoon) and 25 November as stratus lowering, and the remaining events on 15, 16 (morning), 18, 19, 21, 22, 23 November as radiation fogs. The microphysical properties of the droplets and aerosols were measured regularly using different instruments. The details of all the instruments and their setup used during the ParisFog campaign are well documented in previous studies (Hammer et al., 2014; Stolaki et al., 2015; Elias et al., 2015; Dupont et al., 2016; Mazoyer et al., 2017, 2019, 2022); those we use here are listed in Table 1. To evaluate simulated meteorology, we use near surface temperature and relative humidity data from the weather sensors at SIRTa (48.7° N, 2.2° E) and Trappes (48.7° N, 2° E). We also use a regional weighted average of measurements from Trappes, Orly (48.7° N, 2.4° E), and Paris Montsouris (48.8° N, 2.3° E), following 3.2.1 of (Chiriaco et al., 2018). We also use the vertical profiles of temperature and relative humidity from radiosondes launched by Météo-France twice a day from Trappes (48.7° N, 2° E), situated 15 km northwest of the SIRTa observatory.

Table 1. Instruments used to measure optical, radiative and microphysical properties of aerosols and droplets during the ParisFog field campaign that we also use in our model evaluation.

Instrument Name	Measured Parameter	Diameter	Resolution
Scanning Mobility Particle Sizer (SMPS)	Dry Aerosol Size Distribution	10.6–496 nm	5 min
Palas Welas-2020 WELAS-2000 Particle Counter (WELAS)	Ambient aerosol and droplet size distribution	0.39–42 µm	5 min
DMT Fog Monitor (FM-100)	Droplet number size distribution	2–50 µm	1 min
Radiosondes	Vertical temperature and RH profile	NA	NA
Weather Station and Sensors	Near-Surface Temperature and RH	NA	1 min

The dry aerosol number size spectrum was measured using a Scanning Mobility Particle Sizer (SMPS). The instrument was placed inside a shelter. Air was sampled and passed through an aerodynamic size discriminator PM2.5 inlet and then through a dryer, reducing the relative humidity to less than 50%. The differential mobility analyzer (DMA; TSI 3071) in the SMPS that selected particles from 10.6 to 496 nm in diameter had hydrophilic filters lowering the relative humidity to less than 30% (Denjean et al., 2014), the point at which we can neglect water uptake by typical urban aerosols (e.g. Seinfeld and Pandis, 1998). The size distribution of larger particles at ambient relative humidity was measured using two optical spectrometers: the WELAS-2000 (Palas GmbH, Karlsruhe, Germany) and the fog monitor FM-100 (Droplet Measurement Technologies Inc., Boulder, CO, USA). The WELAS-2000 (hereafter referred to as WELAS) is designed to measure particles within 0.4 and 40 µm in diameter, but previous studies found that the detection efficiency decreases drastically below 1 µm (Heim et al., 2008; Elias et al., 2015). Hammer et al. (2014) used data with diameters larger than 1.4 µm and Mazoyer et al. (2019) used 0.96 µm as a threshold diameter. The FM-100 fog monitor provides droplet size distribution from 2 to 50 µm in diameter, thus having a large overlap with the WELAS. However, comparisons by Burnet et al. (2012) and Elias et al. (2015) show that distributions from these instruments overlap only from 5-9 µm diameter, because the FM-100 overestimated particles lower than about 5 µm

while the WELAS underestimated droplets larger than $10\mu\text{m}$ (Burnet et al., 2012; Elias et al., 2015). Figures 1 and A1 of Mazoyer et al. (2019) demonstrate the bias. In our work, we plot the overlapping range from both instruments. The FM also
 145 provides LWC in the fog.

3 Model Description

3.1 Meteorological Model

We use UM version 13.0 to study aerosol activation and aerosol-fog interaction. To enable prognostic aerosol and cloud microphysics, simulations are run within the NUMAC (Nested Unified Model with Aerosols and Chemistry) system (Gordon
 150 et al., 2023). The coupling of the double moment cloud microphysics (Field et al., 2023) to the double moment aerosol microphysics (Mulcahy et al., 2020) is described by Gordon et al. (2020). We use three different configurations of the model: a global model, a 4 km grid resolution regional model nested within it, and the 500 m grid resolution regional model, nested within the 4 km model. **The nesting is ‘one-way’: the coarser resolution domains provide lateral boundary conditions to the finer-resolution domains.** The regional models use time steps of 120 seconds and 30 seconds for the dynamics, respectively,
 155 with a common chemistry time step of 120 seconds.

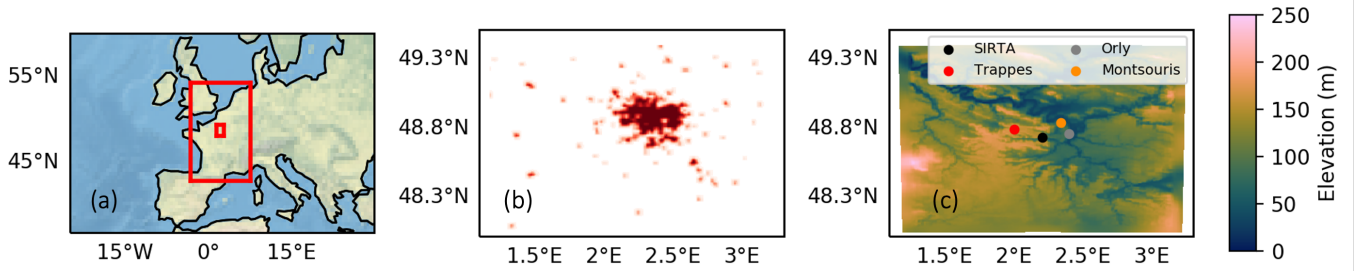


Figure 1. Subfigure (a): Location of the two regional nested domains used in this study is shown. Both the domains are centered over the Sirta observatory near Paris. The outer domain has 4 km grid resolution and the inner domain has 500 m resolution. Both the domains have 300 grid points in the latitude and longitude directions. Subfigure (b): Urban grid cells in the 500 m resolution model domain. The regional scale is set by Paris near the center and Chartres in the south-west at approximately 48.44°N , 1.49°E . Subfigure (c): Surface altitude (m) in the 500 m resolution domain is shown here. Measurement sites at Sirta (observatory, domain center), Trappes (radiosondes), Orly and Paris Montsouris (weather stations) are shown in dots.

This work focuses primarily on results from the regional 500 m resolution model. The 500 m model is centered over the Sirta observatory as shown in Figure 1(a). Subfigure (b) shows the urban grid cells in the 500 m resolution model (roughly the area of Paris city) and subfigure (c) shows surface elevation (m) in our 500 m resolution domain. The Sirta observatory (the domain centre), Trappes (location of radiosondes, discussed later), Orly, and Paris Montsouris (weather stations, discussed later) are shown in dots. We use 300 grid points in both latitude and longitude directions in both our 500 m and
 160

4 km-resolution domains, with 70 vertical levels extending up to 40 km (~~61 levels are below 18 km, and 16 levels below 1000 m~~). These domains use the Regional Atmosphere and Land Version 3 (RAL3) physical atmosphere model configuration (Bush et al., 2024), which is similar to Regional Atmosphere and Land Version 2 (Bush et al., 2022) but with the two moment Cloud–AeroSol Interacting Microphysics (CASIM) scheme (Shipway and Hill, 2012; Grosvenor et al., 2017; Field et al., 2023) used by default in place of the single moment microphysics scheme of Wilson and Ballard (1999). In section 3.2 we describe the microphysics schemes in detail. The RAL3 configuration also uses the more recently developed cloud fraction scheme of ~~Weverberg et al. (2021)~~ Van Weverberg et al. (2021) by default, however we found that the cloud cover was underpredicted with this scheme, and this prevented a robust model evaluation of cloud properties. The underprediction of cloud cover in the bimodal scheme is discussed in more detail by Van Weverberg and Morcrette (2022), who compare all the cloud schemes available in the UM. Therefore in this work we used the sub-grid cloud fraction scheme by Smith (1990), which is better able to generate cloud when supersaturations are low, as in fog. The grey-zone turbulence parameterization of Boutle et al. (2014) is used to represent subgrid-scale mixing in the boundary layer within the boundary layer scheme described by Lock et al. (2000). The model uses the ENDGAME semi-Lagrangian dynamical core (Wood et al., 2014; Thuburn, 2016) and no parameterized convection. Radiative transfer is treated by the SOCRATES scheme (Manners et al., 2015) based on work by Edwards and Slingo (1996).

~~The regional simulations use one-way nesting, which means the global model is independent of the regional model, and the 4 km model is independent of the 500 m-resolution model. Lateral boundary conditions for the 500 m model are provided by the 4 km-resolution model, then the global model provides the lateral boundary conditions for the 4 km model. The 4 km model is configured identically to the 500 m model. It covers all of France and some parts of the UK as shown in Figure 1.~~

The global model has a horizontal resolution of $1.87^\circ \times 1.25^\circ$ (labeled N96 within the UM framework) with 85 vertical levels extending up to 85 km from the surface. It uses the same code base as the regional model, but because the global model uses the global atmosphere science configuration GA7.1 (Walters et al., 2019), which differs from the RAL3 configuration, there are differences between the settings of various parameters in the simulations of dynamics, boundary layer, radiation, and sub-grid cloud. The most important difference for this work is that the configuration stipulates that the PC2 (Prognostic Cloud, Prognostic Condensate) sub-grid cloud scheme (Wilson et al., 2008) be used in the global model instead of the Smith or bimodal schemes, and convection is parameterized in the global model.

To ensure the simulated meteorology closely follows reality, the regional model is initialized at 12:00 UTC on each day from 14th Nov to 25th Nov and run for 28 hours each time. We used the UK Met Office global weather forecast fields, available at high resolution (~ 12 km) to initialize meteorological variables such as temperature, wind speed, and humidity in the nested regional models. These global weather forecasts closely follow real meteorology because they are generated with data assimilation, but we do not use data assimilation in our own simulations, to avoid complicating the interpretation of our results. The concentrations of chemistry and aerosol species are not represented in the global forecast, so are carried forward from the previous forecast as described by Gordon et al. (2023). The aerosol and chemistry fields at the start of the simulation on 14 November are initialized from a nudged global simulation with a configuration similar to the atmosphere-only UKESM1 model (Mulcahy et al., 2020; Sellar et al., 2020).

Results from the first 4 hours of each forecast simulation are discarded to allow simulated low clouds and fog in the initialization files to adjust to the higher spatial grid resolution and aerosol concentrations in our model. We expect that 4 hours is an adequate spin-up time, first because fog is rarely observed during the spin-up period (12:00-16:00 UTC), and second because, even when it is present, we expect that N_d at any given time are independent of N_d four hours earlier. We acknowledge that this may not be enough time to fully represent adjustments of cloud liquid water path to aerosol (e.g. Glassmeier et al., 2021).

3.2 Chemistry, aerosol, and cloud microphysics

We use the StratTrop chemistry scheme within the UK Chemistry and Aerosol (UKCA) submodel (Archibald et al., 2020; Gordon et al., 2023) in this study. ~~This complex scheme with 84 chemical tracers and 291 reactions 84 chemical species are treated as prognostic tracers and there are 291 chemical reactions. This chemistry mechanism is relatively complex and expensive compared to, for example, the simpler alternative available in UKCA that uses climatological oxidant fields, but it is currently is~~ required to simulate nitrate aerosols, which are an important component of total aerosol mass in Paris (Crippa et al., 2013; Roig Rodelas et al., 2019). ~~Several global modeling studies have used this scheme over the last five years (e.g. Sellar et al., 2019, 2020; Stevenson~~ In the regional models, the most important difference arises from the lack of a convection parameterization, which means NO is not produced from the lightning by default. To address this problem, the lightning flash rate parameterization of McCaul et al. (2009) was used in our study, as in Gordon et al. (2023). Updates to the simulated sulfur cycle described by Mulcahy et al. (2023) are included.

This study uses the double moment modal Global Model of Aerosol Processes (GLOMAP-mode, hereafter referred to as GLOMAP) aerosol microphysics scheme (Mann et al., 2010; Mulcahy et al., 2020) within UKCA including the improvements of Mann et al. (2012) and the changes recommended by Mulcahy et al. (2018). Different aerosol species are represented by 5 log-normal modes labeled nucleation soluble, Aitken soluble, Aitken insoluble, accumulation soluble, and coarse soluble by Mann et al. (2010). ~~In practice, the difference between ‘soluble’ and ‘insoluble’ modes is that soluble modes can grow by taking up water, and be wet-seavenged, while ‘insoluble’ modes cannot.~~ Mineral dust is treated separately by the CLASSIC (Coupled Large-scale Aerosol Simulator for Studies In Climate) sectional scheme of Woodward (2001). All aerosol and most chemical species are transported by the Unified Model’s semi-Lagrangian advection scheme. For the first time in the UM regional modeling configurations, our work also includes ammonium and nitrate aerosols along with black carbon, organic carbon, sea-salt and sulfate, following Jones et al. (2021). These chemical species are assumed to be internally mixed within the lognormal modes. ~~Fossil fuel, biofuel, and biomass burning emissions of black carbon and organic carbon are emitted to the Aitken insoluble mode. Once 10 monolayers of sulfate or secondary organic aerosols have condensed on these primary particles, they are moved to the ‘soluble’ modes. The mass and number concentration of these aerosol species in each mode are independent prognostic variables, which is key to accurately representing aerosol-cloud interactions (Bellouin et al., 2013).~~ Each mode has a fixed ‘width’ or geometric standard deviation but the median diameter is calculated from the independent, prognostic mass and number concentrations. The width of the accumulation mode is set to 1.4, based on a comparison with a sectional model and a review of the observational literature by Mann et al. (2012).

The Coupled Model Intercomparison Project (CMIP6) inventory (Feng et al., 2020) is used for anthropogenic and natural aerosol emissions in the global model. The high resolution Emission Database for Global Atmospheric Research developed to assess Hemispheric Transport of Air Pollutants (EDGAR-HTAP) is used for anthropogenic emissions in the regional model (Janssens-Maenhout et al., 2015). EDGAR-HTAP provides monthly global anthropogenic emissions at $0.1^\circ \times 0.1^\circ$ horizontal resolution (for 2010). Non-anthropogenic and biomass burning emissions for the regional model are not included in the EDGAR inventories, so are taken from the CMIP6 inventories used by the global model instead. These datasets are used after regridding to the $1^\circ \times 1^\circ$ resolution of the global model, to avoid additional processing.

Different cloud microphysics schemes are used for different configurations in our study. The single-moment scheme of Wilson and Ballard (1999) is used in the global model. This scheme only uses the mass of hydrometeors as prognostic variables. However, we use the two moment ~~Cloud-AeroSol-Interacting-Microphysics-(CASIM) scheme (introduced earlier)~~ CASIM microphysics scheme in our regional domains to simulate the lifecycle of fog. In CASIM, cloud, rain, ice, snow, and graupel are represented by separate gamma distributions. ~~The mass and number concentration of each species are prognostic variables.~~ We follow Field et al. (2023) in using a shape parameter of 2.5 in the cloud droplet size distribution, which is an update from the 5.0 used by Gordon et al. (2020). Condensation of water vapor onto cloud droplets is represented with the “saturation adjustment” assumption, which means supersaturation is not prognostic and droplets are assumed to be in equilibrium at the end of each model time step. In the regional model, the onset of non-zero fractional cloud cover starts when the grid mean relative humidity exceeds 96% to account for sub-grid variability, as discussed in Boutle et al. (2016). ~~The coupling of the CASIM scheme to the sub-grid cloud fraction scheme is discussed in detail by Field et al. (2023).~~ Liquid water content is passed from the 4 km-resolution model to the 500 m model through the boundaries, while the N_d at the boundaries is kept constant at 100 cm^{-3} . The coupling of CASIM to the GLOMAP aerosol scheme is described by Gordon et al. (2020). Aerosol number concentration in the soluble Aitken, accumulation and coarse modes, and the diameters and volume-weighted hygroscopicities of these modes are passed from the aerosol code to the activation scheme in the cloud microphysics code.

In all configurations of our model, the ~~Abdul-Razzak and Ghan (ARG)~~ ARG activation parameterization (Abdul-Razzak and Ghan, 2000), is used to activate aerosols at cloud base or when new cloud forms. This scheme was also used successfully for fog by Jia et al. (2019) and Yan et al. (2021) in WRF-chem and by Poku et al. (2019) with the CASIM microphysics scheme in a large eddy simulation. The ARG parameterization calculates N_d based on the aerosol size distribution and on the change in ambient supersaturation, which relies only on updraft speeds to generate cooling in this paper (radiative cooling will be introduced in the companion paper). Above cloud base in existing clouds, the supersaturation is determined from a balance assuming a steady-state between a source (adiabatic cooling due to ascent) and the sink to existing cloud droplets (Gordon et al., 2020). Since there is a sub-grid cloud fraction scheme, both this approach and the ARG activation parameterization can be active in the same grid box.

Aerosol activation is simulated whenever there is a tendency for water vapor to condense rather than evaporate. At each timestep, if the activation scheme is called, it updates the N_d if the N_d calculated at that timestep exceeds the N_d that existed in the gridbox before the activation scheme was run. We believe this procedure was first introduced by Clark (1974) and is commonly used in regional and global weather and climate models (e.g. Lohmann, 2002). As a result, we expect that N_d

depends on the highest updraft speed the model simulates since the formation of the cloud or fog in an air parcel, as well as
265 other processes such as sedimentation and advection.

The default model configuration uses a minimum updraft speed of $0.01 \text{ ms}^{-1} \text{ m s}^{-1}$ in the activation scheme (so any updraft
speeds lower than this are set to $0.01 \text{ ms}^{-1} \text{ m s}^{-1}$ for activation when the criteria described in the next paragraph are met).
In this study, most of our simulations use the resolved, grid-average, updraft speed in the ARG activation scheme, with no
representation of sub-grid turbulence. This practice is frequently used in other cloud-resolving models (for horizontal grid
270 resolutions at or below 1 km) such as the Regional Atmospheric Modeling System, RAMS (Saleeby and Cotton, 2004), and
was used in the paper describing CASIM in the UM Field et al. (2023). However, sub-grid turbulence is likely an important
source of updrafts for activation of aerosols in fog. Despite earlier work (Malavelle et al., 2014; Gordon et al., 2020) we do not
yet have a robust approach to represent sub-grid-scale updraft speeds across all cloud types, including fog, and across varying
model grid resolutions. Addressing this limitation fully requires a dedicated, comprehensive study. Nevertheless, in this paper
275 we conduct two additional simulations to understand the possible effects on simulated N_d of including a realistic contribution
from sub-grid-scale turbulence to updrafts in activation.

In the CASIM microphysics as described by Field et al. (2023), the activation scheme is called when the LWC in a gridbox
increases, but droplets deactivate only if cloud fraction decreases, irrespective of LWC. For consistency, we instead choose to
call the activation scheme when the cloud fraction remains the same (for example in 100% foggy gridboxes) or increases, and
280 ~~is~~ not dependent on a change in the LWC. We include this change in all of our simulations. Usually, changes in LWC correlate
with changes in cloud fraction, so we expect this change to have minimal effects on N_d .

Aerosols are not removed or advected separately when they activate to droplets. Hence, in-cloud processing of aerosols is
not represented, although sulfate mass does increase via aqueous chemical reactions, depending on LWC and concentrations
of sulfur dioxide, hydrogen peroxide, and ozone. Aerosols are only removed irreversibly during significant rain or snow,
285 depending on the autoconversion and accretion rates through which cloud droplets are converted to precipitation, as described
by Mulcahy et al. (2020). ~~The rain and snow rates are also used to determine the rate of impaction scavenging of aerosol
by precipitation.~~ In our simulations, therefore, aerosols in fog droplets are only removed via dry deposition; including an
enhancement to aerosol removal due to the faster sedimentation rates of droplets compared to aerosol particles could be a
useful future development. In Table 2, we provide a brief summary of different parameterizations used in this study.

290 4 Testing improvements to simulated activation due to adiabatic cooling

4.1 Default ARG Scheme (Def-ARG)

In our default simulation, termed Def-ARG hereafter, we use the ARG scheme with in-cloud activation (as described earlier)
to examine whether the parameterization developed for the clouds can simulate fog realistically.

Table 2. Summary of parameterizations used in the global and regional models.

Process	Global Model Parameterization	Regional Model Parameterization
Aerosol Activation	Abdul-Razzak and Ghan (2000)	Abdul-Razzak and Ghan (2000)
Aerosol Microphysics	Mann et al. (2010, 2012)	Mann et al. (2010, 2012)
Cloud Fraction	Wilson et al. (2008)	Smith (1990)
Cloud Microphysics	Wilson and Ballard (1999)	Field et al. (2023)
Emission Inventory	Feng et al. (2020)	Janssens-Maenhout et al. (2015); Feng et al. (2020)
Radiation	Manners et al. (2015)	Manners et al. (2015)
Turbulence	Lock et al. (2000)	Boutle et al. (2014)
Configuration	Walters et al. (2019)	Bush et al. (2024)

4.2 ARG scheme with adjusted parameters (Mod-ARG)

295 The semi-empirical ARG scheme for aerosol activation was not, as far as we know, designed for the low updrafts observed in fog (Abdul-Razzak and Ghan, 2000; Ghan et al., 2011), where the effect of the kinetic limit on the rate of water uptake during activation can often become important, especially in polluted conditions. These kinetic limitations are not accounted for in the ARG parameterization (Nenes et al., 2001; Phinney et al., 2003), though they are in some more sophisticated alternatives (e.g. Morales Betancourt and Nenes, 2014). Furthermore, when comparing predictions of the ARG parameterization to the Pycel
300 cloud parcel model of Rothenberg and Wang (2016), we found it exhibits significant biases for the geometric standard deviation of the accumulation mode used in GLOMAP, 1.4, which is smaller than the value used in most other modal aerosol microphysics schemes.

In the ARG activation scheme, activated N_d are calculated from maximum supersaturation S_{max} . The expression for S_{max} is the following:

$$305 \quad S_{max} = \left\{ \sum_i \frac{1}{S_{mi}^2} \left[f_i \left(\frac{\zeta}{\eta_i} \right)^p + g_i \left(\frac{S_{mi}^2}{\eta_i + 3\zeta} \right)^{3/4} \right] \right\}^{-\frac{1}{2}} \quad (1)$$

where i indexes aerosol modes in a multi-modal lognormal size distribution and $p = 3/2$.

The empirical parameters f and g , are functions of aerosol mode width σ . S_{max} depends on the critical supersaturation S_m of a particular mode and two non-dimensional parameters η and ζ which are functions of updraft speed, surface tension and thermodynamic parameters, and are independent of the widths of the size modes. Following Equation 6 in Abdul-Razzak and
310 Ghan (2000), for each aerosol mode f and g were determined by comparison to a parcel model as:

$$\begin{aligned} f_i &= 0.5 \exp(2.5 \ln^2 \sigma_i) \\ g_i &= 1 + 0.25 \ln \sigma_i \end{aligned} \quad (2)$$

Lower values of f and g would lead to higher activation fraction (higher N_d). In a separate study (Ghosh et al., 2024c), we determined improved values of f and g by comparing the parameterization to the Pycel model simulations. We also determined

315 a modified value of p which substantially improves the performance of the scheme in cases where kinetic limitations to droplet
activations are critical. We use the following modified equations to reduce biases in N_d predicted by the parameterization:

$$\begin{aligned} f &= 0.0135 e^{2.367 \sigma_{acc}} \\ g &= 1.1058 - 0.315 \sigma_{acc} \\ p &= -0.5073 + 1.5088 \sigma_{acc} - 0.3699 \sigma_{acc}^2 \end{aligned} \quad (3)$$

320 In Table 3, we list the parameters used in the Def-ARG and Mod-ARG simulations; for Mod-ARG, these are calculated from
this Equation 3.

Table 3. Different values of f , g and p for for Def-ARG and Mod-ARG. In Def-ARG, different values of (f, g) are used for Aitken, accumulation and coarse modes. In Mod-ARG, f and g are constant for all aerosol modes following Ghosh et al. (2024c). acc refer to accumulation mode aerosols. Other aerosol modes make unimportant contributions to activation in our simulations.

Simulation	f_{acc}	g_{acc}	p
Def-ARG (accumulation mode)	0.66	1.08	1.50
Mod-ARG (all modes)	0.37	0.67	0.88 (for $\zeta/\eta_i > 1$) 1.50 (for $\zeta/\eta_i < 1$)

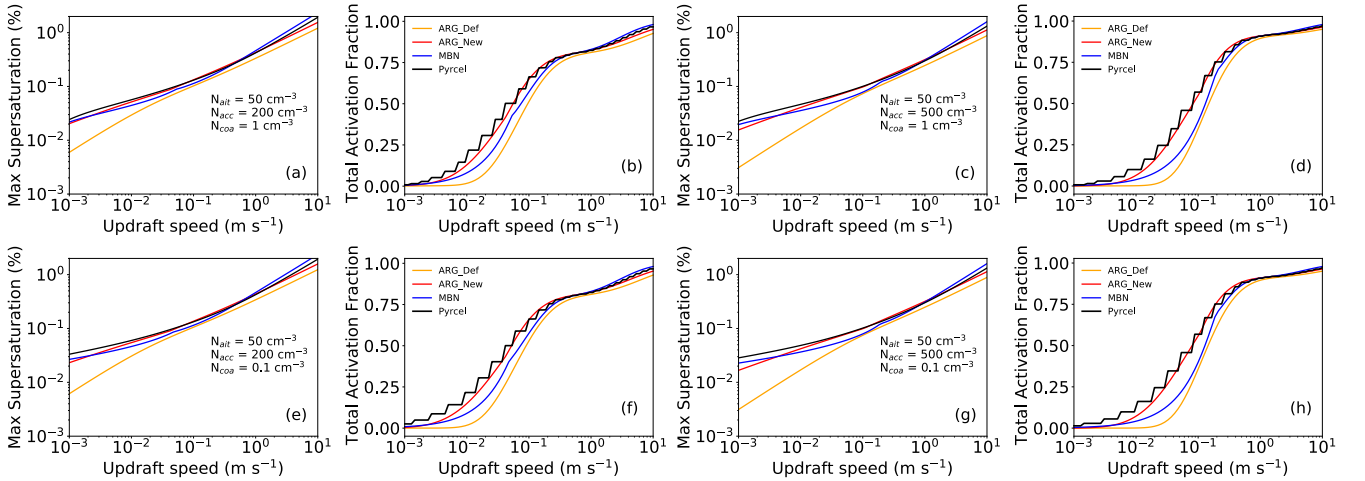


Figure 2. Subfigures (a, c, e, g) show maximum supersaturation, while subfigures (b, d, f, h) show total activation fraction as a function of updraft speeds for the Pyrcel model, default ARG, modified ARG, and the Morales Betancourt and Nenes (2014) (MBN) schemes. Each pair of subfigures (a,b; c,d; e,f; g,h) represents a different aerosol size distribution. The diameters of the Aitken, accumulation, and coarse mode aerosols are fixed at 40 nm, 200 nm, and 750 nm, respectively, with a hygroscopicity of 0.3 for all modes. The temperature is set at 283K and pressure at 1 atm for all cases.

In Figure 2, we compare the performance of the modified ARG scheme when run offline, to Pycel simulations in conditions representative of fog, with updraft speeds ranging from $10^{-3} - 10^{-1} \text{ ms}^{-1} \text{ m s}^{-1}$. We also compare the performance of the ARG parameterization with the Morales Betancourt and Nenes (2014) activation parameterization (hereafter MBN), which is more physically accurate but computationally expensive compared to the ARG scheme. We define the activation fraction as the number of droplets predicted by Pycel or the parameterization divided by the sum of the aerosol number concentrations in the Aitken, accumulation and coarse modes. The Aitken mode here corresponds only to GLOMAP’s Aitken soluble mode; the Aitken insoluble mode typically has higher aerosol concentrations within it but these do not activate. The number concentrations of the accumulation and coarse aerosol modes are varied across the subfigures (the Aitken number concentrations are kept fixed) at 283 K temperature, and 1 atm pressure, representative values for ParisFog. In the parcel simulations, the geometric standard deviations correspond to those set in GLOMAP at 1.59, 1.4 and 2.0 for Aitken soluble, accumulation and coarse aerosol modes. The hygroscopicity of all modes is fixed at 0.3. We find that the default ARG scheme (yellow lines) always significantly underestimates the activation fraction. The modified scheme (red lines) performs much better than the default ARG scheme and often better than the MBN scheme.

For example, at updraft speeds between 0.01 and $0.1 \text{ ms}^{-1} \text{ m s}^{-1}$, the Pycel model usually activates 20- 60% aerosols, while the default ARG parameterization activates 0-50%. In comparison, the updated ARG parameterization activates similar fractions to Pycel. In our UM simulations of fog, cases where the default scheme performs poorly (such as those in Figure 2), occur frequently. Thus, in simulation Mod-ARG, we include our modifications to the ARG parameters (Table 3) to improve the performance of the ARG scheme. In Section 5, we show that this modification substantially improves the model performance.

4.3 Modified ARG Scheme with Updated Hygroscopicities (Mod-Kappa)

Aerosol activation in the model depends upon volume-weighted hygroscopicities for the aerosol modes, described using the Kappa-Kohler approach of Petters and Kreidenweis (2007). However, these numbers are not state-of-the-art in the standard configurations of the climate model (HadGEM3-GC3.1 and UKESM1) used in the most recent Coupled Model Intercomparison Project simulations (Mulcahy et al., 2020, 2023) nor in the NUMAC setup described by Gordon et al. (2023). By default, sulfate (and nitrate) are assumed to fully dissociate in solution, leading to a kappa value for sulfate, for example, of 0.97, while the kappa value of organic carbon is zero. A large corpus of literature provides convincing evidence (e.g. Petters and Kreidenweis, 2007; Schmale et al., 2018) that organic carbon is slightly hygroscopic and the hygroscopicity of sulfate aerosol is lower than 0.97, because it does not fully dissociate in solution.

In this simulation (hereafter termed as Mod-Kappa) we assign a κ of 0.1 to OC (both primary and secondary organics), and, via an approximate approach, we arrive at kappa values close to the recommended 0.61 for ammonium sulfate and bisulfate and 0.73 for sulfuric acid (Schmale et al., 2018; Fanourgakis et al., 2019) and 0.67 for ammonium nitrate (Petters and Kreidenweis, 2007). This is achieved by setting the kappa values of the sulfate component in our model to 0.73, nitrate to 0.83, and ammonium to zero. This solution maintains the simplicity of having a single kappa value for each component species (e.g. sulfate) that does not vary according to which other species are present.

355 In Table 4 we list the hygroscopicities for different aerosol species used in Mod-ARG and Mod-Kappa. When we run our simulation with these new kappa values, we also include changes to the ARG scheme from the Mod-ARG simulation.

Table 4. Different values of hygroscopicities for different aerosol components used in the Mod-ARG and Mod-Kappa simulations. Nitrate and ammonium were not included in climate simulations for CMIP6.

Simulation	BC	OC	Sulfate	Sea Salt	Nitrate	Ammonium
Mod-ARG	0.0	0.0	0.97	1.34	0.87	3.54
Mod-Kappa	0.0	0.1	0.73	1.50	0.83	0.0

5 Results

5.1 Location and Timing of Fog

We start our model evaluation by comparing the location of fog in the 4 km resolution model to satellite imagery. This evaluation demonstrates qualitatively how the model can simulate fog over a large domain with variable topography and some ocean, but the quantitative analysis in this paper focuses on the 500 m-resolution model. Our satellite dataset is the fog product from the Spinning Enhanced Visible and Infrared Imager (SEVIRI) onboard the Meteosat Second Generation (MSG) satellites, operated by the European Organisation for the Exploitation of Meteorological Satellites (EUMETSAT), Schmetz et al. (2002).

In Figure 3, we show the location of the fog from simulation Def-ARG at 4 km resolution, on about half of the days during our case study period at 03:00 UTC. The satellite images (which correspond roughly to the 4 km resolution model domain) on the top panel show the location of fog in different colors depending on fog top temperature. For example, the simulated fog near the center of the domain is much thicker on 15th Nov than on 22nd Nov. The SIRTa observatory is shown by a red dot near the center of the domain. At 03:00 UTC, we have some coverage of fog at the center of the domain on all days. On 15th and 16th November, the fog is much denser in the observations but on 20th, 22nd, and 23rd November, the fog is patchy. The model could realistically simulate fog towards the English Channel and UK, although we underestimate marine fog on the 16th and 23rd. Fog simulated in the top right corner towards Germany on 15th and 16th is less widespread than satellite observations.

Overall, during our simulated period between 14th and 26th November 2011, 11 fog events were observed at SIRTa while, in our default simulation, 13 fog events were simulated in our 500 m-resolution domain. The onset of fog is usually well after dusk (21:00 UTC to 03:00 UTC) on most of the days. The fog layer gradually develops and finally dissipates in the morning due to shortwave heating. When the fog top altitude is lower than 18 m, which is the case for the 4 observed events from 18th to 22nd, Mazoyer et al. (2019) characterized the fog as ‘thin’, while the 7 other cases are thick fog.

Figure 4 shows a time series of the number of foggy gridboxes at the surface in the 500 m model from simulations Def-ARG, Mod-ARG, and Mod-Kappa. ~~We do not show Mod-ARG since it performs similar to Mod-Kappa (discussed later).~~ Mod-ARG and Mod-Kappa have nearly identical numbers of foggy gridboxes. The visibility parameterization of Gultepe et al. (2006) suggests that if N_d is 200 cm^{-3} and LWC is 0.005 g m^{-3} , visibility would be $\sim 1\text{ km}$. Therefore, we define foggy gridboxes

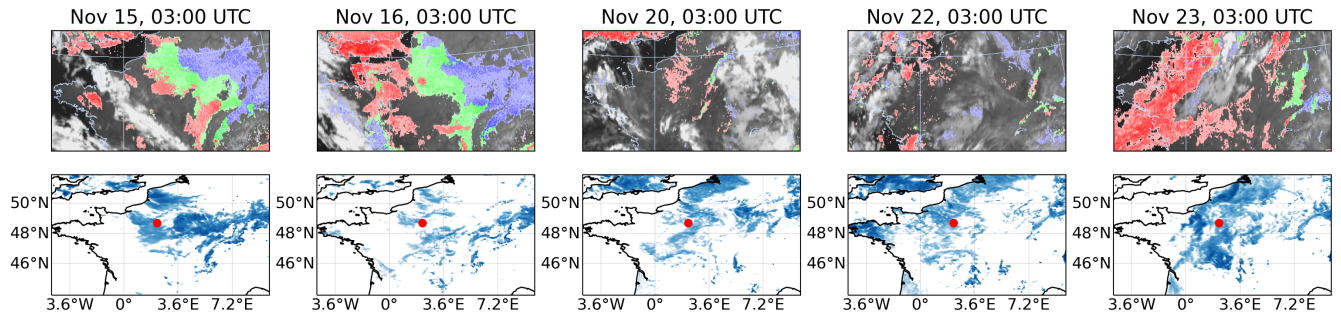


Figure 3. Location of the fog at 03:00 UTC during different representative fog events. The top panels show images from the Spinning Enhanced Visible and Infrared Imager (SEVIRI). Red refers to fog with fog top temperatures $> 1^{\circ}\text{C}$, blue refers to fog top temperature $< -1^{\circ}\text{C}$, and green refers to fog with fog top temperatures between 1°C and -1°C . The bottom panel shows the location of fog in the 4 km model. We show LWC (at the surface) across the domain in blue. Thicker fog is represented by a darker shade. The Sirta observatory at the center of the domain is denoted by a red dot.

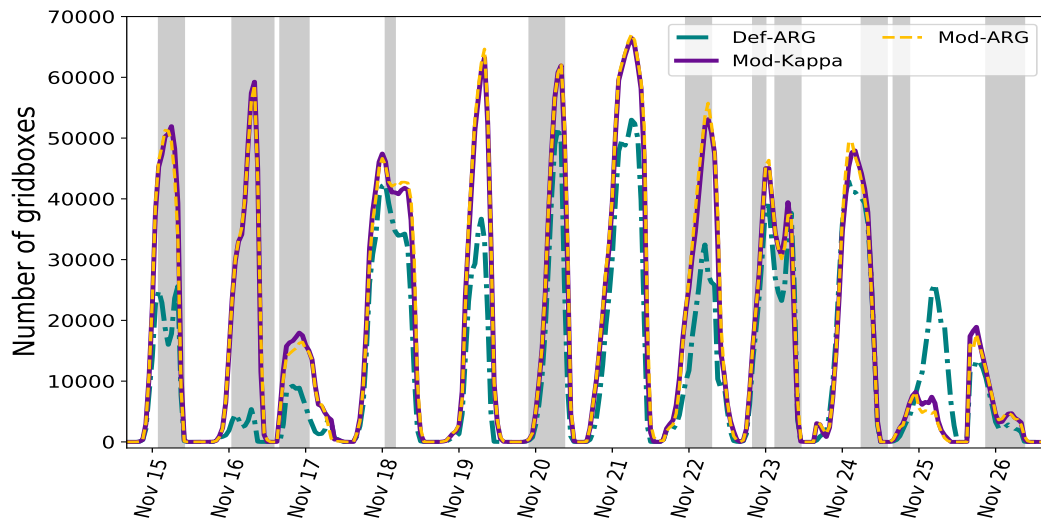


Figure 4. Timeseries of number of foggy gridboxes (at the surface) from the 500 m-resolution model for the two of our simulations that are substantially different (Mod-ARG and Mod-Kappa behave very similarly). simulations Def-ARG, Mod-ARG and Mod-Kappa. If the entire domain was foggy, the total would be 67600 (260×260). Foggy periods in the observations are shown in shaded grey. Tick marks on the x axis are at midnight UTC time.

as those having at least 0.005 g m^{-3} LWC (similar to Mazoyer et al. (2019)) and at least 20% cloud cover. Changing these thresholds by a factor of 2 does not make any significant difference. To avoid artefacts due to the interpolation of the grid from 4 km to 500 m resolution, we do not include the 20 gridboxes near the edges of the domain in the figure, regardless of the presence of fog. Therefore, the maximum number of foggy gridboxes at any given model level is 67600 (260×260).

385 During the two weeks we simulated, the model produces a fog with a realistic lifetime for most of the fog events, however, the onset and dissipation times are not always correct (fog on the morning of 18th Nov starts too early, for example). On the mornings of 19th, 21st and 25th November, the model predicts widespread fog but there was no fog in the observations at SIRTa. For the fog cases on 24th November, the timing of dissipation is either too early or too late across the simulations. For the second fog case on this day (Subfigure j), the Mod-Kappa simulation shows better agreement with observations up to 18:00 UTC, where Mod-ARG overestimates N_d by a factor of 2. Differences in droplet sedimentation velocity (discussed later) may have contributed to the variations in N_d . Some discrepancies are expected considering the difficulty involved in simulating fog accurately at the correct location using NWP models without data assimilation (e.g. Bergot et al., 2005; Zhou and Ferrier, 2008; Velde et al., 2010; Bergot, 2013; Steeneveld et al., 2015; Boutle et al., 2016, 2018; Martinet et al., 2020). However, we simulate enough fog to be able to examine aerosol effects on N_d and fog microphysics.

395 Differences in fog cover between Def-ARG and Mod-Kappa simulations arise via feedback mechanisms. For example, the higher modeled sedimentation velocity near the surface on 16 November in the Def-ARG simulation compared to the others leads to lower N_d and liquid water content, contributing to the reduced number of foggy grid boxes compared to Mod-ARG (as discussed later and shown in Figure 14 and supplementary Figure S15e). The differences are larger at the start of the simulation period, on 15 and 16 November, than towards the end. This may be due to the slightly higher altitude of the top of the inversion present during the first two fog events (next section) compared to most of the others. This higher inversion top could support enhanced feedback mechanisms (discussed later) that influence both N_d and fog top height. Exceptionally, on 24 November, the inversion top is also elevated, but the inversion does not start at the surface, and the fog onset is simulated much too early. In supplementary Figure S1 we show the timeseries of average cloud fraction (at the surface) from the 500 m resolution model for simulations Def-ARG, Mod-ARG and Mod-Kappa (only from the foggy gridboxes). The cloud fraction is consistently lower in Def-ARG compared to other simulations.

405

5.2 Evaluation of temperature and relative humidity profiles and time-series

We evaluate the ability of our model to simulate temperature and relative humidity (RH) realistically near the surface. Accurate representation of these parameters is important because too high temperature or too low relative humidity can lead to dissipation of fog, and fog often needs temperature inversions to form. Two radiosonde profiles are available each day at around 23:00 UTC and 11:00 UTC. In Figure 5, we compare the night-time radiosonde profiles with our 500 m resolution Def-ARG simulation at the same location. Fog is not usually seen at the time of the daytime profile, but the profiles are available in Figure S4S2.

410

Within 200 m of the surface at night, the simulated temperature profile in the 500 m domain is usually in reasonable agreement with observations, within 1°C or so. Exceptions are on November 20th, where simulated temperatures above about 150 m altitude are approximately 2°C too low, and 24th when there is a ~2.5°C overestimation below 300 m altitude. Even an 0.5°C bias may be enough to significantly affect the simulated fog. Nonetheless, the model can reproduce the surface inversion height and approximate strength on all the days, except for November 20th when the inversion is too weak and November 24th when it is too high. The higher-level inversions were not always reproduced accurately. For example, on 17th and 18th, the temperature profile above 1 km has biases of up to ~3°C.

415

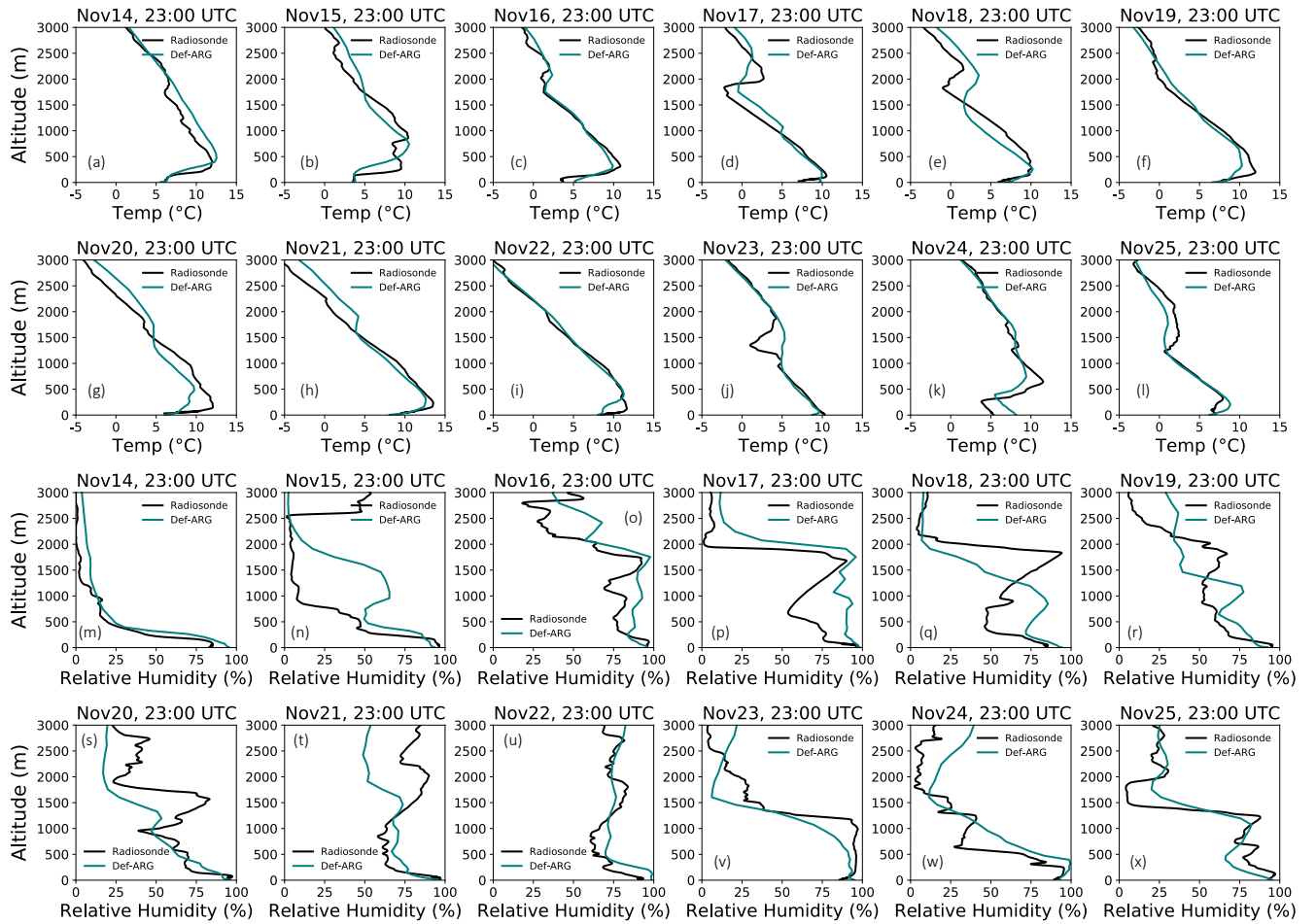


Figure 5. Vertical profiles of temperature and relative humidity from 500 m grid resolution model of simulation Def-ARG. The results are compared with the data from radiosondes launched from Trappes around 23:00 UTC on 14th to 25th November.

Similar trends were observed for the RH profiles. Within 200 m of the surface, the 500 m model simulates RH realistically, within 10% of the observation most of the times. RH near the surface has a larger positive bias on 17th and a negative bias on 25th. At a higher altitude, RH has much larger biases, on most of the days. The model frequently fails to reproduce the detailed structure. In both simulations and observations, the fog top is usually near the surface, where the model performs best, but we must nonetheless consider that (especially) the radiative properties of the fog may be affected by biases in high cloud cover.

Figure 6 compares the observed temperature and RH timeseries with simulated temperatures (a) and RH (b) at ‘Temperate Grass’ and ‘Urban’ surface types. The green shaded area shows the variability within ± 2 standard deviations of the mean temperature and relative humidity. We also show direct measurements from the sites at SIRTa and Trappes. We also plot the regional weighted average using measurements from sites at Paris-Montsouris, Orly, and Trappes following section 3.2.1 of Chiriaco et al. (2018). Nighttime is denoted by the grey shaded regions. Urban tiles are usually warmer and have lower RH

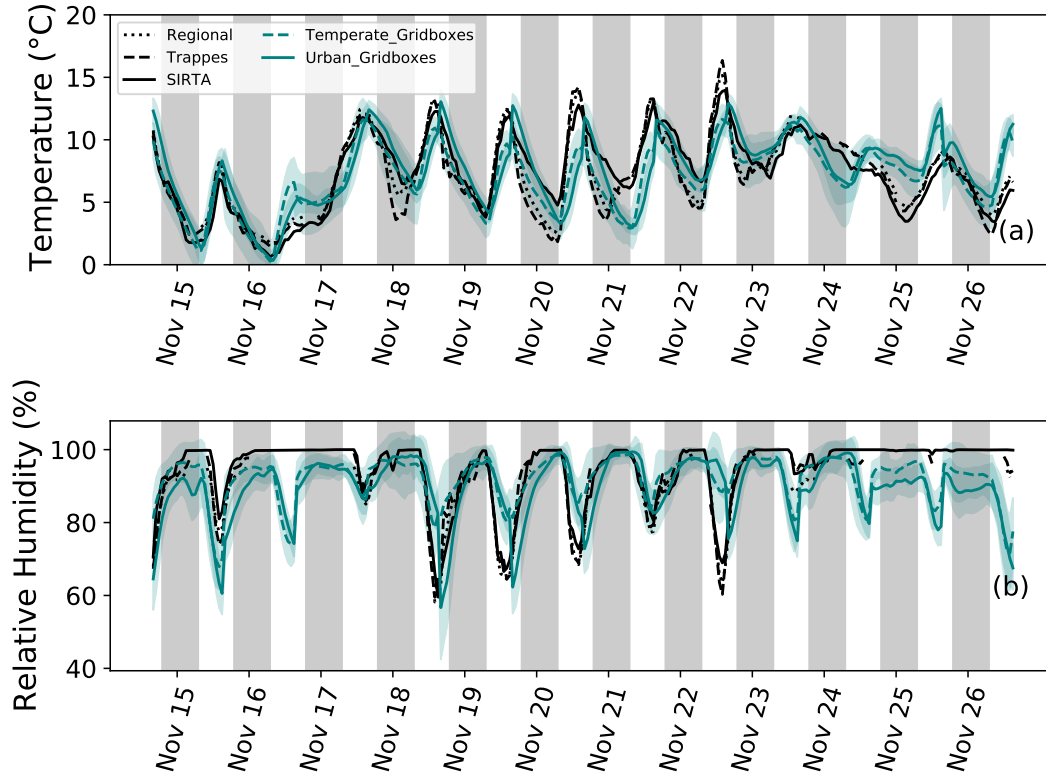


Figure 6. Observed and simulated near-surface temperature (a) and relative humidity (b) during different fog episodes. We show direct measurements from the sites at Sirta and Trappes. ‘Regional’ refers to weighted average temperature and RH calculated from measurements at Orly, Montsouris and Trappes, following section 3.2.1 of Chiriaco et al. (2018). The simulated ‘Temperate’ and ‘Urban’ timeseries are averages of all gridboxes denoted as ‘Temperate Grass’ and ‘Urban’. The green shaded area shows the variability within ± 2 standard deviations of the mean temperature and relative humidity. Less frequently occurring surface types, such as water, are not shown here. Times are UTC and the grey shaded region denotes nighttime.

than grass due to heat island effects. Features of the diurnal cycle which are relevant to fog for both temperature and RH are well simulated by the model.

For temperature, the R value of the timeseries is 0.80, and the normalized mean bias (NMB), defined as

$$\text{NMB} = \frac{\sum_i (M_i - O_i)}{\sum_i O_i}$$

for simulated values M_i and observations O_i , is -0.08; for RH R is 0.49 and NMB -0.03. These statistics are calculated by comparing the mean profiles from four sites with mean profiles from model. There are missing data from observations on 17th and 24th-26th Nov from one or more sites. The model simulates the temperature timeseries within 2 degrees, except on the night of 24th-25th where a bias was already identified from the radiosonde profile. The RH is also biased low during this time, though the relatively low R value for the RH timeseries appears to be mostly due to an overestimation of RH by the model

when RH is low (as on 22nd), and when fog is not present. While observed RH usually falls within the modeled variability, substantial biases remain on certain days (e.g., 25 November). However, these RH biases are comparable to other numerical weather prediction simulations of these cases (Menut et al., 2014) and do not align consistently with errors in the onset or dissipation timing of fog. In contrast, temperature biases appear to be more influential - for example, on 21 November, the model underestimates the surface temperature, resulting in a false fog prediction at SIRTa. Moreover, at higher altitudes, the biases in temperature and RH can be much larger, leading to differences in cloud cover above the fog top.

5.3 Evaluation of Aerosols

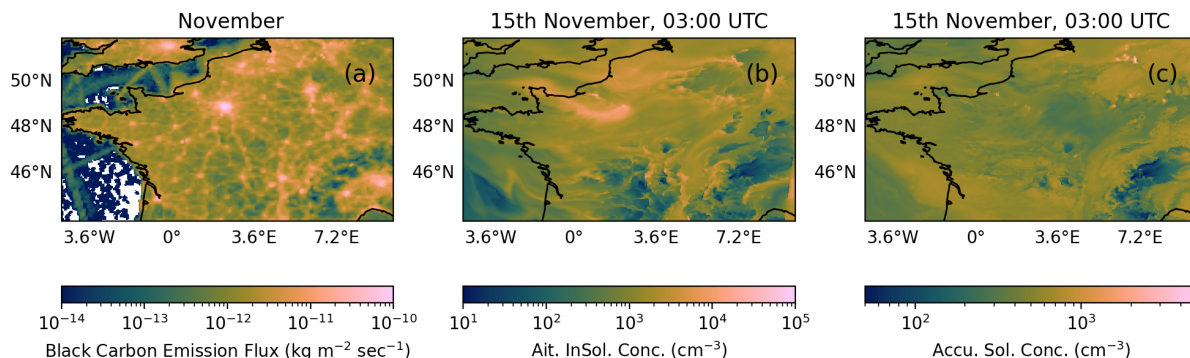


Figure 7. The black carbon emission flux at the surface (a), from the high resolution EDGAR-HTAP inventory, in the 4 km model for the month of November. Hotspots such as London and Paris can be identified. Subfigure (b) shows the Aitken insoluble mode number concentration and (c) shows the accumulation soluble mode particle number concentration, as simulated by the 4 km model in simulation Def-ARG near the surface at 03:00 UTC on 15th Nov.

We investigate the ability of the model to simulate aerosols realistically in simulation Def-ARG. All simulations use the same set of boundary conditions and emissions inventory, so we do not expect the aerosol concentration to differ substantially between our simulations. Figure 7 demonstrates qualitatively how aerosols are simulated in our 4 km-resolution model. Subfigure (a) shows the black carbon (BC) emission flux, to illustrate the major emission sources in our domain while using the high resolution EDGAR-HTAP inventory. BC particles contribute to number concentrations in the ‘Aitken insoluble’ mode (Subfigure (b)). Subfigure (c) shows the number concentration of accumulation ‘soluble’ mode particles near the surface. We infer that CCN concentrations (which are mostly activated accumulation mode aerosols) are not obviously correlated with major emissions sources on this date.

In Figure 8, we compare the timeseries of simulated number concentration of >100 nm dry diameter aerosols with the observations from the SMPS at SIRTa, near the surface. The simulated median number concentration from the 500 m resolution Def-ARG simulation is shown by a green solid line, and the shaded region shows the interquartile range across the model domain. The region within 20 gridboxes of the boundary is excluded, as for our analysis of fog. As mentioned earlier, Figure S2S3 shows timeseries of the number concentrations in the different GLOMAP lognormal aerosol modes. The simulated

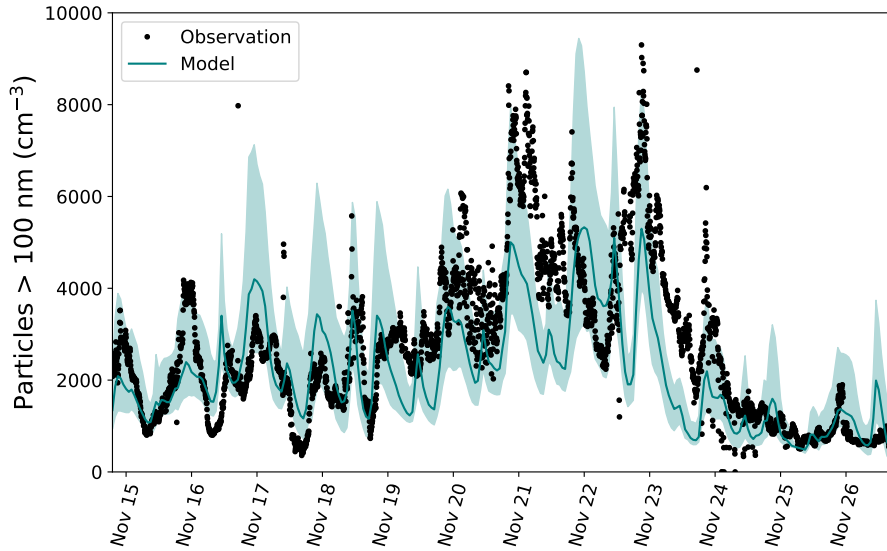


Figure 8. Timeseries of number concentration of aerosols greater than 100 nm in diameter as simulated by the 500 m model in the Def-ARG simulation at 5 m altitude, compared with the observations from SMPS in the same size range. The model median is represented by the green line and the shaded region represents the interquartile range. Times are UTC.

aerosol number concentration agrees reasonably well with the observations, with a correlation coefficient of 0.71 and a normalised mean bias of -0.18 . These biases are typical, or better than typical, for simulated aerosol number concentrations in regional and global models (e.g. Baranizadeh et al., 2016; Williamson et al., 2019; Ranjithkumar et al., 2021).

In Figure 9, we show the percentage of different aerosol species by mass as a function of time. Crippa et al. (2013) carried out a source apportionment study over Paris during winter in November with an aerosol mass spectrometer and aethalometer. They found the following composition of aerosol by mass: 36% organic carbon (OC), 28.4% nitrate, 15.7% sulfate, 11.9% ammonium, 6.8% black carbon (BC), and 1.2% chloride. Another study in northern France in 2015-6 (Roig Rodelas et al., 2019), found similar aerosol composition. On average, our simulations have 28.2% OC, 32.7% nitrate, 9.49.2% sulfate, 12.3% ammonium, 9.4% BC, and 8.08.2% sea-salt (4.84.9% chloride) aerosol mass (see Table 4). Hence, most likely our simulations are realistic, but they probably underestimate organic aerosol. Secondary organic aerosol (SOA) formation from anthropogenic volatile organic compounds and isoprene is not included in our model and could explain the bias. Since aerosol number concentrations align well with observations and N_d is relatively insensitive to hygroscopicities (as demonstrated later), the relative underestimation of sulfate and organic aerosols is unlikely to significantly impact N_d .

Figure 10 shows the aerosol dry and ambient or hydrated size distributions from our 500 m Mod-Kappa simulation, compared to observations at 03:00 UTC on 15th and 16th November. The solid red line represents the total number of particles (and also N_d for the ambient-humidity size distribution subfigure) simulated by the model. In dashed pink line we show the N_d distribution

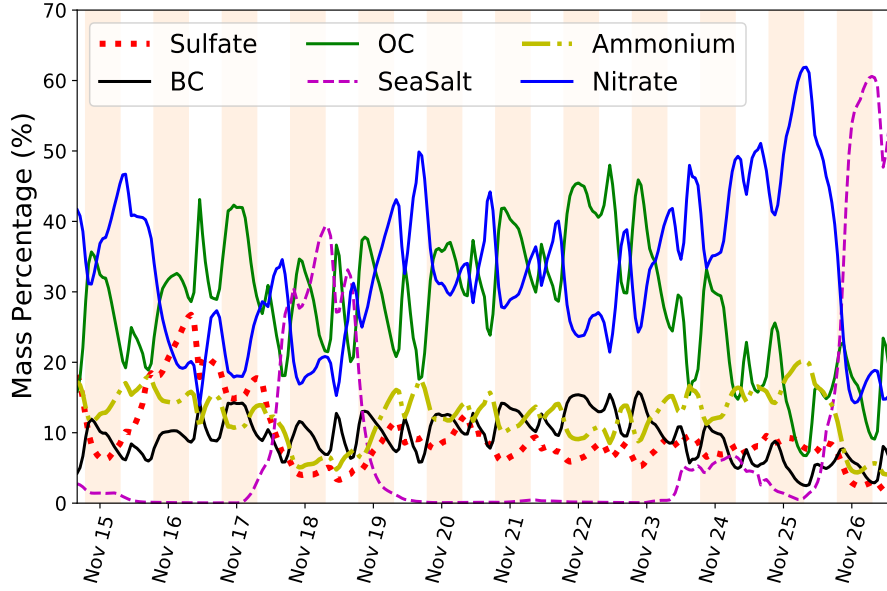


Figure 9. Percentage of different aerosol species by mass as a timeseries (UTC time) throughout the simulation period. The mean values from the gridboxes in the 500 m resolution Def-ARG simulation near the surface are shown. Nighttime is denoted by the shaded regions. All species the model represents with the GLOMAP microphysics scheme are shown; dust cannot participate in CCN activation.

Table 5. Percentage composition of aerosols over Paris from Crippa et al. (2013) and the 500 m model (simulation Def-ARG, at the surface) is listed here.

	BC (%)	OC (%)	Sulfate (%)	Chloride (%)	Nitrate (%)	Ammonium (%)
Crippa et al. (2013)	6.8	36	16	1.2	28	16
500 m Model	9.4	28	9.49.2	4.84.9	33	12

from Def-ARG simulation. Similar plots at the same time on 18, 20, 22, and 26 November20th and 26th November are shown in Figure S3S4.

On the days shown in Figure 10 and Figure S3S4, the model slightly-overpredicts the aerosol concentrations in the Aitken insoluble mode. The aerosol size distributions are better in agreement for the accumulation mode, except on 20th where it is underestimated. The ambient-humidity size distributions show that a more substantial underestimate of the number concentrations is usually observed in the coarse mode ($0.01 - 1 \text{ cm}^{-3}$). This seems to be the main symptom of the inability of the aerosol microphysics scheme to accurately simulate haze, discussed earlier.

On 15th Nov, N_d in the default simulation agrees well with the observations, but on the other three days N_d is severely underestimated. However, a significant improvement is observed in Mod-Kappa, which we show in later figures is due to the change between Def-ARG and Mod-ARG. Also, so far, the difficulties in simulating haze do not appear to prevent a good

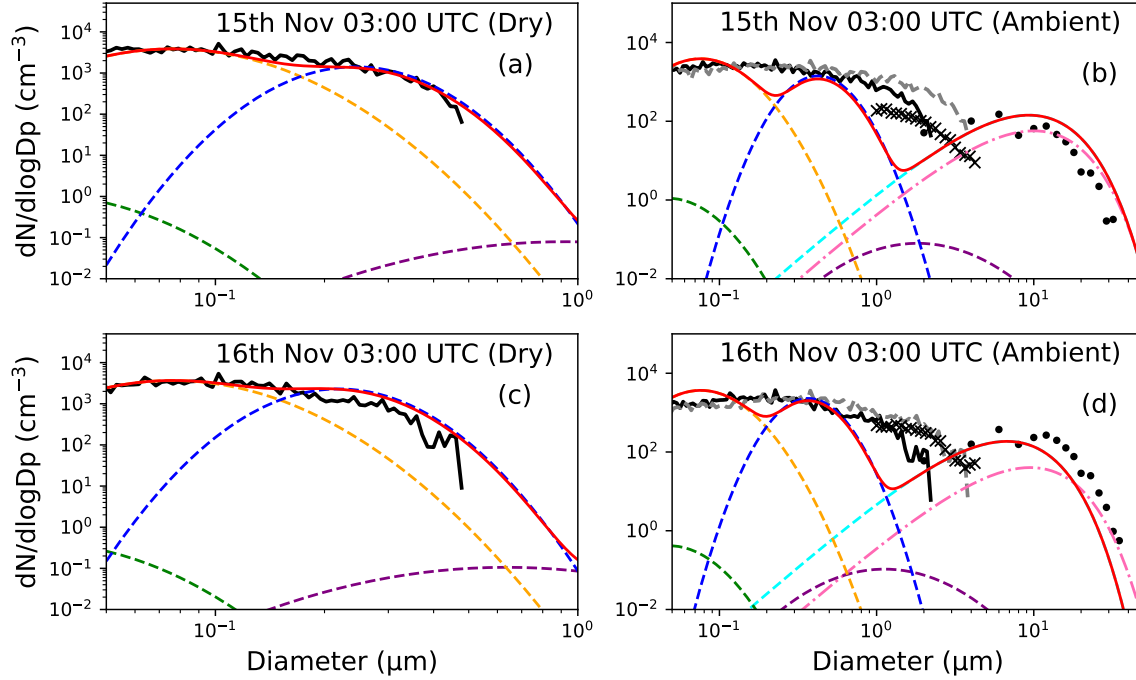


Figure 10. Dry and ambient aerosol size distribution on 15th and 16th November at 03:00 UTC from observations and our Mod-Kappa simulation. Only foggy grid cells are shown. The dry size distribution is measured by the SMPS only, while the WELAS and fog monitor (FM) observed the size distribution at ambient relative humidity. For this ambient size distribution, we also converted dry particle concentration data from the SMPS to ambient using κ -Köhler theory assuming a kappa value of 0.1 (and 0.3) and 100% relative humidity. The red line shows simulated total dry and ambient-humidity particle size distributions, while the dashed lines show the different aerosol and droplet modes. The dashed pink line shows N_d from simulation Def-ARG.

simulation of droplet concentrations. The next sections investigate in greater detail the model performance in simulating fog
485 droplets.

5.4 Evaluation of fog droplet concentration and liquid water content

The 500 m grid resolution simulations show widespread but inhomogeneous fog LWC and N_d during most fog events. To illustrate spatial variability, example patterns are shown from the Def-ARG simulation three times during the fog event on 15th November in Figure 11 at 5 m altitude. The domain is foggy at late night and early in the morning and dissipates around
490 09:00 UTC. Similar figures during four other fog events are shown in Figures S4, S5, S6 and S7.

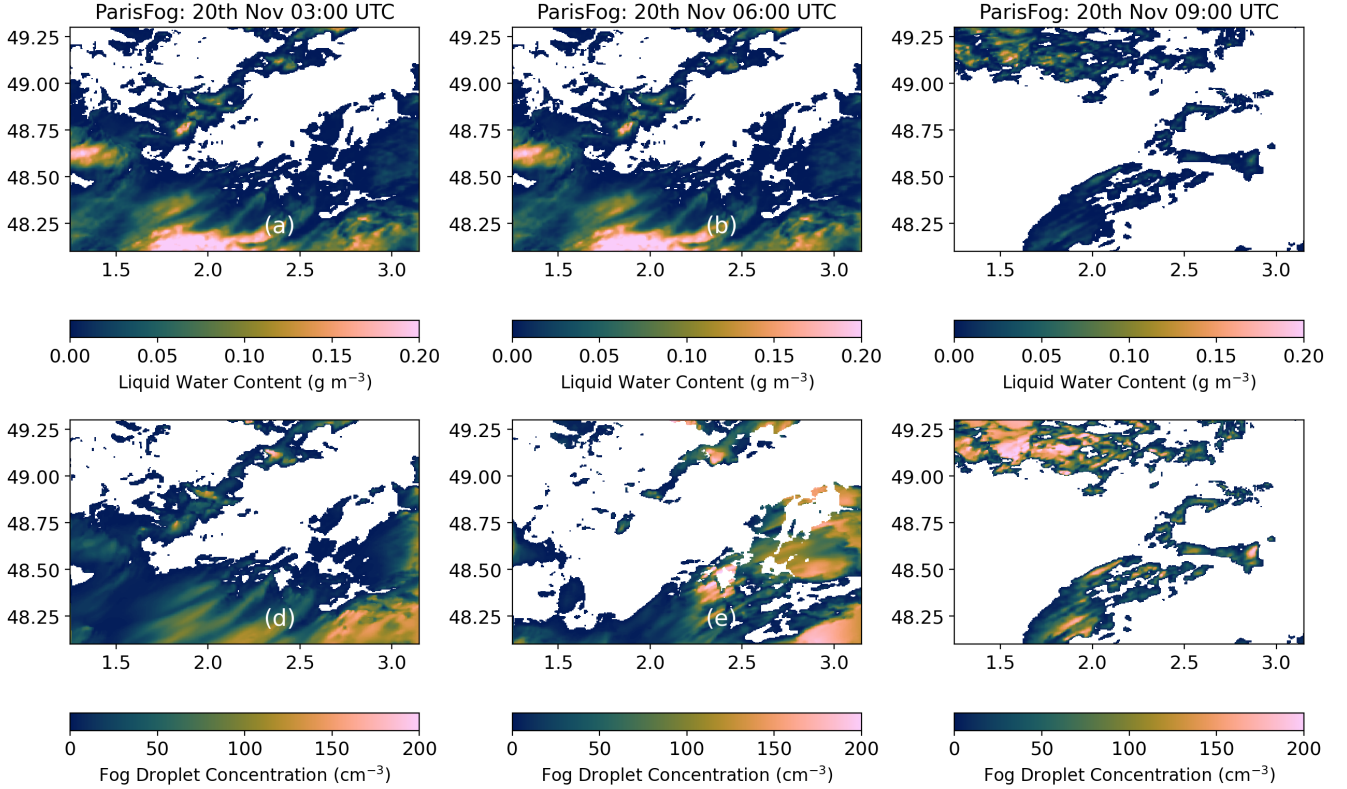


Figure 11. Spatial distribution of in-fog LWC (top panel) and fog N_d (bottom panel) near the surface (5 m altitude) at different UTC times on 15th Nov from simulation Def-ARG. These results are from the 500 m resolution model. The criteria for identifying a grid box as foggy are explained in Section 5.1 and Table 6; grid cells that do not meet the criteria are white.

In Figure 12, we plot the timeseries of in-fog N_d for different fog events from our 500 m model, compared to observations from the fog monitor at SIRTa. In each grid box, in-fog N_d is calculated by dividing the grid-averaged N_d by the fractional cloud cover. To allow a comparison even when simulated and observed fogs are not exactly co-located as in Figure 11, we show the medians as solid (and dashed) lines and the interquartile ranges over all of the foggy gridboxes as shaded regions.

495 We also impose a minimum threshold of 1000 foggy gridboxes while calculating the domain median and IQR, as shown in Table 6. This threshold corresponds to about 1.5% of the area of the entire domain and is designed to eliminate cases where fog forms only in isolated locations that are unlikely to be representative of the SIRTa observatory.

Simulation Def-ARG was designed to understand the performance of the ‘ARG’ activation scheme as implemented in the CASIM microphysics code in simulating N_d in fog. The observed N_d mostly varies between 0 – 300 cm⁻³ among different fog

500 events (except for a couple of hours on 20th Nov morning and 22nd Nov evening). We calculate the Normalized Mean Bias

Table 6. Summary of different thresholds used to prepare N_d and LWC timeseries plots. Min_Fog denotes the threshold number of foggy gridboxes, below which a spatial average of the model domain for a timeseries is not calculated.

Figure	Cloud Fraction	LWC	Min_Fog
4, S2	20 %	0.005 g m ⁻³	NA
12, 13	20 %	0.005 g m ⁻³	1000
S7	20 %	0.005 g m ⁻³	10

Factor (NMBF) and the Normalized Mean Error Factor (NMEF), defined as

$$\text{NMBF}(\overline{M} \geq \overline{O}) = \frac{\sum_i (M_i - O_i)}{\sum_i O_i}$$

$$\text{NMBF}(\overline{M} < \overline{O}) = \frac{\sum_i (M_i - O_i)}{\sum_i M_i}$$

$$\text{NMEF}(\overline{M} \geq \overline{O}) = \frac{\sum_i |M_i - O_i|}{\sum_i O_i}$$

$$\text{NMEF}(\overline{M} < \overline{O}) = \frac{\sum_i |M_i - O_i|}{\sum_i M_i}$$

Here, M_i are the model data, O_i is the observation data, \overline{M} is the model mean, and \overline{O} is the observation mean. NMBF has a range of $-\infty$ to $+\infty$, and NMEF has a range of 0 to $+\infty$. We report NMBF and NMEF for all fog cases in Supplement Tables S1 and S2 and use them as a tool to compare the model performance among different simulations.

By comparing the median time series shown by the dashed bluegreen line, for some of the fog cases the default simulation is in satisfactory agreement with the observations, such as the fog cases on 15th and 24th Nov early in the morning (Figure 12a, i). For these cases, we find NMBF values of 0.720.74 and 0.070.06, and NMEF values of 0.991.02 and 0.720.71. However, most of the time the simulation Def-ARG severely underpredicts N_d . For example, in both fog events on 16th, and in cases on 21 and 25th (Figure 12b, c, f, k), the simulated droplet concentrations are lower than observations by more than a factor of 4 (NMBFs equal to -9.0, -3.3, -8.8 and -3.8-9.01, -3.31, -7.08 and -4.09). However, the severe underestimation on 20th November could be attributed to a negative bias in aerosol concentrations in the accumulation mode (by about a factor of 2, as shown in Figure S4d) and somewhat large temperature biases (2-3°C). Aerosol concentrations are also somewhat underestimated for fog cases between 19th and 23rd November, which may have contributed to the lower simulated values of N_d . Figure S8S9 shows the time series of droplet concentrations during fog events from only foggy gridboxes within a 20×20 cell box around SIRTa. Selecting only these gridboxes does not change the significant underestimate of N_d on average.

In the Mod-ARG simulation, we introduced improved parameters for the ARG scheme (Ghosh et al., 2024c). In the Mod-Kappa simulation, we adjusted the hygroscopicities to more realistic values, reducing that of sulfate while increasing it for organic aerosols. As expected from the activation parameterization tests shown in Figure 2, in simulation Mod-ARG N_d usually increases significantly compared to Def-ARG. Model performance is improved in most fog events. During the two thick fog

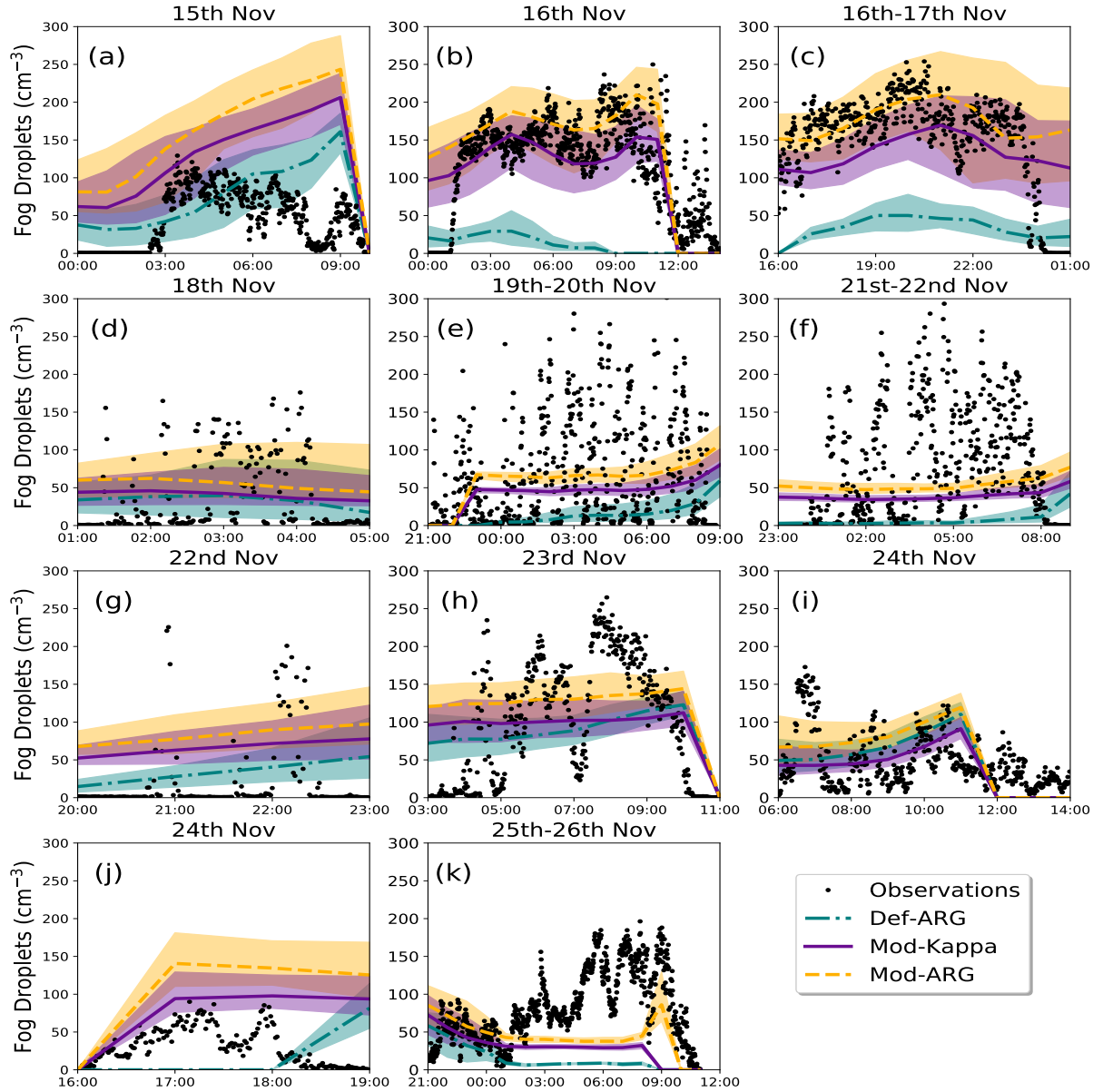


Figure 12. Variation of simulated and observed N_d as a function of time for different fog events. 500 m model results at 5 m altitude from simulations Def-ARG, Mod-ARG, and Mod-Kappa are compared with observations at the SIRTa observatory (UTC time). Different lines represent the median value and shaded regions represent the interquartile range over the foggy gridboxes. *The simulated N_d in Mod-Kappa closely resembles that in Mod-ARG; they can be distinguished, for example, at 09:00 UTC in subfigure k.* Figure S9S10 shows that including a contribution from sub-grid scale updraft velocities in the activation scheme has a similar effect as changing from Def-ARG to Mod-ARG, and that with higher updraft speeds the effect of the change from Def-ARG to Mod-ARG on N_d would often be much smaller.

events on the 16th (subfigures b, c), NMBF (NMEF) changed from ~~-9.0, -3.3 (9.2, 3.5)~~ -9.01, -3.31 (9.25, 3.45) in Def-ARG
525 to ~~0.23, 0.24 (0.37, 0.31)~~ 0.23, 0.25 (0.38, 0.31) in Mod-ARG. ~~In Mod-ARG, simulated N_d is around 150-200 cm⁻³ (similar to observations) compared to 0-50 cm⁻³ (a factor of 10 underestimation) in Def-ARG.~~ Similar performance improvements
are also observed on 19th and 21st November fog cases. The NMBF (NMEF) improves from ~~-5.2, -8.8 (5.9, 9.7)~~ to ~~-0.42, -0.18 (1.01, 0.85)~~ -5.18, -7.08 (5.83, 8.07) to -0.41, -0.19 (1.00, 0.85). In 18th and 24th (morning) fog cases (subfigure d, i), the
performance between default and updated simulations is very similar. On 26th November, the factor of 10 underestimation after
530 midnight, is now within factor of 3. Overall NMBF (NMEF) changes from ~~-3.8 (4.2)~~ to ~~-0.92 (0.97)~~ -4.09 (4.46) to -0.69 (1.02).
On ~~23rd and on~~ this day, the fog dissipation is better simulated in ~~Mod-Kappa~~ Mod-ARG compared to ~~Mod-ARG~~ Def-ARG.
For the 22nd November evening fog event (Subfigure g), on average the default simulation is better, but relatively higher N_d
between 22:00 and 23:00 UTC, is slightly better simulated in Mod-ARG. On 24th November evening (subfigure j), the default
simulation fails to produce fog most of the time, while a good agreement of N_d is simulated with our improvements during fog
535 formation and growth. In both simulations, the dissipation of fog is not accurate in the model. On 15th ~~November~~ November,
 N_d is overestimated (NMBF increases to ~~2.7 from 0.72~~ 2.69 from 0.74 in the default simulation) as a result of our changes;
however, the overestimation is slightly higher than a factor of 2.

~~We did not observe significant differences in droplet concentration (N_d) between the Mod-ARG (gray in Figure 12) and
Mod-Kappa (purple) simulations. This lack of difference could be due to the opposing effects of changes in sulfate, nitrate, and
540 organic aerosols, which may lead to cancellation. However, we also do not expect strong sensitivity to hygroscopicity: Section
4.2 and Figure 6(e) of Mazoyer et al. (2019) demonstrates that, for the ParisFog cases examined in our study, observations do
not suggest there is significant correlation between N_d and κ .~~

N_d decreases across all fog cases in Mod-Kappa (yellow in Figure 12), mainly due to the lower hygroscopicity of sulfate
aerosols. However, the change in N_d from Mod-ARG to Mod-Kappa is smaller than that of Def-ARG to Mod-ARG. Our
545 findings align with Mazoyer et al. (2019), which found no significant correlation between N_d and κ in the ParisFog cases we
study. In the model, for most fog cases, Mod-Kappa further improves model performance over Mod-ARG. On 15th November,
the NMBF decreases from 2.69 to 1.97. For the 16th November cases, N_d remains in good agreement with observations.
Similarly, on 24th November, the NMBF drops from 0.27 and 3.28 to -0.17 and 2.05. However, for fog cases on November
19-20, 21-22 and 26 (subfigures e, f, k), the reduction in droplet concentrations leads to degraded model performance compared
550 to Mod-ARG. NMBF (NMEF) changes from -0.41, -0.19, -0.69 (1.00, 1.00, 1.01) in Mod-ARG to -0.96, -0.64, -1.52 (1.42,
1.24, 1.78). Nonetheless, the model is still in much better agreement with the observations compared to Def-ARG.

We expect that the underestimate in N_d in Def-ARG is caused by an underprediction of the fraction of aerosols activated
at low updraft speeds by the default ARG parameterization, and by an underestimation of the updraft speed in the activation
scheme that results from not resolving all the turbulence. Figure ~~S9~~ S10 shows the diagnosed sub-grid vertical velocity in our
555 simulations (subfigures c and f). Qualitatively, the values seem likely to be realistic if compared with the turbulent kinetic
energy (TKE) shown in ParisFog observations by Stolaki et al. (2015) on 15 November, though the comparison is imprecise
since TKE contains horizontal contributions, and some vertical velocity variance is resolved by our model and therefore not
included in the sub-grid component.

In Figure S40S11, we show two simulations in which the updraft speeds in Def-ARG and Mod-ARG are increased by including a component to represent sub-grid-scale, unresolved vertical turbulence. This turbulence component includes an ad-hoc tuning factor of 0.2 to keep N_d realistic; as mentioned earlier, dedicated future studies are needed to fully explore the turbulence contribution. Figure S40S11 confirms that the underestimation of N_d in Def-ARG could be largely resolved either by using Mod-ARG parameters or by adding a sub-grid component of updraft speeds with a tuning factor. Including both modifications leads to an overestimate of N_d , with NMB positive for all fog events and above 1.0 (a factor 2 overestimate) in 6 out of 11. In the companion paper, we will explore strategies to mitigate the overestimations of N_d , which may also be beneficial when the impacts of sub-grid turbulence are more fully addressed in future. Furthermore, Figure S40S11 shows that the differences in N_d between Def-ARG and Mod-ARG in Figure 12 would be substantially smaller if we included a subgrid turbulence contribution to updrafts for aerosol activation, a result that could also be inferred from Figure 1.

In Figure 13, we compare the timeseries of in-fog LWC in foggy gridboxes to observations. Subfigures (a-k) show different fog cases. In-fog LWC is calculated by dividing the grid average LWC by the cloud cover and the same gridbox number threshold as in previous figures is applied. As shown in Figure 4, most of the time the model simulated enough foggy gridboxes in the domain during all the events for the statistical properties (median and interquartile range) to be meaningful. At other times, the LWC is zero. When there are sufficient foggy gridboxes, the LWC and cloud fraction thresholds for defining these gridboxes as foggy leads to a minimum in the LWC of around 0.025 gm^{-3} . Since low LWC grid boxes also tend to have low cloud fraction, the minimum here is the LWC threshold of 0.005 gm^{-3} divided by the cloud fraction threshold of 20%. The interquartile ranges shaded on the timeseries in Figure 13 show the general nature of the variability between gridboxes, while the inset figures on each subplot are histograms of in-fog LWC that give more detail at a particular time of the corresponding fog event, from the default simulation. In all fog events irrespective of thickness and type, there is substantial spatial variability of the simulated LWC in the 500 m resolution model as shown in the inset histograms. Therefore the observations at the SIRT

observatory may be quite different from the domain averages we present from the model. Figure S44S12 shows only the 20×20 gridboxes around SIRT; however the general trends in LWC in this figure do not look much different to Figure 13.

While our simulations are mostly able to produce fog at the right time and despite reasonable simulations of N_d , neither Def-ARG nor Mod-ARG simulations have much skill in representing LWC on many of the days. Visually, trends in the timeseries only roughly match observations during three fog events of 11 (the two events on 16th and the event on 24th). This low skill may be partly an artefact of comparing a point observation with a domain average (Schutgens et al., 2017). Low skill is also expected from recent intercomparison studies (Boutle et al., 2022), in which LES and single column models were also found to have little skill in simulating liquid water path, even for a case our model is able to simulate reasonably well (see supplement Figure S42S13 and the companion paper). Realistic simulations of surface N_d , perhaps within 50% of observations, may (or may not) be a necessary condition, but are clearly not a sufficient condition, for realistic simulations of LWC. Similarly to the N_d timeseries, LWC is underestimated during several fog events in simulation Def-ARG, such as for fog cases on 16th Nov, 23rd Nov, around 04 : 00 – 06 : 00 UTC on 21st Nov, 24th Nov, and after fog onset on 25th Nov. During these periods, the bias is larger than a factor of 5. LWC in the observations is mostly between $0 - 0.20 \text{ gm}^{-3}$, but LWC in the default simulation is always $< 0.10 \text{ gm}^{-3}$. However, on some days, such as 15th and 20th Nov (on average), the default model performance was

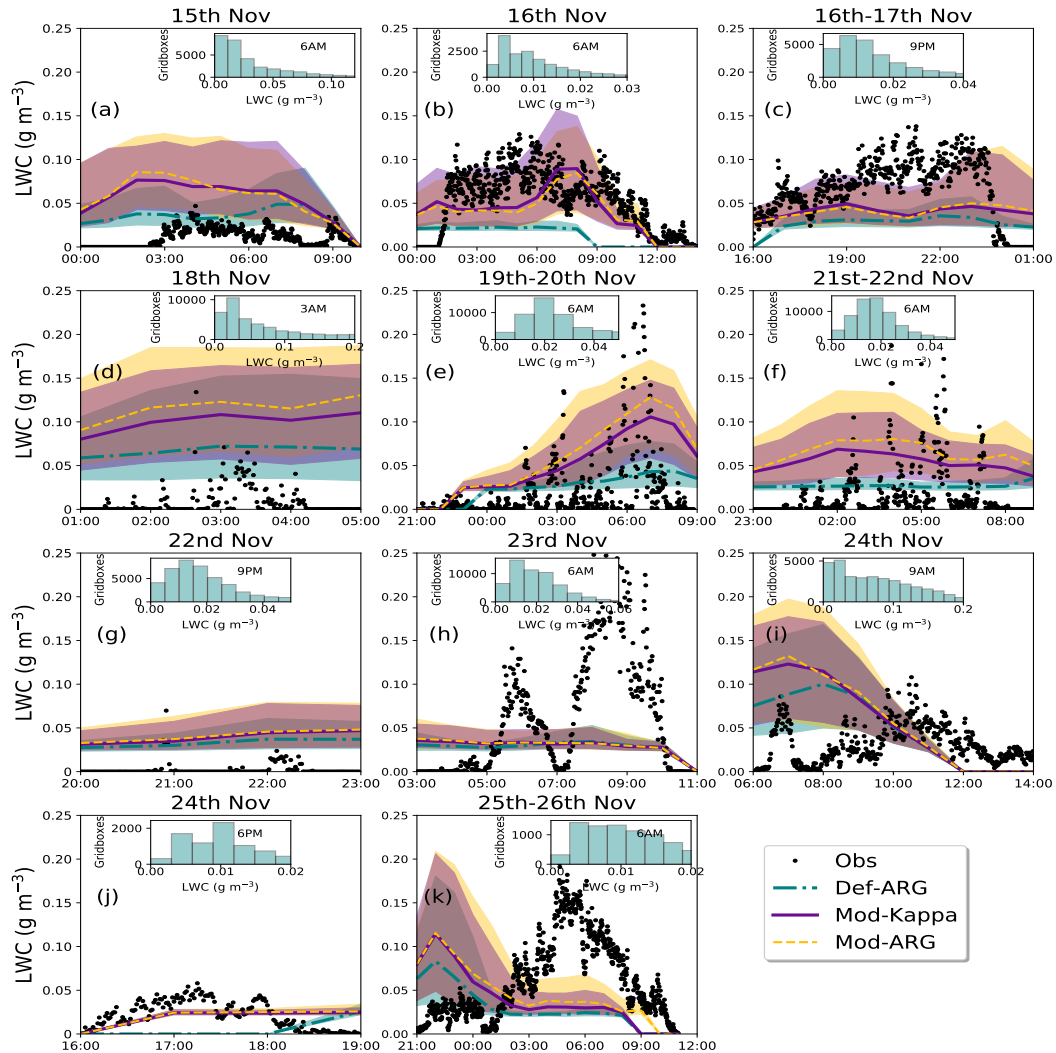


Figure 13. Variation of LWC as a function of time (UTC) for different fog events in the 500 m resolution regional model. Subfigures (a-k) compare all the simulations with the observations for the different fog cases. The solid lines and shaded regions represent the median and interquartile range from foggy gridboxes. The inset plots show histogram of in-fog liquid water content at different times of the fog events. The minimum LWC visible in the plots of around 0.025 g m^{-3} is due to the thresholds for defining gridboxes as foggy, as described in the text.

satisfactory (within a factor of 2 bias). Simulation Def-ARG (and other simulations as well) did not reproduce the thick fog
 595 on 23rd November. The LWC time series could be affected by errors in the simulated higher-level cloud properties on this day. The model simulates substantial cloud cover above 300 m altitude, and the temperature and RH profiles between 500 m and 3000 m altitude (Figure 5) have errors of up to 3°C and 15% respectively, suggesting that these clouds may not be realistic. In addition, simulated aerosol concentrations were much lower than observations (Figure 8).

Similar to N_d , there is a large difference in LWC between Def-ARG and Mod-ARG, and **minimal** differences between Mod-ARG and Mod-Kappa. The large difference between Def-ARG and Mod-ARG suggests that aerosol-fog interactions are important, at least in our simulations. Changes in the ARG scheme, increasing N_d , result in a significant increase in LWC compared to the default simulation. However, comparing to the observations, it is unclear whether biases increase or reduce with this change. The most obvious mechanism that could explain the sensitivity of the simulated LWC to N_d in these simulations is the size dependence of droplet sedimentation rates. Figure 10 and Figure **S3S4** show that the droplets in Def-ARG are, on average, around 3-10 μm larger than in Mod-ARG, at least at the particular times we show.

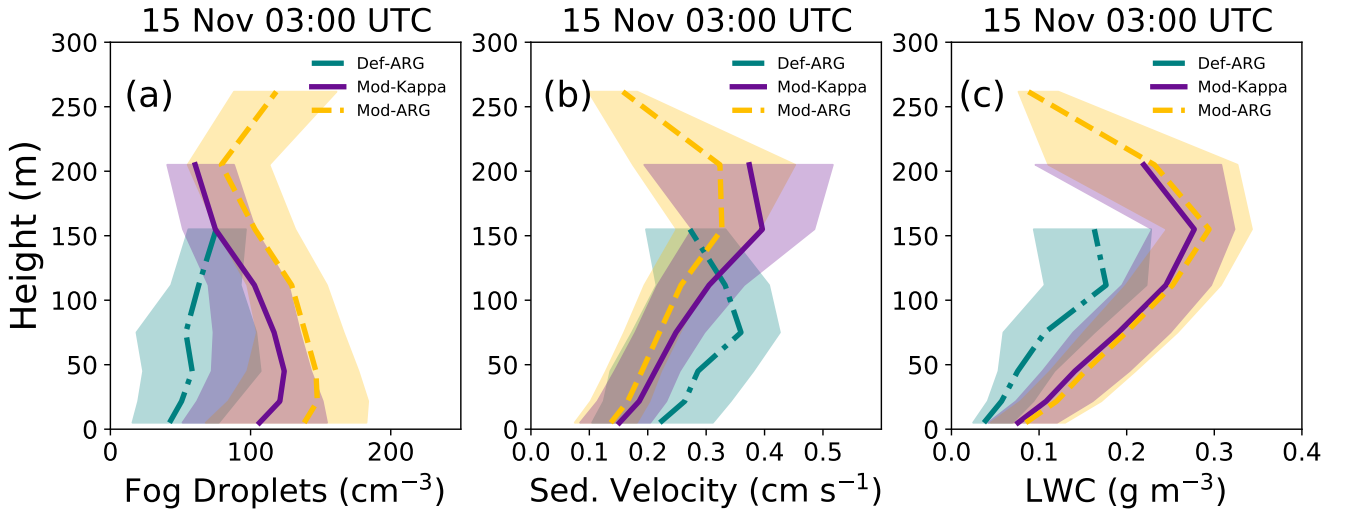


Figure 14. Vertical profiles of N_d (a), droplet sedimentation velocity (b), and LWC (c) in fog for the 15th November ParisFog case (at 03:00 UTC) for different simulations.

In Figure 14, from the 500 m model, we show simulated vertical profiles of N_d , LWC and sedimentation velocity at 03:00 UTC for the 15th November fog case. The increase in LWC from Def-ARG to Mod-ARG **and Mod-Kappa** in this case is fairly typical for this increase in N_d ; profiles from some other fog cases shown in supplementary Figures S13-S16 and are discussed in more detail in the companion paper. Where there is substantial fog, Def-ARG has higher sedimentation rates. However, other aerosol-cloud interactions mediated by radiation are also possible. For most fog cases, a higher LWC in Mod-ARG also leads to a higher fog top height, perhaps due to increased turbulence (also see Figure **S16S17**). A positive feedback mechanism can be proposed as follows: (a) reduced droplet sedimentation increases the liquid water path, enhancing cloud-top radiative cooling. Radiative cooling may also be increased directly due to the smaller droplet effective radius, which leads to more efficient absorption of upwelling surface radiation that is subsequently re-emitted (Boutle et al., 2018). (b) Enhanced radiative cooling promotes further condensation of water vapor and intensifies turbulence (Boutle et al., 2018), resulting in a much optically thicker fog layer. (c) The increased turbulence then accelerates condensation through adiabatic cooling, raising the liquid water path and lifting the fog top, both of which contribute to even greater radiative cooling rates. **On 15 and 16 November, the**

fog coverage in Def-ARG is much lower compared to other simulations, as discussed earlier. However, on 16 November, the inversion height is slightly higher than on 15 November, allowing these proposed feedback mechanisms to develop further. Furthermore, the droplet sedimentation velocity in the Def-ARG simulation on 16 November is higher (0.3 cm s^{-1}) compared to 15 November (0.1 cm s^{-1}), resulting in a larger sink of droplets. Hence, we find that on 16 November the difference in fog top height between simulations is much larger compared to 15 November, and the default simulation severely underestimates the droplets on the 16th November case. While these processes are very likely interrelated, this feedback mechanism remains speculative. More detailed models with finer grid resolution might more accurately represent possible counterbalancing effects, for example enhanced evaporation in the entrainment zone when sedimentation rates are reduced (Bretherton et al., 2007).

5.5 Evaluation of Fog Top Droplet Concentrations

In Figure 15, we compare simulated droplet concentrations at the top of the fog to retrievals from the Moderate Resolution Imaging Spectroradiometer (MODIS) Terra satellite. The satellite retrievals have large uncertainties, but they do allow us to evaluate (to some extent) the spatial variability of the droplet concentration across our model domain, which the SIRT measurements do not.

We calculated N_d using observations of cloud optical depth, cloud droplet effective radius, and cloud top temperature from MODIS, using the Collection 6 Level 2 dataset, and following equations 1 – 11 described by Grosvenor et al. (2018). These equations assume that the vertical profile of liquid water content is adiabatic, which is clearly erroneous in some of the fog cases (the vertical profiles of LWC and N_d from a few ParisFog cases are shown in supplement Figures S11 and S13), but perhaps better than any other possible simple assumption. The fog top droplet concentrations can be calculated as:

$$N_d = \frac{\sqrt{5}}{2\pi k} \left(\frac{f_{ad} c_w \tau_c}{Q_{ext} \rho_w r_e^5} \right)^{\frac{1}{2}} \quad (4)$$

The constant k is the ratio of the volume mean droplet radius to the effective radius, while f_{ad} is the degree of adiabaticity. We use $k = 0.8$ and $f_{ad} = 0.7$ following Grosvenor and Wood (2014). c_w is the rate of increase in liquid water content with height for a moist adiabatic ascent. τ_c is the cloud optical thickness. Q_{ext} is the extinction efficiency factor, set to 2 following Hulst and van de Hulst (1981). ρ_w is the density of water.

We show the spatial variation of fog top droplet concentrations in the 500 m model from the MODIS satellite (subfigures b, e, h) and the MOD-Kappa simulation (subfigures c, f, i) for the ParisFog cases on November 15th 10:00 UTC, and on November 20th and 23rd at 11:00 UTC. We show MODIS data only for those locations where the cloud top height is below 1.5 km; higher cloud is the primary reason why subfigures b and e appear sparse. We also show the histogram of N_d from the Def-ARG, Mod-ARG and Mod-Kappa simulations and compare them with the MODIS-derived droplet distribution (subfigures a, b, ea, d, g). We normalized the histograms to account for different numbers of foggy/cloudy gridboxes in different simulations. The selected days are the only days on which MODIS sees significant cloud with top height below 1500 m. Unfortunately, on November 23, our evaluation at SIRT showed that fog LWC is very poorly simulated by the model, so we do not expect good results. On the other two days, we have fewer valid retrievals, but still hundreds to thousands in total, enough to gain some insight into the N_d variability.

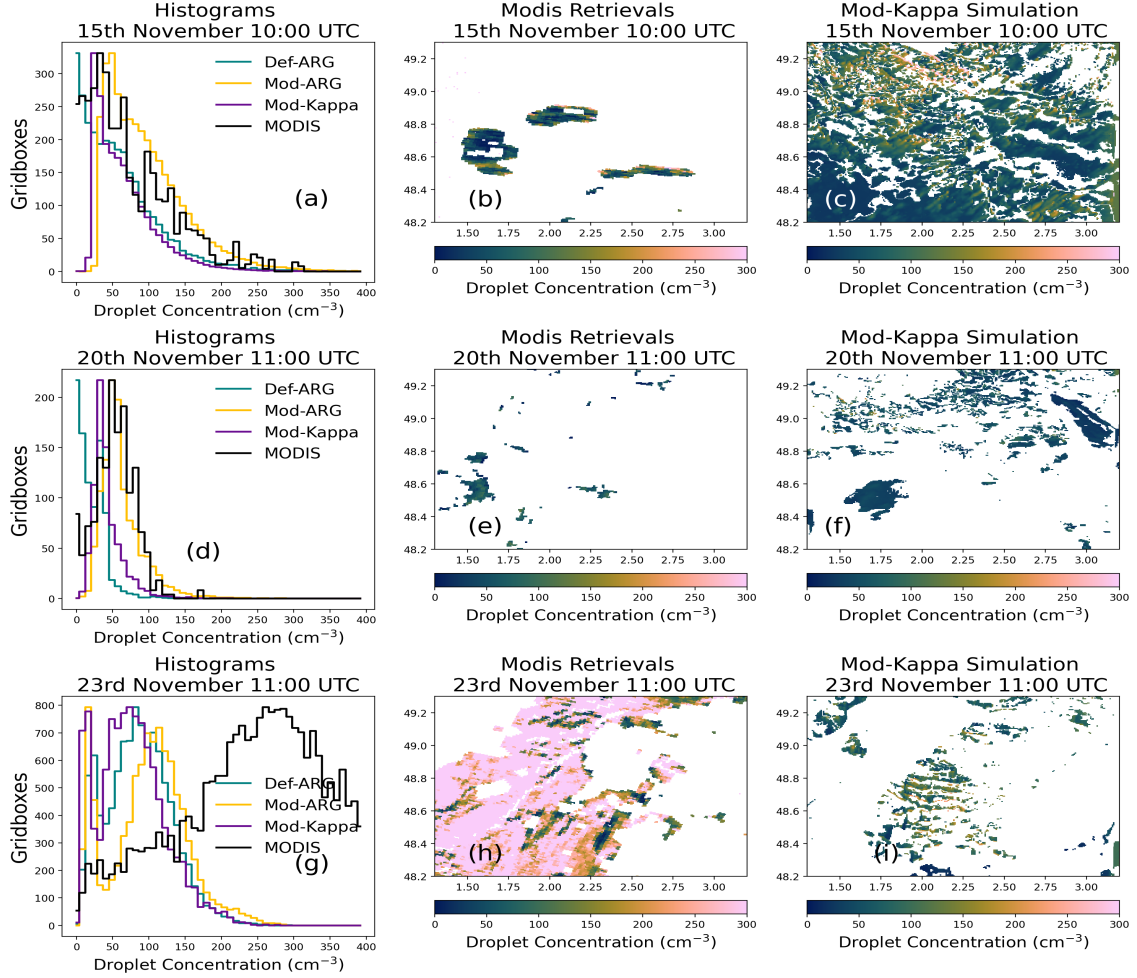


Figure 15. Histogram of fog-top N_d from Def-ARG, Mod-ARG and Mod-Kappa compared with N_d observations from MODIS satellite (subfigures a, d, g). Spatial variation of N_d from MODIS in the 500 m model domain is shown in subfigures b, e, h. The spatial variation of N_d from the Mod-Kappa simulation in the 500 m model for different ParisFog cases is presented in subfigures c, f, i.

Similar to the fog monitor measurements presented earlier, we find that the default simulation severely underestimates N_d . With updates to the ARG scheme (and hygroscopicity fixes), in simulation Mod-Kappa, the N_d distributions are in much better agreement with the observations (considering only 15th and 20th November). Both the mean and spatial variability appear to match reasonably well.

655 We find that the spatial variability in N_d is simulated realistically on both November 15 and 20. However, we also find that the spatial variability at cloud-top does not match the temporal variability at the surface (for example, the spatial standard deviation of cloud-top N_d on 15 November from MODIS is 99 cm^{-3} while the temporal standard deviation during the same fog event from the fog monitor is 38 cm^{-3} at the surface). Therefore, the shaded ranges representing spatial variability we show on Figures 12 and 13 are only approximately comparable with the temporal variability in the observations. While the

660 comparison of simulation and satellite data is valuable because it gives a sense of real observed spatial variability in N_d , the evaluation of simulated N_d with MODIS-derived N_d must be interpreted with care. Firstly, the satellite measurements have large uncertainties, estimated at 78% at the pixel level by Grosvenor et al. (2018) even for relatively adiabatic clouds. Additionally, we cannot be sure our MODIS retrievals are of fog rather than cloud. The retrieved cloud top height used in both our 1.5 km threshold for ‘likely fog’ and in the N_d retrieval itself is uncertain, and layers of cloud that is not fog may still

665 have tops below 1.5 km. Indeed, we know that many of the fogs we study are obscured by higher cloud (although this is often simulated poorly by the UM). However, the contrasting results near the surface and at the fog top, combined with uncertainties in satellite retrievals, further motivate the need to study the vertical structure of fog using ground-based observations—an effort addressed in the companion paper.

6 Discussions and Conclusions

670 The activation of fog droplets at the SIRTa observatory near Paris is studied with a weather and climate model. The aim is to examine how well aerosol and cloud microphysics designed for (relatively) computationally inexpensive weather and climate simulations can simulate droplet concentrations in fog. We simulated 11 fog events that were observed during the 2011 ParisFog field campaign, using a 500 m resolution setup. The aerosol microphysics scheme simulates reasonably realistic aerosol number concentrations and size distributions, and the nitrate aerosol scheme of Jones et al. (2021), tested here at kilometer-scale spatial

675 resolution for the first time, also seems to perform well. The key findings of our work are listed below:

■ The model produces satisfactory simulations of fog cover, given that forecasting fog is difficult

The model could produce some fog in our 500 m domain during all fog events observed at SIRTa, but the fog was not always co-located with the observations and there were some simulated fogs that did not correspond to observations.

■ Droplet concentrations in the default setup are often biased low due to biases in parameterized aerosol activation and probably poorly resolved turbulence

680

Fog droplet concentrations were underestimated by our Def-ARG simulation, in which the model is run without modifications to the activation scheme. Sometimes, the underestimate is more than a factor of five, despite a slight underestimate of the aerosol number concentrations.

■ Improving the ARG parameterization leads to a (usually) realistic simulation of droplet number concentrations

We tested the ability of the ARG activation scheme to simulate aerosol activation scheme in fog-like conditions, and applied improvements to the parameterization we document separately. The updated activation parameterization is more physically realistic, droplet concentrations increase, and model performance improves. Similar improvements could be achieved by including a contribution to updraft speeds from sub-grid turbulence with a tuning factor. However, in our model, combining the update to the ARG parameterization with vertical velocities that match observations would almost certainly lead to overestimates of N_d . Our modifications to hygroscopicity ~~did not have much~~ had a smaller effect on N_d in this model setup but will likely be more useful elsewhere, for example in marine regions. The updates to hygroscopicity are included in Unified Model code releases from version 13.3 onward and we expect that they will be included in version 2 of the UK Earth System Model (UKESM2).

■ Liquid water content can be simulated realistically some of the time and is sensitive to aerosol concentrations, but large biases remain

Fog LWC was generally realistic (within a factor of two of the observations during most of the fog events), although sometimes underestimated. Simulated surface liquid water content trends during the fogs only infrequently matched observations. The variation in LWC was similar to the variation in N_d between our simulations. The LWC is sensitive to modifications to the activation parameterization that lead to substantial perturbations to the droplet concentration.

Simulating fog in a multipurpose model intended for operational weather forecasting and climate prediction has limitations compared to dedicated, detailed simulations designed to resolve large turbulent eddies (e.g. Mazoyer et al., 2017) or studies of fog with sectional cloud microphysics and prognostic supersaturation (e.g. Schwenkel and Maronga, 2019). In particular, we distinguish aerosols from fog droplets somewhat artificially and cannot simulate very large hydrated but unactivated aerosols with sizes well in excess of $1\text{ }\mu\text{m}$. The loss rates of aerosol mass due to sedimentation may therefore be underestimated. Our grid spacing is too coarse to resolve all of the turbulence, and as we do not attempt to correct for this except in sensitivity studies, updraft speeds are likely underestimated. We are also unable to simulate bimodal droplet size distributions. However, the poor simulation of haze does not prevent relatively accurate simulations of fog droplet concentrations, with an activation parameterization that is tuned to a cloud parcel model, not to the observations with which we evaluate our UM simulations. In this paper, we assume (as in some other studies (e.g. Jia et al., 2019; Poku et al., 2019) but not all (e.g. Zhang et al., 2014; Mazoyer et al., 2017; Poku et al., 2021)) that radiative cooling does not activate droplets in radiation fogs, which is an obvious inadequacy we address in the companion paper. In our simulations, fog droplets can be lost to the surface via gravitational sedimentation; however, interception of droplets by trees and buildings near the surface is not included in the model by default. This process, which has been shown to play an important role in the fog lifecycle and vertical structure (Mazoyer et al., 2017), is also addressed, albeit crudely, in the companion paper.

715 These shortcomings, together with errors in the simulation of synoptic meteorology, may partly explain why our N_d and LWC sometimes have large biases, ~~sometimes we~~ fail to simulate the occurrence of fog altogether, and ~~sometimes we~~ simulate fog where there is no fog in reality. Our case study from the ParisFog field campaign may be representative of moderately polluted urban fog but is unlikely to represent other types of fog, such as frontal fog or marine fog, where aerosol concentrations are likely lower and the surface fluxes driving fog formation are different. ~~While it seems bulk microphysics is sufficient to produce realistic N_d in our case study,~~ we also do not explicitly demonstrate in this paper that using prognostic aerosol number concentrations coupled to cloud microphysics actually improves simulated visibility for operational forecasting of fog compared to still simpler setups. Further investigation could also clarify whether all five aerosol modes and full chemistry are needed to simulate fog droplet concentrations accurately, or ~~that whether~~ an aerosol climatology could ~~not~~ be used instead at lower computational cost.,~~but w~~We do present critical tests suggesting that these demonstrations may be possible in future.

720

725 We refer the reader to Jayakumar et al. (2021) where a similar aerosol model without double-moment cloud microphysics was found to improve forecasts.

This paper shows that the microphysical properties of fog, such as droplet concentration and liquid water content, can ~~be realistically simulated most of the time~~generally be simulated with reasonable accuracy in a weather and climate model with prognostic aerosols running at 500 m grid resolution. In particular, we show that an activation parameterization designed to produce droplets in clouds via adiabatic cooling can yield realistic droplet concentrations in fog, and we isolate the sensitivities of the droplet concentration to key modeling choices and input parameters. Simulated fog droplet concentrations on the surface are especially sensitive to the activation parameterization. In our simulations at least, fog liquid water content is sensitive to the droplet number concentration, a result that provides some indirect support to other studies (e.g. Maalick et al., 2016) that suggest aerosols affect fog lifecycle. Our results lay the foundations for more detailed studies of the aerosol activation mechanism in fog in the companion paper. In the companion paper, we include a source of supersaturation from radiative cooling (together with a sink of supersaturation due to shortwave heating) in the same simulation case studies. We also investigate the performance of the model in simulating the vertical structure of fog using case studies from the UK LANFEX campaign in 2014 (Price et al., 2018). We examine how realistically the model simulates turbulence during LANFEX and calculate the relative importance of adiabatic and radiative cooling sources.

730

735

740 *Code and data availability.* All model and observation data used in this work is available at: <https://doi.org/10.5281/zenodo.1400487>~~https://doi.org/10.5281/zenodo.15671189-(Ghosh et al., 2024a)~~ (Ghosh et al., 2025). The Terra/MODIS cloud L2 data sets were acquired from the Level-1 and Atmosphere Archive & Distribution System (LAADS) Distributed Active Archive Center (DAAC), located in the Goddard Space Flight Center in Greenbelt, Maryland : <https://ladsweb.nascom.nasa.gov/> (Last access: Oct 23 2024). A copy of the MODIS satellite data used in this work is available in the same archive. A copy of the SEVIRI satellite data used in this study is also available in the same archive. All atmospheric simulations used in this work were performed using version 13.0 of the Met Office Unified Model (UM) starting from the GA7.1 configuration (Walters et al., 2019), and also included version 7.0 of JULES.. The source code used in this study is free to use. However, software for this research is not publicly available due to intellectual property copyright restrictions, but is available to signatories of the Met Office Software license. Full descriptions of the software, including the specific configurations used in this study, can be found in the text of

745

750 this article and in articles cited therein. A number of research organizations and national meteorological services use the UM in collaboration with the Met Office to undertake atmospheric process research, produce forecasts, develop the UM code, and build and evaluate Earth system models. To apply for a license for the UM, go to <https://www.metoffice.gov.uk/research/approach/modelling-systems/unified-model> (last access: Oct 23 2024; Met Office, 2024), and for permission to use JULES, go to <https://jules.jchmr.org> (last access: Oct 23 2024). Rose and Cylc software were used to drive the Unified Model. The simulations were run using Rose version 2019.01.3 and Cylc version 7.8.8 (and 8.3.3 for a couple of simulations), which are publicly available at <https://doi.org/10.5281/zenodo.3800775> (Shin et al., 2020),
755 <https://doi.org/10.5281/zenodo.4638360> (Oliver et al., 2021), and <https://doi.org/10.5281/zenodo.12801923> (Oliver et al., 2024) respectively. Both Rose and Cylc are available under v3 of the GNU General Public License (GPL). The full list of simulation identifiers for the simulations in this paper is given below.

- Simulation Def-ARG: [u-dh438u-do390](#)
- Simulation Mod-ARG: [u-dh848u-do389](#)
- 760 – Simulation Mod-Kappa: [u-dh847u-do373](#)
- Simulation Def-ARG-Sigma: u-dk245
- Simulation Mod-ARG-Sigma: u-dk246

Author contributions. PG and HG formulated the idea of the paper with important contributions from all co-authors. PG and HG designed the simulations and set up different model configurations with contributions from AJ. MM supplied the data from the ParisFog field campaign.
765 PG ran all the simulations. PG analyzed the simulation and observation data with contributions from NA and HG, and wrote the paper with comments and suggestions from all co-authors.

Competing interests. The authors declare that they have no conflict of interest.

Acknowledgements. This research was supported by the U.S. Air Force Life Cycle Management Center (LCMC) collaboration with Oak Ridge National Laboratory (ORNL). The computational resources on Air Force Weather HPC11 are provided by the Oak Ridge Leadership
770 Computing Facility (OLCF) Director's Discretion Project NWP501. The OLCF at Oak Ridge National Laboratory (ORNL) is supported by the Office of Science of the U.S. Department of Energy under Contract No.DE-AC05-00OR22725. We thank the scientists responsible for the ParisFog field campaign. Model simulations are material produced using Met Office software. This work used the Extreme Science and Engineering Discovery Environment (XSEDE), which is supported by the National Science Foundation Grant ACI-1548562. Specifically, it used the Bridges-2 system, which is supported by the NSF Award ACI-1928147, at the Pittsburgh Supercomputing Center (PSC). This work
775 also used Bridges-2 at the PSC through allocation atm200005p from the Advanced Cyberinfrastructure Coordination Ecosystem: Services & Support (ACCESS) program, which is supported by National Science Foundation grants #2138259, #2138286, #2138307, #2137603, and #2138296.

References

- Abdul-Razzak, H. and Ghan, S.: A parameterization of aerosol activation: 2. Multiple aerosol types, *Journal of Geophysical Research*, 105, 6837–6844, <https://doi.org/10.1029/1999JD901161>, 2000.
- Ackerman, A. S., Kirkpatrick, M. P., Stevens, D., and Toon, O. B.: The impact of humidity above stratiform clouds on indirect aerosol climate forcing, *Nature*, 432, 1014–1017, 2004.
- Archibald, A. T., O'Connor, F. M., Abraham, N. L., Archer-Nicholls, S., Chipperfield, M. P., Dalvi, M., Folberth, G. A., Dennison, F., Dhomse, S. S., Griffiths, P. T., Hardacre, C., Hewitt, A. J., Hill, R. S., Johnson, C. E., Keeble, J., Köhler, M. O., Morgenstern, O., Mulcahy, J. P., Ordóñez, C., Pope, R. J., Rumbold, S. T., Russo, M. R., Savage, N. H., Sellar, A., Stringer, M., Turnock, S. T., Wild, O., and Zeng, G.: Description and evaluation of the UKCA stratosphere–troposphere chemistry scheme (StratTrop vn 1.0) implemented in UKESM1, *Geoscientific Model Development*, 13, 1223–1266, <https://doi.org/10.5194/gmd-13-1223-2020>, 2020.
- Baranizadeh, E., Murphy, B. N., Julin, J., Falahat, S., Reddington, C. L., Arola, A., Ahlm, L., Mikkonen, S., Fountoukis, C., Patoulias, D., Minikin, A., Hamburger, T., Laaksonen, A., Pandis, S. N., Vehkamäki, H., Lehtinen, K. E. J., and Riipinen, I.: Implementation of state-of-the-art ternary new-particle formation scheme to the regional chemical transport model PMCAMx-UF in Europe, *Geoscientific Model Development*, 9, 2741–2754, <https://doi.org/10.5194/gmd-9-2741-2016>, 2016.
- Bellouin, N., Mann, G. W., Woodhouse, M. T., Johnson, C., Carslaw, K. S., and Dalvi, M.: Impact of the modal aerosol scheme GLOMAP-mode on aerosol forcing in the Hadley Centre Global Environmental Model, *Atmospheric Chemistry and Physics*, 13, 3027–3044, <https://doi.org/10.5194/acp-13-3027-2013>, 2013.
- Bergot, T.: Small-scale structure of radiation fog: A large-eddy simulation study, *Quarterly Journal of the Royal Meteorological Society*, 139, 1099–1112, <https://doi.org/10.1002/qj.2051>, 2013.
- Bergot, T., Carrer, D., Noilhan, J., and Bougeault, P.: Improved Site-Specific Numerical Prediction of Fog and Low Clouds: A Feasibility Study, *Weather and Forecasting*, 20, 627 – 646, <https://doi.org/10.1175/WAF873.1>, 2005.
- Boutle, I., Price, J., Kudzotsa, I., Kokkola, H., and Romakkaniemi, S.: Aerosol–fog interaction and the transition to well-mixed radiation fog, *Atmospheric Chemistry and Physics*, 18, 7827–7840, <https://doi.org/10.5194/acp-18-7827-2018>, 2018.
- Boutle, I., Angevine, W., Bao, J.-W., Bergot, T., Bhattacharya, R., Bott, A., Ducongé, L., Forbes, R., Goecke, T., Grell, E., Hill, A., Igel, A. L., Kudzotsa, I., Lac, C., Maronga, B., Romakkaniemi, S., Schmidli, J., Schwenkel, J., Steeneveld, G.-J., and Vié, B.: Demistify: a large-eddy simulation (LES) and single-column model (SCM) intercomparison of radiation fog, *Atmospheric Chemistry and Physics*, 22, 319–333, <https://doi.org/10.5194/acp-22-319-2022>, 2022.
- Boutle, I. A., Eyre, J. E. J., and Lock, A. P.: Seamless Stratocumulus Simulation across the Turbulent Gray Zone, *Monthly Weather Review*, 142, 1655–1668, <https://doi.org/10.1175/MWR-D-13-00229.1>, 2014.
- Boutle, I. A., Finnenkoetter, A., Lock, A. P., and Wells, H.: The London Model: forecasting fog at 333 m resolution, *Quarterly Journal of the Royal Meteorological Society*, 142, 360–371, <https://doi.org/10.1002/qj.2656>, 2016.
- Bretherton, C. S., Blossey, P. N., and Uchida, J.: Cloud droplet sedimentation, entrainment efficiency, and subtropical stratocumulus albedo, *Geophysical Research Letters*, 34, <https://doi.org/https://doi.org/10.1029/2006GL027648>, 2007.
- Burnet, F., Gomes, L., Haefelin, M., Dupont, J. C., and Elias, T.: Analysis of the microphysical structures of fog during the ParisFog project, 16th International Conference on Clouds and Precipitation, Jul 2012, Leipzig, Germany, hal-03463455, 2012.

Bush, M., Boutle, I., Edwards, J., Finnenkoetter, A., Franklin, C., Hanley, K., Jayakumar, A., Lewis, H., Lock, A., Mittermaier, M., et al.: The second Met Office Unified Model/JULES Regional Atmosphere and Land configuration, RAL2, Geoscientific Model Development Discussions, pp. 1–35, 2022.

Bush, M. et al.: Unifying Mid-latitude and Tropical Regional Model Configurations: The third Met Office Unified Model/JULES Regional Atmosphere and Land Configuration, RAL3, Geoscientific Model Development, in preparation, 2024.

Chapman, E. G., Gustafson Jr., W. I., Easter, R. C., Barnard, J. C., Ghan, S. J., Pekour, M. S., and Fast, J. D.: Coupling aerosol-cloud-radiative processes in the WRF-Chem model: Investigating the radiative impact of elevated point sources, *Atmospheric Chemistry and Physics*, 9, 945–964, <https://doi.org/10.5194/acp-9-945-2009>, 2009.

Chiriaco, M., Dupont, J.-C., Bastin, S., Badosa, J., Lopez, J., Haeffelin, M., Chepfer, H., and Guzman, R.: ReOBS: a new approach to synthesize long-term multi-variable dataset and application to the SIRTa supersite, *Earth System Science Data*, 10, 919–940, <https://doi.org/10.5194/essd-10-919-2018>, 2018.

Clark, P. A., Harcourt, S. A., Macpherson, B., Mathison, C. T., Cusack, S., and Naylor, M.: Prediction of visibility and aerosol within the operational Met Office Unified Model. I: Model formulation and variational assimilation, *Quarterly Journal of the Royal Meteorological Society*, 134, 1801–1816, <https://doi.org/https://doi.org/10.1002/qj.318>, 2008.

Clark, T. L.: A Study in Cloud Phase Parameterization Using the Gamma Distribution, *Journal of Atmospheric Sciences*, 31, 142 – 155, [https://doi.org/https://doi.org/10.1175/1520-0469\(1974\)031<0142:ASICPP>2.0.CO;2](https://doi.org/https://doi.org/10.1175/1520-0469(1974)031<0142:ASICPP>2.0.CO;2), 1974.

Crippa, M., DeCarlo, P. F., Slowik, J. G., Mohr, C., Heringa, M. F., Chirico, R., Poulain, L., Freutel, F., Sciare, J., Cozic, J., Di Marco, C. F., Elsassner, M., Nicolas, J. B., Marchand, N., Abidi, E., Wiedensohler, A., Drewnick, F., Schneider, J., Borrmann, S., Nemitz, E., Zimmermann, R., Jaffrezo, J.-L., Prévôt, A. S. H., and Baltensperger, U.: Wintertime aerosol chemical composition and source apportionment of the organic fraction in the metropolitan area of Paris, *Atmospheric Chemistry and Physics*, 13, 961–981, <https://doi.org/10.5194/acp-13-961-2013>, 2013.

Denjean, C., Formenti, P., Picquet-Varrault, B., Katrib, Y., Pangui, E., Zapf, P., and Doussin, J. F.: A new experimental approach to study the hygroscopic and optical properties of aerosols: application to ammonium sulfate particles, *Atmospheric Measurement Techniques*, 7, 183–197, <https://doi.org/10.5194/amt-7-183-2014>, 2014.

Duplessis, P., Bhatia, S., Hartery, S., Wheeler, M. J., and Chang, R. Y.-W.: Microphysics of aerosol, fog and droplet residuals on the Canadian Atlantic coast, *Atmospheric Research*, 264, 105 859, 2021.

Dupont, J.-C., Haeffelin, M., Stolaki, S., and Elias, T.: Analysis of Dynamical and Thermal Processes Driving Fog and Quasi-Fog Life Cycles Using the 2010–2013 ParisFog Dataset, *Pure and Applied Geophysics*, 173, <https://doi.org/10.1007/s00024-015-1159-x>, 2016.

Edwards, J. M. and Slingo, A.: Studies with a flexible new radiation code. I: Choosing a configuration for a large-scale model, *Quarterly Journal of the Royal Meteorological Society*, 122, 689–719, <https://doi.org/https://doi.org/10.1002/qj.49712253107>, 1996.

Elias, T., Dupont, J.-C., Hammer, E., Hoyle, C. R., Haeffelin, M., Burnet, F., and Jolivet, D.: Enhanced extinction of visible radiation due to hydrated aerosols in mist and fog, *Atmospheric Chemistry and Physics*, 15, 6605–6623, <https://doi.org/10.5194/acp-15-6605-2015>, 2015.

Fanourgakis, G. S., Kanakidou, M., Nenes, A., Bauer, S. E., Bergman, T., Carslaw, K. S., Grini, A., Hamilton, D. S., Johnson, J. S., Karydis, V. A., et al.: Evaluation of global simulations of aerosol particle and cloud condensation nuclei number, with implications for cloud droplet formation, *Atmospheric chemistry and physics*, 19, 8591–8617, 2019.

Feng, L., Smith, S. J., Braun, C., Crippa, M., Gidden, M. J., Hoesly, R., Klimont, Z., van Marle, M., van den Berg, M., and van der Werf, G. R.: The generation of gridded emissions data for CMIP6, *Geoscientific Model Development*, 13, 461–482, <https://doi.org/10.5194/gmd-13-461-2020>, 2020.

- Field, P. R., Hill, A., Shipway, B., Furtado, K., Wilkinson, J., Miltenberger, A., Gordon, H., Grosvenor, D. P., Stevens, R., and Van Weverberg, K.: Implementation of a Double Moment Cloud Microphysics Scheme in the UK Met Office Regional Numerical Weather Prediction Model, *Quarterly Journal of the Royal Meteorological Society*, 149, 703–739, 2023.
- Ghan, S. J., Abdul-Razzak, H., Nenes, A., Ming, Y., Liu, X., Ovchinnikov, M., Shipway, B., Meskhidze, N., Xu, J., and Shi, X.:
855 Droplet nucleation: Physically-based parameterizations and comparative evaluation, *Journal of Advances in Modeling Earth Systems*, 3, <https://doi.org/https://doi.org/10.1029/2011MS000074>, 2011.
- Ghosh, P., Boutle, I., Field, P., Hill, A., Jones, A., Mazoyer, M., Evans, K., Salil, M., Kang, H.-G., Zhang, W., Xu, M., Asch, N., and Gordon, H.: High sensitivity of simulated fog properties to parameterized aerosol activation in case studies from ParisFog, <https://doi.org/10.5281/zenodo.14004871>, 2024a.
- 860 Ghosh, P., Boutle, I., Field, P., Hill, A., Mazoyer, M., Evans, K. J., Mahajan, S., Kang, H.-G., Xu, M., Zhang, W., and Gordon, H.: Adiabatic and radiative cooling are both important causes of aerosol activation in simulated fog events in Europe, *EGUsphere*, 2024, 1–37, <https://doi.org/10.5194/egusphere-2024-3397>, 2024b.
- Ghosh, P., Evans, K. J., Grosvenor, D. P., Kang, H.-G., Mahajan, S., Xu, M., Zhang, W., and Gordon, H.: Modifying the Abdul-Razzak & Ghan aerosol activation parameterization (version ARG2000) impacts simulated cloud radiative effects (shown in the UK Met Office
865 Unified Model, version 13.0), *EGUsphere* [preprint], 2024, 1–20, <https://doi.org/10.5194/egusphere-2024-2423>, 2024c.
- Ghosh, P., Boutle, I., Field, P., Hill, A., Jones, A., Mazoyer, M., Evans, K., Salil, M., Kang, H.-G., Zhang, W., Xu, M., Asch, N., and Gordon, H.: High sensitivity of simulated fog properties to parameterized aerosol activation in case studies from ParisFog, <https://doi.org/10.5281/zenodo.15671189>, 2025.
- Ghude, S., Bhat, G., Prabha, T., Jenamani, R., Chate, D., Safai, P., Karipot, A., Konwar, M., Pithani, P., Sinha, V., Pasumarti, R., Dixit, S.,
870 Tiwari, S., Todekar, K., Varpe, S., Srivastava, A., Bisht, D., Murugavel, P., Ali, K., and Rajeevan, M.: Winter Fog Experiment Over the Indo-Gangetic Plains of India, *Current Science*, 112, 767, <https://doi.org/10.18520/cs/v112/i04/767-784>, 2017.
- Glassmeier, F., Hoffmann, F., Johnson, J. S., Yamaguchi, T., Carslaw, K. S., and Feingold, G.: Aerosol-cloud-climate cooling overestimated by ship-track data, *Science*, 371, 485–489, <https://doi.org/10.1126/science.abd3980>, 2021.
- Goodman, C. J. and Griswold, J. D. S.: Meteorological Impacts on Commercial Aviation Delays and Cancellations in the Continental United
875 States, *Journal of Applied Meteorology and Climatology*, 58, 479 – 494, <https://doi.org/10.1175/JAMC-D-17-0277.1>, 2019.
- Gordon, H., Field, P. R., Abel, S. J., Barrett, P., Bower, K., Crawford, I., Cui, Z., Grosvenor, D. P., Hill, A. A., Taylor, J., Wilkinson, J., Wu, H., and Carslaw, K. S.: Development of aerosol activation in the double-moment Unified Model and evaluation with CLARIFY measurements, *Atmospheric Chemistry and Physics*, 20, 10997–11 024, <https://doi.org/10.5194/acp-20-10997-2020>, 2020.
- Gordon, H., Carslaw, K. S., Hill, A. A., Field, P. R., Abraham, N. L., Beyersdorf, A., Corr-Limoges, C., Ghosh, P., Hemmings, J., Jones,
880 A. C., et al.: NUMAC: Description of the Nested Unified Model With Aerosols and Chemistry, and Evaluation With KORUS-AQ Data, *Journal of Advances in Modeling Earth Systems*, 15, e2022MS003 457, 2023.
- Grabowski, W. W. and Wang, L.-P.: Growth of Cloud Droplets in a Turbulent Environment, *Annual Review of Fluid Mechanics*, 45, 293–324, <https://doi.org/https://doi.org/10.1146/annurev-fluid-011212-140750>, 2013.
- Grosvenor, D. P. and Wood, R.: The effect of solar zenith angle on MODIS cloud optical and microphysical retrievals within marine liquid
885 water clouds, *Atmospheric Chemistry and Physics*, 14, 7291–7321, <https://doi.org/10.5194/acp-14-7291-2014>, 2014.
- Grosvenor, D. P., Field, P. R., Hill, A. A., and Shipway, B. J.: The relative importance of macrophysical and cloud albedo changes for aerosol-induced radiative effects in closed-cell stratocumulus: insight from the modelling of a case study, *Atmospheric Chemistry and Physics*, 17, 5155–5183, <https://doi.org/10.5194/acp-17-5155-2017>, 2017.

- Grosvenor, D. P., Sourdeval, O., Zuidema, P., Ackerman, A., Alexandrov, M. D., Bennartz, R., Boers, R., Cairns, B., Chiu, J. C., Christensen, M., Deneke, H., Diamond, M., Feingold, G., Fridlind, A., Hünerbein, A., Knist, C., Kollias, P., Marshak, A., McCoy, D., Merk, D., Painemal, D., Rausch, J., Rosenfeld, D., Russchenberg, H., Seifert, P., Sinclair, K., Stier, P., van Dierenhoven, B., Wendisch, M., Werner, F., Wood, R., Zhang, Z., and Quaas, J.: Remote Sensing of Droplet Number Concentration in Warm Clouds: A Review of the Current State of Knowledge and Perspectives, *Reviews of Geophysics*, 56, 409–453, <https://doi.org/https://doi.org/10.1029/2017RG000593>, 2018.
- Gultepe, I., Müller, M. D., and Boybeyi, Z.: A new visibility parameterization for warm-fog applications in numerical weather prediction models, *Journal of applied meteorology and climatology*, 45, 1469–1480, 2006.
- Gultepe, I., Tardif, R., Michaelides, S., Cermak, J., Bott, A., Muller, M., Pagowski, M., Hansen, B., Ellrod, G., Jacobs, W., Toth, G., and Cober, S.: Fog research: A review of past achievements and future perspectives., *Pure and Applied Geophysics*, 164, 1121–1159, 2007.
- Haefelin, M., Barthès, L., Bock, O., Boitel, C., Bony, S., Bouniol, D., Chepfer, H., Chiriaco, M., Cuesta, J., Delanoë, J., Drobinski, P., Dufresne, J.-L., Flamant, C., Grall, M., Hodzic, A., Hourdin, F., Lapouge, F., Lemaître, Y., Mathieu, A., Morille, Y., Naud, C., Noël, V., O'Hirok, W., Pelon, J., Pietras, C., Protat, A., Romand, B., Scialom, G., and Vautard, R.: SIRTa, a ground-based atmospheric observatory for cloud and aerosol research, *Ann. Geophys.*, 23, 253–275, <https://doi.org/10.5194/angeo-23-253-2005>, 2005.
- Haefelin, M., Bergot, T., Elias, T., Tardif, R., Carrer, D., Chazette, P., Colomb, M., Drobinski, P., Dupont, E., Dupont, J.-C., Gomes, L., Musson-Genon, L., Pietras, C., Plana-Fattori, A., Protat, A., Rangognio, J., Raut, J.-C., Rémy, S., Richard, D., Sciare, J., and Zhang, X.: Parisfog: Shedding new Light on Fog Physical Processes, *Bulletin of the American Meteorological Society*, 91, 767 – 783, <https://doi.org/10.1175/2009BAMS2671.1>, 2010.
- Hammer, E., Gysel, M., Roberts, G. C., Elias, T., Hofer, J., Hoyle, C. R., Bukowiecki, N., Dupont, J.-C., Burnet, F., Baltensperger, U., and Weingartner, E.: Size-dependent particle activation properties in fog during the ParisFog 2012/13 field campaign, *Atmospheric Chemistry and Physics*, 14, 10 517–10 533, <https://doi.org/10.5194/acp-14-10517-2014>, 2014.
- Heim, M., Mullins, B. J., Umhauer, H., and Kasper, G.: Performance evaluation of three optical particle counters with an efficient “multimodal” calibration method, *Journal of Aerosol Science*, 39, 1019–1031, <https://doi.org/https://doi.org/10.1016/j.jaerosci.2008.07.006>, 2008.
- Hill, A. A., Feingold, G., and Jiang, H.: The Influence of Entrainment and Mixing Assumption on Aerosol–Cloud Interactions in Marine Stratocumulus, *Journal of the Atmospheric Sciences*, 66, 1450 – 1464, <https://doi.org/10.1175/2008JAS2909.1>, 2009.
- Hulst, H. C. and van de Hulst, H. C.: Light scattering by small particles, Courier Corporation, 1981.
- Janssens-Maenhout, G., Crippa, M., Guizzardi, D., Dentener, F., Muntean, M., Pouliot, G., Keating, T., Zhang, Q., Kurokawa, J., Wankmüller, R., Gon, H., Klimont, Z., Frost, G., Darras, S., and Koffi, B.: HTAP_v2: a mosaic of regional and global emission gridmaps for 2008 and 2010 to study hemispheric transport of air pollution, *Atmospheric Chemistry and Physics Discussions*, 15, 12 867–12 909, <https://doi.org/10.5194/acpd-15-12867-2015>, 2015.
- Jayakumar, A., Gordon, H., Francis, T., Hill, A. A., Mohandas, S., Sandeepan, B. S., Mitra, A. K., and Beig, G.: Delhi Model with Chemistry and aerosol framework (DM-Chem) for high-resolution fog forecasting, *Quarterly Journal of the Royal Meteorological Society*, 147, 3957–3978, <https://doi.org/https://doi.org/10.1002/qj.4163>, 2021.
- Jia, X., Quan, J., Zheng, Z., Liu, X., Liu, Q., He, H., and Liu, Y.: Impacts of Anthropogenic Aerosols on Fog in North China Plain, *Journal of Geophysical Research: Atmospheres*, 124, <https://doi.org/10.1029/2018JD029437>, 2019.
- Jones, A. C., Hill, A., Remy, S., Abraham, N. L., Dalvi, M., Hardacre, C., Hewitt, A. J., Johnson, B., Mulcahy, J. P., and Turnock, S. T.: Exploring the sensitivity of atmospheric nitrate concentrations to nitric acid uptake rate using the Met Office’s Unified Model, *Atmospheric Chemistry and Physics*, 21, 15 901–15 927, <https://doi.org/10.5194/acp-21-15901-2021>, 2021.

- Lock, A. P., Brown, A. R., Bush, M. R., Martin, G. M., and Smith, R. N. B.: A New Boundary Layer Mixing Scheme. Part I: Scheme Description and Single-Column Model Tests, *Monthly Weather Review*, 128, 3187 – 3199, [https://doi.org/10.1175/1520-0493\(2000\)128<3187:ANBLMS>2.0.CO;2](https://doi.org/10.1175/1520-0493(2000)128<3187:ANBLMS>2.0.CO;2), 2000.
- 930 Lohmann, U.: Possible Aerosol Effects on Ice Clouds via Contact Nucleation, *Journal of the Atmospheric Sciences*, 59, 647 – 656, [https://doi.org/10.1175/1520-0469\(2001\)059<0647:PAEOIC>2.0.CO;2](https://doi.org/10.1175/1520-0469(2001)059<0647:PAEOIC>2.0.CO;2), 2002.
- Maalick, Z., Kühn, T., Korhonen, H., Kokkola, H., Laaksonen, A., and Romakkaniemi, S.: Effect of aerosol concentration and absorbing aerosol on the radiation fog life cycle, *Atmospheric Environment*, 133, 26–33, <https://doi.org/https://doi.org/10.1016/j.atmosenv.2016.03.018>, 2016.
- 935 Malavelle, F. F., Haywood, J. M., Field, P. R., Hill, A. A., Abel, S. J., Lock, A. P., Shipway, B. J., and McBeath, K.: A method to represent subgrid-scale updraft velocity in kilometer-scale models: Implication for aerosol activation, *Journal of Geophysical Research: Atmospheres*, 119, 4149–4173, <https://doi.org/https://doi.org/10.1002/2013JD021218>, 2014.
- Mann, G. W., Carslaw, K. S., Spracklen, D. V., Ridley, D. A., Manktelow, P. T., Chipperfield, M. P., Pickering, S. J., and Johnson, C. E.: Description and evaluation of GLOMAP-mode: a modal global aerosol microphysics model for the UKCA composition-climate model, *Geoscientific Model Development*, 3, 519–551, <https://doi.org/10.5194/gmd-3-519-2010>, 2010.
- 940 Mann, G. W., Carslaw, K. S., Ridley, D. A., Spracklen, D. V., Pringle, K. J., Merikanto, J., Korhonen, H., Schwarz, J. P., Lee, L. A., Manktelow, P. T., Woodhouse, M. T., Schmidt, A., Breider, T. J., Emmerson, K. M., Reddington, C. L., Chipperfield, M. P., and Pickering, S. J.: Intercomparison of modal and sectional aerosol microphysics representations within the same 3-D global chemical transport model, *Atmospheric Chemistry and Physics*, 12, 4449–4476, <https://doi.org/10.5194/acp-12-4449-2012>, 2012.
- 945 Manners, J., Edwards, J. M., Hill, P., and Thelen, J.-C.: SOCRATES (Suite Of Community RAdiative Transfer codes based on Edwards and Slingo) technical guide., 2015.
- Martinet, P., Cimini, D., Burnet, F., Ménétrier, B., Michel, Y., and Unger, V.: Improvement of numerical weather prediction model analysis during fog conditions through the assimilation of ground-based microwave radiometer observations: a 1D-Var study, *Atmospheric Measurement Techniques*, 13, 6593–6611, <https://doi.org/10.5194/amt-13-6593-2020>, 2020.
- 950 Mazoyer, M., Lac, C., Thouron, O., Bergot, T., Masson, V., and Musson-Genon, L.: Large eddy simulation of radiation fog: impact of dynamics on the fog life cycle, *Atmospheric Chemistry and Physics*, 17, 13 017–13 035, <https://doi.org/10.5194/acp-17-13017-2017>, 2017.
- Mazoyer, M., Burnet, F., Denjean, C., Roberts, G. C., Haeffelin, M., Dupont, J.-C., and Elias, T.: Experimental study of the aerosol impact on fog microphysics, *Atmospheric Chemistry and Physics*, 19, 4323–4344, <https://doi.org/10.5194/acp-19-4323-2019>, 2019.
- 955 Mazoyer, M., Burnet, F., and Denjean, C.: Experimental study on the evolution of droplet size distribution during the fog life cycle, *Atmospheric Chemistry and Physics*, 22, 11 305–11 321, <https://doi.org/10.5194/acp-22-11305-2022>, 2022.
- McCaul, E. W., Goodman, S. J., LaCasse, K. M., and Cecil, D. J.: Forecasting Lightning Threat Using Cloud-Resolving Model Simulations, *Weather and Forecasting*, 24, 709 – 729, <https://doi.org/10.1175/2008WAF2222152.1>, 2009.
- Menut, L., Mailler, S., Dupont, J.-C., Laurant, O., Piriou, B., Haeffelin, P., Siour, M., Elias, T., Puygrenier, G., Colomb, A., Bresson, Y.,
960 Delbarre, O., and Augustin, P.: Predictability of the Meteorological Conditions Favourable to Radiative Fog Formation During the 2011 ParisFog Campaign, *Boundary-Layer Meteorology*, 150, 277–297, <https://doi.org/10.1007/s10546-013-9875-1>, 2014.
- Morales Betancourt, R. and Nenes, A.: Droplet activation parameterization: the population-splitting concept revisited, *Geoscientific Model Development*, 7, 2345–2357, <https://doi.org/10.5194/gmd-7-2345-2014>, 2014.

- Mulcahy, J. P., Jones, C., Sellar, A., Johnson, B., Boutle, I. A., Jones, A., Andrews, T., Rumbold, S. T., Mollard, J., Bellouin, N., Johnson, C. E., Williams, K. D., Grosvenor, D. P., and McCoy, D. T.: Improved Aerosol Processes and Effective Radiative Forcing in HadGEM3 and UKESM1, *Journal of Advances in Modeling Earth Systems*, 10, 2786–2805, <https://doi.org/https://doi.org/10.1029/2018MS001464>, 2018.
- Mulcahy, J. P., Johnson, C., Jones, C. G., Povey, A. C., Scott, C. E., Sellar, A., Turnock, S. T., Woodhouse, M. T., Abraham, N. L., Andrews, M. B., Bellouin, N., Browse, J., Carslaw, K. S., Dalvi, M., Folberth, G. A., Glover, M., Grosvenor, D. P., Hardacre, C., Hill, R., Johnson, B., Jones, A., Kipling, Z., Mann, G., Mollard, J., O'Connor, F. M., Palmiéri, J., Reddington, C., Rumbold, S. T., Richardson, M., Schutgens, N. A. J., Stier, P., Stringer, M., Tang, Y., Walton, J., Woodward, S., and Yool, A.: Description and evaluation of aerosol in UKESM1 and HadGEM3-GC3.1 CMIP6 historical simulations, *Geoscientific Model Development*, 13, 6383–6423, <https://doi.org/10.5194/gmd-13-6383-2020>, 2020.
- Mulcahy, J. P., Jones, C. G., Rumbold, S. T., Kuhlbrodt, T., Dittus, A. J., Blockley, E. W., Yool, A., Walton, J., Hardacre, C., Andrews, T., Bodas-Salcedo, A., Stringer, M., de Mora, L., Harris, P., Hill, R., Kelley, D., Robertson, E., and Tang, Y.: UKESM1.1: development and evaluation of an updated configuration of the UK Earth System Model, *Geoscientific Model Development*, 16, 1569–1600, <https://doi.org/10.5194/gmd-16-1569-2023>, 2023.
- Nenes, A., Ghan, S., Abdul-Razzak, H., Chuang, P. Y., and Seinfeld, J. H.: Kinetic limitations on cloud droplet formation and impact on cloud albedo, *Tellus B*, 53, 133–149, <https://doi.org/https://doi.org/10.1034/j.1600-0889.2001.d01-12.x>, 2001.
- Oliver, H. J., Shin, M., Sanders, O., Fitzpatrick, B., Clark, A., Kinoshita, B. P., Dutta, R., Pillinger, T., Bartholomew, S. L., Hall, M., Valters, D., Sutherland, D., Trzeciak, T., challurip, Gaist, S., Matthews, D., Wales, S., ColemanTom, Menezes, G., Haiducek, J., Williams, J., lhuggett, Osprey, A., at BoM, J., Hatcher, R., Veselov, D., Reinecke, A., Andrew, Pulo, K., and Dix, M.: cylc/cylc-flow: cylc-7.8.8, <https://doi.org/10.5281/zenodo.4638360>, 2021.
- Oliver, H. J., Sanders, O., Shin, M., Pillinger, T., Dutta, R., Fitzpatrick, B., Clark, A., Kinoshita, B. P., Hall, M., Bartholomew, S. L., Sutherland, D., Valters, D., Trzeciak, T., challurip, Matthews, D., Gaist, S., Coleman, T., Dawson, M., Menezes, G., Haiducek, J., Wales, S., Huggett, L., Osprey, A., at BoM, J., Hatcher, R., Da, C., Veselov, D., Diquan-BOM, and Andrew: cylc/cylc-flow: cylc-flow-8.3.3, <https://doi.org/10.5281/zenodo.12801923>, 2024.
- Petters, M. D. and Kreidenweis, S. M.: A single parameter representation of hygroscopic growth and cloud condensation nucleus activity, *Atmospheric Chemistry and Physics*, 7, 1961–1971, <https://doi.org/10.5194/acp-7-1961-2007>, 2007.
- Phinney, L. A., Lohmann, U., and Leaitch, W. R.: Limitations of using an equilibrium approximation in an aerosol activation parameterization, *Journal of Geophysical Research: Atmospheres*, 108, <https://doi.org/https://doi.org/10.1029/2002JD002391>, 2003.
- Poku, C., Ross, A., Blyth, A., Hill, A., and Price, J.: How important are aerosol-fog interactions for the successful modelling of nocturnal radiation fog?, *Weather*, 74, <https://doi.org/10.1002/wea.3503>, 2019.
- Poku, C., Ross, A. N., Hill, A. A., Blyth, A. M., and Shipway, B.: Is a more physical representation of aerosol activation needed for simulations of fog?, *Atmospheric Chemistry and Physics*, 21, 7271–7292, 2021.
- Politovich, M. K. and Cooper, W. A.: Variability of the supersaturation in cumulus clouds, *Journal of the Atmospheric Sciences*, 45, 1651–1664, [https://doi.org/10.1175/1520-0469\(1988\)045<1651:VOTSIC>2.0.CO;2](https://doi.org/10.1175/1520-0469(1988)045<1651:VOTSIC>2.0.CO;2), 1988.
- Price, J. D., Lane, S., Boutle, I. A., Smith, D. K. E., Bergot, T., Lac, C., Duconge, L., McGregor, J., Kerr-Munslow, A., Pickering, M., and Clark, R.: LANFEX: A Field and Modeling Study to Improve Our Understanding and Forecasting of Radiation Fog, *Bulletin of the American Meteorological Society*, 99, 2061 – 2077, <https://doi.org/10.1175/BAMS-D-16-0299.1>, 2018.

- Ranjithkumar, A., Gordon, H., Williamson, C., Rollins, A., Pringle, K., Kupc, A., Abraham, N. L., Brock, C., and Carslaw, K.: Constraints on global aerosol number concentration, SO₂ and condensation sink in UKESM1 using ATom measurements, *Atmospheric Chemistry and Physics*, 21, 4979–5014, 2021.
- Roig Rodelas, R., Chakraborty, A., Perdrix, E., Tison, E., and Riffault, V.: Real-time assessment of wintertime organic aerosol characteristics and sources at a suburban site in northern France, *Atmospheric Environment*, 203, 48–61, <https://doi.org/https://doi.org/10.1016/j.atmosenv.2019.01.035>, 2019.
- Roquelaure, S. and Bergot, T.: Contributions from a Local Ensemble Prediction System (LEPS) for improving fog and low cloud forecasts at airports, *Weather and Forecasting*, 24, 39–52, 2009.
- Rothenberg, D. and Wang, C.: Metamodeling of Droplet Activation for Global Climate Models, *Journal of the Atmospheric Sciences*, 73, 1255 – 1272, <https://doi.org/https://doi.org/10.1175/JAS-D-15-0223.1>, 2016.
- Saleeby, S. M. and Cotton, W. R.: A Large-Droplet Mode and Prognostic Number Concentration of Cloud Droplets in the Colorado State University Regional Atmospheric Modeling System (RAMS). Part I: Module Descriptions and Supercell Test Simulations, *Journal of Applied Meteorology*, 43, 182 – 195, [https://doi.org/10.1175/1520-0450\(2004\)043<0182:ALMAPN>2.0.CO;2](https://doi.org/10.1175/1520-0450(2004)043<0182:ALMAPN>2.0.CO;2), 2004.
- Schmale, J., Henning, S., Decesari, S., Henzing, B., Keskinen, H., Sellegri, K., Ovadnevaite, J., Pöhlker, M. L., Brito, J., Bougiatioti, A., et al.: Long-term cloud condensation nuclei number concentration, particle number size distribution and chemical composition measurements at regionally representative observatories, *Atmospheric Chemistry and Physics*, 18, 2853–2881, 2018.
- Schmetz, J., Pili, P., Tjemkes, S., Just, D., Kerkmann, J., Rota, S., and Ratier, A.: An introduction to Meteosat Second Generation (MSG), *Bull. Amer. Meteor. Soc.*, 83, 977–992, 2002.
- Schutgens, N., Tsyro, S., Gryspeerdt, E., Goto, D., Weigum, N., Schulz, M., and Stier, P.: On the spatio-temporal representativeness of observations, *Atmospheric Chemistry and Physics*, 17, 9761–9780, <https://doi.org/10.5194/acp-17-9761-2017>, 2017.
- Schwenkel, J. and Maronga, B.: Large-eddy simulation of radiation fog with comprehensive two-moment bulk microphysics: impact of different aerosol activation and condensation parameterizations, *Atmospheric Chemistry and Physics*, 19, 7165–7181, <https://doi.org/10.5194/acp-19-7165-2019>, 2019.
- Seinfeld, J. H. and Pandis, S. N.: *Atmospheric Chemistry and Physics*, 1326 pp., John Wiley, New York., 1998.
- Sellar, A. A., Jones, C. G., Mulcahy, J. P., Tang, Y., Yool, A., Wiltshire, A., O’connor, F. M., Stringer, M., Hill, R., Palmieri, J., et al.: UKESM1: Description and evaluation of the UK Earth System Model, *Journal of Advances in Modeling Earth Systems*, 11, 4513–4558, 2019.
- Sellar, A. A., Walton, J., Jones, C. G., Wood, R., Abraham, N. L., Andrejczuk, M., Andrews, M. B., Andrews, T., Archibald, A. T., de Mora, L., Dyson, H., Elkington, M., Ellis, R., Florek, P., Good, P., Gohar, L., Haddad, S., Hardiman, S. C., Hogan, E., Iwi, A., Jones, C. D., Johnson, B., Kelley, D. I., Kettleborough, J., Knight, J. R., Köhler, M. O., Kuhlbrodt, T., Liddicoat, S., Linova-Pavlova, I., Mizielski, M. S., Morgenstern, O., Mulcahy, J., Neininger, E., O’Connor, F. M., Petrie, R., Ridley, J., Rioual, J.-C., Roberts, M., Robertson, E., Rumbold, S., Seddon, J., Shepherd, H., Shim, S., Stephens, A., Teixeira, J. C., Tang, Y., Williams, J., Wiltshire, A., and Griffiths, P. T.: Implementation of U.K. Earth System Models for CMIP6, *Journal of Advances in Modeling Earth Systems*, 12, e2019MS001946, <https://doi.org/https://doi.org/10.1029/2019MS001946>, e2019MS001946 10.1029/2019MS001946, 2020.
- Shin, M., Fitzpatrick, B., Clark, A., Sanders, O., Bartholomew, S. L., Whitehouse, S., Pillinger, T., Wardle, S., Matthews, D., Oxley, S., Trzeciak, T., Valters, D., Kinoshita, B. P., Mancell, J., harry shepherd, Oliver, H. J., Wales, S., Hall, M., Seddon, J., Osprey, A., Dix, M., Sharp, R., and Cresswell, P.: metomi/rose: 2019.01.3, <https://doi.org/10.5281/zenodo.3800775>, 2020.

- Shipway, B. J. and Hill, A. A.: Diagnosis of systematic differences between multiple parametrizations of warm rain microphysics using a kinematic framework, *Quarterly Journal of the Royal Meteorological Society*, 138, 2196–2211, <https://doi.org/10.1002/qj.1913>, 2012.
- 1040 Smith, R. N. B.: A scheme for predicting layer clouds and their water content in a general circulation model, *Quarterly Journal of the Royal Meteorological Society*, 116, 435–460, <https://doi.org/10.1002/qj.49711649210>, 1990.
- Steenefeld, G., Ronda, R., and Holtslag, A.: The challenge of forecasting the onset and development of radiation fog using mesoscale atmospheric models, *Boundary-Layer Meteorology*, 154, 265–289, 2015.
- Stevenson, D. S., Zhao, A., Naik, V., O’connor, F. M., Tilmes, S., Zeng, G., Murray, L. T., Collins, W. J., Griffiths, P. T., Shim, S., et al.: Trends in global tropospheric hydroxyl radical and methane lifetime since 1850 from AerChemMIP, *Atmospheric Chemistry and Physics*, 20, 12 905–12 920, 2020.
- 1045 Stolaki, S., Haefelin, M., Lac, C., Dupont, J.-C., Elias, T., and Masson, V.: Influence of aerosols on the life cycle of a radiation fog event. A numerical and observational study, *Atmospheric Research*, 151, 146–161, <https://doi.org/https://doi.org/10.1016/j.atmosres.2014.04.013>, sixth International Conference on Fog, Fog Collection and Dew, 2015.
- 1050 Thornhill, G., Collins, W., Olivié, D., Skeie, R. B., Archibald, A., Bauer, S., Checa-Garcia, R., Fiedler, S., Folberth, G., Gjermundsen, A., et al.: Climate-driven chemistry and aerosol feedbacks in CMIP6 Earth system models, *Atmospheric Chemistry and Physics*, 21, 1105–1126, 2021.
- Thouron, O., Brenguier, J.-L., and Burnet, F.: Supersaturation calculation in large eddy simulation models for prediction of the droplet number concentration, *Geoscientific Model Development*, 5, 761–772, <https://doi.org/10.5194/gmd-5-761-2012>, 2012.
- 1055 Thuburn, J.: ENDGame: The New Dynamical Core of the Met Office Weather and Climate Prediction Model, pp. 27–33, https://doi.org/10.1007/978-3-319-25454-8_4, 2016.
- Van Weverberg, K. and Morcrette, C. J.: Sensitivity of cloud-radiative effects to cloud fraction parametrizations in tropical, midlatitude, and arctic kilometre-scale simulations, *Quarterly Journal of the Royal Meteorological Society*, 148, 2563–2586, <https://doi.org/https://doi.org/10.1002/qj.4325>, 2022.
- 1060 Van Weverberg, K., Morcrette, C. J., Boutle, I., Furtado, K., and Field, P. R.: A Bimodal Diagnostic Cloud Fraction Parameterization. Part I: Motivating Analysis and Scheme Description, *Monthly Weather Review*, 149, 841–857, <https://doi.org/10.1175/MWR-D-20-0224.1>, 2021.
- Velde, I., Steeneveld, G.-J., Wichers Schreur, B., and Holtslag, B.: Modeling and Forecasting the Onset and Duration of Severe Radiation Fog under Frost Conditions, *Monthly Weather Review*, 138, 4237–4253, <https://doi.org/10.1175/2010MWR3427.1>, 2010.
- 1065 Vié, B., Ducongé, L., Lac, C., Bergot, T., and Price, J.: Importance of CCN activation for fog forecasting and its representation in the two-moment microphysical scheme LIMA, *Quarterly Journal of the Royal Meteorological Society*, n/a, <https://doi.org/https://doi.org/10.1002/qj.4812>, 2024.
- Wærsted, E. G., Haefelin, M., Dupont, J.-C., Delanoë, J., and Dubuisson, P.: Radiation in fog: quantification of the impact on fog liquid water based on ground-based remote sensing, *Atmospheric Chemistry and Physics*, 17, 10 811–10 835, [https://doi.org/10.5194/acp-17-](https://doi.org/10.5194/acp-17-10811-2017)
- 1070 10811-2017, 2017.
- Wainwright, C., Chang, R. Y.-W., and Richter, D.: Aerosol Activation in Radiation Fog at the Atmospheric Radiation Program Southern Great Plains Site, *Journal of Geophysical Research: Atmospheres*, 126, e2021JD035 358, <https://doi.org/https://doi.org/10.1029/2021JD035358>, e2021JD035358 2021JD035358, 2021.
- Walters, D., Baran, A. J., Boutle, I., Brooks, M., Earnshaw, P., Edwards, J., Furtado, K., Hill, P., Lock, A., Manners, J., Morcrette, C., Mulcahy, J., Sanchez, C., Smith, C., Stratton, R., Tennant, W., Tomassini, L., Van Weverberg, K., Vosper, S., Willett, M., Browse, J., Bushell, A.,
- 1075

- Carslaw, K., Dalvi, M., Essery, R., Gedney, N., Hardiman, S., Johnson, B., Johnson, C., Jones, A., Jones, C., Mann, G., Milton, S., Rumbold, H., Sellar, A., Ujiie, M., Whittall, M., Williams, K., and Zerroukat, M.: The Met Office Unified Model Global Atmosphere 7.0/7.1 and JULES Global Land 7.0 configurations, Geoscientific Model Development, 12, 1909–1963, <https://doi.org/10.5194/gmd-12-1909-2019>, 2019.
- 1080 Weverberg, K. V., Morcrette, C. J., Boutle, I., Furtado, K., and Field, P. R.: A Bimodal Diagnostic Cloud Fraction Parameterization. Part I: Motivating Analysis and Scheme Description, *Monthly Weather Review*, 149, 841 – 857, <https://doi.org/10.1175/MWR-D-20-0224.1>, 2021.
- Williamson, C. J., Kupc, A., Axisa, D., Bilsback, K. R., Bui, T., Campuzano-Jost, P., Dollner, M., Froyd, K. D., Hodshire, A. L., Jimenez, J. L., et al.: A large source of cloud condensation nuclei from new particle formation in the tropics, *Nature*, 574, 399–403, 2019.
- 1085 Wilson, D. R. and Ballard, S. P.: A microphysically based precipitation scheme for the UK meteorological office unified model, *Quarterly Journal of the Royal Meteorological Society*, 125, 1607–1636, <https://doi.org/https://doi.org/10.1002/qj.49712555707>, 1999.
- Wilson, D. R., Bushell, A. C., Kerr-Munslow, A. M., Price, J. D., and Morcrette, C. J.: PC2: A prognostic cloud fraction and condensation scheme. I: Scheme description, *Quarterly Journal of the Royal Meteorological Society*, 134, 2093–2107, <https://doi.org/10.1002/qj.333>, 2008.
- 1090 Wood, N., Staniforth, A., White, A., Allen, T., Diamantakis, M., Gross, M., Melvin, T., Smith, C., Vosper, S., Zerroukat, M., and Thuburn, J.: An inherently mass-conserving semi-implicit semi-Lagrangian discretization of the deep-atmosphere global non-hydrostatic equations, *Quarterly Journal of the Royal Meteorological Society*, 140, 1505–1520, <https://doi.org/https://doi.org/10.1002/qj.2235>, 2014.
- Woodward, S.: Modeling the atmospheric life cycle and radiative impact of mineral dust in the Hadley Centre climate model, *Journal of Geophysical Research: Atmospheres*, 106, 18 155–18 166, <https://doi.org/https://doi.org/10.1029/2000JD900795>, 2001.
- 1095 Yan, S., Zhu, B., Zhu, T., Shi, C., Liu, D., Kang, H., Lu, W., and Lu, C.: The Effect of Aerosols on Fog Lifetime: Observational Evidence and Model Simulations, *Geophysical Research Letters*, 48, <https://doi.org/10.1029/2020GL091156>, 2021.
- Yang, F., Hoffmann, F., Shaw, R. A., Ovchinnikov, M., and Vogelmann, A. M.: An Intercomparison of Large-Eddy Simulations of a Convection Cloud Chamber Using Haze-Capable Bin and Lagrangian Cloud Microphysics Schemes, *Journal of Advances in Modeling Earth Systems*, 15, e2022MS003 270, <https://doi.org/https://doi.org/10.1029/2022MS003270>, e2022MS003270 2022MS003270, 2023.
- 1100 Zhang, X., Musson-Genon, L., Dupont, E., Milliez, M., and Carissimo, B.: On the influence of a simple microphysics parametrization on radiation fog modelling: A case study during parisfog, *Boundary-layer meteorology*, 151, 293–315, 2014.
- Zhou, B. and Ferrier, B.: Asymptotic Analysis of Equilibrium in Radiation Fog, *Journal of Applied Meteorology and Climatology - J APPL METEOROL CLIMATOL*, 47, 1704–1722, <https://doi.org/10.1175/2007JAMC1685.1>, 2008.
- Árnason, G. and Brown, P. S.: Growth of Cloud Droplets by Condensation: A Problem in Computational Stability, *Journal of Atmospheric Sciences*, 28, 72 – 77, [https://doi.org/10.1175/1520-0469\(1971\)028<0072:GOCDBC>2.0.CO;2](https://doi.org/10.1175/1520-0469(1971)028<0072:GOCDBC>2.0.CO;2), 1971.
- 1105