

Supplement for

Uncovering the Impact of Urban Functional Zones on Air Quality in China

Lulu Yuan^{1,#}, Wenchao Han^{2,#,*}, Jiachen Meng³, Yang Wang^{1,*}, Haojie Yu¹, Wenze Li²

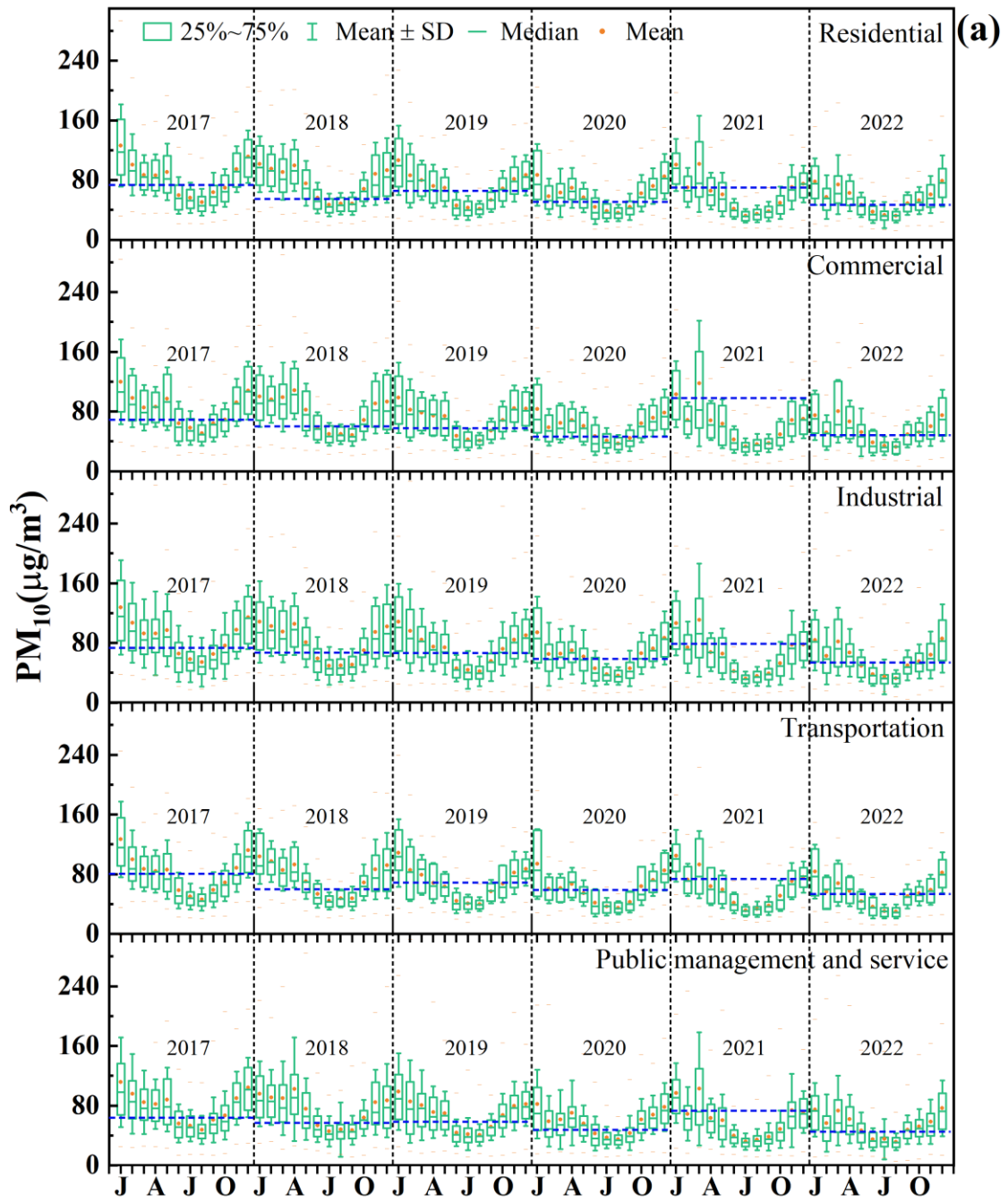
¹College of Earth and Environmental Sciences and College of Atmospheric Sciences, Lanzhou University, Lanzhou, China

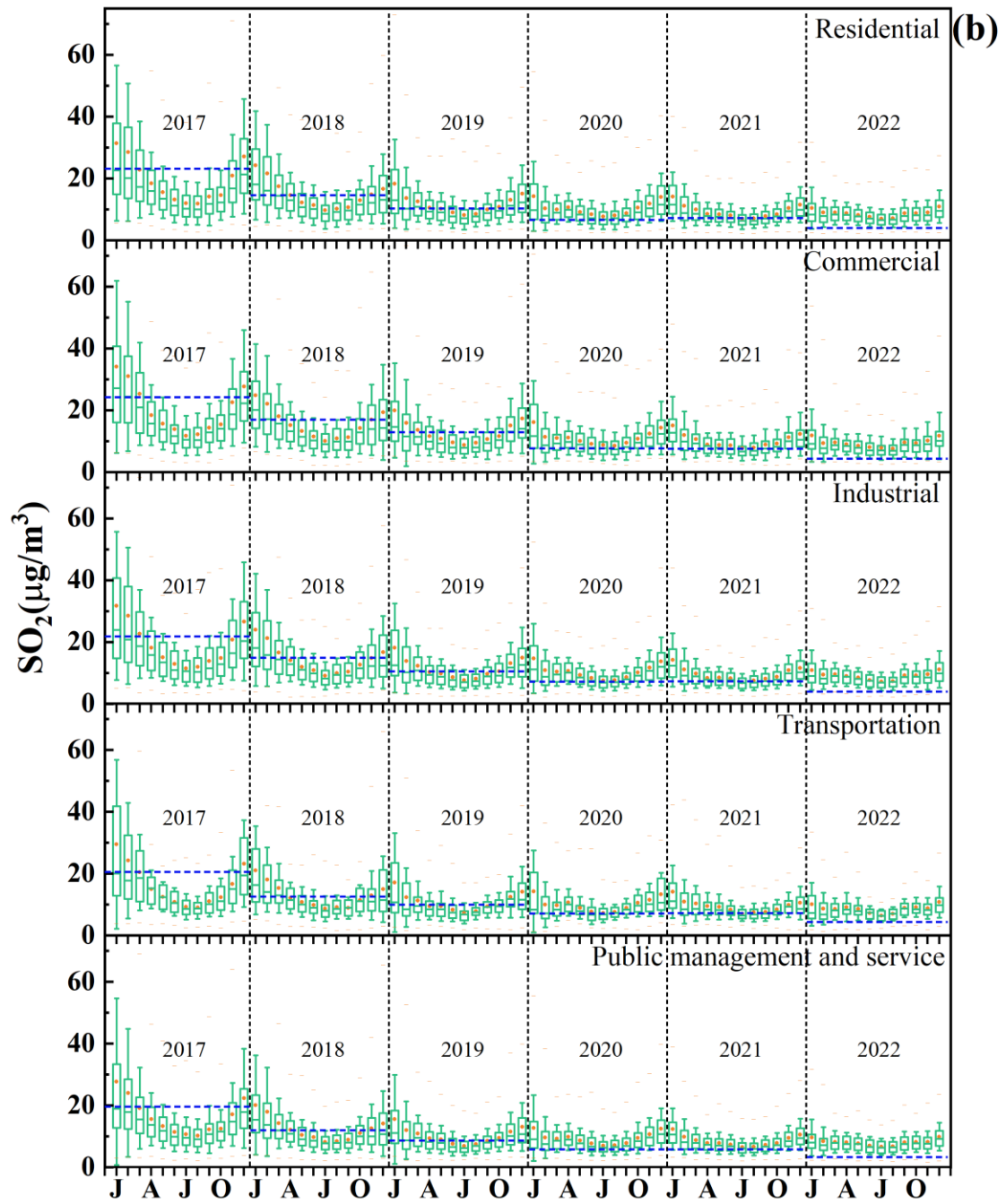
²State Key Laboratory of Environmental Criteria and Risk Assessment, Chinese Research Academy of Environmental Sciences, Beijing, China

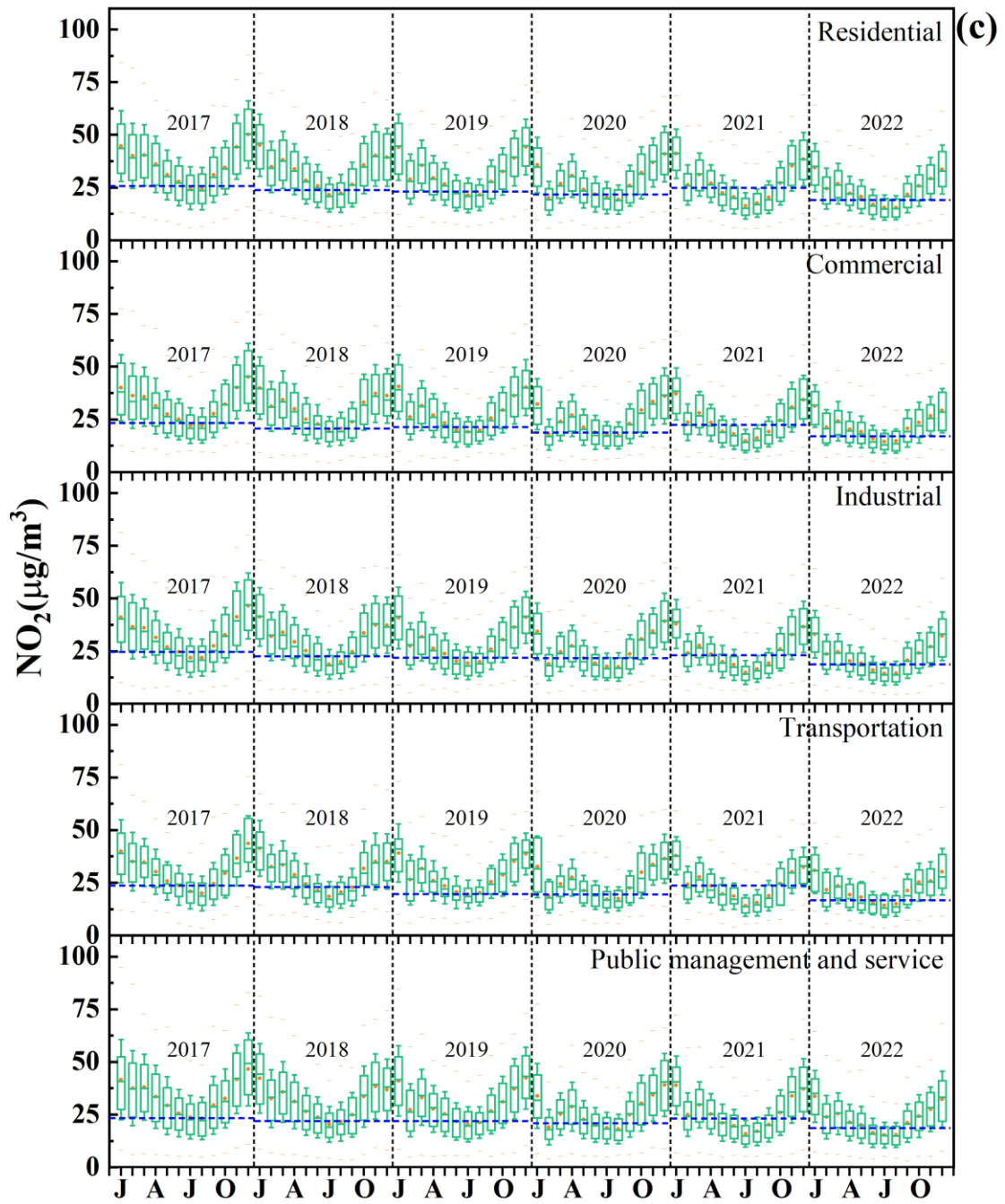
³Emergency Management College, Nanjing University of Information Science & Technology, Nanjing, China

[#]These authors contributed equally to this work.

^{*}*Correspondence to:* Wenchao Han (han.wenchao@craes.org.cn) and Yang Wang (wang_yang@lzu.edu.cn)







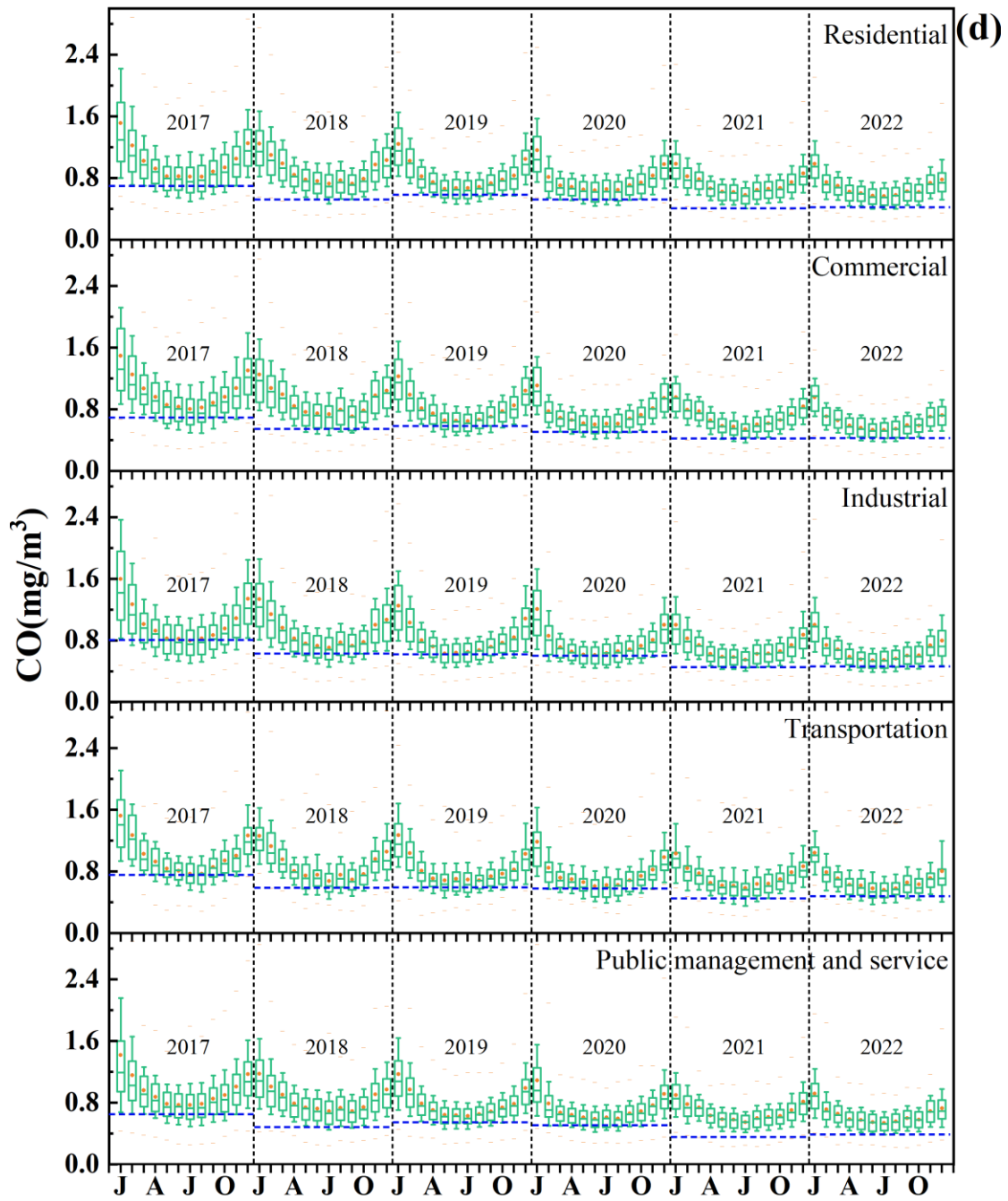
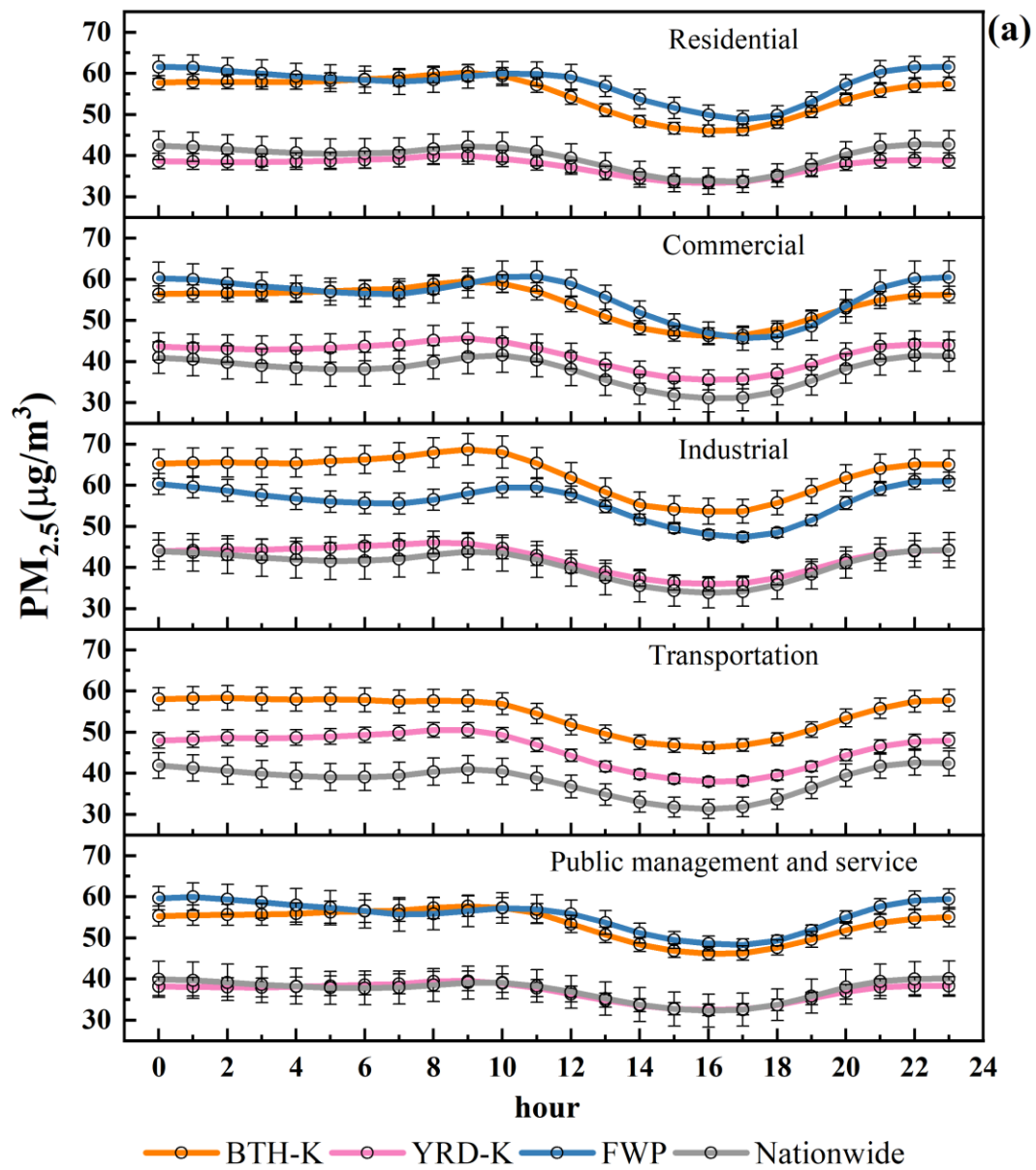
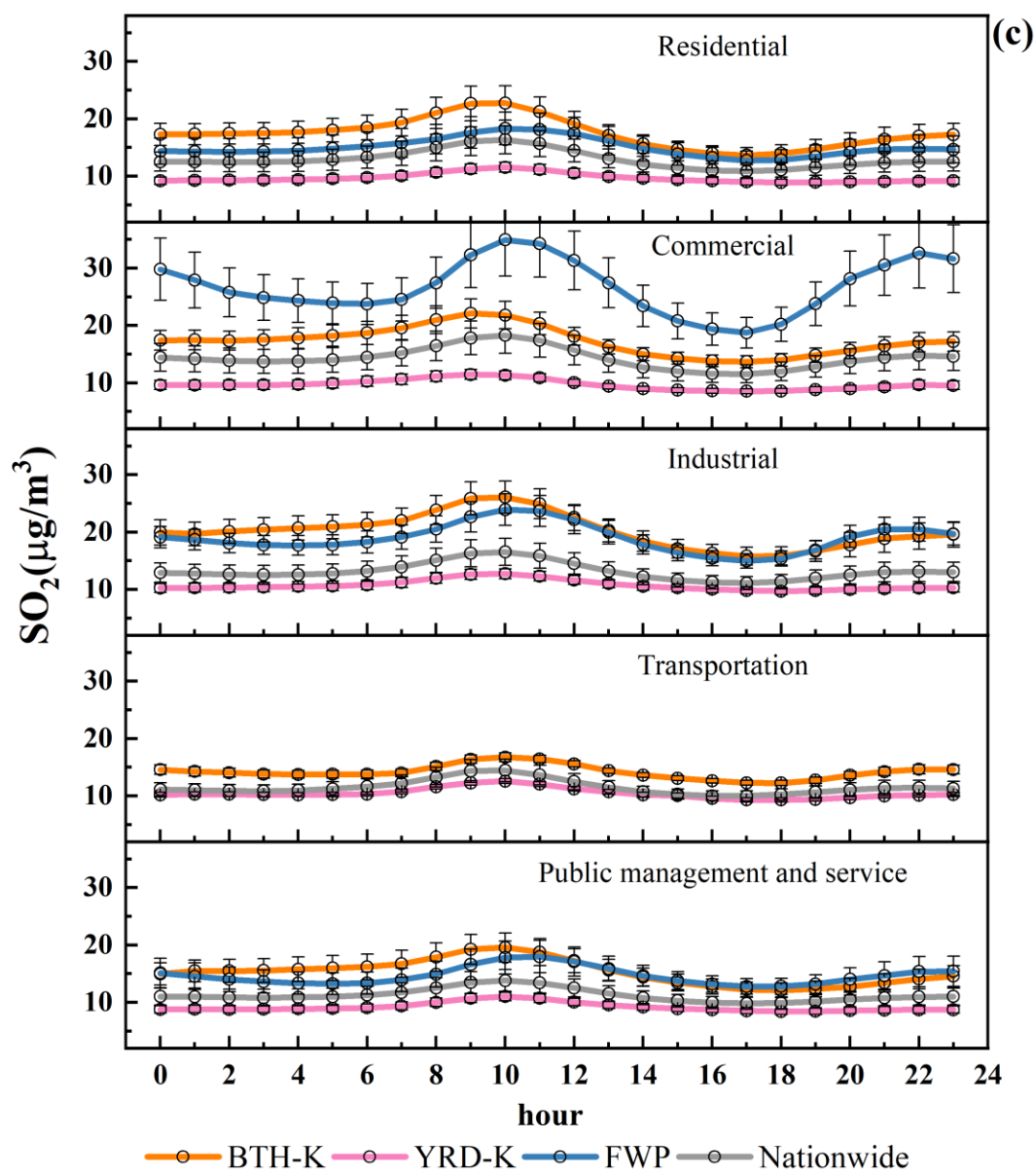
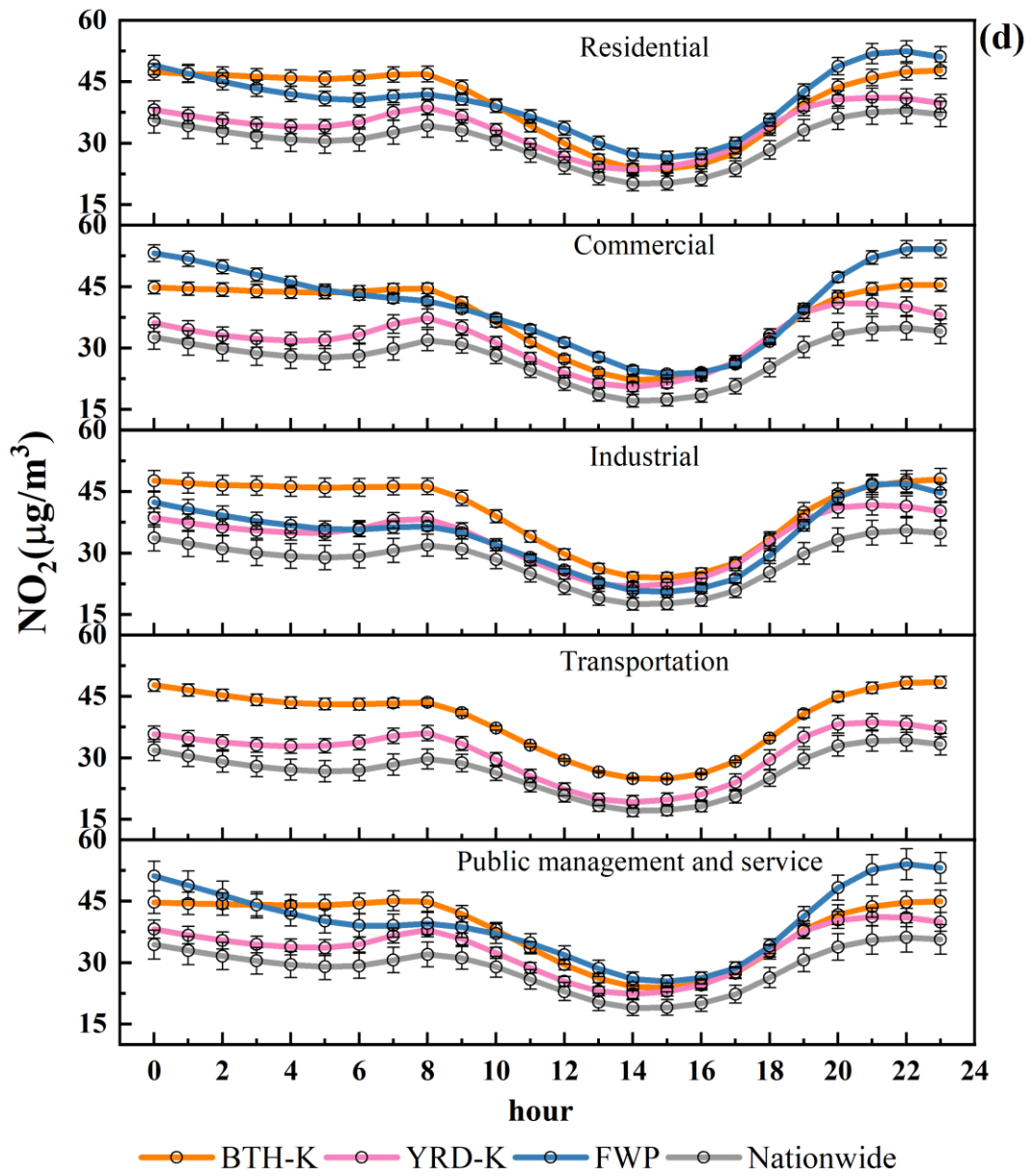
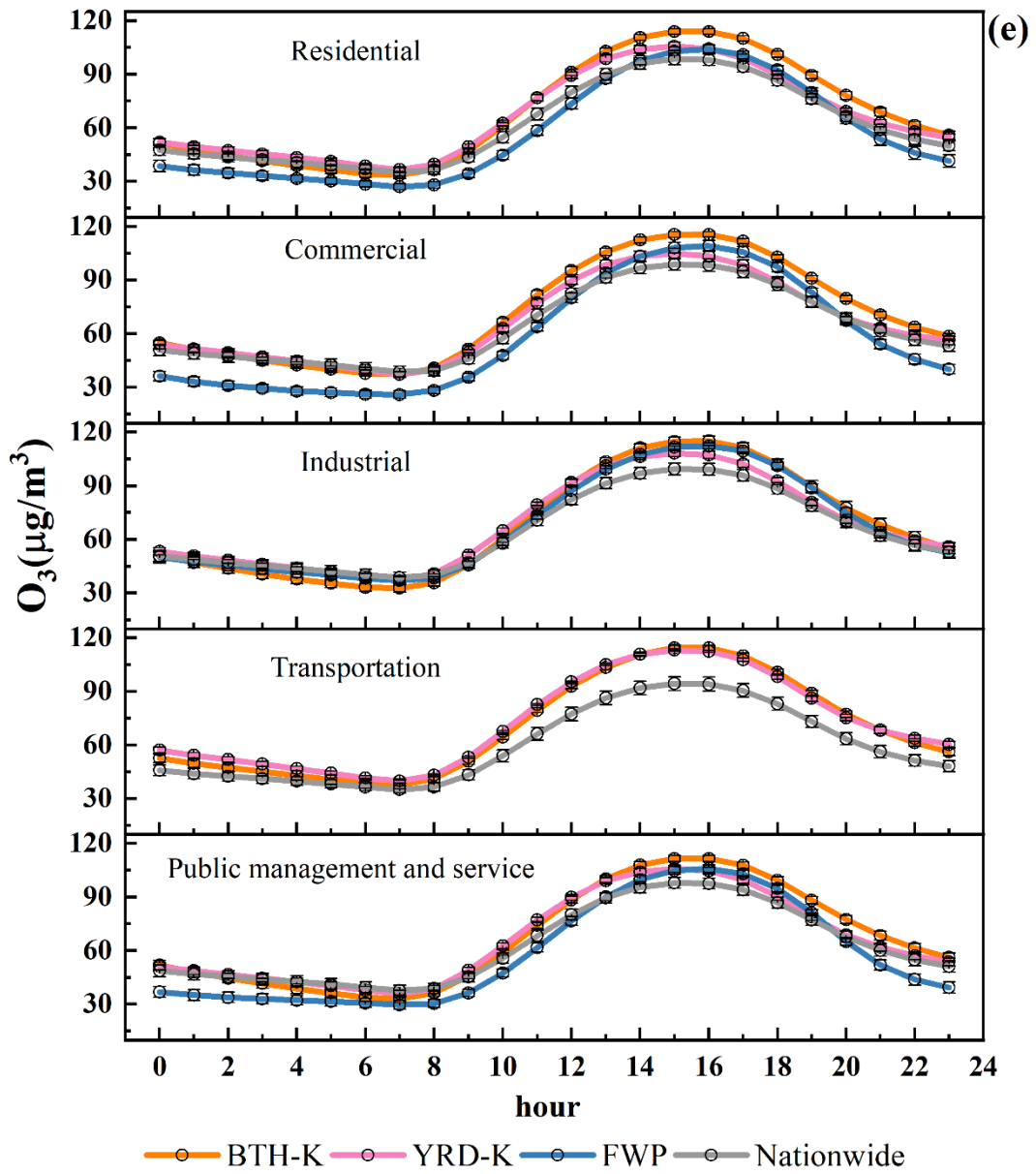


Figure S1. Seasonal variation trend of PM₁₀ (a), SO₂ (b), NO₂ (c), and CO (d) concentrations in various functional zones of Chinese cities. The dashed lines indicate the difference between the highest and lowest monthly mean concentration in the corresponding year.









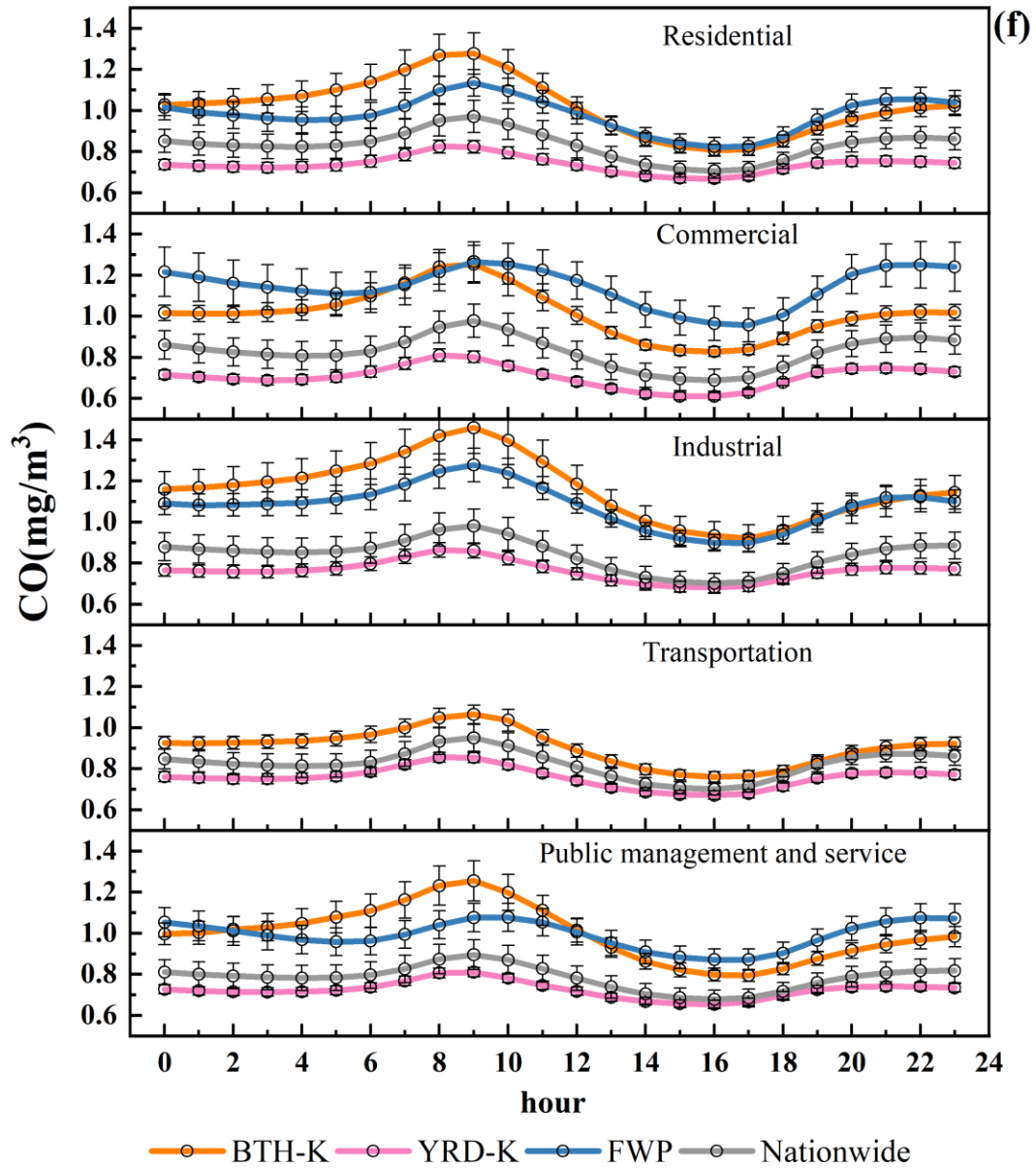
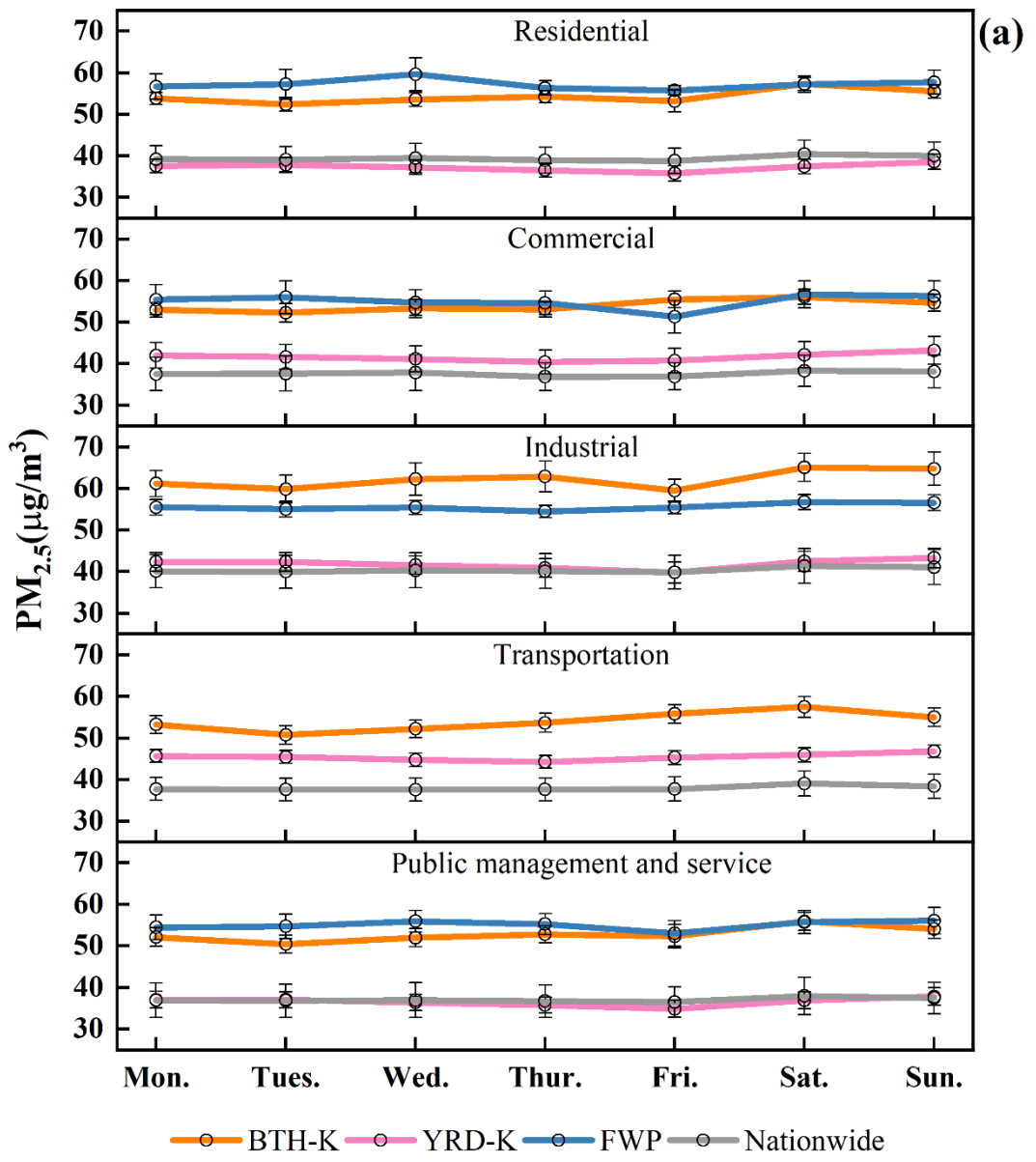
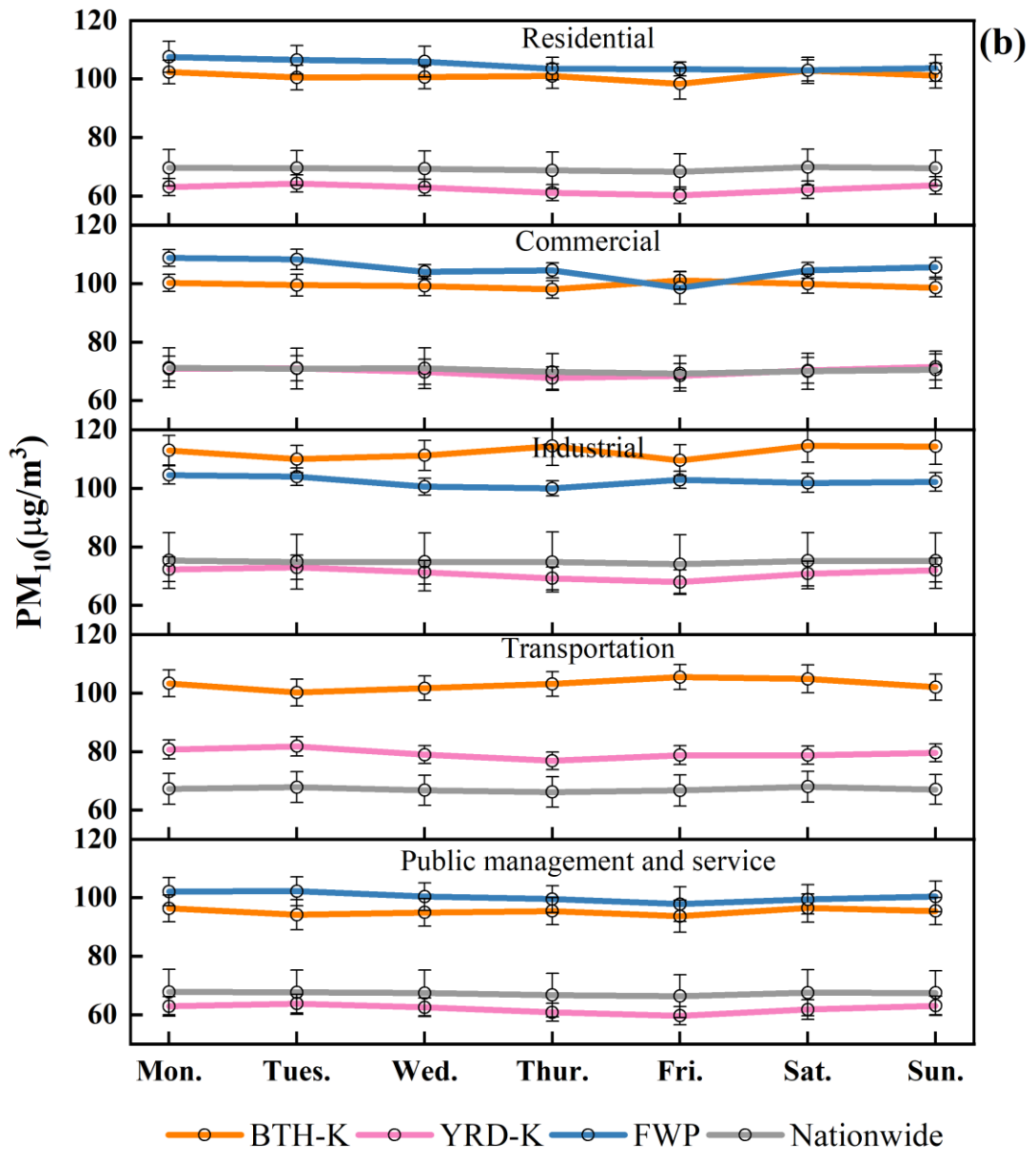
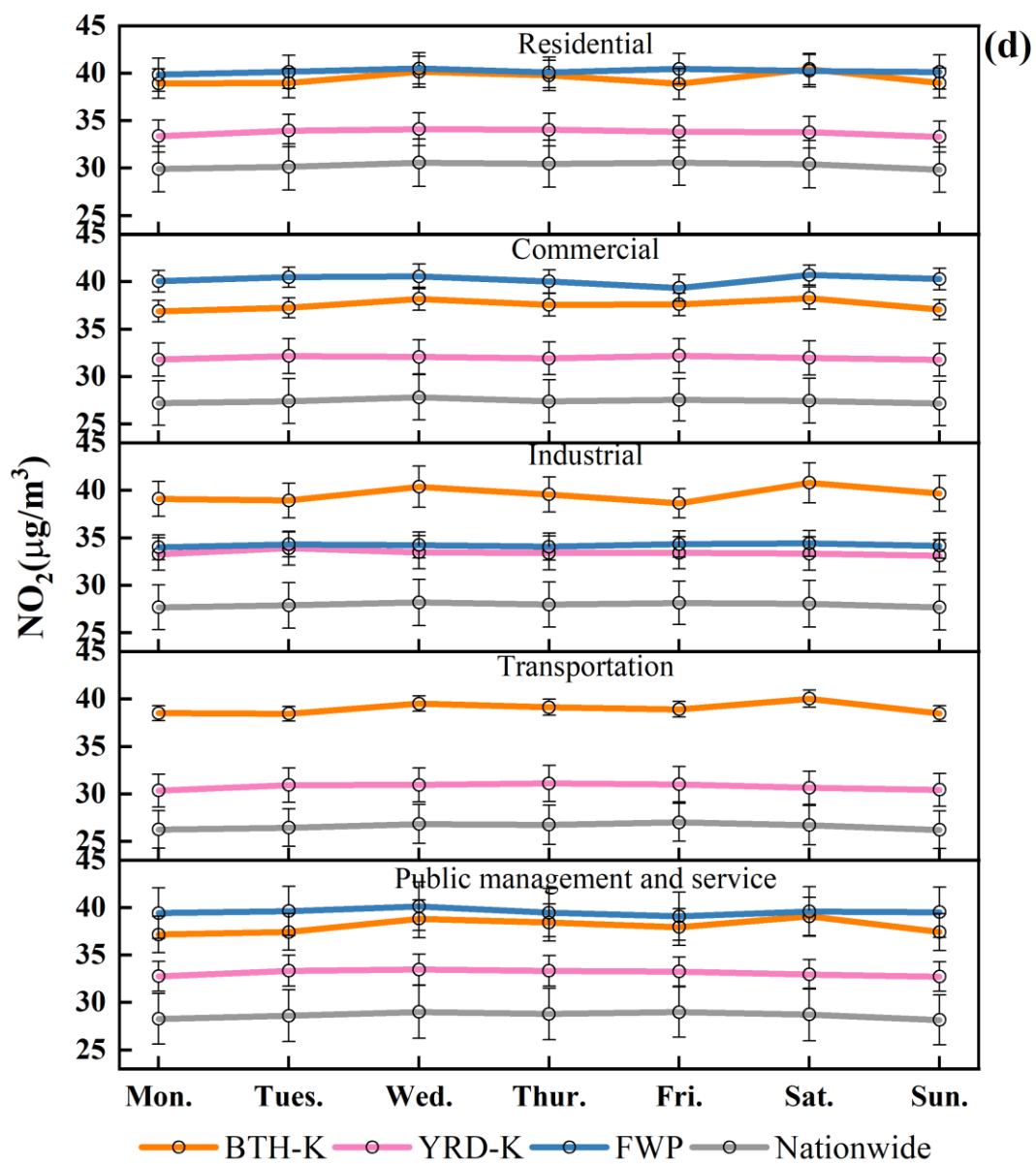
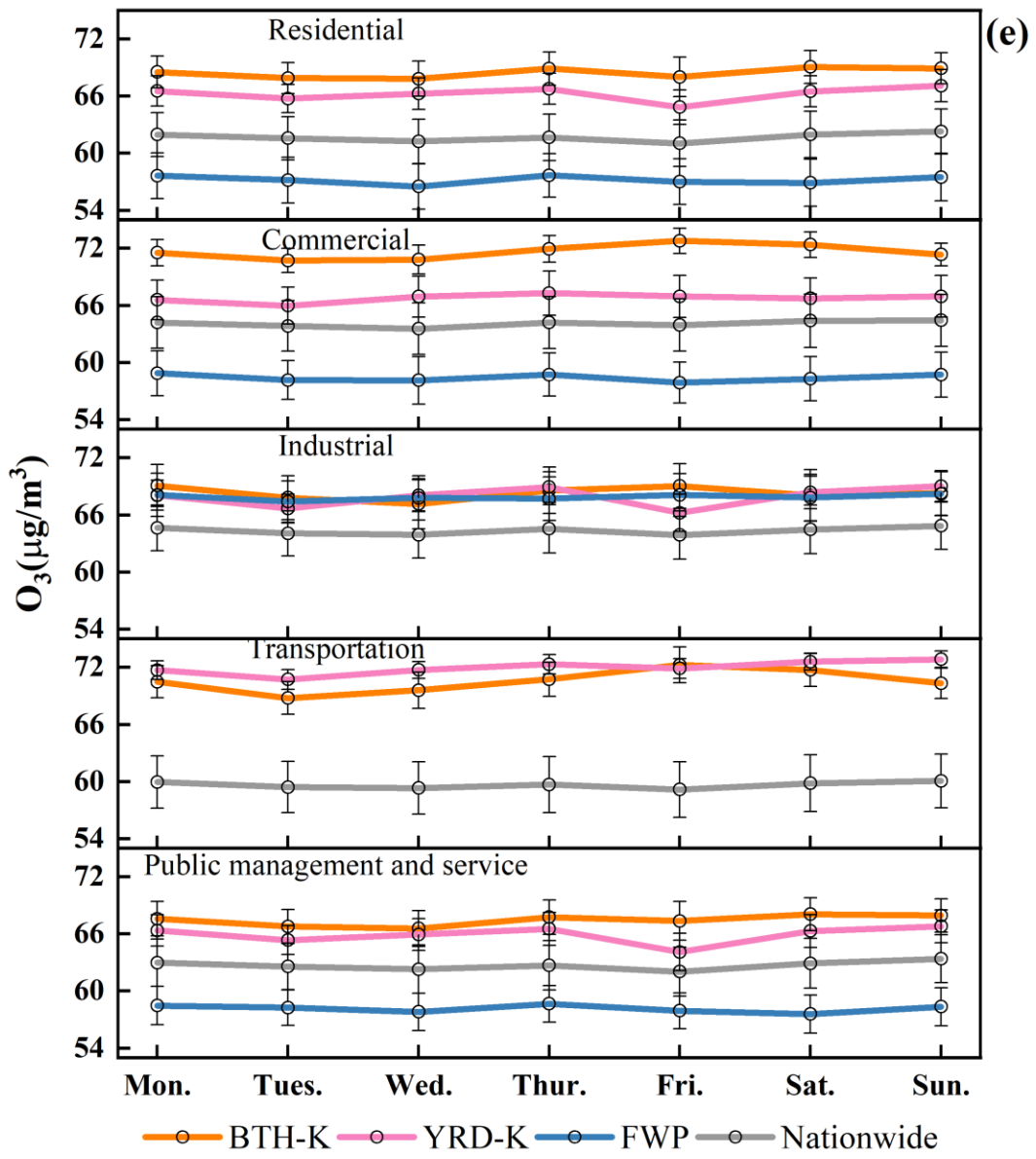


Figure S2. Daily variation curve of PM_{2.5} (a), PM₁₀ (b), SO₂ (c), NO₂ (d), O₃ (e), and CO (f) concentrations in various functional zones of Chinese cities. BTH-K: Beijing-Tianjin-Hebei region and its surrounding areas; YRD-K: Yangtze River Delta region; FWP: Fen-Wei Plain.









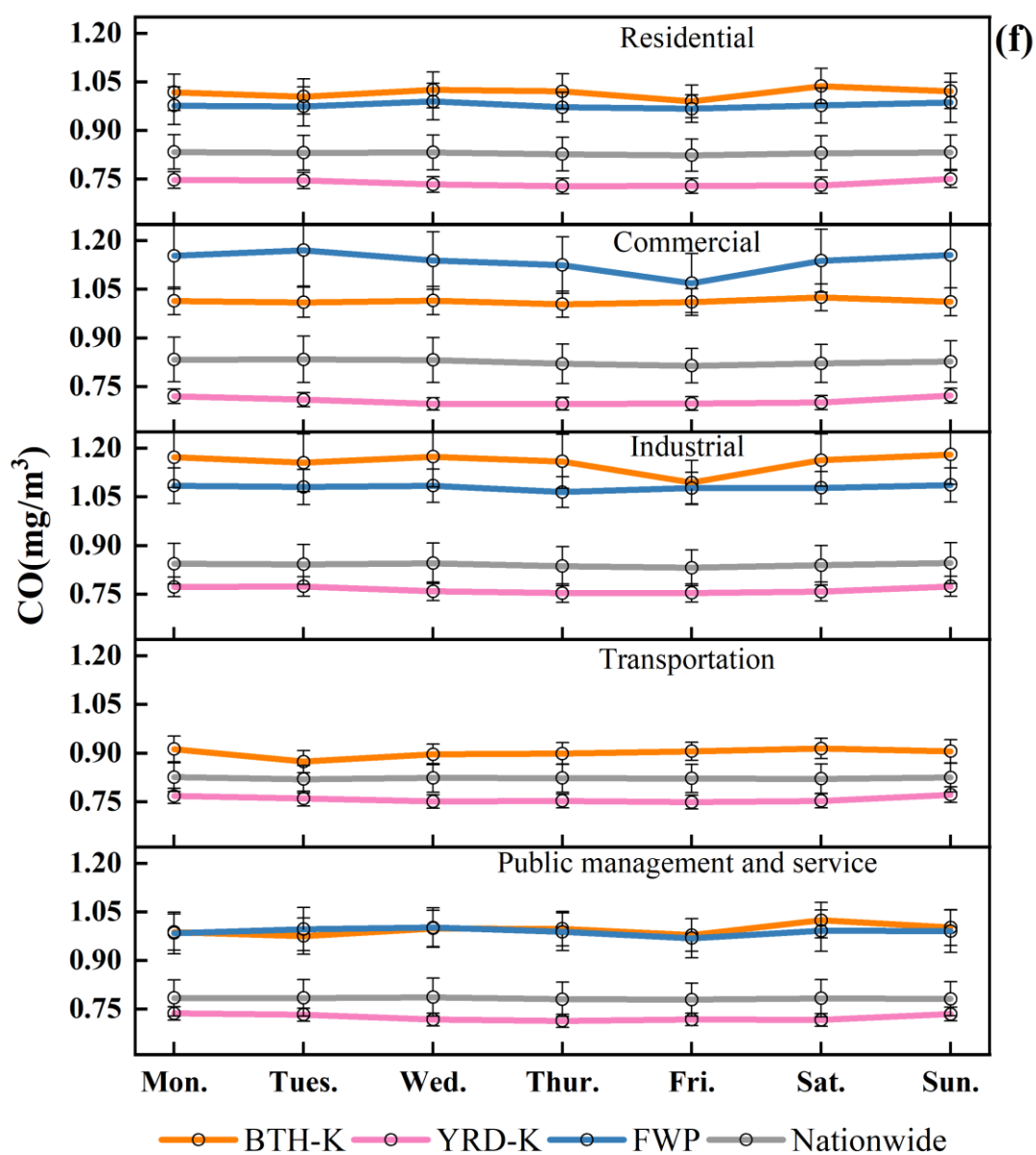


Figure S3. Weekly variation curve of PM_{2.5} (a), PM₁₀ (b), SO₂ (c), NO₂ (d), O₃ (e), and CO (f) concentrations in various functional zones of Chinese cities. BTH-K: Beijing-Tianjin-Hebei region and its surrounding areas; YRD-K: Yangtze River Delta region; FWP: Fen-Wei Plain.