

HSW-V v1.0: localized injections of interactive volcanic aerosols and their climate impacts in a simple general circulation model

Joseph P. Hollowed¹, Christiane Jablonowski¹, Hunter Y. Brown², Benjamin R. Hillman², Diana L. Bull², and Joseph L. Hart²

¹Department of Climate and Space Sciences and Engineering, University of Michigan, Ann Arbor, MI, USA

²Sandia National Laboratories, Albuquerque, NM, USA

Correspondence: Joseph Hollowed (hollowed@umich.edu)

Abstract. A new set of standalone parameterizations is presented for simulating the injection, evolution, and radiative forcing by stratospheric volcanic aerosols against an idealized Held-Suarez-Williamson (HSW) atmospheric background in the Energy Exascale Earth System Model version 2 (E3SMv2). In this model configuration, HSW-V, sulfur dioxide (SO₂) and ash are injected into the atmosphere with a specified profile in the vertical, and proceed to follow a simple exponential decay. The SO₂ decay is modeled as a perfect conversion to a long-living sulfate aerosol which persists in the stratosphere. All three species are implemented as tracers in the model framework, and transported by the dynamical core's advection algorithm. The aerosols contribute simultaneously to a local heating of the stratosphere and cooling of the surface by a simple plane-parallel Beer-Lambert law applied on two zonally-symmetric radiation broadbands in the longwave and shortwave range. It is shown that the implementation parameters can be tuned to produce realistic temperature anomaly signatures of large volcanic events. In particular, results are shown for an ensemble of runs that mimic the volcanic eruption of Mt. Pinatubo in 1991. The design requires no coupling to microphysical subgrid-scale parameterizations, and thus approaches the computational affordability of prescribed-aerosol forcing strategies. The idealized simulations contain a single isolated volcanic event against a statistically uniform climate, where no background aerosols or other sources of externally-forced variability are present. HSW-V represents a simpler-to-understand tool for the development of climate source-to-impact attribution methods.

1 Introduction

Volcanic eruptions are one of the most dominant natural sources of exogenous forcing on the Earth system. In large volcanic events, the stratosphere can be loaded with extraordinary amounts of sulfur dioxide (SO₂), which gradually oxidize to form long-living sulfate aerosols (Bekki, 1995). In the case of tropical eruptions, the radiative properties of long-living aerosols subsequently lead to global stratospheric and surface-level temperature deviations up to a few degrees Kelvin from climatological averages, which can persist for years (Kremser et al., 2016; McCormick et al., 1995; Dutton and Christy, 1992). Variations in the stratospheric sulfate content by the Earth's volcanic history has thus been one of the strongest drivers of interannual climate variability (e.g. Schurer et al. (2013)).

Since volcanic eruptions impact the climate, there is a rich history of implementing volcanic forcing parameterizations for coupled Earth system models (ESMs) in the literature. Simpler techniques prescribe radiative aerosol properties directly from an external dataset or analytic forms (e.g., see DallaSanta et al. (2019); Toohey et al. (2016); Eyring et al. (2013); Gao et al. (2008); Kovilakam et al. (2020)). Prescribed forcing approaches might be chosen for their computational affordability, though they are also used to facilitate climate model intercomparisons by standardizing the forcing scheme (Zanchettin et al., 2016; Clyne et al., 2021). More complex approaches prescribe emissions of volcanic SO₂, which are then handed to separate aerosol, chemistry, and advection codes. These codes then explicitly model the aerosol evolution, transport, and radiative properties (e.g., Mills et al. (2016, 2017); Brown et al. (2024)). Reviews of the wide array of modeling choices for volcanic forcings made by different ESMs are presented in Timmreck (2012) and Marshall et al. (2022).

Prescribed and prognostic methods have also been applied to model other forms of sulfur-based radiative forcing, with significant research recently being devoted to stratospheric aerosol injection (SAI) climate-change intervention activities (Crutzen, 2006; Tilmes et al., 2018, 2017; McCusker et al., 2012). One key goal of SAI research is to quantify the causal connections between an observed climate impact, and an upstream forcing source, i.e. to attribute the SAI source as the cause of a detected, anomalous atmospheric response. Volcanoes are a natural analog to SAI, and thus offer an avenue for developing novel attribution methods of quantifying these causal connections.

The climate impacts that are most societally-relevant tend to be spatially localized (e.g. droughts, heat waves, or fires) and located downstream from their associated sources (e.g. volcanoes, or other solar radiation modification) by multiple causal connections. "Multi-step attribution" involves a sequence of single-step attribution analyses, but is generally not employed, as the single weakest attribution step limits its confidence (Hegerl et al., 2010). Therefore, there is a need for novel multi-step attribution techniques in both climate change studies (Burger et al., 2020) and climate intervention studies (National Academies of Sciences, 2021; Office of Science and Technology Policy (OSTP), 2023) that overcome these issues to enable attribution of societally-relevant impacts.

As the climate community increasingly relies on advanced statistical inference and machine learning approaches to attribute downstream impacts, it is critical to develop testbeds which can be widely shared and used to understand the accuracy of the methods' inferences. Although the development of verification datasets for advanced data analytic techniques in the climate community is nascent, there are a few examples. Fulton and Hegerl (2021) generated synthetic climate modes to test the accuracy of distinct pattern extraction techniques and show that the most commonly used principal component analysis technique does not perform well. Mamalakis et al. (2022) worked to develop an "attribution benchmark dataset" for which the ground truth is known to enable evaluation of different explainable artificial intelligence (AI) methods.

Currently, developing data analytic methods for multi-step attribution in the context of volcanic forcing is restricted to models that utilize expensive prognostic aerosol treatments. This is because with prescribed forcing approaches in free-running atmospheric simulations, there is a dynamical inconsistency between the transport patterns and aerosol distributions. In particular, the forcing dataset does not respond to the atmospheric state. Accordingly, we suggest that a new idealized representation of prognostic volcanic forcing within a highly simplified atmospheric environment would be a useful testbed for the development

of novel multi-step attribution methods (i.e. constructing relationships between stratospheric aerosol forcing and atmospheric temperature perturbations).

Here we outline a simulation strategy which enables an affordable prognostic aerosol implementation for idealized climate model configurations. Our design seeks to maintain a realistic spatio-temporal signature of the atmospheric impacts, while minimizing the terms contributing to temperature and wind tendencies as much as possible. The former is achieved by including a localized injection and subsequent transport of aerosols by a tracer advection scheme. The latter is achieved by coupling the aerosol concentrations directly to the temperature field. While traditional approaches often require the inclusion of an auxiliary radiative transfer code for this second step, our implementation is standalone.

Our approach sacrifices realism by design. The goal is not to simulate an accurate post-eruption climate of a particular historical volcanic event, but rather to produce a plausible realization of a generic volcanic eruption, simulated with a minimal forcing set. This configuration will not offer a deterministic answer to the attribution problem, as the internal variability of the simulated atmosphere implies that there is no single solution to the spatio-temporal evolution of the affordable prognostic aerosol. Nevertheless, it does represent key process characteristics between a source and downstream impact, and can provide large datasets without the typical computational burden of climate simulations, thereby supporting the development and testing of novel data analyses and attribution techniques.

Our model isolates a single volcanic event from any other external source of forcing or variability, and allows the flexibility to be embedded in a simplified atmospheric environment. Though the implementation is generic, we present here a particular tuning of the parameterizations for an eruption similar in character to the 1991 eruption of Mt. Pinatubo, and the subsequently observed impacts (Karpechko et al., 2010; Robock, 2000; McCormick et al., 1995; Hansen et al., 1992). The atmosphere model is an idealized so-called Held-Suarez-Williamson (HSW; Williamson et al. (1998)) configuration of the Energy Exascale Earth System Model version 2 (E3SMv2; Golaz et al. (2022)). The HSW configuration on a flat earth replaces E3SMv2's physical parameterization package with a temperature relaxation towards a prescribed, hemispherically-symmetric equilibrium temperature and Rayleigh friction near the surface. These two forcing mechanisms mimic radiative effects and the boundary-layer turbulence, respectively. There are no background aerosols, no moisture, and no long-term climate trends. The implementation of the injection, aerosol dissipation, and forcing can be tuned to yield sensible atmospheric impacts for almost any model configuration with qualitatively realistic circulation patterns, even in absence of a standard physical parameterization suite. We call this extension to the HSW model with enabled volcanism HSW-V.

The paper is structured as follows. The simplified climate model configuration of E3SMv2 is described in Sect. 2. Section 3 introduces the idealized volcanic injection, sulfate formation, and radiative forcing parameterizations. This is followed by a discussion of the ensemble design, simulation results, and the computational expense in Sect. 4. Section 5 summarizes the findings and provides an outlook on their utility for the modeling community. Appendix A describes custom modifications that were needed for our chosen simplified climate implementation with E3SMv2. In addition, Appendix C provides recommendations for the tuning of the suggested aerosol parameterizations.

90 2 Climate Model Configuration

When choosing the base model configuration, the goal was to provide an environment in which the volcanic forcing can be nearly isolated. In addition, we aimed at keeping the number of physical subgrid-scale forcing mechanisms small. These simplifications are achieved by running a climate model in an atmosphere-only mode, and replacing the standard suite of physical parameterizations with simple forcing functions for the temperature and horizontal winds.

95 Section 2.1 introduces the E3SMv2 climate model which serves as the foundation for our developments. E3SMv2’s chosen HSW configuration is a modified implementation of the idealized scheme originally described by Held and Suarez (1994) (hereafter HS94), involving a damping of low-level winds and a relaxation of the temperature field to a specified zonally-symmetric reference profile, described in Sect. 2.2. The main difference between the HS94 and HSW forcing is the presence of a more realistic relaxation temperature profile above 100 hPa which generates stratospheric polar jets in the HSW variant.
100 Section 2.3 describes a simple extension for idealized physics packages which provides global, zonally-symmetric longwave and shortwave radiation profiles.

2.1 The E3SMv2 climate model

E3SMv2 is a state-of-the-art climate model that consists of various coupled components for the atmosphere, ocean, land, sea ice, and land ice (Golaz et al., 2022). The dynamical core of the E3SM Atmosphere Model version 2 (EAMv2) uses a spectral-
105 element (SE) solver on a quasi-uniform cubed-sphere grid for a shallow, hydrostatic atmosphere (Taylor et al., 2020), and a semi-Lagrangian tracer transport scheme (Bradley et al., 2022) which ensures local mass conservation and shape preservation. Specifically, the experiments presented here use the $\sim 2^\circ$ “ne16pg2” grid, where each cubed-sphere element features a 2x2 grid of physics columns. The grid for the physical parameterizations is thus coarser than the associated dynamics grid (Hannah et al., 2021; Herrington et al., 2019). The vertical grid consists of 72 vertical levels with a model top near 0.1 hPa, or approximately
110 60 km.

We use a highly simplified, dry configuration of EAMv2 with no topography, no moisture, and no coupling to other components. The physical parameterization suite is replaced by a set of idealized forcing functions described in Section 2.2. Internally, this configuration is labeled as the “FIDEAL” component set— an inheritance of E3SMv2 from its original fork of the Community Earth System Model (CESM, Danabasoglu et al. (2020)). As a part of our work, the FIDEAL component set needed to
115 be revived, and is not functional in the official release of E3SMv2.

We note that the ne16pg2 grid is coarser than the default E3SMv2 $\sim 1^\circ$ “ne30pg2” grid. We have not tested activating our implementation on such a higher-resolution grid, which will require a re-tuning the model parameters. Recommendations for performing the tuning of the volcanic forcing are given in Appendix C.

2.2 Idealized climate forcing

120 The HS94 forcing was originally proposed as a benchmark for the intercomparison of statistically steady-states produced by the dry dynamical cores of Atmospheric General Circulation Models (AGCMs) without topography. The forcing includes the

Rayleigh damping of low-level winds to represent friction in the boundary layer and a Newtonian temperature relaxation toward an analytic “radiative equilibrium” temperature $T_{\text{eq}}(\phi, p)$ given by

$$\frac{\partial T}{\partial t} = \dots - k_T(\phi, p) [T - T_{\text{eq}}(\phi, p)]. \quad (1)$$

125 Here, T is the temperature, t stands for the time, ϕ represents the latitude, p symbolizes the pressure, and $k_T(\phi, p)$ is the relaxation rate. T_{eq} has no time dependence and therefore does not include any diurnal or seasonal cycles. The temperature variability on any timescale is purely driven by the internal dynamics arising from nudging towards the equilibrium. The form of the equilibrium temperature is designed to mimic the net effects of radiation, convection, and other subgrid-scale processes. Williamson et al. (1998) (hereafter W98) later noted that since the HS94 benchmark deliberately maintains a “passive”
 130 stratosphere, supporting none of the typical stratospheric structures such as the polar jets, it would not be applicable to their dynamical core intercomparison studies of tropopause formation. To remedy this deficiency, they provide a modification of the original HS94 equilibrium temperature, which includes realistic lower-stratospheric lapse rates in the tropics and polar regions. Such a HSW configuration was, e.g., also used in Yao and Jablonowski (2016) who explored Sudden Stratospheric Warmings (SSWs) in the idealized environment.

135 We use the HSW forcing in our simulations, and omit all other physical parameterizations. This setup provides an atmosphere that is characterized by realistic dynamical motions and a quasi-realistic idealized climatology while maintaining a highly simplified inventory of diabatic subgrid forcings. In implementing HSW in E3SMv2, a few notable modifications were made. First, the lapse rate of the equilibrium temperature T_{eq} was set to zero above 2 hPa to maintain realistic upper-stratospheric temperatures. Next, in addition to the HS94 treatment of surface friction, we include a second Rayleigh damping mechanism
 140 near the model top as a “sponge layer” for calming the polar jet winds and absorbing spurious wave reflections, as described in Jablonowski and Williamson (2011). Specifics of these HSW modifications are provided in Appendix A.

Figure 1 shows the equilibrium temperature in the latitude-pressure plane, the vertical profile of the wind damping strength, and the resulting 10-year average zonal-mean temperature and zonal wind fields following a five-year spinup period using these idealized forcings in E3SMv2. The resulting stratospheric temperature and wind structures are quasi-realistic, reaching
 145 maximum tropical temperatures of about 240 K at the 50-60 km height levels which correspond to the region between 1-0.1 hPa. However, these temperatures are slightly cooler than the observed values near 50 km (1 hPa) which are about 260 K, as documented in Fleming et al. (1990). Temperature minima are seen near the tropical tropopause, as well as the polar middle-stratosphere. Sharp vertical temperature gradients are seen near the polar upper-stratosphere, leading to temperatures in excess of 270 K.

150 In the zonal wind, we see the formation of tropospheric mid-latitude westerly jets with maximum wind speeds of $\sim 30 \text{ m s}^{-1}$, and strong stratospheric polar jets in excess of 60 m s^{-1} . As there are no seasonal variations present, each hemisphere eternally varies about this winter-like steady state, which is qualitatively representative of observations (Fleming et al., 1990). At the same time, the global circulation, and thus mass transport, is characterized by symmetric thermally-direct circulations (Hadley cells) in the troposphere, and symmetric residual streamfunction cells in the stratosphere, consistent with equinox
 155 states in nature (see discussion in Sect. 4.2 and Appendix B).

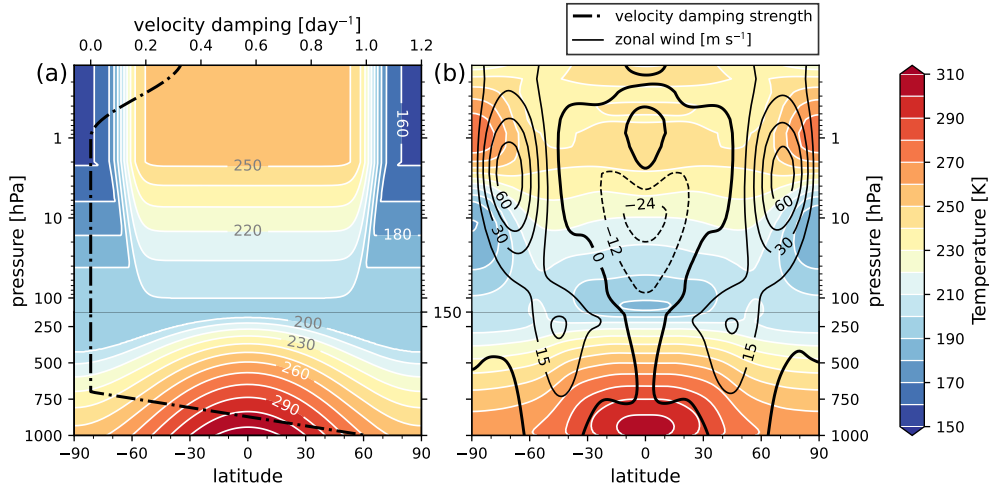


Figure 1. (a) The modified HSW equilibrium temperature in the latitude-pressure plane. Contours are drawn every 10 K. Overlaid as a thick dashed black line is the vertical profile of the velocity damping coefficient for both the sponge layer and the surface, with its values on the top horizontal axis (see Appendix A for details). (b) 10-year average zonal-mean temperature and zonal wind distributions in an E3SMv2 run with temperature relaxation toward the reference temperature of panel (a), after a five-year spinup period. Temperature contours are drawn every 10 K, while positive (negative) wind contours every 15 m s⁻¹ (12 m s⁻¹). Negative contours are dashed, and the zero-line is shown in bold. For all variables shown, the vertical (pressure) axis is logarithmic above 150 hPa, and linear below 150 hPa. The separation between these two domains given as gray horizontal lines.

In the tropical stratosphere, easterlies with speeds up to -30 m s⁻¹ dominate. Note that while the tropical stratospheric winds will vary about this average, the HSW atmosphere does not include any kind of regular quasi-biennial oscillation (QBO) analog. Yao and Jablonowski (2016) showed that whether or not a QBO spontaneously develops in an HSW configuration will largely depend on the dynamical core in use. For a spectral element (SE) dynamical core, they observed that wave forcing was never strong enough to cause a reversal of the tropical stratospheric winds. The same conclusion appears to hold for our configuration of E3SMv2. Despite this, the QBO may be a desirable target for future studies employing this model configuration, as it has been shown that the QBO phase is a significant modulator of the volcanic climate response (Thomas et al., 2009). We do not consider this issue further in the present work, but note that it could be possible to prescribe a QBO by nudging the horizontal winds toward a specified reference state (as has been done for e.g. the Whole Atmosphere Community Climate Model (WACCM) by Matthes et al. (2010)).

2.3 Extending the HSW model with simple radiation

The HSW atmosphere does not describe any radiative processes, except by the extent to which they are mimicked in the temperature relaxation toward T_{eq} . Energy balance at the top of the atmosphere (TOA) is implied, though there are no specifications of incoming or outgoing radiative fluxes.

170 However, in computing the diabatic heating and cooling terms of stratospheric aerosols in Sect. 3, it will be both convenient and natural to have expressions for the flux densities of incoming shortwave (SW) and outgoing longwave (LW) broadbands, which are qualitatively consistent with the HSW equilibrium temperature field. We first define a global, zonally-symmetric longwave flux density based on T_{eq} at the surface, and then deduce a shortwave component by setting the total integrated global power equal to that of the longwave component. Both flux density profiles will be constant in time.

175 In both the HS94 and HSW models, the radiative equilibrium temperature below 100 hPa is

$$T_{\text{eq}}(\phi, p) = \max \left[(200 \text{ K}), \left[(315 \text{ K}) - (60 \text{ K}) \sin^2 \phi - (10 \text{ K}) \log \left(\frac{p}{p_0} \right) \cos^2 \phi \right] \left(\frac{p}{p_0} \right)^{R_d/c_p} \right], \quad (2)$$

where $R_d/c_p = 2/7$ is the ratio of the ideal gas constant and specific heat at constant pressure for dry air. At the reference pressure $p_0 = 1000$ hPa, the equation reduces to

$$T_{\text{eq}}(\phi, p_0) = 315 \text{ K} - (60 \text{ K}) \sin^2 \phi. \quad (3)$$

180 We compute a longwave graybody flux density I_{LW} from the Stefan-Boltzman law as

$$I_{\text{LW}} = \sigma T_{\text{surf}}^4 = \sigma [315 \text{ K} - (60 \text{ K}) \sin^2 \phi]^4 \quad (4)$$

where σ is the Stefan-Boltzman constant. If desired, T_{surf} can be the actual surface temperature on the 2D surface mesh. We instead choose a simplified approach that is both analytic and static in time, by approximating the surface temperature as Eq. (3). For incident shortwave radiation, we use a simple cosine form which vanishes at the poles, resembling equinox

185 conditions, given by

$$I_{\text{SW}} = I_0 \cos \phi. \quad (5)$$

By integrating Eq. (4) and Eq. (5) over the sphere, we find that a normalization parameter of $I_0 \approx 560 \text{ W m}^{-2}$ enforces that the total globally-integrated power is in balance between I_{LW} and I_{SW} . We note that these radiative fluxes are considerably higher than the annual average solar insolation of the real Earth system. The primary reason for the enhanced values is that there is no attenuation of the upwelling longwave radiation by moisture, clouds, or other background constituents (excluding volcanic aerosols) in the HSW atmosphere. Including such an effect in the HSW configuration would be arbitrary and overly-complicated. Further, we will show in Sect. 3 that the aerosol radiative forcing design has sufficient freedom in the number of tunable parameters to achieve desired heating rates, without being preferential about the amplitudes of I_{SW} and I_{LW} .

195 The resulting flux profiles are shown in Fig. 2. This figure shows an energy deficit poleward of 55° , and a surplus equatorward, with maxima in the net flux in the midlatitudes. We emphasize that the shape of the flux profiles is the important aspect here, and that balancing I_{LW} and I_{SW} is only being done for style and physical legibility. This "radiation" will be used *only* to control the heating and cooling rates imposed by injected aerosols, which will ultimately be subject to model tuning, and will have no effect on mean atmospheric temperatures. The overall climate and energy balance is still controlled independently by the HSW temperature relaxation.

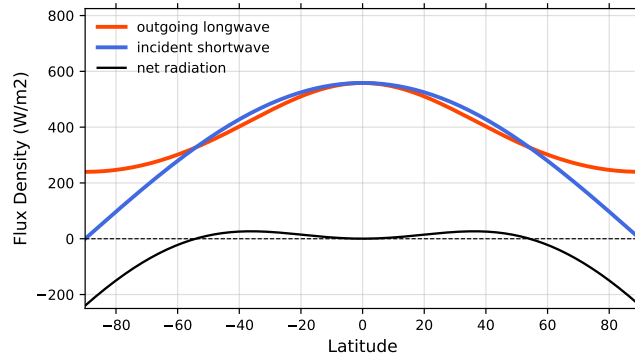


Figure 2. Longwave (Eq. (4)), shortwave (Eq. (5)), and net flux densities as functions of latitude.

200 3 The HSW-V volcanic forcing approach

We model radiative forcing by stratospheric aerosol injection events in the idealized HSW environment by directly forcing the temperature field via a standalone parameterization. This forcing is done without the need for intermediary aerosol or radiation models. While this approach could be generalized for any local injections of sulfur species to the atmosphere, the implementation used here is designed and tuned to produce a realistic representation of the 1991 eruption of Mt. Pinatubo. Specifically, our model describes the localized simultaneous injection of volcanic ash and sulfur dioxide (SO₂) with a specified vertical profile over a single model column. Decay of the SO₂ in turn leads to production of long-lived sulfate aerosols. These chemical species are implemented as “tracers” within EAMv2 (scalar mixing ratio quantities advected by the model’s transport scheme), and contribute independently to local and surface temperature tendencies.

The strategy is to add together various ingredients as follows: (1) define volcanic sources (stratospheric injection), (2) define SO₂ sinks (sulfate aerosol production), (3) compute the aerosol optical depth (AOD) of each model column, and (4) increment the temperature tendency (local radiative heating by absorption, and radiative surface cooling by AOD). Steps (1)-(4) are described in Sect. 3.1-3.4, respectively. Section 3.5 provides a brief summary of the model, a table of the model parameters, and notes on the parameter tuning strategy.

3.1 Tracer injection

215 We model the time tendency of each injected tracer species j (SO₂ and ash) as the sum of a source and sink:

$$\frac{\partial m_j}{\partial t} = R(m_j) + f. \quad (6)$$

$R(m_j)$ is an exponential removal function with e-folding timescale $1/k_j$, and the source term f describes the spatial distribution of injection:

$$R(m_j) = -k_j m_j, \quad (7)$$

$$220 \quad f = \tilde{A}_j T(t) H(\phi, \lambda) V(z). \quad (8)$$

The separable temporal, vertical, and horizontal dependencies are $T(t)$, $V(z)$, and $H(\phi, \lambda)$, respectively, where z is the geometric height and λ symbolizes the longitude. \tilde{A}_j is a normalization parameter. This form is then discretized onto the model grid with horizontal column, vertical level, and timestep indices i , k , and n , respectively. We choose to model an injection uniformly distributed over a single column and time period of length δt . Explicitly, the ‘‘injection region’’ S is symbolized as

$$225 \quad S = \{(\phi_i, \lambda_i, t_n) \mid \phi_i = \phi_{i'}, \lambda_i = \lambda_{i'}, t_0 \leq t_n \leq t_0 + \delta t\}, \quad (9)$$

where i' is the index of the injection column. The product of $T(t_n)$ and $H(\phi_i, \lambda_i)$ in Eq. (8) is then replaced by an indicator function $I_{i,n} \equiv I(t_n, \phi_i, \lambda_i)$, which is equal to one inside of S , and equal to zero outside of S . The mass tendency is then

$$\frac{\partial m_{j,i,k}}{\partial t} = -k_j m_{j,i,k} + I_{i,n} A_j V(z_k). \quad (10)$$

The source f for tracer j is normalized by the constant A_j , which scales the *total* injected mass to a known parameter M_j , by

$$230 \quad M_j = A_j \delta t \sum_k V(z_k) \quad (11)$$

$$\implies A_j = \frac{M_j}{\delta t \sum_k V_k}, \quad (12)$$

where we define $V_k \equiv V(z_k)$. The normalization constant A_j is unique to the vertical grid configuration, and converges to the normalization of the analytic form $A_j \rightarrow \tilde{A}_j$ with increasing resolution. This treatment avoids losing mass to numerical diffusion once the injected mass is placed onto the model grid.

235 Rather than a mass tendency, the quantity required by EAMv2’s physics interface is the tendency of the tracer mixing ratio $q_j \equiv m_j/m_{\text{atm}}$. If $\Delta p_{i,k}$ is the local pressure thickness of the grid cell, g is acceleration due to gravity, and a_i is the column area, the air mass m_{atm} in this definition can be replaced via the hydrostatic equation, yielding

$$q_{j,i,k} = m_{j,i,k} \frac{g}{\Delta p_{i,k} a_i}. \quad (13)$$

Given Eq. (10)-(13), the final expression implemented for the update of tracer j at column i , vertical level k , and timestep n is

$$240 \quad \frac{\partial q_{j,i,k,n}}{\partial t} = \frac{g}{\Delta p_{i,k} a_i} \left[-k_j m_{j,i,k} + I_{i,n} \frac{M_j}{\delta t \sum_k V_k} V_k \right]. \quad (14)$$

For the vertical dependence $V(z)$, we follow Fisher et al. (2019) and assume a Gaussian distribution defined by a center of mass altitude μ , and a geometrical standard deviation

$$V(z) = \exp\left(-\frac{1}{2} \frac{(z - \mu)^2}{(1.5 \text{ km})^2}\right). \quad (15)$$

The profile deviation of 1.5 km is a compromise between Fisher et al. (2019) and the width of the parabolic injection profile of
245 Stenchikov et al. (2021). In hydrostatic models such as E3SMv2, the height z is a diagnostic quantity. Therefore, the vertical
profile needs to be computed at each timestep. We inject both SO₂ and ash at the same height and with the same deviation, and
we do not include a normalization coefficient in $V(z)$, since A_j is already scaled by $\sum_k V_k$.

We tuned the center of mass altitude μ by ensuring that the sulfate tracer which eventually arises from the initial SO₂
injection settles in the lower stratosphere, between 20 and 25 km, consistent with estimates from aerosol transport models
250 (Sheng et al., 2015) and forcing reconstructions (see review in Sect. 2 of Toohey et al. (2016)). As in previous works, we might
expect to inject just above the tropical tropopause, near $\mu = 17$ -18 km (Stenchikov et al., 2021; Fisher et al., 2019), and then
allow the self-lofting process to carry the plume to a level of neutral buoyancy in the lower stratosphere. Per Stenchikov et al.
(2021), this process is expected to be driven by a vertical velocity of $w \approx 1$ km day⁻¹ due to strong initial radiative heating
rates of about 20 K day⁻¹ in the dense, fresh volcanic plume. After tuning the model with these considerations in mind, we use
255 the even lower value of $\mu = 14$ km, which we found to result in a realistic settling altitude for the sulfate tracer distribution. The
need for this exceptionally low injection height is due to an overly aggressive heating of the initial plume given our parameter
choices, which is discussed further in Section 3.5 and Appendix C4.

Observations giving the total injected mass and e-folding time for SO₂ (25 days) and ash (1 day) for the Mt. Pinatubo
eruption were estimated from satellite data and published in Guo et al. (2004a, b) and Barnes and Hofmann (1997). Table 1
260 provides the chosen parameter values. In particular, the model describes a 24-hour injection of a plume centered on 14 km
in the vertical, uniformly over a single column. We assume no background values for any of the injected species prior to the
eruption, as in some other studies (e.g. Bekki and Pyle (1994)).

The remainder of the model formulation as presented in Sect. 3.2-3.4 is applied uniformly on each timestep, and thus the
temporal index n will be omitted for brevity. Optical depths and radiative forcings are computed identically for each tracer
265 species, and so the tracer index j will be also be omitted. Mixtures of multiple tracers j with varying radiative extinction
coefficients will be reintroduced in Sect. 3.4.3.

3.2 Sulfate formation

Once injected into the atmosphere, SO₂ follows an oxidation chain with an end product of sulfuric acid (H₂SO₄) that condenses
with water vapor to form sulfate aerosol particles (Bekki, 1995). Stratospheric sulfate aerosols have an e-folding removal
270 timescale of one year (Barnes and Hofmann, 1997), and are responsible for much of the heating that perturbs the Earth's
energy balance and atmospheric circulation after a stratospheric volcanic eruption (McCormick et al., 1995; Robock, 2002).

In fully coupled climate models, aerosol heating will be mediated by chemistry, radiation, and moist subgrid processes.
Here, the same heating is rather modeled by a direct, analytic coupling of SO₂ to sulfate, in a way inspired by the so-called
"toy chemistry" of Lauritzen et al. (2015), also seen in Toohey et al. (2016). Sulfate will evolve by Eq. (6), where the source
275 term f exactly becomes the SO₂ sink $R(m_{\text{SO}_2})$. The SO₂ removal rate k_{SO_2} is then interpreted purely as a reaction rate, and

Table 1. Model parameters. Parameters with a superscript † are tuned parameters. Parameters with a superscript ‡ are constrained by a data-driven calculation, though not necessarily free for tuning. Parameters without a superscript are observations and/or estimates directly from the literature. For information on tuning, see Sect. 3.5 and Appendix C.

Parameter	Value	Units	Description	Reference
injection parameters				
ϕ_0	15.15	deg	meridional plume center	
λ_0	120.35	deg	zonal plume center	
δt	24	hr	injection duration	
μ	14	km	peak injection altitude	Stenchikov et al. (2021)
tracer parameters				
k_{SO_2}	1/25	day ⁻¹	SO ₂ decay rate	Guo et al. (2004a)
k_{sulfate}	1/360	day ⁻¹	sulfate decay rate	Barnes and Hofmann (1997)
k_{ash}	1	day ⁻¹	ash decay rate	Guo et al. (2004b)
M_{SO_2}	17	Tg	injected mass of SO ₂	Guo et al. (2004a)
M_{ash}	50	Tg	injected mass of ash	Guo et al. (2004b)
ν^\ddagger	2.04	-	SO ₂ → sulfate weighting	See Sect. 3.2
heating parameters				
ζ^\dagger	4.0×10^{-3}	-	surface heat transfer efficiency	See Sect. 3.4
$\tilde{\delta}z^\dagger$	100	m	max height of surface cooling	See Sect. 3.4
$b_{\text{SW, ash}}^\ddagger$	400	m ² kg ⁻¹	SW mass extinction coeff.	See Sect. 3.3
$b_{\text{SW, SO}_2}^\ddagger$	400	m ² kg ⁻¹	SW mass extinction coeff.	See Sect. 3.3
$b_{\text{SW, sulfate}}^\ddagger$	1900	m ² kg ⁻¹	SW mass extinction coeff.	See Sect. 3.3
$b_{\text{LW, ash}}^\dagger$	1×10^{-5}	m ² kg ⁻¹	LW mass extinction coeff.	See Sect. 3.3
$b_{\text{LW, SO}_2}^\dagger$	0.01	m ² kg ⁻¹	LW mass extinction coeff.	See Sect. 3.3
$b_{\text{LW, sulfate}}^\dagger$	29	m ² kg ⁻¹	LW mass extinction coeff.	See Sect. 3.3

the sulfate tendency mass is

$$\frac{\partial m_{\text{sulf}}}{\partial t} = -k_{\text{sulf}} m_{\text{sulf}} + \nu k_{\text{SO}_2} m_{\text{SO}_2} \quad (16)$$

or, in terms of mixing ratio on the computational grid,

$$\frac{\partial q_{\text{sulf},i,k}}{\partial t} = -k_{\text{sulf}} q_{\text{sulf},i,k} + \nu k_{\text{SO}_2} q_{\text{SO}_2,i,k} . \quad (17)$$

280 Here, the reaction weight ν encodes the net production of sulfate per unit mass of SO₂. While ν could be a tuning parameter of the model, we can inform a first choice from chemistry. Since the overall effect of the oxidation sequence yields one aerosol

“particle” of sulfate per molecule of SO_2 (Bekki, 1995), ν will just be the ratio of the sulfate to SO_2 molar mass. Though it is known from observation that sulfate particles vary in their composition across latitude, altitude, and season (Yue et al., 1994), depending on specific humidity and temperature, we make the simplifying assumption that all sulfate particles are 75% H_2SO_4 by mass. The same assumption is made in Bekki (1995) and suggested by observation (Rosen, 1971; Yue et al., 1994). Defining this percentage as $f_{\text{acid}} = 0.75$, and the molar masses of H_2SO_4 and SO_2 as $M(\text{H}_2\text{SO}_4)$ and $M(\text{SO}_2)$, the reaction weighting is

$$\nu = \frac{M(\text{H}_2\text{SO}_4)/f_{\text{acid}}}{M(\text{SO}_2)} \approx \frac{1/0.75 \times 98.079 \text{ g/mol}}{64.066 \text{ g/mol}} = 2.04 . \quad (18)$$

This choice of ν results in a peak sulfate mass of about ~ 28 Mt occurring approximately two months after injection, which is consistent with previous modeling efforts by e.g. Bluth et al. (1997). In that study, however, the authors note that if we assume sulfate production to arise directly from SO_2 depletion, then the inferred sulfate loading does not coincide with observed $0.55 \mu\text{m}$ AOD anomalies after Pinatubo. Citing the AOD database of (Sato et al., 1993), Bluth et al. (1997) show this peak AOD anomaly to occur nearer to nine months than two months.

For this reason, Toohey et al. (2016) (who also modeled the $\text{SO}_2 \rightarrow$ sulfate conversion directly), decided to address this lag in AOD anomaly by artificially inflating the SO_2 dissipation parameter to $k_{\text{SO}_2} = 1/180 \text{ day}^{-1}$. This change is said to represent the *net* timescale of all processes resulting in increased global mean AOD, beyond just the oxidation chain producing H_2SO_4 , which may not be fully captured in this idealized description. In this way, they delay the peak sulfate loading, and thus peak $0.55 \mu\text{m}$ AOD anomaly, from two months to six months post-injection. This figure is more consistent with the Pinatubo AOD anomaly time series constructed by the Chemistry-Climate Model Initiative (CCMI; Eyring et al. (2013)).

Rather than following these findings of Bluth et al. (1997) and Toohey et al. (2016), we decide instead to retain the observed value of $k_{\text{SO}_2} = 1/25 \text{ day}^{-1}$. This choice causes the peak AOD anomaly to occur simultaneously with the sulfate loading near month two, which is consistent with $0.55 \mu\text{m}$ AOD results of the prognostic aerosol implementation of Brown et al. (2024), as well as observations of $0.6 \mu\text{m}$ AOD from the Advanced Very High Resolution Radiometer (AVHRR; Zhao et al. (2013); Heidinger et al. (2014)). We verified that the difference in peak sulfate mass between our model and Toohey et al. (2016) is explained fully by the choice of k_{SO_2} , and not the reaction normalization ν .

3.3 Aerosol optical depth

A single aerosol species can contribute to extinction of transmitted radiation by absorption and scattering, the combined effect of which is expressed by a spatially-varying extinction coefficient $\beta_e(x, y, z)$. Within a single model column, we will make the parallel plane approximation, i.e. $\beta_e(x, y, z) \approx \beta_e(z)$. This coefficient can further be expanded as

$$\beta_e = b_e \rho = b_e q \rho_{\text{atm}}, \quad (19)$$

where b_e is the *mass extinction coefficient* of the aerosol species, with dimensions of area per unit mass, ρ is the tracer mass density, and q is the mixing ratio. Consistent with Sect. 2.3, the extinction properties of each tracer species j will be modeled with respect to two broadbands: b_{LW} will be used for the extinction of longwave (LW) radiation, which is assumed to be entirely

absorption, and b_{SW} will be used for the extinction of shortwave (SW) radiation, which is assumed to be entirely scattering:

315 $b_{\text{LW}} \equiv (b_e \text{ for the longwave band}),$

$b_{\text{SW}} \equiv (b_e \text{ for the shortwave band}).$

For a column with a model top at z_{top} , the dimensionless SW AOD τ at a height z is obtained by vertically integrating the shortwave extinction:

$$\tau(z) = \int_z^{z_{\text{top}}} \beta_e(z') dz' = \int_z^{z_{\text{top}}} b_{\text{SW}} q(z') \rho_{\text{atm}}(z') dz' \quad (20)$$

320 On the model grid, this extinction becomes

$$\tau_{i,k} = \sum_{k' < k} b_{\text{SW}} q_{i,k'} \rho_{\text{atm},i,k'} \Delta z_{i,k'} \quad (21)$$

$$= \sum_{k' < k} b_{\text{SW}} \frac{q_{i,k'} \Delta p_{i,k'}}{g}. \quad (22)$$

where the pressure thickness Δp symbolizes the pressure difference between two neighboring model interface levels that surround the full model level with index k' . We assume that the indices k and k' decrease toward the model top (as in E3SMv2).

325 We also define a shorthand for the cumulative SW AOD at the surface as $\tau_i \equiv \tau(z=0)$. After summing over k for this case, we have the usual result (Petty, 2006) that each remaining term is just the total column mass burden M_i of the tracer, scaled by the mass extinction coefficient b_{SW} and column area a_i ,

$$\tau_i = \sum_k b_{\text{SW}} \frac{q_{i,k} \Delta p_{i,k}}{g} = \sum_k b_{\text{SW}} \frac{q_{i,k} m_{\text{atm},i,k}}{a_i} = b_{\text{SW}} \frac{M_i}{a_i}. \quad (23)$$

Hereafter, "AOD" will refer specifically to the column-integrated SW AOD defined in Eq. (23).

330 **3.4 Radiative forcing**

Injected stratospheric aerosols force the Earth system in two primary ways which are (1) local heating of the stratosphere and (2) remote cooling of the surface. The presence of SO_2 and sulfate aerosols in the stratosphere induces a local diabatic heating to the temperature field by absorption of upward-propagating longwave radiation (Kinne et al., 1992; Brown et al., 2024). After the 1991 Mt. Pinatubo eruption, this process resulted in a positive temperature anomaly of up to $\sim 2\text{--}4$ K peaking near 50–30 hPa (Rieger et al., 2020; Stenchikov et al., 1998; Labitzke and McCormick, 1992), driven by a maximum net temperature change at a rate of ~ 1 K month $^{-1}$ during the initial period following the injection.

At the same time, increased aerosol optical depths of the vertical column decrease the flux density of shortwave solar radiation reaching the troposphere. This upper-level scattering of solar radiation contributed to an observed surface cooling of ~ -0.5 K during the two years following the eruption of Mt. Pinatubo (Dutton and Christy, 1992; Self et al., 1993; Fyfe et al., 340 2013).

We model each of these heating effects by adding new forcing terms to the temperature field of the HSW atmosphere. Heating is applied in the stratospheric aerosol plume, and the lowest few model levels are cooled, via the computation of the energy change that results from the attenuation of the flux densities I_{LW} and I_{SW} .

3.4.1 Local heating of the stratosphere

345 The local warming effect is modeled as an attenuation of upwelling longwave radiation with flux density I_{LW} defined in Eq. (4), computed for each model column via the plane-parallel Beer-Lambert law. To begin, the attenuated flux density after transmission through a particular slab with vertical bounds $[z_0, z_1]$ is an integral of the extinction β_e such as

$$I(z_0, z_1) = I_{LW} \exp \left(- \int_{z_0}^{z_1} \beta_e(z') dz' \right). \quad (24)$$

Here we assume that z_0 is the lowest extent of the aerosol plume, and there has been no attenuation between $z = 0$ and $z = z_0$.

350 In this case, the power per unit area absorbed by the slab is

$$\Delta I = I_{LW} - I(z_0, z_1). \quad (25)$$

If we consider another slab located immediately above z_1 , on $[z_1, z_2]$, then the incident flux is no longer I_{LW} , but rather $I(z_0, z_1)$, and the power per unit area absorbed is

$$\begin{aligned} \Delta I &= I(z_0, z_1) - I(z_1, z_2) \\ 355 \quad &= I_{LW} \exp \left(- \int_{z_0}^{z_1} \beta_e(z') dz' \right) \left[1 - \exp \left(- \int_{z_1}^{z_2} \beta_e(z') dz' \right) \right]. \end{aligned} \quad (26)$$

This form generalizes to an arbitrary slab on $[z_n, z_{n+1}]$ as

$$\begin{aligned} \Delta I &= I(z_{n-1}, z_n) - I(z_n, z_{n+1}) \\ &= I_{LW} \exp \left(- \int_{z_0}^{z_n} \beta_e(z') dz' \right) \left[1 - \exp \left(- \int_{z_n}^{z_{n+1}} \beta_e(z') dz' \right) \right]. \end{aligned} \quad (27)$$

Discretizing these integrals onto the vertical grid with levels k and column i yields

$$360 \quad \Delta I_{i,k} = I_{LW} \exp \left(- \sum_{k' > k} b_{LW} \frac{q_{i,k'} \Delta p_{i,k'}}{g} \right) \left[1 - \exp \left(- b_{LW} \frac{q_{i,k} \Delta p_{i,k}}{g} \right) \right], \quad (28)$$

where the argument to the leftmost exponent sums over all levels k' which are below level k . The effect here is that aerosols lower in the vertical column “shadow” those above, decreasing the power of incident radiation available for absorption. In this way, the peak of the local aerosol heating may lie below the actual density peak of the plume.

The absorbed power per unit area is then translated to a heating rate per unit mass s , and finally to an associated temperature
365 tendency ΔT , with the assumption that all of the absorbed radiation is perfectly converted to heat. If the flux densities are given

in units of W m^{-2} , then by dimensional analysis

$$s_{i,k} = \frac{a_i \Delta I_{i,k}}{m_{i,k}} \frac{\text{J}}{\text{kg s}} \quad (29)$$

$$\implies \Delta T_{i,k} = \frac{1}{c_p} \frac{a_i \Delta I_{i,k}}{m_{i,k}} \frac{\text{K}}{\text{s}}. \quad (30)$$

This temperature tendency is always positive, and will be imposed on the grid cell at (i, k) for each tracer at each timestep.

370 3.4.2 Cooling of the surface

The surface cooling is modeled as an AOD attenuation of incident radiation with flux density I_{SW} , as defined in Eq. (5). We begin with an analogous form to Eq. (24), where the vertical slab on $[z_0, z_1]$ is replaced with the entire vertical column above position z , on $[z, z_{\text{top}}]$. The integral term in brackets is then exactly the AOD as given in Eq. (20). The attenuation is thus

$$I(z) = I_{\text{SW}} \exp\left(-\int_z^{z_{\text{top}}} \beta_e(z') dz'\right) = I_{\text{SW}} e^{-\tau(z)}. \quad (31)$$

375 With the notation used in Eq. (23), the deficit flux density after attenuation by the aerosol over the full height of the atmosphere on a single model column i is

$$\Delta I_i = I_{\text{SW}} (e^{-\tau_i} - 1). \quad (32)$$

That is, a deficit energy density of $\Delta I_i \text{ W m}^{-2}$ is imposed at the surface. For a model column at the equator with $\tau = 0.2$, this form gives $\Delta I \approx -100 \text{ W m}^{-2}$, which is roughly consistent with the observed broadband solar transmission deficits of $\sim 20\%$
380 at Mauna Loa, Hawaii in the months following Pinatubo (Self et al. (1993); see their Fig. 9). By AODs of $\tau \approx 4$, the shortwave attenuation saturates (all available incident radiation has scattered).

The attenuation is next translated to a cooling rate per unit mass s , and an associated temperature tendency ΔT . Since the HSW atmosphere simulates no land-atmosphere coupling processes, we employ a very simple representation of the conduction and convection that would, in reality, be responsible for communicating an energy deficit at the ground to the atmospheric
385 surface layer. We imagine that all of the energy lost over the column heats the planetary surface, which in turn transfers heat to the atmosphere by a function F with some efficiency ζ :

$$s_{i,k} = \zeta F(\Delta I_i). \quad (33)$$

The heat transfer ‘‘efficiency’’ ζ should be considered a catch-all for any surface-atmosphere coupling effects which we do not model, and is treated as a tuning parameter for the magnitude of atmospheric surface cooling (see Sect. 3.5). As in the local
390 heating treatment of the previous section, the function F can be obtained by dimensional analysis:

$$s_{i,k} = \zeta \frac{a_i \Delta I_i}{\tilde{m}_i} \frac{\text{J}}{\text{kg s}} \quad (34)$$

$$\implies \Delta T_{i,k} = \zeta \frac{1}{c_p} \frac{a_i \Delta I_i}{\tilde{m}_i} \frac{\text{K}}{\text{s}}, \quad (35)$$

where \tilde{m}_i is the mass of air in the lowest κ model levels of column i over which the cooling is to be applied. If we apply the cooling only to the lowest model level with $\kappa = K$, then

$$395 \quad \tilde{m}_i = m_{i,K} \quad (36)$$

and otherwise

$$\tilde{m}_i = \sum_{k=K}^{K-(\kappa-1)} m_{i,k}. \quad (37)$$

In this way, the net cooling (total energy loss over unit time) is conserved as the parameter κ is increased, and the cooling per unit mass is “diluted”. The choice of κ will effectively encode whatever missing physical mechanisms would otherwise
 400 communicate the cooling higher into the vertical column. For $\kappa > 1$, $\Delta T_{i,k}$ is a 3D quantity, while ΔI_i and τ_i are always 2D quantities. In Table 1, rather than setting κ directly we set $\tilde{\delta z}$, or the height above the surface in meters where the cooling should be applied, from which κ is inferred, given the vertical discretization.

3.4.3 Generalization to mixtures of tracer species

When multiple tracer species j are present (SO₂, ash, sulfate), the total radiative heating is not derived from a simple sum of the
 405 ΔT solutions found over the preceding sections. Rather, it is the total extinction which is determined by additive extinction coefficients,

$$\beta_e = \sum_j \beta_{e,j} = \sum_j b_{e,j} m_j. \quad (38)$$

In this case, the total AOD of Eq. (23) becomes

$$\tau_i = \sum_k \sum_j b_{sw,j} \frac{q_{j,i,k} \Delta p_{i,k}}{g} = \sum_j b_{sw,j} \frac{M_{j,i}}{a_i} = \sum_j \tau_{j,i}. \quad (39)$$

410 For the total longwave heating, the expression is somewhat more complicated. Equation (28) becomes

$$\Delta I_{i,k} = I_{LW} \exp \left(- \sum_j \sum_{k' > k} b_{LW,j} \frac{q_{j,i,k'} \Delta p_{i,k'}}{g} \right) \left[1 - \exp \left(- \sum_j b_{LW,j} \frac{q_{j,i,k} \Delta p_{i,k}}{g} \right) \right]. \quad (40)$$

Here, each grid cell has an incident flux density that has already been attenuated by *all* species j underneath it, and so the total attenuation is not simply a sum of j separate evaluations of ΔI .

3.5 Model summary & parameter tuning

415 Figure 3 provides a summary of the important equations developed in the previous subsections, and Table 1 gives the chosen parameter values. Some parameter values are taken directly from observations or previous works in the literature, while others are derived quantities. Five parameters are tuning parameters, including the longwave mass extinction coefficients for SO₂, sulfate, and ash, the maximum height of forced surface cooling, and the surface heat transfer efficiency.

Tracer tendencies	SW radiative and optical properties
$\frac{\partial q_{j,i,k,n}}{\partial t} = \frac{g}{\Delta p_{i,k} a_i} \left[-k_j m_{j,i,k} + I_{i,n} \frac{M_j}{\delta t \sum_k V_k} V_k \right] \quad (14)$	$I_{\text{SW}} = I_0 \cos \phi \frac{\text{W}}{\text{m}^2} \quad (5)$
$\frac{\partial q_{\text{sulf},i,k,n}}{\partial t} = -k_{\text{sulf}} q_{\text{sulf},i,k,n} + w k_{\text{SO}_2} q_{\text{SO}_2,i,k,n} \quad (17)$	$\tau_i = \sum_j b_{\text{SW},j} \frac{M_{j,i}}{a_i} \quad (39)$
$V(z) = \exp\left(-\frac{1}{2} \frac{(z - \mu)^2}{(1.5 \text{ km})^2}\right) \quad (15)$	$\Delta I_i = I_{\text{SW}} (e^{-\tau_i} - 1) \frac{\text{W}}{\text{m}^2} \quad (32)$
LW radiative and optical properties	$s_{i,k} = \zeta \frac{a_i \Delta I_i}{m_i^{\text{cool}}} \frac{\text{J}}{\text{kg s}} \quad (34)$
$I_{\text{LW}} = \sigma [315\text{K} - (60\text{K}) \sin^2 \phi]^4 \quad (4)$	
$\Delta I_{i,k} = I_{\text{LW}} \exp\left(-\sum_j \sum_{k' > k} b_{\text{LW},j} \frac{q_{j,i,k'} \Delta p_{i,k'}}{g}\right) \left[1 - \exp\left(-\sum_j b_{\text{LW},j} \frac{q_{j,i,k} \Delta p_{i,k}}{g}\right)\right] \quad (40)$	
$s_{i,k} = \frac{a_i \Delta I_{i,k}}{m_{i,k}} \frac{\text{J}}{\text{kg s}} \quad (29)$	

Figure 3. Summary of the important model equations controlling the tracer injection and removal, and radiative and optical properties for the tracers in shortwave and longwave broadbands. See equation numbers in the text for explanations. The SW and LW equations are written for a mixture of tracer species j at a fixed timestep n . Values for the parameters are given in Table 1.

The longwave attenuation mechanism of the model is tuned to produce realistic stratospheric heating rates by sulfate aerosols. The mass extinction coefficient b_{LW} for sulfate is instrumental in tuning the long-term mean temperature anomalies. We note that while we refer to this heating mechanism specifically as a “longwave attenuation”, the tuning process implicitly accounts for heating contributions from the near-infrared radiation as well (see Appendix C3). Not as obvious is the importance of b_{LW} for the very short-lived ash tracer. Though radiative forcing by ash does not directly contribute to the eventual stratospheric temperature anomalies, it does control the mechanism by which the aerosols are delivered to the lower stratosphere (Stenchikov et al., 2021). The lofting speed of the dense, fresh plume will be controlled by the aggressive heating of ash, which is the dominant component of the initial injection. As such, the mass extinction coefficient for ash serves as the main tuning parameter which controls the settling height of the aged aerosols. Meanwhile, SO_2 participates both in the initial lofting of the plume, as well as the short-term temperature anomalies for the first couple months. This behavior by SO_2 creates some degeneracy in the longwave extinction tuning parameters which could be avoided with a slight modification; see Appendix C4 for a discussion.

The shortwave mass extinction coefficients b_{SW} do not play the same role in tuning the surface cooling. Instead, we simply constrain b_{SW} of each species to yield an AOD representative of post-Pinatubo zonal-mean observations. During the months and years following the eruption, these values peaked near 0.2-0.5 (Toohey et al., 2016; Mills et al., 2016; Stenchikov et al., 2021; Dutton and Christy, 1992; Stenchikov et al., 1998). Tuning the magnitude of surface cooling is then passed on to the efficiency parameter ζ .

A description of the actual tuning process, as well as recommendations for tuning the model on different simulation grids and varying aerosol injection scenarios can be found in Appendix C.

4 Implementation in E3SMv2

4.1 Ensemble generation

We explored two different ensemble generation strategies, which we are characterized by a “high variability” (HV), or a
440 “limited variability” (LV) set of initial conditions. Both strategies appear in the literature, though not often explicitly named
and compared.

In the HV strategy, ensemble member initial conditions are sampled from a base run of the HSW climate (described in
Sect. 2) at an interval which produces *independent* atmospheric states. The choice of this time interval is unique to the model
configuration. In making this determination, we follow the methodology of Gerber et al. (2008). In short, an index measuring
445 the dynamical process which sets the upper-bound on low-frequency variability in the model is defined, and the time that it takes
for the autocorrelation of this index to vanish is found. At that time, we consider the initial condition to have been “forgotten”.
For the HSW forcing, no seasonal cycle or ocean process are imposed, and so the upper-bound variability timescale is set by
positional variations of the extratropical jets, encoded as the annular mode index (defined in Gerber et al. (2008)).

For a standard HS94 forcing on a ~ 1 -degree pseudospectral grid, Gerber et al. (2008) showed the annular mode index
450 autocorrelation to vanish by day 90–100. Lower resolution grids had progressively longer timescales. We found that this auto-
correlation was ~ 0.1 by day 90 for the HSW atmosphere on the ne16pg2 grid in E3SMv2, thereafter only slowly converging
to zero by day ~ 250 . Compromising on these diminishing returns for efficiency, our HV ensembles are generated by sam-
pling initial states from a base run every 90 days. Volcanic injections can then begin at any point in the individual member
integrations.

455 In the LV strategy, all ensemble members are initialized with an identical state, which is subjected to a random gridpoint-
level temperature perturbation of 1×10^{-4} K. We then wait some amount of time before enabling the volcanic injections.
During this pre-injection period, the members will diverge from one another as dynamical feedbacks seeded by the initial
temperature perturbations grow. In our experiments, waiting 75 days produced ensemble member background states that are
more qualitatively similar in their zonally-averaged flow, but exhibit synoptic-scale variations.

460 Note that the two timescales quoted above in the generation of the HV and LV ensembles are distinct, and should not be
confused. In the former case, the initial conditions lie 90 days apart from one another, while in the latter case, the perturbed
initial conditions evolve together, though slowly diverge, for a period of 75 days.

With enough members, the HV ensemble mean will show the average atmospheric response to our volcanic forcing *inde-*
pendent of the background state. Meanwhile, an LV ensemble mean will show the robust response to a *particular* state, at least
465 for the initial plume evolution. Eventually, the LV members will diverge, and will be statistically similar to the HV ensemble
once the aerosol distribution approaches zonal symmetry. Thus, an LV ensemble is perhaps most interesting to studies of this
early phase.

Figure 4 shows a snapshot of a five-member volcanic injection ensemble at eight-days post-injection for the HV and LV
ensemble generation strategies. The differences seen here are principally due to the fact that the HV ensemble samples strongly
470 varying states of the northern polar jet, while the bulk aerosol transport of the plumes of the LV ensemble follow each other

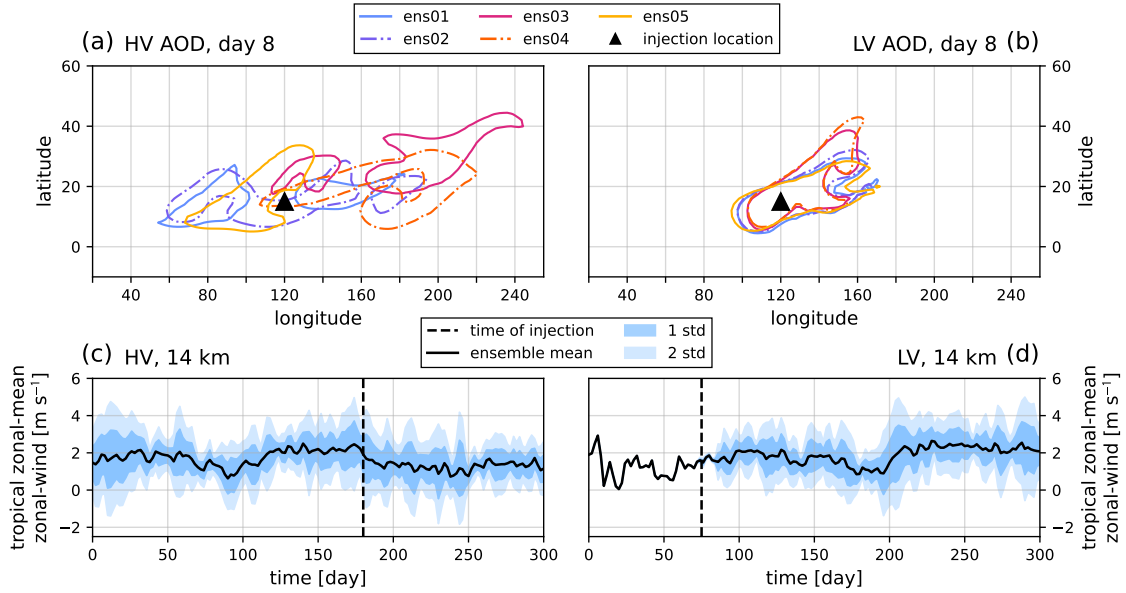


Figure 4. (a) AOD 0.5 contours for five HV ensemble members at eight-days post-injection. Each ensemble member is given a unique color, and their line styles alternate for visual clarity. (b) Identical to panel (a), but for five LV ensemble members. (c) Zonal-mean zonal wind averaged over a tropical region bracketing the injection site, from 5°S to 30°N, at 50 hPa, for the HV ensemble. A bold black line shows the ensemble mean. Dark and light blue shading show one and two standard deviations, respectively. A black vertical dashed line shows the time of injection (day 180). (d) Identical to panel (c), but for the LV ensemble, with injection at day 75.

more closely. Also shown are time histories of the averaged zonal-mean zonal wind within 20 degrees in latitude of the eruption site (from 5°S to 35°N), at 50 hPa for all ensemble members, demonstrating the difference between the background HV and LV states.

Figure 5 displays the zonal-mean of the initial conditions for temperature and zonal wind for ensemble members ens01, 475 ens03, and ens05 for the HV case. These states show the qualitative spread in independent states sampled from an evolving HSW atmosphere, the most notable differences being the balance between (or collapse of) the polar jets, and the strength of the stratospheric equatorial easterlies. Note that the zero-contour rises steeply from the tropical to midlatitude region, and thus the initial transport of a plume for a fixed height will vary strongly with latitude, and will also be particularly sensitive to movements of the jet stream. The combination of the chosen initial condition and the parameter configuration given in Table 1 480 results in the lower-tail of the initial injection distributions catching westerlies, while most of the mass enters the stratosphere and travels East. Note that all of the initial conditions for the LV case were based on perturbations of the HV ensemble member “ens05” (Fig. 5 panel (c)).

For the purposes of the present work, the model results of Sect. 4.2 are shown only for a HV ensemble. We encourage future studies using this model to present their ensemble generation methods in these terms.

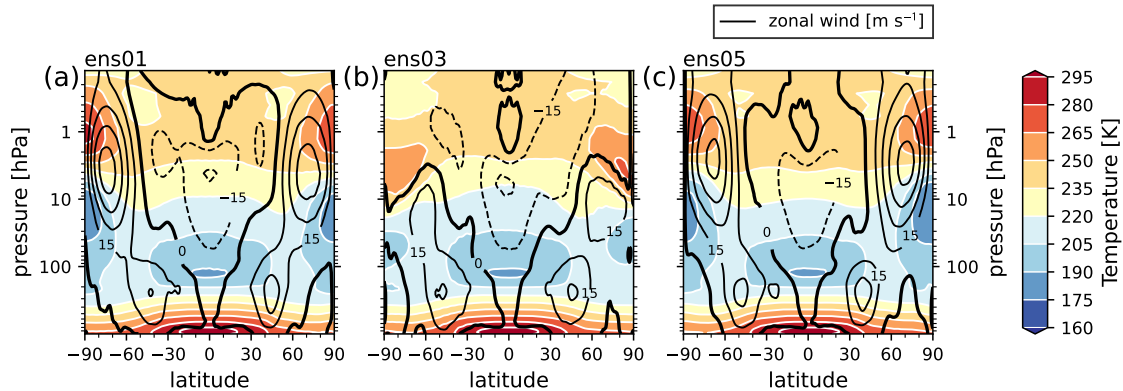


Figure 5. Zonal-mean of the initial condition for ensemble members ens01, ens03, and ens05 for the HV ensemble (corresponding to the solid-line AOD distributions of Fig. 4). Temperature is shown on the color scale with intervals of 15 K, and zonal wind in black contours with intervals of 15 m s⁻¹. The zero m s⁻¹ contour in zonal wind is shown in bold, and negative contours are dashed.

485 4.2 Discussion of the results

We ran a five-member HV ensemble (Sect. 4.1) of E3SMv2 simulations subject to the modified idealized HSW physics (Sect. 2, Appendix A). A volcanic injection of SO₂ and ash (Sect. 3) occurs at day 180, with the parameter configuration of Table 1. Figure 6 shows the transport of the SO₂ and sulfate aerosol plumes at the 45 hPa model level for days 10, 20, 40, and 80 for the single ensemble member “ens01”. At this altitude, the dominant transport is driven by the easterly winds of the tropical
 490 stratosphere (see Fig. 1). By day 20 the plume has circled the globe, and by day 40 the plume has reached the northern pole. Also during this time, both SO₂ and sulfate concentrations have risen for this fixed vertical level. For SO₂, this effect is purely driven by vertical transport (our model contains no gravitational settling of any tracer species, and so all species will dynamically loft as long as heating is present), while for sulfate, this effect is a combination of transport and actual aerosol production. By day 80, the tracer distributions are well-mixed in the tropical and midlatitude regions, and increasingly more
 495 SO₂ has been converted to sulfate.

Figure 7 provides a detailed view of the ash plume evolution over the first 20 days of the simulation. Panel (a) shows the zonal-mean ash mixing ratios as a function of time and pressure, averaged over a 20° band centered on the injection in latitude, from 5°S to 35°N. By day 12, the zonal-mean ash mixing ratios in this region have dissipated below 10⁻¹². Also shown for reference is the growing sulfate plume, which is just starting to be produced by SO₂ conversion. Panel (b) shows the total amount of ash removed from the stratosphere over the same time period, in g m⁻². That is, we are plotting the cumulative sum of the removal function $R(m_{\text{ash}})$ (Eq. (7)) over all grid cells above 100 hPa, from days 180 through 200. Our model does
 500 not actually implement gravitational settling of ash, though our simple removal process can be thought of as an accumulated “fallout”. Thus, this distribution shows both the extent and history of the ash plume after 20 days.

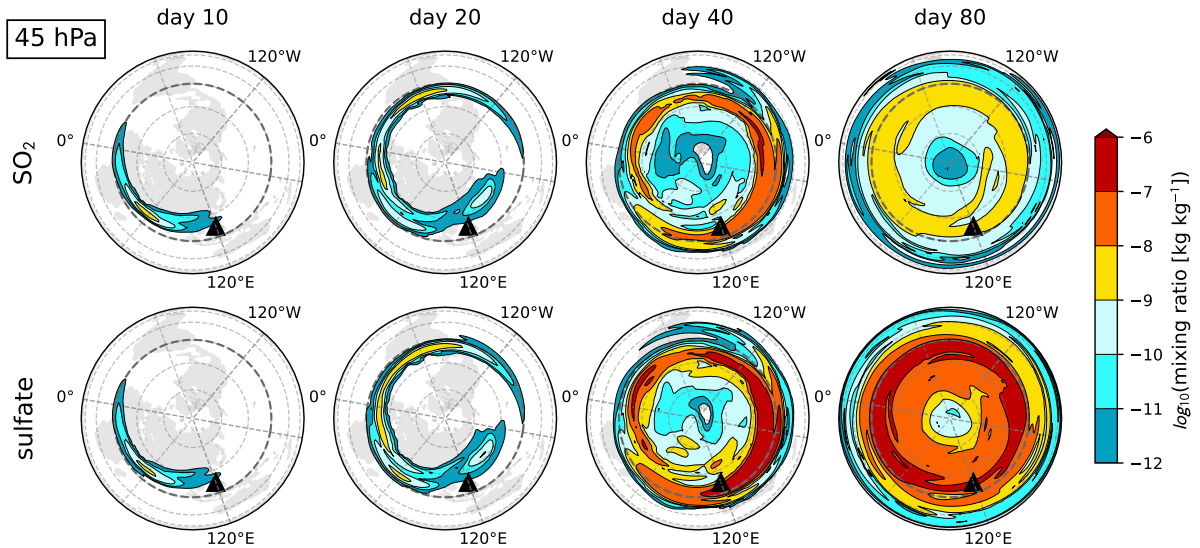


Figure 6. SO_2 (top row) and sulfate aerosol (bottom row) mixing ratios in $(\text{kg tracer})(\text{kg dry air})^{-1}$ for a single ensemble member at the 45.67 hPa model level, displayed with a logarithmic scale. Columns from left-to-right correspond to 10, 20, 40, and 80 days post-injection. The data is plotted on a Lambert azimuthal equal-area projection extending from the north pole to 60°S , where continental landmasses are shown only for spatial reference (our model features no topography or land processes). A $30^\circ \times 30^\circ$ grid is drawn in dashed lines, with the equator in bold dash. The injection location is marked with a black triangle.

Figure 8 displays the evolution of the zonal-mean AOD as a function of latitude and time, as well as the imposed radiative cooling rate at the surface in (K day^{-1}) by SW extinction. The AOD peaks at 0.3 near 15°N after one month, and by day 90 post-injection, zonal-mean optical depths of 0.1 reach the northern pole. Figure 9 shows the zonal-mean distribution of sulfate, and the local stratospheric heating rate by LW absorption, as a 30-day time average over days 60 through 90 post-injection. The aerosol density and heating rates coincide with one another in the tropics, while at higher latitudes, the heating rate distribution develops strong meridional gradients that the sulfate mixing ratio does not. These gradients are an imprint of the LW radiation profile of Fig. 2, which is minimized at the poles.

Several features of the HSW general circulation are exhibited in Figs. 8,9. A realistic tropopause is formed by the inversion of the equilibrium temperature T_{eq} near 130 hPa in the tropics. At the same time, the shape of T_{eq} at the lowest model levels mimics unequal solar insolation of the surface, driving convection in the tropical troposphere. Together, these effects give rise to upper-level divergence at the tropical tropopause, and subsidence in the subtropics. The resulting Hadley cell can be seen in the sulfate distribution tail descending to the surface south of 30°N . The meridional transport of the zonally-averaged tracer distribution, however, appears not to be hemispherically symmetric, with most of the aerosol population remaining in the northern hemisphere.

For the Mt. Pinatubo eruption, relative hemispheric symmetry of the AOD and temperature signal is established much more rapidly both in observations (Stenchikov et al., 1998; Mills et al., 2016), and in more realistic models (Mills et al.,

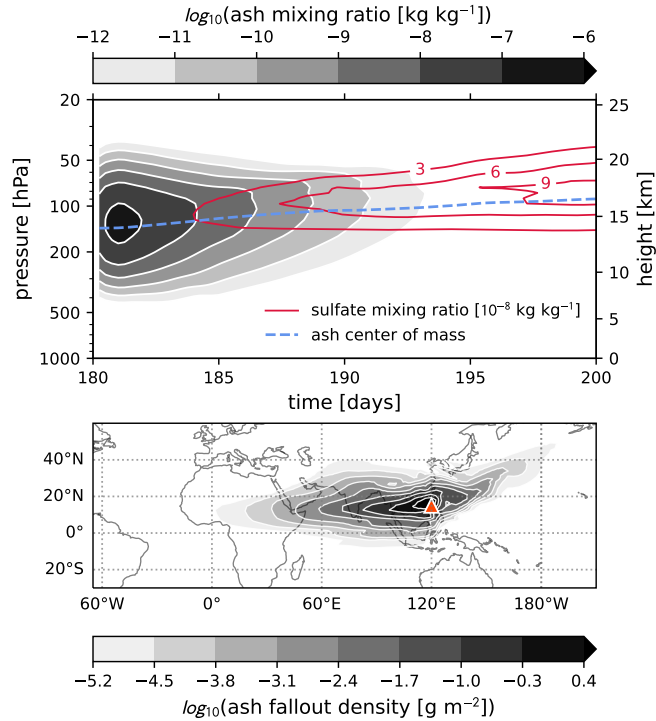


Figure 7. Evolution of the ash plume. **(a)** The zonal-mean, ensemble-mean logarithmic ash mixing ratios, averaged over all latitudes within 20° of the injection (from 5°S to 35°N). A dashed blue line shows the rising center of mass of the ash, and solid red contours show sulfate mixing ratios in intervals of 3×10^8 . The eruption occurs at day 180. **(b)** The cumulative sum of removed (“fallout”) stratospheric ash $R(m_{\text{ash}})$ over days 0 through 20 post-injection, and all grid cells above 100 hPa, for a single ensemble member. Values are logarithmically-scaled densities in g m^{-2} . A red triangle marks the position of the volcanic injection. Continental landmasses are shown only for spatial reference (our model features no topography or land processes).

520 2016; Stenchikov et al., 2021; Ramachandran et al., 2000; Karpechko et al., 2010; Brown et al., 2024). This hemispheric symmetry is imposed because, in reality, the mean meridional circulation is characterized during solstice months by a strong winter hemisphere Hadley cell, a relatively weak cell in the summer hemisphere, and a convergence zone north of the equator (Schneider et al., 2014), driven by the seasonal cycle (Schneider, 2006), as well as asymmetry in the northern and southern land-sea distribution (Cook, 2003). During the northern hemisphere summer of July 1991, the upper-level diverging branch
525 of the southern cell would have readily facilitated cross-equatorial transport of lower-stratospheric aerosols (Hoskins et al., 2020). All of these features are absent from our axisymmetric model, where any air masses in the upper troposphere or above will essentially always diverge from the equator. To see this flow feature, the HSW Hadley cells are visualized via the Stokes streamfunction $\psi(\phi, p)$ in Fig. 9. Following previous studies (Oort and Yienger, 1996; Cook, 2003; Pikovnik et al., 2022), the

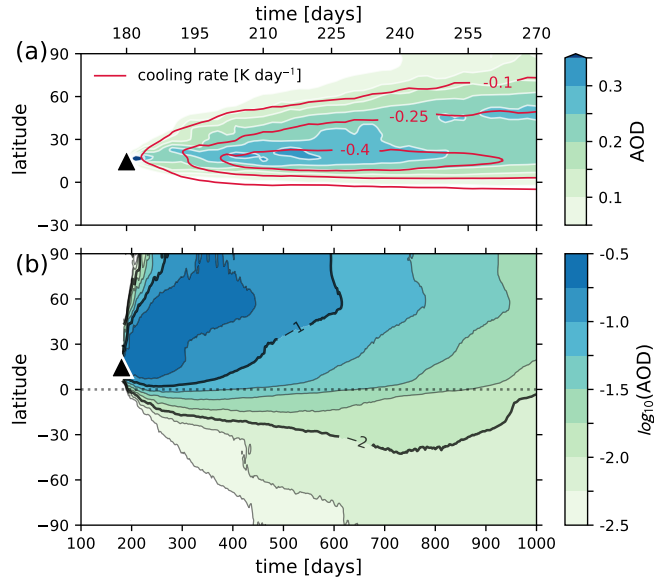


Figure 8. (a) Zonal-mean AOD in the latitude-time plane for the first 90 days post-injection. Overplotted is the cooling rate imposed on the lowest model level by shortwave extinction every 0.15 K day^{-1} in solid red contours. (b) Logarithmic zonal-mean AOD over 1000 days. The 0.1 and 0.001 AOD lines are in bold. Cooling rates are not overplotted in this panel. A faint dotted line shows the equator, and a black triangle shows the time and latitude of the injection.

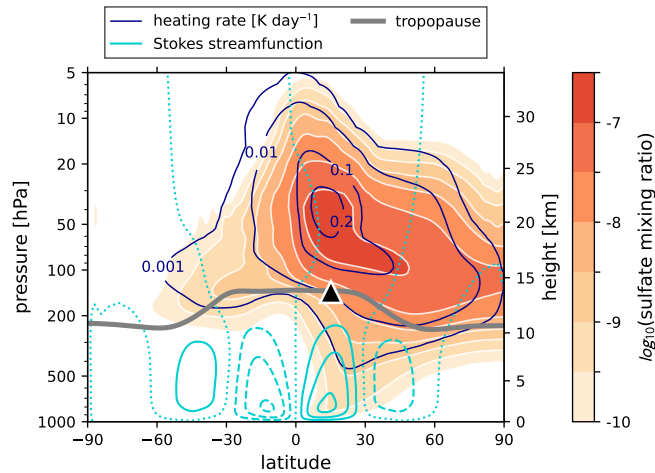


Figure 9. 30-day time average over days 60-90 post-injection of the logarithmic zonal-mean sulfate mixing ratio in $(\text{kg tracer})(\text{kg dry air})^{-1}$. Also plotted in solid dark blue contours is the local stratospheric heating rate by longwave absorption in (K day^{-1}) , with logarithmic intervals between contours 0.001, 0.01, and 0.1, and a final contour drawn at 0.2. Cyan contours show the Stokes streamfunction (Eq. (41)) with intervals of $3 \times 10^{10} \text{ kg s}^{-1}$. Negative (positive) contours are dashed (solid), and the zero line is dotted. A thick gray line shows the tropopause. Height axis is obtained from the model's diagnostic geopotential height.

ψ function is defined by a vertical integration of the zonally-averaged meridional wind \bar{v} as

$$530 \quad \psi(\phi, p) = \frac{2\pi a \cos\phi}{g} \int_0^p \bar{v}(\phi, p') dp' \quad (41)$$

where a symbolizes the Earth's radius. At a position in pressure and latitude, ψ gives the mean meridional mass transport over the entire stratospheric column above. Thus, positive (negative) peaks in the streamfunction distribution indicate clockwise (counterclockwise) circulation in the zonal average. The HSW streamfunction is anti-symmetric about the equator, more closely resembling an equinox state in nature.

535 These conclusions about the mean tropospheric circulation can be expressed more generically for the stratospheric mass transport by way of a transformed Eulerian mean (TEM) analysis. Following the specific TEM framework presented in Gerber and Manzini (2016) based on Andrews et al. (1987), we computed residual velocities in the meridional plane for the HSW atmosphere with no volcanic injections. The five-year average state of the residual velocities between 100 hPa and the the model top near 0.1 hPa are presented in Appendix B. This residual circulation is essentially the HSW analog of the Brewer-
540 Dobson circulation (BDC), which describes the global mass circulation through the stratosphere (see e.g. Butchart (2014) for a detailed review). Figure B1 shows two symmetric overturning circulation features from equator to pole in each hemisphere, characterized by tropical upwelling, a midlatitude surf zone, and polar subsidence. This symmetry is markedly different from the average residual circulation of the northern-hemisphere summer in nature, which sees a single southward pole-to-pole mass transport in the stratosphere (Butchart, 2014). Thus, the volcanic aerosol distribution as manifest in HSW-V remains primarily
545 in the northern hemisphere, unlike the historical Mt. Pinatubo event. This circulation pattern is much more reminiscent of the equinox condition of the BDC. Specifically, the streamfunction presented in Fig. B1 is in good qualitative agreement with the the observed residual streamfunction during the Spring of 1992 following the historical Mt. Pinatubo eruption (Eluszkiewicz et al., 1996). Similarly, the meridional and vertical residual velocities are in qualitative agreement with those derived from the multi-reanalysis mean presented in Abalos et al. (2021) and reanalysis Springtime means as in Fujiwara et al. (2022) (their
550 Chapter 11). We note that if a solstice condition is desired in the global circulation for future studies with this model, it would be straightforward to replace the HSW equilibrium temperature T_{eq} with a different one designed for that purpose, as in Polvani and Kushner (2002).

Finally, we quantify impacts by the volcanic aerosol forcing on the atmospheric state by atmospheric variable anomalies. Anomalies are defined as a the gridpoint-level arithmetic difference between a particular run (or ensemble mean), and the
555 time-average of a volcanically-quietest reference simulation. For this reference run, we use a 10-year run of the spun-up HSW atmosphere with no volcanic forcing, which is shown in Fig. 1, panel (b). Figure 10 shows the resulting ensemble-mean global-mean temperature anomaly as a function of pressure for 1000 days. The temperature anomaly peaks near 2 K at day 120 post-eruption in the stratosphere near 50 hPa, while the surface (lowest model level) anomaly peaks near -1 K. Notice that the surface temperature anomalies exhibit much more noise than those in the stratosphere. In particular, we found that the
560 stratospheric temperature anomaly is positive for any single ensemble members, whereas the negative surface cooling anomaly is often significant (non-zero to at least one standard deviation) only in the ensemble mean.

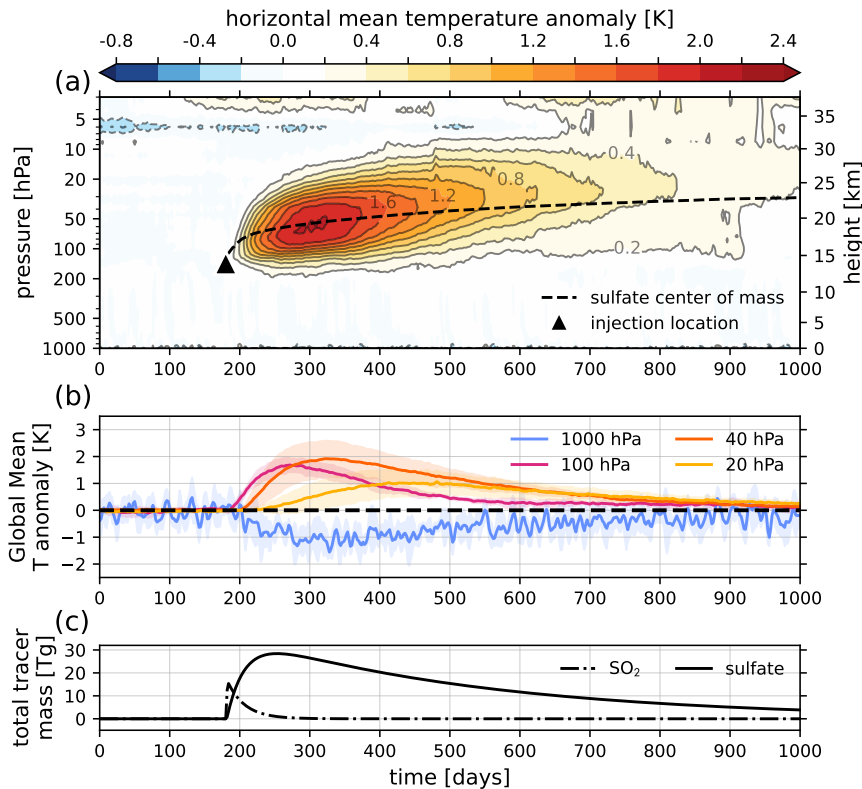


Figure 10. (a) Ensemble mean temperature anomalies with respect to a volcanically quiescent reference period of 10 years, averaged at each model level over all longitudes, and all latitudes within 20° of the injection (from 5°S to 35°N). Contour intervals are drawn every 0.2 K. Height axis is obtained from the model’s diagnostic geopotential height. Black triangle shows the height of the initial mass injection distribution peak, and time of the eruption at 180 days. A dashed black line shows the center of mass of the volcanic sulfate distribution. (b) The temperature anomaly data shown in panel (a), chosen for certain pressure levels, including the surface (1000 hPa). Shading for each curve shows the standard deviation of the ensemble members. (c) The globally-integrated tracer mass time series for SO_2 and sulfate.

Also shown in Fig. 10 are the total (globally-integrated) tracer mass time series for SO_2 and sulfate, as well as the vertical center-of-mass (COM) of the tropical stratospheric component of the sulfate distribution. The latter is simply defined as a subset of sulfate which remains above the peak of the vertical injection profile at 14 km or ~ 130 hPa, and within 20° of the injection in latitude, from 5°S to 35°N . This sulfate subset is the component of the plume most sensitive to radiative heating, and thus largely responsible for the global mean stratospheric temperature anomaly (see Fig. 9).

4.3 Computational expense

Activating our scheme in E3SMv2 involves minimal computational overhead. We observed that a ne16pg2 HSW simulation with the volcanic parameterizations turned off runs at 175 simulated model years per wallclock day (SYPD) executing on

570 384 processes (16 physics columns per process) on the Perlmutter supercomputer at the National Energy Research Scientific Computing Center (NERSC). This is equivalent to 52.6 core-hours (or process-element hours) per simulated year, or “pe-hrs/yr”. With the same specifications, turning on the volcanic parameterizations reduces the throughput to 58.7 pe-hrs/yr, a decrease of $\sim 10\%$.

This performance is in contrast to expensive prognostic aerosol implementations in coupled climate models, which often
575 involve modal aerosol size distributions, more detailed radiative bands, and where aerosol interactions involve an inventory of other chemical species which also must be transported. For comparison, Brown et al. (2024) found 5395 pe-hrs/yr executing their prognostic stratospheric aerosol implementation on the higher-resolution ne30pg2 grid in a nudged atmosphere-only configuration of E3SMv2 on the Cheyenne machine at the National Center for Atmospheric Research (NCAR). For a fully-coupled configuration of E3SMv2, Wagman (2024) found 9898 pe-hrs/yr, also on the ne30pg2 grid. Assuming that increasing
580 the resolution from ne16pg2 to ne30pg2 involves a reduction in pe-hrs/yr by a factor of eight our model is ~ 11 times faster and ~ 21 times faster than atmosphere-only and fully-coupled E3SMv2 simulations, respectively. The assumed factor of eight comes from the fact that when reducing both horizontal dimensions by a factor of two, the timestep must also be halved according to the CFL condition of the dynamical core.

5 Conclusions

585 The injection, evolution, and forcing described in this article constitutes an idealized prognostic simulation of volcanic aerosol emission and impact development. Previously, it has not been possible to include volcanic forcing routines in such a simple environment, as they inherently depend upon a complex library of physical subgrid parameterizations. To our knowledge, there is no other option for simulating sulfur forcing with a prognostic aerosol treatment in a Held-Suarez-based atmosphere.

This idealized prognostic simulation has isolated the volcanic event from other sources of variability, and established a
590 direct relationship between forcing (SO_2 emission) and downstream impact (stratospheric and surface temperature anomalies). Delivering these features as a computationally affordable capability facilitates the development of new multi-step data analytic techniques designed to improve downstream attribution. This simulation has been used in the development of explainable AI techniques which measure the importance of input variables on the prediction of downstream temperature (McClernon et al., 2024). In the near future, we anticipate its broader utility in developing other multi-step attribution methods and in capitalizing
595 on the development of the LV ensemble formulation to establish robust responses to a particular atmospheric state.

This work is a new addition to an idealized AGCM model hierarchy that can be used to study phenomena in isolation. Examples of this model hierarchy include Sheshadri et al. (2015) and Hughes and Jablonowski (2023) who studied the effects of topography on the atmospheric flow, or Polvani and Kushner (2002) and Gerber and Polvani (2009) who assessed polar jets and hemispheric asymmetry. Other idealized configurations focus on simple moist flows with moisture feedbacks (Frierson
600 et al., 2006; Thatcher and Jablonowski, 2016), tropical cyclones (Reed and Jablonowski, 2012), tracer-based cloud microphysics (Frazer and Ming, 2022; Ming and Held, 2018), age-of-air tracers (Gupta et al., 2020), the Madden-Julian oscillation (MacDonald and Ming, 2022), or climate-change forcing (Butler et al., 2010). In addition, this work builds upon previous ide-

alizations of volcanism using simpler prescribed forcing approaches. This includes Toohey et al. (2016) who provide a set of zonally-symmetric volcanic aerosol optical properties tuned to observational data, and DallaSanta et al. (2019) who subjected a set of atmospheric models of increasing complexity to a prescribed aerosol forcing in the form of controlled solar dimming, and steady, zonally uniform lower-stratospheric temperature tendencies.

We illustrated that our implementation can be used to mimic the spatio-temporal temperature anomaly signatures of large volcanic eruptions, and presented one specific parameter tuning that gives rise to a Pinatubo-like event. Our design intentionally leaves out many details which we felt would increase physical complexity, without being necessary for producing realistic atmospheric impacts for attribution studies (e.g. gravitational settling of aerosols). Nevertheless, the formulation remains flexible to modifications. Our parameterizations can:: be tuned toward eruption scenarios other than the 1991 Mt. Pinatubo event. They can also could support any number of co-injected tracer species, concurrence of multiple eruptions, and injections at any latitude and height. In fact, the description is generic enough that by replacing the vertical and/or temporal injection profiles, we could imagine simulating the aerosol direct-effect of various localized emission events of the troposphere (e.g. wildfire smoke) or the stratosphere (e.g. geoengineering SAI experiments) in an idealized model configuration.

Code and data availability. The code for the modified HSW configuration in E3SMv2 and our volcanic emission and forcing parameterizations is available at a public GitHub repository at <https://github.com/sandialabs/CLDERA-E3SM>. The model code is also available as a tarball on the Zenodo platform, at <https://doi.org/10.5281/zenodo.10524801>. The majority of our implementation is contained in a single Fortran file, located within the model repository at `components/eam/src/physics/cam/cldera_sai_tracers.F90`. The subroutines within this module interface with EAM in various places throughout the code, the details of which are beyond the scope of this article. For consultation on setting up and using these parameterizations, users should either contact the corresponding author, or refer to the supplemental namelist settings and model case creation scripts provided in the cited Zenodo repository. Also contained in this Zenodo repository are Python notebooks for reproducing the figures in this manuscript.

Appendix A: Modification of the Held-Suarez-Williamson forcing to accommodate higher model tops

As suggested in Sect. 2.2, we make two modifications to the implementation of the HSW forcing scheme which are (1) the adjustment of the radiative equilibrium temperature T_{eq} near the model top, and (2) the inclusion of an additional sponge-layer wind damping mechanism, described in Sect. A1-A2. Figure 1, panel (a) shows the radiative equilibrium temperature with our modifications, and the employed vertical profiles for the sponge layer and surface-layer damping.

A1 Modified radiative equilibrium temperature

The model employed in the experiments of W98 features a top at ~ 3 hPa, while the standard E3SMv2 model top is located at ~ 60 km, or 0.1 hPa. Applying the temperature relaxation profile as published in W98 to E3SMv2 therefore results in undesired reversals in the polar lapse rate near 2 hPa, as well as temperatures at the tropical model top at around 60 km in excess of 300 K. Observed monthly-mean zonal-mean tropical temperatures peaks near 50 km are closer to ~ 260 K (Holton and Hakim,

2013). We experimented with modifying the lapse rate parameters in the HSW T_{eq} as suggested by W98 and implemented by
 635 Yao and Jablonowski (2016), but ultimately chose to attempt to retain more realistic temperatures of the upper-stratosphere by
 simply imposing a lapse rate of zero for $p < 2$ hPa in T_{eq} . Specifically, the equilibrium temperature used in our modified HSW
 forcing is

$$T_{\text{eq}}(\phi, p) = T_{\text{eq,HSW}}(\phi, \max(p, p^*)) \quad (\text{A1})$$

where $T_{\text{eq,HSW}}(\phi, p)$ is the form presented in Appendix A of Williamson et al. (1998), and $p^* = 2$ hPa.

640 Other than this modification, the design and parameter choices of T_{eq} are identical to those defined in HS94 and W98.
 From W98, we inherit the property that the original implementation of HS94 applies below 100 hPa. Figure A1 shows
 zonally-averaged tropical temperature profiles resulting from five-year E3SMv2 runs responding to the specifications of HS94,
 W98, and our modified HSW forcings. The three implementations exhibit no difference in tropopause structure. Above the
 tropopause, the HS model approaches a constant temperature near 200 K, while W98 and the modified HSW forcings share a
 645 lapse rate of approximately 2.6 K km^{-1} until 2 hPa, where they diverge.

A2 Sponge layer Rayleigh damping

Following HS94 and W98, we use the inverse timescales $k_v(p)$ and $k_T(\phi, p)$ for Rayleigh damping of the velocity \mathbf{v} and
 relaxation temperature T toward T_{eq} , respectively. In addition, we also add a second Rayleigh damping mechanism in the
 ‘‘sponge layer’’ (so-called since it acts to absorb vertically propagating waves near the model top). The vertical profile that we
 650 choose for the damping strength follows the implementation of Harris et al. (2021) (their Eq. (8.15)), having a monotonic onset
 from ~ 100 Pa to the model top:

$$k_s(p) = k_0 \sin\left(\frac{\pi}{2} \frac{\log(\eta_c/\eta)}{\log(\eta_c/\eta_T)}\right)^2. \quad (\text{A2})$$

Here, the normalized pressure coordinate is $\eta \equiv p/p_0$, with $p_0 = 1000$ hPa. We define an onset position at $\eta_c = (1 \text{ hPa})/p_0$, and
 the normalized pressure at the model top as $\eta_T \equiv p_{\text{top}}/p_0$. The maximum strength of the damping is set via $k_0 = 1/(3 \text{ days})$.

655 Given these modifications, the wind and temperature tendencies will be updated at each physics timestep by

$$\frac{\partial T}{\partial t} = -k_T(\phi, p)(T - T_{\text{eq}}) \quad (\text{A3})$$

$$\frac{\partial \mathbf{v}}{\partial t} = (-k_s(p) - k_v(p)) \mathbf{v} \quad (\text{A4})$$

which is the totality of parameterized forcings in our model (in absence of volcanic injections). The vertical profile of the total
 wind damping ($k_s(p) + k_v(p)$) is shown in Fig. 1, panel (a).

660 Appendix B: Residual Circulation of the modified Held-Suarez-Williamson atmosphere

A discussion of the residual circulation of the HSW atmosphere was presented in Section 4.2. Figure B1 shows the vertical and
 meridional components of the residual velocity in the meridional plane from 100 hPa to 0.1 hPa averaged over five years of

integration of a HSW run with no volcanic injections, after a five-year spinup period. Also shown is the residual circulation mass streamfunction. The meridional residual velocity, vertical residual velocity, and residual velocity streamfunction are exactly the forms presented as Eq. A6, A7, and A8 of Gerber and Manzini (2016), respectively.

The residual vertical and meridional velocities agree qualitatively well with those computed from Springtime averages of reanalysis data as presented in Fujiwara et al. (2022) (their Figures 11.12 and 11.15). A curious feature of the HSW residual velocities are the sign reversals in both residual velocity components, as well as the streamfunction, in the polar stratosphere near 10-30 hPa. These features appear in some, but not all, of the Springtime reanalysis results of Fujiwara et al. (2022) in the meridional residual velocity, though not in the vertical residual velocity.

Appendix C: Recommendations for model parameter tuning

This section provides recommendations for re-tuning the idealized volcanic forcing model presented in this work. This information may be useful if the parameterizations are to be activated with a different dynamical core resolution, or if the model parameters are altered to represent a different aerosol injection scenario. The results shown in Sect. 4.2 only represent the Pinatubo-like parameter configuration given in Table 1 for a grid of nominal 200 km horizontal spacing (the ne16pg2 grid).

In our original implementation, the parameter tuning was done by manually perturbing parameter values after a preliminary estimate, running simulations, and observing the result of certain target metrics. In practice, the tuning process is an iterative one, since changing the extinction coefficients changes the local aerosol heating rates, which in turn changes the local circu-

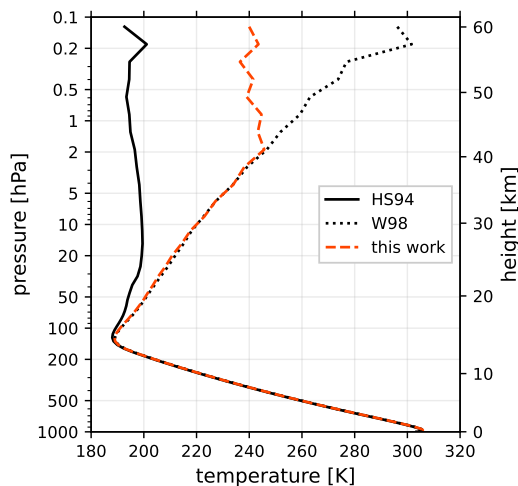


Figure A1. Zonal-mean tropical temperature profiles resulting from E3SMv2 runs of the HS94 (solid black), W98 (dotted black), and our modified HSW (dashed red) forcing schemes, averaged over -7°S to 7°N . The runs were done at the ne16pg2 resolution for 10 years, with the first five years discarded as spin-up, and the time mean of the latter five-year period shown here. The height axis is derived from the geopotential height of the modified HSW run, with the same averaging performed.

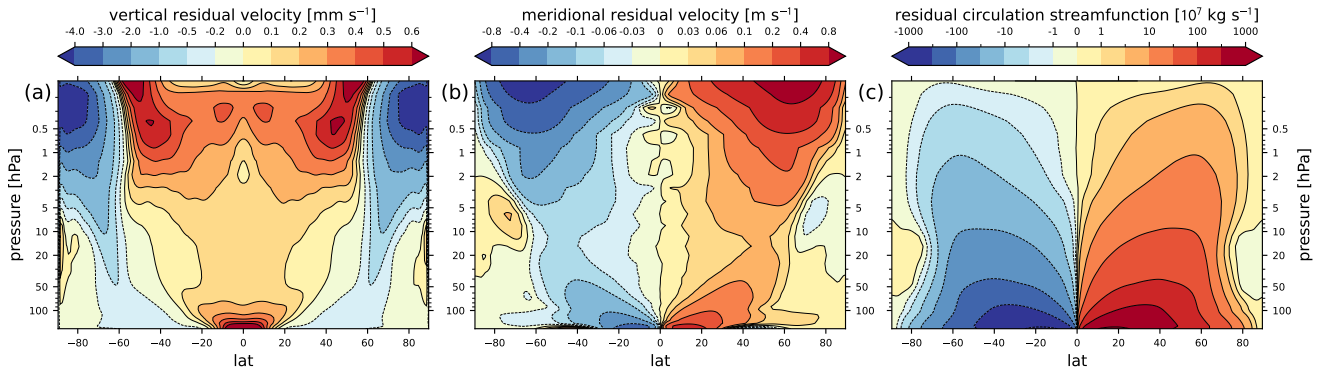


Figure B1. Stratospheric residual circulation of the HSW atmosphere averaged over five years, after a five-year spinup period. The vertical scale extends from 100 hPa to the model top near 0.1 hPa. **(a)** The vertical residual velocity in mm s^{-1} . Contours are irregularly spaced. **(b)** The meridional residual velocity in m s^{-1} . Contours are irregularly spaced. **(c)** The residual streamfunction in units of 10^7 kg s^{-1} . Contours unlabeled on the colorbar are three times their neighboring contour toward zero. That is, the positive contours are 1, 3, 10, 30, 100...

680 lation and thus plume transport. Achieving a plume that leads to both a realistic stratospheric distribution and global mean temperature anomalies was the goal.

Each subsection below describes the tuning of a certain effect, first listing the relevant parameters, the target metric used, and the method of the initial estimate. We suggest that future tuning efforts of our parameterizations follow these procedures. In what follows, we refer to a “passive” run as one where the tracer injection and sulfate production occurs as described in Sect. 3.1-3.2, but all radiative feedback is disabled, and the tracers are only transported.

685 C1 SW mass extinction coefficients

Parameters: $b_{\text{SW,ash}}, b_{\text{SW,SO}_2}, b_{\text{SW,sulfate}}$
Target metric: maximum zonal-mean AOD
Initial estimate method: passive simulation runs

In tuning the shortwave extinction coefficients, we can make a preliminary constraint of b_{SW} , such that the resulting AOD τ_i is representative of post-Pinatubo observations. Zonal-mean AODs observed in the months and years following the Pinatubo eruption peaked near 0.2-0.5 (Dutton and Christy, 1992; Stenchikov et al., 1998; Mills et al., 2016), and passive runs of our
 690 injection protocol yield maximum zonal-mean column mass burdens (as a sum of all species) which peak near $2 \times 10^7 \text{ kg}$ approximately three weeks post-injection near the equator. Constraining columns of this mass burden to have an AOD of 0.35,

Eq. (23) then suggests

$$\begin{aligned}\tau_i = 0.35 &= b_{\text{SW}} \frac{M_i}{a_i} \\ \implies b_{\text{SW}} &= \frac{0.35 a_i}{2 \times 10^7 \text{ kg}} = 700 \frac{\text{m}^2}{\text{kg}}\end{aligned}\tag{C1}$$

695 where we took $a_i = (200 \times 200) \text{ km}^2$, consistent with a ~ 2 degree resolution near the equator. Starting with this initial estimate, we then manually and iteratively altered the b_{SW} parameters until converging upon the desired peak zonal-mean AOD (see Fig. 8), with the final parameter values given in Table 1. These final values are an acceptable starting estimate for new tuning efforts. Since Eq. (C1) involves a factor of (area)/(mass), the b_{SW} parameters should be, in principle, independent of resolution. However, higher resolutions could resolve finer, higher-density structures in the tracer fields and might therefore be indirectly
700 dependent on the grid spacing.

C2 Surface heat transfer efficiency

Parameters:	ζ
Target metric:	minimum mean surface temperature anomaly
Initial estimate method:	derived constraint from literature

As we do not a priori know the relationship between surface cooling rates and the realized surface temperature anomaly in the HSW atmosphere, we make a preliminary tuning of ζ , assuming a known maximum negative cooling rate. In their
705 model experiments of the Pinatubo initial plume dispersion, Stenchikov et al. (2021) observed that spatial-mean values of the surface cooling in the equatorial belt from 0° - 15°N post-injection are around $\Delta T = -0.02 \text{ K/day}$ (their Fig. 6), which is also qualitatively consistent with Stenchikov et al. (1998) and Ramachandran et al. (2000). In this region, we have already roughly constrained τ to be near 0.35 in Eq. (C1). Solving Eq. (35) for ζ in this case gives:

$$\begin{aligned}\left(-0.02 \frac{\text{K}}{\text{day}}\right) &= \zeta \frac{1}{c_p} \frac{a_i}{m_{i,\text{surf}}} \frac{(1 \text{ day})}{(86400 \text{ s})} I_{\text{SW}} (\exp(-0.35) - 1) \\ \implies \zeta^{-1} &= \frac{1}{c_p} \frac{a_i}{m_{i,\text{surf}}} \frac{(1 \text{ day})}{(86400 \text{ s})} \frac{1}{\left(-0.02 \frac{\text{K}}{\text{day}}\right)} I_{\text{SW}} (\exp(-0.35) - 1) .\end{aligned}\tag{C2}$$

Using I_{SW} from Eq. (5) at latitude $\phi = 0$, and $m_{i,\text{surf}} = (\Delta p_{i,k} a_i / g)$ with $\Delta p_{i,k} = 10 \text{ hPa}$ (corresponding to ~ 100 meters or $\kappa = 2$ for Eq. (37) in E3SMv2), this gives

$$\zeta \approx 1.5 \times 10^{-3}$$

which is independent of horizontal resolution, since a_i cancels in Eq. (C2) (though it is dependent on vertical resolution). The
715 tuned value of 4.0×10^{-3} is several times larger than this estimate, since we ultimately required average tropical cooling rates significantly lower than -0.02 K day^{-1} (see Fig. 8, panel (a)) to obtain a significant surface-level temperature anomaly near -1 K . This requirement may simply be due to the strength of the HSW temperature relaxation at the lowest model levels needing a stronger forcing to overcome.

C3 LW mass extinction coefficients

Parameters:	$b_{\text{LW,ash}}, b_{\text{LW,SO}_2}, b_{\text{LW,sulfate}}$
Target metric:	maximum mean stratospheric temperature anomaly, and lofted sulfate plume height
Initial estimate method:	passive simulation run, and derived constraint from literature

720

In making initial estimate of the LW mass extinction parameters, we first simplify Eq. (28) to an approximate form where the aerosol radiative shadowing effect is not allowed (assuming I_{LW} is incident on all vertical positions of the column):

$$\Delta I_{i,k} = I_{\text{LW}} \left[1 - \exp \left(-b_{\text{LW}} \frac{q_{i,k} \Delta p_{i,k}}{g} \right) \right]. \quad (\text{C3})$$

This simplified attenuation implies a stratospheric heating rate in the form of Eq. (30) of

$$\begin{aligned} \Delta T_{i,k} &= \frac{1}{c_p} \frac{a_i}{m_{i,k}} I_{\text{LW}} \left[1 - \exp \left(-b_{\text{LW}} \frac{q_{i,k} \Delta p_{i,k}}{g} \right) \right] \\ &\approx -\frac{1}{c_p} \frac{a_i}{m_{i,k}} I_{\text{LW}} b_{\text{LW}} \frac{q_{i,k} \Delta p_{i,k}}{g}, \end{aligned} \quad (\text{C4})$$

725

where the approximation $e^x \approx (1+x)$ was used. From observations by previous modeling studies (Stenchikov et al., 2021; Ramachandran et al., 2000; Stenchikov et al., 1998), we expect monthly-mean zonal-mean values for the stratospheric heating rate during month three post-injection to approach $\Delta T = 0.3 \text{ K day}^{-1}$ in the tropics. Note that in the works cited for this figure, this is the *total* heating rate due to contributions of visible, near-infrared, and infrared radiation. In this work, though we refer to this heating effect specifically as “longwave”, we are tuning to the *total* heating rate of 0.3 K day^{-1} .

730

The estimate of b_{LW} can now proceed analogously to Sect. C1-C2, by inverting Eq. (C4) for b_{LW} . Passive runs of our injection protocol yield sulfate monthly-mean zonal-mean mixing ratios at this time and location of about $10^{-6} \text{ kg kg}^{-1}$. The preliminary b_{LW} estimate is then

$$\Rightarrow b_{\text{LW}} = \frac{\left(0.3 \frac{\text{K}}{\text{day}}\right)}{\left(10^{-6} \frac{\text{kg}}{\text{kg}}\right)} \frac{g c_p m_{i,k}}{a_i I_{\text{LW}} \Delta p_{i,k}} \frac{(1 \text{ day})}{(86400 \text{ s})} \frac{\text{m}^2}{\text{kg}}. \quad (\text{C5})$$

735

Evaluating this form with $I_{\text{LW}}(\phi=0)$ from Eq. (4), and using $m_{i,\text{surf}} = (\Delta p_{i,k} a_i / g)$ gives

$$b_{\text{LW}} \approx 6.2 \frac{\text{m}^2}{\text{kg}}. \quad (\text{C6})$$

Comparing this estimate with Eq. (C1), our formulation implies that the aerosols are much more efficient at attenuating short-wave radiation (by scattering) than longwave radiation (by absorption).

740

From this estimate, we then manually and iteratively adjust the three b_{LW} parameters for ash, SO_2 , and sulfate. As suggested in Sect. 3.5, this tuning is done with two target metrics in mind: (1) $b_{\text{LW,sulfate}}$ is tuned to give rise to maximum stratospheric temperature anomalies of 2-3 K, and (2) $b_{\text{LW,ash}}$ is tuned to control the initial lofting of the fresh, dense plume, such that the aged sulfate population converges upon the 20-30 km vertical layer. The parameter $b_{\text{LW,SO}_2}$ contributes to both the initial lofting and short-term temperature anomalies. Thus, the final tuned parameters (given in Table 1) arrive at very different values.

745 C4 Avoiding a low injection height by revising the LW mass extinction coefficient tuning

As alluded to in Section 3.5 and Appendix C3, there is some degeneracy between $b_{LW,ash}$ and b_{LW,SO_2} for controlling the initial heating of the aerosol plume, as well as degeneracy between $b_{LW,sulfate}$ and b_{LW,SO_2} for controlling the stratospheric temperature anomalies during the first few months post-injection. This makes the manual process of iteratively tuning the parameters more laborious. In the present case, it also results in the implementation of a unusually low initial injection height of $\mu = 14$ km.

750 Specifically, we did not tune b_{LW,SO_2} along with $b_{LW,ash}$ and instead needed to compensate for the aggressive early plume lofting by lowering μ .

The tuning process would be easier, and a higher initial injection height of 18-20 km could be more easily supported, if the degeneracy between these three extinction parameters were removed. We suggest having the SO_2 tracer instead behave as a radiatively passive tracer, acting only as the vehicle for sulfate production, by setting $b_{LW,SO_2} = 0$ and $b_{SW,SO_2} = 0$. In this
755 case, the LW mass extinction coefficients for ash and sulfate would be independent knobs for the lofting height, and long-term temperature anomalies, respectively. We would consider this tuning choice an improvement of the parameterization.

Author contributions. JPH wrote the Fortran subroutines that implement these parameterizations in E3SMv2, conducted the ensemble model experiments, tuned the model parameters, and wrote the manuscript. CJ originally suggested the implementation of volcanic forcing in an idealized framework, and collaborated on implementation and analysis. HB collaborated on the LW and SW radiative forcing formulation,
760 and reviewed early manuscript drafts. BRH enabled the FIDEAL (including HSW) configuration in E3SMv2, and provided support on integrating our parameterizations with the E3SMv2 physics infrastructure. DLB guided the model design, consulted on target atmospheric impact metrics, and collaborated on devising the simulation ensemble and output strategies. JLH motivated the development of the HV and LV ensemble generation strategies, as well as the forms for the tracer sources and sinks. HB and DLB contributed text to the introduction and conclusion. All co-authors reviewed the manuscript.

765 *Competing interests.* The authors declare that they have no conflict of interest

Acknowledgements. The work was supported by the Laboratory Directed Research and Development program at Sandia National Laboratories (SNL), a multimission laboratory managed and operated by National Technology & Engineering Solutions of Sandia, LLC, a wholly owned subsidiary of Honeywell International Inc., for the U.S. Department of Energy's National Nuclear Security Administration under contract DE-NA0003525. This written work is co-authored by employees of NTESS. The employees, not NTESS, owns the right, title and
770 interest in and to the written work and is responsible for its contents. Any subjective views or opinions that might be expressed in the written work do not necessarily represent the views of the U.S. Government. The publisher acknowledges that the U.S. Government retains a non-exclusive, paid-up, irrevocable, world-wide license to publish or reproduce the published form of this written work or allow others to do so, for U.S. Government purposes. The DOE will provide public access to results of federally sponsored research in accordance with the DOE Public Access Plan. The University of Michigan (UM) researchers were supported by an SNL subcontract, award number 2305233.

775 This research used resources of the National Energy Research Scientific Computing Center (NERSC), a U.S. Department of Energy Of-
fice of Science User Facility located at Lawrence Berkeley National Laboratory, operated under Contract No. DE-AC02-05CH11231 using
NERSC award BER-ERCAP0022865. The team also greatly benefited from the discussions with the UM scientist Owen Hughes and the
CLDERA SNL project members Jerry Watkins, Andrew Steyer, Benjamin Wagman, Irina Tezaur, Kara Peterson, Laura Swiler, and the
greater CLDERA team. The analyses presented in the Results section of this manuscript made extensive use of the NumPy (Harris et al.,
780 2020), Cartopy (Elson et al., 2023), MetPy (May et al., 2022), and xarray (Hoyer and Hamman, 2017) Python packages.

References

- Abalos, M., Calvo, N., Benito-Barca, S., Garny, H., Hardiman, S. C., Lin, P., Andrews, M. B., Butchart, N., Garcia, R., Orbe, C., Saint-Martin, D., Watanabe, S., and Yoshida, K.: The Brewer–Dobson circulation in CMIP6, *Atmospheric Chemistry and Physics*, 21, 13 571–13 591, <https://doi.org/10.5194/acp-21-13571-2021>, publisher: Copernicus GmbH, 2021.
- 785 Andrews, D. G., Holton, J. R., and Leovy, C. B.: *Middle Atmosphere Dynamics*, Academic Press, google-Books-ID: N1oNurYZefAC, 1987.
- Barnes, J. E. and Hofmann, D. J.: Lidar measurements of stratospheric aerosol over Mauna Loa Observatory, *Geophysical Research Letters*, 24, 1923–1926, <https://doi.org/10.1029/97GL01943>, 1997.
- Bekki, S.: Oxidation of volcanic SO₂: A sink for stratospheric OH and H₂O, *Geophysical Research Letters*, 22, 913–916, <https://doi.org/10.1029/95GL00534>, 1995.
- 790 Bekki, S. and Pyle, J. A.: A two-dimensional modeling study of the volcanic eruption of Mount Pinatubo, *Journal of Geophysical Research: Atmospheres*, 99, 18 861–18 869, <https://doi.org/10.1029/94JD00667>, 1994.
- Bluth, G., Rose, W., Sprod, I., and Krueger, A.: Stratospheric Loading of Sulfur from Explosive Volcanic Eruptions, *The Journal of Geology*, 105, 671–684, <https://doi.org/10.1086/515972>, 1997.
- Bradley, A. M., Bosler, P. A., and Guba, O.: Islet: interpolation semi-Lagrangian element-based transport, *Geoscientific Model Development*, 795 15, 6285–6310, <https://doi.org/10.5194/gmd-15-6285-2022>, 2022.
- Brown, H. Y., Wagman, B., Bull, D., Peterson, K., Hillman, B., Liu, X., Ke, Z., and Lin, L.: Validating a microphysical prognostic stratospheric aerosol implementation in E3SMv2 using the Mount Pinatubo eruption, *EGU sphere*, pp. 1–46, <https://doi.org/10.5194/egusphere-2023-3041>, 2024.
- Burger, M., Wentz, J., and Horton, R.: The Law and Science of Climate Change Attribution, *Columbia Journal of Environmental Law*, 45, 800 <https://doi.org/10.7916/cjel.v45i1.4730>, 2020.
- Butchart, N.: The Brewer-Dobson circulation, *Reviews of Geophysics*, 52, 157–184, <https://doi.org/10.1002/2013RG000448>, 2014.
- Butler, A. H., Thompson, D. W. J., and Heikes, R.: The Steady-State Atmospheric Circulation Response to Climate Change–like Thermal Forcings in a Simple General Circulation Model, *Journal of Climate*, 23, 3474–3496, <https://doi.org/10.1175/2010JCLI3228.1>, 2010.
- Clyne, M., Lamarque, J.-F., Mills, M. J., Khodri, M., Ball, W., Bekki, S., Dhomse, S. S., Lebas, N., Mann, G., Marshall, L., Niemeier, 805 U., Poulain, V., Robock, A., Rozanov, E., Schmidt, A., Stenke, A., Sukhodolov, T., Timmreck, C., Toohey, M., Tummon, F., Zanchettin, D., Zhu, Y., and Toon, O. B.: Model physics and chemistry causing intermodel disagreement within the VolMIP-Tambora Interactive Stratospheric Aerosol ensemble, *Atmospheric Chemistry and Physics*, 21, 3317–3343, <https://doi.org/10.5194/acp-21-3317-2021>, 2021.
- Cook, K. H.: Role of Continents in Driving the Hadley Cells, *Journal of the Atmospheric Sciences*, 60, 957–976, [https://doi.org/10.1175/1520-0469\(2003\)060<0957:ROCIDT>2.0.CO;2](https://doi.org/10.1175/1520-0469(2003)060<0957:ROCIDT>2.0.CO;2), 2003.
- 810 Crutzen, P. J.: Albedo Enhancement by Stratospheric Sulfur Injections: A Contribution to Resolve a Policy Dilemma?, *Climatic Change*, 77, 211, <https://doi.org/10.1007/s10584-006-9101-y>, 2006.
- DallaSanta, K., Gerber, E. P., and Toohey, M.: The Circulation Response to Volcanic Eruptions: The Key Roles of Stratospheric Warming and Eddy Interactions, *Journal of Climate*, 32, 1101–1120, <https://doi.org/10.1175/JCLI-D-18-0099.1>, publisher: American Meteorological Society Section: *Journal of Climate*, 2019.
- 815 Danabasoglu, G., Lamarque, J.-F., Bacmeister, J., Bailey, D. A., DuVivier, A. K., Edwards, J., Emmons, L. K., Fasullo, J., Garcia, R., Gettelman, A., Hannay, C., Holland, M. M., Large, W. G., Lauritzen, P. H., Lawrence, D. M., Lenaerts, J. T. M., Lindsay, K., Lipscomb, W. H., Mills, M. J., Neale, R., Oleson, K. W., Otto-Bliesner, B., Phillips, A. S., Sacks, W., Tilmes, S., Kampenhout, L. v., Versteijn,

- M., Bertini, A., Dennis, J., Deser, C., Fischer, C., Fox-Kemper, B., Kay, J. E., Kinnison, D., Kushner, P. J., Larson, V. E., Long, M. C., Mickelson, S., Moore, J. K., Nienhouse, E., Polvani, L., Rasch, P. J., and Strand, W. G.: The Community Earth System Model Version 2 (CESM2), *Journal of Advances in Modeling Earth Systems*, 12, e2019MS001916, <https://doi.org/10.1029/2019MS001916>, 2020.
- 820 Dutton, E. G. and Christy, J. R.: Solar radiative forcing at selected locations and evidence for global lower tropospheric cooling following the eruptions of El Chichón and Pinatubo, *Geophysical Research Letters*, 19, 2313–2316, <https://doi.org/10.1029/92GL02495>, 1992.
- Elson, P., Andrade, E. S. d., Lucas, G., May, R., Hattersley, R., Campbell, E., Dawson, A., Little, B., Raynaud, S., scmc72, Snow, A. D., Comer, R., Donkers, K., Blay, B., Killick, P., Wilson, N., Peglar, P., Igolston, Ibdreyer, Andrew, Szymaniak, J., Berchet, 825 A., Bosley, C., Davis, L., Filipe, Krasting, J., Bradbury, M., Kirkham, D., Worsley, S., and Havlin, C.: SciTools/cartopy: v0.22.0, <https://doi.org/10.5281/zenodo.8216315>, 2023.
- Eluszkiewicz, J., Crisp, D., Zurek, R., Elson, L., Fishbein, E., Froidevaux, L., Waters, J., Grainger, R. G., Lambert, A., Harwood, R., and Peckham, G.: Residual Circulation in the Stratosphere and Lower Mesosphere as Diagnosed from Microwave Limb Sounder Data, https://journals.ametsoc.org/view/journals/atsc/53/2/1520-0469_1996_053_0217_rcitsa_2_0_co_2.xml, section: Journal of the At- 830 mospheric Sciences, 1996.
- Eyring, V., Lamarque, J.-F., Hess, P., Arfeuille, F., Bowman, K., Duncan, B., Fiore, A., Gettelman, A., Giorgetta, M. A., Granier, C., Hegglin, M., Kinnison, D., Kunze, M., Langematz, U., Luo, B., Martin, R., Matthes, K., Newman, P. A., Peter, T., Robock, A., Ryerson, T., Saiz-Lopez, A., Salawitch, R., Schultz, M., Shepherd, T. G., Shindell, D., Staehelin, J., Thomason, L., Tilmes, S., Vernier, J.-P., Waugh, D. W., and Young, P. J.: Overview of IGAC/SPARC Chemistry-Climate Model Initiative (CCMI) Community Simulations in Support of 835 Upcoming Ozone and Climate Assessments, *SPARC Newsletter*, 40, 48–66, 2013.
- Fisher, B. L., Krotkov, N. A., Bhartia, P. K., Li, C., Carn, S. A., Hughes, E., and Leonard, P. J. T.: A new discrete wavelength backscattered ultraviolet algorithm for consistent volcanic SO₂ retrievals from multiple satellite missions, *Atmospheric Measurement Techniques*, 12, 5137–5153, <https://doi.org/10.5194/amt-12-5137-2019>, 2019.
- Fleming, E. L., Chandra, S., Barnett, J. J., and Corney, M.: Zonal mean temperature, pressure, zonal wind and geopotential height as functions 840 of latitude, *Advances in Space Research*, 10, 11–59, [https://doi.org/10.1016/0273-1177\(90\)90386-E](https://doi.org/10.1016/0273-1177(90)90386-E), 1990.
- Frazer, M. E. and Ming, Y.: Understanding Controlling Factors of Extratropical Humidity and Clouds with an Idealized General Circulation Model, *Journal of Climate*, 35, 5321–5337, <https://doi.org/10.1175/JCLI-D-21-0580.1>, 2022.
- Frierson, D. M. W., Held, I. M., and Zurita-Gotor, P.: A Gray-Radiation Aquaplanet Moist GCM. Part I: Static Stability and Eddy Scale, *Journal of the Atmospheric Sciences*, 63, 2548–2566, <https://doi.org/10.1175/JAS3753.1>, 2006.
- 845 Fujiwara, M., Manney, G. L., Gray, L. J., and Wright, J. S. E.: SPARC Reanalysis Intercomparison Project (S-RIP) Final Report, SPARC Report No. 10, WCRP-6/2021, <https://doi.org/10.17874/800dee57d13>, 2022.
- Fulton, D. J. and Hegerl, G. C.: Testing Methods of Pattern Extraction for Climate Data Using Synthetic Modes, *Journal of Climate*, 34, 7645–7660, <https://doi.org/10.1175/JCLI-D-20-0871.1>, 2021.
- Fyfe, J. C., von Salzen, K., Cole, J. N. S., Gillett, N. P., and Vernier, J.-P.: Surface response to stratospheric aerosol changes in a coupled 850 atmosphere–ocean model, *Geophysical Research Letters*, 40, 584–588, <https://doi.org/10.1002/grl.50156>, 2013.
- Gao, C., Robock, A., and Ammann, C.: Volcanic forcing of climate over the past 1500 years: An improved ice core-based index for climate models, *Journal of Geophysical Research: Atmospheres*, 113, <https://doi.org/10.1029/2008JD010239>, 2008.
- Gerber, E. P. and Manzini, E.: The Dynamics and Variability Model Intercomparison Project (DynVarMIP) for CMIP6: assessing the strato- sphere–troposphere system, *Geoscientific Model Development*, 9, 3413–3425, <https://doi.org/10.5194/gmd-9-3413-2016>, 2016.

- 855 Gerber, E. P. and Polvani, L. M.: Stratosphere–Troposphere Coupling in a Relatively Simple AGCM: The Importance of Stratospheric Variability, *Journal of Climate*, 22, 1920–1933, <https://doi.org/10.1175/2008JCLI2548.1>, 2009.
- Gerber, E. P., Voronin, S., and Polvani, L. M.: Testing the Annular Mode Autocorrelation Time Scale in Simple Atmospheric General Circulation Models, *Monthly Weather Review*, 136, 1523–1536, <https://doi.org/10.1175/2007MWR2211.1>, 2008.
- Golaz, J.-C., Van Roekel, L. P., Zheng, X., Roberts, A. F., Wolfe, J. D., Lin, W., Bradley, A. M., Tang, Q., Maltrud, M. E., Forsyth, R. M.,
860 Zhang, C., Zhou, T., Zhang, K., Zender, C. S., Wu, M., Wang, H., Turner, A. K., Singh, B., Richter, J. H., Qin, Y., Petersen, M. R., Mametjanov, A., Ma, P.-L., Larson, V. E., Krishna, J., Keen, N. D., Jeffery, N., Hunke, E. C., Hannah, W. M., Guba, O., Griffin, B. M., Feng, Y., Engwirda, D., Di Vittorio, A. V., Dang, C., Conlon, L. M., Chen, C.-C.-J., Brunke, M. A., Bisht, G., Benedict, J. J., Asay-Davis, X. S., Zhang, Y., Zhang, M., Zeng, X., Xie, S., Wolfram, P. J., Vo, T., Veneziani, M., Tesfa, T. K., Sreepathi, S., Salinger, A. G., Reeves Eyre, J. E. J., Prather, M. J., Mahajan, S., Li, Q., Jones, P. W., Jacob, R. L., Huebler, G. W., Huang, X., Hillman, B. R., Harrop,
865 B. E., Foucar, J. G., Fang, Y., Comeau, D. S., Caldwell, P. M., Bartoletti, T., Balaguru, K., Taylor, M. A., McCoy, R. B., Leung, L. R., and Bader, D. C.: The DOE E3SM Model Version 2: Overview of the Physical Model and Initial Model Evaluation, *Journal of Advances in Modeling Earth Systems*, 14, e2022MS003156, <https://doi.org/10.1029/2022MS003156>, 2022.
- Guo, S., Bluth, G. J. S., Rose, W. I., Watson, I. M., and Prata, A. J.: Re-evaluation of SO₂ release of the 15 June 1991 Pinatubo eruption using ultraviolet and infrared satellite sensors, *Geochemistry, Geophysics, Geosystems*, 5, <https://doi.org/10.1029/2003GC000654>, 2004a.
- 870 Guo, S., Rose, W. I., Bluth, G. J. S., and Watson, I. M.: Particles in the great Pinatubo volcanic cloud of June 1991: The role of ice, *Geochemistry, Geophysics, Geosystems*, 5, <https://doi.org/10.1029/2003GC000655>, 2004b.
- Gupta, A., Gerber, E. P., and Lauritzen, P. H.: Numerical impacts on tracer transport: A proposed intercomparison test of Atmospheric General Circulation Models, *Quarterly Journal of the Royal Meteorological Society*, 146, 3937–3964, <https://doi.org/10.1002/qj.3881>, 2020.
- 875 Hannah, W. M., Bradley, A. M., Guba, O., Tang, Q., Golaz, J.-C., and Wolfe, J.: Separating Physics and Dynamics Grids for Improved Computational Efficiency in Spectral Element Earth System Models, *Journal of Advances in Modeling Earth Systems*, 13, e2020MS002419, <https://doi.org/10.1029/2020MS002419>, 2021.
- Hansen, J., Lacis, A., Ruedy, R., and Sato, M.: Potential climate impact of Mount Pinatubo eruption, *Geophysical Research Letters*, 19, 215–218, <https://doi.org/10.1029/91GL02788>, 1992.
- 880 Harris, C. R., Millman, K. J., van der Walt, S. J., Gommers, R., Virtanen, P., Cournapeau, D., Wieser, E., Taylor, J., Berg, S., Smith, N. J., Kern, R., Picus, M., Hoyer, S., van Kerkwijk, M. H., Brett, M., Haldane, A., del Río, J. F., Wiebe, M., Peterson, P., Gérard-Marchant, P., Sheppard, K., Reddy, T., Weckesser, W., Abbasi, H., Gohlke, C., and Oliphant, T. E.: Array programming with NumPy, *Nature*, 585, 357–362, <https://doi.org/10.1038/s41586-020-2649-2>, 2020.
- Harris, L., Chen, X., Putman, W., Zhou, L., and Chen, J.-H.: A Scientific Description of the GFDL Finite-Volume Cubed-Sphere Dynamical Core, Technical Memorandum GFDL2021001, Geophysical Fluid Dynamics Laboratory, Princeton, New Jersey, https://github.com/NOAA-GFDL/GFDL_atmos_cubed_sphere/tree/master/docs, 2021.
- 885 Hegerl, G. C., Hoegh-Guldberg, O., Casassa, G., Hoerling, M., Kovats, S., Parmesan, C., Pierce, D., and Stott, P.: Good Practice Guidance Paper on Detection and Attribution Related to Anthropogenic Climate Change, in: Meeting Report of the Intergovernmental Panel on Climate Change Expert Meeting on Detection and Attribution of Anthropogenic Climate Change, IPCC Working Group I Technical Support Unit, University of Bern, Bern, Switzerland, 2010.
- 890 Heidinger, A. K., Foster, M. J., Walther, A., and Zhao, X. T.: The Pathfinder Atmospheres–Extended AVHRR Climate Dataset, *Bulletin of the American Meteorological Society*, 95, 909–922, <https://doi.org/10.1175/BAMS-D-12-00246.1>, 2014.

- Held, I. M. and Suarez, M. J.: A Proposal for the Intercomparison of the Dynamical Cores of Atmospheric General Circulation Models, *Bulletin of the American Meteorological Society*, 75, 1825–1830, [https://doi.org/10.1175/1520-0477\(1994\)075<1825:APFTIO>2.0.CO;2](https://doi.org/10.1175/1520-0477(1994)075<1825:APFTIO>2.0.CO;2), 1994.
- 895
- Herrington, A. R., Lauritzen, P. H., Reed, K. A., Goldhaber, S., and Eaton, B. E.: Exploring a Lower-Resolution Physics Grid in CAM-SE-
CSLAM, *Journal of Advances in Modeling Earth Systems*, 11, 1894–1916, <https://doi.org/10.1029/2019MS001684>, 2019.
- Holton, J. R. and Hakim, G. J.: Chapter 10 - The General Circulation, in: *An Introduction to Dynamic Meteorology (Fifth Edition)*,
edited by Holton, J. R. and Hakim, G. J., pp. 325–375, Academic Press, Boston, <https://www.sciencedirect.com/science/article/pii/B9780123848666000106>, 2013.
- 900
- Hoskins, B. J., Yang, G.-Y., and Fonseca, R. M.: The detailed dynamics of the June–August Hadley Cell, *Quarterly Journal of the Royal
Meteorological Society*, 146, 557–575, <https://doi.org/10.1002/qj.3702>, 2020.
- Hoyer, S. and Hamman, J.: xarray: N-D labeled Arrays and Datasets in Python, *Journal of Open Research Software*, <https://openresearchsoftware.metajnl.com/articles/10.5334/jors.148>, 2017.
- 905
- Hughes, O. K. and Jablonowski, C.: A mountain-induced moist baroclinic wave test case for the dynamical cores of atmospheric general
circulation models, *Geoscientific Model Development*, 16, 6805–6831, <https://doi.org/10.5194/gmd-16-6805-2023>, 2023.
- Jablonowski, C. and Williamson, D.: The Pros and Cons of Diffusion, Filters and Fixers in Atmospheric General Circulation Models, in:
Numerical Techniques for Global Atmospheric Models, edited by Lauritzen, P. H., Jablonowski, C., Taylor, M. A., and Nair, R. D., vol. 80
of *Lecture Notes in Computational Science and Engineering*, pp. 381–493, Springer, 2011.
- 910
- Karpechko, A. Y., Gillett, N. P., Dall’Amico, M., and Gray, L. J.: Southern Hemisphere atmospheric circulation response to the El
Chichón and Pinatubo eruptions in coupled climate models, *Quarterly Journal of the Royal Meteorological Society*, 136, 1813–1822,
<https://doi.org/10.1002/qj.683>, 2010.
- Kinne, S., Toon, O. B., and Prather, M. J.: Buffering of stratospheric circulation by changing amounts of tropical ozone a Pinatubo Case
Study, *Geophysical Research Letters*, 19, 1927–1930, <https://doi.org/10.1029/92GL01937>, 1992.
- 915
- Kovilakam, M., Thomason, L. W., Ernest, N., Rieger, L., Bourassa, A., and Millán, L.: The Global Space-based Stratospheric Aerosol
Climatology (version 2.0): 1979–2018, *Earth System Science Data*, 12, 2607–2634, <https://doi.org/10.5194/essd-12-2607-2020>, 2020.
- Kremser, S., Thomason, L. W., von Hobe, M., Hermann, M., Deshler, T., Timmreck, C., Toohey, M., Stenke, A., Schwarz, J. P., Weigel, R.,
Fueglistaler, S., Prata, F. J., Vernier, J.-P., Schlager, H., Barnes, J. E., Antuña-Marrero, J.-C., Fairlie, D., Palm, M., Mahieu, E., Notholt,
J., Rex, M., Bingen, C., Vanhellefont, F., Bourassa, A., Plane, J. M. C., Klocke, D., Carn, S. A., Clarisse, L., Trickl, T., Neely, R., James,
920 A. D., Rieger, L., Wilson, J. C., and Meland, B.: Stratospheric aerosol—Observations, processes, and impact on climate, *Reviews of
Geophysics*, 54, 278–335, <https://doi.org/10.1002/2015RG000511>, 2016.
- Labitzke, K. and McCormick, M. P.: Stratospheric temperature increases due to Pinatubo aerosols, *Geophysical Research Letters*, 19, 207–
210, <https://doi.org/10.1029/91GL02940>, 1992.
- Lauritzen, P. H., Conley, A. J., Lamarque, J.-F., Vitt, F., and Taylor, M. A.: The terminator "toy" chemistry test: a simple tool to assess errors
925 in transport schemes, *Geoscientific Model Development*, 8, 1299–1313, <https://doi.org/10.5194/gmd-8-1299-2015>, 2015.
- MacDonald, C. G. and Ming, Y.: Tropical Intraseasonal Variability Response to Zonally Asymmetric Forcing in an Idealized Moist GCM,
Journal of Climate, 35, 8079–8101, <https://doi.org/10.1175/JCLI-D-22-0344.1>, 2022.
- Mamalakis, A., Ebert-Uphoff, I., and Barnes, E. A.: Neural Network Attribution Methods for Problems in Geoscience: A Novel Synthetic
Benchmark Dataset, *Environmental Data Science*, 1, e8, <https://doi.org/10.1017/eds.2022.7>, 2022.

- 930 Marshall, L. R., Maters, E. C., Schmidt, A., Timmreck, C., Robock, A., and Toohey, M.: Volcanic effects on climate: recent advances and future avenues, *Bulletin of Volcanology*, 84, 54, <https://doi.org/10.1007/s00445-022-01559-3>, 2022.
- Matthes, K., Marsh, R., Garcia, R., Kinnison, E., Sassi, F., and Walters, S.: Role of the QBO in modulating the influence of the 11 year solar cycle on the atmosphere using constant forcings, *Journal of Geophysical Research*, <https://doi.org/10.1029/2009JD013020>, 2010.
- May, R. M., Goebbert, K. H., Thielen, J. E., Leeman, J. R., Camron, M. D., Bruick, Z., Bruning, E. C., Manser, R. P., Arms, S. C., and Marsh, P. T.: MetPy: A Meteorological Python Library for Data Analysis and Visualization, *Bulletin of the American Meteorological Society*, 935 103, E2273–E2284, <https://doi.org/10.1175/BAMS-D-21-0125.1>, 2022.
- McClernon, K., Goode, K., and Ries, D.: A comparison of model validation approaches for echo state networks using climate model replicates, *Spatial Statistics*, 59, 100 813, <https://doi.org/10.1016/j.spasta.2024.100813>, 2024.
- McCormick, M. P., Thomason, L. W., and Trepte, C. R.: Atmospheric effects of the Mt Pinatubo eruption, *Nature*, 373, 399–404, 940 <https://doi.org/10.1038/373399a0>, 1995.
- McCusker, K., Battisti, D., and Bitz, C.: The Climate Response to Stratospheric Sulfate Injections and Implications for Addressing Climate Emergencies, *Journal of Climate*, 25, 3096–3116, <https://doi.org/10.1175/JCLI-D-11-00183.1>, 2012.
- Mills, M. J., Schmidt, A., Easter, R., Solomon, S., Kinnison, D. E., Ghan, S. J., Neely, R. R., Marsh, D. R., Conley, A., Bardeen, C. G., and Gettelman, A.: Global volcanic aerosol properties derived from emissions, 1990–2014, using CESM1(WACCM), *Journal of Geophysical Research: Atmospheres*, 121, 2332–2348, <https://doi.org/10.1002/2015JD024290>, 2016. 945
- Mills, M. J., Richter, J. H., Tilmes, S., Kravitz, B., MacMartin, D. G., Glanville, A. A., Tribbia, J. J., Lamarque, J.-F., Vitt, F., Schmidt, A., Gettelman, A., Hannay, C., Bacmeister, J. T., and Kinnison, D. E.: Radiative and Chemical Response to Interactive Stratospheric Sulfate Aerosols in Fully Coupled CESM1(WACCM), *Journal of Geophysical Research: Atmospheres*, 122, 13,061–13,078, <https://doi.org/10.1002/2017JD027006>, 2017.
- 950 Ming, Y. and Held, I. M.: Modeling Water Vapor and Clouds as Passive Tracers in an Idealized GCM, *Journal of Climate*, 31, 775–786, <https://doi.org/10.1175/JCLI-D-16-0812.1>, 2018.
- National Academies of Sciences, and Medicine, E.: *Reflecting Sunlight: Recommendations for Solar Geoengineering Research and Research Governance*, The National Academies Press, Washington, DC, <https://nap.nationalacademies.org/catalog/25762/reflecting-sunlight-recommendations-for-solar-geoengineering-research-and-research-governance>, 2021.
- 955 Office of Science and Technology Policy (OSTP): *Congressionally-Mandated Report on Solar Radiation Modification* | OSTP, <https://www.whitehouse.gov/ostp/news-updates/2023/06/30/congressionally-mandated-report-on-solar-radiation-modification/>, 2023.
- Oort, A. H. and Yienger, J. J.: Observed Interannual Variability in the Hadley Circulation and Its Connection to ENSO, *Journal of Climate*, 9, 2751–2767, <https://www.jstor.org/stable/26201418>, 1996.
- Petty, G. W.: *A first course in atmospheric radiation*, Madison, Wis: Sundog Pub, 2nd edn., 2006.
- 960 Pikovnik, M., Zaplotnik, Z., Boljka, L., and Z, N.: Metrics of the Hadley circulation strength and associated circulation trends, *Weather and Climate Dynamics*, 3, 625–644, <https://doi.org/10.5194/wcd-3-625-2022>, 2022.
- Polvani, L. M. and Kushner, P. J.: Tropospheric response to stratospheric perturbations in a relatively simple general circulation model, *Geophysical Research Letters*, 29, 18–1–18–4, <https://doi.org/10.1029/2001GL014284>, 2002.
- Ramachandran, S., Ramaswamy, V., Stenchikov, G. L., and Robock, A.: Radiative impact of the Mount Pinatubo volcanic eruption: Lower stratospheric response, *Journal of Geophysical Research: Atmospheres*, 105, 24 409–24 429, <https://doi.org/10.1029/2000JD900355>, 965 2000.

- Reed, K. A. and Jablonowski, C.: Idealized tropical cyclone simulations of intermediate complexity: A test case for AGCMs, *Journal of Advances in Modeling Earth Systems*, 4, <https://doi.org/https://doi.org/10.1029/2011MS000099>, 2012.
- 970 Rieger, L. A., Cole, J. N. S., Fyfe, J. C., Po-Chedley, S., Cameron-Smith, P. J., Durack, P. J., Gillett, N. P., and Tang, Q.: Quantifying CanESM5 and EAMv1 sensitivities to Mt. Pinatubo volcanic forcing for the CMIP6 historical experiment, *Geoscientific Model Development*, 13, 4831–4843, <https://doi.org/10.5194/gmd-13-4831-2020>, 2020.
- Robock, A.: Volcanic Eruptions and Climate, *Reviews of Geophysics*, 38, 191–219, <https://doi.org/10.1029/1998RG000054>, 2000.
- Robock, A.: The Climatic Aftermath, *Science*, 295, 1242–1244, <https://doi.org/10.1126/science.1069903>, 2002.
- Rosen, J. M.: The Boiling Point of Stratospheric Aerosols, *Journal of Applied Meteorology and Climatology*, 10, 1044–1046, [https://doi.org/10.1175/1520-0450\(1971\)010<1044:TBPOSA>2.0.CO;2](https://doi.org/10.1175/1520-0450(1971)010<1044:TBPOSA>2.0.CO;2), 1971.
- 975 Sato, M., Hansen, J. E., McCormick, M. P., and Pollack, J. B.: Stratospheric aerosol optical depths, 1850–1990, *Journal of Geophysical Research: Atmospheres*, 98, 22 987–22 994, <https://doi.org/10.1029/93JD02553>, 1993.
- Schneider, T.: The General Circulation of the Atmosphere, *Annual Review of Earth and Planetary Sciences*, 34, 655–688, <https://doi.org/10.1146/annurev.earth.34.031405.125144>, 2006.
- 980 Schneider, T., Bischoff, T., and Haug, G. H.: Migrations and dynamics of the intertropical convergence zone, *Nature*, 513, 45–53, <https://doi.org/10.1038/nature13636>, 2014.
- Schurer, A., Hegerl, G., Mann, M., Tett, S., and Phipps, S.: Separating Forced from Chaotic Climate Variability over the Past Millennium, *Journal of Climate*, 26, 6954–6973, <https://doi.org/10.1175/JCLI-D-12-00826.1>, 2013.
- Self, S., Zhao, J.-X., Holasek, R. E., Torres, R. C., King, A. J., Zhao, J.-X., Holasek, R. E., Torres, R. C., and King, A. J.: The Atmospheric [Impact of the 1991 Mount Pinatubo Eruption](https://ntrs.nasa.gov/citations/19990021520), <https://ntrs.nasa.gov/citations/19990021520>, 1993.
- 985 Sheng, J.-X., Weisenstein, D. K., Luo, B.-P., Rozanov, E., Arfeuille, F., and Peter, T.: A perturbed parameter model ensemble to investigate Mt. Pinatubo’s 1991 initial sulfur mass emission, *Atmospheric Chemistry and Physics*, 15, 11 501–11 512, <https://doi.org/10.5194/acp-15-11501-2015>, 2015.
- Sheshadri, A., Plumb, R. A., and Gerber, E. P.: Seasonal Variability of the Polar Stratospheric Vortex in an Idealized AGCM with Varying [Tropospheric Wave Forcing](https://doi.org/10.1175/JAS-D-14-0191.1), *Journal of the Atmospheric Sciences*, 72, 2248–2266, <https://doi.org/10.1175/JAS-D-14-0191.1>, 2015.
- 990 Stenchikov, G., Kirchner, I., Robock, A., Graf, H.-F., Antuña-Marrero, J. C., Grainger, R., Lambert, A., and Thomason, L.: Radiative forcing from the 1991 Mount Pinatubo volcanic eruption, *Journal of Geophysical Research*, 1031, 13 837–13 858, <https://doi.org/10.1029/98JD00693>, 1998.
- Stenchikov, G., Ukhov, A., Osipov, S., Ahmadov, R., Grell, G., Cady-Pereira, K., Mlawer, E., and Iacono, M.: How Does a Pinatubo- [Size Volcanic Cloud Reach the Middle Stratosphere?](https://doi.org/10.1029/2020JD033829), *Journal of Geophysical Research: Atmospheres*, 126, e2020JD033 829, <https://doi.org/10.1029/2020JD033829>, 2021.
- 995 Taylor, M. A., Guba, O., Steyer, A., Ullrich, P. A., Hall, D. M., and Eldred, C.: An Energy Consistent Discretization of the Nonhydrostatic Equations in Primitive Variables, *Journal of Advances in Modeling Earth Systems*, 12, e2019MS001 783, <https://doi.org/10.1029/2019MS001783>, 2020.
- 1000 Thatcher, D. R. and Jablonowski, C.: A moist aquaplanet variant of the Held–Suarez test for atmospheric model dynamical cores, *Geoscientific Model Development*, 9, 1263–1292, <https://doi.org/10.5194/gmd-9-1263-2016>, 2016.
- Thomas, M. A., Giorgetta, M. A., Timmreck, C., Graf, H.-F., and Stenchikov, G.: Simulation of the climate impact of Mt. Pinatubo eruption using ECHAM5 – Part 2: Sensitivity to the phase of the QBO and ENSO, *Atmospheric Chemistry and Physics*, 9, 3001–3009, <https://doi.org/10.5194/acp-9-3001-2009>, 2009.

- 1005 Tilmes, S., Richter, J. H., Mills, M. J., Kravitz, B., MacMartin, D. G., Vitt, F., Tribbia, J. J., and Lamarque, J.-F.: Sensitivity of Aerosol Distribution and Climate Response to Stratospheric SO₂ Injection Locations, *Journal of Geophysical Research: Atmospheres*, 122, 12,591–12,615, <https://doi.org/10.1002/2017JD026888>, 2017.
- Tilmes, S., Richter, J. H., Kravitz, B., MacMartin, D. G., Mills, M. J., Simpson, I. R., Glanville, A. S., Fasullo, J. T., Phillips, A. S., Lamarque, J.-F., Tribbia, J., Edwards, J., Mickelson, S., and Ghosh, S.: CESM1(WACCM) Stratospheric Aerosol Geoengineering Large Ensemble Project, *Bulletin of the American Meteorological Society*, 99, 2361–2371, <https://doi.org/10.1175/BAMS-D-17-0267.1>, 2018.
- 1010 Timmreck, C.: Modeling the climatic effects of large explosive volcanic eruptions, *WIREs Climate Change*, 3, 545–564, <https://doi.org/10.1002/wcc.192>, 2012.
- Toohey, M., Stevens, B., Schmidt, H., and Timmreck, C.: Easy Volcanic Aerosol (EVA v1.0): an idealized forcing generator for climate simulations, *Geoscientific Model Development*, 9, 4049–4070, <https://doi.org/10.5194/gmd-9-4049-2016>, 2016.
- 1015 Wagman, B.: Enhancing climate variability in an Earth System Model by simulating prognostic volcanic aerosols (in prep.), 2024.
- Williamson, D., Olson, J. G., and Boville, B. A.: A Comparison of Semi-Lagrangian and Eulerian Tropical Climate Simulations, *Monthly Weather Review*, 126, 1001–1012, [https://doi.org/10.1175/1520-0493\(1998\)126<1001:ACOSLA>2.0.CO;2](https://doi.org/10.1175/1520-0493(1998)126<1001:ACOSLA>2.0.CO;2), 1998.
- Yao, W. and Jablonowski, C.: The Impact of GCM Dynamical Cores on Idealized Sudden Stratospheric Warmings and Their QBO Interactions, *Journal of the Atmospheric Sciences*, 73, 3397–3421, <https://doi.org/10.1175/JAS-D-15-0242.1>, 2016.
- 1020 Yue, G. K., Poole, L. R., Wang, P.-H., and Chiou, E. W.: Stratospheric aerosol acidity, density, and refractive index deduced from SAGE II and NMC temperature data, *Journal of Geophysical Research: Atmospheres*, 99, 3727–3738, <https://doi.org/10.1029/93JD02989>, 1994.
- Zanchettin, D., Khodri, M., Timmreck, C., Toohey, M., Schmidt, A., Gerber, E. P., Hegerl, G., Robock, A., Pausata, F. S. R., Ball, W. T., Bauer, S. E., Bekki, S., Dhomse, S. S., LeGrande, A. N., Mann, G. W., Marshall, L., Mills, M., Marchand, M., Niemeier, U., Poulain, V., Rozanov, E., Rubino, A., Stenke, A., Tsigaridis, K., and Tummon, F.: The Model Intercomparison Project on the climatic response to Volcanic forcing (VolMIP): experimental design and forcing input data for CMIP6, *Geoscientific Model Development*, 9, 2701–2719, <https://doi.org/10.5194/gmd-9-2701-2016>, 2016.
- 1025 Zhao, T. X.-P., Chan, P. K., and Heidinger, A. K.: A global survey of the effect of cloud contamination on the aerosol optical thickness and its long-term trend derived from operational AVHRR satellite observations, *Journal of Geophysical Research: Atmospheres*, 118, 2849–2857, <https://doi.org/10.1002/jgrd.50278>, 2013.