

Referee/Reviewer #2

We would like to thank the anonymous referee #2 for the careful reading and valuable comments, which we address point-by-point.

In the following, the reviewer comments are in *italics*, the answers in plain text and the proposed changes / new text in [blue](#). References to Sections or Figures in our answers refer to the discussion version of the manuscript.

This manuscript by Krautwurst et al. (2024) shows the first use of both active lidar and passive remote sensing on aircraft to estimate landfill methane in Madrid with verification using in situ instruments. The manuscript is generally well written and thoroughly explains the instrumentation and methodologies used. The described research reflects important work to compare instrument capabilities, especially for complex emission sources like landfills. There is growing interest in tracking emissions reductions, and the work by Krautwurst et al. will be valuable for establishing the methodologies available for accurate quantification of methane emissions.

The manuscript currently provides thorough description of instruments, retrievals, and flux estimates, and I recommend publication. The main recommended revision is to add some discussion of how sources on the landfill were identified. Currently, there is little discussion of how sources at the facility were geolocated and attributed and the uncertainties in these methodologies. As the identification of the sources at the landfill is a major conclusion, there needs to be some additional text added to the body of the manuscript explaining how this was done. Detailed comments:

See our answers to the comments below.

#####

Line 34: Is this EU number for landfills? Solid waste? Or total waste sector? And can the actual reported number be added in addition to the relative 24% (as this would allow comparison to other regions of the world)?

The 24% are representative of the total waste sector (IPCC category: 5). Solid waste disposal (IPCC category: 5A) would account for 18 %.

We have amended the sentence as follows:

... reported CH₄ emissions from waste (IPCC sector 5) are 97 Mt CO_{2,eq} yr⁻¹ (or 3.5 Mt yr⁻¹)¹ and still account for ~ 24 % (or ~ 18 % if only solid waste disposal, IPCC sector 5A, is considered) of the anthropogenic CH₄ emissions in the European Union in 2022 (EEA, 2024).

¹Converting CO_{2,eq} to CH₄ by using a factor of 28.

#####

Line 43: If not specified later in the manuscript, it would be helpful to know if the Madrid facilities, specifically, use IPCC-type methods.

We agree that some additional information on the landfill reporting may be useful. For example, the literature review revealed that the Pinto landfill changed its reporting methodology from 2021 to 2022, which may have been the reason for the almost 40-fold decrease in reported emissions over the same period.

We have added the information in Sect. 2.1.2, where the targets are described in more detail and with additional context in Sect. 4, where reporting in recent years is discussed.

According to the Spanish PRTR (Spanish-PRTR, 2025c), the combined annual reported 2022 CH₄ emissions for the two facilities "VERTRESA-URBASER, S.A. UTE (UTE LAS DEHESAS)"³ and "DEPOSITO CONTROLADO DE RESIDUOS URBANOS DE PINTO"⁴ are 0.2 t h⁻¹. Both sites are classified as "landfills" according to the European-Parliament (2006, Regulation (EC) 166/2006 E-PRTR, Annex I). We assume that these reported values are representative for the two investigated areas, which include landfills and waste treatment plants, as other listed sources would not contribute significantly to the emissions according to the Spanish PRTR (Spanish-PRTR, 2025c). According to the European-Commission (2006), both landfills appear not to use strict IPCC reporting methods. They report the methods 'OTH' (for other measurement or calculation methodology) and 'C' (for calculation) using 'issue factors', and 'CRM' (for measurement methodology by means of certified reference materials) and 'M' (for measurement) using 'electrochemical cells' for the Las Dehesas and Pinto landfills, respectively, in 2022. In addition, the reporting method for the Pinto landfill changed from 2021 to 2022, while 'OTH' and 'C' using 'an American EPA (Environmental Protection Agency) calculation model' was applied in 2021 instead of CRM as in 2022.

³E-PRTRSectorCode / Name: 5 / Waste and wastewater managements, mainActivityCode: 5.(d), landfills, EU-Registry Code: 003510000, PRTR Code: 3510 (Spanish-PRTR, 2025a).

⁴E-PRTRSectorCode / Name: 5/Waste and wastewater managements, mainActivityCode: 5.(d), landfills, EU-Registry Code: 001636000, PRTR Code: 1636 (Spanish-PRTR, 2025b).

Interestingly, the reported emissions of the Pinto landfill site decreased by a factor of almost 40 from 2021 to 2022, which could potentially be related to the change in reporting methodology (see Sect. 2.1.1).

#####

Line 63: Some discussion of the value of active remote sensing in comparison to passive remote sensing would be valuable.

Thank you for raising this important point. We have amended the paragraph from line 63 as follows:

Active remote sensing instruments are independent of sunlight because they use a laser as their own source of electromagnetic radiation. In contrast to airborne and satellite-borne passive instruments, they can measure during day and night, across all seasons and latitudes. They provide ranging capabilities resulting from the precise

measurement of the propagation time of the emitted light and, due to their narrow field of view, measure between clouds. IPDA (integrated-path differential absorption) lidars potentially provide highly accurate measurements without varying biases: the exceptions are those introduced by small differences in the scattering and reflectivity of the ground scene and any inaccuracies in the knowledge of the absorption cross-sections.

#####

Section 2.1.1: This description of CoMet 2.0 Arctic seems unrelated to the manuscript focus.

We agree and have deleted the paragraph as the information on the used instrumentation used is given later in Section 2 (and was partly outlined earlier). However, the information on the HALO aircraft has been moved to Section 2.1.

Below we describe the waste treatment facilities that were the targets of the research flights, and the flight strategy used to derive their methane emission rates. We then describe the instruments used, which were installed aboard the German research aircraft HALO (High Altitude and Long Range Research Aircraft, operated by the DLR, Deutsches Zentrum für Luft- und Raumfahrt, type: Gulfstream G550). The retrieval algorithms used to derive the CH₄ columns are explained next. This is followed by a description of the observed CH₄ columns. Finally, we derive the methane fluxes, i.e. the methane emission rates, using the plume cross-sections.

#####

Figure 1: A color key in the figure would be helpful.

It has been added.

#####

Line 121: Adding waste-in-place metrics for the 2 landfills and adding activity per year rates for both landfills (in the same units) would contextualize the landfills better.

We are not sure what the referee exactly means by “activity per year rates”. We assume that he is referring to the waste dumped over a certain period. We added these values for the VTP (and the Las Dehesas landfill) and the Pinto landfill site. We could, however, not find information or data on waste-in-place or the mass of waste material deposited.

The latter [VTP] is a waste treatment complex that accepts around 1,222 kt (Madrid, 2022) of waste, of which around 140 kt were deposited at the Las Dehesas landfill site in 2022 (Spanish-PRTR, 2025a), ...

It [Pinto] opened in 1987, is still operational with around 53 kt of waste being dumped in 2022 (Spanish-PRTR, 2025b), ...

#####

Line 125: Clarify if, for readers unfamiliar with EPRTR, there is potential for the facility reported numbers to be missing methane sources. For example, are some sources not reported due to regulatory limitations, or should we expect the reported number to be comparable to measurements?

Very good point. For CH₄ emissions from landfills, operators have to report their emissions if they emit more than 100 tCH₄/year or receive more than 10 t/d or have a capacity of more than 25 kt [European Parliament, 2006]. Other source types also have specific thresholds or reporting requirements, which can be found in European Parliament [2006]. As a result, potential CH₄ sources, e.g., emitting smaller amounts of CH₄ than specified in the Regulation, are not covered by reporting. Just for clarification, the sentence in line 125 refers to additional sources over the Pinto landfill or the VTP (such as waste treatment plants or biogas plants), not over the entire measurement area. Outside the coloured areas (Fig. 1), there are some additional CH₄ sources according to the Spanish PRTR that we could interfere with our observed plume [Spanish-PRTR, 2025], but their emissions are too small to contribute significantly to the calculated emission rate, if they emit CH₄ at all. Furthermore, our data does not indicate a significant contribution from these potential sources either, or any other sources unknown to PRTR, except for the northeastern most signal discussed in Sect. 3.4.2.

The question as to whether we would expect the measurements to give similar emission rates to those reported is tricky. If the regulations and therefore the reporting are correct, we would expect similar values. However, as we know, reporting, especially when based on bottom-up methods, can yield uncertain estimates. However, in this case, we expected higher values than reported based on the ESA web story released the year before.

We have added the reporting regulations to the introduction, where we introduce the (E-)PRTR (Line 43):

Landfill facility emissions must be reported to the authorities (E-PRTR) in the European Union to comply with the objectives of EU directives if they meet certain criteria, such as emitting more than 100 kt CH₄ yr⁻¹ or receiving more than 10 t d⁻¹ or having a total capacity of more than 25 kt (European-Parliament, 2006).

#####

Line 132: Further information on winds would be valuable in this section. For example, visuals showing the wind speeds and directions over time and space for the study area (can be added to Appendix rather than body of text). Some discussion of topography may also be valuable. For example, is it possible that the second landfill location is a topographic low and the methane from upwind is just pooling there?

We agree and have added a reference in line 132 to the temporally and vertically resolved winds in the measurement area shown in Fig. D2 in Appendix D. The topography in this area shows some variability. Based on SRTM, the surface elevation along the entire flight path over Madrid is around 500 to 1000 m a.s.l. with a mean of around 670 m a.s.l. and a 1-sigma standard deviation of 80 m. Based on Google Earth topography, the highest elevation areas are tentatively located at the eastern and western locations of the flight pattern and have no direct influence on the

plume. The surface elevation around the landfills and the observed plume signal is much less variable, ranging between 550 and 700 m a.s.l. Between the Pinto landfill and the VTP, there is a small valley (about 70 m lower than the surroundings) with a steep increase at the start of the VTP and then remaining relatively stable between 600 and 650 m a.s.l. until the position of the northernmost leg. The most likely location for methane accumulation, if any, would be upwind of the VTP, but there is no evidence for this in our measurements. It is likely that the high solar insolation has already transported the main plume to higher altitudes.

We have added some context concerning the topographical situation around the landfills to the manuscript in Sect. 2.1.2 and a statement on the pooling in Sect. 3.3.

... (Fig. D2 in the Appendix D1 shows time-resolved wind profiles for the time measured in the measurement area).

The topography around these landfill sites shows some variability, ranging from about 550 to 700 m a.g.l. with a small valley between the two sites and a steep rise just south of the VTP, according to Google Earth.

Furthermore, the retrieved column anomalies in Fig. 5 as well as the cross-sectional fluxes in Fig. 7 show no sign of accumulation of CH₄ as, for example, in the valley between the two landfills (see Sect. 2.1.1 for a brief discussion of the local topography).

#####

Line 297: It's unclear what the authors are defining as a "plume" versus "enhancement" and how this relates to the differentiation between "flux" and "emission rate".

In general, we retrieve from the measured spectra the CH₄ column anomalies relative to the local background. These may be positive or negative. Positive anomalies or deviations are called "enhancements". If these enhancements (visible in multiple ground scenes) are caused by a CH₄ source, are connected and have a plume-like shape, they are also called a "plume". Such plumes are always CH₄ enhancements, but a CH₄ enhancement does not have to be a plume. In Eq. 1, we then integrate over contiguous CH₄ enhancements or "plumes", along a straight line (i.e. a cross-section) to calculate the mass flow rate of CH₄ molecules or the flux through this cross-section. If this flux can be associated with a source, we refer to it as the methane emission rate of that source (see also line 291ff).

We went through the document and unified the terminology where appropriate.

#####

Figure 5: It would be helpful to separate 5a-b from 5c-d and provide more explanation of what 5c-d is meant to show. Keys for the color outlines are needed. Were the 5c-d enhancements the highest enhancements of all observed methane, or just those above the landfills? Why do the shapes of enhancement regions vary and how were they delineated? This comment relates to the above comment about providing more details on how source locations were identified on the landfills.

We are not quite sure why 5a-b should be separated from 5c-d. 5c actually belongs to 5a (as does 5b) – all subplots show MAMAP2DL observations, in one form or another. You could separate 5d (showing CHARM-F observations) from 5a-c, but then you would lose the direct comparison between the MAMAP2DL and CHARM-F columns. Presumably, the reviewer is referring to 5b-c when talking about the isolated enhancements.

The shown enhancements are the highest for all observations, i.e., not limited to landfills. There are no enhancements larger than ~8% downwind of the Pinto landfill and no enhancements larger than 4% downwind of the VTP.

The basic assumption for the source identification based on the observed column enhancements is that just above or very close to a potential source, the CH₄ is most concentrated as it has not yet dispersed (horizontally), leading to the highest observed column anomalies. Of course, by chance, high column concentrations could also be observed elsewhere because of turbulent transport, but if the highest column anomalies during multiple overflights point to the same region, there is a high probability that this region is acting as a source. In addition, the observed column enhancement is also modulated by the actual wind speed at which the CH₄ is released into the atmosphere, leading to smaller CH₄ columns (also at the source) for higher wind speeds, and by the strength of local turbulence.

The colour of the outlines is less important and should only show that the observations belong to different legs (i.e., the yellow one belongs to the flight leg in wind direction actually not shown in Fig. 5 but in the Appendix in Fig. A1, a).

With respect to the question “... shapes of enhancements vary”: As mentioned above, the different colour contours indicate different legs, which were acquired during different overflights at different times. In reality, two different observations of an emission plume will never give the same concentration measurements or the same plume shape due to turbulence, which is spatially and temporally variable. Therefore, even for an idealised emission source (with constant emissions, which may not need to be the case for the landfills studied), the plume (location, shape, enhancements) will change from overflight to overflight. In addition, the position of the emission may also vary with the activity across the landfill.

Regarding the question “... delineated”: MAMAP2DL provides approx. square ground scene sizes. In Fig. 5b-c only those ground scenes are shown that are above a certain threshold as defined in the caption.

We have amended Sect. 3.1 and the caption of Fig. 5 accordingly.

They were selected by analysing the flight legs (those flown perpendicular to the wind direction as well as those flown in wind direction) over the landfills to find the ground scenes with the highest column enhancements (only ground scenes above a certain threshold are shown, see Fig. 5 for more details). The assumption is that the CH₄ is most concentrated just above or very close to a source, as it is not yet dispersed (horizontally), leading to the highest observed column enhancements. However, there is a residual uncertainty associated with this method, as by chance, high column enhancements could also be observed further away due to turbulent transport. Columns are also modulated by the prevailing wind speed at the time of release into the atmosphere

and by local atmospheric turbulence. Both can change during a measurement flight. However, if the highest column anomalies during multiple overflights point to the same region, there is a high probability that this region is acting as a source.

The CH₄ plumes clearly begin over these areas of the Pinto and Las Dehesas landfills (see Figs. 5 and A1 and discussion on the step-wise increase of the fluxes in Sect. 3.3). However, we cannot exclude that other parts, closed cells of the landfills or facilities located in these waste treatment areas, also contribute (weakly) to the observed CH₄ plume, but are partly masked by CH₄ released further upwind. For example, in the north western part of the VTP, there are also hot spots identified (two ground scenes outlined in yellow in Fig. 5, b) from the along wind leg (Fig. A1, a), which could be advected there or released from the waste treatment plants (PLANT OF BIOMEIZATION La Paloma and Las Dehesa) immediately to the south. However, as a second overflight (Fig. A1, b) shows no enhancements, it is probably the former.

#####

Line 354-357: These two sentences are confusing and contradictory. The authors point out a source but then say it may not be that source and could be any part of the landfill. Is this due some aspect of method uncertainty (e.g., geolocation of source, wind direction, identification of enhanced pixels)?

This is a good and important point. To unambiguously identify sources over landfills, one would need ground scene sizes in the sub-metre range. Based on the plume shape alone (assuming at least some wind to have a reasonable transport of CH₄ away from the source in one direction), the source of the emissions could usually be identified. For MAMAP2DL, the ground scene size is about 110 m, and the accuracy of the orthorectification has also been estimated to be about one ground scene size (see Sect. B4) limiting the exact geolocation capabilities. For the Pinto landfill in the south, the start of the plume, and therefore at least 'one source', is in the south-eastern part of this landfill, as shown in Figs. 5a and A1 a, b. This is also supported by the already available argumentation in Sect. 3.3, line 381ff, discussing the step-wise increase in fluxes over the landfills. However, it cannot be excluded that other parts of the landfill are also emitting CH₄, which would then be covered/masked by the previously emitted CH₄. The same reasoning applies to areas outside the landfill, but is much less likely if no potential sources on the ground can be identified. Analysing the CH₄ column anomalies at the VTP (Fig. A1), there is again a plume starting in the south-eastern part, which corresponds to the highest observed enhancements (yellow outlined ground scenes in Fig. 5, b) and is over the active landfill. However, there is also a cloud of enhanced CH₄ over the north-western part with smaller enhancements. This cloud could have been advected from the active landfill part, but could have also originated at this location from the waste treatment plants located there.

Overall, there is strong evidence that the active parts of the landfills contribute significantly to the observed emissions, but it can neither be confirmed nor refuted that there are also contributions from other parts of the waste treatment areas. See also the comment to Fig. 5 above for more detailed adaptations in the manuscript.

#####

Figure 7: The flux estimates above the Pinto landfill seem to show that the passive remote sensing is seeing a combination of background and enhancement from landfill whereas active lidar is only seeing the enhancement. Is this the influence of the narrower instrument view? Some discussion on the potential interpretation difficulties if the active lidar "misses" the enhancement when there are steep gradients (and/or need for tight flight patterns to avoid this) would be valuable.

We thank the reviewer for highlighting this important aspect. We agree, and indeed this point has been discussed in the literature in the context of both methane and carbon dioxide emission quantification (e.g., Krautwurst et al., 2021; Wolff et al., 2021). In particular, Wolff et al. (2021) showed that under turbulent atmospheric conditions, the spatial distribution of enhanced concentrations within a plume can be highly heterogeneous. As a result, individual overflights may intersect either strongly enhanced or only weakly enhanced sections, depending on the local variability. This can lead to significant differences in the retrieved fluxes/emission rates despite constant emissions, unless results are averaged over multiple plume crossings.

To address this potential limitation, we have added a brief discussion to the Introduction section of the revised manuscript.

However, Wolff et al. (2021) showed that under turbulent conditions, the spatial distribution of enhanced concentrations within an exhaust plume may be highly heterogeneous. As a result, a single overflight may sample sections with stronger or weaker enhancements purely as a result of the local variability. In some cases, the true emission signal only emerges after averaging over a high number of overflights.

To account for this potential limitation, in the analysis, we combine active lidar with passive imaging spectrometry, both designed to capture atmospheric CH₄ column gradients. Thus, we obtain both high-precision transects and spatial context, which supports a more robust interpretation of the observed CH₄ column enhancements. Moreover, these remote sensing measurements are complemented by auxiliary in situ measurements of CH₄, CO₂ and 3D winds in support of the remote sensing data.

There, we now explicitly state that one motivation for the synergistic deployment of active lidar and passive imaging spectrometry in our campaign is to overcome the interpretation challenges arising from plumes having spatial inhomogeneities. The combination enables the analysis to benefit from the high-precision transects of the lidar while using the wide swath of the imaging spectrometer to provide spatial context and thereby support a more robust interpretation of the observed CH₄ column enhancements.

As the reviewer also correctly notes, the narrower field of view of CHARM-F limits its spatial sampling. Specifically, CHARM-F measures a single ground scene approximately in the middle of the MAMAP2DL swath, which itself consists of 28 cross-track ground scenes. In the case of the Pinto landfill observations discussed in Figure 7, this difference is further influenced by the flight pattern: the flight legs were deliberately designed so that, during the first leg (blue), CHARM-F sampled upwind of the landfill to assess potential background conditions, while MAMAP2DL already partially covered the source area. Conversely, the second leg (green) directly overflew the Pinto landfill

with CHARM-F, while the MAMAP2DL swath still included parts of the upwind background. This difference in spatial coverage is now briefly discussed in the manuscript (line 393). Specifically, we added the following text about Fig. 7:

The first two flight legs were deliberately designed so that, in the blue leg, CHARM-F sampled background conditions upwind of the Pinto landfill, while MAMAP2DL already partially covered the source area. Conversely, during the green leg, CHARM-F measured directly over the Pinto landfill, whereas the MAMAP2DL swath still included parts of the upwind background.

#####

Section 3.4.2: Would it not be possible for the other methane sources in the region to be significantly contributing but not be individually detectable? For example, the enhancement from a single smaller source may not be detectable over that source but as multiple of these sources emit in your domain, could their combined methane lead to detectable enhancements downwind if the winds are stable? It would be valuable to provide some metrics (e.g., emission rate) of the expected potential contribution of the other methane sources in the domain.

We agree with the reviewer that weak sources, if present in very large numbers, can contribute to the observed emission rate. However, to contribute significantly to the calculated emission rate, the sources would have to be within the range of observed CH₄ enhancements and not outside in the background area. We have attempted to estimate these (additional) emissions by analysing the CH₄ emissions reported in EDGAR v8.0 (Crippa et al., 2023) over the entire area covered by our measurement flight, by aggregating all the emissions reported in EDGAR in that area. Figure 1 shows the CH₄ emissions according to EDGAR in the area, where our meas-

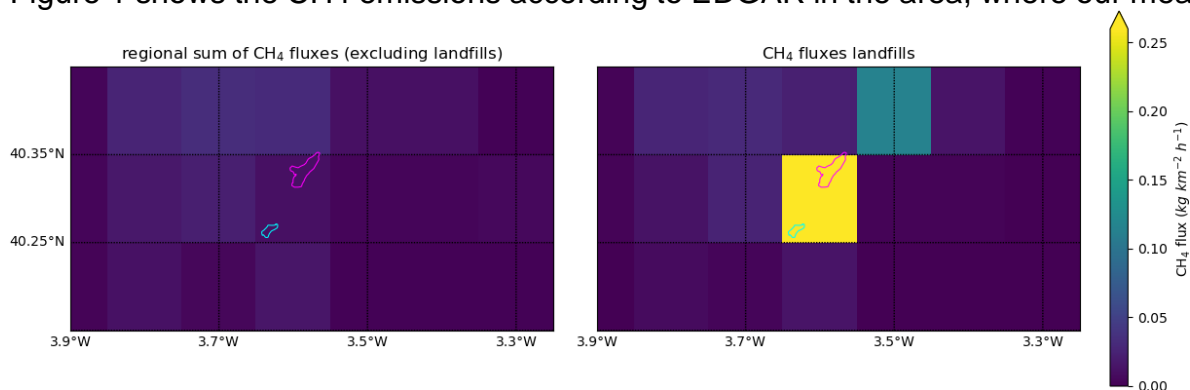


Figure 1: The coloured contours show the position of the Pinto (south) and VTP (north) waste treatment areas. Left: Excluding landfills yielding emissions of ~2 t/h. Right: All CH₄ emissions yielding ~6 t/h.

urements were acquired. All categories are shown except for the 'solid waste landfills' (4A, 4B) sectors, as this is the one we are targeting in our analysis. The sum of the emissions is about 2 t/h (left) or about 15% of our total estimated emission rate. If these emissions are located within our plume region, they would add to the landfill emissions, but if they were only in the background region, they would actually reduce the landfill emissions, as a higher background would then be removed from the landfill plume

signal. Alternatively, if they were evenly distributed between the plume and the background area, then they would have a negligible effect. Please also read the comment above to “Line 125” and the additional sources mentioned according to the Spanish PRTR.

We have amended Sect. 3.4.2 accordingly with a short paragraph.

Furthermore, there is the possibility, that other CH₄ sources located in the measurement area could affect the observed emission rates. Depending on whether these sources are in the plume area or the background area, they either contribute to the emissions or reduce them. If they were evenly distributed around the area, the effect on the estimated emission rate would be negligible. We estimated this effect by analysing the CH₄ emissions reported in EDGAR v8.0 (Emission Database for Global Atmospheric Research, Crippa et al., 2023). We aggregated all CH₄ emissions in our measurement area except for the source categories 4A and 4B (solid waste disposal and biological treatment of solid waste), which are our targets. Consequently, the resulting impact on our estimated emission rates could be approximately up to 2 t h⁻¹ at maximum or around 15 % of our total emission rate estimated according to EDGAR v8.0. Additionally, no other sources stand out in our column observations.

#####

Line 448: This seems like a very important potential limitation of these methodologies, so it would be valuable to move the discussion of the wind changes into the body of the paper rather than the Appendix. A visual showing the potential location of these "puffs" in comparison to the mapped "plumes" would be helpful for understanding the impact this wind direction change could have on the calculated fluxes (this visual does not necessarily need to go in the body of the text though).

Certainly, the mass balance approach is strictly applicable only for constant and persistent wind conditions. We are well aware of these limitations and are therefore currently carrying out model simulations to elucidate the evolution of the wind field. However, this is beyond the scope of this paper at hand and will be the subject of a subsequent paper that is currently in preparation. For this reason, we would like to leave this discussion to the forthcoming publication. In the manuscript at hand, we believe that we have at least mentioned all the possible reasons that could lead to deviations between “real” and “mass-balance derived” emissions rates.

#####

Line 499: Why does the unpredictability of locations impact process-based modeling? In some cases, landfill operators have well documented information on which cells are being filled at different points in time. For the Madrid landfills, is it that this information is not being collected or just not publicly available to researchers?

Our statement is not related to the process-based modelling or unpredictability of locations, but to the emissions which might be modulated by activities on the landfill. Usually, there is a lot of activity on weekdays, when waste is being added. In contrast, during weekends, less waste is shifted and less vehicles drive across the landfill, reducing the pressure on the subsurface waste and disfavour CH₄ release due to compression. Thus, CH₄ might be trapped more easily and is less likely to reach the atmosphere across the active area of the landfill on weekends (or during night, if no work is

done). Information on which cells are active or inactive is available and also included in the paper (see Sect. 2.1.2).

#####

Line 525: It seems inaccurate to say the two landfill sites were "well separated" when the downwind site flux could not be isolated.

We meant that the separation of the landfills was sufficient to quantify the emissions from the upwind (Pinto) independently from the Las Dehesas/VTP area. In fact, because our measurements were performed in the least favorable conditions (with plume emitted by upwind source crossing over the downwind one), it is logical to assume that in the perpendicular wind situation would make independent estimation even easier. Thus, we believe that the areas are, in fact, well separated.

We have amended Line 525 accordingly.

The emissions from the two landfill sites were sufficiently separated for our methods by the two remote sensing instruments with an observed emission rate...

#####

Line 546-548: This implies confidence in the ability of these instruments to identify sub-facility locations of sources. If this is a major conclusion of this manuscript, it does not seem like there was enough explanation of the methodology for identifying source locations and the associated uncertainty in those locations in the body of the paper.

We have expanded the explanation of the source identification methodology and potential uncertainties and limitations as described in previous comments. (e.g., comment to "Fig. 5" and comment to "Line 354 - 357").

We have amended the statement taking the discussions above into account.

The determination of the exact source location is limited by a combination of the ground scene size of ~ 110 x 110 m², the accuracy of the orthorectification process itself being estimated to be better than 110 m, and modulation by local winds. The highest column enhancements and the 'start' of plumes, indicating the origin of the emissions, were observed over active parts of the landfills, ...

#####

Section 5: Given the mention of the coming satellite in the introduction, it may be valuable to have more discussion on how the information gained from this study can inform future methods for the satellite.

We have amended Sect. 5 as follows:

The methods used in this work are also applicable to planned satellite missions such as CO2M and MERLIN. Nevertheless, the generally coarser resolution on the ground will lead to a reduced sensitivity for emission rates, particularly for somewhat dispersed

sources. Also, the combination of active and passive remote sensing on a single satellite platform would show promise for the future, as the advantages of both methods can be synergistically exploited.

#####

References:

Crippa, M., Guizzardi, D., Pagani, F., Banja, M., Muntean, M., Schaaf, E., Becker, W., Monforti-Ferrario, F., Quadrelli, R., Riskey Martin, A., Taghavi-Moharamli, P., Köykkä, J., Grassi, G., Rossi, S., Brandao De Melo, J., Oom, D., Branco, A., San-Miguel, J., Vignati, E., Commission, E., and Centre, J. R.: GHG Emissions of All World Countries – 2023, Publications Office of the European Union, Luxembourg, <https://doi.org/10.2760/953322>, release: EDGAR v8.0_GHG (October 2023). JRC EDGAR website: https://edgar.jrc.ec.europa.eu/dataset_ghg80, 2023.

European-Parliament: Regulation (EC) No 166/2006 of the European Parliament and of the Council of 18 January 2006 concerning the establishment of a European Pollutant Release and Transfer Register and amending Council Directives 91/689/EEC and 96/61/EC, available at <http://data.europa.eu/eli/reg/2006/166/2009-08-07>, <http://data.europa.eu/eli/reg/2006/166/2020-01-01>, and Annex I at https://converters.eionet.europa.eu/xmlfile/EPRTTR_AnnexIActivityCode_1.xml, last access: 24.03.2025, 2006.

Krautwurst, S., Gerilowski, K., Borchardt, J., Wildmann, N., Galkowski, M., Swolkień, J., Marshall, J., Fiehn, A., Roiger, A., Ruhtz, T., Gerbig, C., Necki, J., Burrows, J. P., Fix, A., and Bovensmann, H.: Quantification of CH₄ coal mining emissions in Upper Silesia by passive airborne remote sensing observations with the Methane Airborne MAPper (MAMAP) instrument during the CO₂ and Methane (CoMet) campaign, Atmos. Chem. Phys., 21, 17345–17371, <https://doi.org/10.5194/acp-21-17345-2021>, 2021.

Spanish-PRTR: VERTRESA-URBASER, S.A. UTE (UTE LAS DEHESAS) (COD. PRTR: 3510), available at https://en.prtr-es.es/informes/fichacomplejo.aspx?Id_Complejo=3164, last access: 24.03.2025, 2025a.

Spanish-PRTR: DEPOSITO CONTROLADO DE RESIDUOS URBANOS DE PINTO (COD. PRTR: 1636), available at https://en.prtr-es.es/informes/fichacomplejo.aspx?Id_Complejo=1458, last access: 24.03.2025, 2025b.

Spanish-PRTR: Information point sources, available at <https://en.prtr-es.es/informes/Pollutant.aspx?ReportedYear=2022&contaminante=1&Comunidad=66>, last access: 24.03.2025, 2025c

Spanish-PRTR: Information point sources, available at <https://en.prtr-es.es/informes/Pollutant.aspx?ReportedYear=2022&contaminante=1&Comunidad=66>, last access: 24.03.2025, 2025c.

Wolff, S., Ehret, G., Kiemle, C., Amediek, A., Quatrevalet, M., Wirth, M., and Fix, A.: Determination of the emission rates of CO₂ point sources with airborne lidar, Atmos. Meas. Tech., 14, 2717–2736, <https://doi.org/10.5194/amt-14-2717-2021>, 2021.

Identification and Quantification of CH₄ Emissions from Madrid Landfills using Airborne Imaging Spectrometry and Greenhouse Gas Lidar

Sven Krautwurst¹, Christian Fruck², Sebastian Wolff², Jakob Borchardt¹, Oke Huhs¹, Konstantin Gerilowski¹, Michał Gałkowski^{3,4}, Christoph Kiemle², Mathieu Quatrevalet², Martin Wirth², Christian Mallaun⁵, John P. Burrows¹, Christoph Gerbig³, Andreas Fix², Hartmut Bösch¹, and Heinrich Bovensmann¹

¹University of Bremen, Institute of Environmental Physics, Bremen, Germany

²Deutsches Zentrum für Luft- und Raumfahrt, Institut für Physik der Atmosphäre, Oberpfaffenhofen, Germany

³Department Biogeochemical Signals, Max Planck Institute for Biogeochemistry, Jena, Germany

⁴Faculty of Physics and Applied Computer Science, AGH University of Kraków, Kraków, Poland

⁵Deutsches Zentrum für Luft- und Raumfahrt, Flugexperimente, Oberpfaffenhofen, Germany

Correspondence: Sven Krautwurst (sven.krautwurst@iup.physik.uni-bremen.de)

Abstract.

Methane (CH₄), alongside carbon dioxide (CO₂), is a key driver of anthropogenic climate change. Reducing CH₄ is crucial for short-term climate mitigation. Waste-related activities, such as landfills, are a major CH₄ source, even in developed countries. Atmospheric concentration measurements using remote sensing offer a powerful way to quantify these emissions. We study waste facilities near Madrid, Spain, where satellite data indicated high CH₄ emissions. For the first time, we combine passive imaging (MAMAP2DL) and active lidar (CHARM-F) remote sensing aboard the German research aircraft HALO, supported by in situ instruments, to quantify CH₄ emissions. Using the CH₄ column data and ECMWF ERA5 model wind information validated by airborne measurements, we estimate landfill emissions through a cross-sectional mass balance approach. Strong emission plumes are traced up to 20 km downwind on the 4th August 2022, with the highest CH₄ column anomalies observed over active landfill areas in the vicinity of Madrid, Spain. Total emissions are estimated at $\sim 13 \text{ t h}^{-1}$. Single co-located plume crossings from both instruments agree well within 1.2 t h^{-1} (or 13 %). Flux errors range from ~ 25 to 40 %, mainly due to boundary layer and wind speed variability. This case study not only showcases the capabilities of applying a simple but fast cross-sectional mass balance approach, as well as its limitations due to challenging atmospheric boundary layer conditions, but also demonstrates the, to our knowledge, first successful use of both active and passive airborne remote sensing to quantify methane emissions from hot spots and independently verify their emissions.

1 Introduction

Methane (CH₄) is the second most important anthropogenic greenhouse gas after carbon dioxide (CO₂). It has an effective radiative forcing (ERF) of $\sim 0.54 \text{ W m}^{-1}$ or one quarter of the ERF of CO₂ (Forster et al., 2021). It is a more potent

greenhouse gas than CO₂ by a factor of 81 per unit mass on a time horizon of 20 years (Forster et al., 2021) and its atmospheric lifetime, which is dominated by the oxidation agent hydroxyl (OH) and transport and oxidation in the stratosphere, is relatively short (~ 12 years, Szopa et al., 2021). For the above reasons, Shindell et al. (2012) proposed that the reduction of CH₄ emissions was a potentially valuable short-term strategy to reduce the impact of anthropogenic emissions on the climate. This objective became part of international environmental policy through the Global Methane Pledge, an initiative launched by the European Union (EU) and the United States (U.S.) having the goal of reducing anthropogenic CH₄ emissions by 30 % from 2020 to 2030 (EU-US, 2021).

Landfills and waste related activities are estimated to account for one-fifth of anthropogenic CH₄ emissions (Saunio et al., 2020). Within landfills, CH₄ (but also CO₂ and other gases such as precursors of short-lived climate pollutants and greenhouse gases such as non-methane hydrocarbons) are produced by anaerobic decomposition of organic matter by microbes (e.g., Eklund et al., 1998). This methane has been and is released to the atmosphere nearly unhindered from unmanaged landfills. Alternatively, in the context of greenhouse gas mitigation, measures exist to reduce these emissions by, e.g., installing gas collection systems to recover a large fraction of the CH₄ (e.g., Parameswaran et al., 2023) for possible energy generation in gas-fired power plants or flaring, and/or by deploying special covers, which partly oxidise CH₄ to the less potent greenhouse gas CO₂ (e.g., Bogner et al., 1997). Despite these management, mitigation and reduction efforts, which are typically only available in the developed world (Kumar et al., 2023; Kaza et al., 2018), reported CH₄ emissions from waste ([IPCC sector 5](#)) are 97 Mt CO_{2,eq} yr⁻¹ (or 3.5 Mt yr⁻¹)¹ and still account for ~ 24 % (or ~ 18 % if only solid waste disposal, IPCC sector 5A, is considered) of the anthropogenic CH₄ emissions in the European Union in 2022 (EEA, 2024).

Of relevance to this study, Tu et al. (2022) have investigated landfill sites and related facilities in Madrid, Spain. There, significant amounts of CH₄ have been identified to be released to the atmosphere. Based on satellite observations, acquired between May 2018 and December 2020, Tu et al. (2022) would suggest an underestimation in the reported emissions by the European Pollutant Release and Transfer Register (E-PRTR, EEA, 2024) by a factor of ~ 3. Their estimated emissions would correspond to ~ 4 %² of Spain's national CH₄ emissions in 2020 reported to the United Nations Framework Convention on Climate Change (UNFCCC, EEA, 2023).

Landfill facility emissions ~~need to~~ must be reported to the authorities (E-PRTR) in the European Union to ~~meet the objective~~ comply with the objectives of EU directives if they meet certain criteria, such as emitting more than 100 kt CH₄ yr⁻¹ or receiving more than 10 t d⁻¹ or having a total capacity of more than 25 kt (European-Parliament, 2006). This reporting is usually ~~fulfilled by~~ carried out using bottom-up estimates of methane emissions described in IPCC (2006, 2019). However, emissions based on these bottom-up estimates may be underestimated due to inaccurate model parameters (Wang et al., 2024) and often differ from those using atmospheric measurements (top-down, e.g., Lu et al., 2022; Maasakkers et al., 2022; Duren et al., 2019).

In the past, different approaches have been used from different platforms to provide independent validation of waste facility emissions. Commonly used measurement techniques are ground based measurements of the gases by closure chambers, scat-

¹ Converting CO_{2,eq} to CH₄ by using a factor of 28.

² Applying 28 as conversion factor for to see footnote 1.

tered across the landfill surface (e.g., Xie et al., 2022; Jeong et al., 2019; Trapani et al., 2013), greenhouse gas in situ analyser measurements downwind of landfills with (e.g., Monster et al., 2014a, b) and without tracer (e.g., Liu et al., 2023; Xia et al., 2023), as well as vertical or horizontal scanning lidar observations (e.g., Innocenti et al., 2017; Zhu et al., 2013) or Fourier-transform infrared (FTIR) spectrometer measurements (Sonderfeld et al., 2017). Another strategy involves airborne (e.g., Ren et al., 2018; Krautwurst et al., 2017; Cambaliza et al., 2015, 2014; Peischl et al., 2013; Mays et al., 2009) or drone (Fosco et al., 2024, and references therein) observations collecting in situ CH₄ concentrations downwind of a landfill. Comprehensive comparisons of these techniques are given by Mønster et al. (2019) and Babilotte et al. (2010). Recently, passive remote sensing imaging instruments exploiting solar electromagnetic radiation in the near and short wave infrared have been deployed, that map CH₄ column amounts of the plumes leaving a landfill (e.g., Cusworth et al., 2024, 2020) in addition to airborne thermal imagers (e.g., Tratt et al., 2014). These allow not only precise leakage detection, but also emission quantification. Moreover, nowadays, high spatial resolution (in the order of several tens of meters) satellite instruments are exploited in terms of CH₄ column observations for a more regular investigation of landfills (e.g., McLinden et al., 2024; Maasakkers et al., 2022) than was possible with irregular campaign deployments in the past. However, also satellite observations having a coarse spatial resolution of some kilometres were used to constrain landfill emissions (e.g., Balasus et al., 2024; Nesser et al., 2024) but not to a detail possible by their high spatial counterparts.

Beside the mentioned predominately passive remote sensing approaches, there is currently no satellite mission using active CH₄ remote sensing in orbit and we are not aware of any studies utilising active airborne remote sensing to measure landfill emissions. ~~However~~ Notably, Amediek et al. (2017) have quantified local CH₄ emissions from coal mine ventilation shafts, demonstrating the capabilities of active airborne remote sensing measurements for such endeavours.

~~In the analysis described in this manuscript, we use a data set of unique observations collected by passive imaging and active airborne remote sensing instruments of, generally speaking,~~ Active remote sensing instruments are independent of sunlight because they use a laser as their own source of electromagnetic radiation. In contrast to airborne and satellite-borne passive instruments, they can measure during day and night, across all seasons and latitudes. They provide ranging capabilities resulting from the precise measurement of the propagation time of the emitted light and, due to their narrow field of view, measure between clouds. IPDA (integrated-path differential absorption) lidars potentially provide highly accurate measurements without varying biases: the exceptions are those introduced by small differences in the scattering and reflectivity of the ground scene and any inaccuracies in the knowledge of the absorption cross-sections. However, Wolff et al. (2021) showed that under turbulent conditions, the spatial distribution of enhanced concentrations within an exhaust plume may be highly heterogeneous. As a result, a single overflight may sample sections with stronger or weaker enhancements purely as a result of the local variability. In some cases, the true emission signal only emerges after averaging over a high number of overflights.

To account for this potential limitation, in the analysis, we combine active lidar with passive imaging spectrometry, both designed to capture atmospheric CH₄ column gradients~~combined with~~. Thus, we obtain both high-precision transects and spatial context, which supports a more robust interpretation of the observed CH₄ column enhancements. Moreover, these remote sensing measurements are complemented by auxiliary in situ measurements of CH₄, CO₂ and 3D winds in support of the remote sensing data. It was the first time that this payload was flown aboard the same aircraft acquiring spatially and

temporally collocated active and passive remote sensing measurements side-by-side for the acquisition of atmospheric CH₄ column observations. The greenhouse gas lidar CHARM-F (CO₂ and CH₄ Atmospheric Remote Monitoring Flugzeug) is an airborne demonstrator for the future satellite mission MERLIN (~~Methane Remote Sensing LIDAR Mission, Ehret et al., 2017~~) (Methane Remote Sensing Lidar mission, Ehret et al., 2017). The passive imaging MAMAP2DL (Methane Airborne Mapper 2D - Light) remote sensing instrument demonstrates the applicability of the CH₄ proxy retrieval (see below) at scales probed by CO2M (Copernicus Anthropogenic Carbon Dioxide Monitoring, Sierk et al., 2021) and TANGO (Twin Anthropogenic Greenhouse Gas Observer, SRON, 2024). The observations were collected in 2022 as part of the CoMet 2.0 (Carbon Dioxide and Methane) Arctic mission in Canada (CoMet, 2022). Prior to the transfer to Canada, an initial research flight was carried out to test all the instruments. This test flight was performed on the 4th August over Madrid to investigate the unexpected high landfill emission rates reported by Tu et al. (2022) and in a webstory from the European Space Agency (ESA) from October 2021 (ESA, 2021).

In Sect. 2, we provide a brief summary of the CoMet 2.0 mission and introduce the main instruments MAMAP2DL and CHARM-F used in this study (Sect. 2.1). This also includes a description of the algorithms used to infer CH₄ columns from the measurements (Sect. 2.2), additional steps necessary to achieve comparability between the passive and active observations (Sect. 2.3), and the cross-sectional flux method, which is used to quantify the CH₄ emissions (Sect. 2.4). Section 3 describes the observed CH₄ plumes over Madrid from both remote sensing instruments. This data is used to pin-point the exact source locations within the landfill area (Sect. 3.1), followed by a rigorous comparison of the active and passive data (Sect. 3.2), the resulting emission fluxes (Sect. 3.3), and a comprehensive discussion of potential uncertainties (Sect. 3.4). We close the paper by discussing our fluxes in a broader context (Sect. 4) and summarising our findings (Sect. 5).

2 Methods and Data

2.1 Campaign and Instrumentation

~~In the following, we provide an overview of the observations, the target, used instruments and applied algorithms to retrieve columns and eventually fluxes through our cross-sections, which are related to the emission rates of the~~ Below we describe the waste treatment facilities ~~in the measurement area.~~

2.1.1 CoMet 2.0 Arctic

~~The analysed data was collected in the framework of the Carbon Dioxide and Methane Mission CoMet 2.0 Arctic, executed in Canada in 2022. The main objective of CoMet 2.0 was to investigate the influence of the contribution of major Arctic wetlands to the greenhouse gas budget in summer and how these compare to anthropogenic emissions from, e.g., fossil fuel exploitation and production sites or landfills. To achieve this goal, a comprehensive suite of instruments was~~ that were the targets of the research flights, and the flight strategy used to derive their methane emission rates. We then describe the instruments used, which were installed aboard the German research aircraft HALO (High Altitude and Long Range Research Aircraft, operated

by the DLR, Deutsches Zentrum für Luft- und Raumfahrt, type: Gulfstream G550). ~~HALO was based in Edmonton, Canada, during the period from the 7th August to the 16th September. The measurement flight over Madrid, Spain, on the 4th August 2022, was planned as a test flight to ensure that all instrumentation worked nominally prior to the transfer to Canada but also enabled us to investigate the emissions from landfills. This study focuses on the atmospheric~~ The retrieval algorithms used to derive the CH₄ column observations from the passive MAMAP2DL and the active CHARMF airborne remote sensing instruments. Additionally, auxiliary data from the in situ sensor JIG (Jena Instrument for Greenhouse gases) for and columns are explained next. This is followed by a description of the observed CH₄ concentrations and of the basic data acquisition system of HALO, BAHAMAS (Basic Halo Measurement and Sensor System) including SHARC (Sophisticated Hygrometer for Atmospheric Research) were used. The HALO basic data acquisition suite collects various atmospheric parameters such as the 3D wind field, temperature, humidity, and aircraft attitude data that is used for interpretation of the remote sensing data. The main instrumentation and the flight strategy are described in more detail below: columns. Finally, we derive the methane fluxes, i.e. the methane emission rates, using the plume cross-sections.

130 2.1.1 Target Description and Flight Strategy

The targets under consideration were the Mancomunidad del Sur landfill in the municipality Pinto (40.264°N, 3.633°W; hereafter: Pinto landfill) and the Valdemingómez technology park (VTP, 40.332°N, 3.586°W) in the south-east of Madrid, Spain. The latter is a waste treatment complex ~~accepting around 4000 tons of waste daily and housing that accepts around 1,222 kt (Madrid, 2022) of waste, of which around 140 kt were deposited at the Las Dehesas landfill site in 2022 (Spanish-PRTR, 2025a)~~ , and houses several waste treatment facilities including the largest biomethane plant in Spain (Calero et al., 2023), which is also one of the largest in Europe (UABIO, 2022). Additionally, it contains landfill sites ~~such as the~~ non-operating Valdemingómez landfill (40.331°N, 3.580°W) equipped with a gas recovery system and an active landfill site (40.325°N, 3.591°W; hereafter: Las Dehesas landfill) next to the waste treatment plant Las Dehesas. The northern half of the Las Dehesas landfill, where certain areas (i.e. cells) are already full and therefore closed, are also equipped with a gas recovering system (Sánchez et al., 2019). The two landfills in the technology park spread over an area of ~0.9 and 0.6 km² for the inactive Valdemingómez and the active Las Dehesas sites, respectively. More details about the different facilities are in the Annual Report for 2022 for the VTP (Madrid, 2022). The Pinto landfill, further to the south, stretches over ~1.5 km². It opened in 1987, is still operational with around 800,000 tons 53 kt of waste being dumped yearly (Rodríguez, 2022) in 2022 (Spanish-PRTR, 2025b), and the already closed parts of the landfills are equipped with gas recovering system (MdS, 2024). In E-PRTR, The topography around these landfill sites shows some variability, ranging from about 550 to 700 m a.s.l. with a small valley between the two sites and a steep rise just south of the VTP according to Google Earth.

According to the Spanish PRTR (Spanish-PRTR, 2025c), the combined annual reported 2022 CH₄ emissions for the two facilities "DEPOSITO CONTROLADO DE RESIDUOS URBANOS DE PINTO" and "VERTRESA-URBASER, S.A. UTE

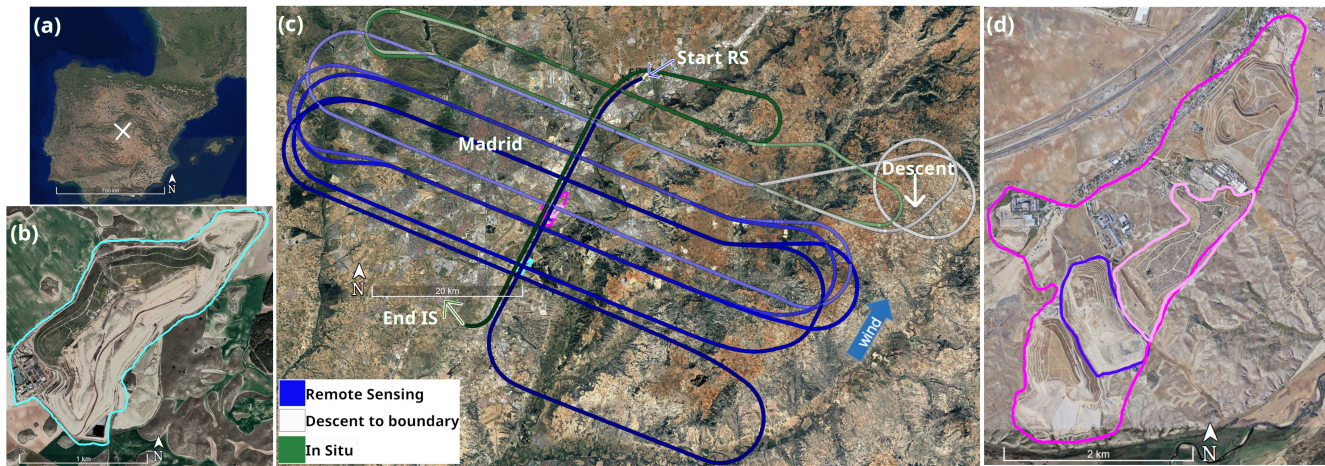


Figure 1. Top-view of the flight path of the HALO aircraft during the test flight over Madrid. An overview map in Google Earth of [Spain the Iberian Peninsula](#) is shown in (a) and Madrid is marked by the white cross. [A zoom to Panel \(b\) shows a zoom-in of the Pinto landfill is shown in \(b\) and to, outlined with a solid cyan line.](#) Panel (d) displays the Valdemingómez Technology Park (VTP) ~~including, marked with a solid magenta line.~~ In the same panel, the closed Valdemingómez and open Las Dehesas landfills in (d). The Pinto landfill and the VTP are marked by the cyan and dark is shown in pink solid lines, respectively. Bright pink and purple mark the closed and open landfills, respectively. Las Dehesas landfill is highlighted in the VTP purple. The flight path is shown in (c) whereby bluish colours represent the remote sensing (RS) part at ~ 7.7 km a.g.l. and greenish colours the in situ (IS) part at ~ 1.6 km a.g.l. (above ground level) of the flight. For better visualisation, the greenish in situ part is slightly shifted to the north-west because otherwise part of the legs would be hidden by RS legs. The map underneath is provided by Google Earth (Image © Landsat/Copernicus, Maxar Technologies).

(UTE LAS DEHESAS)", ³labelled as ³ and "landfills DEPOSITO CONTROLADO DE RESIDUOS URBANOS DE PINTO", ⁴ are 0.2 t h^{-1} in 2022. Both sites are classified as "landfills" according to the European-Parliament (2006, Regulation (EC) 166/2006 E-PRTR). We assume that these reported values are representative for the two ~~areas we investigate, which includes investigated areas, which include~~ landfills and waste treatment plants, as ~~no other sources are given, other listed sources would not contribute significantly to the emissions according to the Spanish PRTR (Spanish-PRTR, 2025c).~~ According to the European-Commission (2006), both landfills appear not to use strict IPCC reporting methods. They report the methods 'OTH' (for other measurement or calculation methodology) and 'C' (for calculation) using 'issue factors', and 'CRM' (for measurement methodology by means of certified reference materials) and 'M' (for measurement) using 'electrochemical cells' for the Las Dehesas and Pinto landfills, respectively, in 2022. In addition, the reporting method for the Pinto landfill changed from 2021 to 2022, while 'OTH' and 'C' using 'an American EPA (Environmental Protection Agency) calculation model' was applied in 2021 instead of CRM as in 2022.

³E-PRTRSectorCode / Name: 5 / Waste and wastewater managements, mainActivityCode: 5.(d), landfills, EU-Registry Code: 003510000, PRTR Code: 3510 (Spanish-PRTR, 2025a).

⁴E-PRTRSectorCode / Name: 5 / Waste and wastewater managements, mainActivityCode: 5.(d), landfills, EU-Registry Code: 001636000, PRTR Code: 1636 (Spanish-PRTR, 2025b).

160 To properly investigate emissions from these two landfills, dedicated flight patterns where the aircraft is levelled (so called flight legs) were aligned perpendicular to the forecasted wind direction (Fig. 1). The overflight time was between 13:00 and 15:40 local time (11:00 to 13:40 UTC) on the 4th August 2022. This time window was chosen using knowledge of the weather forecast predicting stable winds around noon, which also favoured the observations by the passive remote sensing instrument due to the high position of the sun.

165 Prevailing wind direction during the flight was from approximately SSW, aligned with the two waste treatment areas ~~-(Fig. D2 in the Appendix D1 shows time-resolved wind profiles for the time measured in the measurement area)~~. For later emission rate estimates (Sect. 2.4), flight legs were mostly flown perpendicular to the mean wind direction at several distances downwind from the sources ~~downwind~~ at altitudes of ~ 7.7 and 1.6 km a.g.l. (above ground level) as depicted in Fig. 1. The higher flight altitudes were flown to optimise passive and active remote sensing observations, whereas the lower altitudes were used to
170 primarily collect in situ observations within the boundary layer (BL) in and out side of the emission plumes as well as high spatial resolution CH₄ imaging data. Remote sensing observations were collected upwind of each of the landfills to account for potential inflow of CH₄ and to separate emissions from the two waste treatment areas.

Moreover, the flight pattern started with one straight leg against the wind direction directly overflying the landfills at remote sensing altitude at ~ 7.7 km a.g.l. to identify emission hot spots using the imaging capabilities of MAMAP2DL. Then, perpen-
175 dicular remote sensing legs were flown in an alternating order due to the large turning radius of the aircraft. Three legs were repeated twice. Afterwards, the aircraft descended to the altitudes optimal for in situ measurements, flying four legs downwind of both areas. Lastly, the flight pattern was closed with a straight leg overflying both landfills directly at in situ altitude. The in situ flight was performed after the remote sensing part towards the afternoon when a fully developed BL favours these measurements.

180 2.1.2 Passive MAMAP2D-Light Remote Sensing Imaging Instrument

MAMAP2DL (Methane Airborne Mapper 2D - Light) is a light-weighted airborne imaging greenhouse gas sensor for mapping atmospheric column concentration anomalies of CH₄ and CO₂ (in molec cm⁻² or in % relative to the given background column). It builds on the heritage of MAMAP (Gerilowski et al., 2011) and is a passive remote sensing instrument collecting backscattered solar radiation mainly from the ground, which has been modified by absorption from atmospheric gases. Using
185 absorption spectroscopy, the depth of these absorption lines is interpreted as column gas concentrations in the atmosphere (for details, see Sect. 2.2.1). MAMAP2DL comprises a grating spectrometer and records spectra in the range between 1558 and 1689 nm, where prominent absorption features of CH₄ and CO₂ exist (Krings et al., 2011), having a spectral resolution of around 1 nm with a spectral sampling of ~ 3 to 4 pixels per FWHM (full width at half maximum). The front optics maps the measurement scene via 28 glass-optical fibres onto a 2D sensor consisting of 384 pixels in horizontal and 288 pixels in vertical
190 direction. The horizontal direction maps onto the spectral axis and the vertical direction onto the spatial axis (see also Fig. 2). Each glass-optical fibre is mapped onto around 6 usable lines on the chip which are binned to increase the signal-to-noise-ratio before further analysis~~(see Sect. 2.2.1)~~. For the Madrid flight, the exposure time for a single readout was between 40 and

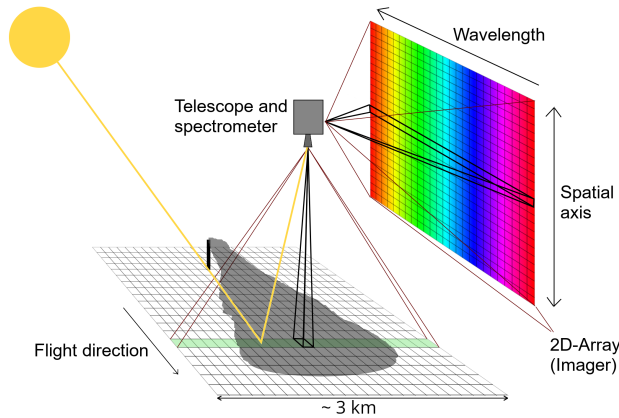


Figure 2. The schematic diagram shows the measurement principle of MAMAP2DL. The instrument simultaneously acquires 28 ground scenes across track with a swath width of ~ 3 km at a flight altitude of ~ 7.7 km a.g.l.. The final ground scene size is $\sim 110 \times 110 \text{ m}^2$.

45 ms. This would result in a ground scene size of $\sim 110 \times 8.5 \text{ m}^2$ (across x along flight direction). To achieve quadratic ground scenes, we therefore bin 13 ground scenes in along flight direction after the retrieval of the column anomalies.

195 The instrument was built at the Institute of Environmental Physics (IUP) at the University of Bremen (UB) and its design has its heritage in the non-imaging greenhouse gas sensor MAMAP (Gerilowski et al., 2011) built at IUP UB in 2006. MAMAP2DL shares many of the optical concepts developed in MAMAP but uses a spectrometer consisting of lenses instead of mirrors and a 2D-detector array allowing for imaging of emission plumes. MAMAP's column observations have been proven to be of high data quality achieving a single-measurement precision of $\sim 0.2\%$ for the background normalised column anomaly (Krautwurst et al., 2021). Its observations have been used successfully to estimate CO_2 emissions from single power plants (Krings et al., 2011), power plant clusters (Krings et al., 2018), and were part of a model validation study for power plant emissions (Brunner et al., 2023). CH_4 emissions from coal mine ventilation shafts (Krautwurst et al., 2021; Krings et al., 2013) and landfills (Krautwurst et al., 2017) were determined, as well as upper limits of emissions from offshore geological CH_4 seeps (Krings et al., 2017; Gerilowski et al., 2015) were estimated.

205 2.1.3 Active CHARM-F Remote Sensing Instrument

CHARM-F (CO_2 and CH_4 Remote Monitoring - Flugzeug), developed and operated by DLR, is an ~~integrated-path-differential-absorption (IPDA)~~ IPDA lidar instrument that consists of a pulsed laser transmitter and a receiver system. The transmitter is based on two optical parametric oscillators (OPOs) which are pumped by means of diode-pumped, injection seeded, and Q-switched Nd:YAG lasers in a master-oscillator power-amplifier configuration. Installed on an aircraft, the nadir oriented lidar emits laser pulses at two precisely tuned wavelengths in the near infrared at $\sim 1645 \text{ nm}$ for CH_4 and $\sim 1572 \text{ nm}$ for CO_2 . These two laser pulses propagate through the atmosphere until they are backscattered at a surface. From the backscattered intensities entering the detector, absolute column-averaged mixing ratios of carbon dioxide ($X\text{CO}_2$ in ppm) and methane ($X\text{CH}_4$ in ppb) be-

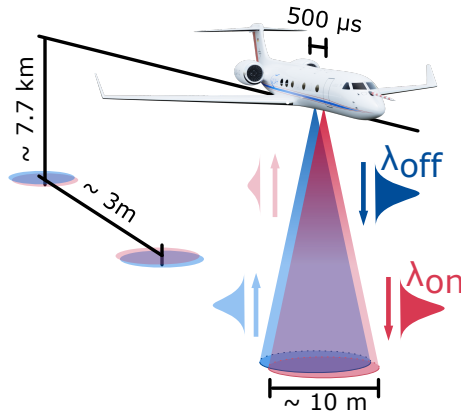


Figure 3. The measurement geometry of CHARM-F installed on the HALO aircraft. Two laser pulses are emitted towards the Earth with a delay of 500 μ s. The laser pulse with the online wavelength is denoted as λ_{on} , while the one with the offline wavelength is denoted as λ_{off} . The concentration in the surveyed column can be derived from the backscattered intensities. As the footprints are larger than the distance between consecutive pulse pairs, they actually overlap. For the visualisation above, they were pulled apart. The order in which the on-off pairs are sent out alternates.

low the aircraft are derived (see Amediek et al., 2017, and Appendix C1). A schematic illustration of the IPDA measurement principle is shown in Figure 3.

215 The generation of narrow band wavelength is realised by injection seeding the OPOs with continuous wave (cw) radiation from stabilised distributed feedback (DFB) lasers. In order to fulfil the stringent requirements on frequency stability for the online and offline wavelengths, a sophisticated locking scheme has been developed that is based on DFB lasers referenced to a multi-pass absorption cell and offset locking techniques (Amediek et al., 2017; Quatrevalet et al., 2010). The online and offline laser pulses are emitted as double pulses with a temporal separation of 500 μ s and a repetition rate of 50 Hz.

220 CHARM-F's receiving system consists of four receiving telescopes, two for each greenhouse gas, with a diameter of 20 and 6 cm, and equipped with InGaAs pin diodes and InGaAs avalanche photo diode-diodes (APD), respectively. This redundant measurement capacity proved to be very valuable for an independent quality assessment of the data. The received signals are sampled using fast digitisers and processed by means of a home-built data acquisition system. Two digital cameras (in the VIS and NIR spectral range) provide additional context information of the ground scene.

225 In the context of this study, we only make use of the (XCH_4) measurement, which is fully independent of the CO_2 channels. The CH_4 wavelengths, at which CHARM-F operates, are at 1645.55 and 1645.86 nm for on- and offline wavelength, respectively.

Previous work has shown that CHARM-F measurements are suitable for quantifying CH_4 and CO_2 emission sources (Amediek et al. (2017); Wolff et al. (2021) Amediek et al. (2017); Wolff et al. (2021)). Furthermore, CHARM-F serves as a technology demonstrator for the MERLIN space-borne methane lidar that will measure methane columns globally starting in the late 2020s (Ehret et al., 2017).

2.1.4 Auxiliary Data

In support of the remote sensing data, we use additional measurements from in situ instruments aboard the HALO aircraft and model data. To adapt radiative transfer model simulations (RTMs) used later during the retrieval process of MAMAP2DL data (for details, see Sect. 2.2.1) to prevailing atmospheric background conditions, we use CH₄ and CO₂ in situ observations from JIG (operated by Max-Planck-Institute for Biogeochemistry, MPI-BGC, Gałkowski et al., 2021; Chen et al., 2010) and H₂O from the BAHAMAS suite (Giez et al., 2023), recorded at a frequency of 1 Hz (CH₄), 1 Hz (CO₂), and 10 Hz (H₂O). CH₄ and CO₂ are measured with a precision and accuracy of 1 ppb and 2 ppb, and 0.1 ppm and 0.2 ppm, respectively. Measurements of H₂O have an uncertainty of up to $\sim 5\%$. Furthermore, for the correct georeferencing of the remote sensing observations, positioning and attitude data of the HALO aircraft also measured by the BAHAMAS suite at 10 Hz is used.

A critical parameter for the ~~emission rate quantification flux~~ and emission rate calculation is the wind in the BL, where the exhaust plumes are located. The BAHAMAS system delivers highly-accurate in situ wind measurements at 10 Hz. The uncertainty of the horizontal wind speed and direction usually is $\sim 0.14 \text{ m s}^{-1}$ and $\sim 2.9^\circ$, respectively, for low flying altitudes (Giez et al., 2023). A special data analysis for the Madrid flight shows slightly increased errors due to the replacement of the static pressure sensor and the strong turbulence, but the wind measurements are still of very high quality with uncertainties of $\sim 0.2 \text{ m s}^{-1}$ and $\sim 4^\circ$ for the relevant altitude levels.

During the remote sensing measurements, the wind information within the BL is needed but not measured, as HALO was flying well above at $\sim 7.7 \text{ km a.g.l.}$. Therefore, we use the wind measurements from the BAHAMAS system to verify the quality of the European Center for Medium-Range Weather Forecast (ECWMF) reanalysis v5 (ERA5) model (Hersbach et al., 2020) in that area on that day. We use ERA5 data with a temporal and horizontal spatial resolution of one hour and 31 km, respectively, and 137 altitude levels. The comparison is found in Appendix D1 and shows a very good agreement between measurements and model with averaged deviations of 0.05 m s^{-1} and 0.8° within the BL and thus gives confidence for the use of the ERA5 winds in our study.

We also use airborne in situ observations to validate the boundary layer height (BLH) from ERA5. The analysis is given in Appendix D2 and reveals that the observed boundary layer heights during the flight are up to 15% lower than those given in ERA5.

2.2 Retrieval Algorithms

The following subsections describe how atmospheric columns are derived from the measured spectra in the case of the passive instrument, and from the backscattered laser pulses in the case of the active instrument.

2.2.1 CH₄ Column Anomalies by MAMAP2DL

For the analysis of the MAMAP2DL spectral data, the WFM-DOAS (Weighting Function Modified - Differential Absorption Spectroscopy) approach is used. It was originally developed for the spaceborne instrument SCIAMACHY aboard ENVISAT (Buchwitz et al., 2000) and later adapted to airborne geometry for the MAMAP sensor (Krings et al., 2011). The latest version

of the algorithm is described in Krautwurst et al. (2021) and has been applied to the imaging data from MAMAP2DL. The results are background normalised column anomaly maps of CH₄ or just CH₄ column anomalies.

For the current study, the single measurement precision of the CH₄ column anomalies, derived from MAMAP2DL columns in areas not (or only little) influenced by emissions, is around 0.4 % (1- σ) for $\sim 110 \times 110 \text{ m}^2$ ground scenes. The accuracy of the CH₄ column anomalies is estimated to be around 0.14 % possibly not correctable by the applied normalisation processes. Further details about the algorithm setup and uncertainties associated with it are given in the Appendix B.

The retrieved anomaly maps are also orthorectified (also known as georeferencing). A correction is applied along the lines as described in Schoenhardt et al. (2015) to account for the orientation of the aircraft (e.g., pitch, roll, yaw) which would lead to spatially incorrectly projected ground scenes and would prohibit proper source allocation. For that, attitude data provided by the BAHAMAS system at 10 Hz resolution has been used. Visual inspection of measured intensity maps overlaid on Google Earth yields a relative accuracy to Google Earth imagery of $\sim 110 \text{ m}$ (or approx. one MAMAP2DL ground scene, see Appendix B4 for details).

2.2.2 XCH₄ by CHARM-F

IPDA lidars, such as CHARM-F, directly measure the differential absorption optical depth between the online and offline wavelength (DAOD), from backscattered signals without the need of auxiliary information. The DAOD is converted into a weighted column average of the dry-air molar mixing ratio of the trace gas in question by applying the so-called weighting function (see Appendix C1).

The weighting function depends, apart from precise spectral information, also on external information about the state of the atmosphere below the aircraft such as temperature, pressure and humidity, vertically resolved. For spectroscopic reasons, the sensitivity of CHARM-F for methane is highest close to the ground, but varies by only a few percent within the lower troposphere (Ehret et al., 2008, 2017).

As mentioned in Sect. 2.1.3, CHARM-F is equipped with two detector channels for CH₄. For this study, XCH₄ measurements from both detectors are combined in a weighted average, where the inverse variance due to noise is used as weights.

For the conditions present during the Madrid measurements the statistical uncertainty (1- σ error) of a single XCH₄ measurement (averaging both available detectors), based on one online and one offline pulse, is on the order of 5%. The main contributing random sources of error are shot and detector noise, as well as random variations in the speckle and albedo pattern (Ehret et al., 2008).

When averaging along the flight track over multiple double-pulse measurements, this uncertainty decreases, as expected, with one over the square root of the number of measurements, until, systematic drifts and offsets start to dominate. For the 3 s averaging, which corresponds to a distance of about 500 m on the ground and which is used in the plots, visualisations, and flux computations that are shown in the following, the statistical measurement uncertainty is roughly 10 ppb or 0.5 %.

Due to the background normalisation that is performed as part of the flux calculation conducted in this context, the results are largely unaffected by constant offsets and slow drifts in the methane column. Our conversion into total columns and comparison

with predicted values from the Copernicus Atmosphere Monitoring Service (CAMS) global inversion model (Segers and Houweling, 2023) suggest an offset of less than 0.5%. See Appendix C3 for more details.

2.3 Common Columns

300 In order to allow for a better comparison between active and passive remote sensing measurements and the application of a uniform approach for computing cross-sectional fluxes with both instruments, CHARM-F partial columns (pc, below the aircraft) XCH_4 have been converted into total column (tc) relative enhancements (column anomalies). This conversion requires assumptions about the composition and structure of the atmosphere that are not directly accessible from CHARM-F measurements alone. A detailed formalised description of this conversion can be found in Appendix C2.

305 In order to estimate a relative column anomaly, the methane concentration from the CAMS global inversion model (Segers and Houweling, 2023) is used as a reference. For the partial column between the aircraft and the ground, XCH_4 measured by CHARM-F is compared to the corresponding value calculated based on CAMS and the CHARM-F weighting function. For the partial column above the aircraft the anomaly is zero by definition.

For the partial column below the aircraft a small correction (corresponding to a 2-3% relative scaling effect on the column anomaly) for the effect of the weighting function has to be applied to the column anomaly computed using CHARM-F measurements. As explained in Sect. 2.2.2, due to the spectroscopic properties of methane and the choice of lidar wavelengths, CHARM-F is somewhat more sensitive close to the ground than in the upper troposphere. As a correction factor for the anomaly of the partial column, we use the ratio between, the average weighting function for the full column below the aircraft, and the average column only within the BL. This assumes that methane emitted from the landfills is only dispersed within the BL⁵.

315 Finally, the anomalies of the partial columns above and below the aircraft are combined in a weighted average with number density of (vertically summed) air molecules per area as weights.

2.4 Flux Computation

Already during the planning activities for the Madrid flight (see Sect. 2.1.1), the position and orientation of the flight legs were designed for the application of a cross-sectional mass balance approach or flux method. To account for instrument specific properties, two slightly different methods are applied and described in the following. Both follow the widely applied approach for in situ (Klausner et al., 2020; Peischl et al., 2018; Cambaliza et al., 2015; Lavoie et al., 2015) or remote sensing (Fuentes Andrade et al., 2024; Wolff et al., 2021; Reuter et al., 2019; Krings et al., 2018; Varon et al., 2018; Frankenberg et al., 2016) observations, where the mass of molecules that is transported through an imaginary curtain or cross-section, is computed by

⁵The way the weighting function is constructed ensures correct values for the average column concentration for a homogeneous methane mixing within the column below the aircraft. Any deviation from homogeneity (column anomaly), as we deal with here by assuming the concentration enhancement from the sources to affect the ~~PBL~~BL only, requires a correction factor like described in the text.

$$F_{cs} = f \cdot \sum_i \Delta V_i \cdot \Delta x_i \cdot u_i \cdot \cos(\alpha_i), \quad (1)$$

where F_{cs} is the resultant and areal integrated CH_4 mass flux or the CH_4 mass flow rate in t hr^{-1} of one cross-section. In the following, we use the term 'flux' when talking about mass flow rates through a cross-section and 'emission rate' if the flux is attributed to a certain source or source area. f is a conversion factor⁶ to transform to units of t hr^{-1} , ΔV_i is the retrieved CH_4 column anomaly in molec cm^{-2} , Δx_i the valid length element for the corresponding ΔV_i in metres, u_i the absolute wind speed (or effective wind speed valid for the plume) in m s^{-1} , and α_i is the angle between the normal of the length element and the wind direction in degrees to calculate the wind fraction perpendicular to the length element. The sum indicates the summation over all observations i within the plume.

The first modification of Eq. 1 accounts for the characteristics of the imaging data from the MAMAP2DL sensor. The retrieved CH_4 anomaly maps consist of strips with a swath width of $\sim 3\text{ km}$ and 28 ground scenes across track (see Fig. 2), which are, however, additionally distorted by the movement of the aircraft (see schematic diagram in Fig. 4, a). In a first step, the leg is aligned parallel to the x-axis (x-axis, thus, corresponds to flight direction in Fig. 4, a, from left to right).

Next, we apply n cross-sections parallel to the x-axis (dark cyan solid lines in Fig. 4, a) evenly distributed across the swath, and define plume and background areas as indicated in Fig. 4 based on visual inspection of the plume signal across the entire swath similar to the approach taken in other publications (e.g., Krings et al., 2018; Krautwurst et al., 2017; Frankenberg et al., 2016). To compute the CH_4 anomalies along one cross-section, it is normalised by the observations in the local background area (i.e. the cross-section is divided by values from a straight line which has been fitted to observations in the background only). This approach also accounts for smooth atmospheric concentration gradients or other systematic effects not considered during the retrieval.

The process of estimating the CH_4 background normalised column anomalies is shown schematically in Fig. 4 (a) to (c). The objective of this sampling approach is to determine representative fluxes of one leg by considering as much available information as possible. Therefore, the number n of cross-sections is chosen such that the swath is well covered (i.e. every 10m) and the number has basically no effect on the average flux of one leg calculated later. In the same manner, one cross-section is sampled with a sufficient number of points (i.e. every 10m) so that changing this sampling has also effectively no effect on the flux anymore. As a result, Eq. 1 simplifies to become:

$$F_{\text{M2D}, cs} = f \cdot \Delta x \cdot u \cdot \cos(\alpha) \cdot \sum_i \Delta V_i \quad (2)$$

as wind speed u , angle α and length element Δx are constant for one cross-section. The wind speed and direction is calculated at the position and overflight time of every leg from ECMWF ERA5 fields (see Sect. 2.1.4 or Appendix D for validity of ERA5 data during the flight). We assume effective mixing of the emissions in the boundary layer and, thus, average the wind over all

⁶E.g. including the conversion from number of CH_4 molecules per cm^2 to mass of CH_4 per m^2 .

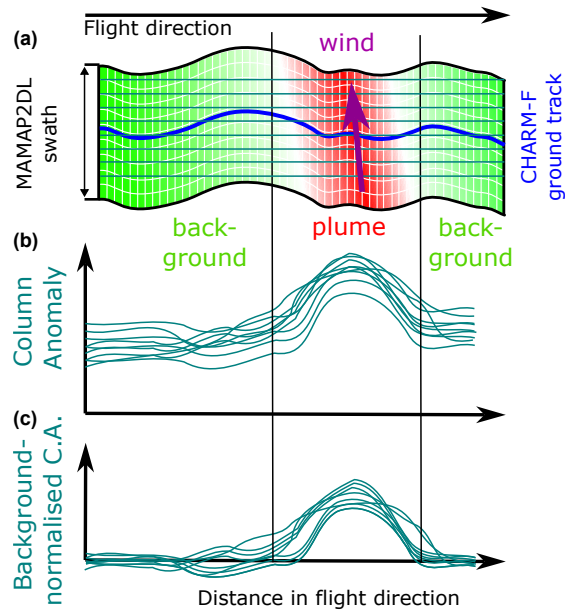


Figure 4. These schematic diagrams explain the principle used to estimate the CH₄ fluxes from the measured MAMAP2DL anomaly maps and CHARM-F anomalies. (a) shows schematically the MAMAP2DL flight leg with the flight direction parallel to the x-axis. The wind direction is approximately perpendicular to the flight direction. Horizontal dark cyan lines indicate the added cross-sections for which the fluxes are computed. Vertical black lines, parallel to the y-axis, separate the plume and background areas. The latter is used to normalise the entire cross-section and to compute the CH₄ anomalies within the plume area. The (10 m wide) CHARM-F ground track is depicted in blue. (b) shows the column anomalies along the cross-sectional lines from (a). (c) shows the normalised cross-sectional lines from (b) normalised by the background observation of the respective cross-section.

layers in ERA5 from the bottom to the top of the BL. Each layer is weighted by its number of air molecules. For an individual
 355 leg, the same winds are applied to the MAMAP2DL and, later, also to the CHARM-F observations for the flux calculation.
 The average flux $F_{M2D, \text{leg}}$ for an entire MAMAP2D leg is computed by

$$F_{M2D, \text{leg}} = \frac{\sum_i F_{M2D, cs_i}}{n} \cdot \frac{\sum_{i=1}^n F_{M2D, cs_i}}{n}, \quad (3)$$

where n is the number of cross-sections of one leg. The errors of the fluxes for one cross-section $F_{M2D, cs}$ and of the average
 flux of one leg $F_{M2D, \text{leg}}$ are then computed by error propagation using the errors on the individual parameters used in Eq. 2, as
 360 explained in Appendix F.

However, the approach above does not allow for a 1-to-1 comparison of fluxes between those determined from the measure-
 ments made by the imaging MAMAP2DL and those by the 1D CHARM-F instruments. Both datasets are actually distorted
 by the aircraft movement (i.e. predominantly the aircraft roll). The straight cross-sections introduced above for MAMAP2DL
 do not follow the distorted CHARM-F ground track. However, as seen in Fig. 4 (a), the CHARM-F ground track follows one

fixed ~~MAMAP2D~~-MAMAP2DL viewing angle approximately in the middle of the swath because the effect of the distortion is the same for both instruments. Therefore, Eq. 1 is directly applied to the measurements, with each parameter being evaluated individually for one measurement i.e. the wind speed, direction and length segment are not constant anymore. The resulting CHARM-F flux is then representative for this one leg. Definition of plume and background areas remain the same.

Independent of the applied approach for MAMAP2DL or CHARM-F data described above, the fluxes from several legs, computed by Eq. 3, are then again averaged to derive the mean emission rates $F_{M2D, ar-aver}$ and $F_{CHARM-F, ar-aver}$ ⁷ of certain areas in the measurement area for the respective instrument:

$$F_{M2D \text{ or } CHARM-F, ar-aver} = \frac{\sum_i F_{M2D \text{ or } CHARM-F, leg_i}}{p} \frac{\sum_{i=1}^p F_{M2D \text{ or } CHARM-F, leg_i}}{p}, \quad (4)$$

where p is the number of legs. This applies, for example, to the area in the lee of the two waste treatment areas, which is representative of the total emissions from the measurement area.

3 Results

3.1 Observed Column Enhancements over Madrid and Source Attribution

Figure 5 visualises the retrieved and orthorectified CH₄ column anomaly maps derived from the MAMAP2DL measurements (a, as described in Sect. 2.2.1) and the XCH_4 , given as 3 seconds averages, derived from CHARM-F data (d, as described in Sect. 2.2.2) for the different remote sensing legs acquired at a flight altitude of ~ 7.7 km a.g.l.. Both data sets clearly show CH₄ enhancements (in red) located at or downwind of the waste treatment areas, whereas upwind or south-west of the Pinto landfill in the bottom left corner, there are no indications of inflow of external enhanced CH₄ in the measurement area. These observations are also confirmed by two legs flown in along wind direction at two different flight altitudes (see Appendix A and Fig. A1 for details). Especially for the Pinto landfill, there is a clear plume visible in both overflights, ~ 2.5 h apart from each other.

The highest CH₄ concentrations are observed at or close to landfills. CH₄ hot spots, with peak enhancements of around 17%, are located at the eastern part of the Pinto landfill according to the MAMAP2DL imaging data. This hot spot is also captured by the CHARM-F instrument with XCH_4 of up to 2.28 ppm.

The insets (b) and (c) show more details of the individual landfills including the locations of the highest column anomalies, which were identified in different overflights. Marked regions in the southeast of the landfills are areas which are, most probably, responsible for a large fraction of the observed emissions. They were selected by analysing the flight legs (those flown perpendicular to the wind direction as well as those flown in wind direction) over the landfills to find the ground scenes with the highest column enhancements (only ground scenes above a certain threshold are shown, see Fig. 5 for more details). The assumption is that the CH₄ is most concentrated just above or very close to a source, as it is not yet dispersed (horizontally).

⁷'ar-aver' stands for areal averages.

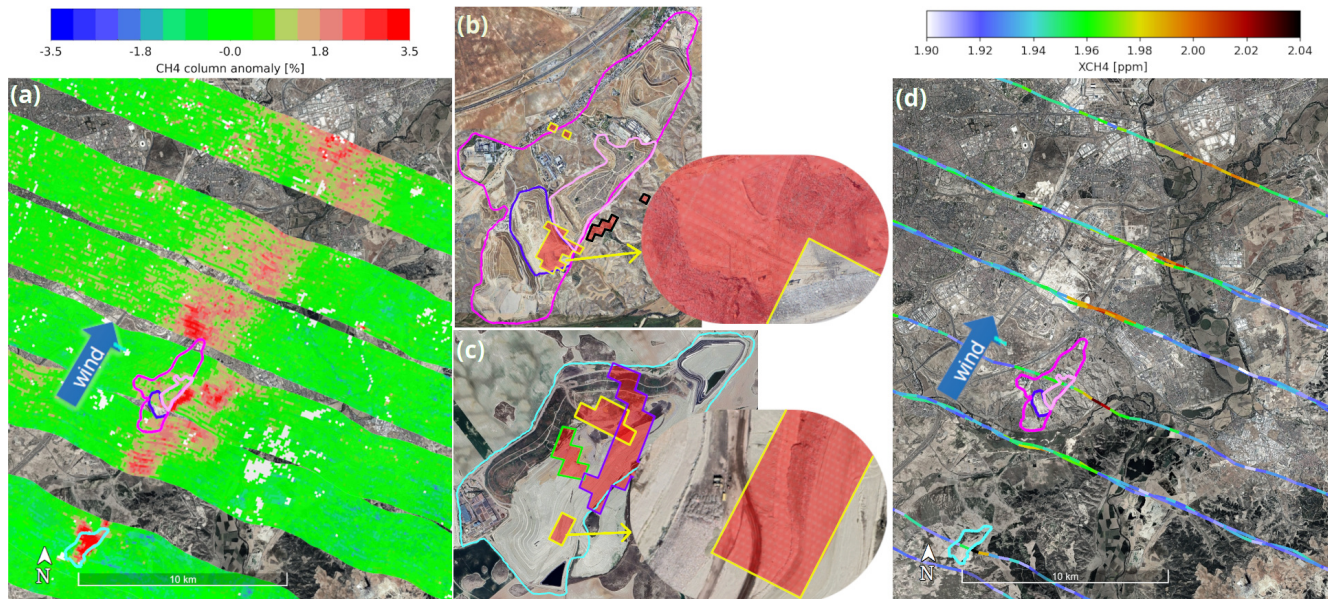


Figure 5. Retrieval results from the airborne remote sensing instruments. (a) and (d) show the retrieved CH_4 column anomalies from MAMAP2DL and the $X\text{CH}_4$ from CHARM-F, respectively. (b) and (c) are zoomed pictures of the two landfills including the MAMAP2DL observations—ground scenes in red with the largest anomalies only (only those larger than $\sim 4\%$ for VTP or Las Dehesas in (b), $\sim 8\%$ for Pinto in (c), see main text for details). The different colours of the borders around those ground scenes in (b) and (c) mark the enhancements observed in different flight legs. E.g., yellow represents the leg flown in along wind direction shown in Fig. A1, a. The small insets in (b) and (c) zoom in further detailing some activities across the areas with the largest observed enhancements. The shown Google Imagery was recorded in August 2022. The different colours of the borders around the observations mark the enhancements observed in different flight legs. The waste treatment areas are encircled by different coloured solid lines: Cyan for the Pinto landfill; dark pink-magenta for the VTP; bright pink for the Valdemingómez landfill; purple for the Las Dehesas landfill. The map underneath is provided by Google Earth (Image © Landsat/Copernicus, Maxar Technologies).

leading to the highest observed column enhancements. However, there is a residual uncertainty associated with this method, as by chance, high column enhancements could also be observed further away due to turbulent transport. Columns are also modulated by the prevailing wind speed at the time of release into the atmosphere and by local atmospheric turbulence. Both can change during a measurement flight. However, if the highest column anomalies during multiple over-flights point to the same region, there is a high probability that this region is acting as a source.

The Google Earth imagery recorded in August 2022 (the same month and year as our flight) clearly shows that these hot spots are directly located over active landfill areas where waste is deposited. The CH_4 plumes clearly begin over these areas of the Pinto and Las Dehesas landfills (see Figs. 5 and A1 and discussion on the step-wise increase of the fluxes in Sect. 3.3). However, we cannot exclude that other parts, for example, closed cells of the landfills or facilities located in these waste treatment areas also contribute, also contribute (weakly) to the observed CH_4 plume, but are partly masked by CH_4 released

405 further upwind. For example, in the north western part of the VTP, there are also hot spots identified (two ground scenes outlined in yellow in Fig. 5, b) from the along wind leg (Fig. A1, a), which could be advected there or released from the waste treatment plants (PLANT OF BIOMEIZATION La Paloma and Las Dehesa) immediately to the south. However, as a second overflight (Fig. A1, b) shows no enhancements, it is probably the former.

3.2 Column Comparison between MAMAP2DL and CHARM-F

Figure 5 shows a good visual agreement between the column anomalies of the passive MAMAP2DL and the XCH_4 of the 410 active CHARM-F instruments. In order to perform a more rigorous comparison between the two types of atmospheric CH_4 columns, we convert the XCH_4 partial columns derived from CHARM-F to total column anomalies (see Sect. 2.3). We then identify the ground scene in the MAMAP2DL swath which corresponds to the CHARM-F measurements, which are approximately located in the middle of the MAMAP2DL swath. This procedure ensures the selection of observations, where both instruments see similar ground scenes and air masses.

415 Figure 6 shows a typical example comparison for one leg. The two different types of observations have been processed as explained previously, i.e the plume anomalies have been processed as described in Sect. 2.3 and the CH_4 fluxes have been estimated as described in Sect. 2.4. The shown background normalised column anomalies agree well within their respective errors inside and outside of the plume. Even more pronounced structures in the CH_4 concentration, as encountered on the right hand side (~ 6 to 15 km distance), are identified by both instruments. The fluxes from the two shown cross-sections deviate by 420 only 0.1 t h^{-1} or 1% .

More generally, when comparing fluxes estimated using measurements of MAMAP2DL with those derived from CHARM-F observations from all flight legs (see Fig. E1), the averaged absolute difference between them is $\sim 1.2 \text{ t h}^{-1}$ or $\sim 13 \%$ excluding the flight legs upwind and directly over the Pinto landfill (see Sect. 3.3 for reasoning). ~~This difference is in part attributed to different~~ These differences may be due to (a) different but overlapping opening angles of the two instruments ~~the widths (and~~ 425 ~~the resultant spatial resolution of the ground scene widths of 110 m vs. and 10 m), as we noted, are different, respectively, or (b) different paths through the atmosphere of the electromagnetic radiation used to measure methane absorption, or (c) differences in the algorithms used to retrieve the columns, e.g. how they deal with variable surface reflectivity etc.~~ Consequently, observed air masses are different.

Typically, the errors of the fluxes are around or below 30% of the respective flux and are similar for MAMAP2DL and 430 CHARM-F.

3.3 Derived Landfill Emission Rates

Using imaging MAMAP2DL observations, we also computed the fluxes within the different legs (see Sect. 2.4). The results are summarised in Fig. 7, which also includes the cross-sectional fluxes derived from the CHARM-F instrument already computed and introduced in Sect. 3.2.

435 Based on the MAMAP2DL observations, the fluxes exhibit a step-wise increase at the location of landfills as expected (from left - upwind, to right - downwind). The upwind leg at -5 km shows no significant inflow of enhanced CH_4 and a steep increase

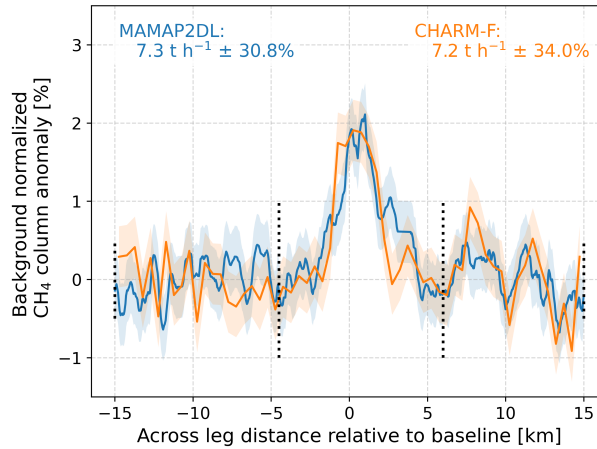


Figure 6. The background normalised CH_4 column anomalies for CHARM-F (orange) and the co-located MAMAP2DL (blue) observations for one flight leg collected between 11:42 and 11:46 UTC are shown. Vertical dotted lines separate the plume and background areas. Shaded areas represent the random error (single measurement precision) of the retrieved column anomalies of the respective instrument. The computed fluxes for the cross-sections according to Eq. 1 and the corresponding errors (MAMAP2DL: Eq. F1, and CHARM-F: Eq. F10) are given by the text insets. For graphical presentation only, the MAMAP2DL data has been smoothed by a 500 m kernel to match the spatial resolution of CHARM-F in along flight direction. Flux, error and uncertainty range is, however, based on the $\sim 110 \times 110 \text{ m}^2$ data.

directly over the Pinto landfill. Between the Pinto and the VTP the flux or emission rate stabilises at $4.2 \text{ t h}^{-1} (\pm 38 \%)$ before increasing to around $12.1 \text{ t h}^{-1} (\pm 27 \%)$ on average at and after the Las Dehesas landfill. However, the cross-sectional fluxes show some variability from flight leg to flight leg (see the bold horizontal coloured lines, representing averaged values over one MAMAP2DL leg) and variability within one leg (see the thin solid coloured lines). Furthermore, the retrieved column anomalies in Fig. 5 as well as the cross-sectional fluxes in Fig. 7 show no sign of accumulation of CH_4 as, for example, in the valley between the two landfills (see Sect. 2.1.1 for a brief discussion of the local topography). Adding the fluxes derived from the CHARM-F observations to the figure (coloured stars) reveals very good agreement between active and passive remote sensing (thin solid coloured lines) data as already indicated in Sect. 3.2. Computing average fluxes or emission rates from the CHARM-F observations alone yields $5.2 \text{ t h}^{-1} (\pm 37 \%)$ for the Pinto landfill and $13.3 \text{ t h}^{-1} (\pm 26 \%)$ for both waste treatment areas combined.

The first two flight legs were deliberately designed so that, in the blue leg, CHARM-F sampled background conditions upwind of the Pinto landfill, while MAMAP2DL already partially covered the source area. Conversely, during the green leg, CHARM-F measured directly over the Pinto landfill, whereas the MAMAP2DL swath still included parts of the upwind background. For the averaged flux between the two landfills, the flight leg directly over the Pinto landfill (i.e. the green lines and star in Fig. 7) has been omitted. There, the plume might be still restricted to the surface and the wind speed is highly biased due to the strong vertical wind gradient (see Fig. D2, a). Over the Las Dehesas landfill, although there are new emissions

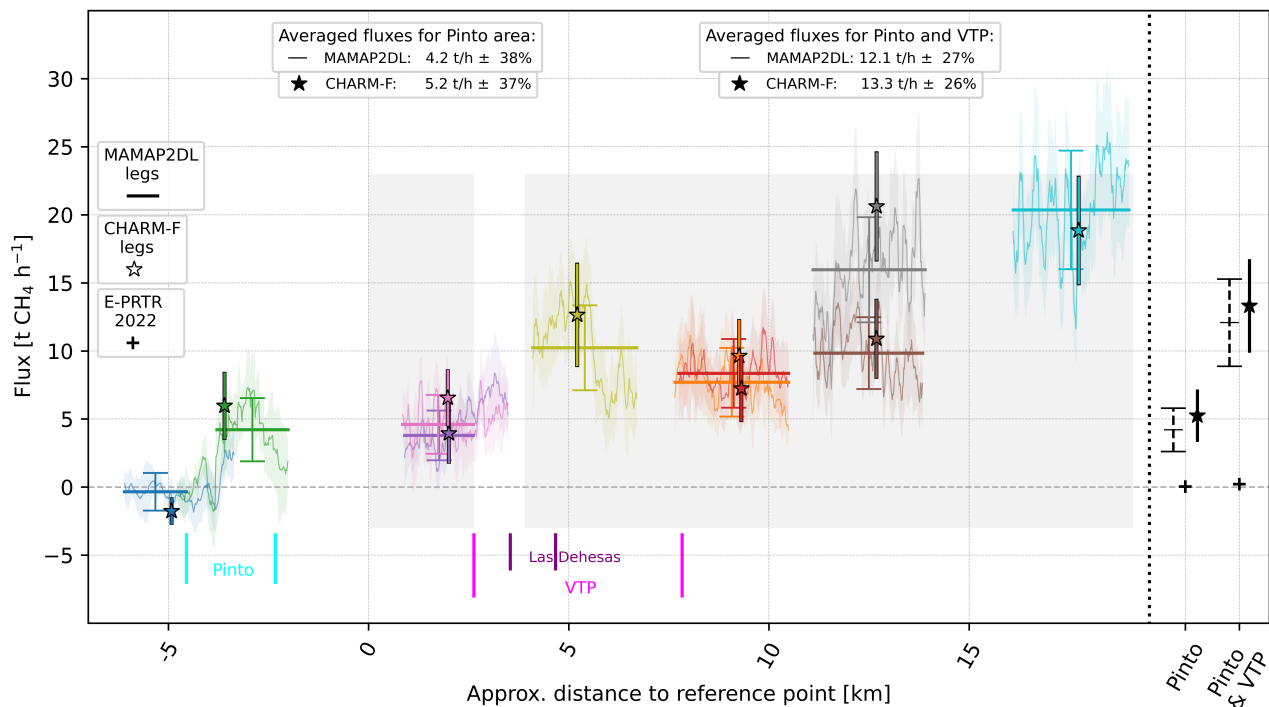


Figure 7. This plot shows the evolution of the CH₄ flux values upwind of the waste treatment areas (-5 km) to downwind (> 8 km). Cyan, purple and magenta vertical lines identify the locations of the two investigated waste treatment areas. The coloured thin solid lines are the values of the cross-sectional fluxes across the different MAMAP2DL legs and exhibit a high variability most likely due to atmospheric variability and turbulence on that day. Corresponding shaded coloured areas show the errors (estimated using Eq. F1). The averaged flux and error (Eq. F3) of one leg is given by the coloured bold horizontal lines and error bars, respectively. The averaged fluxes or emission rates and their errors (Eq. F6) estimated using MAMAP2DL observations for the two areas (in between Pinto and the Valdemingómez technology park, VTP, and in the lee of the VTP) are the black dashed lines in the right panel of the figure. Coloured stars and vertical bars give the fluxes and errors (Eq. F10) estimated using the CHARM-F measurements, respectively. Black stars and bars in the right panel are the averaged fluxes or emission rates and their errors (Eq. F11) over the same areas as for the MAMAP2DL observations. The two areas over which emission rates are computed are indicated by the grey shading. The pluses in the right panel indicate additionally the reported emissions for the Pinto area, and both the Pinto area and the VTP for the year 2022 assuming constant emission during the year.

emerging at the bottom, the plume from Pinto is assumed to be already well-mixed. Therefore, this leg is included in the flux average.

The estimation of errors or uncertainties is extensively discussed in the Appendix F and Table 1 lists the uncertainties for the different components, we assumed in our error analysis. Table 2 summarises the effect of the these components on the computed fluxes.

Table 1. Summary of relevant error sources used during the error analysis described in Appendix F. See Table F1 for further explanation of error sources.

| Parameter | Assumed uncertainty |
|----------------------------|---|
| δF_u | 0.1 ms^{-1} |
| δF_α | 10° |
| δF_{blh} | 20 % on BLH translating to $\sim 0.8 \text{ ms}^{-1}$ on wind speed (see Appendix D1) |
| δF_{bg} | up to 50 % variation of background area(s) |
| $\delta F_{\text{col-pr}}$ | $\sim 0.4 \text{ \%}$ MAMAP2DL (see Sects. 2.2.1 and B2) $\sim 0.5 \text{ \%}$ CHARM-F (see Sect. 2.2.2) |
| $\delta F_{\text{col-ac}}$ | 0.14 % (only MAMAP2DL) (see Sects. 2.2.1 and B2) |
| $\delta F_{\text{col-cf}}$ | 1.2 % (only MAMAP2DL) (see Appendix B3) |

3.4.1 Individual Error Components

460 The uncertainties of our estimated fluxes are on the order of 25 to 40 % of the respective flux for the different spatial scales (single cross-sections/legs or areal averages) and therefore quite similar for the different spatial scales. This is due to the fact that the major error source, BLH (δF_{blh} : $\sim 20 \text{ \%}$ error on the flux, see Table 2) consequently affecting the averaged wind speed over the BL, is systematic and, therefore, cannot be reduced by averaging over several cross-sections or legs. The error on the wind speed (δF_u : $\sim 2 \text{ \%}$) and wind direction (δF_α : $\sim 5 \text{ \%}$) itself, although also a systematic one, have only a limited
465 influence. The other two important error sources are plume distortions caused by atmospheric turbulence ($\delta F_{\text{X, atm, legs}}$: $\sim 15 \text{ \%}$) and the limits for the background area (δF_{bg} : $\sim 14 \text{ \%}$). The latter is especially pronounced on the scales of legs as it reduces by averaging over several legs. The column single measurement precision ($\delta F_{\text{col-pr}}$: $< 1 \text{ \%}$) of the two instruments, or the remaining systematic offset ($\delta F_{\text{col-ac}}$: $< 2 \text{ \%}$) and the conversion factor error ($\delta F_{\text{col-cf}}$: $< 2 \text{ \%}$) of MAMAP2DL lead to negligible errors on the computed fluxes due to the relatively large spatial extent and large enhancements of the observed plume signals.

Table 2. Summary of computed error components for the averaged flux downwind of the two waste treatment areas according to Appendix F. Values are given as percentages of the respective downwind fluxes: 12.1 t h^{-1} for MAMAP2DL and 13.1 t h^{-1} for CHARM-F. 'X' stands for MAMAP2DL or CHARM-F according to nomenclature in Appendix F2 and F3, respectively.

| Parameter | MAMAP2DL | CHARM-F |
|--|----------|---------|
| | [%] | [%] |
| δF_u | 2 | 2 |
| δF_α | 5 | 5 |
| δF_{blh} | 20 | 20 |
| $\delta F_{\text{col-cf}}$ | 1 | - |
| $\delta F_{\text{X, atm, legs}}$ | 15 | 15 |
| $\delta F_{\text{X, legs}}$ | 7 | 6 |
| components of $\delta F_{\text{X, legs}}$ according to Eqs. F8 and F13 | | |
| $\delta F_{\text{M2D, css}}$ | < 1 | - |
| $\delta F_{\text{M2D, atm, css}}$ | 7 | - |
| δF_{bg} | 14 | 13 |
| $\delta F_{\text{col-pr}}$ | - | 1 |

470 The major error source is the uncertainty in BLH, which has a significant influence on the averaged wind speed applied in the flux computation. As stated above (Sect. 2.1.4 and Appendix D), we used atmospheric measurements of wind speed, direction, and potential temperature collected during one ascent and one descent to validate and correct the ERA5 model estimates. Based on the two measured profiles and the overestimation of the BLH in ERA5 compared to these profiles, we apply a correction reducing the ERA5 BLH by $\sim 17\%$ on average. We assume that this correction is also applicable to ERA5 data up to 2 hours
475 earlier when the remote sensing measurements started. Due to the strong vertical gradient in wind speed, this also reduces the averaged wind speed by $\sim 24\%$ and leads to the same relative reduction in the fluxes. The uncertainty of the BLH estimates itself is 20% , which consequently translates into a wind speed error of 0.8 m s^{-1} on average.

Additionally, to estimate the accuracy of the ERA5 wind data, we compare it to the BAHAMAS measurements. The averaged deviations are only 0.05 m s^{-1} and 0.8° . Therefore, we assume that the error on the modelled wind speed within the BL is
480 0.1 m s^{-1} . For the wind direction, we compare the modelled one with the visually observed plumes in Google Earth imagery and concluded an uncertainty of $\sim 10^\circ$.

Other important error sources are the limits for the background area and plume distortions caused by atmospheric turbulence. Depending on the spatial scale, they are reduced by averaging the estimated CH_4 fluxes from multiple cross-sections. For example, the effect of the atmospheric variability reduces if more independent legs or cross-sections are collected (either
485 spatially or temporally separated). This variability is quantified by the standard deviation over all legs of one area where a constant flux is expected, or over the individual cross-sectional fluxes within one leg. We assume that the fluxes are independent

for different legs as they are recorded at different times and/or locations but have a correlation length of around ~ 400 m within one MAMAP2DL leg resulting in 7 independent fluxes across one leg.

Even if correlation between all fluxes of one leg is assumed, the relative error on the averaged downwind flux would only
490 increase from 27 % to 28 %. The effect would be slightly larger for the averaged flux between the two landfills (38 % vs 45 %) and for single legs (7 % vs. 18 %). The errors are still dominated by the systematic wind errors. As we use the standard deviation to quantify the variability, it might also be partly influenced by measurement error and the error introduced by the background normalisation.

For MAMAP2DL, also the uncertainty from the conversion factor related to the magnitude and change of the BLH during the
495 flight time is a systematic error source and scales with the retrieved anomalies. This is not reduced by multiple cross-sections or legs and has the same influence on the cross-sectional fluxes within one MAMAP2DL leg as well as on the averaged total flux from the two waste treatment areas.

3.4.2 Potential Additional Sources

The most downwind leg in Fig. 7 (cyan leg) shows a high variability in the computed fluxes from the MAMAP2DL observations
500 across the first two-third of the leg. Whereas the last third, which is also located downwind of the position of the CHARM-F observation, shows a consistently more stable and higher flux. This might be related to potential additional CH_4 emissions from an industrial area located there (40.433°N , 3.491°W), which also includes a 'Planta de Combustible' (fuel plant, not listed in E-PRTR), several storage tanks, and a waste-water treatment plant. Excluding this latter part of the MAMAP2DL leg would reduce the mean flux of this MAMAP2DL leg from 20.4 to 19.1 t h^{-1} and the average over the entire area, however,
505 only by 0.1 t h^{-1} .

Furthermore, there ~~are additional urban waste-water treatment plants distributed in the measurement area according to E-PRTR. While these could produce and emit, none stands~~ is also the possibility, that other CH_4 sources located in the measurement area could affect the observed emission rates. Depending on whether these sources are in the plume area or the background area, they either contribute to the emissions or reduce them. If they were evenly distributed around the area, the
510 effect on the estimated emission rate would be negligible. We estimated this effect by analysing the CH_4 emissions reported in EDGAR v8.0 (Emission Database for Global Atmospheric Research, Crippa et al., 2023). We aggregated all CH_4 emissions in our measurement area except for the source categories 4A and 4B (solid waste disposal and biological treatment of solid waste), which are our targets. Consequently, in the worst case, the resulting impact on our estimated emission rates could be approximately up to 2 t h^{-1} at maximum or around 15 % of our total emission rate estimated according to EDGAR v8.0.
515 Additionally, no other sources stand out in our column observations.

3.4.3 Potential Plume Accumulation Effects

As discussed in Appendix D1 and shown in Fig. D2 (b), before the start of the remote sensing part of the flight at 11:00 UTC, the wind direction changed from around 130° to 210° . Additionally, during the entire flight time, there was a very strong vertical wind gradient with $\sim 1 \text{ ms}^{-1}$ at the ground and up to $\sim 10 \text{ ms}^{-1}$ at the top of the BL (Fig. D2, a). Especially the turn in wind

520 direction directly before our measurement started could, potentially, have created an area with enhanced CH_4 concentrations due to accumulation (a 'CH₄ puff'), which would have subsequently been advected in wind direction. Surveying such a puff would also lead to increased fluxes.

The grey and cyan leg in Fig. 7 would indicate these enhanced fluxes compared to the remaining legs. Assuming that during the time of the remote sensing measurement, a mean wind speed of $\sim 3.9 \text{ ms}^{-1}$ prevailed, and that these legs were
525 acquired around 90 minutes after the start at 11:00 UTC, would lead to a travel distance of 21 km of the observed air masses. 21 km would roughly correspond to the southern part of the Pinto waste treatment area. Excluding the two legs from the downwind average would lead to a mean flux of 9.6 t h^{-1} instead of 12.7 t h^{-1} . Additionally, the change in wind direction also caused some residual plume structures over the city of Madrid. A potential influence of this residual plume on our background determination is covered by the respective error δF_{bg} .

530 To investigate these effects further and to verify our assumption of CH_4 accumulation would, however, require more sophisticated model simulations and is not possible with a simple and fast mass balance approach. Applying model-inversion based flux-estimation methods is beyond the scope of this publication, but will be addressed in a follow-up paper that is currently in preparation.

4 Comparison of emission rates determined in this study with other estimates

535 The waste treatment areas Pinto and VTP have reported emission rates of 0.35 kt yr^{-1} (or 0.04 t h^{-1} assuming constant emissions throughout the year) and 1.58 kt yr^{-1} (or 0.17 t h^{-1}) in E-PRTR for the year 2022, respectively. Our observations were collected within 2 hours on the 4th August 2022. This represents a snapshot of estimated emission rates and they should not be lightly extrapolated to annual averages. Landfill emissions usually exhibit some temporal variability and are modulated by, e.g., emissions caused by leakages, activities across the landfill when waste is deposited, atmospheric parameters such as
540 pressure changes, temperature, wind speed, or temperature and humidity conditions within the landfill (e.g., Cusworth et al., 2024; Kissas et al., 2022; Delkash et al., 2016; Xu et al., 2014; Trapani et al., 2013; Poulsen and Moldrup, 2006).

However, over the past years, other studies using observations of a limited period derived similar emission rate estimates as observed by us. The most recent is the webstory from ESA (2021) using satellite data from TROPOMI and GHGSat in August and October 2021. They reported total emission rates of 8.8 t h^{-1} with one of the sources emitting 5.0 t h^{-1} , without
545 mentioning landfill names. However, in the GHGSat images on the website, the Pinto and Las Dehesas landfills are identified as part of their target area. Although these estimates are from the preceding year, partly from the same season, they agree well with our results. Additionally, based on the available imagery, one main plume appears to originate, at least partly, from the already closed and covered area of the Las Dehesas landfill. Although we cannot exclude outgassing from closed parts of this landfill, our CH_4 hotspots are predominantly located over the active areas of the landfills.

550 In 2018, another study used ground-based and satellite observations to also estimate emissions of Madrid's landfills (Tu et al., 2022). Their ground-based observations were collected between the end of September and beginning of October 2018

and their resulting flux is $\sim 3.5 \text{ t h}^{-1}$. This flux was assigned to the Valdemingómez waste plant. Satellite data were analysed over the period May 2018 to December 2020. Estimated emission rates are 7.1 t h^{-1} ($\pm 0.6 \text{ t h}^{-1}$) for the entire area.

A ground-based investigation in that area was undertaken from the 1st to 3rd March in 2016. Sánchez et al. (2019) used specifically designed flux chambers to measure CH₄ emission from the already full and closed parts (or cells) of the Las Dehesas landfill north of the still active area. They have estimated 1.1 t h^{-1} on average for this part which accounts for approximately half of the total designated landfill area of $\sim 0.6 \text{ km}^2$. The values for the 95 % confidence interval are given with 0.4 to 2.8 t h^{-1} . Their averaged value would correspond to around 9 % of our total emission rate, however, derived for the entire area also including the Pinto landfill.

Over the past years, all these estimates indicate consistently high emission rates of up to 7 to 9 t h^{-1} for both waste treatment areas, although they are made over short periods (with the exception of the estimates using satellite observations⁸). Our estimated emission rate for the two areas are at the upper end of this range (12.7 t h^{-1} or 9.3 t h^{-1} if the CH₄ puff hypothesis is applicable) and also indicates disagreement with the reported values in E-PRTR (see Table 3). Interestingly, the reported emissions of the Pinto landfill site decreased by a factor of almost 40 from 2021 to 2022, which could potentially be related to the change in reporting methodology (see Sect. 2.1.1).

Table 3. Reported CH₄ emission rates in E-PRTR for the Pinto area and the VTP in t h^{-1} assuming constant emissions throughout the year.

| Year | 2016 | 2017 | 2018 | 2019 | 2020 | 2021 | 2022 |
|-------|------|------|------|------|------|------|------|
| Pinto | 1.10 | 1.19 | 1.28 | 1.37 | 1.47 | 1.55 | 0.04 |
| VTP | 1.02 | 0.70 | 0.82 | 0.94 | 0.29 | 0.33 | 0.18 |

The locations of high human activity and waste deposition correlate with the highest observed column concentrations. We infer that these locations on the landfill are the main origin of our observed emissions. These active areas were also identified by Cusworth et al. (2024) as CH₄ emission sources. However, it is unclear whether these emission hot spots exist only during the day, when work is done on the landfill, or also at night. The degree of correlation between emissions and activity is unclear and these emissions should actually cease when a cell is completed and closed. Local process-based bottom-up modelling of emissions of waste deposition is challenging due to the unpredictability of exact locations and practices. This may explain some of the discrepancies between the inventory and the top-down estimates (Balasus et al., 2024).

5 Summary and Conclusion

The reduction of anthropogenic CH₄ emissions has been proposed as target for climate mitigation strategies, due to CH₄'s relatively short tropospheric life time. In spite of this objective, knowledge of the CH₄ emissions from many anthropogenic sources and in particular landfills, even though these emissions account for a significant fraction of the global anthropogenic CH₄ budget, are still uncertain. Relevant examples are the recent discussions of the emissions from landfill sites in Madrid,

⁸But especially the TROPOMI satellite data have issues to allocated sources precisely due to the large footprint-ground scene size of $7.0 \times 5.5 \text{ km}^2$.

the capital of Spain. Exceptionally high CH₄ emission rates have been reported using both ground based and satellite borne observations in the year 2021 and before.

580 To examine ~~this~~these CH₄ ~~source~~sources and to estimate ~~its~~their emissions, we undertook a measurement flight on the 4th August 2022 as part of the CoMet 2.0 mission. In this study, for the first time, the passive imaging MAMAP2DL and active lidar CHARM-F remote sensing instruments flew aboard the same platform, the German research aircraft HALO, and successful co-located and independent measurements were made. During the first part of the flight, remote sensing column observations were acquired. MAMAP2DL collected 28 ground scenes having a spatial resolution of $\sim 110 \times 110 \text{ m}^2$ within a
585 $\sim 3 \text{ km}$ swath for a flight altitude of 7.7 km a.g.l.. CHARM-F recorded ground tracks with a spatial resolution of $\sim 500 \text{ m}$ in flight direction, due to averaging, and $\sim 10 \text{ m}$ across.

In total, 10 flight legs, aligned perpendicular to the prevailing wind direction, were flown at several distances up- and downwind of the two waste treatment areas Pinto and VTP including the Las Dehesas landfill. Exploiting the design of the flight plan, emissions from the two landfill sites were separated and estimated by combining the retrieved CH₄ column anomalies
590 with model wind data from ECMWF ERA5. Additionally, from the overflights above the landfill areas in combination with CH₄ imaging data, potential source locations on the landfills were identified.

The BL was physically characterised by the measurements of vertical atmospheric profiles of meteorological parameters and trace gases within the BL. This supported our analysis of the remote sensing data and was used to validate the ERA5 model data for that day. As the remote sensing data was acquired well above the BL, we relied on models for (wind) data within the
595 BL.

The emissions from the two landfill sites were ~~well-separated~~sufficiently separated for our methods by the two remote sensing instruments with an observed emission rate of $\sim 5 \text{ t h}^{-1}$ for the Pinto area, while the combined emission rate of Pinto and VTP was $\sim 13 \text{ t h}^{-1}$. The error on these CH₄ emission rate estimates are around 26 to 38 % of the given fluxes (or 1.9 to 3.5 t h^{-1}) and are dominated by the knowledge of the BLH in combination with a strong vertical wind gradient
600 and the separation between plume and background areas. Moreover, the measured fluxes and emission rates are influenced by atmospheric turbulence. This results in the flux variation in different legs expressed as standard deviation over all legs in the downwind area of up to $\sim 5 \text{ t h}^{-1}$. We conclude that a sufficient number of independent flight legs are required to minimise the error from turbulent flow in the estimation of the the fluxes from observed plumes.

This was the first time that emissions were observed and quantified simultaneously by two different and independent active
605 and passive remote sensing techniques. The comparison of fluxes retrieved using the measurements of the active and passive remote sensing instruments shows that the two estimates are in very good agreement. To ensure comparability of the flux estimation using the different remote sensing approaches, we also used identical wind speeds for individual legs. Absolute differences are 13 % of the respective fluxes on average. These differences may be explained by the different ground scene sizes observed by the two instruments, which are 10 m and 110 m for CHARM-F and MAMAP2DL in across flight direction.
610 Consequently, they measure different but overlapping air masses in the plume. The agreement between the two different techniques also increases our confidence that the emission rates are as high as our estimates. The complementarity of the active and passive instruments shows good prospects for their joint deployment also on spaceborne platforms.

For source attribution, the imaging data of the MAMAP2DL instrument was utilised. The determination of the exact source location is limited by a combination of the ground scene size of $\sim 110 \times 110 \text{ m}^2$ and, the accuracy of the orthorectification process itself ~~and has been being~~ estimated to be better than 110 m. ~~Highest column enhancements, identifying, and modulation by local winds. The highest column enhancements and the 'start' of plumes, indicating~~ the origin of the emissions, were observed over active parts of the landfills, where the garbage is deposited, towards the south-east for Las Dehesas and in the eastern part of Pinto. In the same regions CHARM-F observes the largest column enhancements. This implies significant emissions from areas which are not yet managed during nominal operations but probably also not sufficiently covered by the reporting. Nevertheless, the question remains about night time and weekend emissions, when there is less or no activity on the landfill.

A crucial parameter for the estimation of emission rates is the wind speed, which is particular challenging to determine for remote sensing instruments as they typically fly above the plumes and the BL. Here, we used modelled ERA5 data, which were validated by airborne measurements within the BL. On average, wind speed and direction disagree by only 0.05 m s^{-1} and 0.8° , respectively.

However, larger deviations occurred for the BLH in ERA5, which was consistently lower in the comparison of ERA5 to the two measured profiles. Correcting for this discrepancy led to a decrease in the average wind speed used for the cross-sectional fluxes of $\sim 24\%$ due to the strong vertical wind gradient (present in both ERA5 model data and BAHAMAS wind measurements). This reduction in wind speed directly changes proportionately the estimated emission rates.

Our analysis shows the importance of knowledge and understanding of the characteristics of the BL during a measurement. While we had the privilege to compare in situ wind measurements with model data, even though at a later time of the day, emission estimates based on satellite data rely on atmospheric parameters from models. Moreover, there is usually no possibility to validate the conditions during measurement times. Systematic errors such as the BLH in combination with the strong vertical wind speed gradient, ~~influences influence~~ the estimated emission rates. They need to be identified and taken into account to minimise their impact.

Our calculated emission rates are in good agreement with previous top-down estimates, even though, strictly speaking, they are only valid for the time of the overflight. The prevailing winds in combination with the vertical distribution of the CH_4 emissions in the BL could introduce a common error in our emission rate estimate but not to an extent that we approach reported values assuming constant emission throughout the year, at least on the 4th August 2022 during our flight. The fact that our emission estimates are a factor of 40 to 50 higher than reported values (assuming constant emissions) supports the inference that a major part of the emissions are unreported, especially as the reported emissions in E-PRTR fell by a factor of 10 from 2021 to 2022.

The methods used in this work are also applicable to planned satellite missions such as CO2M and MERLIN. Nevertheless, the generally coarser resolution on the ground will lead to a reduced sensitivity for emission rates, particularly for somewhat dispersed sources. Also, the combination of active and passive remote sensing on a single satellite platform would show promise for the future, as the advantages of both methods can be synergistically exploited.

An additional analysis is currently being studied. This makes use of a transport model to constrain the influence of the (changing) wind field and the (vertical) mixing of the CH₄ plume during the measurement flight. We consider the use of a transport model will resolve some of the issues encountered when the direction of the wind changes i.e. residual plume structures over the city of Madrid and potential CH₄ accumulations. These are difficult to account for using the simple cross-sectional mass balance approach.

Data availability. The MAMAP2DL CH₄ column anomalies and the CHARM-F observations are available from the authors upon request. The HALO BAHAMAS in situ dataset (including SHARC and JIG) can be directly inquired from the authors or can be downloaded from the HALO database (<https://halo-db.pa.op.dlr.de/>, Deutsches Zentrum für Luft- und Raumfahrt, 2024). The ECMWF ERA5 data can be directly inquired from the authors.

Appendix A: Further Flight Legs

Figure A1 supplements Fig. 5 with two additional flight legs, which were flown in along wind direction. Therefore, they were not used for any flux estimates. However, they reveal further insights into possible source regions.

The flight leg in (a) was acquired at the same flight altitude as the legs shown in Fig. 5. The leg shown in (b), on the other hand, was collected after the in situ part of the flight at around 13:34 UTC at a flight altitude of ~ 1.6 km a.g.l.. The reduced flight altitude also reduced the swath width of the MAMAP2DL imaging data from ~ 3 km to 700 m and also the ground scene size from $\sim 110 \times 110 \text{ m}^2$ to $24 \times 24 \text{ m}^2$.

Interestingly, in the lower flight leg (b), CH₄ enhancements are observed at similar positions as in the leg flown at higher altitudes (a) and in the perpendicular legs in Fig. 5 (a) for the Pinto landfill in the south. However, no enhancements are visible across the VTP Fig. A1 (b). This is in-line with the legs flown perpendicular to the wind direction, in which the highest anomalies were observed in the south-eastern part of the Las Dehesas landfill, however, not covered by the low flying leg. As the flight leg, acquired at lower flight altitude (b), was within the BL and, therefore, within the plume, caution needs to be taken with an quantitative interpretation of the shown MAMAP2DL column anomalies.

Appendix B: MAMAP2DL Retrieval

B1 WFMD-DOAS

The WFM-DOAS retrieval has been extensively described in other publications (Krings et al., 2011; Krautwurst et al., 2021) and thus, we focus here on the aspects, which are important for the quality of the retrieved CH₄ column anomalies. The core of the retrieval is based on radiative transfer model (RTM) simulations (in our case with SCIATRAN v3.8, Mei et al., 2023; Rozanov et al., 2014) of radiances, which describe the general state of the atmosphere at the time of the measurement flight to our best knowledge. Differences between the modelled radiance and the measured radiance are described by fitting

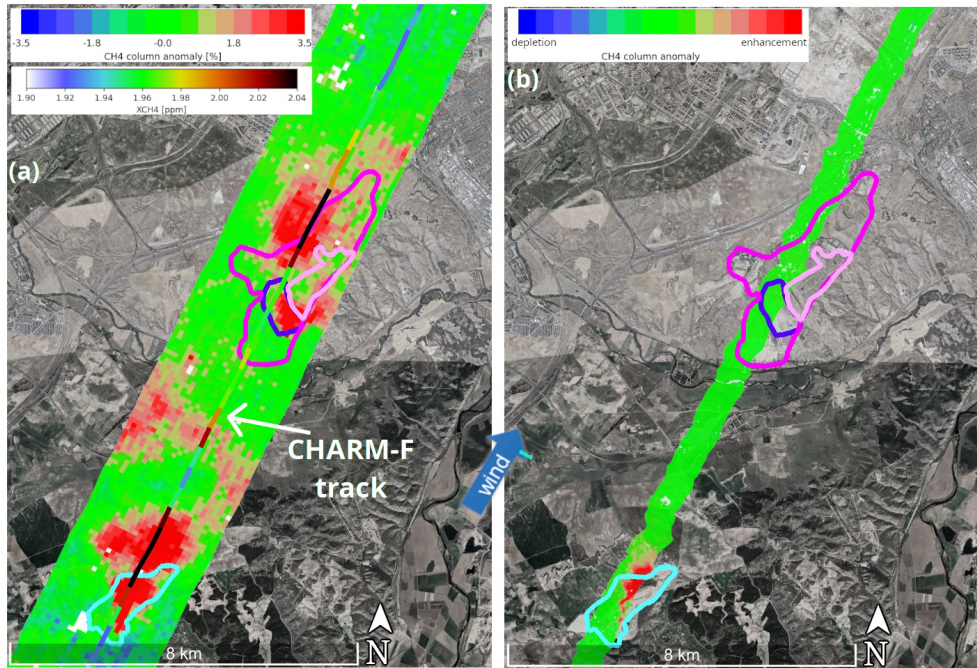


Figure A1. Similar to Fig. 5 but for the along wind legs at flight altitudes of ~ 7.7 km a.g.l. (a) and ~ 1.6 km a.g.l. (b). In (a), the retrieved CH_4 column anomalies from MAMAP2DL data are overlaid by the XCH_4 from CHARM-F data. There is no CHARM-F data available for low flying altitudes due to saturation of the detectors. The map underneath is provided by Google Earth (Image \copyright Landsat/Copernicus, Maxar Technologies).

weighting functions⁹ to the model and minimising the difference between measurement and modified model. An example for such differences are deeper absorption lines due to enhanced CH_4 from an emission plume in the atmosphere. The resulting fit factors are called profile scaling factors (PSFs) and are representative for the observed atmospheric CH_4 and CO_2 columns. The weighting functions, one for each fit parameter (in our case for CH_4 , CO_2 , H_2O and temperature), describe the change of radiance due to a change of one of the listed parameters. Furthermore, we apply a 1D look-up table approach for the topography to account for strong variations in surface elevation during the retrieval process.

To represent the atmosphere by the modelled radiances as realistically as possible, vertical concentration profiles of the gases (CH_4 , CO_2 , H_2O), pressure and temperature are needed. The model takes the properties of the reflecting surface into account. Multiple scattering by aerosols in the atmosphere is considered. Finally, geometrical factors such as flight altitude, surface elevation and solar zenith angle (sza) are included in the calculations (see Table B1 for details on the parameters used). Figure B1 shows one example fit for the two fit windows which we use in this study. These are 1590.0 to 1635.0 nm for CO_2 and 1625.0 to 1672.5 nm for CH_4 .

⁹Here, a weighting function describes the change of radiance due to a change of one parameter and must not be confused with CHARM-F's weighting function used to describe its altitude sensitivity, Appendix C1.

Table B1. Boundary conditions for the radiative transfer model simulations (RTMs) for the remote sensing (RS) part at ~ 7.7 km a.g.l. of the flight over Madrid.

| | |
|--|--------------|
| Flight day | 04.08.2022 |
| Time for RS pattern (local time, UTC) | |
| start [hh:mm] | 13:00, 11:00 |
| end [hh:mm] | 14:40, 12:40 |
| Mean solar zenith angle (sza) ^{a)} [°] | 25.8 |
| Flight altitude ^{b)} [m a.s.l.] | 8371 |
| Surface elevation along flight track ^{c)} | |
| min [m a.s.l.] | 441 |
| max [m a.s.l.] | 1026 |
| Mean column mole fractions ^{d)} | |
| CH ₄ [ppb] | 1876 |
| CO ₂ [ppm] | 417.0 |
| H ₂ O [ppm] | 4127 |
| Aerosol scenario ^{e)} [–] | urban |
| Albedo ^{f)} [–] | 0.30 |

^{a), b), c), e), f)} are estimated similarly to Krautwurst et al. (2021).

^{d)} The vertical atmospheric profiles are taken from the U.S. standard atmosphere (USCESA, 1976), which are adapted to and replaced by the in situ observations collected by BAHAMAS (H₂O, temperature, pressure) and JIG (CH₄, CO₂) for the measurement flight at altitudes between ~ 1.6 and 7.7 km a.g.l..

Then, the CH₄ column anomalies are computed from the retrieved PSFs as follows:

$$\Delta V_{\text{CH}_4} = \left(\frac{\text{PSF}_{\text{ratio}}}{\overline{\text{PSF}_{\text{ratio}}}} - 1 \right) \cdot \text{CH}_4^{\text{abs col}} \cdot \textcolor{red}{k} \textcolor{blue}{cf} \quad (\text{B1})$$

690 where

$$\text{PSF}_{\text{ratio}} = \frac{\text{PSF}_{\text{CH}_4}}{\text{PSF}_{\text{CO}_2}}, \quad (\text{B2})$$

where $\text{PSF}_{\text{ratio}}$ is the unitless ratio of the two retrieved PSFs for CH₄ and CO₂, which is also called the proxy method (Krings et al., 2011, 2013), ΔV_{CH_4} is the CH₄ column anomaly in molec cm⁻² (for visualisation purposes displayed as % relative to the given background column), $\textcolor{red}{k} \textcolor{blue}{cf}$ is a unitless conversion factor (see Appendix B3), $\text{CH}_4^{\text{abs col}}$ is the assumed background column of CH₄ in molec cm⁻² as used in the RTM simulation, and $\overline{\text{PSF}_{\text{ratio}}}$ denotes a normalisation process using observations from the local background (see Sect. 2.4).

695

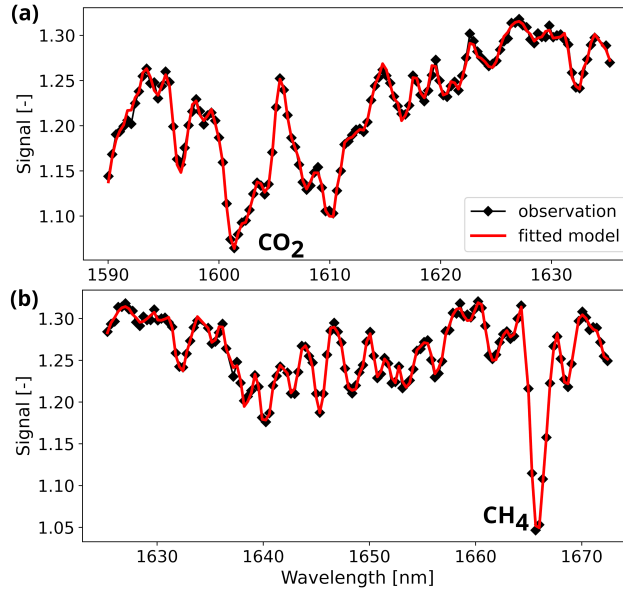


Figure B1. Example fits for the two fit windows used in the WFM-DOAS retrieval: (a) CO₂ and (b) CH₄ fit window. The black diamonds denote the measurement and the red solid line the fitted model.

As an example, a PSF for CH₄ (PSF_{CH₄}) of larger than 1 would, compared to the modelled background radiances, indicate more CH₄ in the measured spectrum (and thus in the atmosphere) due to an emission plume and vice versa. However, the absorption depth in a measurement is not only determined by the amount of gases but also by other effects like variations in
700 sza, surface elevation, flight altitude or aerosol composition, which might not be modelled accurately. These effects lead to a light path error, which affects the PSFs of CH₄ and CO₂ in a similar way due to their spectral proximity. Using the proxy method as indicated in Eq. B2, which is only possible if there are no major variation in the atmospheric CO₂ concentration field expected, reduces these apparent column variations due to light path errors significantly (Krings et al., 2013, 2011). Another important step is the normalisation by the local background, indicated by $\overline{\text{PSF}_{\text{ratio}}}$, and the consideration of the conversion
705 factor, before obtaining the CH₄ column anomalies in molec cm⁻² (or better suited for visualisation purposes in %) used during the cross-sectional flux method (Sect. 2.4).

B2 Errors of the CH₄ Column Anomalies

Previous sensitivity studies have shown (Borchardt et al., 2021; Krautwurst et al., 2021; Krings et al., 2011) that false assumptions in the input parameters for the RTM simulations can cause significant systematic errors in the retrieved single columns
710 or the PSFs of CH₄ and CO₂. Most of these systematic errors are related to light path errors and are thus significantly reduced by the proxy method as described in Sect. B1. Remaining systemic errors (e.g., a changing sza, or a constant offset caused by an inaccurate CO₂ profile, temperature or aerosol profiles) vary either smoothly with time or are approximately constant over the measurement area. These effects are therefore corrected by the additional normalisation with observations outside of

715 a plume. Exceptions could be changes in surface elevation and surface spectral reflectance, which can occur pseudo-random
 and over short distances (see Krautwurst et al., 2021, for details). Additionally, potentially co-emitted CO₂ from landfills af-
 720 fect the proxy method. Krautwurst et al. (2017) have shown that the reduction on the CH₄ anomalies could be around 5 % on
 average. This effect is however, not considered further here. The sensitivity of the retrieval to parameters for the Madrid flight
 are summarised in Table B2 and could potentially lead to a remaining systematic offset of the retrieved CH₄ column anomalies
 of around 0.14 % after correction (Krings et al., 2011) by the conversion factor (0.763) resulting from the basic scenario used
 in Table B2.

Table B2. Sensitivity of the retrieved PSFs to the input parameters for the RTM simulations according to expected variations during the flight
 on the 4th August 2022. The deviations for the PSFs of CH₄, CO₂ and the ratio CH₄ over CO₂ are given relative to the background column.
 The parameters for the basic scenario used during the retrieval are given in Table B1 using a surface elevation of 0.734 km. Not all values
 deviate symmetrically around 0 %, therefore, the worst case scenario is always selected.

| variation in parameter | Expected | | |
|--------------------------------------|----------------------|-----------------|------------|
| | deviation of PSF [%] | | |
| | CH ₄ | CO ₂ | ratio |
| Solar zenith angle [$\pm 3^\circ$] | ± 1.31 | ± 1.29 | ± 0.02 |
| Surface elevation [± 50 m] | ± 0.83 | ± 0.93 | ± 0.10 |
| Flight altitude [± 5 m] | ± 0.02 | ± 0.01 | ± 0.01 |
| Aerosol [desert, background] | ± 0.12 | ± 0.32 | ± 0.21 |
| Albedo [0.1–0.50] | ± 0.98 | ± 1.14 | ± 0.16 |
| H ₂ O [± 50 %] | ± 0.01 | ± 0.00 | ± 0.01 |
| CO ₂ [± 1 %] | ± 0.00 | ± 1.00 | ∓ 1.00 |
| CH ₄ [± 1 %] | ± 1.00 | ± 0.00 | ± 1.00 |
| Temperature [$\pm 5^\circ$ C] | ± 1.60 | ± 1.80 | ± 0.21 |

In addition to the systematic effects described above, random effects like measurement noise produce random column errors.
 They are not separated further and estimated together as the single-measurement precision, which is directly computed from
 the retrieved CH₄ column anomalies outside of the plume (as, e.g., done in McLinden et al., 2024; Chulakadabba et al., 2023;
 Borchardt et al., 2021; Krautwurst et al., 2021; Krings et al., 2013). Moreover, the measurement precision can cover some of
 725 the remaining small scale systematic offsets. For Madrid’s landfills flight, it has been estimated to be ~ 0.4 %. This is slightly
 worse than that of its precursor instrument MAMAP (see Sect. 2.1.2) and possibly related to the coarser spectral sampling (~ 3
 to 4 pixels vs. ~ 10 pixels). However, this is compensated by simultaneously acquiring 28 observation in across flight direction
 for a swath width of ~ 3 km at a flight altitude of ~ 7.7 km a.g.l..

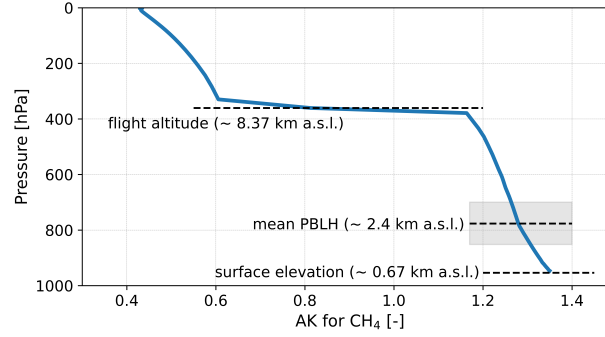


Figure B2. Averaging kernel (AK) of CH_4 for the atmospheric and geometrical conditions as encountered during the Madrid flight for MAMAP2DL. The step in the profile at 8.37 km a.s.l. (or 7.7 km a.g.l.) marks the flight level of the aircraft. The shaded area of the BLH represents the growth and uncertainty of the BLH during the remote sensing flight according to ERA5 and measured vertical profiles (also see Appendix D2).

B3 Averaging Kernels and Conversion Factor

730 An important parameter of the WFM-DOAS retrieval applied to MAMAP2DL observations is the so-called averaging kernel (AK). It describes the sensitivity of the retrieval to CH_4 column changes in different altitude levels. It is computed by retrieving the CH_4 column from simulated measurements in which the CH_4 concentration at various altitude levels has been perturbed. Figure B2 shows the AK based on a RTM simulation mimicking the atmospheric and geometrical condition during the flight over Madrid as used in Sect. B1 for analysis of the MAMAP2DL observations.

735 An AK of unity at a certain altitude or pressure level would indicate that the retrieval is able to retrieve the perturbed CH_4 concentration correctly. However, due to the measurement geometry the retrieval overestimates CH_4 changes below the aircraft close to the surface. This effect is related to the light path in the atmosphere. An idealised light beam covers the air masses below the aircraft twice before reaching the sensor leading to apparent enhanced absorption by CH_4 . This effect must be corrected for, otherwise, the retrieval would overestimate potential enhancements below the aircraft.

740 Assuming that observed variations in the CH_4 column originate from air masses inside the BL, a conversion factor kcf is computed as mean of the averaging kernels \overline{AK}_{below} within the BL and then applied in Eq. B1 for the computation of the column anomaly:

$$kcf = \frac{1}{\overline{AK}_{below}}. \quad (B3)$$

The altitude resolved $AK(z)$ is defined as variation of the retrieved total CH_4 column $\partial V_{retrieved}$ as a result of a perturbation of the true CH_4 subcolumn $\partial v_{true}(z_j)$ at altitude z_j (Krings et al., 2011):

745

$$AK(z_j) = \frac{\partial V_{\text{retrieved}}}{\partial v_{\text{true}}(z_j)}. \quad (\text{B4})$$

The conversion factor ~~k~~_{cf} for the Madrid flight is 0.763 for an average BLH of 2.4 km a.s.l. as encountered during the remote sensing flight. Computing the BLH as described in Appendix D2 indicates an increase in the BLH at the position and time of the different flight legs from approx. 1.9 to 2.7 km a.s.l.. Considering additionally the given uncertainty of the BLH estimate would lead to an error of the estimated conversion factor of 1.2%.

B4 Orthorectification

In order to correctly deduce source positions of the CH₄ emission plumes across the two landfills, the CH₄ anomaly maps from MAMAP2DL have to be accurately projected on the ground. Important parameters for this procedure are the attitude information of the aircraft: pitch, roll, and yaw, which define the line of sight of the instrument. Moreover, the aircraft's flight altitude and the surface elevation at the position of the projected ground scene, in combination with the viewing angle of the instrument, determine the across leg ground scene size and, thus, the width of the entire swath and, finally, the aircraft position itself. The position and attitude data (pitch, roll, yaw, flight altitude, location) are provided by the BAHAMAS system introduced in Sect. 2.1.4 at a resolution of 10 Hz. Topography data is derived from the SRTM (Shuttle Radar Topography Mission, Farr et al., 2007) digital elevation model (DEM) also used for the estimate of the surface elevation applied in the RTMs in Appendix B1. Next, the orthorectification is performed along the lines as described in Schoenhardt et al. (2015).

As main RGB imagery source, we use Google Earth data, overlaid with the CH₄ column anomaly maps (as kmz-files, see Fig. 5). Therefore, the accuracy of the orthorectification is validated against Google Earth imagery. Coincidentally, at least some of the Google Earth images of Madrid were taken in August 2022, which is in the same month as the measurements were acquired. Therefore, we assume that the state of the landfill during the overflight on the 4th August is very similar to that shown in the Google Earth images. For the validation process, we use high-resolution (not spatially binned) intensity maps of the measured on chip signal strength around 1.6 μm with a spatial resolution of ~8.5 m in along flight direction as they mimic to a certain degree the surface properties and structures seen in the Google Earth RGB maps. The deviations (or better gradients) of distinct features such as rivers or streets are then used to verify the accuracy of the orthorectification. In along flight direction the accuracy is better than ~20 m, whereas in across flight direction, it is determined by the coarse spatial resolution of ~110 m. Overall, we estimate an accuracy of the column anomaly maps of better than 110 m, or around one ground scene, for the Madrid dataset, in generally limited by the final ground scene size.

Appendix C: CHARM-F Retrieval

C1 Retrieval and Weighting Function

The quantity that is independently measured by CHARM-F is the differential absorption optical depth (DAOD, $\Delta\tau$), calculated from the received signals by

$$\Delta\tau = \frac{1}{2} \ln \left(\frac{S_{\text{off}}/E_{\text{off}}}{S_{\text{on}}/E_{\text{on}}} \right). \quad (\text{C1})$$

S_{on} , S_{off} are backscattered signal-signals and E_{on} , E_{off} are internal energy reference measurement-measurements at the on- and offline wavelength, respectively. $\Delta\tau$ can on the other hand also be described in terms of the molecular absorption cross-section at both wavelengths (σ_{on} and σ_{off}) and the number density n_{CH_4} or the dry-air mixing ratio of methane r_{CH_4} .

$$\Delta\tau = \int_{h_0}^{h_1} n_{\text{CH}_4} \underbrace{(\sigma_{\text{on}} - \sigma_{\text{off}})}_{=\Delta\sigma} dh, \quad (\text{C2})$$

$$= \int_{h_0}^{h_1} \frac{r_{\text{CH}_4}}{(1 + r_{\text{H}_2\text{O}})} \cdot n_{\text{air}} \cdot \Delta\sigma dh. \quad (\text{C3})$$

The integral runs over the air column between aircraft (h_1) and ground (h_0). In Eq. C3 the number density of greenhouse-gas molecules has been expressed in terms of the number density of air molecules n_{air} and the dry-air molar mixing ratio of the greenhouse-gas species, while also accounting for the dry-air molar mixing ratio of water

$$n_{\text{air}} = (1 + r_{\text{H}_2\text{O}}) \cdot n_{\text{dry air}}. \quad (\text{C4})$$

Using the general gas equation ($n_{\text{air}} = \frac{p}{k_B \cdot T}$) n_{air} can be expressed in terms of pressure p and temperature T . Furthermore, the integral over altitude can be transformed into a pressure integral ($dh = \frac{dh}{dp} \cdot dp = -\frac{k_B \cdot N_A \cdot T}{p \cdot M_{\text{air}} \cdot g} dp$).

$$\Delta\tau = \int_{p_1}^{p_0} \frac{r_{\text{CH}_4} \cdot N_A}{(1 + r_{\text{H}_2\text{O}}) \cdot M_{\text{air}} \cdot g} \cdot \Delta\sigma dp. \quad (\text{C5})$$

Here, k_B is the Boltzmann constant, N_A the Avogadro constant, g the gravitational acceleration and M_{air} the average molar mass of air. Next, molar mass is expressed as molecular mass ($m_{\text{air}} = \frac{M_{\text{air}}}{N_A}$) and dry air is discriminated from water vapour.

$$\Delta\tau = \int_{p_1}^{p_0} \frac{r_{\text{CH}_4}}{(1 + r_{\text{H}_2\text{O}})} \cdot \underbrace{\frac{\Delta\sigma}{m_{\text{air}}}}_{=\frac{m_{\text{dry air}} + r_{\text{H}_2\text{O}} \cdot m_{\text{H}_2\text{O}}}{1 + r_{\text{H}_2\text{O}}}} \cdot g dp, \quad (\text{C6})$$

$$= \int_{p_1}^{p_0} \frac{r_{\text{CH}_4}}{(m_{\text{dry air}} + r_{\text{H}_2\text{O}} \cdot m_{\text{H}_2\text{O}})} \cdot \frac{\Delta\sigma}{g} dp. \quad (\text{C7})$$

Finally, r_{CH_4} is pulled out of the integral by replacing it with a (weighted) column average $X\text{CH}_4$, which is thus defined.

$$\Delta\tau = X\text{CH}_4 \int_{p_1}^{p_0} \frac{\sigma_{\text{on}}(p, T) - \sigma_{\text{off}}(p, T)}{g (m_{\text{dry air}} + r_{\text{H}_2\text{O}} \cdot m_{\text{H}_2\text{O}})} dp, \quad (\text{C8})$$

$$795 \quad = X\text{CH}_4 \int_{p_1}^{p_0} W(p, T) dp. \quad (\text{C9})$$

The quotient remaining in the integral is the so-called weighting function

$$W(p, T) = \frac{\sigma_{\text{on}}(p, T) - \sigma_{\text{off}}(p, T)}{g \cdot (m_{\text{dry air}} + m_{\text{H}_2\text{O}} \cdot r_{\text{H}_2\text{O}})}, \quad (\text{C10})$$

which carries the terms that are pressure/altitude dependent but known to some degree. In the standard data analysis routines of CHARM-F, the absorption cross-sections are calculated based on the spectroscopic data sets GEISA20 and Vasilchenko (Delahaye et al., 2021; Vasilchenko et al., 2023), and the state of the atmosphere (vertical structure at measurement location) is extracted from the ECMWF Integrated Forecasting System (IFS).

The partial-column weighted-average molar mixing ratio is therefore described by

$$X\text{CH}_4 = \frac{\Delta\tau}{\int_{p_1}^{p_0} W(p, T) dp}. \quad (\text{C11})$$

C2 Column Anomalies from CHARM-F Measurements

805 This section describes the details of how we convert $X\text{CH}_4$, as measured by CHARM-F, into a column anomaly of the dry-air CH_4 molar mixing ratio for the total column. The reference for the calculation of anomaly is the methane concentration from the Copernicus Atmosphere Monitoring Service (CAMS) global inversion model (Segers and Houweling, 2023). Based on the dry-air molar mixing ratio from CAMS ($r_{\text{CH}_4, \text{CAMS}}$) we calculate a column-averaged molar mixing ratio between surface (sfc) and flight altitude (flh), using number density of air molecules from CAMS as weight n_{air} :

$$810 \quad X\text{CH}_{4\text{CAMS}} = \frac{\int_{\text{sfc}}^{\text{flh}} r_{\text{CH}_4, \text{CAMS}} \cdot n_{\text{air}} dz}{\int_{\text{sfc}}^{\text{flh}} n_{\text{air}} dz}. \quad (\text{C12})$$

On this basis, the partial column anomaly A_{pc} is calculated.

Due to the temperature and pressure dependence of the spectroscopic properties of methane, $X\text{CH}_{4\text{CHARM-F}}$ and $X\text{CH}_{4\text{CAMS}}$ are weighted somewhat differently along the column (see Fig. C1). Nevertheless, in the hypothetical case, where methane is homogeneously distributed along the surveyed column, they give the exact same result by definition of the weighting function.

815 To compensate for this small bias (few percent), which only affects the anomalous part of the column concentration, based on the CHARM-F weighting function $W(p, T)$, we calculate a correction factor.

$$C_W = \frac{\int_{\text{sfc}}^{\text{flh}} W(p, T) n_{\text{air}} dz}{\int_{\text{sfc}}^{\text{flh}} n_{\text{air}} dz} \cdot \frac{\int_{\text{sfc}}^{\text{blh}} W(p, T) n_{\text{air}} dz}{\int_{\text{sfc}}^{\text{blh}} n_{\text{air}} dz}. \quad (\text{C13})$$

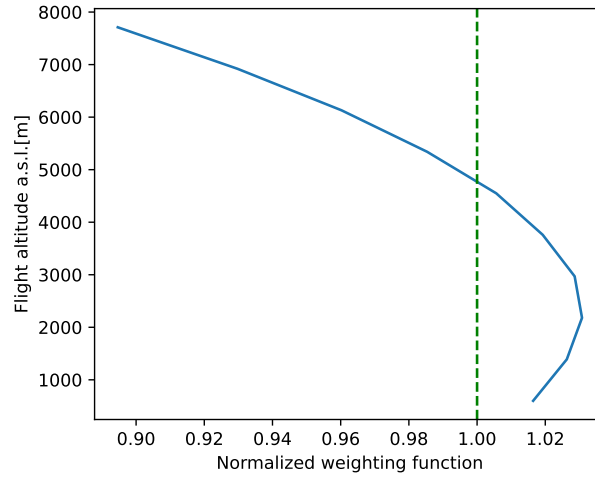


Figure C1. Typical altitude dependency of the CHARM-F weighting function for methane. The weighting function has been normalised to the particle-number-averaged value of the column between the ground and the flight altitude of about 8 km. The dashed green line indicates the unity weighting used for the CAMS reference column concentration.

Here, we assume that methane plumes from a nearby source at the surface lead to a mole-fraction enhancement only below the top of the atmospheric BL. No enhancement is expected within the free troposphere, up to the flight altitude (flh). C_W quantifies the ratio between how a homogeneously distributed methane enhancement would be perceived by CHARM-F versus an enhancement that is also homogeneous, but restricted to the BL.

The partial column anomaly for the column below the aircraft can therefore be calculated as follows:

$$A_{pc} = C_W \cdot \frac{XCH_4 - XCH_{4CAMS}}{XCH_{4CAMS}}. \quad (C14)$$

Finally, also the column from the aircraft to the top of the atmosphere (toa) has to be considered. That region, where the anomaly is zero by definition, is combined with the column below by averaging, using particle number density of air molecules as weight.

$$A_{tc} = \frac{A_{pc} \cdot \int_{sfc}^{flh} n_{air} dz}{\int_{sfc}^{toa} n_{air} dz}. \quad (C15)$$

Thus, A_{tc} is the closest approximation of the CH_4 anomaly in terms of mole fraction for the total column along flight tracks, comparing CHARM-F measurements with CAMS reanalysis data as reference.

830 C3 Uncertainties of CHARM-F Measurements

The measurement uncertainties of XCH_4 retrieved with CHARM-F can be categorised into statistical and systematic uncertainties. Statistical uncertainties are introduced through the measurement of DAOD, or more precisely, the measurement of

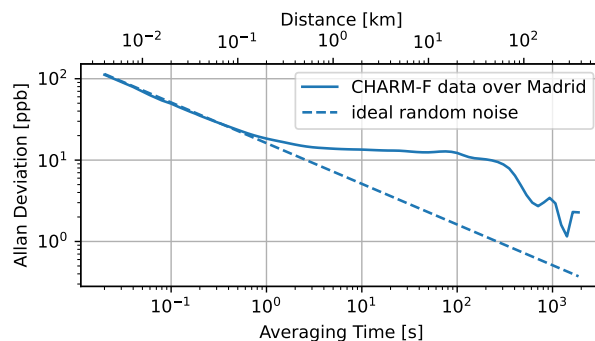


Figure C2. Allan deviation plot of the CHARM-F measurements over the Madrid landfills. In the case of pure ideal noise, the scatter reduces from single pulse-pair measurements with one over the square root of the number of measurements that are averaged. Deviations indicate either drifts, or like in this case, mostly real methane gradients.

the four signal intensities that contribute to DAOD. These are associated with a certain degree of noise, largely independent between individual laser pulses. The main noise sources are photon statistics, detector noise, and speckle noise (Ehret et al., 2008). The exact magnitude can be estimated from the system parameters or directly determined from measurement statistics. The influence of these uncertainties can be reduced by averaging multiple pulse-pairs. Such statistical uncertainties can be characterised with an Allan deviation (Allan, 1966) plot, as shown in Fig. C2. For an individual double-pulse measurement the standard deviation is about 100 ppb or 5%. Averaging multiple measurements reduces the uncertainty with an inverse square-root law, as expected, until at about 1 s of averaging. At this point the Allan deviation diverges from this noise-only expectation, which can be explained by actual gradients in form of the observed methane plumes. Residual uncertainties from systematic drifts or offsets have to be addressed using a different strategy.

Systematic uncertainties are related to inaccurate knowledge or deviation of certain system or meteorological parameters from the design/assumed values. These deviations typically change over time at very slow rates of the order of minutes to hours and are therefore highly correlated between individual pulse-pairs. Systematic uncertainties arise from various sources. These include small misalignments in the optical setup, which could cause unequal clipping of light between the online and offline pulses in the receiver. Additional factors contributing to uncertainties are errors in the tuning of the emitted wavelengths, spectroscopic inaccuracies and discrepancies between the numerical weather simulation model and the actual atmospheric conditions during measurement, which impact the calculation of the weighting function (Ehret et al., 2008).

In order to estimate relevant systematic uncertainties for our measurements, we define a background region, south-east of the landfills and also the city of Madrid. The region has been chosen such, that the aircraft typically stays within that region for about 100s or 5000 individual measurements (orange track segments in Fig. C3). This length/duration is comparable to the typical plume or background regions used for the flux measurements. For each overpass of the background region the average partial-column XCH_4 is computed, resulting in a residual scatter of 4 ppb or 0.2%. From extrapolating the random-noise

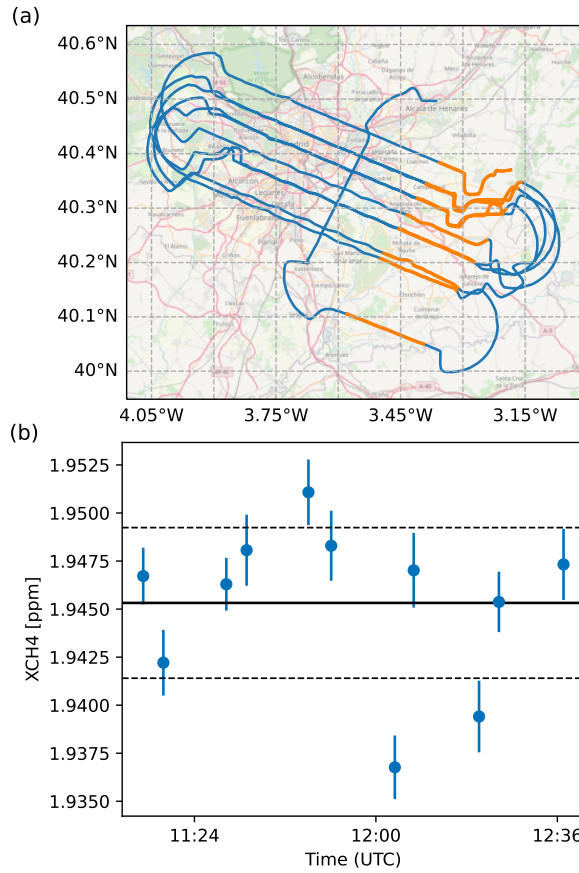


Figure C3. Uncertainties of the CHARM-F column concentration background, averaged over 100 second background segments. The flight-track segments that were used for the background-uncertainty study are shown in orange (a). The average values and statistical errors XCH_4 for these segments are shown in panel (b), together with the overall mean value and standard standard-deviation band, drawn as solid and dashed lines respectively. Base map data © OpenStreetMap contributors, ODbL 1.0. Tiles accessed using Cartopy.

model in the Allan deviation plot, 2ppb or 0.1% are expected. We conclude that on the time scales that are relevant for our
855 measurements, systematic effects lead to a doubling of the errors that would be expected from random noise only.

Appendix D: Validation of ECMWF ERA5 Data by on-board Aircraft Measurements

D1 Validation of ERA5 Wind Data

In order to confirm that the wind parameters, that are relevant for our flux or emission rate estimates, are correctly modelled
in ECMWF ERA5, we compare them to on board wind in situ measurements on HALO from BAHAMAS (see Sect. 2.1.4).
860 ERA5 data have been interpolated and evaluated along the flight track in space and time. The on-board measurements have

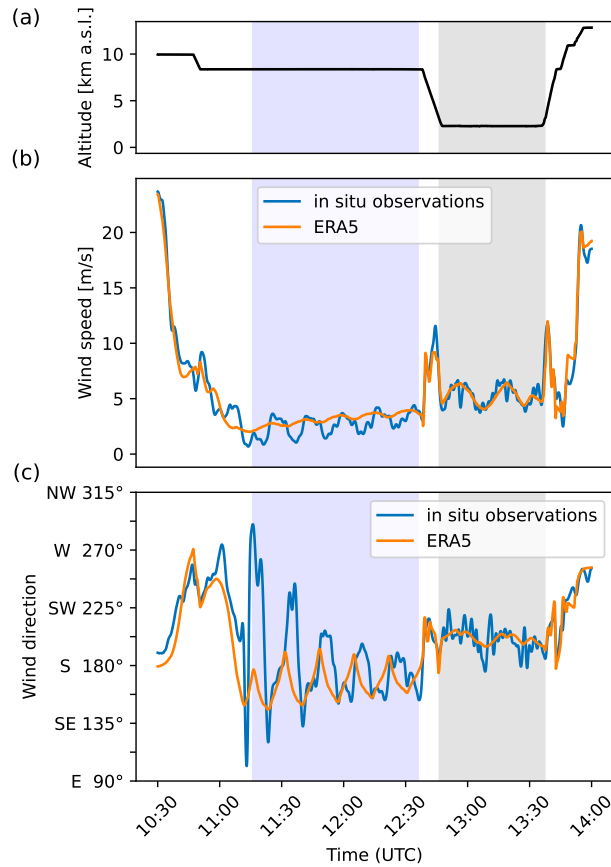


Figure D1. Flight altitude of the HALO aircraft (a), wind speed (b) and direction (c) as modelled in ECMWF ERA5 vs. actual in situ measurements of BAHAMAS during the HALO flight over Madrid. The section of the flight that took place within the BL is highlighted in grey and the section for the remote sensing observations in light blue.

been smoothed with a 30s Gaussian kernel to reduce fluctuations from turbulence, which is on a scale far below the resolution of ERA5. The ERA5 model matches the BAHAMAS measurements very well over longer time frames, especially when neglecting the small scale turbulence still visible in Fig. D1. This is particularly valid for the part of the flight within the BL (gray region), where the plume is located in. The averaged difference between model and measurement for the wind speed and wind direction is 0.05 m s^{-1} and 0.8° in the BL (averages are actually quite independent from the applied smoothing kernel). The only caveat is that the time period for which the good match can be demonstrated is up to around 2h after the start of remote sensing section of the flight. Therefore, a similarly good match between model prediction and actual wind situation within the BL has to be assumed also for earlier times without explicit proof. The significantly larger mismatch between ERA5 and the measured winds in some segments of the flight at earlier times (not within the PBL) can most likely be explained with

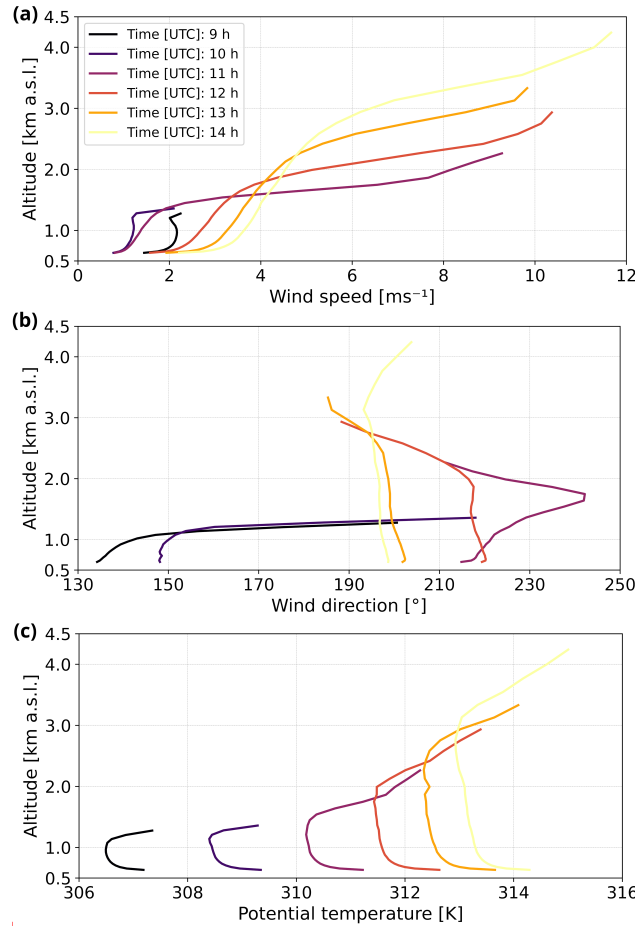


Figure D2. Vertical profiles for wind speed (a), wind direction (b), and potential temperature (c) between 9 and 14 UTC based on the ECMWF ERA5 model data. The height of the profiles is restricted to the BLH as given in ERA5. Time of the remote sensing overflight was between 11:00 and 12:40 UTC. In situ data collection within the BL was between 12:50 and 13:30 UTC. The profiles are representative for 40.292°N and 3.614°W, which is located between the two landfill complexes.

870 strong wind shear in a thin layer, exactly at about the flight altitude during the remote sensing part of the flight, in combination with a relatively coarse vertical resolution of ECMWF there.

Interestingly, during the descent into the BL (at around 12:45 UTC) and the subsequent ascent around two hours later the wind speed peaks at values of up to 10ms^{-1} without significant change in wind direction. This indicates a strong vertical gradient in wind speed in the BL in both model and measurement from top of the BL to at least 1.6 km a.g.l.. This is actually
875 confirmed by vertical profiles of the wind speed from ERA5 data (Fig. D2, a). They show a strong vertical gradient, which is around 2ms^{-1} at the ground and increases to 10ms^{-1} at the top of BL for 12 UTC. Moreover, on that day the wind speed increases from 10 to 14 UTC in the BL. The wind direction (b) is relatively stable after 11 UTC with values between 200° and

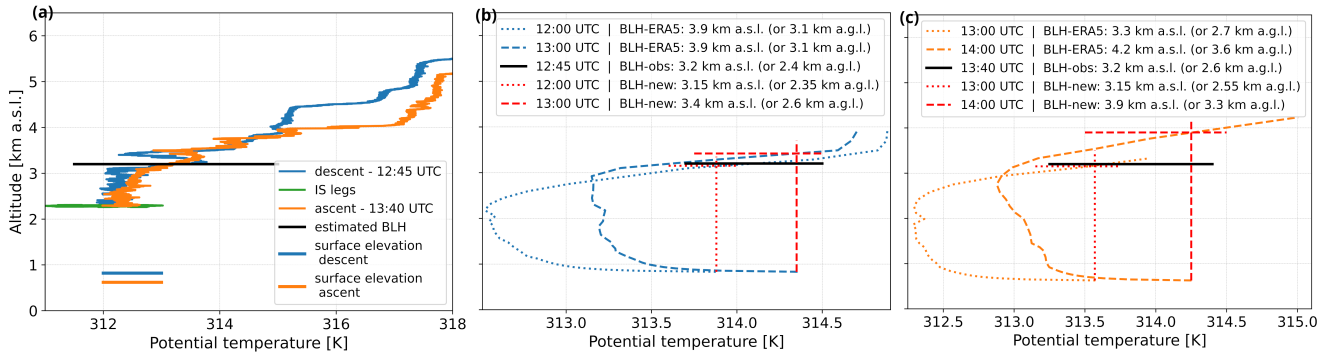


Figure D3. Comparison between HALO in situ measurements and ERA5 model data. The vertical profiles of potential temperature for the descent at 12:45 UTC (40.345°N, 3.010°W) and the ascent at 13:40 UTC (40.322°N, 3.745°W) as measured by BAHAMAS aboard HALO are shown in (a). The dotted-solid black horizontal line marks the BLH, estimated from these profiles to be 3.2 km a.s.l., in all sub-figures. Blue marks the profile during descent; the relevant ERA5 model profiles at that location and times (12, dotted, and 13, dashed, UTC) are then given in (b). Orange marks the profile during ascent; the relevant ERA5 model profiles at that location and times (13, dotted, and 14, dashed, UTC) are then given in (c). Red vertical and horizontal lines mark the newly estimated BLH for each time step in the model based on the method described in the main text. Different line types show different temporal affiliations. BHL values are given in the legends.

220°. However, before the stabilisation to south-south-west at 11 UTC (right before the measurement flight started), the wind had a strong easterly component.

880 D2 Validation of ERA5 BLH Data

For the BLH, ERA5 shows an increase from ~ 1.3 km a.s.l. (0.7 km a.g.l.) to ~ 4.2 km a.s.l. (3.6 km a.g.l.) nicely illustrated in the potential temperature profiles for that location and time period (Fig. D2, c). To validate ERA5's BLH, we compare it to measured potential temperature profiles during the descent and ascent at 12:45 UTC (40.345°N, 3.010°W) and 13:40 UTC (40.322°N, 3.745°W), respectively, at the respective locations. The descent took place over a more hilly environment approx.

885 50 km east of the landfills and the ascent right over the city of Madrid 12 km west of the landfills.

Both profiles are shown in Fig. D3 (a). We estimate the BLH for both profiles to ~ 3.2 km a.s.l. (considering topography would yield 2.4 km a.g.l. and 2.6 km a.g.l. for descend and ascent, respectively) due to the strong increase in potential temperatures at these altitudes. Comparing the BLHs from ERA5 at these positions and times yield significantly and consistently higher BLHs of 700 m relative to sea level (b, c). In order to correct for this discrepancy but also to transfer it to earlier time of the measurement, when the remote sensing observations were collected, we use the potential temperature profile from ERA5 and estimate a new BLH. We do that by using the temperature at the surface and then searching for the altitude level where this value is approached for the first time. The assumption behind this is that an air parcel, having a certain potential temperature, rises if the potential temperature is lower in the surrounding air masses and reaches an equilibrium (height) when the potential temperature of the surrounding is similar. This process is indicated in the panels (b) and (c) in Fig. D3 by the vertical red lines

895 for the respective time steps of the model. If the leg, or in this case one profile, is collected in between two time steps, the newly computed BLH is linearly interpolated in time.

For the descending and ascending profiles, this method yields ~ 3.33 km a.s.l. (2.53 km a.g.l.) and ~ 3.65 km a.s.l. (3.05 km a.g.l.), respectively, which is up to 15 % lower than given directly by ERA5 with regards to km a.s.l.. On average over all leg positions and times, the BLHs decrease by around 17 %, which also leads to a decrease in the computed wind speed of 24 %. As conservative uncertainty estimate, we assume an error of 20 % in our BLH estimate with respect to its depth relative to the ground. A deeper BL would have a larger error. Applying this to the profiles would lead to absolute errors in the BLH for descent and ascent of 0.5 km and 0.6 km, respectively. This uncertainty in BLH translates into a wind speed uncertainty of 0.8 m s^{-1} (or 20 %) on average for our flight legs. The wind direction is hardly influenced by a change in BLH.

Appendix E: Column and Flux Comparison MAMAP2DL and CHARM-F

905 Figure E1 summaries the comparison of cross-sections between MAMAP2DL and CHARM-F.

Appendix F: Errors of the Flux Estimates

F1 General Error Handling

Assuming that the CH_4 emission plumes are well-mixed within the BL, major error sources for the cross-sectional flux computation are the wind speed and direction, the random and systematic errors of the retrieved column anomalies from the remote sensing instruments, the boundaries or limits of the background normalisation used to compute the real enhancements, and the uncertainty in the estimate of the BLH from ERA5. To compute these errors, we use Gaussian error propagation of Eq. 1/2 where possible. All considered sources of uncertainty are summarised in Table F1 and their range is given in Table 1. Error propagation is applied to the error in wind speed (δF_u) and the error in the BLH (δF_{blh}), which changes the part of the wind profiles over which the average is calculated, and remaining systematic errors of the columns ($\delta F_{\text{col-ac}}$) and of the conversion factor ($\delta F_{\text{col-cf}}$). Moreover, the random error of the columns ($\delta F_{\text{col-pr}}$) is propagated. However, the single-column precision is additionally divided by \sqrt{n} , with n being the number of measurements or ground scenes inside of the plume of one cross-section, taking into account its random nature (see for example Appendix C3). The error of the wind direction on the computed flux is considered by varying the direction (α) according to the respective directional uncertainty. The error in the flux is then given by the variation of the computed fluxes. In a similar way, we take into account the error of the background normalisation (δF_{bg}) by computing a set of fluxes based on reasonable variations of the background limits and calculating the standard deviation of their differences from the main flux estimate.

F2 Error Handling for MAMAP2DL

In the case of MAMAP2DL the total error of the flux of one cross-section ($\delta F_{\text{M2D, cs}}$) is calculated by root sum squaring the error contributions:

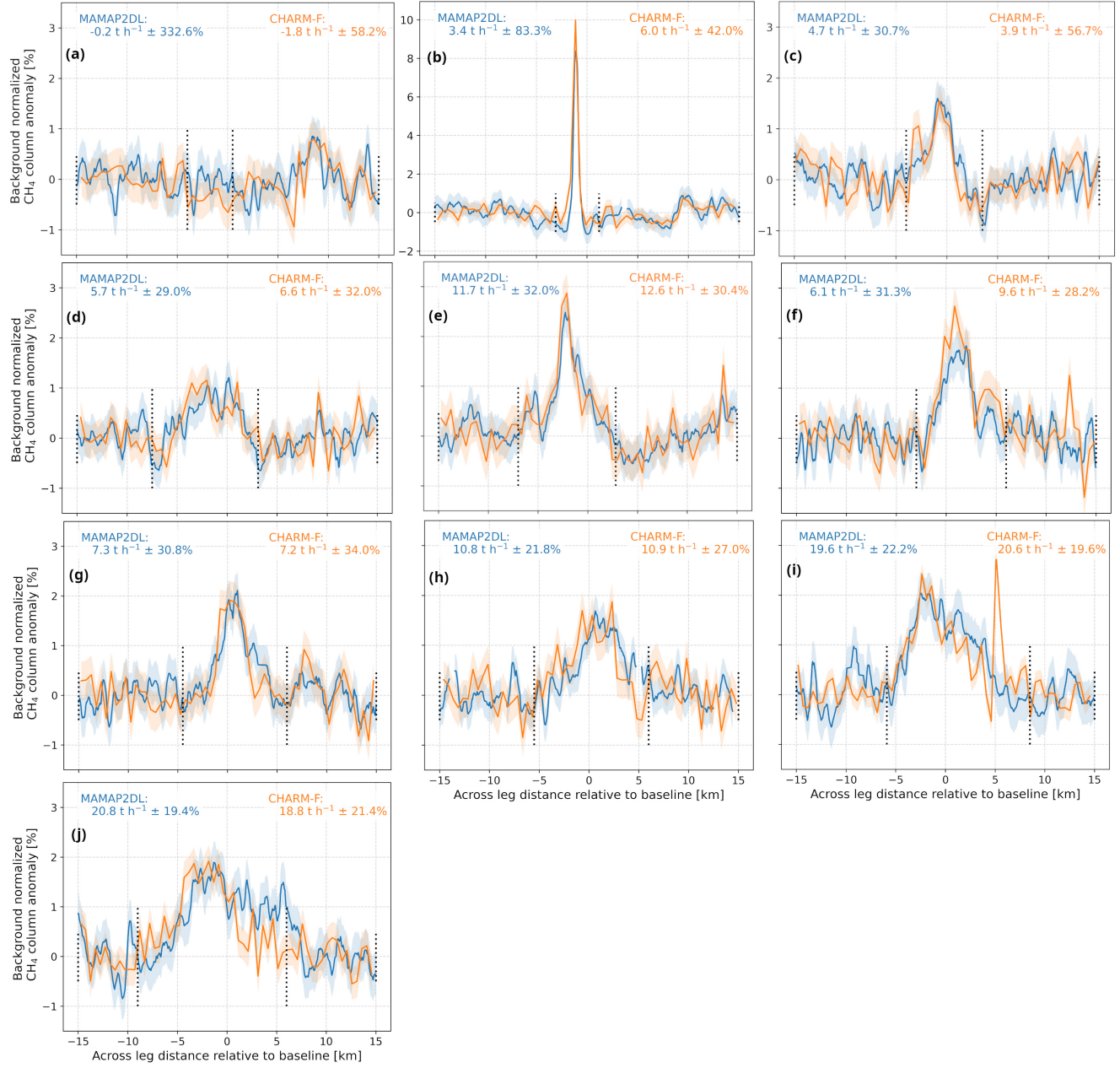


Figure E1. Same as Fig. 6 but for the remaining cross-sectional fluxes of the different legs from MAMAP2DL and CHARM-F observations. Cross-section in Fig. 6 would correspond to (g). Order of cross-sections is from upwind (a) to downwind (j). The spike in the CHARM-F column anomalies at ~ 5 km in (i) is an albedo artefact due to retro-reflecting road markings parallel to the flight leg.

$$925 \quad \delta F_{\text{M2D}, \text{cs}} = \sqrt{\frac{\delta F_u^2 + \delta F_\alpha^2 + \delta F_{\text{blh}}^2 + \delta F_{\text{bg}}^2}{+ \delta F_{\text{col-pr}}^2(n) + \delta F_{\text{col-ac}}^2 + \delta F_{\text{col-cf}}^2}} \sqrt{\frac{\delta F_u^2 + \delta F_\alpha^2 + \delta F_{\text{blh}}^2 + \delta F_{\text{bg}}^2}{+ \delta F_{\text{col-pr}}^2(k) + \delta F_{\text{col-ac}}^2 + \delta F_{\text{col-cf}}^2}} \quad (\text{F1})$$

Table F1. Summary of relevant error sources and quantities for the flux computation.

| Parameter | Description |
|--|--|
| δF_u | error in wind speed |
| δF_α | error in wind direction |
| δF_{blh} | error in boundary layer height |
| δF_{bg} | error in the selected background region(s) |
| $\delta F_{\text{col-pr}}$ | column single measurement precision |
| $\delta F_{\text{col-ac}}$ | remaining systematic column offset (Appendix B2, only MAMAP2DL) |
| $\delta F_{\text{col-cf}}$ | error in the conversion factor (Appendix B3, only MAMAP2DL) |
| $\delta F_{\text{M2D, cs}}$ | error of one cross-section (MAMAP2DL) |
| $\delta F_{\text{M2D, leg}}$ | error of one leg |
| $\delta F_{\text{M2D, css}}$ | errors from the single cross-sections |
| $\delta F_{\text{M2D, atm, css}}$ | error due to atmospheric turbulence within one leg |
| $\delta F_{\text{M2D, ar-aver}}$ | error of one area (or areal average) |
| $\delta F_{\text{M2D, legs}}$ | error from the single legs |
| $\delta F_{\text{M2D, atm, legs}}$ | error due to atmospheric turbulence across area |
| $\delta F_{\text{CHARM-F, leg}}$ | error of one leg |
| $\delta F_{\text{CHARM-F, ar-aver}}$ | error of one area (or areal average) |
| $\delta F_{\text{CHARM-F, legs}}$ | errors from the single legs |
| $\delta F_{\text{CHARM-F, atm, legs}}$ | error due to atmospheric turbulence across area |

If the emission source is constant, the actual uncertainty of the flux of one cross-section at a certain position is also influenced by atmospheric variability or turbulence in the atmosphere (Krautwurst et al., 2021; Wolff et al., 2021; Krautwurst et al., 2017; Matheou and Bowman, 2016). This is also visible in the imaging data and at this point not covered by the error $\delta F_{\text{M2D, cs}}$ (Eq. F1). However, this error component is reduced by taking spatially and/or temporally independent cross-sections. We estimate this factor as 1-sigma standard deviation (SD) from the cross-sections of one entire MAMAP2DL leg itself:

$$\delta F_{\text{M2D, atm, css}} = \frac{\text{SD}(F_{\text{M2D, cs}, j})}{\sqrt{m_{\text{eff}}}} \frac{\text{SD}(F_{\text{M2D, cs}, j})}{\sqrt{n_{\text{eff}}}} \quad (\text{F2})$$

where $m_{\text{eff}} n_{\text{eff}}$ is the number of actual independent cross-sections across a MAMAP2DL flight leg. Additionally, the wind (δF_u^2 and δF_α^2), BLH (δF_{blh}^2), background (δF_{bg}^2) and conversion factor ($\delta F_{\text{col-cf}}^2$) errors introduced in Eq. F1 must be considered as systematic errors¹⁰. For the average flux of one leg, they are computed by averaging over the respective errors for all cross-sections of one leg. Eventually, the error of one leg $\delta F_{\text{M2D, leg}}$ summarises therefore to:

$$\delta F_{\text{M2D, leg}} = \sqrt{\delta F_{\text{M2D, css}}^2 + \delta F_{\text{M2D, atm, css}}^2 + \delta F_u^2 + \delta F_\alpha^2 + \delta F_{\text{blh}}^2 + \delta F_{\text{bg}}^2 + \delta F_{\text{col-cf}}^2} \quad (\text{F3})$$

where

$$\delta F_{\text{M2D, css}} = \frac{\sqrt{\sum_{j=0}^l \delta F_{\text{M2D, cs, j}}^2}}{m} \frac{\sqrt{\sum_{j=1}^n \delta F_{\text{M2D, cs, j}}^2}}{n} \quad (\text{F4})$$

where

$$\delta F_{\text{M2D, cs, j}} = \frac{\sqrt{\delta F_{\text{col-pr, j}}^2(n) + \delta F_{\text{col-ac, j}}^2}}{\sqrt{\delta F_{\text{col-pr, j}}^2(k) + \delta F_{\text{col-ac, j}}^2}} \quad (\text{F5})$$

where $\delta F_{\text{M2D, css}}$ is the contribution of the single cross-sections' errors. However, only random ($\delta F_{\text{col-pr}}^2(n) \delta F_{\text{col-pr}}^2(k)$) and remaining systematic ($\delta F_{\text{col-ac}}^2$) errors of the columns from Eq. F1 are included, as others are systematic for all cross-sections of one leg. $m n$ is the actual number of cross-sections of one leg.

The argumentation above also applies if we compute a mean flux over a specific area, e.g., downwind of the Las Dehesas area or in between the two waste treatment areas, from the averaged MAMAP2DL legs:

$$\delta F_{\text{M2D, ar-aver}} = \sqrt{\delta F_{\text{M2D, legs}}^2 + \delta F_{\text{M2D, atm, legs}}^2 + \delta F_u^2 + \delta F_\alpha^2 + \delta F_{\text{blh}}^2 + \delta F_{\text{col-cf}}^2} \quad (\text{F6})$$

where

$$\delta F_{\text{M2D, legs}} = \frac{\sqrt{\sum_{j=0}^p \delta F_{\text{M2D, leg, j}}^2}}{p} \frac{\sqrt{\sum_{j=1}^p \delta F_{\text{M2D, leg, j}}^2}}{p} \quad (\text{F7})$$

where

$$\delta F_{\text{M2D, leg, j}} = \sqrt{\delta F_{\text{css, j}}^2 + \delta F_{\text{M2D, atm, css, j}}^2 + \delta F_{\text{bg, j}}^2} \quad (\text{F8})$$

and

$$\delta F_{\text{M2D, atm, legs}} = \frac{\text{SD}(F_{\text{M2D, leg, j}})}{\sqrt{p}} \quad (\text{F9})$$

where $\delta F_{\text{M2D, legs}}$ are the error contributions of the errors of the single legs of MAMAP2DL, however, excluding systematic uncertainties that are valid for the entire areas such as errors in wind, BLH, and the conversion factor. For example, the background error is not systematic for different legs anymore. p is the number of (independent) legs.

¹⁰I.e. not being reduced by averaging over several cross-sections.

F3 Error Handling for CHARM-F

In contrast to MAMAP2DL, the CHARM-F instrument measures in one viewing direction so that the differentiation between cross-section and leg is not necessary. Furthermore, errors for $\delta F_{\text{col-ac}}$ and $\delta F_{\text{col-cf}}$ are negligible and Eq. F1 simplifies thus to

$$\delta F_{\text{CHARM-F, leg}} = \sqrt{\delta F_u^2 + \delta F_\alpha^2 + \delta F_{\text{blh}}^2 + \delta F_{\text{bg}}^2 + \delta F_{\text{col-pr}}^2(k)}. \quad (\text{F10})$$

960 The error of the average over certain areas follows then modified versions of Eqs. F6 to F9.

$$\delta F_{\text{CHARM-F, ar-aver}} = \sqrt{\frac{\delta F_{\text{CHARM-F, legs}}^2 + \delta F_{\text{CHARM-F, atm, legs}}^2}{\delta F_u^2 + \delta F_\alpha^2 + \delta F_{\text{blh}}^2}} \quad (\text{F11})$$

where

$$\delta F_{\text{CHARM-F, legs}} = \frac{\sqrt{\sum_{j=0}^p \delta F_{\text{CHARM-F, leg},j}^2}}{p} \frac{\sqrt{\sum_{j=1}^p \delta F_{\text{CHARM-F, leg},j}^2}}{p} \quad (\text{F12})$$

where

$$965 \quad \delta F_{\text{CHARM-F, leg},j} = \sqrt{\delta F_{\text{bg},j}^2 + \delta F_{\text{col-pr},j}^2(n)}, \quad (\text{F13})$$

and

$$\delta F_{\text{CHARM-F, atm, legs}} = \frac{\text{SD}(F_{\text{CHARM-F, leg},j})}{\sqrt{p}}. \quad (\text{F14})$$

970 *Author contributions.* Deriving the results presented here involved the contributions of a large team of scientists. This includes the development of hardware and software, the planning of the measurement campaign, data analysis and last but not least the preparation of the manuscript including a thorough internal review process.

SK performed the analysis of the MAMAP2DL data (from measured spectra to final fluxes) and adapted the algorithms accordingly. CF performed the analysis and conversion to column anomalies of the CHARM-F data and a preliminary flux estimate from the CHARM-F data. SK then performed the final flux inversion of CHARM-F data. MG processed the JIG and JAS data. CM performed the error analysis of the wind data from BAHAMAS.

975 SK developed the flight plan together with inputs from SW and MG. MQ and AF operated the CHARM-F system during the flight. OH operated the MAMAP2DL system during the flight. AF was principal investigator of the CoMet 2.0 mission.

KG, with support from SK and JB, designed and built the MAMAP2DL instrument. JB designed and wrote the operating software for MAMAP2DL. AF, MQ, and MW developed the lidar system CHARM-F. MW designed and wrote the retrieval software for CHARM-F data.

980 SK, CF, and SW wrote the first draft version of the manuscript. All the authors critically assessed the results and corrected and improved the manuscript in an iterative process.

Competing interests. CG has a competing interest as he is ACP editor (and CoMet special issue editor). CK has a competing interest as he is an associate editor at AMT. The remaining authors declare that they have no conflict of interest.

Acknowledgements. HALO flights during the CoMet 2.0 Arctic mission have been supported by the State of Bremen, the Max Planck Society (MPG), and by the German Research Foundation (Deutsche Forschungsgemeinschaft, DFG) within the DFG Priority Program (SPP 1294) Atmospheric and Earth System Research with the Research Aircraft HALO (High Altitude and Long Range Research Aircraft) under grant BO 1731/1-1. MAMAP2DL was in parts funded by BMBF within the project AIRSPACE (01LK1701B), by the University of Bremen and by the State of Bremen (APF). The DLR part of CoMet 2.0 Arctic was funded by DLR headquarters, e.g., via the internal MABAK project.

The publication contains modified Copernicus Atmosphere Monitoring Service (CAMS) information (2023) downloaded from CAMS Atmosphere Data Store (ADS). Neither the European Commission nor ECMWF is responsible for any use that may be made of the Copernicus information or data it contains.

A special thanks goes to A. Schäfler from the DLR for the discussion and interpretation about the boundary layer development in that area on the day of our measurement flight. We also want to thank the weather forecast team (C. Kiemle, A. Schäfler, S. Wolff, S. Arnold, S. Groß, F. Reum, H. ZeisZiereis, M. Gutleben) whose input was essential for flight planning. A big thank you also goes to the entire HALO - Flight Experiments and - Operations teams who took care of the operation of the aircraft and analysed and provided all the data provided by HALO, and especially to A. Minikin, T. Sprünken, A. Hausold, and F. Betsche, who implemented our flight ideas and obtained the necessary permits from the respective authorities. We would also like to thank our pilots S. Grillenbeck and M. Puskeiler realising our flight ideas during the Madrid flight. A big thank you also goes to R. Maser, C. Hallbauer, and D. Schell from enviscope, who took care of the certification of the MAMAP2DL instrument aboard HALO for the CoMet 2.0 mission. A final thank you goes to M. D. A. Hernández from the IUP Bremen who tried to contact the Spanish authorities and landfill operators via a Spanish acquaintance, unfortunately without success.

- Allan, D.: Statistics of atomic frequency standards, *Proceedings of the IEEE*, 54, 221–230, <https://doi.org/10.1109/PROC.1966.4634>, 1966.
- Amediek, A., Ehret, G., Fix, A., Wirth, M., Büdenbender, C., Quatrevalet, M., Kiemle, C., and Gerbig, C.: CHARM-F—a new airborne integrated-path differential-absorption lidar for carbon dioxide and methane observations: measurement performance and quantification of strong point source emissions, *Applied Optics*, 56, 5182, <https://doi.org/10.1364/AO.56.005182>, 2017.
- 1005 Babilotte, A., Lagier, T., Fiani, E., and Taramini, V.: Fugitive Methane Emissions from Landfills: Field Comparison of Five Methods on a French Landfill, *Journal of Environmental Engineering*, 136, 777–784, [https://doi.org/10.1061/\(ASCE\)EE.1943-7870.0000260](https://doi.org/10.1061/(ASCE)EE.1943-7870.0000260), 2010.
- Balalus, N., Jacob, D. J., Maxemin, G., Jenks, C., Nesser, H., Maasakkers, J. D., Cusworth, D. H., Scarpelli, T. R., Varon, D. J., and Wang, X.: Satellite monitoring of annual US landfill methane emissions and trends, preprint, <https://doi.org/10.48550/ARXIV.2408.10957>, 2024.
- Bogner, J., Meadows, M., and Czepiel, P.: Fluxes of methane between landfills and the atmosphere: natural and engineered controls, *Soil Use and Management*, 13, 268–277, <https://doi.org/10.1111/j.1475-2743.1997.tb00598.x>, 1997.
- 1010 Borchardt, J., Gerilowski, K., Krautwurst, S., Bovensmann, H., Thorpe, A. K., Thompson, D. R., Frankenberg, C., Miller, C. E., Duren, R. M., and Burrows, J. P.: Detection and quantification of CH₄ > 4 ppmv plumes using the WFM-DOAS retrieval on AVIRIS-NG hyperspectral data, *Atmospheric Measurement Techniques*, 14, 1267–1291, <https://doi.org/10.5194/amt-14-1267-2021>, 2021.
- Brunner, D., Kuhlmann, G., Henne, S., Koene, E., Kern, B., Wolff, S., Voigt, C., Jöckel, P., Kiemle, C., Roiger, A., Fiehn, A., Krautwurst, S., Gerilowski, K., Bovensmann, H., Borchardt, J., Galkowski, M., Gerbig, C., Marshall, J., Klonecki, A., Prunet, P., Hanfland, R., Pattantyús-Ábrahám, M., Wyszogrodzki, A., and Fix, A.: Evaluation of simulated CO₂ power plant plumes from six high-resolution atmospheric transport models, *Atmospheric Chemistry and Physics*, 23, 2699–2728, <https://doi.org/10.5194/acp-23-2699-2023>, 2023.
- Buchwitz, M., Rozanov, V. V., and Burrows, J. P.: A near-infrared optimized DOAS method for the fast global retrieval of atmospheric CH₄, CO, CO₂, H₂O, and N₂O total column amounts from SCIAMACHY Envisat-1 nadir radiances, *Journal of Geophysical Research: Atmospheres*, 105, 15 231–15 245, <https://doi.org/10.1029/2000JD900191>, 2000.
- 1020 Calero, M., Godoy, V., Heras, C. G., Lozano, E., Arjandas, S., and Martín-Lara, M. A.: Current state of biogas and biomethane production and its implications for Spain, *Sustainable Energy & Fuels*, 7, 3584–3602, <https://doi.org/10.1039/d3se00419h>, 2023.
- Cambaliza, M. O. L., Shepson, P. B., Caulton, D. R., Stirm, B., Samarov, D., Gurney, K. R., Turnbull, J., Davis, K. J., Possolo, A., Karion, A., Sweeney, C., Moser, B., Hendricks, A., Lauvaux, T., Mays, K., Whetstone, J., Huang, J., Razlivanov, I., Miles, N. L., and Richardson, S. J.: Assessment of uncertainties of an aircraft-based mass balance approach for quantifying urban greenhouse gas emissions, *Atmospheric Chemistry and Physics*, 14, 9029–9050, <https://doi.org/10.5194/acp-14-9029-2014>, 2014.
- 1025 Cambaliza, M. O. L., Shepson, P. B., Bogner, J., Caulton, D. R., Stirm, B., Sweeney, C., Montzka, S. A., Gurney, K. R., Spokas, K., Salmon, O. E., Lavoie, T. N., Hendricks, A., Mays, K., Turnbull, J., Miller, B. R., Lauvaux, T., Davis, K., Karion, A., Moser, B., Miller, C., Obermeyer, C., Whetstone, J., Prasad, K., Miles, N., and Richardson, S.: Quantification and source apportionment of the methane emission flux from the city of Indianapolis, *Elementa: Science of the Anthropocene*, 3, 000 037, <https://doi.org/10.12952/journal.elementa.000037>, 2015.
- 1030 Chen, H., Winderlich, J., Gerbig, C., Hoefer, A., Rella, C. W., Crosson, E. R., Pelt, A. D. V., Steinbach, J., Kolle, O., Beck, V., Daube, B. C., Gottlieb, E. W., Chow, V. Y., Santoni, G. W., and Wofsy, S. C.: High-accuracy continuous airborne measurements of greenhouse gases (CO₂ and CH₄) using the cavity ring-down spectroscopy (CRDS) technique, *Atmospheric Measurement Techniques*, 3, 375–386, <https://doi.org/10.5194/amt-3-375-2010>, 2010.
- 1035

- Chulakadabba, A., Sargent, M., Lauvaux, T., Benmergui, J. S., Franklin, J. E., Chan Miller, C., Wilzewski, J. S., Roche, S., Conway, E., Souri, A. H., Sun, K., Luo, B., Hawthorne, J., Samra, J., Daube, B. C., Liu, X., Chance, K., Li, Y., Gautam, R., Omara, M., Rutherford, J. S., Sherwin, E. D., Brandt, A., and Wofsy, S. C.: Methane point source quantification using MethaneAIR: a new airborne imaging spectrometer, *Atmospheric Measurement Techniques*, 16, 5771–5785, <https://doi.org/10.5194/amt-16-5771-2023>, 2023.
- 1040 CoMet: DLR-IPA, IUP University Bremen, MPI-BGC Jena, LMU: CoMet 2.0 Arctic: Research campaign on greenhouse gases in the high latitude, available at <https://comet2arctic.de/>, last access: 29.09.2024, 2022.
- Crippa, M., Guizzardi, D., Pagani, F., Banja, M., Muntean, M., Schaaf, E., Becker, W., Monforti-Ferrario, F., Quadrelli, R., Risquez Martin, A., Taghavi-Moharamli, P., Köykkä, J., Grassi, G., Rossi, S., Brandao De Melo, J., Oom, D., Branco, A., San-Miguel, J., Vignati, E., Commission, E., and Centre, J. R.: GHG Emissions of All World Countries – 2023, Publications Office of the European Union, Luxembourg, <https://doi.org/10.2760/953322>, release: EDGAR v8.0_GHG (October 2023). JRC EDGAR website: https://edgar.jrc.ec.europa.eu/dataset_ghg80, 2023.
- 1045 Cusworth, D. H., Duren, R. M., Thorpe, A. K., Tseng, E., Thompson, D., Guha, A., Newman, S., Foster, K. T., and Miller, C. E.: Using remote sensing to detect, validate, and quantify methane emissions from California solid waste operations, *Environmental Research Letters*, 15, 054 012, <https://doi.org/10.1088/1748-9326/ab7b99>, 2020.
- 1050 Cusworth, D. H., Duren, R. M., Ayasse, A. K., Jiorle, R., Howell, K., Aubrey, A., Green, R. O., Eastwood, M. L., Chapman, J. W., Thorpe, A. K., Heckler, J., Asner, G. P., Smith, M. L., Thoma, E., Krause, M. J., Heins, D., and Thorneloe, S.: Quantifying methane emissions from United States landfills, *Science*, 383, 1499–1504, <https://doi.org/10.1126/science.adi7735>, 2024.
- Delahaye, T., Armante, R., Scott, N. A., Jacquinet-Husson, N., Chédin, A., Crépeau, L., Crevoisier, C., Douet, V., Perrin, A., Barbe, A., Boudon, V., Campargue, A., Coudert, L. H., Ebert, V., Flaud, J. M., Gamache, R. R., Jacquemart, D., Jolly, A., Kwabia Tchana, F., Kyuberis, A., Li, G., Lyulin, O. M., Manceron, L., Mikhailenko, S., Moazzen-Ahmadi, N., Müller, H. S. P., Naumenko, O. V., Nikitin, A., Perevalov, V. I., Richard, C., Starikova, E., Tashkun, S. A., Tyuterev, V. G., Vander Auwera, J., Vispoel, B., Yachmenev, A., and Yurchenko, S.: The 2020 edition of the GEISA spectroscopic database, *Journal of Molecular Spectroscopy*, 380, 111 510, <https://doi.org/10.1016/j.jms.2021.111510>, 2021.
- 1055 Delkash, M., Zhou, B., Han, B., Chow, F. K., Rella, C. W., and Imhoff, P. T.: Short-term landfill methane emissions dependency on wind, *Waste Management*, 55, 288–298, <https://doi.org/10.1016/j.wasman.2016.02.009>, 2016.
- 1060 Duren, R. M., Thorpe, A. K., Foster, K. T., Rafiq, T., Hopkins, F. M., Yadav, V., Bue, B. D., Thompson, D. R., Conley, S., Colombi, N. K., Frankenberg, C., McCubbin, I. B., Eastwood, M. L., Falk, M., Herner, J. D., Croes, B. E., Green, R. O., and Miller, C. E.: California’s methane super-emitters, *Nature*, 575, 180–184, <https://doi.org/10.1038/s41586-019-1720-3>, 2019.
- EEA: EEA greenhouse gases — data viewer, available at <https://www.eea.europa.eu/data-and-maps/data/data-viewers/greenhouse-gases-viewer>, last access: 28.05.2024, 2023.
- 1065 EEA: Industrial Reporting under the Industrial Emissions Directive 2010/75/EU and European Pollutant Release and Transfer Register Regulation (EC) No 166/2006 - ver. 10.0 Dec 2023, <https://doi.org/10.2909/63a14e09-d1f5-490d-80cf-6921e4e69551>, available at <https://www.eea.europa.eu/en/datahub/datahubitem-view/9405f714-8015-4b5b-a63c-280b82861b3d?activeAccordion=1090107%2C1093661>, last access: 08.10.2024, 2024.
- 1070 Ehret, G., Kiemle, C., Wirth, M., Amediek, A., Fix, A., and Houweling, S.: Space-borne remote sensing of CO₂, CH₄, and N₂O by integrated path differential absorption lidar: a sensitivity analysis, *Applied Physics B*, 90, 593–608, <https://doi.org/10.1007/s00340-007-2892-3>, 2008.

- Ehret, G., Bousquet, P., Pierangelo, C., Alpers, M., Millet, B., Abshire, J. B., Bovensmann, H., Burrows, J. P., Chevallier, F., Ciais, P., Crevoisier, C., Fix, A., Flamant, P., Frankenberg, C., Gibert, F., Heim, B., Heimann, M., Houweling, S., Hubberten, H. W., Jöckel, P., Law, K., Löw, A., Marshall, J., Agusti-Panareda, A., Payan, S., Prigent, C., Rairoux, P., Sachs, T., Scholze, M., and Wirth, M.: MERLIN: A French-German Space Lidar Mission Dedicated to Atmospheric Methane, *Remote Sensing*, 9, 1052, <https://doi.org/10.3390/rs9101052>, number: 10 Publisher: Multidisciplinary Digital Publishing Institute, 2017.
- Eklund, B., Anderson, E. P., Walker, B. L., and Burrows, D. B.: Characterization of Landfill Gas Composition at the Fresh Kills Municipal Solid-Waste Landfill, *Environmental Science & Technology*, 32, 2233–2237, <https://doi.org/10.1021/es980004s>, 1998.
- ESA: European Space Agency: Satellites detect large methane emissions from Madrid landfills, available at https://www.esa.int/Applications/Observing_the_Earth/Satellites_detect_large_methane_emissions_from_Madrid_landfills, last access: 29.09.2024, 2021.
- EU-US: Global Methane Pledge, available at https://ec.europa.eu/commission/presscorner/detail/en/IP_21_4785, <https://www.state.gov/global-methane-pledge-from-moment-to-momentum/>, <https://www.globalmethanepledge.org/>, last access: 27.05.2024, 2021.
- European-Commission: Guidance Document for the Implementation of the European PRTR, available at <https://prtr.unitar.org/site/document/1223>, last access: 24.03.2025, 2006.
- European-Parliament: Regulation (EC) No 166/2006 of the European Parliament and of the Council of 18 January 2006 concerning the establishment of a European Pollutant Release and Transfer Register and amending Council Directives 91/689/EEC and 96/61/EC, available at <http://data.europa.eu/eli/reg/2006/166/2009-08-07>, <http://data.europa.eu/eli/reg/2006/166/2020-01-01>, and Annex I at https://converters.eionet.europa.eu/xmlfile/EPTR_AnnexIActivityCode_1.xml, last access: 24.03.2025, 2006.
- Farr, T. G., Rosen, P. A., Caro, E., Crippen, R., Duren, R., Hensley, S., Kobrick, M., Paller, M., Rodriguez, E., Roth, L., Seal, D., Shaffer, S., Shimada, J., Umland, J., Werner, M., Oskin, M., Burbank, D., and Alsdorf, D.: The Shuttle Radar Topography Mission, *Reviews of Geophysics*, 45, <https://doi.org/10.1029/2005RG000183>, data available at [https://search.earthdata.nasa.gov/search?fdc=ShuttleRadarTopographyMission\(SRTM\)&as\[organization\]\[0\]=ShuttleRadarTopographyMission\(SRTM\)](https://search.earthdata.nasa.gov/search?fdc=ShuttleRadarTopographyMission(SRTM)&as[organization][0]=ShuttleRadarTopographyMission(SRTM)), last access: 06.07.2024, 2007.
- Forster, P., Storelvmo, T., Armour, K., Collins, W., Dufresne, J.-L., Frame, D., Lunt, D., Mauritsen, T., Palmer, M., Watanabe, M., Wild, M., and Zhang, H.: *The Earth's Energy Budget, Climate Feedbacks and Climate Sensitivity*, p. 923–1054, Cambridge University Press, 2021.
- Fosco, D., De Molfetta, M., Renzulli, P., and Notarnicola, B.: Progress in monitoring methane emissions from landfills using drones: an overview of the last ten years, *Science of The Total Environment*, 945, 173 981, <https://doi.org/10.1016/j.scitotenv.2024.173981>, 2024.
- Frankenberg, C., Thorpe, A. K., Thompson, D. R., Hulley, G., Kort, E. A., Vance, N., Borchardt, J., Krings, T., Gerilowski, K., Sweeney, C., Conley, S., Bue, B. D., Aubrey, A. D., Hook, S., and Green, R. O.: Airborne methane remote measurements reveal heavy-tail flux distribution in Four Corners region, *Proceedings of the National Academy of Sciences*, 113, 9734–9739, <https://doi.org/10.1073/pnas.1605617113>, 2016.
- Fuentes Andrade, B., Buchwitz, M., Reuter, M., Bovensmann, H., Richter, A., Boesch, H., and Burrows, J. P.: A method for estimating localized CO₂ emissions from co-located satellite XCO₂ and NO₂ images, *Atmospheric Measurement Techniques*, 17, 1145–1173, <https://doi.org/10.5194/amt-17-1145-2024>, 2024.
- Gałkowski, M., Jordan, A., Rothe, M., Marshall, J., Koch, F.-T., Chen, J., Agusti-Panareda, A., Fix, A., and Gerbig, C.: In situ observations of greenhouse gases over Europe during the CoMet 1.0 campaign aboard the HALO aircraft, *Atmospheric Measurement Techniques*, 14, 1525–1544, <https://doi.org/10.5194/amt-14-1525-2021>, 2021.
- Gerilowski, K., Tretner, A., Krings, T., Buchwitz, M., Bertagnolio, P. P., Belemzov, F., Erzinger, J., Burrows, J. P., and Bovensmann, H.: MAMAP - a new spectrometer system for column-averaged methane and carbon dioxide observations from aircraft: instrument description and performance analysis, *Atmospheric Measurement Techniques*, 4, 215–243, <https://doi.org/10.5194/amt-4-215-2011>, 2011.

- Gerilowski, K., Krings, T., Hartmann, J., Buchwitz, M., Sachs, T., Erzinger, J., Burrows, J. P., and Bovensmann, H.: Atmospheric remote sensing constraints on direct sea-air methane flux from the 22/4b North Sea massive blowout bubble plume, *Marine and Petroleum Geology*, 68, 824–835, <https://doi.org/10.1016/j.marpetgeo.2015.07.011>, 2015.
- 1115 Giez, A., Zöger, M., Mallaun, C., Nenakhov, V., Schimpf, M., Grad, C., Numberger, A., and Raynor, K.: Determination of the Measurement Errors for the HALO Basic Data System BAHAMAS by Means of Error Propagation, Tech. rep., DLR-Forschungsbericht, ISSN 1434-8454, <https://doi.org/10.57676/5rdc-q708>, dLR-FB-2022-27, 2023.
- Hersbach, H., Bell, B., Berrisford, P., Hirahara, S., Horányi, A., Muñoz-Sabater, J., Nicolas, J., Peubey, C., Radu, R., Schepers, D., Simmons, A., Soci, C., Abdalla, S., Abellan, X., Balsamo, G., Bechtold, P., Biavati, G., Bidlot, J., Bonavita, M., De Chiara, G., Dahlgren, P., Dee, D., Diamantakis, M., Dragani, R., Flemming, J., Forbes, R., Fuentes, M., Geer, A., Haimberger, L., Healy, S., Hogan, R. J., Hólm, E., 1120 Janisková, M., Keeley, S., Laloyaux, P., Lopez, P., Lupu, C., Radnoti, G., de Rosnay, P., Rozum, I., Vamborg, F., Villaume, S., and Thépaut, J.: The ERA5 global reanalysis, *Quarterly Journal of the Royal Meteorological Society*, 146, 1999–2049, <https://doi.org/10.1002/qj.3803>, 2020.
- Innocenti, F., Robinson, R., Gardiner, T., Finlayson, A., and Connor, A.: Differential Absorption Lidar (DIAL) Measurements of Landfill Methane Emissions, *Remote Sensing*, 9, 953, <https://doi.org/10.3390/rs9090953>, 2017.
- 1125 IPCC: 2006 IPCC Guidelines for National Greenhouse Gas Inventories, <https://www.ipcc-nggip.iges.or.jp/public/2006gl/>, 2006.
- IPCC: 2019 Refinement to the 2006 IPCC Guidelines for National Greenhouse Gas Inventories, <https://www.ipcc-nggip.iges.or.jp/public/2019rf/vol5.html>, 2019.
- Jeong, S., Park, J., Kim, Y. M., Park, M. H., and Kim, J. Y.: Innovation of flux chamber network design for surface methane emission from landfills using spatial interpolation models, *Science of The Total Environment*, 688, 18–25, 1130 <https://doi.org/10.1016/j.scitotenv.2019.06.142>, 2019.
- Kaza, S., Yao, L. C., Bhada-Tata, P., and Van Woerden, F.: What a Waste 2.0: A Global Snapshot of Solid Waste Management to 2050, Urban Development. © Washington, DC: World Bank, <https://hdl.handle.net/10986/30317>, 2018.
- Kissas, K., Ibrom, A., Kjeldsen, P., and Scheutz, C.: Methane emission dynamics from a Danish landfill: The effect of changes in barometric pressure, *Waste Management*, 138, 234–242, <https://doi.org/10.1016/j.wasman.2021.11.043>, 2022.
- 1135 Klausner, T., Mertens, M., Huntrieser, H., Galkowski, M., Kuhlmann, G., Baumann, R., Fiehn, A., Joeckel, P., Püehl, M., Roiger, A., Helmig, D., and Bruhwiler, L.: Urban greenhouse gas emissions from the Berlin area: A case study using airborne CO₂ and CH₄ in situ observations in summer 2018, *Elem Sci Anth*, 8, <https://doi.org/10.1525/elementa.411>, 2020.
- Krautwurst, S., Gerilowski, K., Jonsson, H. H., Thompson, D. R., Kolyer, R. W., Iraci, L. T., Thorpe, A. K., Horstjann, M., Eastwood, M., Leifer, I., Vigil, S. A., Krings, T., Borchardt, J., Buchwitz, M., Fladeland, M. M., Burrows, J. P., and Bovensmann, H.: Methane emissions 1140 from a Californian landfill, determined from airborne remote sensing and in situ measurements, *Atmospheric Measurement Techniques*, 10, 3429–3452, <https://doi.org/10.5194/amt-10-3429-2017>, 2017.
- Krautwurst, S., Gerilowski, K., Borchardt, J., Wildmann, N., Gałkowski, M., Swolkień, J., Marshall, J., Fiehn, A., Roiger, A., Ruhtz, T., Gerbig, C., Necki, J., Burrows, J. P., Fix, A., and Bovensmann, H.: Quantification of CH₄ > 4 < /sub > coal mining emissions in Upper Silesia by passive airborne remote sensing observations with the Methane Airborne MAPper (MAMAP) instrument during the CO₂ > 2 < /sub > and Methane (CoMet) campaign, *Atmospheric Chemistry and Physics*, 21, 17 345–17 371, 1145 <https://doi.org/10.5194/acp-21-17345-2021>, 2021.
- Krings, T., Gerilowski, K., Buchwitz, M., Reuter, M., Tretner, A., Erzinger, J., Heinze, D., Pflüger, U., Burrows, J. P., and Bovensmann, H.: MAMAP - a new spectrometer system for column-averaged methane and carbon dioxide observations from aircraft: retrieval algorithm

- and first inversions for point source emission rates, *Atmospheric Measurement Techniques*, 4, 1735–1758, <https://doi.org/10.5194/amt-4-1735-2011>, 2011.
- 1150 Krings, T., Gerilowski, K., Buchwitz, M., Hartmann, J., Sachs, T., Erzinger, J., Burrows, J. P., and Bovensmann, H.: Quantification of methane emission rates from coal mine ventilation shafts using airborne remote sensing data, *Atmospheric Measurement Techniques*, 6, 151–166, <https://doi.org/10.5194/amt-6-151-2013>, 2013.
- Krings, T., Leifer, I., Krautwurst, S., Gerilowski, K., Horstjann, H., Bovensmann, H., Buchwitz, M., Burrows, J. P., Kolyer, R. W.,
 1155 Jonsson, H. H., and Fladeland, M. M.: Reduced Methane Emissions from Santa Barbara Marine Seeps, *Remote Sensing*, 9, 1162, <https://doi.org/10.3390/rs9111162>, 2017.
- Krings, T., Neining, B., Gerilowski, K., Krautwurst, S., Buchwitz, B., Burrows, J. P., C., L., Ruhtz, T., Schuettmeyer, D., and Bovensmann, H.: Airborne remote sensing and in situ measurements of atmospheric CO₂ to quantify point source emissions, *Atmospheric Measurement Techniques*, 11, 721–739, <https://doi.org/10.5194/amt-11-721-2018>, 2018.
- 1160 Kumar, A., Singh, E., Mishra, R., Lo, S. L., and Kumar, S.: Global trends in municipal solid waste treatment technologies through the lens of sustainable energy development opportunity, *Energy*, 275, 127 471, <https://doi.org/10.1016/j.energy.2023.127471>, 2023.
- Lavoie, T. N., Shepson, P. B., Cambaliza, M. O. L., Stirm, B. H., Karion, A., Sweeney, C., Yacovitch, T. I., Herndon, S. C., Lan, X., and Lyon, D.: Aircraft-Based Measurements of Point Source Methane Emissions in the Barnett Shale Basin, *Environmental Science & Technology*, 49, 7904–7913, <https://doi.org/10.1021/acs.est.5b00410>, 2015.
- 1165 Liu, Y., Paris, J.-D., Vrekoussis, M., Quéhé, P.-Y., Desservettaz, M., Kushta, J., Dubart, F., Demetriou, D., Bousquet, P., and Sciare, J.: Reconciling a national methane emission inventory with in-situ measurements, *Science of The Total Environment*, 901, 165 896, <https://doi.org/10.1016/j.scitotenv.2023.165896>, 2023.
- Lu, X., Jacob, D. J., Wang, H., Maasakkers, J. D., Zhang, Y., Scarpelli, T. R., Shen, L., Qu, Z., Sulprizio, M. P., Nesser, H., Bloom, A. A., Ma, S., Worden, J. R., Fan, S., Parker, R. J., Boesch, H., Gautam, R., Gordon, D., Moran, M. D., Reuland, F., Villasana, C. A. O.,
 1170 and Andrews, A.: Methane emissions in the United States, Canada, and Mexico: evaluation of national methane emission inventories and 2010–2017 sectoral trends by inverse analysis of in situ (GLOBALVIEWplus CH₄ ObsPack) and satellite (GOSAT) atmospheric observations, *Atmospheric Chemistry and Physics*, 22, 395–418, <https://doi.org/10.5194/acp-22-395-2022>, 2022.
- Maasakkers, J. D., Varon, D. J., Elfarsdóttir, A., McKeever, J., Jervis, D., Mahapatra, G., Pandey, S., Lorente, A., Borsdorff, T., Foorthuis, L. R., Schuit, B. J., Tol, P., van Kempen, T. A., van Hees, R., and Aben, I.: Using satellites to uncover large methane emissions from
 1175 landfills, *Science Advances*, 8, <https://doi.org/10.1126/sciadv.abn9683>, 2022.
- Madrid: Valdemingomez Technology Park: Annual report, available at https://www.madrid.es/UnidadWeb/NxC/Valdemingomez2020/RC_Valdemingomez/Publicaciones/SummaryAnnualReportValdemingomez2022.pdf, last access: 29.09.2024, 2022.
- Matheou, G. and Bowman, K. W.: A recycling method for the large-eddy simulation of plumes in the atmospheric boundary layer, *Environmental Fluid Mechanics*, 16, 69–85, <https://doi.org/10.1007/s10652-015-9413-4>, 2016.
- 1180 Mays, K. L., Shepson, P. B., Stirm, B. H., Karion, A., Sweeney, C., and Gurney, K. R.: Aircraft-Based Measurements of the Carbon Footprint of Indianapolis, *Environmental Science & Technology*, 43, 7816–7823, <https://doi.org/10.1021/es901326b>, 2009.
- McLinden, C. A., Griffin, D., Davis, Z., Hempel, C., Smith, J., Sioris, C., Nassar, R., Moeini, O., Legault-Ouellet, E., and Malo, A.: An Independent Evaluation of GHGSat Methane Emissions: Performance Assessment, *Journal of Geophysical Research: Atmospheres*, 129, <https://doi.org/10.1029/2023jd039906>, 2024.
- 1185 MdS: Mancomunidad del Sur: Depósito controlado de Pinto, available at <https://mancomunidaddelsur.org/tratamientos/instalaciones/deposito-controlado-de-pinto>, last access: 29.09.2024, 2024.

- Mei, L., Rozanov, V., Rozanov, A., and Burrows, J. P.: SCIATRAN software package (V4.6): update and further development of aerosol, clouds, surface reflectance databases and models, *Geoscientific Model Development*, 16, 1511–1536, <https://doi.org/10.5194/gmd-16-1511-2023>, 2023.
- 1190 Monster, J., Samuelsson, J., Kjeldsen, P., and Scheutz, C.: Quantification of methane emissions from 15 Danish landfills using the mobile tracer dispersion method, *Waste Management*, <https://doi.org/10.1016/j.wasman.2014.09.006>, 2014a.
- Monster, J. G., Samuelsson, J., Kjeldsen, P., Rella, C. W., and Scheutz, C.: Quantifying methane emission from fugitive sources by combining tracer release and downwind measurements - A sensitivity analysis based on multiple field surveys, *Waste Management*, 34, 1416 – 1428, <https://doi.org/10.1016/j.wasman.2014.03.025>, 2014b.
- 1195 Mønster, J., Kjeldsen, P., and Scheutz, C.: Methodologies for measuring fugitive methane emissions from landfills – A review, *Waste Management*, 87, 835–859, <https://doi.org/10.1016/j.wasman.2018.12.047>, 2019.
- Nesser, H., Jacob, D. J., Maasakkers, J. D., Lorente, A., Chen, Z., Lu, X., Shen, L., Qu, Z., Sulprizio, M. P., Winter, M., Ma, S., Bloom, A. A., Worden, J. R., Stavins, R. N., and Randles, C. A.: High-resolution US methane emissions inferred from an inversion of 2019 TROPOMI satellite data: contributions from individual states, urban areas, and landfills, *Atmospheric Chemistry and Physics*, 24, 5069–5091, <https://doi.org/10.5194/acp-24-5069-2024>, 2024.
- 1200 Parameswaran, T. G., Nazeeh, K. M., Deekshith, P. K., Sivakumar Babu, G. L., and Chamindu Deepagoda, T. K. K.: Gas collection system design for a landfill via three-dimensional stochastic waste heterogeneity models and kriging, *Journal of Environmental Chemical Engineering*, 11, 110 563, <https://doi.org/10.1016/j.jece.2023.110563>, 2023.
- Peischl, J., Ryerson, T. B., Brioude, J., Aikin, K. C., Andrews, A. E., Atlas, E., Blake, D., Daube, B. C., de Gouw, J. A., Dlugokencky, E., 1205 Frost, G. J., Gentner, D. R., Gilman, J. B., Goldstein, A. H., Harley, R. A., Holloway, J. S., Kofler, J., Kuster, W. C., Lang, P. M., Novelli, P. C., Santoni, G. W., Trainer, M., Wofsy, S. C., and Parrish, D. D.: Quantifying sources of methane using light alkanes in the Los Angeles basin, California, *Journal of Geophysical Research: Atmospheres*, 118, 4974–4990, <https://doi.org/10.1002/jgrd.50413>, 2013.
- Peischl, J., Eilerman, S. J., Neuman, J. A., Aikin, K. C., de Gouw, J., Gilman, J. B., Herndon, S. C., Nadkarni, R., Trainer, M., Warneke, C., and Ryerson, T. B.: Quantifying Methane and Ethane Emissions to the Atmosphere From Central and Western U.S. Oil and Natural Gas 1210 Production Regions, *Journal of Geophysical Research: Atmospheres*, <https://doi.org/10.1029/2018jd028622>, 2018.
- Poulsen, T. G. and Moldrup, P.: Evaluating effects of wind-induced pressure fluctuations on soil-atmosphere gas exchange at a landfill using stochastic modelling, *Waste Management & Research*, 24, 473–481, <https://doi.org/10.1177/0734242X06066363>, 2006.
- Quatrevalet, M., Amediek, A., Fix, A., Kiemle, C., Wirth, M., Büdenbender, C., Schweyer, S., Ehret, G., Hoffmann, D., Meissner, A., Löhring, J., and Luttmann, J.: CHARM-F: The Airborne Integral Path Differential Absorption Lidar for Simultaneous Measurements of 1215 Atmospheric CO₂ and CH₄, in: 25th International Laser Radar Conference, St. Petersburg, Russland, <https://elib.dlr.de/67276/>, 2010.
- Ren, X., Salmon, O. E., Hansford, J. R., Ahn, D., Hall, D., Benish, S. E., Stratton, P. R., He, H., Sahu, S., Grimes, C., Heimbürger, A. M. F., Martin, C. R., Cohen, M. D., Stunder, B., Salawitch, R. J., Ehrman, S. H., Shepson, P. B., and Dickerson, R. R.: Methane Emissions From the Baltimore-Washington Area Based on Airborne Observations: Comparison to Emissions Inventories, *Journal of Geophysical Research: Atmospheres*, 123, 8869–8882, <https://doi.org/10.1029/2018jd028851>, 2018.
- 1220 Reuter, M., Buchwitz, M., Schneising, O., Krautwurst, S., O'Dell, C. W., Richter, A., Bovensmann, H., and Burrows, J. P.: Towards monitoring localized CO₂ emissions from space: co-located regional CO₂ and NO₂ enhancements observed by the OCO-2 and S5P satellites, *Atmospheric Chemistry and Physics*, 19, 9371–9383, <https://doi.org/10.5194/acp-19-9371-2019>, 2019.
- Rodríguez, G.: Así es el vertedero más grande de España: irregularidades, gases tóxicos y el mayor emisor de metano de Europa, available at <https://www.20minutos.es/noticia/4919992/0/asi-es-el-vertedero-mas-grande-de-espana/proteccion%20tolerancia%20emergencias%20stretch%20em/>

- 1225 hfuzz.5\p@\vfuzz\hfuzz-irregularidades-gases-toxicos-y-el-mayor-emisor\protect\tolerance9999\emergencystretch3em\hfuzz.5\p@\vfuzz\hfuzz-de-metano-de-europa/, last access: 29.09.2024, 2022.
- Rozanov, V., Rozanov, A., Kokhanovsky, A., and Burrows, J.: Radiative transfer through terrestrial atmosphere and ocean: Software package SCIATRAN, *Journal of Quantitative Spectroscopy and Radiative Transfer*, 133, 13 – 71, <https://doi.org/10.1016/j.jqsrt.2013.07.004>, 2014.
- Saunois, M., Stavert, A. R., Poulter, B., Bousquet, P., Canadell, J. G., Jackson, R. B., Raymond, P. A., Dlugokencky, E. J., Houweling, S.,
1230 Patra, P. K., Ciais, P., Arora, V. K., Bastviken, D., Bergamaschi, P., Blake, D. R., Brailsford, G., Bruhwiler, L., Carlson, K. M., Carrol, M., Castaldi, S., Chandra, N., Crevoisier, C., Crill, P. M., Covey, K., Curry, C. L., Etiope, G., Frankenberg, C., Gedney, N., Hegglin, M. I., Hoeglund-Isaksson, L., Hugelius, G., Ishizawa, M., Ito, A., Janssens-Maenhout, G., Jensen, K. M., Joos, F., Kleinen, T., Krummel, P. B., Langenfelds, R. L., Laruelle, G. G., Liu, L., Machida, T., Maksyutov, S., McDonald, K. C., McNorton, J., Miller, P. A., Melton, J. R., Morino, I., Mueller, J., Murguia-Flores, F., Naik, V., Niwa, Y., Noce, S., ODoherty, S., Parker, R. J., Peng, C., Peng, S., Peters, G. P.,
1235 Prigent, C., Prinn, R., Ramonet, M., Regnier, P., Riley, W. J., Rosentreter, J. A., Segers, A., Simpson, I. J., Shi, H., Smith, S. J., Steele, L. P., Thornton, B. F., Tian, H., Tohjima, Y., Tubiello, F. N., Tsuruta, A., Viovy, N., Voulgarakis, A., Weber, T. S., van Weele, M., van der Werf, G. R., Weiss, R. F., Worthy, D., Wunch, D., Yin, Y., Yoshida, Y., Zhang, W., Zhang, Z., Zhao, Y., Zheng, B., Zhu, Q., Zhu, Q., and Zhuang, Q.: The Global Methane Budget 2000–2017, *Earth System Science Data*, 12, 1561–1623, <https://doi.org/10.5194/essd-12-1561-2020>, 2020.
- 1240 Schoenhardt, A., Altube, P., Gerilowski, K., Krautwurst, S., Hartmann, J., Meier, A. C., Richter, A., and Burrows, J. P.: A wide field-of-view imaging DOAS instrument for two-dimensional trace gas mapping from aircraft, *Atmospheric Measurement Techniques*, 8, 5113–5131, <https://doi.org/10.5194/amt-8-5113-2015>, 2015.
- Segers, A. and Houweling, S.: Global atmospheric concentrations from inversion of surface and GOSAT satellite observations, Copernicus Atmosphere Monitoring Service (CAMS) Atmosphere Data Store (ADS), <https://ads.atmosphere.copernicus.eu/datasets/cams-global-greenhouse-gas-inversion?tab=overview>, last accessed: 2024-10-04, v22r2, 2023.
- 1245 Shindell, D., Kuylenstierna, J. C. I., Vignati, E., van Dingenen, R., Amann, M., Klimont, Z., Anenberg, S. C., Muller, N., Janssens-Maenhout, G., Raes, F., Schwartz, J., Faluvegi, G., Pozzoli, L., Kupiainen, K., Hoeglund-Isaksson, L., Emberson, L., Streets, D., Ramanathan, V., Hicks, K., Oanh, N. T. K., Milly, G., Williams, M., Demkine, V., and Fowler, D.: Simultaneously Mitigating Near-Term Climate Change and Improving Human Health and Food Security, *Science*, 335, 183–189, <https://doi.org/10.1126/science.1210026>, 2012.
- 1250 Sierk, B., Fernandez, V., Bézy, J.-L., Meijer, Y., Durand, Y., Bazalgette Courrèges-Lacoste, G., Pachot, C., Löscher, A., Nett, H., Minoglou, K., Boucher, L., Windpassinger, R., Pasquet, A., Serre, D., and te Hennepe, F.: The Copernicus CO2M mission for monitoring anthropogenic carbon dioxide emissions from space, in: *International Conference on Space Optics — ICSO 2020*, edited by Sodnik, Z., Cugny, B., and Karafolas, N., SPIE, <https://doi.org/10.1117/12.2599613>, 2021.
- Sonderfeld, H., Bösch, H., Jeanjean, A. P. R., Riddick, S. N., Allen, G., Ars, S., Davies, S., Harris, N., Humpage, N., Leigh, R., and Pitt, J.:
1255 CH₄ emission estimates from an active landfill site inferred from a combined approach of CFD modelling and in situ FTIR measurements, *Atmospheric Measurement Techniques*, 10, 3931–3946, <https://doi.org/10.5194/amt-10-3931-2017>, 2017.
- Spanish-PRTR: VERTRESA-URBASER, S.A. UTE (UTE LAS DEHESAS) (COD. PRTR: 3510), available at https://en.prtr-es.es/informes/fichacomplejo.aspx?Id_Complejo=3164, last access: 24.03.2025, 2025a.
- Spanish-PRTR: DEPOSITO CONTROLADO DE RESIDUOS URBANOS DE PINTO (COD. PRTR: 1636), available at https://en.prtr-es.es/informes/fichacomplejo.aspx?Id_Complejo=1458, last access: 24.03.2025, 2025b.
- 1260 Spanish-PRTR: Information point sources, available at <https://en.prtr-es.es/informes/Pollutant.aspx?ReportedYear=2022&contaminante=1&Comunidad=66>, last access: 24.03.2025, 2025c.

- SRON: Netherlands Institute for Space Research: Project Methane: TANGO, available at <https://earth.sron.nl/project/tango/>, last access: 29.09.2024, 2024.
- 1265 Szopa, S., Naik, V., Adhikary, B., Artaxo, P., Bernsten, T., Collins, W., Fuzzi, S., Gallardo, L., Kiendler-Scharr, A., Klimont, Z., Liao, H., Unger, N., and Zanis, P.: Short-lived Climate Forcers, p. 817–922, Cambridge University Press, 2021.
- Sánchez, C., de la Fuente, M. d. M., Narros, A., del Peso, I., and Rodríguez, E.: Comparison of modeling with empirical calculation of diffuse and fugitive methane emissions in a Spanish landfill, *Journal of the Air & Waste Management Association*, 69, 362–372, <https://doi.org/10.1080/10962247.2018.1541029>, 2019.
- 1270 Trapani, D. D., Bella, G. D., and Viviani, G.: Uncontrolled methane emissions from a MSW landfill surface: Influence of landfill features and side slopes, *Waste Management*, 33, 2108 – 2115, <https://doi.org/10.1016/j.wasman.2013.01.032>, 2013.
- Tratt, D. M., Buckland, K. N., Hall, J. L., Johnson, P. D., Keim, E. R., Leifer, I., Westberg, K., and Young, S. J.: Airborne visualization and quantification of discrete methane sources in the environment, *Remote Sensing of Environment*, 154, 74 – 88, <https://doi.org/10.1016/j.rse.2014.08.011>, 2014.
- 1275 Tu, Q., Hase, F., Schneider, M., García, O., Blumenstock, T., Borsdorff, T., Frey, M., Khosrawi, F., Lorente, A., Alberti, C., Bustos, J. J., Butz, A., Carreño, V., Cuevas, E., Curcoll, R., Diekmann, C. J., Dubravica, D., Ertl, B., Estruch, C., León-Luis, S. F., Marrero, C., Morgui, J.-A., Ramos, R., Scharun, C., Schneider, C., Sepúlveda, E., Toledano, C., and Torres, C.: Quantification of CH₄ emissions from waste disposal sites near the city of Madrid using ground- and space-based observations of COCCON, TROPOMI and IASI, *Atmospheric Chemistry and Physics*, 22, 295–317, <https://doi.org/10.5194/acp-22-295-2022>, 2022.
- 1280 UABIO: Civic union “Bioenergy Association of Ukraine”: Biomethane plant in Spain with a capacity of over 55 million m3 of biomethane/year, available at <https://uabio.org/en/news/12498/>, last access: 29.09.2024, 2022.
- USCESA: United States Committee on Extension to the Standard Atmosphere: U.S. standard atmosphere, 1976, National Oceanic and Amospheric Administration, National Aeronautics and Space Administration, United States Air Force, 1976.
- Varon, D. J., Jacob, D. J., McKeever, J., Jervis, D., Durak, B. O. A., Xia, Y., and Huang, Y.: Quantifying methane point sources from fine-scale satellite observations of atmospheric methane plumes, *Atmospheric Measurement Techniques*, 11, 5673–5686, <https://doi.org/10.5194/amt-11-5673-2018>, 2018.
- Vasilchenko, S., Delahaye, T., Kassi, S., Campargue, A., Armante, R., Tran, H., and Mondelain, D.: Temperature dependence of the absorption of the R(6) manifold of the 2ν₃ band of methane in air in support of the MERLIN mission, *Journal of Quantitative Spectroscopy and Radiative Transfer*, 298, 108 483, <https://doi.org/10.1016/j.jqsrt.2023.108483>, 2023.
- 1290 Wang, Y., Fang, M., Lou, Z., He, H., Guo, Y., Pi, X., Wang, Y., Yin, K., and Fei, X.: Methane emissions from landfills differentially underestimated worldwide, *Nature Sustainability*, 7, 496–507, <https://doi.org/10.1038/s41893-024-01307-9>, 2024.
- Wolff, S., Ehret, G., Kiemle, C., Amediek, A., Quatrevalet, M., Wirth, M., and Fix, A.: Determination of the emission rates of CO₂ point sources with airborne lidar, *Atmospheric Measurement Techniques*, 14, 2717–2736, <https://doi.org/10.5194/amt-14-2717-2021>, 2021.
- Xia, T., Borjigin, S. G., Raneses, J., Stroud, C. A., and Batterman, S. A.: Mobile Measurements of Atmospheric Methane at Eight Large Landfills: An Assessment of Temporal and Spatial Variability, *Atmosphere*, 14, 906, <https://doi.org/10.3390/atmos14060906>, 2023.
- 1295 Xie, H., Zuo, X., Chen, Y., Yan, H., and Ni, J.: Numerical model for static chamber measurement of multi-component landfill gas emissions and its application, *Environmental Science and Pollution Research*, 29, 74 225–74 241, <https://doi.org/10.1007/s11356-022-20951-2>, 2022.
- Xu, L., Lin, X., Amen, J., Welding, K., and McDermitt, D.: Impact of changes in barometric pressure on landfill methane emission, *Global Biogeochemical Cycles*, 28, 679–695, <https://doi.org/10.1002/2013GB004571>, 2014.
- 1300

Zhu, H., Letzel, M. O., Reiser, M., Kranert, M., Bächlin, W., and Flassak, T.: A new approach to estimation of methane emission rates from landfills, *Waste Management*, 33, 2713 – 2719, <https://doi.org/http://dx.doi.org/10.1016/j.wasman.2013.08.027>, 2013.