

Referee Comment 1:

In their study, the authors investigated the uncertainties in carbon emissions from land use and land cover change in Indonesia. They analyzed spatiotemporal differences in cropland from several LULCC datasets. The authors run multiple simulations to disentangle the impact of different LULCC datasets on the carbon emissions. They also compared the results of different LULCC data-driven JULES-ES models and the results of MB1-driven TRENDYv12 simulations, as well as comparing their estimates with other models/products such as the National Greenhouse Gas Inventory of Indonesia (NGHGI). Overall, testing the sensitivity of the model to the LULCC changes is of great interest, especially for some important regional carbon emission assessments, and the manuscript is decently written.

However, I have some concerns as follows: (1) In the Introduction, the authors use a lot of paragraphs to describe the importance of Indonesia in the global carbon cycle, which is very important background knowledge, but this part should be streamlined. Even, the authors spend a lot of space on the introduction of some commonly used data, such as LUH2. It is unnecessary to introduce these too much, because it can appear in the data description section. Particularly, there is no review of similar studies and comparison with previous studies. Moreover, too much speculation appears in the Discussions and Conclusions, while there are no results to support them. Some results need to be explained better.

I have reduced several sentences in the introduction, include the explanation about LUH2. I also added the review similar studies in paragraph 5 of introduction.

I have deleted several sentences in discussion and conclusion to address the speculation.

(2) The innovativeness of the present version cannot be observed and was not highlighted in the Introduction.

I have added a sentence about the innovation in the introduction:

“However, we emphasize more on the uncertainties, that is not only cause by the input but also the different approach of models and/or inventories.”

As this research prove that the uncertainties is not only from the different input, but also amongst model itself, as different DGVMs estimates differently with the same input.

(3) I am very concerned about the evaluation of the model as it directly determines the reliability of this study. However, the authors did not provide details on model parameter and their settings, which modules were used, and how carbon emissions were calculated. It is unclear. In particular, the authors used 0.5° resolution land use data (resampling 30 m Mapbiomas data to 0.5 degrees), only about 760 pixels in Indonesia, to run the model and analyze the spatial and temporal variability of the LULCC and investigate their impact on carbon emissions, which will lead to a great deal of uncertainty, and this make me and the readers very sceptical about the reliability of the study.

See new supplementary section JULES-ES model description which show we calculated the carbon emissions especially how land-use change affect it.

The 0.5 resolution is chosen so it can be comparable with the GCB and Trendy output. As one of the datasets is LUH2-GCB22 and all other DGVMs has the resolution of 0.5, so we use the same resolution for running the Mapbiomas.

Furthermore, this resampling process does not massively change the total area. For example, , cropland on MB2 in 2000 is 38.51046 Mha for 30 meters resolution but it is 39.51675 Mha in 0.5 degree resolution.

(4) It seems that this study only focuses on cropland changes, while the title suggests that the authors are concerned about the impact of LULCC changes on uncertainties in carbon emission. Moreover, it should be noted that LULCC not only includes changes in the internal planting structure of a specific land use type (e.g., the area of cropland remaining unchanged, but its planting type can change, thereby affecting carbon emissions), but also includes the mutual transformation between different land use types (e.g., the conversion between cropland and forests). However, this study seems to primarily focus on changes in the area of different land use types.

Thanks a lot, about this input. This research is mainly focused on carbon emissions from land use change, which is mainly related with the deforestation. There are many forested area converted to other land use change, not only cropland, but also other agriculture, and palm oil contribution is increasing the last 20 years. However, as there is no PFT for palm oil, there are some simplifications we should do, but at least we remain capture the effect of this deforestation at the first degree to the carbon emissions. Furthermore, as the Mapbiomas is derived from satellite directly, the land use change should be related with the land cover too. The changing of land cover determines the classification of land use.

Further detailed comments follow below.

Abstract:

Line 39: Please keep the expression of 0.24 [0.22-0.25] Pg C/yr consistent with that of 0.23 ± 0.05 Pg C/yr. Make them comparable.

Done, thanks.

Line 44: Change the “;” to “.”.

Done, thanks.

Introduction

Line 47: I suggest adding the relevant references to support this statement.

Done.

Line 55: What does MHa mean? Is it Mha?

Yes Mha. I fixed it now.

Line 65: Delete “(Emissions of Land Used Change)” as already mentioned above.

Done.

Lines 80-82: Add the references.

Done.

Methods:

Line 105: It appears that only cropland was considered in this study, but not grazing land. This is confusing.

It is the standard input for JULES-ES and LUH2 that needs both cropland and grazing land. Those are both considered. Unfortunately, as Mapbiomas has no specific grazing land category, we instead used the grazing land from LUH2. This relation can be seen in Figure 1.

Although all JULES simulation uses the same grazing land dataset from LUH2, there is adjustment of grazing land on simulation with Mapbiomas when the total fraction is more than 1, so this should be explained.

Line 107: Which method have you used to reduce the grazing land fraction? Please describe the method in detail and add one or two sentences here.

I have explained it on lines 105-107 and it is simple method. Basically we sum the cropland fraction and grazing land fractions, and if the total fraction is greater than 1, we reduce the grazing land fraction so the maximum fraction of cropland+grazing land is 1.

I added the following sentence to make it clearer:

“In case total combination of Mapbiomas agriculture fraction and LUH2- GCB2022 grazing land fraction is higher than 1 in a given grid-cell, we reduce the grazing land fraction accordingly. So the total area of cropland + grazing land will be equal or less than 1.”

Line 131: We could not get some detailed information about these data from Table 1, and I suggest adding some basic parameters about these data, etc.

I added information about these data in table.

Line 145: I am not an expert on the JULES-ES model. For a reader who may not know the JULES-ES model. Please add some important information on this model to the Supplementary, for example, adding the important parameters used in your study and their settings for different plant functional types (PFT), and the equations for the main modules (e.g., how do you calculate carbon emissions?) that used in your study, etc., making it so much easier to understand the scope of the model quickly and be able to interpret your study.

I have created a new supplementary to answer this. Thanks for the suggestions.

Line 190: But there is a big difference in the definitions of agriculture and cropland. In particular, they may have different parameter settings in the model. Generally, “cropland” is commonly used in the models (e.g., JULES-ES model). Are pulpwood or palm oil plantations croplands? These may affect your results and conclusions.

At the moment we treat palm oil and pulpwood as cropland. This is a simplification, but as our focus in on land use change, not land-use, our method will capture the first-order impacts of deforestation/reforestation events.

We do understand that this might affect the uncertainties. But it also results uncertainties if we represent Palm Oil/pulpwood as other PFT. For example, if we classify the palm oil and/or pulpwood as forest, it will not capture the first-order of deforestation and create uncertainties too. Thus, we address it in the discussion and conclusion.

Line 200: We know that Indonesia is mainly composed of islands, and with such a coarse resolution (0.5 degrees) used in this region, it would introduce very large uncertainties. The 0.5-degree resolution is commonly used in global-scale simulations.

This resolution is chosen so it is comparable with the resolution of GCB and Trendy, which is used as global estimation with national details. This is also the resolution of the global climate forcing dataset, CRUJRA. We use LUH2-GCB22 as our basis, and regrid Mapbiomas to the same resolution so it can be comparable.

Indeed it may result in more uncertainties, however the vegetation in the grid is represented as fractions of the grid cell. For example, the total cropland inside the grid is the same/similar for the 0.5 degree or 30 meters resolution. But the exact location of cropland inside the grid might not well represented.

You can check the number and figure bellow under your review for line 241.

Line 221: How to calculate the ELUC trend, magnitude, and pattern with or without peat emission? It's not clear.

Done. Fixed it.

Results:

Line 227: Replace “million hectares” with the same unit, Mha.

Done.

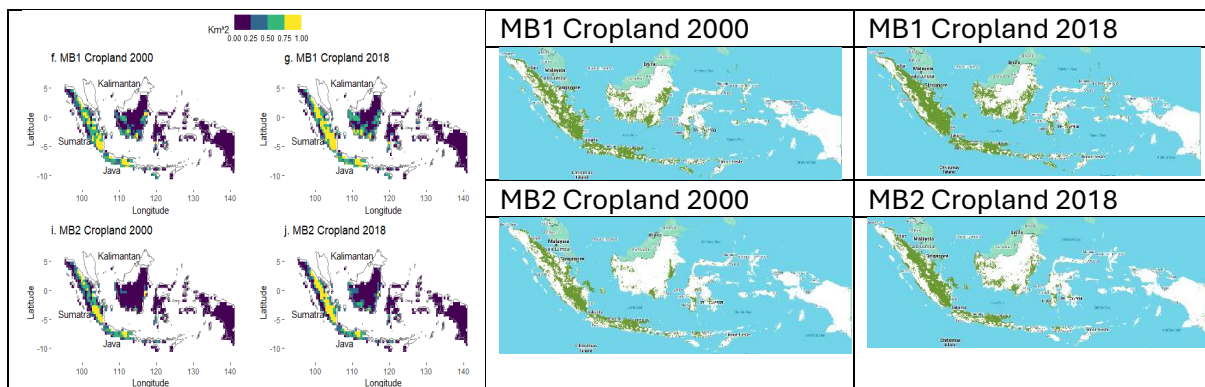
Lines 237-238: This sentence “This aligns with other research...” seems to belong in the Discussion section. I suggest moving it to that section.

Done.

Line 241: In Fig. 2, are the results of spatial and temporal variations in cropland all based on 0.5 degrees? I'm curious how the cropland areas of MB1 and MB2 change at their original resolution? The same or different? This may affect the reliability of all the results. Besides, the scale bar is missing in Figure 2.

Yes all are at the same 0.5 degrees resolution to can comparable.

For example, cropland on MB2 in 2000 is 38.51046 Mha for 30 meters resolution but it is 39.51675 Mha in 0.5 degree resolution. In 2018, 47.43622 Mha for 30 meters, and 48.49098 Mha in 0.5 degree resolution. Here I show you the original Mapbiomas.



The scale bar is not missing. The first scale bar is for 2c,d,f,g,i,j, the second scale bar is for 2e,h,k.

How are Figure 2e, 2h, and 2k calculated? 2018 minus 2000 or 2000 minus 2018? Please explain in the figure caption.

Done. It is 2018 minus 2000.

Lines 250-256: Part of the discussion?

Done.

Line 294: “ 0.12 ± 0.02 PgC/yr and 0.12 ± 0.02 PgC/yr respectively”? Please check these data carefully. They are not the same in Fig 4a.

They are not the same, but similar. If we continue the decimal, it will show the difference. But here I only put until 2 decimals, so it consistent with others.

Discussion:

Lines 308-309: It seems that you are not comparing it to the FAO data. I checked the entire results section and found no comparisons to the FAO data. Why? But you mentioned that data in above text and conclusions. Please add relevant results.

Yes, you are correct. I fix it.

I mean the LUH2 that the cropland derived from FAO, not the FAO dataset directly.

Line 314: JULES or JULES-ES?

JULES-ES. I fix it.

Line 328: Don't repeat what you've already mentioned above (see Line 105).

Done, fixed it.

Lines 333-334: There are no results to support this, it's plain speculation. Similar speculation comes up too many times in your research.

This sentence does not based on the results, this is based on how the JULES-ES treat cropland and grazing land. I added a reference about it.

Lines 337-338: I doubt that it is correct to classify palm oil as cropland? Would the simulation results change if it was classified as forest or other land cover types? This leads to a great deal of uncertainty in your results. Please show the results of these differences.

Yes, the palm oil should not classify as cropland, but it also should not classify as forest. In other hand, this category should not be neglected as it has high percentage. Unfortunately, there is no palm oil PFT in the models yet.

Lines 360-361: It's a very interesting result, but you don't have any more explanations. Can you discuss it in depth?

Yes, I added several sentences to discuss it:

“This is mainly contributed by the carbon emissions from peat fire and peat drainage. During El Nino year, Indonesia experiences drier and hotter climate condition, especially in the Sumatra

and Kalimantan islands (Brasika, 2021; Nurdiati et al., 2022). This condition is favourable for fire regime in the area that not only burnt the above ground biomass, but also peat soil below ground (Brasika et al., 2021; Fanin and Van Der Werf, 2017). As peat contains massive carbon and peat fire is hardly detected and managed (Indradjad et al., 2024), this results the peat fire release massive amount of carbon during hot and dry El Nino year (Stockwell et al., 2016).”

Conclusion

Lines 372-373: Didn't find your results to support that conclusion. Suggest removing it from the text.

Done. Removed.

JULES-ES model description (Land-use Change impact on Carbon Cycle):

a. Vegetation distribution

Land use change in JULES-ES impact on vegetation distribution by modifying the competition term on the simulation of PFT distribution. Here in Equation (1).

$$\frac{dv_i}{dt} = \frac{\lambda \prod v_*}{C_{vi}} \{1 - \alpha a_i - \sum_j c_{ij} v_j\} - \gamma_v v_* - \beta_i v_* \quad (1)$$

Here, v_i denotes the area of grid covered by PFT i . The rate of change in v_i depends on the carbon available for increasing the PFT area ($\lambda \prod v_*$), and the associated carbon cost, determined by the carbon density (C_{vi}). Four terms balance the constant expansion of PFTs:

1. **Vegetation Loss** ($\gamma_v v_*$): Represents vegetation loss from mortality process, not related to competition
2. **Fire disturbance** ($\beta_i v_*$): Accounts for vegetation loss due to fire
3. **Competition amongst PFTs** ($\sum_j c_{ij} v_j$): The dominant PFT will out compete the others.
4. **Land-use change** (αa_i): Represent the competition caused by Land-use change

In the context of land-use change, α is the disturbed fraction, and a_i equals 1 for non-woody PFTs and 0 for woody PFTs. Woody PFTs are restricted from growing in the disturbed fraction, while non-woody PFTs can grow anywhere, including disturbed areas, where they are considered agricultural grasses. These grasses are physiologically identical to natural grasses but are labelled differently. The value of α can change over time. When α increases, natural grasses are reclassified as agricultural grasses, and woody PFT areas are replaced first by bare soil, then potentially by non-woody PFTs if viable. Conversely, as α decreases, agricultural grasses are reclassified as natural grasses, and woody PFTs can re-expand into the grid.

b. Soil carbon store

Land-use change, together with fire, affect the soil carbon store by altering the flux of vegetation-to-soil litter. This litter flux is composed of:

- Local litterfall from leaf, root and stem turnover.
- Litter produced by disturbances and competition.

The effect of land-use change, and fire are integrated into the following equation:

$$\Lambda_{CvLoss} = \sum_i v_i (\Lambda_{li} + (\gamma_{vi} + \beta_i) C_{vi} + \Pi_i \sum_j (\alpha a_i + c_{ij} v_j)) \quad (2)$$

Here, Λ_{CvLoss} represents vegetation carbon loss. However, not all carbon lost enters the soil carbon pools; some loss due to land-use change is diverted to wood-product carbon pools. The litter generated by land-use change (Λ_{LUC}) is calculated using the disturbed fraction (α_{-1}) from the previous time step, as shown in Equation (3):

$$\Lambda_{LUC} = \Lambda_{CvLoss} - \sum_i v_{LUC,i} (\Lambda_{li} + (\gamma_{vi} + \beta_i) C_{vi} + \Pi_i \sum_j ((\alpha - \alpha_{-1}) a_i + c_{ij} v_{LUC,j})) \quad (3)$$

Here, v_{LUC} is the PFT area computed from Equation (1) using $\alpha = \alpha_{-1}$. The litter produced by land-use change is distributed between soil carbon pools and wood-product pools. The below-ground carbon portion, determined by root carbon (C_v), is added to the soil carbon pool, while the remaining above-ground carbon is allocated to the wood-product pool.