

Regional and seasonal evolution of melt ponds on Arctic sea ice

Hannah Niehaus¹, Gunnar Spreen¹, Larysa Istomina², and Marcel Nicolaus²

¹Institute of Environmental Physics, University of Bremen, Bremen, Germany

²Alfred Wegener Institute, Helmholtz Centre for Polar and Marine Research, Bremerhaven, Germany

Correspondence: Gunnar Spreen (gunnar.spreen@uni-bremen.de)

Abstract. Melt ponds on sea ice significantly modify the absorption of solar radiation by the sea ice-ocean system in the Arctic, thereby influencing the energy budget and sea ice mass balance. Consequently, melt ponds are crucial to the positive sea ice-albedo feedback mechanism, which is a major factor to the enhanced Arctic warming observed in recent decades, with implications for the global climate. Given the high seasonal and interannual variability of melt ponds, understanding the mechanisms behind their evolution and their impact on the sea ice state is essential for improving sea ice and global climate models. ~~This~~ Such analysis must also take into account regional differences in melt pond evolution.

Here we present seven years (2017–2023) of melt pond fraction data produced with the Melt Pond Detection 2 (MPD2) algorithm from optical Sentinel-3 satellite observations. We demonstrate strong regional differences in the melt pond evolution process as well as high seasonal and interannual variability. The study shows that the variability is lower in the Central Arctic than in the marginal Arctic seas, which is in compliance with the more stable sea ice coverage in the Central Arctic. Hence this region also shows the highest potential of using melt pond fractions at the beginning of summer as an indicator for the summer surface energy budgets and thus the progress of melt season. Between the nine regions for the ~~marginal~~ Arctic ~~marginal~~ seas, strong differences in melt pond variability are observed.

Sea ice surface topography and air temperature are investigated as primary factors to influence melt pond formation and evolution. Air temperature shows an immediate impact on the melt pond coverage, whose short-lived changes can be well resolved with the new MPD2 melt pond fraction product. A higher sea ice surface roughness leads to lower melt pond fractions in the beginning of the season. Later in the melt season, different behavior of melt pond drainage leads to a reversal of that relationship and hence lower melt pond fractions are observed on the level, flatter sea ice.

1 Introduction

The summer period in the central Arctic is characterized by the continuous presence of shortwave solar radiation. In addition to the infrared terrestrial radiation, which mainly is determined by the presence of clouds, this shortwave radiation can rapidly warm the air and the surface of the sea ice. The sea ice cover acts as a protective shield against incoming solar radiation due to its high albedo, limiting the heat uptake of the Arctic Ocean. Thick, white ice or even snow-covered sea ice reflects more than 70 % of the incoming radiation (Malinka et al., 2018; Light et al., 2022), whereas the darker, open ocean would absorb 90 % of the solar energy if not protected by sea ice (Pohl et al., 2020). Consequently, changes in sea ice extent, thickness or

surface albedo have a significant impact on the Arctic energy budget and sea ice mass balance (Fetterer and Untersteiner, 1998; Perovich et al., 2002a; Nicolaus et al., 2012).

Melt ponds, which form on the surface of Arctic sea ice from surface melt water during summer, drastically reduce the surface albedo (Eicken et al., 2004; Istomina et al., 2015a; Light et al., 2022). The absorption of solar energy in the sea ice and upper ocean (Perovich et al., 2003) is enhanced, which leads to a warming and accelerates the sea ice melt. This self-enhancing feedback loop is known as the sea ice-albedo feedback mechanism (Curry et al., 1995; Perovich et al., 2008; Wendisch et al., 2023). Due to this feedback mechanism, the presence of melt ponds have a strong impact on the sea ice properties, stability and disintegration (Kwok and Untersteiner, 2011; Holland et al., 2012). Some studies even suggest that melt ponds could be used to predict the seasonal Arctic minimum sea ice extent in September (Schröder et al., 2014; Liu et al., 2015), which has decreased dramatically in recent decades (Stroeve et al., 2012b, a; Screen, 2021).

Melt ponds also increase the transmissivity of the sea ice below them and thereby the light availability under the sea ice. This impacts the ecology under the ice and is one of the examples of direct coupling between the physical and biological sea ice systems (Tsamados et al., 2015; Katlein et al., 2019; Stroeve et al., 2024). The increased transmissivity for melt ponds also enhances the upper ocean warming and contributes to the sea ice albedo feedback (Perovich et al., 2007; Wendisch et al., 2023). Given the importance of melt ponds for the sea ice evolution and hence the Arctic climate, there have been efforts to produce pan-Arctic data sets of melt pond coverage from satellite observations (Rösel et al., 2012; Zege et al., 2015; Ding et al., 2020; Lee et al., 2020; Feng et al., 2022; Peng et al., 2022) to enable the analysis of their large-scale distribution. This is much needed as melt pond evolution processes have been shown to be of high spatial and temporal variability (Scharien and Yackel, 2005; Polashenski et al., 2012; Tao et al., 2024) that is not yet adequately considered in global climate models (Flocco and Feltham, 2007; Hunke et al., 2013; Dorn et al., 2018; Diamond et al., 2024). In addition, the quantification of the influence of melt ponds on the surface radiation budget would benefit from a regional and pan-Arctic analysis of melt pond evolution, which is fundamental for a deeper understanding of the amplified warming observed in the Arctic in recent decades (Serreze et al., 2009; Wendisch et al., 2023).

In contrast to other melt pond products based on machine learning approaches, Zege et al. (2015) have developed an entirely physical algorithm, called MPD1, that retrieves pan-Arctic melt pond fractions on sea ice from optical satellite observations. Niehaus et al. (2024) have presented the new MPD2 version of this algorithm for Sentinel-3 OLCI data that includes the open ocean as a third surface type class along with the melt pond and sea ice classes, by using prior information to support and constrain the physical model. This approach has significantly improved the reliability of melt pond products on Arctic sea ice.

Here we apply the MPD2 algorithm on seven years of satellite data from 2017 to 2023 to produce pan-Arctic melt pond fractions and to quantify regional differences in their seasonal evolution. We analyze the ability of the MPD2 products to resolve the temporal and ~~and~~ spatial variability of melt pond processes. We merge our results with sea ice surface roughness data and ice type information from satellite observations to analyze driving mechanisms of melt pond formation and evolution. We further investigate the potential of using melt pond fractions in early summer as an indicator for summer sea ice surface energy budget, including the sea ice minimum extent in September.

The analysis presented in this work is based on the melt pond fraction product from the MPD2 algorithm developed by Niehaus et al. (2024) ~~-It is applied on~~ which provides melt pond fractions with respect to the sea ice area at an uncertainty of 7.8 % and with a bias of +1.6 %. The algorithm is applied to Sentinel-3 OLCI data from 2017 to 2023. For the cloud filtering Sentinel-3 SLSTR data is used in addition. For the quantitative analysis of this data product in this study additional steps of filtering are applied for data consistency purposes as presented in Section 2.1. In addition, data sets used for the interpretation and further analysis of the melt pond fraction data are shortly introduced in this section.

2.1 Melt Pond Fraction Data Preparation

~~Since the~~ The MPD2 algorithm operates ~~in a wavelength regime where~~ on top-of-the-atmosphere (TOA) supplied by the OLCI instruments on the EU Copernicus Sentinel-3A and Sentinel-3B satellites operated by the European Space Agency (ESA) and European Organisation for the Exploitation of Meteorological Satellites (EUMETSAT). These sensors are push-broom instruments looking at nadir along track and spanning a 68.5° across track field of view. With a swath width of 1270 km and a short revisit time, they cover the Arctic, north of 67° N, daily more than once. However, TOA reflectances in 8 spectral bands in the visible and near-infrared (NIR) range (412–885 nm) are used in which clouds are opaque. Hence, cloud pixels must be carefully removed from the data product. The swath data are already filtered for cloud pixels within the MPD2 algorithm itself, according to the criteria defined by Istomina et al. (2010, 2011) and Zege et al. (2015). However, cloud shadows are not captured by this filter but tend to influence the results of the MPD2 algorithm, resulting in an overestimation of melt pond fractions, as illustrated in Figure 1, because the shadowed pixels appear darker. ~~Therefore, an additional filter to~~ The same applies to shadows caused by sea ice ridges. These areas are much smaller than those shaded by clouds and mostly below the satellite footprint size. Thus they add to the uncertainty of the cloud shadow removal which is dominated by the cloud edges. To remove shadowed pixels, an additional filter is applied to the processed swath data, before the daily maps are compiled. This filter is based on the difference in the ratio of measured top of atmosphere (TOA) reflectances in the blue (490 nm) and red (681 nm) edge wavelengths between observations of shaded and not shaded surfaces:

$$\frac{|\rho(681 \text{ nm}) - \rho(490 \text{ nm})|}{\rho(681 \text{ nm})} > 0.95. \quad (1)$$

If this condition is met, which is usually the case when the TOA reflectance is much higher in the blue range than near the red edge, a pixel is likely to be shadowed and thus removed. In cloud shadows, the observed reflectance originates mainly from scattering in the atmosphere, which is dominated by the Rayleigh scattering and hence inversely proportional to the fourth power of the wavelength. Thus, blue light is scattered more than red light and gives a much higher TOA reflectance than the red light and the condition is fulfilled. Otherwise, in the cloud-free case, the measured signal is dominated by the surface reflectance which shows smaller differences between the two wavelengths. Along the edges of the combined cloud and cloud shadow mask, individual pixels and small patches of retrieved data are additionally removed due to the high risk of undetected disturbances. The filtering is performed using a combination of morphological operations, dilation and erosion (i.e., closing),

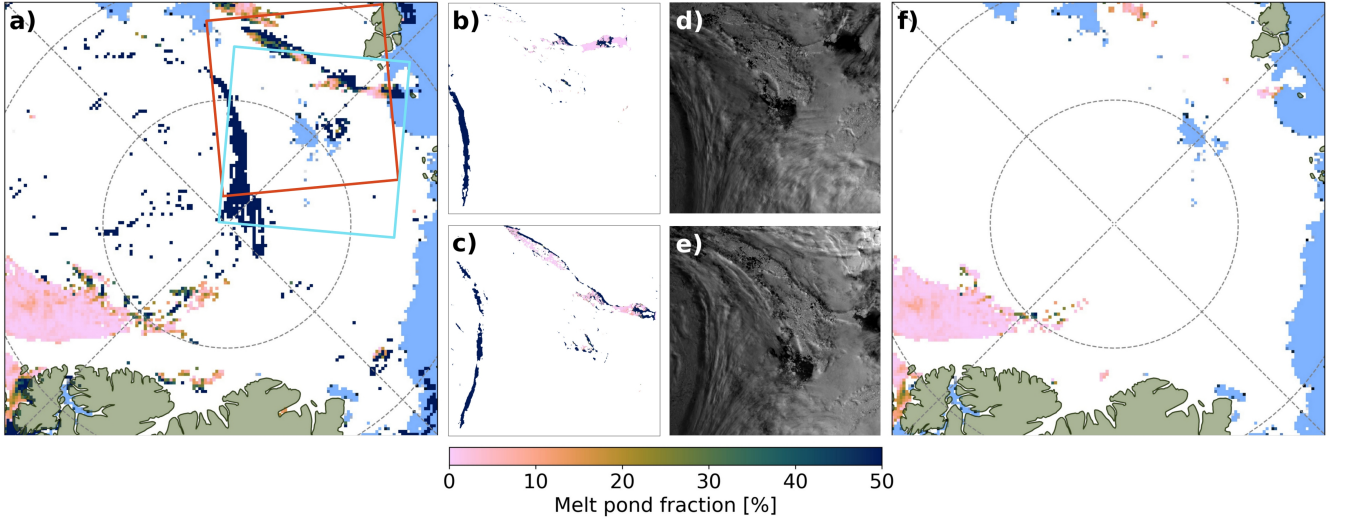


Figure 1. Illustration of cloud shadows leading to falsely high melt pond fraction values, for the example of September 7, 2022. a) Excerpt from the daily melt pond fraction map aggregated from the swath data without additional cloud shadow filtering. In the center, there is a large area indicated with high melt pond fractions resulting from cloud shadows. The cyan and red rectangles shows the position of the excerpts from two processed example swaths displayed in b) and c), respectively. Panels d) and e) present the respective raw data at the wavelength of 490 nm in gray scale. They both show an extended cloud shadow near the left edge, which is classified as high melt pond fraction area. The composite of the two presented swaths and data from other overflights accounts for the large, elongated area of very high melt pond fractions in a). f) Excerpt from the daily melt pond fraction map aggregated from the swath data with the additional cloud shadow filter applied to the swath data. The colorbar indicates the melt pond fraction for all maps of processed data.

applied to the combined mask. The number of applied iterations of the dilation and erosion operations s , which defines the rigor of the filtering, is chosen as a function of the solar zenith angle (SZA), since the probability of larger cloud shadows increases with a lower sun position (higher SZA) for a constant cloud height:

$$s \propto \tan\left(\frac{SZA \cdot \pi}{180^\circ}\right). \quad (2)$$

After the processing just described, the swath data are assembled into daily maps that are gridded on the NSIDC (2024) grid of 12.5 km resolution. During the gridding process, additional filters are necessary to minimize biases due to insufficient or unevenly distributed data, thereby allowing a reliable discussion of the results. The applied process steps follow the inhomogeneity measure I defined by Sofieva et al. (2014), which is essentially divided into a measure of the data asymmetry A and entropy E :

$$I = \frac{1}{2}(A + (1 - E)). \quad (3)$$

Possible values for I , A and E are between 0 and 1. High values of I indicate a strong inhomogeneity of the sampling distribution. The entropy E is 1 for perfectly homogeneously distributed data, decreasing in case of data gaps, and is calculated

by partitioning the data into spatial bins or time steps n , for spatial or temporal measures, respectively:

$$E = \frac{-1}{\log(N)} \sum_i \frac{n(i)}{n_0} \log \left(\frac{n(i)}{n_0} \right). \quad (4)$$

Herein, N is the number of bins or time steps, $n(i)$ is the number of observations within the bin or time step i , and n_0 is the total sample size. Thus, the entropy describes how much data are missing but it does not take into account the distribution of the remaining data. This is captured by the asymmetry A , which is high in case of strongly unbalanced data and 0 if the

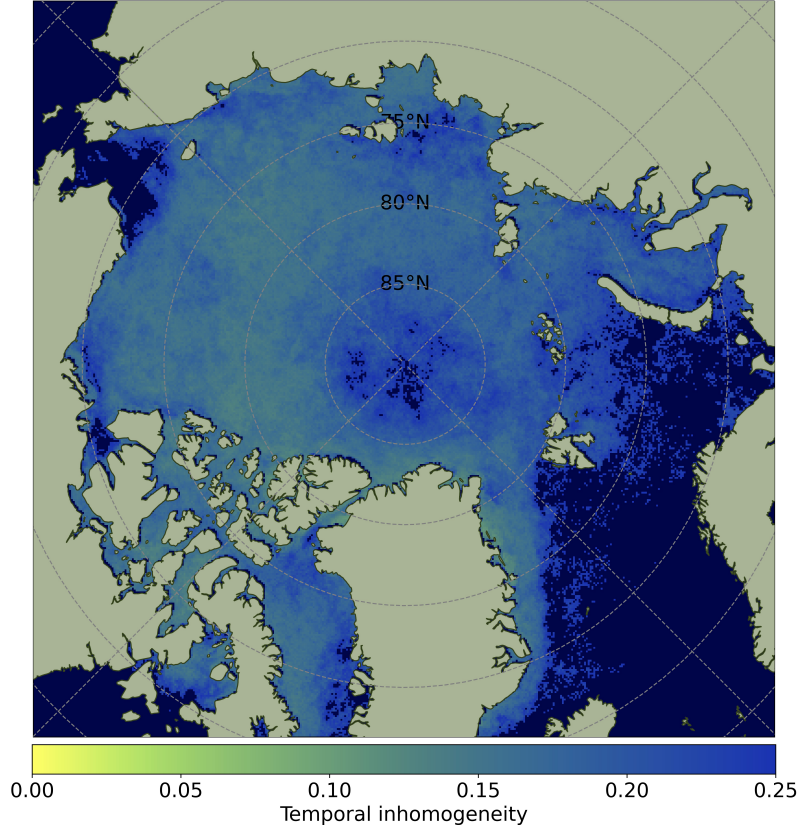


Figure 2. Temporal inhomogeneity calculated using Equations 3 to 5 for each grid cell of the north polar stereographic NSIDC 12.5 km resolution grid. The cutoff is set to 0.25 (upper limit) and mainly removes areas that are not covered by sea ice most of the time period. Data that exceed the limit of allowed temporal inhomogeneity or are not within the observed Arctic regions, are colored in dark blue.

distribution is perfectly symmetric. It is calculated from the mean spatial or temporal position \bar{x} in a grid cell or time period of width Δx and its central position or time x_0 :

$$A = 2 \frac{|\bar{x} - x_0|}{\Delta x}. \quad (5)$$

First, the temporal inhomogeneity I_T within the 7 year time span is tested pixelwise within the 12.5 km spatial resolution daily maps constructed from the swath data. The temporal inhomogeneity is higher for grid cells with sparse data. This mainly

affects areas that are not covered by sea ice for large parts of the observation time period. Additionally, small areas in the high Arctic (above 85 °N) are filtered out because low solar zenith angles at the end of the summer season lead to data gaps at high latitudes first. ~~The filtered areas are indicated by the dark blue color in Figure 2. The threshold of 0.25~~ To assure consistency of the data used for further analysis and regional comparisons, grid cells that have a temporal inhomogeneity larger than 0.25 are removed from the analysis for the entire 7 year time span. This threshold was chosen empirically to preserve the maximum possible amount of data while removing the problematic areas mentioned above. ~~The filtered areas are indicated by the dark blue color in Figure 2. The~~ temporal inhomogeneity filter is computed from and applied to the daily data to avoid losing temporal information. Subsequently, the data are aggregated into 7 day composite maps using a running mean centered on the day of interest.

~~The spatial inhomogeneity is computed separately. Subsequently, the spatial inhomogeneity filter is computed~~ for each Arctic region (see Figure 4) separately to ensure that an analysis of ~~average-mean~~ values per region is reasonable. ~~For the same purpose,~~ i.e., it is ensured that enough data is available for every region. Before equations 3-5 are applied, the grid cells per Arctic region to be considered are reduced to areas that are covered by sea ice at the beginning of the melt period, i.e. the beginning of May. Single days are additionally excluded from the time series if less than 20 % of ~~the this initial~~ sea ice area ~~(at the beginning of the observation period)~~ is covered with retrieval data. ~~Spatial inhomogeneity calculated with Equations 3 to 5 for each day of the observation period. a) Spatial inhomogeneity for the Central Arctic region over the entire 7-year observation period. The dashed horizontal line marks the threshold applied to filter the data. b) More detailed view of the 2017 summer season, for all used Arctic regions.~~ This removes days with strong irregularities in the regional data distribution ~~to ensure that an average represents~~ and avoids a distortion of the analysis results. This is especially important at the end of the melt season, where only a small part of a region might be still covered with sea ice, and thus would not be well representative for the entire region.

Figure 3 displays the calculated spatial inhomogeneity for the Central Arctic for the entire 7 year period, and for all relevant Arctic regions (see Figure 4) for the summer 2017 season in detail. Gaps in the inhomogeneity measure are due to insufficient data coverage. In general, the spatial inhomogeneity increases during the summer periods. This is in large parts explained by the decreasing sea ice area and lower sun elevation towards the end of the summer season season, leading to deficient illumination and larger cloud shadows to be filtered. The upper threshold above which days are removed from the seasonal analysis is the median regional spatial inhomogeneity plus two times its standard deviation. This threshold is applied to each region separately and ranges from 0.1 to 0.2.

In this study, any kind of melt water on top of the sea ice is defined as melt pond, even if they are partly melted through the sea ice or have a lateral connection to the ocean.

2.2 ERA5 Temperature

The 2-meter air temperatures from the ECMWF fifth-generation reanalysis ERA5 (Hersbach et al., 2020) are used to examine the relationship between melt pond evolution and the temperature forcing. These temperature data are sourced from the

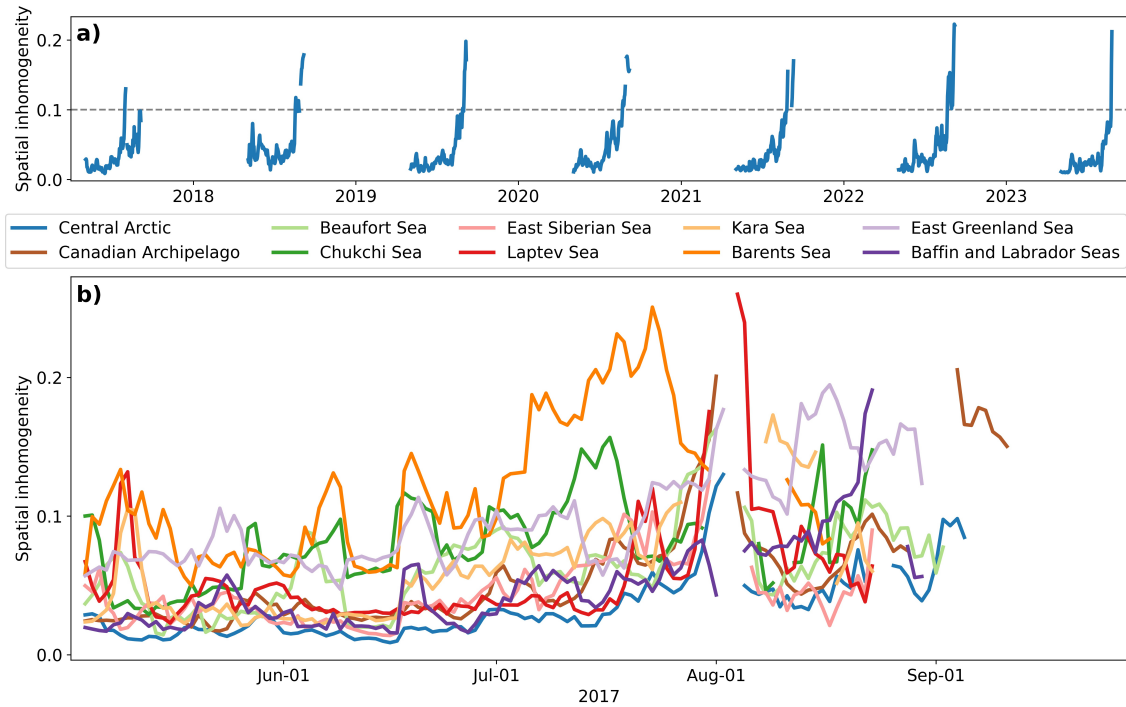


Figure 3. Spatial inhomogeneity calculated with Equations 3 to 5 for each day of the observation period. a) Spatial inhomogeneity for the Central Arctic region over the entire 7 year observation period. The dashed horizontal line marks the threshold applied to filter the data. b) More detailed view of the 2017 summer season, for all used Arctic regions.

ERA5 web page (<https://cds.climate.copernicus.eu/cdsapp#!/dataset/reanalysis-era5-single-levels>, accessed last on September 30, 2023), featuring a spatial resolution of 0.25° and a temporal resolution of 6 hours.

2.3 MOSAiC Campaign Data

150 For the case study of the melt pond evolution along the drift track of the year-long Arctic research expedition MOSAiC of the research vessel *Polarstern*, in situ observations from that measurement campaign have been used for comparison. An overview of the atmospheric and sea ice observations can be found in Shupe et al. (2022) and Nicolaus et al. (2022), respectively. In this work, particular, air temperatures and precipitation measurements from the meteorological station and the atmospheric flux station (ASFS30) are used. Details on these observations can be found in Cox et al. (2023). Additionally, melt pond fraction
155 observations from in situ transects on the sea ice provided by Webster et al. (2022) are used for comparison.

2.4 ASI Sea Ice Concentration

For the assessment of sea ice coverage in the analysis of the regional differences in melt pond evolution, the ASI sea ice concentration (SIC) data product derived from AMSR2 satellite passive microwave observations is used. Details on the retrieval

algorithm and data product can be found in Kaleschke et al. (2001) and Spreen et al. (2008). The data has been downloaded
160 from the web page of the University of Bremen (https://data.seaice.uni-bremen.de/amsr2/asi_daygrid_swath/n6250/) with a
daily temporal resolution and a 6.25 km spatial resolution.

2.5 ICESat-2 Sea Ice Surface Roughness

For the discussion of the correlation between melt pond fractions and the sea ice surface roughness, the pan-Arctic drag
coefficient product developed by Mchedlishvili et al. (2023) from ICESat-2 laser altimeter surface elevation data is used.
165 This data set contains monthly averages, resampled to a 25 km polar stereographic (NSIDC, 2024) grid, of several types of
drag coefficients as well as obstacle height and obstacle spacing. The obstacle spacing is the average distance between ridges
exceeding a height of 20 cm within the grid cells of 25 km edge length. This quantity is applied as a good approximation for the
sea ice surface roughness in terms of large-scale deformation relevant to pond evolution, since obstacles with heights greater
than 20 cm are considered to be serious barriers to the expansion of surface melt water. The data is available daily for the years
170 2019 to 2021 on a 25 km on (<https://doi.pangaea.de/10.1594/PANGAEA.959728>). Details on the data product can be found in
Mchedlishvili et al. (2023).

2.6 Multiyear Ice Concentration

The multiyear ice (MYI) concentration data product (Melsheimer et al., 2019) developed by Ye et al. (2016a, b) using passive
microwave satellite observations of AMSR2 provides daily pan-Arctic maps of MYI concentration, i.e., the percentage of sea
175 ice that has survived at least one summer melt season, at a spatial resolution of 6.25 km. To classify sea ice as either MYI
or first-year ice (FYI), thresholds are applied pixel by pixel and the dominant ice type is taken: pixels with MYI > 70 % are
classified as MYI and pixels with MYI < 30 % are classified as FYI. Because the MYI retrieval was designed for non-melting
conditions, the data are only provided until the beginning of May. Thus, MYI concentrations on May 1 of are used to determine
the areas of MYI and FYI at the beginning of the melt season and relate the melt pond fractions with the sea ice type as presented
180 in Section 4.4. Details on the retrieval algorithm can be found in Ye et al. (2016a, b) and the data is downloaded from the web
page of the University of Bremen (<https://data.seaice.uni-bremen.de/MultiYearIce/>).

2.7 OSI-SAF Drift Product

In Section 4.4, the low-resolution sea ice drift product of the European Organization for the Exploitation of Meteorological
Satellites (EUMETSAT) Ocean and Sea Ice Satellite Application Facility (OSI-SAF) is used to track the sea ice drift and
185 thereby map sea ice types. This product offers sea ice motion vector fields over a 48-hour period merged from multiple satellite
drift vectors, employing an optimal interpolation method. The provided drift data come with an uncertainty estimate of 4 to
8 km. This near-real-time product is available daily since 2019, featuring a grid spacing of 62.5 km projected onto the NSIDC
polar stereographic grid.

3 Melt Pond Fraction Evolution for Arctic Regions

190 Understanding the formation and seasonal evolution of melt ponds is fundamental for understanding and modeling the heat and mass balance of sea ice in the summer season. The here developed pan-Arctic melt pond fraction product offers great potential to extend existing knowledge from in situ measurements by assessing the large-scale variability and monitoring regional differences. For this purpose, the Arctic is divided into ten common regions as defined by the National Snow and Ice Data Center (NSIDC, 2024). These regions are displayed in Figure 4. For each region, the mean values of the melt pond,

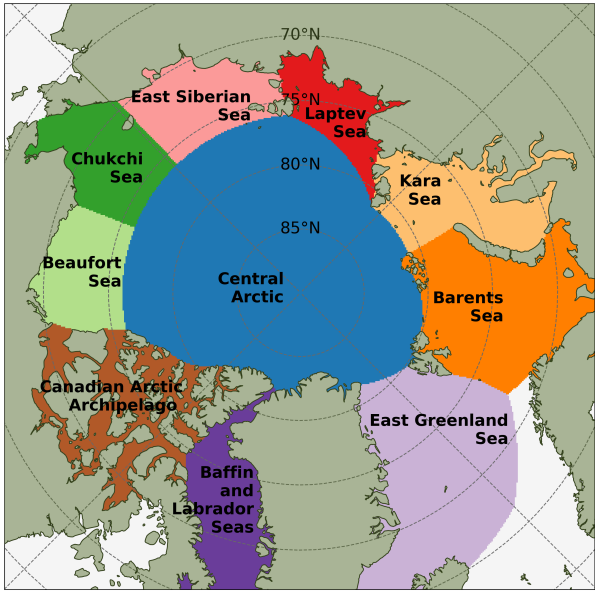


Figure 4. Overview of the Arctic regions following the definition by the National Snow and Ice Data Center (NSIDC, 2024).

195 open ocean and sea ice fractions are calculated from the aggregated 7-day composites described in Section 2.1. A detailed overview of the seasonal evolution of the mean values enriched by the probability density distribution of the melt pond fraction observations is presented in the Figures 5 and 6 for the years 2017 to 2023 and for all regions. Additionally the progression of sea ice extent in the regions is shown to allow an estimation of the relevance of the melt pond fraction. If there is little sea ice in a region (e.g., in the East Siberian Sea at the end of the summer season), the impact of high melt pond fractions on the energy
200 budget is less because this quantity is given relative to the total sea ice area. The sea ice extent is derived from the ASI sea ice concentration (SIC) data product (Section 2.4) using a typical threshold of SIC > 15 % per grid cell. The area defined by this threshold is also the area where the melt pond fraction retrieval is applied. Thus, the mean sea ice fraction retrieved by MPD2 shown in the figures has a different meaning than the sea ice extent from ASI SIC. While the percentage of sea ice extent refers to the entire ocean in a region, the MPD2 sea ice fraction refers only to the area that has more than 15 % sea ice concentration.
205 It then gives information about the open ocean area within the ice pack, which can be cracks, leads and polynyas.

The largest share and most constant area extent of Arctic sea ice is located in the Central Arctic, as can be seen from the gray sea ice lines in the Figures 5 and 6. The marginal seas of the Arctic Ocean can be classified in three groups based on the seasonal cycle of sea ice extent. The first group includes the ~~the~~ Barents Sea, the East Greenland Sea and the Baffin and Labrador Seas: these regions are never fully covered by sea ice and typically become completely ice-free by the end of the summer (dashed gray lines). The second group is the opposite and includes only the Canadian Arctic Archipelago and the Beaufort Sea: these regions are completely ice-covered in the winter and retain some sea ice during the sea ice minimum extent in late summer. However, the late summer sea ice cover in the Beaufort Sea is highly variable and there are exceptions when this region also becomes ice-free. ~~It~~ This region would then fall into the third group ~~that is of Arctic regions that~~ otherwise contains the Chukchi Sea, the East Siberian Sea, the Laptev Sea, and the Kara Sea: all these Arctic marginal seas are close to 100 % ice covered at the beginning of the melt season and tend to become ice-free at the end of that season. Further characteristics to subdivide the Arctic marginal seas are the impact of sea ice drift and the presence of landfast ice. The latter is restricted in many regions to the beginning of the melt season, as landfast ice means that the sea ice is attached to the land masses, which are generally located at lower latitudes and thus experience earlier melt. A special case is the Canadian Arctic Archipelago with its large number of islands, where more than 80 % of the sea ice is landfast ice at the beginning of the melt season (Galley et al., 2012). Other Arctic regions with larger amounts of landfast ice (areas of more than 10^5 km^2) at the beginning of summer are the East Siberian, the Kara and the Laptev Seas. The Barents and Chukchi Seas, on the opposite, contain the least amount of landfast sea ice (Yu et al., 2014; Dammann et al., 2019).

3.1 Central Arctic

The Central Arctic region shows the smallest and latest increase in melt pond fraction per year, with median melt pond fractions not exceeding 30 %. This is consistent with the high stability of sea ice (extent). In all years, the overall melt pond fraction remains close to 0 % until late June, with a stronger increase towards early July. This can be largely explained by the extremely high latitudes and consequently cold average temperatures. Bimodal distributions of the melt pond fraction are a common feature, with some areas in the central Arctic region having no melt ponds at all and some other areas having high melt pond fractions up to 50 %. In some years, e.g., 2020 and 2023, there are periods of temporary melt pond presence throughout the entire Central Arctic with ~~spatially-averaged~~ spatial median values between 20 % and 50 %. This is in agreement with observations by Istomina et al. (2015b), Istomina et al. (2023) and Rösel and Kaleschke (2011).

3.2 Canadian Arctic Archipelago

Melt pond fractions in the Canadian Arctic Archipelago show a sudden increase in mid-June from 0 % to a median of 40 %, usually in less than two weeks, leading to maximum melt pond fractions in early July. Meltwater can spread quickly across the sea ice surface if temperatures are high enough, because much of the Canadian Arctic Archipelago is covered by landfast ice, which tends to be ~~little~~ only slightly deformed and rather flat. Peak melt pond fractions are typically between 40 % and 50 %, which is consistent with observations by Howell et al. (2020). The sea ice fraction within the ice-covered area, which is an estimate of how compact the sea ice is, remains at 100 % until early July, when the peak melt pond fractions are reached.

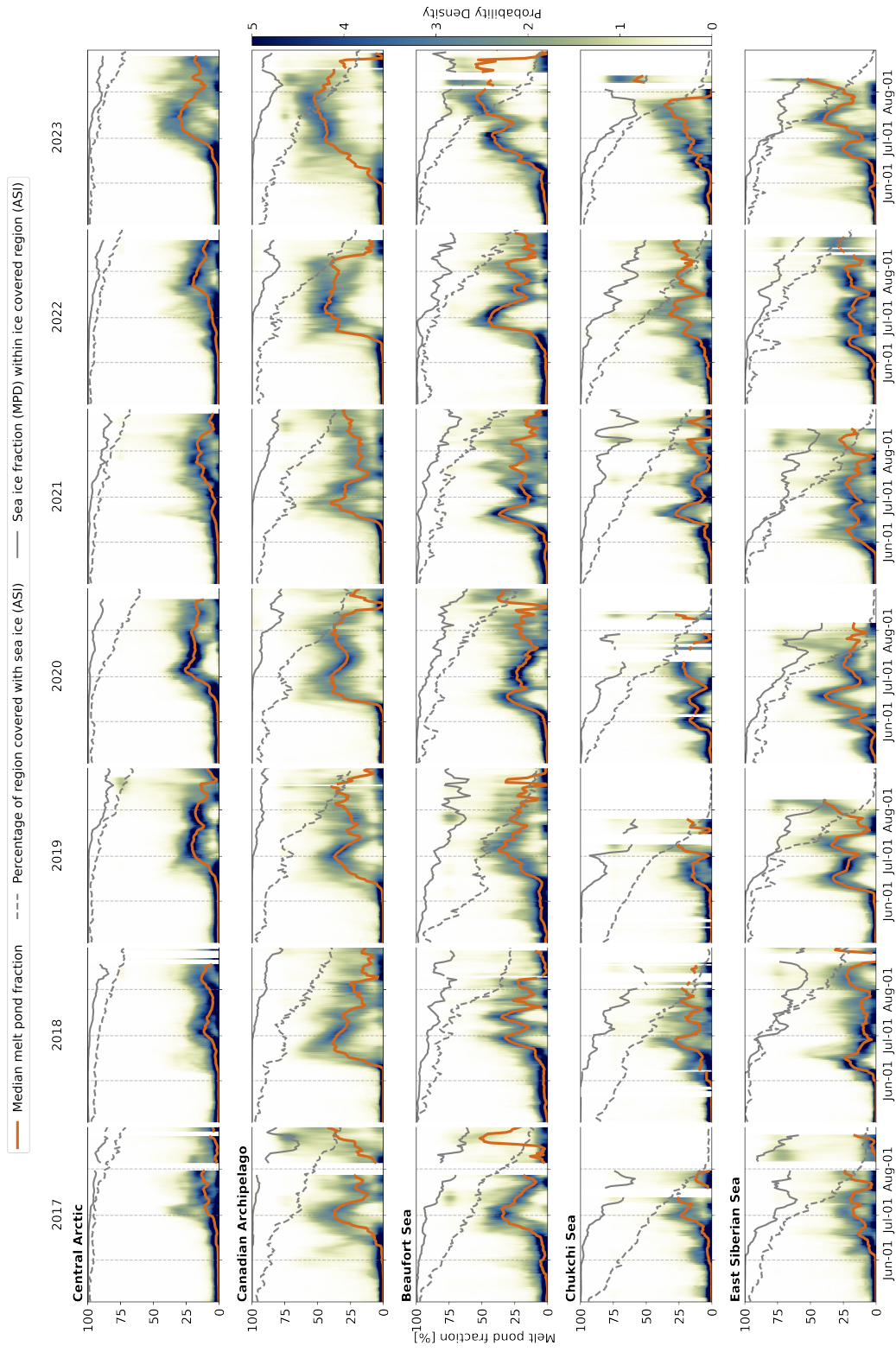


Figure 5. Seasonal evolution of melt pond fraction for seven years of Sentinel-3 observations, differentiated by Arctic regions as shown in Figure 4. The remaining regions are shown in Figure 6. The colorbar indicates the probability density of the melt pond fraction distribution and is valid for all subfigures. [The median melt pond fraction is considered as fraction of sea ice area.](#) Data gaps in the MPD2 output are due to insufficient data coverage.

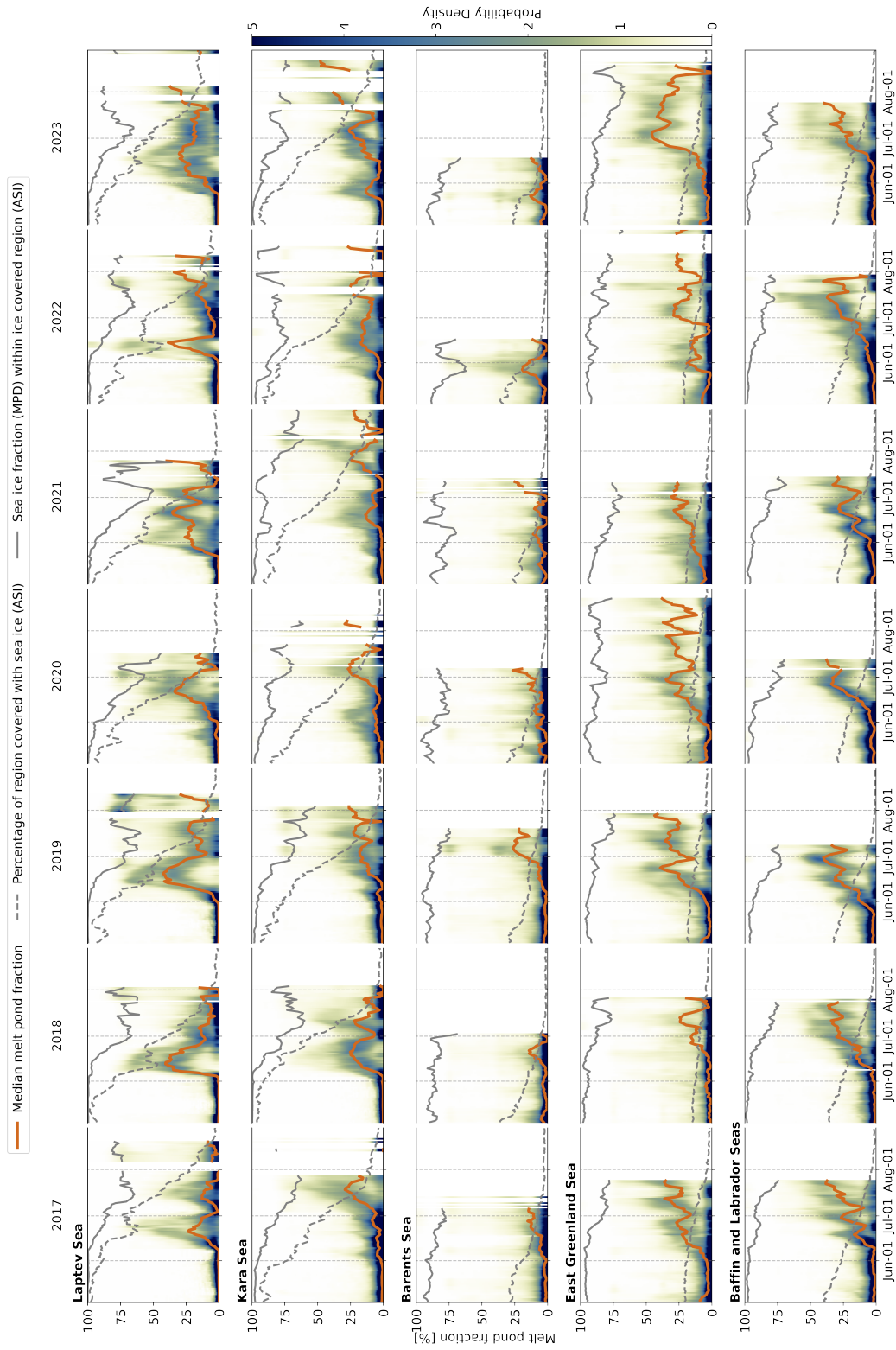


Figure 6. Continuation of Figure 5. Seasonal evolution of melt pond fraction for seven years of Sentinel-3 observations, differentiated by Arctic regions as shown in Figure 4. The colorbar indicates the probability density of the melt pond fraction distribution and is valid for all subfigures. [The median melt pond fraction is considered as fraction of sea ice area.](#) Data gaps in the MPD2 output are due to insufficient data coverage.

Subsequently, sea ice compactness decreases slightly, coinciding with a decrease in melt pond fraction, as melt ponds begin
240 to melt through the ice (Istomina et al., 2023). This is also in line with the onset of drainage dated to the end of June for
landfast ice in the Canadian Arctic Archipelago by Tanaka (2020) using AMSR-E passive microwave data. They also estimate
the duration of the drainage period to be about 15 ± 5 days, which is consistent with the observation that the melt pond fraction
tends to increase again in mid-July due to enhanced lateral melt.

An exceptional year is 2023, when melt pond fractions took more time to increase, but then did not drop in between, reaching
245 more than 50 % median melt pond fraction in late July. During the periods of maximum melt pond fraction, the probability
density distribution usually shows no areas of no melt ponds at all, but a broad distribution around the median with local values
up to 80 %.

3.3 Beaufort Sea

The Beaufort Sea is located at similar latitudes and directly adjacent to the Canadian Arctic Archipelago, but contains very
250 little landfast ice. In contrast, it is characterized by high sea ice drift activity caused by the Beaufort Gyre (Reimnitz et al.,
1994). Thus, the seasonal melt pond evolution is much more variable compared to that in the Canadian Arctic Archipelago,
despite the similar timing of the first strong increase of melt pond fraction in late June. Later in the melt season no coherent
pattern is visible for the years monitored.

3.4 Chukchi Sea, East Siberian Sea, Laptev Sea and Kara Sea

255 These Arctic marginal seas exhibit the strongest seasonal cycle in sea ice extent. They go from near full coverage in spring to
almost completely ice-free by the end of summer, as indicated by the dashed gray lines in Figures 5 and 6 . Overall melt pond
formation is highly variable, with melt pond fractions increasing as early as late May (e.g., Chukchi and East Siberian Seas
in 2020 and Laptev and Kara Seas in 2023) or as late as July (e.g., Kara Sea in 2017). Most commonly, melt pond fractions
increase in late June. Overall, median melt pond fractions show high interannual and seasonal variability. Among these four
260 regions, the highest melt pond fractions are observed in the Laptev Sea, with peak median values up to 45 %, which typically
occur in the first half of the melt season, most likely when landfast ice is largely ponded and not yet melted. The Laptev Sea
typically has one of the largest landfast ice areas of the four marginal seas (Dammann et al., 2019), which is consistent with
having the highest melt pond fractions.

3.5 Barents Sea, East Greenland Sea and Baffin and Labrador Seas

265 The Barents Sea is close to ice-free at the earliest (in July), and it rarely develops mean melt pond fractions of more than 25 %.
This suggests that the sea ice melts more from below than from the surface, which may be due to increased heat transport
into the Barents Sea from the North Atlantic Ocean current, referred to as *Atlantification*. (Årthun et al., 2012; Lundesgaard
et al., 2022; Polyakov et al., 2023). The other two regions in this group, with less than 50 % sea ice at the beginning of the

melt season, the East Greenland Sea and the Baffin and Labrador Seas, have higher median melt pond fractions and also higher extreme values, which is likely related to the extension of sea ice to lower latitudes in these regions.

In the East Greenland Sea, both seasonal and interannual variability are high. This variability is most likely driven by the strong sea ice drift and export through the Fram Strait initiated by the transpolar drift pattern (Spreen et al., 2020; Smedsrud et al., 2017). High sea ice export rates can lead to sudden declines in the melt pond fraction, which can vary greatly from year to year. In the Baffin and Labrador Seas, in contrast, the seasonal evolution is much more similar between years. Typically, melt ponds begin to form in mid-June, and median melt pond fractions rise to about 40 % in July, with peaks much higher and a bimodal distribution.

Hereinafter we focus on the following regions, representing different types of sea ice conditions:

- **Central Arctic:** has the most seasonally stable sea ice extent and contains most of the existing multiyear ice (MYI).
- **Canadian Arctic Archipelago:** contains the largest area of landfast ice and is never completely ice-free.
- **Beaufort Sea:** sea ice is characterized by high drift activity due to the Beaufort Gyre, almost no landfast ice.
- **Kara Sea:** combination of seasonal landfast and drift ice

Figure 7 compares the seasonal evolution of melt pond fraction for these 4 regions and all 7 years. The underlying Sentinel-3 data are the same as in the Figures 5 and 6. In addition, the time period of average-mean melting temperatures per year and region is highlighted using ERA5 reanalysis data, and the exceedance of certain melt pond fraction values is marked to allow a better comparison between years. The same information for the other six subregions are shown in Figure A1 in the appendix but not further discussed here.

For the Central Arctic and the Canadian Arctic Archipelago, there is no obvious change in the duration of the melt season between years. On average, melting temperatures are first reached around the beginning of June and end in late August or the first half of September for the Central Arctic and the Canadian Arctic Archipelago, respectively. In the Beaufort and Kara Seas, there is a slight trend towards longer melting periods: in the later years presented, melting conditions start earlier, as early as May, and temperatures do not fall below 0 °C before mid-September. The pond formation, defined by average-median melt pond fractions exceeding the MPD2 algorithm uncertainty of 87.8 % (Niehaus et al., 2024), is quite consistent between years except for the Kara Sea, where the timing of pond formation varies between mid-May and late June. In the other regions, pond formation typically occurs within a week between mid-June in the Beaufort Sea and early July in the central Arctic. Interestingly, there is no clear correlation between the timing of melting temperatures and the formation of the first melt ponds. The time between these events can vary from a few days to more than a month. This could be due to averaging-over-large regionsthe large region sizes, where small areas could already experience pond formation that would not be visible in the averagemedian, but could also indicate long periods of temperatures meandering around 0 °C.

Higher melt pond fractions are generally observed in the Canadian Arctic Archipelago and the Beaufort Sea with prominent maxima in 2023. In the Canadian Arctic Archipelago, the pond evolution initially appears relatively smooth and uniform, which may be related to the easier expansion of melt ponds on flat landfast ice. However, the timing of maximum pond

coverage varies between early July and late August, which is also the case in the Beaufort Sea, demonstrating the increasing complexity towards the end of the melt season.

The Central Arctic shows the smoothest seasonal evolution, while the Kara Sea is the most variable. As discussed above and shown in the Figures 5 and 6, this can largely be attributed to the changes in sea ice extent. In the Central Arctic, there is generally more time between the onset of melting and the formation of ponds. However, once ponds have formed, their evolution is fast, and 75 % of the maximum melt pond fractions are usually reached within less than 10 days, and the maximum is often reached shortly thereafter. In the Kara Sea, more time elapses between pond formation and maximum melt pond fractions, with an overall high variability. An extreme case is observed in 2023, where pond formation starts earliest and maximum pond fraction is reached latest.

Table 1 summarizes the timing and extend of melt pond formation and evolution for the four focus regions.

Table 1. Summary of basic information on melt pond evolution for the four regions of focus.

| | Central Arctic | Canadian Arctic Archipelago | Beaufort Sea | Kara Sea |
|----------------------------------|---------------------------|-----------------------------|-----------------------|-----------------------|
| Peak median pond fractions | 15 - 30 % | 40 - 50 % | 25 - 50 % | 25 - 45 % |
| Timing of maximum pond fractions | early July - early August | late June - late August | mid-June - mid-August | mid-June - mid-August |
| Timing of melt pond formation | late June - early July | early June - mid-June | mid June | late May - late June |
| Seasonal variability | low | medium | high | medium - high |
| Interannual variability | medium - low | medium - low | medium - high | medium |

4 Mechanisms of Melt Pond Evolution

A vast variety of aspects can influence the initial formation of melt ponds, their seasonal evolution and drainage, and thus the overall spatial and temporal heterogeneity. Here, some of these variables are collected from other data sources and contextualized with the MPD2 melt pond fraction and open ocean fraction products. Correlations are investigated at different spatial scales. First, a special case from the MOSAiC expedition (Nicolaus et al., 2022; Shupe et al., 2022) is examined at the 1.2 km spatial resolution of the Sentinel-3 OLCI swath data. Subsequently, regional and pan-Arctic studies are presented at the 12.5 km spatial resolution of the final melt pond fraction maps.

~~One factor that was considered, but not presented here, is snow depth. Pan-Arctic snow depth data, retrieved by Rostosky et al. (2018) through late April, were used to estimate the distribution of freshwater sources for the initial melt pond formation. It has been~~

reported that the amount or complete absence of snow on the sea ice surface at the beginning of the melt season can influence the timing and distribution of early melt ponds (Eicken et al., 2004; Polashenski et al., 2012; Perovich et al., 2021). However, at regional scales, no effect of pre-melt snow depth on melt pond formation has been observed. It is likely that at these aggregate scales other factors such as air temperatures dominate if small-scale variations are not monitored. The reports on the impact of snow depth usually refer to in situ observations of small areas close together that have experienced the same atmospheric forcing. Thus, not observing an effect of snow depth on melt pond formation is not a contradiction to these reports, but simply a matter of the scales at which one can observe and attribute it.

4.1 Focus: MOSAiC Drift in 2020

During the MOSAiC campaign atmospheric conditions and weather events have been continuously recorded in addition to detailed surface observations including albedo measurements. This documentation gives indication of an early and short-lived melt event near the Polarstern research vessel in May 2020 (Webster et al., 2022), which was at that time located north of Svalbard in the Central Arctic region. The regional [averages analysis](#) shown in Figures 5, 6 and 7 cannot capture such small scale events, but the probability density distribution in Figure 5 shows some occurrences of increased melt pond fraction for late May 2020 in the Central Arctic. The satellite swath data of MPD2 have a footprint of 1.2 km and can be used to study local changes in melt pond fraction that are not well observed in the aggregated 12.5 km resolution product. Along the MOSAiC drift track between May and August 2020, the processed swath data of all matching overflights in cloud-free situations is collected and melt pond fractions are averaged for an area of 20 km radius around the current position of the MOSAiC ice floe. These data are presented in the lower panel of Figure 8. The dark gray shaded area highlights the short melting period in May mentioned above. During this period, rainfall and widespread ponded surfaces have been reported by Webster et al. (2022), which is consistent with the [average mean](#) melt pond fractions between 20 % and 26 % observed in three cloud-free Sentinel-3 overflights on May 29.

The 2 m air temperature rose above 0 °C for the first time in this summer season on May 26, which was well observed by the in-situ observations as well as the reanalysis data, shown in the middle panel of Figure 8. Thus, the precipitation measured by the in situ instruments is rain rather than snowfall, as reported by Webster et al. (2022), leading to an enhanced watering of the sea ice surface and high melt pond fractions, as shown in the lower panel of Figure 8. This observation is consistent with the local observation of a melt pond and corresponding low albedo at one of the radiation stations deployed in the vicinity of the MOSAiC floe, reported by Tao et al. (2024). However, the amount of precipitation is not well captured by the reanalysis data, which is a general problem. According to the in situ measurements, temperatures dropped again between May 29 and 30, and the precipitation turned to snow. Thus, the melt ponds froze over and were covered by snow, which significantly reduced the observed melt pond fraction on May 30. The temperature drop was not well observed in the reanalysis data, where temperatures seem to remain slightly above 0 °C most of the time afterwards, which is a commonly observed bias over sea ice (Wang et al., 2019; Tian et al., 2024).

A second case of a short-lived melt pond fraction increase was observed on June 18 (light gray highlighted area in Figure 8). This increase was not mentioned by Webster et al. (2022), but fits well with the albedo decrease between June 10 and 18 at one

355 of the radiation station sites reported by Tao et al. (2024), which also demonstrates the high small-scale melt pond variability. The short duration of the increase in the melt pond fraction may be explained by the snowfall observed by the in situ weather station on June 20 at -2°C temperatures, which is not identified in the ERA5 reanalysis data. MPD2 melt pond fractions were about 5 % in the monitored area on June 22 and 23. Subsequently, the major melt pond fraction period of the MOSAiC drift began, and according to satellite observations within the 20 km radius, melt pond fractions rose up to of 40 % on August 7, 360 with minor fluctuations in between. This is significantly higher than the melt pond fractions reported by Webster et al. (2022) on their transect route on the MOSAiC central observatory (CO), but also covers a much larger area. Krumpen et al. (2021) and Niehaus et al. (2023) concluded in their studies that the sea ice conditions of the MOSAiC CO was representative for the wider surroundings except for the initial melt pond formation, which occurred earlier in the CO than in the surrounding area. Melt pond fractions retrieved from 10 m resolution Sentinel-2 observations along the MOSAiC drift track presented in Niehaus et al. 365 (2023) show values in between the high resolution in situ and the low resolution MPD2 data, demonstrating the importance of the observational scale for the data interpretation. In addition, a bias of -5% for the in situ observations on the CO has been reported, which fits with overall higher melt pond fractions retrieved from satellite. There are no cloud-free Sentinel-3 passes later than August 7 in this summer season.

Overall, this case study demonstrates the ability of the newly developed MPD2 melt pond fraction product to monitor the 370 high temporal variability of melt pond evolution. However, this study also demonstrates the deficiency of reanalysis data to explain the driving mechanisms of melt pond formation and evolution, partly due to the insufficient spatial resolution of ERA5 reanalysis data. The discrepancies between in situ and ERA5 precipitation lead to the conclusion that this quantity cannot be used on pan-Arctic scales to explain short-term changes in the melt pond fraction. The comparison of in situ and reanalysis temperatures shows better agreement with a common bias towards higher temperatures by ERA5 (Wang et al., 2019; Tian et al., 375 2024).

4.2 Focus: Kara Sea in 2023

Here we investigate the causes for the striking early increase of melt pond fraction in the Kara Sea in late May 2023 (Figures 6 and 7). Figure 9 shows the median and probability density distribution of melt pond fraction in the Kara Sea region for May and June 2023, and the maps of the melt pond fraction, open ocean fraction, broadband albedo and 2 m air temperature in this region for some selected days. On May 12, the entire region ~~is~~was covered by sea ice and melt ponds ~~have~~had not yet formed, as temperatures ~~are~~were generally below 0°C . Only near the Kara Strait, the melt pond fractions ~~are~~were already slightly increased and the open ocean fractions more strongly increased, which does not significantly change the regional median value ~~of melt pond fraction. These areas are also the only areas where the broadband surface albedo~~dropped below 0.6 because melt ponds as well as open ocean areas significantly reduce the surface albedo. Where neither of 385 them is detected, the broadband albedo varies between 0.6 and 0.8 which is common for Arctic sea ice without snow cover (Grenfell and Maykut, 1977; Perovich et al., 1996).

By May 19, the melt pond fraction variability ~~increases~~increased and the median value departs from 0 %.

This change was consistent with increasing air temperatures and was mostly confined to latitudes below 73 °N or near the coast, and where the broadband albedo dropped as well. In the following week, temperatures rose above the melting point throughout the region, reaching above 5 °C in the southern part, leading to strong surface melt that ~~peaks~~peaked on May 26 to 27. The melt pond fraction map shown for May 26 indicates melt pond fractions between 20 % and 40 % up to 76 °N. At higher latitudes, temperatures remained closer to freezing and melt pond fractions near 0 %. Open-ocean fractions increased in the southernmost part of the region and in coastal areas, where small areas were already close to ice-free (light blue areas in Figure 9) according to the ASI sea ice concentration product of Spreen et al. (2008). Subsequently, the melt pond fractions slowly decreased, but the open ocean fractions increased. It is likely that high air temperatures and sea ice motion, which tends to be higher in the southern part of the Kara Sea (see Figure A2), cause the sea ice cover to be highly fractured, allowing easy drainage of melt ponds. Especially in the Gulf of Ob, melt pond fractions are again close to 0 %, while the open ocean fraction is high on June 3. This is also the only part of the Kara Sea where the temperature remained on a high level, while large parts again experienced temperatures close to 0 °C, as shown for June 3 and 11. Overall, the melt pond fraction variability was strongly reduced by June 11, and the median value was very low. This can be explained by the fact that larger areas that previously had high melt pond fractions are now sea ice-free, while melt pond fractions at higher latitudes are still low. The complete break-up of sea ice was most evident in areas that previously had high melt pond and open ocean fractions. In addition, Figure A2 indicates slightly increased sea ice drift activity in the Kara Sea at latitudes below 76 °N, which promoted the break-up of the already thinned sea ice (Rabault et al., 2023). After June 15, the main melt season began in the Kara Sea. By June 22, melt ponds had formed almost everywhere in the region, leading to and overall reduction of the surface broadband albedo.

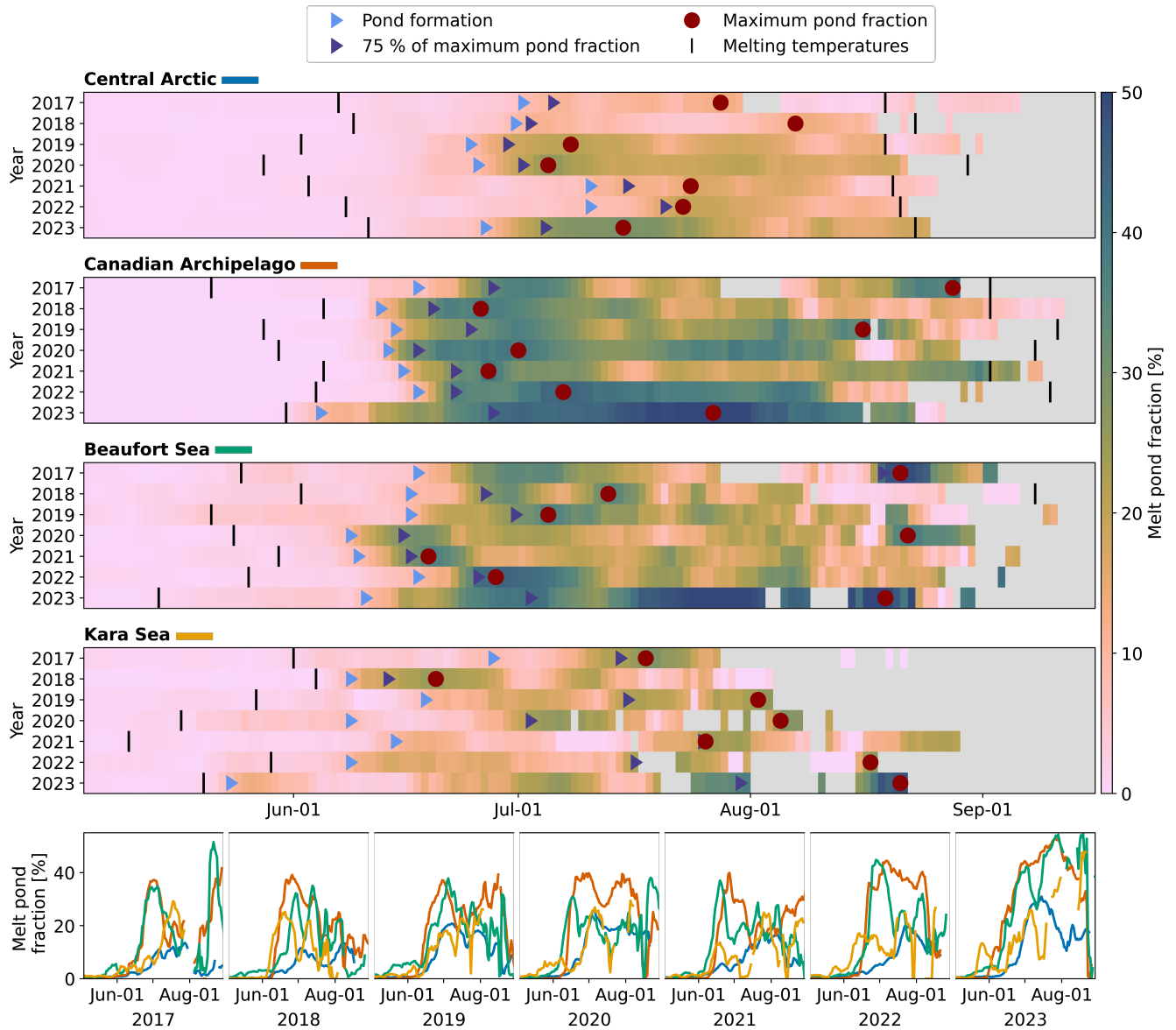


Figure 7. Seasonal evolution of melt pond fraction for 7 years for the Central Arctic, Canadian Arctic Archipelago, Beaufort Sea, and Kara Sea. Top four panels: The color indicates the daily averaged-median melt pond fraction with respect to the sea ice area per region according to the color scale. Gray areas represent data gaps. The vertical black lines mark the beginning and end of the period when regionally-averaged regional mean temperatures are above 0 °C. If the end is not marked, it is beyond the time period shown. The light blue colored triangles indicate the pond formation, defined by melt pond fractions exceeding the uncertainty of the MPD2 product of 87.8%. The red circles mark the time of the regional maximum melt pond fraction per year, and the dark triangles mark the day when 75 % of the maximum is exceeded. Bottom panel: Direct comparison of seasonal melt pond fraction evolution for the Arctic regions shown above, as indicated by the colored bars next to the region names.

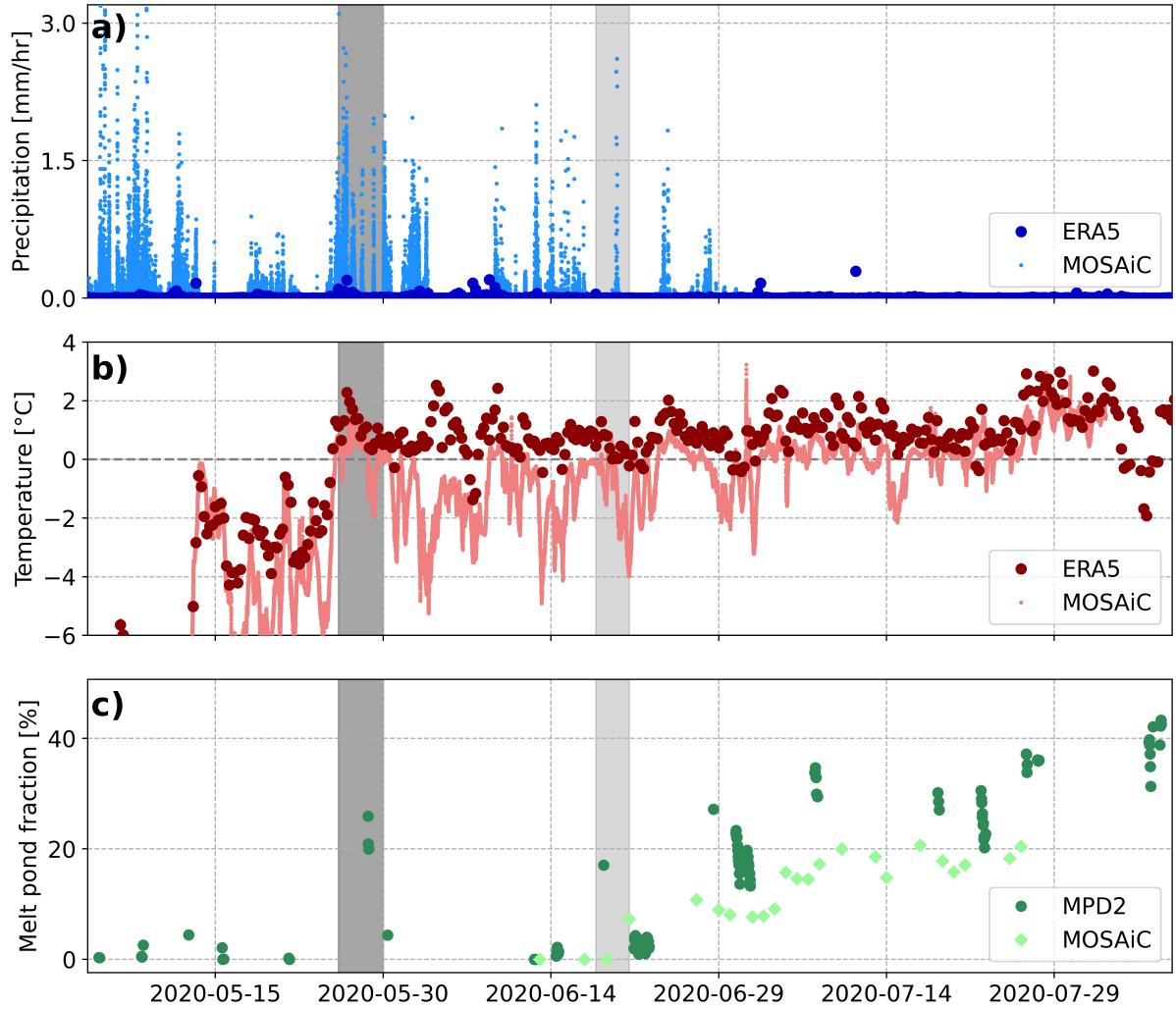


Figure 8. Temporal evolution of melt pond fractions [on sea ice](#) and atmospheric conditions along the drift track of the MOSAiC floe in summer 2020. a) Precipitation rates from ERA5 (dark blue dots) and MOSAiC in situ measurements (light blue) for the same area and from the same stations as for the temperature. b) Temperatures at 2 m height averaged over the same area as the melt pond fractions, from ERA5 (dark red dots) and from the met station and the ASFS30 deployed on the sea ice during the MOSAiC campaign (Cox et al., 2023) (light red). c) Average melt pond fractions of the 20 km radius area around the MOSAiC floe position, retrieved with MPD2 from Sentinel-3 satellite overflights (dark green dots) and in situ observations of melt pond fractions by Webster et al. (2022) (light green). The dark shaded area highlights the melt period reported by Webster et al. (2022), the light shaded area highlights another case of a short-lived increase in the melt pond fraction just before the start of the major melt pond period.

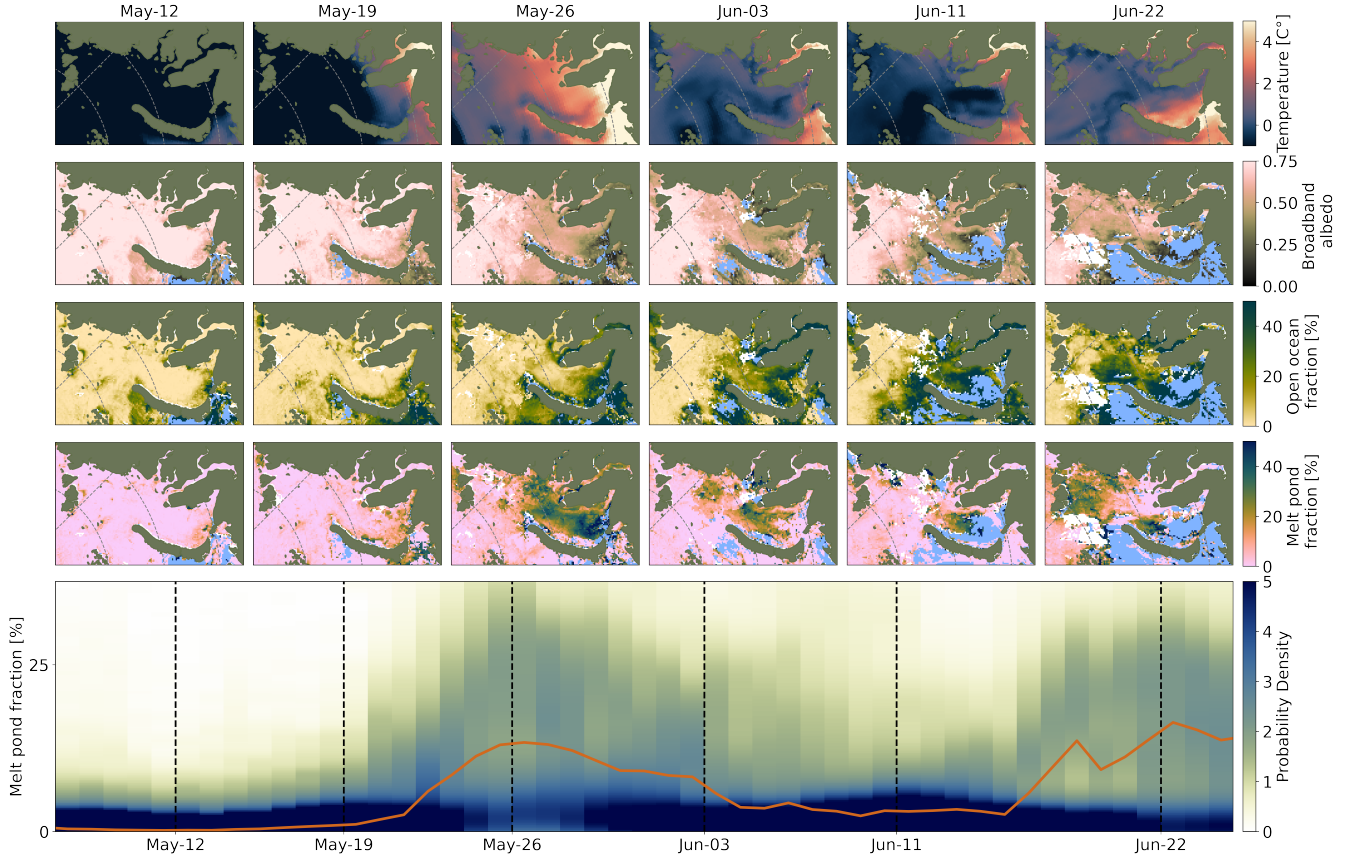


Figure 9. Case study of melt pond evolution on sea ice in the Kara Sea in spring to summer transition in 2023. Bottom panel: median melt pond fraction (orange line) and probability density distribution of the retrieved melt pond fraction in the Kara Sea region in May and June 2023. Vertical dashed lines mark the dates of the maps in the rows above. Third-Fourth row: 7-day composite melt pond fraction maps of the Kara Sea region, retrieved with MPD2 and displayed for the days marked in the lower panel. Second-Third row: 7-day composite open ocean fraction maps of, retrieved with MPD2 for the Kara-Seasame days. Second row: 7-day composite broadband albedo maps, retrieved with MPD2 for the same days. Top row: 2 m air temperatures from ERA5 for the same region and days. The color scales on the right side are unified per row. Light blue areas in the second and third rows indicate sea ice free areas according to the ASI sea ice concentration.

4.3 Sea Ice Surface Topography and Latitude

To study the influence of sea ice surface topography on melt pond formation and evolution, the obstacle spacing between ridges as provided ~~in-by the~~ pan-Arctic drag coefficient product by Mchedlishvili et al. (2023) and described in Section 2.5 is
410 used. This quantity is assumed to be a good proxy for surface roughness in terms of large-scale deformation relevant to pond evolution, since obstacles with heights greater than 20 cm are considered to be serious barriers to the expansion of surface melt water. In the following, sea ice with small obstacle spacing (<300 m) is also referred to as rough or deformed ice, and sea ice with large obstacle spacing (>1200 m) is also referred to as flat or level ice. The impact of the sea ice surface topography, i.e., the obstacle spacing, is differentiated between latitudinal bands to eliminate a strong influence of temperature on the analysis.
415 Moreover, the impact of the obstacle spacing on the probability density distribution of melt pond observations is monitored in weekly steps over the summer season from late May to early August, as shown in Figure 10.

At the end of May, there was little variation in melt pond fraction observations between sea ice of different surface roughness (Figure 10). In the following for simplicity we look at latitudinal bands of 5° to account for temperature changes and discriminate the marginal ice zone from the inner ice pack (we are aware that actual atmospheric and ocean variability does not strictly
420 follow latitudes). At all latitudes, the probability distribution was highest at 0 % melt pond fraction, with a broader extension and higher mean values the lower the latitude. As time progressed and average temperatures exceeded 0 °C (reddish color stripe right of plots) the distributions continued to broaden with ~~average-mean~~ melt pond fractions of about 20 % at latitudes below 75 °N, of about 8 % at latitudes between 75 °N and 80 °N, of 5 % between 80 °N and 85 °N, and still close to 0 % melt pond fraction above 85 °N in the second week of June (third row from left to right in Figure 10).

425 Only one week later, June week 3, the ~~average-mean~~ melt pond fractions at the lowest latitudes were close to 40 %, and also in the other latitude bands melt pond fractions increased strongly. This latitude dependence is consistent with the fact that temperatures rose less at higher latitudes, as indicated by the colored stripes on the right side of each panel in Figure 10. Until then, the melt pond fraction distributions were generally broader, with higher mean values for flat ice compared to deformed sea ice, as indicated by the line colors in Figure 10. This can be explained by the physical limitation of melt water expansion by
430 ridges, resulting in deeper melt ponds with lower surface coverage (Wang et al., 2018). For latitudes below 75 °N the peak at 0 % melt pond fraction completely disappeared, and the entire sea ice was partially covered by melt ponds. The most common coverage for strongly deformed sea ice is between 10 % and 30 %, for level ice this range is shifted up by 10 %. With increasing latitude, the peak of the distribution shifts to lower values, close to 0 %.

By the end of June (week 4), the situation diverged: despite persistently high temperatures, melt pond fractions started to
435 decrease at low latitudes, while they still increased at higher latitudes. This can be explained by the complete melt of sea ice in the marginal ice zone, where melt pond fractions were previously high, as discussed for the Kara Sea in Section 4.2. Another possible explanation is a temporarily increase in sea ice permeability which enhances drainage through the sea ice (Perovich et al., 2002b). This process, however, can not be well identified and attributed in these data of reduced spatial resolution. In addition, the trend for rough sea ice to have lower melt pond fractions decreased and even reversed in July. At latitudes
440 below 75 °N the impact of surface roughness was negligibly small for the remainder of the melt season, but at higher latitudes,

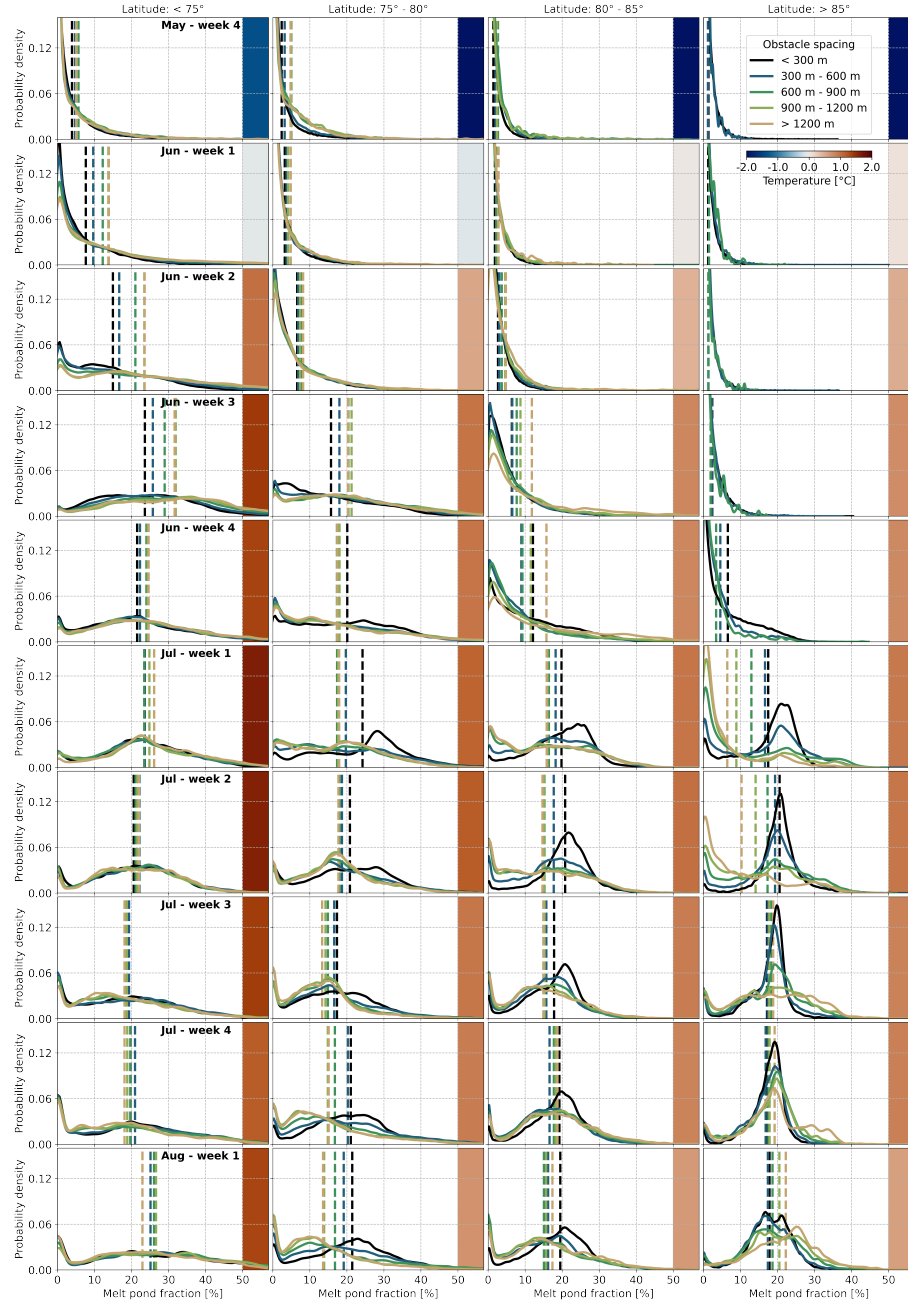


Figure 10. Latitude and surface roughness dependence of melt pond fraction distributions [on the Arctic sea ice](#) for the years 2019-2021. The rows represent the evolution during the summer season divided into weeks, the colors of the lines indicate the roughness classes based on the obstacle spacing from the data developed by Mchedlishvili et al. (2023). The vertical dashed lines mark the mean values. The distributions are shown for a limit of at least 1000 valid data points. The colors on the right side of each panel indicate the mean air temperature per latitude band and time period.

lower melt pond fractions were consistently observed on flat ice compared to higher fractions on deformed ice. This effect was strongest in the first half of July and at high latitudes. Here, for the case of high surface roughness, a strong maximum of the distribution developed at pond fractions between 20 % and 25 %, which is a typical ~~average-mean~~ value observed in the advanced melt season on deformed ice (Fetterer and Untersteiner, 1998; Eicken et al., 2002; Tschudi et al., 2008; Webster et al., 2015). The specific shape of the peak weakens with decreasing surface roughness, especially in the first half of July, when the most likely value of melt pond fraction on level ice was 0 %. Usually, deformed sea ice is also thicker than level ice (von Albedyll et al., 2020), which is more vulnerable to ice dynamics (Shokr and Sinha, 2023) and prone to drainage through cracks or by ice melting through. Later in the melt season, the distributions of different surface roughness moved closer together. However, flat ice tended to have a broader distribution of likely melt pond fractions.

Overall, an influence of surface topography on the evolution of melt pond fractions on Arctic sea ice can be clearly observed with the presented data set. Taking into account the influence of the slight latitudinal temperature bias, it is still noticeable that ice deformation limited melt pond coverage early in the melt season, which caused flat, level ice to have a higher melt pond fraction. Later in the season, flat sea ice showed lower mean melt pond fractions, which likely is related to the on average lower thickness of the level ice which thus earlier melted through and drained the melt ponds.

4.4 Sea Ice Type

The physical properties of the two ice age related sea ice classes, multiyear ice (MYI) and first-year ice (FYI) differ in many respects (Maykut et al., 1992; Eicken et al., 2002). Apparent macroscopic differences concern sea ice thickness and surface topography (Johnston, 2017), but sea ice structure, its salinity and porosity, also evolve over time (Untersteiner, 1968). In order to investigate the impact of the ice type retrieved from (Melsheimer et al., 2019) as described in Section 4.4 on the seasonal evolution of melt pond coverage, we perform a case study for 2023. During summer no ~~ice-type-information on ice types~~ is available. Therefore the daily retrieved melt pond fractions from MPD2 are associated with the sea ice type at the beginning of the melt season. For this purpose, the OSI-SAF drift data used in the MPD2 algorithm itself and described in Section 2.7 are applied. Figure 11 shows the results for the Central Arctic in the year 2023. The study is limited to the Central Arctic region (shown in Figure 4) to reduce the effect of ice completely melting away during summer, which would lead to an inconsistent integration of ice area and, thus, would complicate the interpretation. However, the actual sea ice included in the analysis may still change between days because of sea ice drifting out of the region of interest.

In contrast to the observations summarized by Polashenski et al. (2012), where melt ponds tended to form first and more extensively on FYI, this study shows earlier melt pond formation on MYI. In mid-June, there was a first peak in melt pond fractions on MYI, which decreased again towards early July. Meanwhile, melt pond fractions on FYI started to ~~increase~~ increase later but then more drastically, far exceeding pond fractions on MYI. The maximum ~~pond-fraction-of-of median melt pond fraction on FYI in~~ the entire melt season ~~on-FYI-was-was~~ 34 %, observed on July 10. Such high median melt pond fractions were never observed for the on average more deformed MYI. This highlights again the influence of surface roughness on melt pond fraction discussed in the last section. After July 10, melt pond fraction on FYI slowly decreased until early August, when a short-lived minimum of about 10 % was reached. Later in August, melt pond fractions on FYI increased again

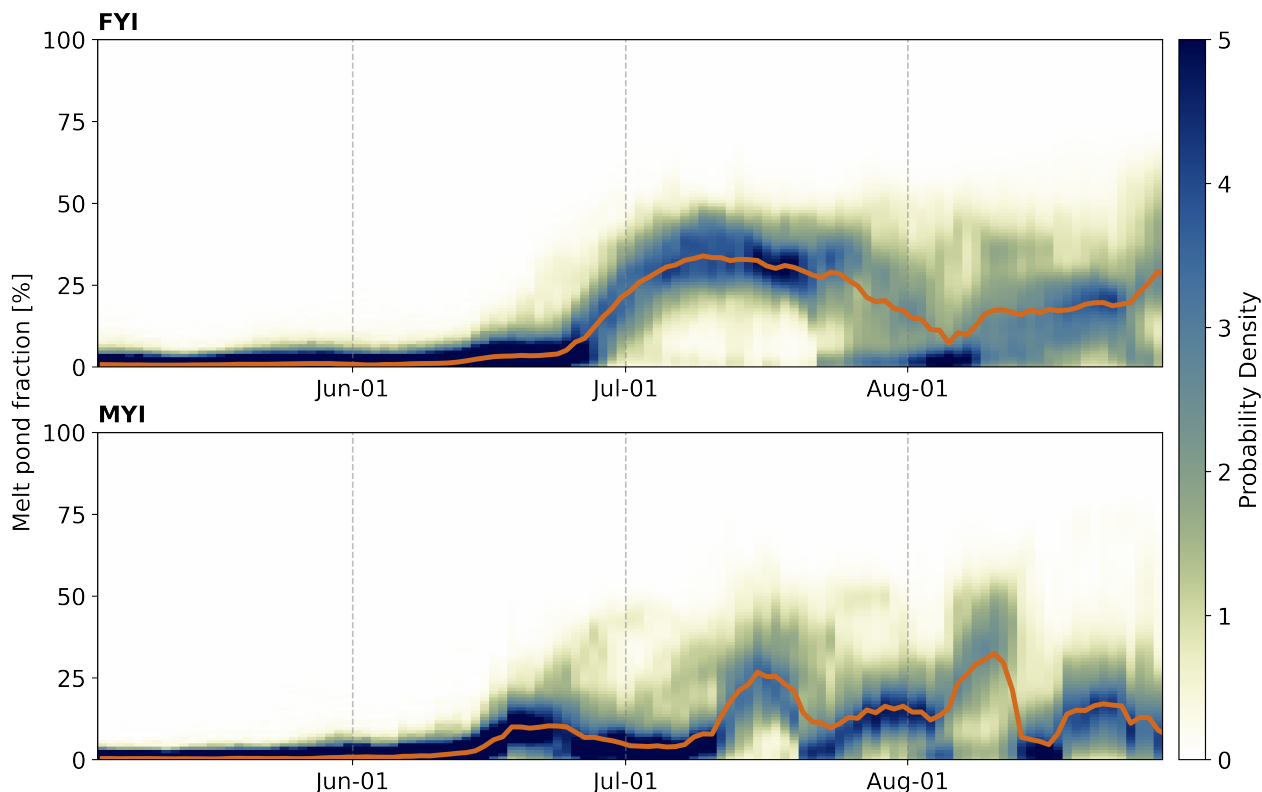


Figure 11. Seasonal evolution of melt pond fraction with respect to the sea ice area in the Central Arctic in 2023, differentiated by ice type. The upper panel presents the evolution for first-year (FYI) and the lower panel for multiyear ice (MYI). The color bar indicates the probability density of the melt pond fraction distribution, the orange line marks the median value of melt pond fraction.

475 to a median value of 25 %. While the evolution on FYI looks smooth, MYI showed significantly higher variability. Here, the melt pond fractions rose and fell several times within the season, with two major peaks in mid-July and around August 10. These fluctuations cannot be clearly attributed. At the time of the second peak, melt pond fractions on FYI were significantly lower. Overall, the maximum median melt pond fractions of the season were not significantly different between the two ice types (~~but the median was higher for FYI~~). 34 % on FYI and 37 % on MYI. Thus, in the year 2023, the ice types cannot be

480 separated by maximum pond fractions on a specific day alone, as generally suggested by Eicken et al. (2004). This discrepancy may be due to the use of completely different types of observations at different spatial resolutions. Eicken et al. (2004) analyzed the differences between FYI and MYI properties and melt pond fractions using spatially restricted in-situ observations during two measurement campaigns ~~in the Chukchi Sea~~. This study considers ~~averages over~~ mean values of much larger regions but at lower spatial resolution. At the 12.5 km resolution grid used here, melt pond fractions as high as 60 %, as reported for FYI

485 by, e.g., Eicken et al. (2004) and Scharien and Yackel (2005), are unlikely to be observed, while they are quite possible for in situ transects or small scale airborne observations. However, if the melt pond fractions shown in Figure 11 are integrated over

the whole season, FYI indeed showed a higher ~~average melt pond fraction~~ median value (19 %) than the MYI (10 %) as would be expected due the lower average surface roughness of FYI (see also last Section 4.3).

490 Instead of maximum values, the seasonal variability of melt pond fraction was the most striking difference between the ice types. Melt pond fractions on MYI appeared to be much more variable, which could be attributed to the more complex surface structure with more ridges and depressions (von Albedyll et al., 2020). As melt water accumulates in depressions, this could explain the earlier increase in melt pond fraction on MYI compared to FYI. However, this was generally not observed in Section 4.3.

495 The melt pond fraction comparison study by Lee et al. (2024) shows differences between monthly ~~averaged mean~~ melt pond fractions on MYI and FYI ~~between of 2 % and to 17 %~~ depending on the data product and month. while we only observe differences of 3 %, 4 %, 10 % and 3 % for the months May to August, respectively. Overall, they report higher variability on FYI at the same spatial resolution as used here. However, as also pointed out by Polashenski et al. (2012), high interannual variability must be taken into account, which makes it impossible to draw firm conclusions from this study, which currently only covers the year 2023.

500 5 Implication of Melt Pond Fractions on the Annual Sea Ice Minimum

The annual minimum extent of Arctic sea ice usually occurs in mid-September and is a measure of great importance for monitoring climate change, making future predictions, and improving climate models, as well as being of interest to the shipping industry. Due to the sea ice albedo feedback, a positive anomaly in melt pond fraction would lead to an imbalance of the surface ~~surface~~ energy budget promoting more sea ice melt and thinner ice which possibly lead to a low (regional) sea ice minimum area. And some models indeed show this effect. Using simulated melt pond fraction data for the time period 1979-2013, Schröder et al. (2014) show that the September sea ice extent is correlated with melt pond fractions in late May by a coefficient of -0.8 . Liu et al. (2015) use melt pond fractions retrieved from MODIS observations and report a similarly high correlation of -0.7 to -0.8 when they accumulate melt pond coverage not only for May but until ~~the mid or~~ end of June, respectively, looking at data between 2000 and 2011. Using only May data, they find no correlation. Both studies ~~look at treat~~ the pan-Arctic region as a whole and do not distinguish between smaller sub-regions. For the comparison with our analysis it is important to note that all three studies cover different time periods and use different data sets. We here analyze the effect of May and June melt pond fractions for the pan-Arctic region as well as for the subregions discussed in Section 3.

515 The dates of the annual sea ice minimum are taken from the NSIDC (2023) website. The minimum sea ice extent is then averaged over the entire week prior to the annual minimum to reduce the effect of daily variability due to retrieval uncertainties and short-term changes. Correlation coefficients are calculated for the 7-year vector (of Sentinel-3 observations) of minimum sea ice extent and vectors of melt pond coverage or open ocean area accumulated for (a) May only and (b) for combined May and June. In addition, the correlation with air temperature averaged for either one or two weeks before the sea ice minimum date is computed. The resulting coefficients for melt pond area and air temperature are shown in Figure 12, those for open ocean area are not shown as they did not show a consistent effect.

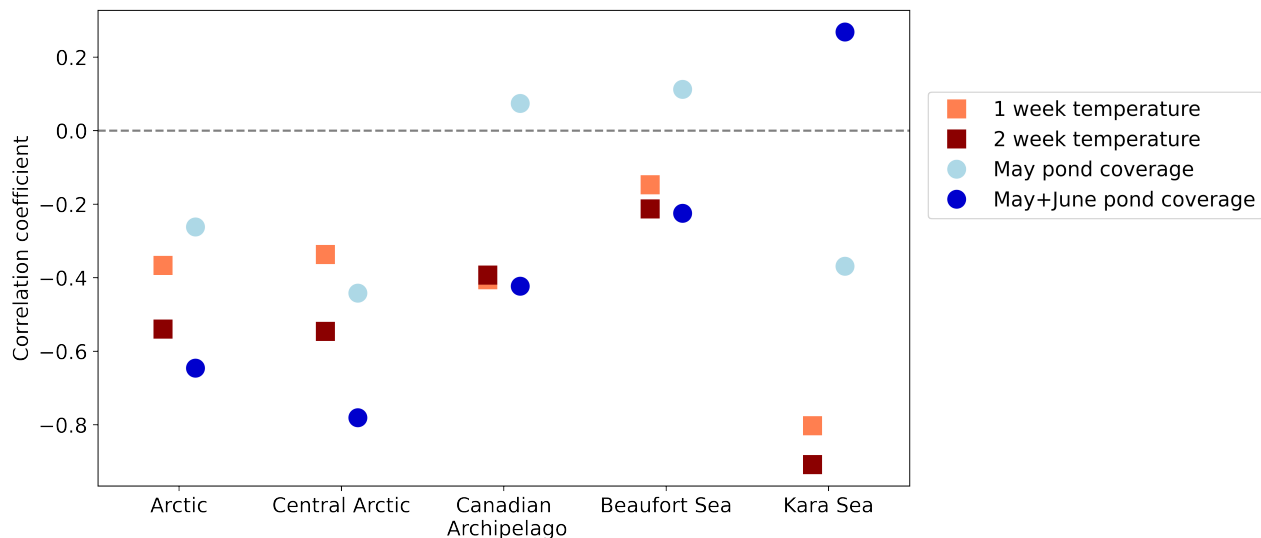


Figure 12. Correlation coefficients of September sea ice minimum extent with early summer melt pond coverage (circles) and with air temperatures just before the minimum (squares), shown for the entire Arctic and selected subregions. The correlation coefficients are calculated based on 7 years of data from 2017 to 2023. The sea ice minimum extent is averaged over the week before the observed minimum extent. The temperature is averaged over the same period of one week (light red squares) and two weeks (dark red squares). The melt pond covered area is accumulated for either May only (light blue circles) or May and June (dark blue circles).

Overall, there appears to be either no correlation or rather an anticorrelation between the extent of the September sea ice minimum and the accumulated melt pond covered area of the early melt season, depending on the region considered. The same is true for air temperatures in the period just before the sea ice minimum. In both cases, considering longer periods leads to a higher anticorrelation (dark colors in Figure 12). In the marginal seas, the May to June melt pond coverage has little or no effect on the extent of the sea ice minimum. This can be explained by the fact that most of these regions are sea ice-free in September in any case. In addition, the sea ice extent is very sensitive to winds and ocean currents. In the Kara Sea, the air temperature just before the minimum seems to have a strong influence on the minimum extent. It seems to be the decisive factor that determines whether the already thin and unstable ice melts completely or not. Air temperatures also play a role in the Central Arctic, but here the effect of early summer melt pond coverage shows the strongest anticorrelation. The presence of early melt ponds appears to alter the thermodynamic properties of the sea ice, leading to increased melting and easier break-up later in the season. As the pan-Arctic region is dominated by its largest region, the Central Arctic, it can be concluded that the early summer melt pond fraction has a significant impact on the extent of the September sea ice minimum. It is not the only predictor, but it can explain a part of the inter-annual variability of sea ice minimum extent and should therefore be taken into account when modeling this (Schröder et al., 2014; Liu et al., 2015). However, it is important to note that the major influence of melt ponds comes from the central Arctic region, while in the marginal seas the correlation is not decisive.

This study demonstrates the potential of the MPD2 melt pond fraction data product to analyze the seasonal evolution of melt ponds on local, regional, and pan-Arctic scales and investigate the fundamental interplay between melt pond fractions and environmental factors such as air temperatures and the sea ice surface topography. The latter is revealed by the subdivision of melt pond fraction observations based on the average distance between ridges of at least 20 cm in height from ICESat-2 data. The weekly inspection shows that higher melt pond fractions are observed first on level ice, which is likely because the melt water can easily spread over the sea ice surface and is not confined by ridges. Later, in July, the deformed sea ice with a high density of ridges tends to exhibit higher melt pond fractions, as the timing and extent of melt pond drainage gets more relevant. Melt ponds on the thinner, level ice often drain earlier, which reduces the melt pond fraction compared to the often thicker, deformed sea ice. Interestingly, this correlation could not be well reproduced by the analysis of melt pond fraction in dependence on the sea ice type, i.e. multiyear and first-year ice, in 2023. Although ice type is a common approximation for the degree of sea ice deformation. Here the melt pond fraction increases earlier on multiyear ice and also maximum melt pond fraction values for multiyear and first-year ice are similar. However, if integrated over the whole summer, melt pond fractions on first-year ice are still higher than for multiyear ice as can be expected from surface roughness.

The regional analysis by subdividing the Arctic into ten regions, i.e., the Central Arctic and the surrounding marginal seas, revealed strong regional differences in the seasonal evolution of melt ponds. The most striking influence can be attributed to the air temperatures. This is true for large-scale regional differences, as, for example, the Central Arctic, laying at higher latitudes, experiences the overall lowest melt pond fractions and temperatures. But also on smaller scales, an air temperature influence is found. This has been demonstrated by the comparison with in-situ observations for the MOSAiC expedition, where the MPD2 product can be used to observe short-term changes in melt pond fraction due to warm air intrusions. The highest melt pond fractions are consistently observed in the Canadian Arctic Archipelago, where the large areas of level landfast ice lead to an early, quick and widespread expansion of melt water on the sea ice surface. Other marginal Arctic seas often show higher seasonal variability in melt pond fractions. This high variability can be related either to higher sea ice drift activity, or to a strong reduction in total sea ice area over the summer. Also the impact of the presence of melt ponds in early summer on the sea ice minimum extent in September shows strong regional differences. Early melt pond formation influences the total summer sea ice energy balance but can either lead to sea ice break up or compact thin ice depending on other external forces. While the Central Arctic shows a strong anticorrelation between the melt pond coverage in May and June and the September sea ice minimum extent, this is reduced for the Canadian Arctic Archipelago and negligible for the Beaufort and Kara Seas. In the latter, in contrast, the sea ice extent is strongly influenced by the air temperatures immediately prior to the sea ice minimum.

Despite the overall high seasonal and inter-annual variability, a slightly increasing trend in the melt pond coverage has been detected within the analyzed time period 2017 to 2023. However, the time period is too short to draw further reaching conclusions from this.

The high temporal and spatial melt pond variability, found here for all studied cases, has to be taken into account when calculating surface energy balances for Arctic summer sea ice. The demonstrated regional dependencies of melt pond fraction

on surface air temperature and surface topography can be useful for integrating melt ponds in climate models. However, for
570 surface topography information about ridge distributions has to be available, which nowadays mostly is not the case for climate
models.

Data availability. The Sentinel-3 satellite data used, is publicly available under <https://ladsweb.modaps.eosdis.nasa.gov/archive/allData/450/>
(last access August 14, 2023).

The aggregated MPD2 melt pond and open ocean fraction data with 12.5 km spatial resolution is available under [https://data.seaice.
575 uni-bremen.de/MeltPonds-Albedo/MPD2/](https://data.seaice.uni-bremen.de/MeltPonds-Albedo/MPD2/).

ERA5 data are made available by the Copernicus Climate Change Service (C3S) at [https://cds.climate.copernicus.eu/cdsapp#!/dataset/
reanalysis-era5-single-levels?tab=form](https://cds.climate.copernicus.eu/cdsapp#!/dataset/reanalysis-era5-single-levels?tab=form).

The OSI-405-c sea ice drift data is available via https://thredds.met.no/thredds/catalog/osisaf/met.no/ice/drift_lr/merged/catalog.html.

The ASI sea ice concentration data is available via https://data.seaice.uni-bremen.de/amsr2/asi_daygrid_swath/n6250/.

580 The ICESat-2 drag coefficient data including the obstacle spacing as an approximation for the sea ice roughness is available on PANGAEA:
<https://doi.pangaea.de/10.1594/PANGAEA.959728>.

The in-situ transect melt pond fractions from the MOSAiC campaign have been provided personally by Melinda Webster.

Author contributions. HN has analyzed the data, and wrote the first draft of the paper. All authors developed the concept of the study, have
actively contributed to discussions of the results and provided critical feedback on the paper.

585 *Competing interests.* The authors declare that they have no conflicts of interest.

Acknowledgements. We gratefully acknowledge the funding by the Deutsche Forschungsgemeinschaft (DFG, German Research Foundation)
through the Transregional Collaborative Research Centre TRR-172 “Arctic Amplification: Climate Relevant Atmospheric and Surface
Processes, and Feedback Mechanisms (AC)3” (grant 268020496) and the European Union’s Horizon 2020 project CRiceS (grant 101003826).
This research wouldn’t have been possible without the availability of open data from satellites by space agencies ESA, NASA, and JAXA as
590 well as the in situ data from the MOSAiC expedition.

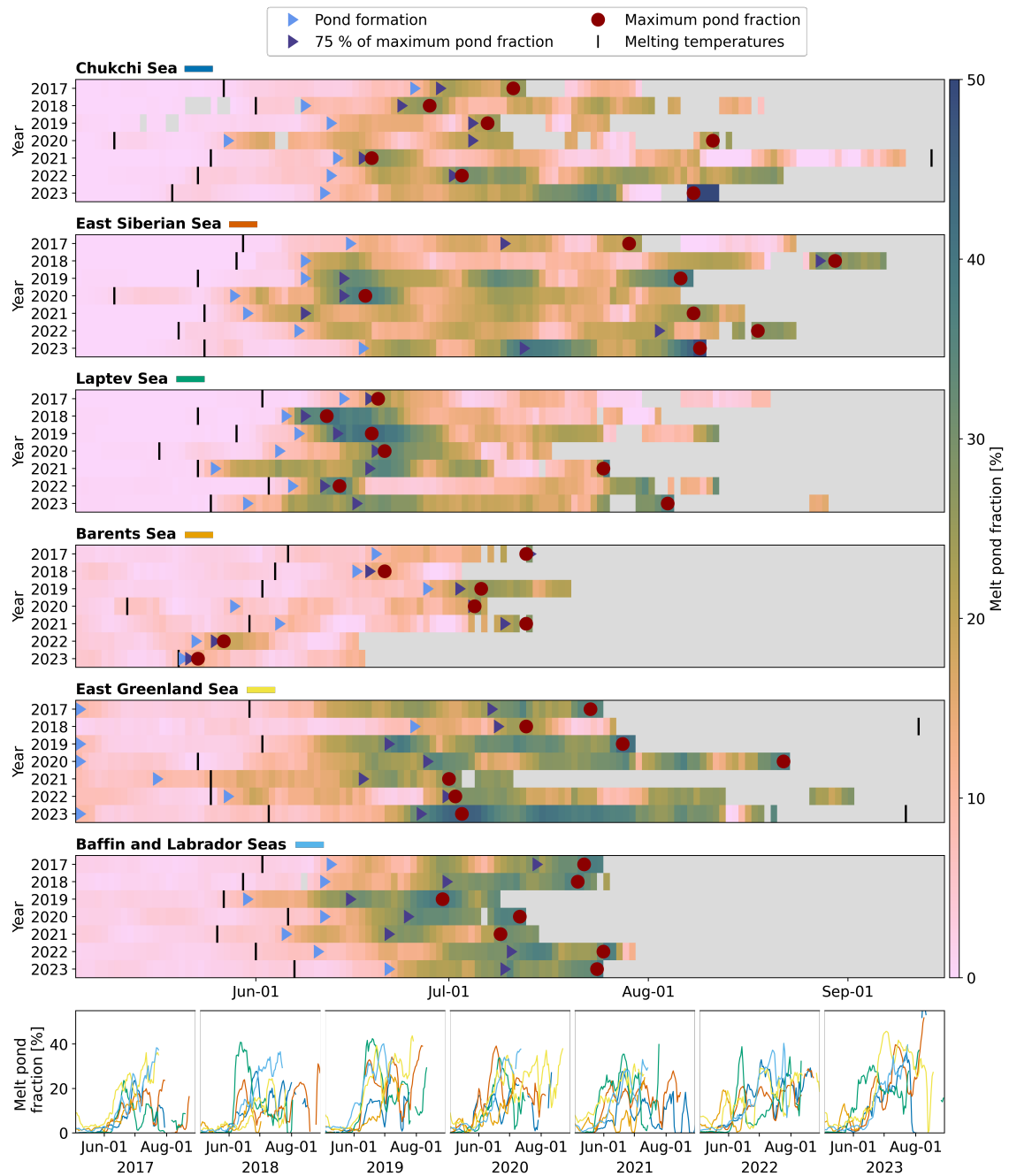


Figure A1. Seasonal evolution of melt pond fraction compared between the 7 years of Sentinel-3 data for the Chukchi Sea, the East Siberian Sea, the Laptev Sea, the Barents Sea, the East Greenland Sea, and the Baffin and Labrador Seas. Upper six panels: The color indicates the daily averaged-median melt pond fraction per region following the color scale on the right. Gray areas represent data gaps. The vertical black lines mark the beginning and the end of the time where regionally averaged temperatures are above 0 C°. The light blue triangles indicate the initial melt pond formation defined by melt pond fractions passes the uncertainty of the MPD2 product of 8 %. The red circles highlight the time of the regional maximum melt pond fraction per year and the dark triangles the day when 75 % of the maximum value are exceeded. Bottom panel: Direct comparison of seasonal melt pond fraction evolution for the Arctic regions shown above, as indicated by the colored bars next to the region names.

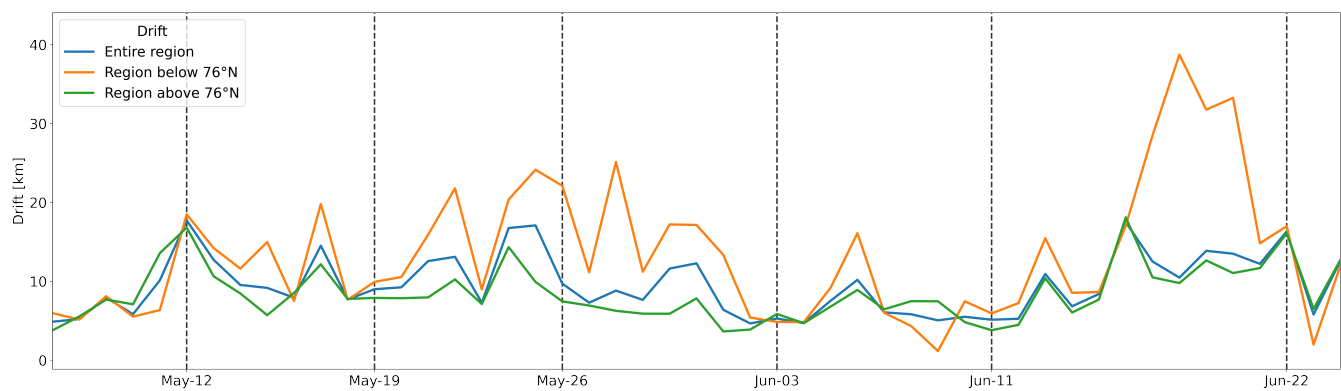


Figure A2. Sea ice drift from the OSI-SAF drift product averaged for the entire region of the Kara Sea (blue), the Kara Sea below 76 °N (orange), and the Kara Sea region above 76 °N (green). Shown are the data for the same period of year 2023 as presented in figure 9.

References

- Årthun, M., Eldevik, T., Smedsrud, L., Skagseth, Ø., and Ingvaldsen, R.: Quantifying the influence of Atlantic heat on Barents Sea ice variability and retreat, *Journal of Climate*, 25, 4736–4743, <https://doi.org/https://doi.org/10.1175/JCLI-D-11-00466.1>, 2012.
- Cox, C. J., Gallagher, M. R., Shupe, M. D., Persson, P. O. G., Solomon, A., Fairall, C. W., Ayers, T., Blomquist, B., Brooks, I. M., Costa, D.,
595 et al.: Continuous observations of the surface energy budget and meteorology over the Arctic sea ice during MOSAiC, *Scientific Data*, 10, 519, <https://doi.org/https://doi.org/10.1038/s41597-023-02415-5>, 2023.
- Curry, J. A., Schramm, J. L., and Ebert, E. E.: Sea ice-albedo climate feedback mechanism, *Journal of Climate*, 8, 240–247, [https://doi.org/https://doi.org/10.1175/1520-0442\(1995\)008<0240:SIACFM>2.0.CO;2](https://doi.org/https://doi.org/10.1175/1520-0442(1995)008<0240:SIACFM>2.0.CO;2), 1995.
- Dammann, D. O., Eriksson, L. E., Mahoney, A. R., Eicken, H., and Meyer, F. J.: Mapping pan-Arctic landfast sea ice stability using Sentinel-1
600 interferometry, *The Cryosphere*, 13, 557–577, <https://doi.org/https://doi.org/10.5194/tc-13-557-2019>, 2019.
- Diamond, R., Schroeder, D., Sime, L. C., Ridley, J., and Feltham, D.: The Significance of the Melt-Pond Scheme in a CMIP6 Global Climate Model, *Journal of Climate*, 37, 249–268, <https://doi.org/https://doi.org/10.1175/JCLI-D-22-0902.1>, 2024.
- Ding, Y., Cheng, X., Liu, J., Hui, F., Wang, Z., and Chen, S.: Retrieval of melt pond fraction over Arctic sea ice during 2000–2019 using an ensemble-based deep neural network, *Remote Sensing*, 12, <https://doi.org/https://10.3390/RS12172746>, 2020.
- 605 Dorn, W., Rinke, A., Köberle, C., Dethloff, K., and Gerdes, R.: HIRHAM–NAOSIM 2.0: The upgraded version of the coupled regional atmosphere-ocean-sea ice model for Arctic climate studies, *Geoscientific Model Development Discussions*, pp. 1–30, <https://doi.org/https://doi.org/10.5194/gmd-2018-278>, 2018.
- Eicken, H., Krouse, H., Kadko, D., and Perovich, D.: Tracer studies of pathways and rates of meltwater transport through Arctic summer sea ice, *Journal of Geophysical Research: Oceans*, 107, SHE–22, <https://doi.org/https://doi:10.1029/2000JC000583>, 2002.
- 610 Eicken, H., Grenfell, T., Perovich, D., Richter-Menge, J., and Frey, K.: Hydraulic controls of summer Arctic pack ice albedo, *Journal of Geophysical Research: Oceans*, 109, <https://doi.org/https://doi:10.1029/2003JC001989>, 2004.
- Feng, J., Zhang, Y., Cheng, Q., and Tsou, J. Y.: Pan-Arctic melt pond fraction trend, variability, and contribution to sea ice changes, *Global and Planetary Change*, 217, 103 932, <https://doi.org/https://doi.org/10.1016/j.gloplacha.2022.103932>, 2022.
- Fetterer, F. and Untersteiner, N.: Observations of melt ponds on Arctic sea ice, *Journal of Geophysical Research: Oceans*, 103, 24 821–24 835,
615 <https://doi.org/https://doi.org/10.1029/98JC02034>, 1998.
- Flocco, D. and Feltham, D. L.: A continuum model of melt pond evolution on Arctic sea ice, *Journal of Geophysical Research: Oceans*, 112, <https://doi.org/https://doi.org/10.1029/2006JC003836>, 2007.
- Galley, R. J., Else, B. G., Howell, S. E., Lukovich, J. V., and Barber, D. G.: Landfast sea ice conditions in the Canadian Arctic: 1983–2009, *Arctic*, pp. 133–144, <https://www.jstor.org/stable/41638586>, 2012.
- 620 Grenfell, T. C. and Maykut, G. A.: The optical properties of ice and snow in the Arctic Basin, *Journal of Glaciology*, 18, 445–463, <https://doi.org/https://doi.org/10.3189/S0022143000021122>, 1977.
- Hersbach, H., Bell, B., Berrisford, P., Hirahara, S., Horányi, A., Muñoz-Sabater, J., Nicolas, J., Peubey, C., Radu, R., Schepers, D., et al.: The ERA5 global reanalysis, *Quarterly Journal of the Royal Meteorological Society*, 146, 1999–2049, <https://doi.org/https://doi.org/10.1002/qj.3803>, 2020.
- 625 Holland, M. M., Bailey, D. A., Briegleb, B. P., Light, B., and Hunke, E.: Improved Sea Ice Shortwave Radiation Physics in CCSM4: The Impact of Melt Ponds and Aerosols on Arctic Sea Ice, *Journal of Climate*, 25, 1413–1430, <https://doi.org/https://doi.org/10.1175/JCLI-D-11-00078.1>, 2012.

- Howell, S. E., Scharien, R. K., Landy, J., and Brady, M.: Spring melt pond fraction in the Canadian Arctic Archipelago predicted from RADARSAT-2, *The Cryosphere*, 14, 4675–4686, <https://doi.org/https://doi.org/10.5194/tc-14-4675-2020>, 2020.
- 630 Hunke, E. C., Hebert, D. A., and Lecomte, O.: Level-ice melt ponds in the Los Alamos sea ice model, CICE, *Ocean Modelling*, 71, 26–42, <https://doi.org/https://doi.org/10.1016/j.ocemod.2012.11.008>, 2013.
- Istomina, L., von Hoyningen-Huene, W., Kokhanovsky, A., and Burrows, J.: The detection of cloud-free snow-covered areas using AATSR measurements, *Atmospheric Measurement Techniques*, 3, 1005–1017, <https://doi.org/https://doi.org/10.5194/amt-3-1005-2010>, 2010.
- Istomina, L., von Hoyningen-Huene, W., Kokhanovsky, A., Schultz, E., and Burrows, J.: Remote sensing of aerosols over snow using
635 infrared AATSR observations, *Atmospheric Measurement Techniques*, 4, 1133–1145, <https://doi.org/https://doi.org/10.5194/amt-4-1133-2011>, 2011.
- Istomina, L., Heygster, G., Huntemann, M., Marks, H., Melsheimer, C., Zege, E., Malinka, A., Prikhach, A., and Katsev, I.: Melt pond fraction and spectral sea ice albedo retrieval from MERIS data–Part 2: Case studies and trends of sea ice albedo and melt ponds in the Arctic for years 2002–2011, *The Cryosphere*, 9, 1567–1578, <https://doi.org/https://doi.org/10.5194/tc-9-1567-2015>, 2015a.
- 640 Istomina, L., Heygster, G., Huntemann, M., Schwarz, P., Birnbaum, G., Scharien, R., Polashenski, C., Perovich, D., Zege, E., Malinka, A., et al.: Melt pond fraction and spectral sea ice albedo retrieval from MERIS data–Part 1: Validation against in situ, aerial, and ship cruise data, *The Cryosphere*, 9, 1551–1566, <https://doi.org/https://doi.org/10.5194/tc-9-1551-2015>, 2015b.
- Istomina, L., Niehaus, H., and Spreen, G.: Updated Arctic melt pond fraction dataset and trends 2002–2023 using ENVISAT and Sentinel-3 remote sensing data, *The Cryosphere Discussions*, 2023, 1–32, <https://doi.org/10.5194/tc-2023-142>, 2023.
- 645 Johnston, M.: Seasonal changes in the properties of first-year, second-year and multi-year ice, *Cold Regions Science and Technology*, 141, 36–53, <https://doi.org/https://doi.org/10.1016/j.coldregions.2017.05.006>, 2017.
- Kaleschke, L., Lüpkes, C., Vihma, T., Haarpaintner, J., Bochert, A., Hartmann, J., and Heygster, G.: SSM/I sea ice remote sensing for mesoscale ocean-atmosphere interaction analysis, *Canadian Journal of Remote Sensing*, 27, 526–537, <https://doi.org/https://doi.org/10.1080/07038992.2001.10854892>, 2001.
- 650 Katlein, C., Arndt, S., Belter, H. J., Castellani, G., and Nicolaus, M.: Seasonal evolution of light transmission distributions through Arctic sea ice, *Journal of Geophysical Research: Oceans*, 124, 5418–5435, <https://doi.org/https://doi.org/10.1029/2018JC014833>, 2019.
- Kruppen, T., von Albedyll, L., Goessling, H. F., Hendricks, S., Juhls, B., Spreen, G., Willmes, S., Belter, H. J., Dethloff, K., Haas, C., Kaleschke, L., Katlein, C., Tian-Kunze, X., Ricker, R., Rostosky, P., Rückert, J., Singha, S., and Sokolova, J.: MOSAiC drift expedition from October 2019 to July 2020: Sea ice conditions from space and comparison with previous years, *The Cryosphere*, 15, 3897–3920,
655 <https://doi.org/https://doi.org/10.5194/tc-15-3897-2021>, 2021.
- Kwok, R. and Untersteiner, N.: The thinning of Arctic sea ice, *Physics today*, 64, 36–41, <https://doi.org/https://doi.org/10.1063/1.3580491>, 2011.
- Lee, S., Stroeve, J., Tsamados, M., and Khan, A. L.: Machine learning approaches to retrieve pan-Arctic melt ponds from visible satellite imagery, *Remote Sensing of Environment*, 247, 111 919, <https://doi.org/https://doi.org/10.1016/j.rse.2020.111919>, 2020.
- 660 Lee, S., Stroeve, J., Webster, M., Fuchs, N., and Perovich, D. K.: Inter-comparison of melt pond products from optical satellite imagery, *Remote Sensing of Environment*, 301, 113 920, <https://doi.org/https://doi.org/10.1016/j.rse.2023.113920>, 2024.
- Light, B., Smith, M. M., Perovich, D. K., Webster, M. A., Holland, M. M., Linhardt, F., Raphael, I. A., Clemens-Sewall, D., Macfarlane, A. R., Anhaus, P., et al.: Arctic sea ice albedo: Spectral composition, spatial heterogeneity, and temporal evolution observed during the MOSAiC drift, *Elementa: Science of the Anthropocene*, 10, 000 103, <https://doi.org/https://doi.org/10.1525/elementa.2021.000103>, 2022.

- 665 Liu, J., Song, M., Horton, R. M., and Hu, Y.: Revisiting the potential of melt pond fraction as a predictor for the seasonal Arctic sea ice extent minimum, *Environmental Research Letters*, 10, <https://doi.org/10.1088/1748-9326/10/5/054017>, 2015.
- Lundesgaard, Ø., Sundfjord, A., Lind, S., Nilsen, F., and Renner, A. H.: Import of Atlantic Water and sea ice controls the ocean environment in the northern Barents Sea, *Ocean Science*, 18, 1389–1418, <https://doi.org/https://doi.org/10.5194/os-18-1389-2022>, 2022.
- Malinka, A., Zege, E., Istomina, L., Heygster, G., Spreen, G., Perovich, D. K., and Polashenski, C.: Reflective properties of melt ponds on
670 sea ice, *The Cryosphere*, 12, 1921–1937, <https://doi.org/https://doi.org/10.5194/tc-12-1921-2018>, 2018.
- Maykut, G., Grenfell, T., and Weeks, W.: On estimating spatial and temporal variations in the properties of ice in the polar oceans, *Journal of marine systems*, 3, 41–72, [https://doi.org/https://doi.org/10.1016/0924-7963\(92\)90030-C](https://doi.org/https://doi.org/10.1016/0924-7963(92)90030-C), 1992.
- Mchedlishvili, A., Lüpkes, C., Petty, A., Tsamados, M., and Spreen, G.: New estimates of the pan-Arctic sea ice–atmosphere neutral drag coefficients from ICESat-2 elevation data, *EGU sphere*, pp. 1–29, <https://doi.org/https://doi.org/10.5194/tc-17-4103-2023>, 2023.
- 675 Melsheimer, C., Spreen, G., Ye, Y., and Shokr, M.: Multiyear Ice Concentration, Antarctic, 12.5 km grid, cold seasons 2013-2018 (from satellite) [data set], <https://doi.org/https://doi.org/10.1594/PANGAEA.909054>, 2019.
- Nicolaus, M., Katlein, C., Maslanik, J., and Hendricks, S.: Changes in Arctic sea ice result in increasing light transmittance and absorption, *Geophysical Research Letters*, 39, <https://doi.org/https://doi.org/10.1029/2012GL053738>, 2012.
- Nicolaus, M., Perovich, D. K., Spreen, G., Granskog, M. A., von Albedyll, L., Angelopoulos, M., Anhaus, P., Arndt, S., Belter, H. J.,
680 Bessonov, V., et al.: Overview of the MOSAiC expedition: Snow and sea ice, *Elementa: Science of the Anthropocene*, 10, 000046, <https://doi.org/https://doi.org/10.1525/elementa.2021.000046>, 2022.
- Niehaus, H., Spreen, G., Birnbaum, G., Istomina, L., Jäkel, E., Linhardt, F., Neckel, N., Fuchs, N., Nicolaus, M., Sperzel, T., et al.: Sea Ice Melt Pond Fraction Derived From Sentinel-2 Data: Along the MOSAiC Drift and Arctic-Wide, *Geophysical Research Letters*, 50, e2022GL102102, <https://doi.org/https://doi.org/10.1029/2022GL102102>, 2023.
- 685 Niehaus, H., Istomina, L., Nicolaus, M., Tao, R., Malinka, A., Zege, E., and Spreen, G.: Melt pond fractions on Arctic summer sea ice retrieved from Sentinel-3 satellite data with a constrained physical forward model, *The Cryosphere*, 18, 933–956, <https://doi.org/10.5194/tc-18-933-2024>, 2024.
- NSIDC: Arctic sea ice minimum at sixth lowest extent on record, National Snow and Ice Data Center <https://nsidc.org/arcticseaicenews/2023/09/arctic-sea-ice-minimum-at-sixth/>, last accessed: February 12, 2024, 2023.
- 690 NSIDC: National Snow and Ice Data Center - Parts of the Cryosphere, <https://nsidc.org/learn/parts-cryosphere>, last accessed: January 15, 2024, 2024.
- Peng, Z., Ding, Y., Qu, Y., Wang, M., and Li, X.: Generating a Long-Term Spatiotemporally Continuous Melt Pond Fraction Dataset for Arctic Sea Ice Using an Artificial Neural Network and a Statistical-Based Temporal Filter, *Remote Sensing*, 14, 4538, <https://doi.org/https://doi.org/10.3390/rs14184538>, 2022.
- 695 Perovich, D. K., Tucker, W. B., and Ligett, K. A.: Aerial observations of the evolution of ice surface conditions during summer, *Journal of Geophysical Research: Oceans*, 107, <https://doi.org/https://doi.org/10.1029/2000jc000449>, 2002a.
- Perovich, D. K., Tucker III, W., and Ligett, K.: Aerial observations of the evolution of ice surface conditions during summer, *Journal of Geophysical Research: Oceans*, 107, SHE–24, <https://doi.org/https://doi.org/10.1029/2000JC000449>, 2002b.
- Perovich, D. K., Grenfell, T. C., Richter-Menge, J. A., Light, B., Tucker III, W. B., and Eicken, H.: Thin and thinner: Sea ice mass balance
700 measurements during SHEBA, *Journal of Geophysical Research: Oceans*, 108, <https://doi.org/https://doi.org/10.1029/2001JC001079>, 2003.

- Perovich, D. K., Light, B., Eicken, H., Jones, K. F., Runciman, K., and Nghiem, S. V.: Increasing solar heating of the Arctic Ocean and adjacent seas, 1979–2005: Attribution and role in the ice-albedo feedback, *Geophysical Research Letters*, 34, <https://doi.org/https://doi.org/10.1029/2007GL031480>, 2007.
- 705 Perovich, D. K., Richter-Menge, J. A., Jones, K. F., and Light, B.: Sunlight, water, and ice: Extreme Arctic sea ice melt during the summer of 2007, *Geophysical Research Letters*, 35, <https://doi.org/https://doi.org/10.1029/2008GL034007>, 2008.
- Perovich, D. K., Smith, M., Light, B., and Webster, M.: Meltwater sources and sinks for multiyear Arctic sea ice in summer, *The Cryosphere*, 15, 4517–4525, <https://doi.org/https://doi.org/10.5194/tc-15-4517-2021>, 2021.
- Perovich, D. K. et al.: The optical properties of sea ice, Cold Regions Research and Engineering Laboratory (U.S.), <https://doi.org/https://hdl.handle.net/11681/2648>, 1996.
- 710 Pohl, C., Istomina, L., Tietsche, S., Jäkel, E., Stapf, J., Spreen, G., and Heygster, G.: Broadband albedo of Arctic sea ice from MERIS optical data, *The Cryosphere*, 14, 165–182, <https://doi.org/https://doi.org/10.5194/tc-14-165-2020>, 2020.
- Polashenski, C., Perovich, D. K., and Courville, Z.: The mechanisms of sea ice melt pond formation and evolution, *Journal of Geophysical Research: Oceans*, 117, <https://doi.org/https://doi.org/10.1029/2011JC007231>, 2012.
- 715 Polyakov, I. V., Ingvaldsen, R. B., Pnyushkov, A. V., Bhatt, U. S., Francis, J. A., Janout, M., Kwok, R., and Skagseth, Ø.: Fluctuating Atlantic inflows modulate Arctic atlantification, *Science*, 381, 972–979, <https://doi.org/https://doi.org/10.1126/science.adh5158>, 2023.
- Rabault, J., Müller, M., Voermans, J., Brazhnikov, D., Turnbull, I., Marchenko, A., Biuw, M., Nose, T., Waseda, T., Johansson, M., Breivik, O., Sutherland, G., Hole, L., Johnson, M., Jensen, A., Gundersen, O., Kristoffersen, Y., Babanin, A., Tedesco, P., Christensen, K., Kristiansen, M., Hope, G., Kodaira, T., de Aguiar, V., Taelman, C., Quigley, C., Filchuk, K., and Mahoney, A.: A dataset of direct observations of sea ice drift and waves in ice, *Scientific Data*, 10, 251, <https://doi.org/https://doi.org/10.1038/s41597-023-02160-9>, 2023.
- 720 Reimnitz, E., Dethleff, D., and Nürnberg, D.: Contrasts in Arctic shelf sea-ice regimes and some implications: Beaufort Sea versus Laptev Sea, *Marine Geology*, 119, 215–225, [https://doi.org/https://doi.org/10.1016/0025-3227\(94\)90182-1](https://doi.org/https://doi.org/10.1016/0025-3227(94)90182-1), 1994.
- Rösel, A. and Kaleschke, L.: Comparison of different retrieval techniques for melt ponds on Arctic sea ice from Landsat and MODIS satellite data, *Annals of Glaciology*, 52, 185–191, <https://doi.org/https://doi.org/10.3189/172756411795931606>, 2011.
- 725 Rösel, A., Kaleschke, L., and Birnbaum, G.: Melt ponds on Arctic sea ice determined from MODIS satellite data using an artificial neural network, *The cryosphere*, 6, 431–446, <https://doi.org/https://doi.org/10.5194/tc-6-431-2012>, 2012.
- Rostosky, P., Spreen, G., Farrell, S. L., Frost, T., Heygster, G., and Melsheimer, C.: Snow depth retrieval on Arctic sea ice from passive microwave radiometers—Improvements and extensions to multiyear ice using lower frequencies, *Journal of Geophysical Research: Oceans*, 123, 7120–7138, <https://doi.org/https://doi.org/10.1029/2018JC014028>, 2018.
- 730 Scharien, R. K. and Yackel, J. J.: Analysis of surface roughness and morphology of first-year sea ice melt ponds: Implications for microwave scattering, *IEEE Transactions on Geoscience and Remote Sensing*, 43, 2927–2939, <https://doi.org/https://doi.org/10.1109/TGRS.2005.857896>, 2005.
- Schröder, D., Feltham, D. L., Flocco, D., and Tsamados, M.: September Arctic sea-ice minimum predicted by spring melt-pond fraction, *Nature Climate Change*, 4, 353–357, <https://doi.org/https://doi.org/10.1038/nclimate2203>, 2014.
- 735 Screen, J. A.: An ice-free Arctic: what could it mean for European weather?, *Weather*, 76, 327–328, <https://doi.org/https://doi.org/10.1002/wea.4069>, 2021.
- Serreze, M., Barrett, A., Stroeve, J., Kindig, D., and Holland, M.: The emergence of surface-based Arctic amplification, *The Cryosphere*, 3, 11–19, <https://doi.org/https://doi.org/10.5194/tc-3-11-2009>, 2009.
- Shokr, M. and Sinha, N. K.: Sea ice: physics and remote sensing, John Wiley & Sons, 2023.

- 740 Shupe, M. D., Rex, M., Blomquist, B., Persson, P. O. G., Schmale, J., Uttal, T., Althausen, D., Angot, H., Archer, S., Bariteau, L., et al.: Overview of the MOSAiC expedition: Atmosphere, <https://doi.org/https://doi.org/10.1525/elementa.2021.00060>, 2022.
- Smedsrud, L. H., Halvorsen, M. H., Stroeve, J. C., Zhang, R., and Kloster, K.: Fram Strait sea ice export variability and September Arctic sea ice extent over the last 80 years, *The Cryosphere*, 11, 65–79, <https://doi.org/https://doi.org/10.5194/tc-11-65-2017>, 2017.
- Sofieva, V. F., Kalakoski, N., Päiväranta, S.-M., Tamminen, J., Laine, M., and Froidevaux, L.: On sampling uncertainty of satellite ozone
745 profile measurements, *Atmospheric Measurement Techniques*, 7, 1891–1900, <https://doi.org/https://doi.org/10.5194/amt-7-1891-2014>, 2014.
- Spreen, G., Kaleschke, L., and Heygster, G.: Sea ice remote sensing using AMSR-E 89-GHz channels, *Journal of Geophysical Research: Oceans*, 113, <https://doi.org/https://doi.org/10.1029/2005JC003384>, 2008.
- Spreen, G., Steur, L., Divine, D., Gerland, S., Hansen, E., and Kwok, R.: Arctic Sea Ice Volume Export Through Fram Strait From 1992 to
750 2014, *J. Geophys. Res. Oceans*, 125, <https://doi.org/10.1029/2019jc016039>, 2020.
- Stroeve, J. C., Kattsov, V., Barrett, A., Serreze, M., Pavlova, T., Holland, M., and Meier, W. N.: Trends in Arctic sea ice extent from CMIP5, CMIP3 and observations, *Geophysical Research Letters*, 39, <https://doi.org/https://doi.org/10.1029/2012GL052676>, 2012a.
- Stroeve, J. C., Serreze, M. C., Holland, M. M., Kay, J. E., Malanik, J., and Barrett, A. P.: The Arctic’s rapidly shrinking sea ice cover: a research synthesis, *Climatic change*, 110, 1005–1027, <https://doi.org/https://doi.org/10.1007/s10584-011-0101-1>, 2012b.
- 755 Stroeve, J. C., Veyssiere, G., Nab, C., Light, B., Perovich, D., Laliberté, J., Campbell, K., Landy, J., Mallett, R., Barrett, A., Liston, G. E., Haddon, A., and Wilkinson, J.: Mapping Potential Timing of Ice Algal Blooms From Satellite, *Geophys. Res. Lett.*, 51, <https://doi.org/10.1029/2023gl106486>, 2024.
- Tanaka, Y.: Estimating Meltwater Drainage Onset Timing and Duration of Landfast Ice in the Canadian Arctic Archipelago Using AMSR-E Passive Microwave Data, *Remote Sensing*, 12, 1033, <https://doi.org/https://doi.org/10.3390/rs12061033>, 2020.
- 760 Tao, R., Nicolaus, M., Katlein, C., Anhaus, P., Hoppmann, M., Spreen, G., Niehaus, H., Jäkel, E., Wendisch, M., and Haas, C.: Seasonality of spectral radiative fluxes and optical properties of Arctic sea ice during the spring–summer transition, *Elem. Sci. Anth.*, 12, <https://doi.org/10.1525/elementa.2023.00130>, 2024.
- Tian, T., Yang, S., Høyer, J. L., Nielsen-Englyst, P., and Singha, S.: Cooler Arctic surface temperatures simulated by climate models are closer to satellite-based data than the ERA5 reanalysis, *Communications Earth & Environment*, 5, 111, <https://doi.org/https://doi.org/10.1038/s43247-024-01276-z>, 2024.
- 765 Tsamados, M., Feltham, D., Petty, A., Schroeder, D., and Flocco, D.: Processes controlling surface, bottom and lateral melt of Arctic sea ice in a state of the art sea ice model, *Philosophical Transactions of the Royal Society A: Mathematical, Physical and Engineering Sciences*, 373, 20140 167, <https://doi.org/https://doi.org/10.1098/rsta.2014.0167>, 2015.
- Tschudi, M. A., Maslanik, J. A., and Perovich, D. K.: Derivation of melt pond coverage on Arctic sea ice using MODIS observations, *Remote
770 Sensing of Environment*, 112, 2605–2614, <https://doi.org/https://doi.org/10.1016/j.rse.2007.12.009>, 2008.
- Untersteiner, N.: Natural desalination and equilibrium salinity profile of perennial sea ice, *Journal of Geophysical Research*, 73, 1251–1257, <https://doi.org/https://doi.org/10.1029/JB073i004p01251>, 1968.
- von Albedyll, L., Haas, C., and Dierking, W.: Linking sea ice deformation to ice thickness redistribution using high-resolution satellite and airborne observations, *The Cryosphere Discussions*, 2020, 1–33, <https://doi.org/https://doi.org/10.5194/tc-15-2167-2021>, 2020.
- 775 Wang, C., Graham, R. M., Wang, K., Gerland, S., and Granskog, M. A.: Comparison of ERA5 and ERA-Interim near-surface air temperature, snowfall and precipitation over Arctic sea ice: effects on sea ice thermodynamics and evolution, *The Cryosphere*, 13, 1661–1679, <https://doi.org/https://doi.org/10.5194/tc-13-1661-2019>, 2019.

- Wang, M., Su, J., and Li, T.: Determination of Arctic melt pond fraction and sea ice roughness from Unmanned Aerial Vehicle (UAV) imagery, *Advances in Polar Science*, 29, 181–189, <https://doi.org/https://doi.org/10.13679/j.advps.2018.3.00181>, 2018.
- 780 Webster, M. A., Rigor, I. G., Perovich, D. K., Richter-Menge, J. A., Polashenski, C. M., and Light, B.: Seasonal evolution of melt ponds on Arctic sea ice, *Journal of Geophysical Research: Oceans*, 120, 5968–5982, <https://doi.org/https://doi.org/10.1002/2015JC011030>, 2015.
- Webster, M. A., Holland, M., Wright, N. C., Hendricks, S., Hutter, N., Itkin, P., Light, B., Linhardt, F., Perovich, D. K., Raphael, I. A., et al.: Spatiotemporal evolution of melt ponds on Arctic sea ice: MOSAiC observations and model results, *Elementa: Science of the Anthropocene*, 10, 000 072, <https://doi.org/https://doi.org/10.1525/elementa.2021.000072>, 2022.
- 785 Wendisch, M., Brückner, M., Crewell, S., Ehrlich, A., Notholt, J., Lüpkes, C., Macke, A., Burrows, J. P., Rinke, A., Quaas, J., Maturilli, M., Schemann, V., Shupe, M. D., Akansu, E. F., Barrientos-Velasco, C., Bärfuss, K., Blechschmidt, A.-M., Block, K., Bougoudis, I., Bozem, H., Böckmann, C., Bracher, A., Bresson, H., Bretschneider, L., Buschmann, M., Chechin, D. G., Chylik, J., Dahlke, S., Deneke, H., Dethloff, K., Donth, T., Dorn, W., Dupuy, R., Ebell, K., Egerer, U., Engelmann, R., Eppers, O., Gerdes, R., Gierens, R., Gorodetskaya, I. V., Gottschalk, M., Griesche, H., Gryanik, V. M., Handorf, D., Harm-Altstädter, B., Hartmann, J., Hartmann, M., Heinold, B., Herber,
- 790 A., Herrmann, H., Heygster, G., Höschel, I., Hofmann, Z., Hölemann, J., Hünerbein, A., Jafariserajehlou, S., Jäkel, E., Jacobi, C., Janout, M., Jansen, F., Jourdan, O., Jurányi, Z., Kalesse-Los, H., Kanzow, T., Käthner, R., Kliesch, L. L., Klingebiel, M., Knudsen, E. M., Kovács, T., Körtke, W., Krampe, D., Kretzschmar, J., Kreyling, D., Kulla, B., Kunkel, D., Lampert, A., Lauer, M., Lelli, L., von Lerber, A., Linke, O., Löhnert, U., Lonardi, M., Losa, S. N., Losch, M., Maahn, M., Mech, M., Mei, L., Mertes, S., Metzner, E., Mewes, D., Michaelis, J., Mioche, G., Moser, M., Nakoudi, K., Neggers, R., Neuber, R., Nomokonova, T., Oelker, J., Papakonstantinou-Presvelou, I., Pätzold,
- 795 F., Pefanis, V., Pohl, C., van Pinxteren, M., Radovan, A., Rhein, M., Rex, M., Richter, A., Risse, N., Ritter, C., Rostosky, P., Rozanov, V. V., Donoso, E. R., Garfias, P. S., Salzmann, M., Schacht, J., Schäfer, M., Schneider, J., Schnierstein, N., Seifert, P., Seo, S., Siebert, H., Soppa, M. A., Spreen, G., Stachlewska, I. S., Stapf, J., Stratmann, F., Tegen, I., Viceto, C., Voigt, C., Vountas, M., Walbröl, A., Walter, M., Wehner, B., Wex, H., Willmes, S., Zanatta, M., and Zeppenfeld, S.: Atmospheric and Surface Processes, and Feedback Mechanisms Determining Arctic Amplification: A Review of First Results and Prospects of the (AC)³ Project, *Bulletin of the American Meteorological*
- 800 *Society*, 104, E208–E242, <https://doi.org/https://doi.org/10.1175/BAMS-D-21-0218.1>, 2023.
- Ye, Y., Heygster, G., and Shokr, M.: Improving Multiyear Ice Concentration Estimates With Reanalysis Air Temperatures, *IEEE Transactions on Geoscience and Remote Sensing*, 54, 2602–2614, <https://doi.org/https://doi.org/10.1109/TGRS.2015.2503884>, 2016a.
- Ye, Y., Shokr, M., Heygster, G., and Spreen, G.: Improving multiyear sea ice concentration estimates with sea ice drift, *Remote Sensing*, 8, 397, <https://doi.org/https://doi.org/10.3390/rs8050397>, 2016b.
- 805 Yu, Y., Stern, H., Fowler, C., Fetterer, F., and Maslanik, J.: Interannual variability of Arctic landfast ice between 1976 and 2007, *Journal of Climate*, 27, 227–243, <https://doi.org/https://doi.org/10.1175/JCLI-D-13-00178.1>, 2014.
- Zege, E., Malinka, A., Katsev, I., Prikhach, A., Heygster, G., Istomina, L., Birnbaum, G., and Schwarz, P.: Algorithm to retrieve the melt pond fraction and the spectral albedo of Arctic summer ice from satellite optical data, *Remote Sensing of Environment*, 163, 153–164, <http://dx.doi.org/10.1016/j.rse.2015.03.012>, 2015.