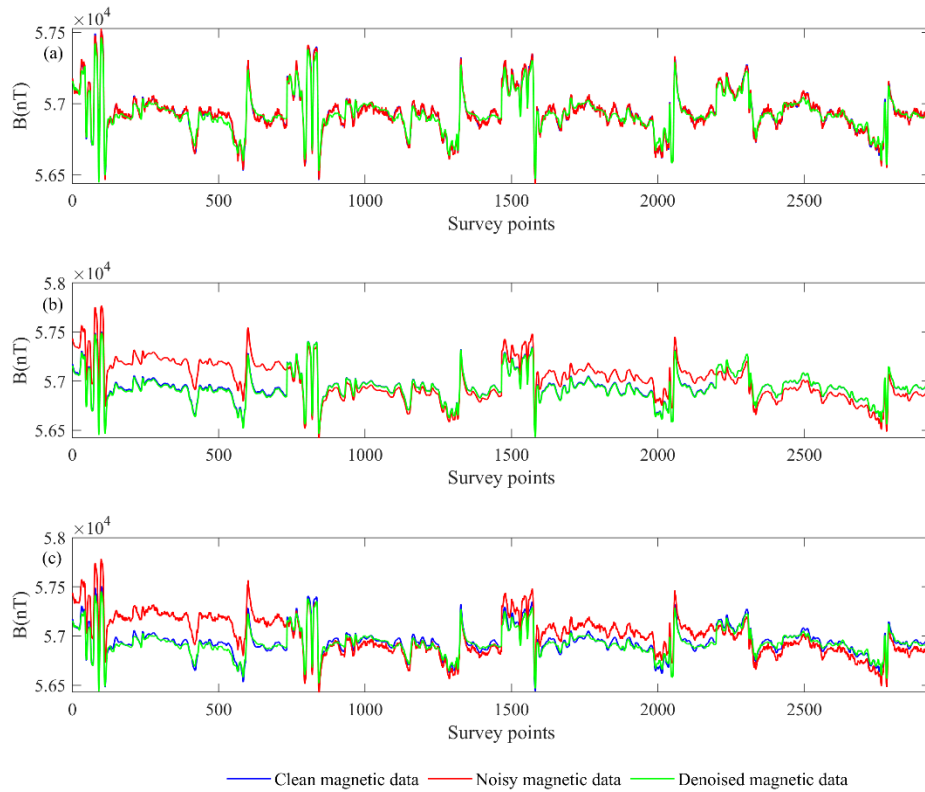


Response to Associate editor:

There is an inappropriate colour scheme when we check our figures using the Coblis. So we have revised colour scheme in Fig.3 as following:

Original version:



Modified version:



The revision will not influence the content and framework of the paper.

We appreciate for Editors and Reviewers' warm work earnestly, and hope that the correction will meet with approval. Once again, thank you very much for your comments and suggestions.