

The spatiotemporal evolution of atmospheric boundary layers over a thermally heterogeneous landscape

Mary Rose Mangan¹, Jordi Vilà-Guerau de Arellano¹, Bart J.H. van Stratum¹, Marie Lothon²,
Guylaine Canut-Rocafort³, and Oscar K. Hartogensis¹

¹Meteorology and Air Quality, Wageningen University & Research, Droevendaalsesteeg 4, 6708 PB, Wageningen, the Netherlands

²Laboratoire d'Aérodynamique, Université de Toulouse, CNRS, UPS, 14 avenue Edouard Belin 31400, Toulouse, France

³CNRM-Université de Toulouse, Météo-France/CNRS, 42 ave. G. Coriolis, 31057, Toulouse, France

Correspondence: Mary Rose Mangan (maryrose.mangan@wur.nl)

Abstract. We study the diurnal variability of the atmospheric boundary layer (ABL) across spatial scales (between ~ 100 m and ~ 10 km) of irrigation-driven surface heterogeneity in the semi-arid landscape of 2021 LIAISE experiment [in the northeast Iberian Peninsula](#). We combine observational analysis with the explicit simulation of the ABL using observationally-driven large-eddy simulation (LES) to better understand the physical mechanisms controlling ABL dynamics in heterogeneous regions. Our choice of spatial scales represent current and future single grid cells of global models, which demonstrates how the sources and [strength-magnitude](#) of sub-grid scale heterogeneity vary with model resolution.

From observations, there is a positive buoyancy flux over the irrigated fields driven primarily by moisture fluxes, whereas over the non-irrigated fields, there is a [linearly-decreasing-buoyancy-flux-profile-with-height](#) [classical buoyancy profile driven by the surface sensible heat flux](#). The surface heterogeneity is felt most strongly near the surface; however, [near-in the afternoon, at approximately 1000 m](#), there appears to be a blending zone of mean scalars ([i.e. potential temperature and specific humidity](#)) indicating that the heterogeneity mixes into a new mean state of the atmosphere. There is [an-a](#) stable internal boundary layer [of-\(as defined as the first stable layer in individual radiosonde potential temperature profiles\) up to approximately 500 m](#) over the irrigated area. Taking advantage of the [three-dimensionality-of-the-spatiotemporal extent of](#) LES results, we perform spectral analyses to find that the ABL height had an integral length scale of ~ 800 m matching that of the imposed surface fluxes. Between irrigated and non-irrigated areas, there is an adjustment of the ABL [characteristics-as it crosses the boundary up to 500 m](#) upwind of the boundary. We observe a variable-dependent blending zone between scales in the middle of the ABL, but it is limited by the entrainment zone effectively introducing another source of heterogeneity driven by upper atmosphere conditions.

1 Introduction

Surface heterogeneity impacts the development of the atmospheric boundary layer (ABL) in a number of ways depending on the atmospheric stability and the strength, size, and orientation of the surface heterogeneity (Bou-Zeid et al., 2020; Brunsell et al., 2011; Hechtel et al., 1990; Huang and Margulis, 2009; Patton et al., 2005; Shen and Leclerc, 1995; van Heerwaarden

et al., 2014). Generally, the process-based impacts of surface heterogeneity can be reduced to two classes of impacts: (1) the formation of an internal boundary layer, and (2) the formation of secondary circulations modulated by the meso- and synoptic scales. In this study, we use a combination of observational data from the Land surface Interactions with the Atmosphere over the Iberian Semi-arid Environment (LIAISE) field experiment and a large-eddy simulation (LES) inspired by the results of the observational study to investigate the impacts of unstructured, realistic surface heterogeneity on the development of the ABL. In the LIAISE domain, locally applied irrigation creates a thermal surface heterogeneity. We hypothesize that based on the scale of heterogeneity, the regional LIAISE boundary layer is a composite of a representative ABL from the wet and dry patches (Mangan et al., 2023a). We are motivated to answer the following general research question:

What physical processes dominate the spatio-temporal evolution of the ABL in a case with realistic surface heterogeneity?

The vertical impact of the surface heterogeneity is largely a function of local stability. Under near neutral conditions, an internal boundary layer can form at the boundary between two patches (Garratt, 1990). Internal boundary layers (IBL) form when the background wind flows across the boundary. The IBL forms at the boundary of the heterogeneity, and it adjusts downwind as it equilibrates with the surface. Typically, IBLs are identified by two mixed-layers in scalar profiles or by vertical flux divergence near the surface (Mahrt, 2000). Mahrt (2000) ~~makes the distinction of the formation of stresses that~~ both mesoscale and microscale IBLs that can be formed ~~in reality~~ depending on the patchiness of the land surface and the length scale of the heterogeneity. ~~However, under~~

Under low wind and convective conditions, secondary circulations can develop (Avissar and Schmidt, 1998; Liu et al., 2011; Maronga et al., 2013; Ouwersloot et al., 2011; Patton et al., 2005; Raasch and Harbusch, 2001; Shen and Leclerc, 1995; van Heerwaarden and Vilà Guerau de Arellano, 2008). Avissar and Schmidt (1998) and Raasch and Harbusch (2001) have found that background winds between 5 and 7 m s⁻¹ eliminate the impact of a secondary circulation, but the effect of the background wind depends on the orientation of the wind with respect to the boundary. If the background wind is not favorable for the formation of secondary circulations – for example it does not flow perpendicular to the boundary – then wind speeds as low as 2.5 m s⁻¹ are high enough to destroy their formation. In addition to the background wind and stability, secondary ~~circulation~~ circulations also depend on the scale of heterogeneity with respect to the ABL depth and ABL turbulence scales. The ABL is most impacted when the scale of the heterogeneity is on the same order of magnitude as the ABL depth (Patton et al., 2005; Raasch and Harbusch, 2001; Shen and Leclerc, 1995; van Heerwaarden et al., 2014).

Because the impacts of surface heterogeneity on the ABL can occur on smaller spatial scales than the ones explicitly resolved by regional and global weather models, sub-grid cell heterogeneity is poorly represented. These impacts are represented either by aggregating the land surface properties to create a composite surface that provides one flux to the atmosphere (e.g. parameter aggregation) or a tiled approach where non-interacting tiles of different land surfaces provide a flux to the lowest model level which blends in the atmosphere like as is done with ECMWF's ERA5 reanalysis model (Bou-Zeid et al., 2020). In the latter method, the blending height is a useful concept for describing how the impacts of surface heterogeneity are projected in the ABL. Unlike the physical processes of the ~~internal boundary layer~~ IBLs and secondary circulations, blending height is a concept

that arises from the practical need that our theory and numerical models necessitate a homogeneous surface. For example, in global scale numerical models, impacts of sub-grid scale surface heterogeneity blend to a composite ABL below the lowest grid cell of the model (Bou-Zeid et al., 2020). In this study, we define blending height the same as Mahrt (2000) where it is a scaling depth that describes the decrease of surface heterogeneity effects on the atmosphere with height. It is not necessarily a physical level where heterogeneity is no longer discernible, instead it is a threshold where the heterogeneity becomes negligible compared to a homogeneous case in the perspective of researchers.

Previous studies that have focused on the array of ways that surface heterogeneity can impact the ABL, have been either (1) observational studies which capture the realistic surface heterogeneities' impact on the ABL on a limited spatial scale or (2) idealized large-eddy simulation (LES) and direct numerical simulation (DNS) studies which create scaling theories to study how the heterogeneity can impact the ABL. Observational studies capture the realistic surfaces and heterogeneities, but typically measurements are unable to capture the full extent of the processes that govern the ABL response to the surface heterogeneity. Some examples of observational studies in heterogeneous areas include the LIFTASS-2003 Experiment (Beyrich and Mengelkamp, 2006), the CHEESEHEAD experiment (Butterworth et al., 2021) and the GRAINEX experiment (Rappin et al., 2021). While the observational studies focus on a relatively small spatial scale, another class of studies focus on idealized ~~large-eddy-simulations~~ LES to write "textbook" cases of how surface heterogeneity impacts the ABL. There have been a few studies using realistic or real surface in LES including Hechtel et al. (1990); Huang and Margulis (2009) and Maronga et al. (2013). Because the impact of the surface heterogeneity on the ABL ~~depend~~ depends on the scale and strength of heterogeneity and the stability, it is unknown how and when these features of surface heterogeneity impact the ABL dynamics over the course of a realistic, unstructured heterogeneity on a convective day.

The purpose of this study is to evaluate the impacts of surface heterogeneity on the ABL across three scales of heterogeneity over a representative LIAISE day both from a data-driven approach with the comprehensive LIAISE field campaign and modeling-driven approach with a high resolution LES. In this way, we can evaluate both the physical nature of how the surface heterogeneity impacts the ABL and the potential impacts of how resolved turbulence blends the heterogeneity with height in the atmosphere. Our approach ~~is that we will start by exploring the LIAISE~~ combines observational data with an LES experiment. First, we explore the LIAISE ABL using observations. We study boundary layer development spatially ~~(horizontal and vertical) and temporally (a composite typical LIAISE diurnal cycle) and temporally~~ by combining a network of surface energy balance stations, radiosondes and aircraft data (Section 2). ~~Because observations are limited in space and time, we employ LES to study how the ABL forms across spatial scales. But first, based on what we learn from the data~~ 2). Based on the results from Section 2, we will define more explicit sub-research questions to be explored with LES (Section 3). ~~With the LES run using all the available data to be a realistic presentation~~ 3). In Section 4, we run an LES experiment inspired by the observations of the LIAISE ~~surface conditions and large-scale ABL forcing, we will explore these sub-questions (Section 4). In composite day to study how the observed ABLs form across different spatial scales. For the LES we prescribe the land surface with observations so that we can capture the realistic, unstructured surface heterogeneity that was observed during the LIAISE experiment. Finally, in~~ the discussion section (Section 5) we will bring model and data results together to ~~come to an answer of the aforementioned general research question and answer~~ the more explicit sub-questions posed in Section 3. question of

95 how the development of the ABLs differ across spatial scales of heterogeneity in the LIAISE experiment. In particular, using the LES, we investigate the characteristic length scales of heterogeneity that propagate into the ABL, and we discuss how the scales of surface heterogeneity blend in the ABL.

2 The LIAISE Experiment

The LIAISE field experiment took place between April and October 2021 in the Ebro River Valley in Catalunya in ~~Northeast Spain~~the northeastern Iberian Peninsula with an intensive observation period (IOP) occurring in July 2021 (~~Boone et al., 2021; Mangan et al. (2023a)~~(Boone et al., 2021, 2025; Mangan et al., 2023a)). In particular, we focus our study on a period of three days in the middle of the IOP, 20-22 July 2021. The extent of the LIAISE experiment was characterized by a thermal surface heterogeneity due to locally applied irrigation in agricultural fields. Although the atmospheric conditions observed in the LIAISE experiment are controlled in part by the surface heterogeneity, there is strong coupling between the ~~synoptic and mesoscale atmosphere and the regional scale~~synoptic-scale processes and the regional scale land surface that complicate the dynamics of the ABL. For that reason, we selected these days with relatively weak synoptic forcing.

105 During the three day period, there was a thermal low building to the west of the LIAISE domain, which was influential in controlling the surface winds and the boundary layer development. Fig. 1 ~~has~~shows the observed Bowen ~~ratios~~ratio ($\beta \equiv H/LE$) for the extent of the LIAISE experiment at 12 UTC averaged over 20-22 July 2021 (Mangan et al., 2023a). In the irrigated area (west side of the domain), β ~~are~~is as low as 0.01, and in the rainfed area (east side of the domain) β ~~are~~is as high as 20. The difference in crop type and irrigation causes a strong heterogeneity with a length scale on the order of 10 times the ABL height, so one would expect a strong influence of this heterogeneity on the ABL.

2.1 Relevant Spatial Scales

There are a number of relevant spatial scales of surface heterogeneity that influence the atmospheric flow in the LIAISE domain. The largest scale of influence is the synoptic scale, which is important for controlling the mean wind and subsidence around our study area. The selected days of study, 20-22 July, are characterized by the development of a thermal low in the north center of the Iberian Peninsula to the west of the study area (Hoinka and Castro, 2003). In addition to the thermal low, in the late afternoons, the LIAISE area is also influenced by a sea breeze from the Mediterranean Sea (Jiménez et al., 2023; Lunel et al., 2024b). In the end of the afternoon, a cool and moist easterly ~~wind~~sea breeze reaches the LIAISE region, suppressing the ABL growth. Depending on the location of the thermal low, it can enhance or diminish the strength of the sea breeze.

Although these synoptic and mesoscale features define the environment, the ABL is also influenced by smaller spatial scales. We focus our study on the three scales of spatial heterogeneities as defined by ~~Mangan et al. (2023a) and Mangan et al. (2023b)~~Mangan et al. (2023a, b): the LIAISE Regional scale, the Wet and Dry Landscape scales and the Alfalfa and Fallow Local scales (indicated in Fig. 1). The regional scale (~~~10s~~~10 km; ~ 10 ABL height [z_i]), which was the largest defined, is characterized by both the irrigated and the non-irrigated areas. It is the area of a single ERA5 grid cell. Within the regional scale, there are two landscape scales (~ 1 km; ~ 1 z_i): the wet and dry landscape scales. Each landscape scale consists of the irrigated

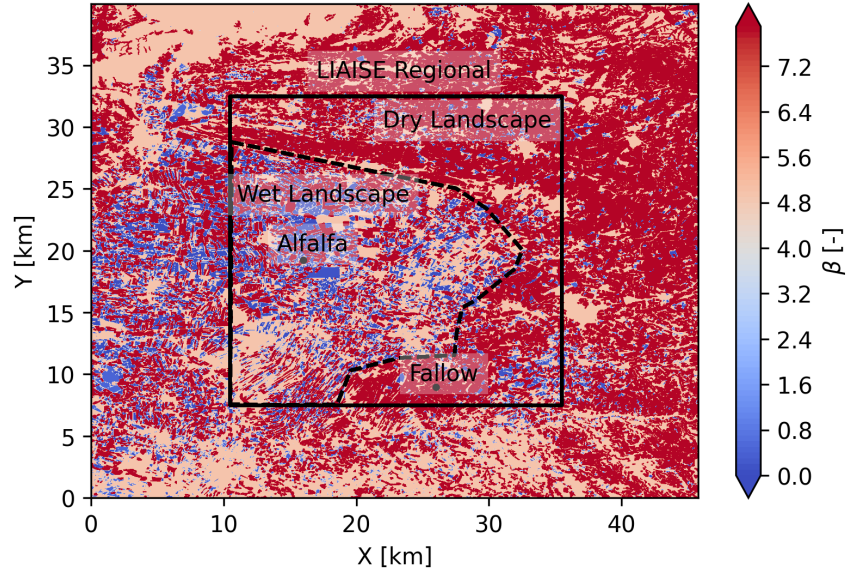


Figure 1. The observed surface Bowen ratio at 12 UTC in domain of the LIAISE LES. The spatial scales are indicated on the map with “LIAISE Regional” (bounded box), “Wet Landscape”, “Dry Landscape” (dashed line), “Alfalfa Local” and “Fallow Local” (points).

125 and rainfed areas and are characterized by the heterogeneity that arises between fields due to agriculture type and irrigation schedule. The separation between the wet and the dry landscape scales is shown with the dashed line in Fig. 1. The smallest scale defined is the local or field scale consisting of homogeneous individual fields (~ 100 m; $\sim 0.1z_i$), the irrigated alfalfa and rainfed fallow fields where much of the measurements were taken. These scales are shown by points in Fig. 1.

2.2 LIAISE Data

130 During the intensive observation period in July 2021, there were high spatial and temporal resolution of measurements of the land surface and the ABL. The surface and surface layer observations came from a network of surface energy budget stations ([SEB](#)) in nine of the predominant crop types in the LIAISE domain. The fluxes from each SEB station was applied to a high-resolution crop-cover map to create spatial estimates of fluxes in the LIAISE regional domain. In addition to SEB stations, Catalunya has a dense network of automated weather stations operated by Servei Meteorològic de Catalunya (<https://www.meteo.cat/observacions/xema>). The stations around the LIAISE domain were used to estimate advection of temperature, moisture and wind using 10 m wind and 2 m temperature and humidity measurements. Both the flux maps and the advection calculation are described in more detail in Mangan et al. (2023a). The extent of the surface layer was studied by two 50 m towers: one located in an irrigated alfalfa and one in a non-irrigated fallow field. These 50 m towers included sensible heat flux measurements at 3, 10, 25 and 50 m and latent heat flux at 3 and 50 m. Furthermore, the 50 m towers each measured wind, temperature and humidity [in-a-profile](#).

140

In addition to the surface and surface layer observations, there were a number of measurements of the ABL located in both the alfalfa and fallow fields. During the IOP, hourly radiosondes were launched at each site between 06 and 18 UTC. ~~Furthermore, there was~~ There was also a tethersonde in the alfalfa field which was repositioned vertically approximately hourly during the daytime. Typically, the tethersondes measured turbulent fluxes including that of moisture and buoyancy between 100 and 500 m AGL at a time resolution of approximately 30 minutes. Finally, the SAFIRE aircraft (as described by Brilouet et al. 2021) measured turbulent fluxes of buoyancy, moisture and momentum in the ABL once per day during the IOP ~~(Brilouet et al., 2021)~~. The measurement strategy included flying “legs” each over the irrigated and non-irrigated areas at heights from 600 – 2000 m AGL and a transect across the wet-dry transition between the alfalfa and fallow fields at approximately 1500 m AGL. On all days, the aircraft flew between 12:00-16:00 UTC.

We have chosen to use a composite “golden-composite day” in this experiment to ~~maximize the data usage. Because the observations are not all continuous in time, by combining multiple days over the afternoon period, we can create a composite dataset that is more representative of the~~ capture the inter-day variability of the atmosphere ~~in the afternoons. The golden~~ during the LIAISE experiment. The composite day is composed of three days – 20-22 July – which are characterized by the thermal low which developed in the north-central area of the Iberian Peninsula. ~~Note that in all cases, all processing~~ During these days, synoptic conditions were similar and relatively weak. Over each of the days, there was a thermal low that developed in the Ebro River Valley, and in the late afternoons, a sea breeze bringing relatively cool and moist air from the Mediterranean Sea arrived in the study domain. Before the sea breeze, at the surface winds were primarily weak ($\approx 0\text{--}3\text{ m s}^{-1}$) from the west/northwest direction. Wind speeds reached up to 5 m s^{-1} in the middle of the ABL. Furthermore, there was little daily variability in surface fluxes at each of the SEB sites over this period.

We calculate the composite day by averaging the available data per 30 minute period across all days. We do this both for surface fluxes and the atmospheric fields from the radiosondes, including wind speed, specific humidity and potential temperature (mean values and daily variability shown in Fig. 2). The benefits of using a composite day for analysis include (1) to gap-fill missing data, (2) reduce the spikes in the data, and (3) to create an atmospheric situation that is typical for the area and a thermal low day. ~~Note that all processing (e.g. computing turbulent fluxes) and normalization was done on individual observations before aggregating-averaging to create the golden-day-composite day. This way, we create a situation that is realistic for the LIAISE experiment but not a real/case study simulation. By using a composite day approach, we can focus on the most persistent and important processes that control land-atmosphere interactions across the spatial scales.~~

2.3 Observed ABL from LIAISE Experiment

Boundary layer observations from the composite ~~golden~~-day show the diurnal evolution of the boundary layer potential temperature and specific humidity profiles in the wet and the dry landscapes of the LIAISE campaign (Fig. 2). In the morning, between 8 and 10 UTC, we observe stable profiles in both landscapes. Temperature differences between the irrigated and non-irrigated profiles are small above 1 km; however, even by 10 UTC, ~~we observe a wetter surface layer from the wet profile than the dry profile~~ the surface layer ($0\text{--}\sim 100\text{ m}$) in the wet landscape is wetter than that of the dry landscape. At 12 UTC, ~~the a~~ more well-mixed convective boundary-layer begins to form. In the wet area, there are two distinct relatively well-mixed layers

175 in the temperature profile: one from the surface to 500 m, and one between 500 m and 1000 m. As a result of averaging to a LIAISE composite day, there is a stable layer near the top of the ABL in both the alfalfa and fallow fields. This layering is not apparent in the humidity profile. The layering in the wet landscape radiosonde data continues in the afternoon at 14 UTC, while the dry landscape radiosonde data show a more traditional single well-mixed profile. Moreover, there is a strong signal of either entrainment or advection in the humidity profiles as the specific humidity in the wet area decreases with height towards
180 the top of the ABL. This could be connected to the presence of a secondary circulation which could increase entrainment as shown by van Heerwaarden and Vilà Guerau de Arellano (2008). In the mid-afternoon, the top of the ABL is still cooler in the wet landscape than the dry landscape. This is likely due to advection, but from observations alone, we cannot quantify the advection between the wet and the dry landscapes. By the end of the afternoon, at 16 UTC, the sea-breeze arrives at the LIAISE region. The ~~surface temperature cools~~ near surface atmosphere cools and moistens in both locations, but the remainder of the
185 profile is well-mixed.

The radiosondes show the influence of the ~~footprint on the observation~~ observation footprint. Near the surface, the profiles show more extreme gradients: unstable layers near the surface in the dry area and moist, internal boundary layers in the wet area. From observations, the IBL height (z_{IBL}) was determined by the first stable layer in the potential temperature profile above the surface (Appendix A). However, the profiles show similar mean values near the top of the ABL (Appendix A). This
190 suggests that there is some sort of “blending height” for the conserved variables potential temperature and specific humidity between the wet and the dry areas within the ABL. Previous LIAISE studies hypothesized this “funnel” type of ABL where near the surface, observations are linked to local fields and near the top of the ABL, observations represent a composite of both the wet and dry areas (Mangan et al., 2023a).

In addition to scalar profiles of the ABL from radiosondes, there were a number of different methods to measure turbulent
195 fluxes within and above the ABL. Fig. 3 shows profiles of turbulent fluxes of heat, water vapor, buoyancy and turbulent kinetic energy (TKE) in both the wet and the dry areas. The profiles are normalized by the ABL height (z_i) derived from the parcel method ($dT = 1.25$ K) using the potential temperatures from the radiosondes (Kaimal and Finnigan, 1994). The observations are averaged both over the three composite days and the hours 13-16 UTC to create the composite profile. Although averaging the observations over both the afternoons and with time could introduce errors, we assume that because each observation is
200 normalized by observed z_i for each time individually that the scaling is reasonable for a convective ABL although the surface fluxes may differ. The standard deviation, which is shown with the error bars in Fig. 3, provides an indication of the diurnal and inter-day variability in the observations. The mean ABL heights for these times are shown in Appendix A.

In the dry landscape, the turbulent fluxes follow traditional textbook profiles of the convective boundary layer (Fig. 3). At the surface, there is the strongest sensible heat flux and it decreases nearly linearly with height. This is consistent with the
205 quasi-steady state approximation for potential temperature in the mixed layer. Near the top of the ABL, the heat flux is near zero. Above the ABL, the heat flux is small. In the dry area, there is a ~~weak~~ virtually no moisture flux near the surface, but this decreases near the top of the boundary layer because of entrainment. The combination of the negative heat flux and positive moisture flux near the top of the boundary layer are indicative of entrainment from the free troposphere. In this landscape, the buoyancy flux is dominated by the signature of the heat flux, and follows the prototypical convective ABL flux patterns

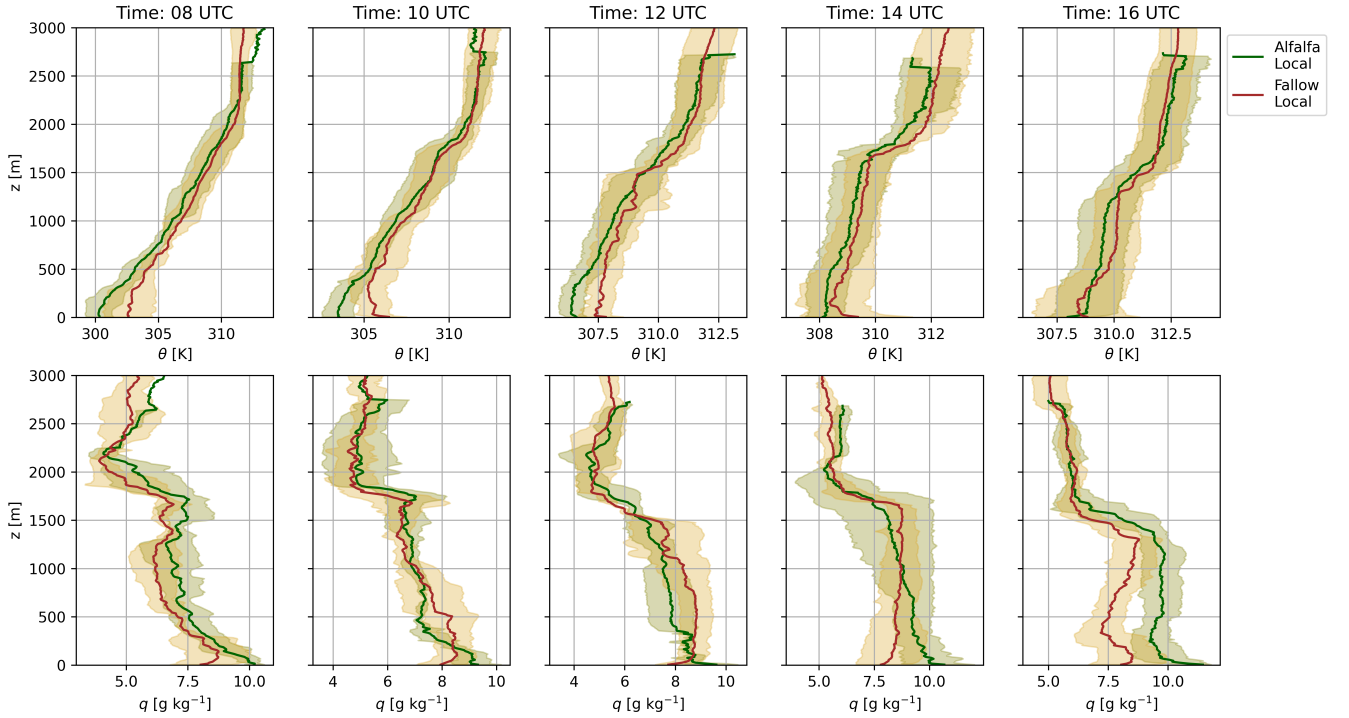


Figure 2. The radiosondes launched at the alfalfa field (green) and the fallow field (gold) on averaged over 20-22 July 2021 at 8, 10, 12, 14 and 16 UTC. The shading is the daily variability across the days that compose the LIAISE composite day. The top panels are the potential temperature profiles, and the bottom panels have the specific humidity profiles.

(Lenschow and Stankov, 1986; Stull and Driedonks, 1987). These turbulent fluxes of scalars are driven by TKE. In the **wet** **dry** landscape, there is relatively strong TKE throughout the column of the ABL. Near the surface, the TKE is driven by the horizontal velocity components (u'^2 and v'^2); however, near the top of the ABL where convective thermals are stronger, the turbulence is more component-wise isotropic. At the top of the ABL in the **wet landscape**, $u'^2 \approx v'^2 \approx w'^2 \approx 0.5$ **dry landscape**, $u'^2 \approx v'^2 \approx w'^2 \approx 0.5$ m² s⁻² and compared to in the surface layer where $u'^2 \approx v'^2 \approx 0.5$ and $w'^2 \approx 0.1$ $u'^2 \approx v'^2 \approx 0.5$ and $w'^2 \approx 0.1$ m² s⁻².

Conversely, in the wet landscape, the turbulent heat flux is near zero from the surface through the entire ABL (Fig. 3). Near the surface, the error bars are large and show that there is uncertainty in the sign of the heat flux. Although the heat flux is small, the moisture flux in the wet area is high (~ 0.1 g kg⁻¹ m s⁻¹) from the surface through the lower half of the boundary layer. Above this layer, the moisture fluxes are near zero before showing a slight increase near the top of the ABL. Unlike in the **dry** area, in the wet area, the buoyancy flux has a large contribution from the moisture flux. In the bottom half of ABL, the moisture flux accounts for 20-50% of the total buoyancy flux. At the surface where heat flux is negative, there is a positive buoyancy flux because of the contribution of moisture. The buoyancy flux peaks at about 25% of the boundary layer height. From there, it decreases to near zero by 50% of the boundary-layer height. The fluxes of scalars are small in part because the

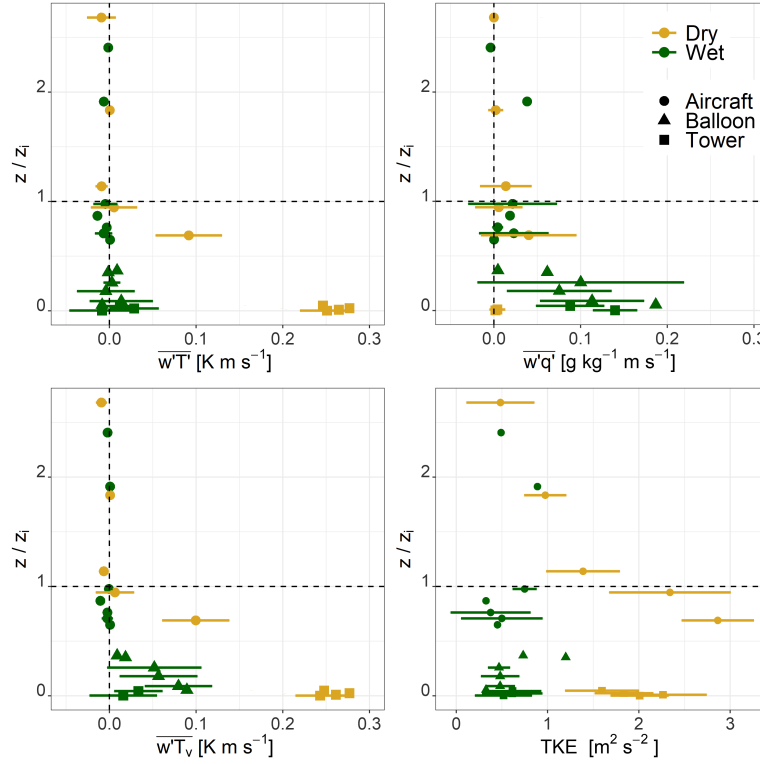


Figure 3. Composite flux profiles constructed at the alfalfa site (green) and the fallow site (gold). The vertical height is normalized by the boundary layer height (z_i) from the radiosondes. The profiles are constructed using data from 20-22 July 2021 from 13:00 – 16:00 UTC. (a) The kinematic heat flux, (b) the moisture flux, (c) the virtual potential temperature (e.g., buoyancy) flux, and (d) the turbulent kinetic energy. The error bars arise from the averaging over the days and from binning the observations by z/z_i .

TKE is smaller than the dry area and remains constant through the ABL. Near the surface, the TKE is driven by shear, like in the dry area, albeit, the variances of shear terms are smaller than in the dry area. In the middle of the ABL, the majority of the TKE difference between landscapes arises from the variance in vertical velocity. The buoyant thermals in the wet landscape are weaker than in the dry landscape, so overall, the mixing of turbulence is weaker in the wet area than the dry area. Both the TKE and buoyancy profiles suggest that there is an internal-boundary-layer-IBL from the surface up until $z/z_i = 0.5$ that is capped by a turbulent layer that stretches towards the ABL top.

Finally, the SAFIRE aircraft flew cross-sections between the wet and the dry areas at 1500 m above ground level during each afternoon on 20-22 July. In Fig. 4 we show the observed temperature perturbation (where the mean is taken across the entire leg) and the velocity scale defined as the square root of the instantaneous turbulent kinetic energy ($uTKE = \sqrt{u'^2 + v'^2 + w'^2}$ $uTKE = \sqrt{u'^2 +$ as used in Mangan et al. (2022)). The x-axis is the distance from the boundary between the wet and the dry landscapes where negative numbers are taken over the wet landscape and positive values are taken over the dry landscape. The data in Fig. 4 was taken on the flight on 22 July from 13:30 to 14:30 UTC before the arrival of the sea-breeze and with relatively high values

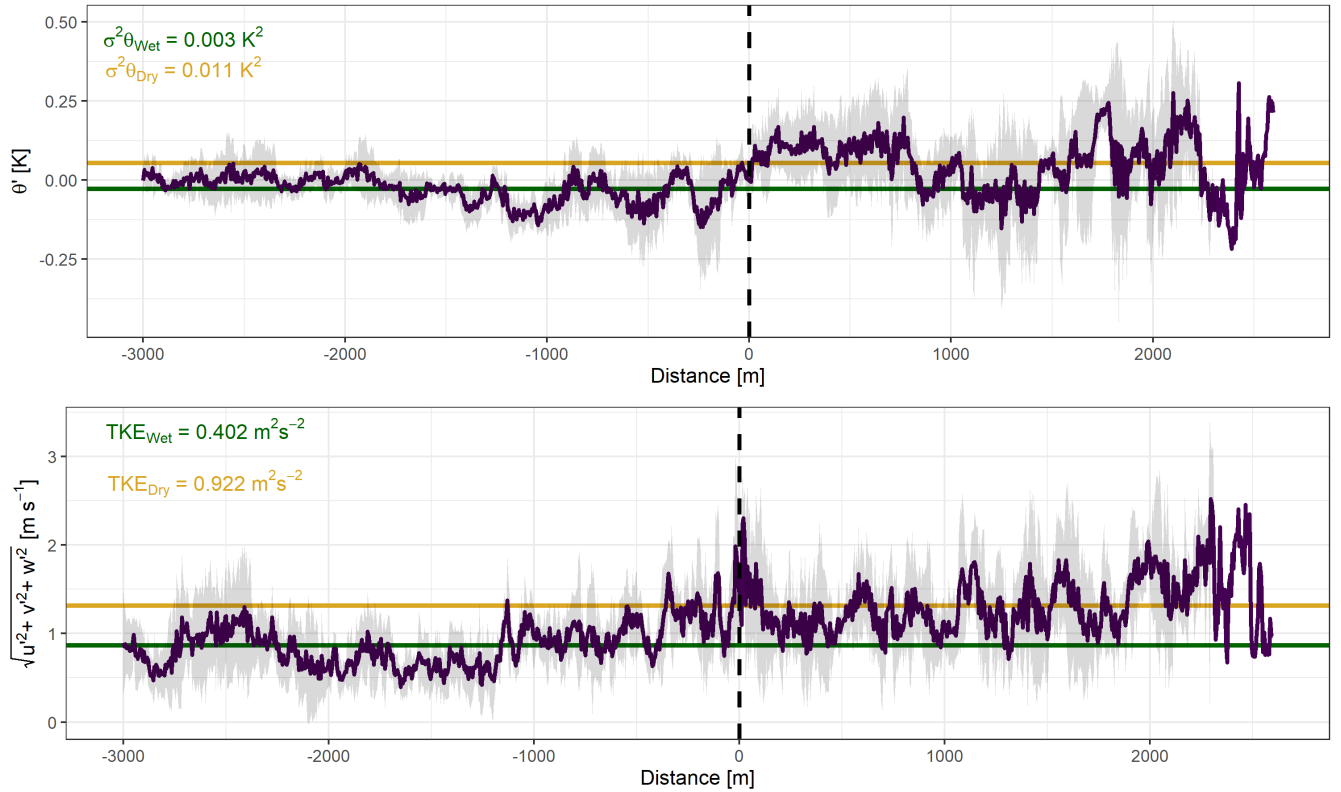


Figure 4. The transect from the aircraft flown at 22 July at 14:00 UTC at 1500 m AGL. Negative distances on the x-axis are in the wet landscape and positive distances are in the dry landscape. The top panel is the temperature perturbations (with respect to the total transect) and the bottom panel is the square-root-of-TKE- $uTKE$ for the same averaging time. The shading represents the standard deviation of these components averaged over four transects. The green and yellow lines indicate the average over the wet and dry landscapes respectively (excluding ± 100 m from the boundary).

of surface fluxes. We chose to select a single flight day to highlight the structure of the turbulence and the potential turbulent coherent structures that occurred during a single afternoon. During the flight time, the wind direction was primarily from the south with a wind speed of 5.17 m s^{-1} at the flight height near the top of the ABL, while the flight flew in a northwest to southeast transect. The data is averaged over four cross-sections of the flight that cross between the wet and the dry landscapes,

240 and data was binned by distance to the boundary for each individual transect before aggregation.

In the wet landscape, the potential temperature perturbations ($\theta' - \theta'$) vary between $\pm 0.1 \text{ K}$, and the standard deviation in $\theta' - \theta'$ is on the same order of magnitude. As the aircraft crosses into the dry landscape, the $\theta' - \theta'$ increases to between $\pm 0.25 \text{ K}$ and the standard deviation also increases. In the dry landscape, there are temperature ramps which indicate strong buoyant activity. Likewise, the signal of $uTKE$ shows that there is stronger turbulent transport in the dry landscape than the wet landscape. The

245 peaks of the $uTKE$ signal correspond with the temperature ramps, which again suggests that the thermals are responsible for

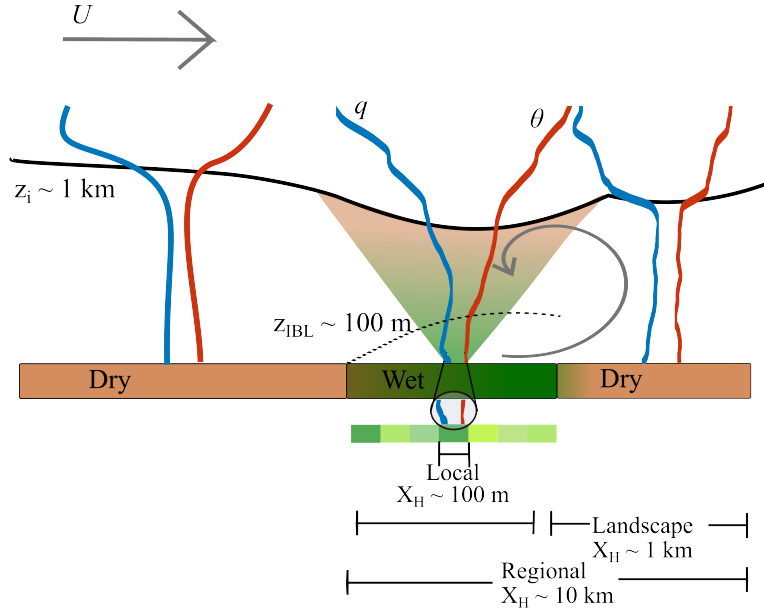


Figure 5. Schematic representation of the formation of the ABL (solid line, labeled as z_i) in the LIAISE domain. An advective boundary layer from upwind moves over the wet landscape area where the ABL is modified with an internal boundary layer (dashed line, labeled as z_{IBL}). The modified boundary layer is advected over the dry landscape where the convective turbulent motions eliminate the IBL.

the peaks in TKE in the dry landscape. In the transition between the wet and the dry landscapes, there appears to be a sudden change in boundary layer characteristics. There is an increase in $\overline{\theta'^2}$ and TKE in the wet landscape starting ~ 500 m before the boundary.

3 Refined Research Objectives

250 To aid with explaining the conclusions from the observations and to prepare hypotheses for the LES experiment, we refer to Fig. 5 throughout this section.

From the observations, we note that above the dry landscape (right of Fig. 5), there is a prototypical, convective ABL throughout the day (Figs. 2 and 3). Profiles of potential temperature and specific humidity are relatively well-mixed, and because of the warm surface, radiosonde profiles show superadiabatic lapse rates ~~in the lowest hundreds of meters just above~~ the surface (Fig. 2, dry profiles in Fig. 5). Likewise, the flux profiles in the dry landscape show a typical linear decrease in height in the ABL (Fig. 3). However, there is some evidence that there is some influence of the wet landscape in the dry landscape: for example, there is an increase in moisture at the top of the ABL (Fig. 2 at times 8, 12, 14 and 16 UTC). Unlike
 255 the surface (Fig. 2, dry profiles in Fig. 5). Likewise, the flux profiles in the dry landscape show a typical linear decrease in height in the ABL (Fig. 3). However, there is some evidence that there is some influence of the wet landscape in the dry landscape: for example, there is an increase in moisture at the top of the ABL (Fig. 2 at times 8, 12, 14 and 16 UTC). Unlike the dry landscape, the wet landscape shows a layered, non-typical convective ABL (Fig. 2 and 3). ~~In~~ During midday, the wet

landscape radiosonde shows an IBL which is ~~evident-through-~~suggested by the potential temperature profile (Fig. 2) and there
260 is a local peak in buoyancy flux at approximately 25-50% of the z_i (Fig. ~~3~~, 3). Above this zone, there is a turbulent layer (Fig.
3) that is well-mixed (Fig. 5). Because the observations are located either in the wet landscape or the dry landscape, we cannot
say much about the interactions between boundary-layers between the wet and dry areas with the observations alone.

While the observations are valuable for their high temporal resolution, the lack of spatial resolution makes it so that we
cannot answer the question of how these spatial scales of surface heterogeneity interact with each other to influence the ABL
265 development. There are three related proposed ways that the surface heterogeneity impacts the ABL (in order from left to right
in Fig. 5): an advective boundary layer, an internal boundary layer, and a secondary circulation. The interaction between these
impacts are a function of spatial scale and wind speed. The advective boundary layer (indicated by the arrow labeled U in Fig.
5) indicates that the ABL could be formed upwind in a dry area, advected over the wet area where it is modified, and this
modified ABL is then advected over the dry landscape. Advective boundary layers have been shown to be a defining feature
270 in ABL dynamics in arid regions including in Chile's Altiplano Desert (Aguirre-Correa et al., 2023). In this way, the wet
~~landscape can influence the dry landscape~~and the dry landscapes can mutually influence each other. Secondly, we potentially
observe a local IBL over the alfalfa field with the peak in buoyancy fluxes coupled with a layered potential profile, however,
from the observations, we can ask if the extent of the IBL extends over the entire dry landscape scale (IBL line, Fig. 5). Finally,
because the observations occur mainly in two locations, it is not clear if there is a secondary circulation that forms because of
275 the heterogeneity (curved arrow, Fig. 5). In this way, the dry landscape can influence the wet landscape.

To this end, we use a realistic ~~large-eddy simulation to compliment~~ LES to complement the observations from the LIAISE
campaign. Using an LES, we can connect the wet and dry landscape scales, so that we can study the impact of non-local pro-
cesses on the development and dynamics of the atmospheric boundary layer. We can also explicitly investigate the development
of the ABL at each of the relevant spatial scales of heterogeneity~~described in Section 2.1~~. We aim to address the following
280 research questions with the LES experiment:

1. How does the interaction between the spatial scales impact the spatial development and diurnal cycle of the ABLs in the LIAISE experiment?
2. How do the scales of heterogeneity dynamically merge in the atmosphere in space and in height?

By addressing these research questions, we advance process-based understanding of how realistic unstructured heterogeneity
285 influences a convective ABL and evaluate how numerical models can capture the turbulent transport from interacting hetero-
geneous patches.

4 Large Eddy Simulation

We employ the MicroHH LES (van Heerwaarden et al., 2017) using large-scale forcing downscaled to the LES domain (van
Stratum et al., 2023) from observations of advection (Mangan et al., 2023a). In this study, we prescribe surface fluxes measured

290 during the LIAISE campaign to ensure a realistic distribution of ~~heterogeneity surface fluxes~~ in space (Mangan et al., 2023a).
In Section ~~4.14.1~~, we describe the numerical simulation, and in Section ~~4.2.4.2~~ we show results for the ABL from the LES.

As our aim in using the LES is to study the impact of the surface heterogeneity on the development of the ABL, we selected the results shown to answer the aforementioned research questions. Therefore, we refer to Appendix ~~A-B~~ for validation of the LES compared with data from the LIAISE experiment. ~~We also refer to supplemental material for an overview of a suite of~~
295 ~~sensitivity studies for the model configuration to the large-scale forcing and initial conditions.~~

4.1 Model Configuration

MicroHH is a computational fluid dynamics simulation which supports direct numerical simulation and ~~large-eddy simulation~~
~~LES~~ (van Heerwaarden et al., 2017). In this experiment, we employ the LES version of MicroHH at 30 m horizontal reso-
lution over a domain of 39 km x 43 km centered on the LIAISE regional domain (Fig. 1). There are 196 grid cells in the
300 vertical with a resolution of 25 m. ~~This domain is large enough to allow the surface to be in equilibrium with ABL before~~
~~reaching the inner LIAISE domain, while the resolution is fine enough to capture the field-scale processes.~~ ~~Near the surface,~~
~~a component the turbulent flux comes from the subgrid scale parameterization. This is done with an eddy diffusivity closure~~
~~with the Smagorinsky sub-grid-scale parametrization (van Heerwaarden et al., 2017). The parameterized flux accounted up to~~
~~5% of the total flux from the surface to 75 m, and it fell below 1% above 150 m. Therefore, we consider the resolved fluxes to~~
305 ~~be sufficient above this level. In the entrainment zone, the parameterized fluxes become important again, accounting for 15%~~
~~of the total flux. With this horizontal resolution, we can capture the presence of individual fields.~~

We use periodic boundary conditions ~~with the large-scale forcing prescribed from observations, for the turbulent fields in~~
~~the simulation. Because of this, our simulation has a "buffer zone" so that the turbulence can adjust before it reaches the inner~~
~~LIAISE regional domain (Fig. 1). Based on a maximum wind speed of $\approx 4 \text{ m s}^{-1}$ in the middle of the ABL and the $\approx 10 \text{ km}$~~
310 ~~buffer around the LIAISE regional scale in all directions, the air parcel has ≈ 42 minutes outside of the study area to adjust to~~
~~the land surface conditions. This buffer zone should be sufficient for the turbulence to adjust to the underlying surface before~~
~~reaching the area of our analysis.~~ In this case, we use prescribed surface fluxes, and the surface layer model was based on
~~Monin-Obkhov~~ ~~Monin-Obukhov~~ similarity theory with no slip conditions, and there was no radiation scheme. We ~~selected the~~
~~Smagorinsky sub-grid-scale parametrization with used~~ a fifth-order advection scheme.

315 We simulated a single composite day using the MicroHH LES between 6 and 18 UTC to represent the external forcing of
the LIAISE ~~golden composite~~ day which comprises 20-21 July 2021 (Mangan et al., 2023a). We considered the first two hours
of the simulation to be spin-up, so our analysis begins at 8 UTC. The initial profile of the atmosphere was prescribed using the
radiosonde launched in the dry landscape at 6 UTC. In terms of large-scale forcing, we have the option to prescribe (1) advection
of potential temperature, specific humidity and wind into the domain (\vec{U} in Fig. 5), (2) geostrophic wind, (4) subsidence, and
320 (3) nudging the domain mean towards observations. The advection terms for temperature, specific humidity and wind were
calculated from observations from automated weather stations located in the larger LIAISE domain. See Mangan et al. (2023a)
for details of the advection calculation. Although the advection terms were calculated using 10 m wind and 2 m temperature
and humidity observations, the advection terms were prescribed at all heights in the LES domain. ~~Mangan et al. (2023a) and~~

Mangan et al. (2023b), Mangan et al. (2023a, b) show that the ERA5 reanalysis misrepresents the LIAISE domain because it misses both the irrigation and does not have irrigation in this area, and it likely does not capture the correct location of the thermal low. For this reason, we opted to neglect geostrophic wind and subsidence. Finally, we nudged the domain averaged profiles of potential temperature, specific humidity and wind hourly to the radiosonde observations from the dry landscape scale.

Because in this study our focus is primarily the development of the ABL, we prescribe observed surface fluxes of sensible and latent heat fluxes and roughness lengths using the “flux map” product described by Mangan et al. (2023a). We assumed that the roughness length for momentum was 10% of the vegetation height. By prescribing surface fluxes from observations, we can focus directly on how the atmosphere feels a realistic surface. We are most interested how the boundary layer forms in this study, so it is beneficial to reduce the complexity of the coupled land-atmosphere system to consider only the one-directional impact of the surface on the atmosphere.

In Appendix B, we show the validation of the LES based on the composite golden day LIAISE profiles from the radiosondes (Fig. 2). We see that, although the model is constrained into the correct order of magnitude as the radiosonde observations, the difference between the wet and the dry local scale is smaller in the model than in the observations. This is likely because there is too much mixing in LES. We performed a number of sensitivity studies (Supplemental Material) where we tested the influence of large-scale forcing terms on the model results. We used a suite of forcing terms based on the ERA5 reanalysis and observational data. The geostrophic wind is too high in the ERA5 which cause a high bias in wind speed in the model compared with observations. Therefore, we opted to run the model entirely forced by observations. Furthermore, from our sensitivity study, we see that even ERA5 does not capture well the larger scale situation in the LIAISE domain, no matter which day we chose to run. This further justifies the use of a golden day approach. We know that the local SEB’s are relatively similar across days, so all ABL variability would have to come from the larger scales. The large scale forcings, however, exhibit large uncertainties and therefore, we cannot capture the details of each day’s ABL. A composite day is then the best approach to focus on the influence of irrigation-induced heterogeneity on the ABL.

4.2 ABL Dynamics in a Realistic LES

In this section, we show the results of the realistic LES experiment. In Section 4.2.1 First, we analyze at the spatiotemporal evolution of z_i and characteristics. In this section First, we consider how the ABL behaves at individual spatial scales. In Section 4.2.2, Then we shift the focus to study how the spatial scales interact with each other to influence the structure of the ABL. We evaluate spatial spectra of key parameters of the ABL development to study the relevant spatial scales. We consider how the ABL adjusts as it moves from wet to dry landscape scales. Furthermore, we introduce a criterion of blending height to investigate how spatial scales blend with height in the ABL.

4.2.1 Spatiotemporal Evolution of the ABL Across Spatial Scales

Using Figs. 6 and 7, we can identify the spatial (Fig. 6) and temporal (Fig. 7a) variability in z_i across the spatial scales of the LIAISE domain. To aid in the interpretation of ABL height in Fig. 7a, Fig. 7b has the evaporative fraction ($EF \equiv LE/(H + LE)$)

as an indication of the nature of the land surface at each scale. For the LES, we defined the boundary-layer height using the parcel method based on the near-surface air temperature (Stull, 1988) with a maximum jump in potential temperature of 0.25 K to identify the top of the mixed-layer. ~~We find that over the course of the day, the ABL~~ Philibert et al. (2024) completed a review of ABL height methods based on observations from the LIAISE experiment. We tested the sensitivity of ABL height to the same methods and found similar (large) variability in ABL height across the methods. We proceeded with the parcel method to most closely match our analysis with the observations.

In Fig. 6, we find that the ABL is consistently higher and grows faster in the dry area than the wet area (Fig. 6). ~~In Fig. 6, the boundary layer~~. The height is highly variable in space as well. In the north-west corner of the irrigated area, the ABL height is the lowest, and it increases towards the southeast, increasing even in the wet landscape. ~~In the irrigated region, the~~ The maximum difference in z_i is on average lower than the between the irrigated- and non-irrigated landscape. ~~The difference is maximized is about 300 m~~ near 12 UTC with a difference of 300 m (Fig. 7a). However, ~~although there is a mean difference between the wet and dry landscapes, the~~ the standard deviation within each of these scales is greater than the mean difference between them. The impact of individual fields on the local boundary layer height is greater than the total difference between the irrigated and non-irrigated landscapes. At the local scale, the ABL heights are more extreme, particularly regarding the morning growth of the ABL (Fig. 7a), but when the sea-breeze arrives by the end of the afternoon ($Adv_\theta = -0.3 \text{ K hr}^{-1}$ and $Adv_q = -0.001 \text{ g kg}^{-1} \text{ hr}^{-1}$), the local scales collapse like the landscape and regional scales.

In Fig. 8, we display the spatially averaged resolved turbulent fluxes of heat (top row) and moisture (bottom row) for all spatial scales. The dashed line indicates the combined resolved and non-resolved fluxes from the between the lowest grid cells and the prescribed surface flux. The y-axis is normalized by the mean boundary layer height at each scale. The fallow local scale has the highest heat flux from the surface and up to $z/z_i \sim 0.5$ at all times of the day. All scales have the resolved heat fluxes decreasing linearly with height to the top of the ABL, like is seen with the observations in the dry landscape from Fig. 3. The heat flux is lower in the wetter scales than the drier scales. At the top of the ABL, the entrainment zone (as defined by a negative heat flux) occurs near $z/z_i \sim 0.75$ and 1.25 at all times. For heat flux, the warm air entrainment is highest at the dry scales (fallow local and dry landscape) compared to the wet scales. Like Fig. 3, the alfalfa local scale shows the increase with of heat flux between the surface and $z/z_i \sim 0.3 \approx 0.2$ and weak entrainment fluxes above the $z/z_i \sim 0.5$. This signature is not evident in the wet landscape scale. This suggests that an IBL forms at the local scale and not across the entire landscape scale.

~~Concerning the moisture flux, the alfalfa local and the wet landscape scales provide much of the moisture for the entire domain. There strong flux diverge in moisture flux in both of these scales~~ All moisture in the domain comes from the irrigated fields represented by alfalfa local which subsequently merges into the wet-landscape and regional scales. In the wet local and landscape scales there is a strong moisture flux divergence throughout the lower half of the ABL. In the dry scales, the moisture flux between the landscape and fallow local scales are similar and low in the bottom half of the ABL; however, unlike. Unlike in the wet areas, there is a strong increase of moisture flux with height near the top of the ABL. This agrees with the observed moisture fluxes in Fig. 3. Near the top of the ABL, the entrainment of dry air from the free atmosphere leads to a strong moisture flux in the dry areas compared to the wet ones. Both the heat and moisture signals indicate stronger entrainment

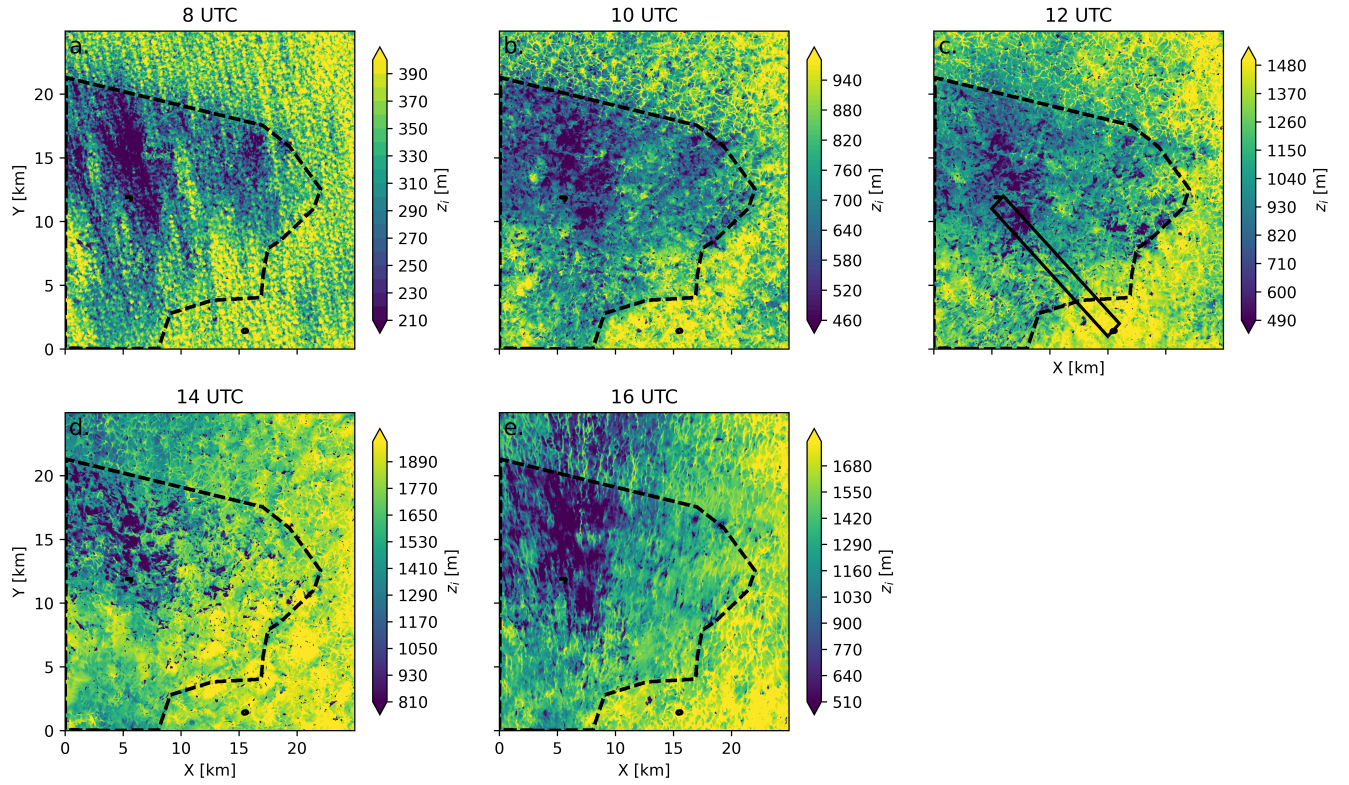


Figure 6. The ABL height at 8, 10, 12, 14 and 16 UTC calculated from the parcel method with a temperature jump of 0.25. The marked boundary is the difference between the irrigated and non-irrigated landscapes, and the points represent the alfalfa and fallow fields. The bounded box in panel (c) is the extent of the area used for the “adjusting ABL fluxes” from Fig. 10.

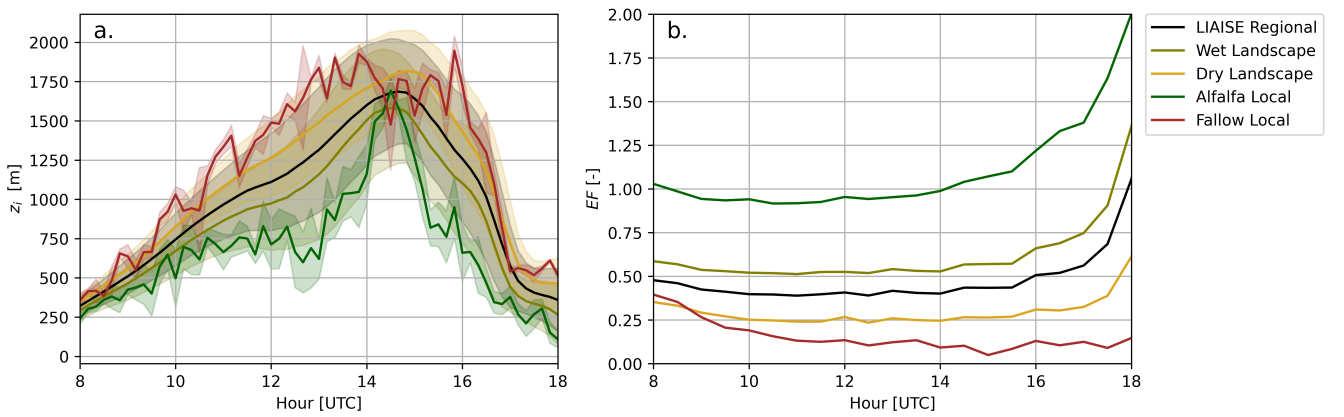


Figure 7. (a) The time series of the mean (solid line) and the standard deviation of boundary layer height for each spatial scale. (b) The mean evaporative fraction ($EF \equiv LE/[H + LE]$) at each spatial scale from 08-18 UTC.

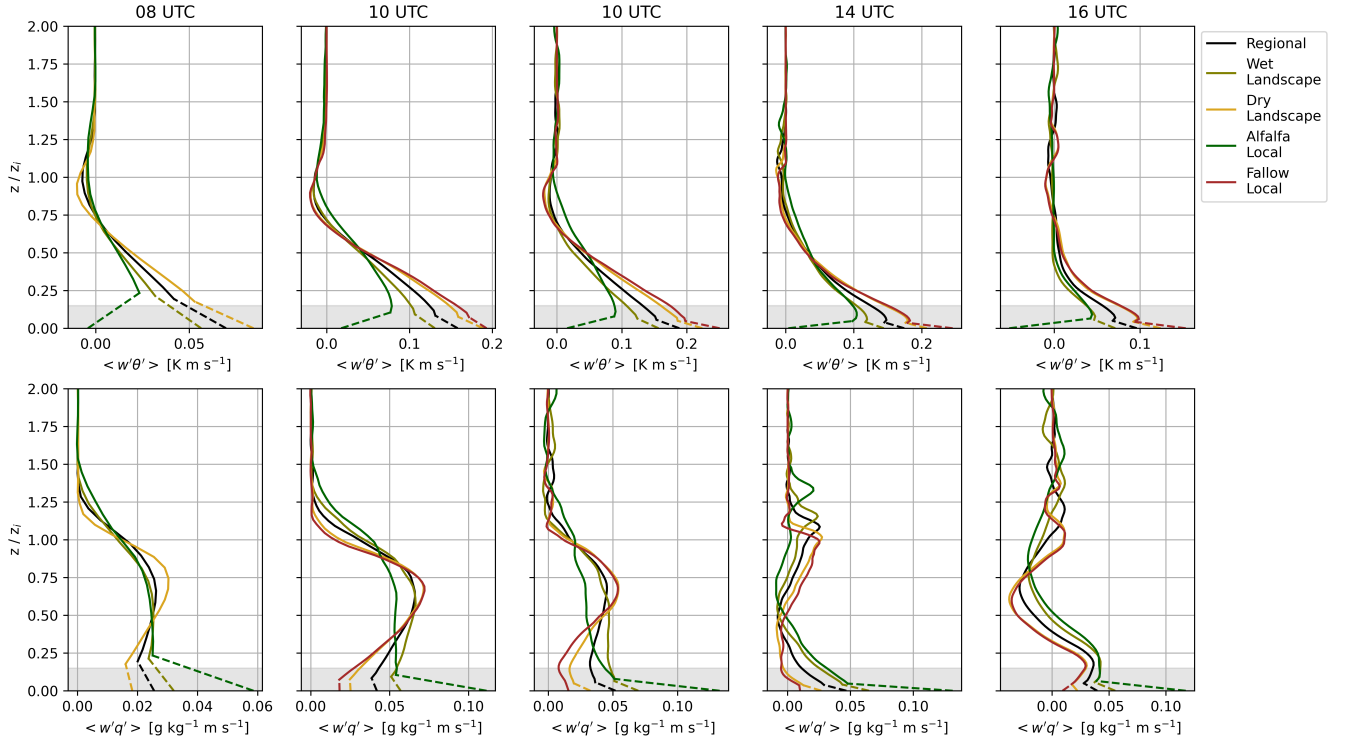


Figure 8. The profiles of LES resolved fluxes with height normalized by ABL height (z_i) for each of the spatial scales. The shaded region indicates the surface layer. The dashed-line indicates the fluxes interpolated between the lowest resolved model level and the prescribed surface flux at each spatial scale.

zones in the dry ~~landscapes~~ landscape than the wet ~~onesone~~, which is likely a consequence of the higher z_i ~~in-at~~ these scales as shown in Fig. 7.

4.2.2 ABL interactions among spatial scales

395 So far, we have only considered the different ABLs that arise at the spatial scales of heterogeneity introduced in Section 2.1.2.1. In reality, these ABLs are not separate: the atmosphere mixes the impacts of the surface heterogeneity acting at different scales. To look at how the ABL mixes across the spatial scales, we start by examining the two-dimensional spatial spectra of key variables that influence the ABL development to determine their most representative length scales. This provides an indication whether the ABL reacts to the same scales of heterogeneity as the surface fluxes. Next, we study the same ~~cross-section~~ transect that the aircraft flew between the alfalfa and the fallow fields ~~as-~~ (spatial extent of Fig. 4 and the polygon in Fig. 6c) to study how the ABL adjusts as it crosses the wet-dry boundary. Finally, we apply a model-driven approach to quantify the blending height among the spatial scales.

405

Although we have defined the relevant spatial scales in this research based on physical characteristics, we can check the importance of these scales on the development of the ABL by calculating the 2-dimensional spatial spectra of surface fluxes, vertical velocity and z_i (Fig. 8)-9). By using a spectral approach, we can identify the length scales which account for most of the variability in the signal. Moreover, we define a characteristic length scale (Λ) based on a weighted integral of the spectrum

410 ~~(Pino et al., 2006; de Roode et al., 2004b);~~ (Pino et al., 2006; de Roode et al., 2004a)

$$\Lambda_\psi = \frac{\int_0^\infty S_\psi(k) k^a dk}{\int_0^\infty S_\psi(k) dk}; a \neq 0 \quad (1)$$

where ψ is a given variable, $S_\psi(k)$ is the spectral density of the variance as a function of wave number k , and a is a weighing factor. Pino et al. (2006) describes their choice of $a = -1$ to weigh the spectra towards the large-scale ranges, while Jonker et al. (1999) chose $a = 1$ to weigh the length scale towards the smaller scales. We have selected to use $a = -0.8$ for both the surface

415 fluxes and z_i to better capture the mesoscale peak in the spectra, while $a = -1$ was best for the vertical velocity to capture the larger scales. The characteristic length scale provides the most important spatial scale to describe the variability of a given parameter.

Fig. 9 shows the results of the spatial spectra at 12 UTC for (a) z_i , (b) sensible heat flux, (c) latent heat flux, and (d) vertical velocity at ~~50% of the mean z_i (which was 1111 m at 0.5 $\langle z_i \rangle = 555$ m at the regional scale at 12 UTC)~~ UTC. At this time, the

420 extent of variability in z_i ranged between 950 m (spectra at 0.58% of z_i) for the wet landscape scale and 1250 m (spectra at 0.44% of z_i) for the dry landscape scale. The sensible and latent heat flux spectra are from the prescribed boundary conditions. The gray line indicates the weighted characteristic length scale. Both the surface fluxes and the z_i show bimodal peaks in the spectra: one with an integral length scale of approximately 800 m, and one in the microscale with a length scale of less than 100 m. The microscale peak relates to the differences between individual fields. This indicates that the ABL responds directly

425 to the variability in fluxes from individual fields, although this effect is dampened as is evident in the reduction in z_i variability in the microscale. This microscale peak in z_i indicates the presence of local IBLs with characteristic length scales of ~ 80 m. The mesoscale peak in these signals indicates that within the landscape scales, there is a strong variability in both surface fluxes and z_i . This indicates that there may be a scale between the landscape and local scales that is most important for driving the ABL growth at the regional level.

430 ~~Unlike the surface fluxes and z_i , the~~ The spectra of the vertical velocity ~~shows more~~ is classical with a single peak in the mesoscale range, with a length scale on the order of 1 km. This means that by 50% of the mean regional z_i , the surface fluxes aggregate to a circulation on the order of 1 km. This relates to the same order of magnitude as the landscape scales as previously defined. Because there is little variation in the microscale spectra of vertical velocity unlike that of z_i , the variability of z_i in ~~in~~

the mesoscale may be representative of an IBL, but these impacts do not reach up to the level of 50% of z_i .

435 Over the course of the day, the integral length scales for surface latent and sensible heat fluxes are ~~unchanging~~ constant (Fig. 9e). The length scale is approximately 800 m for both variables. This indicates that the sensible and latent heat fluxes are

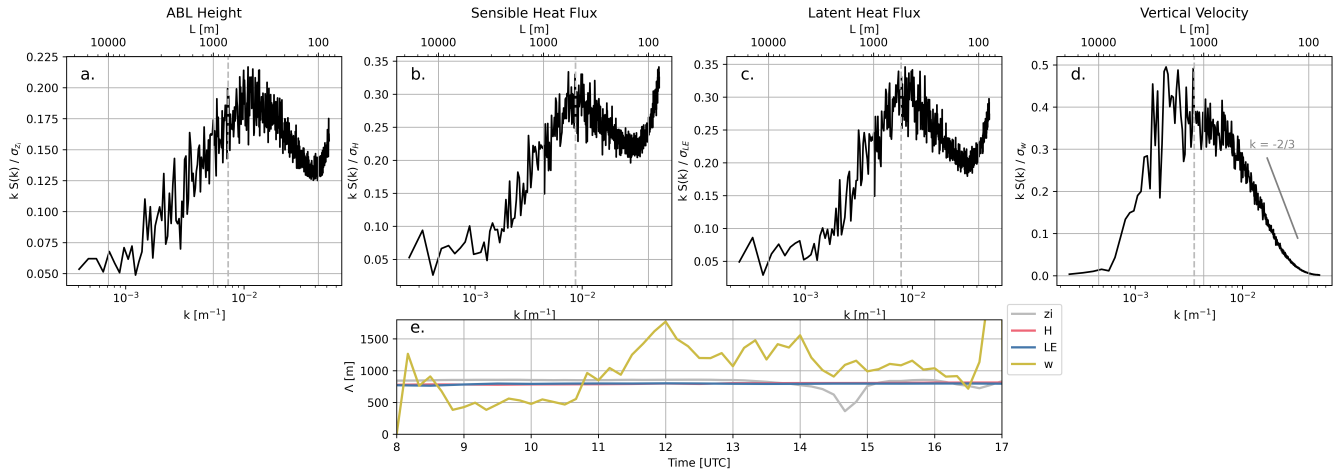


Figure 9. Spatial spectra computed at 12 UTC of (a) z_i , (b) surface sensible heat flux, (c) surface latent heat flux, and (d) vertical velocity at 50% of the mean z_i . The gray dashed line is the location of the integral length scale for each variable at 12 UTC. (e) is the integral length scale calculated with Eq. 1 over time in UTC.

covarying, and although the evaporative fraction of different surfaces vary over the day (Fig. 7b), the ratio between LE and H stays consistent. Like the surface fluxes, the Λ_{z_i} is constantly ~ 800 m over the day, except for a brief dip between 14 and 15 UTC where the sea-breeze arrives in the domain and lessens-reduces the length scale. Finally, the Λ_w is the only variable to
 440 show a diurnal cycle as the height in which this parameter was calculated changes over the day. In the morning, Λ_w is ~ 500 m and it increases to over 1 km in midday. When the sea-breeze arrives at the end of the afternoon, Λ_w decreases again to ~ 1000 m. The time-varying Λ_w relates to the strength of the buoyancy-induced turbulent transport and has implications for the mixing between spatial scales.

445 *Adjusting ABL*

In Fig. 10, we show the instantaneous cross-section of the LES domain between the alfalfa field and the fallow field at 12 UTC. The negative distances indicate the wet landscape, and the positive distances indicate the dry landscape. The transect is computed from the box in Fig. 6a that runs from the northwest to the southeast in the LIAISE regional domain (315° from
 450 north). At this time, the wind speed above the ABL is approximately 2 m s^{-1} , and the wind direction is predominantly from the west. Fluxes are calculated spatially over 50 transects that run parallel to the aircraft transects. The top panel is the heat flux, the middle panel is the moisture flux, and the bottom panel is the TKE. The streamlines indicate the along-transect wind direction (U) and the vertical velocity. The panels on the right are the probability distribution functions (PDF) of the fluxes in the wet and dry landscapes respectively. The solid lines are fluxes from the surface layer ($z/z_i < 0.15$) and the dotted lines are
 455 from the entrainment zone ($0.75 z/z_i$ and $1.25 z/z_i$).

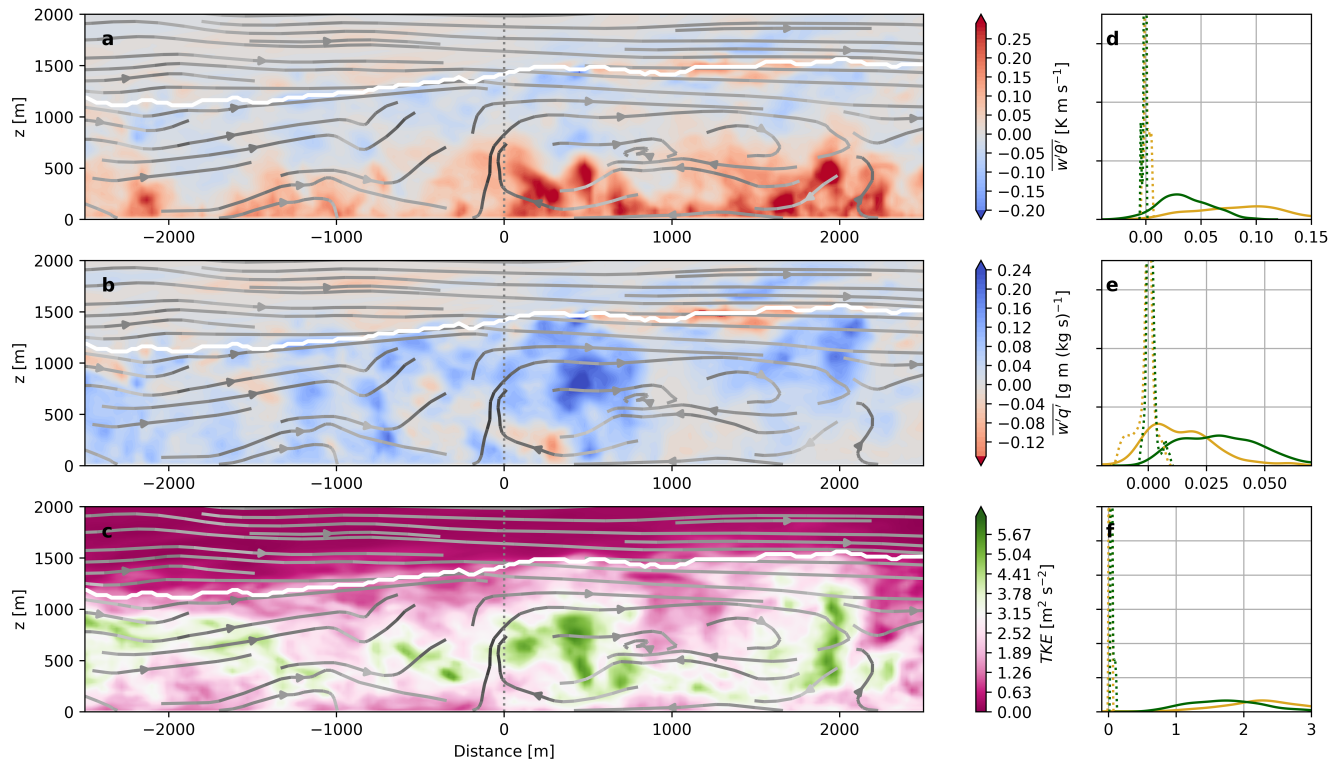


Figure 10. Transect from the wet landscape (negative) to the dry landscape (positive distances) from the LES. Fluxes are calculated spatially over 50 transects that run parallel to the aircraft transects. (a) The heat flux, (b) moisture flux and (c) turbulence kinetic energy averaged over individual transects that mimic the aircraft strategy. Panels d-f are the probability distributions. The extent of the fluxes from transect corresponds to Fig. 6c, and negative X values are in the wet landscape (green) and positive X values are in the dry landscape (yellow). The entrainment fluxes are shown in white line is the dashed lines and the surface-layer fluxes are shown in the solid lines locally determined ABL height (z_i). The streamlines in panels a-c are composed of the along transect wind component and the vertical velocity. Panels d-f are the probability distributions of the fluxes from the wet landscape (green) and dry landscape (yellow) showing both the surface-layer fluxes (solid lines, for $z/z_i < 0.15$) and entrainment fluxes (dotted lines, for $0.75 < z/z_i < 1.25$).

Between the wet and dry landscapes, there is an increase in z_i along the transition between the wet and the dry landscapes of 400 m. ~~Although the transition between the wet and the dry landscape scales is marked at 0 distance, the~~ The ABL responds to the dry landscape ~~near the transition of the wet landscape, downwind of the boundary (marked Distance = 0 in Fig. 10).~~ This is evident by the strong updrafts within the first 500 m of the transition. ~~Comparing~~ ~~If we compare~~ this result to that of Fig. 4 ~~indicates~~, ~~we hypothesize~~ that the aircraft may have been flying above the ABL in the wet landscape ~~then enters it near the transition to the dry landscape. As it enters the dry landscape, it could have flown into the ABL.~~ The sensible heat flux near the surface increases in the dry landscape, while the moisture flux decreases. TKE ~~appears to be higher~~ ~~is highest~~ in the dry landscape ~~than the wet~~ as well, ~~however, TKE is concentrated heavily with, in the absence of strong horizontal winds, the TKE being concentrated~~ in thermals, which are more prevalent in the dry landscape. Near the middle of the ABL, the heat flux weakens, while the moisture flux increases in the wet landscape. Like Fig. 4, TKE and convection are higher in the dry landscape than the wet landscape.

The PDFs of the fluxes confirm that in the surface layer, the heat flux is higher in the dry area than the wet area, and the opposite occurs with the moisture fluxes. ~~In The TKE in the surface layer, the TKE looks similar between the wet and the dry landscapes. The entrainment fluxes are more difficult to separate~~ ~~is larger in the dry than in the wet landscape related to the~~ ~~larger heat flux and thermal activity. For the entrainment fluxes (dotted lines), the impacts of the landscape scales~~ ~~two landscape scales are more difficult to discern for TKE.~~ For the heat flux, the entrainment PDFs look similar: both distributions are centered around 0. For the moisture flux, it skews negative over the dry landscape and positive over the wet landscape. For both the heat and moisture flux, there is a counter-gradient flux in the dry landscape. ~~This~~ ~~Based on profiles of potential temperature specific humidity from the LES (Fig. B1), the along-gradient flux in the entrainment zone is warm and dry air brought from the free atmosphere into the ABL ($\overline{w'\theta'} < 0$ and $\overline{w'q'} > 0$).~~ The counter-gradient fluxes could indicate the influence of the wet landscape on the ABL in the dry landscape. For TKE, there are pockets of strong TKE in the entrainment zone in the wet, although there is a skew to the ~~highest~~ ~~higher~~ TKE in the dry landscapes.

~~From Fig. 10, there is~~ ~~suggests that~~ a weak secondary circulation ~~that~~ forms along this transect, ~~and in approximately 1.5~~ ~~. At approximately 2~~ km into the dry landscape, there appears to be a small circulation that is driven by ~~relatively~~ strong updrafts. ~~Based on the wind speed, one a stronger secondary circulation could form in this region, however, it likely would be at a larger spatial scale than the regional scale. Furthermore, because of the averaging scheme to compute fluxes, impacts of IBL are smoothed in this figure. This confirms the results from Fig. 9 that suggests that IBLs form at the local scale instead of at the landscape scale. In this updraft, there is high TKE coupled with a high, positive moisture flux. This shows the presence of a thermal transporting moisture that was emitted at the surface of the wet landscape towards the top of the ABL above the dry landscape. The return flow in the wet area is not as well defined in the LES. Instead we see lower ABL heights and some "dry tongues" pockets as noted by van Heerwaarden et al. (2009) between $200 \text{ m} < z < 800 \text{ m}$ at distances -700 m and -2000 m~~

Blending Height

490 In addition to the physical processes that ~~arise from~~ are linked to the surface heterogeneity, the concept of a “blending height” arises for both numerical modeling and observational applications. In both contexts, the “blending height” describes the height ~~in at~~ at which the surface heterogeneity is no longer noticeable. We consider the blending height to be a proxy of the ~~strength of the mixing of mixing strength of~~ state variable and turbulent moments that arises from the surface heterogeneity. There is no consensus ~~of on~~ on the definition of blending height in literature, instead it tends to depend on one’s purpose (e.g. model or
495 observational considerations). In Fig. 10, we see that near the top of the ABL, the heat flux is not noticeably different between the scales, however, to quantify the areas in which the scales are blended, we use the coefficient of variation to determine the blending height, like Huang and Margulis (2009). The coefficient of variation (C_v) is defined as

$$C_v \equiv \frac{\sigma_\psi}{\langle \phi \rangle}. \quad (2)$$

where ψ is any given variable and σ_ψ is its standard deviation in space and $\langle \phi \rangle$ is its spatial mean. Huang and Margulis (2009)
500 defined the blending height as the level in which the coefficient of variation for the heterogeneous case is less than or equal to that of the homogeneous case. However, a blending height can be defined relative to a number of dimensions including location, height and domain. Therefore, in a general form, the ~~blending height~~ unitless blending parameter (B) can be expressed as the ratio of C_v of dimension to that of another.

$$B(x, y, \underline{DS}, z) \equiv \left| \frac{C_{v,1}}{C_{v,2}} \right| \quad (3)$$

505 where x and y are locations in space, z is height and ~~D is~~ S is spatial scale (e.g. domain or model resolution). In its most general form, the blending height expresses the lowest level in the atmosphere where the surface heterogeneity is not felt by the atmosphere. In that case, the appropriate form of ~~$C_{v,b}$ Eq. 3~~ would take the field-averaged form

$$\underline{B(z) = \left| \frac{C_v(z)}{C_v(z=0)} \right|} \quad (4)$$

$C_v(z=0)$ would take the variable averaged at the surface over the entire heterogeneous domain, while ~~$C_{v,a}$~~ $C_v(z)$ would
510 be the ~~field taken~~ as a function of height and domain ~~while the scale is held constant~~. With this definition, we observe a local minima of ~~B~~ B inside the ABL which represents a blending zone, and a local maxima of ~~B~~ B in the entrainment zone corresponding to the entrainment processes which causes the atmospheric fields to be heterogeneous. This implies that the surface heterogeneity blends towards the top of the atmosphere ($z/z_i \approx 0.7$ for potential temperature), but entrainment processes reintroduce atmospheric heterogeneity at the top of the ABL.

515 ~~However, in~~ The general form can also be potentially extracted in space to be applied a blending distance used in plume dispersion measurements as introduced by Schulte et al. (2022). To do so, one would hold S and z constant and compute the blending distance by altering the locations in space x and y . In that case, it could take the form

$$\underline{B(x, y) = \left| \frac{C_v(x, y)}{C_v(x, y=0)} \right|} \quad (5)$$

where $C_v(x, y=0)$ could be the background variability.

520 In this case, however, we are interested in the height where the ~~where spatial scales blend together instead of the hypothetical~~
~~ease where the entire region is homogeneous~~ spatial scales (S) blend together. By comparing scales directly, we can study the
impacts of the heterogeneity on grid size of a regional or global model. Therefore, we define the blended zone to be where
the C_v of two scales are within 5% of each other. We found that the choice of threshold was not sensitive to the results of
the blended zone for thresholds between 2 and 10%. In effect, this method means that we consider scales to be blended if the
525 normalized variability of a given variable are approximately equal. In specific form, the blending definition used in this study
is

$$B_{S1 \rightarrow S2}(z|D) \equiv \left| \frac{C_{v,S1}(z)}{C_{v,S2}(z)} \right| \leq 0.05. \quad (6)$$

In Fig. 11, we show a time series of the blending height from the surface (normalized by z_i for the smaller scale) for the
scalars of potential temperature and specific humidity and the fluxes of heat and moisture for each of the scales. Because our
530 scales are nested, we analyze ~~at the heights the height~~ in which the local scales (alfalfa and fallow) blend into their respective
landscape scales (wet and dry) in Fig. 11a and 11b. We also can study where the landscape scales blend into the total LIAISE
regional scale in Fig. 11c and 11d. ~~In Fig. 11, we show a time series of the blending height from the surface (normalized by~~
 ~~z_i for the smaller scale) for the scalars of potential temperature and specific humidity and the fluxes of heat and moisture for~~
~~each of the scales. In general, we~~ We do not identify a strong diurnal cycle for these blending heights, and the lowest level of
535 blending depends on the selected variable.

We assume that the blending occurs first from the surface up into the atmosphere first from the local scales to the landscape
scales, and then from the landscape scales into the regional scale, so we use a bottom-up approach. The local scales blend into
the landscape scales within or closely above the surface layer. At the fallow scale, the moisture flux blends between ~~$z/z_i =$~~
~~0.3-0.4~~ $0.3 < z/z_i < 0.4$ in the morning, while all other fluxes blend within the surface layer (~~less than 0.15~~ $(z/z_i) < 0.15$).
540 This indicates that the fallow local scale is relatively similar to the rest of the dry landscape scales except in the moisture flux.
The alfalfa local scale blends at a higher height for potential temperature and heat flux than the moisture variables. Conversely,
in the morning, the blending height for moisture terms is higher than those of the heat terms. When we compare this result to
the flux profiles in Fig. 8, we observe that the wet landscape and alfalfa local scales, the moisture fluxes converge closer to the
surface than the heat fluxes, and that between the dry landscape and fallow local scales, the heat fluxes converge closer to the
545 surface than the moisture fluxes. This ~~could~~ might suggest that the scales mix closer to the surface for variables which are more
similar between scales; the dominant process for a given scale has a lower blending height.

Unlike the local scales which blend low in the ABL, the landscape scales remain different than the regional scale until the
top of the ABL. The scalars like potential temperature and specific humidity blend from ~~$z/z_i = 0.6-1.0$~~ $0.6 < z/z_i < 1.0$ in
the morning, while fluxes blend lower: heat flux blends in the surface layer and moisture flux increases over the day between
550 ~~$z/z_i = 0.2$ and 0.8~~ $0.2 < z/z_i < 0.8$.

In almost all cases, except for the alfalfa local scale which is characterized by near zero or negative heat flux, the heat flux
blends in the surface layer. This is likely because the heat flux is the dominant component of the buoyancy flux, which is

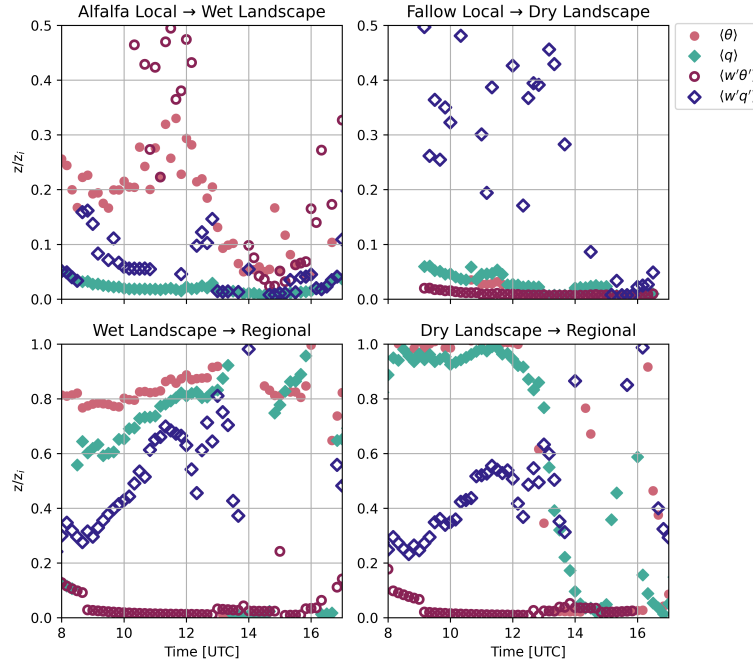


Figure 11. The surface blending height (~~from the surface~~) with respect to time for (a) the alfalfa local scale blending into the wet landscape scale, (b) the fallow local scale blending into the dry landscape scale, (c) the wet landscape scale blending into the LIAISE regional scale, and (d) the dry landscape scale blending into the LIAISE regional scale. The colors are the blending of the variable: potential temperature (pink), heat flux (brown), specific humidity (green) and moisture flux (blue).

controlling the mixing in this convective boundary layer case. However, the moisture flux does not blend at the same locations. This indicates that the mixing process is not physically the same between heat and moisture. It supports previous research that
555 suggests that there is dissimilarity in turbulent transport between heat and moisture fluxes (e.g. Huang et al. 2009). The scalar values do not mix until the top of the ABL in the morning, but in the afternoon when the domain becomes more convective, the ABL becomes better mixed in the scalars.

Another potential reason for the difference in blending heights between the heat and moisture variables is this is that the distributions of the specific humidity and moisture fluxes are more heterogeneous than those of the temperature. To illustrate
560 this, we consider a scale analysis. The mean mixed layer potential temperature ~ 300 K and perturbations from the mean are ~ 1 -2 K depending on the location in the mixed layer, so the $C_v \approx 0.5\%$. Conversely, specific humidity has a mixed-layer mean of ~ 10 g kg $^{-1}$ with perturbations of ~ 1 g kg $^{-1}$, so the $C_v \approx 10\%$. By normalizing the C_v in Eq. 3 by a reference C_v , the relative magnitude of the C_v is taken into account. However, even with this normalization, it still holds that small changes of humidity cause a more heterogeneous atmosphere in terms of humidity than small changes in temperature.

565 It is important to note not only that the blending differs based on the variable of interest, but the entrainment zone causes variables not to be blended. This is because entrainment ~~introduces air masses of different properties~~ rates are not uniform

across the spatial scales. The differences in entrainment introduces heterogeneity into the ABL from the top. It implies that although in the middle of the ABL, statistically, the surface is not directly felt, the process of entrainment still feels the surface, and the ABL itself is heterogeneous. This could be related to the presence of thermals preferentially in one region (e.g. dry landscape). The transport may not be statistically different within and outside of thermals, but strong updrafts could push up the ABL top leading to more entrainment. Thereby, like the surface, the entrainment zone “de-blends” the flow in heterogeneous areas. We show an example of this in Appendix BC.

5 Discussion

Surface heterogeneities can impact the ABL in a number of ways in both vertically and horizontally in the ABL. In this study, we use the realistic case from the LIAISE campaign and a combination of observational and a numerical experiment using LES. In order to combine the methods, we first discuss the dynamics of the ABL across the spatial scales in Section 5.1. In Section 5.2, we shift our focus to the implications for how sub-grid scale heterogeneity is handled in numerical models.

5.1 ABL Across Scales

At the local scales – the alfalfa and fallow fields – we find that the land-surface scale is not large enough to impact the entire depth of the ABL. There is high variation in z_i and characteristics like temperature and humidity, which indicates the presence of localized IBLs at this scale. From observations, there is a clear IBL at the alfalfa local scale based on the layered potential temperature profile of the radiosonde and the flux regime in the bottom half of the ABL. At the alfalfa local scale, the surface layer becomes stable, but it is topped by a convective boundary layer (Fig. 2). The LES is able to capture the stable layer at this scale as evident through the flux profiles (Fig. 8). At the fallow local scale, there is not a clear IBL from either the observations or the LES because it is relatively warmer than the domain. Finally, the peak variability in this length scale in the spectra of z_i indicates that IBLs are formed at this scale, but do not cross defining IBLs do not form at the landscape scale.

The wet and dry landscape scales are characterized by the differences between fields of the irrigated and non-irrigated areas of the LIAISE domain. From the LES, we find that the mean z_i of the wet landscape is at most 300 m lower than that of the dry landscape. The spectral analysis of z_i shows that it varies most within the landscape scale ($\Lambda_{z_i} \sim 800$ m). At the landscape scale, the variability in the height of the ABL is larger than the mean differences in the height of the ABL. This indicates that the local scales which make up the landscape scale are more variable within each landscape scale than between them. The local scales blend into the landscape scales within the surface layer of the ABL, so the impacts of individual fields do not impact the ABL above $z/z_i \sim 0.3$. In Fig. 10, we find that there is a gradual increase in z_i in a cross-section between the landscape scales, and TKE enhances the mixing in the dry landscape scale compared to the wet landscape scales. Finally, there is no evidence of secondary circulations within each landscape scale because the length scale of heterogeneity is smaller than the z_i , but there is indication of a circulation forming between the wet and dry landscape scales. This agrees with findings from Patton et al. (2005).

The regional scale is characterized by the heterogeneity between the wet and dry landscape scales. We might expect a secondary circulation to occur within this scale based on the scale of the heterogeneity and its intensity (Patton et al., 2005).
 600 In the LIAISE area, Lunel et al. (2024a) ~~captured secondary circulations~~ simulated a well defined secondary circulation with a mesoscale model; however, there is not a strong influence of the secondary circulation in the LES. There are a few possible reasons for this. ~~The first is This is because of the pattern of the background wind. Hechtel et al. (1990) ran an LES with a realistic land surface and found no secondary circulation, which they suspected was due to the high velocity in the domain. Avissar and Schmidt (1998) and Raasch and Harbusch (2001) found that a mean background wind greater than 2.5 reduces the~~
 605 ~~formation of secondary circulations if is not normal to the boundary~~ heterogeneity. In our case, ~~the wind is mainly westerly, while the boundary is curved. Additionally, because the pattern of the heterogeneity in this case~~ because the heterogeneity is relatively unstructured in the landscape scale, its impacts are not felt as strongly as if they were structured. Our study differed from that of Lunel et al. (2024a) mainly because of the scale and the unstructured (i.e. each field has a different flux regime) heterogeneity. In this study, we focused on ~~the extent of an ERA5 grid cell~~ a smaller spatial extent, while Lunel et al. (2024a)
 610 modeled all of Catalunya and found secondary circulations with length scales of ~ 100 km. Furthermore, they used a coupled model where the soil moisture in the irrigated fields was at field capacity, which exaggerated the differences between the wet and the dry landscapes compared with our study. In this study, we maintained the microscale heterogeneity that occurred within the landscape scale, which on a whole lessened the differences in surface fluxes between the wet and dry landscape scales. The second reason is the background wind. Hechtel et al. (1990) ran an LES with a realistic land surface and found
 615 no secondary circulation, which they suspected was due to the high velocity in the domain. Avissar and Schmidt (1998) and Raasch and Harbusch (2001) found that a mean background wind greater than 2.5 m s^{-1} reduces the formation of secondary circulations if is not normal to the boundary. In our case, the wind is mainly westerly, but the boundary is curved.

Unlike the landscape scales, the blending height from the surface in the regional scale occurs between ~~$z/z_i = 0.3$ and 0.8~~ $0.3 < z/z_i < 0.8$ in the mornings before the atmosphere is convective. During the afternoon convective period, the blending
 620 heights decrease below ~~$z/z_i = 0.2$~~ $0.2 z/z_i$ for potential temperature and the heat flux. However, moisture and moisture fluxes do not blend until near the top of the boundary layer even when the atmosphere has strong, convective mixing. Convective turbulence, which arises from the buoyancy flux, is responsible for controlling the blending height. Moreover, because the entrainment varies between the wet and dry landscapes, we observe that there is an “unblended” zone at the top of the ABL in the regional scale. This implies that although heterogeneity arises from the surface, its impacts are felt through the entire ABL.

625 5.2 Implications for Handling Sub-grid Heterogeneity

In our study, we focus on the variety of physical processes that control the dynamics of the ABL. Despite our focus on process understanding, the results of this study could have implications on how sub-grid scale heterogeneity is handled in regional scale weather models. Sub-grid scale surface heterogeneity is often handled either with the parameter aggregation approach or with the flux aggregation approach. In the parameter aggregation method, the land surface is linearly averaged over the
 630 heterogeneity. ~~Mangan et al. (2023a) and Mangan et al. (2023b)~~ Mangan et al. (2023a, b) use a parameter aggregation method to represent the LIAISE experiment. Conversely, in this study, we ~~explicitly resolve the surface in the LES~~ prescribe the surface

based on observations, which allows the atmosphere to mix out the impacts of the heterogeneity, which allows this approach to be a proxy flux aggregation approach.

Mangan et al. (2023a) found that the parameter aggregation over the regional and landscape scales re-created the dynamics of the ABL from the observations. This suggested that the regional ABL was formed through a combination of the land surface from both the wet and dry areas. In this study, where scales are able to interact in the atmosphere, we notice similar results: the difference in the z_i between the regional scale is comprised as a composite of the landscape scales, and its impacts are relatively linear. Individual fields have little impact on the regional scale; however, collectively, the relatively wet and dry landscape scales begin to impact the regional scale. More research needs to be done to quantify the influence of the altered ABL on surface fluxes, and how that should best be quantified in numerical models.

In these cases, the regional scale represents a single grid cell of a global model, and the selection of the landscape and local scales represents possible future model resolutions where the sources and strength of sub-grid scale heterogeneity differs. At the resolution of regional scale, flux aggregation occurs at ~~approximately~~ $z/z_i \sim \approx 0.5$, however, it varies depending both on the variable and the atmospheric stability. The differences in fluxes in the entrainment zone should be taken into account in order to better capture the impacts of the surface heterogeneity on the ABL. We use the landscape scales as a proxy for higher resolution models. We find that the differences between flux profiles and ABL height are more notable ~~between landscapes than between fields~~ within the landscape scales than between them. From the surface, the blending between the local and landscape scales occurs in the surface layer, so the aggregation occurring near the surface is more reasonable at this resolution.

While in this case we find that the blending height from the surface depends both on variable and spatial scale, further research should be done to investigate how generalizable this result is in both geographical location and season. We hypothesize that this multi-scaled approach is reasonable in other irrigated semi-arid regions because of typical irrigation patterns. However, as we mentioned in the formation of the LES experiments, the mesoscale forcing is vital for correctly capturing the correct mixing between the heterogeneous land surfaces. In regions with difference synoptic and mesoscale circulations, the influence of how the surface heterogeneity influences the blending in the ABL could vary.

655 **6 Conclusions**

By combining surface and upper air observations of mean and flux state variables of the ABL with a high resolution, realistic LES, we study the dynamics of the ABL. Particular emphasis is placed on how these dynamics are acting across different spatial scales driven by a very large surface heterogeneity with characteristic length scales. The observations show the presence of an IBL locally in an alfalfa field where buoyancy flux at the surface is solely driven by the moisture flux. In contrast, they show a prototypical convective ABL in the fallow field. We hypothesize that there are interactions between the irrigated and non-irrigated areas which influence the dynamics of the ABL. Our main findings are the following:

1. *How does the interaction between the spatial scales impact the spatial development and diurnal cycle of the ABLs in the LIAISE experiment?*

665 The local scales, which are characterized by individual fields, are driven by extreme surface fluxes ($\beta < 0.1$ and $\beta > 20$).
~~Internal boundary layers~~ IBLs form at this scale over the course of the day, but they do not persist at the larger scales. Because
of the relative size of the local scale (~ 100 m) compared to the z_i (~ 1000 m), the impact of the local scale on the total ABL is
relatively limited. Therefore, we find in both the model and observations a stable surface layer topped by a convective boundary
layer in the alfalfa local scale. At the landscape scales, the heterogeneity arises from individual fields within the irrigated or
670 non-irrigated areas. The variability of the ABL within the landscape scales is much larger than the differences among the scales,
therefore, our findings show that there is no IBL that forms within or between the landscape scales. From the LES numerical
experiments, both landscape scales (wet and dry) show a prototypical ABL, although buoyancy is weaker in the wet landscape
than the dry landscape. Finally, at the regional scale heterogeneity is formed by the contrast of irrigated and non-irrigated
agricultural fields. The regional ABL characteristics fall between the extremes of the two landscape scales, which could be a
675 function of the strong vertical mixing that arises from the dry landscape scale.

2. How do the scales of heterogeneity dynamically merge in the atmosphere in space and in height?

Based on spectral analysis of the LES results, we observe that the length scale of the ABL height follows that of the surface
fluxes. There is peak variability in ABL height in the mesoscale ($\Lambda_{z_i} \sim 800$ m) which relates to the landscape scale and
680 the microscale (~ 100 m) which confirms that IBLs are formed at the local scale. By analyzing the blending height from the
LES, we discover that the local scales blend into the landscape scales by $z/z_i = 0.3$ for scalars and turbulent fluxes under
convective conditions. The landscape scales blend into the regional scale by $z/z_i = 0.8$ for scalars turbulent fluxes under
convective conditions. The blending height depends on the variable of interest as well and the strength of the buoyancy of the
turbulence. ~~Because the strength of entrainment is~~ Generally, moisture variables blend higher in the ~~dry landscape than the~~
685 ~~wet landscape~~ atmosphere than temperature variables, because moisture is more heterogeneous in the ABL than temperature.
Because of surface heterogeneity, there is also spatial heterogeneity in entrainment fluxes, which leads to a second, unblended
layer in the entrainment zone above $0.8 z/z_i$. The role of entrainment fluxes on blending within the ABL should be taken into
account in weather models to better capture the impacts of surface heterogeneity on the ABL.

Increasing our understanding of how surface heterogeneity impacts the dynamics of the ABL in a realistic case is an impor-
690 tant step ~~in~~ towards understanding the full impacts of surface heterogeneity on the bi-directional land-atmosphere interactions.
As opposed to previous LES studies which created ABL scaling for heterogeneous surfaces, we apply a realistic land surface
and atmospheric conditions to understand how these concepts hold with realistic configuration of surface heterogeneity. In the
LIAISE domain, the local field scales mix into the landscape scales close to the surface, while the impacts of the landscape
scales are felt throughout the depth of the ABL and with a horizontal length scale ~ 800 m. Because of the patchy surface repre-
695 sentation and a maximum background wind of 2 m s^{-1} , the impacts of secondary circulations are not felt as clearly as previous
idealized LES studies suggest (e.g. Patton et al. 2005; van Heerwaarden and Vilà Guerau de Arellano 2008). Finally, by com-
bining observations with an LES case study, we ~~confirm that the increased buoyancy flux from the dry landscape influences the~~
~~state variables observed in the wet landscape~~ can test how well we can capture the observed ABL in a heterogeneous region.

700 We found that properly constraining the meso- and synoptic-scale forcing is vital for determining the influence of surface heterogeneity on the ABL.

Code and data availability. In-situ observations from the LIAISE field experiment can be found on the LIAISE catalog: <https://liaise.aeris-data.fr/>. The MicroHH LES code can be found at <https://github.com/microhh/microhh>, and its documentation can be found at <https://microhh.readthedocs.io/en/latest/index.html>. The statistics from the LES experiment as well as the input data is available for download at <https://doi.org/10.5281/zenodo.13379335>.

705 **Appendix A: ~~Validation of LES experiment~~Observed Boundary Layer Height**

Table A1. The average observed boundary-layer height (z_i) and internal boundary layer height (z_{IBL}) calculated from the radiosondes from the wet and dry landscape scales.

	Wet Landscape		Dry Landscape
<u>Time (UTC)</u>	<u>z_i (m)</u>	<u>z_{IBL} (m)</u>	<u>z_i (m)</u>
<u>8</u>	<u>268.51</u>	<u>202.02</u>	<u>595.00</u>
<u>10</u>	<u>425.59</u>	<u>217.39</u>	<u>843.67</u>
<u>12</u>	<u>631.70</u>	<u>148.37</u>	<u>1143.00</u>
<u>14</u>	<u>1236.36</u>	<u>143.90</u>	<u>1497.33</u>
<u>16</u>	<u>1029.53</u>	<u>130.65</u>	<u>1119.67</u>

Appendix B: Validation of LES Experiment

We performed sensitivity studies for this LES experiment with the large-scale forcing components. In Fig. B1 we show the results of the spatial means of potential temperature and specific humidity for the LES scales compared to the radiosondes with LIAISE observations. We expect the radiosondes to best represent the wet and dry landscape scales. The shading represents the standard deviation of the observations averaged over the LIAISE ~~golden-composite~~ days.

715 In our selected case, the LES captures the approximate ABL height compared to the radiosondes for both the wet and the dry landscapes. In the afternoon, there is a warm bias compared to the radiosondes at all scales, but moisture appears to be well captured. Furthermore, the spread between the wet and dry landscape scales in the model is less than with observations. This is likely due to the surface representation and the assumptions used as we were able to capture the observed wind using the observationally-driven large-scale forcing terms.

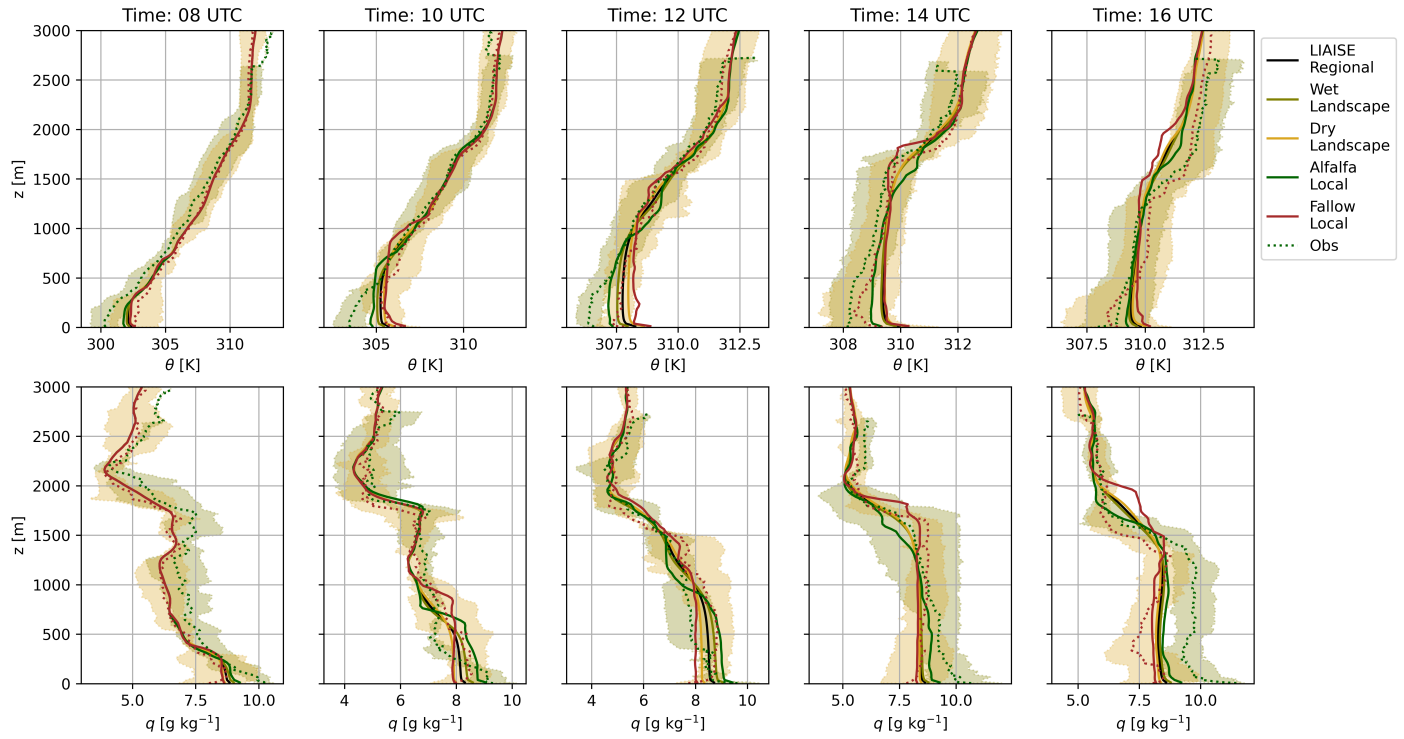


Figure B1. The composite LIAISE golden-composite day radiosondes (dotted line and shading) with the spatial averages of the potential temperature and specific humidity from the LES. The shading is the daily range in the observations as shown in Fig. 2. The colored solid line correspond to the different spatial scales.

Appendix C: Blending Height: Additional Results

Appendix D: **Blending Height**

Because blending height was computed spatially, we can observe the “blending region” in the ABL using a time-height figure. Fig. C1 shows an example of the “blended zone” from the wet landscape to the LIAISE regional scales for (a) potential temperature, (b) specific humidity, (c) heat flux, and (d) moisture flux. The gray indicates the blended zones (where $\left| \frac{C_{v,wet}}{C_{v,dry}} \right| < 0.05$), and white indicates the non-blended zones. The black and green lines indicate z_i of the regional and wet landscape scales respectively. The method of determining the blending height has errors when the C_v approaches zero, meaning the variable is homogeneous in space. For that reason, the method does not work well above the ABL.

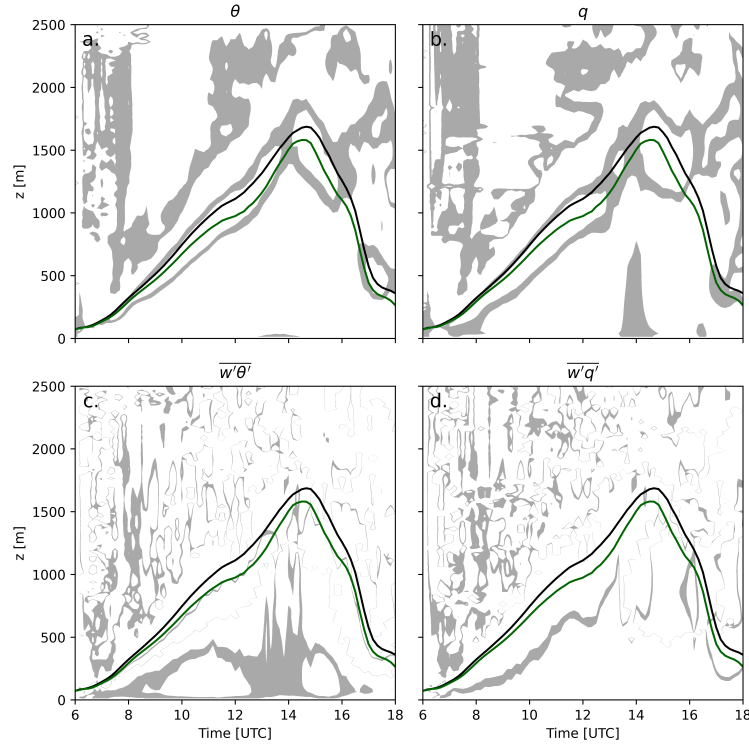


Figure C1. Time-height figures for blended variables between the wet landscape and the LIAISE regional scales. The gray colors indicate that the scales are blended at a certain time. The variable-variables are (a) potential temperature, (b) specific humidity, (c) heat flux and (d) moisture flux.

725 *Author contributions.* **MRM**: Conceptualization, Methodology, Formal analysis, Writing - original draft & preparation; **JV**: Conceptualiza-
tion, Supervision, Writing – review & editing; **BvS**: Methodology, Software, Writing – review & editing; **ML**: Data curation, Methodology;
GC: Data curation, Methodology; **OH**: Conceptualization, Supervision, Writing – review & editing

Competing interests. The authors declare that they have no conflict of interest.

730 *Acknowledgements.* We would like to thank the hosts, organizers and participants of the LIAISE campaign. Prof. Kyaw Tha Paw U and Dr.
Donold Lenschow provided interesting discussions which influenced sections of [this study](#). [We would also like to thank the three anonymous
reviewers and Dr. Dennis Baldocchi for their detailed feedback which greatly improved](#) this study.
This PhD project partly was supported by the appointment of Jordi Vilà-Guerau de Arellano as Chair of the Meteorology and Air Quality
Group of Wageningen University.

References

- Aguirre-Correa, F., de Arellano, J. V.-G., Ronda, R., Lobos-Roco, F., Suárez, F., and Hartogensis, O.: Midday Boundary-Layer Collapse in the Altiplano Desert: The Combined Effect of Advection and Subsidence, *Boundary-Layer Meteorol*, <https://doi.org/10.1007/s10546-023-00790-5>, 2023.
- Avisar, R. and Schmidt, T.: An Evaluation of the Scale at which Ground-Surface Heat Flux Patchiness Affects the Convective Boundary Layer Using Large-Eddy Simulations, *Journal of the Atmospheric Sciences*, 55, 2666–2689, [https://doi.org/10.1175/1520-0469\(1998\)055<2666:AEOTSA>2.0.CO;2](https://doi.org/10.1175/1520-0469(1998)055<2666:AEOTSA>2.0.CO;2), 1998.
- Beyrich, F. and Mengelkamp, H.-T.: Evaporation over a Heterogeneous Land Surface: EVA_GRIPS and the LITFASS-2003 Experiment—An Overview, *Boundary-Layer Meteorol*, 121, 5–32, <https://doi.org/10.1007/s10546-006-9079-z>, 2006.
- Boone, A., Bellvert, J., Best, M., Brooke, J., Canut-Rocafort, G., Cuxart, J., Hartogensis, O., e Moigne, P., Miró, J. R., Polcher, J., Price, J., Quintana Seguí, P., and Wooster, M.: Updates on the International Land Surface Interactions with the Atmosphere over the Iberian Semi-Arid Environment (LIAISE) Field Campaign, *GEWEX News*, 31, 17–21, 2021.
- Boone, A., Bellvert, J., Best, M., Brooke, J. K., Canut-Rocafort, G., Cuxart, J., Hartogensis, O., Moigne, P. L., Miró, J. R., Polcher, J., Price, J., Seguí, P. Q., Bech, J., Bezombes, Y., Branch, O., Cristóbal, J., Dassas, K., Fanise, P., Gibert, F., Goulas, Y., Groh, J., Hanus, J., Hmimina, G., Jarlan, L., Kim, E., Dantec, V. L., Page, M. L., Lohou, F., Lothon, M., Mangan, M. R., Martí, B., Martínez-Villagrasa, D., McGregor, J., Kerr-Munslow, A., Ouadi, N., Philibert, A., Quiros-Vargas, J., Rascher, U., Siegmann, B., Udina, M., Vial, A., Wrenger, B., Wulfmeyer, V., and Zribi, M.: The Land Surface Interactions with the Atmosphere over the Iberian Semi-Arid Environment (LIAISE) field campaign, *Journal of the European Meteorological Society*, 2, 100 007, <https://doi.org/10.1016/j.jemets.2025.100007>, 2025.
- Bou-Zeid, E., Anderson, W., Katul, G. G., and Mahrt, L.: The Persistent Challenge of Surface Heterogeneity in Boundary-Layer Meteorology: A Review, *Boundary-Layer Meteorol*, 177, 227–245, <https://doi.org/10.1007/s10546-020-00551-8>, 2020.
- Brilouet, P.-E., Lothon, M., Etienne, J.-C., Richard, P., Bony, S., Lernoult, J., Bellec, H., Vergez, G., Perrin, T., Delanoë, J., Jiang, T., Pouvesle, F., Lainard, C., Cluzeau, M., Guiraud, L., Medina, P., and Charoy, T.: The EUREC⁴A turbulence dataset derived from the SAFIRE ATR 42 aircraft, *Earth System Science Data*, 13, 3379–3398, <https://doi.org/10.5194/essd-13-3379-2021>, 2021.
- Brunsell, N. A., Mechem, D. B., and Anderson, M. C.: Surface heterogeneity impacts on boundary layer dynamics via energy balance partitioning, *Atmospheric Chemistry and Physics*, 11, 3403–3416, <https://doi.org/10.5194/acp-11-3403-2011>, 2011.
- Butterworth, B. J., Desai, A. R., Townsend, P. A., Petty, G. W., Andresen, C. G., Bertram, T. H., Kruger, E. L., Mineau, J. K., Olson, E. R., Paleri, S., Pertzborn, R. A., Pettersen, C., Stoy, P. C., Thom, J. E., Vermeuel, M. P., Wagner, T. J., Wright, D. B., Zheng, T., Metzger, S., Schwartz, M. D., Iglinski, T. J., Mauder, M., Speidel, J., Vogelmann, H., Wanner, L., Augustine, T. J., Brown, W. O. J., Oncley, S. P., Buban, M., Lee, T. R., Cleary, P., Durden, D. J., Florian, C. R., Lantz, K., Riihimaki, L. D., Sedlar, J., Meyers, T. P., Plummer, D. M., Guzman, E. R., Smith, E. N., Sührling, M., Turner, D. D., Wang, Z., White, L. D., and Wilczak, J. M.: Connecting Land–Atmosphere Interactions to Surface Heterogeneity in CHEESEHEAD19, *Bulletin of the American Meteorological Society*, 102, E421–E445, <https://doi.org/10.1175/BAMS-D-19-0346.1>, 2021.
- de Roode, S. R., Duynkerke, P. G., and Jonker, H. J. J.: Large-Eddy Simulation: How Large is Large Enough? in: *Journal of the Atmospheric Sciences Volume 61 Issue 4 (2004)*, 2004a.
- de Roode, S. R. d., Duynkerke, P. G., and Jonker, H. J. J.: Large-Eddy Simulation: How Large is Large Enough?, *Journal of the Atmospheric Sciences*, 2004b.
- Garratt, J. R.: The internal boundary layer — A review, *Boundary-Layer Meteorol*, 50, 171–203, <https://doi.org/10.1007/BF00120524>, 1990.

- 770 Hechtel, L. M., Stull, R. B., and Moeng, C.-H.: The Effects of Nonhomogeneous Surface Fluxes on the Convective Boundary Layer: A Case Study Using Large-Eddy Simulation, *Journal of the Atmospheric Sciences*, 47, 1721–1741, [https://doi.org/10.1175/1520-0469\(1990\)047<1721:TEONSF>2.0.CO;2](https://doi.org/10.1175/1520-0469(1990)047<1721:TEONSF>2.0.CO;2), 1990.
- Hoinka, K. P. and Castro, M. D.: The Iberian Peninsula thermal low, *Quarterly Journal of the Royal Meteorological Society*, 129, 1491–1511, <https://doi.org/10.1256/qj.01.189>, 2003.
- 775 Huang, H.-Y. and Margulis, S. A.: On the impact of surface heterogeneity on a realistic convective boundary layer, *Water Resources Research*, 45, <https://doi.org/10.1029/2008WR007175>, 2009.
- Huang, J., Lee, X., and Patton, E. G.: Dissimilarity of Scalar Transport in the Convective Boundary Layer in Inhomogeneous Landscapes, *Boundary-Layer Meteorol*, 130, 327–345, <https://doi.org/10.1007/s10546-009-9356-8>, 2009.
- Jiménez, M. A., Grau, A., Martínez-Villagrasa, D., and Cuxart, J.: Characterization of the marine-air intrusion *Marinada* in the eastern Ebro
- 780 sub-basin, *International Journal of Climatology*, 43, 7682–7699, 2023.
- Jonker, H. J. J., Duynkerke, P. G., and Cuijpers, J. W. M.: Mesoscale Fluctuations in Scalars Generated by Boundary Layer Convection, *Journal of the Atmospheric Sciences*, 1999.
- Kaimal, J. C. and Finnigan, J. J.: *Atmospheric boundary layer flows: their structure and measurement*, Oxford University Press, New York, ISBN 978-0-19-506239-7, 1994.
- 785 Lenschow, D. H. and Stankov, B. B.: Length Scales in the Convective Boundary Layer, *Journal of the Atmospheric Sciences*, 43, 1198–1209, [https://doi.org/10.1175/1520-0469\(1986\)043<1198:LSITCB>2.0.CO;2](https://doi.org/10.1175/1520-0469(1986)043<1198:LSITCB>2.0.CO;2), 1986.
- Liu, G., Sun, J., and Yin, L.: Turbulence Characteristics of the Shear-Free Convective Boundary Layer Driven by Heterogeneous Surface Heating, *Boundary-Layer Meteorol*, 140, 57–71, <https://doi.org/10.1007/s10546-011-9591-7>, 2011.
- Lunel, T., Boone, A. A., and Le Moigne, P.: Irrigation strongly influences near-surface conditions and induces breeze circulation: Observa-
- 790 tional and model-based evidence, *Quarterly Journal of the Royal Meteorological Society*, <https://doi.org/10.1002/qj.4736>, 2024a.
- Lunel, T., Jimenez, M. A., Cuxart, J., Martinez-Villagrasa, D., Boone, A., and Le Moigne, P.: The *marinada* fall wind in the eastern Ebro sub-basin: physical mechanisms and role of the sea, orography and irrigation, *Atmospheric Chemistry and Physics*, 24, 7637–7666, <https://doi.org/10.5194/acp-24-7637-2024>, publisher: Copernicus GmbH, 2024b.
- Mahrt, L.: Surface Heterogeneity and Vertical Structure of the Boundary Layer, *Boundary-Layer Meteorology*, 96, 33–62,
- 795 <https://doi.org/10.1023/A:1002482332477>, 2000.
- Mangan, M. R., Oldroyd, H. J., Paw U, K. T., Clay, J. M., Drake, S. A., Kelley, J., and Suvočarev, K.: Integrated Quadrant Analysis: A New Method for Analyzing Turbulent Coherent Structures, *Boundary-Layer Meteorol*, <https://doi.org/10.1007/s10546-022-00694-w>, 2022.
- Mangan, M. R., Hartogensis, O., Boone, A., Branch, O., Canut, G., Cuxart, J., de Boer, H. J., Le Page, M., Martínez-Villagrasa, D., Miró, J. R., Price, J., and Vilà-Guerau de Arellano, J.: The surface-boundary layer connection across spatial scales of irrigation-driven thermal
- 800 heterogeneity: An integrated data and modeling study of the LIAISE field campaign, *Agricultural and Forest Meteorology*, 335, 109 452, <https://doi.org/10.1016/j.agrformet.2023.109452>, 2023a.
- Mangan, M. R., Hartogensis, O., van Heerwaarden, C., and Vilà-Guerau de Arellano, J.: Evapotranspiration controls across spatial scales of heterogeneity, *Quarterly Journal of the Royal Meteorological Society*, 149, 2696–2718, <https://doi.org/10.1002/qj.4527>, 2023b.
- Maronga, B., Moene, A. F., van Dinter, D., Raasch, S., Bosveld, F. C., and Gioli, B.: Derivation of Structure Parameters of Temperature
- 805 and Humidity in the Convective Boundary Layer from Large-Eddy Simulations and Implications for the Interpretation of Scintillometer Observations, *Boundary-Layer Meteorol*, 148, 1–30, <https://doi.org/10.1007/s10546-013-9801-6>, 2013.

- Ouwensloot, H. G., Vilà-Guerau de Arellano, J., van Heerwaarden, C. C., Ganzeveld, L. N., Krol, M. C., and Lelieveld, J.: On the segregation of chemical species in a clear boundary layer over heterogeneous land surfaces, *Atmospheric Chemistry and Physics*, 11, 10 681–10 704, <https://doi.org/10.5194/acp-11-10681-2011>, 2011.
- 810 Patton, E. G., Sullivan, P. P., and Moeng, C.-H.: The Influence of Idealized Heterogeneity on Wet and Dry Planetary Boundary Layers Coupled to the Land Surface, *J. Atmos. Sci.*, 62, 2078–2097, <https://doi.org/10.1175/JAS3465.1>, 2005.
- Philibert, A., Lathon, M., Amestoy, J., Meslin, P.-Y., Derrien, S., Bezombes, Y., Campistron, B., Lohou, F., Vial, A., Canut-Rocafort, G., Reuder, J., and Brooke, J. K.: CALOTRITON: a convective boundary layer height estimation algorithm from ultra-high-frequency (UHF) wind profiler data, *Atmospheric Measurement Techniques*, 17, 1679–1701, <https://doi.org/10.5194/amt-17-1679-2024>, 2024.
- 815 Pino, D., Jonker, H. J. J., Arellano, J. V.-G. d., and Dosio, A.: Role of Shear and the Inversion Strength During Sunset Turbulence Over Land: Characteristic Length Scales, *Boundary-Layer Meteorol*, 121, 537–556, <https://doi.org/10.1007/s10546-006-9080-6>, 2006.
- Raasch, S. and Harbusch, G.: An Analysis Of Secondary Circulations And Their Effects Caused By Small-Scale Surface Inhomogeneities Using Large-Eddy Simulation, *Boundary-Layer Meteorology*, 101, 31–59, <https://doi.org/10.1023/A:1019297504109>, 2001.
- Rappin, E., Mahmood, R., Nair, U., Pielke, R. A., Brown, W., Oncley, S., Wurman, J., Kosiba, K., Kaulfus, A., Phillips, C., Lachenmeier, E.,
- 820 Santanello, J., Kim, E., and Lawston-Parker, P.: The Great Plains Irrigation Experiment (GRAINEX), *Bulletin of the American Meteorological Society*, 102, E1756–E1785, <https://doi.org/10.1175/BAMS-D-20-0041.1>, 2021.
- Schulte, R. B., van Zanten, M. C., van Stratum, B. J. H., and Vilà-Guerau de Arellano, J.: Assessing the representativity of NH₃ measurements influenced by boundary-layer dynamics and the turbulent dispersion of a nearby emission source, *Atmospheric Chemistry and Physics*, 22, 8241–8257, <https://doi.org/10.5194/acp-22-8241-2022>, publisher: Copernicus GmbH, 2022.
- 825 Shen, S. and Leclerc, M. Y.: How large must surface inhomogeneities be before they influence the convective boundary layer structure? A case study, *Quarterly Journal of the Royal Meteorological Society*, 121, 1209–1228, <https://doi.org/https://doi.org/10.1002/qj.49712152603>, 1995.
- Stull, R. B.: *An Introduction of Boundary Layer Meteorology*, Kluwer, Dordrecht, 1988.
- Stull, R. B. and Driedonks, A. G. M.: Applications of the transilient turbulence parameterization to atmospheric boundary-layer simulations,
- 830 *Boundary-Layer Meteorol*, 40, 209–239, <https://doi.org/10.1007/BF00117449>, 1987.
- van Heerwaarden, C. C. and Vilà Guerau de Arellano, J.: Relative Humidity as an Indicator for Cloud Formation over Heterogeneous Land Surfaces, *Journal of the Atmospheric Sciences*, 65, 3263–3277, <https://doi.org/10.1175/2008JAS2591.1>, 2008.
- van Heerwaarden, C. C., Vilà-Guerau de Arellano, J., Moene, A. F., and Holtslag, A. A. M.: Interactions between dry-air entrainment, surface evaporation and convective boundary-layer development, *Quarterly Journal of the Royal Meteorological Society*, 135, 1277–1291,
- 835 <https://doi.org/10.1002/qj.431>, 2009.
- van Heerwaarden, C. C., Mellado, J. P., and Lozar, A. D.: Scaling Laws for the Heterogeneously Heated Free Convective Boundary Layer, *Journal of Atmospheric Sciences*, 71, 3975–4000, <https://doi.org/10.1175/JAS-D-13-0383.1>, 2014.
- van Heerwaarden, C. C., van Stratum, B. J. H., Heus, T., Gibbs, J. A., Fedorovich, E., and Mellado, J. P.: MicroHH 1.0: a computational fluid dynamics code for direct numerical simulation and large-eddy simulation of atmospheric boundary layer flows, *Geoscientific Model*
- 840 *Development*, 10, 3145–3165, <https://doi.org/https://doi.org/10.5194/gmd-10-3145-2017>, 2017.
- van Stratum, B. J. H., van Heerwaarden, C. C., and Vilà-Guerau de Arellano, J.: The Benefits and Challenges of Downscaling a Global Reanalysis With Doubly-Periodic Large-Eddy Simulations, *Journal of Advances in Modeling Earth Systems*, 15, e2023MS003 750, <https://doi.org/10.1029/2023MS003750>, 2023.